

1914 SEASON

D. V. GRAVES	Coach
EMILE HANNON	Assistant Coach
CHARLES A. LONG	Captain
W. M. HUMPHREY	Manager

PLAYERS

Ends: H. B. Love, Lowndes Morton, C. J. Cargile, Henry Iazard . . . **Tackles:** Basil Burks, James Gibbons, T. D. Boman, Bully VandeGraaff . . . **Guards:** H. C. Jones, C. S. Saul, J. W. Hicks . . . **Centers:** H. H. Barrett, A. M. Miller . . . **Backs:** Cecil Bates, Charles A. Long, William Johnston, W. L. Harsh, G. R. Harsh, Charles Joplin.



OCTOBER 3: Alabama defeated Howard on the campus by the score of 13 to 0. Ragged line play by Alabama and an aggressive Howard team kept down the score.

Morton, shifted from end to halfback, scored the first touchdown in the third quarter after two 15 yard runs by Bill Harsh and VandeGraaff had placed the ball in scoring position. Bill Harsh scored the final touchdown following runs by Joplin, VandeGraaff and Long.

Glass and Robinson, backs, and Weaver, end, were the stars for Howard.



OCTOBER 10: Alabama scored at will in defeating Birmingham College by the score of 54 to 0 on the campus. Bill Harsh scored three touchdowns, Joplin made two and Johnston, Love and VandeGraaff one each. Vandegraaff scored six goals after touchdowns.

The playing of Bill Johnston was the feature of the game for Alabama while Jones, Cummings and Capps starred for Birmingham.



OCTOBER 17: The Thin Red Line of Alabama furnished the biggest surprise of the season by defeating the highly favored Yellow Jackets of Georgia Tech in Birmingham by the score of 13 to 0. And Alabama's victory was a convincing one as the line charged low and hard and the tackling was excellent.

Alabama received the kickoff, was held for downs and VandeGraaff punted a long one deep into Tech territory. Thompson fumbled and Morton recovered for Alabama. Tech intercepted a pass, made a first down and fumbled again with Alabama recovering. A pass from Joplin to Morton carried to Tech's 20. After two line plays failed, Joplin passed to Morton for a touchdown. Goal was missed when the kickout was bad.

In the second period, Tech outrushed Alabama and the ball moved from one end of the field to the other. Alabama's defense tightened when her goal was threatened. On one play, VandeGraaff gained 20 yards but stumbled with a clear field ahead.

In the third period, Tech started with a rush, Fielder gaining 35 yards. A forward pass carried to Alabama's 10 where Tech lost the ball on downs and VandeGraaff kicked out of danger. Tech drove within striking distance again but Long intercepted a pass.

In the fourth quarter, Joplin passed to Love for 35 yards to Tech's 3 yard line. After two line plays failed to gain, Joplin passed to Love for the score and VandeGraaff kicked goal.

Alabama gained 235 yards by rushing to Tech's 170.

VandeGraaff, Barnett and Burks were the line stars for Alabama while Joplin, Harsh and Long were outstanding in the backfield. The playing of Fielder featured for Tech.

Georgia Tech—Ends: Goree, Beard, Center, Napp. **Tackles:** Alexander, Carpenter. **Guards:** Lang, Sneed, Mauck, Churcher. **Center:** Bryan. **Backs:** Thompson, Patten, Fielder, Spence, Morrison.

Alabama—Ends: Love, Morton. **Tackles:** VandeGraaff, Burks. **Guards:** Hicks, Jones. **Center:** Barnett. **Backs:** Joplin, Harsh, Long, Johnston.



OCTOBER 24: Charlie Joplin, Alabama's fine quarterback, who threw two touchdown passes against Georgia Tech, was ruled ineligible by President Riggs of the Southern Conference before the

game with Tennessee in Knoxville when he refused to sign an affidavit that he had not played professional baseball. To even up matters, "Red" Rainey, star halfback for Tennessee, was out with injuries. Tennessee won by the score of 17 to 7.

In the first quarter, Tennessee rushed the ball to the Alabama 40 yard line where quarterback May threw a long pass to Cameron, halfback, for a touchdown. Later in the quarter, Tennessee marched to the Alabama 22 yard line where May passed to Carroll for the score. Carroll kicked both goals.

In the second quarter, Captain Kelly of Tennessee fumbled, the ball was recovered by VandeGraaff who ran 50 yards for a touchdown and kicked goal.

A few minutes later, Cameron kicked a field goal from the Alabama 25 yard line to make the score: Tennessee 17, Alabama 7.

VandeGraaff consistently punted for 50 to 60 yards and was the star of the game for Alabama. For Tennessee, Cameron and Lindsey were the offensive stars and Vowell was a stand out at end.

☆ ☆ ☆

OCTOBER 31: Alabama, playing on the campus, defeated what was said to be Tulane's best team in five years by the score of 58 to 0. VandeGraaff made one touchdown, kicked a field goal from the 30 yard line and seven goals after touchdowns. Other touchdowns were made by Bill Harsh (3), Griff Harsh, Love, Long and Saul. "Sunbeam" Saul, a guard, intercepted a pass for his score.

Harsh and VandeGraaff were Alabama's stars as were Oakes, end, Woodward, tackle, and Georges, back, for Tulane.

☆ ☆ ☆

NOVEMBER 7: Alabama had beaten Georgia Tech 13 to 0, while Tech had defeated Sewanee 20 to 0 and, as a result, things looked decidedly favorable towards Alabama defeating the Sewanee Tigers in their annual game in Birmingham. Alabama had defeated Sewanee but once and that was in 1894. Here was a game that Alabama just couldn't lose, thought her supporters. And this attitude doubtless affected the players and Sewanee won again by the score of 18 to 0 by simply outplaying the Crimson in every department from beginning to end.

Sewanee received the kickoff, made two first downs and marched steadily down the field where Long intercepted a pass. G. Harsh then fumbled and Sewanee recovered. Alabama held and Clark punted to G. Harsh, who returned 10 yards. Long fumbled and Sewanee recovered on Alabama's 15. Three plays later, Parker, end, who alternated in the backfield on offense, scored through the line.

Alabama then received, made one first down and punted. Tolley circled end for 25 yards but Sewanee fumbled and Alabama recovered. A few minutes later, VandeGraaff's attempted place kick from the 35 yard line was short.

In the third period, Bates returned the kickoff 30 yards. Two plays made 9 yards but Harsh fumbled and Sewanee recovered. With Parker and Tolley advancing the ball, Parker scored nine plays later on a line plunge.

Alabama received, made two first downs and VandeGraaff punted 60 yards to the Sewanee 5 yard line. Clarke punted back on the first play. Bill Harsh made a first down on Sewanee's 25 but the Tigers held and the ball went over. Alabama held and Parker punted 40 yards. Long and Bill Harsh made a first down but Lonk then fumbled and Sewanee recovered in midfield. After Fort circled end for 30 yards, Parker scored the final touchdown of the day.

Alabama just didn't do anything right. The tackling was very poor while the ball carriers had practically no interference.

VandeGraaff was the big star for Alabama with his punting and backing up of the line. Parker, Dobbins and Tolley featured for Sewanee.

Sewanee—Ends: Parker, McIsaacs. **Tackles:** McCormick, Dobbins. **Guards:** Leftwich, Harrison. **Centers:** Scott, Rucker. **Backs:** Sellers, Tolley, Fort, Talley, Edmunds, Clark, Palmer.

Alabama—Ends: Love, Izard, Cargile, Morton, Gresham. **Tackles:** VandeGraaff, Burks. **Guards:** Hicks, Saul, Jones, Gibbons, Boman. **Center:** Barnett, Miller. **Backs:** Griff Harsh, Bill Harsh, Long, Neville, Johnston, Bates.

☆ ☆ ☆

NOVEMBER 13: Alabama defeated the University of Chattanooga on a muddy field on the campus by the score of 63 to 0. Touchdowns were scored by Love (3), Griff Harsh (2), Bill Harsh (2) and

VandeGraaff (2). VandeGraaff kicked nine goals after touchdowns.

Hicks and Love were the defensive stars for Alabama.



NOVEMBER 26: Alabama and Mississippi A. & M. met in Birmingham on Thanksgiving Day and Alabama lost by the score of 9 to 0.

In the first quarter, Mississippi marched to the Alabama 25 yard line where Alabama held for three downs but Jones, quarterback, drop kicked for three points.

Later in the first quarter, with the ball in Mississippi's possession on the Alabama 35, MacArthur fullback, on fourth down completed a pass to Gaddy over the goal line. The two Alabama defenders appeared to be playing the man instead of the ball.

In the first quarter, on a fake place kick formation, Bill Harsh passed to Morton for 30 yards to the 10 yard line where Alabama lost the ball on a fumble. Alabama was within scoring distance again in the first half but VandeGraaff's try for goal was wide.

Kimball of Mississippi was the best back seen in Birmingham during the year. MacArthur was also effective.

Captain Long once returned a punt 50 yards to the Mississippi 30 yard line but he was tackled with a clear field ahead. Love played an excellent game at end while VandeGraaff stood out by his defensive play and punting.



DECEMBER 2: The Carlisle Indians scored one touchdown in each of the first three periods to defeat Alabama by the score of 20 to 3. Alabama was powerless to stop the varied attack of the Indians who used fake punts, cross bucks and forward passes to advantage.

The Indians received and drove straight down the field for a touchdown with Pratt scoring on a line plunge.

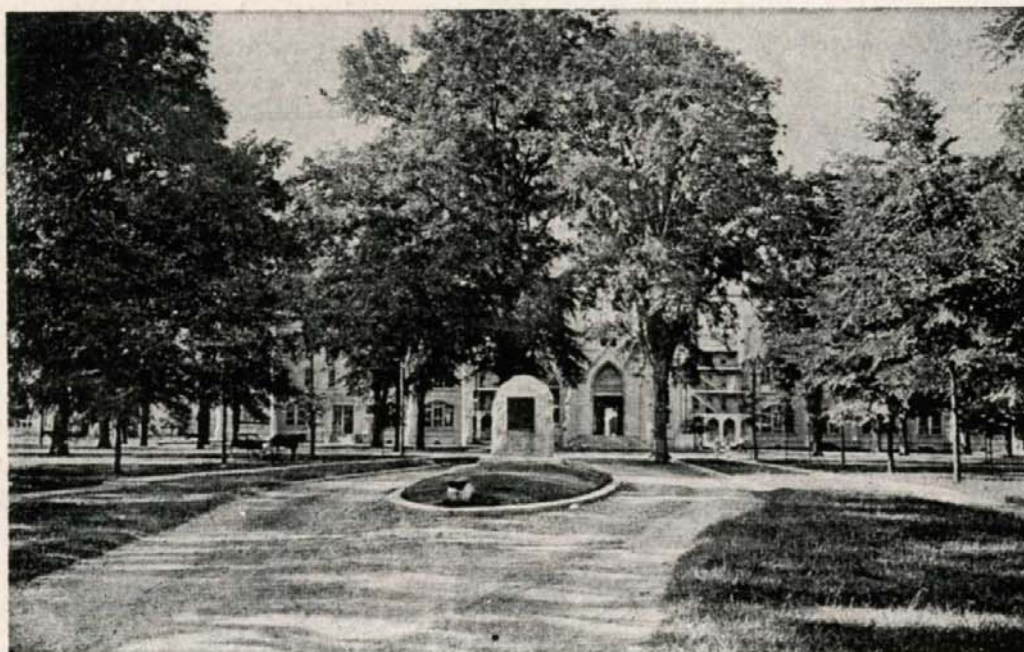
Similar tactics in the second period resulted in another touchdown by Pratt.

The third touchdown was made by Johnston in the third period on a line play climaxing a drive of more than 50 yards.

In the fourth quarter, VandeGraaff ran 56 yards on an off tackle play. After two plays lost, VandeGraaff kicked a field goal from the Indians 35 yard line.

VandeGraaff was complimented by Wahoo, the Indian Coach and 1907 All American, for his fine punting, place kicking, running and backing up the line, Wahoo stating that VandeGraaff could make any team in the country. Love, Morton and Bill Harsh also starred.

For the Indians, Pratt, halfback, Wallett, end, and Martel, tackle, were the outstanding players.



THE YELLOW HAMMER BOULDER