

# **WISCONSIN WRESTLING**



# **RECORD BOOK**

## Badger All-Americans (by year)

1929	Selmer Swenson, 2nd Ferdinand Hammer, 3rd Leland Heywood, 3rd	Hwt 155 145	<b>1985</b>	<b>Jim Jordan, 1st</b> John Giura, 7th	<b>134</b> 142
1941	John Roberts, 2nd Earl Hager, 4th	165 175	<b>1986</b>	<b>Jim Jordan, 1st</b>	<b>134</b>
1954	Bob Konovsky, 2nd	Hwt	1987	Jeff Jordan, 4th Paul McShane, 4th	150 158
1955	Bob Konovsky, 3rd	Hwt	1988	Jeff Jordan, 4th Kyle Richards, 4th Dave Lee, 6th	150 190 167
1956	Bob Konovsky, 2nd	Hwt	<b>1989</b>	<b>Dave Lee, 1st</b> Todd Seiler, 4th	<b>167</b> 190
1962	Roger Pillath, 2nd Ron Paar, 3rd	Hwt 177	1990	Matt Demaray, 7th	150
1963	Ron Paar, 3rd	191	<b>1991</b>	<b>Matt Demaray, 1st</b>	<b>150</b>
1964	Ron Paar, 5th	191	<b>1992</b>	<b>Matt Demaray, 1st</b> Dan Flood, 7th Matt Hanutke, 7th	<b>150</b> 126 118
1965	Dan Pernat, 2nd	191	1993	Keith Davison, 3rd Matt Hanutke, 6th	190 118
1966	Elmer Beale, 4th	160	1994	Keith Davison, 5th Matt Hanutke, 5th	190 118
1967	Mike Gluck, 2nd	145	1995	Matt Hanutke, 4th Jeff Walter, 4th	118 Hwt
1973	Rick Lawinger, 2nd	150	<b>1996</b>	<b>Jeff Walter, 1st</b> Eric Jetton, 3rd	<b>Hwt</b> 126
<b>1974</b>	<b>Rick Lawinger, 1st</b>	<b>142</b>	1997	Eric Jetton, 3rd Kevin Wilmot, 4th	126 167
1975	Lee Kemp, 2nd Laurent Soucie, 3rd Jack Reinwand, 4th	150 190 126	1998	Eric Jetton, 2nd Donny Pritzlaff, 6th	126 150
<b>1976</b>	<b>Jack Reinwand, 1st</b> <b>Lee Kemp, 1st</b> <b>Pat Christenson, 1st</b>	<b>126</b> <b>158</b> <b>167</b>	1999	Donny Pritzlaff, 5th	165
<b>1977</b>	<b>Jim Haines, 1st</b> <b>Lee Kemp, 1st</b> Steve Lawinger, 6th	<b>118</b> <b>158</b> 167	<b>2000</b>	<b>Donny Pritzlaff, 1st</b> Cory Wallman, 4th Kole Clauson, 7th	<b>165</b> 157 174
<b>1978</b>	<b>Lee Kemp, 1st</b> <b>Ron Jeidy, 1st</b> Andy Rein, 2nd Jim Hanson, 4th	<b>158</b> <b>190</b> 142 126	<b>2001</b>	<b>Donny Pritzlaff, 1st</b> Grant Hoerr, 4th	<b>165</b> 141
1979	Dave Evans, 3rd Mitch Hull, 4th Mike Terry, 5th Andy Rein, 6th	158 190 150 142	2002	Kevin Black, 4th	133
<b>1980</b>	<b>Andy Rein, 1st</b> Dave Evans, 3rd Mitch Hull, 6th Mike Terry, 6th Mark Zimmer, 8th	<b>150</b> 167 190 158 118	2003	Tony Black, 5th	125
1981	John Ianuzzi, 5th	126	2005	Tom Clum, 3rd Ryan Flaherty, 8th	133 197
1982	Mark Schmitz, 6th	150	2006	Tom Clum, 5th Craig Henning, 8th	133 157
1983	John Giura, 8th	142	2007	Craig Henning, 2nd Tyler Turner, 6th	157 149
1984	Mark Schmitz, 2nd John Giura, 3rd Rudy Isom, 6th Jim Jordan, 6th Dennis Limmex, 6th	158 142 167 134 177	2008	Dallas Herbst, 6th Kyle Massey, 8th	197 Hwt
			2009	Andrew Howe, 2nd Kyle Ruschell, 3rd Zach Tanelli, 4th	165 149 141

### THREE-TIME ALL-AMERICANS

Bob Kovnosky (1954, 55, 56)  
Ron Paar (1962, 63, 64)  
Andy Rein (1978, 79, 80)  
John Giura (1983, 84, 85)  
Jim Jordan (1984, 85, 86)  
Matt Demaray (1990, 91, 92)  
Eric Jetton (1996, 97, 98)  
Andrew Howe (2009, 10, 11)

### FOUR-TIME ALL-AMERICANS

Lee Kemp (1975, 76, 77, 78)  
Matt Hanutke (1992, 93, 94, 95)  
Donny Pritzlaff (1998, 99, 00, 01)

<b>2010</b>	Tyler Graff, 5th Kyle Ruschell, 4th <b>Andrew Howe, 1st</b> Trevor Brandvold, 6th	133 149 <b>165</b> 197
<b>2011</b>	Tyler Graff, 5th Andrew Howe, 3rd Travis Rutt, 7th Trevor Brandvold, 4th	133 165 184 197
<b>2012</b>	Ben Jordan, 7th	165

**Bold** Denotes NCAA Champion

## 65 ALL-AMERICANS

## 102 ALL-AMERICA HONORS

# All-Americans (by weight)

<b>118</b>		<b>6</b>	1998	Donny Pritzlaff	6th	<b>175</b>		<b>1</b>
1977	Jim Haines	1st				1941	Earl Hager	4th
1980	Mark Zimmer	8th	<b>155</b>		<b>1</b>			
1992	Matt Hanutke	7th	1929	Ferdinand Hammer	3rd	<b>177</b>		<b>2</b>
1993	Matt Hanutke	6th	<b>157</b>		<b>3</b>	1962	Ron Paar	3rd
1994	Matt Hanutke	5th	2000	Cory Wallman	4th	1984	Dennis Limmex	6th
1995	Matt Hanutke	4th	2006	Craig Henning	8th	<b>184</b>		<b>1</b>
			2007	Craig Henning	2nd	2011	Travis Rutt	7th
<b>125</b>		<b>1</b>	<b>158</b>		<b>7</b>	<b>190</b>		<b>8</b>
2003	Tony Black	5th	1976	Lee Kemp	1st	1975	Laurent Soucie	3rd
<b>126</b>		<b>8</b>	1977	Lee Kemp	1st	1978	Ron Jeidy	1st
1975	Jack Reinwand	4th	1978	Lee Kemp	1st	1979	Mitch Hull	4th
1976	Jack Reinwand	1st	1979	Dave Evans	3rd	1980	Mitch Hull	6th
1978	Jim Hanson	4th	1980	Mike Terry	6th	1988	Kyle Richards	4th
1981	John Ianuzzi	5th	1984	Mark Schmitz	2nd	1989	Todd Seiler	4th
1992	Dan Flood	7th	1987	Paul McShane	4th	1993	Keith Davison	3rd
1996	Eric Jetton	3rd	<b>160</b>		<b>1</b>	1994	Keith Davison	5th
1997	Eric Jetton	3rd	1966	Elmer Beale	4th	<b>191</b>		<b>3</b>
1998	Eric Jetton	2nd	<b>165</b>		<b>7</b>	1963	Ron Paar	3rd
<b>133</b>		<b>5</b>	1941	John Roberts	2nd	1964	Ron Paar	5th
2002	Kevin Black	4th	1999	Donny Pritzlaff	5th	1965	Dan Pernat	2nd
2005	Tom Clum	3rd	2000	Donny Pritzlaff	1st	<b>197</b>		<b>4</b>
2006	Tom Clum	5th	2001	Donny Pritzlaff	1st	2005	Ryan Flaherty	8th
2010	Tyler Graff	5th	2009	Andrew Howe	2nd	2008	Dallas Herbst	6th
2011	Tyler Graff	5th	2010	Andrew Howe	1st	2010	Trevor Brandvold	6th
<b>134</b>		<b>3</b>	2011	Andrew Howe	3rd	2011	Trevor Brandvold	4th
1984	Jim Jordan	6th	2012	Ben Jordan	7th	<b>Hwt</b>		<b>8</b>
1985	Jim Jordan	1st	<b>167</b>		<b>7</b>	1929	Selmer Swenson	2nd
1986	Jim Jordan	1st	1976	Pat Christenson	1st	1954	Bob Konovsky	2nd
<b>141</b>		<b>2</b>	1977	Steve Lawinger	6th	1955	Bob Konovsky	3rd
2001	Grant Hoerr	4th	1980	Dave Evans	3rd	1956	Bob Konovsky	2nd
2009	Zach Tanelli	4th	1984	Rudy Isom	6th	1962	Roger Phillath	2nd
<b>142</b>		<b>6</b>	1988	Dave Lee	6th	1995	Jeff Walter	4th
1974	Rick Lawinger	1st	1989	Dave Lee	1st	1996	Jeff Walter	1st
1978	Andy Rein	2nd	1997	Kevin Wilmot	4th	2008	Kyle Massey	8th
1979	Andy Rein	6th	<b>174</b>		<b>1</b>	<b>TOTAL</b>		<b>101</b>
1983	John Giura	8th	2000	Kole Clauson	7th			
1984	John Giura	3rd						
1985	John Giura	7th						
<b>145</b>		<b>2</b>						
1929	Leland Heywood	3rd						
1967	Mike Gluck	2nd						
<b>149</b>		<b>3</b>						
2007	Tyler Turner	6th						
2009	Kyle Ruschell	3rd						
2010	Kyle Ruschell	4th						
<b>150</b>		<b>11</b>						
1973	Rick Lawinger	2nd						
1975	Lee Kemp	2nd						
1979	Mike Terry	5th						
1980	Andy Rein	1st						
1982	Mark Schmitz	6th						
1987	Jeff Jordan	4th						
1988	Jeff Jordan	4th						
1990	Matt Demaray	7th						
1991	Matt Demaray	1st						
1992	Matt Demaray	1st						

## UW coaches by winning percentage

Coach	Yrs	W	L	T	Pct.	Big Ten*	NCAA*
E.B. Nolte (1913)	1	1	0	0	1.000	6th	---
Fred Schlatter (1914-15)	2	3	0	1	.875	2nd	---
Russ Hellickson (1983-86)	4	70	22	1	.758	2nd	6th
Duane Kleven (1971-82)	12	132	46	5	.735	2nd	4th
John Roberts (1943)	1	4	2	0	.667	9th	---
Andy Rein (1987-93)	7	81	41	3	.659	2nd	7th
<b>Barry Davis (1994-present)</b>	<b>18</b>	<b>188</b>	<b>136</b>	<b>11</b>	<b>.578</b>	<b>2nd</b>	<b>4th</b>
George Martin (1936-42, 46-70)	32	182	163	12	.521	4th	6th
Joe Steinauer (1919-20)	2	2	2	0	.500	---	---
George Hitchcock (1921-33)	13	28	36	1	.432	2nd	5th
Frank Jordan (1944-45)	2	1	5	1	.214	3rd	---
Art Knott (1916-17)	2	1	5	0	.167	6th	---
Paul Gerling (1934-35)	2	1	14	0	.067	8th	---

\*Career-best finish

# NCAA Champions

## Rick Lawinger

1974..... 142 lbs.

Rick Lawinger has the distinction of being Wisconsin's first NCAA champion. In 1974, Lawinger boasted a whopping 39-1 record and took home the second of his two All-America awards and the second of his two Big Ten titles en route to being named an NWCA All-Star. In 1973, Lawinger earned the bronze medal at the World University Games in freestyle.

## Jack Reinwald

1976..... 126 lbs.

An NCAA title holder and two-time All-America selection, Jack Reinwald also was a great wrestler on the national and international levels. He took home bronze at the 1977 World Championships in freestyle, as well as bronze (1978) and silver (1979) at the World Cup of Freestyle. In addition, Reinwald was a 1976 NWCA All-Star.

## Pat Christenson

1976..... 167 lbs.

In 1976, Pat Christenson won an NCAA title, earned All-America honors, was named an NWCA All-Star and was awarded the Big Ten Medal of Honor. His 32 career falls are tied for third most in UW history, and his 14 in the 1975-76 season are tied for sixth most in a single season.

## Lee Kemp

1976, 77, 78 ..... 174 lbs.

Three-time NCAA champion Lee Kemp sits atop UW's record book in three categories—single-season falls (18), career falls (47) and winning percentage (.957). Kemp, who also was a 1980 Olympian, won the World Cup of Freestyle in 1979, 1980, 1981 and 1982; the Pan American Games in freestyle in 1979 and 1983; and the World Championships in freestyle in 1978, 1979 and 1982.

## Jim Haines

1977..... 118 lbs.

Jim Haines completed his Badger career with a national championship and an All-America award. An active member in national and international competition, Haines was a 1976 Olympian, won the gold medal at the 1977 and 1978 World Cup of Freestyle and took home silver at the 1975 Pan American Games, the 1979 World Championships in freestyle and the 1979 Tbilisi Tournament.

## Ron Jeidy

1978..... 190 lbs.

Ron Jeidy closed out his senior season by winning an NCAA championship in 1978, the same year in which he earned an All-America nod and a Big Ten title. Just the year before, he competed in the World University games in freestyle.

## Andy Rein

1980 ..... 150 lbs.

The 1979-80 season proved to be a good one for Andy Rein, as he went a perfect 40-0 en route to the national title. Four years later, Rein went on to earn the silver medal at the Olympic Games. In addition to being a two-time All-American and two-time Big Ten champion, Rein took home gold at the 1979 Pan American Games in freestyle and at the 1983 Tbilisi Tournament.

## Jim Jordan

1985, 86 ..... 134 lbs.

Two-time NCAA champion Jim Jordan finished his career with 156 wins, the most in school history. His 49 victories in 1985-86 also set the Wisconsin single-season record. Among his many accomplishments, Jordan was a three-time All-American, a two-time Big Ten titlist and a 1985 NWCA All-Star.

## Dave Lee

1989..... 167 lbs.

Dave Lee was a two-time All-American and won a national title in 1989. He racked up two Big Ten championships in addition to being named an NWCA All-Star in 1988. Lee's resume is extra impressive considering he only lettered two seasons while at Wisconsin.

## Matt Demaray

1991, 92..... 150 lbs.

Matt Demaray, a two-time national champion, three-time All-American and two-time Big Ten champion, is one of three Badgers to have an undefeated season (42-0 in 1990-91). He also racked up 150 triumphs in his career, putting him in second place all-time at UW. In 1992, Demaray was awarded the Big Ten Medal of Honor, and the following year he was named Academic All-Big Ten.

## Jeff Walter

1996..... Hwt.

Jeff Walter finished his Badger career with a national championship at heavyweight in 1996. Walter was a two-time All-American and a four-time Academic All-Big Ten selection. A 1996 NWCA All-Star, Walter finished seventh on UW's all-time falls list with 29, 14 of which came in 1995-96, tying him for sixth on the single-season record list.

## Donny Pritzlaff

2000, 01 ..... 165 lbs.

A two-time NCAA title holder, Donny Pritzlaff boasted a career record of 135-16 (.894), putting him second all-time in winning percentage at Wisconsin. He earned All-America status four times in addition to claiming three Big Ten titles and being named an NWCA All-star in 2001. Pritzlaff was a junior world champion in 1998 and was a member of the United States National Team in 2002-03.

## Andrew Howe

2010 ..... 165 lbs.

Howe, a two-time All-American, capped off a perfect season with a conference and NCAA title. Howe defeated Penn State's Dan Vallimont, 9-3, for the 2010 NCAA Division I Championship title at 165 lbs. He compiled a 37-0 record, including four wins by pin, two by tech fall and 13 by major decision. He is just the fourth Badger to go undefeated in a single season.

# Honors And Awards

## NCAA Post-Graduate Scholarship

1981 Dave Goodspeed  
1985 John Giura

## Pan American Games (Freestyle)

1971 Russ Hellickson, 198, Gold  
1975 Jim Haines, 114.5, Silver  
Russ Hellickson, 220, Gold  
1979 Russ Hellickson, 220, Gold  
Lee Kemp, 163, Gold  
Andy Rein, 149.5, Gold  
1983 Lee Kemp, 163, Gold

## World Championships (Freestyle)

1971 Russ Hellickson, 198, Bronze  
1975 Jim Haines, 114.5  
Russ Hellickson, 198  
1977 Jack Reinwand, 125.5, Bronze  
Laurent Soucie, 198  
1978 Jim Haines, 114.5  
Lee Kemp, 163, Gold  
1979 Jim Haines, 114.5, Silver  
Lee Kemp, 163, Gold  
Laurent Soucie, 198  
Russ Hellickson, 220, Silver  
1981 Andy Rein, 149.5  
Lee Kemp, 163, Bronze  
1982 Lee Kemp, 163, Gold  
Mitch Hull, 198  
1989 John Giura, 149.5  
1993 Matt Demaray, 149.5  
2006 Donny Pritzlaff, 163, Bronze

## World Championships (Greco-Roman)

1977 Mitch Hull, 198  
1985 Mike Houck, 198, Gold

## World University Games (Freestyle)

1973 Rick Lawinger, 149.5, Bronze  
1977 Ron Jeidy, 198  
1981 Mitch Hull, 198, Bronze

## Junior World Championships (Freestyle)

2009 Andrew Howe, 163.5, Bronze

## Junior World Team Members (on current roster)

## Tbilisi Tournament

1972 Russ Hellickson, 198  
1974 Russ Hellickson, 198, Gold  
1977 Laurent Soucie, 198  
1978 Jim Haines, 114.5  
Craig Horswill, 136.5

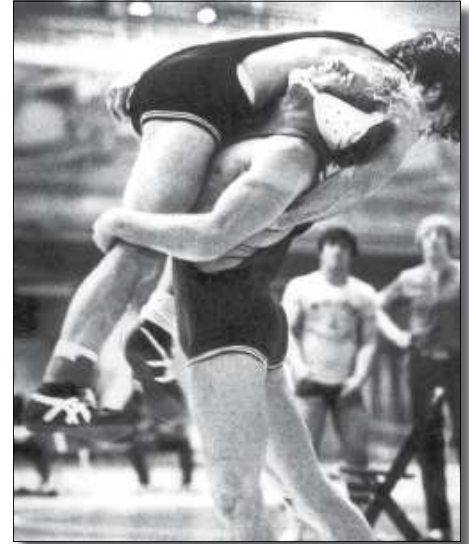
Laurent Soucie, 198, Silver  
1979 Jim Haines, 114.5, Silver  
Laurent Soucie, 198, Silver  
1981 Andy Rein, 149.5  
1983 Andy Rein, 149.5, Gold  
Mitch Hull, 198, Bronze  
1984 Lee Kemp, 163  
Mitch Hull, 198

## World Cup of Freestyle

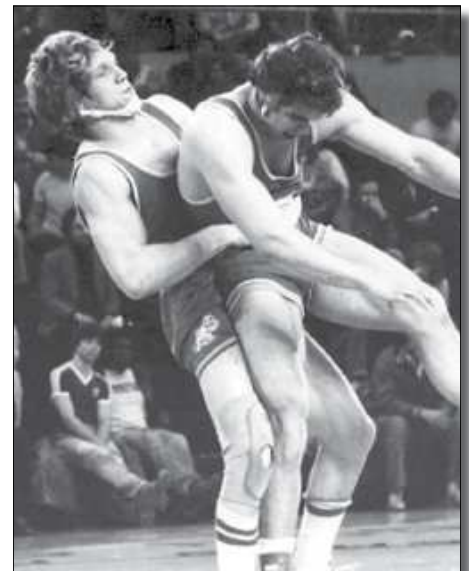
1973 Russ Hellickson, 220, Silver  
1974 Jim Haines, 114.5  
Pete Leiskau, 198  
1977 Jim Haines, 114.5, Gold  
Jack Reinwand, 125.5, Silver  
1978 Jim Haines, 114.5, Gold  
1978 Jack Reinwand, 125.5, Bronze  
Laurent Soucie, 198, Silver  
Russ Hellickson, 220, Gold  
1979 Jack Reinwand, 125.5, Silver  
Lee Kemp, 163, Gold  
1980 Lee Kemp, 163, Gold  
1981 Lee Kemp, 163, Gold  
1982 Lee Kemp, 163, Gold  
Andy Rein, 149.5, Silver  
1983 Mitch Hull, 198  
1984 Lee Kemp, 163  
1991 John Giura, 149.5  
1993 Matt Demaray, 149.5

## NWCA All-Stars

1974 Rick Lawinger, 142  
1976 Jack Reinwand, 126  
Lee Kemp, 150  
Pat Christensen, 167  
1977 Lee Kemp, 158  
1978 Jim Hanson, 126  
Lee Kemp, 150  
1979 Jim Hanson, 126  
Mitch Hull, 190  
1980 Andy Rein, 150  
Dave Evans, 167  
1982 Mark Schmitz, 150  
1984 John Giura, 142  
1985 Jim Jordan, 142  
1988 Dave Lee, 167  
1991 Matt Demaray, 150  
1992 Matt Demaray, 158  
1996 Jeff Walter, Hwt.  
1997 Eric Jetton, 126  
1998 Eric Jetton, 126  
2001 Donny Pritzlaff, 165  
2007 Craig Henning, 157  
2008 Kyle Massey, Hwt.



Jack Reinwand was a 1976 NCAA Champion and a bronze medalist at the 1977 World Championships. He also medaled three different years at the World Cup of Freestyle



Mitch Hull achieved international success by competing at the Greco-Roman World Championships in 1977, the World Cup of Freestyle in 1983 and the Tbilisi Tournament in 1984.

## Big Ten Champions (by year)

1914	Art Knott	135
1915	Ward Freeman	175
1917	W.J. Babcock	135
1922	Ed Templin	145
1923	Ed Templin	145
1924	Ed Templin	145
	Bob Holmes	135
1925	Lisle Zodtner	155
1926	Lisle Zodtner	155
1927	Louis Smitz	115
1929	Ferdinand Hammer	155
1938	Larry Lederman	145
1941	John Roberts	165
1942	John Roberts	175
1944	Ed Dzirbik	136
1948	Clarence Self	165
1950	Don Ryan	157
1951	Don Ryan	157
1952	Don Ryan	157
1954	Bob Konovsky	Hwt
1955	Bob Konovsky	Hwt
1956	Bob Konovsky	Hwt
1959	Jim Innis	147
1960	Fred Rittschof	115
1962	Roger Pillath	Hwt
1964	Roger Pillath	Hwt
1966	Elmer Beale	157
1968	Mike Gluck	145
1973	Rick Lawinger	150
	Ed Vatch	167
1974	Rick Lawinger	142
1975	Laurent Soucie	190
	Ed Vatch	177
1976	Lee Kemp	158
	Gary Sommer	Hwt
1977	Lee Kemp	158
1978	Lee Kemp	158
	Andy Rein	142
	Ron Jeidy	190
1979	Mitch Hull	190
1980	Andy Rein	150
	Mitch Hull	190
	Dave Evans	167
1982	Mark Schmitz	150
1985	Jim Jordan	134
1986	Jim Jordan	134
1987	Paul McShane	158
1988	Dave Lee	167
	Jeff Jordan	150
1989	Dave Lee	167
1991	Matt Demaray	150
1992	Matt Demaray	150
1993	Dan Spilde	142
1994	Keith Davison	190
	Matt Hanutke	118
1997	Eric Jetton	126
	Kevin Wilmot	167
1998	Eric Jetton	126
1999	Donny Pritzlaff	165
2000	Donny Pritzlaff	165
2001	Donny Pritzlaff	165
2004	Tom Clum	125
2006	Tom Clum	133
2009	Andrew Howe	165
2010	Andrew Howe	165
2010	Trevor Brandvold	197
2011	Andrew Howe	165
2011	Trevor Brandvold	197

## Big Ten Champions (by weight)

<b>115</b>		<b>2</b>
1927	Louis Smitz	
1960	Fred Rittschof	
<b>118</b>		<b>1</b>
1994	Matt Hanutke	
<b>125</b>		<b>1</b>
2004	Tom Clum	
<b>126</b>		<b>2</b>
1997	Eric Jetton	
1998	Eric Jetton	
<b>133</b>		<b>1</b>
2006	Tom Clum	
<b>134</b>		<b>2</b>
1985	Jim Jordan	
1986	Jim Jordan	
<b>135</b>		<b>3</b>
1914	Art Knott	
1917	W.J. Babcock	
1924	Bob Holmes	
<b>136</b>		<b>1</b>
1944	Ed Dzirbik	
<b>142</b>		<b>3</b>
1974	Rick Lawinger	
1978	Andy Rein	
1993	Dan Spilde	
<b>145</b>		<b>5</b>
1922	Ed Templin	
1923	Ed Templin	
1924	Ed Templin	
1938	Larry Lederman	
1968	Mike Gluck	
<b>147</b>		<b>1</b>
1959	Jim Innis	
<b>150</b>		<b>6</b>
1973	Rick Lawinger	
1980	Andy Rein	
1982	Mark Schmitz	
1988	Jeff Jordan	
1991	Matt Demaray	
1992	Matt Demaray	
<b>155</b>		<b>3</b>
1925	Lisle Zodtner	
1926	Lisle Zodtner	
1929	Ferdinand Hammer	
<b>155</b>		<b>3</b>
1950	Don Ryan	
1951	Don Ryan	
1952	Don Ryan	
<b>157</b>		<b>1</b>
1966	Elmer Beale	
<b>158</b>		<b>4</b>
1976	Lee Kemp	

1977	Lee Kemp	
1978	Lee Kemp	
1987	Paul McShane	
<b>165</b>		<b>8</b>
1941	John Roberts	
1948	Clarence Self	
1999	Donny Pritzlaff	
1999	Donny Pritzlaff	
2000	Donny Pritzlaff	
2009	Andrew Howe	
2010	Andrew Howe	
2011	Andrew Howe	
<b>167</b>		<b>5</b>
1973	Ed Vatch	
1980	Dave Evans	
1988	Dave Lee	
1989	Dave Lee	
1997	Kevin Wilmot	
<b>175</b>		<b>2</b>
1915	Ward Freeman	
1942	John Roberts	
<b>177</b>		<b>1</b>
1975	Ed Vatch	
<b>190</b>		<b>5</b>
1975	Laurent Soucie	
1978	Ron Jeidy	
1979	Mitch Hull	
1980	Mitch Hull	
1994	Keith Davison	
<b>197</b>		<b>2</b>
2010	Trevor Brandvold	
2011	Trevor Brandvold	
<b>Hwt</b>		<b>6</b>
1954	Bob Konovsky	
1955	Bob Konovsky	
1956	Bob Konovsky	
1962	Roger Pillath	
1964	Roger Pillath	
1976	Gary Sommer	
<b>TOTAL</b>		<b>68</b>

## Big Ten Medal of Honor

1944	Ed Dzirbik
1956	Bob Konovsky
1968	Mike Gluck
1976	Pat Christenson
1981	Dave Goodspeed
1992	Matt Demaray

## Big Ten Freshman of the Year

1990	Keith Davison
1992	Jeff Walter
2009	Andrew Howe

## Academic All-Big Ten

1984–85	Gene Spellman	2004–05	Brady Reinke	Mike Metzger	
1985–86	John Giura		Lee Kraemer	Drew Hammen	
1987–88	Mark Clayton		Zach Menne	Erik Senescu	
	Dan Evensen	2005-06	Brady Reinke	2008-09	Mike Felling
	Tom Evensen		Lee Kraemer	Drew Hammen	
	Brian Krasowski		Zach Menne	Justin Peterson	
1988–89	Dan Evensen	2006-07	Mike Metzger	Erik Senescu	
	Tom Evensen		Drew Hammen	2009-10	Drew Hammen
	Brian Krasowski		Mike Metzger	2010-11	Tom Kelliher
1989–90	Scott Drabenstadt		Justin Peterson	2010-11	John Prezzia
	Dan Evensen		Erik Senescu		Tom Kelliher
	Dan Kittleson	2007-08	Dan Sneider	2011-12	Thomas Glenn
	Brian Krasowski		Tyler Turner		Tom Kelliher
1990–91	Charlie Irick		Collin Cudd		Scott Liegel
	Jon Kelly		Dan Sneider		
1991–92	Matt Abad				
	John Harms				
	Charlie Irick				

## UW Year-by-Year Big Ten Championships Finish

	<i>Year</i>	<i>Place</i>	<i>Points/# of champs</i>	<i>Year</i>	<i>Place</i>	<i>Points/# of champs</i>
	1914	2nd	13 points/1	1974	4th	66 points/1
	1928	4th	No points listed/0	1975	2nd	85.5 points/2
1992–93	1935	T8th	1 point/0	1976	3rd	54 points/2
	1938	T4th	5 points/1	1977	3rd	61.25/1
	1939	T7th	1 point/0	1978	2nd	94 points/3
1993–94	1940	7th	2 points/0	1979	2nd	90.5 points/1
	1941	7th	7 points/1	1980	2nd	80.75 points/3
	1942	T6th	6 points/1	1981	3rd	42.75 points/0
1994–95	1943	9th	3 points/0	1982	3rd	44.25 points/1
	1944	4th	7 points/1	1983	6th	60 points/0
	1945	9th	4 points/0	1984	4th	93.25 points/0
	1946	10th	1 point/0	1985	2nd	105.25/1
1995–96	1947	7th	5 points/0	1986	2nd	95 points/1
	1948	7th	7 points/1	1987	2nd	121.5 points/1
	1949	8th	5 points/0	1988	4th	87 points/2
	1950	T6th	7 points/1	1989	7th	53 points/1
1996–97	1951	T6th	8 points/1	1990	7th	47 points/0
	1952	T5th	14 points/1	1991	4th	78.75 points//1
	1953	10th	0 points/0	1992	2nd	104 points/1
	1954	5th	10 points/1	1993	6th	71.25 points/1
1997–98	1955	4th	33 points/1	1994	--	--/2
	1956	7th	26 points/1	1995	7th	50 points/0
	1957	8th	14 points/0	1996	8th	55 points/0
1999–00	1958	9th	4 points/0	1997	7th	55 points/2
2000–01	1959	6th	18 points/1	1998	5th	65.5 points/1
	1960	10th	0 points/1	1999	6th	59.5 points/1
2001–02	1961	9th	11 points/0	2000	9th	48 points/1
	1962	4th	31 points/1	2001	6th	75 points/1
2002–03	1963	5th	23 points/0	2002	9th	50 points/0
	1964	T5th	28 points/1	2003	9th	71.5 points/0
	1965	T9th	0 points/0	2004	7th	85 points/1
	1966	4th	41 points/1	2005	T5th	89 points/0
	1967	6th	21 points/0	2006	7th	76.5 points/1
2003–04	1968	6th	26 points/1	2007	2nd	100.5 points/0
	1969	6th	19 points/0	2008	6th	85.5 points/0
	1970	7th	16 points/0	2009	4th	88.0 points/1
	1971	5th	25 points/0	2010	3rd	109 points/2
	1972	9th	14 points/0	2011	4th	103.5 points/2
	1973	3rd	59.5 points/2	2012	12th	9 points/0

# The History of Badger Wrestling

**1911**—The Wisconsin wrestling program is established.

**1912**—The Badgers tie Chicago in their first dual meet.

**1913**—The Badgers win their first dual meet, defeating Chicago 2-0.

**1924**—Ed Templin (145 lbs.) becomes Wisconsin's first three-time Big Ten champion. Don Ryan (1950–52), Bob Konovsky (1954–56) and Lee Kemp (1976–78) later accomplish the feat.

**1952**—A 23-5 victory over Iowa gives Wisconsin the 100th victory in its history.

**1956**—Heavyweight Bob Konovsky places second in the nation to become UW's first three-time All-American.

**1962**—Wisconsin finishes sixth at the NCAA championships, beginning a string of 32 consecutive seasons placing at nationals.

**1964**—Wisconsin hosts its first Big Ten championships.

**1968**—Wisconsin earns the 200th win in school history with a 21-10 win over Illinois State.

**1970**—Duane Kleven is named Wisconsin's new head coach following the drowning death of head coach George Martin. In two stints, covering 32 years, Martin amassed the most wins in school history.

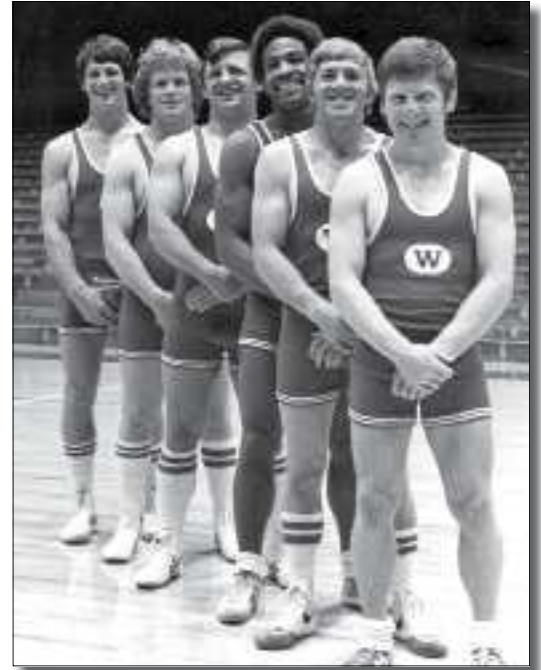
His 181 career victories include fifth-place (1941) and sixth-place (1962) NCAA finishes.

**1974**—Rick Lawinger (142) becomes Wisconsin's first NCAA champion, defeating Oklahoma State's Steve Randall, 8-2. He finishes the campaign with a 39-1 record.

**1976**—A school-record three NCAA champions help the Badgers place fourth nationally, their best-ever finish. Lee Kemp (158) wins the first of his three NCAA titles. Jack Reinwand (126) and Pat Christenson (167) are the other champions. Former UW wrestlers Russ Hellickson (220) and Jim Haines (114.5) represent the U.S. at the Olympics. Hellickson wins the silver medal.

**1977**—Kemp (158) and Haines (118) win individual NCAA titles and the Badgers finish sixth in the team race. For Kemp, it's his second straight title. Wisconsin hosts the Big Ten championships. School victory No. 300 comes against Michigan.

**1978**—Wisconsin places second and fourth at the Big Ten and NCAA championships, respectively. Kemp wraps up a spectacular career by winning his third consecutive NCAA title at 158 pounds. His career record: 143-6-1. Ron Jeidy (190) joins Kemp as an NCAA champion.

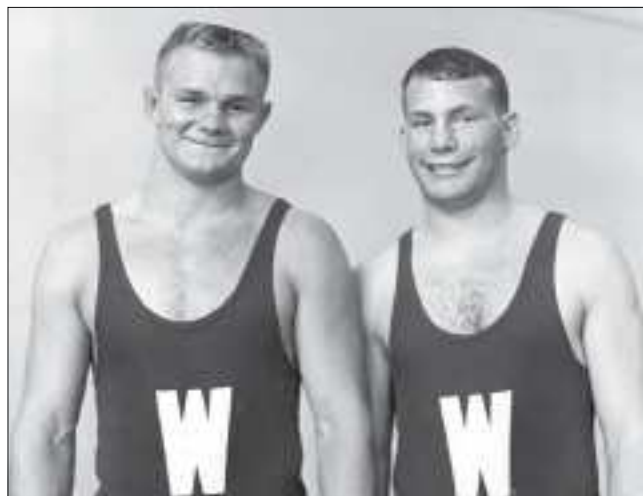
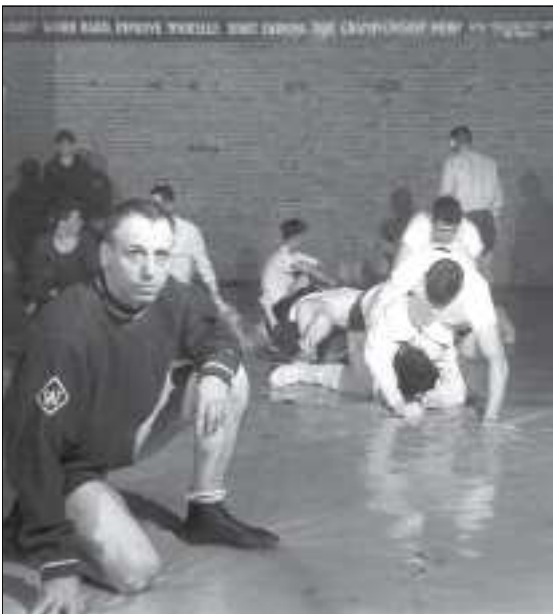


The 1970s was a good decade for Wisconsin wrestling. Wisconsin had six NCAA champions during this decade and they are all pictured here. From left to right is Ron Jeidy (1978, 190 lbs.), Pat Christenson (1976, 167 lbs.), Rick Lawinger (142 lbs., 1974), Lee Kemp (1976-77-78, 158 lbs.), Jack Reinwand (1976, 126 lbs.) and Jim Haines (1977, 118 lbs.)

**1980**—Future UW coach Andy Rein claims the NCAA title (150 lbs.) to lead a school-record five All-Americans. Three Badgers – Rein, Dave Evans (167) and Mitch Hull (190) – win Big Ten titles. Kemp and Hellickson are members of the Olympic freestyle team.

**1981**—Wisconsin hosts the Big Ten championships.

**1982**—Duane Kleven resigns following the 1981–82 season. In nine of his 12



Far Left: George Martin coached the Badgers for 32 years, making him the longest tenured coach at Wisconsin. He started at Wisconsin in 1936 and coached until 1942. He returned again in 1946 and was at the helm until his death in 1970. Martin accumulated 182 wins, the most of any head coach, during his 32-year tenure.

Left: Rick Heinzelman (left) and Mike Gluck (right) both wrestled at Wisconsin from 1967-1968. Gluck earned All-America honors in 1967 when he finished second at 145 lbs.



**ABOVE:** Keith Davison was the Big Ten Freshman of the Year in 1990. He went on to become a two-time All-American after placing third at 190 lbs. at the 1993 NCAA Championships and fifth the following year.

**LEFT:** Jim Jordan captured his first of two NCAA titles during the 1985 season. He wrestled at 134 lbs. and still holds the career record for most wins with 156, and the season record for most wins with 49 during the 1985-86 season. Jim's brother, Jeff, (not pictured) also wrestled at Wisconsin and was a two-time All-American. Jim's son Ben joins the Badgers as a freshman on the 2008-09 squad.

seasons, Kleven's teams finished among the top three in the Big Ten. His teams amassed six top-10 national finishes, including a school-best fourth-place mark in 1976. Former head coach George Martin is inducted posthumously into the National Wrestling Hall of Fame.

**1983**—Russ Hellickson replaces Kleven as head coach. In his four-year tenure, Hellickson amasses 70 wins, including three 20-win seasons.

**1984**—Wisconsin sets a school record with 22 dual-meet victories. Five All-Americans contribute to a sixth-place finish at the NCAA championships. Andy Rein (149.5) wins a silver medal at the Olympics.

**1985**—The Badgers win 21 matches and finish second in the Big Ten. Jim Jordan (134 lbs.) wins the first of his two NCAA crowns. The Badgers beat Illinois, 31-12, for the school's 400th win.

**1986**—Jordan defends his NCAA title at 134 lbs. Hellickson coaches the UW to its third straight 20-win season.

**1987**—Andy Rein becomes UW's 14th head coach, replacing Hellickson. He is named Rookie Coach of the Year by Amateur Wrestling News after guiding the Badgers to 15 wins and a runner-up finish at the Big Ten championships held in Madison. In his seven years, Rein totals 69 wins and six top-15 NCAA finishes.

**1989**—Dave Lee (167) becomes the Badgers' first NCAA champion since Jim Jordan in 1986.

**1990**—Keith Davison is the Big Ten co-Freshman of the Year.

**1991**—Matt Demaray becomes Wisconsin's 10th NCAA champion and the fourth to go undefeated. His 42-0 record includes a win at the NWCA All-Star Meet in Philadel-

phia. He also becomes Wisconsin's first Big Ten Wrestler of the Year, an award he shares with Illinois' Jon Llewellyn and Minnesota's Marty Morgan.

**1992**—Demaray joins Jim Jordan and Kemp as Wisconsin's only repeat NCAA champions. He concludes his career ranked second at the UW with 150 victories. Dan Flood (126) and Matt Hanutke (118) also earn All-America status as the Badgers finish seventh nationally. Wisconsin hosts the Big Ten championships. Jeff Walter is the Big Ten Freshman of the Year and Andy Rein is the conference coach of the year.

**1993**—Senior Dan Spilde (142) becomes the Badgers' 52nd Big Ten champion. He finishes his career with 99 victories. Junior Keith Davison (3rd, 190) and sophomore Matt Hanutke (6th, 118) earn All-America honors. Davison reaches the top of the national rankings in January after winning 17 of his first 18 matches. An 18-12 win against Navy gives Wisconsin its 500th all-time victory.

**1994**—Barry Davis becomes the 15th head coach in Wisconsin wrestling history. Senior Keith Davison (190) and junior Matt Hanutke (118) each win Big Ten titles and place fifth at the NCAA championships. Seven UW wrestlers qualify for nationals.

**1995**—Matt Hanutke finishes his career as the second Badger (Lee Kemp was the other) to earn four All-America honors.

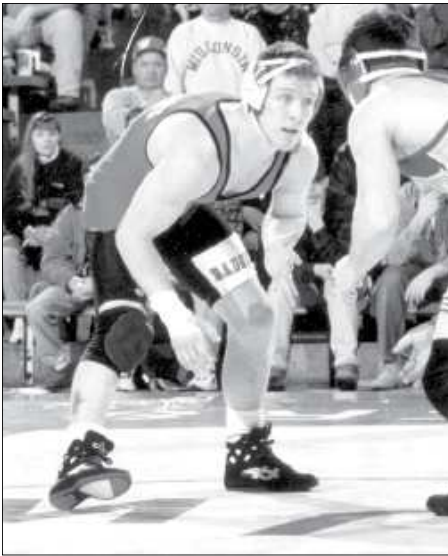


The tradition continued in the 1980s. Pictured here is Andy Rein (bottom row left), who was a 1980 NCAA champion, Steve Kruchowski, Lee Kemp, Mitch Hull, a two-time All-American and former head coach Russ Hellickson. Two-time All-Americans John Guira and Mark Schmitz are pictured from left to right in the back row.

He finished seventh, sixth, fifth and fourth from his freshman year to his senior season, respectively, at the NCAA championships. Jeff Walter is Wisconsin's first All-American heavyweight since Roger Pillath in 1962.

**1996**—Jeff Walter becomes the 11th NCAA individual champion at Wisconsin by winning the first heavyweight title in school history. Eric Jetton finishes third at 126 pounds at nationals for his first All-America honor.

**1997**—Badgers Eric Jetton (126) and Kevin Wilmot (167) are crowned Big Ten champions, advancing to the NCAA cham-



Eric Jetton was a two-time Big Ten champion at 126 lbs. He also was a three-time All-American, finishing third in 1996 and 1997 and runner-up at the 1998 NCAA Championships.

pionships, along with UW wrestlers Mark Beebe (134) and Aaron Stark (190). Jetton finishes third at the NCAA championships, earning his second All-America honor, while Wilmot places fourth, also earning All-America status.

**1998**—Wisconsin turns in its best conference finish under head coach Barry Davis, placing fifth at the 84th annual Big Ten Championships. Senior Eric Jetton (126) and freshman Don Pritzlaff (150) earn All-America honors, finishing second and sixth, respectively, at the NCAA championships. Jetton finishes his career with 115 wins, to rank him sixth on the UW career wins list and third on the career winning percentage list (.865).



Jeff Walter is the lone Badger heavyweight to win a national championship. Walter achieved the feat in 1996 and he finished his career at UW as a two-time All-American and a four-time Academic All-Big Ten selection.

**1999**—Sophomore Donny Pritzlaff (165) wins his first Big Ten title and earns his second All-America honor, finishing fifth at the NCAA championships.

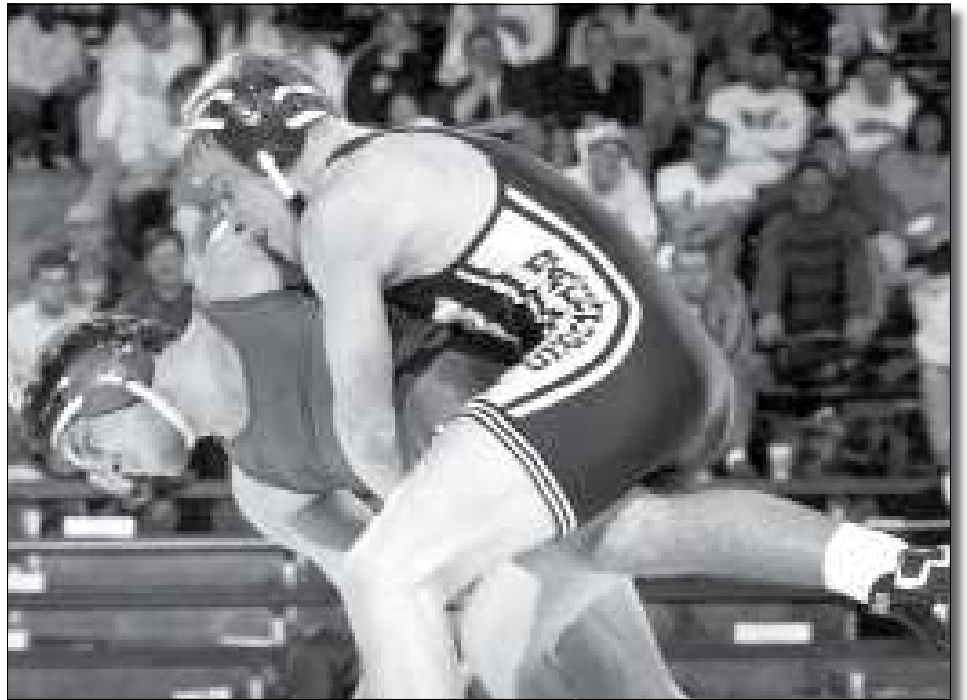
**2000**—Wisconsin finishes the season with a ninth-place finish at the NCAA championships, the highest team finish under Barry Davis, and a ninth-place finish at the Big Ten championships. Donny Pritzlaff (165) captures his second Big Ten title and earns All-America status for the third time after claiming the NCAA championship.

**2001**—Donny Pritzlaff (165) becomes just the fourth Badger to claim back-to-back NCAA titles. Pritzlaff cruised through the season with a 43-1 record, tied for the

fourth-most single-season wins in UW history. Pritzlaff and fellow All-American Grant Hoerr (6th at 141) helped lead Wisconsin to a 10th-place tie at the NCAA championship.

**2002**—Kevin Black (133) places fourth in the NCAA championships to earn his first All-America honor and a place in the history books as Wisconsin's 47th honoree. Grant Hoerr, Ralph DeNisco and Brady Reinke joined Black to help the Badgers place 25th in the NCAA team standings.

**2003**—After leading a team of eight Badgers to the NCAA championships, senior Tony Black (125) narrowly misses a shot at a title and places fifth to earn All-America honors to become the 48th

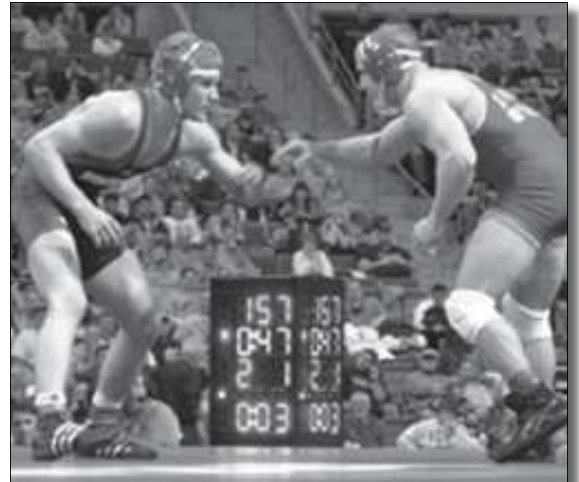


Kevin Wilmont won a Big Ten title at 167 lbs. in 1997. He went on to finish fourth at the NCAA Championships to bring home All-American honors.



**Left: Tony Black (pictured) followed in his brother Kevin Black's footsteps and brought home All-America honors during the 2003 season at 125 lbs. Tony finished fifth in the weight class. In 2002, Kevin placed fourth at 133 lbs.**

**Right: Two-time All-American Craig Henning finished runner-up at the 2007 NCAA Championships at 157 lbs. He was the highest UW finisher since Donny Pritzlaff's NCAA Championship in 2001.**



**Tom Clum was a two-time Big Ten champion. He won the title at 125 lbs. in 2004 and then moved up to 133 lbs. to capture his second title in 2006. Clum is pictured with the Deputy Commissioner of the Big Ten, Brad Traviola.**

UW wrestler in the program's history to win such an honor. Teammates Tom Clum (133), Ralph DeNisco (184) and Justin Staebler (Hwt.) all finish just one win shy of their own All-America honors, while Wisconsin finishes 23rd in the team standings with 24 points.

**2004**—Sophomores Tom Clum, Ed Gutnik, Kelly and Ryan Flaherty lead the Badgers to a 17-6 dual meet record, their best overall record since the 1985-85 campaign.

**2005**—Juniors Tom Clum (133) and Ryan Flaherty (197) earned their first All-America honors. The team also welcomed the top-rated recruiting class in the nation featuring Craig Henning who broke into the lineup and made his first trip to the NCAA tournament.

**2006**—Senior Tom Clum (133) and sophomore Craig Henning (157) earned All-America honors after placing fifth and eighth, respectively, at the 2006 NCAA Championships. Clum also captured the Big Ten title at 133 lbs. to end his career at Wisconsin with two Big Ten titles.

**2007**—Badgers have record season, qualifying nine grapplers for NCAA championships and finishing 13th overall. Junior Craig Henning (157) places second while senior Tyler Turner (149) finishes sixth as both are named All-Americans. Other notable achievements from 2007 include: the Badgers finish second at the Big Ten championship, sophomore Dallas Herbst (197) ties Lee Kemp for the most pins in a season (18), the team wins a school-record 14-straight dual matches and the UW Field House drew a season-high attendance of 2,220 Badger faithful against Illinois.

**2008**—Wisconsin adds two more to its list of All-American wrestlers. Juniors Dallas Herbst (197) and Kyle Massey (Hwt.) earn their first All-America honors by placing sixth and eighth, respectively. Head coach Barry Davis also reaches the 150-win milestone.

**2009**—Three new All-Americans are crowned at the 2009 NCAA Championships including true freshman Andrew Howe, who reached the NCAA finals at 165 lbs. Howe became the first true freshman under Barry Davis to reach the finals and also the first true freshman Big Ten champion in Davis's tenure. Howe was also just the third Badger named Big Ten

Freshman of the Year. Senior Zach Tanelli capped off his Badger career as an All-American (fourth at 141) and junior Kyle Ruschell was on the podium for the first time (third at 149). The Badgers placed ninth at NCAA's, tying the highest finish in Davis's 15-year tenure.

**2010**—Wisconsin placed fourth at the 2010 NCAA Division I Wrestling Championships, tying for the best finish in school history. In addition, the Badgers crowned four All-Americans, tied for the second-most in school history and the most since getting five in 1984. Sophomore Andrew Howe (165) captured a NCAA title and head coach Barry Davis was named the 2010 National Coach of the Year by the National Wrestling Coaches Association.

**2011**—Led by four All-Americans in Tyler Graff (fifth at 133 lbs.), Andrew Howe (third at 165 lbs.), Travis Rutt (seventh at 184 lbs.) and Trevor Brandvold (fourth at 197 lbs.), the Wisconsin wrestling team placed 10th at the NCAA Championships. Graff and Brandvold earn their second All-America accolades while Howe reached the feat for the third time. In addition, Wisconsin placed fourth at the Big Ten Championships after Howe and Brandvold earned their third and second Big Ten titles, respectively.

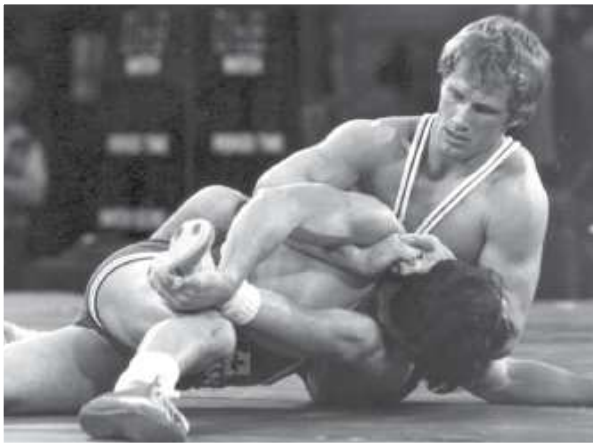
**2012**—Senior Ben Jordan (165) earns his first All-America honor, finishing seventh at the NCAA championships. Wisconsin competed without Tyler Graff (133), Andrew Howe (165) and Travis Rutt (184), who took Olympic redshirt seasons.

# Olympians

Taking their sport to the highest level, four former Badger wrestlers have been members of the United States' Olympic teams, including two silver medalists.

During the summer of 2008, Lee Kemp had the opportunity to coach the U.S. Olympic freestyle team in Beijing. Kemp never had the opportunity to wrestle at the Olympics because of the U.S. boycott in 1980. Kemp accomplished another feat in Beijing during summer 2008, as he was inducted into the International Wrestling Hall of Fame.

In addition to the four Badger Olympian wrestlers, Wisconsin has had many Olympians on the coaching staff throughout the years. Current head coach Barry Davis was a two-time Olympian (1984 and 1988) and a silver medalist at the Los Angeles games in 1984. Five other Olympians that did not compete at UW spent some time coaching the Badgers including, John Azevedo, Wisconsin natives Ben and John Peterson, Dave Schultz and Terry Steiner.



Andy Rein (above) earned two Big Ten titles and one NCAA championship as a Badger before winning a silver medal in the 1984 Olympics. Rein would later become head coach of his alma mater in 1987 and lead the Badgers to an overall record of 69-35-3.



Dave Schultz (top) and Ben Peterson (left) did not wrestle at the University of Wisconsin but served on the coaching staff. Both were Olympic gold medalists, with Schultz capturing gold in 1984 and Peterson winning gold in 1972 and then silver in 1976.

## Badger Olympians

There are 10 Olympic wrestlers with ties to the University of Wisconsin. Included in that group are four former Badger wrestlers and six Olympians that served on the coaching staff at Wisconsin.

Name	Olympic Year	Weight Class	Place	Affiliation with UW
John Azevedo	1980, Moscow*	125.5 lbs.	DNC	Assistant Coach
Barry Davis	1984, Los Angeles 1988, Seoul	125.5 lbs. 125.5 lbs.	Silver DNP	Head Coach, 1994-present
Jim Haines	1976, Montreal	114.5 lbs.	DNP	Wrestler, 1973-75, '77
Russ Hellickson	1976, Montreal	220 lbs.	Silver	Wrestler, 1967-70, Head Coach, 1983-86
Lee Kemp	1980, Moscow*	220 lbs.	DNC	
	1980, Moscow*	163 lbs.	DNC	Wrestler, 1975-78, Assistant Coach
Ben Peterson	2008, Beijing	Freestyle Coach	---	
	1972, Munich	198 lbs.	Gold	Assistant Coach
	1976, Montreal	198 lbs.	Silver	
	1980, Moscow*	198 lbs.	DNC	
John Peterson	1972, Munich	180.5 lbs.	2nd	Assistant Coach
	1976, Montreal	180.5 lbs.	1st	
Andy Rein	1984, Los Angeles	149.5 lbs.	Silver	Wrestler, 1977-80, Head Coach, 1987-93
Dave Schultz	1984, Los Angeles	163 lbs.	Gold	Assistant Coach
Terry Steiner	2008, Beijing	Women's Coach	---	Assistant Coach
Jared Frayer	2012, London	145.5 lbs.	TBD	Assistant Coach

\*1980 the United States boycotted the Olympic games held in Moscow

# Individual Records

## Season Records

### Wins

1.	49	.....	Jim Jordan, 1985-86
2.	47	.....	Jim Jordan, 1984-85
3.	45	.....	Paul McShane, 1986-87
4.	43	.....	Donny Pritzlaff, 2000-01
43	.....	Rudy Isom, 1984-85	
6.	42	.....	Matt Demaray, 1990-91
42	.....	Terry Manning, 1985-86	
8.	40	.....	Jim Jordan, 1983-84
40	.....	Lee Kemp, 1975-76	
40	.....	Rick Lawinger, 1972-73	
40	.....	Andy Rein, 1979-80	

### Falls (1967–Present)

1.	18	.....	Lee Kemp, 1976-77
18	.....	Dallas Herbst, 2006-07	
3.	17	.....	Ed Vatch, 1972-73
4.	16	.....	Dallas Herbst, 2007-08
5.	15	.....	Rick Heinzelman, 1966-67
6.	14	.....	Pat Christensen, 1975-76
14	.....	Dan Flood, 1991-92	
14	.....	Rick Heinzelman, 1967-68	
14	.....	Lee Kemp, 1977-78	
14	.....	Andy Rein, 1979-80	
14	.....	Jeff Walter, 1995-96	

### Winning Percentage (min. 25 wins)

1.	1.000 (42-0)	.....	Matt Demaray, 1990-91
1.000 (40-0)	.....	Andy Rein, 1979-80	
1.000 (39-0)	.....	Lee Kemp, 1975-76	
1.000 (37-0)	.....	Andrew Howe, 2009-10	
4.	.984 (31-0-1)	.....	Lee Kemp, 1977-78
5.	.977 (43-1)	.....	Donny Pritzlaff, 2000-01
6.	.976 (40-1)	.....	Lee Kemp, 1976-77
7.	.975 (39-1)	.....	Rick Lawinger, 1973-74
8.	.963 (26-1)	.....	Roger Pillath, 1961-62
9.	.949 (37-2)	.....	Jim Haines, 1976-77
10.	.947 (36-2)	.....	Donny Pritzlaff, 1999-00

## Career Records

### Wins

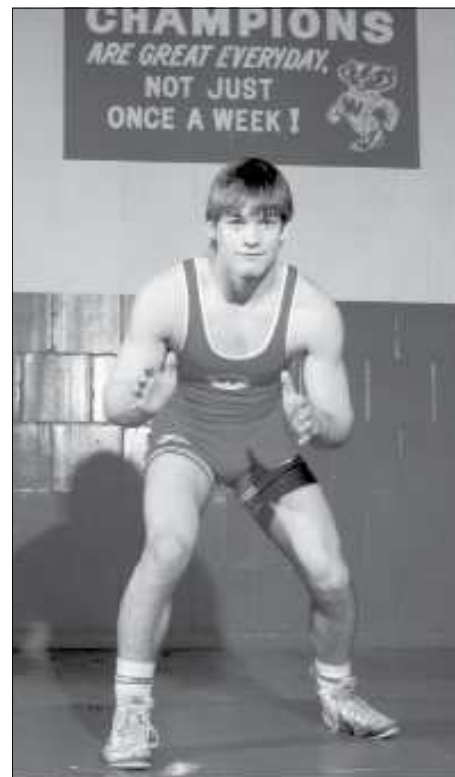
1.	156	.....	Jim Jordan, 1983-86
2.	150	.....	Matt Demaray, 1989-92
3.	143	.....	Lee Kemp, 1975-78
4.	135	.....	Donny Pritzlaff, 1998-01
5.	130	.....	Rick Lawinger, 1971-74
6.	126	.....	John Giura, 1982-85
7.	115	.....	Eric Jetton, 1994-98
8.	114	.....	Jeff Jordan, 1985-88
114	.....	Keith Davison, 1989-93	
10.	113	.....	Andy Rein, 1977-80

### Falls (1967–Present)

1.	58	.....	Dallas Herbst, 2005-09
2.	47	.....	Lee Kemp, 1975-78
3.	32	.....	Pat Christensen, 1973-76
32	.....	Andy Rein, 1977-80	
32	.....	Ed Vatch, 1972-75	
6.	31	.....	Rick Heinzelman, 1965-68
7.	30	.....	Dan Flood, 1989-92
8.	29	.....	Jeff Walter, 1995-96
9.	27	.....	Matt Demaray, 1989-92
27	.....	Donny Pritzlaff, 1998-01	
27	.....	Kevin Black, 1998-03	

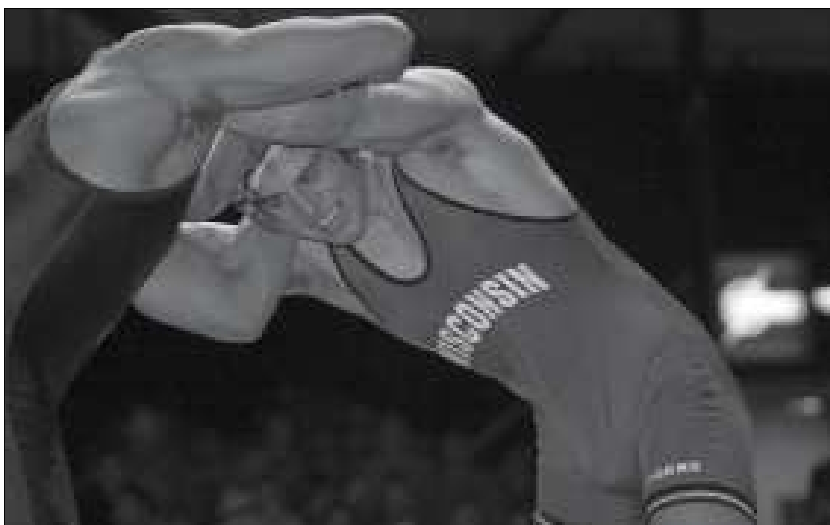
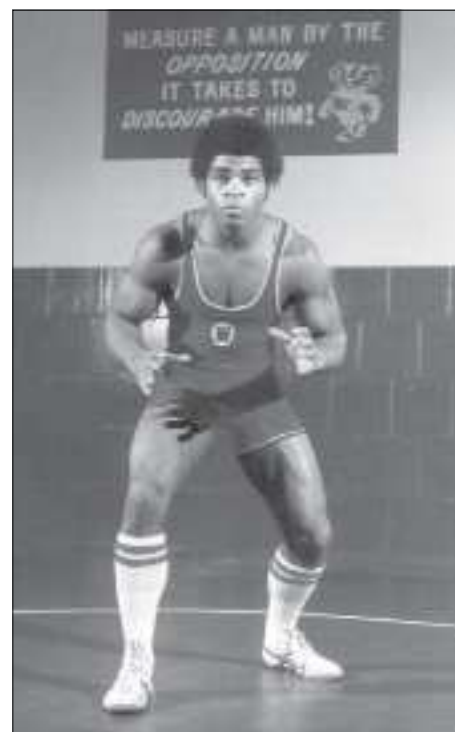
### Winning Percentage (min. 25 wins)

1.	.957 (143-6-1)	.....	Lee Kemp, 1975-78
2.	<b>.924 (98-8)</b>	..	<b>Andrew Howe (2008-present)</b>
3.	.894 (135-16)	.....	Donny Pritzlaff, 1998-01
4.	.882 (130-17-10)	.....	Rick Lawinger, 1971-74
5.	.865 (115-18)	.....	Eric Jetton, 1994-98
6.	.862 (150-24)	.....	Matt Demaray, 1989-92
7.	.853 (113-19-1)	.....	Andy Rein, 1977-80
8.	.846 (156-28-1)	.....	Jim Jordan, 1983-86
9.	.838 (108-20-2)	.....	Ed Vatch, 1972-75
10.	.810 (91-21-1)	.....	Jack Reinwand, 1973-76
11.	.793 (92-24)	.....	Kyle Ruschell, 2006-2010
12.	.788 (86-22-3)	.....	Laurent Soucie, 1972-75



Two-time NCAA champion Jim Jordan (above) holds the school record for most wins in a season (49) and career (156).

Lee Kemp (below), a three-time NCAA Champion, shares the school record for most falls in both a season (18) and ranks second in career pins (47).



Left: Dallas Herbst tied Lee Kemp for most falls in a season (18) during the 2006-07 campaign. Herbst broke Kemp's 30-year-old career pin record during the 2008-09 season. He is the UW record holder with 58 falls.

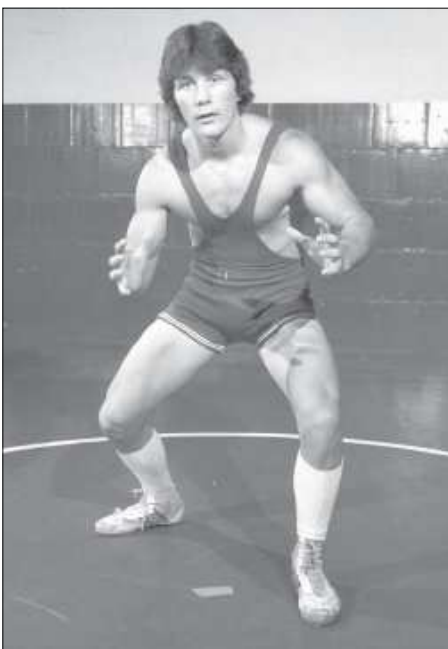
# All-time Letterwinners

## A

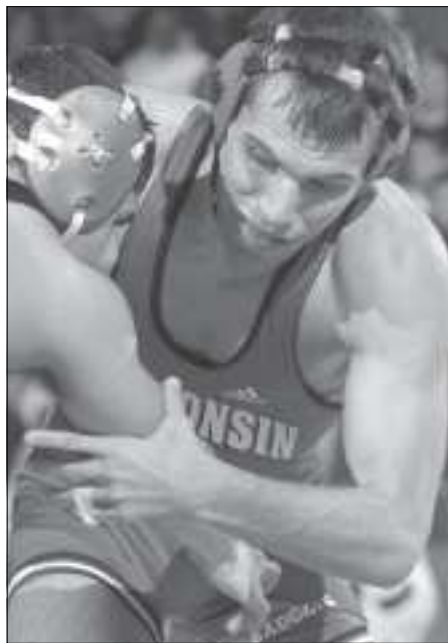
Abad, Matt . . . . . 1989, 90  
 Abbott, James . . . . . 1973, 74  
 Alf, Steve . . . . . 1997, 98, 99, 00  
 Allen, Patrick . . . . . 1989, 90  
 Anderson, John . . . . . 1937, 38, 39  
 Anderson, Zach . . . . . 1996, 97  
 Andreae, Otto, Jr. . . . . 1938 mgr  
 Arnel, Danny . . . . . 2010  
 Aschebrook, Gordon . . . 1975, 76, 77  
 Austin, Stanley . . . . . 1936, 37

## B

Babcock, W. J. . . . . 1917, 18  
 Bach, Steven . . . . . 1965  
 Baer, Frank . . . . . 2012  
 Bagnall, Lorne . . . . . 1931  
 Baker, Robert . . . . . 1937 mgr  
 Ballweg, Charles . . . . . 1970  
 Barbaro, Anthony . . . . . 1946, 47  
 Barnes, Ervin . . . . . 1966  
 Bartkowiak, Donald . . . . 1954, 55, 56  
 Baudhuin, Jim . . . . . 1986  
 Beale, Elmer . . . . . 1964, 65, 66  
 Beebe, Mark . . . . . 1994, 95, 96, 97  
 Beecher, Richard . . . . . 1936  
 Behling, Dave . . . . . 1984, 85 mgr  
 Behling, Mark . . . . . 1985 mgr  
 Bell, Nicholas . . . . . 1980  
 Benbow, Robert . . . . . 1923  
 Bennett, William . . . . 1941, 46, 47, 48  
 Benskin, William . . . . . 1976



Two-time All-American Mike Terry (1979, 80)



2002 All-American Kevin Black

Bergsbaken, Carlton . . . . . 1953  
 Best, Steve . . . . . 1993, 94, 95, 96  
 Bestor, Glenn . . . . . 1957  
 Beyer, James . . . . . 1977  
 Beiberstein, Adolph . . . . 1923, 24  
 Bigger, William . . . . . 1944  
 Blackmore, Roger . . . . . 1941  
 Black, Kevin . . . . . 1999, 01, 02, 03  
 Black, Tony . . . . . 2000, 01, 02, 03  
 Boelk, John . . . . . 1931  
 Bohman, Michael . . . . . 1969  
 Boral, Eitan . . . . . 2003, 04  
 Borchardt, Chris . . . . . 2002, 03  
 Borlie, Derrick . . . . . 2010  
 Bowers, Trevor . . . . . 2008  
 Brackett, Max . . . . . 1927  
 Brandl, Doug . . . . . 1994  
 Brandl, Paul . . . . . 1958  
 Brandvold, Trevor . . . . 2007, 08, 10, 11  
 Breineger, Mike . . . . . 1978  
 Bridgeman, R. . . . . 1928  
 Brinkman, Robert . . . . . 1970  
 Broming, George . . . . . 1934  
 Brotzman, Bruce . . . . . 1978, 80, 82  
 Bugenhagen, Eric . . . . 2008, 09, 10, 11  
 Burich, Bruce . . . . . 1970  
 Burke, Greg . . . . . 2009, 10  
 Busch, Alfred . . . . . 1941, 42

## C

Callahan, Carroll . . . . . 1931  
 Chada, Harvey . . . . . 1925  
 Charland, Jeff . . . . . 1982

Chose, Joe . . . . . 2002, 03  
 Christenson, Pat . . . . 1973, 74, 75, 76  
 Clark, Ty . . . . . 2005, 06  
 Clauson, Kole . . . . . 1997, 98, 99, 00  
 Clayton, Mark . . . . . 1985, 86, 87  
 Clough, Scott . . . . . 1994, 96, 97, 98  
 Clum, Tom . . . . . 2003, 04, 05, 06  
 Clum, Danny . . . . . 2007, 2008  
 Cole, Allan . . . . . 1936  
 Cole, John . . . . . 1955, 56, 57  
 Cole, Wallace . . . . . 1926  
 Corp, Paul . . . . . 1933  
 Costanza, Samuel . . . . . 1950, 51, 52  
 Coufal, Dusty . . . . . 1996, 97, 98, 99  
 Cousins, Frank . . . . . 2012  
 Cox, Ben . . . . . 2010  
 Cruz, Tim . . . . . 1998, 99  
 Crass, Jordan . . . . . 2006, 07  
 Crass, Josh . . . . . 2006  
 Cudd, Brady . . . . . 1999, 00  
 Cudd, Collin . . . . . 2005, 06, 07, 08  
 Culver, Lucian . . . . . 1920

## D

Daemmrich, Otto . . . . . 1947  
 Daly, Thomas . . . . . 1985, 86, 87  
 Davies, Frank . . . . . 1973, 74  
 Davison, Keith . . . . . 1990, 91, 93, 94  
 De Witte, John . . . . . 1947, 49, 50  
 Demaray, Matt . . . . . 1989, 90, 91, 92  
 DeNisco, Ralph . . . . . 2001, 02, 03, 04  
 Dolata, Paul . . . . . 1936 mgr



1985 All-American John Giura

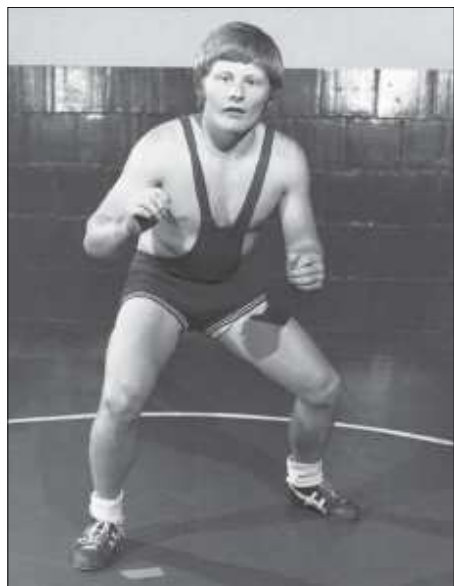
Donar, Jake . . . . .2005, 06, 07, 08  
 Dowdell, Mike . . . . . 1994  
 Dowling, P.J. . . . .1999, 00, 01  
 Drabenstadt, Doug . . . . . 1987  
 Duerst, Steve . . . . . 1979  
 Duffy, Jim . . . . .2010  
 Duus, Eric . . . . . 1989  
 Dzirbik, Edward . . . . .1942, 43, 44

**E**

Edwards, Earle . . . . .1956, 57, 58  
 Elfner, Eliot . . . . . 1960, 61  
 Ensor, Steve . . . . . 1982, 83  
 Errthum, Mike . . . . . 1995  
 Euker, Michael . . . . .1980, 81, 82, 83  
 Evans, David . . . . .1976, 78, 79, 80  
 Evans, Steven . . . . .1972, 74, 75, 76  
 Evensen, Tony . . . . .1986, 87, 88  
 Evenson, Dan . . . . .1987, 88, 89, 90

**F**

Falter, John . . . . .1950, 51, 52  
 Farness, Eric . . . . . 1986  
 Farrison, Kim . . . . . 1978  
 Felling, Mike . . . . .2006, 07, 08, 09  
 Ferguson, William . . . . . 1932, 33  
 Finer, George . . . . . 1936  
 Fiore, Nick . . . . . 1945  
 Fisher, Keith . . . . .1981, 82, 83  
 Fisher, Kevin . . . . .1981, 82, 83  
 Fitzpatrick, Tom . . . . . 1987, 88  
 Flaherty, Kelly . . . . .2003, 04, 05, 06  
 Flaherty, Ryan . . . . .2003, 04, 05  
 Flood, Dan . . . . .1989, 90, 91, 92  
 Flora, John . . . . . 1958, 59  
 Foster, Randall . . . . . 1971  
 Fowler, Oakman . . . . . 1923  
 Fox, Theodore . . . . .1952, 53, 54  
 Framsted, John . . . . . 1971



1977 NCAA Champion Jim Haines

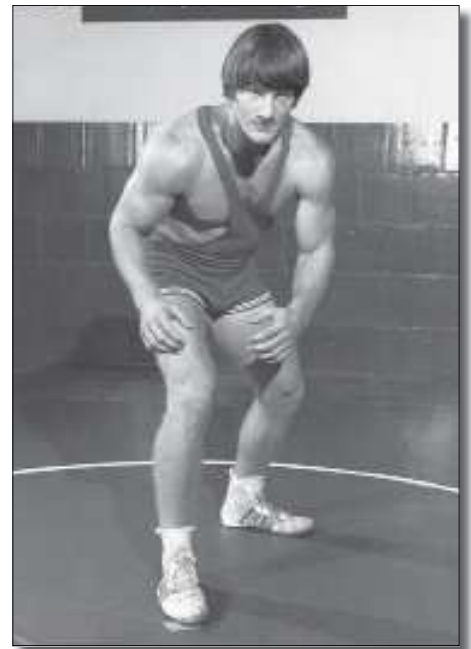
Freeman, Ward . . . . . 1915  
 Frokjer, Randy . . . . . 1972

**G**

Gabert, August . . . . . 1956, 59  
 Galarnyk, John . . . . . 1982 mgr  
 Garvin, Seth . . . . . 2006  
 Geister, Chason . . . . . 1995, 96  
 Gerling, Paul . . . . . 1931 mgr  
 Gerten, Henry . . . . . 1995  
 Getlin, Lonney . . . . .1965, 66, 67  
 Gifford, Court . . . . . 1994, 95  
 Giura, John . . . . .1982, 83, 84, 85  
 Glenn, Thomas . . . . . 2012  
 Glover, Tim . . . . . 2000  
 Gluck, Michael . . . . .1966, 67, 68  
 Goemans, George . . . . . 1953  
 Goeters, Douglas . . . . . 1962  
 Goldstein, Matt . . . . . 1997, 99  
 Gonzales, Lawrence . . . . . 1971, 72  
 Goodspeed, Dave . . . . .1979, 80, 81  
 Gorman, William . . . . .1958, 59, 60  
 Gorres, Larry . . . . .1969, 70, 71  
 Grabot, Thomas . . . . . 1977  
 Graff, Tyler . . . . . 2010, 11  
 Gregor, George . . . . . 1924  
 Grieb, William . . . . . 1940  
 Grinde, Bob . . . . . 1982  
 Griswold, Mike . . . . .1991, 92, 93  
 Grudzinski, Scott . . . . . 1981  
 Guth, Jerry . . . . .1970, 71, 72, 73  
 Gutknecht, Gary . . . . . 1975  
 Gutnik, Ed . . . . .2003, 04, 05, 06

**H**

Haase, Randolph . . . . . 1935, 36  
 Hackbart, Bob . . . . . 1981, 82  
 Haddon, Steve . . . . .1993, 94, 95, 96  
 Hafeman, Donald . . . . . 1951  
 Hager, Earl . . . . .1941, 42, 43  
 Haines, James . . . . .1973, 74, 75, 77  
 Halada, Jerome . . . . . 1940  
 Hales, Myron . . . . .1929, 30, 31  
 Hamel, David . . . . . 1957, 58  
 Hammen, Drew . . . . .2007, 08, 09, 10  
 Hammer, Ferdinand . . . . . 1929, 30  
 Hammes, Jack . . . . . 1953  
 Hammes, Richard . . . . .1955, 56, 57  
 Hanley, Norman . . . . . 1945  
 Hansen, Ronald . . . . . 1971  
 Hanson, Elmer . . . . . 1925  
 Hanson, James . . . . .1976, 77, 78, 79  
 Hanutke, Matt . . . . .1992, 93, 94, 95  
 Harms, John . . . . .1989, 90, 91, 92  
 Hass, Gerald . . . . . 1971  
 Hatch, Robert . . . . . 1968  
 Haugen, Donald . . . . . 1949  
 Hauser, Edward . . . . . 1936  
 Hein, Jackson . . . . .2010, 12  
 Hein, Jordan . . . . . 2007, 08  
 Heine, Kenneth . . . . . 1968, 69  
 Heinzelman, Joseph . . . . . 1971, 72  
 Heinzelman, Rick . . . . .1966, 67, 68



1978 NCAA Champion Ron Jeidy

Heistad, Stephen . . . . . 1976  
 Hellickson, Russ . . . . .1967, 68, 69, 70  
 Helstad, Stephen . . . . . 1976  
 Henning, Craig . . . . .2005, 06, 07, 08  
 Herbst, Dallas . . . . .2006, 07, 08, 09  
 Heuer, Wilbur . . . . . 1923  
 Heywood, Leland . . . . . 1929  
 Hietpas, Austin . . . . . 2012  
 Hill, Brian . . . . . 1975  
 Hill, Donald . . . . . 1952  
 Hill, Randy . . . . . 1978  
 Hill, William . . . . . 1945  
 Hiltbrand, Todd . . . . . 1987  
 Hoerr, Grant . . . . .1998, 00, 01, 02  
 Hofer, Kenneth . . . . . 1954  
 Hoffmann, Steve . . . . .1989, 90, 91, 92  
 Hofman, Robert . . . . . 1945  
 Holt, David . . . . . 1927  
 Holmes, Bob . . . . . 1924  
 Horswill, Craig . . . . .1973, 74, 75, 76  
 Horton, Jareck . . . . .2001, 02, 04  
 Howe, Andrew . . . . . 2009, 10, 11  
 Hoyer, Gale . . . . . 1961  
 Hughes, Bill . . . . . 1986  
 Hull, Calyn . . . . . 2008  
 Hull, Marty . . . . . 1983  
 Hull, Mitch . . . . .1978, 79, 80  
 Husted, Tom . . . . . 1978, 79  
 Huxhold, Terry . . . . . 1958

**I**

Ianuzzi, John . . . . . 1981  
 Ickskowski, Dylan . . . . . 2012  
 Innis, James . . . . . 1959, 60  
 Irick, Charles . . . . .1988, 89, 90, 91  
 Ironside, Larry . . . . . 1963  
 Isom, Rudy . . . . .1983, 84, 85

**J**

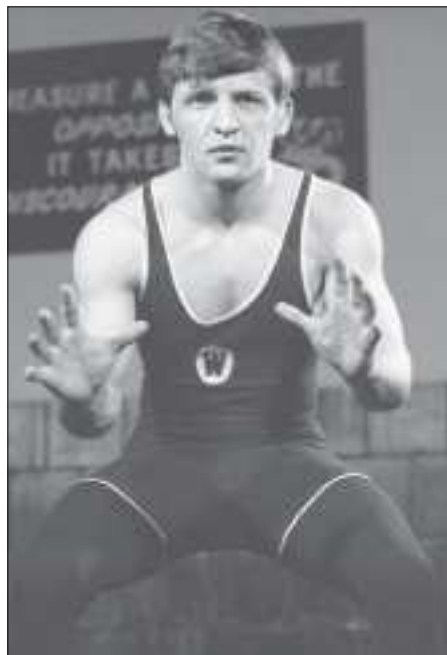
Jeidy, Ron . . . . . 1974, 76, 77, 78  
 Jentz, Casey . . . . . 2003  
 Jerabek, Scott . . . . . 1979, 80  
 Jetton, Eric . . . . . 1995, 96, 97, 98  
 Jewell, Dennis . . . . . 1977  
 Johnson, Brekke . . . . . 1964, 65, 66  
 Johnson, Godfrey . . . . . 1912  
 Johnson, Russell . . . . . 1943  
 Johnson, Thomas . . . . . 1940  
 Jones, Michael . . . . . 1970, 71  
 Jordan, Ben . . . . . 2009, 10, 11, 12  
 Jordan, Jeff . . . . . 1985, 86, 87, 88  
 Jordan, Jim . . . . . 1983, 84, 85, 86

**K**

Karan, Louis . . . . . 1926  
 Karsten, Walter . . . . . 1930  
 Kasakaitas, William . . . . . 1934  
 Kaseguma, Robert . . . . . 1953  
 Keigher, Greg . . . . . 1996  
 Kelliher, Tom . . . . . 2009, 11, 12  
 Kelly, Jon . . . . . 1990  
 Kemp, Lee . . . . . 1975, 76, 77, 78  
 Kipnis, Dennis . . . . . 1980  
 Kissinger, Nyal . . . . . 1971, 72  
 Kleinhans, Jim . . . . . 1978, 79, 80  
 Knoerr, David . . . . . 1944  
 Knott, Arthur . . . . . 1914  
 Knutilla, Raymond . . . . . 1968, 69, 70  
 Konovsky, Robert . . . . . 1954, 55, 56  
 Kopecky, Bob . . . . . 1981  
 Kosek, Koy . . . . . 1998, 99  
 Kraemer, Lee . . . . . 2003, 04, 05, 06  
 Krauss, Richard . . . . . 1943  
 Kreuger, Lee . . . . . 1989, 90  
 Kroner, Ludwig . . . . . 1968, 69, 70  
 Kruchowski, Steve . . . . . 1978, 79  
 Krueger, Donald . . . . . 1949, 50, 51  
 Kruempelstaedter, James . . . . . 1955, 57  
 Krumrie, Tim . . . . . 1981

**L**

LaGrange, Ryan . . . . . 1999  
 Landry, Wallace . . . . . 1915  
 Laudon, Tyler . . . . . 2002, 03, 04, 05  
 Laurenzi, Dino . . . . . 1951  
 Lawinger, Paul . . . . . 1977, 78  
 Lawinger, Rick . . . . . 1971, 72, 73, 74  
 Lawinger, Steve . . . . . 1974, 75, 76, 77  
 Lease, Pat . . . . . 1982  
 Lederman, Lawrence . . . . . 1936, 37, 38  
 Lee, David . . . . . 1988, 89  
 Leiskau, Peter . . . . . 1970, 71, 72  
 Lessl, Robert . . . . . 1949, 50, 51  
 Levihn, William . . . . . 1953  
 Levin, Sebastien . . . . . 2012  
 Lewis, Ryan . . . . . 2001, 02  
 Liegel, Ralph . . . . . 1985, 86, 87  
 Liegel, Scott . . . . . 2012  
 Lietzau, Troy . . . . . 1998  
 Lifsey, Benjamin . . . . . 1986



A four-time letterwinner, Rick Lawinger was Wisconsin's first-ever NCAA Champion.

Limmex, Dennis . . . . . 1981, 82, 83, 84  
 Limmex, Terry . . . . . 1979  
 Lipton, Chad . . . . . 1995, 96, 97  
 Llerandi, Felipe . . . . . 1949, 51  
 Lord, Ryan . . . . . 1992, 93, 94, 95  
 Lowe, James . . . . . 1957, 59  
 Loy, Marty . . . . . 1982, 83, 84  
 Ludeman, Charlie . . . . . 1981, 82

**M**

Maciag, Matt . . . . . 2005, 06, 07, 08  
 Madigan, James . . . . . 1943  
 Magnan, Cal . . . . . 1984  
 Maher, Robert . . . . . 1947  
 Mahoney, Joe . . . . . 1995, 96  
 Mandli, Paul . . . . . 1950  
 Mandli, Ray . . . . . 1981  
 Manning, Terry . . . . . 1984, 85, 86  
 Marchionda, Rocco . . . . . 1993, 94  
 Marten, Brad . . . . . 2000  
 Martens, Robert . . . . . 1940  
 Martin, Stephen . . . . . 1963, 64  
 Martino, Scott . . . . . 1982  
 Massey, Kyle . . . . . 2006, 07, 08, 09  
 Mathews, Edward . . . . . 1952, 54, 55  
 Mathias, Walter . . . . . 1928, 29, 30  
 McCall, Timmy . . . . . 2012  
 McDonald, Douglas . . . . . 1988  
 McInnis, Michael . . . . . 1970  
 McKernan, Michael . . . . . 1987, 88  
 McLeod, John . . . . . 1960  
 McMurray, Ora . . . . . 1921  
 McNeil, Charles . . . . . 1958, 59  
 McNellis, Corey . . . . . 1999, 00, 01  
 McQuade, Shane . . . . . 2011, 12  
 McShane, Paul . . . . . 1983, 84, 85, 87  
 McSweeney, Dennis . . . . . 2003

Menne, Zach . . . . . 2005, 06, 07, 08  
 Mergen, Paul . . . . . 1962, 63  
 Merry, Donald . . . . . 1939  
 Metzger, Mike . . . . . 2006, 07, 08  
 Meyer, Harold . . . . . 1927, 28  
 Meyer, Robert . . . . . 1979, 80, 82  
 Milek, Joseph . . . . . 1963, 65  
 Miller, Mike . . . . . 1987, 88, 89, 90  
 Minkow, David . . . . . 1927 mgr  
 Miyagawa, Richard . . . . . 1944  
 Modahl, Gerald . . . . . 1958, 59  
 Monroe, David . . . . . 1966  
 Moore, David . . . . . 1999  
 Morris, John . . . . . 1982, 83, 84  
 Morris, Rick . . . . . 1978, 79  
 Mory, Dean . . . . . 1934  
 Mullendore, Arthur . . . . . 1949  
 Munson, Earl . . . . . 1955, 56, 57  
 Murphy, Michael . . . . . 1985, 86, 87  
 Murphy, Richard . . . . . 1955, 56

**N**

Nalley, Richard . . . . . 1963, 64, 65  
**Nardick, Brad . . . . . 2010**  
 Narveson, Marshall . . . . . 1978  
 Neale, Ralph . . . . . 1954, 55, 56  
 Nehrkorn, William . . . . . 1961  
 Nettesheim, Dave . . . . . 1946  
 Neumyer, Dave . . . . . 1999, 01, 02, 03  
 Newbury, Kenneth . . . . . 1937, 38, 39  
 Neyer, Neal . . . . . 1980, 81  
 Nicholas, Robert . . . . . 1967, 68, 69  
 Niemuth, Nathan . . . . . 1971  
 Nussbaum, Gerald . . . . . 1951, 52

**O**

O'Laughlin, Michael . . . . . 1925  
 O'Neil, Lawrence . . . . . 1951  
 Oberly, Lowell . . . . . 1943, 47, 48  
 Oestreich, Berlyn . . . . . 1934 mgr  
 Olsen, Donald . . . . . 1957, 58  
 Olsen, Richard . . . . . 1957, 58  
 Osterhoudt, Walter . . . . . 1929  
 Ostrand, Herbert . . . . . 1949  
 Owens, Brad . . . . . 2000, 01, 02

**P**

Paar, Ronald . . . . . 1962, 63, 64  
 Paine, Charles . . . . . 1945  
 Pape, Daniel . . . . . 1995, 96  
 Paulsen, Robert . . . . . 1975  
 Pedersen, William . . . . . 1954, 55  
 Penager, Brett . . . . . 1988, 89  
 Pernat, Daniel . . . . . 1964, 65, 66  
 Pernat, Jason . . . . . 1999, 00  
 Perry, Shawn . . . . . 2011, 12  
 Peterman, Ivan . . . . . 1921, 22  
 Peterson, James . . . . . 1993  
 Peterson, Joseph . . . . . 1947, 48, 49, 50  
 Peterson, Justin . . . . . 2006, 07, 08  
 Peterson, Paul . . . . . 1947, 48, 49, 50

Peterson, Phillip . . . . . 1947  
 Pfeiffer, John . . . . . 1940  
 Phillips, Chester . . . . . 1937, 38, 39  
 Pieper, Ron . . . . . 1991, 92, 93, 94  
 Pillath, Roger . . . . . 1962, 63, 64  
 Plenner, Earl . . . . . 1924  
 Ponic, Bill . . . . . 2006 mgr  
 Popp, William . . . . . 1957, 58, 59  
 Potter, Steven . . . . . 1967  
 Powell, Robert . . . . . 1963, 64  
 Prchlik, Arthur . . . . . 1951, 52, 53  
 Premo, Mark . . . . . 1995  
 Prezzia, John . . . . . 2011  
 Price, James . . . . . 1953  
 Pritzlaff, Donny . . . . . 1998, 99, 00, 01  
 Ptacek, Michael . . . . . 1962, 63

**Q**  
 Quaglio, Mike . . . . . 1995  
 Quale, Duane . . . . . 1962  
 Quincannon, Francis . . . . . 1937, 38

**R**  
 Radandt, Victor . . . . . 1951  
 Rate, John . . . . . 1967  
 Rawhouser, Kent . . . . . 1979, 80, 81  
 Reeve, Kyle . . . . . 2006, 08, 09  
 Reif, Robert . . . . . 1952, 53, 54, 55  
 Rein, Andy . . . . . 1977, 78, 79, 80  
 Reinke, Brady . . . . . 2002, 03, 04, 05  
 Reinwand, Jack . . . . . 1973, 75, 76  
 Rhode, John . . . . . 1933  
 Rice, Eric . . . . . 1994  
 Rice, William . . . . . 1945  
 Richards, Kyle . . . . . 1984, 86, 87, 88



Two-time NCAA champion and three-time Big Ten champion Donny Pritzlaff was a member of the U.S. National Freestyle team in 2003.

Richman, Mark . . . . . 1984, 85, 86  
 Rittschoff, Fredric . . . . . 1959, 60, 61  
 Ritz, Erwin . . . . . 1940, 41, 42  
 Rivers, Dan . . . . . 2009  
 Roberts, Harry, Jr. . . . . 1963  
 Roberts, John . . . . . 1940, 41, 42  
 Roberts, Ronald D. . . . . 1952  
 Robinson, William . . . . . 1944, 46, 47, 48  
 Roth, E. Walter . . . . . 1918  
 Ruschell, Kyle . . . . . 2007, 08, 09, 10  
 Rutt, Travis . . . . . 2009, 10, 11  
 Ryan, Donald . . . . . 1950, 51, 52

**S**  
 Sackerson, John . . . . . 1963, 64  
 Saggau, Jeffery . . . . . 1972, 75  
 Saichek, Norman . . . . . 1942  
 Salisbury, Edgar . . . . . 1949, 50  
 Sandner, John . . . . . 1966  
 Sayas, James . . . . . 2004  
 Schaefer, Lee . . . . . 1952, 53  
 Schank, Steve . . . . . 1994, 95  
 Schiller, Robert . . . . . 1934  
 Schilling, Thomas . . . . . 1982  
 Schmitz, Mark . . . . . 1981, 82, 83, 84  
 Schmook, Gary . . . . . 1966, 67  
 Schneider, Brian . . . . . 1994, 95, 96, 97  
 Schneider, Matt . . . . . 1995, 96, 97  
 Schoeneman, Richard . . . . . 1972  
 Schmitt, Cole . . . . . 2010, 11, 12  
 Schuele, David . . . . . 1934  
 Schultz, Duane . . . . . 1982  
 Sears, John . . . . . 1958, 59, 60  
 Seeber, Luther . . . . . 1952, 53, 54, 55  
 Seiler, Todd . . . . . 1985, 86, 87, 88, 89  
 Self, Clarence . . . . . 1947, 48, 49  
 Senscu, Erik . . . . . 2007, 08, 09  
 Shampo, George . . . . . 1943, 44  
 Sievertsen, Allen . . . . . 1965, 66, 67  
 Sigler, Paul . . . . . 1976, 77, 79  
 Simonson, James . . . . . 1954, 55, 56  
 Skaar, John . . . . . 1971, 72  
 Slater, Brian . . . . . 1998  
 Smith, Arthur . . . . . 1927  
 Smith, Grant . . . . . 1981, 82  
 Smitz, Louis . . . . . 1927  
 Sneider, Dan . . . . . 2006, 07, 08  
 Sommer, Gary . . . . . 1976, 77  
 Soucie, Laurent . . . . . 1972, 73, 74, 75  
 Spellman, Gene . . . . . 1983, 84, 85, 86  
 Spicuzza, Robert . . . . . 1946, 47, 48, 49, 50  
 Spies, Dale . . . . . 1971, 72, 73  
 Spilde, Dan . . . . . 1990, 91, 92, 93  
 Splees, William . . . . . 1925, 26  
 Staebler, Justin . . . . . 2000, 01, 02, 03  
 Stark, Aaron . . . . . 1995, 96, 97, 98  
 Steldt, Chad . . . . . 2002, 03, 04, 05  
 Stenback, Edwin . . . . . 1932  
 Stetson, George . . . . . 1928, 29, 30  
 Steson, Kenneth . . . . . 1956, 58  
 Stipek, Raymond . . . . . 1925  
 Stoppelmoor, Gabe . . . . . 2008, 09  
 Suhm, Frederick . . . . . 1953  
 Sweeney, Tom . . . . . 1990, 93  
 Swenson, Selmer . . . . . 1929, 30, 31

**Szablewski, Gage . . . . . 2009**

**T**  
 Tabet, John . . . . . 1975, 76  
 Tanelli, Zach . . . . . 2006, 07, 08, 09  
 Templin, Edward . . . . . 1921, 22, 23, 24  
 Terrill, Joe . . . . . 1998, 99, 00, 01  
 Terry, Michael . . . . . 1977, 78, 79, 80  
 Terwilliger, Emmett . . . . . 1934, 35  
 Thornally, Richard S. . . . . 1942  
 Threinen, C. . . . . 1943  
 Tiffany, Albert . . . . . 1928, 30  
 Tobin, Cole . . . . . 2012  
 Toman, Thomas . . . . . 1960, 61  
 Trachte, Jed . . . . . 1994, 95  
 Trapino, Robert . . . . . 1976, 77, 78  
 Trinitapoli, Mark . . . . . 1999, 01  
 Turner, Adam . . . . . 2001, 02, 03, 04  
 Turner, Ryan . . . . . 2000, 01, 02, 03  
 Turner, Tony . . . . . 2003, 04, 05, 06  
 Turner, Tyler . . . . . 2004, 05, 06, 07  
 Tyree, Burke . . . . . 1990

**U**  
 Uphagrove, James . . . . . 1957, 58

**V**  
 Valley, Philip . . . . . 1934  
 Van Dinter, Joey . . . . . 1986, 87  
 Vasby, Helmer . . . . . 1934  
 Vatch, Edward . . . . . 1972, 73, 74, 75  
 Viskocil, Eddie . . . . . 1946  
 Vissers, Glen . . . . . 1973, 74, 77  
 Vogel, Kendall . . . . . 2008

**W**  
 Wade, Joseph . . . . . 1971, 72  
 Wahtola, Charles . . . . . 1990, 91, 92, 93  
 Wallman, Cory . . . . . 1998, 99, 00  
 Walter, Chris . . . . . 1992, 93, 94, 95  
 Walter, Jeff . . . . . 1992, 94, 95, 96  
 Wanta, David . . . . . 1985, 86  
 Ward, Jack . . . . . 1954  
 Watts, Richard . . . . . 1971, 73  
 Weber, Brian . . . . . 1982  
 Weeks, Herbert . . . . . 1920  
 Wendorf, Roger . . . . . 1970, 71, 72  
 Wenzel, Fred . . . . . 1935  
 Werkheiser, Brett . . . . . 1995, 96  
 West, Kyle . . . . . 2004  
 Wilmot, Kevin . . . . . 1994, 96, 97  
 Wirnsberger, John . . . . . 1984, 86  
 Witt, Robert . . . . . 1943  
 Woods, John . . . . . 1954  
 Wyss, Orville . . . . . 1936

Yde, Alex . . . . . 2012  
 York, Calvin . . . . . 2011

# Misc. Records

## Most dual wins in a season

- 22 ..... 1983-84/Russ Hellickson
- 21 ..... 1984-85/Russ Hellickson
- 20 ..... 1985-86/Russ Hellickson
- 19 ..... 2006-07/Barry Davis
- 17 ..... 2003-04/Barry Davis
- 15 ..... 1986-87/Russ Hellickson
- 14 ..... 2007-08/Barry Davis
- 14 ..... 1992-92/Andy Rein
- 13 ..... 1976-77/Duane Kleven
- 13 ..... 1975-76/Duane Kleven

## Best season winning percentage (min. 10 duals)

- .863 (19-3-0) ..... 2006-07/Barry Davis
- .840 (21-4) ..... 1984-85/Russ Hellickson
- .813 (13-3) ..... 1976-77/Duane Kleven
- .813 (13-3) ..... 1975-76/Duane Kleven
- .808 (10-2-1) ..... 1974-75/Duane Kleven
- .800 (8-2) ..... 1954-55/George Martin
- .794 (13-3-1) ..... 1965-66/George Martin
- .788 (20-5-1) ..... 1985-86/Russ Hellickson
- .786 (22-6) ..... 1983-84/Russ Hellickson
- .786 (12-5) ..... 1980-81/Duane Kleven
- .786 (11-3) ..... 1979-80/Duane Kleven

## Largest margin of victory

- 60 ..... 60-0 vs. UW-Green Bay, 1983-84
- 59 ..... 59-0 vs. UW-Milwaukee, 1976-77
- 58 ..... 58-0 vs. Dubuque, 2006-07
- 56 ..... 56-0 vs. Marquette, 1994-95
- 56 ..... 56-0 vs. Lincoln JC, 1985-86
- 55 ..... 55-0 vs. Purdue, 1978-79
- 54 ..... 54-0 vs. Morgan State, 1995-96
- 54 ..... 54-0 vs. Northern Illinois, 1991-92
- 53 ..... 53-0 vs. UW-Oshkosh, 2006-07
- 53 ..... 53-0 vs. Cumberland, 2006-07
- 52 ..... 52-0 vs. Marquette, 1978-79
- 52 ..... 52-0 vs. UW-Milwaukee, 1974-75

## Longest dual winning streaks

- 15 ..... 2006-07 season
- 14 ..... 1985-86-1986-87 seasons
- 12 ..... 1975-76-1976-77 seasons
- 11 ..... 1982-83-1983-84 seasons
- 10 ..... 1984-85 season
- 10 ..... 1983-84-1984-85 seasons
- 10 ..... 1979-80-1980-81 seasons
- 9 ..... 2001-02-2002-03 seasons
- 9 ..... 1990-91-1991-92 seasons
- 9 ..... 1976-77-1977-78 seasons
- 9 ..... 1965-66-1966-67 seasons
- 9 ..... 1938-39-1939-40 seasons

## Most NCAA champions in a season

- 3 ..... 1976 (Jack Reinwand, Lee Kemp, Pat Christenson)
- 2 ..... 1977 (Lee Kemp, Jim Haines)
- 2 ..... 1978 (Lee Kemp, Ron Jeidy)

## Most All-Americans in a season

- 5 ..... 1984
- 5 ..... 1980
- 4 ..... 2011
- 4 ..... 2010
- 4 ..... 1979
- 4 ..... 1978
- 3 ..... 2009
- 3 ..... 2000
- 3 ..... 1992
- 3 ..... 1988
- 3 ..... 1977
- 3 ..... 1976
- 3 ..... 1975
- 3 ..... 1929

## Most Big Ten Wrestler of the Week honors in a season

- 4 ..... 2007-08
- 2 ..... 2010-11
- 2 ..... 2006-07
- 2 ..... 2008-09

## UW Big Ten Wrestlers of the Month/Week

- Feb. 1991 ..... Matt Demaray  
 Feb. 1992 ..... Matt Demaray  
 Feb. 1996 ..... Kevin Wilmot  
 Jan. 12, 1998 ..... Donny Pritzlaff  
 Jan. 8, 2002 ..... Ralph DeNisco  
 Feb. 23, 2005 (co-WOW) ..... Brady Reinke  
 Jan. 10, 2007 ..... Dallas Herbst  
 Jan. 24, 2007 (co-WOW) ..... Zach Tanelli  
 Nov. 20, 2007 (co-WOW) ..... Dallas Herbst  
 Jan. 23, 2008 (co-WOW) ..... Dallas Herbst  
 Feb. 20, 2008 (co-WOW) ..... Zach Tanelli  
 Feb. 27, 2008 ..... Kyle Massey  
 Nov. 18, 2008 ..... Dallas Herbst  
 Dec. 31, 2008 ..... Zach Tanelli  
 Feb. 9, 2010 ..... Trevor Brandvold  
 Nov. 23, 2010 ..... Travis Rutt  
 Jan. 13, 2011 ..... Cole Schmitt

# Wisconsin Wrestling Year-by-Year Results

## 1911 (0-0-1, .500)

CHICAGO T n/a

## 1911-12 (0-0-1, .500)

CHICAGO T 1-1

## 1912-13 (1-0, 1.000)

at Chicago W 2-0

## 1913-14 (1-0, 1.000)

CHICAGO W 5-1

## 1914-15 (2-0-1, .833)

at Beloit W 3.5-1

ILLINOIS W 3-0

at Chicago T 1-1

## 1915-16 (1-2, .333)

BELOIT W 3-1

CHICAGO L 0-5

at Illinois L 0-4

## 1916-17 (0-3, .000)

at Northwestern L 0-4

ILLINOIS L 1-5

at Chicago L 1-5

## 1918-19 (0-1, .000)

at Iowa State L 1-5

## 1919-20 (2-1, .667)

LAWRENCE W 5-2

MINNESOTA L 1-5

CHICAGO W 5-0

## 1920-21 (2-1, .667)

at Iowa State L 8-46

at Chicago W 34-8

at Northwestern W 34-14

## 1921-22 (1-3, .250)

at Minnesota L 19-29

NORTHWESTERN W 28-22

CHICAGO L 1.5-4.5

IOWA STATE L 0-52

## 1922-23 (2-3, .400)

at Northwestern W 19-6

MINNESOTA W 24-8

IOWA L 11-16

at Chicago L 14-15

at Iowa State L 5-20

## 1923-24 (2-3, .400)

CHICAGO L 12-18

at Minnesota W 17-6

MICHIGAN W 14-4

at Iowa L 0-23

PURDUE L 6-11

## 1924-25 (4-2, .667)

at Chicago W 11-9

CARLETON W 18-2

MINNESOTA W 14-6

at Michigan W 17-6

IOWA L 7-16

OHIO STATE L 6-8

## 1925-26 (2-3, .400)

at Iowa L 6-8

CHICAGO L 11-12

at Minnesota L 3-14

at Illinois W 13-11

at Northwestern W 14-0

## 1926-27 (2-5, .286)

at Iowa L 7.5-17.5

ILLINOIS L 8-17

at Chicago W 22-3

MINNESOTA L 4.5-22.5

at Cornell (Iowa) L 5-20.5

at Northern Iowa L 9-14

PURDUE W 13-12

## 1927-28 (3-2, .600)

IOWA W 17-11

at Illinois L 4.5-18.5

at Minnesota L 11-14

NORTHWESTERN W 16-12

CHICAGO W 20-3

## 1928-29 (5-3-1, .611)

LAWRENCE W 29-2

ILLINOIS L 5-25

at Northwestern T 16-16

at Chicago L 8-22

at Cornell (Iowa) W 18-14

at Northern Iowa L 9-11

MINNESOTA W 18-12

at Iowa W 15.5-10.5

PURDUE W 19-9

## 1929-30 (4-2, .667)

LAWRENCE W 3-27

CHICAGO W 17-11

ILLINOIS L 4.5-21.5

at Minnesota W 17-11

MINNESOTA W 23-3

at Michigan L 9.5-16.5

## 1930-31 (1-4, .200)

NORTHWESTERN W 21-11

IOWA L 11-15

at Illinois L 3-25

at Chicago L 9-19

at Minnesota L 9-17

## 1931-32 (0-4, .000)

at Northwestern L 6-11

CHICAGO L 11-19

MINNESOTA L 3-27

at Cornell (IA) L 1-32

## 1932-33 (0-1, .000)

NORTHWESTERN L 0-34

## 1933-34 (1-6, .143)

at Iowa L 4-29

at Northern Iowa L 0-30

at Minnesota L 0-28

at Northwestern L 8-28

at Chicago L 11-21

ILLINOIS L 0-34

NORTHWESTERN W 18-16

## 1934-35 (0-8, .000)

NORTHERN IOWA L 3-29

at Northwestern L 10-25

at Illinois L 0-34

at Wheaton L 9-21

WHEATON L 16-18

CHICAGO L 11-17

at Minnesota L 3-29

NORTHWESTERN L 3-27

## 1935-36 (4-4, .500)

NORTHWESTERN W 21-11

IOWA L 8-24

at Chicago L 7.5-24.5

at Northern Illinois W 31-5

at Wheaton W 17-15

at Carleton W 25-8

at Minnesota L 3-25

WHEATON L 9.5-17.5

## 1936-37 (4-6, .400)

N. ILLINOIS W 34-0

at Northwestern L 11-21

CHICAGO W 18-12

at Wheaton W 17-15

at Iowa State L 5-29

at Iowa L 7.5-20.5

at Northern Iowa L 10-24

at Carleton W 18-8

at Minnesota L 6.5-23

NORTHWESTERN L 9-23

## 1937-38 (4-5, .444)

IOWA STATE L 7.5-18.5

IOWA W 17-11

at Ohio W 19-13

at Ohio State L 4.5-21.5

at Kent State L 11-17

at Minnesota L 9.5-18.5

NORTHWESTERN W 19-11

NORTHERN IOWA L 14-16

at Wheaton W 22-11

## 1938-39 (3-4, .429)

at Illinois State W 20-6

at Northwestern L 8-20

at Iowa L 11-23

at Northern Iowa L 8-24

WHEATON W 21-11

MICHIGAN STATE L 8-20

CHICAGO W 19-13

## 1939-40 (8-5, .615)

ILLINOIS STATE W 21-13

DUBUQUE W 19-9

BELOIT W 36-0

PURDUE W 19-9

NORTHWESTERN W 17-13

BELOIT W 29-5

at Carleton W 19-13

LAWRENCE W 27-0

at Wheaton L 16-18

IOWA L 9-21

at Minnesota L 6-26

at Chicago L 11-23

NORTHERN IOWA L 8-26

**1940-41 (5-5-1, .500)**

BELOIT	W	25-13
LAWRENCE	W	22-10
at Michigan State	L	3-27
CHICAGO	L	13-17
MINNESOTA	L	3-29
at Dubuque	W	18-16
at Iowa	L	3-25
WHEATON	W	22-8
at Northwestern	W	24-6
at Purdue	T	16-16
LAWRENCE	L	16-18

**1941-42 (7-2, .778)**

LAWRENCE	W	23-11
at Wheaton	W	19.5-14.5
NORTHWESTERN	W	22-3
DUBUQUE	W	21-13
CHICAGO	W	16-14
at Bradley	W	24-8
at Cornell (Iowa)	L	6-19
IOWA	L	9-19
at Beloit	W	24-10

**1942-43 (4-2, .667)**

at Minnesota	W	17-6
CHICAGO	L	11-23
at Dubuque	W	21-11
at Iowa	L	6-21
at Northwestern	W	18-16
at Lawrence	W	19-11

**1943-44 (0-2-1, .167)**

at Minnesota	L	11-19
NORTHWESTERN	T	16-16
Minnesota	L	11-19

**1944-45 (1-3, .250)**

MINNESOTA	L	11-25
IOWA	W	18-16
at Minnesota	L	0-36
at Northwestern	L	5-29

**1945-46 (5-2, .714)**

at Chicago	W	25-11
NEBRASKA	W	20-10
MICHIGAN	L	11-19
at Iowa	W	15-13
NORTHWESTERN	W	23-3
at Minnesota	L	3-23
WHEATON	W	19-15

**1946-47 (4-4-1, .500)**

at Wheaton	W	23-5
at Bradley	W	32-0
IOWA	L	11-15
MINNESOTA	T	12-12
LAWRENCE	W	34-0
CORNELL (Iowa)	L	11-17
at Michigan	L	3-27
at Purdue	L	0-28
at Northwestern	W	27-5

**1947-48 (3-4, .429)**

CHICAGO	W	22-8
PURDUE	L	8-17
WHEATON	L	9-19
at Iowa	L	6-26
at Iowa State	W	15-13
at Minnesota	L	13-24
NORTHWESTERN	W	25-5

**1948-49 (2-3, .400)**

at Wheaton	L	8-24
IOWA STATE	W	15-11
ILLINOIS	L	8-19
at Northwestern	W	16-11
IOWA	L	6-22

**1949-50 (5-4, .556)**

NORTHWESTERN	W	24-6
WHEATON	W	21-10
at Illinois	L	8-22
at Indiana	W	17-9
at Iowa	L	11-15
OHIO STATE	L	9-17
at Iowa State	W	14-12
at Nebraska	L	9-15
MINNESOTA	W	18-15

**1950-51 (3-4-3, .450)**

at Northwestern	W	18-13
at Wheaton	W	25-3
IOWA	T	14-14
IOWA STATE	W	25-3
at Michigan State	L	8-17
at Ohio State	L	11-16
NEBRASKA	T	12-12
INDIANA	L	13-14
ILLINOIS	T	12-12
at Minnesota	L	9-17

**1951-52 (7-5, .583)**

WHEATON	W	27-3
at Illinois	L	12-18
at Indiana	L	11-15
NORTHWESTERN	W	16-11
IOWA STATE	L	9-19
at Iowa	W	23-5
at Nebraska	W	23-3
at Colorado State	W	21-9
at Wyoming	W	18-10
MICHIGAN STATE	L	11-16
MINNESOTA	L	12-14
MARQUETTE	W	22-6

**1952-53 (3-5, .375)**

MARQUETTE	W	22-6
at Wheaton	W	23-3
IOWA	L	11-15
at Illinois	L	9-23
NEBRASKA	L	13-19
OHIO STATE	W	15-11
at Northwestern	L	12-14
at Minnesota	L	3-23

**1953-54 (6-4-1, .591)**

at Marquette	W	26-0
MINNESOTA	W	16-15
at Iowa	L	3-23
ILLINOIS	L	11-21
at Iowa State	L	11-19
at Nebraska	W	17-11
at Kansas State	W	18-14
INDIANA	L	11-17
NORTHWESTERN	W	19-13
at Ohio State	W	17-11
WYOMING	T	14-14

**1954-55 (8-2, .800)**

at Illinois State	W	25-3
at Wheaton	W	21-3
KANSAS STATE	W	24-5
IOWA	L	5-20

at Northwestern	W	21-10
at Minnesota	W	22-8
at Indiana	W	19-8
at Illinois	L	11-17
OHIO STATE	W	18-6
NEBRASKA	W	25-3

**1955-56 (5-7, .417)**

WHEATON	W	15-11
ILLINOIS STATE	W	22-7
at Northwestern	W	26-5
at Iowa	L	3-21
at Northern Iowa	L	11-19
at Purdue	W	15-9
at Michigan State	L	5-20
INDIANA	L	15-21
MARQUETTE	W	23-10
MINNESOTA	L	8-23
at Iowa State	L	8-21
ILLINOIS	L	19-20

**1956-57 (1-8, .111)**

at Illinois State	L	14-15
at Wheaton	W	20-6
NORTHERN IOWA	L	14-16
at Minnesota	L	11-15
COLORADO STATE	L	9-19
at Indiana	L	13-16
at Illinois	L	7-24
IOWA	L	5-24
MICHIGAN STATE	L	5-24

**1957-58 (5-6, .455)**

at Northern Illinois	W	16-13
MINNESOTA	L	8-20
NORTHWESTERN	W	18-13
at Colorado Mines	L	13-16
at Colorado State	L	2-25
at Air Force	W	14-11
INDIANA	W	17-13
PURDUE	W	16-14
ILLINOIS	L	11-20
at Northern Iowa	L	0-28
at Iowa	L	0-30

**1958-59 (5-4-1, .550)**

at Illinois State	W	17-15
vs. SIU-Carbondale	L	9-23
IOWA	L	3-29
NORTHERN IOWA	W	14-11
at Minnesota	L	8-22
at Northwestern	W	15-9
at Indiana	L	10-19
at Illinois	T	14-14
at Purdue	W	16-14
AIR FORCE	W	24-0

**1959-60 (2-6, .250)**

INDIANA	L	8-25
ILLINOIS	L	11-19
at Iowa	L	3-23
at Cornell (Iowa)	L	14-18
MINNESOTA	L	2-27
PURDUE	W	16-13
NORTHWESTERN	L	7-25
at Central State	W	22-8

**1960-61 (2-10, .167)**

at Wheaton	L	12-14
CORNELL (Iowa)	W	22-5
at Illinois	L	11-25
at Ohio State	L	8-29

at Northwestern	L	14-23
at Purdue	L	11-22
vs. Bowling Green	W	17-16
ARMY	L	8-23
IOWA	L	17-22
MICHIGAN	L	6-32
INDIANA	L	10-29
COLORADO STATE	L	2-27

**1961-62 (9-3-1, .731)**

at Indiana State	W	22-5
vs. Notre Dame	W	30-0
at Indiana	L	8-17
at Ohio State	L	14-15
vs. Bowling Green	W	17-11
vs. West Virginia	W	23-5
at Illinois	W	15-9
vs. Air Force	T	12-12
at Iowa	L	12-16
PURDUE	W	14-12
WHEATON	W	20-6
UW-SUPERIOR	W	19-9
NORTHWESTERN	W	15-11

**1962-63 (4-7, .364)**

at Indiana State	L	11-22
vs. Nebraska	W	16-15
vs. Bloomsburg	L	5-36
at Wheaton	W	28-0
MINNESOTA	W	16-11
IOWA	L	7-23
OHIO STATE	W	19-11
ILLINOIS	L	8-19
INDIANA	L	6-24
MICHIGAN	L	2-29
at Northwestern	L	8-21

**1963-64 (7-6, .538)**

CORNELL (Iowa)	W	20-13
NORTHERN IOWA	W	26-5
UW-SUPERIOR	W	25-3
at Iowa	L	9-23
MICHIGAN	L	8-23
at Illinois	L	13-16
at Indiana	L	9-19
vs. Purdue	W	19-10
at Minnesota	L	11-17
NORTHWESTERN	L	8-21
WHEATON	W	24-3
MARQUETTE	W	21-11
PURDUE	W	24-10

**1964-65 (11-6-1, .639)**

at Wheaton	W	21-5
vs. Northern Illinois	W	29-2
at Cornell (Iowa)	W	25-3
vs. Northern Iowa	W	15-9
vs. UW-Superior	W	15-11
at Michigan	L	3-25
at Northwestern	L	9-19
at Marquette	W	18-11
vs. Central Michigan	W	19-9
vs. Luther College	W	20-11
ILLINOIS	W	19-11
MINNESOTA	L	11-16
PURDUE	L	10-17
KENT STATE	W	19-9
IOWA	L	11-17
OHIO STATE	W	17-8
INDIANA	L	12-18
UW-MILWAUKEE	T	14-14

**1965-66 (13-3-1, .794)**

at UW-Superior	W	23-10
vs. North Dakota	W	20-9
vs. UW-Milwaukee	W	23-5
EASTERN ILLINOIS	W	24-9
MACMURRAY	W	25-5
WHEATON	W	21-12
MARQUETTE	W	31-5
OKLAHOMA	L	5-31
at Minnesota	L	11-19
NORTHWESTERN	W	23-8
at Indiana	W	14-12
at Illinois	W	22-6
vs. Missouri	W	27-3
vs. Purdue	W	27-5
MICHIGAN	L	3-25
at Ohio State	T	12-12
at Iowa	W	18-12

**1966-67 (10-8, .556)**

at UW-Milwaukee	W	21-11
vs. Marquette	W	17-12
vs. UW-Superior	W	21-11
at Northern Iowa	W	26-3
vs. Bemidji State	W	23-5
vs. Fort Hays State	W	31-0
NORTHERN ILL.	W	21-12
ILLINOIS STATE	W	20-15
INDIANA	L	14-17
at Northwestern	L	12-17
at Minnesota	L	12-17
vs. Purdue	W	32-3
vs. Indiana	L	13-19
at Michigan	L	11-20
MINNESOTA	L	10-19
OHIO STATE	L	11-18
IOWA	L	11-19
ILLINOIS	W	21-14

**1967-68 (11-8, .579)**

NORTHWESTERN	L	14-19
MARQUETTE	W	26-9
UW-MILWAUKEE	W	21-13
UW-SUPERIOR	W	15-14
at Northern Illinois	W	22-8
vs. Nebraska-Omaha	L	12-19
vs. Indiana State	L	16-18
at Iowa	L	10-19
vs. Illinois State	W	21-10
NORTHERN MICH	W	17-12
at Indiana	L	11-25
at Illinois	W	24-9
UW-PLATTEVILLE	W	26-3
UW-LA CROSSE	W	33-0
MINNESOTA	W	19-12
MICHIGAN	L	6-25
at Ohio State	W	19-14
vs. Iowa	L	14-17
vs. Virginia Tech	L	16-17

**1968-69 (5-7-1, .423)**

at Northwestern	L	7-25
MARQUETTE	W	24-7
UW-WHITEWATER	W	15-12
ILLINOIS	W	26-3
COLORADO MINES	L	11-20
at Illinois State	T	16-16
INDIANA	L	14-16
at Minnesota	L	14-21
vs. Indiana	L	9-20
vs. Illinois	L	16-17
IOWA	L	6-25

PURDUE	W	22-11
OHIO STATE	W	21-8

**1969-70 (11-6-1, .639)**

at Marquette	W	26-6
vs. UW-Milwaukee	W	34-0
vs. UW-Superior	W	31-2
at Indiana	W	20-12
at Illinois	L	16-17
NORTHERN ILL.	W	20-12
WHEATON	W	27-9
UW-WHITEWATER	W	20-14
NORTHWESTERN	L	12-24
MINNESOTA	W	18-16
UW-OSHKOSH	W	23-12
at Iowa	L	3-29
vs. SIU-Carbondale	W	23-14
vs. Michigan State	L	6-25
at Ohio State	L	11-20
vs. Toledo	T	15-15
vs. Virginia Tech	W	22-13
at Purdue	L	12-20

**1970-71 (13-4, .765)**

at UW-Superior	W	29-3
vs. UW-Milwaukee	W	32-6
vs. Marquette	W	25-9
at Mankato State	L	14-20
UW-OSHKOSH	W	24-8
ILLINOIS	W	25-10
NORTHERN IOWA	W	23-9
at Minnesota	W	21-9
vs. Indiana	W	18-12
at Northwestern	L	14-21
OHIO STATE	L	16-17
IOWA	L	9-21
MINNESOTA	W	17-14
NORTHERN ILL.	W	22-11
PURDUE	W	25-9
MADISON TECH	W	25-15
NORTHERN MICH	W	24-12

**1971-72 (6-9, .400)**

at Northern Illinois	L	9-29
at Indiana	L	13-18
at Purdue	L	18-22
MANKATO STATE	W	28-6
MIAMI (Ohio)	W	20-13
at UW-Milwaukee	W	32-9
vs. Marquette	W	34-7
at Illinois State	W	30-8
at Illinois	L	15-17
MINNESOTA	L	17-21
NORTHWESTERN	W	21-12
at Iowa State	L	3-38
at Iowa	L	9-30
at Michigan	L	6-29
at Michigan State	L	10-24

**1972-73 (12-3-1, .781)**

INDIANA	W	26-12
IOWA STATE	L	6-31
at Minnesota	L	14-17
vs. Nebraska	W	24-12
vs. Drake	W	26-10
at Iowa	T	17-17
MARQUETTE	W	36-4
at Ohio State	W	25-14
vs. Ball State	W	38-10
vs. Cleveland State	W	20-17
ILLINOIS	W	38-5
at Northwestern	W	26-14

PURDUE W 33-9  
 UW-MILWAUKEE W 30-12  
 MICHIGAN L 5-29  
 MICHIGAN STATE W 21-12

**1973-74 (12-3-1, .781)**

at Indiana W 27-5  
 vs. Alabama W 34-3  
 at Purdue W 26-12  
 OKLAHOMA STATE L 12-21  
 IOWA T 17-17  
 at Marquette W 42-0  
 OHIO STATE W 25-8  
 AUGUSTANA (Ill.) W 32-8  
 MINNESOTA W 24-14  
 OKLAHOMA L 18-23  
 NORTHWESTERN W 18-15  
 UW-MILWAUKEE W 35-6  
 at Illinois W 31-8  
 at Michigan L 9-24  
 at Michigan State W 18-16  
 MOORHEAD STATE W 42-6

**1974-75 (10-2-1, .808)**

INDIANA W 33-3  
 IOWA STATE W 17-15  
 at Minnesota W 28-6  
 vs. Arizona W 33-5  
 UW-MILWAUKEE W 52-0  
 at Iowa L 14-17  
 MARQUETTE W 34-0  
 at Northwestern W 22-12  
 ILLINOIS W 29-6  
 MICHIGAN W 19-13  
 MICHIGAN STATE W 20-14  
 at Oklahoma T 15-15  
 at Oklahoma State L 12-20

**1975-76 (13-3, .813)**

at Indiana W 40-2  
 OKLAHOMA STATE L 16-17  
 MINNESOTA W 32-9  
 at Iowa State L 12-23  
 IOWA L 15-22  
 NORTHERN ILL. W 26-9  
 ILLINOIS STATE W 26-12  
 WINONA STATE W 39-2  
 at Marquette W 31-10  
 NORTHWESTERN W 34-10  
 UW-MILWAUKEE W 50-0  
 at Illinois W 33-8  
 at Michigan W 20-14  
 at Michigan State W 19-17  
 OKLAHOMA W 17-16  
 PURDUE W 33-7

**1976-77 (13-3, .813)**

MARQUETTE W 42-0  
 IOWA STATE L 14-19  
 at Minnesota W 20-16  
 vs. Ohio State W 34-7  
 vs. Purdue W 46-0  
 at Iowa L 14-24  
 at Oklahoma W 22-12  
 at Oklahoma State W 20-16  
 at Northern Illinois W 30-5  
 at Northwestern L 14-21  
 UW-MILWAUKEE W 59-0  
 ILLINOIS STATE W 29-12  
 ILLINOIS W 39-6  
 MICHIGAN STATE W 40-2  
 MICHIGAN W 21-14

INDIANA W 36-9

**1977-78 (11-3-1, .767)**

at Marquette W 41-0  
 at Indiana W 38-9  
 at Lehigh W 29-9  
 at Iowa State L 9-23  
 OKLAHOMA STATE L 15-17  
 MINNESOTA STATE W 28-8  
 IOWA L 17-23  
 NORTHWESTERN W 47-2  
 OHIO STATE W 34-3  
 at Purdue W 47-3  
 at Illinois W 34-8  
 vs. Northern Illinois W 37-6  
 at Michigan W 31-11  
 at Michigan State T 20-20  
 OKLAHOMA W 22-13

**1978-79 (11-3, .786)**

MARQUETTE W 52-0  
 INDIANA W 40-2  
 IOWA STATE L 18-20  
 LEHIGH W 32-11  
 at Minnesota W 22-16  
 at Iowa L 14-28  
 at Oklahoma L 17-20  
 at Oklahoma State W 24-13  
 at Northwestern W 37-9  
 at Ohio State W 35-6  
 ILLINOIS W 43-0  
 PURDUE W 55-0  
 MICHIGAN STATE W 26-7  
 MICHIGAN W 31-9

**1979-80 (11-3, .786)**

at Indiana W 43-6  
 at Lehigh L 15-25  
 at Iowa State L 12-25  
 OKLAHOMA STATE W 27-16  
 MINNESOTA W 23-15  
 IOWA L 18-20  
 NORTHERN ILL. W 45-0  
 NORTHWESTERN W 43-3  
 OHIO STATE W 34-5  
 at Purdue W 45-6  
 at Illinois W 35-6  
 at Michigan State W 25-11  
 at Michigan W 27-10  
 OKLAHOMA W 23-17

**1980-81 (12-5, .706)**

vs. Oregon State# W 28-9  
 vs. Navy# W 34-7  
 vs. Oklahoma State# L 12-21  
 INDIANA W 19-13  
 LEHIGH W 26-15  
 IOWA STATE L 9-24  
 at Northern Illinois W 24-11  
 at Minnesota L 11-29  
 at Iowa L 2-41  
 at Oklahoma State L 9-24  
 at Oklahoma W 21-17  
 at Northwestern W 41-5  
 at Ohio State W 24-12  
 ILLINOIS W 27-15  
 PURDUE W 38-11  
 MICHIGAN STATE W 26-14  
 MICHIGAN W 26-15  
 # at Hall of Fame Classic

**1981-82 (8-5-1, .607)**

at Indiana W 35-5  
 at Lehigh T 18-18  
 IOWA STATE L 6-31  
 OKLAHOMA STATE L 14-31  
 MINNESOTA W 22-17  
 at Iowa L 3-43  
 OKLAHOMA L 6-31  
 NORTHERN ILL. W 30-7  
 NORTHWESTERN W 37-9  
 OHIO STATE W 34-8  
 at Purdue W 26-11  
 at Illinois W 32-4  
 at Michigan State L 17-20  
 at Michigan W 21-13

**1982-83 (7-7, .500)**

INDIANA W 27-14  
 at Iowa State L 14-31  
 at Northern Illinois W 24-9  
 LEHIGH L 15-22  
 at Minnesota L 15-27  
 IOWA L 6-37  
 at Oklahoma L 6-34  
 at Oklahoma State L 3-43  
 at Ohio State W 19-17  
 at Northwestern W 19-15  
 ILLINOIS W 38-7  
 PURDUE W 37-2  
 MICHIGAN STATE L 12-27  
 MICHIGAN W 22-17

**1983-84 (22-6, .786)**

at UW-Green Bay W 60-0  
 NORTHERN IOWA W 29-8  
 at N.C. State W 27-11  
 at North Carolina W 21-19  
 at Clemson W 22-16  
 OKLAHOMA W 20-15  
 at Indiana W 46-0  
 at Lehigh W 25-12  
 at Morgan State W 30-6  
 at Lock Haven W 32-12  
 at Penn State L 16-20  
 at Clarion L 18-19  
 Wilkes# W 30-9  
 vs. North Carolina# W 22-13  
 vs. Louisiana State# W 19-15  
 at Iowa L 6-28  
 at Northern Iowa L 13-24  
 OKLAHOMA STATE L 6-33  
 NORTHERN ILL. W 39-6  
 MINNESOTA W Forfeit  
 OHIO STATE W 26-10  
 NORTHWESTERN W 33-11  
 IOWA STATE L 12-24  
 at Purdue W 36-9  
 at Illinois W 25-11  
 INDIANA STATE W 31-6  
 at Michigan State W 29-15  
 at Michigan W 28-9  
 # at Virginia Duals

**1984-85 (21-4, .840)**

at Northern Iowa W 27-8  
 at Drake W 33-6  
 vs. Central Okla.# W 40-2  
 vs. Hofstra# W 44-0  
 vs. Morgan State# W 32-11  
 vs. Louisiana State# L 11-29  
 NORTH CAROLINA W 30-6  
 CLARION W 29-14

PENN STATE W 28-6  
 LOCK HAVEN W 24-13  
 LEHIGH W 32-12  
 at Iowa State W 21-16  
 at Northern Illinois W 21-12  
 NORTHERN IOWA W 24-8  
 at Northwestern W 37-10  
 UW-WHITEWATER W 26-8  
 IOWA L 12-23  
 ILLINOIS W 31-12  
 at Oklahoma L 14-30  
 at Oklahoma State L 11-23  
 at Indiana State W 31-8  
 at Purdue W 41-3  
 at Ohio State W 35-8  
 MICHIGAN STATE W 24-8  
 MICHIGAN W 23-13  
 # at LSU Duals

**1985-86 (20-5-1, .788)**

NORTHERN IOWA W 21-12  
 OKLAHOMA L 15-18  
 at Lehigh W 19-14  
 at Slippery Rock W 34-7  
 at Clarion L 13-26  
 at North Carolina W 25-10  
 at N. Carolina St. W 23-16  
 vs. Cal Poly-SLO# W 23-16  
 vs. North Carolina# T 17-17  
 vs. Northern Iowa# W 23-15  
 vs. Iowa State# L 8-27  
 EDINBORO W 28-12  
 N. ILLINOIS W 26-10  
 MINNESOTA W 27-12  
 IOWA STATE L 12-23  
 at Iowa L 9-34  
 NORTHWESTERN W 34-9  
 NORTHERN MICH W 40-4  
 LINCOLN JC W 56-0  
 OHIO STATE W 24-9  
 at Illinois W 28-9  
 vs. Indiana W 23-13  
 at Purdue W 30-11  
 vs. Indiana State W 39-9  
 at Michigan State W 28-13  
 at Michigan W 24-14  
 # at Virginia Duals

**1986-87 (15-6, .714)**

CLARION W 25-16  
 LEHIGH W 26-12  
 at Oklahoma W 24-8  
 vs. West Virginia# W 20-15  
 vs. North Carolina# L 15-23  
 vs. Indiana# W 32-11  
 vs. Minnesota# W 26-11  
 vs. Bloomsburg# L 17-20  
 NORTH CAROLINA L 19-23  
 IOWA L 12-30  
 at Northwestern W 20-15  
 at Northern Iowa L 15-19  
 at Iowa State L 6-35  
 at Minnesota W 19-15  
 N. MICHIGAN W 28-15  
 INDIANA W 41-8  
 PURDUE W 20-15  
 ILLINOIS W 24-15  
 at Ohio State W 32-9  
 MICHIGAN STATE W 34-8  
 MICHIGAN W 21-18  
 # at Virginia Duals

**1987-88 (10-7, .588)**

NORTHERN IOWA L 12-22  
 IOWA STATE W 28-11  
 vs. North Carolina# W 22-14  
 vs. Arizona State# L 10-25  
 vs. Michigan# W 21-17  
 vs. Minnesota# L 17-21  
 vs. Penn State# W 20-11  
 at Lehigh L 14-23  
 at Iowa L 15-24  
 MINNESOTA W 21-15  
 OKLAHOMA W 30-10  
 at Illinois W 28-9  
 at Purdue W 22-16  
 NORTHWESTERN W 31-9  
 OHIO STATE L 14-21  
 at Michigan State W 23-18  
 at Michigan L 14-27  
 # at Virginia Duals

**1988-89 (8-5-1, .607)**

at Iowa State T 18-18  
 at Minnesota L 12-22  
 at Northwestern W 20-16  
 IOWA L 14-24  
 vs. Indiana# L 18-20  
 vs. Michigan State# W 30-15  
 vs. Purdue# W 28-12  
 vs. Minnesota# W 20-18  
 vs. Northwestern# W 23-12  
 PURDUE W 19-17  
 ILLINOIS W Forfeit  
 at Ohio State L 16-24  
 MICHIGAN STATE W 26-15  
 MICHIGAN L 17-24  
 # at Big Ten Duals

**1989-90 (10-8-1, .553)**

WYOMING W 20-15  
 GV STATE W 41-4  
 MARQUETTE W 43-4  
 WYOMING W 24-11  
 BOISE STATE L 17-18  
 MORGAN STATE W 47-3  
 LOCK HAVEN W 21-15  
 vs. Oklahoma# L 12-22  
 vs. Portland State# W 23-18  
 vs. Iowa State# L 14-17  
 MINNESOTA L 14-28  
 at Iowa L 2-44  
 IOWA STATE L 14-24  
 at Purdue T 18-18  
 vs. Northwestern W 19-18  
 OHIO STATE L 18-19  
 ILLINOIS W 35-7  
 at Michigan State W 19-13  
 at Michigan L 16-22  
 # at National Duals

**1990-91 (12-4-1, .735)**

at Wyoming W 30-7  
 GRAND VALLEY ST. W 43-3  
 MARQUETTE W 43-3  
 SIUE W 35-5  
 at Iowa State L 3-31  
 PURDUE L 15-18  
 LOCK HAVEN W 42-3  
 at Illinois W 34-10  
 at Minnesota W 24-17  
 vs. N. Carolina St. W 28-13  
 at Clarion T 17-17  
 IOWA L 7-30

at Oklahoma State L 13-27  
 at Northwestern W 33-9  
 at Ohio State W 20-19  
 MICHIGAN W 18-17  
 MICHIGAN STATE W 34-7

**1991-92 (14-5, .737)**

N. ILLINOIS W 54-0  
 MARQUETTE W 41-4  
 BROWN W 30-6  
 vs. N.C. State W 36-9  
 CLARION W 24-13  
 IOWA STATE L 16-20  
 MINNESOTA W 29-5  
 at Iowa L 2-35  
 vs. Purdue W 20-13  
 vs. West Virginia# W 30-9  
 vs. Ohio State# L 17-25  
 vs. N. Montana# W 40-6  
 vs. Purdue# W 25-12  
 vs. Penn State# L 14-23  
 vs. Michigan# L 14-22  
 NORTHWESTERN W 29-9  
 ILLINOIS W 44-0  
 at Michigan State W 28-8  
 at Michigan W 19-17  
 # at National Duals

**1992-93 (12-6, .667)**

N. ILLINOIS W 40-9  
 MARQUETTE W 29-10  
 BROWN W 23-13  
 N. C. STATE W 24-21  
 at Penn State L 10-27  
 vs. Old Dominion# W 33-7  
 vs. Cornell# W 21-19  
 vs. Northern Iowa# L 16-19  
 vs. Navy# W 18-12  
 vs. Oklahoma# W 21-15  
 at Minnesota L 9-30  
 IOWA L 6-34  
 at Iowa State L 13-29  
 PURDUE W 20-17  
 at Northwestern W 23-13  
 vs. Wyoming W 26-12  
 MICHIGAN L 19-25  
 MICHIGAN STATE W 28-10  
 # — at Virginia Duals

**1993-94 (7-6-1, .536)**

at North Dakota State W 24-18  
 PENN STATE L 10-18  
 MINNESOTA L 18-28  
 vs. Maryland# T 21-21  
 vs. Lock Haven# W 22-19  
 vs. Minnesota# L 3-41  
 vs. Navy# L 15-22  
 vs. Edinboro# L 9-36  
 at Iowa L 12-26  
 BOISE STATE W 20-16  
 NORTHWESTERN W 25-17  
 at Michigan State W 21-16  
 at Michigan W 24-18  
 at Purdue W 20-19  
 # at Virginia Duals

**1994-95 (8-4-1, .654)**

at UW-Stevens Point W 38-3  
 at Penn State L 12-19  
 at Lock Haven W 19-17  
 at Oregon State W 29-10  
 at Oregon W 35-3

MARQUETTE W 56-0  
 IOWA L 4-31  
 at Northern Iowa W 35-7  
 at Minnesota L 9-28  
 at Northwestern W 24-11  
 at Northern Illinois W 41-3  
 MICHIGAN T 16-16  
 MICHIGAN STATE L 16-25

**1995-96 (10-5, .667)**

OREGON STATE W 31-6  
 at Central Michigan W 42-6  
 vs. Missouri W 37-3  
 vs. Morgan State W 54-0  
 at UW-Stevens Point W 31-13  
 at Indiana L 16-19  
 at Purdue W 24-16  
 NORTHERN IOWA W 39-4  
 at Iowa L 6-35  
 OHIO STATE W 22-13  
 MINNESOTA W 22-13  
 at Northern Illinois W 32-12  
 at Michigan L 13-19  
 at Michigan State L 16-18  
 NORTHWESTERN L 13-20

**1996-97 (7-11-1, .395)**

E. MICHIGAN W 22-16  
 vs. Harvard W 22-16  
 vs. Appalachian State W 29-3  
 at Central Michigan L 16-22  
 vs. Missouri T 21-21  
 vs. Oregon State# L 13-26  
 vs. VMI# W 31-10  
 vs. Cal St.-Bkrsfld# W 20-19  
 vs. Lock Haven# L 14-26  
 at UW-La Crosse L 18-21  
 at Northern Iowa W 24-13  
 IOWA L 4-31  
 at UW-Platteville W 36-9  
 at Minnesota L 9-28  
 PENN STATE L 10-31  
 at Northwestern L 15-23  
 at Ohio State L 11-27  
 MICHIGAN L 10-31  
 MICHIGAN STATE L 15-19  
 # at Virginia Duals

**1997-98 (8-9, .471)**

at UW-Stevens Point W 33-12  
 at Lock Haven L 15-23  
 at Penn State L 14-28  
 vs. Virginia# W 23-16  
 vs. Brown# W 28-10  
 vs. Oklahoma# L 10-25  
 vs. Marquette W 31-12  
 at UW-La Crosse W 25-9  
 INDIANA L 14-21  
 NORTHERN IOWA W 25-21  
 at Iowa L 3-39  
 MINNESOTA L 11-25  
 at Oklahoma State L 8-25  
 vs. Truman State W 40-6  
 vs. Iowa State L 9-25  
 NORTHWESTERN L 14-26  
 OHIO STATE W 23-13  
 # at Lonestar Duals

**1998-99 (4-12-1, .281)**

at UW-La Crosse W 24-13  
 OKLAHOMA STATE L 4-34  
 IOWA STATE L 7-31

at Wyoming T 19-19  
 at N. Colorado W 34-7  
 vs. Cal St.-Bkrsfld# L 18-21  
 vs. Oregon State# L 19-18  
 vs. Oklahoma# L 3-37  
 at N. Illinois W 22-21  
 MICHIGAN STATE L 11-25  
 MICHIGAN L 11-28  
 MINNESOTA L 7-36  
 at Iowa L 13-29  
 ILLINOIS L 10-26  
 at Indiana L 16-21  
 at Ohio State W 20-17  
 at Northwestern L 17-24  
 # at Lonestar Duals

**1999-00 (11-5-1, .676)**

at UW-Stevens Point W 43-0  
 at Northern Iowa T 17-17  
 at Iowa State L 28-9  
 at Minnesota State W 36-6  
 vs. Wyoming# W 22-12  
 vs. Boise State# W 27-12  
 vs. Lock Haven# W 23-12  
 N. ILLINOIS W 22-13  
 PURDUE W 20-19  
 UW-LA CROSSE W 32-12  
 at Minnesota L 32-6  
 OHIO STATE W 22-15  
 at Illinois L 32-7  
 at Michigan State L 24-10  
 at Penn State W 19-17  
 IOWA L 37-6  
 NORTHWESTERN W 27-9  
 # Dallas Duals

**2000-01 (10-10-1, .500)**

at Seton Hall W 31-7  
 at Rutgers W 21-18  
 at Army W 32-12  
 at Hofstra W 19-15  
 NORTHERN IOWA W 20-19  
 vs. Nebraska# L 24-17  
 vs. Navy# W 25-9  
 vs. Iowa State# L 25-9  
 vs. James Madison^ W 37-9  
 vs. Central Michigan^ L 18-16  
 vs. Cornell^ T 16-16  
 vs. West Virginia^ W 28-9  
 vs. Indiana^ L 19-18  
 at Northwestern W 28-9  
 at Iowa L 31-13  
 at Purdue L 19-15  
 at Michigan L 37-4  
 PENN STATE W 19-18  
 ILLINOIS L 27-11  
 MINNESOTA L 33-6  
 INDIANA L 25-13  
 # Lonestar Duals  
 ^ Virginia Duals

**2001-02 (11-10, .524)**

at Minnesota State W 31-9  
 at Iowa State L 21-24  
 HOFSTRA L 16-20  
 at Northern Iowa L 12-26  
 vs. Oklahoma State# L 3-38  
 vs. Navy# W 35-3  
 vs. Nebraska# W 23-16  
 vs. Army^ L 9-27  
 vs. Appalachian St.^ W 29-12  
 vs. Rider^ W 27-18

vs. Pittsburgh^ W 24-18  
 vs. Penn State^ W 26-12  
 vs. Kent State^ W 20-14  
 at Indiana W 33-6  
 at Ohio State L 18-21  
 MICHIGAN STATE W 21-19  
 IOWA L 9-23  
 at Illinois L 9-23  
 at Minnesota L 4-40  
 MICHIGAN L 7-32  
 NORTHWESTERN W 29-12  
 # Lonestar Duals  
 ^ Virginia Duals

**2002-03 (9-7, .563)**

vs. South Dakota State#W 45-0  
 vs. UW-La Crosse# W 24-13  
 at Northern Illinois W 26-12  
 NORTHERN IOWA W 27-18  
 at Portland State W 33-12  
 vs. Oregon State^ W 23-18  
 vs. Oregon^ W 24-13  
 vs. Pacific^ W 40-3  
 at Iowa L 3-34  
 at Northwestern W 24-13  
 at Michigan State L 13-22  
 at Penn State L 9-27  
 ILLINOIS L 7-29  
 PURDUE L 6-32  
 MINNESOTA L 6-40  
 OHIO STATE L 17-28  
 # UW Tri, River Falls, Wis.  
 ^ Oregon Classic

**2003-04 (17-6, .648)**

UW-La Crosse W 24-12  
 at Northern Iowa W 24-13  
 Northern Illinois W 27-9  
 at Drexel W 23-12  
 at Penn L 15-19  
 at Princeton W 32-9  
 vs. Harvard# W 27-13  
 vs. Brown# W 35-9  
 vs. Utah Valley State#W 26-15  
 vs. Cornell# W 21-14  
 vs. Lock Haven^ W 28-15  
 vs. Purdue^ W 26-15  
 vs. Lehigh^ L 15-20  
 vs. Rider^ W 27-18  
 vs. Purdue^ W 22-12  
 INDIANA W 26-12  
 at Minnesota W 17-16  
 PENN STATE L 15-24  
 at Purdue W 28-6  
 at Illinois L 9-30  
 IOWA L 9-24  
 at Michigan L 16-24  
 NORTHWESTERN W 28-6  
 # Lonestar Duals  
 ^ Virginia Duals

**2004-05 (11-3-2, .701)**

at UW-Oshkosh W 46-6  
 NORTHERN IOWA W 20-14  
 at Northern Illinois W 27-12  
 at Chattanooga W 23-12  
 vs. Kent State W 29-12  
 vs. Cal State-Fullerton#W 25-9  
 vs. Brown# W 24-9  
 vs. Nebraska# T 19-19  
 ILLINOIS L 12-25  
 at Iowa L 14-19

MICHIGAN L 16-23  
MICHIGAN STATE T 16-16  
at Ohio State W 20-18  
at Indiana W 18-16  
MINNESOTA W 18-17  
at Northwestern W 19-18  
# Lonestar Duals

**2005-06 (9-5-1, .633)**

at UW-Oshkosh W 51-0  
at Pointer Open -- NTS  
at Dubuque Open -- NTS  
at Lock Haven W 45-3  
at Penn State W 45-3  
at Vegas Invite -- NTS  
at Northern Iowa W 19-16  
N. ILLINOIS L 17-18  
vs. UT-Chattanooga# L 18-19  
vs. Brown# W 36-3  
vs. North Carolina# W 21-15  
IOWA L 7-24  
NORTHWESTERN L 15-24  
PURDUE W 24-16  
at Minnesota L 12-26  
OHIO STATE W 38-12  
at Michigan State W 22-15  
at Illinois T 15-15  
# Lonestar Duals

**2006-07 Results (19-3-0, .863)**

vs. Dubuque W 49-0  
vs. UW-Oshkosh W 40-3  
vs. Indianapolis\$ W 40-3  
vs. Navy\$ W 29-7  
vs. Cumberland\$ W 53-0  
vs. NC State^ W 29-9  
vs. Virginia^ W 30-7  
vs. North Carolina^ W 35-9  
at Cliff Keen Invite 5th 90.5  
NORTHERN IOWA W 24-10  
at Northern Illinois W 26-9  
vs. Harvard# W 36-9  
vs. Northern Colo.# W 29-10  
vs. Army# W 35-3  
vs. Air Force# W 37-6  
PENN STATE W 17-16  
at Northwestern L 18-19  
at Iowa W 21-14  
at Purdue W 27-12  
at Michigan W 21-15  
ILLINOIS L 16-21  
MINNESOTA L 12-28  
INDIANA W 21-13  
\$ Northwestern Duals  
^ ACC/Big Ten Clash  
# Lonestar Duals

**2007-08 Results (14-4-1, .763)**

vs. Dubuque W 58-0  
vs. Tri-State W 45-9  
vs. UW-Oshkosh W 53-0  
vs. Cornell W 21-18  
at Cliff Keen Invite 5th 107.5  
vs. Northern Iowa T 16-16  
vs. Ohio State L 13-23  
vs. Utah Valley State# W 28-7  
vs. Cal State-Fullerton# W 28-12  
vs. Brown# W 24-6  
vs. Navy# W 23-12  
vs. Iowa State L 18-24  
vs. Oklahoma W 18-15  
vs. Indiana W 20-15

MICHIGAN STATE W 26-12  
IOWA L 20-22  
vs. Illinois L 14-24  
MICHIGAN W 20-18  
vs. Minnesota W 20-17  
NORTHWESTERN W 21-19  
Big Ten Champs. 6th 85.5  
NCAAs 17th 31.0  
# Lonestar Duals

**2008-09 (9-8-0, .529)**

vs. #21 Virginia\* W 25-15  
vs. North Carolina\* W 27-8  
vs. N.C. State\* W 20-15  
#2 IOWA STATE# L 7-27  
OREGON STATE W 24-13  
at Cliff Keen Invite T13th 64.5  
#24 Northern Iowa@ W 36-9  
Midlands 4th 98.0  
vs. #16 Boise State% L 12-24  
vs. #19 Indiana% W 19-15  
vs. #11 Minnesota% L 15-22  
at #1 Iowa L 12-24  
at #19 Northwestern L 19-21  
at Michigan State L 17-25  
at #16 Penn State W 28-13  
#9 ILLINOIS L 16-24  
#11 MINNESOTA W 19-15  
#25 PURDUE W 19-15  
#6 OHIO STATE L 18-24  
Big Ten Champs. 4th 88.0  
NCAA Champs. 9th 53.0  
\* ACC/Big Ten Clash  
# Match held at Kohl Center  
@ Match in Wisconsin Dells  
% National Duals

**2009-10 (8-10-0, .444)**

vs. #22 OLD DOMINION W 21-19  
at #7 Nebraska L 17-26  
at Oregon State L 13-22  
at #8 Boise State L 9-30  
at Cliff Keen Invite 9th 42.0  
at Northern Iowa W 25-11  
at Midlands 5th 90.5  
vs. #7 Cornell% L 11-24  
vs. #22 Arizona State% W 23-10  
vs. #5 C. Michigan% W 20-13  
vs. #9 Boise State% L 12-22  
vs. #8 Maryland% L 18-21  
vs. #11 INDIANA W 21-18  
at. #5 Minnesota L 18-20  
vs. #13 PENN STATE L 22-15  
at #24 Purdue W 27-11  
at #21 Illinois L 18-19  
vs. #1 IOWA L 6-31  
Big Ten Champs. 32rd 109  
NCAA Champs. 4th 70.5  
% National Duals

**2010-11 (11-6-1, .639)**

vs. UNC-Greensboro W 34-12  
vs. North Carolina\* W 27-3  
vs. #15 Virginia Tech\* W 24-19  
vs. UT-Chattanooga\* W 25-16  
at Cliff Keen Invite 2nd 101.5  
NORTHERN IOWA W 23-14  
at Midlands Champs. 2nd 95.5  
vs. S. Dakota St.% W 42-3  
vs. #22 American% W 23-16  
vs. #12 Va. Tech% L 19-20  
vs. #5 Minnesota% W 19-17

#15 ILLINOIS T 19-19  
#16 NEBRASKA W 22-15  
at #4 Minnesota L 15-21  
#13 MICHIGAN L 9-26  
#24 PURDUE L 16-18  
at #16 Northwestern L 13-25  
OHIO STATE W 23-18  
at #3 Penn State L 12-30  
at Michigan State W 27-9  
Big Ten Champs. 4th 103.5  
NCAA Champs. 10th 54.5

\* ACC Challenge  
% National Duals

**2011-12 (5-12-0, .294)**

LORAS COLLEGE\* W 38-3  
WARTBURG\* W 17-16  
UW-WHITEWATER\* W 39-3  
at Princeton W 29-9  
vs. Rider W 28-8  
at Hofstra L 12-25  
at Cliff Keen Invite 26th 20  
at Michigan L 12-21  
at Midlands 18th 40  
#17 NORTHWESTERN L 9-33  
at Northern Iowa L 15-25  
#3 PENN STATE L 0-43  
PURDUE L 3-41  
at #4 Minnesota L 3-37  
#7 Nebraska L 0-36  
at #8 Illinois L 3-38  
at #5 Iowa L 3-39  
vs. Iowa State% L 3-36  
vs. Northern Iowa% L 15-30  
Big Ten Champs. 12th 9  
NCAA Champs. 41st 7.5  
\* Badger Duals  
% National Duals

# UW WRESTLING ALL-TIME SERIES RECORDS

<b>Opponent</b>	<b>W</b>	<b>L</b>	<b>T</b>	<b>First Match (Season)</b>	<b>Opponent</b>	<b>W</b>	<b>L</b>	<b>T</b>	<b>First Match (Season)</b>
Air Force	3	0	1	1957-58	Michigan State	24	17	2	1938-39
Alabama	1	0	0	1973-74	Minnesota	36	58	1	1919-20
American	1	0	0	2010-11	Minnesota State	3	0	0	1977-78
Appalachian State	2	0	0	1996-97	Missouri	2	0	1	1965-66
Arizona	1	0	0	1974-75	Moorhead State	1	0	0	1973-74
Arizona State	1	1	0	1987-88	Morgan State	4	0	0	1983-84
Army	2	2	0	1960-61	Navy	6	1	0	1980-81
Augustana (Ill.)	1	0	0	1973-74	Nebraska	8	5	2	1945-46
Ball State	1	0	0	1972-73	Nebraska-Omaha	0	1	0	1967-68
Beloit	6	0	0	1914-15	North Carolina	9	2	1	1983-84
Bemidji State	1	0	0	1966-67	North Carolina State	7	0	0	1983-84
Bloomsburg	0	2	0	1962-63	Northern Colorado	2	0	0	1998-99
Boise State	2	4	0	1989-90	North Dakota	1	0	0	1965-66
Bowling Green State	2	0	0	1960-61	North Dakota State	1	0	0	1993-94
Bradley	2	0	0	1941-42	Northern Illinois	28	2	0	1935-36
Brown	7	0	0	1991-92	Northern Iowa	23	18	2	1926-27
Cal Poly-SLO	1	0	0	1985-86	Northern Michigan	4	0	0	1967-68
Cal State-Bakersfield	1	1	0	1996-97	Northern Montana	1	0	0	1991-92
Cal State-Fullerton	2	0	0	2004-05	Northwestern	59	29	2	1916-17
Carleton	4	0	0	1924-25	Notre Dame	1	0	0	1966-62
Central Michigan	3	2	0	1964-65	Ohio	1	0	0	1937-38
Central State (Ohio)	1	0	0	1959-60	Ohio State	28	18	1	1924-25
Central Oklahoma	1	0	0	1984-85	Oklahoma	10	10	1	1965-66
Chicago	13	15	3	1911	Oklahoma State	3	14	0	1973-74
Clarion	3	2	1	1983-84	Old Dominion	2	0	0	1992-93
Clemson	1	0	0	1983-84	Oregon	2	0	0	1994-95
Cleveland State	1	0	0	1972-73	Oregon State	5	3	0	1980-81
Colorado Mines	0	2	0	1957-58	Pacific	1	0	0	2002-03
Colorado State	1	3	0	1951-52	Penn	0	1	0	2003-04
Cornell (Iowa)	4	5	0	1926-27	Penn State	8	12	0	1983-84
Cornell (N.Y.)	3	1	1	1992-93	Pittsburgh	1	0	0	2001-02
Cumberland	1	0	0	2006-07	Portland State	2	0	0	1989-90
Drake	2	0	0	1972-73	Princeton	2	0	0	2003-04
Drexel	1	0	0	2003-04	Purdue	44	12	2	1923-24
Dubuque	6	0	0	1939-40	Rider	2	0	0	2001-02
Eastern Illinois	1	0	0	1965-66	Rutgers	1	0	0	2000-01
Eastern Michigan	1	0	0	1996-97	Seton Hall	1	0	0	2000-01
Edinboro	1	1	0	1985-86	Slippery Rock	1	0	0	1985-86
Fort Hays State	1	0	0	1966-67	SIU-Carbondale	1	1	0	1958-59
Grand Valley State	2	0	0	1989-90	SIU-Edwardsville	1	0	0	1990-91
Harvard	3	0	0	1996-97	South Dakota State	2	0	0	2002-03
Hofstra	2	2	0	1984-85	Tennessee-Chattanooga	1	1	0	2004-05
Illinois	29	37	4	1914-15	Toledo	0	0	1	1969-70
Illinois State	9	1	1	1938-39	Tri-State	1	0	0	2007-08
Indiana	28	24	0	1949-50	Truman State	1	0	0	1997-98
Indiana State	4	2	0	1961-62	UNC-Greensboro	1	0	0	2010-11
Indianapolis	1	0	0	2006-07	Utah Valley State	2	0	0	2003-04
Iowa	8	74	3	1922-23	UT-Chattanooga	1	0	0	2010-11
Iowa State	7	36	1	1918-19	Virginia	3	0	0	1997-98
James Madison	1	0	0	2000-01	Virginia Tech	3	1	0	1967-68
Kansas State	2	0	0	1953-54	Virginia Military Institute	1	0	0	1996-97
Kent State	3	1	0	1937-38	Wartburg	1	0	0	2011-12
Lawrence	8	1	0	1919-20	West Virginia	4	0	0	1961-62
Lehigh	7	4	1	1977-78	Wheaton	21	7	0	1934-35
Lincoln JC	1	0	0	1985-86	Wilkes	1	0	0	1983-84
Lock Haven	9	2	0	1983-84	Winona State	1	0	0	1975-76
Loras College	1	0	0	2011-12	Wisconsin-Green Bay	1	0	0	1983-84
Louisiana State	1	1	0	1983-84	Wisconsin-La Crosse	6	1	0	1967-68
Luther	1	0	0	1964-65	Wisconsin-Milwaukee	11	0	1	1964-65
MacMurray	1	0	0	1965-66	Wisconsin-Oshkosh	6	0	0	1969-70
Madison Tech	1	0	0	1970-71	Wisconsin-Platteville	2	0	0	1967-68
Mankato State	1	1	0	1970-71	Wisconsin-Stevens Point	4	0	0	1994-95
Marquette	26	0	0	1951-52	Wisconsin-Superior	8	0	0	1961-62
Maryland	0	1	1	1993-94	Wisconsin-Whitewater	4	0	0	1968-69
Miami (Ohio)	1	0	0	1971-72	Wyoming	6	0	2	1951-52
Michigan	22	27	1	1923-24	<b>TOTAL</b>	<b>679</b>	<b>470</b>	<b>37</b>	

## Record Vs. Opponents

### Air Force

1957-58 W  
1958-59 W  
1961-62 T  
2006-07 W

### Wisconsin leads 3-0-1

14-11 Air Force  
24-0 AIR FORCE  
12-12 AIR FORCE  
37-6 vs. Air Force<sup>11</sup>

### Alabama

1973-74 W

### Wisconsin leads 1-0

34-3 ALABAMA

### American

2010-11 W

### Wisconsin leads 1-0

23-16 vs. American<sup>5</sup>

### Appalachian State

1996-97 W  
2001-02 W

### Wisconsin leads 2-0

29-3 APPALACHIAN STATE  
29-12 vs. Appalachian State<sup>2</sup>

### Arizona

1974-75 W

### Wisconsin leads 1-0

33-5 ARIZONA

### Arizona State

1987-88 L  
2009-10 W

### Series tied at 1-1

10-25 vs. Arizona State<sup>2</sup>  
23-10 vs. Arizona State<sup>22</sup>

### Army

1960-61 L  
2000-01 W  
2001-02 L  
2006-07 W

### Series tied at 2-2

8-23 ARMY  
32-12 Army  
9-27 vs. Army<sup>2</sup>  
35-3 vs. Army<sup>11</sup>

### Augustana (Ill.)

1973-74 W

### Wisconsin leads 1-0

32-8 AUGUSTANA

### Ball State

1972-73 W

### Wisconsin leads 1-0

38-10 BALL STATE

### Beloit

1914-15 W  
1915-16 W  
1939-40 W  
1939-40 W  
1940-41 W  
1941-42 W

### Wisconsin leads 6-0

3.5-1 Beloit  
3-1 BELOIT  
36-0 BELOIT  
29-5 BELOIT  
25-13 BELOIT  
24-10 Beloit

### Bemidji State

1966-67 W

### Wisconsin leads 1-0

26-3 BEMIDJI STATE

### Bloomsburg

1962-63 L  
1986-87 L

### Wisconsin trails 0-2

5-36 BLOOMSBURG  
17-20 vs. Bloomsburg<sup>2</sup>

### Boise State

1989-90 L  
1993-94 W  
1999-00 W  
2008-09 L  
2009-10 L  
2009-10 L

### Wisconsin trails 4-2

17-18 BOISE STATE  
20-16 BOISE STATE  
27-12 vs. Boise State<sup>7</sup>  
12-24 vs. Boise State<sup>5</sup>  
30-9 vs. Boise State<sup>8</sup>  
22-12 vs. Boise State<sup>9</sup>

### Bowling Green

1960-61 W  
1961-62 W

### Wisconsin leads 2-0

17-16 Bowling Green  
17-11 BOWLING GREEN

### Bradley

1941-42 W  
1946-47 W

### Wisconsin leads 2-0

24-8 Bradley  
32-0 Bradley

### Brown

1991-92 W  
1992-93 W  
1997-98 W  
2003-04 W

### Wisconsin leads 7-0

30-6 BROWN  
23-13 BROWN  
28-10 vs. Brown<sup>6</sup>  
35-9 vs. Brown<sup>6</sup>

2004-05 W  
2005-06 W  
2007-08 W

24-9 vs. Brown<sup>6</sup>  
36-3 vs. Brown<sup>6</sup>  
24-6 vs. Brown<sup>6</sup>

### Cal Poly-SLO

1895-86 W

### Wisconsin leads 1-0

23-16 vs. Cal Poly-SLO<sup>2</sup>

### Cal St.-Bakersfield

1996-97 W  
1998-99 L

### Series tied at 1-1

20-19 vs. Cal St.-Bakersfield<sup>2</sup>  
18-21 vs. Cal St.-Bakersfield<sup>5</sup>

### Cal St.-Fullerton

2004-05 W  
2007-08 W

### Wisconsin leads 2-0

25-9 vs. Cal St.-Fullerton<sup>6</sup>  
28-12 vs. Cal St.-Fullerton<sup>6</sup>

### Carleton

1924-25 W  
1935-36 W  
1936-37 W  
1939-40 W

### Wisconsin leads 4-0

18-2 CARLETON  
25-8 Carleton  
18-8 Carleton  
19-13 Carleton

### Central Michigan

1964-65 W  
1995-96 W  
1996-97 L  
2000-01 L  
2000-10 W

### Wisconsin leads 3-2

19-9 CENTRAL MICHIGAN  
42-6 Central Michigan  
16-22 Central Michigan  
16-18 vs. Central Michigan<sup>2</sup>  
20-13 vs. Central Michigan<sup>5</sup>

### Central Oklahoma

1984-85 W

### Wisconsin leads 1-0

40-2 vs. Central Oklahoma<sup>3</sup>

### Central State

1959-60 W

### Wisconsin leads 1-0

22-8 Central State

### Chattanooga

2004-05 W  
2005-06 L  
2010-11 W

### Wisconsin leads 2-1

23-12 Chattanooga  
18-19 vs. Chattanooga<sup>6</sup>  
25-16 vs. Chattanooga<sup>11</sup>

### Chicago

1911 T  
1911-12 T  
1912-13 W  
1913-14 W  
1914-15 T  
1915-16 L  
1916-17 L  
1919-20 W  
1920-21 W  
1921-22 L  
1922-23 L  
1923-24 L  
1924-25 W  
1925-26 L  
1926-27 W  
1927-28 W  
1928-29 L  
1929-30 W  
1930-31 L  
1931-32 L  
1933-34 L  
1934-35 L  
1935-36 L  
1936-37 W  
1938-39 W  
1939-40 L  
1940-41 L  
1941-42 W  
1942-43 L  
1945-46 W  
1947-48 W

### Wisconsin trails 13-15-3

n/a CHICAGO  
1-1 CHICAGO  
2-0 Chicago  
5-1 CHICAGO  
1-1 Chicago  
0-5 CHICAGO  
1-5 Chicago  
5-0 CHICAGO  
34-8 Chicago  
1.5-4.5 CHICAGO  
14-15 Chicago  
12-18 CHICAGO  
11-9 Chicago  
11-12 CHICAGO  
22-3 Chicago  
20-3 CHICAGO  
8-22 Chicago  
17-11 CHICAGO  
9-19 Chicago  
11-19 CHICAGO  
11-21 Chicago  
11-17 CHICAGO  
7.5-24.5 Chicago  
18-12 CHICAGO  
19-13 CHICAGO  
11-23 Chicago  
13-17 CHICAGO  
16-14 CHICAGO  
11-23 CHICAGO  
25-11 Chicago  
22-8 CHICAGO

### Clarion

1983-84 L  
1984-85 W

### Wisconsin leads 3-2-1

18-19 Clarion  
29-14 CLARION

1985-86 L  
1986-87 W  
1990-91 T  
1991-92 W

13-26 Clarion  
25-16 CLARION  
17-17 Clarion  
24-13 CLARION

### Clemson

1983-84 W

### Wisconsin leads 1-0

22-16 Clemson

### Cleveland State

1972-73 W

### Wisconsin leads 1-0

20-17 CLEVELAND STATE

### Cliff Keen Invitational

2006-07 5th place 90.5 points  
2007-08 5th place 107.5 points  
2008-09 13th place 64.5 points

### Colorado Mines

1957-58 L  
1968-69 L

### Wisconsin trails 0-2

13-16 Colorado Mines  
11-20 COLORADO MINES

### Colorado State

1951-52 W  
1956-57 L  
1957-58 L  
1960-61 L

### Wisconsin trails 1-3

21-9 Colorado State  
9-19 COLORADO STATE  
2-25 Colorado State  
2-27 COLORADO STATE

### Cornell

1992-93 W  
2000-01 T  
2003-04 W  
2007-08 W  
2009-10 L

### Wisconsin leads 3-1-1

21-19 vs. Cornell<sup>2</sup>  
16-16 vs. Cornell<sup>2</sup>  
21-14 vs. Cornell<sup>6</sup>  
21-18 CORNELL  
24-11 vs. Cornell<sup>7</sup>

### Cornell(Iowa)

1926-27 L  
1928-29 W  
1931-32 L  
1941-42 L  
1946-47 L  
1959-60 L  
1960-61 W  
1963-64 W  
1964-65 W

### Wisconsin trails 4-5

5-20.5 Cornell  
18-14 Cornell  
1-32 Cornell  
6-19 Cornell  
11-17 CORNELL  
14-18 Cornell  
22-5 CORNELL  
20-13 CORNELL  
25-3 Cornell

### Cumberland

2006-07 W

### Wisconsin leads 1-0

53-0 vs. Cumberland<sup>10</sup>

### Drake

1972-73 W  
1984-85 W

### Wisconsin leads 2-0

26-10 DRAKE  
33-6 Drake

### Drexel

2003-04 W

### Wisconsin leads 1-0

23-12 Drexel

### Dubuque

1939-40 W  
1940-41 W  
1941-42 W  
1942-43 W  
2006-07 W  
2007-08 W

### Wisconsin leads 6-0

19-9 DUBUQUE  
18-16 Dubuque  
21-13 DUBUQUE  
21-11 Dubuque  
49-0 DUBUQUE  
58-0 DUBUQUE

### Eastern Illinois

1965-66 W

### Wisconsin leads 1-0

24-9 EASTERN ILLINOIS

### Eastern Michigan

1996-97 W

### Wisconsin leads 1-0

22-16 EASTERN MICHIGAN

### Edinboro

1985-86 W  
1993-94 L

### Series tied 1-1

28-12 EDINBORO  
9-36 vs. Edinboro<sup>2</sup>

### Fort Hays State

1966-67 W

### Wisconsin leads 1-0

31-0 FORT HAYS STATE

**Grand Valley State**

1989-90	W	41-4	GRAND VALLEY ST
1990-91	W	43-3	GRAND VALLEY ST

**Harvard**

1996-97	W	22-16	HARVARD
2003-04	W	27-13	vs. Harvard <sup>6</sup>
2006-07	W	36-9	vs. Harvard <sup>6</sup>

**Hofstra**

1984-85	W	44-0	vs. Hofstra <sup>3</sup>
2000-01	W	19-15	Hofstra
2001-02	L	16-20	HOFSTRA
2011-12	L	12-25	Hofstra

**Illinois**

1914-15	W	3-0	ILLINOIS
1915-16	L	0-4	Illinois
1916-17	L	1-5	ILLINOIS
1925-26	W	13-11	Illinois
1926-27	L	8-17	ILLINOIS
1927-28	L	4.5-18.5	Illinois
1928-29	L	5-25	ILLINOIS
1929-30	L	4.5-21.5	ILLINOIS
193-31	L	3-25	Illinois
1933-34	L	0-34	ILLINOIS
1934-35	L	0-34	Illinois
1948-49	L	8-19	ILLINOIS
1949-50	L	8-22	Illinois
1950-51	T	12-12	ILLINOIS
1951-52	L	12-18	Illinois
1952-53	L	9-23	Illinois
1953-54	L	11-21	ILLINOIS
1954-55	L	11-17	Illinois
1955-56	L	19-20	ILLINOIS
1956-57	L	7-24	Illinois
1957-58	L	11-20	ILLINOIS
1958-59	T	14-14	Illinois
1959-60	L	11-19	ILLINOIS
1960-61	L	11-25	Illinois
1961-62	W	15-9	Illinois
1962-63	L	8-19	ILLINOIS
1963-64	L	13-16	Illinois
1964-65	W	19-11	ILLINOIS
1965-66	W	22-6	Illinois
1966-67	W	21-14	ILLINOIS
1967-68	W	24-9	Illinois
1968-69	W	26-3	ILLINOIS
1968-69	L	16-17	ILLINOIS
1969-70	L	16-17	Illinois
1970-71	W	25-10	ILLINOIS
1971-72	L	15-17	Illinois
1972-73	W	38-5	ILLINOIS
1973-74	W	31-8	Illinois
1974-75	W	29-6	ILLINOIS
1975-76	W	33-8	Illinois
1976-77	W	39-6	ILLINOIS
1977-78	W	34-8	Illinois
1978-79	W	43-0	ILLINOIS
1979-80	W	35-6	Illinois
1980-81	W	27-15	ILLINOIS
1981-82	W	32-4	Illinois
1982-83	W	38-7	ILLINOIS
1983-84	W	25-11	Illinois
1984-85	W	31-12	ILLINOIS
1985-86	W	28-9	Illinois
1986-87	W	24-15	ILLINOIS
1987-88	W	28-9	Illinois
1988-89	W	Forfeit	ILLINOIS
1989-90	W	35-7	ILLINOIS
1990-91	W	34-10	Illinois
1991-92	W	44-0	ILLINOIS
1998-99	L	10-26	ILLINOIS
1999-00	L	7-32	Illinois
2000-01	L	11-27	ILLINOIS

**Wisconsin leads 2-0**

2001-02	L	9-23	Illinois
2002-03	L	7-29	ILLINOIS
2003-04	L	9-30	Illinois
2004-05	L	12-25	ILLINOIS
2005-06	T	15-15	Illinois
2006-07	L	16-21	ILLINOIS
2007-08	L	14-24	Illinois
2008-09	L	16-24	ILLINOIS
2009-10	L	19-18	Illinois <sup>21</sup>
2010-11	W	19-17	ILLINOIS
2011-12	L	3-38	Illinois

**Wisconsin leads 3-0**

2006-07	L	16-21	ILLINOIS
2007-08	L	14-24	Illinois
2008-09	L	16-24	ILLINOIS
2009-10	L	19-18	Illinois <sup>21</sup>
2010-11	W	19-17	ILLINOIS
2011-12	L	3-38	Illinois

**Series tied 2-2**

1984-85	W	44-0	vs. Hofstra <sup>3</sup>
2000-01	W	19-15	Hofstra
2001-02	L	16-20	HOFSTRA
2011-12	L	12-25	Hofstra

**Wisconsin trails 30-37-3**

1914-15	W	3-0	ILLINOIS
1915-16	L	0-4	Illinois
1916-17	L	1-5	ILLINOIS
1925-26	W	13-11	Illinois
1926-27	L	8-17	ILLINOIS
1927-28	L	4.5-18.5	Illinois
1928-29	L	5-25	ILLINOIS
1929-30	L	4.5-21.5	ILLINOIS
193-31	L	3-25	Illinois
1933-34	L	0-34	ILLINOIS
1934-35	L	0-34	Illinois
1948-49	L	8-19	ILLINOIS
1949-50	L	8-22	Illinois
1950-51	T	12-12	ILLINOIS
1951-52	L	12-18	Illinois
1952-53	L	9-23	Illinois
1953-54	L	11-21	ILLINOIS
1954-55	L	11-17	Illinois
1955-56	L	19-20	ILLINOIS
1956-57	L	7-24	Illinois
1957-58	L	11-20	ILLINOIS
1958-59	T	14-14	Illinois
1959-60	L	11-19	ILLINOIS
1960-61	L	11-25	Illinois
1961-62	W	15-9	Illinois
1962-63	L	8-19	ILLINOIS
1963-64	L	13-16	Illinois
1964-65	W	19-11	ILLINOIS
1965-66	W	22-6	Illinois
1966-67	W	21-14	ILLINOIS
1967-68	W	24-9	Illinois
1968-69	W	26-3	ILLINOIS
1968-69	L	16-17	ILLINOIS
1969-70	L	16-17	Illinois
1970-71	W	25-10	ILLINOIS
1971-72	L	15-17	Illinois
1972-73	W	38-5	ILLINOIS
1973-74	W	31-8	Illinois
1974-75	W	29-6	ILLINOIS
1975-76	W	33-8	Illinois
1976-77	W	39-6	ILLINOIS
1977-78	W	34-8	Illinois
1978-79	W	43-0	ILLINOIS
1979-80	W	35-6	Illinois
1980-81	W	27-15	ILLINOIS
1981-82	W	32-4	Illinois
1982-83	W	38-7	ILLINOIS
1983-84	W	25-11	Illinois
1984-85	W	31-12	ILLINOIS
1985-86	W	28-9	Illinois
1986-87	W	24-15	ILLINOIS
1987-88	W	28-9	Illinois
1988-89	W	Forfeit	ILLINOIS
1989-90	W	35-7	ILLINOIS
1990-91	W	34-10	Illinois
1991-92	W	44-0	ILLINOIS
1998-99	L	10-26	ILLINOIS
1999-00	L	7-32	Illinois
2000-01	L	11-27	ILLINOIS

**Illinois State**

1938-39	W	20-6	Illinois State
1939-40	W	21-13	ILLINOIS STATE
1954-55	W	25-3	Illinois State
1955-56	W	22-7	ILLINOIS STATE
1956-57	L	14-15	Illinois State
1958-59	W	17-15	Illinois State
1966-67	W	20-15	ILLINOIS STATE
1967-68	W	21-10	ILLINOIS STATE
1968-69	T	16-16	Illinois State
1971-72	W	30-8	Illinois State
1975-76	W	26-12	ILLINOIS STATE
1976-77	W	29-12	ILLINOIS STATE

**Indiana**

1949-50	W	17-9	Indiana
1950-51	L	13-14	INDIANA
1951-52	L	11-15	Indiana
1953-54	L	11-17	INDIANA
1954-55	W	19-8	Indiana
1955-56	L	15-21	INDIANA
1956-57	L	13-16	Indiana
1957-58	W	17-13	INDIANA
1958-59	L	10-19	Indiana
1959-60	L	8-25	INDIANA
1960-61	L	10-29	INDIANA
1961-62	L	8-17	Indiana
1962-63	L	6-24	INDIANA
1963-64	L	9-19	Indiana
1964-65	L	12-18	INDIANA
1965-66	W	14-12	Indiana
1966-67	L	14-17	INDIANA
1966-67	L	13-19	INDIANA
1967-68	L	11-25	Indiana
1968-69	L	14-16	INDIANA
1968-69	L	9-20	INDIANA
1969-70	W	20-12	Indiana
1970-71	W	18-12	INDIANA
1971-72	L	13-18	Indiana
1972-73	W	26-12	INDIANA
1973-74	W	27-5	Indiana
1974-75	W	33-3	INDIANA
1975-6	W	40-2	Indiana
1976-77	W	36-9	INDIANA
1977-78	W	38-9	Indiana
1978-79	W	40-2	INDIANA
1979-80	W	43-6	Indiana
1980-81	W	19-13	INDIANA
1981-82	W	35-5	Indiana
1982-83	W	27-14	INDIANA
1983-84	W	46-0	Indiana
1985-86	W	23-13	INDIANA
1986-87	W	32-11	vs. Indiana <sup>2</sup>
1986-87	W	41-8	INDIANA
1988-89	L	18-20	vs. Indiana <sup>4</sup>
1995-96	L	16-19	Indiana
1997-98	L	14-21	INDIANA
1998-99	L	16-21	Indiana
2000-01	L	18-19	vs. Indiana <sup>2</sup>
2000-01	L	13-25	INDIANA
2001-02	W	33-6	Indiana
2003-04	W	26-12	INDIANA
2004-05	W	18-16	Indiana

**Wisconsin leads 10-1-1**

1938-39	W	20-6	Illinois State
1939-40	W	21-13	ILLINOIS STATE
1954-55	W	25-3	Illinois State
1955-56	W	22-7	ILLINOIS STATE
1956-57	L	14-15	Illinois State
1958-59	W	17-15	Illinois State
1966-67	W	20-15	ILLINOIS STATE
1967-68	W	21-10	ILLINOIS STATE
1968-69	T	16-16	Illinois State
1971-72	W	30-8	Illinois State
1975-76	W	26-12	ILLINOIS STATE
1976-77	W	29-12	ILLINOIS STATE

**Wisconsin leads 28-24**

1949-50	W	17-9	Indiana
1950-51	L	13-14	INDIANA
1951-52	L	11-15	Indiana
1953-54	L	11-17	INDIANA
1954-55	W	19-8	Indiana
1955-56	L	15-21	INDIANA
1956-57	L	13-16	Indiana
1957-58	W	17-13	INDIANA
1958-59	L	10-19	Indiana
1959-60	L	8-25	INDIANA
1960-61	L	10-29	INDIANA
1961-62	L	8-17	Indiana
1962-63	L	6-24	INDIANA
1963-64	L	9-19	Indiana
1964-65	L	12-18	INDIANA
1965-66	W	14-12	Indiana
1966-67	L	14-17	INDIANA
1966-67	L	13-19	INDIANA
1967-68	L	11-25	Indiana
1968-69	L	14-16	INDIANA
1968-69	L	9-20	INDIANA
1969-70	W	20-12	Indiana
1970-71	W	18-12	INDIANA
1971-72	L	13-18	Indiana
1972-73	W	26-12	INDIANA
1973-74	W	27-5	Indiana
1974-75	W	33-3	INDIANA
1975-6	W	40-2	Indiana
1976-77	W	36-9	INDIANA
1977-78	W	38-9	Indiana
1978-79	W	40-2	INDIANA
1979-80	W	43-6	Indiana
1980-81	W	19-13	INDIANA
1981-82	W	35-5	Indiana
1982-83	W	27-14	INDIANA
1983-84	W	46-0	Indiana
1985-86	W	23-13	INDIANA
1986-87	W	32-11	vs. Indiana <sup>2</sup>
1986-87	W	41-8	INDIANA
1988-89	L	18-20	vs. Indiana <sup>4</sup>
1995-96	L	16-19	Indiana
1997-98	L	14-21	INDIANA
1998-99	L	16-21	Indiana
2000-01	L	18-19	vs. Indiana <sup>2</sup>
2000-01	L	13-25	INDIANA
2001-02	W	33-6	Indiana
2003-04	W	26-12	INDIANA
2004-05	W	18-16	Indiana

2006-07	W	21-13	INDIANA
2007-08	W	20-15	Indiana
2008-09	W	19-15	vs. Indiana <sup>5</sup>
2009-10	W	21-18	INDIANA <sup>11</sup>

**Indiana State**

1961-62	W	22-5	Indiana State
1962-63	L	11-22	Indiana State
1967-68	L	16-18	INDIANA STATE
1983-84	W	31-6	INDIANA STATE
1984-85	W	31-8	Indiana State
1985-86	W	39-9	INDIANA STATE

**Wisconsin leads 4-2**

2006-07	W	21-13	INDIANA
2007-08	W	20-15	Indiana
2008-09	W	19-15	vs. Indiana <sup>5</sup>
2009-10	W	21-18	INDIANA <sup>11</sup>

**Indianapolis**



1998-99	L	11-28	MICHIGAN	1937-38	L	9.5-18.5	Minnesota	2010-11	L	15-21	Minnesota
2000-01	L	4-27	Michigan	1939-40	L	6-26	Minnesota	2010-11	W	19-17	vs. Minnesota <sup>5</sup>
2001-02	L	7-32	MICHIGAN	1940-41	L	3-29	MINNESOTA	2011-12	L	3-37	Minnesota
2003-04	L	16-24	Michigan	1942-43	W	17-6	Minnesota				
2004-05	L	16-23	MICHIGAN	1943-44	L	11-19	Minnesota	<b>Minnesota State</b>	<b>Wisconsin leads 3-0</b>		
2006-07	W	21-15	Michigan	1943-44	L	11-19	MINNESOTA	1977-78	W	28-8	MINNESOTA STATE
2007-08	W	20-18	MICHIGAN	1944-45	L	11-25	MINNESOTA	1999-00	W	36-6	Minnesota State
2009-10	W	26-9	Michigan	1944-45	L	0-36	Minnesota	2001-02	W	31-9	Minnesota State
2010-11	L	9-26	MICHIGAN	1945-46	L	3-23	Minnesota				
2011-12	L	12-21	Michigan	1946-47	T	12-12	MINNESOTA	<b>Missouri</b>	<b>Wisconsin leads 2-0-1</b>		
				1947-48	L	13-24	Minnesota	1965-66	W	27-3	MISSOURI
<b>Michigan State</b>	<b>Wisconsin leads 24-17-2</b>			1949-50	W	18-15	MINNESOTA	1995-96	W	37-3	MISSOURI
1938-39	L	8-20	MICHIGAN STATE	1950-51	L	9-17	Minnesota	1996-97	T	21-21	MISSOURI
1940-41	L	3-27	Michigan State	1951-52	L	12-14	MINNESOTA				
1950-51	L	8-17	Michigan State	1952-53	L	3-23	Minnesota	<b>Moorhead State</b>	<b>Wisconsin leads 1-0</b>		
1951-52	L	11-16	MICHIGAN STATE	1953-54	W	16-15	MINNESOTA	1973-74	W	42-6	MOORHEAD STATE
1955-56	L	5-20	Michigan State	1954-55	W	22-8	Minnesota				
1956-57	L	5-24	MICHIGAN STATE	1955-56	L	8-23	MINNESOTA	<b>Morgan State</b>	<b>Wisconsin leads 4-0</b>		
1969-70	L	6-25	MICHIGAN STATE	1956-57	L	11-15	Minnesota	1983-84	W	30-6	Morgan State
1971-72	L	10-24	Michigan State	1957-58	L	8-20	MINNESOTA	1984-85	W	32-11	vs. Morgan State <sup>3</sup>
1972-73	W	21-12	MICHIGAN STATE	1958-59	L	8-22	Minnesota	1989-90	W	47-3	MORGAN STATE
1973-74	W	18-16	Michigan State	1959-60	L	2-27	MINNESOTA	1995-96	W	54-0	MORGAN STATE
1974-75	W	20-14	MICHIGAN STATE	1962-63	W	16-11	MINNESOTA				
1975-76	W	19-17	Michigan State	1963-64	L	11-17	Minnesota	<b>Navy</b>	<b>Wisconsin leads 6-1</b>		
1976-77	W	40-2	MICHIGAN STATE	1964-65	L	11-16	MINNESOTA	1980-81	W	34-7	vs. Navy <sup>1</sup>
1977-78	T	20-20	Michigan State	1965-66	L	11-19	Minnesota	1992-93	W	18-12	vs. Navy <sup>2</sup>
1978-79	W	26-7	MICHIGAN STATE	1966-67	L	12-17	Minnesota	1993-94	L	15-22	vs. Navy <sup>2</sup>
1979-80	W	25-11	Michigan State	1966-67	L	10-19	MINNESOTA	2000-01	W	25-9	vs. Navy <sup>6</sup>
1980-81	W	26-14	MICHIGAN STATE	1967-68	W	19-12	MINNESOTA	2001-02	W	35-3	vs. Navy <sup>6</sup>
1981-82	L	17-20	Michigan State	1968-69	L	14-21	Minnesota	2006-07	W	29-7	vs. Navy <sup>10</sup>
1982-83	L	12-27	MICHIGAN STATE	1969-70	W	18-16	MINNESOTA	2007-08	W	23-12	vs. Navy <sup>6</sup>
1983-84	W	29-15	Michigan State	1970-71	W	21-9	Minnesota				
1984-85	W	24-8	MICHIGAN STATE	1971-72	L	17-14	MINNESOTA	<b>Nebraska</b>	<b>Wisconsin leads 8-5-2</b>		
1985-86	W	28-13	Michigan State	1972-73	L	14-17	Minnesota	1945-46	W	20-10	NEBRASKA
1986-87	W	34-8	MICHIGAN STATE	1973-74	W	24-14	MINNESOTA	1949-50	L	9-15	Nebraska
1987-88	W	23-18	Michigan State	1974-75	W	28-6	Minnesota	1950-51	T	12-12	NEBRASKA
1988-89	W	30-15	vs. Michigan State <sup>4</sup>	1975-76	W	32-9	MINNESOTA	1951-52	W	23-3	Nebraska
1988-89	W	26-15	MICHIGAN STATE	1976-77	W	20-16	Minnesota	1952-53	L	13-19	NEBRASKA
1989-90	W	19-13	Michigan State	1977-78	W	22-16	Minnesota	1953-54	W	17-11	Nebraska
1990-91	W	34-7	MICHIGAN STATE	1978-79	W	23-15	MINNESOTA	1954-55	W	25-3	NEBRASKA
1991-92	W	28-8	Michigan State	1979-80	W	23-15	MINNESOTA	1962-63	W	16-15	NEBRASKA
1992-93	W	28-10	MICHIGAN STATE	1980-81	L	11-29	Minnesota	1972-73	W	24-12	NEBRASKA
1993-94	W	21-16	Michigan State	1981-82	W	22-17	MINNESOTA	2000-01	L	17-24	vs. Nebraska <sup>6</sup>
1994-95	L	16-25	MICHIGAN STATE	1982-83	L	15-27	Minnesota	2001-02	W	23-16	vs. Nebraska <sup>6</sup>
1995-96	L	16-18	Michigan State	1983-84	W	Forfeit	MINNESOTA	2004-05	T	19-19	vs. Nebraska <sup>6</sup>
1996-97	L	15-19	MICHIGAN STATE	1985-86	W	27-12	MINNESOTA	2009-10	L	26-17	vs. Nebraska <sup>7</sup>
1998-99	L	11-25	MICHIGAN STATE	1986-87	W	26-11	vs. Minnesota <sup>2</sup>	2010-11	W	22-15	NEBRASKA
1999-00	L	10-24	Michigan State	1986-87	W	19-15	Minnesota	2011-12	L	0-36	NEBRASKA
2001-02	W	21-19	MICHIGAN STATE	1987-88	L	17-21	vs. Minnesota <sup>2</sup>				
2002-03	L	13-22	Michigan State	1987-88	W	21-15	MINNESOTA	<b>Nebraska-Omaha</b>	<b>Wisconsin trails 0-1</b>		
2004-05	T	16-16	MICHIGAN STATE	1988-89	L	12-22	Minnesota	1967-68	L	12-19	NEBRASKA-OMAHA
2005-06	W	22-15	Michigan State	1988-89	W	20-18	vs. Minnesota <sup>4</sup>				
2007-08	W	26-12	MICHIGAN STATE	1989-90	L	14-28	MINNESOTA	<b>North Carolina</b>	<b>Wisconsin leads 9-2-1</b>		
2008-09	L	17-25	Michigan State	1990-91	W	24-17	Minnesota	1983-84	W	21-19	North Carolina
2010-11	W	27-9	Michigan State	1991-92	W	29-5	MINNESOTA	1983-84	W	22-13	vs. North Carolina <sup>2</sup>
				1992-93	L	9-30	Minnesota	1984-85	W	30-6	NORTH CAROLINA
				1993-94	L	18-28	MINNESOTA	1985-86	W	25-10	North Carolina
<b>Minnesota</b>	<b>Wisconsin trails 36-58-1</b>			1993-94	L	3-41	vs. Minnesota <sup>2</sup>	1985-86	T	17-17	vs. North Carolina <sup>2</sup>
1919-20	L	1-5	MINNESOTA	1994-95	L	9-28	Minnesota	1986-87	L	15-23	vs. North Carolina <sup>2</sup>
1921-22	L	19-29	Minnesota	1995-96	W	22-13	MINNESOTA	1986-87	L	19-23	NORTH CAROLINA
1922-23	W	24-8	MINNESOTA	1996-97	L	9-28	Minnesota	1987-88	W	22-14	vs. North Carolina <sup>2</sup>
1923-24	W	17-6	Minnesota	1997-98	L	11-25	MINNESOTA	2005-06	W	21-15	vs. North Carolina <sup>6</sup>
1924-25	W	14-6	MINNESOTA	1998-99	L	7-36	MINNESOTA	2006-07	W	35-9	vs. North Carolina <sup>11</sup>
1925-26	L	3-14	Minnesota	1999-00	L	6-32	Minnesota	2008-09	W	27-8	vs. North Carolina <sup>11</sup>
1926-27	L	4.5-22.5	MINNESOTA	2000-01	L	6-33	MINNESOTA	2010-11	W	27-3	vs. North Carolina <sup>11</sup>
1927-28	L	11-14	Minnesota	2001-02	L	4-40	Minnesota				
1928-29	W	18-12	MINNESOTA	2002-03	L	6-40	MINNESOTA	<b>North Carolina State</b>	<b>Wisconsin leads 7-0</b>		
1929-30	W	17-11	Minnesota	2003-04	W	17-16	Minnesota	1983-84	W	27-11	North Carolina St.
1929-30	W	23-3	MINNESOTA	2004-05	W	18-17	MINNESOTA	1985-86	W	23-16	North Carolina St.
1930-31	L	9-17	Minnesota	2005-06	L	12-26	Minnesota	1990-91	W	28-13	NORTH CAROLINA ST
1931-32	L	3-27	MINNESOTA	2006-07	L	12-28	MINNESOTA	1991-92	W	36-9	NORTH CAROLINA ST
1933-34	L	0-29	Minnesota	2007-08	W	20-17	Minnesota	1992-93	W	24-21	NORTH CAROLINA ST
1934-35	L	3-29	Minnesota	2008-09	L	15-22	vs. Minnesota <sup>5</sup>	2006-07	W	29-9	vs. North Carolina
1935-36	L	3-25	Minnesota	2008-09	W	19-15	MINNESOTA	St. <sup>11</sup>			
1936-37	L	6.5-23	Minnesota	2009-10	L	20-18	vs. Minnesota <sup>5</sup>	2008-09	W	20-15	vs. North Carolina

St. <sup>11</sup>			1999-00	T	17-17	Northern Iowa	1971-72	W	21-12	NORTHWESTERN
			2000-01	W	20-19	NORTHERN IOWA	1972-73	W	26-14	Northwestern
<b>North Dakota</b>	<b>Wisconsin leads 1-0</b>		2001-02	L	12-26	Northern Iowa	1973-74	W	18-15	NORTHWESTERN
1965-66	W	20-9	2002-03	W	27-18	NORTHERN IOWA	1974-75	W	22-12	Northwestern
		NORTH DAKOTA	2003-04	W	24-13	Northern Iowa	1975-76	W	34-10	NORTHWESTERN
<b>North Dakota State</b>	<b>Wisconsin leads 1-0</b>		2004-05	W	20-14	NORTHERN IOWA	1976-77	L	14-21	Northwestern
1993-94	W	24-18	2005-06	W	19-16	Northern Iowa	1977-78	W	47-2	NORTHWESTERN
		North Dakota State	2006-07	W	24-10	NORTHERN IOWA	1978-79	W	37-9	Northwestern
<b>Northern Colorado</b>	<b>Wisconsin leads 2-0</b>		2007-08	T	16-16	Northern Iowa	1979-80	W	43-3	NORTHWESTERN
1998-99	W	34-7	2008-09	W	36-9	vs. Northern Iowa <sup>12</sup>	1980-81	W	41-5	Northwestern
2006-07	W	29-10	2009-10	W	25-11	vs. Northern Iowa	1981-82	W	37-9	NORTHWESTERN
		vs. Northern Colorado <sup>11</sup>	2010-11	W	23-14	NORTHERN IOWA	1982-83	W	19-15	Northwestern
			2011-12	L	15-25	Northern Iowa	1983-84	W	33-11	NORTHWESTERN
			2011-12	L	15-30	vs. Northern Iowa <sup>5</sup>	1984-85	W	37-10	Northwestern
							1985-86	W	34-9	NORTHWESTERN
<b>Northern Illinois</b>	<b>Wisconsin leads 28-2</b>						1986-87	W	20-15	Northwestern
1935-36	W	31-5					1987-88	W	31-9	NORTHWESTERN
1936-37	W	34-0	<b>Northern Michigan</b>			<b>Wisconsin leads 4-0</b>	1988-89	W	20-16	Northwestern
1957-58	W	16-13	1967-68	W	17-12	NORTHERN MICH	1988-89	W	23-12	vs. Northwestern <sup>4</sup>
1964-65	W	29-2	1970-71	W	24-12	NORTHERN MICH	1988-89	W	19-18	NORTHWESTERN
1966-67	W	21-12	1985-86	W	40-4	NORTHERN MICH	1989-90	W	33-9	Northwestern
1967-68	W	22-8	1986-87	W	28-15	NORTHERN MICH	1990-91	W	29-9	NORTHWESTERN
1969-70	W	20-12					1991-92	W	23-13	Northwestern
1970-71	W	22-11	<b>Northern Montana</b>			<b>Wisconsin leads 1-0</b>	1992-93	W	25-17	NORTHWESTERN
1971-72	L	9-29	1991-92	W	40-6	vs. Northern Montana <sup>3</sup>	1993-94	W	24-11	Northwestern
1975-76	W	26-9					1994-95	W	13-20	NORTHWESTERN
1976-77	W	30-5	<b>Northwestern</b>			<b>Wisconsin leads 60-28-2</b>	1995-96	L	15-23	Northwestern
1977-78	W	37-6	1916-17	L	0-4	Northwestern	1996-97	L	14-26	NORTHWESTERN
1979-80	W	45-0	1920-21	W	34-14	Northwestern	1997-98	L	17-24	Northwestern
1980-81	W	24-11	1921-22	W	28-22	NORTHWESTERN	1998-99	L	27-9	NORTHWESTERN
1981-82	W	30-7	1922-23	W	19-6	Northwestern	1999-00	W	28-9	Northwestern
1982-83	W	24-9	1925-26	W	14-0	Northwestern	2000-01	W	29-12	NORTHWESTERN
1983-84	W	39-6	1927-28	W	16-12	NORTHWESTERN	2001-02	W	24-13	Northwestern
1984-85	W	21-12	1928-29	T	16-16	Northwestern	2002-03	W	28-6	NORTHWESTERN
1985-86	W	26-10	1930-31	W	21-11	NORTHWESTERN	2003-04	W	19-18	Northwestern
1991-92	W	54-0	1931-32	L	6-11	Northwestern	2004-05	W	15-24	NORTHWESTERN
1992-93	W	40-9	1932-33	L	0-34	NORTHWESTERN	2005-06	L	18-19	Northwestern
1994-95	W	41-3	1933-34	L	8-28	Northwestern	2006-07	L	21-19	NORTHWESTERN
1995-96	W	32-12	1933-34	W	18-16	NORTHWESTERN	2007-08	W	19-21	Northwestern
1998-99	W	22-21	1934-35	L	10-25	Northwestern	2008-09	L	32-6	NORTHWESTERN
1999-00	W	22-13	1934-35	L	3-27	NORTHWESTERN	2009-10	W	13-22	Northwestern
2002-03	W	26-12	1935-36	W	21-11	NORTHWESTERN	2010-11	L	9-33	NORTHWESTERN
2003-04	W	27-9	1936-37	L	11-21	Northwestern				
2004-05	W	27-12	1936-37	L	9-23	NORTHWESTERN	<b>Notre Dame</b>			<b>Wisconsin leads 1-0</b>
2005-06	L	17-18	1937-38	W	19-11	NORTHWESTERN	1961-62	W	30-0	NOTRE DAME
2006-07	W	26-9	1938-39	L	8-20	Northwestern				
			1939-40	W	17-13	NORTHWESTERN	<b>Ohio</b>			<b>Wisconsin leads 1-0</b>
			1940-41	W	24-6	Northwestern	1937-38	W	19-13	Ohio
<b>Northern Iowa</b>	<b>Wisconsin leads 23-18-2</b>		1941-42	W	22-3	NORTHWESTERN				
1926-27	L	9-14	1942-43	W	18-16	Northwestern	<b>Ohio State</b>			<b>Wisconsin leads 28-18-1</b>
1928-29	L	9-11	1943-44	T	16-16	NORTHWESTERN	1924-25	L	6-8	OHIO STATE
1933-34	L	0-30	1944-45	L	5-29	Northwestern	1937-38	L	4.5-21.5	Ohio State
1934-35	L	3-29	1944-45	L	5-29	Northwestern	1949-50	L	9-17	OHIO STATE
1936-37	L	10-24	1945-46	W	23-3	NORTHWESTERN	1950-51	L	11-16	Ohio State
1937-38	L	14-16	1946-47	W	27-5	Northwestern	1952-53	W	15-11	OHIO STATE
1938-39	L	8-24	1947-48	W	25-5	NORTHWESTERN	1953-54	W	17-11	Ohio State
1939-40	L	8-26	1948-49	W	16-11	Northwestern	1954-55	W	18-6	OHIO STATE
1955-56	L	11-19	1949-50	W	24-6	NORTHWESTERN	1960-61	L	8-29	Ohio State
1956-57	L	14-16	1950-51	W	18-13	Northwestern	1961-62	L	14-15	Ohio State
1957-58	L	0-28	1951-52	W	16-11	NORTHWESTERN	1962-63	W	19-11	OHIO STATE
1958-59	W	14-11	1952-53	L	12-14	Northwestern	1964-65	W	17-8	OHIO STATE
1963-64	W	26-5	1953-54	W	19-13	NORTHWESTERN	1965-66	T	12-12	Ohio State
1964-65	W	15-9	1954-55	W	21-10	Northwestern	1966-67	L	11-18	OHIO STATE
1966-67	W	26-3	1955-56	W	26-5	Northwestern	1967-68	W	19-14	Ohio State
1970-71	W	23-9	1957-58	W	18-13	NORTHWESTERN	1968-69	W	21-8	OHIO STATE
1983-84	W	29-8	1958-59	W	15-9	Northwestern	1969-70	L	11-20	Ohio State
1983-84	L	13-24	1959-60	L	7-25	NORTHWESTERN	1970-71	L	16-17	OHIO STATE
1984-85	W	27-8	1960-61	L	14-23	Northwestern	1972-73	W	25-13	Ohio State
1984-85	W	24-8	1961-62	W	15-11	NORTHWESTERN	1973-74	W	25-8	OHIO STATE
1985-86	W	21-12	1962-63	L	8-21	Northwestern	1976-77	W	34-7	OHIO STATE
1985-86	W	23-15	1963-64	L	8-21	NORTHWESTERN	1977-78	W	34-3	OHIO STATE
1986-87	L	15-19	1964-65	L	9-19	Northwestern	1978-79	W	35-6	Ohio State
1987-88	L	12-22	1965-66	W	23-8	NORTHWESTERN	1979-80	W	34-5	OHIO STATE
1992-93	L	16-19	1966-67	L	12-17	Northwestern	1980-81	W	24-12	Ohio State
1994-95	W	35-7	1967-68	L	14-19	NORTHWESTERN	1981-82	W	34-8	OHIO STATE
1995-96	W	39-4	1968-69	L	7-25	Northwestern				
1996-97	W	24-13	1969-70	L	12-24	NORTHWESTERN				
1997-98	W	25-12	1970-71	L	14-21	Northwestern				

1982-83	W	19-17	Ohio State
1983-84	W	26-10	OHIO STATE
1984-85	W	35-8	Ohio State
1985-86	W	24-9	OHIO STATE
1986-87	W	32-9	Ohio State
1987-88	L	14-21	OHIO STATE
1988-89	L	16-24	Ohio State
1989-90	L	18-19	OHIO STATE
1990-91	W	20-19	Ohio State
1991-92	L	17-25	vs. Ohio State <sup>5</sup>
1995-96	W	22-13	OHIO STATE
1996-97	L	11-27	Ohio State
1997-98	W	23-13	OHIO STATE
1998-99	W	20-17	Ohio State
1999-00	W	22-15	OHIO STATE
2001-02	L	18-21	Ohio State
2002-03	L	17-28	OHIO STATE
2004-05	W	20-18	Ohio State
2005-06	W	38-12	OHIO STATE
2007-08	L	13-23	Ohio State
2008-09	L	18-24	OHIO STATE
2010-11	W	23-18	OHIO STATE

**Oklahoma**

1965-66	L	5-31	OKLAHOMA
1973-74	L	18-23	OKLAHOMA
1974-75	T	15-15	Oklahoma
1975-76	W	17-16	OKLAHOMA
1976-77	W	22-12	Oklahoma
1977-78	W	22-13	OKLAHOMA
1978-79	L	17-20	Oklahoma
1979-80	W	32-17	OKLAHOMA
1980-81	W	21-17	Oklahoma
1981-82	L	6-31	OKLAHOMA
1982-83	L	6-34	Oklahoma
1983-84	W	20-15	OKLAHOMA
1984-85	L	14-30	Oklahoma
1985-86	L	15-18	OKLAHOMA
1986-87	W	24-8	Oklahoma
1987-88	W	30-10	OKLAHOMA
1989-90	L	12-22	vs. Oklahoma <sup>5</sup>
1992-93	W	21-15	vs. Oklahoma <sup>2</sup>
1997-98	L	10-25	vs. Oklahoma <sup>6</sup>
1998-99	L	3-37	vs. Oklahoma <sup>6</sup>
2007-08	W	18-15	Oklahoma

**Oklahoma State**

1973-74	L	12-21	OKLAHOMA STATE
1974-75	L	12-20	Oklahoma State
1975-76	L	16-17	OKLAHOMA STATE
1976-77	W	20-16	Oklahoma State
1977-78	L	15-17	OKLAHOMA STATE
1978-79	W	24-13	Oklahoma State
1979-80	W	27-16	OKLAHOMA STATE
1980-81	L	12-21	vs. Oklahoma State <sup>1</sup>
1980-81	L	9-24	Oklahoma State
1981-82	L	14-31	OKLAHOMA STATE
1982-83	L	3-43	Oklahoma State
1983-84	L	6-33	OKLAHOMA STATE
1984-85	L	11-23	Oklahoma State
1990-91	L	13-27	Oklahoma State
1997-98	L	8-25	Oklahoma State
1998-99	L	4-34	OKLAHOMA STATE
2001-02	L	3-38	vs. Oklahoma State <sup>6</sup>

**Old Dominion**

1992-93	W	33-7	vs. Old Dominion <sup>2</sup>
2009-10	W	21-19	vs. Old Dominion <sup>22</sup>

**Oregon**

1994-95	W	35-3	Oregon
2002-03	W	24-13	vs. Oregon <sup>9</sup>

**Oregon State**

1980-81	W	28-9	vs. Oregon State <sup>1</sup>
---------	---	------	-------------------------------

1994-95	W	29-10	Oregon State
1995-96	W	31-6	OREGON STATE
1996-97	L	13-26	vs. Oregon State <sup>2</sup>
1998-99	L	18-19	vs. Oregon State <sup>6</sup>
2002-03	W	23-18	vs. Oregon State <sup>9</sup>
2008-09	W	24-13	OREGON STATE
2009-10	W	22-13	Oregon State

**Pacific**

2002-03	W	40-3	vs. Pacific <sup>9</sup>
---------	---	------	--------------------------

**Penn**

2003-04	L	15-19	Penn
---------	---	-------	------

**Penn State**

1983-84	L	16-20	Penn State
1984-85	W	28-6	PENN STATE
1987-88	W	20-11	vs. Penn State <sup>2</sup>
1991-92	L	14-23	vs. Penn State <sup>5</sup>
1992-93	L	10-27	Penn State
1993-94	L	10-18	PENN STATE
1994-95	L	12-19	Penn State
1996-97	L	10-31	PENN STATE
1997-98	L	14-28	Penn State
1999-00	W	19-17	Penn State
2000-01	W	19-18	PENN STATE
2001-02	W	26-12	vs. Penn State <sup>2</sup>
2002-03	L	9-27	Penn State
2003-04	L	15-24	PENN STATE
2005-06	W	45-3	Penn State
2006-07	W	17-16	PENN STATE
2008-09	W	28-13	Penn State
2009-10	L	22-15	PENN STATE <sup>13</sup>
2010-11	L	12-30	Penn State
2011-12	L	0-43	PENN STATE

**Pittsburgh**

2001-02	W	24-18	vs. Pittsburgh <sup>2</sup>
---------	---	-------	-----------------------------

**Portland State**

1989-90	W	23-18	vs. Portland State <sup>5</sup>
2002-03	W	33-12	Portland State

**Princeton**

2003-04	W	32-9	Princeton
2011-12	W	29-9	Princeton

**Purdue**

1923-24	L	6-11	PURDUE
1926-27	W	13-12	PURDUE
1928-29	W	19-9	PURDUE
1939-40	W	19-9	PURDUE
1940-41	T	16-16	Purdue
1946-47	L	0-28	Purdue
1947-48	L	8-17	PURDUE
1955-56	W	15-9	Purdue
1957-58	W	16-14	PURDUE
1958-59	W	16-14	Purdue
1959-60	W	16-13	PURDUE
1960-61	L	11-22	Purdue
1961-62	W	14-12	PURDUE
1963-64	W	19-10	PURDUE
1963-64	W	24-10	PURDUE
1964-65	L	10-17	PURDUE
1965-66	W	27-5	PURDUE
1966-67	W	32-3	PURDUE
1968-69	W	22-11	PURDUE
1969-70	L	12-20	Purdue
1970-71	W	25-9	PURDUE
1971-72	L	18-22	Purdue
1972-73	W	33-9	PURDUE
1973-74	W	26-12	Purdue
1975-76	W	33-7	PURDUE
1976-77	W	46-0	PURDUE
1977-78	W	47-3	Purdue

**Wisconsin leads 1-0**

40-3	vs. Pacific <sup>9</sup>
------	--------------------------

**Wisconsin trails 0-1**

15-19	Penn
-------	------

**Wisconsin trails 8-12**

16-20	Penn State
28-6	PENN STATE
20-11	vs. Penn State <sup>2</sup>
14-23	vs. Penn State <sup>5</sup>
10-27	Penn State
10-18	PENN STATE
12-19	Penn State
10-31	PENN STATE
14-28	Penn State
19-17	Penn State
19-18	PENN STATE
26-12	vs. Penn State <sup>2</sup>
9-27	Penn State
15-24	PENN STATE
45-3	Penn State
17-16	PENN STATE
28-13	Penn State
22-15	PENN STATE <sup>13</sup>
12-30	Penn State
0-43	PENN STATE

**Wisconsin leads 1-0**

24-18	vs. Pittsburgh <sup>2</sup>
-------	-----------------------------

**Wisconsin leads 2-0**

23-18	vs. Portland State <sup>5</sup>
33-12	Portland State

**Wisconsin leads 2-0**

32-9	Princeton
29-9	Princeton

**Wisconsin leads 44-12-2**

6-11	PURDUE
13-12	PURDUE
19-9	PURDUE
19-9	PURDUE
16-16	Purdue
0-28	Purdue
8-17	PURDUE
15-9	Purdue
16-14	PURDUE
16-14	Purdue
16-13	PURDUE
11-22	Purdue
14-12	PURDUE
19-10	PURDUE
24-10	PURDUE
10-17	PURDUE
27-5	PURDUE
32-3	PURDUE
22-11	PURDUE
12-20	Purdue
25-9	PURDUE
18-22	Purdue
33-9	PURDUE
26-12	Purdue
33-7	PURDUE
46-0	PURDUE
47-3	Purdue

1978-79	W	55-0	PURDUE
1979-80	W	45-6	Purdue
1980-81	W	38-11	PURDUE
1981-82	W	26-11	Purdue
1982-83	W	37-2	PURDUE
1983-84	W	36-9	Purdue
1984-85	W	41-3	Purdue
1985-86	W	30-11	Purdue
1986-87	W	20-15	PURDUE
1987-88	W	22-16	Purdue
1988-89	W	28-12	vs. Purdue <sup>4</sup>
1988-89	W	19-17	PURDUE
1989-90	T	18-18	Purdue
1990-91	L	15-18	PURDUE
1991-92	W	20-13	PURDUE
1991-92	W	25-12	vs. Purdue <sup>5</sup>
1992-93	W	20-17	PURDUE
1993-94	W	20-19	Purdue
1995-96	W	24-16	Purdue
1999-00	W	20-19	PURDUE
2000-01	L	15-19	Purdue
2002-03	L	6-32	PURDUE
2003-04	W	26-15	vs. Purdue <sup>2</sup>
2003-04	W	22-12	vs. Purdue <sup>2</sup>
2003-04	W	28-6	PURDUE
2005-06	W	24-16	PURDUE
2006-07	W	27-12	Purdue
2008-09	W	19-15	PURDUE
2009-10	W	27-11	Purdue <sup>24</sup>
2010-11	L	16-18	PURDUE
2011-12	L	3-41	PURDUE

**Rider**

2001-02	W	27-18	vs. Rider <sup>2</sup>
2003-04	W	27-18	vs. Rider <sup>2</sup>
2011-12	W	28-8	vs. Rider

**Rutgers**

2000-01	W	21-18	Rutgers
---------	---	-------	---------

**Seton Hall**

2000-01	W	31-7	Seton Hall
---------	---	------	------------

**SIU-Carbondale**

1958-59	L	9-23	SIU-Carbondale
1969-70	W	23-14	SIU-CARBONDALE

**SIU-Edwardsville**

1990-91	W	35-5	SIU-EDWARDSVILLE
---------	---	------	------------------

**Slippery Rock**

1985-86	W	34-7	Slippery Rock
---------	---	------	---------------

**South Dakota State**

2002-03	W	45-0	vs. South Dakota St. <sup>8</sup>
2010-11	W	42-3	vs. South Dakota St. <sup>5</sup>

**Toledo**

1969-70	T	15-15	TOLEDO
---------	---	-------	--------

**Tri-State**

2007-08	W	45-9	TRI-STATE
---------	---	------	-----------

**Truman State**

1997-98	W	40-6	TRUMAN STATE
---------	---	------	--------------

**UNC-Greensboro**

2010-11	W	34-12	vs. UNC-Greensboro
---------	---	-------	--------------------

**Utah Valley State**

2003-04	W	26-15	vs. Utah Valley State <sup>9</sup>
2007-08	W	28-7	vs. Utah Valley State <sup>6</sup>

**UT-Chattanooga**

2010-11	W	25-16	vs. UT-Chattanooga <sup>11</sup>
---------	---	-------	----------------------------------

**Wisconsin leads 3-0**

27-18	vs. Rider <sup>2</sup>
27-18	vs. Rider <sup>2</sup>
28-8	vs. Rider

**Wisconsin leads 1-0**

21-18	Rutgers
-------	---------

**Wisconsin leads 1-0**

31-7	Seton Hall
------	------------

**Series tied 1-1**

9-23	SIU-Carbondale
23-14	SIU-CARBONDALE

**Wisconsin leads 1-0**

35-5	SIU-EDWARDSVILLE
------	------------------

**Wisconsin leads 1-0**

34-7	Slippery Rock
------	---------------

**Wisconsin leads 2-0**

45-0	vs. South Dakota St. <sup>8</sup>
42-3	vs. South Dakota St. <sup>5</sup>

**Series tied 0-0-1**

15-15	TOLEDO
-------	--------

**Wisconsin leads 1-0**

**UW-Green Bay**

1983-84 W

**UW-La Crosse**1967-68 W  
1996-97 L  
1997-98 W  
1998-99 W  
1999-00 W  
2002-03 W  
2003-04 W**UW-Milwaukee**1964-65 T  
1965-66 W  
1966-67 W  
1967-68 W  
1969-70 W  
1970-71 W  
1971-72 W  
1972-73 W  
1973-74 W  
1974-75 W  
1975-76 W  
1976-77 W**UW-Oshkosh**1969-70 W  
1970-71 W  
2004-05 W  
2005-06 W  
2006-07 W  
2007-08 W**UW-Platteville**1967-68 W  
1996-97 W**UW-Stevens Point**1994-95 W  
1995-96 W  
1997-98 W  
1999-00 W**UW-Superior**1961-62 W  
1963-64 W  
1964-65 W  
1965-66 W  
1966-67 W  
1967-68 W  
1969-70 W  
1970-71 W**UW-Whitewater**1968-69 W  
1969-70 W  
1984-85 W  
2011-12 W**Virginia**1997-98 W  
2006-07 W  
2008-09 W**Virginia Tech**1967-68 L  
1969-70 W  
2010-11 W  
2010-11 L**VMI**

1996-97 W

**Wartburg****Wisconsin leads 1-0**

60-0 UW-Green Bay

**Wisconsin leads 6-1**33-0 UW-LA CROSSE  
18-21 UW-La Crosse  
25-9 UW-La Crosse  
24-13 UW-La Crosse  
32-12 UW-LA CROSSE  
24-13 vs. UW-La Crosse<sup>8</sup>  
24-12 UW-LA CROSSE**Wisconsin leads 11-0-1**14-14 UW-MILWAUKEE  
23-5 UW-MILWAUKEE  
21-11 UW-Milwaukee  
21-13 UW-MILWAUKEE  
34-0 UW-MILWAUKEE  
32-6 UW-MILWAUKEE  
32-9 UW-Milwaukee  
30-12 UW-MILWAUKEE  
35-6 UW-MILWAUKEE  
52-0 UW-MILWAUKEE  
50-0 UW-MILWAUKEE  
59-0 UW-MILWAUKEE**Wisconsin leads 6-0**23-12 UW-OSHKOSH  
24-8 UW-OSHKOSH  
46-6 UW-Oshkosh  
51-0 UW-Oshkosh  
40-3 UW-OSHKOSH  
53-0 UW-OSHKOSH**Wisconsin leads 2-0**26-3 UW-PLATTEVILLE  
36-9 UW-Platteville**Wisconsin leads 4-0**38-3 UW-Stevens Point  
31-13 UW-Stevens Point  
33-12 UW-Stevens Point  
43-0 UW-Stevens Point**Wisconsin leads 8-0**19-9 UW-SUPERIOR  
25-3 UW-SUPERIOR  
15-11 UW-SUPERIOR  
23-10 UW-Superior  
21-11 UW-SUPERIOR  
15-14 UW-SUPERIOR  
31-2 UW-SUPERIOR  
29-3 UW-Superior**Wisconsin leads 4-0**15-12 UW-WHITEWATER  
20-14 UW-WHITEWATER  
26-8 UW-WHITEWATER  
39-3 UW-WHITEWATER**Wisconsin leads 3-0**23-16 vs. Virginia<sup>6</sup>  
30-7 vs. Virginia<sup>11</sup>  
25-15 vs. Virginia<sup>11</sup>**Series Tied 2-2**16-17 VIRGINIA TECH  
22-13 VIRGINIA TECH  
24-19 vs. Virginia Tech<sup>11</sup>  
19-20 vs. Virginia Tech<sup>9</sup>**Wisconsin leads 1-0**31-10 vs. VMI<sup>2</sup>**Wisconsin leads 1-0**

2011-12 W

**West Virginia**1961-62 W  
1986-87 W  
1991-92 W  
2000-01 W**Wheaton**1934-35 L  
1934-35 L  
1935-36 W  
1935-36 L  
1936-37 W  
1937-38 W  
1938-39 W  
1939-40 L  
1940-41 W  
1941-42 W  
1945-46 W  
1946-47 W  
1947-48 L  
1948-49 L  
1949-50 W  
1950-51 W  
1951-52 W  
1952-53 W  
1954-55 W  
1955-56 W  
1956-57 W  
1960-61 L  
1961-62 W  
1962-63 W  
1963-64 W  
1964-65 W  
1965-66 W  
1969-70 W**Wilkes**

1983-84 W

**Winona State**

1975-76 W

**Wyoming**1951-52 W  
1953-54 T  
1989-90 W  
1989-90 W  
1990-91 W  
1992-93 W  
1998-99 T  
1999-00 W

1 - at Hall of Fame Classic

2 - at Virginia Duals

3 - at Louisiana State Duals

4 - at Big Ten Duals

5 - at National Duals

6 - at Lonestar Duals

7 - at Dallas Duals

8 - at UW Triangular

9 - at Oregon Classic

10 - at Northwestern Duals

11 - at ACC/Big Ten Clash

12 - at Wisconsin Dells - Dells Dual Wrestling Classic

13 - at Badger Duals

17-16 WARTBURG

**Wisconsin leads 4-0**23-5 WEST VIRGINIA  
20-15 vs. West Virginia<sup>2</sup>  
30-9 vs. West Virginia<sup>5</sup>  
28-9 vs. West Virginia<sup>2</sup>**Wisconsin leads 21-7**9-21 Wheaton  
16-18 WHEATON  
17-15 Wheaton  
9.5-17.5 WHEATON  
17-15 Wheaton  
22-11 Wheaton  
21-11 WHEATON  
16-18 Wheaton  
22-8 WHEATON  
19.5-14.5 Wheaton  
19-15 WHEATON  
23-5 Wheaton  
9-19 WHEATON  
8-24 Wheaton  
21-10 WHEATON  
25-3 Wheaton  
27-3 WHEATON  
23-3 Wheaton  
21-3 Wheaton  
15-11 WHEATON  
20-6 Wheaton  
12-14 Wheaton  
20-6 WHEATON  
28-0 Wheaton  
24-3 WHEATON  
21-5 Wheaton  
21-12 WHEATON  
27-9 WHEATON**Wisconsin leads 1-0**30-9 vs. Wilkes<sup>2</sup>**Wisconsin leads 1-0**

39-2 WINONA STATE

**Wisconsin leads 6-0-2**18-10 Wyoming  
14-14 WYOMING  
20-15 WYOMING  
24-11 WYOMING  
30-7 Wyoming  
26-12 WYOMING  
19-19 Wyoming  
22-12 vs. Wyoming<sup>7</sup>