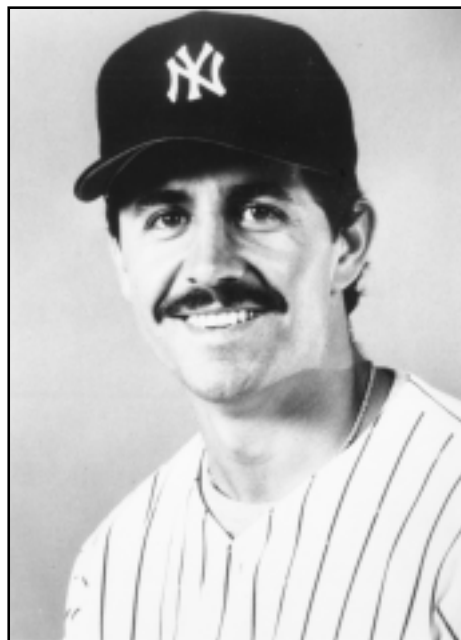
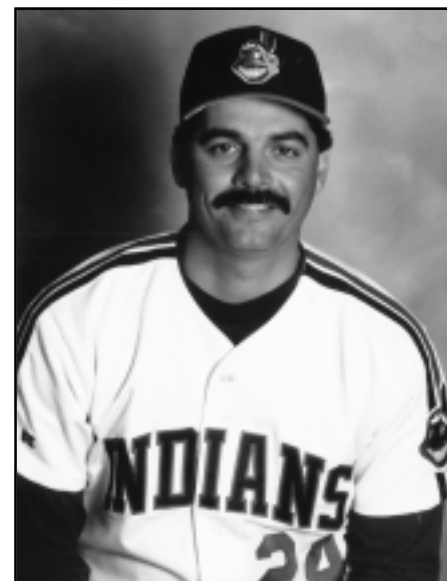


CATAMOUNTS IN THE PROS

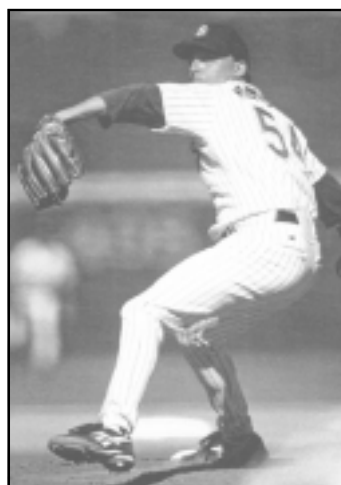
YEAR	PLAYER	SIGNED BY
2000	Charles Thomas	Atlanta Braves
1999	Chris Moore	Colorado Rockies
	Eric Johnson	Cleveland Indians
	David Pember	Milwaukee Brewers
1998	Martin Barrow	Frontier League
	Chris Davidson	Baltimore Orioles
	Mark DiFelice	Colorado Rockies
	Chuck Koone	Baltimore Orioles
	Donnie Suttles	Cleveland Indians
	Jeff Sziksai	New York Yankees
1997	Alex Tolbert	Pittsburgh Pirates
1996	Eric Whitson	Tampa Bay Devil Rays
1994	Jason Beverlin	Oakland Athletics
	Roy Hurst	Chicago Cubs
	Mike Manning	Texas Rangers
	Stephen Pritchard	Milwaukee Brewers
	Mike Tidick	Chicago White Sox
1993	Phillip Grundy	Kansas City Royals
	Brad Tweedlie	Cincinnati Reds
1992	Patrick Kendrick	Chicago Cubs
	Jack Kimel	Texas Rangers
	Dan Kyslinger	Milwaukee Brewers
	Matt Raleigh	Montreal Expos
1991	Kevin Bellomo	San Francisco Giants
	Todd Raleigh	Boston Red Sox
1990	Grant Brittain	Atlanta Braves
	Paul Menhart §	Toronto Blue Jays
1989	Jeff Stevens	Cleveland Indians
1988	Keith LeClair	Atlanta Braves
	Tom Malchesky	St. Louis Cardinals
	Skip Nelloms	New York Yankees
	Dave Piela	Atlanta Braves
1987	Freddie Hailey	New York Yankees
	Andy Rickman	Cincinnati Reds
1986	Ron Huntington	Atlanta Braves
	Keith Smith	Atlanta Braves
1985	Scott Gay	New York Yankees
	John Pust	New York Mets
1984	Charlie Fonville	Seattle Mariners
1983	David Hill	Seattle Mariners
1982	Kyle Carson	Seattle Mariners
1980	Willie Carpenter	Texas Rangers
1979	Rick Adair #	Seattle Mariners
1978	Keith Ebersole	Chicago Cubs
	Wayne Tolleson §	Texas Rangers
1977	Jerry Reed §	Philadelphia Phillies
1976	Mike Hicks	Texas Rangers
	Flip Watson	Texas Rangers
1975	Jerry Gaines	Texas Rangers
1973	Don Bright	Texas Rangers
1972	Jim Grove	Texas Rangers
1971	Tommy Hayes	Chicago White Sox
	Wayne McCauley	Washington Senators
1969	Jim Thompson	St. Louis Cardinals
1967	Roddy Edwards	Washington Senators



**WAYNE
TOLLESON**
WCU • 1975-78
Texas Rangers
1980-85
Chicago White Sox
1986
New York Yankees
1986-90



RICK ADAIR
WCU • 1977-79
Cleveland Indians
Pitching Coach
1991-93
Detroit Tigers
Pitching Coach
1996-2000



PAUL MENHART
WCU • 1988-90
Toronto Blue Jays
1993-95
Seattle Mariners
1996-97
San Diego Padres
1997-98

§ – Played on a major league club

– Pitching coach for the Cleveland Indians from 1991-93 and Detroit Tigers from 1996-2000

WESTERN CAROLINA UNIVERSITY BASEBALL

- 1969 -

Record: 11-15

Coach: Bill Haywood

L	0-9	at Erskine%
W	7-0	at Armstrong State
W	6-2	Guilford
W	3-1	at Elon
W	4-2	at Elon
L	5-7	Salem
L	5-14	Salem
L	3-4	Appalachian State
L	1-3	Appalachian State
W	10-4	Mars Hill
L	6-8	at Catawba
W	4-2	at Catawba
L	5-7	Pfeiffer
W	11-8	Pfeiffer
W	13-2	at Newberry
W	5-4	Lenoir-Rhyne
W	7-0	Lenoir-Rhyne
L	2-7	at Mars Hill
L	4-12	Erskine
L	2-6	Atlantic Christian
L	4-6	Atlantic Christian
L	2-5	at High Point
L	0-20	at High Point
W	2-0	at Newberry
L	1-5	vs. High Point*
L	1-2	vs. Catawba*

% Forfeit game

* Carolinas Conference Tournament

- 1970 -

Record: 9-12

Coach: Bill Haywood

W	5-4	at Armstrong State
L	5-7	at Armstrong State
W	6-3	vs. Lehigh
L	2-3	at Georgia Southern
L	3-5	at Georgia Southern
L	5-7	at Valdosta State
L	2-3	Furman
W	9-3	South Carolina State
W	10-9	Appalachian State
L	4-5	Gardner-Webb
W	10-8	Emory & Henry
W	10-0	at Mars Hill
W	7-6	at Wofford
L	8-10	at Wofford
L	3-5	at Georgia
W	16-2	at Emory & Henry
L	6-8	Erskine
L	2-3	at South Carolina State
L	5-8	Erskine
W	9-1	Mars Hill
L	6-7	at Appalachian State

- 1971 -

Record: 20-11

Coach: Bill Haywood

L	2-4	at South Carolina
L	3-6	at South Carolina
W	4-2	Allen
W	4-2	at Furman
W	5-4	at The Citadel
L	3-4	at Augusta
W	3-0	South Carolina State
W	7-2	Wofford
W	5-0	Wofford
L	3-4	Appalachian State
W	16-1	Salem
W	10-3	Salem
L	1-2	Furman
L	2-9	at Erskine
W	10-6	Maryville
W	4-3	Virginia Military
L	1-2	at Georgia Southern
W	6-1	at Georgia Southern

W	5-4	at Wake Forest
W	9-0	Allen
W	1-0	Mars Hill
W	16-2	Mars Hill
W	5-4	at South Carolina State
L	2-4	at Georgia Tech
W	8-4	Erskine
W	11-7	at Georgia
L	1-6	at Appalachian State
W	3-2	vs. South Carolina State %
L	5-6	vs. Appalachian State %
W	11-1	vs. South Carolina State %
L	1-4	vs. Appalachian State %

- 1972 -

Record: 15-15

Coach: Bill Haywood

L	0-1	at South Carolina
L	1-4	Toledo
L	3-4	Toledo
W	14-1	West Virginia State
W	7-6	West Virginia State
W	9-5	West Virginia State
L	1-6	at Armstrong State
L	1-4	at Georgia Southern
W	7-5	at Georgia Southern
L	2-4	at Georgia
W	15-0	at Wofford
W	10-3	Appalachian State
L	1-5	at South Carolina
L	0-4	at Erskine
W	5-4	Voorhees
W	20-11	Wofford
W	3-2	at Appalachian State
L	0-3	South Carolina State
L	5-6	Furman
W	9-4	at South Carolina State
W	9-5	at Voorhees
W	10-0	at Mars Hill
L	3-5	at Mars Hill
L	2-5	Erskine
W	4-1	vs. Newberry %
W	6-2	vs. Erskine %
W	4-1	vs. Newberry %
L	2-7	at Georgia
L	3-4	vs. Morris Harvey #
L	0-4	vs. Pembroke State #

%-NAIA District 6 Playoffs

#-NAIA Area VII Playoffs

- 1973 -

Record: 11-9

Coach: Bill Haywood

W	2-0	at Wake Forest
W	5-1	at North Carolina (12)
L	2-13	Salem
L	0-14	at Lehigh
L	5-8	at Georgia Southern
L	0-1	Toledo
L	5-9	Toledo
L	1-5	Yale
W	9-2	South Carolina State
L	2-10	at South Carolina
W	6-1	at Erskine
W	8-0	at Wofford
L	3-5	at Georgia Tech (10)
W	4-3	at Furman
W	7-3	Wofford
W	5-1	at Appalachian State
W	8-7	Erskine
W	9-4	Appalachian State
L	4-13	Furman
W	3-0	at South Carolina

- 1974 -

Record: 11-14

Coach: Bill Haywood

W	4-3	at Clemson (10)
L	2-3	at Erskine
L	2-5	at Baptist
L	1-4	at The Citadel
W	11-8	at South Carolina State
W	3-2	at Duke
W	2-1	at Duke
L	2-4	at North Carolina
W	6-0	Western Maryland
L	7-8	Western Maryland (11)
W	6-5	Salem (10)
L	2-10	at Georgia Southern
L	0-14	at Georgia Southern
L	0-13	at Georgia Southern
L	1-8	at South Carolina
W	7-1	East Tennessee State
W	12-0	Mars Hill
L	6-7	at South Carolina
W	10-5	at Georgia Tech
L	6-10	at Georgia Tech
L	3-8	Appalachian State
W	8-0	Erskine
L	5-8	Virginia Tech
W	4-3	at Mars Hill
L	2-8	Appalachian State

- 1975 -

Record: 15-8-1

Coach: Bill Haywood

W	3-0	at Duke
L	2-3	at Duke
W	6-3	at Pembroke
L	0-4	at North Carolina
W	12-1	Salem
W	11-3	Salem
W	10-1	West Virginia State
W	9-8	Slippery Rock
W	1-0	Slippery Rock
L	0-8	at Clemson
L	0-5	at Georgia Southern
L	8-11	at Georgia Southern
W	4-2	at Erskine
W	9-3	East Tennessee State
W	7-0	Erkine
L	0-5	at Georgia
W	19-7	at East Tennessee State
W	7-5	at Georgia Tech
L	8-9	at Appalachian State
W	13-7	at Furman
W	6-5	Georgia
W	7-4	Virginia Tech
L	5-6	Virginia Tech
T	8-8	South Carolina (6)

- 1976 -

Record: 16-15

Coach: Bill Haywood

W	7-4	George Mason
L	3-4	at UNC Wilmington*
W	2-1	at UNC Wilmington*
L	1-5	at East Carolina
L	1-4	at North Carolina
W	12-7	Slippery Rock
W	6-3	Slippery Rock
W	7-4	Fairfield
L	4-5	Salem*
W	5-4	Salem*
W	12-0	WEST VIRGINIA STATE
W	3-1	West Virginia State
W	12-2	Furman
L	3-7	Georgia
L	1-10	at Georgia
L	0-5	at Wake Forest
W	13-4	Wofford
L	0-14	at Georgia Tech

L	0-9	at Georgia Tech
L	8-19	Baptist
W	13-3	Baptist
L	2-7	at Furman
W	7-1	UNC Wilmington
W	13-0	UNC Wilmington
L	5-6	at Appalachian State
L	5-6	East Tennessee State
W	20-5	East Tennessee State
L	6-8	Mars Hill
L	3-4	at East Tennessee State
W	12-7	at Mars Hill
W	4-3	Appalachian State (10)

BOLD-Indicates No Hitter by Reed

- 1977 -

Record: 27-5, 14-2 SoCon

Coach: Bill Haywood

W	4-3	Slippery Rock
W	4-3	at UNC Wilmington
W	13-4	at Pembroke State
L	7-8	at Pembroke State
L	1-3	at North Carolina
W	3-2	at North Carolina
W	13-7	George Mason
L	12-14	George Mason
W	15-6	Salem
W	4-0	West Virginia State
W	28-3	West Virginia State
W	9-5	at Davidson *
W	11-4	at Davidson *
W	12-9	East Tennessee State
L	1-2	The Citadel *
W	13-10	The Citadel *
W	7-6	Furman *
W	12-4	Furman *
W	13-7	at Old Dominion
W	7-2	at William & Mary *
W	4-1	at William & Mary *
W	8-4	East Carolina *
L	1-4	East Carolina *
W	4-3	Appalachian State *
W	1-0	at Marshall *
W	3-2	at Marshall *
W	20-13	at VMI *
W	18-9	at VMI *
W	5-1	at Appalachian State *
W	22-15	Georgia
W	4-3	Erskine
W	14-5	at Georgia Tech

* - Southern Conference Game

- 1978 -

Record: 20-13-1; 8-5 SoCon

Coach: Bill Haywood

FIRST SEASON AT CHILDRESS FIELD		
L	12-19	at Carson-Newman
W	9-0	at Carson-Newman
W	14-13	George Mason
T	16-16	George Mason
L	10-11	at Furman *
W	18-2	Salem (Mar. 21)
W	6-0	Salem
W	28-2	West Virginia State
W	5-3	West Virginia State
W	6-0	Southern Illinois-Edwardsville
L	9-12	at South Carolina
L	1-2	at Francis Marion
W	11-3	at Pembroke State
L	1-3	at UNC Wilmington
L	6-7	at UNC Wilmington
L	3-12	at Clemson
L	5-14	at Georgia
W	9-6	at Gardner-Webb
L	3-6	Marshall *
L	3-6	Marshall *
W	9-0	VMI *
W	13-4	VMI *
W	11-2	at Erskine

YEAR-BY-YEAR RESULTS

W 5-2 at The Citadel *
 L 0-5 at The Citadel *
 L 4-12 at East Tennessee State
 W 12-6 South Carolina
 L 2-3 at Chattanooga *
 W 11-3 at Chattanooga *
 W 12-10 at Appalachian State *
 W 27-6 Gardner-Webb
 W 9-5 Appalachian State *
 W 7-1 Davidson *
 W 6-0 Davidson *

(Mar. 21)-First game at Childress Field
 *-Southern Conference Game

- 1979 -

Record: 13-15; 6-7 SoCon

Coach: Bill Haywood

W 3-1 at Georgia Tech
 L 2-8 at Clemson
 L 2-6 at South Carolina
 L 7-17 at Francis Marion
 L 3-7 at Campbell
 W 12-5 at Campbell
 W 7-4 at UNC Wilmington
 L 0-5 at UNC Wilmington
 W 9-7 Salem
 W 15-2 Salem
 W 8-4 Lenoir-Rhyne
 W 3-0 THE CITADEL *
 L 6-7 The Citadel *
 L 9-10 Erskine
 W 4-1 at Furman *
 L 3-13 Clemson
 L 7-11 Appalachian State *
 W 7-6 Chattanooga *
 L 6-10 Chattanooga *
 W 4-3 Furman *
 W 15-10 Carson-Newman
 L 4-5 Carson-Newman
 W 4-0 at Davidson *
 L 2-7 at Davidson *
 L 3-17 at East Tennessee State *
 L 1-3 at Marshall *
 L 2-15 at Marshall *
 W 7-3 at VMI *

BOLD-Indicates No Hitter by Adair
 *-Southern Conference Game

- 1980 -

Record: 22-15; 8-5 SoCon

Coach: Bill Haywood

L 2-10 at Clemson
 W 5-3 at UNC Charlotte (8)
 L 5-8 at UNC Charlotte
 L 1-12 at North Carolina
 L 1-5 at North Carolina
 W 4-2 at Campbell
 W 14-10 at Francis Marion
 L 2-12 at South Carolina
 W 11-2 Salem
 W 4-1 Salem
 L 2-10 Ohio State
 W 21-5 West Virginia State
 W 6-4 at Furman *
 L 3-7 at Georgia State
 W 8-5 Davidson *
 W 10-2 Davidson *
 W 11-9 Carson-Newman
 L 2-6 at East Tennessee State
 L 4-9 Appalachian State *
 W 7-5 UNC Wilmington
 W 19-8 UNC Wilmington
 W 12-5 Campbell
 W 4-3 Campbell (9)
 W 7-5 Furman *
 L 8-14 Clemson
 W 6-1 at Lenoir-Rhyne
 W 11-8 at Lenoir-Rhyne
 W 4-3 Marshall (8) *

L 1-4 Marshall *
 L 10-13 South Carolina
 W 4-3 VMI (8) *
 W 13-7 VMI *
 W 5-4 at The Citadel (8) *
 L 6-7 at The Citadel *
 L 6-8 East Tennessee State
 W 10-5 at Erskine
 L 2-3 Georgia State

*-Southern Conference Game

- 1981 -

Record: 25-14; 12-4 SoCon

Coach: Bill Haywood

W 9-6 at Georgia
 L 6-7 at Clemson (10)
 W 5-4 at Georgia Tech
 W 8-2 at Georgia Tech
 W 18-5 Slippery Rock
 W 14-5 at High Point
 L 6-9 at High Point
 L 1-7 at Pembroke
 W 6-4 at Pembroke
 W 7-5 vs. West Liberty State @
 L 6-7 at UNC Wilmington
 L 2-3 at UNC Wilmington
 L 6-7 at Campbell
 W 9-8 at Campbell
 W 7-4 Furman *
 W 10-8 Furman *
 W 12-11 Ohio State
 L 16-32 Ohio State
 W 1-0 at Davidson *
 W 9-6 at Davidson *
 W 11-10 East Tennessee State *
 L 5-7 East Tennessee State *
 W 9-6 at Wofford (10)
 L 6-7 at Carson-Newman
 L 7-8 The Citadel *
 L 0-5 The Citadel *
 L 0-1 at Marshall *
 W 9-2 at Marshall *
 W 6-3 at VMI *
 W 15-3 at VMI *
 W 2-1 at Appalachian State *
 W 2-0 at Appalachian State *
 W 4-1 Chattanooga *
 W 8-4 Chattanooga *
 W 10-5 Campbell
 W 12-7 Campbell
 W 11-7 Erskine
 L 4-9 vs. East Tennessee State #
 L 3-5 vs. Marshall #

@-played at UNC Wilmington

*-Southern Conference Game

#-Southern Conference Playoff

- 1982 -

Record: 28-12; 12-4 SoCon

Coach: David Wright

L 7-10 at Georgia
 L 0-5 at Clemson
 L 3-4 UNC Wilmington
 W 6-4 UNC Wilmington
 L 6-9 at Francis Marion
 W 10-8 at Francis Marion
 L 2-3 at Campbell
 L 1-11 at Campbell
 W 14-6 at Erskine
 L 7-8 Ohio State
 W 13-4 Ohio State
 W 17-13 at Carson-Newman
 W 6-5 Marshall *
 W 3-0 Marshall *
 W 10-3 Clemson
 W 12-4 High Point
 W 14-12 High Point
 W 2-0 APPALACHIAN STATE *
 W 6-5 Appalachian State *

W 16-8 Carson-Newman
 L 0-4 at The Citadel *
 W 3-1 at The Citadel *
 L 2-16 at East Tennessee State *
 W 2-1 at East Tennessee State *
 W 18-4 VMI *
 W 7-2 VMI *
 W 7-4 at Furman *
 W 9-2 at Furman *
 W 14-13 Georgia
 W 6-3 Campbell
 W 14-2 Campbell
 L 8-9 Wofford
 W 16-0 Wofford
 L 1-7 at Chattanooga *
 L 8-9 at Chattanooga *
 W 9-5 UNC Charlotte
 W 10-6 UNC Charlotte
 W 5-1 Davidson *
 W 17-13 Davidson *
 W 26-8 Georgia State

BOLD-Indicates No Hitter by Mashburn

*-Southern Conference Game

- 1983 -

Record: 25-20; 9-5 SoCon

Coach: Jack Leggett

L 5-14 at Georgia Tech
 L 9-16 at Georgia Tech
 L 1-19 at Georgia
 L 8-9 at Wake Forest
 L 2-4 South Carolina
 W 6-5 South Carolina
 W 13-12 Tennessee
 W 16-15 Austin Peay
 L 2-3 Austin Peay
 W 14-7 Austin Peay
 L 8-13 at Campbell
 W 9-3 at Campbell
 W 11-4 at High Point
 W 14-6 Ohio
 W 3-2 Ohio (8)
 W 7-3 Ohio
 L 3-4 Ohio State
 W 9-8 Ohio State
 W 9-8 Ohio State
 L 4-24 Ohio State
 W 9-8 Eastern Kentucky (8)
 W 10-9 Eastern Kentucky
 L 8-14 Georgia
 L 2-11 at South Carolina
 W 13-6 Campbell
 W 8-5 Campbell
 L 3-8 at Clemson
 W 7-2 Furman *
 W 4-3 Furman *
 W 9-6 at Appalachian State (12)
 W 4-0 AT APPALACHIAN STATE *
 L 5-8 at Eastern Kentucky
 L 8-9 at Marshall *
 L 3-5 at Marshall *
 W 4-1 at VMI *
 L 3-4 at VMI (8) *
 L 11-16 at Wofford
 W 5-3 East Tennessee State *
 L 8-12 East Tennessee State *
 L 4-21 at Tennessee
 W 13-7 Clemson
 W 10-4 at Davidson *
 W 16-10 at Davidson *
 L 7-8 The Citadel *
 W 2-1 The Citadel (8) *

BOLD-Indicated No Hitter by Moore

*-Southern Conference Game

- 1984 -

Record: 37-20; 13-3 SoCon South

Coach: Jack Leggett

L 2-7 at Florida International
 W 7-0 at Florida International
 L 0-7 at Florida International
 W 4-1 at Florida International
 W 9-8 at Wake Forest
 W 7-6 at North Carolina State
 L 4-14 at North Carolina State
 L 2-16 at North Carolina State
 W 5-3 at North Carolina State
 W 11-4 at Georgia
 W 9-0 Slippery Rock
 W 6-5 Slippery Rock
 L 3-4 Eastern Kentucky
 W 3-2 Eastern Kentucky
 L 4-7 Tennessee
 W 7-3 at East Tennessee State
 W 5-2 at East Tennessee State
 W 9-1 at High Point
 W 4-2 at High Point
 W 16-3 at High Point
 L 1-9 at Campbell
 L 2-3 at Campbell
 W 4-0 at Campbell
 W 10-8 at Furman *
 W 12-2 at Furman *
 W 11-1 at Furman *
 W 2-1 The Citadel *
 W 7-4 The Citadel *
 W 8-3 The Citadel *
 L 0-10 East Tennessee State
 W 6-4 East Tennessee State
 W 16-2 at Davidson *
 W 7-4 at Davidson *
 W 19-7 at Davidson *
 W 13-5 at Carson-Newman
 L 3-5 at Clemson
 L 5-6 Furman *
 W 6-1 Furman *
 W 3-2 Furman *
 L 5-13 at Tennessee
 L 1-6 Campbell
 W 6-5 Campbell
 W 9-2 Clemson
 W 5-3 at The Citadel *
 L 3-4 at The Citadel *
 W 5-4 Wofford
 W 8-5 Wofford
 W 8-6 at South Carolina
 W 3-2 Davidson **
 L 3-5 Davidson
 W 8-7 at Wofford
 L 8-9 at Wofford
 L 10-11 Carson-Newman
 W 10-5 VMI #
 L 5-9 Appalachian State #
 L 0-8 The Citadel #
 L 9-19 Florida International

*-SoCon South Division Game

#-SoCon Tourney (Cullowhee, N.C.)

- 1985 -

Record: 37-35; 11-6 SoCon South

Coach: Jack Leggett

L 0-5 at Georgia Southern
 L 7-11 at Georgia Southern
 W 10-9 at Georgia Southern
 L 3-4 at Georgia Southern
 W 3-1 at UNC Charlotte (12)
 L 4-6 at UNC Charlotte
 W 4-2 at North Carolina State
 W 5-3 at North Carolina State
 L 3-13 at North Carolina State
 L 0-5 at North Carolina State
 L 11-12 at Georgia
 W 7-6 Eastern Kentucky
 W 10-6 Eastern Kentucky
 L 3-9 Eastern Kentucky

WESTERN CAROLINA UNIVERSITY BASEBALL

L 0-2 Eastern Kentucky
W 7-5 South Carolina
W 4-3 Tennessee
L 6-7 UNC Asheville
L 2-7 at Elon
L 1-2 at Elon
W 7-1 at High Point
L 1-2 at High Point
L 7-8 at High Point
L 4-12 at Campbell
L 4-7 at Campbell
L 5-8 at Campbell
W 27-14 at Campbell
W 5-3 Furman *
W 8-1 Furman *
L 9-10 Furman *
W 17-6 at UNC Asheville
W 23-0 at UNC Asheville
L 6-12 Appalachian State
W 7-5 Appalachian State
L 7-14 at South Carolina
W 7-3 at The Citadel *
L 1-8 at The Citadel *
W 9-8 at The Citadel *
W 12-5 Campbell
L 2-6 Campbell
W 9-5 at Wofford
W 11-10 Davidson *
L 4-6 Davidson *
L 8-9 East Tennessee State
W 9-7 at Furman *
W 4-2 at Furman *
W 12-6 at Furman *
L 3-15 at Tennessee
W 13-3 UNC Asheville
W 5-3 The Citadel *
W 9-8 The Citadel *
W 10-3 The Citadel *
W 10-0 Wofford
W 11-0 Wofford
W 15-13 at Carson-Newman
L 2-3 at Davidson *
L 9-10 at Davidson *
L 1-4 at Davidson *
L 2-9 Clemson
W 16-13 Carson-Newman
W 3-2 at Appalachian State #
L 2-5 vs. Marshall #
W 13-2 vs. Davidson #
W 12-6 vs. Marshall #
W 13-12 vs. Marshall #
L 0-11 at North Carolina
L 0-9 at North Carolina
L 4-7 at North Carolina
W 5-3 vs. Old Dominion !
L 12-13 vs. LaSalle !
W 9-6 vs. St. John's !
L 3-14 at South Carolina !
*-SoCon South Division Game
#-SoCon Tourney (Boone, N.C.)
!-NCAA East Regional (Columbia, S.C.)

- 1986 -

Record: 33-28; 12-5 SoCon South
Coach: Jack Leggett

L 6-11 at Georgia Southern
W 4-3 at Georgia Southern
W 8-7 at Georgia Southern
W 6-5 at Georgia Southern
L 5-7 at UNC Charlotte
L 5-7 at North Carolina State
L 1-3 at North Carolina State
W 1-0 at North Carolina State
L 4-13 at North Carolina State
L 7-10 at Georgia
L 4-6 Eastern Kentucky
W 9-7 Eastern Kentucky
W 5-3 Eastern Kentucky
W 12-5 Eastern Kentucky
W 10-8 UNC Asheville
W 24-2 High Point
W 8-1 High Point
L 7-9 High Point
L 0-5 at Elon
W 9-1 at Campbell

W 11-8 at Campbell
L 4-7 at Campbell
W 4-2 at Campbell
W 11-7 at Furman *
W 10-3 at Furman *
L 2-5 at Appalachian State
L 2-8 at Appalachian State
W 10-5 The Citadel *
L 6-7 The Citadel *
W 15-5 The Citadel *
L 15-18 USC Spartanburg
L 14-15 Illinois
L 2-16 at Davidson *
L 3-7 at Davidson *
L 5-13 at Davidson *
L 5-16 at South Carolina
W 17-13 at UNC Asheville
L 15-19 at Carson-Newman
L 0-8 Clemson
W 2-1 Furman *
W 7-1 Furman *
W 15-4 Furman *
W 4-3 at Georgia Tech
L 11-13 at Georgia Tech
W 18-3 at USC Spartanburg
W 8-6 at The Citadel *
W 5-0 at The Citadel *
W 12-4 at The Citadel *
L 11-13 Campbell
L 7-16 Campbell
L 7-13 at Clemson
L 0-10 Davidson *
W 8-7 Davidson *
W 8-5 Davidson *
W 24-14 UNC Asheville
W 9-7 Carson-Newman
W 11-2 East Tennessee State #
W 18-17 Appalachian State #
W 11-8 Appalachian State #
L 8-10 at Miami !
L 7-8 vs. Georgia Tech !
*-SoCon South Division Game
#-SoCon Tourney (Cullowhee, N.C.)
!-NCAA Atlantic Regional (Coral Gables, Fla.)

- 1987 -

Record: 36-20; 13-3 SoCon South
Coach: Jack Leggett

L 7-9 at Florida
W 12-3 at Florida
L 12-13 at Florida
L 5-6 at Georgia Southern
W 14-12 at Georgia Southern
L 0-10 at Georgia Southern
W 8-7 at Georgia Southern
L 0-5 at UNC Charlotte
L 2-3 at UNC Charlotte
L 1-8 at Clemson
W 9-7 Campbell
W 5-3 Campbell
W 12-7 at High Point
W 6-2 at High Point
L 2-13 at High Point
W 10-3 at High Point
W 7-4 at Campbell
L 8-11 at Campbell
L 2-7 at Campbell
W 8-4 Eastern Kentucky
W 17-2 Eastern Kentucky
L 2-6 Furman *
W 6-4 Furman *
W 5-2 Furman *
W 9-4 Appalachian State
L 0-7 Appalachian State
W 11-2 at The Citadel *
W 3-1 at The Citadel (10) *
W 18-4 at The Citadel *
W 17-10 UNC Asheville
W 5-2 Elon
L 5-8 at USC Spartanburg
L 1-14 Davidson *

W 5-2 Davidson *
W 10-4 Davidson *
L 3-8 at Carson-Newman
L 7-10 at Furman *
W 10-1 at Furman *
L 8-11 at Georgia
W 11-9 at Georgia
W 7-6 The Citadel *
W 5-4 The Citadel *
W 14-5 The Citadel *
W 10-8 at East Tennessee State
L 5-6 East Tennessee State
W 14-10 at Davidson *
W 8-2 at Davidson *
W 9-6 USC Spartanburg
W 11-4 Carson-Newman
W 16-4 vs. VMI #
W 8-7 vs. Appalachian State #
W 9-4 vs. VMI #
L 3-6 vs. Oklahoma State !
W 8-7 vs. Purdue !
W 8-1 at Mississippi State !
L 6-9 vs. Oklahoma State !
*-SoCon South Division Game
#-SoCon Tourney (Asheville, N.C.)
!-NCAA Mid-East Regional (Starkville, Miss.)

- 1988 -

Record: 38-24; 14-3 SoCon South
Coach: Jack Leggett

W 3-1 at Florida
L 6-9 at Florida
L 2-7 at Florida
L 0-3 at Auburn
L 3-7 at Auburn
W 4-1 at Auburn
L 0-1 at Auburn
L 1-7 at North Carolina State
W 12-6 at North Carolina State
L 4-6 at North Carolina State
L 0-12 at North Carolina State
W 11-1 Eastern Kentucky
L 3-7 Eastern Kentucky
W 12-0 Eastern Kentucky
W 14-2 Eastern Kentucky
L 4-8 at Clemson
W 15-5 Campbell
L 2-6 Campbell
W 8-6 at High Point
W 15-9 at High Point
W 16-3 at High Point
W 7-2 at Campbell
L 1-9 at Campbell
L 9-10 at Campbell
W 11-10 Liberty
W 13-2 Liberty
W 7-4 Liberty
W 8-5 at Furman *
W 9-0 at Furman *
W 11-10 at USC Spartanburg
L 2-3 at Appalachian State
W 9-2 at Appalachian State
L 6-7 South Carolina
W 8-2 The Citadel *
L 2-9 The Citadel *
W 15-10 The Citadel *
L 2-3 at Georgia
L 2-6 at Georgia
L 7-11 at Davidson *
W 7-3 at Davidson *
W 12-8 at Davidson *
L 11-20 at Clemson
W 10-4 USC Spartanburg
W 6-4 Furman *
W 4-2 Furman *
W 6-5 Furman *
L 4-12 Clemson
W 9-8 at The Citadel *
L 2-4 at The Citadel *
W 5-4 at The Citadel *
W 11-1 UNC Asheville

W 10-5 East Tennessee State
W 9-2 Davidson *
W 8-3 Davidson *
W 16-11 Davidson *
W 17-10 at Carson-Newman
W 14-7 Piedmont
W 18-8 vs. Appalachian State #
W 6-4 vs. The Citadel #
W 22-6 vs. The Citadel #
L 4-7 at Mississippi State !
L 6-8 vs. Texas A&M !
*-SoCon South Division Game
#-Southern Conference Tournament
!-NCAA South Regional (Starkville, Miss.)

- 1989 -

Record: 23-31; 10-5 SoCon
Coach: Jack Leggett

L 3-5 at Florida
L 9-14 at Florida
L 1-18 at Florida
L 2-15 at Auburn
W 3-2 at Auburn
L 3-8 at Auburn
L 2-15 at Auburn
L 0-1 at Georgia
W 8-5 at Georgia
L 2-13 at South Carolina
L 0-17 at South Carolina
L 8-9 at Clemson
L 1-3 Carson-Newman
W 8-1 Carson-Newman
W 12-6 UNC Asheville
L 2-3 at Furman *
W 4-3 at Furman *
W 10-0 at Furman *
L 6-7 at Clemson
W 15-10 USC Spartanburg
W 11-10 The Citadel *
W 10-6 The Citadel *
L 1-5 The Citadel *
L 3-5 at East Tennessee State *
W 16-4 at East Tennessee State *
W 10-0 at East Tennessee State *
W 15-12 at USC Spartanburg
L 4-5 at UNC Asheville (13)
L 3-10 VMI *
W 7-4 VMI *
W 3-2 VMI *
L 2-10 at Georgia
L 5-10 at Georgia
L 2-14 Clemson
L 4-12 at Clemson
L 5-6 at Tennessee
L 0-4 Campbell
W 4-1 Campbell
W 7-4 Middle Tennessee State
L 2-3 Middle Tennessee State
L 3-13 Middle Tennessee State
W 10-4 at Carson-Newman
W 15-6 UNC Asheville
L 12-13 Piedmont
W 11-10 Appalachian State *
L 5-16 Appalachian State *
W 5-3 Appalachian State *
W 15-0 Carson-Newman
W 7-2 vs. Appalachian State #
W 4-2 vs. Marshall #
L 6-16 at Auburn
L 3-5 at Auburn
L 0-8 at Mississippi State !
L 3-10 vs. Indiana State !
*-Southern Conference Game
#-SoCon Tourney (Asheville, N.C.)
NCAA South Regional (Starkville, Miss.)

YEAR-BY-YEAR RESULTS

- 1990 -

Record: 37-25; 10-7 SoCon

Coach: Jack Leggett

W 2-1 at Florida
 L 2-18 at Florida
 L 1-13 at Florida
 W 9-3 at Auburn
 W 4-2 at Auburn
 L 6-9 at Auburn
 W 13-9 at Auburn (8)
 W 4-3 Western Kentucky (10)
 W 5-4 Western Kentucky
 L 1-5 at North Carolina State
 W 16-9 at North Carolina State
 L 1-2 at North Carolina State
 L 2-22 at North Carolina State
 L 6-14 at Georgia
 L 2-14 at Clemson
 L 6-9 Eastern Kentucky
 W 25-7 Eastern Kentucky
 L 7-8 Eastern Kentucky (8)
 W 10-3 Eastern Kentucky
 W 6-4 at Davidson
 W 22-1 at Davidson
 L 2-7 at East Carolina
 L 0-12 at East Carolina
 L 3-6 at The Citadel *
 L 3-7 at The Citadel *
 L 3-10 at The Citadel *
 W 6-5 Winthrop
 L 5-7 Providence
 W 12-1 East Tennessee State *
 W 5-0 East Tennessee State *
 W 11-4 East Tennessee State *
 W 15-8 Piedmont
 W 13-5 UNC Asheville
 L 8-9 at Virginia Tech
 W 8-5 at VMI *
 W 4-0 at VMI *
 W 18-6 Virginia Tech
 W 10-7 Marshall *
 L 5-6 Marshall *
 W 17-13 Marshall *
 W 8-6 at Carson-Newman
 W 12-5 Milligan
 W 3-1 Wofford
 W 5-4 Newberry
 W 17-2 Newberry
 W 8-3 Newberry
 W 18-0 Milligan
 L 2-11 at Appalachian State *
 W 6-1 at Appalachian State *
 L 0-3 at Appalachian State *
 L 11-12 at Georgia
 L 3-15 at Georgia
 W 13-2 Carson-Newman
 L 6-7 Furman *
 W 5-2 Furman *
 W 15-3 Furman *
 W 8-3 Piedmont
 W 6-1 vs. East Tennessee State #
 L 1-3 vs. Marshall #
 W 5-4 vs. Appalachian State #
 W 11-3 vs. Marshall #
 L 5-9 at The Citadel #
 *-Southern Conference Game
 #-SoCon Tournament (Charleston, S.C.)

- 1991 -

Record: 36-26; 11-3 SoCon

Coach: Jack Leggett

L 16-17 at Auburn
 L 2-9 at Auburn
 W 4-3 at Auburn
 L 6-13 at Auburn
 L 3-8 at North Carolina State
 L 8-10 at North Carolina State
 L 5-6 at North Carolina State (10)
 W 10-2 Radford

W 6-5 Radford
 W 12-3 Radford
 W 5-3 at Winthrop
 W 13-4 Winthrop
 L 6-8 East Carolina
 W 10-1 at High Point
 W 17-6 at High Point
 L 1-11 at Virginia Tech
 L 10-15 at Virginia Tech
 L 7-11 at Radford
 W 5-1 at East Tennessee St. *
 W 8-4 at East Tennessee St. *
 W 4-3 at East Tennessee St. (10) *
 W 10-5 at Georgia Tech
 W 7-5 at Georgia Tech
 W 14-2 VMI *
 W 20-1 VMI *
 W 21-0 VMI *
 W 17-6 Tennessee Tech
 W 14-2 Tennessee Tech
 W 7-3 at Marshall *
 W 17-0 at Marshall *
 W 7-6 Augusta
 L 6-8 Augusta
 L 0-3 North Carolina State
 L 2-6 North Carolina State
 W 9-7 North Carolina State
 L 3-13 at Clemson
 L 3-4 Appalachian State *
 W 4-1 Appalachian State *
 W 15-9 Appalachian State *
 W 6-0 UNC Asheville
 W 11-0 UNC Asheville
 W 9-1 at Milligan
 W 7-5 at Milligan
 W 14-7 at UNC Asheville
 L 3-18 USC Aiken
 L 3-7 USC Aiken
 L 7-8 USC Aiken
 W 10-4 The Citadel *
 L 6-8 The Citadel *
 L 5-9 The Citadel *
 W 10-6 Piedmont
 W 18-2 vs. VMI#
 L 4-7 vs. East Tennessee State #
 W 7-4 at The Citadel #
 W 9-4 vs. East Tennessee State #
 W 4-0 vs. Appalachian State #
 L 9-11 vs. Furman #
 L 4-6 at Maine
 L 1-3 at Maine
 W 14-7 at Maine
 L 11-14 at Maine
 L 13-14 at Maine

*-Southern Conference Game
 #-SoCon Tourney (Charleston, S.C.)

- 1992 -

Record: 44-21-1; 17-4

Coach: Keith LeClair

L 2-3 at South Carolina
 L 3-6 at USC Aiken
 W 11-8 at USC Aiken (11)
 L 0-6 at Clemson
 L 3-5 at North Carolina State
 L 2-5 at North Carolina State
 L 4-7 at North Carolina State
 L 3-4 Wright State
 W 6-4 Wright State
 W 12-7 Wright State
 L 7-11 at Davidson
 L 2-14 at Virginia Tech
 T 5-5 at Virginia Tech (11)
 W 16-5 at Radford
 W 7-4 at VMI *
 W 8-3 at VMI *
 L 5-6 at VMI *
 L 10-11 at Georgia Tech
 W 13-11 at Georgia (14)
 W 13-3 Davidson
 W 6-4 Marshall *

W 3-1 Marshall *
 W 29-1 Marshall *
 L 1-10 Virginia Tech
 W 5-2 at Tennessee Tech
 W 7-3 at Tennessee Tech
 W 3-0 Georgia Southern *
 W 3-1 Georgia Southern *
 W 18-6 Georgia Southern *
 W 8-4 Georgia
 W 4-1 at Appalachian State *
 W 10-6 at Appalachian State *
 W 8-2 at Appalachian State *
 L 17-19 at UNC Asheville
 W 13-7 Tennessee Tech
 W 18-7 UNC Greensboro
 W 14-5 Winthrop
 W 14-7 Furman *
 W 8-3 Furman *
 L 7-8 Furman *
 W 14-13 UNC Asheville
 W 15-5 Davidson
 W 9-5 at Winthrop
 L 1-2 at The Citadel *
 L 0-1 at The Citadel *
 W 8-7 at The Citadel *
 L 6-10 USC Aiken
 L 0-7 USC Aiken
 W 16-5 Presbyterian
 W 5-3 East Tennessee State *
 W 3-0 East Tennessee State *
 W 6-3 East Tennessee State *
 W 8-7 Piedmont
 W 3-2 vs. VMI #
 W 2-1 at The Citadel #
 W 17-10 vs. Georgia Southern #
 L 12-14 vs. Georgia Southern #
 W 4-3 vs. Georgia Southern #
 W 5-2 at Northwestern
 W 10-4 at Northwestern
 W 9-3 at Northwestern
 W 1-0 at Florida State !
 W 14-1 vs. Kent !
 W 5-0 vs. Stanford !
 L 3-4 at Florida State !
 L 3-18 at Florida State !

*-Southern Conference Game
 #-SoCon Tourney (Charleston, S.C.)
 !-NCAA South II Regional (Tallahassee, Fla.)

- 1993 -

Record: 34-28; 15-6 SoCon

Coach: Keith LeClair

L 9-11 UNC Charlotte
 W 10-6 UNC Charlotte
 W 16-5 Winthrop
 L 1-3 Wright State
 W 8-4 Wright State
 L 5-10 at UNC Asheville
 W 12-2 at The Citadel *
 W 8-7 at The Citadel (9) *
 L 5-7 at The Citadel *
 L 0-9 at Jacksonville
 L 1-18 at Jacksonville
 L 2-4 at Stetson
 L 0-4 at Stetson
 W 9-7 Davidson *
 W 10-5 Davidson *
 W 10-5 Davidson *
 L 4-5 at Georgia
 L 9-11 at Georgia
 W 23-7 Furman *
 W 9-2 Furman *
 W 13-6 Furman *
 L 1-4 at Georgia Tech
 W 4-3 at Georgia Tech
 W 11-4 UNC Asheville
 W 1-0 at Georgia Southern *
 W 6-1 at Georgia Southern *
 L 0-2 at Georgia Southern *
 W 10-7 UNC Asheville
 L 8-12 Virginia Tech

L 3-6 Marshall *
 W 15-3 Marshall *
 W 13-4 Marshall *
 L 4-9 at Tennessee
 W 3-1 Presbyterian
 L 5-8 at Virginia Tech
 L 3-4 at VMI *
 L 1-7 at VMI *
 W 13-1 at VMI *
 L 2-12 Clemson
 L 1-8 at Clemson
 L 7-8 at UNC Greensboro
 W 11-2 at UNC Greensboro
 W 8-6 at UNC Greensboro
 W 7-5 USC Aiken
 L 10-13 USC Aiken
 W 9-3 at Winthrop
 L 3-7 at Appalachian State *
 W 13-5 at Appalachian State (8) *
 W 8-5 at Appalachian State *
 W 14-7 Lincoln Memorial
 W 7-6 vs. Marshall #
 W 6-3 at The Citadel #
 L 4-8 vs. VMI #
 W 6-5 vs. Georgia Southern (10) #
 W 12-5 vs. VMI #
 W 5-1 vs. VMI #
 W 10-8 vs. Grand Canyon ^
 L 22-25 vs. Grand Canyon ^
 L 5-12 at Brigham Young
 L 2-7 at Louisiana State !
 W 10-5 vs. Miami !
 L 5-8 vs. Kent !

*-Southern Conference Game
 #-SoCon Tourney (Charleston, S.C.)
 ^-Played at Provo, Utah
 !-NCAA South Regional (Baton Rouge, La.)

- 1994 -

Record: 45-18; 19-4 SoCon

Coach: Keith LeClair

L 1-3 at Clemson
 L 1-4 at Clemson
 L 5-6 at Clemson (13)
 W 4-3 Wright State
 W 2-1 Wright State
 W 9-0 Wright State
 W 18-1 UNC Asheville
 W 7-1 The Citadel *
 W 3-2 The Citadel *
 W 3-2 The Citadel *
 W 9-5 at Winthrop (8)
 W 14-5 at UNC Charlotte
 W 7-3 at UNC Charlotte
 L 7-8 at Davidson *
 W 7-4 at Davidson *
 W 9-7 at Davidson *
 W 10-1 at Georgia
 W 7-2 UNC Wilmington
 W 10-8 at East Tennessee State *
 W 2-1 at East Tennessee State *
 W 13-6 at East Tennessee State *
 W 9-2 at South Carolina
 L 4-6 at Winthrop
 W 6-5 at Furman *
 W 5-3 at Furman *
 W 7-0 at Furman *
 W 6-4 at Tennessee Tech
 L 5-6 at Tennessee Tech
 W 10-2 Charleston Southern
 W 5-2 Georgia Southern *
 W 10-2 Georgia Southern *
 L 0-1 Tennessee
 W 7-4 at Marshall *
 W 5-4 at Marshall (8) *
 W 8-5 at Marshall *
 W 9-4 USC Aiken
 W 13-4 Eastern Kentucky
 W 5-2 Eastern Kentucky
 W 9-3 VMI *
 W 5-1 VMI *

WESTERN CAROLINA UNIVERSITY BASEBALL

L	1-3	VMI *
W	4-3	Winthrop (10)
W	7-5	Lincoln Memorial
W	9-2	South Florida
W	5-4	South Florida
L	4-7	South Florida
W	7-0	Tennessee Tech
W	10-6	Tennessee Tech
W	6-2	Appalachian State *
L	2-13	Appalachian State *
L	4-6	Appalachian State *
W	6-5	Greensboro College
L	1-2	vs. Davidson #
W	4-0	vs. East Tennessee State #
W	8-2	vs. Marshall #
W	13-1	vs. Davidson #
W	7-1	vs. VMI #
L	2-4	at The Citadel #
L	2-7	at Miami
L	2-8	at Miami
L	4-5	at Miami
L	6-8	vs. Arizona State !
L	4-6	at Tennessee !

*-Southern Conference Game
#-SoCon Tourney (Charleston, S.C.)
!-NCAA Mid-East Regional (Knoxville, Tenn.)

- 1995 -

Record: 32-24; 13-11 SoCon
Coach: Keith LeClair

L	0-9	at South Florida
W	6-1	at South Florida
W	11-6	at South Florida
L	3-6	Wright State
L	1-8	Wright State
W	7-4	Wright State
W	10-9	at Georgia
W	7-0	Davidson *
W	5-2	Davidson *
W	16-4	Davidson *
W	10-5	UNC Asheville
L	5-8	East Tennessee State *
L	4-10	East Tennessee State *
W	5-4	East Tennessee State *
L	0-6	at Georgia Tech
W	13-7	at Georgia Tech
W	10-9	Furman *
L	3-4	Furman *
W	12-8	Furman *
L	2-5	Clemson
L	3-27	Old Dominion
L	6-15	Old Dominion
L	2-9	at Georgia Southern *
W	6-2	at Georgia Southern *
L	2-9	at Georgia Southern *
W	15-0	at UNC Asheville
W	13-11	Lenoir-Rhyne
L	9-10	Marshall *
W	3-1	Marshall *
W	20-6	Marshall *
L	4-5	at Clemson
W	7-6	at Virginia Tech
W	1-0	at VMI *
L	1-2	at VMI *
W	7-2	at VMI *
W	10-9	Virginia Tech
W	8-2	Virginia Tech
W	11-7	Troy State
W	6-3	Troy State
W	3-1	at Tennessee
L	4-6	at Appalachian State *
W	8-7	at Appalachian State *
W	17-10	at Appalachian State *
L	4-7	Charleston Southern
W	5-1	Charleston Southern
L	2-4	at The Citadel *
L	3-11	at The Citadel *
L	4-8	at The Citadel *
W	9-5	Montreat
W	9-6	vs. Appalachian State #

L	4-10	vs. Georgia Southern #
W	10-3	vs. Marshall #
L	1-6	vs. East Tennessee State #
W	7-0	Troy State
L	4-5	Troy State
L	5-7	at Old Dominion

*-Southern Conference Game
#-SoCon Tourney (Charleston, S.C.)

- 1996 -

Record: 32-24-1; 17-7 SoCon
Coach: Keith LeClair

L	4-5	at Central Florida
L	8-11	at Central Florida
L	2-12	at Central Florida
L	4-10	vs. North Carolina State ^
L	3-6	vs. UNC Greensboro ^
L	4-9	vs. Old Dominion ^
W	4-3	Wright State
W	15-1	Wright State
L	6-8	Wright State
L	0-3	at Georgia
W	7-5	at Georgia
W	5-1	at East Tennessee State *
L	1-5	at East Tennessee State *
W	7-4	at East Tennessee State *
L	3-6	at Charleston Southern
T	5-5	at Charleston Southern
W	12-6	at Furman *
L	2-12	at Furman *
W	11-6	at Furman *
L	2-4	at Clemson
L	10-17	Georgia Southern *
W	3-2	Georgia Southern *
W	9-8	Georgia Southern *
W	4-3	at Eastern Kentucky
W	11-6	at Eastern Kentucky
W	9-7	at Morehead State
W	10-6	at Marshall *
W	4-3	at Marshall *
W	7-1	at Marshall *
W	12-7	Milligan
W	8-6	VMI *
W	3-1	VMI *
W	13-5	VMI *
L	4-9	Kent State
W	19-5	at UNC Asheville
L	3-13	Clemson
L	7-14	Wofford
W	13-0	Wofford
W	9-3	at Winthrop
W	8-0	Wofford
L	10-18	UNC Asheville
L	12-15	Appalachian State *
L	6-20	Appalachian State *
W	8-5	Appalachian State *
L	4-10	Clemson
W	6-5	Winthrop
L	1-6	The Citadel *
W	5-2	The Citadel *
L	1-2	The Citadel *
W	14-10	Eastern Kentucky
W	12-11	Eastern Kentucky
W	9-6	at Davidson *
W	7-5	at Davidson *
W	11-6	at Davidson *
W	19-5	Montreat
L	3-7	vs. VMI #
L	4-7	vs. Furman #

^-Southern Challenge (Charleston, S.C.)
*-Southern Conference Game
#-SoCon Tourney (Charleston, S.C.)

- 1997 -

Record: 42-20; 18-6 SoCon
Coach: Keith LeClair

W	7-6	at Jacksonville State
L	1-10	at Jacksonville State
W	10-9	at Jacksonville State
L	10-16	vs. Old Dominion ^
W	1-6	vs. Va. Commonwealth ^
L	4-5	vs. East Carolina ^
W	9-8	Wright State
W	15-1	Wright State
W	6-5	Wright State
L	6-9	at Georgia
W	3-1	at Georgia
W	10-6	Furman *
W	12-3	Furman *
W	10-4	Furman *
L	13-15	at Georgia Southern *
W	7-6	at Georgia Southern *
W	18-6	at Georgia Southern *
L	8-10	Old Dominion
W	15-4	Marshall *
W	10-2	Marshall *
L	3-4	Marshall *
W	20-10	Marshall
W	13-7	at Georgia Tech
L	0-14	at Georgia Tech
L	9-17	at VMI *
L	5-6	at VMI *
W	13-6	at VMI *
L	12-30	at South Carolina
W	13-6	UNC Asheville
W	12-6	Miami (Ohio)
W	3-0	Miami (Ohio)
W	11-8	Miami (Ohio)
W	9-4	Clemson
L	9-14	at Clemson
W	18-4	at Appalachian State *
W	26-6	at Appalachian State *
W	8-2	at Appalachian State *
L	8-10	at Tennessee
W	14-3	UNC Asheville
W	5-4	at The Citadel *
W	5-2	at The Citadel *
L	5-6	at The Citadel *
L	3-9	Morehead State
W	13-5	Morehead State
W	11-1	Davidson *
W	9-4	Davidson *
L	9-11	Davidson *
W	14-3	UNC Asheville (11)
W	9-8	East Tennessee State *
W	11-10	East Tennessee State *
W	8-6	East Tennessee State *
W	4-3	vs. VMI #
W	7-1	vs. Furman #
W	10-3	at The Citadel #
W	10-9	vs. Furman (10) #
L	7-11	at Old Dominion
W	11-10	at Old Dominion
W	6-3	at Old Dominion
L	7-8	at Old Dominion
L	3-11	vs. Auburn !
W	8-3	vs. Marist !
L	4-9	vs. South Florida !

^-Southern Challenge (Charleston, S.C.)
*-Southern Conference Game
#-SoCon Tournament (Charleston, S.C.)
!-NCAA East Regional (Tallahassee, Fla.)

- 1998 -

Record: 45-15; 20-6 SoCon
Coach: Rodney Hennon

W	7-6	at Stetson
W	8-1	at Stetson
W	11-9	at Stetson
L	5-11	vs. South Carolina ^
W	15-2	vs. Richmond ^
L	6-9	vs. Tennessee ^

L	0-3	at South Carolina
L	5-6	Wright State
W	7-3	Wright State
W	10-3	Wright State
W	17-1	St. Bonaventure
W	5-4	St. Bonaventure
W	16-9	at Charleston Southern
W	8-2	at Charleston Southern
W	4-1	at Charleston Southern
W	15-5	William & Mary
W	10-7	William & Mary
W	10-6	at Georgia Southern *
W	12-2	at Georgia Southern *
L	3-4	at Georgia Southern *
L	1-5	at Clemson
W	10-7	Clemson
W	11-6	at Davidson *
W	11-6	at Davidson *
W	9-7	at Davidson *
L	5-8	at Georgia
W	5-3	at UNC Asheville
W	25-1	VMI *
W	8-7	VMI *
W	11-4	VMI *
W	7-1	Furman *
W	6-5	Furman *
W	6-4	Furman *
W	10-9	at UNC Greensboro *
L	0-1	at UNC Greensboro (8) *
L	0-5	at UNC Greensboro *
W	6-5	at Kentucky
W	11-3	Wofford *
L	3-4	Wofford *
W	6-3	Wofford *
W	12-4	Charleston Southern
W	14-0	Charleston Southern
W	9-8	at East Tennessee State *
W	9-6	The Citadel *
L	7-10	The Citadel *
L	6-9	UNC Asheville
W	10-9	at East Tennessee State *
L	4-10	at East Tennessee State *
W	15-7	at Appalachian State *
W	9-8	at Appalachian State *
W	14-3	at Appalachian State *
W	9-7	UNC Asheville
W	6-5	vs. Georgia Southern #
L	0-5	at The Citadel #
W	9-4	vs. Wofford #
W	2-1	vs. Furman #
L	2-4	vs. UNC Greensboro #
W	5-4	at UNC Wilmington (11)
W	7-4	at UNC Wilmington
W	10-9	at UNC Wilmington (11)

^-Franklin Life Shootout (Charleston, S.C.)
*-Southern Conference Game
#-SoCon Tourney (Charleston, S.C.)

- 1999 -

Record: 36-23-1; 18-10 SoCon
Coach: Rodney Hennon

W	5-2	at Coastal Carolina
L	3-5	at Coastal Carolina
L	9-11	at Coastal Carolina
W	5-4	Wright State
W	8-5	Wright State
W	11-8	Wright State
L	0-6	at Georgia
L	11-15	at Georgia
W	9-8	North Carolina A&T
W	20-0	North Carolina A&T
W	13-2	North Carolina A&T
W	12-9	at Wofford *
W	5-4	at Wofford *
W	14-10	at Wofford *
W	15-8	High Point
W	10-4	High Point
W	5-4	UNC Greensboro *
L	2-7	at North Carolina State
L	1-11	at North Carolina State
W	8-7	St. John's

YEAR-BY-YEAR RESULTS

W	4-1	St. John's
L	11-13	St. John's
L	0-2	at Georgia Tech
W	9-3	Davidson *
L	8-11	Davidson *
W	15-7	Davidson *
T	8-8	at High Point
L	1-4	at The Citadel *
L	1-6	at The Citadel *
L	1-5	at The Citadel *
W	9-8	Clemson
L	11-16	at Clemson
W	18-3	East Tennessee State *
W	11-10	East Tennessee State *
L	9-12	East Tennessee State *
W	10-7	at UNC Asheville
W	11-4	Appalachian State *
L	5-6	Appalachian State *
W	5-4	Appalachian State *
W	9-6	at UNC Asheville
W	18-5	at VMI *
W	10-4	at VMI *
W	7-4	at VMI *
L	8-14	UNC Asheville
W	12-11	at Furman *
W	13-3	at Furman *
W	10-9	at Furman *
L	10-11	at Clemson
L	7-8	at College of Charleston *
L	1-2	at College of Charleston *
W	12-11	at College of Charleston *
L	10-12	Georgia Southern *
L	10-11	Georgia Southern *
W	12-11	Georgia Southern *
L	5-8	vs. Georgia Southern #
W	8-4	vs. VMI #
W	7-5	vs. East Tennessee State #
W	11-4	vs. Furman #
W	3-2	vs. College of Charleston #
L	3-6	at The Citadel #

*-Southern Conference Game
#-SoCon Tourney (Charleston, S.C.)

- 2000 -

Record: 15-38; 8-22 SoCon
Coach: Todd Raleigh

L	0-6	at Tennessee
L	1-12	at Tennessee
L	2-7	at Central Florida
L	0-21	at Central Florida
L	7-13	at Central Florida
W	13-11	Wright State
W	18-3	Wright State
W	16-4	Wright State
L	3-23	at Georgia
L	3-8	VMI *
W	11-7	VMI *
L	6-7	VMI *
L	1-9	UNC Asheville
L	1-6	at UNC Greensboro *
L	0-6	at UNC Greensboro *
L	7-10	at UNC Greensboro *
L	8-11	at North Carolina
L	1-4	at North Carolina
L	6-8	The Citadel *
W	10-5	The Citadel *
L	5-7	The Citadel *
L	3-4	UNC Asheville
L	2-5	at Appalachian State *
W	12-6	at Appalachian State *
L	12-13	at Appalachian State *
L	13-24	Furman *
L	5-8	Furman *
L	9-13	Furman *
L	8-21	Georgia State
W	5-4	Georgia State
W	5-3	Wofford *
W	9-4	Wofford *
W	12-8	Wofford *
L	7-11	at Clemson
L	1-4	College of Charleston *

L	5-10	College of Charleston *
W	15-6	College of Charleston *
L	6-12	at East Tennessee State *
L	2-3	at East Tennessee State *
L	4-5	at East Tennessee State *
L	4-5	at Tennessee
L	4-10	Elon
W	3-1	Elon
L	9-11	Elon
L	4-13	vs. Clemson @
L	3-4	at Davidson *
W	15-4	at Davidson *
L	2-3	at Davidson *
L	7-8	at Georgia Southern
L	5-6	at Georgia Southern
L	5-6	at Georgia Southern
W	7-4	at UNC Asheville
W	8-5	vs. UNC Asheville @

*-Southern Conference Game
@-Played at McCormick Field

- 2001 -

Record: 30-26; 18-11 SoCon
Coach: Todd Raleigh

L	1-14	at Auburn
L	2-4	at Auburn
L	4-5	at Auburn
L	5-9	at East Carolina
L	0-6	at East Carolina
L	1-12	at East Carolina
W	15-2	Wright State
L	12-13	Wright State
W	10-6	Wright State
W	9-5	vs. Kent State ^
L	2-13	at Coastal Carolina ^
W	7-6	vs. Delaware ^
W	9-7	UNC Asheville
L	2-3	at College of Charleston *
W	7-3	at College of Charleston *
L	2-5	at College of Charleston *
L	3-6	at Tennessee
W	10-1	UNC Greensboro *
L	5-22	UNC Greensboro *
W	11-9	UNC Greensboro *
W	13-12	Georgia Southern *
L	3-17	Georgia Southern *
W	13-8	Georgia Southern *
L	13-15	Tennessee
W	7-3	Appalachian State *
W	18-7	Appalachian State *
L	11-13	Appalachian State (10) *
L	0-7	at The Citadel *
W	7-6	at The Citadel *
W	12-6	at The Citadel *
L	3-4	at Georgia State
W	13-7	at Georgia State
W	9-8	East Tennessee State *
L	5-9	East Tennessee State *
W	8-7	East Tennessee State *
W	16-1	at UNC Asheville
L	8-11	at Furman *
L	1-6	at Furman *
W	7-5	at Furman *
L	2-8	at Clemson
W	13-12	North Carolina A&T (10)
W	18-4	North Carolina A&T
W	9-3	North Carolina A&T
L	2-7	at Georgia
W	5-4	at UNC Asheville @
W	8-7	Davidson *
W	13-7	Davidson *
W	7-0	Davidson *
W	5-3	at VMI *
L	8-15	at VMI *
W	6-3	at VMI *
L	5-7	vs. UNC Greensboro #
L	7-9	vs. College of Charleston #

^-Baseball at the Beach (Myrtle Beach, S.C.)
*-Southern Conference Game
@-Played at McCormick Field
#-SoCon Tourney (Charleston, S.C.)

WCU VERSUS ALL OPPONENTS

OPPONENT	W - L - T	OPPONENT	W - L - T
Appalachian State	52- 32- 0	Miami (Fla.)	2- 5- 0
Allen	2- 0- 0	Miami (Ohio)	3- 0- 0
Arizona State	0- 1- 0	Milligan	5- 0- 0
Armstrong State	1- 1- 0	Mississippi State	1- 2- 0
Auburn	6- 16- 0	Montreat	2- 0- 0
Augusta	1- 2- 0	Morehead State	2- 1- 0
Austin Peay	2- 1- 0	Newberry	6- 0- 0
Barton	0- 2- 0	North Carolina	2- 11- 0
Brigham Young	0- 1- 0	North Carolina A&T	6- 0- 0
Campbell	24- 21- 0	UNC Asheville	33- 9- 0
Carson-Newman	16- 7- 0	UNC Charlotte	7- 6- 0
Catawba	1- 2- 0	UNC Greensboro	7- 10- 0
Central Florida	0- 6- 0	UNC Wilmington	14- 5- 0
Charleston (W.Va.)	0- 1- 0	North Carolina State	7- 24- 0
Charleston Southern	8- 4- 1	Northwestern	3- 0- 0
The Citadel	52- 42- 0	Ohio	3- 0- 0
Clemson	8- 37- 0	Ohio State	4- 5- 0
Coastal Carolina	1- 3- 0	Oklahoma State	0- 2- 0
College of Charleston	4- 7- 0	Old Dominion	4- 7- 0
Davidson	57- 19- 0	Pembroke State	4- 3- 0
Delaware	1- 0- 0	Pfeiffer	1- 1- 0
Duke	3- 1- 0	Piedmont	5- 1- 0
East Carolina	1- 9- 0	Presbyterian	2- 0- 0
East Tennessee State	42- 24- 0	Providence	0- 1- 0
Eastern Kentucky	20- 9- 0	Purdue	1- 0- 0
Elon	4- 4- 0	Radford	4- 1- 0
Erskine	12- 7- 0	Richmond	4- 1- 0
Fairfield	2- 1- 0	St. Bonaventure	2- 0- 0
Florida	3- 9- 0	St. John's	3- 1- 0
Florida International	2- 3- 0	Salem (W.Va.)	13- 5- 0
Florida State	1- 2- 0	Slippery Rock	8- 0- 0
Francis Marion	2- 3- 0	South Carolina	6- 22- 1
Furman	69- 21- 0	USC Aiken	3- 7- 0
Gardner-Webb	2- 0- 0	USC Spartanburg	6- 2- 0
George Mason	2- 2- 1	South Carolina State	7- 1- 0
Georgia	14- 29- 0	South Florida	4- 3- 0
Georgia Southern	29- 29- 0	Southern Ill.-Edwardsville	1- 0- 0
Georgia State	3- 4- 0	Stanford	1- 0- 0
Georgia Tech	12- 13- 0	Stetson	3- 2- 0
Grand Canyon	1- 1- 0	Tennessee	2- 15- 0
Greensboro College	1- 0- 0	Tennessee-Chattanooga	4- 6- 0
Guilford	1- 0- 0	Tennessee Tech	8- 1- 0
High Point	19- 7- 0	Texas A&M	0- 1- 0
Illinois	0- 1- 0	Toledo	0- 4- 0
Indiana State	0- 1- 0	Troy State	3- 1- 0
Jacksonville	0- 2- 0	Virginia Commonwealth	1- 0- 0
Jacksonville State	2- 1- 0	Virginia Military Institute	50- 14- 0
Kent State	2- 2- 0	Virginia Tech	5- 9- 1
LaSalle	0- 1- 0	Voorhees	0- 2- 0
Lehigh	0- 1- 0	Wake Forest	3- 2- 0
Lenoir-Rhyne	6- 0- 0	Western Kentucky	2- 0- 0
Liberty	3- 0- 0	Western Maryland	1- 1- 0
Lincoln Memorial	2- 0- 0	West Liberty State	1- 0- 0
Louisiana State	0- 1- 0	West Virginia State	8- 3- 0
Maine	1- 4- 0	William & Mary	4- 0- 0
Marist	1- 0- 0	Winthrop	10- 1- 0
Mars Hill	7- 3- 0	Wofford	28- 6- 0
Marshall	35- 13- 0	Wright State	22- 7- 0
Maryville	1- 0- 0	Yale	0- 1- 0

CATAMOUNT COACHES

(Records prior to 1951 are incomplete. First year of baseball at WCU was 1928.)

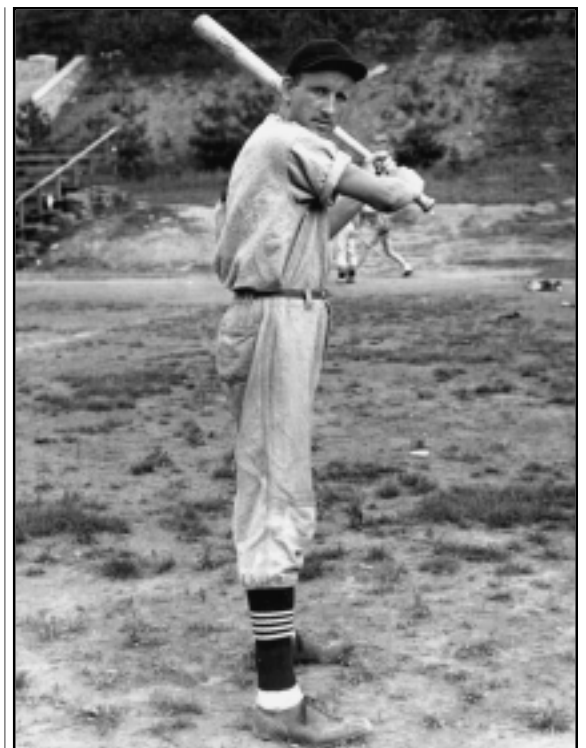
Coach	Years	Seasons	Overall	SoCon
Jim Gudger	11	1951-60, 1963	140-83	--
Charles Seeger	2	1961-62	20-21	--
Ron Blackburn	5	1964-68	78-65	--
Bill Haywood	13	1969-81	215-161-2	48-23
David Wright	1	1982	28-12	12-4
Jack Leggett	9	1983-91	302-226	103-39
Keith LeClair	6	1992-97	229-135-2	99-38
Rodney Hennon	2	1998-99	81-38-1	38-16
Todd Raleigh	2	2000-pres	46-64	26-33

WESTERN CAROLINA UNIVERSITY BASEBALL

Adair, Rick	1977-79
Adams, Charles	1941
Aiello, Bobby	1972
Allen, Billy	1992
Allison, Steve	1990-91
Amos, Lynn	1987-88
Anderson, Willis	1957-60
Ardrey, Sam	1938-40
Arnette, Johnny Mack	1954
Bailey, Phil	1958
Bain, Brian	1995-98
Baldwin, Kevin	1995-96
Ball, David	1977-79
Ballance, Bobby	1957-60
Ballard, Danny	1955
Ballard, Dave	1955
Baquer, Bryan	1983
Barile, Jordan	1991
Barkley, Steve	1967-70
Barnhorst, Howard	1948
Barnwell, Alex	1981-84
Barnwell, Don	1962
Barnwell, Howard	1938-41
Barrow, Martin	1995-98
Bartlett, Rodney	1961-62
Basner, Ryan	2000-pres
Baxter, Mark	1980
Beacham, Wade	1997
Beck, Alan	2000-pres
Beddingfield, Jim	1957-58
Belcolle, Chris	1994-96
Bellomo, Kevin	1988-91
Bennett, Bill	1952-53
Bentley, Wes	1999-2000
Bethel, Bobby	1994-95
Beverlin, Jason	1992-94
Biggs, Tracy	1997-2000
Blair, Leslie	1959
Blake, Dennis	1974-77
Booth, John	1968-71
Bowles, Gene	1970-72
Bowman, Randy	1979
Boyd, Billy	1978-80
Bracken, Cary	1975
Bradburn, C. Wayne	1941-46
Bradley, Dwayne	1989-92
Brady, Robert	1960
Brandon, Tom	1961
Bratcher, Toby	1981
Bright, Don	1971-73
Brigman, Bill	1961
Brittain, Grant	1987-90
Brock, McDonald	1942
Brogden, Jim	1953-54, 56-57
Brooks, Craig	1983-86
Brooks, Eric	1986
Brooks, P.J.	1986-87
Brown, Bobby	1973
Brown, Freddy	1976-79
Brown, George	1942, 48-49
Bruce, Jeremy	1997-98
Bryant, George	1954-55
Bryant, Jennings	1939-40
Buchanan, Todd	2000-pres
Bullins, Jim	1965-68
Bunting, Jim	1966
Burns, Ronnie	1950
Burton, Jared	2000-pres
Burwell, J.P.	1994-97
Bush, Andy	1996
Byrd, Bruce	1965-66
Byrd, Cary	1960
Cagle, O.V.	1951-53, 1955
Caldwell, Cecil	1963-67
Camac, Joe	2000-pres
Cantrell, John	1977
Capobianco, E.G.	1992-93
Carlton, Wayne	1955
Carpenter, Willie	1977-80
Carson, Kyle	1981-82
Carson, Mike	1984-87
Carswell, Danny	1972-75
Carter, Darryl	1991-92

Carter, Artis	1950
Carter, Mike	1980
Carter, Mike	1957-58
Case, Kevin	1981
Caskey, Jerry	1960-63
Chamberlain, Jody	1981-82
Chamlee, Steve	1979-80
Champion, Russ	1983
Chapman, Russ	1992
Chavers, Sam	1995
Cherry, Rick	1976
Christian, Jim	1985
Clark, Joe	1961
Clark, Jon	2001-pres
Clements, Jack	1960-62
Cloer, Dallas	1955-56
Cockrell, Derek	1993-96
Cogburn, Barry	1977
Cole, Ed	1969-70
Collins, Harold	1942
Colvin, Robert	1960-61
Connolly, John	1993-94
Cooper, Bob	1959
Cowan, Leo	1939-40
Cowan, Ray	1941
Cox, Joey	1989-92
Crawford, Charles	1955-57
Crawford, Doug	1955
Crawford, Dewey	1981
Crocker, Lawrence	1949-51
Crotts, Earl	1961-64
Crowell, Wayne	1954
Cunningham, R.L.	1956
Daniels, Joe	1960-61
Davidson, Chris	1996-98
Davidson, Mike	1979-80
Davis, Bill	1950
Davis, Eddie	1972-74
Deal, Mike	1967-69
Dellinger, Denny	1965
Demeree, George	1985
Derosia, Dan	1992-94
Deweese, Tim	1974, 1976-78
DiFelice, Mark	1995-98
DiFelice, Matt	1996
Dixon, Allen	1959-62
Doeherty, Rob	1990-93
Donovan, Al	1985
Downs, John	1968-69
Drury, Ken	1960
DuBard, Danny	1977-79
Duke, Harry	1950
Duncan, Keith	1982
Dunlap, Mike	1984
Dunn, Andy	1988-91
Eads, James	1960
Ebersole, Keith	1977-78
Edens, Dick	1950
Edwards, Roddey	1964-67
Eldredge, Jim	1984-86
Ellingburg, Ray	1958
Elsesser, Mike	1974
Eubanks, Tim	1980
Evans, Jim	1950
Fairey, Clint	1986-89
Fann, Waldo	1942
Feimster, Emmett	1950-52
Feimster, Tim	1981
Feilds, McCauley, Jr.	1959
Fishel, Gary	1972-75
Fisher, Chip	1983, 1985-87
Fisher, Harry	1956
Fogleman, Craig	1967
Foley, Dan	2001-pres
Fonville, Charlie	1981-84
Ford, Lynn	1967-68
Foster, John	1950-53
Foster, Ryan	2000-pres
Foster, Seth	2000-pres
Fowler, Tony	1974-75
Fox, Buddy	1974-77
Fox, Dale	1972-75
Fraser, Joe	1965-67

Frazier, Morgan	1999-2000
Frye, Revis	1940-41
Fugate, James	1953
Fulbright, Brent	1988-89
Fulmer, Mark	1973
Gaines, Jerry	1975
Galloway, Grady	1938
Gambill, Mike	1972
Game, Bobby	1957-58
Gay, Scott	1983-85
Gayle, Ted	1949-50
Gaylor, Fred	1942
Geiger, Jim	1983-84
Gheen, Tom	1941-42
Gibson, Sam	1942, 1948-49
Giles, Kelly	1989-90
Gilmore, Bobby	1973-76
Giunta, Rich	1995
Glace, Bill	1950
Glover, Glenn	1970-73
Glymph, Danny	1977
Godfrey, Josh	1998
Goforth, Leonard	1960-63
Goldston, Larry	1994-95
Goldston, Rod	2000-pres
Gonzalez, Luis Mario	1954
Goodwin, Larry	1971-72
Gordon, Blake	2000
Gordon, Robbie	1985-88
Graham, Jeff	1990-91
Graham, Joe	1961
Grande, Jeff	1984-85
Grant, Shelton	1988-89
Graves, Tommy	1996
Greeson, Chet	1979-82
Grieve, Kevin	1998
Griffin, Andy	1983-84
Griffin, Brown	1942
Griffin, Odell	1939-40
Griffin, Dwight	1950
Griffin, U.S.	1950
Griffith, Reed	1969
Grindstaff, Gary	1973-76
Grogan, John	1959
Grove, Jim	1970-73
Grundt, Phillip	1991-93
Gudger, Frank	1940-42
Gunter, Sam	1959
Guy, Randy	1972-75
Hager, Rusty	1978
Hailey, Freddie	1984-87
Hall, Ed	1970
Hampton, Gray	1937-40
Hamrick, Brad	1998
Hamrick, Jeremy	2000
Hannon, Bill	1968
Hansil, John	1951-54
Hardin, Frank	1950
Hare, Ken	1980, 1982-84
Hargett, Ron	1976
Harp, Gerald	1979
Harris, Steve	1998
Harwell, Wayne	1978-79
Hawkins, Chris	1984
Hawkins, Jerry	1957-58
Hayes, Tommy	1969-71
Haynes, Bill	1962, 1964-65
Haynes, Leslie	1959
Hearrell, Ryan	1993
Heavner, Bob	1949-50
Hennon, Rodney	1990-93
Hensley, McKinley	1942, 1948
Henson, Jody	1992-95
Hicks, Jerry	1965-66
Hicks, Mickey	1968-71
Hicks, Mike	1973-76
Hicks, Robert	1965-66
Hill, David	1980-83
Hilliard, Robert	1961-63
Hilton, Mike	1990-93
Holcombe, Bobby	1954-57
Hollifield, Sonny	1964, 1966
Hollow, Dennis	1983
Holloway, Ray	1958



Sam "Hoot" Gibson (1942; 1948-49)

Holshouser, Jeff	1985
Hooper, Jon	1989
Hooven, Branan	1989-92
Hoover, Rob	1998-pres
Hope, Eddie	1968-70
Hornaday, Tommy	1950, 1953
Horne, Tony	1993-96
House, Brad	1999-2000
Howard, Grady	1942
Howard, Herbert	1938-41
Howard, William	1940-42
Howell, Charles D.	1952-53
Hudson, Steve	1981
Huie, Brian	1988-89
Huntington, Ron	1983-86
Hurst, Roy	1992-94
Hutchinson, Brian	1996-98
Hutchinson, John	1952-54
Hyatt, David	1984-86
Hyde, Ken	1965-66
Hyde, Todd	1989-90
Ibrahim, Jack	1957-59
Idol, David	1975-76
Ingle, Don	1979-82
Ivie, Glenn	1963-66
Jarrett, Bill	1978
Jarvis, George	1936-38
Johnson, Charles	1952
Johnson, Eric	1997-98
Johnson, Greg	1980-83
Johnson, Kenneth	1949-50
Jolly, Ed	1964
Jones, Chip	1991
Jones, Danny	1964-67
Jones, Lackie	1966
Jones, Lewis	1990
Jones, Preston	1959-60
Jones, Tom	1942
Joyce, Lon	1967-70
Kay, Johnny	1977-80
Keener, Harold	1950-51
Kendrick, Patrick	1990-92
Kepler, Howard	1961
Keyes, Stewart	1986-89
Kilpatrick, James	1965
Kimbrell, Jim	1965-67
Kimel, Jack	1989-92
King, Fred	1950-51
King, Wesley	1998
Kinsey, Mel	1980-83
Kirby, Aaron	1998-2000
Kirby, George	1955-56
Klutzy, Mike	1982
Knight, John	1978
Koone, Chad	1998
Koone, Chuck	1997-98
Koontz, Chip	1974-77
Kuykendall, Bob	1954
Kuykendall, Jim	1952-55
Kysliger, Dan	1992
Lackey, Hal	1955
Lamb, Ed	1950-51
Landing, Frank	1976
Lasher, Ernie	1974-77
Laughridge, Jim	1971-72
Lawrence, David	1938-41
Leagan, Charles	1941-42
LeClair, Keith	1985-88
Ledford, Buddy	1957
Lee, George	1939-40
Leger, Freddy	1955
Lethcoe, Johnny	1979
Lewis, Tommy	1954
Lindley, Owen	1942
Liner, Fred	1952, 1955-56
Lister, Ted	1992
Lloyd, Bill	1950
Lockey, Alfred	1950-51
Logan, Ronnie	1964-65
Long, Jason	1998-2000
Lowman, Leon	1950
Lundy, Ralph	1971-72
Lyman, Scott	1990-93
Lytle, Ronnie	1963
Mabe, Paul	1982
Malchesky, Tom	1988
Maney, Johnny	1965
Manis, Mike	1970
Manning, Mike	1991-94
Martin, R.J.	1952-53
Marvels, Mike	1979
Mashburn, Cecil	1957-58
Mashburn, Jeff	1979-82

(FROM 1969-PRES. AND AVAILABLE INFO FROM 1938-68) ALL-TIME LETTERMEN

Maska, Bob	1964-66
Massey, Chris	1994-95
Matthews, Jimmy	1956-57
Mattocks, Clen	1980
Maxwell, Clark	1994-97
McAvoy, Jeff	1997
McCauley, Wayne	1971
McClure, David	1981-82
McConnell, Bud	1960-61
McCrackine, Travis	1989
McCrary, Charles	1952-53, 1956-57
McCraw, Reggie	1981-84
McCurry, Ryan	2000-pres
McKay, Dave	1995-98
McKenzie, Donald	1949-50
McKinney, Richard	1951
Mehaffey, Zeb	1957
Menhart, Paul	1988-90
Meredith, David	1940-42
Meredeth, Horace	1938-40
Michalove, Clint	1980-81
Mikeal, Norris	1970
Milewski, John	1984-85
Miller, Roger	1968-70
Minacci, Mike	1991
Minero, Donovan	2001-pres
Mintz, Doyle	1958-59, 1964
Mitchell, Doug	1980, 1982
Mitchell, Kevin	1991-92
Mitcham, Joe	2001-pres
Moody, Realus	1955
Moore, Arnold	1956-57
Moore, Chad	1992-96
Moore, Chris	1996-98
Moore, DeWayne	1967
Moore, Greg	1980-83
Moore, Jason	1995
Moore, Robert, Jr.	1964
Morgan, Ken	1961-63
Morgan, Leonard	1967-69
Morhardt, Darryl	1983
Moss, B.C.	1940-42
Moss, Kevin	1995
Murray, Shannon	1994
Myers, Charlie	1941
Myers, Doug	2001-pres
Myers, Jeff	1991-92
Myers, Tony	1984-87



Todd (left) and Matt Raleigh were together from 1989-91.

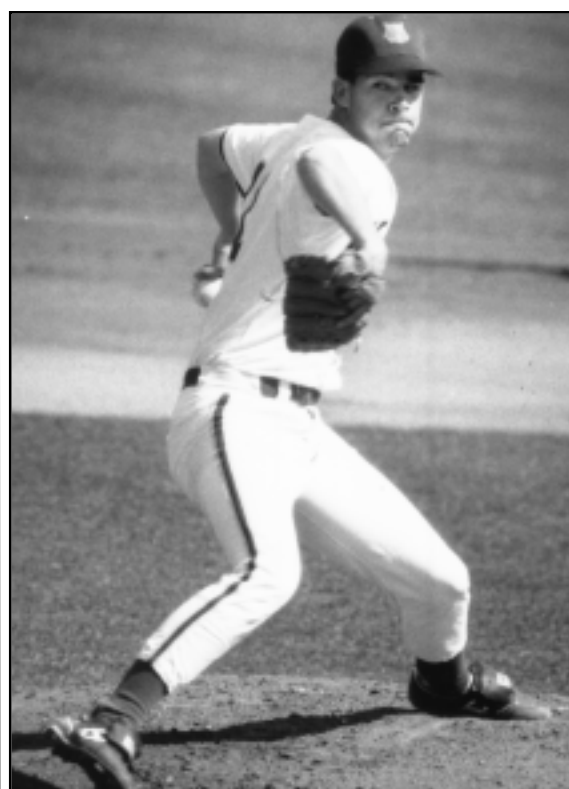
Page, Bedford	1950
Pardue, James	1950-52, 1956
Parker, Frank	1950-53
Parker, Larry	1962-63
Parker, William	1960-63
Parks, Wayne	1977-80
Pash, Joe	1983
Patterson, Jack	1972-74
Patton, W.	1938
Peek, Bill	1940
Peek, Clyde	1940-41
Pember, David	1997-98
Pressley, W. Clyde	1948-50
Pressley, James	1952
Pressley, Joe	1950
Pritchard, Stephen	1992-94
Price, Benjamin	1941, 1947
Price, Glenn	1942
Price, Hooper	1940-41
Price, Joseph C.	1950, 53-54
Price, Matt	1998-2001
Pryor, Floyd	1958-60
Pryor, Harris	1956-59
Pulliam, Guy	1954
Pulliam, Rusty	1977
Pusey, Mike	1978
Pust, John	1982-85

Radford, Kyle	1980-82
Raleigh, Jim	1964-65
Raleigh, Matt	1989-92
Raleigh, Todd	1988-91
Ramsey, Jerry	1972-75
Ramshaw, Mike	1989
Ray, Jim	1959-62
Ray, Phillip	1941
Reed, Jerry	1974-77
Reese, Bob	1941
Reeser, Mark	1976-79
Reid, Andy	1985-86
Reid, Eddie	1962
Reinicker, Jim	1978-80, 1982
Repass, Bill	1978
Rexrode, Kevin	1994-95
Rhinehart, Bill	1962-64
Rhinehart, Joe	1957
Rhodes, Raymond	1941-42
Rhodes, Max	1950, 1952, 1954-55
Rhoney, Ben	2000-2001

Rhyne, Gary	1973-75
Rice, Jerry	1942, 1947
Rich, Brian	1985
Rickman, Andy	1984-87
Rieger, Eddie	1987
Rigsby, Bill, Jr.	1954
Riley, Pat	1985-86
Roane, Michael	2001
Roberts, Mike	1976
Robertson, Ralph	1948
Robertson, Shelby	1938
Robinson, David Ray	1980-83
Robinson, Edgar	1968-69
Robinson, J.J.	1983
Robinson, Jay	1980
Rogers, Clarence	1962-64, 1966
Rogers, Darryl	1984-87
Rogers, Ronald	1950-53
Roper, Todd	2001-pres
Rowley, Chris	1994-97
Royal, Phillip	1959
Rudder, Robert	1999-2000
Rushing, Scott	1986-87
Rynders, Chris	1996-97

Santarelli, Cal	1980
Saunders, John	1953
Schade, Ryan	2000-pres
Schreiber, Stan	1978-79
Scott, Fred	1958
Seawright, Bobby	1957-58
Sellers, Joe Jack	1992-95
Sells, Danny	1958-61
Selzer, Thomas	1949-52
Senn, Richie	1987-90
Sey, Bob	1954
Shamel, Herman	1954
Shamp, Gary	1984-87
Sherrill, Alex	1952-53
Sherrill, Dwight	1952-57
Sherrill, Jeff	1985-87
Short, Jack	1953-55
Shuford, Albert	1941-45
Shumate, Keith	1986-88
Signmon, Brian	2001-pres
Silver, Jack	1942
Simms, Terry	1976
Simpson, R. Ray	1940-41
Sims, Dale	1976-78
Sims, Randy	1979-82
Singleton, Dick	1954
Sinicki, Tim	1987-88
Sisk, Jan	1954
Skinner, Jeff	2001
Slaughter, Jackie	1984-87
Sluder, Bob	1950-53
Smathers, Noland	1968-71
Smith, Keith	1984-86
Smith, Mick	1964
Smith, Phil	1956
Smith, Scotty	1962-65
Smith, Tommy	1973-74
Smithwick, Austin	1997-2000
Snyder, Chris	1993
Snyder, Terry	1974
Souther, Ray	1968-69
Spady, Jack	1959, 1961, 1963
Stadler, Lin	1980-83
Stallings, Charles	1950-51, 1956-57
Stein, Andy	1988
Stevens, Jeff	1986-89
Stewart, Jerry	1965
Stewart, Jimmy	1972-75
Stillwell, Matt	1995-98
Stoudenmire, Jim	1976
Striker, Marc	1991-94
Stroud, Aaron	1950-52
Sudderth, Troy	1982-83
Suttles, Donnie	1996-98
Swartzel, Ronnie	1954-57
Sziksai, Jeff	1996-98

Tanner, Ronnie	1971
Tate, Phil	1963-65
Tatham, Bergin	1972-74
Taylor, Brad	1990
Taylor, Guy	1956-58
Taylor, Ricky	1994
Teague, Garnett	1966
Teague, Marshall	1949-50
Tebbo, Brian	1983-86
Teeter, James	1959
Tesh, Rodney	1988-91
Tharpe, Danny	1963-64
Thomas, Charles	1998-2000
Thomas, Mike	1989-91
Thompson, Ed	1967-70
Thompson, Jim	1966-69
Thrasher, Matt	1980-83
Tidick, Mike	1990-94
Teiger, Matt	1996-97
Tilley, Charles	1942
Tolbert, Alex	1994-97
Tollson, Wayne	1975-78
Tomberlin, Hugh	1937-39
Torres, Chris	1999-2000
Towery, Mike	1979
Treadway, Wes	1984
Turner, Alfred	1984-85
Turnrose, Erik	1996-98
Tuttle, Larry	1954-56
Tweedie, Brad	1991-93



Jack Kimel notched 32 wins (1989-92) for a WCU career record.

Urey, Max	1957
Ussery, Ira	1952-53
Uzdilla, Doug	1987-90
Valley, Tom	1983
Vestal, Randy	1985
Volpe, Gary	1986-89
Volrath, Ray	1954, 1957-58
Waddell, Ken	1960
Waddell, Scott	1988
Wagoner, Mike	1977
Walker, Charles	1960-62
Wall, Ronnie	1968-71
Wallace, Herb	1989
Wallen, J.C.	1961
Wands, Charlie	1998-2000
Ward, Carl	1950
Ward, Frankie	1997-98
Ward, Heath	1990

Ward, Larry	1978
Ware, Joe	1952-55
Warren, Ed	1986-87
Warren, Jerry	1978-79
Wasik, Peter	1983-84
Waters, Chris	1995-98
Watson, Flip	1973-76
Watson, Nat	1975
Weams, Steve	1970-71
Webster, Jerry	1961-62
Weeden, Linden	1968
West, Bruce	1970-73
West, Larry	1965-66
Whetstone, Darryl	1969
Whitaker, Ron	1960-61, 1963-64
White, Lyndon	1937, 1939-40
White, Steve	1963
Whitfield, Joel	1964
Whitson, Eric	1992-95
Whittington, D. Gene	1952
Whitworth, Ted	1969-72
Wilhoit, Harold	1959
Wilhoit, Kevin	1994-95
Williams, Al	1941
Williams, Don	1978-79
Williams, Lowell	1954
Williams, Olin	1956-58
Williamson, Robert	1949-50
Wilkerson, Ken	1964
Wilson, Dave	1987
Wilson, Landrum	1950
Wilson, Wesley	1961
Withrow, Ward	1987-88
Witzke, Karl	1978-79
Wofford, Bill	1968-71
Woodley, Dan	2001-pres
Wright, Lester	1972-75
Wright, Ron	1963
Wright, Thelbert	1938
York, Phillip	1950
Youmans, Kirk	1979
Young, Ronnie	1962, 1964-65
Yount, Ron	1971
Yarbrough, Jeff	1979