



2007-08 Vanderbilt Women's Basketball



Head Coach: Melanie Balcomb • **Record at VU:** 127-44 (sixth season; 74.3%) • **Overall Record:** 290-148 (15th season; 66.2%)

SID: Chris Weinman • **Phone:** 615.343.0019 • **E-mail:** chris.weinman@vanderbilt.edu • **Fax:** 615.343.7064 • **Press Row:** 615.320.0436

Radio: WNSR-AM 560; Charlie Mattos (13th season), play-by-play • **Online:** <http://vucommODORES.com> -- audio and live stats

Projected Starters

reserves on page 3

2007-08 statistics

2	Jennifer RISPER G • 5-9 • Jr. Moreno Valley, Calif.	PPG 8.9 FG% .459 Min. 28.9 RPG 6.1 FT% .800	The Risper File: Has made 23 consecutive starts... Among SEC leaders in steals and free throw percentage... Has led the Dores in rebounding on three occasions this year... Career highs in points (12), rebounds (13), steals (6) and minutes (45) against Indiana State included first collegiate double-double.
5	Lauren LUEDERS G • 5-8 • So. Jackson, Mo.	PPG 8.1 FG% .396 Min. 20.7 RPG 3.0 FT% .429	The Lueders File: Made fourth straight start (16th of career) Sunday vs. Duke... Ranked among SEC leader in three-point shooting... Has hit multiple three's in six of seven games this season... Played with the boys' varsity team at Saxony Lutheran High School.
23	Merideth MARSH G • 5-7 • Fr. Louisville, Ky.	PPG 7.0 FG% .432 Min. 23.7 APG 2.6 FT% 1.00	The Marsh File: Made her first career start in win over No. 10 Duke... Career-high 35 minutes against Iowa State... Scored team-high 13 points vs. UAB... Moves between point guard and shooting guard positions... Career-high 15 points in SEC tourney against Georgia included 10-of-10 from the free throw line.
32	Liz SHERWOOD C • 6-4 • Sr. Castle Rock, Colo.	PPG 14.3 FG% .746 Min. 22.3 RPG 5.7 FT% .286	The Sherwood File: Has connected on 47-of-63 field goal attempts this season... VU's lone senior... Has led SEC in FG% the last two seasons... Two-time reigning SEC "Sixth Woman of the Year" started a season opener for the third straight time... Named preseason second-team All-SEC by league coaches.
34	Christina WIRTH F • 6-1 • Jr. Mesa, Ariz.	PPG 15.4 FG% .568 Min. 33.9 RPG 5.4 FT% .667	The Wirth File: Made her 41st consecutive start Wednesday against Duke... Shooting 55 percent from three... Ranks 7th in the SEC in scoring... MVP of the 2007 Vanderbilt Thanksgiving Tournament... Named preseason All-SEC by league coaches (first team) and AP (second team).

Overall: 6-1
SEC: 0-0

2007-08 Schedule

all times CENTRAL

-- NOVEMBER (6-1) --	-- DECEMBER (0-0) --	-- JANUARY --	-- FEBRUARY --	-- MARCH --
Fri. 9.....UAB NASHVILLE W, 92-51	Sat. 1..... vs. St. Mary's Berkeley 6p	Wed. 2..SOUTH FLORIDA NASHVILLE 7p	Sun. 3..... at Georgia* Athens 1:30p	Sun. 2..... ALABAMA* NASHVILLE 2p
Sun. 11.....FURMAN NASHVILLE W, 68-51	Sun. 2..... at No. 12/13 Cal Berkeley 3p	Sat. 5..... at Princeton Princeton 1p	Thurs. 7...SO. CAROLINA* NASHVILLE 7p	-- SEC Tournament -- Nashville, Tenn. March 6-9 Sommet Center
Wed. 14. . at Indiana State Terra Haute Lot, 72-77	Thurs. 6.....WKU NASHVILLE 7p	Thurs. 10...MISS. STATE* NASHVILLE 7p	Sun. 10..... at Alabama* Tuscaloosa 2p	-- NCAA Tournament -- Campus Sites March 22-April 1
Tues. 20..... at Clemson Clemson W, 74-56	Sun. 9.....COLORADO NASHVILLE 2p	Sun. 13..... at LSU* Baton Rouge 4p	Thurs. 14..... KENTUCKY* NASHVILLE 7p	-- NCAA Final Four -- Tampa, Fla. April 6-8 St. Pete Times Forum
Thanksgiving Tournament	Sat. 22.....LIPSCOMB NASHVILLE 5:30p	Thurs. 17..... GEORGIA* NASHVILLE 7p	Sun. 17..... TENNESSEE* NASHVILLE 2:30p	
Fri. 23.....BELMONT NASHVILLE W, 104-43	Sun. 30...OLD DOMINION NASHVILLE 2p	Sun. 20.... at Tennessee* Knoxville 2p	Thurs. 21.... at Arkansas* Fayetteville 7p	
Sun. 25.....IOWA STATE NASHVILLE W, 62-53		Sun. 27.....OLE MISS* NASHVILLE 2p	Thurs. 28..... at Auburn* Auburn 8p	
Wed. 28. .No. 11/10 DUKE NASHVILLE W, 68-55		Thurs. 31..... at Florida* Gainesville 6p		

* - denotes SEC game

<http://vucommODORES.com>

Head Coach Melanie Balcomb



The 2007-08 season marks the sixth year for Melanie Balcomb in the Music City. The New Jersey native brought her uptempo style to the Southeastern Conference prior to the 2002-03 season, and success followed close on her heels.

Last season, the Commodores made their eighth consecutive trip to the NCAA Tournament after winning the school's fifth SEC Tournament championship. It was Balcomb's second time to cut down the nets as a Commodore, and promises not be her last. She won her 100th game as Vanderbilt's head coach on Nov. 30, 2006, a 85-63 victory at UAB.

Now in her 15th season as a collegiate head coach, Balcomb is nearing 300 career victories and has won more than 65 percent of her games all-time. Before coming to Nashville, Balcomb led her Xavier team to the NCAA Tournament three times, reaching the Elite Eight in 2001.

Balcomb has coached 15 players who have received all-conference accolades, and six of her players have been drafted by the WNBA -- including VU great Chantelle Anderson, who went as the second overall pick to the Sacramento Monarchs in the 2003 draft. Last year, Carla Thomas was a first-round selection while Dee Davis was chosen with the first pick in the second round.

BALCOMB'S COACHING RESUME

2002-present	Vanderbilt, Head Coach
1995-2002	Xavier, Head Coach
1993-95	Ashland, Head Coach
1990-93	Providence, Asst. Coach
1989-90	Ohio, Asst. Coach
1985-90	Niagara, Asst. Coach

BALCOMB'S YEAR-BY-YEAR RECORDS

Year	University	W - L	Postseason
1993-94	Ashland	18 - 9	
1994-95	Ashland	10 - 17	
1995-96	Xavier	15 - 13	
1996-97	Xavier	10 - 17	
1997-98	Xavier	17 - 12	WNIT
1998-99	Xavier	24 - 9	NCAA
1999-00	Xavier	26 - 5	NCAA
2000-01	Xavier	31 - 3	NCAA Elite 8
2001-02	Xavier	12 - 19	
2002-03	Vanderbilt	22 - 10	NCAA Second Round
2003-04	Vanderbilt	26 - 8	SEC Tourney Champs, NCAA Sweet 16
2004-05	Vanderbilt	24 - 8	NCAA Sweet 16
2005-06	Vanderbilt	21 - 11	NCAA 2nd Round
2006-07	Vanderbilt	28 - 6	SEC Tourney Champs, NCAA 2nd Round
<u>2007-08</u>	<u>Vanderbilt</u>	<u>6 - 1</u>	
Overall (14+ years)		290 - 148	

THE BALCOMB FILE

Hometown: Cranbury, N.J.
College: Trenton State
 Bachelor's Degree, 1984
 Master's of Education, Sports Administration/Athletic Management, 1985
Parents: Alan and Barbara
Birthday: Sept. 24

2007-08 Rosters

NUMERICAL						ALPHABETICAL					
#	Player	Pos.	Cl.	Ht.	High School	#	Player	Pos.	Cl.	Ht.	Hometown
2	Jennifer Risper	G	Jr.	5-9	Canyon Springs	11	Ashlee Bridge	G/F	So.	5-11	Cincinnati, Ohio
3	Chanel Chisholm	G	Fr.	5-11	North Babylon	3	Chanel Chisholm	G	Fr.	5-11	Long Island, N.Y.
5	Lauren Lueders	G	So.	5-8	Saxony Lutheran	5	Lauren Lueders	G	So.	5-8	Jackson, Mo.
11	Ashlee Bridge	G/F	So.	5-11	Princeton	43	Amy Malo	F	So.	6-3	Fairmont, Minn.
15	Hannah Tuomi	F	Fr.	6-0	Horizon	23	Merideth Marsh	G	S.	5-6	Louisville, Ky.
20	Jessica Mooney	G	So.	5-8	Hillsboro	20	Jessica Mooney	G	So.	5-8	Nashville, Tenn.
22	Jence Rhoads	G	Fr.	5-11	Slippery Rock	25	Amber Norton	F	So.	6-1	Louisville, Ky.
23	Merideth Marsh	G	S.	5-6	Christian Academy	22	Jence Rhoads	G	Fr.	5-11	Slippery Rock, Pa.
25	Amber Norton	F	So.	6-1	Assumption	2	Jennifer Risper	G	Jr.	5-9	Moreno Valley, Calif.
32	Liz Sherwood	C	Sr.	6-4	Highlands Ranch	32	Liz Sherwood	C	Sr.	6-4	Castle Rock, Colo.
33	Rebecca Silinski	F	Fr.	6-3	Shades Mountain Christian	33	Rebecca Silinski	F	Fr.	6-3	Birmingham, Ala.
34	Christina Wirth	F	Jr.	6-1	Seton Catholic	15	Hannah Tuomi	F	Fr.	6-0	Thornton, Colo.
43	Amy Malo	F	So.	6-3	Fairmont	34	Christina Wirth	F	Jr.	6-1	Mesa, Ariz.

Head Coach: Melanie Balcomb (Trenton State, 1984)

Assistant Coaches: Vicky Picott (Rutgers, 1992)

Lisa Cermignano (George Washington, 1997)

Kim Rosamond (Ole Miss, 1998)

Director of Operations: Justin Van Orman

Video Coordinator: Clare Drosch; **Grad Assistant:** Caroline Williams

Pronunciation Guide

Melanie Balcomb..... BALL come Lisa Cermignano... SIR min YA no
 Chanel Chisholm..... sha NELL Lauren Lueders..... LEEDERS
 Amy Malo MAY low Vicky Picott..... PIE cut
 Jence Rhoads JEN see Hannah Tuomi..... TWA mee

Coming Off The Bench

3	Chanel CHISHOLM G • 5-11 • Fr. Long Island, N.Y.	PPG	FG%	Min.
		2.5	.400	6.0
		RPG	FT%	
		2.5	.600	

The Chisholm File: Pulled a team-high eight rebounds while scoring six points from the free-throw line in 13 minutes against Belmont... Honorable-mention *Street & Smith's* high school all-american... Named to Scout.com's Hot 100 list.

11	Ashlee BRIDGE G • 5-11 • Fr. Cincinnati, Ohio	PPG	FG%	Min.
		1.8	.400	5.0
		RPG	FT%	
		0.8	.667	

The Bridge File: Hit her second career three-pointer against UAB... Also had two steals in her eight minutes... Played a reserve role in 18 games last season... Scored a career-high nine points against Lipscomb last December... Prepped at the same high school as VU's all-time assists leader, Dee Davis.

15	Hannah TUOMI F • 6-0 • Fr. Thornton, Colo.	PPG	FG%	Min.
		3.6	.600	5.8
		RPG	FT%	
		1.2	.750	

The Tuomi File: Has averaged 4.5 points in only 6.3 minutes through her first four collegiate games... Second-leading scorer among freshmen in VU's preseason contests... Took high school squad to state finals twice during career... Named Colorado's Ms. Basketball in 2006.

20	Jessica MOONEY G • 5-8 • So. Nashville, Tenn.	PPG	FG%	Min.
		7.4	.450	17.9
		RPG	FT%	
		2.6	.813	

The Mooney File: Career-high 16 points in win over 10th-ranked Duke included 7-of-9 from free throw line... Started first three games of the season... Only freshmen to appear in all 34 games last season... Local product nominated for High School Athlete Award at O'Charley's Dinner of Champions.

22	Jence RHOADS G • 5-11 • Fr. Slippery Rock, Pa.	PPG	FG%	Min.
		3.4	.303	23.9
		APG	FT%	
		3.1	.667	

The Rhoads File: Started first six collegiate games at point guard before playing a reserve role in win over No. 10 Duke... Boasts assist-to-turnover ratio of 1.57:1, ranking eighth in the SEC... Also ranks 14th in the conference in assists per game... Rated a five-star, Top 20 prospect by Scout.com.

25	Amber NORTON F • 6-1 • Fr. Louisville, Ky.	PPG	FG%	Min.
		3.7	.478	11.0
		RPG	FT%	
		2.0	.444	

The Norton File: Scored 10 points on 5-of-8 shooting against Iowa State, marking her third career game in double-figures... Career-high 14 points against Lipscomb last year... Played in 32 of 34 games last year... Teammate of Merideth Marsh for Kentucky in annual high school all-star game against Indiana.

33	Rebecca SILINSKI F • 6-3 • Fr. Birmingham, Ala.	PPG	FG%	Min.
		2.0	.429	6.8
		RPG	FT%	
		1.3	.500	

The Silinski File: Career-high 15 minutes against Belmont included four points and three rebounds... Also saw reserve action in the post in both of VU's exhibition games... Named 2007 Female Student-Athlete of the Year by the *Birmingham News*... All-time leading scorer at Shades Mountain Christian.

43	Amy MALO F • 6-3 • R-So. Fairmont, Minn.	PPG	FG%	Min.
		2.7	.571	7.1
		RPG	FT%	
		1.4	.647	

The Malo File: Scored in double-figures for the second time in her career against UAB... Appeared in 18 games last year as a reserve... Career-high 13 points vs. Texas A&M-Corpus Christi... Eligible through 2010 after medical redshirt year in 2005-06 (knee).

Commodore Notes

Commodores In SEC Statistics (Through games of Nov. 28)

Category	Rank (Actual)	2006-07
Scoring	4th (77.1)	2nd (76.3)
Scoring Def.	5th (55.1)	T-5th (61.9)
Sco. Margin	3rd (+22.0)	3rd (+14.4)
FT %	7th (.647)	1st (.752)
FG %	1st (.506)	1st (.506)
FG Pct. Def	3rd (.346)	8th (.388)
3pt FG %	1st (.408)	1st (.437)
3pt FG % Def	10th (.323)	4th (.298)
Reb. Offense	11th (36.4)	12th (34.0)
Reb. Defense	5th (34.3)	1st (32.4)
Reb. Margin	10th (+2.1)	9th (+1.5)
Blocks	12th (3.00)	10th (2.79)
Assists	5th (16.29)	1st (18.03)
Steals	6th (10.29)	11th (8.26)
TO Margin	4th (+5.86)	7th (+1.94)
Asst/TO Ratio	T-3rd (1.00)	2nd (1.07)
3s Made	1st (7.00)	2nd (6.15)

Lauren Lueders

3pt FG %	T-3rd (.421)	NR
3s Made	4th (2.29)	NR

Jence Rhoads

Assists	T-13th (3.14)	NR
Asst/TO	11th (1.57)	NR

Jennifer Risper

Rebounding	20th (6.1)	NR
Steals	2nd (3.43)	NR
FT %	3rd (.800)	NR
Minutes	16th (28.86)	NR

Liz Sherwood

Scoring	12th (14.3)	NR
FG %	1st (.746)	1st (.657)

Christina Wirth

Scoring	7th (15.4)	23rd (11.3)
FG %	5th (.568)	15th (.502)
Assists	8th (3.57)	NR
3pt FG %	1st (.545)	2nd (.426)
3s Made	2nd (2.57)	12th (1.53)
Asst/TO	2nd (2.50)	NR
Minutes	1st (33.86)	NR

MEDIA PRESEASON PICKS

Vanderbilt was picked to finish fourth overall in the Southeastern Conference, according to media voting that preceded 2007 Media Day.

Melanie Balcomb's sixth squad at Vanderbilt was predicted to finish behind Tennessee, LSU and Georgia.

Commodore junior forward Christina Wirth was chosen as an All-SEC Second Team honoree by the media.

PRESEASON COACHES' PICKS

Vanderbilt was also chosen fourth overall by a vote of Southeastern Conference coaches.

In the coaches' All-SEC selections, Christina Wirth earned first-team honors, while Liz Sherwood was chosen to the second team.

GREAT GRADS

With the loss of three All-SEC seniors from last year's squad, the Commodores have a new look in 2007-08. The chart below highlights the production that Vanderbilt graduated in May.

	2006-07	'07 Class	Lost
Pts	76.3	36.0	47.2%
Rebs	34.0	12.9	37.9%
Assts	18.0	9.5	52.8%
Steals	8.3	4.4	53.0%
Blocks	2.8	1.1	39.3%
Minutes	6800	3105	45.7%

STILL SHOOTING

Vanderbilt ranked first in the nation in three-point field-goal percentage last season, and, despite the loss of the most accurate shooter in the history of the Southeastern Conference (current VU grad assistant Caroline Williams), the Commodores have shown few signs of cooling off this season.

The Commodores hit 10-of-21 three-point attempts (47.6 percent) in their season opener against UAB, led by junior Christina Wirth (4-of-5) and sophomore Merideth Marsh (3-of-5). Sophomores Ashlee Bridge and Lauren Lueders also connected from downtown.

Vanderbilt shot 43.7 percent during the 2006-07 season -- a full 3.5 percentage points better than runner-up Iowa among all NCAA Division I schools.

BEST SHOOTING HALVES

Last season, the Commodores connected on at least 60% of their field goal attempts during a total of 15 halves of basketball. This year, they have already achieved the feat on three separate occasions:

First Half	Second Half
Furman (65.4)	Indiana State (63.0)
	Clemson (62.5)

The Last Time...

VANDERBILT

Scored 100 or more points.....	104, vs. Belmont (11/23/07)
Allowed 100 or more points.....	102, Alabama (2/21/99)
Scored 50 or fewer points.....	48, at Duke (12/7/06)
Held an opponent to 50 or less points.....	43, vs. Belmont (11/23/07)
Scored 50 points in a half.....	56 (20-36, 1st), vs. Belmont (11/23/07)
Scored 60 points in a half.....	61 (2nd), vs. Lipscomb (12/20/06)
Allowed 50 points in a half.....	54 (2nd), at Georgia (1/18/07)
Scored 20 pts or less in a half.....	19 (1st), at Arkansas (1/8/06)
Held an opponent to 20 pts or less in a half.....	16 (2nd), vs. Belmont (11/23/07)
Shot 70% from the field.....	76.2 (32-42), vs. Alabama (2/4/07)
Shot 60% from the field.....	63.6 (21-33), vs. Delaware State (3/18/07)
Shot 60% for a half.....	62.5 (15-24, 2nd), at Clemson (11/20/07)
Shot 70% for a half.....	72.2 (13-18, 2nd), vs. Delaware State (3/18/07)
Shot 90% at the foul line.....	90.0 (9-10), vs. LSU (2/22/07)
Made 10 or more 3-point field goals.....	10, vs. UAB (11/9/07)
Had 50 rebounds.....	51, at Arkansas (1/28/07)
Had 25 or more assists.....	26, vs. Indiana State (12/21/06)
Had 15 steals.....	16, vs. Georgia Tech (1/21/07)
Had 10 or fewer turnovers.....	10, vs. Belmont (11/23/07)
Had 6 players score double figures.....	vs. TAMUCC (11/20/06) (Williams 18, Thomas 16, Malo 13, Sherwood 12, Norton 10, Wirth 10)
Had 5 players score double figures.....	vs. Florida (3/2/07) (Wirth 19, Thomas 16, Williams 16, Davis 15, Mooney 11)
Had 3 players score 20 or more points.....	vs. St. Francis (Pa.) (11/19/04) (Thomas 23, Earley 22, Davis 21)
Had a player score 40 points.....	40, Chantelle Anderson vs. Portland State (12/23/01)
Had a player score 30 points.....	32, Carla Thomas at UAB (11/30/06)
Had a player grab 15 rebounds.....	17, Carla Thomas at Miss. State (2/3/05) 16, Ashley Earley at Miss. State (2/3/05) 15, Ashley Earley at Georgia (2/27/05)
Had a player dish out 10 assists.....	12, Dee Davis at UAB (11/30/06)
Had a player to collect five steals.....	5, Jennifer Risper vs. Iowa State (11/25/07)
Had a player block five shots.....	5, Liz Sherwood vs. Colgate (11/26/05)

Commodore Notes

BEST SHOOTING GAMES

Three of Vanderbilt's six games this season rank in the SEC's Top 10 for field goal percentage. The Commodores shot better than 50 percent in their first five contests.

SEC 2007-08 Top 10 FG % Games

1. **LSU** (.574) vs. Samford
2. **Georgia** (.569) vs. Georgia Southern
3. **Vanderbilt** (.563) vs. Clemson
4. **Alabama** (.556) vs. Washington State
5. **Vanderbilt** (.552) vs. Indiana State
6. **Vanderbilt** (.548) vs. Belmont
7. **Tennessee** (.537) vs. Texas
8. **South Carolina** (.529) vs. Saint Francis
9. **Auburn** (.525) vs. UAB
10. **Kentucky** (.524) vs. Minnesota

LIGHTS OUT!

Vanderbilt senior center Liz Sherwood is quite a force on the low block. The Castle Rock, Colo., native is shooting an unbelievable 80 percent from the field this season. Sherwood has made 44 of her 55 field goal attempts this season, including a 10-of-11 performance at Clemson. Sherwood's only miss of that game came on her third attempt -- she promptly rebounded the ball, connected on the put-back and would not miss again in the contest.

For her career, Sherwood has connected on 66.6 percent of her field goal attempts (345-518), including an outstanding 70.9 percent of her shots during regular season non-conference games (200-282). Sherwood entered the season just behind the Commodores' all-time leader in career field goal percentage, All-American Chantelle Anderson (1,020-of-1,568, 65.1 percent). Anderson holds the SEC record for career shooting accuracy, and her mark ranks fifth all-time in the NCAA (minimum of 400 made field goals).

MAKING A POINT

Freshman point guard Jence Rhoads earned a spot in the starting lineup for her collegiate debut against UAB. Rhoads and sophomore Merideth Marsh have shared time running the Commodore offense like a well-oiled machine.

Vanderbilt is averaging 82 points and 18 assists per game in its first five contests. The Commodores' averaged 18 assists a season ago to rank third in the nation behind only Maryland and Arizona State.

Rhoads handed out nine assists against only three turnovers in her first two games, while Marsh had seven assists.

Both players share the daunting task of replacing the Commodores' all-time assists leader, Dee Davis. Davis graduated in 2007 after totalling 724 assists in her four-year career. She ranks sixth all-time in the SEC for assists.

2007-08 at a Glance

Overall.....	6-1
Home Games.....	5-0
Road Games.....	1-1
Neutral Sites.....	0-0
SEC Games.....	0-0
Home.....	0-0
Road.....	0-0
Non-Conference Games.....	6-1
Home.....	5-0
Road.....	1-1
Neutral.....	0-0
Postseason Games.....	0-0
Day Games.....	3-0
Night Games.....	3-1
November.....	6-1
December.....	0-0
January.....	0-0
February.....	0-0
March.....	0-0
April.....	0-0
Monday.....	0-0
Tuesday.....	1-0
Wednesday.....	1-1
Thursday.....	0-0
Friday.....	2-0
Saturday.....	0-0
Sunday.....	2-0
Overtime.....	0-0
Television.....	0-0
vs. Ranked Teams.....	1-0
vs. Unranked Teams.....	5-1
VU Scores First.....	4-0
Opp. Scores First.....	2-1
Leading at Halftime.....	4-0
Trailing/Tied at Halftime.....	2-1
Leading with 10 Minutes.....	6-0
Tied with 10 Minutes.....	0-0
Trailing with 10 Minutes.....	0-1
Leading with 5 Minutes.....	6-0
Tied with 5 Minutes.....	0-0
Trailing with 5 Minutes.....	0-1
VU Shoots 50% or Better.....	4-1
Opponent Shoots 50% or Better.....	0-0
VU Outrebounds/ties Opponent.....	3-1
Opponent Outrebounds VU.....	3-0
VU has fewer/same turnovers.....	5-0
Opponent has fewer turnovers.....	1-1
VU Makes More Threes.....	4-0
Opp. Makes More/Same Threes.....	2-1

COMMODORES VS. GAELS

Saturday marks the first-ever meeting for Vanderbilt and St. Mary's in women's basketball. The Commodores are 3-0 all-time against the current membership of the West Coast Conference, including wins over Loyola Marymount (1990), Pepperdine (2004) and San Francisco (1998).

COMMODORES VS. BEARS

Sunday marks the fourth meeting between Vanderbilt and California in women's basketball. The Commodores took a 2-1 lead in the all-time series with a 67-55 victory in Nashville last season (11/25/06) in the championship game of the 2006 Vanderbilt Thanksgiving Tournament. The series began on Dec. 30, 1989 -- a 72-70 Cal victory on VU's home court. Three seasons later, the Bears would return to the Music City to face Vanderbilt on March 20, 1993, in the second round of the NCAA Tournament (hosted by neighboring Belmont University). The Commodores won that matchup 82-63, en route to an appearance in the NCAA Final Four.

VU VS. RANKED OPPONENTS

(Calendar Year 2007)

The Commodores hold a 5-3 record games against ranked opponents since beginning the 2007 Spring semester with a 98-51 over No. 20 Arkansas. The Dores have won four of their last five against ranked foes.

Date	Opponent	AP Rank	Results
12/2/07	at California	12	3 p.m. CT
11/28/07	Duke	11	W, 68-55
3/4/07	vs. LSU \$	11	W, 51-45
3/3/07	vs. Georgia \$	10	W, 81-56
2/25/07	at Tennessee	2	L, 53-73
2/22/07	LSU	7	W, 68-58
1/25/07	Tennessee	4	L, 57-67
1/18/07	at Georgia	16	L, 71-83
1/4/07	Arkansas	20	W, 98-61

\$ - SEC Tournament

VANDERBILT QUICK FACTS

Location..... Nashville, Tenn.
 Enrollment..... 6,378
 Nickname..... Commodores
 Colors..... Black & Gold
 Home Court... Memorial Gymnasium (14,168)
 Conference..... Southeastern
 Website..... <http://vucommoedores.com>

Tale Of The Tape

VU	77.1	55.1	.506	.346	.408	.323	.647	+2.1	16.3	16.3	+5.9	10.3	3.0
Team	PPG	OppPPG	FG%	OppFG%	3FG%	Opp3FG%	FT%	RMarg	Assts	TOs	TOMarg	Stls	Bkls
SMC	75.1	75.4	.409	.401	.330	.343	.659	-1.7	12.7	25.7	-2.4	10.4	6.4

Updated Career Highs

NO. 2 — JENNIFER RISPER

Career Highs
 Points: 12, at Ind. State (11/14/07)
 FG Made: 6, at Ind. State (11/14/07)
 FG Atts: 11, at Ind. State (11/14/07)
 3FG Made: 2, vs. Alabama (3/2/06)
 3FG Atts: 3, vs. Alabama (3/2/06)
 FT Made: 8 (3x), last vs. Duke (11/28/07)
 FT Atts: 10, vs. Duke (11/28/07)
 Rebounds: 13, at Ind. State (11/14/07)
 Assists: 9, vs. Alabama (3/2/06)
 Blocks: 1 (2x), last vs. Florida (3/2/07)
 Steals: 6, at Ind. State (11/14/07)
 Minutes: 45, at Ind. State (11/14/07)

NO. 3 — CHANEL CHISHOLM

Career Highs
 Points: 6, vs. Belmont (11/23/07)
 FG Made: 2, vs. UAB (11/9/07)
 FG Atts: 2 (2x), last vs. Belmont (11/23/07)
 3FG Made: --
 3FG Atts: --
 FT Made: 6, vs. Belmont (11/23/07)
 FT Atts: 10, vs. Belmont (11/23/07)
 Rebounds: 8, vs. Belmont (11/23/07)
 Assists: 1 (2x), last vs. Belmont (11/23/07)
 Blocks: --
 Steals: --
 Minutes: 13, vs. Belmont (11/23/07)

NO. 5 — LAUREN LUEDERS

Career Highs
 Points: 14, vs. Iowa State (11/25/07)
 FG Made: 5, vs. Iowa State (11/25/07)
 FG Atts: 10, vs. Iowa State (11/25/07)
 3FG Made: 3 (4x), last vs. Duke (11/28/07)
 3FG Atts: 7 (2x), last vs. Iowa State (11/25/07)
 FT Made: 3 (2x), last vs. La Salle (1/1/07)
 FT Atts: 4, vs. Indiana State (12/21/06)
 Rebounds: 8, at Clemson (11/20/07)
 Assists: 5, vs. Belmont (11/23/07)
 Blocks: 1 (2x), last vs. Arkansas (1/4/07)
 Steals: 2 (3x), last vs. Belmont (11/23/07)
 Minutes: 35, at Clemson (11/20/07)

NO. 11 — ASHLEE BRIDGE

Career Highs
 Points: 9, vs. Lipscomb (12/20/06)
 FG Made: 4, vs. Lipscomb (12/20/06)
 FG Atts: 6, vs. Lipscomb (12/20/06)
 3FG Made: 1 (2x), last vs. UAB (11/9/07)
 3FG Atts: 1 (5x), last vs. Belmont (11/23/07)
 FT Made: 1 (5x), last vs. Belmont (11/23/07)
 FT Atts: 2 (3x), last vs. UAB (11/9/07)
 Rebounds: 3, vs. Lipscomb (12/20/06)
 Assists: 2 (2x), last vs. Alabama (2/4/07)
 Blocks: 1 (4x), last vs. Florida (3/2/07)
 Steals: 2, vs. UAB (11/9/07)
 Minutes: 11, vs. Lipscomb (12/20/06)

NO. 15 — HANNAH TUOMI

Career Highs
 Points: 6, vs. Belmont (11/23/07)
 FG Made: 2 (2x), last vs. Belmont (11/23/07)
 FG Atts: 5, vs. Belmont (11/23/07)
 3FG Made: --
 3FG Atts: --
 FT Made: 3, vs. Furman (11/11/07)
 FT Atts: 4, vs. Furman (11/11/07)
 Rebounds: 4, vs. UAB (11/9/07)
 Assists: --
 Blocks: --
 Steals: 1 (2x), last vs. Duke (11/28/07)
 Minutes: 8, vs. Belmont (11/23/07)

NO. 20 — JESSICA MOONEY

Career Highs
 Points: 16, vs. Duke (11/28/07)
 FG Made: 6, vs. Lipscomb (12/20/06)
 FG Atts: 9, vs. Furman (11/11/07)
 3FG Made: 1 (5x), last vs. Duke (11/28/07)
 3FG Atts: 2 (6x), last vs. Iowa State (11/25/07)
 FT Made: 7, vs. Duke (11/28/07)
 FT Atts: 9, vs. Duke (11/28/07)
 Rebounds: 6, vs. Duke (11/28/07)
 Assists: 4, vs. Bowling Green (3/20/07)
 Blocks: 3, vs. Bowling Green (3/20/07)
 Steals: 6, vs. Lipscomb (12/20/06)
 Minutes: 22 (2x), last vs. Duke (11/28/07)

NO. 22 — JENCE RHOADS

Career Highs
 Points: 8, at Clemson (11/20/07)
 FG Made: 3 (2x), last at Clemson (11/20/07)
 FG Atts: 8, vs. UAB (11/9/07)
 3FG Made: 1 (2x), last at Clemson (11/20/07)
 3FG Atts: 2 (3x), last at Clemson (11/20/07)
 FT Made: 1 (2x), last vs. Duke (11/28/07)
 FT Atts: 2, vs. Duke (11/28/07)
 Rebounds: 4 (2x), last at Ind. State (11/14/07)
 Assists: 6, vs. Belmont (11/23/07)
 Blocks: --
 Steals: 2, at Clemson (11/20/07)
 Minutes: 35, at Ind. State (11/14/07)

NO. 23 — MERIDETH MARSH

Career Highs
 Points: 15, vs. Georgia (3/3/07)
 FG Made: 5, vs. UAB (11/9/07)
 FG Atts: 9 (2x), last vs. UAB (11/9/07)
 3FG Made: 3 (3x), last vs. Furman (11/11/07)
 3FG Atts: 6, vs. Furman (11/11/07)
 FT Made: 10, vs. Georgia (3/3/07)
 FT Atts: 10, vs. Georgia (3/3/07)
 Rebounds: 4 (3x), last vs. Georgia (3/3/07)
 Assists: 7, vs. TAMUCC (11/20/06)
 Blocks: --
 Steals: 3 (2x), last vs. Alabama (2/4/07)
 Minutes: 35, vs. Iowa State (11/25/07)

NO. 25 — AMBER NORTON

Career Highs
 Points: 14, vs. Lipscomb (12/20/06)
 FG Made: 6, vs. Lipscomb (12/20/06)
 FG Atts: 9, vs. Lipscomb (12/20/06)
 3FG Made: --
 3FG Atts: --
 FT Made: 3 (3x), last vs. Florida (3/2/07)
 FT Atts: 6 (2x), last vs. Clemson (12/3/06)
 Rebounds: 7, vs. Lipscomb (12/20/06)
 Assists: 1 (7x), last vs. Iowa State (11/25/07)
 Blocks: 2, at Ind. State (11/14/07)
 Steals: 3, vs. Alabama (2/4/07)
 Minutes: 26, vs. Georgia (3/3/07)

NO. 32 — LIZ SHERWOOD

Career Highs
 Points: 28, vs. WKU (1/3/06)
 FG Made: 12, vs. Belmont (11/23/07)
 FG Atts: 15 (2x), vs. Belmont (11/23/07)
 3FG Made: --
 3FG Atts: --
 FT Made: 6 (2x), last vs. Georgia (2/19/06)
 FT Atts: 8 (3x), last at Clemson (11/20/07)
 Rebounds: 13 (3x), last at Clemson (11/20/07)
 Assists: 4, vs. Clemson (12/3/06)
 Blocks: 5, vs. Colgate (11/26/05)
 Steals: 4, vs. WKU (1/3/06)
 Minutes: 36, at Arizona State (11/11/05)

NO. 33 — REBECCA SILINSKI

Career Highs
 Points: 4, vs. Belmont (11/23/07)
 FG Made: 2, vs. Belmont (11/23/07)
 FG Atts: 4, vs. Belmont (11/23/07)
 3FG Made: --
 3FG Atts: --
 FT Made: 1 (2x), last vs. Furman (11/11/07)
 FT Atts: 2 (2x), last vs. Furman (11/11/07)
 Rebounds: 3, vs. Belmont (11/23/07)
 Assists: 1, vs. UAB (11/9/07)
 Blocks: 1, vs. Furman (11/11/07)
 Steals: --
 Minutes: 15, vs. Belmont (11/23/07)

NO. 34 — CHRISTINA WIRTH

Career Highs
 Points: 24, vs. Arkansas (1/4/07)
 FG Made: 10 (2x), last at Ind. State (11/14/07)
 FG Atts: 16 (2x), last at Ind. State (11/14/07)
 3FG Made: 5, vs. Florida (3/2/07)
 3FG Atts: 8, vs. Florida Atlantic (11/24/06)
 FT Made: 6, vs. Delaware State (3/18/07)
 FT Atts: 6 (2x), last vs. Delaware State (3/18/07)
 Rebounds: 11 (2x), vs. Tennessee (1/25/07)
 Assists: 6 (3x), last vs. Iowa State (11/25/07)
 Blocks: 1 (6x), last vs. Belmont (11/23/07)
 Steals: 3 (5x), last vs. LSU (2/22/07)
 Minutes: 45, at Ind. State (11/14/07)

NO. 43 — AMY MALO

Career Highs
 Points: 13, vs. TAMUCC (11/20/06)
 FG Made: 5, vs. TAMUCC (11/20/06)
 FG Atts: 8, vs. TAMUCC (11/20/06)
 3FG Made: --
 3FG Atts: --
 FT Made: 4 (2x), last vs. Belmont (11/23/07)
 FT Atts: 6, vs. UAB (11/9/07)
 Rebounds: 5 (2x), last vs. UAB (11/9/07)
 Assists: 1 (2x), last vs. Arkansas (1/4/07)
 Blocks: 2 (2x), last vs. UAB (11/9/07)
 Steals: 1 (5x), last vs. Furman (11/11/07)
 Minutes: 16, vs. UAB (11/9/07)

2007-08/CAREER MISCELLANEOUS

10+ Points

Liz Sherwood.....	4 / 36
Christina Wirth.....	7 / 34
Jennifer Risper.....	3 / 7
Jessica Mooney.....	3 / 6
Lauren Lueders.....	2 / 5
Merideth Marsh.....	2 / 4
Amber Norton.....	1 / 3
Amy Malo.....	1 / 2

20+ points

Liz Sherwood.....	2 / 7
Christina Wirth.....	1 / 4

10+ Rebounds

Christina Wirth.....	1 / 4
Liz Sherwood.....	1 / 3
Jennifer Risper.....	1 / 1

Career Double-doubles

Liz Sherwood.....	1 / 3
Christina Wirth.....	1 / 2
Jennifer Risper.....	1 / 1

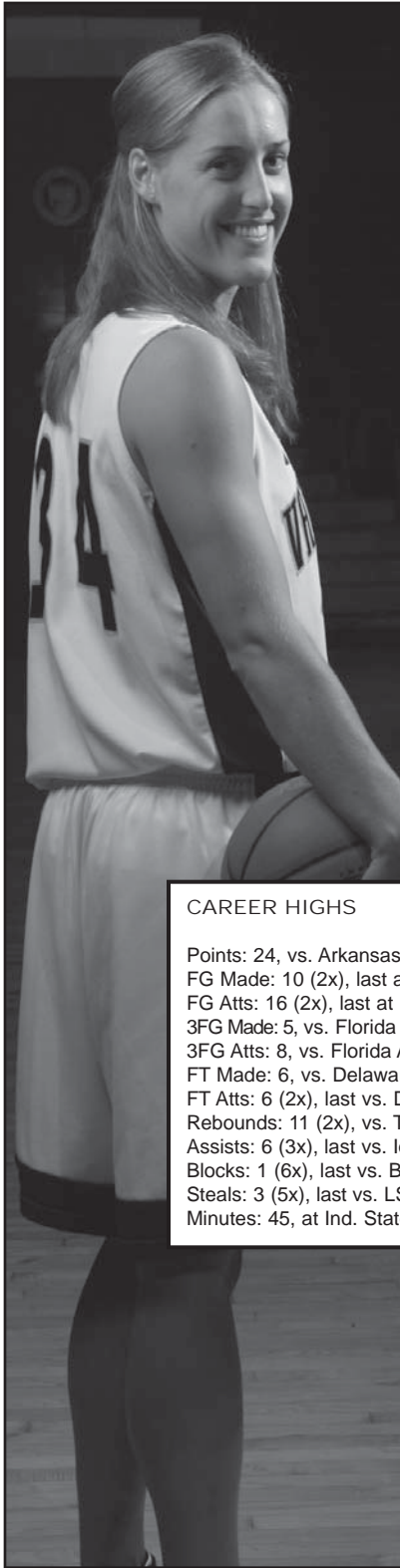
Christina Wirth

Junior • Forward
6-1 • Mesa, Ariz.

34

All-America Candidate

2007-08 Notes: Ranks in the SEC's Top 10 in scoring (7th), field-goal percentage (7th), assists (8th), 3-point field-goal percentage (1st), 3-pointers made (2nd), assist-to-turnover ratio (2nd) and minutes played (1st)... Only Commodore to score in double-figures in every game... Played 40 minutes for second-straight game in win over No. 10 Duke... Shot 60 percent from the floor and behind-the-arc to score 15 points... Named Most Valuable Player of the 2007 Vanderbilt Thanksgiving Tournament... Posted 10 points and six assists in 40 minutes against Iowa State... Hit 4-of-4 three's and 7-of-9 from the field to total 19 points against Belmont... Team-high 37 minutes and five assists at Clemson... Connected on 5-of-9 field goals (13 points)... Posted the second double-double of her career with 22 points and 10 rebounds against Indiana State... Tied a career high with 10 field goals made... Played the entire 45 minutes of the overtime game... Scored a team-high 17 points on 7-of-11 shooting against Furman... Connected on 4-of-5 three's to open the season against UAB (12 points)... Named preseason All-SEC by league coaches (first team) and writers (second team).



CAREER HIGHS

Points: 24, vs. Arkansas (1/4/07)
 FG Made: 10 (2x), last at Ind. State (11/14/07)
 FG Atts: 16 (2x), last at Ind. State (11/14/07)
 3FG Made: 5, vs. Florida (3/2/07)
 3FG Atts: 8, vs. Florida Atlantic (11/24/06)
 FT Made: 6, vs. Delaware State (3/18/07)
 FT Atts: 6 (2x), last vs. Delaware State (3/18/07)
 Rebounds: 11 (2x), vs. Tennessee (1/25/07)
 Assists: 6 (3x), last vs. Iowa State (11/25/07)
 Blocks: 1 (6x), last vs. Belmont (11/23/07)
 Steals: 3 (5x), last vs. LSU (2/22/07)
 Minutes: 45, at Ind. State (11/14/07)

2007-08 Game-by-Game Statistics

2007-08	Min	FG-A	3G-A	FT-A	O-D-T	PF	A	TO	Blk	Stl	Pts
UAB*	23	4-9	4-5	0-0	0-4-4	3	3	1	0	0	12
FURMAN*	30	7-11	2-5	1-2	3-3-6	0	3	0	1	1	17
at Indiana State*	45	10-16	2-6	0-1	1-9-10	1	3	2	0	0	22
at Clemson*	37	5-9	1-4	2-2	2-3-5	1	5	2	0	0	13
BELMONT*	22	7-9	4-4	1-1	0-4-4	1	2	0	1	0	19
IOWA STATE*	40	3-10	2-4	2-2	2-3-5	1	6	1	0	1	10
DUKE*	40	6-10	3-5	0-1	0-4-4	0	3	4	0	1	15
vs. St. Mary's at California											
WKU											
COLORADO											
LIPSCOMB											
OLD DOMINION											
SOUTH FLORIDA											
at Princeton											
MISS. STATE											
at LSU											
GEORGIA											
at Tennessee											
OLE MISS											
at Florida											
at Georgia											
SO. CAROLINA											
at Alabama											
KENTUCKY											
TENNESSEE											
at Arkansas											
at Auburn											
ALABAMA											

CAREER STATISTICS

Season	GP--GS	Min- Avg	FG-FGA	Pct	3FG-FGA	Pct	FT-FTA	Pct	-- Rebounds --				PF-FO	A	TO	Blk	Stl	Pts - Avg
									Off	Def	Tot	Avg						
2007-08	7--7	237-33.9	42-74	.568	18-33	.545	6-9	.667	8	30	38	5.4	7-0	25	10	2	3	108-15.4
2006-07	34--34	989-29.1	140-279	.502	53-121	.438	54-62	.871	50	98	148	4.4	71-2	80	65	3	27	387-11.4
2005-06	32--15	560-17.5	66-141	.468	31-70	.443	18-24	.750	28	51	79	2.5	43-1	34	24	3	26	181-5.7
Career	73--56	1786-24.5	248-494	.502	102-224	.455	78-95	.821	86	179	265	3.6	121-3	139	99	8	56	676-9.3

Liz Sherwood

32

Senior • Center
6-4 • Castle Rock, Colo.

All-America Candidate

2007-08 Notes: Ranks in the SEC's Top 20 in scoring (13th) and field-goal percentage (1st)... Held under double-figures for second consecutive game in VU's win over No. 10 Duke... Named an all-tournament selection following the 2007 Vanderbilt Thanksgiving Tournament following wins over Belmont and Iowa State... Made 12-of-15 field goal attempts to score a game-high 24 against Belmont... Also contributed five rebounds, three assists and three steals... Posted the third double-double of her career at Clemson with 22 points and a career-high tying 13 rebounds... Led the team in points and rebounds for the second time... Connected on 10-of-11 field goals (90.9 percent) -- including a put-back of her only miss -- in a season-high 29 minutes... 19 points and seven rebounds against Indiana State... Season-low field-goal percentage (75.0%, 9-of-12)... Knocked down all three field-goal attempts (seven points) against Furman... Missed only one of her seven field-goal attempts against UAB (team-high 13 points)... Also led the team with nine rebounds... Named preseason second-team All-SEC by league coaches.



2007-08 Game-by-Game Statistics

2007-08	Min	FG-A	3G-A	FT-A	O-D-T	PF	A	TO	Blk	Stl	Pts
UAB*	18	6-7	0-0	1-2	2-7-9	2	0	2	1	0	13
FURMAN*	18	3-3	0-0	1-4	0-1-1	3	1	0	3	3	7
at Indiana State*	28	9-12	0-0	1-5	3-4-7	4	1	3	1	1	19
at Clemson*	29	10-11	0-0	2-8	3-10-13	2	3	5	0	2	22
BELMONT	20	12-15	0-0	0-0	3-2-5	0	3	1	0	3	24
IOWA STATE*	24	4-7	0-0	1-2	2-3-5	4	1	0	1	0	9
DUKE*	19	3-8	0-0	0-0	0-0-0	2	1	1	2	1	6
vs. St. Mary's											
at California											
WKU											
COLORADO											
LIPSCOMB											
OLD DOMINION											
SOUTH FLORIDA											
at Princeton											
MISS. STATE											
at LSU											
GEORGIA											
at Tennessee											
OLE MISS											
at Florida											
at Georgia											
SO. CAROLINA											
at Alabama											
KENTUCKY											
TENNESSEE											
at Arkansas											
at Auburn											
ALABAMA											

CAREER HIGHS

Points: 28, vs. WKU (1/3/06)
 FG Made: 12, vs. Belmont (11/23/07)
 FG Atts: 15 (2x), vs. Belmont (11/23/07)
 3FG Made: --
 3FG Atts: --
 FT Made: 6 (2x), last vs. Georgia (2/19/06)
 FT Atts: 8 (3x), last at Clemson (11/20/07)
 Rebounds: 13 (3x), last at Clemson (11/20/07)
 Assists: 4, vs. Clemson (12/3/06)
 Blocks: 5, vs. Colgate (11/26/05)
 Steals: 4, vs. WKU (1/3/06)
 Minutes: 36, at Arizona State (11/11/05)

CAREER STATISTICS

Career at Vanderbilt													-- Rebounds --						
Season	GP - GS	Min- Avg	FG - FGA	Pct	3FG - FGA	Pct	FT - FTA	Pct	Off	Def	Tot	Avg	PF - FO	A	TO	Blk	Stl	Pts - Avg	
2007-08	7 - 7	156 - 22.3	47 - 63	.746	0 - 0	.000	6 - 21	.286	13	27	40	5.7	17 - 0	10	12	8	10	100 - 14.3	
2006-07	34 - 6	509 - 15.0	129 - 195	.662	0 - 0	.000	40 - 69	.580	48	76	124	3.6	85 - 1	22	58	30	13	298 - 8.8	
2005-06	32 - 18	643 - 20.1	172 - 268	.642	0 - 0	.000	46 - 76	.605	43	85	128	4.0	77 - 1	27	74	31	19	390 - 12.2	
@ VU	73 - 31	1308 - 17.9	348 - 526	.662	0 - 0	.000	92 - 166	.554	104	188	292	4.0	179 - 2	59	144	69	42	788 - 10.8	
2003-04 at Connecticut																			
Season	GP - GS	Min- Avg	FG - FGA	Pct	3FG - FGA	Pct	FT - FTA	Pct	Off	Def	Tot	Avg	PF - FO	A	TO	Blk	Stl	Pts - Avg	
UConn	25 - 0	213 - 8.5	42 - 72	.583	0 - 0	.000	24 - 43	.558	18	28	46	1.8	35 - 0	12	21	19	4	108 - 4.3	

Jennifer Risper

Junior • Guard
5-9 • Moreno Valley, Calif.

2

All-SEC Candidate



2007-08 Notes: Ranks in the SEC's Top 20 in rebounding (20th), steals (2nd), free-throw percentage (3rd) and minutes played (14th)... Against No. 10 Duke, made eight free throws for the third time in four games... Also contributed three assists and a team-high three steals... Named an all-tournament selection following the 2007 Vanderbilt Thanksgiving Tournament... Team-high seven rebounds and five steals in championship game win over Iowa State... Went 8-of-8 from the free throw line against Belmont to score in double-figures for the third consecutive game... Knocked down a career-high 8-of-9 free throws in road win at Clemson to score in double-figures in back-to-back games for the first time in her career... Contributed the first double-double of her career at Indiana State, with career highs in points (12) and rebounds (13)... Also had a personal-best six steals in that game while playing the entire 45 minutes... Averaged seven points, six rebounds and 2.5 steals in the Commodores' first two homes wins of the season over Furman and UAB.

2007-08 Game-by-Game Statistics

2007-08	Min	FG-A	3G-A	FT-A	O-D-T	PF	A	TO	Blk	Stl	Pts
UAB*	22	3-9	0-1	2-3	1-4-5	1	3	1	0	3	8
FURMAN*	22	3-4	0-0	0-0	2-5-7	2	2	1	0	2	6
at Indiana State*	45	6-11	0-1	0-2	3-10-13	3	5	0	0	6	12
at Clemson*	30	1-3	0-1	8-9	4-2-6	3	2	3	0	3	10
BELMONT	18	1-1	0-0	8-8	0-1-1	1	1	0	0	2	10
IOWA STATE*	31	3-6	0-1	2-3	2-5-7	2	1	3	0	5	8
DUKE*	34	0-3	0-0	8-10	2-2-4	4	3	2	0	3	8
vs. St. Mary's											
at California											
WKU											
COLORADO											
LIPSCOMB											
OLD DOMINION											
SOUTH FLORIDA											
at Princeton											
MISS. STATE											
at LSU											
GEORGIA											
at Tennessee											
OLE MISS											
at Florida											
at Georgia											
SO. CAROLINA											
at Alabama											
KENTUCKY											
TENNESSEE											
at Arkansas											
at Auburn											
ALABAMA											

CAREER HIGHS

Points: 12, at Ind. State (11/14/07)
 FG Made: 6, at Ind. State (11/14/07)
 FG Atts: 11, at Ind. State (11/14/07)
 3FG Made: 2, vs. Alabama (3/2/06)
 3FG Atts: 3, vs. Alabama (3/2/06)
 FT Made: 8 (3x), last vs. Duke (11/28/07)
 FT Atts: 10, vs. Duke (11/28/07)
 Rebounds: 13, at Ind. State (11/14/07)
 Assists: 9, vs. Alabama (3/2/06)
 Blocks: 1 (2x), last vs. Florida (3/2/07)
 Steals: 6, at Ind. State (11/14/07)
 Minutes: 45, at Ind. State (11/14/07)

CAREER STATISTICS

Season	GP--GS	Min- Avg	FG- FGA	Pct	3FG- FGA	Pct	FT- FTA	Pct	-- Rebounds --				PF- FO	A	TO	Blk	Stl	Pts - Avg
									Off	Def	Tot	Avg						
2007-08	7--7	202- 28.9	17- 37	.459	0- 4	.000	28- 35	.800	14	29	43	6.1	16- 0	17	10	0	24	62- 8.9
2006-07	32--17	628- 19.6	57-124	.460	3-10	.300	57-72	.792	32	72	104	3.3	61-2	60	50	2	36	174- 5.4
2005-06	20--0	282- 14.1	17-41	.415	7-14	.500	13-23	.565	11	20	31	1.6	27-0	26	22	0	13	54- 2.7
Career	59--24	1112- 18.8	91-202	.450	10- 28	.357	98-130	.754	57	121	178	3.0	104- 2	103	82	2	73	290- 4.9

Chanel Chisholm



3

Freshman • Guard
5-11 • Long Island, N.Y.

2007-08 Notes: Has seen reserve action on the wing in four games this season... Pulled a team-high eight rebounds in 13 minutes of action against Belmont... Also scored six points, all from the free-throw line... Scored four points by connecting on a pair of field-goal attempts in her first

collegiate action.

2007-08 Game-by-Game Statistics

2007-08	Min	FG-A	3G-A	FT-A	O-D-T	PF	A	TO	Bk	Stl	Pts
UAB	6	2-2	0-0	0-0	0-2-2	0	1	0	0	0	4
FURMAN	5	0-1	0-0	0-0	0-0-0	1	0	1	0	0	0
at Indiana State		-	DNP	-							
at Clemson	0	0-0	0-0	0-0	0-0-0	0	0	0	0	0	0
BELMONT	13	0-2	0-0	6-10	0-8-8	2	1	0	0	0	6
IOWA STATE		-	DNP	-							
DUKE		-	DNP	-							
vs. St. Mary's											
at California											
WKU											
COLORADO											
LIPSCOMB											
OLD DOMINION											
SOUTH FLORIDA											
at Princeton											
MISS. STATE											
at LSU											
GEORGIA											
at Tennessee											
OLE MISS											
at Florida											
at Georgia											
SO. CAROLINA											
at Alabama											
KENTUCKY											
TENNESSEE											
at Arkansas											
at Auburn											
ALABAMA											

Lauren Lueders



5

Sophomore • Guard
5-8 • Jackson, Mo.

2007-08 Notes: Earned her fourth start of the season, and the 16th of her career, against Duke... Hit three three-pointers for the third straight game in win over No. 10 Duke... Scored a career-high 14 points, including 3-of-7 from behind-the-arc to lead VU over Iowa State... Hit 3-of-5 three's

against Belmont, scoring 12 points... Also dished out a career-high five assists against the Bruins... Played a career-high 35 minutes against Clemson, scoring seven points and pulling a personal-best eight rebounds... Has hit at least one three-pointer in every game... Averaging over five points per contest... Played a reserve role in the Commodores' first three games.

2007-08 Game-by-Game Statistics

2007-08	Min	FG-A	3G-A	FT-A	O-D-T	PF	A	TO	Bk	Stl	Pts
UAB	17	2-9	2-7	0-0	1-3-4	0	1	1	0	1	6
FURMAN	12	2-6	2-5	0-0	0-0-0	0	2	0	0	0	6
at Indiana State	15	1-3	1-3	0-0	0-1-1	2	1	1	0	1	3
at Clemson*	35	2-6	2-6	1-3	0-8-8	2	1	1	0	0	7
BELMONT*	23	4-8	3-5	1-2	0-4-4	1	5	2	0	2	12
IOWA STATE*	25	5-10	3-7	1-2	0-2-2	2	0	2	0	1	14
DUKE*	18	3-6	3-5	0-0	0-2-2	1	1	1	0	1	9
vs. St. Mary's											
at California											
WKU											
COLORADO											
LIPSCOMB											
OLD DOMINION											
SOUTH FLORIDA											
at Princeton											
MISS. STATE											
at LSU											
GEORGIA											
at Tennessee											
OLE MISS											
at Florida											
at Georgia											
SO. CAROLINA											
at Alabama											
KENTUCKY											
TENNESSEE											
at Arkansas											
at Auburn											
ALABAMA											

Ashlee Bridge



11

Sophomore • Guard/Forward
5-11 • Cincinnati, Ohio

2007-08 Notes: Has seen reserve action on the wing in four games this season... Played a season-high nine minutes against Belmont, scoring three points... Hit the second three-pointer of her career in eight minutes of action to open the season against UAB.

2007-08 Game-by-Game Statistics

2007-08	Min	FG-A	3G-A	FT-A	O-D-T	PF	A	TO	Blk	Stl	Pts
UAB	8	1-1	1-1	1-2	0-1-1	0	0	2	0	2	4
FURMAN	3	0-1	0-0	0-0	0-0-0	0	0	0	0	0	0
at Indiana State		- DNP -									
at Clemson	0	0-0	0-0	0-0	0-0-0	0	0	0	0	0	0
BELMONT	9	1-3	0-1	1-1	1-1-2	0	0	0	0	1	3
IOWA STATE		- DNP -									
DUKE		- DNP -									
vs. St. Mary's											
at California											
WKU											
COLORADO											
LIPSCOMB											
OLD DOMINION											
SOUTH FLORIDA											
at Princeton											
MISS. STATE											
at LSU											
GEORGIA											
at Tennessee											
OLE MISS											
at Florida											
at Georgia											
SO. CAROLINA											
at Alabama											
KENTUCKY											
TENNESSEE											
at Arkansas											
at Auburn											
ALABAMA											

Hannah Tuomi



15

Freshman • Forward
6-1 • Thornton, Colo.

2007-08 Notes: Has seen reserve action in the post in five games this season... Played four minutes and had one steal in win over No. 10 Duke... Scored five points in each of her first two games... Played eight minutes and scored six points against Belmont... Has connected on 6-of-10 shots this season... Hit 3-of-4 free throws in win over Furman... Pulled four rebounds in only seven minutes in her first game.

2007-08 Game-by-Game Statistics

2007-08	Min	FG-A	3G-A	FT-A	O-D-T	PF	A	TO	Blk	Stl	Pts
UAB	7	2-3	0-0	1-2	2-2-4	2	0	1	0	1	5
FURMAN	7	1-1	0-0	3-4	0-0-0	1	0	0	0	0	5
at Indiana State		- DNP -									
at Clemson	3	1-1	0-0	0-0	0-0-0	0	0	0	0	0	2
BELMONT	8	2-5	0-0	2-2	2-0-2	1	0	2	0	0	6
IOWA STATE		- DNP -									
DUKE	4	0-0	0-0	0-0	0-0-0	1	0	0	0	1	0
vs. St. Mary's											
at California											
WKU											
COLORADO											
LIPSCOMB											
OLD DOMINION											
SOUTH FLORIDA											
at Princeton											
MISS. STATE											
at LSU											
GEORGIA											
at Tennessee											
OLE MISS											
at Florida											
at Georgia											
SO. CAROLINA											
at Alabama											
KENTUCKY											
TENNESSEE											
at Arkansas											
at Auburn											
ALABAMA											

Jessica Mooney



20

Sophomore • Guard
5-8 • Nashville, Tenn.

2007-08 Notes: Has scored in double-figures three times this season in wins over Furman, Clemson and Duke... Started the first three games of the season and averaged 20.0 minutes per... Led the Commodores in scoring with a career-high 16 points against No. 10 Duke... Connected on 7-of-

9 free throws against the Blue Devils, while pulling a career-high six rebounds... Hit 4-of-6 shot against Clemson, including 10 first-half points and her fourth-career three-pointer.

2007-08 Game-by-Game Statistics

2007-08	Min	FG-A	3G-A	FT-A	O-D-T	PF	A	TO	Bk	Stl	Pts
UAB*	22	3-6	0-0	0-0	0-3-3	3	1	3	0	1	6
FURMAN*	20	4-9	0-2	2-2	1-2-3	3	1	4	0	1	10
at Indiana State*	18	1-4	1-2	1-2	1-0-1	3	2	1	0	0	4
at Clemson	12	4-6	1-1	1-1	1-1-2	2	1	7	2	1	10
BELMONT	13	2-4	0-0	2-2	0-0-0	2	0	1	0	1	6
IOWA STATE	18	0-4	0-2	0-0	1-2-3	0	1	4	2	1	0
DUKE	22	4-7	1-1	7-9	2-4-6	2	1	1	1	3	16
vs. St. Mary's											
at California											
WKU											
COLORADO											
LIPSCOMB											
OLD DOMINION											
SOUTH FLORIDA											
at Princeton											
MISS. STATE											
at LSU											
GEORGIA											
at Tennessee											
OLE MISS											
at Florida											
at Georgia											
SO. CAROLINA											
at Alabama											
KENTUCKY											
TENNESSEE											
at Arkansas											
at Auburn											
ALABAMA											

Jence Rhoads



22

Freshman • Guard
5-11 • Slippery Rock, Pa.

2007-08 Notes: Started the first six games of her collegiate career... Averaging 3.2 assists per game... Increased her scoring output in each of her first four games... Came off the bench to play 16 minutes in win over No. 10 Duke... Personal-

best six assists came against Belmont... Made two steals in only 19 minutes against Clemson... Played a career-high 35 minutes at Indiana State.

2007-08 Game-by-Game Statistics

2007-08	Min	FG-A	3G-A	FT-A	O-D-T	PF	A	TO	Bk	Stl	Pts
UAB*	27	1-8	0-2	0-0	0-2-2	1	5	1	0	0	2
FURMAN*	30	2-4	1-2	0-0	2-2-4	0	4	2	0	0	5
at Indiana State*	35	3-5	0-1	0-0	0-4-4	4	4	6	0	1	6
at Clemson*	19	3-5	1-2	1-1	0-2-2	1	1	1	0	2	8
BELMONT*	28	1-4	0-0	0-0	1-0-1	1	6	1	0	1	2
IOWA STATE*	12	0-1	0-0	0-0	0-0-0	0	0	1	0	0	0
DUKE	16	0-6	0-1	1-2	0-3-3	1	2	2	0	0	1
vs. St. Mary's											
at California											
WKU											
COLORADO											
LIPSCOMB											
OLD DOMINION											
SOUTH FLORIDA											
at Princeton											
MISS. STATE											
at LSU											
GEORGIA											
at Tennessee											
OLE MISS											
at Florida											
at Georgia											
SO. CAROLINA											
at Alabama											
KENTUCKY											
TENNESSEE											
at Arkansas											
at Auburn											
ALABAMA											

Merideth Marsh



23

Sophomore • Guard
5-9 • Louisville, Ky.

2007-08 Notes: Made her first career start in win over Duke...Had seen reserve action at guard in the previous six games this season, rotating between point and shooting guard... Had nine points, two assists and two steals in victory over 10th-ranked Blue Devils... Career-high 35 minutes

played against Iowa State... Five assists and no turnovers against Belmont... Scored in double figures for the third time in her career in season-opening win over UAB... Hit three three-pointers in each of VU's first two games... Has had three or more assists in four contests this season.

2007-08 Game-by-Game Statistics

2007-08	Min	FG-A	3G-A	FT-A	O-D-T	PF	A	TO	Bk	Stl	Pts
UAB	17	5-9	3-5	0-0	0-3-3	1	3	1	0	1	13
FURMAN	23	3-6	3-6	0-0	0-0-0	1	4	5	0	1	9
at Indiana State	22	1-2	1-1	0-0	0-3-3	2	0	2	0	0	3
at Clemson	24	0-5	0-5	0-0	0-0-0	4	3	5	0	1	0
BELMONT	15	1-3	0-2	2-2	1-0-1	3	5	0	0	2	4
IOWA STATE	35	4-7	1-4	2-2	0-1-1	1	1	1	0	0	11
DUKE*	30	2-5	1-4	4-4	0-3-3	0	2	3	0	2	9
vs. St. Mary's											
at California											
WKU											
COLORADO											
LIPSCOMB											
OLD DOMINION											
SOUTH FLORIDA											
at Princeton											
MISS. STATE											
at LSU											
GEORGIA											
at Tennessee											
OLE MISS											
at Florida											
at Georgia											
SO. CAROLINA											
at Alabama											
KENTUCKY											
TENNESSEE											
at Arkansas											
at Auburn											
ALABAMA											

Amber Norton



25

Sophomore • Forward
6-1 • Louisville, Ky.

2007-08 Notes: Has seen reserve action in the post in all seven games this season... Had four points and three rebounds in 16 minutes of reserve action against No. 10 Duke... Scored 10 points on 5-of-8 shooting in win over Iowa State, marking the third double-figures scoring output of

her career... Connected on 3-of-3 field goals to score six points in Vanderbilt's season-opening win over UAB... Came away with two steals against Furman... Averaged 13.3 minutes per game through the first three contests.

2007-08 Game-by-Game Statistics

2007-08	Min	FG-A	3G-A	FT-A	O-D-T	PF	A	TO	Bk	Stl	Pts
UAB	12	3-3	0-0	0-0	1-0-1	2	0	0	0	1	6
FURMAN	13	0-0	0-0	0-0	0-1-1	1	0	1	0	2	0
at Indiana State	15	1-4	0-0	0-2	1-2-3	2	0	5	2	0	2
at Clemson	3	0-1	0-0	0-0	0-0-0	2	0	1	0	0	0
BELMONT	6	1-3	0-0	2-2	1-3-4	1	0	0	0	0	4
IOWA STATE	12	5-8	0-0	0-1	1-1-2	4	1	0	0	0	10
DUKE	16	1-4	0-0	2-4	1-2-3	4	0	0	0	0	4
vs. St. Mary's											
at California											
WKU											
COLORADO											
LIPSCOMB											
OLD DOMINION											
SOUTH FLORIDA											
at Princeton											
MISS. STATE											
at LSU											
GEORGIA											
at Tennessee											
OLE MISS											
at Florida											
at Georgia											
SO. CAROLINA											
at Alabama											
KENTUCKY											
TENNESSEE											
at Arkansas											
at Auburn											
ALABAMA											

Rebecca Silinski



33

Freshman • Center
6-3 • Birmingham, Ala.

2007-08 Notes: Has seen reserve action in the post in four games this season... Saw 15 minutes of action against Belmont, scoring four points... Played six minutes and had one block in win over Furman... Scored three points in her first collegiate game (against UAB), making her only field-goal attempt and connecting on 1-of-2 free throws.

2007-08 Game-by-Game Statistics

2007-08	Min	FG-A	3G-A	FT-A	O-D-T	PF	A	TO	Bk	Stl	Pts
UAB	5	1-1	0-0	1-2	1-0-1	0	1	0	0	0	3
FURMAN	6	0-2	0-0	1-2	1-0-1	1	0	0	1	0	1
at Indiana State		- DNP -									
at Clemson	1	0-0	0-0	0-0	0-0-0	0	0	1	0	0	0
BELMONT	15	2-4	0-0	0-0	1-2-3	4	0	2	0	0	4
IOWA STATE		- DNP -									
DUKE		- DNP -									
vs. St. Mary's											
at California											
WKU											
COLORADO											
LIPSCOMB											
OLD DOMINION											
SOUTH FLORIDA											
at Princeton											
MISS. STATE											
at LSU											
GEORGIA											
at Tennessee											
OLE MISS											
at Florida											
at Georgia											
SO. CAROLINA											
at Alabama											
KENTUCKY											
TENNESSEE											
at Arkansas											
at Auburn											
ALABAMA											

attempt and connecting on 1-of-2 free throws.

Amy Malo



43

R-Sophomore • Forward
6-3 • Fairmont, Minn.

2007-08 Notes: Has seen reserve action in the post in all seven games this season... Has hit four free throws twice already this season... Opened the season with 10 points and five rebounds in win over UAB... Game marked the second time in her career with double-figures scoring... Has scored in every game this season.

2007-08 Game-by-Game Statistics

2007-08	Min	FG-A	3G-A	FT-A	O-D-T	PF	A	TO	Bk	Stl	Pts
UAB	16	3-4	0-0	4-6	1-4-5	3	0	2	2	2	10
FURMAN	11	0-0	0-0	2-4	0-3-3	3	0	1	1	0	2
at Indiana State	2	0-1	0-0	1-2	0-0-0	0	0	0	0	0	1
at Clemson	7	1-1	0-0	0-0	0-0-0	1	0	1	0	0	2
BELMONT	10	0-1	0-0	4-5	0-1-1	0	0	1	0	0	4
IOWA STATE	3	0-0	0-0	0-0	1-0-1	1	0	1	0	0	0
DUKE	1	0-0	0-0	0-0	0-0-0	0	0	0	0	0	0
vs. St. Mary's											
at California											
WKU											
COLORADO											
LIPSCOMB											
OLD DOMINION											
SOUTH FLORIDA											
at Princeton											
MISS. STATE											
at LSU											
GEORGIA											
at Tennessee											
OLE MISS											
at Florida											
at Georgia											
SO. CAROLINA											
at Alabama											
KENTUCKY											
TENNESSEE											
at Arkansas											
at Auburn											
ALABAMA											

every game this season.

2007-08 Results

Date	Opponent	W-L	Score	Attendance	High Scorer	High Rebounder	High Assists
Nov. 9	UAB	W	92-51	3797	(13) Liz Sherwood (13) Merideth Marsh	(9) Liz Sherwood	(5) Jence Rhoads
Nov. 11	FURMAN	W	68-51	3590	(17) Christina Wirth	(7) Jennifer Risper	(4) Merideth Marsh (4) Jence Rhoads
Nov. 14	at Indiana State	L (ot)	72-77	3800	(22) Christina Wirth	(13) Jennifer Risper	(5) Jennifer Risper
Nov. 20	at Clemson	W	72-54	950	(22) Liz Sherwood	(13) Liz Sherwood	(5) Christina Wirth
Nov. 23	BELMONT	W	104-43	4025	(24) Liz Sherwood	(8) Chanel Chisholm	(6) Jence Rhoads
Nov. 25	IOWA STATE	W	62-53	3907	(14) Lauren Lueders	(7) Jennifer Risper	(6) Christina Wirth
Nov. 28	No. 11/10 DUKE	W	68-55	6022	(16) Jessica Mooney	(6) Jessica Mooney	(3) Merideth Marsh (3) Jennifer Risper
Dec. 1	vs. St. Mary's						
Dec. 2	at No. 12/13 California						
Dec. 6	WESTERN KENTUCKY						
Dec. 9	COLORADO						
Dec. 22	LIPSCOMB						
Dec. 30	OLD DOMINION						
Jan. 2	SOUTH FLORIDA						
Jan. 5	at Princeton						
Jan. 10	MISS. STATE *						
Jan. 13	at LSU *						
Jan. 17	GEORGIA *						
Jan. 20	at Tennessee *						
Jan. 27	OLE MISS *						
Jan. 31	at Florida *						
Feb. 3	at Georgia *						
Feb. 7	SOUTH CAROLINA *						
Feb. 10	at Alabama *						
Feb. 14	KENTUCKY *						
Feb. 17	TENNESSEE *						
Feb. 21	at Arkansas *						
Feb. 28	at Auburn *						
March 2	ALABAMA *						

March 6-9 2008 SEC Tournament (Sommet Center, Nashville, Tenn.)

TBA

Vanderbilt's 2007-08 Statistics
Vanderbilt Combined Team Statistics (as of Nov 29, 2007)
All games

RECORD:	OVERALL	HOME	AWAY	NEUTRAL
ALL GAMES.....	(6-1)	(5-0)	(1-1)	(0-0)
CONFERENCE.....	(0-0)	(0-0)	(0-0)	(0-0)
NON-CONFERENCE.....	(6-1)	(5-0)	(1-1)	(0-0)

## Player	GP-GS	Min--Avg	---TOTAL---		---3-PTS---		FT-FTA	Pct	---REBOUNDS---				PF	FO	A	TO	Blk	Stl	Pts	Avg
			FG-FGA	Pct	3FG-FGA	Pct			Off	Def	Tot	Avg								
34 Wirth,Christina....	7-7	237 33.9	42-74	.568	18-33	.545	6-9	.667	8	30	38	5.4	7	0	25	10	2	3	108	15.4
32 Sherwood,Liz.....	7-7	156 22.3	47-63	.746	0-0	.000	6-21	.286	13	27	40	5.7	17	0	10	12	8	10	100	14.3
02 Risper,Jennifer....	7-7	202 28.9	17-37	.459	0-4	.000	28-35	.800	14	29	43	6.1	16	0	17	10	0	24	62	8.9
05 Lueders,Lauren....	7-4	145 20.7	19-48	.396	16-38	.421	3-7	.429	1	20	21	3.0	8	0	11	8	0	6	57	8.1
20 Mooney,Jessica....	7-3	125 17.9	18-40	.450	3-8	.375	13-16	.813	6	12	18	2.6	15	0	7	21	5	8	52	7.4
23 Marsh,Merideth....	7-1	166 23.7	16-37	.432	9-27	.333	8-8	1.000	1	10	11	1.6	12	0	18	17	0	7	49	7.0
25 Norton,Amber.....	7-0	77 11.0	11-23	.478	0-0	.000	4-9	.444	5	9	14	2.0	16	0	1	7	2	3	26	3.7
15 Tuomi,Hannah....	5-0	29 5.8	6-10	.600	0-0	.000	6-8	.750	4	2	6	1.2	5	0	0	3	0	2	18	3.6
22 Rhoads,Jence.....	7-6	167 23.9	10-33	.303	2-8	.250	2-3	.667	3	13	16	2.3	8	0	22	14	0	4	24	3.4
43 Malo,Amy.....	7-0	50 7.1	4-7	.571	0-0	.000	11-17	.647	2	8	10	1.4	8	0	6	3	2	19	2.7	
03 Chisholm,Chanel...	4-0	24 6.0	2-5	.400	0-0	.000	6-10	.600	0	10	10	2.5	3	0	2	1	0	0	10	2.5
33 Silinski,Rebecca...	4-0	27 6.8	3-7	.429	0-0	.000	2-4	.500	3	2	5	1.3	5	0	1	3	1	0	8	2.0
11 Bridge,Ashlee.....	4-0	20 5.0	2-5	.400	1-2	.500	2-3	.667	1	2	3	0.8	0	0	0	2	0	3	7	1.8
TEAM.....										9	11	20	2.9	0		0				

Total.....	7	1425	197-389	.506	49-120	.408	97-150	.647	70	185	255	36.4	120	0	114	114	21	72	540	77.1
Opponents.....	7	1425	136-393	.346	42-130	.323	72-107	.673	92	148	240	34.3	133	-	69	155	12	43	386	55.1

TEAM STATISTICS	VU	OPP	DATE	OPPONENT	W/L	SCORE	ATTEND
SCORING.....	540	386	11/09/07	UAB	W	92-51	3797
Points per game.....	77.1	55.1	11/11/07	FURMAN	W	68-51	3590
Scoring margin.....	+22.0	-	11/14/07	at Indiana State	LOT	72-77	3800
FIELD GOALS-ATT.....	197-389	136-393	11/20/07	at Clemson	W	74-56	950
Field goal pct.....	.506	.346	11/23/07	BELMONT	W	104-43	4025
3 POINT FG-ATT.....	49-120	42-130	11/25/07	IOWA STATE	W	62-53	3907
3-point FG pct.....	.408	.323	11/28/07	DUKE	W	68-55	6022
3-pt FG made per game..	7.0	6.0					
FREE THROWS-ATT.....	97-150	72-107					
Free throw pct.....	.647	.673					
REBOUNDS.....	255	240					
Rebounds per game.....	36.4	34.3					
Rebounding margin.....	+2.1	-					
ASSISTS.....	114	69					
Assists per game.....	16.3	9.9					
TURNOVERS.....	114	155					
Turnovers per game.....	16.3	22.1					
Turnover margin.....	+5.9	-					
Assist/turnover ratio..	1.0	0.4					
STEALS.....	72	43					
Steals per game.....	10.3	6.1					
BLOCKS.....	21	12					
Blocks per game.....	3.0	1.7					
WINNING STREAK.....	4	-					
Home win streak.....	5	-					
ATTENDANCE.....	21341	4750					
Home games-Avg/Game....	5-4268	2-2375					
Neutral site-Avg/Game..	-	0-0					

SCORE BY PERIODS:	1st	2nd	OT	Total
-----	-----	-----	-----	-----
Vanderbilt.....	257	274	9	540
Opponents.....	179	193	14	386

Game Capsules

Game 7 Duke at Vanderbilt

Nov. 28 • Nashville, Tenn. • Memorial Gymnasium

VISITORS: Duke 5-2

Player	FG	3P	FT	R	F	TP	A	TO	B	S	Min
Mitchell*	1-3	0-1	2-2	5	3	4	0	1	0	0	19
Gay*	3-8	0-0	0-1	9	4	6	2	4	0	0	30
Black*	5-9	0-0	0-0	10	3	10	3	4	1	0	32
E. Waner*	0-1	0-1	0-0	0	0	0	1	2	0	0	15
A. Waner*	3-11	2-7	1-2	0	4	9	1	5	0	1	25
Thomas	3-11	2-4	4-4	1	3	12	1	4	0	2	27
Christmas	1-4	0-1	0-1	1	2	2	0	0	0	0	14
Cheek	4-4	0-0	0-0	1	4	8	0	2	1	0	13
Mitch	0-1	0-1	0-0	0	1	0	0	0	0	0	11
Jackson	1-3	0-0	0-1	3	0	2	0	2	1	0	10
Thomas	1-2	0-0	0-0	2	1	2	0	0	0	1	4
TEAM	-	-	-	7							
Totals	22-57	4-15	7-11	39	25	55	8	24	3	4	200

FG% 1st: 15-34 44.1% 2nd: 7-23 30.4% Game: 38.6%
 3-Pt. FG% 1st: 3-7 42.9% 2nd: 1-8 12.5% Game: 26.7%
 F Throw % 1st: 0-2 0.0% 2nd: 7-9 77.8% Game: 63.6%

HOME TEAM: Vanderbilt 6-1

Player	FG	3P	FT	R	F	TP	A	TO	B	S	Min
Wirth*	6-10	3-5	0-1	4	0	15	3	4	0	1	40
Sherwood*	3-8	0-0	0-0	0	2	6	1	1	2	1	19
Risper*	0-3	0-0	8-10	4	4	8	3	2	0	3	34
Lueders*	3-6	3-5	0-0	2	1	9	1	1	0	1	18
Marsh*	2-5	1-4	4-4	3	0	9	2	3	0	2	30
Tuomi	0-0	0-0	0-0	0	1	0	0	0	0	1	4
Mooney	4-7	1-1	7-9	6	2	16	1	1	1	3	22
Rhoads	0-6	0-1	1-2	3	1	1	2	2	0	0	16
Norton	1-4	0-0	2-4	3	4	4	0	0	0	0	16
Malo	0-0	0-0	0-0	0	0	0	0	0	0	0	1
TEAM	-	-	-	4							
Totals	19-49	8-16	22-30	29	15	68	13	14	3	12	200

FG% 1st: 11-23 47.8% 2nd: 8-26 30.8% Game: 38.8%
 3-Pt. FG% 1st: 4-6 66.7% 2nd: 4-10 40.0% Game: 50.0%
 F Throw % 1st: 4-6 66.7% 2nd: 18-24 75.0% Game: 73.3%

Officials: Lisa Mattingly, Dee Kantner, Eric Brewton
 Technical fouls: Duke-None. Vanderbilt-None.
 Attendance: 6022

Score by Periods	1st	2nd	Total
Duke	33	22	55
Vanderbilt	30	38	68

Game Recap

NASHVILLE, Tenn. (AP) -- Jessica Mooney scored a career-high 16 points to lead Vanderbilt (No. 18 ESPN/USA Today, No. 23 AP) to a 68-55 win over Duke on Wednesday night, handing the Blue Devils consecutive losses for the first time since 2000.

Mooney was 4-for-7 from the field and added six rebounds for Vanderbilt (6-1). The Commodores ended the game on an 18-3 run that began with 3:35 left to topple Duke (5-2), which lost consecutive games for the first time in eight seasons. The Blue Devils lost to No. 2 Connecticut 74-48 on Sunday in the Paradise Jam championship in the U.S. Virgin Islands.

Christina Wirth had 15 points, and Lauren Lueders and Merideth Marsh each added nine points for Vanderbilt. Jasmine Thomas led Duke with 12 points, and Chante Black chipped in with 10 points and 10 rebounds for the Blue Devils, who had a season-high 24 turnovers. Duke's previous high of 23 came against Denver.

Jennifer Risper made four consecutive free throws to give Vanderbilt a 57-52 lead with 3:35 left, and the Commodores kept their cushion with late free throws. Vanderbilt finished 22-for-30 on free throws.

Risper also put the Commodores ahead 44-43 with 12:42 left, taking the lead for the first time since the opening minutes. Both teams were in the free-throw bonus the final 10 minutes that kept the game tight.

Duke got off to another slow start. The Blue Devils had five turnovers in their first five possessions against the Commodores, and fell behind 7-4 in the opening minutes. Duke has trailed in the first 10 minutes in five of its first seven games.

After the Blue Devils went on a 19-7 run, Vanderbilt slowly crept its way back, closing the gap to 33-30 at halftime with a spurt of 3-pointers.

Game 8

Vanderbilt vs. St. Mary's

Dec. 1 • Berkeley, Calif. • Haas Pavilion

Game 9

Vanderbilt at California

Dec. 2 • Berkeley, Calif. • Haas Pavilion

Last Time Vs. California

11/25/06 2 p.m. at Memorial Gym, Nashville, TN

VISITORS: California 4-1

##	Player Name	TOT-FG	3-PT	FG-FGA	FG-FGA	FT-FTA	REBOUNDS			PF	TP	A	TO	BLK	S	MIN
							OF	DE	TOT							
20	Hampton, Devanei....	f	2-2	0-0	0-0	0	2	2	0	4	0	2	0	0	6	
44	Walker, Ashley.....	f	8-15	0-0	3-6	1	5	6	5	19	1	4	3	1	32	
10	Greif, Lauren.....	g	2-4	1-2	0-0	1	2	3	3	5	0	2	0	3	33	
14	Levy, Keanna.....	g	0-3	0-2	0-0	1	1	2	1	0	0	2	0	0	21	
21	Gray-Lawson, Alexis.	g	3-11	3-8	2-3	0	4	4	1	11	3	1	0	3	40	
15	Foster, Krista.....		1-3	0-1	0-0	0	0	0	1	2	0	2	0	0	10	
2	Vital, Natasha.....		1-5	0-1	2-2	0	2	2	4	4	2	4	0	2	26	
22	N'Diaye, Rama.....		3-8	0-0	4-4	2	8	10	3	10	4	2	0	0	32	
	TEAM.....					2	3	5				1				
	Totals.....		20-51	4-14	11-15	7	27	34	18	55	10	20	3	9	200	

TOTAL FG% 1st Half:	8-24	33.3%	2nd Half:	12-27	44.4%	Game:	39.2%	DEADB
3-Pt. FG% 1st Half:	2-8	25.0%	2nd Half:	2-6	33.3%	Game:	28.6%	REBS
F Throw % 1st Half:	2-4	50.0%	2nd Half:	9-11	81.8%	Game:	73.3%	1

HOME TEAM: Vanderbilt 6-0

##	Player Name	TOT-FG	3-PT	FG-FGA	FG-FGA	FT-FTA	REBOUNDS			PF	TP	A	TO	BLK	S	MIN
							OF	DE	TOT							
34	Christina Wirth.....	f	3-6	2-3	2-2	0	6	6	2	10	3	2	0	0	31	
50	Carla Thomas.....	f	8-16	0-0	0-2	2	5	7	3	16	4	0	1	0	36	
32	Liz Sherwood.....	c	4-6	0-0	2-4	0	2	2	2	10	0	4	0	0	14	
10	Dee Davis.....	g	1-3	0-0	2-2	0	4	4	3	4	7	2	0	0	36	
33	Caroline Williams...	g	6-12	5-7	1-2	0	4	4	3	18	0	1	0	2	37	
2	Jennifer Risper.....		2-6	0-1	3-3	1	0	1	1	7	1	3	0	2	17	
20	Jessica Mooney.....		0-3	0-1	0-0	1	0	1	2	0	2	1	1	0	8	
23	Merideth Marsh.....		1-1	0-0	0-0	0	0	0	0	2	1	0	0	1	4	
25	Amber Norton.....		0-1	0-0	0-0	1	2	3	0	0	0	2	0	0	9	
5	Lauren Lueders.....		0-1	0-0	0-0	0	1	1	1	0	0	1	0	0	8	
	TEAM.....					1	2	3								
	Totals.....		25-55	7-12	10-15	6	26	32	17	67	18	16	2	5	200	

TOTAL FG% 1st Half:	12-27	44.4%	2nd Half:	13-28	46.4%	Game:	45.5%	DEADB
3-Pt. FG% 1st Half:	3-5	60.0%	2nd Half:	4-7	57.1%	Game:	58.3%	REBS
F Throw % 1st Half:	4-7	57.1%	2nd Half:	6-8	75.0%	Game:	66.7%	2,1

Officials: Dennis DeMayo, Bill Titus, Beverly Roberts

Technical fouls: California-None. Vanderbilt-None.

Attendance: 2257

Score by Periods	1st	2nd	Total
California.....	20	35	- 55
Vanderbilt.....	31	36	- 67

ID-504988

Points in the paint-CA 26,VUW 22. Points off turnovers-CA 12,VUW 17.

2nd chance points-CA 5,VUW 4. Fast break points-CA 6,VUW 8.

Bench points-CA 16,VUW 9. Score tied-0 times. Lead changed-1 time.

Last FG-CA 2nd-01:44, VUW 2nd-01:17.

Largest lead-CA by 3 1st-19:19, VUW by 19 2nd-16:20.

Vanderbilt's 2007-08 Statistics
 Vanderbilt Team High/Low Analysis (as of Nov 29, 2007)
 All games

Vanderbilt - TEAM GAME HIGHS

POINTS.....	104	vs Belmont (11/23/07)
	92	vs UAB (11/09/07)
	74	at Clemson (11/20/07)
	72	at Indiana State (11/14/07)
	68	vs Duke (11/28/07)
	68	vs Furman (11/11/07)
FIELD GOALS MADE.....	36	vs UAB (11/09/07)
	34	vs Belmont (11/23/07)
FIELD GOAL ATTEMPTS.....	71	vs UAB (11/09/07)
	62	vs Belmont (11/23/07)
FIELD GOAL PERCENTAGE.....	.563 (27-48)	at Clemson (11/20/07)
	.552 (32-58)	at Indiana State (11/14/07)
3 PT FIELD GOALS MADE.....	10	vs UAB (11/09/07)
	8	vs Duke (11/28/07)
	8	vs Furman (11/11/07)
3 PT FG ATTEMPTS.....	21	vs UAB (11/09/07)
	20	vs Furman (11/11/07)
3 PT FG PERCENTAGE.....	.583 (7-12)	vs Belmont (11/23/07)
	.500 (8-16)	vs Duke (11/28/07)
FREE THROWS MADE.....	29	vs Belmont (11/23/07)
	22	vs Duke (11/28/07)
FREE THROW ATTEMPTS.....	35	vs Belmont (11/23/07)
	30	vs Duke (11/28/07)
FREE THROW PERCENTAGE.....	.829 (29-35)	vs Belmont (11/23/07)
	.733 (22-30)	vs Duke (11/28/07)
REBOUNDS.....	47	vs UAB (11/09/07)
	43	at Indiana State (11/14/07)
ASSISTS.....	23	vs Belmont (11/23/07)
	18	vs UAB (11/09/07)
STEALS.....	12	vs Duke (11/28/07)
	12	vs Belmont (11/23/07)
	12	vs UAB (11/09/07)
BLOCKED SHOTS.....	6	vs Furman (11/11/07)
	3	vs Duke (11/28/07)
	3	vs Iowa State (11/25/07)
	3	at Indiana State (11/14/07)
	3	vs UAB (11/09/07)
TURNOVERS.....	27	at Clemson (11/20/07)
	20	at Indiana State (11/14/07)
FOULS.....	21	at Indiana State (11/14/07)
	18	at Clemson (11/20/07)
	18	vs UAB (11/09/07)

Vanderbilt's 2007-08 Statistics
Vanderbilt High/Low Analysis (as of Nov 29, 2007)
All games

Opponent - GAME HIGHS

POINTS.....	77	at Indiana State (11/14/07)
	56	at Clemson (11/20/07)
	55	vs Duke (11/28/07)
	53	vs Iowa State (11/25/07)
	51	vs Furman (11/11/07)
	51	vs UAB (11/09/07)
FIELD GOALS MADE.....	26	at Indiana State (11/14/07)
	22	vs Duke (11/28/07)
FIELD GOAL ATTEMPTS.....	66	at Indiana State (11/14/07)
	64	at Clemson (11/20/07)
FIELD GOAL PERCENTAGE.....	.394 (26-66)	at Indiana State (11/14/07)
	.386 (22-57)	vs Duke (11/28/07)
3 PT FIELD GOALS MADE.....	8	at Indiana State (11/14/07)
	8	vs Furman (11/11/07)
3 PT FG ATTEMPTS.....	25	vs Belmont (11/23/07)
	22	at Indiana State (11/14/07)
3 PT FG PERCENTAGE.....	.533 (8-15)	vs Furman (11/11/07)
	.438 (7-16)	vs Iowa State (11/25/07)
FREE THROWS MADE.....	17	at Indiana State (11/14/07)
	11	at Clemson (11/20/07)
	11	vs Furman (11/11/07)
FREE THROW ATTEMPTS.....	20	at Indiana State (11/14/07)
	19	vs UAB (11/09/07)
FREE THROW PERCENTAGE.....	.909 (10-11)	vs Iowa State (11/25/07)
	.850 (17-20)	at Indiana State (11/14/07)
REBOUNDS.....	39	vs Duke (11/28/07)
	38	vs Belmont (11/23/07)
ASSISTS.....	20	at Indiana State (11/14/07)
	13	at Clemson (11/20/07)
STEALS.....	16	at Clemson (11/20/07)
	8	at Indiana State (11/14/07)
BLOCKED SHOTS.....	3	vs Duke (11/28/07)
	2	vs Iowa State (11/25/07)
	2	vs Belmont (11/23/07)
	2	at Indiana State (11/14/07)
	2	vs Furman (11/11/07)
TURNOVERS.....	31	vs Belmont (11/23/07)
	24	vs Duke (11/28/07)
	24	vs UAB (11/09/07)
FOULS.....	25	vs Duke (11/28/07)
	24	at Clemson (11/20/07)

Vanderbilt's 2007-08 Statistics
 Vanderbilt High/Low Analysis (as of Nov 29, 2007)
 All games

Vanderbilt - GAME LOWS

POINTS.....	62	vs Iowa State (11/25/07)
	68	vs Furman (11/11/07)
	68	vs Duke (11/28/07)
	72	at Indiana State (11/14/07)
	74	at Clemson (11/20/07)
FIELD GOALS MADE.....	19	vs Duke (11/28/07)
	24	vs Iowa State (11/25/07)
FIELD GOAL ATTEMPTS.....	48	vs Furman (11/11/07)
	48	at Clemson (11/20/07)
FIELD GOAL PERCENTAGE.....	.388 (19-49)	vs Duke (11/28/07)
	.453 (24-53)	vs Iowa State (11/25/07)
3 PT FIELD GOALS MADE.....	5	at Indiana State (11/14/07)
	5	at Clemson (11/20/07)
3 PT FG ATTEMPTS.....	12	vs Belmont (11/23/07)
	14	at Indiana State (11/14/07)
3 PT FG PERCENTAGE.....	.263 (5-19)	at Clemson (11/20/07)
	.333 (6-18)	vs Iowa State (11/25/07)
FREE THROWS MADE.....	3	at Indiana State (11/14/07)
	8	vs Iowa State (11/25/07)
FREE THROW ATTEMPTS.....	12	vs Iowa State (11/25/07)
	14	at Indiana State (11/14/07)
FREE THROW PERCENTAGE.....	.214 (3-14)	at Indiana State (11/14/07)
	.556 (10-18)	vs Furman (11/11/07)
REBOUNDS.....	28	vs Furman (11/11/07)
	29	vs Duke (11/28/07)
ASSISTS.....	11	vs Iowa State (11/25/07)
	13	vs Duke (11/28/07)
STEALS.....	8	vs Iowa State (11/25/07)
	9	at Indiana State (11/14/07)
	9	at Clemson (11/20/07)
BLOCKED SHOTS.....	1	vs Belmont (11/23/07)
	2	at Clemson (11/20/07)
TURNOVERS.....	10	vs Belmont (11/23/07)
	13	vs Iowa State (11/25/07)
FOULS.....	15	vs Iowa State (11/25/07)
	15	vs Duke (11/28/07)

Vanderbilt's 2007-08 Statistics
Vanderbilt High/Low Analysis (as of Nov 29, 2007)
All games

Opponent - GAME LOWS

POINTS.....	43	vs Belmont (11/23/07)
	51	vs UAB (11/09/07)
	51	vs Furman (11/11/07)
	53	vs Iowa State (11/25/07)
	55	vs Duke (11/28/07)
FIELD GOALS MADE.....	14	vs Belmont (11/23/07)
	16	vs Furman (11/11/07)
FIELD GOAL ATTEMPTS.....	44	vs Furman (11/11/07)
	47	vs Iowa State (11/25/07)
FIELD GOAL PERCENTAGE.....	.250 (14-56)	vs Belmont (11/23/07)
	.322 (19-59)	vs UAB (11/09/07)
3 PT FIELD GOALS MADE.....	3	at Clemson (11/20/07)
	4	vs Duke (11/28/07)
3 PT FG ATTEMPTS.....	15	vs Furman (11/11/07)
	15	vs Duke (11/28/07)
3 PT FG PERCENTAGE.....	.176 (3-17)	at Clemson (11/20/07)
	.240 (6-25)	vs Belmont (11/23/07)
FREE THROWS MADE.....	7	vs UAB (11/09/07)
	7	vs Duke (11/28/07)
FREE THROW ATTEMPTS.....	11	vs Iowa State (11/25/07)
	11	vs Duke (11/28/07)
FREE THROW PERCENTAGE.....	.368 (7-19)	vs UAB (11/09/07)
	.529 (9-17)	vs Belmont (11/23/07)
REBOUNDS.....	29	vs Furman (11/11/07)
	31	vs Iowa State (11/25/07)
ASSISTS.....	5	vs Iowa State (11/25/07)
	6	vs UAB (11/09/07)
STEALS.....	2	vs Belmont (11/23/07)
	4	vs Furman (11/11/07)
	4	vs Iowa State (11/25/07)
	4	vs Duke (11/28/07)
BLOCKED SHOTS.....	0	at Clemson (11/20/07)
	1	vs UAB (11/09/07)
TURNOVERS.....	12	at Indiana State (11/14/07)
	18	vs Iowa State (11/25/07)
FOULS.....	13	at Indiana State (11/14/07)
	15	vs Furman (11/11/07)

Vanderbilt's 2007-08 Statistics
 Vanderbilt Player High/Low Analysis (as of Nov 29, 2007)
 All games

Vanderbilt - INDIVIDUAL GAME HIGHS

POINTS.....	24	Sherwood,Liz vs Belmont (11/23/07)
	22	Sherwood,Liz at Clemson (11/20/07)
	22	Wirth,Christina at Indiana State (11/14/07)
	19	Wirth,Christina vs Belmont (11/23/07)
	19	Sherwood,Liz at Indiana State (11/14/07)
FIELD GOALS MADE.....	12	Sherwood,Liz vs Belmont (11/23/07)
	10	Sherwood,Liz at Clemson (11/20/07)
	10	Wirth,Christina at Indiana State (11/14/07)
FIELD GOAL ATT.....	16	Wirth,Christina at Indiana State (11/14/07)
	15	Sherwood,Liz vs Belmont (11/23/07)
FG PCT (min 5 made).....	.909 (10-11)	Sherwood,Liz at Clemson (11/20/07)
	.857 (6-7)	Sherwood,Liz vs UAB (11/09/07)
3 PT FG MADE.....	4	Wirth,Christina vs Belmont (11/23/07)
	4	Wirth,Christina vs UAB (11/09/07)
3 PT FG ATTEMPTS.....	7	Lueders,Lauren vs Iowa State (11/25/07)
	7	Lueders,Lauren vs UAB (11/09/07)
3-PT FG PCT (min 2 made).....	1.000 (4-4)	Wirth,Christina vs Belmont (11/23/07)
	.800 (4-5)	Wirth,Christina vs UAB (11/09/07)
FREE THROWS MADE.....	8	Risper,Jennifer vs Duke (11/28/07)
	8	Risper,Jennifer vs Belmont (11/23/07)
	8	Risper,Jennifer at Clemson (11/20/07)
FREE THROW ATT.....	10	Risper,Jennifer vs Duke (11/28/07)
	10	Chisholm,Chanel vs Belmont (11/23/07)
FT PCT (min 3 made).....	1.000 (8-8)	Risper,Jennifer vs Belmont (11/23/07)
	1.000 (4-4)	Marsh,Merideth vs Duke (11/28/07)
REBOUNDS.....	13	Sherwood,Liz at Clemson (11/20/07)
	13	Risper,Jennifer at Indiana State (11/14/07)
ASSISTS.....	6	Wirth,Christina vs Iowa State (11/25/07)
	6	Rhoads,Jence vs Belmont (11/23/07)
STEALS.....	6	Risper,Jennifer at Indiana State (11/14/07)
	5	Risper,Jennifer vs Iowa State (11/25/07)
BLOCKED SHOTS.....	3	Sherwood,Liz vs Furman (11/11/07)
	2	Sherwood,Liz vs Duke (11/28/07)
	2	Mooney,Jessica vs Iowa State (11/25/07)
	2	Mooney,Jessica at Clemson (11/20/07)
	2	Norton,Amber at Indiana State (11/14/07)
	2	Malo,Amy vs UAB (11/09/07)
TURNOVERS.....	7	Mooney,Jessica at Clemson (11/20/07)
	6	Rhoads,Jence at Indiana State (11/14/07)
FOULS.....	4	Risper,Jennifer vs Duke (11/28/07)
	4	Norton,Amber vs Duke (11/28/07)
	4	Sherwood,Liz vs Iowa State (11/25/07)
	4	Norton,Amber vs Iowa State (11/25/07)
	4	Silinski,Rebecca vs Belmont (11/23/07)
	4	Marsh,Merideth at Clemson (11/20/07)
	4	Sherwood,Liz at Indiana State (11/14/07)
	4	Rhoads,Jence at Indiana State (11/14/07)

Vanderbilt's 2007-08 Statistics
 Vanderbilt High/Low Analysis (as of Nov 29, 2007)
 All games

OPPONENT INDIVIDUAL GAME HIGHS

POINTS.....	23	ROGERS, Diamond vs UAB (11/09/07)
	22	Luna, Kelsey at Indiana State (11/14/07)
	17	Lloyd, D'Lesha at Clemson (11/20/07)
	17	Rudolphi, Laura at Indiana State (11/14/07)
	15	Wieben,Nicky vs Iowa State (11/25/07)
FIELD GOALS MADE.....	9	ROGERS, Diamond vs UAB (11/09/07)
	7	Lloyd, D'Lesha at Clemson (11/20/07)
	7	Rudolphi, Laura at Indiana State (11/14/07)
FIELD GOAL ATT.....	16	Lloyd, D'Lesha at Clemson (11/20/07)
	16	Rudolphi, Laura at Indiana State (11/14/07)
	16	ROGERS, Diamond vs UAB (11/09/07)
FG PCT (min 5 made).....	.625 (5-8)	Olsthoorn, Maria at Indiana State (11/14/07)
	.563 (9-16)	ROGERS, Diamond vs UAB (11/09/07)
3 PT FG MADE.....	5	Luna, Kelsey at Indiana State (11/14/07)
	5	ROGERS, Diamond vs UAB (11/09/07)
3 PT FG ATTEMPTS.....	12	Luna, Kelsey at Indiana State (11/14/07)
	9	ROGERS, Diamond vs UAB (11/09/07)
3-PT FG PCT (min 2 made).....	1.000 (3-3)	Stephens, Lee vs Furman (11/11/07)
	1.000 (2-2)	Wieben,Nicky vs Iowa State (11/25/07)
FREE THROWS MADE.....	5	Luna, Kelsey at Indiana State (11/14/07)
	4	Jasmine Thomas vs Duke (11/28/07)
	4	Ezell, Heather vs Iowa State (11/25/07)
	4	Phillips, Angela at Indiana State (11/14/07)
FREE THROW ATT.....	8	BUNCH, Kristin vs Belmont (11/23/07)
	6	INGRAM, Christon vs UAB (11/09/07)
FT PCT (min 3 made).....	1.000 (5-5)	Luna, Kelsey at Indiana State (11/14/07)
	1.000 (4-4)	Jasmine Thomas vs Duke (11/28/07)
	1.000 (4-4)	Ezell, Heather vs Iowa State (11/25/07)
	1.000 (4-4)	Phillips, Angela at Indiana State (11/14/07)
	1.000 (3-3)	Wieben,Nicky vs Iowa State (11/25/07)
REBOUNDS.....	11	Schilli, Kara at Indiana State (11/14/07)
	10	Chante Black vs Duke (11/28/07)
ASSISTS.....	5	Phillips, Angela at Indiana State (11/14/07)
	4	Thomas, Sthefany at Clemson (11/20/07)
	4	Luna, Kelsey at Indiana State (11/14/07)
STEALS.....	5	Luna, Kelsey at Indiana State (11/14/07)
	4	Thomas, Sthefany at Clemson (11/20/07)
	4	Lloyd, D'Lesha at Clemson (11/20/07)
BLOCKED SHOTS.....	2	Wieben,Nicky vs Iowa State (11/25/07)
	1	Keturah Jackson vs Duke (11/28/07)
	1	Chante Black vs Duke (11/28/07)
	1	Joy Cheek vs Duke (11/28/07)
	1	SWISHER, Rachel vs Belmont (11/23/07)
	1	HOLIDAY, LaWanna vs Belmont (11/23/07)
	1	Rudolphi, Laura at Indiana State (11/14/07)
	1	Olsthoorn, Maria at Indiana State (11/14/07)
	1	Johnson, Katie vs Furman (11/11/07)
	1	Troutman, Susan vs Furman (11/11/07)
	1	PETERSON, Amanda vs UAB (11/09/07)
TURNOVERS.....	8	Lacey, Alison vs Iowa State (11/25/07)
	7	BUNCH, Kristin vs Belmont (11/23/07)
FOULS.....	5	Anderson, Jocelyn vs Iowa State (11/25/07)
	5	Johnson, Katie vs Furman (11/11/07)

Vanderbilt's 2007-08 Statistics
 Vanderbilt Game-by-Game Points-Rebounds-Assists (as of Nov 29, 2007)
 All games

Opponent	Date	Score	02	03	05	11	15	20	22	23	25	32	33	34	43
UAB	11/09/07	92-51 W	8-5-3	4-2-1	6-4-1	4-1-0	5-4-0	6-3-1	2-2-5	13-3-3	6-1-0	13-9-0	3-1-1	12-4-3	10-5-0
at INS	11/11/07	68-51 W	6-7-2	0-0-0	6-0-2	0-0-0	5-0-0	10-3-1	5-4-4	9-0-4	0-1-0	7-1-1	1-1-0	17-6-3	2-3-0
at CU	11/14/07	72-77 OL	12-13-5	DNP	3-1-1	DNP	DNP	4-1-2	6-4-4	3-3-0	2-3-0	19-7-1	DNP	22-10-3	1-0-0
BEL	11/20/07	74-56 W	10-6-2	0-0-0	7-8-1	0-0-0	2-0-0	10-2-1	8-2-1	0-0-3	0-0-0	22-13-3	0-0-0	13-5-5	2-0-0
ISU	11/23/07	104-43 W	10-1-1	6-8-1	12-4-5	3-2-0	6-2-0	6-0-0	2-1-6	4-1-5	4-4-0	24-5-3	4-3-0	19-4-2	4-1-0
DUKE	11/25/07	62-53 W	8-7-1	DNP	14-2-0	DNP	DNP	0-3-1	0-0-0	11-1-1	10-2-1	9-5-1	DNP	10-5-6	0-1-0
	11/28/07	68-55 W	8-4-3	DNP	9-2-1	DNP	0-0-0	16-6-1	1-3-2	9-3-2	4-3-0	6-0-1	DNP	15-4-3	0-0-0

Vanderbilt's 2007-08 Statistics
 Vanderbilt Team Game-by-Game (as of Nov 29, 2007)
 All games

TEAM STATISTICS

Opponent	Date	Score	W/L	---TOTAL---		--3-PTRS--		----REBOUNDS----											Pts---Avg		
				FG-FGA	Pct	3FG-FGA	Pct	FT-FTA	Pct	Off	Def	Tot	Avg	PF	A	TO	Blk	Stl			
UAB	11/09/07	92-51	W	36-71	.507	10-21	.476	10-17	.588	9	38	47	47.0	18	18	15	3	12	92	92.0	
FURMAN	11/11/07	68-51	W	25-48	.521	8-20	.400	10-18	.556	11	17	28	37.5	16	17	15	6	10	68	80.0	
at Indiana State	11/14/07	72-77	Lot	32-58	.552	5-14	.357	3-14	.214	9	34	43	39.3	21	16	20	3	9	72	77.3	
at Clemson	11/20/07	74-56	W	27-48	.563	5-19	.263	15-24	.625	10	26	36	38.5	18	16	27	2	9	74	76.5	
BELMONT	11/23/07	104-43	W	34-62	.548	7-12	.583	29-35	.829	13	29	42	39.2	17	23	10	1	12	104	82.0	
IOWA STATE	11/25/07	62-53	W	24-53	.453	6-18	.333	8-12	.667	12	18	30	37.7	15	11	13	3	8	62	78.7	
DUKE	11/28/07	68-55	W	19-49	.388	8-16	.500	22-30	.733	6	23	29	36.4	15	13	14	3	12	68	77.1	
Vanderbilt				540	197-389	.506	49-120	.408	97-150	.647	70	185	255	36.4	120	114	114	21	72	540	77.1
Opponents				386	136-393	.346	42-130	.323	72-107	.673	92	148	240	34.3	133	69	155	12	43	386	55.1

Games played: 7
 Points/game: 77.1
 FG Pct: 50.6
 3FG Pct: 40.8
 FT Pct: 64.7

Rebounds/game: 36.4
 Assists/game: 16.3
 Turnovers/game: 16.3
 Assist/turnover ratio: 1.0
 Steals/game: 10.3
 Blocks/game: 3.0

2007-08 Radio & TV Chart



2
Jennifer Risper
 5-9, Jr., G
 Moreno Valley, Calif.



3
Chanel Chisholm
 5-11, Fr., G
 Long Island, N.Y.



5
Lauren Lueders
 5-8, So., G
 Jackson, Mo.



11
Ashlee Bridge
 5-11, So., G/F
 Cincinnati, Ohio



15
Hannah Tuomi
 6-0, Fr., F
 Thornton, Colo.



20
Jessica Mooney
 5-8, So., G
 Nashville, Tenn.



22
Jence Rhoads
 5-10, Fr., G
 Slippery Rock, Pa.



23
Merideth Marsh
 5-9, So., G
 Louisville, Ky.



25
Amber Norton
 6-1, So., F
 Louisville, Ky.



Caroline Williams
 Graduate Assistant
 First Season



32
Liz Sherwood
 6-4, Sr., C
 Castle Rock, Colo.



33
Rebecca Silinski
 6-3, Fr., F/C
 Birmingham, Ala.



34
Christina Wirth
 6-1, Jr., G/F
 Mesa, Ariz.



43
Amy Malo
 6-3, R-So., F
 Fairmont, Minn.



Clare Drosch
 Video Coordinator
 First Season



Melanie Balcomb
 Head Coach
 Sixth Season



Vicky Picott
 Assistant Coach
 Sixth Season



Lisa Cermignano
 Assistant Coach
 Second Season



Kim Rosamond
 Assistant Coach
 First Season



Justin Van Orman
 Director of Operations
 Fourth Season