



TULANE GREEN WAVE BASKETBALL

Contact: Roger Dunaway (cell 504.452.2906/Office 504.862.8240), Asst. AD-Athletic Comm.
James W. Wilson Center, Ben Weiner Drive • New Orleans, La. 70118
roger@tulane.edu

2007-08 TULANE QUICK FACTS

GENERAL INFORMATION

Location: New Orleans, La.
Founded: 1834
Enrollment: 10,606
President: Dr. Scott Cowen
Athletic Director: Rick Dickson
Faculty Athletics Representative: Michael Hogg
Nickname: Green Wave
Colors: Olive Green and Sky Blue
Arena: Fogelman Arena (3,600)
Conference: Conference USA
Website: www.TulaneGreenWave.com

COACHING STAFF

Head Coach: Dave Dickerson (Maryland, 1990), 3rd year
Career Record/Years: 29-30/2 years
Record at Tulane: Same
Assistant Coaches:
Dick Bender (Western Maryland, 1986), 1st year
Chris Hawkins (Radford, 1993), 1st year
Andrew Novick (Chicago, 1999), 2nd year
Graduate Assistant: Brent Hartman (Maryland, 2006), 2nd year
Athletic Trainer: Andy Massey
Equipment Manager: Tommy Meyers
Best Time To Reach Coach: Contact SID
Basketball Office Phone: 504.314.7660

HISTORY

First Year of Basketball: 1905-06
All-Time Record: 1067-1073 (.498), 97 seasons
Years in NCAA Tournament: 3/1992, 1993, 1995
Years in NIT: 6/1982, 1983, 1994, 1996, 1997, 2000
Last Postseason Opponent: North Carolina State
Result: Lost, 64-60, NIT first round, 2000

TEAM INFORMATION

2006-07 Record: 17-13 (11-5 home, 5-7 away, 1-1 neutral)
Conference Record/Finish: 9-7/T-4th
Letterwinners Returning/Lost: 7/3
Starters Returning/Lost: 4/1
Redshirts: 2
Newcomers: 4

ATHLETIC COMMUNICATIONS

**Asst. Athletic Director
for Athletic Communications:** Roger Dunaway
Office Phone: 504.862.8240
Home/Cell Phone: 504.452.2906
Office Fax: 504.865.5379
Email: roger@tulane.edu
Press Row Phone: 504.862.8122
Mailing Address:
James W. Wilson Jr. Center
Ben Weiner Drive
New Orleans, LA 70118

Returns

No.	Player	Pos.	Ht.	Wt.	Yr.	Hometown/Last School	PPG	RPG	APG
21	David Gomez	F/C	6-7	240	Sr.	Baton Rouge, La./Episcopal	13.5	5.8	1.4 bpg
1	Kevin Sims	G	5-10	160	So.	Jackson, Miss./Forest Hills	10.0	2.0	3.4
44	Daniel Puckett	F	6-7	200	Jr.	McEwan, Tenn./McEwan	7.1	4.1	1.3
5	Donnavan Stiith	F	6-6	215	Sr.	Virginia Beach, Va./Salem	6.6	5.3	1.8 bpg
25	Matt Wheaton	G/F	6-5	215	Sr.	Katy, Texas/Mayde Creek	4.5	3.7	1.1
45	Robinson Louisme	F/C	6-7	260	Jr.	Fort Myers, Fla./Fort Myers	6.4	3.3	1.2 bpg
4	Asim McQueen	F	6-7	220	So.	Auburn, Ala./Auburn	2.2	1.7	0.2
23	Johnny Mayhane	F	6-5	185	Fr-RS	Mobile, Ala./Mobile			Redshirt
24	Eric Vianney	G	6-2	205	So-Tr.	Yaounde, Cameroon/Illinois State			Redshirt

Newcomers

No.	Player	Pos.	Ht.	Wt.	Yr.	Hometown/Last School
0	Kris Richard	G	6-5	165	Fr-HS	Beaumont, Texas/Ozen HS
2	David Booker	F	6-7	235	So-Tr.	Moss Point, Miss/Moss Point HS/Charlotte
13	Jon Andersen	F	6-9	219	Fr-HS	Metairie, La./Country Day HS
14	Jake Henderson	G	6-1	170	Fr-HS	Baton Rouge, La./Parkview Baptist HS

Losses (Pos., Ht., Wt., Stats)

Andrew Garcia, G, 6-2, 180, 5.7 ppg, 3.7 rpg, 3.4 apg
Kory Castine, F/C, 6-8, 265, 4.2 ppg, 3.2 rpg
Chris Moore, G, 6-5, 185, 10.3 ppg, 3.4 rpg, 2.3 apg

2007-08 GREEN WAVE ROSTER

Numerical

No.	Name	Pos.	Ht.	Wt.	Cl.-Exp.	Hometown/Previous School/High School
0	Kris Richard	G	6-5	165	Fr. HS	Beaumont, Texas/Ozen HS
1	Kevin Sims	G	5-10	160	So. 1L	Jackson, Miss./Forest Hills HS
2	David Booker	F	6-7	235	So. Tr.	Moss Point, Miss/Moss Point HS/Charlotte
4	Asim McQueen	F	6-7	220	So. 1L	Auburn, Ala./Auburn HS
5	Donnavan Stith	F	6-6	215	Sr. 3L	Virginia Beach, Va./Salem HS
13	Jon Andersen	F	6-9	219	Fr. HS	Metairie, La./Country Day HS
14	Jake Henderson	G	6-1	170	Fr. HS	Baton Rouge, La./Parkview Baptist HS
21	David Gomez	F	6-8	235	Sr. 3L	Baton Rouge, La./Episcopal HS
23	Johnny Mayhane	G/F	6-5	185	Fr. RS	Mobile, Ala./LeFlore HS
24	Eric Vianney	G	6-2	205	So.TR	Yaounde, Cameroon/Picayune (MS) HS/III. St.
25	Matt Wheaton	G	6-5	190	Sr. 3L	Katy, Texas/Mayde Creek HS
44	Daniel Puckett	F	6-7	190	Jr. 2L	McEwen, Tenn./McEwan HS
45	Robinson Louisme	F/C	6-7	265	Jr. 2L	Fort Myers, Fla./Fort Myers HS

Alphabetical

No.	Name	Pos.	Ht.	Wt.	Cl.-Exp.	Hometown/High School/Previous School
13	Jon Andersen	F	6-9	219	Fr. HS	Metairie, La./Country Day
2	David Booker	F	6-7	235	So. Tr.	Moss Point, Miss/Moss Point HS/Charlotte
21	David Gomez	F	6-8	235	Sr. 3L	Baton Rouge, La./Episcopal HS
14	Jake Henderson	G	6-1	170	Fr. HS	Baton Rouge, La./Parkview Baptist HS
45	Robinson Louisme	F/C	6-7	265	Jr. 2L	Fort Myers, Fla./Fort Myers HS
23	Johnny Mayhane	G/F	6-5	185	Fr. RS	Mobile, Ala./LeFlore HS
4	Asim McQueen	F	6-7	220	So. 1L	Auburn, Ala./Auburn HS
44	Daniel Puckett	F	6-7	190	Jr. 2L	McEwen, Tenn./McEwan HS
0	Kris Richard	G	6-5	165	Fr. HS	Beaumont, Texas/Ozen HS
1	Kevin Sims	G	5-10	160	So. 1L	Jackson, Miss./Forest Hills HS
5	Donnavan Stith	F	6-6	215	Sr. 3L	Virginia Beach, Va./Salem HS
24	Eric Vianney	G	6-2	205	So.TR	Yaounde, Cameroon/Picayune (MS) HS/III. St.
25	Matt Wheaton	G	6-5	190	Sr. 3L	Katy, Texas/Mayde Creek HS

Head Coach: Dave Dickerson (Maryland, 1990), 3rd season

Assistant Coaches: Dick Bender (Western Maryland, 1986), 1st season

Chris Hawkins (Radford, 1993), 1st season

Andrew Novick (Chicago, 1999), 3rd season

Graduate Assistant: Brent Hartman (Maryland, 2006), 2nd season

Athletic Trainer: Andy Massey

Equipment Manager: Tommy Meyers

2007-08 TULANE SCHEDULE

<u>Date</u>	<u>Day</u>	<u>Opponent</u>	<u>Site</u>	<u>Time</u>
November				
1	Thurs.	Loyola (La.) (Exh.)	Fogelman Arena	7:30 p.m.
9	Fri.	Auburn	Fogelman Arena	8 p.m.
12	Mon.	at Charleston Southern	Charleston, S.C.	6:30 p.m.
16	Fri.	Nicholls State	Fogelman Arena	7 p.m.
24	Sat.	New Orleans	Fogelman Arena	2 p.m.
29	Thurs.	at Buffalo	Buffalo, N.Y.	6 p.m.
December				
1	Sat.	at Syracuse	Syracuse, N.Y.	6 p.m.
5	Wed.	Huston-Tillotson	Fogelman Arena	7 p.m.
8	Sat.	Gardner-Webb	Fogelman Arena	2 p.m.
17	Mon.	Indiana State	Fogelman Arena	7 p.m.
20	Thurs.	St. Mary's (Calif.)!	Honolulu, Hawaii	12 p.m.
21	Fri.	Georgia/East Tennessee State!	Honolulu, Hawaii	TBA
22	Sat.	Rainbow Classic Game	Honolulu, Hawaii	TBA
28	Fri.	Alabama State	Fogelman Arena	7 p.m.
January				
2	Wed.	LSU	New Orleans Arena	7 p.m.
9	Wed.	UAB*	Fogelman Arena	7 p.m.
12	Sat.	at Southern Miss*	Hattiesburg, Miss.	4 p.m.
16	Wed.	at Tulsa*	Tulsa, Okla.	7 p.m.
19	Sat.	Rice*	Fogelman Arena	2 p.m.
23	Wed.	SMU*	Fogelman Arena	7 p.m.
26	Sat.	at East Carolina*	Greenville, N.C.	6 p.m.
February				
2	Sat.	at Rice*	Houston, Texas	2 p.m.
6	Wed.	at UTEP*	El Paso, Texas	8 p.m.
9	Sat.	Houston*	Fogelman Arena	2 p.m.
16	Sat.	at Marshall*	Huntington, W. Va.	6 p.m.
20	Wed.	Memphis*	Fogelman Arena	7 p.m.
23	Sat.	Southern Miss*	Fogelman Arena	6 p.m.
27	Wed.	at UCF*	Orlando, Fla.	6 p.m.
March				
1	Sat.	at UAB*	Birmingham, Ala.	7 p.m.
5	Wed.	Marshall*	Fogelman Arena	7 p.m.
8	Sat.	East Carolina*	Fogelman Arena	6 p.m.
12-15	Wed.-Sat.	Conference USA Tournament	Memphis, Tenn.	TBA

All times CST and subject to change

Bold denotes home games

*Conference USA game

! Rainbow Classic

Tulane Basketball Looks to Carry Last Season's Late Success into 2007-08 Campaign

Green Wave Returns Seven Letterwinners, Four starters for Dickerson's Third Season

Over the past two seasons, the Tulane University men's basketball team has made a habit of proving people wrong and demonstrating to the members of Conference USA, and to the entire nation, that Green Wave is becoming a force to be reckoned with.

Last year, Tulane entered its second season under head coach **Dave Dickerson** and the Wave was once again picked to finish near the bottom of the C-USA race. However, much like the year before when the Wave surprised the league with a sixth-place finish, last year's Tulane team surpassed expectations and was one of the hottest in the conference, winning eight of its final 10 games en route to the Conference USA Tournament semifinals. It took the fifth-ranked Memphis Tigers to derail Tulane's late season surge with a win over the Wave in the semifinals.

Dickerson begins his third campaign at the helm of the Green Wave and has Tulane primed for what could be one of the best seasons in recent years, and what he hopes will be a banner season with a return to postseason play.

"We are very excited about the upcoming season," Dickerson said. "We have a solid group of returning players with an abundance of playing experience. Our goal is to try and recapture the momentum we found late last season and carry it over to the 2007-08 campaign. I thought we were one of the best teams in Conference USA down the stretch and were easily one of the hardest teams to beat in the league."

Tulane returns seven letterwinners, including four starters, from last year's 17-13 squad that posted the most victories since the 1999-2000 season. The Wave's 9-7 league mark was good for a fourth place finish conference play and marked the program's most conference wins since 1996-97. The finish also earned the Green Wave a first round bye in the conference tournament for the first time since 2000.

What has Dickerson chomping at the bit to get started this season is not only the fact he returns 72 percent of his scoring offense and 68 percent of his rebounding corps, but the fact the Wave will feature two talented redshirt players, who were forced to sit out last season, and a four-member newcomer class to go with his solid group of returners.

Leading the way this season will be the four returning starters of seniors **David Gomez** and **Matt Wheaton**, junior **Robinson Lousime** and sophomore **Kevin Sims**. Gomez was an All C-USA Third Team performer, while Sims was selected to the all-conference freshman team. After winning just 10 games as freshman in 2004-05, this year's senior class has helped rebuild the Green Wave with a combined record of 29 victories over the last two seasons.

Dickerson believes this will be the year the Green Wave and Conference USA will each have breakout seasons and prove to the nation the league is one of the most challenging in the nation.

"Conference USA will be one of the toughest in leagues in the nation this year and we want to take advantage of the conference being at its best in the last three years. I believe Conference USA will have multiple schools in postseason play this season and we are trying to be one of those teams," Dickerson said.

FRONTCOURT

The strength of this year's Green Wave squad lies in its frontcourt where TU returns two starters and two of its top returners. Last year, TU's inside game was responsible for a school record 182 blocks, which led all C-USA schools and ranked 10th in the country, and the paint proved to be a no trespassing zone as Tulane outscored its opponents, 902-717.

Gomez (6-8, 235) returns as the team's top scorer (13.5) and rebounder (5.8), and also led the team in field goals (148), free throws (106) and ranked second with 42 blocked shots. He started 27 of 30

games and reached the 30-point plateau twice with a career-best 32-point, 10-rebound performance at cross-town rival New Orleans and a 31-point afternoon at TCU. Gomez reached double-figure scoring in 22 games and in rebounds five times, and notched three double-doubles. He begins his senior campaign just 73 points shy of becoming the 29th player in school history to score 1,000 career points.

"I believe David Gomez is one of the best inside players in Conference USA and we will depend on him for his scoring, rebounding and leadership. We need him to take his game to the next level and become one of the top five players in our league," Dickerson said.

Senior **Donnavan Stith** (6-6, 215) elevated his game on both ends of the floor during his junior campaign. Stith played in 29 games and earned four starting assignments. He led the squad with 52 blocked shots, which ranked No. 5 among C-USA players, and ranked second on the team in rebounds (5.3). Stith averaged 6.6 points and 21.7 minutes per outing and shot better than 50 percent (.512) from the field. He chalked up two double-doubles and reached double figure scoring in eight games. Stith begins his senior season ranked fifth among the school's career blocked shots leaders with 103 rejections.

"Donnie is poised to have the best year of his Tulane career this season. He is smart enough to play three different spots on the floor, and will play a much bigger role on this year's team. He is a classic inside/outside player and one of the best shot-blockers in the country," Dickerson said.

One of Tulane's most productive players (in terms of production per minutes played) last season was **Louisme** (6-7, 265), who started 18 of 30 games and connected on a team-best 52.6 percent from the field. He averaged 6.4 points and 3.3 rebounds per game and reached double figures in seven games, including a career-best 19 points, eight field goals and 11 rebounds at Rice.

"Last year was Robbie's first season of playing major college minutes, and he was one of our most productive players when he was on the floor. The challenge will be to keep him out of foul trouble and on the floor for longer stints. He had the best offseason of all our players," Dickerson said.

Sophomore **Asim McQueen** (6-7, 220) played in all 30 games last season as a true freshman and averaged 9.9 minutes, 2.2 points and 1.7 rebounds per contest. He reached the scoring column in 22 games, including a career-best seven points against Huston-Tillotson and on the road at No. 8 Memphis.

"Asim played limited minutes last season, but may be the most skilled inside player on the team. He has gained confidence in his ability to become a good player and he will have every opportunity to prove he is as good as I think he will be," Dickerson said.

The lone newcomer to the frontcourt will be **Jon Andersen** (pronounced Yoon) (6-9, 219), a local product from nearby Metairie, La. Andersen, a two-time all-district performer, was named to the all-East Jefferson Parish team as a sophomore and he led Country Day High School to a 75-32 overall record including a pair of state runner-up finishes as a sophomore and senior. During his senior campaign, he helped the Cajuns to a 29-12 overall record, including a perfect 8-0 league mark.

"Jon had a great summer and preseason. He has the best shooting touch of all our post players, which is something I believe you cannot teach, but he needs to learn to play with his back to the basket and rebound," Dickerson said.

"We outscored our opponents in the paint 80 percent of the time last year and that was a major reason we won 17 games and finished fourth in Conference USA. In order for us to find that same success again this season, we will need to dominate the paint on both ends of the floor," Dickerson said.

BACKCOURT

Tulane's backcourt has question marks and large holes to fill with the departure of seniors Chris Moore and Andrew Garcia to graduation. Moore was the team's second-leading scorer (10.3) and top outside shooting threat with 50 three-pointers, while Garcia ranked second on the team for assists with 100 and steals with 31. The group returns two starters and one letterwinner who played significant minutes a year ago.

Returning to his familiar role as the point guard for the Green Wave will be Sims (5-10, 160), who was one of the top freshman in Conference USA last season. He started 26 of 30 games and led the team in assists (102), steals (34) and free throw percentage (.815), and finished third on the team in scoring with 10 points per game and was second for three-pointers with 36. Sims averaged 28.2 minutes per game, reached the 20-point plateau twice and chalked up 16 double figure scoring games. His best game of the year came in his home state against Southern Miss where he registered a career-high 23 points and led the Wave to a win over the Golden Eagles.

"Kevin solidified his role as our point guard with his play last season. As a sophomore, we will depend on him to run the team, be our floor leader and score. We are looking for him to have a big year," Dickerson said.

A player who has evolved into a silent killer for Tulane is Wheaton (6-5, 190), who may not have gaudy stats, but has proved to be a difference maker with his gritty play. Last season, he started 21 of 30 games and averaged 4.5 points, 3.7 rebounds and 20.3 minutes per game, and connected on 44.4 percent of his three-point field goal attempts (16-36). However, his biggest contributions of the year came on two different occasions when he accounted for game-winning shots. His three-pointer with 10.7 seconds remaining at UAB wrapped up a fourth-place finish and a first-round bye in the Conference USA Tournament. His first of the year was at home against Arkansas-Pine Bluff when he rebounded a missed shot and banked in a jumper with one second remaining.

"The one player I am most excited about is Matt Wheaton. He is another player who had a great offseason. Matt stayed on campus and worked with our strength and conditioning coaches on improving his stamina and put in the most gym time where he refined his mid-range and three-point jump shot. He has a lot of confidence and we are counting on him and Sims for perimeter scoring this season," Dickerson said.

Junior **Daniel Puckett** (6-7, 190) proved to be one of the Green Wave's most consistent players last season. He started in 13 of 30 games and reached the scoring column in 29 of 30 contests. Puckett registered seven double figure games, including a career-best 17 points on the road at Marshall. He finished fourth on the team in scoring with 7.1 points per game and contributed 4.1 rebounds per contest in 20.4 minutes per outing.

"Daniel had the toughest offseason of any of our players with two surgeries, which limited his time on the court this summer and pre-season. I believe he has the most potential of any player in our program. He is one of our better defenders on the perimeter and will have every opportunity to be a good player for us this season," Dickerson said.

Along with its three returners, Tulane's backcourt will feature four newcomers this season, including sophomore-transfer **Eric Vianney** (6-2, 205), freshman red-shirt **Johnny Mayhane** (6-5, 185) and a pair of true freshmen in **Kris Richard** (6-5, 165) and **Jake Henderson** (6-1, 170).

Vianney played the 2005-06 campaign at Illinois State before transferring to Tulane and sitting out last season due to NCAA transfer rules. As a prepster senior at Picayune (Miss.) High School, he led his team to a 31-4 record and the Class 5A South State Championship, while averaging 13 points, four rebounds and eight assists per game.

Mayhane was a highly recruited player out of Alabama during his senior season of high school and signed with the Green Wave. However, a leg injury forced him to shelve his freshman campaign and he received a medical hardship. Mayhane averaged 19 points and eight rebounds per

game as a senior and led Mobile's (Ala.) LeFlore High School to a 28-6 record and to the regional semifinals.

One of the most highly touted players in this year's recruiting class who could come in and earn playing minutes right away is Richard. A native of Beaumont, Texas, Richard completed his career as a four-year letterwinner at Ozen High School and was named to the all-state and all-region team after averaging 24 points per game as a senior. He led his high school to a combined record of 127-7 and a ranking of No. 3 in the state of Texas prior to his senior campaign.

Henderson, who hails from Baton Rouge and attended Parkview Baptist High School, averaged 14.6 points, 5.6 assists and 4.8 rebounds per game. He connected on 47.6 percent of its attempts from behind the three-point line and shot 84 percent from the free-throw line during his senior season. He led PBHS to a combined record of 53-14 and a 25-3 mark in district play during his final two seasons.

"I believe with Kevin, Matt and Daniel we have one of the best backcourts Tulane has had over the last three years. Eric and Johnny will look to secure a role at shooting guard, while Kris is capable of playing multiple spots for us and has a chance to earn minutes right away in our guard rotation. He is the fastest player on the team and a capable scorer. Jake was a proven three-point shooter throughout his prep career and will need to make perimeter shots to stretch the defense and also play point guard for us," Dickerson said.

WHAT TO EXPECT

Tulane should once again be a formidable force on the inside with its experienced frontcourt, but will need its backcourt to step up and fill the void on the perimeter and in the scoring column left by Moore's departure. However, Tulane appears to have several solid candidates who will look to emerge as not only long-range shooters, but are pure scorers as well.

On the inside, the Wave boasts just two players standing at 6-8 or higher including Gomez and Andersen, but Tulane should once again be a physical team with a stingy defense inside the paint.

The last two seasons, Tulane has exceeded preseason predictions by Conference USA coaches and fans around the league with strong finishes. Last year, the Wave advanced just one game short of the C-USA Tournament title game. Dickerson has now positioned his Tulane team on both ends of the floor and looks to have the best chance of his three seasons to make a run toward a conference title and postseason bid.

"This season marks the first time since I have been here that there is a sense of normalcy in the program and the distractions have been minimal. I believe we can finally concentrate on being a great team and make Tulane fans excited about the Green Wave basketball program once again," Dickerson said.

The Green Wave's 2007-08 schedule features four 2007 postseason teams, 16 home games, including marquee matchups against preseason top-ranked Memphis and Southeastern Conference members Auburn and LSU, and trips to Hawaii and New York.

Tulane will face one NCAA Tournament (Memphis) and three postseason National Invitation Tournament (NIT) squads (Georgia, East Tennessee State, and Syracuse). Memphis advanced to the NCAA Tournament "Elite Eight" a year ago and is expected to be the top-ranked team in many preseason polls. The Green Wave will face either Georgia or East Tennessee State in the second round of the 2007 Rainbow Classic this December.

"Our schedule accomplishes our original goal two years ago when I took over which was to play a national schedule in hopes of improving our program from year-to-year," Dickerson said. "We are very excited about this year's schedule. Most importantly, with this schedule we will need support from our student body and fans to have success this season because it is very challenging."



Dave *Dickerson*

**Head Coach
Maryland, 1990
Third Year**

The mastermind behind the resurgence of the Tulane men's basketball program, Dave Dickerson begins his third season as the head coach on the Uptown campus. Dickerson has an overall record of 29-30 and a Conference USA mark of 15-15.

Dickerson has taken the Green Wave basketball from a program that enjoyed just one winning season over the previous five years prior to his arrival and overhauled the squad into a conference contender by his second season.

During his second season, Tulane was once again picked to finish close to the bottom of the Conference USA race, but Dickerson and the Green Wave proved the league wrong with a 17-13 overall record and TU recorded its best conference finish in nine years with a 9-7 league mark, which was good enough for fourth place. Dickerson led the Green Wave to its most wins in seven seasons and the program's first winning season in four years.

Tulane was tough to beat at Fogelman Arena with a 11-4 mark and concluded the year riding a four-game win streak.

Dickerson's 29 wins in his first two seasons puts him in third place for the most wins by a Tulane coach in the first two seasons.

When Dickerson became the 22nd head men's basketball coach on April 1, 2005, his first goal was to focus on turning a group of individuals into more than a team; his goal is to make Tulane Basketball into a family. After all, a strong, tight-knit family has been the key to his own success.

"I believe in family and I believe in our team trying to be a family," Dickerson said. "In order to have a successful basketball program, we all must work together - players, coaches and support staff. We must believe in each other and support each other like a family to reach the levels I plan to reach."

During his first season at the helm of the Green Wave basketball program, Dickerson was faced with perhaps a challenge no other first-year basketball coach in NCAA history has ever had to overcome. On August 29, 2005, Hurricane Katrina made landfall south of New Orleans and the effects of the storm were devastating as levees broke and flooded a majority of the city.

The Green Wave settled in College Station, Texas, home of Texas A&M University, and Dickerson, along with his players and staff, began their first campaign together.

Despite the challenges, Dickerson led Tulane to a 12-17 overall record and a 6-8 Conference USA mark, which tied the Wave for sixth place. The Green Wave continued to jell late in the season, winning seven of its final 12 games, including a 64-58 first round victory over Marshall in the Conference USA Tournament. TU dropped a hard-fought decision to eventual champion and NCAA "Elite Eight" team, Memphis, on its home floor in the C-USA Tourney quarterfinals.

With just one season under his belt, Dickerson went through and was faced with much more than any basketball coach in the nation may ever endure.

Dickerson came to Tulane from alma mater of Maryland, where he spent nine years as an assistant under Gary Williams. In 2004-05, he was the program's associate head coach. He helped the Terrapins to nine straight postseason appearances, five Sweet Sixteens, two Final Fours and one National Championship in 2002.

Accolades for Dickerson have included his recognition as an AFLAC Assistant Coach of the Year in 2003, the ACC's No. 1 Assistant Coach as named by Basketball News (2003-04), Athlon Sports' No. 4 Assistant Coach in the nation (2003-04), and an "Assistant Coach on the Rise" as tabbed by ESPN's Andy Katz.

After six straight winning seasons as an assistant coach at three schools, Dickerson was tabbed by Gary Williams to return to his alma mater as an assistant. Williams had built a foundation for success with the Terrapins in his first seven years as the head coach, but with Dickerson at his side, Maryland enjoyed an unprecedented run. In their nine years together, the Terrapins made nine postseason appearances, posted eight 20-win seasons, advanced to two Final Fours and won the first National Championship in program history in 2002.

"Winning the national championship at Maryland was a dream come true," Dickerson said. "It validated the reason I went to Maryland as a student-athlete. I thought we were the type of school that could get into a position to win a national championship. One of my goals after winning the championship as an assistant coach was to try and be a head coach and chase that dream again."

With his impressive run as an assistant coach, his strong family background and his reputation as one of the hardest-working coaches in the business, Dickerson was an easy choice for Tulane Athletic Director Rick Dickson as the man to take charge of the Green Wave basketball program.

Soon, Dickerson recognized that Tulane matched his personality and requirements as well.

"The first thing that attracted me to Tulane was the opportunity to be a head coach at one of the best schools in the country with a national reputation for its academics and the potential to be a nationally-recognized basketball program," Dickerson said. "As I did more research, I could see that it was also an opportunity to come into a program and make a difference by winning basketball games, which has always been the type of situation I saw myself going into."

Once again, family played a major part in Dickerson's decision. While he was excited with the opportunity presented by Tulane, he needed assurance that his wife Laurette and five-year old son, Dave III, would be comfortable with a move to the Big Easy.

"It is very important for my wife and son to be comfortable with anything I do," Dickerson said. "My family will always come first for me and they are a major part of my career. They needed to feel comfortable with the city of New Orleans and Tulane University; and they did."

Upon settling into New Orleans and Tulane, Dickerson quickly embraced his new family - the Tulane basketball players. As a collegiate player, he had experienced a coaching change and knew the stress and confusion it could cause. He set up individual meetings with all of the returning players and his first road trips were to the homes of the two players who had signed letters of intent to play for the Green Wave.

From there, Dickerson's goal was to change the atmosphere and attitude surrounding the program.

Dickerson, facing what was likely to be among the most trying first years for a head coach in history, responded with strength and determination, drawing on his own experiences as a player at Maryland to guide the Green Wave players through the challenges. Following Dickerson's freshman year at Maryland, that program experienced a tragedy when All-American Len Bias suffered a drug-related death shortly after being selected No. 2 in the 1986 NBA Draft. Dickerson, who had served as Bias' backup, saw the Maryland program thrown into disarray.

"I learned so much from everything that happened to our program when I was a player at Maryland," Dickerson said. "You can approach adversity in two ways, you can shrink from it and hide, or you can meet it head-on and learn from it. As much as I wish that none of that happened, I learned from it, I grew up much quicker than I would have otherwise. Seeing how things were handled at the time, both positively and negatively, made me realize that I wanted to be a basketball coach."

Dickerson's long-term goals for his men's basketball program are consistent with the same values Tulane holds as a university.

"My long-range goal for the program is for us to be as good as the school," Dickerson said. "If we are a top 30 school in the country, then my goal is for us to be a top 30 basketball program. If we can be at that level, then we will be competing for postseason play every year. My top priority is to make sure that our players have a great experience, both on and off the court, in and out of the classroom, and that they are better people from being at Tulane. I want the Tulane experience to be one of the best experiences of their lives."

As his team comes together as a family, Dickerson is clearly the mentor and role model for his "kids." Winning basketball games is a goal for every coach, but Dickerson also focuses on developing his players into responsible young men with the tools necessary to succeed in life, whether on or off the basketball court.

"The guys that come through a college basketball program are not all going to be professional basketball players," Dickerson said. "Our guys can look at me and see that going to college and getting a degree can do something for you. You don't have to be a pro basketball player; you don't have to be a great basketball player in college to be successful. I hope I can rub off on them. I am a true student-athlete. I used basketball to get a scholarship and I used basketball to be successful in life. That is what 90 percent of our basketball players at Tulane have to do, use basketball to earn a Tulane education which will allow them to be successful in life."

Dickerson wants each and every Tulane basketball player to know that they will always have the support of their Green Wave family to help them achieve success, just as Dickerson has relied upon his original family of his parents and sisters, his number one family of his wife and son, and his basketball families at Maryland and now Tulane.

Growing up in the small town of Olar, S.C., Dickerson did not have to look far for positive role models. When his mother passed when he was eight years old, his father and his older sisters provided the drive for his success.

"I have six older sisters and they are all very, very successful in different ways, so I had instant role models because they were the people I wanted to be like and they demanded that I be successful," Dickerson said. "There was pressure from them just to go to college, not to play basketball, but just to go to college."

"My father was also a role model for me. He worked every day for 35 years, never complained and the most he ever made was \$15,000. I never knew I was poor, because we had stability and discipline within the family, and everyone in my family knew they had to do something with their lives."

With that support, Dickerson grew into a standout high school basketball player before making his first big move - to the University of Maryland, where he was a standout basketball player. In 1988-89, he was selected a team captain for the Terrapins, a tribute to his leadership skills. From there, coaching was the obvious next step.

"I knew in the back of my mind that playing basketball was not going to be a career for me, so I started looking at different things," Dickerson said. "I was the type of student-athlete that always wanted to give back; I was always a leader. Even though I had a tough career at Maryland with a lot adversity, my coaches were always the people that kept me going in the right direction. I wanted to be like them. So coaching was my destiny."

A native of Olar, S.C., Dickerson is married to the former Laurette Newsom, a 1991 graduate of Maryland. The couple has one child, Dave III (5).

THE DAVE DICKERSON FILE

Dickerson's Year-By-Year Record as a Head Coach

Year	School	Record	Team Accomplishments
2005-06	Tulane	12-17	C-USA Tourn. Quarterfinals
2006-07	Tulane	17-13	C-USA Tourn. Semifinals

Dickerson's Year-By-Year Record as an Assistant Coach

Year	School	Record	Team Accomplishments
2004-05	Maryland	19-13	NIT Semifinals
2003-04	Maryland	20-12	NCAA Phoenix Region Second Round - ACC Tournament Champ.
2002-03	Maryland	21-10	NCAA South Region Semifinals
2001-02	Maryland	32-4	NCAA Champions - ACC Regular Season Champions
2000-01	Maryland	25-11	NCAA Final Four, West Region Champions
1999-00	Maryland	25-10	NCAA Midwest Region Second Rd
1998-99	Maryland	28-6	NCAA South Region Semifinals
1997-98	Maryland	21-11	NCAA West Region Semifinals
1996-97	Maryland	21-11	NCAA Southeast Region First Rd
1995-96	Radford	14-13	Big South Tournament
1994-95	Radford	16-12	Big South Tournament, Semifinals
1993-94	Radford	20-8	Big South Tournament, Semifinals
1992-93	Radford	16-15	Big South Tournament, Semifinals
1991-92	James Madison	21-11	Colonial Athletic Association Finals - NIT 1st Round
1990-91	Gardner Webb	15-14	South Atlantic Conference Tournament Finals

Coaching Experience

2005-	<i>Tulane University, Head Coach</i>
2004-2005	University of Maryland, Associate Head Coach
1996-2004	University of Maryland, Assistant Coach
1992-96	Radford University, Assistant Coach
1991-92	James Madison University, Assistant Coach
1990-91	Gardner Webb College, Assistant Coach

Playing Experience

1985-89, University of Maryland

Playing Honors

Maryland team captain, 1989
 Career Contribution Award, 1989
 Most Improved Player Award, 1987

Personal

Education: University of Maryland, 1990,
 B.A. in government and politics

Date of Birth: March 29, 1967

Family: Wife Laurette, son Dave III (5)



Dick *Bender*

**Assistant Coach
Western Maryland, 1986
First Year**

Dick Bender begins his first season as an assistant coach for the Green Wave in 2007-08.

Although he begins his first season at Tulane in 2007-08, Bender is no stranger to TU head coach Dave Dickerson, as both coaches served on the men's basketball staff at Radford University for four seasons (1992-96). He will assist in every aspect of the men's program at Tulane.

Bender came to Tulane from Indiana State University where he completed his 10th overall season on the Sycamores' staff in 2006-07, and his fifth campaign as an associated head coach after being elevated to the position following the 2001 campaign.

Bender, who also served as former ISU head coach Royce Waltman's top assistant at DePauw University in Greencastle, Ind., was responsible for the Sycamores' daily basketball operations and he assisted in individual player development, scouting, game preparation, and academic support.

Bender was hired at Indiana State from Radford, where he spent six seasons as an assistant for Highlander head coach Ron Bradley. In those six seasons, Radford compiled not only the best non-conference record of any member of the Big South Conference, but also the top conference mark. Bender witnessed one of the biggest wins in school history, when Radford traveled to Baton Rouge, La., and upset LSU, 73-72, during the 1993-94 season. The Highlanders also posted excellent marks in the classroom, as the graduation rates of Highlander student-athletes ranked ninth in the nation at one point of Bender's tenure.

Prior to Radford, Bender spent those aforementioned seasons with Waltman at DePauw from 1987-92. Bender helped lead the Tigers to a four-year record of 80-30. They were twice ranked number-one in the country in Division III during that span and were national runners-up in the NCAA tournament in 1989-90.

A native of Grantsville, Md., Bender graduated from Western Maryland in 1986 and received his master's degree from DePauw in 1989. Bender played two seasons of basketball at Western Maryland and was the team MVP as a senior. His 91 percent free throw shooting ranked third nationally among Division III players in 1985-86.

Before arriving at DePauw, Bender spent one year teaching in Maryland while also serving as an assistant basketball coach at Charles County Community College. During his tenure, the team posted a 26-7 record and won the Maryland Junior College National Division Championship.

Dick and his wife, Beth, have two sons: Dalton and Dillon.



Chris *Hawkins*

**Assistant Coach
Radford, 1993
First Year**

Entering his first season as an assistant coach for the Green Wave in 2007-08 is Chris Hawkins.

Hawkins, 36, came to Tulane after spending seven seasons as an assistant coach at the University of Buffalo, where he was instrumental in the Bulls' recruiting efforts and also contributed to the scouting of opponents and coaching the perimeter players.

During his tenure at Buffalo, Hawkins helped the Bulls to 71 victories over the last four seasons, including a 23-10 record and postseason NIT appearance in 2004-05, and a 19-win season in 2005-06.

Hawkins came to UB from Radford University, where he served as an assistant coach for three seasons. While with the Highlanders, Hawkins helped lead the team to a 58-28 record over three seasons, including the 1997-98 Big South Championship and a trip to the NCAA Tournament. In 1999-2000, Radford was the Big South Conference regular season champions. Hawkins played for current TU assistant coach Dick Bender, who was an assistant coach at Radford.

As a player for the Highlanders from 1988-92, Hawkins was named the Most Valuable Player of the 1991-92 team that won the Big South regular season championship. During his last two seasons playing at Radford, the team finished with a 42-16 record. He still ranks fourth in the school's records for career assists.

Prior to his coaching stint at Radford, Hawkins coached for three seasons at Bladensburg High School in Bladensburg, Md. His first year was as an assistant coach, followed by two seasons as the head coach. During his tenure as head coach, he guided the team to a 27-15 record, including a 17-5 record during the 1996-97 season.

Hawkins received a bachelor's degree from Radford University in 1993, and a master's degree in education from National-Louis University.

Hawkins and with his wife, Jacquie, have one daughter: Chandler (10).



Andrew *Novick*

**Assistant Coach
Chicago, 1999
Third Year**

The longest tenured coach on Dave Dickerson's staff, Andrew Novick begins his third season as an assistant coach for Tulane basketball team.

In just two seasons, Novick has played an instrumental role in helping the Green Wave to 29 wins, back-to-back Conference USA Tournament opening round victories and three players have garnered all-conference honors.

Novick's second season saw the Wave post a 17-13 overall record, a 9-7 Conference USA mark, which was good enough for a fourth place finish, and TU advanced to the C-USA Tournament semifinals for the first time since 1999-2000. Tulane's league win total was the most in 10 years.

During his first season on the Green Wave staff, Novick helped Tulane to a 12-17 overall record, a sixth-place finish in Conference USA action and to the quarterfinals of the 2006 Conference USA Tournament with a first round victory over Marshall.

Novick was the final hire by head coach Dave Dickerson for the Tulane men's basketball coaching staff two years ago. Novick was reunited with Dickerson after serving as a graduate assistant with Dickerson at Maryland.

Novick was a graduate assistant on Gary Williams' staff at Maryland for the last two years. He joined the Terrapins for their 2003-04 ACC Championship campaign, making his return to basketball after three years in corporate America and a stint as the assistant varsity basketball coach at Cheverus High School in Portland, Maine.

A native of Portland, Maine, Novick became Maryland basketball's inaugural graduate assistant after being introduced to the program during the 2003 Gary Williams Basketball Camp. In addition to assisting in the day-to-day activities of the basketball office, Novick's responsibilities included supporting recruiting, assisting in the management of Coach Williams' daily schedule, supervising the student-managers and assisting in operations.

After earning a varsity letter and captaining Deering High's basketball team, Novick earned a bachelor's degree in political science from the University of Chicago in 1999. During his college years he managed and coached in the Yes! To Youth program in Portland, Maine, a basketball clinic that serves approximately 400 middle and high schoolers annually.

Novick is married to the former Sabrina Saraf and the couple resides in New Orleans.



Brent *Hartman*

**Graduate Assistant Coach
Maryland, 2006
Second Year**

Brent Hartman begins his second season as a graduate assistant coach for the Green Wave in 2006-07.

During Hartman's first season on the Wave staff, Tulane recorded a 17-13 overall record, registered a fourth-place finish in Conference USA play and advanced to the C-USA Tournament semifinals.

Hartman is no stranger to two members of the TU coaching staff-- head coach Dave Dickerson and assistant coach Andrew Novick.

Hartman was a men's basketball manager for the Maryland Terrapins team from 2002-06, and spent his first three years working with both Dickerson and Novick. During his time as a manager, he was responsible for the daily set-up and management of the basketball court, locker room and the film room for game, practices and workouts.

He also assisted the Maryland coaching staff in practices and individual workouts, helped with preparing self scouts and opponent scouts and organized team gear and equipment for road games.

Since 2002, Hartman has been heavily involved with summer camps on the collegiate level, including working camps for Dickerson, Maryland's Gary Williams, Florida's Billy Donovan, Vermont's Mike Lonergan, Clemson's Oliver Purnell, Kentucky's Tubby Smith and former Maryland standout Steve Blake.

He has also worked with basketball tournaments on the national level, including the Boo Williams Invitational from 2003-05 and the Charlie Weber Invitational in 2002 and 2004.

A native of Gainesville, Fla., Hartman earned his bachelor's degree in history with a minor in secondary education from Maryland in May of 2006. He is currently working in the teacher preparation and certification program at Tulane.



David Gomez **#21**
6-8 • Forward • 235 • Sr. 3L
Baton Rouge, La.
Episcopal HS

TULANE – A three-year letterwinner and starter . . . has started 69 of 86 games played . . . career statistics include 10.7 points and 5.0 rebounds per game and his 94 career blocks ranks seventh in the Tulane record book . . . enters the season 73 points shy of becoming the 29th player in school history to score 1,000 points . . . has finished in double figures in 47 career games and has six career double-doubles . . . has nine career double-digit rebounding games . . . a returning All-Conference USA performer.

AS A JUNIOR (2006-07) – An third team All-Conference USA performer and second team, all-district selection, started 27 of 30 games led the team in scoring (13.5), rebounding (5.8), field goals (148) and free throws (106) . . . reached the 30-point plateau twice with a career-best 32-point, 10-rebound performance at cross-town rival New Orleans (1/1) and a 31-point afternoon at TCU (12/9) . . . finished in double-figure scoring in 22 games and in rebounds five times . . . notched three double-doubles on the year . . . ranked among the top Conference USA players in several categories, including scoring (12th), rebounding (10th), field goal percentage (5th), free throw percentage (6th), blocked shots (8th) and defensive rebounds (5th) . . . produced 20 points and seven rebounds at Indiana State (11/25) . . . chalked up a double-double with 17 points and 10 rebounds against Huston-Tillotson (11/28) . . . registered 19 points and five blocks vs. No. 10 LSU (12/2) . . . connected on a career-best 12 field goals, grabbed nine rebounds and finished with 31 points at TCU . . . tallied 16 points vs. Arkansas-Pine Bluff (12/22) . . . produced a career-high 32 points on nine field goals and a career-best 14 free throws at UNO . . . grabbed a career-high 13 rebounds vs. UAB (1/13) . . . grabbed 10 rebounds at SMU (1/24) . . . chipped in 17 points vs. Rice (1/27) . . . contributed 13 points, eight rebounds vs. Tulsa (1/31) . . . posted 18 points at Southern Miss (2/3) . . . notched 15 points in 17 minutes vs. UCF (2/14) . . . notched a double-double with 20 points and 10 rebounds vs. Southern Miss (2/24) . . . finished with 20 points, five rebounds and four steals against East Carolina (2/28).

AS A SOPHOMORE (2005-06) – Started 21 of 29 games and averaged 11.9 points and 4.8 rebounds per contest . . . matched his then career-best with 21 points and 10 boards in the C-USA Tourney win over Marshall (3/8) . . . also scored 21 points against LSU (1/3) while playing 32 minutes and against Seton Hall (12/11) . . . tallied 14 points with five boards and three blocks against Memphis (2/18) . . . scored 17 points, 15 in the second half, on perfect 6-of-6 shooting to key the win over Marshall (2/4) . . . averaged 16.5 points over an eight-game stretch

(12/31 - 1/14) . . . finished with 17 points, including a game-tying three-pointer from the corner with 1.9 seconds to go in regulation against Rice (1/14) . . . produced 19 points on 8-of-13 shooting with three blocks against Savannah State (1/7) . . . posted a 19-point effort against St. Edward's (12/19) . . . took over the UNO game (11/22) in the second half with 13 points, eight rebounds and four blocks as he finished with 16 points and 10 boards for his second career double-double.

AS A FRESHMAN

(2004-05) – Closed his rookie season with an impressive effort against DePaul (3/9) in the C-USA Tournament, scoring 16 points and adding six rebounds . . . registered a season-high 18 points and eight rebounds in 20 minutes against TCU (2/23) . . . tallied nine points with nine rebounds in the Houston win (1/26) . . . scored 13 points with five boards against Southern Miss (1/22) . . . registered his first career double-double against UAB (1/19) with 14 points and 10 rebounds while also blocking four shots . . . tallied 11 points with six rebounds against DePaul (1/15) . . . collected a season-best 10 rebounds against Savannah State (12/18) . . . in his first career start, had 11 points and nine rebounds in the win over Loyola (12/3).

HIGH SCHOOL – A three-time all-state selection and a four-time all-district choice . . . the all-time leading scorer and rebounder at Episcopal High School . . . led his school to the regional playoffs and the best record in school history (32-6) while averaging 25 points and 9.8 rebounds per game as a senior . . . set school records for career dunks and dunks in a game (8) . . . as a junior, led his team to a 30-6 record while averaging 25.2 points and 9.2 rebounds per game to earn district MVP honors . . . twice scored more than 50 points in a game . . . played for coach Chris Beckman for four years, helping the team to an overall record of 114-35.

PERSONAL – Majoring in paralegal studies . . . born David Anthony Gomez on December 27, 1985, in Baton Rouge . . . the son of Charlene Gomez Ourso and Stephen Hall.

Gomez's Career Highs

Points
32 at New Orleans (1/1/07)

Rebounds
13 vs. UAB (1/13/07)

Assists
4 vs. Charlotte (2/19/05)

Three Pointers
1 vs. 10 opponents

Free Throws
14 at New Orleans (1/1/07)

Steals
4 vs. Tulsa (1/31/07);
ECU (2/28/07)

Blocks
5 vs. #10 LSU (12/2/06)

Minutes
38 vs. Marshall (3/8/06)

Gomez's Career Statistics

Year	G-GS	Min-Avg	FG-A	Pct.	3FG-A	Pct.	FT-A	Pct.	O-D-Reb	Avg.	PF-D	Ast	TO	Blk	Stl	TP	Avg.
2004-05	27-21	476-17.6	61-120	.508	2-8	.250	43-61	.705	33-84-117	4.3	73-2	17	30	26	8	167	6.2
2005-06	29-21	685-23.6	120-247	.486	8-21	.381	98-148	.662	47-92-139	4.8	83-1	16	66	26	18	346	11.9
2006-07	30-27	766-25.5	148-283	.523	2-8	.250	106-137	.774	46-129-175	5.8	86-3	31	66	42	25	404	13.5
Career	86-69	1927-22.4	329-650	.510	12-37	.324	247-346	.713	126-305-431	5.0	242-6	64	162	94	51	917	10.7



Robinson #45
Louisme
6-7 • Forward • 265 • Jr. 2L
Fort Myers, Fla.
Fort Myers HS

TULANE – A two-year letterwinner who has played in 46 games with 18 starts . . . career numbers include 4.8 points and 2.5 rebounds per game.

AS A REDSHIRT-SOPHOMORE (2006-07) – Started 18 of 30 games and connected on a team-best .526 from the field . . . averaged 6.4 points and 3.3 rebounds per game . . . reached double figures in seven games, including a career-best 19 points, eight field goals and 11 rebounds at Rice (1/10) . . . started his first game against New Orleans (11/14) . . . came off the bench to lead TU in scoring with eight points vs. Butler (11/10) in the season opener . . . tallied eight points, seven rebounds and connected on 3-of-4 shots vs. Huston-Tillotson (11/28) . . . produced six points and two blocks vs. Buffalo (12/6) . . . connected on 6-of-7 field goal attempts for 12 points vs. Arkansas-Pine Bluff (12/22) . . . scored 13 points at Richmond and at New Orleans (1/1) . . . finished with 10 points and three blocks at SMU (1/24) . . . contributed 12 points and nine rebounds vs. Rice (1/27) . . . finished with 11 points and four blocks vs. East Carolina (2/28).

AS A SOPHOMORE (2005-06) – Did not play due to injury . . . received a medical hardship.

AS A FRESHMAN (2004-05) – Played in 16 games and averaged four minutes per contest . . . a hard-working big man off the bench for the Wave . . . scored a career-high seven points, including his first career dunk (and was fouled for a three-point play) against UAB (2/26) . . . tallied two points and two rebounds against Memphis (2/12) and added a block of a Tiger dunk attempt . . . scored his first career points against Prairie View (11/27), finishing with four in the game . . . registered three points and three rebounds in the win over Savannah State (12/18).

HIGH SCHOOL – A two-time all-state selection and the Fort Myers News-Press Player of the Year as a senior playing for Coach Ed O’Brien . . . averaged 15.8 points, 12.8 rebounds and 4.5 blocked shots per game as a senior and 12.5 points, 12.5 rebounds and 3.0 blocks his junior year . . . named one of the Top 25 players in Florida . . . led Fort Myers High to the state semifinals as a junior in Class 5A, the second-largest classification in Florida, and to the regional finals as a senior . . . played in a pair of postseason state all-star games.

PERSONAL – A media arts major . . . born October 13, 1984, in Miami, Fla. . . the son of Marc Louisme and Elucienne Celus.

Louisme’s Career Highs

Points
19 at Rice (1/10/07)

Rebounds
11 at Rice (1/10/07)

Assists
1 vs. six opponents

Three Pointers
1 vs. four opponents

Free Throws
6 at Rice (1/28/05)

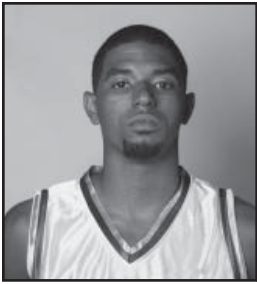
Steals
3 vs. three opponents

Blocks
4 vs. Rice (1/27/07);
ECU (2/28/07)

Minutes
23 at Rice (1/10/07)

Louisme’s Career Statistics

Year	G-GS	Min-Avg	FG-A	Pct.	3FG-A	Pct.	FT-A	Pct.	O-D-Reb	Avg.	PF-D	Ast	TO	Blk	Stl	TP	Avg.
2004-05	16-0	64-4.0	4-11	.364	0-0	.000	10-15	.667	5-8-13	0.8	15-0	1	3	3	1	18	1.1
2005-06	Injured-DNP																
2006-07	30-18	421-14.0	80-152	.526	0-0	.000	33-62	.532	42-58-100	3.3	84-2	6	24	37	14	193	6.4
Career	46-18	485-10.5	84-163	.520	0-0	.000	43-77	.560	47-66-113	2.5	99-2	7	27	40	15	219	4.8



Johnny #23
Mayhane
6-5 • Guard • 185 • Fr-RS
Mobile, Ala.
LeFlore HS

Mayhane's Career Highs

Points
N/A

Rebounds
N/A

Assists
N/A

Three Pointers
N/A

Free Throws
N/A

Steals
N/A

Blocks
N/A

Minutes
N/A

TULANE – Begins his first playing season

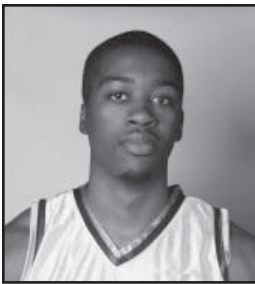
AS A FRESHMAN (2006-07) – Did not play due to injury and received a medical hardship.

HIGH SCHOOL – Averaged 19 points and eight rebounds per game as a senior, leading LeFlore High School to a 28-6 record and the regional semifinals . . . earned first team all-state honors as well as collecting all-region, all-county and all-city recognition . . . during his junior campaign, he helped the team to the No. 2 national ranking and a 35-game win streak, which was snapped in the state championship game by current Tulane teammate Asim McQueen's Auburn High School . . . high school coach was Otis Hughly . . . helped his high school to a 92-12 record during his three-year varsity career.

PERSONAL – Undecided on a major . . . born December 9, 1986, in Mobile, Ala. . . one of seven children and the only son of Phyllis Mayhane.

Mayhane's Career Statistics

Year	G-GS	Min-Avg	FG-A	Pct.	3FG-A	Pct.	FT-A	Pct.	O-D-Reb	Avg.	PF-D	Ast	TO	Blk	Stl	TP	Avg.
2006-07	DNP- Received a Medical Hardship																



Asim **#4**
McQueen
6-7 • Forward • 220 • So. 1L
Auburn, Ala.
Auburn HS

TULANE – A returning letterwinner.

AS A FRESHMAN (2006-07) – Played in all 30 games and averaged 9.9 minutes, 2.2 points and 1.7 rebounds per contest . . . reached the scoring column in 22 games, including a career-best seven points against Huston-Tillotson (11/28) and on the road at No. 8 Memphis (2/10) . . . snared a career-best six rebounds against Loyola (11/21) . . . played a season-high 19 minutes on the road at Marshall (2/17).

HIGH SCHOOL – Averaged 16.2 points per game as a senior and led Auburn High School with 8.2 rebounds per outing while shooting 75 percent from the free-throw line . . . in addition to being named second-team all-state, he was an all-area selection and was named his team’s Most Valuable Player . . . also selected to play in the Mississippi-Alabama All-Star Game . . . helped Auburn advance to the regional championships with a 25-8 record during his senior season . . . led his team to the Alabama State Championship, including a title game victory over LeFlore High School, which was rated as the No. 2 team in the nation and lost just one game all year, and was the high school of current teammate Johnny Mayhane . . . high school coach was Frank Tolbert . . . also earned one letter in the high jump.

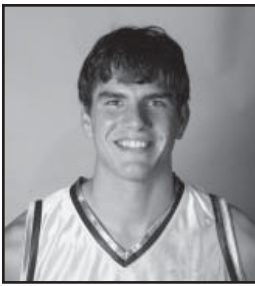
PERSONAL – Undecided on a major . . . born February 10, 1988, in Birmingham, Ala. . . . one of three sons of Sandra McQueen and Alex McQueen.

McQueen’s Career Highs

- Points**
7 vs. Huston-Tillotson (11/28/06); at Memphis (2/10/07)
- Rebounds**
6 vs. Loyola (11/21/07)
- Assists**
2 vs. East Carolina (2/28/07)
- Three Pointers**
N/A
- Free Throws**
3 vs. Rice (1/27/07); at Memphis (2/10/07)
- Steals**
1 vs. six opponents
- Blocks**
1 vs. four opponents
- Minutes**
19 at Marshall (2/17/07)

McQueen’s Career Statistics

Year	G-GS	Min-Avg	FG-A	Pct.	3FG-A	Pct.	FT-A	Pct.	O-D-Reb	Avg.	PF-D	Ast	TO	Blk	Stl	TP	Avg.
2006-07	30-0	297-9.9	19-59	.322	0-1	.000	29-45	.644	19-33-52	1.7	43-0	7	18	5	7	67	2.2



Daniel **#44**
Puckett
6-7 • Forward • 190 • Jr. 2L
McEwen, Tenn.
McEwen HS

TULANE – A two-year letterwinner who has played in 59 games with 13 starts . . . career numbers include 4.5 points and 3.1 rebounds per game.

AS A SOPHOMORE (2006-07) – Started in 13 of 30 games and finished fourth on the team in scoring with 7.1 points per game . . . averaged 20.4 minutes per outing and contributed 4.1 rebounds per contest . . . reached double figures in seven games . . . reached the scoring column in 29 of 30 games . . . registered 10 points and a career-best nine rebounds in 26 minutes vs. Huston-Tillotson (11/28) . . . produced nine points and played a career-high 31 minutes vs. Buffalo (12/6) . . . tied his career high with nine rebounds at TCU (12/9) . . . chalked up 12 points and added five rebounds, two assists, one block and two steals at Richmond (12/28) . . . produced 14 points, hitting a career-high four three-pointers and tied his single game record for assists with three in 36 minutes of action at Rice (1/13) . . . finished with 12 points vs. Tulsa (1/30) . . . produced 10 points vs. UTEP (2/7) . . . tallied 11 points vs. UCF (2/14) . . . scored a career-high 17 points at Marshall (2/17).

AS A FRESHMAN (2005-06) – Played in 29 games . . . collected five rebounds in the Wave's Conference USA Tournament win over Marshall (3/8) . . . played a season-high 23 minutes against East Carolina (2/25), scoring seven points with six rebounds . . . notched a career-best three steals against No. 3 Memphis (2/18) . . . tallied eight points, including a pair of three-pointers, and two steals in the Loyola win (2/7) . . . scored his first C-USA points with a three-pointer against Marshall (2/4) . . . seven rebounds, two blocks, two steals and 16 minutes against LSU (1/3), while scoring two points . . . scored five points, including his first career three-pointer, with two boards, an assist, a block and a steal in 15 minutes against Richmond (12/27) . . . played 14 minutes with four points, three rebounds, an assist and a steal against Fairfield (12/3) . . . scored six points with six rebounds in eight minutes against Valparaiso (12/2) . . . recorded his first career basket with a layup against Butler (11/30) . . . scored his first career points with a pair of free throws in the loss to Texas A&M (11/26) . . . made his collegiate debut with three minutes of action against UNO (11/22), snagging one rebound.

HIGH SCHOOL – A two-time Class A all-state selection and a finalist for Mr. Basketball in the state of Tennessee at McEwan High School . . . as a senior, averaged 20.1 points, 10.1 rebounds, 5.4 assists and 5.0 blocks per game . . . the career scoring leader at his high school with over 1,700 points . . . averaged 21 points, 8.7 rebounds and three assists per game as a junior . . . named the district player of the year as a junior while leading his young team to a 21-10 record and second place in the district.

PERSONAL – A digital design major . . . born October 6, 1986 . . . the son of Roger and Annette Puckett.

Puckett's Career Highs

Points
17 at Marshall (2/17/07)

Rebounds
9 vs. Huston-Tillotson (11/28/06)

Assists
3 vs. four opponents

Three Pointers
4 at Rice (1/10/07)

Free Throws
5 vs. East Carolina (2/28/07)

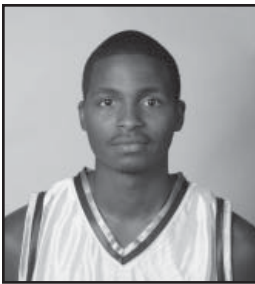
Steals
3 vs. Memphis (2/18/06)

Blocks
3 vs. Buffalo (12/6/06); UCF (2/14/07)

Minutes
36 at Rice (1/10/07)

Puckett's Career Statistics

Year	G-GS	Min-Avg	FG-A	Pct.	3FG-A	Pct.	FT-A	Pct.	O-D-Reb	Avg.	PF-D	Ast	TO	Blk	Stl	TP	Avg.
2005-06	29-0	320-11.0	18-63	.286	5-23	.217	12-19	.632	12-46-58	2.0	37-0	18	25	12	13	53	1.8
2006-07	30-13	612-20.4	87-206	.422	13-56	.232	26-52	.500	30-93-123	4.1	80-2	38	52	19	24	213	7.1
Career	59-13	932-15.7	105-269	.390	18-79	.227	38-71	.535	42-139-181	3.1	117-2	56	77	31	37	266	4.5



Kevin **#1**
Sims
5-10 • Guard • 160 • So. 1L
Jackson, Miss.
Forest Hills HS

Sims' Career Highs

Points
 23 at Southern Miss (2/3/07)

Rebounds
 6 vs. Buffalo (12/6/06)

Assists
 7 vs. East Carolina (2/28/07)

Three Pointers
 3 vs. seven opponents

Free Throws
 12 at Southern Miss (2/3/07)

Steals
 3 vs. Rice (1/27/07)

Blocks
 1 at UNO (1/1/07)

Minutes
 36 vs. Tulsa (1/31/07);
 at Houston (2/21/07)

TULANE – A returning letterwinner and starter.

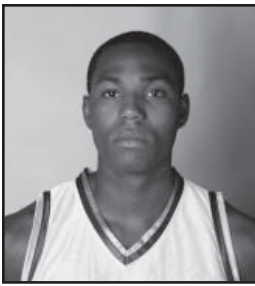
AS A FRESHMAN (2006-07) – Started 26 of 30 games and led the team in assists (102), steals (34) and free throw percentage (.815) . . . finished third on the team in scoring with 10 points per game and was second for three-pointers with 36 . . . averaged 28.2 minutes per game and reached the 20-point plateau twice. . . named to the C-USA All-Freshman squad . . . reached double figure scoring in 16 games . . . came off the bench and scored 16 points against Charleston Southern (11/18) . . . scored 18 points and hit 10-of-12 free throws against Loyola (11/21) . . . totaled 16 points and six assists vs. Huston-Tillotson (11/28) . . . registered 12 points and five rebounds against No. 10/12 LSU (12/2) . . . turned in 21 points and six rebounds vs. Buffalo (12/6) . . . finished with 12 points vs. Arkansas-Pine Bluff (12/22) . . . contributed 10 points and four assists at Richmond (12/28) . . . added 10 points at UNO (1/1) and 11 points vs. UAB (1/13) . . . turned in 11 points, six assists and three steals vs. Rice (1/27) . . . produced 17 points and six assists vs. Tulsa (1/31) . . . registered a career-high 23 points and 12 free throws at Southern Miss (2/3) . . . tallied 15 points and four assists vs. UTEP (2/7) . . . came away with 11 points vs. UCF (2/14) . . . scored 14 points at Houston (2/21) . . . dished out seven assists vs. East Carolina (2/28) and six assists at UAB (3/3).

HIGH SCHOOL – Led Forest Hill High School to a 26-8 record and the state semifinals while averaging 26.2 points per game as a senior . . . a first team all-state selection for all classifications in Mississippi and was selected to play in the Mississippi-Alabama All-Star Game . . . a native of New Orleans, he scored 24 points to help his team snap Lanier High's five-year home winning streak and added 31 points in the first round of the South 5A playoffs as Forest Hill upset top-ranked Gulfport . . . his career-high was 42 points against Brandon High . . . a first-team all-metro selection and a McDonald's All-American nominee and averaged 2.5 assists and 2.3 steals per game while shooting 86.2% from the line . . . was inducted into his high school's Hall of Fame.

PERSONAL – A media arts major . . . born Kevin Terrell Sims on January 25, 1988 in New Orleans . . . one of two children of Janice Sims.

Sims' Career Statistics

Year	G-GS	Min-Avg	FG-A	Pct.	3FG-A	Pct.	FT-A	Pct.	O-D-Reb	Avg.	PF-D	Ast	TO	Blk	Stl	TP	Avg.
2006-07	30-20	846-28.2	88-224	.393	36-92	.391	88-108	.815	15-46-61	2.0	63-1	102	91	1	34	300	10.0



Donnavan #5
Stith
6-6 • Forward • 215 • Sr. 3L
Virginia Beach, Va.
Salem HS

TULANE – A three-year letterwinner who has played in 86 games with 33 starts . . . owns career averages of 6.2 points and 4.6 rebounds per game . . . ranks fifth among the school's career blocked shots leaders with 103 blocked shots . . . has scored in double figures in 16 games and has four career double-doubles.

AS A JUNIOR (2006-07) – Played in 29 games and earned four starting assignments . . . led the squad with 52 blocked shots (ranked 64th nationally) and ranked second on the team in rebounds (5.3) . . . averaged 6.6 points and 21.7 minutes per outing and shot better than 50-percent (.512) from the field . . . chalked up two double-doubles and reached double figure scoring in eight games . . . produced a double-double with 12 points and 10 rebounds against New Orleans (11/14) . . . turned in 10 points and five boards against Charleston Southern (11/18) . . . tied his career-high with 11 rebounds vs. Buffalo (12/6) . . . grabbed eight rebounds at Rice (1/10) . . . scored 15 points, corralled 11 rebounds and added two blocks at East Carolina (1/17) . . . produced 16 points, nine rebounds and hit 7-of-9 field goal attempts vs. Marshall (1/20) . . . tied his season high with 16 points vs. Tulsa (1/31) . . . tied his career-high six blocks and three steals at Southern Miss (2/3) . . . totaled eight points, four steals, three blocks and four assists vs. UCF (2/14) . . . finished with 10 points at Marshall (2/17) and at Houston (2/21) . . . posted 14 points, seven rebounds and three assists against No. 5 Memphis in the C-USA Tourney semifinals.

AS A SOPHOMORE (2005-06) – Started 15 of 29 games and ranked fourth in scoring, second in rebounding, second in blocks and third in assists . . . closed the year with 35 points and 17 rebounds in the last three games . . . tallied 10 points and five boards against Memphis (3/9) . . . matched his season-high with 13 points to go with seven rebounds in a career-best 35 minutes in the C-USA Tournament win over Marshall (3/8) . . . led the Wave with 12 points, including 10 in a two-minute stretch late in the second half, against Tulsa (3/4) . . . scoring six points with eight rebounds in 26 minutes against ECU (2/25) . . . tallied eight points with four rebounds and six assists against Memphis (2/18) . . . blocked a career-high six shots (tied for third best in Tulane history) in the Loyola win (2/7) . . . matched his career-high with five assists while playing excellent defense on Rice's Morris Almond (1/28) . . . played 34 minutes against Seton Hall (12/11), scoring 12 points . . . posted a 13-point, seven-rebound performance against Fairfield (12/3) . . . tallied 12 points, including 10 in the second half, in 33 minutes against Valpo (12/2) . . . recorded his second career double-double with 10 points and 10

rebounds against Butler (11/30) . . . impressive performance against UNO (11/22) with nine points and six rebounds, including a pair of free throws following an offensive rebound with 3:03 remaining to make it 68-64 in favor of the Green Wave.

AS A FRESHMAN

(2004-05) – Played in 29 games and earned four starts . . .

averaged 24.1 minutes over the final 13 games of the season . . .

hit a streak of 22 consecutive free throws during the year . . .

collected nine points in a season-high 32 minutes of action against DePaul (3/9) in the C-USA Tourney . . .

returned to the starting lineup (after coming off the bench for five games) against Cincinnati (3/2) and tallied nine points in 31 minutes . . .

scored five points with 10 rebounds against TCU (2/23) . . .

added nine second-half points against Memphis (2/12) . . .

scored eight points with six rebounds and three blocks, including four points, two rebounds and two blocks in the final 2:17, against Southern Miss (2/9) . . .

scored a career-high 19 points while setting a Tulane record by hitting all 14 of his free throws in the Louisville game (1/29) . . .

solid game with seven points, eight rebounds and three assists against Houston (1/26) . . .

scored five points with five boards and four assists against Marquette (1/8) . . .

tallied his first career double-double in the win over Alabama State (12/28) with 11 points and 11 rebounds . . .

registered eight points against LSU (11/19) in his first career game.

HIGH SCHOOL – A two-time all-district selection and the district and defensive player of the year as a senior at Salem High School for coach Bill Cochrane . . . led his team to the district championship as a junior after being part of the state championship team as a freshman . . . registered career bests of 32 points, 18 rebounds, eight blocks and eight assists during his prep career . . . named MVP of the Sunshine Classic in Florida as a senior . . . averaged 13 points, 12 rebounds, six assists and three blocks per game as a senior . . . as a junior, averaged 13 points, 9.5 rebounds, 3.5 blocks and 3.5 assists per game .

PERSONAL – A media arts major . . . born Donnavan Miguel Stith, Jr., on October 4, 1985, in Jacksonville, N.C. . . . the son of Dorothy and Donnavan Stith, Sr.

Stith's Career Highs

Points

19 vs. Louisville (1/29/05)

Rebounds

11 vs. three opponents

Assists

5 vs. two opponents

Three Pointers

2 vs. four opponents

Free Throws

14 vs. Louisville (1/29/05)

Steals

4 vs. UCF (2/14/07)

Blocks

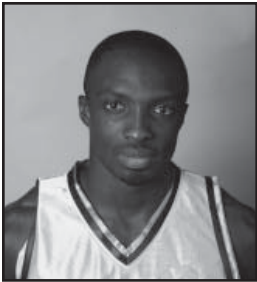
6 vs. Loyola (2/7/06);
Southern Miss (2/3/07)

Minutes

35 vs. Marshall (3/8/06)

Stith's Career Statistics

Year	G-GS	Min-Avg	FG-A	Pct.	3FG-A	Pct.	FT-A	Pct.	O-D-Reb	Avg.	PF-D	Ast	TO	Blk	Stl	TP	Avg.
2004-05	28-14	543-19.4	53-107	.495	10-28	.357	43-62	.694	36-62-98	3.5	53-2	39	51	18	11	159	5.7
2005-06	29-15	741-25.6	59-134	.440	11-33	.333	54-84	.643	47-101-148	5.1	65-4	57	65	33	19	183	6.3
2006-07	29-4	629-21.7	65-127	.512	4-18	.222	57-108	.528	44-111-155	5.3	46-1	31	54	52	23	191	6.6
Career	86-33	1913-22.2	174-368	.472	25-79	.320	154-254	.610	127-274-401	4.6	164-7	127	170	103	53	533	6.2



Eric **#1**
Vianney
6-2 • Guard • 205 • So. Tr.
Yaounde, Cameroon
Picayune (MS) HS/Ill. State

TULANE – Begins his first playing season at Tulane.

AS A SOPHOMORE (2006-07) – Did not play due to NCAA transfer rules.

PRIOR TO TULANE – Spent one season at Illinois State where he played in 11 games during the 2005-06 campaign and averaged 1.2 points and 0.5 rebounds per game, while logging 39 minutes.

HIGH SCHOOL – Played his senior season at Picayune (Miss.) High School and helped the Maroon Tide to a 31-4 record and the Class 5A South State Championship . . . averaged 13 points, four rebounds and eight assists per game . . . has played basketball since the age of eight . . . an honorable mention all-state selection.

PERSONAL – Majoring in computer information systems . . . born Ayangma Guiako Vianney (pronounced: EYE-yung-mah GEE-eck-oh VEE-ah-nay) on April 28, 1986, in Yaoundé, Cameroon . . . nickname is Eric . . . one of nine children of Ayangma Albert and Ngeubong Madeleine Vianney . . . speaks five languages.

Vianney's Career Highs

Points

9 vs. IPFW (12/6/05)

Rebounds

3 vs. IPFW (12/6/05)

Assists

1 vs. Southern Illinois (1/28/06); Cincinnati (11/22/05)

Three Pointers

1 vs. three opponents

Free Throws

2 vs. Cincinnati (11/22/05)

Steals

1 vs. two opponents

Blocks

N/A

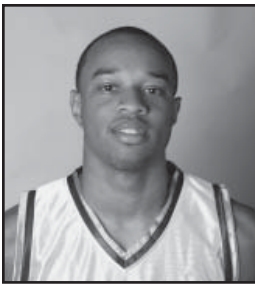
Minutes

8 vs. IPFW (12/6/05)

Vianneys Career Statistics

Year	G-GS	Min-Avg	FG-A	Pct.	3FG-A	Pct.	FT-A	Pct.	O-D-Reb	Avg.	PF-D	Ast	TO	Blk	Stl	TP	Avg.
*2005-06	11-0	39-3.5	4-8	.500	3-5	.600	2-5	.400	1-4-5	0.5	9-0	2	6	0	2	13	1.2
2006-07	DNP- Redshirt																

*totals at Illinois State



Matt **#25**
Wheaton
6-5 • Guard • 190 • Sr. 3L
Katy, Texas
Mayde Creek HS

TULANE – A three-year letterwinner and returning starter who has played in 83 career games with 46 starts . . . career averages include 4.3 points and 2.8 rebounds per game.

AS A JUNIOR (2006-07) – Started 21 of 30 games and averaged 4.5 points, 3.7 rebounds and 20.3 minutes per game . . . connected on 44.4 percent of his three-point field goal attempts (16-36) . . . accounted for two game-winning shots, including a three-pointer with 10.7 seconds remaining against UAB (3/3), which wrapped up a fourth-place finish and a first-round bye in the Conference USA Tournament . . . his first game-winner came at home against Arkansas-Pine Bluff when he scored a season-high 10 points and hit the game-winner when he rebounded a missed shot and banked in a jumper with one second remaining . . . finished 2-of-2 from the field, including a three-pointer, for eight points and added seven rebounds at Richmond (12/28) . . . played a season-high 31 minutes at Rice (1/10) and finished with 10 points, six rebounds and three assists . . . finished with nine points and a career-high 11 rebounds at East Carolina (1/17) . . . chipped in nine rebounds vs. Rice (1/27) . . . recorded his first career double-double with 10 points and 11 rebounds at Houston (2/21).

AS A SOPHOMORE (2005-06) – Started 19 of 26 games . . . suffered a high-ankle sprain one minute into the Memphis game (2/18) and missed three games before playing three minutes against Marshall (3/8) and nine vs. Memphis (3/9) . . . collected seven points and season-bests of eight rebounds and four assists against Loyola (2/7) . . . tallied five points with seven rebounds and a career-best two blocks in the Marshall win (2/4) . . . led the Wave with 11 points in the loss to Houston (1/25) . . . scored seven points (five in the second half) in a career-high 33 minutes in the Wave's win over East Carolina (1/21) . . . had his fourth double-figure scoring game of his career with 12 points against Southern Miss (1/11) . . . scored nine points with four boards and three assists against Savannah State (1/7) . . . had 36 points in a four-game stretch following his career-best 13-point, 6-rebound performance against Richmond (12/27) . . . registered nine points against St. Edward's (12/19), including the game-tying bucket to force overtime . . . played 22 minutes against TCU (12/7), scoring seven points, including a pair of free throws with 11 seconds left to make it 56-52 and ice the victory . . . in the opener against UNO (11/22), tallied six points with six rebounds in 25 minutes of action.

AS A FRESHMAN (2004-05)

– Started 21 of 30 games and averaged 17.9 minutes over the last 16 regular-season games . . . started six straight games before coming off the bench on Senior Day . . . matched his season-high with 11 points to go with four rebounds against Charlotte (2/19) . . . made his first career start against Southern Miss (2/9) and scored eight points with three rebounds, three assists and two steals . . . scored nine points (perfect 3-for-3 from three) against USF (2/5) . . . recorded five points with five rebounds in 28 minutes against Louisville (1/29) . . . scored nine points and grabbed eight rebounds at Houston (1/26) . . . registered season-bests of 11 points and 28 minutes against DePaul (1/15) . . . connected on his only shot, a three-pointer, in his collegiate debut against LSU (11/19).

Wheaton's Career Highs

Points
13 vs. Richmond (12/27/05)

Rebounds
11 at East Carolina (1/17/07)

Assists
4 vs. two opponents

Three Pointers
3 vs. three opponents

Free Throws
7 at Houston (2/21/07)

Steals
3 vs. two opponents

Blocks
2 vs. two opponents

Minutes
33 vs. two opponents

HIGH SCHOOL – A versatile defensive player with excellent scoring ability for Coach O'Jay Heil at Mayde Creek high School . . . a four-time all-district selection and an all-state choice as a senior when he led his team to a second-place finish and its first postseason action in eight years . . . tallied 17 points, seven rebounds and three assists per game as a senior . . . averaged 18 points per game as a junior, earning first team all-district honors while leading his squad to a fourth-place finish . . . had a career-high 39-point performance during his junior season.

PERSONAL – A digital design major . . . born November 19, 1985, in Katy, Texas . . . the son of Lonnie and Aneice Wheaton . . . his older sister, Kendra, played volleyball at UT-San Antonio.

Wheaton's Career Statistics

Year	G-GS	Min-Avg	FG-A	Pct.	3FG-A	Pct.	FT-A	Pct.	O-D-Reb	Avg.	PF-D	Ast	TO	Blk	Stl	TP	Avg.
2004-05	27-6	349-12.9	27-81	.333	19-55	.345	11-20	.550	19-37-56	2.1	40-0	14	31	5	9	84	3.1
2005-06	26-19	493-19.0	44-98	.449	14-43	.326	39-52	.750	23-45-68	2.6	67-2	15	36	8	7	141	5.4
2006-07	30-21	609-20.3	42-101	.416	16-36	.444	36-55	.655	35-76-111	3.7	63-1	34	28	8	18	136	4.5
Career	83-46	1451-17.5	113-280	.403	49-134	.370	86-127	.677	77-158-235	2.8	170-3	63	95	21	34	361	4.3

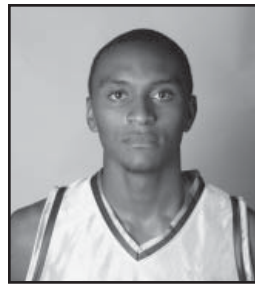


Jon **#13**
Andersen

6-9 • Forward • 219 • Fr. HS
Metairie, La.
Country Day HS

HIGH SCHOOL – A two-time all-district performer and was named to the all-East Jefferson Parrish team as a sophomore . . . led Country Day to a 75-32 overall record including a pair of state runner-up finishes as a sophomore and senior . . . during his senior campaign, he helped the Cajuns to a 29-12 overall record, including a perfect 8-0 league mark . . . as a junior, he averaged 13 points and eight rebounds per game and helped his squad to a district title . . . registered a then career-high 25 points and 15 rebounds against Plain Dealing in the state tournament . . . in AAU action, was a member of the New Orleans Panthers . . . high school coach was Mike McGuire.

PERSONAL – Undecided on a major . . . born December 13, 1987 in Gouda, Netherlands . . . one of three children and the only son of Juliene Van Vliet and Jan Andersen . . . speaks Dutch, Norwegian and English.



David **#2**
Booker

6-7 • Forward • 235 • So. Tr.
Moss Point, Miss.
Moss Point HS/Charlotte

PRIOR TO TULANE – Played one season at Charlotte.

HIGH SCHOOL – Completed his career as Mississippi's 2006 Gatorade Player of the Year and as the school's all-time leading scorer with 2,251 career points . . . a two-time first team all-state performer, was an honorable mention all-Southeast Region by Basketball Today . . . a four-year starter, led the Tigers to the state playoffs in each of his four seasons, and had his jersey retired by the school . . . scored 14 points and added seven rebounds in the 2006 Mississippi-Alabama High School All-Star Game . . . during his senior campaign, he averaged 27 points, 12 rebounds, five assists and four blocked shots per game and led the Tigers to a 22-9 record, a 5A South State title and the team advanced to the Class 5A Final Four, where he averaged 37.8 points in his last four games . . . scored a career-high 50 points in a state playoff first round victory over Brandon High School as Moss Point reached the 5A final four . . . averaged 21.0 points and 11.0 rebounds per outing as a junior, and posted 18.0 points with 13.0 rebounds per contest as a sophomore . . . high school coach was Brian Brooks.

PERSONAL – Undecided on a major . . . born David Isaiah Booker on January 3, 1988 in Pascagoula, Miss. . . . the only son of Bill and Sharon Booker.

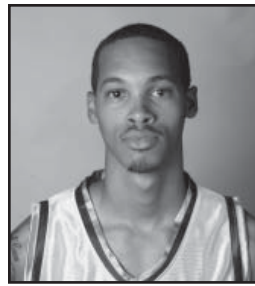


Jake **#14**
Henderson

6-1 • Guard • 170 • Fr. HS
Baton Rouge, La.
Parkview Baptist HS

HIGH SCHOOL – A combo-guard, he averaged 14.6 points, 5.6 assists and 4.8 rebounds per game at Parkview High School . . . shot 47.6 percent from behind the three-point line and 84 percent from the free-throw line during his senior season . . . during his final two seasons, he helped PBHS to a combined record of 53-14, a 25-3 mark in district play . . . helped his team to the quarterfinal round of the state playoffs during his junior season and to the second round as a senior . . . was an all-district selection and earned honorable mention academic all-state honors during his final season . . . was rated as the third best state prospect at his position as a junior and was the seventh-best as a senior . . . was a member of the National Honor Society, Mu Alpha Theta and the Latin Club.

PERSONAL – Undecided on a major . . . born February 8, 1989 in Baton Rouge, La. . . one of three children of Jeff and Paula Henderson . . . his dad played college basketball at Southwest Missouri State (now called Missouri State) . . . brother, Josh, played college soccer at Duke University and for the Scottish Premier League.



Kris **#0**
Richard

6-5 • Guard • 165 • Fr. HS
Beaumont, Texas
Ozen HS

HIGH SCHOOL – Completed his career as a four-year letterwinner and was named to the all-state and all-region team as a senior . . . led his high school to a combined record of 127-7 . . . his team began his senior season ranked No. 3 in the state of Texas . . . averaged 24 points per game during his final season . . . as a junior, averaged 18 points and four rebounds per game and led his team to the regional semifinals . . . received all-region and all-district honors, was selected as the District 24-A MVP and named “Mr. Outside” for the Golden Triangle area . . . participated in the adidas Superstar Camp in Atlanta, Ga., and was a member of the T-MAC AAU squad, which played in tournaments in both Houston, Texas, and Las Vegas, Nev. . . played in the same high school program that produced Kendrick Perkins, the first round (27th overall) draft pick by the Boston Celtics in 2003 . . . high school coach was Andre Boatte . . . also lettered twice in track & field.

PERSONAL – Undecided on a major . . . born March 1, 1989, in Beaumont, Texas . . . one of four children of Dwight and Jana Richard . . . his uncle, Bob Pollard, is a former NFL player for the New Orleans Saints.