

In-game Scoring for 4-Quarter Basketball

Legacy Stat Crew —

1. Initial Game Data Setup (blue screen)

- Set Q/H option to Quarter
- Set period minutes to 10
- Set OT minutes to 5

If the game is setup and saved with wrong venue settings, you cannot change the settings. Delete the incorrect game and replace it with another.

2. Between quarters

- Balance/Edit minutes.
- Press C, then 4 and F1 from Main Menu (red screen)
- Print Reports.

New for v4.16 or higher!

Game Reports | Reports | Selected box score lets you select period-only, cumulative, or manually selected plays.

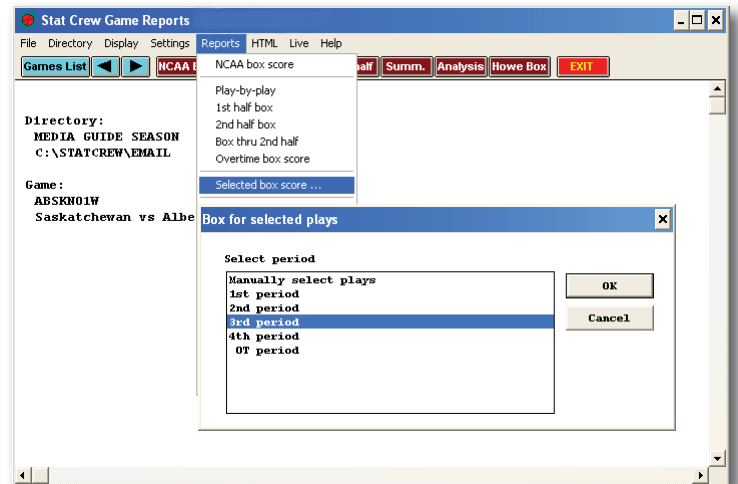
Set new period.

Press C, then 1 from Main Menu (red screen)

At start of each new period, Legacy automatically reenters game starters.

3. Post-game

- Wrapup as normal
- Print GameBook from Game Reports | Display | All Selected
- Not designed to include 1Q or 3Q. May choose to add those manually. See option above.*



New Stat Crew —

1. Women's venue

New Stat Crew is pre-configured for four (4) 10-minute periods. No adjustment to settings needed.

2. Between quarters

- Balance minutes, print reports and setup new period
- Starters automatically reentered, similar to Legacy.

3. Post-game

- Wrapup game, mark complete, print GameBook
- Not designed to include 1Q or 3Q. May choose to add those manually.*

For additional information or support, please contact Stat Crew Software.