

ATHLETIC COMPLIANCE NEWS

Key Upcoming Dates

October 7th–10th:
Mid-term Break; no classes

October 11th:
Classes Resume

October 18th:
Mid-term grades due



November 1st–2nd:
Senior Registration S'07

November 2nd:
Last Day to Withdraw from a class

November 3rd & 6th:
Junior Registration S'07

November 7th–8th:
Sophomore Registration S'07

November 9th–10th:
Freshman Registration S'07

November 17th:
*Final day for Spring/
Summer I grade changes*

November 22nd–26th:
Thanksgiving Recess; no classes

November 27th:
Classes Resume

December 8th:
Last day of classes

December 9th & 10th:
Reading Days

***SBU'S NCAA GRADUATION SUCCESS RATES
REMAIN STRONG***

NCAA President Myles Brand's goal of an 80 percent Graduation Success Rate for Division I is a percentage point closer to fruition with the release of recent NCAA data showing the overall GSR for the division at 77 percent, up from 76 percent last year.

The GSR release is the first of two this fall, and it includes four-class averages for each team at each institution, as well as the four-class graduation rate for that sport. Because the focus is at the team level, the data are provided as four-class aggregates, since that format is a much more accurate indicator of a team's academic performance than any single-cohort rate. The NCAA will release each institution's overall federal graduation rate in October. The NCAA also will include each school's overall GSR for student-athletes on the federal report.

The data is from the four-class aggregate of entering classes from 1996 through 1999, for which the NCAA has compiled sport-by-sport GSR and the comparable graduation rate using the federally mandated methodology.

The NCAA developed the GSR two years ago because the federal graduation rate does not credit institutions with student-athletes who leave in good academic standing or for transfers into the school who graduate. The GSR accounts for both of those transfer groups, which has resulted in a more accurate depiction of student-athlete academic success, .

All but two SBU teams were above the Division I average for that sport.



SBU's Fall 2006 GSR Data

SPORT	GSR	D-1 AVG
Baseball	92	65
M. Basketball	80	59
W. Basketball	100	82
Golf	100	78
Lacrosse	100	93
M. Soccer	91	78
W. Soccer	100	88
Softball	100	85
M. Swim/Dive	88	81
W. Swim/Dive	89	91
M. Tennis	67	82
W. Tennis	100	88

Only athletes receiving athletically related financial aid are calculated in the data



RESTRICTIONS ON TEXT MESSAGING BEING CONSIDERED

The use of text messaging and other forms of electronic communication between coaches and prospective student-athletes would be restricted under a proposal supported by the Division I Academics/Eligibility/Compliance Cabinet of the NCAA Management Council.

The proposal, which will be considered by the Division I Management Council at the NCAA Convention in January, would limit the use of text messaging and other electronic communication to between 4 p.m. and 8 p.m. (in

the prospect's home time zone) Monday through Friday and between 8 a.m. and 8 p.m. on Saturday and Sunday. Electronic mail is exempted from the restrictions.

The proposal also eliminates any electronic communication prior to September 1 of the junior year for prospects in most sports. For men's basketball recruits, communication may begin June 15 prior to the junior year.

The cabinet believes restricting—but not limiting entirely--text messaging and

other forms of electronic communication will be beneficial to both prospective student-athletes and coaches. The restrictions would allow prospects to return messages at any time, but would keep coaches from intruding during the school day. The proposal also would relieve coaches of the need to keep in continual contact with recruits through electronic communication in order to "keep up" with the recruiting efforts of other coaches.



QUESTIONS FOR NUTRITIONAL SUPPLEMENTS

First ask: For what purpose is this product being provided? If staff intend to provide this product to student-athletes for performance gains, then this product goes against the legislative intent.

Secondly ask: Does this product meet the criteria of the legislation, [i.e., can it legitimately be classified as a carbohydrate booster (no more than 30 percent of calories from

protein)], a fluid/electrolyte replacement drink, or a standard vitamin/mineral? If the product makes claims beyond replacing carbohydrates and fluids, then this product goes against both the intent and the letter of the legislation.

And finally, if the product's list of ingredients contain strange and exotic blends and ingredients that make claims regarding health and perform-

ance, this product has placed itself outside the realm of accuracy, safety and legitimacy, and should not be provided to student-athletes. Remember, the intent of the supplement manufacturers is to sell product, not protect a NCAA student-athlete's health and safety.

All purchase requests MUST be reviewed and approved by the Sports Medicine Department

COMPLIANCE TIPS OF THE MONTH

PSA Code of Conduct

Per NCAA Bylaw 13.6.1, St. Bonaventure has written policies governing the social activities of PSA's and their hosts during official and unofficial visits. Every PSA and the Head Coach must read and sign the Code of Conduct form upon the PSA's initial arrival on campus.

St. Bonaventure does not tolerate or condone the use of alcohol, illegal drugs, sex or any form of gambling or hazing. Additionally, any

activities that violate team rules, university policies or local/state/federal laws by the PSA or their host are forbidden.

Regardless of their ages, student hosts and their respective prospects may not visit any bars, adult entertainment clubs, the Seneca-Allegany Casino or Off-Track Betting (OTB) facilities.

Failure to abide by these policies may effect the eligibility of both the host and the PSA.

2007 Prospects and the NCAA Clearinghouse

2007 high school prospects should begin the process of applying to the NCAA Clearinghouse early in their senior year of high school. With the adoption of new legislation, **all SAT and ACT scores must now be sent directly to the Clearinghouse from the testing agency** (i.e., College Board). Remind your PSA's when they are taking the tests this fall to request the NCAA Clearinghouse as one of their choices to have their scores sent to.



Recruiting Calendars

Baseball

Oct. 1—Nov. 5 Cont/Eval

Men's Basketball

Oct. 1—Oct. 5 Contact

Oct. 6—Nov. 5 Eval

Women's Basketball

Oct. 1—Oct. 6 Contact

Oct. 7—Nov. 5 Eval

Softball

Oct. 1—Nov. 5 Cont/Eval

* no more than 50 days from 8/1/06 - 7/31/07

Lacrosse

Oct. 1—Nov. 6 Cont/Eval



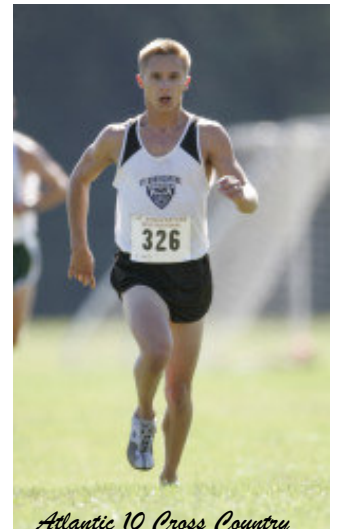
DEAD PERIOD

November 6th—9th, 2006

SBU Admissions

Open Houses

Sunday October 15th
Sunday October 22nd
Sunday November 5th
Invite your high school recruits to come visit!



Atlantic 10 Cross Country Championships Oct. 28th

Good Luck Bonnies!

