

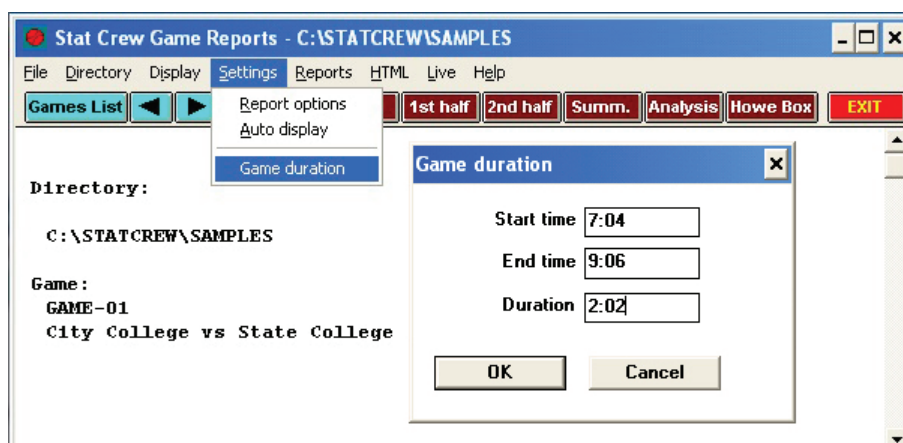
STATCREW SOFTWARE *Basketball* *Game Duration*

The NCAA Media Coordination and Statistics office is tracking game duration as much as possible during the 2014-15 campaign. Users may input game duration after the game through either Stat Crew Legacy or Next Generation. The data is shared with the NCAA via the XML output file. It does not appear in printed reports.

LEGACY Stat Crew System for Basketball (versions 4.15 and 4.16)

Go to: Game Reports | Settings | Game duration

- Start time, End time, and Duration fields are designed for HH:MM.
- Neither a leading zero (02:02), nor AM/PM abbreviations are required.
- After pressing OK, the data is saved in the game's XML file.



NEXT GENERATION Stat Crew System for Basketball

Go to: Game | Properties | Wrap Up

- Total Time field is designed for H:MM. A leading zero (0) is not required.
- After pressing Save, the data is saved in the game's XML file.

