

Rice Owls

2008-2009 BASKETBALL SEASON TICKETS

SEAT	PRIORITY	TICKET	TOTAL
CHAIR BACK	\$1,000	\$300	\$1,300
SIDE COURT	\$90	\$160	\$250
END COURT ADULT		\$160	\$160
END COURT YOUTH		\$100	\$100

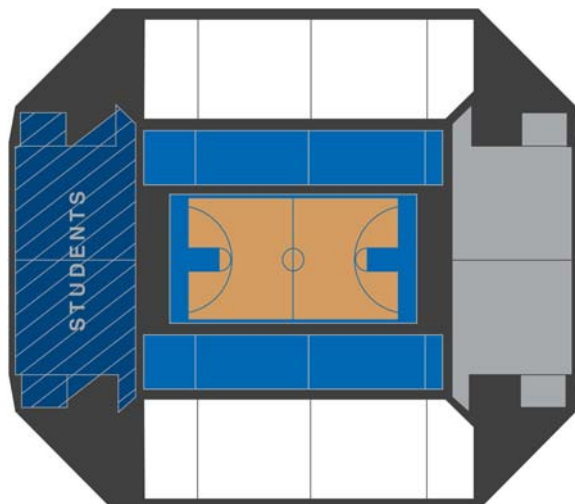
SEAT SELECTION

- Season ticket holders will be able to choose their seat at an assigned time based on priority.
- \$57 deposit for each seat
- The remaining ticket balance will be due at seat selection

SEAT SELECTION ORDER

- | |
|---|
| 1st - 06-07 or 07-08 Season ticket holder and
-07-08 donor (\$500+) |
| 2nd - 06-07 Season ticket holder |
| 3rd - 07-08 Donor |
| 4th - Rice letter winner |

Autry Court



IT'S



TIME

713.522.OWLS

www.riceowls.com