

5K COURSE

START

FINISH

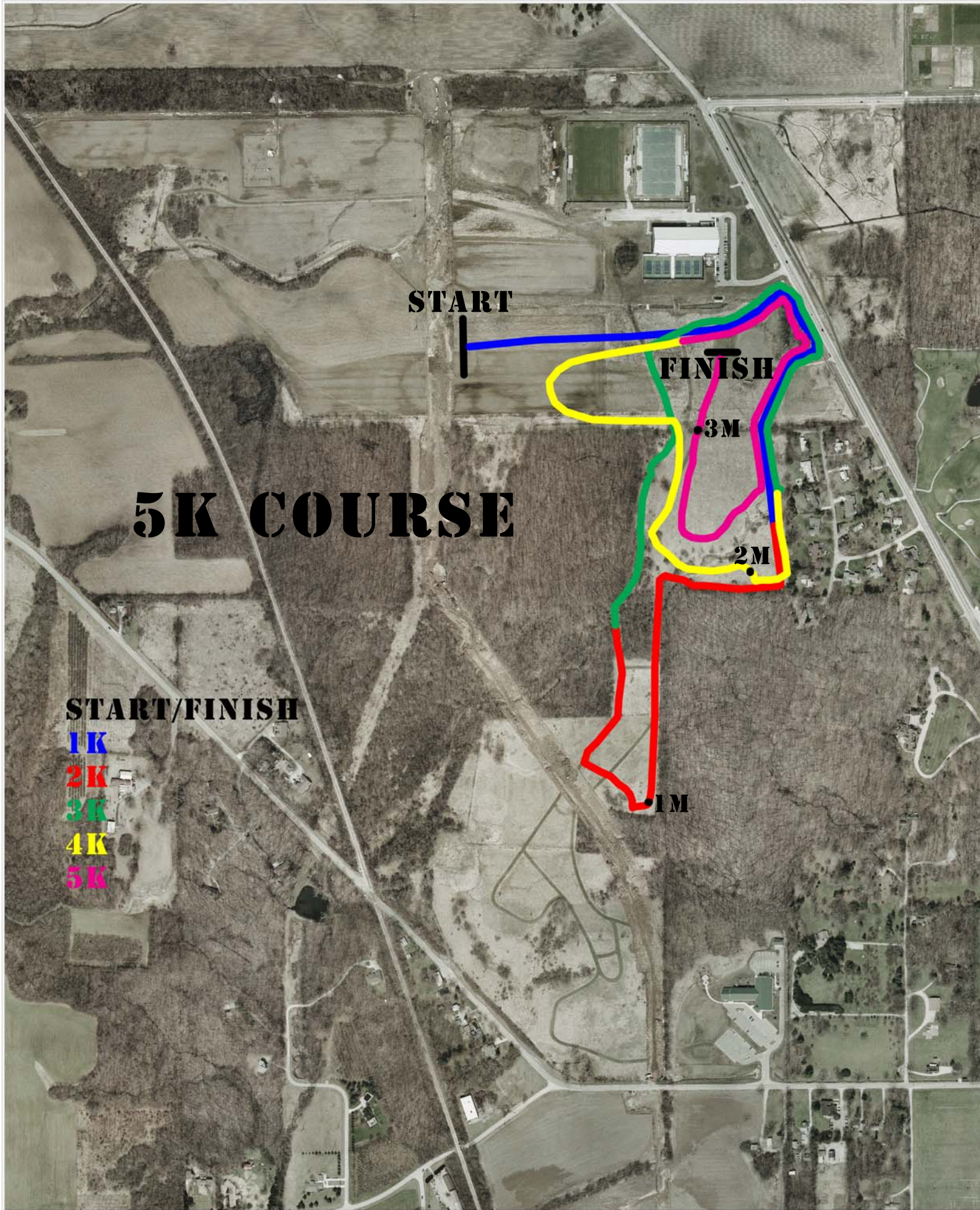
3M

2M

1M

START/FINISH

- 1K**
- 2K**
- 3K**
- 4K**
- 5K**



CROSS COUNTRY COURSE



DATE	BY	PROJECT No.	SCALE
11/20/10	BT/DB		

APPROXIMATE SCALE 1" = 100'



Copyright 2010 by Purdue University. All rights reserved. This drawing is the property of Purdue University and is not to be reproduced without the written consent of the University.

Phys 300 T 2010/10