



Contact: **Jeremy S. Fallis** • jsf16@psu.edu  
 O: (814) 865-3613 • C: (814) 206-6544

10 NCAA Tournament Appearances  
 3 NFCA All-Americans (all since 2000)  
 \$10.2 Million State-of-the-Art Stadium

## PENN STATE NITTANY LIONS

(0-0)



Games 1-4: February 10-12 • Tiger Park • Baton Rouge, La.

2012 SCHEDULE		
Date	Opponent	Result/Time
Feb. 10	<sup>1</sup> at #22 LSU	7:00 p.m.
Feb. 11	<sup>1</sup> vs. Louisiana Tech	11:00 a.m.
	<sup>1</sup> at #22 LSU	4:00 p.m.
Feb. 12	<sup>1</sup> vs. #15 Michigan	11:00 a.m.
Feb. 25	<sup>2</sup> vs. Notre Dame	10:00 a.m.
	<sup>2</sup> vs. James Madison	12:30 p.m.
Feb. 26	<sup>2</sup> vs. James Madison	10:00 a.m.
	<sup>2</sup> at North Carolina	3:00 p.m.
Mar. 2	<sup>3</sup> vs. Virginia	11:00 a.m.
	<sup>3</sup> vs. Long Island	1:00 p.m.
Mar. 3	<sup>3</sup> vs. North Carolina State	4:00 p.m.
	<sup>3</sup> vs. Lipscomb	6:00 p.m.
Mar. 4	<sup>3</sup> vs. Auburn	12:15 p.m.
Mar. 7	<sup>4</sup> vs. Miami (Ohio)	1:00 p.m.
Mar. 9	<sup>5</sup> vs. Virginia Tech	11:30 a.m.
	<sup>5</sup> at South Florida	2:00 p.m.
Mar. 10	<sup>5</sup> vs. USC Upstate	11:30 a.m.
	<sup>5</sup> vs. Central Connecticut St.	2:00 p.m.
Mar. 11	<sup>5</sup> vs. Rutgers	9:00 a.m.
Mar. 16	<sup>6</sup> vs. #23 Louisiana-Lafayette	2:00 p.m.
	<sup>6</sup> vs. #5 Oklahoma	8:30 p.m.
Mar. 17	<sup>6</sup> vs. Fresno State	6:30 p.m.
	<sup>6</sup> vs. Brigham Young	8:30 p.m.
Mar. 18	<sup>6</sup> at Cal State Fullerton	2:00 p.m.
Mar. 24	* at #15 Michigan (DH)	1:00 p.m.
Mar. 25	* at #15 Michigan	1:00 p.m.
Mar. 31	* at Purdue (DH)	1:00 p.m.
Apr. 1	* at Purdue	1:00 p.m.
Apr. 3	* PITTSBURGH (DH)	3:00 p.m.
Apr. 7	* MICHIGAN STATE (DH)	2:00 p.m.
Apr. 8	* MICHIGAN STATE	1:00 p.m.
Apr. 11	* TEMPLE (DH)	3:00 p.m.
Apr. 14	* INDIANA (DH)	2:00 p.m.
Apr. 15	* INDIANA	1:00 p.m.
Apr. 21	* at Wisconsin (DH)	1:00 p.m.
Apr. 22	* at Wisconsin	1:00 p.m.
Apr. 25	* at Kent State (DH)	3:00 p.m.
Apr. 28	* MINNESOTA (DH)	2:00 p.m.
Apr. 29	* MINNESOTA	1:00 p.m.
May 5	* at Illinois (DH)	2:00 p.m.
May 6	* at Illinois	3:00 p.m.
May 11	* OHIO STATE	6:00 p.m.
May 12	* OHIO STATE (DH)	2:00 p.m.



**LSU TIGERS**  
 (0-0)  
 2/10, 7 p.m.



**LOUISIANA TECH LADY TECHSTERS**  
 (0-0)  
 2/11, 11 a.m.



**LSU TIGERS**  
 (0-0)  
 2/11, 4 p.m.



**MICHIGAN WOLVERINES**  
 (0-0)  
 2/12, 11 a.m.

### SERIES INFORMATION

VENUE  
 COVERAGE  
 ALL-TIME RECORD vs. LSU  
 ALL-TIME RECORD vs. MICH  
 ALL-TIME RECORD vs. LT  
 NEXT SERIES

Tiger Field (1,800)  
 GoPSUsports.com GameTracker  
 1-2 (Last: 3/1/08, PSU 3-0 at #9 LSU)  
 7-46 (Last: 4/20/11, #1 MICH 5-4 at PSU)  
 0-2 (Last: 5/13/83, LT 2-0 at PSU)  
 Feb. 26-27 at Carolina Classic; Chapel Hill, N.C.

### SERIES STORIES

- Nittany Lions travel to Baton Rouge, La. for the Tiger Classic
- The Lions are 5-4 all-time in Baton Rouge, last visit was in 2008
- Penn State will play three games against ranked foes to start the year
- **Cassidy Bell, Lisa Akamine & Alyssa Sovereign** earned '11 All-Big Ten honors
- Head coach **Robin Pettrini** returns for 16th year at helm of Nittany Lions
- Penn State returns eight starters from a year ago, including top seven hitters
- The Nittany Lions play rare Big Ten team in non-conference game vs. Michigan
- PSU went a perfect 8-0 in the Fall Ball season

### PROBABLE STARTERS

#	PLAYERS	YR	POS	AVG	GP-GS	AB	R	H	2B	3B	HR	RBI	SLG	OBP	FLD
8	Ashley Todd	Sr.	3B	.071	10-6	14	0	1	0	0	0	0	.071	.235	.864
9	Lauren Yao	Jr.	2B	.215	54-54	144	7	31	6	0	1	11	.278	.305	.945
11	Shannon Hutchinson	Jr.	LF	.091	50-15	33	17	3	0	0	0	0	.091	.143	.926
12	Lisa Akamine	Sr.	P	.246	49-48	142	11	35	4	0	1	15	.296	.296	.979
15	Kasie Hatfield	So.	C	.223	49-45	130	10	29	6	1	1	10	.308	.273	.992
16	Danee Collett	Sr.	DP	.214	51-36	112	4	24	3	0	1	9	.268	.273	1.000
21	Cassidy Bell	Jr.	CF	.280	56-56	182	31	51	15	3	7	27	.511	.355	.970
22	Alyssa Sovereign	So.	RF	.257	56-55	167	11	43	9	1	5	26	.413	.302	1.000
24	Kailyn Johnson	Jr.	1B	.326	55-55	144	17	47	8	0	6	29	.507	.470	.986
44	Alyssa Renwick	Jr.	SS	.147	55-55	68	7	10	1	0	0	1	.162	.227	.935

### PITCHING STAFF

#	PLAYERS	ERA	W-L	APP	GS	CG	SHO	SV	IP	H	R	ER	BB	SO	BAA
00	Jordan Wheatley	8.65	0-1	4	0	0	0/2	0	5.2	6	7	7	4	6	.250
4	Marissa Diescher	-	-	-	-	-	-	-	-	-	-	-	-	-	-
12	Lisa Akamine	1.89	11-9	31	23	11	3/2	0	151.2	107	54	41	71	135	.193

### RESERVES

#	PLAYERS	YR	POS	AVG	GP-GS	AB	R	H	2B	3B	HR	RBI	SLG	OBP	FLD
00	Jordan Wheatley	So.	P	.000	5-0	2	0	0	0	0	0	0	.000	.000	1.000
2	Alicia Walker	Fr.	UTL	-	-	-	-	-	-	-	-	-	-	-	-
3	Liz Presto	So.	C	.067	16-4	15	4	1	1	0	0	1	.133	.300	-
4	Marissa Diescher	Fr.	P	-	-	-	-	-	-	-	-	-	-	-	-
18	Rachel Myers	Jr.	UTL	-	30-0	-	9	-	-	-	-	-	-	-	-
20	Ellen McNair	Sr.	C	.095	19-3	21	0	2	1	0	0	2	.143	.208	1.000
23	Lauren Anderson	Fr.	C/INF	-	-	-	-	-	-	-	-	-	-	-	-
25	Meghan Bradley	Fr.	OF	-	-	-	-	-	-	-	-	-	-	-	-
28	Morgan Long	Sr.	INF	.121	25-4	33	1	4	0	0	0	4	.121	.208	-
33	Mackenzie Liss	Fr.	INF	-	-	-	-	-	-	-	-	-	-	-	-

Home games in CAPS at Beard Field; All times Eastern; \* - Big Ten Games;  
 1 - Tiger Classic @ LSU  
 2 - Carolina Classic @ UNC  
 3 - Citrus Classic @ Kissimmee, Fla.  
 4 - at Clearwater, Fla.  
 5 - Under Armour Classic at Tampa/Clearwater, Fla.  
 6 - Judi Garman Classic @ CS Fullerton

Note: Big Ten Network games have yet to be announced, times are subject to change on short notice



# 2012 PENN STATE SOFTBALL

## 2012 PENN STATE SOFTBALL NUMERICAL ROSTER

No.	Name	Pos.	Year	Height	B/T	Hometown	High School
00	Jordan Wheatley	P/INF	So.	5-11	R/R	Troy, Mich.	Troy
2	Alicia Walker	UTL	Fr.	5-6	R/R	Los Alamitos, Calif.	Los Alamitos
3	Liz Presto	C	So.	5-7	R/R	Bethlehem, Pa.	Bethlehem Catholic
4	Marissa Diescher	P	Fr.	5-10	R/R	Livingston Manor, N.Y.	Livingston Manor
8	Ashley Todd	INF	Sr.	5-9	R/R	Mill Creek, Wash.	Henry M. Jackson
9	Lauren Yao	INF	Jr.	5-6	R/R	Los Angeles, Calif.	Cantwell Sacred Heart
11	Shannon Hutchinson	OF	Jr.	5-9	L/R	Sewell, N.J.	Washington Township
12	Lisa Akamine	P/UTL	Sr.	5-6	L/R	Escondido, Calif.	Escondido
15	Kasie Hatfield	C/3B	So.	5-5	R/R	Lutz, Fla.	Chamberlain
16	Danee Collett	C/UTL	Sr.	6-0	R/R	Rogersville, Tenn.	El Modena (Calif.)
18	Rachel Myers	UTL	Jr.	5-7	R/R	Millheim, Pa.	Penns Valley
20	Ellen McNair	C/UTL	Sr.	5-7	L/L	Niceville, Fla.	Niceville
21	Cassidy Bell	OF	Jr.	5-7	L/R	Bakersfield, Calif.	Liberty
22	Alyssa Sovereign	OF	So.	5-5	L/R	La Canada, Calif.	Crescenta Valley
23	Lauren Anderson	C/INF	Fr.	5-7	R/R	Valencia, Calif.	William S. Hart
24	Kailyn Johnson	1B	Jr.	5-8	L/L	Yorba Linda, Calif.	Esperanza
25	Meghan Bradley	OF	Fr.	5-7	L/L	Santa Monica, Calif.	Santa Monica
28	Morgan Long	INF	Sr.	5-4	R/R	Oro Valley, Ariz.	Ironwood Ridge
33	Mackenzie Liss	INF	Fr.	5-5	R/R	Mountainside, N.J.	Governor Livingston
44	Alyssa Renwick	SS	Jr.	5-7	R/R	Laurens, S.C.	Clinton

Head Coach: Robin Petrini (16th Year)

Associate Head Coach: Jen McIntyre (11th Year); Assistant Coach: Lisa Banse (Second Year)

## 2012 PENN STATE SOFTBALL ALPHABETICAL ROSTER

No.	Name	Pos.	Year	Height	B/T	Hometown	High School
23	Lauren Anderson	C/INF	Fr.	5-7	R/R	Valencia, Calif.	William S. Hart
12	Lisa Akamine	P/UTL	Sr.	5-6	L/R	Escondido, Calif.	Escondido
21	Cassidy Bell	OF	Jr.	5-7	L/R	Bakersfield, Calif.	Liberty
25	Meghan Bradley	OF	Fr.	5-7	L/L	Santa Monica, Calif.	Santa Monica
16	Danee Collett	C/UTL	Sr.	6-0	R/R	Rogersville, Tenn.	El Modena (Calif.)
4	Marissa Diescher	P	Fr.	5-10	R/R	Livingston Manor, N.Y.	Livingston Manor
15	Kasie Hatfield	C/3B	So.	5-5	R/R	Lutz, Fla.	Chamberlain
13	Shannon Hutchinson	OF	Jr.	5-9	L/R	Sewell, N.J.	Washington Township
24	Kailyn Johnson	1B	Jr.	5-8	L/L	Yorba Linda, Calif.	Esperanza
33	Mackenzie Liss	INF	Fr.	5-5	R/R	Mountainside, N.J.	Governor Livingston
28	Morgan Long	INF	Sr.	5-4	R/R	Oro Valley, Ariz.	Ironwood Ridge
20	Ellen McNair	C/UTL	Sr.	5-7	L/L	Niceville, Fla.	Niceville
18	Rachel Myers	UTL	Jr.	5-7	R/R	Millheim, Pa.	Penns Valley
3	Liz Presto	C	So.	5-7	R/R	Bethlehem, Pa.	Bethlehem Catholic
44	Alyssa Renwick	SS	Jr.	5-7	R/R	Laurens, S.C.	Clinton
22	Alyssa Sovereign	OF	So.	5-5	L/R	La Canada, Calif.	Crescenta Valley
8	Ashley Todd	INF	Sr.	5-9	R/R	Mill Creek, Wash.	Henry M. Jackson
2	Alicia Walker	UTL	Fr.	5-6	R/R	Los Alamitos, Calif.	Los Alamitos
00	Jordan Wheatley	P/INF	So.	5-11	R/R	Troy, Mich.	Troy
9	Lauren Yao	INF	Jr.	5-6	R/R	Los Angeles, Calif.	Cantwell Sacred Heart

### PRONUNCIATION GUIDE

Lisa Akamine	Ah-kah-MEE-nay
Lisa Banse	BANCE
Danee Collett	DAN-ee
Marissa Diescher	DEE-scher
Kasie Hatfield	KAY-see
Jen McIntyre	MACK-in-tire
Robin Petrini	Peh-TREE-nee
Lauren Yao	YOW

### LIONS BY ELIGIBILITY

<b>Seniors (5):</b> Akamine, Collett, Long, McNair, Todd
<b>Juniors (6):</b> Bell, Hutchinson, Johnson, Myers, Renwick, Yao
<b>Sophomores (4):</b> Hatfield, Presto, Sovereign, Wheatley
<b>Freshmen (5):</b> Anderson, Bradley, Diescher, Liss, Walker

### LIONS BY POSITION

<b>Catchers (4):</b> Anderson, Collett, McNair, Hatfield, Presto
<b>Infielders (9):</b> Anderson, Hatfield, Johnson, Liss, Long, Renwick, Todd, Wheatley, Yao
<b>Outfielders (4):</b> Bell, Bradley, Hutchinson, Sovereign
<b>Pitchers (3):</b> Akamine, Diescher, Wheatley
<b>Utility Players (4):</b> Akamine, Collett, McNair, Myers, Walker

### LIONS BY STATE

<b>Arizona (1):</b> Long
<b>California (7):</b> Anderson, Bradley, Akamine, Bell, Johnson, Walker, Yao
<b>Florida (2):</b> Hatfield, McNair
<b>Michigan (1):</b> Wheatley
<b>New Jersey (2):</b> Liss, Hutchinson
<b>New York (1):</b> Diescher
<b>Pennsylvania (2):</b> Myers, Presto
<b>South Carolina (1):</b> Renwick
<b>Tennessee (1):</b> Collett
<b>Washington (1):</b> Todd



### SCOUTING THE TIGERS

The 22nd-ranked LSU Tigers return a potent pitching staff from a year ago that went 40-18. Ace Brittany Mack and No. 2 Rachele Fico combined for 34 of 40 victories last season to lead a staff ERA of 2.21. Offensively, sophomore Simone Heyward set the table, leading team in average (.294) and runs (39). Ashley Langoni and Tammy Wray are the run producers, combining for 71 RBI in 2011.

#### SERIES HISTORY vs. LSU

All-Time Series		1-2
PSU Streak		1 wins
First Meeting	3/1/98, LSU 9-3	
Last Meeting	3/1/08, PSU 3-0	
Last PSU Win	3/1/08, 3-0	
Last LSU Win	5/18/01, 2-1	
Largest PSU Win	3-0, 3/1/08	
Largest LSU Win	9-3, 3/14/98	

#### Last 3 Meetings

3/1/08	W	3-0	A
5/18/01	L	1-2	A
3/14/98	L	3-9	N

### SCOUTING THE LADY TECHSTERS

Louisiana Tech looks to improve upon its 17-39 overall record last season by continuing the momentum garnered by its 2011 WAC Tournament Finals appearance. The Techsters return a young group of pitchers that threw just 131.1 of the team's 378.1 innings last year with a combined 6.02 ERA and allowed hitters to bat .355. At the plate, LT looks to improve its .229 average, returning top hitters Janna Fandrup (.292, 5 HR, 22 RBI) and Allie Geisler (.264, 6 HR 23 RBI). Cassie Krieg also figures into the equation with a .300 average from last season.

#### SERIES HISTORY vs. LT

All-Time Series		0-2
PSU Streak		2 losses
First Meeting	5/13/83, LT 9-1	
Last Meeting	5/13/83, LT 2-0	
Last PSU Win	n/a	
Last LT Win	5/13/83, 2-0	
Largest PSU Win	n/a	
Largest LT Win	9-1, 5/13/83	

#### Last 2 Meetings

5/13/83	L	0-2	H
5/13/83	L	1-9	H

### SCOUTING THE WOLVERINES

A familiar opponent for Penn State, No. 15 Michigan, went 53-6 last year with an 18-2 mark in Big Ten play, winning the conference. The Wolverines hit .329 with 56 homers and 77 doubles. Amanda Chidester, the 2011 Big Ten Player of the Year, is one of many UM threats, hitting .423 with 13 homers last year. Lead-off hitter Bree Evans (.411, 63 R) returns as well along with Ashley Lane (.345, 18 HR). Michigan graduated All-American Jordan Taylor in the circle, but junior Stephanie Speierman (18-1, 1.88 ERA, 109 K) is back, welcoming freshman Sara Driesenga.

#### SERIES HISTORY vs. MICH

All-Time Series		7-46
PSU Streak		9 losses
First Meeting	3/15/92, MICH 4-2	
Last Meeting	4/20/11, MICH 5-4	
Last PSU Win	3/18/07, 5-2	
Last MICH Win	4/21/10, 8-0 (5)	
Largest PSU Win	5-2, 3/18/07	
Largest MICH Win	14-0, 4/12/95	

#### Last 5 Meetings

4/20/11	L	4-5	H
4/20/11	L	4-5	H
4/21/10	L	0-8 (5 inn.)	A
4/21/10	L	0-8 (5 inn.)	A
4/1/09	L	3-11	H

### PREVIEWING THE NITTANY LIONS

The 2012 Nittany Lion softball season brings with it a new batch of expectations in addition to the attainable goal of a top Big Ten finish and an NCAA Tournament bid. Last season, Penn State earned its eighth bid to the NCAA Tournament in the last 12 seasons, hosting postseason games for the first time in 28 years. Nevertheless, this team wants more.

The Nittany Lions have the fortune of returning the bulk of its producers from a year ago, as eight starters will blend with a new crop of talented freshman in 2012. As part of that experienced core features three All-Big Ten honorees from a year ago, including three-time All-Big Ten and CoSIDA Academic All-District II First Team member **Lisa Akamine**. Centerfielder **Cassidy Bell** was a second-team honoree and rightfielder **Alyssa Sovereign** landed on the third team. Power-hitting first baseman **Kailyn Johnson** also is back for Penn State, looking for its first back-to-back NCAA Tournament invite since 2006-07.

### PRESEASON ACCOLADES

Two Nittany Lion softball student-athletes were honored by CollegeSportsMadness.com on Wednesday, Jan. 4 on its preseason All-Big Ten teams. Senior pitcher **Lisa Akamine** and junior outfielder **Cassidy Bell** were placed on the second team.

### RETURNING TO BATON ROUGE

Penn State last played in Baton Rouge during the 2008 season, going 3-2 at the Purple & Gold Challenge, including a victory over then-No. 9 LSU, 3-0. Prior to that, PSU's only other visit was during the 2001 NCAA Region 3 Tournament. PSU went 2-2, falling to LSU in an elimination game, 2-1.

### WE WILL SEE YOU LATER

Penn State is no stranger to facing Big Ten opponents prior to conference play. During head coach Robin Petrini's tenure, PSU has played 10 non-conference Big Ten games, going 5-5 (not including Nebraska). This year's matchup against the Wolverines is the fourth such meeting. PSU is 2-1 in those games, including a 1-0 win over the then-No. 1 team in 2006 and a 5-2 win over the then-No. 9 squad. The two teams will play in the Big Ten opener Mar. 24-25 in Ann Arbor.

### PERFECT FALL BALL

Nittany Lion softball enjoyed a successful Fall Ball season, going 8-0 in two home tournaments, while out-scoring opponents 43-4. Penn State's bats were alive, hitting .283 with four home runs, while the pitching staff boasted a 0.25 ERA in its eight contests. Penn State's first tournament was hosted at Beard Field in the Nittany Lion Softball Park as PSU rolled to a 5-0 win

over Bucknell and a 9-1, six-inning triumph against Delaware on Sept. 17. The following day, Penn State downed Bucknell, 2-0, before handing Lock Haven an 8-2 defeat. **Danee Collett** collected eight hits, batting .727 with four doubles, a homer and six RBI. In the circle, **Lisa Akamine** dazzled, going 10.2 innings allowing just two hits and two walks with 17 strikeouts against 39 batters.

During the second weekend of play (Oct. 1-2), rain and cool temperatures played havoc with the schedule as all games were moved inside to Holuba Hall with a makeshift field. Akamine was again the star in the circle, spinning 15 innings of scoreless ball and striking out 23 of the 55 batters she faced with just four hits against. **Kailyn Johnson** was the leader at the plate, hitting .600 with a double and a homer for four RBI in Penn State's 4-0 weekend. PSU downed Cleveland State, 1-0, in eight innings, before defeating Colgate on Saturday. The Nittany Lions bounced local squads, Indiana (Pa.), 9-1, and Saint Francis, 5-0, to cap the 8-0 Fall season.

### NEW CROP OF NITTANY LIONS

Penn State formally announced its seven incoming Nittany Lions from the high school ranks on Wednesday, Dec. 14, 2011. Joining the Nittany Lions as freshmen in the 2012-13 academic year are Taylor Abeta (San Diego, Calif.), Reina Furuya (Waikale, Hawaii), Shannon Good (Horseheads, N.Y.), Karlie Habitz (Santa Clarita, Calif.), Macy Jones (Ashburn, Va.), Lexi Knief (Ramsey, N.J.) and Christie Von Pusch (Bryn Mawr, Pa.).

"The 2012 class is one of the largest classes we have ever signed and just oozes with talent," Head coach Robin Petrini said. "They are all very bright young ladies that understand the commitment, drive, and determination it takes to be successful in the classroom and on the field as a student-athlete at Penn State. We are very excited about what each one brings to our roster and we are eager to see them succeed throughout their careers."

### NEXT TIME OUT

Penn State takes next weekend off but returns to the diamond Feb. 25-26 at the Carolina Classic. PSU will face off against Notre Dame, James Madison twice and host North Carolina.



## USA TODAY/NFCA COACHES

(as of Jan. 24)

#	Team	Record	Last
1	Arizona State	60-6	1
2	Florida	56-13	2
3	Alabama	53-11	3
4	California	45-13	5
<b>5</b>	<b>Oklahoma</b>	<b>43-19</b>	<b>7</b>
6	Missouri	53-13	6
7	Baylor	47-15	4
8	Arizona	43-18	11
9	Stanford	42-17	10
10	Georgia	51-14	9
11	Oklahoma State	42-20	8
12	Washington	37-16	12
13	Kentucky	40-16	13
14	Tennessee	49-12	18
<b>15</b>	<b>Michigan</b>	<b>53-6</b>	<b>17</b>
16	Oregon	42-16	15
17	Texas A&M	44-15	14
18	Texas	46-10	20
19	UCLA	36-19	19
20	Houston	44-18	16
21	Nebraska	41-14	21
<b>22</b>	<b>LSU</b>	<b>40-18</b>	<b>22</b>
<b>23</b>	<b>La.-Lafayette</b>	<b>51-11</b>	<b>23</b>
24	Tulsa	46-15	24
25	Louisville	38-20	RV

RV: DePaul, Syracuse, Georgia Tech, Notre Dame, Fresno St., ECU, Hawaii, Hofstra, SDSU, UNC, Tx. Tech, FSU, UMass, BYU, Fordham, NMSU

## ESPN.COM/USA SOFTBALL

(as of Jan. 24)

#	Team	Record	Last
1	Arizona State	60-6	1
2	Alabama	53-11	3
3	California	45-13	5
4	Florida	56-13	2
5	Missouri	53-10	6
<b>6</b>	<b>Oklahoma</b>	<b>43-19</b>	<b>7</b>
7	Baylor	47-15	4
8	Arizona	43-18	11
9	Tennessee	49-12	16
10	Stanford	42-17	10
11	Oregon	42-16	14
12	Georgia	51-14	9
13	UCLA	36-19	16
14	Washington	37-15	15
15	Texas A&M	44-15	13
<b>T16.</b>	<b>Michigan</b>	<b>53-6</b>	<b>17</b>
T16.	Oklahoma State	40-20	8
18	Kentucky	40-16	12
19	Texas	46-10	19
<b>T20.</b>	<b>LSU</b>	<b>40-18</b>	<b>22</b>
T20.	Nebraska	41-14	21
22	Houston	44-18	18
23	Georgia Tech	45-12	24
<b>24</b>	<b>La.-Lafayette</b>	<b>51-11</b>	<b>25</b>
<b>25</b>	<b>Notre Dame</b>	<b>46-11</b>	<b>23</b>

RV: Syracuse, Ohio St., Tulsa, BYU, UNC, DePaul, SDSU, Tx. Tech, Auburn, Fresno St., USF, FSU, Lipscomb, L'ville, Northwestern, Fordham, UMass, UNLV

**Bold indicates 2012 Opponent**

## PSU CAREER RECORD BOOK WATCH

### VICTORIES

63	Jackie Hill	2007-11
53	Missy Beseres	2002-06
49	Jaci Kalp	1997-00
	Ashley Esparza	2005-08
48	Marisa Hanson	2001-04
41	Aileen Polanis	1984-87
37	Tanis Ambelang	1998-00
	Cathy Kaminski	1987-89
35	Kelly McCann	1998-01
	Brenda Frey	1980-83
<b>32</b>	<b>Lisa Akamine</b>	<b>2009-present</b>

### STRIKEOUTS

745	Missy Beseres	2002-06
689	Jackie Hill	2007-11
593	Ashley Esparza	2005-08
535	Jaci Kalp	1997-2000
<b>411</b>	<b>Lisa Akamine</b>	<b>2009-present</b>

### INNINGS PITCHED

747.1	Jackie Hill	2007-11
648.0	Missy Beseres	2002-06
631.1	Marisa Hanson	2001-04
609.0	Jaci Kalp	1997-2000
569.0	Ashley Esparza	2005-08
<b>421.0</b>	<b>Lisa Akamine</b>	<b>2009-present</b>

### BATTING AVERAGE

.369	Nan Sichler	1985-88
.349	Karen Gulini	1998-01
.352	Michelle Turk	1981-84
.348	Christy Phillips	1981-84
.341	Gina Bianchini	1999-03
.341	Ashley Esparza	2005-08
.335	Danielle Kinley	2006-09
.334	Geri Saya	1982-85
.333	Carol Fultz	1982-85
.315	Megan Humphrey	2000-03
.314	Jennifer Tripken	1999-02
.312	Erin Norton	2000-03
<b>.304</b>	<b>Cassidy Bell</b>	<b>2010-present</b>
.304	Allison Medellin	1998-01

### WALKS

99	Shannon Salsburg	1995-98
96	Ashley Esparza	2005-08
92	Jennifer Tripken	1999-02
87	Danielle Kinley	2006-09
80	Megan Humphrey	2000-03
73	Ashley Griffith	2007-10
62	Gina Bianchini	1999-03
59	Marisa Marucci	1994-97
	Jenn Reynolds	2005-08
54	Leigh Murray	2002-06
<b>49</b>	<b>Kailyn Johnson</b>	<b>2010-present</b>
	Val Serpico	1993-96
	Joyce Tinner	1989-92

## 2011 BIG TEN STANDINGS

Team	W	L-T	GB	Pct.	W	L-T	Pct.
Michigan <sup>^</sup> *	18	2	-	.900	53	6	.898
Indiana *	17	3	1	.850	37	18	.673
Illinois	12	8	6	.600	27	22	.551
<b>PENN STATE *</b>	<b>11</b>	<b>8-1</b>	<b>6½</b>	<b>.575</b>	<b>31</b>	<b>24-1</b>	<b>.563</b>
Purdue	8	9-1	8½	.472	30	18-2	.620
Wisconsin	9	11	9	.450	30	23	.566
Minnesota	9	11	9	.450	31	24	.564
Iowa	9	11	9	.450	27	24	.529
Michigan State	6	14	12	.300	27	27	.500
Northwestern	5	13	13	.278	23	20	.535
Ohio State	3	17	15	.150	14	37	.275

<sup>^</sup> - Earned NCAA Tournament Automatic Bid; \* - Competed in NCAA Tournament



**ROBIN PETRINI**

Head Coach • 16th Year  
**UTAH STATE '83**

**RECORD:** 455-371-2 (.551)

Sixteen years after arriving in Happy Valley, fans and foes alike know that Penn State head coach **Robin Petrini** has brought the Nittany Lions to a new level. Petrini's vision of taking a below average Big Ten team and building it into a force that expects a run to the NCAA Tournament every year. In the past 12 years alone, Petrini has guided the Nittany Lions to eight appearances in the NCAA Tournament, while her overall record stands at 455-371-2. Petrini owns the all-time mark for career wins by a Penn State coach and has the longest tenure of any PSU skipper.

With a quality coaching résumé, top-notch Division I playing credentials and unbridled ambition, Petrini and her staff have rebuilt a program that hadn't been to an NCAA Tournament since 1985 when she took the 2000 Lion squad to the national tournament.

"We've established a standard and our expectation is that we get to NCAAs every year. Now we're looking to improve upon that," stated Petrini. "We've been to the NCAAs eight times. It doesn't get any easier to accomplish that goal, but now we want to take it to the next level. We want to get to the next round of the NCAAs and move forward with our expectations of this program."

Since taking over in 1997, Petrini has upgraded the program to become nationally competitive. She brought on board an excellent coaching staff with competitive experience at the collegiate ranks and upgraded the schedule to include nationally prominent teams year in and year out. In 1999, she led the Nittany Lions to their first 30-win season since 1988 and earned Big Ten Co-Coach of the Year en route to a Big Ten Tournament bid. Since then, Petrini's teams have recorded seven more 30-win seasons, including 2006's 39-17 NCAA Tournament campaign, which set the school record for wins in a season.

More recently, Petrini overcame a three-year drought from the NCAA Tournament by taking the 2011 club not only to the event, but by hosting the NCAA Regionals at brand new Nittany Lion Softball Park and Beard Field. Petrini was instrumental in the building of the \$10.2 million, softball-only complex on Penn State's campus. In less than a year's time, the new facility has hosted the NCAA Tournament and all four levels of the PIAA Softball Championship.

**Before Penn State**

Petrini spent eight seasons at Northwestern University prior to her tenure at PSU. Named associate head coach in 1995-96, Petrini served as an assistant coach for the Wildcats from 1988-95. The primary Northwestern recruiter, she was instrumental in assembling the 1997 class, regarded as one of the top-two in the nation.

During Petrini's appointment, Northwestern produced 12 All-Big Ten selections, as well as an All-American and several GTE Academic All-Americans. The Wildcats compiled 30-win seasons in four of her last five years, and finished fourth or better in the conference race

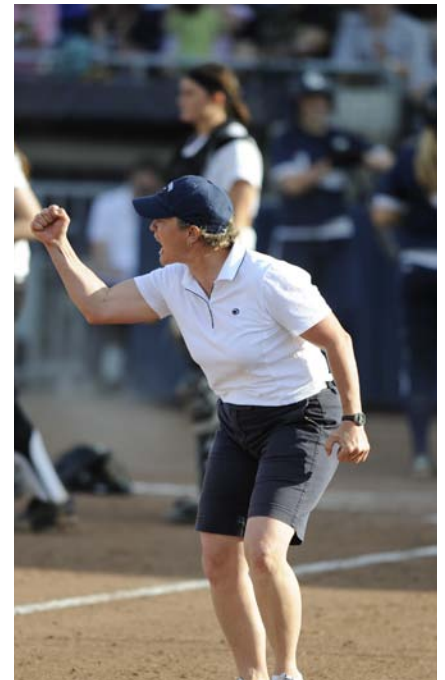
five times during her eight seasons.

"I am a firm believer in the student-athlete concept," confided Petrini. "I am committed to making sure that our athletes are given the opportunity to be successful academically and athletically. I believe our athletes have the opportunity to get a quality education and play some of the finest softball in the country."

She continues that excellence with her Penn State teams, as well. While in Happy Valley, she has produced 33 All-Big Ten performers, 94 academic all-conference, 16 Academic All-District honorees, six overall Academic All-Americans, multiple National Fastpitch Coaches Association All-Americans as well as three Academic All-American First Teamers including current assistant coach Jen McIntyre.

Prior to her position at Northwestern, Petrini spent five years at Brigham Young University, where she received her master's degree in physical education. After one season as the Cougars' assistant coach, she was promoted to head coach. Working without the aid of scholarships, she developed a nationally competitive program that beat a pair of top 20 teams in 1988.

A native of South San Francisco, Calif., Petrini is a 1983 graduate of Utah State University with bachelor's degrees in political science and physical education. She enjoyed a successful playing career as a four-year letterwinner and starting shortstop for the Aggies' 1980 and 1981 AIAW national championship squads. In September 2011, Petrini and her teammates from those national championship teams were inducted into the Utah State Athletics Hall of Fame. A three-time all-conference selection, she was also an All-America nominee. In the summer of 2003, she was inducted into the San Mateo County Sports Hall of Fame, which also includes the likes of Tom Brady and John Madden.



**CAREER RECORD**

Season	Overall	Pct.	Big Ten	Pct.	Finish	Postseason Appearances
1997	23-32	.418	2-22	.083	10th	-
1998	21-28-1	.430	8-14	.364	7th	Big Ten Tournament
1999	35-22	.614	15-9	.625	3rd	Big Ten Tournament
2000	38-19	.667	12-5	.706	3rd	Big Ten & NCAA Tournaments
2001	34-28	.548	9-11	.540	T-5th	Big Ten & NCAA Tournaments
2002	34-26	.567	10-9	.526	T-5th	Big Ten & NCAA Tournaments
2003	31-23	.574	9-9	.500	7th	NCAA Tournament
2004	25-33	.431	8-12	.400	7th	Big Ten Tournament
2005	36-23	.610	10-9	.526	6th	Big Ten & NCAA Tournaments
2006	39-17	.696	10-10	.500	5th	Big Ten & NCAA Tournaments
2007	26-25	.510	5-9	.357	8th	Big Ten & NCAA Tournaments
2008	34-22	.607	6-12	.333	T-9th	-
2009	19-27	.413	7-13	.350	7th*	-
2010	29-22	.569	8-11	.421	7th*	-
2011	31-24-1	.563	11-8-1	.575	4th*	NCAA Tournament
<b>Career</b>	<b>455-371-2</b>	<b>.551</b>	<b>130-163-1</b>	<b>.444</b>		<b>8 NCAA Appearances (10-14)</b>

\* - No Big Ten Tournament Held



**2011 Penn State Nittany Lion Softball  
Overall Statistics for Penn State (May 28, 2011)  
(All games Sorted by Batting avg)**

Record: 31-24-1 Home: 11-8-1 Away: 9-8 Neutral: 11-8 Big Ten: 11-8-1

Player	avg	gp-gs	ab	r	h	2b	3b	hr	rbi	tb	slg%	bb	hp	so	gdp	ob%	sf	sh	sb-att	po	a	e	fld%	
Johnson, Kailyn	.326	55-55	144	17	47	8	0	6	29	73	.507	35	4	20	0	.470	0	2	0-0	336	14	5	.986	
Bell, Cassidy	.280	56-56	182	31	51	15	3	7	27	93	.511	19	2	21	0	.355	0	0	8-11	58	6	2	.970	
Sovereign, Alyssa	.257	56-55	167	11	43	9	1	5	26	69	.413	9	2	38	1	.302	1	4	0-1	56	6	0	1.000	
Akamine, Lisa	.246	49-48	142	11	35	4	0	1	15	42	.296	5	1	28	0	.277	0	3	2-3	8	39	1	.979	
Hatfield, Kasie	.223	49-45	130	10	29	6	1	1	10	40	.308	6	3	23	2	.273	0	3	0-0	218	16	2	.992	
Yao, Lauren	.215	54-54	144	7	31	6	0	1	11	40	.278	13	6	19	1	.305	1	2	3-5	87	85	10	.945	
Collett, Danee	.214	51-36	112	4	24	3	0	1	9	30	.268	7	2	25	1	.273	0	2	0-0	152	14	0	1.000	
Ostman, Mary	.213	51-40	89	16	19	0	0	0	0	19	.213	3	1	34	0	.247	0	1	7-11	44	0	6	.880	
Renwick, Alyssa	.147	55-55	68	7	10	1	0	0	1	11	.162	7	0	26	0	.227	0	4	5-5	102	99	14	.935	
Rossi, Lauren	.141	52-45	99	9	14	0	0	1	3	17	.172	10	0	23	1	.220	0	4	3-3	56	79	9	.938	
-----																								
Giordano, Desi	.333	5-5	9	2	3	0	0	1	1	6	.667	6	0	4	0	.600	0	0	1-1	4	5	3	.750	
Hill, Jackie	.128	43-34	47	6	6	0	0	0	3	6	.128	3	1	17	2	.196	0	0	0-0	21	45	1	.985	
Long, Morgan	.121	25-4	33	1	4	0	0	0	4	4	.121	0	0	7	0	.118	1	0	0-0	0	0	0	.000	
McNair, Ellen	.095	19-3	21	0	2	1	0	0	2	3	.143	1	2	10	0	.208	0	1	0-0	1	0	0	1.000	
Hutchinson, Shannon	.091	50-15	33	17	3	0	0	0	0	3	.091	2	0	14	0	.143	0	0	2-3	22	3	2	.926	
Todd, Ashley	.071	10-6	14	0	1	0	0	0	0	1	.071	3	0	4	0	.235	0	0	0-0	5	14	3	.864	
Presto, Liz	.067	16-4	15	4	1	1	0	0	1	2	.133	5	0	5	0	.300	0	0	0-0	0	0	0	.000	
Wheatley, Jordan	.000	5-0	2	0	0	0	0	0	0	0	.000	0	0	2	0	.000	0	0	0-0	0	4	0	1.000	
Myers, Rachel	.000	30-0	0	9	0	0	0	0	0	0	.000	0	0	0	0	.000	0	0	1-1	0	0	0	.000	
Totals	.223	56	1451	162	323	54	5	24	142	459	.316	134	24	320	8	.298	3	26	32-44	1170	429	58	.965	
Opponents	.212	56	1446	146	307	46	12	31	131	470	.325	134	32	342	2	.292	7	31	63-77	1155	473	50	.970	

LOB - Team (327), Opp (339). DPs turned - Team (13), Opp (16). CI - Team (0), Opp (1). IBB - Team (1), Johnson 1, Opp (1).

**(All games Sorted by Earned run avg)**

Player	era	w-l	app	gs	cg	sho	sv	ip	h	r	er	bb	so	2b	3b	hr	b/avg	wp	hp	bk	sfa	sha
Akamine, Lisa	1.89	11-9	31	23	11	3/2	0	151.2	107	54	41	71	135	20	5	12	.193	11	7	1	1	5
Hill, Jackie	1.93	20-14	41	33	25	6/0	1	232.1	194	85	64	59	201	25	7	16	.224	5	24	0	6	26
-----																						
Myers, Rachel	0.00	0-0	1	0	0	0/0	0	0.1	0	0	0	0	0	0	0	0	.000	0	0	0	0	0
Wheatley, Jordan	8.65	0-1	4	0	0	0/2	0	5.2	6	7	7	4	6	1	0	3	.250	2	1	0	0	0
Totals	1.99	31-24	56	56	36	11/2	1	390.0	307	146	111	134	342	46	12	31	.212	18	32	1	7	31
Opponents	2.35	24-31	56	56	31	16/4	4	385.0	323	162	129	134	320	54	5	24	.223	24	24	2	3	26

PB - Team (7), Hatfield 6, Collett 1, Opp (7). SBA/ATT - Hill (46-51), Hatfield (31-40), Collett (31-36), Akamine (15-24), Wheatley (2-2), McNair (1-1).



**2011 Penn State Nittany Lion Softball  
Conference statistics for Penn State (May 28, 2011)  
(Big Ten games only Sorted by Batting avg)**

Record: 11-8-1 Home: 5-4-1 Away: 6-4 Big Ten: 11-8-1

Player	avg	gp-gs	ab	r	h	2b	3b	hr	rbi	tb	slg%	bb	hp	so	gdp	ob%	sf	sh	sb-att	po	a	e	fld%	
Johnson, Kailyn	.392	20-20	51	11	20	3	0	4	17	35	.686	17	1	9	0	.551	0	0	0-0	117	6	0	1.000	
Bell, Cassidy	.333	20-20	66	15	22	7	1	2	10	37	.561	9	1	6	0	.421	0	0	3-5	24	5	1	.967	
Sovereign, Alyssa	.333	20-20	60	4	20	5	0	0	12	25	.417	3	1	12	0	.369	1	1	0-1	17	3	0	1.000	
Yao, Lauren	.273	20-20	55	4	15	4	0	1	5	22	.400	4	3	2	0	.355	0	1	2-3	38	40	4	.951	
Akamine, Lisa	.237	18-18	59	5	14	2	0	1	4	19	.322	1	0	11	0	.250	0	1	1-1	1	8	1	.900	
Hatfield, Kasie	.220	20-19	59	5	13	3	0	0	6	16	.271	4	1	9	2	.281	0	1	0-0	111	6	1	.992	
Rossi, Lauren	.174	20-19	46	6	8	0	0	1	2	11	.239	5	0	7	0	.255	0	1	1-1	26	34	6	.909	
Renwick, Alyssa	.148	20-20	27	4	4	0	0	0	1	4	.148	4	0	9	0	.258	0	1	1-1	36	31	7	.905	
Ostman, Mary	.148	19-15	27	5	4	0	0	0	0	4	.148	0	0	11	0	.148	0	0	2-2	15	0	2	.882	
Hill, Jackie	.143	17-14	21	4	3	0	0	0	2	3	.143	2	1	5	2	.250	0	0	0-0	3	20	0	1.000	
Collett, Danee	.040	16-6	25	1	1	0	0	0	2	1	.040	0	2	9	0	.111	0	1	0-0	21	1	0	1.000	
-----																								
Long, Morgan	.125	5-2	8	0	1	0	0	0	1	1	.125	0	0	1	0	.111	1	0	0-0	0	0	0	.000	
Hutchinson, Shannon	.111	17-4	9	7	1	0	0	0	0	1	.111	1	0	6	0	.200	0	0	0-0	6	3	2	.818	
McNair, Ellen	.111	9-1	9	0	1	0	0	0	1	1	.111	0	2	4	0	.273	0	0	0-0	1	0	0	1.000	
Presto, Liz	.000	9-2	7	1	0	0	0	0	0	0	.000	3	0	3	0	.300	0	0	0-0	0	0	0	.000	
Wheatley, Jordan	.000	1-0	0	0	0	0	0	0	0	0	.000	0	0	0	0	.000	0	0	0-0	0	0	0	.000	
Myers, Rachel	.000	11-0	0	3	0	0	0	0	0	0	.000	0	0	0	0	.000	0	0	0-0	0	0	0	.000	
Totals	.240	20	529	75	127	24	1	9	63	180	.340	53	12	104	4	.322	2	7	10-14	416	157	24	.960	
Opponents	.249	20	534	67	133	17	5	9	59	187	.350	52	17	118	1	.333	4	13	24-28	410	193	22	.965	

LOB - Team (118), Opp (137). DPs turned - Team (3), Opp (9). IBB - Team (1), Johnson 1, Opp (1).

**(Big Ten games only Sorted by Earned run avg)**

Player	era	w-l	app	gs	cg	sho	sv	ip	h	r	er	bb	so	2b	3b	hr	b/avg	wp	hp	bk	sfa	sha
Hill, Jackie	2.67	8-5	17	14	11	1/0	0	94.1	102	46	36	27	77	12	3	5	.274	3	13	0	3	12
Akamine, Lisa	2.75	3-2	9	6	2	1/0	0	43.1	30	20	17	24	41	5	2	3	.191	2	4	0	1	1
-----																						
Wheatley, Jordan	7.00	0-1	1	0	0	0/0	0	1.0	1	1	1	1	0	0	0	1	.200	0	0	0	0	0
Totals	2.73	11-8	20	20	13	2/0	0	138.2	133	67	54	52	118	17	5	9	.249	5	17	0	4	13
Opponents	2.87	8-11	20	20	11	5/0	1	136.2	127	75	56	53	104	24	1	9	.240	10	12	0	2	7

PB - Team (4), Hatfield 4, Opp (4). SBA/ATT - Hill (19-21), Hatfield (17-21), Collett (6-6), Akamine (4-6), Wheatley (1-1), McNair (1-1).



TV/RADIO ROSTER



**JORDAN WHEATLEY**  
Sophomore • P/INF  
Troy, Mich.



**ALICIA WALKER**  
Freshman • UTL  
Los Alamitos, Calif.



**LIZ PRESTO**  
Sophomore • C  
Bethlehem, Pa.



**MARISSA DIESCHER**  
Freshman • P  
Livingston Manor, N.Y.



**KASIE HATFIELD**  
Sophomore • C/3B  
Tampa, Fla.



**ASHLEY TODD**  
Senior • INF  
Mill Creek, Wash.



**LAUREN YAO**  
Junior • INF  
Los Angeles, Calif.



**SHANNON HUTCHINSON**  
Junior • OF  
Sewell, N.J.



**LISA AKAMINE**  
Senior • P/UTL  
Escondido, Calif.



**DANEE COLLETT**  
Senior • C/UTL  
Rogersville, Tenn.



**RACHEL MYERS**  
Junior • UTL  
Millheim, Pa.



**ELLEN MCNAIR**  
Senior • C/UTL  
Niceville, Fla.



**CASSIDY BELL**  
Junior • OF  
Bakersfield, Calif.



**ALYSSA SOVEREIGN**  
Sophomore • OF  
La Canada, Calif.



**LAUREN ANDERSON**  
Freshman • C/INF  
Valencia, Calif.



**KAILYN JOHNSON**  
Junior • 1B  
Yorba Linda, Calif.



**MEGHAN BRADLEY**  
Freshman • OF  
Santa Monica, Calif.



**MORGAN LONG**  
Senior • INF  
Oro Valley, Calif.



**MACKENZIE LISS**  
Freshman • INF  
Mountainside, N.J.



**ALYSSA RENWICK**  
Junior • SS  
Laurens, S.C.



**ROBIN PETRINI**  
Utah State '83  
Head Coach • 16th Year



**JEN MCINTYRE**  
Penn State '98  
Assoc. Head Coach • 11th Year



**LISA BANSE**  
Iowa '06  
Asst. Coach • 2nd Year