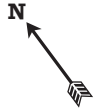




# THE PENNSYLVANIA STATE UNIVERSITY BEAVER STADIUM

CAPACITY: 107,282



PORTER ROAD



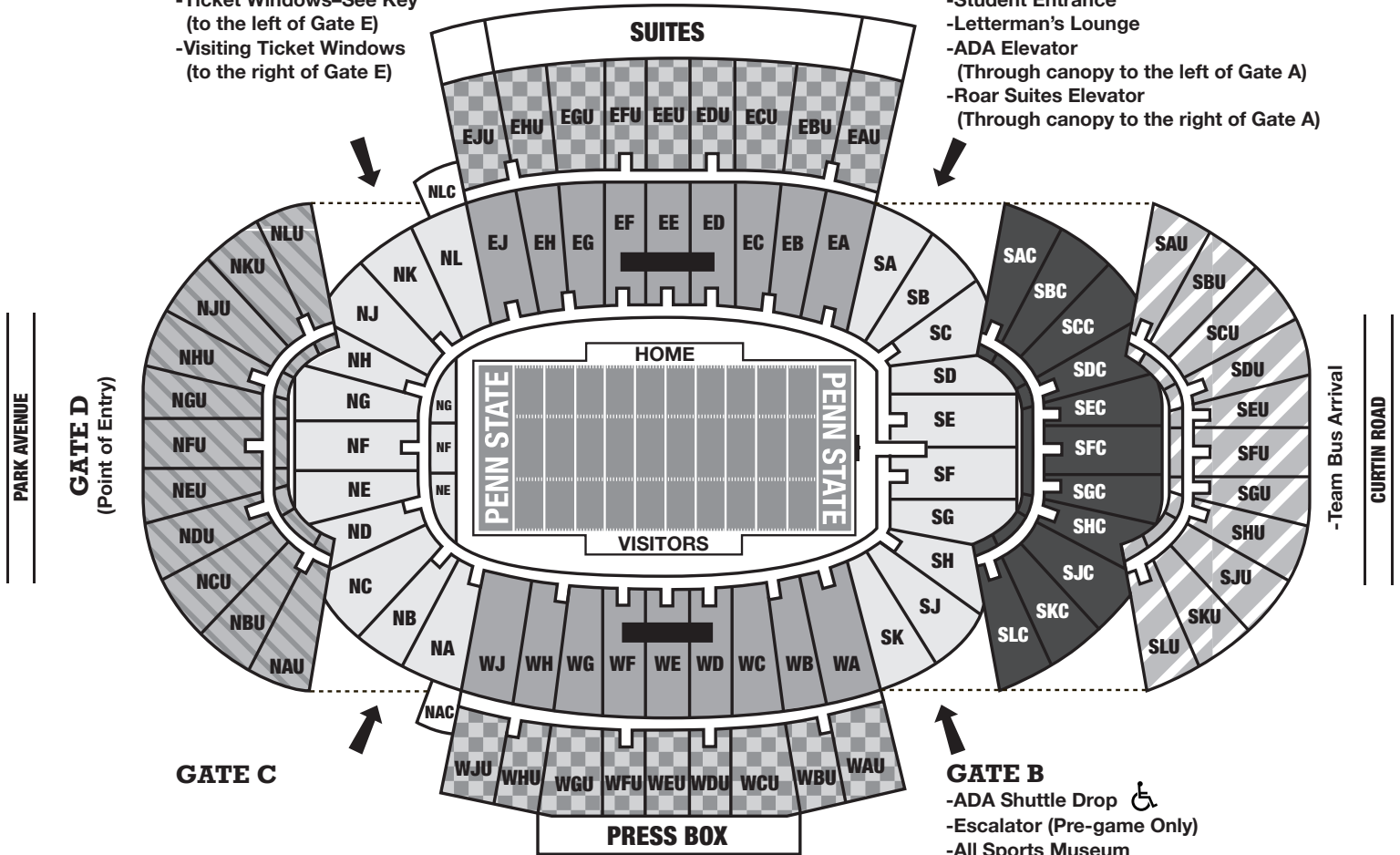
-Joe Paterno Statue  
-EMS/First Aid

## GATE E

- Ticket Windows—See Key (to the left of Gate E)
- Visiting Ticket Windows (to the right of Gate E)

## GATE A

- Student Entrance
- Letterman's Lounge
- ADA Elevator (Through canopy to the left of Gate A)
- Roar Suites Elevator (Through canopy to the right of Gate A)



- Elevator—Athletics Pass Required
- ADA Customer Service

UNIVERSITY DRIVE

### SEATING GUIDE

- North End: Rows A-K, 1-60  
South End: Rows 1-58
- East & West: Rows A-U, 1-40
- Box Seating: Rows 1-5
- Upper East: Rows 41-90  
Upper West: Rows 41-80
- Club Section: Rows AA-VV\*
- Upper North End: Rows AA-EE\*, 61-95
- Upper South End: Rows AA-EE\* (varies with Section), 61-80\*

\* Indicates chairbacks, all other seats are bleachers

From a field view:  
-seats to the right of the aisle are even numbers  
-seats to the left of the aisle are odd numbers

### TICKET WINDOWS

(Open 4 hours prior to Kick-Off)

- #1 Sales and Will-Call/Collect
- #2 Sales and Will-Call/Collect
- #3 Will-Call/Prepaid (A - L)
- #4 Will-Call/Prepaid (M - Z)
- #5 Ticket Problems and Duplicates
- #6 ADA