

# NLC Annual Report



A special edition of the Nittany Lion Club Newsletter



## *Success with Honor*

Nittany Lion Club activities, giving and events for 2009.



“Team ICA,” members of the Penn State Department of Intercollegiate Athletics—administrators, coaches and staff.

## About the Annual Report

A special edition of the NLC Newsletter.  
Vol. 30, No. 2 / Annual Report, January 2010  
U.Ed. ICA-10-30

The Nittany Lion Club Newsletter is a quarterly publication sent to all Nittany Lion Club members. The magazine is published by the Department of Intercollegiate Athletics.

**Nittany Lion Club Web Site**  
www.nittanylionclub.com

**Official Web Site of Penn State Athletics**  
www.gopsusports.com

**Executive Editors**  
Greg Myford, John Nitardy

**Assistant Editors**  
Nikki Potoczny, Mike Milliron

**Contributors**  
Penn State Athletic Communications,  
Steve Sampsell

**Photographers**  
Penn State Athletic Communications,  
Steve Manuel, Mark Selders

**Printing**  
Nittany Valley Offset, State College, Pa.

### PENN STATE ATHLETICS Mission Statement

Consistent with the University’s mission, the Department of Intercollegiate Athletics offers students exemplary programs that develop scholarship, sportsmanship and leadership within the educational and social environments of the Pennsylvania State University.

### — Contact Us —

**Phone:** 1-800-NITTANY (648-8269)  
**Web:** www.nittanylionclub.com  
**E-mail:** nittanylionclub@athletics.psu.edu  
**Mail:** 157 Bryce Jordan Center,  
University Park, PA 16802

Our first annual report from the Nittany Lion Club provides a look at the NLC’s activities and finances.

The report includes giving during the 2009 fiscal year  
(July 1, 2008 to June 30, 2009)  
and a summary of Intercollegiate Athletics  
and NLC activities during the 2009 calendar year.

As we recap and look back, and as we continue our “*For the Future*” campaign focused on our student-athletes, we hope you find the information helpful and informative.

The Nittany Lion Club, comprised of Penn State alumni and friends of the Department of Intercollegiate Athletics, was established in 1959 to create greater interest in and financial support of Penn State varsity athletics.

Members of the Nittany Lion Club make possible grant-in-aid support for student-athletes among 29 varsity programs and provide operational support for the University’s entire intercollegiate athletics program. We sincerely appreciate your support because it enables us to maintain our approach the Penn State Way, striving for success with honor.

“Thank you for your past and present support of Intercollegiate Athletics. Your support has made a profound impact and allows our student-athletes to succeed at the highest levels in the classroom and on the playing field.”

— John Nitardy,

NLC director of annual giving  
and major gifts



ON THE COVER: Student-athletes at commencement, and (left to right) Capital One Bowl champions, wrestling coach Cael Sanderson and members of the women’s volleyball team cutting the net to celebrate their third consecutive national championship.

# 22,007

Members of the Nittany Lion Club in 2009,  
up from 18,498 members (19 percent) in 2005.

Nittany Lion Club members primarily support grant-in-aid for Penn State student-athletes. In addition, members provide operational, academic, medical, individual endowment and capital project support for our student-athletes.

In the 2009 fiscal year, support totaled \$27.1 million.

---

“Your support has given me the opportunity to get an amazing education and accomplish something great.”  
— Arielle Wilson,  
women’s volleyball

---



Three-time NCAA champion and All-American Arielle Wilson

### NLC Fiscal 2009 Receipts

Annual Fund.....	\$13,011,617
Beaver Stadium Suites/Club.....	\$5,426,626
Athletic Facilities .....	\$1,170,611
Endowments .....	\$6,111,804
Other (program support, etc.)..	\$1,426,517
Total .....	\$27,147,175

Nittany Lion Club operational costs totaled **\$1,177,586**,  
 and **96 percent** of what the NLC raises  
 goes to student-athletes, coaches and programs.

Members of the NLC provide important support, and both membership and total giving have increased since 2005.

We appreciate your ongoing support and are committed to getting the most value from your gifts.



**NLC MEMBERSHIP BREAKDOWN**

Numbers of donors at each level along with the percent of total Nittany Lion Club dollars raised.

All-American (\$17,000+)	65	14%
Lion's Circle (\$6,000-\$16,999)	157	8%
Honorary Director (\$3,000-\$5,999)	410	9%
Honorary Coach (\$2,200-\$2,999)	1,680	24%
Honorary Captain (\$1,500-\$2,199)	365	4%
Blue/White (\$800-\$1,499)	2,477	13%
Lion Loyalty (\$400-\$799)	6,481	17%
Lion Backer (\$200-\$399)	7,526	10%
Lion Patron (\$50-\$199)	2,166	1%
Non-Specified Level	154	0.01%
Student NLC	526	0.09%

NOTE: The NLC spent \$1,177,586 (13 percent less than its allotted budget) to support staff members and all of its fundraising and operational costs.

Every gift matters, and the annual **average gift**  
of NLC members is **\$591** per year.

**Because Intercollegiate Athletics receives no funding from the University or state, every contribution goes directly into the program and helps in substantial ways.**

As a member of the Nittany Lion Club, your commitment and donations contribute tremendously to the success of the Nittany Lion family. Your annual donation allows our student-athletes to be in top form, both in the classroom and on the field. Because of your support, our student-athletes can compete with honor and pride at the highest level.

Today, fundraising is more important to Intercollegiate Athletics than ever before. Wherever you look—student-athlete tuition bills, academic support services, facility construction and maintenance, team travel and health care—the costs of running a top athletic program are growing in every sport.

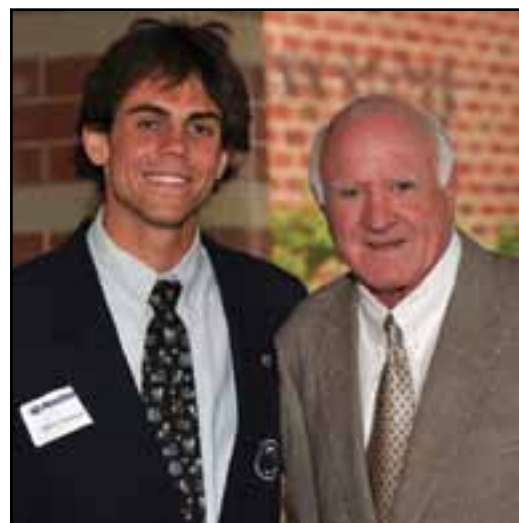
Each year, the challenge grows to make sure that we have the funds necessary to field intercollegiate teams that are second to none.

Your Nittany Lion Club investment helps fund the following areas:

**1. Grant-in-Aid:** A major portion of your gift goes toward scholarship support, which provides more than \$10 million annually for student-athletes' grant-in-aid.

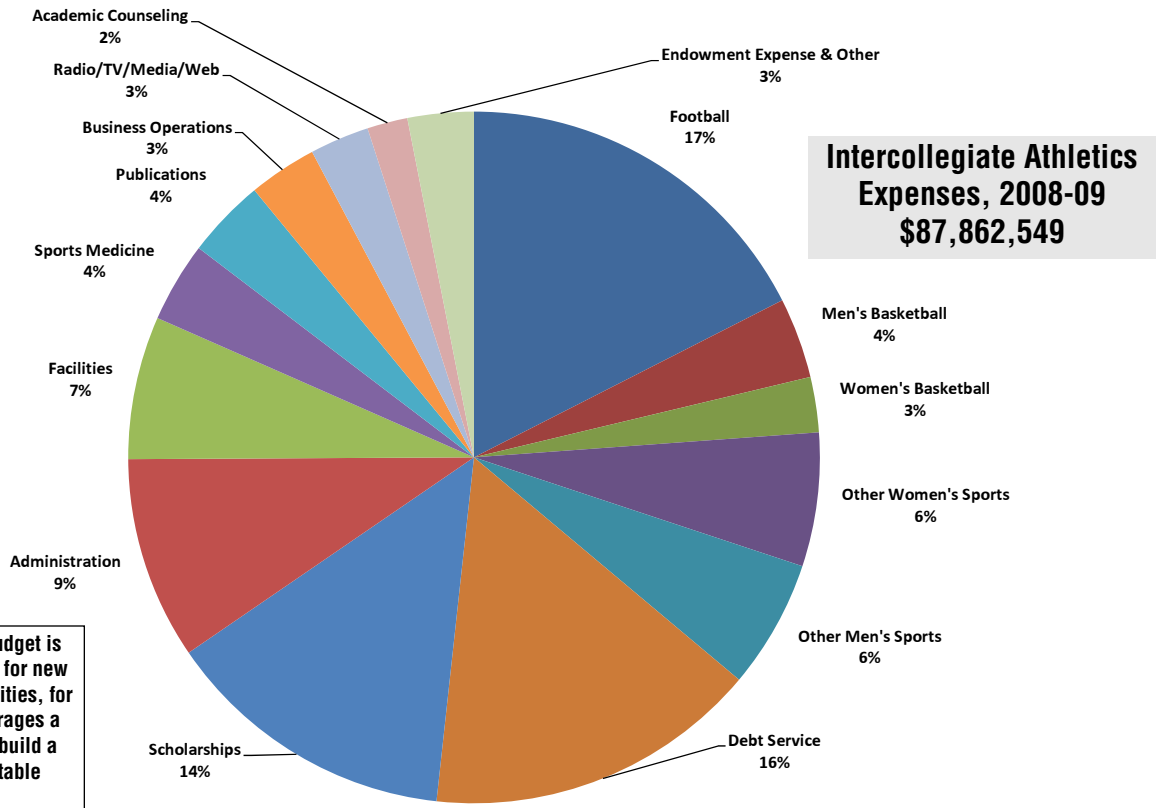
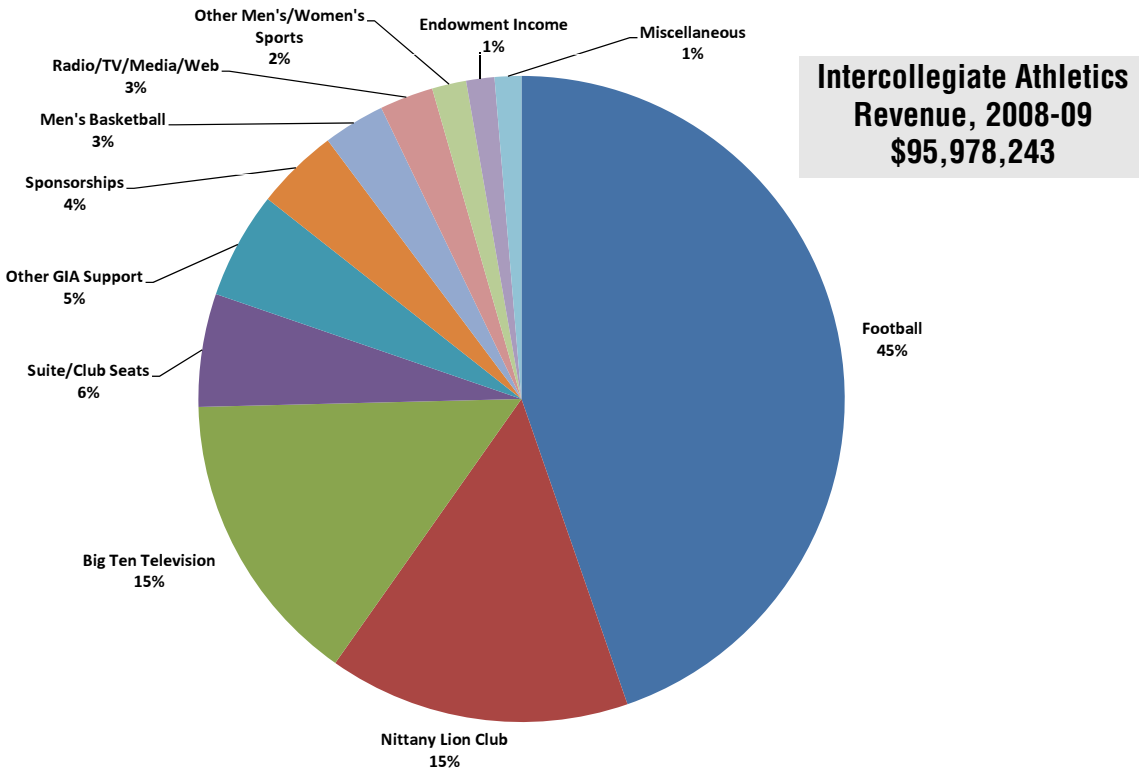
**2. Individual Team Expenses:** Your gift helps to provide a competitive environment by funding travel and operational support for our entire 29 sport program, including 15 men's and 14 women's teams.

**3. Support Services:** Your gift also provides funds for the Morgan Academic Support Center and the Penn State Sports Medicine Center. Academic support assists our student-athletes in achieving academic excellence through tutoring, mentoring and career planning. Meanwhile, sports medicine provides our student-athletes with top quality medical care, rehabilitation, and training services, keeping our athletes healthy and getting our injured athletes back on the field as soon as possible.



Women's swimmers Kristen Rodman (far left) and Michelle Myers with donor Fran Vanden (left photo), and soccer player Jason Yeisley with donor Dick Packer.

The Nittany Lion Club is responsible for **15 percent** of Penn State Intercollegiate Athletics revenues.



**NOTE:** Any surplus in the budget is used as the primary source for new and renovated athletic facilities, for which the University encourages a self-funding model, and to build a safety net against unpredictable financial impacts.

Penn State funds **329 full scholarships**  
among its 29 varsity sports teams each academic year.




---

“Without your help I would never have had the opportunity to attend such an incredible university. I am aware of the difference that you are making in my life, and I cannot thank you enough.”

— **Melissa Hayes**, women’s soccer

---

The current economy has resulted in an increase of tuition costs across the nation, and that also increases the amount of support Intercollegiate Athletics needs to fund scholarships.

For the 2008-09 academic year at Penn State, in-state tuition was \$14,426 per student and out-of-state tuition was \$26,020 per student. Other fees including room and board add approximately \$8,300 to the tuition bill each academic year.

As an example, costs for in-state and out-of-state tuition have increased 28 and 22 percent, respectively, since 2005.

Needless to say, a Penn State education is valuable and your investment in the future of our student-athletes is greatly appreciated.

“It’s enjoyable to work with people who have a passion and want to support our program and support Penn State.”  
— Russ Rose, women’s volleyball coach



Three-time consecutive and four-time overall NCAA champion coach Russ Rose

Strong **relationships** have helped the women’s volleyball team create a sizable measure of support with endowed **scholarships.**

More than a month after his team’s third consecutive national championship, which extended a record winning streak, Russ Rose was sorting T-shirts and writing notes thanking alumni and friends for their support of Penn State’s women’s volleyball team.

“We have a lot of people who support our program, and I have the time to thank them for what they do,” Rose said. “It just makes sense.”

Rose not only has the time, he makes time to interact with supporters. In recent years those efforts have helped, in part, create

seven endowed scholarships for the program—and more are on the way. Few other women’s volleyball programs have such support.

Sometimes Rose’s relationships with alumni and friends have led to support for other varsity sports teams, too.

“We’re all Penn State, so that’s OK,” Rose said. “Some things are vitally important to the success of a program, with recruiting at the top of the list. At the same time, how you treat people, and having a willingness to work with people can mean good things.”

In 2009, **endowed funds** designated for  
Intercollegiate Athletics provided **\$2.3 million.**

Only endowed position scholarships and coaching endowments listed.

**General**

James L. & Theresa Wagner Endowed Athletic Scholarship

**Men's Basketball**

David W. Angstadt Endowed Men's Basketball Scholarship  
Kay F. Kustanbauer Endowed Men's Basketball Scholarship for Point Guard  
John and Nancy Steimer Scholarship for a Men's Basketball Power Forward  
David E. and Jane A. Zazworsky Endowed Scholarship  
for Men's Basketball Point Guard

**Women's Basketball**

Helen H. Chelius Endowed Scholarship for Lady Lion Point Guard  
Carl and Joyce Chelius Endowed Scholarship for Lady Lion Shooting Guard  
John and Ann Curley Endowed Basketball Scholarship  
for the Lady Lion Forward Position  
Nancy Dreibelbis Scholarship for a Women's Basketball Point Guard  
Margaret "Granny" Muth Endowed Basketball Scholarship  
for the Lady Lion Center Position  
Christine M. Portland Endowed Basketball Scholarship for the Lady Lion Captain  
John S. and Joanne Q. Spangler Endowed Scholarship  
for a Lady Lion Basketball Forward

**Football**

Angeline & Louis Adams Endowed Football Scholarship  
Laraine and Jack Beiter Endowed Scholarship for Right Cornerbacks  
John A. "Jack" and Christine F. "Christi" Borgerding  
Football Scholarship Endowment for Walk-Ons  
Audrey and Kenton Broyles Endowed Scholarship for Middle Linebackers  
Rick Chivaroli Endowed Scholarship for the Football Flanker Position  
Chris and Linda Christensen "Hero" Endowed Football Scholarship  
Kerry Collins Endowed Scholarship for Quarterbacks  
John and Ann Curley Endowed Scholarship for a Punter  
Frank "Fritz" DeFluri Football Scholarship  
Horstman Family Endowed Football Scholarship  
Andy and Matt Joyner Endowed Scholarship for a Walk-On  
Robert and Judith A. Klein Endowed Scholarship for Placekickers  
Mel Kling Endowed Scholarship for Defensive Tackles  
Martin G. Lane, Jr. and Sheri L. Phillips  
Endowed Football Scholarship for Split End  
John and Willie Leone Endowed Scholarship for "Nickel" Linebackers  
Malloy/Paterno Head Coach Football Endowment  
Jim and Janet Meister Endowed Football Scholarship for the Center Position  
Lenny Moore/Buddy Rowell Endowed Scholarship for Tailbacks  
Joe and Sue Paterno/Nike Endowed Football Position Scholarship  
Robert H. and Linda F. Schimmel Endowed Linebacker Scholarship  
Richard Schroeder and Dolores Shaw Endowed Scholarship for Quarterbacks  
Richard P. Schroeder Endowed Scholarship for Linebackers  
Richard P. Schroeder Endowed Football Scholarship for Tight Ends  
Joseph and Phyllis Shearer Endowed Football Scholarship for Left Defensive End  
Peter and Patricia Spoor Endowed Football Scholarship  
Jim and Peg Stine Endowed Football Scholarship for the Right Guard Position  
D. L. Stroehmann Sr. Scholarship  
The Tom and Beth Stubler Family Endowment  
Dewey and Doris Walker Endowed Scholarship for Fullbacks  
Richard and Sharon Westerlund Endowed Football Scholarship  
Harding G. and Joan Y. Williams Family  
Endowed Scholarship for Right Defensive End  
Gregory H. and Betsy E. Wolf Endowed Scholarship for Strong Safety

**Men's Golf**

Michael P. Carter Memorial Men's Golf Endowed Scholarship

**Endowed funds may be designated for  
scholarships, program support, operations  
or other specific uses.**

**2009 Endowment Specifics**

Number of endowments.....	456
Book value .....	\$44,602,237
Market value.....	\$43,924,392
Available for expenditure.....	\$2,338,481

(NOTE: Money available was 5% of the market value.)

**Men's Gymnastics**

Robert and Ann Emery Endowed Men's Gymnastics Scholarship

**Men's or Women's Lacrosse**

Candace and Patrick E. Malloy Lacrosse Scholarships

**Men's Track and Field**

Kevin Dare Pole Vaulting Endowed Position Scholarship

**Women's Lacrosse**

Jim and Peg Stine Endowed Women's Lacrosse Scholarship  
The Stine Family Endowed Women's Lacrosse Scholarship

**Women's Soccer**

Peggy Chalmers Hart Endowed Women's Soccer Scholarship

**Softball**

Frances Vanden Endowed Scholarship for the Women's Softball Pitcher

**Swimming and Diving**

Mickey Becket Family Endowed Athletic Scholarship  
for Men's and Women's Swimming and Diving

**Women's Track and Field**

Dewey and Doris Walker Family - Jeannine C. Walker, Andrea Walker Eisenbri,  
and Edward D. Walker Endowed Track and Cross Country

**Women's Volleyball**

Russ Rose/Kenton and Audrey Broyles Endowed  
Women's Volleyball Scholarship for Setters  
Kenton & Audrey Broyles Women's Volleyball Coach  
Bernie and Bea Winn Sandson Women's Volleyball  
Endowment Honoring Russ Rose  
Richard and Susan Sokolov Family Endowed Women's Volleyball Scholarship  
Bruce R. Miller and Dean D. LaVigne Endowed  
Women's Volleyball Scholarship for the Middle Hitter Position

**Wrestling**

Galen E. Dreibelbis Wrestling Scholarship (125 lb Weight Class)  
Kenton and Audrey Broyles Endowed Wrestling Scholarship (133 lb Weight Class)  
Mel Kling Endowed Scholarship for Wrestlers (157 lb Weight Class)  
Raymond Shibley Wrestling Endowment (174 lb Weight Class)  
Rich Lorenzo, Head Wrestling Coach From 1979-1992,  
Endowed Wrestling Scholarship (197 lb Weight Class)  
Lubert Family Varsity Wrestling Coaches Endowment



# Opportunities to Provide Support

## NAMED SCHOLARSHIP: \$50,000

Donors can personally name endowed scholarships which will help support the team of their choice with a minimum gift of \$50,000. The amount of support provided by the scholarship will increase with the value of the endowment. You have the opportunity to continue to support this scholarship after the original commitment is fulfilled.

## POSITION SCHOLARSHIP: \$300,000

Donors can endow a specific position in a sport with a gift of \$300,000. In such a case, scholarship funds will be reserved for student-athletes who play that particular position.

## FULLY ENDOWED SCHOLARSHIP: \$750,000

Donors can be recognized for endowing a full athletic scholarship with a gift of \$750,000.

## TRUSTEE MATCHING SCHOLARSHIP PROGRAM

The Trustee Matching Scholarship Program, created in 2002 by the Board of Trustees, aims to ensure that a Penn State education is accessible to qualified students, regardless of their financial means. Under the program, the University matches five percent of the principal of each gift annually and combines those funds with income from the endowment to effectively double the financial impact of the scholarship. A \$50,000 gift payable over five years or less is the minimum gift eligible for the program.

Since 2008, a total of seven Trustee Scholarships have been established in Intercollegiate Athletics. The program is one of the most effective ways to support student-athletes because the distribution amount is essentially worth double the traditional endowed scholarship.

## PLANNED GIVING

Planned giving is finding ways to make charitable gifts now or after your lifetime while enjoying financial benefits for yourself. Unlike cash donations, they are typically made from assets in your estate rather than disposable income, and come to fruition upon your death. The most common planned gifts is a bequest. Other methods include a charitable gift annuity, a charitable remainder trust, a charitable lead trust, retirement plan assets, life insurance policies, and a remainder interest in your home.

During the 2009 fiscal year, nine donors took advantage of this opportunity to benefit general athletics, football, ice hockey, men's gymnastics, men's basketball, swimming, and wrestling. Unlike cash donations, planned giving commitments are not eligible for benefits within the annual Nittany Lion Club benefits structure.

## New Endowments for 2009

Anonymous Endowed Scholarship  
for Men's Athletics

Anonymous Family Endowed  
Men's Tennis Scholarship

Armen Family Endowed Football Scholarship

Albert and Dominic Barcaro  
Endowed Football Scholarship

Joseph M. Battista Endowed Fund  
for Ice Hockey

Joseph S. and Edythe M. Bellissimo  
Endowed Football Scholarship

Bradley Football Scholarship

Delaney Family Trustee Scholarship in Athletics

Fink Family: Michael, Maggi, Michael Rod  
and Alexandra Women's Volleyball  
Endowment Fund

Steve Garban and Mary Ann Lucas  
Endowed Fund for Sports Medicine

Hollock Family Endowed Scholarship  
for Women's Volleyball

Hyde Trustee Scholarship  
for Intercollegiate Athletics

Mary Alice and Ken Lindquist Endowed  
Football Scholarship

Patty Marrero Endowed Fund for Football

Joseph P. Nassib Endowed  
Football Scholarship

Penn State Club of Wilkes Barre  
Endowed Athletic Scholarship

Richard and Annetta Pierce  
Women's Basketball Award

Allen G. Porter Family Endowed  
Men's Gymnastics Scholarship  
in Gratitude of Gene Wettstone

Martin L. Strayer and Eleanor H. Strayer  
Endowed Wrestling Scholarship

Stuck Family Abilities Program Support Fund

William A. Torchia and John M. Travers  
Intercollegiate Athletics Trustee Scholarship

R. J. Walker Family  
Men's and Women's Golf Scholarship

Rich, Marjorie, and Will Weiler  
Endowed Baseball Scholarship

James C. White Endowed  
Program Support Fund for Ice Hockey

Thomas J. Wilkinson  
Men's Basketball Scholarship

# Facilities represent an important area of support that help teams remain competitive.

In 2009, construction continued on the new Tombros Varsity Golf Clubhouse, improvements were made at the Lasch Football Building and commitments were secured for the new softball complex. All such facility improvements represent important additions that help the programs remain among the nation's best.



In an effort to continue to provide this type of environment for our football program, Intercollegiate Athletics has created naming opportunities within the Lasch Football Building that will fund needed upgrades and improvements as we continue to recruit, train and compete at the highest level. Several generous donors have named various areas of the facility, totaling \$400,000 in commitments to date. These commitments have helped secure funding for projects such as upgrades to the player's lounge and for the purchase of new equipment for the strength and conditioning center.



## TOMBROS VARSITY GOLF CLUBHOUSE

The team's year-round home was put under roof just west of the Blue Course's 18th green, providing views of the course and Mount Nittany. This project was fully funded by support of Nittany Lion Club donors. In addition to the lead gift from Peter and Ann Tombros in 2007, several more commitments have been made by 40 donors totaling more than \$2 million.

## SOFTBALL STADIUM COMPLEX

In 2010, Penn State will break ground on a new stadium complex for softball. This new facility will create a number of exciting possibilities for the program, including a stadium that is at the top of its class at both the Big Ten Conference and national levels. The project will include the construction of 1,000-plus seats, pristine clubhouses, coaches' offices, locker rooms and outdoor / indoor training areas. William and Lee Beard pledged \$500,000 for the new complex. In recognition of the gift, the field will be known as Beard Field. Additional commitments to date total \$375,000. A lead gift for naming the entire complex remains available at \$2.5 million. Construction is expected to begin this spring.

## MILDRED & LOUIS LASCH

### FOOTBALL BUILDING

Housing a 13,000-square-foot weight room, massive locker room, athletic training facilities, meeting rooms for every position, a team theatre, a state-of-the-art video production suite and an academic support center and computer room, the Lasch Building is one of the finest collegiate football operations facilities in the nation.



A sampling of the many **highlights** from Penn State teams and student-athletes in 2009.

## Academic and Overall Accomplishments

- Penn State finished 19th in the Learfield Sports/NACDA Directors' Cup standings, and has finished in the Top 25 in all 16 years of the survey.

- The Nittany Lions had 56 All-Americans and 48 total first team all-conference honorees.

- A total of 72 Nittany Lion student-athletes, representing seven fall sports, earned Academic All-Big Ten honors. Penn State's 72 honorees pushed the Lions' all-time total to 3,202 during the last 16 years. That ranks first among all Big Ten Conference institutions. Ohio State ranks second with 3,091.

- The NCAA reported Penn State student-athletes earned a school record 89 percent Graduation Success Rate, 11 points higher than the national average.

- Sixty-two Penn State student-athletes were recognized as inaugural recipients of the Big Ten Conference Distinguished Scholar Award—the second-highest total among all conference institutions.

## NCAA Championships

- Penn State won three NCAA Championships, giving the Nittany Lions six NCAA team titles since March 2007, and pushing the University's all-time total to 64 titles.

- The women's volleyball team captured its third consecutive NCAA Championship. The squad won its seventh consecutive Big Ten title and 13th overall.

- The fencing team captured its nation's best 11th NCAA Championship since 1990. Four Nittany Lions won national titles.

- Seventeen Penn State squads were represented in their respective NCAA Championship for the second consecutive year.



NCAA champion Anastasia Ferdman



NIT MVP Jamelle Cornley



## Big Ten Championships

● Penn State won six Big Ten Championships: field hockey; football; women's soccer (regular season and tournament); women's outdoor track and field; and women's volleyball.



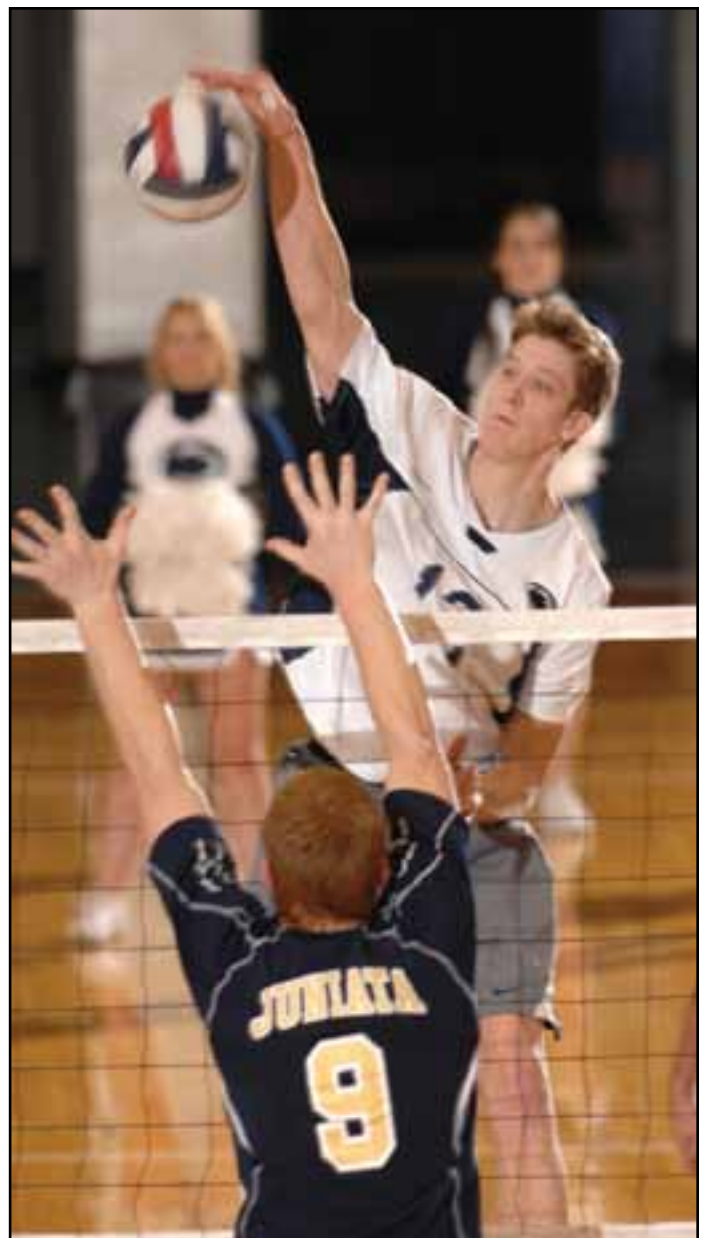
Field hockey standout Alex Schlener

● Penn State has won 60 Big Ten Championships all-time, with 19 titles over the past four years, and tied for second-highest in the conference during that span.

## Team Titles

● The Nittany Lion basketball team captured the 2009 National Invitation Tournament championship, the program's first national title. Led by Big Ten Coach of the Year Ed DeChellis, Penn State won a school record 27 games, with four victories over Top 25 teams

● The men's volleyball team captured its 11th consecutive EIVA Championship and 21st overall, reaching the national semifinals for the 11th straight year. A program record-tying five Nittany Lions were named AVCA All-Americans.



Men's volleyball player Max Holt



Tailback Stephfon Green

The football team finished the season 11-2 and ranked ninth in the Associated Press poll. In the classroom and on graduation day, the Nittany Lions did even better. In 2009, they were:

- No. 1 for both Graduation Success Rate (85 percent) and Federal Graduation Rate (89 percent) among teams ranked in the final 2009 Associated Press Top 25 poll.



Kicker Collin Wagner and holder Jeremy Boone

- No. 1 for Academic Progress Rate and No. 2 for Graduation Success Rate among the 28 teams that played in a New Year's bowl game.

- No. 1 in the "Academic Bowl Championship Series" compiled by *Higher Ed Watch*, which analyzes federal

graduation statistics and Academic Progress Rates. According to the *Higher Ed Watch* system, Penn State scored 126.0, ahead of No. 2 Stanford (113.0) and well ahead of the next team in the Big Ten, Ohio State (75.7). The Nittany Lions also ranked higher than their opponent in the Capital One Bowl, LSU (42.3).

- No. 1 for first-team ESPN The Magazine Academic All-Americans, with five, among all Football Bowl Subdivision teams.

- No. 6 among the 68 bowl squads for Graduation Success Rate, trailing only Northwestern's 92 percent among the teams in a January bowl game.

- Also, the team has a 51-13 (79.7) record since the start of the 2005 season, tied for the nation's No. 7 winning percentage over that span (with West Virginia). The Nittany Lions have won 53 of their last 66 games.

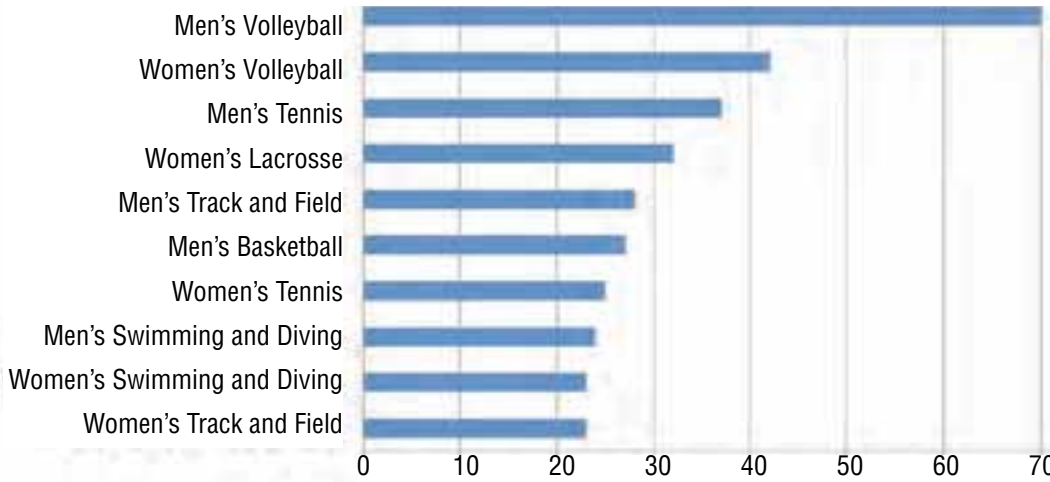
The number of former student-athletes who made gifts **has increased 3 years in a row**, with a 20.6 percent jump the past two years.



2009 Women's Tennis Alumni Event

The Varsity 'S' Club exists to create and enhance a culture where former University Park Nittany Lion letter winners are active members of Penn State Athletics, while supporting current student-athletes.

### Percent Increase in NLC Membership Since 2007



### Sports with Highest Percentage of NLC Participation in 2009

- |                                      |                           |                             |
|--------------------------------------|---------------------------|-----------------------------|
| 1. Football                          | Wrestling                 | 10. (tie) Men's Gymnastics  |
| 2. (tie) Women's Swimming and Diving | 5. Women's Basketball     | Women's Tennis              |
| Men's Volleyball                     | 6. (tie) Men's Basketball | 11. (tie) Women's Soccer    |
| 3. (tie) Baseball                    | Men's Tennis              | Women's Track/Cross Country |
| Men's Golf                           | 7. Men's Soccer           | 12. (tie) Men's Fencing     |
| Men's Lacrosse                       | 8. (tie) Women's Golf     | Women's Fencing             |
| Men's Swimming and Diving            | Women's Lacrosse          | 13. Women's Volleyball      |
| Men's Track/Cross Country            | Softball                  |                             |
| 4. (tie) Field Hockey                | 9. Women's Gymnastics     |                             |

### Sports-Specific Giving Starts, Makes an Impact

In 2009, for the first time, former student-athletes could designate their gifts to a specific sport.

A sampling of what coaches have planned, or have already purchased, with that money includes:

- facility enhancement, recruiting trips and team travel for baseball;
- golf training equipment and travel costs for men's golf;
- recruiting expenses and a video system for men's gymnastics;
- equipment, travel and video equipment for men's tennis; and
- a new mat for home wrestling matches.

In 2009, the Varsity 'S' Club hosted **17 alumni events** that brought back nearly **1,100 former student-athletes** to the University Park campus.

Teams that conducted events on campus during the year included: baseball, men's basketball, women's basketball, fencing, field hockey, football, men's and women's lacrosse, men's and women's soccer, swimming and diving, men's and women's tennis, men's and women's cross country and track and field; women's gymnastics and wrestling.

Highlights from those events included:

- **more than 100 football lettermen** returned to campus for the annual Football Lettermen Club Golf Outing;
- **more than 50 swimming and**

**diving alumni** came back to Happy Valley to honor the 1999 Big Ten championship team;

● **35 wrestling alumni** weathered the Homecoming snowstorm to meet the new coaching staff and members of the current squad;

● Varsity 'S' Day 2009 brought a **record of more than 385 former student-athletes** back to campus; and

● **40 former Lady Lion basketball players** returned to the celebrate the 10-year anniversary of the 2000 Final Four team.



Members of the Lady Lions Final Four team were honored at the Bryce Jordan Center in December.

# \$4,536,431

Record amount that former student-athletes gave to Intercollegiate Athletics in 2009.



Wrestler Jake Strayer controls an opponent.

Former Penn State wrestler Marty Strayer started giving back to the University upon graduation, joining the Alumni Association as a Life Member. He has been giving back ever since—and it's an approach he believes all student-athletes should embrace.

“That Life Membership was \$25, and that was a lot back then when rent was \$150 a month,” Strayer ('65 Bus) said. “Still, giving back just makes sense because Penn State gave me so much and wrestling changed my life.”

“Wrestling brought me to Penn State and it was because of the University that I was able to get an education, to meet my wife, have a magnificent group of friends and so much more.”

In 2009, Strayer committed to a \$50,000 scholarship for wrestling. He has been giving regularly to Intercollegiate Athletics and the College of Business

since the 1980s. The scholarship represents his biggest gift to date, and he thinks that only makes sense.

“I guess I'm just a loyal Penn Stater,” said Strayer, who operates Central Penn Nursing Care in Lancaster, Pa., with his wife, Eleanor. “Plus, I'm a former wrestler and Cael Sanderson has brought a little something extra to the program, so it just makes sense to support the program.”

After graduation, Strayer lived for 15 years in California before returning to Pennsylvania in 1996. During the last 13 years, thanks to his proximity to campus, his involvement with Penn State has increased.

He has season tickets for football and plans to attend every home wrestling match this season.

“It's easy, with any size gift, to help out,” Strayer said. “It just seems like something everyone can do.”

Along with supporting student-athletes, members accumulate **priority points**.

Priority points for NLC are amassed as follows:

- 1 point for every \$50 donated;
- 2 points each year of membership; and
- one-time alumni and Lifetime Alumni Association points are allocated for those who qualify.

Points are used to help determine eligibility for many benefits, including access to home season football tickets, away football game tickets and other special activities and events. Points necessary for those benefits vary depending on the event itself. In 2009, 51 points were necessary to purchase season football tickets as a new member. Going forward priority points will help determine seating priority in the new STEP program.

“All of my experiences at Penn State have been unforgettable and enjoyable, and you are the people that make it possible.”  
 — Ashley Griffith,  
 softball



## PRIORITY POINTS STANDINGS

Breakdown of NLC accumulated points through 2009 with the corresponding number of members in each increment.

1-50 .....	4,650
51-100 .....	3,837
101-150 .....	3,695
151-200 .....	2,745
201-250 .....	1,801
251-300 .....	697
301-350 .....	554
351-400 .....	438
401-450 .....	285
451-500 .....	232
501-1,000 .....	1,517
1,001-1,500 .....	446
1,501-2,000 .....	121
2,001-2,500 .....	69
2,501-3,000 .....	29
3,501-4,000 .....	8
4,001-4,500 .....	9
4,501-5,000 .....	8
5,000+ .....	65

NOTE: Calculations from 2009 contributions. Listing does not include Student NLC, non-specified level donors or those who wish to receive no benefits and no points.



“I can’t begin to tell you the many ways your support has assisted me in the pursuit of my educational and athletic goals.”  
 — Daryll Clark,  
 football

**The Nittany Lion Club appreciates support from all of its members. Listed below are donors at the highest levels.**

**All-American (\$17,000 and above)**

Anonymous (6)  
 Louis C. Adams  
 David W. Angstadt  
 Jim & Wendy Balthaser  
 Walter D. Barker  
 Fred & Suzanne Biesecker  
 Chris Bonzo  
 Kenneth & Sandra Brinker  
 Kenton & Audrey Broyles  
 Brantley F. Carmichael  
 Rick Chivaroli  
 John J. & Ann Curley  
 Edward & Theresa Dare  
 Michael & Susan Delaney  
 Bryon & Cynthia Deyscher  
 Gregory & Renee Elinsky  
 Keith & Linda Forrest  
 Robert & Shirley Fortinsky  
 John & Natalie Gaburick  
 William T. & Elaine F. Given  
 Ken & Ginny Grosse  
 Wayne L. Hockersmith  
 Stanley & Lynn Holuba Jr.  
 Angela Holuba  
 Robert Holuba  
 Hoy Transfer Inc  
 Don & Carolyn Jones  
 J. Kenneth & Nancy Jones  
 Andrew B. & Becky Jordon  
 William & Kimberly Kerlin Jr.  
 Charles & Karen Koval  
 Stephen M. & Diane Krentzman  
 William D. & Karen Lenker  
 Liebert Corporation (Robert P. Bauer)  
 Kenneth & Mary Alice Lindquist  
 Ira M. Lubert  
 Anthony & Sara Jane Lubrano  
 Paul H. & Mona Lou McConnaughey  
 Robert F. & Cathy L. McKeon  
 Heath & Micaela Mitts  
 Milton K. & Lois Morgan  
 Chris Nagle  
 Robert K. & Kimberly Nielsen  
 Joseph & Suzanne Paterno  
 Terry & Kim Pegula  
 Harold & Lois Pellow  
 Kenneth M. & Eileen Pollock  
 Frederic L. & Maria Ragucci  
 Richard & Bonnie Richardson  
 Robert H. & Linda F. Schimmel  
 Donald & Donna Schoenly  
 Matthew & Shannon Schuyler  
 John & Marta Shaffer  
 Tom & Barbara Slowey  
 Derek & Lisa Smith  
 Steve & Eileen Smith  
 Richard & Susan Sokolov  
 Bill & Elke Spoor  
 John & Nancy Steimer

Stine Foundation  
 Ira & Kay Stolzer  
 Martin & Eleanor Strayer  
 Donald W. Strickler  
 Thomas G. & Beth B. Stubler  
 Robert & Eleanor Weirman  
 William & Josephine Weiss  
 Timothy & Cathy Wiebe  
 Gregory H & Betsy E Wolf  
 Quentin E. & Louise Wood  
 David E. & Jane Zazworsky

**Lions Circle (\$6,000 to \$16,999)**

Anonymous (10)  
 Acolyte, LLC  
 Keith J. & Stephanie Anderson  
 Arris  
 Janet Atwood  
 Barash Group  
 Suzanne Bauer  
 Henry G. & Katherine Beamer III  
 Milton Becket  
 John F. (Jack) Beiter  
 Joseph S. & Edythe Bellissimo  
 Charles Biddle  
 Stephen A. & Maribeth Bogush  
 Edward R. & Inga M. Book  
 Bowersox Truck Rentals, Inc.  
 Patrick & Patricia Boyer  
 Eric & Nina Brugel  
 James J. & Coral Bryja  
 Russell T. & Liz Bundy  
 Dr. James P. & Dr. Nancy A. Burke  
 Ricardo & Diane Carter M.D.  
 James T. & Martha Chadwick  
 Peter & Kirsten Chadwick  
 Robert J. Chaney  
 William F. Coach, Jr.  
 David & Maressa Cochran  
 Martin D. & Beth Cohen  
 John & Kathleen Collins  
 Philip R. Cook  
 Corning Asahi Video Prod. Co.  
 Andrew D. Cost  
 Kenneth S. & Nancy L. Costa Dmd  
 Christopher M Creager  
 Timothy & Melinda Curley  
 Rick & Sharon Dandrea  
 Eric & Lisa W. Davis  
 Bruce R. Miller & Dean LaVigne  
 Merle W. & Mary Ann Deem  
 Delaware Valley NLC  
 Michael G. & Patricia Devine  
 Galen E. & Nancy Dreibelbis  
 DVL, Inc.  
 Mark & Shelly Eagen  
 Frank R. Ebert  
 Robert W. & Ann M. Emery M.D.  
 Mark A. Falvo  
 Kenneth J. & Tenley Fasola  
 Orlie Ferretti  
 Richard F. & Nancy Fiore  
 John Fowler, Jr.  
 Markus Frieske  
 Martin J. & Stacy S. Gillespie  
 Gordon M. Graffius  
 Herbert C. & Nancy Graves III  
 Kelly Grimes & Felix J. Boake  
 Kenneth E. & Juanita Guise Jr.

Joan J. Haag  
 GA & MS Hanks, L.P.  
 Daniel M & Vilma Harrington  
 Richard J. & Scheryl Harshman  
 Michael A. & Beth Hess  
 Edward R. & Lisa M. Hodgson  
 Barry & Sherry Hollock  
 Raymond W. & Deborah S. Hoover  
 Mark G. Hoskinson  
 Gary & Patricia Houck  
 Kara A. Houck  
 Paul F. & Judy Hummer II  
 Craig S. & Jill M. Huse  
 Jeffrey L. & Sharon Hyde  
 Howard M. & Susan Imanuel  
 William & Honey Jaffe  
 Matthew W & Mary Johnson  
 Brent Kai  
 Harry A. & Susan Kauffman  
 James B. & Carol Kauffman  
 L. R. Kimball & Associates  
 Michael S. & Patty Kirschner  
 William G. & Marie Knecht  
 Kurt & Abigail Knott  
 Dallas & Diane Krapf  
 Krapf's Coaches  
 David A. & Christina Kunko  
 Alan R. & Judith S. Larson  
 Roger & Cathy Larson  
 John A. & Willie Leone  
 Paul & Barbara Loftus  
 Lance & Anne Lonergan  
 Albert L. & Suzanne Lord  
 Cali Lyons  
 Alfred C. & Marilyn Maiello  
 John & Nancy Malinchok  
 Joel & Kristen Manchester  
 Ms. Mary Marsh  
 Stephen & Kristine Martin  
 Richard L. & Lois Mattern  
 Larry D. & Jacquelin McCauley  
 Harold D. & Elizabeth R. McKerny  
 Lee & Lori McLaughlin  
 James & Janet Meister  
 Robert K. & Kim Mericle  
 Miller Motor Co.  
 Anthony F. & Catherine Misitano  
 David & Anna Morris

Nathan T. & Linda Mroz  
 Joe L. & Joyce Mumma  
 Joel N Myers  
 Joseph P. Nassib  
 William G. & Donna Nelson  
 William F. Oldsey & Julie Alexander  
 George & Barbara Parmer  
 William John & Debra Paronish  
 A. Duer & Edna Pierce Jr.  
 Barbara F. Polansky  
 Francis J & Patricia Puleo  
 Richard J. & Lorraine Puleo  
 Mark & Nancy Quigley  
 Bruce & Patricia Rambo  
 Eric R. & Kim Ratner  
 James & Donna Reddinger  
 Catherine Rein  
 Melvin & Carolyn Rex  
 Gustavo & Elisa San Roman M.D.  
 David & Victoria Schirm  
 Henry F. Schoenfeld  
 Paul & Nancy Silvis  
 Ronald E. & Barbara Sloan  
 James A. & Jill Smeltzer  
 Stephen S. & Susan Smith  
 Carl W. Snyder Jr.  
 Clayton D. & Daria Snyder  
 Catherine Sourbeer  
 D. Leonard & Mary Jane Stairs  
 George L. & Ann Strachan III  
 Jonathan & Linda Strumpf  
 Superior Metal Products Co., Inc.  
 John B. & Nancy Swayne III  
 Michael & Deborah Tanitsky  
 Mark & Roberta Toniatti  
 William A. Torchia  
 James L. & F. Theresa Wagner  
 Robert J. & Madelyn Walker  
 Richard A. & Marjorie Weiler  
 William Weiler  
 Robert & Suzanne Wertz  
 Eric & Louise M. Whorral  
 Harding G. & Joan Williams  
 John M. & Denise Winarchick  
 Jake Yahn  
 Simon & Hope L. Ziff

**In 2009 ...**

**4,143** members increased their donation

**2,681** members increased their donation by one or more giving levels

**836** new members joined the NLC

**97** percent of season football ticket holders renewed their accounts

**51** Nittany Lion Club points were necessary to get football season tickets as a new member



The Penn State University  
157 Bryce Jordan Center  
University Park, PA 16802

NONPROFIT ORG.  
U.S. POSTAGE  
**PAID**  
Permit No. 150  
Altoona, PA

