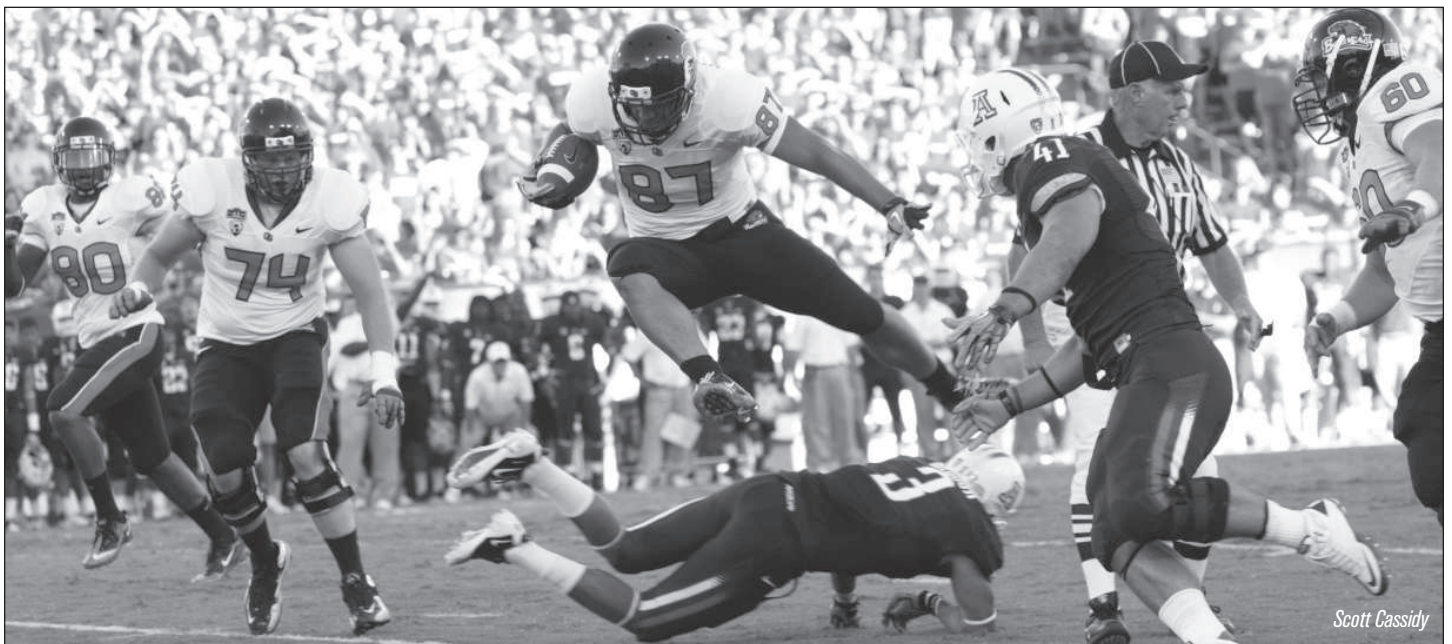


# TABLE OF CONTENTS

<b>TABLE OF CONTENTS</b> . . . . .1	<b>THE COACHES</b> . . . . . 50-67	<b>YEAR-BY-YEAR RESULTS</b> . 104-113	<b>ON THE COVER:</b> Brandon Hardin (17) and Cameron Collins (5). <b>Back Cover:</b> Ryan Katz.
<b>MEDIA INFORMATION</b> . . . . .2-7	Mike Riley . . . . . 50-52	Composite Year-by-Year . . . . .104	<b>CREDITS:</b> Content by Steve Fenk and Jason Amberg.
Department Contact Info. . . . .2	Assistant Coaches . . . . . 53-62	Composite Series Records . . . . .105	Layout and design by Jason Amberg.
Credential Information . . . . .3	Support Staff . . . . . 63-67	<b>SERIES RECORDS</b> . . . . . 114-117	Editing by the Steve Fenk and Jason Amberg.
Team Travel Information . . . . .3	<b>2010 REVIEW</b> . . . . . 68-82	<b>BOWL GAME HISTORY</b> . . . 118-131	Cover design by Ben Little. Front cover photography by Ethan Erickson; back cover by Erik Dresser.
Beaver Sports Radio Network . . . 4	Season Statistics . . . . . 68-76	<b>PLAYER ACCOLADES</b> . . . . 132-137	Printing by Precision Graphics of Oregon in Tualatin, Ore.
OSU Social Media . . . . .5	Game Summaries . . . . . 77-82	<b>TERRY BAKER SALUTE</b> . . . . .138	Special thanks to Cindy Arbelbide, Kip Carlson, Hal Cowan, Hank Hager, Caleb Hawley, Ryan McCall, Lauren Pullen, Tucker Smith, Melody Stockwell and Michelle Woodard.
Quick Facts . . . . .7	<b>LETTERWINNERS LOST</b> . . . . 83-89	<b>ALL-AMERICANS</b> . . . . . 139-143	Photo credits to Beth Buglione, Ethan Erickson, Dave Nishitani, Dennis Wolverton, Brock Ameen, Chris Becerra, Scott Cassidy, Erik Dresser, Brittany Lawlor, Karl Maasdarm, Stoddard Reynolds, Barry Schwartz, Mike Shields, Steve Shields, Scobel Wiggins, James D. Smith, Mike Fabus/Pittsburgh Steelers, Buffalo Bills, Tampa Bay Buccaneers and many others.
Pronunciation Guide . . . . .7	<b>RECORDS</b> . . . . . 90-103	<b>BEAVERS IN THE PROS</b> . . 144-148	
<b>2011 ROSTERS</b> . . . . . 8-11	Individual Records . . . . . 90-96	<b>LETTERWINNERS LIST</b> . . 149-153	
Alphabetical Roster . . . . . 8-9	Team Records . . . . . 97-98	<b>RESER STADIUM / FACILITIES</b> . . . . . 154-155	
Numerical Roster . . . . . 8-9	Reser Stadium Records . . . . . 99	<b>ADMINISTRATION</b> . . . . . 156-159	
Roster Breakdowns . . . . .10	Bowl Records . . . . .100	<b>COMPOSITE PAC-12 SCHEDULE / STANDINGS</b> . . . . .160	
Preseason Depth Chart . . . . .11	Opponent Records . . . . .101		
<b>PLAYER PROFILES</b> . . . . . 12-49	All-Time Coaching Records . . .102		
Returning Players . . . . . 12-41	Attendance Records . . . . .103		
Newcomers . . . . . 42-49			



Scott Cassidy

Joe Halahuni (87) was on the receiving end of five touchdowns - and recovered a fumble for a touchdown - in 2010. The athletic H-Back/tight end could miss the start of 2011 season but will be expected to continue to work the middle of the field as a primary target for Ryan Katz and the Beavers' signal callers.

## 2011 SCHEDULE

Date	Opponent	Time	Network	Site
Sept. 3	Sacramento State	TBA	TBA	Reser Stadium
Sept. 10	at Wisconsin	9 a.m. PDT	ESPN/ESPN2	Madison, Wis. (Camp Randall Stadium)
Sept. 24	UCLA <sup>^</sup>	TBA	TBA	Reser Stadium
Oct. 1	at Arizona State <sup>^</sup>	TBA	TBA	Tempe, Ariz. (Sun Devil Stadium)
Oct. 8	Arizona <sup>^</sup>	TBA	TBA	Reser Stadium
Oct. 15	BYU	TBA	TBA	Reser Stadium
Oct. 22	vs. Washington State <sup>^</sup>	TBA	TBA	Seattle, Wash. (CenturyLink Field)
Oct. 29	at Utah <sup>^</sup>	TBA	TBA	Salt Lake City, Utah (Rice-Eccles Stadium)
Nov. 5	Stanford <sup>^</sup>	TBA	TBA	Reser Stadium
Nov. 12	at California <sup>^</sup>	TBA	TBA	San Francisco, Calif. (AT&T Park)
Nov. 19	Washington <sup>^</sup>	TBA	TBA	Reser Stadium
Nov. 26	at Oregon <sup>^</sup>	TBA	TBA	Eugene, Ore. (Autzen Stadium)

<sup>^</sup> indicates Pac-12 Conference game

# ATHLETIC DEPARTMENT CONTACT INFORMATION

## ATHLETICS COMMUNICATIONS CONTACT INFORMATION

ADDRESS . . . . . Oregon State University  
 . . . . . Athletics Communications Office  
 . . . . . 104 Gill Coliseum  
 . . . . . Corvallis, OR 97331-4105  
**COMMUNICATIONS PHONE** . . . . . 541-737-3720  
**COMMUNICATIONS FAX** . . . . . 541-737-3072  
**RESER STADIUM PRESS BOX** . . . . . 541-737-2795  
**OFFICIAL WEBSITE.** . . . . . www.osubeavers.com

### Athletics Communications Director/Football Contact

**Steve Fenk, Associate Athletic Director**

Football  
 Office: 541-737-7470  
 Cell: 541-230-0627  
 E-mail: steve.fenk@oregonstate.edu

### Assistant Athletics Communications Directors

**Jason Amberg**  
 Football / Gymnastics  
 Office: 541-737-7469  
 Cell: 541-230-0706  
 E-mail: jason.amberg@oregonstate.edu

**Hank Hager**  
 Baseball / Wrestling  
 Office: 541-737-7472  
 Cell: 541-230-0611  
 E-mail: hank.hager@oregonstate.edu

**Shawn Schoeffler**  
 Men's Basketball / Golf  
 Office: 541-737-8898  
 Cell: 541-231-1430  
 E-mail: shawn.schoeffler@oregonstate.edu

**Melody Stockwell**  
 Volleyball / Women's Basketball  
 Office: 541-737-8588  
 Cell: 541-230-4482  
 E-mail: melody.stockwell@oregonstate.edu

### Athletics Communications Assistants

**John Cantalupi**  
 Men's Soccer / Rowing / Cross Country / Track  
 Cell: TBA  
 E-mail: john.cantalupi@oregonstate.edu

**Jordie Lindley**  
 Women's Soccer / Swimming / Softball  
 Cell: TBA  
 E-mail: jordie.lindley@oregonstate.edu

### Athletics Communications Student Assistants

Anthony Casson	Mariah Ellis
Ethan Erickson	Lauren Jones
Trevor Leo	Terrill Petersen
Chris Santos	Abbie Silva
Natalie Smith	Ashley Theeler



**STEVE FENK**  
 Associate Athletic Director /  
 Athletic Communications



**JASON AMBERG**  
 Assistant Director



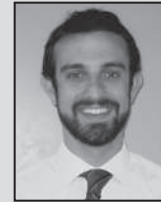
**HANK HAGER**  
 Assistant Director



**SHAWN SCHOEFFLER**  
 Assistant Director



**MELODY STOCKWELL**  
 Assistant Director



**JOHN CANTALUPI**  
 Communications Assistant



**JORDIE LINDLEY**  
 Communications Assistant

## ATHLETICS DEPARTMENT DIRECTORY

### ADMINISTRATION . . . . . 541-737-7373

Bob De Carolis, Director of Athletics  
 Todd Stansbury, Executive Senior Associate Athletic Director  
 Marianne Vydra, Senior Associate Athletic Director / SWA  
 Bob Clifford, Senior Associate Athletic Director / Sports and Administration  
 Sara Eicano, Executive Assistant

### ACADEMICS FOR STUDENT-ATHLETES . . . . . 541-737-9338

Kate Halischak, Associate Athletic Director / Student-Athlete Academic Affairs  
 Ardell Bailey, Academic Counselor  
 Lindy Brown, Academic Counselor  
 Megan O'Quin, Academic Counselor  
 Laura Smithers, Academic Counselor  
 Katie Whitehead, Academic Counselor  
 Paul Yager, Academic Counselor

### BEAVER ATHLETIC STUDENT FUND . . . . . 541-737-2370

Shawn Heilbron, Senior Associate Athletic Director, Development  
 Linda Hurd, Associate Athletic Director / Director of BASF  
 Bob Westlund, Vice President for Principal Gifts to Athletics  
 Tim Allen, Donor Relations Coordinator  
 Roz Burch, Donor Relations Coordinator  
 Mike Keller, Regional Director Portland  
 Nicole Markel, Director of BASF Events  
 Jennifer Mays, Events Coordinator

### BEAVER AUTHENTICS . . . . . 541-737-6720

James Tibbott, General Manager  
 Patrick Matthis, Event Manager

### BEAVER SPORTS PROPERTIES . . . . . 541-737-8364

Steve Sullivan, General Manager  
 Barry Spiegelberg, Assistant General Manager  
 Anjie Daiker, Account Executive  
 Malcolm Jamison, Account Executive  
 Stuart Burke, Sales Coordinator

### BUSINESS OFFICE . . . . . 541-737-2785

Mark Spencer, Senior Associate Athletic Director / Business  
 Jacque Bruns, Assistant Athletic Director / Business Operations  
 Christina Adams, IT Administrator and Manager  
 Garrett Haldeman, Accounting Technician  
 Mary Seymour, Office Specialist  
 Sally Wright, Office Specialist

### COMPLIANCE . . . . . 541-737-7369

Alex Parker, Associate Athletic Director / Compliance  
 Jackie Babich, Director of Compliance

### EQUIPMENT . . . . . 541-737-2481

Steve McCoy, Director of Equipment Operations  
 Arnold Alcantar, Football Equipment Coordinator  
 Todd Jacob, Assistant Equipment Coordinator

### EVENT MANAGEMENT . . . . . 541-737-3577

John Cheney, Associate Athletic Director / Facilities & Operations  
 Kathy Brier, Event Coordinator  
 Jason O'Quin, Event Coordinator

### MAINTENANCE & GROUNDS CREW . . . . . 541-737-2328

Jess Lewis  
 Jeff Frost  
 Al Kirk  
 Eric Reisdorf  
 Matt Siewell

### MARKETING/PROMOTIONS . . . . . 541-737-9895

Nikki Pruett, Assistant Athletic Director of Marketing & Promotions  
 Ben Little, Director of Branding & Advertising  
 Shelby Van Orsow, Marketing Coordinator  
 Amber Bezates, Head Cheer Coach  
 Robyn Chapman, Assistant Director of Athletic Bands  
 Brad Townsend, Director of Athletic Bands

### SPORTS MEDICINE . . . . . 541-737-8544

Dr. Craig Graham, Director of Sports Medicine  
 Dr. Donald Pennington, Orthopedic Surgeon  
 Dr. Luis Vela, Orthopedic Surgeon  
 Ariko Iso, Head Football Athletic Trainer - Valley Football Center  
 Heather Elkinton, Assistant Athletic Trainer - Valley Football Center  
 Holly Fisher, Assistant Athletic Trainer - Gill Coliseum  
 Tom Fregoso, Assistant Athletic Trainer - Gill Coliseum  
 Deb Graff, Assistant Athletic Trainer - Gill Coliseum  
 Jason Liew, Assistant Athletic Trainer - Gill Coliseum  
 Annie McCauley-Toth, Assistant Athletic Trainer - Gill Coliseum  
 Josh Sims, Assistant Athletic Trainer - Valley Football Center  
 Mitch Swee, Assistant Athletic Trainer - Valley Football Center  
 Josh Therrien, Assistant Athletic Trainer - Valley Football Center

### STRENGTH & CONDITIONING . . . . . 541-737-8680

Bryan Miller, Sports Performance Coordinator  
 Clete McLeod, Assistant Sports Performance Coordinator  
 Jen Miller, Assistant Sports Performance Coordinator  
 Tim Rabas, Assistant Sports Performance Coordinator  
 Brendon Ziegler, Assistant Sports Performance Coordinator

### STUDENT-ATHLETE SERVICES . . . . . 541-737-6804

Linda Johnson, Associate Athletic Director / Life Skills Coordinator

### TICKET OFFICE . . . . . 541-60-BEAVS

Cecil Hairston, Assistant Athletic Director of Ticket Operations  
 Ronnet Bryant, Assistant Director  
 Alicia English, Ticket/Donor Account Manager  
 Luann Knapp, Customer Service Representative  
 Shannon Sauvage, Customer Service Representative  
 Pam Sugden, Customer Service Representative  
 Linda Windom, Customer Service Representative

### VARSITY "O" . . . . . 541-737-8396

Bob Frank, Director

### VIDEO OPERATIONS . . . . . 541-737-8213

Mike Ortiz, Director of Football Video Operations  
 Maisa Hollis, Director of Sports Video  
 Matt Riley, Video Coordinator  
 Jeff Taylor, Video Coordinator

## DIRECTIONS TO RESER STADIUM

### From Eugene & Airport

- HWY 99 north to Junction City.
- Turn left on HWY 99W (north end of JC) and proceed to Corvallis. Turn left on Western Blvd, immediately after crossing the Marys River bridge.
- Follow Western Blvd to stadium (Approx 2 miles).
- Total drive time from airport is 45 minutes.

### From Portland Airport

- I-205 South to I-5 South.
- Stay on I-5 south to approximately five miles south of Albany.
- Take the HWY 34 exit (#228) and proceed west for 10 miles.
- Turn left on HWY 34 (see Reser Stadium signs) to 26th street – turn right.
- Left on Western Blvd.
- Total drive time from PDX airport is 1:45.

## OSU TRAVEL INFORMATION

### WISCONSIN

**Holiday Inn Hotel & Suites**  
1109 Fourier Drive  
Madison, WI 53717  
608-826-4700

### ARIZONA STATE

**Hilton Phoenix Airport**  
2435 S. 47th Street  
Phoenix, AZ 85034  
480-804-6097

### WASHINGTON STATE

**Hilton Seattle Airport**  
17620 International Boulevard  
Seattle, WA 98188  
206-439-6186

### UTAH

**Salt Lake Marriott City Center**  
220 South State Street  
Salt Lake City, UT 84111  
801-366-8056

### CALIFORNIA

**Hilton San Francisco Union Square**  
333 O'Farrell Street  
San Francisco, CA 94102  
415-923-5097

### OREGON

**Valley River Inn**  
1000 Valley River Way  
Eugene, OR 97401  
541-341-3472

## PAC-12 BOWL ARRANGEMENTS

Rose Bowl presented by VIZIO (Pasadena)	Pac-12 vs. Big Ten	Jan. 2	ESPN
Valero Alamo (San Antonio)	Pac-12 vs. Big 12	Dec. 29	ESPN
Bridgepoint Education Holiday (San Diego)	Pac-12 vs. Big 12	Dec. 28	ESPN
Hyundai Sun (El Paso)	Pac-12 vs. ACC	Dec. 31	CBS
MAACO Bowl Las Vegas	Pac-12 vs. MWC	Dec. 22	ESPN
Kraft Fight Hunger (San Francisco)	Pac-12 vs. Army	Dec. 31	ESPN
New Mexico Bowl (Albuquerque)	Pac-12 vs. MWC	Dec. 17	ESPN

## MEDIA INFORMATION

The 2011 Oregon State football media guide is a source of information intended for the news media. Additional information is available upon request from the Oregon State Athletics Communications Office. News releases and photographs will be made available to accredited members of the media. The OSU Athletics Communications Office is located, adjacent to Reser Stadium and the Valley Football Center, on the second floor of Gill Coliseum in room 209.

## MEDIA CREDENTIALS

Credentials to cover Oregon State home football games may be secured by contacting Steve Fenk, Associate Athletic Director/Communications at 541-737-7470 or [steve.fenk@oregonstate.edu](mailto:steve.fenk@oregonstate.edu).

## MEDIA PARKING

Limited media parking is available immediately behind the press box on the west side of the stadium (enter off Western Blvd.). Overflow parking is available approximately three blocks from the press box in the OSU Foundation lot.

## PHOTOGRAPHY REGULATIONS

Photo passes will be issued only to accredited photographers on assignment. Photographers should proceed to the press box when arriving at the stadium to obtain an armband for field access. NCAA regulations forbid photographers from being between the 25-yard lines.

## PRESS BOX

The fourth level of the Reser Stadium press box serves as the media center. Radio and television booths are located from approximately the 50-yard line to the left as you look onto the field. The remainder of the seating is for the print media. A photo deck runs nearly the length of the press box and is located off the fourth level. Lunch or dinner is served in the press box.

## POSTGAME WORK AREAS

The Reser Stadium press box will be closed following the game, with the exception of deadline issues for writers for night games. Two working areas postgame are available for use – the Valley Football Center (OSU) work room is located on the second floor next to the postgame interview room. The Gill Coliseum media room (located near the opponents' lockerroom) serves as the visiting media room. The usual statistical packets with quotes will be delivered to both areas.

## INTERNET

Wireless internet access is available at all working areas of Reser Stadium and Gill Coliseum. Please see the OSU Communications staff for the access code.

## PROFESSIONAL SCOUTS

Professional scouts are generally seated in the second row of the press box, behind the print media. Some seats have partially obstructed views.

## PRACTICES

Practices are open to the media and public. Generally, interviews are conducted post-practice (5 p.m.) on Tuesdays-Thursdays for Saturday games. Video may be shot of practice with some limitations, please see the on-field Communications personnel for that day's schedule.

## MIKE RILEY INTERVIEWS

Every Tuesday, **except for bye weeks and Thursday games**, OSU hosts a media conference with head coach Mike Riley and student-athletes. Coach Riley is available for approximately 30 minutes. Visiting media may also call into the conference to participate – contact the OSU Communications Office (541-737-3720) for the access information. The taped press conference is also available later that day on [osubeavers.com](http://osubeavers.com) and as a podcast. **Check with OSU staff for the time of the press conferences for Thursday games.**

## PAC-12 TELECONFERENCE

The Pacific-12 Conference conducts a weekly press conference on Tuesday with all 12 head coaches. For the time and access information please contact the conference office at (925) 932-4411. The Conference also provides a weekly video satellite feed.

## OPPONENT SIDS

### GAME 1 – SACRAMENTO STATE

**BRIAN BERGER**  
(916) 278-4313  
[bwberger@csus.edu](mailto:bwberger@csus.edu)  
[www.hornetsports.com](http://www.hornetsports.com)

### GAME 2 – WISCONSIN

**BRIAN LUCAS**  
(608) 263-5052  
[BML@athletics.wisc.edu](mailto:BML@athletics.wisc.edu)  
[www.uwathletics.com](http://www.uwathletics.com)

### GAME 3 – UCLA

**STEVE ROURKE**  
(310) 206-8187  
[srourke@athletics.ucla.edu](mailto:srourke@athletics.ucla.edu)  
[www.uclabruins.com](http://www.uclabruins.com)

### GAME 4 – ARIZONA STATE

**MARK BRAND**  
(480) 965-6592  
[mbrand@asu.edu](mailto:mbrand@asu.edu)  
<http://thesundevils.cstv.com>

### GAME 5 – ARIZONA

**TOM DUDDLESTON, JR.**  
(520) 621-5511  
[tduddles@u.arizona.edu](mailto:tduddles@u.arizona.edu)  
[www.arizonaathletics.com](http://www.arizonaathletics.com)

### GAME 6 – BYU

**BRETT PYNE**  
(801) 422-4912  
[brett\\_pyne@byu.edu](mailto:brett_pyne@byu.edu)  
[www.byucougars.com](http://www.byucougars.com)

### GAME 7 – WASHINGTON STATE

**BILL STEVENS**  
(509) 335-4294  
[wsstevens@wsu.edu](mailto:wsstevens@wsu.edu)  
<http://wsucougars.cstv.com>

### GAME 8 – UTAH

**LIZ ABEL**  
(801) 581-3511  
[label@huntsman.utah.edu](mailto:label@huntsman.utah.edu)  
[www.utahutes.com](http://www.utahutes.com)

### GAME 9 – STANFORD

**JIM YOUNG**  
(650) 723-4418  
[jfyoung@stanford.edu](mailto:jfyoung@stanford.edu)  
[www.gostanford.com](http://www.gostanford.com)

### GAME 10 – CALIFORNIA

**KYLE McRAE**  
(510) 643-4723  
[mcray@berkeley.edu](mailto:mcray@berkeley.edu)  
[www.calbears.com](http://www.calbears.com)

### GAME 11 – WASHINGTON

**JEFF BECHTOLD**  
(206) 543-2230  
[bechtold@u.washington.edu](mailto:bechtold@u.washington.edu)  
[www.gohuskies.com](http://www.gohuskies.com)

### GAME 12 – OREGON

**DAVE WILLIFORD**  
(541) 346-5488  
[diw@uoregon.edu](mailto:diw@uoregon.edu)  
[www.goducks.com](http://www.goducks.com)

## RADIO

**GAME DAY** — Beaver Sports Properties, a division of Learfield Sports, produces game-day radio broadcasts and special programming, syndicated on the Beaver Sports Radio Network. The 8-hour broadcasts consist of over 30 stations across Oregon and is anchored by the Portland flagship station AM 860 (KPAM). AM 860 also airs Beaver segments throughout the day produced by sports director Ron Callan.



Mike Parker, the “voice of the Beavers”, handles the play-by-play and is joined in the booth by former Beaver lineman and OSU Hall of Famer Jim Wilson. Former Beaver, NFL player and OSU Hall of Famer Steve Preece delivers pre-game analysis with Parker, Callan and Wilson. Callan handles the sideline duties and is joined by Wilson for the post-game call-in show.

Beaver Sports Network programming begins two hours before kickoff with the “Countdown to Kickoff Show” and signs off approximately two hours after each game with the popular “Beaver Wrap Up Show.”

AM 860, owned locally by the Pamplin Media Group, is the 50,000-watt home of the Beaver Sports Radio Network. Along with its extended football coverage, KPAM or its sister station KKAD (1550 AM) broadcast Beaver men’s and women’s basketball games, every Beaver Sports Talk (Tues. or Thurs.) from late August through early April, and Beaver baseball. Oregon State enjoys the strongest comprehensive radio package in the Pac-12 Conference by offering the most total hours of play-by-play and auxiliary programming beginning with Inside Sports with Ron Callan — The Beaver Blitz Pre-Game Show precedes network coverage by 60 or 90 minutes. For home games Callan broadcasts live from Fan Fair at Parker Plaza.

There will be several options to complement local radio with football and men’s basketball games available on XM Satellite Radio (official partner of the Pac-12 Conference), internet audio through Beaver Nation Online’s audio/visual service and www.kpam.com. Beaver Nation Online links are available at www.osubeavers.com (via several subscription-based plans).

**NORTHWEST SPORTS TONIGHT WITH RON CALLAN** — AM 860 sports director and OSU sideline reporter Ron Callan hosts a Beaver-themed show weekdays from 6-9 p.m. in Portland.

**BEAVERS IN SPANISH** — In 2003, Oregon State Athletics, through Beaver Sports Properties, became the first Northwest school to offer Spanish-language broadcasts to the Latino community. For the eighth consecutive year every football game will be offered in Spanish and in 2011 it will be available by a third-year partnership with KWIP-AM, a 5,000-watt station in Dallas, Ore., covering the Willamette Valley. Juan De Dios Andrade handles play-by-play.



**BEAVER SPORTS TALK** — In addition, Beaver stations also carry “Beaver Sports Talk” a weekly statewide call-in show every Thursday (Tuesdays for weekday games) night from 7-8 p.m. featuring head coach Mike Riley and Mike Parker. BST is live from McMenamins Brewpub on Monroe Street in Corvallis and airs on most of the Beaver Sports Radio Network stations, and is streamed live on Beaver Nation Online on www.osubeavers.com.

**THE JOE BEAVER SHOW** — Each weekday from Noon to 2 p.m. Mike Parker and Jon Warren host an OSU sports-themed show in the Greater Corvallis area on 1240 KEJO.



## MIKE PARKER

Mike Parker is entering his 13th season calling OSU football, men’s basketball and baseball action and has been behind the microphone for some of the school’s crowning achievements on the athletic fields. The “Voice of the Beavers” is a 1982 graduate of the University of Oregon with a bachelor’s degree in rhetoric and communications. His broadcasting career includes play-by-play for football, basketball and baseball for high school sports in Oregon, beginning in 1977. He was the voice of the Eugene Emeralds (1983-86) minor league baseball club and the Oregon women’s basketball program (1983-87). He also was the play-by-play voice of the AAA Portland Beavers from 1987-92. Parker hosted a show on all-sports KFXR Radio from 1990-95 before moving to KEX Radio as host of Sportsline and the Fifth Quarter program following Portland Trail Blazers games. Parker has been named the Oregon SportsCaster of the Year five times, including in 2008. Mike and his wife Missy have two daughters, Lydia and Ellie.



## JIM WILSON

Jim Wilson is in his eighth year on the OSU football radio crew, and has also worked as a color analyst on OSU baseball broadcasts. He is one of the top two-sport student-athletes in the history of the school, participating in baseball and football. Wilson, a member of the OSU Sports Hall of Fame, still holds the school record for home runs in one season with 21 and for single season (.829) and career (.640) slugging percentage. He was the Pac-10 Conference’s Northern Division MVP and third team All-American in 1982. Wilson was drafted by the Cleveland Indians in 1982 and played Major League Baseball with the Indians and Seattle Mariners, and in Japan. Wilson lettered in football as an offensive lineman in 1980 and ’81. Jim and his wife Lisa have been married for 25 years and have 11-year-old twin daughters, Esti and Evan.



## RON CALLAN

Ron Callan has spent over 35 years in the broadcast media business, all in the Pacific Northwest, and is in his fourth year as a member of the Beaver broadcast team. Callan handles sideline duties as well as hosting the pre- and post-game shows. The AM 860 (OSU’s flagship station) sports director has been named the Associated Press SportsCaster of the Year three times. Callan spent seven seasons as the sideline reporter for the Seattle Seahawks’ radio network after a 10-year stint hosting the Washington Huskies’ postgame show on KIRO TV in Seattle. The 1974 Linfield College graduate also has worked for KVDO TV in Salem, KTVB TV in Boise, KHQ TV in Spokane and ROOT SPORTS. Callan, a former opera singer, has three children — Cassie, Daniel and Lily.



## STEVE PREECE

Steve Preece has been a mainstay with the Beavers both on the field as a quarterback on the famed 1967 “Giant Killers” team and in the booth as a color analyst for ROOT SPORTS Beaver broadcasts. The 1969 OSU graduate played nine seasons in the NFL for the New Orleans Saints, Philadelphia Eagles, Denver Broncos, Los Angeles Rams and Seattle Seahawks. He played on four conference championship teams with the Rams. Preece adds insight on network pre-game radio and interviews head coach Mike Riley from the Valley Football Center following home games. The interview is live on the “Dam Cam” video board and on the radio. Preece also co-hosts “Beavers All-Access.” He is married to Karen Renee Hammer. Preece has two sons, Travis and Nick, and a daughter Whitney and her husband Pete. He also has one grandson, Travis.



## BEAVER SPORTS RADIO NETWORK

Astoria	KAST-AM	1370	Hermiston	KOHU-AM	1360
Baker City	KBKR-AM	1490	Klamath Falls	KLAD-AM	960
Bend	KICE-AM	940	La Grande	KLBM-AM	1450
Burns	KORC-FM	92.7	Lakeview	KQIK-AM	1230
Coos Bay	KBRR-AM	1340	Lakeview	KQIK-FM	93.5
Corvallis	KEJO-AM	1240	Medford	KAKT-FM	105.1
Corvallis	KTHH-AM	990	Newport	KNPT-AM	1310
Cottage Grove	KNND-AM	1400	Ontario	KSRV-AM	1380
Dallas	KWIP-AM (Spanish)	880	Pendleton	KUMA-AM	1290
Enterprise	KWVR-AM	1340	Portland	KPAM-AM	860
Enterprise	KWVR-FM	92.1	Portland	KKAD-AM	1550
Eugene	KKNX-AM	840	Prineville	KRCO-AM	690
Florence	KCFM-FM	104.1	Roseburg	KSKR-AM	1490
Florence	KCFM-FM	103.1	Salem	KBZY-AM	1490
Florence	KCFM-AM	1250	The Dalles	KDDL-AM	1440
Grants Pass	KAKT-FM	104.7	Tillamook	KTIL-AM	1590

## OSU ATHLETIC DIRECTORS

T.P. “Ted” Cramer	1918-19
Jimmy Richardson	1919-22
Carl Lodell	1922-32
Percy Locey	1937-47
R.S. “Spec” Keene	1947-64
Slats Gill	1964-66
Jim Barratt	1966-76
Dee Andros	1976-85
Lynn Snyder	1985-90
Dutch Baughman	1990-97
Mitch Barnhart	1997-2002
Bob De Carolis	2002-present

## HISTORY OF OSU SIDS

There have been only six Sports Information Directors in Oregon State’s history. Oregon State’s current SID, Steve Fenk, joined the OSU staff in September of 1990 as the men’s basketball SID. It was not until 2004 that he took over as the Interim Sports Information Director for the entire department. In 2006, Fenk received a permanent appointment as an Assistant Athletic Director for Communications.

A complete list of OSU Sports Information Directors follows:

Art Taafe	1924-37
Bud Forrester	1937-41
Irwin Harris	1942-51
John Eggers	1952-79
Hal Cowan	1976-2004
Steve Fenk	2004-present

## TELEVISION

**PAC-12 TV PARTNERS** — As a member of the Pac-12 Conference, Beaver games air regionally and nationally on ABC, ESPN, ESPN2, FSN and Versus.

**ROOT SPORTS** — ROOT SPORTS is the regional television partner for OSU Athletics and reaches 3.4 million households in the states of Oregon, Washington, Alaska, Idaho, and parts of Nevada and Montana. ROOT SPORTS, which is also available on the Fox College Sports cable and satellite digital tier, airs football, men's and women's basketball, and baseball games as well as OSU's weekly magazine show Beavers All Access.



### BEAVERS ALL ACCESS —

ROOT SPORTS will again air the popular magazine show tentatively on Wednesday nights during the season. The show will also be replayed several times each week on FSN's ROOT SPORTS, a part of the DIRECTV Sports Networks that comprises three regional sports networks that reach more than 8.5 million viewers across 17 states. Through its subsidiaries and affiliated companies in the United States, Brazil, Mexico and other countries in Latin America, DIRECTV, the world's most popular television service, serves more than 18.4 million households.



## INTERNET

OSUBeavers.com is Oregon State's official athletic website and provides fans with the most complete and up-to-date coverage of all Beaver football. OSUBeavers.com is powered by CBS Sports Network which also manages the premium audio/visual service Beaver Nation Online. The subscription based-service airs live events, and archived shows featuring games, press conferences and special features on OSU student-athletes.



## LEARFIELD SPORTS

Welcome to Learfield Sports, and we hope that you find the information on our corporate site to be beneficial. For 35 years, we have excelled in administering the multimedia rights for a host of reputable colleges and universities. We also provide exclusive sports programming to more than 1,000 radio stations throughout the country, secure marketing partnerships for the Black Coaches and Administrators (BCA), and spearhead corporate partner platforms for the Big Ten Conference, Missouri Valley Conference and the Western Athletic Conference. Our strategic affiliation with Team Services, LLC also affords our partners a distinct advantage in the areas of venue consulting, naming rights and market research. With roots firmly planted in collegiate sports, we celebrate the opportunity to brand our name in connection with one of the industry's most prestigious awards — the Directors' Cup — having renamed it the Learfield Sports Directors' Cup in partnership with *USA Today* and NACDA.

Our mission to "Build the Team, Grow the Company and Have Fun" is accentuated through a culture driven to exceed goals, serve partners enthusiastically, work as a team, celebrate successes, and do what is right and honest in every endeavor. Collectively, we remain unwavering in our commitment to ensure each and every relationship is served to the best of our ability, while building on our strengths and striving to lead the way in college sports.



Steve Sullivan



Barry Spiegelberg



Anjie Daiker



Malcolm Jamison



Stuart Burke

## BEAVERS SPORTS PROPERTIES

Beaver Sports Properties (BSP) a division of Learfield Sports is the multi-media rights holder that represents the Oregon State Athletic Department. BSP is responsible for all aspects of corporate sponsorships; production of game-day television, radio and publications; securing media partnerships; and development of the official Oregon State Athletics website at [www.osubeavers.com](http://www.osubeavers.com).

Oregon State has enjoyed record levels of marketing revenue and built strong business partnerships during its association with BSP.

The BSP staff consists of Steve Sullivan, General Manager, Barry Spiegelberg, Associate GM, Malcolm Jamison and Anjie Daiker, Account Executives and Stuart Burke, Sales Coordinator.

BSP can be reached in Corvallis at (541) 737-8364 or in Portland at (503) 553-3401.



## SOCIAL NETWORKING

In recent years Oregon State Athletics has embraced social networking and now offers fans of Beaver Nation the opportunity to follow your favorite teams closer than ever via Facebook, Twitter and YouTube.

Stay up to date with the Beavers by becoming a fan of Oregon State Athletics official Facebook (OregonStateBeavers), YouTube (OSUBeaversAthletics) sites and Twitter feed (@beaverathletics). Followers of the Beavers will be updated with the

very latest in the world of OSU Athletics from score updates, to event recaps, to video features, to special ticket offers. In addition, many teams have their own sites including football: Facebook (OregonStateFootball), YouTube (OregonStateFootball) and Twitter (@OSUBeaversFB) ... and head coach Mike Riley has a Twitter feed of his own (@Coach\_Riley).

## OSU HISTORY / TRADITIONS

### THE FIGHT SONG

*OSU our hats are off to you,  
Beavers, Beavers, fighters thru and thru,  
We'll cheer thru-out the land,  
We'll root for every stand,  
That's made for old OSU.*

*Watch our team go tearing down the field;  
Those of iron, their strength will never yield.  
Hail! Hail! Hail! Hail!  
Hail to old OSU*

### NICKNAME — THE BEAVERS

In the early days of the institution, Oregon State University's athletic teams were known as the Aggies. When orange uniforms replaced the drab sweatshirt gray and tan jerseys, the teams were referred to as the Orangemen.

In 1916 the school yearbook was renamed "The Beaver" and the name Beaver became associated with the school. It is believed the press also had some influence in changing the name, particularly L.H. Gregory of *The Oregonian* newspaper. The name gained instant popularity among alumni and students.

The Beaver is the state's official animal.

### THE MASCOT — BENNY

Benny Beaver was adopted as Oregon State University's mascot in 1952 after the school had a reported three previous mascots. The first mascot in 1893 was a coyote named Jimmie, owned by M.M.H. Kriebel. In 1909, a second mascot appeared on the scene. Dr. John Bell, a Corvallis pastor and former regent of Corvallis when the college was taken over by the state and became Oregon Agricultural College. In the early 1900s, "Doc Bell" was considered to be the varsity football squad's "mascot" because of his steadfast attendance and advising. In 1921 there was an attempt to make a live Beaver, "Bevo", into the school mascot, but with little success.

Benny Beaver, OSU's current mascot, was introduced to the student body by the school's rally squad on September 18, 1952, in an effort to pick up sagging school spirit.

"Benny Beaver, the rally squad's candidate for handsomest man in school, has never been on campus before," according to *The Barometer* (student paper), at the time.

"The animal stands six-feet tall, wears vivid orange knickerbockers, a black jersey, and his familiar orange and black rooters lid."

Adopted as the official mascot in 1952, Benny Beaver still fires up the crowds at OSU athletic events today.

Benny Beaver, while officially accepted as the school's mascot in 1952, actually can be traced back to the 1940-41 school year. A statue of a beaver named "Benny" appears in the school's yearbook, and later a *Barometer* sports columnist used the pen name "Benny Beaver."

### TEAM COLORS — ORANGE & BLACK

Oregon State was known as Corvallis College until the mid 1890s and the school color was navy blue. A faculty committee appointed by school President John Bloss voted to replace blue with orange. Not long after, black was selected by the student body as a background color. A local tailor named J.H. Harris donated black uniforms for the baseball team in this time frame, and it is believed to be where the black color scheme began in athletics, although that is debatable. An article in the local *Corvallis Gazette-Times* in 1892 describes the use of orange and black in commencement ceremonies, nearly a year prior to orange becoming the official color.

While orange was originally the official color, over the years black has become more universally accepted as one of the official colors. Today, nearly all of OSU accepts black and Pantone 165 orange as the official colors.

# OREGON STATE MEDIA INFO

## PRINT MEDIA

OUTLET	MAILING ADDRESS	CITY	PHONE	CONTACT	EMAIL	WEBSITE
Associated Press	121 SW Salmon, Suite 1450	Portland, OR 97204	(503) 228-2169	Anne Peterson	apeterson@ap.org	www.ap.org
Bend Bulletin	P.O. Box 6020	Bend, OR 97708	(541) 382-1811	Bill Bigelow	bbigelow@bendbulletin.com	www.bendbulletin.com
Coos Bay World	P.O. Box 1840	Coos Bay, OR 97420	(541) 269-1222	John Gunther	jgunther@theworldlink.com	www.theworldlink.com
Corvallis Gazette-Times	600 SW Jefferson	Corvallis, OR 97330	(541) 753-2641	Cliff Kirkpatrick	cliff.kirkpatrick@lee.net	www.gazettetimes.com
The Daily Barometer	Oregon State University	Corvallis, OR 97331	(541) 737-2231	Grady Garrett	baro.sports@oregonstate.edu	www.media.barometer.orst.edu
East Oregonian	211 SE Byers	Pendleton, OR 97801	(541) 276-2211	Matt Entrup	mentrup@eastoregonian.com	www.eastoregonian.com
Eugene Register-Guard	P.O. Box 10188	Eugene, OR 97440	(541) 485-1234	Bob Clark	bob.clark@registerguard.com	www.registerguard.com
Klamath Falls Herald and News	P.O. Box 788	Klamath Falls, OR 97601	(541) 885-4410	Steve Matthies	smatthies@heraldandnews.com	www.heraldandnews.com
Medford Mail Tribune	P.O. Box 1108	Medford, OR 97501	(541) 776-4499	Tim Trower	ttrower@mailtribune.com	www.mailtribune.com
The Oregonian	1320 SW Broadway	Portland, OR 97201	(503) 221-8161	Paul Buker	pbuker@oregonian.com	www.oregonlive.com
Portland Tribune	6605 SE Lake Rd.	Portland, OR 97222	(503) 226-6397	Kerry Eggers	kerryeggers@portlandtribune.com	www.portlandtribune.com
Roseburg News-Review	345 NE Winchester	Roseburg, OR 97470	(541) 672-3321	Tom Eggers	teggers@newsreview.info	www.nrtday.com
Statesman-Journal	280 Church Street	Salem, OR 97308	(503) 399-6700	Gary Horowitz	ghorowit@statesmanjournal.com	www.statesmanjournal.com
Vancouver Columbian	701 W. 8th Street	Vancouver, WA 98660	(360) 694-3391	Greg Jayne	greg.jayne@columbian.com	www.columbian.com

## RADIO MEDIA

OUTLET	MAILING ADDRESS	CITY	PHONE	CONTACT	EMAIL	WEBSITE
Beaver Sports Radio Network	114 Gill Coliseum	Corvallis, OR 97331	(541) 737-8360	Steve Sullivan	ssullivan@beaversportsproperties.com	www.osubeavers.com
KPAM (860)	6605 SE Lake Road	Portland, OR 97222	(503) 223-4321	Ron Callan	rcallan@kpam.com	www.kpam.com
KEJO (1240)	2840 Marion St. SE	Albany, OR 97321	(541) 926-8628	Mike Parker	parker@osubeavers.com	www.kejoam.com
KEX (1190)	4949 SW MacAdam Ave.	Portland, OR 97204	(503) 225-1190	Scott Lynn	scottlynn@clearchannel.com	www.1190kex.com
KFXN - The Fan (1080)	0700 SW Bancroft	Portland, OR 97239	(503) 223-1441	Jason Swygard	jswygard@entercom.com	www.kfx.com
KGAL (1580)	P.O. Box 749	Albany, OR 97321	(541) 926-8683			www.kgal.com
95.3 The Score (FM)	1200 Executive Parkway Suite 400	Eugene, OR 97405	(541) 284-8571	George Schroeder	writersblock@1320thescore.com	www.1320thescore.com
750 The Game	0234 SW Bancroft	Portland, OR 97239	(503) 243-7595	Jay Allen	jay.allen@kxl.com	www.955thegame.com

## TELEVISION MEDIA

OUTLET	MAILING ADDRESS	CITY	PHONE	CONTACT	EMAIL	WEBSITE
KVAL (CBS)	P.O. Box 1313	Eugene, OR 97401	(541) 485-4888	Tom Ward	ward@kval.com	www.kval.com
KATU (ABC)	P.O. Box 2	Portland, OR 97207	(503) 231-4222	Katy Brown	katyb@katu.com	www.katu.com
KBVR (on campus)	Oregon State University	Corvallis, OR 97331	(541) 737-3522			
KDRV (ABC)	P.O. Box 4220	Medford, OR 97501	(541) 773-1212	Chris Leone	cleone@kdrv.com	www.kdrv.com
KEZI (ABC)	P.O. Box 7709	Eugene, OR 97401	(541) 485-5611	Bryan Salmond	bryansalmond@kezi.com	www.kezi.com
KGW (NBC)	1501 SW Jefferson	Portland, OR 97201	(800) 288-5498	Joe Becker	jbecker@kgw.com	www.kgw.com
KMTR (NBC)	3825 International Court	Springfield, OR 97477	(541) 746-1600	Joe Leadingham	josephleadingham@kmtr.com	www.kmtr.com
KOBI (NBC)	125 Fir Street	Medford, OR 97501	(541) 779-5555	Joe Camarlinghi	jcamarlinghi@kobi5.com	www.localnewscomesfirst.com
KOIN (CBS)	222 SW Columbia Street	Portland, OR 97201	(503) 464-0600	Dan Christopherson	dchristopherson@koin.com	www.koin.com
KPTV (FOX)	14975 NW Greenbrier Parkway	Beaverton, OR 97006	(503) 548-6539	Daniel Sheldon	daniel.sheldon@kptv.com	www.kptv.com
KTVL (CBS)	P.O. Box 10	Medford, OR 97501	(541) 773-7373			www.ktv.com
KTVZ (NBC)	62990 O.B. Riley Road	Bend, OR 97708	(541) 383-2121	Jim Murray	jmurray@ktvz.com	www.ktvz.com



Beth Buglione

# QUICK FACTS

## OREGON STATE UNIVERSITY

Location: ..... Corvallis, Ore.  
 Enrollment: ..... 23,761  
 Founded: ..... 1868  
 Nickname: ..... Beavers  
 School Colors: ..... Orange & Black  
 Stadium (Capacity): ..... Reser Stadium (45,674)  
 Surface: ..... FieldTurf  
 Practice Facilities (Surface): ..... Merritt-Truax Indoor Center (FieldTurf)  
 ..... Tommy Prothro Complex (Grass)  
 Conference: ..... Pacific-12  
 President: ..... Dr. Edward Ray  
 Director of Athletics: ..... Bob De Carolis  
 Department of Athletics Phone: ..... 541-737-7373  
 Faculty Athletic Representative: ..... Dr. Joseph Spatafora  
 Director of Ticket Operations: ..... Cecil Hairston  
 Ticket Office Phone: ..... 1-800-GO-BEAVS  
 Athletic Department Address: ..... 104 Gill Coliseum, Corvallis, OR 97331-4105  
 Athletic Department Website: ..... www.osubeavers.com

## OREGON STATE FOOTBALL HISTORY

First Year: ..... 1893  
 All-Time Record: ..... 504-538-50 (.484)  
 Bowl Record: ..... 10-5 (.667)  
 Last Bowl: ..... 2009 Las Vegas Bowl (def. by BYU, 20-44)  
 Bowl Streak: ..... Missed 1  
 2010 Record: ..... 5-7  
 Conference Record: ..... 4-5 (15th)  
 Final Ranking: ..... NA  
 Offense: ..... Multiple  
 Defense: ..... Multiple  
 Lettermen Returning: ..... 52 (24 O, 26 D, 2 S)  
 Lettermen Lost: ..... 24 (10 O, 13 D, 1 S)  
 Starters Returning: ..... 14 (8 O, 4 D, 2 S)  
 Starters Lost: ..... 12 (4 O, 7 D, 1 S)

## OREGON STATE COACHING STAFF

Head Coach ..... Mike Riley (Alabama, '75)  
 School Record ..... 69-54, .561 (10 seasons)  
 Career Record ..... Same  
 Football Phone ..... (541) 737-2614  
 Football Fax ..... (541) 737-3135  
 Best Time for Coach ..... Through Communications Personnel

### ASSISTANT COACHES

Jay Locey (Oregon State, '79) — Assistant Head Coach / Tight Ends  
 Mark Banker (Springfield College, '78) — Defensive Coordinator / Linebackers  
 Bruce Read (Portland State, '86) — Coordinator of Special Teams  
 Danny Langsdorf (Linfield College, '95) — Offensive Coordinator / Quarterbacks  
 Chris Brasfield (Texas Christian, '96) — Running Backs  
 Brent Brennan (UCLA, '96) — Wide Receivers  
 Mike Cavanaugh (Southern Connecticut State, '86) — Offensive Line  
 Keith Heyward (Oregon State, '02) — Secondary  
 Joe Seumalo (Hawaii, '95) — Defensive Line  
 Alan Darlin (Oregon State, '09) — Graduate Assistant / Assistant Linebackers  
 Mitch Meeuwssen (Oregon State, '07) — Graduate Assistant / Assistant Secondary

## OREGON STATE SUPPORT STAFF

### FOOTBALL OPERATIONS

Director of Football Operations ..... Dan Van De Riet  
 Assistant Director of Football Operations ..... Ryan Gunderson  
 Coordinator of Support Services ..... Gary Beck  
 Executive Assistant to Mike Riley ..... Hilary O'Bryan  
 Football Interns ..... Brooks Armstrong, Jay Harbaugh & Beau Walker

### ACADEMIC SERVICES

Lead Academic Counselor (Football) ..... Megan O'Quin

### EQUIPMENT OPERATIONS

Director of Equipment Operations ..... Steve McCoy  
 Football Equipment Coordinator ..... Arnold Alcantar

### SPORTS MEDICINE

Director of Sports Medicine ..... Dr. Craig Graham  
 Head Athletic Football Trainer ..... Ariko Iso  
 Assistant Athletic Trainers ..... Heather Elkinton, Josh Sims,  
 ..... Mitch Swee, Josh Therrien

### STRENGTH & CONDITIONING

Sports Performance Coordinator ..... Bryan Miller  
 Assistant Sports Performance Coordinators ..... Clete McLeod, Jen Miller  
 ..... Tim Rabas, Brendon Zeigler

### TRAINING TABLE

Executive Chef ..... Raul Vera

### VIDEO OPERATIONS

Director of Football Video Operations ..... Mike Ortiz

## WHERE TO FIND THE COACHES ON THE FIELD

Mike Riley ..... Head Coach  
 Jay Locey ..... Assistant Head Coach / Tight Ends  
 Mark Banker ..... Defensive Coordinator / Linebackers  
 Bruce Read ..... Coordinator of Special Teams  
 Chris Brasfield ..... Running Backs  
 Brent Brennan ..... Wide Receivers  
 Mike Cavanaugh ..... Offensive Line  
 Joe Seumalo ..... Defensive Line  
 Mitch Meeuwssen ..... Graduate Assistant / Asst. Secondary

## IN THE PRESS BOX

Danny Langsdorf ..... Offensive Coordinator / Quarterbacks  
 Keith Heyward ..... Secondary  
 Alan Darlin ..... Graduate Assistant / Asst. Linebackers  
 \* subject to change - check game notes

## PRONUNCIATION GUIDE

### # PLAYERS

55 Shaydon Akuna ..... Ah-KOO-nuh  
 83 Kellen Clute ..... rhymes with flute  
 95 Scott Crichton ..... CRY-ton  
 23 Mishawn Cummings ..... MEE-shawn  
 74 Kevin Frahm ..... Frähm  
 86 Obum Gwacham ..... Oh-BOOM GWAH-chem  
 87 Joe Halahuni ..... Howl-ah-who-nee  
 48 Jaswha James ..... Joshua  
 94 Devon Kell ..... Dev-in  
 26 Josh LaGrone ..... La-Groan  
 22 Malcolm Marable ..... MAR-uh-bul  
 98 Castro Masaniai ..... Mah-sahn-EE-eye  
 66 Ben Motter ..... Mah-ter  
 77 Michael Philipp ..... Phil-ip

### # PLAYERS

90 Na'Alii Robins ..... Nah-Ah-LEE-ee  
 65 Roman Sapolu ..... Suh-POLL-ew  
 49 Andrew Seumalo ..... Say-oh-malo  
 19 Jovan Stevenson ..... JOE-von  
 46 Shiloah Te'o ..... TAY-oh  
 9 Tyler Trosin ..... Tro-SEEN  
 97 Mana Tuivailala ..... Mah-nuh Too-ee-VYE-la-la  
 41 Kevin "Feti" Unga ..... Fed-TEE OONG-uh  
 14 Cody Vaz ..... rhymes with RAZ  
 73 David Vieru ..... VEER-ew  
 3 Tyrequek Zimmerman ..... TYE-reek  
**COACHES**  
 Mitch Meeuwssen ..... MEW-son  
 Joe Seumalo ..... Say-oh-malo

# ROSTERS

## NUMERICAL ROSTER

NO	NAME	POS
1	James Rodgers	WR
2	Markus Wheaton	WR
3	Anthony Watkins	S
3	Tyrequek Zimmerman	WR
4	Sean Mannion	QB
4	D.J. Welch	LB
5	Cameron Collins	LB
6	Sean Martin	CB
7	Johnny Hekker	P
8	Richard Mullaney	WR
9	Tyler Trosin	WR
10	Peter Ashton	QB
10	Lance Mitchell	S
12	Dax Dilbeck	S
12	Ryan Katz	QB
13	Brandin Cooks	WR
13	Rueben Robinson	LB
14	Jordan Poyer	CB
14	Cody Vaz	QB
15	Darrell Catchings	WR
15	Levi Levasa	S
15	Larry Scott	CB
16	Rashaad Reynolds	CB
17	Brandon Hardin	CB
17	Jack Lomax	QB
18	Max Johnson	PK
18	Geno Munoz	WR
19	Jovan Stevenson	RB
20	Keynan Parker	CB
21	Ryan Handford	CB
21	Mitch Singler	WR
22	Malcolm Marable	RB
23	Jordan Bishop	WR
23	Mishawn Cummings	CB
24	Ryan McCants	RB
25	Ryan Murphy	S
26	Josh LaGrone	S
27	Trevor Romaine	PK
28	Terron Ward	RB
29	Will Storey	S
30	Zeke Sanders	S
31	Storm Woods	RB
32	Westly Meng	FB
33	Tyler Anderson	FB
34	Jordan Jenkins	RB
35	Malcolm Agnew	RB
36	Josh Parish	LB
36	Dylan Parsons	FB
37	Jeff Bedbury	WR
38	Brian Watkins	CB
40	Michael Doctor	LB
40	Garett Hall	WR
41	Kevin "Feti" Unga	LB
42	Clayton York	FB
43	Tony Wilson	LB
44	Jabral Johnson	LB
45	Michael Bibbee	LB
45	Dylan Wynn	DE

## ALPHABETICAL ROSTER

NO	NAME	POS	HT	WT	YR	EXP	HOMETOWN (SCHOOLS)
63	Addie, Justin	OL	6-3	290	FR	HS	Mesa, AZ (Skyline)
35	Agnew, Malcolm	RB	5-9	190	FR	HS	Chesterfield, MO (De Smet Jesuit)
55	Akuna, Shaydon	LB	6-0	226	FR*	RS	Nanakuli, HI (Kapolei)
	Aluesi, Elisinoa	TE	6-6	243	FR	HS	Portland, OR (Jefferson)
33	Anderson, Tyler #	FB	5-9	215	FR*	RS	Walnut Creek, CA (De La Salle)
69	Andrews, Josh	OG	6-2	295	SO*	1V	Fontana, CA (Colony)
10	Ashton, Peter	QB	6-3	185	FR	HS	Keller, TX (Faith Christian)
59	Barnett, Lavonte	DE	6-2	235	FR	HS	Lancaster, CA (Paraclete)
51	Beaton, Michael	OL	6-3	300	FR*	RS	Dallas, OR (Dallas)
37	Bedbury, Jeff #	WR	5-10	188	FR*	RS	Eugene, OR (Marist)
54	Bennett, Brandon	DT	6-3	250	FR	HS	Birmingham, AL (Spring (TX))
45	Bibbee, Michael	LB	6-2	244	FR*	RS	Eugene, OR (North Eugene)
23	Bishop, Jordan	WR	6-3	205	JR*	2V	West Salem, OR (West Salem)
76	Braun, John	DT	6-5	275	SO*	1V	Lebanon, OR (West Albany)
15	Catchings, Darrell	WR	5-11	178	SR*	3V	Escondido, CA (Escondido)
83	Clute, Kellen	TE	6-6	225	FR	HS	Spokane, WA (Mt. Spokane)
5	Collins, Cameron	LB	6-2	238	SR*	3V	Santa Monica, CA (Santa Monica)
68	Collins, Desmond	DE	6-3	240	FR	HS	Salt Lake City, UT (Highland)
13	Cooks, Brandin	WR	5-11	168	FR	HS	Stockton, CA (Lincoln)
95	Crichton, Scott	DE	6-3	258	FR*	RS	Tacoma, WA (Henry Foss)
84	Cummings, Kevin	WR	6-0	178	SO	1V	Culver City, CA (Crespi)
23	Cummings, Mishawn	CB	5-11	190	SO	TR	San Jose, CA (Valley Christian/Foothill CC)
12	Dilbeck, Dax	S	6-1	204	SO*	1V	Edmond, OK (Deer Creek)
40	Doctor, Michael	LB	5-11	222	SO	1V	Tulsa, OK (Booker T. Washington)
74	Ellis, Burke #	OG	6-4	292	SR*	3V	Canby, OR (Canby)
71	Enger, Grant	OL	6-5	281	SO*	1V	Bothell, WA (O'Dea)
80	Evans, Danny #	WR	6-3	191	JR*	RS	Pine Bluff, AR (Watson Chapel/Arkansas-Pine Bluff)
56	Fernando, Rusty	DE	6-3	235	JR	TR	Apache Junction, AZ (Apache Junction/Glendale CC)
78	Fifita, Rudolf	DT	6-4	240	JR	TR	Eueless, TX (Trinity/Mt. San Antonio CC)
74	Frahm, Kevin	DT	6-2	281	SR*	3V	Portland, OR (Central Catholic)
62	Garner, Geoff	OT	6-5	308	SO*	1V	Mesa, AZ (Mesa)
51	Gilmur, Charlie #	LB	6-1	240	SO*	TM	University Place, WA (Curtis)
96	Glover, Dominic	DT	6-2	279	SR*	1V	Mission Viejo, CA (Mission Viejo/Saddleback JC/Oregon)
60	Gonzales, Akeem	DE	6-4	240	FR	HS	Mission Hills, CA (Bishop Alemany)
86	Gwacham, Obum	WR	6-5	223	FR*	RS	Chino Hills, CA (Ayala)
87	Halahun, Joe	TE	6-2	255	SR*	3V	Graham, WA (Orting)
40	Hall, Garrett #	WR	5-9	198	SO*	TM	Olympia, WA (Olympia)
89	Hamlett, Connor	TE	6-7	257	FR*	RS	Edmonds, WA (Meadowdale)
21	Handford, Ryan	CB	5-9	197	JR*	RS	New Brunswick, NJ (Santiago (CA)/Wyoming/Santa Ana JC)
17	Hardin, Brandon	CB	6-2	216	SR*	3V	Honolulu, HI (Kamehameha)
99	Harrah, Blake	DE	6-1	245	JR	TR	Temecula, CA (Temecula Valley/Saddleback JC)
81	Hatfield, Micah	WR	6-0	174	SO*	1V	Lake Oswego, OR (Lake Oswego)
7	Hekker, Johnny	P	6-5	221	SR	3V	Bothell, WA (Bothell)
	Henry, D'Vante	DE	6-5	195	FR	HS	Oklahoma City, OK (Southmoore)
91	Henry, Taylor	DE	6-1	258	JR*	2V	Altadena, CA (Campbell Hall)
72	Jackson, Darryl	OT	6-6	323	FR	HS	Lakewood, CA (Mayfair)
48	James, Jaswha	LB	6-3	230	FR	HS	Inglewood, CA (Inglewood)
34	Jenkins, Jordan	RB	6-1	205	JR*	2V	Salem, OR (West Salem)
70	Johnson, Grant	C	6-3	293	SR*	3V	Baker City, OR (Baker)
44	Johnson, Jabral	LB	6-1	221	FR	HS	Lawton, OK (Lawton)
18	Johnson, Max #	PK	5-10	186	FR*	RS	Astoria, OR (Astoria)
12	Katz, Ryan	QB	6-1	214	JR*	2V	Santa Monica, CA (Santa Monica)
94	Kell, Devon #	DE	6-3	251	SO*	1V	Hilo, HI (Hilo)
64	Kelly, Colin	OT	6-4	295	JR*	2V	Kelso, WA (Kelso)
48	Kostol, Keith #	P	6-3	182	FR*	RS	Tigard, OR (Tigard)
26	LaGrone, Josh	S	6-1	201	JR*	1V	San Diego, CA (McQueen (NV))
61	Lamb, Michael #	OG	6-3	290	SR*	2V	Portland, OR (Jesuit)
15	Levasa, Levi #	S	5-11	211	SO*	TM	Tualatin, OR (Tualatin)
17	Lomax, Jack	QB	6-2	172	SO*	TM	Lake Oswego, OR (Lake Oswego)

# ROSTERS

## ALPHABETICAL ROSTER

NO	NAME	POS	HT	WT	YR	EXP	HOMETOWN (SCHOOLS)
79	Lopez, Joe #	DT	6-0	275	FR*	RS	Portland, OR (Central Catholic)
53	Lyons, Colin	OL	6-3	306	JR*	TM	Carmichael, CA (Del Campo)
4	Mannion, Sean	QB	6-5	218	FR*	RS	Pleasanton, CA (Foothill)
22	Marable, Malcolm	RB	5-7	164	FR*	RS	Pasadena, CA (Bishop Alemany)
6	Martin, Sean	CB	5-11	183	SO*	1V	Corona, CA (Santiago)
98	Masaniai, Castro	DT	6-2	334	JR*	2V	Waipahu, HI (Waipahu)
24	McCants, Ryan	RB	6-1	225	SR*	3V	Corona, CA (Santiago)
32	Meng, Westly #	FB	6-0	217	FR*	RS	Gresham, OR (Gresham)
10	Mitchell, Lance	S	6-2	207	SR*	3V	Pasadena, CA (Muir)
58	Morovick, Michael #	LS	6-0	217	FR*	RS	Mission Viejo, CA (Trabuco Hills)
66	Motter, Ben #	DT	6-5	285	SR*	2V	Philomath, OR (Philomath)
8	Mullaney, Richard	WR	6-3	185	FR	HS	Thousand Oaks, CA (Thousand Oaks)
18	Munoz, Geno	WR	6-0	190	JR*	2V	Tacoma, WA (Mt. Tahoma)
25	Murphy, Ryan	S	6-3	209	FR*	RS	Oakland, OR (Oakland Tech)
75	Nielsen, Derek #	OL	6-3	270	FR*	RS	Eugene, OR (Sheldon)
36	Parish, Josh #	LB	5-11	219	SR*	1V	Los Angeles, CA (South Pasadena)
20	Parker, Keynan	CB	5-11	183	JR*	1V	New Westminster, B.C. (Thomas More Collegiate)
36	Parsons, Dylan #	FB	5-9	212	SO*	TM	Olympia, WA (Olympia)
57	Perry, Marcus	LS	5-11	230	SR	3V	Eastlake, CA (Eastlake)
88	Perry, Tyler	TE	6-4	241	FR*	RS	Ventura, CA (Buena)
77	Philipp, Michael	OT	6-3	308	JR	2V	San Bernardino, CA (Arroyo Valley)
14	Poyer, Jordan	CB	5-11	190	JR	2V	Astoria, OR (Astoria)
82	Prince, Colby	TE	6-3	260	JR*	2V	Albany, OR (West Albany)
50	Remmers, Mike	OT	6-4	303	SR*	3V	West Linn, OR (Jesuit)
16	Reynolds, Rashaad	CB	5-10	185	SO*	1V	Los Angeles, CA (San Fernando)
90	Robins, Na'Alii	DT	6-3	245	FR	HS	Ewa Beach, HI (Saint Louis)
13	Robinson, Rueben	LB	6-3	238	JR	2V	Chandler, AZ (Hamilton)
1	Rodgers, James	WR	5-7	188	SR	3V	Richmond, TX (Lamar Consolidated)
27	Romaine, Trevor	PK	5-10	193	FR	HS	Corona, CA (Centennial)
93	Rosa, Mana	DE	6-3	268	SO*	1V	Haiku, HI (Baldwin)
30	Sanders, Zeke	S	6-1	211	SO*	1V	Santa Cruz, CA (Santa Cruz)
65	Sapolu, Roman	C	6-0	269	FR*	RS	Huntington Beach, CA (Edison)
15	Scott, Larry	CB	6-1	170	FR	HS	Corona, CA (Centennial)
49	Seumalo, Andrew #	DT	6-3	281	JR*	2V	Corvallis, OR (Santiam Christian)
21	Singler, Mitch #	WR	6-2	202	SO*	TM	Medford, OR (South Medford)
19	Stevenson, Jovan	RB	5-11	193	SO*	1V	Tucson, AZ (Sunnyside)
29	Storey, Will	S	6-1	215	FR	HS	Lake Oswego, OR (Lake Oswego)
46	Te'o, Shiloah #	LB	5-10	226	JR*	RS	Laie, HI (Kahuku / BYU)
92	Thompson, Fred	DT	6-4	317	FR	HS	Richmond, CA (Oakland Tech)
9	Trosin, Tyler	WR	5-11	185	FR	HS	Folsom, CA (Folsom)
97	Tuivailala, Mana	DT	6-3	287	FR*	RS	Seaside, CA (Seaside)
41	'Unga, Kevin "Feti"	LB	6-2	243	JR	2V	Rochester, CA (Kahuku (HI))
14	Vaz, Cody	QB	6-0	191	SO*	1V	Lodi, CA (St. Mary's)
73	Vieru, David #	OL	6-2	315	FR	HS	Portland, OR (Centennial)
28	Ward, Terron	RB	5-7	189	FR	HS	Antioch, CA (De La Salle)
3	Watkins, Anthony	S	6-1	218	JR*	2V	Burien, WA (Highline)
38	Watkins, Brian #	CB	5-9	186	JR*	1V	Burien, WA (Highline)
4	Welch, D.J.	LB	6-1	223	FR	HS	Palm Desert, CA (Palm Desert)
52	Whalen, Troy #	LS	6-1	206	FR	HS	Concord, CA (De La Salle)
2	Wheaton, Markus	WR	6-0	178	JR	2V	Chandler, AZ (Chandler)
47	Williams, Josh	LB	6-0	226	FR	HS	Los Angeles, CA (Salesian)
43	Wilson, Tony	LB	6-1	246	JR*	1V	Salem, OR (Sprague)
31	Woods, Storm	RB	6-1	201	FR	HS	Pflugerville, TX (Pflugerville)
45	Wynn, Dylan	DE	6-3	250	FR	HS	Concord, CA (De La Salle)
42	York, Clayton #	FB	6-0	225	JR*	2V	Redmond, OR (Redmond)
3	Zimmerman, Tyreque	WR	6-0	186	FR	HS	Lawton, OK (Lawton)

\*Utilized Redshirt Year

#Walk-on

TM - Member of the team, but has not lettered.

## NUMERICAL ROSTER

NO	NAME	POS
46	Shiloah Te'o	LB
47	Josh Williams	LB
48	Jaswha James	LB
48	Keith Kostol	P
49	Andrew Seumalo	DT
50	Mike Remmers	OT
51	Michael Beaton	OL
51	Charlie Gilmur	LB
52	Troy Whalen	LS
53	Colin Lyons	OL
54	Brandon Bennett	DT
55	Shaydon Akuna	LB
56	Rusty Fernando	DE
57	Marcus Perry	LS
58	Michael Morovick	LS
59	Lavonte Barnett	DE
60	Akeem Gonzales	DE
61	Michael Lamb	OG
62	Geoff Garner	OT
63	Justin Addie	OL
64	Colin Kelly	OT
65	Roman Sapolu	C
66	Ben Motter	DT
68	Desmond Collins	DE
69	Josh Andrews	OG
70	Grant Johnson	C
71	Grant Enger	OL
72	Darryl Jackson	OT
73	David Vieru	OL
74	Burke Ellis	OG
74	Kevin Frahm	DT
75	Derek Nielsen	OL
76	John Braun	DT
77	Michael Philipp	OT
78	Rudolf Fifita	DT
79	Joe Lopez	DT
80	Danny Evans	WR
81	Micah Hatfield	WR
82	Colby Prince	TE
83	Kellen Clute	TE
84	Kevin Cummings	WR
86	Obum Gwacham	WR
87	Joe Halahuni	TE
88	Tyler Perry	TE
89	Connor Hamlett	TE
90	Na'Alii Robins	DT
91	Taylor Henry	DE
92	Fred Thompson	DT
93	Mana Rosa	DE
94	Devon Kell	DE
95	Scott Crichton	DE
96	Dominic Glover	DT
97	Mana Tuivailala	DT
98	Castro Masaniai	DT
99	Blake Harrah	DE
	Elisinoa Aluesi	TE
	D'Vante Henry	DE

# OREGON STATE FOOTBALL AT A GLANCE

## RETURNING LETTERMEN

All classes reflect status for the 2011 season. Returning starters are in **BOLD** face. The number of career starts is listed in parenthesis.

\* indicates letters earned.

### OFFENSE (9 starters, 25 lettermen overall)

<b>SE</b>	<b>2</b>	<b>**</b>	<b>Markus Wheaton</b>	<b>Jr.</b>	<b>6-0</b>	<b>178</b>	<b>(9)</b>
	18	**	Geno Munoz	Jr.	6-0	190	
<b>SL</b>	<b>23</b>	<b>**</b>	<b>Jordan Bishop</b>	<b>Jr.</b>	<b>6-3</b>	<b>205</b>	<b>(4)</b>
	84	*	Kevin Cummings	So.	6-0	178	
<b>LT</b>	<b>77</b>	<b>**</b>	<b>Michael Philipp</b>	<b>Jr.</b>	<b>6-3</b>	<b>308</b>	<b>(13)</b>
	62	*	Geoff Garner	So.	6-5	308	
<b>LG</b>	<b>70</b>	<b>***</b>	<b>Grant Johnson</b>	<b>Sr.</b>	<b>6-3</b>	<b>293</b>	<b>(25)</b>
	71	*	Grant Enger	So.	6-5	281	
<b>C</b>	<b>69</b>	<b>*</b>	<b>Josh Andrews</b>	<b>So.</b>	<b>6-2</b>	<b>295</b>	
<b>RG</b>	<b>74</b>	<b>***</b>	<b>Burke Ellis</b>	<b>Sr.</b>	<b>6-4</b>	<b>292</b>	<b>(12)</b>
	61	**	Michael Lamb	Sr.	6-3	290	
<b>RT</b>	<b>50</b>	<b>***</b>	<b>Mike Remmers</b>	<b>Sr.</b>	<b>6-4</b>	<b>303</b>	<b>(32)</b>
	64	**	Colin Kelly	Jr.	6-4	295	
<b>TE</b>	<b>82</b>	<b>**</b>	<b>Colby Prince</b>	<b>Jr.</b>	<b>6-3</b>	<b>260</b>	
<b>H-B</b>	<b>87</b>	<b>***</b>	<b>Joe Halahuni</b>	<b>Sr.</b>	<b>6-2</b>	<b>255</b>	<b>(9)</b>
<b>QB</b>	<b>12</b>	<b>**</b>	<b>Ryan Katz</b>	<b>Jr.</b>	<b>6-1</b>	<b>214</b>	<b>(12)</b>
	14	*	Cody Vaz	So.	6-0	191	
<b>TB</b>	<b>24</b>	<b>***</b>	<b>Ryan McCants</b>	<b>Sr.</b>	<b>6-1</b>	<b>225</b>	<b>(3)</b>
	34	**	Jordan Jenkins	Jr.	6-1	205	
	19	*	Jovan Stevenson	So.	5-11	193	
<b>FB</b>	<b>42</b>	<b>**</b>	<b>Clayton York</b>	<b>Jr.</b>	<b>6-0</b>	<b>225</b>	
<b>FL</b>	<b>1</b>	<b>***</b>	<b>James Rodgers</b>	<b>Sr.</b>	<b>5-7</b>	<b>188</b>	<b>(30)</b>
	15	***	Darrell Catchings	Sr.	5-11	178	(11)
	81	*	Micah Hatfield	So.	6-0	174	
<b>PK</b>							
<b>LS</b>	<b>57</b>	<b>***</b>	<b>Marcus Perry</b>	<b>Sr.</b>	<b>5-11</b>	<b>230</b>	

OSU often starts games with two tight ends (one as an H-back).

### DEFENSE (5 starters, 27 lettermen overall)

<b>LE</b>	<b>49</b>	<b>*</b>	<b>Andrew Seumalo</b>	<b>Jr.</b>	<b>6-3</b>	<b>281</b>	
	76	*	John Braun	So.	6-5	275	
	93	*	Mana Rosa	So.	6-3	268	
<b>LT</b>	<b>98</b>	<b>**</b>	<b>Castro Masaniai</b>	<b>Jr.</b>	<b>6-2</b>	<b>334</b>	
	66	**	Ben Motter	Sr.	6-5	285	
<b>RT</b>	<b>74</b>	<b>***</b>	<b>Kevin Frahm</b>	<b>Sr.</b>	<b>6-2</b>	<b>281</b>	<b>(11)</b>
<b>RE</b>	<b>96</b>	<b>*</b>	<b>Dominic Glover</b>	<b>Sr.</b>	<b>6-2</b>	<b>279</b>	<b>(8)</b>
	91	**	Taylor Henry	Jr.	6-1	258	(4)
	94	*	Devon Kell	So.	6-3	251	
<b>SLB</b>	<b>5</b>	<b>***</b>	<b>Cameron Collins</b>	<b>Sr.</b>	<b>6-2</b>	<b>238</b>	<b>(13)</b>
<b>MLB</b>	<b>13</b>	<b>**</b>	<b>Rueben Robinson</b>	<b>Jr.</b>	<b>6-3</b>	<b>238</b>	<b>(7)</b>
	43	*	Tony Wilson	Jr.	6-1	246	(5)
	41	**	Feti 'Unga	Jr.	6-2	243	
<b>WLB</b>	<b>40</b>	<b>*</b>	<b>Michael Doctor</b>	<b>So.</b>	<b>5-11</b>	<b>222</b>	
	36	*	Josh Parish	Sr.	5-11	219	
<b>LCB</b>	<b>14</b>	<b>**</b>	<b>Jordan Poyer</b>	<b>Jr.</b>	<b>5-11</b>	<b>190</b>	
	6	*	Sean Martin	So.	5-11	183	
	38	*	Brian Watkins	Jr.	5-9	186	
<b>S</b>	<b>10</b>	<b>***</b>	<b>Lance Mitchell</b>	<b>Sr.</b>	<b>6-2</b>	<b>207</b>	<b>(24)</b>
	30	*	Zeke Sanders	So.	6-1	211	
<b>S</b>	<b>3</b>	<b>**</b>	<b>Anthony Watkins</b>	<b>Jr.</b>	<b>6-1</b>	<b>218</b>	
	26	*	Josh LaGrone	Jr.	6-1	201	
	12	*	Dax Dilbeck	So.	6-1	204	
<b>RCB</b>	<b>17</b>	<b>***</b>	<b>Brandon Hardin</b>	<b>Sr.</b>	<b>6-2</b>	<b>216</b>	<b>(15)</b>
	16	*	Rashaad Reynolds	So.	5-10	185	
	20	*	Keynan Parker	Jr.	5-11	183	
<b>P</b>	<b>7</b>	<b>***</b>	<b>Johnny Hekker</b>	<b>Sr.</b>	<b>6-5</b>	<b>221</b>	

## LETTERMEN LOST

### OFFENSE (5 starters, 11 lettermen overall)

<b>SE</b>							
<b>SL</b>	<b>9</b>	<b>**</b>	<b>Kevan Walker, So.</b>				
<b>LT</b>	<b>68</b>	<b>**</b>	<b>Wilder McAndrews, Sr. (3)</b>				
	72	*	Timi Oshinowo, Sr.				
<b>LG</b>	<b>63</b>	<b>***</b>	<b>Ryan Pohl, Sr. (2)</b>				
<b>C</b>	<b>60</b>	<b>****</b>	<b>Alex Linnenkohl, Sr. (38)</b>				
<b>RG</b>							
<b>RT</b>							
<b>TE</b>	<b>83</b>	<b>****</b>	<b>Brady Camp, Sr. (25)</b>				
<b>H-B</b>	<b>80</b>	<b>****</b>	<b>John Reese, Sr. (6)</b>				
<b>QB</b>							
<b>TB</b>	<b>1</b>	<b>***</b>	<b>Jacquizz Rodgers, Jr. (35)</b>				
<b>FB</b>	<b>33</b>	<b>***</b>	<b>Will Darkins, Jr. (8)</b>				
<b>FL</b>	<b>46</b>	<b>****</b>	<b>Aaron Nichols, Sr. (10)</b>				
<b>PK</b>	<b>27</b>	<b>***</b>	<b>Justin Kahut, Sr.</b>				
<b>LS</b>							

### DEFENSE (7 starters, 13 lettermen)

<b>LE</b>	<b>99</b>	<b>****</b>	<b>Gabe Miller, Sr. (24)</b>				
<b>LT</b>	<b>54</b>	<b>***</b>	<b>Stephen Paea, Sr. (37)</b>				
	77	**	Evan Hull, Sr.				
<b>RT</b>	<b>78</b>	<b>***</b>	<b>Brennan Olander, Sr. (19)</b>				
	75	*	Nathan Hannah, Sr.				
<b>RE</b>							
<b>SLB</b>	<b>35</b>	<b>****</b>	<b>Keith Pankey, Sr. (24)</b>				
	52	****	Keo Camat, Sr.				
<b>MLB</b>	<b>48</b>	<b>***</b>	<b>Walker Vave, Sr.</b>				
<b>WLB</b>	<b>59</b>	<b>****</b>	<b>Dwight Roberson, Sr. (24)</b>				
	29	**	Zane Norris, So.				
	44	**	Devin "Uani" 'Unga, So.				
<b>LCB</b>	<b>4</b>	<b>***</b>	<b>James Dockery, Sr. (25)</b>				
<b>S</b>	<b>28</b>	<b>****</b>	<b>Suaesi Tuimaunei, Sr. (18)</b>				
<b>RCB</b>							
<b>P</b>							

# OREGON STATE FOOTBALL AT A GLANCE

## 2011 PRESEASON DEPTH CHART

### OFFENSE

#### SPLIT END (X)

2	**	<b>MARKUS WHEATON</b>	Jr.	6-0	178	<b>Chandler, Ariz.</b>
86		Obum Gwacham	Fr-RS	6-5	223	Chino Hills, Calif.
80		Danny Evans, Jr.	Jr.	6-3	191	Pine Bluff, Ark.

#### SLOTBACK

23	**	<b>JORDAN BISHOP</b>	Jr.	6-3	205	<b>West Salem, Ore.</b>
18	**	Geno Munoz	Jr.	6-0	190	Tacoma, Wash.
81	*	Micah Hatfield	So.	6-0	174	Lake Oswego, Ore.
84	*	Kevin Cummings	So.	6-0	178	Culver City, Calif.
21		Mitch Singler	So.	6-2	202	Medford, Ore.
37		Jeff Bedbury	Fr-RS	5-10	188	Eugene, Ore.

#### LEFT TACKLE

50	***	<b>MIKE REMMERS</b>	Sr.	6-4	303	<b>West Linn, Ore.</b>
62	*	Geoff Garner	So.	6-5	308	Mesa, Ariz.
72		Darryl Jackson	Fr.	6-6	323	Lakewood, Calif.

#### LEFT GUARD

69	*	Josh Andrews	So.	6-2	295	Fontana, Calif.
71	*	Grant Enger	So.	6-5	281	Bothell, Wash.
53		Colin Lyons	Jr.	6-3	306	Carmichael, Calif.
73		David Vieru	Fr.	6-2	315	Portland, Ore.

#### CENTER

70	***	<b>GRANT JOHNSON</b>	Sr.	6-3	293	<b>Baker City, Ore.</b>
65		Roman Sapolu	Fr-RS	6-0	269	Huntington Beach, Calif.
51		Michael Beaton	Fr-RS	6-3	300	Dallas, Ore.

#### RIGHT GUARD

74	***	<b>BURKE ELLIS</b>	Sr.	6-4	292	<b>Canby, Ore.</b>
61	**	Michael Lamb	Sr.	6-3	290	Portland, Ore.
75		Derek Nielsen	Fr-RS	6-3	270	Eugene, Ore.

#### RIGHT TACKLE

77	**	<b>MICHAEL PHILIPP</b>	Jr.	6-3	308	<b>San Bernardino, Calif.</b>
OR 64	**	Colin Kelly	Jr.	6-4	295	Kelso, Wash.

#### TIGHT END

82	**	Colby Prince	Jr.	6-3	260	Albany, Ore.
89		Connor Hamlett	Fr-RS	6-7	257	Edmonds, Wash.

#### H-BACK

87	***	<b>JOE HALAHUNI</b>	Sr.	6-2	255	<b>Graham, Wash.</b>
88		Tyler Perry	Fr-RS	6-4	241	Ventura, Calif.

#### QUARTERBACK

12	**	<b>RYAN KATZ</b>	Jr.	6-1	214	<b>Santa Monica, Calif.</b>
14	*	Cody Vaz	So.	6-0	191	Lodi, Calif.
4		Sean Mannion	Fr-RS	6-5	218	Pleasanton, Calif.
17		Jack Lomax	So.	6-2	172	Lake Oswego, Ore.

#### TAILBACK

24	***	<b>Ryan McCants</b>	Sr.	6-1	225	Corona, Calif.
OR 19	*	Jovan Stevenson	So.	5-11	193	Tucson, Ariz.
OR 34	**	Jordan Jenkins	Jr.	6-1	205	Salem, Ore.
OR 28		Terron Ward	Fr.	5-7	189	Antioch, Calif.
OR 22		Malcolm Marable	Fr-RS	5-7	164	Pasadena, Calif.

#### FLANKER (Z)

1	***	<b>JAMES RODGERS</b> %	Sr.	5-7	188	<b>Richmond, Texas</b>
15	***	Darrell Catchings	Sr.	5-11	178	Escondido, Calif.
40		Garett Hall	So.	5-9	198	Olympia, Wash.

### SPECIALISTS

#### PAT-FG/KICKOFF

27		Trevor Romaine	Fr.	5-10	193	Corona, Calif.
18		Max Johnson	Fr-RS	5-10	186	Astoria, Ore.

#### PUNTER

7	***	<b>JOHNNY HEKKER</b>	Sr.	6-5	221	<b>Bothell, Wash.</b>
48		Keith Kostol	Fr-RS	6-3	182	Tigard, Ore.

### FULLBACK

42	**	Clayton York	Jr.	6-0	225	Redmond, Ore.
33		Tyler Anderson	Fr-RS	5-9	215	Walnut Creek, Calif.
36		Dylan Parsons	So.	5-9	212	Olympia, Wash.
32		Westly Meng	Fr-RS	6-0	217	Gresham, Ore.

### DEFENSE (Defensive players listed alphabetically by position)

#### DEFENSIVE ENDS

95		Scott Crichton	Fr-RS	6-3	258	Tacoma, Wash.
56		Rusty Fernando	Jr.	6-3	235	Apache Junction, Ariz.
99		Blake Harrah	Jr.	6-1	245	Temecula, Calif.
91	**	Taylor Henry	Jr.	6-1	258	Altadena, Calif.
94	*	Devon Kell	So.	6-3	251	Hilo, Hawai'i
93	*	Mana Rosa	So.	6-3	268	Haiku, Hawai'i

#### DEFENSIVE TACKLES

76	*	John Braun	So.	6-5	275	Lebanon, Ore.
74	***	Kevin Frahm	Sr.	6-2	281	Portland, Ore.
96	*	<b>DOMINIC GLOVER</b>	Sr.	6-3	279	<b>Mission Viejo, Calif.</b>
79		Joe Lopez	Fr-RS	6-0	275	Portland, Ore.
98	**	Castro Masaniai	Jr.	6-2	334	Waipahu, Hawai'i
66	**	Ben Motter	Sr.	6-5	285	Philomath, Ore.
49	**	Andrew Seumalo	Jr.	6-3	281	Corvallis, Ore.
92		Fred Thompson	Fr.	6-4	317	Richmond, Calif.
97		Mana Tuivailala	Fr-RS	6-3	287	Seaside, Calif.

#### OUTSIDE LINEBACKERS

55		Shaydon Akuna	Fr-RS	6-0	226	Nanakuli, Hawai'i
5	***	Cameron Collins	Sr.	6-2	238	Santa Monica, Calif.
40	*	Michael Doctor	So.	5-11	222	Tulsa, Okla.
51		Charlie Gilmur	So.	6-1	240	University Place, Wash.
36	*	Josh Parish	Sr.	5-11	219	Los Angeles, Calif.
13	**	<b>RUEBEN ROBINSON</b>	Jr.	6-3	238	<b>Chandler, Ariz.</b>
46		Shiloah Te'o	Jr.	5-10	226	Laie, Hawai'i
4		D.J. Welch	Fr.	6-1	223	Palm Desert, Calif.
47		Josh Williams	Fr.	6-0	226	Los Angeles, Calif.

#### MIDDLE LINEBACKERS

45		Michael Bibbee	Fr-RS	6-2	244	Eugene, Ore.
41	**	Kevin "Feti" Unga	Jr.	6-2	243	Rochester, Calif.
42	*	Tony Wilson	Jr.	6-1	246	Salem, Ore.

#### CORNERBACK

21		Ryan Handford	Jr.	5-9	197	New Brunswick, N.J.
17	***	<b>BRANDON HARDIN</b>	Sr.	6-2	216	<b>Honolulu, Hawai'i</b>
6	*	Sean Martin	So.	5-11	183	Corona, Calif.
20	*	Keynan Parker	Jr.	5-10	183	New Westminster, B.C.
14	**	Jordan Poyer	Jr.	5-11	190	Astoria, Ore.
16	*	Rashaad Reynolds	So.	5-10	185	Los Angeles, Calif.
38	*	Brian Watkins	Jr.	5-9	186	Burien, Wash.

#### SAFETIES

12	*	Dax Dilbeck	So.	6-1	204	Edmond, Okla.
26	*	Josh LaGrone	Jr.	6-1	201	San Diego, Calif.
10	***	<b>LANCE MITCHELL</b>	Sr.	6-2	207	<b>Pasadena, Calif.</b>
25		Ryan Murphy	Fr-RS	6-3	209	Oakland, Calif.
30	*	Zeke Sanders	So.	6-1	211	Santa Cruz, Calif.
29		Will Storey	Fr.	6-1	215	Lake Oswego, Ore.
3	**	Anthony Watkins	Jr.	6-1	218	Burien, Wash.

#### HOLDER

7	***	<b>JOHNNY HEKKER</b>	Sr.	6-5	221	<b>Bothell, Wash.</b>
---	-----	----------------------	-----	-----	-----	-----------------------

#### SNAPPER

57	***	<b>MARCUS PERRY</b>	Sr.	5-11	230	<b>Eastlake, Calif.</b>
58		Michael Morovick	Fr-RS	6-0	217	Mission Viejo, Calif.
52		Troy Whalen	Fr.	6-1	206	Concord, Calif.

Depth chart is subject to dramatic change throughout summer workouts and Fall Ball.

**BOLD** indicates player was a starter in 2010.

% indicates player was a starter in 2009 and five games in 2010 prior to injury.