

# NEW MEXICO

## 2009 LOBO VOLLEYBALL

Assistant Director - Media Relations: Judy Willson

Office: (505) 925-5851

Email: jwillson@unm.edu

Cell: (505) 688-2364

### 2009 SCHEDULE/RESULTS

[16-8, 7-5 MWC]

Aug. 22	Cherry & Silver Alumni (Ex.)	Johnson Center	W, 3-1 (C)
		Johnson Center	W, 4-0
<i>Aug. 28-29 --- MCM Elegante Lobo Classic</i>			
Aug. 28	Delaware	Johnson Center	W, 3-0
Aug. 29	Portland State	Johnson Center	W, 3-2
Aug. 29	UC Santa Barbara	Johnson Center	W, 3-2
<i>Sept. 4-5 --- Nike Portland Invitational</i>			
Sept. 4	vs. American	Portland, Ore.	W, 3-0
Sept. 5	at Portland	Portland, Ore.	W, 3-0
<i>Sept. 11-12 --- Comcast Lobo Challenge</i>			
Sept. 11	Cal State Fullerton	Johnson Center	W, 3-0
Sept. 11	Baylor	Johnson Center	L, 2-3
Sept. 12	Pittsburgh	Johnson Center	W, 3-1
Sept. 16	*TCU	Johnson Center	L, 1-3
<i>Sept. 19-20 --- Arizona Invitational by Marriott University Park</i>			
Sept. 19	vs. UTEP	Tucson, Ariz.	W, 3-0
Sept. 19	at No. 21 Arizona	Tucson, Ariz.	L, 2-3
Sept. 20	vs. Tulane	Tucson, Ariz.	L, 2-3
Sept. 24	*#at Colorado State	Fort Collins, Colo.	L, 0-3
Sept. 26	*at Wyoming	Laramie, Wyo.	W, 3-1
Oct. 1	*San Diego State	Johnson Center	W, 3-0
Oct. 3	*Air Force	Johnson Center	W, 3-0
Oct. 8	*at BYU	Provo, Utah	L, 0-3
Oct. 10	*at Utah	Salt Lake City, Utah	W, 3-1
Oct. 13	*at New Mexico State	Las Cruces, N.M.	W, 3-0
Oct. 17	*UNLV	Johnson Center	L, 0-3
Oct. 22	*Wyoming	Johnson Center	W, 3-0
Oct. 24	*No. 25 Colo. State	Johnson Center	L, 2-3
Oct. 29	*at Air Force	Colorado Springs, Colo.	W, 3-0
Oct. 31	*at San Diego State	San Diego, Calif.	W, 3-1
Nov. 5	*Utah	Johnson Center	7 p.m.
Nov. 7	*BYU	Johnson Center	7 p.m.
Nov. 12	*at UNLV	Las Vegas, Nev.	8 p.m.
Nov. 20	*#at TCU	Fort Worth, Texas	6 p.m.
Nov. 27	at New Orleans	New Orleans	6 p.m.
Dec. 3-6 --- NCAA First and Second Rounds			
Dec. 11-12 --- NCAA Regionals			
Dec. 17 and 19 --- NCAA Semifinals and Championship			

Home Games in Bold

\* = Mountain West Conference Matches

# = The Mtn. (Mountain West Sports Network)

! = BYU-TV

^ = Fox Sports Arizona



### UP NEXT IN LOBO VOLLEYBALL

MATCHES 25-26

VS. UTAH • NOV. 5 • 7 P.M. (MT)

THINK PINK NIGHT

VS. BYU • NOV. 7 • 7 P.M. (MT)

SENIOR NIGHT

JOHNSON CENTER • ALBUQUERQUE, N.M.

**This Week ...** The Lobos (16-8, 7-5 MWC) host Utah and BYU in the final two home contests of the 2009 season.

\*\* Think Pink, breast cancer awareness night, is set for Thursday, Nov. 5 at 7 p.m. against Utah. If fans wear pink, adults get in for \$3 and kids, ages 2-18, get in for \$2. There will also be a silent auction with lots of great items throughout the night. It will be the fourth match this season that the Lobos have worn their pink jerseys - at Utah, at New Mexico State, and at Air Force.

\*\* Nov. 7 is Senior Night ... It will be the final home match for seniors Anna Lehne, Rose Morris and Allie Suiter.

**If You Can't Make It To The Johnson Center ...** Fans can follow along on the internet at GoLobos.com with Gametracker and live video and audio.

**Next Week ...** The Lobos play one match on the road at UNLV on Thursday, Nov. 12.

### QUICK HITS

• **Lobos Among Tops In Attendance ...** New Mexico is currently ranked 26th in the nation with an attendance average of 1,548 fans this season. It is the only time that the Lobos have had over 1,000 fans at the first 11 matches of the season. The 1996 team started the season with seven consecutive matches over 1,000. The Lobos' season-high so far in 2009 is 2,338 vs. San Diego State on Oct. 1. MWC member Colorado State is ranked 20th overall with an average of 1,819 fans per match. Rankings are updated on Monday mornings.

• **Official NCAA RPI ...** New Mexico is currently ranked 48th in the nation in the NCAA's official RPI, released on Monday afternoons. The Lobos have the third-highest RPI ranking in the Mountain West Conference behind Colorado State (19) and TCU (44).

• **Lehne Named MWC Co-Player of the Week ...** Senior Anna Lehne became the second Lobo to earn Mountain West Conference Player of the Week honors in 2009. Lehne earned her first MWC accolade for her performances at Air Force and San Diego State.

### THE 2009 NEW MEXICO LOBOS - 2009 AVERAGES

No.	Name	Pos.	Ht.	Yr./Exp.	Hometown/Last School	KPS	APS	SAPS	DPS	BPS	PPS
2	Lisa Meeter	OH	5-11	Jr./2L	Colorado Springs, Colo./Colo. Springs Christian School	2.39	0.37	0.27	2.48	0.30	2.84
3	Melissa Rohr	L/DS	5-8	Fr./HS	Albuquerque, N.M./Cibola HS	0.02	0.03	0.05	1.30	0.00	0.06
4	Ashley Rhoades	MB	5-11	So./1L	Rio Rancho, N.M./Rio Rancho HS	2.54	0.07	0.01	0.25	1.07	3.20
5	Jordan Russell	S	5-7	Fr./HS	Stanley, N.M./Moriarty HS	0.00	0.21	0.08	0.88	0.00	0.08
6	Rose Morris	OH	6-1	Sr./3L	Albuquerque, N.M./Sandia HS	2.33	0.12	0.10	1.26	0.43	2.66
7	Jade Michaelson	S	6-0	Jr./2L	Tucson, Ariz./Salpointe Catholic HS	0.96	10.25	0.22	2.03	0.63	1.53
8	Allison Buck	LIB	5-7	So./1L	Camas, Wash./Camas HS	0.06	0.71	0.17	4.08	0.00	0.22
9	Allie Suiter	MB	6-2	Sr./3L	Littleton, Colo./Chatfield HS	0.97	0.05	0.11	0.24	0.57	1.42
11	Amy Wong	OH	5-7	So./1L	Litchfield Park, Ariz./Va. Commonwealth Univ.	0.04	0.12	0.20	1.54	0.00	0.24
12	Taylor Hadfield	MB	6-1	Jr./2L	Corte Madera, Calif./Redwood HS	2.79	0.05	0.13	0.66	0.59	3.26
13	Kelly Williamson	OH	6-1	So./1L	Buenos Aires, Argentina/Lincoln International School	1.26	0.00	0.00	0.20	0.37	1.48
14	Anna Lehne	MB	6-1	Sr./3L	Pueblo, Colo./Pueblo County HS	2.11	0.05	0.01	0.28	1.10	2.78
15	Jackie Rodriguez	L/DS	5-7	Fr./HS	Rio Rancho, N.M./Rio Rancho HS	0.00	0.00	0.00	0.75	0.00	0.00
16	Rachel Barber	OH	6-1	Fr./RS	Phoenix, Ariz./Arcadia HS	0.08	0.00	0.00	0.00	0.00	0.08
17	Carli Torr	L/DS	5-6	Fr./HS	Albuquerque, N.M./La Cueva HS	Redshirt season					

**Head Coach:** Jeff Nelson (Ball State, 1986), 54-28 at New Mexico (3rd Year), 296-175 Overall (15th Year)

**Assistant Coaches:** Steve Hendricks, Lisa Beauchene, Marc Swindle (volunteer) **Director of Operations:** Jordie Hadfield

WWW.GOLOBOS.COM

# LOBO VOLLEYBALL NOTES



**Jeff Nelson**  
(Ball State, 1986)

- **Head Coach**
- **3rd Season at New Mexico**
- **15th Season Overall**

## Year-By-Year Record

School	Year	Record	Pct.	NCAA
Texas Tech	1995	21-12	.636	2nd Rnd
Texas Tech	1996	25-9	.735	1st Rnd
Texas Tech	1997	23-11	.676	
Texas Tech	1998	23-11	.676	1st Rnd
Texas Tech	1999	18-15	.545	
Texas Tech	2000	24-9	.727	1st Rnd
Texas Tech	2001	18-14	.563	1st Rnd
Texas Tech	2002	14-15	.483	
	<b>8 yrs.</b>	<b>166-96</b>	<b>.634</b>	<b>5 app.</b>
San Francisco	2003	23-8	.742	1st Rnd
San Francisco	2004	12-20	.375	
San Francisco	2005	18-13	.581	
San Francisco	2006	23-10	.697	
	<b>4 yrs.</b>	<b>76-51</b>	<b>.598</b>	<b>1 app.</b>
New Mexico	2007	16-13	.552	
	2008	22-7	.759	
	<b>2 yrs.</b>	<b>38-20</b>	<b>.655</b>	
<b>Totals</b>	<b>14 yrs.</b>	<b>280-167</b>	<b>.626</b>	<b>6 app.</b>

## Other Experience

- Currently serves on NCAA Regional Committee
- Muncie Burriss HS assistant coach, 1995
- Arizona State assistant coach, 1990-95
- U.S. Olympic Festival West assistant coach, 1994
- U.S. Olympic Festival North assistant coach, 1993
- U.S. Junior National Boys head coach, 1992
- U.S. Junior National Boys assistant coach, 1991
- Minnesota assistant coach, 1989-90
- Minnesota Monarchs (MLV) head coach, 1989
- Minnesota Monarchs (MLV) assistant head coach, 1988
- Nebraska graduate assistant, 1986-88
- Ball State student-athlete, 1984-86
- 1985 team advanced to NCAA national semifinals

## 2009 Volleyball Staff

Assistant Coach: Steve Hendricks (Ball State, 1990); Lisa Beauchene (Sacramento State, 2005)

Volunteer Assistant Coach: Marc Swindle

Director of Operations: Jordie Hadfield

Athletic Trainer: Brenda Critchfield

Graduate Assistant Trainers: Dominic Vincentini, Maureen Healy

**About New Mexico (16-8, 7-5 MWC) ...** Lobo fans will see UNM sporting a lighter shade of Cherry on the court. UNM will be wearing its pink Nike jerseys for the fourth time this season on Thursday night when UNM hosts Utah for the Lobos' Think Pink Night in conjunction with UNM Hospital and the UNM Cancer Center. The Lobos have won three big road matches wearing their new pink Nike jerseys on opponents' breast cancer awareness matches ... Another losing streak came to an end on Oct. 13 as the Lobos beat New Mexico State, 3-0 in Las Cruces, 10-match overall and 8-match road losing streaks ... The Lobos beat Utah, 3-1, on Saturday, Oct. 10, the first win for UNM on Crimson Court since 1996 ... UNM picked up its first MWC win of the season at Wyoming on Sept. 26 (3-1) and won three straight after an 0-2 start ... Senior Rose Morris made her return to the court after a finger injury on Oct. 3 against Air Force with 11 kills over two sets ... Junior Taylor Hadfield leads the team with 2.79 kills per set, one of five players with 2.11 or more kps on the season ... Junior Jade Michaelsen leads UNM in assists with 10.25 per set ... Junior Lisa Meeter has the most service aces this season with 24 ... On defense, sophomore Allison Buck leads the Lobos with a 4.08 digs per set average, while senior Anna Lehne and sophomore Ashley Rhoades lead UNM in blocking with 1.10 and 1.07 per set, respectively ... UNM placed third at the Arizona Invitational. Jade Michaelsen was named to the all-tournament team ... UNM finishes second at the 2009 Comcast Lobo Challenge to now-No. 22 Baylor. Michaelsen and Morris were named to the all-tournament team ... UNM won the 2009 Nike Portland Invitational with wins over American and Portland. Michaelsen was named MVP of the tournament, while Meeter and Buck were named to the all-tournament team ... UNM won the 2009 MCM Elegante Lobo Classic to begin the season. It is the third season in a row the Lobos have started the season 3-0 and won the MCM Elegante Lobo Classic. Lehne was named the tournament MVP, and joined by Michaelsen and Buck on the all-tournament team ... The Lobos were picked third in the 2009 Mountain West Conference Preseason Poll, the same place they finished the 2008 season. The big difference this season is UNM earned three first-place votes from the voting panel of coaches and media ... Junior setter Jade Michaelsen was named MWC Preseason Co-Player of the Year by the same voting group ... Michaelsen and Morris are the team captains for 2009.

**About Utah (15-7, 8-2 MWC; Utah leads the series, 43-26) ...** The Utes are currently in 3rd place in the MWC standings at 8-2 in league play. UNM won the first meeting of the season in Salt Lake City on Oct. 10, 3-1. Utah was led by Cinthia Silva with 11 kills, while four Lobos recorded double-digit kills, led by Rose Morris with 17. Karolina Bartkowiak leads Utah with 3.00 kills per set.

**About BYU (12-10, 6-4 MWC; BYU leads the series, 62-11, UNM has won 4 of the last 7 meetings; play TCU on Thursday night) ...** The Cougars are in 4th place in MWC standings at 6-4. BYU won the first meeting between the two teams in Provo, 3-0, on Oct. 8. Kayla Walker led BYU with 14 kills, while Ashley Rhoades and Anna Lehne recorded 11.5 points each. Walker, the top hitter in the league with 4.04 kills per set, missed the next few matches with an ankle sprain suffered during practice the following day, but is back in action.

**About Senior Anna Lehne (3L; Pueblo, Colo./Pueblo County HS; Accounting) ...** Anna Lehne is a front row starter for the Lobos and three-plus years of hard work is paying off. Lehne recently moved into second place on the UNM career total blocks list and has 344 going into this week's matches. Lehne was named MWC Co-Player of the Week on Nov. 2, her first MWC career honor, and earned tournament MVP honors at the MCM Elegante Lobo Classic on Aug. 28-29. For more about Anna Lehne, see her full bio on page 9 of the release.

**About Senior Rose Morris (3L; Albuquerque, N.M./Sandia HS; Education) ...** Rose Morris is a 2009 team captain and a front row starter at L1 for the Lobos. Morris has been a steady player during her career and posted a career match against Baylor earlier this season. Earlier this season, Morris earned Comcast Lobo Challenge All-Tournament team honors. Her senior leadership became stronger off the court after a seven-match hiatus due to a finger injury. The setback made Morris work hard in rehab to get back on the court. For more about Rose Morris, see her full bio on page 10 of the release.

**About Senior Allie Suiter (3L; Littleton, Colo./Chatfield HS; Exercise Science) ...** Allie Suiter has been a key role player for the Lobos at middle blocker over her career. Suiter

# LOBO VOLLEYBALL NOTES

also has had a strong showing in the classroom, earning the team's Scholar-Athlete Award for three consecutive seasons. Suiter has been a three-time *ESPN the Magazine* Academic All-America nominee, three-time Mountain West Conference Scholar-Athlete and three-time Academic All-Mountain West Conference honoree. For more about Allie Suiter, see her full bio on page 11 of the release.

**Current RPI rankings ...** The official NCAA RPI rankings were released Monday afternoon and the Lobos are sitting at 48, third among MWC schools. RichKern.com releases its RPI rankings on Monday nights. The unofficial RPI rankings, that are close to the NCAA's system, has the Lobos ranked 48 and the Lobos' Pablo ranking is 56. The Lobos ended the 2008 season ranked 66th in the NCAA RPI report.

**Another Streak Goes Down ...** In Lobo head coach Jeff Nelson's three years at UNM, several ominous road losing streaks have come to a halt. The most recent was Tuesday, Oct. 13 in Las Cruces when UNM beat NMSU, 3-0, ending an 8-match road losing streak. The first one came in 2007 when the Lobos beat BYU on Oct. 6 in Provo for the first time in 12 years. Also in 2007, UNM won at San Diego State for the first time after 7 straight losses at the beach. In 2008, it had been since 2000 that UNM had won at UNLV and since 2001 at Wyoming. On Saturday, Oct. 10, 2009, UNM beat Utah, 3-1 on Crimson Court for the first time in 13 years. It was also Nelson's 50th win as a Lobo.

**Injury Report ...** Lobo sophomore middle blocker Ashley Rhoades missed the Air Force and San Diego State road matches with a sprained ankle. Rhoades is day-to-day ... Senior outside hitter Rose Morris returned to action on Saturday, Oct 3 against Air Force with 11 kills and three blocks in two sets. Morris missed seven matches with a finger injury suffered in the Pitt match on Sept. 12. Morris suffered the injury on a block in the fourth set with the score tied at 22-22.

**Lehne Named MWC Co-Player of the Week (Nov. 2) ...** New Mexico middle blocker Anna Lehne and TCU middle blocker Kourtney Edwards have been named Mountain West Conference Volleyball Co-Players of the Week. This is the fourth weekly award of the season (fifth career honor) for Edwards and the first career accolade for Lehne.

Lehne, a 6-1 sophomore from Pueblo, Colo., led New Mexico to Conference wins over Air Force (3-0) and San Diego State (3-1) last week. Against Air Force, Lehne tallied 12 kills with only two errors for a .400 hitting percentage, while also collecting four total blocks. Lehne's four blocks vs. the Falcons put her in second place on the UNM career blocks list. Against San Diego State, she posted a .370 efficiency (12-2-27) and seven total blocks. On the week, Lehne averaged 3.43 kills, 1.57 blocks and 4.29 points per set, while hitting .385 (24-4-52).

**Rhoades Named MWC Co-Player of the Week (Oct. 5) ...** New Mexico middle blocker Ashley Rhoades and TCU middle blocker Kourtney Edwards were named Mountain West Conference Volleyball Co-Players of the Week on Oct. 5. This is the first career accolade for Rhoades.

Rhoades, a 5-11 sophomore from Rio Rancho, N.M., led New Mexico to conference-match home wins over San Diego State (3-0) and Air Force (3-0) last week. Against the Aztecs, she collected 11 kills with no errors for a .647 hitting percentage. Rhoades also tallied two blocks and one dig vs. SDSU. Against Air Force, she posted a career-high 15 kills with only two errors in 21 attempts for an efficiency of .619, while also collecting three blocks. For the week, she averaged 4.33 kills, 0.83 blocks, 0.17 digs and 4.75 points per set, while hitting .632 (26-2-38).

**Jam Johnson Sets Season Attendance Mark ...** 2,338 fans showed up for Jam Johnson 2009 on Oct. 1 vs. San Diego State. It was the eighth match of the season with over 1,000 fans at the Johnson Center. UNM is averaging 1,548 fans over 11 sessions, currently ranking 26th in the nation. It is the only time the Lobos have recorded over 1,000 fans in each of the first 11 matches of the season.

## 2009 National Attendance Rankings (courtesy of Wisconsin; updated on Mondays)

School	Avg.	Total	#
1. Hawaii	6,363	101,807	16
2. Nebraska	5,077	50,770	10
3. Minnesota	4,467	40,207	9

## 2009 BISON/AVCA TOP 25 (Nov. 2)

Rk.	School (1st Pl. Vts.)	Pts.	Record	LW
1	Penn State (50)	1490	24-0	1
2	Texas (10)	1450	18-0	2
3	Hawaii	1378	20-2	3
4	Washington	1297	19-2	5
T5	Illinois	1174	18-3	6
T5	Stanford	1174	15-6	4
7	UCLA	1105	18-6	11
8	Iowa State	1079	19-3	9
9	Florida	1006	18-3	10
10	Nebraska	975	16-6	8
11	Kentucky	898	22-2	12
12	Minnesota	840	17-7	7
13	California	742	13-8	14
14	Oregon	729	15-5	15
15	Michigan	641	19-6	13
16	Florida State	599	21-2	17
17	Southern California	555	15-8	16
<b>18</b>	<b>Arizona</b>	<b>510</b>	<b>16-6</b>	<b>18</b>
19	LSU	393	18-5	20
<b>20</b>	<b>Baylor</b>	<b>296</b>	<b>19-5</b>	<b>22</b>
21	Saint Louis	229	17-6	24
22	San Diego	211	15-5	19
23	Texas A&M	139	14-6	25
24	Washington State	96	16-6	21
T25	Northern Iowa	82	22-2	NR
T25	St. Mary's (Calif.)	82	16-4	NR

**RECEIVING VOTES:** UC Santa Barbara; Notre Dame; UC Irvine; Dayton; Florida International; Colorado State; Oregon State; Michigan State; Long Beach State; Ohio State; Tennessee; Duke; Pepperdine; Oklahoma. Five schools were listed on only one ballot.

**Highlight** = 2009 UNM opponent

## UNM'S 2009 RECORD WHEN...

Overall	16-8
Mountain West	7-5
Non-conference	9-3
Post-season	0-0
Home	8-4
Away	6-3
Neutral	2-1
Three games	10-3
Four games	4-1
Five games	2-4
Day games	7-3
Night games	9-5
Winning first set	15-0
Losing first set	1-8
Lobo records a double-double	8-5
Lobo records a triple-double	0-0
vs. Top 25 opponent	0-1
vs. Big 12 Conference	0-1
vs. Big East Conference	1-0
vs. Big Sky Conference	1-0
vs. Big West Conference	2-0
vs. Colonial Athletic Association	1-0
vs. Conference USA	1-1
vs. Pac-10 Conference	0-1
vs. Patriot League	1-0
vs. Sun Belt Conference	0-0
vs. West Coast Conference	1-0
vs. Western Athletic Conference	1-0

# LOBO VOLLEYBALL NOTES

## 2009 MWC RANKINGS

### SEASON STATS LEADERS

#### Individual (All Games)

Hitting Pct.	387, Kourtney Edwards, TCU
Kills	4.04 ps, Kayla Walker, BYU
Assists	11.14 ps, Lauren Van Orden, SDSU
Aces	0.46 ps, Megan Munce, TCU
Blocks	1.32 ps, Tessa Nelson, CSU
Digs	4.24 ps, Katelyn Blackwood, TCU
Points	4.54 ps, Kayla Walker, BYU

#### Team (All Games)

Hitting Percentage	.240, CSU
Opponent Hitting Percentage	.153, TCU
Assists	12.32 ps, SDSU
Kills	13.21 ps, CSU
Blocks	2.81 ps, BYU
Service Aces	1.64 ps, TCU
Digs	16.02 ps, TCU
Win-Loss Percentage	.909, CSU

#### Individual (MWC Games)

Hitting Pct.	441, Megan Ploudre, CSU
Kills	4.43 ps, Kayla Walker, BYU
Assists	11.41 ps, Lauren Van Orden, SDSU
Aces	0.61 ps, Megan Munce, TCU
Blocks	1.56 ps, Christina Measom, BYU
Digs	4.50 ps, Katelin Batten, CSU
Points	5.07 ps, Kayla Walker, BYU

#### Team (MWC Games)

Hitting Percentage	.264, CSU
Opponent Hitting Percentage	.146, CSU
Assists	12.89 ps, CSU
Kills	13.97 ps, CSU
Blocks	3.05 ps, BYU
Service Aces	1.68 ps, TCU
Digs	16.66 ps, TCU
Win-Loss Percentage	.909, CSU

### UNM IN THE MWC STATS

Individual	Overall	MWC
<b>Allison Buck</b>		
Digs	4.08/4th	3.86/5th
<b>Taylor Hadfield</b>		
Attack Percentage	---	.345/5th
Kills	2.79/8th	3.22/5th
Points	3.26/8th	3.60/8th
<b>Anna Lehne</b>		
Attack Percentage	.304/7th	---
Blocks (88)	1.10/5th	1.19/6th
<b>Lisa Meeter</b>		
Service Aces	0.27/6th	0.24/9th
<b>Jade Michaelsen</b>		
Assists (78)	10.25/3rd	10.67/3rd
Service Aces	---	0.29/4th
<b>Ashley Rhoades</b>		
Attack Percentage (86)	.333/4th	.318/7th
Kills	---	3.09/8th
Blocks	1.07/7th	1.03/10th
Points	3.20/10th	3.71/7th
<b>Team</b>		
Hitting Percentage (90)	.226/3rd	.233/2nd
Opp Hit Percentage	.176/4th	.199/5th
Assists	11.76/4th	12.26/3rd
Kills	12.75/4th	13.33/4th
Blocks (47)	2.39/3rd	2.39/4th
Service Aces	1.17/5th	1.02/3rd
Win-Loss Pct. (82)	.667/3rd	.583/5th
Digs	13.43/5th	12.88/8th

(#) = Rank in 2009 NCAA Top 100

4. Wisconsin	3,912	31,300	8
5. Texas	3,337	23,362	7
6. Penn State	2,990	29,896	10
7. Wichita State	2,729	30,019	11
8. Florida	2,723	24,510	9
9. Illinois	2,489	19,910	8
10. Washington	2,460	14,761	6
11. Stanford	2,359	18,872	8
12. Northern Iowa	2,287	16,077	7
13. Purdue	2,213	28,775	13
14. Michigan State	2,018	20,180	10
15. Ohio	1,936	15,489	8
16. Kansas State	1,913	19,130	10
17. Fresno State	1,871	14,967	8
18. New Mexico State	1,836	18,363	10
19. Iowa State	1,830	14,643	8
20. Colorado State	1,819	21,826	12
21. North Carolina	1,793	16,137	9
22. Texas A&M	1,689	15,025	9
23. Missouri	1,625	14,629	9
24. Oregon State	1,596	12,768	8
25. UCLA	1,577	7,885	5
<b>26. New Mexico</b>	<b>1,548</b>	<b>18,580</b>	<b>12</b>
27. Oregon	1,433	14,328	10
28. Kentucky	1,384	13,835	10
29. Michigan	1,254	16,307	13
30. South Florida	1,244	8,711	7

### UNM Average Attendance Top 10 (1996-partial 1999 in University Arena/The Pit)

Year	Total	Average
1. 1991	28,190	2,349
2. 1992	27,237	1,702
3. 1995	22,915	1,636
4. 1990	20,493	1,576
5. 2008	20,408	1,570
6. 1996	23,274	1,552
<b>7. 2009</b>	<b>18,580</b>	<b>1,548</b>
8. 1994	19,770	1,412
9. 1993	19,138	1,276
10. 1997	13,489	1,226

**Setting Records ...** Junior setter Jade Michaelsen cracked the Top 10 on the UNM career assists list during the MCM Elegante Lobo Classic. Michaelsen, from Tucson, Ariz., tied for 6th place on the list in the fourth set of the San Diego State match on Oct. 31, matching Monica Meihack (2,840; 2002-04). Moving into fifth place should happen in the first set of Thursday's match vs. Utah. She is now 1 and 6 assists away from taking sole possession of sixth and moving into fifth place past former Lobo Karen Saavedra-Warnock (2,845; 1985-88).

### UNM Career Assists

1. Janelle Torres	3,794	1996-99
2. Alicia Bergmann	3,283	1992-95
3. Sharon Browning	3,214	1989-92
4. Jocelyn Funk	3,153	1983-86
5. Karen Saavedra-Warnock	2,845	1985-88
6. Monica Meihack	2,840	2002-04
<b>Jade Michaelsen</b>	<b>2,840</b>	<b>2007-present</b>
8. Sarah Kwasigroch	2,634	2005-09
9. Gretchen Gegenfurtner	2,193	1993-96
10. Kelly Griffin	2,096	1999-01

**Blocking Into The Books ...** Senior Anna Lehne moved into second place on the UNM career total blocks list with four blocks at Air Force on Oct. 29. Earlier this season, in addi-

# LOBO VOLLEYBALL NOTES

tion to picking up the first all-tournament MVP honor of her career, Lehne moved onto the UNM career Top 10 lists for blocking - total blocks and block assists - during the MCM Elegante Lobo Classic. On Sept. 16 against TCU, Lehne added the career solo blocks Top 10 list as well. She is working her way into the top 5 in all three lists. Lehne, a senior from Pueblo, Colo., had a Top 10 season mark with 101 block assists in 2008.

## UNM Career Total Blocks

1. Chelsea Sondrup	433	2002-05
<b>2. Anna Lehne</b>	<b>344</b>	<b>2006-present</b>
3. Kelly Therckelsen	336	2003-06
4. Linda Archuleta	326	1980-82, '84
5. Laurel Luman	320	1990-93
6. Robyn Wentworth	313	1992-94
7. Tammy Lansford	299	1987-90
Pauline Manser	299	1988-91
Zhao Lu	299	1995-96
10. Amber Smith	258	1996-99

## UNM Career Block Solos

1. Linda Archuleta	120	1980-82, '84
2. Terri Nelson	107	1980-83
3. Tammy Lansford	86	1987-90
4. Pauline Manser	76	1988-91
5. Sue Guinn	73	1983-84
<b>6. Anna Lehne</b>	<b>72</b>	<b>2006-present</b>
7. Robyn Wentworth	68	1992-94
Shannon Vessup	68	1981, '83
Laurel Luman	68	1990-93
10. Kelly Knowles	62	1980-82

## UNM Career Block Assists

1. Chelsea Sondrup	433	2002-05
2. Kelly Therckelsen	326	2003-06
<b>3. Anna Lehne</b>	<b>272</b>	<b>2006-present</b>
4. Laurel Luman	252	1990-93
5. Zhao Lu	249	1995-98
6. Robyn Wentworth	245	1992-94
7. Pauline Manser	223	1988-91
8. Vanessa Shields	216	1998-99, 2001-02
9. Tammy Lansford	213	1987-90
10. Kristine Butler	207	1993-96

**Winning Ways ...** In 2008, New Mexico's 22 overall wins were the highest total by a Lobo team since 1991. UNM finished the season 11-5 in MWC action, the most conference wins by the Lobos since the MWC formed in 1999 and most in any conference since 1996.

## UNM Most Overall Wins

1.	1983	28
2.	1981	26
3.	1988	25
4.	1991	23
5.	<b>2008</b>	<b>22</b>
	1990	22
	1989	22
8.	1982	21
9.	1994	20
10.	1996	18
	1993	18
	1992	18
<b>2009 - 16</b>		

## UNM Most Conference Wins

1.	1996	13
2.	1991	12
3.	2008	11
4.	1988	10
5.	1994	9
	1989	9
7.	1993	8
	1981	8
9.	2007	7
	1992	7
	1990	7
	<b>2009</b>	<b>7</b>

**Non-conference Record Among The Best ...** The Lobos are on track to have another successful non-conference season in the Jeff Nelson era. The Lobos' 11-2 non-conference record in 2008 ranked as the third-best in program history following the final regular season matches against New Mexico State and Virginia Commonwealth.

## UNM Best Non-Conference Records (by percentage)

1.	1986	.875 (14-2)
2.	1989	.867 (13-2)
3.	2008	.846 (11-2)
4.	1988	.833 (15-3)
5.	1983	.793 (23-6)
6.	1990	.789 (15-4)
7.	2007	.750 (9-3)
	<b>2009</b>	<b>.750 (9-3)</b>
9.	1992	.688 (11-5)
	1994	.688 (11-5)

**Lobos on Television ...** The Lobos have four television opportunities in 2009. UNM kicked off the Mountain West Sports Network volleyball season on Thursday, Sept. 24 at Colorado State. The Lobos got more face time on Thursday, Oct. 8 at BYU and Oct. 13 at New Mexico State on Aggie Vision/Fox Sports Arizona. Fans can watch

## 2009 Mountain West Conference Preseason Info

### School Points (1st Place Votes)

1. Utah (16)	138 (8)
2. Colorado State (24)	135 (4)
<b>3. New Mexico</b>	<b>112 (3)</b>
4. BYU	96 (2)
5. TCU	89
6. UNLV	87
7. San Diego State	53
8. Wyoming	38
9. Air Force	17

(#) = 2008 national ranking

### 2009 PRESEASON ALL-MWC TEAM

#### Player, Class, Pos., Team

Kayla Walker, Sr., RS, BYU  
 Tessa Nelson, R-Sr., MB, Colorado State  
 Lauren Salisbury, Jr., MB, San Diego State  
 Christy Hudson, Jr., RS, TCU  
 Karolina Bartkowiak, Jr., OPP, Utah  
**Setter: Jade Michaelson, Jr., New Mexico**  
 Libero: Katelyn Blackwood, Sr., TCU



**JADE MICHAELSEN**

### Preseason Co-Players of the Year:

**Jade Michaelson, New Mexico**  
 Tessa Nelson, Colorado State

# LOBO VOLLEYBALL NOTES

the Lobos one more time before the end of the season. UNM will be on the tube Friday, Nov. 20 at TCU, tape delayed on The Mtn.

**Lobos Place Third At Arizona Invitational ...** New Mexico finished third in the 2009 Arizona Invitational by Marriott University Park. The Lobos won the first match against UTEP, 3-0, then struggled in a pair of 3-2 losses to No. 21 Arizona and Tulane. Setter Jade Michaelson earned all-tournament honors with three double-double performances (assists-digs) - 30-10 vs. UTEP, 52-11 at Arizona and 41-10 vs. Tulane.

**Lobos Finish Second In Comcast Lobo Challenge; Four Career Performances During The Weekend ...** New Mexico finished in second place at the 2009 Comcast Lobo Challenge. The Lobos were edged out by the now ranked No. 24 Baylor Bears, 3-2, in a tough match the evening of Sept. 11 for the tournament title. Earlier in the day, UNM beat Cal State Fullerton, 3-0, with a spread out offense led by senior Anna Lehne with 10 kills, senior Rose Morris with nine and junior Lisa Meeter and sophomore Ashley Rhoades with seven each. Lehne also put down seven blocks, followed by Rhoades with five ... Against Baylor, Morris recorded a career-high 20 kills, followed by Meeter with 14 and Lehne with 13 to keep UNM in the fight. Sophomore Allison Buck and junior Jade Michaelson also had career nights with 23 and 14 digs, respectively against the Bears ... In the final round, UNM beat Pittsburgh, 3-1. Junior Taylor Hadfield had a career-high 16 kills, including three of the Lobos last four points to win the match. Morris and Meeter had 11 kills each ... Junior Jade Michaelson was named to the all-tournament team for a strong performance in all three matches with a double-double against CSF and Baylor. Morris joined Michaelson on the All-Tournament Team.

**Lobos Win Nike Portland Invitational ...** New Mexico won its second tournament of the season with a 2-0 run at the Nike Portland Invitational. The Lobos got things started with a 3-0 win over Patriot League member American. Juniors Taylor Hadfield and Lisa Meeter led the Lobos with 10 kills each, while junior setter Jade Michaelson had 44 assists. Meeter had a double-double with 12 digs. Sophomore Allison Buck had an at-the-time career-high 20 digs ... In the championship match on Saturday night, Meeter and sophomore Ashley Rhoades recorded 10 kills each, while Meeter added nine digs. Michaelson had 31 assists, while Buck had 15 digs ... Michaelson was named tournament MVP ... Meeter and Buck joined Michaelson on the All-Tournament Team.

**Lobos Win MCM Elegante Lobo Classic ...** For the third year in a row, New Mexico won its own MCM Elegante Lobo Classic to start the season. The Lobos got things started with a 3-0 win over Colonial Athletic Association champions Delaware. Junior Taylor Hadfield led the Lobos with 10 kills, while junior setter Jade Michaelson had 25 assists. Sophomore Allison Buck took over the starting libero position and had a team-leading 17 digs ... Saturday afternoon, UNM went five rounds with Portland State, pulling out a 3-2 win. Tournament MVP Anna Lehne recorded a career-high 17 kills to go along with eight blocks to keep UNM in the tournament championship hunt. Senior Rose Morris had 11 kills and Jade Michaelson recorded her first double-double of the season - 46 assists and 11 digs ... The Lobos took UC Santa Barbara to 3-2 for an exciting championship battle. This time it was junior Lisa Meeter leading the way with 13 kills and sophomore Ashley Rhoades with nine kills and a career-high 10 blocks ... Michaelson and Buck joined Lehne on the All-Tournament Team.

**Lobos in the Classroom ...** Nine members of the 2008 volleyball team earned recognition in the classroom from the Mountain West Conference. Jade Michaelson, Allie Suiter, Kelly Williamson and Amy Wong were named MWC Scholar-Athletes at the end of the school year. Michaelson, Suiter and Williamson along with Allison Buck, Jeanne Fairchild, Sarah Kwasigroch, Lisa Meeter and Gayle Tripp were named Academic All-MWC following the season.

**Kwasigroch Named Lobo Club Female Student-Athlete of the Year ...** Sarah Kwasigroch, former Lobo player and current student assistant coach from Palos Park, Ill., finished her UNM career ranked seventh on the Lobos career assists list with 2,634. A pharmacy major, Kwasigroch was a four-time Academic all-Mountain West honoree and is expected to make the annual MWC Scholar-Athlete list for a third time this summer ... Kwasigroch's biggest achievement during her Lobo career was coordinating the Lobos' Volley for the Cure Night on Oct. 23 against UNLV. The evening's events raised over \$3,200 for the American Cancer Society and the promotion of breast cancer awareness. The Lobo team captain promoted the event in honor of her mother, Patricia, a breast cancer survivor.

**Playing Against the Best ...** The Lobos has seven teams on the 2009 schedule that participated in the 2008 NCAA Tournament, including Mountain West Conference members Colorado State and Utah. Two of the five non-conference foes will be participating in the MCM Elegante Lobo Classic – Delaware and Portland State. The Lobos will face American in the Nike Portland Invitational and Tulane in the Arizona Invitational. In-state rival New Mexico State also advanced to the NCAA Tournament in 2008.

# 2009 OVERALL STATS AND RESULTS

<b>RECORD:</b>	<b>OVERALL</b>	<b>HOME</b>	<b>AWAY</b>	<b>NEUTRAL</b>
ALL MATCHES	16-8	8-4	6-3	2-1
CONFERENCE	7-5	3-3	4-2	0-0
NON-CONFERENCE	9-3	5-1	2-1	2-1

##	STATS SUMMARY	ATTACK					SET		SERVE				DIG		BLOCKING				Points			
		SP	K	K/S	E	TA	Pct	A	A/S	SA	SE	SA/S	RE	DIG	D/S	BS	BA	TB		B/S	BE	BHE
12	HADFIELD, Taylor	87	243	2.79	99	539	.267	4	0.05	11	14	0.13	1	57	0.66	8	43	51	0.59	4	0	283.5
4	RHOADES, Ashley	71	180	2.54	55	375	.333	5	0.07	1	10	0.01	0	18	0.25	17	59	76	1.07	3	1	227.5
2	MEETER, Lisa	89	213	2.39	107	600	.177	33	0.37	24	26	0.27	27	221	2.48	5	22	27	0.30	2	0	253.0
6	MORRIS, Rose	58	135	2.33	68	424	.158	7	0.12	6	13	0.10	4	73	1.26	1	24	25	0.43	7	0	154.0
14	LEHNE, Anna	83	175	2.11	51	408	.304	4	0.05	1	6	0.01	0	23	0.28	18	73	91	1.10	11	0	230.5
13	WILLIAMSON, Kelly	46	58	1.26	39	214	.089	0	0.00	0	4	0.00	1	9	0.20	3	14	17	0.37	1	0	68.0
9	SUITER, Allie	37	36	0.97	16	83	.241	2	0.05	4	6	0.11	0	9	0.24	4	17	21	0.57	1	1	52.5
7	MICHAELSEN, Jade	89	85	0.96	24	235	.260	912	10.25	20	18	0.22	1	181	2.03	6	50	56	0.63	5	12	136.0
16	BARBER, Rachel	12	1	0.08	6	19	-.263	0	0.00	0	1	0.00	0	0	0.00	0	0	0	0.00	0	0	1.0
8	BUCK, Allison	89	5	0.06	4	17	.059	63	0.71	15	18	0.17	29	363	4.08	0	0	0	0.00	0	1	20.0
11	WONG, Amy	85	3	0.04	4	14	-.071	10	0.12	17	26	0.20	3	131	1.54	0	0	0	0.00	0	1	20.0
3	ROHR, Melissa	64	1	0.02	1	2	.000	2	0.03	3	5	0.05	3	83	1.30	0	0	0	0.00	0	0	4.0
15	RODRIGUEZ, Jackie	8	0	0.00	0	0	.000	0	0.00	0	1	0.00	1	6	0.75	0	0	0	0.00	0	0	0.0
5	RUSSELL, Jordan	24	0	0.00	0	0	.000	5	0.21	2	6	0.08	0	21	0.88	0	0	0	0.00	0	0	2.0
TEAM		3																				
	NEW MEXICO.....	89	1135	12.75	474	2930	.226	1047	11.76	104	1541	1.17	73	1195	13.43	62	302	213	0.239	34	16	1452.0
	Opponents.....	89	1089	12.24	546	3084	.176	1026	11.53	73	1730	0.82	104	1098	12.34	42	344	214	0.240	44	15	1376.0

DATE	OPPONENT	W/L	SCORE	SCORE-BY-GAME	ATTEND
!Aug. 28, 2009	DELAWARE	W	3-0	25-20, 25-13, 25-21	1,782
!Aug. 29, 2009	PORTLAND STATE	W	3-2	25-22, 22-25, 19-25, 25-23, 15-12	1,039
!Aug. 29, 2009	UC SANTA BARBARA	W	3-2	25-17, 19-25, 25-18, 19-25, 15-13	1,282
#Sept. 4, 2009	vs. American	W	3-0	25-15, 26-24, 26-24	111
#Sept. 5, 2009	at Portland	W	3-0	25-20, 25-19, 25-23	209
^Sept. 11, 2009	CAL STATE FULLERTON	W	3-0	25-19, 25-17, 25-22	1,171
^Sept. 11, 2009	BAYLOR	L	2-3	13-25, 26-24, 20-25, 25-20, 12-15	1,911
^Sept. 12, 2009	PITTSBURGH	W	3-1	25-19, 22-25, 25-11, 26-24	1,220
*Sept. 16, 2009	TCU	L	1-3	18-25, 25-16, 22-25, 22-25	1,467
\$Sept. 19, 2009	vs. UTEP	W	3-0	28-26, 25-12, 25-23	163
\$Sept. 19, 2009	at #21 Arizona	L	2-3	24-26, 25-14, 25-12, 14-25, 13-15	1,015
\$Sept. 20, 2009	vs. Tulane	L	2-3	13-25, 25-17, 25-20, 19-25, 10-15	103
*Sept. 24, 2009	at Colorado State	L	0-3	21-25, 15-25, 15-25	2,135
*Sept. 26, 2009	at Wyoming	W	3-1	25-15, 25-15, 20-25, 25-17	761
*Oct. 1, 2009	SAN DIEGO STATE	W	3-0	25-19, 25-16, 25-20	2,338
*Oct. 3, 2009	AIR FORCE	W	3-0	25-7, 25-22, 25-20	1,289
*Oct. 8, 2009	at BYU	L	0-3	16-25, 17-25, 23-25	961
*Oct. 10, 2009	at Utah	W	3-1	25-12, 25-19, 23-25, 25-21	502
Oct. 13, 2009	at New Mexico State	W	3-0	25-18, 25-21, 25-23	2,532
*Oct. 17, 2009	UNLV	L	0-3	21-25, 18-25, 18-25	1,508
*Oct. 22, 2009	WYOMING	W	3-0	25-23, 25-19, 25-22	1,450
*Oct. 24, 2009	#25 COLORADO STATE	L	2-3	18-25, 25-18, 20-25, 25-20, 11-15	2,123
*Oct. 29, 2009	at Air Force	W	3-0	25-9, 25-23, 25-20	183
*Oct. 31, 2009	at San Diego State	W	3-1	24-26, 25-19, 25-18, 25-22	167

! MCM Elegante Lobo Classic  
\$ Arizona Invitational

# Nike Portland Invitational  
\* Mountain West Conference match

^ Comcast Lobo Challenge

ATTENDANCE	Home	Away
Total	18,580	8,465
Matches/Avg.	12/1,548	9/941
Neutral site #/Avg	3/126	
Current win streak	2	
Home win streak	0	

# 2009 MWC STATS AND RESULTS

RECORD: OVERALL HOME AWAY  
 CONFERENCE 7-5 3-3 4-2

#	STATS SUMMARY	ATTACK					SET		SERVE				DIG			BLOCKING				Points		
		SP	K	K/S	E	TA	Pct	A	A/S	SA	SE	SA/S	RE	DIG	D/S	BS	BA	TB	B/S		BE	BHE
12	HADFIELD, Taylor	41	132	3.22	43	258	.345	4	0.10	4	9	0.10	0	32	0.78	4	15	19	0.46	0	0	147.5
4	RHOADES, Ashley	35	108	3.09	37	223	.318	3	0.09	0	5	0.00	0	7	0.20	8	28	36	1.03	0	0	130.0
2	MEETER, Lisa	42	98	2.33	54	278	.158	16	0.38	10	14	0.24	15	105	2.50	2	12	14	0.33	1	0	116.0
6	MORRIS, Rose	26	60	2.31	32	171	.164	3	0.12	3	5	0.12	2	36	1.38	1	13	14	0.54	3	0	70.5
14	LEHNE, Anna	37	70	1.89	22	169	.284	0	0.00	0	2	0.00	0	9	0.24	12	32	44	1.19	7	0	98.0
13	WILLIAMSON, Kelly	22	26	1.18	23	109	.028	0	0.00	0	0	0.00	0	4	0.18	0	7	7	0.32	1	0	29.5
7	MICHAELSEN, Jade	42	42	1.00	12	112	.268	448	10.67	12	12	0.29	0	72	1.71	2	25	27	0.64	1	5	68.5
9	SUITER, Allie	20	18	0.90	6	43	.279	1	0.05	2	3	0.10	0	5	0.25	0	11	11	0.55	0	1	25.5
16	BARBER, Rachel	7	1	0.14	5	16	-.250	0	0.00	0	1	0.00	0	0	0.00	0	0	0	0.00	0	0	1.0
8	BUCK, Allison	42	3	0.07	1	6	.333	27	0.64	6	5	0.14	15	162	3.86	0	0	0	0.00	0	1	9.0
3	ROHR, Melissa	33	1	0.03	1	2	.000	1	0.03	1	2	0.03	1	47	1.42	0	0	0	0.00	0	0	2.0
11	WONG, Amy	38	1	0.03	0	3	.333	7	0.18	3	9	0.08	0	42	1.11	0	0	0	0.00	0	0	4.0
15	RODRIGUEZ, Jackie	5	0	0.00	0	0	.000	0	0.00	0	1	0.00	1	3	0.60	0	0	0	0.00	0	0	0.0
5	RUSSELL, Jordan	17	0	0.00	0	0	.000	5	0.29	2	5	0.12	0	17	1.00	0	0	0	0.00	0	0	2.0
	TEAM												2									
	NEW MEXICO.....	42	560	13.33	236	1390	.233	515	12.26	43	73	1.02	36	541	12.88	29	143	100.5	2.39	13	7	703.5
	Opponents.....	42	517	12.31	239	1397	.199	486	11.57	36	84	0.86	43	505	12.02	18	167	101.5	2.42	22	7	654.5

DATE	OPPONENT	W/L	SCORE	SCORE-BY-GAME	ATTEND
*Sept. 16, 2009	TCU	L	1-3	18-25, 25-16, 22-25, 22-25	1,467
*Sept. 24, 2009	at Colorado State	L	0-3	21-25, 15-25, 15-25	2,135
*Sept. 26, 2009	at Wyoming	W	3-1	25-15, 25-15, 20-25, 25-17	761
*Oct. 1, 2009	SAN DIEGO STATE	W	3-0	25-19, 25-16, 25-20	2,338
*Oct. 3, 2009	AIR FORCE	W	3-0	25-7, 25-22, 25-20	1,289
*Oct. 8, 2009	at BYU	L	0-3	16-25, 17-25, 23-25	961
*Oct. 10, 2009	at Utah	W	3-1	25-12, 25-19, 23-25, 25-21	502
*Oct. 17, 2009	UNLV	L	0-3	21-2, 18-25, 18-25	1,508
*Oct. 22, 2009	WYOMING	W	3-0	25-23, 25-19, 25-22	1,450
*Oct. 24, 2009	#25 COLORADO STATE	L	2-3	18-25, 25-18, 20-25, 25-20, 11-15	2,123
*Oct. 29, 2009	at Air Force	W	3-0	25-9, 25-23, 25-20	183
*Oct. 31, 2009	at San Diego State	W	3-1	24-26, 25-19, 25-18, 25-22	167

ATTENDANCE	Home	Away
Total	10,175	4,709
Matches/Avg.	6/1,696	6/785
Current win streak	2	
Home win streak	0	

## 2009 Mountain West Conference Standings

(through Sunday, Nov. 1)



School	Conference				Overall			
	W-L	Pct.	Sets	Streak	W-L	Pct.	Sets	Streak
Colorado State (RV)	10-1	.909	30-6	W2	18-4	.818	55-20	W2
TCU	10-2	.833	31-10	W6	21-5	.807	69-27	W6
Utah	8-2	.800	25-14	W2	15-7	.682	48-35	W2
BYU	6-4	.600	22-17	W1	12-10	.545	48-38	W2
<b>New Mexico</b>	<b>7-5</b>	<b>.583</b>	<b>24-18</b>	<b>W2</b>	<b>16-8</b>	<b>.667</b>	<b>55-35</b>	<b>W2</b>
San Diego State	4-7	.364	18-26	L2	10-12	.455	40-47	L2
UNLV	4-8	.333	15-26	L2	6-14	.300	23-46	L2
Wyoming	1-10	.091	12-30	L6	10-15	.400	43-49	L6
Air Force	0-11	.000	2-33	L41	8-16	.333	26-58	L13

Upcoming Schedule: Nov. 3 - Colorado Christian at Wyoming; Nov. 5 - **Utah at New Mexico**, Air Force at Colorado State, BYU at TCU, San Diego State at Wyoming, UNLV at Nevada; Nov. 7 - **BYU at New Mexico**, Utah at TCU, Air Force at Wyoming, San Diego State at Colorado State; Nov. 12 - **New Mexico at UNLV**, Wyoming at BYU, Colorado State at Utah; Nov. 13 - San Diego State at Air Force; Nov. 14 - Colorado State at BYU, TCU at UNLV, Wyoming at Utah; Nov. 15 - Cal State Bakersfield at San Diego State; Nov. 19 - BYU at Air Force, Utah at San Diego State, UNLV at Wyoming; Nov. 20 - **New Mexico at TCU**; Nov. 21 - Utah at Air Force, BYU at San Diego State, UNLV at Colorado State; Nov. 24 - San Diego State at UC Santa Barbara; Nov. 27 - **New Mexico at New Orleans**, TCU vs. UC Irvine, UNLV at Long Beach State; Nov. 28 - New Mexico State at Colorado State, TCU at Long Beach State, UNLV vs. Cal State Fullerton, Utah at Long Beach State

# SENIOR ANNA LEHNE



**Middle Blocker • 6-1**  
**Senior-3L**  
**Pueblo, Colo.**  
**Pueblo County High School**

**14**

**SENIOR (2009):** Named MWC Co-Player of the Week on Nov. 2 for solid road performances against Air Force and San Digo State ... Moved into second place on the UNM career total blocks list on Oct. 29 in front of family and friends at Air Force ... Named MCM Elegante Lobo Classic Most Valuable Player ... Recorded a career-high 17 kills vs. Portland State on Aug. 29 ... Cracked Top 10 on UNM career total blocks, solo blocks and block assists lists.

**JUNIOR (2008):** Saw her hitting percentage significantly improve for the second season in a row, finishing second on the team with a .305 percentage, also good for 10th in the Mountain West Conference ... Was second on the team in kills with 2.15 per set ... Led team, fifth in MWC and 29th in nation in blocks with 1.27 per set ... Tied career-high with 12 kills on Sept. 12 vs. St. John's ... Recorded a career-high 12 blocks at Colorado State on Oct. 12, included career-high two solo stops and 10 assists ... Career blocking performance led to career-high of 15.0 points (8K-2BS-10BA) ... Hit a career-high .692 hitting percentage (9K-0E-13TA) against St. Francis (Pa.) on Sept. 6 ... Followed up later in the day with a .688 against George Mason (11K-0E-16TA) ... Named to the MCM Elegante Lobo Classic.

**SOPHOMORE (2007):** Had a good season as the Lobos' top blocker, ranking 11th in the Mountain West Conference with a 1.12 per game average ... Blocked a season-high 9 opponent attacks, all assists, against San Jose State on Aug. 25 ... Had a career-high 2 solo blocks against Utah on Nov. 3 ... Pounded a career-high 12 kills in the season opener against Florida Atlantic on Aug. 24 ... Hit a solid .688 (11K-0E-16TA) in the win at BYU on Oct. 6 ... Dropped a career-high 3 service aces vs. Air Force on Sept. 20 ... Passed a season-high 4 digs against Gonzaga on Sept. 8 ... Combined for a career-high 14.5 points against UNLV on Oct. 13 – 11 kills and 7 block assists ... After playing in 27 matches, missed last match of the regular season for a family emergency.

**FRESHMAN (2006):** Missed first matches of the season with a knee injury ... Recorded 3 kills on 7 attacks with a block and a dig in her first collegiate match against Hous-

## CAREER SINGLE-MATCH HIGHS

Kills: 17, vs. Portland State (8/29/09)  
 Attacks: 34, vs. Portland State (8/29/09)  
 Hitting Percentage: .692, vs. St. Francis (9/6/08)  
 Assists: 1, 16x - last vs. UTEP (9/19/09)  
 Service Aces: 3, vs. Air Force (9/20/07)  
 Digs: 9, 2x - last vs. Cal State Fullerton (9/9/06)  
 Total Blocks: 12, at Colorado State (10/12/08)  
 Solo Blocks: 3, vs. Colorado State (10/24/09)  
 Block Assists: 10, at Colorado State (10/12/08)  
 Points: 22.0, vs. Portland State (8/29/09)

## 2009 SINGLE-MATCH HIGHS

Kills: 17, vs. Portland State (8/29/09)  
 Attacks: 34, vs. Portland State (8/29/09)  
 Hitting Percentage: .545, vs. Delaware (8/28/09)  
 Assists: 1, 4x - last vs. UTEP (9/19/09)  
 Service Aces: 1, at Arizona (9/19/09)  
 Digs: 3, vs. Tulane (9/20/09)  
 Total Blocks: 8, vs. Portland State (8/29/09)  
 Solo Blocks: 3, vs. Colorado State (10/24/09)  
 Block Assists: 6, 3x - last at San Diego State (10/31/09)  
 Points: 22.0, vs. Portland State (8/29/09)

ton on Sept. 1 ... posted her first career assist and aces (2) vs. UALR on Sept. 2 ... Notched a season-high 11 kills vs. Louisiana-Monroe on Sept. 2 ... Matched her season-highs in kills (11) while setting a new best in digs (9) vs. UTEP on Sept. 8 ... Had a career-high 6 blocks vs. Dartmouth on Sept. 9 ... Tied her career-high for digs with 9 vs. Cal State Fullerton on Sept. 9 ... Matched her season-high for kills with 11, leading the Lobos vs. NMSU on Sept. 11 ... Returned to the lineup at the MWC Tournament after missing two months of the season ... Hit a season-high .615 (9K-1E-13TA) with three blocks, two digs and an ace vs. Air Force in the first round of the MWC Tournament on Nov. 22.

**HIGH SCHOOL:** Lettered in volleyball and basketball at Pueblo County High School ... Garnered all-state honorable mention accolades in 2003, 2004 and 2005 ... Named the MVP of the Southern Colorado League her senior season ... Two-time all-league first team selection ... Placed on the all-state honorable mention basketball team in 2003, 2004 and 2005 ... Four-year member of the Honor Roll.

**PERSONAL:** Daughter of Ronald and Susan Lehne ... Has a sister, Bonnie, and a brother, Ben ... Lists her hobbies as swimming, playing basketball and sleeping ... Likes Chinese food ... Favorite athlete is professional volleyball player Misty May ... Says the competition and the thrill of a game are what she likes most about participating in sports ... Majoring in Accounting.

## Lehne's Career Stats

Year	SP-MP	K	E	TA	Pct.	A	SA	Dig	BS	BA	TB	Pts.
2006	39-13	94	47	237	.198	2	5	46	34	5	39	121.0
2007	90-28	158	67	379	.240	8	3	29	8	93	101	215.5
2008	89-29	191	57	439	.305	2	0	11	12	101	113	253.5
<b>Totals</b>	<b>218-70</b>	<b>443</b>	<b>171</b>	<b>1055</b>	<b>.258</b>	<b>12</b>	<b>8</b>	<b>86</b>	<b>54</b>	<b>199</b>	<b>253</b>	<b>590.0</b>

# SENIOR ROSE MORRIS



**Outside Hitter • 6-1**  
**Senior-3L**  
**Albuquerque, N.M.**  
**Sandia High School**



**SENIOR (2009):** Missed seven matches with finger injury suffered during the Pittsburgh match on Sept. 12 ... Returned to action on Oct. 3 vs. Air Force with 11 kills and three blocks in two sets ... Named to Comcast Lobo Challenge All-Tournament Team ... Team captain ... Recorded career-high 20 kills against Baylor on Sept. 11.

**JUNIOR (2008):** Key front row hitter for the Lobos ... Recorded a career-high two solo blocks against New Mexico State on Nov. 28 ... Hit a career-high .550 (12K-1E-20TA) vs. Rutgers on Sept. 5 ... Finished fourth on the team with 1.85 kills per set ... Named to the George Mason Patriot Invitational all-tournament team ... Played for the Bring It Promotions/USA Developmental Team in Croatia from July 17-26.

**SOPHOMORE (2007):** One of the Lobos' top hitters, playing primarily in the front row ... Had a season-high 14 kills and career-high 5 assists against Gonzaga on Sept. 8 ... Blocked a career-high 5 attacks the day before against Northern Colorado ... Hit a career-high .500 (5K-0E-10TA) at Air Force on Oct. 19.

**FRESHMAN (2006):** Led the team in attacks with 797 while posting the third most kills (236) ... Recorded 7 kills and 4 digs in back-to-back matches against Utah State and UC Riverside to start her collegiate career ... Recorded her first solo block in the season opener vs. Utah State on Aug. 25 ... Posted 14 kills and 10 digs vs. UNLV on Sept. 30 for her first career double-double ... Posted her second double-double with a career-high 16 kills and 11 digs at BYU on Oct. 7 ... Posted a team-high 11 kills vs. Air Force on Oct. 20 with a career-high 15 digs for her third double-double of the season ... Ended up with five double-doubles on the season.

**HIGH SCHOOL:** Lettered in volleyball three years at Sandia under coach Brent Black ... Three-time selection to the all-district and all-metro first teams ... Named the Matadors' Defensive Player of the Year in 2002 ... Received an academic letter.

## CAREER SINGLE-MATCH HIGHS

Kills: 20, vs. Baylor (9/11/09)  
 Attacks: 57, vs. Baylor (9/11/09)  
 Hitting Percentage: .550, vs. Rutgers (9/5/08)  
 Assists: 5, vs. Gonzaga (9/8/07)  
 Service Aces: 3, at New Mexico State (10/15/06)  
 Digs: 15, vs. Air Force (10/20/06)  
 Total Blocks: 5, vs. Northern Colorado (9/7/07)  
 Solo Blocks: 2, vs. New Mexico State (11/28/08)  
 Block Assists: 5, vs. Northern Colorado (9/7/07)  
 Points: 21.5, vs. Baylor (9/11/09)

## 2009 SINGLE-MATCH HIGHS

Kills: 20, vs. Baylor (9/11/09)  
 Attacks: 57, vs. Baylor (9/11/09)  
 Hitting Percentage: .368, vs. Air Force (10/3/09)  
 Assists: 2, 2x - last at New Mexico State (10/13/09)  
 Service Aces: 2, vs. Cal State Fullerton (9/11/09)  
 Digs: 8, at San Diego State (10/31/09)  
 Total Blocks: 3, vs. Air Force (10/3/09)  
 Solo Blocks: 1, at Air Force (10/29/09)  
 Block Assists: 3, 3x - last at New Mexico State (10/8/09)  
 Points: 21.5, vs. Baylor (9/11/09)

**PERSONAL:** Daughter of Ray Morris and Jaymi McKay ... Has one sister, Jasmine, who played volleyball at New Mexico Highlands ... Enjoys shopping ... Likes hashbrowns ... Says her greatest thrill while participating in sports has been playing overseas in Argentina and Croatia ... Majoring in Education.

## Morris' Career Stats

Year	SP-MP	K	E	TA	Pct.	A	SA	Dig	BS	BA	TB	Pts.
2006	91-29	236	156	797	.100	7	11	147	6	35	41	270.5
2007	84-27	174	72	465	.219	32	0	22	5	42	47	200.0
2008	84-28	155	65	429	.210	7	0	33	3	29	32	172.5
<b>Totals</b>	<b>259-84</b>	<b>565</b>	<b>293</b>	<b>1691</b>	<b>.161</b>	<b>46</b>	<b>11</b>	<b>202</b>	<b>14</b>	<b>106</b>	<b>120</b>	<b>643.0</b>

# SENIOR ALLIE SUITER



**Middle Blocker • 6-2**  
**Senior-3L**  
**Littleton, Colo.**  
**Chatfield High School**



**SENIOR (2009):** *ESPN the Magazine Academic All-America nominee* ... Tied career record for solo blocks in a match with two against Portland State on Aug. 29 ... Had season-high seven kills and four blocks vs. Tulane on Sept. 20.

**JUNIOR (2008):** Mountain West Conference Scholar-Athlete ... Academic All-MWC ... *ESPN the Magazine Academic All-America nominee* ... Part-time starter at middle blocker ... Had a career-high 2 solo stops vs. Loyola Marymount on Aug. 30 ... Recorded season-high 7 kills and .583 hitting percentage (7K-0E-12TA) at Texas-Arlington on Sept. 20.

**SOPHOMORE (2007):** Mountain West Conference Scholar-Athlete ... Academic All-MWC ... A key reserve on the front row for blocking and attack ... Recorded season-high 7 kills against Grambling State on Aug. 25 and TCU on Sept. 28 ... Posted a career-high 5 service aces against Grambling on Aug. 25 ... Passed a season-high 3 digs and 6 blocks against Colorado State on Nov. 17.

**FRESHMAN (2006):** Mountain West Conference Scholar-Athlete ... Academic All-MWC ... Posted a career-high 13 kills against UNLV on Sept. 30 ... Tied that mark on Nov. 4 against Utah and added 2 aces and 5 blocks for a career-high 17.5 points ... Had a season-high 4 aces against Houston on Sept. 1 ... Recorded a career-high 9 blocks at Colorado State on Sept. 22 ... Set a career-high for digs with 6 against Houston on Sept. 1.

**HIGH SCHOOL:** Three-time letterwinner in volleyball under head coach Tom Pazko at Chatfield Senior High School ... Second team all-state as a junior and senior ... Selected to play for the Colorado Coaches of Girls Sports senior all-star team ... First team all-Jefferson County Conference in 2005 and second team all-conference in 2004 ... Guided the Chargers to the Jefferson County league title in 2005 ... Led Chatfield in blocks from 2003-2005 and notched a career-best 10 blocks against Air Academy in 2005 ... Honored on the Jefferson County all-academic team ... Member of the National Honor Society ... Valedictorian of her graduating

## CAREER SINGLE-MATCH HIGHS

Kills: 13, 2x - last vs. Utah (11/4/06)  
 Attacks: 29, vs. Utah (11/4/06)  
 Hitting Percentage: 1.000, vs. Louisiana-Monroe (9/2/06)  
 Assists: 1, 3x - last vs. Baylor (9/11/09)  
 Service Aces: 5, vs. Grambling State (8/25/07)  
 Digs: 6, vs. Houston (9/1/06)  
 Total Blocks: 9, at Colorado State (9/22/06)  
 Solo Blocks: 2, 3x - last vs. Tulane (9/20/09)  
 Block Assists: 8, 2x - last at Colorado State (9/22/06)  
 Points: 17.5, vs. Utah (11/4/06)

## 2009 SINGLE-MATCH HIGHS

Kills: 7, vs. Tulane (9/20/09)  
 Attacks: 14, vs. Tulane (9/20/09)  
 Hitting Percentage: .667, 2x - last at Utah (10/10/09)  
 Assists: 1, vs. Baylor (9/11/09)  
 Service Aces: 1, 4x - last at Air Force (10/29/09)  
 Digs: 3, at Colorado State (9/24/09)  
 Total Blocks: 4, 2x - last vs. Air Force (10/3/09)  
 Solo Blocks: 2, 2x - last vs. Tulane (9/20/09)  
 Block Assists: 4, vs. Air Force (10/3/09)  
 Points: 11.0, vs. Tulane (9/20/09)

class with a 4.0 GPA.

**PERSONAL:** Daughter of Robert and Cindy Suiter ... Has an older sister, Carrie, and an older brother, David ... Favorite food is bananas ... Favorite athlete is Todd Helton of the Colorado Rockies ... Claims her greatest thrill while participating in sports was the chance to play in the Junior Olympics ... Exercise Science major.

## Suiter's Career Stats

Year	SP-MP	K	E	TA	Pct.	A	SA	Dig	BS	BA	TB	Pts.
2006	80-26	156	72	380	.221	0	15	42	4	73	77	211.5
2007	43-22	44	28	114	.140	0	5	12	1	40	41	70.0
2008	59-22	68	25	155	.277	2	8	23	7	42	49	104.0
<b>Totals</b>	<b>182-70</b>	<b>268</b>	<b>125</b>	<b>649</b>	<b>.220</b>	<b>2</b>	<b>28</b>	<b>77</b>	<b>12</b>	<b>155</b>	<b>167</b>	<b>385.5</b>

# JUNIOR TAYLOR HADFIELD



**Middle Blocker • 6-1  
Junior-2L  
Corte Madera, Calif.  
Redwood HS**

**12**

## CAREER SINGLE-MATCH HIGHS

Kills: 21, vs. Colorado State (10/24/09)  
Attacks: 39, vs. Colorado State (10/24/09)  
Hitting Percentage: 1.000, vs. TCU (11/21/08)  
Assists: 2, 4x - last at Air Force (10/29/09)  
Service Aces: 3, at Arizona (9/19/09)  
Digs: 7, 3x - last at Wyoming (9/26/09)  
Total Blocks: 7, at San Diego State (9/25/08)  
Solo Blocks: 2, 2x - last vs. UNLV (10/17/09)  
Block Assists: 7, at San Diego State (9/25/08)  
Points: 22.5, vs. Colorado State (10/24/09)

## 2009 SINGLE-MATCH HIGHS

Kills: 21, vs. Colorado State (10/24/09)  
Attacks: 39, vs. Colorado State (10/24/09)  
Hitting Percentage: .714, at Utah (10/10/09)  
Assists: 2, at Air Force (10/29/09)  
Service Aces: 3, at Arizona (9/19/09)  
Digs: 7, 2x - last at Wyoming (9/26/09)  
Total Blocks: 5, 2x - last vs. Pittsburgh (9/12/09)  
Solo Blocks: 2, 2x - last vs. UNLV (10/17/09)  
Block Assists: 5, vs. Portland State (8/29/09)  
Points: 22.5, vs. Colorado State (10/24/09)

**JUNIOR (2009):** Had a career match against No. 25 Colorado State on Oct. 24 with 21 kills ... Tied then-career-high with 16 kills in first win at Utah since 1996 ... Put down a then-career-high 16 kills vs. Pittsburgh, including three of the Lobos final four points to win the match ... Led team with 10 kills vs. Delaware on Aug. 28 and vs. American on Sept. 4.

**SOPHOMORE (2008):** Earned a starting role on the front row ... Pounded a season-high 10 kills at TCU on Sept. 17 ... Was a perfect 7K-0E-7TA vs. TCU on Nov. 21 ... Had a .833 hitting percentage (5K-0E-6TA) at George Mason on Sept. 6 ... Had a career-high two service aces vs. Sam Houston State on Sept. 19.

**FRESHMAN (2007):** Had occasional starts and was a key front row reserve ... Had a career-high 11 kills and 12.5 points at nationally-ranked San Diego on Sept. 24 ... Best attack percentage was .727 (8K-0E-11TA) vs. Northern Arizona on Sept. 1 ... Recorded a career-high 4 blocks against Grambling State on Aug. 25.

**HIGH SCHOOL:** Middle blocker and right-side hitter for Redwood High School and head coach Katie Pease ... Garnered MVP honors her senior year for the Marin County Athletic League ... Was a three-time all-conference honoree, guiding the Giants to four consecutive league championships ... Also led Redwood to the 2006 North Coast Section Championship title ... During senior season, was named Rivals.com Female Athlete of the Week once and the conference Player of the Week twice ... Played club volleyball for the Empire VBC under the direction of Bear Grassl.

**PERSONAL:** Daughter of Dave and Dee Hadfield ... Sister, Jordie, is the UNM Director of Volleyball Operations ... Majoring in Sociology.

## Hadfield's Career Stats

Year	SP-MP	K	E	TA	Pct.	A	SA	Dig	BS	BA	TB	Pts.
2007	40-18	69	37	184	.174	9	0	8	1	22	23	81.0
2008	83-28	151	44	336	.318	5	5	34	8	65	73	196.5
<b>Totals</b>	<b>123-46</b>	<b>220</b>	<b>81</b>	<b>520</b>	<b>.267</b>	<b>14</b>	<b>5</b>	<b>42</b>	<b>9</b>	<b>87</b>	<b>96</b>	<b>277.5</b>

# JUNIOR LISA MEETER



**Outside Hitter • 5-11**  
**Junior-2L**  
**Colorado Springs, Colo.**  
**Colorado Springs Christian School**



## CAREER SINGLE-MATCH HIGHS

Kills: 26, vs. Utah (11/3/07)  
 Attacks: 61, vs. Utah (11/3/07)  
 Hitting Percentage: .750, vs. Rutgers (9/5/08)  
 Assists: 5, at UNLV (9/27/08)  
 Service Aces: 4, 2x - last at San Diego (9/24/07)  
 Digs: 22, vs. Wyoming (11/8/08)  
 Total Blocks: 4, at Arizona State (8/31/07)  
 Solo Blocks: 1, 16x - last at Air Force (10/29/09)  
 Block Assists: 3, 5x - last at San Diego State (11/10/07)  
 Points: 29.0, vs. Utah (11/3/07)

## 2009 SINGLE-MATCH HIGHS

Kills: 19, at San Diego State (10/31/09)  
 Attacks: 47, vs. Baylor (9/11/09)  
 Hitting Percentage: .500, vs. Air Force (10/3/09)  
 Assists: 4, vs. Wyoming (10/22/09)  
 Service Aces: 3, 2x - last vs. Wyoming (10/22/09)  
 Digs: 15, at Utah (10/10/09)  
 Total Blocks: 3, vs. Wyoming (10/22/09)  
 Solo Blocks: 1, 5x - last at Air Force (10/29/09)  
 Block Assists: 2, 6x - last vs. Colorado State (10/24/09)  
 Points: 20.0, at San Diego State (10/31/09)

**JUNIOR (2009):** *ESPN the Magazine Academic All-America nominee* ... Three-year starter for the Lobos ... Named to Nike Portland Invitational All-Tournament Team ... Has five double-doubles on the season ... Posted season-high 14 kills at Arizona on Sept. 19, matching mark against Baylor on Sept. 11 ... Recorded a double-double of 10 kills and 12 digs vs. American on Sept. 4 and just missed a second in the tournament with 10 kills and 9 digs at Portland on Sept. 5 ... Then-season-high 13 kills and three service aces to lead UNM in win over UC Santa Barbara on Aug. 29.

**SOPHOMORE (2008):** Academic All-Mountain West Conference ... *ESPN the Magazine Academic All-America nominee* ... Finished third on team with 2.01 kills and 2.24 digs per set ... Tied for fourth with 16 service aces ... Compiled a season-high 15 kills and 17 points vs. New Mexico State on Nov. 28 ... Had three double-double matches ... Recorded a career-high 22 digs against Wyoming on Nov. 8 ... Season got off to a rocky start with a sprained ankle in the first match of the season ... Got back on the court in the George Mason tournament.

**FRESHMAN (2007): Mountain West Conference Freshman of the Year** ... MWC Scholar-Athlete ... Academic All-MWC ... Only Lobo to play in every game ... Named to MCM Elegante Lobo Classic all-tournament team ... Named to Comcast Lobo Invitational all-tournament team ... Finished the season ranked in the MWC in kills per game (11th; 3.33), aces (2nd; 0.36), points (14th; 3.90) and digs (14th; 2.82) ... Double-digit kills in 21 matches ... Led the team with 12 double-doubles on the season ... Set career marks in kills (26), attacks (61) and points (29.0) vs. Utah on Nov. 3 ... Had career-highs of 4 assists and 4 aces, twice during the season ... Career-high 19 digs and 4 blocks came at Arizona State on Aug. 31.

**HIGH SCHOOL:** Four-year varsity outside hitter for head coach Verlyn Rosenthal ... Helped team to three consecutive district championships (2004-2006) and regional championships (2003-2005) ... As a senior, CSCS captured their third 3A State Championship (2004, 2005, 2006) ... Named

All-Colorado and 3A All-State First Team by the *Denver Post* in 2006 ... In 2005, named to the All-Colorado and State All-Tournament teams by both the *Rocky Mountain News* and *Denver Post* ... *Denver Post* Most Valuable Player of the 2005 3A State Tournament ... Holds the Colorado High Schools Activities Association records for most career points and most points in a single season (512 - 2004) ... A member of Colorado Juniors since 2000 and finished 10th in the USA Junior National Volleyball Olympics 17 Open division under coach Sherri Hawkins ... Team captured gold in the Open Division of the 2005 Colorado Crossroads and bronze in the Open Division at the 2005 Far Westerns Qualifier ... 2006 and 2005 PrepVolleyball.com High School All-American ... Finalist for the 2004 PrepVolleyball.com National High School Sophomore of the Year ... Carried a 4.10 GPA ... National Honor Society member ... CSCS Highest Honor Roll from 2003-2006.

**PERSONAL:** Daughter of Glenn and Diane Meeter ... Sister, Laura, played volleyball at University of Colorado-Colorado Springs ... Majoring in Business with emphasis in marketing and entrepreneurial studies.

## Meeter's Career Stats

Year	SP-MP	K	E	TA	Pct.	A	SA	Dig	BS	BA	TB	Pts.
2007	105-29	350	173	1041	.170	35	38	296	5	34	39	410.0
2008	91-27	183	98	577	.147	32	16	204	5	22	27	215.0
<b>Totals</b>	<b>196-56</b>	<b>533</b>	<b>271</b>	<b>1618</b>	<b>.162</b>	<b>67</b>	<b>54</b>	<b>500</b>	<b>10</b>	<b>56</b>	<b>66</b>	<b>625.0</b>

# JUNIOR JADE MICHAELSEN



**Setter • 6-0**  
**Junior-2L**  
**Tucson, Ariz.**  
**Salpointe Catholic HS**



**JUNIOR (2009):** *ESPN the Magazine Academic All-America nominee* ... Arizona Invitational by Marriott University Park All-Tournament Team ... Comcast Lobo Challenge All-Tournament Team ... Nike Portland Invitational Most Valuable Player ... MCM Elegante All-Tournament Team ... 2009 Mountain West Conference Preseason Co-Player of the Year ... Team captain ... Earned 2,000th career assist on first assist vs. UC Santa Barbara on Aug. 29 ... Cracked the UNM Top 10 career assists list during MCM Elegante Lobo Classic ... Posted a career-high 14 digs against Baylor on Sept. 11

**SOPHOMORE (2008): All-Mountain West Conference** ... MWC Scholar-Athlete ... Academic All-MWC ... *ESPN the Magazine Academic All-America nominee* ... Named Mountain West Conference Co-Player of the Week on Sept. 29 ... Team captain ... Finished second in MWC and 28th in nation with 10.92 assists per set ... Led team with 20 service aces ... Named to Ameritas Players Challenge All-Tournament Team ... Named to the George Mason Patriot Invitational All-Tournament Team ... Named to the MCM Elegante Lobo Classic All-Tournament Team ... Recorded a season-high 54 assists at Texas-Arlington on Sept. 20 ... Season-high 11 digs vs. New Mexico State for her third double-double of the season (47 assists) ... In same match had season-high seven blocks and six assists.

**REDSHIRT FRESHMAN (2007):** Academic All-Mountain West Conference ... Became the Lobos lead setter halfway through the season ... MWC ranking of 6th in assists with a 8.77 per game average ... Dished out a career-high 57 assists vs. UNLV on Oct. 13 ... Recorded three double-doubles, including two in back-to-back matches at Utah (27A-12D) and at BYU (38A-11D) ... Had a career-high 7 kills vs. TCU on Sept. 28 and at BYU on Oct. 6 ... Dropped a career-high 3 aces vs. Utah on Nov. 3 ... Matched career-high 12 digs at TCU on Oct. 26 ... Had a career-high 9 blocks on Aug. 25 vs. San Jose State, leading to a career-high 10.5 points.

**FRESHMAN (2006):** Redshirt season.

**HIGH SCHOOL:** Three-year letterwinner in volleyball at Sal-

## CAREER SINGLE-MATCH HIGHS

Kills: 7, 2x - last at BYU (10/6/07)  
 Attacks: 20, vs. Baylor (9/11/09)  
 Hitting Percentage: .857, at San Diego State (11/10/07)  
 Assists: 57, vs. UNLV (10/13/07)  
 Service Aces: 3, vs. Utah (11/3/07)  
 Digs: 14, 2x - last vs. TCU (9/16/09)  
 Total Blocks: 9, vs. San Jose State (8/25/07)  
 Solo Blocks: 2, 2x - last at Portland (9/5/09)  
 Block Assists: 9, vs. San Jose State (8/25/07)  
 Points: 10.5, vs. San Jose State (8/25/07)

## 2009 SINGLE-MATCH HIGHS

Kills: 6, 3x - last vs. Wyoming (10/22/09)  
 Attacks: 20, vs. Baylor (9/11/09)  
 Hitting Percentage: .571, at Air Force (10/29/09)  
 Assists: 53, 2x - last at Utah (10/10/09)  
 Service Aces: 2, 4x - last vs. Colorado State (10/24/09)  
 Digs: 14, 2x - last vs. TCU (9/16/09)  
 Total Blocks: 6, 2x - last at New Mexico State (10/13/09)  
 Solo Blocks: 2, at Portland (9/5/09)  
 Block Assists: 6, 2x - last at New Mexico State (10/13/09)  
 Points: 10.0, vs. Tulane (9/20/09)

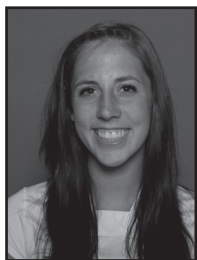
pointe Catholic in Tucson, Ariz. ... Guided her team to three regional championships ... Named the 5A Southern Arizona Player of the Year as a junior ... First team all-state selection as a senior and second team honoree as a junior ... Named to the All-Southern Arizona second team as a sophomore ... Put down a career-high 198 kills as sophomore, 110 as a junior and 74 as a senior ... Blocked a career-high 52 attempts in 2005, 42 in 2004 and 35 in 2003 ... Dished out a career-high 842 assists as a junior, 753 as a senior and 425 as a sophomore ... Averaged over 109 digs and 21 aces per season ... Received the Gary Gillette Memorial, Fine Arts Ceramics and Club Cactus Junior Volleyball Captain's awards ... Made the Honor Roll three consecutive years.

**PERSONAL:** Daughter of Jerry and Joanne Michaelsen ... Brother, Justin, played middle blocker for the University of Arizona ... Her uncle, John Butcher, played professional baseball for the Texas Rangers, Minnesota Twins and Cleveland Indians ... Lists her hobbies as reading, playing video games and water sports and off-roading ... Likes ice cream and pasta ... Favorite athlete is Tiger Woods ... Says her greatest thrill while participating in sports was going undefeated in her region to claim three regional titles ... Business major.

## Michaelsen's Career Stats

Year	SP-MP	K	E	TA	Pct.	A	SA	Dig	BS	BA	TB	Pts.
2007	104-29	106	25	279	.290	912	13	118	9	75	84	165.5
2008	93-20	65	25	216	.185	1016	20	154	7	70	77	127.0
<b>Totals</b>	<b>197-49</b>	<b>171</b>	<b>50</b>	<b>495</b>	<b>.244</b>	<b>1928</b>	<b>33</b>	<b>272</b>	<b>16</b>	<b>145</b>	<b>161</b>	<b>292.5</b>

# SOPHOMORE ALLISON BUCK



**Libero • 5-7**  
**Sophomore/1L**  
**Camas, Wash.**  
**Camas HS**



**SOPHOMORE (2009):** Nike Portland Invitational All-Tournament Team ... MCM Elegante Lobo Classic All-Tournament Team ... Recorded three consecutive matches of 17 digs to start the season ... Recorded a career-high 23 digs against Baylor on Sept. 11 ... Played for Bring It Promotions/USA Development Team in July 2009, winning 2009 Global Challenge in Pula, Croatia ... Starting libero.

**FRESHMAN (2008):** Made her first collegiate start on Aug. 29 against Central Arkansas ... Came in right away as a solid back row player ... Led team with 20 service aces ... Recorded her first collegiate kill at UNLV on Sept. 27 ... Recorded a season-high 17 digs at TCU on Sept. 17.

**HIGH SCHOOL:** Two-time first team all-state as junior and senior, honorable mention as a sophomore ... Three-time all-region and all-league ... Columbia Region MVP as a junior ... Greater St. Helen's League MVP as a senior, Co-MVP as a junior.

**PERSONAL:** Daughter of Ted and Katie Buck ... Older sister Annie played volleyball at Whitworth (1999-2002) and older sister Jessie played at Northwest (2002-05) ... Has a younger brother, Matt ... Majoring in Elementary Education ... Played club for Cowlitz Volleyball Club.

## CAREER SINGLE-MATCH HIGHS

Kills: 2, vs. Wyoming (10/22/09)  
 Attacks: 4, vs. Wyoming (10/22/09)  
 Hitting Percentage: 1.000, 2x - last vs. Tulane (9/20/09)  
 Assists: 6, 2x - last vs. TCU (9/16/09)  
 Service Aces: 3, 6x - last vs. Air Force (10/3/09)  
 Digs: 23, vs. Baylor (9/11/09)  
 Total Blocks: N/A  
 Solo Blocks: N/A  
 Block Assists: N/A  
 Points: 3.0, 8x - last vs. Wyoming (10/22/09)

## 2009 SINGLE-MATCH HIGHS

Kills: 2, vs. Wyoming (10/22/09)  
 Attacks: 4, vs. Wyoming (10/22/09)  
 Hitting Percentage: 1.000, vs. Tulane (9/20/09)  
 Assists: 6, 2x - last vs. TCU (9/16/09)  
 Service Aces: 3, 3x - last vs. Air Force (10/3/09)  
 Digs: 23, vs. Baylor (9/11/09)  
 Total Blocks: N/A  
 Solo Blocks: N/A  
 Block Assists: N/A  
 Points: 3.0, 5x - last vs. Wyoming (10/22/09)

### Buck's Career Stats

Year	SP-MP	K	E	TA	Pct.	A	SA	Dig	BS	BA	TB	Pts.
2008	98-29	1	9	21	-.381	8	20	190	0	0	0	21.0

# SOPHOMORE ASHLEY RHOADES



**Middle Blocker • 5-11**  
**Sophomore/1L**  
**Rio Rancho, N.M.**  
**Rio Rancho HS**

**4**

## CAREER SINGLE-MATCH HIGHS

Kills: 15, 2x - last at Utah (10/10/09)  
 Attacks: 30, at Wyoming (9/26/09)  
 Hitting Percentage: .714, at Portland (9/5/09)  
 Assists: 1, 5x - last at Utah (10/10/09)  
 Service Aces: 1, vs. Pittsburgh (9/12/09)  
 Digs: 2, 5x - last at New Mexico State (10/13/09)  
 Total Blocks: 10, vs. UC Santa Barbara (8/29/09)  
 Solo Blocks: 4, vs. UC Santa Barbara (8/29/09)  
 Block Assists: 7, at New Mexico State (10/13/09)  
 Points: 19.0, at Utah (10/10/09)

## 2009 SINGLE-MATCH HIGHS

Kills: 15, 2x - last at Utah (10/10/09)  
 Attacks: 30, at Wyoming (9/26/09)  
 Hitting Percentage: .714, at Portland (9/5/09)  
 Assists: 1, 5x - last at Utah (10/10/09)  
 Service Aces: 1, vs. Pittsburgh (9/12/09)  
 Digs: 2, 5x - last at New Mexico State (10/13/09)  
 Total Blocks: 10, vs. UC Santa Barbara (8/29/09)  
 Solo Blocks: 4, vs. UC Santa Barbara (8/29/09)  
 Block Assists: 7, at New Mexico State (10/13/09)  
 Points: 19.0, at Utah (10/10/09)

**SOPHOMORE (2009):** *ESPN the Magazine Academic All-America nominee* ... Missed two matches at Air Force and San Diego State with a sprained ankle ... Had second consecutive week of 11 kills on Thursday (at BYU on Oct. 8) and 15 on Saturday (at Utah on Oct. 10), matching her career-high ... Named MWC Co-Player of the Week on Oct. 5 for a career week against San Diego State and Air Force to start October with 11 kills and .647 attack percentage vs. SDSU and career-high 15 kills and .619 percentage vs. AFA ... Pounded 12 kills at Wyoming on Sept. 26 ... Recorded 10 kills and career-high .714 (10k-0e-14ta) hitting percentage at Portland on Sept. 5 ... Had nine kills and career-high 10 blocks vs. UC Santa Barbara, including match-winning block ... Played for Bring It Promotions/USA Development Team in July 2009, winning 2009 Global Challenge in Pula, Croatia.

**FRESHMAN (2008):** Made first collegiate appearance vs. Idaho State on Aug. 30 and recorded four kills and two blocks ... Was second on the team in blocks with 1.11 per set in limited reserve action.

**HIGH SCHOOL:** Led Rio Rancho to three consecutive New Mexico 5A state championships ... Named New Mexico 5A Player of the Year ... Two-time first team all-state selection ... All-district performer in volleyball and basketball ... Also an all-state honoree in basketball.

**PERSONAL:** Daughter of Ron and Terry Rhoades ... Has a younger sister, Madison, and a younger brother, Jeremy ... Madison is a freshman on the Eastern New Mexico University volleyball team ... Majoring in Construction Management ... Played club with High Desert and New Mexico Juniors.

### Rhoades's Career Stats

Year	SP-MP	K	E	TA	Pct.	A	SA	Dig	BS	BA	TB	Pts.
2008	18-11	16	5	42	.262	0	0	2	8	12	20	30.0

# SOPHOMORE KELLY WILLIAMSON



**Outside Hitter • 6-2**  
**Sophomore/1L**  
**Buenos Aires, Argentina**  
**Lincoln International School**



## CAREER SINGLE-MATCH HIGHS

Kills: 9, at Arizona (9/19/09)  
 Attacks: 24, at Arizona (9/19/09)  
 Hitting Percentage: .727, vs. Air Force (10/18/08)  
 Assists: 1, vs. Air Force (10/18/08)  
 Service Aces: n/a  
 Digs: 2, 3x - last at Wyoming (9/26/09)  
 Total Blocks: 3, 2x - last at Wyoming (9/26/09)  
 Solo Blocks: 2, vs. UTEP (9/19/09)  
 Block Assists: 3, at Wyoming (9/26/09)  
 Points: 9.5, at Arizona (9/19/09)

## 2009 SINGLE-MATCH HIGHS

Kills: 9, at Arizona (9/19/09)  
 Attacks: 24, at Arizona (9/19/09)  
 Hitting Percentage: .500, 2x - last at Air Force (10/29/09)  
 Assists: N/A  
 Service Aces: N/A  
 Digs: 2, 2x - last at Wyoming (9/26/09)  
 Total Blocks: 3, 2x - last at Wyoming (9/26/09)  
 Solo Blocks: 2, vs. UTEP (9/19/09)  
 Block Assists: 3, at Wyoming (9/26/09)  
 Points: 9.5, at Arizona (9/19/09)

**SOPHOMORE (2009):** *ESPN the magazine Academic All-America nominee* ... Had a career-high 9 kills, 9.5 points and 24 attempts at Arizona on Sept. 19 ... Had a big blocking weekend in Tucson with two solos vs. UTEP on Sept. 19 and three total vs. Tulane on Sept. 20 ... Spent the first summer session in Nepal working on sustainable technologies and rainwater harvesting systems.

**FRESHMAN (2008):** Made first collegiate appearance against Idaho State on Aug. 30 and had four kills and one block ... Had a season-high 8 kills, 2 digs, 8.5 points and .727 hitting percentage (8K-0E-11TA) against Air Force on Oct. 18.

**HIGH SCHOOL:** Played for the Argentine Junior National Team ... Named Lincoln International Athlete of the Year as a sophomore and senior ... Two-time Community Service Award honoree ... Named Outstanding Freshman and Outstanding Sophomore ... Received awards in Spanish, Musical Theater and Senior Science.

**PERSONAL:** Daughter of Cliff and Marcia Williamson ... Has a brother, Tyler ... Was born in Brasilia, Brazil ... Majoring in Conservation Biology with a minor in sustainability.

### Williamson's Career Stats

Year	SP-MP	K	E	TA	Pct.	A	SA	Dig	BS	BA	TB	Pts.
2008	27-18	26	10	79	.203	1	0	4	0	6	6	29.0

# SOPHOMORE AMY WONG



**Setter • 5-7 • Sophomore/1L**  
**Litchfield Park, Ariz.**  
**Virginia Commonwealth Univ.**  
**Millennium HS**



**SOPHOMORE (2009):** *ESPN the Magazine Academic All-America* nominee ... Key back row player.

**REDSHIRT FRESHMAN (2008):** Key back row reserve ... Transferred to UNM in Spring 2008 ... Dean's List Spring 2008 ... Travelled with team to Argentina ... Season-high 6 digs vs. Sam Houston State on Sept. 19.

**FRESHMAN (2007):** Redshirt season at VCU ... Dean's List and VCU Athletics Commissioners Award.

**HIGH SCHOOL:** Two-time second team all-state performer in volleyball ... First 4-year varsity player at Millennium ... Three-time first team all-region, honorable mention as a freshman ... Two-time West Valley Region Player of the Year ... Named to numerous all-tournament teams during four seasons ... Team captain as sophomore, junior and senior in volleyball ... Also a four-year letterwinner in track and field ... Track and field team captain as a senior ... Regional champion in shot put and discus as a senior ... Student Body President as a senior, after serving as Junior Class President and Sophomore Class President ... National Honor Society ... Honor Roll all eight semesters and graduated in Top 10 percent of class with 4.33 GPA.

**PERSONAL:** Daughter of Wray and Patricia Wong ... Majoring in Business Administration ... Sister, Kelly, attends Northern Arizona University ... Played club, Desert Sky Flash.

## CAREER SINGLE-MATCH HIGHS

Kills: 1, 2x - last at Portland (9/5/09)  
 Attacks: 4, vs. Tulane (9/20/09)  
 Hitting Percentage: .500, vs. American (9/4/09)  
 Assists: 1, 7x - last vs. UNLV (10/17/09)  
 Service Aces: 2, 6x - last vs. Tulane (9/20/09)  
 Digs: 15, vs. Portland State (8/29/09)  
 Total Blocks: N/A  
 Solo Blocks: N/A  
 Block Assists: N/A  
 Points: 3.0, vs. American (9/4/09)

## 2009 SINGLE-MATCH HIGHS

Kills: 1, 3x - last at San Diego State (10/31/09)  
 Attacks: 4, vs. Tulane (9/20/09)  
 Hitting Percentage: .500, vs. American (9/4/09)  
 Assists: 2, vs. Wyoming (10/22/09)  
 Service Aces: 2, 6x - last vs. Tulane (9/20/09)  
 Digs: 15, vs. Portland State (8/29/09)  
 Total Blocks: N/A  
 Solo Blocks: N/A  
 Block Assists: N/A  
 Points: 3.0, vs. American (9/4/09)

### Wong's Career Stats

Year	SP-MP	K	E	TA	Pct.	A	SA	Dig	BS	BA	TB	Pts.
2008	9-9	0	0	0	.000	0	4	16	0	0	0	4.0

# LOBO NEWCOMERS



**16**

**RACHEL BARBER**  
*Outside Hitter • 6-1 • Freshman/RS*  
 Phoenix, Ariz. • Arcadia HS

**REDSHIRT FRESHMAN (2009):** Made first collegiate appearance on Sept. 4 vs. American.

**FRESHMAN (2008):** Redshirt season ... Dean's List.

**HIGH SCHOOL:** Lettered in volleyball, track and field, and swimming and diving at Arcadia ... Played volleyball as a sophomore and junior ... Named second team all-region.

**PERSONAL:** Daughter of Robert and Linda Barber ... Studying to be a physician's assistant ... Played club for Arizona Volleyball Academy for three years ... Sister, Megan, attends Arizona State.

**2009 SINGLE-MATCH HIGHS**

Kills: 1, vs. TCU (9/16/09)  
 Attacks: 9, vs. TCU (9/16/09)  
 Hitting Percentage: N/A  
 Assists: N/A  
 Service Aces: N/A  
 Digs: N/A  
 Total Blocks: N/A  
 Solo Blocks: N/A  
 Block Assists: N/A  
 Points: 1.0, vs. TCU (9/16/09)



**15**

**JACKIE RODRIGUEZ**  
*Libero • 5-7 • Freshman*  
 Rio Rancho, N.M. • Rio Rancho HS

**FRESHMAN (2009):** Made first collegiate appearance on Sept. 11 vs. Cal State Fullerton.

**HIGH SCHOOL:** First team all-state and first team all-district 1-5A libero in 2007 and 2008 ... 2009 Class 5A North All-Star ... 2008 All-Metro second team ... All-Academic 2007 and 2008 ... West Texas Tournament of Champions Libero of the Tournament ... Rio Rancho won 5A title in 2007 and runner-up in 2008.

**PERSONAL:** Daughter of Chris and Julie Rodriguez ... Has two younger sisters, Jasmine and Jayden ... Majoring in Public Relations ... Played club for High Desert and New Mexico Juniors ... Cousin, Jonelle Martinez, is a senior on the women's golf team at Wyoming and was the medalist at the 2009 MWC Championships.

**2009 SINGLE-MATCH HIGHS**

Kills: N/A  
 Attacks: N/A  
 Hitting Percentage: N/A  
 Assists: N/A  
 Service Aces: N/A  
 Digs: 3, 2x - last at Colorado State (9/24/09)  
 Total Blocks: N/A  
 Solo Blocks: N/A  
 Block Assists: N/A  
 Points: N/A



**3**

**MELISSA ROHR**  
*Libero • 5-8 • Freshman*  
 Albuquerque, N.M. • Cibola HS

**FRESHMAN (2009):** Made her first appearance as a Lobo against Delaware on Aug. 28 ... Recorded two service aces against UC Santa Barbara on Aug. 29.

**HIGH SCHOOL:** Two-sport athlete for the Cougars ... 5A honorable mention all-state libero ... First team all-Metro and District Player of the Year ... 2009 Class 5A North All-Star as an outside hitter.

**PERSONAL:** Daughter of Phil and Robyn Rohr ... Has an older sister, Amy ... Father played basketball at Idaho State ... Aunt, Julie Rohr, played volleyball at New Mexico in 1976 and 1978 ... Majoring in Elementary Education and Religion ... Played club for New Mexico Juniors ... Team won regionals in 2008 to advance to nationals.

**2009 SINGLE-MATCH HIGHS**

Kills: 1, at San Diego State (10/31/09)  
 Attacks: 1, 2x - last at San Diego State (10/31/09)  
 Hitting Percentage: 1.000, at San Diego State (10/31/09)  
 Assists: 1, 2x - last at San Diego State (10/31/09)  
 Service Aces: 2, vs. UC Santa Barbara (8/29/09)  
 Digs: 12, vs. Colorado State (10/24/09)  
 Total Blocks: N/A  
 Solo Blocks: N/A  
 Block Assists: N/A  
 Points: 2.0, vs. UC Santa Barbara (8/29/09)

# LOBO NEWCOMERS



5

## JORDAN RUSSELL

*Setter • 5-7 • Freshman  
Stanley, N.M. • Moriarty HS*

**FRESHMAN (2009):** Made first appearance as a Lobo against Portland State on Aug. 29 ... Key reserve at service line and in back row.

**HIGH SCHOOL:** Led Moriarty to back-to-back 4A state titles in 2007 and 2008 ... First team all-state setter in 2007 and 2008 ... Four-time all-district and two-time all-Metro in volleyball ... 2009 North 3-4A All-Star ... All-district and all-Metro basketball honoree in 2009 ... Four-year academic letterwinner.

**PERSONAL:** Daughter of Joe and Lori Russell ... Has three older sisters, Heather, April and Krystal ... Majoring in Nursing ... Played club with High Desert and New Mexico Juniors.



17

## CARLI TORR

*Libero • 5-6 • Freshman  
Albuquerque, N.M. •  
La Cueva HS*

**FRESHMAN (2009):** Redshirt season.

**HIGH SCHOOL:** Third team all-Metro, first team all-district and all-academic honors ... 2009 North 5A All-Star ... Member of DECA, advancing to national competition.

**PERSONAL:** Daughter of Doug Torr and Maria Barber ... Has two sisters, Brittany and Brandi ... Majoring in Psychology ... Played club with New Mexico Juniors ... 17s won regionals to advance to national tournament.

### 2009 SINGLE-MATCH HIGHS

Kills: N/A

Attacks: N/A

Hitting Percentage: N/A

Assists: 2, at San Diego State (10/31/09)

Service Aces: 1, 2x - last at San Diego

State (10/31/09)

Digs: 5, vs. San Diego State (10/1/09)

Total Blocks: N/A

Solo Blocks: N/A

Block Assists: N/A

Points: 1.0, 2x - last at San Diego State

(10/24/09)

# 2009 BOX SCORES

## Match #1 \*\*\* New Mexico 3, Delaware 0 Aug. 28, 2009 at Johnson Center, Albuquerque, N.M. MCM Elegante Lobo Classic

##	Delaware	SP	K	E	TA	PCT	A	SA	SE	RE	DIG	BS	BA	BE	BHE	PTS
3	Erickson, Paige	3	5	5	21	.000	1	0	4	0	3	1	2	1	0	7.0
7	Stewart, Kim	3	3	2	17	.059	0	0	1	0	0	1	0	1	0	4.0
9	Dennehy, Katie	3	8	6	33	.061	0	1	1	2	0	0	0	0	0	9.0
10	Chason, Jess	3	0	0	5	.000	24	0	1	0	4	0	0	0	1	0.0
12	Alker, Alissa	3	4	7	15	-.200	0	0	0	0	4	0	2	0	0	5.0
14	LaLonde, Michelle	3	5	0	9	.556	0	0	0	0	0	1	0	0	0	6.0
1	Barry, Stephanie	3	0	0	0	.000	0	2	1	11	0	0	0	0	0	0.0
5	Gibboney, Greta	3	0	0	0	.000	0	3	0	3	0	0	0	0	0	0.0
8	Gibson, Kelly	3	1	3	7	-.286	0	2	2	1	6	0	0	0	0	3.0
15	Sebastian, Logan	1	0	0	1	.000	0	0	0	0	0	0	0	0	0	0.0
Totals.....		3	26	23	108	.028	25	3	14	3	33	3	4	2	1	34.0

### TEAM ATTACK PER GAME

Game	K	E	TA	Pct
1	6	8	47	-.043
2	8	10	31	-.065
3	12	5	30	.233

### TOTAL TEAM BLOCKS: 5.0

### GAME SCORES

	1	2	3
Delaware	20	13	21
New Mexico	25	25	25

### TEAM RECORDS

	1	2	3
Delaware	20	13	21
New Mexico	25	25	25

##	New Mexico	SP	K	E	TA	PCT	A	SA	SE	RE	DIG	BS	BA	BE	BHE	PTS
2	MEETER, Lisa	3	7	2	18	.278	0	0	1	0	6	0	0	0	0	7.0
4	RHOADES, Ashley	2	2	3	8	-.125	0	0	0	0	0	0	0	1	0	2.0
6	MORRIS, Rose	2	4	1	19	.158	0	0	2	0	3	0	0	0	0	4.0
7	MICHAELSEN, Jade	3	1	1	4	.000	25	1	0	0	8	0	0	0	0	2.0
12	HADFIELD, Taylor	3	10	5	23	.217	0	0	0	0	0	0	3	0	0	11.5
14	LEHNE, Anna	3	7	1	11	.545	1	0	1	0	2	1	2	1	0	9.0
3	ROHR, Melissa	1	0	0	0	.000	0	0	0	0	0	0	0	0	0	0.0
8	BUCK, Allison	3	0	0	0	.000	4	0	1	2	17	0	0	0	0	0.0
9	SUITER, Allie	1	2	1	3	.333	0	0	0	0	0	0	0	1	0	2.5
11	WONG, Amy	3	0	1	1	-.000	0	2	2	1	4	0	0	0	0	2.0
13	WILLIAMSON, Kelly	2	1	0	3	.333	0	3	0	2	0	0	0	0	0	1.0
Totals.....		3	34	15	90	.211	30	3	3	3	42	1	6	2	0	41.0

### TEAM ATTACK PER GAME

Game	K	E	TA	Pct
1	12	7	42	.119
2	8	2	17	.353
3	14	6	31	.258

### TOTAL TEAM BLOCKS: 4.0

Attend: 1782

Time: 1:20

Referees: Kevin Cull, Cedric All Runner

Tie scores 1 2 3 Total

Lead changes 1 1 7 9

1 1 2 4

## Match #2 \*\*\* New Mexico 3, Portland State 2 Aug. 29, 2009 at Johnson Center, Albuquerque, N.M. MCM Elegante Lobo Classic

##	Portland State	SP	K	E	TA	PCT	A	SA	SE	RE	DIG	BS	BA	BE	BHE	PTS
3	VARGAS, Tracy	5	9	5	20	.200	1	2	0	0	2	1	3	1	0	13.5
6	ONEY, Jennifer	5	7	4	25	.120	1	0	0	0	1	0	1	0	0	7.5
11	FRADELLA, Nique	5	4	4	12	.000	48	2	0	0	0	13	0	4	0	8.0
14	JEPSEN, Erica	5	7	3	19	.211	0	0	0	0	1	2	10	2	0	14.0
16	VILLALPANDO, Diana	5	0	0	0	.000	1	0	3	1	9	0	0	0	0	0.0
18	PHILLIPS, Whitney	5	25	11	60	.233	4	0	4	0	11	0	4	2	0	27.0
2	HAMILTON, Christie	5	7	2	18	.278	2	0	0	0	5	0	4	0	0	9.0
4	STEELE, Lindsey	5	0	0	0	.000	3	0	1	2	17	0	0	0	0	0.0
8	ROSENDALE, Alexa	1	0	0	0	.000	0	0	1	2	3	0	0	0	0	0.0
9	VOJNOVIC, Marija	5	3	2	24	.042	1	1	1	0	13	0	0	0	0	4.0
22	ZIELKE, Lana	2	2	0	5	.400	0	0	0	0	0	0	0	0	0	2.0
Totals.....		5	64	31	183	.180	61	5	10	5	75	3	26	5	1	85.0

### TEAM ATTACK PER GAME

Game	K	E	TA	Pct
1	12	8	35	.114
2	16	8	41	.195
3	15	3	34	.353
4	14	9	48	.104
5	7	3	25	.160

### TOTAL TEAM BLOCKS: 16.0

### GAME SCORES

	1	2	3	4	5
Portland State	22	25	25	23	12
New Mexico	25	22	19	25	15

### TEAM RECORDS

	1	2	3	4	5
Portland State	22	25	25	23	12
New Mexico	25	22	19	25	15

##	New Mexico	SP	K	E	TA	PCT	A	SA	SE	RE	DIG	BS	BA	BE	BHE	PTS
2	MEETER, Lisa	5	9	7	37	.054	3	2	0	2	11	1	0	0	0	12.0
6	MORRIS, Rose	5	11	7	41	.098	0	0	1	0	6	0	2	0	0	12.0
7	MICHAELSEN, Jade	5	4	1	11	.273	46	1	0	1	11	0	3	1	2	6.5
9	SUITER, Allie	2	1	2	6	-.167	0	0	0	0	1	2	1	0	0	3.5
12	HADFIELD, Taylor	5	7	7	23	.000	0	0	0	0	3	0	5	3	0	9.5
14	LEHNE, Anna	5	17	4	34	.382	0	0	0	0	0	2	6	1	0	22.0
3	ROHR, Melissa	5	0	0	0	.000	0	0	0	0	1	4	0	0	0	0.0
4	RHOADES, Ashley	3	6	2	12	.333	1	0	0	0	0	0	0	3	1	7.5
5	RUSSELL, Jordan	1	0	0	0	.000	0	0	0	0	0	0	0	0	0	0.0
8	BUCK, Allison	5	1	0	2	.500	1	2	1	0	17	0	0	0	0	3.0
11	WONG, Amy	5	0	1	1	-.000	0	0	1	1	15	0	0	0	0	0.0
13	WILLIAMSON, Kelly	1	2	1	7	.143	0	0	1	0	1	0	1	0	0	2.5
Totals.....		5	58	32	174	.149	51	5	4	5	69	5	21	6	2	78.5

### TEAM ATTACK PER GAME

Game	K	E	TA	Pct
1	12	6	33	.182
2	12	7	34	.147
3	14	9	38	.132
4	11	6	43	.116
5	9	4	26	.192

### TOTAL TEAM BLOCKS: 15.5

Attend: 1039

Time: 2:18

Referees: Kevin Cull, Steve Franco

Tie scores 1 2 3 4 5 Total

Lead changes 8 14 3 15 4 44

6 10 0 7 2 25

## Match #3 \*\*\* New Mexico 3, UC Santa Barbara 2 Aug. 29, 2009 at Johnson Center, Albuquerque, N.M. MCM Elegante Lobo Classic

##	UC Santa Barbara	SP	K	E	TA	PCT	A	SA	SE	RE	DIG	BS	BA	BE	BHE	PTS
3	Charlene DeHoog	3	8	5	23	.130	1	0	2	0	3	0	3	0	0	9.5
4	Leah Sully	5	16	7	43	.209	1	2	2	2	10	0	1	0	0	17.5
10	Dana Vargas	5	3	1	5	.400	48	0	0	0	9	0	1	0	2	3.5
11	Rebecca Schmidt	5	6	3	21	.143	0	1	0	1	3	0	3	0	0	8.5
21	Rebecca Saraceno	5	16	7	44	.205	1	1	6	0	13	0	0	0	0	17.0
24	Lily Lopez	5	7	7	20	.000	1	0	0	0	0	0	6	0	0	10.0
2	Chelsey Lowe	5	0	0	0	.000	2	0	2	6	14	0	0	0	0	0.0
5	Kasey Kipp	3	3	2	9	.111	2	0	0	0	2	0	1	0	0	3.5
15	Olivia Ruff	0	0	0	0	.000	0	0	1	0	2	0	0	0	0	0.0
23	Nicole Favreau	5	0	0	0	.000	0	1	0	0	4	0	0	0	0	1.0
Totals.....		5	59	32	165	.164	56	4	13	9	60	0	15	0	2	70.5

### TEAM ATTACK PER GAME

Game	K	E	TA	Pct
1	14	8	43	.140
2	15	5	35	.286
3	7	7	29	.000
4	16	5	36	.306
5	7	7	22	.000

### TOTAL TEAM BLOCKS: 7.5

### GAME SCORES

	1	2	3	4	5
UC Santa Barbara	17	25	18	25	13
New Mexico	25	19	25	19	15

### TEAM RECORDS

	1	2	3	4	5
UC Santa Barbara	17	25	18	25	13
New Mexico	25	19	25	19	15

##	New Mexico	SP	K	E	TA	PCT	A	SA	SE	RE	DIG	BS	BA	BE	BHE	PTS
2	MEETER, Lisa	5	13	6	31	.226	1	3	2	1	9	0	2	0	0	17.0
4	RHOADES, Ashley	5	9	1	24	.333	0	0	1	0	2	4	6	0	0	16.0
6	MORRIS, Rose	4	4	5	22	-.045	0	0	1	1	2	0	1	1	0	4.5
7	MICHAELSEN, Jade	5	0	2	16	.125	37	0	0	1	11	1	0	0	2	5.5</

# 2009 BOX SCORES

## Match #5 \*\*\* New Mexico 3, Portland 0 Sept. 5, 2009 at Chiles Center, Portland, Ore. Nike Portland Invitational

#	New Mexico	SP	K	E	TA	PCT	A	SA	SE	RE	DIG	BS	BA	BE	BHE	PTS
2	MEETER, Lisa	3	10	3	26	.269	1	1	1	1	9	0	2	0	0	12.0
4	RHOADES, Ashley	3	10	0	14	.714	0	0	0	0	0	4	0	0	0	12.0
6	MORRIS, Rose	3	4	3	23	.043	0	0	0	0	3	0	0	1	0	4.0
7	MICHAELSEN, Jade	3	5	0	9	.556	31	0	0	0	6	2	2	0	1	8.0
12	HADFIELD, Taylor	2	3	6	18	-.167	0	0	0	0	0	0	3	0	0	4.5
14	LEHNE, Anna	2	5	2	12	.250	0	0	0	0	0	0	3	0	0	6.5
3	ROHR, Melissa	3	0	0	0	.000	0	0	1	0	6	0	0	0	0	0.0
5	RUSSELL, Jordan	2	0	0	0	.000	0	0	1	0	4	0	0	0	0	0.0
8	BUCK, Allison	3	0	0	0	.000	5	0	3	0	15	0	0	0	0	0.0
9	SUITER, Allie	1	2	1	6	.167	0	1	0	0	0	0	0	0	0	3.0
11	WONG, Amy	3	1	0	1	1.000	0	1	0	0	5	0	0	0	0	2.0
13	WILLIAMSON, Kelly	1	1	3	13	-.154	0	0	0	0	0	0	0	0	0	1.0
16	BARBER, Rachel	1	0	0	0	.000	0	0	0	0	0	0	0	0	0	0.0
Totals.....		3	41	18	122	.189	37	3	6	1	48	2	14	1	1	53.0

TEAM ATTACK PER GAME				
Game	K	E	TA	Pct
1	15	4	36	.306
2	14	8	39	.154
3	12	6	47	.128

TOTAL TEAM BLOCKS: 9.0

GAME SCORES					TEAM RECORDS				
	1	2	3						
New Mexico	25	25	25	5-0					
Portland	20	19	23	2-5					

#	Portland	SP	K	E	TA	PCT	A	SA	SE	RE	DIG	BS	BA	BE	BHE	PTS
3	BATY, Jessica	3	0	0	0	.000	0	0	0	2	6	0	0	0	0	0.0
6	SIEVERS, Shelley	3	6	1	10	.500	1	0	0	0	2	1	5	0	0	9.5
7	CLEMENS, Jessica	3	9	9	33	.000	1	1	1	0	11	0	0	1	0	10.0
10	CLEMENS, Maria	3	9	6	29	.103	2	0	0	1	12	2	1	0	0	11.5
11	JONES, Kaylyn	2	0	0	2	.000	22	0	0	0	2	0	2	1	0	1.0
12	PLUMMER, Marissa	3	4	3	22	.045	1	0	0	0	1	0	4	0	0	6.0
1	DUPAR, Danielle	3	0	1	1	-1.000	0	0	1	0	14	0	0	0	0	0.0
4	USHER, Ariel	3	6	7	24	-.042	0	0	0	1	0	6	0	0	0	9.0
14	SMITH, Madison	1	1	2	4	-.250	7	0	0	0	2	0	0	0	0	1.0
Totals.....		3	35	29	125	.048	34	1	2	3	51	3	18	2	0	48.0

TEAM ATTACK PER GAME				
Game	K	E	TA	Pct
1	11	10	37	.027
2	10	9	35	.029
3	14	10	53	.075

TOTAL TEAM BLOCKS: 12.0

Attend: 209  
Time: 1:30  
Referees: Mark Sykes, Mary Jacobson

	1	2	3	Total
Tie scores	2	14	4	20
Lead changes	0	8	1	9

## Match #6 \*\*\* New Mexico 3, Cal State Fullerton 0 Sept. 11, 2009 at Johnson Center, Albuquerque, N.M. Comcast Lobo Challenge

#	Cal State Fullerton	SP	K	E	TA	PCT	A	SA	SE	RE	DIG	BS	BA	BE	BHE	PTS
1	Ragan, Andrea	3	0	0	2	.000	33	1	1	0	8	0	0	0	0	1.0
3	Sommer, Stephanie	3	0	0	0	.000	0	0	0	1	1	0	0	0	0	0.0
4	Neto, Kayla	3	12	8	27	.148	1	1	0	0	2	1	3	0	0	15.5
11	Wolnisty, Alex	3	9	0	14	.643	0	0	0	0	0	1	0	0	0	10.0
22	Collier, Ashley	3	0	0	1	.000	0	0	1	1	5	0	0	0	0	0.0
23	Saddler, Erin	3	8	8	40	.000	1	2	0	2	7	0	2	0	0	11.0
2	Croteau, Cami	3	0	0	0	.000	0	0	1	1	15	0	0	0	0	0.0
15	Brown, Torrie	3	4	5	18	-.056	0	0	0	0	0	0	0	0	1	4.0
18	Edmond, Jennifer	3	4	3	15	.067	0	0	1	0	1	0	1	0	1	4.5
Totals.....		3	37	24	117	.111	35	4	4	5	39	2	6	2	0	46.0

TEAM ATTACK PER GAME				
Game	K	E	TA	Pct
1	15	7	38	.211
2	11	8	38	.079
3	11	9	41	.049

TOTAL TEAM BLOCKS: 5.0

GAME SCORES					TEAM RECORDS				
	1	2	3						
Cal State Fullerton	19	17	22	6-2					
New Mexico	25	25	25	6-0					

#	New Mexico	SP	K	E	TA	PCT	A	SA	SE	RE	DIG	BS	BA	BE	BHE	PTS
2	MEETER, Lisa	3	7	4	18	.167	2	1	1	0	9	0	1	0	0	8.5
4	RHOADES, Ashley	3	7	1	12	.500	0	0	0	0	1	2	3	0	0	10.5
6	MORRIS, Rose	3	9	2	24	.292	0	2	1	0	6	0	2	0	0	12.0
7	MICHAELSEN, Jade	3	5	1	10	.400	32	0	1	0	10	0	3	0	0	6.5
11	WONG, Amy	3	0	0	1	.000	0	2	1	0	9	0	0	0	0	2.0
14	LEHNE, Anna	3	10	2	15	.533	1	0	0	0	1	1	6	0	0	14.0
8	BUCK, Allison	3	0	0	1	.000	6	0	0	4	11	0	0	0	0	0.0
12	HADFIELD, Taylor	3	4	3	18	.056	0	0	0	0	0	0	2	0	0	5.0
13	WILLIAMSON, Kelly	1	0	0	2	.000	0	0	0	0	0	0	1	0	0	0.5
15	RODRIGUEZ, Jackie	3	0	0	0	.000	0	0	0	0	3	0	0	0	0	0.0
Totals.....		3	42	13	101	.287	41	5	4	4	50	3	18	0	0	59.0

TEAM ATTACK PER GAME				
Game	K	E	TA	Pct
1	15	2	32	.406
2	14	4	32	.312
3	13	7	37	.162

TOTAL TEAM BLOCKS: 12.0

Attend: 1711  
Time: 1:24  
Referees: Marvin Hall, Cedric All Runner

	1	2	3	Total
Tie scores	0	0	3	3
Lead changes	0	0	1	1

## Match #7 \*\*\* RV Baylor 3, New Mexico 2 Sept. 11, 2009 at Johnson Center, Albuquerque, N.M. Comcast Lobo Challenge

#	Baylor	SP	K	E	TA	PCT	A	SA	SE	RE	DIG	BS	BA	BE	BHE	PTS
1	Trice, Caitlyn	5	0	1	2	-.500	0	1	0	0	10	0	0	0	0	1.0
6	Byrd, Ashley	2	2	1	6	.167	0	0	0	0	1	0	1	0	0	2.5
7	Campbell, Torri	5	10	3	27	.259	0	0	0	0	2	0	6	0	0	13.0
9	Barnes, Taylor	5	8	1	15	.467	53	0	2	0	8	0	4	0	0	10.0
14	Breyfogle, Anna	5	21	1	32	.625	1	0	1	0	1	0	7	1	0	24.5
22	Sanders, Katie	5	14	7	47	.149	3	0	0	0	15	0	4	0	0	16.0
8	King, Allison	5	0	0	0	.000	7	0	1	2	18	0	0	0	0	0.0
18	Rice, Jordan	5	0	0	0	.000	1	0	1	1	18	0	0	0	0	0.0
24	Christenson, Ashlie	5	11	7	35	.114	0	0	0	0	1	0	3	0	0	12.5
31	Graham, Elizabeth	4	3	1	10	.200	0	0	0	0	3	0	1	0	0	3.5
Totals.....		5	69	22	174	.270	65	1	5	3	77	0	26	1	0	83.0

TEAM ATTACK PER GAME				
Game	K	E	TA	Pct
1	13	2	24	.458
2	16	5	44	.250
3	14	5	30	.300
4	16	7	52	.173
5	10	3	24	.292

TOTAL TEAM BLOCKS: 13.0

GAME SCORES					TEAM RECORDS				
	1	2	3	4	5				
Baylor	25	24	25	20	15	10-0			
New Mexico	13	25	20	25	12	6-1			

#	New Mexico	SP	K	E	TA	PCT	A	SA	SE	RE	DIG	BS	BA	BE	BHE	PTS
2	MEETER, Lisa	5	14	11	47	.064	3	0	0	1	14	1	0	0	0	15.0
4	RHOADES, Ashley	3	6	1	10	.500	1	0	1	0	2	0	1	0	0	6.5
6	MORRIS, Rose	5	20	7	57	.228	0	1	2	0	7	0	1	0	0	21.5
7	MICHAELSEN, Jade	5	6	2	20	.200	53	0	0	0	14	0	1	0	1	6.5
11	WONG, Amy	5	0	0	0	.000	1	2	3	0	11	0	0	0	0	2.0
14	LEHNE, Anna	5	13	4	31	.290	0	0	0	0	2	0	2	0	0	14.0
8	BUCK, Allison	5	0	1	3	-.333	3	0	1	0	23	0	0	0	0	0.0
9	SUITER, Allie	4	2	1	3	.333	1	0	1	0	0	0	1	0	0	2.5
12	HADFIELD, Taylor	5	5	3	18	.111	0	0	0	0	1	0	2	0	0	6.0
Totals.....		5	66	30	189	.190	62	3	8	1	74	1	8	0	1	74.0

TEAM ATTACK PER GAME				
Game	K	E	TA	Pct
1	11	10	37	.027
2	18	7	44	.250
3	12	6	33	.182
4	16	2	51	.275
5	9	5	24	.167

TOTAL TEAM BLOCKS: 5.0

Attend: 1911  
Time: 2:06  
Referees: Marvin Hall, Cedric All Runner

# 2009 BOX SCORES

## Match #9 \*\*\* TCU 3, New Mexico 1 Sept. 16, 2009 at Johnson Center, Albuquerque, N.M.

##	TCU	SP	K	E	TA	PCT	A	SA	SE	RE	DIG	BS	BA	BE	BHE	PTS
2	EDWARDS, Kourtney	4	12	5	36	.194	1	0	0	0	3	0	1	2	0	12.5
5	HESTER, Kristen	4	11	2	20	.450	0	2	3	0	5	1	6	0	0	17.0
7	MUNCE, Megan	4	6	4	14	.143	37	1	4	0	11	0	1	0	0	7.5
8	HUDSON, Christy	4	13	2	28	.393	3	0	0	0	2	1	3	0	0	15.5
10	HESTER, Irene	4	4	3	27	.037	4	0	1	1	12	0	3	0	0	5.5
17	OTTO, Lauren	4	5	6	22	-.045	1	0	0	2	12	0	0	0	0	5.0
1	BLACKWOOD, Katelyn	4	0	0	0	.000	1	0	1	2	14	0	0	0	0	0.0
12	HORIO, Meghan	4	0	0	1	.000	0	0	1	0	3	0	0	0	0	0.0
Totals.....		4	51	22	148	.196	47	3	10	5	62	2	14	2	0	63.0

### TEAM ATTACK PER GAME

Game	K	E	TA	Pct
1	16	3	32	.406
2	8	6	37	.054
3	15	7	40	.200
4	12	6	39	.154

### TOTAL TEAM BLOCKS: 9.0

### GAME SCORES

	1	2	3	4
TCU	25	16	25	25
New Mexico	18	25	22	22

### TEAM RECORDS

9-3, 1-0 MWC  
7-2, 0-1 MWC

##	New Mexico	SP	K	E	TA	PCT	A	SA	SE	RE	DIG	BS	BA	BE	BHE	PTS
2	MEETER, Lisa	4	13	8	44	.114	0	2	2	1	9	0	0	0	0	15.0
4	RHOADES, Ashley	4	9	4	18	.278	1	0	0	0	2	1	2	0	0	11.0
7	MICHAELSEN, Jade	4	4	2	15	.133	40	0	2	0	14	0	1	0	0	4.5
11	WONG, Amy	4	0	0	0	.000	0	2	2	0	10	0	0	0	0	2.0
13	WILLIAMSON, Kelly	3	1	3	14	-.143	0	0	0	0	0	0	0	0	0	1.0
14	LEHNE, Anna	4	10	4	21	.286	0	0	0	0	2	2	1	3	0	12.5
3	ROHR, Melissa	4	0	0	0	.000	0	0	1	0	5	0	0	0	0	0.0
5	RUSSELL, Jordan	1	0	0	0	.000	0	0	0	0	0	0	0	0	0	0.0
8	BUCK, Allison	4	0	0	0	.000	6	0	0	2	20	0	0	0	0	0.0
9	SUITER, Allie	1	0	0	0	.000	0	0	0	0	0	0	0	0	0	0.0
12	HADFIELD, Taylor	4	12	6	29	.207	1	1	1	0	4	0	2	0	0	14.0
15	RODRIGUEZ, Jackie	1	0	0	0	.000	0	0	0	0	0	0	0	0	0	0.0
16	BARBER, Rachel	2	1	2	9	-.111	0	0	0	0	0	0	0	0	0	1.0
Totals.....		4	50	29	151	.139	48	5	8	3	66	3	6	3	0	61.0

### TEAM ATTACK PER GAME

Game	K	E	TA	Pct
1	11	7	34	.118
2	15	6	34	.265
3	12	8	35	.114
4	12	8	48	.083

### TOTAL TEAM BLOCKS: 12.0

Attend: 1467

Time: 1:51

Referees: Margie Ray, Cedric All Runner

	1	2	3	4	Total
Tie scores	4	2	5	9	20
Lead changes	2	1	3	6	12

## Match #10 \*\*\* New Mexico 3, UTEP 0 Sept. 19, 2009 at McKale Center, Tucson, Ariz. Arizona Invitational by Marriott University Park

##	New Mexico	SP	K	E	TA	PCT	A	SA	SE	RE	DIG	BS	BA	BE	BHE	PTS
2	MEETER, Lisa	3	5	2	18	.167	1	1	1	1	9	1	0	1	0	7.0
4	RHOADES, Ashley	2	7	1	11	.545	0	0	0	0	1	0	1	0	0	7.5
7	MICHAELSEN, Jade	3	2	2	7	.000	30	1	1	0	10	0	1	0	0	3.5
12	HADFIELD, Taylor	3	9	3	25	.240	0	1	0	0	1	0	2	0	0	11.0
13	WILLIAMSON, Kelly	3	7	2	17	.294	0	0	0	0	0	2	0	0	0	9.0
14	LEHNE, Anna	3	9	3	15	.400	1	0	0	0	0	0	2	0	0	10.0
3	ROHR, Melissa	3	0	0	0	.000	0	0	0	0	1	5	0	0	0	0.0
8	BUCK, Allison	3	0	0	0	.000	3	0	0	0	14	0	0	0	0	0.0
9	SUITER, Allie	1	2	1	4	.250	0	0	0	0	1	0	0	0	0	2.0
11	WONG, Amy	3	0	0	0	.000	1	0	2	0	2	0	0	0	0	0.0
Totals.....		3	41	14	97	.278	36	3	6	2	43	3	6	2	0	50.0

### TEAM ATTACK PER GAME

Game	K	E	TA	Pct
1	17	4	41	.317
2	12	2	18	.556
3	12	8	38	.105

### TOTAL TEAM BLOCKS: 6.0

### GAME SCORES

	1	2	3	TEAM RECORDS
New Mexico	28	25	25	8-2
UTEP	26	12	23	7-5

##	UTEP	SP	K	E	TA	PCT	A	SA	SE	RE	DIG	BS	BA	BE	BHE	PTS
3	CHAVEZ, Catherine	3	6	5	20	.050	3	1	2	0	12	0	1	0	0	7.5
6	JARMOC, Patty	3	3	1	10	.200	26	1	2	0	4	0	1	0	0	4.5
7	SANDERS, Amy	3	10	4	36	.167	1	0	2	1	8	1	4	0	0	13.0
8	MOONEY, Aidan	3	4	2	7	.286	0	0	0	0	1	0	2	0	0	5.0
12	MOORE, Kelsey	3	4	3	12	.083	0	0	0	0	1	0	2	0	0	5.0
16	SIERRA, Stephanie	1	0	0	0	.000	0	0	1	0	1	0	0	0	0	0.0
1	NOLASCO, Jennifer	3	0	0	0	.000	0	0	1	2	7	0	0	0	0	0.0
2	JOYCE, Marie-Therese	3	0	0	0	.000	0	0	1	0	3	0	0	0	0	0.0
4	BLANCO, Irma	3	5	4	16	.062	2	0	0	0	1	0	1	0	0	5.5
5	BURRUELO, Cassandra	2	3	1	6	.333	0	0	0	0	0	0	1	0	0	3.5
10	LANGFELD, KeAnne	2	0	0	0	.000	0	0	1	0	0	0	0	0	0	0.0
Totals.....		3	35	20	107	.140	32	2	10	3	38	1	12	0	0	44.0

### TEAM ATTACK PER GAME

Game	K	E	TA	Pct
1	14	5	41	.220
2	9	8	25	.040
3	12	7	41	.122

### TOTAL TEAM BLOCKS: 7.0

Attend: 163

Time: 1:24

Referees: Rusty Wellman, Rory Arisumi

	1	2	3	Total
Tie scores	8	3	8	19
Lead changes	3	2	3	8

## Match #11 \*\*\* No. 21 Arizona 3, New Mexico 2 Sept. 19, 2009 at McKale Center, Tucson, Ariz. Arizona Invitational by Marriott University Park

##	New Mexico	SP	K	E	TA	PCT	A	SA	SE	RE	DIG	BS	BA	BE	BHE	PTS
2	MEETER, Lisa	5	14	3	34	.324	0	0	3	3	11	0	1	0	0	14.5
3	ROHR, Melissa	5	0	0	0	.000	0	0	0	0	11	0	0	0	0	0.0
4	RHOADES, Ashley	5	6	1	13	.385	0	0	3	0	0	2	2	0	0	9.0
7	MICHAELSEN, Jade	5	0	0	0	.000	52	1	2	0	11	0	3	2	0	2.5
13	WILLIAMSON, Kelly	5	9	3	24	.250	0	0	0	0	1	0	1	0	0	9.5
14	LEHNE, Anna	5	10	4	31	.194	0	1	0	0	2	2	4	0	0	15.0
8	BUCK, Allison	5	0	0	0	.000	1	1	2	1	19	0	0	0	0	1.0
11	WONG, Amy	5	0	0	0	.000	0	1	0	0	5	0	0	0	0	1.0
12	HADFIELD, Taylor	5	15	11	35	.114	0	3	1	0	6	0	1	0	0	18.5
16	BARBER, Rachel	2	0	1	3	-.333	0	0	0	0	0	0	0	0	0	0.0
Totals.....		5	54	23	147	.211	53	7	11	4	66	4	12	2	0	71.0

### TEAM ATTACK PER GAME

Game	K	E	TA	Pct
1	15	7	39	.205
2	6	7	24	-.042
3	15	1	27	.519
4	8	6	31	.065
5	10	2	26	.308

### TOTAL TEAM BLOCKS: 10.0

### GAME SCORES

	1	2	3	4	5	TEAM RECORDS
New Mexico	24	25	25	14	13	8-3
Arizona	26	14	12	25	15	10-0

##	Arizona	SP	K	E	TA	PCT	A	SA	SE	RE	DIG	BS	BA	BE	BHE	PTS
7	Hutchinson, Dana	5	5	8	39	-.077	1	2	1	0	9	1	1	0	0	8.5
9	Owens, Tiffany	5	29	7	59	.373	0	0	1	2	9	1	2	0	0	31.0
12	Norton, Jacy	5	7	5	20	.100	0	0	0	0	1	3	2	0	0	11.0
23	Karst, Courtney	5	2	7	21	-.238	0	0	0	0	1	2	0	1	0	2.5
34	Weber, Paige	5	4	2	8	.250	41	1	1	0	8	1	2	1	0	7.0
55	Snow, Stephanie	4	3	4	12	-.083	1	0	0	0	0	0	2	1	0	4.0
1	Holloway, Danielle	3	0	0	0	.000	0	1	0	1	3	0	0	0	0	1.0
8	Querrey, Ellen	1	0	0	0	.000	0	0	0	0	0	0	0	0	0	0.0
11	Hendrickson, Elise	5	0	0	0	.000	0	0	1	1	5	0	0	0	0	0.0
22	Bannister, Kaylen	4	2	0	5	.400	0	0	0	0	0	0	2	0	0	3.0
33	Resch, Alanna	5	0	0	0	.000	2	0	1	2	13	0	0	0</		

# 2009 BOX SCORES

## Match #13 \*\*\* Colorado State 3, New Mexico 0 Sept. 24, 2009 at Moby Arena, Fort Collins, Colo.

##	New Mexico	SP	K	E	TA	PCT	A	SA	SE	RE	DIG	BS	BA	BE	BHE	PTS
2	MEETER, Lisa	3	4	5	17	-.059	2	0	0	0	9	0	0	0	0	4.0
3	ROHR, Melissa	3	0	0	0	.000	0	0	0	0	5	0	0	0	0	0.0
4	RHOADES, Ashley	3	7	5	23	.087	0	0	0	0	1	0	1	0	0	7.5
7	MICHAELSEN, Jade	3	3	0	8	.375	29	0	1	0	4	0	1	0	0	3.5
13	WILLIAMSON, Kelly	3	8	4	21	.190	0	0	0	0	1	0	1	1	0	8.5
14	LEHNE, Anna	2	0	2	4	-.500	0	0	0	0	0	0	1	0	0	0.5
8	BUCK, Allison	3	0	0	0	.000	0	0	0	1	6	0	0	0	0	0.0
9	SUITER, Allie	2	3	1	8	.250	1	0	0	0	3	0	0	0	0	3.0
11	WONG, Amy	2	0	0	1	.000	0	0	1	0	1	0	0	0	0	0.0
12	HADFIELD, Taylor	3	9	5	20	.200	0	0	0	0	1	0	0	0	0	9.0
15	RODRIGUEZ, Jackie	1	0	0	0	.000	0	0	0	0	3	0	0	0	0	0.0
16	BARBER, Rachel	2	0	1	1	-.1000	0	1	0	0	0	0	0	0	0	0.0
Totals.....		3	34	23	103	.107	32	0	3	1	34	0	4	1	0	36.0

### TEAM ATTACK PER GAME

Game	K	E	TA	Pct
1	15	8	40	.175
2	10	4	26	.231
3	9	11	37	-.054

### TOTAL TEAM BLOCKS: 2.0

### GAME SCORES

	1	2	3	TEAM RECORDS
New Mexico	21	15	18	8-5, 0-2 MWC
Colorado State	25	25	25	9-3, 2-0 MWC

##	Colorado State	SP	K	E	TA	PCT	A	SA	SE	RE	DIG	BS	BA	BE	BHE	PTS
2	CRANSTON, Dana	3	1	0	1	1.000	1	0	0	0	1	0	0	0	0	1.0
5	FLOURDE, Megan	3	10	0	13	.769	0	0	0	0	1	0	5	0	0	12.5
8	SANDERS, Evan	3	4	1	8	.375	37	0	3	0	7	0	4	0	0	6.0
10	DAVISSON, Jacques	3	13	3	30	.333	1	0	1	0	5	0	5	0	0	15.5
11	NELSON, Tessa	3	6	3	14	.214	1	0	1	0	2	0	0	0	0	9.0
13	MINCH, Danielle	3	7	0	16	.438	0	0	1	0	3	0	1	0	0	7.5
4	STEFFAN, Katelyn	3	6	3	15	.200	4	0	1	0	0	0	1	0	0	6.5
6	BATTEN, Katelyn	3	0	0	0	.000	0	0	0	0	10	0	0	0	0	0.0
9	KOENNING, Emily	2	0	0	0	.000	0	0	0	0	2	0	0	0	0	0.0
16	HEMMINGS, Audrey	3	0	0	0	.000	1	1	1	0	7	0	0	0	0	1.0
Totals.....		3	47	10	97	.381	45	1	8	0	38	0	22	0	0	59.0

### TEAM ATTACK PER GAME

Game	K	E	TA	Pct
1	15	2	35	.371
2	18	2	29	.552
3	14	6	33	.242

### TOTAL TEAM BLOCKS: 11.0

Attend: 2135

Time: 1:22

Referees: John Martin, Bill Peer

	1	2	3	Total
Tie scores	10	1	5	16
Lead changes	4	0	4	8

## Match #14 \*\*\* New Mexico 3, Wyoming 1 Sept. 26, 2009 at UniWyo Sports Complex, Laramie, Wyo.

##	New Mexico	SP	K	E	TA	PCT	A	SA	SE	RE	DIG	BS	BA	BE	BHE	PTS
2	MEETER, Lisa	4	11	6	28	.179	1	0	1	1	11	0	1	0	0	11.5
3	ROHR, Melissa	4	0	0	0	.000	0	0	0	0	5	0	0	0	0	0.0
4	RHOADES, Ashley	4	12	5	30	.233	1	0	1	0	0	0	2	5	0	16.5
7	MICHAELSEN, Jade	4	3	0	8	.375	41	2	3	0	10	0	2	0	0	6.0
13	WILLIAMSON, Kelly	4	7	2	23	.217	0	0	0	0	2	0	3	0	0	8.5
14	LEHNE, Anna	4	7	1	16	.375	0	0	0	0	1	0	3	2	0	8.5
5	RUSSELL, Jordan	2	0	0	0	.000	0	0	0	0	0	0	0	0	0	0.0
8	BUCK, Allison	4	0	0	0	.000	5	0	0	0	14	0	0	0	0	0.0
11	WONG, Amy	4	0	0	0	.000	0	0	2	0	5	0	0	0	0	0.0
12	HADFIELD, Taylor	4	14	1	20	.650	0	0	0	0	7	0	3	0	0	15.5
15	RODRIGUEZ, Jackie	2	0	0	0	.000	0	0	1	0	0	0	0	0	0	0.0
TEAM																
Totals.....		4	54	15	125	.312	48	2	8	2	55	2	17	2	0	66.5

### TEAM ATTACK PER GAME

Game	K	E	TA	Pct
1	14	4	35	.286
2	16	2	30	.467
3	13	6	32	.219
4	11	3	28	.286

### TOTAL TEAM BLOCKS: 10.5

### GAME SCORES

	1	2	3	4	TEAM RECORDS
New Mexico	25	25	20	25	9-5, 1-2 MWC
Wyoming	15	15	25	17	8-8, 0-3 MWC

##	Wyoming	SP	K	E	TA	PCT	A	SA	SE	RE	DIG	BS	BA	BE	BHE	PTS
1	BEDORE, Dani	4	8	8	32	.000	6	0	2	0	5	0	2	1	0	9.0
3	WHITNEY, Lauren	4	11	8	34	.088	0	0	0	0	2	0	1	1	0	11.5
5	PURDY, Jodi	4	13	8	37	.135	1	1	0	0	5	2	1	0	0	16.5
12	LASIC, Barbara	4	3	0	5	.600	29	0	1	0	5	0	0	0	0	3.0
15	JESTER, JennaRae	4	3	6	13	-.231	0	1	0	0	4	1	3	0	0	6.5
20	COFFMAN, Camille	3	3	1	9	.222	0	0	0	0	0	0	1	0	0	3.5
6	KAGARISE, Jessica	4	0	1	2	-.500	0	0	2	1	14	0	0	0	0	0.0
16	TRAMOSLANIN, J.	4	1	0	2	.500	3	0	0	0	12	0	0	0	0	1.0
24	BARTSCH, Mackenzie	4	4	2	16	.125	1	0	0	0	1	0	2	0	0	5.0
TEAM																
Totals.....		4	46	34	150	.080	40	2	5	2	48	3	10	2	0	56.0

### TEAM ATTACK PER GAME

Game	K	E	TA	Pct
1	9	10	39	-.026
2	12	8	37	.108
3	15	4	35	.314
4	10	12	39	-.051

### TOTAL TEAM BLOCKS: 8.0

Attend: 761

Time: 1:45

Referees: Tom Given, Stephen Arichea

	1	2	3	4	Total
Tie scores	1	1	5	1	8
Lead changes	1	0	1	0	2

## Match #15 \*\*\* New Mexico 3, San Diego State 0 Oct. 1, 2009 at Johnson Center, Albuquerque, N.M.

##	San Diego State	SP	K	E	TA	PCT	A	SA	SE	RE	DIG	BS	BA	BE	BHE	PTS
1	HANNASCH, Andrea	3	8	3	15	.333	0	0	1	0	2	1	5	0	0	11.5
2	PEARSON, Pajje	3	5	3	15	.133	0	0	0	0	1	0	4	0	0	7.0
3	SALISBURY, Lauren	3	11	3	26	.308	0	0	1	0	1	0	1	0	0	11.5
5	VAN ORDEN, Lauren	3	0	1	4	-.250	34	0	2	0	4	0	1	0	0	0.5
6	EVANS, Hannah	3	4	4	23	.000	0	0	1	1	3	0	1	1	0	4.5
10	MANASCO, Kelsey	3	6	6	19	.000	0	0	1	0	2	0	2	1	0	7.0
4	MCMLLAN, Caitlin	1	0	0	0	.000	0	1	0	0	0	0	0	0	0	1.0
7	MILLER, Courtney	1	0	0	0	.000	0	0	0	0	0	0	0	0	0	0.0
8	SEXTON, Kylee	1	0	0	0	.000	0	0	0	0	0	0	0	0	0	0.0
13	LAMPHER, Courtney	3	0	0	0	.000	0	0	1	0	2	0	0	0	0	0.0
17	JACKELS, Kristi	3	0	1	1	-.1000	0	2	2	14	0	0	0	0	0	0.0
Totals.....		3	34	21	103	.126	34	1	9	3	29	1	14	2	0	43.0

### TEAM ATTACK PER GAME

Game	K	E	TA	Pct
1	14	9	36	.139
2	8	3	23	.217
3	12	9	44	.068

### TOTAL TEAM BLOCKS: 8.0

### GAME SCORES

	1	2	3	TEAM RECORDS
San Diego State	19	16	20	6-8, 1-3 MWC
New Mexico	25	25	25	11-5, 3-2 MWC

##	New Mexico	SP	K	E	TA	PCT	A	SA	SE	RE	DIG	BS	BA	BE	BHE	PTS
2	MEETER, Lisa	3	7	1	14	.429	3	2	1	0	6	0	2	0	0	10.0
3	ROHR, Melissa	2	0	0	0	.000	0	0	0	0	2	0	0	0	0	0.0
4	RHOADES, Ashley	3	11	0	17	.647	0	0	1	0	1	0	2	0	0	12.0
7	MICHAELSEN, Jade	3	2	2	7	.000	34	1	0	0	6	0	1	0	1	3.5
13	WILLIAMSON, Kelly	3	2	8	20	-.300	0	0	0	0	1	0	2	0	0	3.0
14	LEHNE, Anna	3	8	1	14	.500	0	0	0	0	2	3	0	0	0	11.5
5	RUSSELL, Jordan	1	0	0	0	.000	1	0	0	0	5	0	0	0	0	0.0
8	BUCK, Allison	3	0	0	0	.000	2	0	1	1	15	0	0	0	0	0.0
11	WONG, Amy	3	0	0	0	.000	1	0	0	0	2	0	0	0	0	0.0
12	HADFIELD, Taylor	3	12	3	19	.474	0	0	1	0	0	0	0	0	0	12.0

# 2009 BOX SCORES

## Match #17 \*\*\* BYU 3, New Mexico 0 Oct. 8, 2009 at Smith Fieldhouse, Provo, Utah

##	New Mexico	SP	K	E	TA	PCT	A	SA	SE	RE	DIG	BS	BA	BE	BHE	PTS
2	MEETER, Lisa	3	4	7	19	-.158	0	0	0	3	7	0	0	0	0	4.0
4	RHOADES, Ashley	3	11	1	17	.588	0	0	2	0	0	0	1	0	0	11.5
6	MORRIS, Rose	3	3	5	14	-.143	0	0	0	0	3	0	0	0	0	3.0
7	MICHAELSEN, Jade	3	0	0	2	.000	30	0	1	0	2	0	1	0	0	0.5
12	HADFIELD, Taylor	3	5	2	14	.214	0	0	0	0	3	0	1	0	0	5.5
14	LEHNE, Anna	3	9	2	20	.350	0	0	0	0	1	2	1	1	0	11.5
3	ROHR, Melissa	2	0	0	0	.000	0	0	0	0	6	0	0	0	0	0.0
5	RUSSELL, Jordan	2	0	0	0	.000	1	0	0	0	0	0	0	0	0	0.0
8	BUCK, Allison	3	0	0	0	.000	0	1	0	0	11	0	0	0	0	1.0
9	SUITER, Allie	1	0	0	0	.000	0	0	0	0	0	0	0	0	0	0.0
11	WONG, Amy	3	0	0	0	.000	1	1	2	0	1	0	0	0	0	1.0
13	WILLIAMSON, Kelly	2	3	1	6	.333	0	0	0	0	0	0	0	0	0	3.0
Totals.....		3	35	18	92	.185	32	2	5	3	34	2	4	1	0	41.0

**TEAM ATTACK PER GAME**

Game	K	E	TA	Pct
1	12	10	34	.059
2	7	4	28	.107
3	16	4	30	.400

**GAME SCORES**

	1	2	3	TEAM RECORDS
New Mexico	16	17	23	11-6, 3-3 MWC
BYU	25	25	25	9-7, 4-1 MWC

##	BYU	SP	K	E	TA	PCT	A	SA	SE	RE	DIG	BS	BA	BE	BHE	PTS
6	GOODSELL, Chelsea	2	0	0	0	.000	0	1	0	0	1	0	0	0	0	1.0
7	MEASOM, Christina	3	9	1	15	.533	2	0	0	0	1	1	4	0	0	12.0
9	ROGERS, Kiana	3	4	0	6	.667	35	1	2	1	3	0	4	0	0	7.0
11	LAKE WRIGHT, Melissa	3	0	0	0	.000	1	0	1	0	4	0	0	0	0	0.0
12	WALKER, Kayla	3	14	1	33	.394	0	0	0	0	3	1	2	0	0	11.0
15	WARNER, Nicole	3	7	3	13	.308	1	1	2	0	3	0	6	0	0	6.0
1	LLOYD SORENSEN, Morg	3	0	0	1	.000	2	0	1	0	5	0	0	0	0	0.0
10	PHILLIPS, Camilla	3	6	2	11	.364	0	0	0	0	1	0	5	0	0	8.5
14	CARPENTER, Christie	3	9	2	20	.350	0	4	1	9	0	1	0	0	0	9.5
Totals.....		3	49	9	99	.404	41	3	10	2	30	2	22	0	0	65.0

**TEAM ATTACK PER GAME**

Game	K	E	TA	Pct
1	13	2	30	.367
2	19	4	39	.385
3	17	3	30	.467

Attend: 961  
Time: 1:21  
Referees: Michael Blalock, Tom Given

Tie scores: 1 2 3 Total  
5 3 21 29  
Lead changes: 2 0 7 9

## Match #18 \*\*\* New Mexico 3, Utah 1 Oct. 10, 2009 at Crimson Court, Salt Lake City, Utah

##	New Mexico	SP	K	E	TA	PCT	A	SA	SE	RE	DIG	BS	BA	BE	BHE	PTS
2	MEETER, Lisa	4	11	3	26	.308	1	2	3	2	15	0	1	0	0	13.5
4	RHOADES, Ashley	4	15	4	28	.393	1	0	1	0	0	1	6	0	0	19.0
6	MORRIS, Rose	4	17	4	44	.295	1	1	3	1	5	0	3	1	0	19.5
7	MICHAELSEN, Jade	4	5	2	13	.231	53	1	1	0	4	1	3	0	0	8.5
9	SUITER, Allie	4	2	0	3	.667	0	0	0	0	0	0	2	0	1	3.0
12	HADFIELD, Taylor	4	16	1	21	.714	0	0	3	0	2	1	3	0	0	18.5
8	BUCK, Allison	4	1	1	2	.000	1	0	1	0	13	0	0	0	0	1.0
11	WONG, Amy	4	0	0	0	.000	1	0	0	0	4	0	0	0	0	0.0
14	LEHNE, Anna	2	0	0	1	.000	0	0	0	0	0	0	2	0	0	1.0
Totals.....		4	67	15	138	.377	58	4	12	3	43	3	20	1	1	84.0

**TEAM ATTACK PER GAME**

Game	K	E	TA	Pct
1	18	0	24	.750
2	17	2	32	.469
3	16	9	39	.179
4	16	4	43	.279

**GAME SCORES**

	1	2	3	4	TEAM RECORDS
New Mexico	25	25	23	25	12-6, 4-3 MWC
Utah	12	19	25	21	12-6, 5-1 MWC

##	Utah	SP	K	E	TA	PCT	A	SA	SE	RE	DIG	BS	BA	BE	BHE	PTS
6	SANDBERG, Chelsey	4	9	2	17	.412	0	2	1	0	1	0	4	0	0	13.0
9	KILLPACK, Danielle	3	3	1	7	.286	0	0	0	0	0	0	1	0	0	3.5
10	BARTKOWIAK, Karolina	4	9	3	25	.240	0	0	1	0	6	0	2	0	0	10.0
13	SILVA, Cinthia	4	11	6	31	.161	0	1	2	2	12	0	3	0	0	13.5
14	SIMMONS, Abby	4	0	0	0	.000	19	0	1	0	7	0	0	1	0	0.0
16	HIBBERT, Sarah	4	8	6	25	.080	0	0	0	1	2	0	1	0	0	8.5
2	NEELEY, Stephanie	4	0	0	0	.000	22	0	0	0	7	0	0	0	0	0.0
3	BRADSHAW, Miranda	3	0	0	2	.000	0	0	0	0	0	0	0	0	0	0.0
7	LANTING, Jennifer	4	6	4	14	.143	0	0	0	0	0	0	0	0	0	6.0
11	FISHER, Keisha	4	0	0	1	.000	1	0	0	1	11	0	0	0	0	0.0
Totals.....		4	46	22	122	.197	42	3	5	4	46	0	11	1	0	54.5

**TEAM ATTACK PER GAME**

Game	K	E	TA	Pct
1	9	5	27	.148
2	14	5	33	.273
3	10	4	28	.214
4	13	8	34	.147

Attend: 502  
Time: 1:41  
Referees: Patsy Malta, Maile Jewkes

Tie scores: 1 2 3 4 Total  
1 3 7 3 14  
Lead changes: 0 1 1 1 3

## Match #19 \*\*\* New Mexico 3, New Mexico State 0 Oct. 13, 2009 at Pan American Center, Las Cruces, N.M.

##	New Mexico	SP	K	E	TA	PCT	A	SA	SE	RE	DIG	BS	BA	BE	BHE	PTS
2	MEETER, Lisa	3	7	5	20	.100	1	1	0	0	10	0	0	0	0	8.0
4	RHOADES, Ashley	3	10	3	23	.304	0	0	0	0	2	0	7	0	0	13.5
6	MORRIS, Rose	3	5	3	20	.100	2	0	0	1	4	0	3	1	0	6.5
7	MICHAELSEN, Jade	3	4	1	10	.300	34	0	0	0	9	0	6	1	1	7.0
11	WONG, Amy	3	0	0	0	.000	1	0	0	0	6	0	0	0	0	0.0
14	LEHNE, Anna	3	5	2	7	.429	0	0	3	0	1	0	4	0	0	7.0
8	BUCK, Allison	3	0	0	0	.000	2	0	1	0	14	0	0	0	0	0.0
12	HADFIELD, Taylor	3	11	2	22	.409	0	0	2	0	2	1	2	1	0	13.0
TEAM											1					
Totals.....		3	42	16	102	.255	40	1	6	2	48	1	22	3	1	55.0

**TEAM ATTACK PER GAME**

Game	K	E	TA	Pct
1	14	5	32	.281
2	13	8	31	.161
3	15	3	39	.308

**GAME SCORES**

	1	2	3	TEAM RECORDS
New Mexico	25	25	25	13-6, 4-3 MWC
New Mexico State	18	21	23	10-6, 5-1 WAC

##	New Mexico State	SP	K	E	TA	PCT	A	SA	SE	RE	DIG	BS	BA	BE	BHE	PTS
3	Birmingham, Erin	3	4	3	12	.083	0	0	1	0	1	0	2	1	0	5.0
6	Brennan, Kelsey	3	9	4	18	.278	0	0	0	0	0	0	5	1	0	11.5
10	Devries, Jenna	3	1	0	5	.200	29	0	0	0	9	0	1	0	0	1.5
23	Woods, Whitney	3	9	7	20	.100	0	0	0	0	0	0	2	0	0	10.0
24	Giddens, Kayleigh	3	5	6	35	-.029	0	0	1	0	3	0	1	1	0	5.5
28	Altermatt, Krista	3	8	7	31	.032	0	2	0	1	7	0	2	2	0	11.0
5	Wolfe, Lilly	2	0	0	0	.000	3	0	0	0	2	0	0	0	0	0.0
8	Brown, Bryanna	3	0	0	0	.000	0	0	1	0	3	0	0	0	0	0.0
13	Goodan, Kelli	3	1	1	2	.000	0	0	0	0	0	0	0	1	0	1.5
59	Phillips, Kelsi	3	0	0	0	.000	4	0	0	0	11	0	0	0	0	0.0
Totals.....		3	37	28	123	.073	36	2	3	1	36	0	14	5	0	46.0

**TEAM ATTACK PER GAME**

Game	K	E	TA	Pct
1	10	9	43	.023
2	10	11	33	-.030
3	17	8	47	.191

Attend: 2532  
Time: 1:37  
Referees: Rob Torres, Rory Arsumi

Tie scores: 1 2 3 Total  
0 0 12 12  
Lead changes: 0 0 8 8

## Match #20 \*\*\* UNLV 3, New Mexico 0 Oct. 17, 2009 at Johnson Center, Albuquerque, N.M.

##	UNLV	SP	K	E	TA	PCT	A	SA	SE	RE	DIG	BS	BA	BE	BHE	PTS
3	TE'O, Nile	3	0	0	0	.000	0	0	0	0	5	0	0	0	0	0.0
5	KEELER, Kelsey	3	11	5	27	.222	1	0	2	2	4	0	1	1	0	11.5
8	RICHARD, Samantha	3	1	0	5	.200	36	1	1	0	5	0	1	0	0	2.5
9	NOLAND, Samantha	3	1	2	4	-.250	2	0	0	0	0	0	2	0	0	2.0
13	JACKSON, Cursty	3	17	2	25	.600	1	0	0	0	4	2	4	0	0	21.0
18	GREENWOOD, Erin	3	6	3	14	.214	1	0	0	0	0	0	2	0	0	7.0
1	LAU HEE, Kela	3	0	0	0	.000	0	2	1	0	14	0	0	0	0	2.0
2																

# 2009 BOX SCORES

## Match #21 \*\*\* New Mexico 3, Wyoming 0 Oct. 22, 2009 at Johnson Center, Albuquerque, N.M.

#	Wyoming	SP	K	E	TA	PCT	A	SA	SE	RE	DIG	BS	BA	BE	BHE	PTS
1	BEDORE, Dani	3	3	6	11	.273	22	1	1	0	12	1	1	0	0	5.5
5	PURDY, Jodi	3	12	10	36	.056	1	0	1	0	5	0	1	0	0	12.5
6	KAGARISE, Jessica	3	0	0	2	.000	1	0	1	0	13	0	0	0	0	0.0
15	JESTER, JennaRae	3	5	3	16	.125	1	0	2	0	1	0	3	2	0	6.5
20	COFFMAN, Camille	3	5	0	13	.385	1	0	0	0	0	1	0	0	0	5.5
24	BARTSCH, Makenzie	3	2	2	6	.000	0	0	0	0	0	0	3	1	0	3.5
2	SAPP, Nikky	2	0	0	0	.000	1	0	0	1	0	0	0	0	0	0.0
3	WHITNEY, Lauren	3	7	0	23	.304	0	1	0	2	3	0	3	1	0	9.5
9	CROWE, Brianna	3	0	0	0	.000	0	0	1	0	4	0	0	0	0	0.0
12	LASIC, Barbara	1	0	0	0	.000	6	0	0	0	0	0	0	0	0	0.0
16	TRAMOSLANJIN, J.	2	0	0	1	.000	0	0	0	2	0	0	0	0	0	0.0
Totals.....		3	34	21	108	.120	33	2	6	5	38	1	12	4	0	43.0

### TEAM ATTACK PER GAME

Game	K	E	TA	Pct
1	11	5	40	.150
2	11	7	32	.125
3	12	9	36	.083

### TOTAL TEAM BLOCKS: 7.0

### GAME SCORES

	1	2	3
Wyoming	23	19	22
New Mexico	25	25	25

### TEAM RECORDS

	1-8 MWC
Wyoming	10-13, 1-8 MWC
New Mexico	14-7, 5-4 MWC

#	New Mexico	SP	K	E	TA	PCT	A	SA	SE	RE	DIG	BS	BA	BE	BHE	PTS
2	MEETER, Lisa	3	5	3	15	.133	4	3	3	0	5	1	2	0	0	10.0
4	RHOADES, Ashley	3	8	3	21	.238	0	0	0	0	1	3	0	0	0	10.0
6	MORRIS, Rose	3	7	5	23	.087	1	0	0	1	6	0	2	0	0	8.0
7	MICHAELSEN, Jade	3	6	2	10	.400	30	1	2	0	2	0	2	0	2	8.0
11	WONG, Amy	3	0	0	1	.000	2	0	0	0	5	0	0	0	0	0.0
14	LEHNE, Anna	3	4	2	14	.143	0	0	0	0	2	1	4	0	0	7.0
3	ROHR, Melissa	3	0	1	1	-.1000	0	0	0	0	0	0	0	0	0	0.0
5	RUSSELL, Jordan	1	0	0	0	.000	0	0	0	0	0	0	0	0	0	0.0
8	BUCK, Allison	3	2	0	4	.500	1	1	2	1	19	0	0	0	0	3.0
9	SUITER, Allie	1	0	0	0	.000	0	0	0	0	0	0	0	0	0	0.0
12	HADFIELD, Taylor	3	10	3	17	.412	0	0	0	0	2	0	1	0	0	10.5
Totals.....		3	42	19	106	.217	38	5	7	2	41	3	14	0	2	57.0

### TEAM ATTACK PER GAME

Game	K	E	TA	Pct
1	15	9	43	.140
2	15	5	33	.303
3	12	5	30	.233

### TOTAL TEAM BLOCKS: 10.0

Attend: 1450

Time: 1:27

Referees: Verna Klubnikin, Rory Arisumi

1 2 3 Total

7 7 2 16

3 4 0 7

Tie scores

Lead changes

## Match #22 \*\*\* No. 25 Colorado State 3, New Mexico 2 Oct. 24, 2009 at Johnson Center, Albuquerque, N.M.

#	#25 Colorado State	SP	K	E	TA	PCT	A	SA	SE	RE	DIG	BS	BA	BE	BHE	PTS
4	STEFFAN, Katelyn	5	11	5	26	.231	1	1	3	1	2	0	3	0	0	13.5
5	PLOURDE, Megan	5	14	3	22	.500	0	0	0	0	3	1	8	0	0	19.0
8	SANDERS, Evan	5	2	2	11	.000	46	0	0	0	9	1	6	1	1	6.0
10	DAVISSON, Jacques	5	10	5	40	.125	1	3	0	2	7	0	4	0	0	15.0
11	NELSON, Tessa	5	2	3	17	-.059	1	0	2	0	2	0	2	0	0	6.0
16	HEMMINGS, Audrey	5	1	0	1	.000	2	0	0	1	10	0	0	0	0	1.0
1	GAULIA, Izzy	5	0	0	0	.000	0	0	0	0	2	0	0	0	0	0.0
6	BATTEN, Katelyn	5	0	0	0	.000	0	0	2	0	20	0	0	0	0	1.0
9	KOENNING, Emily	2	0	0	0	.000	0	0	1	0	0	0	0	0	0	0.0
13	MINCH, Danielle	5	14	7	34	.206	0	0	2	2	1	0	5	1	0	16.5
17	PAIGE, Brieon	1	0	0	0	.000	0	0	0	0	0	0	0	0	0	0.0
Totals.....		5	54	25	151	.192	51	4	11	6	56	2	34	2	2	77.0

### TEAM ATTACK PER GAME

Game	K	E	TA	Pct
1	13	4	30	.300
2	12	9	45	.067
3	12	5	25	.280
4	8	3	27	.185
5	9	4	24	.208

### TOTAL TEAM BLOCKS: 19.0

### GAME SCORES

	1	2	3	4	5
Colorado State	25	18	25	20	15
New Mexico	18	25	20	25	11

### TEAM RECORDS

	17-4, 9-1 MWC
Colorado State	17-4, 9-1 MWC
New Mexico	14-8, 5-5 MWC

#	New Mexico	SP	K	E	TA	PCT	A	SA	SE	RE	DIG	BS	BA	BE	BHE	PTS
2	MEETER, Lisa	5	8	6	31	.065	0	1	1	1	9	0	2	0	0	9.0
3	ROHR, Melissa	5	0	0	0	.000	0	1	1	1	12	0	0	0	0	1.0
4	RHOADES, Ashley	5	11	10	28	.036	0	0	0	0	3	1	3	0	0	13.5
6	MORRIS, Rose	5	7	6	20	.050	0	1	0	0	1	0	1	0	0	8.5
7	MICHAELSEN, Jade	5	3	0	14	.214	44	2	0	0	6	0	1	0	1	5.5
14	LEHNE, Anna	5	4	4	14	.000	0	0	0	1	3	3	0	0	0	8.5
5	RUSSELL, Jordan	3	0	0	0	.000	0	1	2	0	4	0	0	0	0	1.0
8	BUCK, Allison	5	0	0	0	.000	4	1	1	2	18	0	0	0	0	1.0
9	SUITER, Allie	1	0	0	1	.000	0	0	0	0	0	0	0	1	0	0.5
11	WONG, Amy	3	0	0	0	.000	0	0	0	0	6	0	0	0	0	0.0
12	HADFIELD, Taylor	5	21	7	39	.359	0	0	2	0	1	0	3	0	0	22.5
13	WILLIAMSON, Kelly	2	0	4	5	-.800	0	0	0	0	0	0	0	0	0	0.0
Totals.....		5	54	37	152	.112	48	6	7	4	61	4	14	0	1	71.0

### TEAM ATTACK PER GAME

Game	K	E	TA	Pct
1	8	9	29	-.034
2	12	5	34	.206
3	12	9	30	.100
4	17	10	36	.194
5	5	4	23	.043

### TOTAL TEAM BLOCKS: 11.0

Attend: 2123

Time: 2:18

Referees: Verna Klubnikin, Cedric AllRunner

1 2 3 4 5 Total

8 9 8 8 8 41

4 6 5 4 1 20

Tie scores

Lead changes

## Match #23 \*\*\* New Mexico 3, Air Force 0 Oct. 29, 2009 at Clune Arena, Colorado Springs, Colo.

#	New Mexico	SP	K	E	TA	PCT	A	SA	SE	RE	DIG	BS	BA	BE	BHE	PTS
2	MEETER, Lisa	3	4	3	15	.067	2	1	3	2	11	1	0	0	0	6.0
6	MORRIS, Rose	2	2	1	13	.077	0	0	0	0	4	1	2	1	0	4.0
7	MICHAELSEN, Jade	3	5	1	7	.571	31	1	1	0	8	0	4	0	0	8.0
9	SUITER, Allie	3	6	2	13	.308	0	1	1	0	1	0	2	0	0	8.0
12	HADFIELD, Taylor	3	7	3	18	.222	2	0	1	0	6	0	0	0	0	7.0
14	LEHNE, Anna	3	12	2	25	.400	0	0	0	0	0	0	0	0	0	14.0
3	ROHR, Melissa	1	0	0	0	.000	0	0	0	0	4	0	0	0	0	0.0
5	RUSSELL, Jordan	1	0	0	0	.000	0	1	0	1	0	0	0	0	0	0.0
8	BUCK, Allison	3	0	0	0	.000	1	0	0	0	10	0	0	0	0	0.0
11	WONG, Amy	3	0	0	0	.000	0	0	0	0	6	0	0	0	0	0.0
13	WILLIAMSON, Kelly	1	2	0	4	.500	0	0	0	0	0	0	0	0	0	2.0
16	BARBER, Rachel	1	0	2	5	-.400	0	0	0	0	0	0	0	0	0	0.0
Totals.....		3	38	14	100	.240	36	3	7	2	51	2	12	1	0	49.0

### TEAM ATTACK PER GAME

Game	K	E	TA	Pct
1	9	1	25	.320
2	13	6	33	.212
3	16	7	42	.214

### TOTAL TEAM BLOCKS: 8.0

### GAME SCORES

	1	2	3
New Mexico	25	25	25
Air Force	9	23	20

### TEAM RECORDS

	15-8, 6-5 MWC
New Mexico	15-8, 6-5 MWC
Air Force	8-15, 0-10 MWC

#	Air Force	SP	K	E	TA	PCT	A	SA	SE	RE	DIG	BS	BA	BE	BHE	PTS
2	KONSTANZER, Grace	3	7	2	17	.294	0	1	1	7	0	1	0	0	0	8.5
3	SPENCER, Kelly	3	0	0	3	.000	3	0	3	0	7	0	0	0	0	0.0
11	HARRINGTON, Michelle	3														