



HUSKIES

2007-08 Northern Illinois University Women's Basketball Game Notes

2007-08 Schedule NIU Women's Basketball

Nov. 6	Robert Morris (exh.)	W, 65-42
Nov. 9	Bradley	W, 54-48
Nov. 12	at Chicago State	L, 64-57
Nov. 15	Western Illinois	W, 60-59
<u>Caribbean Challenge</u>		
Nov. 21	vs. Michigan State	L, 67-40
Nov. 22	vs. Tulane	L, 70-57
Nov. 25	at Illinois-Chicago	L, 50-42
Nov. 28	at UW-Green Bay	L, 76-54
<u>Hawkeye Classic</u>		
Dec. 8	at Iowa	L, 87-43
Dec. 9	vs. St. Joseph	W, 90-82
Dec. 17	DePaul	L, 90-58
Dec. 21	Northern Iowa	W, 61-46
Dec. 29	at IUPUI	L, 58-55
Dec. 31	at Illinois State	L, 78-54
Jan. 9	at Eastern Michigan #	L, 61-42
Jan. 12	Ball State #	L, 84-78
Jan. 15	Central Michigan #	W, 87-60
Jan. 19	at Western Michigan #	L, 75-51
Jan. 23	Toledo #	7 pm
Jan. 26	at Miami (OH) #	1 pm
Jan. 31	Buffalo #	7 pm
Feb. 3	at Akron #	1 pm
Feb. 9	at Bowling Green #	1 pm
Feb. 13	Kent State #	7 pm
Feb. 16	Ohio #	2 pm
Feb. 19	at Central Michigan #	6 pm
Feb. 23	at Toledo #	6 pm
Feb. 27	Western Michigan #	7 pm
Mar. 1	Eastern Michigan #	11 am
Mar. 5	at Ball State #	6 pm
Mar. 9	First Round	TBA
Mar. 11	Quarterfinals	TBA
Mar. 14	Semifinals	TBA
Mar. 15	Championship	TBA

All times Central and subject to change
Home Games in **Bold**
#-Mid-American Conference game

All Home Games Played at
Convocation Center

NIU MEDIA RELATIONS

Joe Summins
Women's Basketball Contact
Work: 815-753-9539
Cell: 815-690-6519
Press Row: 815-752-6767/6768
jsummings@niu.edu

GAME 18

Wednesday, January 23, 2008 - 7 p.m. CST

University of Toledo Rockets
(9-7, 2-2 MAC)

Head Coach: Mark Ehlen (357-270, 13th Season)



VS

Northern Illinois University Huskies
(5-12, 1-3 MAC)

Head Coach: Carol Owens (36-41, 3rd Season)



Convocation Center: (9,100)
DeKalb, Ill.

PROBABLE STARTERS

NORTHERN ILLINOIS			PPG	RPG	APG	TOLEDO			PPG	RPG	APG
G 3	Kylie York	10.4	2.7	2.7	F 33	Amber Heistan	5.0	2.8	1.3		
G 10	Jessie Wilcox	9.8	2.6	2.6	F 44	Lisa Johnson	7.4	7.3	1.1		
G 2	Shari' Welton	8.2	3.7	1.3	G 1	Nacole Stocks	5.8	3.1	3.9		
F 11	Whitney Lowe	8.5	4.4	0.5	G 14	Ta'Yani Clark	8.4	5.0	1.7		
F 44	Ebony Ellis	5.6	6.4	0.6	G 34	Olivia Terry	7.5	2.9	1.1		

2007-08 Northern Illinois Numerical Roster

No.	Name	Pos.	Ht.	Cl.	Hometown (Previous School)
1	Terriel Cannon	G/F	5-9	So.	Hillside, Ill. (Proviso West)
2	Shari' Welton	G/F	5-11	Jr.-RS	Calumet City, Ill. (Wisconsin)
3	Kylie York	G	5-8	So.	Fishers, Ind. (Hamilton Southeastern)
10	Jessie Wilcox	G	5-7	Jr.	Oshkosh, Wis. (West)
11	Whitney Lowe	G/F	6-0	Sr.	Bushnell, Ill. (Prairie City)
25	Bianca Brown	G	5-9	Fr.	Detroit, Mich. (Detroit Renaissance)
31	Tara Michels	G	5-7	Jr.-RS	Dixon, Ill. (Dixon)
34	Becky Smith	F	6-2	Jr.	Janesville, Wis. (Parker)
41	Aileen Rossouw	F	6-2	Jr.-RS	Plano, Texas (Auburn)
44	Ebony Ellis	C	6-3	Fr.-RS	Joliet, Ill. (Joliet Township)
50	Mauvolyene Adams	F	6-0	Fr.	Bolingbrook, Ill. (Bolingbrook)

Pronunciation Key

Name	Pronunciation
Terriel.....	Terry-EL
Shari'.....	Sha-REE
Aileen Rossouw.....	eye-LEAN ROO-so
Mauvolyene.....	Maw-vo-LEAN

Mid-American Conference Standings

	Conference			Overall			Conference			Overall		
	W-L	Pct.		W-L	Pct.		W-L	Pct.		W-L	Pct.	
WEST							EAST					
Eastern Michigan	3-1	.750		9-7	.563		Bowling Green	4-0	1.000	15-3	.833	
Ball State	3-1	.750		7-10	.412		Miami	2-2	.500	10-8	.556	
Western Michigan	3-1	.750		6-12	.333		Ohio	2-2	.500	9-8	.529	
Toledo	2-2	.500		9-7	.563		Buffalo	2-2	.500	9-8	.529	
Northern Illinois	1-3	.250		5-12	.294		Kent State	2-2	.500	5-11	.313	
Central Michigan	0-4	.000		4-13	.250		Akron	0-4	.000	5-13	.278	



2007-08 NIU WOMEN'S BASKETBALL

Toledo vs. NIU, January 23 • Page 2

University Quick Facts

School..... Northern Illinois University
 City, Zip..... DeKalb, IL 60115
 Founded..... 1895
 Enrollment..... 25,254
 Nickname..... Huskies
 School Colors..... Cardinal & Black
 Home Court..... Convocation Center
 Capacity..... 9,100
 Affiliation..... NCAA Division I
 Conference..... Mid-American (West)
 President..... Dr. John Peters
 (John Carroll 1967)
 Assoc. VP/Director of Athletics... Dr. Jim Phillips
 (Illinois, 1990)
 Athletics Phone..... 815 / 753-7370
 Ticket Office..... 815 / 752-6800
 Website..... www.niuhuskies.com

Coaching Staff

Head Coach..... Carol Owens
 Alma Mater/Year..... Northern Illinois/ 1990
 Record at NIU/Years..... 36-41/3
 Career Record..... Same
 Office Phone..... (815) 753-0586
 Best Time To Reach..... Contact SID
 Assistant Coaches..... Molly Murray, E.C. Hill,
 Carl Armato
 Dir. of Basketball Operations.... Cecilia Bolles
 Athletic Trainer..... Tricia Schank

Team Information

2006-07 Overall Record..... 19-12
 Home..... 10-3
 Road..... 6-8
 Neutral..... 3-1
 2006-07 MAC Record/Finish..... 8-8/ 3rd West
 Starters Returning/Lost..... 2/3
 Letterwinners Returning/Lost..... 6/4

Team History

First Year of Basketball..... 1957-58
 First Season in Division I..... 1982-83
 Overall All-Time Division I Record.... 345-348
 NCAA Tournament Appearances..... 5
 1990, 1992, 1993, 1994, 1995

HUSKIES ALL-ACCESS

Huskies All-Access is your online home for the most comprehensive coverage of Northern Illinois sports. Get the games, highlights, press conferences and coach's shows you want - all in one place Plans start at \$6.95 a month.

The Northern Illinois University women's basketball team returns to the Convocation Center after falling to Western Michigan, 75-51, at Kalamazoo Saturday.

The Huskies played a solid first half, shooting 50 percent from the field in the half. After falling behind early, NIU responded with a 6-0 run midway through the first period to take an 18-13 lead with 9:59 left to play in the half. Western Michigan went on an 8-0 run to take a 21-18 lead with 6:34 left in the half. The Broncos would never trail. They went into the break with a 40-28 advantage.

The Huskies struggled offensively in the second half. NIU shot 27 percent from the field in the final frame. Western Michigan took advantage of the Huskies poor shooting, opening up the second half with an 8-0 run to take a 47-28 lead with 16:43 left to play. The Broncos would lead by as many as 26.

Four of the five Bronco starters finished in double figures. WMU's Ebony Cleary led the way with a game-high 17 points. Whitney Lowe (Bushnell, Ill./Prairie City) was the leading scorer for the Huskies with 14 points. Jessie Wilcox (Oshkosh, Wis./West) also finished in double digits, adding 12 points.

The Huskies were outrebounded, 34-25. Foul trouble also plagued Northern. Western Michigan went to the charity stripe 33 times, cashing in on 26 of those visits. The Huskies went 8-10 from the free throw line.

THE SERIES

Toledo leads the all-time series, 18-13, but the Huskies have won the last four meetings between the two. NIU outscored Toledo 138-128 in the two meetings last season, winning the first game, 65-58, Jan. 10, 2007 at Toledo and taking the second game, 73-70, in the Convocation Center, Feb. 21, 2007. Stephanie Raymond scored a game-high 30 points the last time the two met.

THE COACHES

Northern Illinois head coach Carol Owens is in her third season leading the Huskie women's basketball program. Owens, a NIU grad, has turned the Huskies into a contender in the Mid-American Conference in a very short period of time. Last season, the Huskies advanced to the semifinals to the 2007 MAC Women's Basketball Tournament. Toledo's head coach Mark Ehlen is in his 13th season at Toledo and owns a 235-140 record with the Rockets and a 357-270 overall head coaching record.

THE TEAMS

Northern Illinois returns to the Convocation Center looking for its second-straight home victory. The Huskies defeated Central Michigan, 87-60, in their last home contest. NIU is looking to rebound from a 75-51 defeat at the hands on Western Michigan.

Toledo snapped a two-game losing streak after posting a 72-66 victory over Ball State Saturday at home. Tamesha Scotton came off the bench to score a game-high 17 points. Three other Rockets finished in double figures. The Huskies and Rockets do have a common opponent outside of MAC play. Both teams faced off against Bradley, with the Huskies beating the Braves, while Toledo lost its match up with Bradley.

KEY PLAYERS TO WATCH

Whitney Lowe has steadily improved since the beginning of conference play, scoring in double digits in all four MAC games this season with a career-high 24 coming against Ball State. She is the Huskies' leading scorer, averaging 15.3 points a game since the beginning of conference play, well above her season average of 8.5 points. Shari' Welton is averaging 9.8 points a game in MAC play, while averaging 8.2 points a game for the season.

Allie Clifton leads the Rockets in scoring and rebounding, averaging 17.6 points and grabbing 7.6 boards a game. Tamesha Scotton is right behind her, averaging 10.3 points a game and grabbing 7.3 rebounds.

BREAKOUT GAME

• The Huskies victory over Central Michigan was the largest NIU victory since Nov. 11, 2006 when NIU defeated Illinois State, 97-69. It was the largest point total the Huskies have posted since they scored 90 against St. Joseph's in the Hawkeye Challenge Dec. 9, 2007.

THREE AND OUT

• The Huskies held IUPUI to .000 percent shooting from beyond the three-point line. The last time the Huskies shut a team out from beyond the arc was Jan 25, 2003 when



2007-08 NIU WOMEN'S BASKETBALL

Toledo vs. NIU, January 23 • Page 3

2007-08 STATISTICS

POINTS

Player	G	PTS	AVG/G
Kylie York	17	177	10.4
Whitney Lowe	17	145	8.5
Shari' Welton	17	140	8.2
Jessie Wilcox	13	128	9.8
Ebony Ellis	17	96	5.6

FIELD GOAL PERCENTAGE

Player	FG	ATT	PCT
Becky Smith	28	58	.483
Ebony Ellis	36	78	.462
Aileen Rossouw	22	48	.458
Jessie Wilcox	44	100	.440
Terriel Cannon	11	29	.379

FIELD GOAL ATTEMPTS

Player	G	ATT	ATT/G
Kylie York	17	163	9.6
Whitney Lowe	17	148	8.7
Shari' Welton	17	145	8.5
Jessie Wilcox	13	100	7.7
Ebony Ellis	17	78	4.6

3-POINT PERCENTAGE

Player	3FG	ATT	PCT
Terriel Cannon	7	15	.467
Jessie Wilcox	20	46	.435
Aileen Rossouw	3	7	.429
Shari' Welton	2	5	.400
Kylie York	41	120	.342

FREE THROW PERCENTAGE

Player	FT	ATT	PCT
Terriel Cannon	2	2	1.000
Kylie York	20	21	.952
Jessie Wilcox	20	24	.833
Whitney Lowe	32	39	.821
Mauvolyene Adams	21	30	.700

ASSISTS

Player	G	No.	A/G
Kylie York	17	46	2.7
Jessie Wilcox	13	34	2.6
Shari' Welton	17	22	1.3
Aileen Rossouw	10	20	2.0
Tara Michels	17	16	0.9

STEALS

Player	G	No.	S/G
Shari' Welton	17	18	1.1
Kylie York	17	17	1.0
Whitney Lowe	17	11	0.6
Mauvolyene Adams	16	10	0.6
Jessie Wilcox	13	10	0.8

REBOUNDING

Player	G	No.	REB/G
Ebony Ellis	17	108	6.4
Whitney Lowe	17	74	4.4
Mauvolyene Adams	16	66	4.1
Shari' Welton	17	63	3.7
Becky Smith	17	54	3.2

NIU held Marshall to 0-2 from the three-point line, a span of 137 games.

STREAKING

• The Huskies have hit at least one three-pointer in 90 consecutive games. The last time the Huskies went a game without connecting on a trey was Jan 19, 2005 when the Huskies went 0-11 from beyond the arc against Ball State.

STREAK BUSTER

• Under Carol Owens, the Huskies have posted a 18-18 record in games following a loss. Last season, the longest losing streak the Huskies had was two games. The longest losing streak the Huskies have endured under Owens has been five games, that came earlier season.

TURNING THE TABLES

• For the first time this season, the Huskies have had fewer turnovers than their opponent in three-straight games. In the Huskies' game against Ball State (1/12/08), NIU had 15 turnovers to Ball State's 17, in NIU's victory over Central Michigan, the Huskies had 15 miscues to CMU's 18. NIU edged out Western Michigan 25-26.

HELPING HAND

• In the Huskies' win over Central Michigan, NIU had more assists (23) than turnovers (15) for the third time this season. The first came in the victory over St. Joseph's, NIU had more assists (20) than turnovers (19). In the Huskies' loss to Ball State, the Huskies had more assists (15) than turnovers (12) for the second time this season.

• The Western Michigan game marks the fourth-straight game NIU has had more assists than its opponents.

• The Huskies' 23 assists against Ball State was the highest assist total by NIU this season.

ON THE OFFENSIVE

• The Huskies attempted a season-high 77 field goals against Ball State (1/12/08) surpassing the previous high of 65 against UIC (11/25/07). The record is 108 at Cleveland State (2/6/92).

AMERICAN WOMAN

• NIU head coach Carol Owens was an assistant coach on the USA Basketball's Under 19 Women's Basketball Team that captured the gold at the 2007 FIBA U19 World Championship in Bratislava, Slovakia this past summer. Owens also took home the gold at the FIBA Americas U18 Championship in Colorado Springs, Colo. in the summer of 2006 as an assistant on Team USA's Under 18 Women's Team.

NEW ADDITION

• New Huskies' assistant coach Carl Armato didn't have to move too far after taking the job on Carol Owens' staff. Armato had served as an assistant on the NIU men's basketball staff for the past six seasons before joining the women's staff in May. His new office is approximately 30 feet away from his old one.

ALL IN THE FAMILY

• With the addition of Armato, there are currently three NIU graduates on staff in 2007-08. Carol Owens (1990), E.C. Hill (1995) and Armato (1984) all earned their undergraduate degrees from NIU. Owens was a four-year letterwinner and three-time team captain from 1986-90, while Hill was a three-year letterwinner from 1992-93 in women's basketball. Armato was a three-year letterwinner on the Huskies' men's basketball team from 1982-84.

STILL COLLECTING HONORS

• E.C. Hill was named to the *Chicago Tribune's* all-Chicago Public League Team. The Whitney Young product earned second team honors.

PRO HUSKIE

• Former Huskie standout and current Chicago Sky player Stephanie Raymond is in her first season as a student coach for NIU. Raymond is assisting Owens and her staff as she completes her undergraduate work in physical education. She is on schedule to graduate in December 2008.



2007-08 NIU WOMEN'S BASKETBALL

When leading at halftime	5-0
When the game was tied at halftime	0-0
When trailing at halftime	0-12

When NIU...

shot less than 40 % from floor	1-11
shot 40.0-44.9 % from floor	0-1
shot 45.0-49.9 % from floor	2-0
shot better than 50 % from floor	2-0

When opponent...

shot less than 40 % from floor	2-3
shot 40.0-49.9 % from floor	1-4
shot better than 50 % from floor	2-5

When outshooting opponent.....	4-1
When outshot by opponent.....	1-11

When outrebounding opponents	5-5
When rebounds are even	0-1
When out-rebounded by opponents	0-6

When committing fewer turnovers than foes	1-2
When turnovers are tied	0-0
When committing more turnovers than foes.....	4-10

When scoring under 59 points.....	1-11
When scoring 60-69 points.....	2-0
When scoring 70 or more points.....	2-1
When holding opponents to less than 59 points.....	3-2
When holding opponents to 60-69 points.....	1-3
When opponents score 70 or more points.....	1-7

In games decided by 1 or 2 points.....	1-0
In games decided by 3-5 points.....	0-1
In games decided by 6-10 points.....	2-3
In games decided by 11-15 points.....	1-1
In games decided by 16-plus points.....	1-7

In day games.....	1-6
In night games.....	4-6

In November	2-5
In December	2-3
In January.....	1-4
In February	0-0
In March.....	0-0

HELLO, MY NAME IS...

- The Huskies welcomed five newcomers to the floor this season although three of those “newcomers,” Ebony Ellis, Aileen Rossouw and Shari’ Welton are in their second seasons with the program after spending 2006-07 on the bench as redshirts. The other two newcomers–Bianca Brown and Mauvolyene Adams–are true freshmen.

- Bianca Brown and Mauvolyene Adams come to NIU with championship credentials as both played on state championship teams during their junior years in high school. Brown’s Detroit Renaissance was the state of Michigan’s 2006 Class B championship and Adams was a member of Bolingbrook’s 2006 Class AA state championship team.

HAPPY ANNIVERSARY

- The Northern Illinois University women’s basketball team is celebrating 50 years of women’s basketball. The program was started in 1957-58 with the Huskies posting a 1-1 record. NIU’s defeated George Williams, 43-8, for its the first victory in school history.

AYE, AYE, CAPTAIN

- Jessie Wilcox, Tara Michels and Becky Smith will serve as team captains in 2007-08.

GLASS CLEANERS

- The Huskies grabbed a season-high 61 rebounds against UIC (11/25/07) It was the highest total produced by the Huskies in the Carol Owens era. The previous high was 52 set last season in the Huskies 65-58 victory over Toledo (1/10/07). The Huskies have out rebounded their opponents 234-188 this season.

FEELS LIKE THE FIRST TIME

- Freshmen Ebony Ellis and Bianca Brown and sophomore Terriel Cannon made their first career starts in the Hawkeye Challenge. Ellis started against Iowa, while Cannon and Brown started against St. Joseph’s.

GETTING TO KNOW YOU

- With so many new faces, Carol Owens has employed eight different line ups this season in an effort to better evaluate her personnel in game situations.
 - Becky Smith, Aileen Rossouw, Shari’ Welton, Kylie York, Jessie Wilcox
Bradley, Chicago State
 - Becky Smith, Whitney Lowe, Shari’ Welton, Charmaine Bell, Jessie Wilcox
Western Illinois, Michigan State
 - Becky Smith, Whitney Lowe, Shari’ Welton, Kylie York, Charmaine Bell
Tulane, UIC
 - Becky Smith, Whitney Lowe, Shari’ Welton, Kylie York, Aileen Rossouw
Green Bay
 - Becky Smith, Ebony Ellis, Shari’ Welton, Kylie York, Tara Michels
Iowa
 - Ebony Ellis, Whitney Lowe, Terriel Cannon, Kylie York, Bianca Brown
St. Joseph’s
 - Ebony Ellis, Whitney Lowe, Shari’ Welton, Kylie York, Bianca Brown
DePaul
 - Ebony Ellis, Whitney Lowe, Shari’ Welton, Kylie York, Jessie Wilcox
Northern Iowa, IUPUI, Illinois State, Eastern Michigan, Ball State, Central Michigan, Western Michigan

WHERE THERE’S A WILCOX THERE’S A WAY

- Jessie Wilcox was named to the 2007-08 Preseason All-MAC Team. She is the second-straight Huskie to earn that honor, following Stephanie Raymond who was named to last year’s team. Wilcox was the Huskies’ third-leading scorer last season with 304 points, averaging 9.8 points a game.

- Wilcox is 41 points away from 600 for her career. She recorded her 500th career point against Northern Iowa (12/21/07).



2007-08 NIU WOMEN'S BASKETBALL

NIU in the Mid-American Conference

(Through games of Jan. 20, 2008)

Scoring Offense

Team	G	W-L	Pts.	Avg/G
1. Bowling Green	18	15-3	1308	72.7
12. NIU	17	5-12	983	57.8

Scoring Defense

Team	G	Pts.	Avg/G
1. Eastern Michigan	16	940	58.8
8. NIU	17	1155	67.9

Scoring Margin

Team	G	Off	Def	Margin
1. Bowling Green	18	72.7	59.1	+13.6
11. NIU	17	57.8	67.9	-10.1

Free Throw Percentage

Team	G	FTM	FTA	Pct.
1. Bowling Green	18	263	358	.735
8. NIU	17	180	264	.682

Field Goal Percentage

Team	G	FGM	FGA	Pct.
1. Bowling Green	18	463	1007	.460
10. NIU	17	356	928	.384

Field Goal Percentage Defense

Team	G	FGM	FGA	Pct.
1. Eastern Michigan	16	350	917	.382
11. NIU	17	416	936	.444

3-Point Field Goal Percentage

Team	G	FGM	FGA	Pct.
1. Ohio	17	131	321	.408
5. NIU	17	91	265	.343

3-Point Field Goal Percentage Defense

Team	G	FGM	FGA	Pct.
1. Ohio	17	70	255	.275
2. NIU	17	75	245	.306

Rebounding Offense

Team	G	REB	Avg/G
1. Ohio	17	722	42.5
8. NIU	17	620	36.5

Rebounding Defense

Team	G	REB	Avg/G
1. Bowling Green	18	578	32.1
2. NIU	17	563	33.1

Rebounding Margin

Team	G	Team	Avg	Opp	Avg	Margin
1. Ohio	17	722	42.5	599	35.2	+7.2
2. NIU	17	620	36.5	563	33.1	+3.4

• Wilcox missed four games earlier this season due to a hand injury.

• Wilcox is 23rd in the conference in scoring, averaging 9.8 points a game.
• Wilcox is 11th on the Huskies' career list for three-point field goals made with 77. She needs three three-pointers to move into 10th and is 146 away from No. 1.

• Wilcox recorded the first double-double of her career in the Huskies' win over Toledo (1/10/07), scoring 13 points and grabbing 11 rebounds.

• Wilcox recorded a perfect day against Buffalo last season in the Huskies' 58-52 victory (1/27/07) as she went 4-4 from the field and 3-3 from the free throw line for 12 points.

• Wilcox scored a career-high 24 points in NIU's 82-70 victory over Miami (OH) (2/3/07) and is NIU's third leading scorer with an average of 10 points a game.

HOW LOWE CAN YOU GO

• Senior Whitney Lowe is 92 points away from 700 career points and 48 rebounds from 400 career rebounds. She recorded her 600th career point at Western Michigan(1/19/08) and grabbed her 300th career rebound against Tulane (11/22/07).

• Lowe posted a season and career-high 24-points against Ball State Jan. 12, 2008. She went 10-20 from the field and 2-3 from the free throw line.

• Lowe was the Huskies representative on the all-tournament team of the Hawkeye Challenge, averaging 10 points a game for the two-day tourney.

• Lowe is 10th on the NIU career list for three-point field goals made with 80. She needs four more three pointers to pass Cindy Conner (1990-93) and Stephanie Smith (2000-04) to move into eighth and is 143 from No. 1 (Denise Dove, 1987-91).

FEEL THE SENSATION

• Sophomore Kylie York is already seventh on the NIU list for career three-point field goals made with 89. She needs four more threes to move past E.C. Hill for sixth-place and is 135 away from No. 1.

• York is 55 points away from 400. She scored her 300th career point in the Huskies' loss to IUPUI (Dec. 29, 2007).

• York has hit 41 three pointers through the first 17 games of the season. The record for threes made in a season is 80 set by Denise Dove during the 1988-89 season.

• York is currently 18th in the MAC in scoring, averaging 10.4 points a game.

• York is tied for third in the conference in three-point field goals made, averaging 2.41 a game.

• This season, York hit at least one three pointer in the first seven games. Last season, she had two streaks of eight-straight games hitting at least one three-pointer. The first was from Dec. 20, 2006 to Jan. 17, 2007 and the second was from Feb. 7, 2007 to March 4, 2007.

WELTON'S WORLD

• Shari' Welton posted the first double-double of the season for the Huskies, and the first of her career, when she scored 10 points and grabbed 12 rebounds in the Huskies' 60-59 victory over Western Illinois. Her 10th point and 12th rebound came on the game-winning play.

• Welton has scored in double digits in seven of the last eight games. She had two double digit scoring efforts in her first nine games.



2007-08 NIU WOMEN'S BASKETBALL

HUSKIE RADIO NETWORK

Flagship Station:

WLBK-AM (1360 khz), DeKalb

The Huskie Sports Radio Network includes five stations whose signals blanket the region. This fall, for the 19th consecutive year, WLBK-AM (1360) in DeKalb, serves as the flagship station. One of the pioneer AM outlets in the area, WLBK-AM first aired in 1947. [The other affiliate that will include WRHL-AM (1060) in Rochelle and WSEY-FM (95.7) in Oregon-Mount Morris.]

Home and away, Bill Baker handles the on-air duties for the Huskie Sports Radio Network. Baker, 59, begins his 28th year as the play-by-play voice of Northern Illinois women's basketball. He also handles radio play-by-play for Huskie football and men's basketball games.

Tentative Radio Broadcast Schedule

Day	Date	Game	Air Time
Mon.	Nov. 12	at Chicago State	6:50 p.m.
Thurs.	Nov. 15	Western Illinois	6:55 p.m.
Sun.	Nov. 25	at UIC	6:50 p.m.
Wed.	Nov. 28	at UW-Green Bay	6:50 p.m.
Sun.	Dec. 9	at Iowa Tourney	TBA
Mon.	Dec. 17	DePaul	6:55 p.m.
Fri.	Dec. 21	Northern Iowa	6:55 p.m.
Mon.	Dec. 31	at Illinois State	1:50 p.m.
Wed.	Jan. 9	at Eastern Michigan	5:55 p.m.
Sat.	Jan. 12	Ball State	1:55 p.m.
Tue.	Jan. 15	Central Michigan	6:55 p.m.
Wed.	Jan. 23	Toledo	6:55 p.m.
Sat.	Jan. 26	at Miami	12:50 p.m.
Thur.	Jan. 31	Buffalo	6:55 p.m.
Sun.	Feb. 3	at Akron	12:50 p.m.
Wed.	Feb. 13	Kent State	6:55 p.m.
Sat.	Feb. 16	Ohio	1:55 p.m.
Tue.	Feb. 19	at Central Michigan	5:55 p.m.
Sat.	Feb. 23	at Toledo	5:55 p.m.
Wed.	Feb. 27	Western Michigan	6:55 p.m.
Sat.	Mar. 1	Eastern Michigan	4:20 p.m.
Wed.	Mar. 5	at Ball State	5:55 p.m.

MAC Post-Season Tournament In Cleveland, OH

- March 9 - First Round**
- March 10 - Quarterfinals**
- March 14 - Semifinals**
- March 15 - Finals**

Exact playing dates and times all TBD.

All Air-Times – Central and subject to change

• Welton scored a career-high 15 points in the Huskies 78-54 loss to Illinois State (Dec. 31, 2007).

DOUBLE E

• Freshman Ebony Ellis posted her first career double-double, scoring a career-high 17 points and grabbing 11 rebounds in NIU's victory over Central Michigan (Jan. 15, 2008).

• Ellis grabbed a career-high 12 rebounds against Ball State and hauled in 11 boards against Bradley in her first collegiate game. She leads the Huskies in rebounding with 92 rebounds, averaging 6.1 a game.

• Ellis is tied for 10th in the Mid-American Conference in rebounding, averaging 6.4 rebounds a game.

• Ellis is tied for seventh in the MAC in blocks, with 17 on the season, averaging one block per game.

LEAN ON ME

• Aileen Rossouw transferred to NIU after two seasons at Auburn, while Welton transferred to Northern after two years at Wisconsin. In 47 games at Auburn, Rossouw, a native of Plano, Texas, averaged 2.2 points and 1.8 rebounds a game. In 51 games at Wisconsin, Calumet City product Welton averaged 2.1 points and 1.5 rebounds a game.

• Rossouw led all scorers with a career-high 14 points and had six steals in her first regular season game with NIU in the season opener with Bradley.

• Rossouw has missed seven games this season due to an ankle injury.

MS. SMITH

• Becky Smith scored her 200th career point against Illinois State (Dec. 31, 2007). She is 82 points away from 300.

• Smith is two boards from 200 career rebounds.

• Smith set a MAC Tournament record in the 2007 MAC Tournament, shooting 94 percent from the field (12-of-13) for the tournament.

• Smith recorded her career-high in points at Western Michigan (2/25/07), with 12 points; and had a career-best nine rebounds against Akron in the first round of the MAC Tournament.

MAUVOLYENE

• Mauvolyene Adams set career highs in points (18), minutes played (21) and made field goals (8) in the Huskies victory over St. Joseph's. She grabbed a season-high 10 rebounds against IUPUI.

CANNON-BALL

• Terriel Cannon posted her first career double-digit scoring effort against Iowa, scoring 11 points. She went 4-8 from the field and 3-5 from three-point territory.

• Cannon has missed four games due to a knee injury.



2007-08 NIU WOMEN'S BASKETBALL

Toledo vs. NIU, January 23 • Page 7



Head Coach **Carol Owens**

Education

Northern Illinois, 1990
Bachelor's degree (Communications)

Owens at Northern Illinois

Season	W-L	Pct.	MAC	Pct.
2005-06	12-17	.413	7-9 (4th)	.437
2006-07	19-12	.613	8-8 (3rd)	.500
2007-08	5-12	.294	1-3	.250
Totals	36-41	.467	16-20	.444

Entering her third season at the helm of Northern Illinois' women's basketball program, head coach Carol Owens has turned the Huskies into a contender in the Mid-American Conference in a very short period of time. This season, she and the Huskies are coming off their most successful season to date.

In 2006-07, the Huskies posted their best record and first winning season since 2001-02 (17-12). The Huskies jumped out to a fast start, winning seven of their first nine games, including winning the title of the Mildred and Roger L. White Invitational at Northwestern. The Huskies defeated the Cincinnati Bearcats, 81-73, and the host Wildcats, 70-54, in the two-day tourney.

In the battle for state pride, Northern Illinois went 6-2 against Illinois schools in 2006-07, posting wins over Illinois State, Illinois, Chicago State and Western Illinois at home and beat Bradley in Peoria.

Owens navigated the Huskies through a tough MAC schedule, going 8-8 and earning a No. 3 seed in the 2007 MAC Women's Basketball Tournament in Cleveland. NIU made an impressive run in the MAC Tournament, disposing of Akron in the first round, 69-56, to advance to a quarterfinal match-up with Kent State.

After falling behind early, the Huskies stormed back to post a 72-68 win over the Golden Flashes and moved on to the semifinals for the first time since 2002. Forward Becky Smith set a tournament record shooting 94 percent from the field.

In 2006-07, the Huskies broke several school records including three-pointers made (236) and attempted (639). The Huskies also set the single-season mark for free throw percentage, hitting 78.9 percent from the charity stripe.

Owens had two players earn all-MAC

honors. Forward Kristin Wiener was named third-team all-MAC, while Stephanie Raymond earned first-team honors. In April, Raymond became the first Huskie drafted by the WNBA when the Chicago Sky selected her 20th overall.

Northern Illinois also enjoyed success in the classroom a year ago as 10 Huskies posted a cumulative G.P.A. of 3.0. The Huskies earned recognition from the NCAA after posting Academic Progress Rate numbers for 2006-07 that qualified them in the Top 10 percent of all

women's basketball programs. NIU was one of 33 Division I women's basketball programs recognized nationwide and the only MAC team in the Top 10 percent of APR for women's basketball.

The success the Huskies enjoyed in 2006-07 was no surprise to anyone that followed Owens. In her first season, she guided Northern Illinois through a year of steady improvement. After winning her first game as a head coach, the Huskies opened up with a 4-7 record, then posted a 7-9 mark in the MAC and hosted Miami (OH) in the first round of the 2006 MAC Tournament. NIU defeated the RedHawks, 73-65, advancing to the quarterfinals Cleveland.

Carol Owens File

Head Coach, Northern Illinois University

Season	W-L	Pct.	Conf	Pct.	Highlights
2005-06	12-17	.413	7-9 (4th)	.437	Advanced to MAC Quarterfinals
2006-07	19-12	.613	8-8 (3rd)	.500	Advanced to MAC Semifinals
Totals	31-29	.517	15-17	.469	

Assistant Coach, University of Notre Dame

Season	W-L	Pct.	Conf	Pct.	Highlights
1995-96	23-8	.742	15-3 (2nd)	.833	NCAA Tournament / Second Round
1996-97	31-7	.816	17-1 (2nd)	.944	NCAA Tournament / NCAA Final
1997-98	22-10	.688	12-6 (T2nd)	.667	NCAA Tournament / Sweet 16
1998-99	26-5	.839	15-3 (3rd)	.833	NCAA Tournament / Second Round
99-2000	27-5	.844	15-1 (2nd)	.938	NCAA Tournament / Sweet 16
2000-01	34-2	.944	15-1 (T-1st)	.938	NCAA Tournament / National Champions
2001-02	20-10	.657	13-3 (2nd)	.813	NCAA Tournament / Sweet 16
2002-03	21-11	.656	10-6 (5th)	.625	NCAA Tournament / Second Round
2003-04	21-11	.656	12-4 (T-2nd)	.750	NCAA Tournament / Sweet 16
2004-05	27-6	.818	13-3 (T-2nd)	.813	NCAA Tournament / Sweet 16
Totals	252-75	.770	137-31	.815	10 Consecutive NCAA Appearances One National Title / Two Final Fours

Assistant Coach, University of Michigan

Season	W-L	Pct.	Conf	Pct.	Highlights
1993-94	3-24	.111	0-18 (11th)	.000	First season under head coach Trish Roberts
1994-95	8-19	.296	3-13 (10th)	.188	Five-win improvement
Totals	11-43	.203	3-31	.088	

As a collegiate player at Northern Illinois

Season	W-L	Pct.	Conf	Pct.	Highlights
1985-86	8-19	.296	6-12 (8th)	.333	Averaged 13.4 points, 8.1 rebounds
1986-87	11-16	.407	- - -	- - -	Missed season due to knee injury / surgery
1987-88	14-14	.500	6-4 (4th)	.600	Named team captain as a sophomore
1988-89	23-7	.767	12-2 (2nd)	.847	First 20-win season in school history
1989-90	26-5	.839	12-0 (1st)	1.000	NCAA Tournament / Second Round
Totals	82-61	.566	36-18	.667	First NCAA Appearance in NIU history



2007-08 NIU WOMEN'S BASKETBALL

Toledo vs. NIU, January 23 • Page 8

ALL GAMES

RECORD:	OVERALL	HOME	AWAY	NEUTRAL
ALL GAMES:	5-12	4-2	0-8	1-2
CONFERENCE:	1-3	1-1	0-2	0-0
NON-CONFERENCE:	4-9	3-1	0-6	1-2

PLAYER	GP-S	MIN	TOTAL		3-PTS		FT-FTA	PCT	REBOUNDS			PF-FO	AST	TO	BLK	STL	PTS	AVG
			FG-FGA	PCT	FG-FGA	PCT			OFF-DEF	TOT	AVG							
YORK, KYLIE	17-15	517	58-163	.356	41-120	.342	20-21	.952	5-41	46	2.7	34-0	46	49	1	17	177	10.4
WILCOX, JESSIE	13-11	367	44-100	.440	20-46	.435	20-24	.833	7-27	34	2.6	27-0	34	47	1	10	128	9.8
LOWE, WHITNEY	17-14	444	52-148	.351	9-37	.243	32-39	.821	34-40	74	4.4	22-0	9	44	7	11	145	8.5
WELTON, SHARI'	17-16	478	55-145	.379	2-5	.400	28-52	.538	26-37	63	3.7	49-0	22	41	0	18	140	8.2
ROSSOUW, AILEEN	10-3	185	22-48	.458	3-7	.429	11-16	.688	9-24	33	3.3	20-0	11	29	1	8	58	5.8
ELLIS, EBONY	17-10	308	36-78	.462	0-1	.000	24-39	.615	45-63	108	6.4	51-2	11	29	17	10	96	5.6
ADAMS, MAUVOLYENE	16-0	232	25-75	.333	0-0	.000	21-30	.700	27-39	66	4.1	35-0	6	24	2	10	71	4.4
SMITH, BECKY	17-8	327	28-58	.483	0-0	.000	12-18	.667	16-38	54	3.2	60-4	5	35	7	6	68	4.0
BELL, CHARMAINE	6-4	85	5-18	.278	4-12	.333	2-4	.500	2-10	12	2.0	6-0	7	14	1	5	16	2.7
CANNON, TERRIEL	13-1	118	11-29	.379	7-15	.467	2-2	1.000	1-14	15	1.2	6-0	5	15	1	4	31	2.4
BROWN, BIANCA	14-2	123	10-30	.333	0-0	.000	4-10	.400	7-10	17	1.2	13-0	5	11	0	3	24	1.7
MICHEL, TARA	17-1	217	10-36	.278	5-22	.227	4-9	.444	2-13	15	0.9	15-0	16	21	0	9	29	1.7
TEAM									41-42	83	4.9	0		13				
TOTAL	17	3401	356-928	.384	91-265	.343	180-264	.682	222-398	620	36.5	338-6	186	374	38	111	983	57.8
OPPONENTS	17	3401	416-936	.444	75-245	.306	248-365	.679	182-381	563	33.1	270-0	235	263	39	191	1155	67.9

SCORE BY PERIODS:	1ST	2ND	TOTAL
NORTHERN ILLINOIS:	445	538	983
OPPONENTS:	546	609	1155

DEADBALL REBOUNDS:	OFF	DEF	TOTAL
NORTHERN ILLINOIS:	44	10	54
OPPONENTS:	49	7	56

Team Statistics

	NIU	OPP
SCORING	983	1155
Points per game	57.8	67.9
Scoring Margin	-10.1	-
FIELD GOALS-ATT	356-928	416-936
Field goal pct.	.384	.444
3 POINT FG-ATT	91-265	75-245
3-point FG pct.	.343	.306
3-pt. FG made per game	5.4	4.4
FREE THROWS-ATT	180-264	248-365
Free throw pct.	.682	.679
REBOUNDS	620	563
Rebounds per game	36.5	33.1
Rebounding margin	+3.4	-
ASSISTS	186	235
Assists per game	10.9	13.8
TURNOVERS	374	263
Turnovers per game	22.0	15.5
Turnover margin	-6.5	-
Assist/turnover ratio	0.5	0.9
STEALS	111	191
Steals per game	6.5	11.2
BLOCKS	38	39
Blocks per game	2.2	2.3
WINNING STREAK	0	-
Home win streak	1	-
Attendance	3873	8641
Home games-Avg./Game	6-646	8-1031
Neutral Site-Avg./Game	-	3-130



2007-08 NIU WOMEN'S BASKETBALL

Toledo vs. NIU, January 23 • Page 9



#50 Mauvolyene Adams

F • 6-0 • Fr.
Bolingbrook, Ill.
Bolingbrook

	Career Bests	Season Bests:
Points:	18	18
Field Goals:	8	8
3-point FGs:	0	0
Free Throws:	5	5
Rebounds:	10	10
Assists:	2	2
Blocks:	1	1



#25 Bianca Brown

G • 5-9 • Fr.
Detroit, Mich.
Detroit Renaissance

	Career Bests:	Season Bests:
Points:	6	6
Field Goals:	3	3
3-point FGs:	0	0
Free Throws:	2	2
Rebounds:	4	4
Assists:	4	4
Steals:	2	2

Game	FG-A	3FG-A	FT-A	O	D	T	A	TO	B	S	MIN	TP
Bradley	0-1	0-0	2-4	1	0	1	0	2	0	0	8	2
at Chicago St.	2-5	0-0	2-2	1	3	4	0	2	0	0	15	6
Western Ill.	0-1	0-0	0-0	0	1	1	1	1	0	0	7	0
Michigan St.	1-1	0-0	2-2	0	0	0	0	2	1	1	15	4
Tulane	1-4	0-0	1-2	2	1	3	0	1	0	1	13	3
at UIC	4-9	0-0	0-2	3	3	6	0	1	0	1	13	8
at UWGB	1-4	0-0	0-0	3	0	3	0	3	0	1	15	2
at Iowa	0-5	0-0	3-4	3	1	4	0	2	0	0	9	3
vs. St. Joseph's	8-12	0-0	2-3	3	5	8	0	2	0	0	21	18
DePaul	1-3	0-0	0-1	1	2	3	1	2	0	1	12	2
Northern Iowa	1-3	0-0	2-2	0	0	0	0	2	0	0	14	4
at IUPUI	1-6	0-0	0-0	2	8	10	0	1	0	0	21	2
at Illinois State	DNP											
at E. Michigan	2-7	0-0	2-2	3	2	5	0	2	0	0	15	6
Ball St.	1-2	0-0	0-0	0	4	4	0	0	0	1	9	2
C. Michigan	0-4	0-0	5-6	2	7	9	2	1	0	2	23	5
at W. Michigan	2-8	0-0	0-0	3	2	5	2	0	1	2	22	4
Toledo												
at Miami (OH)												
Buffalo												
at Akron												
at Bowling Green												
Kent St.												
Ohio												
at C. Michigan												
W. Michigan												
E. Michigan												
at Ball St.												
Season	25-75	0-0	21-29	27	39	66	6	24	2	9	232	71
Career	25-75	0-0	21-29	27	39	66	6	24	2	9	232	71

Game	FG-A	3FG-A	FT-A	O	D	T	A	TO	B	S	MIN	TP
Bradley	DNP											
at Chicago St.	0-0	0-0	0-0	0	0	0	0	0	0	0	0+	0
Western Ill.	DNP											
Michigan St.	0-0	0-0	0-0	1	2	3	0	0	0	0	5	0
Tulane	0-1	0-0	0-0	0	0	0	0	0	0	0	4	0
at UIC	0-1	0-0	1-4	2	0	2	0	1	0	0	7	1
at UWGB	1-4	0-0	0-0	0	1	1	0	3	0	0	15	2
at Iowa	2-4	0-0	1-2	3	1	4	1	0	0	0	14	5
vs. St. Joseph's*	2-6	0-0	0-0	0	4	4	4	1	0	2	24	4
DePaul*	3-7	0-0	0-0	1	1	2	0	2	0	0	15	6
Northern Iowa	0-0	0-0	0-0	0	0	0	0	0	0	0	3	0
at IUPUI	DNP											
at Illinois State	0-1	0-0	0-0	0	1	1	0	2	0	1	7	0
at E. Michigan	1-4	0-0	0-0	0	0	0	0	1	0	1	10	2
Ball St.	0-0	0-0	0-0	0	0	0	0	0	0	0	2	0
C. Michigan	1-1	0-0	2-2	0	1	1	0	0	0	0	11	4
at W. Michigan	0-1	0-0	0-2	0	0	0	0	1	0	1	7	0
Toledo												
at Miami (OH)												
Buffalo												
at Akron												
at Bowling Green												
Kent St.												
Ohio												
at C. Michigan												
W. Michigan												
E. Michigan												
at Ball St.												
Season	10-30	0-0	4-10	7	11	18	5	11	0	5	124	24
Career	10-30	0-0	4-10	7	11	18	5	11	0	5	124	24

*-Game Started



2007-08 NIU WOMEN'S BASKETBALL

Toledo vs. NIU, January 23 • Page 10



#1 Terriel Cannon

G/F • 5-9 • So.
Hillside, Ill.
Proviso West

	Career Bests	Season Bests:
Points:	11	11
Field Goals:	4	4
3-point FGs:	3	3
Free Throws:	3	0
Rebounds:	3	3
Assists:	2	2
Steals:	2	2



#44 Ebony Ellis

G • 5-9 • Fr.
Joliet, Ill.
Joliet Township

	Career Bests:	Season Bests:
Points:	17	17
Field Goals:	8	8
3-point FGs:	0	0
Free Throws:	5	5
Rebounds:	12	12
Assists:	4	4
Blocks:	5	5

Game	FG-A	3FG-A	FT-A	O	D	T	A	TO	B	S	MIN	TP
Bradley	1-1	0-0	0-0	0	0	0	0	0	0	0	2	2
at Chicago St.	0-0	0-0	0-0	0	1	1	0	1	0	0	2	0
Western Ill.	2-4	1-1	0-0	0	0	0	0	0	0	2	11	5
Michigan St.	1-5	1-5	0-0	0	3	3	0	2	0	1	18	3
Tulane	0-1	0-0	0-0	0	2	2	0	0	0	0	8	0
at UIC	0-2	0-0	0-0	0	1	1	1	0	0	1	5	0
at UWGB	0-1	0-0	0-0	0	1	1	2	3	0	0	8	0
at Iowa	4-8	3-5	0-0	0	1	1	0	1	0	0	19	11
vs. St. Joseph's*	2-5	2-3	0-0	1	2	3	1	4	0	0	23	6
DePaul	1-2	0-1	0-0	0	1	1	1	1	0	0	7	2
Northern Iowa	0-0	0-0	2-2	0	1	1	0	1	0	0	6	2
at IUPUI	0-0	0-0	0-0	0	1	1	0	1	0	0	6	0
at Illinois State	0-0	0-0	0-0	0	0	0	0	1	0	0	3	0
at E. Michigan	DNP											
Ball St.	DNP											
C. Michigan	DNP											
at W. Michigan	DNP											
Toledo												
at Miami (OH)												
Buffalo												
at Akron												
at Bowling Green												
Kent St.												
Ohio												
at C. Michigan												
W. Michigan												
E. Michigan												
at Ball St.												
Season	11-29	7-15	2-2	1	14	15	5	15	0	4	118	33
Career	13-34	7-16	7-9	2	19	21	7	19	1	6	168	44

*-Game Started

Game	FG-A	3FG-A	FT-A	O	D	T	A	TO	B	S	MIN	TP
Bradley	3-3	0-0	0-0	4	7	11	0	3	1	0	21	6
at Chicago St.	0-1	0-0	1-2	3	2	5	0	2	0	0	12	1
Western Ill.	0-1	0-0	0-0	0	0	0	0	0	0	0	4	0
Michigan St.	0-1	0-0	0-0	0	1	1	1	1	0	0	10	0
Tulane	1-6	0-0	4-6	4	6	10	1	0	2	0	17	6
at UIC	1-8	0-0	1-4	4	5	9	0	2	0	1	16	3
at UWGB	2-5	0-1	0-0	2	7	9	0	2	1	0	19	4
at Iowa*	4-8	0-0	2-3	5	4	9	0	2	5	2	34	10
vs. St. Joseph's*	4-6	0-0	0-0	1	2	3	4	2	2	1	15	8
DePaul*	2-4	0-0	0-0	1	1	2	0	1	0	0	16	4
Northern Iowa*	3-6	0-0	3-4	1	6	7	0	3	2	1	17	9
at IUPUI*	1-2	0-0	3-4	1	2	3	0	1	0	1	15	5
at Illinois State*	3-6	0-0	5-6	4	4	8	2	3	0	0	25	11
at E. Michigan*	1-2	0-0	1-2	3	0	3	2	3	1	3	20	3
Ball St.*	2-6	0-0	1-2	8	4	12	1	1	1	1	21	5
C. Michigan	8-12	0-0	1-4	3	8	11	0	2	1	0	29	17
at W. Michigan	1-1	0-0	2-2	1	4	5	1	1	1	0	17	4
Toledo												
at Miami (OH)												
Buffalo												
at Akron												
at Bowling Green												
Kent St.												
Ohio												
at C. Michigan												
W. Michigan												
E. Michigan												
at Ball St.												
Season	36-73	0-1	24-39	45	63	108	12	29	17	10	308	96
Career	36-73	0-1	24-39	45	63	108	12	29	17	10	308	96

*-Game Started



2007-08 NIU WOMEN'S BASKETBALL

Toledo vs. NIU, January 23 • Page 11



#11 Whitney Lowe

G/F • 6-0 • Sr.
Bushnell, Ill.
Prairie City

	Career Bests:	Season Bests:
Points:	24	24
Field Goals:	10	10
3-point FGs:	4	2
Free Throws:	5	5
Rebounds:	10	8
Assists:	3	2
Steals:	3	2



#31 Tara Michels

G • 5-7 • Jr.-RS
Dixon, Ill.
Dixon

	Career Bests:	Season Bests:
Points:	11	6
Field Goals:	4	2
3-point FGs:	3	2
Free Throws:	3	2
Rebounds:	4	3
Assists:	3	3
Steals:	3	3

Game	FG-A	3FG-A	FT-A	O	D	T	A	TO	B	S	MIN	TP
Bradley	3-11	0-5	1-2	2	2	4	0	2	0	0	29	7
at Chicago St.	0-6	0-1	2-2	1	3	4	0	2	0	1	19	2
Western Ill.*	3-11	1-3	2-2	3	5	8	0	5	1	2	35	9
Michigan St.*	0-2	0-1	0-0	0	0	0	0	2	0	0	8	0
Tulane*	5-12	0-3	4-4	3	3	6	1	0	1	0	37	14
at UIC*	1-5	0-1	0-0	1	3	4	0	3	0	0	15	2
at UWGB*	1-2	0-0	3-4	2	2	4	0	5	1	1	24	5
at Iowa	1-7	1-4	0-0	2	4	6	1	3	0	0	27	3
vs. St. Joseph's*	5-10	2-3	5-6	1	2	3	1	2	2	0	30	17
DePaul*	3-6	1-2	4-4	2	1	3	0	2	0	0	22	11
Northern Iowa*	1-5	0-1	1-2	2	2	4	2	1	1	1	26	3
at IUPUI*	2-6	0-1	2-2	3	2	5	0	4	0	0	29	6
at Illinois State*	1-11	0-5	3-4	1	4	5	0	1	0	1	31	5
at E. Michigan*	5-12	0-0	1-2	5	1	6	1	3	1	0	30	11
Ball St.*	10-20	2-3	2-3	5	2	7	2	2	0	1	33	24
C. Michigan	5-10	0-1	2-2	0	0	0	0	3	0	2	20	12
at W. Michigan	6-12	2-3	0-0	1	4	5	1	4	0	2	29	14
Toledo												
at Miami (OH)												
Buffalo												
at Akron												
at Bowling Green												
Kent St.												
Ohio												
at C. Michigan												
W. Michigan												
E. Michigan												
at Ball St.												
Season	52-148	9-37	32-39	34	40	74	9	44	7	11	444	145
Career	212-597	80-259	104-142	130	222	352	39	136	16	42	1765	608

*-Game Started

Game	FG-A	3FG-A	FT-A	O	D	T	A	TO	B	S	MIN	TP
Bradley	0-1	0-1	0-0	0	1	1	0	2	0	0	7	0
at Chicago St.	1-3	1-2	0-0	0	0	0	1	0	0	0	6	3
Western Ill.	0-0	0-0	0-0	0	0	0	1	2	0	0	6	0
Michigan St.	0-6	0-4	0-0	1	2	3	2	0	0	1	28	0
Tulane	0-0	0-0	0-0	0	0	0	0	0	0	0	4	0
at UIC	1-4	0-2	2-2	1	2	3	3	4	0	0	30	4
at UWGB	1-1	0-0	0-2	0	0	0	0	2	0	1	10	2
at Iowa*	2-5	1-4	0-0	0	1	1	1	5	0	1	26	5
vs. St. Joseph's	1-2	0-0	0-1	0	0	0	0	0	0	0	15	2
DePaul	0-2	0-1	0-0	0	0	0	0	0	0	1	10	0
Northern Iowa	2-2	2-2	0-0	0	1	1	2	3	0	1	12	6
at IUPUI	0-1	0-1	0-1	0	0	0	0	2	0	0	7	0
at Illinois State	1-2	1-2	0-0	0	0	0	0	1	0	1	7	3
at E. Michigan	0-1	0-0	0-0	0	2	2	1	0	0	0	21	0
Ball St.	0-0	0-0	0-0	0	1	1	0	0	0	0	2	0
C. Michigan	0-2	0-1	2-3	0	1	1	3	0	0	3	16	2
at W. Michigan	1-4	0-2	0-0	0	0	0	2	0	0	0	10	2
Toledo												
at Miami (OH)												
Buffalo												
at Akron												
at Bowling Green												
Kent St.												
Ohio												
at C. Michigan												
W. Michigan												
E. Michigan												
at Ball St.												
Season	10-36	5-22	4-9	2	11	13	16	21	0	9	217	29
Career	42-121	30-89	16-26	16	39	55	33	46	0	13	571	132

*-Game Started



2007-08 NIU WOMEN'S BASKETBALL

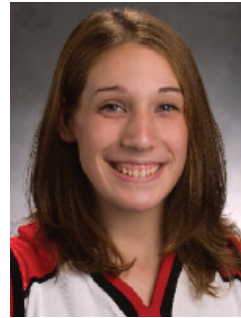
Toledo vs. NIU, January 23 • Page 12



#41 Aileen Rossouw

F • 6-2 • Jr.-RS
Plano, Texas
Auburn

	Career Bests:	Season Bests:
Points:	14	14
Field Goals:	5	5
3-point FGs:	1	1
Free Throws:	4	4
Rebounds:	6	6
Assists:	6	6
Steals:	6	6



#34 Becky Smith

F • 6-2 • Jr.
Janesville, Wis.
Parker

	Career Bests:	Season Bests:
Points:	12	9
Field Goals:	6	4
3-point FGs:	0	0
Free Throws:	5	5
Rebounds:	8	6
Assists:	3	3
Blocks:	3	3

Game	FG-A	3FG-A	FT-A	O	D	T	A	TO	B	S	MIN	TP
Bradley*	5-6	0-1	4-6	4	2	6	0	4	0	6	22	14
at Chicago St.*	4-7	0-0	0-0	2	4	6	3	3	1	0	22	8
Western Ill.	DNP											
Michigan St.	1-3	0-0	1-2	0	1	1	1	1	0	0	21	3
Tulane	1-2	0-0	0-0	0	2	2	1	2	0	0	8	2
at UIC	0-3	0-0	0-0	0	3	3	0	4	0	0	12	0
at UWGB*	3-5	0-0	0-0	1	4	5	2	2	0	0	23	6
at Iowa	DNP											
vs. St. Joseph's	DNP											
DePaul	0-3	0-0	2-4	1	6	7	0	1	0	0	10	2
Northern Iowa	DNP											
at IUPUI	DNP											
at Illinois State	DNP											
at E. Michigan	DNP											
Ball St.	3-10	1-2	0-0	0	1	1	6	4	0	1	25	7
C. Michigan	3-4	1-1	0-0	0	1	1	4	3	0	0	16	7
at W. Michigan	2-5	1-3	4-4	1	0	1	3	7	0	1	26	9
Toledo												
at Miami (OH)												
Buffalo												
at Akron												
at Bowling Green												
Kent St.												
Ohio												
at C. Michigan												
W. Michigan												
E. Michigan												
at Ball St.												
Season	22-48	3-7	11-15	9	24	33	20	31	1	8	185	58
Career	62-135	3-7	36-59	54	62	116	35	69	8	33	715	163

*-Game Started

Game	FG-A	3FG-A	FT-A	O	D	T	A	TO	B	S	MIN	TP
Bradley*	1-2	0-0	0-0	0	4	4	1	3	0	0	26	2
at Chicago St.*	1-3	0-0	0-0	0	4	4	0	4	0	1	21	2
Western Ill.*	1-6	0-0	5-6	2	4	6	1	5	0	1	36	7
Michigan St.*	4-8	0-0	0-1	4	1	5	0	1	1	0	31	8
Tulane*	1-1	0-0	0-0	0	0	0	0	2	0	0	7	2
at UIC*	0-4	0-0	0-0	0	6	6	0	2	0	1	26	0
at UWGB*	2-3	0-0	0-1	0	2	2	1	2	0	0	23	4
at Iowa*	0-0	0-0	0-0	0	2	2	0	1	1	0	10	0
vs. St. Joseph's	4-4	0-0	1-1	1	2	3	0	5	1	0	14	9
DePaul	2-4	0-0	0-1	0	4	4	0	0	0	0	20	4
Northern Iowa	1-3	0-0	0-0	0	1	1	1	3	0	0	23	2
at IUPUI	2-4	0-0	1-1	0	0	0	0	0	0	0	14	5
at Illinois State	3-6	0-0	0-0	3	3	6	0	3	0	1	23	6
at E. Michigan	1-4	0-0	0-0	3	0	3	1	3	0	1	16	2
Ball St.	3-3	0-0	3-4	2	3	5	0	2	1	1	17	9
C. Michigan	2-3	0-0	2-3	1	1	2	0	0	0	0	8	6
at W. Michigan	0-0	0-0	0-0	0	1	1	0	1	0	0	12	0
Toledo												
at Miami (OH)												
Buffalo												
at Akron												
at Bowling Green												
Kent St.												
Ohio												
at C. Michigan												
W. Michigan												
E. Michigan												
at Ball St.												
Season	28-58	0-0	12-18	16	38	54	5	35	7	6	327	68
Career	93-172	0-3	29-43	63	135	198	43	69	31	20	1005	218

*-Game Started



2007-08 NIU WOMEN'S BASKETBALL

Toledo vs. NIU, January 23 • Page 13



#2 Shari' Welton

G/F • 6-2 • Jr.-RS
Calumet City, Ill.
Wisconsin

	Career Bests:	Season Bests:
Points:	15	15
Field Goals:	7	7
3-point FGs:	1	1
Free Throws:	4	4
Rebounds:	12	12
Assists:	3	3
Steals:	3	3



#10 Jessie Wilcox

G • 5-7 • Jr.
Oshkosh, Wis.
West

	Career Bests:	Season Bests:
Points:	24	23
Field Goals:	8	7
3-point FGs:	4	3
Free Throws:	8	7
Rebounds:	11	5
Assists:	6	5
Steals:	4	3

Game	FG-A	3FG-A	FT-A	O	D	T	A	TO	B	S	MIN	TP
Bradley*	1-7	0-0	0-0	2	1	3	0	2	0	2	23	2
at Chicago St.*	1-6	0-0	1-2	2	1	3	1	2	0	0	17	3
Western Ill.*	4-11	0-0	2-4	5	7	12	2	0	0	3	32	10
Michigan St.*	4-8	0-0	0-2	0	0	0	3	2	0	1	30	8
Tulane*	0-4	0-0	2-4	1	1	2	2	1	0	1	26	2
at UIC*	6-14	0-0	2-4	4	5	9	0	3	0	0	31	14
at UWGB*	2-6	0-1	1-2	1	0	1	0	6	0	3	28	5
at Iowa*	1-5	0-0	0-1	0	1	1	1	2	0	1	22	2
vs. St. Joseph's	2-4	0-0	1-2	1	3	4	2	2	0	2	24	5
DePaul*	4-11	0-1	3-5	2	4	6	1	1	0	0	30	11
Northern Iowa*	4-7	1-1	2-4	0	1	1	2	4	0	0	29	11
at IUPUI*	5-10	0-0	3-3	2	1	3	3	1	0	0	35	13
at Illinois State*	7-11	0-0	1-5	0	7	7	2	5	0	1	35	15
at E. Michigan*	6-12	1-1	0-1	2	4	6	0	3	0	2	38	13
Ball St.*	2-11	0-0	6-6	0	0	0	1	1	0	0	27	10
C. Michigan	4-9	0-0	4-7	4	0	4	2	1	0	1	21	12
at W. Michigan	2-9	0-1	0-0	0	1	1	0	5	0	1	30	4
Toledo												
at Miami (OH)												
Buffalo												
at Akron												
at Bowling Green												
Kent St.												
Ohio												
at C. Michigan												
W. Michigan												
E. Michigan												
at Ball St.												
Season	55-145	2-5	28-52	26	37	63	22	41	0	18	478	140
Career	99-263	4-9	43-76	61	78	139	50	80	2	29	850	245

*-Game Started

Game	FG-A	3FG-A	FT-A	O	D	T	A	TO	B	S	MIN	TP
Bradley*	3-3	1-1	0-1	1	2	3	5	7	0	1	28	7
at Chicago St.*	4-8	3-5	0-0	0	3	3	3	4	0	1	30	11
Western Ill.*	7-13	2-5	7-8	1	4	5	1	2	0	0	35	23
Michigan St.*	0-1	0-0	0-0	0	0	0	0	1	0	0	4	0
Tulane	2-2	1-1	1-1	0	1	1	1	2	0	0	19	6
at UIC	DNP											
at UWGB	DNP											
at Iowa	DNP											
vs. St. Joseph's	DNP											
DePaul	3-7	2-5	2-2	0	2	2	0	4	0	1	25	10
Northern Iowa*	6-10	3-4	4-4	0	4	4	4	3	0	0	37	19
at IUPUI*	5-10	2-3	3-4	1	3	4	4	7	0	0	35	15
at Illinois State*	1-5	0-1	3-4	0	3	3	3	6	0	0	37	5
at E. Michigan*	1-7	0-2	0-0	1	1	2	1	5	0	1	27	2
Ball St.*	2-9	1-6	0-0	0	2	2	3	1	0	0	29	5
C. Michigan	5-12	3-8	0-0	2	2	4	5	4	1	3	31	13
at W. Michigan	5-13	2-5	0-0	1	0	1	4	1	0	3	30	12
Toledo												
at Miami (OH)												
Buffalo												
at Akron												
at Bowling Green												
Kent St.												
Ohio												
at C. Michigan												
W. Michigan												
E. Michigan												
at Ball St.												
Season	44-99	20-46	21-24	7	27	34	34	47	1	10	367	128
Career	182-479	77-209	118-153	65	164	229	165	184	4	52	1941	559

*-Game Started



2007-08 NIU WOMEN'S BASKETBALL



#3 Kylie York

G • 5-8 • So.

Fishers, Ind.

Hamilton Southeastern

	Career	Season
	Bests:	Bests:
Points:	24	24
Field Goals:	9	9
3-point FGs:	6	6
Free Throws:	6	6
Rebounds:	9	9
Assists:	8	8
Steals:	3	3

Game	FG-A	3FG-A	FT-A	O	D	T	A	TO	B	S	MIN	TP
Bradley*	4-10	4-10	0-0	1	1	2	0	0	0	0	29	12
at Chicago St.*	4-10	3-8	1-1	1	8	9	4	3	0	0	34	12
Western Ill.	1-5	1-4	0-0	0	1	1	0	2	0	1	18	3
Michigan St.	5-13	4-11	0-0	0	0	0	2	2	0	1	21	14
Tulane*	7-11	3-6	1-2	0	2	2	1	0	0	1	33	18
at UIC*	2-14	2-9	4-4	0	3	3	3	1	0	1	37	10
at UWGB*	9-18	6-13	0-0	0	3	3	2	7	0	3	35	24
at Iowa*	2-11	0-6	0-0	1	3	4	3	7	0	3	39	4
vs. St. Joseph's*	6-8	3-4	6-6	0	4	4	8	1	0	0	34	21
DePaul*	2-11	0-8	2-2	0	1	1	6	5	0	1	33	6
Northern Iowa*	1-2	1-2	2-2	0	3	3	3	4	0	1	34	5
at IUPUI*	3-7	3-6	0-0	0	3	3	1	5	0	2	38	9
at Illinois State*	3-11	3-10	0-0	0	1	1	1	2	0	0	32	9
at E. Michigan*	1-10	1-6	0-0	1	2	3	3	5	0	0	23	3
Ball St.*	5-16	4-11	2-2	1	3	4	2	1	0	2	35	16
C. Michigan	3-6	3-6	0-0	0	3	3	7	0	1	1	25	9
at W. Michigan	0-0	0-0	2-2	0	0	0	0	4	0	0	17	2
Toledo												
at Miami (OH)												
Buffalo												
at Akron												
at Bowling Green												
Kent St.												
Ohio												
at C. Michigan												
W. Michigan												
E. Michigan												
at Ball St.												
Season	58-163	41-123	20-21	5	41	46	46	49	1	17	514	177
Career	112-307	89-246	32-33	18	71	89	68	69	1	21	904	345

*-Game Started



2007-08 NIU WOMEN'S BASKETBALL

Toledo vs. NIU, January 23 • Page 15

GAME 1 Bradley 48 Northern Illinois 54 DeKalb, Ill. • November 9

BRADLEY

##	PLAYER	FG-FGA	3FG-A	FT-FTA	REB	TP	A	TO	BK	S	
40	Krumwiede (f)	5-11	0-0	1-6	9	11	0	3	0	2	
25	Cotton (c)	0-4	0-0	0-0	2	0	0	2	0	0	
14	Merriman (g)	2-4	1-2	8-8	1	13	2	3	0	1	
23	Flanagan (g)	2-10	2-6	0-0	2	6	3	3	1	3	
24	Johnson (g)	1-3	1-1	2-2	0	5	0	2	1	4	
1	Nekmouche	1-1	0-0	0-0	0	2	0	0	0	0	
13	Van Kirk	0-0	0-0	0-0	0	0	0	0	0	0	
33	Klingler	4-6	0-0	0-0	6	8	0	2	0	0	
34	Taylor	0-7	0-5	2-3	1	2	0	2	0	0	
35	Itiavkase	0-1	0-0	1-2	0	1	0	1	0	2	
TEAM				3							
Totals		15-47	4-14	14-21	24	48	5	18	2	12	
FG%: 31.9		3FG%: 28.6		FT%: 66.7							

NORTHERN ILLINOIS

##	PLAYER	FG-FGA	3FG-A	FT-FTA	REB	TP	A	TO	BK	S	
34	Smith (f)	1-2	0-0	0-0	4	2	1	3	0	0	
41	Rossouw (f)	5-6	0-1	4-6	6	14	0	4	0	6	
2	Welton (g)	1-7	0-0	0-0	3	2	0	2	0	2	
3	York (g)	4-10	4-10	0-0	2	12	0	0	0	0	
10	Wilcox (g)	3-3	1-1	0-1	3	7	5	7	0	1	
1	Cannon	1-1	0-0	0-0	0	2	0	0	0	0	
11	Lowe	3-11	0-5	1-2	4	7	0	2	0	0	
22	Bell	0-0	0-0	0-0	1	0	0	0	0	0	
31	Michels	0-1	0-1	0-0	1	0	0	2	0	0	
44	Ellis	3-3	0-0	0-0	11	6	0	3	1	0	
50	Adams	0-1	0-0	2-4	1	2	0	2	0	0	
TEAM				4							
Totals		21-45	5-18	7-13	40	54	6	29	1	9	
FG%: 46.7		3FG%: 27.8		FT%: 53.8							

Officials: Becky Blank, Andrew Bills, Mark Berger
Attendance: 695

Score by Periods	1st	2nd	Total
Bradley	25	23	48
Northern Illinois	26	28	54

Points in the paint-BU 16,NIU 22. Points off turnovers-BU 22,NIU 11. 2nd chance points-BU 10,NIU 11. Fast break points-BU 2,NIU 8. Bench points-BU 13,NIU 17. Score tied-2 times. Lead changed-11 times.

NIU Women's Basketball Team Defeats Bradley, 54-48, in Season Opener

DEKALB, Ill. –The Northern Illinois University women's basketball team posted a 54-48 victory over Bradley University Friday night at the Convocation Center in the Huskies' home and season opener.

Led by Aileen Rossouw (Plano, Texas/Plano) and Kylie York (Fishers, Ind./Hamilton Southeastern), the Huskies (1-0) opened the season with a win at home for the third-straight year under NIU head coach Carol Owens. Rossouw led all scorers with 14 points, while York scored 12. All four of her field goals were of the three-point variety.

Once again, rebounding played a big factor in the Huskies victory. NIU outrebounded Bradley (0-1) 40-24 and freshman Ebony Ellis (Joliet, Ill. Joliet Township) led all rebounders with 11. Rossouw was second on the team with six.

The Huskies took a 26-25 lead going into the break, thanks to a three-point basket at the buzzer by Jessie Wilcox.

Bradley didn't back down in the second half. After the Huskies jumped out to an eight-point lead with 9:37 left to play, the Braves cut the deficit in half with 8:34 left to play. That would be as close as they would get the rest of the night as the Huskies began to pull away late. NIU led by as many as 13 points late in the second half. Bradley made a bit of a run at the end but it was not enough.

GAME 2 Northern Illinois 57 Chicago State 64 Chicago, Ill. • November 12

NORTHERN ILLINOIS

##	PLAYER	FG-FGA	3FG-A	FT-FTA	REB	TP	A	TO	BK	S	
34	Smith (f)	1-3	0-0	0-0	4	2	0	4	0	1	
41	Rossouw (f)	4-7	0-0	0-0	6	8	3	3	1	0	
2	Welton (g)	1-6	0-0	1-2	3	3	1	2	0	0	
3	York (g)	4-10	3-8	1-1	9	12	4	3	0	0	
10	Wilcox (g)	4-8	3-5	0-0	3	11	3	4	0	1	
1	Cannon	0-0	0-0	0-0	1	0	0	1	0	0	
11	Lowe	0-6	0-1	2-2	4	2	0	2	0	1	
22	Bell	3-5	3-5	0-0	5	9	4	3	0	0	
25	Brown	0-0	0-0	0-0	0	0	0	0	0	0	
31	Michels	1-3	1-2	0-0	0	3	1	0	0	0	
44	Ellis	0-1	0-0	1-2	5	1	0	2	0	0	
50	Adams	2-5	0-0	2-2	4	6	0	2	0	0	
TEAM				2							
Totals		20-54	10-21	7-9	46	57	16	26	1	3	
FG%: 37.0		3FG%: 47.6		FT%: 77.8							

CHICAGO STATE

##	PLAYER	FG-FGA	3FG-A	FT-FTA	REB	TP	A	TO	BK	S	
20	Black (f)	2-3	1-1	4-4	3	9	0	0	0	1	
22	Waldon (f)	3-6	1-2	0-1	5	7	1	0	1	1	
10	Dixon (g)	3-13	1-2	7-10	9	14	2	2	0	5	
12	Williams (g)	2-10	2-6	4-6	2	10	5	1	0	0	
15	Waldon (g)	3-13	1-6	0-1	1	7	4	2	0	3	
11	London	0-2	0-1	2-4	1	2	2	3	0	3	
23	Clark	0-1	0-0	0-0	0	1	0	0	0	0	
31	Pierson	6-6	0-0	3-3	4	15	1	3	0	1	
34	Nair	0-0	0-0	0-0	0	0	0	0	0	0	
TEAM				3							
Totals		19-54	6-18	20-29	28	64	15	11	1	14	
FG%: 35.2		3FG%: 33.3		FT%: 69.0							

Attendance: 379

Score by Periods	1st	2nd	Total
NIU	26	31	57
Chicago State	36	28	64

Points in the paint-NIU 18,CSUW 20. Points off turnovers-NIU 8,CSUW 24. 2nd chance points-NIU 2,CSUW 9. Fast break points-NIU 2,CSUW 12. Bench points-NIU 21,CSUW 17. Score tied-3 times. Lead changed-3 times.

NIU Women's Basketball Team Falls to Chicago State, 64-57

CHICAGO –The Northern Illinois University women's basketball team dropped its first road test of the season, falling to Chicago State, 64-57, at the Jones Convocation Center Monday night.

Turnovers and the inability to get to the free throw line cost the Huskies (1-1). NIU turned the ball over 26 times and Chicago State (1-1) capitalized converting those turnovers into 24 points. The Cougars also beat the Huskies at the free throw line, visiting the charity stripe 29 times, converting 20 of those visits for points. Conversely, the Huskies only made nine trips to the free throw line, hitting seven.

Kylie York (Fishers, Ind./Hamilton Southeastern) led the Huskies with 12 points and a career high nine boards, while Jessie Wilcox also finished in double figures with 11 points.

While the Huskies outrebounded their opponents, 46-28, they were unable to convert those rebounds into points. NIU had just two second-chance points.

Aileen Rossouw (Plano, Texas/Plano) finished the game with eight points and three rebounds. Ebony Ellis (Joliet, Ill./Joliet Township) had one point and five rebounds, while Mauvolyene Adams (Bolingbrook, Ill./Bolingbrook) had six points and four rebounds.

GAME 3 Western Illinois 59 Northern Illinois 60 DeKalb, Ill. • November 15

WESTERN ILLINOIS

##	PLAYER	FG-FGA	3FG-A	FT-FTA	REB	TP	A	TO	BK	S	
33	Davenport (f)	8-13	0-2	0-0	4	16	1	3	1	0	
42	Lovingood (f)	7-11	0-0	3-5	13	17	0	2	3	0	
4	Walker (g)	2-6	0-3	0-0	3	4	5	3	0	2	
24	O'Brien (g)	3-7	2-6	2-2	3	10	2	1	0	3	
32	Miller (g)	1-5	0-1	0-0	2	2	1	3	0	0	
10	Harris	0-2	0-1	0-0	3	0	2	0	0	2	
15	Salter	0-0	0-0	0-0	0	0	0	0	0	0	
21	Hugeleir	2-7	1-3	0-0	1	5	1	2	0	4	
23	Clark	1-3	1-1	0-0	1	3	1	3	0	1	
25	Myers	0-0	0-0	1-4	0	1	0	1	0	0	
44	Wutt	0-0	0-0	1-2	1	1	0	0	0	1	
TEAM				2							
Totals		24-54	4-17	7-13	33	59	13	19	4	13	
FG%: 44.4		3FG%: 23.5		FT%: 53.8							

NORTHERN ILLINOIS

##	PLAYER	FG-FGA	3FG-A	FT-FTA	REB	TP	A	TO	BK	S	
11	Lowe (f)	3-11	1-3	2-2	8	9	0	5	1	2	
34	Smith (f)	1-6	0-0	5-6	6	7	1	5	0	1	
2	Welton (g)	4-11	0-0	2-4	12	10	2	0	0	3	
10	Wilcox (g)	7-13	2-5	7-8	5	23	1	2	0	0	
22	Bell (g)	1-3	1-3	0-0	2	3	1	5	0	3	
1	Cannon	2-4	1-1	0-0	0	5	0	0	0	2	
3	York	1-5	1-4	0-0	1	3	0	2	0	1	
31	Michels	0-0	0-0	0-0	0	0	1	2	0	0	
44	Ellis	0-1	0-0	0-0	0	0	0	0	0	0	
50	Adams	0-1	0-0	0-0	1	0	1	1	0	0	
TEAM				4							
Totals		19-55	6-16	16-20	39	60	7	22	1	12	
FG%: 34.5		3FG%: 37.5		FT%: 80.0							

Officials: David Stewart, Erika Herriman, Cameron Inouye
Attendance: 601

Score by Periods	1st	2nd	Total
Western Illinois	30	29	59
Northern Illinois	35	25	60

Points in the paint-WIU 28,NIU 22. Points off turnovers-WIU 24,NIU 16. 2nd chance points-WIU 5,NIU 15. Fast break points-WIU 4,NIU 2. Bench points-WIU 10,NIU 8. Score tied-2 times. Lead changed-4 times.

NIU Women's Basketball Defeats Western Illinois, 60-59

DeKALB, Ill. – The Northern Illinois University women's basketball team posted its second win of the season in dramatic fashion Thursday night when junior Shari' Welton (Calumet City, Ill./Thornwood) scored the game-winning basket with three seconds left to play to give the Huskies a 60-59 victory over Western Illinois in the Convocation Center.

Trailing 58-59 with 25 seconds left to play, the Huskies (2-1) took a timeout to draw up the winning play. Jessie Wilcox (Oshkosh, Wis./West) drove to the basket and passed it to Kylie York (Fishers, Ind./Hamilton Southeastern) in the corner. Her three-point missed, but Welton was right there for the rebound and the put back.

Welton's game-winning rebound and shot topped her first career double-double as a Huskie, scoring 10 points and grabbing 12 rebounds, but the Huskies were led by Wilcox' 23-point performance.

Thursday night's game began under unusual circumstances. Western Illinois (1-1) was assessed and administrative technical foul when the jersey number of Katy Davenport was entered into the scorebook improperly. Wilcox went to the line and made both free throws to give the Huskies a 2-0 lead before the ball was tipped.



2007-08 NIU WOMEN'S BASKETBALL

Toledo vs. NIU, January 23 • Page 16

GAME 4 Northern Illinois 40 Michigan State 67

Cancun, Mexico • November 21

NORTHERN ILLINOIS

##	PLAYER	FG-FGA	3FG-A	FT-FTA	REB	TP	A	TO	BK	S	
2	Welton (f)	4-8	0-0	0-2	0	8	3	2	0	1	
11	Lowe (f)	0-2	0-1	0-0	0	0	0	2	0	0	
34	Smith (f)	4-8	0-0	0-1	5	8	0	1	1	0	
10	Wilcox (g)	0-1	0-0	0-0	0	0	0	1	0	0	
22	Bell (g)	0-2	0-2	0-0	1	0	0	1	0	0	
1	Cannon	1-5	1-5	0-0	3	3	0	2	0	1	
3	York	5-13	4-11	0-0	0	14	2	2	0	1	
25	Brown	0-0	0-0	0-0	3	0	0	0	0	0	
31	Michels	0-6	0-4	0-0	3	0	2	0	0	1	
41	Rossouw	1-3	0-0	1-2	1	3	1	1	0	0	
44	Ellis	0-1	0-0	0-0	1	0	0	1	0	0	
50	Adams	1-1	0-0	2-2	0	4	0	2	1	1	
TEAM											
Totals		16-50	5-23	3-7	18	40	8	18	2	5	
FG%: 32.0		3FG%: 21.7		FT%: 42.9							

MICHIGAN STATE UNIVERSITY

##	PLAYER	FG-FGA	3FG-A	FT-FTA	REB	TP	A	TO	BK	S	
15	Washington (f)	1-3	0-0	0-0	1	2	3	0	1	1	
32	Keane (f)	5-11	0-4	5-6	4	15	0	5	0	0	
41	DeHaan (c)	7-11	0-0	3-3	5	17	1	1	3	1	
20	Thomas (g)	3-5	0-0	2-2	7	8	4	2	1	5	
33	Wulff (g)	3-6	3-6	2-2	5	11	2	1	0	1	
2	Piechowski	0-0	0-0	0-0	0	0	0	0	0	0	
13	Davidson	0-0	0-0	4-4	2	4	3	2	0	0	
25	Wilson	0-3	0-0	2-2	1	2	0	1	1	0	
45	Aitch	4-5	0-0	0-0	3	8	0	0	0	0	
TEAM											
Totals		23-44	3-10	18-19	29	67	13	12	6	8	
FG%: 52.3		3FG%: 30.0		FT%: 94.7							

Officials: Kary Smith-McGehee, Erica Herriman, Kim Davis
Attendance: 140

Score by Periods	1st	2nd	Total
NIU	16	24	40
Michigan State	31	36	67

Points in the paint-NIU 10,MSU 34. Points off turnovers-NIU 14,MSU 21.
2nd chance points-NIU 6,MSU 13. Fast break points-NIU 0,MSU 2.
Bench points-NIU 24,MSU 14. Score tied-0 times. Lead changed-0 times.

NIU Women's Basketball Team Falls to Michigan State

CANCUN –The Northern Illinois University women's basketball team lost its first game of the Caribbean Challenge when the Huskies fell to No. 17/18 Michigan State, 67-40, at the Moon Palace Resort in Cancun, Mexico Wednesday afternoon.

The Huskies (2-2) struggled offensively in the first half, shooting 23 percent from the field. At one point the Huskies trailed 24-1 after opening up the game with a 0-15 slump. The first NIU field goal, a three pointer from Terriel Cannon (Hillside, Ill./Proviso West), came with 5:52 left to play in the first half. The Huskies went into the break down 31-16.

Michigan State's (3-1) 6-9 center Allyssa DeHaan, who played for Owens on Team USA's U19 Team this past summer, led all scorers with 17 points, followed by her teammate, Kalisha Keane, who had 15 points.

NIU's Kylie York (Fishers, Ind./Hamilton Southeastern) found her stroke late in the second half, to lead the Huskies with 14 points, all coming in the second frame. She went 5-11 from the field and 4-11 from beyond the arc in the second half, including hitting three three-pointers in a row. Shari' Welton (Calumet City, Ill./Thornwood) and Becky Smith (Janesville, Wis./Parker) each added eight points, while Smith hauled in five boards.

GAME 5 Tulane 70 Northern Illinois 57

Cancun, Mexico • November 22

TULANE

##	PLAYER	FG-FGA	3FG-A	FT-FTA	REB	TP	A	TO	BK	S	
00	Barnes, K (f)	2-3	0-0	1-3	1	5	1	1	0	0	
14	Valicevic (f)	2-3	0-0	6-8	4	10	3	0	0	0	
35	Lindsey (f)	6-9	0-0	1-2	7	13	0	0	0	1	
2	Langford (g)	3-7	2-5	6-6	4	14	3	2	0	0	
3	Luckhurst (g)	0-6	0-3	0-0	2	0	1	0	0	2	
5	Jackson	0-1	0-1	0-0	0	0	0	0	0	0	
11	Barnes, R	0-0	0-0	0-0	0	0	0	0	1	0	
13	Cleveland	0-0	0-0	0-0	0	0	0	0	0	0	
23	Aidoo	2-6	2-4	0-0	3	6	3	0	0	1	
24	Stadium	3-3	1-1	0-0	1	7	2	0	1	0	
32	Brown	2-6	0-1	3-7	2	7	1	0	0	1	
45	Philpots	2-3	0-0	0-0	2	4	0	2	1	0	
50	Slaton	2-7	0-0	0-0	4	4	1	1	0	0	
TEAM											
Totals		24-54	5-15	17-26	30	70	15	6	3	5	
FG%: 44.4		3FG%: 33.3		FT%: 65.4							

NORTHERN ILLINOIS

##	PLAYER	FG-FGA	3FG-A	FT-FTA	REB	TP	A	TO	BK	S	
2	Welton (f)	0-4	0-0	2-4	2	2	2	1	0	1	
11	Lowe (f)	5-12	0-3	4-4	6	14	1	0	1	0	
34	Smith (f)	1-1	0-0	0-0	0	2	0	2	0	0	
3	York (g)	7-11	3-6	1-2	2	18	1	0	0	1	
22	Bell (g)	1-7	0-2	2-4	3	4	2	2	1	1	
1	Cannon	0-1	0-0	0-0	2	0	0	0	0	0	
10	Wilcox	2-2	1-1	1-1	1	6	1	2	0	0	
25	Brown	0-1	0-0	0-0	0	0	0	0	0	0	
31	Michels	0-0	0-0	0-0	0	0	0	0	0	0	
41	Rossouw	1-2	0-0	0-0	2	2	1	2	0	0	
44	Ellis	1-6	0-0	4-6	10	6	1	0	2	0	
50	Adams	1-4	0-0	1-2	3	3	0	1	0	1	
TEAM											
Totals		19-51	4-12	15-23	31	57	9	10	4	4	
FG%: 37.3		3FG%: 33.3		FT%: 65.2%							

Officials: Kim Davis, Michelle Del Duco, Erica Herriman
Attendance: 250

Score by Periods	1st	2nd	Total
Tulane	27	43	70
NIU	26	31	57

Points in the paint-TLNU 30,NIU 26. Points off turnovers-TLNU 13,NIU 1.
2nd chance points-TLNU 15,NIU 15. Fast break points-TLNU 4,NIU 0.
Bench points-TLNU 70,NIU 17. Score tied-5 times. Lead changed-7 times.

NIU Women's Basketball Team Loses to Tulane

CANCUN –The Northern Illinois University women's basketball team fell to Tulane, 70-57, in the final game of the Caribbean Challenge Thursday night at the Moon Palace Resort in Cancun, Mexico.

The Huskies (2-3) jumped out to an early 6-2 lead. Led by Kylie York's (Fishers, Ind./Hamilton Southern) 12 first-half points, the Huskies led much of the first half. Tulane tied the game at 21 with 3:31 left to play in the first half.

The Greenwave (5-1) went on a 5-0 run to take a 26-21 lead with 1:27 left to play in the half. The Huskies responded with a 5-1 run to go into halftime trailing 27-26. NIU opened the second half with a bucket from Becky Smith (Janesville, Wis./Parker) to take a 28-27 lead. It would be the last advantage NIU would enjoy as Tulane would take control of the game from then on.

Tulane led by as many as 14 with 7:08 left to play. The Huskies were able to cut the deficit in half, 59-52 with 2:44 left to play, but that would be as close as the Huskies would get.

York led all scorers with 18 points, tying her career high, and Whitney Lowe (Bushnell, Ill./Prairie City) had her best game of the season, scoring 14 points and grabbing six boards. Ebony Ellis (Joliet, Ill./Joliet Township) led all rebounders with 10, while adding six points.

GAME 6 Northern Illinois 42 UIC 50

Chicago, Ill. • November 25

NORTHERN ILLINOIS

##	PLAYER	FG-FGA	3FG-A	FT-FTA	REB	TP	A	TO	BK	S	
11	Lowe (f)	1-5	0-1	0-0	4	2	0	3	0	0	
34	Smith (f)	0-4	0-0	0-0	6	0	0	2	0	1	
2	Welton (g)	6-14	0-0	2-4	9	14	0	3	0	0	
22	Bell (g)	0-1	0-0	0-0	0	0	0	3	0	1	
3	York (g)	2-14	2-9	4-4	3	10	3	1	0	1	
1	Cannon	0-2	0-0	0-0	1	0	1	0	0	1	
25	Brown	0-1	0-0	1-4	2	1	0	1	0	0	
31	Michels	1-4	0-2	2-2	3	4	3	4	0	0	
41	Rossouw	0-3	0-0	0-0	3	0	0	4	0	0	
44	Ellis	1-8	0-0	1-4	9	3	0	2	0	1	
50	Adams	4-9	0-0	0-2	6	8	0	1	0	1	
TEAM											
Totals		15-65	2-12	10-20	61	42	7	24	0	6	
FG%: 23.1		3FG%: 16.7		FT%: 50.0							

UIC

##	PLAYER	FG-FGA	3FG-A	FT-FTA	REB	TP	A	TO	BK	S	
35	Hluska (f)	3-6	0-0	0-2	2	6	1	2	1	2	
30	Grobekker (c)	0-2	0-0	2-4	11	2	0	2	0	2	
12	Hinkle (g)	3-11	0-0	3-4	4	9	1	3	0	4	
22	Hutchens (g)	1-7	0-1	0-2	2	2	2	0	0	1	
3	Miller (g)	3-10	2-7	5-9	6	13	6	1	0	1	
1	Sadler	0-1	0-0	0-0	0	0	0	0	0	0	
11	Tomzik	3-9	1-5	0-0	3	7	0	1	0	1	
21	Johnson	1-4	0-0	2-2	2	0	1	0	0	0	
23	Manley	1-5	0-2	2-4	6	4	1	1	0	0	
4	O'Donoghue	0-0	0-0	0-0	0	0	0	0	0	0	
40	Green	0-1	0-0	0-0	0	0	1	2	0	0	
44	Petrinec	0-0	0-0	0-0	0	0	0	0	0	1	
54	Rinaldi	2-4	0-0	1-1	2	5	0	0	0	1	
TEAM											
Totals		17-60	3-15	13-28	44	50	12	15	1	13	
FG%: 28.3		3FG%: 20.0		FT%: 46.4							

Officials: Erika Herriman, Bob Enterline, Kim Hobbs
Attendance: 510

Score by Periods	1st	2nd	Total
Northern Illinois	15	27	42
UIC Flames	19	31	50

Points in the paint-NIU 18,UIC 24. Points off turnovers-NIU 3,UIC 10.
2nd chance points-NIU 14,UIC 10. Fast break points-NIU 6,UIC 8.
Bench points-NIU 16,UIC 18. Score tied-0 times. Lead changed-0 times.

NIU Women's Basketball Team Falls to UIC, 50-42

CHICAGO – The Northern Illinois University women's basketball team fell to the UIC Flames, 50-42, Sunday night at the UIC Pavilion.

The Huskies (2-4) got off to a slow start offensively, going 1-17 from the field through the first 12 and a half minutes of play. A three-pointer from Kylie York (Fishers, Ind./Hamilton Southeastern) with 1:48 left to play in the first half pulled the Huskies to within two, 17-15.

NIU opened the final frame going 3-15 in the first nine minutes. Three pointers by UIC's Jessica Miller and Ashley Tomzik pushed the Flames lead to 36-26 with 7:51 left to play.

Shari' Welton (Calumet City, Ill./Thornwood) scored five-straight points to cut the Huskie deficit to 38-33 with 3:16 left to play. That would be as close as the Huskies would get as UIC began to pull away and come away with the win.

Welton had nine points in the second half to finish with a game-high 14 points and a team-high nine rebounds. York also finished in double digits with 10 points. Mauvolyene Adams (Bolingbrook, Ill./Bolingbrook) had a solid game with eight points and six rebounds.

The Huskies grabbed a season high 61 rebounds. Both teams struggled offensively, with NIU shooting 23 percent for the game and the Flames shooting 28 percent.



2007-08 NIU WOMEN'S BASKETBALL

Toledo vs. NIU, January 23 • Page 17

GAME 7 Northern Illinois 54 Green Bay 76

Green Bay, Wis. • November 28

NORTHERN ILLINOIS

##	PLAYER	FG-FGA	3FG-A	FT-FTA	REB	TP	A	TO	BK	S
11	Lowe (f)	1-2	0-0	3-4	4	5	0	5	1	1
34	Smith (f)	2-3	0-0	0-1	2	4	1	2	0	0
41	Rossouw (c)	3-5	0-0	0-0	5	6	2	2	0	0
2	Welton (g)	2-6	0-1	1-2	1	5	0	6	0	3
3	York (g)	9-18	6-13	0-0	3	24	2	7	0	3
1	Cannon	0-1	0-0	0-0	1	0	2	3	0	0
25	Brown	1-4	0-0	0-0	1	2	0	3	0	0
31	Michels	1-1	0-0	0-2	0	2	0	2	0	1
44	Ellis	2-5	0-1	0-0	9	4	0	2	1	0
50	Adams	1-4	0-0	0-0	3	2	0	3	0	1
TEAM		3								
Totals		22-49	6-15	4-9	32	54	7	35	2	9
FG%: 44.9		3FG%: 40.0		FT%: 44.4						

GREEN BAY

##	PLAYER	FG-FGA	3FG-A	FT-FTA	REB	TP	A	TO	BK	S
5	Glover (f)	6-11	0-0	1-2	6	13	1	1	1	1
25	Templin (f)	1-4	0-1	3-4	3	5	0	3	0	2
1	Harty (f)	3-4	0-1	1-2	1	7	4	4	0	2
11	Groh (g)	3-8	1-5	3-4	4	10	3	3	0	4
30	Porath (g)	9-14	0-3	2-3	4	20	2	3	0	4
3	Beckel	0-2	0-0	3-4	3	3	0	2	0	0
4	Hoewisch	3-3	1-1	0-0	3	7	1	2	0	5
10	Legois	1-1	0-0	0-0	2	0	0	0	0	1
24	Golden	3-4	0-0	0-0	0	6	1	0	0	1
33	Faase	1-3	0-0	1-2	0	3	0	1	0	0
42	Tetschlag	0-1	0-0	0-0	1	0	0	1	0	0
TEAM		2								
Totals		30-55	2-11	14-21	27	76	12	20	1	20
FG%: 54.5		3FG%: 18.2		FT%: 66.7						

Officials: Kevin Dillard, David Peterson, Brian Kenney
Attendance: 1937

Score by Periods	1st	2nd	Total
Northern Illinois	22	32	54
Green Bay	38	38	76

Points in the paint-NIU 26,GB 44. Points off turnovers-NIU 14,GB 36. 2nd chance points-NIU 2,GB 7. Fast break points-NIU 0,GB 14. Bench points-NIU 10,GB 21. Score tied-0 times. Lead changed-4 times.

York's Career-High Not Enough as Huskies Fall to Phoenix

GREEN BAY, Wis. – Sophomore guard Kylie York scored a career-high 24 points, but it wasn't enough to overcome 35 Northern Illinois turnovers, as the Huskies fell 76-54 to UW-Green Bay, Wednesday.

York (Fishers, Ind./Hamilton Southeastern) scored 18 of her points in the second half, and hit a career-high six three-pointers in the game. But UW-Green Bay took advantage of a multitude of NIU miscues, scoring 36 points off Huskie turnovers.

The trend started early, as the Phoenix capitalized on seven Huskie handouts over the first eight minutes of the game to take a 17-7 lead. By the end of the period, UW-Green Bay cashed-in 20 points off 18 Northern Illinois turnovers.

Huskie forward Aileen Rossouw (Plano, Texas/Auburn) highlighted the period with six points and four rebounds, but despite her efforts Northern Illinois trailed 38-22 at halftime.

Phoenix Rachel Porath scored seven of her team-high 20 points in the first three minutes of the second half, helping UW-Green Bay to a 10-2 run and a 48-24 lead five minutes into the period. The Phoenix rode the advantage to a 22-point win.

Northern Illinois shot 44.9 percent from the field, the team's best outing since its season-opener, when the Huskies shot 46.7 percent in a win over Bradley.

GAME 8 Northern Illinois 43 Iowa 87

Iowa City, Iowa • December 8

NORTHERN ILLINOIS

##	PLAYER	FG-FGA	3FG-A	FT-FTA	REB	TP	A	TO	BK	S
02	Welton (f)	1-5	0-0	0-1	1	2	1	2	0	1
34	Smith (f)	0-0	0-0	0-0	2	0	0	1	1	0
41	Ellis (c)	4-8	0-0	2-3	9	10	0	2	5	2
03	York (g)	2-11	0-6	1-2	4	4	3	7	0	3
31	Michels (g)	2-5	1-4	0-0	1	5	1	5	0	1
01	Cannon	4-8	3-5	0-0	1	11	0	1	0	0
11	Lowe	1-7	1-4	0-0	6	3	1	3	0	0
25	Brown	2-4	0-0	1-2	4	5	1	0	0	0
50	Adams	0-5	0-0	3-4	4	3	0	2	0	0
TEAM		3								
Totals		16-53	5-19	6-10	33	43	7	23	6	7
FG%: 30.2		3FG%: 26.3		FT%: 60.0						

IOWA

##	PLAYER	FG-FGA	3FG-A	FT-FTA	REB	TP	A	TO	BK	S
32	Ausdemore (f)	5-7	2-3	0-0	4	12	2	1	0	1
51	VanderVenter (f)2-3	0-0	0-0	0-0	5	4	1	1	1	2
40	Schlapkohl (c)	2-6	0-0	3-4	2	7	1	2	1	0
11	Smith (g)	2-3	1-1	0-0	2	5	1	1	0	1
04	Solverson (g)	3-6	2-4	2-2	3	10	3	2	0	1
33	Emmert	1-3	0-2	0-0	1	2	5	3	0	0
21	Alexander	1-1	0-0	0-1	1	2	0	0	0	1
22	Cernak	0-0	0-0	0-0	1	0	1	0	0	1
24	Graham	2-2	0-0	0-0	3	4	2	1	0	1
43	VanderPol	2-3	1-2	0-0	3	5	1	0	0	1
44	Skouby	4-10	0-0	2-2	2	10	1	0	1	0
45	Hamlin	6-10	0-0	0-0	3	12	4	1	1	2
50	Nyenhuis	5-6	4-4	0-0	2	14	1	0	0	1
TEAM		3								
Totals		35-60	10-16	7-9	34	87	23	12	4	11
FG%: 58.3		3FG%: 62.5		FT%: 77.8						

Officials: Lisa Mattingly, Teresa Dahlem, Dawn Marsh
Attendance: 2675

Score by Periods	1st	2nd	Total
Northern Illinois	17	26	43
Iowa	41	46	87

Points in the paint-NIU 14,IOWA 32. Points off turnovers-NIU 4,IOWA 29. 2nd chance points-NIU 10,IOWA 11. Fast break points-NIU 7,IOWA 14. Bench points-NIU 22,IOWA 49. Score tied-0 times. Lead changed-0 times.

NIU Women's Basketball Team Falls to Iowa in Opening Game of Hawkeye Challenge

IOWA CITY, Iowa -The Northern Illinois University women's basketball team dropped its opening game of the Hawkeye Challenge to the host University of Iowa, 87-43, Saturday at Carver-Hawkeye Arena.

The Huskies (2-6) struggled offensively against the Hawkeyes (6-3), shooting 30 percent from the floor, while Iowa shot 58 percent from the field. NIU shot 24 percent from the floor in the first half, and 35 percent in the second.

Ebony Ellis (Joliet, Ill./Joliet Township) played very well in her first career start for the Huskies. The freshman center posted a career-high 10 points, grabbed nine boards and blocked a career-high five shots in 34 minutes of play.

Terriel Cannon (Hillside, Ill./Proviso West) also posted a career-high in points, leading the Huskies in scoring with 11 points. The sophomore guard went 4-8 from the field, including 3-5 from three-point territory coming off the bench. Freshman Bianca Brown (Detroit, Mich./Detroit Renaissance) also posted a career high in scoring, finishing with five points coming off the bench.

GAME 9 Saint Joseph's 82 Northern Illinois 90

Iowa City, Iowa • December 9

SAINT JOSEPH'S

##	PLAYER	FG-FGA	3FG-A	FT-FTA	REB	TP	A	TO	BK	S
30	Gillespie (f)	7-13	4-6	4-5	7	22	0	1	0	0
51	Acker (c)	12-16	0-0	2-5	7	26	2	2	0	0
05	McDade (g)	1-4	0-0	2-2	3	4	9	3	0	1
25	Loschiavo (g)	4-8	3-7	0-0	1	11	3	1	0	4
32	Gomez (g)	3-8	1-3	1-1	3	8	0	3	0	1
02	Hovatter	1-2	1-1	0-0	0	3	2	2	0	0
04	Wold	1-9	0-5	0-0	5	2	0	0	0	0
23	Johnson	0-0	0-0	0-0	2	0	0	1	0	0
33	Logue	2-7	0-0	2-4	1	6	1	1	0	2
TEAM		3								
Totals		31-67	9-22	11-17	29	82	19	14	0	8
FG%: 46.3		3FG%: 40.9		FT%: 64.7						

NORTHERN ILLINOIS

##	PLAYER	FG-FGA	3FG-A	FT-FTA	REB	TP	A	TO	BK	S
11	Lowe (f)	5-10	2-3	5-6	3	17	1	2	2	0
44	Ellis (c)	4-6	0-0	0-0	3	8	4	2	2	1
01	Cannon (g)	2-5	2-3	0-0	3	6	1	4	0	0
03	York (g)	6-8	3-4	6-6	4	21	8	1	0	0
25	Brown (g)	2-6	0-0	0-0	4	4	4	1	0	0
02	Welton	2-4	0-0	1-2	4	5	2	2	0	2
31	Michels	1-2	0-0	0-1	0	2	0	0	0	0
34	Smith	4-4	0-0	1-1	3	9	0	5	1	0
50	Adams	8-12	0-0	2-3	8	18	0	2	0	0
TEAM		3								
Totals		34-57	7-10	15-19	36	90	20	19	5	3
FG%: 59.6		3FG%: 70.0		FT%: 78.9						

Officials: Bob Trammell, Teresa Dahlem, Dawn Marsh
Attendance:

Score by Periods	1st	2nd	Total
Saint Joseph's	38	44	82
Northern Illinois	41	49	90

Points in the paint-SJU 38, NIU 42. Points off turnovers-SJU 23, NIU 21. 2nd chance points-SJU 16, NIU 9. Fast break points-SJU 9, NIU 4. Bench points-SJU 11, NIU 34. Score tied-10 times. Lead changed-3 times.

NIU Women's Basketball Team Snaps Skid With Win Over St. Joseph's

IOWA CITY, Iowa -In its highest scoring output of the season, the Northern Illinois University women's basketball team snapped its five-game losing streak, defeating St. Joseph's in the consolation game of the Hawkeye Challenge, 90-82, Sunday at Carver-Hawkeye Arena.

After falling behind 6-0 in the opening minutes of the first half, the Huskies (3-6) came back to tie the game 11-11 thanks to a Kylie York (Fishers, Ind./Hamilton Southeastern) three-pointer. NIU would tie it four more times before Mauvolyene Adams (Bolingbrook, Ill./Bolingbrook) gave the Huskies their first lead of the game, 35-34, with a put back with 1:41 left in the half. The Huskies went into the break with a 41-38 lead.

Adams posted nine points in the first half. York went 3-4 from the field, all three pointers, to also go into halftime with nine points. Whitney Lowe (Bushnell, Ill./Prairie City) led the Huskies with 10 first half points.

The Huskies jumped out to a seven-point lead to open the second half, but St. Joseph's responded with a 10-0 run to recapture the lead, 51-48. The Hawks were able to extend their lead to 56-52 with 14:51 left to play.

St. Joseph's (5-5) built a seven point lead with 13:11 left to play, but the Huskies clawed back to tie the game at 64-64 with 8:49 left to play. NIU was able to build its lead to 79-71 with 3:09 left to play.

York led the way for the Huskies with 21 points, while Adams followed with a career-high 18 points. Lowe, who finished with a season-high 17 points, was named to the all-tournament team.



2007-08 NIU WOMEN'S BASKETBALL

Toledo vs. NIU, January 23 • Page 18

GAME 10 DePaul 90 Northern Illinois 58 DeKalb, Ill. • December 17

DEPAUL	FG-FGA	3FG-A	FT-FTA	REB	TP	A	TO	BK	S
20 Williams (f)	5-8	0-0	4-9	7	14	2	1	3	2
23 Smith (f)	2-8	0-1	0-0	2	4	0	3	0	0
14 Quigley (g)	9-14	0-1	1-2	7	19	5	1	0	3
22 Mitidiero (g)	3-8	2-7	0-1	2	8	4	0	0	1
32 Naughton (g)	6-8	2-4	2-5	2	16	2	0	0	1
02 Pikes	3-3	1-1	1-2	6	8	0	0	1	1
05 Cattell	2-6	0-1	0-0	4	4	0	1	0	1
12 Threatt	2-8	1-1	2-2	0	7	3	2	0	0
21 Johnson	0-1	0-0	2-4	0	2	0	0	0	0
24 Carney	0-0	0-0	2-2	3	2	1	0	1	1
33 Medley	1-1	0-0	0-0	0	2	0	0	0	0
41 Chester	0-1	0-0	4-5	6	4	0	0	0	2
TEAM				7					
Totals	33-66	6-16	18-32	46	90	17	8	5	12
FG%: 50.0	3FG%: 37.5	FT%: 56.3							

NORTHERN ILLINOIS	FG-FGA	3FG-A	FT-FTA	REB	TP	A	TO	BK	S
11 Lowe (f)	3-6	1-2	4-4	3	11	0	2	0	0
44 Ellis (c)	2-4	0-0	0-0	2	4	0	1	0	0
02 Welton (g)	4-11	0-1	3-5	6	11	1	1	0	0
03 York (g)	2-11	0-8	2-2	1	6	6	5	0	1
25 Brown (g)	3-7	0-0	0-0	2	6	0	2	0	0
01 Cannon	1-2	0-1	0-0	1	2	1	1	0	0
31 Michels	0-2	0-1	0-0	0	0	0	0	0	1
34 Smith	2-4	0-0	0-1	4	4	0	0	0	0
41 Rossouw	0-3	0-0	2-4	7	2	0	1	0	0
50 Adams	1-3	0-0	0-1	3	2	1	2	0	1
TEAM				6					
Totals	21-60	3-18	13-19	37	58	9	20	0	4
FG%: 35.0	3FG%: 16.7	FT%: 68.4							

Officials: Dave Stewart, Becky Blank, Brian Enterline
Attendance: 663

Score by Periods	1st	2nd	Total
DePaul	45	45	90
Northern Illinois	23	35	58

Points in the paint-DPU 32, NIU 22. Points off turnovers-DPU 29, NIU 3. 2nd chance points-DPU 17, NIU 10. Fast break points-DPU 18, NIU 4. Bench points-DPU 29, NIU 20. Score tied-4 times. Lead changed-1 time.

NIU Women's Basketball Falls to No. 16 DePaul, 90-58

DeKALB, Ill. – The Northern Illinois University women's basketball team suffered its first home loss of the season when it lost to No. 16 DePaul, 90-58, Monday night at the Convocation Center.

The Huskies (3-7) opened the game strong, taking a 6-2 lead early in the contest. The two teams exchanged leads through the first five minutes of the game, with the Huskies' last lead, 12-11, coming with 15:13 left to play in the first half. From then on it was all DePaul (9-0).

DePaul's Allie Quigley led all scorers with 19 points, while the Huskies had three players finish in double figures. Whitney Lowe (Bushnell, Ill./Prairie City) and Shari' Welton (Calumet City, Ill./Thornwood) each had 11 points. Lowe went 4-4 from the free throw line, while Welton grabbed six rebounds. In her first action in four games, Jessie Wilcox (Oshkosh, Wis./West) finished with 10 points.

The Huskies lost the rebounding battle, 46-37, and the Blue Demons turned 20 NIU turnovers into 29 points. NIU shot 35 percent from the field, while DePaul hit 50 percent of its shots.

GAME 11 Northern Iowa 46 Northern Illinois 61 DeKalb, Ill. • December 21

NORTHERN IOWA	FG-FGA	3FG-A	FT-FTA	REB	TP	A	TO	BK	S
44 Brocka (f)	0-2	0-1	0-0	3	0	0	3	0	1
21 Mennen (c)	1-5	1-1	0-1	3	3	0	1	0	0
10 Kalin (g)	2-9	0-3	7-8	3	11	3	5	0	4
22 Wubbens (g)	3-5	0-0	0-0	4	6	1	3	0	2
23 Ollendieck (g)	4-15	2-9	0-1	8	10	0	1	0	2
13 Iehl	0-4	0-1	2-4	1	2	1	0	0	1
20 Boeck	2-5	0-0	2-2	3	6	0	2	0	2
24 Clausen	0-6	0-4	8-8	3	8	0	1	0	0
54 Yeggy	0-0	0-0	0-0	0	0	0	1	0	0
TEAM				3					
Totals	12-51	3-19	19-24	31	46	5	17	0	12
FG%: 23.5	3FG%: 15.8	FT%: 79.2							

NORTHERN ILLINOIS	FG-FGA	3FG-A	FT-FTA	REB	TP	A	TO	BK	S
11 Lowe (f)	1-5	0-1	1-2	4	3	2	1	1	1
44 Ellis (c)	3-6	0-0	3-4	7	9	0	3	2	1
02 Welton (g)	4-7	1-1	2-4	1	11	2	4	0	0
03 York (g)	1-2	1-2	2-2	3	5	3	4	0	1
10 Wilcox (g)	6-10	3-4	4-4	4	19	4	3	0	0
01 Cannon	0-0	0-0	2-2	1	2	0	1	0	0
25 Brown	0-0	0-0	0-0	0	0	0	0	0	0
31 Michels	2-2	2-2	0-0	1	6	2	3	0	1
34 Smith	1-3	0-0	0-0	1	2	1	1	3	0
50 Adams	1-3	0-0	2-2	0	4	0	2	0	0
TEAM				12					
Totals	19-38	7-10	16-20	34	61	14	22	6	4
FG%: 50.0	3FG%: 70.0	FT%: 80.0							

Officials: Ron Dressander, Kim Hobbs, Ron Quirk
Attendance: 561

Score by Periods	1st	2nd	Total
Northern Iowa	45	45	90
Northern Illinois	23	35	58

Points in the paint-UNI 12, NIU 10. Points off turnovers-UNI 11, NIU 17. 2nd chance points-UNI 4, NIU 3. Fast break points-UNI 4, NIU 0. Bench points-UNI 16, NIU 14. Score tied-1 times. Lead changed-4 times.

NIU Women's Basketball Defeats Northern Iowa, 61-46

DeKALB, Ill. – Jessie Wilcox (Oshkosh, Wis./West) celebrated her return to the starting line up scoring a game-high 19 points to lead the Northern Illinois University women's basketball team to a 61-46 victory over Northern Iowa Friday night at the Convocation Center.

The senior, who had been out of the Huskie starting line up for six games, went 6-10 from the field, 3-4 from three-point land and 4-4 from the charity stripe. Wilcox also passed a personal milestone scoring her 500th-career point. Shari' Welton (Calumet City, Ill./Thornwood) also finished in double figures with 11 points.

The Huskies (4-7) opened the game with a 10-3 run, but the Panthers (4-6) responded with a 10-2 run of their own to take a 13-12 lead with 9:30 left to play in the half. The lead would change hands three more times in the half before the Huskies closed the half with an 11-2 run to take a 25-17 lead into the half.

The Huskies put up solid offensive numbers, shooting 50 percent from the field, 70 percent from three-point territory and 80 percent from the line. It was also one of the Huskies best defensive nights, holding the Panthers to 23 percent from the field and 15 percent from beyond the arc. Once again, the rebounding edge went to the Huskies, beating UNI to the glass 34-31.

GAME 12 Northern Illinois 55 IUPUI 58 Indianapolis, Ind. • December 29

NORTHERN ILLINOIS	FG-FGA	3FG-A	FT-FTA	REB	TP	A	TO	BK	S
11 Lowe (f)	2-6	0-1	2-2	5	6	0	4	0	0
44 Ellis (c)	1-2	0-0	3-4	3	5	0	1	0	1
02 Welton (g)	5-10	0-0	3-3	3	13	3	1	0	0
03 York (g)	3-7	3-6	0-0	3	9	1	5	0	2
10 Wilcox (g)	5-10	2-3	3-4	4	15	4	7	0	0
01 Cannon	0-0	0-0	0-0	1	0	0	1	1	0
31 Michels	0-1	0-1	0-1	2	0	0	2	0	0
34 Smith	2-4	0-0	1-1	2	5	0	0	0	0
50 Adams	1-6	0-0	0-0	10	2	0	1	0	0
TEAM				1					
Totals	19-46	5-11	12-15	32	55	8	22	1	3
FG%: 41.3	3FG%: 45.5	FT%: 80.0							

IUPUI	FG-FGA	3FG-A	FT-FTA	REB	TP	A	TO	BK	S
33 Cann (f)	4-11	0-1	1-1	9	8	8	1	1	4
50 Whitted (c)	8-12	0-0	0-1	3	16	2	5	2	0
05 Cook (g)	0-4	0-1	0-0	0	0	0	0	0	2
10 Conner (g)	2-5	0-1	0-0	4	2	2	0	2	0
30 James (g)	4-7	0-1	0-0	3	8	1	1	0	3
21 Cunningham	2-4	0-1	3-5	4	7	0	1	0	0
23 Tate	1-4	0-0	3-4	1	5	2	2	0	1
25 Ransom	3-6	0-0	4-5	3	10	0	2	0	1
42 Stackhouse	0-0	0-0	0-0	0	0	0	0	0	0
TEAM				5					
Totals	24-53	0-5	10-16	28	58	15	14	3	13
FG%: 45.3	3FG%: 0.0	FT%: 62.5							

Officials: Tim Daly, Bob Enterline, Alycia Dukes
Attendance: 561

Score by Periods	1st	2nd	Total
Northern Illinois	25	30	55
IUPUI	28	30	58

Points in the paint-NIU 14, IUPUI 36. Points off turnovers-NIU 10, IUPUI 21. 2nd chance points-NIU 6, IUPUI 10. Fast break points-NIU 0, IUPUI 0. Bench points-NIU 7, IUPUI 22. Score tied-7 times. Lead changed-5 times.

NIU Women's Basketball Team Falls to IUPUI, 58-55

INDIANAPOLIS—The Northern Illinois University women's basketball team was edged out by IUPUI, 58-55 Saturday afternoon at The Jungle in Indianapolis.

The first half was a see-saw affair, with the score tied five times and the lead changing hands five times. The Huskies were down by four early, but back-to-back threes from Jessie Wilcox (Oshkosh, Wis./West) and Kylie York (Fishers, Ind./Hamilton Southeastern) and a jumper from Whitney Lowe (Bushnell, Ill./Prairie City) gave the Huskies (4-8) a 20-15 lead with 8:42 left to play in the half. However, the Jaguars closed out the half with an 8-0 run to take a 28-25 lead into halftime.

A 6-0 to open the second half, allowed IUPUI (4-9) to push its lead to 34-25 with 18:18 left to play. The Huskies responded with an 8-0 run to pull to within one with 14:16 left to play. A three from York tied the game at 36, but back-to-back IUPUI baskets gave the advantage back to the Jaguars. The Huskies tied it at 54 with 2:28 left to play on a made free throw by Wilcox.

The Huskies began the final minute and 20 seconds down 56-54, but were unable to get the go-ahead basket. Two free throws by IUPUI's Brykeesha Tate sealed the victory for the Jaguars.

NIU had two Huskies finish in double figures. Wilcox led the way for the Huskies with 15 points, while Shari' Welton (Calumet City, Ill./Thornwood) add 13. Mauvolyene Adams finished with a career-high 10 rebounds. The Huskies shot 41 percent from the field and 80 percent from the charity stripe.



2007-08 NIU WOMEN'S BASKETBALL

Toledo vs. NIU, January 23 • Page 19

GAME 13 Northern Illinois 54 Illinois State 78 Normal, Ill. • December 31

NORTHERN ILLINOIS

##	PLAYER	FG-FGA	3FG-A	FT-FTA	REB	TP	A	TO	BK	S
11	Lowe (f)	1-11	0-5	3-4	4	5	0	1	0	1
44	Ellis (c)	3-6	0-0	5-6	8	11	2	3	0	0
02	Welton (g)	7-11	0-0	1-5	7	15	2	5	0	1
03	York (g)	3-11	3-10	0-0	1	9	1	2	0	0
10	Wilcox (g)	1-5	0-1	3-4	3	5	3	6	0	0
01	Cannon	0-0	0-0	0-0	0	0	0	1	0	0
25	Brown	0-1	0-0	0-0	1	0	0	2	0	1
31	Michels	1-2	1-2	0-0	0	3	0	1	0	1
34	Smith	3-6	0-0	0-0	6	6	0	3	0	1
	TEAM				7					
Totals		19-53	4-18	12-19	38	54	8	24	0	5
		FG%: 35.8	3FG%: 22.2	FT%: 63.2						

ILLINOIS STATE

##	PLAYER	FG-FGA	3FG-A	FT-FTA	REB	TP	A	TO	BK	S
40	Bracey (f)	7-9	0-0	1-3	9	15	0	2	1	2
31	Lewis (c)	2-4	0-0	0-0	3	4	1	1	0	0
10	Cirone (g)	4-8	1-3	3-4	2	12	5	1	0	2
20	Hudson (g)	3-9	0-1	4-4	3	10	5	2	0	3
32	Krick (g)	4-11	2-5	0-0	1	4	2	0	0	3
03	Butler	2-3	0-0	0-0	2	4	0	0	0	0
04	Banks	3-5	0-2	0-0	2	6	0	0	0	0
14	Clifton	0-1	0-1	0-0	0	0	3	1	0	1
21	Shelton	3-5	0-0	0-2	5	6	0	0	1	0
23	Calef	0-0	0-0	0-0	0	0	1	0	0	0
33	Jackson	2-4	0-1	2-2	1	6	2	1	0	0
34	Singleton	2-3	1-2	0-0	0	5	0	1	0	0
42	Johnson	0-1	0-0	0-0	4	0	0	0	0	0
	TEAM				2					
Totals		32-63	4-15	10-15	34	78	21	11	2	11
		FG%: 50.8	3FG%: 26.7	FT%: 66.7						

Officials: June Courteau, Teresa Dahlem, Erika Herriman
Attendance: 1692

Score by Periods	1st	2nd	Total
Northern Illinois	26	28	54
Illinois State	42	36	78

Points in the paint-NIU 20, ISU 36. Points off turnovers-NIU 12, ISU 31. 2nd chance points-NIU 8, ISU 6. Fast break points-NIU 3, ISU 6. Bench points-NIU 9, ISU 27. Score tied-1 times. Lead changed-2 times.

NIU Women's Basketball Team Defeated by Illinois State

NORMAL, Ill.—The Northern Illinois University women's basketball team closed out its non-conference schedule falling to in-state rival Illinois State, 78-54, Monday afternoon at Redbird Arena.

The Huskies (4-9) opened the game strong, taking an early 5-4 lead, but Illinois State responded with a 16-2 run to take a 20-7 lead with 11:58 left to play in the half. Shari' Welton (Calumet City, Ill./Thornwood) and Becky Smith (Janesville, Wis./Parker) combined to score 14 points for the Huskies and bring NIU to within 12, 33-21, with 5:58 left to play.

A three-pointer from Kylie York (Fishers, Ind./Hamilton Southeastern) cut the deficit to nine with 4:51 left in the half. The Redbirds closed out the half with a 9-2 run to give ISU a 42-26 lead heading into the break.

Illinois State (10-1) continued to dominate in the second half, leading by as many as 25. Four of the five Redbird starters finished in double figures with Ashleen Bracey leading the way with 15 points and nine rebounds.

Welton and Ebony Ellis (Joliet, Ill./Joliet Township) turned in their best performances as Huskies. Welton led NIU with a career-high 15 points, while Ellis reached her season high in points with 11. She also led the Huskies in rebounding, grabbing eight boards. York was 3-11 from the field en route to scoring nine points.

GAME 14 Northern Illinois 42 Eastern Michigan 61 Ypsilanti, Mich. • January 9

NORTHERN ILLINOIS

##	PLAYER	FG-FGA	3FG-A	FT-FTA	REB	TP	A	TO	BK	S
11	Lowe (f)	5-12	0-0	1-2	6	11	1	3	1	0
44	Ellis (c)	1-2	0-0	1-2	3	3	2	3	1	3
02	Welton (g)	6-12	1-1	0-1	6	13	0	3	0	2
03	York (g)	1-10	1-6	0-0	3	3	3	5	0	0
10	Wilcox (g)	1-7	0-2	0-0	2	2	1	5	0	1
25	Brown	1-4	0-0	0-0	0	2	0	1	0	1
31	Michels	0-1	0-0	0-0	2	0	1	0	0	0
34	Smith	1-4	0-0	0-0	3	2	1	3	0	1
50	Adams	2-7	0-0	2-2	5	6	0	2	0	0
	TEAM				8					
Totals		18-59	2-9	4-7	38	42	9	28	2	8
		FG%: 30.5	3FG%: 22.2	FT%: 57.1						

EASTERN MICHIGAN

##	PLAYER	FG-FGA	3FG-A	FT-FTA	REB	TP	A	TO	BK	S
35	Watts (f)	1-3	0-1	3-4	4	5	2	1	0	1
52	Russell (f)	6-12	0-0	4-7	4	16	1	6	3	1
11	Schrock (g)	3-9	0-1	4-4	5	10	2	2	0	1
12	Williams (g)	1-4	0-3	0-0	1	2	1	3	0	0
22	Pittman (g)	3-10	0-3	0-0	4	6	2	5	0	8
02	Johnson	1-1	0-0	0-0	2	2	0	0	0	0
03	Land	2-2	0-0	1-1	4	5	0	2	1	1
15	Tyson	2-3	0-0	2-2	4	6	8	1	0	0
20	Compton	1-2	1-2	0-0	0	3	0	1	0	2
24	Yamanoglu	2-6	1-1	1-2	6	6	1	3	0	0
42	McKinney	0-0	0-0	0-2	0	0	0	1	0	0
	TEAM				5					
Totals		22-52	2-11	15-22	39	61	17	25	4	14
		FG%: 42.3	3FG%: 18.2	FT%: 68.2						

Officials: Thomas Case, Michelle DelDuco, Carmela McMullen
Attendance: 242

Score by Periods	1st	2nd	Total
Northern Illinois	12	30	42
Eastern Michigan	20	41	61

Points in the paint-NIU 20, EMU 36. Points off turnovers-NIU 19, EMU 15. 2nd chance points-NIU 14, EMU 5. Fast break points-NIU 2, EMU 22. Bench points-NIU 10, EMU 22. Score tied-4 times. Lead changed-2 times.

NIU Women's Basketball Team Drops Conference Opener to Eastern Michigan

YPSILANTI, Mich.—The Northern Illinois University women's basketball team was defeated by Eastern Michigan Wednesday night at EMU's Convocation Center, 61-42, in the Huskies' Mid-American Conference opener.

Both teams played a sloppy first half of basketball, combining for more than 30 turnovers. The Huskies (4-10, 0-1) had 17 miscues, while the Eagles had 15. NIU shot 29 percent from the field and EMU was connected on 26 percent of its shots.

EMU (7-6, 1-0) went 6-9 from the charity stripe, while NIU failed to get to the line in the first half. Eastern Michigan's Colleen Russell accounted for half of the Eagles' first half points. The Huskies went into the break down, 20-12, their lowest first half point total this season.

The two teams struggled with turnovers in the second half as well, but Eastern Michigan was able to overcome their mistakes with solid free throw shooting. EMU went 9-13 from the line in the second half. The Eagles also improved their shooting from the field, connecting on 60 percent of its shots in the second half to finish the game shooting 42.3 percent from the field.

EMU's Russell led all scorers with 16 points, while Shari' Welton (Calumet City, Ill./Thornwood) led the way for the Huskies with 13 points and six rebounds. Senior Whitney Lowe (Bushnell, Ill./Prairie City) was the only other Huskie to finish in double figures with 11 points and six boards.

GAME 15 Ball State 84 Northern Illinois 78 DeKalb, Ill. • January 12

BALL STATE

##	PLAYER	FG-FGA	3FG-A	FT-FTA	REB	TP	A	TO	BK	S
14	DeMuth (f)	6-8	0-0	0-0	4	12	3	1	0	0
42	Rusche (f)	5-14	0-0	2-4	8	12	1	1	0	0
03	Green (g)	9-12	2-2	0-0	8	20	3	7	0	2
12	Jarrett (g)	2-3	2-3	4-4	6	10	6	2	0	2
33	McDonald (g)	4-10	4-7	2-2	3	14	2	3	0	2
11	Klei	0-3	0-2	0-0	0	0	0	0	0	0
25	Moorman	0-0	0-0	0-0	0	0	0	0	0	0
41	Maggert	5-8	0-1	6-8	6	16	0	1	0	0
	TEAM				5					
Totals		31-58	8-15	14-18	40	84	15	17	0	6
		FG%: 53.4	3FG%: 53.3	FT%: 77.8						

NORTHERN ILLINOIS

##	PLAYER	FG-FGA	3FG-A	FT-FTA	REB	TP	A	TO	BK	S
11	Lowe (f)	10-20	2-3	2-3	7	24	2	2	0	1
44	Ellis (c)	2-6	0-0	1-2	12	5	1	1	1	1
02	Welton (g)	2-11	0-0	6-6	0	10	1	1	0	0
03	York (g)	5-16	4-11	2-2	4	16	2	1	0	2
10	Wilcox (g)	2-9	1-6	0-0	2	5	3	1	0	0
25	Brown	0-0	0-0	0-0	0	0	0	0	0	0
31	Michels	0-0	0-0	0-0	1	0	0	0	0	0
34	Smith	3-3	0-0	3-4	5	9	0	2	1	1
41	Rossouw	3-10	1-2	0-0	1	7	6	4	0	1
50	Adams	1-2	0-0	0-0	4	2	0	0	0	1
	TEAM				4					
Totals		28-77	8-22	14-17	40	78	15	12	2	7
		FG%: 36.4	3FG%: 36.4	FT%: 82.4						

Officials: Dennis Mayer, Todd Klapatuskas, Kevin Dillard
Attendance: 738

Score by Periods	1st	2nd	Total
Ball State	38	46	84
Northern Illinois	36	42	78

Points in the paint-BSU 40, NIU 30. Points off turnovers-BSU 19, NIU 19. 2nd chance points-BSU 10, NIU 22. Fast break points-BSU 0, NIU 0. Bench points-BSU 16, NIU 18. Score tied-8 times. Lead changed-8 times.

NIU Women's Basketball Team Comes Up Short Against Ball State, 84-78

DEKALB, Ill.—The Northern Illinois University women's basketball team suffered a tough loss Saturday afternoon, falling to Ball State, 84-78, at the Convocation Center.

Down 41-43 with 17:15 left to play, the Huskies (4-11, 0-2) went on a 14-0 run to take a 55-43 lead with 13:29 left in the game. But Ball State (6-9, 2-0) responded with a 12-2 run to close the gap to two points, 57-55, midway through the second half.

NIU led 60-59 with 9:07 left to play, when the Cardinals scored back-to-back buckets to take a 63-60 lead with 8:21 left. Kylie York (Fishers, Ind./Hamilton Southeastern) tied the game at 63 with her fourth three of the game with 7:11. That would be as close as the Huskies would get.

The Cardinals went on an 8-0 to take a 73-65 advantage with five minutes left in the contest. NIU did close the gap to 80-78 with 50 seconds remaining, but were unable to come up with a defensive stop on the ensuing possession and the Cardinals walked away with the victory.

Whitney Lowe (Bushnell, Ill./Prairie City) turned in one of her best games of her career, scoring a game-high and career-high 24 points. She went 10-20 from the field, 2-3 from three-point land and 2-3 from the foul line and grabbed seven boards in the losing effort.

York finished the game with 16 points, going 5-16 from the field and 4-11 from beyond the three-point line. Shari' Welton (Calumet City, Ill./Thornwood) finished in double figures for the sixth-straight game, finishing with 10 points.



2007-08 NIU WOMEN'S BASKETBALL

Toledo vs. NIU, January 23 • Page 20

GAME 16

Central Michigan 60
Northern Illinois 87

DeKalb, Ill. • January 15

##	PLAYER	FG-FGA	3FG-A	FT-FTA	REB	TP	A	TO	BK	S
12	Houghton (f)	7-16	0-3	6-8	8	20	2	3	1	1
25	Armstrong (f)	1-1	0-0	2-4	4	4	2	4	1	0
03	Long (g)	0-4	0-2	2-3	2	2	0	3	0	1
10	Verhoff (g)	5-9	2-5	0-1	2	12	0	1	0	1
20	Luckett (g)	4-11	0-0	2-3	3	10	0	3	0	2
04	Westover	0-1	0-0	2-2	0	2	0	0	0	0
14	Holman	3-6	1-3	1-1	2	8	1	1	0	0
21	Szunko	0-0	0-0	0-0	2	0	0	0	0	0
24	Chan	1-5	0-3	0-0	2	2	3	2	0	1
30	Ramsey	0-2	0-0	0-0	1	0	0	1	0	0
42	Brown	0-0	0-0	0-0	0	0	0	0	0	0
44	Heike	0-0	0-0	0-0	0	0	0	0	0	0
TEAM										
Totals										
		21-55	3-16	15-22	33	60	8	18	2	6
		FG%: 38.2	3FG%: 18.8	FT%: 68.2						

##	PLAYER	FG-FGA	3FG-A	FT-FTA	REB	TP	A	TO	BK	S
02	Welton (f)	4-9	0-0	4-7	4	12	2	1	0	1
44	Ellis (f)	8-12	0-0	1-4	11	17	0	2	1	0
03	York (g)	3-6	3-6	0-0	3	9	7	0	1	1
10	Wilcox (g)	5-12	3-8	0-0	4	13	5	4	1	3
11	Lowe (g)	5-10	0-1	2-2	0	12	0	3	0	2
25	Brown	1-1	0-0	2-2	0	4	0	0	0	0
31	Michels	0-2	0-1	2-3	1	2	3	0	0	3
34	Smith	2-3	0-0	2-3	2	6	0	0	0	0
41	Rossouw	3-4	1-1	0-0	1	7	4	3	0	0
50	Adams	0-4	0-0	5-6	9	5	2	1	0	2
TEAM										
Totals										
		31-63	7-17	18-27	41	87	23	15	3	12
		FG%: 49.2	3FG%: 41.2	FT%: 66.7						

Officials: Ron Dressander, Marvin Sykes, Tim Daley
Attendance: 615

Score by Periods	1st	2nd	Total
Central Michigan	32	28	60
Northern Illinois	46	41	87

Points in the paint-CMU 30, NIU 30. Points off turnovers-CMU 12, NIU 23. 2nd chance points-CMU 10, NIU 15. Fast break points-CMU 4, NIU 0. Bench points-CMU 12, NIU 24. Score tied-2 times. Lead changed-1 times.

NIU Women's Basketball Team Defeats Central Michigan in Convincing Fashion

DEKALB, Ill.—The Northern Illinois University women's basketball team headed into their game with Central Michigan riding a four-game losing streak. The Huskies took out their frustrations on the visiting Chippewas, posting an 87-60 victory Tuesday night at the Convocation Center.

The Huskies (5-11, 1-2) had four players finish in double figures for the first time all season and every Huskie that participated in the game scored. Leading the way was freshman Ebony Ellis (Joliet, Ill./Joliet Township), who posted her first career double-double with a team- and career-high 17 points and a game-high 11 rebounds.

Jessie Wilcox (Oshkosh, Wis./West) was right behind Ellis with 13 points, all coming in the first half. Shari' Welton (Calumet City, Ill./Thornwood) scored in double figures for the seventh straight game adding 12 points. Whitney Lowe rounded out the top scorers for the Huskies also finishing with 12. Kylie York (Fishers, Ind./Hamilton Southeastern) had a and dishing out seven assists.

While the Huskies had one of their best offensive performances of the season, they took care of the little things. For the first time this season, NIU had more assists (23) than turnovers (15) and had fewer turnovers than their opponents in back-to-back games.

GAME 17

Northern Illinois 51
Western Michigan 75

Kalamazoo, Mich. • January 19

##	PLAYER	FG-FGA	3FG-A	FT-FTA	REB	TP	A	TO	BK	S
11	Lowe (f)	6-12	2-3	0-0	5	14	1	4	0	2
44	Ellis (c)	1-1	0-0	2-2	5	4	1	1	1	0
02	Welton (g)	2-9	0-1	0-0	1	4	0	5	0	1
03	York (g)	0-0	0-0	2-2	0	2	0	4	0	0
10	Wilcox (g)	5-13	2-5	0-0	1	12	4	1	0	3
31	Michels	1-4	0-2	0-0	0	2	2	0	0	0
34	Smith	0-0	0-0	0-0	1	0	0	1	0	0
41	Rossouw	2-5	1-3	4-4	1	9	3	7	0	1
50	Adams	2-8	0-0	0-0	5	4	2	0	1	2
TEAM										
Totals										
		19-53	5-14	8-10	25	51	13	25	2	10
		FG%: 35.8	3FG%: 35.7	FT%: 80.0						

##	PLAYER	FG-FGA	3FG-A	FT-FTA	REB	TP	A	TO	BK	S
32	Bankston (f)	3-4	0-0	0-2	3	6	1	4	0	0
35	Cleary (f)	5-6	0-0	7-7	4	17	0	1	0	2
44	Parker (f)	3-9	1-4	3-4	3	10	1	5	0	4
01	DeLaHoussaye (g)	5-9	0-0	1-2	5	11	4	4	0	4
03	Dreher	0-2	0-2	0-0	1	0	0	2	0	1
12	Vest	0-0	0-0	10-10	9	10	1	3	1	0
23	Iaquaniello	1-2	1-2	1-2	2	4	0	3	0	1
25	Wilson	1-1	0-0	0-0	2	2	0	0	0	0
34	Smith	0-0	0-0	0-0	2	0	0	0	0	0
40	Loney	1-3	0-0	0-0	0	2	1	0	0	0
54	DeNooyer	0-1	0-0	2-2	0	2	0	0	0	0
TEAM										
Totals										
		23-43	3-10	26-33	34	75	10	26	1	13
		FG%: 53.5	3FG%: 30.0	FT%: 78.8						

Officials: Bob DeMinico, Perry Costello, Brad Duisternars
Attendance: 816

Score by Periods	1st	2nd	Total
Northern Illinois	28	23	51
IUPUI	39	36	75

NIU Women's Basketball Team Defeated by Western Michigan, 75-51

KALAMAZOO, Mich.—The Northern Illinois University women's basketball team lost to Western Michigan Saturday afternoon, 75-51.

The Huskies played a solid first half, shooting 50 percent from the field in the half. After falling behind early, NIU responded with a 6-0 midway through the first period to take an 18-13 lead with 9:59 left to play in the half. Western Michigan went on an 8-0 run to take a 21-18 lead with 6:34 left in the half. The Broncos would never trail. They went into the break with a 40-28 advantage.

The Huskies (5-12, 1-3) struggled offensively in the second half. NIU shot 27 percent from the field in the final frame. Western Michigan (6-12, 3-1) took advantage of the Huskies poor shooting, opening up the second half with an 8-0 run to take a 47-28 lead with 16:43 left to play. The Broncos would lead by as many as 26, 70-44.

Four of the five Bronco starters finished in double figures. WMU's Ebony Cleary led the way with a game-high 17 points. Whitney Lowe (Bushnell, Ill./Prairie City) was the leading scorer for the Huskies with 14 points. Jessie Wilcox (Oshkosh, Wis./West) also finished in double digits, adding 12 points.

The Huskies were outrebounded, 34-25. Foul trouble also plagued Northern. Western Michigan went to the charity stripe 33 times, cashing in on 26 of those visits. The Huskies went 8-10 from the free throw line.