



NOTRE DAME

2006-07 OPPONENTS

- Notre Dame will open up the 2006-07 campaign against the Mastodons of IPFW on Nov. 10 ... It will mark the earliest start date ever in the 102-year history of the program.
- The Irish will be making their third appearance ever in the NIT Season Tip-off event and first since 1999 ... Each time Notre Dame has played in the Preseason NIT, the Irish have advanced to Madison Square Garden for the semifinals and then played in the consolation game ... Notre Dame owns a 4-4 record overall in the Preseason NIT.
- The NIT Season Tip-off moves to a doubleheader "common site" format featuring four regional sites — East (Charlotte, N.C.), South (Nashville, Tenn.) Midwest (Indianapolis, Ind.) and West (Spokane, Wash.).
- Notre Dame will open up play at the 2006 NIT Season Tip-Off event against Butler on Nov. 13 at Conseco Fieldhouse in Indianapolis ... The double-header format also will feature Lafayette and Indiana at the same site with the losers and winners of both games squaring off the following evening on Nov. 14.
- There have been 101 meetings between Notre Dame and Butler with the Irish leading the series 71-30 ... This will be the first matchup between the two schools since Feb. 15, 1995 when Butler earned a 76-60 victory ... Notre Dame heads into the matchup with the Bulldogs looking to end a five-game losing streak.
- The Irish slate features 10 non-conference home games that includes a matchup with Alabama on ESPN on Dec. 7 ... It will mark the second straight year that the two schools have faced each other ... Last season, Notre Dame earned a 78-71 victory in Tuscaloosa ... It will be the fourth meeting ever between the two schools with the Irish holding 2-1 advantage ... This will mark the first-ever visit by a Crimson Tide basketball team to the Joyce Center.
- Notre Dame will play Maryland in a single game of the BB&T Classic at the Verizon Center in Washington, D.C. on Dec. 3 ... The Irish won the BB&T championship in 2002 when it was a four-team format, defeating '02 national champion Maryland and then Texas in the title en route to the tournament crown.
- Notre Dame will play DePaul, USF and Villanova twice as part of its 16-game BIG EAST schedule ... As was the case in 2005-06, each team will face 10 opponents once and three opponents twice (home and away), but will not play two teams ... The Irish will play home games against Louisville, Marquette, Providence, Seton Hall and West Virginia and will face Cincinnati, Georgetown, Rutgers, St. John's and Syracuse on the road ... The two schools Notre Dame will not be playing during the upcoming campaign are Connecticut and Pittsburgh.
- Former Irish captain Billy Taylor returns to his alma mater on Nov. 27 when he brings his Lehigh squad to the Joyce Center ... Taylor played for Notre Dame from 1991-95 and served as captain during his senior season in 1994-95 ... This mark be the third meeting between the two schools with the Irish holding a 2-0 advantage in the series.
- Notre Dame's matchup with Cincinnati (on Feb. 18 at Cincinnati) will be the first time the two schools have played each other since Nov. 11, 2000 when the Irish handed the Bearcats a 69-51 setback at the Wooden Tradition in Indianapolis ... Notre Dame leads the overall series between the two schools 3-1 and has won each of the last two meetings.
- Louisville will be making its first appearance at the Joyce Center since Feb. 26, 1994 when the Cardinals defeated the Irish 85-82 in overtime ... Louisville leads the all-time 13-7 and has won eight straight over the Irish.
- Since the inaugural season in 1968-69 at the Joyce Center, Notre Dame owns a 456-140 record all-time for a .765 winning percentage ... The Irish are 71-27 (.724) at the Joyce Center during Mike Brey's six seasons.
- Notre Dame will make 11 appearances on national television during upcoming 2006-07 campaign.

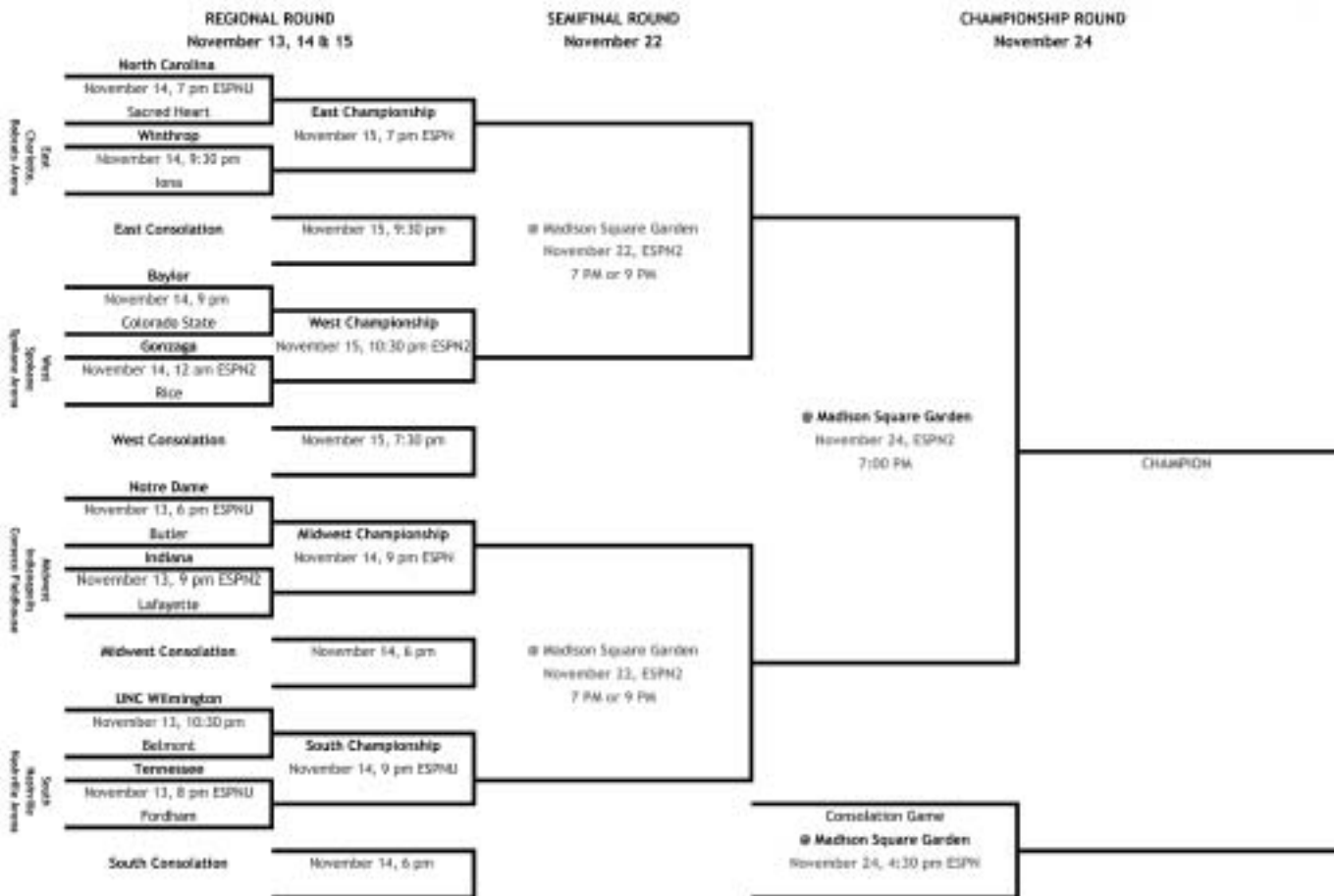


2006



NIT SEASON TIP-OFF

College Basketball Beginnings...



All Games Eastern Standard Time // HOME TEAM IN BOLD



IPFW



Dane Fife
 HEAD COACH

Friday, November 10, 2006
8:00 p.m. (EST)
Joyce Center
Notre Dame, Ind.



Tyler Best
 FORWARD

GENERAL INFORMATION

Location: Fort Wayne, Ind. **Enrollment:** 11,672
Colors: Royal Blue and White **Founded:** 1964
Nickname: Mastodons **Conference:** Mid-Continent
Arena (Capacity): Allen County War Memorial Coliseum (11,500)

COACHING STAFF

Head Coach: Dane Fife (Indiana '02)
Overall Record: 10-18 (1 year)
Record at IPFW: 10-18 (1 year)
Office Phone: (260) 481-6889
Associate Head Coach: Jeff Tungate (Oakland '93)
Assistant Coaches: Tony Jasick (Mars Hill '00), Jermaine Kimbrough (West Virginia Tech '01)

INSTITUTE PERSONNEL

President: Dr. Michael A. Wartell
Athletic Director: Mark A. Pope
Athletic Department Phone: (260) 481-6643
Ticket Office Phone: (260) 481-6617

SERIES INFORMATION

Series Record: Notre Dame leads 2-0
Series Record at Notre Dame: Notre Dame leads 1-0
Series Record at IPFW: Notre Dame leads 1-0
Series Record at Neutral Site: No Meetings
Last Game: Dec. 18, 2005, ND-65, IPFW-63
Current Series Streak: Notre Dame won 2

MEDIA INFORMATION

SID Office Phone: (260) 481-6646
Basketball Contact: Rudy Yovich (yovichr@ipfw.edu)
Website: www.gomastodons.com
SID Fax: (260) 481-6002
Press Row Phone: (260) 449-4811
Mailing Address: IPFW, 2101 E. Coliseum Blvd., Fort Wayne, IN 46805

TEAM CAPSULE

2005-06 Record: 10-18
2005-06 Conference Record/Finish: N/A
Starters Returning/Lost: 4/1
Postseason: None
Final Ranking: Not Ranked

2005-06 RESULTS

LOYOLA-CHICAGO	L	61-69	TRI-STATE UNIVERSITY	W	75-61
at Southeast Missouri State	W	65-64	at Valparaiso	L	72-88
VALPARAISO	L	68-74	at Texas A&M Corpus Christi	L	71-77
at Michigan State	L	73-84	at Texas-Pan American	W	56-61
at Toledo	L	65-85	at Longwood	L	59-60
MARYGROVE COLLEGE	W	80-54	at North Dakota State	L	59-71
at Illinois State	L	36-65	at South Dakota State	W	58-38
at Kent State	L	61-86	at Northwestern	L	49-73
NOTRE DAME	L	63-65	TEXAS A&M		
at Purdue	L	69-79	CORPUS CHRISTI	L	64-79
WEBER STATE	L	67-74	at Northern Colorado	L	61-79
at Penn State	L	59-74	SOUTH DAKOTA STATE	W	75-54
at Air Force	L	42-77	NORTH DAKOTA STATE	W	72-64
at Indiana State	W	54-46	UT-PAN AMERICAN	W	55-54
LONGWOOD	W	92-90			



THE CITADEL



Ed Conroy
 HEAD COACH

Sunday, November 19, 2006
4:00 p.m. (EST)
Joyce Center
Notre Dame, Ind.



J'mel Everhart
 FORWARD

GENERAL INFORMATION

Location: Charleston, S.C. **Enrollment:** 1,964
Colors: Citadel Blue and White **Founded:** 1842
Nickname: Bulldogs **Conference:** Southern
Arena (Capacity): McAlister Field house (6,000)

COACHING STAFF

Head Coach: Ed Conroy (Citadel '89)
Overall Record: First year
Record at The Citadel: First year
Office Phone: (843) 953-5120
Assistant Coaches: Doug Novak (Tennessee '90), Clyde Wormley (The Citadel '02), Andy Fox (Assumption '00)

INSTITUTE PERSONNEL

President: Maj. Gen. John S. Grinalds
Athletic Director: Les Robinson
Athletic Department Phone: (843) 953-5070
Ticket Office Phone: (843) 953-5121

SERIES INFORMATION

Series Record: Notre Dame leads 1-0
Series Record at Notre Dame: Notre Dame leads 1-0
Series Record at The Citadel: No Meetings
Series Record at Neutral Site: No Meetings
Last Game: Nov. 17, 1997, ND-72, Citadel-53
Current Series Streak: Notre Dame won 1

MEDIA INFORMATION

SID Office Phone: (843) 953-5120
Basketball Contact: Kevin Rhodes (2rhodesk@citadel.edu)
Website: www.citadelsports.com
SID Fax: (843) 953-5058
Press Row Phone: (843) 953-2138
Mailing Address: The Citadel Athletic Media Relations Office, McAlister Field House, 171 Moultrie St., Charleston, SC 29409

TEAM CAPSULE

2005-06 Record: (10-20)
2005-06 Conference Record/Finish: (1-14) / 11th
Starters Returning/Lost: 2/3
Postseason: None
Final Ranking: Not Ranked

2005-06 RESULTS

vs. Delaware	L	57-77	WOFFORD	L	52-67
at North Carolina State	L	59-91	at Furman	L	57-81
vs. Stetson	W	73-60	at UNC Greensboro	L	46-65
ASBURY	W	75-48	APPALACHIAN STATE	L	65-66
at Army	W	70-68	CHATTANOOGA	L	64-74
FLORIDA CHRISTIAN	W	126-43	at Elon	L	62-73
CHARLESTON SOUTHERN	L	74-57	SAVANNAH STATE	W	80-73
ATLANTA CHRISTIAN	W	126-61	at Georgia Southern	L	68-96
WEBBER INTERNATIONAL	W	73-56	DAVIDSON	L	77-81
at Western Carolina	L	53-87	COLLEGE OF CHARLESTON	L	52-72
at Duquesne	L	61-90	FURMAN	L	41-64
at Navy	L	70-84	at Savannah State	W	70-61
PENN	L	49-84	at Wofford	W	84-80
GEORGIA SOUTHERN	L	65-83	vs. Furman	W	65-53
at Davidson	L	49-85	vs. Davidson	L	73-79
at College of Charleston	L	65-77			



LEHIGH



Billy Taylor
HEAD COACH

Monday, November 27, 2006
7:30 p.m. (EST)
Joyce Center
Notre Dame, Ind.



Jose Olivero
GUARD

GENERAL INFORMATION

Location: Bethlehem, Pa. **Enrollment:** 4,700
Colors: Brown and White **Founded:** 1865
Nickname: Mountain Hawk **Conference:** Patriot League
Arena (Capacity): Stabler Arena (5,600)

COACHING STAFF

Head Coach: Billy Taylor (Notre Dame '95)
Overall Record: 69-50 (4 years)
Record at Lehigh: 69-50 (4 years)
Office Phone: (610) 758-4188
Associate Head Coach: Brett Reed (Eckerd '95), Bob Simmons (Wilkes '93), Brad Szalachowski (Lehigh '05)

INSTITUTE PERSONNEL

President: Dr. Alice P. Gast
Athletic Director: Joe Sterrett
Athletic Department Phone: (610) 758-4300
Ticket Office Phone: (610) 758-4263

SERIES INFORMATION

Series Record: Notre Dame leads 2-0
Series Record at Notre Dame: Notre Dame leads 2-0
Series Record at Lehigh: No Meetings
Series Record at Neutral Site: No Meetings
Last Game: Jan. 3, 1995, ND-89, Lehigh-65
Current Series Streak: Notre Dame won 2

MEDIA INFORMATION

SID Office Phone: (610) 758-6631
Basketball Contact: Mike Stagnitta (mis3@lehigh.edu)
Website: www.lehighsports.com
SID Fax: (610) 758-4407
Press Row Phone: (610) 758-4903
Mailing Address: Lehigh University, 27 Memorial Dr. West, Bethlehem, PA 18015

TEAM CAPSULE

2005-06 Record: 19-12
2005-06 Conference Record/Finish: 11-3/T2nd
Starters Returning/Lost: 3/2
Postseason: None
Final Ranking: Not Ranked

2005-06 RESULTS

vs. Northwestern	L	59-61	NAVY	W	65-58
vs. Coppin State	W	65-64	ARMY	W	63-60
vs. Butler	L	41-66	at Colgate	W	53-45
PRINCETON	L	54-64	at Lafayette	W	76-58
STONY BROOK	W	58-54	BUCKNELL	L	54-59
at Villanova	L	47-84	HOLY CROSS	W	64-63
EASTERN	W	67-48	AMERICAN	W	65-58
at Cornell	L	53-57	at Navy	W	74-59
at Sacred Heart	L	55-66	at Army	W	69-44
HARVARD	W	67-56	COLGATE	W	67-58
MONMOUTH	W	71-57	LAFAYETTE	W	82-64
at Washington	L	37-54	at Bucknell	L	70-81
TOWSON	L	66-69	at Holy Cross	L	54-68
at Columbia	W	65-57	vs. Colgate	W	48-44
MUHLENBERG	W	80-70	at Holy Cross	L	66-73
at American	W	70-59			



WINSTON-SALEM



Bobby Collins
HEAD COACH

Wednesday, November 29, 2006
7:30 p.m. (EST)
Joyce Center
Notre Dame, Ind.



Roy Peake
GUARD

GENERAL INFORMATION

Location: Winston Salem, N.C. **Enrollment:** 5,567
Colors: Red and White **Founded:** 1892
Nickname: Rams **Conference:** Mid-Eastern Athletic Conference

Arena (Capacity): C.E. Gaines Center (3100); LJV Coliseum Annex (4500)

COACHING STAFF

Head Coach: Bobby Collins (Eastern Kentucky University '91)
Overall Record: 65-57 (4 years)
Record at Winston-Salem: First year
Office Phone: (336) 750-2140
Best Time to Contact Coach: Contact SID
Assistant Coach: David Brown (Fayetteville State '97)

INSTITUTE PERSONNEL

President: Dr. Harold L. Martin
Athletic Director: Dr. Percy "Chico" Caldwell
Athletic Department Phone: (336) 750-2141
Ticket Office Phone: (336) 750-3220

SERIES INFORMATION

Series Record: First meeting
Series Record at Notre Dame: First meeting
Series Record at Winston-Salem: First meeting
Series Record at Neutral Site: First meeting
Last Game: First meeting
Current Series Streak: First meeting

MEDIA INFORMATION

SID Office Phone: (336) 760-2143
Basketball Contact: Chris Zona (zonac@wssu.edu)
Website: www.wssurams.com
SID Fax: (336) 750-2144
Press Row Phone: NA
Mailing Address: WSSU, CB 19529 Winston-Salem, NC 27110

TEAM CAPSULE

2005-06 Record: 19-10
2005-06 Conference Record/Finish: N/A
Starters Returning/Lost:
Postseason: None
Final Ranking: Not Ranked

2005-06 RESULTS

at Lenoir-Rhyne	L	61-64	at Virginia State	W	79-70
at Wingate	L	85-88	DISTRICT OF COLUMBIA	W	83-45
TUSCULUM	W	64-62	JOHNSON C. SMITH	L	62-71
at Tusculum	W	75-65	FAYETTEVILLE STATE	L	75-82
at Bowie State	L	71-80	at Edward Waters	W	79-67
KNOXVILLE	W	103-80	at North Carolina Central	L	55-65
WINGATE	L	67-69	at Saint Augustine's	L	68-90
LENOIR-RHYNE	W	74-69	at Johnson C. Smith	W	81-57
SHAW	W	71-63	LIVINGSTONE	W	60-49
ELIZABETH CITY STATE	W	65-58	at Fayetteville State	W	76-58
at Virginia Union	L	42-59	NORTH CAROLINA CENTRAL	W	59-51
SAINT AUGUSTINE'S	W	98-90	EDWARD WATERS	W	89-61
at Livingstone	W	69-47	vs. Saint Paul's	W	74-38
at Shaw	W	65-59	vs. Bowie State	L	67-71
SAINT PAUL'S	W	88-76			



MARYLAND



Gary Williams
 HEAD COACH

Sunday, December 3, 2006
6:30 p.m. (EST)
Verizon Center
Washington, D.C.
BB&T Classic



D.J. Strawberry
 GUARD

GENERAL INFORMATION

Location: College Park, MD **Enrollment:** 35,329
Colors: Red, White, Black and Gold **Founded:** 1807
Nickname: Terrapins, Terps **Conference:** Atlantic Coast
Arena (Capacity): Comcast Center (17,950)

COACHING STAFF

Head Coach: Gary Williams (Maryland '68)
Overall Record: 560-349 (28 years)
Record at Maryland: 353-191 (13 years)
Office Phone: (301) 314-7029
Best Time to Contact Coach: Contact SID
Assistant Coaches: Michael Adams (Boston College '85) Chuck Driesell (Maryland '85) Keith Booth (Maryland '03)

INSTITUTE PERSONNEL

President: C.D. Mote Jr.
Athletic Director: Deborah A. Yow
Athletic Department Phone: (301) 314-7075
Ticket Office Phone: (301) 314-8624

SERIES INFORMATION

Series Record: Notre Dame leads 9-8
Series Record at Notre Dame: Notre Dame leads 5-2
Series Record at Maryland: Maryland leads 4-3
Series Record at Neutral Site: Maryland leads 2-1
Last Game: Dec. 7, '02, ND
Current Series Streak: Notre Dame won 1

MEDIA INFORMATION

SID Office Phone: (301) 314-8052
Basketball Contact: Jason Yaman (jyaman@umd.edu)
Website: www.umterps.com
SID Fax: (301) 314-9094
Press Row Phone: (301) 314-8624
Mailing Address: 2725 Comcast Center, College Park, MD 20742

TEAM CAPSULE

2005-06 Record: 19-13
2005-06 Conference Record/Finish: 8-8/6th
Starters Returning/Lost: 4/1
Postseason: NIT First Round
Final Ranking: Not Ranked

2005-06 RESULTS

FAIRLEIGH DICKINSON	W	111-85	VIRGINIA TECH	W	81-72
vs. Gonzaga	L	76-88	at Georgia Tech	W	86-74
vs. Chaminade	W	98-69	at Temple	L	85-91
vs. Arkansas	W	75-62	NORTH CAROLINA	L	62-77
NICHOLLS STATE	W	88-56	at North Carolina State	L	58-62
MINNESOTA	W	83-66	VIRGINIA	W	76-65
Vs. George Washington	L	70-79	DUKE	L	88-96
WESTERN CAROLINA	W	87-57	at Clemson	L	77-89
BOSTON COLLEGE	W	73-71	GEORGIA TECH	W	87-84
AMERICAN	W	81-55	at Florida State	L	60-71
DELAWARE STATE	W	68-54	at North Carolina	L	57-81
VMI	W	99-68	MIAMI (Fla.)	W	65-61
TEXAS A&M CORPUS CHRISTI	W	99-73	at Virginia	W	71-70
at Miami (Fla.)	L	70-84	vs. Georgia Tech	W	82-64
at Duke	L	52-76	vs. Boston College	L	66-80
WAKE FOREST	W	90-86	MANHATTAN	L	84-87



ALABAMA



Mark Gottfried
 HEAD COACH

Thursday, December 7, 2006
9:00 p.m. (EST)
Joyce Center
Notre Dame, Ind.



Ronald Steele
 GUARD

GENERAL INFORMATION

Location: Tuscaloosa, Ala. **Enrollment:** 20,969
Colors: Crimson and White **Founded:** 1831
Nickname: Crimson Tide **Conference:** Southeastern
Arena (Capacity): Coleman Coliseum (15,316)

COACHING STAFF

Head Coach: Mark Gottfried (Alabama '87)
Overall Record: 168-80 (11 years)
Record at Alabama: 162-95 (7 years)
Office Phone: (205) 348-4551
Best Time to Contact Coach: Contact SID
Assistant Coaches: Philip Pearson (Alabama '93), Tom Asbury (Wyoming '68), James Holland (South Carolina -Spartanburg '85)

INSTITUTE PERSONNEL

President: Dr. Robert E. Witt
Athletic Director: Mal Moore
Athletic Department Phone: (205) 348-6161
Ticket Office Phone: (205) 348-BAMA

SERIES INFORMATION

Series Record: Notre Dame leads 2-1
Series Record at Notre Dame: No Meetings
Series Record at Alabama: Notre Dame leads 1-0
Series Record at Neutral Site: Series tied 1-1
Last Game: Dec. 7, 2005, ND-78, UA-71
Current Series Streak: Notre Dame won 1

MEDIA INFORMATION

SID Office Phone: (205) 348-6084
Basketball Contact: Becky Hopf bhopf@ia.ua.edu
Website: www.rolltide.com
SID Fax: (205) 348-8841
Press Row Phone: (205) 348-6084
Mailing Address: P.O. Box 870391, Tuscaloosa, AL 35487

TEAM CAPSULE

2005-06 Record: 18-13
2005-06 Conference Record/Finish: 10-6/T2nd SEC West
Starters Returning/Lost: 4/1
Postseason: NCAA Tournament, Second Round
Final Ranking: Not Ranked

2005-06 RESULTS

vs. MIAMI (OH)	W	64-58	at LSU	L	57-68
vs. MEMPHIS	L	76-87	MISSISSIPPI STATE	W	69-65
ALABAMA STATE	W	105-68	at Georgia	L	79-88
LOUISIANA TECH	W	73-63	LSU	W	67-62
WINTHROP	W	60-57	VANDERBILT	W	77-74
NOTRE DAME	L	71-78	at Mississippi	W	64-50
at Temple	L	58-68	at South Carolina	L	56-67
GEORGIA STATE	W	85-58	TENNESSEE	W	92-79
NORTH CAROLINA STATE	L	64-68	at Arkansas	L	63-65
JACKSON STATE	W	101-66	FLORIDA	W	82-77
at Oklahoma	L	56-68	AUBURN	W	71-67
BIRMINGHAM SOUTHERN	W	61-57	at Mississippi State	L	58-71
MISSISSIPPI	L	61-71	vs. Kentucky	L	61-68
at Auburn	W	56-52	vs. Marquette	W	90-85
at Kentucky	W	68-64	vs. UCLA	L	59-62
ARKANSAS	W	78-75			



ELON



Ernie Nestor
HEAD COACH

Saturday, December 16, 2006

7:00 p.m. (EST)

**Joyce Center
Notre Dame, Ind.**



Chris Chalko
FORWARD

GENERAL INFORMATION

Location: Elon, N.C. **Enrollment:** 5,230
Colors: Maroon and Gold **Founded:** 1889
Nickname: Phoenix **Conference:** Southern
Arena (Capacity): Alumni Gym (1,558)

COACHING STAFF

Head Coach: Ernie Nestor (Alderson-Broadus '68)
Overall Record: 103-136 (7 years)
Record at Elon: 35-55 (2 years)
Office Phone: (336) 278-6730
Assistant Coaches: Michael Preston (Lynchburg College '98) Joel Justus (UNC Wilmington '04) David Willson (Hampden-Sydney College '04)

INSTITUTE PERSONNEL

President: Dr. Leo M. Lambert
Athletic Director: Dave Blank
Athletic Department Phone: (336) 278-2000
Ticket Office Phone: (336) 278-6750

SERIES INFORMATION

Series Record: Notre Dame leads 1-0
Series Record at Notre Dame: Notre Dame leads 1-0
Series Record at Elon: No Meetings
Series Record at Neutral Site: No Meetings
Last Game: Dec. 28, 1999 ND-97, Elon-71
Current Series Streak: Notre Dame leads 1-0

MEDIA INFORMATION

SID Office Phone: (336) 278-6803
Basketball Contact: Megan Donald (mdonald@elon.edu)
Website: www.elon.edu/athletics
SID Fax: (336) 278-6768
Press Row Phone: (336) 278-6749
Mailing Address: 2500 Campus Box 100 Campus Dr. Elon, N.C. 27244

TEAM CAPSULE

2005-06 Record: 15-14
2005-06 Conference Record/Finish: 10-4/1st North Division
Starters Returning/Lost: 3/2
Postseason: None
Final Ranking: Not Ranked

2005-06 RESULTS

SOUTHEASTERN	W	78-42	UNC GREENSBORO	W	62-56
at Georgia Tech	L	69-81	MONTREAT	W	90-76
UNC WILMINGTON	L	51-59	WESTERN CAROLINA	W	50-48
IUPUI	L	70-82	FURMAN	W	81-77
at Virginia Commonwealth	L	49-69	at Davidson	L	60-79
vs. Wake Forest	L	59-78	at Georgia Southern	L	45-63
GUILFORD	W	87-63	THE CITADEL	W	73-62
HIGH POINT	L	73-71	COLLEGE OF CHARLESTON	W	76-69
at IUPUI	L	57-58	at Appalachian State	L	60-71
at Butler	L	40-86	CHATTANOOGA	W	69-61
at Buffalo	L	67-68	at Western Carolina	L	78-85
at Clemson	W	74-69	at UNC Greensboro	W	87-82
at Wofford	W	64-61	vs. UNC Greensboro	W	64-61
APPALACHIAN STATE	W	65-59	vs. Davidson	L	58-65
at Chattanooga	W	92-74			



PORTLAND

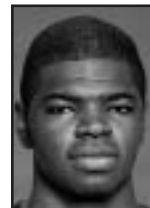


Eric Reveno
HEAD COACH

Tuesday, December 19, 2006

7:30 p.m. (EST)

**Joyce Center
Notre Dame, Ind.**



Darren Cooper
GUARD

GENERAL INFORMATION

Location: Portland, Ore. **Enrollment:** 3,300
Colors: Purple and White **Founded:** 1901
Nickname: Pilots **Conference:** West Coast
Arena (Capacity): Chiles Center (4,852)

COACHING STAFF

Head Coach: Eric Reveno (Stanford '89)
Overall Record: First year
Record at Portland: First year
Office Phone: (503) 943-7117
Assistant Coaches: Joel Sabotka (Arizona State '93) Eric Jackson (UW-Green Bay '00) Michael Wolf (Tufts University '94)

INSTITUTE PERSONNEL

President: Rev. E. William Beauchamp
Athletic Director: Larry Williams
Athletic Department Phone: (503) 943-7117
Ticket Office Phone: (503) 943-7525

SERIES INFORMATION

Series Record: Notre Dame leads 4-0
Series Record at Notre Dame: Notre Dame leads 3-0
Series Record at Portland: Notre Dame leads 1-0
Series Record at Neutral Site: No Meetings
Last Game: Dec. 12, 1990 ND-84, UP-61
Current Series Streak: Notre Dame won 4

MEDIA INFORMATION

SID Office Phone: (503) 943-8439
Basketball Contact: Jason Brough (brough@up.edu)
Website: www.portlandpilots.com
SID Fax: (503) 943-7242
Press Row Phone: (503) 943-7525
Mailing Address: 5000 N. Willamette Blvd. Portland, OR 97203

TEAM CAPSULE

2005-06 Record: 11-18
2005-06 Conference Record/Finish: 5-9/T7th
Starters Returning/Lost: 3/2
Postseason: None
Final Ranking: Not Ranked

2005-06 RESULTS

vs. Georgia Southern	L	75-89	at Saint Mary's	W	74-72
vs. San Jose State	L	53-82	LOYOLA MARYMOUNT	L	68-84
UC RIVERSIDE	W	92-74	PEPPERDINE	W	84-82
SEATTLE	L	85-88	at San Francisco	L	50-62
at Winthrop	L	46-77	at San Diego	L	68-78
at Charlotte	L	46-59	at Gonzaga	L	64-81
LONG BEACH STATE	W	99-95	SAINT MARY'S	L	52-66
PORTLAND STATE	W	70-52	SANTA CLARA	L	56-80
OREGON STATE	W	76-62	GONZAGA	L	83-97
at Washington State	L	46-61	at Pepperdine	W	81-76
at Montana State	L	68-70	at Loyola Marymount	W	71-59
OREGON	W	80-72	SAN FRANCISCO	L	72-74
at UC Santa Barbara	L	53-76	SAN DIEGO	W	90-72
at Cal Poly	W	66-61	vs. Santa Clara	L	68-72
at Santa Clara	L	77-87			

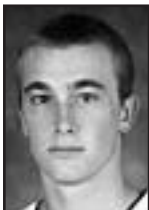


ARMY



Jim Crews
HEAD COACH

Thursday, December 21, 2006
7:30 p.m. (EST)
Joyce Center
Notre Dame, Ind.



Matt Bell
GUARD

GENERAL INFORMATION

Location: West Point, N.Y. **Enrollment:** 4,000
Colors: Black, Gold, and Gray **Founded:** 1802
Nickname: Black Knights, Cadets **Conference:** Patriot League
Arena (Capacity): Christi Arena (5,043)

COACHING STAFF

Head Coach: Jim Crews (Indiana '76)
Overall Record: 314-297 (21 years)
Record at Army: 20-88 (4 years)
Office Phone: (845) 938-2419
Best Time to Contact Coach: Contact SID
Assistant Coaches: Chris Hollender (Evansville '98), Clay Nunley (Goucher '98), Jim Platt (Concordia '73), Kendrick Saunders (Palm Beach Atlantic '98)

INSTITUTE PERSONNEL

President: Lt. Gen. Franklin L. Hagenbeck
Athletic Director: Kevin Anderson
Athletic Department Phone: (845) 938-3701
Ticket Office Phone: 1-877-849-2769

SERIES INFORMATION

Series Record: Notre Dame leads 7-0
Series Record at Notre Dame: Notre Dame leads 4-0
Series Record at Army: Notre Dame leads 2-0
Series Record at Neutral Site: Notre Dame leads 1-0
Last Game: Dec. 19, 2004, ND-71, Army-52
Current Series Streak: Notre Dame won 7

MEDIA INFORMATION

SID Office Phone: (845) 938-3303
Basketball Contact: Christian Anderson (christian.anderson@usma.edu)
Website: www.goarmysports.com
SID Fax: (845) 446-2556
Press Row Phone: (845) 938-4441
Mailing Address: United States Military Academy, ODIA 639 Howard Rd., West Point, NY 10996

TEAM CAPSULE

2005-06 Record: 5-22
2005-06 Conference Record/Finish: 1-13/8th
Starters Returning/Lost: 4/1
Postseason: None
Final Ranking: Not Ranked

2005-06 RESULTS

vs. Temple	L	37-69	at Lehigh	L	60-63
POLYTECHNIC	W	76-37	at American	L	63-65
at VMI	W	53-49	at Navy	W	80-73
THE CITADEL	L	68-70	LAFAYETTE	L	61-82
at Connecticut	L	54-68	at Colgate	L	41-60
at Columbia	W	67-66	BUCKNELL	L	54-67
at Sacred Heart	L	62-76	NAVY	L	62-67
VMI	L	63-72	at Holy Cross	L	38-88
NEW YORK MARITIME	W	53-36	LEHIGH	L	44-69
at Cornell	L	39-74	AMERICAN	L	55-68
BROWN	L	57-59	at Lafayette	L	64-73
DARTMOUTH	L	42-55	at Bucknell	L	47-70
COLGATE	L	58-71	vs. Bucknell	L	47-59
HOLY CROSS	L	46-84			



RIDER



Tommy Dempsey
HEAD COACH

Thursday, December 28, 2006
7:00 p.m. (EST)
Joyce Center
Notre Dame, Ind.



Jason Thompson
FORWARD

GENERAL INFORMATION

Location: Lawrenceville, N.J. **Enrollment:** 5,822
Colors: Cranberry and White **Founded:** 1865
Nickname: Broncs **Conference:** Metro Atlantic Athletic

Arena (Capacity): Alumni Gymnasium (1,650)

COACHING STAFF

Head Coach: Tommy Dempsey (Susquehanna '97)
Overall Record: 8-20 (1 year)
Record at Rider: 8-20 (1 year)
Office Phone: (609) 896-5329
Best Time to Contact Coach: Contact SID
Associate Head Coach: Fred Dupree (Canisius College '98)
Assistant Coaches: Kevin Baggett (St. Joseph's '89) Dane Fischer (Ithaca College '02) George White (Harvard '83)

INSTITUTE PERSONNEL

President: Dr. Mordechai Rozanski
Athletic Director: Don Hamum
Athletic Department Phone: (609) 896-5054
Ticket Office Phone: (609) 896-5054

SERIES INFORMATION

Series Record: Notre Dame leads 1-0
Series Record at Notre Dame: Notre Dame leads 1-0
Series Record at Rider: No Meetings
Series Record at Neutral Site: No Meetings
Last Game: Dec. 22, 1999, ND-75, Rider-62
Current Series Streak: Notre Dame won 1

MEDIA INFORMATION

SID Office Phone: (609) 896-5138
Basketball Contact: Bud Focht (focht@rider.edu)
Website: www.gobroncs.com
SID Fax: (609) 896-0341
Press Row Phone: (609) 896-5138
Mailing Address: Alumni Gymnasium, 2083 Lawrenceville Rd., Lawrenceville, NJ 08648

TEAM CAPSULE

2005-06 Record: 8-20
2005-06 Conference Record/Finish: 4-14/10th
Starters Returning/Lost: 3/2
Postseason: None
Final Ranking: Not Ranked

2005-06 RESULTS

BUCKNELL	L	54-56	NIAGARA	W	78-70
at Drexel	L	60-72	at Loyola	L	76-78
BOSTON UNIVERSITY	W	71-64	MANHATTAN	W	75-56
vs. Villanova	L	57-86	at Canisius	W	81-62
at Monmouth	W	75-67	at Niagara	L	70-84
at Iona	L	59-80	at Fairfield	L	69-77
DELAWARE	W	89-84	CANISIUS	W	73-69
vs. Long Island	W	63-59	at Marist	L	62-73
at College of Charleston	L	67-72	SIENA	L	73-92
at Saint Peter's	L	100-104	IONA	L	79-83
at Siena	L	62-85	at Northeastern	L	79-92
FAIRFIELD	L	81-85	LOYOLA	L	66-69
at Manhattan	L	81-87	SAINT PETER'S	L	64-77
MARIST	L	66-89	vs. Saint Peter's	L	51-80



STONY BROOK



Steve Pikiell
HEAD COACH

Saturday, December 30, 2006

7:00 p.m. (EST)

**Joyce Center
Notre Dame, Ind.**



Mitchell Beauford
GUARD

GENERAL INFORMATION

Location: Stony Brook, N.Y. **Enrollment:** 22,355
Colors: Scarlet and Grey **Founded:** 1957
Nickname: Seawolves **Conference:** America East
Arena (Capacity): Sports Complex (4,103)

COACHING STAFF

Head Coach: Steve Pikiell (Connecticut '90)
Overall Record: 4-24 (1 year)
Record at Stony Brook: 4-24 (1 year)
Office Phone: (631) 632-7201
Assistant Coaches: Jay Young (Marist '86) Guy Rancourt (Western Connecticut '97) Kelvin Jefferson (Southern Connecticut '95)

INSTITUTE PERSONNEL

President: Dr. Shirley Strum Kenny
Athletic Director: Jim Fiore
Athletic Department Phone: (631) 632-7205
Ticket Office Phone: (631) 632-9653

SERIES INFORMATION

Series Record: First meeting
Series Record at Notre Dame: First meeting
Series Record at Stony Brook: First meeting
Series Record at Neutral Site: First meeting
Last Game: First meeting
Current Series Streak: First meeting

MEDIA INFORMATION

SID Office Phone: (631) 632-6312
Basketball Contact: Rob Emmerich Jr.
(Robert.emmerich@stonybrook.edu)
Website: www.goseawolves.org
SID Fax: (631) 632-8841
Press Row Phone: (631) 632-9260
Mailing Address: Stony Brook of USB Sports Complex Stony Brook, NY 11794

TEAM CAPSULE

2005-06 Record: 4-24
2005-06 Conference Record/Finish: 2-14/9th
Starters Returning/Lost:
Postseason: None
Final Ranking: Not Ranked

2005-06 RESULTS

at Villanova	L	35-78	at George Washington	L	60-88
at Lehigh	L	54-58	BOSTON UNIVERSITY	L	65-73
COLUMBIA	L	54-55	at Hartford	L	69-71
at St. John's	L	45-63	at Maine	L	56-72
at UMBC	L	57-72	UMBC	W	75-65
at Hofstra	L	56-73	at Albany	L	62-85
ALBANY	L	58-63	at Vermont	L	58-71
at Connecticut	L	52-85	BINGHAMTON	L	58-76
at Wagner	L	54-67	at Boston College	L	47-59
COLGATE	W	70-57	at New Hampshire	L	51-59
VERMONT	W	61-58	at Boston University	L	68-73
at Binghamton	L	54-63	HARTFORD	L	65-76
at Dartmouth	W	51-48	MAINE	L	75-87
NEW HAMPSHIRE	L	50-54	vs. UMBC	L	70-88



LOUISVILLE



Rick Pitino
HEAD COACH

Wednesday, January 3, 2007

7:30 p.m. (EST)

**Joyce Center
Notre Dame, Ind.**



Juan Palacios
FORWARD

GENERAL INFORMATION

Location: Louisville, Ky. **Enrollment:** 21,000
Colors: Cardinal Red and Black **Founded:** 1798
Nickname: Cardinals **Conference:** BIG EAST
Arena (Capacity): Freedom Hall (18,865)

COACHING STAFF

Head Coach: Rick Pitino (Massachusetts '74)
Overall Record: 470-172 (19 years)
Record at U of L: 118-48 (4 years)
Office Phone: (502) 852-6651
Best Time to Contact Coach: Contact SID
Associate Head Coach: Kevin Willard (Pittsburgh '97)
Assistant Coaches: Marvin Menzies (UCLA '87) Steve Masiello (Kentucky '00)

INSTITUTE PERSONNEL

President: Dr. James Ramsey
Athletic Director: Tom Jurich
Athletic Department Phone: (502) 852-5732
Ticket Office Phone: (502) 852-5151

SERIES INFORMATION

Series Record: Louisville leads 13-7
Series Record at Notre Dame: Louisville leads 6-3
Series Record at U of L: Louisville leads 6-1
Series Record at Neutral Site: Notre Dame leads 3-1
Last Game: Feb. 04, 2006 UL-89, ND-86 (OT)
Current Series Streak: Louisville won 8

MEDIA INFORMATION

SID Office Phone: (502) 852-6581
Basketball Contact: Kenny Klein (kenny.klein@louisville.edu)
Website: www.UofLSports.com
SID Fax: (502) 852-7401
Press Row Phone: (502) 852-5567
Mailing Address: Sports Information, University of Louisville,
Louisville, KY 40292

TEAM CAPSULE

2005-06 Record: 21-13
2005-06 Conference Record/Finish: 6-10/T11th
Starters Returning/Lost: 4/1
Postseason: NIT Semifinal Round
Final Ranking: Not Ranked

2005-06 RESULTS

TENNESSEE-MARTIN	W	78-61	CONNECTICUT	L	58-71
PRAIRIE VIEW A&M	W	90-65	CINCINNATI	W	67-50
ARKANSAS STATE	W	67-55	at Rutgers	L	56-65
RICHMOND	W	53-45	at Villanova	L	73-79
AKRON	W	111-85	NOTRE DAME	W	89-86
CHICAGO STATE	W	78-54	at Cincinnati	L	68-74
at Kentucky	L	61-73	SOUTH FLORIDA	W	57-54
MIDDLE TENNESSEE STATE	W	76-68	at Syracuse	L	66-79
COLLEGE OF CHARLESTON	W	78-63	DEPAUL	W	65-53
DETROIT	W	56-48	at West Virginia	L	64-68
FAIRLEIGH DICKINSON	W	89-66	MARQUETTE	W	67-60
at Miami (FL)	W	58-43	at Connecticut	L	80-84
VILLANOVA	L	67-76	vs. Pittsburgh	L	56-61
at Providence	W	72-67	vs. DELAWARE STATE	W	71-54
UC DAVIS	W	81-58	vs. CLEMSON	W	74-68
PITTSBURGH	L	57-61	vs. MISSOURI STATE	W	74-56
at St. John's	L	56-68	vs. South Carolina	L	63-78



GEORGETOWN



John Thompson III
HEAD COACH

Saturday, January 6, 6007
12:00 p.m. (EST)
Verizon Center
Washington, D.C.



Roy Hibbert
CENTER

GENERAL INFORMATION

Location: Washington, DC **Enrollment:** 12,290
Colors: Blue and Gray **Founded:** 1789
Nickname: Hoyas **Conference:** BIG EAST
Arena (Capacity): MCI Center (20,600)

COACHING STAFF

Head Coach: John Thompson III (Princeton '88)
Overall Record: 110-65 (6 years)
Record at Georgetown: 42-23 (2 years)
Office Phone: (202) 687-2374
Best Time to Contact Coach: Contact SID
Associate Head Coach:
Assistant Coaches: Robert Burke (Haverford '88) Kevin Broadus (Bowie State '90) Sydney Johnson (Princeton '97)

INSTITUTE PERSONNEL

President: John J. DeGioia
Athletic Director: Bernard Muir
Athletic Department Phone: (202) 687-2435
Ticket Office Phone: (202) 687-2449

SERIES INFORMATION

Series Record: Georgetown leads 11-9
Series Record at Notre Dame: Notre Dame leads 6-5
Series Record at Georgetown: Series tied 4-4
Series Record at Neutral Site: Georgetown leads 2-0
Last Game: Mar. 8, 2006, GU-67, ND-63
Current Series Streak: Georgetown won 2

MEDIA INFORMATION

SID Office Phone: (202) 687-2492
Basketball Contact: Bill Shapland (shapland@georgetown.edu)
Website: www.guhoyas.com
SID Fax: (202) 687-2491
Press Row Phone: (202) 628-3200
Mailing Address: McDonough Gym, 37th and O St., Washington, DC 20057

TEAM CAPSULE

2005-06 Record: 23-10
2005-06 Conference Record/Finish: 10-6/T4th
Starters Returning/Lost: 3/2
Postseason: NCAA Tournament, Regional Semifinals
Final Ranking: 16

2005-06 RESULTS

at Navy	W	72-49	CINCINNATI	W	76-57
at James Madison	W	73-66	at DePaul	W	64-44
VANDERBILT	L	61-68	PITTSBURGH	W	61-58
at Oregon	W	71-57	ST. JOHN'S	W	64-41
at Illinois	L	48-58	WEST VIRGINIA	L	56-69
FAIRFIELD	W	76-51	at Marquette	L	51-57
STETSON	W	70-50	at Villanova	L	65-75
SAVANNAH STATE	W	78-49	RUTGERS	W	66-50
vs. Colgate	W	61-45	SYRACUSE	W	68-53
at UTEP	W	76-64	at South Florida	W	63-56
PROVIDENCE	W	72-62	vs. Notre Dame	W	67-63
at St. John's	W	79-65	vs. Marquette	W	62-59
at West Virginia	L	61-68	vs. Syracuse	L	57-58
at Connecticut	L	67-74	vs. Northern Iowa	W	54-49
SOUTH FLORIDA	W	50-47	vs. Ohio State	W	70-52
DUKE	W	87-84	vs. Florida	L	53-57
at Notre Dame	W	85-82			



WEST VIRGINIA



John Beilein
HEAD COACH

Tuesday, January 9, 2007
7:00 p.m. (EST)
Joyce Center
Notre Dame, Ind.



Frank Young
FORWARD

GENERAL INFORMATION

Location: Morgantown, W. Va. **Enrollment:** 25,255
Colors: Old Gold and Blue **Founded:** 1867
Nickname: Mountaineers **Conference:** BIG EAST
Arena (Capacity): WVU Coliseum (14,000)

COACHING STAFF

Head Coach: John Beilein (Wheeling Jesuit '75)
Overall Record: 524-323 (28 years)
Record at West Virginia: 77-51 (4 years)
Office Phone: (304) 293-2193
Best Time to Contact Coach: Contact SID
Assistant Coaches: Matt Bown (Shippensburg '94) Jerry Dunn (George Mason '81) Mike Maker (California Baptist '88)

INSTITUTE PERSONNEL

President: David C. Hardesty Jr.
Athletic Director: Ed Pastilong
Athletic Department Phone: (304) 293-2193
Ticket Office Phone: (800) WVU-GAME

SERIES INFORMATION

Series Record: Notre Dame leads 22-8
Series Record at Notre Dame: Notre Dame leads 13-3
Series Record at West Virginia: Notre Dame leads 8-6
Series Record at Neutral Site: Notre Dame leads 1-0
Last Game: Feb. 01, 2006, WVU-71, ND-70
Current Series Streak: West Virginia won 1

MEDIA INFORMATION

SID Office Phone: (304) 293-2821
Basketball Contact: Bryan Messerly (bryan.messerly@mail.wvu.edu)
Website: www.msnsportsnet.com
SID Fax: (304) 293-4105
Press Row Phone: (304) 293-2821
Mailing Address: P.O. Box 0877, Morgantown, W. Va. 26507

TEAM CAPSULE

2005-06 Record: 22-11
2005-06 Conference Record/Finish: 11-5/3rd
Starters Returning/Lost: 1/4
Postseason: NCAA Tournament, Regional Semifinals
Final Ranking: 15

2005-06 RESULTS

LOUISIANA-MONROE	W	88-69	at Marshall	L	52-58
WOFFORD	W	61-41	at St. John's	W	66-61
Texas	L	75-76	NOTRE DAME	W	71-70
Kentucky	L	66-80	CINCINNATI	W	66-57
LSU	L	68-71	at Pittsburgh	L	53-57
at Saint Bonaventure	W	66-61	at Georgetown	W	69-56
MARYLAND-BALT. COUNTY	W	82-53	at Seton Hall	L	64-71
DUQUESNE	W	86-66	CONNECTICUT	L	75-81
vs. Oklahoma	W	92-68	at Syracuse	L	58-60
CANISIUS	W	80-68	LOUISVILLE	W	68-64
at South Florida	W	57-53	PITTSBURGH	W	67-62
at Villanova	W	91-87	at Cincinnati	L	75-78
GEORGETOWN	W	68-61	vs. Pittsburgh	L	57-68
MARQUETTE	W	104-85	vs. Southern Illinois	W	64-46
PROVIDENCE	W	64-48	vs. Northwestern State	W	67-54
at UCLA	W	60-56	vs. Texas	L	71-74



SETON HALL



Bobby Gonzalez
HEAD COACH

Sunday, January 14, 2007
2:00 p.m. (EST)
Joyce Center
Notre Dame, Ind.



Grant Billmeier
CENTER

GENERAL INFORMATION

Location: South Orange, N.J. **Enrollment:** 9,700
Colors: Blue and White **Founded:** 1856
Nickname: Pirates **Conference:** BIG EAST
Arena (Capacity): Continental Airlines Arena (20,029) Walsh Gym (2,600)

COACHING STAFF

Head Coach: Bobby Gonzalez (Buffalo State '86)
Overall Record: 129-77 (7 years)
Record at Seton Hall: First year
Office Phone: (973) 761-9070
Assistant Coaches: Dermon Player (St. John's '00) Geoff Billet (Rutgers '99) Kevin Murphy (Kentucky '00)

INSTITUTE PERSONNEL

President: Monsignor Robert Sheeran
Athletic Director: Joseph A. Quinlan, Jr.
Athletic Department Phone: (973) 761-9497
Ticket Office Phone: (973) 275-HALL

SERIES INFORMATION

Series Record: Notre Dame leads 12-7
Series Record at Notre Dame: Notre Dame leads 7-1
Series Record at Seton Hall: Series tied 5-5
Series Record at Neutral Site: Seton Hall leads 1-0
Last Game: Feb. 18, 2006, ND-102, SHU-91
Current Series Streak: Notre Dame won 3

MEDIA INFORMATION

SID Office Phone: (973) 761-9493
Basketball Contact: TBA
Website: www.shupirates.com
SID Fax: (973) 761-9061
Press Row Phone: (201) 842-5720 (Continental Airlines Arena) (973) 761-9493 (Walsh Gym)
Mailing Address: Sports Information Office, Seton Hall University, 400 South Orange Ave., South Orange, NJ 07079

TEAM CAPSULE

2005-06 Record: 18-12
2005-06 Conference Record/Finish: 9-7/7th
Starters Returning/Lost: 3/2
Postseason: NCAA Tournament, First Round
Final Ranking: Not Ranked

2005-06 RESULTS

MANHATTAN	W	66-52	SOUTH FLORIDA	W	94-89
Duke	L	40-93	at North Carolina State	W	83-65
MARIST	W	75-72	at Syracuse	W	68-61
SAINT PETER'S	W	66-57	at Providence	W	77-74
at Richmond	L	49-60	RUTGERS	W	73-67
FAIRLEIGH DICKINSON	W	65-57	at South Florida	W	70-65
MONMOUTH	W	61-45	CONNECTICUT	L	57-99
TULANE	W	83-64	WEST VIRGINIA	W	71-64
NORTHWESTERN	L	42-44	NOTRE DAME	L	91-102
MORGAN STATE	W	93-46	at St. John's	L	47-58
IONA	W	73-59	at DePaul	L	64-67
ST. JOHN'S	W	69-61	CINCINNATI	W	72-62
at Rutgers	L	78-82	at Pittsburgh	W	65-61
MARQUETTE	L	63-67	vs. Rutgers	L	48-61
at Villanova	L	63-74	vs. Wichita State	L	66-86



VILLANOVA



Jay Wright
HEAD COACH

Wednesday, January 17, 2007
7:00 p.m. (EST)
The Pavilion
Villanova, Pa.

Saturday, January 27, 2007
4:00 p.m. (EST)
Joyce Center
Notre Dame, Ind.



Will Sheridan
FORWARD

GENERAL INFORMATION

Location: Villanova, Pa. **Enrollment:** 6,295
Colors: Blue and White **Founded:** 1842
Nickname: Wildcats **Conference:** BIG EAST
Arena (Capacity): The Pavilion (6,500); Wachovia Center (20,056)

COACHING STAFF

Head Coach: Jay Wright (Bucknell '83)
Overall Record: 226-144 (12 years)
Record at Villanova: 104-59 (5 years)
Office Phone: (610) 519-4120
Associate Head Coach: Brett Gunning (UNLV '94)
Assistant Coaches: Ed Pickney (Villanova '85), Patrick Chambers (Philadelphia '94)

INSTITUTE PERSONNEL

President: Rev. Peter M. Donohue
Athletic Director: Vince Nicastro
Athletic Department Phone: (610) 519-4120
Ticket Office Phone: (610) 519-4100

SERIES INFORMATION

Series Record: 15-11
Series Record at Notre Dame: Series tied 7-7
Series Record at Villanova: Villanova leads 8-4
Series Record at Neutral Site: No meetings
Last Game: Jan. 28, 2006, Villanova 72, ND 70
Current Series Streak: Villanova won 2

MEDIA INFORMATION

SID Office Phone: (610) 519-4120
Basketball Contact: Mike Sheridan (Michael.sheridan@villanova.edu)
Website: www.villanova.edu
SID Fax: (610) 519-7323
Press Row Phone: TBA
Mailing Address: Jake Nevin Field House, 800 Lancaster Avenue, Villanova, PA 19805

TEAM CAPSULE

2005-06 Record: 29-5
2005-06 Conference Record/Finish: 14-2 (T1st)
Starters Returning/Lost: 2/3
Postseason: NCAA Tournament, Regional Finals
Final Ranking: 5

2005-06 RESULTS

STONY BROOK	W	78-35	LOUISVILLE	W	79-73
LEHIGH	W	84-47	MARQUETTE	W	72-67
vs. Rider	W	86-57	SAINT JOSEPH'S (PA)	W	71-58
OKLAHOMA	W	85-74	at DePaul	W	61-51
at Bucknell	W	79-60	CONNECTICUT	W	69-64
vs. Longwood	W	90-77	GEORGETOWN	W	75-65
at Penn	W	62-55	at Cincinnati	W	74-72
LA SALLE	W	98-57	at Connecticut	L	75-89
at Temple	W	75-53	ST. JOHN'S	W	65-52
at Louisville	W	76-67	at Syracuse	W	92-82
WEST VIRGINIA	L	87-91	vs. Rutgers	W	87-55
at Rutgers	W	84-78	vs. Pittsburgh	L	54-68
at Texas	L	55-58	vs. Monmouth	W	58-45
SETON HALL	W	74-63	vs. Arizona	W	82-78
SYRACUSE	W	80-65	vs. Boston College	W	60-59
at South Florida	W	49-46	vs. Florida	L	62-75
at Notre Dame	W	72-70			

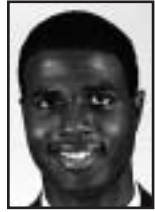
SOUTH FLORIDA



Robert McCullum
HEAD COACH

Sunday, January 21, 2007
1:00 p.m. (EST)
Joyce Center
Notre Dame, Ind.

Saturday, February 3, 2007
8:00 p.m.
Sun Dome
Tampa, Fla.



Melvin Buckley
FORWARD

GENERAL INFORMATION

Location: Tampa, FL **Enrollment:** 41,000
Colors: Green and Gold **Founded:** 1956
Nickname: Bulls **Conference:** BIG EAST
Arena (Capacity): Sun Dome (10,411)

COACHING STAFF

Head Coach: Robert McCullum (Birmingham Southern '76)
Overall Record: 72-103
Record at NSF: 28-58
Office Phone: (813) 974-3252
Best Time to Contact Coach: Contact SID
Associate Head Coach:
Assistant Coaches: Frank Burnell (Stetson '85) Charles Cunningham (N. Alabama '73) Greg Gary (Tulane '92)

INSTITUTE PERSONNEL

President: Dr. Judy Genshaft
Athletic Director: Doug Woolard
Athletic Department Phone: (813) 974-2125
Ticket Office Phone: (813) 974-3002

SERIES INFORMATION

Series Record: Notre Dame leads 1-0
Series Record at Notre Dame: Notre Dame leads 1-0
Series Record at NSF: No Meetings
Series Record at Neutral Site: No Meetings
Last Game: Feb. 15, 2006, ND-62, USF-55
Current Series Streak: Notre Dame won 1

MEDIA INFORMATION

SID Office Phone: (813) 974-7099
Basketball Contact: Scott Kuykendall (skuyken@admin.usf.edu)
Website: www.gousfbulls.com
SID Fax: (813) 974-5328
Press Row Phone: (813) 974-3287
Mailing Address: 4202 East Fowler Ave., ATH100, Tampa, FL 33620

TEAM CAPSULE

2005-06 Record: 7-22
2005-06 Conference Record/Finish: 1-15/16th
Starters Returning/Lost: 3/2
Postseason: None
Final Ranking: Not Ranked

2005-06 RESULTS

ALCORN STATE W 69-52	ST. JOHN'S L 49-68
JACKSONVILLE W 91-78	at Georgetown L 47-50
FLORIDA INTERNATIONAL L 64-69	at Seton Hall L 89-94
vs. Texas A&M-Corpus Christi L 47-59	VILLANOVA L 46-49
vs. Georgia Southern W 72-66	at Cincinnati L 60-73
at Stetson W 77-52	DEPAUL L 66-80
MICHIGAN L 47-68	SETON HALL L 65-70
FLORIDA ATLANTIC W 62-44	at Louisville L 54-57
vs. Oregon State L 56-61	at Notre Dame L 55-62
vs. Iowa State L 74-83	RUTGERS L 51-65
vs. Loyola Marymount W 54-50	at Providence L 56-77
BETHUNE-COOKMAN L 68-75	at Rutgers L 44-62
UAB L 47-59	CONNECTICUT L 53-66
WEST VIRGINIA L 53-57	GEORGETOWN W 63-56
at Syracuse L 57-63	

ST. JOHN'S



Norm Roberts
HEAD COACH

Tuesday, January 23, 2007
7:30 p.m. (EST)
Madison Square Garden
New York, N.Y.



Lamont Hamilton
FORWARD/CENTER

GENERAL INFORMATION

Location: Queens, N.Y. **Enrollment:** 19,600
Colors: Red and White **Founded:** 1870
Nickname: Red Storm **Conference:** BIG EAST
Arena (Capacity): Camessecca Arena (6,008) Madison Square Garden (19,786)

COACHING STAFF

Head Coach: Norm Roberts (Queens College '87)
Overall Record: 21-33 (2 years)
Record at St. Johns: 21-33 (2 years)
Office Phone: (718) 990-6225
Assistant Coaches: Glenn Braica (Queens College '87) Fred Quartlebaum (Fordham '89) Chris Casey (Western Conn. State '86)

INSTITUTE PERSONNEL

President: Rev. Donald J. Harrington
Athletic Director: Chris Monasch
Athletic Department Phone: (718) 990-6138
Ticket Office Phone: (888) 467-7876

SERIES INFORMATION

Series Record: Notre Dame leads 17-13
Series Record at Notre Dame: Notre Dame leads 9-7
Series Record at St. Johns: Notre Dame leads 6-5
Series Record at Neutral Site: Notre Dame leads 2-1
Last Game: Jan. 15, 2005, ND-67, SJU-66
Current Series Streak: Notre Dame won 2

MEDIA INFORMATION

SID Office Phone: (718) 990-6897
Basketball Contact: Mark Fratto
Website: www.redstormsports.com
SID Fax: (718) 969-8468
Press Row Phone: (212) 465-6536
Mailing Address: Athletic Communications Office, Camessecca Arena
 Room 157, 8000 Utopia Parkway, Queens, NY 11439

TEAM CAPSULE

2005-06 Record: 12-15
2005-06 Conference Record/Finish: 5-11/13th
Starters Returning/Lost: 5/0
Postseason: None
Final Ranking: Not Ranked

2005-06 RESULTS

MARYLAND-EASTERN SHORE W 77-40	LOUISVILLE W 68-56	SAINT FRANCIS (NY) W 64-50	PITTSBURGH W 55-50
NIAGARA W 67-61	at Connecticut L 50-66	HOFSTRA L 51-64	WEST VIRGINIA L 61-66
CHARLESTON SOUTHERN W 64-50	at Marquette L 61-81	STONY BROOK W 63-45	at Providence L 73-81
at Virginia Tech L 64-73	at Georgetown L 41-64	MARIST L 53-56	SYRACUSE L 60-75
at Duke L 57-70	at Rutgers W 54-51	COLUMBIA W 63-39	DEPAUL L 48-52
MASSACHUSETTS W 51-49	SETON HALL W 58-47	at Seton Hall L 61-69	at Villanova L 52-65
GEORGETOWN L 65-79	RUTGERS L 70-82	at South Florida W 68-49	



SYRACUSE



Jim Boeheim
HEAD COACH

Tuesday, January 30, 2007
7:00 p.m. (EST)
Carrier Dome
Syracuse, N.Y.



Terrence Roberts
FORWARD

GENERAL INFORMATION

Location: Syracuse, N.Y. **Enrollment:** 10,750
Colors: Orange **Founded:** 1870
Nickname: Orange **Conference:** BIG EAST
Arena (Capacity): Carrier Dome (33,000)

COACHING STAFF

Head Coach: Jim Boeheim (Syracuse '66)
Overall Record: 726-253 (30 years)
Record at Syracuse: 726-253 (30 years)
Office Phone: (315) 443-2082
Associate Head Coach: Bernie Fine (Syracuse '67)
Assistant Coaches: Mike Hopkins (Syracuse '93) Rob Murphy (Central State '96)

INSTITUTE PERSONNEL

President: Dr. Nancy Cantor
Athletic Director: Dr. Daryl Gross
Athletic Department Phone: (315) 443-8705
Ticket Office Phone: (315) 443-2121

SERIES INFORMATION

Series Record: Syracuse leads 21-15
Series Record at Notre Dame: Syracuse leads 10-7
Series Record at Syracuse: Syracuse leads 9-8
Series Record at Neutral Site: Syracuse leads 2-0
Last Game: Jan. 11, 2006, SU-88, ND-82
Current Series Streak: Notre Dame lost 3

MEDIA INFORMATION

SID Office Phone: (315) 443-2608
Basketball Contact: Pete Moore (pimoore@syr.edu)
Website: www.suathletics.com
SID Fax: (315) 443-2076
Press Row Phone: (317) 443-4241
Mailing Address: Manley Field House, Syracuse, NY 13244

TEAM CAPSULE

2005-06 Record: 23-12
2005-06 Conference Record/Finish: 7-9/T9th
Starters Returning/Lost: 4/1
Postseason: NCAA Tournament, First Round
Final Ranking: 21

2005-06 RESULTS

BETHUNE-COOKMAN	W	68-37	at Villanova	L	65-80
CORNELL	W	67-62	at Pittsburgh	L	67-80
TEXAS TECH	W	81-46	SETON HALL	L	61-68
FLORIDA	L	70-75	RUTGERS	W	86-84
BUCKNELL	L	69-74	at Connecticut	L	50-73
SIENA	W	96-77	at St. John's	W	75-60
MANHATTAN	W	87-82	CINCINNATI	L	65-85
TCU	W	80-64	LOUISVILLE	W	79-66
COLGATE	W	58-35	WEST VIRGINIA	W	60-58
DAVIDSON	W	90-80	at Georgetown	L	53-68
ILLINOIS-CHICAGO	W	75-61	at DePaul	L	69-108
at Towson	W	86-52	VILLANOVA	L	82-92
KENT STATE	W	78-66	vs. Cincinnati	W	74-73
UTEP	W	69-56	vs. Connecticut	W	86-84
SOUTH FLORIDA	W	63-57	vs. Georgetown	W	58-57
at Notre Dame	W	88-82	vs. Pittsburgh	W	65-61
at Cincinnati	W	77-58	vs. Texas A&M	L	58-66
CONNECTICUT	L	80-88			



DEPAUL



Jerry Wainwright
HEAD COACH

Thursday, February 8, 2006
7:00 p.m. (EST)
Allstate Arena
Rosemont, Ill.

Tuesday, February 20, 2006
7:00 p.m. (EST)
Joyce Center
Notre Dame, Ind.



Sammy Mejia
GUARD

GENERAL INFORMATION

Location: Chicago, Ill. **Enrollment:** 23,148
Colors: Royal Blue and Scarlet **Founded:** 1898
Nickname: Blue Demons **Conference:** BIG EAST
Arena (Capacity): Allstate Arena (18,500)

COACHING STAFF

Head Coach: Jerry Wainwright (Colorado College '68)
Overall Record: 198-159 (12 years)
Record at DePaul: 12-15 (1 year)
Office Phone: (773) 325-7521
Associate Head Coach: Gary DeCesare (Iona '85)
Assistant Coaches: Ramon Williams (VMI '90) Scott Wainwright (UNC Willmington '99)

INSTITUTE PERSONNEL

President: Rev. Dennis H. Holtschneider, C.M.
Athletic Director: Jean Lenti Ponsetto
Athletic Department Phone: (773) 325-7526
Ticket Office Phone: (773) 325-7526

SERIES INFORMATION

Series Record: Notre Dame leads 51-43
Series Record at Notre Dame: Notre Dame leads 32-14
Series Record at DePaul: DePaul leads 29-17
Series Record at Neutral Site: Notre Dame leads 2-0
Last Game: Mar. 4, 2006, ND-66, DPU-61
Current Series Streak: Notre Dame won 1

MEDIA INFORMATION

SID Office Phone: (773) 325-7525
Basketball Contact: Scott Reed (sreed1@depaul.edu)
Website: www.depaulbluedemons.com
SID Fax: (773) 325-7531
Press Row Phone: (847) 296-6999
Mailing Address: 2323 North Sheffield, Chicago, IL 60614

TEAM CAPSULE

2005-06 Record: 12-15
2005-06 Conference Record/Finish: 5-11/T13th
Starters Returning/Lost: 4/1
Postseason: None
Final Ranking: Not Ranked

2005-06 RESULTS

BRADLEY	L	60-75	at Pittsburgh	L	65-73
NORTHWESTERN	W	59-49	RUTGERS	L	68-78
at Northern Illinois	L	68-77	MARQUETTE	L	79-82
CREIGHTON	W	72-57	at Providence	L	75-76
BUCKNELL	L	52-57	at Marquette	L	47-62
UAB	W	70-66	GEORGETOWN	L	44-64
at Dayton	W	61-54	at South Florida	W	66-80
at Wake Forest	W	84-81	PROVIDENCE	L	60-61
at Old Dominion	L	43-87	VILLANOVA	L	51-61
vs. California	W	68-65	at St. John's	W	52-48
FLORIDA INTERNATIONAL	W	72-60	SETON HALL	W	67-64
at Cincinnati	L	60-82	SYRACUSE	W	108-69
NOTRE DAME	W	73-67	at Notre Dame	L	61-66

PROVIDENCE



Tim Welsh
HEAD COACH

Thursday, February 15, 2007
7:00 p.m. (EST)
Joyce Center
Notre Dame, Ind.



Herbert Hill
FORWARD/CENTER

GENERAL INFORMATION

Location: Providence, R.I. **Enrollment:** 3,912
Colors: Black, White and Silver **Founded:** 1917
Nickname: Friars **Conference:** BIG EAST
Arena (Capacity): Dunkin Donuts Center (12,993)

COACHING STAFF

Head Coach: Tim Welsh (Potsdam State '84)
Overall Record: 197-136 (11 years)
Record at Providence: 127-114 (8 years)
Office Phone: (401) 865-2266
Associate Head Coach: Steve DeMeo (SUNY-Buffalo '87)
Assistant Coaches: Vince Cautero (Florida State '88), Allen Griffin (Syracuse '01)

INSTITUTE PERSONNEL

President: Rev. Brian J. Shanley, O.P.
Athletic Director: Robert Driscoll
Athletic Department Phone: (401) 865-2500
Ticket Office Phone: (401) 865-GOPC

SERIES INFORMATION

Series Record: Notre Dame leads 10-9
Series Record at Notre Dame: Notre Dame leads 5-4
Series Record at Providence: Notre Dame leads 5-4
Series Record at Neutral Site: Providence leads 1-0
Last Game: March 3, 2006, ND-'88, PC-'75
Current Series Streak: Notre Dame won 2

MEDIA INFORMATION

SID Office Phone: (401) 865-2759
Basketball Contact: Arthur Parks (aparkscprovidence.edu)
Website: www.friars.com
SID Fax: (401) 865-2583
Press Row Phone: (401) 751-9737
Mailing Address: Sports Information Office, 549 River Avenue, Providence College, Providence, RI 02918

TEAM CAPSULE

2005-06 Record: 12-15
2005-06 Conference Record/Finish: 5-11/T13th
Starters Returning/Lost: 4/1
Postseason: None
Final Ranking: Not Ranked

2005-06 RESULTS

VERMONT	W	87-77	at West Virginia	L	48-64
NEW HAMPSHIRE	W	75-51	DEPAUL	W	76-75
at Fairfield	W	81-78	at Rutgers	W	79-69
at Wichita State	L	74-82	CONNECTICUT	L	62-76
at Rhode Island	L	69-77	SETON HALL	L	74-77
FLORIDA	L	77-87	ST. JOHN'S	W	81-73
MEMPHIS	L	89-97	at DePaul	W	61-60
NORTHEASTERN	W	92-70	PITTSBURGH	L	77-85
YALE	W	76-63	at Cincinnati	L	64-66
SAN DIEGO STATE	W	80-65	SOUTH FLORIDA	W	77-56
LOYOLA	W	94-81	at Pittsburgh	L	68-81
at Georgetown	L	62-72	NOTRE DAME	L	75-82
LOUISVILLE	L	67-72	at Marquette	L	78-88
at Notre Dame	L	77-92			

CINCINNATI



Mick Cronin
HEAD COACH

Sunday,
February 18, 2007
Time TBA
Fifth Third Arena
Cincinnati, Ohio



Cedric McGowan
FORWARD

GENERAL INFORMATION

Location: Cincinnati, Ohio **Enrollment:** 35,244
Colors: Red and Black **Founded:** 1819
Nickname: Bearcats **Conference:** BIG EAST
Arena (Capacity): Fifth Third Arena at Shoemaker Center (13,176)

COACHING STAFF

Head Coach: Mick Cronin (Cincinnati '97)
Overall Record: 69-23 (3 years)
Record at Cincinnati: First year
Office Phone: (513) 556-5847
Associate Head Coach: Larry Davis (Asbury '78)
Assistant Coaches: Chris Goggin (Toledo '98) Tony Stubblefield (Nebraska-Omaha '95)

INSTITUTE PERSONNEL

President: Dr. Nancy L. Zimpher
Athletic Director: Mike Thomas
Athletic Department Phone: (513) 556-4603
Ticket Office Phone: (513) 556-0622

SERIES INFORMATION

Series Record: Notre Dame leads 3-1
Series Record at Notre Dame: Notre Dame leads 1-0
Series Record at Cincinnati: Notre Dame leads 0-0
Series Record at Neutral Site: Notre Dame leads 2-1
Last Game: Nov. 25, 2000, ND
Current Series Streak: Notre Dame won 2

MEDIA INFORMATION

SID Office Phone: (513) 556-0617
Basketball Contact: Brian Teter (brian.teter@uc.edu)
Website: www.ucbearcats.com
SID Fax: (513)556-5059
Press Row Phone: (513)556-3800
Mailing Address: One Edwards Center, Suite 1100 University of Cincinnati, Cincinnati, OH 45221

TEAM CAPSULE

2005-06 Record: 21-13
2005-06 Conference Record/Finish: 8-8/8th
Starters Returning/Lost: 5/6
Postseason: NIT Third Round
Final Ranking: Not Ranked

2005-06 RESULTS

MURRAY STATE	W	79-75	XAVIER	L	71-73
ILLINOIS STATE	W	79-75	RUTGERS	W	71-66
HOLY CROSS	W	77-55	at Louisville	L	50-67
DAYTON	L	66-75	at Georgetown	L	57-76
MEMPHIS	L	81-91	SOUTH FLORIDA	W	73-60
at Vanderbilt	W	82-73	at West Virginia	L	57-66
OHIO	W	86-58	LOUISVILLE	W	68-74
vs. Tennessee Tech	W	105-62	at Pittsburgh	L	69-89
vs. Arkansas-Monticello	W	84-63	at Syracuse	W	85-65
vs. Dayton	W	65-55	PROVIDENCE	W	66-64
vs. LSU	W	75-72	VILLANOVA	L	72-74
MIAMI (OH)	W	75-65	at Seton Hall	L	62-72
NORTH CAROLINA A&T	W	105-69	WEST VIRGINIA	W	78-75
DEPAUL	W	82-60	Syracuse	L	74-73
at Marquette	W	70-66	CHARLOTTE	W	86-80
at Connecticut	L	59-70	MINNESOTA	W	76-62
SYRACUSE	L	58-77	SOUTH CAROLINA	L	65-62



MARQUETTE



Tom Crean
HEAD COACH

Saturday, February 24, 2007
3:30 p.m. (EST)
Joyce Center
Notre Dame, Ind.



Dominic James
GUARD

GENERAL INFORMATION

Location: Milwaukee, Wis. **Enrollment:** 11,000
Colors: Blue and Gold **Founded:** 1881
Nickname: Golden Eagles **Conference:** BIG EAST
Arena (Capacity): Bradley Center (18,850)

COACHING STAFF

Head Coach: Tom Crean (Central Michigan '89)
Overall Record: 141-76 (7 years)
Record at Marquette: 141-76 (7 years)
Office Phone: (414) 288-7130
Best Time to Contact Coach: Contact SID
Associate Head Coach:
Assistant Coaches: Jason Rabedeaux (UC-Davis '88) Jean Prioleaux (Fordham '92)

INSTITUTE PERSONNEL

President: Rev. Robert A. Wild, S.J.
Athletic Director: Bill Cords
Athletic Department Phone: (414) 288-3030
Ticket Office Phone: (414) 288-4668

SERIES INFORMATION

Series Record: Notre Dame leads 2-0
Series Record at Notre Dame: Notre Dame leads 1-0
Series Record at Marquette: Notre Dame leads 1-0
Series Record at Neutral Site: No Meetings
Last Game: Dec. 18, 2005, MU-80, ND-72
Current Series Streak: Notre Dame won 2

MEDIA INFORMATION

SID Office Phone: (414) 288-5287
Basketball Contact: Mike Broeker (Mike.broeker@marquette.edu)
Website: www.gomarquette.com
SID Fax: (414) 288-6519
Press Row Phone: (414) 227-0580
Mailing Address: Al McGuire Center, 770 N. 12th St., Milwaukee, WI 53211

TEAM CAPSULE

2005-06 Record: 20-11
2005-06 Conference Record/Finish: 10-6/T4th
Starters Returning/Lost: 3/2
Postseason: NCAA Tournament, First Round
Final Ranking: Not Ranked

2005-06 RESULTS

RICE	W	82-65	at West Virginia	L	85-104
WINTHROP	L	64-71	at DePaul	W	82-79
vs. Eastern Washington	W	83-73	NOTRE DAME	W	67-65
vs. Oral Roberts	W	73-70	DEPAUL	W	62-47
vs. South Carolina	W	92-89	at Pittsburgh	L	71-77
at Nebraska	W	84-74	ST. JOHN'S	W	81-61
SOUTH DAKOTA STATE	W	87-52	at Villanova	L	67-72
VALPARAISO	W	69-54	at Rutgers	L	84-91
at Wisconsin	L	63-77	GEORGETOWN	W	57-51
SAN FRANCISCO	W	61-48	PITTSBURGH	W	84-82
OAKLAND	W	90-69	at Notre Dame	W	80-72
DELAWARE STATE	W	60-48	at Louisville	L	60-67
LEWIS	W	88-40	PROVIDENCE	W	88-78
CONNECTICUT	W	94-79	vs. Georgetown	L	59-62
CINCINNATI	L	66-70	vs. Alabama	L	85-90
at Seton Hall	W	67-63			



RUTGERS



Fred Hill
HEAD COACH

Saturday, March 2, 2007
4:00 p.m. (EST)
Louis Brown
Athletic Center
Piscataway, N.J.



Marquis Webb
GUARD/FORWARD

GENERAL INFORMATION

Location: New Brunswick, N.J. **Enrollment:** 33,500
Colors: Scarlet **Founded:** 1766
Nickname: Scarlet Knights **Conference:** BIG EAST
Arena (Capacity): Louis Brown Athletic Center (8,000)

COACHING STAFF

Head Coach: Fred Hill (Montclair St. '81)
Overall Record: First year
Record at Rutgers: First year
Office Phone: (732) 445-4291
Assistant Coaches: Jim Carr (York '91) Craig Carter (Rutgers '91) Darren Savino (Jersey City State '94)

INSTITUTE PERSONNEL

President: Dr. Richard L. McCormick
Athletic Director: Robert E. Mulcahy III
Athletic Department Phone: (732) 445-8610
Ticket Office Phone: 1-866-445-GORU

SERIES INFORMATION

Series Record: Notre Dame leads 12-11
Series Record at Notre Dame: Notre Dame leads 8-2
Series Record at Rutgers: Rutgers leads 8-3
Series Record at Neutral Site: Series tied 1-1
Last Game: Feb. 08, 2006 ND-90, RU-63
Current Series Streak: ND won 1

MEDIA INFORMATION

SID Office Phone: (732) 445-4200
Basketball Contact: John Wooding (jwooding@scarletknights.com)
Website: www.scarletknights.com
SID Fax: (732) 445-3063
Press Row Phone: (732) 445-4200
Mailing Address: 83 Rockefeller Road, Piscataway, NJ 08854

TEAM CAPSULE

2005-06 Record: 19-14
2005-06 Conference Record/Finish: 7-9/T10th
Starters Returning/Lost: 4/1
Postseason: NIT First Round
Final Ranking: Not Ranked

2005-06 RESULTS

AUSTIN PEAY	W	66-46	PITTSBURGH	L	68-76
DELAWARE STATE	W	49-42	at Cincinnati	L	66-71
KENT STATE	W	55-52	PROVIDENCE	L	69-79
ILLINOIS	L	57-77	LOUISVILLE	W	65-56
TEMPLE	W	67-53	at Syracuse	L	84-86
at Saint Mary's (CA)	W	75-69	at Saint Hall	L	67-73
MARYLAND-EASTERN SHORE	W	92-50	at Notre Dame	L	63-90
at Buffalo	L	53-62	MARQUETTE	W	91-84
ST. THOMAS AQUINAS	W	94-56	ST. JOHN'S	L	51-54
MAINE	W	91-56	at South Florida	W	65-51
SOUTH CAROLINA STATE	W	63-45	at St. John's	W	82-70
CHARLOTTE	L	82-85	vs. Seton Hall	W	61-48
PRINCETON	W	54-44	vs. Villanova	L	55-87
SETON HALL	W	82-78	vs. Penn State	W	76-71
VILLANOVA	L	78-84	vs. Saint Joseph's (PA)	L	62-71
at DePaul	W	78-68			