

NOTRE DAME

OPPONENTS



• Notre Dame heads into the 2007-08 campaign riding a 20-game home unbeaten streak ... The Irish were a perfect 18-0 at home last season at the Joyce Center – the most single-season wins in school history – and just the third time since its opening in 1968-69 that a Notre Dame team went undefeated at home ... The Irish have not lost at home since an 80-72 setback to Marquette on February 25, 2006 ... The longest home win streak is 24 games which began on February 3, 1973 with a win over Xavier 94-68 and ended on December 11, 1974 with a 94-84 loss to Indiana.

• Notre Dame will open up the 2007-08 campaign against the Blackbirds of Long Island on Monday November 12 ... It will mark the third meeting between the two schools ... In the last meeting, the Irish earned a 97-49 win on December 29, 2000 at the Joyce Center.

• The Irish will be making their first-ever appearance in the Paradise Jam taking place in St. Thomas, U.S. Virgin Islands from November 16-19 ... Monmouth will be the opening round opponent for Notre Dame in this eight-team tournament and the Irish will play either Baylor or Wichita State in second-round action ... This will be the first meeting between the two schools since they met on November 25, 2001 in the Hawaii-Pacific Thanksgiving Classic, a game the Irish won 85-48 ... Other teams competing in the tournament include Charlotte, Georgia Tech, Illinois-Chicago and Winthrop.

• This season will be the first time in which the Irish compete in the Jimmy V Classic in New York's Madison Square Garden ... Notre Dame will face Kansas State in the event, a program it has not faced since March 23, 1992 when the Irish earned a 64-47 victory ... Notre Dame has a record of 50-38 in games played at MSG.

• The Irish will play host to the Bears of Brown on December 29 ... This meeting will be only the second time these two teams have matched up with the previous game resulting in a 80-53 win back on January 30, 1979.

• Notre Dame will welcome North Florida on December 31 ... North Florida head coach Matt Kilcullen served as an Irish assistant coach from 1985-91.

• The matchup against Kansas State will mark the first nationally-televised game for the Irish in 2007-08 ... Overall, Notre Dame will make nine appearances on national television ... Of those contests, eight games will be during the BIG EAST regular season and six will be played at the Joyce Center.

• The Marquette game will mark the first road test for the Irish in BIG EAST play on January 12 when the two teams square off at the Bradley Center ... It will be the first of two meetings with the second one slated for February 9 at the Joyce Center.

• This year will mark the first time since 1998-99 in which the BIG EAST will utilize an 18-game conference schedule...The Irish will play Connecticut, DePaul and Marquette twice this year as part of the 18-game schedule ... Notre Dame will play home games against West Virginia, Cincinnati, Providence, Pittsburgh, and Syracuse and will face Georgetown, Villanova, Seton Hall, Rutgers, and Louisville on the road.

• Since the inaugural season in 1968-69 at the Joyce Center, Notre Dame owns a 474-142 record all-time for a .769 winning percentage ... The Irish are 88-27 (.765) at the Joyce Center during Mike Brey's seven seasons.

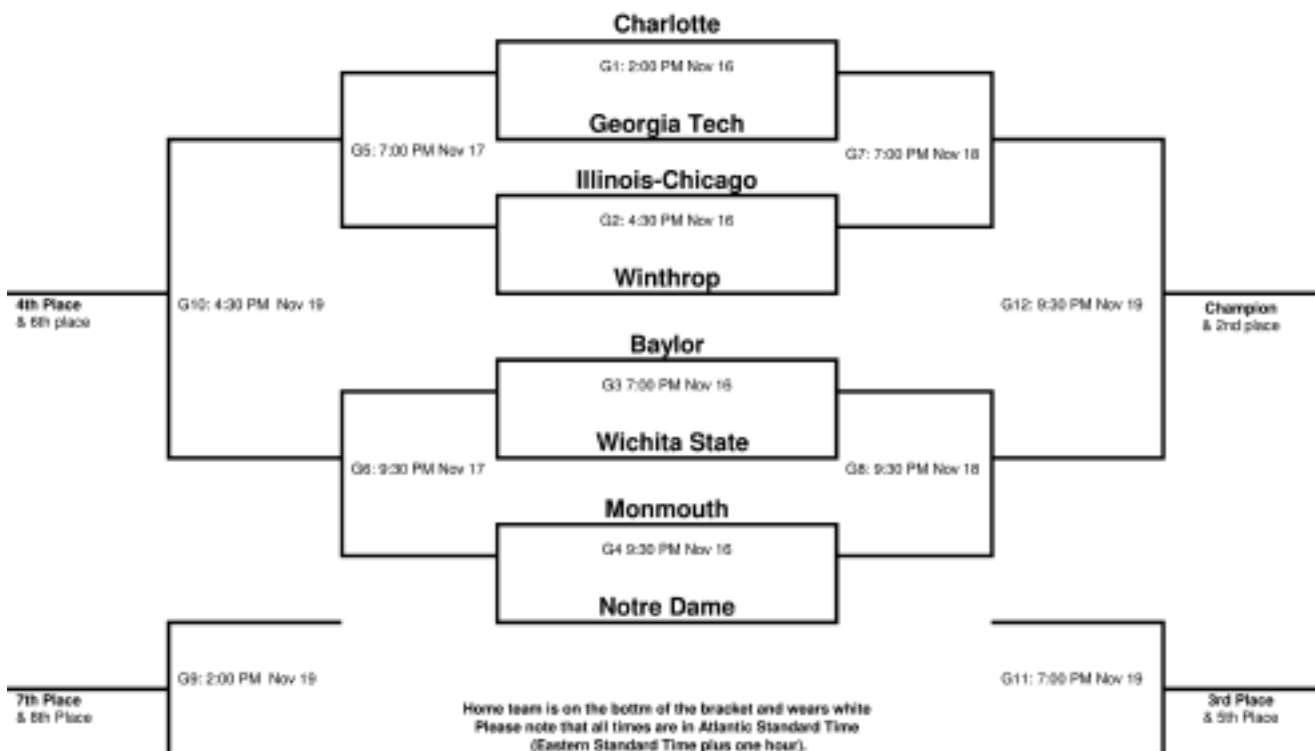
• When Notre Dame plays at Connecticut on February 13, it will mark the second time ever that an Irish team has played at Gampel Pavilion ... The last time Notre Dame faced the Huskies at Gampel Pavilion it suffered an 86-65 setback on February 17, 1996.

• Irish teams are 26-3 (.897) all-time during November under head coach Mike Brey.





2007 MEN'S BASKETBALL TOURNAMENT



LONG ISLAND



Jim Ferry
HEAD COACH



Eugene Kotorobai
FORWARD

Monday, November 12, 2007 • 7:30 p.m. (EST)
Joyce Center • Notre Dame, IN

GENERAL INFORMATION

Location: Brooklyn, New York **Enrollment:** 11,000
Colors: Black and Silver **Founded:** 1926
Nickname: Blackbirds **Conference:** Northeast Conference
Arena (Capacity): Wellness, Recreation & Athletic Center (2,000)

COACHING STAFF

Head Coach: Jim Ferry (Keene State '90)
Overall Record: 157-107 (9 years)
Record at Long Island: 53-88 (5 years)
Office Phone: (718) 488-3499
Best Time to Contact Coach: Contact SID
Assistant Coaches: Jack Perri (Bentley '98) Lenny Pitt (Adelphi '93) Rich Glesmann (Emerson '01)

INSTITUTE PERSONNEL

President: Dr. David J. Steinberg
Athletic Director: John Suarez
Athletic Department Phone: (718) 488-1030
Ticket Office Phone: (718) 488-3340

SERIES INFORMATION

Series Record: Notre Dame leads 2-0
Series Record at Notre Dame: Notre Dame leads 1-0
Series Record at Long Island: 0-0
Series Record at Neutral Site: Notre Dame leads 1-0
Last Game: Dec. 29, 2000; ND-97, LIU-49
Current Series Streak: Notre Dame won 2

MEDIA INFORMATION

SID Office Phone: (718) 488-1420
Basketball Contact: Jeff Mead (jeff.mead@liu.edu)
Website: www.liuathletics.com
SID Fax: 718-488-3302
Press Row Phone: (718) 488-3338
Mailing Address: One University Plaza, Brooklyn, NY 11201

TEAM CAPSULE

2006-07 Record: 10-19
2006-07 Conference Record/Finish: 6-12/10th
Starters Returning/Lost: 3/2
Postseason: None
Final Ranking: Not Ranked

2006-07 RESULTS

BINGHAMTON	W	73-59	ST. FRANCIS (PA)	W	72-60
at MINNESOTA	L	54-70	at CENTRAL CONN. ST	L	48-61
at COLUMBIA	L	63-90	FAIRLEIGH DICKINSON	L	73-74
OLD WESTBURY	W	105-50	at WAGNER	L	74-88
at ST. JOHNS	L	46-64	at QUINNIPIAC	L	71-73 (OT)
at HARTFORD	L	49-64	WAGNER	L	77-80
NEW HAMPSHIRE	W	70-62 (OT)	at SACRED HEART	L	72-80
at MONMOUTH	W	74-71	CENTRAL CONN. ST	L	75-96
HARVARD	L	79-87	at ST. FRANCIS (NY)	W	82-79 (OT)
at PENN STATE	L	45-66	at FAIRLEIGH DICKINSON	W	85-80
at BINGHAMTON	L	80-91	QUINNIPIAC	L	68-70
at ST. PETER'S	W	72-61	MONMOUTH	W	82-78
MOUNT ST. MARY'S	L	76-78(4 OT)	at ST. FRANCIS (PA)	L	56-72
ST. FRANCIS (NY)	L	52-68	at ROBERT MORRIS	L	74-90
ROBERT MORRIS	W	59-56			

YOUNGSTOWN STATE



Jerry Slocum
HEAD COACH



Byron Davis
GUARD

Saturday, November 24, 2007 • 4:00 p.m. (EST)
Joyce Center • Notre Dame, IN

GENERAL INFORMATION

Location: Youngstown, Ohio **Enrollment:** 13,185
Colors: Red and White **Founded:** 1908
Nickname: Penguins **Conference:** Horizon League
Arena (Capacity): Beeghly Center (6,400)

COACHING STAFF

Head Coach: Jerry Slocum (The Kings (N.Y.) College '75)
Overall Record: 601-363 (33 years)
Record at Youngstown State: 21-38 (3 Years)
Office Phone: (330) 941-3004
Best Time to Contact Coach: Contact SID
Assistant Coaches: Brian DePaoli (Clarion, '00) Michael Wernicki (Pittsburgh '96) Byron Thorne (Penn State-Behrend '94)

INSTITUTE PERSONNEL

President: Dr. David C. Sweet
Athletic Director: Ron Strollo
Athletic Department Phone: (330) 941-2385
Ticket Office Phone: (330) 941-1534

SERIES INFORMATION

Series Record: Notre Dame leads 1-0
Series Record at Notre Dame: Notre Dame leads 1-0
Series Record at Youngstown State: 0-0
Series Record at Neutral Site: 0-0
Last Game: Nov. 26, 1996; ND-69, YS-48
Current Series Streak: Notre Dame won 1

MEDIA INFORMATION

SID Office Phone: (330) 941-3192
Basketball Contact: Trevor Parks (tparks@ysu.edu)
Website: YSUsports.com
SID Fax: (330) 941-3191
Press Row Phone: (330) 941-2270
Mailing Address: Youngstown State University Athletic Department, One University Plaza, Youngstown, OH 44555

TEAM CAPSULE

2006-07 Record: 14-17
2006-07 Conference Record/Finish: 7-9/T-4th
Starters Returning/Lost: 3/2
Postseason: None
Final Ranking: Not Ranked

2006-07 RESULTS

vs. Central Michigan	W	74-50	UW-GREEN BAY	L	49-59
vs. Michigan State	L	61-86	UW-MILWAUKEE	W	81-63
@ Duquesne	L	75-81	@ Butler	L	39-67
SLIPPERY ROCK	W	95-57	CLEVELAND STATE	W	68-63
@ Michigan	L	56-65	@ Wright State	L	49-62
@ Ohio State	L	57-91	@ Loyola	L	68-80
CANISIUS	L	59-71	BUTLER	L	58-71
@ UIC	L	64-80	UIC	W	92-87
LOCK HAVEN	W	70-36	@ UW-Green Bay	L	46-55
@ UW-Milwaukee	W	68-65	DETROIT	W	82-70
@ Robert Morris	L	78-79	EASTERN KENTUCKY	W	66-61
@ James Madison	W	78-58	WRIGHT STATE	W	72-57
@ Kent State	W	62-58	@ Cleveland State	L	55-68
LOYOLA	W	76-71	DETROIT	W	82-80
AKRON	L	61-70	vs. UW-Green Bay	L	55-72
@ Detroit	L	51-66			

COLGATE



Emmett Davis
HEAD COACH



Kyle Roemer
GUARD/FORWARD

Monday, November 26, 2007 • 7:30 p.m. (EST)
Joyce Center • Notre Dame, IN

GENERAL INFORMATION

Location: Hamilton, NY Enrollment: 2,800
Colors: Maroon, Gray, and White Founded: 1819
Nickname: Raiders Conference: Patriot League
Arena (Capacity): Cotterell Court (3,100)

COACHING STAFF

Head Coach: Emmett Davis (St. Lawrence University '81)
Overall Record: 120-136 (10 years)
Record at Colgate: 120-136 (10 years)
Office Phone: (315) 228-7571
Best Time to Contact Coach: Contact SID
Assistant Coaches: Bill Holden (Bentley '90) Aaron Marshall (St. Lawrence '05) Kelvin Jefferson (Southern Conn. '95) Greg Snyder (Volunteer Dir. Of Basketball Operations)(Potsdam '05)

INSTITUTE PERSONNEL

President: Dr. Rebecca S. Chopp
Athletic Director: David Roach
Athletic Department Phone: (315) 228-7611
Ticket Office Phone: (315) 228-7600

SERIES INFORMATION

Series Record: Notre Dame leads 3-0
Series Record at Notre Dame: Notre Dame leads 1-0
Series Record at Colgate: Notre Dame leads 2-0
Series Record at Neutral Site: 0-0
Last Game: Dec. 30, 2001; ND-92, CU-61
Current Series Streak: Notre Dame won 3

MEDIA INFORMATION

SID Office Phone: (315) 228-7602
Basketball Contact: Robert D. Cornell (rcornell@mail.colgate.edu)
Website: www.goColgateRaiders.com
SID Fax: (315) 228-7977
Press Row Phone: (315)228-6816
Mailing Address: 13 Oak Drive, Hamilton NY 13346

TEAM CAPSULE

2006-07 Record: 10-19
2006-07 Conference Record/Finish: 5-9/5th
Starters Returning/Lost: 3/2
Postseason: None
Final Ranking: Not Ranked

2006-07 RESULTS

STONY BROOK	L	59-65	at American	L	48-70
at Dartmouth	W	55-43	at Lehigh	L	59-60
CANISIUS	L	73-78 OT	at Bucknell	L	36-50
BINGHAMTON	W	78-70	HOLY CROSS	L	55-58
QUINNIPAC	W	80-71	at Navy	W	66-58
HARVARD	L	64-76	BUCKNELL	L	53-56
ELMIRA	W	82-34	at Army	W	42-38
at Syracuse	L	52-79	at Lafayette	W	54-51
at Arizona State	L	36-52	AMERICAN	L	58-64 OT
at UC Riverside	W	59-56	LEHIGH	L	53-56 OT
at Santa Clara	L	39-53	at Marist	L	47-63
at George Washington	L	42-75	at Holy Cross	L	57-68
CORNELL	L	53-64	NAVY	W	70-62
ARMY	W	73-71 OT	vs. American	L	44-59
LAFAYETTE	L	65-71			

EASTERN MICHIGAN



Charles E. Ramsey
HEAD COACH



Carlos Medlock
GUARD

Saturday, December 1, 2007 • 7:00 p.m. (EST)
Joyce Center • Notre Dame, IN

GENERAL INFORMATION

Location: Ypsilanti, MI Enrollment: 24,800
Colors: Dark Green and White Founded: 1849
Nickname: Eagles Conference: Mid-American (MAC)
Arena (Capacity): Convocation Center (8,824)

COACHING STAFF

Head Coach: Charles E. Ramsey (Eastern Michigan '92)
Overall Record: 20-40 (3rd season)
Record at Eastern Michigan: 20-40 (3rd season)
Office Phone: (734) 487-0214
Best Time to Contact Coach: Contact SID
Assistant Coaches: Derrick McDowell (Stetson '83) Carl Thomas (Eastern Michigan '00) Dave Donnelly (Northern Illinois '97)

INSTITUTE PERSONNEL

President: TBA
Athletic Director: Dr. Derrick Gragg
Athletic Department Phone: (734) 487-1050
Ticket Office Phone: (734) 487-2282

SERIES INFORMATION

Series Record: Notre Dame leads 1-0
Series Record at Notre Dame: Notre Dame leads 1-0
Series Record at Eastern Michigan: 0-0
Series Record at Neutral Site: 0-0
Last Game: Dec. 11, 1986; ND-81, EMU-76
Current Series Streak: Notre Dame won 1

MEDIA INFORMATION

SID Office Phone: (734) 487-0317
Basketball Contact: Jim Streefer (jim.streefer@emich.edu)
Website: www.EMU Eagles.com
SID Fax: (734) 485-3840
Press Row Phone: (734) 484-0612 or (734) 484-0637
Mailing Address: EMU Sports Information Room 307, Convocation Center, Ypsilanti, MI 48197

TEAM CAPSULE

2006-07 Record: 13-19
2006-07 Conference Record/Finish: 6-10/4th West Division
Starters Returning/Lost: 5/0
Postseason: None
Final Ranking: Not Ranked

2006-07 RESULTS

vs. Davidson	L	77-81	TOLEDO	L	56-66
vs. Central Conn. St.	W	76-69	at Western Michigan	L	80-84
vs. Michigan	L	51-80	at Ohio	L	61-67
at Marquette	L	62-95	BUFFALO	W	89-76
at Detroit	L	52-72	AKRON	L	60-70
OAKLAND	L	54-66	at Kent State	L	46-82
vs. San Diego	L	76-78	MIAMI (OH)	L	64-74
vs. Chicago St.	L	61-72	at Bowling Green	W	65-63
NORTHERN COLORADO	W	71-61	at Toledo	L	56-68
at Tulsa	L	48-66	MANHATTAN	W	65-51
EASTERN ILLINOIS	W	63-51	WESTERN MICHIGAN	L	61-80
IPFW	W	62-61	BALL STATE	W	61-51
NORTH DAKOTA STATE	W	74-66	at Central Michigan	W	87-83 OT
CENTRAL MICHIGAN	L	68-74	at Northern Illinois	L	69-76
NORTHERN ILLINOIS	W	62-61	vs. Ball State	W	51-48
at Ball State	W	56-52	vs. Toledo	L	54-62

KANSAS STATE



Frank Martin
HEAD COACH



David Hoskins
FORWARD

Tuesday, December 4, 2007 • 7:00 p.m. (EST)
Madison Square Garden • New York, NY
Jimmy V Classic

GENERAL INFORMATION

Location: Manhattan, Kan. Enrollment: 23,151
 Colors: Purple and White Founded: 1863
 Nickname: Wildcats Conference: Big 12
 Arena (Capacity): Bramlage Coliseum (12,528)

COACHING STAFF

Head Coach: Frank Martin (Florida International '93)
 Overall Record: First Year
 Record at Kansas State: First Year
 Office Phone: (785) 532-6531
 Best Time to Contact Coach: Contact SID
 Assistant Coaches: Dalonte Hill (Charlotte '01), Brad Underwood (Kansas State '86), Matt Figger (Eastern Kentucky '95)

INSTITUTE PERSONNEL

President: Dr. Jon Wefald
 Athletic Director: Tim Weiser
 Athletic Department Phone: (785) 532-6910
 Ticket Office Phone: (800) 221-CATS

SERIES INFORMATION

Series Record: Notre Dame leads 3-1
 Series Record at Notre Dame: Notre Dame leads 2-0
 Series Record at Kansas State: Notre Dame leads 1-0
 Series Record at Neutral Site: Kansas State leads 1-0
 Last Game: March 23, 1992; ND-64, KSU-47
 Current Series Streak: Notre Dame won 2

MEDIA INFORMATION

SID Office Phone: (785) 532-7979
 Basketball Contact: Tom Gilbert (tgilbert@ksu.edu)
 Website: www.K-Statesports.com
 SID Fax: (785) 532-6093
 Press Row Phone: (785) 539-3423
 Mailing Address: 1800 College Ave., Manhattan, KS 66502

TEAM CAPSULE

2006-07 Record: 23-12
 2006-07 Conference Record/Finish: 10-6/4th
 Starters Returning/Lost: 2/3
 Postseason: NIT Second Round
 Final Ranking: Not Ranked

2006-07 RESULTS

WILLIAM & MARY	W	70-60	at Iowa State	W	69-60
at Rutgers	W	55-41	CHICAGO STATE	W	73-36
at New Mexico	L	54-78	NEBRASKA	W	61-45
COPPIN STATE	W	68-57	MISSOURI	W	80-73
at California	L	48-78	at Texas	W	73-72
at Colorado State	L	83-84	at Kansas	L	70-97
CLEVELAND STATE	W	93-60	COLORADO	W	78-59
at North Dakota State	W	83-81	at Nebraska	L	63-74
KENNESAW STATE	W	82-54	IOWAS STATE	W	65-47
MARYLAND-EAST SHORE	W	79-58	KANSAS	L	62-71
vs. Southern California	W	68-55	at Colorado	W	87-71
vs. New Mexico	W	72-56	at Oklahoma State	L	70-84
vs. Xavier	L	66-76	OKLAHOMA	W	72-61
at Texas A&M	L	65-76	vs. Texas Tech	W	66-45
TEXAS TECH	L	52-62	vs. Kansas	L	61-67
at Missouri	W	85-81	VERMONT	W	59-57
BAYLOR	W	69-60	DEPAUL	L	65-70

NORTHERN ILLINOIS



Ricardo Patton
HEAD COACH



Ryan Paradise
GUARD

Saturday, December 8, 2007 • 7:00 p.m. (EST)
Joyce Center • Notre Dame, IN

GENERAL INFORMATION

Location: DeKalb, Illinois Enrollment: 25,208
 Colors: Cardinal and Black Founded: 1895
 Nickname: Huskies Conference: Mid American
 Arena (Capacity): Convocation Center (9,100)

COACHING STAFF

Head Coach: Ricardo Patton (Belmont '80)
 Overall Record: 184-160 (11 years)
 Record at Northern Illinois: First year
 Office Phone: (815) 753-1633
 Best Time to Contact Coach: Contact SID
 Assistant Coaches: John Anderson (Stillman College, '80) Dennis Gates (California '02) Sundance Wicks (Northern State, '03)

INSTITUTE PERSONNEL

President: Dr. John G. Peters
 Athletic Director: James Phillips
 Athletic Department Phone: (815) 753-1295
 Ticket Office Phone: (815) 752-6800

SERIES INFORMATION

Series Record: Notre Dame leads 2-1
 Series Record at Notre Dame: Notre Dame leads 2-1
 Series Record at Northern Illinois: 0-0
 Series Record at Neutral Site: 0-0
 Last Game: Nov. 24, 2003; ND-74, NIU-65
 Current Series Streak: Notre Dame won 1

MEDIA INFORMATION

SID Office Phone: (815) 753-9538
 Basketball Contact: Matt Brendich (brendich@niu.edu)
 Website: niuhuskies.cstv.com/
 SID Fax: (815) 753-9540
 Press Row Phone: (815) 752-6767/6768
 Mailing Address: Office of Sports Information, Convocation Center, 525 Lincoln Highway, DeKalb, IL 60115

TEAM CAPSULE

2006-07 Record: 7-23
 2006-07 Conference Record/Finish: 4-12/6th West Division
 Starters Returning/Lost: 3/2
 Postseason: None
 Final Ranking: Not Ranked

2006-07 RESULTS

ST. MARY'S (MINN.)	W	84-69	at Ball State	L	60-71
at Duquesne	W	87-82 (OT)	at Toledo	L	60-76
DUQUESNE	W	85-74	AKRON	L	64-87
WINTHROP	L	62-72	KENT STATE	L	49-68
ILLINOIS-CHICAGO	L	48-71	at Miami	L	59-62
vs Georgia Southern	L	70-72	at Buffalo	L	74-80
vs Troy	L	81-84	BOWLING GREEN	W	73-51
at Michigan	L	52-67	at Ohio	W	81-74
at Lamar University	L	53-74	BALL STATE	L	55-57
at SFA	L	78-86	LW-GREEN BAY PHOENIX	L	76-82
at Marist	L	63-67	TOLEDO	L	83-86
vs Bucknell	L	59-77	at Central Michigan	L	64-71
WESTERN MICHIGAN	W	70-68	at Western Michigan	L	54-68
at Eastern Michigan	L	62-63	EASTERN MICHIGAN	W	76-69
CENTRAL MICHIGAN	L	64-67	vs Western Michigan	L	62-67

SAN FRANCISCO



Jessie Evans
HEAD COACH



Manny Quezada
GUARD

Saturday, December 22, 2007 • 4:00 p.m. (EST)
Joyce Center • Notre Dame, IN

GENERAL INFORMATION

Location: San Francisco, CA Enrollment: 8,000
Colors: Green and Gold Founded: 1855
Nickname: Dons Conference: West Coast
Arena (Capacity): War Memorial Gymnasium (4,500)

COACHING STAFF

Head Coach: Jessie Evans (Eastern Michigan, '72)
Overall Record: 159-129 (10 years)
Record at San Francisco: 41-49 (4 years)
Office Phone: (415) 422-5993
Best Time to Contact Coach: Contact SID
Assistant Coaches: Michael Quick (San Francisco, '73) Chris Farr (CS Hayward, '94) David Grace (Park University, '03)

INSTITUTE PERSONNEL

President: Rev. Stephen Privett, S.J.
Athletic Director: Debra Gore-Mann
Athletic Department Phone: (415) 422-6891
Ticket Office Phone: (415) 422-2USF

SERIES INFORMATION

Series Record: Notre Dame leads 6-5
Series Record at Notre Dame: Notre Dame leads 6-0
Series Record at San Francisco: San Francisco leads 1-0
Series Record at Neutral Site: San Francisco leads 4-0
Last Game: Nov. 28, 1989; ND-84, USF-64
Current Series Streak: Notre Dame won 1

MEDIA INFORMATION

SID Office Phone: (415) 422-6162
Basketball Contact: Ryan McCrary (mccrary@usfca.edu)
Website: www.usfdons.com
SID Fax: (415) 422-2929
Press Row Phone: (415) 422-2919
Mailing Address: 2130 Fulton Street, San Francisco, CA 94117-1080

TEAM CAPSULE

2006-07 Record: 13-18
2006-07 Conference Record/Finish: 8-6/T/3rd
Starters Returning/Lost: 3/2
Postseason: None
Final Ranking: Not Ranked

2006-07 RESULTS

CAL STATE STANISLAUS	W	95-88	SAN DIEGO	W	103-100
SONOMA STATE	W	87-73	at Loyola Marymount	W	68-61
at Sacramento State	W	89-64	at Pepperdine	W	72-71
FRESNO STATE	L	66-86	SAINT MARY'S	L	64-71
at Ohio State	L	60-82	SANTA CLARA	L	58-61
at UNLV	L	88-96	at Gonzaga	L	56-72
NORTHERN ARIZONA	W	82-73	at Portland	W	66-65
at Pacific	L	72-79	at San Diego	W	98-88
at Southeastern Louisiana	W	71-56	at Santa Clara	L	62-74
at New Mexico State	L	78-89	PEPPERDINE	W	82-70
at Northern Arizona	L	62-84	LOYOLA MARYMOUNT	W	76-69
UC SANTA BARBARA	L	69-74	UC IRVINE	W	76-62
at Hawaii	L	85-89	at Saint Mary's	L	83-92
at Wyoming	L	81-84	GONZAGA	L	79-86
vs. Valparaiso	L	59-64	PORTLAND	W	70-67
at Louisville	L	63-76	vs. San Diego	L	75-77

BROWN



Craig Robinson
HEAD COACH



Mark McAndrew
GUARD

Saturday, December 29, 2007 • 4:00 p.m. (EST)
Joyce Center • Notre Dame, IN

GENERAL INFORMATION

Location: Providence, RI Enrollment: 5754
Colors: Seal Brown, Cardinal Red, and White Founded: 1764
Nickname: Bears Conference: Ivy League
Arena (Capacity): Pizzitola Sports Center (2,800)

COACHING STAFF

Head Coach: Craig Robinson (Princeton '83)
Overall Record: 11-18 (1 year)
Record at Brown: 11-18 (1 year)
Office Phone: (401) 863-1226
Best Time to Contact Coach: Contact SID
Assistant Coaches: Jesse Agel (Vermont '84) Doug Stewart (Brown '94) Isaac Willis (West Virginia Wesleyan '91)

INSTITUTE PERSONNEL

President: Ruth J. Simmons
Athletic Director: Michael Goldberger
Athletic Department Phone: (401) 863-2348
Ticket Office Phone: (401) 863-2212

SERIES INFORMATION

Series Record: Notre Dame leads 1-0
Series Record at Notre Dame: Notre Dame leads 1-0
Series Record at Brown: 0-0
Series Record at Neutral Site: 0-0
Last Game: Jan. 30, 1979; ND-80, BU-63
Current Series Streak: Notre Dame won 1

MEDIA INFORMATION

SID Office Phone: (401) 863-1095
Basketball Contact: Christopher Humm (Christopher_Humm@Brown.edu)
Website: http://brownbears.cstv.com/
SID Fax: (401) 863-1436
Press Row Phone: (401) 863-3208
Mailing Address: 235 Hope St. Box 1932 Providence, RI 02912

TEAM CAPSULE

2006-07 Record: 11-18
2006-07 Conference Record/Finish: 6-8/5th
Starters Returning/Lost: 4/1
Postseason: None
Final Ranking: Not Ranked

2006-07 RESULTS

vs Michigan State	L	34-45	YALE	L	42-56
vs Central Michigan	L	58-71	at Yale	W	76-71
at Navy	L	47-70	at Dartmouth	L	52-56
at Providence	W	51-41	at Harvard	L	88-92
at Northwestern	L	40-64	PENN	L	61-77
ARMY	L	54-62	PRINCETON	W	63-48
at Wagner	W	66-61	at Cornell	L	59-61
QUINNIPIAC	W	80-74	at Columbia	L	68-77
at Rhode Island	L	68-72	HARVARD	W	70-66
at Albany	L	52-62	DARTMOUTH	W	53-33
HARTFORD	W	95-82	COLUMBIA	W	64-59
vs Western Illinois	W	63-59	CORNELL	L	67-79
vs Texas A&M Corpus Christi	L	57-71	at Princeton	W	64-55
UC-DAVIS	L	47-49	at Penn	L	64-67
at Southern Methodist	L	56-60 (OT)			

NORTH FLORIDA



Matt Kilcullen
HEAD COACH



Chris Timberlake
GUARD

Monday, December 31, 2007 • 1:00 p.m. (EST)
Joyce Center • Notre Dame, IN

GENERAL INFORMATION

Location: Jacksonville, FL **Enrollment:** 17,000
Colors: Navy Blue and Gray **Founded:** 1965
Nickname: Ospreys **Conference:** Atlantic Sun
Arena (Capacity): UNF Arena (5,800)

COACHING STAFF

Head Coach: Matt Kilcullen (Lehman '76)
Overall Record: 208-285 (19 years)
Record at North Florida: 87-138 (9 years)
Office Phone: (904) 620-2494
Best Time to Contact Coach: UNF Athletics Media Relations Office
Assistant Coaches: Mike Summey (North Carolina State '97) Evans
Davis (Mercer '00) Earnest Crumbley (Florida Atlantic '04)

INSTITUTE PERSONNEL

President: John Delaney
Athletic Director: Dr. Richard Gropper
Athletic Department Phone: (904) 620-2833
Ticket Office Phone: (904) 620-2473

SERIES INFORMATION

Series Record: First Meeting
Series Record at Notre Dame: 0-0
Series Record at North Florida: 0-0
Series Record at Neutral Site: 0-0
Last Game: First Meeting
Current Series Streak: First Meeting

MEDIA INFORMATION

SID Office Phone: (904) 620-4026
Basketball Contact: Tom Strother (tstrothe@unf.edu)
Website: www.UNFOSPREYS.com
SID Fax: (904) 620-2821
Press Row Phone: (904) 620-1902
Mailing Address: 1 UNF Drive, Jacksonville, FL, 32224-2672

TEAM CAPSULE

2006-07 Record: 3-26
2006-07 Conference Record/Finish: 1-17/10th
Starters Returning/Lost: 5/0
Postseason: None
Final Ranking: Not Ranked

2006-07 RESULTS

vs. St. John's	L	53-74	at East Tennessee	L	58-77
vs. Loyola (MD)	L	50-65	at Kennesaw State	L	57-77
at Florida	L	40-86	STETSON	L	60-63
CONCORDIA (N.Y.)	W	77-72	MERCER	L	58-77
FLORIDA ATLANTIC	L	44-59	at Campbell	L	49-54
at Northwestern	L	39-40	at Gardner-Webb	L	40-72
at Belmont	L	32-87	at Savannah State	L	47-49
at Lipscomb	L	54-68	at Jacksonville	L	61-75
at William & Mary	L	44-61	KENNESAW STATE	L	66-68
BINGHAMTON	L	61-79	EAST TENNESSE	L	51-56
FLORIDA A&M	L	65-66	at Stetson	L	63-74
SKIDMORE	W	70-43	at Mercer	L	59-69
CAMPBELL	L	48-78	LIPSCOMB	W	73-64
GARDNER-WEBB	L	52-72	BELMONT	L	54-74
JACKSONVILLE	L	60-64			

WEST VIRGINIA



Bob Huggins
HEAD COACH



Darris Nichols
GUARD

Thursday, January 3, 2008 • 7:00 p.m. (EST)
Joyce Center • Notre Dame, IN

GENERAL INFORMATION

Location: Morgantown, W. Va. **Enrollment:** 27,715
Colors: Old Gold and Blue **Founded:** 1867
Nickname: Mountaineers **Conference:** BIG EAST
Arena (Capacity): WVU Coliseum (14,000)

COACHING STAFF

Head Coach: Bob Huggins (West Virginia '77)
Overall Record: 590-211 (25 years)
Record at West Virginia: First year
Office Phone: (304) 293-2193
Best Time to Contact Coach: Contact SID
Assistant Coaches: Billy Hahn (Maryland '75) Erik Martin (Cincinnati '93)
Larry Harrison (Pittsburgh '78)

INSTITUTE PERSONNEL

President: Mike Garrison
Athletic Director: Ed Pastilong
Athletic Department Phone: (304) 293-5621
Ticket Office Phone: (800) WVU-GAME

SERIES INFORMATION

Series Record: Notre Dame leads 23-8
Series Record at Notre Dame: Notre Dame leads 14-2
Series Record at West Virginia: Notre Dame leads 8-6
Series Record at Neutral Site: Notre Dame leads 1-0
Last Game: Jan. 9, 2007; ND-61, WVU-58
Current Series Streak: Notre Dame won 1

MEDIA INFORMATION

SID Office Phone: (304) 293-2821
Basketball Contact: Bryan Messerly (bryan.messerly@mail.wvu.edu)
Website: www.msnsportsnet.com
SID Fax: (304) 293-4105
Press Row Phone: (304) 293-2821
Mailing Address: P.O. Box 0877, Morgantown, W. Va. 26507

TEAM CAPSULE

2006-07 Record: 27-9
2006-07 Conference Record/Finish: 9-7/7th
Starters Returning/Lost: 3/2
Postseason: NIT Champions
Final Ranking: Not Ranked

2006-07 RESULTS

MOUNT ST. MARY'S	W	50-42	vs Marshall (Charleston)	W	77-63
SLIPPERY ROCK	W	87-37	DEPAUL	W	64-52
CANISIUS	W	66-43	at Rutgers	W	89-83
vs Montana	W	73-56	at Seton Hall	W	81-70
vs Western Michigan	W	79-54	PITTSBURGH	L	47-60
vs Arkansas	L	64-71	UCLA	W	70-65
vs North Carolina State	W	71-60	at Georgetown	L	53-71
at Duquesne	W	85-54	SETON HALL	W	81-71
SAVANNAH STATE	W	76-41	at Providence	L	61-64
THE CITADEL	W	63-36	at Pittsburgh	L	66-80
MARYLAND EASTERN-SHORE	W	95-49	CINCINNATI	W	79-65
CONNECTICUT	W	81-71	PROVIDENCE	W	92-79
VILLANOVA	W	67-56	LOUISVILLE	L	71-82 2OT
ST. JOHN'S	W	73-46	DELAWARE STATE	W	74-50
at NOTRE DAME	L	58-61	MASSACHUSETTS	W	90-77
at Marquette	L	63-81	NORTH CAROLINA STATE	W	71-66
SOUTH FLORIDA	W	69-58	vs Mississippi State	W	63-62
at Cincinnati	L	83-96 OT	vs Clemson	W	78-73

CONNECTICUT



Jim Calhoun
HEAD COACH



Jeff Adrien
FORWARD

Saturday, January 5, 2008 • 9:00 p.m. (EST)
Joyce Center • Notre Dame, IN

Wednesday, February 13, 2008 • 7:00 p.m. (EST)
Gampel Pavilion • Storrs, CT

GENERAL INFORMATION

Location: Storrs, CT Enrollment: 27,579
Colors: National Flag Blue (Navy) and White Founded: 1881
Nickname: Huskies Conference: BIG EAST
Arena (Capacity): Harry A. Gampel Pavilion/ Hartford Civic Center
(10,167/16,294)

COACHING STAFF

Head Coach: Jim Calhoun (AIC '68)
Overall Record: 750-328 (35 years)
Record at Connecticut: 502-191 (21 years)
Office Phone: (860) 486-2720
Best Time to Contact Coach: Contact SID
Assistant Coaches: George Blaney (Holy Cross '61) Andre LaFleur
(Northeastern '88) Patrick Sellers (Central Connecticut '91)

INSTITUTE PERSONNEL

President: Dr. Michael J. Hogan
Athletic Director: Jeffery Hathaway
Athletic Department Phone: (860) 486-2725
Ticket Office Phone: (860) 486-2724

SERIES INFORMATION

Series Record: Connecticut leads 12-5
Series Record at Notre Dame: Notre Dame leads 4-3
Series Record at Connecticut: Connecticut leads 7-1
Series Record at Neutral Site: Connecticut leads 2-0
Last Game: Feb. 21, 2006; UC-75, ND-74 (OT)
Current Series Streak: Notre Dame lost 2

MEDIA INFORMATION

SID Office Phone: (860) 486-3531
Basketball Contact: Kyle Muncy (kyle@athletics.ath.uconn.edu)
Website: www.uconnhuskies.com
SID Fax: (860) 486-5085
Press Row Phone: (860) 486-1888 (Gampel)
Mailing Address: 2095 Hillside Road, Gampel Pavilion, Unit 3078, Storrs,
CT 06269

TEAM CAPSULE

2006-07 Record: 17-14
2006-07 Conference Record/Finish: 6-10/12th
Starters Returning/Lost: 5/0 Postseason: None
Final Ranking: Not Ranked

2006-07 RESULTS

QUINNIPIAC	W	53-46	at Pittsburgh	L	54-63
CENTRAL ARKANSAS	W	88-59	INDIANA	L	73-77
FAIRFIELD	W	74-49	at Louisville	L	54-68
MISSISSIPPI	W	77-59	PROVIDENCE	L	72-84
ALBANY	W	86-55	at DePaul	L	58-66
SACRED HEART	W	89-46	RUTGERS	W	61-50
TEXAS SOUTHERN	W	106-55	SYRACUSE	W	67-60
NORTHEASTERN	W	81-53	at Georgia Tech	L	52-65
ST. MARY'S (CA)	W	89-73	SETON HALL	W	67-55
PEPPERDINE	W	88-66	at Syracuse	L	63-73
COPPIN STATE	W	84-41	at Rutgers	W	65-55
at West Virginia	L	71-81	LOUISVILLE	L	69-76
SOUTH FLORIDA	W	69-50	VILLANOVA	L	74-78
at Louisiana State	L	49-66	at Georgetown	L	46-59
MARQUETTE	L	69-73	vs Syracuse	L	65-78
at St. John's	W	68-59			

MARQUETTE



Tom Crean
HEAD COACH



Dominic James
GUARD

Saturday, January 12, 2008 • 2:00 p.m. (EST)
Bradley Center • Milwaukee, WI

Saturday, February 9, 2008 • 12:00 p.m. (EST)
Joyce Center • Notre Dame, IN

GENERAL INFORMATION

Location: Milwaukee, Wis. Enrollment: 11,000
Colors: Blue and Gold Founded: 1881
Nickname: Golden Eagles Conference: BIG EAST
Arena (Capacity): Bradley Center (18,850)

COACHING STAFF

Head Coach: Tom Crean (Central Michigan '89)
Overall Record: 165-86 (8 years)
Record at Marquette: 165-86 (8 years)
Office Phone: (414) 288-7130
Best Time to Contact Coach: Contact SID
Assistant Coaches: Tim Buckley (Bemidji State '86) Bennie Seltzer
(Washington State '93) Buzz Williams (Oklahoma City University '94)

INSTITUTE PERSONNEL

President: Rev. Robert A. Wild, S.J.
Athletic Director: Steve Cottingham
Athletic Department Phone: (414) 288-3030
Ticket Office Phone: (414) 288-4668

SERIES INFORMATION

Series Record: Notre Dame leads 76-32
Series Record at Notre Dame: Notre Dame leads 44-11
Series Record at Marquette: Notre Dame leads 32-21
Series Record at Neutral Site: No Meetings
Last Game: Feb. 24, 2007; ND-85, MU-73
Current Series Streak: Notre Dame won 1

MEDIA INFORMATION

SID Office Phone: (414) 288-4794
Basketball Contact: Scott Kuykendall (scott.kuykendall@marquette.edu)
Website: www.gomarquette.com
SID Fax: (414) 288-6519
Press Row Phone: (414) 227-0580
Mailing Address: Al McGuire Center, 770 N. 12th Street,
Milwaukee, WI 53211

TEAM CAPSULE

2006-07 Record: 24-10
2006-07 Conference Record/Finish: 10-6/5th
Starters Returning/Lost: 5/0 Postseason: NCAA First round
Final Ranking: 20th (AP)

2006-07 RESULTS

HILLSDALE COLLEGE	W	76-66	at Connecticut	W	73-69
IDAHO STATE	W	59-56 OT	WEST VIRGINIA	W	81-63
DETROIT	W	87-45	at Louisville	W	74-65
EASTERN MICHIGAN	W	95-62	at Pittsburgh	W	77-74 OT
vs Texas Tech	W	87-72	SETON HALL	W	89-76
vs Duke	W	73-62	at USF	W	70-68
at Valparaiso	W	65-62	PROVIDENCE	W	69-62
NORTHWESTERN STATE	W	83-67	RUTGERS	W	67-47
NORTH DAKOTA STATE	L	60-64	at Georgetown	L	58-76
DELAWARE STATE	W	65-48	at DePaul	L	67-72
WISCONSIN	L	66-70	LOUISVILLE	L	59-61
MD.-BALTIMORE COUNTY	W	68-46	VILLANOVA	W	80-67
OAKLAND	W	80-62	at Notre Dame	L	73-85
MORGAN STATE	W	77-57	PITTSBURGH	W	75-71
SAVANNAH STATE	W	69-51	at St. John's	W	76-67
at Providence College	L	59-74	vs Pittsburgh	W	79-89
SYRACUSE	L	58-70	vs Michigan State	L	49-61

CINCINNATI



Mick Cronin
HEAD COACH



Josh Williamson
FORWARD

Tuesday, January 15, 2008 • 7:00 p.m. (EST)
Joyce Center • Notre Dame, IN

GENERAL INFORMATION

Location: Cincinnati, Ohio Enrollment: 35,244
Colors: Red and Black Founded: 1819
Nickname: Bearcats Conference: BIG EAST
Arena (Capacity): Fifth Third Arena (13,176)

COACHING STAFF

Head Coach: Mick Cronin (Cincinnati '97)
Overall Record: 80-43 (4 years)
Record at Cincinnati: 11-19 (1 year)
Office Phone: (513) 556-5847
Best Time to Contact Coach: Contact SID
Associate Head Coach: Larry Davis (Asbury '78)
Assistant Coaches: Chris Goggin (Toledo '98) Tony Stubblefield (Nebraska-Omaha '95)

INSTITUTE PERSONNEL

President: Dr. Nancy L. Zimpher
Athletic Director: Mike Thomas
Athletic Department Phone: (513) 556-4603
Ticket Office Phone: (513) 556-2287

SERIES INFORMATION

Series Record: Notre Dame leads 4-1
Series Record at Notre Dame: Notre Dame leads 1-0
Series Record at Cincinnati: Notre Dame leads 1-0
Series Record at Neutral Site: Notre Dame leads 2-1
Last Game: Feb. 18, 2007; ND-76, UC-64
Current Series Streak: Notre Dame won 3

MEDIA INFORMATION

SID Office Phone: (513) 556-0617
Basketball Contact: Mike Harris (michael.harris@uc.edu)
Website: GoBEARCATS.com
SID Fax: (513) 556-5059
Press Row Phone: (513) 556-3800
Mailing Address: Richard E. Lindner Center, Suite 860, 2751 O'Varsity Way, Cincinnati, OH 45221

TEAM CAPSULE

2006-07 Record: 11-19
2006-07 Conference Record/Finish: 2-14/16th
Starters Returning/Lost: 3/2
Postseason: None
Final Ranking: Not Ranked

2006-07 RESULTS

HOWARD	W	70-39	at USF	L	59-74
TENNESSEE-MARTIN	W	67-49	at Syracuse	L	77-78
HIGH POINT	W	63-51	WEST VIRGINIA	W	96-83
WOFFORD	L	90-91	PITTSBURGH	L	51-67
CENTRAL MICHIGAN	W	60-50	At Georgetown	L	67-82
OAKLAND	W	68-61	LOUISVILLE	L	53-69
UAB	L	57-59	ST. JOHN'S	L	64-73
vs Temple	W	80-71	At Providence	L	70-71
XAVIER	W	67-57	At Rutgers	L	69-73
vs. Ohio State	L	50-72	At Villanova	L	48-64
NORTH CAROLINA ST.	W	80-71	NOTRE DAME	L	64-76
MIAMI (OH)	W	60-52	GEORGETOWN	L	65-75
vs. Ohio	L	66-79	At DePaul	L	45-58
at Memphis	L	55-88	SETON HALL	W	70-67 OT
RUTGERS	L	42-54	At West Virginia	L	65-79

GEORGETOWN



John Thompson III
HEAD COACH



Roy Hibbert
CENTER

Saturday January 19, 2008 • 12:00 p.m. (EST)
Verizon Center • Washington, D.C.

GENERAL INFORMATION

Location: Washington, DC Enrollment: 12,290
Colors: Blue and Gray Founded: 1789
Nickname: Hoyas Conference: BIG EAST
Arena (Capacity): Verizon Center (20,600)

COACHING STAFF

Head Coach: John Thompson III (Princeton '88)
Overall Record: 140-72 (6 years)
Record at Georgetown: 72-30 (3 years)
Office Phone: (202) 687-2374
Best Time to Contact Coach: Contact SID
Assistant Coaches: Robert Burke (Haverford '88) David Cox (William & Mary '95) Kenya Hunter (Duquesne '96)

INSTITUTE PERSONNEL

President: John DeGioia
Athletic Director: Bernard Muir
Athletic Department Phone: (202) 687-2435
Ticket Office Phone: (202) 687-2449

SERIES INFORMATION

Series Record: Georgetown leads 13-10
Series Record at Notre Dame: Notre Dame leads 6-5
Series Record at Georgetown: Georgetown leads 5-4
Series Record at Neutral Site: Georgetown leads 3-0
Last Game: March 9, 2007; GU-84, ND-82
Current Series Streak: Notre Dame Lost 4

MEDIA INFORMATION

SID Office Phone: (202) 687-2492
Basketball Contact: Bill Shapland (Shaplanw@georgetown.edu)
Website: www.guhoyas.com
SID Fax: (202) 687-2491
Press Row Phone: (202) 628-3200
Mailing Address: McDonough Gym, 37th and O St., Washington DC 20057

TEAM CAPSULE

2006-07 Record: 30-7
2006-07 Conference Record/Finish: 13-3/1st
Starters Returning/Lost: 4/1
Postseason: NCAA Tournament, Final Four
Final Ranking: 4th (USA TODAY/ESPN), 4th (AP)

2006-07 RESULTS

HARTFORD	W	69-59	CINCINNATI	W	82-67
at Vanderbilt	W	85-70	at St. John's	W	72-48
OLD DOMINION	L	62-75	at Louisville	W	73-65
at Fairfield	W	73-60	MARQUETTE	W	76-58
BALL STATE	W	69-54	WEST VIRGINIA	W	71-53
OREGON	L	50-57	at Villanova	W	58-55
at Duke	L	52-61	at Cincinnati	W	75-65
JAMES MADISON	W	89-53	PITTSBURGH	W	61-53
ORAL ROBERTS	W	73-58	at Syracuse	L	58-72
WINSTON-SALEM	W	76-32	CONNECTICUT	W	59-46
TOWSON	W	69-41	vs Villanova	W	62-57
NAVY	W	65-44	vs. Notre Dame	W	84-82
at Michigan	W	67-51	vs. Pittsburgh	W	65-42
NOTRE DAME	W	66-48	vs Belmont	W	80-55
VILLANOVA	L	52-56	vs Boston College	W	62-55
at Pittsburgh	L	69-74	vs Vanderbilt	W	66-65
at Seton Hall	W	74-58	vs North Carolina	W	96-84
DEPAUL	W	66-52	vs Ohio State	L	60-67

VILLANOVA



Jay Wright
HEAD COACH



Dante Cunningham
FORWARD

Saturday, January 26, 2008 • 12:00 p.m. (EST)
Wachovia Center • Philadelphia, PA

GENERAL INFORMATION

Location: Villanova, Pa. Enrollment: 6,240
Colors: Blue and White Founded: 1842
Nickname: Wildcats Conference: BIG EAST
Arena (Capacity): The Pavilion (6,500); Wachovia Center (20,056)

COACHING STAFF

Head Coach: Jay Wright (Bucknell '83)
Overall Record: 248-155 (13 years)
Record at Villanova: 126-70 (6 years)
Office Phone: (610) 519-4140
Best Time to Contact Coach: Contact SID
Assistant Coaches: Brett Gunning (UNLV/94) Ed Pickney (Villanova '85)
Patrick Chambers (Philadelphia '94)

INSTITUTE PERSONNEL

President: Rev. Peter M. Donohue
Athletic Director: Vince Nicastro
Athletic Department Phone: (610) 519-4120
Ticket Office Phone: (610) 519-4100

SERIES INFORMATION

Series Record: Villanova leads 16-13
Series Record at Notre Dame: Notre Dame leads 8-7
Series Record at Villanova: Villanova leads 9-4
Series Record at Neutral Site: 0-0
Last Game: Jan. 27, 2007; ND-66, VU-63
Current Series Streak: Notre Dame won 1

MEDIA INFORMATION

SID Office Phone: (610) 519-4120
Basketball Contact: Mike Sheridan (Michael.sheridan@villanova.edu)
Website: www.Villanova.edu
SID Fax: (610) 519-7323
Press Row Phone: Wachovia (215) 952-2920
Mailing Address: Jake Nevin Field House, 800 Lancaster Avenue,
Villanova, PA 19805

TEAM CAPSULE

2006-07 Record: 22-11
2006-07 Conference Record/Finish: 9-7/9th
Starters Returning/Lost: 2/3
Postseason: NCAA First Round
Final Ranking: Not Ranked

2006-07 RESULTS

at Northwood	W	97-60	TEXAS	W	76-69
vs. College of Charleston	W	81-68	at Providence	W	82-73
vs. Xavier	L	66-71	at Notre Dame	L	63-66
vs. Iowa	W	89-60	PITTSBURGH	L	59-65
NAVY	W	70-61	LOUISVILLE	W	57-53
at Stony Brook	W	72-44	SAINT JOSEPH'S	W	56-39
at Penn	W	99-89	at Seton Hall	W	78-69
at Oklahoma	W	67-51	CINCINNATI	W	64-48
DREXEL	L	76-81	GEORGETOWN	L	55-58
RIDER	W	108-61	at Marquette	L	67-80
at La Salle	W	64-51	RUTGERS	W	74-51
TEMPLE	W	83-65	at Connecticut	W	78-74
at West Virginia	L	56-67	SYRACUSE	W	78-75
DEPAUL	L	65-73	vs. DePaul	W	75-67
at Georgetown	W	56-52	vs. Georgetown	L	57-62
at Syracuse	L	64-75	vs. Kentucky	L	58-67
NOTRE DAME	W	102-87			

PROVIDENCE



Tim Welsh
HEAD COACH



Charles Burch
FORWARD

Thursday, January 31, 2008 • 7:00 p.m. (EST)
Joyce Center • Notre Dame, IN

GENERAL INFORMATION

Location: Providence, R.I. Enrollment: 3,998
Colors: Black, White and Silver Founded: 1917
Nickname: Friars Conference: Big East
Arena (Capacity): Dunkin' Donuts Center (10,800)

COACHING STAFF

Head Coach: Tim Welsh (Potsdam State '84)
Overall Record: 215-149 (12 years)
Record at Providence: 145-127 (9 years)
Office Phone: (401) 865-2266
Best Time to Contact Coach: Contact SID
Assistant Coaches: Steve DeMeo (SUNY-Buffalo '87) Vince Cautero
(Florida State '88) Allen Griffin (Syracuse '01)

INSTITUTE PERSONNEL

President: Rev. Brian J. Shanley, O.P.
Athletic Director: Robert Driscoll
Athletic Department Phone: (401) 865-2500
Ticket Office Phone: (401) 865-GOPC

SERIES INFORMATION

Series Record: Notre Dame leads 11-9
Series Record at Notre Dame: Notre Dame leads 6-4
Series Record at Providence: Notre Dame leads 5-4
Series Record at Neutral Site: Providence leads 1-0
Last Game: Feb. 15, 2007; ND-81, PC-78
Current Series Streak: Notre Dame won 1

MEDIA INFORMATION

SID Office Phone: (401) 865-2759
Basketball Contact: Arthur Parks (aparks@providence.edu)
Website: www.friars.com
SID Fax: (401) 865-2583
Press Row Phone: (401) 751-9737
Mailing Address: Sports Information Office, 549 River Avenue,
Providence College, Providence, RI 02918

TEAM CAPSULE

2006-07 Record: 18-13
2006-07 Conference Record/Finish: 8-8/10th
Starters Returning/Lost: 4/1
Postseason: NIT First Round
Final Ranking: Not Ranked

2006-07 RESULTS

FAIRLEIGH DICKINSON	W	96-71	at Seton Hall	L	68-69
BROWN	L	41-51	Rutgers	W	78-63
BOSTON COLLEGE	W	73-64	VILLANOVA	L	73-82
GEORGE WASHINGTON	W	86-67	at Connecticut	W	84-72
COLUMBIA	W	81-55	at Marquette	L	62-69
RHODE ISLAND	W	95-66	CINCINNATI	W	71-70
FAIRFIELD	W	67-50	at Pittsburgh	L	68-74
at Florida	L	67-85	at Notre Dame	L	78-81
MAINE	W	94-79	ST. JOHN'S	W	71-66
HOLY CROSS	W	77-68	WEST VIRGINIA	W	64-61
HARVARD	W	101-92	SYRACUSE	L	67-71
at Florida State	L	62-92	at South Florida	W	77-72
LONGWOOD	W	107-69	at St. John's	L	64-77
MARQUETTE	W	74-59	vs West Virginia	L	79-92
SETON HALL	W	91-69	at Bradley	L	78-90
at Louisville	L	63-78			

DEPAUL



Jerry Wainwright
HEAD COACH



Draelon Burns
GUARD

Saturday February 2, 2008 • 6:00 p.m. (EST)
Joyce Center • Notre Dame, IN

Sunday, March 2, 2008 • 1:00 p.m. (EST)
All-State Arena • Rosemont, IL

GENERAL INFORMATION

Location: Chicago, Ill. **Enrollment:** 23,148
Colors: Royal Blue and Scarlet **Founded:** 1898
Nickname: Blue Demons **Conference:** BIG EAST
Arena (Capacity): Allstate Arena (18,500)

COACHING STAFF

Head Coach: Jerry Wainwright (Colorado College '68)
Overall Record: 218-173 (13 years)
Record at DePaul: 32-29 (2 years)
Office Phone: (773) 325-7521
Best Time to Contact Coach: Contact SID
Assistant Coaches: Ramon Williams (VMI '90) Scott Wainwright (UNC Wilmington '99) Gary DeCesare (Iona '85)

INSTITUTE PERSONNEL

President: Rev. Dennis H. Holtschneider, C.M.
Athletic Director: Jean Lenti Ponsetto
Athletic Department Phone: (773) 325-7526
Ticket Office Phone: (773) 325-7526

SERIES INFORMATION

Series Record: Notre Dame leads 52-44
Series Record at Notre Dame: Notre Dame leads 33-14
Series Record at DePaul: DePaul leads 30-17
Series Record at Neutral Site: Notre Dame leads 2-0
Last Game: Feb 20, 2007; ND-78, DPU-54
Current Series Streak: Notre Dame won 1

MEDIA INFORMATION

SID Office Phone: (773) 325-7525
Basketball Contact: Scott Reed (sreed1@depaul.edu)
Website: www.depaulbluedemons.com
SID Fax: (773) 325-7531
Press Row Phone: (847) 296-6999
Mailing Address: 2323 North Sheffield, Chicago, IL 60614

TEAM CAPSULE

2006-07 Record: 20-14
2006-07 Conference Record/Finish: 9-7/8th
Starters Returning/Lost: 3/2
Postseason: NIT Third Round **Final Ranking:** Not Ranked

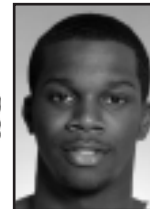
2006-07 RESULTS

at Bradley	L	58-78	at Rutgers	W	60-37
at Northwestern	L	39-49	ST. JOHN'S	W	71-63
EASTERN ILLINOIS	W	71-41	LOUISVILLE	L	50-59
vs Kentucky	L	81-87	at Georgetown	L	52-66
vs Chaminade	W	93-74	at West Virginia	L	52-64
vs Purdue	L	73-81	CONNECTICUT	W	66-58
KANSAS	W	64-57	at Syracuse	L	69-75
CHICAGO STATE	W	83-56	NOTRE DAME	W	67-66
UAB	L	57-58 OT	MARQUETTE	W	72-67
WAKE FOREST	W	78-63	at USF	W	75-62
at Rhode Island	W	89-81	at Notre Dame	L	54-78
UC IRVINE	W	65-53	CINCINNATI	W	58-45
CALIFORNIA	W	90-62	USF	W	70-54
NORTHWESTERN STATE	W	97-67	vs Villanova	L	67-75
at St. John's	L	53-64	HOFSTRA	W	83-71
at Villanova	W	73-65	at Kansas State	W	70-65
PITTSBURGH	L	49-59	at Air Force	L	51-52

SETON HALL



Bobby Gonzalez
HEAD COACH



Brian Laing
GUARD/FORWARD

Wednesday, February 6, 2008 • 7:30 p.m. (EST)
Prudential Center • South Orange, N.J.

GENERAL INFORMATION

Location: South Orange, N.J. **Enrollment:** 9,700
Colors: Blue and White **Founded:** 1856
Nickname: Pirates **Conference:** BIG EAST
Arena (Capacity): Prudential Center (18,500) Walsh Gym (2,600)

COACHING STAFF

Head Coach: Bobby Gonzalez (Buffalo State '86)
Overall Record: 142-93 (8 years)
Record at Seton Hall: 13-16 (1 Year)
Office Phone: (973) 761-9070
Best Time to Contact Coach: Contact SID
Assistant Coaches: Dermon Player (St. John's '00), Kevin Murphy (Kentucky '00)

INSTITUTE PERSONNEL

President: Monsignor Robert Sheeran
Athletic Director: Joseph A. Quinlan, Jr.
Athletic Department Phone: (973) 761-9497
Ticket Office Phone: (973) 275-HALL

SERIES INFORMATION

Series Record: Notre Dame leads 13-7
Series Record at Notre Dame: Notre Dame leads 8-1
Series Record at Seton Hall: Series tied 5-5
Series Record at Neutral Site: Seton Hall leads 1-0
Last Game: Jan. 14, 2007; ND-88, SHU-76
Current Series Streak: Notre Dame won 4

MEDIA INFORMATION

SID Office Phone: (973) 761-9493
Basketball Contact: Matt Sweeney (sweenemc@shu.edu)
Website: www.shupirates.com
SID Fax: (973) 761-9061
Press Row Phone: TBA
Mailing Address: Athletic Communications Office Seton Hall University, 400 South Orange Ave., South Orange, NJ 07079

TEAM CAPSULE

2006-07 Record: 13-16
2006-07 Conference Record/Finish: 4-12/13th
Starters Returning/Lost: 3/2
Postseason: None
Final Ranking: Not Ranked

2006-07 RESULTS

Caldwell	W	92-51	at Notre Dame	L	76-88
FAIRLEIGH DICKINSON	L	71-76	PROVIDENCE	W	69-68
Morgan St.	W	83-63	GEORGETOWN	L	58-74
SAINT PETER'S	W	80-60	at Marquette	L	76-89
ST. MARY'S	W	93-82 OT	at Rutgers	L	70-74
MONMOUTH	W	83-49	PRINCETON	W	79-41
PENN STATE	W	69-59	WEST VIRGINIA	L	70-81
vs Virginia Tech	L	61-80	VILLANOVA	L	69-78
PENNSYLVANIA	W	94-85	at Connecticut	L	66-67
vs Oral Roberts	L	74-76	at West Virginia	L	71-81
vs Liberty	W	85-81	PITTSBURGH	L	68-71
vs Brigham Young	L	68-77	SOUTH FLORIDA	W	89-76
RUTGERS	W	77-72	at Cincinnati	L	67-70
at Providence	L	69-91	at Louisville	L	71-86
ST. JOHN'S	W	79-63			

RUTGERS



Fred Hill
HEAD COACH



JR Inman
FORWARD

Sunday, February 17, 2008 • 2:00 p.m. (EST)
Louis Brown Athletic Center • Piscataway, N.J.

GENERAL INFORMATION

Location: New Brunswick, N.J. **Enrollment:** 33,500
Colors: Scarlet **Founded:** 1766
Nickname: Scarlet Knights **Conference:** BIG EAST
Arena (Capacity): Louis Brown Athletic Center (8,000)

COACHING STAFF

Head Coach: Fred Hill (Montclair St. '81)
Overall Record: 10-19 (1 year)
Record at Rutgers: 10-19 (1 year)
Office Phone: (732) 445-4291
Best Time to Contact Coach: Contact SID
Assistant Coaches: Jim Carr (York '91) Craig Carter (Rutgers '91) Darren Savino (Jersey City State '94)

INSTITUTE PERSONNEL

President: Dr. Richard L. McCormick
Athletic Director: Robert E. Mulcahy III
Athletic Department Phone: (732) 445-8610
Ticket Office Phone: (866) 445-GORU

SERIES INFORMATION

Series Record: Notre Dame leads 13-11
Series Record at Notre Dame: Notre Dame leads 8-2
Series Record at Rutgers: Rutgers leads 8-4
Series Record at Neutral Site: Series tied 1-1
Last Game: March 3, 2007; ND-73, RU-66
Current Series Streak: Notre Dame won 2

MEDIA INFORMATION

SID Office Phone: (732) 445-4200
Basketball Contact: Kevin Lorincz (klorincz@scarletknights.com)
Website: www.scarletknights.com
SID Fax: (732) 445-3063
Press Row Phone: (732) 445-4200
Mailing Address: 83 Rockefeller Road, Piscataway, NJ 08854

TEAM CAPSULE

2006-07 Record: 10-19
2006-07 Conference Record/Finish: 3-13/14th
Starters Returning/Lost: 3/2
Postseason: None
Final Ranking: Not Ranked

2006-07 RESULTS

KANSAS STATE	L	41-55	SYRACUSE	L	58-68
ST. THOMAS	W	82-41	DEPALUL	L	37-60
JACKSON STATE	L	70-71	GEORGETOWN	L	54-68
vs Bradley	L	72-101	at Providence College	L	63-78
vs Miami	L	44-57	at USF	L	40-62
at Temple	L	54-77	SETON HALL	W	74-70 OT
NEBRASKA	W	75-73	WEST VIRGINIA	L	83-89
NEW HAMPSHIRE	W	55-48	at Connecticut	L	50-61 OT
at Princeton	W	53-47	at Marquette	L	47-67
IONA	W	66-51	CINCINNATI	W	73-69
LEHIGH	W	67-61	at St. John's	L	55-60
at North Carolina	L	48-87	CONNECTICUT	L	55-65
SOUTH CAROLINA STATE	W	75-68	at Villanova	L	51-74
at Seton Hall	L	72-77	NOTRE DAME	L	66-73
at Cincinnati	W	54-42			

PITTSBURGH



Jamie Dixon
HEAD COACH



Mike Cook
GUARD/FORWARD

Thursday, February 21, 2008 • 7:00 p.m. (EST)
Joyce Center • Notre Dame, IN

GENERAL INFORMATION

Location: Pittsburgh, PA **Enrollment:** 33,574
Colors: Blue and Gold **Founded:** 1787
Nickname: Panthers **Conference:** BIG EAST
Arena (Capacity): Peterson Events Center (12,508)

COACHING STAFF

Head Coach: Jamie Dixon (TCU '87)
Overall Record: 105-30 (4 years)
Record at Pittsburgh: 105-30 (4 years)
Office Phone: (412) 648-8350
Best Time to Contact Coach: Contact SID
Assistant Coaches: Pat Sandle (San Francisco State '87) Orlando Antigua (Pittsburgh 95') Tom Herrion (Merrimack 89')

INSTITUTE PERSONNEL

President: Mark Nordenberg
Athletic Director: Jeff Long
Athletic Department Phone: (412) 624-5550
Ticket Office Phone: (412) 648-PITT

SERIES INFORMATION

Series Record: Pittsburgh leads 26-25
Series Record at Notre Dame: Notre Dame leads 14-9
Series Record at Pittsburgh: Pittsburgh leads 16-10
Series Record at Neutral Site: Series tied 1-1
Last Game: Jan. 4, 2006; ND-97, PITT-100
Current Series Streak: Notre Dame lost 5

MEDIA INFORMATION

SID Office Phone: (412) 648-8240
Basketball Contact: Greg Hotchkiss (ghotchkiss@athletics.pitt.edu)
Website: www.pittsburghpanthers.com
SID Fax: (412) 648-8248
Press Row Phone: (412) 648-2318
Mailing Address: P.O. Box 7436, Peterson Events Center, Pittsburgh, PA 15213

TEAM CAPSULE

2006-07 Record: 29-8
2006-07 Conference Record/Finish: 12-4/T2nd
Starters Returning/Lost: 2/3
Postseason: NCAA Tournament, Regionals
Final Ranking: 10th (USA TODAY/ESPN), 12th (AP)

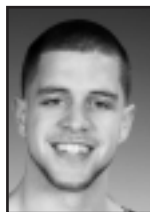
2006-07 RESULTS

vs Western Michigan	W	86-67	MARQUETTE	L	74-77 OT
DELAWARE STATE	W	67-50	at Cincinnati	W	67-51
NORTHEASTERN	W	78-52	ST. JOHN'S	W	72-46
MASSACHUSETTS	W	85-68	at Villanova	W	65-59
OAKLAND	W	66-55	at West Virginia	W	60-47
FLORIDA STATE	W	88-66	PROVIDENCE	W	74-68
ROBERT MORRIS	W	67-53	LOUISVILLE	L	53-66
at Auburn	W	74-66	WASHINGTON	W	65-61
DUQUESNE	W	73-56	at Seton Hall	W	71-68
at Buffalo	W	70-67	at Georgetown	L	53-61
at Wisconsin	L	75-89	WEST VIRGINIA	W	80-66
vs Oklahoma State	L	89-95 OT	at Marquette	L	71-75
DAYTON	W	84-54	vs Marquette	W	89-79
FLORIDA A&M	W	77-51	vs Louisville	W	65-59
at Syracuse	W	74-66	vs Georgetown	L	42-65
SOUTH FLORIDA	W	69-48	vs Wright State	W	79-58
at DePaul	W	59-49	vs VCU	W	84-79 OT
GEORGETOWN	W	74-69	vs UCLA	L	55-64
CONNECTICUT	W	63-54			

SYRACUSE



Jim Boeheim
HEAD COACH



Eric Devendorf
GUARD

Sunday, February 24, 2008 • 2:00 p.m. (EST)
Joyce Center • Notre Dame, IN

GENERAL INFORMATION

Location: Syracuse, N.Y. Enrollment: 11,500
Colors: Orange Founded: 1870
Nickname: Orange Conference: BIG EAST
Arena (Capacity): Carrier Dome (33,633)

COACHING STAFF

Head Coach: Jim Boeheim (Syracuse '66)
Overall Record: 750-264 (31 years)
Record at Syracuse: 750-264 (31 years)
Office Phone: (315) 443-2082
Best Time to Contact Coach: Contact SID
Associate Head Coach: Bernie Fine (Syracuse '67)
Assistant Coaches: Mike Hopkins (Syracuse '93) Rob Murphy (Central State '96)

INSTITUTE PERSONNEL

President: Dr. Nancy Cantor
Athletic Director: Dr. Daryl Gross
Athletic Department Phone: (315) 443-2385
Ticket Office Phone: (888) DOMETIX

SERIES INFORMATION

Series Record: Syracuse leads 21-17
Series Record at Notre Dame: Syracuse leads 10-7
Series Record at Syracuse: Tied 9-9
Series Record at Neutral Site: Syracuse leads 2-1
Last Game: March 8, 2007; ND-89, Syracuse-83
Current Series Streak: Notre Dame won 2

MEDIA INFORMATION

SID Office Phone: (315) 443-2608
Basketball Contact: Pete Moore (pimoores@syr.edu)
Website: www.suathletics.com
SID Fax: (315) 443-2076
Press Row Phone: (317) 443-4241
Mailing Address: 102 Manley Field House, Syracuse, NY 13244

TEAM CAPSULE

2006-07 Record: 24-11
2006-07 Conference Record/Finish: 10-6/T5th
Starters Returning/Lost: 2/3
Postseason: NIT Third Round
Final Ranking: Not Ranked

2006-07 RESULTS

ST. FRANCIS	W	83-51	CINCINNATI	W	77-76
PENNSYLVANIA	W	78-60	at St. John's	L	60-64
UTEP	W	83-69	at Louisville	L	71-76
NORTHEASTERN	W	81-58	NOTRE DAME	L	91-103
CHARLOTTE	W	79-67	DEPAUL	W	75-69
at Canisius	W	81-71	at Connecticut	L	60-67
HOLY CROSS	W	72-64	ST. JOHN'S	W	76-74
WICHITA STATE	L	61-64	at South Florida	W	70-53
vs Oklahoma State	L	68-72	CONNECTICUT	W	73-63
COLGATE	W	79-52	at Providence	W	71-67
BAYLOR	W	94-71	GEORGETOWN	W	72-58
DREXEL	L	79-84	at Villanova	L	75-78
HOFSTRA	W	85-60	vs Connecticut	W	78-65
ST. BONAVENTURE	W	82-70	vs Notre Dame	L	83-89
PITTSBURGH	L	66-74	SOUTH ALABAMA	W	79-73
at Marquette	W	70-58	SAN DIEGO STATE	W	80-64
at Rutgers	W	68-58	at Clemson	L	70-74
VILLANOVA	W	75-64			

LOUISVILLE



Rick Pitino
HEAD COACH



David Padgett
FORWARD/CENTER

Thursday, February 28, 2008 • 7:00 p.m. (EST)
Freedom Hall • Louisville, KY

GENERAL INFORMATION

Location: Louisville, KY. Enrollment: 21,000
Colors: Cardinal Red and Black Founded: 1798
Nickname: Cardinals Conference: BIG EAST
Arena (Capacity): Freedom Hall (18,865)

COACHING STAFF

Head Coach: Rick Pitino (Massachusetts '74)
Overall Record: 494-182 (21 years)
Record at U of L: 142-58 (6 years)
Office Phone: (502) 852-6651
Best Time to Contact Coach: Contact SID
Assistant Coaches: Steve Masiello (Kentucky '00), Walter McCarty (Kentucky '96), Richard Pitino (Providence '05)

INSTITUTE PERSONNEL

President: Dr. James Ramsey
Athletic Director: Tom Jurich
Athletic Department Phone: (502) 852-5732
Ticket Office Phone: (502) 852-5151

SERIES INFORMATION

Series Record: Louisville leads 13-8
Series Record at Notre Dame: Louisville leads 6-4
Series Record at U of L: Louisville leads 6-1
Series Record at Neutral Site: Notre Dame leads 3-1
Last Game: Jan. 03, 2007; ND-78, UL-62
Current Series Streak: Notre Dame won 1

MEDIA INFORMATION

SID Office Phone: (502) 852-6581
Basketball Contact: Kenny Klein (kenny.klein@louisville.edu)
Website: www.UofLsports.com
SID Fax: (502) 852-7401
Press Row Phone: (502) 852-5567
Mailing Address: Sports Information, University of Louisville, Louisville, KY 40292

TEAM CAPSULE

2006-07 Record: 24-10
2006-07 Conference Record/Finish: 12-4/T2nd
Starters Returning/Lost: 4/1
Postseason: NCAA Tournament, Second Round
Final Ranking: 20th (USA TODAY/ESPN), 16th (AP)

2006-07 RESULTS

NORTHWESTERN ST.	W	100-87	MARQUETTE	L	65-74
at Dayton	L	64-68	at DePaul	W	59-50
SACAMENTO ST.	W	99-69	CONNECTICUT	W	68-54
vs. Arizona	L	65-72	SYRACUSE	W	76-71
OHIO	W	74-71	at Cincinnati	W	69-53
SAINT JOSEPH'S	W	74-64	at Villanova	L	53-57
BELLARMINE	W	76-64	GEORGETOWN	L	65-73
MASSACHUSETTS	L	68-72	USF	W	83-63
KENTUCKY	L	49-61	at Pittsburgh	W	66-53
SAVANNAH ST.	W	71-45	at Marquette	W	61-59
MIAMI (FL)	W	82-59	ST. JOHN'S	W	72-48
NORTHEASTERN	W	61-41	at Connecticut	W	76-69
SAN FRANCISCO	W	76-63	SETON HALL	W	86-71
UNC ASHVILLE	W	66-51	vs. West Virginia	W	82-71
At Notre Dame	L	62-78	vs. Pittsburgh	L	59-65
at USF	W	81-55	vs. Stanford	W	78-58
PROVIDENCE	W	78-63	vs. Texas A&M	L	69-72

ST. JOHN'S



Norm Roberts
HEAD COACH



Anthony Mason Jr.
FORWARD

Wednesday, March 5, 2008 • 7:30 p.m. (EST)
Joyce Center • Notre Dame, IN

GENERAL INFORMATION

Location: Queens, N.Y. Enrollment: 19,600
Colors: Red and White Founded: 1870
Nickname: Red Storm Conference: BIG EAST
Arena (Capacity): Carnesecca Arena (6,008) Madison Square Garden (19,786)

COACHING STAFF

Head Coach: Norm Roberts (Queens College '87)
Overall Record: 37-48 (3 years)
Record at St. Johns: 37-48 (3 years)
Office Phone: (718) 990-6225
Best Time to Contact Coach: Contact SID
Assistant Coaches: Glenn Braica (Queens College '87) Fred Quartlebaum (Fordham '89) Chris Casey (Western Conn. State '86)

INSTITUTE PERSONNEL

President: Rev. Donald J. Harrington
Athletic Director: Chris Monasch
Athletic Department Phone: (718) 990-6138
Ticket Office Phone: (888) 467-7876

SERIES INFORMATION

Series Record: Notre Dame leads 17-14
Series Record at Notre Dame: Notre Dame leads 9-7
Series Record at St. Johns: Tied 6-6
Series Record at Neutral Site: Notre Dame leads 2-1
Last Game: Jan 23, 2007; SJU-71, ND-68
Current Series Streak: Notre Dame lost 1

MEDIA INFORMATION

SID Office Phone: (718) 990-6897
Basketball Contact: Mark Fratto (frattom@stjohns.edu)
Website: www.redstormsports.com
SID Fax: (718) 969-8468
Press Row Phone: (212) 465-6536
Mailing Address: Athletic Communications Office, Carnesecca Arena
Room 157, 8000 Utopia Parkway Queens, NY 11439

TEAM CAPSULE

2006-07 Record: 16-15
2006-07 Conference Record/Finish: 7-9/11th
Starters Returning/Lost: 3/2
Postseason: None
Final Ranking: Not Ranked

2006-07 RESULTS

NORTH FLORIDA	W	74-53	CONNECTICUT	L	59-68
NAVY	W	72-49	at DePaul	L	63-71
vs Maryland	L	60-92	SYRACUSE	W	64-60
vs Texas	L	76-77	NOTRE DAME	W	71-68
ILLINOIS STATE	L	65-78	at Pittsburgh	L	46-72
LONG ISLAND UNIVERSITY	W	64-46	GEORGETOWN	L	48-72
UMBC	W	78-57	at Cincinnati	W	73-64
ST. FRANCIS (Ny)	W	59-42	SOUTH FLORIDA	W	66-62
at Niagara	W	86-64	at Syracuse	L	74-76
NJIT	W	68-50	RUTGERS	W	60-55
COLUMBIA	W	76-70	at Providence College	L	66-71
BOSTON	W	45-44 OT	at Louisville	L	48-72
HOFSTRA	L	51-63	DUKE	L	50-67
DEPAUL	W	64-53	PROVIDENCE COLLEGE	W	77-64
at West Virginia	L	46-73	vs Marquette	L	67-76
at Seton Hall	L	63-79			

USF



Stan Heath
HEAD COACH



Kentrell Gransberry
CENTER

Saturday, March 8, 2008 • 7:00 p.m. (EST)
Sun Dome • Tampa, FL

GENERAL INFORMATION

Location: Tampa, FL Enrollment: 41,000
Colors: Green and Gold Founded: 1956
Nickname: Bulls Conference: BIG EAST
Arena (Capacity): Sun Dome (10,411)

COACHING STAFF

Head Coach: Stan Heath (Eastern Michigan '88)
Overall Record: 112-77 (6 years)
Record at USF: First Year
Office Phone: (813) 974-3252
Best Time to Contact Coach: Contact SID
Assistant Coaches: Dan Hipsher (Bowling State University '77), Reggie Hanson (Kentucky '91) Byron Samuels (UNC Asheville '86)

INSTITUTE PERSONNEL

President: Dr. Judy Genshaft
Athletic Director: Doug Woolard
Athletic Department Phone: (813) 974-2125
Ticket Office Phone: (813) 974-3002

SERIES INFORMATION

Series Record: Notre Dame leads 2-1
Series Record at Notre Dame: Notre Dame leads 2-0
Series Record at USF: USF leads 1-0
Series Record at Neutral Site: 0-0
Last Game: Feb. 3, 2007; USF-69, ND-63
Current Series Streak: Notre Dame lost 1

MEDIA INFORMATION

SID Office Phone: (813) 974-7099
Basketball Contact: Chris Freet (cfreet@admin.usf.edu)
Website: www.gousfbulls.com
SID Fax: (813) 974-5328
Press Row Phone: (813) 974-3287
Mailing Address: 4202 East Fowler Ave. ATH100 Tampa, FL 33620

TEAM CAPSULE

2006-07 Record: 12-18
2006-07 Conference Record/Finish: 3-13/14th
Starters Returning/Lost:
Postseason: None
Final Ranking: Not Ranked

2006-07 RESULTS

BUFFALO	W	77-61	at Pittsburgh	L	48-69
SOUTH CAROLINA STATE	W	82-69	LOUISVILLE	L	55-81
FLORIDA INTERNATIONAL	W	79-50	CINCINNATI	W	74-59
STETSON	W	77-72	at West Virginia	L	58-69
RICHMOND	L	46-56	at Notre Dame	L	58-82
at Winston-Salem	W	63-43	RUTGERS	W	62-40
at East Carolina	W	65-52	MARQUETTE	L	68-70
vs Norfolk State	W	87-56	NOTRE DAME	W	69-63
vs Texas A&M Corpus Christi	L	63-69	at St. John's	L	62-66
vs UNLV	L	59-74	at Louisville	L	63-83
MISSOURI STATE	L	69-81	SYRACUSE	L	53-70
at UAB	L	62-78	DEPAUL	L	62-75
WAKE FOREST	W	75-67	at Seton Hall	L	76-89
BETHUNE-COOKMAN	W	82-49	PROVIDENCE	L	72-77
at Connecticut	L	50-69	at DePaul	L	54-70