



# BYU Women's Volleyball Match News & Notes

**Nov. 29-30, 2001**

**NCAA First & Second Round**

## BYU Earns 20th NCAA Invite, 12th Straight No. 19 Cougars Face Utah State in First Round in Salt Lake City

BYU is one of 64 teams to receive an invitation Monday to participate in the 2001 NCAA Women's Volleyball Championship. The field of 64 was announced by the NCAA Division I Women's Volleyball Committee.

The 19th-ranked Cougars enter the tournament on the road for the first time since 1984. BYU (20-8) will play in Salt Lake City and face Utah State (19-10) in a first-round match Thursday at 6 p.m. Host Utah (23-6), ranked 13th, will play Texas Tech (18-13) at 8 p.m. in the second match at Crimson Court. The Aggies and Cougars met earlier this season in Provo, with Utah State defeating BYU in three games to end the Cougars' 20-match home winning streak. BYU has played Utah three times this season, going 1-2. The Cougars haven't played Texas Tech since 1998.

BYU will be making its 20th overall and 12th straight appearance in the NCAA Tournament. The Cougars, one of only eight teams with 19 NCAA appearances, have advanced to the Sweet 16 in each of the last five tournaments.

BYU has an all-time record of 26-19 in NCAA Tournaments with one Final Four appearance (1993). The Cougars rank ninth in total NCAA tournament victories. BYU has hosted a NCAA tournament match ever year it has been invited except the 1984 season. In 1989 BYU did not receive an invitation to the championship.

### THIS WEEK UP CLOSE

### NCAA First Round

**Thursday, Nov. 29, 2001**

**BYU (20-8, 10-4 MWC) vs. Utah State (19-10, 12-6 Big West)**  
Crimson Court • Salt Lake City, Utah • 6 p.m. MT

**Thursday, Nov. 29, 2001**

**Texas Tech (18-13, 9-11 Big 12) at Utah (23-6, 11-3 MWC)**  
Crimson Court • Salt Lake City, Utah • 8 p.m. MT

### NCAA Second Round

**Friday, Nov. 30, 2001**

**BYU/Utah State winner vs. Texas Tech/Utah winner**  
Crimson Court • Salt Lake City, Utah • 7 p.m. MT

### Quick Reference:

BYU 2001 Record: 20-8  
BYU MWC Record/Finish: 10-4 / 3rd  
Current AVCA Ranking: 19th  
Current Volleyball Magazine Ranking: 17th

### Contact Information:

Media Relations Contact: Brett Pyne  
Phone: 801-378-4912  
Fax: 801-378-3520  
Email: brett\_pyne@byu.edu

### 2001 Schedule/Results

Date	Opponent	Time/Score(TV)
Aug. 31-Sept. 1	Point! Huskies! Invitational • Seattle, WA	
Aug. 31	@ Washington	30-25, 30-26, 32-30 W
Sept. 1	vs. Texas	24-30, 27-30, 13-15 L
Sept. 1	vs. Purdue	30-27, 34-32, 24-30, 27-30, 13-15 L 30-23, 30-21, 26-30, 30-20 W
Sept. 3	Rhode Island	30-21, 30-19, 30-25 W
Sept. 6-8	BYU Mizuno Classic • Provo, Utah	
Sept. 6	Colorado	33-35, 30-26, 26-30, 30-27, 15-10 W
Sept. 8	Southwest Missouri State	30-25, 30-22, 30-24 W
Sept. 13	vs. Loyola Marymount (inHonolulu, HI)	canceled
Sept. 15	@ University of Hawaii	canceled
Sept. 20*	University of Utah	30-26, 30-25, 30-25 W
Sept. 26	UC Santa Barbara	30-27, 30-26, 30-23 W
Sept. 28*	University of New Mexico	30-18, 30-21, 30-15 W
Sept. 29*	Air Force	30-13, 30-20, 30-15 W
Oct. 5*	@ Wyoming	30-24, 30-27, 30-24 W
Oct. 6*	@ Colorado State University	18-30, 24-30, 15-30 L
Oct. 12*	San Diego State	30-27, 15-30, 30-28, 31-29 W
Oct. 13*	UNLV	30-21, 33-31, 30-19 W
Oct. 16	Utah State	26-30, 23-30, 21-30 L
Oct. 19*	@ Utah	25-30, 30-25, 32-30, 26-30, 12-15 L
Oct. 25*	@ Sacramento State	28-30, 30-18, 30-21, 30-28 W
Oct. 26*	@ Air Force	30-19, 30-18, 30-23 W
Oct. 27*	@ New Mexico	30-18, 30-18, 30-21 W
Oct. 30	@ Weber State	30-25, 27-30, 30-27, 30-22 W
Nov. 2*	Colorado State	24-30, 28-30, 27-30 L
Nov. 3	Wyoming	30-16, 30-20, 30-27 W
Nov. 9*	@ UNLV	30-16, 28-30, 28-30, 26-30 L
Nov. 10*	@ San Diego State	30-28, 30-27, 30-25 W
Nov. 15-17	Mountain West Tournament • Provo, Utah (SportsWest)	
Nov. 15	Wyoming	30-14, 30-16, 30-23 W
Nov. 16	Utah	27-30, 30-25, 30-32, 25-30 L
Nov. 23-24	Long Beach Thanksgiving Tournament • Long Beach, Calif.	
Nov. 23	vs. Cal Poly SLO	28-30, 30-20, 25-30, 30-25, 15-7 W
Nov. 24	@ LBSU	22-30, 30-25, 24-30, 28-30 L
Nov. 30-Dec. 1	NCAA First/Second Round • Salt Lake City, Utah	
Nov. 29	vs. Utah State	6 p.m.
Dec. 7-8	NCAA Regionals	TBA
Dec. 13-15	NCAA Final Four	San Diego, CA

## Utah State Aggies (19-10, 12-8 Big West)

Utah State will play in its second straight NCAA Tournament. Last year the Aggies defeated Missouri in the first round before falling to BYU in three straight games in the second round in Provo, Utah. This year Utah State is 19-10 overall and finished fourth with a 12-6 record in the highly competitive Big West Conference. Other teams from the Big West that advanced to the NCAA Tournament include top-ranked Long Beach State, 12th-ranked Pacific, and 24th-ranked UC Santa Barbara. USU is receiving votes in the poll (30th), owns a 4-9 record against 10 teams in this year's NCAA field. This year the Aggies split two matches with Pacific, while defeating Brigham Young, Cincinnati, and Arkansas and losing to Long Beach State (twice), UC Santa Barbara (twice), Hawai'i, Southern California, Utah and Colorado State. Chelsi Neves averages 12.14 assists per game and has a team-best .388 hitting percentage while Lisa Borom leads the team with 3.60 kills per game and Erin Cartwright averages 3.34 kills per contest. Michelle Matheson has a hitting percentage of .310, the second best mark on the team, and leads the squad with 1.05 blocks per game. Matheson and Neves were named first-team all-Big West while teammates Borom, Heather Olmstead and Cartwright all earned honorable mention all-league honors. Of USU's 10 losses this year, nine were at the hands of ranked teams, while the Aggies defeated two ranked teams on the year in BYU and Pacific. USU was 8-3 in its last 11 matches with the three losses coming at then 17th-ranked Pacific as well as twice to top-ranked Long Beach State.

### SERIES INFO

BYU lost to Utah State last year during the regular season before defeating the Aggies in the second round of the NCAA tournament. The Aggies defeated BYU 3-0 (30-26, 30-23, 30-21) this year (Oct. 16) in Provo to end the Cougars' 20-match home winning streak. BYU is 45-10 against Utah State all-time.

## Texas Tech Red Raiders (18-13, 9-11 Big 12)

The Texas Tech volleyball team earned its second consecutive NCAA Tournament bid on Monday afternoon and will play Utah in the first-round at 8 p.m. on Crimson Court. Texas Tech is 18-13 on the year and went 9-11 in the Big 12 Conference. They have won five of the last eight matches, with losses to Nebraska, Texas A&M and Missouri. Texas Tech was one of eight Big 12 teams to receive bids to this year's NCAA Tournament including Nebraska, Texas A&M, Kansas State, Colorado, Missouri, Texas and Baylor. Texas Tech redshirt freshman Kelly Johnson was named the 2001 Big 12 Volleyball Newcomer of the Year on Monday. Junior outside hitter Melissa McGehee was also rewarded by the coaches as an honorable mention selection. Johnson, a 5-10 redshirt freshman from Fort Worth, set a school kill record this season as she tallied 379 kills surpassing Ann Romjue's mark of 347 set during the 1999 season. Johnson finished the season with 222 digs, 16 service aces 35 blocks. Melissa McGhee, a 5-9 junior outside hitter from Kerrville, was named to the honorable mention team after finishing the 2001 season with 382 kills and 382 digs.

### SERIES INFO

BYU is 2-2 all-time against Texas Tech. The Cougars won the last meeting in Provo in 1998.

## Utah Utes (23-6, 11-3 Mountain West)

The Utes are currently 23-6 overall, and finished with an 11-3 Mountain West Conference record. Last week, the 13th-ranked Utes defeated Fairfield in a five-game (24-30, 30-19, 27-30, 30-23, 15-7), come from behind battle to clinch third place at the Banker's Classic, on Sat., Nov. 24 in Stockton, Calif. Utah lost to Hawaii, 3-2 (24-30, 30-19, 27-30, 30-23, 15-7), on Fri., Nov. 23 in Stockton, Calif. Utah finished the regular-season in second-place in the MWC. The second-place finish is the highest finish ever in the Launiere era. Utah recorded its sixth-consecutive and 12th overall 20-win season. The Utes' 23-6 overall record marks the best win-loss percentage (.793) in school history. Head coach Beth Launiere hit the 225 career win mark in the MWC tournament championship, with a 3-2 win over No. 8 ranked Colorado State. Possible starters for the Utes in the NCAA Tournament are: McKelle Stilson (Sr., MB), Kelsie Kartchner (Fr., S) or Jackie Morrill (So., S/DS), Lenka Urbanová (Sr., OH), Sylva Strzinková (Jr., OH), Katrena Ellett (Jr., OH/MB), Alisa Geddes (Sr., OH), Kim Turner (So., MB) and Adrienne Bradley-Drake (Sr., MB/OH). The Utes return four starters, 10 letterwinners and add three true freshmen, along with two transfers to this year's roster.

### SERIES INFO

As members of the Mountain West Conference, BYU and Utah have played three times this season. They split home victories during the regular season and then Utah defeated BYU in Provo in the MWC Tournament Semifinals. Utah has won the past two matches - the only time in the series dating to 1970 that Utah has earned consecutive victories. Utah also has a two-match win streak over BYU on Crimson Court (last year and this season) to achieve back-to-back home wins over BYU for the first time since 1980 and 1981. Utah has won three straight at home only once in the series, also winning in 1979. BYU leads the overall series 61-9. BYU is 30-2 in Provo, 19-7 in Salt Lake City and 12-0 on a neutral floor in the series.

**ALL-TIME NCAA LISTS****Most Appearances**

1st T – (21)UCSB, Pacific, Penn State, Stanford  
 5th T – (20) BYU, Hawaii, Nebraska, UCLA

**Most NCAA Victories**

1. Stanford (57-17)
2. UCLA (51-17)
3. Nebraska (47-17)
4. Hawaii (44-16)
5. Pacific (42-20)
6. Texas (38-17)
7. Penn State (36-19)
8. USC (30-17)
9. *BYU (26-19)*
10. UCSB (18-20)

**BYU Record by Round**

First Round  
 11-3 (NOT including five byes)  
 Second Round  
 6-2  
 Regional Semifinals  
 8-6  
 Regional Finals  
 1-7  
 National Semifinals  
 0-1  
 Championship Match  
 0-0  
 Overall NCAA Record  
 26-19

**BYU's Top National Finishes**

Best NCAA Finish  
 1993 – Final Four  
 Tie for third  
 Best AIAW Finish  
 1972 – Championship Match,  
 Second Place

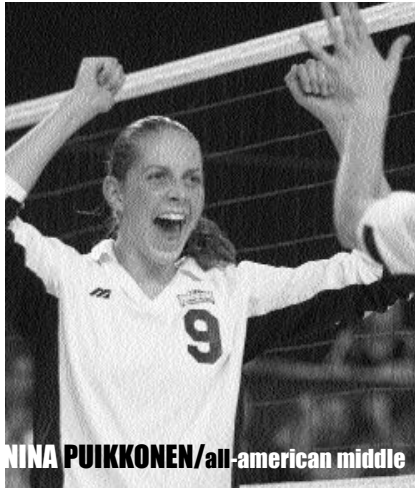
**BYU Last Year in the NCAA First and Second Rounds**

**BYU def. Hofstra, 3-0**— Led by a solid offensive effort from All-American Nina Puikkonen, the BYU women's volleyball team began NCAA Tournament play with a 15-3, 15-10, 15-6 win over Hofstra at home in the Smith Fieldhouse. Hofstra finishes the season at 23-11. Puikkonen was one of four Cougars to record double-digit kills in the match, tallying 16 kills with just one attack error on her way to a .682 hitting percentage. Middle blocker Jackie Bundy also had 16 kills, and recorded a match-high 10 blocks to lead a strong Cougar defensive effort. BYU recorded 17 team blocks to just four for the visiting Lady Dutch. BYU jumped on Hofstra early, opening the match with a 10-0 run. The Cougars went on the win the first game 15-3. Midway through the second game, Hofstra opened up a 10-6 lead. But repeated hitting errors by the Lady Dutch allowed BYU to score the next nine points to take the second game. The BYU defense proved to be too much in the third game, as the Cougars tallied 12 block assists and held Hofstra to a negative attack percentage (-.125) in the final frame.

**BYU def. Utah State, 3-0**— Avenging an early season loss to in-state rival Utah State, BYU defeated the Aggies 15-9, 15-10, 15-10 at the Smith Fieldhouse to move on the Sweet 16 of the NCAA Volleyball Tournament. The Cougars improved their overall record to 26-6 with the win, while the Aggies finish their season at 22-10. All-American Nina Puikkonen was one of four BYU players to record double-digit kills on the night, finishing the match with 14 kills and seven blocks. Sophomore Sunny Tonga had 13 kills for the match, and Jackie Bundy and Kalani Tonga added 10 kills each. Utah State led 9-8 in the first game before BYU scored the next seven points to take the game. Feeding off the strength of a solid front line that recorded 17.5 team blocks, the Cougars managed to slow down the Utah State offense in the second and third games, holding the Aggies to under a .100 hitting percentage in the final frames. BYU recorded five service aces for the match, including three timely winners by senior Melissa Layton.

**BYU in the NCAA Tournament**

- This is the 12th straight season the Cougars have qualified for the NCAA Tournament. They have also qualified for the tournament in 20 of the 21 all-time NCAA Tournaments. The only year BYU failed to qualify was 1989 when they finished the season 24-11. Despite the record, BYU failed to earn one of the 17 at-large bids.
- Prior to this year's tournament, BYU has hosted its opening NCAA tournament match each of the past 11 seasons and every year BYU has been invited to the tournament except 1984. BYU lost in three games to San Diego State that year in San Diego. BYU did not get invited to the tournament in 1989.
- BYU has hosted the regional round of the tournament only twice. BYU hosted the Southwest Regional (its first match after an opening round bye) in the first-ever tournament in 1981, losing to UCSB in five games. In 1986, the Cougars were ranked No. 1 after the regular season and hosted both the first round and the West Regional. BYU beat Washington in the first round and Arizona State in the regional semifinal before losing at home to Stanford in the regional final.
- BYU has advanced to the regional semifinals for five straight years. The Cougars earned a regional finals appearance in three of the last five seasons, having lost in the semifinals the past two seasons.
- BYU has advanced to the NCAA Final Four once, beating UCLA in Los Angeles in the 1993 West Regional Final to advance to Madison, Wis., and a national semifinal match against Penn State. The Cougars didn't reach the title match, losing to the Lions in a close four-game contest.
- BYU's highest finish in the NCAA Tournament was 1993 when the Cougars lost to Penn State in a national semifinal at the Final Four hosted by Wisconsin.
- BYU is ninth all-time in NCAA wins with a 26-19 NCAA Tournament record.



**NINA PUIKKONEN/all-american middle**

## **Puikkonen Honored On and Off the Court**

### **BYU Middle Blocker Earns All-Conference, All-Tournament and National Academic Awards**

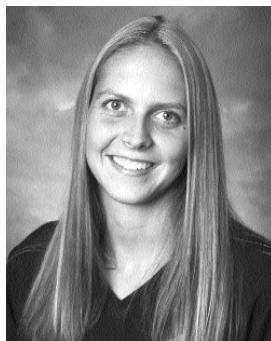
Nina Puikkonen added yet another award to her collegiate career, winning MWC all-conference and all-tournament honors and being named a Vorizon Academic All-America Team. Named to the MWC all-conference team, Puikkonen has been named to the team in each of her four years as a player. Despite a loss in the semifinals of the 2001 MWC Tournament, Puikkonen's solid performance against Wyoming and double-double effort against Utah earned her a spot on the 2001 MWC all-tournament team. She had a 32-kill, 20-dig, 11-block triple-double, the fourth of her career, last week in a win over Cal Poly.

Puikkonen has made an effort in the classroom as well, being named an academic all-American for the second time in her career. Puikkonen was selected to the 2001 Vorizon Academic District VIII Second Team with a 3.44 GPA in Zoology. Puikkonen stepped up her academic game after being selected to the third team the previous year.

Puikkonen adds these recent awards to three all-conference selections, 1998 WAC Freshman of the Year, 1999 MWC Player of the Year, MVP of the 2000 MWC tournament and three-time all-American citations.

# **All-Conference Cougars**

## **Four BYU Players Named to 2001 MWC All-Conference Team**



**Nina Puikkonen  
6-3, Sr., MB**

A three-time All-American, last year Nina was named to the AVCA and *Volleyball Magazine* All-America First Teams and was the only player selected AVCA National Player of the Week twice last season ... she was a *Volleyball Magazine* freshman All-American and earned second-team AVCA and *Volleyball Magazine* All-America honors as a sophomore ... last year she was named to the all-west region team ... she had her fourth career triple-double last week with career highs of 32 kills and 20 digs along with a season-high 11 blocks. ... she led the MWC in kills per game (4.23) and averages 2.28 digs and 1.60 blocks per game on the year ... she was teh MWC Player of the Week once in 2001.



**Karina Puikkonen  
6-0, So., S**

Sister of Nina Puikkonen, last year Karina was named all-conference in her first season as the Cougars' setter ... continued as the Cougar's dominant setter with 12.75 apg ... second in conference in assists (12.70) ... set a new career high of 10 kills this season, while averaging 1.49 kpg ... qualifying as a setter, she was fourth in the conference matches in hitting percentage (.369)... fifth on the team with 1.90 digs and 0.90 blocks per game.



**Sunny Tonga Mahe  
6-2, Jr., RS/OH**

Last year Sunny was named to the All-Mountain West Conference team as a sophomore after earning freshman All-America honors ... was named to the all-MWC tournament team, BYU Mizuno Classic team and Shamrock Invitational team ... in 2001, Mahe was named AVCA National Player of the Week ... named MWC Player of the Week twice in 2001 ... second on the team averaging 3.65 kills per game ... eighth in the conference in kills (3.57) ... seventh in the conference with .357 hitting percentage ... second on team in attack percentage (.330) ... ninth in the conference in points (4.22) ... leads team with 27 service aces (.33 apg).



**Uila Crabbe  
5-7, So., DS**

Also named to 2001 MWC all-tournament team as the tournament's defensive specialist selection...played in every game for BYU this season ... second on the team with 207 digs (2.49 dpg) ... sixth in the conference in digs (2.46) ... second on the team with 25 service aces (.30) ... last year Uila played in 31 of 114 games as a true freshman while appearing in 16 matches after being high school player of the year in Hawaii.

**BYU BRIEF OUTLOOK**

The 2001 Cougars are 20-8 and have won eight of their last 12. They lost their last match at No. 1 Long Beach State. They are led by first-team AVCA All-American middle blocker Nina Puikkonen and NCAA All-West Region rightside hitter Sunny Tonga Mahe. Mahe is a junior in 2001 while Puikkonen is one of three seniors returning with significant court experience. She is joined by fellow seniors Jackie Bundy, an All-MWC middle blocker who finished 12th nationally in blocking last year, and Natalie Whittaker, BYU's top reserve last season. The Cougars also return setter Karina Puikkonen, who earned all-conference honors last year as a freshman. While Michaelis returns four all-conference starters, she will need to replace the services of starting outside hitters Melissa Layton and Kalani Tonga. Reserve middle blocker Alyssa Barrus and backup setter Martha Brinton also won't return in 2001. Both players decided to leave on an 18-month mission for the Church of Jesus Christ of Latter-day Saints, with Barrus to serve in Washington, D.C. and Brinton in Switzerland. Whittaker, junior transfer Allison Holsten Larson and the redshirt freshman tandem of Lindsey Steele and Becky Warnick all are talented players with the potential to fill the void left on the outside. Freshman Lauren Richards could play outside or setter. A solid freshmen recruiting class join sophomore Carrie Bowers (middle blocker/rightside hitter), sophomore Uila Crabbe (defensive specialist) and junior Michelle Mahaffey (defensive specialist) to provide Michaelis with a strong supporting cast. Last year, the Cougars were ranked second nationally in blocking and eighth in hitting and should continue to excel in those categories in 2001. With Karina Puikkonen having a year of experience on her resume and setting many of the same hitters, BYU's offense should again be one of the nation's most potent. The Cougar block could be the nation's best with Puikkonen and Bundy in the middle.

**BYU LAST WEEK**

BYU went 1-1 last week with a win over Cal Poly and a four-game loss at No. 1 Long Beach State. The Cougars ended LBSU's 41-game win streak, the seventh-longest single season streak in NCAA history, with their 30-25 win in game two Saturday. BYU closed game two on an 11-4 run. The Cougars came close to pushing the match to five games before losing 30-28 while trying to even game four up at 29.

**A FEW GOOD WOMEN**

BYU players made a good showing on the Mountain West Conference all-conference and all-tournament teams. BYU garnered four spots on the all-conference team with sisters Nina (MB) and Karina (S) Puikkonen, AVCA/ Sports Imports National Player of the Week Sunny Mahe (OH) and Uila Crabbe (DS). In the MWC tournament, Nina Puikkonen and Crabbe returned to the spotlight, despite losing in the semifinals.

**28 STRAIGHT SEASONS**

BYU finished the regular season at 20-8. The Cougars have achieved 20 wins or more in 28 consecutive seasons.

**RECORD ANALYSIS**

BYU is 14-3 this year in three-game matches. The Cougars are 4-3 when going four games and 2-2 in five-game contests.

**PUIKKONEN EARNED SIXTH CAREER CONFERENCE PLAYER OF THE WEEK**

Senior middle blocker Nina Puikkonen was named the Mountain West Conference Player of the Week along with Colorado State's Courtney Cox on Oct. 29. Puikkonen led BYU to three road wins, averaging 5.00 kills, 2.30 digs, 2.30 blocks and hitting .438 for the week. She had the Cougars' top attack percentage and totaled team bests of 50 kills and 23 blocks. She was third with 23 digs behind team-leader Natalie Whittaker's 26 and DS Uila Crabbe's 25. After recording 24 kills, 14 digs, eight blocks and a .500 attack percentage in a tough five-game loss at No. 18 Utah, Puikkonen continued her hot play. She started the week by nearly putting up another triple-double with 21 kills, a season-high 18 digs and nine blocks while hitting .400 at Sacramento State. At Air Force, Puikkonen again had match highs with 17 kills and 10 blocks (equaling a season high) in just three games while hitting a season-best .609. Puikkonen recorded 12 kills, five digs and four blocks while hitting .318 against New Mexico.

**RARE HOME LOSING STREAK**

The Cougars lost a regular season match to Colorado State in Provo for the first time since 1984 with the 24-30, 28-30, 27-30 defeat. Having lost its prior home match to Utah State (0-3) on Oct. 16, BYU suffered consecutive home losses for the first time since September 1996 when the Cougars lost three straight to Pacific, Pepperdine and Long Beach State. It marked the first time since September of 1992 that BYU had been swept in consecutive home matches (swept in three

straight matches by UCLA, Florida and Stanford). In BYU's 33-year recorded history, the Cougars have only had eight occasions when they have suffered a multiple-match home losing streak. The Cougars longest home losing streak is four matches (lost to USC last match of 1991, then lost three straight in first three home matches of 1992 to UCLA, Florida and Stanford).

**BYU IN MWC PLAY**

BYU finished regular MWC play with a 10-4 record. In the conference tournament, the Cougars beat Wyoming in three games in the first match. Facing Utah in the semifinals, BYU fell in four close games. The Utes advanced to the championship match and defeated No. 1 seed Colorado State for the league tournament title. Overall, BYU has a 357-38 (.904) series record against MWC teams.

**DOUBLE-DIGITS DOUBLE-DOUBLES**

Nina Puikkonen recorded a team-leading 12 double-doubles so far this season for the Cougars.

**NINA CLOSE TO ANOTHER MILESTONE**

Puikkonen is fifth all-time at BYU in kills, second all-time in total blocks and block assists and is the school's leader in blocks per game. She needs three more block solos to move into a third-place tie with Jill Plumb.

**RICHARDS ROCKS VS. 49ERS**

Freshman outside hitter Lauren Richards set a career high with 20 kills vs. No. 1 Long Beach State last week. Recruited as a setter, she came out of a redshirt year to play outside after sitting out the first 10 matches.

**1,100 AND COUNTING**

BYU coach Elaine Michaelis has coached 1,116 recorded (since 1969) matches. She has won nearly 80 percent of those matches, with 887 wins. She is second in all-time Division I victories.

**TRIPLE-DOUBLES**

All-American senior middle blocker Nina Puikkonen and fellow senior middle blocker Jackie Bundy have each recorded one triple-double of the year. Bundy had her first career triple-double in BYU's win over No. 23 Colorado. She totaled 15 kills, 12 digs and a season-high 10 blocks on the night. Puikkonen had her fourth career triple-double last week with career highs of 32 kills and 20 digs along with a season-high 11 blocks. Two of her triple-doubles were recorded last season, both against the University of Utah.

**2001 BYU Quick Facts**

**General Information**

Location: Provo, Utah 84602  
 Elevation: 4,553 feet  
 Enrollment: 30,069 (Daytime)  
 Founded: October 15, 1875  
 Owned: Church of Jesus Christ of Latter-day Saints  
 Nickname: Cougars  
 Mascot: Cosmo  
 Colors: dark blue, white and tan  
 Conference: Mountain West  
 Arena: Smith Fieldhouse (5,000) wood floor  
 Ticket Office Phone: (801) 378-BYU1  
 or 1-800-322 BYU1

**Volleyball Information**

Head Coach: Elaine Michaelis (BYU, 1960)  
 Office Phone: 801-378-4225  
 Assistant Coaches:  
     Stephanie Trane, 801-378-3838  
     Karen Curtis Lamb, 801-378-2808  
 Michaelis Record at BYU: 887-224-5  
 \*32 years (records kept starting in 1969)  
 Career Record: same  
 2000 Record: 26-7  
 2000 MWC Record: 12-2 (2nd)  
     \*2000 MWC Tournament Champions  
 2000 NCAA: Central Region Semifinals (T-9th)  
 2000 Final Ranking: 13th (AVCA)  
 Starters Returning/Lost: 4/2  
 Letterwinners Returning/Lost: 8/4  
 Newcomers: 5

**Media Relations**

Media Relations: Brett Pyne  
 Office Phone: (801) 378-4912  
 Home Phone: (801) 796-6867  
 Media Relations Mailing Address:  
 30 SFH, Provo, UT, 84602-2239  
 Media Relations FAX: (801) 378-3520  
 Press Box Phone: (801) 378-3675  
 Website: www.byucougars.com

**MAHE NAMED AVCA NATIONAL PLAYER OF THE WEEK**  
*Mahe Becomes Third Cougar to Ever Earn the National Honor*

Sunny Mahe, a 6-2 junior right side/opposite hitter for the 14th-ranked BYU Cougars (9-1), was selected the AVCA/Sports Imports Division I National Player of the Week on Oct. 1. Mahe also garnered Mountain West Conference Player of the Week honors for the second time this year and the third time during her career.

Mahe hit a team-best .554 attack percentage to guide the Cougars to three 3-0 victories last week with wins over then-No. 19 UC Santa Barbara, New Mexico and Air Force. She averaged 4.56 kills, 1.00 blocks, 1.78 digs, 1.11 assists and 0.44 service aces per game. For the week, she tallied 41 kills with just five attack errors on 65 swings.

Mahe charted 12 kills, five blocks, six digs and six assists against UC Santa Barbara while hitting .357. She added 13 kills as part of a .647 attack percentage versus New Mexico, followed by a MWC season-high .750 hitting percentage with a match-best 16 kills on 20 attacks against Air Force. Mahe has topped the .600 hitting percentage mark in a match four times this year.

Mahe has tallied double-digit kills in each of the last nine matches and ranks third in MWC matches for kills per game (4.33) and hitting percentage (.550).

The native of Allen, Texas, is the third BYU player to win the AVCA National Player of the Week award. Current teammate Nina Puikkonen and former Cougar Amy Steele Gant also have won the award, both winning it twice. A first-team AVCA All-American, Puikkonen was the only player in the country to receive the honor twice last season. Gant was recognized in 1996 and 1997.

**NINA PUIKKONEN NAMED MWC CO-PLAYER OF THE WEEK OCT. 29**

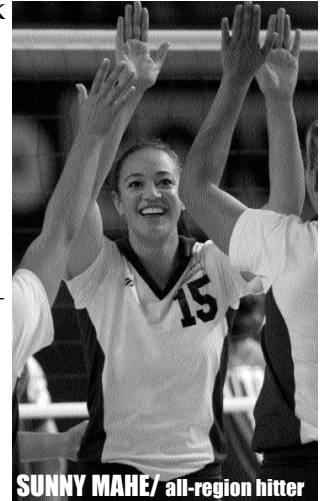
Senior middle blocker Nina Puikkonen was named the Mountain West Conference Player of the Week along with Colorado State's Courtney Cox on Monday. Puikkonen led BYU to three road wins, averaging 5.00 kills, 2.30 digs, 2.30 blocks and hitting .438 for the week. She had the Cougars' top attack percentage and totaled team bests of 50 kills and 23 blocks. She was third with 23 digs behind team-leader Natalie Whittaker's 26 and DS Uila Crabbe's 25. After recorded 24 kills, 14 digs, eight blocks and a .500 attack percentage in a tough five-game loss at No. 18 Utah, Puikkonen continued her hot play last week. She started the week by nearly putting up another triple-double with 21 kills, a season-high 18 digs and nine blocks while hitting .400 at Sacramento State on Thursday. Friday night at Air Force, Puikkonen again had match highs with 17 kills and 10 blocks (equaling a season high) in just three games while hitting a season-best .609. Saturday, Puikkonen recorded 12 kills, five digs and four blocks while hitting .318.

**BYU'S MAHE EARNS FIRST MOUNTAIN WEST PLAYER OF THE WEEK AWARD**

BYU junior outside hitter Sunny Mahe was named the Mountain West Conference Volleyball Player of the Week Sept. 3, marking the second time overall she has earned the award. A native of Allen, Texas (Allen HS), Mahe led BYU with 45 kills (3.75 per game) and a .330 hitting percentage (45k-11e-103a) as the Cougars posted a 2-1 record at the Washington Tournament in Seattle last weekend. Mahe, who earned all-tournament honors, posted her best numbers of the week in a four-game win against Purdue with a career-high 22 kills, 12 digs, five total blocks and a .724 hitting percentage. She also had nine kills in a sweep of Washington and 14 kills in a five-game loss to Texas. For the week, Mahe racked up 23 digs, (1.92 per game), 13 total blocks (1.08 per game), four aces (.33 per game) and 56.5 points, which ranks second in the MWC.

**ALL-TOURNAMENT HONORS**

BYU's Sunny Mahe earned Mizuno Classic MVP honors while Nina Puikkonen, Jackie Bundy and Karina Puikkonen were selected to the all-tournament team along with Rese McNatt of Southwest Missouri State and Elizabeth Gower and Monique Gerlach of Colorado. Mahe and Nina Puikkonen also were named to the Point Huskies Invitational All-Tournament Team.



**SUNNY MAHE/ all-region hitter**

**2001 Numerical Roster**

No.	Name	Ht.	Cl.	Pos.	Hometown	Player Note
2	Natalie Whittaker	6-0	Sr.	OH	American Fork, Utah	• Led the MWC in digs in overall matches 2.98 dpg.
4	Becky Warnick	5-11	Fr.	OH	Coto de Caza, Calif.	• Played in 25 games this year, averaging 1.76 kills per game.
5	Karina Puikkonen	6-0	So.	S	Murray, Utah	• All-MWC setter hits team-best .412 with 12.70 assists per game
6	Lindsey Steele	6-0	Fr.	OH	Orem, Utah	• Good blocker, redshirt freshman has played in 12 games
7	Allison Holsten Larson	6-0	Jr.	MB/OH	Richland, Wash.	• JC All-American has played in 20 games this year.
8	Carrie Bowers	6-2	So.	MB/RS	Salt Lake City, Utah	• Played for first time this year at Utah, 8 total games played.
9	Nina Puikkonen	6-3	Sr.	MB	Murray, Utah	• All-American led the MWC in kills per game (4.23 kpg)
10	Jackie Bundy	6-1	Sr.	MB	Sacramento, Calif.	• One of three Cougars over three kills per game (3.05 kpg)
11	Lauren Richards	5-11	Fr.	S	Orem, Utah	• Had career-high 20 kills last week against No. 1 LBSU
12	Uila Crabbe	5-7	So.	DS	Mililani, Hawai'i	• Earned All-MWC honors as a defensive specialist (2.51 dpg)
15	Sunny Mahe	6-2	Jr.	RS/OH	Allen, Texas	• All-West Region hitter hits .318 with 3.58 kills per game
17	Michelle Mahaffey	5-6	Jr.	DS	Martinez, Calif.	• Back row specialist has played in 20 games this season

Redshirting in 2001

3	Lexi Brown	6-1	Fr.	MB	Sandy, Utah
14	Krystal Curtis	5-5	Fr.	DS	Orem, Utah
18	Erin Webb	6-0	Fr.	MB	Sandy, Utah

Head Coach: Elaine Michaelis (40th year)

Asst. Coaches: Stephanie Trane (10th year); Karen Curtis Lamb (8th year)

**Roster Breakdown (includes 2000 stats)**

**Returning Starters (4)**

Name	Pos.	Ht.	Cl.	Pct.	KPG	DPG	Other
Nina Puikkonen	MB	6-3	Sr.	.357	4.13	2.00	1.88 BPG; 38 aces
Jackie Bundy	MB	6-1	Sr.	.237	2.88	1.89	1.58 BPG
Sunny Tonga Mahe	RS	6-2	Jr.	.324	3.14	1.63	1.15 BPG; 25 aces
Karina Puikkonen	S	6-0	So.	.290	1.22	1.59	12.68 APG; 0.98 BPG

**Starters Lost (2)**

Melissa Layton	OH	6-1	Sr.	.243	2.72	1.89	0.75 BPG; 42 aces
Kalani Tonga	OH	6-0	Sr.	.211	2.47	2.47	0.65 BPG; 27 aces

**Letterwinners Returning (8)**

Nina Puikkonen	MB	6-3	Sr.	.357	4.13	2.00	1.88 BPG, 38 aces
Jackie Bundy	MB	6-1	Sr.	.237	2.88	1.89	1.58 BPG
Sunny Tonga Mahe	RS	6-2	Jr.	.324	3.14	1.63	1.15 BPG; 25 aces
Karina Puikkonen	S	6-0	So.	.290	1.22	1.59	12.68 APG; 0.98 BPG
Natalie Whittaker	OH	6-0	Sr.	.204	0.52	2.02	Played in 66 of 114 games
Uila Crabbe	DS	5-7	So.	.250	0.06	1.65	Played in 31 of 114 games
Carrie Bowers	MB	6-2	So.	.188	1.75	0.25	Played in 4 of 114 games
Michelle Mahaffey	DS	5-6	Jr.	.000	.000	0.83	Played in 6 of 114 games

**Redshirts Returning (2)**

Lindsey Steele	OH	6-0	Fr.	RS	Orem, Utah (Mountain View HS)		
Becky Warnick	OH	5-11	Fr.	RS	Coto de Caza, Calif. (Capistrano Valley)		

**Letterwinners Lost (4)**

Melissa Layton	OH	6-1	Sr.	.243	2.72	1.89	0.75 BPG; 42 aces
Kalani Tonga	OH	6-0	Jr.	.211	2.47	2.47	0.65 BPG; 27 aces
Martha Brinton	S	5-10	So.	.143	0.50	0.50	Played 6 of 114 games
Alyssa Barrus	MB	6-2	Jr.	.071	0.83	0.33	Played 6 of 114 games

**Newcomers (5)**

Allison Larson	MB/OH	6-0	Jr.	TR	Richland, Wash. (Columbia Basin College)		
Lauren Richards	S	5-11	Fr.	HS	Orem, Utah (Timpanogos HS)		
Lexi Brown	MB	6-1	Fr.	HS	Sandy, Utah (Jordan HS)		
Krystal Curtis	DS	5-5	Fr.	HS	Lindon, Utah (Timpanogos HS)		
Erin Webb	MB	6-0	Fr.	HS	Sandy, Utah (Skyline HS)		

**BYU's Probable Starters**

No.	Name.	Year	Pos.
15	Sunny Mahe	Jr.	RS
9	Nina Puikkonen	Sr.	MB
2	Natalie Whittaker	Sr.	OH
5	Karina Puikkonen	So.	S
10	Jackie Bundy	Sr.	MB
11	Lauren Richards	Fr.	OH
12	Uila Crabbe	So.	DS

**Breakdown By Class**

**Seniors (3)**

Jackie Bundy  
Nina Puikkonen  
Natalie Whittaker

**Juniors (3)**

Allison Holsten Larson  
Michelle Mahaffey  
Sunny Mahe

**Sophomores (3)**

Carrie Bowers  
Uila Crabbe  
Karina Puikkonen

**Freshman (6)**

Lexi Brown  
Krystal Curtis  
Lauren Richards  
Lindsey Steele  
Erin Webb  
Becky Warnick



**Polls**

USA Today/AVCA Coaches  
Nov. 25

Rank	Team
1.	<u>Long Beach St.</u>
2.	Nebraska
3.	Stanford
4.	Arizona
5.	USC
6.	Wisconsin
7.	Florida
8.	Pepperdine
9.	<u>Colorado St.</u>
10.	Ohio St.
11.	Hawaii
12.	Pacific
13.	<u>Utah</u>
14.	UCLA
15.	Texas A&M
16.	Penn St.
17.	Northern Iowa
18.	Kansas St.
19.	BYU
20.	Michigan St.
21.	Illinois
22.	Santa Clara
23.	South Carolina
24.	<u>UC Santa Barbara</u>
25.	Notre Dame

Volleyball Magazine  
Week 14

Rank	Team
1.	<u>Long Beach St.</u>
2.	Nebraska
3.	Stanford
4.	Arizona
5.	USC
6.	Florida
7.	Wisconsin
8.	<u>Colorado St.</u>
9.	Pepperdine
10.	Ohio State
11.	Texas A&M
12.	Pacific
13.	Hawaii
14.	<u>Utah</u>
15.	UCLA
16.	Penn State
17.	BYU
18.	Northern Iowa
19.	Michigan State
20.	Kansas State

**2001 Home Attendance**

School	Avg.	Total	Matches
1. Hawai'i	6,514	104,222	16
2. Nebraska	4,443	57,763	13
3. Wisconsin	3,467	41,604	12
4. Colorado State	2,700	35,095	13
5. Florida	2,655	23,893	9
6. Penn State	2,501	45,020	18
7. Long Beach State	2,444	29,331	12
8. Stanford	1,999	19,994	10
9. Arizona	1,958	21,533	11
10. Pacific	1,957	29,362	15
11. Minnesota	1,837	20,202	11
12. Kansas State	1,774	23,056	13
13. Illinois State	1,743	22,659	13
14. Texas	1,605	19,259	12
15. North Carolina	1,585	12,678	8
16. Northern Iowa	1,549	18,592	12
17. Illinois	1,460	18,978	13
18. BYU	1,315	18,415	14

**MOUNTAIN WEST CONFERENCE**

BYU is a member of the Mountain West Conference. Four teams, BYU, Colorado State, Utah and San Deigo State were invited to this year's tournament. Six of the eight MWC programs have competed in post-season action over the years while the other two programs have only been in competition since 1996. Since the MWC was founded in 1999, BYU, Colorado State and Utah have represented the conference in the last three NCAA tournaments. Last year all three teams were ranked in the top 20. Overall, BYU has made 20 NCAA appearances and Colorado State has made 13. The MWC was one of just five conferences to send four or more teams to the NCAA Tournament. The Big 12 led all conferences with eight teams selected. The Big Ten, and Pacific-10 conferences each placed six teams in the field, followed by the Mountain West and Big West conferences with four.

**BYU PLAYER 2001 SEASON & CAREER HIGHS**

	Kills	*Hitting	Assts	Aces	Digs	Blocks	Points
<b>#9 NINA PUIKKONEN</b>	32	.609	2	3	20	11	38.5
<b>Career</b>	same	.688	4	6	same	14	same
<b>#5 KARINA PUIKKONEN</b>	10	.667	67	2	11	7	13.0
<b>Career</b>	same	same	same	3	12	8	same
<b>#10 JACKIE BUNDY</b>	16	.526	4	4	20	10	20.5
<b>Career</b>	same	.769	same	same	same	14	same
<b>#15 SUNNY MAHE</b>	22	.750	6	4	19	9	25.0
<b>Career</b>	same	.909**	same	same	same	10	same
<b># 2 NATALIE WHITTAKER</b>	14	.462	5	5	19	6	16.0
<b>Career</b>	same	same	same	same	same	same	same
<b>#4 BECKY WARNICK</b>	12	.455	1	-	3	2	12.0
<b>Career</b>	same	same	same	-	same	same	same
<b>#7 ALLISON LARSON</b>	7	.267	1	1	3	2	7.5
<b>Career</b>	same	same	same	same	same	same	same
<b>#11 LAUREN RICHARDS</b>	20	.471	3	-	3	4	13.0
<b>Career</b>	same	same	same	-	same	same	same
<b># 12 UILA CRABBE</b>	1	-	3	4	17	-	4.0
<b>Career</b>	same	-	same	same	same	-	same
<b>#17 MICHELLE MAHAFFEY</b>	-	-	2	1	4	-	1.0
<b>Career</b>	-	-	same	same	same	-	same
<b>#6 LINDSEY STEELE</b>	3	-	1	-	1	2	2.5
<b>Career</b>	same	-	same	-	same	same	same
<b>#8 CARRIE BOWERS</b>	1	-	-	-	3	3	2.5
<b>Career</b>	6	.364	-	-	same	same	same

\* minimum of 10 attempts      \*\* BYU Record



**NINA PUIKKONEN • 6-3 • SR • MB**

A three-time All-American, last year Nina was named to the AVCA and *Volleyball Magazine* All-America First Teams and was the only player selected AVCA National Player of the Week twice last season ... she was a *Volleyball* magazine freshman All-American and earned second-team AVCA and *Volleyball Magazine* All-America honors as a sophomore ... led MWC players in kills per game this year with 4.23 kpg ... had fourth career triple-double last week with 32 kills, 20 digs and 11 blocks vs. Cal Poly ... was dominating in the match, setting personal highs in kills and digs and a season high in blocks ... set the MWC season high with 32 kills, the only MWC player to record more than 30 kills this year ... MWC Player of the Week once in 2001 ... was the MWC Player of the Week four times in 2000 and was an all-conference selection for the third straight year ... was named the MVP of the 2000 MWC tournament after leading the Cougars to the tournament championship.



**KARINA PUIKKONEN • 6-0 • SO • S**

Sister of Nina Puikkonen, last year Karina was named all-conference in her first season as the Cougars' setter ... continued as the Cougar's dominant setter with 12.75 apg ... second in conference in assists (12.28) ... set a new career high of 10 kills this season, while averaging 1.52 kpg ... qualifying as a setter, she is fourth in the conference in hitting percentage (.369)... fifth on the team with 1.90 digs and 0.90 blocks per game.



**JACKIE BUNDY • 6-1 • SR • MB**

Last year Jackie was an all-MWC selection last year in her second season starting in the middle ... ranked 12th nationally in blocking (1.58) ... had a BYU season-best 14 blocks at Notre Dame ... in 2000 Bundy was third on the team with 3.17 kills per game ... finished with 1.17 blocks per game on 96 blocks ... eighth in conference in blocks (1.18) ... fourth on the Cougar squad with 1.95 dpg ... eighth in the conference in points (4.33).



**SUNNY TONGA MAHE • 6-2 • JR • RS**

Last year Sunny was named to the All-Mountain West Conference team as a sophomore after earning freshman All-America honors ... was named to the all-MWC tournament team, BYU Mizuno Classic team and Shamrock Invitational team ... in 2001, Mahe was named AVCA National Player of the Week ... named MWC Player of the Week twice in 2001 ... second on the team averaging 3.65 kills per game ... eighth in the conference in kills (3.57) ... seventh in the conference with .357 hitting percentage ... second on team in attack percentage (.330) ... ninth in the conference in points (4.22) ... leads team with 27 service aces (.33 apg)



**NATALIE WHITTAKER • 6-0 • SR • OH**

Returning in 2001, led the Cougars defensively with 259 digs (3.12 dpg) ... led MWC in digs in overall matches (2.98) and was second in the conference matches ... averaged 2.00 kills per game will hitting .238

**UILA CRABBE • 5-7 • SO • DS**



Played in every game for BYU this season ... second on the team with 207 digs (2.49 dpg) ... sixth in the conference in digs (2.46) ... second on the team with 25 service aces (.30) ... last year Uila played in 31 of 114 games as a true freshman while appearing in 16 matches after being high school player of the year in Hawaii.



**CARRIE BOWERS • 6-2 • SO • MB**

Played in eight games for the Cougars this year while nursing an injury ... good middle blocker, but can also play righth side ... last year Carrie appeared in four matches, playing only four games as a redshirt freshman.



**MICHELLE MAHAFFEY • 5-6 • JR • DS**

Played in 20 games this season ... averaged 1.00 dig per game for the Cougars, providing a defensive spark ... recorded two service aces with no service errors in limited action ... last year Michelle appeared in six matches, playing in six games as a sophomore.



**BECKY WARNICK • 5-11 • FR • OH**

Played in 25 games this season ... recorded 44 kills (1.76) ... recorded 14 digs ... a well-conditioned athlete with good fundamentals ... last year Becky redshirted after earning first-team All-CIF honors at Capistrano Valley HS (Calif.)



**LINDSEY STEELE • 6-0 • FR • OH**

Played in 22 games ... recorded 11 kills and 8 blocks ... jumps well, quick and very coachable ... last year Lindsey redshirted after earning first-team all-state honors at Mountain View HS (Utah).

**NEWCOMER PLAYER PROFILES**

**ALLISON LARSON • 6-0 • JR • MB/OH**

Played in 20 games this season ... recorded 31 kills (1.55) ... 15 digs and eight blocks ... Allison joins the Cougars from Columbia Basin College in Pasco, Wash. ... was a two-time JC All-American ... hit .432 while averaging 4.66 kills, 3.79 digs and 1.40 blocks last year.

**LAUREN RICHARDS • 5-11 • FR • S/OH**

Relinquished redshirt against Wyoming on Oct. 5 ... played in 58 games this season ... recorded 137 kills (2.36) ... has 26 blocks (.45 bpg) ... Lauren was a three-time all-state first team player and two time state MVP and Gatorade Player of the Year at Timpanogos High School in Orem, Utah ... setter on junior national team ... rated 12th on *Volleyball magazine's* Feb 50 list ... recruited by UCLA, Nebraska, Long Beach State, Stanford, Utah, Colorado State.

**LEXI BROWN • 6-1 • FR • MB**

Redshirt in 2001 ... Lexi was a first-team all-state middle blocker at Jordan High School in Salt Lake City ... recruited by Utah, Arizona State, USC, UCLA, Nebraska, Wisconsin, Tennessee.

**ERIN WEBB • 6-0 • FR • MB**

Redshirt in 2001 ... Erin was an all-state player at Skyline High School in Salt Lake City ... An excellent student, Erin was a high honor roll student and earned an academic scholarship to BYU.

**KRYSTAL CURTIS • 5-5 • FR • DS**

Redshirt in 2001 ... Krystal was defensive all-region as a senior and honorable mention all-region as a junior at Timpanogos High School in Orem, Utah ... three sport athlete who also earned all-region honors in softball and played point guard on the basketball team.

**ELAINE MICHAELIS/coaching profile**



Now in her 40th year at the helm of the BYU program, Elaine Michaelis also enters her seventh year as Director of Women's Athletics. A proven winner, Michaelis is second all-time in

Division I victories with an 887-224-5 record (since records were kept in 1969) and has the most wins ever by a female coach. With BYU's 26-7 record last season, Michaelis posted her 27th consecutive 20-win season and her 29th in 32 years since records have been kept at BYU beginning in 1969. She has never had a losing season. Her team won last year's Mountain West Tournament title after winning the previous season's inaugural MWC regular season title. She has the distinction of winning the inaugural championship in each of the five leagues in which BYU has been a volleyball member. Michaelis is 35-7 in MWC play in three years and now has an overall conference mark of 356-37. She has guided her team to the NCAA tournament 20 times in the 21-year history of NCAA control of the sport, including 12 straight appearances. Her teams have participated in 30 of 33 national tournaments. BYU's two wins last year in the NCAA tournament improved Michaelis' national tournament record to 73-43 (.629). Michaelis is 26-19 (.578) in the NCAA tournament.

**Michaelis' Coaching Record**

Overall (*32 years) .....	887-224-5 (.797)
Conference ** (32 years) .....	356-37 (.906)
MWC (3 years) .....	35-7 (.833)
Reg./Conf. Tourney (17 years) .....	59-12 (.831)
National tourney (29 years) .....	73-43 (.629)
NCAA (19 years) .....	26-19 (.578)
IAIAW (10 years) .....	47-24 (.662)

\*Michaelis has coached volleyball at BYU 39 years but no records were maintained until 1969.

\*\*Five leagues include the Intermountain Conference of Collegiate Women, Intermountain Athletic Conference, High Country Athletic Conference, Western Athletic Conference and Mountain West Conference.

**SCHEDULE**

BYU boasts a typically strong schedule that includes many of the nation's top teams. BYU's schedule included 10 teams that qualified for last year's NCAA tournament in a minimum of 12 matches during their 2001 regular season schedule. Two of those matches were canceled because of the terrorist attacks on the United States. BYU will not play its matches in Hawaii vs. Loyola Marymount and the University of Hawaii, who advanced to the NCAA Final Four last year. Of the eight NCAA teams left on the schedule, seven earned a tournament victory last year. UC Santa Barbara had its run end with a regional final loss to Hawaii while Long Beach State and Colorado State each earned regional semi-final appearances. Utah, Cal Poly, Colorado, and Utah State made it to the second round while Sacramento State earned a spot in the big dance.

**RULE CHANGES**

Women's volleyball will take on a different look in 2001 with several new rule changes. The National Association for Girls and Women in Sports, the official rules-making body for women's collegiate volleyball, released the changes in its "2001-2002 NAGWS Official Rules, Interpretations & Officiating Rulebook." The most noticeable difference this season will be the move from sideout volleyball to a rally scoring format where each play will result in a point. The first four games will be scored to 30 points, with the winner holding a two-point lead. The fifth and deciding game will be played to 15 with the winner leading by two points. Other significant changes involve the serve. Players must serve the ball within eight seconds after the referee authorizes service and will not be allowed a second toss for service. Further, the collegiate game will mimic the international game with the let serve. A served ball will remain in play if it hits the net and continues its path to the opposition's court. A service ace can be earned if the ball falls to the opposition's side of the court on the serve, despite contact with the net on service. The international pursuit rule was also added as an experimental rule for the upcoming season, and can be implemented in a match by agreement of both coaches. The rule allows for a player to retrieve a ball (on second contact) that has crossed the plane of the net to the opponent's free space, provided that player does not touch the opponent's court and sends the ball back to their court, over or outside the antennas, for an opportunity for the third contact.

**2000 SEASON SUMMARY**

The Cougars won the Mountain West Conference Tournament and were ranked as high as No. 10 in 2000 while advancing to the NCAA Regional Semifinals for the fifth straight season, finishing 26-7. The tournament appearance was BYU's 11th straight and its 19th in the 20 years of the NCAA tournament. With its ninth-place tie in the tournament, BYU recorded its 20th overall top-10 national finish in the 32 years the Cougars have competed at the national level. All seven Cougar losses in 2000 were to teams ranked in the top 20 during the season, including a season-ending loss to No. 5 Arizona in the NCAA Central Regional Semifinals in Lincoln, Neb. BYU had won 13 straight matches entering the NCAA Central Regional in Lincoln. Junior middle blocker Nina Puikkonen was named to the AVCA All-America First Team and earned AVCA Sports Imports National Player of the Week honors twice (Sept. 11 and Nov. 20) during the season. She was the only player to earn the award more than once last season. Four BYU players earned All-MWC honors, including juniors Jackie Bundy (MB) and Nina Puikkonen (MB), sophomore Sunny Tonga (MB) and freshman Karina Puikkonen (S). Nina Puikkonen is a two-time All-MWC selection and three-time all-conference player (All-WAC as a freshman). Nina also earned four Mountain West Conference Player of the Week awards (Sept. 11, Oct. 16, Nov. 6, Nov. 20) while sophomore rightside hitter Sunny Tonga earned one MWC Player of the Week award (Oct. 30). Second all-time in division I wins, BYU coach Elaine Michaelis achieved her 850th career win with a 3-0 win over San Diego State on Sept. 23. Michaelis finished the season with an 867-216-5 overall record in 32 seasons since records were kept. She has won an amazing 80 percent of her matches and is the all-time leader in women's volleyball victories among female coaches. The Cougars defeated teams ranked No. 1, No. 2, No. 3 and No. 4 last season with wins over No. 1 Stanford, No. 2 Long Beach State and two wins over Colorado State when the Rams were ranked third and fourth. BYU's last win over the Rams was for the Mountain West Conference Tournament title and ended CSU's nation-best 44-match home court winning streak. The Cougars had a chance to beat a No. 5 team but dropped their bid losing to fifth-ranked Arizona in the NCAA Central Region semifinals. BYU played 14 matches last season against a ranked team. BYU had a 9-5 record in those matches with wins over Stanford, LBSU, Colorado State (2), Utah (2) and Kansas State, UCSB and Utah State. BYU has also played two matches, both losses, against teams who were not ranked at the time but later moved into the top 25 (Notre Dame and Utah State). The Cougars finished the year with an active streak of 11 straight home victories.

**Team Statistics – All Matches**

TEAM STATISTICS	BYU	OPP
<b>ATTACK</b>		
Kills	1637	1422
Errors	670	703
Total Attacks	3803	3844
Attack Pct	.254	.187
Kills/Game	16.5	14.4
<b>SET</b>		
Assists	1461	1286
Assists/Game	14.8	13.0
<b>SERVE</b>		
Aces	141	106
Errors	202	217
Aces/Game	1.4	1.1
<b>SERVE RECEPTIONS</b>		
Errors	106	141
Errors/Game	1.1	1.4
<b>DEFENSE</b>		
Digs	1413	1257
Digs/Game	14.3	12.7
<b>BLOCKING</b>		
Block Solo	52	53
Block Assist	499	353
Total Blocks	301.5	229.5
Blocks Per Game	3.0	2.3
Block Errors	59	47
<b>BALL HANDLING ERRORS</b>		
	32	48
<b>ATTENDANCE</b>		
Total	18415	14206
Dates/Avg Per Date	14/1315	11/1291
Neutral site #/Avg	3/924	
Current win streak	0	-
Home win streak	0	-

**BYU Record ...**

	TEAM RECORD W-L
Overall	.20-8
Conference	.10-4
Home	.11-3
Away	.7-4
Neutral	.2-1
3 games	.14-3
4 games	.4-3
5 games	.2-2
when win first game	.16-2
when win first two games	.14-1
when lose first game	.3-6
when lose first two games	.0-4
when attack pct. over .400	.3-0
when attack pct. over .300	.6-0
when attack pct. over .200	.18-4
when attack pct. under .200	.2-4
when have higher attack percentage	.19-0
when opponent has higher attack percentage	.1-8
when have more kills	.18-2
when opponent has more kills	.1-6
when have more aces	.14-2
when opponent has more aces	.5-4
when have same aces as opponent	.1-2
when have more service errors	.9-3
when opponent has more service errors	.10-5
when have same service errors	.1-0
when have more return errors	.5-4
when opponent has more return errors	.13-1
when have same return errors as opponent	.2-3
when have 5 or less return errors	.18-4
when have more than 5 return errors	.2-3
when have more digs	.16-4
when opponent has more digs	.3-3
when have more team blocks	.18-2
when opponent has more team blocks	.2-5
on Mondays	.1-0
on Tuesdays	.1-1
on Wednesdays	.1-0
on Thursdays	.4-0
on Fridays	.6-4
on Saturdays	.7-3

**BYU 2001 Results**

Date	Opponent	Score	Score-by-game	Overall	Conf	Time	Attend
^ Aug 31, 2001	at Washington	W 3-0	30-25,30-26,32-30	1-0	0-0	1:32	1159
^ Sep 01, 2001	vs Texas Longhorns	2-3 L	30-27,34-32,24-30,27-30,13-15	1-1	0-0	2:35	531
^ Sep 01, 2001	vs Purdue University	W 3-1	30-23,30-21,26-30,30-20	2-1	0-0	1:55	460
Sep 03, 2001	RHODE ISLAND RAMS	W 3-0	30-21,30-19,30-25	3-1	0-0	1:20	1390
Sep 06, 2001	COLORADO BUFFALOES	W 3-2	33-35,30-26,26-30,30-27,15-10	4-1	0-0	2:15	1537
Sep 08, 2001	SW MISSOURI ST BEARS	W 3-0	30-25,30-22,30-24	5-1	0-0	1:25	1428
* Sep 20, 2001	UTAH UTES	W 3-0	30-26,30-25,30-25	6-1	1-0	1:30	1858
Sep 26, 2001	UCSB GAUCHOS	W 3-0	30-27,30-26,30-23	7-1	1-0	1H 30M	1073
* Sep 28, 2001	NEW MEXICO LOBOS	W 3-0	30-18,30-21,30-15	8-1	2-0	1H 15M	1160
* Sep 29, 2001	AIR FORCE FALCONS	W 3-0	30-13,30-20,30-15	9-1	3-0	1H 15M	715
* Oct 05, 2001	at Wyoming Cowgirls	W 3-0	30-24,30-27,30-24	10-1	4-0	1:25	607
* Oct 06, 2001	at Colorado State	0-3 L	18-30,24-30,15-30	10-2	4-1	1:20	5486
* Oct 12, 2001	SAN DIEGO STATE AZTECS	W 3-1	30-27,15-30,30-28,31-29	11-2	5-1	2H	2429
* Oct 13, 2001	UNLV REBELS	W 3-0	30-21,33-31,30-19	12-2	6-1	1H 20M	1168
Oct 16, 2001	USU AGGIES	0-3 L	26-30,23-30,21-30	12-3	6-1	1H 30M	1066
* Oct 19, 2001	at Utah Utes	2-3 L	25-30,30-25,32-30,26-30,12-15	12-4	6-2	2:12	1571
10-25-01	at Sacramento State	W 3-1	28-30,30-18,30-21,30-28	13-4	6-2	1:45	792
* Oct 26, 2001	at Air Force Falcons	W 3-0	30-19,30-18,30-23	14-4	7-2	1:25	288
* Oct 27, 2001	at New Mexico Lobos	W 3-0	30-18,30-18,30-21	15-4	8-2	1:20	324
Oct 30, 2001	at Weber State	W 3-1	30-25,27-30,30-27,30-22	16-4	8-2	1:49	487
* Nov 02, 2001	COLORADO STATE	0-3 L	24-30,28-30,27-30	16-5	8-3	1H 45 M*	2096
* Nov 03, 2001	WYOMING COWGIRLS	W 3-0	30-16,30-20,30-27	17-5	9-3	1H 15M	971
* Nov 09, 2001	at UNLV Rebels	1-3 L	30-16,28-30,28-30,26-30	17-6	9-4	1:54	688
* Nov 10, 2001	at San Diego St Aztecs	W 3-0	30-28,30-27,30-25	18-6	10-4	1:28	313
Nov 15, 2001	WYOMING COWGIRLS	W 3-0	30-14,30-16,30-23	19-6	10-4	1H 20M	503
Nov 16, 2001	UTAH UTES	1-3 L	27-30,30-25,30-32,25-30	19-7	10-4	2H 10M	1021
Nov 23, 2001	vs Cal Poly	W 3-2	28-30,30-20,25-30,30-25,15-7	20-7	10-4	2:10	1780
Nov 24, 2001	at Long Beach State	1-3 L	22-30,30-25,24-30,28-30	20-8	10-4	1:47	2491
* MWC Match							

**ALL MATCHES**

RECORD:	OVERALL	HOME	AWAY	NEUTRAL
ALL MATCHES	20-8	11-3	7-4	2-1
CONFERENCE	10-4	6-1	4-3	0-0
NON-CONFERENCE	10-4	5-2	3-1	2-1

##	STATS SUMMARY	ATTACK					Pct	SET			SERVE			DIG			BLOCKING					Points
		G	K	KPG	E	TA		A	APG	SA	SE	SAPG	RE	DIG	DPG	BS	BA	TB	BPG	BE	BHE	
9	PUIKKONEN, Nina	99	419	4.23	163	860	.298	22	0.22	28	62	0.28	19	226	2.28	15	143	158	1.60	12	1	533.5
15	MAHE, Sunny	97	347	3.58	90	807	.318	66	0.68	30	31	0.31	25	177	1.82	6	94	100	1.03	4	2	430.0
10	BUNDY, Jackie	98	299	3.05	162	679	.202	41	0.42	18	35	0.18	19	198	2.02	10	100	110	1.12	22	4	377.0
2	WHITTAKER, Natalie	99	194	1.96	64	556	.234	39	0.39	20	20	0.20	13	295	2.98	4	42	46	0.46	3	0	239.0
5	PUIKKONEN, Karina	99	148	1.49	33	279	.412	1257	12.70	16	21	0.16	1	188	1.90	10	76	86	0.87	8	23	212.0
11	RICHARDS, Lauren	58	137	2.36	90	338	.139	6	0.10	0	0	0.00	1	19	0.33	5	21	26	0.45	8	2	152.5
4	WARNICK, Becky	25	44	1.76	24	119	.168	4	0.16	0	0	0.00	2	14	0.56	0	6	6	0.24	0	0	47.0
7	LARSON, Allison	20	31	1.55	26	94	.053	1	0.05	1	2	0.05	0	15	0.75	1	7	8	0.40	0	0	36.5
12	CRABBE, Uila	99	4	0.04	7	24	-.125	20	0.20	26	29	0.26	20	248	2.51	0	0	0	0.00	0	0	30.0
6	STEELE, Lindsey	22	11	0.50	8	37	.081	2	0.09	0	0	0.00	1	7	0.32	1	7	8	0.36	2	0	15.5
8	BOWERS, Carrie	8	3	0.38	3	10	.000	0	0.00	0	2	0.00	0	6	0.75	0	3	3	0.38	0	0	4.5
17	MAHAFFEY, Michelle	20	0	0.00	0	0	.000	3	0.15	2	0	0.10	4	20	1.00	0	0	0	0.00	0	0	2.0
TEAM		1																				
	BYU COUGARS.....	99	1637	16.54	670	3803	.254	1461	14.76	141	202	1.42	106	1413	14.27	52	499	301.5	3.05	59	32	2079.5
	Opponents.....	99	1422	14.36	703	3844	.187	1286	12.99	106	217	1.07	141	1257	12.70	53	353	229.5	2.32	47	48	1757.5

**MOUNTAIN WEST CONFERENCE MATCHES**

RECORD:	OVERALL	HOME	AWAY	NEUTRAL
ALL MATCHES	10-4	6-1	4-3	0-0
CONFERENCE	10-4	6-1	4-3	0-0
NON-CONFERENCE	0-0	0-0	0-0	0-0

##	STATS SUMMARY	ATTACK					Pct	SET			SERVE			DIG			BLOCKING					Points
		G	K	KPG	E	TA		A	APG	SA	SE	SAPG	RE	DIG	DPG	BS	BA	TB	BPG	BE	BHE	
9	PUIKKONEN, Nina	46	187	4.07	65	374	.326	9	0.20	11	28	0.24	9	92	2.00	8	63	71	1.54	4	0	237.5
15	MAHE, Sunny	44	155	3.52	39	351	.330	33	0.75	12	10	0.27	11	62	1.41	1	40	41	0.93	3	0	188.0
10	BUNDY, Jackie	45	142	3.16	80	298	.208	20	0.44	13	15	0.29	15	75	1.67	5	52	57	1.27	6	2	186.0
2	WHITTAKER, Natalie	46	98	2.13	27	271	.262	14	0.30	9	6	0.20	6	138	3.00	2	14	16	0.35	2	0	116.0
5	PUIKKONEN, Karina	46	71	1.54	18	135	.393	574	12.48	7	8	0.15	0	89	1.93	3	43	46	1.00	4	8	102.5
11	RICHARDS, Lauren	35	71	2.03	56	185	.081	4	0.11	0	0	0.00	0	10	0.29	4	11	15	0.43	6	1	80.5
6	STEELE, Lindsey	14	10	0.71	6	25	.160	2	0.14	0	0	0.00	1	3	0.21	0	5	5	0.36	2	0	12.5
12	CRABBE, Uila	46	3	0.07	4	13	-.077	9	0.20	9	9	0.20	10	118	2.57	0	0	0	0.00	0	0	12.0
4	WARNICK, Becky	7	11	1.57	5	32	.188	2	0.29	0	0	0.00	0	3	0.43	0	0	0	0.00	0	0	11.0
7	LARSON, Allison	4	6	1.50	8	18	-.111	0	0.00	1	1	0.25	0	4	1.00	0	4	4	1.00	0	0	9.0
8	BOWERS, Carrie	6	1	0.17	2	7	-.143	0	0.00	0	1	0.00	0	3	0.50	0	3	3	0.50	0	0	2.5
17	MAHAFFEY, Michelle	12	0	0.00	0	0	.000	3	0.25	2	0	0.17	3	16	1.33	0	0	0	0.00	0	0	2.0
TEAM		0																				
	BYU COUGARS.....	46	755	16.41	310	1709	.260	670	14.57	64	78	1.39	55	613	13.33	23	235	140.5	3.05	27	11	959.5
	Opponents.....	46	642	13.96	329	1721	.182	584	12.70	55	111	1.20	64	543	11.80	22	175	109.5	2.38	22	22	806.5

Opponent	Score	GP	ATTACK				SET		SERVE	
			Kills	Errors	Total	Pct	A	SA	SE	
Washington.....	3-0	3	49/46	17/20	114/110	.281/ .236	41/45	7/5	11/12	
Texas Longhorns.....	2-3	5	77/79	40/30	210/209	.176/ .234	69/65	9/9	10/8	
Purdue University...	3-1	4	71/48	31/28	171/170	.234/ .118	64/43	9/3	14/6	
RHODE ISLAND RAMS...	3-0	3	48/36	15/30	109/121	.303/ .050	40/31	5/2	11/7	
COLORADO BUFFALOES..	3-2	5	72/77	25/35	168/196	.280/ .214	69/73	5/7	18/18	
SW MISSOURI ST BEARS	3-0	3	46/32	24/31	112/108	.196/ .009	39/30	4/5	10/4	
UTAH UTES.....	3-0	3	49/44	19/22	114/125	.263/ .176	45/40	3/3	7/13	
UCSB GAUCHOS.....	3-0	3	57/45	20/22	134/131	.276/ .176	52/42	5/3	7/2	
NEW MEXICO LOBOS....	3-0	3	54/28	12/21	92/93	.457/ .075	46/27	7/3	7/8	
AIR FORCE FALCONS...	3-0	3	55/25	13/19	104/103	.404/ .058	46/23	4/2	6/10	
Wyoming Cowgirls...	3-0	3	50/37	26/31	114/114	.211/ .053	42/33	2/4	5/4	
Colorado State.....	0-3	3	40/63	21/8	105/103	.181/ .534	35/55	0/2	4/9	
San Diego St AZTECS..	3-1	4	67/64	37/28	182/161	.165/ .224	58/59	4/6	7/3	
UNLV REBELS.....	3-0	3	50/38	22/19	123/118	.228/ .161	43/36	9/4	6/11	
USU AGGIES.....	0-3	3	55/54	22/10	123/111	.268/ .396	49/50	2/4	8/2	
Utah Utes.....	2-3	5	73/79	38/36	194/197	.180/ .218	69/72	3/6	7/9	
Sacramento State....	3-1	4	71/59	27/33	170/182	.259/ .143	66/55	6/3	5/8	
Air Force Falcons...	3-0	3	48/26	18/26	94/86	.319/ .000	40/26	9/5	8/4	
New Mexico Lobos....	3-0	3	55/33	17/19	107/98	.355/ .143	52/28	7/2	5/8	
Weber State.....	3-1	4	76/64	32/30	157/158	.280/ .215	75/58	5/0	7/5	
COLORADO STATE.....	0-3	3	45/62	18/23	123/141	.220/ .277	43/59	4/4	3/5	
WYOMING COWGIRLS...	3-0	3	53/35	21/27	109/114	.294/ .070	45/32	2/1	3/8	
UNLV Rebels.....	1-3	4	68/60	27/19	149/147	.275/ .279	62/51	8/9	6/11	
San Diego St Aztecs..	3-0	3	48/48	21/31	99/121	.273/ .140	44/43	2/4	4/8	
WYOMING COWGIRLS...	3-0	3	47/36	12/26	81/100	.432/ .100	40/32	7/0	4/8	
UTAH UTES.....	1-3	4	62/76	26/29	156/172	.231/ .273	58/67	7/6	6/9	
Cal Poly.....	3-2	5	87/60	38/25	214/204	.229/ .172	75/50	3/2	6/8	
Long Beach State....	1-3	4	64/68	31/25	175/151	.189/ .285	54/61	3/2	7/9	
Totals.....	67-32	99	1637/1422	670/703	3803/3844	.254/ .187	1461/1286	141/106	202/217	

Opponent	PASS		DEF		BLOCK				GEN	
	RE	DIG	BS	BA	BE	Total	BHE			
Washington.....	5/7	43/42	2-14	/ 1-8	1/1	9.0/ 5.0	2/0			
Texas Longhorns.....	9/9	86/74	0-22	/ 4-18	1/0	11.0/ 13.0	0/1			
Purdue University...	3/9	72/61	3-20	/ 1-6	2/3	13.0/ 4.0	1/2			
RHODE ISLAND RAMS...	2/5	48/36	7-14	/ 0-6	2/1	14.0/ 3.0	0/0			
COLORADO BUFFALOES..	7/5	62/63	3-22	/ 2-16	4/0	14.0/ 10.0	0/3			
SW MISSOURI ST BEARS	5/4	32/33	1-31	/ 1-12	1/1	16.5/ 7.0	0/4			
UTAH UTES.....	3/3	47/39	4-10	/ 0-10	0/2	9.0/ 5.0	1/2			
UCSB GAUCHOS.....	3/5	49/47	2-20	/ 1-8	2/0	12.0/ 5.0	1/1			
NEW MEXICO LOBOS....	3/7	37/20	1-12	/ 2-7	1/0	7.0/ 5.5	3/0			
AIR FORCE FALCONS...	2/4	51/33	1-10	/ 1-2	0/1	6.0/ 2.0	0/2			
Wyoming Cowgirls...	4/2	40/35	3-18	/ 3-2	0/0	12.0/ 4.0	0/0			
Colorado State.....	2/0	23/34	0-4	/ 4-15	0/0	2.0/ 11.5	0/0			
San Diego St AZTECS..	6/4	61/65	2-24	/ 3-20	5/3	14.0/ 13.0	0/2			
UNLV REBELS.....	4/9	52/42	0-21	/ 0-20	1/2	10.5/ 10.0	1/4			
USU AGGIES.....	4/2	41/37	3-4	/ 2-10	6/4	5.0/ 7.0	1/2			
Utah Utes.....	6/3	67/71	3-28	/ 2-27	3/5	17.0/ 15.5	0/4			
Sacramento State....	3/6	68/63	1-26	/ 3-18	2/3	14.0/ 12.0	3/0			
Air Force Falcons...	5/9	22/22	1-22	/ 1-4	2/2	12.0/ 3.0	0/1			
New Mexico Lobos....	2/7	39/35	0-16	/ 0-10	1/3	8.0/ 5.0	1/3			
Weber State.....	0/5	52/40	3-10	/ 1-18	0/0	8.0/ 10.0	1/1			
COLORADO STATE.....	4/4	45/44	1-10	/ 0-14	3/1	6.0/ 7.0	0/1			
WYOMING COWGIRLS...	1/2	42/32	2-14	/ 1-6	2/0	9.0/ 4.0	1/1			
UNLV Rebels.....	9/8	54/46	1-18	/ 2-16	3/2	10.0/ 10.0	2/1			
San Diego St Aztecs..	4/2	33/25	4-28	/ 3-22	6/1	18.0/ 14.0	2/1			
WYOMING COWGIRLS...	0/7	35/21	1-16	/ 2-2	3/4	9.0/ 3.0	1/2			
UTAH UTES.....	6/7	58/58	2-16	/ 3-20	3/4	10.0/ 13.0	3/4			
Cal Poly.....	2/3	102/70	1-22	/ 7-20	3/1	12.0/ 17.0	4/3			
Long Beach State....	2/3	52/69	0-27	/ 3-16	2/3	13.5/ 11.0	4/3			
Totals.....	106/141	1413/1257	52-499	/ 53-353	59/47	301.5/229.5	32/48			

Note: Match totals are displayed in the format TEAM/OPPONENT for each category

### ATTACK PERCENT (K-E-TA) minimum 12 kills

.457 (54-12- 92) . . . vs New Mexico Lobos (Sep 28, 2001)  
 .432 (47-12- 81) . . . vs Wyoming Cowgirls (Nov 15, 2001)  
 .404 (55-13-104) . . . vs Air Force Falcons (Sep 29, 2001)  
 .355 (55-17-107) . . . at New Mexico Lobos (Oct 27, 2001)  
 .319 (48-18- 94) . . . at Air Force Falcons (Oct 26, 2001)

### KILLS (K-E-TA)

87 (87-38-214) 5g . . . at Cal Poly (Nov 23, 2001)  
 77 (77-40-210) 5g . . . vs Texas Longhorns (Sep 01, 2001)  
 76 (76-32-157) 4g . . . at Weber State (Oct 30, 2001)  
 73 (73-38-194) 5g . . . at Utah Utes (Oct 19, 2001)  
 72 (72-25-168) 5g . . . vs Colorado Buffaloes (Sep 06, 2001)

### KILLS 3-GAMES (K-E-TA)

57 (57-20-134) . . . vs UCSB Gauchos (Sep 26, 2001)  
 55 (55-13-104) . . . vs Air Force Falcons (Sep 29, 2001)  
 55 (55-22-123) . . . vs USU Aggies (Oct 16, 2001)  
 55 (55-17-107) . . . at New Mexico Lobos (Oct 27, 2001)  
 54 (54-12- 92) . . . vs New Mexico Lobos (Sep 28, 2001)

### KILLS 4-GAMES (K-E-TA)

76 (76-32-157) . . . at Weber State (Oct 30, 2001)  
 71 (71-31-171) . . . vs Purdue University (Sep 01, 2001)  
 71 (71-27-170) . . . at Sacramento State (10-25-01)  
 68 (68-27-149) . . . at UNLV Rebels (Nov 09, 2001)  
 67 (67-37-182) . . . vs SDS Aztecs (Oct 12, 2001)

### KILLS 5-GAMES (K-E-TA)

87 (87-38-214) . . . at Cal Poly (Nov 23, 2001)  
 77 (77-40-210) . . . vs Texas Longhorns (Sep 01, 2001)  
 73 (73-38-194) . . . at Utah Utes (Oct 19, 2001)  
 72 (72-25-168) . . . vs Colorado Buffaloes (Sep 06, 2001)

### TOTAL ATTEMPTS (K-E-TA)

214 (87-38-214) 5g . . . at Cal Poly (Nov 23, 2001)  
 210 (77-40-210) 5g . . . vs Texas Longhorns (Sep 01, 2001)  
 194 (73-38-194) 5g . . . at Utah Utes (Oct 19, 2001)  
 182 (67-37-182) 4g . . . vs SDS Aztecs (Oct 12, 2001)  
 175 (64-31-175) 4g . . . at Long Beach State (Nov 24, 2001)

### TOTAL ATTEMPTS 3-GAMES (K-E-TA)

134 (57-20-134) . . . vs UCSB Gauchos (Sep 26, 2001)  
 123 (45-18-123) . . . vs Colorado State (Nov 02, 2001)  
 123 (50-22-123) . . . vs UNLV Rebels (Oct 13, 2001)  
 123 (55-22-123) . . . vs USU Aggies (Oct 16, 2001)  
 114 (49-19-114) . . . vs Utah Utes (Sep 20, 2001)

### TOTAL ATTEMPTS 4-GAMES (K-E-TA)

182 (67-37-182) . . . vs SDS Aztecs (Oct 12, 2001)  
 175 (64-31-175) . . . at Long Beach State (Nov 24, 2001)  
 171 (71-31-171) . . . vs Purdue University (Sep 01, 2001)  
 170 (71-27-170) . . . at Sacramento State (10-25-01)  
 157 (76-32-157) . . . at Weber State (Oct 30, 2001)

### TOTAL ATTEMPTS 5-GAMES (K-E-TA)

214 (87-38-214) . . . at Cal Poly (Nov 23, 2001)  
 210 (77-40-210) . . . vs Texas Longhorns (Sep 01, 2001)  
 194 (73-38-194) . . . at Utah Utes (Oct 19, 2001)  
 168 (72-25-168) . . . vs Colorado Buffaloes (Sep 06, 2001)

### ASSISTS

75 (5g) . . . . . at Cal Poly (Nov 23, 2001)  
 75 (4g) . . . . . at Weber State (Oct 30, 2001)  
 69 (5g) . . . . . vs Colorado Buffaloes (Sep 06, 2001)  
 69 (5g) . . . . . vs Texas Longhorns (Sep 01, 2001)  
 69 (5g) . . . . . at Utah Utes (Oct 19, 2001)

### ASSISTS 3-GAMES

52 . . . . . at New Mexico Lobos (Oct 27, 2001)  
 52 . . . . . vs UCSB Gauchos (Sep 26, 2001)  
 49 . . . . . vs USU Aggies (Oct 16, 2001)  
 46 . . . . . vs New Mexico Lobos (Sep 28, 2001)  
 46 . . . . . vs Air Force Falcons (Sep 29, 2001)

### ASSISTS 4-GAMES

75 . . . . . at Weber State (Oct 30, 2001)  
 66 . . . . . at Sacramento State (10-25-01)  
 64 . . . . . vs Purdue University (Sep 01, 2001)  
 62 . . . . . at UNLV Rebels (Nov 09, 2001)  
 58 . . . . . vs SDS Aztecs (Oct 12, 2001)

### ASSISTS 5-GAMES

75 . . . . . at Cal Poly (Nov 23, 2001)  
 69 . . . . . vs Colorado Buffaloes (Sep 06, 2001)  
 69 . . . . . vs Texas Longhorns (Sep 01, 2001)  
 69 . . . . . at Utah Utes (Oct 19, 2001)

### DIGS

102 (5g) . . . . . at Cal Poly (Nov 23, 2001)  
 86 (5g) . . . . . vs Texas Longhorns (Sep 01, 2001)  
 72 (4g) . . . . . vs Purdue University (Sep 01, 2001)  
 68 (4g) . . . . . at Sacramento State (10-25-01)  
 67 (5g) . . . . . at Utah Utes (Oct 19, 2001)

### DIGS 3-GAMES

52 . . . . . vs UNLV Rebels (Oct 13, 2001)  
 51 . . . . . vs Air Force Falcons (Sep 29, 2001)  
 49 . . . . . vs UCSB Gauchos (Sep 26, 2001)  
 48 . . . . . vs RHODE ISLAND Rams (Sep 03, 2001)  
 47 . . . . . vs Utah Utes (Sep 20, 2001)

### DIGS 4-GAMES

72 . . . . . vs Purdue University (Sep 01, 2001)  
 68 . . . . . at Sacramento State (10-25-01)  
 61 . . . . . vs SDS Aztecs (Oct 12, 2001)  
 58 . . . . . vs Utah Utes (Nov 16, 2001)  
 54 . . . . . at UNLV Rebels (Nov 09, 2001)

### DIGS 5-GAMES

102 . . . . . at Cal Poly (Nov 23, 2001)  
 86 . . . . . vs Texas Longhorns (Sep 01, 2001)  
 67 . . . . . at Utah Utes (Oct 19, 2001)  
 62 . . . . . vs Colorado Buffaloes (Sep 06, 2001)

### ACES

9 . . . . . at Air Force Falcons (Oct 26, 2001)  
 9 . . . . . vs Purdue University (Sep 01, 2001)  
 9 . . . . . vs Texas Longhorns (Sep 01, 2001)  
 9 . . . . . vs UNLV Rebels (Oct 13, 2001)  
 8 . . . . . at UNLV Rebels (Nov 09, 2001)

### BLOCKS

18.0 . . . . . at San Diego St Aztecs (Nov 10, 2001)  
 17.0 . . . . . at Utah Utes (Oct 19, 2001)  
 16.5 . . . . . vs SW Missouri ST Bears (Sep 08, 2001)  
 14.0 . . . . . vs RHODE ISLAND Rams (Sep 03, 2001)  
 14.0 . . . . . at Sacramento State (10-25-01)  
 14.0 . . . . . vs SDS Aztecs (Oct 12, 2001)  
 14.0 . . . . . vs Colorado Buffaloes (Sep 06, 2001)  
 13.5 . . . . . at Long Beach State (Nov 24, 2001)  
 13.0 . . . . . vs Purdue University (Sep 01, 2001)  
 12.0 . . . . . vs UCSB Gauchos (Sep 26, 2001)

### ATTACK PERCENT (K-E-TA) minimum 12 kills

.750 (16- 1-20) . . . MAHE, Sunny vs Air Force Falcons (Sep 29, 2001)  
 .724 (22- 1-29) . . . MAHE, Sunny vs Purdue University (Sep 01, 2001)  
 .667 (14- 2-18) . . . MAHE, Sunny vs SW Missouri ST Bears (Sep 08, 2001)  
 .647 (13- 2-17) . . . MAHE, Sunny vs New Mexico Lobos (Sep 28, 2001)  
 .611 (14- 3-18) . . . PUIKKONEN, Nina vs Wyoming Cowgirls (Nov 15, 2001)

### KILLS (K-E-TA)

32 (32- 3-56) 5g . . . PUIKKONEN, Nina at Cal Poly (Nov 23, 2001)  
 24 (24- 7-42) 4g . . . PUIKKONEN, Nina at UNLV Rebels (Nov 09, 2001)  
 24 (24- 3-42) 5g . . . PUIKKONEN, Nina at Utah Utes (Oct 19, 2001)  
 22 (22- 1-29) 4g . . . MAHE, Sunny vs Purdue University (Sep 01, 2001)  
 21 (21- 7-35) 4g . . . PUIKKONEN, Nina at Sacramento State (10-25-01)

### KILLS 3-GAMES (K-E-TA)

17 (17- 3-23) . . . PUIKKONEN, Nina at Air Force Falcons (Oct 26, 2001)  
 16 (16- 6-36) . . . PUIKKONEN, Nina vs UCSB Gauchos (Sep 26, 2001)  
 16 (16- 1-20) . . . MAHE, Sunny vs Air Force Falcons (Sep 29, 2001)  
 15 (15- 7-34) . . . PUIKKONEN, Nina vs UNLV Rebels (Oct 13, 2001)  
 15 (15- 4-31) . . . PUIKKONEN, Nina vs RHODE ISLAND Rams (Sep 03, 2001)

### KILLS 4-GAMES (K-E-TA)

24 (24- 7-42) . . . PUIKKONEN, Nina at UNLV Rebels (Nov 09, 2001)  
 22 (22- 1-29) . . . MAHE, Sunny vs Purdue University (Sep 01, 2001)  
 21 (21- 9-50) . . . PUIKKONEN, Nina vs SDS Aztecs (Oct 12, 2001)  
 21 (21- 7-35) . . . PUIKKONEN, Nina at Sacramento State (10-25-01)  
 21 (21- 5-36) . . . PUIKKONEN, Nina vs Utah Utes (Nov 16, 2001)

### KILLS 5-GAMES (K-E-TA)

32 (32- 3-56) . . . PUIKKONEN, Nina at Cal Poly (Nov 23, 2001)  
 24 (24- 3-42) . . . PUIKKONEN, Nina at Utah Utes (Oct 19, 2001)  
 19 (19- 6-48) . . . PUIKKONEN, Nina vs Texas Longhorns (Sep 01, 2001)  
 19 (19- 8-39) . . . PUIKKONEN, Nina vs Colorado Buffaloes (Sep 06, 2001)  
 16 (16-11-40) . . . BUNDY, Jackie vs Texas Longhorns (Sep 01, 2001)

### TOTAL ATTEMPTS (K-E-TA)

56 (32- 3-56) 5g . . . PUIKKONEN, Nina at Cal Poly (Nov 23, 2001)  
 50 (21- 9-50) 4g . . . PUIKKONEN, Nina vs SDS Aztecs (Oct 12, 2001)  
 48 (19- 6-48) 5g . . . PUIKKONEN, Nina vs Texas Longhorns (Sep 01, 2001)  
 46 (16- 6-46) 5g . . . MAHE, Sunny at Utah Utes (Oct 19, 2001)  
 46 (14- 7-46) 5g . . . MAHE, Sunny vs Texas Longhorns (Sep 01, 2001)

### TOTAL ATTEMPTS 3-GAMES (K-E-TA)

36 (16- 6-36) . . . PUIKKONEN, Nina vs UCSB Gauchos (Sep 26, 2001)  
 34 (15- 7-34) . . . PUIKKONEN, Nina vs UNLV Rebels (Oct 13, 2001)  
 33 (12- 4-33) . . . MAHE, Sunny vs USU Aggies (Oct 16, 2001)  
 32 (11-12-32) . . . PUIKKONEN, Nina vs SW Missouri ST Bears (Sep 08, 2001)  
 31 (12- 3-31) . . . MAHE, Sunny vs Colorado State (Nov 02, 2001)

### TOTAL ATTEMPTS 4-GAMES (K-E-TA)

50 (21- 9-50) . . . PUIKKONEN, Nina vs SDS Aztecs (Oct 12, 2001)  
 44 (17- 3-44) . . . MAHE, Sunny at Sacramento State (10-25-01)  
 43 (20- 6-43) . . . RICHARDS, Lauren at Long Beach State (Nov 24, 2001)  
 42 (24- 7-42) . . . PUIKKONEN, Nina at UNLV Rebels (Nov 09, 2001)  
 41 (14-12-41) . . . PUIKKONEN, Nina vs Purdue University (Sep 01, 2001)

### TOTAL ATTEMPTS 5-GAMES (K-E-TA)

56 (32- 3-56) . . . PUIKKONEN, Nina at Cal Poly (Nov 23, 2001)  
 48 (19- 6-48) . . . PUIKKONEN, Nina vs Texas Longhorns (Sep 01, 2001)  
 46 (14- 7-46) . . . MAHE, Sunny vs Texas Longhorns (Sep 01, 2001)  
 46 (16- 6-46) . . . MAHE, Sunny at Utah Utes (Oct 19, 2001)  
 45 (16- 4-45) . . . MAHE, Sunny at Cal Poly (Nov 23, 2001)

### POINTS

38.5 (32- 1- 5.5) 5g PUIKKONEN, Nina at Cal Poly (Nov 23, 2001)  
 28.5 (21- 2- 5.5) 4g PUIKKONEN, Nina vs SDS Aztecs (Oct 12, 2001)  
 28.5 (24- 2- 2.5) 4g PUIKKONEN, Nina at UNLV Rebels (Nov 09, 2001)  
 28.0 (24- 0- 4.0) 5g PUIKKONEN, Nina at Utah Utes (Oct 19, 2001)  
 26.0 (21- 2- 3.0) 4g PUIKKONEN, Nina vs Utah Utes (Nov 16, 2001)

### POINTS 3-GAMES

23.5 (17- 1- 5.5) . . . PUIKKONEN, Nina at Air Force Falcons (Oct 26, 2001)  
 22.5 (14- 4- 4.5) . . . MAHE, Sunny vs SW Missouri ST Bears (Sep 08, 2001)  
 20.5 (16- 0- 4.5) . . . PUIKKONEN, Nina vs UCSB Gauchos (Sep 26, 2001)  
 20.5 (15- 2- 3.5) . . . BUNDY, Jackie vs New Mexico Lobos (Sep 28, 2001)  
 18.5 (16- 1- 1.5) . . . MAHE, Sunny vs Air Force Falcons (Sep 29, 2001)

### POINTS 4-GAMES

28.5 (21- 2- 5.5) . . . PUIKKONEN, Nina vs SDS Aztecs (Oct 12, 2001)  
 28.5 (24- 2- 2.5) . . . PUIKKONEN, Nina at UNLV Rebels (Nov 09, 2001)  
 26.0 (21- 2- 3.0) . . . PUIKKONEN, Nina vs Utah Utes (Nov 16, 2001)  
 25.5 (21- 0- 4.5) . . . PUIKKONEN, Nina at Sacramento State (10-25-01)  
 25.0 (22- 0- 3.0) . . . MAHE, Sunny vs Purdue University (Sep 01, 2001)

### POINTS 5-GAMES

38.5 (32- 1- 5.5) . . . PUIKKONEN, Nina at Cal Poly (Nov 23, 2001)  
 28.0 (24- 0- 4.0) . . . PUIKKONEN, Nina at Utah Utes (Oct 19, 2001)  
 23.5 (19- 1- 3.5) . . . PUIKKONEN, Nina vs Texas Longhorns (Sep 01, 2001)  
 23.0 (19- 3- 1.0) . . . PUIKKONEN, Nina vs Colorado Buffaloes (Sep 06, 2001)  
 20.5 (15- 0- 5.5) . . . BUNDY, Jackie vs Colorado Buffaloes (Sep 06, 2001)

### ASSISTS

67 (4g) . . . . . PUIKKONEN, Karina at Weber State (Oct 30, 2001)  
 66 (5g) . . . . . PUIKKONEN, Karina at Cal Poly (Nov 23, 2001)  
 62 (5g) . . . . . PUIKKONEN, Karina at Utah Utes (Oct 19, 2001)  
 57 (4g) . . . . . PUIKKONEN, Karina at Sacramento State (10-25-01)  
 57 (5g) . . . . . PUIKKONEN, Karina vs Texas Longhorns (Sep 01, 2001)

### ASSISTS 3-GAMES

45 . . . . . PUIKKONEN, Karina vs USU Aggies (Oct 16, 2001)  
 43 . . . . . PUIKKONEN, Karina vs UCSB Gauchos (Sep 26, 2001)  
 42 . . . . . PUIKKONEN, Karina at Wyoming Cowgirls (Oct 05, 2001)  
 41 . . . . . PUIKKONEN, Karina at New Mexico Lobos (Oct 27, 2001)  
 40 . . . . . PUIKKONEN, Karina at San Diego St Aztecs (Nov 10, 2001)

### ASSISTS 4-GAMES

67 . . . . . PUIKKONEN, Karina at Weber State (Oct 30, 2001)  
 57 . . . . . PUIKKONEN, Karina at Sacramento State (10-25-01)  
 55 . . . . . PUIKKONEN, Karina at UNLV Rebels (Nov 09, 2001)  
 54 . . . . . PUIKKONEN, Karina vs Purdue University (Sep 01, 2001)  
 51 . . . . . PUIKKONEN, Karina vs Utah Utes (Nov 16, 2001)

### ASSISTS 5-GAMES

66 . . . . . PUIKKONEN, Karina at Cal Poly (Nov 23, 2001)  
 62 . . . . . PUIKKONEN, Karina at Utah Utes (Oct 19, 2001)  
 57 . . . . . PUIKKONEN, Karina vs Texas Longhorns (Sep 01, 2001)  
 56 . . . . . PUIKKONEN, Karina vs Colorado Buffaloes (Sep 06, 2001)  
 5 . . . . . MAHE, Sunny vs Colorado Buffaloes (Sep 06, 2001)

### DIGS

20 (5g) . . . . . PUIKKONEN, Nina at Cal Poly (Nov 23, 2001)  
 20 (5g) . . . . . BUNDY, Jackie at Cal Poly (Nov 23, 2001)  
 19 (5g) . . . . . WHITTAKER, Natalie vs Texas Longhorns (Sep 01, 2001)  
 19 (5g) . . . . . MAHE, Sunny at Cal Poly (Nov 23, 2001)  
 18 (4g) . . . . . PUIKKONEN, Nina at Sacramento State (10-25-01)

### DIGS 3-GAMES

15 . . . . . WHITTAKER, Natalie vs RHODE ISLAND Rams (Sep 03, 2001)  
 15 . . . . . WHITTAKER, Natalie at San Diego St Aztecs (Nov 10, 2001)  
 13 . . . . . BUNDY, Jackie at Washington (Aug 31, 2001)  
 13 . . . . . WHITTAKER, Natalie vs Utah Utes (Sep 20, 2001)  
 13 . . . . . WHITTAKER, Natalie vs UNLV Rebels (Oct 13, 2001)

### DIGS 4-GAMES

18 . . . . . PUIKKONEN, Nina at Sacramento State (10-25-01)  
 17 . . . . . WHITTAKER, Natalie at Sacramento State (10-25-01)  
 16 . . . . . WHITTAKER, Natalie vs SDS Aztecs (Oct 12, 2001)  
 16 . . . . . CRABBE, Uila at UNLV Rebels (Nov 09, 2001)  
 15 . . . . . WHITTAKER, Natalie vs Purdue University (Sep 01, 2001)

### DIGS 5-GAMES

20 . . . . . BUNDY, Jackie at Cal Poly (Nov 23, 2001)  
 20 . . . . . PUIKKONEN, Nina at Cal Poly (Nov 23, 2001)  
 19 . . . . . WHITTAKER, Natalie vs Texas Longhorns (Sep 01, 2001)  
 19 . . . . . MAHE, Sunny at Cal Poly (Nov 23, 2001)  
 17 . . . . . CRABBE, Uila vs Texas Longhorns (Sep 01, 2001)

### ACES

5 . . . . . WHITTAKER, Natalie at Air Force Falcons (Oct 26, 2001)  
 4 . . . . . BUNDY, Jackie vs UNLV Rebels (Oct 13, 2001)  
 4 . . . . . MAHE, Sunny vs SW Missouri ST Bears (Sep 08, 2001)  
 4 . . . . . CRABBE, Uila vs Texas Longhorns (Sep 01, 2001)  
 4 . . . . . CRABBE, Uila vs Purdue University (Sep 01, 2001)

### BLOCKS (BS-BA)

11 ( 0-11) . . . . . PUIKKONEN, Nina at Cal Poly (Nov 23, 2001)  
 10 ( 1- 9) . . . . . BUNDY, Jackie vs Colorado Buffaloes (Sep 06, 2001)  
 10 ( 1- 9) . . . . . PUIKKONEN, Nina at Air Force Falcons (Oct 26, 2001)  
 10 ( 0-10) . . . . . PUIKKONEN, Nina vs SW Missouri ST Bears (Sep 08, 2001)  
 9 ( 2- 7) . . . . . PUIKKONEN, Nina vs SDS Aztecs (Oct 12, 2001)  
 9 ( 0- 9) . . . . . PUIKKONEN, Nina at Sacramento State (10-25-01)  
 9 ( 0- 9) . . . . . MAHE, Sunny vs SW Missouri ST Bears (Sep 08, 2001)  
 8 ( 1- 7) . . . . . PUIKKONEN, Nina vs UCSB Gauchos (Sep 26, 2001)  
 8 ( 1- 7) . . . . . PUIKKONEN, Nina at San Diego St Aztecs (Nov 10, 2001)  
 8 ( 0- 8) . . . . . PUIKKONEN, Nina at Utah Utes (Oct 19, 2001)

##	ATTACK (by Pct)	G	K	K/Game	E	TA	Pct	##	KILL (by K/Game)	G	K	K/Game
5	PUIKKONEN, Karina	99	148	1.49	33	279	.412	9	PUIKKONEN, Nina	99	419	4.23
15	MAHE, Sunny	97	347	3.58	90	807	.318	15	MAHE, Sunny	97	347	3.58
9	PUIKKONEN, Nina	99	419	4.23	163	860	.298	10	BUNDY, Jackie	98	299	3.05
2	WHITTAKER, Natalie	99	194	1.96	64	556	.234	11	RICHARDS, Lauren	58	137	2.36
10	BUNDY, Jackie	98	299	3.05	162	679	.202	2	WHITTAKER, Natalie	99	194	1.96
4	WARNICK, Becky	25	44	1.76	24	119	.168	4	WARNICK, Becky	25	44	1.76
11	RICHARDS, Lauren	58	137	2.36	90	338	.139	7	LARSON, Allison	20	31	1.55
6	STEELE, Lindsey	22	11	0.50	8	37	.081	5	PUIKKONEN, Karina	99	148	1.49
7	LARSON, Allison	20	31	1.55	26	94	.053	6	STEELE, Lindsey	22	11	0.50
8	BOWERS, Carrie	8	3	0.38	3	10	.000	8	BOWERS, Carrie	8	3	0.38
12	CRABBE, Uila	99	4	0.04	7	24	-.125	12	CRABBE, Uila	99	4	0.04
	BYU COUGARS.....	99	1637	16.54	670	3803	.254		BYU COUGARS.....	99	1637	16.54
	Opponents.....	99	1422	14.36	703	3844	.187		Opponents.....	99	1422	14.36

##	SET (by A)	G	A	A/Game	##	SERVE (by ##)	G	SA	SE	SA/G
5	PUIKKONEN, Karina	99	1257	12.70	2	WHITTAKER, Natalie	99	20	20	0.20
15	MAHE, Sunny	97	66	0.68	4	WARNICK, Becky	25	0	0	0.00
10	BUNDY, Jackie	98	41	0.42	5	PUIKKONEN, Karina	99	16	21	0.16
2	WHITTAKER, Natalie	99	39	0.39	6	STEELE, Lindsey	22	0	0	0.00
9	PUIKKONEN, Nina	99	22	0.22	7	LARSON, Allison	20	1	2	0.05
12	CRABBE, Uila	99	20	0.20	8	BOWERS, Carrie	8	0	2	0.00
11	RICHARDS, Lauren	58	6	0.10	9	PUIKKONEN, Nina	99	28	62	0.28
4	WARNICK, Becky	25	4	0.16	10	BUNDY, Jackie	98	18	35	0.18
17	MAHAFFEY, Michelle	20	3	0.15	11	RICHARDS, Lauren	58	0	0	0.00
6	STEELE, Lindsey	22	2	0.09	12	CRABBE, Uila	99	26	29	0.26
7	LARSON, Allison	20	1	0.05	15	MAHE, Sunny	97	30	31	0.31
8	BOWERS, Carrie	8	0	0.00	17	MAHAFFEY, Michelle	20	2	0	0.10
	BYU COUGARS.....	99	1461	14.76		BYU COUGARS.....	99	141	202	1.42
	Opponents.....	99	1286	12.99		Opponents.....	99	106	217	1.07

##	BLOCK (by B/Game)	G	BS	BA	Total	B/Game	BE	##	DEFENSE (by Dig/Gm)	G	DIG	Dig/G	BHE
9	PUIKKONEN, Nina	99	15	143	158.0	1.60	12	2	WHITTAKER, Natalie	99	295	2.98	0
10	BUNDY, Jackie	98	10	100	110.0	1.12	22	12	CRABBE, Uila	99	248	2.51	0
15	MAHE, Sunny	97	6	94	100.0	1.03	4	9	PUIKKONEN, Nina	99	226	2.28	1
5	PUIKKONEN, Karina	99	10	76	86.0	0.87	8	10	BUNDY, Jackie	98	198	2.02	4
2	WHITTAKER, Natalie	99	4	42	46.0	0.46	3	5	PUIKKONEN, Karina	99	188	1.90	23
11	RICHARDS, Lauren	58	5	21	26.0	0.45	8	15	MAHE, Sunny	97	177	1.82	2
7	LARSON, Allison	20	1	7	8.0	0.40	0	17	MAHAFFEY, Michelle	20	20	1.00	0
8	BOWERS, Carrie	8	0	3	3.0	0.38	0	7	LARSON, Allison	20	15	0.75	0
6	STEELE, Lindsey	22	1	7	8.0	0.36	2	8	BOWERS, Carrie	8	6	0.75	0
4	WARNICK, Becky	25	0	6	6.0	0.24	0	4	WARNICK, Becky	25	14	0.56	0
12	CRABBE, Uila	99	0	0	0.0	0.00	0	11	RICHARDS, Lauren	58	19	0.33	2
	BYU COUGARS.....	99	52	499	301.5	3.05	59	6	STEELE, Lindsey	22	7	0.32	0
	Opponents.....	99	53	353	229.5	2.32	47		BYU COUGARS.....	99	1413	14.27	32
									Opponents.....	99	1257	12.70	48

##	POINTS (by Points)	G	Points	Pts/G	##	RECEPT (by RE)	G	RE	RE/Gm
9	PUIKKONEN, Nina	99	533.5	5.38	15	MAHE, Sunny	97	25	0.26
15	MAHE, Sunny	97	430.0	4.43	12	CRABBE, Uila	99	20	0.20
10	BUNDY, Jackie	98	377.0	3.85	10	BUNDY, Jackie	98	19	0.19
2	WHITTAKER, Natalie	99	239.0	2.41	9	PUIKKONEN, Nina	99	19	0.19
5	PUIKKONEN, Karina	99	212.0	2.14	2	WHITTAKER, Natalie	99	13	0.13
11	RICHARDS, Lauren	58	152.5	2.62	17	MAHAFFEY, Michelle	20	4	0.20
4	WARNICK, Becky	25	47.0	1.88	4	WARNICK, Becky	25	2	0.08
7	LARSON, Allison	20	36.5	1.80	TM	TEAM	99	1	0.01
12	CRABBE, Uila	99	30.0	0.30	6	STEELE, Lindsey	22	1	0.05
6	STEELE, Lindsey	22	15.5	0.68	11	RICHARDS, Lauren	58	1	0.02
8	BOWERS, Carrie	8	4.5	0.50	5	PUIKKONEN, Karina	99	1	0.01
	BYU COUGARS.....	99	2079.5	21.00	8	BOWERS, Carrie	8	0	0.00
	Opponents.....	99	1757.5	17.75	7	LARSON, Allison	20	0	0.00
						BYU COUGARS.....	99	106	1.07
						Opponents.....	99	141	1.42

Opponent	Date	Score	WL	2	4	5	6	7	8	9
at Washington	Aug 31	3-0	W	WHITTAKER, N	WARNICK, B	PUIKKONEN, K	STEELE, L	LARSON, A	BOWERS, C	PUIKKONEN, N
vs Texas Longhorns	Sep 01	2-3	L	8-0-9-0	DNP	5-0-2-4	DNP	7-0-1-1	DNP	11-2-7-4
vs Purdue University	Sep 01	3-1	W	14-1-19-2	2-0-2-1	8-0-11-2	DNP	4-0-3-1	DNP	19-1-14-7
RHODE ISLAND RAMS	Sep 03	3-0	W	5-1-15-2	12-0-3-0	6-2-9-6	DNP	1-0-1-0	DNP	14-2-14-5
COLORADO BUFFALOES	Sep 06	3-2	W	4-1-15-3	4-0-2-0	4-0-8-4	DNP	2-0-1-1	DNP	15-0-4-6
SW MISSOURI ST BEARS	Sep 08	3-0	W	8-0-9-2	9-0-1-2	10-1-7-3	DNP	DNP	DNP	19-3-11-2
UTAH UTES	Sep 20	3-0	W	4-0-3-3	0-0-1-2	4-0-2-2	DNP	4-0-2-1	DNP	11-0-2-10
UCSB GAUCHOS	Sep 26	3-0	W	4-0-13-0	5-0-1-0	8-0-7-3	0-0-1-0	DNP	DNP	11-0-4-3
NEW MEXICO LOBOS	Sep 28	3-0	W	5-0-11-2	5-0-1-1	6-2-7-4	0-0-1-0	1-0-0-0	DNP	16-0-6-8
AIR FORCE FALCONS	Sep 29	3-0	W	7-0-6-0	1-0-1-0	5-1-6-3	1-0-1-0	1-0-1-1	DNP	10-1-4-1
at Wyoming Cowgirls	Oct 05	3-0	W	7-0-12-0	2-0-1-0	7-1-8-3	2-0-0-1	2-0-1-0	DNP	10-0-12-3
at Colorado State	Oct 06	0-3	L	7-0-9-2	DNP	2-0-4-2	DNP	DNP	DNP	11-1-8-7
SDS AZTECS	Oct 12	3-1	W	4-0-4-0	DNP	3-0-9-1	1-0-0-0	DNP	DNP	11-0-1-1
UNLV REBELS	Oct 13	3-0	W	7-0-16-1	DNP	6-1-5-7	0-0-0-0	DNP	DNP	21-2-12-9
USU AGGIES	Oct 16	0-3	L	6-0-13-1	DNP	4-1-7-4	0-0-0-0	DNP	DNP	15-1-9-5
at Utah Utes	Oct 19	2-3	L	8-0-10-0	DNP	3-0-6-0	0-0-0-0	DNP	DNP	11-0-3-4
at Sacramento State	10-25-01	3-1	W	9-1-15-4	DNP	4-0-11-5	1-0-0-1	DNP	0-0-0-0	24-0-14-8
at Air Force Falcons	Oct 26	3-0	W	6-3-17-1	DNP	2-0-10-3	DNP	DNP	DNP	21-0-18-9
at New Mexico Lobos	Oct 27	3-0	W	4-5-3-1	0-0-0-0	3-0-5-4	2-0-0-1	2-1-2-2	1-0-0-3	17-1-0-10
at Weber State	Oct 30	3-1	W	8-1-6-2	DNP	7-1-6-3	DNP	DNP	DNP	12-0-5-4
COLORADO STATE	Nov 02	0-3	L	6-1-13-2	DNP	7-1-7-1	DNP	DNP	DNP	17-2-10-6
WYOMING COWGIRLS	Nov 03	3-0	W	8-1-6-2	DNP	4-1-5-1	DNP	DNP	0-0-0-0	3-2-9-3
at UNLV Rebels	Nov 09	1-3	L	9-1-9-2	3-0-0-0	9-0-7-3	3-0-1-2	1-0-0-1	0-0-3-0	10-0-5-4
at San Diego St Aztecs	Nov 10	3-0	W	14-0-11-0	DNP	5-1-7-2	0-0-0-0	DNP	0-0-0-0	24-2-7-5
WYOMING COWGIRLS	Nov 15	3-0	W	4-0-15-1	DNP	4-0-2-5	DNP	DNP	DNP	8-1-2-8
UTAH UTES	Nov 16	1-3	L	2-1-3-0	1-0-1-0	4-2-4-2	0-0-3-2	2-0-0-0	2-0-1-0	14-2-5-3
vs Cal Poly	Nov 23	3-2	W	9-1-11-3	DNP	5-0-11-2	1-0-0-1	DNP	DNP	21-2-11-6
at Long Beach State	Nov 24	1-3	L	9-2-11-6	DNP	6-0-11-5	DNP	4-0-3-0	0-0-2-0	32-1-20-11
				8-0-11-4	DNP	7-1-4-2	DNP	DNP	DNP	11-2-9-6

Opponent	Date	Score	WL	10	11	12	15	17
at Washington	Aug 31	3-0	W	BUNDY, J	RICHARDS, L	CRABBE, U	MAHE, S	MAHAFFEY, M
vs Texas Longhorns	Sep 01	2-3	L	9-1-13-4	DNP	0-3-8-0	9-1-3-3	DNP
vs Purdue University	Sep 01	3-1	W	16-0-12-4	DNP	0-4-17-0	14-3-8-5	DNP
RHODE ISLAND RAMS	Sep 03	3-0	W	11-0-6-5	DNP	0-4-12-0	22-0-12-5	0-0-0-0
COLORADO BUFFALOES	Sep 06	3-2	W	9-0-6-3	DNP	0-2-3-0	10-2-9-4	DNP
SW MISSOURI ST BEARS	Sep 08	3-0	W	15-0-12-10	DNP	0-0-13-0	11-1-9-6	DNP
UTAH UTES	Sep 20	3-0	W	9-0-7-5	DNP	0-0-8-0	14-4-7-9	0-0-0-0
UCSB GAUCHOS	Sep 26	3-0	W	11-0-6-5	DNP	0-1-7-0	10-2-8-3	DNP
NEW MEXICO LOBOS	Sep 28	3-0	W	12-1-8-2	DNP	0-0-9-0	12-2-6-5	DNP
AIR FORCE FALCONS	Sep 29	3-0	W	15-2-5-6	DNP	1-1-8-0	13-1-4-2	0-1-1-0
at Wyoming Cowgirls	Oct 05	3-0	W	9-0-7-2	DNP	0-1-3-0	16-1-6-2	0-1-1-0
at Colorado State	Oct 06	0-3	L	8-1-2-4	7-0-2-0	0-0-11-0	15-0-4-6	DNP
SDS AZTECS	Oct 12	3-1	W	13-0-2-1	1-0-0-0	0-0-4-0	7-0-1-1	0-0-2-0
UNLV REBELS	Oct 13	3-0	W	12-1-6-5	10-0-0-1	0-0-14-0	11-0-8-3	DNP
USU AGGIES	Oct 16	0-3	L	9-4-9-5	5-0-1-1	0-2-7-0	11-1-6-5	DNP
at Utah Utes	Oct 19	2-3	L	9-0-3-0	12-0-1-1	0-2-7-0	12-0-7-2	0-0-4-0
at Sacramento State	10-25-01	3-1	W	13-1-8-7	6-0-1-2	0-0-9-0	16-1-8-4	0-0-1-0
at Air Force Falcons	Oct 26	3-0	W	14-1-10-5	10-0-0-2	1-1-7-0	17-1-6-7	DNP
at New Mexico Lobos	Oct 27	3-0	W	4-1-2-0	6-0-0-2	0-1-5-0	9-0-1-0	0-0-4-0
at Weber State	Oct 30	3-1	W	13-2-3-4	9-0-1-0	0-2-13-0	6-1-5-3	DNP
COLORADO STATE	Nov 02	0-3	L	14-0-8-1	12-0-2-2	0-0-5-0	20-1-7-1	DNP
WYOMING COWGIRLS	Nov 03	3-0	W	9-0-9-3	9-0-0-0	0-0-9-0	12-0-5-2	0-0-2-0
at UNLV Rebels	Nov 09	1-3	L	12-0-7-3	0-0-0-1	0-0-6-0	6-1-2-0	0-0-2-0
at San Diego St Aztecs	Nov 10	3-0	W	6-1-7-5	6-0-4-4	1-1-16-0	12-3-2-3	0-0-0-0
WYOMING COWGIRLS	Nov 15	3-0	W	8-0-2-7	12-0-1-4	1-0-6-0	11-1-2-7	0-0-3-0
UTAH UTES	Nov 16	1-3	L	12-0-3-6	1-0-0-1	0-0-6-0	9-2-9-3	0-0-0-0
vs Cal Poly	Nov 23	3-2	W	12-2-5-2	0-0-2-1	0-1-11-0	14-1-7-3	0-0-0-0
at Long Beach State	Nov 24	1-3	L	9-0-20-0	11-0-3-0	0-0-13-0	16-0-19-1	DNP
				6-0-10-6	20-0-1-4	0-0-11-0	12-0-6-5	DNP



**Natalie Whittaker**  
6-0, Sr., OH



**Lexi Brown**  
6-1, Fr., MB



**Becky Warnick**  
5-11, Fr., OH



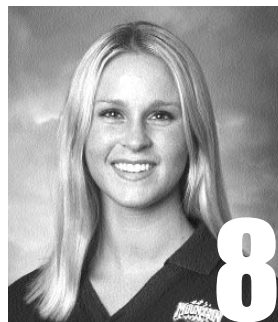
**Karina Puikkonen**  
6-0, So., S



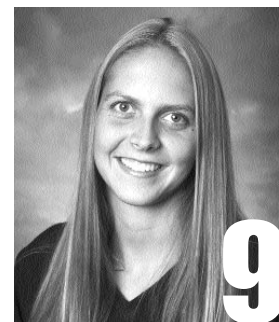
**Lindsey Steele**  
6-0, Fr., OH



**Allison Holsten Larson**  
6-0, Jr., MB/OH



**Carrie Bowers**  
6-2, So., MB/RS



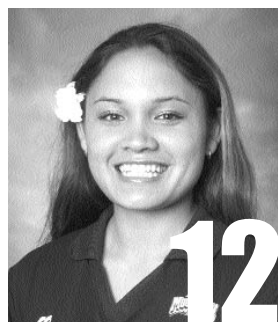
**Nina Puikkonen**  
6-3, Sr., MB



**Jackie Bundy**  
6-1, Sr., MB



**Lauren Richards**  
5-11, Fr., S



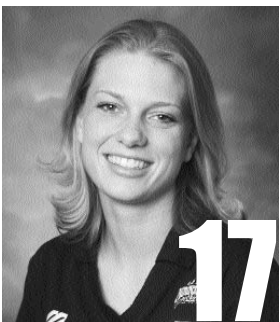
**Uila Crabbe**  
5-7, So., DS



**Krystal Curtis**  
5-5, Fr., DS



**Sunny Tonga Mahe**  
6-2, Jr., RS/OH



**Michelle Mahaffey**  
5-6, Jr., DS



**Erin Webb**  
6-0, Fr., MB



**Elaine Michaelis**  
Head Coach

**Pronunciation ...**

Uila Crabbe  
Karina Puikkonen

WEE-luh  
ku-REE-nuh

CRAB  
PWEE-koh-nehn

Nina Puikkonen  
Sunny Mahe  
Elaine Michaelis

NEE-nuh

PWEE-koh-nehn  
MAH-hay  
MY-kehl-iss