



Missouri State™

VISITOR'S GUIDE

MISSOURISTATEBEARS.COM



CAR WASH & LUBE CENTERS



SPRINGFIELD HISTORY

There are several versions of how Springfield was named. The most common is that it was named after Springfield Massachusetts. The story says, James Wilson offered a free whiskey to everyone who would vote for the name of his hometown, Springfield, Massachusetts, as the name for the new town. Some say the name was geographic because the town was on a field near a spring on a hill. Another story says that when a group met to choose a name, they handed in their favorite names. Kindred Rose turned in the name of Springfield after his hometown of Springfield, Tennessee.

SPRINGFIELD WEATHER

The climate for Springfield is seasonal, but milder than much of the surrounding area.

The weather in Springfield is four seasons type.

The average low temperature is 24-55 (winter) degrees F.

The average high temperature is 59-87 (summer) degrees F.

SPRINGFIELD ATTRACTIONS

Springfield offers a unique mix of large-city amenities and hometown hospitality -- a perfect family destination for a city vacation or outdoor getaway, or better yet, a combination to please the entire family. Beautiful scenery, family-oriented recreation and attractions are just a few of the qualities found in Springfield, and all at affordable prices.

Dickerson Park Zoo

3043 N. Fort Ave.
Springfield, Missouri
Phone: (417) 864-1800

Springfield Regional Opera

109 Park Central Square
Springfield, MO 65806-1314
Phone: 417-863-1960

Discovery Center

438 E St Louis
Springfield, MO 65806
Phone: 417-862-9910

Springfield Art Museum

1111 E Brookside Dr
Springfield, MO 65807-1829
Phone: 417-837-5700

Springfield Symphony Association

1536 E Division St
Springfield, MO 65803-3823
Phone: 417-864-6683

Springfield Greenways Trails

PO Box 50733
Springfield, MO 65805
Phone: 417-864-2015





BEARS CONTACT INFORMATION

Athletics Administration (Director of Athletics-Kyle Moats).....	417.836.5244
Senior Woman Administrator (Casey Comoroski).....	417.836.5246
Business Administration (Tiffany Akre).....	417.836.4103
Facilities (Keith Boaz/Laree Moore) –	
JQH Arena and Hammons Student Center.....	417.836.5240
Athletics Communications – (Rick Kindhart).....	417.836.5426
Athletic Training – Forsythe (Jim Penkalski).....	417.836.5461
Ticket Office (JQH Arena).....	417.836.7678
Achievement Center (Joan Newman/Bryan Hicks).....	417.836.6829
Compliance (Joan Newman/Kyle Yates).....	417.836.6829
Athletics Development (Julie Wright).....	417.836.4143
Nelligan Sports Marketing	417.836.5243
Strength and Conditioning (Terry Sauerbry).....	417.836.6910
Equipment Manager	
Women (Danny Weathermon).....	417-836-5056
Men (Cory Starr).....	417-836-5056
Men’s Basketball /Swimming (Brenda Essary).....	417.836.5250
Women’s Basketball /Volleyball (Terrie Coulter).....	417.836.4136
Football	417.836.5343
Softball (Helen McDowell).....	417.836.5246
Cross Country, Track and Field, Baseball, Field Hockey, Men’s and Women’s Soccer, Men’s and Women’s Golf (Lois Goldade).....	417.836.5242





COACHES DIRECTORY

Baseball- Keith Guttin.....	417.836.4497
Men’s Basketball- Paul Lusk.....	417.836.4471
Women’s Basketball- Nyla Milleson.....	417.836.4378
Cross Country- Alick Musukuma.....	417.836.4498
Field Hockey- Gabby Gomez-Sosa.....	417.836.6968
Football- Terry Allen.....	417.836.4246
Men’s Golf- Neal Stafford.....	417.836.4863
Women’s Golf- Kevin Kane.....	417.836.4138
Men’s Soccer- Jon Leamy.....	417.836.5243
Women’s Soccer- Rob Brewer.....	417.836.6654
Softball- Holly Hesse.....	417.836.6912
Swimming and Diving- Jack Steck.....	417.836.5466
Track and Field- Ron Boyce.....	417.836.4717
Volleyball- Melissa Stokes.....	417.836.8375

GAME DAY PARKING

Plaster Sports Complex

Football: Julie Wright.....417.836.4143
 Soccer/Field Hockey: South Lots Across from Stadium

JQH Arena

Men’s and Women’s Basketball: Julie Wright.....417.836.4143
 Volleyball: Lots South and Northwest of Hammons Student Center

Hammons Field

Baseball: Julie Wright417.836.4143

Killian Softball Complex

Softball: South Parking Lot off Pythian

Media Parking

Rick Kindhart-Assistant Director of Athletics for Communications 417-836-5402





EMERGENCY LISTINGS

Campus Security

On campus

417.836.5509

Taylor Health and Wellness Center

On campus

417.836.4000

St. John's Hospital (South)

1235 E. Cherokee Street

417.820.2000

Cox Medical Center (South)

3801 S. National Ave.

417.269.6000

PHARMACIES NEAR CAMPUS

Taylor Health and Wellness Center

On campus (near the bookstore and student union)

417.836.4000

Walgreens

1155 E St. Louis St. (on the corner of National & St. Louis)

417.862.5782

CVS

1735 S. Glenstone Ave. (just north of Glenstone and Sunshine)

417.881.7651

Walgreens

1955 S. National Ave. (across from St. Johns)

417.881.6836



MISSOURISTATEBEARS.COM



SPRINGFIELD HOTELS

University Plaza

333 S. John Q. Hammons Parkway
417.864.7333

Doubletree Hotel

2431 N Glenstone Ave
417.864.7333
800.222.8733

GreenStay Hotel and Suites

222 North Ingram Mill Road
417.836.1440

Clarion Hotel

3333 S Glenstone Ave
417.883.6500
800.756.7318

Ramada Oasis Convention Center

2546 N Glenstone Ave
417.866.5253
888.532.4338

Best Western Deerfield Inn

3343 E Battlefield
417.887.2323
800.528.1234

Hilton Garden Inn

4155 South Nature Center Way
417.875.8800

Comfort Inn and Conference Center

3370 Battlefield Road
417.520.6200
877.570.6200

Hampton Inn and Suites

2750 N Glenstone Ave
417.869.5548
800.Hampton

Holiday Inn Express and Suites

1117 E St. Louis Street
417.862.0070
800.Holiday

Residence Inn by Marriott

1303 E Kingsley Street
417.890.0020
800.831.3131

Days Inn

621 W Sunshine
417.862.0153

Baymont Inn & Suites

2445 N Airport Blvd
417.447.4466



MISSOURISTATEBEARS.COM



TRANSPORTATION

AIRLINES

Springfield/Branson Regional Airport

Allegiant Air	702.505.8888
American Eagle / American Connection	800.433.7300
Delta Connection	800.221.1212
Northwest Airlin	800.225.2525
United Express	800.241.6522

Branson Airport

Air Tran	800.247.8726
Sun Country	Book Online

CAR RENTALS

Avis Rent A Car	417.864.4466
1210 W Sunshine	
Enterprise Rent A Car	417.866.0300
207 E Kearney	
J. Howard Fisk Limousines	417.862.2900
2001 E Trafficway St	
Cavallo Bus Lines	417.869.4190
3755 E Kearney	

TAXI SERVICE

City Cab	417.865.7700
Yellow Cab	417.862.5511

BUS

Greyhound Bus Line	800.231.2222
2425 E. Kearney Street	





ENTERTAINMENT

MOVIE THEATRES

Campbell 16 4005 South Ave	417.326.3264
Springfield 8 Ingram @ Battlefield & I-65	417.882.7469
Palace 2220 W Chesterfield Blvd	417.875.6200
Hollywood Theater 415 W College St	417.799.3456

SHOPPING

Battlefield Mall 2825 S Glenstone	417.883.7777
Tanger Outlets-Branson 300 Tanger Blvd	417.337.9328
Bass Pro Shops 1935 S Campbell	417.887.7334
Primrose Marketplace 3408 S Glenstone	417.882.8876

NIGHT LIFE

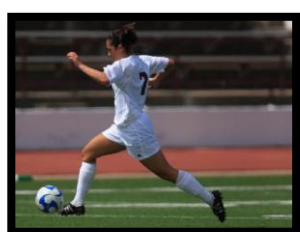
South Street

Located in Downtown Springfield.

Live Music, Upscale Dinning, Bars, and Recreational Activities



MISSOURISTATEBEARS.COM



FOOD

RESTAURANT	ADDRESS	PHONE #	TYPE
Andy's Frozen Custard	2726 S Campbell	881.3424	Dessert
Brunos*	416 South Ave	866.0007	Italian
Buckingham's BBQ*	2002 S Campbell	866.9979	BBQ
Buffalo Wild Wings	900 E Battlefield	881.9464	American
Chick-Fil-A	2825 S Glenstone	883.2275	Fast Food
Chili's	3020 S Glenstone	886.3630	American
Chipotle Mexican Grill*	1211 E St. Louis	831.2159	Fast Food
Classic's Sports	3333 S Glenstone	883.5232	American
Cold Stone Creamery	900 E Battlefield	883.4222	Dessert
Crosstown BBQ	1331 E Division	862.4646	BBQ
Ebbet's Field*	1027 E Walnut St	865.5050	American
Golden Corral	2020 E Primrose	883.6767	Buffet
Houlihan's	2431 N Glenstone	862.7777	American
Jimmy John's*	322 E Walnut	832.0500	Sub Shop
Lambert's Café	1800 W State Highway J	581.7655	American
Maria's*	406 South Ave	831.9339	Mexican
McAlister's Deli*	210 W Sunshine	831.4450	American
McSalty's Pizza	2627 E Sunshine	887.2589	Pizza
Millie's Café*	313 S Jefferson Ave	831.1996	American
Outback	3760 S Glenstone	890.5900	Steakhouse
Panera Bread Co.*	500 S National	862.9898	American
Pasta House	4109 S National	883.5678	Italian
Planet Sub*	533 S Kimbrough	862.4782	Sub Shop
Qdoba Mexican Grill	900 E Battlefield	887.7329	Fast Food
Red Robin	3720 S Glenstone	883.9363	American
Ebbet's South	3662 S Glenstone	877.7995	American
Ryan's Family Steakhouse	2501 S Campbell	887.9553	Buffet
South Ave Pizza Co.*	307 South Ave	869.1500	Pizza
Springfield Brewing Co*	301 S Market	832.8277	American
Steak N Shake*	1158 E St. Louis	866.0273	American
Subway*	605 E Harrison	863.7827	Sub Shop
Taco Bell*	601 S National	869.5801	Fast Food
Texas Roadhouse	255 E Monastery	877.4650	Steakhouse
Trolley's*	107 Park Central Sq	799.0309	American
Wendy's*	3334 E Sunshine	889.9946	Fast Food

*Near the Campus of MSU



MISSOURISTATEBEARS.COM



DRIVING DIRECTIONS TO MISSOURI STATE

DIRECTIONS FROM THE NORTH:

From Highway 13: Take Highway 13 into town. Highway changes into Kansas Expressway once in Springfield. Turn East (left) at Chestnut Expressway. Follow Chestnut Expressway for 2 miles, then turn South (right) onto National Ave. Follow National Ave south for 1 mile and then arrive at Missouri State University

From US 65: Take US 65 into town. Take the US 65 Business/Chestnut Expressway exit. Turn West (right) onto Chestnut Expressway. Follow Chestnut Expressway for 2.8 miles, and then turn South (left) onto National Ave. Follow National Ave. south for 1 mile and then arrive at Missouri State University

DIRECTIONS FROM THE SOUTH:

From US 65: Take US 65 North into town. Take the Chestnut Expressway Exit. Turn West (left) onto Chestnut Expressway. Follow Chestnut Expressway for 2 miles, then turn South (left) onto National Ave. Follow National Ave. south for 1 mile and then arrive at Missouri State University.

DIRECTIONS FROM THE WEST:

From I-44: Take I-44 East until you reach exit 72/Chestnut Expressway. Turn East (right) onto Chestnut Expressway. Follow Chestnut Expressway for 5.9 miles until you reach National Ave. Turn south (right) onto National Ave. Follow National Ave. south for 1 mile and then arrive at Missouri State University.

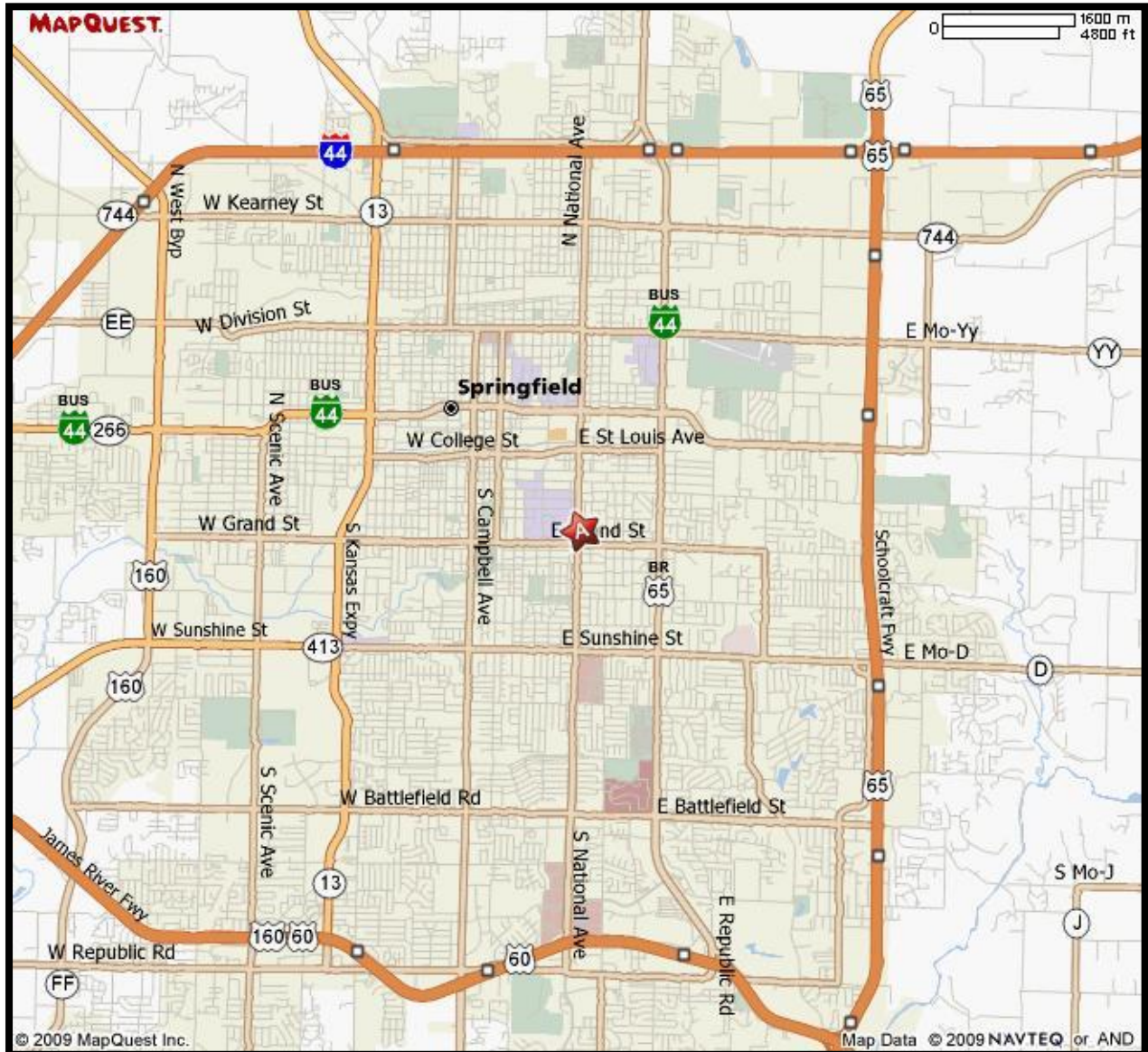
DIRECTIONS FROM THE EAST:

From I-44: Take I-44 West until you reach US 65. Merge onto US 65 South via exit 82a toward Branson. Follow US 65 South for 2.8 miles. Take the Chestnut Expressway exit. Turn West (right) onto Chestnut Expressway. Follow Chestnut Expressway for 2.8 miles, then turn South (left) onto National Ave. Take National Ave. south for 1 mile and then arrive at Missouri State University.





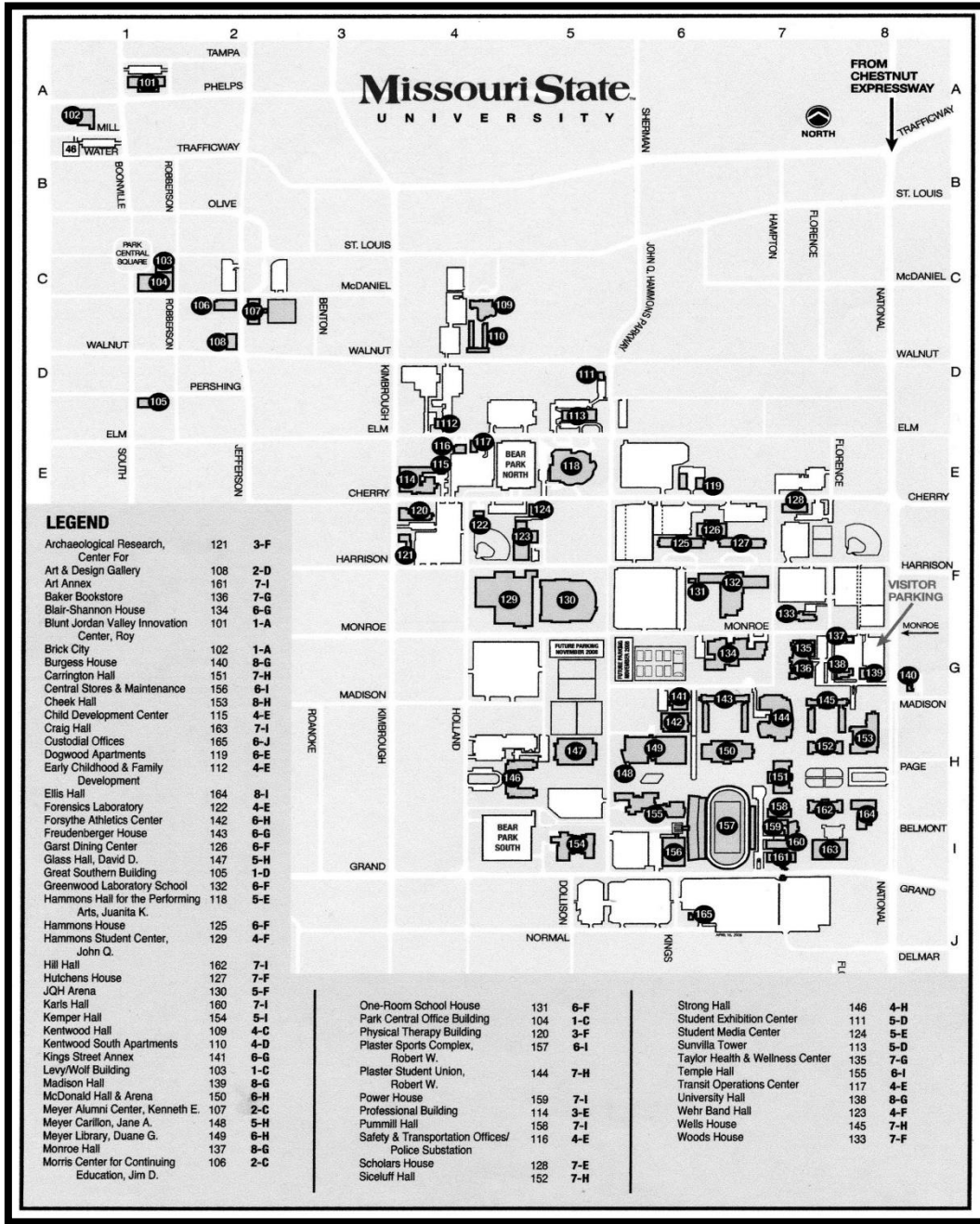
MISSOURI STATE UNIVERSITY AREA MAP



MISSOURI**STATE**BEARS.COM

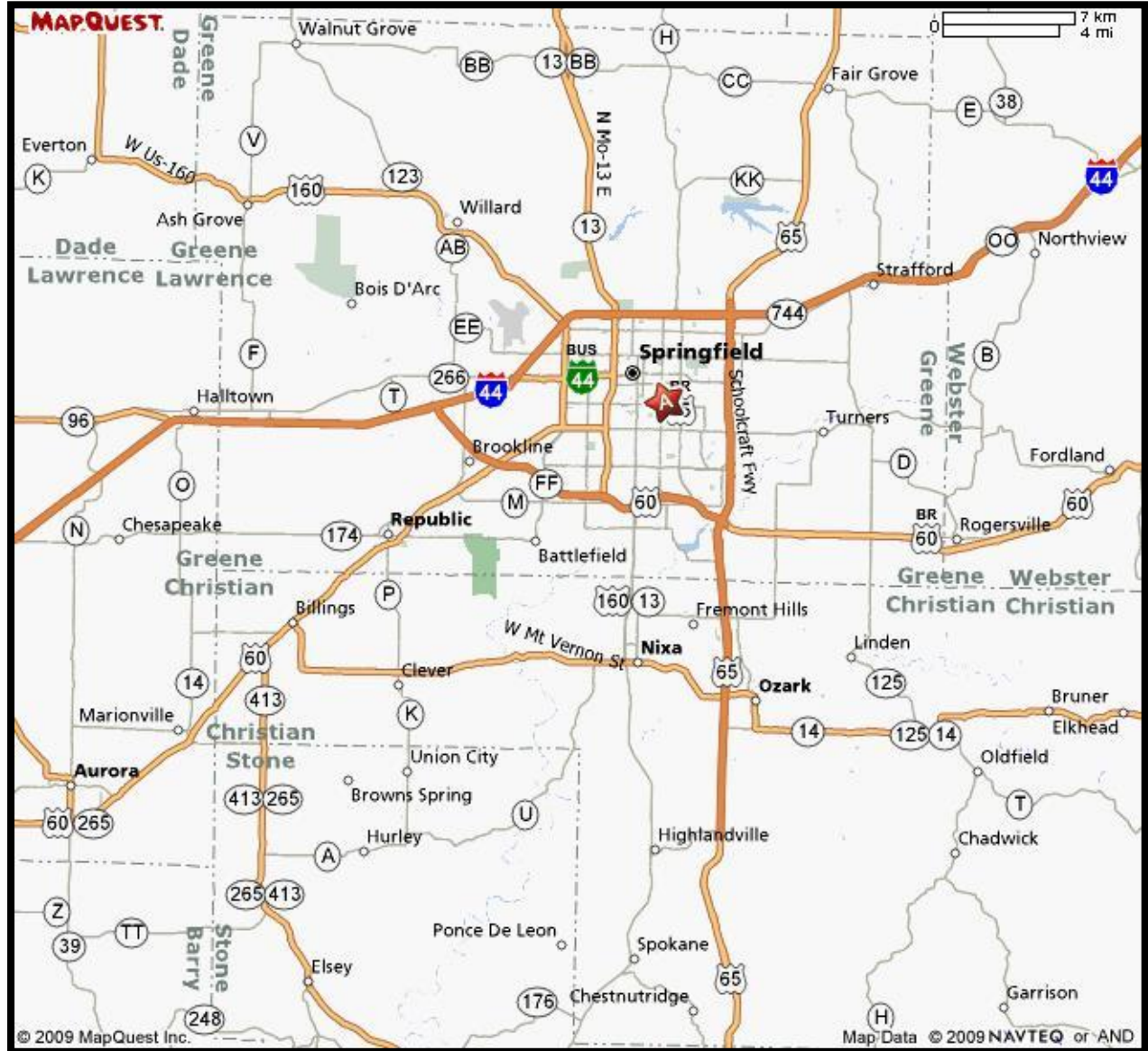


MISSOURI STATE UNIVERSITY CAMPUS MAP





MISSOURI HIGHWAY MAP





BEAR FACILITIES



JQH Arena
685 S John Q Hammons Parkway
Home of MSU Men's and Women's Basketball



Plaster Sports Complex
1015 E. Grand St.
Home of MSU Football, Men's and Women's Soccer,
Field Hockey, and Track Teams



Hammons Student Center
661 S. John Q Hammons Parkway
Home of MSU Volleyball and Swimming & Diving



Killian Softball Stadium
2141 E. Pythian St.
Home of MSU Softball



MISSOURISTATEBEARS.COM



ADDITIONAL BEAR FACILITIES



Plaster Strength and Conditioning Center
1015 E. Grand St.
Home to all MSU Athletes



MSU Cross Country Facility
2019 N Farm Road 185
Home of MSU Cross Country



Hammons Field
935 E. Trafficway St.
Home of MSU Baseball



MISSOURISTATEBEARS.COM