



**U miami™**



# **University of Miami 2009 Visiting Team Guide**



# General Information

School Information	
Location	Coral Gables, FL
Founded	1926
Enrollment	15,600
President	Dr. Donna Shalala
Athletic Director	Kirby Hocutt
Colors	Orange, Green, and White
Nickname	Hurricanes
Mascot	Sebastian the Ibis
Conference	Atlantic Coast Conference (ACC)
Mailing Address	University of Miami Athletics Hecht Athletic Center 5821 San Amaro Drive Coral Gables, FI 33146
Main Phone Number	305.284.3822
Competition Sites	
Baseball	Alex Rodriguez Park at Mark Light Field (3,678)
Basketball	The Bank United Center (7,000)
Football	Land Shark Stadium (75,540)
Golf	Don Shula Golf Resort
Rowing	Ronald W. Shane Water Sports Center
Soccer	Cobb Stadium (500)
Swimming & Diving	Norman Whitten Student Union Pool
Tennis	Neil Schiff Tennis Center (1,000)
Track & Field	Cobb Stadium (500)
Volleyball	Knight Sports Complex (800)
Ticket Sales	
<p>For ticket information, contact:            Office: (305) 284-CANE            Toll Free: 1-800-GO-CANES  <a href="http://www.hurricanesports.com">www.hurricanesports.com</a></p>	



# University of Miami Staff Directory

<b>Athletic Department Staff</b>		
<b>Kirby Hocutt</b>	<b>Athletic Director</b>	<b>305.284.2689</b>
<b>Tony Hernandez</b>	<b>Senior Associate AD</b>	<b>305.284.2692</b>
<b>Connie Nickel</b>	<b>Associate AD and SWA</b>	<b>305.284.2651</b>
<b>Dawn Reynolds</b>	<b>Associate AD   Business</b>	<b>305.284.2690</b>
<b>Lindsey Williams</b>	<b>Associate AD   Development</b>	<b>305.284.6699</b>
<b>Jim Frevola</b>	<b>Associate AD   External Communications</b>	<b>305.284.2678</b>
<b>Mark Pray</b>	<b>Assistant AD   Communications</b>	<b>305.284.3244</b>
<b>David Wyman</b>	<b>Assistant AD   Academic Services</b>	<b>305.284.3243</b>
<b>Jeremy Gerson</b>	<b>Assistant AD   Strategic Marketing</b>	<b>305.284.2678</b>
<b>Erik Book</b>	<b>Assistant AD   Ticket Operations</b>	<b>305.284.8153</b>
<b>Scott McGonagle</b>	<b>Head Athletic Trainer</b>	<b>305.284.4528</b>
<b>Coaching Staff</b>		
<b>Baseball</b>	<b>Jim Morris</b>	<b>305.284.4171</b>
<b>Basketball (M)</b>	<b>Frank Haith</b>	<b>305.284.2680</b>
<b>Basketball (W)</b>	<b>Katie Meier</b>	<b>305.284.5801</b>
<b>Diving (M&amp;W)</b>	<b>Randy Ableman</b>	<b>305.284.3639</b>
<b>Football</b>	<b>Randy Shannon</b>	<b>305.284.2674</b>
<b>Golf (W)</b>	<b>Lela Cannon</b>	<b>305.284.3822</b>
<b>Rowing (W)</b>	<b>TBA</b>	<b>TBA</b>
<b>Soccer (W)</b>	<b>Tricia Taliaferro</b>	<b>305.284.3640</b>
<b>Swimming (W)</b>	<b>Christie Shefchunas</b>	<b>305.284.9023</b>
<b>Tennis (M)</b>	<b>Mario Rincon</b>	<b>305.284.4166</b>
<b>Tennis (W)</b>	<b>Paige Yaroshuk-Tews</b>	<b>305.284.5174</b>
<b>Track &amp; Field / Cross Country (M&amp;W)</b>	<b>Amy Deem</b>	<b>305.284.5029</b>
<b>Volleyball (W)</b>	<b>Nicole Lantagne-Welch</b>	<b>305.284.5765</b>



# Visiting Team Travel

<b>Air Travel</b>	
American Airlines	800.433.7300
Continental Airlines	800.525.0280
Delta Airlines	800.221.1212
United Airlines	800.241.6522
US Airways	800.428.4322
<b>Ground Transportation</b>	
<b>BUS LINES</b>	
American Coach	305.688.7700
<b>CAR RENTALS</b>	
Alamo	800.462.5266
Avis	800.230.4898
Budget	800.527.0700
Dollar	800.800.3665
Hertz	800.654.3131
National	800.227.7368
<b>CAB SERVICE</b>	
Diamond Cab	305.545.5555
Metro Taxi	305.888.8888
Sunshine Cab Company	305.445.3333
SuperShuttle	305.871.1210
Yellow Cab	305.444.4444
<b>Emergency Numbers</b>	
Campus Police	305.284.6666
Athletic Switchboard	305.284.3822
Coral Gables	911
Fire/EMS/Ambulance	911



# Hotels

Airport	
Airport Hilton	305.262.1000
Miami Airport Marriott	305.374.0000
SpringHill Suites by Marriott	305.592.3393
Brickell / Downtown	
Renaissance Hotel Miami	305.374.0000
Coral Gables / Coconut Grove	
Holiday Inn University of Miami	305.667.5611
Courtyard Miami Coral Gables	305.443.2301
Hampton Inn Coconut Grove	305.448.2800
Hampton Inn Dadeland	305.269.0072
Dadeland Marriott	305.670.1035
The Biltmore Hotel	305.445.8066
The Mayfair Hotel & Spa	305.441.0000
Sonesta Bayfront Hotel Coconut Grove	305.529.2828
Miami Beach	
Eden Roc	305.531.0000
Fountainbleu Hilton	305.538.2000
South Beach Group ( <a href="http://www.southbeachgroup.com">www.southbeachgroup.com</a> )	877.762.3477
Others	
Courtyard Miami Dadeland	305.670.1220
Don Shula's Hotels	305.821.1150
Doral Hotel & Country Club	305.592.2000



The logo features a stylized 'U' icon on the left, composed of two overlapping shapes: a green one on top and an orange one on the bottom. To the right of the icon, the word 'EXCELLENCE' is written in a bold, blue, sans-serif font.



# Restaurants

Near Campus	
Bernie's Steakhouse	305.669.5130
The Big Cheese	305.662.6855
Café Abbracci	305.441.0700
Chicken Kitchen	305.669.0099
Eat At Bezzies	305.666.9951
Quiznos	305.441.4481
Shorty's Bar-B-Q	305.227.3196
Stop n' Shop Subs	305.668.4642
Subway	305.662.6188
Swensen's	305.661.7658
T.G.I. Friday's	305.668.7808
Tony Roma's	305.667.4806
Titanic Brewing Company	305.668.1742
University Chicken Grill	786.621.7300
South Beach	
Big Pink	305.531.0888
Joe's Stone Crab	305.673.0365
News Café	305.538.6397
Outback Steakhouse	305.531.1338
Coconut Grove	
The Charthouse	305.856.9741
The Cheesecake Factory	305.447.9898
Hooters	305.442.6004
Monty's Seafood Restaurant	305.858.1431
Sand Bar & Grill	305.444.5270
Downtown	
Capital Grille	305.374.4500
Hard Rock Café	305.377.3110
Morton's of Chicago	305.400.9990



# Points of Interest

<b>Places to Shop</b>	
Bal Harbour Shops	North Miami Beach
Bayside Marketplace	Downtown
Lincoln Road	South Beach
Dadeland Mall	Kendall
Village at Merrick Park	Coral Gables
The Shops at Sunset Place	South Miami
Streets of Mayfair	Coconut Grove
The Falls	South Miami-Dade
<b>Site Seeing</b>	
Biscayne National Underwater Park	305.230.1100
Lowe Art Museum at the University of Miami	305.284.3535
Miami Art Museum of Dade County	305.375.3000
Miami Metro Zoo	305.251.0400
Miami Museum of Science	305.646.4200
Miami Seaquarium	305.361.5705
Parrot Jungle Island	305.2.JUNGLE

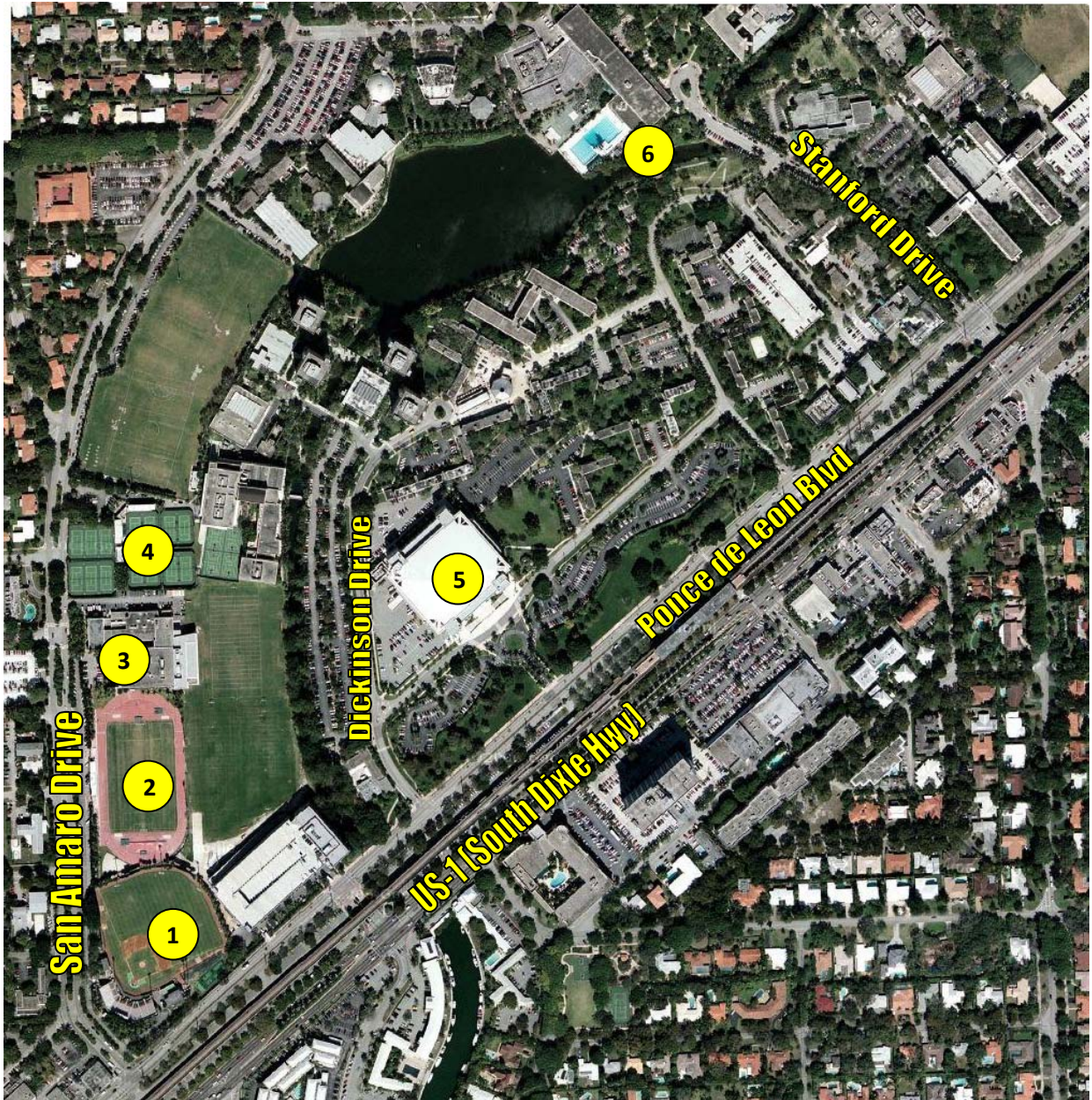


# Directions

<b>Hecht Athletic Center, Alex Rodriguez Park, Cobb Stadium, Knight Sports Complex, Neil Schiff Tennis Center</b>	
<b>From the North (City of Miami)</b>	Take I-95 South until it becomes US-1 (South Dixie Hwy) south and take a right on Alhambra Drive (under the metro rail). At the light, take a left onto Ponce de Leon Blvd. At the following light, turn right onto San Amaro Drive (Hurricane Drive). Athletic facilities are on the right.
<b>From the South</b>	Take US-1 (South Dixie Hwy) north and take a left on Alhambra Drive (under the metro rail). At the light, take a left onto Ponce de Leon Blvd. At the following light, turn right onto San Amaro Drive (Hurricane Drive). Athletic facilities are on the right.
<b>From Route 826 (Palmetto Expwy)</b>	Take Route 826 and exit Miller Drive (SW 56th Street). Turn left and continue until it ends at the University and San Amaro Drive. Turn right onto San Amaro. Make a U-turn across the median at Corniche and the Hecht Athletic Center will be in front of you.
<b>From Miami International Airport</b>	Take Exit marked Coral Gables/LeJeune Road. Exit onto LeJeune and head south and turn right onto Ponce de Leon Blvd (just before the Metrorail). Go 1.7 miles and turn right onto San Amaro Drive (Hurricane Drive). Athletic facilities are on the right.
<b>The BankUnited Center</b>	
<b>From the North (City of Miami)</b>	Take I-95 South until it becomes US-1 (South Dixie Hwy). Continue south about 5 miles, turn right onto Stanford Drive, and make an immediate left onto Ponce de Leon Blvd. As you pass the BankUnited Center on the right, turn onto Dickinson Drive.
<b>From the Airport</b>	Take exit marked Coral Gables/LeJeune Rd. Exit onto LeJeune and head South until it intersects Ponce de Leon Blvd (just before the Metrorail). Turn right onto Ponce de Lone and continue for about 2 miles. As you pass the Bank United Center of the right, turn onto Dickinson Drive.
<b>Norman Whitten Student Union Pool</b>	
<b>From the North (City of Miami)</b>	Take I-95 South until it becomes US-1 (South Dixie Hwy). Continue south about 5 miles, turn right onto Stanford Drive. Pool is at the end of the circle.
<b>From the Airport</b>	Take exit marked Coral Gables/LeJeune Rd. Exit onto LeJeune and head South until it intersects Ponce de Leon Blvd (just before the Metrorail). Turn right onto Ponce de Lone and continue for about 2 miles. Turn right onto Stanford Drive. Pool is at the end of the circle.
<b>Land Shark Stadium</b>	
<b>From Miami (South)</b>	Take I-95 North, to North on the Florida Turnpike, to Exit 2X (Dolphin Toll Plaza), to Land Shark Stadium.
<b>From Ft. Lauderdale / West Palm Beach</b>	Take Florida Turnpike South to Exit 2X (Dolphin Toll Plaza), to Land Shark Stadium.
<b>From Fort Myers / Naples</b>	Take I-75 East to I-595 East, to South on Florida Turnpike, to exit 2X (Dolphin Toll Plaza), to East side of Land Shark Stadium.
<b>Ronald W. Shane Watersports Center</b>	
<b>From I-95</b>	Take Exit 7, Miami Beach 195 (Julia Tuttle Causeway). Cross Biscayne Bay via 1-95. Approaching Miami Beach, take the Alton Road NORTH - HOSPITALS exit. Follow Alton Road for approximately 3 miles. Alton will curve sharply to the east. Stay in left lane and continue to follow Alton across bridges and over the over pass. This will put you on Indian Creek Drive going north. At the first light, 65th Street, you will take a left, which puts you in the boathouse parking lot.
<b>Don Shula's Golf Resort</b>	
<b>From Route 826 (Palmetto Expwy)</b>	Take 826 North to NW 154th St. Exit. Take NW 154th St east ½ a block. The Don Shula's Golf Resort is on the left hand side of the road.



# Campus Map



## KEY:

1. Alex Rodriguez Park
2. Cobb Stadium
3. Hecht Athletic Department & Knight Sports Complex
4. Neil Schiff Tennis Center
5. BankUnited Center
6. Norman Whitten Student Union Pool

