

UNIVERSITY OF MARYLAND, COLLEGE PARK

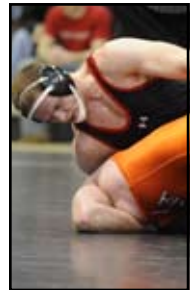
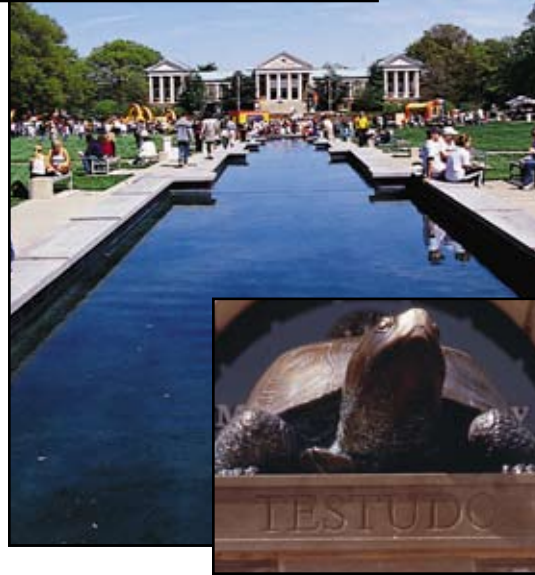
The University of Maryland welcomes you to our campus.

This guide contains information that will assist you with your stay in the College Park, Baltimore/Washington area. The hotel and restaurant properties you contact will be happy to answer your questions concerning rates. Teams coming to Maryland during football or men's basketball weekends may experience higher rates than usual.

Many of our teams and support services (Sports Medicine, SID) may send out additional information regarding sport-specific information for home events, including locker room assignment, medical services, practice times, etc.

Please feel free to contact any UM Intercollegiate Athletics staff member for additional assistance. Best of success with your upcoming season.

University of Maryland
Department of Intercollegiate Athletics
Comcast Center
Terrapin Trail
College Park, MD 20742
301/314-7126
301/314-7907 (fax)
www.umterps.com



"NO BETTER PLACE TO BE"

There is no better place to be than the University of Maryland, College Park. With its top-ranked academic programs, nationally recognized faculty, diverse population, and lush 1,580-acre campus located between Washington, D.C., and Baltimore, Maryland, it's no wonder the University of Maryland is a sought-after destination for some of the state's – and the country's – best and brightest students.

Offering students 127 undergraduate majors and 112 graduate degrees, the University of Maryland has some of the highest-ranked programs in the nation. According to *U.S. News & World Report*, the University ranks 18th among public institutions in the nation - with 31 undergraduate programs in the top 10 and 86 undergraduate programs ranked in the top 25 nationally.

Specifically, Maryland's Smith School of Business undergraduate program was ranked 17th, while the Clark School of Engineering was ranked 25th. Among graduate school rankings, the College of Information Studies took the 10th spot, the Clark School of Engineering ranked 17th and the school of Education ranked 24th.

High-tech, engineering, and service industries thrive in close proximity to the campus, offering a wide spectrum of internships, work-study opportunities and career choices for students. And, the campus is surrounded by the dynamic cultural opportunities that only a major metropolitan area can provide.

Whether your focus is the sciences or the humanities, a small-town atmosphere or a metropolitan feel, the University of Maryland offers a wide range of educational and cultural opportunities.

City lights, history, sparkling water-fronts, monumental landscapes, jazz, film festivals, marches and demonstrations, shopping, professional sports, regattas on the Chesapeake Bay; not just one city, but three; not just any city, but the nation's capital, a major port city, and the state capital of Maryland. It's all here beyond the University of Maryland Campus.

The nation's capital and its major attractions are within ten miles of College Park. And the highly efficient Metro rail system, with a station at the campus doorstep, makes navigating the greater Washington, D.C., area easy. Campus shuttle buses serve the College Park Metro station, allowing easy access to one of the country's model transportation systems.

Baltimore, the 16th largest city in the United States, is often referred to as the "Charm City". Located just 30 miles north of the University of Maryland, its rejuvenation as an urban center is unprecedented.

The Inner Harbor, its National Aquarium and tall ships, and the nearby Oriole Park at Camden Yards create an exciting, vibrant holiday atmosphere in a city that boasts one of the world's great seaports. The heart of Maryland, the Chesapeake Bay, is 20 miles from campus, and the state capital, Annapolis, is 30 miles away.

Campus neighbors include such important national resources as the Library of Congress, the Smithsonian Institution, the National Institute of Health, the National Aeronautics and Space Administration, and the U.S. Department of Agriculture's Research Center.

There truly is no better place to be than the University of Maryland, College Park.



DIRECTIONS TO MARYLAND

TRAVEL BY AUTOMOBILE

From Baltimore and points North

I95 South to Exit 27 and then follow signs to U.S. 1 South towards College Park. After a long exit ramp, follow Exit 25B to the right and go one mile south on U.S. Route 1, bear right on Route 193 W, turn left onto Paint Branch Drive at the first traffic light. Take the second right into Lot 4b.

From Points South

I95/495 North to Exit 25 and U.S. 1 South towards College Park. Go one mile south on U.S. Route 1, bear right on Route 193 W, turn left onto Paint Branch Drive at the first traffic light. Take the second right into Comcast Center at Lot 4b.

From Bowie/Annapolis Areas and Points East

U.S. 50 to the Capital Beltway (I-95/495) North Exit Beltway at Exit 25 and U.S. 1 South towards College Park. Go one mile south on U.S. Route 1, bear right on Route 193 W, turn left onto Paint Branch Drive at the first traffic light. Take the second right into Comcast Center at Lot 4b.

From Points West

I495 North to Exit 25 and U.S. Route 1, College Park. Go one mile south on U.S. Route 1, bear right on Route 193 W, turn left onto Paint Branch Drive at the first traffic light. Take the second right into Comcast Center, Lot 4b.

From Washington, DC

Take 16th St. North to Georgia Ave. North (U.S. 97). Go about 1/2 mile to Capital Beltway (I-495) East. Take Exit 25 and U.S. 1 South towards College Park. Go one mile south on U.S. Route 1, bear right on Route 193 W, turn left onto Paint Branch Drive at the first traffic light. Take the second right into Comcast Center at Lot 4b.

AIRPORTS, DIRECTIONS AND APPROXIMATE DRIVING TIME

The University is served by three major airports:

Baltimore Washington International (BWI)

Take I-195 West and follow signs to I-95 South. Take Interstate I-95 South to Exit 25, College Park/U.S. Route 1 South. After 1 mile south on U.S. Route 1, bear right on Route 193 W, turn left onto Paint Branch Drive at the first traffic light. Take the second right into Comcast Center at Lot 4b (approximately 30 minutes).

Dulles International Airport

Take the Dulles Toll Road to I-495 East. Follow "from points south" directions above (approximately 1 hour)

Reagan National Airport

Take I-395 North until it terminates at New York Avenue. Take a right on Baltimore/Washington Parkway North (Route 295). Exit at Greenbelt Road (Route 193 West) and at first traffic light bear right onto Route 193 W. Proceed to Paint Branch Drive, turn left. Take the second right into Comcast Center at Lot 4b (approximately 45 minutes).

TRANSPORTATION TO AND AROUND UM

Following are suggestions for ground transportation while visiting the University.

BUS CHARTERS

| | | |
|--|----------------|----------------|
| Dillon's Bus Service | (410) 647-2321 | |
| 8377 Elvaton Road Millersville | | |
| Eyre Bus Company | (800) 321-3973 | (301) 854-6600 |
| 13600 Tridelphia Road Glenelg (www.eyre.com) | | |
| Executive Charter | (877) 262-3133 | (301) 953-3133 |
| 7535 Montevideo Road Jessup | | |
| Ferguson Charter | (410) 945-9000 | |
| 46 S Franklinton Road Baltimore | | |
| Rainbow Bus | (301) 474-8200 | |
| 13604 Engleman Road Baltimore | | |
| Woodlawn Bus | (410) 655-0880 | |
| 3109 Rolling Road Baltimore | | |

AUTO/VAN RENTALS

| | |
|------------|----------------|
| Alamo | (800) 462-5266 |
| Avis | (800) 230-4898 |
| Budget | (800) 527-0700 |
| Dollar | (800) 800-3665 |
| Enterprise | (800) 261-7331 |
| Hertz | (800) 654-3131 |
| National | (800) 227-7368 |
| Thrifty | (800) 847-4389 |

TAXIS/SHUTTLES

| | |
|------------------|----------------|
| Super Shuttle | (800) 258-3826 |
| Blue Bird Cab Co | (301) 864-7700 |
| Yellow Cab Co | (301) 864-7700 |

CAR SERVICE

| | |
|------------------------|----------------|
| Ace Limousine | (301) 441-3266 |
| Carey Limousine | (703) 892-2000 |
| Dream Limousine | (301) 982-2005 |
| Pass (Airport Service) | (301) 459-7084 |
| Tip Top Limousine | (800) 894-0545 |

PARKING

Please contact the Facilities, Operations & Events Office at 301/314-7126 to obtain parking passes for official team vehicles while competing at the University.

STAYING IN MARYLAND

LODGING

Best Western
 (301) 474-2800/(800) 442-1644
 Fax: (301) 474-0714
 8601 Baltimore Blvd., College Park
 5 minutes to campus, 1/2 mile

Courtyard by Marriott
 (301) 441-3311/(800) 321-2211
 Fax: (301) 441-4978
 6301 Golden Triangle Drive, Greenbelt
 15 minutes to campus, 5 miles

Greenbelt Marriott
 (301) 441-3700/(800) 228-9290
 Fax: (301) 441-3995
 6400 Ivy Lane, Greenbelt
 15 minutes to campus, 5 miles

Holiday Inn - College Park
 (301) 345-6700/(800)655-4669
 Fax: (301) 441-4923
 10000 Baltimore Blvd., College Park
 10 minutes to campus, 3 miles

Holiday Inn – Greenbelt
 (301) 982-7000/(800)655-4669
 Fax: (301) 345-8271
 7200 Hanover Drive, Greenbelt
 10 minutes to campus, 5 miles

Quality Inn
 (301) 276-1000/(877)424-6423
 Fax: (301) 276-1111
 7200 Baltimore Ave., College Park
 Downtown College Park , 1/3 mile

The Inn and Conference Center
 (301) 985-7300/(800)228-9290
 Fax: (301) 985-7850 (by Marriott)
 University Blvd @ Adelphi Rd.
 College Park -- On campus

Sheraton – College Park
 (301)937-4422/(888)625-5144
 Fax: (301) 937-4455
 4095 Powder Mill Rd., Beltsville
 20 minutes to campus, 11 miles

Bethesda Marriott
 (301) 897-9400/(800) 228-9290
 Fax: (301) 897-0192
 5151 Pooks Hill Rd., Bethesda
 30 minutes to campus, 15 miles

Sheraton Columbia Hotel
 (410) 730-3900/(888)625-5144
 Fax: (410)730-1319
 10207 Wincopin Circle, Columbia
 40 minutes, 21 miles

Ramada New Carrollton
 (301)459-6700/(800) 272-6232
 Fax: (301) 459-8192
 8500 Annapolis Rd., New Carrollton
 20 minutes to campus, 5 miles

Comfort Inn and Suites
 9020 Baltimore Avenue
 College Park, MD 20740
 (301) 441-8110/(877)424-6423
 Fax: (301)474-7725
 5 minutes to campus, 1 1/2 miles

Comfort Suites at Laurel Lakes
 (301)206-2600/(877)424-6423
 Fax: (301) 725-0056
 14402 Laurel Place, Laurel
 20 minutes to campus, 10 miles

Hilton Columbia
 (410)997-1060/(800) 445-8667
 Fax: (410) 997-0169
 5485 Twin Knolls Rd., Columbia, MD
 20 miles, 40 minutes

Hotel Four Points by Sheraton
 (301)654-1000/(888)625-5144
 Fax: (301)654-9751
 8400 Wisconsin Ave., Bethesda
 30 minutes to campus, 20 miles

ENTERTAINMENT

BOOKSTORES/ATHLETIC APPAREL

| | | |
|------------------------|--------------------------------|----------------|
| UM Book Center | Stamp Student Union | (301) 314-2665 |
| Maryland Book Exchange | 4500 College Ave, College Park | (301) 927-2510 |
| Terrapin Team Store | Comcast Center, Lobby Floor | (301) 314-9656 |
| Vertigo Books | College Park Shopping Center | (301) 779-9300 |

BOWLING ALLEYS

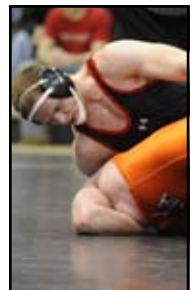
| | | |
|---------------------------------|----------------------------------|----------------|
| AMF College Park Lanes | 9021 Baltimore Ave, College Park | (301) 474-8282 |
| Rinaldi Riverdale Bowling Lanes | 6322 Kenilworth Ave, Riverdale | (301) 864-5940 |

MOVIE THEATRES

| | | |
|----------------------------|------------------------------------|----------------|
| AMC Academy | 86198 Greenbelt Road, Greenbelt | (301) 220-1155 |
| AMC Academy West | 6228 Greenbelt Road, Greenbelt | (301) 220-1155 |
| Bowie Hoyt's Cinema 14 | Route 50 and Route 197, Bowie | (301) 262-7433 |
| Cineplex Odeon White Flint | 11301 Rockville Pike, Rockville | (301) 881-5207 |
| MUVICO Egyptian 24 | 7000 Arundel Mills Circle, Hanover | (443) 755-8992 |
| Sony Theatres Centerpark 8 | 4001 Powder Mill Rd., Calverton | (301) 937-0742 |
| United Artists Bethesda | 7272 Wisconsin Ave., Bethesda | (301) 718-4323 |

SHOPPING CENTERS

| | | |
|-------------------------|---|----------------|
| Annapolis Mall | Defense Hwy, Annapolis | (410) 266-5432 |
| Columbia Mall | 10300 Little Patuxent Pkwy | (410) 730-3300 |
| Arundel Mills (Outlets) | 7000 Arundel Mills Circle, Hanover | (410) 540-5100 |
| Laurel Lakes Mall | 14828 Baltimore Ave, Laurel | (301) 490-7467 |
| Montgomery Mall | 7101 Democracy Blvd, Bethesda | (301) 469-6000 |
| Pentagon City Mall | 1100 Hayes St S Arlington, VA | (703) 415-2400 |
| Tyson's Corner Mall | 1961 Chain Bridge Road Tysons Corner, VA | (703) 893-9400 |
| Bowie Town Center | 15606 Emerald Way, Bowie | (301) 860-1818 |





EATING OUT IN MARYLAND

RESTAURANTS

FAST FOOD/DELI

| | | |
|------------------------|-----------------------------------|----------------|
| Bagel Place, The | 7423 Baltimore Ave., College Park | (301) 779-3900 |
| Boston Market | 6228 Greenbelt Rd, Greenbelt | (301) 220-4445 |
| Chipotle Mexican Grill | 7332 Baltimore Ave, College Park | (240)582-0015 |
| Cluck-U Chicken | 7415 Baltimore Ave, College Park | (301) 699-0345 |
| Jason's Deli | 7356 Baltimore Ave, College Park | (301) 779-3924 |
| KFC | 6101 Greenbelt Rd., Greenbelt | (301) 474-9664 |
| Marathon Deli | 429 Leigh Road, College Park | (301) 927-6717 |
| McDonald's | 8301 Baltimore Ave, College Park | (301) 345-1072 |
| New York Deli | 4926 Edgewood Road, College Park | (301) 345-0366 |
| Subway | 7411 Baltimore Ave, College Park | (301) 864-1311 |
| Taco Bell | 8428 Baltimore Ave, College Park | (301) 982-7198 |
| Wendy's | 6242 Greenbelt Road, Greenbelt | (301) 474-3539 |

PIZZA/ITALIAN

| | | |
|----------------|------------------------------------|----------------|
| Alario's | 9024 Baltimore Ave, College Park | (301) 474-3003 |
| Domino's | 7312 Baltimore Ave., College Park | (301) 852-3030 |
| Ledo's Pizza | 2420 University Blvd, College Park | (301) 422-8622 |
| Papa John's | 4509 College Ave, College Park | (301) 277-7722 |
| Pizza Boli's | 8147G Baltimore Ave, College Park | (301) 474-1313 |
| Pizza Hut | 9015 Baltimore Blvd, College Park | (301) 345-2244 |
| Ratsie's | 7400 Baltimore Ave, College Park | (301) 864-8220 |
| Three Brothers | 6160 Greenbelt Rd, Greenbelt | (301) 474-5330 |

CASUAL RESTAURANTS

| | | |
|--------------------------|-------------------------------------|----------------|
| Adele's Restaurant | UM Stamp Student Union | (301) 314-8054 |
| Applebee's | 7272 Baltimore Ave, College Park | (301) 864-6118 |
| Atlanta Bread Company | 5506A Cherrywood Ln, Greenbelt | (301) 982-3200 |
| Chevy's Mexican | 7511 Greenbelt Rd, Greenbelt | (301) 220-0078 |
| Chili's | 14601 Baltimore Ave, Laurel | (301) 317-6580 |
| China Buffet | 9098 Baltimore Ave, College Park | (301) 982-6600 |
| Cornerstone Grill & Loft | Baltimore Ave & Knox Rd | (301) 779-7044 |
| Denny's | 7405 Greenbelt Rd, Greenbelt | (301) 474-6423 |
| IHOP | 9680 Baltimore Blvd, College Park | (301) 982-7400 |
| Jasper's | 7401 Greenbelt Rd, Greenbelt | (301) 441-8030 |
| Jungle Grill | 8145-F Baltimore Ave., College Park | (301) 441-3321 |
| Los Panchos | 8424 Baltimore Ave., College Park | (301) 313-0848 |
| Moose Creek Steakhouse | 10000 Baltimore Ave, College Park | (301) 345-6700 |
| Noodles & Company | 7320 Baltimore Ave., College Park | (301) 779-5300 |
| Olive Garden | 14650 Baltimore Ave, Laurel | (301) 498-0881 |
| Peking Delight | 11621 Beltsville Dr, Beltsville | (301) 572-6018 |
| RJ Bentley's | 7323 Baltimore Blvd, College Park | (301) 779-1755 |
| Ruby Tuesdays | 8811 Greenbelt Rd., Greenbelt | (301) 552-0100 |
| Seven Seas Chinese | 8503 Baltimore Ave., College Park | (301) 345-5807 |
| Sir Walter Raleigh | 6323 Greenbelt Rd, Greenbelt | (301) 474-6500 |
| Taco Fiesta | 8145C Baltimore Ave, College Park | (301) 441-1661 |
| TGI Friday's | 6460 Capital Dr, Greenbelt | (301) 345-2503 |
| Varsity Grille | 8424 Baltimore Ave, College Park | (301) 345-8424 |

SIGHTSEEING

WASHINGTON, D.C.

- UNITED STATES

CAPITAL BUILDING

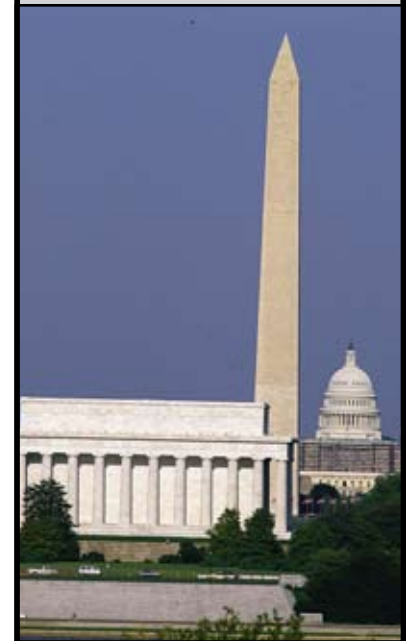
Take 193 East to Baltimore Washington Parkway (295) South to 50 West (New York Avenue) towards Washington D.C. Follow for approximately 4 miles to North Capital Street, turn left. Follow street for approximately 2 miles and the Capital will be right in front of you. This begins the National Mall with all the monuments and attractions to your right.

ANNAPOLIS- NAVAL ACADEMY AND RIVERFRONT

Take 193 East to 495 South towards Richmond. Follow to Highway 50 East to Route 70-Rowe Boulevard Exit (Naval Academy). Stay to the right and take Rowe to either the Naval Academy or the Riverfront.

BALTIMORE- INNER HARBOR

Take 193 East to 495/95 North towards Baltimore. Stay to the right and follow 95 North approximately 20 miles to Exit 53-Russell Street. Follow Russell Street past the two sports complexes and turn right on Pratt Street. The Inner Harbor, which contains a variety of restaurants and shops along with the National Aquarium (410-576-3800) and the Maryland Science Center (410-685-5225), will be on your right.



ATHLETIC FACILITIES

CAPITAL ONE FIELD AT BYRD STADIUM

Football/Men's Lacrosse

Byrd Stadium has been home to national championship football and men's lacrosse teams and more than 50 ACC track and field champions. Byrd is situated at the foot of the Campus' North Hill. Extensive renovations have occurred since its opening, a five-tier, 90-foot high, 160-foot long press box (Tyser Tower) was added with 236 exterior luxury seats and an increase in seating with a massive upper deck was added in 1994 to bring seating capacity up to 51,500. Refurbishing also included new restrooms, bleachers and a formal entranceway off Field House Drive. Located on the east end of the field is the Football Team House.

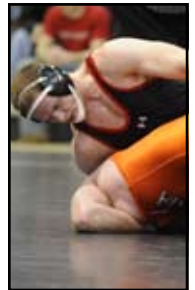
Visiting Team locker room facilities: Football locker room, showers, and training room are available in Gossett Football Team House. Team Buses unload at Varsity Team House, walk down stairs to Gossett Team House to visitors' locker room.



COMCAST CENTER

Men's and Women's Basketball; Wrestling; Volleyball; Gymnastics

Opened in the summer of 2002, the 17,950-seat Comcast Center is the incredible new home of Terrapin athletics. The Comcast Center houses the athletic administration offices and coaches' offices and an academic support and career development center for student-athletes. In addition to weight training and conditioning areas, the Comcast Center includes a wrestling practice gymnasium, locker facilities for several sports, an equipment distribution area, a sports medicine/training area and an auxiliary gymnasium for practice and competition. Other features include the Sprint Heritage Hall multi-purpose room, 20 suites, a Terp merchandise store and a media relations center. The arena also features the M Club Walk of Fame and History. Comcast's \$20 million naming gift matched the largest corporate naming gift ever for a newly built collegiate facility. An additional \$5 million was given by Comcast for naming rights to the floor. Visiting Team locker room facilities: Locker room, showers and training room are available in the Comcast Center. Buses can pull up in the Loading Dock Area.



LUDWIG FIELD/ JAMES H. KEHOE TRACK

Men's and Women's Soccer; Men's and Women's Track

Built in 1995, the Ludwig Field and Kehoe Track Complex has become one of the premier facilities in the Atlantic Coast Conference. It's the home of the men's and women's soccer teams, the men's and women's track teams and the seven-time NCAA champion women's lacrosse team. Its seating capacity is 2,300. The track itself is a six-lane rubberized surface with pole vaulting and long jump facilities. In its first year of existence, the complex was the site of the women's ACC Soccer Tournament and the men's and women's ACC Track and Field Championships. In each of the past three years, both the men's and women's NCAA Soccer Tournaments have come to Ludwig Field. Ludwig Field has also been the site of the NCAA Division II men's lacrosse finals.

Visiting Team locker room facilities: Locker room and showers are available upon request in the Gossett Football Team House.





SHIPLEY FIELD

Baseball

Since it was dedicated in 1956, Shipley Field has been the home of the baseball team. It seats 2,500 spectators. In 1994, Shipley Field had lights installed making it possible for the Terps to play night games during the latter portion of their schedule each season. A synthetic infield was installed in the summer of 2004.

Shipley received a complete facelift in 2005 with new dugouts, spectator seating, padded outfield fencing, batting cages and numerous other cosmetic upgrades.

Visiting Team locker room facilities: Locker rooms, showers and training room are available upon request in Gossett Football Team House. Buses unload at the Varsity Team House.



FIELD HOCKEY AND WOMEN'S LACROSSE COMPLEX

Field Hockey; Women's Lacrosse

The premier, state-of-the-art home of the four-time national champions seats 1,500 spectators and meets the highest field standards of the Federation of International Hockey (F.I.H.). Opened in 2003 with a water-based Astroturf 12 playing surface, the fan-friendly facility is located on Paint Branch Drive (off Route 193) adjacent to Comcast Center. Parking for fans is available in on-site lots or the nearby Terrapin Trail Garage. Visiting Team Locker Room Facilities: Locker Rooms, showers and training room facilities are located in the new facilities building, which was added in 2005. Buses can pull up in the Loading Dock Area.



CAMPUS RECREATION CENTER NATATORIUM

Men's and Women's Swimming and Water Polo

Built in 1998, the Campus Recreation Center Natatorium is a state-of-the-art facility for both the men's and women's swimming and diving teams and the women's water polo team. There is balcony seating for 1,000 spectators. In its first years of existence it has attracted top-notch meets and has been the site of the ACC Swimming and Diving Championships, the YMCA Nationals and the World Cup Meet. Visiting Team locker room facilities:

Locker rooms and showers are available in the Campus Recreation Center. Bus drop-off site is at the STOP sign on Farm Dr. directly in front of the Campus Recreation Center and LaPlata Hall.

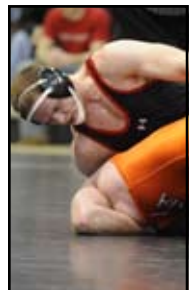


MARYLAND GOLF COURSE

Men's and Women's Golf

The Maryland Golf Course is located just off Route 193 at Stadium Drive, across the street from the entrance to Byrd Stadium. It is the home of the men's and women's golf and cross country teams.

Visiting Team locker room facilities: Locker rooms and showers are available in the Golf Course Clubhouse.



TENNIS CENTER AT COLLEGE PARK

Men's and Women's Tennis

The new, state-of-the-art home of Terrapin Tennis features 12 indoor and 15 outdoor courts, training room and weight room facilities, locker rooms, and a spacious lounge and reception area. The 27 courts include 3 court surfaces: 8 indoor hard courts, 4 indoor Har-Tru courts, 9 outdoor hard courts, 4 outdoor Har-Tru courts, and 2 outdoor red clay courts. The Tennis Center is located at 5200 Paint Branch Parkway, approximately 1 mile from the main campus entrance on Route 1. It is easily accessible from the College Park Metro Station.



SOFTBALL COMPLEX

Softball

A new state-of-the-art facility was completed in the summer of 2002 that includes stadium seating for over 1,000 fans, underground dugouts with restrooms, two bullpen areas and four batting cages, light towers, an electronic scoreboard, a concessions area, a ticket booth, press box and a natural Bermuda Grass outfield. Located adjacent to Maryland's new Comcast Center on the north side of campus, there is accessibility to locker room and weight training facilities and an indoor practice gymnasium. Visiting Team locker room facilities: Locker rooms and showers are available in the Comcast Center. Buses can pull up in the Loading Dock Area.



ATHLETIC SERVICES

SPORTS MEDICINE FACILITIES AND SERVICES

The University of Maryland Sports Medicine staff will be available to assist in providing the best possible medical care and attention to all student-athletes. The University of Maryland operates three co-ed athletic training rooms. The Gossett Football Team House serves as the main sports medicine facility and services the football, swimming and water polo teams. Adjunct athletic training rooms are located in the Comcast Center (men's and women's basketball, volleyball, wrestling, softball, men's and women's tennis, gymnastics, competitive cheer and spirit squad) and at the Varsity Team House (men's and women's track and field and cross country, baseball, and men's and women's golf). The athletic training facility offers a variety of hot and cold modalities, along with hydrotherapy, electrical stimulation, and ultrasound.

Thirteen certified athletic trainers provide support to the University's 27 varsity sport programs. A University of Maryland certified athletic trainer will be on-site for all home athletic competitions. If your team is traveling without a certified athletic trainer, advance notification is appreciated. A written prescription from a physician and/or certified athletic trainer is required for treatment other than ice and heat in such situations. In addition, University of Maryland Sports Medicine personnel will be happy to assist your team with its taping and/or wrapping needs, provided that student-athletes provide their own taping supplies. Please contact the host athletic trainer and/or Darryl Conway, Assistant Athletic Director, Sports Medicine (301-314-2663; email dconway@umd.edu) with any questions or to make special arrangements.

Water, ice bags, cups, towels, and biohazard supplies will be provided on your sideline and in your locker room. Emergency supplies including a Gator/golf cart, an AED, oxygen, crutches, splints, spineboard, cervical collars, etc., will also be available should the need arise. A physician will be in attendance for football, men's and women's basketball, men's and women's soccer, field hockey, wrestling, gymnastics, and men's and women's lacrosse games. A physician will be on-call for all other events.

The University of Maryland Sports and Medicine staff will try to accommodate all reasonable requests. If you are in need of any additional supplies or information, or if we can be of service to you in any way, please do not hesitate to contact host athletic trainer for the sport and/or Darryl Conway, Assistant Athletic Director, Sports Medicine (301-314-2663; email dconway@umd.edu).

MEDIA RELATIONS FACILITIES AND SERVICES

Media and photographer credentials of working press, radio and television staff for athletic events at the university may be obtained by writing or calling the Maryland Media Relations Office, 2731 Comcast Center, Terrapin Trail, College Park, MD 20741. All requests should be submitted 48 hours prior to the event by phoning the Media Relations Office at 301/314-7064. Since space is limited, accommodations are on a priority basis to daily newspapers and wire services, originating radio and television stations, national weekly or monthly publications, electronic media outlets, local and regional television crews. Priority is granted to members of the media who cover Maryland athletics on a regular basis and to visiting team media members. Photo passes will be issued only to accredited photographers on assignment.

Services: The Media Relations Office will provide complete statistics at the conclusion of every home game. Programs containing rosters and event notes on each team will be provided for the working media.

Fax machine: The Media Relations Office has one facsimile machine located in Room 2731 of the Comcast Center, that is available upon request. The fax number is 301/314-9094.

Terps on the Web: For up-to-date game stories, statistics, schedules and results, and other Maryland Athletic Department information, please visit www.umterps.com on the Internet.

PLAYER COMPLIMENTARY TICKET INFORMATION/ PLAYERS' GUEST PASS GATE

Pass Gate Location
Pass List Turn-In

WOMEN'S BASKETBALL

Gate A of Comcast Center
1 1/2 hours before tip-off,
turn-in at Ticket Office

MEN'S BASKETBALL

Gate A of Comcast Center
3 hours before tip-off,
turn-in at Ticket Office

BASEBALL

Main entrance Shipley Field
1 1/2 hours before 1st pitch,
turn-in at gate

MEN'S SOCCER

Men's: North gate Ludwig Field
Women's: Main gate Ludwig Field
1 1/2 hours before game, turn-in at gate

WOMEN'S LACROSSE

Field Hockey/Lacrosse Complex
1 1/2 hours before game, turn-in at gate

MEN'S LACROSSE

Auto Gate, Byrd Stadium or Main Gate,
Ludwig Field
1 1/2 hours before game, turn-in at gate

FOOTBALL

Gate B, north side of the stadium

Terrapin Ticket Office
University of Maryland
2739 Comcast Center
Terrapin Trail
College Park, MD 20741
(301) 314-7070 • (800) 462-TERP



EMERGENCY NUMBERS AND INFORMATON

**WASHINGTON ADVENTIST HOSPITAL
7600 CARROLL AVENUE
TAKOMA PARK, MD 20912
301-891-7600**

**SUBURBAN HOSPITAL
8600 OLD GEORGETOWN ROAD
BETHESDA, MD 20814
301-896-3100**

EMS, POLICE, FIRE, AMBULANCE - 911

**CAMPUS INFORMATION
301-405-1000**

**CAMPUS POLICE
301-405-3333**

