



MARQUETTE

8-13 (2-6)

VOLLEYBALL

This Week's Matches



Nov. 1 DePaul
3-19 (1-8)



Nov. 2 Notre Dame
11-11 (6-3)

Marquette's All-Time Record Against DePaul and Notre Dame

Marquette vs. DePaul, DePaul leads 28-17

Last Meeting: Oct. 14, 2007 (Al McGuire Center)
W, 3-1 (30-25, 30-23, 30-32, 30-20)

Marquette vs. Notre Dame, ND leads 9-1

Last Meeting: Oct. 12, 2007 (Al McGuire Center)
W, 3-1 (30-26, 20-30, 30-25, 31-29)

Match vs. Pittsburgh to be Streamed Live on GoMarquette.com

The match against Pittsburgh will be broadcast live on GoMarquette.com. Fans can view the match and future matches by going to the All-Access player, which is available through the GoMarquette.com homepage.

Marquette Downs UW-Milwaukee

Against the Panthers, **Rabbecca Gonyo** tied her career-high with 18 kills, while **Leslie Bielski** also tied a career high with 17. **Caryn Mastandrea** recorded a career-high 20 digs to go along with 47 assists for her sixth double-double of the season. The win stopped a four-match losing streak for the Golden Eagles.

Syracuse Match Highlights

Leslie Bielski set a career-high will 17 kills in the loss and **Ashlee Fisher** set a season-best with 23 kills, topping her previous high of 22 against Northern Illinois. **Fisher's** 23 kills were the most by a BIG EAST athlete this year. Junior **Caryn Mastandrea** recorded at least 50 assists for the third time this season with her 50 helpers. Against the Orange, MU dropped the first two sets to extend its set winless streak to 11 sets before rebounding to take the next two but ultimately fell in five.

St. John's Match Includes Career Highs and Program Firsts

Helping the Golden Eagles beat St. John's for the first time in school history and improve to 2-0 in the BIG EAST for the first time ever, was junior setter **Caryn Mastandrea** who recorded a career-high 19 digs to go along with seven kills and 39 assists. Also registering career highs were junior **Katie Vancura** with seven blocks and freshman **Tiara Russell** with eight kills and nine blocks. Freshman libero **Amy Deelo** also tied a career high with four service aces.

Mastandrea Earns Second BIG EAST Honor Roll Selection

After leading MU to victory over St. John's for the first time in school history, Caryn Mastandrea was named to the BIG EAST Honor Roll for the week of Oct. 6. It is the second such honor of her career.

MU Upends Rutgers For Second Straight Year to Start BIG EAST Play

Marquette starts BIG EAST play 1-0 for the fourth straight season after defeating Rutgers, 3-0 Friday night. The Golden Eagles beat Rutgers, 3-0 at the Al McGuire Center last season to begin conference play. In 2006 MU beat Cincinnati, 3-2 and in 2005 they beat USF, 3-0.

2008 SCHEDULE

| Date | Opponent | Time/Result |
|------|----------|-------------|
|------|----------|-------------|

AUGUST

Aug. 29 - Aug. 30 - Marquette Kick-Off Tournament

| | | |
|----------------|--------------------|---------------|
| Fri. 29 | Houston | L, 3-1 |
| Sat. 30 | Chattanooga | W, 3-0 |
| | Tennessee | L, 3-1 |

SEPTEMBER

Sept. 5-6 - UNI Tournament

| | | |
|---------------|-----------------------------|---------------|
| Fri. 5 | vs Clemson | L, 3-0 |
| Sat. 6 | at Northern Iowa | L, 3-0 |
| | vs Northern Illinois | W, 3-1 |

Sept. 12-13 - Marquette Challenge

| | | |
|----------------|----------------------|---------------|
| Fri. 12 | Temple | W, 3-2 |
| Sat. 13 | Green Bay | W, 3-1 |
| | Bowling Green | L, 3-2 |

Sept. 20-21 - Marquette Cheese Bowl

| | | |
|----------------|----------------------|---------------|
| Sat. 20 | Oregon State | L, 3-1 |
| | American | W, 3-2 |
| Sun. 21 | #13 Wisconsin | L, 3-0 |
| Fri. 26 | at Rutgers* | W, 3-0 |

OCTOBER

| | | |
|----------------|-----------------------|---------------|
| Fri. 3 | St. John's* | W, 3-1 |
| Sun. 5 | Connecticut* | L, 3-0 |
| Fri. 10 | at USF* | L, 3-0 |
| Sun. 12 | at Georgetown* | L, 3-0 |
| Sat. 18 | Syracuse* | L, 3-2 |
| Mon. 20 | UW-Milwaukee | W, 3-2 |
| Fri. 24 | Louisville* | L, 3-0 |
| Sun. 26 | Cincinnati* | L, 3-0 |

NOVEMBER

| | | |
|----------------|-----------------------|---------------|
| Sat. 1 | at DePaul* | 2 p.m. |
| Sun. 2 | at Notre Dame* | 1 p.m. |
| Sat. 8 | at Villanova* | 1 p.m. |
| Sun. 9 | at Seton Hall* | 1 p.m. |
| Fri. 14 | West Virginia* | 7 p.m. |
| Sun. 16 | Pittsburgh* | 2 p.m. |

Nov. 21-23 - BIG EAST Tournament; Pittsburgh, Pa.

Nov. 28-29 - Western Michigan Classic.

| | | |
|------------------|----------------------------|------------|
| Fri./Sat. | at Western Michigan | TBA |
| Fri./Sat. | vs Miami (Ohio) | TBA |

All times listed are Central and subject to change
Home matches are bolded and played at the Al McGuire Center

*Denotes BIG EAST match

MARQUETTE MEDIA RELATIONS

Volleyball Contact: Michael Wittliff

Office Phone: 414.288.7447

Fax: 414.288.6519

E-mail:

michael.wittliff@marquette.edu

Website: www.GoMarquette.com

Overall Set-by-Set

| Match Wins By Set | 1 | 2 | 3 | 4 | 5 | Total |
|-------------------|---|---|---|---|---|-------|
| Marquette | - | - | 2 | 3 | 3 | 8 |
| Opponents | - | - | 8 | 3 | 2 | 13 |

| Set Wins By Match | 1 | 2 | 3 | 4 | 5 | Total |
|-------------------|----|----|----|---|---|-------|
| Marquette | 8 | 6 | 7 | 7 | 3 | 32 |
| Opponents | 13 | 15 | 13 | 4 | 2 | 47 |

| Points By Set | 1 | 2 | 3 | 4 | 5 | Total |
|---------------|-----|-----|-----|-----|----|-------|
| Marquette | 451 | 441 | 455 | 280 | 71 | 1,698 |
| Opponents | 497 | 486 | 476 | 268 | 65 | 1,767 |

Marquette Volleyball Individual Awards

Ashlee Fisher

2008 Marquette Challenge All-Tournament

Rabbecka Gonyo

2008 Marquette Challenge All-Tournament

Caryn Mastandrea

2008 UNI Invitational All-Tournament
 2008 Marquette Challenge All-Tournament
 2008 Marquette Cheese Bowl All-Tournament
 BIG EAST Honor Roll (Week of Sept. 15)
 BIG EAST Honor Roll (Week of Oct. 6)

The Last time a MU player...

Recorded a double-double

Caryn Mastandrea Oct. 26 Cincinnati
 27 assists-11 digs

Recorded a triple-double

Sarah Vernon Oct. 30, '04 St. Louis
 12 kills, 70 assists, 16 digs

Recorded 20+ kills

Ashlee Fisher Oct. 18 Syracuse
 23 kills

Recorded 30+ kills

Kim Todd Nov. 14, '06 Louisville
 31 kills

Recorded 20+ digs

Amy Deelo Oct. 20 UWM
 24 digs

Recorded 30+ digs

Jamie Mueller Sept. 8, '06 Pacific
 41 digs

Recorded 50+ assists

Caryn Mastandrea Oct. 18 Syracuse
 50 assists

Recorded 60+ assists

Katie Weidner Nov. 24, '07 S. Dakota St.
 85 assists

Recorded 10+ blocks

Jenn Brown Sept. 14, '07 Belmont
 10 blocks

Recorded 15+ blocks

Jenn Brown Nov. 17, '06 Pittsburgh
 19 blocks

Marquette Volleyball Match Notes

Nov. 1 & 2, 2008

Marquette Cheese Bowl All-Tournament Team

Caryn Mastandrea was named to an all-tournament for the third consecutive weekend when she was chosen as a member of the Marquette Cheese Bowl All-Tournament Team. The junior setter set a career high with 52 assists against American in Marquette's lone win of the weekend. Mastandrea also recorded 15 digs in the American match for her fourth double-double of the season.

Mastandrea Honored Once Again

In recognition of her outstanding play in the Marquette Challenge, setter **Caryn Mastandrea** was named to the BIG EAST Honor Roll for the week of Sept. 15.

Three Named to Marquette Challenge All-Tournament Team

Junior setter **Caryn Mastandrea** earned all-tournament recognition for the second consecutive weekend when she was named to the Marquette Challenge All-Tournament Team. Also joining Mastandrea on the team were senior outside hitter **Ashlee Fisher** and sophomore middle blocker **Rabbecka Gonyo**.

Active BIG EAST Coaches Career Victories

| | | |
|----------------------|-----------|------------|
| Veronica Hammersmith | WVU | 562 |
| Debbie Brown | ND | 535 |
| Leonid Yelin | UL | 427 |
| Pati Rolf | MU | 410 |



Pronunciation

| | |
|------------------|----------------|
| Laira Akin | LAIR-uh A-kin |
| Alexandra Coello | co-EL-o |
| Amy Deelo | dee-low |
| Rabbecka Gonyo | gon-YO |
| Samantha Hertaus | HER-tau |
| Ciara Jones | SEE-AIR-uh |
| Jessica Keiser | KEY-zer |
| Caryn Mastandrea | MA-san-dree-uh |

2008 Marquette Roster

| No. | Name | Pos. | Class | Ht. | Hometown | High School/College |
|-----|------------------|------|-------|------|------------------------|---------------------|
| 1 | Ciara Jones | OH | Fr. | 5-10 | Orlando, Fla. | Edgewater |
| 2 | Leslie Bielski | OH | So. | 6-0 | Chanhassen, Minn. | Chaska |
| 3 | Laira Akin | S | Fr. | 6-0 | Blue Springs, Mo. | Oakwood Academy |
| 4 | Terri Angst | DS/L | Sr. | 5-7 | New Berlin, Wis. | Catholic Memorial |
| 5 | Ashlee Fisher | OH | Sr. | 5-11 | West Bend, Wis. | West/Kentucky |
| 6 | Tia Russell | MB | Fr. | 5-10 | Brooklyn Park, Minn. | Osseo Senior |
| 7 | Holly Mertens | MB | Fr. | 6-0 | Stanley, Wis. | Stanley-Boyd |
| 8 | Jessica Kieser | DS | Sr. | 5-4 | Verona, Wis. | Verona |
| 9 | Alex Coello | DS | Fr. | 5-2 | South Elgin, Ill. | St. Charles East |
| 10 | Katie Vancura | RS | So. | 6-1 | Waukesha, Wis. | Mukwonago |
| 11 | Rabbecka Gonyo | MB | So. | 6-4 | Ingleside, Ill. | Grant Community |
| 12 | Amy Deelo | DS/L | Fr. | 5-8 | St. Louis, Mo. | Cor Jesu Academy |
| 13 | Sammie Hertaus | DS | Fr. | 5-7 | New Prague, Minn. | New Prague |
| 14 | Hailey Viola | DS | Jr. | 5-7 | Pleasant Prairie, Wis. | St. Joseph |
| 15 | Caryn Mastandrea | S | Jr. | 5-8 | Downers Grove, Ill. | Downers Grove South |

Head Coach: Pati Rolf, seventh season (North Dakota State, 1992)
 Assistant Coaches: Erica Heisser, fourth season (Marquette, 2005)
 Raftyn Rignell, second season (Connecticut, 2004)

2008 Marquette Volleyball Results

| Date | Opponent | W | L | Set Scores | | | | Kills | Digs | Blocks |
|--|----------------------|---|---|------------|-------|-------|-------|------------|--------------------|---------------------------------|
| Aug. 29-30 — Marquette Kick-Off Tournament; Al McGuire Center | | | | | | | | | | |
| Aug. 29 | Houston | | L | 23-25 | 25-22 | 22-25 | 22-25 | Fisher 13 | Angst 11 | Gonyo 6 |
| Aug. 30 | Chattanooga | W | | 25-11 | 25-12 | 25-17 | | Fisher 18 | Deelo 13 | Vancura 5 |
| | Tennessee | | L | 14-25 | 25-22 | 22-25 | 21-25 | Fisher 13 | Deelo 10 | Russell 6 |
| Sept. 5-6 — UNI Invitational; Cedar Falls, Iowa | | | | | | | | | | |
| Sept. 5 | vs Clemson | | L | 10-25 | 23-25 | 17-25 | | Bielski 13 | Deelo 9 | Gonyo 5 |
| Sept. 6 | at Northern Iowa | | L | 20-25 | 23-25 | 20-25 | | Bielski 12 | Bielski, Viola 9 | Bielski 4 |
| | vs Northern Illinois | W | | 30-28 | 25-21 | 22-25 | 25-23 | Fisher 22 | Deelo 21 | Akin, Gonyo, Russell 3 |
| Sept. 12-13 — Marquette Challenge; Al McGuire Center | | | | | | | | | | |
| Sept. 12 | Temple | W | | 25-14 | 18-25 | 21-25 | 27-25 | 15-10 | Fisher 19 | Mastandrea 16 Russell 8 |
| Sept. 13 | Green Bay | W | | 27-29 | 25-16 | 25-12 | 25-19 | | Gonyo 18 | Deelo 26 Fisher, Gonyo 4 |
| | Bowling Green | | L | 25-21 | 25-21 | 16-25 | 16-25 | 13-15 | Bielski 14 | Viola 16 Gonyo 5 |
| Sept. 20-21 — Marquette Cheese Bowl; Al McGuire Center | | | | | | | | | | |
| Sept. 20 | Oregon State | | L | 19-25 | 10-25 | 25-23 | 19-25 | | Bielski 14 | Deelo 13 Russell 7 |
| | American | | W | 29-27 | 16-25 | 22-25 | 25-18 | 16-14 | Fisher 17 | Deelo 20 Russell, Gonyo 7 |
| Sept. 21 | Wisconsin | | L | 23-25 | 23-25 | 15-25 | | | Fisher 11 | Mastandrea 9 Russell, Vancura 5 |
| Sept. 26 | at Rutgers* | | W | 25-20 | 25-18 | 25-23 | | | Fisher 14 | Deelo 14 Gonyo 5 |
| Oct. 3 | at St. John's* | | W | 25-21 | 17-25 | 26-24 | 25-21 | | Bielski 14 | Mastandrea 19 Russell 9 |
| Oct. 5 | Connecticut* | | L | 20-25 | 21-25 | 19-25 | | | Bielski, Fisher 13 | Deelo 10 Russell 3 |
| Oct. 10 | at USF* | | L | 21-25 | 20-25 | 16-25 | | | Fisher 10 | Deelo 9 Gonyo 4 |
| Oct. 12 | at Georgetown* | | L | 24-26 | 19-25 | 23-25 | | | Fisher 10 | Deelo 10 Russell, Vancura 5 |
| Oct. 18 | Syracuse* | | L | 16-25 | 21-25 | 25-16 | 25-21 | 12-15 | Fisher 23 | Deelo 19 Gonyo 4 |
| Oct. 20 | UW-Milwaukee | W | | 25-27 | 24-26 | 25-11 | 25-16 | 15-11 | Gonyo 18 | Deelo 24 Russell, Gonyo 7 |
| Oct. 24 | Louisville* | | L | 8-25 | 19-25 | 21-25 | | | Jones 6 | Deelo 9 Russell 3 |
| Oct. 26 | Cincinnati* | | L | 15-25 | 18-25 | 23-25 | | | Bielski 10 | Deelo 14 Russell, Vancura 2 |
| Nov. 1 | at DePaul* | | | | | | | | | |
| Nov. 2 | at Notre Dame* | | | | | | | | | |
| Nov. 8 | at Villanova* | | | | | | | | | |
| Nov. 9 | at Seton Hall* | | | | | | | | | |
| Nov. 14 | West Virginia* | | | | | | | | | |
| Nov. 16 | Pittsburgh* | | | | | | | | | |
| Nov. 28-29 — Western Michigan Classic | | | | | | | | | | |
| Nov. 28/29 | Western Michigan | | | | | | | | | |
| Nov. 28/29 | Miami (Ohio) | | | | | | | | | |

Record Breakdown

| | | | |
|----------------|------|----------------------|-----|
| Overall Record | 8-13 | BIG EAST Record | 2-6 |
| Home | 6-9 | BIG EAST at Home | 1-4 |
| Road | 1-3 | BIG EAST on the Road | 1-2 |
| Neutral | 1-1 | | |

* denotes BIG EAST Contest

Attendance

| Site | Total | MP | Avg. | High |
|---------|-------|----|------|----------------------------|
| Home | 7,084 | 15 | 472 | 831 (Aug. 29 vs Wisconsin) |
| Away | 2,229 | 4 | 557 | 1,053 (Sept. 7 at UNI) |
| Neutral | 297 | 2 | 148 | - |
| Season | 9,061 | 21 | 432 | 1,053 (Sept. 7 at UNI) |

2008 Match Superlatives

| Statistic | Player | Opponent |
|-------------------|----------------|--------------------------------|
| K | 23 | Ashlee Fisher Syracuse |
| TA | 57 | Ashlee Fisher Syracuse |
| Pct. (min. 10 TA) | .643 (18-0-28) | Ashlee Fisher Chattanooga |
| Ast | 52 | Caryn Mastandrea American |
| SA | 4 | Amy Deelo twice |
| Digs | 26 | Amy Deelo Green Bay |
| BS | 3 | two players four times |
| BA | 8 | Tiara Russell St. John's |
| Pts | 23.5 | Ashlee Fisher vs Northern Ill. |

2008 MU Team Superlatives

| | | | | | |
|------|----------------|------------------|------|------|---------------|
| K | 71 | vs Northern Ill. | Digs | 89 | Green Bay |
| TA | 169 | UW-Milwaukee | BS | 10 | at Georgetown |
| Pct. | .389 (42-7-90) | Chattanooga | BA | 20 | three times |
| Ast | 65 | vs Northern Ill. | Pts | 85.5 | UW-Milwaukee |
| SA | 10 | Bowling Green | | | |

2008 Match-by-Match Results



| | | | | |
|-------------------------------------|----|----|----|----|
| Houston (3) | 23 | 25 | 25 | 25 |
| Marquette (1) | 25 | 22 | 22 | 22 |
| Aug. 29 • Al McGuire Center • (0-1) | | | | |

MILWAUKEE--The Marquette women's volleyball team lost a hard fought match Friday night, falling to the University of Houston in four sets, 3-1 (25-23, 22-25, 22-25, 22-25).

"I was really excited with how we started the match," said Marquette head volleyball coach Pati Rolf. "Our freshmen really showed the potential that this team possesses. Laura [Akin] is coming back from a knee injury and Ciara [Jones] really showed how powerful she could be once we started getting her the balls she needed. Amy Deelo really played some serious defense as well."

On the night both teams struggled with consistency as Houston had 16 service errors to Marquette's 13, four of which came in the pivotal fourth set. At the net, the Golden Eagles also had eight blocking errors.

"It was an error-driven game," said Rolf "If you eliminate errors you will win games. We had too many errors and that put us in a bad position."

Marquette came out firing on all cylinders in the opening set, getting off to a 8-3 lead following a kill by sophomore Rabbecca Gonyo and an attack error by Houston's Kelsey King. The Cougars continued to fight back, eventually tying the set at 15-15 on a kill by Nataliya Panova and took their first lead of the night at 16-15. The back-and-forth battle continued in the first set as Marquette regained the lead after another kill by Gonyo on an assist from junior Caryn Mastandrea. Following Gonyo's fourth kill, Houston called their second timeout but failed to catch the Golden Eagles as Marquette captured the first set, 25-23 on a ferocious volley by freshman Ciara Jones.

Gonyo, Jones and Ashlee Fisher each had four kills in the first set while Mastandrea lead both squads with 13 assists.

The Golden Eagles got off to a slow start in the second set but never trailed by more than four points. After falling behind 7-3, Marquette fired back on a kill by Gonyo and a service ace by Hailey Viola to bring the score to 7-5. After continuing to cut into the Cougars' lead after falling behind by four, the Golden Eagles brought their deficit to 21-19 on an ace by Fisher forcing Houston to call a timeout. Out of the timeout, Leslie Bielski and Jones responded with kills to pull Marquette within one at 23-22 before they ultimately lost the match, 25-22.

A kill by freshman Tiara Russell and an ace from Mastandrea let Marquette take the early advantage in the third set, 3-2. The Cougars came back roaring, forcing Marquette to take a timeout after falling behind 10-4. Following the timeout, Jones and Gonyo responded with kills bring the score to 11-6. Freshman defensive specialist Deelo got into the action with an acrobatic play, as she dove out of bounds to save a ball and struck it back over the net with one hand for a kill. The Golden Eagles used their last timeout of the set upon seeing their deficit grow to eight at 20-12. Following Rolf's use of her final timeout, the Golden Eagles responded with kills from Fisher and Jones, along with four attack errors by the Cougars. Out of a Houston timeout, the Cougars built a lead of five at 24-19. The Golden Eagles would not let Houston close out the set as they played for the set-point. Two kills from Ashlee Fisher on assists from freshman Laura Akin brought Marquette to within two at 24-22 before the Cougars ended the set on a kill from Justine Farmer.

The fourth set mirrored the third as the Golden Eagles struggled to keep pace with the Cougars early on, leading to a Marquette timeout with the score 14-9. Houston took their first set timeout after an attack error by Kinsey Cave and an ace by Terri Angst put the game at 22-16. Coming out of the timeout, Houston responded with an ace and a kill and awaited match-point at 24-16. Just as the Golden Eagles had in the first set, they stormed back and brought the set within two at 24-22 following two powerful kills from Jones. Houston eventually ended the match on the next play with a kill from Farmer, who ended the match with a match-high 22 kills.

On the night, Fisher led Marquette with 13 kills, while Jones added 11 and Mastandrea led the squad with 31 assists.

| Houston | SP | K-E-TA | PCT | A | S-A | RE | DIG | BS | BABE | BHE | PTS |
|-------------------|----|-----------|-------|----|------|----|-----|------|------|-----|------|
| CAVE, Kinsey | 4 | 5-5-15 | .000 | 2 | 0-2 | 0 | 4 | 0-2 | 0 | 0 | 6.0 |
| PANOVA, Nataliya | 4 | 11-2-23 | .391 | 0 | 1-3 | 1 | 6 | 0-1 | 0 | 0 | 12.5 |
| KING, Kelsey | 4 | 1-2-4 | -.250 | 35 | 1-2 | 1 | 4 | 0-3 | 1 | 0 | 3.5 |
| FARMER, Justine | 4 | 22-6-40 | .400 | 0 | 1-2 | 2 | 8 | 1-1 | 0 | 0 | 24.5 |
| FREITAS, Barbara | 4 | 2-3-9 | -.111 | 1 | 1-4 | 0 | 2 | 0-4 | 0 | 0 | 5.0 |
| ZHARUK, Lucy | 4 | 6-2-18 | .222 | 0 | 0-0 | 1 | 0 | 2-4 | 0 | 0 | 10.0 |
| ZAJUREK, Ingrida | 2 | 1-0-3 | .333 | 0 | 0-0 | 0 | 0 | 0-1 | 0 | 0 | 1.5 |
| CARSON, Amanda | 4 | 1-0-1 | 1.000 | 0 | 2-3 | 0 | 12 | 0-0 | 0 | 0 | 3.0 |
| CARDOSO DESA, Aik | 2 | 0-0-0 | .000 | 3 | 1-0 | 0 | 1 | 0-0 | 0 | 0 | 1.0 |
| BAKER, Samantha | 2 | 0-0-0 | .000 | 1 | 0-0 | 0 | 1 | 0-0 | 1 | 0 | 0.0 |
| Totals | 4 | 49-20-113 | .257 | 42 | 7-16 | 5 | 38 | 3-16 | 2 | 0 | 67.0 |

| Marquette | S-P | K-E-TA | PCT | A | S-A | RE | DIG | BS | BABE | BHE | PTS |
|------------|-----|-----------|-------|----|------|----|-----|------|------|-----|------|
| BIELSKI | 4 | 9-6-22 | .136 | 1 | 1-0 | 1 | 3 | 0-3 | 1 | 0 | 11.5 |
| FISHER | 4 | 13-10-35 | .086 | 1 | 1-3 | 2 | 7 | 0-2 | 1 | 0 | 15.0 |
| RUSSELL | 4 | 4-3-12 | .083 | 0 | 0-0 | 0 | 0 | 0-2 | 2 | 0 | 5.0 |
| GONYO | 4 | 9-4-20 | .250 | 0 | 0-5 | 0 | 3 | 0-6 | 2 | 0 | 12.0 |
| DEELO | 4 | 1-0-2 | .500 | 0 | 0-1 | 0 | 6 | 0-0 | 0 | 0 | 1.0 |
| MASTANDREA | 4 | 0-1-6 | -.167 | 31 | 1-2 | 0 | 4 | 0-0 | 2 | 0 | 1.0 |
| JONES | 4 | 11-5-23 | .261 | 1 | 0-0 | 0 | 2 | 1-2 | 0 | 0 | 13.0 |
| ANGST | 2 | 2-0-3 | .667 | 8 | 0-0 | 0 | 2 | 0-1 | 0 | 0 | 2.5 |
| KIESER | 1 | 0-0-0 | .000 | 0 | 0-0 | 0 | 0 | 0-0 | 0 | 0 | 0.0 |
| VIOLA | 3 | 0-0-0 | .000 | 0 | 1-0 | 0 | 2 | 0-0 | 0 | 0 | 1.0 |
| Team | | | | | | | | | | | 2 |
| Totals | 4 | 49-29-124 | .161 | 43 | 5-13 | 7 | 40 | 1-16 | 8 | 0 | 63.0 |

| | | | |
|-------------------------------------|----|----|----|
| Chattanooga (0) | 11 | 12 | 17 |
| Marquette (3) | 25 | 25 | 25 |
| Aug. 30 • Al McGuire Center • (1-1) | | | |

MILWAUKEE--The Marquette women's volleyball team easily dispatched of the Chattanooga Lady Mocs Saturday afternoon in their second match of the season, 3-0 (25-11, 25-12, 25-17). Leading the way for the Golden Eagles was senior Ashlee Fisher with 18 kills while setters Laura Akin and Caryn Mastandrea contributed 12 and 14 assists, respectively. Fisher's zero errors in the match helped her post a 64.3 attack percentage, while Akin and Mastandrea spent time on the floor together as Rabbecca Gonyo was held out of action for the first two sets.

"The upperclassmen really held it together this afternoon," said head volleyball coach Pati Rolf.

In the first set, with the score at 9-7 in Marquette's favor, ten straight points by the Golden Eagles effectively put the set and eventually the match out of reach. Starting the rally with a kill was Caryn Mastandrea who also pitched in two service aces and two assists during the run. Mastandrea closed out the scoring in the first set with a kill as well.

"Caryn really had a great game and moved the ball around well," said Rolf.

Continuing her solid play in the second set was freshman Amy Deelo, who recorded 13 kills and four assists as the libero. Deelo helped the Golden Eagles out to a 7-2 lead in the second set and Marquette never looked back, only allowing the Lady Mocs to score one more point than they did in the first frame.

With the Golden Eagles up two sets to none, Gonyo returned to the floor in the third and hammered home three kills on four attacks while Fisher's six attacks netted seven kills. Akin added nine assists in the frame.

| Chattanooga | SP | K-E-TA | PCT | A | S-A | RE | DIG | BS | BABE | BHE | PTS |
|---------------------|----|----------|-------|----|-----|----|-----|-----|------|-----|------|
| NETHERY, Laura | 3 | 5-4-12 | .083 | 1 | 0-0 | 0 | 0 | 0-1 | 0 | 0 | 5.5 |
| KUHN, Ellie | 3 | 3-1-8 | .250 | 0 | 2-0 | 0 | 1 | 0-1 | 1 | 0 | 5.5 |
| CONNOR, Cassie | 3 | 1-2-8 | -.125 | 13 | 0-3 | 0 | 1 | 0-0 | 0 | 0 | 1.0 |
| KULLAK, Aureore | 3 | 1-4-12 | -.250 | 0 | 1-0 | 0 | 4 | 0-0 | 0 | 0 | 2.0 |
| SCOTT, Jessica | 3 | 7-2-14 | .357 | 0 | 0-1 | 0 | 4 | 0-2 | 0 | 0 | 8.0 |
| YEAGER, Ashley | 3 | 5-2-20 | .150 | 1 | 0-0 | 3 | 11 | 0-0 | 0 | 0 | 5.0 |
| BARNES, Courtney | 1 | 0-0-3 | .000 | 0 | 0-0 | 0 | 0 | 0-0 | 0 | 0 | 0.0 |
| HARVILLE, Stephanie | 2 | 0-2-5 | -.400 | 0 | 0-0 | 2 | 0 | 0-0 | 0 | 0 | 0.0 |
| HUFF, Michaela | 1 | 0-0-0 | .000 | 2 | 0-0 | 0 | 0 | 0-0 | 0 | 0 | 0.0 |
| NEWBERRY, Lara | 3 | 0-0-1 | .000 | 1 | 0-1 | 1 | 11 | 0-0 | 0 | 0 | 0.0 |
| CHASTAIN, Bailee | 2 | 0-0-2 | .000 | 1 | 0-1 | 0 | 0 | 0-0 | 1 | 0 | 0.0 |
| Team | | | | | | | | | | | 1 |
| Totals | 3 | 22-17-85 | .059 | 19 | 3-6 | 7 | 32 | 0-4 | 2 | 0 | 27.0 |

| Marquette | GP | K-E-TA | PCT | A | S-A | RE | DIG | BS | BABE | BHE | PTS |
|------------|----|---------|-------|----|-----|-----|-----|------|------|-----|------|
| BIELSKI | 3 | 7-3-16 | .250 | 0 | 0-0 | 0 | 4 | 0-1 | 2 | 0 | 7.5 |
| AKIN | 3 | 4-1-11 | .273 | 12 | 0-0 | 0 | 0 | 0-4 | 0 | 0 | 6.0 |
| FISHER | 3 | 18-0-28 | .643 | 0 | 1-3 | 0 | 5 | 0-2 | 1 | 0 | 20.0 |
| RUSSELL | 3 | 4-1-13 | .231 | 1 | 0-0 | 0 | 0 | 0-4 | 0 | 0 | 6.0 |
| VANCURA | 3 | 0-2-8 | -.250 | 0 | 0-0 | 0 | 3 | 0-5 | 0 | 0 | 2.5 |
| MASTANDREA | 3 | 6-0-8 | .750 | 14 | 2-1 | 0 | 9 | 0-0 | 1 | 0 | 8.0 |
| ANGST | 3 | 0-0-0 | .000 | 2 | 2-1 | 0 | 5 | 0-0 | 0 | 0 | 2.0 |
| KIESER | 2 | 0-0-0 | .000 | 0 | 0-0 | 0 | 0 | 0-0 | 0 | 0 | 0.0 |
| GONYO | 1 | 3-0-4 | .750 | 0 | 0-0 | 0 | 0 | 0-2 | 0 | 0 | 4.0 |
| DEELO | 3 | 0-0-2 | .000 | 4 | 2 | 0-1 | 13 | 0-0 | 0 | 0 | 2.0 |
| VIOLA | 3 | 0-0-0 | .000 | 3 | 0 | 0-0 | 1 | 0-0 | 1 | 0 | 0.0 |
| Team | | | | | | | | | | | 2 |
| Totals | 3 | 42-7-90 | .389 | 36 | 7 | 7-3 | 40 | 0-18 | 4 | 1 | 58.0 |

| | | | | |
|-------------------------------------|----|----|----|----|
| Tennessee (3) | 25 | 22 | 25 | 25 |
| Marquette (1) | 14 | 25 | 22 | 21 |
| Aug. 30 • Al McGuire Center • (1-2) | | | | |

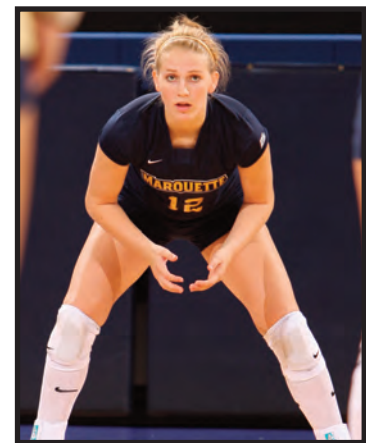
MILWAUKEE --The Marquette women's volleyball team dropped a tough match to the Tennessee Lady Vols in the final game of the Marquette Kick-off Tournament, 3-1 (25-14, 22-25, 25-22, 25-21).

"The upperclassmen really held it together this afternoon and we had two solid games," said head volleyball coach Pati Rolf. Marquette got off to a fast start in the first set against the Vols, taking a 4-1 lead on a kill by senior Ashlee Fisher. After dominating the Mocs this afternoon, the Golden Eagles struggled to continue that momentum and consistency in the first frame against Tennessee. With the score at 9-8 in Tennessee's favor, the Vols went on a 16-6 run to close out the first set.

In the second set the Marquette squad the crowd had seen in the earlier match returned to take the set by the score of 25-22. Fisher accounted for four kills in the stanza while freshman Laura Akin had 6 assists for the Golden Eagles.

Marquette got off to a sluggish start after the break, falling behind the Lady Vols, 7-3 on an attack error by Fisher. After fighting back to cut the deficit to one at 11-10, the Golden Eagles could never get any closer in the third frame, dropping it 25-22.

The fourth and final set saw Marquette get off to a better start as the lead went back-and-forth throughout the stanza. After Marquette pulled within two on a kill by Fisher at 22-20, the Lady Vols pulled away and took the final points of the match, winning the set, 25-21.



Freshman libero Amy Deelo

| Tennessee | GP | K-E-TA | PCT | A | S-A | RE | DIG | BS | BABE | BHE | PTS |
|--------------------|----|-----------|-------|----|-----|----|-----|------|------|-----|------|
| HANAKOVA, Michaela | 4 | 0-0-0 | .000 | 25 | 0-0 | 0 | 4 | 0-0 | 0 | 1 | 0.0 |
| HINKEY, Leah | 4 | 5-3-13 | .154 | 0 | 2-2 | 0 | 2 | 0-5 | 0 | 0 | 9.5 |
| CLARKE, Milan | 4 | 13-9-33 | .121 | 0 | 0-0 | 0 | 1 | 0-1 | 0 | 0 | 13.5 |
| MARSHALL, Kylie | 4 | 13-2-27 | .407 | 1 | 2-0 | 1 | 10 | 0-0 | 0 | 0 | 15.0 |
| POWE, Farren | 4 | 3-3-9 | .000 | 0 | 0-0 | 0 | 0 | 0-1 | 0 | 0 | 3.5 |
| FOWLER, Nikki | 4 | 15-7-34 | .235 | 0 | 1-0 | 0 | 8 | 0-3 | 0 | 0 | 17.5 |
| FLYNN, Mandy | 4 | 9-3-20 | .300 | 1 | 0-0 | 0 | 1 | 0-2 | 2 | 0 | 10.0 |
| CHEADE, Carol | 1 | 0-0-0 | .000 | 0 | 0-0 | 0 | 0 | 0-0 | 0 | 0 | 0.0 |
| GOODMAN, Chloe | 4 | 0-0-1 | .000 | 1 | 0-2 | 0 | 12 | 0-0 | 0 | 0 | 0.0 |
| MAHONEY, Kelsey | 4 | 1-0-1 | 1.000 | 25 | 2-2 | 0 | 6 | 0-0 | 0 | 0 | 3.0 |
| LAFLAMME, Lauren | 1 | 0-0-0 | .000 | 0 | 0-0 | 0 | 1 | 0-0 | 0 | 0 | 0.0 |
| LOYD, Jave | 1 | 0-0-0 | .000 | 0 | 0-0 | 0 | 0 | 0-0 | 0 | 0 | 0.0 |
| Totals | 4 | 59-27-138 | .232 | 53 | 7-6 | 1 | 45 | 0-12 | 2 | 1 | 72.0 |

| Marquette | GP | K-E-TA | PCT | A | S-A | RE | DIG | BS | BABE | BHE | PTS |
|------------|----|-----------|-------|----|-----|----|-----|------|------|-----|------|
| BIELSKI | 4 | 10-5-23 | .217 | 2 | 0-0 | 0 | 4 | 1-2 | 3 | 0 | 12.0 |
| AKIN | 4 | 1-1-5 | .000 | 21 | 0-0 | 0 | 2 | 0-3 | 1 | 0 | 2.5 |
| FISHER | 4 | 13-11-49 | .041 | 0 | 0-2 | 2 | 4 | 0-4 | 0 | 0 | 15.0 |
| RUSSELL | 4 | 3-4-12 | -.083 | 1 | 0-1 | 0 | 2 | 1-5 | 0 | 0 | 6.5 |
| GONYO | 4 | 11-2-21 | .493 | 2 | 0-0 | 0 | 3 | 1-4 | 0 | 0 | 14.0 |
| VIOLA | 4 | 0-0-1 | .000 | 2 | 1-0 | 1 | 7 | 0-0 | 0 | 0 | 1.0 |
| ANGST | 4 | 0-0-0 | .000 | 0 | 0-1 | 2 | 7 | 0-0 | 0 | 0 | 0.0 |
| VANCURA | 4 | 6-1-17 | .294 | 0 | 0-0 | 0 | 0 | 0-2 | 0 | 0 | 7.0 |
| DEELO | 4 | 0-1-1 | 1.000 | 1 | 0-0 | 1 | 10 | 0-0 | 0 | 0 | 0.0 |
| MASTANDREA | 4 | 3-0-4 | .750 | 17 | 0-1 | 0 | 5 | 0-0 | 0 | 0 | 3.0 |
| Team | | | | | | | | | | | 1 |
| Totals | 4 | 47-25-133 | .165 | 46 | 1-5 | 7 | 44 | 3-20 | 4 | 0 | 61.0 |

2008 Match-by-Match Results



| | | | |
|---------------|----|----|----|
| Clemson (3) | 25 | 25 | 25 |
| Marquette (0) | 10 | 23 | 17 |

Sept. 5 • Cedar Falls, Iowa • (1-3)

MILWAUKEE-- The Marquette women's volleyball team dropped a match to the Clemson Tigers Friday afternoon in the first day of competition at the UNI Invitational, 3-0 (25-10, 25-23, 25-17). Leading the way for the Golden Eagles were sophomores Leslie Bielski with 13 kills and Rabbecca Gonyo with five blocks and freshmen Amy Deelo with nine digs and Laura Akin with 15 assists.

The team showed a lot of energy and a lot of effort tonight," said head coach Pati Rolf. "Clemson had a really mature team with a lot of experience. We are a young squad and we just have to keep playing."

Clemson came out strong in the first set as they rushed out to a 6-1 lead. Marquette failed to recover in the first set from the slow start, dropping the set, 25-10.

The match's second set saw Marquette match Clemson's early intensity as they stretched the Tigers to the brink. The Clemson lead fluctuated early in the set as Marquette tied it up at five a piece following a kill by Bielski. With the score notted at five, Clemson mounted a rally to put the team on top at 12-5 before the Golden Eagles staged a furious comeback.

Marquette then received three-straight kills from Caryn Mastandrea, Ashlee Fisher and Katie Vancura, putting the score at 12-8. With the score at 19-14, Marquette reeled off six of the next seven points to tie the score at 20 on two kills and a service ace by Bielski. Clemson went on to score the set's next four points, leaving them at set point. The Golden Eagles showed that they still had something left in the tank as Fisher hammered home two kills and Rabbecca Gonyo and Vancura assisted on a block to cut Clemson's lead to one at 24-23. Unfortunately for Marquette, Clemson's Danielle Hepburn's kill ended the set at 25-23.

The third set started a lot like the second as the two squads fought for the set's early lead. MU took its first lead of the match at 3-2 on a kill by Fisher just before the Tigers scored seven straight points to put the set at 9-3. A Golden Eagles comeback put the set at 12-11 on another block by Gonyo and Vancura before the Tigers pulled away to score 13 of the match's final 19 points.

| Clemson | GP | K-E-TA | PCT | A | SA-SE | RE | DIG | BS-BABE | BHE | PTS |
|-------------------|----|----------|--------|----|-------|----|-----|---------|-----|------|
| Fennell, Brittany | 3 | 3-1-9 | .222 | 0 | 0-0 | 0 | 0 | 0-3 | 0 | 4.5 |
| Abbott, Jeannette | 3 | 10-2-19 | .421 | 0 | 1-0 | 1 | 2 | 0-2 | 0 | 12.0 |
| Hepburn, Danielle | 3 | 9-3-15 | .400 | 0 | 0-0 | 0 | 4 | 1-6 | 0 | 13.0 |
| Hayes, Lacy | 3 | 0-0-4 | .000 | 1 | 0-0 | 0 | 1 | 1-0 | 1 | 1.0 |
| Proctor, Lia | 3 | 13-4-29 | .310 | 1 | 2-1 | 0 | 3 | 0-3 | 0 | 16.5 |
| Murphy, Kelsey | 3 | 1-1-3 | .000 | 30 | 0-0 | 0 | 6 | 1-4 | 1 | 4.0 |
| Hinemeyer, Meghan | 3 | 0-1-1 | -1.000 | 0 | 2-0 | 1 | 7 | 0-0 | 0 | 2.0 |
| Ege, Didem | 3 | 0-0-0 | .000 | 1 | 1-0 | 0 | 9 | 0-0 | 0 | 1.0 |
| Totals | 3 | 36-12-80 | .300 | 33 | 6-1 | 2 | 32 | 3-18 | 2 | 54.0 |

| Marquette | GP | K-E-TA | PCT | A | SA-SE | RE | DIG | BS-BABE | BHE | PTS |
|------------|----|-----------|-------|----|-------|----|-----|---------|-----|------|
| BIELSKI | 3 | 13-11-38 | .053 | 1 | 1-2 | 1 | 6 | 0-0 | 1 | 14.0 |
| AKIN | 3 | 1-0-3 | .333 | 15 | 0-0 | 0 | 0 | 0-0 | 1 | 1.0 |
| FISHER | 3 | 12-5-26 | .269 | 0 | 0-0 | 0 | 1 | 0-0 | 0 | 12.0 |
| RUSSELL | 3 | 0-0-1 | .000 | 1 | 0-1 | 0 | 0 | 0-1 | 0 | 1.0 |
| VANCURA | 3 | 1-4-14 | .214 | 0 | 0-0 | 0 | 1 | 0-4 | 0 | 3.5 |
| GONYO | 3 | 6-5-18 | .056 | 1 | 0-0 | 1 | 2-3 | 0 | 0 | 9.5 |
| ANGST | 3 | 0-0-1 | .000 | 1 | 0-0 | 1 | 1 | 0-0 | 0 | 0.0 |
| DEELO | 3 | 0-0-0 | .000 | 1 | 0-0 | 2 | 9 | 0-0 | 0 | 0.0 |
| VIOLA | 3 | 0-0-0 | .000 | 1 | 0-1 | 1 | 7 | 0-0 | 0 | 0.0 |
| MASTANDREA | 3 | 1-0-1 | 1.000 | 11 | 1-0 | 3 | 0-0 | 1 | 0 | 2.0 |
| Team | | | | | | | | | | 1 |
| Totals | 3 | 34-25-102 | .088 | 32 | 2-4 | 6 | 29 | 2-8 | 2 | 42.0 |

| | | | |
|-------------------|----|----|----|
| Marquette (0) | 20 | 23 | 20 |
| Northern Iowa (3) | 25 | 25 | 25 |

Sept. 6 • Cedar Falls, Iowa • (1-4)

MILWAUKEE-- The Marquette women's volleyball team dropped a match Saturday afternoon to Northern Iowa, 3-0 (25-20, 25-23, 25-20).

Earlier in the day, in the first set of the match against Northern Iowa, Marquette got off to a rough start, falling behind the Panthers 13-7 before mounting a comeback to knot the score at 14-14. After a UNI timeout, the Panthers took back the lead before MU responded with a kill by Vancura and Fisher added another to tie the set at 16-16. UNI built a three point lead at 20-17 before MU rallied to cut their deficit to one at 21-20. The Panthers then reeled off four straight points to take the set 25-20. Bielski led the Golden Eagles in the set with four kills.

The Panthers came out firing in the second set, building their lead quickly to nine at 20-11 before Marquette answered with a run of their own to cut the Panther lead to one at 23-22 on a kill by Bielski. During that run, Fisher accounted for three kills while Bielski added four and a block. UNI proceeded to close out the set, 25-23, even after Bielski added another kill for the Golden Eagles. In the frame, Mastandrea had 10 assists.

The match's last set saw MU and UNI fight for the early lead as a kill by Fisher tied the set at 10-10. UNI then rattled off seven straight points to build a seven point lead at 17-10. After a kill by Mastandrea, the Panthers scored five more points to build the Golden Eagles' deficit to 11 at 22-11. With UNI sitting at match point, MU scored six straight points on a pair of kills from Vancura and Fisher before UNI closed out the set and the match 25-20.

Bielski led the Golden Eagles against UNI with 12 kills, while Fisher added 10. Mastandrea assisted on 25 kills while Bielski led the squad with nine digs and four blocks.

| Marquette | GP | K-E-TA | PCT | A | SA-SE | RE | DIG | BS-BABE | BHE | PTS |
|------------|----|-----------|-------|----|-------|----|-----|---------|-----|------|
| BIELSKI | 3 | 12-8-29 | .138 | 0 | 0-0 | 2 | 9 | 2-2 | 1 | 15.0 |
| FISHER | 3 | 10-1-22 | .409 | 0 | 0-0 | 0 | 4 | 0-0 | 0 | 10.0 |
| RUSSELL | 3 | 2-3-7 | -.143 | 0 | 0-1 | 0 | 1 | 0-3 | 0 | 3.5 |
| VANCURA | 3 | 6-2-17 | .235 | 0 | 0-0 | 0 | 0 | 0-1 | 0 | 6.5 |
| GONYO | 3 | 3-3-15 | .000 | 0 | 0-0 | 0 | 2 | 0-1 | 1 | 3.5 |
| MASTANDREA | 3 | 2-0-8 | .250 | 25 | 0-1 | 0 | 5 | 0-0 | 1 | 2.0 |
| AKIN | 2 | 1-0-5 | .200 | 5 | 0-0 | 0 | 1 | 0-1 | 0 | 1.5 |
| ANGST | 3 | 0-0-0 | .000 | 1 | 1-0 | 0 | 3 | 0-0 | 1 | 1.0 |
| DEELO | 3 | 0-0-0 | .000 | 0 | 0-1 | 4 | 7 | 0-0 | 0 | 0.0 |
| VIOLA | 3 | 0-0-3 | .000 | 1 | 0-0 | 0 | 9 | 0-0 | 0 | 0.0 |
| Totals | 3 | 36-17-106 | .179 | 32 | 1-3 | 6 | 41 | 2-8 | 3 | 43.0 |

| Northern Iowa | GP | K-E-TA | PCT | A | SA-SE | RE | DIG | BS-BABE | BHE | PTS |
|--------------------|----|-----------|--------|----|-------|----|-----|---------|-----|------|
| Payton, Bre | 3 | 4-2-8 | .250 | 32 | 0-4 | 0 | 5 | 0-4 | 1 | 6.0 |
| Stelken, Ashton | 3 | 12-2-17 | .588 | 0 | 1-0 | 0 | 2 | 1-2 | 0 | 15.0 |
| Sampson, Amy | 3 | 8-5-27 | .111 | 0 | 0-0 | 0 | 2 | 0-1 | 0 | 8.5 |
| Aschoff, Shannon | 3 | 9-4-28 | .179 | 5 | 2-0 | 0 | 6 | 1-3 | 0 | 13.5 |
| Buraw, Michelle | 3 | 9-2-16 | .438 | 0 | 0-0 | 0 | 0 | 0-4 | 0 | 11.0 |
| Discher, Beth | 3 | 4-0-12 | .333 | 0 | 0-0 | 0 | 1 | 0-0 | 0 | 4.0 |
| Blankenship, Ellie | 3 | 0-0-0 | .000 | 3 | 0-0 | 1 | 22 | 0-0 | 0 | 0.0 |
| Grunder, Kayla | 3 | 0-0-0 | .000 | 0 | 1-0 | 0 | 4 | 0-0 | 0 | 1.0 |
| Oexmann, Sarah | 1 | 0-1-1 | -1.000 | 0 | 0-0 | 0 | 0 | 0-0 | 0 | 0.0 |
| Saunders, Chelsea | 3 | 0-1-1 | -1.000 | 1 | 2-1 | 0 | 5 | 0-0 | 0 | 2.0 |
| Totals | 3 | 46-17-110 | .264 | 41 | 6-5 | 1 | 47 | 2-14 | 1 | 61.0 |

| | | | | |
|-----------------------|----|----|----|----|
| Marquette (3) | 30 | 25 | 22 | 25 |
| Northern Illinois (1) | 28 | 21 | 25 | 23 |

Sept. 6 • Cedar Falls, Iowa • (2-4)

MILWAUKEE-- The Marquette women's volleyball team defeated Northern Illinois, 3-1 (30-28, 25-21, 22-25, 25-23) after being swept Saturday afternoon by UNI Invitational host Northern Iowa.

After failing to win a set in the first two matches of the UNI Invitational, the Golden Eagles headed into their match Saturday night against Northern Illinois looking for some early success. Marquette took an early lead at 1-0 on a kill by senior Ashlee Fisher before the Huskies reeled off five points to take a 5-1 lead. After tying the set at 6-6 and 7-7, Marquette regained the lead at 8-7 on another kill from Fisher. From there, MU continued to lead until an ace from NIU's Jody Hardwick tied the score at 21-21. After trading the lead back and forth, a block by sophomore Rabbecca Gonyo put Marquette at set point with the score 24-23.

A subsequent service error by junior Katie Vancura tied the score at 24-24 and a kill by the Huskies' Meagan Schoenrock helped Northern Illinois reach 25 points first. Sophomore Leslie Bielski responded with a kill to tie the set at 25-25. The lead exchanged as both squads attempted to take a two point advantage until junior Caryn Mastandrea's kill ended the set at 30-28. In the first set Fisher led Marquette with seven kills while Mastandrea added two kills and 11 assists.

Northern Illinois scored first in the second set but the Golden Eagles responded with five straight points to take an early 5-1 lead. Marquette's lead remained slim until the Huskies took a 13-12 lead on a service ace from Maria Benitez. A kill from Gonyo knotted the score at 14-14 and a block by Gonyo and freshman Laura Akin put MU on top 15-14. Marquette took the set 25-21 as Gonyo closed out the scoring with yet another kill. In the second set, Gonyo led the Golden Eagles with five kills and two blocks.

Following the break, the Huskies came out determined to not allow MU to close out the match in the third set. Much like the second, the third saw NIU get out to a 1-0 lead before Marquette answered with kills from Fisher and Tiara Russell. The Golden Eagles built a two point lead at 12-10 on a kill from Vancura before the Huskies pulled away to take the set 25-22.

Not wanting to leave Cedar Falls without a win, Marquette made sure to not let the match go to a fifth frame by closing out the Huskies in the fourth set. After NIU shot out to a 4-0 lead, the Golden Eagles chased down them the entire game, eventually catching up to them at 21-21 on a kill from Russell. After a point scored by NIU, Fisher hammered a kill to tie the score again at 22-22. From that point, two more kills from Fisher and an attack error by NIU's Katie Walsh ended the match at 25-23.

Against Northern Illinois, Fisher led MU with 21 kills while Gonyo added 14 and Bielski pitched in 12. Bielski's 12 kills along with her 15 digs allowed her to notch Marquette's first double-double of the season and libero Amy Deelo led MU with 21 digs while Mastandrea had 39 assists.

For her efforts during the two-day event, Mastandrea was the lone Golden Eagle named to the UNI Invitational All-Tournament Team.

| Marquette | GP | K-E-TA | PCT | A | SA-SE | RE | DIG | BS-BABE | BHE | PTS |
|------------|----|-----------|------|----|-------|----|-----|---------|-----|------|
| BIELSKI | 4 | 12-5-28 | .250 | 1 | 0-1 | 1 | 15 | 1-0 | 1 | 13.0 |
| FISHER | 4 | 22-5-53 | .321 | 1 | 0-0 | 3 | 3 | 1-1 | 0 | 23.5 |
| RUSSELL | 4 | 5-1-13 | .308 | 0 | 0-3 | 0 | 1 | 0-3 | 1 | 6.5 |
| VANCURA | 4 | 8-7-23 | .343 | 0 | 0-2 | 0 | 1 | 0-1 | 0 | 8.5 |
| GONYO | 4 | 14-1-21 | .619 | 0 | 0-0 | 0 | 0 | 1-2 | 0 | 16.0 |
| MASTANDREA | 4 | 6-1-11 | .455 | 39 | 0-0 | 0 | 5 | 0-0 | 0 | 6.0 |
| AKIN | 4 | 1-0-5 | .200 | 17 | 0-0 | 0 | 0 | 0-3 | 1 | 2.5 |
| ANGST | 4 | 0-0-0 | .000 | 1 | 1-0 | 0 | 6 | 0-0 | 0 | 1.0 |
| DEELO | 4 | 0-0-2 | .000 | 4 | 0-0 | 6 | 21 | 0-0 | 0 | 0.0 |
| VIOLA | 4 | 3-1-4 | .500 | 2 | 1-0 | 0 | 11 | 0-0 | 0 | 4.0 |
| Totals | 4 | 71-21-160 | .312 | 65 | 2-6 | 10 | 63 | 3-10 | 3 | 81.0 |

| Northern Illinois | GP | K-E-TA | PCT | A | SA-SE | RE | DIG | BS-BABE | BHE | PTS |
|---------------------|----|-----------|-------|----|-------|----|-----|---------|-----|------|
| WALSH, Katie | 4 | 1-3-14 | -.143 | 1 | 0-0 | 1 | 1 | 0-1 | 0 | 1.5 |
| JOHNSON, Irene | 4 | 10-3-23 | .304 | 0 | 0-0 | 1 | 1 | 1-1 | 1 | 11.5 |
| TADLA, Amanda | 4 | 2-0-5 | .400 | 46 | 2-1 | 0 | 11 | 0-0 | 0 | 4.0 |
| YATES, Cassie | 4 | 7-3-18 | .222 | 2 | 0-0 | 0 | 2 | 0-2 | 0 | 8.0 |
| SCHOENROCK, Meagan | 4 | 23-8-63 | .238 | 0 | 0-0 | 0 | 6 | 0-1 | 1 | 23.5 |
| MCLAUGHLIN, Allison | 4 | 12-5-31 | .226 | 2 | 2-2 | 0 | 6 | 0-1 | 0 | 14.5 |
| LANG, Monica | 3 | 0-0-0 | .000 | 0 | 1-0 | 0 | 0 | 0-0 | 0 | 1.0 |
| BENITEZ, Maria | 4 | 0-0-0 | .000 | 0 | 2-0 | 0 | 11 | 0-0 | 0 | 2.0 |
| HUGHES, Maddie | 4 | 0-0-1 | .000 | 0 | 2-1 | 1 | 19 | 0-0 | 0 | 2.0 |
| HARDWICK, Jody | 4 | 0-0-0 | .000 | 1 | 1-1 | 0 | 4 | 0-0 | 0 | 1.0 |
| Totals | 4 | 55-22-155 | .213 | 52 | 10-5 | 2 | 61 | 1-6 | 2 | 69.0 |

2008 Match-by-Match Results



| | | | | | |
|---------------|----|----|----|----|----|
| Temple (2) | 14 | 25 | 25 | 25 | 10 |
| Marquette (3) | 25 | 18 | 21 | 27 | 15 |

Sept. 12 • Al McGuire Center • (3-4)

MILWAUKEE--The Marquette women's volleyball team edged Temple in five sets on Friday night in opening round action of the Marquette Challenge, 3-2 (25-14, 18-25, 21-25, 27-25, 15-10). Down two games-to-one, and 7-0 in the fourth set, Marquette staged a dramatic rally to force a fifth game.

Senior Ashlee Fisher paced the Golden Eagles with 19 kills, while Rabbecca Gonyo, Leslie Bielski, and Katie Vancura each recorded double-digit kills. Gonyo's 14 kills came on 24 attacks with only two errors, allowing her to lead the way for Marquette with a .500 attack percentage. Junior Caryn Mastandrea tied a career-high with 50 assists, while also notching 16 digs for the MU defense.

"We were up and down in today's match," said head coach Pati Rolf. "What this match came down to was discipline and consistency, which comes with maturity. Our kids really showed that this evening."

Marquette jumped to an early 7-4 lead in the first set and would never trail the rest of the way. After Temple tied the set at 8-8, the Golden Eagles used an 11-3 run and extended their lead to eight at 19-11. After MU lengthened their lead to ten at 24-14, Vancura sealed the 25-14 win for Marquette by hammering home her fourth kill of the set. Mastandrea chipped in 10 assists for the Golden Eagles in the first set, while Gonyo was a perfect 5-for-5 on her attacks.

"Becca opened up the middle for us, which allowed the other hitters a lot of other opportunities," said Rolf.

Sets two and three went to the Owls, 25-18 and 25-21. Temple was led by Yun Yi Zhang who posted a match-high 23 kills for Temple, while Ashley Carr also chipped in 15 kills on a .483 hitting percentage. In game two, Marquette was led by Bielski, Fisher, and Gonyo with three kills apiece while Fisher paced the Golden Eagles in the third set with 5 kills. Mastandrea posted 12 assists in each set defeat.

Marquette appeared to be heading for the loss column when Temple jumped out to an early 7-0 lead in set four. However, a service error on the Owls put Marquette on the board and sparked a 13-6 run that tied the set at 13. Both teams traded points until Temple took a 23-21 advantage. From there, it was Fisher's show as the senior recorded four straight kills to even the game at 25-25. A block by freshman Tiarra Russell put the Golden Eagles ahead 26-25 and an attack error by Temple proved to be the game winner for Marquette.

"We were in trouble in the fourth set but we got some big points when we needed them," said Rolf. "The team showed a lot of courage late in the match."

Feeding off the momentum of the fourth set, Marquette led the entire way in set five and posted a 15-10 victory to win the match. Fisher and Vancura each notched three kills and were aided by Mastandrea's 10 assists.

| | | | | |
|---------------|----|----|----|----|
| Green Bay (1) | 29 | 16 | 12 | 19 |
| Marquette (3) | 27 | 25 | 25 | 25 |

Sept. 13 • Al McGuire Center • (4-4)

MILWAUKEE--The Marquette volleyball team (4-4) defeated the Green Bay Phoenix (3-6) in their first game of the day Saturday in the Marquette Challenge, 3-1 (27-29, 25-16, 25-12, 25-19).

"I thought the team really played well this afternoon," said head coach Pati Rolf. "[Ashlee] Fisher had another great game, as did Caryn [Mastandrea]."

Leading the way for the Golden Eagles once again were senior outside hitter Ashlee Fisher, junior setter Caryn Mastandrea and sophomore middle blocker Rabbecca Gonyo. Fisher had a double-double with 16 kills and 10 digs while Gonyo led MU with 18 kills and four blocks. Freshman libero Amy Deelo led the Golden Eagles with 26 digs and Mastandrea continued her string of solid games with 48 assists and 15 digs.

A kill by sophomore Leslie Bielski started the scoring in the first set as MU took the 1-0 lead. In a set that saw six lead changes and 12 ties, neither team gained much of an advantage. Down 7-8, Katie Vancura slammed home a kill on a set from Mastandrea to tie the game at 8-8. From that point, Marquette took the lead on a service ace from freshman Tiarra Russell and would lead until a kill by Green Bay's Liesl Tesch tied the game at 15-15. After the Phoenix took the lead, MU stayed right with them, eventually tying the game at 23-23, 24-24, 25-25 and 26-26 before taking a 27-26 lead on a kill by Bielski. Green Bay then grabbed three straight points to take the set 29-27. In the first frame, Mastandrea had a set-high 16 assists while Fisher contributed six kills.

The Golden Eagles got off to a slow start in the second set as the Phoenix scored the first three points to take a 3-0 lead before MU responded to tie the game at 3-3 with the help of kills from Mastandrea and Fisher. After the Phoenix took back the lead, MU reclaimed it on a kill from Russell to put the Golden Eagles up 8-7. With the set sitting at 11-11, MU went on a 8-1 run and effectively put the set out of reach, winning it 25-16. Fisher led the way for Marquette in the second stanza with four kills and no errors.

In the third set, the Golden Eagles fell behind once again, trailing Green Bay 4-1. From that point, MU rallied to tie the set at 6-6 before taking the lead on a kill from Katie Vancura at 7-6. Up 15-9, the Golden Eagles scored eight straight points with three kills from Fisher and two from Gonyo to take their largest lead at 23-9. Another kill from Gonyo and an error by Green Bay's Abby Bergsma ended the set at 25-12. In the third set the Phoenix recorded a six attack errors to five kills, leading to a negative attack percentage.

Marquette started off strong in the fourth set as they built a 3-1 advantage after a service ace by Deelo. Green Bay battled back to tie the set at 6-6 before the Golden Eagles took a lead at 7-6 that they would never relinquish, winning the set 25-19 and taking the match.

| | | | | | |
|-------------------|----|----|----|----|----|
| Bowling Green (3) | 21 | 21 | 25 | 25 | 15 |
| Marquette (2) | 25 | 25 | 16 | 16 | 13 |

Sept. 13 • Al McGuire Center • (4-5)

MILWAUKEE--The Marquette volleyball team fell to the Bowling Green Falcons after taking the first two sets of Saturday night's match, 3-2 (21-25, 21-25, 25-16, 25-16, 15-13). Pacing the Golden Eagles were sophomore Leslie Bielski with 14 kills, junior Caryn Mastandrea with 46 assists and junior Hailey Viola with 16 digs.

"We had some of the best two games to start but struggled later in the match," said head coach Pati Rolf. "We played very well early on but our consistency and youth caught up with us."

In the first set the Golden Eagles got off to a fast start, taking a 6-1 lead on a kill by senior Ashlee Fisher before three straight service aces by freshman libero Amy Deelo extended the MU lead to 10-2. Coming out of a Bowling Green timeout, the Golden Eagles got kills from junior Katie Vancura and freshman Tiara Russell before Bowling Green went on a run to cut the MU lead to two at 21-19. Following another Bowling Green timeout, Russell recorded her first collegiate service ace to put Marquette up 22-19 and help MU take the first set, 25-21.

The second set started off completely opposite as the first but ended in the same 25-21 victory for the Golden Eagles. MU opened scoring with a service ace by Mastandrea before two kills from Bielski put Marquette on top 6-5. Coming out of a Bowling Green timeout, with the score 10-6, Corey Domek added two kills for the Falcons to cut the lead to 11-8 before the Golden Eagles reeled off five straight points. From there MU kept the Falcons at arms length to take the set 25-21.

Coming out of the intermission, the Falcons looked like a totally different team from the first two frames, building a 7-2 lead before MU called their first timeout of the frame. After the timeout, Gonyo responded with a kill but the Golden Eagles were unable to get much else going as Bowling Green went on a 7-1 run with the score 12-16 to seal their set victory.

The Golden Eagles' woes continued into the fourth frame as they struggled to make consistent contact on their attacks. Bowling Green shot out to a 10-2 lead, forcing MU to take its first timeout of the set. From there, Marquette fought back to shave some points off the lead but really struggled to put much pressure on the Falcons before losing 25-16. In the fourth set, Marquette registered nine errors and 12 kills while Bowling Green's 12 kills came with only one error, leading to an attack percentage of .500 for the Falcons.

Marquette came out with it's back against the wall in the fifth set and looked as though they had recovered from sub-par performances in sets three and four. MU leapt out to a 7-4 lead on consecutive service aces from Viola before Bowling Green came back to tie the game at 11-11. After a Marquette timeout, Vancura responded with a kill to put MU up 12-11. From there the Falcons scored the next two points to put Bowling Green up 13-12, leading to another MU timeout. Following the timeout, two kills by Domek ended the match with the final set going to the Falcons, 15-13.

"We got back on track in set five but it we should have played like that in set three," said Rolf. "Overall we had a good weekend and really took a big step up in our play and confidence."

For their efforts in the Marquette Challenge, Mastandrea, Fisher and Gonyo were named to the Marquette Challenge All-Tournament Team.

| Temple | GP | K-E-TA | PCT | A SA-SE RE | DIG | BS-BABE | BHE | PTS |
|--------------------|----|-----------|------|------------|-----|---------|-----|------|
| COWDEN, Jacqueline | 5 | 5-4-24 | .042 | 1 0-0 0 | 1 | 0-3 | 0 | 6.5 |
| ASHMAN, Cayleigh | 5 | 4-3-17 | .059 | 3 3-4 0 | 0 | 3-5 | 0 | 12.5 |
| LOUDON, Caitlin | 5 | 4-2-16 | .125 | 8 0-0 3 | 10 | 0-2 | 0 | 5.0 |
| CARR, Ashley | 5 | 15-1-29 | .483 | 0 2-2 1 | 7 | 0-1 | 0 | 17.5 |
| ZHANG, Yun Yi | 5 | 23-8-47 | .319 | 0 1-1 0 | 4 | 1-2 | 0 | 26.0 |
| MORRISON, Jackie | 5 | 2-1-5 | .200 | 30 1-1 0 | 7 | 0-3 | 0 | 4.5 |
| PIERRE, Ariel | 5 | 1-0-3 | .333 | 2 1-4 2 | 12 | 0-0 | 0 | 2.0 |
| FRANK, Elizabeth | 1 | 0-0-0 | .000 | 0 0-0 0 | 0 | 0-0 | 0 | 0.0 |
| WHITNEY, Amisa | 2 | 0-1-2 | .500 | 0 0-0 0 | 0 | 0-0 | 0 | 0.0 |
| Totals | 5 | 54-20-143 | .238 | 44 8-12 6 | 41 | 4-16 | 0 | 74.0 |

| Marquette | GP | K-E-TA | PCT | A SA-SE RE | DIG | BS-BABE | BHE | PTS |
|------------|----|-----------|------|------------|-----|---------|-----|------|
| BIELSKI | 5 | 13-7-31 | .194 | 0 0-1 2 | 5 | 0-1 | 0 | 13.5 |
| FISHER | 5 | 19-6-41 | .317 | 0 2-4 2 | 2 | 1-1 | 1 | 22.5 |
| RUSSELL | 5 | 4-2-10 | .200 | 3 1-2 0 | 4 | 3-5 | 0 | 10.5 |
| VANCURA | 5 | 12-5-26 | .269 | 0 0-0 0 | 0 | 0-2 | 1 | 13.0 |
| GONYO | 5 | 14-2-24 | .500 | 4 0-0 0 | 3 | 1-0 | 0 | 15.0 |
| MASTANDREA | 5 | 5-1-8 | .500 | 50 2-0 0 | 16 | 0-2 | 0 | 1.0 |
| ANGST | 5 | 0-1-1 | .000 | 0 1-0 1 | 7 | 0-0 | 0 | 1.0 |
| KIESEER | 2 | 0-0-0 | .000 | 0 0-0 0 | 1 | 0-0 | 0 | 0.0 |
| DEELO | 5 | 0-0-1 | .000 | 2 0-1 3 | 14 | 0-0 | 0 | 0.0 |
| VIOLA | 5 | 0-0-3 | .000 | 1 0-2 0 | 6 | 0-0 | 0 | 0.0 |
| Totals | 5 | 67-24-145 | .297 | 60 6-10 8 | 58 | 5-11 | 2 | 83.5 |

| Green Bay | GP | K-E-TA | PCT | A SA-SE RE | DIG | BS-BABE | BHE | PTS |
|---------------------|----|-----------|------|------------|-----|---------|-----|------|
| JOYCE, Melissa | 4 | 4-4-14 | .000 | 34 0-1 0 | 11 | 0-2 | 0 | 5.0 |
| BERGSMAN, Abby | 4 | 6-3-13 | .231 | 0 0-1 0 | 0 | 1-2 | 0 | 8.0 |
| HINTZE, Nikki | 4 | 16-4-47 | .255 | 2 0-1 3 | 9 | 0-2 | 0 | 17.0 |
| LYGA, Chelsea | 4 | 0-0-0 | .000 | 0 0-0 0 | 7 | 0-0 | 0 | 0.0 |
| MISCHLER, Kelly | 4 | 2-2-13 | .000 | 1 0-0 0 | 2 | 0-1 | 2 | 2.5 |
| VISSER, Holly | 4 | 9-7-39 | .051 | 0 1-2 10 | 10 | 0-0 | 0 | 10.0 |
| MEULEMANS, Rochelle | 0 | 0-0-0 | .000 | 2 0-1 0 | 4 | 0-0 | 0 | 0.0 |
| BOHREN, Alison | 1 | 0-0-0 | .000 | 0 0-0 0 | 0 | 0-2 | 0 | 0.0 |
| TESCH, Liesl | 4 | 0-7-44 | .045 | 0 0-0 0 | 3 | 1-0 | 0 | 10.0 |
| ELFERING, Megan | 4 | 0-0-0 | .000 | 1 0-0 2 | 25 | 0-0 | 0 | 0.0 |
| GARROW, Laura | 1 | 0-0-0 | .000 | 0 0-1 0 | 0 | 0-0 | 0 | 0.0 |
| GITTER, Abbey | 1 | 0-1-3 | .333 | 0 0-0 0 | 0 | 0-1 | 0 | 0.5 |
| TEAM | | | | | 2 | | | |
| Totals | 4 | 46-28-173 | .104 | 40 1-7 7 | 71 | 2-10 | 2 | 54.0 |

| Marquette | GP | K-E-TA | PCT | A SA-SE RE | DIG | BS-BABE | BHE | PTS |
|------------|----|-----------|------|------------|-----|---------|-----|------|
| BIELSKI | 4 | 8-4-31 | .129 | 0 0-0 0 | 2 | 0-2 | 0 | 9.0 |
| FISHER | 4 | 16-7-45 | .200 | 0 2-2 10 | 13 | 2 | 0 | 20.5 |
| RUSSELL | 4 | 7-2-16 | .312 | 1 2-2 0 | 3 | 0-3 | 1 | 10.5 |
| GONYO | 4 | 18-4-42 | .333 | 0 0-0 0 | 1 | 1-3 | 1 | 20.5 |
| VIOLA | 4 | 0-0-1 | .000 | 3 0-0 0 | 20 | 0-0 | 0 | 0.0 |
| MASTANDREA | 4 | 2-4-15 | .133 | 48 1-0 1 | 15 | 0-0 | 1 | 3.0 |
| ANGST | 4 | 0-0-0 | .000 | 0 0-1 1 | 12 | 0-0 | 0 | 0.0 |
| VANCURA | 4 | 6-0-14 | .429 | 0 0-0 0 | 0 | 0-3 | 1 | 7.5 |
| DEELO | 4 | 0-0-0 | .000 | 0 2-0 0 | 26 | 0-0 | 0 | 2.0 |
| Totals | 4 | 57-21-164 | .220 | 53 7-6 1 | 89 | 2-14 | 7 | 73.0 |

| Bowling Green | GP | K-E-TA | PCT | A SA-SE RE | DIG | BS-BABE | BHE | PTS |
|-------------------|----|-----------|------|------------|-----|---------|-----|------|
| DOMEK, Corey | 5 | 15-4-32 | .344 | 0 0-0 0 | 0 | 0-2 | 0 | 16.0 |
| FISH, Sam | 5 | 6-0-13 | .462 | 51 1-0 2 | 8 | 0-1 | 0 | 2.75 |
| MOHR, Meghan | 5 | 14-6-29 | .265 | 4 0-0 2 | 7 | 0-4 | 0 | 17.0 |
| HALM, Kendra | 5 | 14-6-29 | .276 | 0 1-3 0 | 2 | 1-8 | 2 | 20.0 |
| FACCA, Louise | 5 | 3-1-11 | .182 | 1 1-1 2 | 9 | 0-4 | 0 | 6.0 |
| LUTHER, Shari | 5 | 10-2-24 | .333 | 0 0-0 0 | 1 | 1-3 | 0 | 12.5 |
| ZLABIS, Alex | 3 | 0-0-0 | .000 | 0 0-0 1 | 1 | 0-0 | 0 | 0.0 |
| MEEK, Chelsea | 5 | 1-0-3 | .333 | 2 1-1 0 | 25 | 0-0 | 0 | 2.0 |
| NETTA, Madison | 1 | 0-0-0 | .000 | 0 0-0 0 | 1 | 0-0 | 0 | 0.0 |
| ISPHORDING, Susie | 5 | 0-1-1 | .000 | 1 3-2 2 | 12 | 0-0 | 0 | 3.0 |
| JACKSON, Kaitlin | 3 | 0-1-4 | .250 | 0 0-0 0 | 0 | 0-0 | 0 | 0.0 |
| TEAM | | | | | 3 | | | |
| Totals | 5 | 64-21-151 | .285 | 59 7-7 10 | 66 | 2-22 | 2 | 84.0 |

| Marquette | GP | K-E-TA | PCT | A SA-SE RE | DIG | BS-BABE | BHE | PTS |
|------------|----|-----------|------|------------|-----|---------|-----|------|
| BIELSKI | 5 | 14-5-35 | .257 | 0 0-0 1 | 2 | 0-4 | 0 | 16.0 |
| FISHER | 5 | 12-10-44 | .045 | 0 0-1 2 | 1 | 0-1 | 0 | 12.5 |
| RUSSELL | 5 | 6-2-11 | .364 | 0 1-3 1 | 0 | 1-2 | 0 | 9.0 |
| GONYO | 5 | 7-6-27 | .037 | 0 0-0 0 | 3 | 0-5 | 0 | 9.5 |
| VIOLA | 5 | 0-0-2 | .000 | 4 2-1 1 | 15 | 0-0 | 0 | 2.0 |
| MASTANDREA | 5 | 7-0-8 | .396 | 46 2-3 0 | 11 | 0-0 | 0 | 9.0 |
| ANGST | 5 | 0-0-1 | .000 | 0 1-0 1 | 5 | 0-0 | 0 | 1.0 |
| VANCURA | 5 | 9-5-27 | .148 | 0 0-0 0 | 1 | 0-2 | 0 | 10.0 |
| DEELO | 5 | 0-0-0 | .000 | 3 4-0 0 | 14 | 0-0 | 0 | 4.0 |
| TEAM | | | | | 1 | | | |
| Totals | 5 | 55-28-165 | .164 | 53 10-8 7 | 53 | 1-14 | 0 | 73.0 |

2008 Match-by-Match Results



| | | | | |
|------------------|----|----|----|----|
| Oregon State (3) | 25 | 25 | 23 | 25 |
| Marquette (1) | 19 | 10 | 25 | 19 |

Sept. 20 • Al McGuire Center • (4-6)

MILWAUKEE-- Marquette women's volleyball team lost a four set match to the Oregon State Beavers in the opening match of the Marquette Cheese Bowl, 3-1 (19-25, 10-25, 25-23, 19-25).

The Golden Eagles fell behind early to the Beavers as OSU got out to an 10-4 lead, forcing MU to call a timeout. OSU then went on to build a 20-11 lead before MU rallied to pull within three at 21-18 on a kill by junior setter Caryn Mastandrea. The Beavers then closed out the set, taking it 25-19.

The second saw much of the same for Marquette as OSU got out to a 14-6 lead on two straight service aces by Oregon State's Bree Knitter. After a kill by Leslie Bielski put the set at 18-10, Oregon State reeled off the next seven points to win the set 25-10.

Through the first and second stanzas, Marquette's attack percentage stood at .000 with 19 kills and 19 errors.

MU came out of the break looking like a different squad as they led for most of the third set. Two kills by Bielski provided Marquette's last two points as they won, 25-23. In the third, Bielski recorded five kills while Mastandrea had 14 assists.

In the fourth set, Marquette and Oregon State fought back and fourth, eventually leading to a tie score at 16-16. From that point, Oregon State pulled away to take the set and the match 25-19.

Leading the way against Oregon State were Bielski with 14 kills, Mastandrea with 38 assists and Deelo with 13 digs. Russell recorded seven kills in each of her matches on the day.

| | | | | | |
|---------------|----|----|----|----|----|
| American (2) | 27 | 25 | 25 | 18 | 14 |
| Marquette (3) | 29 | 16 | 22 | 25 | 16 |

Sept. 20 • Al McGuire Center • (5-6)

MILWAUKEE -- The Marquette women's volleyball team went 1-1 on opening day action in the Marquette Cheese Bowl, defeating American, 3-2 (29-27, 16-25, 22-25, 25-18, 16-14) after dropping the noon match with Oregon State, 3-1 (25-19, 25-10, 23-25, 25-19).

"I think the ladies are learning a lot, quickly," said head coach Pati Rolf. "I thought we had a much more consistent game against American than against Oregon State. When things weren't going our way the team stuck it out and manufactured some points."

The Golden Eagles fell behind in the first set as American got out to a 2-0 lead before MU tied the set at 2-2 on a kill from senior Ashlee Fisher. From that point both teams exchanged the lead in a frame that saw nine ties. MU got out to as much as a four point lead and led 24-20 after a service error by American's Rubena Sukaj. American then rallied to tie the score at 24-22 forcing Marquette to take a time out. The set then went on to be tied at 25-25, 26-26, and 27-27 before MU put the set away on a kill by sophomore Rabbecca Gonyo.

"We got some excellent work up front by Katie Vancura, Rabbecca Gonyo, Tiara Russell and Caryn Mastandrea," said Rolf. "That really forced American to try to score other ways and got them out of their rhythm."

In the second frame, Marquette fell behind 5-0 and never led, falling 25-16. American's attack percentage in the second was .481 compared to .067 for the Golden Eagles.

The third started similar to the first, but MU was unable to pull out the set victory. Trailing 24-20, Marquette fought back to put the score at 24-22 before American took the set, 25-20. In the third, junior setter Caryn Mastandrea had 17 assists to lead the Golden Eagles while Ashlee Fisher had six kills on only one error.

In the fourth stanza, Marquette and American traded the lead early on with American eventually taking a 10-8 lead. From that point, MU reeled off 11 of the next 12 points to go up 19-11. Although American fought back to close the gap to six points Marquette won the set, 25-18.

Both teams struggled getting the ball over the net in the fifth set as American's attack percentage in the frame was .029, while MU fared a little better at .067. After American had gotten out to a 11-8 lead, Marquette called a timeout and responded by taking the next three points on two kills by Fisher and one by Vancura to tie the set at 11-11. With the score tied at 14-14, MU scored the next two points, the last on a kill by Leslie Bielski to close out the match, 16-14.

In the match against American, Fisher led the team with 17 kills, Mastandrea set a career high with 52 assists, freshman Amy Deelo added 20 digs and Vancura pitched in a solid performance with 14 kills.

| | | | |
|---------------|----|----|----|
| Wisconsin (3) | 25 | 25 | 25 |
| Marquette (0) | 23 | 23 | 15 |

Sept. 21 • Al McGuire Center • (5-7)

MILWAUKEE -- The Marquette women's volleyball team dropped Sunday's match in the finale of the Marquette Cheese Bowl to No. 13 Wisconsin, 3-0 (25-23, 25-23, 25-15).

"We had a great first two sets tonight, but we struggled closing them out," said head coach Pati Rolf.

The Golden Eagles got off to a fast start in the first set, scoring the first four points before the Badgers answered. Marquette then led 5-1 on a kill from junior setter Caryn Mastandrea, who was named to the Marquette Cheese Bowl All-Tournament Team, making it her third all-tournament team in as many weekends. After a Badgers' kill and attack error, MU led 6-2 before UW mounted a comeback to tie the match at 6-6.

Marquette regained the lead and led by as many as four with the score 21-17, forcing Wisconsin to call a timeout. Out of the timeout, the Badgers scored the next four points to tie the match at 21-21, leading to a Marquette timeout. Kills by Ashlee Fisher and Leslie Bielski put MU up 22-21 and 23-22, respectively. The Badgers responded by scoring the next three points to take the set, 25-23.

In the first frame, Fisher and Mastandrea led the way for MU with five kills, while Mastandrea also had 11 assists and four digs. Brittney Dolgner led the Badgers with five kills.

The second set started much like the first as neither team led by more than one point through the set's first 14 points. The set was tied early on at every point from 1-1 to 7-7. From there, UW jumped out to take a three point lead at 10-7 before MU came back to tie the set at 15-15. MU then took the lead at 17-16 on a block from Katie Vancura and Tiara Russell. The block was followed by the Badgers taking the next four points to extend their lead to four at 21-17. The Golden Eagles fought back to pull within one at 24-23 on a kill by Bielski. A kill by Audra Jeffers closed out the set for the Badgers, 25-23.

In the second stanza, Marquette out hit Wisconsin, .269 to .216, as the Badgers registered 10 errors while MU only recorded three.

"I thought our defense really played well," said Rolf. "In the first two sets our defense was everywhere. They have really elevated their game."

After the break, Marquette took an early lead at 4-3 on an attack error by Wisconsin's Katherine Dykstra before UW rallied back to take a six point advantage at 12-6 on a kill by Dolgner. Out of an MU timeout, the Golden Eagles fought back to tie the score at 14-14 on a service ace from Mastandrea. From that point, Wisconsin took control of the match, taking 11 of 12 points to seal the victory, 25-15.

"It is really important to play against teams like Oregon State and Wisconsin because it really elevates your game," Rolf said. "It is great that the kids are gaining confidence as we enter BIG EAST play."

Marquette falls to 5-7 on the season while Wisconsin improves to 10-2. The Golden Eagles return to action next weekend when they open BIG EAST Conference play on Friday, Sept. 26 at Rutgers.

| Oregon State | GP | K-E-TA | PCT | A | SA-SE | RE | DIG | BS-BABE | BHE | PTS |
|----------------------|----|----------|------|----|-------|----|-----|---------|-----|------|
| Sawatzky, Jill | 4 | 9-3-29 | .207 | 1 | 2-1 | 0 | 3 | 0-2 | 0 | 12.0 |
| Ah-Hoy, Camilla | 4 | 3-0-5 | .600 | 43 | 0-2 | 0 | 9 | 0-5 | 0 | 5.5 |
| Rourke, Rachel | 4 | 21-6-43 | .349 | 2 | 1-1 | 0 | 4 | 0-1 | 0 | 22.5 |
| Rathgeber, Lexie | 4 | 5-2-13 | .231 | 0 | 0-0 | 0 | 1 | 0-5 | 0 | 7.5 |
| Rinderknecht, Lauren | 4 | 6-1-14 | .357 | 0 | 0-1 | 0 | 6 | 1-5 | 2 | 9.5 |
| Knitter, Bree | 4 | 5-3-21 | .095 | 0 | 2-1 | 0 | 5 | 2-2 | 2 | 10.0 |
| Hooper, Natalie | 3 | 0-0-0 | .000 | 0 | 0-0 | 0 | 3 | 0-0 | 0 | 0.0 |
| Evans, Ashley | 4 | 1-1-2 | .000 | 2 | 0-1 | 0 | 6 | 0-0 | 0 | 1.0 |
| Devich, Betsy | 0 | 0-0-0 | .000 | 0 | 0-0 | 1 | 1 | 0-0 | 0 | 0.0 |
| Locke, Kaitlan | 3 | 0-0-0 | .000 | 0 | 1-1 | 0 | 1 | 0-0 | 0 | 1.0 |
| Totals | 4 | 34-17-97 | .175 | 34 | 3-6 | 0 | 39 | 6-10 | 1 | 48.0 |

| Marquette | GP | K-E-TA | PCT | A | SA-SE | RE | DIG | BS-BABE | BHE | PTS |
|------------|----|-----------|-------|----|-------|----|-----|---------|-----|------|
| BIELSKI | 4 | 14-3-30 | .200 | 1 | 0-0 | 1 | 3 | 0-0 | 3 | 14.0 |
| FISHER | 0 | 13-14-40 | -.025 | 0 | 1-1 | 0 | 4 | 1-2 | 0 | 15.0 |
| RUSSELL | 4 | 2-2-7 | .000 | 0 | 0-0 | 0 | 5 | 1-6 | 0 | 6.0 |
| VANCURA | 4 | 6-4-20 | .100 | 0 | 0-0 | 0 | 1 | 0-4 | 0 | 8.0 |
| GONYO | 4 | 6-5-20 | .050 | 0 | 0-0 | 0 | 0 | 0-2 | 0 | 7.0 |
| MASTANDREA | 4 | 5-1-11 | .364 | 38 | 0-3 | 0 | 5 | 0-2 | 1 | 6.0 |
| ANGST | 4 | 0-0-1 | .000 | 1 | 0-0 | 0 | 2 | 10 | 0-0 | 0.0 |
| DEELO | 4 | 0-0-1 | .000 | 2 | 0-1 | 0 | 13 | 0-0 | 0 | 0.0 |
| VIOLA | 4 | 0-0-0 | .000 | 2 | 0-1 | 2 | 8 | 0-0 | 0 | 0.0 |
| Team | | | | | | | 1 | | | |
| Totals | 4 | 33-21-107 | .112 | 34 | 0-2 | 3 | 33 | 0-8 | 2 | 37.0 |

| American | GP | K-E-TA | PCT | A | SA-SE | RE | DIG | BS-BABE | BHE | PTS |
|---------------------|----|-----------|--------|----|-------|----|-----|---------|-----|------|
| Sukaj, Rubena | 5 | 19-7-52 | .231 | 1 | 0-5 | 2 | 15 | 0-2 | 1 | 20.0 |
| Heath, Rebecca | 5 | 18-6-43 | .279 | 2 | 1-1 | 0 | 11 | 0-1 | 1 | 19.5 |
| Nash, Christina | 5 | 4-2-11 | .182 | 55 | 0-1 | 0 | 9 | 0-3 | 1 | 5.5 |
| Ginkova, Katerina | 1 | 0-2-2 | -1.000 | 0 | 1-1 | 0 | 0 | 0-0 | 0 | 0.0 |
| Recht, Claire | 5 | 14-2-27 | .444 | 0 | 0-0 | 0 | 0 | 0-7 | 3 | 17.5 |
| Ricketts, Cassandra | 5 | 9-6-34 | .288 | 1 | 1-3 | 0 | 2 | 1-5 | 0 | 13.5 |
| Chakova, Ivana | 5 | 0-1-1 | -1.000 | 2 | 2-2 | 0 | 19 | 0-0 | 0 | 2.0 |
| Burns, Cynammon | 5 | 0-0-0 | .000 | 0 | 0-0 | 0 | 6 | 0-0 | 0 | 0.0 |
| Paganini, Tessa | 5 | 0-0-0 | .000 | 0 | 0-3 | 0 | 0 | 0-0 | 0 | 0.0 |
| Recht, Ann | 5 | 3-1-8 | .250 | 0 | 0-0 | 0 | 0 | 0-4 | 0 | 5.0 |
| Tekiel, Magdalena | 1 | 0-0-0 | .000 | 0 | 0-0 | 0 | 2 | 0-0 | 0 | 0.0 |
| Waterman, Angelina | 3 | 0-0-5 | .000 | 0 | 0-0 | 0 | 0 | 0-0 | 0 | 0.0 |
| Team | | | | | | | 1 | | | |
| Totals | 5 | 67-27-183 | .219 | 61 | 5-16 | 3 | 64 | 1-22 | 6 | 84.0 |

| Marquette | GP | K-E-TA | PCT | A | SA-SE | RE | DIG | BS-BABE | BHE | PTS |
|------------|----|-----------|------|----|-------|----|-----|---------|-----|------|
| ANGST | 5 | 0-0-0 | .000 | 1 | 0-0 | 0 | 5 | 0-0 | 0 | 0.0 |
| FISHER | 5 | 17-8-48 | .188 | 1 | 1-3 | 0 | 8 | 0-2 | 1 | 19.0 |
| RUSSELL | 5 | 3-2-10 | .100 | 2 | 0-2 | 0 | 1 | 3-4 | 0 | 8.0 |
| GONYO | 5 | 9-3-23 | .261 | 3 | 0-0 | 0 | 1 | 1-6 | 1 | 13.0 |
| VIOLA | 5 | 0-0-1 | .000 | 1 | 0-0 | 0 | 13 | 0-0 | 0 | 0.0 |
| MASTANDREA | 5 | 6-1-16 | .312 | 52 | 1-1 | 0 | 15 | 0-2 | 0 | 8.0 |
| BIELSKI | 5 | 13-9-37 | .108 | 0 | 0-0 | 1 | 6 | 0-1 | 0 | 13.5 |
| VANCURA | 5 | 14-5-33 | .273 | 0 | 1-0 | 0 | 3 | 0-5 | 0 | 16.5 |
| DEELO | 5 | 0-0-1 | .000 | 1 | 0-0 | 3 | 20 | 0-0 | 0 | 1.0 |
| Team | | | | | | | 1 | | | |
| Totals | 5 | 62-28-169 | .201 | 61 | 3-6 | 5 | 72 | 4-20 | 2 | 79.0 |

| Wisconsin | GP | K-E-TA | PCT | A | SA-SE | RE | DIG | BS-BABE | BHE | PTS |
|---------------------|----|-----------|------|----|-------|----|-----|---------|-----|------|
| Klingsporn, Nikki | 3 | 0-0-1 | .000 | 20 | 0-1 | 0 | 6 | 1-0 | 0 | 1.0 |
| Gabrielsen, Janelle | 3 | 4-1-9 | .333 | 17 | 3-0 | 0 | 9 | 1-0 | 0 | 8.0 |
| Dolgner, Brittney | 3 | 12-5-24 | .292 | 0 | 0-1 | 0 | 7 | 0-3 | 0 | 13.5 |
| Wack, Allison | 3 | 2-3-8 | .125 | 0 | 1-0 | 1 | 6 | 0-0 | 0 | 3.0 |
| Jeffers, Audra | 3 | 9-0-12 | .750 | 1 | 0-0 | 0 | 1 | 0-3 | 0 | 10.5 |
| Ohlander, Elle | 3 | 3-1-8 | .250 | 1 | 0-0 | 1 | 1 | 0-4 | 0 | 5.0 |
| Kuzma, Kim | 3 | 0-0-0 | .000 | 0 | 0-0 | 0 | 8 | 0-0 | 0 | 3.0 |
| Dykstra, Katherine | 3 | 11-4-22 | .318 | 0 | 0-0 | 0 | 14 | 0 | 0 | 14.0 |
| DuPont, Caitly | 3 | 2-4-16 | .125 | 0 | 0-2 | 0 | 0 | 0-0 | 1 | 2.0 |
| Team | | | | | | | 1 | | | |
| Totals | 3 | 43-18-100 | .250 | 39 | 7-4 | 2 | 38 | 3-4 | 1 | 60.0 |

| Marquette | GP | K-E-TA | PCT | A | SA-SE | RE | DIG | BS-BABE | BHE | PTS |
|------------|----|----------|------|----|-------|----|-----|---------|-----|------|
| ANGST | 3 | 0-0-0 | .000 | 1 | 0-1 | 1 | 4 | 0-0 | 0 | 0.0 |
| FISHER | 3 | 11-6-33 | .152 | 4 | 0-2 | 1 | 4 | 0-1 | 0 | 11.5 |
| RUSSELL | 3 | 3-0-7 | .429 | 0 | 0-1 | 0 | 0 | 0-5 | 1 | 5.5 |
| GONYO | 3 | 4-1-12 | .250 | 0 | 0-0 | 0 | 1 | 0-1 | 1 | 4.5 |
| VIOLA | 3 | 0-0-0 | .000 | 0 | 0-0 | 0 | 3 | 0-0 | 0 | 0.0 |
| MASTANDREA | 3 | 7-1-15 | .400 | 24 | 2-0 | 0 | 9 | 0-0 | 1 | 9.0 |
| BIELSKI | 3 | 9-6-15 | .167 | 0 | 0-0 | 1 | 3 | 0-0 | 0 | 9.0 |
| VANCURA | 3 | 1-4-12 | .250 | 0 | 0-0 | 0 | 0 | 0-5 | 0 | 3.5 |
| DEELO | 3 | 0-0-1 | .000 | 4 | 0-0 | 2 | 8 | 0-0 | 0 | 0.0 |
| Team | | | | | | | 2 | | | |
| Totals | 3 | 35-18-98 | .173 | 33 | 2-4 | 7 | 32 | 0-12 | 2 | 43.0 |

2008 Match-by-Match Results



| | | | |
|---------------|----|----|----|
| Marquette (3) | 25 | 25 | 25 |
| Rutgers (0) | 20 | 18 | 23 |

Sept. 26 • New Brunswick, N.J. • (6-7, 1-0)

NEW BRUNSWICK, N.J. -- The Marquette women's volleyball team defeated Rutgers in a three-set sweep Friday night in the BIG EAST Conference opener, 3-0 (25-20, 25-18, 25-23).

"We played well tonight," said head coach Pati Rolf. "Becca Gonyo had one heck of a game and it was a really good overall effort."

The Golden Eagles lost the first point of the opening set but responded to win the next three to take a 3-1 lead on a kill by freshman Tiara Russell. After an attack error by Leslie Bielski tied the set at 4-4, a Rutgers' kill by Hannah Curtis pushed the Scarlet Knights to a 8-5 lead. A kill by Rabbecca Gonyo retied the set at 9-9 and two straight kills put MU up 12-9, forcing Rutgers to call a timeout.

Out of the timeout, MU and Rutgers battled for the lead and with the score once again tied, this time at 18-18, Marquette called a timeout. Following the timeout, the Golden Eagles took the next three points to put themselves up for good, winning the set 25-20.

In the first frame, Gonyo led the Golden Eagles' front line with four of MU's 10 assisted blocks, while Bielski recorded four kills and Caryn Mastandrea had nine assists.

After Rutgers took the first point once again in the second, Marquette scored six unanswered, with kills from Gonyo, Mastandrea and Ashlee Fisher to take a 6-1 lead. Rutgers never led again in the set as MU pulled away and won, 25-18. The second frame saw Gonyo record a 1.000 attack percentage, hammering home all four of her attacks for kills. Fisher led the squad with five kills in the stanza, while Mastandrea pitched in 10 assists and freshman libero Amy Deelo recorded six digs.

Both squads battled back-and-forth in the third as neither team built up much of a lead early in the set. After another 1-0 Rutgers lead, Fisher sent two balls to the floor to put MU on top 2-1. After a Rutgers' kill, Fisher landed another attack for a kill to put the Golden Eagles up 3-2. After a 4-2 Marquette lead, the Scarlet Knights tied the set at 4-4 and would lead for much of the way.

With the score sitting at 9-9, Rutgers went on a 7-2 run to extend their lead to five points at 16-11. Marquette then fought back to tie the set at 17-17 on a kill by Mastandrea. With MU down 20-18, coach Rolf took a timeout and Marquette responded, tying the set at 21-21 and 22-22 before the Golden Eagles took set's final three points on two kills from Bielski and one from Gonyo. Marquette won the set 25-23, taking the match, 3-0. In the third, Fisher had seven kills, while Mastandrea aided on 16.

"We just tried to stay calm," said Rolf. "With this situation, being on the road, we just wanted to keep the pressure on them and be smart. We stayed steady and kept the balls in play."

Leading the way for the Golden Eagles (6-7, 1-0 BIG EAST) against the Scarlet Knights (1-9, 0-1 BIG EAST) were Fisher with 14 kills, Mastandrea with 35 assists and Deelo with 14 digs.

| Marquette | GP | K-E-TA | PCT | A SA-SE RE | DIG | BS-BABE | BHE | PTS |
|------------------|----|-----------|--------|------------|-----|---------|-----|------|
| BIELSKI | 3 | 12-5-22 | .318 | 0 0-0 0 | 4 | 0-1 | 0 0 | 12.5 |
| FISHER | 3 | 14-7-34 | .206 | 2 0-0 0 | 6 | 0-1 | 0 0 | 14.5 |
| RUSSELL | 3 | 3-2-8 | .250 | 0 1-2 0 | 1 | 0-3 | 0 0 | 5.5 |
| VANCUA | 3 | 4-3-18 | .075 | 1 0-0 0 | 0 | 0-4 | 0 0 | 6.0 |
| GONYO | 3 | 11-3-20 | .400 | 0 0-0 0 | 0 | 0-5 | 1 1 | 13.5 |
| MASTANDREA | 3 | 5-0-10 | .500 | 35 0-0 0 | 6 | 0-2 | 0 2 | 6.0 |
| ANGST | 3 | 0-1-1 | -1.000 | 0 0-1 0 | 3 | 0-0 | 0 0 | 0.0 |
| DEELO | 3 | 0-0-0 | .000 | 1 1-0 0 | 14 | 0-0 | 0 0 | 1.0 |
| VIOLA | 3 | 1-0-1 | 1.000 | 3 1-2 0 | 4 | 0-0 | 0 0 | 2.0 |
| Totals | 3 | 50-20-114 | .263 | 42 3-5 0 | 38 | 0-16 | 1 3 | 61.0 |
| Rutgers | GP | K-E-TA | PCT | A SA-SE RE | DIG | BS-BABE | BHE | PTS |
| CHRISTAL, Emma | 3 | 4-0-12 | .333 | 0 0-0 0 | 6 | 1-0 | 0 0 | 5.0 |
| BARRENS, Katie | 3 | 8-3-15 | .333 | 0 0-0 0 | 0 | 0-2 | 0 0 | 9.0 |
| VOSS, Lauren | 3 | 9-6-23 | .139 | 0 0-0 1 | 2 | 0-1 | 0 0 | 9.5 |
| PENCE, Kallie | 3 | 2-0-4 | .500 | 18 0-1 0 | 6 | 0-1 | 0 0 | 2.5 |
| SAXTON, Caitlin | 3 | 4-5-20 | .050 | 0 0-0 0 | 2 | 0-2 | 1 0 | 5.0 |
| CURTIS, Hannah | 3 | 4-1-9 | .333 | 0 0-1 0 | 0 | 0-2 | 0 0 | 5.0 |
| GODFREY, Jamie | 3 | 0-0-1 | .000 | 3 0-0 0 | 1 | 0-0 | 0 0 | 0.0 |
| THOMPSON, Kyra | 3 | 0-0-1 | .000 | 1 0-0 0 | 9 | 0-0 | 0 0 | 0.0 |
| GROFF, Katie | 2 | 0-0-0 | .000 | 0 0-0 0 | 2 | 0-0 | 0 0 | 0.0 |
| CALDER, Roxie | 1 | 0-0-0 | .000 | 7 0-0 0 | 1 | 0-0 | 0 0 | 0.0 |
| COOK, Sophie | 1 | 0-1-1 | -1.000 | 0 0-0 0 | 0 | 0-0 | 0 0 | 0.0 |
| THOMAS, Victoria | 2 | 1-0-3 | .333 | 0 0-0 0 | 0 | 0-0 | 0 0 | 1.0 |
| TEAM | | | | | 1 | | | |
| Totals | 3 | 32-16-89 | .180 | 29 0-2 3 | 37 | 1-8 | 1 2 | 37.0 |

| | | | | |
|----------------|----|----|----|----|
| St. John's (1) | 21 | 25 | 24 | 21 |
| Marquette (3) | 25 | 17 | 26 | 25 |

Oct. 3 • Al McGuire Center • (7-7, 2-0)

MILWAUKEE -- The Marquette University women's volleyball team defeated reigning BIG EAST Conference Champion St. John's at the Al McGuire Center Friday night, 3-1 (25-21, 17-25, 26-24, 25-21).

"St. John's is one of the top teams in the conference and our team really played well tonight," said head coach Pati Rolf. "This weekend is critical for us to establish ourselves against the top teams in the BIG EAST and we really took an important step in doing that."

Leading the way for the Golden Eagles was junior setter Caryn Mastandrea, who along with a career-high 19 digs, provided 39 assists and seven kills on a .467 attack percentage. Leslie Bielski chipped in 14 kills, while Ashlee Fisher added 12 for MU. Defensively, the Marquette blockers had career-nights, as Katie Vancura had a career-high seven blocks and freshman Tiara Russell's nine blocks are the most of her young career. Rabbecca Gonyo also provided five blocks, including three solos.

Marquette shot out to a fast start in the first set, registering the frame's first five points to put MU up 5-0 after a kill by Fisher. After a St. John's timeout, the Red Storm rallied back to eventually tie the set at 17-17 on a service ace by Casie Brooks, forcing MU into a timeout. Marquette came out of the timeout with a kill by Gonyo to put MU up 18-17. After the score was tied once again at 18-18, Marquette pulled away to take the set, 25-21.

In the first, Bielski and Vancura both had five kills, while Gonyo provided three. The three of them registered only one error in the frame, with their 13 kills coming on only 15 attacks. Mastandrea added 16 assists in the stanza, helping the team to an attack percentage of .615.

The second set saw Marquette once again jump out to an early lead, taking a 3-1 advantage on an attack error by Valeria Kovaleva. St. John's responded with a kill from Darlene Ramdin and two kills from Casie Brooks to take a 4-3 lead. Following that juncture, Marquette would not lead again as St. John's took the set, 25-17.

Following the break, Marquette got off to a very slow start, falling behind 3-0 before a kill by Vancura put MU on the board. The Red Storm dominated early in the set, building up a 19-8 lead before the Golden Eagles mounted their largest comeback of the season. Marquette started to chip away at the lead with three straight points, forcing St. John's to call a timeout with the score 19-11. Out of the timeout, Marquette responded by taking five of the next six points, including two consecutive kills by Bielski, which put MU within four at 20-16. After another St. John's timeout, both teams battled as the Red Storm eventually sat at set-point, up 24-20. Marquette then tore off six straight points to take the set 26-24 with three kills from Fisher.

Another slow start caused Marquette to call a timeout early in the fourth stanza after an attack error by Amy Deelo put St. John's up 6-2. After the lead had extended to 16-10, Marquette used their second timeout to take control of the set and consequently, the match. Out of the timeout, Marquette took 11 of the next 14 points to take a lead at 21-19. From that point, two kills by Mastandrea and one by Fisher closed out the set and the match, 25-21.

| American | GP | K-E-TA | PCT | A SA-SE RE | DIG | BS-BABE | BHE | PTS |
|---------------------|----|-----------|--------|------------|-----|---------|-----|------|
| Sikaj, Rubena | 5 | 19-27-52 | .231 | 1 0-5 2 | 15 | 0-2 | 1 0 | 20.0 |
| Heath, Rebecca | 5 | 18-6-43 | .279 | 2 1-1 0 | 11 | 0-1 | 0 0 | 19.5 |
| Nash, Christina | 5 | 4-2-11 | .182 | 55 0-1 0 | 9 | 0-3 | 1 0 | 5.5 |
| Cinkova, Katerina | 1 | 0-2-2 | -1.000 | 0 1-0 0 | 0 | 0-0 | 0 0 | 1.0 |
| Recht, Claire | 5 | 14-2-27 | .444 | 0 0-0 0 | 0 | 0-7 | 3 0 | 17.5 |
| Ricketts, Cassandra | 5 | 9-6-34 | .088 | 1 1-3 0 | 2 | 1-5 | 0 0 | 13.5 |
| Cebakova, Ivana | 5 | 0-1-1 | -1.000 | 2 2-2 0 | 19 | 0-0 | 0 0 | 2.0 |
| Burns, Cynammon | 5 | 0-0-0 | .000 | 0 0-0 0 | 6 | 0-0 | 0 0 | 0.0 |
| Paganini, Tessa | 5 | 0-0-0 | .000 | 0 0-3 0 | 0 | 0-0 | 0 0 | 0.0 |
| Recht, Ann | 5 | 3-1-8 | .250 | 0 0-0 0 | 0 | 0-4 | 0 0 | 5.0 |
| Tekiel, Magdalena | 1 | 0-0-0 | .000 | 0 0-0 0 | 2 | 0-0 | 0 0 | 0.0 |
| Waterman, Angelina | 3 | 0-0-5 | .000 | 0 0-0 0 | 0 | 0-0 | 0 0 | 0.0 |
| TEAM | | | | | 1 | | | |
| Totals | 5 | 67-27-183 | .219 | 61 5-16 3 | 64 | 1-22 | 6 0 | 84.0 |
| Marquette | GP | K-E-TA | PCT | A SA-SE RE | DIG | BS-BABE | BHE | PTS |
| ANGST | 5 | 0-0-0 | .000 | 1 0-0 0 | 5 | 0-0 | 0 0 | 0.0 |
| FISHER | 5 | 17-8-48 | .188 | 1 1-3 0 | 8 | 0-2 | 1 0 | 19.0 |
| RUSSELL | 5 | 3-2-10 | .100 | 2 0-2 0 | 1 | 3-4 | 1 0 | 8.0 |
| GONYO | 5 | 9-3-23 | .261 | 3 0-0 0 | 1 | 1-6 | 1 0 | 13.0 |
| VIOLA | 5 | 0-0-1 | .000 | 1 0-0 0 | 13 | 0-0 | 0 0 | 0.0 |
| MASTANDREA | 5 | 6-1-16 | .312 | 52 1-1 0 | 15 | 0-2 | 0 0 | 8.0 |
| BIELSKI | 5 | 13-9-37 | .108 | 0 0-0 1 | 6 | 0-1 | 0 0 | 13.5 |
| VANCUA | 5 | 14-5-33 | .273 | 0 0-0 0 | 3 | 0-5 | 0 0 | 16.5 |
| DEELO | 5 | 0-0-1 | .000 | 1 1-0 3 | 20 | 0-0 | 0 0 | 1.0 |
| TEAM | | | | | 1 | | | |
| Totals | 5 | 62-28-169 | .201 | 61 3-6 5 | 72 | 4-20 | 2 1 | 79.0 |

| | | | |
|-----------------|----|----|----|
| Connecticut (3) | 25 | 25 | 25 |
| Marquette (0) | 20 | 21 | 19 |

Oct. 5 • Al McGuire Center • (7-8, 2-1)

MILWAUKEE -- The Marquette University women's volleyball team dropped a match to Connecticut Sunday afternoon at the Al McGuire Center, 3-0 (25-20, 25-21, 25-19).

"UConn did exactly what our scouting report said they were going to do and they did it well," said head coach Pati Rolf. "They forced us to follow our plan but we did not execute."

The Golden Eagles got off to a slow start in the first frame, falling behind 4-0 before a kill by senior Ashlee Fisher got MU on the board. Another kill by Leslie Bielski gave the Golden Eagles another point, but after three straight points from the Huskies, MU took a timeout, down 7-2. Out of the timeout, MU rallied to pull within one at 9-8 before UConn reeled off five points to put the set out of reach, winning 25-20.

In the first set, Bielski led MU with nine kills while Caryn Mastandrea added 13 assists.

The second set saw Marquette get off to a 1-0 lead on a kill by Fisher. UConn scored the next three points to take the lead at 3-1 before MU tied the set at 4-4 on a service ace by freshman Tiara Russell. Marquette rallied back from a five point deficit at 10-5 to tie the set at 12-12 before UConn pulled away for the 25-21 victory.

In the second, Fisher had five kills, Mastandrea had 11 assists and Amy Deelo had six digs.

The third stanza began just as the first, with UConn taking a 4-0 lead before MU responded. An early 8-2 hole forced Marquette to take their first timeout of the set. Out of the break, two kills by Fisher and an attack error by UConn put points on the board for MU before the Golden Eagles called another timeout, down 13-5. From that point, Marquette scored five straight to pull within three at 13-10 before UConn pulled away for the 25-19 set win.

On the day, Bielski and Fisher paced the Golden Eagles (7-8, 2-1 BIG EAST) with 13 kills a piece, while Mastandrea had 32 assists and Deelo had 10 digs. For the Huskies (11-6, 2-2), Chauntay Mickens had 11 kills while BIG EAST Conference Freshman of the Week Annie Luhrs added eight kills and 30 assists.

| Wisconsin | GP | K-E-TA | PCT | A SA-SE RE | DIG | BS-BABE | BHE | PTS |
|---------------------|----|-----------|------|------------|-----|---------|-----|------|
| Kingsporn, Nikki | 3 | 0-0-1 | .000 | 20 0-1 0 | 6 | 1-0 | 0 0 | 1.0 |
| Gabrielsen, Janelle | 3 | 4-1-9 | .333 | 17 3-0 0 | 7 | 0-3 | 0 0 | 8.0 |
| Dolger, Brittany | 3 | 12-5-24 | .292 | 0 0-1 0 | 9 | 1-0 | 0 0 | 13.5 |
| Wack, Allison | 3 | 2-3-8 | .125 | 0 1-0 1 | 6 | 0-0 | 0 0 | 3.0 |
| Jeffers, Audra | 3 | 9-0-12 | .750 | 1 0-0 0 | 1 | 0-3 | 0 0 | 10.5 |
| Ohlander, Elle | 3 | 3-1-8 | .250 | 1 0-0 0 | 1 | 0-4 | 0 0 | 5.0 |
| Kuzma, Kim | 3 | 0-0-0 | .000 | 0 3-0 0 | 8 | 0-0 | 0 0 | 3.0 |
| Dylstra, Katherine | 3 | 11-4-22 | .318 | 0 0-0 0 | 0 | 1-4 | 0 0 | 14.0 |
| DuPont, Caitly | 3 | 2-4-16 | .125 | 0 0-2 0 | 0 | 0-0 | 1 0 | 2.0 |
| TEAM | | | | | 1 | | | |
| Totals | 3 | 43-18-100 | .250 | 39 7-4 2 | 38 | 3-14 | 1 0 | 60.0 |
| Marquette | GP | K-E-TA | PCT | A SA-SE RE | DIG | BS-BABE | BHE | PTS |
| ANGST | 3 | 0-0-0 | .000 | 1 0-1 1 | 4 | 0-0 | 0 0 | 0.0 |
| FISHER | 3 | 11-6-33 | .152 | 4 0-2 1 | 4 | 0-1 | 0 0 | 11.5 |
| RUSSELL | 3 | 3-0-7 | .429 | 0 0-1 0 | 0 | 0-5 | 1 1 | 5.5 |
| GONYO | 3 | 4-1-12 | .250 | 0 0-0 0 | 1 | 0-1 | 0 0 | 4.5 |
| VIOLA | 3 | 0-0-0 | .000 | 0 0-0 0 | 3 | 0-0 | 0 0 | 0.0 |
| MASTANDREA | 3 | 7-1-15 | .400 | 24 2-0 0 | 9 | 0-0 | 0 1 | 9.0 |
| BIELSKI | 3 | 9-6-18 | .167 | 0 0-0 1 | 3 | 0-0 | 0 0 | 9.0 |
| VANCUA | 3 | 1-4-12 | .250 | 0 0-0 0 | 0 | 0-5 | 0 0 | 3.5 |
| DEELO | 3 | 0-0-1 | .000 | 4 0-0 2 | 8 | 0-0 | 0 0 | 0.0 |
| TEAM | | | | | 2 | | | |
| Totals | 3 | 35-18-98 | .173 | 33 2-4 7 | 32 | 0-12 | 2 2 | 43.0 |

2008 Match-by-Match Results



| | | | |
|---------------|----|----|----|
| Marquette (0) | 21 | 20 | 16 |
| USF (3) | 25 | 25 | 25 |

Oct. 10 • Tampa, Fla. • (7-9, 2-2)

TAMPA, Fla. -- The Marquette University women's volleyball team lost a three-set match to USF, 3-0 (25-21, 25-20, 25-16).

"Things did not go our way," said head coach Pati Rolf. "They really came out and battled but our energy was not where it should have been."

USF's Marcela Gurgel, ranked seventh in the nation in kills per set, got the Bulls off to a 5-0 lead after two service aces. Marquette got on the board with two kills by sophomore Rabbecca Gonyo and rallied to eventually tie the score at 9-9. From there the Bulls pulled away to extend their lead to seven at 21-14 and won the set 25-21.

After a rough first set, Marquette responded by getting off to a fast start in the second frame, taking a 4-0 lead with kills coming from Gonyo and Leslie Bielski. USF came back to tie the set at 5-5 and 6-6 before the Bulls went on an 11-4 run to take a 17-10 lead. The Golden Eagles came back to score six of the next eight points and pull within three after a kill from Gonyo at 19-16. USF then closed out the second set, 25-20.

In the third, MU took a 2-0 lead after a kill by Ashlee Fisher and a service ace from Caryn Mastandrea. USF scored the next nine points to take a commanding 9-2 lead on four service aces from Gurgel, who ended the night with six aces. After a couple of kills by freshman Ciara Jones, who saw her first playing time since the first match of the season, the Bulls took their largest lead of the night at 16-7. Four straight points followed for the Golden Eagles with a couple of kills coming from Fisher and one from Bielski, to put the score at 16-11. USF then took the next four and won the set and the match, 25-16.

Fisher led the Golden Eagles (7-9, 2-2 BIG EAST) with 10 kills but also had 10 errors on the night. Mastandrea contributed 19 assists and eight digs while Gonyo had eight kills, two assists, three digs and four total blocks, including two solos.

"Becca played great and our middle offense ran really well with her," said Rolf.

MU held Gurgel below her average of 4.59 kills per set with only 11 for the match, but was unable to corral her serves as she registered six aces along with 12 digs.

| Marquette | GP | K-E-TA | PCT | A SA-SE | RE | DIG | BS-BABEBH | BHE | PTS | |
|-------------------|----|----------|-------|---------|-----|-----|-----------|-----|-----|------|
| BIELSKI | 3 | 8-5-22 | .136 | 3 | 0-0 | 0 | 2 | 1-0 | 0 | 9.0 |
| FISHER | 3 | 10-10-29 | .000 | 0 | 0-2 | 0 | 4 | 0-2 | 0 | 11.0 |
| RUSSELL | 3 | 0-2-4 | -.500 | 1 | 0-1 | 0 | 1 | 0-1 | 0 | 0.5 |
| VANCUA | 1 | 0-1-2 | -.500 | 0 | 0-0 | 1 | 2 | 0-0 | 0 | 0.0 |
| GONYO, Rabbecca | 3 | 8-4-13 | .308 | 2 | 0-0 | 0 | 3 | 2-2 | 1 | 11.0 |
| MASTANDREA, Caryn | 3 | 2-0-7 | .286 | 19 | 1-1 | 0 | 8 | 0-0 | 0 | 3.0 |
| JONES, Ciara | 3 | 3-3-12 | .000 | 0 | 0-0 | 0 | 3 | 0-1 | 0 | 3.5 |
| ANGST, Terri | 2 | 0-0-0 | .000 | 1 | 1-0 | 0 | 2 | 0-0 | 0 | 1.0 |
| DEELO, Amy | 3 | 0-0-0 | .000 | 2 | 1-0 | 6 | 9 | 0-0 | 0 | 1.0 |
| VIOLA, Hailey | 3 | 0-0-0 | .000 | 0 | 1-0 | 0 | 3 | 0-0 | 0 | 1.0 |
| Team | | | | | | 2 | | | | |
| Totals | 3 | 31-25-89 | .067 | 28 | 4-4 | 9 | 37 | 3-6 | 1 | 41.0 |

| USF | GP | K-E-TA | PCT | A SA-SE | RE | DIG | BS-BABEBH | BHE | PTS | |
|----------------------|----|----------|------|---------|-----|-----|-----------|------|-----|------|
| BOAZ, Allie | 3 | 6-2-18 | .222 | 0 | 0-0 | 0 | 0 | 0-3 | 0 | 7.5 |
| GURGEL, Marcela | 3 | 11-6-26 | .192 | 2 | 6-1 | 2 | 12 | 0-0 | 0 | 17.0 |
| ARBOGAST, Alli | 3 | 2-2-13 | .000 | 0 | 0-0 | 0 | 0 | 2-2 | 1 | 5.0 |
| THON, Mariana | 3 | 0-0-1 | .000 | 16 | 1-1 | 0 | 4 | 0-0 | 0 | 2.0 |
| O'CONNOR, Alli | 3 | 7-2-16 | .312 | 1 | 1-1 | 1 | 4 | 1-0 | 0 | 9.0 |
| WILLIAMS, Nakia | 3 | 5-2-12 | .250 | 0 | 0-0 | 0 | 1 | 1-4 | 0 | 8.0 |
| AUGUSTAVO, Stephanie | 3 | 0-0-0 | .000 | 1 | 1-1 | 1 | 8 | 0-0 | 0 | 1.0 |
| HAVLICKOVA, Jarka | 3 | 6-1-12 | .417 | 1 | 0-0 | 0 | 0 | 0-3 | 0 | 7.5 |
| CASTELAMARE, Brittan | 3 | 0-0-0 | .000 | 11 | 0-0 | 0 | 0 | 0-0 | 0 | 0.0 |
| Totals | 3 | 37-15-98 | .224 | 32 | 9-4 | 4 | 28 | 4-12 | 1 | 56.0 |

| | | | |
|----------------|----|----|----|
| Marquette (0) | 24 | 19 | 23 |
| Georgetown (3) | 26 | 25 | 25 |

Oct. 12 • Washington, D.C. • (7-10, 2-3)

WASHINGTON, D.C. -- The Marquette women's volleyball team dropped Sunday's match to Georgetown, 3-0 (26-24, 25-19, 25-23).

"Georgetown did one heck of a job," said head coach Pati Rolf. "They came out ready to go and they played without too many errors. Without the errors we could not capitalize the way we would have liked throughout the match."

Ashlee Fisher led the way for the Golden Eagles (7-10, 2-3 BIG EAST) with 10 kills while Caryn Mastandrea had 28 assists and Amy Deelo had 10 digs. Rabbecca Gonyo and Katie Vancura both had a career-high four solo blocks to help MU to 15.0 total blocks for the match.

Marquette got off to a 5-2 lead in the first set behind a couple of kills from Fisher and also led by three at 10-7. Marquette built a 16-14 lead before Georgetown took their largest lead of the set at 20-17. After Marquette tied the set at 21-21, Georgetown took a timeout to regroup, but a kill by Leslie Bielski forced the Hoyas into another timeout. MU sat at set-point with the score 24-22, but was unable to close out the set as GU scored three straight to win 26-24.

In the second, Marquette trailed early but rallied to tie the score at 6-6 on a kill by Gonyo. From there, neither team was able to pull away as the game was tied at every point from 6-6 to 13-13. Georgetown built a 20-18 lead and following two timeouts, MU was only able to manage another point, dropping the set 25-19.

A quick 8-2 start by the Hoyas forced Marquette into an early timeout. The Golden Eagles then reeled off 11 of the next 18 points to pull within two at 15-13, forcing a Georgetown timeout. Out of the timeout, MU scored two points to pull even at 15-15 and three straight points by GU lengthened their lead back to three at 18-15. MU would go on to score five of seven to tie the game at 20-20 before GU scored the final four points to take the set 25-23.

| Marquette | GP | K-E-TA | PCT | A SA-SE | RE | DIG | BS-BABEBH | BHE | PTS | |
|------------|----|-----------|-------|---------|-----|-----|-----------|-------|------|------|
| JONES | 3 | 3-4-8 | .125 | 0 | 0-0 | 0 | 4 | 0-0 | 1 | 3.0 |
| BIELSKI | 3 | 9-5-30 | .133 | 0 | 0-2 | 0 | 7 | 1-2 | 1 | 11.0 |
| FISHER | 3 | 10-7-27 | .111 | 1 | 1-0 | 5 | 0-0 | 0 | 11.0 | |
| RUSSELL | 3 | 2-3-5 | -.200 | 0 | 0-3 | 0 | 0 | 0-5 | 0 | 4.5 |
| GONYO | 3 | 6-4-19 | .105 | 1 | 0-0 | 2 | 4 | 0-0 | 0 | 10.0 |
| MASTANDREA | 3 | 2-0-8 | .250 | 28 | 0-0 | 1 | 12 | 0-1 | 4 | 4.0 |
| AKIN | 1 | 1-0-1 | 1.000 | 0 | 0-0 | 0 | 0 | 0-0 | 0 | 1.0 |
| ANGST | 1 | 0-0-0 | .000 | 0 | 0-0 | 0 | 0 | 0-0 | 0 | 0.0 |
| VANCUA | 3 | 2-0-4 | .500 | 0 | 0-0 | 0 | 4 | 1-1 | 0 | 6.5 |
| DEELO | 3 | 0-0-0 | .000 | 2 | 0-2 | 10 | 0-0 | 0 | 0.0 | |
| VIOLA | 3 | 0-0-0 | .000 | 0 | 0-0 | 4 | 0-0 | 0 | 1.0 | |
| Team | | | | | | 2 | | | | |
| Totals | 3 | 35-23-102 | .118 | 32 | 1-7 | 2 | 33 | 10-10 | 2 | 51.0 |

| Georgetown | GP | K-E-TA | PCT | A SA-SE | RE | DIG | BS-BABEBH | BHE | PTS | |
|--------------------|----|-----------|-------|---------|-----|-----|-----------|-----|-----|------|
| MALONE, Ashley | 3 | 0-0-0 | .000 | 0 | 0-3 | 0 | 9 | 0-0 | 0 | 0.0 |
| HARDY, Jessica | 3 | 12-5-28 | .250 | 0 | 1-0 | 4 | 0-1 | 1 | 0 | 13.5 |
| BOLAND, Caitlin | 3 | 0-3-5 | -.600 | 38 | 0-0 | 7 | 1 | 0 | 0 | 1.0 |
| DORISMOND, Vanessa | 3 | 6-5-15 | .067 | 0 | 0-0 | 0 | 2 | 0-0 | 0 | 8.0 |
| MANLEY, Sara | 3 | 6-7-27 | -.037 | 0 | 0-1 | 6 | 0-0 | 0 | 6.0 | |
| NIESEN, Katherine | 3 | 9-0-13 | .692 | 0 | 1-1 | 0 | 12 | 1 | 0 | 12.0 |
| REZIN, Victoria | 3 | 0-0-0 | .000 | 1 | 0-0 | 11 | 0-0 | 0 | 0.0 | |
| TRAUTH, Samantha | 2 | 0-0-0 | .000 | 0 | 0-0 | 1 | 0-0 | 0 | 0.0 | |
| COHEN, Courtney | 3 | 7-2-14 | .357 | 0 | 0-0 | 2 | 2-1 | 0 | 9.5 | |
| MCKOY, Kiersten | 1 | 0-0-0 | .000 | 0 | 0-0 | 0 | 0-0 | 0 | 0.0 | |
| Totals | 3 | 40-22-102 | .176 | 39 | 2-5 | 1 | 40 | 6-4 | 2 | 50.0 |

| | | | | | |
|---------------|----|----|----|----|----|
| Syracuse (2) | 25 | 25 | 16 | 21 | 15 |
| Marquette (3) | 16 | 21 | 25 | 25 | 12 |

Oct. 18 • Al McGuire Center • (7-11, 2-4)

MILWAUKEE -- The Marquette women's volleyball team dropped a tough five-set match, 3-2 (25-16, 25-21, 16-25, 21-25, 15-12), to Syracuse on Saturday afternoon, falling to 7-11 (2-4 BIG EAST) on the season.

"We have to continue to gain more experience," said head coach Pati Rolf. "The team, because they are young, doesn't always bring the same intensity that they need to and we have a tendency to see what is going on and pick up our game accordingly. You can't spot a team two games and then expect to win."

Marquette got off to a sluggish start, pushing their streak of sets without a win to 11 after dropping the match's first two sets. Following the break, Marquette came out and claimed the next two sets to tie the match at 2-2 before Syracuse won the final set to close out the match.

Senior Ashlee Fisher topped her previous season-high with 23 kills, while junior Caryn Mastandrea provided 50 assists, making it her third match this season with at least 50 assists. Freshman Amy Deelo led the way with 19 digs and Terri Angst had 14.

The first frame saw the Golden Eagles struggle to connect on their attacks, leading to an attack percentage of -.100, with 11 errors on 30 attacks. A kill from freshman Tiara Russell opened the scoring in the first set but MU would fall behind 2-1 on a service ace from Brittany Kern and not lead again, dropping the first set, 25-16.

Fisher hammered home a kill in the second set to get MU off to a 1-0 lead before the Orange went up 2-1. Marquette responded to tie the score at 10-10, forcing Syracuse into a timeout and would eventually take a 14-13 lead on a Syracuse attack error. From there, Syracuse rallied to build a 22-17 lead and took the set 25-21.

Out of the intermission, Marquette turned up the tempo, getting out to a 3-1 lead on two kills from Gonyo and one from Fisher. With the set tied at 12-12, MU ripped off three points to take a 15-12 lead, forcing a Syracuse timeout. From there the Golden Eagles scored five of the next seven points to put MU up 20-14, a lead they would not relinquish to win the set, 25-16.

In the third, Leslie Bielski and Fisher led MU with five kills each and Mastandrea provided 14 assists.

The fourth saw MU shoot out to a 4-0 lead on two kills from Gonyo, one from Mastandrea and one from Fisher before Syracuse answered to tie the set at 7-7. After a MU timeout with Syracuse leading 14-10, Marquette came back to tie the set at 16-16 on a kill from Fisher. After the two teams traded the lead, MU pulled ahead 20-19 and would take the set 25-21.

In the fourth stanza, Fisher chipped in eight kills while Mastandrea contributed 14 assists.

In the final frame, the first few points were highly contested before Syracuse scored five straight to put the Orange up 9-4 and win the set by a score of 15-12.

| Syracuse | GP | K-E-TA | PCT | A SA-SE | RE | DIG | BS-BABEBH | BHE | PTS | |
|--------------------|----|-----------|------|---------|------|-----|-----------|------|-----|------|
| MORTON, Sarah | 5 | 10-3-22 | .318 | 0 | 0-0 | 0 | 0 | 2-4 | 0 | 14.0 |
| LEFFBvre, Noemie | 5 | 15-6-33 | .273 | 0 | 0-2 | 0 | 11 | 0-2 | 1 | 16.0 |
| KERN, Brittany | 5 | 3-1-7 | .286 | 0 | 2-2 | 0 | 2 | 0-5 | 0 | 7.5 |
| MacFAVISH, Kacie | 5 | 13-4-47 | .191 | 3 | 1-2 | 1 | 12 | 1-4 | 0 | 17.0 |
| QUIGLEY, April | 5 | 4-3-10 | .100 | 41 | 0-0 | 0 | 7 | 2-5 | 1 | 8.5 |
| LITTLE, Erin | 5 | 3-2-17 | .059 | 0 | 0-0 | 0 | 0 | 0-0 | 1 | 3.0 |
| TODD, Hayley | 3 | 3-1-9 | .222 | 0 | 0-1 | 0 | 0 | 1-0 | 0 | 4.0 |
| WILLIAMS, Ashley | 1 | 0-0-0 | .000 | 0 | 0-0 | 0 | 0 | 0-0 | 0 | 0.0 |
| McLAURIN, Shanetha | 5 | 0-0-0 | .000 | 3 | 2-1 | 0 | 7 | 0-0 | 0 | 2.0 |
| KANEMURA, Marissa | 5 | 0-0-0 | .000 | 1 | 0-2 | 0 | 15 | 0-0 | 0 | 0.0 |
| Totals | 5 | 51-20-145 | .214 | 48 | 5-11 | 1 | 54 | 6-20 | 2 | 72.0 |

| Marquette | GP | K-E-TA | PCT | A SA-SE | RE | DIG | BS-BABEBH | BHE | PTS | |
|------------|----|-----------|-------|---------|-----|-----|-----------|------|-----|------|
| BIELSKI | 5 | 17-5-31 | .387 | 0 | 0-0 | 2 | 6 | 0-1 | 0 | 17.5 |
| FISHER | 5 | 23-9-57 | .246 | 0 | 1-3 | 1 | 7 | 2-1 | 0 | 25.0 |
| RUSSELL | 5 | 4-4-12 | .000 | 2 | 0-2 | 0 | 2 | 0-3 | 1 | 5.5 |
| VANCUA | 5 | 5-6-19 | -.053 | 1 | 0-0 | 0 | 0 | 0-2 | 0 | 6.0 |
| GONYO | 5 | 8-7-21 | .048 | 0 | 0-0 | 2 | 3 | 1-0 | 0 | 11.5 |
| MASTANDREA | 5 | 5-3-17 | .118 | 50 | 0-0 | 0 | 7 | 0-1 | 3 | 5.5 |
| ANGST | 5 | 0-0-0 | .000 | 2 | 0-0 | 1 | 14 | 0-0 | 0 | 0.0 |
| DEELO | 5 | 0-0-2 | .000 | 1 | 0-2 | 1 | 19 | 0-0 | 1 | 0.0 |
| VIOLA | 5 | 1-1-2 | .000 | 2 | 0-0 | 0 | 6 | 0-0 | 0 | 1.0 |
| Totals | 5 | 63-35-161 | .174 | 58 | 1-7 | 5 | 63 | 3-10 | 5 | 72.0 |

2008 Match-by-Match Results



| | | | | | |
|------------------|----|----|----|----|----|
| UW-Milwaukee (2) | 27 | 26 | 11 | 16 | 11 |
| Marquette (3) | 25 | 24 | 25 | 25 | 15 |

Oct. 20 • Al McGuire Center • (8-11, 2-4)

MILWAUKEE -- Putting an end to their four-match losing streak, the Marquette volleyball team defeated cross-town rival UW-Milwaukee Monday night, 3-2.

Leading the Golden Eagles to victory were Rabbecca Gonyo and Leslie Bielski, who both tied career-highs with 18 and 17 kills, respectively. Caryn Mastandrea orchestrated the MU attack with 47 assists, along with a career-high 20 digs. Freshman libero Amy Deelo provided an additional 24 digs, while Gonyo and Tiara Russell tied for the team lead with seven block aiece.

Marquette got off to a slow start in the first two sets, giving the Panthers a fight but ultimately falling after forcing UWM over the 25-point barrier. In the first, UWM took a four point lead on a kill by Natalie Schmitting to put the Panthers up 9-5 before four MU points caused UWM to use their first timeout. Out of the timeout, MU took their first lead of the game at 10-9 on Mastandrea's second straight service ace. From there, UWM took back the lead at 12-10 on a kill by the squad's lone senior, Becky Peters, and led until MU took the lead at 25-24. Three straight UWM points ensued, allowing the Panthers to close out the set at 27-24.

The Golden Eagles fell behind 4-1 early in the match's second set on a service ace by Samantha Trawitzke and never led the rest of the way. MU did tie the score at 24-24 in an attack error by Schmitting but UWM scored the next two points to win the set 26-24.

MU came out of the intermission with their guns blazing, forcing UWM to call timeouts with the score at 6-2 and 12-6. The second UWM timeout was in the midst of a 9-1 MU run which lengthened Marquette's lead to 19-7. The Golden Eagles closed out the scoring in the third frame to take the set 25-11.

The 11 points allowed in the third, tied for the least given up this year by Marquette in one of a match's first four sets. The Golden Eagles also defeated Chattanooga, 25-11, this year in that match's first stanza.

In the third, MU did not have an error leading to a .522 attack percentage, while UWM hit .152 in the set. Gonyo contributed five kills, while Ashlee Fisher had four and Russell had three. For UWM, Peters hit .727 in the set, with eight errors coming on 11 total attacks.

Marquette got off to another fast start in the fourth, building a 3-1 lead on an ace from Bielski and built the lead to 8-4 on another attack error by Peters. Out of a UWM timeout, MU upped their scoring pace and took a 15-8 lead prior to another UWM timeout. Three errors by Fisher forced MU into a timeout after a 4-1 UWM run. Marquette then responded to take eight of the next 12 points to win the set 25-16 after two straight kills from Gonyo.

Gonyo led the way in the fourth set with six kills and two blocks. Bielski pitched in four kills in the effort and Deelo added 10 digs.

With the score tied 5-5 in the fifth, four Marquette points, including kills from Bielski and Vancura, forced UWM into two more early timeouts. From there, UWM pulled within two at 12-10 but that was as close as they would get as MU pulled out the set and the match, 15-11.

In the shortened fifth set, Bielski led the Golden Eagles with five kills and Mastandrea contributed eight assists.

| UWM | GP | K-E-TA | PCT | A | S-A-SE | RE | DIG | BS-BABE | BHE | PTS |
|---------------------|----|-----------|-------|----|--------|----|-----|---------|-----|------|
| SUEPPEL, Maddie | 5 | 13-5-33 | .242 | 0 | 0-0 | 0 | 3 | 0-5 | 0 | 15.5 |
| ZAPORSKI, Kellye | 5 | 0-1-6 | -.167 | 46 | 0-2 | 0 | 7 | 0-2 | 1 | 1.0 |
| SCHUH, Kerri | 5 | 9-3-31 | .394 | 0 | 0-0 | 0 | 4 | 0-5 | 2 | 11.5 |
| CHERY, Natalie | 4 | 3-4-21 | -.048 | 0 | 0-0 | 0 | 3 | 1-0 | 0 | 4.0 |
| SCHMITTING, Natalie | 5 | 12-4-28 | .286 | 0 | 0-1 | 0 | 6 | 1-2 | 0 | 14.0 |
| PETERS, Becky | 5 | 15-12-48 | .062 | 0 | 1-1 | 3 | 12 | 0-0 | 0 | 16.0 |
| POTTER, Morgan | 1 | 0-0-0 | .000 | 0 | 0-0 | 0 | 0 | 0-0 | 0 | 0.0 |
| TRAWITZKE, Samantha | 5 | 0-0-1 | .000 | 3 | 1-1 | 0 | 3 | 0-0 | 0 | 1.0 |
| O'BRIEN, Mary Beth | 2 | 0-1-3 | -.333 | 0 | 0-0 | 0 | 2 | 0-0 | 1 | 0.0 |
| HINTZE, Lauren | 5 | 1-1-3 | .000 | 0 | 1-0 | 0 | 6 | 0-0 | 0 | 2.0 |
| PELSING, Lauren | 5 | 1-0-2 | .500 | 0 | 0-1 | 0 | 15 | 0-0 | 0 | 1.0 |
| VIOLA | 4 | 0-0-0 | .000 | 0 | 0-0 | 0 | 0 | 0-0 | 1 | 0.0 |
| JANSING, Melissa | 4 | 0-0-0 | .000 | 0 | 0-0 | 0 | 0 | 0-0 | 1 | 0.0 |
| Totals | 5 | 54-31-176 | .131 | 49 | 3-6 | 3 | 61 | 2-14 | 5 | 66.0 |

| Marquette | GP | K-E-TA | PCT | A | S-A-SE | RE | DIG | BS-BABE | BHE | PTS |
|------------|----|-----------|------|----|--------|----|-----|---------|-----|------|
| BIELSKI | 5 | 17-10-45 | .376 | 0 | 1-4 | 0 | 9 | 0-1 | 1 | 18.5 |
| FISHER | 5 | 16-5-39 | .282 | 0 | 0-0 | 0 | 1 | 0-4 | 0 | 18.0 |
| RUSSELL | 5 | 7-4-17 | .176 | 2 | 0-0 | 0 | 4 | 1-6 | 0 | 11.0 |
| VANCURA | 5 | 5-1-16 | .250 | 2 | 0-0 | 0 | 1 | 0-5 | 0 | 7.5 |
| GONYO | 5 | 18-2-30 | .533 | 0 | 0-0 | 0 | 1 | 1-6 | 0 | 22.0 |
| MASTANDREA | 5 | 5-3-18 | .111 | 47 | 2-0 | 0 | 20 | 0-3 | 0 | 8.5 |
| JONES | 1 | 0-0-0 | .000 | 0 | 0-0 | 0 | 0 | 0-0 | 0 | 0.0 |
| ANGST | 5 | 0-0-0 | .000 | 2 | 0-0 | 0 | 9 | 0-0 | 0 | 0.0 |
| COELLO | 2 | 0-0-0 | .000 | 0 | 0-0 | 0 | 2 | 0-0 | 0 | 0.0 |
| DEELO | 5 | 0-0-0 | .000 | 5 | 0-1 | 2 | 24 | 0-0 | 0 | 0.0 |
| VIOLA | 5 | 0-0-4 | .000 | 4 | 0-1 | 0 | 5 | 0-0 | 0 | 0.0 |
| Team | | | | | | | 1 | | | 1 |
| Totals | 5 | 68-25-169 | .254 | 62 | 3-6 | 3 | 76 | 2-25 | 1 | 85.5 |

| | | | |
|----------------|----|----|----|
| Louisville (3) | 25 | 25 | 25 |
| Marquette (0) | 8 | 19 | 21 |

Oct. 24 • Al McGuire Center • (8-12, 2-5)

MILWAUKEE -- The Marquette volleyball team was defeated Saturday night at the Al McGuire Center by Louisville, 3-0 (25-8, 25-19, 25-21).

"We did not play well," said head coach Pati Rolf. "We struggled to generate the proper offense that we needed against this team. Ciara (Jones) was really aggressive with her play tonight and Caryn (Mastandrea) did a great job getting her the ball in the third set, while our other outside hitters struggled."

In the first set, Marquette managed a season-low eight points on three kills, while the Cardinals landed 13. Previously, MU's lowest set point total was against Clemson on Sept. 5 and Oregon State on Sept. 20 when the Golden Eagles scored 10 points. In the first, Ashlee Fisher landed a kill to put MU within four at 8-4, but from there Louisville scored 12 of the next 13 points to take a commanding 20-5 lead before claiming the set, 25-8.

The second saw Marquette fall behind 5-1 before responding to tie the set at 10-10 after a kill by Rabbecca Gonyo. The Golden Eagles eventually took the 16-15 lead on a kill from Caryn Mastandrea, but Louisville came back to score 10 of 13 to take the set, 25-19.

Out of the intermission, Marquette was the first to strike on a kill from Fisher to put MU up 1-0. The Golden Eagles also led at 5-4 on a kill from Katie Vancura and at 6-5 on a kill from Ciara Jones. Louisville responded to pull out to a 15-10 advantage to force a MU timeout. Marquette would close the gap to two points at 17-15, but that would be as close as they would get, falling 25-21.

On the night, Ciara Jones posted a team-high six kills for MU, five of which came in the third frame, and Amy Deelo led the team with nine digs. For the Cardinals Justine Landi registered a triple-double with 10 kills, 18 assists and 11 digs, while BIG EAST blocks leader Lecia Brown had six blocks for the match.

Throughout the match, Marquette failed to connect on its attacks, leading to a .000 hitting percentage for the night, while Louisville hit .304.

| Louisville | GP | K-E-TA | PCT | A | S-A-SE | RE | DIG | BS-BABE | BHE | PTS |
|----------------------|----|----------|-------|----|--------|----|-----|---------|-----|------|
| LIU, Rui | 3 | 4-4-7 | .429 | 0 | 0-1 | 0 | 3 | 0-3 | 0 | 5.5 |
| BROWN, Lecia | 3 | 2-5-7 | -.143 | 0 | 0-0 | 0 | 0 | 0-6 | 0 | 5.0 |
| RUCKER, Gwen | 3 | 6-1-15 | .333 | 0 | 0-0 | 0 | 0 | 1-1 | 0 | 7.5 |
| KOLESNIKOVA, Tatiana | 3 | 7-4-20 | .350 | 5 | 0-1 | 0 | 2 | 0-4 | 1 | 9.0 |
| MATIASOVSKA, Jana | 3 | 11-0-19 | .579 | 0 | 1-1 | 0 | 5 | 1-3 | 1 | 14.5 |
| LANDI, Justine | 3 | 10-4-23 | .261 | 18 | 2-2 | 0 | 11 | 0-1 | 0 | 12.5 |
| WETTERER, Kristie | 3 | 0-0-0 | .000 | 1 | 0-1 | 1 | 8 | 0-0 | 0 | 0.0 |
| MANGO, Lindsey | 3 | 1-0-1 | 1.000 | 1 | 1-0 | 1 | 6 | 0-0 | 1 | 2.0 |
| LECH, Gosia | 3 | 0-0-0 | .000 | 14 | 0-0 | 0 | 4 | 0-0 | 1 | 0.0 |
| Totals | 3 | 41-13-92 | .304 | 39 | 4-6 | 2 | 39 | 2-18 | 4 | 56.0 |

| Marquette | GP | K-E-TA | PCT | A | S-A-SE | RE | DIG | BS-BABE | BHE | PTS |
|------------|----|-----------|-------|----|--------|----|-----|---------|-----|------|
| BIELSKI | 3 | 2-4-10 | -.200 | 0 | 1-0 | 1 | 2 | 0-0 | 0 | 3.0 |
| FISHER | 3 | 5-1-34 | -.176 | 1 | 0-0 | 0 | 1 | 0-2 | 0 | 6.0 |
| RUSSELL | 3 | 2-3-12 | -.083 | 2 | 1-0 | 0 | 0 | 0-3 | 0 | 4.5 |
| VANCURA | 3 | 4-3-13 | .077 | 0 | 0-0 | 0 | 0 | 0-1 | 0 | 4.5 |
| GONYO | 3 | 3-2-10 | .100 | 0 | 0-0 | 0 | 1 | 0-1 | 0 | 3.5 |
| MASTANDREA | 3 | 3-1-12 | .167 | 18 | 0-1 | 0 | 8 | 0-2 | 0 | 4.0 |
| JONES | 2 | 6-1-8 | .625 | 0 | 0-0 | 0 | 0 | 0-0 | 1 | 6.0 |
| ANGST | 3 | 0-0-0 | .000 | 1 | 0-1 | 0 | 8 | 0-0 | 0 | 0.0 |
| COELLO | 2 | 0-0-0 | .000 | 0 | 0-0 | 0 | 1 | 0-0 | 0 | 0.0 |
| DEELO | 3 | 0-0-0 | .000 | 1 | 0-1 | 2 | 9 | 0-0 | 1 | 0.0 |
| VIOLA | 3 | 0-0-2 | .000 | 2 | 0-0 | 1 | 5 | 0-0 | 0 | 0.0 |
| Totals | 3 | 25-25-101 | .000 | 25 | 2-3 | 4 | 35 | 0-9 | 0 | 31.5 |

| | | | |
|----------------|----|----|----|
| Cincinnati (3) | 25 | 25 | 25 |
| Marquette (0) | 15 | 18 | 23 |

Oct. 26 • Al McGuire Center • (8-13, 2-6)

MILWAUKEE -- The Marquette women's volleyball team dropped a 3-0 decision to the Cincinnati Bearcats Sunday at the Al McGuire Center.

"Cincinnati was the stronger team today," said head coach Pati Rolf. "We really needed to push them harder. We pushed too hard with our hitting and couldn't get it back together when things weren't going our way."

Marquette opened the scoring in the match's first set with consecutive kills from Katie Vancura and Rabbecca Gonyo to put the Golden Eagles up 2-0. With the Bearcats leading 8-6, MU scored seven of the next eight points to go up 13-9. After a Cincinnati timeout, the Bearcats reeled off a 16-2 run, including the set's final 10 points to take the frame, 25-15.

In the second stanza, Cincinnati shot out to a 4-1 lead and would never trail in the set. Marquette used two timeouts with the set at 18-13 and 20-13 before taking four of the next five points to pull within four at 21-17. The Bearcats then closed out the scoring to win, 25-18. Gonyo and Vancura each had three kills in the second set.

Cincinnati got out to a 3-0 lead in the third and built a 7-4 lead before MU responded to tie the set at 7-7 on kills from Tiara Russell, Caryn Mastandrea and Leslie Bielski. Marquette pushed its lead to 12-9 on another kill from Bielski, following a Cincinnati timeout. The Golden Eagles took another three-point lead at 17-14 on a kill from freshman outside hitter Ciara Jones before Cincinnati tied the set at 19-19. Marquette led 20-19 after a Bearcats' service error, but Cincinnati would respond to take the set and the match, 25-23. Jones registered three kills in limited action in the third set.

"We are seeing really good things out of Ciara Jones, really coming in and being able to handle things," said Rolf. "Our outside hitters were really struggling today. We have an outside hitter-generated offense and when we aren't doing well there, we are in trouble."

Bielski led the way for Marquette (8-13, 2-6 BIG EAST) with 10 kills, while Mastandrea gave 27 assists and Amy Deelo recorded 14 digs. For the Bearcats (20-5, 7-2 BIG EAST), Jessica Elley had 13 kills and Jessie Nevitt had 12.

| Cincinnati | GP | K-E-TA | PCT | A | S-A-SE | RE | DIG | BS-BABE | BHE | PTS |
|-------------------|----|-----------|------|----|--------|----|-----|---------|-----|------|
| FESL, Annie | 3 | 4-0-6 | .667 | 39 | 0-1 | 0 | 5 | 0-2 | 0 | 5.0 |
| NIEMER, Stephanie | 3 | 5-2-23 | .430 | 0 | 1-1 | 0 | 12 | 0-0 | 0 | 6.0 |
| NEVITT, Jessie | 3 | 12-0-22 | .545 | 1 | 1-3 | 0 | 0 | 0-6 | 0 | 16.0 |
| UPTON, Lindsay | 3 | 5-1-7 | .235 | 1 | 0-3 | 0 | 3 | 0-0 | 0 | 5.0 |
| ELLEY, Jessica | 3 | 13-4-22 | .409 | 0 | 4-0 | 0 | 4 | 0-3 | 1 | 18.5 |
| HARPENAU, Missy | 3 | 7-3-21 | .390 | 2 | 0-1 | 0 | 9 | 0-1 | 0 | 7.5 |
| GUENTHER, Julie | 3 | 0-0-0 | .000 | 0 | 0-0 | 0 | 4 | 0-0 | 0 | 0.0 |
| FREY, Jaime | 3 | 0-0-0 | .000 | 0 | 0-0 | 0 | 9 | 0-0 | 0 | 0.0 |
| DOSSMAN, Natalie | 1 | 0-0-0 | .000 | 0 | 0-0 | 0 | 0 | 0-0 | 1 | 0.0 |
| Totals | 3 | 46-10-111 | .324 | 43 | 6-9 | 0 | 46 | 0-12 | 1 | 58.0 |

| Marquette | GP | K-E-TA | PCT | A | S-A-SE | RE | DIG | BS-BABE | BHE | PTS |
|------------|----|-----------|-------|----|--------|----|-----|---------|-----|------|
| BIELSKI | 3 | 10-5-35 | .343 | 0 | 0-0 | 1 | 4 | 0-1 | 2 | 10.5 |
| ANGST | 3 | 0-0-1 | .000 | 0 | 0-0 | 0 | 7 | 0-0 | 0 | 0.0 |
| FISHER | 2 | 3-5-14 | .143 | 0 | 0-0 | 0 | 0 | 0-1 | 0 | 3.0 |
| RUSSELL | 3 | 2-2-6 | .000 | 1 | 0-2 | 0 | 1 | 0-2 | 0 | 3.0 |
| GONYO | 3 | 8-4-21 | .390 | 1 | 0-0 | 0 | 2 | 0-1 | 0 | 8.5 |
| MASTANDREA | 3 | 2-0-9 | .222 | 27 | 0-0 | 0 | 11 | 0-0 | 0 | 2.0 |
| JONES | 1 | 3-0-6 | .500 | 0 | 0-0 | 0 | 0 | 0-0 | 0 | 3.0 |
| COELLO | 1 | 0-0-0 | .000 | 0 | 0-0 | 0 | 0 | 0-0 | 0 | 0.0 |
| VANCURA | 3 | 7-3-17 | .235 | 0 | 0-0 | 0 | 1 | 0-2 | 0 | 8.0 |
| DEELO | 3 | 0-0-1 | .000 | 2 | 0-0 | 2 | 14 | 0-0 | 0 | 0.0 |
| VIOLA | 3 | 0-1-1 | -.000 | 0 | 0-0 | 2 | 7 | 0-0 | 1 | 0.0 |
| Team | | | | | | | 1 | | | 1 |
| Totals | 3 | 35-20-111 | .135 | 31 | 0-2 | 6 | 47 | 0-6 | 3 | 38.0 |

2008 Marquette Volleyball Statistics

1 • Ciara Jones

| 2008 | K-E-TA | Pct | A | SA-SE | DIG | BS-BA |
|----------------------|---------|-------|---|-------|-----|-------|
| Houston | 11-5-23 | .261 | 1 | 0-0 | 2 | 1-2 |
| Chattanooga | | | | | | |
| Tennessee | | | | | | |
| vs Clemson | | | | | | |
| at Northern Iowa | | | | | | |
| vs Northern Illinois | | | | | | |
| Temple | | | | | | |
| Green Bay | | | | | | |
| Bowling Green | | | | | | |
| Oregon State | | | | | | |
| American | | | | | | |
| Wisconsin | | | | | | |
| at Rutgers | | | | | | |
| St. John's | | | | | | |
| Connecticut | | | | | | |
| at USF | 3-3-12 | .000 | 0 | 0-0 | 3 | 0-1 |
| at Georgetown | 3-4-8 | -.125 | 0 | 0-0 | 4 | 0-0 |
| Syracuse | | | | | | |
| UW-Milwaukee | 0-0-0 | .000 | 0 | 0-0 | 0 | 0-0 |
| Louisville | 6-1-8 | .625 | 0 | 0-0 | 0 | 0-0 |
| Cincinnati | 3-0-6 | .500 | 0 | 0-0 | 0 | 0-0 |
| at DePaul | | | | | | |
| at Notre Dame | | | | | | |
| at Villanova | | | | | | |
| at Seton Hall | | | | | | |
| West Virginia | | | | | | |
| Pittsburgh | | | | | | |

Career Highs

| | | |
|----------------|----|----------------------------|
| Kills | 11 | Houston (Aug. 29, 2008) |
| Attacks | 23 | Houston (Aug. 29, 2008) |
| Assists | 1 | Houston (Aug. 29, 2008) |
| Digs | 4 | Georgetown (Oct. 12, 2008) |
| Aces | 0 | - |
| Blocks | 2 | Houston (Aug. 29, 2008) |

2 • Leslie Bielski

| 2008 | K-E-TA | Pct | A | SA-SE | DIG | BS-BA |
|----------------------|----------|-------|---|-------|-----|-------|
| Houston | 9-6-22 | .136 | 1 | 1-0 | 3 | 0-3 |
| Chattanooga | 7-3-16 | .250 | 0 | 0-0 | 4 | 0-1 |
| Tennessee | 10-5-23 | .217 | 2 | 0-0 | 4 | 1-2 |
| vs Clemson | 13-11-38 | .053 | 1 | 1-2 | 6 | 0-0 |
| at Northern Iowa | 12-8-29 | .138 | 0 | 0-0 | 9 | 2-2 |
| vs Northern Illinois | 12-5-28 | .250 | 1 | 0-1 | 15 | 1-0 |
| Temple | 13-7-31 | .194 | 0 | 0-1 | 5 | 0-1 |
| Green Bay | 8-4-31 | .129 | 0 | 0-0 | 2 | 0-2 |
| Bowling Green | 14-5-35 | .257 | 0 | 0-0 | 2 | 0-4 |
| Oregon State | 14-8-30 | .200 | 1 | 0-0 | 3 | 0-0 |
| American | 13-9-37 | .108 | 0 | 0-0 | 6 | 0-1 |
| Wisconsin | 9-6-18 | .167 | 0 | 0-0 | 3 | 0-0 |
| at Rutgers | 12-5-22 | .318 | 0 | 0-0 | 4 | 0-1 |
| St. John's | 14-6-32 | .250 | 0 | 0-0 | 1 | 0-1 |
| Connecticut | 13-5-29 | .276 | 1 | 0-0 | 1 | 0-2 |
| at USF | 8-5-22 | .136 | 3 | 0-0 | 2 | 1-0 |
| at Georgetown | 9-5-30 | .133 | 0 | 0-2 | 7 | 1-2 |
| Syracuse | 17-5-31 | .387 | 0 | 0-0 | 6 | 0-1 |
| UW-Milwaukee | 17-10-45 | .156 | 0 | 1-4 | 9 | 0-1 |
| Louisville | 2-4-10 | -.200 | 0 | 1-0 | 2 | 0-0 |
| Cincinnati | 10-5-35 | .143 | 0 | 0-0 | 4 | 0-1 |
| at DePaul | | | | | | |
| at Notre Dame | | | | | | |
| at Villanova | | | | | | |
| at Seton Hall | | | | | | |
| West Virginia | | | | | | |
| Pittsburgh | | | | | | |

Career Highs

| | | |
|----------------|----|--------------------------------------|
| Kills | 17 | twice |
| Attacks | 45 | UW-Milwaukee (Oct. 20, 2008) |
| Assists | 3 | West Virginia (Oct. 22, 2006) |
| Digs | 15 | vs Northern Illinois (Sept. 6, 2008) |
| Aces | 5 | Connecticut (Nov. 2, 2006) |
| Blocks | 12 | at USF (Sept. 29, 2006) |

3 • Laura Akin

| 2008 | K-E-TA | Pct | A | SA-SE | DIG | BS-BA |
|----------------------|--------|------|----|-------|-----|-------|
| Houston | 2-0-3 | .667 | 8 | 0-0 | 2 | 0-1 |
| Chattanooga | 4-1-11 | .273 | 12 | 0-0 | 0 | 0-4 |
| Tennessee | 1-1-5 | .000 | 21 | 0-0 | 2 | 0-3 |
| vs Clemson | 1-0-3 | .333 | 15 | 0-0 | 0 | 0-0 |
| at Northern Iowa | 1-0-5 | .200 | 5 | 0-0 | 1 | 0-1 |
| vs Northern Illinois | 1-0-5 | .200 | 17 | 0-0 | 0 | 0-3 |
| Temple | | | | | | |
| Green Bay | | | | | | |
| Bowling Green | | | | | | |
| Oregon State | | | | | | |
| American | | | | | | |
| Wisconsin | | | | | | |
| at Rutgers | | | | | | |
| St. John's | | | | | | |
| Connecticut | | | | | | |
| at USF | | | | | | |
| at Georgetown | | | | | | |
| Syracuse | | | | | | |
| UW-Milwaukee | | | | | | |
| Louisville | | | | | | |
| Cincinnati | | | | | | |
| at DePaul | | | | | | |
| at Notre Dame | | | | | | |
| at Villanova | | | | | | |
| at Seton Hall | | | | | | |
| West Virginia | | | | | | |
| Pittsburgh | | | | | | |

Career Highs

| | | |
|----------------|----|-----------------------------|
| Kills | 4 | Chattanooga (Aug. 29, 2008) |
| Attacks | 11 | Chattanooga (Aug. 29, 2008) |
| Assists | 21 | Tennessee (Aug. 30, 2008) |
| Digs | 2 | twice |
| Aces | 0 | - |
| Blocks | 4 | Chattanooga (Aug. 29, 2008) |

4 • Terri Angst

| 2008 | K-E-TA | Pct | A | SA-SE | DIG | BS-BA |
|----------------------|--------|--------|---|-------|-----|-------|
| Houston | 0-0-0 | .000 | 1 | 1-2 | 11 | 0-0 |
| Chattanooga | 0-0-0 | .000 | 2 | 2-1 | 5 | 0-0 |
| Tennessee | 0-0-0 | .000 | 0 | 0-1 | 7 | 0-0 |
| vs Clemson | 0-0-1 | .000 | 1 | 0-0 | 1 | 0-0 |
| at Northern Iowa | 0-0-0 | .000 | 1 | 1-0 | 3 | 0-0 |
| vs Northern Illinois | 0-0-0 | .000 | 1 | 1-0 | 6 | 0-0 |
| Temple | 0-1-1 | -1.000 | 0 | 1-0 | 7 | 0-0 |
| Green Bay | 0-0-0 | .000 | 1 | 0-1 | 12 | 0-0 |
| Bowling Green | 0-0-1 | .000 | 0 | 1-0 | 5 | 0-0 |
| Oregon State | 0-0-1 | .000 | 1 | 0-0 | 10 | 0-0 |
| American | 0-0-0 | .000 | 1 | 0-0 | 5 | 0-0 |
| Wisconsin | 0-0-0 | .000 | 1 | 0-1 | 4 | 0-0 |
| at Rutgers | 0-1-1 | .000 | 0 | 0-1 | 3 | 0-0 |
| St. John's | 0-1-4 | -.250 | 0 | 0-1 | 8 | 0-0 |
| Connecticut | 0-0-0 | .000 | 0 | 0-0 | 1 | 0-0 |
| at USF | 0-0-0 | .000 | 1 | 1-0 | 2 | 0-0 |
| at Georgetown | 0-0-0 | .000 | 0 | 0-0 | 0 | 0-0 |
| Syracuse | 0-0-0 | .000 | 2 | 0-0 | 14 | 0-0 |
| UW-Milwaukee | 0-0-0 | .000 | 2 | 0-0 | 9 | 0-0 |
| Louisville | 0-0-0 | .000 | 1 | 0-1 | 8 | 0-0 |
| Cincinnati | 0-0-1 | .000 | 0 | 0-0 | 7 | 0-0 |
| at DePaul | | | | | | |
| at Notre Dame | | | | | | |
| at Villanova | | | | | | |
| at Seton Hall | | | | | | |
| West Virginia | | | | | | |
| Pittsburgh | | | | | | |

Career Highs

| | | |
|----------------|----|------------------------------|
| Kills | 1 | eight times |
| Attacks | 4 | Notre Dame (Oct. 12, 2007) |
| Assists | 4 | Notre Dame (Oct. 12, 2007) |
| Digs | 22 | Belmont (Sept. 14, 2007) |
| Aces | 3 | Miami (Fla.) (Aug. 31, 2007) |
| Blocks | 1 | three times |

5 • Ashlee Fisher

| 2008 | K-E-TA | Pct | A | SA-SE | DIG | BS-BA |
|----------------------|----------|-------|---|-------|-----|-------|
| Houston | 13-10-35 | .086 | 1 | 1-3 | 7 | 0-2 |
| Chattanooga | 18-0-28 | .643 | 0 | 1-3 | 5 | 0-2 |
| Tennessee | 13-11-49 | .041 | 0 | 0-2 | 4 | 0-4 |
| vs Clemson | 12-5-26 | .269 | 0 | 0-0 | 1 | 0-0 |
| at Northern Iowa | 10-1-22 | .409 | 0 | 0-0 | 4 | 0-0 |
| vs Northern Illinois | 22-5-53 | .321 | 1 | 0-0 | 3 | 1-1 |
| Temple | 19-6-41 | .317 | 0 | 2-4 | 2 | 1-1 |
| Green Bay | 16-7-45 | .200 | 0 | 2-2 | 10 | 1-3 |
| Bowling Green | 12-10-44 | .045 | 0 | 0-1 | 1 | 0-1 |
| Oregon State | 13-14-40 | .200 | 1 | 1-1 | 3 | 0-0 |
| American | 17-8-48 | .188 | 1 | 1-3 | 8 | 0-2 |
| Wisconsin | 11-6-33 | .152 | 4 | 0-2 | 4 | 0-1 |
| at Rutgers | 14-7-34 | .206 | 2 | 0-0 | 6 | 0-0 |
| St. John's | 12-6-39 | .154 | 0 | 3-1 | 8 | 0-1 |
| Connecticut | 13-8-34 | .147 | 0 | 0-1 | 2 | 1-0 |
| at USF | 10-10-29 | .000 | 0 | 0-2 | 4 | 0-2 |
| at Georgetown | 10-7-27 | .111 | 1 | 1-0 | 5 | 0-0 |
| Syracuse | 23-9-57 | .246 | 0 | 1-3 | 7 | 0-2 |
| UW-Milwaukee | 16-5-39 | .282 | 0 | 0-0 | 1 | 0-4 |
| Louisville | 5-11-34 | -.176 | 1 | 0-0 | 1 | 0-2 |
| Cincinnati | 3-5-14 | -.143 | 0 | 0-0 | 0 | 0-0 |
| at DePaul | | | | | | |
| at Notre Dame | | | | | | |
| at Villanova | | | | | | |
| at Seton Hall | | | | | | |
| West Virginia | | | | | | |
| Pittsburgh | | | | | | |

Career Highs

| | | |
|----------------|----|------------------------------------|
| Kills | 27 | South Dakota State (Nov. 24, 2007) |
| Attacks | 58 | Alabama (Nov. 5, 2006) |
| Assists | 4 | Wisconsin (Sept. 21, 2008) |
| Digs | 10 | Green Bay (Sept. 13, 2008) |
| Aces | 3 | Alabama (Nov. 5, 2006) |
| Blocks | 7 | Miami (Fla.) (Aug. 31, 2007) |

6 • Tiara Russell

| 2008 | K-E-TA | Pct | A | SA-SE | DIG | BS-BA |
|----------------------|--------|-------|---|-------|-----|-------|
| Houston | 4-3-12 | .083 | 0 | 0-0 | 0 | 0-2 |
| Chattanooga | 4-1-13 | .231 | 1 | 0-0 | 0 | 0-4 |
| Tennessee | 3-4-12 | -.083 | 1 | 0-1 | 2 | 1-5 |
| vs Clemson | 0-0-1 | .000 | 1 | 0-1 | 0 | 0-1 |
| at Northern Iowa | 2-3-7 | -.143 | 0 | 0-1 | 1 | 0-3 |
| vs Northern Illinois | 5-1-13 | .308 | 0 | 0-3 | 1 | 0-3 |
| Temple | 4-2-10 | .200 | 3 | 1-2 | 4 | 3-5 |
| Green Bay | 7-2-16 | .312 | 1 | 2-2 | 3 | 0-3 |
| Bowling Green | 6-2-11 | .364 | 0 | 1-3 | 0 | 1-2 |
| Oregon State | 2-2-7 | .000 | 0 | 0-0 | 5 | 1-6 |
| American | 3-2-10 | .100 | 2 | 0-2 | 1 | 3-4 |
| Wisconsin | 3-0-7 | .429 | 0 | 0-1 | 0 | 0-5 |
| at Rutgers | 3-1-8 | .250 | 0 | 1-2 | 1 | 0-3 |
| St. John's | 8-1-12 | .583 | 0 | 0-1 | 0 | 1-8 |
| Connecticut | 1-3-5 | -.400 | 0 | 2-1 | 1 | 2-1 |
| at USF | 0-2-4 | -.500 | 1 | 0-1 | 1 | 0-1 |
| at Georgetown | 2-3-5 | -.200 | 0 | 0-3 | 0 | 0-5 |
| Syracuse | 4-4-12 | .000 | 2 | 0-2 | 2 | 0-3 |
| UW-Milwaukee | 7-4-17 | .176 | 2 | 0-0 | 4 | 1-6 |
| Louisville | 2-3-12 | -.083 | 2 | 1-0 | 0 | 0-3 |
| Cincinnati | 2-2-6 | .000 | 1 | 0-2 | 1 | 0-2 |
| at DePaul | | | | | | |
| at Notre Dame | | | | | | |
| at Villanova | | | | | | |
| at Seton Hall | | | | | | |
| West Virginia | | | | | | |
| Pittsburgh | | | | | | |

Career Highs

| | | |
|----------------|----|-------------------------------|
| Kills | 8 | St. John's (Oct. 3, 2008) |
| Attacks | 16 | Green Bay (Sept. 13, 2008) |
| Assists | 3 | Temple (Sept. 12, 2008) |
| Digs | 5 | Oregon State (Sept. 20, 2008) |
| Aces | 2 | twice |
| Blocks | 8 | Temple (Sept. 12, 2008) |

2008 Marquette Volleyball Statistics

7 • Holly Mertens

| 2008 | K-E-TA | Pct. | A | SA-SE | DIG | BS-BA |
|----------------------|--------|------|--------------|-------|-----|-------|
| Houston | | | Did Not Play | | | |
| Chattanooga | | | Did Not Play | | | |
| Tennessee | | | Did Not Play | | | |
| vs Clemson | | | Did Not Play | | | |
| at Northern Iowa | | | Did Not Play | | | |
| vs Northern Illinois | | | Did Not Play | | | |
| Temple | | | Did Not Play | | | |
| Green Bay | | | Did Not Play | | | |
| Bowling Green | | | Did Not Play | | | |
| Oregon State | | | Did Not Play | | | |
| American | | | Did Not Play | | | |
| Wisconsin | | | Did Not Play | | | |
| at Rutgers | | | Did Not Play | | | |
| St. John's | | | Did Not Play | | | |
| Connecticut | | | Did Not Play | | | |
| at USF | | | Did Not Play | | | |
| at Georgetown | | | Did Not Play | | | |
| Syracuse | | | Did Not Play | | | |
| UW-Milwaukee | | | Did Not Play | | | |
| Louisville | | | Did Not Play | | | |
| Cincinnati | | | Did Not Play | | | |
| at DePaul | | | | | | |
| at Notre Dame | | | | | | |
| at Villanova | | | | | | |
| at Seton Hall | | | | | | |
| West Virginia | | | | | | |
| Pittsburgh | | | | | | |

Career Highs

| | | |
|----------------|---|---|
| Kills | - | - |
| Attacks | - | - |
| Assists | - | - |
| Digs | - | - |
| Aces | - | - |
| Blocks | - | - |

8 • Jessica Kieser

| 2008 | K-E-TA | Pct. | A | SA-SE | DIG | BS-BA |
|----------------------|--------|------|--------------|-------|-----|-------|
| Houston | 0-0-1 | .000 | 0 | 0-0 | 0 | 0-0 |
| Chattanooga | 0-0-0 | .000 | 0 | 0-0 | 0 | 0-0 |
| Tennessee | | | Did Not Play | | | |
| vs Clemson | | | Did Not Play | | | |
| at Northern Iowa | | | Did Not Play | | | |
| vs Northern Illinois | | | Did Not Play | | | |
| Temple | 0-0-0 | .000 | 0 | 0-0 | 1 | 0-0 |
| Green Bay | | | Did Not Play | | | |
| Bowling Green | | | Did Not Play | | | |
| Oregon State | | | Did Not Play | | | |
| American | | | Did Not Play | | | |
| Wisconsin | | | Did Not Play | | | |
| at Rutgers | | | Did Not Play | | | |
| St. John's | | | Did Not Play | | | |
| Connecticut | | | Did Not Play | | | |
| at USF | | | Did Not Play | | | |
| at Georgetown | | | Did Not Play | | | |
| Syracuse | | | Did Not Play | | | |
| UW-Milwaukee | | | Did Not Play | | | |
| Louisville | | | Did Not Play | | | |
| Cincinnati | | | Did Not Play | | | |
| at DePaul | | | | | | |
| at Notre Dame | | | | | | |
| at Villanova | | | | | | |
| at Seton Hall | | | | | | |
| West Virginia | | | | | | |
| Pittsburgh | | | | | | |

Career Highs

| | | |
|----------------|----|------------------------------------|
| Kills | 1 | South Dakota State (Nov. 24, 2007) |
| Attacks | 1 | five times |
| Assists | 2 | twice |
| Digs | 17 | Belmont (Sept. 14, 2007) |
| Aces | 4 | Belmont (Sept. 14, 2007) |
| Blocks | - | - |

9 • Alex Coello

| 2008 | K-E-TA | Pct. | A | SA-SE | DIG | BS-BA |
|----------------------|--------|------|--------------|-------|-----|-------|
| Houston | | | Did Not Play | | | |
| Chattanooga | | | Did Not Play | | | |
| Tennessee | | | Did Not Play | | | |
| vs Clemson | | | Did Not Play | | | |
| at Northern Iowa | | | Did Not Play | | | |
| vs Northern Illinois | | | Did Not Play | | | |
| Temple | | | Did Not Play | | | |
| Green Bay | | | Did Not Play | | | |
| Bowling Green | | | Did Not Play | | | |
| Oregon State | | | Did Not Play | | | |
| American | | | Did Not Play | | | |
| Wisconsin | | | Did Not Play | | | |
| at Rutgers | | | Did Not Play | | | |
| St. John's | | | Did Not Play | | | |
| Connecticut | | | Did Not Play | | | |
| at USF | | | Did Not Play | | | |
| at Georgetown | | | Did Not Play | | | |
| Syracuse | | | Did Not Play | | | |
| UW-Milwaukee | 0-0-0 | .000 | 0 | 0-0 | 2 | 0-0 |
| Louisville | 0-0-0 | .000 | 0 | 0-0 | 1 | 0-0 |
| Cincinnati | 0-0-0 | .000 | 0 | 0-0 | 0 | 0-0 |
| at DePaul | | | | | | |
| at Notre Dame | | | | | | |
| at Villanova | | | | | | |
| at Seton Hall | | | | | | |
| West Virginia | | | | | | |
| Pittsburgh | | | | | | |

Career Highs

| | | |
|----------------|---|------------------------------|
| Kills | - | - |
| Attacks | - | - |
| Assists | - | - |
| Digs | 2 | UW-Milwaukee (Oct. 20, 2008) |
| Aces | - | - |
| Blocks | - | - |

10 • Katie Vancura

| 2008 | K-E-TA | Pct. | A | SA-SE | DIG | BS-BA |
|----------------------|---------|-------|--------------|-------|-----|-------|
| Houston | | | Did Not Play | | | |
| Chattanooga | 0-2-8 | -.250 | 0 | 0-0 | 3 | 0-5 |
| Tennessee | 6-1-17 | .294 | 0 | 0-0 | 0 | 0-2 |
| vs Clemson | 1-4-14 | -.214 | 0 | 0-0 | 1 | 0-4 |
| at Northern Iowa | 6-2-17 | .235 | 0 | 0-0 | 0 | 0-1 |
| vs Northern Illinois | 8-7-23 | .043 | 0 | 0-2 | 1 | 0-1 |
| Temple | 12-5-26 | .269 | 0 | 0-0 | 0 | 0-2 |
| Green Bay | 6-0-14 | .249 | 0 | 0-0 | 0 | 0-3 |
| Bowling Green | 9-5-27 | .148 | 0 | 0-0 | 1 | 0-2 |
| Oregon State | 6-4-20 | .100 | 0 | 0-0 | 1 | 0-4 |
| American | 14-5-33 | .273 | 0 | 0-0 | 3 | 0-5 |
| Wisconsin | 1-4-12 | -.250 | 0 | 0-0 | 0 | 0-5 |
| at Rutgers | 4-3-18 | .056 | 1 | 0-0 | 0 | 0-4 |
| St. John's | 6-4-16 | .125 | 1 | 0-0 | 2 | 1-6 |
| Connecticut | 4-1-9 | .333 | 0 | 0-0 | 0 | 0-0 |
| at USF | 0-1-2 | -.500 | 0 | 0-0 | 2 | 0-0 |
| at Georgetown | 2-0-4 | .500 | 0 | 0-0 | 0 | 4-1 |
| Syracuse | 5-6-19 | -.053 | 1 | 0-0 | 0 | 0-2 |
| UW-Milwaukee | 5-1-16 | .250 | 2 | 0-0 | 1 | 0-5 |
| Louisville | 4-3-13 | .077 | 0 | 0-0 | 0 | 0-1 |
| Cincinnati | 7-3-17 | .235 | 0 | 0-0 | 1 | 0-2 |
| at DePaul | | | | | | |
| at Notre Dame | | | | | | |
| at Villanova | | | | | | |
| at Seton Hall | | | | | | |
| West Virginia | | | | | | |
| Pittsburgh | | | | | | |

Career Highs

| | | |
|----------------|----|---------------------------|
| Kills | 14 | American (Sept. 20, 2008) |
| Attacks | 33 | American (Sept. 20, 2008) |
| Assists | 1 | twice |
| Digs | 3 | three times |
| Aces | 0 | - |
| Blocks | 7 | St. John's (Oct. 3, 2008) |

11 • Rabbecka Gonyo

| 2008 | K-E-TA | Pct. | A | SA-SE | DIG | BS-BA |
|----------------------|---------|-------|---|-------|-----|-------|
| Houston | 9-4-20 | .250 | 0 | 0-5 | 3 | 0-6 |
| Chattanooga | 3-0-4 | .750 | 0 | 0-2 | 0 | 0-2 |
| Tennessee | 11-2-21 | .429 | 2 | 0-0 | 3 | 1-4 |
| vs Clemson | 6-5-18 | .056 | 1 | 0-0 | 1 | 2-3 |
| at Northern Iowa | 3-3-15 | .000 | 0 | 0-0 | 2 | 0-1 |
| vs Northern Illinois | 14-1-21 | .619 | 0 | 0-0 | 0 | 1-2 |
| Temple | 14-2-24 | .500 | 4 | 0-0 | 3 | 1-0 |
| Green Bay | 18-4-42 | .333 | 0 | 0-0 | 1 | 1-3 |
| Bowling Green | 7-6-27 | .037 | 0 | 0-0 | 3 | 0-5 |
| Oregon State | 6-5-20 | .050 | 0 | 0-0 | 0 | 0-2 |
| American | 9-3-23 | .261 | 3 | 0-0 | 1 | 1-6 |
| Wisconsin | 4-1-12 | .250 | 0 | 0-0 | 1 | 0-1 |
| at Rutgers | 11-3-20 | .400 | 0 | 0-0 | 0 | 0-5 |
| St. John's | 5-5-12 | .000 | 1 | 0-0 | 1 | 3-2 |
| Connecticut | 2-4-12 | -.167 | 0 | 0-0 | 1 | 1-2 |
| at USF | 8-4-13 | .308 | 2 | 0-0 | 3 | 2-2 |
| at Georgetown | 6-4-19 | .105 | 1 | 0-0 | 2 | 4-0 |
| Syracuse | 8-7-21 | .048 | 0 | 0-0 | 2 | 3-1 |
| UW-Milwaukee | 18-2-30 | .533 | 0 | 0-0 | 1 | 1-6 |
| Louisville | 3-2-10 | .100 | 0 | 0-0 | 0 | 0-1 |
| Cincinnati | 8-4-21 | .190 | 1 | 0-0 | 2 | 0-1 |
| at DePaul | | | | | | |
| at Notre Dame | | | | | | |
| at Villanova | | | | | | |
| at Seton Hall | | | | | | |
| West Virginia | | | | | | |
| Pittsburgh | | | | | | |

Career Highs

| | | |
|----------------|----|-------------------------------|
| Kills | 18 | twice |
| Attacks | 42 | Green Bay (Sept. 13, 2008) |
| Assists | 3 | three times |
| Digs | 6 | Tennessee (Sept. 8, 2007) |
| Aces | 1 | Rutgers (Sept. 23, 2007) |
| Blocks | 8 | at Connecticut (Nov. 3, 2007) |

12 • Amy Deelo

| 2008 | K-E-TA | Pct. | A | SA-SE | DIG | BS-BA |
|----------------------|--------|--------|---|-------|-----|-------|
| Houston | 1-0-2 | .500 | 0 | 0-1 | 6 | 0-0 |
| Chattanooga | 0-0-2 | .000 | 4 | 2-0 | 13 | 0-0 |
| Tennessee | 0-1-1 | -1.000 | 1 | 0-0 | 10 | 0-0 |
| vs Clemson | 0-0-0 | .000 | 1 | 0-0 | 9 | 0-0 |
| at Northern Iowa | 0-0-0 | .000 | 0 | 0-1 | 7 | 0-0 |
| vs Northern Illinois | 0-0-2 | .000 | 4 | 0-0 | 21 | 0-0 |
| Temple | 0-0-1 | .000 | 2 | 0-1 | 14 | 0-0 |
| Green Bay | 0-0-0 | .000 | 0 | 2-0 | 26 | 0-0 |
| Bowling Green | 0-0-0 | .000 | 3 | 4-0 | 14 | 0-0 |
| Oregon State | 0-0-1 | .000 | 2 | 0-1 | 13 | 0-0 |
| American | 0-0-1 | .000 | 1 | 1-0 | 20 | 0-0 |
| Wisconsin | 0-0-1 | .000 | 4 | 0-0 | 8 | 0-0 |
| at Rutgers | 0-0-0 | .000 | 1 | 1-0 | 14 | 0-0 |
| St. John's | 0-1-2 | -.500 | 1 | 4-1 | 12 | 0-0 |
| Connecticut | 0-0-0 | .000 | 0 | 3-1 | 10 | 0-0 |
| at USF | 0-0-0 | .000 | 2 | 1-0 | 9 | 0-0 |
| at Georgetown | 0-0-0 | .000 | 2 | 0-2 | 10 | 0-0 |
| Syracuse | 0-0-2 | .000 | 1 | 0-2 | 19 | 0-0 |
| UW-Milwaukee | 0-0-0 | .000 | 5 | 0-1 | 24 | 0-0 |
| Louisville | 0-0-0 | .000 | 1 | 0-1 | 9 | 0-0 |
| Cincinnati | 0-0-1 | .000 | 2 | 0-0 | 14 | 0-0 |
| at DePaul | | | | | | |
| at Notre Dame | | | | | | |
| at Villanova | | | | | | |
| at Seton Hall | | | | | | |
| West Virginia | | | | | | |
| Pittsburgh | | | | | | |

Career Highs

| | | |
|----------------|----|------------------------------|
| Kills | 1 | Houston (Aug. 29, 2008) |
| Attacks | 2 | twice |
| Assists | 5 | UW-Milwaukee (Oct. 20, 2008) |
| Digs | 26 | Green Bay (Sept. 13, 2008) |
| Aces | 4 | twice |
| Blocks | - | - |

2008 Marquette Volleyball Statistics

13 • Samantha Hertaus

| 2008 | K-E-TA | Pct. | A | SA-SE | DIG | BS-BA |
|----------------------|--------|------|--------------|-------|-----|-------|
| Houston | | | Did Not Play | | | |
| Chattanooga | | | Did Not Play | | | |
| Tennessee | | | Did Not Play | | | |
| vs Clemson | | | Did Not Play | | | |
| at Northern Iowa | | | Did Not Play | | | |
| vs Northern Illinois | | | Did Not Play | | | |
| Temple | | | Did Not Play | | | |
| Green Bay | | | Did Not Play | | | |
| Bowling Green | | | Did Not Play | | | |
| Oregon State | | | Did Not Play | | | |
| American | | | Did Not Play | | | |
| Wisconsin | | | Did Not Play | | | |
| at Rutgers | | | Did Not Play | | | |
| St. John's | | | Did Not Play | | | |
| Connecticut | | | Did Not Play | | | |
| at USF | | | Did Not Play | | | |
| at Georgetown | | | Did Not Play | | | |
| Syracuse | | | Did Not Play | | | |
| UW-Milwaukee | | | Did Not Play | | | |
| Louisville | | | Did Not Play | | | |
| Cincinnati | | | Did Not Play | | | |
| at DePaul | | | | | | |
| at Notre Dame | | | | | | |
| at Villanova | | | | | | |
| at Seton Hall | | | | | | |
| West Virginia | | | | | | |
| Pittsburgh | | | | | | |

Career Highs

| | | |
|----------------|---|---|
| Kills | - | - |
| Attacks | - | - |
| Assists | - | - |
| Digs | - | - |
| Aces | - | - |
| Blocks | - | - |

14 • Hailey Viola

| 2008 | K-E-TA | Pct. | A | SA-SE | DIG | BS-BA |
|----------------------|--------|--------|---|-------|-----|-------|
| Houston | 0-0-0 | .000 | 0 | 1-0 | 2 | 0-0 |
| Chattanooga | 0-0-0 | .000 | 3 | 0-0 | 1 | 0-0 |
| Tennessee | 0-0-1 | .000 | 2 | 1-0 | 7 | 0-0 |
| vs Clemson | 0-0-0 | .000 | 1 | 0-1 | 7 | 0-0 |
| at Northern Iowa | 0-0-3 | .000 | 1 | 0-0 | 9 | 0-0 |
| vs Northern Illinois | 3-1-4 | .500 | 2 | 1-0 | 11 | 0-0 |
| Temple | 0-0-3 | .000 | 1 | 0-2 | 6 | 0-0 |
| Green Bay | 0-0-1 | .000 | 3 | 0-0 | 20 | 0-0 |
| Bowling Green | 0-0-2 | .000 | 4 | 2-1 | 16 | 0-0 |
| Oregon State | 0-0-0 | .000 | 2 | 0-1 | 8 | 0-0 |
| American | 0-0-1 | .000 | 1 | 0-0 | 13 | 0-0 |
| Wisconsin | 0-0-0 | .000 | 0 | 0-0 | 3 | 0-0 |
| at Rutgers | 1-0-1 | 1.000 | 3 | 1-2 | 4 | 0-0 |
| St. John's | 0-0-1 | .000 | 5 | 0-0 | 9 | 0-0 |
| Connecticut | 0-0-0 | .000 | 2 | 1-0 | 7 | 0-0 |
| at USF | 0-0-0 | .000 | 0 | 1-0 | 3 | 0-0 |
| at Georgetown | 0-0-0 | .000 | 0 | 0-0 | 4 | 0-0 |
| Syracuse | 1-1-2 | .000 | 2 | 0-0 | 6 | 0-0 |
| UW-Milwaukee | 0-0-4 | .000 | 4 | 0-1 | 5 | 0-0 |
| Louisville | 0-0-2 | .000 | 2 | 0-0 | 5 | 0-0 |
| Cincinnati | 0-1-1 | -1.000 | 0 | 0-0 | 7 | 0-0 |
| at DePaul | | | | | | |
| at Notre Dame | | | | | | |
| at Villanova | | | | | | |
| at Seton Hall | | | | | | |
| West Virginia | | | | | | |
| Pittsburgh | | | | | | |

Career Highs

| | | |
|----------------|----|----------------------------------|
| Kills | 3 | twice |
| Attacks | 8 | Houston Baptist (Sept. 15, 2007) |
| Assists | 5 | Houston Baptist (Sept. 15, 2007) |
| Digs | 26 | South Dakota St. (Nov. 24, 2007) |
| Aces | 5 | at West Virginia (Oct. 28, 2007) |
| Blocks | - | - |

15 • Caryn Mastandrea

| 2008 | K-E-TA | Pct. | A | SA-SE | DIG | BS-BA |
|----------------------|--------|-------|----|-------|-----|-------|
| Houston | 0-1-6 | -.016 | 31 | 1-2 | 4 | 0-0 |
| Chattanooga | 6-0-8 | .750 | 14 | 2-1 | 9 | 0-0 |
| Tennessee | 3-0-4 | .750 | 17 | 0-1 | 5 | 0-0 |
| vs Clemson | 1-0-1 | 1.000 | 11 | 1-0 | 3 | 0-0 |
| at Northern Iowa | 2-0-8 | .250 | 25 | 0-1 | 5 | 0-0 |
| vs Northern Illinois | 6-1-11 | .455 | 39 | 0-0 | 5 | 0-0 |
| Temple | 5-1-8 | .500 | 50 | 2-0 | 16 | 0-2 |
| Green Bay | 2-4-15 | -.133 | 48 | 1-1 | 15 | 0-0 |
| Bowling Green | 7-0-18 | .389 | 46 | 2-3 | 11 | 0-0 |
| Oregon State | 5-1-11 | .364 | 38 | 0-3 | 5 | 0-2 |
| American | 6-1-16 | .312 | 52 | 1-1 | 15 | 0-2 |
| Wisconsin | 7-1-15 | .400 | 24 | 2-0 | 9 | 0-0 |
| at Rutgers | 5-0-10 | .500 | 35 | 0-0 | 6 | 0-2 |
| St. John's | 7-0-15 | .467 | 39 | 0-0 | 19 | 0-2 |
| Connecticut | 3-1-7 | .286 | 32 | 0-0 | 2 | 0-1 |
| at USF | 2-0-7 | .286 | 19 | 1-1 | 8 | 0-0 |
| at Georgetown | 2-0-8 | .250 | 28 | 0-0 | 1 | 1-2 |
| Syracuse | 5-3-17 | .118 | 50 | 0-0 | 7 | 0-1 |
| UW-Milwaukee | 5-3-18 | .111 | 47 | 2-0 | 20 | 0-3 |
| Louisville | 3-1-12 | .167 | 18 | 0-1 | 8 | 0-2 |
| Cincinnati | 2-0-9 | .222 | 27 | 0-0 | 11 | 0-0 |
| at DePaul | | | | | | |
| at Notre Dame | | | | | | |
| at Villanova | | | | | | |
| at Seton Hall | | | | | | |
| West Virginia | | | | | | |
| Pittsburgh | | | | | | |

Career Highs

| | | |
|----------------|----|----------------------------------|
| Kills | 9 | at West Virginia (Oct. 28, 2007) |
| Attacks | 24 | at West Virginia (Oct. 28, 2007) |
| Assists | 52 | American (Sept. 20, 2008) |
| Digs | 19 | St. John's (Oct. 3, 2008) |
| Aces | 3 | at West Virginia (Oct. 28, 2007) |
| Blocks | 2 | five times |

Marquette Volleyball Match-by-Match Starters

8/29 Houston:

Bielski, Fisher, Russell, Gonyo, Deelo and Mastandrea. Libero: Angst.

8/30 Chattanooga:

Akin, Bielski, Fisher, Russell, Vancura and Mastandrea. Libero: Deelo.

8/30 Tennessee:

Akin, Bielski, Fisher, Gonyo, Russell and Viola. Libero: Deelo.

9/5 Clemson:

Akin, Bielski, Fisher, Gonyo, Russell and Vancura. Libero: Deelo.

9/6 Northern Iowa:

Bielski, Fisher, Gonyo, Mastandrea, Russell and Vancura. Libero: Deelo.

9/7 Northern Illinois:

Bielski, Fisher, Gonyo, Mastandrea, Russell and Vancura. Libero: Deelo.

9/12 Temple:

Bielski, Fisher, Gonyo, Mastandrea, Russell and Vancura. Libero: Deelo.

9/13 Green Bay:

Bielski, Fisher, Gonyo, Mastandrea, Russell and Vancura. Libero: Deelo.

9/13 Bowling Green:

Bielski, Fisher, Gonyo, Mastandrea, Russell and Viola. Libero: Deelo.

9/20 Oregon State

Bielski, Fisher, Gonyo, Mastandrea, Russell and Vancura. Libero: Deelo.

9/20 American

Angst, Fisher, Gonyo, Mastandrea, Russell and Viola. Libero: Deelo.

9/21 Wisconsin

Angst, Fisher, Gonyo, Mastandrea, Russell and Viola. Libero: Deelo.

9/26 Rutgers

Bielski, Fisher, Gonyo, Mastandrea, Russell and Vancura. Libero: Deelo.

10/3 St. John's

Bielski, Fisher, Gonyo, Mastandrea, Russell and Vancura. Libero: Deelo.

10/5 Connecticut

Bielski, Fisher, Gonyo, Mastandrea, Russell and Vancura. Libero: Deelo.

10/10 USF

Bielski, Fisher, Gonyo, Mastandrea, Russell and Vancura. Libero: Deelo.

10/12 Georgetown

Bielski, Fisher, Gonyo, Jones, Mastandrea and Russell. Libero: Deelo.

10/18 Syracuse

Bielski, Fisher, Gonyo, Mastandrea, Russell and Vancura. Libero: Deelo.

10/20 UW-Milwaukee

Bielski, Fisher, Gonyo, Mastandrea, Russell and Vancura. Libero: Deelo.

10/24 Louisville

Bielski, Fisher, Gonyo, Mastandrea, Russell and Vancura. Libero: Deelo.

10/26 Cincinnati

Bielski, Fisher, Gonyo, Mastandrea, Russell and Vancura. Libero: Deelo.

Double-Doubles

Leslie Bielski

12 kills-15 digs Sept. 6 vs Northern Ill.

Ashlee Fisher

16 kills-10 digs Sept. 13 Green Bay

Caryn Mastandrea

50 assists-16 digs Sept. 12 Temple
 48 assists-15 digs Sept. 13 Green Bay
 46 assists-11 digs Sept. 13 Bowling Green
 52 assists-15 digs Sept. 20 American
 39 assists-19 digs Oct. 3 St. John's
 47 assists-20 digs Oct. 20 UW-Milwaukee
 27 assists-11 digs Oct. 26 Cincinnati

2008 Marquette Volleyball Photo Roster



1 • Ciara Jones



2 • Leslie Bielski



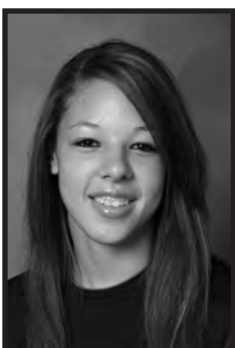
3 • Laira Akin



4 • Terri Angst



5 • Ashlee Fisher



6 • Tiara Russell



7 • Holly Mertens



8 • Jessica Kieser



9 • Alex Coello



10 • Katie Vancura



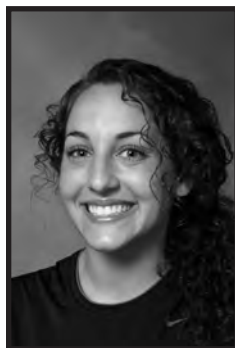
11 • Rabbecka Gonyo



12 • Amy Deelo



13 • Samantha Hertaus



14 • Hailey Viola



15 • Caryn Mastandrea



Marquette Overall/Conference Stats (as of Oct 27, 2008)
All matches

Overall record: 8-13 Conf: 2-6 Home: 6-9 Away: 1-3 Neutral: 1-1

| ## | Name | OVERALL | | | | | | | | CONFERENCE | | | | | | | |
|----|----------------------|------------------|-----|-------|-----|------|-------|---------|-------|------------------|-----|-------|-----|-----|-------|---------|-------|
| | | -----ATTACK----- | | | | | | --SET-- | | -----ATTACK----- | | | | | | --SET-- | |
| | | G | K | K/G | E | TA | Pct | A | A/G | G | K | K/G | E | TA | Pct | A | A/G |
| 5 | FISHER, Ashlee..... | 74 | 282 | 3.81 | 151 | 771 | .170 | 11 | 0.15 | 26 | 90 | 3.46 | 63 | 268 | .101 | 4 | 0.15 |
| 2 | BIELSKI, Leslie..... | 75 | 222 | 2.96 | 119 | 564 | .183 | 9 | 0.12 | 27 | 85 | 3.15 | 40 | 211 | .213 | 4 | 0.15 |
| 11 | GONYO, Rabbecka..... | 77 | 173 | 2.25 | 71 | 405 | .252 | 15 | 0.19 | 27 | 51 | 1.89 | 33 | 128 | .141 | 5 | 0.19 |
| 1 | JONES, Ciara..... | 14 | 26 | 1.86 | 13 | 57 | .228 | 1 | 0.07 | 9 | 15 | 1.67 | 8 | 34 | .206 | 0 | 0.00 |
| 10 | VANCURA, Katie..... | 73 | 106 | 1.45 | 61 | 325 | .138 | 5 | 0.07 | 25 | 32 | 1.28 | 21 | 98 | .112 | 3 | 0.12 |
| 15 | MASTANDREA, Caryn... | 79 | 84 | 1.06 | 18 | 224 | .295 | 690 | 8.73 | 27 | 29 | 1.07 | 5 | 85 | .282 | 248 | 9.19 |
| 6 | RUSSELL, Tiara..... | 79 | 72 | 0.91 | 45 | 200 | .135 | 17 | 0.22 | 27 | 22 | 0.81 | 19 | 64 | .047 | 6 | 0.22 |
| 3 | AKIN, Laura..... | 19 | 11 | 0.58 | 2 | 33 | .273 | 78 | 4.11 | 1 | 1 | 1.00 | 0 | 1 | 1.000 | 0 | 0.00 |
| 14 | VIOLA, Hailey..... | 78 | 5 | 0.06 | 3 | 26 | .077 | 38 | 0.49 | 27 | 2 | 0.07 | 2 | 7 | .000 | 14 | 0.52 |
| 12 | DEELO, Amy..... | 79 | 1 | 0.01 | 2 | 16 | -.062 | 37 | 0.47 | 27 | 0 | 0.00 | 1 | 5 | -.200 | 10 | 0.37 |
| 9 | COELLO, Alexandra... | 5 | 0 | 0.00 | 0 | 0 | .000 | 0 | 0.00 | 3 | 0 | 0.00 | 0 | 0 | .000 | 0 | 0.00 |
| 8 | KIESER, Jessica..... | 5 | 0 | 0.00 | 0 | 1 | .000 | 0 | 0.00 | - | | | | | | | |
| 4 | ANGST, Terri..... | 76 | 0 | 0.00 | 3 | 10 | -.300 | 16 | 0.21 | 24 | 0 | 0.00 | 2 | 6 | -.333 | 4 | 0.17 |
| | MARQUETTE..... | 79 | 996 | 12.61 | 496 | 2662 | .188 | 918 | 11.62 | 27 | 327 | 12.11 | 194 | 907 | .147 | 298 | 11.04 |
| | Opponents..... | 79 | 990 | 12.53 | 414 | 2611 | .221 | 899 | 11.38 | 27 | 345 | 12.78 | 138 | 877 | .236 | 319 | 11.81 |

| Name | ---SERVE--- | | | | | | | | | | ---DIG--- | | | | ----BLOCKING---- | | | | | |
|----------------------|-------------|-------|-----|-----|------|-------|----|-----|-------|--------|-----------|-------|----|----|------------------|-------|----|-----|-------|--------|
| | SA | SA/Gm | SE | RE | DIG | Dig/G | BS | BA | Total | B/Game | SA | SA/Gm | SE | RE | DIG | Dig/G | BS | BA | Total | B/Game |
| FISHER, Ashlee..... | 13 | 0.18 | 28 | 17 | 87 | 1.18 | 4 | 31 | 35 | 0.47 | 5 | 0.19 | 7 | 5 | 33 | 1.27 | 1 | 8 | 9 | 0.35 |
| BIELSKI, Leslie..... | 4 | 0.05 | 10 | 14 | 95 | 1.27 | 6 | 25 | 31 | 0.41 | 1 | 0.04 | 2 | 4 | 27 | 1.00 | 2 | 8 | 10 | 0.37 |
| GONYO, Rabbecka..... | 0 | 0.00 | 7 | 0 | 31 | 0.40 | 21 | 55 | 76 | 0.99 | 0 | 0.00 | 0 | 0 | 12 | 0.44 | 13 | 14 | 27 | 1.00 |
| JONES, Ciara..... | 0 | 0.00 | 0 | 0 | 9 | 0.64 | 1 | 3 | 4 | 0.29 | 0 | 0.00 | 0 | 0 | 7 | 0.78 | 0 | 1 | 1 | 0.11 |
| VANCURA, Katie..... | 0 | 0.00 | 2 | 1 | 16 | 0.22 | 5 | 55 | 60 | 0.82 | 0 | 0.00 | 0 | 1 | 5 | 0.20 | 5 | 16 | 21 | 0.84 |
| MASTANDREA, Caryn... | 15 | 0.19 | 15 | 0 | 184 | 2.33 | 1 | 19 | 20 | 0.25 | 1 | 0.04 | 2 | 0 | 62 | 2.30 | 1 | 10 | 11 | 0.41 |
| RUSSELL, Tiara..... | 8 | 0.10 | 28 | 1 | 27 | 0.34 | 13 | 75 | 88 | 1.11 | 4 | 0.15 | 12 | 0 | 6 | 0.22 | 3 | 26 | 29 | 1.07 |
| AKIN, Laura..... | 0 | 0.00 | 0 | 0 | 5 | 0.26 | 0 | 12 | 12 | 0.63 | 0 | 0.00 | 0 | 0 | 0 | 0.00 | 0 | 0 | 0 | 0.00 |
| VIOLA, Hailey..... | 8 | 0.10 | 8 | 9 | 153 | 1.96 | 0 | 0 | 0 | 0.00 | 3 | 0.11 | 2 | 4 | 45 | 1.67 | 0 | 0 | 0 | 0.00 |
| DEELO, Amy..... | 18 | 0.23 | 12 | 39 | 282 | 3.57 | 0 | 0 | 0 | 0.00 | 9 | 0.33 | 7 | 15 | 97 | 3.59 | 0 | 0 | 0 | 0.00 |
| COELLO, Alexandra... | 0 | 0.00 | 0 | 0 | 3 | 0.60 | 0 | 0 | 0 | 0.00 | 0 | 0.00 | 0 | 0 | 1 | 0.33 | 0 | 0 | 0 | 0.00 |
| KIESER, Jessica..... | 0 | 0.00 | 0 | 0 | 1 | 0.20 | 0 | 0 | 0 | 0.00 | - | | | | | | | | | |
| ANGST, Terri..... | 8 | 0.11 | 9 | 16 | 128 | 1.68 | 0 | 0 | 0 | 0.00 | 1 | 0.04 | 3 | 5 | 43 | 1.79 | 0 | 0 | 0 | 0.00 |
| Team..... | | | | 19 | | | | | | | | | | 7 | | | | | | |
| MARQUETTE..... | 74 | 0.94 | 119 | 117 | 1024 | 12.96 | 51 | 275 | 188.5 | 2.39 | 24 | 0.89 | 35 | 41 | 338 | 12.52 | 25 | 83 | 66.5 | 2.46 |
| Opponents..... | 117 | 1.48 | 143 | 74 | 964 | 12.20 | 46 | 290 | 191.0 | 2.42 | 41 | 1.52 | 44 | 24 | 329 | 12.19 | 20 | 102 | 71.0 | 2.63 |

Marquette Category Leaders (as of Oct 26, 2008)
All matches

| ## | ATTACK (by K) | G | K | K/Game | E | TA | Pct |
|----|-------------------|----|-----|--------|-----|------|-------|
| 5 | FISHER, Ashlee | 74 | 282 | 3.81 | 151 | 771 | .170 |
| 2 | BIELSKI, Leslie | 75 | 222 | 2.96 | 119 | 564 | .183 |
| 11 | GONYO, Rabbecka | 77 | 173 | 2.25 | 71 | 405 | .252 |
| 10 | VANCURA, Katie | 73 | 106 | 1.45 | 61 | 325 | .138 |
| 15 | MASTANDREA, Caryn | 79 | 84 | 1.06 | 18 | 224 | .295 |
| 6 | RUSSELL, Tiara | 79 | 72 | 0.91 | 45 | 200 | .135 |
| 1 | JONES, Ciara | 14 | 26 | 1.86 | 13 | 57 | .228 |
| 3 | AKIN, Laura | 19 | 11 | 0.58 | 2 | 33 | .273 |
| 14 | VIOLA, Hailey | 78 | 5 | 0.06 | 3 | 26 | .077 |
| 12 | DEELO, Amy | 79 | 1 | 0.01 | 2 | 16 | -.062 |
| 4 | ANGST, Terri | 76 | 0 | 0.00 | 3 | 10 | -.300 |
| 8 | KIESER, Jessica | 5 | 0 | 0.00 | 0 | 1 | .000 |
| | MARQUETTE..... | 79 | 996 | 12.61 | 496 | 2662 | .188 |
| | Opponents..... | 79 | 990 | 12.53 | 414 | 2611 | .221 |

| ## | KILL (by K) | G | K | K/Game |
|----|-------------------|----|-----|--------|
| 5 | FISHER, Ashlee | 74 | 282 | 3.81 |
| 2 | BIELSKI, Leslie | 75 | 222 | 2.96 |
| 11 | GONYO, Rabbecka | 77 | 173 | 2.25 |
| 10 | VANCURA, Katie | 73 | 106 | 1.45 |
| 15 | MASTANDREA, Caryn | 79 | 84 | 1.06 |
| 6 | RUSSELL, Tiara | 79 | 72 | 0.91 |
| 1 | JONES, Ciara | 14 | 26 | 1.86 |
| 3 | AKIN, Laura | 19 | 11 | 0.58 |
| 14 | VIOLA, Hailey | 78 | 5 | 0.06 |
| 12 | DEELO, Amy | 79 | 1 | 0.01 |
| 4 | ANGST, Terri | 76 | 0 | 0.00 |
| 8 | KIESER, Jessica | 5 | 0 | 0.00 |
| | MARQUETTE..... | 79 | 996 | 12.61 |
| | Opponents..... | 79 | 990 | 12.53 |

| ## | SET (by A) | G | A | A/Game |
|----|-------------------|----|-----|--------|
| 15 | MASTANDREA, Caryn | 79 | 690 | 8.73 |
| 3 | AKIN, Laura | 19 | 78 | 4.11 |
| 14 | VIOLA, Hailey | 78 | 38 | 0.49 |
| 12 | DEELO, Amy | 79 | 37 | 0.47 |
| 6 | RUSSELL, Tiara | 79 | 17 | 0.22 |
| 4 | ANGST, Terri | 76 | 16 | 0.21 |
| 11 | GONYO, Rabbecka | 77 | 15 | 0.19 |
| 5 | FISHER, Ashlee | 74 | 11 | 0.15 |
| 2 | BIELSKI, Leslie | 75 | 9 | 0.12 |
| 10 | VANCURA, Katie | 73 | 5 | 0.07 |
| 1 | JONES, Ciara | 14 | 1 | 0.07 |
| 8 | KIESER, Jessica | 5 | 0 | 0.00 |
| 9 | COELLO, Alexandra | 5 | 0 | 0.00 |
| | MARQUETTE..... | 79 | 918 | 11.62 |
| | Opponents..... | 79 | 899 | 11.38 |

| ## | SERVE (by SA) | G | SA | SE | SA/G |
|----|-------------------|----|-----|-----|------|
| 12 | DEELO, Amy | 79 | 18 | 12 | 0.23 |
| 15 | MASTANDREA, Caryn | 79 | 15 | 15 | 0.19 |
| 5 | FISHER, Ashlee | 74 | 13 | 28 | 0.18 |
| 4 | ANGST, Terri | 76 | 8 | 9 | 0.11 |
| 6 | RUSSELL, Tiara | 79 | 8 | 28 | 0.10 |
| 14 | VIOLA, Hailey | 78 | 8 | 8 | 0.10 |
| 2 | BIELSKI, Leslie | 75 | 4 | 10 | 0.05 |
| 8 | KIESER, Jessica | 5 | 0 | 0 | 0.00 |
| 9 | COELLO, Alexandra | 5 | 0 | 0 | 0.00 |
| 10 | VANCURA, Katie | 73 | 0 | 2 | 0.00 |
| 11 | GONYO, Rabbecka | 77 | 0 | 7 | 0.00 |
| 3 | AKIN, Laura | 19 | 0 | 0 | 0.00 |
| | MARQUETTE..... | 79 | 74 | 119 | 0.94 |
| | Opponents..... | 79 | 117 | 143 | 1.48 |

| ## | BLOCK (by Total) | G | BS | BA | Total | B/Game | BE |
|----|-------------------|----|----|-----|-------|--------|----|
| 6 | RUSSELL, Tiara | 79 | 13 | 75 | 88.0 | 1.11 | 6 |
| 11 | GONYO, Rabbecka | 77 | 21 | 55 | 76.0 | 0.99 | 9 |
| 10 | VANCURA, Katie | 73 | 5 | 55 | 60.0 | 0.82 | 3 |
| 5 | FISHER, Ashlee | 74 | 4 | 31 | 35.0 | 0.47 | 9 |
| 2 | BIELSKI, Leslie | 75 | 6 | 25 | 31.0 | 0.41 | 16 |
| 15 | MASTANDREA, Caryn | 79 | 1 | 19 | 20.0 | 0.25 | 11 |
| 3 | AKIN, Laura | 19 | 0 | 12 | 12.0 | 0.63 | 2 |
| 1 | JONES, Ciara | 14 | 1 | 3 | 4.0 | 0.29 | 1 |
| 14 | VIOLA, Hailey | 78 | 0 | 0 | 0.0 | 0.00 | 0 |
| 12 | DEELO, Amy | 79 | 0 | 0 | 0.0 | 0.00 | 0 |
| 4 | ANGST, Terri | 76 | 0 | 0 | 0.0 | 0.00 | 0 |
| | MARQUETTE..... | 79 | 51 | 275 | 188.5 | 2.39 | 60 |
| | Opponents..... | 79 | 46 | 290 | 191.0 | 2.42 | 45 |

| ## | DEFENSE (by Dig) | G | DIG | Dig/G | BHE |
|----|-------------------|----|------|-------|-----|
| 12 | DEELO, Amy | 79 | 282 | 3.57 | 2 |
| 15 | MASTANDREA, Caryn | 79 | 184 | 2.33 | 7 |
| 14 | VIOLA, Hailey | 78 | 153 | 1.96 | 3 |
| 4 | ANGST, Terri | 76 | 128 | 1.68 | 1 |
| 2 | BIELSKI, Leslie | 75 | 95 | 1.27 | 1 |
| 5 | FISHER, Ashlee | 74 | 87 | 1.18 | 0 |
| 11 | GONYO, Rabbecka | 77 | 31 | 0.40 | 2 |
| 6 | RUSSELL, Tiara | 79 | 27 | 0.34 | 3 |
| 10 | VANCURA, Katie | 73 | 16 | 0.22 | 0 |
| 1 | JONES, Ciara | 14 | 9 | 0.64 | 1 |
| 3 | AKIN, Laura | 19 | 5 | 0.26 | 1 |
| 9 | COELLO, Alexandra | 5 | 3 | 0.60 | 0 |
| 8 | KIESER, Jessica | 5 | 1 | 0.20 | 0 |
| | MARQUETTE..... | 79 | 1024 | 12.96 | 21 |
| | Opponents..... | 79 | 964 | 12.20 | 17 |

| ## | RECEIPT (by TA) | G | RE | RE/Gm |
|----|-------------------|----|-----|-------|
| TM | Team | 79 | 19 | 0.24 |
| 12 | DEELO, Amy | 79 | 39 | 0.49 |
| 2 | BIELSKI, Leslie | 75 | 14 | 0.19 |
| 14 | VIOLA, Hailey | 78 | 9 | 0.12 |
| 4 | ANGST, Terri | 76 | 16 | 0.21 |
| 5 | FISHER, Ashlee | 74 | 17 | 0.23 |
| 9 | COELLO, Alexandra | 5 | 0 | 0.00 |
| 10 | VANCURA, Katie | 73 | 1 | 0.01 |
| 15 | MASTANDREA, Caryn | 79 | 0 | 0.00 |
| 6 | RUSSELL, Tiara | 79 | 1 | 0.01 |
| 11 | GONYO, Rabbecka | 77 | 0 | 0.00 |
| 3 | AKIN, Laura | 19 | 0 | 0.00 |
| | MARQUETTE..... | 79 | 117 | 1.48 |
| | Opponents..... | 79 | 74 | 0.94 |