



MARQUETTE

(5-7)

VOLLEYBALL

This Week's Match

Sept. 26

at Rutgers
(1-8)



MU leads all-time series, 5-1

Last Meeting MU def. RU, 3-0
Sept. 23, 2007

Marquette Cheese Bowl All-Tournament Team

Caryn Mastandrea was named to an all-tournament for the third consecutive weekend when she was chosen as a member of the Marquette Cheese Bowl All-Tournament Team. The junior setter set a career high with 52 assists against American in Marquette's lone win of the weekend. Mastandrea also recorded 15 digs in the American match for her fourth double-double of the season.

Mastandrea Honored Once Again

In recognition of her outstanding play in the Marquette Challenge, setter **Caryn Mastandrea** was named to the BIG EAST Honor Roll for the week of Sept. 15. She is the first Golden Eagle to be named to the Honor Roll during the 2008 season. It is also the first such honor of her career.

Double(-Double) Your Pleasure

In the Marquette Challenge, two Golden Eagles recorded double-doubles. Senior **Ashlee Fisher** recorded 16 kills and had a career-high 10 digs in MU's win over Green Bay. Meanwhile, junior **Caryn Mastandrea** had a double-double in all three games over the weekend. Mastandrea tied a career high with 50 assists and 16 digs against Temple, 48 assists and 15 digs against Green Bay and narrowly missed a triple-double with seven kills, 46 assists and 11 digs against Bowling Green in the tournament finale.

Three Named to Marquette Challenge All-Tournament Team

Junior setter **Caryn Mastandrea** earned all-tournament recognition for the second consecutive weekend when she was named to the to the Marquette Challenge All-Tournament Team. Also joining Mastandrea on the team were senior outside hitter **Ashlee Fisher** and sophomore middle blocker **Rabbecka Gonyo**.

Time Warner Cable Sports, Channel 32

Over the course of the 2008 season, three Marquette volleyball matches will be televised locally by TWC Sports 32.

Sept. 13 vs Green Bay
Sept. 21 vs Wisconsin
Oct. 20 vs UW-Milwaukee

Times and dates that the Wisconsin-Marquette match will be aired:
Wednesday, Sept. 24: 7 p.m.
Thursday, Sept. 25: 12:30 p.m.
Saturday, Sept. 27: 7 p.m.

2008 SCHEDULE

Date Opponent Time/Result

AUGUST

Aug. 29 - Aug. 30 - Marquette Kick-Off Tournament

Fri. 29 **Houston** L, 3-1
Sat. 30 **Chattanooga** W, 3-0
Tennessee L, 3-1

SEPTEMBER

Sept. 5-6 - UNI Tournament

Fri. 5 vs Clemson L, 3-0
Sat. 6 at Northern Iowa L, 3-0
vs Northern Illinois W, 3-1

Sept. 12-13 - Marquette Challenge

Fri. 12 **Temple** W, 3-2
Sat. 13 **Green Bay** W, 3-1
Bowling Green L, 3-2

Sept. 20-21 - Marquette Cheese Bowl

Sat. 20 **Oregon State** L, 3-1
American W, 3-2
Sun. 21 **#13 Wisconsin** L, 3-0

Fri. 26 at Rutgers* 6 p.m.

OCTOBER

Fri. 3 **St. John's*** 7 p.m.
Sun. 5 **Connecticut*** 2 p.m.
Fri. 10 at USF* 6 p.m.
Sun. 12 at Georgetown* 1 p.m.
Sat. 18 **Syracuse*** 2 p.m.
Mon. 20 **UW-Milwaukee** 7 p.m.
Fri. 24 **Louisville*** 7 p.m.
Sun. 26 **Cincinnati*** 2 p.m.

NOVEMBER

Sat. 1 at DePaul* 2 p.m.
Sun. 2 at Notre Dame* 1 p.m.
Sat. 8 at Villanova* 1 p.m.
Sun. 9 at Seton Hall* 1 p.m.
Fri. 14 **West Virginia*** 7 p.m.
Sun. 16 **Pittsburgh*** 2 p.m.

Nov. 21-23 - BIG EAST Tournament; Pittsburgh, Pa.

Nov. 28-29 - Western Michigan Classic.

Fri./Sat. at Western Michigan TBA
Fri./Sat. vs Miami (Ohio) TBA

All times listed are Central and subject to change
Home matches are bolded and played at the Al McGuire Center

*Denotes BIG EAST match

MARQUETTE MEDIA RELATIONS

Volleyball Contact: Michael Wittliff
Office Phone: 414.288.7447
Fax: 414.288.6519
E-mail: michael.wittliff@marquette.edu
Website: www.GoMarquette.com



Overall Set-by-Set

| Match Wins By Set | 1 | 2 | 3 | 4 | 5 | Total |
|-------------------|-----|-----|-----|-----|----|-------|
| Marquette | 0 | 0 | 1 | 2 | 2 | 5 |
| Opponents | 0 | 0 | 3 | 3 | 1 | 7 |
| Set Wins By Match | 1 | 2 | 3 | 4 | 5 | Total |
| Marquette | 6 | 5 | 3 | 4 | 2 | 20 |
| Opponents | 6 | 7 | 8 | 4 | 1 | 26 |
| Points By Set | 1 | 2 | 3 | 4 | 5 | Total |
| Marquette | 272 | 257 | 252 | 205 | 44 | 1,030 |
| Opponents | 278 | 267 | 277 | 185 | 39 | 1,046 |

Marquette Volleyball Individual Awards

Ashlee Fisher

2008 Marquette Challenge All-Tournament

Rabbecka Gonyo

2008 Marquette Challenge All-Tournament

Caryn Mastandrea

2008 UNI Invitational All-Tournament
 2008 Marquette Challenge All-Tournament
 BIG EAST Honor Roll (Week of Sept. 15)
 2008 Marquette Cheese Bowl All-Tournament

The Last time a MU player...

Recorded a double-double

Caryn Mastandrea Sept. 20 American
 52 assists-15 digs

Recorded a triple-double

Sarah Vernon Oct. 30, '04 St. Louis
 12 kills, 70 assists, 16 digs

Recorded 20+ kills

Ashlee Fisher Sept. 6 vs Northern Ill.
 22 kills

Recorded 30+ kills

Kim Todd Nov. 14, '06 Louisville
 31 kills

Recorded 20+ digs

Amy Deelo Sept. 20 American
 20 digs

Recorded 30+ digs

Jamie Mueller Sept. 8, '06 Pacific
 41 digs

Recorded 50+ assists

Caryn Mastandrea Sept. 20 American
 52 assists

Recorded 60+ assists

Katie Weidner Nov. 24, '07 S. Dakota St.
 85 assists

Recorded 10+ blocks

Jenn Brown Sept. 14, '07 Belmont
 10 blocks

Recorded 15+ blocks

Jenn Brown Nov. 17, '06 Pittsburgh
 19 blocks

Marquette Volleyball Match Notes

Sept. 26, 2008

Mastandrea Honored

Junior setter **Caryn Mastandrea** was named to the UNI Invitational All-Tournament Team following her performance at the Invitational. Mastandrea averaged 25 assists per match over the three matches against Clemson, Northern Iowa and Northern Illinois. In the win against Northern Illinois she had 39 assists, six kills and five digs.

Golden Eagles Among BIG EAST Statistical Leaders

| | | | |
|-------|-----|------------------|------|
| K/Set | 2. | Ashlee Fisher | 4.12 |
| A/Set | 10. | Caryn Mastandrea | 8.43 |
| B/Set | 5. | Tiara Russell | 1.07 |
| D/Set | 10. | Amy Deelo | 3.48 |

Active BIG EAST Coaches Career Victories

| | | |
|----------------------|-----------|------------|
| Veronica Hammersmith | WVU | 561 |
| Debbie Brown | ND | 529 |
| Leonid Yelin | UL | 421 |
| Pati Rolf | MU | 407 |



Pronunciation

| | |
|------------------|----------------|
| Laira Akin | LAIR-uh A-kin |
| Alexandra Coello | co-EL-o |
| Amy Deelo | dee-low |
| Rabbecka Gonyo | gon-YO |
| Samantha Hertaus | HER-tau |
| Ciara Jones | SEE-AIR-uh |
| Jessica Keiser | KEY-zer |
| Caryn Mastandrea | MA-san-dree-uh |

2008 Marquette Roster

| No. | Name | Pos. | Class | Ht. | Hometown | High School/College |
|-----|------------------|------|-------|------|------------------------|---------------------|
| 1 | Ciara Jones | OH | Fr. | 5-10 | Orlando, Fla. | Edgewater |
| 2 | Leslie Bielski | OH | So. | 6-0 | Chanhassen, Minn. | Chaska |
| 3 | Laira Akin | S | Fr. | 6-0 | Blue Springs, Mo. | Oakwood Academy |
| 4 | Terri Angst | DS/L | Sr. | 5-7 | New Berlin, Wis. | Catholic Memorial |
| 5 | Ashlee Fisher | OH | Sr. | 5-11 | West Bend, Wis. | West/Kentucky |
| 6 | Tia Russell | MB | Fr. | 5-10 | Brooklyn Park, Minn. | Osseo Senior |
| 7 | Holly Mertens | MB | Fr. | 6-0 | Stanley, Wis. | Stanley-Boyd |
| 8 | Jessica Kieser | DS | Sr. | 5-4 | Verona, Wis. | Verona |
| 9 | Alex Coello | DS | Fr. | 5-2 | South Elgin, Ill. | St. Charles East |
| 10 | Katie Vancura | RS | So. | 6-1 | Waukesha, Wis. | Mukwonago |
| 11 | Rabbecka Gonyo | MB | So. | 6-4 | Ingleside, Ill. | Grant Community |
| 12 | Amy Deelo | DS/L | Fr. | 5-8 | St. Louis, Mo. | Cor Jesu Academy |
| 13 | Sammie Hertaus | DS | Fr. | 5-7 | New Prague, Minn. | New Prague |
| 14 | Hailey Viola | DS | Jr. | 5-7 | Pleasant Prairie, Wis. | St. Joseph |
| 15 | Caryn Mastandrea | S | Jr. | 5-8 | Downers Grove, Ill. | Downers Grove South |

Head Coach: Pati Rolf, seventh season (North Dakota State, 1992)
 Assistant Coaches: Erica Heisser, fourth season (Marquette, 2005)
 Raftyn Rignell, second season (Connecticut, 2004)

2008 Marquette Volleyball Results

| Date | Opponent | W | L | Set Scores | | | | Kills | Digs | Blocks |
|--|----------------------|---|---|------------|-------|-------|-------|------------|------------------|---------------------------------|
| Aug. 29-30 — Marquette Kick-Off Tournament; Al McGuire Center | | | | | | | | | | |
| Aug. 29 | Houston | | L | 23-25 | 25-22 | 22-25 | 22-25 | Fisher 13 | Angst 11 | Gonyo 6 |
| Aug. 30 | Chattanooga | W | | 25-11 | 25-12 | 25-17 | | Fisher 18 | Deelo 13 | Vancura 5 |
| | Tennessee | | L | 14-25 | 25-22 | 22-25 | 21-25 | Fisher 13 | Deelo 10 | Russell 6 |
| Sept. 5-6 — UNI Invitational; Cedar Falls, Iowa | | | | | | | | | | |
| Sept. 5 | vs Clemson | | L | 10-25 | 23-25 | 17-25 | | Bielski 13 | Deelo 9 | Gonyo 5 |
| Sept. 6 | at Northern Iowa | | L | 20-25 | 23-25 | 20-25 | | Bielski 12 | Bielski, Viola 9 | Bielski 4 |
| | vs Northern Illinois | W | | 30-28 | 25-21 | 22-25 | 25-23 | Fisher 22 | Deelo 21 | Akin, Gonyo, Russell 3 |
| Sept. 12-13 — Marquette Challenge; Al McGuire Center | | | | | | | | | | |
| Sept. 12 | Temple | W | | 25-14 | 18-25 | 21-25 | 27-25 | 15-10 | Fisher 19 | Mastandrea 16 Russell 8 |
| Sept. 13 | Green Bay | W | | 27-29 | 25-16 | 25-12 | 25-19 | | Gonyo 18 | Deelo 26 Fisher, Gonyo 4 |
| | Bowling Green | | L | 25-21 | 25-21 | 16-25 | 16-25 | 13-15 | Bielski 14 | Viola 16 Gonyo 5 |
| Sept. 20-21 — Marquette Cheese Bowl; Al McGuire Center | | | | | | | | | | |
| Sept. 20 | Oregon State | | L | 19-25 | 10-25 | 25-23 | 19-25 | | Bielski 14 | Deelo 13 Russell 7 |
| | American | W | | 29-27 | 16-25 | 22-25 | 25-18 | 16-14 | Fisher 17 | Deelo 20 Russell, Gonyo 7 |
| Sept. 21 | Wisconsin | | L | 23-25 | 23-25 | 15-25 | | | Fisher 11 | Mastandrea 9 Russell, Vancura 5 |
| Sept. 26 | at Rutgers* | | | | | | | | | |
| Oct. 3 | St. John's* | | | | | | | | | |
| Oct. 5 | Connecticut* | | | | | | | | | |
| Oct. 10 | at USF* | | | | | | | | | |
| Oct. 12 | at Georgetown* | | | | | | | | | |
| Oct. 18 | Syracuse* | | | | | | | | | |
| Oct. 20 | Wis.-Milwaukee | | | | | | | | | |
| Oct. 24 | Louisville* | | | | | | | | | |
| Oct. 26 | Cincinnati* | | | | | | | | | |
| Nov. 1 | at DePaul* | | | | | | | | | |
| Nov. 2 | at Notre Dame* | | | | | | | | | |
| Nov. 8 | at Villanova* | | | | | | | | | |
| Nov. 9 | at Seton Hall* | | | | | | | | | |
| Nov. 14 | West Virginia* | | | | | | | | | |
| Nov. 16 | Pittsburgh* | | | | | | | | | |
| Nov. 28-29 — Western Michigan Classic | | | | | | | | | | |
| Nov. 28/29 | Western Michigan | | | | | | | | | |
| Nov. 28/29 | Miami (Ohio) | | | | | | | | | |

Record Breakdown

| | | | |
|----------------|-----|----------------------|-----|
| Overall Record | 5-7 | BIG EAST Record | 0-0 |
| Home | 4-5 | BIG EAST at Home | 0-0 |
| Road | 0-1 | BIG EAST on the Road | 0-0 |
| Neutral | 1-1 | | |

* denotes BIG EAST Contest

Attendance

| Site | Total | MP | Avg. | High |
|---------|-------|----|-------|----------------------------|
| Home | 3,920 | 9 | 436 | 831 (Aug. 29 vs Wisconsin) |
| Away | 1,053 | 1 | 1,053 | 1,053 (Sept. 7 at UNI) |
| Neutral | 297 | 2 | 148 | - |
| Season | 5,270 | 12 | 439 | 1,053 (Sept. 7 at UNI) |

2008 Match Superlatives

| Statistic | Player | Opponent |
|-------------------|------------------------------|------------------|
| K | 22 Ashlee Fisher | vs Northern Ill. |
| TA | 53 Ashlee Fisher | vs Northern Ill. |
| Pct. (min. 10 TA) | .643 (18-0-28) Ashlee Fisher | Chattanooga |
| Ast | 52 Caryn Mastandrea | American |
| SA | 4 Amy Deelo | Bowling Green |
| Digs | 26 Amy Deelo | Green Bay |
| BS | 3 Tia Russell | Twice |
| BA | 6 Two Players | |
| Pts | 23.5 Ashlee Fisher | vs Northern Ill. |

2008 MU Team Superlatives

| | | | | | |
|------|----------------|------------------|------|------|------------------|
| K | 71 | vs Northern Ill. | Digs | 89 | Green Bay |
| TA | 165 | Bowling Green | BS | 5 | Temple |
| Pct. | .389 (42-7-90) | Chattanooga | BA | 20 | Twice |
| Ast | 65 | vs Northern Ill. | Pts | 81.0 | vs Northern Ill. |
| SA | 10 | Bowling Green | | | |

2008 Match-by-Match Results



| | | | | |
|-------------------------------------|----|----|----|----|
| Houston (3) | 23 | 25 | 25 | 25 |
| Marquette (1) | 25 | 22 | 22 | 22 |
| Aug. 29 • Al McGuire Center • (0-1) | | | | |

MILWAUKEE--The Marquette women's volleyball team lost a hard fought match Friday night, falling to the University of Houston in four sets, 3-1 (25-23, 22-25, 22-25, 22-25).

"I was really excited with how we started the match," said Marquette head volleyball coach Pati Rolf. "Our freshmen really showed the potential that this team possesses. Laura [Akin] is coming back from a knee injury and Ciara [Jones] really showed how powerful she could be once we started getting her the balls she needed. Amy Deelo really played some serious defense as well."

On the night both teams struggled with consistency as Houston had 16 service errors to Marquette's 13, four of which came in the pivotal fourth set. At the net, the Golden Eagles also had eight blocking errors.

"It was an error-driven game," said Rolf. "If you eliminate errors you will win games. We had too many errors and that put us in a bad position."

Marquette came out firing on all cylinders in the opening set, getting off to a 8-3 lead following a kill by sophomore Rabbecca Gonyo and an attack error by Houston's Kelsey King. The Cougars continued to fight back, eventually tying the set at 15-15 on a kill by Nataliya Panova and took their first lead of the night at 16-15. The back-and-forth battle continued in the first set as Marquette regained the lead after another kill by Gonyo on an assist from junior Caryn Mastandrea. Following Gonyo's fourth kill, Houston called their second timeout but failed to catch the Golden Eagles as Marquette captured the first set, 25-23 on a ferocious volley by freshman Ciara Jones.

Gonyo, Jones and Ashlee Fisher each had four kills in the first set while Mastandrea lead both squads with 13 assists.

The Golden Eagles got off to a slow start in the second set but never trailed by more than four points. After falling behind 7-3, Marquette fired back on a kill by Gonyo and a service ace by Hailey Viola to bring the score to 7-5. After continuing to cut into the Cougars' lead after falling behind by four, the Golden Eagles brought their deficit to 21-19 on an ace by Fisher forcing Houston to call a timeout. Out of the timeout, Leslie Bielski and Jones responded with kills to pull Marquette within one at 23-22 before they ultimately lost the match, 25-22.

A kill by freshman Tiara Russell and an ace from Mastandrea let Marquette take the early advantage in the third set, 3-2. The Cougars came back roaring, forcing Marquette to take a timeout after falling behind 10-4. Following the timeout, Jones and Gonyo responded with kills bring the score to 11-6. Freshman defensive specialist Deelo got into the action with an acrobatic play, as she dove out of bounds to save a ball and struck it back over the net with one hand for a kill. The Golden Eagles used their last timeout of the set upon seeing their deficit grow to eight at 20-12. Following Rolf's use of her final timeout, the Golden Eagles responded with kills from Fisher and Jones, along with four attack errors by the Cougars. Out of a Houston timeout, the Cougars built a lead of five at 24-19. The Golden Eagles would not let Houston close out the set as they played for the set-point. Two kills from Ashlee Fisher on assists from freshman Laura Akin brought Marquette to within two at 24-22 before the Cougars ended the set on a kill from Justine Farmer.

The fourth set mirrored the third as the Golden Eagles struggled to keep pace with the Cougars early on, leading to a Marquette timeout with the score 14-9. Houston took their first set timeout after an attack error by Kinsey Cave and an ace by Terri Angst put the game at 22-16. Coming out of the timeout, Houston responded with an ace and a kill and awaited match-point at 24-16. Just as the Golden Eagles had in the first set, they stormed back and brought the set within two at 24-22 following two powerful kills from Jones. Houston eventually ended the match on the next play with a kill from Farmer, who ended the match with a match-high 22 kills.

On the night, Fisher led Marquette with 13 kills, while Jones added 11 and Mastandrea led the squad with 31 assists.

| Houston | SP | K-E-TA | PCT | A | SA-SE | RE | DIG | BS | BA | BH | E | PTS |
|-------------------|----|-----------|-------|----|-------|----|-----|------|----|----|---|------|
| CAVE, Kinsey | 4 | 5-15 | .000 | 2 | 0-2 | 0 | 4 | 0-2 | 0 | 0 | 0 | 6.0 |
| PANOVA, Nataliya | 4 | 11-23 | .391 | 0 | 1-3 | 1 | 6 | 0-1 | 0 | 0 | 0 | 12.5 |
| KING, Kelsey | 4 | 1-2-4 | -.250 | 35 | 1-2 | 1 | 4 | 0-3 | 1 | 0 | 0 | 3.5 |
| FARMER, Justine | 4 | 22-40 | .400 | 0 | 1-2 | 2 | 8 | 1-1 | 0 | 0 | 0 | 24.5 |
| FREITAS, Barbara | 4 | 2-3-9 | -.111 | 1 | 1-4 | 0 | 2 | 0-4 | 0 | 0 | 0 | 5.0 |
| ZHARUK, Lucy | 4 | 6-2-18 | .222 | 0 | 0-0 | 1 | 0 | 2-4 | 0 | 0 | 0 | 10.0 |
| ZAJUREK, Ingrida | 2 | 1-0-3 | .333 | 0 | 0-0 | 0 | 0 | 0-1 | 0 | 0 | 0 | 1.5 |
| CARSON, Amanda | 4 | 1-0-1 | 1.000 | 0 | 2-3 | 0 | 12 | 0-0 | 0 | 0 | 0 | 3.0 |
| CARDOSO DESA, Aik | 2 | 0-0-0 | .000 | 3 | 1-0 | 0 | 1 | 0-0 | 0 | 0 | 0 | 1.0 |
| BAKER, Samantha | 2 | 0-0-0 | .000 | 1 | 0-0 | 0 | 1 | 0-0 | 1 | 0 | 0 | 0.0 |
| Totals | 4 | 49-20-113 | .257 | 42 | 7-16 | 5 | 38 | 3-16 | 2 | 0 | 0 | 67.0 |

| Marquette | S-P | K-E-TA | PCT | A | SA-SE | RE | DIG | BS | BA | BH | E | PTS |
|------------|-----|-----------|------|----|-------|----|-----|------|----|----|---|------|
| BIELSKI | 4 | 9-6-22 | .136 | 1 | 1-0 | 1 | 3 | 0-3 | 1 | 0 | 0 | 11.5 |
| FISHER | 4 | 13-10-35 | .086 | 1 | 1-3 | 2 | 7 | 0-2 | 1 | 0 | 0 | 15.0 |
| RUSSELL | 4 | 4-3-12 | .083 | 0 | 0-0 | 0 | 0 | 0-2 | 2 | 0 | 0 | 5.0 |
| GONYO | 4 | 9-4-20 | .250 | 0 | 0-5 | 0 | 3 | 0-6 | 2 | 0 | 0 | 12.0 |
| DEELO | 4 | 1-0-2 | .500 | 0 | 0-1 | 0 | 6 | 0-0 | 0 | 0 | 0 | 1.0 |
| MASTANDREA | 4 | 0-1-6 | .167 | 31 | 1-2 | 0 | 4 | 0-0 | 2 | 0 | 0 | 1.0 |
| JONES | 4 | 11-5-23 | .251 | 1 | 0-0 | 0 | 2 | 1-2 | 0 | 0 | 0 | 13.0 |
| AKIN | 2 | 2-0-1 | .667 | 8 | 0-0 | 0 | 2 | 0-1 | 0 | 0 | 0 | 2.5 |
| ANGST | 4 | 0-0-0 | .000 | 0 | 1-2 | 2 | 11 | 0-0 | 0 | 0 | 0 | 1.0 |
| KIESER | 1 | 0-0-1 | .000 | 0 | 0-0 | 0 | 0 | 0-0 | 0 | 0 | 0 | 0.0 |
| VIOLA | 3 | 0-0-0 | .000 | 0 | 1-0 | 0 | 2 | 0-0 | 0 | 0 | 0 | 1.0 |
| Team | | | | | | | | | | | | 2 |
| Totals | 4 | 49-29-124 | .161 | 43 | 5-13 | 7 | 40 | 1-16 | 8 | 0 | 0 | 63.0 |

| | | | |
|-------------------------------------|----|----|----|
| Chattanooga (0) | 11 | 12 | 17 |
| Marquette (3) | 25 | 25 | 25 |
| Aug. 30 • Al McGuire Center • (1-1) | | | |

MILWAUKEE--The Marquette women's volleyball team easily dispatched the Chattanooga Lady Mocs Saturday afternoon in their second match of the season, 3-0 (25-11, 25-12, 25-17). Leading the way for the Golden Eagles was senior Ashlee Fisher with 18 kills while setters Laura Akin and Caryn Mastandrea contributed 12 and 14 assists, respectively. Fisher's zero errors in the match helped her post a 64.3 attack percentage, while Akin and Mastandrea spent time on the floor together as Rabbecca Gonyo was held out of action for the first two sets.

"The upperclassmen really held it together this afternoon," said head volleyball coach Pati Rolf.

In the first set, with the score at 9-7 in Marquette's favor, ten straight points by the Golden Eagles effectively put the set and eventually the match out of reach. Starting the rally with a kill was Caryn Mastandrea who also pitched in two service aces and two assists during the run. Mastandrea closed out the scoring in the first set with a kill as well.

"Caryn really had a great game and moved the ball around well," said Rolf.

Continuing her solid play in the second set was freshman Amy Deelo, who recorded 13 kills and four assists as the libero. Deelo helped the Golden Eagles out to a 7-2 lead in the second set and Marquette never looked back, only allowing the Lady Mocs to score one more point than they did in the first frame.

With the Golden Eagles up two sets to none, Gonyo returned to the floor in the third and hammered home three kills on four attacks while Fisher's six attacks netted seven kills. Akin added nine assists in the frame.



Senior outside hitter Ashlee Fisher

| Chattanooga | SP | K-E-TA | PCT | A | SA-SE | RE | DIG | BS | BA | BH | E | PTS |
|---------------------|----|----------|-------|----|-------|----|-----|-----|----|----|---|------|
| NETHERY, Laura | 3 | 5-4-12 | .083 | 1 | 0-0 | 0 | 0 | 0-1 | 0 | 0 | 0 | 5.5 |
| KUHN, Ellie | 3 | 3-1-8 | .250 | 0 | 2-0 | 0 | 1 | 0-1 | 1 | 0 | 0 | 5.5 |
| CONNOR, Cassie | 3 | 1-2-8 | -.125 | 13 | 0-3 | 0 | 1 | 0-0 | 0 | 0 | 0 | 1.0 |
| KULLAK, Aurore | 3 | 1-4-12 | -.250 | 0 | 1-0 | 0 | 4 | 0-0 | 0 | 0 | 0 | 2.0 |
| SCOTT, Jessica | 3 | 7-2-14 | .357 | 0 | 0-1 | 0 | 4 | 0-2 | 0 | 0 | 0 | 8.0 |
| YEAGER, Ashley | 3 | 5-2-20 | .150 | 1 | 0-0 | 3 | 11 | 0-0 | 0 | 0 | 0 | 5.0 |
| BARNES, Courtney | 1 | 0-0-3 | .000 | 0 | 0-0 | 0 | 0 | 0-0 | 0 | 0 | 0 | 0.0 |
| HARVILLE, Stephanie | 2 | 0-2-5 | -.400 | 0 | 0-0 | 2 | 0 | 0-0 | 0 | 0 | 0 | 0.0 |
| HUFF, Michaela | 1 | 0-0-0 | .000 | 2 | 0-0 | 0 | 0 | 0-0 | 0 | 0 | 0 | 0.0 |
| NEWBERRY, Lara | 3 | 0-0-1 | .000 | 1 | 0-1 | 1 | 11 | 0-0 | 0 | 0 | 0 | 0.0 |
| CHASTAIN, Bailee | 2 | 0-0-2 | .000 | 1 | 0-1 | 0 | 0 | 0-0 | 1 | 0 | 0 | 0.0 |
| Team | | | | | | | | | | | | 1 |
| Totals | 3 | 22-17-85 | .059 | 19 | 3-6 | 7 | 32 | 0-4 | 2 | 0 | 0 | 27.0 |

| Marquette | GP | K-E-TA | PCT | A | SA-SE | RE | DIG | BS | BA | BH | E | PTS |
|------------|----|---------|-------|----|-------|-----|-----|-----|----|----|---|------|
| BIELSKI | 3 | 7-3-16 | .250 | 0 | 0-0 | 0 | 4 | 0-1 | 2 | 0 | 0 | 7.5 |
| AKIN | 3 | 4-1-11 | .273 | 12 | 0-0 | 0 | 0 | 0-4 | 0 | 0 | 0 | 6.0 |
| FISHER | 3 | 18-0-28 | .643 | 0 | 1-3 | 0 | 5 | 0-2 | 1 | 0 | 0 | 20.0 |
| RUSSELL | 3 | 4-1-13 | .231 | 1 | 0-0 | 0 | 0 | 0-4 | 0 | 0 | 0 | 6.0 |
| VANCURA | 3 | 0-2-8 | -.250 | 0 | 0-0 | 2 | 0 | 0-0 | 0 | 0 | 0 | 2.5 |
| MASTANDREA | 3 | 6-0-8 | .750 | 14 | 2-1 | 0 | 9 | 0-0 | 1 | 0 | 0 | 8.0 |
| ANGST | 3 | 0-0-0 | .000 | 2 | 2-1 | 0 | 5 | 0-0 | 0 | 0 | 0 | 2.0 |
| KIESER | 2 | 0-0-0 | .000 | 0 | 0-0 | 0 | 0 | 0-0 | 0 | 0 | 0 | 0.0 |
| GONYO | 1 | 3-0-4 | .750 | 0 | 0-0 | 0 | 0 | 0-2 | 0 | 0 | 0 | 4.0 |
| DEELO | 3 | 0-0-2 | .000 | 4 | 2 | 0-1 | 13 | 0-0 | 0 | 0 | 0 | 2.0 |
| VIOLA | 3 | 0-0-0 | .000 | 3 | 0 | 0-0 | 1 | 0-0 | 1 | 0 | 0 | 1.0 |
| Team | | | | | | | | | | | | 2 |
| Totals | 3 | 42-7-90 | .389 | 36 | 7 | 7-3 | 40 | 0-8 | 4 | 1 | 0 | 58.0 |

| | | | | |
|-------------------------------------|----|----|----|----|
| Tennessee (3) | 25 | 22 | 25 | 25 |
| Marquette (1) | 14 | 25 | 22 | 21 |
| Aug. 30 • Al McGuire Center • (1-2) | | | | |

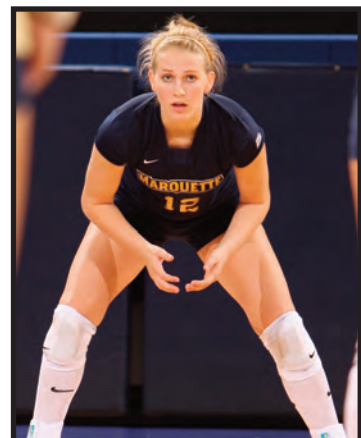
MILWAUKEE --The Marquette women's volleyball team dropped a tough match to the Tennessee Lady Vols in the final game of the Marquette Kick-off Tournament, 3-1 (25-14, 22-25, 25-22, 25-21).

"The upperclassmen really held it together this afternoon and we had two solid games," said head volleyball coach Pati Rolf. Marquette got off to a fast start in the first set against the Vols, taking a 4-1 lead on a kill by senior Ashlee Fisher. After dominating the Mocs this afternoon, the Golden Eagles struggled to continue that momentum and consistency in the first frame against Tennessee. With the score at 9-8 in Tennessee's favor, the Vols went on a 16-6 run to close out the first set.

In the second set the Marquette squad the crowd had seen in the earlier match returned to take the set by the score of 25-22. Fisher accounted for four kills in the stanza while freshman Laura Akin had 6 assists for the Golden Eagles.

Marquette got off to a sluggish start after the break, falling behind the Lady Vols, 7-3 on an attack error by Fisher. After fighting back to cut the deficit to one at 11-10, the Golden Eagles could never get any closer in the third frame, dropping it 25-22.

The fourth and final set saw Marquette get off to a better start as the lead went back-and-forth throughout the stanza. After Marquette pulled within two on a kill by Fisher at 22-20, the Lady Vols pulled away and took the final points of the match, winning the set, 25-21.



Freshman libero Amy Deelo

| Tennessee | GP | K-E-TA | PCT | A | SA-SE | RE | DIG | BS | BA | BH | E | PTS |
|--------------------|----|-----------|-------|----|-------|----|-----|------|----|----|---|------|
| HANAKOVA, Michaela | 4 | 0-0-0 | .000 | 25 | 0-0 | 0 | 4 | 0-0 | 0 | 1 | 0 | 0.0 |
| HINKEY, Leah | 4 | 5-3-13 | .154 | 0 | 2-2 | 0 | 2 | 0-5 | 0 | 0 | 0 | 9.5 |
| CLARKE, Milan | 4 | 13-9-33 | .121 | 0 | 0-0 | 0 | 1 | 0-1 | 0 | 0 | 0 | 13.5 |
| MARSHALL, Kylie | 4 | 13-2-27 | .407 | 1 | 2-0 | 1 | 10 | 0-0 | 0 | 0 | 0 | 15.0 |
| POWE, Farren | 4 | 3-3-9 | .000 | 0 | 0-0 | 0 | 0 | 0-1 | 0 | 0 | 0 | 3.5 |
| FOWLER, Nikki | 4 | 15-7-34 | .235 | 0 | 1-0 | 0 | 8 | 0-3 | 0 | 0 | 0 | 17.5 |
| FLYNN, Mimiely | 4 | 9-3-20 | .300 | 1 | 0-0 | 0 | 1 | 0-2 | 2 | 0 | 0 | 10.0 |
| CHEADE, Carol | 1 | 0-0-0 | .000 | 0 | 0-0 | 0 | 0 | 0-0 | 0 | 0 | 0 | 0.0 |
| GOODMAN, Chloe | 4 | 0-0-1 | .000 | 1 | 0-2 | 0 | 12 | 0-0 | 0 | 0 | 0 | 0.0 |
| MAHONEY, Kelsey | 4 | 1-0-1 | 1.000 | 25 | 2-2 | 0 | 6 | 0-0 | 0 | 0 | 0 | 3.0 |
| LAFLAMME, Lauren | 1 | 0-0-0 | .000 | 0 | 0-0 | 0 | 1 | 0-0 | 0 | 0 | 0 | 0.0 |
| LOYD, Jave | 1 | 0-0-0 | .000 | 0 | 0-0 | 0 | 0 | 0-0 | 0 | 0 | 0 | 0.0 |
| Totals | 4 | 59-27-138 | .232 | 53 | 7-6 | 1 | 45 | 0-12 | 2 | 1 | 0 | 72.0 |

| Marquette | GP | K-E-TA | PCT | A | SA-SE | RE | DIG | BS | BA | BH | E | PTS |
|------------|----|----------|-------|----|-------|----|-----|-----|----|----|---|------|
| BIELSKI | 4 | 10-5-23 | .217 | 2 | 0-0 | 0 | 4 | 1-2 | 3 | 0 | 0 | 12.0 |
| AKIN | 4 | 1-1-5 | .000 | 21 | 0-0 | 0 | 2 | 0-3 | 1 | 0 | 0 | 2.5 |
| FISHER | 4 | 13-11-49 | .041 | 0 | 0-2 | 2 | 4 | 0-4 | 0 | 0 | 0 | 15.0 |
| RUSSELL | 4 | 3-4-12 | -.083 | 1 | 0-1 | 0 | 2 | 1-5 | 0 | 0 | 0 | 6.5 |
| GONYO | 4 | 11-2-21 | .493 | 2 | 0-0 | 0 | 3 | 1-4 | 0 | 0 | 0 | 14.0 |
| VIOLA | 4 | 0-0-1 | .000 | 2 | 1-0 | 1 | 7 | 0-0 | 0 | 0 | 0 | 1.0 |
| ANGST | 4 | 0-0-0 | .000 | 0 | 0-1 | 2 | 7 | 0-0 | 0 | 0 | 0 | 0.0 |
| VANCURA | 4 | 6-1-17 | .294 | 0 | 0-0 | 0 | 0 | 0-2 | 0 | 0 | 0 | 7.0 |
| DEELO | 4 | 0-1-1 | 1.000 | 1 | 0-0 | 1 | 10 | 0-0 | 0 | 0 | 0 | 0.0 |
| MASTANDREA | 4 | 3-0-4 | .750 | 17 | 0-1 | 0 | 5 | 0-0 | 0 | 0 | 0 | 3.0 |
| Team | | | | | | | | | | | | |

2008 Match-by-Match Results



| | | | |
|-------------------------------------|----|----|----|
| Clemson (3) | 25 | 25 | 25 |
| Marquette (0) | 10 | 23 | 17 |
| Sept. 5 • Cedar Falls, Iowa • (1-3) | | | |

MILWAUKEE-- The Marquette women's volleyball team dropped a match to the Clemson Tigers Friday afternoon in the first day of competition at the UNI Invitational, 3-0 (25-10, 25-23, 25-17). Leading the way for the Golden Eagles were sophomores Leslie Bielski with 13 kills and Rabbecca Gonyo with five blocks and freshman Amy Deelo with nine digs and Laura Akin with 15 assists.

The team showed a lot of energy and a lot of effort tonight," said head coach Pati Rolf. "Clemson had a really mature team with a lot of experience. We are a young squad and we just have to keep playing."

Clemson came out strong in the first set as they rushed out to a 6-1 lead. Marquette failed to recover in the first set from the slow start, dropping the set, 25-10.

The match's second set saw Marquette match Clemson's early intensity as they stretched the Tigers to the brink. The Clemson lead fluctuated early in the set as Marquette tied it up at five a piece following a kill by Bielski. With the score notted at 15-5, Clemson mounted a rally to put them on top at 12-5 before the Golden Eagles staged a furious comeback.

Marquette then received three-straight kills from Caryn Mastandrea, Ashlee Fisher and Katie Vancura, putting the score at 12-8. With the score at 19-14, Marquette reeled off six of the next seven points to tie the score at 20 on two kills and a service ace by Bielski. Clemson went on to score the set's next four points, leaving them at set point. The Golden Eagles showed that they still had something left in the tank as Fisher hammered home two kills and Rabbecca Gonyo and Vancura assisted on a block to cut Clemson's lead to one at 24-23. Unfortunately for Marquette, Clemson's Danielle Hepburn's kill ended the set at 25-23.

The third set started a lot like the second as the two squads fought for the set's early lead. MU took its first lead of the match at 3-2 on a kill by Fisher just before the Tigers scored seven straight points to put the set at 9-3. A Golden Eagles comeback put the set at 12-11 on another block by Gonyo and Vancura before the Tigers pulled away to score 13 of the match's final 19 points.

| | | | |
|-------------------------------------|----|----|----|
| Marquette (0) | 20 | 23 | 20 |
| Northern Iowa (3) | 25 | 25 | 25 |
| Sept. 6 • Cedar Falls, Iowa • (1-4) | | | |

MILWAUKEE--The Marquette women's volleyball team dropped a match Saturday afternoon to Northern Iowa, 3-0 (25-20, 25-23, 25-20).

Earlier in the day, in the first set of the match against Northern Iowa, Marquette got off to a rough start, falling behind the Panthers 13-7 before mounting a comeback to knot the score at 14-14. After a UNI timeout, the Panthers took back the lead before MU responded with a kill by Vancura and Fisher added another to tie the set at 16-16. UNI built a three point lead at 20-17 before MU rallied to cut their deficit to one at 21-20. The Panthers then reeled off four straight points to take the set 25-20. Bielski led the Golden Eagles in the set with four kills.

The Panthers came out firing in the second set, building their lead quickly to nine at 20-11 before Marquette answered with a run of their own to cut the Panther lead to one at 23-22 on a kill by Bielski. During that run, Fisher accounted for three kills while Bielski added four and a block. UNI proceeded to close out the set, 25-23, even after Bielski added another kill for the Golden Eagles. In the frame, Mastandrea had 10 assists.

The match's last set saw MU and UNI fight for the early lead as a kill by Fisher tied the set at 10-10. UNI then rattled off seven straight points to build a seven point lead at 17-10. After a kill by Mastandrea, the Panthers scored five more points to build the Golden Eagles' deficit to 11 at 22-11. With UNI sitting at match point, MU scored six straight points on a pair of kills from Vancura and Fisher before UNI closed out the set and the match 25-20.

Bielski led the Golden Eagles against UNI with 12 kills, while Fisher added 10. Mastandrea assisted on 25 kills while Bielski led the squad with nine digs and four blocks.



Junior setter Caryn Mastandrea

| | | | | |
|-------------------------------------|----|----|----|----|
| Marquette (3) | 30 | 25 | 22 | 25 |
| Northern Illinois (1) | 28 | 21 | 25 | 23 |
| Sept. 6 • Cedar Falls, Iowa • (2-4) | | | | |

MILWAUKEE-- The Marquette women's volleyball team defeated Northern Illinois, 3-1 (30-28, 25-21, 22-25, 25-23) after being swept Saturday afternoon by UNI Invitational host Northern Iowa.

After failing to win a set in the first two matches of the UNI Invitational, the Golden Eagles headed into their match Saturday night against Northern Illinois looking for some early success. Marquette took an early lead at 1-0 on a kill by senior Ashlee Fisher before the Huskies reeled off five points to take a 5-1 lead. After tying the set at 6-6 and 7-7, Marquette regained the lead at 8-7 on another kill from Fisher. From there, MU continued to lead until an ace from NIU's Jody Hardwick tied the score at 21-21. After trading the lead back and forth, a block by sophomore Rabbecca Gonyo put Marquette at set point with the score 24-23.

A subsequent service error by junior Katie Vancura tied the score at 24-24 and a kill by the Huskies' Meagan Schoenrock helped Northern Illinois reach 25 points first. Sophomore Leslie Bielski responded with a kill to tie the set at 25-25. The lead exchanged as both squads attempted to take a two point advantage until junior Caryn Mastandrea's kill ended the set at 30-28. In the first set Fisher led Marquette with seven kills while Mastandrea added two kills and 11 assists.

Northern Illinois scored first in the second set but the Golden Eagles responded with five straight points to take a early 5-1 lead. Marquette's lead remained slim until the Huskies took a 13-12 lead on a service ace from Maria Benitez. A kill from Gonyo knotted the score at 14-14 and a block by Gonyo and freshman Laura Akin put MU on top 15-14. Marquette took the set 25-21 as Gonyo closed out the scoring with yet another kill. In the second set, Gonyo led the Golden Eagles with five kills and two blocks.

Following the break, the Huskies came out determined to not allow MU to close out the match in the third set. Much like the second, the third saw NIU get out to a 1-0 lead before Marquette answered with kills from Fisher and Tiara Russell. The Golden Eagles built a two point lead at 12-10 on a kill from Vancura before the Huskies pulled away to take the set 25-22.

Not wanting to leave Cedar Falls without a win, Marquette made sure to not let the match go to a fifth frame by closing out the Huskies in the fourth set. After NIU shot out to a 4-0 lead, the Golden Eagles chased down them the entire game, eventually catching up to them at 21-21 on a kill from Russell. After a point scored by NIU, Fisher hammered a kill to tie the score again at 22-22. From that point, two more kills from Fisher and an attack error by NIU's Katie Walsh ended the match at 25-23.

"It was one of the most exciting matches I have been involved with in the last year and a half," added Rolf. "This young team really dug in and played hard."

Against Northern Illinois, Fisher led MU with 21 kills while Gonyo added 14 and Bielski pitched in 12. Bielski's 12 kills along with her 15 digs allowed her to notch Marquette's first double-double of the season and libero Amy Deelo led MU with 21 digs while Mastandrea had 39 assists.

For her efforts during the two-day event, Mastandrea was the lone Golden Eagle named to the UNI Invitational All-Tournament Team.

| Clemson | GP | K-E-TA | PCT | A | SA-SE | RE | DIG | BS-BABE | BHE | PTS |
|-------------------|----|----------|--------|----|-------|----|-----|---------|-----|------|
| Fennell, Brittany | 3 | 3-1-9 | .222 | 0 | 0-0 | 0 | 0 | 0-3 | 0 | 4.5 |
| Abbott, Jeannette | 3 | 10-2-19 | .421 | 0 | 1-0 | 1 | 2 | 0-2 | 0 | 12.0 |
| Hepburn, Danielle | 3 | 9-3-15 | .400 | 0 | 0-0 | 0 | 4 | 1-6 | 0 | 13.0 |
| Hayes, Lacy | 3 | 0-0-4 | .000 | 1 | 0-0 | 0 | 1 | 1-0 | 1 | 1.0 |
| Proctor, Lia | 3 | 13-4-29 | .310 | 1 | 2-1 | 0 | 3 | 0-3 | 0 | 16.5 |
| Murphy, Kelsey | 3 | 1-3 | .000 | 30 | 0-0 | 0 | 6 | 1-4 | 1 | 4.0 |
| Hinemeyer, Meghan | 3 | 0-1-1 | -1.000 | 0 | 2-0 | 1 | 7 | 0-0 | 0 | 2.0 |
| Ege, Didem | 3 | 0-0-0 | .000 | 1 | 1-0 | 0 | 9 | 0-0 | 0 | 1.0 |
| Totals | 3 | 36-12-80 | .300 | 33 | 6-1 | 2 | 32 | 3-18 | 2 | 54.0 |

| Marquette | GP | K-E-TA | PCT | A | SA-SE | RE | DIG | BS-BABE | BHE | PTS |
|------------|----|-----------|-------|----|-------|----|-----|---------|-----|------|
| BIELSKI | 3 | 13-11-38 | .053 | 1 | 1-2 | 1 | 6 | 0-0 | 1 | 14.0 |
| AKIN | 3 | 1-0-3 | .333 | 15 | 0-0 | 0 | 0 | 0-0 | 1 | 1.0 |
| FISHER | 3 | 12-5-26 | .269 | 0 | 0-0 | 0 | 1 | 0-0 | 0 | 12.0 |
| RUSSELL | 3 | 0-0-1 | .000 | 1 | 0-1 | 0 | 0 | 0-1 | 0 | 1.5 |
| VANCURA | 3 | 1-4-14 | .214 | 0 | 0-0 | 0 | 1 | 0-4 | 0 | 3.0 |
| GONYO | 3 | 6-5-18 | .056 | 1 | 0-0 | 0 | 1 | 2-3 | 0 | 9.5 |
| ANGST | 3 | 0-0-1 | .000 | 1 | 0-0 | 1 | 1 | 0-0 | 0 | 0.0 |
| DEELO | 3 | 0-0-0 | .000 | 1 | 0-0 | 2 | 9 | 0-0 | 0 | 0.0 |
| VIOLA | 3 | 0-0-0 | .000 | 1 | 0-1 | 1 | 7 | 0-0 | 0 | 0.0 |
| MASTANDREA | 3 | 1-0-1 | 1.000 | 11 | 1-0 | 0 | 3 | 0-0 | 1 | 2.0 |
| Team | | | | | | | | | | 1 |
| Totals | 3 | 34-25-102 | .088 | 32 | 2-4 | 6 | 29 | 2-8 | 2 | 42.0 |

| Marquette | GP | K-E-TA | PCT | A | SA-SE | RE | DIG | BS-BABE | BHE | PTS |
|------------|----|-----------|-------|----|-------|----|-----|---------|-----|------|
| BIELSKI | 3 | 12-8-29 | .138 | 0 | 0-0 | 2 | 9 | 2-2 | 1 | 15.0 |
| FISHER | 3 | 10-1-22 | .409 | 0 | 0-0 | 0 | 4 | 0-0 | 0 | 10.0 |
| RUSSELL | 3 | 2-3-7 | -.143 | 0 | 0-1 | 0 | 1 | 0-3 | 0 | 3.5 |
| VANCURA | 3 | 6-2-17 | .235 | 0 | 0-0 | 0 | 0 | 0-1 | 0 | 6.5 |
| GONYO | 3 | 3-3-15 | .000 | 0 | 0-0 | 0 | 2 | 0-1 | 1 | 3.5 |
| MASTANDREA | 3 | 2-0-8 | .250 | 25 | 0-4 | 0 | 5 | 0-0 | 1 | 2.0 |
| AKIN | 2 | 1-0-5 | .200 | 5 | 0-0 | 0 | 1 | 0-1 | 0 | 1.5 |
| ANGST | 3 | 0-0-0 | .000 | 1 | 1-0 | 0 | 3 | 0-0 | 1 | 1.0 |
| DEELO | 3 | 0-0-0 | .000 | 0 | 0-1 | 4 | 7 | 0-0 | 0 | 0.0 |
| VIOLA | 3 | 0-0-3 | .000 | 1 | 0-0 | 0 | 9 | 0-0 | 0 | 0.0 |
| Totals | 3 | 36-17-106 | .179 | 32 | 1-3 | 6 | 41 | 2-8 | 3 | 43.0 |

| Northern Iowa | GP | K-E-TA | PCT | A | SA-SE | RE | DIG | BS-BABE | BHE | PTS |
|--------------------|----|-----------|--------|----|-------|----|-----|---------|-----|------|
| Payton, Bre | 3 | 4-2-8 | .250 | 32 | 0-4 | 0 | 5 | 0-4 | 1 | 6.0 |
| Stelken, Ashton | 3 | 12-2-17 | .588 | 0 | 1-0 | 0 | 2 | 1-2 | 0 | 15.0 |
| Sampson, Amy | 3 | 8-5-27 | .111 | 0 | 0-0 | 0 | 2 | 0-1 | 0 | 8.5 |
| Aschoff, Shannon | 3 | 9-4-28 | .179 | 5 | 2-0 | 0 | 6 | 1-3 | 0 | 13.5 |
| Buraw, Michelle | 3 | 9-2-16 | .438 | 0 | 0-0 | 0 | 0 | 0-4 | 0 | 11.0 |
| Discher, Beth | 3 | 4-0-12 | .333 | 0 | 0-0 | 0 | 1 | 0-0 | 0 | 4.0 |
| Blankenship, Ellie | 3 | 0-0-0 | .000 | 3 | 0-0 | 1 | 22 | 0-0 | 0 | 0.0 |
| Grunder, Kayla | 3 | 0-0-0 | .000 | 0 | 1-0 | 0 | 4 | 0-0 | 0 | 1.0 |
| Oexmann, Sarah | 1 | 0-1-1 | -1.000 | 0 | 0-0 | 0 | 0 | 0-0 | 0 | 0.0 |
| Saunders, Chelsea | 3 | 0-1-1 | -1.000 | 1 | 2-1 | 0 | 5 | 0-0 | 0 | 2.0 |
| Totals | 3 | 46-17-110 | .264 | 41 | 6-5 | 1 | 47 | 2-14 | 1 | 61.0 |

| Marquette | GP | K-E-TA | PCT | A | SA-SE | RE | DIG | BS-BABE | BHE | PTS |
|------------|----|-----------|------|----|-------|----|-----|---------|-----|------|
| BIELSKI | 4 | 12-5-28 | .250 | 1 | 0-1 | 1 | 15 | 1-0 | 1 | 13.0 |
| FISHER | 4 | 22-5-53 | .321 | 1 | 0-0 | 3 | 3 | 1-1 | 0 | 23.5 |
| RUSSELL | 4 | 5-1-13 | .308 | 0 | 0-3 | 0 | 1 | 0-3 | 1 | 6.5 |
| VANCURA | 4 | 8-7-23 | .343 | 0 | 0-2 | 0 | 1 | 0-1 | 0 | 8.5 |
| GONYO | 4 | 14-1-21 | .619 | 0 | 0-0 | 0 | 0 | 1-2 | 0 | 16.0 |
| MASTANDREA | 4 | 6-1-11 | .455 | 39 | 0-1 | 0 | 5 | 0-0 | 0 | 6.0 |
| AKIN | 4 | 1-0-5 | .200 | 17 | 0-0 | 0 | 0 | 0-3 | 1 | 2.5 |
| ANGST | 4 | 0-0-0 | .000 | 1 | 1-0 | 0 | 6 | 0-0 | 0 | 1.0 |
| DEELO | 4 | 0-0-2 | .000 | 4 | 0-0 | 6 | 21 | 0-0 | 0 | 0.0 |
| VIOLA | 4 | 3-1-4 | .500 | 2 | 1-0 | 0 | 11 | 0-0 | 0 | 4.0 |
| Totals | 4 | 71-21-160 | .312 | 65 | 2-6 | 10 | 63 | 3-10 | 3 | 81.0 |

| Northern Illinois | GP | K-E-TA | PCT | A | SA-SE | RE | DIG | BS-BABE | BHE | PTS |
|---------------------|----|-----------|-------|----|-------|----|-----|---------|-----|------|
| WALSH, Katie | 4 | 1-3-14 | -.143 | 1 | 0-0 | 0 | 1 | 0-1 | 0 | 1.5 |
| JOHNSON, Irene | 4 | 10-3-23 | .304 | 0 | 0-0 | 1 | 1 | 1-1 | 1 | 11.5 |
| TADLA, Amanda | 4 | 2-0-5 | .400 | 46 | 2-1 | 0 | 11 | 0-0 | 0 | 4.0 |
| YATES, Cassie | 4 | 7-3-18 | .222 | 2 | 0-0 | 0 | 2 | 0-2 | 0 | 8.0 |
| SCHOENROCK, Meagan | 4 | 23-8-63 | .238 | 0 | 0-0 | 0 | 6 | 0-1 | 1 | 23.5 |
| MCLAUGHLIN, Allison | 4 | 12-5-31 | .226 | 2 | 2-2 | 0 | 6 | 0-1 | 0 | 14.5 |
| LANG, Monica | 3 | 0-0-0 | .000 | 0 | 1-0 | 0 | 0 | 0-0 | 0 | 1.0 |
| BENTEZ, Maria | 4 | 0-0-0 | .000 | 0 | 2-0 | 0 | 11 | 0-0 | 0 | 2.0 |
| HUGHES, Maddie | 4 | 0-0-1 | .000 | 0 | 2-1 | 1 | 19 | 0-0 | 0 | 2.0 |
| HARDWICK, Jody | 4 | 0-0-0 | .000 | 1 | 1-1 | 0 | 4 | 0-0 | 0 | 1.0 |
| Totals | 4 | 55-22-155 | .213 | 52 | 10-5 | 2 | 61 | 1-6 | 2 | 69.0 |

2008 Match-by-Match Results



| | | | | | |
|---------------|----|----|----|----|----|
| Temple (2) | 14 | 25 | 25 | 25 | 10 |
| Marquette (3) | 25 | 18 | 21 | 27 | 15 |

Sept. 12 • Al McGuire Center • (3-4)

MILWAUKEE--The Marquette women's volleyball team edged Temple in five sets on Friday night in opening round action of the Marquette Challenge, 3-2 (25-14, 18-25, 21-25, 27-25, 15-10). Down two games-to-one, and 7-0 in the fourth set, Marquette staged a dramatic rally to force a fifth game.

Senior Ashlee Fisher paced the Golden Eagles with 19 kills, while Rabbecca Gonyo, Leslie Bielski, and Katie Vancura each recorded double-digit kills. Gonyo's 14 kills came on 24 attacks with only two errors, allowing her to lead the way for Marquette with a .500 attack percentage. Junior Caryn Mastandrea tied a career-high with 50 assists, while also notching 16 digs for the MU defense.

"We were up and down in today's match," said head coach Pati Rolf. "What this match came down to was discipline and consistency, which comes with maturity. Our kids really showed that this evening."

Marquette jumped to an early 7-4 lead in the first set and would never trail the rest of the way. After Temple tied the set at 8-8, the Golden Eagles used an 11-3 run and extended their lead to eight at 19-11. After MU lengthened their lead to ten at 24-14, Vancura sealed the 25-14 win for Marquette by hammering home her fourth kill of the set. Mastandrea chipped in 10 assists for the Golden Eagles in the first set, while Gonyo was a perfect 5-for-5 on her attacks.

"Becka opened up the middle for us, which allowed the other hitters a lot of other opportunities," said Rolf.

Sets two and three went to the Owls, 25-18 and 25-21. Temple was led by Yun Yi Zhang who posted a match-high 23 kills for Temple, while Ashley Carr also chipped in 15 kills on a .483 hitting percentage. In game two, Marquette was led by Bielski, Fisher, and Gonyo with three kills apiece while Fisher paced the Golden Eagles in the third set with 5 kills. Mastandrea posted 12 assists in each set defeat.

Marquette appeared to be heading for the loss column when Temple jumped out to an early 7-0 lead in set four. However, a service error on the Owls put Marquette on the board and sparked a 13-6 run that tied the set at 13. Both teams traded points until Temple took a 23-21 advantage. From there, it was Fisher's show as the senior recorded four straight kills to even the game at 25-25. A block by freshman Tiarra Russell put the Golden Eagles ahead 26-25 and an attack error by Temple proved to be the game winner for Marquette.

"We were in trouble in the fourth set but we got some big points when we needed them," said Rolf. "The team showed a lot of courage late in the match."

Feeding off the momentum of the fourth set, Marquette led the entire way in set five and posted a 15-10 victory to win the match. Fisher and Vancura each notched three kills and were aided by Mastandrea's 10 assists.

| Temple | GP | K-E-TA | PCT | A | SA-SE | RE | DIG | BS-BABE | BHE | PTS |
|--------------------|----|-----------|------|----|-------|----|-----|---------|-----|------|
| COWDEN, Jacqueline | 5 | 5-4-24 | .042 | 1 | 0-0 | 0 | 1 | 0-3 | 0 | 6.5 |
| ASHMAN, Cayleigh | 5 | 4-3-17 | .059 | 3 | 3-4 | 0 | 0 | 3-5 | 0 | 12.5 |
| LOUDON, Caitlin | 5 | 4-2-16 | .125 | 8 | 0-0 | 3 | 10 | 0-2 | 0 | 5.0 |
| CARR, Ashley | 5 | 15-1-29 | .483 | 0 | 2-2 | 1 | 7 | 0-1 | 0 | 17.5 |
| ZHANG, Yun Yi | 5 | 23-8-47 | .319 | 0 | 1-1 | 0 | 4 | 1-2 | 0 | 26.0 |
| MORRISON, Jackie | 5 | 2-1-5 | .200 | 30 | 1-1 | 0 | 7 | 0-3 | 0 | 4.5 |
| PIERRE, Ariel | 5 | 1-0-3 | .333 | 2 | 1-4 | 2 | 12 | 0-0 | 0 | 2.0 |
| FRANK, Elizabeth | 1 | 0-0-0 | .000 | 0 | 0-0 | 0 | 0 | 0-0 | 0 | 0.0 |
| WHITNEY, Amisa | 2 | 0-1-2 | .500 | 0 | 0-0 | 0 | 0 | 0-0 | 0 | 0.0 |
| Totals | 5 | 54-20-143 | .238 | 44 | 8-12 | 6 | 41 | 4-16 | 0 | 74.0 |

| Marquette | GP | K-E-TA | PCT | A | SA-SE | RE | DIG | BS-BABE | BHE | PTS |
|------------|----|-----------|-------|----|-------|----|-----|---------|-----|------|
| BIELSKI | 5 | 13-7-31 | .194 | 0 | 0-1 | 2 | 5 | 0-1 | 0 | 13.5 |
| FISHER | 5 | 19-6-41 | .317 | 0 | 2-4 | 2 | 2 | 1-1 | 1 | 22.5 |
| RUSSELL | 5 | 4-2-10 | .200 | 3 | 1-2 | 0 | 4 | 3-5 | 0 | 10.5 |
| VANCURA | 5 | 12-5-26 | .269 | 0 | 0-0 | 0 | 0 | 0-2 | 1 | 13.0 |
| GONYO | 5 | 14-2-24 | .500 | 4 | 0-0 | 0 | 3 | 1-0 | 0 | 15.0 |
| MASTANDREA | 5 | 5-1-8 | .500 | 50 | 2-0 | 0 | 16 | 0-2 | 0 | 1.0 |
| ANGST | 5 | 0-1-1 | 1.000 | 0 | 1-0 | 1 | 7 | 0-0 | 0 | 1.0 |
| KIESEB | 2 | 0-0-0 | .000 | 0 | 0-0 | 0 | 1 | 0-0 | 0 | 0.0 |
| DEELO | 5 | 0-0-1 | .000 | 2 | 0-1 | 3 | 14 | 0-0 | 0 | 0.0 |
| VIOLA | 5 | 0-0-3 | .000 | 1 | 0-2 | 0 | 6 | 0-0 | 0 | 0.0 |
| Totals | 5 | 67-24-145 | .297 | 60 | 6-10 | 8 | 58 | 5-11 | 2 | 83.5 |

| | | | | |
|---------------|----|----|----|----|
| Green Bay (1) | 29 | 16 | 12 | 19 |
| Marquette (3) | 27 | 25 | 25 | 25 |

Sept. 13 • Al McGuire Center • (4-4)

MILWAUKEE--The Marquette volleyball team (4-4) defeated the Green Bay Phoenix (3-6) in their first game of the day Saturday in the Marquette Challenge, 3-1 (27-29, 25-16, 25-12, 25-19).

"I thought the team really played well this afternoon," said head coach Pati Rolf. "[Ashlee] Fisher had another great game, as did Caryn [Mastandrea]."

Leading the way for the Golden Eagles once again were senior outside hitter Ashlee Fisher, junior setter Caryn Mastandrea and sophomore middle blocker Rabbecca Gonyo. Fisher had a double-double with 16 kills and 10 digs while Gonyo led MU with 18 kills and four blocks. Freshman libero Amy Deelo led the Golden Eagles with 26 digs and Mastandrea continued her string of solid games with 48 assists and 15 digs.

A kill by sophomore Leslie Bielski started the scoring in the first set as MU took the 1-0 lead. In a set that saw six lead changes and 12 ties, neither team gained much of an advantage. Down 7-8, Katie Vancura slammed home a kill on a set from Mastandrea to tie the game at 8-8. From that point, Marquette took the lead on a service ace from freshman Tiarra Russell and would lead until a kill by Green Bay's Liesl Tesch tied the game at 15-15. After the Phoenix took the lead, MU stayed right with them, eventually tying the game at 23-23, 24-24, 25-25 and 26-26 before taking a 27-26 lead on a kill by Bielski. Green Bay then grabbed three straight points to take the set 29-27. In the first frame, Mastandrea had a set-high 16 assists while Fisher contributed six kills.

The Golden Eagles got off to a slow start in the second set as the Phoenix scored the first three points to take a 3-0 lead before MU responded to tie the game at 3-3 with the help of kills from Mastandrea and Fisher. After the Phoenix took back the lead, MU reclaimed it on a kill from Russell to put the Golden Eagles up 8-7. With the set sitting at 11-11, MU went on a 8-1 run and effectively put the set out of reach, winning it 25-16. Fisher led the way for Marquette in the second stanza with four kills and no errors.

In the third set, the Golden Eagles fell behind once again, trailing Green Bay 4-1. From that point, MU rallied to tie the set at 6-6 before taking the lead on a kill from Katie Vancura at 7-6. Up 15-9, the Golden Eagles scored eight straight points with three kills from Fisher and two from Gonyo to take their largest lead at 23-9. Another kill from Gonyo and an error by Green Bay's Abby Bergsma ended the set at 25-12. In the third set the Phoenix recorded a six attack errors to five kills, leading to a negative attack percentage.

Marquette started off strong in the fourth set as they built a 3-1 advantage after a service ace by Deelo. Green Bay battled back to tie the set at 6-6 before the Golden Eagles took a lead at 7-6 that they would never relinquish, winning the set 25-19 and taking the match.

| Green Bay | GP | K-E-TA | PCT | A | SA-SE | RE | DIG | BS-BABE | BHE | PTS |
|---------------------|----|-----------|------|----|-------|----|-----|---------|-----|------|
| JOYCE, Melissa | 4 | 4-4-14 | .000 | 34 | 0-1 | 0 | 11 | 0-2 | 0 | 5.0 |
| BERGSM, Abby | 4 | 6-3-13 | .231 | 0 | 0-1 | 0 | 0 | 1-2 | 0 | 8.0 |
| HINTZE, Nikki | 4 | 16-4-37 | .255 | 2 | 0-1 | 3 | 9 | 0-2 | 0 | 17.0 |
| LYGA, Chelsea | 4 | 0-0-0 | .000 | 0 | 0-0 | 0 | 7 | 0-0 | 0 | 0.0 |
| MISCHLER, Kelly | 4 | 2-2-13 | .000 | 1 | 0-0 | 0 | 2 | 0-1 | 2 | 2.5 |
| VISSER, Holly | 4 | 9-7-39 | .051 | 0 | 1-2 | 0 | 10 | 0-0 | 0 | 10.0 |
| MEULEMANS, Rochelle | 0 | 0-0-0 | .000 | 2 | 0-1 | 0 | 4 | 0-0 | 0 | 0.0 |
| BOHNER, Alison | 1 | 0-0-0 | .000 | 0 | 0-0 | 0 | 0 | 0-2 | 0 | 0.0 |
| TESCH, Liesl | 4 | 9-7-44 | .045 | 0 | 0-0 | 0 | 3 | 1-0 | 0 | 10.0 |
| ELFERING, Megan | 4 | 0-0-0 | .000 | 1 | 0-0 | 2 | 25 | 0-0 | 0 | 0.0 |
| GARROW, Laura | 1 | 0-0-0 | .000 | 0 | 0-1 | 0 | 0 | 0-0 | 0 | 0.0 |
| GITTER, Abby | 1 | 0-1-3 | .333 | 0 | 0-0 | 0 | 0 | 0-1 | 0 | 0.5 |
| TEAM | | | | | | | 2 | | | |
| Totals | 4 | 46-28-173 | .104 | 40 | 1-7 | 7 | 71 | 2-10 | 2 | 54.0 |

| Marquette | GP | K-E-TA | PCT | A | SA-SE | RE | DIG | BS-BABE | BHE | PTS |
|------------|----|-----------|------|----|-------|----|-----|---------|-----|------|
| BIELSKI | 4 | 8-4-31 | .129 | 0 | 0-0 | 0 | 2 | 0-2 | 0 | 9.0 |
| FISHER | 4 | 16-7-45 | .200 | 0 | 2-2 | 0 | 10 | 1-3 | 2 | 20.5 |
| RUSSELL | 4 | 7-2-16 | .312 | 1 | 2-2 | 0 | 3 | 0-3 | 1 | 10.5 |
| GONYO | 4 | 18-4-42 | .333 | 0 | 0-0 | 0 | 1 | 1-3 | 1 | 20.5 |
| VIOLA | 4 | 0-0-1 | .000 | 3 | 0-0 | 0 | 20 | 0-0 | 0 | 0.0 |
| MASTANDREA | 4 | 2-4-15 | .133 | 48 | 1-0 | 1 | 15 | 0-0 | 1 | 3.0 |
| ANGST | 4 | 0-0-0 | .000 | 0 | 0-1 | 1 | 12 | 0-0 | 0 | 0.0 |
| VANCURA | 4 | 6-0-14 | .429 | 0 | 0-0 | 0 | 0 | 0-3 | 1 | 7.5 |
| DEELO | 4 | 0-0-0 | .000 | 0 | 2-0 | 0 | 26 | 0-0 | 0 | 2.0 |
| Totals | 4 | 57-21-164 | .220 | 53 | 7-6 | 1 | 89 | 2-14 | 7 | 73.0 |

| | | | | | |
|-------------------|----|----|----|----|----|
| Bowling Green (3) | 21 | 21 | 25 | 25 | 15 |
| Marquette (2) | 25 | 25 | 16 | 16 | 13 |

Sept. 13 • Al McGuire Center • (4-5)

MILWAUKEE--The Marquette volleyball team fell to the Bowling Green Falcons after taking the first two sets of Saturday night's match, 3-2 (21-25, 21-25, 25-16, 25-16, 15-13). Pacing the Golden Eagles were sophomore Leslie Bielski with 14 kills, junior Caryn Mastandrea with 46 assists and junior Hailey Viola with 16 digs.

"We had some of the best two games to start but struggled later in the match," said head coach Pati Rolf. "We played very well early on but our consistency and youth caught up with us."

In the first set the Golden Eagles got off to a fast start, taking a 6-1 lead on a kill by senior Ashlee Fisher before three straight service aces by freshman libero Amy Deelo extended the MU lead to 10-2. Coming out of a Bowling Green timeout, the Golden Eagles got kills from junior Katie Vancura and freshman Tiara Russell before Bowling Green went on a run to cut the MU lead to two at 21-19. Following another Bowling Green timeout, Russell recorded her first collegiate service ace to put Marquette up 22-19 and help MU take the first set, 25-21.

The second set started off completely opposite as the first but ended in the same 25-21 victory for the Golden Eagles. MU opened scoring with a service ace by Mastandrea before two kills from Bielski put Marquette on top 6-5. Coming out of a Bowling Green timeout, with the score 10-6, Corey Domek added two kills for the Falcons to cut the lead to 11-8 before the Golden Eagles reeled off five straight points. From there MU kept the Falcons at arms length to take the set 25-21.

Coming out of the intermission, the Falcons looked like a totally different team from the first two frames, building a 7-2 lead before MU called their first timeout of the frame. After the timeout, Gonyo responded with a kill but the Golden Eagles were unable to get much else going as Bowling Green went on a 7-1 run with the score 12-16 to seal their set victory.

The Golden Eagles' woes continued into the fourth frame as they struggled to make consistent contact on their attacks. Bowling Green shot out to a 10-2 lead, forcing MU to take its first timeout of the set. From there, Marquette fought back to shave some points off the lead but really struggled to put much pressure on the Falcons before losing 25-16. In the fourth set, Marquette registered nine errors and 12 kills while Bowling Green's 12 kills came with only one error, leading to an attack percentage of .500 for the Falcons.

Marquette came out with it's back against the wall in the fifth set and looked as though they had recovered from sub-par performances in sets three and four. MU leapt out to a 7-4 lead on consecutive service aces from Viola before Bowling Green came back to tie the game at 11-11. After a Marquette timeout, Vancura responded with a kill to put MU up 12-11. From there the Falcons scored the next two points to put Bowling Green up 13-12, leading to another MU timeout. Following the timeout, two kills by Domek ended the match with the final set going to the Falcons, 15-13.

"We got back on track in set five but it we should have played like that in set three," said Rolf. "Overall we had a good weekend and really took a big step up in our play and confidence."

For their efforts in the Marquette Challenge, Mastandrea, Fisher and Gonyo were named to the Marquette Challenge All-Tournament Team.

| Bowling Green | GP | K-E-TA | PCT | A | SA-SE | RE | DIG | BS-BABE | BHE | PTS |
|-------------------|----|-----------|-------|----|-------|----|-----|---------|-----|------|
| DOMEK, Corey | 5 | 15-4-35 | .344 | 0 | 0-0 | 0 | 0 | 0-2 | 0 | 16.0 |
| FISH, Sam | 5 | 6-0-13 | .462 | 51 | 0-0 | 2 | 8 | 0-1 | 0 | 2.75 |
| MOHR, Meghan | 5 | 14-6-29 | .265 | 4 | 0-0 | 2 | 7 | 0-4 | 0 | 17.0 |
| HALM, Kendra | 5 | 14-6-29 | .276 | 0 | 1-3 | 0 | 2 | 0-8 | 2 | 20.0 |
| FACCA, Louise | 5 | 3-1-11 | .182 | 1 | 1-1 | 2 | 9 | 0-4 | 0 | 6.0 |
| LUTHER, Shari | 5 | 10-2-24 | .333 | 0 | 0-0 | 1 | 1 | 1-3 | 0 | 12.5 |
| ZLABIS, Alex | 3 | 0-0-0 | .000 | 0 | 0-0 | 1 | 1 | 0-0 | 0 | 0.0 |
| MEEK, Chelsea | 5 | 1-0-3 | .333 | 2 | 1-1 | 0 | 25 | 0-0 | 0 | 2.0 |
| NETTA, Madison | 1 | 0-0-0 | .000 | 0 | 0-0 | 0 | 1 | 0-0 | 0 | 0.0 |
| ISPHORDING, Susie | 5 | 0-1-1 | 1.000 | 1 | 3-2 | 2 | 12 | 0-0 | 0 | 3.0 |
| JACKSON, Kaitlin | 3 | 0-1-4 | .250 | 0 | 0-0 | 0 | 0 | 0-0 | 0 | 0.0 |
| TEAM | | | | | | | 3 | | | |
| Totals | 5 | 64-21-151 | .285 | 59 | 7-7 | 10 | 66 | 2-22 | 2 | 84.0 |

| Marquette | GP | K-E-TA | PCT | A | SA-SE | RE | DIG | BS-BABE | BHE | PTS |
|------------|----|-----------|------|----|-------|----|-----|---------|-----|------|
| BIELSKI | 5 | 14-5-35 | .257 | 0 | 0-0 | 1 | 2 | 0-4 | 0 | 16.0 |
| FISHER | 5 | 12-10-44 | .045 | 0 | 0-1 | 2 | 1 | 0-1 | 0 | 12.5 |
| RUSSELL | 5 | 6-2-11 | .364 | 0 | 1-3 | 1 | 0 | 1-2 | 0 | 9.0 |
| GONYO | 5 | 7-6-27 | .037 | 0 | 0-0 | 0 | 3 | 0-5 | 0 | 9.5 |
| VIOLA | 5 | 0-0-2 | .000 | 4 | 2-1 | 1 | 16 | 0-0 | 0 | 2.0 |
| MASTANDREA | 5 | 7-0-8 | .396 | 46 | 2-3 | 0 | 11 | 0-0 | 0 | 9.0 |
| ANGST | 5 | 0-0-1 | .000 | 0 | 1-0 | 1 | 5 | 0-0 | 0 | 1.0 |
| VANCURA | 5 | 9-5-27 | .148 | 0 | 0-0 | 0 | 1 | 0-2 | 0 | 10.0 |
| DEELO | 5 | 0-0-0 | .000 | 3 | 4-0 | 0 | 14 | 0-0 | 0 | 4.0 |
| TEAM | | | | | | | 1 | | | |
| Totals | 5 | 55-28-165 | .164 | 53 | 10-8 | 7 | 53 | 1-14 | 0 | 73.0 |

2008 Match-by-Match Results



| | | | | |
|------------------|----|----|----|----|
| Oregon State (3) | 25 | 25 | 23 | 25 |
| Marquette (1) | 19 | 10 | 25 | 19 |

Sept. 20 • Al McGuire Center • (4-6)

MILWAUKEE-- Marquette women's volleyball team lost a four set match to the Oregon State Beavers in the opening match of the Marquette Cheese Bowl, 3-1 (19-25, 10-25, 25-23, 19-25).

The Golden Eagles fell behind early to the Beavers as OSU got out to an 10-4 lead, forcing MU to call a timeout. OSU then went on to build a 20-11 lead before MU rallied to pull within three at 21-18 on a kill by junior setter Caryn Mastandrea. The Beavers then closed out the set, taking it 25-19.

The second saw much of the same for Marquette as OSU got out to a 14-6 lead on two straight service aces by Oregon State's Bree Knitter. After a kill by Leslie Bielski put the set at 18-10, Oregon State reeled off the next seven points to win the set 25-10.

Through the first and second stanzas, Marquette's attack percentage stood at .000 with 19 kills and 19 errors.

MU came out of the break looking like a different squad as they led for most of the third set. Two kills by Bielski provided Marquette's last two points as they won, 25-23. In the third, Bielski recorded five kills while Mastandrea had 14 assists.

In the fourth set, Marquette and Oregon State fought back and fourth, eventually leading to a tie score at 16-16. From that point, Oregon State pulled away to take the set and the match 25-19.

Leading the way against Oregon State were Bielski with 14 kills, Mastandrea with 38 assists and Deelo with 13 digs. Russell recorded seven kills in each of her matches on the day.

| | | | | | |
|---------------|----|----|----|----|----|
| American (2) | 27 | 25 | 25 | 18 | 14 |
| Marquette (3) | 29 | 16 | 22 | 25 | 16 |

Sept. 20 • Al McGuire Center • (5-6)

MILWAUKEE -- The Marquette women's volleyball team went 1-1 on opening day action in the Marquette Cheese Bowl, defeating American, 3-2 (29-27, 16-25, 22-25, 25-18, 16-14) after dropping the noon match with Oregon State, 3-1 (25-19, 25-10, 23-25, 25-19).

"I think the ladies are learning a lot, quickly," said head coach Pati Rolf. "I thought we had a much more consistent game against American than against Oregon State. When things weren't going our way the team stuck it out and manufactured some points."

The Golden Eagles fell behind in the first set as American got out to a 2-0 lead before MU tied the set at 2-2 on a kill from senior Ashlee Fisher. From that point both teams exchanged the lead in a frame that saw nine ties. MU got out to as much as a four point lead and led 24-20 after a service error by American's Rubena Sukaj. American then rallied to tie the score at 24-22 forcing Marquette to take a time out. The set then went on to be tied at 25-25, 26-26, and 27-27 before MU put the set away on a kill by sophomore Rabbecca Gonyo.

"We got some excellent work up front by Katie Vancura, Rabbecca Gonyo, Tiara Russell and Caryn Mastandrea," said Rolf "That really forced American to try to score other ways and got them out of their rhythm."

In the second frame, Marquette fell behind 5-0 and never led, falling 25-16. American's attack percentage in the second was .481 compared to .067 for the Golden Eagles.

The third started similar to the first, but MU was unable to pull out the set victory. Trailing 24-20, Marquette fought back to put the score at 24-22 before American took the set, 25-20. In the third, junior setter Caryn Mastandrea had 17 assists to lead the Golden Eagles while Ashlee Fisher had six kills on only one error.

In the fourth stanza, Marquette and American traded the lead early on with American eventually taking a 10-8 lead. From that point, MU reeled off 11 of the next 12 points to go up 19-11. Although American fought back to close the gap to six points Marquette won the set, 25-18.

Both teams struggled getting the ball over the net in the fifth set as American's attack percentage in the frame was .029, while MU fared a little better at .067. After American had gotten out to a 11-8 lead, Marquette called a timeout and responded by taking the next three points on two kills by Fisher and one by Vancura to tie the set at 11-11. With the score tied at 14-14, MU scored the next two points, the last on a kill by Leslie Bielski to close out the match, 16-14.

In the match against American, Fisher led the team with 17 kills, Mastandrea set a career high with 52 assists, freshman Amy Deelo added 20 digs and Vancura pitched in a solid performance with 14 kills.

| | | | |
|---------------|----|----|----|
| Wisconsin (3) | 25 | 25 | 25 |
| Marquette (0) | 23 | 23 | 15 |

Sept. 21 • Al McGuire Center • (5-7)

MILWAUKEE -- The Marquette women's volleyball team dropped Sunday's match in the finale of the Marquette Cheese Bowl to No. 13 Wisconsin, 3-0 (25-23, 25-23, 25-15).

"We had a great first two sets tonight, but we struggled closing them out," said head coach Pati Rolf.

The Golden Eagles got off to a fast start in the first set, scoring the first four points before the Badgers answered. Marquette then led 5-1 on a kill from junior setter Caryn Mastandrea, who was named to the Marquette Cheese Bowl All-Tournament Team, making it her third all-tournament team in as many weekends. After a Badgers' kill and attack error, MU led 6-2 before UW mounted a comeback to tie the match at 6-6.

Marquette regained the lead and led by as many as four with the score 21-17, forcing Wisconsin to call a timeout. Out of the timeout, the Badgers scored the next four points to tie the match at 21-21, leading to a Marquette timeout. Kills by Ashlee Fisher and Leslie Bielski put MU up 22-21 and 23-22, respectively. The Badgers responded by scoring the next three points to take the set, 25-23.

In the first frame, Fisher and Mastandrea led the way for MU with five kills, while Mastandrea also had 11 assists and four digs. Brittney Dolgner led the Badgers with five kills.

The second set started much like the first as neither team led by more than one point through the set's first 14 points. The set was tied early on at every point from 1-1 to 7-7. From there, UW jumped out to take a three point lead at 10-7 before MU came back to tie the set at 15-15. MU then took the lead at 17-16 on a block from Katie Vancura and Tiara Russell. The block was followed by the Badgers taking the next four points to extend their lead to four at 21-17. The Golden Eagles fought back to pull within one at 24-23 on a kill by Bielski. A kill by Audra Jeffers closed out the set for the Badgers, 25-23.

In the second stanza, Marquette out hit Wisconsin, .269 to .216, as the Badgers registered 10 errors while MU only recorded three.

"I thought our defense really played well," said Rolf. "In the first two sets our defense was everywhere. They have really elevated their game."

After the break, Marquette took an early lead at 4-3 on an attack error by Wisconsin's Katherine Dykstra before UW rallied back to take a six point advantage at 12-6 on a kill by Dolgner. Out of an MU timeout, the Golden Eagles fought back to tie the score at 14-14 on a service ace from Mastandrea. From that point, Wisconsin took control of the match, taking 11 of 12 points to seal the victory, 25-15.

"It is really important to play against teams like Oregon State and Wisconsin because it really elevates your game," Rolf said. "It is great that the kids are gaining confidence as we enter BIG EAST play."

Marquette falls to 5-7 on the season while Wisconsin improves to 10-2. The Golden Eagles return to action next weekend when they open BIG EAST Conference play on Friday, Sept. 26 at Rutgers.

| Oregon State | GP | K-E-TA | PCT | A | SA | SE | RE | DIG | BS | BABE | BHE | PTS |
|----------------------|----|----------|------|----|-----|-----|----|------|-----|------|-----|------|
| Sawatzky, Jill | 4 | 9-3-29 | .207 | 1 | 2-1 | 0 | 3 | 0-2 | 0 | 0 | 0 | 12.0 |
| Ah-Hoy, Camilla | 4 | 3-0-5 | .600 | 0 | 3 | 0-2 | 0 | 9 | 0-5 | 0 | 0 | 5.5 |
| Rourke, Rachel | 4 | 21-6-43 | .349 | 2 | 1-1 | 0 | 4 | 0-1 | 0 | 0 | 0 | 22.5 |
| Rathgeber, Lexie | 4 | 5-2-13 | .231 | 0 | 0-0 | 0 | 1 | 0-5 | 0 | 0 | 0 | 7.5 |
| Rinderknecht, Lauren | 4 | 6-1-14 | .357 | 0 | 0-1 | 0 | 6 | 1-5 | 2 | 0 | 0 | 9.5 |
| Knitter, Bree | 4 | 5-3-21 | .095 | 0 | 2-1 | 0 | 5 | 2-2 | 2 | 0 | 0 | 10.0 |
| Hooper, Natalie | 3 | 0-0-0 | .000 | 0 | 0-0 | 0 | 3 | 0-0 | 0 | 0 | 0 | 0.0 |
| Evans, Ashley | 4 | 1-1-2 | .000 | 2 | 0-1 | 0 | 6 | 0-0 | 0 | 0 | 0 | 1.0 |
| Devich, Betsy | 0 | 0-0-0 | .000 | 0 | 0-0 | 0 | 1 | 0-0 | 0 | 0 | 0 | 0.0 |
| Locke, Kaitlan | 3 | 0-0-0 | .000 | 0 | 1-1 | 0 | 1 | 0-0 | 0 | 0 | 0 | 1.0 |
| Totals | 4 | 34-17-97 | .175 | 34 | 3-6 | 0 | 39 | 6-10 | 1 | 0 | 0 | 48.0 |

| Marquette | GP | K-E-TA | PCT | A | SA | SE | RE | DIG | BS | BABE | BHE | PTS |
|------------|----|-----------|-------|----|-----|----|----|-----|-----|------|-----|------|
| BIELSKI | 4 | 14-3-30 | .200 | 1 | 0-0 | 1 | 3 | 0-0 | 3 | 0 | 0 | 14.0 |
| FISHER | 0 | 13-14-40 | -.025 | 0 | 1-1 | 0 | 4 | 0-2 | 0 | 0 | 0 | 15.0 |
| RUSSELL | 4 | 2-2-7 | .000 | 0 | 0-0 | 0 | 5 | 1-6 | 0 | 0 | 0 | 6.0 |
| VANCURA | 4 | 6-4-20 | .100 | 0 | 0-0 | 0 | 1 | 0-4 | 0 | 0 | 0 | 8.0 |
| GONYO | 4 | 6-5-20 | .050 | 0 | 0-0 | 0 | 0 | 0-2 | 0 | 0 | 0 | 7.0 |
| MASTANDREA | 4 | 5-1-11 | .364 | 38 | 0-3 | 0 | 5 | 0-2 | 1 | 0 | 0 | 6.0 |
| ANGST | 4 | 0-0-1 | .000 | 1 | 0-0 | 0 | 2 | 10 | 0-0 | 0 | 0 | 0.0 |
| DEELO | 4 | 0-0-1 | .000 | 2 | 0-1 | 0 | 13 | 0-0 | 0 | 0 | 0 | 0.0 |
| VIOLA | 4 | 0-0-0 | .000 | 2 | 0-1 | 2 | 8 | 0-0 | 0 | 0 | 0 | 0.0 |
| Team | | | | | | | 1 | | | | | |
| Totals | 4 | 33-21-107 | .112 | 34 | 0-2 | 3 | 33 | 0-8 | 2 | 0 | 0 | 37.0 |

| American | GP | K-E-TA | PCT | A | SA | SE | RE | DIG | BS | BABE | BHE | PTS |
|---------------------|----|-----------|--------|----|------|----|----|------|----|------|-----|------|
| Sukaj, Rubena | 5 | 19-7-52 | .231 | 1 | 0-5 | 2 | 15 | 0-2 | 1 | 0 | 0 | 20.0 |
| Heath, Rebecca | 5 | 18-6-43 | .279 | 2 | 1-1 | 0 | 11 | 0-1 | 1 | 0 | 0 | 19.5 |
| Nash, Christina | 5 | 4-2-11 | .182 | 55 | 0-1 | 0 | 9 | 0-3 | 1 | 0 | 0 | 5.5 |
| Ginkova, Katerina | 1 | 0-2-2 | -1.000 | 0 | 1-1 | 0 | 0 | 0-0 | 0 | 0 | 0 | 1.0 |
| Recht, Claire | 5 | 14-2-27 | .444 | 0 | 0-0 | 0 | 0 | 0-7 | 3 | 0 | 0 | 17.5 |
| Ricketts, Cassandra | 5 | 9-6-34 | .288 | 1 | 1-3 | 0 | 2 | 1-5 | 0 | 0 | 0 | 13.5 |
| Chakova, Ivana | 5 | 0-1-1 | -1.000 | 2 | 2-2 | 0 | 19 | 0-0 | 0 | 0 | 0 | 2.0 |
| Burns, Cynammon | 5 | 0-0-0 | .000 | 0 | 0-0 | 0 | 6 | 0-0 | 0 | 0 | 0 | 0.0 |
| Paganini, Tessa | 5 | 0-0-0 | .000 | 0 | 0-3 | 0 | 0 | 0-0 | 0 | 0 | 0 | 0.0 |
| Recht, Ann | 5 | 3-1-8 | .250 | 0 | 0-0 | 0 | 0 | 0-4 | 0 | 0 | 0 | 5.0 |
| Tekiel, Magdalena | 1 | 0-0-0 | .000 | 0 | 0-0 | 0 | 2 | 0-0 | 0 | 0 | 0 | 0.0 |
| Waterman, Angelina | 3 | 0-0-5 | .000 | 0 | 0-0 | 0 | 0 | 0-0 | 0 | 0 | 0 | 0.0 |
| Team | | | | | | | 1 | | | | | |
| Totals | 5 | 67-27-183 | .219 | 61 | 5-16 | 3 | 64 | 1-22 | 6 | 0 | 0 | 84.0 |

| Marquette | GP | K-E-TA | PCT | A | SA | SE | RE | DIG | BS | BABE | BHE | PTS |
|------------|----|-----------|------|----|-----|----|----|------|----|------|-----|------|
| ANGST | 5 | 0-0-0 | .000 | 1 | 0-0 | 0 | 5 | 0-0 | 0 | 0 | 0 | 0.0 |
| FISHER | 5 | 17-8-48 | .388 | 1 | 1-3 | 0 | 8 | 0-2 | 1 | 0 | 0 | 19.0 |
| RUSSELL | 5 | 3-2-10 | .100 | 2 | 0-2 | 0 | 1 | 3-4 | 0 | 1 | 0 | 8.0 |
| GONYO | 5 | 9-3-23 | .261 | 3 | 0-0 | 0 | 1 | 1-6 | 1 | 0 | 0 | 13.0 |
| VIOLA | 5 | 0-0-1 | .000 | 1 | 0-0 | 0 | 13 | 0-0 | 0 | 0 | 0 | 0.0 |
| MASTANDREA | 5 | 6-1-16 | .312 | 52 | 1-1 | 0 | 15 | 0-2 | 0 | 0 | 0 | 8.0 |
| BIELSKI | 5 | 13-9-37 | .108 | 0 | 0-0 | 1 | 6 | 0-1 | 0 | 0 | 0 | 13.5 |
| VANCURA | 5 | 14-5-33 | .273 | 0 | 1-0 | 0 | 3 | 0-5 | 0 | 0 | 0 | 16.5 |
| DEELO | 5 | 0-0-1 | .000 | 1 | 0-0 | 3 | 20 | 0-0 | 0 | 0 | 0 | 1.0 |
| Team | | | | | | | 1 | | | | | |
| Totals | 5 | 62-28-169 | .201 | 61 | 3-6 | 5 | 72 | 4-20 | 2 | 1 | 0 | 79.0 |

| Wisconsin | GP | K-E-TA | PCT | A | SA | SE | RE | DIG | BS | BABE | BHE | PTS |
|---------------------|----|-----------|------|----|-----|----|----|-----|----|------|-----|------|
| Klingsporn, Nikki | 3 | 0-0-1 | .000 | 20 | 0-1 | 0 | 6 | 1-0 | 0 | 0 | 0 | 1.0 |
| Gabrielsen, Janelle | 3 | 4-1-9 | .333 | 17 | 3-0 | 0 | 9 | 1-0 | 0 | 0 | 0 | 8.0 |
| Dolgner, Brittney | 3 | 12-5-24 | .292 | 0 | 0-1 | 0 | 7 | 0-3 | 0 | 0 | 0 | 13.5 |
| Wack, Allison | 3 | 2-3-8 | .125 | 0 | 1-0 | 1 | 6 | 0-0 | 0 | 0 | 0 | 3.0 |
| Jeffers, Audra | 3 | 9-0-12 | .750 | 1 | 0-0 | 0 | 1 | 0-3 | 0 | 0 | 0 | 10.5 |
| Ohlander, Elle | 3 | 3-1-8 | .250 | 1 | 0-0 | 0 | 1 | 0-4 | 0 | 0 | 0 | 5.0 |
| Kuzma, Kim | 3 | 0-0-0 | .000 | 0 | 0-0 | 0 | 8 | 0-0 | 0 | 0 | 0 | 3.0 |
| Dykstra, Katherine | 3 | 11-4-22 | .318 | 0 | 0-0 | 0 | 0 | 1-4 | 0 | 0 | 0 | 14.0 |
| DuPont, Caitly | 3 | 2-4-16 | .125 | 0 | 0-2 | 0 | 0 | 0-0 | 1 | 0 | 0 | 2.0 |
| Team | | | | | | | 1 | | | | | |
| Totals | 3 | 43-18-100 | .250 | 39 | 7-4 | 2 | 38 | 3-4 | 1 | 0 | 0 | 60.0 |

| Marquette | GP | K-E-TA | PCT | A | SA | SE | RE | DIG | BS | BABE | BHE | PTS |
|------------|----|----------|------|----|-----|----|----|------|----|------|-----|------|
| ANGST | 3 | 0-0-0 | .000 | 1 | 0-1 | 1 | 4 | 0-0 | 0 | 0 | 0 | 0.0 |
| FISHER | 3 | 11-6-33 | .152 | 4 | 0-2 | 1 | 4 | 0-1 | 0 | 0 | 0 | 11.5 |
| RUSSELL | 3 | 3-0-7 | .429 | 0 | 0-1 | 0 | 0 | 0-5 | 1 | 1 | 0 | 5.5 |
| GONYO | 3 | 4-1-12 | .250 | 0 | 0-0 | 0 | 1 | 0-1 | 1 | 0 | 0 | 4.5 |
| VIOLA | 3 | 0-0-0 | .000 | 0 | 0-0 | 0 | 3 | 0-0 | 0 | 0 | 0 | 0.0 |
| MASTANDREA | 3 | 7-1-15 | .400 | 24 | 2-0 | 0 | 9 | 0-0 | 0 | 1 | 0 | 9.0 |
| BIELSKI | 3 | 9-6-15 | .167 | 0 | 0-0 | 1 | 3 | 0-0 | 0 | 0 | 0 | 9.0 |
| VANCURA | 3 | 1-4-12 | .250 | 0 | 0-0 | 0 | 0 | 0-5 | 0 | 0 | 0 | 3.5 |
| DEELO | 3 | 0-0-1 | .000 | 4 | 0-0 | 2 | 8 | 0-0 | 0 | 0 | 0 | 0.0 |
| Team | | | | | | | 2 | | | | | |
| Totals | 3 | 35-18-98 | .173 | 33 | 2-4 | 7 | 32 | 0-12 | 2 | 2 | 0 | 43.0 |

2008 Marquette Volleyball Statistics

1 • Ciara Jones

| 2008 | K-E-TA | Pct | A | SA-SE | DIG | BS-BA |
|----------------------|---------|------|---|-------|-----|-------|
| Houston | 11-5-23 | .261 | 1 | 0-0 | 2 | 1-2 |
| Chattanooga | | | | | | |
| Tennessee | | | | | | |
| vs Clemson | | | | | | |
| at Northern Iowa | | | | | | |
| vs Northern Illinois | | | | | | |
| Temple | | | | | | |
| Green Bay | | | | | | |
| Bowling Green | | | | | | |
| Oregon State | | | | | | |
| American | | | | | | |
| Wisconsin | | | | | | |
| at Rutgers | | | | | | |
| St. John's | | | | | | |
| Connecticut | | | | | | |
| at USF | | | | | | |
| at Georgetown | | | | | | |
| Syracuse | | | | | | |
| UW-Milwaukee | | | | | | |
| Louisville | | | | | | |
| Cincinnati | | | | | | |
| at DePaul | | | | | | |
| at Notre Dame | | | | | | |
| at Villanova | | | | | | |
| at Seton Hall | | | | | | |
| West Virginia | | | | | | |
| Pittsburgh | | | | | | |

Career Highs

| | | | | | | |
|----------------|----|--|--|--|--|-------------------------|
| Kills | 11 | | | | | Houston (Aug. 29, 2008) |
| Attacks | 23 | | | | | Houston (Aug. 29, 2008) |
| Assists | 1 | | | | | Houston (Aug. 29, 2008) |
| Digs | 2 | | | | | Houston (Aug. 29, 2008) |
| Aces | 0 | | | | | - |
| Blocks | 2 | | | | | Houston (Aug. 29, 2008) |

2 • Leslie Bielski

| 2008 | K-E-TA | Pct | A | SA-SE | DIG | BS-BA |
|----------------------|----------|------|---|-------|-----|-------|
| Houston | 9-6-22 | .136 | 1 | 1-0 | 3 | 0-3 |
| Chattanooga | 7-3-16 | .250 | 0 | 0-0 | 4 | 0-1 |
| Tennessee | 10-5-23 | .217 | 2 | 0-0 | 4 | 1-2 |
| vs Clemson | 13-11-38 | .053 | 1 | 1-2 | 6 | 0-0 |
| at Northern Iowa | 12-8-29 | .138 | 0 | 0-0 | 9 | 2-2 |
| vs Northern Illinois | 12-5-28 | .250 | 1 | 0-1 | 15 | 1-0 |
| Temple | 13-7-31 | .194 | 0 | 0-1 | 5 | 0-1 |
| Green Bay | 8-4-31 | .129 | 0 | 0-0 | 2 | 0-2 |
| Bowling Green | 14-5-35 | .257 | 0 | 0-0 | 2 | 0-4 |
| Oregon State | 14-8-30 | .200 | 1 | 0-0 | 3 | 0-0 |
| American | 13-9-37 | .108 | 0 | 0-0 | 6 | 0-1 |
| Wisconsin | 9-6-18 | .167 | 0 | 0-0 | 3 | 0-0 |
| at Rutgers | | | | | | |
| St. John's | | | | | | |
| Connecticut | | | | | | |
| at USF | | | | | | |
| at Georgetown | | | | | | |
| Syracuse | | | | | | |
| UW-Milwaukee | | | | | | |
| Louisville | | | | | | |
| Cincinnati | | | | | | |
| at DePaul | | | | | | |
| at Notre Dame | | | | | | |
| at Villanova | | | | | | |
| at Seton Hall | | | | | | |
| West Virginia | | | | | | |
| Pittsburgh | | | | | | |

Career Highs

| | | | | | | |
|----------------|----|--|--|--|--|--------------------------------------|
| Kills | 13 | | | | | three times |
| Attacks | 38 | | | | | vs Clemson (Sept. 5, 2008) |
| Assists | 3 | | | | | West Virginia (Oct. 22, 2006) |
| Digs | 15 | | | | | vs Northern Illinois (Sept. 6, 2008) |
| Aces | 5 | | | | | Connecticut (Nov. 2, 2006) |
| Blocks | 12 | | | | | at USF (Sept. 29, 2006) |

3 • Laura Akin

| 2008 | K-E-TA | Pct | A | SA-SE | DIG | BS-BA |
|----------------------|--------|------|----|-------|-----|--------------|
| Houston | 2-0-3 | .667 | 8 | 0-0 | 2 | 0-1 |
| Chattanooga | 4-1-11 | .273 | 12 | 0-0 | 0 | 0-4 |
| Tennessee | 1-1-5 | .000 | 21 | 0-0 | 2 | 0-3 |
| vs Clemson | 1-0-3 | .333 | 15 | 0-0 | 0 | 0-0 |
| at Northern Iowa | 1-0-5 | .200 | 5 | 0-0 | 1 | 0-1 |
| vs Northern Illinois | 1-0-5 | .200 | 17 | 0-0 | 0 | 0-3 |
| Temple | | | | | | Did Not Play |
| Green Bay | | | | | | Did Not Play |
| Bowling Green | | | | | | Did Not Play |
| Oregon State | | | | | | Did Not Play |
| American | | | | | | Did Not Play |
| Wisconsin | | | | | | Did Not Play |
| at Rutgers | | | | | | |
| St. John's | | | | | | |
| Connecticut | | | | | | |
| at USF | | | | | | |
| at Georgetown | | | | | | |
| Syracuse | | | | | | |
| UW-Milwaukee | | | | | | |
| Louisville | | | | | | |
| Cincinnati | | | | | | |
| at DePaul | | | | | | |
| at Notre Dame | | | | | | |
| at Villanova | | | | | | |
| at Seton Hall | | | | | | |
| West Virginia | | | | | | |
| Pittsburgh | | | | | | |

Career Highs

| | | | | | | |
|----------------|----|--|--|--|--|-----------------------------|
| Kills | 4 | | | | | Chattanooga (Aug. 29, 2008) |
| Attacks | 11 | | | | | Chattanooga (Aug. 29, 2008) |
| Assists | 21 | | | | | Tennessee (Aug. 30, 2008) |
| Digs | 2 | | | | | twice |
| Aces | 0 | | | | | - |
| Blocks | 4 | | | | | Chattanooga (Aug. 29, 2008) |

4 • Terri Angst

| 2008 | K-E-TA | Pct | A | SA-SE | DIG | BS-BA |
|----------------------|--------|--------|---|-------|-----|-------|
| Houston | 0-0-0 | .000 | 1 | 1-2 | 11 | 0-0 |
| Chattanooga | 0-0-0 | .000 | 2 | 2-1 | 5 | 0-0 |
| Tennessee | 0-0-0 | .000 | 0 | 0-1 | 7 | 0-0 |
| vs Clemson | 0-0-1 | .000 | 1 | 0-0 | 1 | 0-0 |
| at Northern Iowa | 0-0-0 | .000 | 1 | 1-0 | 3 | 0-0 |
| vs Northern Illinois | 0-0-0 | .000 | 1 | 1-0 | 6 | 0-0 |
| Temple | 0-1-1 | -1.000 | 0 | 1-0 | 7 | 0-0 |
| Green Bay | 0-0-0 | .000 | 1 | 0-1 | 12 | 0-0 |
| Bowling Green | 0-0-1 | .000 | 0 | 1-0 | 5 | 0-0 |
| Oregon State | 0-0-1 | .000 | 1 | 0-0 | 10 | 0-0 |
| American | 0-0-0 | .000 | 1 | 0-0 | 5 | 0-0 |
| Wisconsin | 0-0-0 | .000 | 1 | 0-1 | 4 | 0-0 |
| at Rutgers | | | | | | |
| St. John's | | | | | | |
| Connecticut | | | | | | |
| at USF | | | | | | |
| at Georgetown | | | | | | |
| Syracuse | | | | | | |
| UW-Milwaukee | | | | | | |
| Louisville | | | | | | |
| Cincinnati | | | | | | |
| at DePaul | | | | | | |
| at Notre Dame | | | | | | |
| at Villanova | | | | | | |
| at Seton Hall | | | | | | |
| West Virginia | | | | | | |
| Pittsburgh | | | | | | |

Career Highs

| | | | | | | |
|----------------|----|--|--|--|--|------------------------------|
| Kills | 1 | | | | | eight times |
| Attacks | 4 | | | | | Notre Dame (Oct. 12, 2007) |
| Assists | 4 | | | | | Notre Dame (Oct. 12, 2007) |
| Digs | 22 | | | | | Belmont (Sept. 14, 2007) |
| Aces | 3 | | | | | Miami (Fla.) (Aug. 31, 2007) |
| Blocks | 1 | | | | | three times |

5 • Ashlee Fisher

| 2008 | K-E-TA | Pct | A | SA-SE | DIG | BS-BA |
|----------------------|----------|------|---|-------|-----|-------|
| Houston | 13-10-35 | .086 | 1 | 1-3 | 7 | 0-2 |
| Chattanooga | 18-0-28 | .643 | 0 | 1-3 | 5 | 0-2 |
| Tennessee | 13-11-49 | .041 | 0 | 0-2 | 4 | 0-4 |
| vs Clemson | 12-5-26 | .269 | 0 | 0-0 | 1 | 0-0 |
| at Northern Iowa | 10-1-22 | .409 | 0 | 0-0 | 4 | 0-0 |
| vs Northern Illinois | 22-5-53 | .321 | 1 | 0-0 | 3 | 1-1 |
| Temple | 19-6-41 | .317 | 0 | 2-4 | 2 | 1-1 |
| Green Bay | 16-7-45 | .200 | 0 | 2-2 | 10 | 1-3 |
| Bowling Green | 12-10-44 | .045 | 0 | 0-1 | 1 | 0-1 |
| Oregon State | 13-14-40 | .200 | 1 | 1-1 | 3 | 0-0 |
| American | 17-8-48 | .188 | 1 | 1-3 | 8 | 0-2 |
| Wisconsin | 11-6-33 | .152 | 4 | 0-2 | 4 | 0-1 |
| at Rutgers | | | | | | |
| St. John's | | | | | | |
| Connecticut | | | | | | |
| at USF | | | | | | |
| at Georgetown | | | | | | |
| Syracuse | | | | | | |
| UW-Milwaukee | | | | | | |
| Louisville | | | | | | |
| Cincinnati | | | | | | |
| at DePaul | | | | | | |
| at Notre Dame | | | | | | |
| at Villanova | | | | | | |
| at Seton Hall | | | | | | |
| West Virginia | | | | | | |
| Pittsburgh | | | | | | |

Career Highs

| | | | | | | |
|----------------|----|--|--|--|--|------------------------------------|
| Kills | 27 | | | | | South Dakota State (Nov. 24, 2007) |
| Attacks | 58 | | | | | Alabama (Nov. 5, 2006) |
| Assists | 4 | | | | | Wisconsin (Sept. 21, 2008) |
| Digs | 10 | | | | | Green Bay (Sept. 13, 2008) |
| Aces | 3 | | | | | Alabama (Nov. 5, 2006) |
| Blocks | 7 | | | | | Miami (Fla.) (Aug. 31, 2007) |

6 • Tia Russell

| 2008 | K-E-TA | Pct | A | SA-SE | DIG | BS-BA |
|----------------------|--------|-------|---|-------|-----|-------|
| Houston | 4-3-12 | .083 | 0 | 0-0 | 0 | 0-2 |
| Chattanooga | 4-1-13 | .231 | 1 | 0-0 | 0 | 0-4 |
| Tennessee | 3-4-12 | -.083 | 1 | 0-1 | 2 | 1-5 |
| vs Clemson | 0-0-1 | .000 | 1 | 0-1 | 0 | 0-1 |
| at Northern Iowa | 2-3-7 | -.143 | 0 | 0-1 | 1 | 0-3 |
| vs Northern Illinois | 5-1-13 | .308 | 0 | 0-3 | 1 | 0-3 |
| Temple | 4-2-10 | .200 | 3 | 1-2 | 4 | 3-5 |
| Green Bay | 7-2-16 | .312 | 1 | 2-2 | 3 | 0-3 |
| Bowling Green | 6-2-11 | .364 | 0 | 1-3 | 0 | 1-2 |
| Oregon State | 2-2-7 | .000 | 0 | 0-0 | 5 | 1-6 |
| American | 3-2-10 | .100 | 2 | 0-2 | 1 | 3-4 |
| Wisconsin | 3-0-7 | .429 | 0 | 0-1 | 0 | 0-5 |
| at Rutgers | | | | | | |
| St. John's | | | | | | |
| Connecticut | | | | | | |
| at USF | | | | | | |
| at Georgetown | | | | | | |
| Syracuse | | | | | | |
| UW-Milwaukee | | | | | | |
| Louisville | | | | | | |
| Cincinnati | | | | | | |
| at DePaul | | | | | | |
| at Notre Dame | | | | | | |
| at Villanova | | | | | | |
| at Seton Hall | | | | | | |
| West Virginia | | | | | | |
| Pittsburgh | | | | | | |

Career Highs

| | | | | | | |
|----------------|----|--|--|--|--|----------------------------|
| Kills | 5 | | | | | Green Bay (Sept. 13, 2008) |
| Attacks | 16 | | | | | Green Bay (Sept. 13, 2008) |
| Assists | 3 | | | | | Temple (Sept. 12, 2008) |
| Digs | 4 | | | | | Temple (Sept. 12, 2008) |
| Aces | 2 | | | | | Green Bay (Sept. 13, 2008) |
| Blocks | 8 | | | | | Temple (Sept. 12, 2008) |

2008 Marquette Volleyball Statistics

7 • Holly Mertens

| 2008 | K-E-TA | Pct. | A | SA-SE | DIG | BS-BA |
|----------------------|--------|------|--------------|-------|-----|-------|
| Houston | | | Did Not Play | | | |
| Chattanooga | | | Did Not Play | | | |
| Tennessee | | | Did Not Play | | | |
| vs Clemson | | | Did Not Play | | | |
| at Northern Iowa | | | Did Not Play | | | |
| vs Northern Illinois | | | Did Not Play | | | |
| Temple | | | Did Not Play | | | |
| Green Bay | | | Did Not Play | | | |
| Bowling Green | | | Did Not Play | | | |
| Oregon State | | | Did Not Play | | | |
| American | | | Did Not Play | | | |
| Wisconsin | | | Did Not Play | | | |
| at Rutgers | | | | | | |
| St. John's | | | | | | |
| Connecticut | | | | | | |
| at USF | | | | | | |
| at Georgetown | | | | | | |
| Syracuse | | | | | | |
| UW-Milwaukee | | | | | | |
| Louisville | | | | | | |
| Cincinnati | | | | | | |
| at DePaul | | | | | | |
| at Notre Dame | | | | | | |
| at Villanova | | | | | | |
| at Seton Hall | | | | | | |
| West Virginia | | | | | | |
| Pittsburgh | | | | | | |

Career Highs

| | | | | | | |
|----------------|---|--|--|--|--|--|
| Kills | - | | | | | |
| Attacks | - | | | | | |
| Assists | - | | | | | |
| Digs | - | | | | | |
| Aces | - | | | | | |
| Blocks | - | | | | | |

8 • Jessica Kieser

| 2008 | K-E-TA | Pct. | A | SA-SE | DIG | BS-BA |
|----------------------|--------|------|--------------|-------|-----|-------|
| Houston | 0-0-1 | .000 | 0 | 0-0 | 0 | 0-0 |
| Chattanooga | 0-0-0 | .000 | 0 | 0-0 | 0 | 0-0 |
| Tennessee | | | Did Not Play | | | |
| vs Clemson | | | Did Not Play | | | |
| at Northern Iowa | | | Did Not Play | | | |
| vs Northern Illinois | | | Did Not Play | | | |
| Temple | 0-0-0 | .000 | 0 | 0-0 | 1 | 0-0 |
| Green Bay | | | Did Not Play | | | |
| Bowling Green | | | Did Not Play | | | |
| Oregon State | | | Did Not Play | | | |
| American | | | Did Not Play | | | |
| Wisconsin | | | Did Not Play | | | |
| at Rutgers | | | | | | |
| St. John's | | | | | | |
| Connecticut | | | | | | |
| at USF | | | | | | |
| at Georgetown | | | | | | |
| Syracuse | | | | | | |
| UW-Milwaukee | | | | | | |
| Louisville | | | | | | |
| Cincinnati | | | | | | |
| at DePaul | | | | | | |
| at Notre Dame | | | | | | |
| at Villanova | | | | | | |
| at Seton Hall | | | | | | |
| West Virginia | | | | | | |
| Pittsburgh | | | | | | |

Career Highs

| | | | | | | |
|----------------|----|------------------------------------|--|--|--|--|
| Kills | 1 | South Dakota State (Nov. 24, 2007) | | | | |
| Attacks | 1 | five times | | | | |
| Assists | 2 | twice | | | | |
| Digs | 17 | Belmont (Sept. 14, 2007) | | | | |
| Aces | 4 | Belmont (Sept. 14, 2007) | | | | |
| Blocks | - | | | | | |

9 • Alex Coello

| 2008 | K-E-TA | Pct. | A | SA-SE | DIG | BS-BA |
|----------------------|--------|------|--------------|-------|-----|-------|
| Houston | | | Did Not Play | | | |
| Chattanooga | | | Did Not Play | | | |
| Tennessee | | | Did Not Play | | | |
| vs Clemson | | | Did Not Play | | | |
| at Northern Iowa | | | Did Not Play | | | |
| vs Northern Illinois | | | Did Not Play | | | |
| Temple | | | Did Not Play | | | |
| Green Bay | | | Did Not Play | | | |
| Bowling Green | | | Did Not Play | | | |
| Oregon State | | | Did Not Play | | | |
| American | | | Did Not Play | | | |
| Wisconsin | | | Did Not Play | | | |
| at Rutgers | | | | | | |
| St. John's | | | | | | |
| Connecticut | | | | | | |
| at USF | | | | | | |
| at Georgetown | | | | | | |
| Syracuse | | | | | | |
| UW-Milwaukee | | | | | | |
| Louisville | | | | | | |
| Cincinnati | | | | | | |
| at DePaul | | | | | | |
| at Notre Dame | | | | | | |
| at Villanova | | | | | | |
| at Seton Hall | | | | | | |
| West Virginia | | | | | | |
| Pittsburgh | | | | | | |

Career Highs

| | | | | | | |
|----------------|---|--|--|--|--|--|
| Kills | - | | | | | |
| Attacks | - | | | | | |
| Assists | - | | | | | |
| Digs | - | | | | | |
| Aces | - | | | | | |
| Blocks | - | | | | | |

10 • Katie Vancura

| 2008 | K-E-TA | Pct. | A | SA-SE | DIG | BS-BA |
|----------------------|---------|-------|--------------|-------|-----|-------|
| Houston | | | Did Not Play | | | |
| Chattanooga | 0-2-8 | -.250 | 0 | 0-0 | 3 | 0-5 |
| Tennessee | 6-1-17 | .294 | 0 | 0-0 | 0 | 0-2 |
| vs Clemson | 1-4-14 | -.214 | 0 | 0-0 | 1 | 0-4 |
| at Northern Iowa | 6-2-17 | .235 | 0 | 0-0 | 0 | 0-1 |
| vs Northern Illinois | 8-7-23 | .043 | 0 | 0-2 | 1 | 0-1 |
| Temple | 12-5-26 | .269 | 0 | 0-0 | 0 | 0-2 |
| Green Bay | 6-0-14 | .249 | 0 | 0-0 | 0 | 0-3 |
| Bowling Green | 9-5-27 | .148 | 0 | 0-0 | 1 | 0-2 |
| Oregon State | 6-4-20 | .100 | 0 | 0-0 | 1 | 0-4 |
| American | 14-5-33 | .273 | 0 | 0-0 | 3 | 0-5 |
| Wisconsin | 1-4-12 | -.250 | 0 | 0-0 | 0 | 0-5 |
| at Rutgers | | | | | | |
| St. John's | | | | | | |
| Connecticut | | | | | | |
| at USF | | | | | | |
| at Georgetown | | | | | | |
| Syracuse | | | | | | |
| UW-Milwaukee | | | | | | |
| Louisville | | | | | | |
| Cincinnati | | | | | | |
| at DePaul | | | | | | |
| at Notre Dame | | | | | | |
| at Villanova | | | | | | |
| at Seton Hall | | | | | | |
| West Virginia | | | | | | |
| Pittsburgh | | | | | | |

Career Highs

| | | | | | | |
|----------------|----|-------------------------------|--|--|--|--|
| Kills | 14 | American (Sept. 20, 2008) | | | | |
| Attacks | 33 | American (Sept. 20, 2008) | | | | |
| Assists | 1 | twice | | | | |
| Digs | 3 | three times | | | | |
| Aces | 0 | | | | | |
| Blocks | 5 | West Virginia (Oct. 22, 2006) | | | | |

11 • Rabbecka Gonyo

| 2008 | K-E-TA | Pct. | A | SA-SE | DIG | BS-BA |
|----------------------|---------|------|---|-------|-----|-------|
| Houston | 9-4-20 | .250 | 0 | 0-5 | 3 | 0-6 |
| Chattanooga | 3-0-4 | .750 | 0 | 0-2 | 0 | 0-2 |
| Tennessee | 11-2-21 | .429 | 2 | 0-0 | 3 | 1-4 |
| vs Clemson | 6-5-18 | .056 | 1 | 0-0 | 1 | 2-3 |
| at Northern Iowa | 3-3-15 | .000 | 0 | 0-0 | 2 | 0-1 |
| vs Northern Illinois | 14-1-21 | .619 | 0 | 0-0 | 0 | 1-2 |
| Temple | 14-2-24 | .500 | 4 | 0-0 | 3 | 1-0 |
| Green Bay | 18-4-42 | .333 | 0 | 0-0 | 1 | 1-3 |
| Bowling Green | 7-6-27 | .037 | 0 | 0-0 | 3 | 0-5 |
| Oregon State | 6-5-20 | .050 | 0 | 0-0 | 0 | 0-2 |
| American | 9-3-23 | .261 | 3 | 0-0 | 1 | 1-6 |
| Wisconsin | 4-1-12 | .250 | 0 | 0-0 | 1 | 0-1 |
| at Rutgers | | | | | | |
| St. John's | | | | | | |
| Connecticut | | | | | | |
| at USF | | | | | | |
| at Georgetown | | | | | | |
| Syracuse | | | | | | |
| UW-Milwaukee | | | | | | |
| Louisville | | | | | | |
| Cincinnati | | | | | | |
| at DePaul | | | | | | |
| at Notre Dame | | | | | | |
| at Villanova | | | | | | |
| at Seton Hall | | | | | | |
| West Virginia | | | | | | |
| Pittsburgh | | | | | | |

Career Highs

| | | | | | | |
|----------------|----|-------------------------------|--|--|--|--|
| Kills | 18 | Green Bay (Sept. 13, 2008) | | | | |
| Attacks | 42 | Green Bay (Sept. 13, 2008) | | | | |
| Assists | 3 | three times | | | | |
| Digs | 6 | Tennessee (Sept. 8, 2007) | | | | |
| Aces | 1 | Rutgers (Sept. 23, 2007) | | | | |
| Blocks | 8 | at Connecticut (Nov. 3, 2007) | | | | |

12 • Amy Deelo

| 2008 | K-E-TA | Pct. | A | SA-SE | DIG | BS-BA |
|----------------------|--------|--------|---|-------|-----|-------|
| Houston | 1-0-2 | .500 | 0 | 0-1 | 6 | 0-0 |
| Chattanooga | 0-0-2 | .000 | 4 | 2-0 | 13 | 0-0 |
| Tennessee | 0-1-1 | -1.000 | 1 | 0-0 | 10 | 0-0 |
| vs Clemson | 0-0-0 | .000 | 1 | 0-0 | 9 | 0-0 |
| at Northern Iowa | 0-0-0 | .000 | 0 | 0-1 | 7 | 0-0 |
| vs Northern Illinois | 0-0-2 | .000 | 4 | 0-0 | 21 | 0-0 |
| Temple | 0-0-1 | .000 | 2 | 0-1 | 14 | 0-0 |
| Green Bay | 0-0-0 | .000 | 0 | 2-0 | 26 | 0-0 |
| Bowling Green | 0-0-0 | .000 | 3 | 4-0 | 14 | 0-0 |
| Oregon State | 0-0-1 | .000 | 2 | 0-1 | 13 | 0-0 |
| American | 0-0-1 | .000 | 1 | 1-0 | 20 | 0-0 |
| Wisconsin | 0-0-1 | .000 | 4 | 0-0 | 8 | 0-0 |
| at Rutgers | | | | | | |
| St. John's | | | | | | |
| Connecticut | | | | | | |
| at USF | | | | | | |
| at Georgetown | | | | | | |
| Syracuse | | | | | | |
| UW-Milwaukee | | | | | | |
| Louisville | | | | | | |
| Cincinnati | | | | | | |
| at DePaul | | | | | | |
| at Notre Dame | | | | | | |
| at Villanova | | | | | | |
| at Seton Hall | | | | | | |
| West Virginia | | | | | | |
| Pittsburgh | | | | | | |

Career Highs

| | | | | | | |
|----------------|----|--------------------------------|--|--|--|--|
| Kills | 1 | Houston (Aug. 29, 2008) | | | | |
| Attacks | 2 | twice | | | | |
| Assists | 4 | three times | | | | |
| Digs | 26 | Green Bay (Sept. 13, 2008) | | | | |
| Aces | 4 | Bowling Green (Sept. 13, 2008) | | | | |
| Blocks | - | | | | | |

2008 Marquette Volleyball Statistics

13 • Sammie Hertaus

| 2008 | K-E-TA | Pct. | A | SA-SE | DIG | BS-BA |
|----------------------|--------|------|--------------|-------|-----|-------|
| Houston | | | Did Not Play | | | |
| Chattanooga | | | Did Not Play | | | |
| Tennessee | | | Did Not Play | | | |
| vs Clemson | | | Did Not Play | | | |
| at Northern Iowa | | | Did Not Play | | | |
| vs Northern Illinois | | | Did Not Play | | | |
| Temple | | | Did Not Play | | | |
| Green Bay | | | Did Not Play | | | |
| Bowling Green | | | Did Not Play | | | |
| Oregon State | | | Did Not Play | | | |
| American | | | Did Not Play | | | |
| Wisconsin | | | Did Not Play | | | |
| at Rutgers | | | | | | |
| St. John's | | | | | | |
| Connecticut | | | | | | |
| at USF | | | | | | |
| at Georgetown | | | | | | |
| Syracuse | | | | | | |
| UW-Milwaukee | | | | | | |
| Louisville | | | | | | |
| Cincinnati | | | | | | |
| at DePaul | | | | | | |
| at Notre Dame | | | | | | |
| at Villanova | | | | | | |
| at Seton Hall | | | | | | |
| West Virginia | | | | | | |
| Pittsburgh | | | | | | |

Career Highs

| | | |
|----------------|---|---|
| Kills | - | - |
| Attacks | - | - |
| Assists | - | - |
| Digs | - | - |
| Aces | - | - |
| Blocks | - | - |

14 • Hailey Viola

| 2008 | K-E-TA | Pct. | A | SA-SE | DIG | BS-BA |
|----------------------|--------|------|---|-------|-----|-------|
| Houston | 0-0-0 | .000 | 0 | 1-0 | 2 | 0-0 |
| Chattanooga | 0-0-0 | .000 | 3 | 0-0 | 1 | 0-0 |
| Tennessee | 0-0-1 | .000 | 2 | 1-0 | 7 | 0-0 |
| vs Clemson | 0-0-0 | .000 | 1 | 0-1 | 7 | 0-0 |
| at Northern Iowa | 0-0-3 | .000 | 1 | 0-0 | 9 | 0-0 |
| vs Northern Illinois | 3-1-4 | .500 | 2 | 1-0 | 11 | 0-0 |
| Temple | 0-0-3 | .000 | 1 | 0-2 | 6 | 0-0 |
| Green Bay | 0-0-1 | .000 | 3 | 0-0 | 20 | 0-0 |
| Bowling Green | 0-0-2 | .000 | 4 | 2-1 | 16 | 0-0 |
| Oregon State | 0-0-0 | .000 | 2 | 0-1 | 8 | 0-0 |
| American | 0-0-1 | .000 | 1 | 0-0 | 13 | 0-0 |
| Wisconsin | 0-0-0 | .000 | 0 | 0-0 | 3 | 0-0 |
| at Rutgers | | | | | | |
| St. John's | | | | | | |
| Connecticut | | | | | | |
| at USF | | | | | | |
| at Georgetown | | | | | | |
| Syracuse | | | | | | |
| UW-Milwaukee | | | | | | |
| Louisville | | | | | | |
| Cincinnati | | | | | | |
| at DePaul | | | | | | |
| at Notre Dame | | | | | | |
| at Villanova | | | | | | |
| at Seton Hall | | | | | | |
| West Virginia | | | | | | |
| Pittsburgh | | | | | | |

Career Highs

| | | |
|----------------|----|----------------------------------|
| Kills | 3 | twice |
| Attacks | 8 | Houston Baptist (Sept. 15, 2007) |
| Assists | 5 | Houston Baptist (Sept. 15, 2007) |
| Digs | 26 | South Dakota St. (Nov. 24, 2007) |
| Aces | 5 | at West Virginia (Oct. 28, 2007) |
| Blocks | - | - |

15 • Caryn Mastandrea

| 2008 | K-E-TA | Pct. | A | SA-SE | DIG | BS-BA |
|----------------------|--------|-------|----|-------|-----|-------|
| Houston | 0-1-6 | -.016 | 31 | 1-2 | 4 | 0-0 |
| Chattanooga | 6-0-8 | .750 | 14 | 2-1 | 9 | 0-0 |
| Tennessee | 3-0-4 | .750 | 17 | 0-1 | 5 | 0-0 |
| vs Clemson | 1-0-1 | 1.000 | 11 | 1-0 | 3 | 0-0 |
| at Northern Iowa | 2-0-8 | .250 | 25 | 0-1 | 5 | 0-0 |
| vs Northern Illinois | 6-1-11 | .455 | 39 | 0-0 | 5 | 0-0 |
| Temple | 5-1-8 | .500 | 50 | 2-0 | 16 | 0-2 |
| Green Bay | 2-4-15 | -.133 | 48 | 1-1 | 15 | 0-0 |
| Bowling Green | 7-0-18 | .389 | 46 | 2-3 | 11 | 0-0 |
| Oregon State | 5-1-11 | .364 | 38 | 0-3 | 5 | 0-2 |
| American | 6-1-16 | .312 | 52 | 1-1 | 15 | 0-2 |
| Wisconsin | 7-1-15 | .400 | 24 | 2-0 | 9 | 0-0 |
| at Rutgers | | | | | | |
| St. John's | | | | | | |
| Connecticut | | | | | | |
| at USF | | | | | | |
| at Georgetown | | | | | | |
| Syracuse | | | | | | |
| UW-Milwaukee | | | | | | |
| Louisville | | | | | | |
| Cincinnati | | | | | | |
| at DePaul | | | | | | |
| at Notre Dame | | | | | | |
| at Villanova | | | | | | |
| at Seton Hall | | | | | | |
| West Virginia | | | | | | |
| Pittsburgh | | | | | | |

Career Highs

| | | |
|----------------|----|----------------------------------|
| Kills | 9 | at West Virginia (Oct. 28, 2007) |
| Attacks | 24 | at West Virginia (Oct. 28, 2007) |
| Assists | 52 | American (Sept. 20, 2008) |
| Digs | 16 | Temple (Sept. 12, 2008) |
| Aces | 3 | at West Virginia (Oct. 28, 2007) |
| Blocks | 2 | four times |

Marquette Volleyball Match-by-Match Starters

8/29 Houston:
Bielski, Fisher, Russell, Gonyo, Deelo and Mastandrea. Libero: Angst

8/30 Chattanooga:
Akin, Bielski, Fisher, Gonyo, Russell and Mastandrea. Libero: Deelo

8/30 Tennessee:
Akin, Bielski, Fisher, Gonyo, Russell and Viola. Libero: Deelo

9/5 Clemson:
Akin, Bielski, Fisher, Gonyo, Russell and Vancura. Libero: Deelo

9/6 Northern Iowa:
Bielski, Fisher, Gonyo, Mastandrea, Russell and Vancura. Libero: Deelo

9/7 Northern Illinois:
Bielski, Fisher, Gonyo, Mastandrea, Russell and Vancura. Libero: Deelo

9/12 Temple:
Bielski, Fisher, Gonyo, Mastandrea, Russell and Vancura. Libero: Deelo.

9/13 Green Bay:
Bielski, Fisher, Gonyo, Mastandrea, Russell and Vancura. Libero: Deelo.

9/13 Bowling Green:
Bielski, Fisher, Gonyo, Mastandrea, Russell and Viola. Libero: Deelo.

9/20 Oregon State:
Bielski, Fisher, Gonyo, Mastandrea, Russell and Vancura. Libero: Deelo.

9/20 American:
Angst, Fisher, Gonyo, Mastandrea, Russell and Viola. Libero: Deelo.

9/21 Wisconsin:
Angst, Fisher, Gonyo, Mastandrea, Russell and Viola. Libero: Deelo

Double-Doubles

Leslie Bielski

12 kills-15 digs Sept. 6 vs Northern Ill.

Ashlee Fisher

16 kills-10 digs Sept. 13 Green Bay

Caryn Mastandrea

50 assists-16 digs Sept. 12 Temple
48 assists-15 digs Sept. 13 Green Bay
46 assists-11 digs Sept. 13 Bowling Green
52 assists-15 digs Sept. 20 American

2008 Marquette Volleyball Photo Roster



1 • Ciara Jones



2 • Leslie Bielski



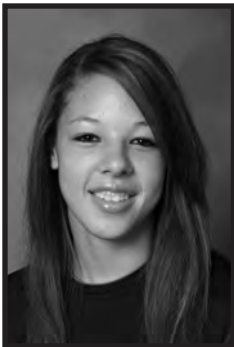
3 • Laira Akin



4 • Terri Angst



5 • Ashlee Fisher



6 • Tiara Russell



7 • Holly Mertens



8 • Jessica Kieser



9 • Alex Coello



10 • Katie Vancura



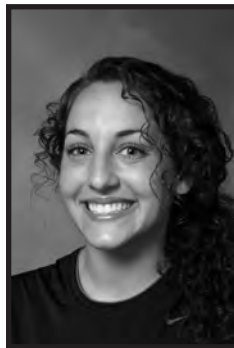
11 • Rabbecka Gonyo



12 • Amy Deelo



13 • Samantha Hertaus



14 • Hailey Viola



15 • Caryn Mastandrea



Marquette Combined Team Statistics (as of Sep 22, 2008)
All matches

| | | | | |
|----------------------------|----------------|----------------|----------------|----------------|
| RECORD: | OVERALL | HOME | AWAY | NEUTRAL |
| ALL MATCHES..... | (5-7) | (4-5) | (0-1) | (1-1) |
| CONFERENCE..... | (0-0) | (0-0) | (0-0) | (0-0) |
| NON-CONFERENCE..... | (5-7) | (4-5) | (0-1) | (1-1) |

| ## | STATS | SUMMARY | ATTACK | | | | | SET | | SERVE | | | DIG | | BLOCKING | | | | | | | |
|----|-------------------|---------|--------|-----|-------|-----|------|-------|-----|-------|----|----|------|----|----------|-------|----|-----|-------|------|----|-----|
| | | | G | K | K/G | E | TA | Pct | A | A/G | SA | SE | SA/G | RE | DIG | D/G | BS | BA | Total | B/G | BE | BHE |
| 5 | FISHER, Ashlee | | 43 | 176 | 4.09 | 83 | 464 | .200 | 7 | 0.16 | 8 | 21 | 0.19 | 12 | 53 | 1.23 | 3 | 19 | 22 | 0.51 | 6 | 0 |
| 2 | BIELSKI, Leslie | | 43 | 120 | 2.79 | 69 | 308 | .166 | 5 | 0.12 | 2 | 4 | 0.05 | 10 | 59 | 1.37 | 4 | 16 | 20 | 0.47 | 11 | 0 |
| 1 | JONES, Ciara | | 4 | 11 | 2.75 | 5 | 23 | .261 | 1 | 0.25 | 0 | 0 | 0.00 | 0 | 2 | 0.50 | 1 | 2 | 3 | 0.75 | 0 | 0 |
| 11 | GONYO, Rabbecka | | 45 | 104 | 2.31 | 36 | 247 | .275 | 10 | 0.22 | 0 | 7 | 0.00 | 0 | 18 | 0.40 | 7 | 35 | 42 | 0.93 | 6 | 0 |
| 10 | VANCURA, Katie | | 43 | 69 | 1.60 | 39 | 211 | .142 | 0 | 0.00 | 0 | 2 | 0.00 | 0 | 10 | 0.23 | 0 | 34 | 34 | 0.79 | 2 | 0 |
| 15 | MASTANDREA, Caryn | | 47 | 50 | 1.06 | 10 | 121 | .331 | 395 | 8.40 | 12 | 13 | 0.26 | 0 | 102 | 2.17 | 0 | 6 | 6 | 0.13 | 6 | 3 |
| 6 | RUSSELL, Tiara | | 47 | 43 | 0.91 | 22 | 119 | .176 | 9 | 0.19 | 4 | 16 | 0.09 | 1 | 17 | 0.36 | 9 | 43 | 52 | 1.11 | 5 | 3 |
| 3 | AKIN, Laira | | 18 | 10 | 0.56 | 2 | 32 | .250 | 78 | 4.33 | 0 | 0 | 0.00 | 0 | 5 | 0.28 | 0 | 12 | 12 | 0.67 | 2 | 1 |
| 14 | VIOLA, Hailey | | 46 | 3 | 0.07 | 1 | 15 | .133 | 20 | 0.43 | 5 | 5 | 0.11 | 5 | 103 | 2.24 | 0 | 0 | 0 | 0.00 | 0 | 1 |
| 12 | DEELO, Amy | | 47 | 1 | 0.02 | 1 | 11 | .000 | 22 | 0.47 | 9 | 4 | 0.19 | 22 | 161 | 3.43 | 0 | 0 | 0 | 0.00 | 0 | 0 |
| 4 | ANGST, Terri | | 47 | 0 | 0.00 | 1 | 4 | -.250 | 10 | 0.21 | 7 | 6 | 0.15 | 11 | 76 | 1.62 | 0 | 0 | 0 | 0.00 | 0 | 1 |
| 8 | KIESER, Jessica | | 5 | 0 | 0.00 | 0 | 1 | .000 | 0 | 0.00 | 0 | 0 | 0.00 | 0 | 1 | 0.20 | 0 | 0 | 0 | 0.00 | 0 | 0 |
| | Team | | | | | | | | | | | | | 11 | | | | | | | | |
| | MARQUETTE..... | | 47 | 601 | 12.79 | 277 | 1586 | .204 | 558 | 11.87 | 47 | 78 | 1.00 | 73 | 610 | 12.98 | 24 | 167 | 107.5 | 2.29 | 41 | 9 |
| | Opponents..... | | 47 | 591 | 12.57 | 245 | 1558 | .222 | 531 | 11.30 | 73 | 93 | 1.55 | 47 | 574 | 12.21 | 24 | 174 | 111.0 | 2.36 | 26 | 4 |

| TEAM STATISTICS | MU | OPP | DATE | OPPONENT | W/L | SCORE | SCORE-BY-GAME | ATTEND |
|----------------------|-------|--------|----------|----------------------|-----|-------|-------------------------------|--------|
| ATTACK..... | | | ^ Aug 29 | HOUSTON | L | 1-3 | 25-23,22-25,22-25,22-25 | 501 |
| Kills..... | 601 | 591 | ^ Aug 30 | CHATTANOOGA | W | 3-0 | 25-11,25-12,25-17 | 223 |
| Errors..... | 277 | 245 | ^ Aug 30 | TENNESSEE | L | 1-3 | 14-25,25-22,22-25,21-25 | 488 |
| Total Attacks.... | 1586 | 1558 | 09/05/08 | vs Clemson | L | 0-3 | 10-25,23-25,17-25 | 129 |
| Attack Pct..... | .204 | .222 | 09/06/08 | at Northern Iowa | L | 0-3 | 20-25,23-25,20-25 | 1053 |
| Kills/Set..... | 12.8 | 12.6 | 09/06/08 | vs Northern Illinois | W | 3-1 | 30-28,25-21,22-25,25-23 | 168 |
| SET..... | | | * Sep 12 | TEMPLE | W | 3-2 | 25-14,18-25,21-25,27-25,15-10 | 462 |
| Assists..... | 558 | 531 | * Sep 13 | GREEN BAY | W | 3-1 | 27-29,25-16,25-12,25-19 | 249 |
| Assists/Set..... | 11.9 | 11.3 | * Sep 13 | BOWLING GREEN | L | 2-3 | 25-21,25-21,16-25,16-25,13-15 | 452 |
| SERVE..... | | | % S | OREGON STATE | L | 1-3 | 19-25,10-25,25-23,19-25 | 240 |
| Aces..... | 47 | 73 | % Sep 20 | AMERICAN | W | 3-2 | 29-27,16-25,22-25,25-18,16-14 | 474 |
| Errors..... | 78 | 93 | % Sep 21 | WISCONSIN | L | 0-3 | 23-25,23-25,15-25 | 831 |
| Aces/Set..... | 1.0 | 1.6 | | | | | | |
| SERVE RECEPTIONS.... | | | | | | | | |
| Errors..... | 73 | 47 | | | | | | |
| Errors/Set..... | 1.6 | 1.0 | | | | | | |
| DEFENSE..... | | | | | | | | |
| Digs..... | 610 | 574 | | | | | | |
| Digs/Set..... | 13.0 | 12.2 | | | | | | |
| BLOCKING..... | | | | | | | | |
| Block Solo..... | 24 | 24 | | | | | | |
| Block Assist..... | 167 | 174 | | | | | | |
| Total Blocks..... | 107.5 | 111.0 | | | | | | |
| Blocks Per Game... | 2.3 | 2.4 | | | | | | |
| Block Errors..... | 41 | 26 | | | | | | |
| Ball handling errors | 9 | 4 | | | | | | |
| ATTENDANCE..... | | | | | | | | |
| Total..... | 3920 | 1053 | | | | | | |
| Dates/Avg Per Date | 9/436 | 1/1053 | | | | | | |
| Neutral site #/Avg | 2/148 | | | | | | | |
| Current win streak | 0 | - | | | | | | |
| Home win streak... | 0 | - | | | | | | |

Marquette Category Leaders (as of Sep 22, 2008)
All matches

| ## | ATTACK (by K) | G | K | K/Game | E | TA | Pct |
|----|-------------------|----|-----|--------|-----|------|-------|
| 5 | FISHER, Ashlee | 43 | 176 | 4.09 | 83 | 464 | .200 |
| 2 | BIELSKI, Leslie | 43 | 120 | 2.79 | 69 | 308 | .166 |
| 11 | GONYO, Rabbecka | 45 | 104 | 2.31 | 36 | 247 | .275 |
| 10 | VANCURA, Katie | 43 | 69 | 1.60 | 39 | 211 | .142 |
| 15 | MASTANDREA, Caryn | 47 | 50 | 1.06 | 10 | 121 | .331 |
| 6 | RUSSELL, Tiara | 47 | 43 | 0.91 | 22 | 119 | .176 |
| 1 | JONES, Ciara | 4 | 11 | 2.75 | 5 | 23 | .261 |
| 3 | AKIN, Laura | 18 | 10 | 0.56 | 2 | 32 | .250 |
| 14 | VIOLA, Hailey | 46 | 3 | 0.07 | 1 | 15 | .133 |
| 12 | DEELO, Amy | 47 | 1 | 0.02 | 1 | 11 | .000 |
| 8 | KIESER, Jessica | 5 | 0 | 0.00 | 0 | 1 | .000 |
| 4 | ANGST, Terri | 47 | 0 | 0.00 | 1 | 4 | -.250 |
| | MARQUETTE..... | 47 | 601 | 12.79 | 277 | 1586 | .204 |
| | Opponents..... | 47 | 591 | 12.57 | 245 | 1558 | .222 |

| ## | KILL (by K) | G | K | K/Game |
|----|-------------------|----|-----|--------|
| 5 | FISHER, Ashlee | 43 | 176 | 4.09 |
| 2 | BIELSKI, Leslie | 43 | 120 | 2.79 |
| 11 | GONYO, Rabbecka | 45 | 104 | 2.31 |
| 10 | VANCURA, Katie | 43 | 69 | 1.60 |
| 15 | MASTANDREA, Caryn | 47 | 50 | 1.06 |
| 6 | RUSSELL, Tiara | 47 | 43 | 0.91 |
| 1 | JONES, Ciara | 4 | 11 | 2.75 |
| 3 | AKIN, Laura | 18 | 10 | 0.56 |
| 14 | VIOLA, Hailey | 46 | 3 | 0.07 |
| 12 | DEELO, Amy | 47 | 1 | 0.02 |
| 4 | ANGST, Terri | 47 | 0 | 0.00 |
| 8 | KIESER, Jessica | 5 | 0 | 0.00 |
| | MARQUETTE..... | 47 | 601 | 12.79 |
| | Opponents..... | 47 | 591 | 12.57 |

| ## | SET (by A) | G | A | A/Game |
|----|-------------------|----|-----|--------|
| 15 | MASTANDREA, Caryn | 47 | 395 | 8.40 |
| 3 | AKIN, Laura | 18 | 78 | 4.33 |
| 12 | DEELO, Amy | 47 | 22 | 0.47 |
| 14 | VIOLA, Hailey | 46 | 20 | 0.43 |
| 11 | GONYO, Rabbecka | 45 | 10 | 0.22 |
| 4 | ANGST, Terri | 47 | 10 | 0.21 |
| 6 | RUSSELL, Tiara | 47 | 9 | 0.19 |
| 5 | FISHER, Ashlee | 43 | 7 | 0.16 |
| 2 | BIELSKI, Leslie | 43 | 5 | 0.12 |
| 1 | JONES, Ciara | 4 | 1 | 0.25 |
| 10 | VANCURA, Katie | 43 | 0 | 0.00 |
| 8 | KIESER, Jessica | 5 | 0 | 0.00 |
| | MARQUETTE..... | 47 | 558 | 11.87 |
| | Opponents..... | 47 | 531 | 11.30 |

| ## | SERVE (by SA) | G | SA | SE | SA/G |
|----|-------------------|----|----|----|------|
| 15 | MASTANDREA, Caryn | 47 | 12 | 13 | 0.26 |
| 12 | DEELO, Amy | 47 | 9 | 4 | 0.19 |
| 5 | FISHER, Ashlee | 43 | 8 | 21 | 0.19 |
| 4 | ANGST, Terri | 47 | 7 | 6 | 0.15 |
| 14 | VIOLA, Hailey | 46 | 5 | 5 | 0.11 |
| 6 | RUSSELL, Tiara | 47 | 4 | 16 | 0.09 |
| 2 | BIELSKI, Leslie | 43 | 2 | 4 | 0.05 |
| 8 | KIESER, Jessica | 5 | 0 | 0 | 0.00 |
| 3 | AKIN, Laura | 18 | 0 | 0 | 0.00 |
| 10 | VANCURA, Katie | 43 | 0 | 2 | 0.00 |
| 11 | GONYO, Rabbecka | 45 | 0 | 7 | 0.00 |
| | MARQUETTE..... | 47 | 47 | 78 | 1.00 |
| | Opponents..... | 47 | 73 | 93 | 1.55 |

| ## | BLOCK (by Total) | G | BS | BA | Total | B/Game | BE |
|----|-------------------|----|----|-----|-------|--------|----|
| 6 | RUSSELL, Tiara | 47 | 9 | 43 | 52.0 | 1.11 | 5 |
| 11 | GONYO, Rabbecka | 45 | 7 | 35 | 42.0 | 0.93 | 6 |
| 10 | VANCURA, Katie | 43 | 0 | 34 | 34.0 | 0.79 | 2 |
| 5 | FISHER, Ashlee | 43 | 3 | 19 | 22.0 | 0.51 | 6 |
| 2 | BIELSKI, Leslie | 43 | 4 | 16 | 20.0 | 0.47 | 11 |
| 3 | AKIN, Laura | 18 | 0 | 12 | 12.0 | 0.67 | 2 |
| 15 | MASTANDREA, Caryn | 47 | 0 | 6 | 6.0 | 0.13 | 6 |
| 1 | JONES, Ciara | 4 | 1 | 2 | 3.0 | 0.75 | 0 |
| 14 | VIOLA, Hailey | 46 | 0 | 0 | 0.0 | 0.00 | 0 |
| 12 | DEELO, Amy | 47 | 0 | 0 | 0.0 | 0.00 | 0 |
| 4 | ANGST, Terri | 47 | 0 | 0 | 0.0 | 0.00 | 0 |
| | MARQUETTE..... | 47 | 24 | 167 | 107.5 | 2.29 | 41 |
| | Opponents..... | 47 | 24 | 174 | 111.0 | 2.36 | 26 |

| ## | DEFENSE (by Dig) | G | DIG | Dig/G | BHE |
|----|-------------------|----|-----|-------|-----|
| 12 | DEELO, Amy | 47 | 161 | 3.43 | 0 |
| 14 | VIOLA, Hailey | 46 | 103 | 2.24 | 1 |
| 15 | MASTANDREA, Caryn | 47 | 102 | 2.17 | 3 |
| 4 | ANGST, Terri | 47 | 76 | 1.62 | 1 |
| 2 | BIELSKI, Leslie | 43 | 59 | 1.37 | 0 |
| 5 | FISHER, Ashlee | 43 | 53 | 1.23 | 0 |
| 11 | GONYO, Rabbecka | 45 | 18 | 0.40 | 0 |
| 6 | RUSSELL, Tiara | 47 | 17 | 0.36 | 3 |
| 10 | VANCURA, Katie | 43 | 10 | 0.23 | 0 |
| 3 | AKIN, Laura | 18 | 5 | 0.28 | 1 |
| 1 | JONES, Ciara | 4 | 2 | 0.50 | 0 |
| 8 | KIESER, Jessica | 5 | 1 | 0.20 | 0 |
| | MARQUETTE..... | 47 | 610 | 12.98 | 9 |
| | Opponents..... | 47 | 574 | 12.21 | 4 |

| ## | RECEIPT (by TA) | G | RE | RE/Gm |
|---------|-----------------|----|----|-------|
| TM Team | | 47 | 11 | 0.23 |
| 12 | DEELO, Amy | 47 | 22 | 0.47 |
| 2 | BIELSKI, Leslie | 43 | 10 | 0.23 |
| 4 | ANGST, Terri | 47 | 11 | 0.23 |
| 14 | VIOLA, Hailey | 46 | 5 | 0.11 |
| 5 | FISHER, Ashlee | 43 | 12 | 0.28 |
| 6 | RUSSELL, Tiara | 47 | 1 | 0.02 |
| 10 | VANCURA, Katie | 43 | 0 | 0.00 |
| 3 | AKIN, Laura | 18 | 0 | 0.00 |
| | MARQUETTE..... | 47 | 73 | 1.55 |
| | Opponents..... | 47 | 47 | 1.00 |