



MARQUETTE

(4-5)

VOLLEYBALL

Marquette Cheese Bowl

Sept. 20:	Oregon State vs Marquette	noon
	American vs Wisconsin	2 p.m.
	American vs Marquette	6 p.m.
	Oregon State vs Wisconsin	8 p.m.
Sept. 21:	Oregon State vs UW-Milwaukee	12:30 p.m.
	Wisconsin vs Marquette	4 p.m.

Marquette and Wisconsin Face off for First Time in Nine Years

When Marquette and Wisconsin play each other on Sunday it will be the first meeting between the two schools since Sept. 17, 1999, a match which the Badgers won, 3-0. Wisconsin leads the all-time series, 17-2

Mastandrea Honored Once Again

In recognition of her outstanding play this past weekend in the Marquette Challenge, setter **Caryn Mastandrea** was named to the BIG EAST Honor Roll for the week of Sept. 15. She is the first Golden Eagle to be named to the Honor Roll during the 2008 season. It is also the first such honor of her career.

Double(-Double) Your Pleasure

In the Marquette Challenge, two Golden Eagles recorded double-doubles. Senior **Ashlee Fisher** recorded 16 kills and had a career-high 10 digs in MU's win over Green Bay. Meanwhile, junior **Caryn Mastandrea** had a double-double in all three games over the weekend. Mastandrea tied a career high with 50 assists and 16 digs against Temple, 48 assists and 15 digs against Green Bay and narrowly missed a triple-double with seven kills, 46 assists and 11 digs against Bowling Green in the tournament finale.

Three Named to Marquette Challenge All-Tournament Team

Junior setter **Caryn Mastandrea** earned all-tournament recognition for the second consecutive weekend when she was named to the to the Marquette Challenge All-Tournament Team. Also joining Mastandrea on the team were senior outside hitter **Ashlee Fisher** and sophomore middle blocker **Rabbecka Gonyo**.

Time Warner Cable Sports, Channel 32

Over the course of the 2008 season, three Marquette volleyball matches will be televised locally by TWC Sports 32.

Sept. 13	vs Green Bay
Sept. 21	vs Wisconsin
Oct. 20	vs UWM

Times and dates that the Wisconsin-Marquette match will be aired:

Wednesday, Sept. 24:	7 p.m.
Thursday, Sept. 25:	12:30 p.m.
Saturday, Sept. 27:	7 p.m.

2008 SCHEDULE

Date	Opponent	Time/Result
------	----------	-------------

AUGUST

Aug. 29 - Aug. 30 – Marquette Kick-Off Tournament

Fri. 29	Houston	L, 3-1
Sat. 30	Chattanooga	W, 3-0
	Tennessee	L, 3-1

SEPTEMBER

Sept. 5-6 – UNI Tournament

Fri. 5	vs Clemson	L, 3-0
Sat. 6	at Northern Iowa	L, 3-0
	vs Northern Illinois	W, 3-1

Sept. 12-13 – Marquette Challenge

Fri. 12	Temple	W, 3-2
Sat. 13	Green Bay	W, 3-1
	Bowling Green	L, 3-2

Sept. 20-21 – Marquette Cheese Bowl

Sat. 20	Oregon State	Noon
	American	6 p.m.
Sun. 21	#13 Wisconsin	4 p.m.

Fri. 26	at Rutgers*	6 p.m.
---------	-------------	--------

OCTOBER

Fri. 3	St. John's*	7 p.m.
Sun. 5	Connecticut*	2 p.m.
Fri. 10	at USF*	6 p.m.
Sun. 12	at Georgetown*	1 p.m.
Sat. 18	Syracuse*	2 p.m.
Mon. 20	UW-Milwaukee	7 p.m.
Fri. 24	Louisville*	7 p.m.
Sun. 26	Cincinnati*	2 p.m.

NOVEMBER

Sat. 1	at DePaul*	2 p.m.
Sun. 2	at Notre Dame*	1 p.m.
Sat. 8	at Villanova*	1 p.m.
Sun. 9	at Seton Hall*	1 p.m.
Fri. 14	West Virginia*	7 p.m.
Sun. 16	Pittsburgh*	2 p.m.

Nov. 21-23 – BIG EAST Tournament; Pittsburgh, Pa.

Nov. 28-29 – Western Michigan Classic.

Fri./Sat.	at Western Michigan	TBA
Fri./Sat.	vs Miami (Ohio)	TBA

All times listed are Central and subject to change
Home matches are bolded and played at the Al McGuire Center

*Denotes BIG EAST match

MARQUETTE MEDIA RELATIONS

Volleyball Contact: Michael Wittliff
Office Phone: 414.288.7447
Fax: 414.288.6519
E-mail: michael.wittliff@marquette.edu
Website: www.GoMarquette.com



Overall Set-by-Set

Match Wins By Set	1	2	3	4	5	Total
Marquette	0	0	1	2	1	4
Opponents	0	0	2	2	1	5

Set Wins By Match	1	2	3	4	5	Total
Marquette	5	5	2	3	1	16
Opponents	4	4	6	3	1	18

Points By Set	1	2	3	4	5	Total
Marquette	201	208	190	161	28	788
Opponents	201	192	204	142	25	764

Marquette Volleyball Individual Awards

Ashlee Fisher

2008 Marquette Challenge All-Tournament

Rabbecka Gonyo

2008 Marquette Challenge All-Tournament

Caryn Mastandrea

2008 UNI Invitational All-Tournament
2008 Marquette Challenge All-Tournament
BIG EAST Honor Roll (Week of Sept. 15)

The Last time a MU player...

Recorded a double-double

Caryn Mastandrea Sept.13 Bowling Green
46 assists-11 digs

Recorded a triple-double

Sarah Vernon Oct. 30, '04 St. Louis
12 kills, 70 assists, 16 digs

Recorded 20+ kills

Ashlee Fisher Sept. 6 vs Northern Ill.
22 kills

Recorded 30+ kills

Kim Todd Nov. 14, '06 Louisville
31 kills

Recorded 20+ digs

Amy Deelo Sept. 13 Green Bay
26 digs

Recorded 30+ digs

Jamie Mueller Sept. 8, '06 Pacific
41 digs

Recorded 50+ assists

Caryn Mastandrea Sept. 12 Temple
50 assists

Recorded 60+ assists

Katie Weidner Nov. 24, '07 S. Dakota St.
85 assists

Recorded 10+ blocks

Jenn Brown Sept. 14, '07 Belmont
10 blocks

Recorded 15+ blocks

Jenn Brown Nov.17, '06 Pittsburgh
19 blocks

Marquette Volleyball Match Notes

Sept. 20-21, 2008

Mastandrea Honored

Junior setter **Caryn Mastandrea** was named to the UNI Invitational All-Tournament Team following her performance at the Invitational. Mastandrea averaged 25 assists per match over the three matches against Clemson, Northern Iowa and Northern Illinois. In the win against Northern Illinois she had 39 assists, six kills and five digs.

Golden Eagles Block Party

The Golden Eagle's front line currently is tied for fourth in the BIG EAST in blocks with 2.24 per set. On the season Marquette has 78.5 total blocks.

Active BIG EAST Coaches Career Victories

Veronica Hammersmith	WVU	558
Debbie Brown	ND	527
Leonid Yelin	UL	420
Pati Rolf	MU	406



Pronunciation

Laira Akin	LAIR-uh A-kin
Alexandra Coello	co-EL-o
Amy Deelo	dee-low
Rabbecka Gonyo	gon-YO
Samantha Hertaus	HER-tau
Ciara Jones	SEE-AIR-uh
Jessica Keiser	KEY-zer
Caryn Mastandrea	MA-san-dree-uh

2008 Marquette Roster

No.	Name	Pos.	Class	Ht.	Hometown	High School/College
1	Ciara Jones	OH	Fr.	5-10	Orlando, Fla.	Edgewater
2	Leslie Bielski	OH	So.	6-0	Chanhassen, Minn.	Chaska
3	Laira Akin	S	Fr.	6-0	Blue Springs, Mo.	Oakwood Academy
4	Terri Angst	DS/L	Sr.	5-7	New Berlin, Wis.	Catholic Memorial
5	Ashlee Fisher	OH	Sr.	5-11	West Bend, Wis.	West/Kentucky
6	Tia Russell	MB	Fr.	5-10	Brooklyn Park, Minn.	Osseo Senior
7	Holly Mertens	MB	Fr.	6-0	Stanley, Wis.	Stanley-Boyd
8	Jessica Kieser	DS	Sr.	5-4	Verona, Wis.	Verona
9	Alex Coello	DS	Fr.	5-2	South Elgin, Ill.	St. Charles East
10	Katie Vancura	RS	So.	6-1	Waukesha, Wis.	Mukwonago
11	Rabbecka Gonyo	MB	So.	6-4	Ingleside, Ill.	Grant Community
12	Amy Deelo	DS/L	Fr.	5-8	St. Louis, Mo.	Cor Jesu Academy
13	Sammie Hertaus	DS	Fr.	5-7	New Prague, Minn.	New Prague
14	Hailey Viola	DS	Jr.	5-7	Pleasant Prairie, Wis.	St. Joseph
15	Caryn Mastandrea	S	Jr.	5-8	Downers Grove, Ill.	Downers Grove South

Head Coach: Pati Rolf, seventh season (North Dakota State, 1992)
Assistant Coaches: Erica Heisser, fourth season (Marquette, 2005)
Raftyn Rignell, second season (Connecticut, 2004)

2008 Marquette Volleyball Results

Date	Opponent	W	L	Set Scores				Kills	Digs	Blocks
Aug. 29-30 — Marquette Kick-Off Tournament; Al McGuire Center										
Aug. 29	Houston		L	23-25	25-22	22-25	22-25	Fisher 13	Angst 11	Gonyo 6
Aug. 30	Chattanooga	W		25-11	25-12	25-17		Fisher 18	Deelo 13	Vancura 5
	Tennessee		L	14-25	25-22	22-25	21-25	Fisher 13	Deelo 10	Russell 6
Sept. 5-6 — UNI Invitational; Cedar Falls, Iowa										
Sept. 5	vs Clemson		L	10-25	23-25	17-25		Bielski 13	Deelo 9	Gonyo 5
Sept. 6	at Northern Iowa		L	20-25	23-25	20-25		Bielski 12	Bielski, Viola 9	Bielski 4
	vs Northern Illinois	W		30-28	25-21	22-25	25-23	Fisher 22	Deelo 21	Akin, Gonyo, Russell 3
Sept. 12-13 — Marquette Challenge; Al McGuire Center										
Sept. 12	Temple	W		25-14	18-25	21-25	27-25	15-10	Fisher 19	Mastandrea 16
Sept. 13	Green Bay	W		27-29	25-16	25-12	25-19		Gonyo 18	Deelo 26
	Bowling Green		L	25-21	25-21	16-25	16-25	13-15	Bielski 14	Viola 16
Sept. 20-21 — Marquette Cheese Bowl; Al McGuire Center										
Sept. 20	Oregon State									
	American									
Sept. 21	Wisconsin									
Sept. 26	at Rutgers*									
Oct. 3	St. John's*									
Oct. 5	Connecticut*									
Oct. 10	at USF*									
Oct. 12	at Georgetown*									
Oct. 18	Syracuse*									
Oct. 20	Wis.-Milwaukee									
Oct. 24	Louisville*									
Oct. 26	Cincinnati*									
Nov. 1	at DePaul*									
Nov. 2	at Notre Dame*									
Nov. 8	at Villanova*									
Nov. 9	at Seton Hall*									
Nov. 14	West Virginia*									
Nov. 16	Pittsburgh*									
Nov. 28-29 — Western Michigan Classic										
Nov. 28/29	Western Michigan									
Nov. 28/29	Miami (Ohio)									

Record Breakdown

Overall Record	4-5	BIG EAST Record	0-0
Home	3-3	BIG EAST at Home	0-0
Road	0-1	BIG EAST on the Road	0-0
Neutral	1-1		

* denotes BIG EAST Contest

Attendance

Site	Total	MP	Avg.	High
Home	2,375	6	396	501 (Aug. 29 vs Houston)
Away	1,053	1	1,053	1,053 (Sept. 7 at UNI)
Neutral	297	2	148	-
Season	3,725	9	414	1,053 (Sept. 7 at UNI)

2008 Match Superlatives

Statistic	Player	Opponent
K	22	Ashlee Fisher vs Northern Ill.
TA	53	Ashlee Fisher vs Northern Ill.
Pct. (min. 10 TA)	64.3 (18-0-28)	Ashlee Fisher Chattanooga
Ast	50	Caryn Mastandrea Temple
SA	4	Amy Deelo Bowling Green
Digs	26	Amy Deelo Green Bay
BS	3	Tia Russell Temple
BA	6	Rabbecka Gonyo Houston
Pts	23.5	Ashlee Fisher vs Northern Ill.

2008 MU Team Superlatives

K	71	vs Northern Ill.	Digs	89	Green Bay
TA	165	Bowling Green	BS	5	Temple
Pct.	38.9 (42-7-90)	Chattanooga	BA	20	Tennessee
Ast	65	vs Northern Ill.	Pts	81.0	vs Northern Ill.
SA	10	Bowling Green			

2008 Match-by-Match Results



Houston (3)	23	25	25	25
Marquette (1)	25	22	22	22
Aug. 29 • Al McGuire Center • (0-1)				

MILWAUKEE--The Marquette women's volleyball team lost a hard fought match Friday night, falling to the University of Houston in four sets, 3-1 (25-23, 22-25, 22-25, 22-25).

"I was really excited with how we started the match," said Marquette head volleyball coach Pati Rolf. "Our freshmen really showed the potential that this team possesses. Laura [Akin] is coming back from a knee injury and Ciara [Jones] really showed how powerful she could be once we started getting her the balls she needed. Amy Deelo really played some serious defense as well."

On the night both teams struggled with consistency as Houston had 16 service errors to Marquette's 13, four of which came in the pivotal fourth set. At the net, the Golden Eagles also had eight blocking errors.

"It was an error-driven game," said Rolf "If you eliminate errors you will win games. We had too many errors and that put us in a bad position."

Marquette came out firing on all cylinders in the opening set, getting off to a 8-3 lead following a kill by sophomore Rabbecca Gonyo and an attack error by Houston's Kelsey King. The Cougars continued to fight back, eventually tying the set at 15-15 on a kill by Nataliya Panova and took their first lead of the night at 16-15. The back-and-forth battle continued in the first set as Marquette regained the lead after another kill by Gonyo on an assist from junior Caryn Mastandrea. Following Gonyo's fourth kill, Houston called their second timeout but failed to catch the Golden Eagles as Marquette captured the first set, 25-23 on a ferocious volley by freshman Ciara Jones.

Gonyo, Jones and Ashlee Fisher each had four kills in the first set while Mastandrea lead both squads with 13 assists.

The Golden Eagles got off to a slow start in the second set but never trailed by more than four points. After falling behind 7-3, Marquette fired back on a kill by Gonyo and a service ace by Hailey Viola to bring the score to 7-5. After continuing to cut into the Cougars' lead after falling behind by four, the Golden Eagles brought their deficit to 21-19 on an ace by Fisher forcing Houston to call a timeout. Out of the timeout, Leslie Bielski and Jones responded with kills to pull Marquette within one at 23-22 before they ultimately lost the match, 25-22.

A kill by freshman Tiara Russell and an ace from Mastandrea let Marquette take the early advantage in the third set, 3-2. The Cougars came back roaring, forcing Marquette to take a timeout after falling behind 10-4. Following the timeout, Jones and Gonyo responded with kills bring the score to 11-6. Freshman defensive specialist Deelo got into the action with an acrobatic play, as she dove out of bounds to save a ball and struck it back over the net with one hand for a kill. The Golden Eagles used their last timeout of the set upon seeing their deficit grow to eight at 20-12. Following Rolf's use of her final timeout, the Golden Eagles responded with kills from Fisher and Jones, along with four attack errors by the Cougars. Out of a Houston timeout, the Cougars built a lead of five at 24-19. The Golden Eagles would not let Houston close out the set as they played for the set-point. Two kills from Ashlee Fisher on assists from freshman Laura Akin brought Marquette to within two at 24-22 before the Cougars ended the set on a kill from Justine Farmer.

The fourth set mirrored the third as the Golden Eagles struggled to keep pace with the Cougars early on, leading to a Marquette timeout with the score 14-9. Houston took their first set timeout after an attack error by Kinsey Cave and an ace by Terri Angst put the game at 22-16. Coming out of the timeout, Houston responded with an ace and a kill and awaited match-point at 24-16. Just as the Golden Eagles had in the first set, they stormed back and brought the set within two at 24-22 following two powerful kills from Jones. Houston eventually ended the match on the next play with a kill from Farmer, who ended the match with a match-high 22 kills.

On the night, Fisher led Marquette with 13 kills, while Jones added 11 and Mastandrea led the squad with 31 assists.

Houston	SP	K-E-TA	PCT	A	SA	SE	RE	DIG	BS	BA	BH	BHE	PTS
CAVE, Kinsey	4	5-15	.000	2	0-2	0	4	0-2	0	0	0	0	6.0
PANOVA, Nataliya	4	11-23	.391	0	1-3	1	6	0-1	0	0	0	0	12.5
KING, Kelsey	4	1-2-4	-.250	35	1-2	1	4	0-3	1	0	0	0	3.5
FARMER, Justine	4	22-40	.400	0	1-2	2	8	1-1	0	0	0	0	24.5
FREITAS, Barbara	4	2-3-9	-.111	1	1-4	0	2	0-4	0	0	0	0	5.0
ZHARUK, Lucy	4	6-2-18	.222	0	0-0	1	0	2-4	0	0	0	0	10.0
ZAJUREK, Ingrida	2	1-0-3	.333	0	0-0	0	0	0-1	0	0	0	0	1.5
CARSON, Amanda	4	1-0-1	1.000	0	2-3	0	12	0-0	0	0	0	0	3.0
CARDOSO DESA, Aik	2	0-0-0	.000	3	1-0	0	1	0-0	0	0	0	0	1.0
BAKER, Samantha	2	0-0-0	.000	1	0-0	0	1	0-0	1	0	0	0	0.0
Totals	4	49-20-113	.257	42	7-16	5	38	3-16	2	0	0	0	67.0

Marquette	S-P	K-E-TA	PCT	A	SA	SE	RE	DIG	BS	BA	BH	BHE	PTS
BIELSKI	4	9-6-22	.136	1	1-0	1	3	0-3	1	0	0	0	11.5
FISHER	4	13-10-35	.086	1	1-3	2	7	0-2	1	0	0	0	15.0
RUSSELL	4	4-3-12	.083	0	0-0	0	0	0-2	2	0	0	0	5.0
GONYO	4	9-4-20	.250	0	0-5	0	3	0-6	2	0	0	0	12.0
DEELO	4	1-0-2	.500	0	0-1	0	6	0-0	0	0	0	0	1.0
MASTANDREA	4	0-1-6	.167	31	1-2	0	4	0-0	2	0	0	0	1.0
JONES	4	11-5-23	.251	1	0-0	0	2	1-2	0	0	0	0	13.0
AKIN	2	2-0-1	.667	8	0-0	0	2	0-1	0	0	0	0	2.5
ANGST	4	0-0-0	.000	0	1-2	2	11	0-0	0	0	0	0	1.0
KIESER	1	0-0-1	.000	0	0-0	0	0	0-0	0	0	0	0	0.0
VIOLA	3	0-0-0	.000	0	1-0	0	2	0-0	0	0	0	0	1.0
Team													2
Totals	4	49-29-124	.161	43	5-13	7	40	1-16	8	0	0	0	63.0

Chattanooga (0)	11	12	17
Marquette (3)	25	25	25
Aug. 30 • Al McGuire Center • (1-1)			

MILWAUKEE--The Marquette women's volleyball team easily dispatched the Chattanooga Lady Mocs Saturday afternoon in their second match of the season, 3-0 (25-11, 25-12, 25-17). Leading the way for the Golden Eagles was senior Ashlee Fisher with 18 kills while setters Laura Akin and Caryn Mastandrea contributed 12 and 14 assists, respectively. Fisher's zero errors in the match helped her post a 64.3 attack percentage, while Akin and Mastandrea spent time on the floor together as Rabbecca Gonyo was held out of action for the first two sets.

"The upperclassmen really held it together this afternoon," said head volleyball coach Pati Rolf.

In the first set, with the score at 9-7 in Marquette's favor, ten straight points by the Golden Eagles effectively put the set and eventually the match out of reach. Starting the rally with a kill was Caryn Mastandrea who also pitched in two service aces and two assists during the run. Mastandrea closed out the scoring in the first set with a kill as well.

"Caryn really had a great game and moved the ball around well," said Rolf.

Continuing her solid play in the second set was freshman Amy Deelo, who recorded 13 kills and four assists as the libero. Deelo helped the Golden Eagles out to a 7-2 lead in the second set and Marquette never looked back, only allowing the Lady Mocs to score one more point than they did in the first frame.

With the Golden Eagles up two sets to none, Gonyo returned to the floor in the third and hammered home three kills on four attacks while Fisher's six attacks netted seven kills. Akin added nine assists in the frame.



Senior outside hitter Ashlee Fisher

Chattanooga	SP	K-E-TA	PCT	A	SA	SE	RE	DIG	BS	BA	BH	BHE	PTS
NETHERY, Laura	3	5-4-12	.083	1	0-0	0	0	0-1	0	0	0	0	5.5
KUHN, Ellie	3	3-1-8	.250	0	2-0	0	1	0-1	1	0	0	0	5.5
CONNOR, Cassie	3	1-2-8	-.125	13	0-3	0	1	0-0	0	0	0	0	1.0
KULLAK, Aurore	3	1-4-12	-.250	0	1-0	0	4	0-0	0	0	0	0	2.0
SCOTT, Jessica	3	7-2-14	.357	0	0-1	0	4	0-2	0	0	0	0	8.0
YEAGER, Ashley	3	5-2-20	.150	1	0-0	3	11	0-0	0	0	0	0	5.0
BARNES, Courtney	1	0-0-3	.000	0	0-0	0	0	0-0	0	0	0	0	0.0
HARVILLE, Stephanie	2	0-2-5	-.400	0	0-0	2	0	0-0	0	0	0	0	0.0
HUFF, Michaela	1	0-0-0	.000	2	0-0	0	0	0-0	0	0	0	0	0.0
NEWBERRY, Lara	3	0-0-1	.000	1	0-1	1	11	0-0	0	0	0	0	0.0
CHASTAIN, Bailee	2	0-0-2	.000	1	0-1	0	0	0-0	1	0	0	0	0.0
Team													1
Totals	3	22-17-85	.059	19	3-6	7	32	0-4	2	0	0	0	27.0

Marquette	GP	K-E-TA	PCT	A	SA	SE	RE	DIG	BS	BA	BH	BHE	PTS
BIELSKI	3	7-3-16	.250	0	0-0	0	4	0-1	2	0	0	0	7.5
AKIN	3	4-1-11	.273	12	0-0	0	0	0-4	0	0	0	0	6.0
FISHER	3	18-0-28	.643	0	1-3	0	5	0-2	1	0	0	0	20.0
RUSSELL	3	4-1-13	.231	1	0-0	0	3	0-4	0	0	0	0	6.0
VANCURA	3	0-2-8	-.250	0	0-0	0	9	0-0	0	0	0	0	2.5
MASTANDREA	3	6-0-8	.750	14	2-1	0	9	0-0	1	0	0	0	8.0
ANGST	3	0-0-0	.000	2	2-1	0	5	0-0	0	0	0	0	2.0
KIESER	2	0-0-0	.000	0	0-0	0	0	0-0	0	0	0	0	0.0
GONYO	1	3-0-4	.750	0	0-0	0	0	0-2	0	0	0	0	4.0
DEELO	3	0-0-2	.000	4	2	0-1	13	0-0	0	0	0	0	2.0
VIOLA	3	0-0-0	.000	3	0	0-0	1	0-0	1	0	0	0	1.0
Team													2
Totals	3	42-7-90	.389	36	7	7-3	40	0-8	4	1	0	0	58.0

Tennessee (3)	25	22	25	25
Marquette (1)	14	25	22	21
Aug. 30 • Al McGuire Center • (1-2)				

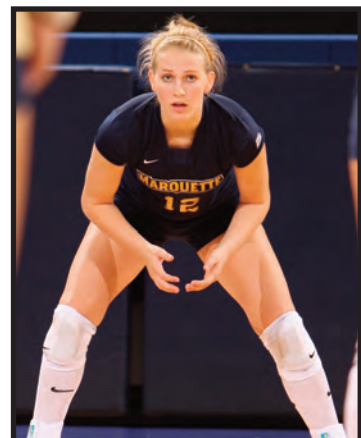
MILWAUKEE --The Marquette women's volleyball team dropped a tough match to the Tennessee Lady Vols in the final game of the Marquette Kick-off Tournament, 3-1 (25-14, 22-25, 25-22, 25-21).

"The upperclassmen really held it together this afternoon and we had two solid games," said head volleyball coach Pati Rolf. Marquette got off to a fast start in the first set against the Vols, taking a 4-1 lead on a kill by senior Ashlee Fisher. After dominating the Mocs this afternoon, the Golden Eagles struggled to continue that momentum and consistency in the first frame against Tennessee. With the score at 9-8 in Tennessee's favor, the Vols went on a 16-6 run to close out the first set.

In the second set the Marquette squad the crowd had seen in the earlier match returned to take the set by the score of 25-22. Fisher accounted for four kills in the stanza while freshman Laura Akin had 6 assists for the Golden Eagles.

Marquette got off to a sluggish start after the break, falling behind the Lady Vols, 7-3 on an attack error by Fisher. After fighting back to cut the deficit to one at 11-10, the Golden Eagles could never get any closer in the third frame, dropping it 25-22.

The fourth and final set saw Marquette get off to a better start as the lead went back-and-forth throughout the stanza. After Marquette pulled within two on a kill by Fisher at 22-20, the Lady Vols pulled away and took the final points of the match, winning the set, 25-21.



Freshman libero Amy Deelo

Tennessee	GP	K-E-TA	PCT	A	SA	SE	RE	DIG	BS	BA	BH	BHE	PTS
HANAKOVA, Michaela	4	0-0-0	.000	25	0-0	0	4	0-0	0	1	0	0	0.0
HINKEY, Leah	4	5-3-13	.154	0	2-2	0	2	0-5	0	0	0	0	9.5
CLARKE, Milan	4	13-9-33	.121	0	0-0	0	1	0-1	0	0	0	0	13.5
MARSHALL, Kylie	4	13-2-27	.407	1	2-0	1	10	0-0	0	0	0	0	15.0
POWE, Farren	4	3-3-9	.000	0	0-0	0	0	0-1	0	0	0	0	3.5
FOWLER, Nikki	4	15-7-34	.235	0	1-0	0	8	0-3	0	0	0	0	17.5
FLYNN, Mimiely	4	9-3-20	.300	1	0-0	0	1	0-2	2	0	0	0	10.0
CHEADE, Carol	1	0-0-0	.000	0	0-0	0	0	0-0	0	0	0	0	0.0
GOODMAN, Chloe	4	0-0-1	.000	1	0-2	0	12	0-0	0	0	0	0	0.0
MAHONEY, Kelsey	4	1-0-1	1.000	25	2-2	0	6	0-0	0	0	0	0	3.0
LAFLAMME, Lauren	1	0-0-0	.000	0	0-0	0	1	0-0	0	0	0	0	0.0
LOYD, Jave	1	0-0-0	.000	0	0-0	0	0	0-0	0	0	0	0	0.0
Totals	4	59-27-138	.232	53	7-6	1	45	0-12	2	1	0	0	72.0

Marquette	GP	K-E-TA	PCT	A	SA	SE	RE	DIG	BS	BA	BH	BHE	PTS
BIELSKI	4	10-5-23	.217	2	0-0	0	4	1-2	3	0	0	0	12.0
AKIN	4	1-1-5	.000	21	0-0	0	2	0-3	1	0	0	0	2.5
FISHER	4	13-11-49	.041	0	0-2	2	4	0-4	0	0	0	0	15.0
RUSSELL	4	3-4-12	-.083	1	0-1	0	2	1-5	0	0	0	0	6.5
GONYO	4	11-2-21	.493	2	0-0	0	3	1-4	0	0	0	0	14.0
VIOLA	4	0-0-1	.000	2	1-0	1	7	0-0	0	0</			

2008 Match-by-Match Results



Clemson (3)	25	25	25
Marquette (0)	10	23	17
Sept. 5 • Cedar Falls, Iowa • (1-3)			

MILWAUKEE-- The Marquette women's volleyball team dropped a match to the Clemson Tigers Friday afternoon in the first day of competition at the UNI Invitational, 3-0 (25-10, 25-23, 25-17). Leading the way for the Golden Eagles were sophomores Leslie Bielski with 13 kills and Rabbecca Gonyo with five blocks and freshman Amy Deelo with nine digs and Laura Akin with 15 assists.

The team showed a lot of energy and a lot of effort tonight," said head coach Pati Rolf. "Clemson had a really mature team with a lot of experience. We are a young squad and we just have to keep playing."

Clemson came out strong in the first set as they rushed out to a 6-1 lead. Marquette failed to recover in the first set from the slow start, dropping the set, 25-10.

The match's second set saw Marquette match Clemson's early intensity as they stretched the Tigers to the brink. The Clemson lead fluctuated early in the set as Marquette tied it up at five a piece following a kill by Bielski. With the score notted at 15-5, Clemson mounted a rally to put them on top at 12-5 before the Golden Eagles staged a furious comeback.

Marquette then received three-straight kills from Caryn Mastandrea, Ashlee Fisher and Katie Vancura, putting the score at 12-8. With the score at 19-14, Marquette reeled off six of the next seven points to tie the score at 20 on two kills and a service ace by Bielski. Clemson went on to score the set's next four points, leaving them at set point. The Golden Eagles showed that they still had something left in the tank as Fisher hammered home two kills and Rabbecca Gonyo and Vancura assisted on a block to cut Clemson's lead to one at 24-23. Unfortunately for Marquette, Clemson's Danielle Hepburn's kill ended the set at 25-23.

The third set started a lot like the second as the two squads fought for the set's early lead. MU took its first lead of the match at 3-2 on a kill by Fisher just before the Tigers scored seven straight points to put the set at 9-3. A Golden Eagles comeback put the set at 12-11 on another block by Gonyo and Vancura before the Tigers pulled away to score 13 of the match's final 19 points.

Marquette (0)	20	23	20
Northern Iowa (3)	25	25	25
Sept. 6 • Cedar Falls, Iowa • (1-4)			

MILWAUKEE--The Marquette women's volleyball team dropped a match Saturday afternoon to Northern Iowa, 3-0 (25-20, 25-23, 25-20).

Earlier in the day, in the first set of the match against Northern Iowa, Marquette got off to a rough start, falling behind the Panthers 13-7 before mounting a comeback to knot the score at 14-14. After a UNI timeout, the Panthers took back the lead before MU responded with a kill by Vancura and Fisher added another to tie the set at 16-16. UNI built a three point lead at 20-17 before MU rallied to cut their deficit to one at 21-20. The Panthers then reeled off four straight points to take the set 25-20. Bielski led the Golden Eagles in the set with four kills.

The Panthers came out firing in the second set, building their lead quickly to nine at 20-11 before Marquette answered with a run of their own to cut the Panther lead to one at 23-22 on a kill by Bielski. During that run, Fisher accounted for three kills while Bielski added four and a block. UNI proceeded to close out the set, 25-23, even after Bielski added another kill for the Golden Eagles. In the frame, Mastandrea had 10 assists.

The match's last set saw MU and UNI fight for the early lead as a kill by Fisher tied the set at 10-10. UNI then rattled off seven straight points to build a seven point lead at 17-10. After a kill by Mastandrea, the Panthers scored five more points to build the Golden Eagles' deficit to 11 at 22-11. With UNI sitting at match point, MU scored six straight points on a pair of kills from Vancura and Fisher before UNI closed out the set and the match 25-20.

Bielski led the Golden Eagles against UNI with 12 kills, while Fisher added 10. Mastandrea assisted on 25 kills while Bielski led the squad with nine digs and four blocks.



Junior setter Caryn Mastandrea

Marquette (3)	30	25	22	25
Northern Illinois (1)	28	21	25	23
Sept. 6 • Cedar Falls, Iowa • (2-4)				

MILWAUKEE-- The Marquette women's volleyball team defeated Northern Illinois, 3-1 (30-28, 25-21, 22-25, 25-23) after being swept Saturday afternoon by UNI Invitational host Northern Iowa.

After failing to win a set in the first two matches of the UNI Invitational, the Golden Eagles headed into their match Saturday night against Northern Illinois looking for some early success. Marquette took an early lead at 1-0 on a kill by senior Ashlee Fisher before the Huskies reeled off five points to take a 5-1 lead. After tying the set at 6-6 and 7-7, Marquette regained the lead at 8-7 on another kill from Fisher. From there, MU continued to lead until an ace from NIU's Jody Hardwick tied the score at 21-21. After trading the lead back and forth, a block by sophomore Rabbecca Gonyo put Marquette at set point with the score 24-23.

A subsequent service error by junior Katie Vancura tied the score at 24-24 and a kill by the Huskies' Meagan Schoenrock helped Northern Illinois reach 25 points first. Sophomore Leslie Bielski responded with a kill to tie the set at 25-25. The lead exchanged as both squads attempted to take a two point advantage until junior Caryn Mastandrea's kill ended the set at 30-28. In the first set Fisher led Marquette with seven kills while Mastandrea added two kills and 11 assists.

Northern Illinois scored first in the second set but the Golden Eagles responded with five straight points to take a early 5-1 lead. Marquette's lead remained slim until the Huskies took a 13-12 lead on a service ace from Maria Benitez. A kill from Gonyo knotted the score at 14-14 and a block by Gonyo and freshman Laura Akin put MU on top 15-14. Marquette took the set 25-21 as Gonyo closed out the scoring with yet another kill. In the second set, Gonyo led the Golden Eagles with five kills and two blocks.

Following the break, the Huskies came out determined to not allow MU to close out the match in the third set. Much like the second, the third saw NIU get out to a 1-0 lead before Marquette answered with kills from Fisher and Tiara Russell. The Golden Eagles built a two point lead at 12-10 on a kill from Vancura before the Huskies pulled away to take the set 25-22.

Not wanting to leave Cedar Falls without a win, Marquette made sure to not let the match go to a fifth frame by closing out the Huskies in the fourth set. After NIU shot out to a 4-0 lead, the Golden Eagles chased down them the entire game, eventually catching up to them at 21-21 on a kill from Russell. After a point scored by NIU, Fisher hammered a kill to tie the score again at 22-22. From that point, two more kills from Fisher and an attack error by NIU's Katie Walsh ended the match at 25-23.

"It was one of the most exciting matches I have been involved with in the last year and a half," added Rolf. "This young team really dug in and played hard."

Against Northern Illinois, Fisher led MU with 21 kills while Gonyo added 14 and Bielski pitched in 12. Bielski's 12 kills along with her 15 digs allowed her to notch Marquette's first double-double of the season and libero Amy Deelo led MU with 21 digs while Mastandrea had 39 assists.

For her efforts during the two-day event, Mastandrea was the lone Golden Eagle named to the UNI Invitational All-Tournament Team.

Clemson	GP	K-E-TA	PCT	A	SA-SE	RE	DIG	BS-BABE	BHE	PTS
Fennell, Brittany	3	3-1-9	.222	0	0-0	0	0	0-3	0	4.5
Abbott, Jeannette	3	10-2-19	.421	0	1-0	1	2	0-2	0	12.0
Hepburn, Danielle	3	9-3-15	.400	0	0-0	0	4	1-6	0	13.0
Hayes, Lacy	3	0-0-4	.000	1	0-0	0	1	1-0	1	1.0
Proctor, Lia	3	13-4-29	.310	1	2-1	0	3	0-3	0	16.5
Murphy, Kelsey	3	1-1-3	.000	30	0-0	0	6	1-4	1	4.0
Hinemeyer, Meghan	3	0-1-1	-1.000	0	2-0	1	7	0-0	0	2.0
Ege, Didem	3	0-0-0	.000	1	1-0	0	9	0-0	0	1.0
Totals	3	36-12-80	.300	33	6-1	2	32	3-18	2	54.0

Marquette	GP	K-E-TA	PCT	A	SA-SE	RE	DIG	BS-BABE	BHE	PTS
BIELSKI	3	13-11-38	.053	1	1-2	1	6	0-0	1	14.0
AKIN	3	1-0-3	.333	15	0-0	0	0	0-0	1	1.0
FISHER	3	12-5-26	.269	0	0-0	0	1	0-0	0	12.0
RUSSELL	3	0-0-1	.000	1	0-1	0	0	0-1	0	1.5
VANCURA	3	1-4-14	.214	0	0-0	0	1	0-4	0	3.0
GONYO	3	6-5-18	.056	1	0-0	0	1	2-3	0	9.5
ANGST	3	0-0-1	.000	1	0-0	1	1	0-0	0	0.0
DEELO	3	0-0-0	.000	1	0-0	2	9	0-0	0	0.0
VIOLA	3	0-0-0	.000	1	0-1	1	7	0-0	0	0.0
MASTANDREA	3	1-0-1	1.000	11	1-0	0	3	0-0	1	2.0
Team										1
Totals	3	34-25-102	.088	32	2-4	6	29	2-8	2	42.0

Marquette	GP	K-E-TA	PCT	A	SA-SE	RE	DIG	BS-BABE	BHE	PTS
BIELSKI	3	12-8-29	.138	0	0-0	2	9	2-2	1	15.0
FISHER	3	10-1-22	.409	0	0-0	0	4	0-0	0	10.0
RUSSELL	3	2-3-7	-.143	0	0-1	0	1	0-3	0	3.5
VANCURA	3	6-2-17	.235	0	0-0	0	0	0-1	0	6.5
GONYO	3	3-3-15	.000	0	0-0	0	2	0-1	1	3.5
MASTANDREA	3	2-0-8	.250	25	0-4	0	5	0-0	1	2.0
AKIN	2	1-0-5	.200	5	0-0	0	1	0-1	0	1.5
ANGST	3	0-0-0	.000	1	1-0	0	3	0-0	1	1.0
DEELO	3	0-0-0	.000	0	0-1	4	7	0-0	0	0.0
VIOLA	3	0-0-3	.000	1	0-0	0	9	0-0	0	0.0
Totals	3	36-17-106	.179	32	1-3	6	41	2-8	3	43.0

Northern Iowa	GP	K-E-TA	PCT	A	SA-SE	RE	DIG	BS-BABE	BHE	PTS
Payton, Bre	3	4-2-8	.250	32	0-4	0	5	0-4	1	6.0
Stelken, Ashton	3	12-2-17	.588	0	1-0	0	2	1-2	0	15.0
Sampson, Amy	3	8-5-27	.111	0	0-0	0	2	0-1	0	8.5
Aschoff, Shannon	3	9-4-28	.179	5	2-0	0	6	1-3	0	13.5
Buraw, Michelle	3	9-2-16	.438	0	0-0	0	0	0-4	0	11.0
Discher, Beth	3	4-0-12	.333	0	0-0	0	1	0-0	0	4.0
Blankenship, Ellie	3	0-0-0	.000	3	0-0	1	22	0-0	0	0.0
Grunder, Kayla	3	0-0-0	.000	0	1-0	0	4	0-0	0	1.0
Oexmann, Sarah	1	0-1-1	-1.000	0	0-0	0	0	0-0	0	0.0
Saunders, Chelsea	3	0-1-1	-1.000	1	2-1	0	5	0-0	0	2.0
Totals	3	46-17-110	.264	41	6-5	1	47	2-14	1	61.0

Marquette	GP	K-E-TA	PCT	A	SA-SE	RE	DIG	BS-BABE	BHE	PTS
BIELSKI	4	12-5-28	.250	1	0-1	1	15	1-0	1	13.0
FISHER	4	22-5-53	.321	1	0-0	3	3	1-1	0	23.5
RUSSELL	4	5-1-13	.308	0	0-3	0	1	0-3	1	6.5
VANCURA	4	8-7-23	.043	0	0-2	0	1	0-1	0	8.5
GONYO	4	14-1-21	.019	0	0-0	0	0	1-2	0	16.0
MASTANDREA	4	6-1-11	.455	39	0-1	0	5	0-0	0	6.0
AKIN	4	1-0-5	.200	17	0-0	0	0	0-3	1	2.5
ANGST	4	0-0-0	.000	1	1-0	0	6	0-0	0	1.0
DEELO	4	0-0-2	.000	4	0-0	6	21	0-0	0	0.0
VIOLA	4	3-1-4	.500	2	1-0	0	11	0-0	0	4.0
Totals	4	71-21-160	.312	65	2-6	10	63	3-10	3	81.0

Northern Illinois	GP	K-E-TA	PCT	A	SA-SE	RE	DIG	BS-BABE	BHE	PTS
WALSH, Katie	4	1-3-14	-.143	1	0-0	0	1	0-1	0	1.5
JOHNSON, Irene	4	10-3-23	.304	0	0-0	1	1	1-1	1	11.5
TADLA, Amanda	4	2-0-5	.400	46	2-1	0	11	0-0	0	4.0
YATES, Cassie	4	7-3-18	.222	2	0-0	0	2	0-2	0	8.0
SCHOENROCK, Meagan	4	23-8-63	.238	0	0-0	0	6	0-1	1	23.5
MCLAUGHLIN, Allison	4	12-5-31	.226	2	2-2	0	6	0-1	0	14.5
LANG, Monica	3	0-0-0	.000	0	1-0	0	0	0-0	0	1.0
BENTEZ, Maria	4	0-0-0	.000	0	2-0	0	11	0-0	0	2.0
HUGHES, Maddie	4	0-0-1	.000	0	2-1	1	19	0-0	0	2.0
HARDWICK, Jody	4	0-0-0	.000	1	1-1	0	4	0-0	0	1.0
Totals	4	55-22-155	.213	52	10-5	2	61	1-6	2	69.0

2008 Match-by-Match Results



Temple (2)	14	25	25	25	10
Marquette (3)	25	18	21	27	15

Sept. 12 • Al McGuire Center • (3-4)

MILWAUKEE--The Marquette women's volleyball team edged Temple in five sets on Friday night in opening round action of the Marquette Challenge, 3-2 (25-14, 18-25, 21-25, 27-25, 15-10). Down two games-to-one, and 7-0 in the fourth set, Marquette staged a dramatic rally to force a fifth game.

Senior Ashlee Fisher paced the Golden Eagles with 19 kills, while Rabbecca Gonyo, Leslie Bielski, and Katie Vancura each recorded double-digit kills. Gonyo's 14 kills came on 24 attacks with only two errors, allowing her to lead the way for Marquette with a .500 attack percentage. Junior Caryn Mastandrea tied a career-high with 50 assists, while also notching 16 digs for the MU defense.

"We were up and down in today's match," said head coach Pati Rolf. "What this match came down to was discipline and consistency, which comes with maturity. Our kids really showed that this evening."

Marquette jumped to an early 7-4 lead in the first set and would never trail the rest of the way. After Temple tied the set at 8-8, the Golden Eagles used an 11-3 run and extended their lead to eight at 19-11. After MU lengthened their lead to ten at 24-14, Vancura sealed the 25-14 win for Marquette by hammering home her fourth kill of the set. Mastandrea chipped in 10 assists for the Golden Eagles in the first set, while Gonyo was a perfect 5-for-5 on her attacks.

"Becka opened up the middle for us, which allowed the other hitters a lot of other opportunities," said Rolf.

Sets two and three went to the Owls, 25-18 and 25-21. Temple was led by Yun Yi Zhang who posted a match-high 23 kills for Temple, while Ashley Carr also chipped in 15 kills on a .483 hitting percentage. In game two, Marquette was led by Bielski, Fisher, and Gonyo with three kills apiece while Fisher paced the Golden Eagles in the third set with 5 kills. Mastandrea posted 12 assists in each set defeat.

Marquette appeared to be heading for the loss column when Temple jumped out to an early 7-0 lead in set four. However, a service error on the Owls put Marquette on the board and sparked a 13-6 run that tied the set at 13. Both teams traded points until Temple took a 23-21 advantage. From there, it was Fisher's show as the senior recorded four straight kills to even the game at 25-25. A block by freshman Tiarra Russell put the Golden Eagles ahead 26-25 and an attack error by Temple proved to be the game winner for Marquette.

"We were in trouble in the fourth set but we got some big points when we needed them," said Rolf. "The team showed a lot of courage late in the match."

Feeding off the momentum of the fourth set, Marquette led the entire way in set five and posted a 15-10 victory to win the match. Fisher and Vancura each notched three kills and were aided by Mastandrea's 10 assists.

Temple	GP	K-E-TA	PCT	A	SA-SE	RE	DIG	BS-BABE	BHE	PTS
COWDEN, Jacqueline	5	5-4-24	.042	1	0-0	0	1	0-3	0	6.5
ASHMAN, Cayleigh	5	4-3-17	.059	3	3-4	0	0	3-5	0	12.5
LOUDON, Caitlin	5	4-2-16	.125	8	0-0	3	10	0-2	0	5.0
CARR, Ashley	5	15-1-29	.483	0	2-2	1	7	0-1	0	17.5
ZHANG, Yun Yi	5	23-8-47	.319	0	1-1	0	4	1-2	0	26.0
MORRISON, Jackie	5	2-1-5	.200	30	1-1	0	7	0-3	0	4.5
PIERRE, Ariel	5	1-0-3	.333	2	1-4	2	12	0-0	0	2.0
FRANK, Elizabeth	1	0-0-0	.000	0	0-0	0	0	0-0	0	0.0
WHITNEY, Amisa	2	0-1-2	.500	0	0-0	0	0	0-0	0	0.0
Totals	5	54-20-143	.238	44	8-12	6	41	4-16	0	74.0

Marquette	GP	K-E-TA	PCT	A	SA-SE	RE	DIG	BS-BABE	BHE	PTS
BIELSKI	5	13-7-31	.194	0	0-1	2	5	0-1	0	13.5
FISHER	5	19-6-41	.317	0	2-4	2	2	1-1	1	22.5
RUSSELL	5	4-2-10	.200	3	1-2	0	4	3-5	0	10.5
VANCURA	5	12-5-26	.269	0	0-0	0	0	0-2	1	13.0
GONYO	5	14-2-24	.500	4	0-0	0	3	1-0	0	15.0
MASTANDREA	5	5-1-8	.500	50	2-0	0	16	0-2	0	1.0
ANGST	5	0-1-1	1.000	0	1-0	1	7	0-0	0	1.0
KIESEB	2	0-0-0	.000	0	0-0	0	1	0-0	0	0.0
DEELO	5	0-0-1	.000	2	0-1	3	14	0-0	0	0.0
VIOLA	5	0-0-3	.000	1	0-2	0	6	0-0	0	0.0
Totals	5	67-24-145	.297	60	6-10	8	58	5-11	2	83.5

Green Bay (1)	29	16	12	19
Marquette (3)	27	25	25	25

Sept. 13 • Al McGuire Center • (4-4)

MILWAUKEE--The Marquette volleyball team (4-4) defeated the Green Bay Phoenix (3-6) in their first game of the day Saturday in the Marquette Challenge, 3-1 (27-29, 25-16, 25-12, 25-19).

"I thought the team really played well this afternoon," said head coach Pati Rolf. "[Ashlee] Fisher had another great game, as did Caryn [Mastandrea]."

Leading the way for the Golden Eagles once again were senior outside hitter Ashlee Fisher, junior setter Caryn Mastandrea and sophomore middle blocker Rabbecca Gonyo. Fisher had a double-double with 16 kills and 10 digs while Gonyo led MU with 18 kills and four blocks. Freshman libero Amy Deelo led the Golden Eagles with 26 digs and Mastandrea continued her string of solid games with 48 assists and 15 digs.

A kill by sophomore Leslie Bielski started the scoring in the first set as MU took the 1-0 lead. In a set that saw six lead changes and 12 ties, neither team gained much of an advantage. Down 7-8, Katie Vancura slammed home a kill on a set from Mastandrea to tie the game at 8-8. From that point, Marquette took the lead on a service ace from freshman Tiarra Russell and would lead until a kill by Green Bay's Liesl Tesch tied the game at 15-15. After the Phoenix took the lead, MU stayed right with them, eventually tying the game at 23-23, 24-24, 25-25 and 26-26 before taking a 27-26 lead on a kill by Bielski. Green Bay then grabbed three straight points to take the set 29-27. In the first frame, Mastandrea had a set-high 16 assists while Fisher contributed six kills.

The Golden Eagles got off to a slow start in the second set as the Phoenix scored the first three points to take a 3-0 lead before MU responded to tie the game at 3-3 with the help of kills from Mastandrea and Fisher. After the Phoenix took back the lead, MU reclaimed it on a kill from Russell to put the Golden Eagles up 8-7. With the set sitting at 11-11, MU went on a 8-1 run and effectively put the set out of reach, winning it 25-16. Fisher led the way for Marquette in the second stanza with four kills and no errors.

In the third set, the Golden Eagles fell behind once again, trailing Green Bay 4-1. From that point, MU rallied to tie the set at 6-6 before taking the lead on a kill from Katie Vancura at 7-6. Up 15-9, the Golden Eagles scored eight straight points with three kills from Fisher and two from Gonyo to take their largest lead at 23-9. Another kill from Gonyo and an error by Green Bay's Abby Bergsma ended the set at 25-12. In the third set the Phoenix recorded a six attack errors to five kills, leading to a negative attack percentage.

Marquette started off strong in the fourth set as they built a 3-1 advantage after a service ace by Deelo. Green Bay battled back to tie the set at 6-6 before the Golden Eagles took a lead at 7-6 that they would never relinquish, winning the set 25-19 and taking the match.

Green Bay	GP	K-E-TA	PCT	A	SA-SE	RE	DIG	BS-BABE	BHE	PTS
JOYCE, Melissa	4	4-4-14	.000	34	0-1	0	11	0-2	0	5.0
BERGSMAN, Abby	4	6-3-13	.231	0	0-1	0	0	1-2	0	8.0
HINTZE, Nikki	4	16-4-37	.255	2	0-1	3	9	0-2	0	17.0
LYGA, Chelsea	4	0-0-0	.000	0	0-0	0	7	0-0	0	0.0
MISCHLER, Kelly	4	2-2-13	.000	1	0-0	2	0	0-1	2	2.5
VISSER, Holly	4	9-7-39	.051	0	1-2	10	10	0-0	0	10.0
MEULEMANS, Rochellet	0	0-0-0	.000	2	0-1	0	4	0-0	0	0.0
BOHNER, Alison	1	0-0-0	.000	0	0-0	0	0	0-2	0	0.0
TESCH, Liesl	4	9-7-44	.045	0	0-0	0	3	1-0	0	10.0
ELFERING, Megan	4	0-0-0	.000	1	0-0	2	25	0-0	0	0.0
GARROW, Laura	1	0-0-0	.000	0	0-1	0	0	0-0	0	0.0
GITTER, Abbey	1	0-1-3	.333	0	0-0	0	0	0-1	0	0.5
TEAM							2			
Totals	4	46-28-173	.104	40	1-7	7	71	2-10	2	54.0

Marquette	GP	K-E-TA	PCT	A	SA-SE	RE	DIG	BS-BABE	BHE	PTS
BIELSKI	4	8-4-31	.129	0	0-0	0	2	0-2	0	9.0
FISHER	4	16-7-45	.200	0	2-2	10	13	2	0	20.5
RUSSELL	4	7-2-16	.312	1	2-2	3	0-3	1	0	10.5
GONYO	4	18-4-42	.333	0	0-0	1	13	1	0	20.5
VIOLA	4	0-0-1	.000	3	0-0	0	20	0-0	0	0.0
MASTANDREA	4	2-4-15	.133	48	1-1	15	0	0	1	3.0
ANGST	4	0-0-0	.000	0	0-1	1	12	0-0	0	0.0
VANCURA	4	6-0-14	.429	0	0-0	0	0	0-3	1	7.5
DEELO	4	0-0-0	.000	0	2-0	0	26	0-0	0	2.0
Totals	4	57-21-164	.220	53	7-6	1	89	2-14	7	73.0

Bowling Green (3)	21	21	25	25	15
Marquette (2)	25	25	16	16	13

Sept. 13 • Al McGuire Center • (4-5)

MILWAUKEE--The Marquette volleyball team fell to the Bowling Green Falcons after taking the first two sets of Saturday night's match, 3-2 (21-25, 21-25, 25-16, 25-16, 15-13). Pacing the Golden Eagles were sophomore Leslie Bielski with 14 kills, junior Caryn Mastandrea with 46 assists and junior Hailey Viola with 16 digs.

"We had some of the best two games to start but struggled later in the match," said head coach Pati Rolf. "We played very well early on but our consistency and youth caught up with us."

In the first set the Golden Eagles got off to a fast start, taking a 6-1 lead on a kill by senior Ashlee Fisher before three straight service aces by freshman libero Amy Deelo extended the MU lead to 10-2. Coming out of a Bowling Green timeout, the Golden Eagles got kills from junior Katie Vancura and freshman Tiara Russell before Bowling Green went on a run to cut the MU lead to two at 21-19. Following another Bowling Green timeout, Russell recorded her first collegiate service ace to put Marquette up 22-19 and help MU take the first set, 25-21.

The second set started off completely opposite as the first but ended in the same 25-21 victory for the Golden Eagles. MU opened scoring with a service ace by Mastandrea before two kills from Bielski put Marquette on top 6-5. Coming out of a Bowling Green timeout, with the score 10-6, Corey Domek added two kills for the Falcons to cut the lead to 11-8 before the Golden Eagles reeled off five straight points. From there MU kept the Falcons at arms length to take the set 25-21.

Coming out of the intermission, the Falcons looked like a totally different team from the first two frames, building a 7-2 lead before MU called their first timeout of the frame. After the timeout, Gonyo responded with a kill but the Golden Eagles were unable to get much else going as Bowling Green went on a 7-1 run with the score 12-16 to seal their set victory.

The Golden Eagles' woes continued into the fourth frame as they struggled to make consistent contact on their attacks. Bowling Green shot out to a 10-2 lead, forcing MU to take its first timeout of the set. From there, Marquette fought back to shave some points off the lead but really struggled to put much pressure on the Falcons before losing 25-16. In the fourth set, Marquette registered nine errors and 12 kills while Bowling Green's 12 kills came with only one error, leading to an attack percentage of .500 for the Falcons.

Marquette came out with it's back against the wall in the fifth set and looked as though they had recovered from sub-par performances in sets three and four. MU leapt out to a 7-4 lead on consecutive service aces from Viola before Bowling Green came back to tie the game at 11-11. After a Marquette timeout, Vancura responded with a kill to put MU up 12-11. From there the Falcons scored the next two points to put Bowling Green up 13-12, leading to another MU timeout. Following the timeout, two kills by Domek ended the match with the final set going to the Falcons, 15-13.

"We got back on track in set five but it we should have played like that in set three," said Rolf. "Overall we had a good weekend and really took a big step up in our play and confidence."

For their efforts in the Marquette Challenge, Mastandrea, Fisher and Gonyo were named to the Marquette Challenge All-Tournament Team.

Bowling Green	GP	K-E-TA	PCT	A	SA-SE	RE	DIG	BS-BABE	BHE	PTS
DOMEK, Corey	5	15-4-35	.344	0	0-0	0	0	0-2	0	16.0
FISH, Sam	5	6-0-13	.462	51	1-0	8	0-1	0	2	7.5
MOHR, Meghan	5	14-6-29	.265	4	0-0	2	7	0-4	0	17.0
HALM, Kendra	5	14-6-29	.276	0	1-3	0	2	0-8	2	20.0
FACCA, Louise	5	3-1-11	.182	1	1-1	2	9	0-4	0	6.0
LUTHER, Shari	5	10-2-24	.333	0	0-0	1	1	1-3	0	12.5
ZLABIS, Alex	3	0-0-0	.000	0	0-0	1	1	0-0	0	0.0
MEEK, Chelsea	5	1-0-3	.333	2	1-1	0	25	0-0	0	2.0
NETTA, Madison	1	0-0-0	.000	0	0-0	0	1	0-0	0	0.0
ISPHORDING, Susie	5	0-1-1	1.000	1	3-2	2	12	0-0	0	3.0
JACKSON, Kaitlin	3	0-1-4	.250	0	0-0	0	0	0-0	0	0.0
TEAM							3			
Totals	5	64-21-151	.285	59	7-7	10	66	2-22	2	84.0

Marquette	GP	K-E-TA	PCT	A	SA-SE	RE	DIG	BS-BABE	BHE	PTS
BIELSKI	5	14-5-35	.257	0	0-0	1	2	0-4	0	16.0
FISHER	5	12-10-44	.045	0	0-1	2	1	0-1	0	12.5
RUSSELL	5	6-2-11	.364	0	1-3	1	0	1-2	0	9.0
GONYO	5	7-6-27	.037	0	0-0	3	0-5	0	0	9.5
VIOLA	5	0-0-2	.000	4	2-1	1	16	0-0	0	2.0
MASTANDREA	5	7-0-8	.396	46	2-3	0	11	0-0	0	9.0
ANGST	5	0-0-1	.000	0	1-0	1	5	0-0	0	1.0
VANCURA	5	9-5-27	.148	0	0-0	1	0	0-2	0	10.0
DEELO	5	0-0-0	.000	3	4-0	0	14	0-0	0	4.0
TEAM							1			
Totals	5	55-28-165	.164	53	10-8	7	53	1-14	0	73.0

2008 Marquette Volleyball Statistics

1 • Ciara Jones

2008	K-E-TA	Pct.	A	SA-SE	DIG	BS-BA
Houston	11-5-23	26.1	1	0-0	2	1-2
Chattanooga				Did Not Play		
Tennessee				Did Not Play		
vs Clemson				Did Not Play		
at Northern Iowa				Did Not Play		
vs Northern Illinois				Did Not Play		
Temple				Did Not Play		
Green Bay				Did Not Play		
Bowling Green				Did Not Play		
Oregon State						
American						
Wisconsin						
at Rutgers						
St. John's						
Connecticut						
at USF						
at Georgetown						
Syracuse						
UW-Milwaukee						
Louisville						
Cincinnati						
at DePaul						
at Notre Dame						
at Villanova						
at Seton Hall						
West Virginia						
Pittsburgh						

Career Highs

Kills	11		Houston (Aug. 29, 2008)
Attacks	23		Houston (Aug. 29, 2008)
Assists	1		Houston (Aug. 29, 2008)
Digs	2		Houston (Aug. 29, 2008)
Aces	0		-
Blocks	2		Houston (Aug. 29, 2008)

2 • Leslie Bielski

2008	K-E-TA	Pct.	A	SA-SE	DIG	BS-BA
Houston	9-6-22	13.6	1	1-0	3	0-3
Chattanooga	7-3-16	25.0	0	0-0	4	0-1
Tennessee	10-5-23	21.7	2	0-0	4	1-2
vs Clemson	13-11-38	5.3	1	1-2	6	0-0
at Northern Iowa	12-8-29	13.8	0	0-0	9	2-2
vs Northern Illinois	12-5-28	25.0	1	0-1	15	1-0
Temple	13-7-31	19.4	0	0-1	5	0-1
Green Bay	8-4-31	12.9	0	0-0	2	0-2
Bowling Green	14-5-35	25.7	0	0-0	2	0-4
Oregon State						
American						
Wisconsin						
at Rutgers						
St. John's						
Connecticut						
at USF						
at Georgetown						
Syracuse						
UW-Milwaukee						
Louisville						
Cincinnati						
at DePaul						
at Notre Dame						
at Villanova						
at Seton Hall						
West Virginia						
Pittsburgh						

Career Highs

Kills	13		three times
Attacks	38		vs Clemson (Sept. 5, 2008)
Assists	3		West Virginia (Oct. 22, 2006)
Digs	15		vs Northern Illinois (Sept. 6, 2008)
Aces	5		Connecticut (Nov. 2, 2006)
Blocks	12		at USF (Sept. 29, 2006)

3 • Laura Akin

2008	K-E-TA	Pct.	A	SA-SE	DIG	BS-BA
Houston	2-0-3	66.7	8	0-0	2	0-1
Chattanooga	4-1-11	27.3	12	0-0	0	0-4
Tennessee	1-1-5	0.0	21	0-0	2	0-3
vs Clemson	1-0-3	33.3	15	0-0	0	0-0
at Northern Iowa	1-0-5	20.0	5	0-0	1	0-1
vs Northern Illinois	1-0-5	20.0	17	0-0	0	0-3
Temple				Did Not Play		
Green Bay				Did Not Play		
Bowling Green				Did Not Play		
Oregon State						
American						
Wisconsin						
at Rutgers						
St. John's						
Connecticut						
at USF						
at Georgetown						
Syracuse						
UW-Milwaukee						
Louisville						
Cincinnati						
at DePaul						
at Notre Dame						
at Villanova						
at Seton Hall						
West Virginia						
Pittsburgh						

Career Highs

Kills	4		Chattanooga (Aug. 29, 2008)
Attacks	11		Chattanooga (Aug. 29, 2008)
Assists	21		Tennessee (Aug. 30, 2008)
Digs	2		twice
Aces	0		-
Blocks	4		Chattanooga (Aug. 29, 2008)

4 • Terri Angst

2008	K-E-TA	Pct.	A	SA-SE	DIG	BS-BA
Houston	0-0-0	0.0	1	1-2	11	0-0
Chattanooga	0-0-0	0.0	2	2-1	5	0-0
Tennessee	0-0-0	0.0	0	0-1	7	0-0
vs Clemson	0-0-1	0.0	1	0-0	1	0-0
at Northern Iowa	0-0-0	0.0	1	1-0	3	0-0
vs Northern Illinois	0-0-0	0.0	1	1-0	6	0-0
Temple	0-1-1	-100.0	0	1-0	7	0-0
Green Bay	0-0-0	0.0	1	0-1	12	0-0
Bowling Green	0-0-1	0.0	0	1-0	5	0-0
Oregon State						
American						
Wisconsin						
at Rutgers						
St. John's						
Connecticut						
at USF						
at Georgetown						
Syracuse						
UW-Milwaukee						
Louisville						
Cincinnati						
at DePaul						
at Notre Dame						
at Villanova						
at Seton Hall						
West Virginia						
Pittsburgh						

Career Highs

Kills	1		eight times
Attacks	4		Notre Dame (Oct. 12, 2007)
Assists	4		Notre Dame (Oct. 12, 2007)
Digs	22		Belmont (Sept. 14, 2007)
Aces	3		Miami (Fla.) (Aug. 31, 2007)
Blocks	1		three times

5 • Ashlee Fisher

2008	K-E-TA	Pct.	A	SA-SE	DIG	BS-BA
Houston	13-10-35	8.6	1	1-3	7	0-2
Chattanooga	18-0-28	64.3	0	1-3	5	0-2
Tennessee	13-11-49	4.1	0	0-2	4	0-4
vs Clemson	12-5-26	26.9	0	0-0	1	0-0
at Northern Iowa	10-1-22	40.9	0	0-0	4	0-0
vs Northern Illinois	22-5-53	32.1	1	0-0	3	1-1
Temple	19-6-41	31.7	0	2-4	2	1-1
Green Bay	16-7-45	20.0	0	2-2	10	1-3
Bowling Green	12-10-44	4.5	0	0-1	1	0-1
Oregon State						
American						
Wisconsin						
at Rutgers						
St. John's						
Connecticut						
at USF						
at Georgetown						
Syracuse						
UW-Milwaukee						
Louisville						
Cincinnati						
at DePaul						
at Notre Dame						
at Villanova						
at Seton Hall						
West Virginia						
Pittsburgh						

Career Highs

Kills	27		South Dakota State (Nov. 24, 2007)
Attacks	58		Alabama (Nov. 5, 2006)
Assists	3		at West Virginia (Oct. 28, 2007)
Digs	10		Green Bay (Sept. 13, 2008)
Aces	3		Alabama (Nov. 5, 2006)
Blocks	7		Miami (Fla.) (Aug. 31, 2007)

6 • Tia Russell

2008	K-E-TA	Pct.	A	SA-SE	DIG	BS-BA
Houston	4-3-12	8.3	0	0-0	0	0-2
Chattanooga	4-1-13	23.1	1	0-0	0	0-4
Tennessee	3-4-12	-8.3	1	0-1	2	1-5
vs Clemson	0-0-1	0.0	1	0-1	0	0-1
at Northern Iowa	2-3-7	-14.3	0	0-1	1	0-3
vs Northern Illinois	5-1-13	30.8	0	0-3	1	0-3
Temple	4-2-10	20.0	3	1-2	4	3-5
Green Bay	7-2-16	31.2	1	2-2	3	0-3
Bowling Green	6-2-11	36.4	0	1-3	0	1-2
Oregon State						
American						
Wisconsin						
at Rutgers						
St. John's						
Connecticut						
at USF						
at Georgetown						
Syracuse						
UW-Milwaukee						
Louisville						
Cincinnati						
at DePaul						
at Notre Dame						
at Villanova						
at Seton Hall						
West Virginia						
Pittsburgh						

Career Highs

Kills	5		Green Bay (Sept. 13, 2008)
Attacks	16		Green Bay (Sept. 13, 2008)
Assists	3		Temple (Sept. 12, 2008)
Digs	4		Temple (Sept. 12, 2008)
Aces	2		Green Bay (Sept. 13, 2008)
Blocks	8		Temple (Sept. 12, 2008)

2008 Marquette Volleyball Statistics

7 • Holly Mertens

2008	K-E-TA	Pct.	A	SA-SE	DIG	BS-BA
Houston			Did Not Play			
Chattanooga			Did Not Play			
Tennessee			Did Not Play			
vs Clemson			Did Not Play			
at Northern Iowa			Did Not Play			
vs Northern Illinois			Did Not Play			
Temple			Did Not Play			
Green Bay			Did Not Play			
Bowling Green			Did Not Play			
Oregon State						
American						
Wisconsin						
at Rutgers						
St. John's						
Connecticut						
at USF						
at Georgetown						
Syracuse						
UW-Milwaukee						
Louisville						
Cincinnati						
at DePaul						
at Notre Dame						
at Villanova						
at Seton Hall						
West Virginia						
Pittsburgh						

Career Highs

Kills	-	-
Attacks	-	-
Assists	-	-
Digs	-	-
Aces	-	-
Blocks	-	-

8 • Jessica Kieser

2008	K-E-TA	Pct.	A	SA-SE	DIG	BS-BA
Houston	0-0-1	0.0	0	0-0	0	0-0
Chattanooga	0-0-0	0.0	0	0-0	0	0-0
Tennessee			Did Not Play			
vs Clemson			Did Not Play			
at Northern Iowa			Did Not Play			
vs Northern Illinois			Did Not Play			
Temple	0-0-0	0.0	0	0-0	1	0-0
Green Bay			Did Not Play			
Bowling Green			Did Not Play			
Oregon State						
American						
Wisconsin						
at Rutgers						
St. John's						
Connecticut						
at USF						
at Georgetown						
Syracuse						
UW-Milwaukee						
Louisville						
Cincinnati						
at DePaul						
at Notre Dame						
at Villanova						
at Seton Hall						
West Virginia						
Pittsburgh						

Career Highs

Kills	1	South Dakota State (Nov. 24, 2007)
Attacks	1	five times
Assists	2	twice
Digs	17	Belmont (Sept. 14, 2007)
Aces	4	Belmont (Sept. 14, 2007)
Blocks	-	-

9 • Alex Coello

2008	K-E-TA	Pct.	A	SA-SE	DIG	BS-BA
Houston			Did Not Play			
Chattanooga			Did Not Play			
Tennessee			Did Not Play			
vs Clemson			Did Not Play			
at Northern Iowa			Did Not Play			
vs Northern Illinois			Did Not Play			
Temple			Did Not Play			
Green Bay			Did Not Play			
Bowling Green			Did Not Play			
Oregon State						
American						
Wisconsin						
at Rutgers						
St. John's						
Connecticut						
at USF						
at Georgetown						
Syracuse						
UW-Milwaukee						
Louisville						
Cincinnati						
at DePaul						
at Notre Dame						
at Villanova						
at Seton Hall						
West Virginia						
Pittsburgh						

Career Highs

Kills	-	-
Attacks	-	-
Assists	-	-
Digs	-	-
Aces	-	-
Blocks	-	-

10 • Katie Vancura

2008	K-E-TA	Pct.	A	SA-SE	DIG	BS-BA
Houston			Did Not Play			
Chattanooga	0-2-8	-25.0	0	0-0	3	0-5
Tennessee	6-1-17	29.4	0	0-0	0	0-2
vs Clemson	1-4-14	-21.4	0	0-0	1	0-4
at Northern Iowa	6-2-17	23.5	0	0-0	0	0-1
vs Northern Illinois	8-7-23	4.3	0	0-2	1	0-1
Temple	12-5-26	26.9	0	0-0	0	0-2
Green Bay	6-0-14	24.9	0	0-0	0	0-3
Bowling Green	9-5-27	14.8	0	0-0	1	0-2
Oregon State						
American						
Wisconsin						
at Rutgers						
St. John's						
Connecticut						
at USF						
at Georgetown						
Syracuse						
UW-Milwaukee						
Louisville						
Cincinnati						
at DePaul						
at Notre Dame						
at Villanova						
at Seton Hall						
West Virginia						
Pittsburgh						

Career Highs

Kills	8	vs Northern Illinois (Sept. 6, 2008)
Attacks	23	vs Northern Illinois (Sept. 6, 2008)
Assists	1	twice
Digs	3	twice
Aces	0	-
Blocks	5	West Virginia (Oct. 22, 2006)

11 • Rabbecka Gonyo

2008	K-E-TA	Pct.	A	SA-SE	DIG	BS-BA
Houston	9-4-20	25.0	0	0-5	3	0-6
Chattanooga	3-0-4	75.0	0	0-2	0	0-2
Tennessee	11-2-21	42.9	2	0-0	3	1-4
vs Clemson	6-5-18	5.6	1	0-0	1	2-3
at Northern Iowa	3-3-15	0.0	0	0-0	2	0-1
vs Northern Illinois	14-1-21	61.9	0	0-0	0	1-2
Temple	14-2-24	50.0	4	0-0	3	1-0
Green Bay	18-4-42	33.3	0	0-0	1	1-3
Bowling Green	7-6-27	3.7	0	0-0	3	0-5
Oregon State						
American						
Wisconsin						
at Rutgers						
St. John's						
Connecticut						
at USF						
at Georgetown						
Syracuse						
UW-Milwaukee						
Louisville						
Cincinnati						
at DePaul						
at Notre Dame						
at Villanova						
at Seton Hall						
West Virginia						
Pittsburgh						

Career Highs

Kills	18	Green Bay (Sept. 13, 2008)
Attacks	42	Green Bay (Sept. 13, 2008)
Assists	3	three times
Digs	6	Tennessee (Sept. 8, 2007)
Aces	1	Rutgers (Sept. 23, 2007)
Blocks	8	at Connecticut (Nov. 3, 2007)

12 • Amy Deelo

2008	K-E-TA	Pct.	A	SA-SE	DIG	BS-BA
Houston	1-0-2	50.0	0	0-1	6	0-0
Chattanooga	0-0-2	0.0	4	2-0	13	0-0
Tennessee	0-1-1	-100.0	1	0-0	10	0-0
vs Clemson	0-0-0	0.0	1	0-0	9	0-0
at Northern Iowa	0-0-0	0.0	0	0-1	7	0-0
vs Northern Illinois	0-0-2	0.0	4	0-0	21	0-0
Temple	0-0-1	0.0	2	0-1	14	0-0
Green Bay	0-0-0	0.0	0	2-0	26	0-0
Bowling Green	0-0-0	0.0	3	4-0	14	0-0
Oregon State						
American						
Wisconsin						
at Rutgers						
St. John's						
Connecticut						
at USF						
at Georgetown						
Syracuse						
UW-Milwaukee						
Louisville						
Cincinnati						
at DePaul						
at Notre Dame						
at Villanova						
at Seton Hall						
West Virginia						
Pittsburgh						

Career Highs

Kills	1	Houston (Aug. 29, 2008)
Attacks	2	twice
Assists	4	twice
Digs	26	Green Bay (Sept. 13, 2008)
Aces	4	Bowling Green (Sept. 13, 2008)
Blocks	-	-

2008 Marquette Volleyball Statistics

13 • Sammie Hertaus

2008	K-E-TA	Pct.	A	SA-SE	DIG	BS-BA
Houston			Did Not Play			
Chattanooga			Did Not Play			
Tennessee			Did Not Play			
vs Clemson			Did Not Play			
at Northern Iowa			Did Not Play			
vs Northern Illinois			Did Not Play			
Temple			Did Not Play			
Green Bay			Did Not Play			
Bowling Green			Did Not Play			
Oregon State						
American						
Wisconsin						
at Rutgers						
St. John's						
Connecticut						
at USF						
at Georgetown						
Syracuse						
UW-Milwaukee						
Louisville						
Cincinnati						
at DePaul						
at Notre Dame						
at Villanova						
at Seton Hall						
West Virginia						
Pittsburgh						

Career Highs

Kills	-	-
Attacks	-	-
Assists	-	-
Digs	-	-
Aces	-	-
Blocks	-	-

14 • Hailey Viola

2008	K-E-TA	Pct.	A	SA-SE	DIG	BS-BA
Houston	0-0-0	0.0	0	1-0	2	0-0
Chattanooga	0-0-0	0.0	3	0-0	1	0-0
Tennessee	0-0-1	0.0	2	1-0	7	0-0
vs Clemson	0-0-0	0.0	1	0-1	7	0-0
at Northern Iowa	0-0-3	0.0	1	0-0	9	0-0
vs Northern Illinois	3-1-4	50.0	2	1-0	11	0-0
Temple						
Green Bay						
Bowling Green						
Oregon State						
American						
Wisconsin						
at Rutgers						
St. John's						
Connecticut						
at USF						
at Georgetown						
Syracuse						
UW-Milwaukee						
Louisville						
Cincinnati						
at DePaul						
at Notre Dame						
at Villanova						
at Seton Hall						
West Virginia						
Pittsburgh						

Career Highs

Kills	3	twice
Attacks	8	Houston Baptist (Sept. 15, 2007)
Assists	5	Houston Baptist (Sept. 15, 2007)
Digs	26	South Dakota St. (Nov. 24, 2007)
Aces	5	at West Virginia (Oct. 28, 2007)
Blocks	-	-

15 • Caryn Mastandrea

2008	K-E-TA	Pct.	A	SA-SE	DIG	BS-BA
Houston	0-1-6	-1.6	31	1-2	4	0-0
Chattanooga	6-0-8	75.0	14	2-1	9	0-0
Tennessee	3-0-4	75.0	17	0-1	5	0-0
vs Clemson	1-0-1	100.0	11	1-0	3	0-0
at Northern Iowa	2-0-8	25.0	25	0-1	5	0-0
vs Northern Illinois	6-1-11	45.5	39	0-0	5	0-0
Temple	5-1-8	50.0	50	2-0	16	0-2
Green Bay	2-4-15	-13.3	48	1-1	15	0-0
Bowling Green	7-0-18	38.9	46	2-3	11	0-0
Oregon State						
American						
Wisconsin						
at Rutgers						
St. John's						
Connecticut						
at USF						
at Georgetown						
Syracuse						
UW-Milwaukee						
Louisville						
Cincinnati						
at DePaul						
at Notre Dame						
at Villanova						
at Seton Hall						
West Virginia						
Pittsburgh						

Career Highs

Kills	9	at West Virginia (Oct. 28, 2007)
Attacks	24	at West Virginia (Oct. 28, 2007)
Assists	50	twice
Digs	16	Temple (Sept. 12, 2008)
Aces	3	at West Virginia (Oct. 28, 2007)
Blocks	2	three times

Marquette Volleyball Match-by-Match Starters

8/29 Houston:
Bielski, Fisher, Russell, Gonyo, Deelo and Mastandrea. Libero: Angst

8/30 Chattanooga:
Akin, Bielski, Fisher, Russell, Vancura and Mastandrea. Libero: Deelo

8/30 Tennessee:
Akin, Bielski, Fisher, Gonyo, Russell and Viola. Libero: Deelo

9/5 Clemson:
Akin, Bielski, Fisher, Gonyo, Russell and Vancura. Libero: Deelo

9/6 Northern Iowa:
Bielski, Fisher, Gonyo, Mastandrea, Russell and Vancura. Libero: Deelo

9/7 Northern Illinois:
Bielski, Fisher, Gonyo, Mastandrea, Russell and Vancura. Libero: Deelo

9/12 Temple:
Bielski, Fisher, Gonyo, Mastandrea, Russell, and Vancura. Libero: Deelo.

9/13 Green Bay:
Bielski, Fisher, Gonyo, Mastandrea, Russell, and Vancura. Libero: Deelo.

9/13 Bowling Green:
Bielski, Fisher, Gonyo, Mastandrea, Russell, and Viola. Libero: Deelo.

Double-Doubles

Leslie Bielski

12 kills-15 digs Sept. 6 vs Northern Ill.

Ashlee Fisher

16 kills-10 digs Sept. 13 Green Bay

Caryn Mastandrea

50 assists-16 digs Sept. 12 Temple

48 assists-15 digs Sept. 13 Green Bay

46 assists-11 digs Sept. 13 Bowling Green

2008 Marquette Volleyball Photo Roster



1 • Ciara Jones



2 • Leslie Bielski



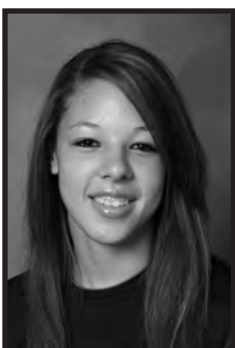
3 • Laira Akin



4 • Terri Angst



5 • Ashlee Fisher



6 • Tiara Russell



7 • Holly Mertens



8 • Jessica Kieser



9 • Alex Coello



10 • Katie Vancura



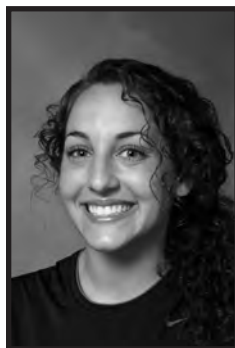
11 • Rabbecka Gonyo



12 • Amy Deelo



13 • Samantha Hertaus



14 • Hailey Viola



15 • Caryn Mastandrea



MARQUETTE CHEESE BOWL ROSTERS

A
M
E
R
I
C
A
N



(5-4)

Head Coach: Barry Goldberg
(Pittsburgh, 1984)- 20th year
Assistant Coach: Aaron Shepardsoon
(Baylor, 1989),
Russ Friedland
(Endicott College, 2005)

No.	Name	Pos.	Ht.	Cl.	Hometown/Previous School
2	Ivana Cebakova	DS	5-10	Jr.	Brno, Czech Republic/Ludvika Danka H.S.
3	Cynammon Burns	DS/L	5-4	Jr.	Dallas, Texas/Trinity Christian Academy
4	Tessa Paganini	L/DS	5-4	Sr.	Sonoma, Calif./Sonoma Valley H.S.
5	Sarah Jankowitz	OH/RS	5-11	Jr.	Sparta, N.J./Sparta H.S.
6	Bianca Richardson	MB	6-3	Fr.	Stafford, Va./Colonial Forge H.S.
7	Rubena Sukaj	OH	6-1	Sr.	Tirana, Albania/Asim Vokshi H.S.
8	Ann Recht	MB	6-8	Jr.	Canby, Ore./La Salle H.S.
10	Rebecca Heath	OH	5-11	Fr.	Naperville, Ill./Naperville Central H.S.
11	Christina Nash	S	6-3	Sr.	Princeton, Fla./Coral Reef
12	Katerina Cinkova	OH	6-1	So.	Morgan Hill, Calif./Live Oak
14	Claire Recht	MB	6-8	Jr.	Canby, Ore./La Salle
16	Magdalena Tekiel	OH	6-1	So.	Warsaw, Poland/Hagerstown CC
18	Deborah Frantz	OH/DS	5-10	So.	Beverly Hills, Calif./Beverly Hills
19	Cassandra Ricketts	RS	6-3	So.	Sandy, Utah/Brighton
20	Angelina Waterman	RS	6-2	So.	Queens, N.Y./Archbishop Molloy

M
A
R
Q
U
E
T
T
E



(4-5)

Head Coach: Pati Rolf
(North Dakota State, 1992)- Seventh year
Assistant Coaches: Erica Heisser
(Marquette, 2005)
Raftyn Rignell (Connecticut, 2004)

No.	Name	Pos.	Ht.	Cl.	Hometown/Previous School
1	Ciara Jones	OH	5-10	Fr.	Orlando, Fla./Edgewater H.S.
2	Leslie Bielski	OH	6-0	So.	Chanhassen, Minn./Chaska H.S.
3	Laura Akin	S	6-0	Fr.	Blue Springs, Mo./Oakwood Academy
4	Terri Angst	L	5-7	Sr.	New Berlin, Wis./Catholic Memorial H.S.
5	Ashlee Fisher	OH	5-11	Sr.	West Bend, Wis./Univ. of Kentucky
6	Tiara Russell	MB	5-10	Fr.	Brooklyn Park, Minn./Osseo Senior H.S.
7	Holly Mertens	MB	6-0	Fr.	Stanley, Wis./Stanley-Boyd H.S.
8	Jessica Kieser	DS	5-4	Sr.	Verona, Wis./Verona H.S.
9	Alexandra Coello	DS	5-2	Fr.	South Elgin, Ill./St. Charles East H.S.
10	Katie Vancura	RS	6-1	Jr.	Waukesha, Wis./Mukwonago H.S.
11	Rabbecka Gonyo	MB	6-4	So.	Ingleside, Ill./Grant Community H.S.
12	Amy Deelo	DS	5-8	Fr.	St. Louis, Mo./Cor Jesu Academy
13	Samantha Hertaus	DS	5-7	Fr.	New Prague, Minn./New Prague H.S.
14	Hailey Viola	DS	5-7	Jr.	Pleasant Prairie, Wis./St. Joseph H.S.
15	Caryn Mastandrea	S	5-8	Jr.	Downers Grove, Ill./Downers Grove South H.S.

O
R
E
G
O
N



(8-2)

Head Coach: Taras Liskevych
(Loyola, 1970)-4th year
Associate Head Coach:
Mark Barnard (Sydney, 1991)
Assistant Coach:
Laura Benzing (Bradley, 2002)

No.	Name	Pos.	Ht.	Cl.	Hometown/Previous School
2	Jill Sawatzky	OH	6-2	So.	St. Andrews, Manitoba/Lord Selkirk Secondary
4	Natalie Hooper	DS/L	5-4	Sr.	Roseburg, Ore./Roseburg HS
5	Ashley Evans	L/DS	5-9	Sr.	West Linn, Ore./West Linn HS
6	Camilla Ah-Hoy	S	5-10	Jr.	Laie, Hawai'i/Kahuku HS
7	Kiersten Sambrailo	MB	6-0	So.	Watsonville, Calif./Aptos HS
8	Betsy Devich	DS/L	5-7	Fr.	Kirkland, Wash./Woodinville HS
9	Rachel Rourke	OH	6-5	Jr.	Queensland, Australia/Caloundra HS
13	Lexie Rathgeber	MB	6-3	Jr.	White Rock, B.C./Elgin Park Secondary
14	Kaitlan Locke	S	5-10	So.	West Linn, Ore./West Linn HS
15	Lauren Rinderknecht	MB	6-0	Sr.	Santa Barbara, Calif./Miami (Fla.)
16	Katie Cochran	OH	6-3	Jr.	Woodburn, Ore./McNary HS
19	Brecht Gijsbertsen	MB	6-3	Jr.	Bunnik, Holland/University of Utrecht
21	Bree Knitter	OH	6-1	Jr.	Fallbrook, Calif./Fallbrook HS
22	Brittney Belshe	DS	5-10	Jr.	Roseburg, Ore./Roseburg HS/Mt. Hood CC

W
I
S
C
O
N
S
I
N

#13



(8-1)

Head Coach: Pete Waite
(Ball State, 1981)- 10th year
Assistant Coaches: Celleen Bayer
(Wisconsin, 2001)
Brian Heffernan (Penn State, 1993)

No.	Name	Pos.	Ht.	Cl.	Hometown/Previous School
1	Morgan Salow	OH/MB	6-4	Sr.	Manchester, Iowa/West Delaware
2	Kim Kuzma	L	5-7	So.	Muncie, Ind./Central
3	Nikki Klingsporn	S	5-10	So.	Oakdale, Minn./Tartan
4	Faye McCormack	DS	5-5	Sr.	Downers Grove, Ill./South
5	Sally Shumaker	DS	5-7	Fr.	Bristol, Wis./Westosha Central
6	Janelle Gabrielsen	S/OH	6-1	Fr.	Menomonee Falls, Wis./Menomonee Falls
7	Brittney Dolgner	OH	6-0	Jr.	Waupun, Wis./Waupun
8	Kelsey Maloney	MB	6-3	Fr.	Centreville, Va./Westfield
9	Katherine Dykstra	RS	6-3	Jr.	Winnetka, Ill./New Trier
10	Katie Schill	OH	6-0	Fr.	La Crosse, Wis./Aquinas
11	Allison Wack	OH	6-0	So.	Salem, Wis./Westosha Central
15	Audra Jeffers	MB	6-2	Sr.	Hartland, Wis./Arrowhead
18	Elle Ohlander	MB	6-6	Fr.	Rockford, Ill./Hononegah
19	Caity DuPont	OH	6-0	Jr.	Muskego, Wis./Muskego

Marquette Combined Team Statistics (as of Sep 15, 2008)
All matches

RECORD:	OVERALL	HOME	AWAY	NEUTRAL
ALL MATCHES.....	(4-5)	(3-3)	(0-1)	(1-1)
CONFERENCE.....	(0-0)	(0-0)	(0-0)	(0-0)
NON-CONFERENCE.....	(4-5)	(3-3)	(0-1)	(1-1)

##	STATS	SUMMARY	-----ATTACK-----					--SET--		----SERVE----			--DIG--		-----BLOCKING-----							
			G	K	K/G	E	TA	Pct	A	A/G	SA	SE	SA/G	RE	DIG	D/G	BS	BA	Total	B/G	BE	BHE
5	FISHER, Ashlee		35	135	3.86	55	343	.233	2	0.06	6	15	0.17	11	37	1.06	3	14	17	0.49	5	0
2	BIELSKI, Leslie		35	98	2.80	54	253	.174	5	0.14	2	4	0.06	8	50	1.43	4	15	19	0.54	11	0
1	JONES, Ciara		4	11	2.75	5	23	.261	1	0.25	0	0	0.00	0	2	0.50	1	2	3	0.75	0	0
11	GONYO, Rabbecca		33	85	2.58	27	192	.302	7	0.21	0	7	0.00	0	16	0.48	6	26	32	0.97	4	0
10	VANCURA, Katie		31	48	1.55	26	146	.151	0	0.00	0	2	0.00	0	6	0.19	0	20	20	0.65	2	0
6	RUSSELL, Tiara		35	35	1.00	18	95	.179	7	0.20	4	13	0.11	1	11	0.31	5	28	33	0.94	4	1
15	MASTANDREA, Caryn		35	32	0.91	7	79	.316	281	8.03	9	9	0.26	0	73	2.09	0	2	2	0.06	5	2
3	AKIN, Laura		18	10	0.56	2	32	.250	78	4.33	0	0	0.00	0	5	0.28	0	12	12	0.67	2	1
14	VIOLA, Hailey		34	3	0.09	1	14	.143	17	0.50	5	4	0.15	3	79	2.32	0	0	0	0.00	0	1
12	DEELO, Amy		35	1	0.03	1	8	.000	15	0.43	8	3	0.23	17	120	3.43	0	0	0	0.00	0	0
4	ANGST, Terri		35	0	0.00	1	3	-.333	7	0.20	7	5	0.20	8	57	1.63	0	0	0	0.00	0	1
8	KIESER, Jessica		5	0	0.00	0	1	.000	0	0.00	0	0	0.00	0	1	0.20	0	0	0	0.00	0	0
	Team													7								
	MARQUETTE.....		35	458	13.09	197	1189	.220	420	12.00	41	62	1.17	55	457	13.06	19	119	78.5	2.24	33	6
	Opponents.....		35	431	12.31	184	1148	.215	383	10.94	55	65	1.57	41	433	12.37	17	118	76.0	2.17	15	4

TEAM STATISTICS	MU	OPP	DATE	OPPONENT	W/L	SCORE	SCORE-BY-GAME	ATTEND
ATTACK.....			^ Aug 29	HOUSTON	L	1-3	25-23,22-25,22-25,22-25	501
Kills.....	458	431	^ Aug 30	CHATTANOOGA	W	3-0	25-11,25-12,25-17	223
Errors.....	197	184	^ Aug 30	TENNESSEE	L	1-3	14-25,25-22,22-25,21-25	488
Total Attacks....	1189	1148	09/05/08	vs Clemson	L	0-3	10-25,23-25,17-25	129
Attack Pct.....	.220	.215	09/06/08	at Northern Iowa	L	0-3	20-25,23-25,20-25	1053
Kills/Set.....	13.1	12.3	09/06/08	vs Northern Illinois	W	3-1	30-28,25-21,22-25,25-23	168
SET.....			* Sep 12	TEMPLE	W	3-2	25-14,18-25,21-25,27-25,15-10	462
Assists.....	420	383	* Sep 13	GREEN BAY	W	3-1	27-29,25-16,25-12,25-19	249
Assists/Set.....	12.0	10.9	* Sep 13	BOWLING GREEN	L	2-3	25-21,25-21,16-25,16-25,13-15	452
SERVE.....								
Aces.....	41	55						
Errors.....	62	65						
Aces/Set.....	1.2	1.6						
SERVE RECEPTIONS....								
Errors.....	55	41						
Errors/Set.....	1.6	1.2						
DEFENSE.....								
Digs.....	457	433						
Digs/Set.....	13.1	12.4						
BLOCKING.....								
Block Solo.....	19	17						
Block Assist.....	119	118						
Total Blocks.....	78.5	76.0						
Blocks Per Game...	2.2	2.2						
Block Errors.....	33	15						
Ball handling errors	6	4						
ATTENDANCE.....								
Total.....	2375	1053						
Dates/Avg Per Date	6/396	1/1053						
Neutral site #/Avg	2/148							
Current win streak	0	-						
Home win streak...	0	-						

Marquette Category Leaders (as of Sep 15, 2008)
All matches

##	ATTACK (by K)	G	K	K/Game	E	TA	Pct
5	FISHER, Ashlee	35	135	3.86	55	343	.233
2	BIELSKI, Leslie	35	98	2.80	54	253	.174
11	GONYO, Rabbecka	33	85	2.58	27	192	.302
10	VANCURA, Katie	31	48	1.55	26	146	.151
6	RUSSELL, Tiara	35	35	1.00	18	95	.179
15	MASTANDREA, Caryn	35	32	0.91	7	79	.316
1	JONES, Ciara	4	11	2.75	5	23	.261
3	AKIN, Laira	18	10	0.56	2	32	.250
14	VIOLA, Hailey	34	3	0.09	1	14	.143
12	DEELO, Amy	35	1	0.03	1	8	.000
8	KIESER, Jessica	5	0	0.00	0	1	.000
4	ANGST, Terri	35	0	0.00	1	3	-.333
	MARQUETTE.....	35	458	13.09	197	1189	.220
	Opponents.....	35	431	12.31	184	1148	.215

##	KILL (by K)	G	K	K/Game
5	FISHER, Ashlee	35	135	3.86
2	BIELSKI, Leslie	35	98	2.80
11	GONYO, Rabbecka	33	85	2.58
10	VANCURA, Katie	31	48	1.55
6	RUSSELL, Tiara	35	35	1.00
15	MASTANDREA, Caryn	35	32	0.91
1	JONES, Ciara	4	11	2.75
3	AKIN, Laira	18	10	0.56
14	VIOLA, Hailey	34	3	0.09
12	DEELO, Amy	35	1	0.03
4	ANGST, Terri	35	0	0.00
8	KIESER, Jessica	5	0	0.00
	MARQUETTE.....	35	458	13.09
	Opponents.....	35	431	12.31

##	SET (by A)	G	A	A/Game
15	MASTANDREA, Caryn	35	281	8.03
3	AKIN, Laira	18	78	4.33
14	VIOLA, Hailey	34	17	0.50
12	DEELO, Amy	35	15	0.43
4	ANGST, Terri	35	7	0.20
11	GONYO, Rabbecka	33	7	0.21
6	RUSSELL, Tiara	35	7	0.20
2	BIELSKI, Leslie	35	5	0.14
5	FISHER, Ashlee	35	2	0.06
1	JONES, Ciara	4	1	0.25
10	VANCURA, Katie	31	0	0.00
8	KIESER, Jessica	5	0	0.00
	MARQUETTE.....	35	420	12.00
	Opponents.....	35	383	10.94

##	SERVE (by SA)	G	SA	SE	SA/G
15	MASTANDREA, Caryn	35	9	9	0.26
12	DEELO, Amy	35	8	3	0.23
4	ANGST, Terri	35	7	5	0.20
5	FISHER, Ashlee	35	6	15	0.17
14	VIOLA, Hailey	34	5	4	0.15
6	RUSSELL, Tiara	35	4	13	0.11
2	BIELSKI, Leslie	35	2	4	0.06
8	KIESER, Jessica	5	0	0	0.00
3	AKIN, Laira	18	0	0	0.00
10	VANCURA, Katie	31	0	2	0.00
11	GONYO, Rabbecka	33	0	7	0.00
	MARQUETTE.....	35	41	62	1.17
	Opponents.....	35	55	65	1.57

##	BLOCK (by Total)	G	BS	BA	Total	B/Game	BE
6	RUSSELL, Tiara	35	5	28	33.0	0.94	4
11	GONYO, Rabbecka	33	6	26	32.0	0.97	4
10	VANCURA, Katie	31	0	20	20.0	0.65	2
2	BIELSKI, Leslie	35	4	15	19.0	0.54	11
5	FISHER, Ashlee	35	3	14	17.0	0.49	5
3	AKIN, Laira	18	0	12	12.0	0.67	2
1	JONES, Ciara	4	1	2	3.0	0.75	0
15	MASTANDREA, Caryn	35	0	2	2.0	0.06	5
12	DEELO, Amy	35	0	0	0.0	0.00	0
14	VIOLA, Hailey	34	0	0	0.0	0.00	0
	MARQUETTE.....	35	19	119	78.5	2.24	33
	Opponents.....	35	17	118	76.0	2.17	15

##	DEFENSE (by Dig)	G	DIG	Dig/G	BHE
12	DEELO, Amy	35	120	3.43	0
14	VIOLA, Hailey	34	79	2.32	1
15	MASTANDREA, Caryn	35	73	2.09	2
4	ANGST, Terri	35	57	1.63	1
2	BIELSKI, Leslie	35	50	1.43	0
5	FISHER, Ashlee	35	37	1.06	0
11	GONYO, Rabbecka	33	16	0.48	0
6	RUSSELL, Tiara	35	11	0.31	1
10	VANCURA, Katie	31	6	0.19	0
3	AKIN, Laira	18	5	0.28	1
1	JONES, Ciara	4	2	0.50	0
8	KIESER, Jessica	5	1	0.20	0
	MARQUETTE.....	35	457	13.06	6
	Opponents.....	35	433	12.37	4

##	RECEIPT (by TA)	G	RE	RE/Gm
TM Team		35	7	0.20
12	DEELO, Amy	35	17	0.49
2	BIELSKI, Leslie	35	8	0.23
4	ANGST, Terri	35	8	0.23
14	VIOLA, Hailey	34	3	0.09
5	FISHER, Ashlee	35	11	0.31
6	RUSSELL, Tiara	35	1	0.03
10	VANCURA, Katie	31	0	0.00
3	AKIN, Laira	18	0	0.00
	MARQUETTE.....	35	55	1.57
	Opponents.....	35	41	1.17

Marquette Match Highs (as of Sep 15, 2008)
All matches

INDIVIDUAL MATCH HIGHS

ATTACK PERCENT (K-E-TA) minimum 12 kills

.643 (18- 0-28) FISHER, Ashlee vs Chattanooga (Aug 30, 2008)
.619 (14- 1-21) GONYO, Rabbecca vs Northern Illinois (09/06/08)
.500 (14- 2-24) GONYO, Rabbecca vs Temple (Sep 12, 2008)
.333 (18- 4-42) GONYO, Rabbecca vs Green Bay (Sep 13, 2008)
.321 (22- 5-53) FISHER, Ashlee vs Northern Illinois (09/06/08)
.317 (19- 6-41) FISHER, Ashlee vs Temple (Sep 12, 2008)
.269 (12- 5-26) FISHER, Ashlee vs Clemson (09/05/08)
.269 (12- 5-26) VANCURA, Katie vs Temple (Sep 12, 2008)
.257 (14- 5-35) BIELSKI, Leslie vs Bowling Green (Sep 13, 2008)
.250 (12- 5-28) BIELSKI, Leslie vs Northern Illinois (09/06/08)

KILLS (K-E-TA)

22 (22- 5-53) 4s FISHER, Ashlee vs Northern Illinois (09/06/08)
19 (19- 6-41) 5s FISHER, Ashlee vs Temple (Sep 12, 2008)
18 (18- 4-42) 4s GONYO, Rabbecca vs Green Bay (Sep 13, 2008)
18 (18- 0-28) 3s FISHER, Ashlee vs Chattanooga (Aug 30, 2008)
16 (16- 7-45) 4s FISHER, Ashlee vs Green Bay (Sep 13, 2008)
14 (14- 2-24) 5s GONYO, Rabbecca vs Temple (Sep 12, 2008)
14 (14- 5-35) 5s BIELSKI, Leslie vs Bowling Green (Sep 13, 2008)
14 (14- 1-21) 4s GONYO, Rabbecca vs Northern Illinois (09/06/08)
13 (13- 7-31) 5s BIELSKI, Leslie vs Temple (Sep 12, 2008)
13 (13-11-49) 4s FISHER, Ashlee vs Tennessee (Aug 30, 2008)

KILLS 3-SETS (K-E-TA)

18 (18- 0-28) FISHER, Ashlee vs Chattanooga (Aug 30, 2008)
13 (13-11-38) BIELSKI, Leslie vs Clemson (09/05/08)
12 (12- 8-29) BIELSKI, Leslie at Northern Iowa (09/06/08)
12 (12- 5-26) FISHER, Ashlee vs Clemson (09/05/08)
10 (10- 1-22) FISHER, Ashlee at Northern Iowa (09/06/08)

KILLS 4-SETS (K-E-TA)

22 (22- 5-53) FISHER, Ashlee vs Northern Illinois (09/06/08)
18 (18- 4-42) GONYO, Rabbecca vs Green Bay (Sep 13, 2008)
16 (16- 7-45) FISHER, Ashlee vs Green Bay (Sep 13, 2008)
14 (14- 1-21) GONYO, Rabbecca vs Northern Illinois (09/06/08)
13 (13-11-49) FISHER, Ashlee vs Tennessee (Aug 30, 2008)

KILLS 5-SETS (K-E-TA)

19 (19- 6-41) FISHER, Ashlee vs Temple (Sep 12, 2008)
14 (14- 2-24) GONYO, Rabbecca vs Temple (Sep 12, 2008)
14 (14- 5-35) BIELSKI, Leslie vs Bowling Green (Sep 13, 2008)
13 (13- 7-31) BIELSKI, Leslie vs Temple (Sep 12, 2008)
12 (12- 5-26) VANCURA, Katie vs Temple (Sep 12, 2008)

TOTAL ATTEMPTS (K-E-TA)

53 (22- 5-53) 4s FISHER, Ashlee vs Northern Illinois (09/06/08)
49 (13-11-49) 4s FISHER, Ashlee vs Tennessee (Aug 30, 2008)
45 (16- 7-45) 4s FISHER, Ashlee vs Green Bay (Sep 13, 2008)
44 (12-10-44) 5s FISHER, Ashlee vs Bowling Green (Sep 13, 2008)
42 (18- 4-42) 4s GONYO, Rabbecca vs Green Bay (Sep 13, 2008)
41 (19- 6-41) 5s FISHER, Ashlee vs Temple (Sep 12, 2008)
38 (13-11-38) 3s BIELSKI, Leslie vs Clemson (09/05/08)
35 (13-10-35) 4s FISHER, Ashlee vs Houston (Aug 29, 2008)
35 (14- 5-35) 5s BIELSKI, Leslie vs Bowling Green (Sep 13, 2008)
31 (8- 4-31) 4s BIELSKI, Leslie vs Green Bay (Sep 13, 2008)

TOTAL ATTEMPTS 3-SETS (K-E-TA)

38 (13-11-38) BIELSKI, Leslie vs Clemson (09/05/08)
29 (12- 8-29) BIELSKI, Leslie at Northern Iowa (09/06/08)
28 (18- 0-28) FISHER, Ashlee vs Chattanooga (Aug 30, 2008)
26 (12- 5-26) FISHER, Ashlee vs Clemson (09/05/08)
22 (10- 1-22) FISHER, Ashlee at Northern Iowa (09/06/08)

TOTAL ATTEMPTS 4-SETS (K-E-TA)

53 (22- 5-53) FISHER, Ashlee vs Northern Illinois (09/06/08)
49 (13-11-49) FISHER, Ashlee vs Tennessee (Aug 30, 2008)
45 (16- 7-45) FISHER, Ashlee vs Green Bay (Sep 13, 2008)
42 (18- 4-42) GONYO, Rabbecca vs Green Bay (Sep 13, 2008)
35 (13-10-35) FISHER, Ashlee vs Houston (Aug 29, 2008)

TOTAL ATTEMPTS 5-SETS (K-E-TA)

44 (12-10-44) FISHER, Ashlee vs Bowling Green (Sep 13, 2008)
41 (19- 6-41) FISHER, Ashlee vs Temple (Sep 12, 2008)
35 (14- 5-35) BIELSKI, Leslie vs Bowling Green (Sep 13, 2008)
31 (13- 7-31) BIELSKI, Leslie vs Temple (Sep 12, 2008)
27 (9- 5-27) VANCURA, Katie vs Bowling Green (Sep 13, 2008)

ASSISTS

50 (5s) MASTANDREA, Caryn vs Temple (Sep 12, 2008)
48 (4s) MASTANDREA, Caryn vs Green Bay (Sep 13, 2008)
46 (5s) MASTANDREA, Caryn vs Bowling Green (Sep 13, 2008)
39 (4s) MASTANDREA, Caryn vs Northern Illinois (09/06/08)
31 (4s) MASTANDREA, Caryn vs Houston (Aug 29, 2008)

ASSISTS 3-SETS

25 MASTANDREA, Caryn at Northern Iowa (09/06/08)
15 AKIN, Laura vs Clemson (09/05/08)
14 MASTANDREA, Caryn vs Chattanooga (Aug 30, 2008)
12 AKIN, Laura vs Chattanooga (Aug 30, 2008)
11 MASTANDREA, Caryn vs Clemson (09/05/08)

ASSISTS 4-SETS

48 MASTANDREA, Caryn vs Green Bay (Sep 13, 2008)
39 MASTANDREA, Caryn vs Northern Illinois (09/06/08)
31 MASTANDREA, Caryn vs Houston (Aug 29, 2008)
21 AKIN, Laura vs Tennessee (Aug 30, 2008)
17 AKIN, Laura vs Northern Illinois (09/06/08)

ASSISTS 5-SETS

50 MASTANDREA, Caryn vs Temple (Sep 12, 2008)
46 MASTANDREA, Caryn vs Bowling Green (Sep 13, 2008)
4 VIOLA, Hailey vs Bowling Green (Sep 13, 2008)
4 GONYO, Rabbecka vs Temple (Sep 12, 2008)
3 DEELO, Amy vs Bowling Green (Sep 13, 2008)

DIGS

26 (4s) DEELO, Amy vs Green Bay (Sep 13, 2008)
21 (4s) DEELO, Amy vs Northern Illinois (09/06/08)
20 (4s) VIOLA, Hailey vs Green Bay (Sep 13, 2008)
16 (5s) MASTANDREA, Caryn vs Temple (Sep 12, 2008)
16 (5s) VIOLA, Hailey vs Bowling Green (Sep 13, 2008)

DIGS 3-SETS

13 DEELO, Amy vs Chattanooga (Aug 30, 2008)
9 BIELSKI, Leslie at Northern Iowa (09/06/08)
9 MASTANDREA, Caryn vs Chattanooga (Aug 30, 2008)
9 VIOLA, Hailey at Northern Iowa (09/06/08)
9 DEELO, Amy vs Clemson (09/05/08)

DIGS 4-SETS

26 DEELO, Amy vs Green Bay (Sep 13, 2008)
21 DEELO, Amy vs Northern Illinois (09/06/08)
20 VIOLA, Hailey vs Green Bay (Sep 13, 2008)
15 MASTANDREA, Caryn vs Green Bay (Sep 13, 2008)
15 BIELSKI, Leslie vs Northern Illinois (09/06/08)

DIGS 5-SETS

16 MASTANDREA, Caryn vs Temple (Sep 12, 2008)
16 VIOLA, Hailey vs Bowling Green (Sep 13, 2008)
14 DEELO, Amy vs Bowling Green (Sep 13, 2008)
14 DEELO, Amy vs Temple (Sep 12, 2008)
11 MASTANDREA, Caryn vs Bowling Green (Sep 13, 2008)

ACES

4 DEELO, Amy vs Bowling Green (Sep 13, 2008)
2 ANGST, Terri vs Chattanooga (Aug 30, 2008)
2 VIOLA, Hailey vs Bowling Green (Sep 13, 2008)
2 DEELO, Amy vs Chattanooga (Aug 30, 2008)
2 RUSSELL, Tiara vs Green Bay (Sep 13, 2008)

BLOCKS (BS-BA)

8 (3- 5) RUSSELL, Tiara vs Temple (Sep 12, 2008)
6 (1- 5) RUSSELL, Tiara vs Tennessee (Aug 30, 2008)
6 (0- 6) GONYO, Rabbecka vs Houston (Aug 29, 2008)
5 (2- 3) GONYO, Rabbecka vs Clemson (09/05/08)
5 (1- 4) GONYO, Rabbecka vs Tennessee (Aug 30, 2008)
5 (0- 5) GONYO, Rabbecka vs Bowling Green (Sep 13, 2008)
5 (0- 5) VANCURA, Katie vs Chattanooga (Aug 30, 2008)
4 (2- 2) BIELSKI, Leslie at Northern Iowa (09/06/08)
4 (1- 3) GONYO, Rabbecka vs Green Bay (Sep 13, 2008)
4 (1- 3) FISHER, Ashlee vs Green Bay (Sep 13, 2008)

TEAM MATCH HIGHS

ATTACK PERCENT (K-E-TA)

.389 (42- 7- 90) vs Chattanooga (Aug 30, 2008)
.312 (71-21-160) vs Northern Illinois (09/06/08)
.297 (67-24-145) vs Temple (Sep 12, 2008)
.220 (57-21-164) vs Green Bay (Sep 13, 2008)
.179 (36-17-106) at Northern Iowa (09/06/08)
.165 (47-25-133) vs Tennessee (Aug 30, 2008)
.164 (55-28-165) vs Bowling Green (Sep 13, 2008)
.161 (49-29-124) vs Houston (Aug 29, 2008)
.088 (34-25-102) vs Clemson (09/05/08)

KILLS (K-E-TA)

71 (71-21-160) 4s vs Northern Illinois (09/06/08)
67 (67-24-145) 5s vs Temple (Sep 12, 2008)
57 (57-21-164) 4s vs Green Bay (Sep 13, 2008)
55 (55-28-165) 5s vs Bowling Green (Sep 13, 2008)
49 (49-29-124) 4s vs Houston (Aug 29, 2008)
47 (47-25-133) 4s vs Tennessee (Aug 30, 2008)
42 (42- 7- 90) 3s vs Chattanooga (Aug 30, 2008)
36 (36-17-106) 3s at Northern Iowa (09/06/08)
34 (34-25-102) 3s vs Clemson (09/05/08)

KILLS 3-SETS (K-E-TA)

42 (42- 7- 90) vs Chattanooga (Aug 30, 2008)
36 (36-17-106) at Northern Iowa (09/06/08)
34 (34-25-102) vs Clemson (09/05/08)

KILLS 4-SETS (K-E-TA)

71 (71-21-160) vs Northern Illinois (09/06/08)
57 (57-21-164) vs Green Bay (Sep 13, 2008)
49 (49-29-124) vs Houston (Aug 29, 2008)
47 (47-25-133) vs Tennessee (Aug 30, 2008)

KILLS 5-SETS (K-E-TA)

67 (67-24-145) vs Temple (Sep 12, 2008)
55 (55-28-165) vs Bowling Green (Sep 13, 2008)

TOTAL ATTEMPTS (K-E-TA)

165 (55-28-165) 5s vs Bowling Green (Sep 13, 2008)
164 (57-21-164) 4s vs Green Bay (Sep 13, 2008)
160 (71-21-160) 4s vs Northern Illinois (09/06/08)
145 (67-24-145) 5s vs Temple (Sep 12, 2008)
133 (47-25-133) 4s vs Tennessee (Aug 30, 2008)
124 (49-29-124) 4s vs Houston (Aug 29, 2008)
106 (36-17-106) 3s at Northern Iowa (09/06/08)
102 (34-25-102) 3s vs Clemson (09/05/08)
90 (42- 7- 90) 3s vs Chattanooga (Aug 30, 2008)

TOTAL ATTEMPTS 3-SETS (K-E-TA)

106 (36-17-106) at Northern Iowa (09/06/08)
102 (34-25-102) vs Clemson (09/05/08)
90 (42- 7- 90) vs Chattanooga (Aug 30, 2008)

TOTAL ATTEMPTS 4-SETS (K-E-TA)

164 (57-21-164) vs Green Bay (Sep 13, 2008)
160 (71-21-160) vs Northern Illinois (09/06/08)
133 (47-25-133) vs Tennessee (Aug 30, 2008)
124 (49-29-124) vs Houston (Aug 29, 2008)

TOTAL ATTEMPTS 5-SETS (K-E-TA)

165 (55-28-165) vs Bowling Green (Sep 13, 2008)
145 (67-24-145) vs Temple (Sep 12, 2008)

ASSISTS

65 (4s) vs Northern Illinois (09/06/08)
60 (5s) vs Temple (Sep 12, 2008)
53 (4s) vs Green Bay (Sep 13, 2008)
53 (5s) vs Bowling Green (Sep 13, 2008)
46 (4s) vs Tennessee (Aug 30, 2008)

ASSISTS 3-SETS

36 vs Chattanooga (Aug 30, 2008)
32 vs Clemson (09/05/08)
32 at Northern Iowa (09/06/08)

ASSISTS 4-SETS

65 vs Northern Illinois (09/06/08)
53 vs Green Bay (Sep 13, 2008)
46 vs Tennessee (Aug 30, 2008)
43 vs Houston (Aug 29, 2008)

ASSISTS 5-SETS

60 vs Temple (Sep 12, 2008)
53 vs Bowling Green (Sep 13, 2008)

DIGS

89 (4s) vs Green Bay (Sep 13, 2008)
63 (4s) vs Northern Illinois (09/06/08)
58 (5s) vs Temple (Sep 12, 2008)
53 (5s) vs Bowling Green (Sep 13, 2008)
44 (4s) vs Tennessee (Aug 30, 2008)

DIGS 3-SETS

41 at Northern Iowa (09/06/08)
40 vs Chattanooga (Aug 30, 2008)
29 vs Clemson (09/05/08)

DIGS 4-SETS

89 vs Green Bay (Sep 13, 2008)
63 vs Northern Illinois (09/06/08)
44 vs Tennessee (Aug 30, 2008)
40 vs Houston (Aug 29, 2008)

DIGS 5-SETS

58 vs Temple (Sep 12, 2008)
53 vs Bowling Green (Sep 13, 2008)

ACES

10 vs Bowling Green (Sep 13, 2008)
7 vs Green Bay (Sep 13, 2008)
7 vs Chattanooga (Aug 30, 2008)
6 vs Temple (Sep 12, 2008)
5 vs Houston (Aug 29, 2008)

BLOCKS

13.0 vs Tennessee (Aug 30, 2008)
10.5 vs Temple (Sep 12, 2008)
9.0 vs Chattanooga (Aug 30, 2008)
9.0 vs Green Bay (Sep 13, 2008)
9.0 vs Houston (Aug 29, 2008)
8.0 vs Northern Illinois (09/06/08)
8.0 vs Bowling Green (Sep 13, 2008)
6.0 vs Clemson (09/05/08)
6.0 at Northern Iowa (09/06/08)