



December 20, 2008

Green Bay (7-2, 0-0 Horizon League)

at

Marquette (8-3, 0-0 BIG EAST)

Al McGuire Center (4,000)

2008 WNIT Champions • 8 NCAA Tournament Appearances (1994, 1995, 1997, 1998, 1999, 2000, 2004, 2007)

2008-09 Schedule

Date	Opponent	Time/Result
November		
Nov. 1	Winona State (exh.)	W, 78-53
Nov. 10	UW - Parkside (exh.)	W, 76-46
Nov. 15	Oral Roberts	W, 89-67
Nov. 17	Sacred Heart	W, 77-55
Nov. 19	at Indiana State	W, 77-53
Nov. 23	at Western Michigan	W, 89-58
<i>WBCA Classic (Nov. 28-30)</i>		
Nov. 28	RV/RV Gonzaga	W, 80-77
Nov. 29	16/15 Virginia	L, 71-76
Nov. 30	RV/RV Utah	L, 76-79
December		
Dec. 2	at Northwestern	BNT W, 55-54
Dec. 7	Kansas	W, 67-57
Dec. 13	at RV Wisconsin	BTN.com L, 48-67
Dec. 17	Oregon	Sports 32 W, 69-39
Dec. 20	Green Bay	Sports 32 2 p.m.
Dec. 28	at Oakland	3 p.m.
Dec. 31	Milwaukee	Sports 32 3 p.m.
January		
Jan. 3	USF*	Sports 32 7 p.m.
Jan. 10	at Seton Hall*	2 p.m.
Jan. 13	Notre Dame*	CBSC 8 p.m.
Jan. 18	at Rutgers*	ESPNU Noon
Jan. 21	at Georgetown*	7 p.m.
Jan. 27	Syracuse*	Sports 32 7 p.m.
Jan. 30	at Pittsburgh*	6 p.m.
February		
Feb. 3	at USF*	6 p.m.
Feb. 7	Connecticut*	Sports 32 7 p.m.
Feb. 10	Villanova*	Sports 32 7 p.m.
Feb. 15	West Virginia*	ESPNU 1 p.m.
Feb. 18	at Cincinnati*	6 p.m.
Feb. 21	St. John's*	BETV/Sports 32 3 p.m.
Feb. 25	at Providence*	6 p.m.
Feb. 28	at DePaul*	7 p.m.
March		
March 2	Louisville*	CBSC 8 p.m.
<i>BIG EAST Conference Tournament (March 6-10)</i>		
March 6	First Round	XL Center
March 7	Second Round	XL Center
March 8	Quarterfinals	XL Center
March 9	Semifinals	XL Center
March 10	Championship	XL Center

- All times are listed as Central unless otherwise listed and are subject to change.
- Home games are played at the Al McGuire Center and are listed in bold.
- * Denotes BIG EAST game.

BTN - Big Ten Network
 BETV - BIG EAST TV
 CBSCS - CBS College Sports Network
 Sports 32 - Time Warner Cable Sports 32

2008-09 Marquette Records:

8-3	overall
0-0	BIG EAST
5-2	at home
3-1	on the road
0-0	at neutral sites

Head Coach Terri Mitchell Records:

246-133 (64.2)	13th season
117-67 (63.5)	in conference play
10-12 (45.4)	in conference tourneys
1-3 (25.0)	in BIG EAST Tournament
64-12 (85.1)	at the Al McGuire Center
3-6 (33.3)	in the NCAA Tournament
11-5 (54.4)	in the WNIT

Marquette All-Access

TV:	Time Warner Sports Ch. 32
Radio:	540 ESPN Radio
Live Stats:	gomarquette.com

The Marquette women's basketball team is set to renew its long-standing rivalry with Green Bay Saturday afternoon at the Al McGuire Center. The game will be broadcast live on Time Warner Sports 32 with Steve "The Homer" True and former Marquette standout Kelly Schwerman calling all of the action courtside. The game can also be heard on 540 AM ESPN Radio with Kent Sommerfeld and Matt Salmon on the call.

The Golden Eagles are encouraging fans to bring in a canned food for MU's Hometown versus Hunger food drive. Donations will be exchanged for a discounted game ticket for a future game.

The Golden Eagles got back to what they do best, playing unselfishly, and dominated Oregon, 69-39, before a sellout crowd Wednesday afternoon. The Golden Eagles distributed 21 assists on 29 made baskets and out-rebounded the Ducks 44-31. Senior guard Krystal Ellis led the team with 17 points, six steals and four assists, but it was perhaps Courtney Weibel who had the eye-catching performance of the game. In her first career start, Weibel knocked down three shots from beyond the arc, dished three assists and registered the second block of her career. Entering the game Weibel averaged 4.9 minutes per game. She played 17 minutes against the Ducks.

2008-09 Marquette Lineup

	Yr.	Pos.	Ht.	MPG	PPG	RPG	APG	
00	Jasmine Collins	So.	F	6-2	7.8	1.4	2.0	0.1
Played a career-high 20 minutes against Kansas								
1	Angel Robinson *	So.	G	5-8	26.6	11.7	4.6	3.9
Scored a career-high 25 points against Virginia								
3	Courtney Weibel*	So.	G	5-8	6.2	2.7	0.3	0.2
Played a season high 10 minutes at Western Michigan								
5	Erin Monfre	Sr.	G	5-11	14.0	2.1	1.1	17
Scored a season-high nine points against Utah								
11	Janelle Harris	Jr.	G	6-0	12.8	3.8	2.2	0.5
As a reserve, pulled down a season-high five rebounds against Virginia								
12	Jessica Pachko*	Fr.	G	6-0	20.0	8.4	4.8	0.6
Returned to action against Wisconsin after sitting six games with a foot injury								
20	Krystal Ellis *	Sr.	G	5-9	27.2	16.9	2.9	3.5
Matched her Al McGuire Center scoring record with 32 points against Kansas								
22	Jocelyn Mellen	RSSo.	F	6-3	18.0	4.2	4.0	0.4
Out for the season due to injury - tore her ACL in her left knee against Gonzaga								
23	Tatijiana McMorris	So.	G	5-7	8.9	4.1	1.3	1.0
Boasts a team-high 46.7 3-point shooting percentage								
24	Lauren Thomas-Johnson	Jr.	G	5-10	23.5	7.5	1.8	1.6
Has started in eight consecutive games								
34	Georgie Jones	Fr.	C	6-2	17.0	4.2	5.9	0.4
Posted career-highs with 12 points, two blocks against Gonzaga in 26 minutes of action								
41	Paige Fiedorowicz *	So.	F	6-0	23.2	8.3	5.6	1.1
Registered her first career double double against Oregon with 12 points and 12 rebounds								
42	Marissa Thrower	Sr.	F	5-11	13.7	3.6	2.6	0.3
Scored six points and five rebounds at Western Michigan								

* denotes probable starter

2008-09 Marquette Numerical Roster

No.	Name	Ht.	Pos.	Yr.	Hometown (Last College/High School)
00	Jasmine Collins	6-2	F	So.	Detroit, Mich. (Martin Luther King)
1	Angel Robinson	5-8	G	So.	St. Paul, Minn. (Central)
3	Courtney Weibel	5-8	G	So.	Rockton, Ill. (Hononegah)
5	Erin Monfre	5-11	G	Sr.	Waukesha, Wis. (Waukesha South)
11	Janelle Harris	6-0	G	Jr.	Detroit, Mich. (Renaissance)
12	Jessica Pachko	6-2	F	Fr.	Cincinnati, Ohio (Oak Hills)
20	Krystal Ellis	5-9	G	Sr.	Racine, Wis. (St. Catherine's)
22	Jocelyn Mellen	6-3	F	RSSo.	Dixon, Ill. (Newman Catholic)
23	Tat'yiana McMorris	5-7	G	So.	Bronx, N.Y. (John F. Kennedy)
24	Lauren Thomas-Johnson	5-10	G	Jr.-Tr.	Manchester, England (Notre Dame Acad. (Va.)/Kirkwood CC)
34	Georgie Jones	6-3	C	Fr.	St. Paul, Minn. (Central)
41	Paige Fiedorowicz	6-0	F	So.	Johnsburg, Ill. (Johnsburg)
42	Marissa Thrower	5-11	F	Sr.	Detroit, Mich. (Renaissance)

Head Coach: Terri Mitchell

Assistant Coaches: Michelle Nason, Cara Consuegra, Jennie Lillis

Quick Facts

Location	Milwaukee, Wis., 53233
Founded	1881
Enrollment	11,000
Nickname	Golden Eagles
Colors	Blue <small>(PMS 281)</small> and Gold <small>(PMS 123)</small>
Arena	Al McGuire Center (4,000)
Affiliation	NCAA Division I
Conference	BIG EAST
President	Rev. Robert A. Wild, S.J.
Athletics Director	Steve Cottingham
Ticket Office:	414-288-GOMU
University Website	www.marquette.edu
First Year of Basketball	1975-76
All-Time Record	493-430 (53.2)
2007-08 Results	
Overall Record	21-14
BIG EAST Record/Finish	8-8/8th
NCAA Tourney Appearances	8
Last NCAA Appearance	2007
WNIT Appearances/Last	4/2008
Last Postseason Result	WNIT, 2008 Champions Defeated Michigan State, 81-66
Media Relations	
Women's Basketball Contact	Amy Ufnowski
Office Phone	414-288-7419
Cell Phone	414-313-6717
E-Mail	Amy.Ufnowski@marquette.edu
Media Relations Fax	414-288-6519
Al McGuire Center Press Row	414-288-0340
Athletics Website	www.gomarquette.com
Delivery Address	Al McGuire Center 770 N. 12th Street Milwaukee, WI 53233-2203

Marquette Basketball Staff

Head Coach	Terri Mitchell (Duquesne, '89)
Assistant Coaches	Michelle Nason (Bradley, '95) Cara Consuegra (Iowa '01) Jennie Lillis (Iowa, '04)
Dir. of Basketball Operations	Angie Lewis (Saint Louis, '04)
Asst. Dir. of Basketball Operations	Angie Nelp (Colorado State, '02)
Athletic Trainer	Jeremy Johnson (Penn State, '99)
Strength and Conditioning Coach	Rudy Thomas (Wis.-La Crosse, '01)

Pronunciation Guide

Cara Consuegra — Con-sueg-*raa*
 Paige Fiedorowicz — Fa-door-o-witz
 Janelle Harris — Juh-Nell
 Jocelyn Mellen — joss-lin
 Erin Monfre — Mon-free
 Jessica Pachko — Patch-co
 Courtney Weibel — WHY-bull

Credentials

Media interested in covering the Golden Eagles, both at home and on the road, should contact Amy Ufnowski, Assistant Director of Athletic Media Relations, at least 48 hours prior to the game.

News and Notes

Golden Eagle Quickhits

- Marquette started the season 5-0 for the first time since the 2004-05 season. It was only the second time in program history Marquette began the season with five straight wins.
- The Golden Eagles shot 50 percent or better from the floor in three games this season, including a season-high 52.7 percent at Indiana State. Marquette also outscored each of its first four opponents by at least 22 points.
- Through eight games, Ellis leads the team in scoring with 16.9 ppg, followed by sophomore Angel Robinson averaging 11.7 ppg.
- Ellis matched her Al McGuire Center scoring record with 32 points in MU's 67-57 win over Kansas. Her 32 points marked the first time this season Ellis has registered 30-or-more points in a game and the sixth time of her career.
- Freshman Jessica Pachko returned to the line-up against Wisconsin after sitting six games with a stress reaction in her foot. Prior to the injury, Pachko averaged a team-high 5.0 rebounds per game.
- The Golden Eagles have registered 40 or more rebounds in seven games this season, and have out-rebounded all but four of their opponents. Freshman Georgie Jones was the first Golden Eagle this season to pull down double-digit rebounds with 10 at Indiana State and again with 10 against Utah. She leads the team with 5.9 rpg.
- Sophomore Angel Robinson registered her first career double-double as well as the team's first this season, scoring 13 points and grabbing a career-high 11 rebounds against Virginia. Robinson is also the second player this season to record double-digit rebounds.
- Sophomore Paige Fiedorowicz earned her first double double of her career against Oregon with 12 points and 12 rebounds.
- Four different Golden Eagles have led Marquette in scoring this season, including Krystal Ellis, Jessica Pachko, Angel Robinson and Paige Fiedorowicz.
- Marquette has used six different starting lineups already this season and 10 Golden Eagles are averaging over 12 minutes per game.
- Marquette has made a three-pointer in 134 consecutive games dating back to Nov. 24, 2004. Ellis ranks second all-time with 191 career treys.

- The Golden Eagles have compiled a 104-45 mark in regular season non-conference games under Terri Mitchell, including a 25-5 record at the Al McGuire Center. The Golden Eagles are 39-21 in road games under Mitchell.
- Marquette is 16-35 all-time against ranked opponents under Mitchell.
- Marquette is 64-12 all-time at the Al McGuire Center.

Series History against Green Bay

Saturday's game between the Golden Eagles and Phoenix will be the 35th meeting since Jan. 15, 1980. Green Bay owns the lopsided advantage, 27-7, but Marquette has won the last two.

Regaining Some Depth

Marquette regained a bit of its depth in its post game due to the return of freshman Jessica Pachko. Pachko was hampered with a foot injury that sidelined her for six games. She returned to the line up against Wisconsin and contributed five points and three rebounds in 14 minutes of action.

Ellis on Pace

Senior guard Krystal Ellis is closing in on the all-time MU scoring record (male or female). She has 1,733 points and needs 86 points to break Abbie Willenborg's record (1,818 points). Her 1,733 points place her fourth on MU's all-time scoring list and she is the fifth player in program history to score over 1,700 career points. Ellis is currently No. 4 on the nation's active leading scorers list.

Nation's Active Leading Scorers

1. Courtney Paris (Okla)	2,282
2. Angel McCoughtry (UofL)	2,107
3. Traci Edwards (UWM)	1,908
4. Krystal Ellis (MU)	1,733
5. Marissa Coleman (MD)	1,702

Injury Report

Sophomore forward Jocelyn Mellen tore the ACL in her left knee in MU's game against Gonzaga and will miss the remainder of the 2008-09 season. Prior to the injury, Mellen started in all five games and averaged 5.3 ppg and 5.0 rpg over 22.0 mpg.

2008-09 BIG EAST Preseason Poll

1. Connecticut (14), 225
2. Rutgers (1), 211
3. Louisville (1), 200
4. Notre Dame, 182
5. Pittsburgh, 162
6. Syracuse, 156
7. Marquette, 147
8. DePaul, 132
9. West Virginia, 109
10. Villanova, 85
11. Georgetown, 77
12. USF, 76
13. St. John's 66
14. Seton Hall, 40
15. Cincinnati, 33
16. Providence, 30

2008-09 BIG EAST Standings

	BIG EAST		Overall	
Connecticut	0-0	.000	8-0	1.000
Louisville	0-0	.000	9-1	.900
St. John's	0-0	.000	9-1	.900
USF	0-0	.000	9-1	.900
Notre Dame	0-0	.000	8-1	.889
Pittsburgh	0-0	.000	8-1	.889
Seton Hall	0-0	.000	7-1	.875
DePaul	0-0	.000	10-2	.833
Cincinnati	0-0	.000	8-2	.800
Syracuse	0-0	.000	8-2	.800
Georgetown	0-0	.000	7-2	.778
West Virginia	0-0	.000	7-2	.778
Rutgers	0-0	.000	6-2	.750
Marquette	0-0	.000	8-3	.727
Providence	0-0	.000	5-4	.556
Villanova	0-0	.000	5-4	.556

*through games on Thursday, Dec. 18, 2008



www.krystalellis20.com
20 • Krystal Ellis • Senior • Guard
All-America Candidate

Career Notables

- * Named to the 2008-09 Wooden Award Preseason Top 30 List
- * Named to the 2008-09 State Farm Wade Trophy Preseason List
- * Unanimous Preseason All-BIG EAST selection
- * Two-time All-BIG EAST First Team selection
- * 2006-07 Associated Press All-American

Marquette vs Green Bay Statistical Comparison

Marquette		Green Bay
72.5	Points per Game	64.3
+10.5	Scoring Margin	+11.9
39.7	Rebounds per Game	30.7
+4.7	Rebounding Margin	-3.3
15.1	Assists per Game	13.4
16.3	Turnovers per Game	17.2
9.9	Steals per Game	11.1
4.0	Blocks per game	2.3
42.8 (297-694)	FG Pct.	44.2 (198-448)
32.2 (64-199)	3-PT FG Pct.	33.3 (50-150)
67.3 (140-208)	Ft Pct.	72.3 (133-184)

2008-09 Women's Basketball National Polls

USA Today/ESPN Coaches Top 25

Rank	School (First Place Votes)	Record	Points	Last
1.	Connecticut (31)	7-0	775	1
2.	North Carolina	11-0	741-2	
3.	Texas A&M	9-0	697	3
4.	Stanford	7-1	673	4
5.	Texas	9-0	648	5
6.	Oklahoma	8-2	612	6
T7.	Notre Dame	8-1	550	8
T7.	Baylor	9-1	550	9
9.	California	8-2	496	7
10.	Auburn	10-0	466	11
11.	Louisville	9-1	456	T13
12.	Duke	6-1	449	12
13.	Tennessee	7-2	430	10
14.	Rutgers	6-2	373	T13
15.	Virginia	7-2	325	15
16.	Maryland	8-2	304	16
17.	Ohio State	8-2	265	17
18.	Kansas State	9-0	254	18
19.	Pittsburgh	7-1	219	20
20.	Vanderbilt	8-2	171	19
21.	Arizona State	7-2	132	21
22.	South Dakota State	10-1	97	NR
23.	Oklahoma State	4-2	77	24
24.	Florida	10-1	65	NR
25.	TCU	8-3	59	22

Also receiving votes: Minnesota (8-2) 24; Old Dominion (5-2) 23; Georgia Tech (8-2) 22; Purdue (6-4) 22; Xavier (8-3) 20; Wisconsin (10-1) 15; Marist (8-1) 14; New Mexico (9-1) 12; Florida State (8-2) 9; DePaul (9-2) 5; Houston (6-2) 5; Iowa State (7-2) 5; Nebraska (8-2) 4; Georgia (7-3) 2; Gonzaga (9-3) 2; Western Kentucky (6-2) 2; Hartford (5-5) 1; Michigan (6-4) 1; North Carolina A&T (4-3) 1; Quinnipiac (8-1) 1; Wake Forest (8-0) 1.

Dec. 16, 2008

Associated Press Top 25

Rank	School (First Place Votes)	Record	Points	Last
1	Connecticut (45)	7-0	1125	1
2	North Carolina	10-0	1076	2
3	Stanford	7-1	1016	3
4	Texas A&M	9-0	963	4
5	Texas	9-0	928	6
6	Oklahoma	8-2	918	5
7	Baylor	9-1	797	10
8	Duke	6-1	732	11
9	Louisville	9-1	724	12
10	Auburn	10-0	701	13
11	Tennessee	7-2	687	7
12	California	8-2	621	9
13	Notre Dame	8-1	598	8
14	Rutgers	6-2	559	14
15	Maryland	8-2	537	15
16	Pittsburgh	7-1	479	16
17	Virginia	7-2	401	17
18	Ohio St.	7-2	370	18
19	Vanderbilt	8-2	211	20
20	Florida	10-1	194	23
21	Arizona St.	7-2	182	22
22	Oklahoma St.	4-2	164	24
23	Kansas St.	9-0	154	25
24	TCU	8-3	120	19
25	Georgia Tech	8-2	110	NR

Also receiving votes: S. Dakota St. 73, Wisconsin 63, Old Dominion 37, Xavier 27, Marist 14, New Mexico 11, DePaul 10, Purdue 7, South Florida 6, Florida St. 3, Wake Forest 3, Oregon St. 2, Michigan 1, Mississippi St. 1.

Dec. 15, 2008

Approaching 500

The Golden Eagles are closing in on a milestone 500th all-time program victory. Marquette has 493 wins since its first year of basketball in 1975-76.

Breann Hill Leaves Team

Junior forward Breann Hill has informed the coaching staff that she will leave the team for personal reasons.

"Bre has decided to leave Marquette and move on with her collegiate basketball career. We enjoyed her time here at Marquette and wish her the best of luck in her future," said head coach Terri Mitchell.

Hill, a junior college transfer from Kirkwood Community College (Iowa), appeared in eight games for the Golden Eagles this season and averaged 3.0 ppg, 2.5 rpg over 9.4 mpg. She played a season-high 14 minutes against Sacred Heart (Nov. 16) where she scored six points and added five rebounds. She scored a season high eight points at Western Michigan (Nov. 23).

Comeback Queens

After back-to-back losses in which the Golden Eagles held double-digit leads, the Golden Eagles overcame a 16-point deficit to defeat Northwestern, 55-54, on Dec. 2. The last time Marquette won a game that was decided by one point was against DePaul, 62-61, on Feb 29, 2004. In its next game against Kansas, Marquette turned a nine-point deficit into a second-half lead. Ellis scored 16-straight points between the 1:34 mark in the first half and 17:31 mark the second half to give

MU the lead for good. Marquette is 2-1 in games in which it has trailed at half-time.

Ellis Named to the BIG EAST Honor Roll

Senior guard Krystal Ellis was named to the BIG EAST Honor Roll announced by conference officials Nov. 8. The selection marked the ninth of her career.

Ellis led the Golden Eagles to an undefeated 2-0 week where both of their wins were in come-from-behind fashion. Against Northwestern on Dec. 2, Ellis scored the final nine points of the game over the last 3:04 to rally Marquette from a 16-point deficit and defeat the Wildcats, 55-54. She finished the game with game-high 18 points and a season-high five steals.

Against Kansas, Ellis matched her Al McGuire Center record of 32 points while almost single-handedly turning what had been a nine-point deficit into a second-half lead. Ellis scored 16-straight points between the 1:34 mark in the first half and 17:31 mark the second half to give MU the lead for good.

The All-America candidate averaged 25.0 ppg, 3.5 rpg, and 4.5 spg over the two games, while connecting on 51.4 percent of her attempts from the field, including 45.5 percent from long range.

Second-Half Star

Senior guard Krystal Ellis seems to rise to the occasion in the second half. Ellis averages 10.6 ppg in the second half, nearly double her output (6.3 ppg) in the first half. She scored MU's final nine points to help it defeat Northwestern 55-54 on Dec. 2, and almost single-handedly turning what had

MU Starting Line-Ups, Points and % of Offense

Opponent	MU Starting Line-Up	Line-Up Record	Points	% of Offense	WL
Oral Roberts	Robinson, Ellis, Harris, Mellen, Pachko	1-0	49	55.1	W
Sacred Heart	Robinson, Ellis, Thomas-Johnson, Mellen, Pachko	1-0	48	62.3	W
at Indiana State	Robinson, Ellis, Thomas-Johnson, Mellen, Pachko	2-0	53	68.8	W
at Western Michigan	Robinson, Ellis, Thomas-Johnson, Mellen, Fiedorowicz	1-0	50	56.2	W
Gonzaga	Robinson, Ellis, Thomas-Johnson, Mellen, Fiedorowicz	2-0	59	73.8	W
Virginia	Robinson, Ellis, Thomas-Johnson, Fiedorowicz, Jones	0-1	70	92.1	L
Utah	Robinson, Ellis, Thomas-Johnson, Fiedorowicz, Jones	0-2	44	57.9	L
at Northwestern	Robinson, Ellis, Thomas-Johnson, Monfre, Fiedorowicz	1-0	49	89.1	W
Kansas	Robinson, Ellis, Thomas-Johnson, Fiedorowicz, Jones	1-2	54	80.6	W
at Wisconsin	Robinson, Ellis, Thomas-Johnson, Fiedorowicz, Jones	1-3	31	65.6	L
Oregon	Robinson, Ellis, Weibel, Fiedorowicz, Pachko	1-0	49	71.0	W
Green Bay					
at Oakland					
Milwaukee					
USF					
at Seton Hall					
Notre Dame					
at Rutgers					
at Georgetown					
Syracuse					
at Pittsburgh					
at USF					
Connecticut					
Villanova					
West Virginia					
at Cincinnati					
St. John's					
at Providence					
at DePaul					
Louisville					

MU in the BIG EAST Statistics

	All Games	BIG EAST Games
Scoring Offense	72.5	9th
Scoring Defense	62.0	15th
Scoring Margin	+10.5	12th
FT Pct.	67.3	13th
FG Pct.	42.8	10th
FG Pct. Def.	38.4	15th
3FG Pct.	32.2	7th
3FG Pct. Def.	35.6	15th
Rebounding	39.7	11th
Rebound Defense	35.0	10th
Rebound Margin	+4.7	10th
Blocked Shots	4.0	9th
Assists	15.1	6th
Steals	9.9	6th
Turnover Margin	+3.91	6th
Ast/TO Ratio	0.9	6th
Off. Rebounds	15.5	8th
Def. Rebounds	24.2	14th
3FG Made	5.8	5th

Individuals in the BIG EAST Statistics

(All Games)

Krystal Ellis	Scoring	16.9	10th
	Assists	3.5	14th
	Steals	2.6	4th
	Asst/TO	1.3	14th
Angel Robinson	Scoring	11.7	30th
	3FG Pct.	39.3	T-12th
	Assists	3.9	10th
	Asst/TO	1.3	13th
Paige Fiedorowicz	FG Pct.	48.5	13th

* BIG EAST statistics through games on Dec. 18, 2008

MU in the NCAA Statistics

(Top-100)

Scoring Offense	72.9	42nd
Scoring Margin	8.6	80th
FG Pct.	42.3	85th
Rebounding Margin	3.9	84th
3-Pt FG per game	5.8	90th
Assist Per Game	14.5	89th
Blocked Shots Per Game	4.2	80th
Steals Per Game	9.9	82nd

Individuals in the NCAA Statistics

Krystal Ellis	Points	16.9	73rd
---------------	--------	------	------

* NCAA statistics as of Dec. 14, 2008

been a nine-point deficit into a second-half lead with 16-straight points against Kansas on Dec. 7. Three times has Ellis scored in double figures in the first half, Kansas (13, Virginia (13) and Utah (11), compared to five games which she has scored 10 or more in the second half: Indiana State (16), Gonzaga (12), Virginia (10), Utah (12), and Northwestern (13).

20/20 Vision

Marquette had two players with 20 or more points for the first time this season against Virginia, led by sophomore Angel Robinson who scored a career-high 25. Ellis followed with 23. It was the first time since Feb. 24, 2007 MU has had two players score 20 or more points in the same game. Ellis' followed her performance up against Virginia with 23 points against Utah. For the WBCA Classic Ellis averaged 19.3 ppg, 3.0 rpg, and 2.0 apg. She was named to the all-tournament team for her efforts.

Jones Comes on Strong

It was baptism by fire for freshman Georgie Jones who was called upon to fill the shoes of sophomore Jocelyn Mellen. Jones stepped up in impressive fashion registering 12 points, seven rebounds, two blocks, one assist and one steal all without turning the ball over in 26 minutes of action. She registered career highs in points, blocks and minutes played. She followed that performance up with her first career double-double (10 points, 10 rebounds) against Utah. Prior to the game against Gonzaga, Jones averaged 12.5 mpg, 3.0 ppg and 5.0 rpg.

Taking Care of Business

The Golden Eagles have taken care of business in both their home and road openers this season. The Golden Eagles earned their sixth straight season opening win with a 89-67 decision over Oral Roberts on Nov. 15, and won their first road opener since the 2005-06 season winning at Indiana

State, 77-53.

Lights Out

In MU's 77-53 win at Indiana State, the Golden Eagles were on fire in the second half shooting an incredible 72.0 percent from the floor, and were 50 percent from long range. Marquette finished the game with a 52.7 shooting percentage to mark the second time this season MU has shot 50 percent or better for the game.

Ellis Named to Preseason All-BIG EAST Team

Senior guard Krystal Ellis was unanimously selected to the Preseason All-BIG EAST Team announced at the BIG EAST Women's Basketball Media Day at ESPN Zone in New York City.

Ellis is a two-time All-BIG EAST pick and was named the WNIT MVP after the team's run through the postseason tournament. For the second consecutive season, Ellis led the team in scoring, averaging 19.4 points per game, a mark that ranked second in the league.

Marquette Picked Seventh

Marquette was picked to finish seventh in the BIG EAST Conference at the league's annual media day. MU finished with 147 points, nine points behind Syracuse (156), predicted to finish sixth in the poll, while tallying 15 more points than DePaul, selected eighth. The poll is determined by a vote of the league's 16 head coaches who are not permitted to select their own teams. Connecticut garnered 14 of 16 first-place votes to total 224 points in the poll.

BIG EAST Expands Tourney

The Presidents of the BIG EAST Conference voted to include all 16 member institutions in the men's and women's basketball championship tournaments beginning in 2009. The new format will have the teams seeded 9 through 16 meet on the first day of competition. The matchups will be No. 9 vs. No. 16, No. 10 vs. No. 15, No. 11 vs. No. 14 and No.

Sarina Simmons Signs with Marquette

MILWAUKEE - Milwaukee native Sarina Simmons has signed a National Letter of Intent to continue her academic and athletic endeavors at Marquette University for the 2009-10 season announced head coach Terri Mitchell. With just the signing of Simmons, the Golden Eagles' '09 recruiting class is ranked No. 27 by All-Star Girls Report.

"Sarina is an outstanding athlete who can play a variety of positions," said head coach Terri Mitchell. "We love her versatility and passion on the court. We have known Sarina for a long time and are so excited that she is part of our family."

Simmons is a 6-1 forward out of Rufus King High School in Milwaukee, Wis. She is ranked as high as No. 8 by the Collegiate Girls Basketball Report and No. 47 by All-Star Girls Basketball Report. ESPN HoopGurlz lists her as No. 59 overall, but as the 14th best wing recruit of the 2009 class.

During her career at King, she has earned an honorable mention all-state accolades by both the *Milwaukee Journal Sentinel* and the Associated Press, as well as first team All-City Conference and all-area honors each season.

She averaged 11.7 points per game as a junior while helping the Generals to a 20-2 overall record, and 12.3 points, 3.8 steals, and 3.7 blocks per game as a sophomore. While Simmons has been at Rufus King, the team has claimed three City Conference Championships and has not lost a home game.

"Sarina phenomenal student-athlete," added her former coach Alina Cunningham at Rufus King High School. She will contribute at Marquette a great deal. The Marquette program is already successful, but I believe Sarina will help take it to the next level. She has great upside, yet still has a lot to learn. She has an opportunity to really blossom while playing in the BIG EAST Conference and could be unstoppable. She will work hard, but keep a smile on her face all of the time."

12 vs. No. 13.

The winners of those four games will meet seeds 5 through 8 on the second day of play. The 9/16 winner will advance to play the No. 8 seed. The 10/15 winner will play the No. 7 seed. The 11/14 winner will meet the No. 6 seed. The 12/13 winner will play the No. 5 seed.

Those four winners will advance to play the top four seeds in the quarterfinal round. Thus, the top four seeded teams still will not play until the quarterfinals, which occurs in the current 12-team format.

Preseason Recognition

Preseason recognition continues to pour in the the Marquette women's basketball team as *Sporting News* tabbed MU No. 25 in its preseason poll. *Sporting News* is the third publication to recognize the Golden Eagles, as both Lindy's College Basketball and Charlie Creme of ESPY.com listed Marquette as No. 25 heading into the 2008-09 campaign.

Player of the Year Candidate

Senior guard Krystal Ellis is among college basketball elite players as she is recognized on two national player of the year lists. Ellis is was one of 25 players named to the "Wade Watch" list for the State Farm Wade Trophy Division I Player of the Year and one of 30 players named to the John R. Wooden Award Preseason Top 30. Ellis also earned preseason second-team All-America honors by *Sporting News*.

Lights, Camera, Action

The reigning WNIT Champion Marquette University women's basketball team will make five appearances on national and regional networks during the 2008-09 season as part of the BIG EAST Conference's expanded television coverage announced Thursday.

The Golden Eagles will make four national television appearances on ESPNU and CBS College Sports (formerly CSTV), and once as part of the conference's regional BIG EAST Game of the Week package.

A Look Back at 2007-08--WNIT Champions

The 2007-08 season turned into one of the most memorable seasons in program history as the Golden Eagles ended the season as the 2008 Women's National Invitation Tournament Champions. On April 5, 2008, the Golden Eagles marched into the Breslin Center on the campus of Michigan State University and knocked off the Spartans 81-66 to claim Marquette's fourth national title in school history and the first in women's history. En route to the championship, MU won five straight games, with its last three being away from the friendly confines of the Al McGuire Center. The Golden Eagles' road to the title included home wins over Creighton in overtime, 75-69, Illinois, 72-64, and at Kentucky, 69-64, at Colorado, 86-72, and at Michigan State. The Golden Eagles finished the season 21-14 overall and their third straight 20-win

season.

Thomas-Johnson Gets an Olympic Experience

Junior Lauren Thomas-Johnson had an Olympic experience unlike any other athlete or coach participating in the 2008 Summer Olympic Games as she served as an athlete ambassador for British Basketball Federation.

Thomas-Johnson, a native of Manchester, England, was one of five male and female athletes chosen to represent Great Britain in Beijing as the nation prepares to host the 2012 Summer Olympics in London. Thomas-Johnson along with her fellow ambassadors had access to the athletes' village and different athletic venues around Beijing, along with going to the Opening Ceremonies and basketball games.

Thomas-Johnson, who expects to earn a spot on Great Britain's senior national team over the next four years, helped the Great Britain U20 team collect a bronze medal at the 2007 European Championship. It was the first medal ever won by a British basketball team in international competition.

Great Britain's senior national team did not qualify for the 2008 Olympics, but automatically qualifies for the 2012 Summer Olympics in London since it is the host nation.

Head Coach Terri Mitchell

Believe, Commit, Mature, Respect, Thankfulness - These are the five principles that serve as the foundation of the Marquette women's basketball team. And with these principles the Marquette lives by each day, head coach Terri Mitchell has molded the Golden Eagles into champions.

The foundation was laid years ago during her upbringing in Harrisburg, Pa. The life lessons Mitchell learned have served as her guide in coaching the Marquette women's basketball team for the last 13 years.

The Golden Eagles have thrived under Mitchell as she has compiled a 246-133 overall record - just short of 20 wins per season - 10 trips to the postseason and eight 20-win seasons. Notably, the Golden Eagles have earned six consecutive postseason berths, with their most recent postseason trip concluding with the Women's National Invitation Tournament Championship in 2008.

On the court, Mitchell's teams are known for their well-balanced offense coupled with a tenacious style of defense and off the court for their academic excellence and commitment to community service.

Since becoming the fourth women's basketball coach in Marquette University history, Mitchell has paved a path of excellence. That journey began in her very first year, as Mitchell was at the helm for the largest turnaround in school history. She guided MU to a 21-10 record in 1996-97, which was 13 wins better than the previous season's record of 8-20. It was the largest turnaround of any first-year head coach and third-best single-season turnaround among all NCAA Division I schools that year.

The drive and commitment to excellence Mitchell had in her first year as a head coach continues to be instilled in her teams year after year. Her players don't question it; they know it and live it each day. One of the team's favorite Mitchell sayings is "we didn't come to compete in the BIG EAST, we came to win it."

USA Basketball

The respect and admiration for the way Terri Mitchell relates to her players and her success in the BIG EAST Conference led to an opportunity with USA Basketball. During the summer of 2008, Mitchell served as an assistant coach for USA Basketball's U18 Women's National Team. Under her guidance, Team USA won the gold medal while rolling through the FIBA Americas Championship in Buenos Aires, Argentina undefeated.

Marquette has also had other ties to USA Basketball, as Krystal Ellis was a finalist for a spot on the 2007 USA Women's Pan American Games Team.

Player Development

She believes that her personal interaction with each player not only leads to success on the court, but off as well. Her vision for each player in her program is that they enter as girls, but leave as well-rounded, confident young women.

Under her guidance, her student-athletes have earned numerous individual accolades, for their work on the hardwood and in the classroom. Since 1996, 18 of Mitchell's players have earned all-conference honors, while two have achieved All-America status, with Krystal Ellis becoming MU's latest All-America selection following the 2006-07 season. Ellis was also the third player in program history to earn repeat first team all-conference honors. In addition, 27 players have earned spots on the league's Academic Honor Roll and three have been awarded GTE Academic All-America honors.

Service

Through her faith, compassion for others, and commitment to service, she has touched the lives of many. For example, in May of 2006 Mitchell took a mission trip to Rwanda where she spent 16 days in the impoverished African country.

In addition to her coaching duties, Mitchell is active in the community and is heavily involved with charitable events. She is an avid speaker on campus, at local schools, basketball clinics, nonprofit organizations and is actively involved in prison ministry. Through her speaking engagements, Mitchell incorporates the program's five principles and encourages her audiences to dream, believe, and live in the now. She also hosts motivational breakfasts entitled "Breakfast with Terri," for Milwaukee area business women throughout the year.

Mitchell believes in giving back to her profession and the community by serving on several Women's Basketball Coaches Association (WBCA) committees as well as on its Executive Board as Treasurer, the State Farm Wade Trophy Committee, the Midwest Athletes against Childhood Cancer (MACC) Fund Board of Directors, and many other service-oriented organizations.

Service is not only a significant part of Mitchell's life, but of her team's life as well. The Golden Eagles are involved in many service projects throughout the year including Big Brothers Big Sisters of Metro Milwaukee, Briggs & Al's Run & Walk, the Susan G. Komen Race for the Cure, the Kay Yow/WBCA Cancer Fund, the American Heart Association, the WBCA's Pink Zone initiative, school speaking engagements and basketball clinics.

Career Overview

2007-08

Champions is a word Mitchell's team speaks daily. Mitchell is adamant that one's words lead to one's destiny. It did on April 5,



The Mitchell Record

Season	Record	Accolades
Head Coach, Marquette (1996-present)		
2008-09	8-3	
2007-08	21-14	WNIT Champions Wisconsin Basketball Coaches Assoc. Div. I Women's Coach of the Year
2006-07	26-7	NCAA 2nd Round BIG EAST Coach of the Year Wisconsin Basketball Coaches Assoc. Div. I Women's Coach of the Year WBCA Executive Committee
2005-06	22-11	WNIT Championship Finalist
2004-05	18-12	WNIT 1st Round; WBCA Board of Directors
2003-04	22-10	NCAA 2nd Round; WBCA Board of Directors
2002-03	16-14	WNIT 2nd Round; WBCA Board of Directors
2001-02	14-14	WBCA Board of Directors
2000-01	13-16	
1999-2000	22-7	C-USA Coach-of-the-Year; C-USA Champs; NCAA Tournament; NCAA Div.-I Mideast Region Advisory Cmte.; Div. I All-America Committee
1998-99	21-8	C-USA Coach-of-the-Year; C-USA Champs; NCAA Tournament; Wisconsin Basketball Coaches Assoc. Div. I Women's Coach of the Year NCAA Div.-I Mideast Region Advisory Cmte.;
1997-98	22-7	Div. I All-America Committee
1996-97	21-10	C-USA Div. Champs; NCAA Tournament
		C-USA Div. Champs; NCAA 2nd Round
Career	246-133	64.9 percent
Assistant Coach, Marquette (1991-96)		
1995-96	8-20	
1994-95	19-12	GMC Tourney Champs; NCAA Tournament
1993-94	22-7	Great Midwest Champs; NCAA Tournament
1992-93	22-9	NWIT
1991-92	16-13	
Graduate Assistant, Arizona State (1989-90)		
1989-90	13-15	
Letterwinner, Duquesne (1986-89)		
Career Notes		
<ul style="list-style-type: none"> • 246-133 career record • Best winning percentage by a coach in Marquette women's basketball history • The second coach in MU women's history to win 100 games • The first coach in MU women's history to win 200 games • The winningest women's basketball coach in MU history • Six NCAA Tournament appearances • Four WNIT appearances • Two time C-USA Champions • Three-time Conference Coach-of-the-Year • Three-time Wisconsin Basketball Coaches Assoc. Div. I Women's Coach of the Year 		

Mitchell All-Time vs the Top 25

Nov. 23, 1996	#3 Tennessee 83, Marquette 68 (Howard Bank Classic - Burlington, Vt.)
Jan. 5, 1997	at Marquette 66, #24 DePaul 59
Jan. 17, 1997	at #25 DePaul 89, Marquette 83
Feb. 14, 1997	at #25 Tulane 76, Marquette 70
Mar. 15, 1997	Marquette 70, #21 Clemson 66 (NCAA Tournament - Baton Rouge, La.)
Mar. 17, 1997	#9 LSU 71, Marquette 58 (NCAA Tournament - Baton Rouge, La.)
Dec. 7, 1997	at #6 Illinois 99, Marquette 86
Mar. 13, 1998	#12 Florida Intl. 59, Marquette 45 (NCAA Tournament - Chapel Hill, N.C.)
Nov. 28, 1998	Marquette 77, #13 Florida 61 (Ronald McDonald Classic - Durham, N.C.)
Nov. 29, 1998	#20 Duke 91, Marquette 60 (Ronald McDonald Classic - Durham, N.C.)
Dec. 8, 1999	at Marquette 69, #22 Wisconsin 65
Jan. 2, 2000	at #10 Notre Dame 75, Marquette 60
Feb. 5, 2000	Marquette 81, at #21 Tulane 62
Dec. 21, 2000	#3 Notre Dame 75, at Marquette 56
Nov. 17, 2001	#7 Iowa State 68, Marquette 50
Nov. 29, 2001	at #16 Michigan 65, Marquette 49
Dec. 5, 2001	#19 Wisconsin 56, Marquette 55
Jan. 2, 2002	Marquette 56, at #20 Colo. State 52
Dec. 31, 2002	#13 Notre Dame 75, at Marquette 68
Jan. 8, 2003	#19 Green Bay 58, at Marquette 47
Jan. 12, 2003	#25 DePaul 62, at Marquette 57
Feb. 8, 2004	at #15 DePaul 61, Marquette 59
Feb. 20, 2004	at #17 TCU 56, Marquette 47
Feb. 22, 2004	at #21 Houston 77, Marquette 64
Feb. 29, 2004	at Marquette 62, #20 DePaul 61
Mar. 3, 2004	Marquette 74, #24 DePaul 70 (C-USA Tournament - Fort Worth, Tex.)
Mar. 6, 2004	#11 Houston 67, Marquette 59 (C-USA Tournament - Fort Worth, Tex.)
Mar. 23, 2004	#1 Duke 76, Marquette 67 (NCAA Tournament - Durham, N.C.)
Dec. 19, 2004	#7 Notre Dame 50, Marquette 47
Jan. 9, 2005	Marquette 63, #18 DePaul 57
Feb. 27, 2005	at #12 DePaul 77, Marquette 56
Feb. 8, 2006	Marquette 74, at #23 St. John's 59
Feb. 21, 2006	#8 Rutgers 71, at Marquette 50
Feb. 25, 2006	at #7 Connecticut 74, Marquette 59
Nov. 14, 2006	at Marquette 78, #-/23 Washington 61
Jan. 6, 2007	at #18/ Marquette 82, #23/24 DePaul 79
Jan. 30, 2007	at #23/25 Rutgers 66, #16/18 Marquette 56
Feb. 3, 2007	#6/5 Connecticut 52, #16/18 Marquette 48
Feb. 17, 2007	at #21/21 Marquette 65, #20/19 Louisville 54
Mar. 5, 2007	#19/21 Rutgers 63, #21 Marquette 55 (BIG EAST Tournament - Hartford, Conn.)
Mar. 19, 2007	#9/10 Oklahoma 78, #22/ Marquette 47 (NCAA Tournament - Austin, Texas)
Nov. 17, 2007	at Marquette 67, #RV/25 Wisconsin 53
Dec. 30, 1007	#23/RV Arkansas 71, Marquette 69
Jan. 8, 2008	#5/5 Rutgers 65, at Marquette 61
Jan. 16, 2008	at #14/14 West Virginia 68, Marquette 63
Jan. 19, 2008	at Marquette 65, #23/22 DePaul 56
Feb. 10, 2008	at #23/24 Syracuse 70, Marquette 67
Feb. 13, 2008	at #16/16 Notre Dame 99, Marquette 76
Feb. 20, 2008	at #1/1 Connecticut 95, Marquette 63
Feb. 23, 2008	at Marquette 76, #23/21 Pittsburgh 69
Nov. 29, 2008	No. 16/15 Virginia 76, at Marquette 71

2008, when the Golden Eagles marched into the Breslin Center at Michigan State and knocked off the Spartans, 81-66, to claim the Women's National Invitation Tournament Championship. It marked the fourth national title in Marquette history and the first in women's history.

Up against a bevy of talented teams - the BIG EAST sent 12 teams to post season play - Mitchell led the youngest team in the BIG EAST Conference into battle with six freshmen and only one returning starter. The Golden Eagles fought through adversity, the Golden Eagles won over 20 games for the third straight season. Marquette finished the season with a five-game win streak - its longest of the season - and as one of only two Division I women's college basketball teams in the nation to end the season with a victory. Junior Krystal Ellis was named First Team All-BIG EAST for the second consecutive season and freshman phenom Angel Robinson was an all-freshman team selection. Both continued their stellar play through the team's championship run and were honored with WNIT All-Tournament Team accolades. Ellis was named tournament MVP, while Robinson was an all-tournament selection.

Following its championship run, Marquette was honored by the City of Milwaukee and Mayor Tom Barrett as they proclaimed April 15, 2008 Marquette Women's Basketball Day. For the second consecutive year, Mitchell earned the Wisconsin Basketball Coaches Association Division I Women's Coach of the Year honor.

2006-07

The 2006-07 season was one for the history books as Mitchell guided the Golden Eagles to their best season ever, a 26-7 overall record. It was the seventh season in which her team won 20 or more games. After being picked eighth in the BIG EAST preseason poll, Marquette started the season winning 15 of its first 16 games, and jumped into the national polls on December 4 for the first time since the 1999-2000 season. The season for the ages included a school record 14-game win streak and being ranked in the Top 25 for the majority of the season. During that streak Mitchell won her 200th game on Dec. 9, 2006. In BIG EAST play, the Golden Eagles finished tied for second place with Rutgers registering a 12-4 conference record. For her efforts, Mitchell received the league's highest honor and was named the BIG EAST Coach of the Year. It was Mitchell's third coach of the year honor.

More honors continued to follow Mitchell at the conclusion of the 2006-07 season as she was elected to the Women's Basketball Coaches Association (WBCA) Executive Committee as its Treasurer and tabbed the Wisconsin Basketball Coaches Association Division I Women's Coach of the Year. She was also named a Woman of Influence by the Milwaukee Business Journal in the category of "Inspiration."

Marquette made a trip back to the "big dance" behind the inside-outside combination of All-BIG EAST First Team selections Krystal Ellis and Christina Quaye, and the leadership of seniors, Jasmine McCullough, Danielle Kamm and Efueko Osagie-Landry. It was the first time in program history two players were first team all-conference selections in the same year.

2005-06

In 2005-06, Marquette made a remarkable postseason run, advancing to the championship game of the Women's National Invitation Tournament. Led by All-BIG EAST honorees Christina Quaye, Carolyn Kieger, and BIG EAST All-Rookie Team member Krystal Ellis, the Golden Eagles posted a 22-11 overall record, including a 9-7 record in BIG EAST play before falling in the championship game at Kansas State.

2004-05

During the 2004-05 campaign, MU qualified for its third consecutive postseason appearance by earning a spot in the WNIT. Led by Second Team All-Conference USA honorees Carolyn Kieger and Christina Quaye, the Golden Eagles finished with an overall record of 18-12.

2003-04

In 2003-04, the team tied a school record with 22 wins and advanced to the Second Round of the NCAA Tournament. In the first round, playing as the ninth seed in the Mideast Region, MU defeated Old Dominion, 67-64 as Christina Quaye hit the go-ahead layup with 5.8 seconds left. In the next game, the Golden Eagles gave the nation's No. 1 ranked team, Duke, all it could handle and opened the eyes of many around the country.

The 2003-04 campaign was typical of the Terri Mitchell era. Offensively, the team was balanced, as eight different players led the team in scoring during a game over the course of the season. Games were won with defense and teamwork, as MU led Conference USA in scoring defense, yielding just 57.2 points per contest.

2002-03

Mitchell led the 2002-03 Golden Eagles to a 16-14 mark and a spot in the Women's National Invitation Tournament, advancing to the second round. That season, the team set new school records in three-point shooting and free throw shooting percentages.

2001-02

Mitchell reached the 100-victory milestone the third game of the 2001-02 season as the Golden Eagles downed Alaska-Anchorage, 88-50, in the Great Alaska Shootout. On Jan. 27, she became Marquette's all-time winningest coach in a 65-44 victory over Tulane. That season, the Golden Eagles continued to be one of the best defensive squads in the nation, holding the opposition to just 59.6 points per game. That total tied for the top spot in Conference USA and tied for 10th in the NCAA.

At the end of that season, Mitchell was elected to the Board of Directors of the Women's Basketball Coaches Association, an honor in which she took great pride.

2000-01

The 2000-01 season proved to be a pivotal year in the growth of the Marquette women's basketball program. Mitchell was instrumental in carrying forward the goals of the program while providing stability, despite the graduation of three of the school's all-time leading scorers. With a young squad of five freshmen and two returning starters, the Golden Eagles picked up key victo-

ries against NCAA Tournament teams Michigan and UW - Milwaukee early on and closed out the season winning four straight before falling to C-USA Champion Tulane on a last-minute shot.

1999-2000

Her 1999-2000 squad finished the season in fine fashion, winning 13 of its last 15 regular season contests, claiming the regular season C-USA championship and a berth in the NCAA Mideast regional. Guiding her squad to a 14-2 conference record, Mitchell earned her second C-USA Coach of the Year honor. That season, Marquette led Conference USA and was 10th in the nation in defense allowing only a 36.4 shooting percentage.

1998-99

Mitchell led the 1998-99 squad to a 21-8 overall mark, a 12-4 record in C-USA play and a third straight trip to the NCAA Tournament. For her efforts, Mitchell was named the Wisconsin Basketball Coaches Association Women's Basketball Coach of the Year. Marquette allowed its foes to shoot just 39.0 percent from the field and out-rebounded teams by 8.0 boards per game, a stat that topped C-USA and was sixth in the nation.

1997-98

In 1997-98, the Golden Eagles finished 22-7 overall and had a 13-3 record in Conference USA play, capturing the American Division title en route to their second consecutive appearance in the NCAA Tournament. Mitchell also earned her first conference honor in her second year at the helm as she was named Conference USA Coach of the Year.

1996-97

Mitchell was named head coach on June 6, 1996. In her first season leading the Golden Eagles, Mitchell set a few precedents. She shattered the record for most wins by a Marquette first-year head coach, 21, and holds the distinction of reaching 50 wins faster than any coach in Marquette history. In addition, she became the only coach in school history to take her team to the NCAA Tournament in her first season.

Not only did she take the 1996-97 Golden Eagles to the Big Dance, but they also recorded the first NCAA Tournament win in school history.

The Early Days

Prior to becoming head coach, Mitchell was an assistant for the Golden Eagles for five seasons. She was instrumental in recruiting Marquette's 1996-97 freshman class, which was ranked 12th in the nation by the Blue Star Index. Marquette posted an 87-61 record and made three postseason appearances during Mitchell's tenure as an assistant.

A native of Harrisburg, Pa., Mitchell was a four-year letterwinner and team captain at Duquesne University. After an outstanding career with the Dukes, Mitchell graduated Cum Laude with a psychology degree in 1989. She began her coaching career serving as a graduate assistant at Arizona State during the 1989-90 season.

2008-09 Overall Statistics

Record	Overall	Home	Away	Neutral
All Games	8-3	4-2	3-1	0-0
BIG EAST	0-0	0-0	0-0	0-0

Player	GP	GS	Min.	Avg.	Field Goals			3-Point FG			Free Throws			Rebounds				PF	DQ	A	TO	B	S	Pts.	Avg.
					FG	FGA	Pct.	3P	3PA	Pct.	FT	FTA	Pct.	Off.	Def.	Tot.	Avg.								
20 Krystal Ellis	11	11	299	27.2	69	158	.437	17	57	.298	31	40	.775	7	25	32	2.9	24	1	39	31	6	29	186	16.9
01 Angel Robinson	11	11	293	26.6	49	132	.371	11	28	.393	20	31	.645	14	37	51	4.6	32	1	43	34	7	17	129	11.7
12 Jessica Pachko	5	4	100	20.0	16	21	.762	0	0	.000	10	14	.714	8	16	24	4.8	11	0	3	7	1	4	42	8.4
41 Paige Fiedorowicz	11	8	255	23.2	33	68	.485	1	2	.500	24	28	.857	27	35	62	5.6	21	0	12	11	3	11	91	8.3
24 L. Thomas-Johnson	11	9	259	23.5	25	78	.321	12	41	.293	21	25	.840	5	15	20	1.8	16	0	18	22	6	10	83	7.5
34 Georgie Jones	10	4	170	17.0	17	26	.654	0	0	.000	8	26	.308	23	36	59	5.9	16	0	4	14	8	5	42	4.2
22 Jocelyn Mellen	5	5	90	18.0	8	19	.421	1	1	1.000	4	7	.571	3	17	20	4.0	9	0	2	6	3	1	21	4.2
23 Tatiyana McMorris	9	0	80	8.9	14	27	.519	7	15	.467	2	2	1.000	2	10	12	1.3	7	0	9	6	0	2	37	4.1
11 Janelle Hrris	11	1	141	12.8	17	37	.459	0	2	.000	8	14	.571	14	10	24	2.2	16	0	6	16	1	13	42	3.8
42 Marissa Thrower	11	0	151	13.7	15	32	.469	0	0	.000	10	14	.714	12	17	29	2.6	15	0	3	8	4	5	40	3.6
32 HILL, Breann	8	0	75	9.4	12	23	.522	0	1	.000	0	3	.000	12	8	20	2.5	7	0	4	8	0	7	24	3.0
03 Courtney Weibel	9	1	56	6.2	8	24	.333	8	23	.348	0	0	.000	2	0	2	0.2	3	0	3	1	1	1	24	2.7
05 Erin Monfre	11	1	154	14.0	8	31	.258	7	29	.241	0	0	.000	1	11	12	1.1	9	0	19	7	1	2	23	2.1
00 Jasmine Collins	10	0	78	7.8	6	18	.333	0	0	.000	2	4	.500	11	9	20	2.0	16	0	1	4	3	2	14	1.4
TM TEAM																									
Total	11				297	694	.428	64	199	.322	140	208	.673	171	266	437	39.7	203	2	166	179	44	109	798	72.5
Opponents	11				233	606	.384	68	191	.356	148	211	.701	131	254	385	35.0	205	-	131	222	34	69	682	62.0

TEAM STATISTICS

	MARQ	OPP	Date	Opponent	W	L	Score	High Scorer	High Rebounder	Att.
SCORING	798	682	11/15	Oral Roberts	W		89-67	Ellis 16	Pachko, Mellen 8	1,201
Points per game	72.5	62.0	11/17	Sacred Heart	W		77-55	Pachko 14	Jones 7	1,045
Scoring margin	+10.5	-	11/19	at Indiana State	W		77-53	Ellis 19	Jones 10	3,577
FIELD GOALS-ATT	297-694	233-606	11/23	at Western Michigan	W		89-58	Fiedorowicz 14	Fiedorowicz & Collins 6	1,392
Field goal pct	.428	.384	11/28	Gonzaga	W		80-77	Fiedorowicz 21	Robinson 11	1,407
3 POINT FG-ATT	64-199	68-191	11/29	16/15 Virginia	L		71-76	Robinson 25	Fiedorowicz 8	1,709
3-point FG pct	.322	.356	11/30	Utah	L		76-79	Ellis 23	Jones 10	1,283
3-pt FG made per game	5.8	6.2	12/02	at Northwestern	W		55-54	Ellis 18	Robinson 8	452
FREE THROWS-ATT	140-208	148-211	12/07	Kansas	W		67-57	Ellis 32	Jones 6	1,353
Free throw pct	.673	.701	12/13	at Wisconsin	L		48-67	Robinson, Fiedorowicz 9	Thomas-Johnson 7	5,773
REBOUNDS	437	385	12/17	Oregon	W		69-39	Ellis 17	Fiedorowicz 12	4,000
Rebounds per game	39.7	35.0								
Rebounding margin	+4.7	-								
ASSISTS	166	131								
Assists per game	15.1	11.9								
TURNOVERS	179	222								
Turnovers per game	16.3	20.2								
Turnover margin	+3.9	-								
Assist/turnover ratio	0.9	0.6								
STEALS	109	69								
Steals per game	9.9	6.3								
BLOCKS	44	34								
Blocks per game	4.0	3.1								
WINNING STREAK	1	-								
Home win streak	2	-								
ATTENDANCE	11998	11194								
Home games-Avg/Game	7-1714	4-2798								
Neutral site-Avg/Game	-	0-0								

SCORE BY PERIODS:

	1st	2nd	Total
Marquette	392	406	798
Opponents	333	349	682

Attendance Summary

Site	Total	(GP)	Avg.	High
Home	11,998	7	1,714	4,000 vs Oregon (Dec. 17)
Away	11,194	4	2,798	5,773 at Wisconsin (Dec. 13)
Neutral	-	-	-	
Total	23,192	11		

Statistics in Home Games (5-2)

Player	GP	GS	Min.	Avg.	Field Goals			3-Point FG			Free Throws			Rebounds				PF	DQ	A	TO	B	S	Pts.	Avg.
					FG	FGA	Pct.	3P	3PA	Pct.	FT	FTA	Pct.	Off.	Def.	Tot.	Avg.								
20 Krystal Ellis	7	7	187	26.7	48	107	.449	13	37	.351	22	28	.786	5	16	21	3.0	13	0	27	21	6	19	131	18.7
01 Angel Robinson	7	7	194	27.7	33	93	.355	6	17	.353	14	23	.609	10	21	31	4.4	20	1	28	18	7	14	86	12.3
12 Jessica Pachko	3	3	64	21.3	13	16	.813	0	0	.000	5	7	.714	5	12	17	5.7	5	0	2	3	0	3	31	10.3
41 Paige Fiedorowicz	7	5	164	23.4	22	41	.537	1	2	.500	13	16	.813	15	28	43	6.1	12	0	9	7	2	9	58	8.3
24 L. Thomas-Johnson	7	5	165	23.6	17	54	.315	8	26	.308	11	14	.786	3	8	11	1.6	9	0	16	11	3	8	53	7.6
34 Georgie Jones	7	3	131	18.7	16	24	.667	0	0	.000	7	23	.304	19	26	45	6.4	9	0	4	7	6	4	39	5.6
23 Tatiyana McMorris	5	0	43	8.6	8	14	.571	2	5	.400	2	2	1.000	2	3	5	1.0	4	0	4	2	0	1	20	4.0
11 Janelle Hrris	7	1	95	13.6	10	25	.400	0	1	.000	7	11	.636	12	5	17	2.4	13	0	4	10	0	9	27	3.9
42 Marissa Thrower	7	0	96	13.7	9	21	.429	0	0	.000	8	12	.667	10	7	17	2.4	10	0	2	6	0	5	26	3.7
22 Jocelyn Mellen	3	3	44	14.7	4	9	.444	1	1	1.000	0	1	.000	2	12	14	4.7	5	0	1	3	1	1	9	3.0
05 Erin Monfre	7	0	85	12.1	6	17	.353	5	16	.313	0	0	.000	1	3	4	0.6	4	0	14	6	1	2	17	2.4
03 Courtney Weibel	5	1	28	5.6	4	11	.364	4	11	.364	0	0	.000	1	0	1	0.2	2	0	3	0	1	0	12	2.4
32 HILL, Breann	5	0	52	10.4	6	14	.429	0	1	.000	0	2	.000	5	6	11	2.2	6	0	3	6	0	5	12	2.4
00 Jasmine Collins	7	0	52	7.4	3	12	.250	0	0	.000	2	4	.500	8	6	14	2.0	12	0	0	2	0	1	8	1.1
TM TEAM														18	14	32	4.6	1		3					
Totals	7				199	458	.434	40	117	.342	91	143	.636	116	167	283	40.4	125	1	117	105	27	81	529	75.6
Opponents	7				157	396	.396	48	127	.378	88	125	.704	83	164	247	35.3	132	-	88	146	18	45	450	64.3

Statistics on the Road Games (3-1)

Player	GP	GS	Min.	Avg.	Field Goals			3-Point FG			Free Throws			Rebounds				PF	DQ	A	TO	B	S	Pts.	Avg.
					FG	FGA	Pct.	3P	3PA	Pct.	FT	FTA	Pct.	Off.	Def.	Tot.	Avg.								
20 Krystal Ellis	4	4	112	28.0	21	51	.412	4	20	.200	9	12	.750	2	9	11	2.8	11	1	12	10	0	10	55	13.8
01 Angel Robinson	4	4	99	24.8	16	39	.410	5	11	.455	6	8	.750	4	16	20	5.0	12	0	15	16	0	3	43	10.8
41 Paige Fiedorowicz	4	3	91	22.8	11	27	.407	0	0	.000	11	12	.917	12	7	19	4.8	9	0	3	4	1	2	33	8.3
24 L. Thomas-Johnson	4	4	94	23.5	8	24	.333	4	15	.267	10	11	.909	2	7	9	2.3	7	0	2	11	3	2	30	7.5
22 Jocelyn Mellen	2	2	46	23.0	4	10	.400	0	0	.000	4	6	.667	1	5	6	3.0	4	0	1	3	2	0	12	6.0
12 Jessica Pachko	2	1	36	18.0	3	5	.600	0	0	.000	5	7	.714	3	4	7	3.5	6	0	1	4	1	1	11	5.5
23 Tatiyana McMorris	4	0	37	9.3	6	13	.462	5	10	.500	0	0	.000	0	7	7	1.8	3	0	5	4	0	1	17	4.3
32 Breann Hill	3	0	23	7.7	6	9	.667	0	0	.000	0	1	.000	7	2	9	3.0	1	0	1	2	0	2	12	4.0
11 Janelle Harris	4	0	46	11.5	7	12	.583	0	1	.000	1	3	.333	2	5	7	1.8	3	0	2	6	1	4	15	3.8
42 Marissa Thrower	4	0	55	13.8	6	11	.545	0	0	.000	2	2	1.000	2	10	12	3.0	5	0	1	2	4	0	14	3.5
03 Courtney Weibel	4	0	28	7.0	4	13	.308	4	12	.333	0	0	.000	1	0	1	0.3	1	0	0	1	0	1	12	3.0
00 Jasmine Collins	3	0	26	8.7	3	6	.500	0	0	.000	0	0	.000	3	3	6	2.0	4	0	1	2	3	1	6	2.0
05 Erin Monfre	4	1	69	17.3	2	14	.143	2	13	.154	0	0	.000	0	8	8	2.0	5	0	5	1	0	0	6	1.5
34 Georgie Jones	3	1	39	13.0	1	2	.500	0	0	.000	1	3	.333	4	10	14	4.7	7	0	0	7	2	1	3	1.0
TM TEAM														12	6	18	4.5	0		1					
Tota	4				98	236	.415	24	82	.293	49	65	.754	55	99	154	38.5	78	1	49	74	17	28	269	67.2
Opponents	4				76	210	.362	20	64	.313	60	86	.698	48	90	138	34.5	73	-	43	76	16	24	232	58.0

Statistics in Games Won (8-0)

Player	GP	GS	Min.	Avg.	Field Goals			3-Point FG			Free Throws			Rebounds				PF	DQ	A	TO	B	S	Pts.	Avg.
					FG	FGA	Pct.	3P	3PA	Pct.	FT	FTA	Pct.	Off.	Def.	Tot.	Avg.								
20 Krystal Ellis	8	8	216	27.0	49	104	.471	11	38	.289	24	31	.774	3	21	24	3.0	17	0	37	24	3	26	133	16.6
01 Angel Robinson	8	8	205	25.6	33	83	.398	7	15	.467	16	25	.640	10	31	41	5.1	22	0	26	28	7	11	89	11.1
41 Paige Fiedorowicz	8	5	172	21.5	30	56	.536	1	2	.500	13	14	.929	18	23	41	5.1	13	0	10	6	1	7	74	9.3
12 Jessica Pachko	4	4	86	21.5	15	18	.833	0	0	.000	7	9	.778	7	14	21	5.3	9	0	3	6	1	3	37	9.3
24 L. Thomas-Johnson	8	6	180	22.5	22	59	.373	10	30	.333	13	17	.765	4	7	11	1.4	13	0	13	17	5	7	67	8.4
23 Tatiyana McMorris	6	0	60	10.0	11	21	.524	5	12	.417	2	2	1.000	2	7	9	1.5	6	0	7	6	0	2	29	4.8
22 Jocelyn Mellen	5	5	90	18.0	8	19	.421	1	1	1.000	4	7	.571	3	17	20	4.0	9	0	2	6	3	1	21	4.2
34 Georgie Jones	7	1	113	16.1	11	16	.688	0	0	.000	6	20	.300	13	27	40	5.7	12	0	2	9	7	4	28	4.0
11 Janelle Hrris	8	1	104	13.0	12	30	.400	0	2	.000	7	13	.538	7	8	15	1.9	11	0	5	12	1	9	31	3.9
32 HILL, Breann	6	0	59	9.8	11	19	.579	0	1	.000	0	1	.000	12	8	20	3.3	5	0	2	7	0	5	22	3.7
42 Marissa Thrower	8	0	97	12.1	10	19	.526	0	0	.000	8	12	.667	8	11	19	2.4	11	0	3	7	3	4	28	3.5
03 Courtney Weibel	6	1	45	7.5	6	17	.353	6	17	.353	0	0	.000	2	0	2	0.3	2	0	3	1	1	1	18	3.0
05 Erin Monfre	8	1	115	14.4	5	22	.227	4	20	.200	0	0	.000	1	9	10	1.3	5	0	17	5	1	1	14	1.8
00 Jasmine Collins	7	0	59	8.4	5	15	.333	0	0	.000	2	4	.500	8	9	17	2.4	15	0	1	4	3	1	12	1.7
TM TEAM														21	18	39	4.9	0		3					
Total	8				228	498	.458	45	138	.326	102	155	.658	119	210	329	41.1	150	0	131	141	36	82	603	75.4
Opponents	8				155	439	.353	48	141	.340	102	150	.680	94	172	266	33.2	160	-	92	174	21	53	460	57.5

Statistics in Games Lost (0-3)

Player	GP	GS	Min.	Avg.	Field Goals			3-Point FG			Free Throws			Rebounds				PF	DQ	A	TO	B	S	Pts.	Avg.
					FG	FGA	Pct.	3P	3PA	Pct.	FT	FTA	Pct.	Off.	Def.	Tot.	Avg.								
20 Krystal Ellis	3	3	83	27.7	20	54	.370	6	19	.316	7	9	.778	4	4	8	2.7	7	1	2	7	3	3	53	17.7
01 Angel Robinson	3	3	88	29.3	16	49	.327	4	13	.308	4	6	.667	4	6	10	3.3	10	1	17	6	0	6	40	13.3
41 Paige Fiedorowicz	3	3	83	27.7	3	12	.250	0	0	.000	11	14	.786	9	12	21	7.0	8	0	2	5	2	4	17	5.7
24 L. Thomas-Johnson	3	3	79	26.3	3	19	.158	2	11	.182	8	8	1.000	1	8	9	3.0	3	0	5	5	1	3	16	5.3
12 Jessica Pachko	1	0	14	14.0	1	3	.333	0	0	.000	3	5	.600	1	2	3	3.0	2	0	0	1	0	1	5	5.0
34 Georgie Jones	3	3	57	19.0	6	10	.600	0	0	.000	2	6	.333	10	9	19	6.3	4	0	2	5	1	1	14	4.7
42 Marissa Thrower	3	0	54	18.0	5	13	.385	0	0	.000	2	2	1.000	4	6	10	3.3	4	0	0	1	1	1	12	4.0
11 Janelle Harris	3	0	37	12.3	5	7	.714	0	0	.000	1	1	1.000	7	2	9	3.0	5	0	1	4	0	4	11	3.7
05 Erin Monfre	3	0	39	13.0	3	9	.333	3	9	.333	0	0	.000	0	2	2	0.7	4	0	2	2	0	1	9	3.0
23 Tatiyana McMorris	3	0	20	6.7	3	6	.500	2	3	.667	0	0	.000	0	3	3	1.0	1	0	2	0	0	0	8	2.7
03 Courtney Weibel	3	0	11	3.7	2	7	.286	2	6	.333	0	0	.000	0	0	0	0.0	1	0	0	0	0	0	6	2.0
32 Breann Hill	2	0	16	8.0	1	4	.250	0	0	.000	0	2	.000	0	0	0	0.0	2	0	2	1	0	2	2	1.0
00 Jasmine Collins	3	0	19	6.3	1	3	.333	0	0	.000	0	0	.000	3	0	3	1.0	1	0	0	0	0	1	2	0.7
TM TEAM														9	2	11	3.7	1			1				
Total	3				69	196	.352	19	61	.311	38	53	.717	52	56	108	36.0	53	2	35	38	8	27	195	65.0
Opponents	3				78	167	.467	20	50	.400	46	61	.754	37	82	119	39.7	45	-	39	48	13	16	222	74.0

Marquette Players in Double Figures

	Points	Rebounds
Oral Roberts	Ellis 16, Mellen 14, Fiedorowicz 13, Thomas Johnson 12, Pachko 10	-
Sacred Heart	Packo 14, Thomas-Johnson 13	-
at Indiana St.	Ellis 19, Thomas-Johnson 13	Jones 10
at West.Mich.	Fiedorowicz 14, Robinson 12, Ellis 12	-
Gonzaga	Fiedorowicz 21, Robinson 13, Thomas Johnson 13, Jones 12, Ellis 12	Robinson 11
Virginia	Robinson 25, Ellis 23, Thomas-Johnson 10	-
Utah	Ellis 23, Jones 10	Jones 10
at Northwestern	Ellis 18, Robinson 14	-
Kansas	Ellis 32, Robinson 15	-
at Wisconsin	-	-
Oregon	Ellis 17, Fiedorowicz 12	Fiedorowicz 12
Green Bay		
at Oakland		
Milwaukee		
USF		
at Seton Hall		
Notre Dame		
at Rutgers		
at Georgetown		
Syracuse		
at Pittsburgh		
at USF		
Connecticut		
Villanova		
West Virginia		
at Cincinnati		
St. John's		
at Providence		
at DePaul		
Louisville		

Marquette Bench Scoring

	Starters	Bench	Bench Scoring
Oral Roberts	49	40	Fiedorowicz 13, Thomas-Johnson 12, Thrower 5, Monfre 3, Weibel 3, Collins 2, Hill 2
Sacred Heart	48	29	Jones 9, Hill 6, Harris 5, Thrower 5, Fiedorowicz 4
at Indiana State	53	14	McMorris 9, Harris 5, Hill 2, Fiedorowicz 2, Thrower 2, Jones 1
at W. Michigan	50	39	Harris 8, Hill 8, Collins 6, McMorris 6, Thrower 6, Weibel 3, Jones 2
Gonzaga	59	21	Jones 12, Thrower 4, Harris 3, Hill 2
Virginia	70	6	Harris 4, Thrower 2
Utah	44	32	Monfre 9, McMorris 8, Thrower 6, Harris 5, Hill 2, Collins 2
at Northwestern	49	6	McMorris 2, Hill 2, Thrower 2
Kansas	54	13	Collins 4, McMorris 4, Monfre 3, Harris 2
at Wisconsin	31	17	Weibel 6, Pachko 5, Thrower 4, Harris 2
Oregon	49	20	McMorris 8, Thrower 4, Harris 4, Jones 2, Jones 2
Green Bay			
at Oakland			
Milwaukee			
USF			
at Seton Hall			
Notre Dame			
at Rutgers			
at Georgetown			
Syracuse			
at Pittsburgh			
at USF			
Connecticut			
Villanova			
West Virginia			
at Cincinnati			
St. John's			
at Providence			
at DePaul			
Louisville			

Marquette's Record When

Leading at half	5-2
Trailing at half	3-1
Tied at half	-
Scoring 70 or more points	5-2
Allowing 70 or more points	1-2
Allowing 80 or more points	-
Holding opponents to 60 points or less	6-0
Holding opponents to 65 points or less	-
Holding opponents to 70 points or less	1-1
Shooting 50 percent or better	3-0
Opponents shoot 50 percent or better	0-1
Opponent shoots under 40 percent	4-0
MU's FG percent is higher than opp.	5-0
MU's FG percent is lower than opp.	2-3
MU's 3FG percent is 40 percent or higher	1-0
Opponent's 3FG percent is 40 percent or higher	2-1
MU shoots more FT than opponent	3-1
MU shoots fewer FT than opponent	5-2
MU shoots same FT as opponent	-
Out-rebounded opponent	7-0
Out-rebounded by opponent	1-2
Rebounds tied	0-1
Same or fewer turnovers as opp.	7-1
More turnovers than opponent	1-2
Overtime games	-
In games decided by 5 pts. or less	2-2
In games decided by 6-10	1-0
In games decided by 11-15	-
In games decided by 16 pts. or more	5-1
When Ranked in AP or Coaches Poll	-
vs Ranked Teams (AP or Coaches)	0-1
vs Teams with a RPI of 25 or better	1-1
vs Teams with a RPI of 26-50	0-1
vs Teams with a RPI of 50-100	3-1
vs Teams with a RPI of 100 or higher	4-1
When winning the opening tip	5-2
When scoring first	5-1
On Sundays	2-1
On Mondays	1-0
On Tuesdays	1-0
On Wednesdays	2-0
On Thursdays	-
On Fridays	1-0
On Saturdays	1-1

Team Superlatives by Half

	First Half	Second Half
Points	52 at West. Mich. (11/23)	47 Twice
Fewest Pts. Allowed	20 Oregon (12/17)	19 Oregon (12/17)
FG Percentage	59.4 at West. Mich. (11/23)	72.0 at Indiana State (11/19)
Lowest FG Pct. Allowed	21.4 at West. Mich. (11/23)	18.2 Oregon (12/17)
3-Point Percentage	63.6 at West. Mich. (11/23)	55.6 Virginia (11/29)
FT Made	9 Four Times	18 Gonzaga (11/28)
Rebounds	25 Virginia (11/29)	27 Oral Roberts (11/15)
Assists	13 Twice	11 Oral Roberts (11/15)
Blocks	3 Three Times	5 Gonzaga (11/28)
Steals	8 Twice	12 Sacred Heart (11/17)

Individual Superlatives by Half

First Half		
Points	14 Paige Fiedorowicz	Gonzaga (11/28)
FG Made	6 Two Players	Sacred Heart (11/17)
3-Point Made	3 Erin Monfre	Last time: Virginia (11/29)
FT Made	7 Paige Fiedorowicz	Wisconsin (12/13)
Rebounds	7 Paige Fiedorowicz	Gonzaga (11/28)
Assists	5 Two players, 3x	Last time: Utah (11/30)
Second Half		
Points	19 Krystal Ellis	Kansas (12/7)
FG Made	7 Krystal Ellis	Twice
3-Point Made	2 Two players, 4x	Last time: Kansas (12/7)
FT Made	6 Krystal Ellis	Gonzaga (11/28)
Rebounds	8 Georgie Jones	Utah (11/30)
Assists	4 Three Players	Last: at Indiana State (11/19)

High Marks

Double-figure scoring games	2008-09	Career
Krystal Ellis	9	85
Erin Monfre	-	6
Marissa Thrower	-	4
Janielle Harris	-	8
Breann Hill	-	-
Lauren Thomas-Johnson	5	5
Jasmine Collins	-	-
Paige Fiedorowicz	4	8
Tat'yiana McMorris	-	1
Jocelyn Mellen	-	5
Angel Robinson	6	31
Courtney Weibel	-	2
Georgie Jones	2	2
Jessica Pachko	2	2

20-point games	2008-09	Career
Krystal Ellis	3	31
Angel Robinson	1	3
Paige Fiedorowicz	1	1

30-point games	2008-09	Career
Krystal Ellis	1	6

40-point games	2008-09	Career
Krystal Ellis	-	1

Double-figure rebound games	2008-09	Career
Krystal Ellis	-	1
Jocelyn Mellen	-	4
Georgie Jones	2	2
Paige Fiedorowicz	1	1

Double-doubles	2008-09	Career
Krystal Ellis	-	2
Paige Fiedorowicz	1	1
Georgie Jones	1	1

Individual Season Records

	Starts	10+ points	10+ rebs.
Krystal Ellis	11	7-2	-
Erin Monfre	1	-	-
Marissa Thrower	-	-	-
Lauren Thomas-Johnson	9	4-1	-
Breann Hill	-	-	-
Janelle Harris	1	-	-
Jasmine Collins	-	-	-
Paige Fiedorowicz	8	4-0	1-0
Tat'yiana McMorris	-	-	-
Jocelyn Mellen	5	-	-
Angel Robinson	11	5-1	1-0
Courtney Weibel	1	-	-
Georgie Jones	4	1-1	1-1
Jessica Pachko	4	2-0	-

Individual Career Records

	Starts	10+ points	10+ rebs.
Krystal Ellis	99	64-21	-
Erin Monfre	26	6-1	-
Marissa Thrower	9	4-0	-
Janielle Harris	36	4-3	-
Breann Hill	-	-	-
Lauren Thomas Johnson	9	4-1	-
Jasmine Collins	-	-	-
Paige Fiedorowicz	22	7-2	1-0
Tat'yiana McMorris	3	0-1	-
Jocelyn Mellen	14	4-1	1-3
Angel Robinson	44	21-10	1-0
Courtney Weibel	1	-	-
Georgie Jones	4	1-1	1-1
Jessica Pachko	4	2-0	-

Specialty Statistics

	Marquette	Opponents
Points in the Paint	347	31.5
Points off Turnovers	221	20.0
Second Chance Points	139	12.6
Fast Break Points	144	13.1
Bench Points	247	22.5

Specialty Stats Superlatives

	Marquette	Opponents
Points in the Paint	45 Oral Roberts	30 Gonzaga
Points off Turnovers	30 Sacred Heart	22 Virginia
Second Chance Points	23 Utah	22 Virginia
Fast Break Points	35 Sacred Heart	14 Virginia
Bench Points	40 Oral Roberts	29 Virginia

The Last Time

Team	Marquette	Opponent
100+ Points	102-99 vs. Memphis (3/11/95)	60-104 vs. Georgia (1/11/95)
90+ Points	92-59 vs. Providence (1/31/06)	63-95 at #1/1 Connecticut (2/20/08)
Under 40 Points	33-60 vs. Notre Dame (12/22/01)	69-39 vs. Oregon (12/17/08)
FG Pct. 60+	68.2 vs. Saint Louis (1/22/95)	64.3 at #16/16 Notre Dame (2/10/08)
FG Pct. 50+	52.2 at Western Michigan (11/23/08)	58.7 vs Utah (2/20/08)
Five Players, 10+ pts.	80-77 vs. Gonzaga (11/28/08)	64-77 at Wis.-Green Bay (12/04/04)

Team	Marquette Win	Marquette Loss
Ranked Opponent (AP)	76-69 vs #23 Pittsburgh (2/23/08)	71-76 vs #16 Virginia (11/29/08)
Overtime Game	75-69 vs. Creighton (3/24/08)	87-91 OT at Pittsburgh (1/9/07)
Double Overtime	79-75 vs. Georgia State (12/07/02)	63-65 at UAB (1/18/04)
Triple Overtime	Never	Never
Home Opener	89-67 vs. Oral Roberts (11/15/08)	50-68 vs. Iowa State (11/17/01)
Road Openers	77-53 at Indiana State (11/19/08)	56-57 at Oregon (11/20/07)

Individual	Marquette	Opponent
40+ Points	40, Krystal Ellis 69-64 at Kentucky (3/30/08)	40, Danielle Viglione 86-98 vs. Texas (1/05/94)
30+ Points	32, Krystal Ellis 67-57 vs Kansas (12/7/08)	30, Kalee Whipple 76-79 vs Utah (11/30/08)
2 Players, 20 + pts.	25, Angel Robinson ; 23 Krystal Ellis 71-76 vs No. 16/15 Virginia (11/29/08)	20 Georgia Jones; 20, Janae Voelker 89-67 vs. Oral Roberts (11/15/08)
2 Players, 10+ rebs.	13, Svetlana Kovalenko; 10, Krystal Ellis 63-65 vs Northwestern (12/17/07)	13, Danielle McCray; 10, Nicollette Smith 67-57 vs Kansas (12/7/08)
10+ assists	11, Krystal Ellis 81-66, at Michigan State (4/5/08)	12, Micah Harvey 69-79 at Cincinnati (2/05/05)

5+ Steals	6, Krystal Ellis 69-39 vs Oregon (12/17/08)	7, Angel McCoughtry 69-79 at Louisville (1/23/08)
5+ Blocks	6, Danielle Kamm 54-60 vs. Charlotte (1/14/05)	8, Sandora Irvin 47-56 at TCU (2/20/04)
Double Double	12 pts, 12 reb; Paige Fiedorowicz 69-39 vs Oregon (12/17/08)	22 pts, 13 reb; Danielle McCray 10 pts, 10 reb; Nicollette Smith 67-57 vs Kansas (12/7/08)

This season . . .

Largest halftime lead	30	at Western Michigan (Nov. 23)
Largest halftime deficit	14	at Northwestern (Dec. 2)
Largest lead in a game	32	Twice -- Oregon (Dec. 17), at Western Michigan (Nov. 23)
Largest deficit in a game	21	at Wisconsin (Dec. 13)
Largest winning margin	31	at Western Michigan (Nov. 23)
Largest losing margin	19	at Wisconsin (Dec. 13)
Largest deficit in a victory	16	at Northwestern (Dec. 2)
Largest lead in a loss	17	Utah (Nov. 30)
Largest home crowd	4,000	Oregon (Dec. 17)
Largest road crowd	5,773	
Largest neutral crowd	-	
30-point games	Ellis 1	
20-point games	Ellis 3, Fiedorowicz 1, Robinson 1	
10-rebound games	Jones 2, Fiedorowicz 1	
Double-doubles	Jones 1, Robinson 1, Fiedorowicz 1	
Games as leading scorer	Ellis 6, Fiedorowicz 3, Robinson 2, Pachko 1	
Games as leading rebounder	Jones 4, Fiedorowicz 3, Collins 1, Mellen 1, Pachko ,1 Robinson 2, Thomas-Johnson 1	
Games as assists leader	Ellis 7, Robinson 6, Fiedorowicz 1	
Foul outs	Robinson 1, Ellis 1	
BIG EAST Player of the Week Selections	-	
BIG EAST Freshman of the Week Selections	-	
BIG EAST Honor Roll Selections	Ellis 1	

Career Records Update

All-Time Leading Scorers

Name	Points	Years
1. Abbie Willenborg	1,818	1997-00
2. Julie Sievers	1,759	1980-83
3. Kristen Maskala	1,745	1992-94
4. Krystal Ellis	1,733	2005-

All-Time Leading Rebounders

Name	Rebounds	Years
1. Abbie Willenborg	1,167	1997-00
2. Julie Sievers	1,151	1980-83
3. Christine Kennedy	1,089	1992-95

Scoring Average

Name	Years	Gm.	Avg.
1. Kristen Maskala	1992-94	89	19.6
2. Kathy Andrykowski	1977-80	69	19.0
3. Julie Sievers	1980-83	105	16.8

Field Goals Made

Name	Years	FGs
1. Julie Sievers	1980-83	721
2. Abbie Willenborg	1997-00	677
3. Kristen Maskala	1992-94	649
7. Krystal Ellis	2005-	594

Field Goal Percentage (Min. 400 Attempts)

Name	Years	Pct.	
1. Lisa Oldenburg	1997-00	638-1,182	54.0
2. Rachel Klug	1999-03	342-634	53.9
3. Heidi Ach	1988-91	569-1,068	53.3

Three-Point Field Goals Made

Name	Years	3FGM
1. Lori Goerlitz	1992-95	223
2. Krystal Ellis	2005-	191
3. Kristi Johnson	1999-02	162

Three-Point Field Goals Attempted*

Name	Years	3FGA
1. Lori Goerlitz	1992-95	662
2. Courtney Romeiser	1990-93	558
3. Krystal Ellis	2005-	536

Three-Point FG Percentage (Min. 50 Attempts)

Name	Years	Pct.	
1. Kristi Johnson	1998-02	162-413	39.2
2. Anita Godlewski	1988-91	26-64	39.1
3. Lesley Juedes	2001-05	81-217	37.3
Krystal Ellis	2005-	191-536	35.6

Free Throws Made

Name	Years	FTM
1. Abbie Willenborg	1997-00	435
2. Clare Barnard	1994-97	410
3. Christina Quaye	2003-07	408
5. Krystal Ellis	2005-	354

Free Throws Attempted

Name	Years	FTA
1. Abbie Willenborg	1997-00	635
2. Clare Barnard	1994-97	579
3. Christina Quaye	2003-07	566
7. Krystal Ellis	2005-	429

Free Throw Percentage (Min. 175 Attempts)

Name	Years	Pct.	
1. Kelly Scherman	2000-04	191-229	83.1
2. Beth Ayers	1984-87	202-249	81.1
3. Kristin Maskala	1992-94	287-358	80.2
Krystal Ellis	2005-	354-429	83.0

Rebounding Average

Name	Years	Reb.	Avg.
1. Kathy Andrykowski	1977-80	943	13.7
2. Julie Sievers	1980-83	1,151	11.0
3. Abbie Willenborg	1997-00	1,167	9.9

Assists

Name	Years	Assists
1. Carolyn Kieger	2002-06	694
2. Joan Pitrof	1987-90	689
3. Lori Goerlitz	1992-95	566

Steals

Name	Years	Steals
1. Courtney Romeiser	1990-93	287
2. Tammy Shain	1989-92	266
3. Beth Ayers	1984-87	239
5. Krystal Ellis	2005-	224

Blocks

Name	Years	Blocks
1. Kerri Christianson	1986-89	170
2. Lisa Oldenburg	1997-00	160
3. Christine Kennedy	1992-95	157

Season Records Update

Points

Name	Season	Points
1. Kristen Maskala	1991-92	635
2. Krystal Ellis	2007-08	601
Krystal Ellis	2006-07	593
3. Julie Sievers	1981-82	582
4. Kristen Maskala	1993-94	567
5. Kerri Reaves	1994-95	546

Scoring Average

Name	Season	Avg.
1. Kristen Maskala	1991-92	21.9
2. Julie Sievers	1981-82	20.7
3. Kathy Andrykowski	1977-78	20.2
4. Kathy Andrykowski	1979-80	20.0
5. Kathy Andrykowski	1976-77	19.8

Field Goals Made

Name	Season	F6M
1. Kristen Maskala	1991-92	242
2. Julie Sievers	1981-82	213
3. Krystal Ellis	2007-08	212
4. Kathy Andrykowski	1979-80	210
5. Lisa Oldenburg	1997-98	205

Field Goal Percentage (Min. 100 Attempts)

Name	Season	FGM-FGA	Pct.
1. Heidi Ach	1987-88	129-223	57.8
2. Heidi Ach	1989-90	124-215	57.7
3. Lisa Oldenburg	1998-99	154-274	56.2
4. Lisa Oldenburg	1999-00	183-327	56.0
5. Rachel Klug	2001-02	145-258	56.2

Three-Point Field Goals Made

Name	Season	3PM
1. Lori Goerlitz	1994-95	91
2. Kelly Scherman	2003-04	70
3. Kristen Maskala	1991-92	69
4. Lori Goerlitz	1993-94	68
5. Krystal Ellis	2007-08	67
6. Krystal Ellis	2006-07	65

Three-Point Field Goals Attempted

Name	Season	3PA
1. Lori Goerlitz	1994-95	274
2. Lori Goerlitz	1993-94	191
3. Krystal Ellis	2007-07	190
4. Krystal Ellis	2006-07	183
5. Courtney Romeiser	1992-93	171
Kristen Maskala	1991-92	171

Three-Point Field Goals Pct. (Min. 50 Attempts)

Name	Season	3PM-A	Pct.
1. Kelly Scherman	2002-03	56-131	42.7
2. Carolyn Kieger	2002-03	26-61	42.6
3. Lesley Juedes	2004-05	59-141	41.8
3. Kristen Maskala	1991-92	69-171	40.4
4. Anita Godlewski	1990-91	25-63	39.7

Free Throws Made

Name	Season	FTM
1. Kerri Reaves	1994-95	167
2. Clare Barnard	1996-97	153
3. Krystal Ellis	2006-07	150
4. Christina Quaye	2006-07	130
5. Abbie Willenborg	1998-99	127
Clare Barnard	1995-96	127

Free Throw Percentage (Min. 75 Attempts)

Name	Season	FTM-FTA	Pct.
1. Kelly Scherman	2003-04	71-81	87.7
2. Carolyn Kieger	2002-03	98-112	87.5
3. Krystal Ellis	2006-07	150-172	87.2
4. Kristen Maskala	1993-94	116-137	84.7
5. Beth Ayers	1985-86	69-82	84.1

Rebounds

Name	Season	Reb.
1. Kathy Andrykowski	1979-80	347
2. Julie Sievers	1980-81	325
3. Abbie Willenborg	1996-97	314
4. Christine Kennedy	1994-95	309
5. Abbie Willenborg	1997-98	297

Rebounding Average

Name	Season	Avg.
1. Kathy Andrykowski	1976-77	16.8
2. Kathy Andrykowski	1977-78	14.4
3. Kathy Andrykowski	1979-80	13.9
4. Julie Sievers	1980-81	12.0
5. Julie Sievers	1981-82	11.3
Mary Spellacy	1980-81	11.3

Assists

Name	Season	Assists
1. Lori Goerlitz	1994-95	222
2. Nicki Taggart	1997-98	215
3. Nicki Taggart	1996-97	206
4. Joan Pitrof	1987-88	199
5. Carolyn Kieger	2003-04	188

Steals

Name	Season	Steals
1. Courtney Romeiser	1991-92	93
2. Courtney Romeiser	1992-93	92
3. Angel Robinson	2007-08	86
4. Kristen Maskala	1992-93	75
Kristen Maskala	1991-92	75
6. Krystal Ellis	2006-07	73

Blocks

Name	Season	Blocks
1. Christine Kennedy	1994-95	53
2. Christine Kennedy	1993-94	52
Kerri Christianson	1988-89	52
4. Kerri Christianson	1985-86	51
5. Lisa Oldenburg	1999-00	50

2008-09 Season Superlatives

Marquette Highs

POINTS	89	Twice (at Western Michigan and vs Oral Roberts)
FIELD GOALS MADE	35	at Western Michigan (11/23/08)
FIELD GOAL ATTEMPTS	73	vs Virginia (11/29/08)
FIELD GOAL PERCENTAGE	.527	(29-55) at Indiana State (11-19-08)
3 PT FIELD GOALS MADE	9	at Indiana State (11-19-08)
3 PT FG ATTEMPTS	25	at Indiana State (11-19-08)
3 PT FG PERCENTAGE	.389	(7-18) Twice (at Western Michigan and vs Virginia)
FREE THROWS MADE	26	vs Gonzaga (11/28/08)
FREE THROW ATTEMPTS	35	vs Gonzaga (11/28/08)
FREE THROW PERCENTAGE	.857	(12-14) at Western Michigan (11/23/08)
REBOUNDS	45	at Western Michigan (11/23/08)
ASSISTS	22	vs Sacred Heart (11/17/08)
STEALS	19	vs Sacred Heart (11/17/08)
BLOCKED SHOTS	8	vs Gonzaga (11/28/08)
TURNOVERS	23	at Western Michigan (11/23/08)
FOULS	25	vs Oral Roberts (11/15/08)

Marquette Lows

POINTS	71	vs Virginia (11/29/08)
FIELD GOALS MADE	26	vs Gonzaga (11/28/08)
FIELD GOAL ATTEMPTS	55	at Indiana State (11-19-08)
FIELD GOAL PERCENTAGE	.397	(29-73) vs Virginia (11/29/08)
3 PT FIELD GOALS MADE	2	vs Gonzaga (11/28/08)
3 PT FG ATTEMPTS	12	vs Gonzaga (11/28/08)
3 PT FG PERCENTAGE	.167	(2-12) vs Gonzaga (11/28/08)
FREE THROWS MADE	5	vs Virginia (11/29/08)
FREE THROW ATTEMPTS	12	vs Virginia (11/29/08)
FREE THROW PERCENTAGE	.417	(5-12) vs Virginia (11/29/08)
REBOUNDS	29	vs Utah (11/30/08)
ASSISTS	13	vs Virginia (11/29/08)
STEALS	5	at Western Michigan (11/23/08)
BLOCKED SHOTS	1	vs Utah (11/30/08)
TURNOVERS	9	vs Utah (11/30/08)
FOULS	17	vs Sacred Heart (11/17/08)
	17	vs Virginia (11/29/08)
	17	vs Utah (11/30/08)

Marquette — Individual Game Highs

POINTS	32	Krystal Ellis vs Kansas (12/7/08)
	25	Angel Robinson vs Virginia (11/29/08)
	23	Krystal Ellis, Twice
FIELD GOALS MADE	10	Krystal Ellis vs Virginia (11/29/08)
	10	Angel Robinson vs Virginia (11/29/08)
FIELD GOAL ATT	24	Krystal Ellis vs Virginia (11/29/08)
FG PCT (min 5 made)	.857 (6-7)	Jessica Pachko vs Sacred Heart (11/17/08)
	.800 (8-10)	Paige Fiedorowicz vs Gonzaga (11/28/08)
3 PT FG MADE	3	Six Times
3 PT FG ATTEMPTS	10	Krystal Ellis vs Virginia (11/29/08)
	8	Krystal Ellis at Indiana State (11-19-08)
3-PT FG PCT (min 2 made)	1.000 (2-2)	Tatijana McMorris vs Utah (11/30/08)
	.750 (3-4)	Angel Robinson vs Virginia (11/29/08)
FREE THROWS MADE	7	Krystal Ellis vs Utah (11/30/08)
FREE THROW ATT	9	Angel Robinson vs Gonzaga (11/28/08)
FT PCT (min 3 made)	1.000 (7-7)	Krystal Ellis vs Utah (11/30/08)
	1.000 (5-5)	Paige Fiedorowicz vs Gonzaga (11/28/08)
REBOUNDS	11	Angel Robinson vs Gonzaga (11/28/08)
	10	Georgie Jones vs Utah (11/30/08)
	10	Georgie Jones at Indiana State (11-19-08)
ASSISTS	8	Krystal Ellis vs Sacred Heart (11/17/08)
	7	Two players, five times
STEALS	4	Janelle Harris vs Sacred Heart (11/17/08)
	4	Angel Robinson vs Sacred Heart (11/17/08)
BLOCKED SHOTS	3	Krystal Ellis vs Virginia (11/29/08)
	3	Angel Robinson vs Oral Roberts (11/15/08)
TURNOVERS	6	Angel Robinson at W. Michigan (11/23/08)
	6	Krystal Ellis vs Sacred Heart (11/17/08)
FOULS	5	Angel Robinson vs Virginia (11/29/08)

Opponent Highs

POINTS	79	vs Utah (11/30/08)
FIELD GOALS MADE	28	vs Virginia (11/29/08)
	28	vs Gonzaga (11/28/08)
FIELD GOAL ATTEMPTS	68	vs Gonzaga (11/28/08)
FIELD GOAL PERCENTAGE	.587 (27-46)	vs Utah (11/30/08)
3 PT FIELD GOALS MADE	9	vs Utah (11/30/08)
3 PT FG ATTEMPTS	21	vs Sacred Heart (11/17/08)
3 PT FG PERCENTAGE	.600 (9-15)	vs Kansas (12/7/08)
FREE THROWS MADE	16	vs Utah (11/30/08)
	16	vs Gonzaga (11/28/08)
	16	at Western Michigan (11/23/08)
FREE THROW ATTEMPTS	27	vs Oral Roberts (11/15/08)
FREE THROW PERCENTAGE	.889 (16-18)	vs Utah (11/30/08)
REBOUNDS	43	vs Virginia (11/29/08)
ASSISTS	17	vs Gonzaga (11/28/08)
STEALS	11	at Western Michigan (11/23/08)
BLOCKED SHOTS	4	vs Virginia (11/29/08)
	4	at Indiana State (11-19-08)
	4	vs Sacred Heart (11/17/08)
TURNOVERS	32	vs Sacred Heart (11/17/08)
FOULS	27	vs Gonzaga (11/28/08)

Opponent Lows

POINTS	53	at Indiana State (11-19-08)
FIELD GOALS MADE	17	vs Sacred Heart (11/17/08)
FIELD GOAL ATTEMPTS	46	vs Utah (11/30/08)
FIELD GOAL PERCENTAGE	.305 (18-59)	at Western Michigan (11/23/08)
3 PT FIELD GOALS MADE	5	at Indiana State (11-19-08)
	5	vs Gonzaga (11/28/08)
3 PT FG ATTEMPTS	14	vs Gonzaga (11/28/08)
3 PT FG PERCENTAGE	.278 (5-18)	at Indiana State (11-19-08)
FREE THROWS MADE	11	vs Oral Roberts (11/15/08)
FREE THROW ATTEMPTS	17	vs Sacred Heart (11/17/08)
FREE THROW PERCENTAGE	.407 (11-27)	vs Oral Roberts (11/15/08)
REBOUNDS	29	at Western Michigan (11/23/08)
ASSISTS	8	at Western Michigan (11/23/08)
STEALS	3	vs Utah (11/30/08)
BLOCKED SHOTS	1	vs Gonzaga (11/28/08)
TURNOVERS	14	vs Gonzaga (11/28/08)
FOULS	13	vs Virginia (11/29/08)

Opponent — Individual Game Highs

POINTS	32	VANDERSLOOT,C. vs Gonzaga (11/28/08)
	31	Monica Wright vs Virginia (11/29/08)
	30	WHIPPLE, Kalee vs Utah (11/30/08)
FIELD GOALS MADE	13	Monica Wright vs Virginia (11/29/08)
FIELD GOAL ATT	24	Monica Wright vs Virginia (11/29/08)
FG PCT (min 5 made)	.750 (6-8)	VANDERSLOOT,C. vs Gonzaga (11/28/08)
	.750 (6-8)	KING, Katie vs Utah (11/30/08)
3 PT FG MADE	5	WARBURTON, Morgan vs Utah (11/30/08)
3 PT FG ATTEMPTS	10	JONES, Georgia vs Oral Roberts (11/15/08)
	7	Five Times
3-PT FG PCT (min 2 made)	1.000 (3-3)	PRYOR, Amy vs Oral Roberts (11/15/08)
	.714 (5-7)	WARBURTON, Morgan vs Utah (11/30/08)
FREE THROWS MADE	11	WHIPPLE, Kalee vs Utah (11/30/08)
	9	VANDERSLOOT,Courtney vs Gonzaga
FREE THROW ATT	12	WHIPPLE, Kalee vs Utah (11/30/08)
	11	VOELKER, Janae vs Oral Roberts (11/15/08)
FT PCT (min 3 made)	1.000 (4-4)	APO, Alisa vs Sacred Heart (11/17/08)
	.917 (11-12)	WHIPPLE, Kalee vs Utah (11/30/08)
REBOUNDS	13	McCray, Danielle vs Kansas (12/7/08)
	12	Aisha Mohammed vs Virginia (11/29/08)
ASSISTS	8	VANDERSLOOT,Courtney vs Gonzaga
	5	Three Times
STEALS	5	DELAHOUSSEY, T. at W. Michigan (11/23/08)
BLOCKED SHOTS	4	SOWINSKI, Kaitlin vs Sacred Heart (11/17/08)
TURNOVERS	7	Twice
FOULS	5	Four Times

2008-09 Season Box Scores

Marquette 89, Oral Roberts 67

Game 1 • November 15, 2008

Al McGuire Center • Milwaukee, Wis.

MILWAUKEE — The Marquette women's basketball team opened its regular season on Saturday with an impressive 89-67 victory over Oral Roberts (0-1). The Golden Eagles (1-0) saw five players in double-digit scoring, led by preseason All-American Krystal Ellis who tallied 16 points in 26 minutes. Saturday also marked the unfolding of the 2008 WNIT Championship banner in front of a crowd of 1,201 at the Al McGuire Center.

Sophomore Angel Robinson hit a three-pointer in the first eight seconds of play to open the scoring for Marquette. Freshman Jessica Pachko, making her first official collegiate start, added a layup to extend the lead to 5-0. After back-to-back layups by Ellis extended the Blue and Gold's lead to 9-3, consecutive baskets by Oral Roberts' Georgia Jones and Kelly Kindell tightened the MU advantage to 12-9.

A Jocelyn Mellen entry pass to Paige Fiedorowicz allowed the home team a seven point advantage, 16-9. The ORU squad tried once again to close the gap with back-to-back treys by Amy Pryor and Jones, respectively, to close the MU lead to one point. Lauren Thomas-Johnson answered from long distance with a three of her own, to maintain a 19-15 lead.

Freshman Jordan Pyle's layup, and a Janae Voelker bank shot three, allowed Oral Roberts (0-1, 0-0) their first and only lead of the game at 20-19 with 10:52 left. After an official timeout with just under ten minutes to play, Marquette went on an 19-0 scoring spree, not allowing an opposing point for eight minutes of play. During MU's 19-0 run, five Golden Eagles scored before Georgia Jones' jumper with 2:53 left to play. Robinson tallied six points, off two layups and four foul shots, while Ellis and Thomas-Johnson added four points apiece.

Thomas-Johnson's jumper from the top of the key extended MU's lead to 38-20, its biggest lead of the first half. During ORU's drought, Marquette forced ten of ORU's 13 first half turnovers, and scored 21 points off turnovers in the first frame.

ORU's Jones, a freshman from Manchester, England, was able to hit a layup and baseline three to reduce Marquette's lead to 38-25 with 2:05 remaining in the first half. The Golden Eagles went into intermission with a 17-point lead, 42-25, after back-to-back layups by Janelle Harris and Angel Robinson, the latter coming with three seconds on the clock.

Marquette used its post presence to outscore ORU in the paint, 27-10, with Thomas-Johnson and Fiedorowicz scoring eight and seven points, respectively, in the first half. Robinson led all scorers at the half with 11 points off 4-of-6 shooting from the field. As a whole, the home team shot 46.9 percent from the field, while limited to 3-for-11 shooting from three-point range. Meanwhile, Oral Roberts hit 5-of-8 from long distance, while their drought caused a 43.5 percent clip shooting from the field.

The Golden Eagles came out with the same intensity and momentum in the second half with a 15-5 run. MU spread the scoring, with Fiedorowicz hitting a back-to-back jump shot and layup to maintain a 47-32 Marquette lead. An Ellis entry pass led to a Robinson layup, and the senior then tallied her own two points with a layup for a 51-32 advantage. Mellen and Erin Monfre both dialed in from long range, holding the comfortable lead at 57-32.

Senior Noelia Quintas' basket with 15:00 on the clock redeemed the ORU squad after being outscored 8-0 in almost four minutes without a basket. Marissa Thrower helped boost points from the bench, making two foul shots and a shot from the lane to extend the Marquette lead to 66-41.

After ORU's 6-foot-3 Monah Pegorari fouled out with 11:32 on the clock, Terri Mitchell's squad took full advantage, tallying 18 points in the paint in the second half. The two teams traded baskets for the remainder of the game, with a stifling Marquette defense outscoring the opponents, as the second Oral Roberts' player fouled out in Pyle. Janelle Harris' putback put the Golden Eagles ahead, 80-59.

Marquette 89, Oral Roberts 67

Oral Roberts	FG-A	3P-A	FT-A	O-D-REB	PF	TP	A	TO	B	S	MIN
VOELKER f	7-12	1-5	5-11	2-5-7	3	20	3	2	0	1	39
PEGORARI f	1-3	0-0	0-0	0-1-1	5	2	0	1	1	0	14
CAMARGO g	0-6	0-0	1-6	0-5-2	2	1	1	4	1	3	27
JONES g	7-17	4-10	2-4	0-3-3	3	20	2	4	0	0	37
PRYOR g	3-4	3-3	1-2	1-1-2	0	10	3	3	0	0	21
KINDLELL g	0-0	0-0	0-0	0-2-2	0	0	0	0	1	0	7
TURNER	0-1	0-0	0-0	0-0-0	1	0	0	0	0	0	8
QUINTAS	2-7	0-2	2-4	1-0-1	3	6	0	2	0	0	22
PYLE	4-7	0-0	0-0	3-4-7	5	8	0	1	1	1	23
DAKES	0-0	0-0	0-0	1-0-1	0	0	0	0	0	0	2
TEAM				1-2-3							
Totals	24-57	8-20	11-27	9-23-32	22	67	9	18	3	6	200

Marquette	FG-A	3P-A	FT-A	O-D-REB	PF	TP	A	TO	B	S	MIN
PACHKO f	4-4	0-0	2-3	2-6-8	2	10	2	1	0	2	24
MELLEN f	2-3	1-1	0-0	2-6-8	3	5	0	2	0	0	21
ROBINSON g	5-10	1-2	3-4	1-4-5	3	14	4	1	3	2	28
HARRIS g	2-5	0-0	0-0	4-0-4	3	4	0	1	0	0	19
ELLIS g	7-16	0-5	2-2	4-0-4	3	16	7	4	0	1	26
COLLINS	1-1	0-0	0-0	0-2-2	3	2	0	1	0	0	3
WEIBEL	1-3	1-3	0-0	1-0-1	1	3	0	0	0	0	6
MONFRE	1-4	1-4	0-0	0-1-1	0	3	4	1	0	0	10
THOMAS-JOHNSON 3-8	2-5	4-6	0-1-1	2	12	1	1	0	2	0	20
HILL	1-3	0-1	0-0	1-2-3	2	2	0	1	0	0	10
JONES	0-0	0-0	0-3	0-1-1	1	0	1	1	0	0	9
FIEDOROWICZ	5-8	1-1	2-2	1-1-2	0	13	0	0	0	1	18
THROWER	1-1	0-0	3-4	1-1-2	2	5	0	1	0	0	6
TEAM				0-2-2							
Totals	33-66	7-22	16-24	13-31-44	25	89	19	16	3	8	200

Officials: Dennis Mayer, Robert Entlerline, Carol Comanita
 Attendance: 1,201
 Score by Periods
 Oral Roberts 25 42 67
 Marquette 42 47 89

Marquette 77, Sacred Heart 55

Game 2 • November 17, 2008

Al McGuire Center • Milwaukee, Wis.

MILWAUKEE — With another balanced scoring effort, the Marquette women's basketball team earned a 77-55 win over Sacred Heart Monday night at the Al McGuire Center. The Golden Eagles had two newcomers scoring in double figures with freshman Jessica Pachko leading the way with game-high 14 points. The win puts Marquette at 2-0 overall, while Sacred Heart drops to 0-2 on the season.

The Golden Eagles completed the evening 44.1 percent (30-68) from the field, led by Pachko and Thomas-Johnson with 14 and 13 points apiece, respectively. Pachko missed just one shot total, as she hit 6-of-7 from the field and both of her attempts from the charity stripe. All-American candidate senior Krystal Ellis contributed eight points and as many assists in the win to go along with four steals.

After a dismal 6-for-22 shooting from the floor in the second half, the Pioneers ended the game connecting on 32.1 percent from the floor, 33.3 percent from long range. The Pioneers saw three players in double-digits scoring, paced by Apo with 13 points, and Taylor and Ryan with 12 and 11 points, respectively.

Marquette's depth plagued the Pioneers, as the Golden Eagles' bench combined for 29 points, in comparison to Sacred Heart's six. For the second consecutive game, Marquette scored more than 40 points in the paint and tallied more than 40 rebounds.

Sacred Heart opened scoring with Alisa Apo hitting a three from the top of the key, but two consecutive layups by Pachko got MU off and running. Marquette began an 11-0 run 2:23 into the game and never looked back. During the scoring spree, Thomas-Johnson tallied seven points for the Golden Eagles. Marquette pushed its lead to 14 points, 25-11, midway through the first half before Kaitlin Sowinski started a mini 6-0 run for the Pioneers to cut the lead to eight, 25-17, with 8:59 to play in the first.

MU freshman Georgie Jones answered with a layup of her own to spark a 9-0 MU run, keeping Sacred Heart stranded with 17 points for over three minutes on game clock. Thomas-Johnson hit a three from the corner, and back-to-back layups by Jones and Hill extended MU's lead to 17 points (34-17), its largest of the half. SHU responded with a 7-0 run but never got closer than eight points near the end of the first half.

The Golden Eagles went into halftime with a 13-point lead, 41-28. Marquette connected on 17-of-37 (45.9%) of its attempts from the field, led by Pachko and Thomas-Johnson with 12 and 10 points, respectively. Pachko was a perfect 6-of-6 from the floor in the first.

Thomas-Johnson opened the second half with third three-pointer of the game, extending the Golden Eagles' lead to 16 points, 44-28. The Pioneers cut the gap to 13 points twice in the second frame, but Marquette put the game out of reach with an 11-2 run that pushed its lead to 22 points with 11:06 to play. The closest SHU came for the remainder of the game was 17 points.

Marquette 77, Sacred Heart 55

Sacred Heart	FG-A	3P-A	FT-A	O-D-REB	PF	TP	A	TO	B	S	MIN
TAYLOR f	4-9	2-4	2-3	1-4-5	3	12	1	3	0	1	30
SOWINSKI c	3-7	0-0	2-2	1-7-8	2	8	4	6	4	0	28
COSGROVE g	1-7	1-4	2-2	0-2-2	3	5	1	4	0	2	26
RYAN g	4-11	1-4	2-2	5-4-9	2	11	1	7	0	3	33
APO g	3-7	3-7	4-4	3-1-4	3	13	2	6	0	1	32
HYNCIK	0-0	0-0	0-0	0-0-0	0	0	0	0	0	0	2
GIBSON	0-0	0-0	0-0	0-0-0	2	0	1	2	0	0	14
GRUBER	0-0	0-0	1-2	0-0-0	0	1	0	0	0	0	2
CAIN	1-7	0-1	1-2	1-0-1	1	3	2	0	0	1	17
GREENLEE	0-0	0-0	0-0	0-1-1	0	0	1	0	0	1	5
SCHMIDT	1-1	0-0	0-0	0-0-0	0	2	0	0	0	0	3
CAMPBELL	0-4	0-1	0-0	1-0-1	1	0	0	1	0	1	8
TEAM				1-4-5							
Totals	17-53	7-21	14-17	13-23-36	17	55	13	32	4	10	202

Marquette	FG-A	3P-A	FT-A	O-D-REB	PF	TP	A	TO	B	S	MIN
PACHKO f	6-7	0-0	2-2	2-2-4	2	14	0	1	0	0	21
MELLEN f	2-5	0-0	0-1	0-6-6	2	4	1	1	1	1	21
ROBINSON g	4-12	0-1	1-1	1-3-4	3	9	2	5	0	4	22
ELLIS g	3-7	1-2	1-2	1-2-3	1	8	6	1	3	26	
THOMAS-JOHNSON 4-9	3-6	2-2	1-1-2	1	13	4	1	1	1	23	
COLLINS	0-0	0-0	0-0	0-1-1	1	0	0	0	0	0	3
WEIBEL	0-0	0-0	0-0	0-0-0	0	0	0	0	0	0	4
MONFRE	0-2	0-2	0-0	0-0-0	2	0	2	1	0	0	16
HARRIS	1-7	0-0	3-4	1-0-1	2	5	3	1	0	4	13
HILL	3-6	0-0	0-0	4-1-5	0	6	0	4	0	1	14
JONES	4-7	0-0	1-2	4-3-7	0	9	0	1	1	1	13
FIEDOROWICZ	1-3	0-1	2-2	1-1-2	2	4	2	0	0	2	14
THROWER	2-3	0-0	1-3	1-1-2	1	5	0	0	0	2	10
TEAM				2-4-6							
Totals	30-68	4-13	13-19	18-25-43	17	77	22	21	4	19	200

Officials: Cameron Inouye, John Orminski, Kevin Dillard
 Attendance: 1,045
 Score by Periods
 Sacred Heart 28 27 55
 Marquette 41 36 77

Marquette 77, Indiana State 53

Game 3 • November 19, 2008

Hulman Center • Terre Haute, Ind.

TERRE HAUTE, Ind. - The Marquette women's basketball team shot 72-percent from the floor in the second half to defeat Indiana State, 77-53, Wednesday night at the Hulman Center in Terre Haute, Ind. The win keeps Marquette undefeated at 3-0, while the Sycamores drop to 0-2.

Senior All-America candidate Krystal Ellis finished with a season-high 19 points after scoring just three points in the first half, and added seven assists and three steals. Junior Lauren Thomas-Johnson followed with 13 points, and freshman Georgie Jones pulled down a game-high 10 rebounds.

Marquette finished the game shooting 52.7 percent, while holding the Sycamores to make just 18 of their attempts (32.1 percent), only six in the second half. Kelsey Luna led the Sycamores with 18 points.

After a back and forth first half, Marquette went into the locker room at the intermission with a slim three-point advantage, 35-32.

The Golden Eagles were a dismal, 1-for-9 from long-range over the first 15 minutes of the game before sophomore Tatiyana McMorris and Angel Robinson knocked down back-to-back 3-pointers to put the score at 27-25 with 4:57 remaining in the first half.

Marquette finished the first frame connecting on 11 of its 30 attempts from the floor (36.7 percent) while Indiana State shot 40 percent from the field (12-of-30). Sophomore Jocelyn Mellen gave Marquette seven points, while McMorris, Pachko and Robinson each added six points apiece.

Deja Mattox led ISU with eight points, while Kelsey Luna add with seven points in the first half.

Marquette stormed out of the intermission to take a 39-32 lead but the Sycamores countered with made three-pointers to cut the lead to two points, 39-37.

Marquette let its defense spark its offense and went on a 16-4 run over six minutes to take a 14-point lead, 55-41 with 11:22 to play.

After a mini 6-0 run by ISU to cut MU's lead to eight points, but Lauren Thomas Johnson hit her third trifecta of the game and Ellis added a bucket of her own to go ahead 13 points, 60-47, with 8:28 to play in the game.

Marquette sealed the win after taking 21-point lead, when Ellis made the basket in traffic and drew the foul to put the score at 70-49 with 4:35 left to play.

The Golden Eagles closed the game holding the Sycamores without a field goal for the final 5:21.

Marquette 77, Indiana State 53

Marquette	FG-A	3P-A	FT-A	O-D-REB	PF	TP	A	TO	B	S	MIN
PACHKO f	2-2	0-0	2-2	2-2-4	4	6	1	3	1	0	22
MELLEN f	3-7	0-0	1-2	1-2-3	2	7	0	2	2	0	26
ROBINSON g	3-5	1-2	1-2	0-2-2	3	8	3	3	0	0	18
ELLIS g	8-17	1-8	2-4	0-4-4	0	19	7	2	0	3	35
THOMAS-JOHNSON 4-6	3-5	2-2	1-1-2	2	13	1	4	1	1	1	24
WEIBEL	1-1	1-1	0-0	0-0-0	0	3	0	0	0	1	1
MONFRE	0-3	0-3	0-0	0-1-1	1	0	3	0	0	0	15
HARRIS	2-3	0-1	1-2	0-2-2	0	5	0	2	1	1	10
McMORRIS	3-5	3-5	0-0	0-3-3	2	9	1	0	0	0	13
HILL	1-1	0-0	0-1	1-2-3	1	2	0	2	0	1	5
JONES	0-1	0-0	1-3	3-7-10	3	1	0	3	1	1	14
FIEDOROWICZ	1-3	0-0	0-0	2-1-3	3	2	1	0	0	1	15
THROWER	1-1	0-0	0-0	0-0-0	0	2	0	0	0	0	2
TEAM				1-2-3							
Totals	29-55	9-25	10-18	11-29-40	21	77	17	21	6	9	200

Marquette 89, Western Michigan 58

Game 4 • November 23, 2008

University Arena • Kalamazoo, Mich.

KALAMAZOO, Mich. The Marquette women's basketball team jumped out to a quick 15-0 lead in the first half and never looked back to earn a 89-58 win at Western Michigan Sunday afternoon at Varsity Arena. The win keeps Marquette perfect at 4-0, while the Broncos remain winless at 0-3 overall. The 4-0 start marks the first time since the 2004-05 season the Golden Eagles have begun the season with a four straight wins.

Marquette had three players with double-digit point totals with sophomore Paige Fiedorowicz registering a team-high 14 points. Sophomore Angel Robinson and senior Krystal Ellis each added 12 and 11 points, respectively. All but one player in the lineup registered a basket while the Golden Eagles shot 52.2 percent from the floor, including 38.9 percent from 3-point land.

Marquette dominated the glass for the fourth consecutive game, 45-29. Fiedorowicz and sophomore Jasmine Collins each pulled down a game-high six apiece.

During the Golden Eagles' early 15-0 early run over the first 5:23 of action, Ellis, junior Lauren Thomas-Johnson and Robinson each made one 3-pointer. Marquette pushed that lead to 22 points following another 12-0 run that put the Golden Eagles ahead 29-7 with 7:27 to play in the first half.

Marquette outscored the Broncos 18-7 over the last five minutes of the first half to help Marquette cruise into the locker room at half-time with a 30-point cushion, 52-22.

The Broncos countered early in the second with a 9-2 run to cut their deficit to 25 points, but back-to-back buckets from junior Janelle Harris gave a 29-point lead back to the Golden Eagles, 64-35, with 12:04 left in the game.

An 11-4 run by Western Michigan that put the score at 68-47 with 7:34 to play and again with 7:02 left would be the closest it would come for the remainder of the game. The Golden Eagles held onto a 20-plus point lead for the remainder of the game.

Marquette connected on a first-half season high 59.4 percent of attempts from the floor, while holding Western Michigan to make just six total shots. The Golden Eagles were on fire from long range knocking down seven of 11 treys.

Fiedorowicz led MU with 11 points and three rebounds, Robinson added eight points and four assists, and Lauren Thomas-Johnson and Tatyiana McMorris gave MU six points apiece.

Marquette 80, Gonzaga 77

Game 5 • November 28, 2008 • WBCA Classic

Al McGuire Center • Milwaukee, Wis.

MILWAUKEE -- The Marquette University women's basketball team held Gonzaga without a field goal for the final seven minutes, 33 seconds of regulation Friday night to complete an 80-77 come-from-behind victory in the opening round of the WBCA Classic from the Al McGuire Center.

Marquette (5-0) overtook the Bulldogs (5-1) with a 13-4 run to close out the contest and win its 11 straight game going back to the 2007-08 season when the Golden Eagles ran the table to claim its first WNIT Championship.

Trailing by as many as eight points at the 7:34 mark, MU methodically chipped away at the Bulldogs' lead through a series of key defensive stops and by converting on its opportunities at the foul line.

The Golden Eagles went to the free throw line a season-high 35 times and shot 18-of-24 (75.0 percent) from the charity stripe in the second half. They also got a career-high 21 points from sophomore forward Paige Fiedorowicz, who led five MU players scoring in double figures and was 8-of-10 shooting from the floor.

Fiedorowicz netted the first six points of game for MU, which raced out to an early 8-2 lead. She had 14 points at halftime, but that was hardly enough to keep pace with Gonzaga point guard Courtney Vandersloot.

Vandersloot was exceptional in orchestrating a Bulldogs' offense that withstood five lead changes to control a 39-33 lead at the intermission. Last year's West Coast Conference (WCC) Newcomer of the Year finished with a career-high -- and Al McGuire Center record -- 32 points and eight rebounds, while dishing out eight assists.

At one point, Vandersloot was 11-of-13 shooting from the field, including a pair of 3-point baskets. She knocked down a short jumper to give Gonzaga a 71-63 lead just past the midway point of the second half. That was the last basket made by the Bulldogs, however, as their scoring was relegated exclusively to foul shots.

Freshman Georgie Jones, who came off the Marquette bench to score 12 points, ignited the Al McGuire Center crowd by connecting on back-to-back buckets to get the Golden Eagles to within one, 73-72, at the 3:41 mark. Jones was fouled on a putback attempt on the very next possession and tied the game at 73-73 by sinking the second of her two free throw attempts.

Senior Krystal Ellis took over from there, scoring seven of her 12 points in the final one minute, 40 seconds of action. Ellis was held scoreless during the first half, but went 6-of-7 from the foul line to fend off a late Bulldogs' rally. Down by three in the closing seconds, Vandersloot raced up the court, shook a couple of MU defenders, and double-pumped a desperation 3-pointer that rimmed out as time expired.

Like Ellis, sophomore Angel Robinson persevered through a sluggish start to finish with 13 points and a career-best 11 rebounds and freshman Lauren Thomas-Johnson added 13 points.

16/15 Virginia 76, Marquette 71

Game 6 • November 29, 2008 • WBCA Classic

Al McGuire Center • Milwaukee, Wis.

MILWAUKEE -- The Marquette University women's basketball team overcame an early deficit, but surrendered a 13-point lead in the second half Saturday in falling to No. 15/16 Virginia, 76-71, on day two of the 2008 WBCA Classic from the Al McGuire Center.

Virginia's (5-1) Monica Wright led all scorers with 31 points and was instrumental during a 21-7 Cavaliers' run midway through the second half in which Wright scored 12 points to help Virginia close the gap, and eventually take back the lead.

Meanwhile, Marquette (5-1) struggled offensively in the first half. The Golden Eagles shot just 6-of-22 (27.3 percent) from the field following opening tip-off until sophomore Angel Robinson knocked down a baseline jumper at 11:11 mark to get the Golden Eagles to within five points at 20-15.

Marquette went on to secure 13 offensive rebounds in the first stanza, which led to nine second-chance points. A fast-paced game also allowed for some easy buckets in transition for both teams early on.

Robinson found senior Krystal Ellis for fast-break layup to give Marquette it's first lead, 30-28, since the opening minutes of action. Ellis also knocked down a 3-pointer during the run, scoring nine of Marquette's 11 points to close out the half. MU went on to out-score the Cavaliers 22-10 during the stretch and took a 37-30 lead into the locker room at halftime.

Ellis picked up in the second half right where she had left off. The All-American guard and junior teammate Lauren Thomas-Johnson connected on back-to-back 3-point attempts to give MU its largest lead of the evening, 43-30, forcing Virginia head coach Debbie Ryan to burn a timeout less than a minute into the second period.

The duo knocked down two more 3-pointers as Marquette went 4-of-4 from beyond the arc to open the second half, but the Cavaliers netted three 3-pointers of their own before going on their late run.

Marquette's lead was cut to two following a pair of free throws by Virginia's Whitney Edwards, following a technical foul called on the Golden Eagles' bench. The Cavaliers then got a pair of layups from Aisha Mohammed on their next two possessions to take the lead, 61-59, with 5:58 left to play.

Virginia extended its cushion to as many as five points, 69-64, on a spot-up jumper by Wright with 43 seconds remaining.

The Golden Eagles wouldn't go away. Sophomore Angel Robinson scored seven of her team-high 25 points in the closing seconds, including a 3-point basket with 21 seconds on the clock to get MU back to within two points at 73-71. But the Cavaliers converted on their foul shots at the other end to keep MU out of reach.

Marquette shot just 39.7 percent (29-of-73) from the field, despite a better shooting effort in the second half. Ellis finished with 23 points to go along with three blocked shots and Thomas-Johnson tallied 10 points.

Marquette 89, Western Michigan 58

Marquette	FG-A	3P-A	FT-A	O-D-REB	PF	TP	A	TO	B	S	MIN
MELLEN	f 1-3	0-0	3-4	0-3-3	2	5	1	1	0	0	20
FIEDOROWICZ	f 6-11	0-0	2-2	5-1-6	1	14	0	1	0	0	20
ROBINSON	g 4-7	2-3	2-2	1-3-4	2	12	7	6	0	1	24
ELLIS	g 4-8	1-3	2-2	0-2-2	3	11	3	3	0	1	20
THOMAS-JOHNSON	g 3-6	1-4	1-1	0-0-0	1	8	0	3	0	0	19
COLLINS	g 3-6	0-0	0-0	3-3-6	2	6	0	2	0	0	10
WEIBEL	1-4	1-4	0-0	0-0-0	0	3	0	0	0	0	10
MONFRE	0-2	0-1	0-0	0-2-2	0	0	0	1	0	0	10
HARRIS	4-6	0-0	0-1	0-1-1	3	8	1	2	0	2	16
McMORRIS	2-3	2-3	0-0	0-2-2	0	6	4	1	0	1	9
HILL	4-7	0-0	0-0	3-0-3	0	8	0	0	0	0	12
JONES	1-1	0-0	0-0	0-2-2	3	2	0	2	1	0	14
THROWER	2-3	0-0	2-2	0-5-5	2	6	1	1	2	0	17
TEAM				5-4-9							
Totals	35-67	7-18	12-14	17-28-45	19	89	17	23	5	5	200

West. Mich.	FG-A	3P-A	FT-A	O-D-REB	PF	TP	A	TO	B	S	MIN
BANKSTON	f 1-5	1-2	2-2	1-1-2	5	5	1	1	0	3	22
GIDEN	f 5-14	1-3	5-6	3-0-3	2	16	1	1	0	1	34
CLEARY	f 1-5	0-1	0-0	1-4-5	3	2	0	1	0	0	22
DELAHOUSAYE	g 6-15	0-1	4-5	2-1-3	2	16	5	6	0	5	33
DWYER	g 1-4	0-2	2-2	0-2-2	1	4	0	7	0	0	24
DREHER	1-5	1-2	2-2	0-0-0	3	5	0	1	0	0	13
VEST	0-1	0-0	1-2	0-3-3	0	1	0	0	1	2	13
HARVEY	0-1	0-0	0-0	0-0-0	0	0	0	0	0	0	6
IACUANIELLO	0-1	0-0	0-0	1-0-1	0	0	0	0	0	0	8
FLETCHER	0-0	0-0	0-0	0-0-0	0	0	0	0	0	0	1
WILSON	0-0	0-0	0-0	0-1-1	0	0	0	0	0	0	4
GIDEN	0-0	0-0	0-0	0-0-0	0	0	0	0	1	0	2
LONEY	3-8	3-6	0-0	2-1-3	3	9	1	4	0	0	18
TEAM				4-2-6							
Totals	18-59	6-17	16-19	14-15-29	19	58	8	22	2	11	200

Officials: Kim Hobbs, Mark Berger, Andrew Bills
Attendance: 1392

Score by Periods	1st	2nd	Total
Marquette	52	37	89
Western Michigan	22	36	58

Marquette 80, Gonzaga 77

Gonzaga	FG-A	3P-A	FT-A	O-D-REB	PF	TP	A	TO	B	S	MIN
FRIESON	f 6-12	0-0	0-0	0-4-4	5	12	4	0	1	2	37
BOWMAN	f 3-8	0-0	2-3	2-5-7	3	8	2	1	0	1	37
BEKKERING	g 2-4	0-0	2-2	1-0-1	3	6	0	1	0	0	18
VANDERSLOOT	10-19	3-6	9-10	3-5-8	4	32	8	6	0	0	36
SCHAEFER	g 2-10	0-0	0-0	4-1-5	4	4	2	3	0	0	22
LORENZO	0-1	0-0	0-0	0-0-0	0	1	0	0	0	0	6
STANDISH	0-0	0-0	2-2	0-2-2	1	2	0	1	0	0	6
SHIVES	3-10	2-7	1-1	0-0-0	4	9	0	1	0	1	25
BOWEN	2-4	0-1	0-1	0-1-1	3	4	0	0	0	0	13
TEAM				2-5-7							
Totals	28-68	5-14	16-19	12-23-35	27	77	17	14	1	4	200

Marquette	FG-A	3P-A	FT-A	O-D-REB	PF	TP	A	TO	B	S	MIN
MELLEN	f 0-1	0-0	0-0	0-0-0	0	0	0	0	0	0	2
FIEDOROWICZ	8-10	0-0	5-5	2-6-8	0	21	2	0	0	2	32
ROBINSON	g 3-18	1-3	6-9	5-6-11	1	13	4	5	2	0	36
ELLIS	g 3-11	0-4	6-7	0-2-2	4	12	4	1	1	3	20
THOMAS-JOHNSON	5-8	1-3	2-2	0-1-1	3	13	3	2	2	0	29
COLLINS	0-1	0-0	0-0	1-0-1	2	0	0	1	0	0	4
MONFRE	0-0	0-0	0-0	0-0-0	0	0	2	1	0	0	7
HARRIS	1-3	0-0	1-2	1-0-1	1	3	0	1	0	0	11
McMORRIS	0-2	0-0	0-0	0-1-1	1	0	0	0	0	0	6
HILL	1-1	0-0	0-0	0-3-3	2	2	1	0	0	2	12
JONES	4-4	0-0	4-8	2-5-7	4	12	1	0	2	1	26
THROWER	1-5	0-0	2-2	2-2-4	2	4	1	3	0	0	15
TEAM				3-1-4							
Totals	26-64	2-12	26-35	16-27-43	20	80	18	14	8	8	200

Officials: Janice Aliberti, Kathy Ridilla, Becky Blank
Attendance: 1407

Score by Periods	1st	2nd	Total
Gonzaga	39	38	77
Marquette	33	47	80

16/15 Virginia 76, Marquette 71

Virginia	FG-A	3P-A	FT-A	O-D-REB	PF	TP	A	TO	B	S	MIN
Hartig	f 0-1	0-0	0-0	0-1-1	3	0	1	1	0	0	14
Mohammed	c 4-6	0-0	1-2	4-8-12	2	9	0	3	3	0	34
Millner	g 1-5	0-3	3-4	1-1-2	3	5	0	3	0	0	29
Moorer	g 1-6	0-2	0-0	0-2-2	0	2	2	3	0	1	15
Wright	g 13-24	3-7	2-2	2-2-4	3	31	5	3	0	1	35
Edwards	3-10	2-5	5-7	1-1-2	1	13	0	0	0	2	21
Stovall	3-6	1-2	1-2	1-8-9	1	8	3	1	0	2	28
Shine	3-8	0-0	2-3	4-3-7	0	8	0	1	1	3	24
TEAM				2-2-4							
Totals	28-66	6-19	14-20	15-28-43	13	76	11	15	4	9	200

Marquette	FG-A	3P-A	FT-A	O-D-REB	PF	TP	A	TO	B	S	MIN
FIEDOROWICZ	f 1-4	0-0	1-2	3-5-8	2	3	1	1	0	1	32
JONES	c 2-4	0-0	0-2	3-4-7	1	4	1	2	1	1	25
ROBINSON	g 10-19	3-4	2-4	2-2-4	5	25	7	3	0	3	34
ELLIS	g 10-24	3-10	2-2	3-3-6	1	23	1	3	3	1	31
THOMAS-JOHNSON	3-9	2-5	2-2	0-2-2	1	10	3	1	0	2	28
COLLINS	0-0	0-0	0-0	0-0-0	0	0	0	0	0	0	1

Utah 79, Marquette 76

Game 7 • November 30, 2008 • WBCA Classic
Al McGuire Center • Milwaukee, Wis.

MILWAUKEE (AP) - Utah coach Elaine Elliott breathed a big sigh of relief after her club snapped its four-game losing streak.

Her Utes did it in stunning fashion Sunday, bouncing back from a 18-point second-half deficit to defeat Marquette 79-76 in the WBCA Classic.

"That's always a mental challenge," Elliott said of ending a losing streak. "I'm obviously very proud of the effort in the second half. It was significantly better and it was nice to see."

Kalee Whipple tied her career high with a game-high 30 points for the Utes (2-4). The most important were a pair of free throws that put her team in front for good at 75-73 with 2:25 remaining.

With Marquette trailing 77-76, Georgie Jones missed a pair of free throws with 6.3 seconds left that could have tied or won the game, and Utah hung on for the victory.

The win was far from easy, as early on the Utes played poorly. They trailed 48-33 at the half and were down 51-33 early in the second period before starting their comeback, which saw them tie or lead the game several times.

Whipple said the difference in the second half was that Utah players decided not to lose again.

"It was just a choice," Whipple said. "We got in the locker room and we knew we weren't playing how we should. It was a choice we made that we weren't going to just play it out — that we wanted to fight and dig it out."

The choice was spurred by Elliott's halftime advice that the team needed to play harder.

The Utah players took that message and went on to win. On the other side, Marquette players seemed to not listen to coach Terri Mitchell, who told them they had to keep playing hard despite their big lead.

"We took a lead on Virginia and we lost, that doesn't mean anything. Basketball is two halves. They did not take that to heart," Mitchell said of her advice to keep the pressure on the Utes. "I was very disappointed. There was no urgency in the second half."

The loss was especially bothersome to Mitchell because Marquette (5-2) blew a halftime lead for the second straight night to fall to 1-2 in the tournament. No. 16 Virginia bounced back from a 14-point deficit Saturday night to beat Marquette 76-71.

Utah, also 1-2 in the tournament, got 19 points from Morgan Warburton and 14 from Katie King.

Krystal Ellis had 23 points to lead Marquette and Jones added 10.

Although Ellis said she did not think the Golden Eagles quit against the Utes, she realized they showed more intensity in the second half.

"I don't think they wanted to win more than we did but they played harder," she said.

In Sunday's first game in the Classic, Gonzaga upset No. 16 Virginia 69-62.

Marquette 55, Northwestern 54

Game 8 • December 2, 2008
Welsh-Ryan Arena • Evanston, Ill.

EVANSTON, Ill. - Senior guard Krystal Ellis scored the Golden Eagles' final nine points of the game to help the Marquette women's basketball team to overcome a 16-point deficit to defeat Northwestern, 55-54, Tuesday evening at Welsh-Ryan Arena. The win snaps MU's two-game skid to improve to 6-2 overall, while the Wildcats drop to 2-5 on the season.

Ellis finished the night with a game-high 18 points and five steals, and freshman Angel Robinson contributed 14 points and eight rebounds. For the game, the Golden Eagles shot 36.2 percent, including 42.4 percent in the second half after shooting a meager 28.0 percent in the first.

Kristin Cartwright paced the Wildcats with 12 points, while Brittany Orban, Amy Jaeschke and Meshia Reed each scored 10 points apiece. Marquette held Northwestern to make just five of its attempts from the floor and forced 10 turnovers in the second half during its comeback.

After being out-scored 34-20 in the first half, the Golden Eagles came out of the locker room with a renewed sense of urgency. Ellis sparked an 11-4 MU run that helped the Golden Eagles cut the deficit to seven points, 38-31, just over four minutes into the second half.

However, Northwestern regained its 10-point lead following buckets by Cartwright and Jaeschke.

Another pair of made free throws by Orban after Krystal Ellis was forced to the bench with her third foul with just over 13 minutes to play gave NU a 12-point advantage. Monfre quickly answered with a trifecta putting the score at 43-34, still in favor of the Wildcats.

The Golden Eagles didn't back down and continued to chip away at NU's lead. Marquette came within six points, 46-40 with 8:32 to play, using a series of key defensive stops and converting their own scoring opportunities.

With the Wildcats ahead 52-44 coming out of the final official timeout, senior Marissa Thrower scored a put-back opportunity to help MU come within six points, 52-46. Ellis scored the next basket with 3:04 remaining to keep Marquette within six points, 54-48.

The Golden Eagles made a key stop with 2:09 left as NU's Jenny Eckhart was called for an offensive foul. Ellis then scored the next six points to tie the game at 54-54, with 35 seconds to play.

On the MU's next possession Ellis drew the foul with 13 seconds left on the clock and sunk the first of two free throws to give the Golden Eagles the lead and win, 55-54.

Marquette shot a dismal 28.0 percent in the first making only seven of its 25 attempts from the floor, while turning the ball over 14 times.

The Wildcats quickly jumped on the Golden Eagles with a 5-0 run to put Northwestern ahead 13-7. MU cut that deficit to one point, 13-12, but Northwestern quickly pushed the lead to 15 points, 28-13, over the next nine minutes. The only point the Golden Eagles would score over that nine-minute frame was a free throw by Robinson.

Marquette 67, Kansas 57

Game 9 • December 7, 2008
Al McGuire Center • Milwaukee, Wis.

MILWAUKEE - The Marquette University women's basketball team defeated the previously undefeated Kansas Jayhawks Sunday afternoon at the Al McGuire Center, 67-57.

All-America candidate Krystal Ellis chipped in a season-high 32 points, tying an Al McGuire Center record, in 32 minutes for the Golden Eagles who improved to 7-2 on the season.

"Krystal is a scorer and yet she's played plenty games this year where she has distributed, but today was her game," said MU head coach Terri Mitchell. "We just kept calling her number. We'd go away from it and then call her back. The team was getting excited to get her set up. She made some amazing shots and she was in the zone."

From the 3:47 mark of the first, Ellis scored Marquette's final eight points of the half and opened the second with eight more, pulling the Golden Eagles within one at 36-35. Ellis accounted for 16 straight points during that stretch and helped Marquette take the lead, 37-36, after a steal and assist to Lauren Thomas-Johnson.

"My teammates started finding me, and that really helped," said Ellis. "They set screens for me to get open, and they always find the hot shooter in the second half. They realized I was the hot shooter, and I think that made the difference."

With Ellis being held scoreless for 10:15 in the second half, sophomore Angel Robinson stepped up to score seven straight before Ellis hit a three to give Marquette its largest lead of the game at 61-51, effectively closing out the game for the Golden Eagles.

Missed free throws and lapses on the defensive end from the three-point line and on the offensive glass characterized the first half for the Golden Eagles.

The Jayhawks got off to quick start thanks to junior Danielle McCray who scored eight of Kansas' first 10 points, helping KU jump out to a 10-4 lead. In the first half McCray led all scorers with 14 points on 4-of-5 shooting from the three-point line and scored 22 for the game. Kansas was 6-of-11 from three in the first while the Golden Eagles were a mere 2-of-6.

"It all comes down to our defense," said Mitchell. "[Kansas] averaged 80-some points a game, and to hold them to 57 is a big deal. Obviously, we have all the respect in the world for Danielle McCray and what she does, and I think our team made her a complete focus and were able to stop her the best we could."

The charity stripe was not so charitable for Marquette in the first half as the Golden Eagles shot 25 percent on 3-of-12 shooting. Contributing to that number was George Jones who missed four straight free throws with under a minute to play in the first.

On the offensive glass Marquette was being beaten 10-to-5 after the final media timeout of the first half but pulled their deficit to 11-to-9 by the intermission.

While the Jayhawks controlled the offensive boards, the Golden Eagles patrolled the KU passing lanes, forcing 13 turnovers in the first half, leading to a 14-0 advantage in points off turnovers. For the game, Marquette held a 29-10 advantage in points off of 28 KU turnovers.

In the first, both teams shot 37.9 percent from the floor on 11-of-29 shooting, while Marquette responded to shoot 46.7 percent in the second.

Utah 79, Marquette 76

Utah	FG-A	3P-A	FT-A	O-D-REB	PF	TP	A	TO	B	S	MIN
WHIPPLE f	8-14	3-7	11-12	2-7-9	1	30	5	4	0	0	37
SAWYER f	3-7	0-1	3-4	3-6-9	2	9	4	5	1	1	38
KING, Katie f	6-8	0-0	2-2	2-4-6	3	14	1	0	1	1	36
STEPHENS g	2-4	0-1	0-0	0-0-0	3	4	4	3	0	1	37
WARBURTON g	7-12	5-7	0-0	0-3-3	4	19	1	6	1	0	34
BADON	0-0	0-0	0-0	0-0-0	0	0	0	0	0	0	3
NIGHT	1-1	1-1	0-0	0-0-0	0	3	0	1	0	0	9
MUNJNS	0-0	0-0	0-0	0-0-0	2	0	0	0	0	0	6
TEAM			3-14		2						
Totals	27-46	9-17	16-18	10-21-31	15	79	15	21	3	3	200
Marquette	FG-A	3P-A	FT-A	O-D-REB	PF	TP	A	TO	B	S	MIN-
JONES f	4-6	0-0	2-4	6-4-10	2	10	1	1	0	0	21
FIEDOROWICZ f	1-4	0-0	3-4	5-3-8	4	5	0	2	1	3	25
ROBINSON g	3-14	0-4	0-0	0-0-0	2	8	7	1	0	2	25
ELLIS g	7-18	2-5	7-7	0-1-1	1	23	1	1	0	1	27
THOMAS-JOHNSONG	0-5	0-2	0-0	0-0-0	1	0	2	2	0	1	25
COLLINS	1-3	0-0	0-0	3-0-3	1	2	0	0	0	0	12
WEIBEL	0-0	0-0	0-0	0-0-0	0	0	0	0	0	0	0+
MONFRE	3-5	3-5	0-0	0-0-0	2	9	2	1	0	1	12
HARRIS	2-2	0-0	1-1	1-0-1	2	5	0	1	0	2	12
McMORRIS	3-4	2-2	0-0	0-1-1	1	8	2	0	0	0	13
HILL	1-2	0-0	0-2	0-0-0	0	2	2	0	0	2	11
THROWER	2-4	0-0	2-2	2-0-2	1	6	0	0	0	1	17
TEAM			3-0-3								
Totals	27-67	7-18	15-20	20-9-29	17	76	17	9	1	13	200

Officials: Kathy Ridilla, Ed Sidlasky, Rod Creech
Attendance: 1283

Score by Periods	1st	2nd	Total
Utah	33	46	79
Marquette	48	28	76

Marquette 55, Northwestern 54

Marquette	FG-A	3P-A	FT-A	O-D-REB	PF	TP	A	TO	B	S	MIN
FIEDOROWICZ f	3-9	0-0	2-2	4-1-5	3	8	1	1	0	1	30
ROBINSON g	6-11	1-1	1-2	1-7-8	4	14	2	5	0	1	28
ELLIS g	6-14	1-5	5-6	1-3-4	3	18	2	2	0	5	32
THOMAS-JOHNSONG	1-7	0-2	1-2	0-0-0	3	3	1	2	1	1	25
MONFRE g	2-7	2-7	0-0	0-4-4	2	6	2	0	0	0	26
COLLINS	0-0	0-0	0-0	0-0-0	2	0	1	0	1	0	10
HARRIS	0-1	0-0	0-0	0-1-1	0	0	0	2	0	1	9
McMORRIS	1-4	0-1	0-0	0-1-1	1	2	0	3	0	0	10
WEIBEL	0-2	0-2	0-0	1-0-1	0	0	0	1	0	0	7
HILL	1-1	0-0	0-0	3-0-3	0	2	1	0	1	0	17
THROWER	1-2	0-0	0-0	1-1-2	1	2	0	0	1	0	6
TEAM			4-0-4								
Totals	21-58	4-18	9-12	15-18-33	19	55	10	17	3	10	203
Northwestern	FG-A	3P-A	FT-A	O-D-REB	PF	TP	A	TO	B	S	MIN-
Orban f	2-5	0-1	6-8	1-4-5	1	10	2	3	0	0	33
Jaeschke c	4-5	0-0	2-3	1-9-10	1	10	3	2	1	0	38
Reed g	4-8	2-3	0-0	1-2-3	3	10	0	5	0	1	26
Eckhart g	0-3	0-3	4-5	2-1-3	3	4	1	4	1	4	37
Cartwright g	4-9	0-2	4-6	1-3-4	4	12	2	1	0	0	25
Dickerson	2-6	2-4	0-0	0-1-1	2	6	2	2	0	0	18
Mocchi	1-4	0-2	0-0	1-1-2	1	2	2	2	1	0	21
Boyd	0-0	0-0	0-0	0-0-0	1	0	0	0	1	0	2
Jaeschke	0-0	0-0	0-0	0-0-0	0	0	0	0	0	0	0+
TEAM			0-2-2								
Totals	17-40	4-15	16-22	7-23-30	16	54	12	19	4	5	201

Officials: Dee Kantner, Dennis DeMayo, Tim Daley
Attendance: 452

Score by Periods	1st	2nd	Total
MARQUETTE	20	35	55
Northwestern	34	20	54

Marquette 67, Kansas 57

Kansas	FG-A	3P-A	FT-A	O-D-REB	PF	TP	A	TO	B	S	MIN
Smith f	4-9	2-5	0-0	3-7-10	5	10	0	6	0	2	31
Weddington f	1-4	0-0	0-0	1-1-1	4	2	0	3	1	0	20
Jacobs g	2-5	0-0	1-2	1-2-3	5	5	7	5	0	0	29
McCray g	8-17	6-8	0-0	5-8-13	3	22	1	3	1	0	33
Morrisg	3-12	0-0	3-6	1-2-3	2	9	5	5	1	2	34
Kohn	2-3	0-1	0-1	1-1-2	0	4	1	1	0	0	18
Catic	0-1	0-0	2-2	0-0-0	3	2	0	3	0	0	12
Znic	0-0	0-0	0-0	0-0-0	1	0	0	1	0	0	1
Smith	0-0	0-0	0-0	0-0-0	0	0	0	0	0	0	1
Feickert	1-1	1-1	0-1	1-1-2	3	3	0	1	0	1	21
TEAM			2-3-5								
Totals	21-52	9-15	6-12	15-24-39	26	57	14	28	3	5	200
Marquette	FG-A	3P-A	FT-A	O-D-REB	PF	TP	A	TO	B	S	MIN-
FIEDOROWICZ f	0-2	0-0	0-0	0-3-3	3	0	0	4	1	0	19
JONES c	1-2	0-0	0-4	3-3-6	0	2	0	1	2	1	19
ROBINSON g	6-13	1-2	2-5	0-4-4	3	15	0	2	2	3	26
ELLIS g	12-21	4-6	4-6	0-3-3	2	32	2	2	0	4	32
THOMAS-JOHNSONG	2-10	0-2	1-2	2-0-2	0	5	1	2	0	2	26
COLLINS	1-3	0-0	2-4	2-2-4	2	4	0	0	0	1	20
MONFRE	1-2	1-2	0-0	1-1-2	0	3	2	1	0	0	21
HARRIS	1-2	0-0	0-2	1-0-1	2	2	1	0	0	0	11
McMORRIS	1-3	0-1	2-2	1-0-1	0	4	0	0</			

Wisconsin 67, Marquette 48

Game 10 • December 13, 2008

Kohl Center • Madison, Wis.

MADISON - The Marquette women's basketball team couldn't overcome cold shooting and dropped a 67-48 decision at Wisconsin Saturday afternoon at the Kohl Center. The Golden Eagles (7-3) connected on a dismal 23.2 percent of their attempts from the floor. Meanwhile, the Badgers (10-1) collectively made 41.8 of its shots from the floor and had three players in double figures led by Alyssa Karel with a game-high 18 points and en route to their 10th straight win.

Sophomores Paige Fiedorowicz and Angel Robinson each scored nine points for MU in the loss.

The Badgers also owned the advantage on the glass pulling down 45, compared to 36 from Marquette. Prior to this loss, the Golden Eagles had been out-rebounded only two other times.

The Badgers jumped out to a quick 10-3 lead just over four minutes into the game and never looked back. The lead was pushed to 13 points, 16-3, 72 seconds later after Wisconsin scored back-to-back 3-pointers off consecutive Marquette turnovers.

Marquette answered with a mini 7-0 run that cut UW's lead to six points, 16-10, but the Badgers reclaimed the double-digit advantage (24-10) when Teah Gant knocked down a jumper, and Rae Lin D'Alie and Jade Davis drilled a pair from long range.

The Badgers maintained that lead and took a 13-point advantage, 37-24, heading into the locker room at half-time. Nine of the Golden Eagles' first-half points came from the charity stripe.

It was much of the same in the second half as the Golden Eagles came no closer than 11 points (37-26) of the Badgers early on in the second frame.

Wisconsin took its largest lead of the game, 21 points, with 11:11 remaining.

Marquette 69, Oregon 39

Game 11 • December 17, 2008

Al McGuire Center • Milwaukee, Wis.

MILWAUKEE - Marquette cruised to a 69-39 victory over Oregon in front of an announced crowd of 4,000 fans Wednesday afternoon at a sold out Al McGuire Center. A stingy defense coupled with a well-rounded offensive attack, led by a game-high 17 points from senior Krystal Ellis, helped the Golden Eagles improve to 8-3 on the season.

Ten different players scored for MU, while the visiting Ducks (3-5) connected on just 22.2 percent (12-of-49) of their shots from the field. A combination of full- and half-court pressure, along with a match-up zone, forced 11 Oregon turnovers in the first half and just six field goals.

MU used a 15-2 run in the opening minutes to help grab an early 20-7 lead. Oregon closed the gap by producing a run of their own and held Marquette scoreless for a six-minute stretch. Micaela Cocks hit a 3-pointer at the 6:04 mark to cut the MU lead down to 22-14 and moments later followed with an easy layup to pull the Ducks within six points.

Ellis put an end to MU's scoreless drought by knocking down her second 3-pointer of the half with 3:18 remaining. Back-to-back layups by Jessica Pachko in the final minute of the first half gave the Golden Eagles a 15-point advantage, and Marquette enjoyed a 33-20 lead at the break.

Fiedorowicz had garnered her first collegiate double-double by halftime, collecting 10 of Marquette's 19 rebounds in the first half. She finished with 12 points and a career-high 12 boards.

Marquette opened the second half with a 14-2 run, extending the MU cushion to 25 points at 47-22 and quickly eliminating the hopes of an Oregon comeback. Sophomore guard Courtney Weibel, who made her first start as a Golden Eagle, drained a pair of 3-pointers during the stretch. Weibel scored nine points, all from beyond the arc.

Wisconsin 67, Marquette 48

Marquette	FG-A	3P-A	FT-A	O-D-REB	PF	TP	A	TO	B	S	MIN
FIEDOROWICZ	1-4	0-0	7-8	1-4-5	2	9	1	2	1	0	26
JONES	0-0	0-0	0-0	1-1-2	1	0	0	2	0	0	11
ROBINSON	3-16	1-5	2-2	2-4-6	3	9	3	2	0	1	29
ELLIS	3-12	1-4	0-0	1-0-1	5	7	0	3	0	1	25
THOMAS-JOHNSON	0-5	0-4	6-6	1-6-7	1	6	0	2	1	0	26
COLLINS	0-0	0-0	0-0	0-0-0	0	0	0	0	0	1	6
WEIBEL	2-6	2-5	0-0	0-0-0	1	6	0	0	0	0	10
MONFRE	0-2	0-2	0-0	0-1-1	2	0	0	0	0	0	18
HARRIS	1-2	0-0	0-0	2-1-3	0	2	1	0	0	0	11
PACHKO	1-3	0-0	3-5	1-2-3	2	5	0	1	0	1	14
McMORRIS	0-1	0-1	0-0	0-1-1	0	0	0	0	0	0	5
THROWER	2-5	0-0	0-0	1-4-5	2	4	0	1	1	0	19
TEAM				2-0-2							
Totals	13-56	4-21	18-21	12-24-36	19	48	5	13	3	4	200

Officials: Lisa Mattingly, Cameron Inouye, Bonita Spence
Attendance: 5773

Score by Periods	1st	2nd	Total
Marquette	24	24	48
Wisconsin	37	30	67

Marquette 69, Oregon 39

Oregon	FG-A	3P-A	FT-A	O-D-REB	PF	TP	A	TO	B	S	MIN
Johnson	3-9	0-2	1-2	1-3-4	0	7	0	3	0	1	24
Saffold	0-3	0-1	0-0	0-2-2	0	0	0	1	0	0	12
Canepa	2-3	0-0	0-0	0-0-0	2	4	1	3	0	0	20
Lilley	0-8	0-6	0-0	1-3-4	2	0	4	2	0	1	18
Cocks	5-12	4-10	0-0	0-1-1	2	14	0	4	0	4	35
Ironmonger	0-2	0-0	4-4	0-2-2	0	4	0	0	0	0	12
Gaynor	0-4	0-1	0-0	0-2-2	2	0	2	1	0	0	15
Kenyon	0-3	0-0	2-2	1-2-3	0	2	0	0	0	0	20
Thomas	1-4	0-1	0-0	0-1-1	2	2	2	2	0	0	17
Holliday	1-6	0-0	4-4	2-3-5	2	6	0	1	0	2	27
TEAM				4-3-7							
Totals	12-54	4-21	11-12	9-22-31	12	39	9	18	0	8	200

Officials: Barbara Jo Smith, Laura Morris, Angie Enlund
Attendance: 4000

Score by Periods	1st	2nd	Total
Oregon	20	19	39
Marquette	33	36	69



00 • Jasmine Collins

Sophomore
Forward
6-2
Detroit, Mich.
Martin Luther King

2008-09: Scored two points and grabbed two boards in three minutes against Oral Roberts in the season opener...Scored a career-high six points on 3-of-6 shooting and pulled down six rebounds at Western Michigan (11/23)...Grabbed three offensive rebounds against Utah (11/30)...Grabbed four rebounds and scored four points in a career-high 20 minutes against Kansas (12/7)...

Career Highs

Points 6, at Western Mich. (11/23/08)
Rebounds 6, at Western Mich. (11/23/08)
Field Goals 3, at Western Mich. (11/23/08)
FG Attempts 6, at Western Mich. (11/23/08)
Three FG —
Three FG Att. —
Free Throws 2, Twice
Free Throw Att. 4, Kansas (12/7/08)
Assists 2, Western Michigan (1/2/08)
Steals 1, Four Times
Blocks 2, at Western Mich. (11/23/08)
Minutes 20, Kansas (12/7/08)

08-09 Season Highs

6, at Western Michigan (11/23/08)
6, at Western Michigan (11/23/08)
3, at Western Michigan (11/23/08)
6, at Western Michigan (11/23/08)
—
—
2, Kansas (12/7/08)
4, Kansas (12/7/08)
1, at Northwestern (12/2/08)
1, Twice
2, at Western Michigan (11/23/08)
20, Kansas (12/7/08)

Collins' Game-by-Game Stats

Opponent	Date	GS	Min.	FG-A	Pct.	3P-A	Pct.	FT-FTA	Pct.	Off-Def.	Tot.	Avg	PF	FO	A	TO	Blk	Stl	Pts	Avg
Oral Roberts	11/14	3	1-1	100.0	0-0	-	0-0	-	0-2	2	2.0	3	0	1	0	0	2	2.0		
Sacred Heart	11/17	3	0-0	-	0-0	-	0-0	-	0-1	1	1.5	1	0	0	0	0	0	0	1.0	
at Indiana State	11/19									Did Not Play										
at Western Michigan	11/23	10	3-6	50.0	0-0	-	0-0	-	3-3	6	3.0	2	0	2	2	0	6	2.7		
Gonzaga	11/28	4	0-1	0.0	0-0	-	0-0	-	1-0	1	2.5	2	0	1	0	0	0	2.0		
Virginia	11/29	1	0-0	-	0-0	-	0-0	-	0-0	0	2.0	0	0	0	0	0	0	1.6		
Utah	11/30	12	1-3	33.3	0-0	-	0-0	-	3-0	3	2.2	1	0	0	0	0	2	1.7		
at Northwestern	12/2	10	0-0	-	0-0	-	0-0	-	0-0	0	1.9	2	1	0	1	0	0	1.4		
Kansas	12/6	20	1-3	33.3	0-0	-	2-4	-	2-2	4	2.1	2	0	0	0	1	4	1.8		
at Wisconsin	12/13	6	0-0	-	0-0	-	0-0	-	0-0	0	1.9	0	0	0	0	1	0	1.6		
Oregon	12/17	9	0-4	0.0	0-0	-	0-0	-	2-1	3	2.0	3	0	0	0	0	0	1.4		
Green Bay																				
at Oakland																				
Milwaukee																				
USF																				
at Seton Hall																				
Notre Dame																				
at Rutgers																				
at Georgetown																				
Syracuse																				
at Pittsburgh																				
at USF																				
Connecticut																				
Villanova																				
West Virginia																				
at Cincinnati																				
St. John's																				
at Providence																				
at DePaul																				
Louisville																				

Denotes BIG EAST Conference Game
^ Denotes BIG EAST Conference Tournament Game

Collins' Career Stats

Year	GP	GS	Min	Avg	FG-FGA	Pct	3FG-FGA	Pct	FT-FTA	Pct	Off	Def	Tot	Avg	PF	FO	Ast	TO	Blk	Stl	Pts	Avg
2007-08	19	0	96	5.1	6-25	.240	0-0	-	4-6	.667	12	5	17	0.9	16	0	2	9	6	2	16	0.8
2008-09	10	0	78	7.8	6-18	.333	0-0	-	2-4	.500	11	9	20	2.0	16	0	1	4	3	2	14	1.4
TOTAL	29	0	174	6.0	12-43	.279	0-0	-	6-10	.600	23	14	37	1.3	32	0	3	13	9	4	30	1.0



1 • Angel Robinson

Sophomore

Guard

5-8

St. Paul, Minn.

Central

BIG EAST All-Conference Candidate

2008-09: In season opener versus Oral Roberts (11/14), tied career-highs in three-point field goals made (3) and attempted (4) and also tied a career-high with three blocks...Recorded four steals against Sacred Heart (11/17)...Registered a season-high seven assists at Western Michigan (11/23)...Hit a season-high 6-of-9 from the free throw line on her way to 13 points, along with a career-high 11 rebounds, and her first career double-double against Gonzaga (11/28)...Scored a career-high 25 points against Virginia (11/29)...Scored 14 points to help MU pull out a one-point win at Northwestern (12/2)...Scored 15 points, including seven straight in a key second half run, to help MU defeat Kansas (12/7)...

Points	25, Virginia (11/29/08)
Rebounds	11, Gonzaga (11/29/08)
Field Goals	10, Virginia (11/29/08)
FG Attempts	23, USF (3/3/08)
Three FG	3, Three Times
Three FG Att.	5, at Wisconsin (12/13/08)
Free Throws	8, Twice
Free Throw Att.	11, Twice
Assists	10, Seton Hall (2/16/08)
Steals	7, at Gonzaga (11/23/07)
Blocks	3, Twice
Minutes	39, Twice

08-09 Season Highs

25, Virginia (11/29/08)
11, Gonzaga (11/28/08)
10, Virginia (11/29/08)
19, Virginia (11/29/08)
3, Twice
5, at Wisconsin (12/13/08)
6, Gonzaga (11/28/08)
9, Gonzaga (11/28/08)
7, Three Times
4, Sacred Heart (11/17/08)
3, Oral Roberts (11/15/08)
36, Gonzaga (11/28/08)

Robinson's Game-by-Game Stats

Opponent	Date	GS	Min.	FG-A	Pct.	3P-A	Pct.	FT-FTA	Pct.	Off-Def.	Tot	Avg	PF	FO	A	TO	Blk	Stl	Pts	Avg
Oral Roberts	11/14	*	28	5-10	50.0	3-4	75.0	1-2	50.0	1-4	5	5.0	3	-	4	1	3	2	14	14.0
Sacred Heart	11/17	*	22	4-12	33.3	0-1	0.0	1-1	100.0	1-3	4	4.5	3	-	2	5	0	4	9	11.5
at Indiana State	11/19	*	18	3-5	60.0	1-2	50.0	1-2	50.0	0-2	2	3.7	3	-	3	3	0	0	8	10.3
at Western Michigan	11/23	*	24	4-7	57.1	2-3	66.7	2-2	100.0	1-3	4	3.8	2	-	7	6	0	1	12	10.8
Gonzaga	11/28	*	36	3-18	16.7	1-3	33.3	6-9	66.7	5-6	11	5.2	1	-	4	5	2	0	13	11.2
Virginia	11/29	*	34	10-19	52.6	3-4	75.0	2-4	50.0	2-2	4	5.0	5	1	7	3	0	3	25	13.5
Utah	11/30	*	25	3-14	21.4	0-4	0.0	0-0	-	0-0	0	4.3	2	-	7	1	0	2	6	12.4
at Northwestern	12/2	*	28	6-11	54.5	1-1	100.0	1-2	50.0	1-7	8	4.8	4	-	2	5	0	1	14	12.6
Kansas	12/7	*	26	6-13	46.2	1-2	50.0	2-5	40.0	0-4	4	4.7	3	-	0	2	2	3	15	12.9
at Wisconsin	12/13	*	29	3-16	18.8	1-5	20.0	2-2	100.0	2-4	6	4.8	3	-	3	2	0	1	9	12.5
Oregon	12/17	*	23	2-7	28.6	0-1	0.0	0-0	-	1-2	3	4.6	3	-	4	1	0	0	4	11.7

Green Bay
at Oakland
Milwaukee
USF
at Seton Hall
Notre Dame
at Rutgers
at Georgetown
Syracuse
at Pittsburgh
at USF
Connecticut
Villanova
West Virginia
at Cincinnati
St. John's
at Providence
at DePaul
Louisville

Denotes BIG EAST Conference Game
^ Denotes BIG EAST Conference Tournament Game

Robinson's Career Stats

Year	GP	GS	Min	Avg	FG-FGA	Pct	3FG-FGA	Pct	FT-FTA	Pct	Off	Def	Tot	Avg	PF	FO	Ast	TO	Blk	Stl	Pts	Avg
2007-08	35	33	955	27.3	141-364	.387	18-54	.333	99-142	.697	55	97	152	4.3	104	4	135	118	13	86	399	11.4
2008-09	11	11	293	26.6	49-132	.371	11-28	.393	20-31	.645	14	37	51	4.6	32	1	43	34	7	17	129	11.7
TOTALS	46	44	1248	27.1	190-496	.383	29-82	.354	119-173	.688	69	134	203	4.4	136	5	178	152	20	103	528	11.5



3 • Courtney Weibel

Sophomore
Guard
5-9
Rockton, Ill.
Hononegah

2008-09: Made a three-pointer against Oral Roberts (11/14), Indiana State (11/19) and Western Michigan (11/23)...Scored a season-high six points at Wisconsin (12/13)...Made first collegiate start against Oregon (12/17), recording a season-high nine points...

Points	Career Highs	08-09 Season Highs
Rebounds	15, Seton Hall (2/16/08)	9, Oregon (12/17/08)
Field Goals	3, Pittsburgh (2/23/08)	1, Twice
FG Attempts	5, Seton Hall (2/16/08)	3, Oregon (12/17/08)
Three FG	8, Twice	7, Oregon (12/17/08)
Three FG Att.	5, Seton Hall (2/16/08)	3, Oregon (12/17/08)
Free Throws	8, Twice	7, Oregon (12/17/08)
Free Throw Att.	2, at Notre Dame (2/13/08)	—
Assists	2, at Notre Dame (2/13/08)	—
Steals	2, at Connecticut (2/20/08)	3, Oregon (12/17/08)
Blocks	1, Indiana State (12/15/07)	1, at Indiana State (11/19/08)
Minutes	20, at Notre Dame (2/13/08)	1, Oregon (12/17/08)
		17, Oregon (12/17/08)

Weibel's Game-by-Game Stats

Opponent	Date	GS	Min.	FG-A	Pct.	3P-A	Pct.	FT-FTA	Pct.	Off-Def.	Tot	Avg	PF	FO	A	TO	Blk	Stl	Pts	Avg
Oral Roberts	11/14		6	1-3	33.3	1-3	33.3	0-0	-	1-0	1	1.0	1	-	0	0	0	0	3	3.0
Sacred Heart	11/16		4	0-0	-	0-0	-	0-0	-	0-0	0	0.5	0	-	0	0	0	0	0	1.5
at Indiana State	11/19		1	1-1	100.0	1-1	100.0	0-0	-	0-0	0	0.3	0	-	0	0	0	1	3	2.0
at Western Michigan	11/23		10	1-4	25.0	1-4	25.0	0-0	-	0-0	0	0.3	0	-	0	0	0	0	3	2.3
Gonzaga	11/28																			
Virginia	11/29		1	0-1	0.0	0-1	0.0	0-0	-	0-0	0	0.2	0	-	0	0	0	0	0	1.8
Utah	11/30		0+	0-0	-	0-0	-	0-0	-	0-0	0	0.2	0	-	0	0	0	0	0	1.5
at Northwestern	12/2		7	0-2	0.0	0-2	0.0	0-0	-	1-0	1	0.3	0	-	0	1	0	0	0	1.3
Kansas																				
at Wisconsin	12/13		10	2-6	33.3	2-5	40.0	0-0	-	0-0	0	0.3	1	-	0	0	0	0	6	1.9
Oregon	12/17	*	17	3-7	42.9	3-7	42.9	0-0	-	0-0	0	0.2	1	-	3	0	1	0	9	2.7
Green Bay																				
at Oakland																				
Milwaukee																				
USF																				
at Seton Hall																				
Notre Dame																				
at Rutgers																				
at Georgetown																				
Syracuse																				
at Pittsburgh																				
at USF																				
Connecticut																				
Villanova																				
West Virginia																				
at Cincinnati																				
St. John's																				
at Providence																				
at DePaul																				
Louisville																				

Denotes BIG EAST Conference Game
^ Denotes BIG EAST Conference Tournament Game

Weibel's Career Stats

Year	GP	GS	Min	Avg	FG-FGA	Pct	3FG-FGA	Pct	FT-FTA	Pct	Off	Def	Tot	Avg	PF	FO	Ast	TO	Blk	Stl	Pts	Avg
2007-08	30	0	201	6.7	23-78	.295	22-72	.306	2-2	1.000	6	12	18	0.6	14	0	8	14	1	6	70	2.3
2008-09	9	1	56	6.2	8-24	.333	8-23	.348	0-0	-	2	0	2	0.2	3	0	3	1	1	1	24	2.7
TOTALS	39	1	257	6.6	31-102	.304	30-95	.316	2-2	1.000	8	12	20	0.5	17	0	11	15	2	7	94	2.4



5 • Erin Monfre

Senior
Guard
5-11
Waukesha, Wis.
Waukesha South

2008-09: Dished out four assists in season opener against Oral Roberts...Played in 100th career game at Indiana State (11/19)...Scored a season-high nine points on 3-of-5 shooting from three point range against Utah (11/30)...Made first start of the season at Northwestern (12/2), scoring six points in the win...

Points	18, at Virginia (11/17/06)	08-09 Season Highs	9, Utah (11/30/08)
Rebounds	8, at Colorado (4/2/08)		4, at Northwestern (12/2/08)
Field Goals	6, at Virginia (11/17/06)		3, Utah (11/30/08)
FG Attempts	9, at Michigan State (4/5/08)		7, at Northwestern (12/2/08)
Three FG	6, at Virginia (11/17/06)		3, Utah (11/30/08)
Three FG Att.	8, at Michigan State (4/5/08)		7, at Northwestern (12/2/08)
Free Throws	4, Twice		—
Free Throw Att.	4, Twice		—
Assists	8, Navy (12/29/06)		4, Oral Roberts (11/15/08)
Steals	3, Five Times		1, Utah (11/30/08)
Blocks	1, Five Times		—
Minutes	34, at Oregon (11/20/07)		16, Sacred Heart (11/17/08)

Monfre's Game-by-Game Stats

Opponent	Date	GS	Min	FG-A	Pct	3P-A	Pct	FT-FTA	Pct	Off-Def	Tot	Avg	PF	FO	A	TO	Blk	Stl	Pts	Avg
Oral Roberts	11/14		10	1-4	.250	1-4	.250	0-0	-	0-1	1	1.0	0	-	4	1	0	0	3	3.0
Sacred Heart	11/16		16	0-2	0.0	0-2	0.0	0.0	-	0-0	0	0.5	2	-	2	1	0	0	0	1.5
at Indiana State	11/19		15	0-3	0.0	0-3	0.0	0-0	-	0-1	1	0.7	1	-	3	0	0	0	0	1.0
at Western Michigan	11/23		10	0-2	0.0	0-1	0.0	0-0	-	0-2	2	1.0	0	-	0	1	0	0	0	0.8
Gonzaga	11/28		7	0-0	-	0-0	-	0-0	-	0-0	0	0.8	0	-	2	1	1	0	0	0.6
Virginia	11/29		9	0-2	0.0	0-2	0.0	0-0	-	0-1	1	0.8	0	-	0	1	0	0	0	0.5
Utah	11/30		12	3-5	.600	3-5	.600	0-0	-	0-0	0	0.7	2	-	2	1	0	1	9	1.7
at Northwestern	12/2	*	26	2-7	.286	2-7	.286	0-0	-	0-4	4	1.1	2	-	2	0	0	0	6	2.3
Kansas	12/7		21	1-2	.500	1-2	.500	0-0	-	1-1	2	1.2	0	-	2	1	0	0	3	2.3
at Wisconsin	12/13		18	0-2	0.0	0-2	0.0	0-0	-	0-1	1	1.2	2	-	0	0	0	0	0	2.1
Oregon	12/17		10	1-2	.500	0-1	0.0	0-0	-	0-0	0	1.1	0	-	2	0	0	1	2	2.1
Green Bay																				
at Oakland																				
Milwaukee																				
USF																				
at Seton Hall																				
Notre Dame																				
at Rutgers																				
at Georgetown																				
Syracuse																				
at Pittsburgh																				
at USF																				
Connecticut																				
Villanova																				
West Virginia																				
at Cincinnati																				
St. John's																				
at Providence																				
at DePaul																				
Louisville																				

Denotes BIG EAST Conference Game
^ Denotes BIG EAST Conference Tournament Game

Monfre's Career Stats

Year	GP	GS	Min	Avg	FG-FGA	Pct	3FG-FGA	Pct	FT-FTA	Pct	Off	Def	Tot	Avg	PF	FO	Ast	TO	Blk	Stl	Pts	Avg
2005-06	33	6	481	14.6	31-105	.295	29-88	.330	9-11	.818	6	26	32	1.0	25	0	25	26	0	16	100	3.0
2006-07	33	17	696	21.1	35-130	.269	28-101	.277	21-26	.808	13	55	68	2.1	28	0	86	43	4	21	119	3.6
2007-08	31	2	496	16.0	32-114	.281	28-96	.292	5-12	.417	14	32	46	1.5	23	0	38	24	2	19	97	3.1
2008-09	11	1	154	14.0	8-31	.258	7-29	.241	0-0	-	1	11	12	1.1	9	0	19	7	1	2	23	2.1
TOTAL	108	26	1827	16.9	106-380	.279	92-314	.293	35-49	.714	34	124	158	1.5	85	0	168	100	7	58	339	3.1



11 • Janelle Harris

Junior
Guard
6-0
Detroit, Mich.
Renaissance

2008-09: Started 36th straight game in season opening win against Oral Roberts, scoring four points and grabbing four rebounds...Recorded a career-high four steals against Sacred Heart (11/17)...Notched first blocked shot of her career at Indiana State (11/19)...Scored a season-high eight points at Western Michigan (11/23)...

Points	17, at St. John's (2/2/08)	08-09 Season Highs	8, at Western Michigan (11/23/08)
Rebounds	9, Western Michigan (1/2/08)		5, Virginia (11/29/08)
Field Goals	6, Twice		4, at Western Michigan (11/23/08)
FG Attempts	14, at St. John's (2/2/08)		7, Sacred Heart (11/17/08)
Three FG	1, Four Times		—
Three FG Att.	2, Three Times		1, Twice
Free Throws	7, at Colorado (4/2/08)		3, Sacred Heart (11/17/08)
Free Throw Att.	10, at Colorado (4/2/08)		4, Sacred Heart (11/17/08)
Assists	4, vs. Arkansas (12/30/07)		3, Sacred Heart (11/17/08)
Steals	4, Sacred Heart (11/17/08)		4, Sacred Heart (11/17/08)
Blocks	1, at Indiana State (11/19/08)		1, at Indiana State (11/19/08)
Minutes	33, Creighton (3/24/08)		19, Oral Roberts (11/15/08)

Harris' Game-by-Game Stats

Opponent	Date	GS	Min.	FG-A	Pct.	3P-A	Pct.	FT-FTA	Pct.	Off-Def.	Tot	Avg	PF	FO	A	TO	Blk	Stl	Pts	Avg
Oral Roberts	11/14	*	19	2-5	40.0	0-0	-	0-0	-	4-0	4	4.0	3	-	0	1	0	0	4	4.0
Sacred Heart	11/16		13	1-7	14.2	0-0	-	3-4	75.0	1-0	1	2.5	2	-	3	1	0	4	5	4.5
at Indiana State	11/19		10	2-3	66.7	0-1	0.0	1-2	50.0	0-2	2	2.3	0	-	0	2	1	1	5	4.7
at Western Michigan	11/23		16	4-6	66.7	0-0	-	0-1	0.0	0-1	1	2.0	3	-	1	2	0	2	8	5.5
Gonzaga	11/28		11	1-3	33.3	0-0	-	1-2	50.0	1-0	1	1.8	1	-	0	1	0	0	3	5.0
Virginia	11/29		14	2-3	66.7	0-0	-	0-0	-	4-1	5	2.3	3	-	0	3	0	2	4	4.8
Utah	11/30		12	2-2	100.0	0-0	-	1-1	100.0	1-0	1	2.1	2	-	0	1	0	2	5	4.9
at Northwestern	12/2		9	0-1	0.0	0-0	-	0-0	-	0-1	1	2.0	0	-	0	2	0	1	0	4.3
Kansas	12/7		11	1-2	50.0	0-0	-	0-2	0.0	1-0	1	1.9	2	-	1	0	0	0	2	4.0
at Wisconsin	12/13		11	1-2	50.0	0-0	-	0-0	-	2-1	3	2.0	0	-	1	0	0	0	2	3.8
Oregon	12/17		15	1-3	33.3	0-1	0.0	2-2	100.0	0-4	4	2.2	0	-	0	3	0	1	4	3.8
Green Bay																				
at Oakland																				
Milwaukee																				
USF																				
at Seton Hall																				
Notre Dame																				
at Rutgers																				
at Georgetown																				
Syracuse																				
at Pittsburgh																				
at USF																				
Connecticut																				
Villanova																				
West Virginia																				
at Cincinnati																				
St. John's																				
at Providence																				
at DePaul																				
Louisville																				

Denotes BIG EAST Conference Game
^ Denotes BIG EAST Conference Tournament Game

Harris' Career Stats

Year	GP	GS	Min	Avg	FG-FGA	Pct	3FG-FGA	Pct	FT-FTA	Pct	Off	Def	Tot	Avg	PF	FO	Ast	TO	Blk	Stl	Pts	Avg
2006-07	32	0	275	8.6	24-67	.358	1-6	.167	19-29	.655	19	29	48	1.5	23	0	11	34	1	20	68	2.1
2007-08	35	35	794	22.7	89-221	.403	4-17	.235	60-80	.750	52	81	133	3.8	66	0	39	87	0	45	242	6.9
2008-09	11	1	141	12.8	17-37	.459	0-2	.000	8-14	.571	14	10	24	2.2	16	0	6	16	1	13	42	3.8
TOTAL	78	36	1210	15.5	130-325	.400	5-25	.200	87-123	.707	85	120	205	2.6	105	0	56	137	2	78	352	4.5



12 • Jessica Pachko

Freshman
Forward
6-2
Cincinnati, Ohio
Oak Hills

2008-09: Started first collegiate game against Oral Roberts (11/14), scoring 10 points on 4-of-4 shooting from the field and grabbed eight rebounds...Scored 14 points against Sacred Heart (11/17) on 6-of-7 shooting from the field to begin college career 10-11 from the field...Recorded first career blocked shot at Indiana State (11/19)...Has only missed one field goal attempt this year...After missing the previous six games returned to score five points at Wisconsin (12/13)...Returned to the starting lineup against Oregon (12/17) after coming off the bench at Wisconsin...

Career /08-09 Season Highs

Points 14, Sacred Heart (11/17/08)
Rebounds 8, Oral Roberts (11/15/08)
Field Goals 6, Sacred Heart (11/17/08)
FG Attempts 7, Sacred Heart (11/17/08)
Three FG —
Three FG Att —
Free Throws 3, at Wisconsin (12/13/08)
Free Throw Att. 5, at Wisconsin (12/13/08)
Assists 2, Oral Roberts (11/15/08)
Steals 2, Oral Roberts (11/15/08)
Blocks 1, at Indiana State (11/19/08)
Minutes 24, Oral Roberts (11/17/08)

Pachko's Game-by-Game Stats

Opponent	Date	GS	Min.	FG-A	Pct.	3P-A	Pct.	FT-FTA	Pct.	Off-Def.	Tot	Avg	PF	FO	A	TO	Blk	Stl	Pts	Avg
Oral Roberts	11/14	*	24	4-4	100.0	0-0	-	2-3	66.6	2-6	8	8.0	2	-	2	1	0	2	10	10.0
Sacred Heart	11/16	*	21	6-7	85.7	0-0	-	2-2	100.0	2-2	4	6.0	2	-	0	1	0	0	14	12.0
at Indiana State	11/19	*	22	2-2	100.0	0-0	-	2-2	100.0	2-2	4	5.3	4	-	1	3	1	0	6	10.0
at Western Michigan	11/23																			
Gonzaga	11/28																			
Virginia	11/29																			
Utah	11/30																			
at Northwestern	12/2																			
Kansas	12/7																			
at Wisconsin	12/13		14	1-3	33.3	0-0	-	3-5	60.0	1-2	3	4.8	2	-	0	1	0	1	5	8.8
Oregon	12/17	*	19	3-5	60.0	0-0	-	1-2	50.0	1-4	5	4.8	1	-	0	1	0	1	7	8.4
Green Bay																				
at Oakland																				
Milwaukee																				
USF																				
at Seton Hall																				
Notre Dame																				
at Rutgers																				
at Georgetown																				
Syracuse																				
at Pittsburgh																				
at USF																				
Connecticut																				
Villanova																				
West Virginia																				
at Cincinnati																				
St. John's																				
at Providence																				
at DePaul																				
Louisville																				

Denotes BIG EAST Conference Game
^ Denotes BIG EAST Conference Tournament Game

Pachko's Career Stats

Year	GP	GS	Min	Avg	FG-FGA	Pct	3FG-FGA	Pct	FT-FTA	Pct	Off	Def	Tot	Avg	PF	FO	Ast	TO	Blk	Stl	Pts	Avg
2008-09	5	4	100	20.0	16-21	.762	0-0	-	10-14	.714	8	16	24	4.8	11	0	3	7	1	4	42	8.4



20 • Krystal Ellis

Senior
Guard
5-9
Racine, Wis.
St. Catherine's

All-America Candidate
2008 "Wade Watch" List selection
2008 Naismith Top-30 List

2008-09: Scored 16 points, grabbed four rebounds and dished out seven assists in season opening win over Oral Roberts...Scored a game-high 19 points and assisted on seven baskets at Indiana State (11/19) in 100th career game...Scored 23 points against Virginia (11/29) on a season-high 10 made field goals along with six rebounds...Was a perfect 7-of-7 from the charity stripe against Utah (11/30) on her way to 23 points... Led MU in scoring with 18 points and had a season-high five steals in come-from-behind win over Northwestern (12/2)...Scored an AI McGuire Center-record 32 points, including 16 straight, while leading MU back from a second half deficit against Kansas (11/7)...Was 6-of-10 from the field against Oregon (12/17), finishing with 17 points and a career-high-tying six steals...

Points	40, at Kentucky (3/30/08)	08-09 Season Highs	32, Kansas (12/7/08)
Rebounds	10, Northwestern (12/17/07)		6, Virginia (11/29/08)
Field Goals	13, at USF (1/26/08)		12, Kansas (12/7/08)
FG Attempts	27, at USF (1/26/08)		24, Virginia (11/19/08)
Three FG	5, Five Times		4, Kansas (12/7/08)
Three FG Att.	11, Twice		10, Virginia (11/29/08)
Free Throws	13, at Kentucky (3/30/08)		7, Utah (11/30/08)
Free Throw Att.	14, at Kentucky (3/30/08)		7, Twice
Assists	11, at Michigan St. (4/5/08)		8, Sacred Heart (11/17/08)
Steals	6, Twice		6, Oregon (12/17/08)
Blocks	4, at Kentucky (3/30/08)		3, Virginia (11/29/08)
Minutes	38, Twice		35, at Indiana State (11/19/08)

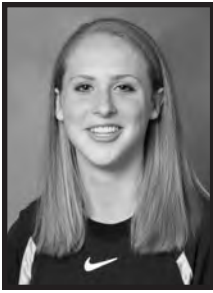
Ellis' Game-by-Game Stats

Opponent	Date	GS	Min.	FG-A	Pct.	3P-A	Pct.	FT-FTA	Pct.	Off-Def.	Tot	Avg	PF	FO	A	TO	Blk	Stl	Pts	Avg
Oral Roberts	11/14	*	26	7-16	43.8	0-5	0.0	2-2	100.0	0-4	4	4.0	3	-	7	4	0	1	16	16.0
Sacred Heart	11/16	*	26	3-7	42.9	1-3	33.3	1-2	50.0	1-2	3	3.5	1	-	8	6	1	3	8	12.0
at Indiana State	11/19	*	35	8-17	47.1	1-8	12.5	2-4	50.0	0-4	4	3.7	0	-	7	2	0	3	19	14.3
at Western Michigan	11/23	*	20	4-8	50.0	1-3	33.3	2-2	100.0	0-2	2	3.3	3	-	3	3	0	1	11	13.5
Gonzaga	11/28	*	20	3-11	27.3	0-4	0.0	6-7	85.7	0-2	2	3.0	4	-	4	1	1	3	12	13.2
Virginia	11/29	*	31	10-24	41.7	3-10	30.0	0-2	0.0	3-3	6	3.5	1	-	1	3	3	1	23	14.8
Utah	11/30	*	27	7-18	38.9	2-5	40.0	7-7	100.0	0-1	1	3.1	1	-	1	1	0	1	23	16.0
at Northwestern	12/2	*	32	6-14	42.9	1-5	20.0	5-6	83.3	1-3	4	3.3	3	-	2	2	0	5	18	16.3
Kansas	12/7	*	32	12-21	57.1	4-6	66.7	4-6	66.7	0-3	3	3.2	2	-	2	2	0	4	32	18.0
at Wisconsin	12/13	*	25	3-12	25.0	1-4	25.0	0-0	-	1-0	1	3.0	5	-	0	3	0	1	7	16.9
Oregon	12/17	*	25	6-10	60.0	3-4	75.0	2-2	100.0	1-1	2	2.9	1	-	4	4	1	6	17	16.9
Green Bay																				
at Oakland																				
Milwaukee																				
USF																				
at Seton Hall																				
Notre Dame																				
at Rutgers																				
at Georgetown																				
Syracuse																				
at Pittsburgh																				
at USF																				
Connecticut																				
Villanova																				
West Virginia																				
at Cincinnati																				
St. John's																				
at Providence																				
at DePaul																				
Louisville																				

Denotes BIG EAST Conference Game
^ Denotes BIG EAST Conference Tournament Game

Ellis' Career Stats

Year	GP	GS	Min	Avg	FG-FGA	Pct	3FG-FGA	Pct	FT-FTA	Pct	Off	Def	Tot	Avg	PF	FO	Ast	TO	Blk	Stl	Pts	Avg
2005-06	33	26	792	24.0	124-275	.451	42-106	.396	63-83	.759	30	59	89	2.7	65	0	89	62	10	62	353	10.7
2006-07	33	33	999	30.3	189-436	.433	65-183	.355	150-172	.872	28	81	109	3.3	71	0	115	90	5	73	593	18.0
2007-08	31	29	949	30.6	212-510	.416	67-190	.353	110-134	.821	28	61	89	2.9	76	1	107	84	14	60	601	19.4
2008-09	11	11	299	27.2	69-158	.437	17-57	.298	31-40	.775	7	25	32	2.9	24	1	39	31	6	29	186	16.9
TOTAL	108	99	3039	28.1	594-1379	.431	191-536	.356	354-429	.825	93	226	319	3.0	236	2	350	267	35	224	1733	16.0



22 • Jocelyn Mellen

RS Sophomore
Forward
6-3
Dixon, Ill.
Newman Catholic

2008-09: Hit first career three-point basket against Oral Roberts in the season opener...Scored seven points in 26 minutes at Indiana State (11/19)...Out for the season with a torn ACL...

Career Highs

Points 17, Creighton (3/24/08)
Rebounds 16, USF (3/3/08)
Field Goals 6, Creighton (3/24/08)
FG Attempts 10, at Michigan State (4/5/08)
Three FG 1, Oral Roberts (11/15/08)
Three FG Att. 2, at Oregon (11/20/07)
Free Throws 7, at Villanova (3/1/08)
Free Throw Att. 10, at Villanova (3/1/08)
Assists 2, William & Mary (11/26/07)
Steals 4, Creighton (3/24/08)
Blocks 4, at Oregon (11/20/07)
Minutes 38, Creighton (3/24/08)

07-08 Season Highs

7, at Indiana State (11/19/08)
8, Oral Roberts (11/15/08)
2, Oral Roberts (11/15/08)
5, Sacred Heart (11/17/08)
1, Oral Roberts (11/15/08)
1, Oral Roberts (11/15/08)
3, at Western Michigan (11/23/08)
4, at Western Michigan (11/23/08)
1, Sacred Heart (11/17/08)
1, Sacred Heart (11/17/08)
2, at Indiana State (11/19/08)
26, at Indiana State (11/19/08)

Mellen's Game-by-Game Stats

Opponent	Date	GS	Min	FG-A	Pct	3P-A	Pct	FT-FTA	Pct	Off-Def	Tot	Avg	PF	FO	A	TO	Blk	Stl	Pts	Avg
Oral Roberts	11/14	*	21	2-3	66.6	1-1	100.0	0-0	-	2-6	8	8.0	3	-	0	2	0	0	5	5.0
Sacred Heart	11/16	*	21	2-5	40.0	0-0	-	0-1	0.0	0-6	6	7.0	2	-	1	1	1	1	4	4.5
at Indiana State	11/19	*	26	3-7	0-0	0-0	0.0	1-2	50.0	1-2	3	5.7	2	-	0	2	2	0	7	5.3
at Western Michigan	11/23	*	20	1-3	33.3	0-0	-	3-4	75.0	0-3	3	5.0	2	-	1	1	0	0	5	5.3
Gonzaga	11/28	*	2	0-1	0.0	0-0	-	0-0	-	0-0	0	4.0	0	-	0	0	0	0	0	4.2
Virginia	11/29									Did Not Play										
Utah	11/30									Did Not Play										
at Northwestern	12/2									Did Not Play										
Kansas	12/7									Did Not Play										
at Wisconsin	12/13									Did Not Play										
Oregon	12/17									Did Not Play										
Green Bay																				
at Oakland																				
Milwaukee																				
USF																				
at Seton Hall																				
Notre Dame																				
at Rutgers																				
at Georgetown																				
Syracuse																				
at Pittsburgh																				
at USF																				
Connecticut																				
Villanova																				
West Virginia																				
at Cincinnati																				
St. John's																				
at Providence																				
at DePaul																				
Louisville																				

Denotes BIG EAST Conference Game
^ Denotes BIG EAST Conference Tournament Game

Mellen's Career Stats

Year	GP	GS	Min	Avg	FG-FGA	Pct	3FG-FGA	Pct	FT-FTA	Pct	Off	Def	Tot	Avg	PF	FO	Ast	TO	Blk	Stl	Pts	Avg
2006-07																						
2007-08	35	9	648	18.5	66-153	.431	0-6	-	64-100	.640	63	104	167	4.8	73	0	11	43	14	27	196	5.6
2008-09	5	5	90	18.0	8-19	.421	1-1	1.000	4-7	.571	3	17	20	4.0	9	0	2	6	3	1	21	4.2
TOTALS	40	14	738	18.5	74-172	.430	1-7	.143	68-107	.636	66	121	187	4.7	82	0	13	49	17	28	217	5.4



23 • Tatiyana McMorris

Sophomore
Guard
5-7
Bronx, N.Y.
JFK

2008-09: In first action of the season against Indiana State (11/19) hit a career-high 3-of-5 from three point range to finish with nine points...Recorded a career-high four assists at Western Michigan (11/23/08)...Second on the team with five made three-point baskets...Scored eight points against Utah (11/30), making both three point attempts...Was a perfect 2-of-2 from the free throw line against Kansas (12/7)...Was a perfect 4-of-4 from the floor against Oregon (12/17)...

	Career Highs	07-08 Season Highs
Points	12, at Kansas (12/06/07)	9, at Indiana State (11/19/08)
Rebounds	4, Five times	3, at Indiana State (11/19/08)
Field Goals	4, Twice	4, Oregon (12/17/08)
FG Attempts	8, Twice	5, at Indiana State (11/19/08)
Three FG	3, at Indiana State (11/19/08)	3, at Indiana State (11/19/08)
Three FG Att.	5, at Indiana State (11/19/08)	5, at Indiana State (11/19/08)
Free Throws	3, Twice	2, Kansas (12/7/08)
Free Throw Att.	4, Twice	2, Kansas (12/7/08)
Assists	4, at Western Mich. (11/23/08)	4, at Western Michigan (11/23/08)
Steals	2, Five Times	1, Twice
Blocks	1, Twice	—
Minutes	31, USF (3/3/08)	14, Oregon (12/17/08)

McMorris' Game-by-Game Stats

Opponent	Date	GS	Min.	FG-A	Pct.	3P-A	Pct.	FT-FTA	Pct.	Off-Def.	Tot	Avg	PF	FO	A	TO	Blk	Stl	Pts	Avg	
Oral Roberts																					
Sacred Heart																					
at Indiana State	11/19		13	3-5	60.0	3-5	60.0	0-0	-	0-3	3	3.0	2	-	1	0	0	0	9	9.0	
at Western Michigan	11/23		9	2-3	66.7	2-3	66.7	0-0	-	0-2	2	2.5	0	-	4	1	0	1	6	7.5	
Gonzaga	11/28		6	0-2	0.0	0-2	0.0	0-0	-	0-1	1	2.0	1	-	0	0	0	0	0	5.0	
Virginia	11/29		2	0-1	0.0	0-0	-	0-0	-	0-1	1	1.8	0	-	0	0	0	0	0	3.8	
Utah	11/30		13	3-4	75.0	2-2	100.0	0-0	-	0-1	1	1.6	1	-	2	0	0	0	8	4.6	
at Northwestern	12/2		10	1-4	25.0	0-1	0.0	0-0	-	0-1	1	1.5	1	-	0	3	0	0	2	4.2	
Kansas	12/7		8	1-3	33.3	0-1	0.0	2-2	100.0	1-0	1	1.4	0	-	0	0	0	0	4	4.1	
at Wisconsin	12/13		5	0-1	0.0	0-1	0.0	0-0	-	0-1	1	1.4	0	-	0	0	0	0	0	3.6	
Oregon	12/17		14	4-4	100.0	0-0	-	0-0	-	1-0	1	1.3	2	-	2	2	0	1	8	4.1	
Green Bay																					
at Oakland																					
Milwaukee																					
USF																					
at Seton Hall																					
Notre Dame																					
at Rutgers																					
at Georgetown																					
Syracuse																					
at Pittsburgh																					
at USF																					
Connecticut																					
Villanova																					
West Virginia																					
at Cincinnati																					
St. John's																					
at Providence																					
at DePaul																					
Louisville																					

Denotes BIG EAST Conference Game
^ Denotes BIG EAST Conference Tournament Game

McMorris' Career Stats

Year	GP	GS	Min	Avg	FG-FGA	Pct	3FG-FGA	Pct	FT-FTA	Pct	Off	Def	Tot	Avg	PF	FO	Ast	TO	Blk	Stl	Pts	Avg
2007-08	34	3	435	12.8	28-88	.318	11-37	.297	24-32	.750	20	37	57	1.7	34	0	31	36	2	19	91	2.7
2008-09	9	0	80	8.9	14-27	.519	7-15	.467	2-2	1.000	2	10	12	1.3	7	0	9	6	0	2	37	4.1
TOTALS	43	3	515	12.0	42-115	.365	18-52	.346	26-34	.765	22	47	69	1.6	41	0	40	42	2	21	128	3.0



24 • Lauren Thomas-Johnson

Junior-Transfer
Guard
5-10
Machester, England
Notre Dame Acad. (Va.)/Kirkwood CC

2008-09: Scored 12 points in first NCAA Division I game against Oral Roberts (11/14)...Recorded 13 points against Sacred Heart (11/17) while also registering four assists...Marquette's second leading scorer (13 points) at Indiana State (11/19)...Scored 13 points on 5-of-8 shooting from the field against Gonzaga (11/28)...Grabbed a season-high seven rebounds and was a perfect 6-of-6 from the free throw line at Wisconsin (12/13)...

Points	Career /08-09 Season Highs
Rebounds	13, Three Times
Field Goals	7, at Wisconsin (12/13/08)
FG Attempts	5, Gonzaga (11/28/08)
Three FG	10, Kansas (12/7/08)
Three FG Att	3, Twice
Free Throws	6, Sacred Heart (11/17/08)
Free Throw Att.	6, at Wisconsin (12/13/08)
Assists	6, Twice
Steals	1, Oral Roberts (11/15/08)
Blocks	2, Four Times
Minutes	2, Gonzaga (11/28/08)
	29, Gonzaga (12/13/08)

Thomas-Johnson's Game-by-Game Stats

Opponent	Date	GS	Min.	FG-A	Pct.	3P-A	Pct.	FT-FTA	Pct.	Off-Def.	Tot	Avg	PF	FO	A	TO	Blk	Stl	Pts	Avg
Oral Roberts	11/14		20	3-8	37.5	2-5	40.0	4-6	66.6	0-1	1	1.0	2	-	1	1	0	2	12	12.0
Sacred Heart	11/16	*	23	4-9	44.4	3-6	50.0	2-2	100.0	1-1	2	1.5	1	-	4	1	1	1	13	12.5
at Indiana State	11/19	*	24	4-6	66.7	3-5	60.0	2-2	100.0	1-1	2	1.7	2	-	1	4	1	1	13	12.7
at Western Michigan	11/23	*	19	3-6	50.0	1-4	25.0	1-1	100.0	0-0	0	1.3	1	-	0	3	0	0	8	11.5
Gonzaga	11/28	*	29	5-8	62.5	1-3	33.3	2-2	100.0	0-1	1	1.2	3	-	3	2	2	2	13	11.8
Virginia	11/29	*	28	3-9	33.3	2-5	40.0	2-2	100.0	0-2	2	1.3	1	-	3	1	0	2	10	11.5
Utah	11/30	*	25	0-5	0.0	0-2	0.0	0-0	-	0-0	0	1.1	1	-	2	2	0	1	0	9.8
at Northwestern	12/2	*	25	1-7	14.3	0-2	0.0	1-2	50.0	0-0	0	1.0	3	-	1	2	1	1	3	9.0
Kansas	12/7	*	26	2-10	20.0	0-2	0.0	1-2	50.0	2-0	2	1.1	0	-	1	2	0	2	5	8.6
at Wisconsin	12/13	*	26	0-5	0.0	0-4	0.0	6-6	100.0	1-6	7	1.7	1	-	0	2	1	0	6	8.3
Oregon	12/17		14	0-5	0.0	0-3	0.0	0-0	-	0-3	3	1.8	1	-	2	2	0	0	0	7.5
Green Bay																				
at Oakland																				
Milwaukee																				
USF																				
at Seton Hall																				
Notre Dame																				
at Rutgers																				
at Georgetown																				
Syracuse																				
at Pittsburgh																				
at USF																				
Connecticut																				
Villanova																				
West Virginia																				
at Cincinnati																				
St. John's																				
at Providence																				
at DePaul																				
Louisville																				

Denotes BIG EAST Conference Game
^ Denotes BIG EAST Conference Tournament Game

Thomas-Johnson's Career Stats

Year	GP	GS	Min	Avg	FG-FGA	Pct	3FG-FGA	Pct	FT-FTA	Pct	Off	Def	Tot	Avg	PF	FO	Ast	TO	Blk	Stl	Pts	Avg
2008-09	11	9	259	23.5	25-78	.321	12-41	.293	21-25	.840	5	15	20	1.8	16	0	18	22	6	10	83	7.5



34 • Georgie Jones

Freshman
Center
6-3
St. Paul, Minn.
Central

2008-09: Scored nine points and grabbed seven rebounds in 13 minutes against Sacred Heart (11/17)...Hauled in 10 rebounds at Indiana State (11/19)...Was a perfect 4-of-4 from the floor on her way to a career-high 12 points against Gonzaga (11/28)...Made first collegiate start against Virginia (11/29)...Recorded first career double-double against Utah (11/30) with 10 points and 10 rebounds...

	Career /Season Highs
Points	12, Gonzaga (11/28/08)
Rebounds	10, Twice
Field Goals	4, Three Times
FG Attempts	7, Sacred Heart (11/16/08)
Three FG	—
Three FG Att	—
Free Throws	4, Gonzaga (11/28/08)
Free Throw Att.	8, Gonzaga (11/28/08)
Assists	1, Four Times
Steals	1, Four Times
Blocks	2, Twice
Minutes	26, Gonzaga (11/28/08)

Jones' Game-by-Game Stats

Opponent	Date	GS	Min.	FG-A	Pct.	3P-A	Pct.	FT-FTA	Pct.	Off-Def.	Tot	Avg	PF	FO	A	TO	Blk	Stl	Pts	Avg
Oral Roberts	11/14		9	0-0	-	0-0	-	0-3	0.0	0-1	1	1.0	1	-	1	1	0	0	0	0.0
Sacred Heart	11/16		13	4-7	57.1	0-0	-	1-2	50.0	4-3	7	4.0	0	-	0	1	1	1	9	4.5
at Indiana State	11/19		14	0-1	0.0	0-0	-	1-3	33.3	3-7	10	6.0	3	-	0	3	1	1	1	3.3
at Western Michigan	11/23		14	1-1	100.0	0-0	-	0-0	-	0-2	2	5.0	3	-	0	2	1	0	2	3.0
Gonzaga	11/28		26	4-4	100.0	0-0	-	4-8	50.0	2-5	7	5.4	4	-	1	0	2	1	12	4.8
Virginia	11/29	*	25	2-4	50.0	0-0	-	0-2	0.0	3-4	7	5.7	1	-	1	2	1	1	4	4.7
Utah	11/30	*	21	4-6	66.7	0-0	-	2-4	50.0	6-4	10	6.3	2	-	1	1	0	0	10	5.4
at Northwestern	12/2									Did Not Play										
Kansas	12/7	*	19	1-2	50.0	0-0	-	0-4	0.0	3-3	6	6.3	0	-	0	1	2	1	2	5.0
at Wisconsin	12/13	*	11	0-0	-	0-0	-	0-0	-	1-1	2	5.8	1	-	0	2	0	0	0	4.4
Oregon	12/17		18	1-1	100.0	0-0	-	0-0	-	1-6	7	5.9	1	-	0	1	0	0	2	4.2
Green Bay																				
at Oakland																				
Milwaukee																				
USF																				
at Seton Hall																				
Notre Dame																				
at Rutgers																				
at Georgetown																				
Syracuse																				
at Pittsburgh																				
at USF																				
Connecticut																				
Villanova																				
West Virginia																				
at Cincinnati																				
St. John's																				
at Providence																				
at DePaul																				
Louisville																				

Denotes BIG EAST Conference Game
^ Denotes BIG EAST Conference Tournament Game

Jones' Career Stats

Year	GP	GS	Min	Avg	FG-FGA	Pct	3FG-FGA	Pct	FT-FTA	Pct	Off	Def	Tot	Avg	PF	FO	Ast	TO	Blk	Stl	Pts	Avg
2008-09	10	4	170	17.0	17-26	.654	0-0	-	8-26	.308	23	36	59	5.9	16	0	4	14	8	5	42	4.2



41 • Paige Fiedorowicz

Sophomore
Forward
6-0
Johnsburg, Ill.
Johnsburg

2008-09: Hit first career three-point basket against Oral Roberts on her way to 13 points...In first start of the season, set season highs in points (14), assists (6), and minutes (20) at Western Michigan (11/23)...Scored a career-high 21 points in 32 minutes to go along with eight rebounds in a win over Gonzaga (11/28)...Recorded a career-high three steals against Utah (11/30)...Pulled down four offensive rebounds at Northwestern (12/2)...Shot a career-high 7-of-8 from the free throw line at Wisconsin (12/13)...Registered first career double-double in the victory over Oregon (12/17) with 12 points and 12 rebounds (had 10 and 10 by halftime), and recorded a career-high four assists...

Points	Career Highs	07-08 Season Highs
Rebounds	21, Gonzaga (11/28/08)	21, Gonzaga (11/28/08)
Field Goals	12, Oregon (12/17/08)	12, Oregon (12/17/08)
FG Attempts	8, Twice	8, Gonzaga (11/28/08)
Three FG	12, at Notre Dame (2/13/08)	11, at Western Michigan (11/23/08)
Three FG Att.	1, Oral Roberts (11/15/08)	1, Oral Roberts (11/15/08)
Free Throws	1, Twice	1, Twice
Free Throw Att.	7, at Wisconsin (12/13/08)	7, at Wisconsin (12/13/08)
Assists	8, at Wisconsin (12/13/08)	8, at Wisconsin (12/13/08)
Steals	4, Oregon (12/17/08)	4, Oregon (12/17/08)
Blocks	3, Utah (11/30/08)	3, Utah (11/30/08)
Minutes	2, at Green Bay (12/01/07)	1, Three Times
	32, Twice	32, Twice

Fiedorowicz's Game-by-Game Stats

Opponent	Date	GS	Min.	FG-A	Pct.	3P-A	Pct.	FT-FTA	Pct.	Off-Def.	Tot	Avg	PF	FO	A	TO	Blk	Stl	Pts	Avg
Oral Roberts	11/14		18	5-8	62.5	1-1	100.0	2-2	100.0	1-1	2	2.0	0	-	0	0	0	1	13	13.0
Sacred Heart	11/16		14	1-3	33.3	0-1	-	2-2	100.0	1-1	2	2.0	2	-	2	0	0	2	4	8.5
at Indiana State	11/19		15	1-3	33.3	0-0	-	0-0	-	2-1	3	2.3	3	-	1	0	0	1	2	6.3
at Western Michigan	11/23	*	20	6-11	54.5	0-0	-	2-2	100.0	5-1	6	3.3	1	-	0	1	0	0	14	8.3
Gonzaga	11/28	*	32	8-10	80.0	0-0	-	5-5	100.0	2-6	8	4.2	0	-	2	0	0	2	21	10.8
Virginia	11/29	*	32	1-4	25.0	0-0	-	1-2	50.0	3-5	8	4.8	2	-	1	1	0	1	3	9.5
Utah	11/30	*	25	1-4	25.0	0-0	-	3-4	75.0	5-3	8	5.3	4	-	0	2	1	3	5	8.1
at Northwestern	12/2	*	30	3-9	33.3	0-0	-	2-2	100.0	4-1	5	5.3	3	-	1	1	0	1	8	8.8
Kansas	12/7	*	19	0-2	0.0	0-0	-	0-0	-	0-3	3	5.0	3	-	0	4	1	0	0	7.8
at Wisconsin	12/13	*	26	1-4	25.0	0-0	-	7-8	87.5	1-4	5	5.0	2	-	1	2	1	0	9	7.9
Oregon	12/17	*	24	6-10	60.0	0-0	-	0-1	0.0	3-9	12	5.6	1	-	4	0	0	0	12	8.3
Green Bay																				
at Oakland																				
Milwaukee																				
USF																				
at Seton Hall																				
Notre Dame																				
at Rutgers																				
at Georgetown																				
Syracuse																				
at Pittsburgh																				
at USF																				
Connecticut																				
Villanova																				
West Virginia																				
at Cincinnati																				
St. John's																				
at Providence																				
at DePaul																				
Louisville																				

Denotes BIG EAST Conference Game
^ Denotes BIG EAST Conference Tournament Game

Fiedorowicz's Career Stats

Year	GP	GS	Min	Avg	FG-FGA	Pct	3FG-FGA	Pct	FT-FTA	Pct	Off	Def	Tot	Avg	PF	FO	Ast	TO	Blk	Stl	Pts	Avg
2007-08	27	14	485	18.0	68-149	.456	0-1	.000	40-59	.678	52	61	113	4.2	63	2	16	40	6	21	176	6.5
2008-09	11	8	255	23.2	33-68	.485	1-2	.500	24-28	.857	27	35	62	5.6	21	0	12	11	3	11	91	8.3
TOTALS	38	22	740	19.5	101-217	.465	1-3	.333	64-87	.736	79	96	175	4.6	84	2	28	51	9	32	267	7.0



42 • Marissa Thrower

Senior
Forward
5-11
Detroit, Mich.
Renaissance

2008-09: Scored five points in six minutes of action against Oral Roberts...Saw a season-high 17 minutes at Western Michigan (11/23), scoring six points...Also scored six points against Utah (11/30)...Thrower will finish second in all-time games played at MU if she sees time in every game during the regular season (128 games); the record is 131 games set by Svetlana Kovalenko...

	Career Highs	08-09 Season Highs
Points	19, William & Mary (11/26/07)	6, Twice
Rebounds	8, vs Pittsburgh (3/4/07)	5, Twice
Field Goals	7, William & Mary (11/26/07)	2, Four Times
FG Attempts	14, William & Mary (11/26/07)	5, at Wisconsin (12/13/08)
Three FG	2, Three Times	-
Three FG Att.	2, Six Times	-
Free Throws	6, Twice	3, Oral Roberts (11/15/08)
Free Throw Att.	7, Pittsburgh (3/27/06)	4, Oral Roberts (11/15/08)
Assists	3, Twice	1, Twice
Steals	3, Three Times	2, Twice
Blocks	2, Four Times	2, at Western Michigan (11/23/08)
Minutes	29, Providence (1/31/06)	19, at Wisconsin (12/13/08)

Thrower's Game-by-Game Stats

Opponent	Date	GS	Min.	FG-A	Pct.	3P-A	Pct.	FT-FTA	Pct.	Off-Def.	Tot	Avg	PF	FO	A	TO	Blk	Stl	Pts	Avg
Oral Roberts	11/14		6	1-1	100.0	0-0	-	3-4	75.0	1-1	2	2.0	2	-	0	1	0	0	5	5.0
Sacred Heart	11/16		10	2-3	66.7	0-0	-	1-3	33.3	1-1	2	2.0	1	-	0	0	0	2	5	5.0
at Indiana State	11/19		2	1-1	100.0	0-0	-	0-0	-	0-0	0	1.3	0	-	0	0	0	0	2	4.0
at Western Michigan	11/23		17	2-3	66.7	0-0	-	2-2	100.0	0-5	5	2.3	2	-	1	1	2	0	6	4.5
Gonzaga	11/28		15	1-5	20.0	0-0	-	2-2	100.0	2-2	4	2.6	2	-	1	3	0	0	4	4.4
Virginia	11/29		18	1-4	25.0	0-0	-	0-0	-	1-2	3	2.7	1	-	0	0	0	0	2	4.0
Utah	11/30		17	2-4	50.0	0-0	-	2-2	100.0	2-0	2	2.6	1	-	0	0	0	1	6	4.3
at Northwestern	12/2		17	1-2	50.0	0-0	-	0-0	-	1-1	2	2.5	1	-	0	0	1	0	2	4.0
Kansas	12/7		18	0-1	0.0	0-0	-	0-1	0.0	3-0	3	2.6	1	-	1	1	0	2	0	3.6
at Wisconsin	12/13		19	2-5	40.0	0-0	-	0-0	-	1-4	5	2.8	2	-	0	1	1	0	4	3.6
Oregon	12/17		12	2-3	66.7	0-0	-	0-0	-	0-1	1	2.6	2	-	0	1	0	0	4	3.6
Green Bay																				
at Oakland																				
Milwaukee																				
USF																				
at Seton Hall																				
Notre Dame																				
at Rutgers																				
at Georgetown																				
Syracuse																				
at Pittsburgh																				
at USF																				
Connecticut																				
Villanova																				
West Virginia																				
at Cincinnati																				
St. John's																				
at Providence																				
at DePaul																				
Louisville																				

Denotes BIG EAST Conference Game
^ Denotes BIG EAST Conference Tournament Game

Thrower's Career Stats

Year	GP	GS	Min	Avg	FG-FGA	Pct	3FG-FGA	Pct	FT-FTA	Pct	Off	Def	Tot	Avg	PF	FO	Ast	TO	Blk	Stl	Pts	Avg
2005-06	31	0	316	10.2	36-86	.419	0-3	-	26-36	.722	17	47	64	2.1	38	0	9	22	7	10	98	3.2
2006-07	33	6	495	15.0	43-106	.406	12-25	.480	21-24	.875	24	60	84	2.5	63	1	28	31	5	14	119	3.6
2007-08	34	3	452	13.3	40-116	.345	2-21	.095	26-41	.634	27	53	80	2.4	47	0	24	45	7	19	108	3.2
2008-09	11	0	151	13.7	15-32	.469	0-0	-	10-14	.714	12	17	29	2.6	15	0	3	8	4	5	40	3.6
TOTAL	109	9	1414	13.0	134-340	.394	14-49	.286	83-115	.722	80	177	257	2.4	163	1	64	106	23	48	365	3.3