



# November 19, 2008

RV/RV Marquette (2-0, 0-0 BIG EAST)  
at  
Indiana State (0-1, 0-0 Missouri Valley)  
Hulman Center

## 2008-09 Schedule

Date	Opponent	Time/Result
<b>November</b>		
Nov. 1	Winona State (exh.)	W, 78-53
Nov. 10	UW - Parkside (exh.)	W, 76-46
Nov. 15	Oral Roberts	W, 89-67
Nov. 17	Sacred Heart	W, 77-55
Nov. 19	at Indiana State	7 p.m.
Nov. 23	at Western Michigan	1 p.m.
	<i>WBCA Classic (Nov. 28-30)</i>	
Nov. 28	Gonzaga	7 p.m.
Nov. 29	Virginia	7 p.m.
Nov. 30	Utah	3 p.m.
<b>December</b>		
Dec. 2	at Northwestern	BNT 7 p.m.
Dec. 7	Kansas	2 p.m.
Dec. 13	at Wisconsin	BTN.com 1 p.m.
Dec. 17	Oregon	Sports 32 Noon
Dec. 20	Green Bay	Sports 32 2 p.m.
Dec. 28	at Oakland	3 p.m.
Dec. 31	Milwaukee	Sports 32 3 p.m.
<b>January</b>		
Jan. 3	USF*	7 p.m.
Jan. 10	at Seton Hall*	2 p.m.
Jan. 13	Notre Dame*	CBS 8 p.m.
Jan. 18	at Rutgers*	ESPN Noon
Jan. 21	at Georgetown*	7 p.m.
Jan. 27	Syracuse*	Sports 32 7 p.m.
Jan. 30	at Pittsburgh*	6 p.m.
<b>February</b>		
Feb. 3	at USF*	6 p.m.
Feb. 7	Connecticut*	Sports 32 7 p.m.
Feb. 10	Villanova*	7 p.m.
Feb. 15	West Virginia*	ESPN 1 p.m.
Feb. 18	at Cincinnati*	6 p.m.
Feb. 21	St. John's*	BETV/Sports 32 3 p.m.
Feb. 25	at Providence*	6 p.m.
Feb. 28	at DePaul*	7 p.m.
<b>March</b>		
March 2	Louisville*	CBS 8 p.m.
	BIG EAST Conference Tournament (March 6-10)	
March 6	First Round	XL Center
March 7	Second Round	XL Center
March 8	Quarterfinals	XL Center
March 9	Semifinals	XL Center
March 10	Championship	XL Center

- All times are listed as Central unless otherwise listed and are subject to change.
- Home games are played at the Al McGuire Center and are listed in bold.
- \* Denotes BIG EAST game.

BTN - Big Ten Network  
BETV - BIG EAST TV  
CBSCS - CBS College Sports Network  
Sports 32 - Time Warner Cable Sports 32

## 2008-09 Marquette Records:

2-0	overall
0-0	BIG EAST
2-0	at home
0-0	on the road
0-0	at neutral sites

## Head Coach Terri Mitchell Records:

240-130 (64.2)	13th season
117-67 (63.5)	in conference play
10-12 (45.4)	in conference tournaments
1-3 (25.0)	in BIG EAST Tournament
61-10 (85.1)	at the Al McGuire Center
3-6 (33.3)	in the NCAA Tournament
11-5 (54.4)	in the WNIT

The Marquette women's basketball team will hit the road for the first time this season when it heads to Terre Haute, Ind., to take on Indiana State Wednesday, Nov. 19 at 6 p.m. CT. The game will be the Sycamores first ever game on the Nellie & John Wooden Court at the Hulman Center.

The Golden Eagles will look for their third straight win when they take to the court Wednesday, while the young Sycamore squad, that features seven freshmen, will look to claim its first win of the season. ISU narrowly lost at Central Michigan, 84-83, in its season opener.

Marquette has started the season in impressive fashion with a pair of 22-point wins over Oral Roberts (89-67) and Sacred Heart (77-55).

Following its game at Indiana State, Marquette will head to Western Michigan on Sunday, Nov. 23, for a 1 p.m. CT tip-off with the Broncos. The Golden Eagles will then return home to host the WBCA Classic at the Al McGuire Center Nov. 28-30.

## Marquette All-Access

TV:	None
Radio:	None
Live Stats:	<a href="http://gosycamores.com">gosycamores.com</a>

## 2008-09 Marquette Lineup

	Yr.	Pos.	Ht.	MPG	PPG	RPG	APG	
00	Jasmine Collins	So.	F	6-2	3.0	1.0	1.5	—
	Has played three minutes in both games against Oral Roberts and Sacred Heart.							
1	Angel Robinson *	So.	G	5-8	25.0	11.5	4.5	3.0
	Scored 14 points in her season debut against Oral Roberts.							
3	Courtney Weibel	So.	G	5-8	5.0	1.5	0.5	—
	Played a season high six minutes against Oral Roberts.							
5	Erin Monfre	Sr.	G	5-11	13.0	1.5	0.5	3.0
	Dished a season-high four assists against Oral Roberts.							
11	Janelle Harris	Jr.	G	6-0	16.0	4.5	2.5	1.4
	As a reserve, registered five points, four steals and three assists against Sacred Heart.							
12	Jessica Pachko *	Fr.	G	6-0	22.5	12.0	6.0	1.0
	Has scored in double figures in her first two career starts.							
20	Krystal Ellis *	Sr.	G	5-9	26.0	12.0	3.5	7.5
	Dished a season-high eight assists against Sacred Heart.							
22	Jocelyn Mellen *	RSSo.	F	6-3	21.0	4.5	7.0	0.5
	Led the team with eight rebounds against Oral Roberts.							
23	Tatijiana McMorris	So.	G	5-7	—	—	—	—
	Has not played yet.							
24	Lauren Thomas-Johnson*	Jr.	G	5-10	21.5	12.5	1.5	2.5
	Scored 13 points in her first career start against Sacred Heart.							
32	Breann Hill	Jr.	F	5-10	12.0	4.0	4.0	—
	Came off the bench to register six points and five rebounds in 14 minutes against Sacred Heart.							
34	Georgie Jones	Fr.	C	6-2	11.0	4.5	4.0	0.5
	Led the team with seven rebounds against Sacred Heart.							
41	Paige Fiedorowicz	So.	F	6-0	16.0	8.5	2.0	1.0
	Scored 13 points off the bench against Oral Roberts.							
42	Marissa Thrower	Sr.	F	5-11	8.0	5.0	2.0	—
	In 10 minutes against Sacred Heart, recorded five points, two steals and two rebounds.							

\* denotes probable starter

## 2008-09 Marquette Numerical Roster

No.	Name	Ht.	Pos.	Yr.	Hometown (Last College/High School)
00	Jasmine Collins	6-2	F	So.	Detroit, Mich. (Martin Luther King)
1	Angel Robinson	5-8	G	So.	St. Paul, Minn. (Central)
3	Courtney Weibel	5-8	G	So.	Rockton, Ill. (Hononegah)
5	Erin Monfre	5-11	G	Sr.	Waukesha, Wis. (Waukesha South)
11	Janelle Harris	6-0	G	Jr.	Detroit, Mich. (Renaissance)
12	Jessica Pachko	6-2	F	Fr.	Cincinnati, Ohio (Oak Hills)
20	Krystal Ellis	5-9	G	Sr.	Racine, Wis. (St. Catherine's)
22	Jocelyn Mellen	6-3	F	RSSo.	Dixon, Ill. (Newman Catholic)
23	Tatiana McMorris	5-7	G	So.	Bronx, N.Y. (John F. Kennedy)
24	Lauren Thomas-Johnson	5-10	G	Jr.-Tr.	Manchester, England (Notre Dame Acad. (Va.)/Kirkwood CC)
32	Breann Hill	5-10	F	Jr.-Tr.	Harrisburg, Pa. (Bishop McDevitt/Kirkwood CC)
34	Georgie Jones	6-3	C	Fr.	St. Paul, Minn. (Central)
41	Paige Fiedorowicz	6-0	F	So.	Johnsburg, Ill. (Johnsburg)
42	Marissa Thrower	5-11	F	Sr.	Detroit, Mich. (Renaissance)

Head Coach: Terri Mitchell

Assistant Coaches: Michelle Nason, Cara Consuegra, Jennie Lillis

### Quick Facts

Location	Milwaukee, Wis., 53233
Founded	1881
Enrollment	11,000
Nickname	Golden Eagles
Colors	Blue <sup>(PMS 281)</sup> and Gold <sup>(PMS 123)</sup>
Arena	Al McGuire Center (4,000)
Affiliation	NCAA Division I
Conference	BIG EAST
President	Rev. Robert A. Wild, S.J.
Athletics Director	Steve Cottingham
Ticket Office:	414-288-GOMU
University Website	www.marquette.edu
First Year of Basketball	1975-76
All-Time Record	487-427 (53.2)
2007-08 Results	
Overall Record	21-14
BIG EAST Record/Finish	8-8/8th
NCAA Tourney Appearances	8
Last NCAA Appearance	2007
WNIT Appearances/Last	4/2008
Last Postseason Result	WNIT, 2008 Champions Defeated Michigan State, 81-66
Media Relations	
Women's Basketball Contact	Amy Ufnowski
Office Phone	414-288-7419
Cell Phone	414-313-6717
E-Mail	Amy.Ufnowski@marquette.edu
Media Relations Fax	414-288-6519
Al McGuire Center Press Row	414-288-0340
Athletics Website	www.gomarquette.com
Delivery Address	Al McGuire Center 770 N. 12th Street Milwaukee, WI 53233-2203

### Marquette Basketball Staff

<b>Head Coach</b>	Terri Mitchell (Duquense, '89)
<b>Assistant Coaches</b>	Michelle Nason (Bradley, '95) Cara Consuegra (Iowa '01) Jennie Lillis (Iowa, '04)
<b>Dir. of Basketball Operations</b>	Angie Lewis (Saint Louis, '04)
<b>Asst. Dir. of Basketball Operations</b>	Angie Nelp (Colorado State, '02)
<b>Athletic Trainer</b>	Jeremy Johnson (Penn State, '99)
<b>Strength and Conditioning Coach</b>	Rudy Thomas (Wis.-La Crosse, '01)

### Pronunciation Guide

Cara Consuegra — Con-sueg-*raa*  
 Paige Fiedorowicz — Fa-door-o-witz  
 Janelle Harris — Juh-Nell  
 Jocelyn Mellen — joss-lin  
 Erin Monfre — Mon-free  
 Jessica Pachko — PaCH-co  
 Courtney Weibel — WHY-bull

### Credentials

Media interested in covering the Golden Eagles, both at home and on the road, should contact Amy Ufnowski, Assistant Director of Athletic Media Relations, at least 48 hours prior to the game.

## News and Notes

### A Quick Glimpse at the Golden Eagles

- The Golden Eagles earned their sixth straight season opening win with a 89-67 decision over Oral Roberts on Nov. 15.
- In back-to-back starts, freshman Jessica Pachko has impressed averaging 12.0 points and 6.0 rebounds. She was perfect 4-of-4 from the floor in 24 minutes of action against Oral Roberts and missed only one shot (6-of-7) in 21 minutes against Sacred Heart.
- The Golden Eagles have registered 40 or more points and 40 or more rebounds in their first two games this season.
- Marquette is 61-10 all-time at the Al McGuire Center.
- Marquette has made a three-pointer in 125 consecutive games dating back to Nov. 24, 2004. Ellis ranks second all-time with 175 career treys.
- The Golden Eagles have compiled a 98-42 mark in regular season non-conference games under Terri Mitchell, including a 22-3 record at the Al McGuire Center. The Golden Eagles are 36-20 in road games under Mitchell.

### Series History with Indiana State

Wednesday's meeting between Marquette and Indiana State is the third in program history. The Golden Eagles and the Sycamores met last season Dec. 15 at the Al McGuire Center with MU claiming the win, 83-79. The first game of the series came in 1981 where Indiana State defeated MU, 70-47.

### Ellis Named to Preseason All-BIG EAST Team

Senior guard Krystal Ellis was unanimously selected to the Preseason All-BIG EAST Team announced at the BIG EAST Women's Basketball Media Day at ESPN Zone in New York City.

Ellis is a two-time All-BIG EAST pick and was named the WNIT MVP after the team's run through the postseason tournament. For the second consecutive season, Ellis led the team in scoring, averaging 19.4 points per game, a mark that ranked second in the league.

### Marquette Picked Seventh

Marquette was picked to finish seventh in the BIG EAST Conference at the league's annual media day. MU finished with 147 points, nine points

behind Syracuse (156), predicted to finish sixth in the poll, while tallying 15 more points than DePaul, selected eighth. The poll is determined by a vote of the league's 16 head coaches who are not permitted to select their own teams. Connecticut garnered 14 of 16 first-place votes to total 224 points in the poll.

### BIG EAST Expands Tourney

The Presidents of the BIG EAST Conference voted to include all 16 member institutions in the men's and women's basketball championship tournaments beginning in 2009. The new format will have the teams seeded 9 through 16 meet on the first day of competition. The matchups will be No. 9 vs. No. 16, No. 10 vs. No. 15, No. 11 vs. No. 14 and No. 12 vs. No. 13.

The winners of those four games will meet seeds 5 through 8 on the second day of play. The 9/16 winner will advance to play the No. 8 seed. The 10/15 winner will play the No. 7 seed. The 11/14 winner will meet the No. 6 seed. The 12/13 winner will play the No. 5 seed.

Those four winners will advance to play the top four seeds in the quarterfinal round. Thus, the top four seeded teams still will not play until the quarterfinals, which occurs in the current 12-team format.

### Preseason Recognition

Preseason recognition continues to pour in the the Marquette women's basketball team as *Sporting News* tabbed MU No. 25 in its preseason poll. *Sporting News* is the third publication to recognize the Golden Eagles, as both Lindy's College Basketball and Charlie Creme of ESPN.com listed Marquette as No. 25 heading into the 2008-09 campaign.

### Player of the Year Candidate

Senior guard Krystal Ellis is among college basketball elite players as she is recognized on two national player of the year lists. Ellis is was one of 25 players named to the "Wade Watch" list for the State Farm Wade Trophy Division I Player of the Year and one of 30 players named to the John R. Wooden Award Preseason Top 30. Ellis also earned preseason second-team All-America honors by *Sporting News*.

## 2008-09 BIG EAST Preseason Poll

1. Connecticut (14), 225
2. Rutgers (1), 211
3. Louisville (1), 200
4. Notre Dame, 182
5. Pittsburgh, 162
6. Syracuse, 156
7. Marquette, 147
8. DePaul, 132
9. West Virginia, 109
10. Villanova, 85
11. Georgetown, 77
12. USF, 76
13. St. John's 66
14. Seton Hall, 40
15. Cincinnati, 33
16. Providence, 30

## 2008-09 BIG EAST Standings

	BIG EAST		Overall	
Louisville	0-0	.000	2-0	1.000
<b>Marquette</b>	<b>0-0</b>	<b>.000</b>	<b>2-0</b>	<b>1.000</b>
Seton Hall	0-0	.000	2-0	1.000
Syracuse	0-0	.000	2-0	1.000
USF	0-0	.000	2-0	1.000
Connecticut	0-0	.000	1-0	1.000
Georgetown	0-0	.000	1-0	1.000
Notre Dame	0-0	.000	1-0	1.000
Providence	0-0	.000	1-0	1.000
Rutgers	0-0	.000	1-0	1.000
St. John's	0-0	.000	1-0	1.000
DePaul	0-0	.000	2-1	.667
Cincinnati	0-0	.000	1-1	.500
Villanova	0-0	.000	1-1	.500
West Virginia	0-0	.000	1-1	.500
Pittsburgh	0-0	.000	0-1	.000

\*through games on Monday, Nov. 17, 2008

### Elsewhere in the BIG EAST

#### Wednesday, Nov. 19

- Evansville at Notre Dame
- Georgetown at Brown
- Syracuse at Ohio State
- Villanova at Penn
- DePaul at New Mexico



[www.krystalellis20.com](http://www.krystalellis20.com)  
**20 • Krystal Ellis • Senior • Guard**  
**All-America Candidate**

#### Career Notables

- \* Named to the 2008-09 Wooden Award Preseason Top 30 List
- \* Named to the 2008-09 State Farm Wade Trophy Preseason List
- \* Unanimous Preseason All-BIG EAST selection
- \* Two-time All-BIG EAST First Team selection
- \* 2006-07 Associated Press All-American

## 2008-09 Women's Basketball National Polls

### Preseason USA Today/ESPN Coaches Top 25

Rank	School (First Place Votes)	Record	Points	Last
1.	Connecticut (30)	0-0	773	
2.	Stanford	0-0	676	
3.	Rutgers	0-0	639	
4.	North Carolina	0-0	629	
5.	Maryland	0-0	624	
6.	Tennessee (1)	0-0	602	
7.	Oklahoma	0-0	600	
8.	Duke	0-0	508	
9.	California	0-0	495	
10.	Texas A&M	0-0	493	
11.	Louisville	0-0	481	
12.	Vanderbilt	0-0	419	
13.	Texas	0-0	315	
14.	Notre Dame	0-0	294	
15.	Virginia	0-0	279	
15.	Oklahoma State	0-0	279	
17.	Baylor	0-0	272	
18.	Arizona State	0-0	215	
19.	Ohio State	0-0	188	
20.	Old Dominion	0-0	163	
21.	Auburn	0-0	154	
22.	LSU	0-0	133	
23.	Pittsburgh	0-0	104	
24.	Florida State	0-0	101	
25.	Georgia	0-0	94	

**Also receiving votes:** Xavier (24-9) 87; Purdue (19-15) 85; Kansas State (22-10) 72; Iowa State (21-13) 63; Marist (32-3) 48; Utah (27-5) 46; George Washington (27-7) 24; Syracuse (22-9) 24; **Marquette (21-14) 22**; Hartford (28-6) 11; Michigan State (23-14) 11; Texas-El Paso (28-4) 9; West Virginia (25-8) 8; Liberty (28-4) 7; Gonzaga (25-9) 6; Illinois State (26-7) 3; Iowa (21-11) 3; New Mexico (20-13) 3; Minnesota (20-12) 2; Montana (25-7) 2; Southern Methodist (24-9) 2; TCU (23-12) 2; Boise State (24-8) 1; DePaul (20-12) 1; East Carolina (13-17) 1; Georgia Tech (22-10) 1; North Carolina A&T (25-8) 1.

Nov. 5, 2008

### Associated Press Preseason Top 25

Rank	School (First Place Votes)	Record	Points	Last
1	Connecticut (45)	1-0	1125	1
2	Oklahoma	1-0	1018	4
3	Rutgers	1-0	1010	5
4	North Carolina	2-0	963	6
5	Tennessee	1-0	931	7
6	Duke	2-0	900	8
7	California	2-0	788	9
8	Stanford	1-1	764	2
9	Louisville	1-0	724	10
10	Baylor	2-0	698	19
11	Maryland	1-1	680	3
12	Texas A&M	2-0	658	11
13	Vanderbilt	2-0	603	12
14	Texas	2-0	519	13
15	Notre Dame	1-0	459	16
16	Virginia	1-0	440	15
17	Ohio St.	2-0	361	18
18	Arizona St.	2-0	345	17
19	Oklahoma St.	0-1	291	14
20	Auburn	1-0	258	20
21	Purdue	1-0	178	23
22	Florida St.	1-0	173	21
23	Xavier	2-0	152	22
24	TCU	2-0	148	NR
25	Old Dominion	2-0	106	25

**Also receiving votes:** Michigan St. 49, Iowa St. 45, Pittsburgh 41, Marist 39, LSU 32, **Marquette 28**, Utah 24, Georgia 20, Georgia Tech 17, Syracuse 12, DePaul 8, George Washington 7, Kansas St. 6, Arkansas 2, Gonzaga 2, Montana 1.

Nov. 17, 2008

earned preseason second-team All-America honors by *Sporting News*.

### Marquette to Host WBCA Classic

The Golden Eagles will host the 2008 WBCA Classic over the Thanksgiving holiday weekend Nov. 28-30 at the Al McGuire Center. Along with Marquette, the three-day tournament will feature women's basketball powerhouses Virginia, Gonzaga and Utah. It will arguably be the toughest holiday tournament in the continental United States.

### Lights, Camera, Action

The reigning WNIT Champion Marquette University women's basketball team will make five appearances on national and regional networks during the 2008-09 season as part of the BIG EAST Conference's expanded television coverage announced Thursday.

The Golden Eagles will make four national television appearances on ESPNU and CBS College Sports (formerly CSTV), and once as part of the conference's regional BIG EAST Game of the Week package.

### Ellis on Pace

Senior guard Krystal Ellis is closing in on the all-time MU scoring record (male or female). She has 1,571 points entering her senior season and needs 247 points to match Abbie Willenborg's record (1,818 points). At Marquette, the only other two players (male or female) that could catch her are men's basketball senior guards Jerel McNeal (1,312 points) and Dominic James (1,436 points entering the season). Ellis is currently No. 5 on the

### Nation's Active Leading Scorers

1. Courtney Paris (Okla)	2,157
2. Angel McCoughtry (UofL)	1,922
3. Traci Edwards (UWM)	1,793
4. Marissa Coleman (MD)	1,580
5. Krystal Ellis (MU)	1,571

nation's active leading scorers list.

### A Look Back at 2007-08--WNIT Champions

The 2007-08 season turned into one of the most memorable seasons in program history as the Golden Eagles ended the season as the 2008 Women's National Invitation Tournament Champions. On April 5, 2008, the Golden Eagles marched into the Breslin Center on the campus of Michigan State University and knocked off the Spartans 81-66 to claim Marquette's fourth national title in school history and the first in women's history. En route to the championship, MU won five straight games, with its last three being away from the friendly confines of the Al McGuire Center. The Golden Eagles' road to the title included home wins over Creighton in overtime, 75-69, Illinois, 72-64, and at Kentucky, 69-64, at Colorado, 86-72, and at Michigan State. The Golden Eagles finished the season 21-14 overall and their third straight 20-win season.

### Thomas-Johnson Gets an Olympics Experience

Junior Lauren Thomas-Johnson had an Olympic experience unlike any other athlete or coach participating in the 2008 Summer Olympic Games as she served as an athlete ambassador for British Basketball Federation.

Thomas-Johnson, a native of Manchester, England, was one of five male and female athletes

### MU Starting Line-Ups, Points and % of Offense

Opponent	MU Starting Line-Up	Line-Up Record	Points	% of Offense	W/L
Oral Roberts	Robinson, Ellis, Harris, Mellen, Pachko	1-0	49	55.1	W
Sacred Heart	Robinson, Ellis, Thomas-Johnson, Mellen, Pachko	1-0	48	62.3	W
at Indiana State					
at Western Michigan					
Gonzaga					
Virginia					
Utah					
at Northwestern					
Kansas					
at Wisconsin					
Oregon					
Green Bay					
at Oakland					
Milwaukee					
USF					
at Seton Hall					
Notre Dame					
at Rutgers					
at Georgetown					
Syracuse					
at Pittsburgh					
at USF					
Connecticut					
Villanova					
West Virginia					
at Cincinnati					
St. John's					
at Providence					
at DePaul					
Louisville					

in London. Thomas-Johnson along with her fellow ambassadors had access to the athletes' village and different athletic venues around Beijing, along with going to the Opening Ceremonies and basketball games.

Thomas-Johnson, who expects to earn a spot on Great Britain's senior national team over the next four years, helped the Great Britain U20 team collect a bronze medal at the 2007 European Championship. It was the first medal ever won by a British basketball team in international competition.

Great Britain's senior national team did not qualify for the 2008 Olympics, but automatically qualifies for the 2012 Summer Olympics in London since it is the host nation.

# Head Coach Terri Mitchell

**Believe, Commit, Mature, Respect, Thankfulness** - These are the five principles that serve as the foundation of the Marquette women's basketball team. And with these principles the Marquette lives by each day, head coach Terri Mitchell has molded the Golden Eagles into champions.

The foundation was laid years ago during her upbringing in Harrisburg, Pa. The life lessons Mitchell learned have served as her guide in coaching the Marquette women's basketball team for the last 13 years.

The Golden Eagles have thrived under Mitchell as she has compiled a 240-130 overall record - just short of 20 wins per season - 10 trips to the postseason and eight 20-win seasons. Notably, the Golden Eagles have earned six consecutive postseason berths, with their most recent postseason trip concluding with the Women's National Invitation Tournament Championship in 2008.

On the court, Mitchell's teams are known for their well-balanced offense coupled with a tenacious style of defense and off the court for their academic excellence and commitment to community service.

Since becoming the fourth women's basketball coach in Marquette University history, Mitchell has paved a path of excellence. That journey began in her very first year, as Mitchell was at the helm for the largest turnaround in school history. She guided MU to a 21-10 record in 1996-97, which was 13 wins better than the previous season's record of 8-20. It was the largest turnaround of any first-year head coach and third-best single-season turnaround among all NCAA Division I schools that year.

The drive and commitment to excellence Mitchell had in her first year as a head coach continues to be instilled in her teams year after year. Her players don't question it; they know it and live it each day. One of the team's favorite Mitchell sayings is "we didn't come to compete in the BIG EAST, we came to win it."

## USA Basketball

The respect and admiration for the way Terri Mitchell relates to her players and her success in the BIG EAST Conference led to an opportunity with USA Basketball. During the summer of 2008, Mitchell served as an assistant coach for USA Basketball's U18 Women's National Team. Under her guidance, Team USA won the gold medal while rolling through the FIBA Americas Championship in Buenos Aires, Argentina undefeated.

Marquette has also had other ties to USA Basketball, as Krystal Ellis was a finalist for a spot on the 2007 USA Women's Pan American Games Team.

## Player Development

She believes that her personal interaction with each player not only leads to success on the court, but off as well. Her vision for each player in her program is that they enter as girls, but leave as well-rounded, confident young women.

Under her guidance, her student-athletes have earned numerous individual accolades, for their work on the hardwood and in the classroom. Since 1996, 18 of Mitchell's players have earned all-conference honors, while two have achieved All-America status, with Krystal Ellis becoming MU's latest All-America selection following the 2006-07 season. Ellis was also the third player in program history to earn repeat first team all-conference honors. In addition, 27 players have earned spots on the league's Academic Honor Roll and three have been awarded GTE Academic All-America honors.

## Service

Through her faith, compassion for others, and commitment to service, she has touched the lives of many. For example, in May of 2006 Mitchell took a mission trip to Rwanda where she spent 16 days in the impoverished African country.

In addition to her coaching duties, Mitchell is active in the community and is heavily involved with charitable events. She is an avid speaker on campus, at local schools, basketball clinics, nonprofit organizations and is actively involved in prison ministry. Through her speaking engagements, Mitchell incorporates the program's five principles and encourages her audiences to dream, believe, and live in the now. She also hosts motivational breakfasts entitled "Breakfast with Terri," for Milwaukee area business women throughout the year.

Mitchell believes in giving back to her profession and the community by serving on several Women's Basketball Coaches Association (WBCA) committees as well as on its Executive Board as Treasurer, the State Farm Wade Trophy Committee, the Midwest Athletes against Childhood Cancer (MACC) Fund Board of Directors, and many other service-oriented organizations.

Service is not only a significant part of Mitchell's life, but of her team's life as well. The Golden Eagles are involved in many service projects throughout the year including Big Brothers Big Sisters of Metro Milwaukee, Briggs & Al's Run & Walk, the Susan G. Komen Race for the Cure, the Kay Yow/WBCA Cancer Fund, the American Heart Association, the WBCA's Pink Zone initiative, school speaking engagements and basketball clinics.

## Career Overview

### 2007-08

Champions is a word Mitchell's team speaks daily. Mitchell is adamant that one's words lead to one's destiny. It did on April 5,



## The Mitchell Record

Season	Record	Accolades
<b>Head Coach, Marquette (1996-present)</b>		
2008-09	2-0	
2007-08	21-14	WNIT Champions Wisconsin Basketball Coaches Assoc. Div. I Women's Coach of the Year
2006-07	26-7	NCAA 2nd Round BIG EAST Coach of the Year Wisconsin Basketball Coaches Assoc. Div. I Women's Coach of the Year WBCA Executive Committee
2005-06	22-11	WNIT Championship Finalist
2004-05	18-12	WNIT 1st Round; WBCA Board of Directors
2003-04	22-10	NCAA 2nd Round; WBCA Board of Directors
2002-03	16-14	WNIT 2nd Round; WBCA Board of Directors
2001-02	14-14	WBCA Board of Directors
2000-01	13-16	
1999-2000	22-7	C-USA Coach-of-the-Year; C-USA Champs; NCAA Tournament; NCAA Div.-I Mideast Region Advisory Cmte.; Div. I All-America Committee
1998-99	21-8	C-USA Coach-of-the-Year; C-USA Champs; NCAA Tournament; Wisconsin Basketball Coaches Assoc. Div. I Women's Coach of the Year NCAA Div.-I Mideast Region Advisory Cmte.;
1997-98	22-7	Div. I All-America Committee
1996-97	21-10	C-USA Div. Champs; NCAA Tournament
		C-USA Div. Champs; NCAA 2nd Round
<b>Career</b>	<b>240-130</b>	<b>64.7 percent</b>
<b>Assistant Coach, Marquette (1991-96)</b>		
1995-96	8-20	
1994-95	19-12	GMC Tourney Champs; NCAA Tournament
1993-94	22-7	Great Midwest Champs; NCAA Tournament
1992-93	22-9	NWIT
1991-92	16-13	
<b>Graduate Assistant, Arizona State (1989-90)</b>		
1989-90	13-15	
<b>Letterwinner, Duquesne (1986-89)</b>		
<b>Career Notes</b>		
<ul style="list-style-type: none"> <li>• 240-130 career record</li> <li>• Best winning percentage by a coach in Marquette women's basketball history</li> <li>• The second coach in MU women's history to win 100 games</li> <li>• The first coach in MU women's history to win 200 games</li> <li>• The winningest women's basketball coach in MU history</li> <li>• Six NCAA Tournament appearances</li> <li>• Four WNIT appearances</li> <li>• Two time C-USA Champions</li> <li>• Three-time Conference Coach-of-the-Year</li> <li>• Three-time Wisconsin Basketball Coaches Assoc. Div. I Women's Coach of the Year</li> </ul>		

## Mitchell All-Time vs the Top 25

Nov. 23, 1996	#3 Tennessee 83, Marquette 68 (Howard Bank Classic - Burlington, Vt.)
<b>Jan. 5, 1997</b>	<b>at Marquette 66, #24 DePaul 59</b>
Jan. 17, 1997	at #25 DePaul 89, Marquette 83
Feb. 14, 1997	at #25 Tulane 76, Marquette 70
<b>Mar. 15, 1997</b>	<b>Marquette 70, #21 Clemson 66</b> (NCAA Tournament - Baton Rouge, La.)
Mar. 17, 1997	#9 LSU 71, Marquette 58 (NCAA Tournament - Baton Rouge, La.)
Dec. 7, 1997	at #6 Illinois 99, Marquette 86
Mar. 13, 1998	#12 Florida Intl. 59, Marquette 45 (NCAA Tournament - Chapel Hill, N.C.)
<b>Nov. 28, 1998</b>	<b>Marquette 77, #13 Florida 61</b> (Ronald McDonald Classic - Durham, N.C.)
Nov. 29, 1998	#20 Duke 91, Marquette 60 (Ronald McDonald Classic - Durham, N.C.)
<b>Dec. 8, 1999</b>	<b>at Marquette 69, #22 Wisconsin 65</b>
Jan. 2, 2000	at #10 Notre Dame 75, Marquette 60
<b>Feb. 5, 2000</b>	<b>Marquette 81, at #21 Tulane 62</b>
Dec. 21, 2000	#3 Notre Dame 75, at Marquette 56
Nov. 17, 2001	#7 Iowa State 68, Marquette 50
Nov. 29, 2001	at #16 Michigan 65, Marquette 49
Dec. 5, 2001	#19 Wisconsin 56, Marquette 55
<b>Jan. 2, 2002</b>	<b>Marquette 56, at #20 Colo. State 52</b>
Dec. 31, 2002	#13 Notre Dame 75, at Marquette 68
Jan. 8, 2003	#19 Green Bay 58, at Marquette 47
Jan. 12, 2003	#25 DePaul 62, at Marquette 57
Feb. 8, 2004	at #15 DePaul 61, Marquette 59
Feb. 20, 2004	at #17 TCU 56, Marquette 47
Feb. 22, 2004	at #21 Houston 77, Marquette 64
<b>Feb. 29, 2004</b>	<b>at Marquette 62, #20 DePaul 61</b>
<b>Mar. 3, 2004</b>	<b>Marquette 74, #24 DePaul 70</b> (C-USA Tournament - Fort Worth, Tex.)
Mar. 6, 2004	#11 Houston 67, Marquette 59 (C-USA Tournament - Fort Worth, Tex.)
Mar. 23, 2004	#1 Duke 76, Marquette 67 (NCAA Tournament - Durham, N.C.)
Dec. 19, 2004	#7 Notre Dame 50, Marquette 47
<b>Jan. 9, 2005</b>	<b>Marquette 63, #18 DePaul 57</b>
Feb. 27, 2005	at #12 DePaul 77, Marquette 56
<b>Feb. 8, 2006</b>	<b>Marquette 74, at #23 St. John's 59</b>
Feb. 21, 2006	#8 Rutgers 71, at Marquette 50
Feb. 25, 2006	at #7 Connecticut 74, Marquette 59
<b>Nov. 14, 2006</b>	<b>at Marquette 78, #-/23 Washington 61</b>
<b>Jan. 6, 2007</b>	<b>at #18/ Marquette 82, #23/24 DePaul 79</b>
Jan. 30, 2007	at #23/25 Rutgers 66, #16/18 Marquette 56
Feb. 3, 2007	#6/5 Connecticut 52, #16/18 Marquette 48
<b>Feb. 17, 2007</b>	<b>at #21/21 Marquette 65, #20/19 Louisville 54</b>
Mar. 5, 2007	#19/21 Rutgers 63, #21 Marquette 55 (BIG EAST Tournament - Hartford, Conn.)
Mar. 19, 2007	#9/10 Oklahoma 78, #22/ Marquette 47 (NCAA Tournament - Austin, Texas)
<b>Nov. 17, 2007</b>	<b>at Marquette 67, #RV/25 Wisconsin 53</b>
Dec. 30, 1007	#23/RV Arkansas 71, Marquette 69
Jan. 8, 2008	#5/5 Rutgers 65, at Marquette 61
Jan. 16, 2008	at #14/14 West Virginia 68, Marquette 63
<b>Jan. 19, 2008</b>	<b>at Marquette 65, #23/22 DePaul 56</b>
Feb. 10, 2008	at #23/24 Syracuse 70, Marquette 67
Feb. 13, 2008	at #16/16 Notre Dame 99, Marquette 76
Feb. 20, 2008	at #1/1 Connecticut 95, Marquette 63
<b>Feb. 23, 2008</b>	<b>at Marquette 76, #23/21 Pittsburgh 69</b>

2008, when the Golden Eagles marched into the Breslin Center at Michigan State and knocked off the Spartans, 81-66, to claim the Women's National Invitation Tournament Championship. It marked the fourth national title in Marquette history and the first in women's history.

Up against a bevy of talented teams - the BIG EAST sent 12 teams to post season play - Mitchell led the youngest team in the BIG EAST Conference into battle with six freshmen and only one returning starter. The Golden Eagles fought through adversity, the Golden Eagles won over 20 games for the third straight season. Marquette finished the season with a five-game win streak - its longest of the season - and as one of only two Division I women's college basketball teams in the nation to end the season with a victory. Junior Krystal Ellis was named First Team All-BIG EAST for the second consecutive season and freshman phenom Angel Robinson was an all-freshman team selection. Both continued their stellar play through the team's championship run and were honored with WNIT All-Tournament Team accolades. Ellis was named tournament MVP, while Robinson was an all-tournament selection.

Following its championship run, Marquette was honored by the City of Milwaukee and Mayor Tom Barrett as they proclaimed April 15, 2008 Marquette Women's Basketball Day. For the second consecutive year, Mitchell earned the Wisconsin Basketball Coaches Association Division I Women's Coach of the Year honor.

### 2006-07

The 2006-07 season was one for the history books as Mitchell guided the Golden Eagles to their best season ever, a 26-7 overall record. It was the seventh season in which her team won 20 or more games. After being picked eighth in the BIG EAST preseason poll, Marquette started the season winning 15 of its first 16 games, and jumped into the national polls on December 4 for the first time since the 1999-2000 season. The season for the ages included a school record 14-game win streak and being ranked in the Top 25 for the majority of the season. During that streak Mitchell won her 200th game on Dec. 9, 2006. In BIG EAST play, the Golden Eagles finished tied for second place with Rutgers registering a 12-4 conference record. For her efforts, Mitchell received the league's highest honor and was named the BIG EAST Coach of the Year. It was Mitchell's third coach of the year honor.

More honors continued to follow Mitchell at the conclusion of the 2006-07 season as she was elected to the Women's Basketball Coaches Association (WBCA) Executive Committee as its Treasurer and tabbed the Wisconsin Basketball Coaches Association Division I Women's Coach of the Year. She was also named a Woman of Influence by the Milwaukee Business Journal in the category of "Inspiration."

Marquette made a trip back to the "big dance" behind the inside-outside combination of All-BIG EAST First Team selections Krystal Ellis and Christina Quaye, and the leadership of seniors, Jasmine McCullough, Danielle Kamm and Efueko Osagie-Landry. It was the first time in program history two players were first team all-conference selections in the same year.

### 2005-06

In 2005-06, Marquette made a remarkable postseason run, advancing to the championship game of the Women's National Invitation Tournament. Led by All-BIG EAST honorees Christina Quaye, Carolyn Kieger, and BIG EAST All-Rookie Team member Krystal Ellis, the Golden Eagles posted a 22-11 overall record, including a 9-7 record in BIG EAST play before falling in the championship game at Kansas State.

### 2004-05

During the 2004-05 campaign, MU qualified for its third consecutive postseason appearance by earning a spot in the WNIT. Led by Second Team All-Conference USA honorees Carolyn Kieger and Christina Quaye, the Golden Eagles finished with an overall record of 18-12.

### 2003-04

In 2003-04, the team tied a school record with 22 wins and advanced to the Second Round of the NCAA Tournament. In the first round, playing as the ninth seed in the Mideast Region, MU defeated Old Dominion, 67-64 as Christina Quaye hit the go-ahead layup with 5.8 seconds left. In the next game, the Golden Eagles gave the nation's No. 1 ranked team, Duke, all it could handle and opened the eyes of many around the country.

The 2003-04 campaign was typical of the Terri Mitchell era. Offensively, the team was balanced, as eight different players led the team in scoring during a game over the course of the season. Games were won with defense and teamwork, as MU led Conference USA in scoring defense, yielding just 57.2 points per contest.

### 2002-03

Mitchell led the 2002-03 Golden Eagles to a 16-14 mark and a spot in the Women's National Invitation Tournament, advancing to the second round. That season, the team set new school records in three-point shooting and free throw shooting percentages.

### 2001-02

Mitchell reached the 100-victory milestone the third game of the 2001-02 season as the Golden Eagles downed Alaska-Anchorage, 88-50, in the Great Alaska Shootout. On Jan. 27, she became Marquette's all-time winningest coach in a 65-44 victory over Tulane. That season, the Golden Eagles continued to be one of the best defensive squads in the nation, holding the opposition to just 59.6 points per game. That total tied for the top spot in Conference USA and tied for 10th in the NCAA.

At the end of that season, Mitchell was elected to the Board of Directors of the Women's Basketball Coaches Association, an honor in which she took great pride.

### 2000-01

The 2000-01 season proved to be a pivotal year in the growth of the Marquette women's basketball program. Mitchell was instrumental in carrying forward the goals of the program while providing stability, despite the graduation of three of the school's all-time leading scorers. With a young squad of five freshmen and two returning starters, the Golden Eagles picked up key victo-

ries against NCAA Tournament teams Michigan and UW - Milwaukee early on and closed out the season winning four straight before falling to C-USA Champion Tulane on a last-minute shot.

#### **1999-2000**

Her 1999-2000 squad finished the season in fine fashion, winning 13 of its last 15 regular season contests, claiming the regular season C-USA championship and a berth in the NCAA Mideast regional. Guiding her squad to a 14-2 conference record, Mitchell earned her second C-USA Coach of the Year honor. That season, Marquette led Conference USA and was 10th in the nation in defense allowing only a 36.4 shooting percentage.

#### **1998-99**

Mitchell led the 1998-99 squad to a 21-8 overall mark, a 12-4 record in C-USA play and a third straight trip to the NCAA Tournament. For her efforts, Mitchell was named the Wisconsin Basketball Coaches Association Women's Basketball Coach of the Year. Marquette allowed its foes to shoot just 39.0 percent from the field and out-rebounded teams by 8.0 boards per game, a stat that topped C-USA and was sixth in the nation.

#### **1997-98**

In 1997-98, the Golden Eagles finished 22-7 overall and had a 13-3 record in Conference USA play, capturing the American Division title en route to their second consecutive appearance in the NCAA Tournament. Mitchell also earned her first conference honor in her second year at the helm as she was named Conference USA Coach of the Year.

#### **1996-97**

Mitchell was named head coach on June 6, 1996. In her first season leading the Golden Eagles, Mitchell set a few precedents. She shattered the record for most wins by a Marquette first-year head coach, 21, and holds the distinction of reaching 50 wins faster than any coach in Marquette history. In addition, she became the only coach in school history to take her team to the NCAA Tournament in her first season.

Not only did she take the 1996-97 Golden Eagles to the Big Dance, but they also recorded the first NCAA Tournament win in school history.

#### **The Early Days**

Prior to becoming head coach, Mitchell was an assistant for the Golden Eagles for five seasons. She was instrumental in recruiting Marquette's 1996-97 freshman class, which was ranked 12th in the nation by the Blue Star Index. Marquette posted an 87-61 record and made three postseason appearances during Mitchell's tenure as an assistant.

A native of Harrisburg, Pa., Mitchell was a four-year letterwinner and team co-captain at Duquesne University. After an outstanding career with the Dukes, Mitchell graduated Cum Laude with a psychology degree in 1989. She began her coaching career serving as a graduate assistant at Arizona State during the 1989-90 season.

# 2008-09 Overall Statistics

Record	Overall	Home	Away	Neutral
All Games	2-0	2-0	0-0	0-0
BIG EAST	0-0	0-0	0-0	0-0

Player	GP	GS	Min.	Avg.	Field Goals			3-Point FG			Free Throws			Rebounds				PF	DQ	A	TO	B	S	Pts.	Avg.
					FG	FGA	Pct.	3P	3PA	Pct.	FT	FTA	Pct.	Off.	Def.	Tot.	Avg.								
24 THOMAS-JOHNSON, L2	1		43	21.5	7	17	.412	5	11	.455	6	8	.750	1	2	3	1.5	3	0	5	2	1	3	25	12.5
20 ELLIS, Krystal	2	2	52	26.0	10	23	.435	1	8	.125	3	4	.750	1	6	7	3.5	4	0	15	10	1	4	24	12.0
12 PACHKO, Jessica	2	2	45	22.5	10	11	.909	0	0	.000	4	5	.800	4	8	12	6.0	4	0	2	2	0	2	24	12.0
01 ROBINSON, Angel	2	2	50	25.0	9	22	.409	1	3	.333	4	5	.800	2	7	9	4.5	6	0	6	6	3	6	23	11.5
41 FIEDOROWICZ, Paige	2	0	32	16.0	6	11	.545	1	2	.500	4	4	1.000	2	2	4	2.0	2	0	2	0	0	3	17	8.5
42 THROWER, Marissa	2	0	16	8.0	3	4	.750	0	0	.000	4	7	.571	2	2	4	2.0	3	0	0	1	0	2	10	5.0
34 JONES, Georgie	2	0	22	11.0	4	7	.571	0	0	.000	1	5	.200	4	4	8	4.0	1	0	1	2	1	1	9	4.5
22 MELLEN, Jocelyn	2	2	42	21.0	4	8	.500	1	1	1.000	0	1	.000	2	12	14	7.0	5	0	1	3	1	1	9	4.5
11 HARRIS, Janelle	2	1	32	16.0	3	12	.250	0	0	.000	3	4	.750	5	0	5	2.5	5	0	3	2	0	4	9	4.5
32 HILL, Breann	2	0	24	12.0	4	9	.444	0	1	.000	0	0	.000	5	3	8	4.0	2	0	0	5	0	1	8	4.0
05 MONFRE, Erin	2	0	26	13.0	1	6	.167	1	6	.167	0	0	.000	0	1	1	0.5	2	0	6	2	0	0	3	1.5
03 WEIBEL, Courtney	2	0	10	5.0	1	3	.333	1	3	.333	0	0	.000	1	0	1	0.5	1	0	0	0	0	0	3	1.5
00 COLLINS, Jasmine	2	0	6	3.0	1	1	1.000	0	0	.000	0	0	.000	0	3	3	1.5	4	0	0	1	0	0	2	1.0
TM TEAM														2	6	8	4.0	0			1				
Total	2				63	134	.470	11	35	.314	29	43	.674	31	56	87	43.5	42	0	41	37	7	27	166	83.0
Opponents	2				41	110	.373	15	41	.366	25	44	.568	22	46	68	34.0	39	-	22	50	7	16	122	61.0

TEAM STATISTICS	MARQ	OPP	Date	Opponent	W	L	Score	High Scorer	High Rebounder	Att.
SCORING	166	122	11/15	Oral Roberts	W		89-67	Ellis 16	Pachko, Mellen 8	1,201
Points per game	83.0	61.0	11/17	Sacred Heart	W		77-55	Pachko 14	Jones 17	1,045
Scoring margin	+22.0	-								
FIELD GOALS-ATT	63-134	41-110								
Field goal pct	.470	.373								
3 POINT FG-ATT	11-35	15-41								
3-point FG pct	.314	.366								
3-pt FG made per game	5.5	7.5								
FREE THROWS-ATT	29-43	25-44								
Free throw pct	.674	.568								
REBOUNDS	87	68								
Rebounds per game	43.5	34.0								
Rebounding margin	+9.5	-								
ASSISTS	41	22								
Assists per game	20.5	11.0								
TURNOVERS	37	50								
Turnovers per game	18.5	25.0								
Turnover margin	+6.5	-								
Assist/turnover ratio	1.1	0.4								
STEALS	27	16								
Steals per game	13.5	8.0								
BLOCKS	7	7								
Blocks per game	3.5	3.5								
WINNING STREAK	2	-								
Home win streak	2	-								
ATTENDANCE	2246	0								
Home games-Avg/Game	2-1123	0-0								
Neutral site-Avg/Game	-	0-0								
SCORE BY PERIODS	1st	2nd	Total							
Marquette	83	83	166							
Opponents	53	69	122							

## Attendance Summary

Site	Total	(GP)	Avg.	High
Home	2,246	2	1,123	1,201 vs Oral Roberts (Nov. 15)
Away	-	-	-	-
Neutral	-	-	-	-
Total	2,246	2	1,123	

## Marquette Players in Double Figures

	Points	Rebounds
Oral Roberts	Ellis 16, Mellen 14, Fiedorowicz 13, Thomas Johnson 12, Pachko 10	-
Sacred Heart	Packo 14, Thomas-Johnson 13	-
at Indiana St.		
at West.Mich.		
Gonzaga		
Virginia		
Utah		
at Northwestern		
Kansas		
at Wisconsin		
Oregon		
Green Bay		
at Oakland		
Milwaukee		
USF		
at Seton Hall		
Notre Dame		
at Rutgers		
at Georgetown		
Syracuse		
at Pittsburgh		
at USF		
Connecticut		
Villanova		
West Virginia		
at Cincinnati		
St. John's		
at Providence		
at DePaul		
Louisville		

## Marquette Bench Scoring

	Starters	Bench	Bench Scoring
Oral Roberts	49	40	Fiedorowicz 13, Thomas-Johnson 12, Thrower 5, Monfre 3, Weibel 3, Collins 2, Hill 2
Sacred Heart	48	29	Jones 9, Hill 6, Harris 5, Thrower 5, Fiedorowicz 4
at Indiana State			
at W. Michigan			
Gonzaga			
Virginia			
Utah			
at Northwestern			
Kansas			
at Wisconsin			
Oregon			
Green Bay			
at Oakland			
Milwaukee			
USF			
at Seton Hall			
Notre Dame			
at Rutgers			
at Georgetown			
Syracuse			
at Pittsburgh			
at USF			
Connecticut			
Villanova			
West Virginia			
at Cincinnati			
St. John's			
at Providence			
at DePaul			
Louisville			

## Marquette's Record When

Leading at half	2-0
Trailing at half	-
Tied at half	-
Scoring 70 or more points	2-0
Allowing 80 or more points	-
Holding opponents to 60 points or less	1-0
Holding opponents to 65 points or less	-
Holding opponents to 70 points or less	1-0
Shooting 50 percent or better	1-0
Opponents shoot 50 percent or better	-
Opponent shoots under 40 percent	1-0
MU's FG percent is higher than opp.	2-0
MU's FG percent is lower than opp.	-
MU's 3FG percent is 40 percent or higher	-
Opponent's 3FG percent is 40 percent or higher	1-0
MU shoots more FT than opponent	1-0
MU shoots fewer FT than opponent	1-0
MU shoots same FT as opponent	-
Out-rebounded opponent	2-0
Out-rebounded by opponent	-
Rebounds tied	-
Same or fewer turnovers as opp.	2-0
More turnovers than opponent	-
Overtime games	-
In games decided by 5 pts. or less	-
In games decided by 6-10	-
In games decided by 11-15	-
In games decided by 16 pts. or more	2-0
When Ranked in AP or Coaches Poll	-
vs Ranked Teams (AP or Coaches)	-
vs Teams with a RPI of 25 or better	-
vs Teams with a RPI of 26-50	-
vs Teams with a RPI of 50-100	-
vs Teams with a RPI of 100 or higher	2-0
When winning the opening tip	1-0
When scoring first	1-0
On Sundays	-
On Mondays	1-0
On Tuesdays	-
On Wednesdays	-
On Thursdays	-
On Fridays	-
On Saturdays	1-0

## Team Superlatives by Half

	First Half	Second Half
<b>Points</b>	42 Oral Roberts (11/15)	47 Oral Roberts (11/15)
<b>Fewest Pts. Allowed</b>	24 Oral Roberts (11/15)	27 Sacred Heart (11/17)
<b>FG Percentage</b>	46.9 Oral Roberts (11/15)	52.9 Oral Roberts (11/15)
<b>Lowest FG Pct. Allowed</b>	35.5 Sacred Heart (11/17)	27.3 Sacred Heart (11/17)
<b>3-Point Percentage</b>	27.3 Oral Roberts (11/15)	40.0 Sacred Heart (11/17)
<b>FT Made</b>	9 Oral Roberts (11/15)	8 Sacred Heart (11/17)
<b>Rebounds</b>	22 Sacred Heart (11/17)	27 Oral Roberts (11/15)
<b>Assists</b>	13 Sacred Heart (11/17)	11 Oral Roberts (11/15)
<b>Blocks</b>	3 Sacred Heart (11/17)	1 Twice
<b>Steals</b>	8 Oral Roberts (11/15)	12 Sacred Heart (11/17)

## Individual Superlatives by Half

First Half		
<b>Points</b>	12 Jessica Pachko	Sacred Heart (11/17)
<b>FG Made</b>	6 Jessica Pachko	Sacred Heart (11/17)
<b>3-Point Made</b>	2 L. Thomas-Johnson	Oral Roberts (11/15)
<b>FT Made</b>	3 L. Thomas-Johnson	Oral Roberts (11/15)
<b>Rebounds</b>	5 Jocelyn Mellen	Sacred Heart (11/17)
<b>Assists</b>	5 Krystal Ellis	Sacred Heart (11/17)
Second Half		
<b>Points</b>	8 Krystal Ellis	Oral Roberts (11/15)
<b>FG Made</b>	4 Krystal Ellis	Oral Roberts (11/15)
<b>3-Point Made</b>	1 Four Players	Last: Oral Roberts (11/15)
<b>FT Made</b>	2 Two Players	Sacred Heart (11/17)
<b>Rebounds</b>	5 Jessica Pachko	Oral Roberts (11/15)
<b>Assists</b>	4 Two Players	Oral Roberts (11/15)

## High Marks

Double-figure scoring games	2008-09	Career
Krystal Ellis	1	77
Erin Monfre	-	6
Marissa Thrower	-	4
Janielle Harris	-	8
Breann Hill	-	-
Lauren Thomas-Johnson	2	2
Jasmine Collins	-	-
Paige Fiedorowicz	1	5
Tatiana McMorris	-	1
Jocelyn Mellen	-	5
Angel Robinson	1	26
Courtney Weibel	-	2
Georgie Jones	-	-
Jessica Pachko	2	2

20-point games	2008-09	Career
Krystal Ellis	-	28
Angel Robinson	-	2

30-point games	2008-09	Career
Krystal Ellis	-	5

40-point games	2008-09	Career
Krystal Ellis	-	1

Double-figure rebound games	2008-09	Career
Krystal Ellis	-	1
Jocelyn Mellen	-	4

Double-doubles	2008-09	Career
Krystal Ellis	-	2

## Individual Season Records

	Starts	10+ points	10+ rebs.
Krystal Ellis	2	1-0	-
Erin Monfre	-	-	-
Marissa Thrower	-	-	-
Lauren Thomas-Johnson	1	2-0	-
Breann Hill	-	-	-
Janelle Harris	1	-	-
Jasmine Collins	-	-	-
Paige Fiedorowicz	-	-	-
Tatiana McMorris	-	-	-
Jocelyn Mellen	2	-	-
Angel Robinson	2	1-0	-
Courtney Weibel	-	-	-
Georgie Jones	-	-	-
Jessica Pachko	2	2-0	-

## Individual Career Records

	Starts	10+ points	10+ rebs.
Krystal Ellis	90	58-19	-
Erin Monfre	25	6-1	-
Marissa Thrower	9	4-0	-
Janielle Harris	36	4-3	-
Breann Hill	-	-	-
Lauren Thomas Johnson	1	2-0	-
Jasmine Collins	-	-	-
Paige Fiedorowicz	14	3-2	-
Tatiana McMorris	3	0-1	-
Jocelyn Mellen	11	4-1	1-3
Angel Robinson	35	17-9	-
Courtney Weibel	-	-	-
Georgie Jones	-	-	-
Jessica Pachko	2	2-0	-

## Specialty Statistics

	Marquette	Opponents
Points in the Paint	89	44.5
Points off Turnovers	51	25.5
Second Chance Points	26	13.0
Fast Break Points	56	28.0
Bench Points	69	34.5

## Specialty Stats Superlatives

	Marquette	Opponents
Points in the Paint	45 Oral Roberts	24 Oral Roberts
Points off Turnovers	30 Sacred Heart	17 Oral Roberts
Second Chance Points	17 Oral Roberts	17 Oral Roberts
Fast Break Points	35 Sacred Heart	5 Sacred Heart
Bench Points	40 Oral Roberts	14 Oral Roberts

## The Last Time

Team	Marquette	Opponent
100+ Points	102-99 vs. Memphis (3/11/95)	60-104 vs. Georgia (1/11/95)
90+ Points	92-59 vs. Providence (1/31/06)	63-95 at #1/1 Connecticut (2/20/08)
Under 40 Points	33-60 vs. Notre Dame (12/22/01)	89-38 vs. Manhattan (12/21/06)
FG Pct. 60+	68.2 vs. Saint Louis (1/22/95)	64.3 at #16/16 Notre Dame (2/10/08)
FG Pct. 50+	<b>50.0 vs. Oral Roberts (11/15/08)</b>	54.4 at #1/1 Connecticut (2/20/08)
Five Players, 10+ pts.	<b>89-67 vs. Oral Roberts (11/15/08)</b>	64-77 at Wis.-Green Bay (12/04/04)

Team	Marquette Win	Marquette Loss
Ranked Opponent (AP)	76-69 vs #23 Pittsburgh (2/23/08)	76-99 vs #16 Notre Dame (2/13/08)
Overtime Game	75-69 vs. Creighton (3/24/08)	87-91 OT at Pittsburgh (1/9/07)
Double Overtime	79-75 vs. Georgia State (12/07/02)	<i>63-65 at UAB (1/18/04)</i>
Triple Overtime	Never	Never
Home Opener	<b>89-67 vs. Oral Roberts (11/15/08)</b>	50-68 vs. Iowa State (11/17/01)
Road Openers	54-46 at Evansville (11/28/05)	56-57 at Oregon (11/20/07)

Individual	Marquette	Opponent
40+ Points	<b>40, Krystal Ellis</b> <i>69-64 at Kentucky (3/30/08)</i>	40, Danielle Viglione 86-98 vs. Texas (1/05/94)

30+ Points	<b>30, Krystal Ellis</b> <i>79-66 at USF (1/26/08)</i>	<b>31, Maya Moore</b> <i>63-95 at #1/1 Connecticut (2/20/08)</i>
------------	---	---

2 Players, 20+ pts.	26, Christina Quaye; 21 Krystal Ellis 75-63 vs USF (2/24/07)	<b>20 Georgia Jones; 20, Janae Voelker</b> <i>89-67 vs. Oral Roberts (11/15/08)</i>
---------------------	---	--

2 Players, 10+ rebs.	<b>13, Svetlana Kovalenko; 10, Krystal Ellis</b> <i>63-65 vs Northwestern (12/17/07)</i>	<b>14, Angel McCoughtry; 10, Candyce Bingham</b> <i>69-79 at Louisville (1/23/08)</i>
----------------------	---	--

10+ assists	<b>11, Krystal Ellis</b> <i>81-66, at Michigan State (4/5/08)</i>	12, Micah Harvey 69-79 at Cincinnati (2/05/05)
-------------	--	---

5+ Steals	<b>5, Angel Robinson</b> <i>67-70 at 23/24 Syracuse (2/10/08)</i>	<b>7, Angel McCoughtry</b> <i>69-79 at Louisville (1/23/08)</i>
-----------	--	--

5+ Blocks	6, Danielle Kamm 54-60 vs. Charlotte (1/14/05)	8, Sandora Irvin 47-56 at TCU (2/20/04)
-----------	---	--

Double Double	<b>15 pts, 11 asst; Krystal Ellis</b> <i>81-66, at Michigan State (4/5/08)</i>	<b>14 pts, 10 reb; Victoria Dunlap</b> <i>69-64 at Kentucky (3/30/08)</i>
---------------	---	--

## This season . . .

Largest halftime lead . . . . .	17	Oral Roberts (Nov. 15)
Largest halftime deficit . . . . .	-	
Largest lead in a game . . . . .	25	Oral Roberts (Nov. 15)
Largest deficit in a game . . . . .	3	Sacred Heart (Nov. 17)
Largest winning margin . . . . .	22	Twice: Oral Roberts (Nov. 15), Sacred Heart (Nov. 17)
Largest losing margin . . . . .	-	
Largest deficit in a victory . . . . .	3	Sacred Heart (Nov. 17)
Largest lead in a loss . . . . .	-	
Largest home crowd . . . . .	1,201	Oral Roberts (Nov. 15)
Largest road crowd . . . . .	-	
Largest neutral crowd . . . . .	-	
30-point games . . . . .	-	
20-point games . . . . .	-	
10-rebound games . . . . .	-	
Double-doubles . . . . .	-	
Games as leading scorer . . . . .		Ellis 1, Pachko 1
Games as leading rebounder . . . . .		Mellen 1, Pachko 1, Jones 2
Games as assists leader . . . . .		Ellis 2
Foul outs . . . . .	-	
BIG EAST Player of the Week Selections . . . . .	-	
BIG EAST Freshman of the Week Selections . . . . .	-	
BIG EAST Honor Roll Selections . . . . .	-	

# Career Records Update

## All-Time Leading Scorers

Name	Points	Years
1. Abbie Willenborg	1,818	1997-00
2. Julie Sievers	1,759	1980-83
3. Kristen Maskala	1,745	1992-94
<b>Krystal Ellis</b>	<b>1,571</b>	<b>2005-</b>

## All-Time Leading Rebounders

Name	Rebounds	Years
1. Abbie Willenborg	1,167	1997-00
2. Julie Sievers	1,151	1980-83
3. Christine Kennedy	1,089	1992-95

## Scoring Average

Name	Years	Gm.	Avg.
1. Kristen Maskala	1992-94	89	19.6
2. Kathy Andrykowski	1977-80	69	19.0
3. Julie Sievers	1980-83	105	16.8

## Field Goals Made

Name	Years	FGs
1. Julie Sievers	1980-83	721
2. Abbie Willenborg	1997-00	677
3. Kristen Maskala	1992-94	649
<b>Krystal Ellis</b>	<b>2005-</b>	<b>535</b>

## Field Goal Percentage (Min. 400 Attempts)

Name	Years	Pct.
1. Lisa Oldenburg	1997-00	638-1,182 54.0
2. Rachel Klug	1999-03	342-634 53.9
3. Heidi Ach	1988-91	569-1,068 53.3

## Three-Point Field Goals Made

Name	Years	3FGM
1. Lori Goerlitz	1992-95	223
<b>2. Krystal Ellis</b>	<b>2005-</b>	<b>175</b>
3. Kristi Johnson	1999-02	162

## Three-Point Field Goals Attempted\*

Name	Years	3FGA
1. Lori Goerlitz	1992-95	662
2. Courtney Romeiser	1990-93	558
<b>3. Krystal Ellis</b>	<b>2005-</b>	<b>487</b>

## Three-Point FG Percentage (Min. 50 Attempts)

Name	Years	Pct.
1. Kristi Johnson	1998-02	162-413 39.2
2. Anita Godlewski	1988-91	26-64 39.1
3. Lesley Juedes	2001-05	81-217 37.3
<b>Krystal Ellis</b>	<b>2005-</b>	<b>175-487 36.3</b>

## Free Throws Made

Name	Years	FTM
1. Abbie Willenborg	1997-00	435
2. Clare Barnard	1994-97	410
3. Christina Quaye	2003-07	408
<b>Krystal Ellis</b>	<b>2005-</b>	<b>326</b>

## Free Throws Attempted

Name	Years	FTA
1. Abbie Willenborg	1997-00	635
2. Clare Barnard	1994-97	579
3. Christina Quaye	2003-07	566

## Free Throw Percentage (Min. 175 Attempts)

Name	Years	Pct.
1. Kelly Scherman	2000-04	191-229 83.1
2. Beth Ayers	1984-87	202-249 81.1
3. Kristin Maskala	1992-94	287-358 80.2
<b>Krystal Ellis</b>	<b>2005-</b>	<b>326-392 83.0</b>

## Rebounding Average

Name	Years	Reb.	Avg.
1. Kathy Andrykowski	1977-80	943	13.7
2. Julie Sievers	1980-83	1,151	11.0
3. Abbie Willenborg	1997-00	1,167	9.9

## Assists

Name	Years	Assists
1. Carolyn Kieger	2002-06	694
2. Joan Pitrof	1987-90	689
3. Lori Goerlitz	1992-95	566

## Steals

Name	Years	Steals
1. Courtney Romeiser	1990-93	287
2. Tammy Shain	1989-92	266
3. Beth Ayers	1984-87	239
<b>Krystal Ellis</b>	<b>2005-</b>	<b>199</b>

## Blocks

Name	Years	Blocks
1. Kerri Christianson	1986-89	170
2. Lisa Oldenburg	1997-00	160
3. Christine Kennedy	1992-95	157

# Season Records Update

## Points

Name	Season	Points
1. Kristen Maskala	1991-92	635
2. Krystal Ellis	2007-08	601
Krystal Ellis	2006-07	593
3. Julie Sievers	1981-82	582
4. Kristen Maskala	1993-94	567
5. Kerri Reaves	1994-95	546

## Scoring Average

Name	Season	Avg.
1. Kristen Maskala	1991-92	21.9
2. Julie Sievers	1981-82	20.7
3. Kathy Andrykowski	1977-78	20.2
4. Kathy Andrykowski	1979-80	20.0
5. Kathy Andrykowski	1976-77	19.8

## Field Goals Made

Name	Season	F6M
1. Kristen Maskala	1991-92	242
2. Julie Sievers	1981-82	213
3. Krystal Ellis	2007-08	212
4. Kathy Andrykowski	1979-80	210
5. Lisa Oldenburg	1997-98	205

## Field Goal Percentage (Min. 100 Attempts)

Name	Season	FGM-FGA	Pct.
1. Heidi Ach	1987-88	129-223	57.8
2. Heidi Ach	1989-90	124-215	57.7
3. Lisa Oldenburg	1998-99	154-274	56.2
4. Lisa Oldenburg	1999-00	183-327	56.0
5. Rachel Klug	2001-02	145-258	56.2

## Three-Point Field Goals Made

Name	Season	3PM
1. Lori Goerlitz	1994-95	91
2. Kelly Scherman	2003-04	70
3. Kristen Maskala	1991-92	69
4. Lori Goerlitz	1993-94	68
5. Krystal Ellis	2007-08	67
6. Krystal Ellis	2006-07	65

## Three-Point Field Goals Attempted

Name	Season	3PA
1. Lori Goerlitz	1994-95	274
2. Lori Goerlitz	1993-94	191
3. Krystal Ellis	2007-07	190
4. Krystal Ellis	2006-07	183
5. Courtney Romeiser	1992-93	171
Kristen Maskala	1991-92	171

## Three-Point Field Goals Pct. (Min. 50 Attempts)

Name	Season	3PM-A	Pct.
1. Kelly Scherman	2002-03	56-131	42.7
2. Carolyn Kieger	2002-03	26-61	42.6
3. Lesley Juedes	2004-05	59-141	41.8
3. Kristen Maskala	1991-92	69-171	40.4
4. Anita Godlewski	1990-91	25-63	39.7

## Free Throws Made

Name	Season	FTM
1. Kerri Reaves	1994-95	167
2. Clare Barnard	1996-97	153
3. Krystal Ellis	2006-07	150
4. Christina Quaye	2006-07	130
5. Abbie Willenborg	1998-99	127
Clare Barnard	1995-96	127

## Free Throw Percentage (Min. 75 Attempts)

Name	Season	FTM-FTA	Pct.
1. Kelly Scherman	2003-04	71-81	87.7
2. Carolyn Kieger	2002-03	98-112	87.5
3. Krystal Ellis	2006-07	150-172	87.2
4. Kristen Maskala	1993-94	116-137	84.7
5. Beth Ayers	1985-86	69-82	84.1

## Rebounds

Name	Season	Reb.
1. Kathy Andrykowski	1979-80	347
2. Julie Sievers	1980-81	325
3. Abbie Willenborg	1996-97	314
4. Christine Kennedy	1994-95	309
5. Abbie Willenborg	1997-98	297

## Rebounding Average

Name	Season	Avg.
1. Kathy Andrykowski	1976-77	16.8
2. Kathy Andrykowski	1977-78	14.4
3. Kathy Andrykowski	1979-80	13.9
4. Julie Sievers	1980-81	12.0
5. Julie Sievers	1981-82	11.3
Mary Spellacy	1980-81	11.3

## Assists

Name	Season	Assists
1. Lori Goerlitz	1994-95	222
2. Nicki Taggart	1997-98	215
3. Nicki Taggart	1996-97	206
4. Joan Pitrof	1987-88	199
5. Carolyn Kieger	2003-04	188

## Steals

Name	Season	Steals
1. Courtney Romeiser	1991-92	93
2. Courtney Romeiser	1992-93	92
3. Angel Robinson	2007-08	86
4. Kristen Maskala	1992-93	75
Kristen Maskala	1991-92	75
6. Krystal Ellis	2006-07	73

## Blocks

Name	Season	Blocks
1. Christine Kennedy	1994-95	53
2. Christine Kennedy	1993-94	52
Kerri Christianson	1988-89	52
4. Kerri Christianson	1985-86	51
5. Lisa Oldenburg	1999-00	50

# 2008-09 Season Box Scores

## Marquette 89, Oral Roberts 67

Game 1 • November 15, 2008

Al McGuire Center • Milwaukee, Wis.

MILWAUKEE — The Marquette women's basketball team opened its regular season on Saturday with an impressive 89-67 victory over Oral Roberts (0-1). The Golden Eagles (1-0) saw five players in double-digit scoring, led by preseason All-American Krystal Ellis who tallied 16 points in 26 minutes. Saturday also marked the unfolding of the 2008 WNIT Championship banner in front of a crowd of 1,201 at the Al McGuire Center.

Sophomore Angel Robinson hit a three-pointer in the first eight seconds of play to open the scoring for Marquette. Freshman Jessica Pachko, making her first official collegiate start, added a layup to extend the lead to 5-0. After back-to-back layups by Ellis extended the Blue and Gold's lead to 9-3, consecutive baskets by Oral Roberts' Georgia Jones and Kelly Kindell tightened the MU advantage to 12-9.

A Jocelyn Mellen entry pass to Paige Fiedorowicz allowed the home team a seven point advantage, 16-9. The ORU squad tried once again to close the gap with back-to-back treys by Amy Pryor and Jones, respectively, to close the MU lead to one point. Lauren Thomas-Johnson answered from long distance with a three of her own, to maintain a 19-15 lead.

Freshman Jordan Pyle's layup, and a Janae Voelker bank shot three, allowed Oral Roberts (0-1, 0-0) their first and only lead of the game at 20-19 with 10:52 left. After an official timeout with just under ten minutes to play, Marquette went on a 19-0 scoring spree, not allowing an opposing point for eight minutes of play. During MU's 19-0 run, five Golden Eagles scored before Georgia Jones' jumper with 2:53 left to play. Robinson tallied six points, off two layups and four foul shots, while Ellis and Thomas-Johnson added four points apiece.

Thomas-Johnson's jumper from the top of the key extended MU's lead to 38-20, its biggest lead of the first half. During ORU's drought, Marquette forced ten of ORU's 13 first half turnovers, and scored 21 points off turnovers in the first frame.

ORU's Jones, a freshman from Manchester, England, was able to hit a layup and baseline three to reduce Marquette's lead to 38-25 with 2:05 remaining in the first half. The Golden Eagles went into intermission with a 17-point lead, 42-25, after back-to-back layups by Janelle Harris and Angel Robinson, the latter coming with three seconds on the clock.

Marquette used its post presence to outscore ORU in the paint, 27-10, with Thomas-Johnson and Fiedorowicz scoring eight and seven points, respectively, in the first half. Robinson led all scorers at the half with 11 points off 4-of-6 shooting from the field. As a whole, the home team shot 46.9 percent from the field, while limited to 3-for-11 shooting from three-point range. Meanwhile, Oral Roberts hit 5-of-8 from long distance, while their drought caused a 43.5 percent clip shooting from the field.

The Golden Eagles came out with the same intensity and momentum in the second half with a 15-5 run. MU spread the scoring, with Fiedorowicz hitting a back-to-back jump shot and layup to maintain a 47-32 Marquette lead. An Ellis entry pass led to a Robinson layup, and the senior then tallied her own two points with a layup for a 51-32 advantage. Mellen and Erin Monfre both dialed in from long range, holding the comfortable lead at 57-32.

Senior Noelia Quintas' basket with 15:00 on the clock redeemed the ORU squad after being outscored 8-0 in almost four minutes without a basket. Marissa Thrower helped boost points from the bench, making two foul shots and a shot from the lane to extend the Marquette lead to 66-41.

After ORU's 6-foot-3 Monah Pegorari fouled out with 11:32 on the clock, Terri Mitchell's squad took full advantage, tallying 18 points in the paint in the second half. The two teams traded baskets for the remainder of the game, with a stifling Marquette defense outscoring the opponents, as the second Oral Roberts' player fouled out in Pyle. Janelle Harris' putback put the Golden Eagles ahead, 80-59.

## Marquette 89, Oral Roberts 67

Oral Roberts	FG-A	3P-A	FT-A	O-D-REB	PF	TP	A	TO	B	S	MIN
VOELKER f	7-12	1-5	5-11	2-5-7	3	20	3	2	0	1	39
PEGORARI f	1-3	0-0	0-0	0-1-1	5	2	0	1	1	0	14
CAMARGO g	0-6	0-0	1-6	0-5-5	2	1	1	4	1	3	27
JONES g	7-17	4-10	2-4	0-3-3	3	20	2	4	0	0	37
PRYOR g	3-4	3-3	1-2	1-1-2	0	10	3	3	0	0	21
KINDELL	0-0	0-0	0-0	0-2-2	0	0	0	1	0	1	7
TURNER	0-1	0-0	0-0	0-0-0	1	0	0	1	0	0	8
QUINTAS	2-7	0-2	2-4	1-0-1	3	6	0	2	0	0	22
PYLE	4-7	0-0	0-0	3-4-7	5	8	0	1	1	1	23
DAKES	0-0	0-0	0-0	1-0-1	0	0	0	0	0	0	2
TEAM				1-2-3							
Totals	24-57	8-20	11-27	9-23-32	22	67	9	18	3	6	200

Marquette	FG-A	3P-A	FT-A	O-D-REB	PF	TP	A	TO	B	S	MIN
PACHKO f	4-4	0-0	2-3	2-6-8	2	10	2	1	0	2	24
MELLEN f	2-3	1-1	0-0	2-6-8	3	5	0	2	0	0	21
ROBINSON g	5-10	1-2	3-4	1-4-5	3	14	4	1	3	2	28
HARRIS g	2-5	0-0	0-0	4-0-4	3	4	0	1	0	0	19
ELLIS g	7-16	0-5	2-2	0-4-4	3	16	7	4	0	1	26
COLLINS	1-1	0-0	0-0	0-2-2	3	2	0	1	0	0	3
WEIBEL	1-3	1-3	0-0	1-0-1	1	3	0	0	0	0	6
MONFRE	1-4	1-4	0-0	0-1-1	0	3	4	1	0	0	10
THOMAS-JOHNSON 3-8	2-5	4-6	0-1-1	2	12	1	1	0	0	2	20
HILL	1-3	0-1	0-0	1-2-3	2	2	0	1	0	0	10
JONES	0-0	0-0	0-3	0-1-1	1	0	1	1	0	0	9
FIEDOROWICZ	5-8	1-1	2-2	1-1-2	0	13	0	0	0	1	18
THROWER	1-1	0-0	3-4	1-1-2	2	5	0	1	0	0	6
TEAM				0-2-2							
Totals	33-66	7-22	16-24	13-31-44	25	89	19	16	3	8	200

Officials: Dennis Mayer, Robert Enterline, Carol Comanata  
 Attendance: 1,201  
 Score by Periods  
 Oral Roberts 25 42 67  
 Marquette 42 47 89

## Marquette 77, Sacred Heart 55

Game 2 • November 17, 2008

Al McGuire Center • Milwaukee, Wis.

MILWAUKEE — With another balanced scoring effort, the Marquette women's basketball team earned a 77-55 win over Sacred Heart Monday night at the Al McGuire Center. The Golden Eagles had two newcomers scoring in double figures with freshman Jessica Pachko leading the way with game-high 14 points. The win puts Marquette at 2-0 overall, while Sacred Heart drops to 0-2 on the season.

The Golden Eagles completed the evening 44.1 percent (30-68) from the field, led by Pachko and Thomas-Johnson with 14 and 13 points apiece, respectively. Pachko missed just one shot total, as she hit 6-of-7 from the field and both of her attempts from the charity stripe. All-American candidate senior Krystal Ellis contributed eight points and as many assists in the win to go along with four steals.

After a dismal 6-for-22 shooting from the floor in the second half, the Pioneers ended the game connecting on 32.1 percent from the floor, 33.3 percent from long range. The Pioneers saw three players in double-digits scoring, paced by Apo with 13 points, and Taylor and Ryan with 12 and 11 points, respectively.

Marquette's depth plagued the Pioneers, as the Golden Eagles' bench combined for 29 points, in comparison to Sacred Heart's six. For the second consecutive game, Marquette scored more than 40 points in the paint and tallied more than 40 rebounds.

Sacred Heart opened scoring with Alisa Apo hitting a three from the top of the key, but two consecutive layups by Pachko got MU off and running. Marquette began an 11-0 run 2:23 into the game and never looked back. During the scoring spree, Thomas-Johnson tallied seven points for the Golden Eagles. Marquette pushed its lead to 14 points, 25-11, midway through the first half before Kaitlin Sowinski started a mini 6-0 run for the Pioneers to cut the lead to eight, 25-17, with 8:59 to play in the first.

MU freshman Georgie Jones answered with a layup of her own to spark a 9-0 MU run, keeping Sacred Heart stranded with 17 points for over three minutes on game clock. Thomas-Johnson hit a three from the corner, and back-to-back layups by Jones and Hill extended MU's lead to 17 points (34-17), its largest of the half. SHU responded with a 7-0 run but never got closer than eight points near the end of the first half.

The Golden Eagles went into halftime with a 13-point lead, 41-28. Marquette connected on 17-of-37 (45.9%) of its attempts from the field, led by Pachko and Thomas-Johnson with 12 and 10 points, respectively. Pachko was a perfect 6-of-6 from the floor in the first.

Thomas-Johnson opened the second half with third three-pointer of the game, extending the Golden Eagles' lead to 16 points, 44-28. The Pioneers cut the gap to 13 points twice in the second frame, but Marquette put the game out of reach with an 11-2 run that pushed its lead to 22 points with 11:06 to play. The closest SHU came for the remainder of the game was 17 points.

## Marquette 77, Sacred Heart 55

Sacred Heart	FG-A	3P-A	FT-A	O-D-REB	PF	TP	A	TO	B	S	MIN
TAYLOR f	4-9	2-4	2-3	1-4-5	3	12	1	3	0	1	30
SOWINSKI c	3-7	0-0	2-2	1-7-8	2	8	4	6	4	0	28
COSGROVE g	1-7	1-4	2-2	0-2-2	3	5	1	6	0	2	26
RYAN g	4-11	1-4	2-2	5-4-9	2	11	1	7	0	3	33
APO g	3-7	3-7	4-4	3-1-4	3	13	2	6	0	1	32
HYNCIK	0-0	0-0	0-0	0-0-0	0	0	0	0	0	0	2
GIBSON	0-0	0-0	0-0	0-0-0	2	0	1	2	0	0	14
GRUBER	0-0	0-0	1-2	0-0-0	0	1	0	0	0	0	2
CAIN	1-7	0-1	1-2	1-0-1	1	3	2	0	0	1	17
GREENLEE	0-0	0-0	0-0	0-1-1	0	0	1	0	0	1	5
SCHMIDT	1-1	0-0	0-0	0-0-0	0	2	0	0	0	0	3
CAMPBELL	0-4	0-1	0-0	1-0-1	1	0	0	1	0	1	8
TEAM				1-4-5							
Totals	17-53	7-21	14-17	13-23-36	17	55	13	32	4	10	202

Marquette	FG-A	3P-A	FT-A	O-D-REB	PF	TP	A	TO	B	S	MIN
PACHKO f	6-7	0-0	2-2	2-2-4	2	14	0	1	0	0	21
MELLEN f	2-5	0-0	0-1	0-6-6	2	4	1	1	1	1	21
ROBINSON g	4-12	0-1	1-1	1-3-4	3	9	2	5	0	4	22
ELLIS g	3-7	1-3	1-2	1-2-3	1	8	8	6	1	3	26
THOMAS-JOHNSON 4-9	3-6	2-2	1-1-2	1	13	4	1	1	1	1	23
COLLINS	0-0	0-0	0-0	0-1-1	1	0	0	0	0	0	3
WEIBEL	0-0	0-0	0-0	0-0-0	0	0	0	0	0	0	4
MONFRE	0-2	0-2	0-0	0-0-0	2	0	2	1	0	0	16
HARRIS	1-7	0-0	3-4	1-0-1	2	5	3	1	0	4	13
HILL	3-6	0-0	0-0	4-1-5	0	6	0	4	0	1	14
JONES	4-7	0-0	1-2	4-3-7	0	9	0	1	1	1	13
FIEDOROWICZ	1-3	0-1	2-2	1-1-2	2	4	2	0	0	2	14
THROWER	2-3	0-0	1-3	1-1-2	1	5	0	0	0	2	10
TEAM				2-4-6							
Totals	30-68	4-13	13-19	18-25-43	17	77	22	21	4	19	200

Officials: Cameron Inouye, John Orminiski, Kevin Dillard  
 Attendance: 1,045  
 Score by Periods  
 Sacred Heart 28 27 55  
 Marquette 41 36 77



## 00 • Jasmine Collins

Sophomore  
Forward  
6-2  
Detroit, Mich.  
Martin Luther King

2008-09: Scored two points and grabbed two boards in three minutes against Oral Roberts in the season opener.

	Career	08-09 Season Highs
Points	4, at Notre Dame (2/13/08)	2, Oral Roberts (11/15/08)
Rebounds	3, Ark.-Pine Bluff (12/21/07)	2, Oral Roberts (11/15/08)
Field Goals	1, Six times	1, Oral Roberts (11/15/08)
FG Attempts	5, at Connecticut (2/20/08)	1, Oral Roberts (11/15/08)
Three FG	—	—
Three FG Att.	—	—
Free Throws	2, at Notre Dame (2/13/08)	—
Free Throw Att.	2, Twice	—
Assists	2, Western Michigan (1/2/08)	—
Steals	1, Twice times	—
Blocks	1, Six times	—
Minutes	12, Ark.-Pine Bluff (12/21/07)	3, Twice

### Collins' Game-by-Game Stats

Opponent	Date	GS	Min.	FG-A	Pct.	3P-A	Pct.	FT-FTA	Pct.	Off-Def.	Tot	Avg	PF	FO	A	TO	Blk	Stl	Pts	Avg
Oral Roberts	11/14		3	1-1	100.0	0-0	-	0-0	-	0-2	2	2.0	3	-	0	1	0	0	2	2.0
Sacred Heart	11/17		3	0-0	-	0-0	-	0-0	-	0-1	1	1.5	1	-	0	0	0	0	0	1.0
at Indiana State																				
at Northwestern																				
at Gonzaga																				
at Virginia																				
at Utah																				
at Northwestern																				
at Kansas																				
at Wisconsin																				
at Oregon																				
at Green Bay																				
at Oakland																				
at Milwaukee																				
at USF																				
at Seton Hall																				
at Notre Dame																				
at Rutgers																				
at Georgetown																				
at Syracuse																				
at Pittsburgh																				
at USF																				
at Connecticut																				
at Villanova																				
at West Virginia																				
at Cincinnati																				
at St. John's																				
at Providence																				
at DePaul																				
at Louisville																				

# Denotes BIG EAST Conference Game  
^ Denotes BIG EAST Conference Tournament Game

### Collins' Career Stats

Year	GP	GS	Min	Avg	FG-FGA	Pct	3FG-FGA	Pct	FT-FTA	Pct	Off	Def	Tot	Avg	PF	FO	Ast	TO	Blk	Stl	Pts	Avg
2007-08	19	0	96	5.1	6-25	24.0	0-0	-	4-6	66.7	12	5	17	0.9	16	0	2	9	6	2	16	0.8
2008-09	2	0	6	3.0	1-1	1.000	0-0	.000	0-0	.000	0	3	3	1.5	4	0	0	1	0	0	2	1.0
TOTAL	21	0	102	4.9	7-26	.269	0-0	.000	4-6	.667	12	8	20	1.0	20	0	2	10	6	2	18	0.9



# 1 • Angel Robinson

Sophomore  
Guard  
5-8  
St. Paul, Minn.  
Central  
BIG EAST All-Conference Candidate

2008-09: Recorded four steals against Sacred Heart (11/17)...In season opener versus Oral Roberts (11/14), tied career-highs in three-point field goals made (3) and attempted (4) and also tied a career-high with three blocks.

Points	Career	08-09 Season Highs
Rebounds	22, at Connecticut (2/20/08)	14, Oral Roberts (11/15/08)
Field Goals	9, Creighton (3/24/08)	5, Oral Roberts (11/15/08)
FG Attempts	8, Three times	5, Oral Roberts (11/15/08)
Three FG	23, USF (3/3/08)	12, Sacred Heart (11/17/08)
Three FG Att.	3, Twice	3, Oral Roberts (11/15/08)
Free Throws	4, Four Times	4, Oral Roberts (11/15/08)
Free Throw Att.	8, Twice	1, Oral Roberts (11/15/08)
Assists	11, Twice	2, Oral Roberts (11/15/08)
Steals	10, Seton Hall (2/16/08)	4, Oral Roberts (11/15/08)
Blocks	7, at Gonzaga (11/23/07)	4, Sacred Heart (11/17/08)
Minutes	3, Twice	3, Oral Roberts (11/15/08)
	39, Twice	28, Oral Roberts (11/15/08)

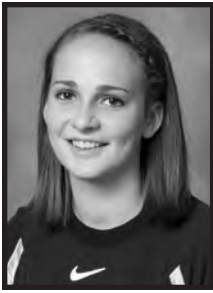
## Robinson's Game-by-Game Stats

Opponent	Date	GS	Min.	FG-A	Pct.	3P-A	Pct.	FT-FTA	Pct.	Off-Def.	Tot	Avg	PF	FO	A	TO	Blk	Stl	Pts	Avg
Oral Roberts	11/14	*	28	5-10	50.0	3-4	75.0	1-2	50.0	1-4	5	5.0	3	-	4	1	3	2	14	14.0
Sacred Heart	11/17	*	22	4-12	33.3	0-1	0.0	1-1	100.0	1-3	4	4.5	3	-	2	5	0	4	9	11.5
at Indiana State																				
at Western Michigan																				
Gonzaga																				
Virginia																				
Utah																				
at Northwestern																				
Kansas																				
at Wisconsin																				
Oregon																				
Green Bay																				
at Oakland																				
Milwaukee																				
USF																				
at Seton Hall																				
Notre Dame																				
at Rutgers																				
at Georgetown																				
Syracuse																				
at Pittsburgh																				
at USF																				
Connecticut																				
Villanova																				
West Virginia																				
at Cincinnati																				
St. John's																				
at Providence																				
at DePaul																				
Louisville																				

# Denotes BIG EAST Conference Game  
^ Denotes BIG EAST Conference Tournament Game

## Robinson's Career Stats

Year	GP	GS	Min	Avg	FG-FGA	Pct	3FG-FGA	Pct	FT-FTA	Pct	Off	Def	Tot	Avg	PF	FO	Ast	TO	Blk	Stl	Pts	Avg
2007-08	35	33	955	27.3	141-364	38.7	18-54	33.3	99-142	69.7	55	97	152	4.3	104	4	135	118	13	86	399	11.4
2008-09	2	2	50	25.0	9-22	.409	1-3	.333	4-5	.800	2	7	9	4.5	6	0	6	6	3	6	23	11.5
TOTALS	37	35	1005	27.2	150-386	.389	19-57	.333	103-147	.701	57	104	161	4.4	110	4	141	124	16	92	422	11.4



### 3 • Courtney Weibel

Sophomore  
Guard  
5-9  
Rockton, Ill.  
Hononegah

2008-09: Made a three-pointer against Oral Roberts...

<b>Career</b>	15, Seton Hall (2/16/08)	<b>08-09 Season Highs</b>	3, Oral Roberts (11/15/08)
Points	3, Pittsburgh (2/23/08)	1, Oral Roberts (11/15/08)	
Rebounds	5, Seton Hall (2/16/08)	1, Oral Roberts (11/15/08)	
Field Goals	8, Twice	3, Oral Roberts (11/15/08)	
FG Attempts	5, Seton Hall (2/16/08)	1, Oral Roberts (11/15/08)	
Three FG	8, Twice	3, Oral Roberts (11/15/08)	
Three FG Att.	2, at Notre Dame (2/13/08)	—	
Free Throws	2, at Notre Dame (2/13/08)	—	
Free Throw Att.	2, at Notre Dame (2/13/08)	—	
Assists	2, at Connecticut (2/20/08)	—	
Steals	1, Indiana State (12/15/07)	—	
Blocks	20, at Notre Dame (2/13/08)	6, Oral Roberts (11/15/08)	
Minutes			

### Weibel's Game-by-Game Stats

Opponent	Date	GS	Min.	FG-A	Pct.	3P-A	Pct.	FT-FTA	Pct.	Off-Def.	Tot	Avg	PF	FO	A	TO	Blk	Stl	Pts	Avg
Oral Roberts	11/14		6	1-3	.33.3	1-3	.33.3	0-0	-	1-0	1	1.0	1	-	0	0	0	0	3	3.0
Sacred Heart	11/16		4	0-0	-	0-0	-	0-0	-	0-0	0	0.5	0	-	0	0	0	0	0	1.5
at Indiana State																				
at Western Michigan																				
Gonzaga																				
Virginia																				
Utah																				
at Northwestern																				
Kansas																				
at Wisconsin																				
Oregon																				
Green Bay																				
at Oakland																				
Milwaukee																				
USF																				
at Seton Hall																				
Notre Dame																				
at Rutgers																				
at Georgetown																				
Syracuse																				
at Pittsburgh																				
at USF																				
Connecticut																				
Villanova																				
West Virginia																				
at Cincinnati																				
St. John's																				
at Providence																				
at DePaul																				
Louisville																				

# Denotes BIG EAST Conference Game  
^ Denotes BIG EAST Conference Tournament Game

### Weibel's Career Stats

Year	GP	GS	Min	Avg	FG-FGA	Pct	3FG-FGA	Pct	FT-FTA	Pct	Off	Def	Tot	Avg	PF	FO	Ast	TO	Blk	Stl	Pts	Avg
<b>2007-08</b>	30	0	201	6.7	23-78	29.5	22-72	30.6	2-2	100.0	6	12	18	0.6	14	0	8	14	1	6	70	2.3
2008-09	2	0	10	5.0	1-3	.333	1-3	.333	0-0	.000	1	0	1	0.5	1	0	0	0	0	0	3	1.5
<b>TOTALS</b>	32	0	211	6.6	24-81	.296	23-75	.307	2-2	1.000	7	12	19	0.6	15	0	8	14	1	6	73	2.3



## 5 • Erin Monfre

Senior  
Guard  
5-11  
Waukesha, Wis.  
Waukesha South

Points	Career Highs	08-09 Season Highs
Rebounds	18, at Virginia (11/17/06)	3, Oral Roberts (11/15/08)
Field Goals	8, at Colorado (4/2/08)	1, Oral Roberts (11/15/08)
FG Attempts	6, at Virginia (11/17/06)	1, Oral Roberts (11/15/08)
Three FG	9, at Michigan State (4/5/08)	4, Oral Roberts (11/15/08)
Three FG Att.	6, at Virginia (11/17/06)	1, Oral Roberts (11/15/08)
Free Throws	8, at Michigan State (4/5/08)	4, Oral Roberts (11/15/08)
Free Throw Att.	4, Twice	—
Assists	4, Twice	—
Steals	8, Navy (12/29/06)	4, Oral Roberts (11/15/08)
Blocks	3, Five Times	—
Minutes	1, Five Times	—
	34, at Oregon (11/20/07)	16, Sacred Heart (11/17/08)

2008-09: Dished out four assists in season opener against Oral Roberts.

### Monfre's Game-by-Game Stats

Opponent	Date	GS	Min.	FG-A	Pct.	3P-A	Pct.	FT-FTA	Pct.	Off-Def.	Tot	Avg	PF	FO	A	TO	Blk	Stl	Pts	Avg
Oral Roberts	11/14		10	1-4	25.0	1-4	25.0	0-0	-	0-1	1	1.0	0	-	4	1	0	0	3	3.0
Sacred Heart	11/16		16	0-2	0.0	0-2	0.0	0-0	-	0-0	0	0.5	2	-	2	1	0	0	0	1.5
at Indiana State																				
at Western Michigan																				
Gonzaga																				
Virginia																				
Utah																				
at Northwestern																				
Kansas																				
at Wisconsin																				
Oregon																				
Green Bay																				
at Oakland																				
Milwaukee																				
USF																				
at Seton Hall																				
Notre Dame																				
at Rutgers																				
at Georgetown																				
Syracuse																				
at Pittsburgh																				
at USF																				
Connecticut																				
Villanova																				
West Virginia																				
at Cincinnati																				
St. John's																				
at Providence																				
at DePaul																				
Louisville																				

# Denotes BIG EAST Conference Game  
^ Denotes BIG EAST Conference Tournament Game

### Monfre's Career Stats

Year	GP	GS	Min	Avg	FG-FGA	Pct	3FG-FGA	Pct	FT-FTA	Pct	Off	Def	Tot	Avg	PF	FO	Ast	TO	Blk	Stl	Pts	Avg
2005-06	33	6	481	14.6	31-105	29.5	29-88	33.0	9-11	81.8	6	26	32	1.0	25	0	25	26	0	16	100	3.0
2006-07	33	17	696	21.1	35-130	26.9	28-101	27.7	21-26	80.8	13	55	68	2.1	28	0	86	43	4	21	119	3.6
2007-08	31	2	496	16.0	32-114	28.1	28-96	29.2	5-12	41.7	14	32	46	1.5	23	0	38	24	2	19	97	3.1
2008-09	2	0	26	13.0	1-6	.167	1-6	.167	0-0	.000	0	1	1	0.5	2	0	6	2	0	0	3	1.5
<b>TOTAL</b>	<b>99</b>	<b>25</b>	<b>1699</b>	<b>17.2</b>	<b>99-355</b>	<b>.279</b>	<b>86-291</b>	<b>.296</b>	<b>35-49</b>	<b>.714</b>	<b>33</b>	<b>114</b>	<b>147</b>	<b>1.5</b>	<b>78</b>	<b>0</b>	<b>155</b>	<b>95</b>	<b>6</b>	<b>56</b>	<b>319</b>	<b>3.2</b>



## 11 • Janelle Harris

Junior  
Guard  
6-0  
Detroit, Mich.  
Renaissance

2008-09: Recorded a career-high four steals against Sacred Heart (11/17)...Started 36th straight game in season opening win against Oral Roberts, scoring four points and grabbing four rebounds.

Points	17, at St. John's (2/2/08)	08-09 Season Highs	4, Oral Roberts (11/15/08)
Rebounds	9, Western Michigan (1/2/08)	4, Oral Roberts (11/15/08)	4, Oral Roberts (11/15/08)
Field Goals	6, Twice	2, Oral Roberts (11/15/08)	7, Sacred Heart (11/17/08)
FG Attempts	14, at St. John's (2/2/08)	—	—
Three FG	1, Four Times	—	—
Three FG Att.	2, Three Times	3, Sacred Heart (11/17/08)	4, Sacred Heart (11/17/08)
Free Throws	7, at Colorado (4/2/08)	4, Sacred Heart (11/17/08)	3, Sacred Heart (11/17/08)
Free Throw Att.	10, at Colorado (4/2/08)	4, Sacred Heart (11/17/08)	4, Sacred Heart (11/17/08)
Assists	4, vs. Arkansas (12/30/07)	—	—
Steals	4, Sacred Heart (11/17/08)	—	—
Blocks	—	—	—
Minutes	33, Creighton (3/24/08)	19, Oral Roberts (11/15/08)	

### Harris' Game-by-Game Stats

Opponent	Date	GS	Min.	FG-A	Pct.	3P-A	Pct.	FT-FTA	Pct.	Off-Def.	Tot	Avg	PF	FO	A	TO	Blk	Stl	Pts	Avg
Oral Roberts	11/14	*	19	2-5	40.0	0-0	-	0-0	-	4-0	4	4.0	3	-	0	1	0	0	4	4.0
Sacred Heart	11/16		13	1-7	14.2	0-0	-	3-4	75.0	1-0	1	2.5	2	-	3	1	0	4	5	4.5
at Indiana State																				
at Western Michigan																				
Gonzaga																				
Virginia																				
Utah																				
at Northwestern																				
Kansas																				
at Wisconsin																				
Oregon																				
Green Bay																				
at Oakland																				
Milwaukee																				
USF																				
at Seton Hall																				
Notre Dame																				
at Rutgers																				
at Georgetown																				
Syracuse																				
at Pittsburgh																				
at USF																				
Connecticut																				
Villanova																				
West Virginia																				
at Cincinnati																				
St. John's																				
at Providence																				
at DePaul																				
Louisville																				

# Denotes BIG EAST Conference Game  
^ Denotes BIG EAST Conference Tournament Game

### Harris' Career Stats

Year	GP	GS	Min	Avg	FG-FGA	Pct	3FG-FGA	Pct	FT-FTA	Pct	Off	Def	Tot	Avg	PF	FO	Ast	TO	Blk	Stl	Pts	Avg
2006-07	32	0	275	8.6	24-67	35.8	1-6	16.7	19-29	65.5	19	29	48	1.5	23	0	11	34	1	20	68	2.1
2007-08	35	35	794	22.7	89-221	40.3	4-17	23.5	60-80	75.0	52	81	133	3.8	66	0	39	87	0	45	242	6.9
2008-09	2	1	32	16.0	3-12	.250	0-0	.000	3-4	.750	5	0	5	2.5	5	0	3	2	0	4	9	4.5
<b>TOTAL</b>	<b>69</b>	<b>36</b>	<b>1101</b>	<b>16.0</b>	<b>116-300</b>	<b>.387</b>	<b>5-23</b>	<b>.217</b>	<b>82-113</b>	<b>.726</b>	<b>76</b>	<b>110</b>	<b>186</b>	<b>2.7</b>	<b>94</b>	<b>0</b>	<b>53</b>	<b>123</b>	<b>1</b>	<b>69</b>	<b>319</b>	<b>4.6</b>



## 12 • Jessica Pachko

Freshman  
Forward  
6-2  
Cincinnati, Ohio  
Oak Hills

2008-09: Scored 14 points against Sacred Heart (11/17) on 6-of-7 shooting from the field to begin college career 10-11 from the field...Started first collegiate game against Oral Roberts, scoring 10 points on 4-of-4 shooting from the field and grabbed eight rebounds.

### Career /08-09 Season Highs

Points	14, Sacred Heart (11/17/08)
Rebounds	8, Oral Roberts (11/15/08)
Field Goals	6, Sacred Heart (11/17/08)
FG Attempts	7, Sacred Heart (11/17/08)
Three FG	—
Three FG Att	—
Free Throws	2, Twice
Free Throw Att.	3, Oral Roberts (11/15/08)
Assists	2, Oral Roberts (11/15/08)
Steals	2, Oral Roberts (11/15/08)
Blocks	—
Minutes	24, Oral Roberts (11/17/08)

### Pachko's Game-by-Game Stats

Opponent	Date	GS	Min.	FG-A	Pct.	3P-A	Pct.	FT-FTA	Pct.	Off-Def.	Tot	Avg	PF	FO	A	TO	Blk	Stl	Pts	Avg
Oral Roberts	11/14	*	24	4-4	100.0	0-0	-	2-3	66.6	2-6	8	8.0	2	-	2	1	0	2	10	10.0
Sacred Heart	11/16	*	21	6-7	85.7	0-0	-	2-2	100.0	2-2	4	6.0	2	-	0	1	0	0	14	12.0
at Indiana State																				
at Western Michigan																				
Gonzaga																				
Virginia																				
Utah																				
at Northwestern																				
Kansas																				
at Wisconsin																				
Oregon																				
Green Bay																				
at Oakland																				
Milwaukee																				
USF																				
at Seton Hall																				
Notre Dame																				
at Rutgers																				
at Georgetown																				
Syracuse																				
at Pittsburgh																				
at USF																				
Connecticut																				
Villanova																				
West Virginia																				
at Cincinnati																				
St. John's																				
at Providence																				
at DePaul																				
Louisville																				

# Denotes BIG EAST Conference Game

^ Denotes BIG EAST Conference Tournament Game

### Pachko's Career Stats

Year	GP	GS	Min	Avg	FG-FGA	Pct	3FG-FGA	Pct	FT-FTA	Pct	Off	Def	Tot	Avg	PF	FO	Ast	TO	Blk	Stl	Pts	Avg
2008-09	2	2	45	22.5	10-11	.909	0-0	.000	4-5	.800	4	8	12	6.0	4	0	2	2	0	2	24	12.0



## 20 • Krystal Ellis

Senior  
Guard  
5-9  
Racine, Wis.  
St. Catherine's

*All-America Candidate*  
*2008 "Wade Watch" List selection*  
*2008 Naismith Top-30 List*

2008-09: Against Sacred Heart (11/17), saw action in 99th career collegiate game...Scored 16 points, grabbed four rebounds and dished out seven assists in season opening win over Oral Roberts.

	Career Highs	08-09 Season Highs
Points	40, at Kentucky (3/30/08)	16, Oral Roberts (11/15/08)
Rebounds	10, Northwestern (12/17/07)	4, Oral Roberts (11/15/08)
Field Goals	13, at USF (1/26/08)	7, Oral Roberts (11/15/08)
FG Attempts	27, at USF (1/26/08)	16, Oral Roberts (11/15/08)
Three FG	5, Five Times	—
Three FG Att.	11, Twice	5, Oral Roberts (11/15/08)
Free Throws	13, at Kentucky (3/30/08)	2, Oral Roberts (11/15/08)
Free Throw Att.	14, at Kentucky (3/30/08)	2, Oral Roberts (11/15/08)
Assists	11, at Michigan St. (4/5/08)	8, Sacred Heart (11/17/08)
Steals	6, at Rice (12/3/06)	3, Sacred Heart (11/17/08)
Blocks	4, at Kentucky (3/30/08)	—
Minutes	38, Twice	26, Oral Roberts (11/15/08)

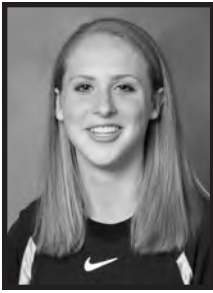
### Ellis' Game-by-Game Stats

Opponent	Date	GS	Min.	FG-A	Pct.	3P-A	Pct.	FT-FTA	Pct.	Off-Def.	Tot	Avg	PF	FO	A	TO	Blk	Stl	Pts	Avg
Oral Roberts	11/14	*	26	7-16	43.8	0-5	0.0	2-2	100.0	0-4	4	4.0	3	-	7	4	0	1	16	16.0
Sacred Heart	11/16	*	26	3-7	42.9	1-3	33.3	1-2	50.0	1-2	3	3.5	1	-	8	6	1	3	8	12.0
at Indiana State																				
Gonzaga																				
Virginia																				
Utah																				
at Northwestern																				
Kansas																				
at Wisconsin																				
Oregon																				
Green Bay																				
at Oakland																				
Milwaukee																				
USF																				
at Seton Hall																				
Notre Dame																				
at Rutgers																				
at Georgetown																				
Syracuse																				
at Pittsburgh																				
at USF																				
Connecticut																				
Villanova																				
West Virginia																				
at Cincinnati																				
St. John's																				
at Providence																				
at DePaul																				
Louisville																				

# Denotes BIG EAST Conference Game  
^ Denotes BIG EAST Conference Tournament Game

### Ellis' Career Stats

Year	GP	GS	Min	Avg	FG-FGA	Pct	3FG-FGA	Pct	FT-FTA	Pct	Off	Def	Tot	Avg	PF	FO	Ast	TO	Blk	Stl	Pts	Avg
2005-06	33	26	792	24.0	124-275	45.1	42-106	39.6	63-83	75.9	30	59	89	2.7	65	0	89	62	10	62	353	10.7
2006-07	33	33	999	30.3	189-436	43.3	65-183	35.5	150-172	87.2	28	81	109	3.3	71	0	115	90	5	73	593	18.0
2007-08	31	29	949	30.6	212-510	41.6	67-190	35.3	110-134	82.1	28	61	89	2.9	76	1	107	84	14	60	601	19.4
2008-09	2	2	52	26.0	10-23	.435	1-8	.125	3-4	.750	1	6	7	3.5	4	0	15	10	1	4	24	12.0
TOTAL	99	90	2792	28.2	535-1244	.430	175-487	.359	326-393	.830	87	207	294	3.0	216	1	326	246	30	199	1571	15.9



## 22 • Jocelyn Mellen

RS Sophomore  
Forward  
6-3  
Dixon, Ill.  
Newman Catholic

2008-09: Hit first career three-point basket against Oral Roberts in the season opener...

### Career

Points	17, Creighton (3/24/08)	07-08 Season Highs	5, Oral Roberts (11/15/08)
Rebounds	16, USF (3/3/08)		8, Oral Roberts (11/15/08)
Field Goals	6, Creighton (3/24/08)		2, Oral Roberts (11/15/08)
FG Attempts	10, at Michigan State (4/5/08)		5, Sacred Heart (11/17/08)
Three FG	1, Oral Roberts (11/15/08)		1, Oral Roberts (11/15/08)
Three FG Att.	2, at Oregon (11/20/07)		1, Oral Roberts (11/15/08)
Free Throws	7, at Villanova (3/1/08)		—
Free Throw Att.	10, at Villanova (3/1/08)		1, Sacred Heart (11/17/08)
Assists	2, William & Mary (11/26/07)		1, Sacred Heart (11/17/08)
Steals	4, Creighton (3/24/08)		1, Sacred Heart (11/17/08)
Blocks	4, at Oregon (11/20/07)		1, Sacred Heart (11/17/08)
Minutes	38, Creighton (3/24/08)		21, Twice

### Mellen's Game-by-Game Stats

Opponent	Date	GS	Min	FG-A	Pct	3P-A	Pct	FT-FTA	Pct	Off-Def	Tot	Avg	PF	FO	A	TO	Blk	Stl	Pts	Avg
Oral Roberts	11/14	*	21	2-3	66.6	1-1	100.0	0-0	-	2-6	8	8.0	3	-	0	2	0	0	5	5.0
Sacred Heart	11/16	*	21	2-5	40.0	0-0	-	0-1	0.0	0-6	6	7.0	2	-	1	1	1	1	4	4.5
at Indiana State																				
at Western Michigan																				
Gonzaga																				
Virginia																				
Utah																				
at Northwestern																				
Kansas																				
at Wisconsin																				
Oregon																				
Green Bay																				
at Oakland																				
Milwaukee																				
USF																				
at Seton Hall																				
Notre Dame																				
at Rutgers																				
at Georgetown																				
Syracuse																				
at Pittsburgh																				
at USF																				
Connecticut																				
Villanova																				
West Virginia																				
at Cincinnati																				
St. John's																				
at Providence																				
at DePaul																				
Louisville																				

# Denotes BIG EAST Conference Game  
^ Denotes BIG EAST Conference Tournament Game

### Mellen's Career Stats

Year	GP	GS	Min	Avg	FG-FGA	Pct	3FG-FGA	Pct	FT-FTA	Pct	Off	Def	Tot	Avg	PF	FO	Ast	TO	Blk	Stl	Pts	Avg
2006-07																						
2007-08	35	9	648	18.5	66-153	43.1	0-6	-	64-100	64.0	63	104	167	4.8	73	0	11	43	14	27	196	5.6
2008-09	1	1	21	21.0	2-3	66.6	1-1	100.0	0-0	-	2	6	8	8.0	3	0	0	2	0	0	5	5.0
TOTALS	36	10	669	18.6	68-156	.436	1-7	.143	64-100	.640	65	110	175	4.9	76	0	11	45	14	27	201	5.6

Game 3 • Marquette at Indiana State • November 19, 2008 • Terre Haute, Ind.



## 23 • Tatiyana McMorris

Sophomore  
Guard  
5-7  
Bronx, N.Y.  
JFK

2008-09: Has not seen any action...

	Career	07-08 Season Highs
Points	12, at Kansas (12/06/07)	—
Rebounds	4, Five times	—
Field Goals	4, at Kansas (12/06/07)	—
FG Attempts	8, Twice	—
Three FG	2, Twice	—
Three FG Att.	3, Five Times	—
Free Throws	3, Twice	—
Free Throw Att.	4, Twice	—
Assists	3, Indiana State (12/15/07)	—
Steals	2, Five Times	—
Blocks	1, Twice	—
Minutes	31, USF (3/3/08)	—

### McMorris' Game-by-Game Stats

Opponent	Date	GS	Min.	FG-A	Pct.	3P-A	Pct.	FT-FTA	Pct.	Off-Def.	Tot	Avg	PF	FO	A	TO	Blk	Stl	Pts	Avg	
Oral Roberts																					Did Not Play
Sacred Heart																					Did Not Play
at Indiana State																					
at Western Michigan																					
Gonzaga																					
Virginia																					
Utah																					
at Northwestern																					
Kansas																					
at Wisconsin																					
Oregon																					
Green Bay																					
at Oakland																					
Milwaukee																					
USF																					
at Seton Hall																					
Notre Dame																					
at Rutgers																					
at Georgetown																					
Syracuse																					
at Pittsburgh																					
at USF																					
Connecticut																					
Villanova																					
West Virginia																					
at Cincinnati																					
St. John's																					
at Providence																					
at DePaul																					
Louisville																					

# Denotes BIG EAST Conference Game  
^ Denotes BIG EAST Conference Tournament Game

### McMorris' Career Stats

Year	GP	GS	Min	Avg	FG-FGA	Pct	3FG-FGA	Pct	FT-FTA	Pct	Off	Def	Tot	Avg	PF	FO	Ast	TO	Blk	Stl	Pts	Avg
2007-08	34	3	435	12.8	28-88	31.8	11-37	29.7	24-32	75.0	20	37	57	1.7	34	0	31	36	2	19	91	2.7
2008-09	0	0	0	-	0-0	-	0-0	-	0-0	-	0	0	0	-	0	0	0	0	0	0	0	-
<b>TOTALS</b>	<b>34</b>	<b>3</b>	<b>435</b>	<b>12.8</b>	<b>28-88</b>	<b>31.8</b>	<b>11-37</b>	<b>29.7</b>	<b>24-32</b>	<b>75.0</b>	<b>20</b>	<b>37</b>	<b>57</b>	<b>1.7</b>	<b>34</b>	<b>0</b>	<b>31</b>	<b>36</b>	<b>2</b>	<b>19</b>	<b>91</b>	<b>2.7</b>



## 24 • Lauren Thomas-Johnson

Junior-Transfer  
Guard  
5-10  
Machester, England  
Notre Dame Acad. (Va.)/Kirkwood CC

2008-09: Recorded 13 points against Sacred Heart (11/17) while also recording four assists...Scored 12 points in first NCAA Division I game against Oral Roberts (11/14).

### Career /08-09 Season Highs

Points 13, Sacred Heart (11/17/08)  
Rebounds 2, Sacred Heart (11/17/08)  
Field Goals 4, Sacred Heart (11/17/08)  
FG Attempts 9, Sacred Heart (11/17/08)  
Three FG 3, Sacred Heart (11/17/08)  
Three FG Att 6, Sacred Heart (11/17/08)  
Free Throws 4, Oral Roberts (11/15/08)  
Free Throw Att. 6, Oral Roberts (11/15/08)  
Assists 1, Oral Roberts (11/15/08)  
Steals 2, Oral Roberts (11/15/08)  
Blocks 1, Sacred Heart (11/17/08)  
Minutes 23, Sacred Heart (11/17/08)

### Thomas-Johnson's Game-by-Game Stats

Opponent	Date	GS	Min.	FG-A	Pct.	3P-A	Pct.	FT-FTA	Pct.	Off-Def.	Tot	Avg	PF	FO	A	TO	Blk	Stl	Pts	Avg
Oral Roberts	11/14		20	3-8	37.5	2-5	40.0	4-6	66.6	0-1	1	1.0	2	-	1	1	0	2	12	12.0
Sacred Heart	11/16	*	23	4-9	44.4	3-6	50.0	2-2	100.0	1-1	2	1.5	1	-	4	1	1	1	13	12.5
at Indiana State																				
at Western Michigan																				
Gonzaga																				
Virginia																				
Utah																				
at Northwestern																				
Kansas																				
at Wisconsin																				
Oregon																				
Green Bay																				
at Oakland																				
Milwaukee																				
USF																				
at Seton Hall																				
Notre Dame																				
at Rutgers																				
at Georgetown																				
Syracuse																				
at Pittsburgh																				
at USF																				
Connecticut																				
Villanova																				
West Virginia																				
at Cincinnati																				
St. John's																				
at Providence																				
at DePaul																				
Louisville																				

# Denotes BIG EAST Conference Game  
^ Denotes BIG EAST Conference Tournament Game

### Thomas-Johnson's Career Stats

Year	GP	GS	Min	Avg	FG-FGA	Pct	3FG-FGA	Pct	FT-FTA	Pct	Off	Def	Tot	Avg	PF	FO	Ast	TO	Blk	Stl	Pts	Avg
2008-09	2	1	43	21.5	7-17	.412	5-11	.455	6-8	.750	1	2	3	1.5	3	0	5	2	1	3	25	12.5



## 32 • Breann Hil

Junior-Transfer  
 Forward  
 5-10  
 Harrisburg, Pa.  
 Bishop McDevitt/Kirkwood CC

2008-09: Scored six points and pulled down five boards against Sacred Heart (11/17)...  
 Grabbed three rebounds in season opening win over Oral Roberts.

	Career /08-09 Season Highs
Points	6, Sacred Heart (11/17/08)
Rebounds	5, Sacred Heart (11/17/08)
Field Goals	3, Sacred Heart (11/17/08)
FG Attempts	6, Sacred Heart (11/17/08)
Three FG	—
Three FG Att	1, Oral Roberts (11/15/08)
Free Throws	—
Free Throw Att.	—
Assists	—
Steals	1, Sacred Heart (11/17/08)
Blocks	—
Minutes	14, Sacred Heart (11/17/08)

### Hil's Game-by-Game Stats

Opponent	Date	GS	Min.	FG-A	Pct.	3P-A	Pct.	FT-FTA	Pct.	Off-Def.	Tot	Avg	PF	FO	A	TO	Blk	Stl	Pts	Avg
Oral Roberts	11/14		10	1-3	33.3	0-1	0.0	0-0	-	1-2	3	3.0	2	-	0	1	0	0	2	2.0
Sacred Heart	11/16		14	3-6	50.0	0-0	-	0-0	-	4-1	5	4.0	0	-	0	4	0	1	6	4.0
at Indiana State																				
at Western Michigan																				
Gonzaga																				
Virginia																				
Utah																				
at Northwestern																				
Kansas																				
at Wisconsin																				
Oregon																				
Green Bay																				
at Oakland																				
Milwaukee																				
USF																				
at Seton Hall																				
Notre Dame																				
at Rutgers																				
at Georgetown																				
Syracuse																				
at Pittsburgh																				
at USF																				
Connecticut																				
Villanova																				
West Virginia																				
at Cincinnati																				
St. John's																				
at Providence																				
at DePaul																				
Louisville																				

# Denotes BIG EAST Conference Game  
 ^ Denotes BIG EAST Conference Tournament Game

### Hil's Career Stats

Year	GP	GS	Min	Avg	FG-FGA	Pct	3FG-FGA	Pct	FT-FTA	Pct	Off	Def	Tot	Avg	PF	FO	Ast	TO	Blk	Stl	Pts	Avg
2008-09	2	0	24	12.0	4-9	.444	0-1	.000	0-0	.000	5	3	8	4.0	2	0	0	5	0	1	8	4.0



## 34 • Georgie Jones

Freshman  
Center  
6-3  
St. Paul, Minn.  
Central

2008-09: Scored nine points and grabbed seven rebounds in 13 minutes against Sacred Heart (11/17).

### Career /Season Highs

Points	—
Rebounds	—
Field Goals	—
FG Attempts	—
Three FG	—
Three FG Att	—
Free Throws	—
Free Throw Att.	3, Oral Roberts (11/15/08)
Assists	1, Oral Roberts (11/15/08)
Steals	—
Blocks	—
Minutes	9, Oral Roberts (11/15/08)

### Jones' Game-by-Game Stats

Opponent	Date	GS	Min.	FG-A	Pct.	3P-A	Pct.	FT-FTA	Pct.	Off-Def.	Tot	Avg	PF	FO	A	TO	Blk	Stl	Pts	Avg
Oral Roberts	11/14		9	0-0	-	0-0	-	0-3	0.0	0-1	1	1.0	1	-	1	1	0	0	0	0.0
Sacred Heart	11/16		13	4-7	.571	0-0	-	1-2	50.0	4-3	7	4.0	0	-	0	1	1	1	9	4.5
at Indiana State																				
at Western Michigan																				
Gonzaga																				
Virginia																				
Utah																				
at Northwestern																				
Kansas																				
at Wisconsin																				
Oregon																				
Green Bay																				
at Oakland																				
Milwaukee																				
USF																				
at Seton Hall																				
Notre Dame																				
at Rutgers																				
at Georgetown																				
Syracuse																				
at Pittsburgh																				
at USF																				
Connecticut																				
Villanova																				
West Virginia																				
at Cincinnati																				
St. John's																				
at Providence																				
at DePaul																				
Louisville																				

# Denotes BIG EAST Conference Game  
^ Denotes BIG EAST Conference Tournament Game

### Jones' Career Stats

Year	GP	GS	Min	Avg	FG-FGA	Pct	3FG-FGA	Pct	FT-FTA	Pct	Off	Def	Tot	Avg	PF	FO	Ast	TO	Blk	Stl	Pts	Avg
2008-09	2	0	22	11.0	4-7	.571	0-0	.000	1-5	.200	4	4	8	4.0	1	0	1	2	1	1	9	4.5



## 41 • Paige Fiedorowicz

Sophomore  
Forward  
6-0  
Johnsburg, Ill.  
Johnsburg

2008-09: Hit first career three-point basket against Oral Roberts on her way to 13 points.

	Career	07-08 Season Highs
Points	17, William & Mary (11/26/07)	13, Oral Roberts (11/15/08)
Rebounds	9, Twice	2, Oral Roberts (11/15/08)
Field Goals	8, William & Mary (11/26/07)	5, Oral Roberts (11/15/08)
FG Attempts	12, at Notre Dame (2/13/08)	8, Oral Roberts (11/15/08)
Three FG	1, Oral Roberts (11/15/08)	1, Oral Roberts (11/15/08)
Three FG Att.	1, Twice	1, Twice
Free Throws	5, Three Times	2, Twice
Free Throw Att.	6, Twice	2, Twice
Assists	2, Four Times	2, Sacred Heart (11/17/08)
Steals	2, Six times	2, Sacred Heart (11/17/08)
Blocks	2, at Green Bay (12/01/07)	-
Minutes	26, Twice	18, Oral Roberts (11/15/08)

### Fiedorowicz's Game-by-Game Stats

Opponent	Date	GS	Min.	FG-A	Pct.	3P-A	Pct.	FT-FTA	Pct.	Off-Def.	Tot.	Avg.	PF	FO	A	TO	Blk	Stl	Pts	Avg.
Oral Roberts	11/14		18	5-8	62.5	1-1	100.0	2-2	100.0	1-1	2	2.0	0	-	0	0	0	1	13	13.0
Sacred Heart	11/16		14	1-3	33.3	0-1	-	2-2	100.0	1-1	2	2.0	2	-	2	0	0	2	4	8.5
at Indiana State																				
at Western Michigan																				
Gonzaga																				
Virginia																				
Utah																				
at Northwestern																				
Kansas																				
at Wisconsin																				
Oregon																				
Green Bay																				
at Oakland																				
Milwaukee																				
USF																				
at Seton Hall																				
Notre Dame																				
at Rutgers																				
at Georgetown																				
Syracuse																				
at Pittsburgh																				
at USF																				
Connecticut																				
Villanova																				
West Virginia																				
at Cincinnati																				
St. John's																				
at Providence																				
at DePaul																				
Louisville																				

# Denotes BIG EAST Conference Game  
^ Denotes BIG EAST Conference Tournament Game

### Fiedorowicz's Career Stats

Year	GP	GS	Min	Avg	FG-FGA	Pct	3FG-FGA	Pct	FT-FTA	Pct	Off	Def	Tot	Avg	PF	FO	Ast	TO	Blk	Stl	Pts	Avg
<b>2007-08</b>	27	14	485	18.0	68-149	45.6	0-1	-	40-59	67.8	52	61	113	4.2	63	2	16	40	6	21	176	6.5
2008-09	2	0	32	16.0	6-11	.545	1-2	.500	4-4	1.000	2	2	4	2.0	2	0	2	0	0	3	17	8.5
<b>TOTALS</b>	29	14	517	17.8	74-160	.463	1-3	.333	44-63	.698	54	63	117	4.0	65	2	18	40	6	24	193	6.7



## 42 • Marissa Thrower

Senior  
Forward  
5-11  
Detroit, Mich.  
Renaissance

2008-09: Scored five points in six minutes of action against Oral Roberts.

	Career Highs	08-09 Season Highs
Points	19, William & Mary (11/26/07)	5, Twice
Rebounds	8, vs Pittsburgh (3/4/07)	2, Twice
Field Goals	7, William & Mary (11/26/07)	2, Sacred Heart (11/17/08)
FG Attempts	14, William & Mary (11/26/07)	3, Sacred Heart (11/17/08)
Three FG	2, Three Times	-
Three FG Att.	2, Six Times	-
Free Throws	6, Twice	3, Oral Roberts (11/15/08)
Free Throw Att.	7, Pittsburgh (3/27/06)	4, Oral Roberts (11/15/08)
Assists	3, Twice	-
Steals	3, Three Times	2, Sacred Heart (11/17/08)
Blocks	2, Three times	-
Minutes	29, Providence (1/31/06)	10, Oral Roberts (11/15/08)

### Thrower's Game-by-Game Stats

Opponent	Date	GS	Min.	FG-A	Pct.	3P-A	Pct.	FT-FTA	Pct.	Off-Def.	Tot	Avg	PF	FO	A	TO	Blk	Stl	Pts	Avg
Oral Roberts	11/14		6	1-1	100.0	0-0	-	3-4	75.0	1-1	2	2.0	2	-	0	1	0	0	5	5.0
Sacred Heart	11/16		10	2-3	66.7	0-0	-	1-3	33.3	1-1	2	2.0	1	-	0	0	0	2	5	5.0
at Indiana State																				
at Western Michigan																				
Gonzaga																				
Virginia																				
Utah																				
at Northwestern																				
Kansas																				
at Wisconsin																				
Oregon																				
Green Bay																				
at Oakland																				
Milwaukee																				
USF																				
at Seton Hall																				
Notre Dame																				
at Rutgers																				
at Georgetown																				
Syracuse																				
at Pittsburgh																				
at USF																				
Connecticut																				
Villanova																				
West Virginia																				
at Cincinnati																				
St. John's																				
at Providence																				
at DePaul																				
Louisville																				

# Denotes BIG EAST Conference Game  
^ Denotes BIG EAST Conference Tournament Game

### Thrower's Career Stats

Year	GP	GS	Min	Avg	FG-FGA	Pct	3FG-FGA	Pct	FT-FTA	Pct	Off	Def	Tot	Avg	PF	FO	Ast	TO	Blk	Stl	Pts	Avg
2005-06	31	0	316	10.2	36-86	41.9	0-3	-	26-36	72.2	17	47	64	2.1	38	0	9	22	7	10	98	3.2
2006-07	33	6	495	15.0	43-106	40.6	12-25	48.0	21-24	87.5	24	60	84	2.5	63	1	28	31	5	14	119	3.6
2007-08	34	3	452	13.3	40-116	34.5	2-21	9.5	26-41	63.4	27	53	80	2.4	47	0	24	45	7	19	108	3.2
2008-09	2	0	16	8.0	3-4	.750	0-0	.000	4-7	.571	2	2	4	2.0	3	0	0	1	0	2	10	5.0
<b>TOTAL</b>	100	9	1279	12.8	122-312	.391	14-49	.286	77-108	.713	70	162	232	2.3	151	1	61	99	19	45	335	3.4