



November 28, 2008

RV/RV Gonzaga (5-0, 0-0 West Coast)
at
RV/RV Marquette (4-0, 0-0 BIG EAST)
Al McGuire Center (4,000)
WBCA Classic

2008-09 Schedule

Date	Opponent	Time/Result
November		
Nov. 1	Winona State (exh.)	W, 78-53
Nov. 10	UW - Parkside (exh.)	W, 76-46
Nov. 15	Oral Roberts	W, 89-67
Nov. 17	Sacred Heart	W, 77-55
Nov. 19	at Indiana State	W, 77-53
Nov. 23	at Western Michigan	W, 89-58
WBCA Classic (Nov. 28-30)		
Nov. 28	RV/RV Gonzaga	7 p.m.
Nov. 29	16/15 Virginia	7 p.m.
Nov. 30	RV/RV Utah	3 p.m.
December		
Dec. 2	at Northwestern	BNT 7 p.m.
Dec. 7	Kansas	2 p.m.
Dec. 13	at Wisconsin	BTN.com 1 p.m.
Dec. 17	Oregon	Sports 32 Noon
Dec. 20	Green Bay	Sports 32 2 p.m.
Dec. 28	at Oakland	3 p.m.
Dec. 31	Milwaukee	Sports 32 3 p.m.
January		
Jan. 3	USF*	Sports 32 7 p.m.
Jan. 10	at Seton Hall*	2 p.m.
Jan. 13	Notre Dame*	CBSC 8 p.m.
Jan. 18	at Rutgers*	ESPNU Noon
Jan. 21	at Georgetown*	7 p.m.
Jan. 27	Syracuse*	Sports 32 7 p.m.
Jan. 30	at Pittsburgh*	6 p.m.
February		
Feb. 3	at USF*	6 p.m.
Feb. 7	Connecticut*	Sports 32 7 p.m.
Feb. 10	Villanova*	Sports 32 7 p.m.
Feb. 15	West Virginia*	ESPNU 1 p.m.
Feb. 18	at Cincinnati*	6 p.m.
Feb. 21	St. John's*	BETV/Sports 32 3 p.m.
Feb. 25	at Providence*	6 p.m.
Feb. 28	at DePaul*	7 p.m.
March		
March 2	Louisville*	CBSC 8 p.m.
BIG EAST Conference Tournament (March 6-10)		
March 6	First Round	XL Center
March 7	Second Round	XL Center
March 8	Quarterfinals	XL Center
March 9	Semifinals	XL Center
March 10	Championship	XL Center

- All times are listed as Central unless otherwise listed and are subject to change.
- Home games are played at the Al McGuire Center and are listed in bold.
- * Denotes BIG EAST game.

BTN - Big Ten Network
BETV - BIG EAST TV
CBSCS - CBS College Sports Network
Sports 32 - Time Warner Cable Sports 32

2008-09 Marquette Records:

4-0 overall
0-0 BIG EAST
2-0 at home
2-0 on the road
0-0 at neutral sites

Head Coach Terri Mitchell Records:

242-130 (64.2) 13th season
117-67 (63.5) in conference play
10-12 (45.4) in conference tourneys
1-3 (25.0) in BIG EAST Tournament
61-10 (85.1) at the Al McGuire Center
3-6 (33.3) in the NCAA Tournament
11-5 (54.4) in the WNIT

It will be "Feast Weekend" at the Al McGuire Center starting Friday as the Marquette women's basketball team hosts the WBCA (Women's Basketball Coaches Association) Classic Nov. 28-30. Along with Marquette, No. 16/15 Virginia, Gonzaga and Utah make up the field of competition that is arguably the toughest holiday tournament in the United States.

Virginia of the ACC and Utah of the Mountain West Conference will clash in the opening game of the round-robin tournament at 5 p.m. on Friday, while Marquette will host undefeated Gonzaga of the West Coast Conference at 7 p.m.

On Saturday, Gonzaga and Utah will tangle at 5 p.m., and Marquette will play Virginia at 7 p.m. On Sunday, Virginia and Gonzaga will meet at 1 p.m., while Marquette closes out the tournament against Utah at 3 p.m.

Marquette's games against Gonzaga and Virginia can be heard live on WJYI 1340 AM with Matt Salmon and Tony Matera on the call. Sunday's game against Utah will be produced by WMUR and available online at www.gomarquette.com.

Marquette All-Access

TV: None
Radio: WJYI 1340 AM
Live Stats: gomarquette.com

2008-09 Marquette Lineup

	Yr.	Pos.	Ht.	MPG	PPG	RPG	APG
00	Jasmine Collins	So.	F	6-2	5.3	2.7	3.0
Registered a career-high six rebounds at Western Michigan							
1	Angel Robinson *	So.	G	5-8	23.0	10.8	3.8
Dished a season high seven assists at Western Michigan							
3	Courtney Weibel	So.	G	5-8	5.3	2.3	0.3
Played a season high 10 minutes at Western Michigan							
5	Erin Monfre	Sr.	G	5-11	12.8	0.8	1.0
Dished a season-high four assists against Oral Roberts.							
11	Janelle Harris	Jr.	G	6-0	14.5	5.5	2.0
As a reserve, registered eight points, two steals and one assist at Western Michigan.							
12	Jessica Pachko	Fr.	G	6-0	22.3	10.0	5.3
Averaging a league best 92.3 percent form the floor							
20	Krystal Ellis *	Sr.	G	5-9	26.8	13.5	3.3
Scored 16 points in the second half at Indiana State. Finished the game with 19 points.							
22	Jocelyn Mellen *	RSSo.	F	6-3	22.0	5.3	5.0
Led the team with eight rebounds against Oral Roberts.							
23	Tatijiana McMorris	So.	G	5-7	11.0	7.5	2.5
Knocked down three 3-pointers at Indiana State.							
24	Lauren Thomas-Johnson* Jr.	G	G	5-10	21.5	11.5	1.3
Scored 13 points in her first career start against Sacred Heart.							
32	Breann Hill	Jr.	F	5-10	10.3	4.5	3.5
Came off the bench to register eight points and three rebounds in 12 min. at Western Michigan.							
34	Georgie Jones	Fr.	C	6-2	12.5	3.0	5.0
Pulled down a career-high 10 rebounds at Indiana State							
41	Paige Fiedorowicz *	So.	F	6-0	16.8	8.3	3.3
Led the team with 14 points at Western Michigan.							
42	Marissa Thrower	Sr.	F	5-11	8.8	4.5	2.3
Scored six points and five rebounds at Western Michigan.							

* denotes probable starter

2008-09 Marquette Numerical Roster

No.	Name	Ht.	Pos.	Yr.	Hometown (Last College/High School)
00	Jasmine Collins	6-2	F	So.	Detroit, Mich. (Martin Luther King)
1	Angel Robinson	5-8	G	So.	St. Paul, Minn. (Central)
3	Courtney Weibel	5-8	G	So.	Rockton, Ill. (Hononegah)
5	Erin Monfre	5-11	G	Sr.	Waukesha, Wis. (Waukesha South)
11	Janelle Harris	6-0	G	Jr.	Detroit, Mich. (Renaissance)
12	Jessica Pachko	6-2	F	Fr.	Cincinnati, Ohio (Oak Hills)
20	Krystal Ellis	5-9	G	Sr.	Racine, Wis. (St. Catherine's)
22	Jocelyn Mellen	6-3	F	RSSo.	Dixon, Ill. (Newman Catholic)
23	Tat'yiana McMorris	5-7	G	So.	Bronx, N.Y. (John F. Kennedy)
24	Lauren Thomas-Johnson	5-10	G	Jr.-Tr.	Manchester, England (Notre Dame Acad. (Va.)/Kirkwood CC)
32	Breann Hill	5-10	F	Jr.-Tr.	Harrisburg, Pa. (Bishop McDevitt/Kirkwood CC)
34	Georgie Jones	6-3	C	Fr.	St. Paul, Minn. (Central)
41	Paige Fiedorowicz	6-0	F	So.	Johnsburg, Ill. (Johnsburg)
42	Marissa Thrower	5-11	F	Sr.	Detroit, Mich. (Renaissance)

Head Coach: Terri Mitchell

Assistant Coaches: Michelle Nason, Cara Consuegra, Jennie Lillis

Quick Facts

Location	Milwaukee, Wis., 53233
Founded	1881
Enrollment	11,000
Nickname	Golden Eagles
Colors	Blue ^(PMS 281) and Gold ^(PMS 123)
Arena	Al McGuire Center (4,000)
Affiliation	NCAA Division I
Conference	BIG EAST
President	Rev. Robert A. Wild, S.J.
Athletics Director	Steve Cottingham
Ticket Office:	414-288-GOMU
University Website	www.marquette.edu
First Year of Basketball	1975-76
All-Time Record	489-427 (53.2)
2007-08 Results	
Overall Record	21-14
BIG EAST Record/Finish	8-8/8th
NCAA Tourney Appearances 8	
Last NCAA Appearance	2007
WNIT Appearances/Last	4/2008
Last Postseason Result	WNIT, 2008 Champions Defeated Michigan State, 81-66
Media Relations	
Women's Basketball Contact	Amy Ufnowski
Office Phone	414-288-7419
Cell Phone	414-313-6717
E-Mail	Amy.Ufnowski@marquette.edu
Media Relations Fax	414-288-6519
Al McGuire Center Press Row	414-288-0340
Athletics Website	www.gomarquette.com
Delivery Address	Al McGuire Center 770 N. 12th Street Milwaukee, WI 53233-2203

Marquette Basketball Staff

Head Coach	Terri Mitchell (Duquense, '89)
Assistant Coaches	Michelle Nason (Bradley, '95) Cara Consuegra (Iowa '01) Jennie Lillis (Iowa, '04)
Dir. of Basketball Operations	Angie Lewis (Saint Louis, '04)
Asst. Dir. of Basketball Operations	Angie Nelp (Colorado State, '02)
Athletic Trainer	Jeremy Johnson (Penn State, '99)
Strength and Conditioning Coach	Rudy Thomas (Wis.-La Crosse, '01)

Pronunciation Guide

Cara Consuegra — Con-sueg-*raa*
 Paige Fiedorowicz — Fa-door-o-witz
 Janelle Harris — Juh-Nell
 Jocelyn Mellen — joss-lin
 Erin Monfre — Mon-free
 Jessica Pachko — PaCH-co
 Courtney Weibel — WHY-bull

Credentials

Media interested in covering the Golden Eagles, both at home and on the road, should contact Amy Ufnowski, Assistant Director of Athletic Media Relations, at least 48 hours prior to the game.

News and Notes

Golden Eagle Quickhits

- For the first time since the 2004-05 season, Marquette has started the season 4-0. It is only the fourth time in program history Marquette has begun the season with four straight wins.
- The Golden Eagles have shot 50 percent or better from the floor in three of their last four games including a season-high 52.7 percent at Indiana State. Marquette has also outscored each of its first four opponents by at least 22 points.
- Overall through four games, Ellis leads the team in scoring with 13.5 ppg, followed by junior Lauren Thomas-Johnson averaging 11.5 ppg. Freshman Jessica Pachko is averaging a team-high 5.3 rebounds per game, but sat out the Western Michigan game due to injury. Sophomore Jocelyn Mellen and freshman Georgie Jones have each contributed an average of 5.0 rpg.
- The Golden Eagles have registered 40 or more rebounds in their first four games this season. Freshman Georgie Jones is the first Golden Eagle this season to pull down double-digit rebounds with 10 at Indiana State.
- Three different Golden Eagles have led Marquette already in scoring this season including Krystal Ellis, Jessica Pachko and Paige Fiedorowicz.
- Marquette has made a three-pointer in 127 consecutive games dating back to Nov. 24, 2004. Ellis ranks second all-time with 178 career treys.
- The Golden Eagles have compiled a 100-42 mark in regular season non-conference games under Terri Mitchell, including a 22-3 record at the Al McGuire Center. The Golden Eagles are 38-20 in road games under Mitchell.
- Marquette is 16-34 all-time against ranked opponents under Mitchell.
- Marquette is 61-10 all-time at the Al McGuire Center.

Approaching 500

The Golden Eagles are closing in on a milestone 500 all-time program victory. Marquette has 489 wins since its first year of basketball in 1975-76.

Series History against the WBCA Classic Field

Friday's meeting with its pacific northwest Jesuit counterpart, Gonzaga, will be the third in as many seasons and the third in program history. The two

teams first met in 2006 at the Al McGuire Center where MU handled the Bulldogs, 74-60. Last season Gonzaga got revenge and defeated Marquette in Spokane, 77-64. Marquette is 0-2 against Virginia as it fell 64-56 at the Al McGuire Center in Jan. 4, 2006, and at UVA's John Paul Jones Arena in Nov. 17, 2006, 84-76. Sunday's meeting with Utah will be the first in program history.

A Glimpse at the WBCA Classic

- Four teams who are either nationally ranked or receiving votes in No. 16/15 Virginia and vote-getters Marquette, Gonzaga and Utah, make of the field of arguably the toughest tournament in the United States during the Thanksgiving Holiday weekend.
- There is also a boatload of experience among the four teams' head coaches as Debbie Ryan (Virginia, 32nd season), Elaine Elliot (Utah, 26th season), Terri Mitchell (Marquette, 13th season) Kelly Graves (Gonzaga, 9th season) combine to total 76 years of Division I head coaching experience.
- There are three national player of the year candidates participating in the tournament in MU's Krystal Ellis (Wooden Award and Wade Watch lists), Gonzaga's Heather Bowman (Wooden Award) and Virginia's Monica Wright (Wooden Award and Wade Watch lists).
- Marquette is 76-69 all-time in tournament play. The Golden Eagles have won eight tournament titles most recently being the 2006 U.S. Virgin Islands Paradise Jam where they knocked off Western Michigan (74-61), Auburn (65-61) and Xavier (73-53) over the three-day tournament.

Jesuit Basketball Spotlight

Friday night's matchup between Marquette and Gonzaga is part of the nationwide Jesuit Basketball Spotlight project, using Jesuit basketball to raise awareness of Jesuit education. Both Gonzaga and Marquette are Jesuit schools.

The Jesuit Basketball Spotlight project highlights more than 90 games this season between men's and women's teams from the 28 Jesuit colleges and universities across the U.S. Each of the 28 is dedicated to strong academics and teaching women and men to serve others and

2008-09 BIG EAST Preseason Poll

1. Connecticut (14), 225
2. Rutgers (1), 211
3. Louisville (1), 200
4. Notre Dame, 182
5. Pittsburgh, 162
6. Syracuse, 156
7. Marquette, 147
8. DePaul, 132
9. West Virginia, 109
10. Villanova, 85
11. Georgetown, 77
12. USF, 76
13. St. John's 66
14. Seton Hall, 40
15. Cincinnati, 33
16. Providence, 30

2008-09 BIG EAST Standings

	BIG EAST		Overall	
Connecticut	0-0	.000	4-0	1.000
Georgetown	0-0	.000	4-0	1.000
Louisville	0-0	.000	4-0	1.000
Marquette	0-0	.000	4-0	1.000
Notre Dame	0-0	.000	4-0	1.000
Seton Hall	0-0	.000	4-0	1.000
St. John's	0-0	.000	4-0	1.000
USF	0-0	.000	4-0	1.000
DePaul	0-0	.000	4-1	.800
Syracuse	0-0	.000	4-1	.800
West Virginia	0-0	.000	3-1	.750
Cincinnati	0-0	.000	2-1	.667
Pittsburgh	0-0	.000	2-1	.667
Villanova	0-0	.000	2-1	.667
Providence	0-0	.000	2-2	.500
Rutgers	0-0	.000	2-2	.500

*through games on Tuesday, Nov. 26, 2008

Elsewhere in the BIG EAST

Friday, Nov. 28

Stony Brook at St. John's
 West Virginia at New Jersey Inst. Tech
 Villanova vs Baylor (USVI Paradise Jam)
 Elon at Pittsburgh
 USF vs Iowa (USVI Paradise Jam)
 Georgetown at North Dakota State
 Mississippi Valley State at Cincinnati
 Illinois State at DePaul
 Louisville at Alabama
 Seton Hall at San Diego

Saturday, Nov. 29

Villanova vs Central Florida (USVI Paradise Jam)
 Michigan State at Notre Dame
 Savannah State at Cincinnati
 USF vs Texas Tech (USVI Paradise Jam)



www.krystalellis20.com
20 • Krystal Ellis • Senior • Guard
All-America Candidate

Career Notables

- * Named to the 2008-09 Wooden Award Preseason Top 30 List
- * Named to the 2008-09 State Farm Wade Trophy Preseason List
- * Unanimous Preseason All-BIG EAST selection
- * Two-time All-BIG EAST First Team selection
- * 2006-07 Associated Press All-American

2008-09 Women's Basketball National Polls

USA Today/ESPN Coaches Top 25

Rank	School (First Place Votes)	Record	Points	Last
1.	Connecticut (31)	3-0	775	1
2.	North Carolina	5-0	736	3
3.	California	3-0	677	6
4.	Oklahoma	3-1	653	4
5.	Texas A&M	3-0	606	7
6.	Stanford	3-1	601	8
7.	Baylor	4-0	598	9
8.	Louisville	3-0	580	10
9.	Texas	5-0	484	14
10.	Notre Dame	3-0	464	15
11.	Rutgers	2-2	440	2
12.	Tennessee	3-1	410	13
13.	Duke	3-1	406	5
14.	Maryland	3-1	367	16
15.	Virginia	3-1	355	11
16.	Auburn	4-0	324	20
17.	Vanderbilt	4-1	281	12
18.	Oklahoma State	2-1	196	19
19.	Arizona State	2-1	183	17
20.	Old Dominion	3-1	144	T24
21.	Ohio State	3-1	142	18
22.	Iowa State	3-0	122	T24
23.	Purdue	3-0	89	NR
24.	TCU	4-0	63	NR
25.	Xavier	2-2	50	22

Also receiving votes: Florida State 45; Kansas State 41; Marist 40; **Marquette 38**; Hartford 29; Michigan State 29; Pittsburgh 18; Gonzaga 14; Texas Tech 12; Nebraska 11; Georgia 9; Syracuse 8; East Carolina 7; LSU 6; Georgia Tech 5; Minnesota 5; Montana 4; Michigan 3; DePaul 2; Liberty 1; North Carolina A&T 1; South Dakota State 1. Mississippi 1.

Nov. 25, 2008

Associated Press Top 25

Rank	School (First Place Votes)	Record	Points	Last
1	Connecticut (44)	3-0	1124	1
2	North Carolina (1)	5-0	1070	4
3	California	3-0	971	7
4	Oklahoma	3-1	943	2
5	Stanford	3-1	925	8
6	Baylor	4-0	845	10
7	Louisville	3-0	836	9
8	Texas A&M	3-0	741	12
9	Tennessee	2-1	716	5
10	Maryland	3-1	704	11
11	Texas	5-0	664	14
12	Duke	3-1	626	6
13	Rutgers	2-2	583	3
14	Notre Dame	3-0	579	15
15	Auburn	4-0	469	20
16	Virginia	2-1	444	16
17	Vanderbilt	4-1	352	13
18	Oklahoma St.	2-1	318	19
19	Purdue	3-0	303	21
20	Ohio St.	3-1	258	17
21	Arizona St.	2-1	257	18
22	TCU	3-0	211	24
23	Old Dominion	3-1	186	25
24	Michigan St.	5-0	79	NR
25	Iowa St.	3-0	67	NR
25	Xavier	2-2	67	23

Also receiving votes: Marist 59, Pittsburgh 40, **Marquette 30**, Florida St. 29, Hartford 24, Kansas St. 18, LSU 18, Georgia Tech 15, Arkansas 9, DePaul 8, Syracuse 8, Georgia 6, Coastal Carolina 4, Michigan 4, S. Dakota St. 4, Florida 3, Gonzaga 3, Utah 3, Montana 2.

Nov. 24, 2008

live a faith that does justice.

The spotlight project includes awareness announcements during these designated games and during gamecasts on radio and television; and other awareness opportunities.

Jesuit, Catholic colleges and universities in the United States have more than 200,000 students currently and more than 1.7 million living alumni. The Jesuit educational mission began in Europe approximately 500 years ago.

Taking Care of Business

The Golden Eagles have taken care of business in both their home and road openers this season. The Golden Eagles earned their sixth straight season opening win with a 89-67 decision over Oral Roberts on Nov. 15, and won their first road opener since the 2005-06 season winning at Indiana State, 77-53.

Lights Out

In MU's 77-53 win at Indiana State, the Golden Eagles were on fire in the second half shooting an incredible 72.0 percent from the floor, and were 50 percent from long range. Marquette finished the game with a 52.7 shooting percentage to mark the second time this season MU has shot 50 percent or better for the game.

Ellis Named to Preseason All-BIG EAST Team

Senior guard Krystal Ellis was unanimously selected to the Preseason All-BIG EAST Team announced at the BIG EAST Women's Basketball Media Day at ESPN Zone in New York City.

Ellis is a two-time All-BIG EAST pick and was named the WNIT MVP after the team's run through

the postseason tournament. For the second consecutive season, Ellis led the team in scoring, averaging 19.4 points per game, a mark that ranked second in the league.

Marquette Picked Seventh

Marquette was picked to finish seventh in the BIG EAST Conference at the league's annual media day. MU finished with 147 points, nine points behind Syracuse (156), predicted to finish sixth in the poll, while tallying 15 more points than DePaul, selected eighth. The poll is determined by a vote of the league's 16 head coaches who are not permitted to select their own teams. Connecticut garnered 14 of 16 first-place votes to total 224 points in the poll.

BIG EAST Expands Tourney

The Presidents of the BIG EAST Conference voted to include all 16 member institutions in the men's and women's basketball championship tournaments beginning in 2009. The new format will have the teams seeded 9 through 16 meet on the first day of competition. The matchups will be No. 9 vs. No. 16, No. 10 vs. No. 15, No. 11 vs. No. 14 and No. 12 vs. No. 13.

The winners of those four games will meet seeds 5 through 8 on the second day of play. The 9/16 winner will advance to play the No. 8 seed. The 10/15 winner will play the No. 7 seed. The 11/14 winner will meet the No. 6 seed. The 12/13 winner will play the No. 5 seed.

Those four winners will advance to play the top four seeds in the quarterfinal round. Thus, the top four seeded teams still will not play until the quarterfinals, which occurs in the current 12-team for-

MU Starting Line-Ups, Points and % of Offense

Opponent	MU Starting Line-Up	Line-Up Record	Points	% of Offense	WL
Oral Roberts	Robinson, Ellis, Harris, Mellen, Pachko	1-0	49	55.1	W
Sacred Heart	Robinson, Ellis, Thomas-Johnson, Mellen, Pachko	1-0	48	62.3	W
at Indiana State	Robinson, Ellis, Thomas-Johnson, Mellen, Pachko	2-0	53	68.8	W
at Western Michigan	Robinson, Ellis, Thomas-Johnson, Mellen, Fiedorowicz	1-0	50	56.2	W
Gonzaga					
Virginia					
Utah					
at Northwestern					
Kansas					
at Wisconsin					
Oregon					
Green Bay					
at Oakland					
Milwaukee					
USF					
at Seton Hall					
Notre Dame					
at Rutgers					
at Georgetown					
Syracuse					
at Pittsburgh					
at USF					
Connecticut					
Villanova					
West Virginia					
at Cincinnati					
St. John's					
at Providence					
at DePaul					
Louisville					

MU in the BIG EAST Statistics

	All Games	BIG EAST Games
Scoring Offense	83.0	4th
Scoring Defense	58.2	10th
Scoring Margin	+24.8	5th
FT Pct.	68.0	9th
FG Pct.	49.6	3rd
FG Pct. Def.	34.2	7th
3FG Pct.	34.6	6th
3FG Pct. Def.	34.2	11th
Rebounding	43.0	8th
Rebound Defense	32.8	8th
Rebound Margin	+10.2	8th
Blocked Shots	4.5	5th
Assists	18.8	4th
Steals	10.3	T8th
Turnover Margin	+3.50	9th
Ast/TO Ratio	0.9	6th
Off. Rebounds	14.8	8th
Def. Rebounds	28.3	6th
3FG Made	6.8	5th

Individuals in the BIG EAST Statistics

(All Games)

Krystal Ellis	Scoring	13.5	23rd
	Assists	6.3	2nd
Jessica Pachko	FG Pct.	92.3	1st
	FT Pct.	85.7	T9th
Angel Robinson	3FG Pct.	50.0	T6th
	Assists	4.0	T9th
L. Thomas-Johnson	Scoring	11.5	T30th
	FT Pct.	81.8	12th
	3FG Pct.	45.0	T14th
	3FG Made	2.3	12th

* BIG EAST statistics through games on Nov. 25, 2008

Marquette vs Gonzaga Statistical Comparison		
Marquette		Gonzaga
83.0	Points per Game	85.6
+24.8	Scoring Margin	+28.2
43.0	Rebounds per Game	47.6
+10.3	Rebounding Margin	+14.0
18.8	Assists per Game	18.2
20.3	Turnovers per Game	14.0
10.3	Steals per Game	16.0
4.5	Blocks per game	3.8
49.6 (127-256)	FG Pct.	43.9 (166-378)
34.6 (27-78)	3-PT FG Pct.	36.8 (25-68)
68.0 (51-75)	Ft Pct.	68.3 (74-104)

mat.

Preseason Recognition

Preseason recognition continues to pour in the the Marquette women's basketball team as *Sporting News* tabbed MU No. 25 in its preseason poll. *Sporting News* is the third publication to recognize the Golden Eagles, as both Lindy's College Basketball and Charlie Creme of ESPY.com listed Marquette as No. 25 heading into the 2008-09 campaign.

Player of the Year Candidate

Senior guard Krystal Ellis is among college basketball elite players as she is recognized on two national player of the year lists. Ellis is was one of 25 players named to the "Wade Watch" list for the State Farm Wade Trophy Division I Player of the Year and one of 30 players named to the John R. Wooden Award Preseason Top 30. Ellis also earned preseason second-team All-America honors by *Sporting News*.

Lights, Camera, Action

The reigning WNIT Champion Marquette University women's basketball team will make five appearances on national and regional networks during the 2008-09 season as part of the BIG EAST Conference's expanded television coverage announced Thursday.

The Golden Eagles will make four national television appearances on ESPNU and CBS College Sports (formerly CSTV), and once as part of the conference's regional BIG EAST Game of the Week package.

Ellis on Pace

Senior guard Krystal Ellis is closing in on the all-time MU scoring record (male or female). She has 1,601 points currently and needs 217 points to match Abbie Willenborg's record (1,818 points). Ellis is currently No. 5 on the nation's active leading scorers list.

Nation's Active Leading Scorers	
1. Courtney Paris (Okla)	2,204
2. Angel McCoughtry (UofL)	1,951
3. Traci Edwards (UWM)	1,811
4. Marissa Coleman (MD)	1,616
5. Krystal Ellis (MU)	1,601

A Look Back at 2007-08--WNIT Champions

The 2007-08 season turned into one of the most memorable seasons in program history as the Golden Eagles ended the season as the 2008 Women's National Invitation Tournament Champions. On April 5, 2008, the Golden Eagles marched into the Breslin Center on the campus of Michigan State University and knocked off the Spartans 81-66 to claim Marquette's fourth national title in school history and the first in women's history. En route to the championship, MU won five straight games, with its last three being away from the friendly confines of the Al McGuire Center. The Golden Eagles' road to the title included home wins over Creighton in overtime, 75-69, Illinois, 72-64, and at Kentucky, 69-64, at Colorado, 86-72, and at Michigan State. The Golden Eagles finished the season 21-14 overall and their third straight 20-win season.

Thomas-Johnson Gets an Olympic Experience

Junior Lauren Thomas-Johnson had an Olympic experience unlike any other athlete or coach participating in the 2008 Summer Olympic Games as she served as an athlete ambassador for British Basketball Federation.

Thomas-Johnson, a native of Manchester, England, was one of five male and female athletes chosen to represent Great Britain in Beijing as the nation prepares to host the 2012 Summer Olympics in London. Thomas-Johnson along with her fellow ambassadors had access to the athletes' village and different athletic venues around Beijing, along with going to the Opening Ceremonies and basket-

Sarina Simmons Signs with Marquette

MILWAUKEE - Milwaukee native Sarina Simmons has signed a National Letter of Intent to continue her academic and athletic endeavors at Marquette University for the 2009-10 season announced head coach Terri Mitchell. With just the signing of Simmons, the Golden Eagles' '09 recruiting class is ranked No. 27 by All-Star Girls Report.

"Sarina is an outstanding athlete who can play a variety of positions," said head coach Terri Mitchell. "We love her versatility and passion on the court. We have known Sarina for a long time and are so excited that she is part of our family."

Simmons is a 6-1 forward out of Rufus King High School in Milwaukee, Wis. She is ranked as high as No. 8 by the Collegiate Girls Basketball Report and No. 47 by All-Star Girls Basketball Report. ESPN HoopGurlz lists her as No. 59 overall, but as the 14th best wing recruit of the 2009 class.

During her career at King, she has earned an honorable mention all-state accolades by both the *Milwaukee Journal Sentinel* and the Associated Press, as well as first team All-City Conference and all-area honors each season.

She averaged 11.7 points per game as a junior while helping the Generals to a 20-2 overall record, and 12.3 points, 3.8 steals, and 3.7 blocks per game as a sophomore. While Simmons has been at Rufus King, the team has claimed three City Conference Championships and has not lost a home game.

"Sarina phenomenal student-athlete," added her former coach Alina Cunningham at Rufus King High School. She will contribute at Marquette a great deal. The Marquette program is already successful, but I believe Sarina will help take it to the next level. She has great upside, yet still has a lot to learn. She has an opportunity to really blossom while playing in the BIG EAST Conference and could be unstoppable. She will work hard, but keep a smile on her face all of the time."

ball games.

Thomas-Johnson, who expects to earn a spot on Great Britain's senior national team over the next four years, helped the Great Britain U20 team collect a bronze medal at the 2007 European Championship. It was the first medal ever won by a British basketball team in international competition.

Great Britain's senior national team did not qualify for the 2008 Olympics, but automatically qualifies for the 2012 Summer Olympics in London since it is the host nation.

Head Coach Terri Mitchell

Believe, Commit, Mature, Respect, Thankfulness - These are the five principles that serve as the foundation of the Marquette women's basketball team. And with these principles the Marquette lives by each day, head coach Terri Mitchell has molded the Golden Eagles into champions.

The foundation was laid years ago during her upbringing in Harrisburg, Pa. The life lessons Mitchell learned have served as her guide in coaching the Marquette women's basketball team for the last 13 years.

The Golden Eagles have thrived under Mitchell as she has compiled a 241-130 overall record - just short of 20 wins per season - 10 trips to the postseason and eight 20-win seasons. Notably, the Golden Eagles have earned six consecutive postseason berths, with their most recent postseason trip concluding with the Women's National Invitation Tournament Championship in 2008.

On the court, Mitchell's teams are known for their well-balanced offense coupled with a tenacious style of defense and off the court for their academic excellence and commitment to community service.

Since becoming the fourth women's basketball coach in Marquette University history, Mitchell has paved a path of excellence. That journey began in her very first year, as Mitchell was at the helm for the largest turnaround in school history. She guided MU to a 21-10 record in 1996-97, which was 13 wins better than the previous season's record of 8-20. It was the largest turnaround of any first-year head coach and third-best single-season turnaround among all NCAA Division I schools that year.

The drive and commitment to excellence Mitchell had in her first year as a head coach continues to be instilled in her teams year after year. Her players don't question it; they know it and live it each day. One of the team's favorite Mitchell sayings is "we didn't come to compete in the BIG EAST, we came to win it."

USA Basketball

The respect and admiration for the way Terri Mitchell relates to her players and her success in the BIG EAST Conference led to an opportunity with USA Basketball. During the summer of 2008, Mitchell served as an assistant coach for USA Basketball's U18 Women's National Team. Under her guidance, Team USA won the gold medal while rolling through the FIBA Americas Championship in Buenos Aires, Argentina undefeated.

Marquette has also had other ties to USA Basketball, as Krystal Ellis was a finalist for a spot on the 2007 USA Women's Pan American Games Team.

Player Development

She believes that her personal interaction with each player not only leads to success on the court, but off as well. Her vision for each player in her program is that they enter as girls, but leave as well-rounded, confident young women.

Under her guidance, her student-athletes have earned numerous individual accolades, for their work on the hardwood and in the classroom. Since 1996, 18 of Mitchell's players have earned all-conference honors, while two have achieved All-America status, with Krystal Ellis becoming MU's latest All-America selection following the 2006-07 season. Ellis was also the third player in program history to earn repeat first team all-conference honors. In addition, 27 players have earned spots on the league's Academic Honor Roll and three have been awarded GTE Academic All-America honors.

Service

Through her faith, compassion for others, and commitment to service, she has touched the lives of many. For example, in May of 2006 Mitchell took a mission trip to Rwanda where she spent 16 days in the impoverished African country.

In addition to her coaching duties, Mitchell is active in the community and is heavily involved with charitable events. She is an avid speaker on campus, at local schools, basketball clinics, nonprofit organizations and is actively involved in prison ministry. Through her speaking engagements, Mitchell incorporates the program's five principles and encourages her audiences to dream, believe, and live in the now. She also hosts motivational breakfasts entitled "Breakfast with Terri," for Milwaukee area business women throughout the year.

Mitchell believes in giving back to her profession and the community by serving on several Women's Basketball Coaches Association (WBCA) committees as well as on its Executive Board as Treasurer, the State Farm Wade Trophy Committee, the Midwest Athletes against Childhood Cancer (MACC) Fund Board of Directors, and many other service-oriented organizations.

Service is not only a significant part of Mitchell's life, but of her team's life as well. The Golden Eagles are involved in many service projects throughout the year including Big Brothers Big Sisters of Metro Milwaukee, Briggs & Al's Run & Walk, the Susan G. Komen Race for the Cure, the Kay Yow/WBCA Cancer Fund, the American Heart Association, the WBCA's Pink Zone initiative, school speaking engagements and basketball clinics.

Career Overview

2007-08

Champions is a word Mitchell's team speaks daily. Mitchell is adamant that one's words lead to one's destiny. It did on April 5,



The Mitchell Record

Season	Record	Accolades
Head Coach, Marquette (1996-present)		
2008-09	4-0	
2007-08	21-14	WNIT Champions Wisconsin Basketball Coaches Assoc. Div. I Women's Coach of the Year
2006-07	26-7	NCAA 2nd Round BIG EAST Coach of the Year Wisconsin Basketball Coaches Assoc. Div. I Women's Coach of the Year WBCA Executive Committee
2005-06	22-11	WNIT Championship Finalist
2004-05	18-12	WNIT 1st Round; WBCA Board of Directors
2003-04	22-10	NCAA 2nd Round; WBCA Board of Directors
2002-03	16-14	WNIT 2nd Round; WBCA Board of Directors
2001-02	14-14	WBCA Board of Directors
2000-01	13-16	
1999-2000	22-7	C-USA Coach-of-the-Year; C-USA Champs; NCAA Tournament; NCAA Div.-I Mideast Region Advisory Cmte.; Div. I All-America Committee
1998-99	21-8	C-USA Coach-of-the-Year; C-USA Champs; NCAA Tournament; Wisconsin Basketball Coaches Assoc. Div. I Women's Coach of the Year NCAA Div.-I Mideast Region Advisory Cmte.;
1997-98	22-7	Div. I All-America Committee
1996-97	21-10	C-USA Div. Champs; NCAA Tournament C-USA Div. Champs; NCAA 2nd Round
Career	242-130	64.9 percent
Assistant Coach, Marquette (1991-96)		
1995-96	8-20	
1994-95	19-12	GMC Tourney Champs; NCAA Tournament
1993-94	22-7	Great Midwest Champs; NCAA Tournament
1992-93	22-9	NWIT
1991-92	16-13	
Graduate Assistant, Arizona State (1989-90)		
1989-90	13-15	
Letterwinner, Duquesne (1986-89)		
Career Notes		
<ul style="list-style-type: none"> • 242-130 career record • Best winning percentage by a coach in Marquette women's basketball history • The second coach in MU women's history to win 100 games • The first coach in MU women's history to win 200 games • The winningest women's basketball coach in MU history • Six NCAA Tournament appearances • Four WNIT appearances • Two time C-USA Champions • Three-time Conference Coach-of-the-Year • Three-time Wisconsin Basketball Coaches Assoc. Div. I Women's Coach of the Year 		

Mitchell All-Time vs the Top 25

Nov. 23, 1996	#3 Tennessee 83, Marquette 68 (Howard Bank Classic - Burlington, Vt.)
Jan. 5, 1997	at Marquette 66, #24 DePaul 59
Jan. 17, 1997	at #25 DePaul 89, Marquette 83
Feb. 14, 1997	at #25 Tulane 76, Marquette 70
Mar. 15, 1997	Marquette 70, #21 Clemson 66 (NCAA Tournament - Baton Rouge, La.)
Mar. 17, 1997	#9 LSU 71, Marquette 58 (NCAA Tournament - Baton Rouge, La.)
Dec. 7, 1997	at #6 Illinois 99, Marquette 86
Mar. 13, 1998	#12 Florida Intl. 59, Marquette 45 (NCAA Tournament - Chapel Hill, N.C.)
Nov. 28, 1998	Marquette 77, #13 Florida 61 (Ronald McDonald Classic - Durham, N.C.)
Nov. 29, 1998	#20 Duke 91, Marquette 60 (Ronald McDonald Classic - Durham, N.C.)
Dec. 8, 1999	at Marquette 69, #22 Wisconsin 65
Jan. 2, 2000	at #10 Notre Dame 75, Marquette 60
Feb. 5, 2000	Marquette 81, at #21 Tulane 62
Dec. 21, 2000	#3 Notre Dame 75, at Marquette 56
Nov. 17, 2001	#7 Iowa State 68, Marquette 50
Nov. 29, 2001	at #16 Michigan 65, Marquette 49
Dec. 5, 2001	#19 Wisconsin 56, Marquette 55
Jan. 2, 2002	Marquette 56, at #20 Colo. State 52
Dec. 31, 2002	#13 Notre Dame 75, at Marquette 68
Jan. 8, 2003	#19 Green Bay 58, at Marquette 47
Jan. 12, 2003	#25 DePaul 62, at Marquette 57
Feb. 8, 2004	at #15 DePaul 61, Marquette 59
Feb. 20, 2004	at #17 TCU 56, Marquette 47
Feb. 22, 2004	at #21 Houston 77, Marquette 64
Feb. 29, 2004	at Marquette 62, #20 DePaul 61
Mar. 3, 2004	Marquette 74, #24 DePaul 70 (C-USA Tournament - Fort Worth, Tex.)
Mar. 6, 2004	#11 Houston 67, Marquette 59 (C-USA Tournament - Fort Worth, Tex.)
Mar. 23, 2004	#1 Duke 76, Marquette 67 (NCAA Tournament - Durham, N.C.)
Dec. 19, 2004	#7 Notre Dame 50, Marquette 47
Jan. 9, 2005	Marquette 63, #18 DePaul 57
Feb. 27, 2005	at #12 DePaul 77, Marquette 56
Feb. 8, 2006	Marquette 74, at #23 St. John's 59
Feb. 21, 2006	#8 Rutgers 71, at Marquette 50
Feb. 25, 2006	at #7 Connecticut 74, Marquette 59
Nov. 14, 2006	at Marquette 78, #-/23 Washington 61
Jan. 6, 2007	at #18/ Marquette 82, #23/24 DePaul 79
Jan. 30, 2007	at #23/25 Rutgers 66, #16/18 Marquette 56
Feb. 3, 2007	#6/5 Connecticut 52, #16/18 Marquette 48
Feb. 17, 2007	at #21/21 Marquette 65, #20/19 Louisville 54
Mar. 5, 2007	#19/21 Rutgers 63, #21 Marquette 55 (BIG EAST Tournament - Hartford, Conn.)
Mar. 19, 2007	#9/10 Oklahoma 78, #22/ Marquette 47 (NCAA Tournament - Austin, Texas)
Nov. 17, 2007	at Marquette 67, #RV/25 Wisconsin 53
Dec. 30, 1007	#23/RV Arkansas 71, Marquette 69
Jan. 8, 2008	#5/5 Rutgers 65, at Marquette 61
Jan. 16, 2008	at #14/14 West Virginia 68, Marquette 63
Jan. 19, 2008	at Marquette 65, #23/22 DePaul 56
Feb. 10, 2008	at #23/24 Syracuse 70, Marquette 67
Feb. 13, 2008	at #16/16 Notre Dame 99, Marquette 76
Feb. 20, 2008	at #1/1 Connecticut 95, Marquette 63
Feb. 23, 2008	at Marquette 76, #23/21 Pittsburgh 69

2008, when the Golden Eagles marched into the Breslin Center at Michigan State and knocked off the Spartans, 81-66, to claim the Women's National Invitation Tournament Championship. It marked the fourth national title in Marquette history and the first in women's history.

Up against a bevy of talented teams - the BIG EAST sent 12 teams to post season play - Mitchell led the youngest team in the BIG EAST Conference into battle with six freshmen and only one returning starter. The Golden Eagles fought through adversity, the Golden Eagles won over 20 games for the third straight season. Marquette finished the season with a five-game win streak - its longest of the season - and as one of only two Division I women's college basketball teams in the nation to end the season with a victory. Junior Krystal Ellis was named First Team All-BIG EAST for the second consecutive season and freshman phenom Angel Robinson was an all-freshman team selection. Both continued their stellar play through the team's championship run and were honored with WNIT All-Tournament Team accolades. Ellis was named tournament MVP, while Robinson was an all-tournament selection.

Following its championship run, Marquette was honored by the City of Milwaukee and Mayor Tom Barrett as they proclaimed April 15, 2008 Marquette Women's Basketball Day. For the second consecutive year, Mitchell earned the Wisconsin Basketball Coaches Association Division I Women's Coach of the Year honor.

2006-07

The 2006-07 season was one for the history books as Mitchell guided the Golden Eagles to their best season ever, a 26-7 overall record. It was the seventh season in which her team won 20 or more games. After being picked eighth in the BIG EAST preseason poll, Marquette started the season winning 15 of its first 16 games, and jumped into the national polls on December 4 for the first time since the 1999-2000 season. The season for the ages included a school record 14-game win streak and being ranked in the Top 25 for the majority of the season. During that streak Mitchell won her 200th game on Dec. 9, 2006. In BIG EAST play, the Golden Eagles finished tied for second place with Rutgers registering a 12-4 conference record. For her efforts, Mitchell received the league's highest honor and was named the BIG EAST Coach of the Year. It was Mitchell's third coach of the year honor.

More honors continued to follow Mitchell at the conclusion of the 2006-07 season as she was elected to the Women's Basketball Coaches Association (WBCA) Executive Committee as its Treasurer and tabbed the Wisconsin Basketball Coaches Association Division I Women's Coach of the Year. She was also named a Woman of Influence by the Milwaukee Business Journal in the category of "Inspiration."

Marquette made a trip back to the "big dance" behind the inside-outside combination of All-BIG EAST First Team selections Krystal Ellis and Christina Quaye, and the leadership of seniors, Jasmine McCullough, Danielle Kamm and Efueko Osagie-Landry. It was the first time in program history two players were first team all-conference selections in the same year.

2005-06

In 2005-06, Marquette made a remarkable postseason run, advancing to the championship game of the Women's National Invitation Tournament. Led by All-BIG EAST honorees Christina Quaye, Carolyn Kieger, and BIG EAST All-Rookie Team member Krystal Ellis, the Golden Eagles posted a 22-11 overall record, including a 9-7 record in BIG EAST play before falling in the championship game at Kansas State.

2004-05

During the 2004-05 campaign, MU qualified for its third consecutive postseason appearance by earning a spot in the WNIT. Led by Second Team All-Conference USA honorees Carolyn Kieger and Christina Quaye, the Golden Eagles finished with an overall record of 18-12.

2003-04

In 2003-04, the team tied a school record with 22 wins and advanced to the Second Round of the NCAA Tournament. In the first round, playing as the ninth seed in the Mideast Region, MU defeated Old Dominion, 67-64 as Christina Quaye hit the go-ahead layup with 5.8 seconds left. In the next game, the Golden Eagles gave the nation's No. 1 ranked team, Duke, all it could handle and opened the eyes of many around the country.

The 2003-04 campaign was typical of the Terri Mitchell era. Offensively, the team was balanced, as eight different players led the team in scoring during a game over the course of the season. Games were won with defense and teamwork, as MU led Conference USA in scoring defense, yielding just 57.2 points per contest.

2002-03

Mitchell led the 2002-03 Golden Eagles to a 16-14 mark and a spot in the Women's National Invitation Tournament, advancing to the second round. That season, the team set new school records in three-point shooting and free throw shooting percentages.

2001-02

Mitchell reached the 100-victory milestone the third game of the 2001-02 season as the Golden Eagles downed Alaska-Anchorage, 88-50, in the Great Alaska Shootout. On Jan. 27, she became Marquette's all-time winningest coach in a 65-44 victory over Tulane. That season, the Golden Eagles continued to be one of the best defensive squads in the nation, holding the opposition to just 59.6 points per game. That total tied for the top spot in Conference USA and tied for 10th in the NCAA.

At the end of that season, Mitchell was elected to the Board of Directors of the Women's Basketball Coaches Association, an honor in which she took great pride.

2000-01

The 2000-01 season proved to be a pivotal year in the growth of the Marquette women's basketball program. Mitchell was instrumental in carrying forward the goals of the program while providing stability, despite the graduation of three of the school's all-time leading scorers. With a young squad of five freshmen and two returning starters, the Golden Eagles picked up key victo-

ries against NCAA Tournament teams Michigan and UW - Milwaukee early on and closed out the season winning four straight before falling to C-USA Champion Tulane on a last-minute shot.

1999-2000

Her 1999-2000 squad finished the season in fine fashion, winning 13 of its last 15 regular season contests, claiming the regular season C-USA championship and a berth in the NCAA Mideast regional. Guiding her squad to a 14-2 conference record, Mitchell earned her second C-USA Coach of the Year honor. That season, Marquette led Conference USA and was 10th in the nation in defense allowing only a 36.4 shooting percentage.

1998-99

Mitchell led the 1998-99 squad to a 21-8 overall mark, a 12-4 record in C-USA play and a third straight trip to the NCAA Tournament. For her efforts, Mitchell was named the Wisconsin Basketball Coaches Association Women's Basketball Coach of the Year. Marquette allowed its foes to shoot just 39.0 percent from the field and out-rebounded teams by 8.0 boards per game, a stat that topped C-USA and was sixth in the nation.

1997-98

In 1997-98, the Golden Eagles finished 22-7 overall and had a 13-3 record in Conference USA play, capturing the American Division title en route to their second consecutive appearance in the NCAA Tournament. Mitchell also earned her first conference honor in her second year at the helm as she was named Conference USA Coach of the Year.

1996-97

Mitchell was named head coach on June 6, 1996. In her first season leading the Golden Eagles, Mitchell set a few precedents. She shattered the record for most wins by a Marquette first-year head coach, 21, and holds the distinction of reaching 50 wins faster than any coach in Marquette history. In addition, she became the only coach in school history to take her team to the NCAA Tournament in her first season.

Not only did she take the 1996-97 Golden Eagles to the Big Dance, but they also recorded the first NCAA Tournament win in school history.

The Early Days

Prior to becoming head coach, Mitchell was an assistant for the Golden Eagles for five seasons. She was instrumental in recruiting Marquette's 1996-97 freshman class, which was ranked 12th in the nation by the Blue Star Index. Marquette posted an 87-61 record and made three postseason appearances during Mitchell's tenure as an assistant.

A native of Harrisburg, Pa., Mitchell was a four-year letterwinner and team captain at Duquesne University. After an outstanding career with the Dukes, Mitchell graduated Cum Laude with a psychology degree in 1989. She began her coaching career serving as a graduate assistant at Arizona State during the 1989-90 season.

2008-09 Overall Statistics

Record	Overall	Home	Away	Neutral
All Games	4-0	2-0	2-0	0-0
BIG EAST	0-0	0-0	0-0	0-0

Player	GP	GS	Min.	Avg.	Field Goals			3-Point FG			Free Throws			Rebounds				PF	DQ	A	TO	B	S	Pts.	Avg.
					FG	FGA	Pct.	3P	3PA	Pct.	FT	FTA	Pct.	Off.	Def.	Tot.	Avg.								
20 ELLIS, Krystal	4	4	107	26.8	22	48	.458	3	19	.158	7	10	.700	1	12	13	3.3	7	0	25	15	1	8	54	13.5
24 THOMAS-JOHNSON, L	4	3	86	21.5	14	29	.483	9	20	.450	9	11	.818	2	3	5	1.3	6	0	6	9	2	4	46	11.5
01 ROBINSON, Angel	4	4	92	23.0	16	34	.471	4	8	.500	7	9	.778	3	12	15	3.8	11	0	16	15	3	7	43	10.8
12 PACHKO, Jessica	3	3	67	22.3	12	13	.923	0	0	.000	6	7	.857	6	10	16	5.3	8	0	3	5	1	2	30	10.0
41 FIEDOROWICZ, Paige	4	1	67	16.8	13	25	.520	1	2	.500	6	6	1.000	9	4	13	3.3	6	0	3	1	0	4	33	8.3
23 MCMORRIS, Tatiyana	2	0	22	11.0	5	8	.625	5	8	.625	0	0	.000	0	5	5	2.5	2	0	5	1	0	1	15	7.5
11 HARRIS, Janelle	4	1	58	14.5	9	21	.429	0	1	.000	4	7	.571	5	3	8	2.0	8	0	4	6	1	7	22	5.5
22 MELLEN, Jocelyn	4	4	88	22.0	8	18	.444	1	1	1.000	4	7	.571	3	17	20	5.0	9	0	2	6	3	1	21	5.3
42 THROWER, Marissa	4	0	35	8.8	6	8	.750	0	0	.000	6	9	.667	2	7	9	2.3	5	0	1	2	2	2	18	4.5
32 HILL, Breann	4	0	41	10.3	9	17	.529	0	1	.000	0	1	.000	9	5	14	3.5	3	0	0	7	0	2	18	4.5
34 JONES, Georgie	4	0	50	12.5	5	9	.556	0	0	.000	2	8	.250	7	13	20	5.0	7	0	1	7	3	2	12	3.0
00 COLLINS, Jasmine	3	0	16	5.3	4	7	.571	0	0	.000	0	0	.000	3	6	9	3.0	6	0	0	3	2	0	8	2.7
03 WEIBEL, Courtney	4	0	21	5.3	3	8	.375	3	8	.375	0	0	.000	1	0	1	0.3	1	0	0	0	0	1	9	2.3
05 MONFRE, Erin	4	0	51	12.8	1	11	.091	1	10	.100	0	0	.000	0	4	4	1.0	3	0	9	3	0	0	3	0.8
TM TEAM														8	12	20	5.0	0			1				
Total	4				127	256	.496	27	78	.346	51	75	.680	59	113	172	43.0	82	0	75	81	18	41	332	83.0
Opponents	4				77	225	.342	26	76	.342	53	85	.624	51	80	131	32.8	79	-	40	95	13	31	233	58.2

TEAM STATISTICS

	MARQ	OPP	Date	Opponent	W	L	Score	High Scorer	High Rebounder	Att.
SCORING	332	233	11/15	Oral Roberts	W		89-67	Ellis 16	Pachko, Mellen 8	1,201
Points per game	83.0	58.2	11/17	Sacred Heart	W		77-55	Pachko 14	Jones 7	1,045
Scoring margin	+24.8	-	11/19	at Indiana State	W		77-53	Ellis 19	Jones 10	3,577
FIELD GOALS-ATT	127-256	77-225	11/23	at Western Michigan	W		89-58	Fiedorowicz 14	Fiedorowicz & Collins 6	1,392
Field goal pct	.496	.342								
3 POINT FG-ATT	27-78	26-76								
3-point FG pct	.346	.342								
3-pt FG made per game	6.8	6.5								
FREE THROWS-ATT	51-75	53-85								
Free throw pct	.680	.624								
REBOUNDS	172	131								
Rebounds per game	43.0	32.8								
Rebounding margin	+10.3	-								
ASSISTS	75	40								
Assists per game	18.8	10.0								
TURNOVERS	81	95								
Turnovers per game	20.3	23.8								
Turnover margin	+3.5	-								
Assist/turnover ratio	0.9	0.4								
STEALS	41	31								
Steals per game	10.3	7.8								
BLOCKS	18	13								
Blocks per game	4.5	3.3								
WINNING STREAK	4	-								
Home win streak	2	-								
ATTENDANCE	2246	4969								
Home games-Avg/Game	2-1123	2-2484								
Neutral site-Avg/Game	-	0-0								

SCORE BY PERIODS:

	1st	2nd	Total
Marquette	170	162	332
Opponents	107	126	233

Attendance Summary

Site	Total	(GP)	Avg.	High
Home	2,246	2	1,123	1,201 vs Oral Roberts (Nov. 15)
Away	3,577	1	3,577	3,577 at Indiana State (Nov. 19)
Neutral	-	-	-	
Total	5,823	3		

Statistics in Home Games (2-0)

Player	GP	GS	Min.	Avg.	Field Goals			3-Point FG			Free Throws			Rebounds				PF	DQ	A	TO	B	S	Pts.	Avg.
					FG	FGA	Pct.	3P	3PA	Pct.	FT	FTA	Pct.	Off.	Def.	Tot.	Avg.								
24 L. Thomas-Johnson	2	1	43	21.5	7	17	.412	5	11	.455	6	8	.750	1	2	3	1.5	3	0	5	2	1	3	25	12.5
20 Krystal Ellis	2	2	52	26.0	10	23	.435	1	8	.125	3	4	.750	1	6	7	3.5	4	0	15	10	1	4	24	12.0
12 Jessica Pachko	2	2	45	22.5	10	11	.909	0	0	.000	4	5	.800	4	8	12	6.0	4	0	2	2	0	2	24	12.0
01 Angel Robinson	2	2	50	25.0	9	22	.409	1	3	.333	4	5	.800	2	7	9	4.5	6	0	6	6	3	6	23	11.5
41 Paige Fiedorowicz	2	0	32	16.0	6	11	.545	1	2	.500	4	4	1.000	2	2	4	2.0	2	0	2	0	0	3	17	8.5
42 Marissa Thrower	2	0	16	8.0	3	4	.750	0	0	.000	4	7	.571	2	2	4	2.0	3	0	0	1	0	2	10	5.0
34 Georgie Jones	2	0	22	11.0	4	7	.571	0	0	.000	1	5	.200	4	4	8	4.0	1	0	1	2	1	1	9	4.5
22 Jocelyn Mellen	2	2	42	21.0	4	8	.500	1	1	1.000	0	1	.000	2	12	14	7.0	5	0	1	3	1	1	9	4.5
11 Janelle Harris	2	1	32	16.0	3	12	.250	0	0	.000	3	4	.750	5	0	5	2.5	5	0	3	2	0	4	9	4.5
32 Breann Hill	2	0	24	12.0	4	9	.444	0	1	.000	0	0	.000	5	3	8	4.0	2	0	0	5	0	1	8	4.0
05 Erin Monfre	2	0	26	13.0	1	6	.167	1	6	.167	0	0	.000	0	1	1	0.5	2	0	6	2	0	0	3	1.5
03 Courtney Weibel	2	0	10	5.0	1	3	.333	1	3	.333	0	0	.000	1	0	1	0.5	1	0	0	0	0	0	3	1.5
00 COLLINS, Jasmine	2	0	6	3.0	1	1	1.000	0	0	.000	0	0	.000	0	3	3	1.5	4	0	0	1	0	0	2	1.0
TM TEAM														2	6	8	4.0	0			1				
Total	2				63	134	.470	11	35	.314	29	43	.674	31	56	87	43.5	42	0	41	37	7	27	166	83.0
Opponents	2				41	110	.373	15	41	.366	25	44	.568	22	46	68	34.0	39	-	22	50	7	16	122	61.0

Statistics on the Road Games (2-0)

Player	GP	GS	Min.	Avg.	Field Goals			3-Point FG			Free Throws			Rebounds				PF	DQ	A	TO	B	S	Pts.	Avg.
					FG	FGA	Pct.	3P	3PA	Pct.	FT	FTA	Pct.	Off.	Def.	Tot.	Avg.								
20 ELLIS, Krystal	2	2	55	27.5	12	25	.480	2	11	.182	4	6	.667	0	6	6	3.0	3	0	10	5	0	4	30	15.0
24 THOMAS-JOHNSON, L.	2	2	43	21.5	7	12	.583	4	9	.444	3	3	1.000	1	1	2	1.0	3	0	1	7	1	1	21	10.5
01 Robinson, Angel	2	2	42	21.0	7	12	.583	3	5	.600	3	4	.750	1	5	6	3.0	5	0	10	9	0	1	20	10.0
41 FIEDOROWICZ, Paige	2	1	35	17.5	7	14	.500	0	0	.000	2	2	1.000	7	2	9	4.5	4	0	1	1	0	1	16	8.0
23 MCMORRIS, Tatiyiana	2	0	22	11.0	5	8	.625	5	8	.625	0	0	.000	0	5	5	2.5	2	0	5	1	0	1	15	7.5
11 HARRIS, Janelle	2	0	26	13.0	6	9	.667	0	1	.000	1	3	.333	0	3	3	1.5	3	0	1	4	1	3	13	6.5
22 MELLEN, Jocelyn	2	2	46	23.0	4	10	.400	0	0	.000	4	6	.667	1	5	6	3.0	4	0	1	3	2	0	12	6.0
00 COLLINS, Jasmine	1	0	10	10.0	3	6	.500	0	0	.000	0	0	.000	3	3	6	6.0	2	0	0	2	2	0	6	6.0
12 PACHKO, Jessica	1	1	22	22.0	2	2	1.000	0	0	.000	2	2	1.000	2	2	4	4.0	4	0	1	3	1	0	6	6.0
32 HILL, Breann	2	0	17	8.5	5	8	.625	0	0	.000	0	1	.000	4	2	6	3.0	1	0	0	2	0	1	10	5.0
42 THROWER, Marissa	2	0	19	9.5	3	4	.750	0	0	.000	2	2	1.000	0	5	5	2.5	2	0	1	1	2	0	8	4.0
03 Weibel, Courtney	2	0	11	5.5	2	5	.400	2	5	.400	0	0	.000	0	0	0	0.0	0	0	0	0	0	1	6	3.0
34 JONES, Georgie	2	0	28	14.0	1	2	.500	0	0	.000	1	3	.333	3	9	12	6.0	6	0	0	5	2	1	3	1.5
05 Monfre, Erin	2	0	25	12.5	0	5	.000	0	4	.000	0	0	.000	0	3	3	1.5	1	0	3	1	0	0	0	0.0
TM TEAM														6	6	12	6.0	0			0				
Total	2				64	122	.525	16	43	.372	22	32	.688	28	57	85	42.5	40	0	34	44	11	14	166	83.0
Opponents	2				36	115	.313	11	35	.314	28	41	.683	29	34	63	31.5	40	-	18	45	6	15	111	55.5

Marquette Players in Double Figures

	Points	Rebounds
Oral Roberts	Ellis 16, Mellen 14, Fiedorowicz 13, Thomas Johnson 12, Pachko 10	-
Sacred Heart	Packo 14, Thomas-Johnson 13	-
at Indiana St.	Ellis 19, Thomas-Johnson 13	Jones 10
at West.Mich.	Fiedorowicz 14, Robinson 12, Ellis 12	-
Gonzaga		
Virginia		
Utah		
at Northwestern		
Kansas		
at Wisconsin		
Oregon		
Green Bay		
at Oakland		
Milwaukee		
USF		
at Seton Hall		
Notre Dame		
at Rutgers		
at Georgetown		
Syracuse		
at Pittsburgh		
at USF		
Connecticut		
Villanova		
West Virginia		
at Cincinnati		
St. John's		
at Providence		
at DePaul		
Louisville		

Marquette Bench Scoring

	Starters	Bench	Bench Scoring
Oral Roberts	49	40	Fiedorowicz 13, Thomas-Johnson 12, Thrower 5, Monfre 3, Weibel 3, Collins 2, Hill 2
Sacred Heart	48	29	Jones 9, Hill 6, Harris 5, Thrower 5, Fiedorowicz 4
at Indiana State	53	14	McMorris 9, Harris 5, Hill 2, Fiedorowicz 2, Thrower 2, Jones 1
at W. Michigan	50	39	Harris 8, Hill 8, Collins 6, McMorris 6, Thrower 6, Weibel 3, Jones 2
Gonzaga			
Virginia			
Utah			
at Northwestern			
Kansas			
at Wisconsin			
Oregon			
Green Bay			
at Oakland			
Milwaukee			
USF			
at Seton Hall			
Notre Dame			
at Rutgers			
at Georgetown			
Syracuse			
at Pittsburgh			
at USF			
Connecticut			
Villanova			
West Virginia			
at Cincinnati			
St. John's			
at Providence			
at DePaul			
Louisville			

Marquette's Record When

Leading at half	4-0
Trailing at half	-
Tied at half	-
Scoring 70 or more points	4-0
Allowing 80 or more points	-
Holding opponents to 60 points or less	3-0
Holding opponents to 65 points or less	-
Holding opponents to 70 points or less	1-0
Shooting 50 percent or better	3-0
Opponents shoot 50 percent or better	-
Opponent shoots under 40 percent	3-0
MU's FG percent is higher than opp.	4-0
MU's FG percent is lower than opp.	-
MU's 3FG percent is 40 percent or higher	-
Opponent's 3FG percent is 40 percent or higher	1-0
MU shoots more FT than opponent	1-0
MU shoots fewer FT than opponent	3-0
MU shoots same FT as opponent	-
Out-rebounded opponent	4-0
Out-rebounded by opponent	-
Rebounds tied	-
Same or fewer turnovers as opp.	3-0
More turnovers than opponent	1-0
Overtime games	-
In games decided by 5 pts. or less	-
In games decided by 6-10	-
In games decided by 11-15	-
In games decided by 16 pts. or more	4-0
When Ranked in AP or Coaches Poll	-
vs Ranked Teams (AP or Coaches)	-
vs Teams with a RPI of 25 or better	1-0
vs Teams with a RPI of 26-50	-
vs Teams with a RPI of 50-100	-
vs Teams with a RPI of 100 or higher	3-0
When winning the opening tip	3-0
When scoring first	3-0
On Sundays	1-0
On Mondays	1-0
On Tuesdays	-
On Wednesdays	1-0
On Thursdays	-
On Fridays	-
On Saturdays	1-0

Team Superlatives by Half

	First Half	Second Half
Points	52 at West. Mich. (11/23)	47 Oral Roberts (11/15)
Fewest Pts. Allowed	22 at West. Mich. (11/23)	21 at Indiana State (11/19)
FG Percentage	59.4 at West. Mich. (11/23)	72.0 at Indiana State (11/19)
Lowest FG Pct. Allowed	21.4 at West. Mich. (11/23)	23.1 at Indiana State (11/19)
3-Point Percentage	63.6 at West. Mich. (11/23)	50.0 at Indiana State (11/19)
FT Made	9 Twice	8 Sacred Heart (11/17)
Rebounds	23 at West. Mich. (11/23)	27 Oral Roberts (11/15)
Assists	13 Sacred Heart (11/17)	11 Oral Roberts (11/15)
Blocks	3 Twice	3 Twice
Steals	8 Oral Roberts (11/15)	12 Sacred Heart (11/17)

Individual Superlatives by Half

First Half		
Points	12 Jessica Pachko	Sacred Heart (11/17)
FG Made	6 Jessica Pachko	Sacred Heart (11/17)
3-Point Made	2 Four Players	Last time: at West. Mich. (11/23)
FT Made	3 L. Thomas-Johnson	Oral Roberts (11/15)
Rebounds	5 Jocelyn Mellen	Sacred Heart (11/17)
Assists	5 Krystal Ellis	Sacred Heart (11/17)
Second Half		
Points	16 Krystal Ellis	at Indiana State (11/19)
FG Made	7 Krystal Ellis	at Indiana State (11/19)
3-Point Made	2 L. Thomas-Johnson	at Indiana State (11/19)
FT Made	2 Four Players	Last time: at West. Mich. (11/23)
Rebounds	6 Georgie Jones	at Indiana State (11/19)
Assists	4 Three Players	Last: at Indiana State (11/19)

High Marks

Double-figure scoring games	2008-09	Career
Krystal Ellis	3	79
Erin Monfre	-	6
Marissa Thrower	-	4
Janielle Harris	-	8
Breann Hill	-	-
Lauren Thomas-Johnson	3	3
Jasmine Collins	-	-
Paige Fiedorowicz	2	6
Tatiana McMorris	-	1
Jocelyn Mellen	-	5
Angel Robinson	2	27
Courtney Weibel	-	2
Georgie Jones	-	-
Jessica Pachko	2	2

20-point games	2008-09	Career
Krystal Ellis	-	28
Angel Robinson	-	2

30-point games	2008-09	Career
Krystal Ellis	-	5

40-point games	2008-09	Career
Krystal Ellis	-	1

Double-figure rebound games	2008-09	Career
Krystal Ellis	-	1
Jocelyn Mellen	-	4
Georgie Jones	1	1

Double-doubles	2008-09	Career
Krystal Ellis	-	2

Individual Season Records

	Starts	10+ points	10+ rebs.
Krystal Ellis	4	3-0	-
Erin Monfre	-	-	-
Marissa Thrower	-	-	-
Lauren Thomas-Johnson	3	3-0	-
Breann Hill	-	-	-
Janielle Harris	1	-	-
Jasmine Collins	-	-	-
Paige Fiedorowicz	1	2-0	-
Tatiana McMorris	-	-	-
Jocelyn Mellen	4	-	-
Angel Robinson	4	2-0	-
Courtney Weibel	-	-	-
Georgie Jones	-	-	1-0
Jessica Pachko	3	2-0	-

Individual Career Records

	Starts	10+ points	10+ rebs.
Krystal Ellis	92	60-19	-
Erin Monfre	25	6-1	-
Marissa Thrower	9	4-0	-
Janielle Harris	36	4-3	-
Breann Hill	-	-	-
Lauren Thomas Johnson	3	3-0	-
Jasmine Collins	-	-	-
Paige Fiedorowicz	15	5-2	-
Tatiana McMorris	3	0-1	-
Jocelyn Mellen	13	4-1	1-3
Angel Robinson	37	18-9	-
Courtney Weibel	-	-	-
Georgie Jones	-	-	1-0
Jessica Pachko	3	2-0	-

Specialty Statistics

	Marquette	Opponents
Points in the Paint	159 39.8	76 19.0
Points off Turnovers	92 23.0	67 16.8
Second Chance Points	52 13.0	40 10.0
Fast Break Points	80 20.0	13 3.3
Bench Points	132 33.0	45 11.3

Specialty Stats Superlatives

	Marquette	Opponents
Points in the Paint	45 Oral Roberts	24 Oral Roberts
Points off Turnovers	30 Sacred Heart	19 Western Mich.
Second Chance Points	17 Oral Roberts	17 Oral Roberts
Fast Break Points	35 Sacred Heart	5 Sacred Heart
Bench Points	40 Oral Roberts	15 Western Mich.

The Last Time

Team	Marquette	Opponent
100+ Points	102-99 vs. Memphis (3/11/95)	60-104 vs. Georgia (1/11/95)
90+ Points	92-59 vs. Providence (1/31/06)	63-95 at #1/1 Connecticut (2/20/08)
Under 40 Points	33-60 vs. Notre Dame (12/22/01)	89-38 vs. Manhattan (12/21/06)
FG Pct. 60+	68.2 vs. Saint Louis (1/22/95)	64.3 at #16/16 Notre Dame (2/10/08)
FG Pct. 50+	52.2 at Western Michigan (11/23/08)	54.4 at #1/1 Connecticut (2/20/08)
Five Players, 10+ pts.	89-67 vs. Oral Roberts (11/15/08)	64-77 at Wis.-Green Bay (12/04/04)

Team	Marquette Win	Marquette Loss
Ranked Opponent (AP)	76-69 vs #23 Pittsburgh (2/23/08)	76-99 vs #16 Notre Dame (2/13/08)
Overtime Game	75-69 vs. Creighton (3/24/08)	87-91 OT at Pittsburgh (1/9/07)
Double Overtime	79-75 vs. Georgia State (12/07/02)	<i>63-65 at UAB (1/18/04)</i>
Triple Overtime	Never	Never
Home Opener	89-67 vs. Oral Roberts (11/15/08)	50-68 vs. Iowa State (11/17/01)
Road Openers	77-53 at Indiana State (11/19/08)	56-57 at Oregon (11/20/07)

Individual	Marquette	Opponent
40+ Points	40, Krystal Ellis <i>69-64 at Kentucky (3/30/08)</i>	40, Danielle Viglione 86-98 vs. Texas (1/05/94)

30+ Points	30, Krystal Ellis <i>79-66 at USF (1/26/08)</i>	31, Maya Moore 63-95 at #1/1 Connecticut (2/20/08)
------------	---	---

2 Players, 20+ pts.	26, Christina Quaye; 21 Krystal Ellis 75-63 vs USF (2/24/07)	20 Georgia Jones; 20, Janae Voelker 89-67 vs. Oral Roberts (11/15/08)
---------------------	---	--

2 Players, 10+ rebs.	13, Svetlana Kovalenko; 10, Krystal Ellis <i>63-65 vs Northwestern (12/17/07)</i>	14, Angel McCoughtry; 10, Candyce Bingham <i>69-79 at Louisville (1/23/08)</i>
----------------------	---	--

10+ assists	11, Krystal Ellis 81-66, at Michigan State (4/5/08)	12, Micah Harvey 69-79 at Cincinnati (2/05/05)
-------------	--	---

5+ Steals	5, Angel Robinson <i>67-70 at 23/24 Syracuse (2/10/08)</i>	7, Angel McCoughtry <i>69-79 at Louisville (1/23/08)</i>
-----------	--	--

5+ Blocks	6, Danielle Kamm 54-60 vs. Charlotte (1/14/05)	8, Sandora Irvin 47-56 at TCU (2/20/04)
-----------	---	--

Double Double	15 pts, 11 asst; Krystal Ellis 81-66, at Michigan State (4/5/08)	14 pts, 10 reb; Victoria Dunlap 69-64 at Kentucky (3/30/08)
---------------	---	--

This season . . .

Largest halftime lead	30	at Western Michigan (Nov. 23)
Largest halftime deficit	-	
Largest lead in a game	32	at Western Michigan (Nov. 23)
Largest deficit in a game	4	at Indiana State (11/19)
Largest winning margin	31	at Western Michigan (Nov. 23)
Largest losing margin	-	
Largest deficit in a victory	4	at Indiana State (11/19)
Largest lead in a loss	-	
Largest home crowd	1,201	Oral Roberts (Nov. 15)
Largest road crowd	3,755	
Largest neutral crowd	-	
30-point games	-	
20-point games	-	
10-rebound games	Jones 1	
Double-doubles	-	
Games as leading scorer	Ellis 2, Fiedorowicz 1, Pachko 1	
Games as leading rebounder	Collins 1, Fiedorowicz 1, Mellen 1, Pachko 1, Jones 3	
Games as assists leader	Ellis 3, Robinson 1	
Foul outs	-	
BIG EAST Player of the Week Selections	-	
BIG EAST Freshman of the Week Selections	-	
BIG EAST Honor Roll Selections	-	

2008-09 Season Superlatives

Marquette Highs

POINTS	89	Twice (at Western Michigan and vs Oral Roberts)
FIELD GOALS MADE	77	Twice (at Indiana State and vs Sacred Heart)
FIELD GOAL ATTEMPTS	35	at Western Michigan (11/23/08)
FIELD GOAL PERCENTAGE	.527	(29-55) vs Sacred Heart (11/17/08)
3 PT FIELD GOALS MADE	9	at Indiana State (11-19-08)
3 PT FG ATTEMPTS	25	at Indiana State (11-19-08)
3 PT FG PERCENTAGE	.389	(7-18) at Western Michigan (11/23/08)
FREE THROWS MADE	16	vs Oral Roberts (11/15/08)
FREE THROW ATTEMPTS	24	vs Oral Roberts (11/15/08)
FREE THROW PERCENTAGE	.857	(12-14) at Western Michigan (11/23/08)
REBOUNDS	45	at Western Michigan (11/23/08)
ASSISTS	22	vs Sacred Heart (11/17/08)
STEALS	19	vs Sacred Heart (11/17/08)
BLOCKED SHOTS	6	at Indiana State (11-19-08)
TURNOVERS	23	at Western Michigan (11/23/08)
FOULS	25	vs Oral Roberts (11/15/08)

Marquette Lows

POINTS	77	Twice
FIELD GOALS MADE	29	at Indiana State (11-19-08)
FIELD GOAL ATTEMPTS	55	at Indiana State (11-19-08)
FIELD GOAL PERCENTAGE	.441	(30-68) vs Sacred Heart (11/17/08)
3 PT FIELD GOALS MADE	4	vs Sacred Heart (11/17/08)
3 PT FG ATTEMPTS	13	vs Sacred Heart (11/17/08)
3 PT FG PERCENTAGE	.308	(4-13) vs Sacred Heart (11/17/08)
FREE THROWS MADE	10	at Indiana State (11-19-08)
FREE THROW ATTEMPTS	14	at Western Michigan (11/23/08)
FREE THROW PERCENTAGE	.556	(10-18) at Indiana State (11-19-08)
REBOUNDS	40	at Indiana State (11-19-08)
ASSISTS	17	at Indiana State (11-19-08)
STEALS	5	at Western Michigan (11/23/08)
BLOCKED SHOTS	3	vs Oral Roberts (11/15/08)
TURNOVERS	16	vs Oral Roberts (11/15/08)
FOULS	17	vs Sacred Heart (11/17/08)

Marquette — Individual Game Highs

POINTS	19	ELLIS, Krystal at Indiana State (11-19-08)
FIELD GOALS MADE	8	ELLIS, Krystal at Indiana State (11-19-08)
FIELD GOAL ATT	17	ELLIS, Krystal at Indiana State (11-19-08)
FG PCT (min 5 made)	.857 (6-7)	PACHKO, Jessica vs Sacred Heart (11/17/08)
3 PT FG MADE	3	Two players, three times
3 PT FG ATTEMPTS	8	ELLIS, Krystal at Indiana State (11-19-08)
3-PT FG PCT (min 2 made)	.667 (2-3)	Two players, twice
FREE THROWS MADE	4	THOMAS-JOHNSON, L. vs Oral Roberts (11/15/08)
FREE THROW ATT	6	THOMAS-JOHNSON, L. vs Oral Roberts (11/15/08)
FT PCT (min 3 made)	.750 (3-4)	Four players, four times
REBOUNDS	10	JONES, Georgie at Indiana State (11-19-08)
ASSISTS	8	ELLIS, Krystal vs Sacred Heart (11/17/08)
STEALS	4	Two players, twice
BLOCKED SHOTS	3	ROBINSON, Angel vs Oral Roberts (11/15/08)
TURNOVERS	6	Two players, twice
FOULS	4	PACHKO, Jessica at Indiana State (11-19-08)

Opponent Highs

POINTS	67	vs Oral Roberts (11/15/08)
FIELD GOALS MADE	24	vs Oral Roberts (11/15/08)
FIELD GOAL ATTEMPTS	59	at Western Michigan (11/23/08)
FIELD GOAL PERCENTAGE	.421 (24-57)	vs Oral Roberts (11/15/08)
3 PT FIELD GOALS MADE	8	vs Oral Roberts (11/15/08)
3 PT FG ATTEMPTS	21	vs Sacred Heart (11/17/08)
3 PT FG PERCENTAGE	.400 (8-20)	vs Oral Roberts (11/15/08)
FREE THROWS MADE	16	at Western Michigan (11/23/08)
FREE THROW ATTEMPTS	27	vs Oral Roberts (11/15/08)
FREE THROW PERCENTAGE	.842 (16-19)	at Western Michigan (11/23/08)
REBOUNDS	36	vs Sacred Heart (11/17/08)
ASSISTS	13	vs Sacred Heart (11/17/08)
STEALS	11	at Western Michigan (11/23/08)
BLOCKED SHOTS	4	Twice
TURNOVERS	32	vs Sacred Heart (11/17/08)
FOULS	22	vs Oral Roberts (11/15/08)

Opponent Lows

POINTS	53	at Indiana State (11-19-08)
FIELD GOALS MADE	17	vs Sacred Heart (11/17/08)
FIELD GOAL ATTEMPTS	53	vs Sacred Heart (11/17/08)
FIELD GOAL PERCENTAGE	.305 (18-59)	at Western Michigan (11/23/08)
3 PT FIELD GOALS MADE	5	at Indiana State (11-19-08)
3 PT FG ATTEMPTS	17	at Western Michigan (11/23/08)
3 PT FG PERCENTAGE	.278 (5-18)	at Indiana State (11-19-08)
FREE THROWS MADE	11	vs Oral Roberts (11/15/08)
FREE THROW ATTEMPTS	17	vs Sacred Heart (11/17/08)
FREE THROW PERCENTAGE	.407 (11-27)	vs Oral Roberts (11/15/08)
REBOUNDS	29	at Western Michigan (11/23/08)
ASSISTS	8	at Western Michigan (11/23/08)
STEALS	4	at Indiana State (11-19-08)
BLOCKED SHOTS	2	at Western Michigan (11/23/08)
TURNOVERS	18	vs Oral Roberts (11/15/08)
FOULS	17	vs Sacred Heart (11/17/08)

Opponent — Individual Game Highs

POINTS	20	Two players, twice
FIELD GOALS MADE	7	Two players, twice
FIELD GOAL ATT	17	JONES, Georgia vs Oral Roberts (11/15/08)
FG PCT (min 5 made)	.583 (7-12)	VOELKER, Janae vs Oral Roberts (11/15/08)
3 PT FG MADE	4	JONES, Georgia vs Oral Roberts (11/15/08)
3 PT FG ATTEMPTS	10	JONES, Georgia vs Oral Roberts (11/15/08)
3-PT FG PCT (min 2 made)	1.000 (3-3)	PRYOR, Amy vs Oral Roberts (11/15/08)
FREE THROWS MADE	6	Luna, Kelsey at Indiana State (11-19-08)
FREE THROW ATT	11	VOELKER, Janae vs Oral Roberts (11/15/08)
FT PCT (min 3 made)	1.000 (4-4)	APD, Alisa vs Sacred Heart (11/17/08)
REBOUNDS	9	RYAN, Stephanie vs Sacred Heart (11/17/08)
ASSISTS	5	DELAHOUSSAYE, T. at Wst. Mich. (11/23/08)
STEALS	5	DELAHOUSSAYE, T. at Wst. Mich. (11/23/08)
BLOCKED SHOTS	4	SOWINSKI, Kaitlin vs Sacred Heart (11/17/08)
TURNOVERS	7	Two players, twice
FOULS	5	Three Players, three times

Career Records Update

All-Time Leading Scorers

Name	Points	Years
1. Abbie Willenborg	1,818	1997-00
2. Julie Sievers	1,759	1980-83
3. Kristen Maskala	1,745	1992-94
Krystal Ellis	1,601	2005-

All-Time Leading Rebounders

Name	Rebounds	Years
1. Abbie Willenborg	1,167	1997-00
2. Julie Sievers	1,151	1980-83
3. Christine Kennedy	1,089	1992-95

Scoring Average

Name	Years	Gm.	Avg.
1. Kristen Maskala	1992-94	89	19.6
2. Kathy Andrykowski	1977-80	69	19.0
3. Julie Sievers	1980-83	105	16.8

Field Goals Made

Name	Years	FGs
1. Julie Sievers	1980-83	721
2. Abbie Willenborg	1997-00	677
3. Kristen Maskala	1992-94	649
Krystal Ellis	2005-	547

Field Goal Percentage (Min. 400 Attempts)

Name	Years	Pct.	
1. Lisa Oldenburg	1997-00	638-1,182	54.0
2. Rachel Klug	1999-03	342-634	53.9
3. Heidi Ach	1988-91	569-1,068	53.3

Three-Point Field Goals Made

Name	Years	3FGM
1. Lori Goerlitz	1992-95	223
2. Krystal Ellis	2005-	177
3. Kristi Johnson	1999-02	162

Three-Point Field Goals Attempted*

Name	Years	3FGA
1. Lori Goerlitz	1992-95	662
2. Courtney Romeiser	1990-93	558
3. Krystal Ellis	2005-	498

Three-Point FG Percentage (Min. 50 Attempts)

Name	Years	Pct.	
1. Kristi Johnson	1998-02	162-413	39.2
2. Anita Godlewski	1988-91	26-64	39.1
3. Lesley Juedes	2001-05	81-217	37.3
Krystal Ellis	2005-	177-498	36.3

Free Throws Made

Name	Years	FTM
1. Abbie Willenborg	1997-00	435
2. Clare Barnard	1994-97	410
3. Christina Quaye	2003-07	408
Krystal Ellis	2005-	330

Free Throws Attempted

Name	Years	FTA
1. Abbie Willenborg	1997-00	635
2. Clare Barnard	1994-97	579
3. Christina Quaye	2003-07	566

Free Throw Percentage (Min. 175 Attempts)

Name	Years	Pct.	
1. Kelly Scherman	2000-04	191-229	83.1
2. Beth Ayers	1984-87	202-249	81.1
3. Kristin Maskala	1992-94	287-358	80.2
Krystal Ellis	2005-	330-398	83.0

Rebounding Average

Name	Years	Reb.	Avg.
1. Kathy Andrykowski	1977-80	943	13.7
2. Julie Sievers	1980-83	1,151	11.0
3. Abbie Willenborg	1997-00	1,167	9.9

Assists

Name	Years	Assists
1. Carolyn Kieger	2002-06	694
2. Joan Pitrof	1987-90	689
3. Lori Goerlitz	1992-95	566

Steals

Name	Years	Steals
1. Courtney Romeiser	1990-93	287
2. Tammy Shain	1989-92	266
3. Beth Ayers	1984-87	239
Krystal Ellis	2005-	203

Blocks

Name	Years	Blocks
1. Kerri Christianson	1986-89	170
2. Lisa Oldenburg	1997-00	160
3. Christine Kennedy	1992-95	157

Season Records Update

Points

Name	Season	Points
1. Kristen Maskala	1991-92	635
2. Krystal Ellis	2007-08	601
Krystal Ellis	2006-07	593
3. Julie Sievers	1981-82	582
4. Kristen Maskala	1993-94	567
5. Kerri Reaves	1994-95	546

Scoring Average

Name	Season	Avg.
1. Kristen Maskala	1991-92	21.9
2. Julie Sievers	1981-82	20.7
3. Kathy Andrykowski	1977-78	20.2
4. Kathy Andrykowski	1979-80	20.0
5. Kathy Andrykowski	1976-77	19.8

Field Goals Made

Name	Season	F6M
1. Kristen Maskala	1991-92	242
2. Julie Sievers	1981-82	213
3. Krystal Ellis	2007-08	212
4. Kathy Andrykowski	1979-80	210
5. Lisa Oldenburg	1997-98	205

Field Goal Percentage (Min. 100 Attempts)

Name	Season	FGM-FGA	Pct.
1. Heidi Ach	1987-88	129-223	57.8
2. Heidi Ach	1989-90	124-215	57.7
3. Lisa Oldenburg	1998-99	154-274	56.2
4. Lisa Oldenburg	1999-00	183-327	56.0
5. Rachel Klug	2001-02	145-258	56.2

Three-Point Field Goals Made

Name	Season	3PM
1. Lori Goerlitz	1994-95	91
2. Kelly Scherman	2003-04	70
3. Kristen Maskala	1991-92	69
4. Lori Goerlitz	1993-94	68
5. Krystal Ellis	2007-08	67
6. Krystal Ellis	2006-07	65

Three-Point Field Goals Attempted

Name	Season	3PA
1. Lori Goerlitz	1994-95	274
2. Lori Goerlitz	1993-94	191
3. Krystal Ellis	2007-07	190
4. Krystal Ellis	2006-07	183
5. Courtney Romeiser	1992-93	171
Kristen Maskala	1991-92	171

Three-Point Field Goals Pct. (Min. 50 Attempts)

Name	Season	3PM-A	Pct.
1. Kelly Scherman	2002-03	56-131	42.7
2. Carolyn Kieger	2002-03	26-61	42.6
3. Lesley Juedes	2004-05	59-141	41.8
3. Kristen Maskala	1991-92	69-171	40.4
4. Anita Godlewski	1990-91	25-63	39.7

Free Throws Made

Name	Season	FTM
1. Kerri Reaves	1994-95	167
2. Clare Barnard	1996-97	153
3. Krystal Ellis	2006-07	150
4. Christina Quaye	2006-07	130
5. Abbie Willenborg	1998-99	127
Clare Barnard	1995-96	127

Free Throw Percentage (Min. 75 Attempts)

Name	Season	FTM-FTA	Pct.
1. Kelly Scherman	2003-04	71-81	87.7
2. Carolyn Kieger	2002-03	98-112	87.5
3. Krystal Ellis	2006-07	150-172	87.2
4. Kristen Maskala	1993-94	116-137	84.7
5. Beth Ayers	1985-86	69-82	84.1

Rebounds

Name	Season	Reb.
1. Kathy Andrykowski	1979-80	347
2. Julie Sievers	1980-81	325
3. Abbie Willenborg	1996-97	314
4. Christine Kennedy	1994-95	309
5. Abbie Willenborg	1997-98	297

Rebounding Average

Name	Season	Avg.
1. Kathy Andrykowski	1976-77	16.8
2. Kathy Andrykowski	1977-78	14.4
3. Kathy Andrykowski	1979-80	13.9
4. Julie Sievers	1980-81	12.0
5. Julie Sievers	1981-82	11.3
Mary Spellacy	1980-81	11.3

Assists

Name	Season	Assists
1. Lori Goerlitz	1994-95	222
2. Nicki Taggart	1997-98	215
3. Nicki Taggart	1996-97	206
4. Joan Pitrof	1987-88	199
5. Carolyn Kieger	2003-04	188

Steals

Name	Season	Steals
1. Courtney Romeiser	1991-92	93
2. Courtney Romeiser	1992-93	92
3. Angel Robinson	2007-08	86
4. Kristen Maskala	1992-93	75
Kristen Maskala	1991-92	75
6. Krystal Ellis	2006-07	73

Blocks

Name	Season	Blocks
1. Christine Kennedy	1994-95	53
2. Christine Kennedy	1993-94	52
Kerri Christianson	1988-89	52
4. Kerri Christianson	1985-86	51
5. Lisa Oldenburg	1999-00	50

2008-09 Season Box Scores

Marquette 89, Oral Roberts 67

Game 1 • November 15, 2008

Al McGuire Center • Milwaukee, Wis.

MILWAUKEE — The Marquette women's basketball team opened its regular season on Saturday with an impressive 89-67 victory over Oral Roberts (0-1). The Golden Eagles (1-0) saw five players in double-digit scoring, led by preseason All-American Krystal Ellis who tallied 16 points in 26 minutes. Saturday also marked the unfolding of the 2008 WNIT Championship banner in front of a crowd of 1,201 at the Al McGuire Center.

Sophomore Angel Robinson hit a three-pointer in the first eight seconds of play to open the scoring for Marquette. Freshman Jessica Pachko, making her first official collegiate start, added a layup to extend the lead to 5-0. After back-to-back layups by Ellis extended the Blue and Gold's lead to 9-3, consecutive baskets by Oral Roberts' Georgia Jones and Kelly Kindell tightened the MU advantage to 12-9.

A Jocelyn Mellen entry pass to Paige Fiedorowicz allowed the home team a seven point advantage, 16-9. The ORU squad tried once again to close the gap with back-to-back treys by Amy Pryor and Jones, respectively, to close the MU lead to one point. Lauren Thomas-Johnson answered from long distance with a three of her own, to maintain a 19-15 lead.

Freshman Jordan Pyle's layup, and a Janae Voelker bank shot three, allowed Oral Roberts (0-1, 0-0) their first and only lead of the game at 20-19 with 10:52 left. After an official timeout with just under ten minutes to play, Marquette went on an 19-0 scoring spree, not allowing an opposing point for eight minutes of play. During MU's 19-0 run, five Golden Eagles scored before Georgia Jones' jumper with 2:53 left to play. Robinson tallied six points, off two layups and four foul shots, while Ellis and Thomas-Johnson added four points apiece.

Thomas-Johnson's jumper from the top of the key extended MU's lead to 38-20, its biggest lead of the first half. During ORU's drought, Marquette forced ten of ORU's 13 first half turnovers, and scored 21 points off turnovers in the first frame.

ORU's Jones, a freshman from Manchester, England, was able to hit a layup and baseline three to reduce Marquette's lead to 38-25 with 2:05 remaining in the first half. The Golden Eagles went into intermission with a 17-point lead, 42-25, after back-to-back layups by Janelle Harris and Angel Robinson, the latter coming with three seconds on the clock.

Marquette used its post presence to outscore ORU in the paint, 27-10, with Thomas-Johnson and Fiedorowicz scoring eight and seven points, respectively, in the first half. Robinson led all scorers at the half with 11 points off 4-of-6 shooting from the field. As a whole, the home team shot 46.9 percent from the field, while limited to 3-for-11 shooting from three-point range. Meanwhile, Oral Roberts hit 5-of-8 from long distance, while their drought caused a 43.5 percent clip shooting from the field.

The Golden Eagles came out with the same intensity and momentum in the second half with a 15-5 run. MU spread the scoring, with Fiedorowicz hitting a back-to-back jump shot and layup to maintain a 47-32 Marquette lead. An Ellis entry pass led to a Robinson layup, and the senior then tallied her own two points with a layup for a 51-32 advantage. Mellen and Erin Monfre both dialed in from long range, holding the comfortable lead at 57-32.

Senior Noelia Quintas' basket with 15:00 on the clock redeemed the ORU squad after being outscored 8-0 in almost four minutes without a basket. Marissa Thrower helped boost points from the bench, making two foul shots and a shot from the lane to extend the Marquette lead to 66-41.

After ORU's 6-foot-3 Monah Pegorari fouled out with 11:32 on the clock, Terri Mitchell's squad took full advantage, tallying 18 points in the paint in the second half. The two teams traded baskets for the remainder of the game, with a stifling Marquette defense outscoring the opponents, as the second Oral Roberts' player fouled out in Pyle. Janelle Harris' putback put the Golden Eagles ahead, 80-59.

Marquette 89, Oral Roberts 67

Oral Roberts	FG-A	3P-A	FT-A	O-D-REB	PF	TP	A	TO	B	S	MIN
VOELKER f	7-12	1-5	5-11	2-5-7	3	20	3	2	0	1	39
PEGORARI f	1-3	0-0	0-0	0-1-1	5	2	0	1	1	0	14
CAMARGO g	0-6	0-0	1-6	0-5-2	2	1	4	1	3	27	
JONES g	7-17	4-10	2-4	0-3-3	3	20	2	4	0	0	37
PRYOR g	3-4	3-3	1-2	1-1-2	0	10	3	3	0	0	21
KINDLELL	0-0	0-0	0-0	0-2-2	0	0	0	1	0	1	7
TURNER	0-1	0-0	0-0	0-0-0	1	0	0	0	0	0	8
QUINTAS	2-7	0-2	2-4	1-0-1	3	6	0	2	0	0	22
PYLE	4-7	0-0	0-0	3-4-7	5	8	0	1	1	1	23
DAKES	0-0	0-0	0-0	1-0-1	0	0	0	0	0	0	2
TEAM				1-2-3							
Totals	24-57	8-20	11-27	9-23-32	22	67	9	18	3	6	200

Marquette	FG-A	3P-A	FT-A	O-D-REB	PF	TP	A	TO	B	S	MIN
PACHKO f	4-4	0-0	2-3	2-6-8	2	10	2	1	0	2	24
MELLEN f	2-3	1-1	0-0	2-6-8	3	5	0	2	0	0	21
ROBINSON g	5-10	1-2	3-4	1-4-5	3	14	4	1	3	2	28
HARRIS g	2-5	0-0	0-0	4-0-4	3	4	0	1	0	0	19
ELLIS g	7-16	0-5	2-2	0-4-4	3	16	7	4	0	1	26
COLLINS	1-1	0-0	0-0	0-2-2	3	2	0	1	0	0	3
WEIBEL	1-3	1-3	0-0	1-0-1	1	3	0	0	0	0	6
MONFRE	1-4	1-4	0-0	0-1-1	0	3	4	1	0	0	10
THOMAS-JOHNSON 3-8	2-5	4-6	0-1-1	2	12	1	1	0	2	20	
HILL	1-3	0-1	0-0	1-2-3	2	2	0	1	0	0	10
JONES	0-0	0-0	0-3	0-1-1	1	0	1	1	0	0	9
FIEDOROWICZ	5-8	1-1	2-2	1-1-2	0	13	0	0	0	1	18
THROWER	1-1	0-0	3-4	1-1-2	2	5	0	1	0	0	6
TEAM				0-2-2							
Totals	33-66	7-22	16-24	13-31-44	25	89	19	16	3	8	200

Officials: Dennis Mayer, Robert Entlerline, Carol Comanita
 Attendance: 1,201
 Score by Periods
 Oral Roberts 25 42 67
 Marquette 42 47 89

Marquette 77, Sacred Heart 55

Game 2 • November 17, 2008

Al McGuire Center • Milwaukee, Wis.

MILWAUKEE — With another balanced scoring effort, the Marquette women's basketball team earned a 77-55 win over Sacred Heart Monday night at the Al McGuire Center. The Golden Eagles had two newcomers scoring in double figures with freshman Jessica Pachko leading the way with game-high 14 points. The win puts Marquette at 2-0 overall, while Sacred Heart drops to 0-2 on the season.

The Golden Eagles completed the evening 44.1 percent (30-68) from the field, led by Pachko and Thomas-Johnson with 14 and 13 points apiece, respectively. Pachko missed just one shot total, as she hit 6-of-7 from the field and both of her attempts from the charity stripe. All-American candidate senior Krystal Ellis contributed eight points and as many assists in the win to go along with four steals.

After a dismal 6-for-22 shooting from the floor in the second half, the Pioneers ended the game connecting on 32.1 percent from the floor, 33.3 percent from long range. The Pioneers saw three players in double-digits scoring, paced by Apo with 13 points, and Taylor and Ryan with 12 and 11 points, respectively.

Marquette's depth plagued the Pioneers, as the Golden Eagles' bench combined for 29 points, in comparison to Sacred Heart's six. For the second consecutive game, Marquette scored more than 40 points in the paint and tallied more than 40 rebounds.

Sacred Heart opened scoring with Alisa Apo hitting a three from the top of the key, but two consecutive layups by Pachko got MU off and running. Marquette began an 11-0 run 2:23 into the game and never looked back. During the scoring spree, Thomas-Johnson tallied seven points for the Golden Eagles. Marquette pushed its lead to 14 points, 25-11, midway through the first half before Kaitlin Sowinski started a mini 6-0 run for the Pioneers to cut the lead to eight, 25-17, with 8:59 to play in the first.

MU freshman Georgie Jones answered with a layup of her own to spark a 9-0 MU run, keeping Sacred Heart stranded with 17 points for over three minutes on game clock. Thomas-Johnson hit a three from the corner, and back-to-back layups by Jones and Hill extended MU's lead to 17 points (34-17), its largest of the half. SHU responded with a 7-0 run but never got closer than eight points near the end of the first half.

The Golden Eagles went into halftime with a 13-point lead, 41-28. Marquette connected on 17-of-37 (45.9%) of its attempts from the field, led by Pachko and Thomas-Johnson with 12 and 10 points, respectively. Pachko was a perfect 6-of-6 from the floor in the first.

Thomas-Johnson opened the second half with third three-pointer of the game, extending the Golden Eagles' lead to 16 points, 44-28. The Pioneers cut the gap to 13 points twice in the second frame, but Marquette put the game out of reach with an 11-2 run that pushed its lead to 22 points with 11:06 to play. The closest SHU came for the remainder of the game was 17 points.

Marquette 77, Sacred Heart 55

Sacred Heart	FG-A	3P-A	FT-A	O-D-REB	PF	TP	A	TO	B	S	MIN
TAYLOR f	4-9	2-4	2-3	1-4-5	3	12	1	3	0	1	30
SOWINSKI c	3-7	0-0	2-2	1-7-8	2	8	4	6	4	0	28
COSGROVE g	1-7	1-4	2-2	0-2-2	3	5	1	4	0	2	26
RYAN g	4-11	1-4	2-2	5-4-9	2	11	1	7	0	3	33
APO g	3-7	3-7	4-4	3-1-4	3	13	2	6	0	1	32
HYNCIK	0-0	0-0	0-0	0-0-0	0	0	0	0	0	0	2
GIBSON	0-0	0-0	0-0	0-0-0	2	0	1	2	0	0	14
GRUBER	0-0	0-0	1-2	0-0-0	0	1	0	0	0	0	2
CAIN	1-7	0-1	1-2	1-0-1	1	3	2	0	0	1	17
GREENLEE	0-0	0-0	0-0	0-1-1	0	0	1	0	0	1	5
SCHMIDT	1-1	0-0	0-0	0-0-0	0	2	0	0	0	0	3
CAMPBELL	0-4	0-1	0-0	1-0-1	1	0	0	1	0	1	8
TEAM				1-4-5							
Totals	17-53	7-21	14-17	13-23-36	17	55	13	32	4	10	202

Marquette	FG-A	3P-A	FT-A	O-D-REB	PF	TP	A	TO	B	S	MIN
PACHKO f	6-7	0-0	2-2	2-2-4	2	14	0	1	0	0	21
MELLEN f	2-5	0-0	0-1	0-6-6	2	4	1	1	1	1	21
ROBINSON g	4-12	0-1	1-1	1-3-4	3	9	2	5	0	4	22
ELLIS g	3-7	1-3	1-2	1-2-3	1	8	6	1	3	26	
THOMAS-JOHNSON 4-9	3-6	2-2	1-1-2	1	13	4	1	1	1	23	
COLLINS	0-0	0-0	0-0	0-1-1	1	0	0	0	0	0	3
WEIBEL	0-0	0-0	0-0	0-0-0	0	0	0	0	0	0	4
MONFRE	0-2	0-2	0-0	0-0-0	2	0	2	1	0	0	16
HARRIS	1-7	0-0	3-4	1-0-1	2	5	3	1	0	4	13
HILL	3-6	0-0	0-0	4-1-5	0	6	0	4	0	1	14
JONES	4-7	0-0	1-2	4-3-7	0	9	0	1	1	1	13
FIEDOROWICZ	1-3	0-1	2-2	1-1-2	2	4	2	0	0	2	14
THROWER	2-3	0-0	1-3	1-1-2	1	5	0	0	0	2	10
TEAM				2-4-6							
Totals	30-68	4-13	13-19	18-25-43	17	77	22	21	4	19	200

Officials: Cameron Inouye, John Orminski, Kevin Dillard
 Attendance: 1,045
 Score by Periods
 Sacred Heart 28 27 55
 Marquette 41 36 77

Marquette 77, Indiana State 53

Game 3 • November 19, 2008

Hulman Center • Terre Haute, Ind.

TERRE HAUTE, Ind. - The Marquette women's basketball team shot 72-percent from the floor in the second half to defeat Indiana State, 77-53, Wednesday night at the Hulman Center in Terre Haute, Ind. The win keeps Marquette undefeated at 3-0, while the Sycamores drop to 0-2.

Senior All-America candidate Krystal Ellis finished with a season-high 19 points after scoring just three points in the first half, and added seven assists and three steals. Junior Lauren Thomas-Johnson followed with 13 points, and freshman Georgie Jones pulled down a game-high 10 rebounds.

Marquette finished the game shooting 52.7 percent, while holding the Sycamores to make just 18 of their attempts (32.1 percent), only six in the second half. Kelsey Luna led the Sycamores with 18 points.

After a back and forth first half, Marquette went into the locker room at the intermission with a slim three-point advantage, 35-32.

The Golden Eagles were a dismal, 1-for-9 from long-range over the first 15 minutes of the game before sophomore Tatiyana McMorris and Angel Robinson knocked down back-to-back 3-pointers to put the score at 27-25 with 4:57 remaining in the first half.

Marquette finished the first frame connecting on 11 of its 30 attempts from the floor (36.7 percent) while Indiana State shot 40 percent from the field (12-of-30). Sophomore Jocelyn Mellen gave Marquette seven points, while McMorris, Pachko and Robinson each added six points apiece.

Deja Mattox led ISU with eight points, while Kelsey Luna add with seven points in the first half.

Marquette stormed out of the intermission to take a 39-32 lead but the Sycamores countered with made three-pointers to cut the lead to two points, 39-37.

Marquette let its defense spark its offense and went on a 16-4 run over six minutes to take a 14-point lead, 55-41 with 11:22 to play.

After a mini 6-0 run by ISU to cut MU's lead to eight points, but Lauren Thomas Johnson hit her third trifecta of the game and Ellis added a bucket of her own to go ahead 13 points, 60-47, with 8:28 to play in the game.

Marquette sealed the win after taking 21-point lead, when Ellis made the basket in traffic and drew the foul to put the score at 70-49 with 4:35 left to play.

The Golden Eagles closed the game holding the Sycamores without a field goal for the final 5:21.

Marquette 77, Indiana State 53

Marquette	FG-A	3P-A	FT-A	O-D-REB	PF	TP	A	TO	B	S	MIN
PACHKO f	2-2	0-0	2-2	2-2-4	4	6	1	3	1	0	22
MELLEN f	3-7	0-0	1-2	1-2-3	2	7	0	2	2	0	26
ROBINSON g	3-5	1-2	1-2	0-2-2	3	8	3	3	0	0	18
ELLIS g	8-17	1-8	2-4	0-4-4	0	19	7	2	0	3	35
THOMAS-JOHNSON 4-9	3-5	2-2	1-1-2	2	13	1	4	1	1	1	24
WEIBEL	1-1	1-1	0-0	0-0-0	0	3	0	0	0	1	1
MONFRE	0-3	0-3	0-0	0-1-1	1	0	3	0	0	0	15
HARRIS	2-3	0-1	1-2	0-2-2	0	5	0	2	1	1	10
McMORRIS	3-5	3-5	0-0	0-3-3	2	9	1	0	0	0	13
HILL	1-1	0-0	0-1	1-2-3	1	2	0	2	0	1	5
JONES	0-1	0-0	1-3	3-7-10	3	1	0	3	1	1	14
FIEDOROWICZ	1-3	0-0	0-0	2-1-3	3	2	1	0	0	1	15
THROWER	1-1	0-0	0-0	0-0-0	0	2	0	0	0	0	2
TEAM				1-2-3							
Totals	29-55	9-25	10-18	11-29-40	21	77	17	21	6	9	200

Marquette 80, Western Michigan 58

Game 4 • November 23, 2008

Hulman Center • Terre Haute, Ind.

KALAMAZOO, Mich. The Marquette women's basketball team jumped out to a quick 15-0 lead in the first half and never looked back to earn a 89-58 win at Western Michigan Sunday afternoon at Varsity Arena. The win keeps Marquette perfect at 4-0, while the Broncos remain winless at 0-3 overall. The 4-0 start marks the first time since the 2004-05 season the Golden Eagles have begun the season with a four straight wins.

Marquette had three players with double-digit point totals with sophomore Paige Fiedorowicz registering a team-high 14 points. Sophomore Angel Robinson and senior Krystal Ellis each added 12 and 11 points, respectively. All but one player in the lineup registered a basket while the Golden Eagles shot 52.2 percent from the floor, including 38.9 percent from 3-point land.

Marquette dominated the glass for the fourth consecutive game, 45-29. Fiedorowicz and sophomore Jasmine Collins each pulled down a game-high six apiece.

During the Golden Eagles' early 15-0 early run over the first 5:23 of action, Ellis, junior Lauren Thomas-Johnson and Robinson each made one 3-pointer. Marquette pushed that lead to 22 points following another 12-0 run that put the Golden Eagles ahead 29-7 with 7:27 to play in the first half.

Marquette outscored the Broncos 18-7 over the last five minutes of the first half to help Marquette cruise into the locker room at half-time with a 30-point cushion, 52-22.

The Broncos countered early in the second with a 9-2 run to cut their deficit to 25 points, but back-to-back buckets from junior Janelle Harris gave a 29-point lead back to the Golden Eagles, 64-35, with 12:04 left in the game.

An 11-4 run by Western Michigan that put the score at 68-47 with 7:34 to play and again with 7:02 left would be the closest it would come for the remainder of the game. The Golden Eagles held onto a 20-plus point lead for the remainder of the game.

Marquette connected on a first-half season high 59.4 percent of attempts from the floor, while holding Western Michigan to make just six total shots. The Golden Eagles were on fire from long range knocking down seven of 11 treys.

Fiedorowicz led MU with 11 points and three rebounds, Robinson added eight points and four assists, and Lauren Thomas-Johnson and Tatiyana McMorris gave MU six points apiece.

Marquette 89, Western Michigan 58

Marquette	FG-A	3P-A	FT-A	O-D-REB	PF	TP	A	TO	B	S	MIN
MELLEN f	1-3	0-0	3-4	0-3-3	2	5	1	1	0	0	20
FIEDOROWICZ f	6-11	0-0	2-2	5-1-6	1	14	0	1	0	0	20
ROBINSON g	4-7	2-3	2-2	1-3-4	2	12	7	6	0	1	24
ELLIS g	4-8	1-3	2-2	0-2-2	3	11	3	3	0	1	20
THOMAS-JOHNSON g	3-6	1-4	1-1	0-0-0	1	8	0	3	0	0	19
COLLINS g	3-6	0-0	0-0	3-3-6	2	6	0	2	2	0	10
WEIBEL g	1-4	1-4	0-0	0-0-0	0	3	0	0	0	0	10
MONFRE g	0-2	0-1	0-0	0-2-2	0	0	0	1	0	0	10
HARRIS g	4-6	0-0	0-1	0-1-1	3	8	1	2	0	2	16
McMORRIS g	2-3	2-3	0-0	0-2-2	0	6	4	1	0	1	9
HILL g	4-7	0-0	0-0	3-0-3	0	8	0	0	0	0	12
JONES g	1-1	0-0	0-0	0-2-2	3	2	0	2	1	0	14
THROWER g	2-3	0-0	2-2	0-5-5	2	6	1	1	2	0	17
TEAM				5-4-9							
Totals.....	35-67	7-18	12-14	17-28-45	19	89	17	23	5	5	200

West. Mich.	FG-A	3P-A	FT-A	O-D-REB	PF	TP	A	TO	B	S	MIN
BANKTSON f	1-5	1-2	2-2	1-1-2	5	5	1	1	0	3	22
GIDEN f	5-14	1-3	5-6	3-0-3	2	16	1	1	0	1	34
CLEARAY f	1-5	0-1	0-0	1-4-5	3	2	0	1	0	0	22
DELAHOUSSE g	6-15	0-1	4-5	2-1-3	2	16	5	6	0	5	33
DWYER g	1-4	0-2	2-2	0-2-2	1	4	0	7	0	0	24
DREHER g	1-5	1-2	2-2	0-0-0	3	5	0	1	0	0	13
VEST g	0-1	0-0	1-2	0-3-3	0	1	0	0	1	2	13
HARVEY g	0-1	0-0	0-0	0-0-0	0	0	0	0	0	0	6
IACUANIELLO g	0-1	0-0	0-0	1-0-1	0	0	0	0	0	0	8
FLETCHER g	0-0	0-0	0-0	0-0-0	0	0	0	0	0	0	1
WILSON g	0-0	0-0	0-0	0-1-1	0	0	0	0	0	0	4
GIDEN g	0-0	0-0	0-0	0-0-0	0	0	0	0	1	0	2
LONEY g	3-8	3-6	0-0	2-1-3	3	9	1	4	0	0	18
TEAM				4-2-6							
Totals	18-59	6-17	16-19	14-15-29	19	58	8	22	2	11	200

Officials: Kim Hobbs, Mark Berger, Andrew Bills

Attendance: 1392

Score by Periods	1st	2nd	Total
Marquette	52	37	89
Western Michigan	22	36	58



00 • Jasmine Collins

Sophomore
 Forward
 6-2
 Detroit, Mich.
 Martin Luther King

2008-09: Scored two points and grabbed two boards in three minutes against Oral Roberts in the season opener...Scored a career-high six points on 3-of-6 shooting and pulled down six rebounds at Western Michigan (11/23)...

Career Highs

Points	6, at Western Mich. (11/23/08)	08-09 Season Highs	6, at Western Michigan (11/23/08)
Rebounds	6, at Western Mich. (11/23/08)		6, at Western Michigan (11/23/08)
Field Goals	3, at Western Mich. (11/23/08)		3, at Western Michigan (11/23/08)
FG Attempts	6, at Western Mich. (11/23/08)		6, at Western Michigan (11/23/08)
Three FG	—		—
Three FG Att.	—		—
Free Throws	2, at Notre Dame (2/13/08)		—
Free Throw Att.	2, Twice		—
Assists	2, Western Michigan (1/2/08)		—
Steals	1, Twice times		—
Blocks	2, at Western Mich. (11/23/08)		2, at Western Michigan (11/23/08)
Minutes	12, Ark.-Pine Bluff (12/21/07)		10, at Western Michigan (11/23/08)

Collins' Game-by-Game Stats

Opponent	Date	GS	Min.	FG-A	Pct.	3P-A	Pct.	FT-FTA	Pct.	Off-Def.	Tot	Avg	PF	FO	A	TO	Blk	Stl	Pts	Avg
Oral Roberts	11/14		3	1-1	100.0	0-0	-	0-0	-	0-2	2	2.0	3	-	0	1	0	0	2	2.0
Sacred Heart	11/17		3	0-0	-	0-0	-	0-0	-	0-1	1	1.5	1	-	0	0	0	0	0	1.0
at Indiana State	11/19									Did Not Play										
at Western Michigan	11/23		10	3-6	50.0	0-0	-	0-0	-	3-3	6	3.0	2	-	0	2	2	0	6	2.7
Gonzaga																				
Virginia																				
Utah																				
at Northwestern																				
Kansas																				
at Wisconsin																				
Oregon																				
Green Bay																				
at Oakland																				
Milwaukee																				
USF																				
at Seton Hall																				
Notre Dame																				
at Rutgers																				
at Georgetown																				
Syracuse																				
at Pittsburgh																				
at USF																				
Connecticut																				
Villanova																				
West Virginia																				
at Cincinnati																				
St. John's																				
at Providence																				
at DePaul																				
Louisville																				

Denotes BIG EAST Conference Game
 ^ Denotes BIG EAST Conference Tournament Game

Collins' Career Stats

Year	GP	GS	Min	Avg	FG-FGA	Pct	3FG-FGA	Pct	FT-FTA	Pct	Off	Def	Tot	Avg	PF	FO	Ast	TO	Blk	Stl	Pts	Avg
2007-08	19	0	96	5.1	6-25	.240	0-0	-	4-6	.667	12	5	17	0.9	16	0	2	9	6	2	16	0.8
2008-09	3	0	16	5.3	4-7	.571	0-0	-	0-0	.000	3	6	9	3.0	6	0	0	3	2	0	8	2.7
TOTAL	22	0	112	5.1	10-32	.313	0-0	-	4-6	.667	15	11	26	1.2	22	0	2	12	8	2	24	1.1



1 • Angel Robinson

Sophomore

Guard

5-8

St. Paul, Minn.

Central

BIG EAST All-Conference Candidate

2008-09: In season opener versus Oral Roberts (11/14), tied career-highs in three-point field goals made (3) and attempted (4) and also tied a career-high with three blocks...Recorded four steals against Sacred Heart (11/17)...Registered a season-high seven assists at Western Michigan (11/23)...

Points	22, at Connecticut (2/20/08)	08-09 Season Highs	14, Oral Roberts (11/15/08)
Rebounds	9, Creighton (3/24/08)		5, Oral Roberts (11/15/08)
Field Goals	8, Three times		5, Oral Roberts (11/15/08)
FG Attempts	23, USF (3/3/08)		12, Sacred Heart (11/17/08)
Three FG	3, Twice		3, Oral Roberts (11/15/08)
Three FG Att.	4, Four Times		4, Oral Roberts (11/15/08)
Free Throws	8, Twice		2, at Western Michigan (11/23/08)
Free Throw Att.	11, Twice		2, Twice
Assists	10, Seton Hall (2/16/08)		7, at Western Michigan (11/23/08)
Steals	7, at Gonzaga (11/23/07)		4, Sacred Heart (11/17/08)
Blocks	3, Twice		3, Oral Roberts (11/15/08)
Minutes	39, Twice		28, Oral Roberts (11/15/08)

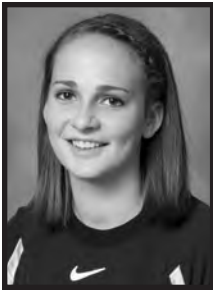
Robinson's Game-by-Game Stats

Opponent	Date	GS	Min.	FG-A	Pct.	3P-A	Pct.	FT-FTA	Pct.	Off-Def.	Tot	Avg	PF	FO	A	TO	Blk	Stl	Pts	Avg
Oral Roberts	11/14	*	28	5-10	50.0	3-4	75.0	1-2	50.0	1-4	5	5.0	3	-	4	1	3	2	14	14.0
Sacred Heart	11/17	*	22	4-12	33.3	0-1	0.0	1-1	100.0	1-3	4	4.5	3	-	2	5	0	4	9	11.5
at Indiana State	11/19	*	18	3-5	60.0	1-2	50.0	1-2	50.0	0-2	2	3.7	3	-	3	3	0	0	8	10.3
at Western Michigan	11/23	*	24	4-7	57.1	2-3	66.7	2-2	100.0	1-3	4	3.8	2	-	7	6	0	1	12	10.8
Gonzaga																				
Virginia																				
Utah																				
at Northwestern																				
Kansas																				
at Wisconsin																				
Oregon																				
Green Bay																				
at Oakland																				
Milwaukee																				
USF																				
at Seton Hall																				
Notre Dame																				
at Rutgers																				
at Georgetown																				
Syracuse																				
at Pittsburgh																				
at USF																				
Connecticut																				
Villanova																				
West Virginia																				
at Cincinnati																				
St. John's																				
at Providence																				
at DePaul																				
Louisville																				

Denotes BIG EAST Conference Game
 ^ Denotes BIG EAST Conference Tournament Game

Robinson's Career Stats

Year	GP	GS	Min	Avg	FG-FGA	Pct	3FG-FGA	Pct	FT-FTA	Pct	Off	Def	Tot	Avg	PF	FO	Ast	TO	Blk	Stl	Pts	Avg
2007-08	35	33	955	27.3	141-364	.387	18-54	.333	99-142	.697	55	97	152	4.3	104	4	135	118	13	86	399	11.4
2008-09	4	4	92	23.0	16-34	.471	4-8	.500	7-9	.778	3	12	15	3.8	11	0	16	15	3	7	43	10.8
TOTALS	39	37	1047	26.8	157-398	.394	22-62	.355	106-151	.702	58	109	167	4.3	115	4	151	133	16	93	442	11.3



3 • Courtney Weibel

Sophomore
Guard
5-9
Rockton, Ill.
Hononegah

2008-09: Made a three-pointer against Oral Roberts (11/14), Indiana State (11/19) and Western Michigan (11/23)...

Points	15, Seton Hall (2/16/08)	08-09 Season Highs	3, Three Times
Rebounds	3, Pittsburgh (2/23/08)		1, Oral Roberts (11/15/08)
Field Goals	5, Seton Hall (2/16/08)		1, Three Times
FG Attempts	8, Twice		4, at Western Michigan (11/23/08)
Three FG	5, Seton Hall (2/16/08)		1, Twice
Three FG Att.	8, Twice		4, at Western Michigan (11/23/08)
Free Throws	2, at Notre Dame (2/13/08)		—
Free Throw Att.	2, at Notre Dame (2/13/08)		—
Assists	2, at Notre Dame (2/13/08)		—
Steals	2, at Connecticut (2/20/08)		1, at Indiana State (11/19/08)
Blocks	1, Indiana State (12/15/07)		—
Minutes	20, at Notre Dame (2/13/08)		10, at Western Michigan (11/23/08)

Weibel's Game-by-Game Stats

Opponent	Date	GS	Min.	FG-A	Pct.	3P-A	Pct.	FT-FTA	Pct.	Off-Def.	Tot	Avg	PF	FO	A	TO	Blk	Stl	Pts	Avg
Oral Roberts	11/14		6	1-3	33.3	1-3	33.3	0-0	-	1-0	1	1.0	1	-	0	0	0	0	3	3.0
Sacred Heart	11/16		4	0-0	-	0-0	-	0-0	-	0-0	0	0.5	0	-	0	0	0	0	0	1.5
at Indiana State	11/19		1	1-1	100.0	1-1	100.0	0-0	-	0-0	0	0.3	0	-	0	0	0	1	3	2.0
at Western Michigan	11/23		10	1-4	25.0	1-4	25.0	0-0	-	0-0	0	0.3	0	-	0	0	0	0	3	2.3
Gonzaga																				
Virginia																				
Utah																				
at Northwestern																				
Kansas																				
at Wisconsin																				
Oregon																				
Green Bay																				
at Oakland																				
Milwaukee																				
USF																				
at Seton Hall																				
Notre Dame																				
at Rutgers																				
at Georgetown																				
Syracuse																				
at Pittsburgh																				
at USF																				
Connecticut																				
Villanova																				
West Virginia																				
at Cincinnati																				
St. John's																				
at Providence																				
at DePaul																				
Louisville																				

Denotes BIG EAST Conference Game
^ Denotes BIG EAST Conference Tournament Game

Weibel's Career Stats

Year	GP	GS	Min	Avg	FG-FGA	Pct	3FG-FGA	Pct	FT-FTA	Pct	Off	Def	Tot	Avg	PF	FO	Ast	TO	Blk	Stl	Pts	Avg
2007-08	30	0	201	6.7	23-78	.295	22-72	.306	2-2	1.000	6	12	18	0.6	14	0	8	14	1	6	70	2.3
2008-09	4	0	21	5.3	3-8	.375	3-8	.375	0-0	1.000	1	0	1	0.3	1	0	0	0	0	1	9	2.3
TOTALS	34	0	222	6.5	26-86	.302	25-80	.313	2-2	1.000	7	12	19	0.6	15	0	8	14	1	7	79	2.3



5 • Erin Monfre

Senior
Guard
5-11
Waukesha, Wis.
Waukesha South

2008-09: Dished out four assists in season opener against Oral Roberts...Played in 100th career game at Indiana State (11/19)...

Points	18, at Virginia (11/17/06)	08-09 Season Highs	3, Oral Roberts (11/15/08)
Rebounds	8, at Colorado (4/2/08)		2, at Western Michigan (11/23/08)
Field Goals	6, at Virginia (11/17/06)		1, Oral Roberts (11/15/08)
FG Attempts	9, at Michigan State (4/5/08)		4, Oral Roberts (11/15/08)
Three FG	6, at Virginia (11/17/06)		1, Oral Roberts (11/15/08)
Three FG Att.	8, at Michigan State (4/5/08)		4, Oral Roberts (11/15/08)
Free Throws	4, Twice		—
Free Throw Att.	4, Twice		—
Assists	8, Navy (12/29/06)		4, Oral Roberts (11/15/08)
Steals	3, Five Times		—
Blocks	1, Five Times		—
Minutes	34, at Oregon (11/20/07)		16, Sacred Heart (11/17/08)

Monfre's Game-by-Game Stats

Opponent	Date	GS	Min	FG-A	Pct	3P-A	Pct	FT-FTA	Pct	Off-Def	Tot	Avg	PF	FO	A	TO	Blk	Stl	Pts	Avg
Oral Roberts	11/14		10	1-4	.250	1-4	.250	0-0	-	0-1	1	1.0	0	-	4	1	0	0	3	3.0
Sacred Heart	11/16		16	0-2	0.0	0-2	0.0	0-0	-	0-0	0	0.5	2	-	2	1	0	0	0	1.5
at Indiana State	11/19		15	0-3	0.0	0-3	0.0	0-0	-	0-1	1	0.7	1	-	3	0	0	0	0	1.0
at Western Michigan	11/23		10	0-2	0.0	0-1	0.0	0-0	-	0-2	2	1.0	0	-	0	1	0	0	0	0.8
Gonzaga																				
Virginia																				
Utah																				
at Northwestern																				
Kansas																				
at Wisconsin																				
Oregon																				
Green Bay																				
at Oakland																				
Milwaukee																				
USF																				
at Seton Hall																				
Notre Dame																				
at Rutgers																				
at Georgetown																				
Syracuse																				
at Pittsburgh																				
at USF																				
Connecticut																				
Villanova																				
West Virginia																				
at Cincinnati																				
St. John's																				
at Providence																				
at DePaul																				
Louisville																				

Denotes BIG EAST Conference Game
^ Denotes BIG EAST Conference Tournament Game

Monfre's Career Stats

Year	GP	GS	Min	Avg	FG-FGA	Pct	3FG-FGA	Pct	FT-FTA	Pct	Off	Def	Tot	Avg	PF	FO	Ast	TO	Blk	Stl	Pts	Avg
2005-06	33	6	481	14.6	31-105	.295	29-88	.330	9-11	.818	6	26	32	1.0	25	0	25	26	0	16	100	3.0
2006-07	33	17	696	21.1	35-130	.269	28-101	.277	21-26	.808	13	55	68	2.1	28	0	86	43	4	21	119	3.6
2007-08	31	2	496	16.0	32-114	.281	28-96	.292	5-12	.417	14	32	46	1.5	23	0	38	24	2	19	97	3.1
2008-09	4	0	51	12.8	1-11	.091	1-10	.100	0-0	.000	0	4	4	1.0	3	0	9	3	0	0	3	0.8
TOTAL	101	25	1724	17.1	99-360	.275	86-295	.292	35-49	.714	33	117	150	1.5	79	0	158	96	6	56	319	3.2

Game 5 • Gonzaga at Marquette • WBCA Classic • November 28, 2008 • Al McGuire Center



11 • Janelle Harris

Junior
Guard
6-0
Detroit, Mich.
Renaissance

2008-09: Started 36th straight game in season opening win against Oral Roberts, scoring four points and grabbing four rebounds...Recorded a career-high four steals against Sacred Heart (11/17)...Notched first blocked shot of her career at Indiana State (11/19)...Scored a season-high eight points at Western Michigan (11/23)...

Career Highs
Points 17, at St. John's (2/2/08)
Rebounds 9, Western Michigan (1/2/08)
Field Goals 6, Twice
FG Attempts 14, at St. John's (2/2/08)
Three FG 1, Four Times
Three FG Att. 2, Three Times
Free Throws 7, at Colorado (4/2/08)
Free Throw Att. 10, at Colorado (4/2/08)
Assists 4, vs. Arkansas (12/30/07)
Steals 4, Sacred Heart (11/17/08)
Blocks 1, at Indiana State (11/19/08)
Minutes 33, Creighton (3/24/08)

08-09 Season Highs
8, at Western Michigan (11/23/08)
4, Oral Roberts (11/15/08)
4, at Western Michigan (11/23/08)
7, Sacred Heart (11/17/08)
—
1, at Indiana State (11/19/08)
3, Sacred Heart (11/17/08)
4, Sacred Heart (11/17/08)
3, Sacred Heart (11/17/08)
4, Sacred Heart (11/17/08)
1, at Indiana State (11/19/08)
19, Oral Roberts (11/15/08)

Harris' Game-by-Game Stats

Opponent	Date	GS	Min.	FG-A	Pct.	3P-A	Pct.	FT-FTA	Pct.	Off-Def.	Tot	Avg	PF	FO	A	TO	Blk	Stl	Pts	Avg
Oral Roberts	11/14	*	19	2-5	40.0	0-0	-	0-0	-	4-0	4	4.0	3	-	0	1	0	0	4	4.0
Sacred Heart	11/16		13	1-7	14.2	0-0	-	3-4	75.0	1-0	1	2.5	2	-	3	1	0	4	5	4.5
at Indiana State	11/19		10	2-3	66.7	0-1	0.0	1-2	50.0	0-2	2	2.3	0	-	0	2	1	1	5	4.7
at Western Michigan	11/23		16	4-6	66.7	0-0	-	0-1	0.0	0-1	1	2.0	3	-	1	2	0	2	8	5.5
Gonzaga																				
Virginia																				
Utah																				
at Northwestern																				
Kansas																				
at Wisconsin																				
Oregon																				
Green Bay																				
at Oakland																				
Milwaukee																				
USF																				
at Seton Hall																				
Notre Dame																				
at Rutgers																				
at Georgetown																				
Syracuse																				
at Pittsburgh																				
at USF																				
Connecticut																				
Villanova																				
West Virginia																				
at Cincinnati																				
St. John's																				
at Providence																				
at DePaul																				
Louisville																				

Denotes BIG EAST Conference Game
^ Denotes BIG EAST Conference Tournament Game

Harris' Career Stats

Year	GP	GS	Min	Avg	FG-FGA	Pct	3FG-FGA	Pct	FT-FTA	Pct	Off	Def	Tot	Avg	PF	FO	Ast	TO	Blk	Stl	Pts	Avg
2006-07	32	0	275	8.6	24-67	.358	1-6	.167	19-29	.655	19	29	48	1.5	23	0	11	34	1	20	68	2.1
2007-08	35	35	794	22.7	89-221	.403	4-17	.235	60-80	.750	52	81	133	3.8	66	0	39	87	0	45	242	6.9
2008-09	4	1	58	14.5	9-21	.429	0-1	.000	4-7	.571	5	3	8	2.0	8	0	4	6	1	7	22	5.5
TOTAL	71	36	1127	15.9	122-309	.395	5-24	.208	83-116	.716	76	113	189	2.7	97	0	54	127	2	72	332	4.7



12 • Jessica Pachko

Freshman
Forward
6-2
Cincinnati, Ohio
Oak Hills

2008-09: Started first collegiate game against Oral Roberts (11/14), scoring 10 points on 4-of-4 shooting from the field and grabbed eight rebounds...Scored 14 points against Sacred Heart (11/17) on 6-of-7 shooting from the field to begin college career 10-11 from the field...Recorded first career blocked shot at Indiana State (11/19)...Has only missed one field goal attempt this year...

Career /08-09 Season Highs

Points 14, Sacred Heart (11/17/08)
Rebounds 8, Oral Roberts (11/15/08)
Field Goals 6, Sacred Heart (11/17/08)
FG Attempts 7, Sacred Heart (11/17/08)
Three FG —
Three FG Att —
Free Throws 2, Twice
Free Throw Att. 3, Oral Roberts (11/15/08)
Assists 2, Oral Roberts (11/15/08)
Steals 2, Oral Roberts (11/15/08)
Blocks 1, at Indiana State (11/19/08)
Minutes 24, Oral Roberts (11/17/08)

Pachko's Game-by-Game Stats

Opponent	Date	GS	Min.	FG-A	Pct.	3P-A	Pct.	FT-FTA	Pct.	Off-Def.	Tot	Avg	PF	FO	A	TO	Blk	Stl	Pts	Avg
Oral Roberts	11/14	*	24	4-4	100.0	0-0	-	2-3	66.6	2-6	8	8.0	2	-	2	1	0	2	10	10.0
Sacred Heart	11/16	*	21	6-7	85.7	0-0	-	2-2	100.0	2-2	4	6.0	2	-	0	1	0	0	14	12.0
at Indiana State	11/19	*	22	2-2	100.0	0-0	-	2-2	100.0	2-2	4	5.3	4	-	1	3	1	0	6	10.0
at Western Michigan	11/23																			
Gonzaga																				
Virginia																				
Utah																				
at Northwestern																				
Kansas																				
at Wisconsin																				
Oregon																				
Green Bay																				
at Oakland																				
Milwaukee																				
USF																				
at Seton Hall																				
Notre Dame																				
at Rutgers																				
at Georgetown																				
Syracuse																				
at Pittsburgh																				
at USF																				
Connecticut																				
Villanova																				
West Virginia																				
at Cincinnati																				
St. John's																				
at Providence																				
at DePaul																				
Louisville																				

Denotes BIG EAST Conference Game

^ Denotes BIG EAST Conference Tournament Game

Pachko's Career Stats

Year	GP	GS	Min	Avg	FG-FGA	Pct	3FG-FGA	Pct	FT-FTA	Pct	Off	Def	Tot	Avg	PF	FO	Ast	TO	Blk	Stl	Pts	Avg
2008-09	3	3	67	22.3	12-13	.923	0-0	.000	6-7	.857	6	10	16	5.3	8	0	3	5	1	2	30	10.0



20 • Krystal Ellis

Senior
Guard
5-9
Racine, Wis.
St. Catherine's

All-America Candidate
2008 "Wade Watch" List selection
2008 Naismith Top-30 List

2008-09: Scored 16 points, grabbed four rebounds and dished out seven assists in season opening win over Oral Roberts...Scored a game-high 19 points and assisted on seven baskets at Indiana State (11/19) in 100th career game...

Points	40, at Kentucky (3/30/08)	08-09 Season Highs	16, Oral Roberts (11/15/08)
Rebounds	10, Northwestern (12/17/07)		4, Oral Roberts (11/15/08)
Field Goals	13, at USF (1/26/08)		7, at Indiana State (11/19/08)
FG Attempts	27, at USF (1/26/08)		17, at Indiana State (11/19/08)
Three FG	5, Five Times		1, Twice
Three FG Att.	11, Twice		8, at Indiana State (11/19/08)
Free Throws	13, at Kentucky (3/30/08)		2, Three Times
Free Throw Att.	14, at Kentucky (3/30/08)		4, at Indiana State (11/19/08)
Assists	11, at Michigan St. (4/5/08)		8, Sacred Heart (11/17/08)
Steals	6, at Rice (12/3/06)		3, Sacred Heart (11/17/08)
Blocks	4, at Kentucky (3/30/08)		1, Sacred Heart (11/17/08)
Minutes	38, Twice		35, at Indiana State (11/19/08)

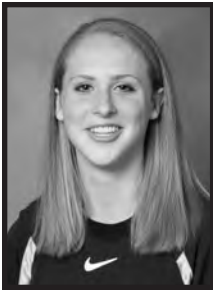
Ellis' Game-by-Game Stats

Opponent	Date	GS	Min.	FG-A	Pct.	3P-A	Pct.	FT-FTA	Pct.	Off-Def.	Tot	Avg	PF	FO	A	TO	Blk	Stl	Pts	Avg
Oral Roberts	11/14	*	26	7-16	43.8	0-5	0.0	2-2	100.0	0-4	4	4.0	3	-	7	4	0	1	16	16.0
Sacred Heart	11/16	*	26	3-7	42.9	1-3	33.3	1-2	50.0	1-2	3	3.5	1	-	8	6	1	3	8	12.0
at Indiana State	11/19	*	35	8-17	47.1	1-8	12.5	2-4	50.0	0-4	4	3.7	0	-	7	2	0	3	19	14.3
at Western Michigan	11/23	*	20	4-8	50.0	1-3	33.3	2-2	100.0	0-2	2	3.3	3	-	3	3	0	1	11	13.5
Gonzaga																				
Virginia																				
Utah																				
at Northwestern																				
Kansas																				
at Wisconsin																				
Oregon																				
Green Bay																				
at Oakland																				
Milwaukee																				
USF																				
at Seton Hall																				
Notre Dame																				
at Rutgers																				
at Georgetown																				
Syracuse																				
at Pittsburgh																				
at USF																				
Connecticut																				
Villanova																				
West Virginia																				
at Cincinnati																				
St. John's																				
at Providence																				
at DePaul																				
Louisville																				

Denotes BIG EAST Conference Game
^ Denotes BIG EAST Conference Tournament Game

Ellis' Career Stats

Year	GP	GS	Min	Avg	FG-FGA	Pct	3FG-FGA	Pct	FT-FTA	Pct	Off	Def	Tot	Avg	PF	FO	Ast	TO	Blk	Stl	Pts	Avg
2005-06	33	26	792	24.0	124-275	.451	42-106	.396	63-83	.759	30	59	89	2.7	65	0	89	62	10	62	353	10.7
2006-07	33	33	999	30.3	189-436	.433	65-183	.355	150-172	.872	28	81	109	3.3	71	0	115	90	5	73	593	18.0
2007-08	31	29	949	30.6	212-510	.416	67-190	.353	110-134	.821	28	61	89	2.9	76	1	107	84	14	60	601	19.4
2008-09	4	4	107	26.8	22-48	.458	3-19	.158	7-10	.700	1	12	13	3.3	7	0	25	15	1	8	54	13.5
TOTAL	101	92	2847	28.2	547-1269	.431	177-498	.355	330-399	.827	87	213	300	3.0	219	1	336	251	30	203	1601	15.9



22 • Jocelyn Mellen

RS Sophomore
Forward
6-3
Dixon, Ill.
Newman Catholic

2008-09: Hit first career three-point basket against Oral Roberts in the season opener...Scored seven points in 26 minutes at Indiana State (11/19)...

Career Highs

Points 17, Creighton (3/24/08)
Rebounds 16, USF (3/3/08)
Field Goals 6, Creighton (3/24/08)
FG Attempts 10, at Michigan State (4/5/08)
Three FG 1, Oral Roberts (11/15/08)
Three FG Att. 2, at Oregon (11/20/07)
Free Throws 7, at Villanova (3/1/08)
Free Throw Att. 10, at Villanova (3/1/08)
Assists 2, William & Mary (11/26/07)
Steals 4, Creighton (3/24/08)
Blocks 4, at Oregon (11/20/07)
Minutes 38, Creighton (3/24/08)

07-08 Season Highs

7, at Indiana State (11/19/08)
8, Oral Roberts (11/15/08)
2, Oral Roberts (11/15/08)
5, Sacred Heart (11/17/08)
1, Oral Roberts (11/15/08)
1, Oral Roberts (11/15/08)
3, at Western Michigan (11/23/08)
4, at Western Michigan (11/23/08)
1, Sacred Heart (11/17/08)
1, Sacred Heart (11/17/08)
2, at Indiana State (11/19/08)
26, at Indiana State (11/19/08)

Mellen's Game-by-Game Stats

Opponent	Date	GS	Min	FG-A	Pct	3P-A	Pct	FT-FTA	Pct	Off-Def	Tot	Avg	PF	FO	A	TO	Blk	Stl	Pts	Avg
Oral Roberts	11/14	*	21	2-3	66.6	1-1	100.0	0-0	-	2-6	8	8.0	3	-	0	2	0	0	5	5.0
Sacred Heart	11/16	*	21	2-5	40.0	0-0	-	0-1	0.0	0-6	6	7.0	2	-	1	1	1	1	4	4.5
at Indiana State	11/19	*	26	3-7	0-0	0-0	0.0	1-2	50.0	1-2	3	5.7	2	-	0	2	2	0	7	5.3
at Western Michigan	11/23	*	20	1-3	33.3	0-0	-	3-4	75.0	0-3	3	5.0	2	-	1	1	0	0	5	5.3
Gonzaga																				
Virginia																				
Utah																				
at Northwestern																				
Kansas																				
at Wisconsin																				
Oregon																				
Green Bay																				
at Oakland																				
Milwaukee																				
USF																				
at Seton Hall																				
Notre Dame																				
at Rutgers																				
at Georgetown																				
Syracuse																				
at Pittsburgh																				
at USF																				
Connecticut																				
Villanova																				
West Virginia																				
at Cincinnati																				
St. John's																				
at Providence																				
at DePaul																				
Louisville																				

Denotes BIG EAST Conference Game
^ Denotes BIG EAST Conference Tournament Game

Mellen's Career Stats

Year	GP	GS	Min	Avg	FG-FGA	Pct	3FG-FGA	Pct	FT-FTA	Pct	Off	Def	Tot	Avg	PF	FO	Ast	TO	Blk	Stl	Pts	Avg
2006-07																						
2007-08	35	9	648	18.5	66-153	.431	0-6	-	64-100	.640	63	104	167	4.8	73	0	11	43	14	27	196	5.6
2008-09	4	4	88	22.0	8-18	.444	1-1	1.000	4-7	.571	3	17	20	5.0	9	0	2	6	3	1	21	5.3
TOTALS	39	13	736	18.9	74-171	.433	1-7	.143	68-107	.636	66	121	187	4.8	82	0	13	49	17	28	217	5.6

Game 5 • Gonzaga at Marquette • WBCA Classic • November 28, 2008 • Al McGuire Center



23 • Tatiyana McMorris

Sophomore
Guard
5-7
Bronx, N.Y.
JFK

2008-09: In first action of the season against Indiana State (11/19) hit a career-high 3-of-5 from three point range to finish with nine points...Recorded a career-high four assists at Western Michigan (11/23/08)...Second on the team with five made three-point baskets...

Points	12, at Kansas (12/06/07)	07-08 Season High	9, at Indiana State (11/19/08)
Rebounds	4, Five times		3, at Indiana State (11/19/08)
Field Goals	4, at Kansas (12/06/07)		3, at Indiana State (11/19/08)
FG Attempts	8, Twice		5, at Indiana State (11/19/08)
Three FG	3, at Indiana State (11/19/08)		3, at Indiana State (11/19/08)
Three FG Att.	5, at Indiana State (11/19/08)		5, at Indiana State (11/19/08)
Free Throws	3, Twice		—
Free Throw Att.	4, Twice		—
Assists	4, at Western Mich. (11/23/08)		4, at Western Michigan (11/23/08)
Steals	2, Five Times		1, at Western Michigan (11/23/08)
Blocks	1, Twice		—
Minutes	31, USF (3/3/08)		13, at Indiana State (11/19/08)

McMorris' Game-by-Game Stats

Opponent	Date	GS	Min.	FG-A	Pct.	3P-A	Pct.	FT-FTA	Pct.	Off-Def.	Tot	Avg	PF	FO	A	TO	Blk	Stl	Pts	Avg	
Oral Roberts																					
Sacred Heart																					
at Indiana State	11/19		13	3-5	60.0	3-5	60.0	0-0	-	0-3	3	3.0	2	-	1	0	0	0	9	9.0	
at Western Michigan	11/23		9	2-3	66.7	2-3	66.7	0-0	-	0-2	2	2.5	0	-	4	1	0	1	6	7.5	
Gonzaga																					
Virginia																					
Utah																					
at Northwestern																					
Kansas																					
at Wisconsin																					
Oregon																					
Green Bay																					
at Oakland																					
Milwaukee																					
USF																					
at Seton Hall																					
Notre Dame																					
at Rutgers																					
at Georgetown																					
Syracuse																					
at Pittsburgh																					
at USF																					
Connecticut																					
Villanova																					
West Virginia																					
at Cincinnati																					
St. John's																					
at Providence																					
at DePaul																					
Louisville																					

Denotes BIG EAST Conference Game
^ Denotes BIG EAST Conference Tournament Game

McMorris' Career Stats

Year	GP	GS	Min	Avg	FG-FGA	Pct	3FG-FGA	Pct	FT-FTA	Pct	Off	Def	Tot	Avg	PF	FO	Ast	TO	Blk	Stl	Pts	Avg
2007-08	34	3	435	12.8	28-88	.318	11-37	.297	24-32	.750	20	37	57	1.7	34	0	31	36	2	19	91	2.7
2008-09	2	0	22	11.0	5-8	.625	5-8	.625	0-0	.000	0	5	5	2.5	2	0	5	1	0	1	15	7.5
TOTALS	36	3	457	12.7	33-96	.344	16-45	.356	24-32	.750	20	42	62	1.7	36	0	36	37	2	20	106	2.9



24 • Lauren Thomas-Johnson

Junior-Transfer
 Guard
 5-10
 Machester, England
 Notre Dame Acad. (Va.)/Kirkwood CC

2008-09: Scored 12 points in first NCAA Division I game against Oral Roberts (11/14)...Recorded 13 points against Sacred Heart (11/17) while also registering four assists...Marquette's second leading scorer (13 points) at Indiana State (11/19)...

Career /08-09 Season Highs

Points 13, Twice
 Rebounds 2, Twice
 Field Goals 4, Twice
 FG Attempts 9, Sacred Heart (11/17/08)
 Three FG 3, Twice
 Three FG Att 6, Sacred Heart (11/17/08)
 Free Throws 4, Oral Roberts (11/15/08)
 Free Throw Att. 6, Oral Roberts (11/15/08)
 Assists 1, Oral Roberts (11/15/08)
 Steals 2, Oral Roberts (11/15/08)
 Blocks 1, Twice
 Minutes 24, at Indiana State (11/19/08)

Thomas-Johnson's Game-by-Game Stats

Opponent	Date	GS	Min.	FG-A	Pct.	3P-A	Pct.	FT-FTA	Pct.	Off-Def.	Tot	Avg	PF	FO	A	TO	Blk	Stl	Pts	Avg
Oral Roberts	11/14		20	3-8	37.5	2-5	40.0	4-6	66.6	0-1	1	1.0	2	-	1	1	0	2	12	12.0
Sacred Heart	11/16	*	23	4-9	44.4	3-6	50.0	2-2	100.0	1-1	2	1.5	1	-	4	1	1	1	13	12.5
at Indiana State	11/19	*	24	4-6	66.7	3-5	60.0	2-2	100.0	1-1	2	1.7	2	-	1	4	1	1	13	12.7
at Western Michigan	11/23	*	19	3-6	50.0	1-4	25.0	1-1	100.0	0-0	0	1.3	1	-	0	3	0	0	8	11.5
Gonzaga																				
Virginia																				
Utah																				
at Northwestern																				
Kansas																				
at Wisconsin																				
Oregon																				
Green Bay																				
at Oakland																				
Milwaukee																				
USF																				
at Seton Hall																				
Notre Dame																				
at Rutgers																				
at Georgetown																				
Syracuse																				
at Pittsburgh																				
at USF																				
Connecticut																				
Villanova																				
West Virginia																				
at Cincinnati																				
St. John's																				
at Providence																				
at DePaul																				
Louisville																				

Denotes BIG EAST Conference Game
 ^ Denotes BIG EAST Conference Tournament Game

Thomas-Johnson's Career Stats

Year	GP	GS	Min	Avg	FG-FGA	Pct	3FG-FGA	Pct	FT-FTA	Pct	Off	Def	Tot	Avg	PF	FO	Ast	TO	Blk	Stl	Pts	Avg
2008-09	4	3	86	21.5	14-29	.483	9-20	.450	9-11	.818	2	3	5	1.3	6	0	6	9	2	4	46	11.5



32 • Breann Hill

Junior-Transfer
 Forward
 5-10
 Harrisburg, Pa.
 Bishop McDevitt/Kirkwood CC

2008-09: Scored six points and pulled down five boards against Sacred Heart (11/17)...
 Grabbed three rebounds in season opening win over Oral Roberts...Scored a season-high eight points on four-of-seven shooting at Western Michigan (11/23)...

	Career /08-09 Season Highs
Points	8, at Western Michigan (11/23/08)
Rebounds	5, Sacred Heart (11/17/08)
Field Goals	4, at Western Michigan (11/23/08)
FG Attempts	7, at Western Michigan (11/23/08)
Three FG	—
Three FG Att	1, Oral Roberts (11/15/08)
Free Throws	—
Free Throw Att.	1, at Indiana State (11/19/08)
Assists	—
Steals	1, Twice
Blocks	—
Minutes	14, Sacred Heart (11/17/08)

Hill's Game-by-Game Stats

Opponent	Date	GS	Min.	FG-A	Pct.	3P-A	Pct.	FT-FTA	Pct.	Off-Def.	Tot	Avg	PF	FO	A	TO	Blk	Stl	Pts	Avg
Oral Roberts	11/14		10	1-3	33.3	0-1	0.0	0-0	-	1-2	3	3.0	2	-	0	1	0	0	2	2.0
Sacred Heart	11/16		14	3-6	50.0	0-0	-	0-0	-	4-1	5	4.0	0	-	0	4	0	1	6	4.0
at Indiana State	11/19		5	1-1	100.0	0-0	-	0-1	0.0	1-2	3	3.7	1	-	0	2	0	1	2	3.3
at Western Michigan	11/23		12	4-7	57.1	0-0	-	0-0	-	3-0	3	3.5	0	-	0	0	0	0	8	4.5
Gonzaga																				
Virginia																				
Utah																				
at Northwestern																				
Kansas																				
at Wisconsin																				
Oregon																				
Green Bay																				
at Oakland																				
Milwaukee																				
USF																				
at Seton Hall																				
Notre Dame																				
at Rutgers																				
at Georgetown																				
Syracuse																				
at Pittsburgh																				
at USF																				
Connecticut																				
Villanova																				
West Virginia																				
at Cincinnati																				
St. John's																				
at Providence																				
at DePaul																				
Louisville																				

Denotes BIG EAST Conference Game
 ^ Denotes BIG EAST Conference Tournament Game

Hill's Career Stats

Year	GP	GS	Min	Avg	FG-FGA	Pct	3FG-FGA	Pct	FT-FTA	Pct	Off	Def	Tot	Avg	PF	FO	Ast	TO	Blk	Stl	Pts	Avg
2008-09	4	0	41	10.3	9-17	.529	0-1	.000	0-1	.000	9	5	14	3.5	3	0	0	7	0	2	18	4.5



34 • Georgie Jones

Freshman
Center
6-3
St. Paul, Minn.
Central

2008-09: Scored nine points and grabbed seven rebounds in 13 minutes against Sacred Heart (11/17)...Hauled in 10 rebounds at Indiana State (11/19)..

	Career /Season Highs
Points	9, Sacred Heart (11/17/08)
Rebounds	10, at Indiana State (11/19/08)
Field Goals	4, Sacred Heart (11/16/08)
FG Attempts	7, Sacred Heart (11/16/08)
Three FG	—
Three FG Att	—
Free Throws	1, Twice
Free Throw Att.	3, Twice
Assists	1, Oral Roberts (11/15/08)
Steals	1, Twice
Blocks	1, Three Times
Minutes	14, Twice

Jones' Game-by-Game Stats

Opponent	Date	GS	Min.	FG-A	Pct.	3P-A	Pct.	FT-FTA	Pct.	Off-Def.	Tot	Avg	PF	FO	A	TO	Blk	Stl	Pts	Avg
Oral Roberts	11/14		9	0-0	-	0-0	-	0-3	0.0	0-1	1	1.0	1	-	1	1	0	0	0	0.0
Sacred Heart	11/16		13	4-7	57.1	0-0	-	1-2	50.0	4-3	7	4.0	0	-	0	1	1	1	9	4.5
at Indiana State	11/19		14	0-1	0.0	0-0	-	1-3	33.3	3-7	10	6.0	3	-	0	3	1	1	1	3.3
at Western Michigan	11/23		14	1-1	100.0	0-0	-	0-0	-	0-2	2	5.0	3	-	0	2	1	0	2	3.0
Gonzaga																				
Virginia																				
Utah																				
at Northwestern																				
Kansas																				
at Wisconsin																				
Oregon																				
Green Bay																				
at Oakland																				
Milwaukee																				
USF																				
at Seton Hall																				
Notre Dame																				
at Rutgers																				
at Georgetown																				
Syracuse																				
at Pittsburgh																				
at USF																				
Connecticut																				
Villanova																				
West Virginia																				
at Cincinnati																				
St. John's																				
at Providence																				
at DePaul																				
Louisville																				

Denotes BIG EAST Conference Game
^ Denotes BIG EAST Conference Tournament Game

Jones' Career Stats

Year	GP	GS	Min	Avg	FG-FGA	Pct	3FG-FGA	Pct	FT-FTA	Pct	Off	Def	Tot	Avg	PF	FO	Ast	TO	Blk	Stl	Pts	Avg
2008-09	4	0	50	12.5	5-9	.556	0-0	-	2-8	.250	7	13	20	5.0	7	0	1	7	3	2	12	3.0



41 • Paige Fiedorowicz

Sophomore
Forward
6-0
Johnsburg, Ill.
Johnsburg

2008-09: Hit first career three-point basket against Oral Roberts on her way to 13 points...In first start of the season, set season highs in points (14), assists (6), and minutes (20) at Western Michigan (11/23)...

Career Highs

Points 17, William & Mary (11/26/07)
Rebounds 9, Twice
Field Goals 8, William & Mary (11/26/07)
FG Attempts 12, at Notre Dame (2/13/08)
Three FG 1, Oral Roberts (11/15/08)
Three FG Att. 1, Twice
Free Throws 5, Three Times
Free Throw Att. 6, Twice
Assists 2, Four Times
Steals 2, Six times
Blocks 2, at Green Bay (12/01/07)
Minutes 26, Twice

07-08 Season Highs

14, at Western Michigan (11/23/08)
6, at Western Michigan (11/23/08)
11, at Western Michigan (11/23/08)
1, Oral Roberts (11/15/08)
1, Twice
2, Three Times
2, Three Times
2, Sacred Heart (11/17/08)
2, Sacred Heart (11/17/08)
-
20, at Western Michigan (11/23/08)

Fiedorowicz's Game-by-Game Stats

Opponent	Date	GS	Min.	FG-A	Pct.	3P-A	Pct.	FT-FTA	Pct.	Off-Def.	Tot.	Avg.	PF	FO	A	TO	Blk	Stl	Pts	Avg.
Oral Roberts	11/14		18	5-8	62.5	1-1	100.0	2-2	100.0	1-1	2	2.0	0	-	0	0	0	1	13	13.0
Sacred Heart	11/16		14	1-3	33.3	0-1	-	2-2	100.0	1-1	2	2.0	2	-	2	0	0	2	4	8.5
at Indiana State	11/19		15	1-3	33.3	0-0	-	0-0	-	2-1	3	2.3	3	-	1	0	0	1	2	6.3
at Western Michigan	11/23	*	20	6-11	54.5	0-0	-	2-2	100.0	5-1	6	3.3	1	-	0	1	0	0	14	8.3
Gonzaga																				
Virginia																				
Utah																				
at Northwestern																				
Kansas																				
at Wisconsin																				
Oregon																				
Green Bay																				
at Oakland																				
Milwaukee																				
USF																				
at Seton Hall																				
Notre Dame																				
at Rutgers																				
at Georgetown																				
Syracuse																				
at Pittsburgh																				
at USF																				
Connecticut																				
Villanova																				
West Virginia																				
at Cincinnati																				
St. John's																				
at Providence																				
at DePaul																				
Louisville																				

Denotes BIG EAST Conference Game
^ Denotes BIG EAST Conference Tournament Game

Fiedorowicz's Career Stats

Year	GP	GS	Min	Avg	FG-FGA	Pct	3FG-FGA	Pct	FT-FTA	Pct	Off	Def	Tot	Avg	PF	FO	Ast	TO	Blk	Stl	Pts	Avg
2007-08	27	14	485	18.0	68-149	.456	0-1	.000	40-59	.678	52	61	113	4.2	63	2	16	40	6	21	176	6.5
2008-09	4	1	67	16.8	13-25	.520	1-2	.500	6-6	1.000	9	4	13	3.3	6	0	3	1	0	4	33	8.3
TOTALS	31	15	552	17.8	81-174	.466	1-3	.333	46-65	.708	61	65	126	4.1	69	2	19	41	6	25	209	6.7



42 • Marissa Thrower

Senior
Forward
5-11
Detroit, Mich.
Renaissance

2008-09: Scored five points in six minutes of action against Oral Roberts...Currently on pace to be Marquette's all-time leader in games played (128 games is the current record)...Saw a season high 17 minutes at Western Michigan (11/23), scoring six points...

Career Highs

Points 19, William & Mary (11/26/07)
Rebounds 8, vs Pittsburgh (3/4/07)
Field Goals 7, William & Mary (11/26/07)
FG Attempts 14, William & Mary (11/26/07)
Three FG 2, Three Times
Three FG Att. 2, Six Times
Free Throws 6, Twice
Free Throw Att. 7, Pittsburgh (3/27/06)
Assists 3, Twice
Steals 3, Three Times
Blocks 2, Four Times
Minutes 29, Providence (1/31/06)

08-09 Season Highs

6, at Western Michigan (11/23/08)
5, at Western Michigan (11/23/08)
2, Sacred Heart (11/17/08)
3, Sacred Heart (11/17/08)
-
-
3, Oral Roberts (11/15/08)
4, Oral Roberts (11/15/08)
-
2, Sacred Heart (11/17/08)
2, at Western Michigan (11/23/08)
17, at Western Michigan (11/23/08)

Thrower's Game-by-Game Stats

Opponent	Date	GS	Min.	FG-A	Pct.	3P-A	Pct.	FT-FTA	Pct.	Off-Def.	Tot	Avg	PF	FO	A	TO	Blk	Stl	Pts	Avg
Oral Roberts	11/14		6	1-1	100.0	0-0	-	3-4	75.0	1-1	2	2.0	2	-	0	1	0	0	5	5.0
Sacred Heart	11/16		10	2-3	66.7	0-0	-	1-3	33.3	1-1	2	2.0	1	-	0	0	0	2	5	5.0
at Indiana State	11/19		2	1-1	100.0	0-0	-	0-0	-	0-0	0	1.3	0	-	0	0	0	0	2	4.0
at Western Michigan	11/23		17	2-3	66.7	0-0	-	2-2	100.0	0-5	5	2.3	2	-	1	1	2	0	6	4.5
Gonzaga																				
Virginia																				
Utah																				
at Northwestern																				
Kansas																				
at Wisconsin																				
Oregon																				
Green Bay																				
at Oakland																				
Milwaukee																				
USF																				
at Seton Hall																				
Notre Dame																				
at Rutgers																				
at Georgetown																				
Syracuse																				
at Pittsburgh																				
at USF																				
Connecticut																				
Villanova																				
West Virginia																				
at Cincinnati																				
St. John's																				
at Providence																				
at DePaul																				
Louisville																				

Denotes BIG EAST Conference Game
^ Denotes BIG EAST Conference Tournament Game

Thrower's Career Stats

Year	GP	GS	Min	Avg	FG-FGA	Pct	3FG-FGA	Pct	FT-FTA	Pct	Off	Def	Tot	Avg	PF	FO	Ast	TO	Blk	Stl	Pts	Avg
2005-06	31	0	316	10.2	36-86	.419	0-3	-	26-36	.722	17	47	64	2.1	38	0	9	22	7	10	98	3.2
2006-07	33	6	495	15.0	43-106	.406	12-25	.480	21-24	.875	24	60	84	2.5	63	1	28	31	5	14	119	3.6
2007-08	34	3	452	13.3	40-116	.345	2-21	.095	26-41	.634	27	53	80	2.4	47	0	24	45	7	19	108	3.2
2008-09	4	0	35	8.8	6-8	.750	0-0	.000	6-9	.667	2	7	9	2.3	5	0	1	2	2	2	18	4.5
TOTAL	102	9	1298	12.7	125-316	.396	14-49	.286	79-110	.718	70	167	237	2.3	153	1	62	100	21	45	343	3.4