



## MEDIA INFORMATION

### Credentials:

Working media in need of credentials for Marquette home games should contact the Athletics Media Relations Office. Credential requests must be received at least 24 hours in advance of the game, and may be made via fax (414.288.6519) or email (mike.broeker@marquette.edu or blain.fowler@marquette.edu). Credentials will be held at the Media Entrance (Arena Control at the Bradley Center) for pick up on the day of the game approximately two hours prior to tip-off.

Credentials are for WORKING MEDIA ONLY and will be allocated with the appropriate work space in the media seating areas according to the following priority:

1. Originating radio and television outlets;
2. Daily newspapers providing regular coverage of Marquette and its opponent;
3. National news agencies servicing the print and electronic media;
4. Radio and television outlets providing regular coverage of Marquette and its opponent;
5. National or regional print and electronic media;
6. Officially-sanctioned student media, specialty publications and broadcast publications of Marquette and its opponents;
7. Other types of print and electronic media.

**Parking:** A limited number of on-site parking at the Bradley Center is available for media and may be obtained by making advanced arrangements with the Athletics Media Relations Office.

**Photographers:** Photographers are limited to working in the designated areas at each base-line, unless other arrangements have been made with the Athletics Media Relations Office.

**Radio & TV:** All requests for broadcasting a Marquette game from the Bradley Center must be made through Mike Broeker, Associate Athletic Director. Two analog and one ISDN line are available on a courtesy basis for visiting radio.

**Postgame:** Per BIG EAST Conference policy, the head coaches for both teams will be made available to the media in the interview room. The order of appearance will be determined by postgame radio/television commitments of the coaches.

The Marquette locker room is closed to all members of the media. Marquette players that are requested by the media will be brought to the interview room. The Bradley Center press room is located in the west corridor on the floor level of the arena.

**Game Services:** The Marquette Athletics Media Relations Office will provide game programs, notes, statistics and media guides for both teams prior to each home game. An NCAA box score, play-by-play and shot chart will be made available at halftime and post game. Television monitors displaying in-game statistics are available and located along press row.

**Telephones:** A limited number of telephones for media to use are available in the press room on a first-come, first-serve basis. Media requiring personal phone service should contact the Bradley Center (414.227.0794).

**Internet Services:** Marquette University's athletic website is designed and hosted by CSTV's College Sports Online. Located at [www.gomarquette.com](http://www.gomarquette.com), the site contains updated game notes, statistics, box scores and other helpful information related to Marquette basketball. A PDF version of the 2006-07 media guide is also available on-line.

**Interview Policy:** All requests for interviews with Marquette head coach Tom Crean or players on non-game days should be made a minimum of one day in advance and directed through Mike Broeker (414-288-5287). Coach Crean and selected player(s) are available to the media on the day prior to each game.

**Mailing Address:** The Athletics Media Relations Office is located on the second floor of the Al McGuire Center and the mailing address is:  
Athletics Media Relations  
Al McGuire Center  
P.O. Box 1881  
Milwaukee, WI 53201

### Marquette Athletic Media Relations

#### Mike Broeker

Associate AD/Marketing & Communications  
(414) 288-5287  
[mike.broeker@marquette.edu](mailto:mike.broeker@marquette.edu)



#### Blain Fowler

Assistant Director, Media Relations  
(414) 288-6980  
[blain.fowler@marquette.edu](mailto:blain.fowler@marquette.edu)



#### Amy Ufnowski

Assistant Director, Media Relations  
(414) 288-7419  
[amy.ufnowski@marquette.edu](mailto:amy.ufnowski@marquette.edu)



#### Matt Devine

Media Relations Assistant  
(414) 288-7447  
[matt.devine@marquette.edu](mailto:matt.devine@marquette.edu)



**Shipping Address:**  
Al McGuire Center  
770 N. 12th Street  
Milwaukee, Wisconsin 53233

**Phone:** (414) 288-7447  
**Fax:** (414) 288-6519  
**Website:** [www.gomarquette.com](http://www.gomarquette.com)



MEDIA INFORMATION





## MEDIA INFORMATION

### Marquette Radio Network

From Northern Wisconsin to Illinois, Marquette basketball fans can listen to all the team's games on the Marquette Radio Network. Steve "The Homer" True partners with former Marquette great Jim McIlvaine on all Golden Eagles broadcasts.

Kent Sommerfeld is in his 16th season as Director of the Marquette Basketball Radio Network.

In 2006-07, Marquette basketball can be heard on the following stations:

Flagship: ESPN Radio 1510 AM/1290 AM (Milwaukee)

Fox Sports Radio 100.5 FM (Madison, Wis.)

WDUZ 107.5 FM (Green Bay, Wis.)

WXCO 1230 AM (Wausau, Wis.)

WCLO 1230 AM (Janesville, Wis.)

WFHR 1230 AM (Wisconsin Rapids, Wis.)

ESPN Radio 1380 AM (Rockford, Ill.)

WSCO 1570 AM (Appleton, Wis.)

WOMT 1240 AM (Manitowoc, Wis.)

WPRN 1600 AM (Ripon, Wis.)

WDLB 1450 AM (Marshfield, Wis.)

WKBV 1490 AM (Richmond, Ind.)



### Media Covering Marquette

#### Wire Service

Associated Press

918 N. 4th Street, Milwaukee, WI 53203

(414.225.3580; Fax: 414.225.3599; email: [apmlw@ap.org](mailto:apmlw@ap.org)). Arnie Stapleton, Sports Editor; Dave DeGrace, Editorial Assistant.

#### Newspapers

Milwaukee Journal Sentinel

333 W. State Street, Milwaukee, WI 53201

(414.224.2310; Fax: 414.224.2049; email: [jssports@journalsentinel.com](mailto:jssports@journalsentinel.com)). Garry D. Howard, Sports Editor; Todd Rosiak, Marquette Beat Writer; Michael Hunt, Columnist, Bob Wolfley, TV & Radio Columnist.

Racine Journal Times

212 4th Street, Racine, WI 53403 (262.631.1750;

Fax: 262.631.1780). Susan Shemanske, Sports Editor; Jerry Karpowicz, Marquette Beat Writer; Gery Woelfel, Columnist.

Appleton Post Crescent

P.O. Box 59, Appleton, WI 54912 (920.993.1000 ext.

230; Fax: 920.733.1945;

email: [pcsports@postcrescent.com](mailto:pcsports@postcrescent.com)). Brad Zimanek, Sports Editor; Ben Wideman, Marquette Beat Writer.

#### Marquette Tribune

Johnston Hall, Room 009, P.O. Box 1881, Milwaukee, WI 53201 (414.288.5603). Paul Day, Sports Editor; Paul Day, Marquette Beat Writer; Steve Yanda, Marquette Beat Writer.

#### Television

WTMJ 4 (NBC)

720 E. Capitol Drive, Milwaukee, WI 53201 (414.967.5399; Fax: 414.967.5466). Rick Rietbrock, Executive Producer; Kevin Hunt, Sports Director/Anchor; Lance Allan, Anchor; Eric Weber, Anchor; Jessie Garcia, Weekend Anchor.

WITI 6 (FOX)

9001 N. Green Bay Road, Milwaukee, WI 53209 (414.586.2181; Fax: 414.586.2141). Tom Pipines, Sports Director/Anchor; Tim Van Vooren, Anchor.

WISN 12 (ABC)

759 N. 19th Street, Milwaukee, WI 53233 (414.937.3337; Fax: 414.342.7505). Dan Needles, Sports Director/Anchor; Andy Kendeigh, Anchor; Stephanie Sutton, Anchor.

WDJT 58 (CBS)

809 S. 60th Street, Milwaukee, WI 53214 (414.607.8127; Fax: 414.777.5802). Rock Rote, Sports Director/Anchor; Matt Engel, Anchor.

#### Radio

ESPN Radio 1510 Days/1290 Nights

770 N. Jefferson St., Milwaukee, WI 53202 (800.990.3776; Fax: 414.291.3776). C.J. Knee, Executive Producer/Operations Manager; Steve Haywood, Host; Bill Johnson, Host; Steve True, Host; John Babalola, Producer; Erich Dochterman, Producer; Kyndra de St. Aubin, Reporter.

WISN 1130 AM

12100 Howard Ave., Greenfield, WI 53220 (414.944.5432; Fax: 414.944.5484).

WTMJ 620 AM

720 E. Capitol Drive, Milwaukee, WI 53201 (414.967.5310; Fax: 414.967.5561). Bill Michaels, Sports Director/Host; Todd Welter, Producer.

WSSP 1250 AM

11800 W. Grange Ave., Hales Corners, WI 53130 (414.529.1250). Chip Ramsey, Program Director; Peter Brown, Host; Chuck Garbedian, Host; Steve Fifer, Host; Jon Kurozawa, Producer; Dave Metcalfe, Producer; Cliff Saunders, Producer; Brian Van Scoyk, Producer.





# THE BRADLEY CENTER



**STEVE COSTELLO**  
President and CEO

## Bradley Center – Home of the Golden Eagles

The Bradley Center, one of the premier facilities in the country, serves as home to Marquette Basketball. Opened in 1988-89, it seats 18,850 for basketball.

If you enjoy the atmosphere that surrounds college basketball, then the Bradley Center is the place for you. Since its opening, over 3.7 million fans have witnessed Marquette Basketball games and given the Blue and Gold a definite home court advantage.

The Bradley Center is a gift to the state of Wisconsin from Jane and Lloyd Pettit in memory of her late father, Harry Lynde Bradley. Bradley was co-founder and chairman of the Allen-Bradley Company. The Bradley Center is the only major, public assembly facility in North America with construction underwritten through the philanthropy of a single family.

The Bradley Center is the home of three sports teams; the Milwaukee Bucks of the NBA, the AHL's Milwaukee Admirals, and the Marquette University men's basketball team. The \$91 million structure features glass-enclosed lobbies, three concourses, movable seats and accommodates both sports and non-sports events, such as concerts, ice shows, family entertainment and even motor sports events.

Bradley Center patrons won't miss a moment of action with the Center's use of state-of-the-art video technology. In September, 1995, the Bradley Center unveiled a new Sony Jumbo Tron large screen video display system. The four-sided Jumbo Tron is the largest center-hung system in North America. Supplementing the scoreboard are two 14-foot by 10-foot videowalls that are used during events for replays and split-screen action. In addition, there are over 120 video monitors located throughout the center.

The Bradley Center Video Suite/Press Box, located on the west side of the Suite Concourse, contains the production facilities for the Center's video and audio systems. The video system receives signals from multiple, high-resolution CCD

cameras placed in various locations in the Center. The Bradley Center sound system is capable of delivering 100 decibels to all areas of the arena. It features distributed speaker clusters suspended 85 feet over the seating area and floor.

## Marquette Attendance in the Bradley Center

Season	W-L	Total Attendance	Average Attendance
1988-89	10-7	203,337	11,961
1989-90	11-5	213,088	13,318
1990-91	8-7	201,495	13,433
1991-92	13-5	227,037	12,613
1992-93	13-3	215,089	13,443
1993-94	13-3	229,562	14,347
1994-95	12-6	225,396	13,258
1995-96	14-0	167,105	11,936
1996-97	12-4	195,961	12,247
1997-98	13-5	207,150	11,508
1998-99	10-5	182,176	12,145
1999-2000	11-3	159,528	9,971
2000-2001	10-5	170,397	11,360
2001-2002	15-0	191,650	12,777
2002-2003	15-1	248,851	15,553
2003-2004	15-3	275,241	15,291
2004-2005	15-6	251,274	11,965
2005-2006	14-2	223,983	13,999
<b>TOTALS</b>	<b>224-70</b>	<b>3,778,320</b>	<b>12,840</b>

## Top 10 Marquette Crowds in the Bradley Center

Attendance	Opponent	Date	Result
1. 19,007	Pittsburgh	Feb. 18, 2006	W, 84-82
2. 18,874	Notre Dame	Jan. 20, 2006	W, 67-65
3. 18,850	Louisville	Feb. 15, 2003	L, 70-73
4. 18,790	Cincinnati	Mar. 1, 2003	W, 70-61
5. 18,788	DePaul	Mar. 1, 2002	W, 72-53
6. 18,753	Louisville	Feb. 16, 2002	W, 75-63
7. 18,712	Providence	March 4, 2006	W, 88-78
8. 18,698	Cincinnati	Feb. 2, 2002	W, 74-60
9. 18,677	Wisconsin	Dec. 14, 2002	W, 63-54
10. 18,645	DePaul	Jan. 24, 2004	W, 70-62



## Bradley Center Facts

- The Bradley Center hosts approximately 200 events a year. Nearly 60-percent are sporting events that feature the facility's three home athletic teams.
- In addition to serving as an outstanding venue for athletics, the Bradley Center has hosted concerts featuring the world of entertainment's biggest names including Bruce Springsteen, Garth Brooks, The Rolling Stones, U2, Eric Clapton, Janet Jackson, Paul McCartney, Elton John, The Dave Matthews Band, John Mellencamp and WWE.
- Marquette's first game at the Bradley Center took place on Dec. 2, 1988, when it recorded a 76-60 win over Rice.
- The largest crowd for a regular-season Marquette game was on Feb. 18, 2006, when 19,007 saw Marquette defeat Pittsburgh. It was also the largest crowd to witness a college basketball game in Wisconsin.
- In addition to regular-season games, Marquette also has hosted postseason competition at the Bradley Center. The Golden Eagles have a 5-1 record in National Invitation Tournament (NIT) games in the Bradley Center.
- Marquette has hosted the first and second rounds of the NCAA Men's Basketball Championship four times; in 1992, 1996, 1999, and 2004.

## Directions to Bradley Center

Bradley Center (BC) Parking Structure - 1030 North Sixth Street.

The Bradley Center Parking Structure is adjacent to the Bradley Center.

### Madison / Points West:

Take I-94 east to the Civic Center/J. Lovell exit (Exit #1-H); travel 3 blocks north on J. Lovell to Wells Street; turn right on Wells to 6th Street; turn left on 6th; travel 2 1/2 blocks. BC Parking Structure is located to your right.

### Chicago / Points South:

Take I-94 north to I-43 north; travel north on I-43 to the Civic Center / Kilbourn Avenue tunnel exit (Exit #72-C). At the first traffic light, turn left onto 6th Street; travel 2 blocks. BC Parking Structure is located to your right.

### Green Bay / Points North:

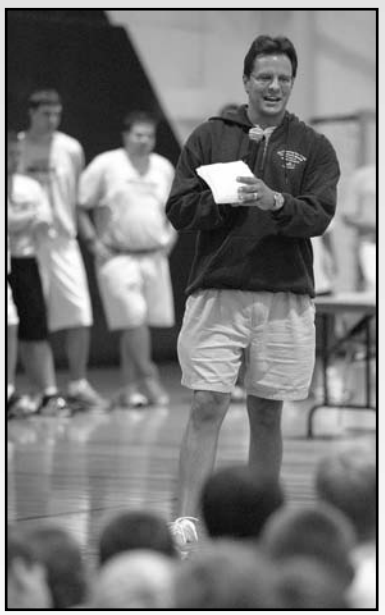
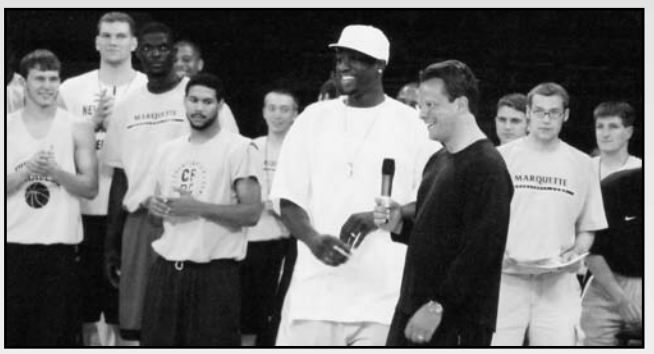
Take I-43 south to the 4th and Broadway exit (Exit #73-A); follow left lane to 4th Street / Civic Center exit; exit curves down to the right; turn right at the traffic light (Juneau Avenue) to 5th Street; turn left on 5th which curves into Highland. Entrance to the BC Parking Structure is located to your left.



# TOM CREAN/MARQUETTE BASKETBALL SUMMER CAMP

The Tom Crean/Marquette Basketball Day Camp for Boys has established itself as one of the most popular and enriching camps in the country. Last summer, over 2,000 campers attended four sold-out sessions and came away with better basketball skills while making friends and having fun in the process.

Next summer, the Camp continues with four outstanding weeks of great basketball instruction from the Marquette coaching staff, Golden Eagle players and special guests. For more information on the Tom Crean/Marquette Basketball Day Camp for Boys, call (414) 288-7130.



## 2007 Camp Dates

June 11-15

June 18-22

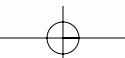
July 16-20

July 23-27



104

BASKETBALL SUMMER CAMPS



Basketball

Cross  
Country

# BLUE & GOLD FUND

Volleyball

The Blue & Gold Athletic Scholarship Fund was established in 1994 to help fund scholarships for Marquette University's top student-athletes. With our goal of raising \$2.1 million in scholarship funding this academic year, we need your help. Join our team as Marquette competes in the BIG EAST Conference in 2005-06.

Track  
& Field

Your gifts to the Blue & Gold Fund help bring the best and brightest student-athletes to Marquette.



Soccer

Tennis

Golf

2005-06 SEASON

To make a gift to the Blue & Gold Fund or for more information call (414) 288-3988

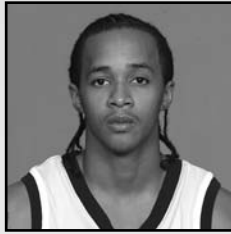
[gomarquette.com](http://gomarquette.com)

**MARQUETTE ATHLETICS BE PART OF OUR TEAM!**



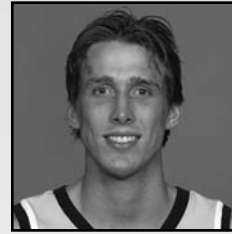
**1 • Dominic James**

Sophomore • 5-11 • 175 • G  
Richmond, Ind./Richmond



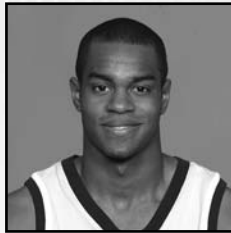
**2 • Maurice Acker**

Sophomore • 5-8 • 165 • G  
Hazelcrest, Ill./Hillcrest/Ball State



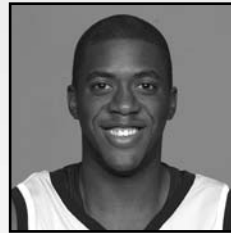
**5 • Dan Fitzgerald**

Junior • 6-9 • 205 • F  
St. Paul, Minn./St. Thomas/Tulane



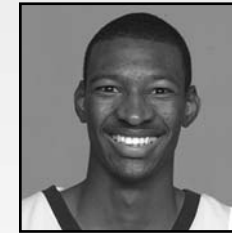
**10 • David Cubillan**

Freshman • 6-0 • 170 • G  
Mara Caibo, Venezuela/St. Benedict's (N.J.)



**12 • Dwight Burke**

Sophomore • 6-8 • 245 • F  
Brooklyn, N.Y./St. Benedict's (N.J.)



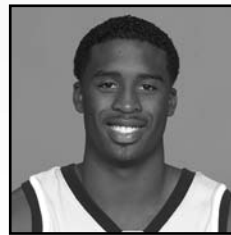
**21 • Lawrence Blackledge**

Junior • 6-8 • 185 • F  
Carbondale, Ill./Carbondale



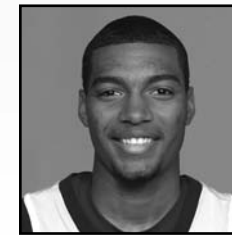
**22 • Jerel McNeal**

Sophomore • 6-3 • 195 • G  
Chicago, Ill./Hillcrest



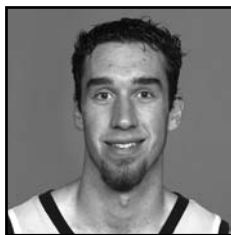
**23 • Wesley Matthews**

Sophomore • 6-5 • 215 • G  
Madison, Wis./Memorial



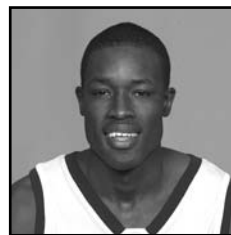
**24 • Lazar Hayward**

Freshman • 6-6 • 215 • F  
Buffalo, N.Y./Notre Dame Prep (Mass.)



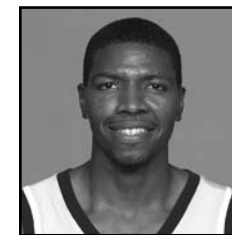
**40 • Mike Kinsella**

Senior • 7-0 • 250 • C  
Rochester, Minn./John Marshall/Rice



**41 • Ousmane Barro**

Junior • 6-10 • 245 • F  
Dakar, Senegal/Julian (Ill.)



**51 • Jamil Lott**

Senior • 6-7 • 225 • F  
St. Paul, Minn./Como Park



**Tom Crean**

Head Coach



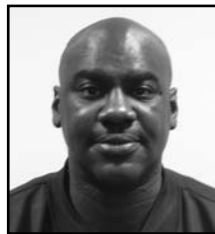
**Jason Rabadeaux**

Assistant Coach



**Jerry Sichting**

Assistant Coach



**Bennie Selzer**

Assistant Coach



**Todd Townsend**

Director Basketball  
Operations



**Derek Deprey**

Coordinator/Basketball  
Operations

