

2011 LOUISVILLE VOLLEYBALL NCAA TOURNAMENT NOTES



LOLA ARSLANBEKOVA - 2011 BIG EAST PLAYER OF THE YEAR

LOUISVILLE Volleyball 2011

Destination San Antonio Begins in West Lafayette vs. Ball State

Setting the Stage: The Louisville Cardinals (23-8) return to the NCAA Tournament for the 22nd time when they head back to West Lafayette, Ind. to take on Ball State (25-7) on Friday, Dec. 2 at 5 p.m. Louisville returns to West Lafayette for the second straight season. Last season, the Cardinals fell to the Boilermakers in the second round of the NCAA Tournament after defeating Middle Tennessee in the first round. Purdue (27-4) takes on Morehead State (26-7) in the other first round match at 7:30 p.m. The winners advance to square off on Saturday, Dec. 3 at 7 p.m. The winner of the Saturday match advances to the Minneapolis Regional.



Louisville earned an at-large bid this season after falling in the semifinals of the BIG EAST Championship. With the at-large bid, the Cardinals return to the NCAA Tournament for the 13th-straight season which is 10th-longest active streak in the nation. Louisville is one of 18 schools who have been to the big dance at least 20 times.

The Cardinals are led by BIG EAST Player of the Year **Lola Arslanbekova** who ranks third in the nation in kills and leads the BIG EAST Conference with 547 kills. The junior has amassed 13 double-doubles this season.

Fans can follow the action through UofLSports.com and can follow the West Lafayette Sub-Regional through Purdue-sports.com. Purdue will offer free video streaming of all matches and will also provide a free online radio stream of all Purdue matches. Fans can also follow the action through Gametracker on UofLSports.com.

University Facts	
Location:	Louisville, Ky.
Founded:	1798
Enrollment:	24,000
Nickname:	Cardinals
Colors:	Red & Black
Conference:	BIG EAST
Affiliation:	NCAA Division I
President:	Dr. James Ramsey
Athletics Director:	Tom Jurich
Faculty Representative:	Elaine Wise
Program History	
First Year:	1977
All-Time Record:	795-401-2 (.664); 35 Seasons
NCAA Tournament Appearances:	22
NCAA Tournament Record:	13-21 (.382)
All-Time BIG EAST Record:	85-13 (.867)
BIG EAST Championship Appearances:	7
BIG EAST Championship Record:	17-3 (.850)
BIG EAST Tournament Championships:	4
Volleyball Staff	
Head Coach:	Anne Kordes
Alma Mater:	Louisville '98, '01
Overall Record (Years):	169-83 (.671) (Eighth Year)
Record at School (Years):	23-8 (.742) (First Year)
Office Phone:	502-852-0100
Assistant Coaches:	Dani Busboom (Nebraska '07)
	Kyle Walton (Otterbein '05)
Director of Operations:	Sarah Drury-Petkovic (Louisville '03)
Strength & Conditioning Coach:	Eric Hammer
Athletic Trainer:	Lauren San Agustin
2011 Team Facts	
2010 Record:	23-8 (.656), 12-2 (.733)
Starters Returning/Lost:	5/2
Letterwinners Returning/Lost:	9/4

Up Next: NCAA Second Round

The winner of the Louisville-Ball State match advances to play the winner of the Purdue-Morehead State match on Saturday, Dec. 3 at 7 p.m. in West Lafayette, Ind. The Cardinals will be looking for their 10th second round appearance .

THIS IS LOUISVILLE VOLLEYBALL

795	Program Wins
23	Conference Regular Season/Tournament Championships
22	NCAA Appearances
12	Professional Alumnae
8	National Team Members
3	UofL Athletic Hall of Famers



2011 Schedule (23-8, 13-1)

	Georgia Tech Courtyard Classic		
Fri.	Aug. 26	vs. Tenn Tech	W, 3-0
Sat.	Aug. 27	vs. Kansas State	W, 3-0
Sat.	Aug. 27	at Georgia Tech	L, 3-2
	Crowne Plaza Cardinal Classic		
Fri.	Sept. 2	OLE MISS	W, 3-0
Sat.	Sept. 3	E. ILLINOIS	W, 3-0
Sat.	Sept. 3	WICHITA STATE	W, 3-1
Wed.	Sept. 7	at Kentucky	L, 3-0
	Baymont Bobcat Classic		
Fri.	Sept. 9	at Ohio	W, 3-1
Sat.	Sept. 10	vs. Virginia	W, 3-1
Sat.	Sept. 10	vs. Marshall	W, 3-0
	BIG EAST/Big Ten Challenge		
Fri.	Sept. 16	vs. #14 Purdue	L, 3-2
Sat.	Sept. 17	at #3 Illinois	L, 3-2
Fri.	Sept. 23	ST. JOHN'S**%	W, 3-0
Sun.	Sept. 25	CONNECTICUT**%	W, 3-0
Fri.	Sept. 30	at DePaul*	W, 3-0
Sun.	Oct. 2	at Notre Dame*	W, 3-1
Fri.	Oct. 7	at Seton Hall*	W, 3-0
Sun.	Oct. 9	at Rutgers*	W, 3-0
Fri.	Oct. 14	CINCINNATI*	W, 3-0
Tues.	Oct. 18	at Lipscomb	L, 3-1
Sat.	Oct. 22	WEST VIRGINIA*	W, 3-1
Sun.	Oct. 23	PITTSBURGH**%	L, 3-1
Fri.	Oct. 28	at USF*	W, 3-0
Wed.	Nov. 2	TENNESSEE%	L, 3-0
Sat.	Nov. 5	SYRACUSE**%	W, 3-1
Sun.	Nov. 6	MARQUETTE**%	W, 3-0
Fri.	Nov. 11	at Villanova*	W, 3-2
Sun.	Nov. 13	at Georgetown *	W, 3-0
	BIG EAST CHAMPIONSHIP		
Fri.	Nov. 18	Pittsburgh	W, 3-1
Sat.	Nov. 19	Notre Dame	L, 3-1
	CARDS VS. OVC CHAMPION		
Sat.	Nov. 26	Morehead State	W, 3-0
Sun.	Nov. 27	NCAA Selection Show	6 p.m.
	NCAA TOURNAMENT		
Fri.	Dec. 2	Ball State	5 p.m.
Sat.	Dec. 3	NCAA Second Round	7 p.m.
Fri.-Sat.	Dec. 9-10	NCAA Regionals	TBA
Thurs.-Sat.	Dec. 15-17	NCAA Final Four	TBA

* Denotes BIG EAST Conference Match
 % Denotes match to be played at KFC Yum! Center
 All other home matches to be played at Cardinal Arena
 All times Eastern

2011 Season Highs

Hitting Percentage (min 12 K): .706 by Emily Juhl vs. Morehead State (13-1-17)

Kills: 30 by Lola Arslanbekova at #3 Illinois

Total Attacks: 79 by Lola Arslanbekova at #3 Illinois

Digs: 29 by Caitlin Welch at Villanova

Assists: 56 by Taylor Brauneis at Notre Dame

TB: 9 by Tanya Lukyanenko at Notre Dame, at Georgetown

BS: 3 by L. Arslanbekova vs. #16 Tennessee, by K. James vs. Morehead State

BA: 9 by Tanya Lukyanenko at Notre Dame

Aces: 5 by Emily Juhl vs. Marquette

2011 Roster

- 1 Caitlin Welch**
L/DS, 5-6, So., Louisville, Ky. (Mercy Academy)
- 2 Brooke Mattingly**
MB, 6-3, r-So., St. Henry, Ohio (St. Henry)
- 3 Hannah Kvitle**
S, 5-11, So., Quincy, Ill. (Saint Louis)
- 4 Emily Juhl**
OH, 5-10, So., Louisville, Ky. (Sacred Heart)
- 5 Taylor Brauneis**
S, 5-10, So., Crystal Lake, Ill. (Prairie Ridge)
- 7 Gwen Rucker**
MB, 6-2, Sr., Lexington, Ky. (Henry Clay)
- 9 Lola Arslanbekova**
OH, 5-11, Jr., Tashkent, Uzbekistan (SS #60)
- 11 Tanya Lukyanenko**
OH, 6-3, Jr., Tashkent, Uzbekistan (Laramie CC)
- 14 Kaitlynn James**
OH, 5-11, Jr., Louisville, Ky. (Nebraska)
- 15 Maci Wachtel**
DS/L, 5-4, Sr., Louisville, Ky. (Assumption)
- 17 Gosia Lech**
S, 6-1, Sr., Milicz, Poland (Karola Miarki Pszczgna)

Pronunciation Guide

- #4 Emily Juhl** (Jewel)
#5 Taylor Brauneis (Brown-eyes)
#9 Lola Arslanbekova (Arse-lan-BECK-ovah)
#11 Tanya Lukyanenko (Lou-kan-yenk-oh)
#15 Maci Wachtel (Walk-tuhl)
#17 Gosia Lech (Go-shah Leck)

Louisville Cardinals in the BIG EAST Championship

2011 - Semifinalist

Defeated Pittsburgh 3-1

Lost to Notre Dame 3-1

2010- Champion

Defeated Seton Hall 3-1

Defeated Marquette 3-1

Defeated Cincinnati 3-0

2009- Champion

Defeated Syracuse 3-0

Defeated Notre Dame 3-2

Defeated Cincinnati 3-1

2008- Champion

Defeated Syracuse 3-0

Defeated Pittsburgh 3-1

Defeated Notre Dame 3-1

2007- Runner-Up

Defeated Syracuse 3-0

Defeated Notre Dame 3-0

Lost to #20 St. John's 0-3

2006- Champion

Defeated Connecticut 3-1

Defeated Marquette 3-2

Defeated Notre Dame 3-2

2005- Runner-Up

Defeated Marquette 3-1

Defeated Syracuse 3-1

Lost to #8 Notre Dame 2-3

LOUISVILLE Volleyball 2011

The Last Time Louisville vs. Ball State and Purdue

	Louisville	25-25-23-25 (3)
	Ball State	16-13-25-16 (1)
	Sept. 5, 2009 ■ Muncie, Ind. @ Active Ankle Challenge	

	Louisville	25-19-18-25-10 (2)
	Purdue	21-25-25-16-15 (3)
	Sept. 16, 2011 ■ Champaign, Ill. @ The BIG EAST/Big Ten Challenge	

Series Quick Facts:

Louisville Leads 11-4

Streak - Louisville 1

Louisville Leads 1-0 In NCAA Tournament

Freshman Lola Arslanbekova had 19 kills and an ace and was named Tournament MVP to lead the University of Louisville to a 3-1 win over host Ball State to win the Ball State Active Ankle Challenge Saturday night in Muncie, Ind.

U of L improved its record to 4-2 with the 25-16, 25-13, 23-25, 25-16 win. Ball State finished second and now posts a 2-4 mark. Lindsey Mango and Justine Landi joined Arslanbekova on the all-tournament squad. U of L hit .327 for the match with eight service aces and 12 blocks. Lecia Brown had six and nine kills. Lindsey Mango had 12 digs and an ace.

"We served aggressively and our serve receive was excellent tonight," said U of L head coach Leonid Yelin. "We outblocked them 12-3 too."

U of L used a 6-0 run to go up 21-14 on Ball State in the first set. Louisville hit .444 and had three blocks led by Lecia Brown's perfect five for five hitting and two blocks for the 25-16 win. U of L had a 7-1 run in the second set to build a 15-7 lead and then broke it open by scoring seven of the last eight points of the set for the 25-13 win. U of L hit a torrid .565 and Lola Arslanbekova had five kills to pace The Ville to take a 2-0 set lead into the lockerroom at the break. Ball State was down four at 15-11 and came back to tie at 15 and takes its first lead at 19-18 and then ran off four more points to go up 23-19. Louisville rallied to get within two at 24-23 on a kill but a Louisville service error gave BSU the set. U of L hit .125 to BSU's .395. Charde Phillips had the hot hand for Ball State with seven kills in the set.

Ball State went down swinging in the fourth set as Louisville had to call time out at 14-11 to cool a four point run by BSU. However, U of L had a 7-0 run to put the set and match out of reach enroute to a 25-16 win.

Louisville knocked out Ball State in their previous NCAA appearance in 2002 in Columbus, Ohio. Louisville volleyball director of operations Sarah Drury-Petkovic was a member of the 2002 team and finished with a match-high 23 digs.

Series Quick Facts:

Purdue Leads 8-0

Streak - Purdue 8

Purdue Leads 2-0 In NCAA Tournament

Lola Arslanbekova's 20 kills, 13 digs, two aces and two blocks were not enough as U of L fell 3-2 to No. 14-ranked Purdue in the first match of the BIG EAST/Big Ten Challenge Friday evening in Huff Hall in Champaign, Ill.

"We came out and competed," said U of L head coach Anne Kordes. "We had stretches of greatness and everyone showed sparks of just how good we can be. It was a full team effort and we can build on this experience in the future."

U of L (8-3) hit .157, outblocked the Boilers 10.5-8.5 and recorded nine aces. Emily Juhl joined Arslanbekova in double digit kills with 11. Caitlin Welch had 13 digs. Purdue remains unbeaten at 10-0 with the 21-25, 25-19, 25-18, 16-25, 15-10 win. The Boilers were paced by Ariel Turner's 20 kills.

U of L withstood a 6-0 Purdue run midway through the first set, trailing 12-10, but nine kills by Lola Arslanbekova kept U of L in the hunt and they took the lead for good at 16-15. PU came within one at 20-19 when Brooke Mattingly was blocked after a Boiler ace to force a timeout. The Cards regrouped and had a 5-2 run with three Lola kills to get to set point at 24-21. Emily Juhl tipped to the middle for set point. The Cardinals hit .261 in the set with three aces.

The Cards fell behind 15-10 midway through the second set and had used both their timeouts before a 5-1 run brought them back to within two at 17-15. A frigid hitting percentage of .037 did little to help the cause. The Boilers held Arslanbekova to three of U of L's seven kills for the set. Purdue's four service errors and two receiving errors gave the Cardinals hope before falling 25-19.

Purdue used a 5-1 run to go up 15-10 in the third set. The Cards scrapped their way back into the set with a 3-0 run to comewithin three at 15-13 but had no answer for Ariel Turner who had five of PU's last nine points. U of L staved off set point three times but a service error by Juhl ended the rally as the Cards fell 25-18. U of L hitting stayed icy at .029 to the Boilers'.314. Turner had seven kills in the set to pace PU.

In the fourth set, U of L blew out to a 19-10 lead and then held off a furious PU rally to get within five at 19-14 and force a Cardinal timeout. U of L put together a 5-1 run and two straight Lola kills gave U of L the 25-16 win and forced a fifth set. U of L hit .310 in the set and had two blocks.

In the fifth set, U of L led 7-5 before Purdue went on a 6-0 run and took a 10-7 lead. Brooke Mattingly scored twice more for the Cards and a miss by Emily Ehlers took the Cardinals to 13-10, but a block and a kill by Turner were good for set and match point.

LOUISVILLE Volleyball 2011

The Last Time Louisville - Morehead State

	Morehead State	12-20-18 (0)
	Louisville	25-25-25 (3)
Nov. 26, 2011 ■ Louisville, Ky. Louisville vs. OVC Champion		

Louisville vs. Morehead State Quick Facts Louisville leads series 26-11

Outside hitters Emily Juhl and Lola Arslanbekova had 13 kills apiece to lead the University of Louisville to a 25-12, 25-20, 25-18 win over Morehead State in volleyball action Saturday afternoon in Cardinal Arena.

U of L (23-8) is awaiting its NCAA fate, hoping to earn an at-large bid for its 22nd appearance in the tournament. The pairings will be announced Sunday at 6 p.m. ET on ESPNU. Morehead State earned the OVC automatic qualifier after sweeping Tennessee-Martin for the OVC crown.

"We did what we had to do today. Today was about taking care of business and it was a group effort for the win," said U of L head coach Anne Kordes. "Caitlin Welch did a great job defensively and Taylor Brauneis set a great, balanced offense against a very good Morehead State team. We did what we could to create the opportunity for the NCAA tournament. Our goal is to advance in the tournament and continue the tradition. Now we wait and see what happens tomorrow on the Selection Show."

The Cardinals hit .280 as a team and outblocked the Eagles 10-5. U of L had 40 kills to MSU's 23 and aced the Eagles five times. Caitlin Welch notched 14 digs. Juhl added two aces and two blocks to her total and Arslanbekova had an ace and three blocks. Setter Taylor Brauneis had a match-high 34 assists. Morehead was led by Aryn Bohannon's nine kills.

U of L blew out to a 9-4 lead early and never looked back, using torrid .455 hitting and five blocks to push to the 25-12 win. Emily Juhl and Lola Arslanbekova combined for eight of U of L's 13 kills and Kaitlynn James roofed the Eagles three times.

U of L seemed to have the second set in hand when it built a 17-11 lead early, but the Eagles chipped away at the lead and used a 4-0 run to tie at 20. After a Louisville timeout, the Cards ran off five straight for the 25-20 win. U of L hitting cooled to .179 but Morehead could muster only .000 hitting but the Eagles did outblock the Cards 4-2. Arslanbekova added another six kills to her total.

After tying at 11, Morehead let Louisville run off five straight to go up 16-11 and force an Eagle timeout. Morehead was able to score twice right after the timeout before Emily Juhl got two kills and an ace to squelch the comeback and take the Cards to a 20-14 lead. Morehead battled back to score three straight but then got outscored 5-0 down the stretch giving the Cards a 25-18 win.

2011 BIG EAST VOLLEYBALL STANDINGS

Team	Conference			Overall		
	W	L	Pct.	W	L	Pct.
&X-Louisville	13	1	.929	23	8	.742
\$X-Cincinnati	12	2	.857	26	9	.743
X-Marquette	12	2	.857	23	10	.697
X-Syracuse	8	6	.571	19	12	.613
X-Notre Dame	8	6	.571	17	13	.567
X-Seton Hall	8	6	.571	17	13	.567
X-Villanova	8	6	.571	17	13	.567
X-Pittsburgh	7	7	.500	18	13	.581
USF	7	7	.500	12	16	.429
Georgetown	6	8	.429	14	13	.519
West Virginia	5	9	.357	7	18	.280
Connecticut	4	10	.286	14	15	.483
DePaul	3	11	.214	7	22	.241
Rutgers	3	11	.214	10	21	.323
St. John's	1	13	.071	10	21	.323

* As of 11/27/2011

X = Clinched berth in BIG EAST Tournament

& = BIG EAST Regular Season Champion

\$ = BIG EAST Tournament Champion

Louisville in the NCAA Tournament (13-21, .382)

1983:	UCLA def. UofL 3-0
1990:	LSU def. UofL 3-0
1991:	Florida def. UofL 3-0
1992:	Pacific def. UofL 3-0
1993:	Duke def. UofL 3-0
1994:	Texas def. UofL 3-0
1995:	UofL def. UCF 3-1
	Hawaii def. UofL 3-0
1996:	UofL def. Brown 3-0
	UofL def. Maryland 3-1
	Nebraska def. UofL 3-0
1998:	UofL def. American 3-0
	UofL def. No. Ill. 3-1
	Penn State def. UofL 3-0
1999:	Kansas State def. UofL 3-0
2000:	Michigan def. UofL 3-1
2001:	UofL def. Ga. Tech 3-2
	Pacific def. UofL 3-1
2002:	UofL def. Ball State 3-0
	Ohio State def. UofL 3-0
2003:	UofL def. Notre Dame, 3-0
	Illinois def. UofL 3-0
2004:	UofL def. Illinois 3-1
	UofL def. Missouri 3-1
	Nebraska def. U of L 3-0
2005:	UofL def. WKU 3-1
	UofL def. Maryland 3-0
	Florida def. UofL 3-0
2006:	Middle Tennessee def. UofL 3-2
2007:	Middle Tennessee def. UofL 3-2
2008:	Purdue def. UofL 3-2
2009:	Minnesota def. UofL 3-1
2010:	UofL def. Middle Tennessee 3-0
	Purdue def. UofL 3-1

Louisville Looks to Improve NCAA Mark

Louisville has struggled over the years in the NCAA Tournament and enter this season's tournament with a 13-21 mark all-time. Despite their struggles, Louisville has advanced past the first round nine times including five straight from 2001-05.

Three BIG EAST Teams Make NCAA Tournament

The BIG EAST Conference will be making a strong presence in the NCAA Tournament. Three teams from the conference made the NCAA Tournament in Louisville, Cincinnati and Marquette. The three berths ties the conference record for most teams selection to participate in the NCAA Tournament. Three BIG EAST teams made the NCAA Tournament in 2006 and 2009. No BIG EAST team has advanced past the third round in the current 64-team format.

Weren't You Just Here?

Louisville returns to West Lafayette for the second straight season for the NCAA Tournament. The Cardinals also traveled to West Lafayette in 2008 where they lost to Purdue in the first round in five sets.

Frequent Members

Louisville is one of 18 programs with at least 20 NCAA Appearances. Illinois and Ohio State both earned their 20th NCAA berth this season.

Into the RPI Rankings

Louisville has been a staple over the past several years in the top quadrant of the NCAA DI RPI Rankings. Here is a look at Louisville's weekly RPI ranking:

Week	Rank
Oct. 17	41
Oct. 24	49
Oct. 31	49
Nov. 7	37
Nov. 14	35
Nov. 21	38
Nov. 28	38

Arslanbekova Adds More Accolades

Lola Arslanbekova was named to the All-BIG EAST Tournament Team on Nov. 20. In Louisville's two tournament matches, the junior posted two double-doubles. Arslanbekova accumulated 40 kills and 30 digs in Louisville's two matches.

Notre Dame Halts Louisville's Tournament Run

The Fighting Irish snapped Louisville's streak of three straight BIG EAST Tournament Championships with a four set win in the semifinals on Nov. 19. The loss marked the first time Louisville did not advance to the championship match of the BIG EAST Championship.

The BIG EAST Championship Goes Through Notre Dame

Louisville and Notre Dame have made a habit of facing each other in the BIG EAST Championship. Louisville joined the BIG EAST Conference in 2005 and have faced Notre Dame in the BIG EAST Championship each year with the exception of 2010. The Cardinals own a 4-2 record against the Irish in the BIG EAST Championship and had won four straight which included the 2008 and 2006 title matches and semifinal matches in 2009 and 2007 before the Irish took a four set decision in the semifinals of the 2011 BIG EAST Championship. Notre Dame beat Louisville in 2005 to take home the BIG EAST Championship.

Lock and Load

Louisville's hitters were out on full force on Friday afternoon at the Al McGuire Center with four individuals finishing with double-digit kills totals. Junior **Lola Arslanbekova** led the quartet with 16 kills while red-shirt sophomore **Brooke Mattingly** added a career-high with 15. **Emily Juhl** finished the match with 14 kills while **Kaitlynn James** added 12. Louisville finished the match with a 62-38 advantage over Pittsburgh in kills.

250 Matches and Counting

Louisville head coach **Anne Kordes** coached her 250th career match on Nov. 18 against Pittsburgh. Kordes owns a 168-83 mark during her coaching career.

The Avengers

For the second year in a row, the Cardinals found themselves facing an opponent in the first round of the BIG EAST Championship that they lost to in the regular season and for the second straight season, avenged regular season losses with four set victories. Last season, Seton Hall took a five set decision in Cardinal Arena before Louisville came back to win in four sets in the BIG EAST Championship.

Damage Control

Louisville limited Pittsburgh to 13 points in the first set during the quarterfinals of the BIG EAST Championship. The 13 points was the fewest by a UofL opponent in the BIG EAST Championship since Notre Dame was held to 13 points in the fifth set in the 2009 BIG EAST Championship semifinals.

Haley Pouliezos Receives All-American Honors

Louisville volleyball signess was one of 100 members of the sixth-annual Under Armour Girls High School All-American Teams. Pouliezos received second-team honors.

Three Cardinals Take Home Honors at BIG EAST Volleyball Banquet

Junior **Lola Arslanbekova** was named BIG EAST Player of the Year while sophomores **Taylor Brauneis** and **Emily Juhl** were named to the All-BIG EAST First Team. Arslanbekova was one of two unanimous selections to the All-BIG EAST First Team. The league also honored seniors **Gosia Lech** and **Maci Wachtel** in addition to All-Academic BIG EAST members Brauneis, Juhl, **Brooke Mattingly**, Lech and **Gwen Rucker**.

Cardinals Compile BIG EAST Accolades

For each week during the regular season, the BIG EAST Conference selects a Player of the Week, a Freshman of the Week and name several players to the weekly Honor Roll. Louisville volleyball players have regularly earned spots on these weekly lists. Here is a look at the Cardinals weekly BIG EAST awards with the number of times each individual has received weekly awards in parenthesis.

Week	Player (# times with conference honors)	Award
Aug. 29	Gwen Rucker (1)	Honor Roll
Sept. 5	Lola Arslanbekova (1)	Player of the Week
Sept. 12	Lola Arslanbekova (2)	Honor Roll
Sept. 19	Lola Arslanbekova (3)	Honor Roll
Sept. 26	Lola Arslanbekova (4)	Player of the Week
Oct. 3	Lola Arslanbekova (5)	Player of the Week
Oct. 9	Lola Arslanbekova (6)	Player of the Week
Oct. 17	Lola Arslanbekova (7)	Honor Roll
Nov. 7	Taylor Brauneis (1)	Honor Roll
Nov. 14	Lola Arslanbekova (8)	Honor Roll

Cardinals Received Votes in AVCA Poll

The Cardinals received 33 votes in the Division I AVCA Coaches Preseason Poll released on August 15th. Through the first 14 polls this season, Louisville has received votes in nine of them. Here's a look at the Cardinals week-by-week rankings.

Week	Rank	Votes
Preseason	RV	33
Aug. 29	NR	0
Sept. 5	RV	3
Sept. 12	RV	5
Sept. 19	RV	12
Sept. 26	RV	16
Oct. 3	RV	14
Oct. 10	RV	27
Oct. 17	RV	36
Oct. 24	NR	0
Oct. 31	NR	0
Nov. 7	NR	0
Nov. 14	RV	2
Nov. 21	NR	0

Seeing Double?

The Cardinals have recorded 24 double-doubles already this season. Junior **Lola Arslanbekova** leads the team with 13 while sophomore **Taylor Brauneis** has notched eight. Junior **Kaitlynn James** has two and sophomore **Emily Juhl** has one. Below is an in-depth look at the Cards double-doubles.

Name (#)	Opponent	Stats
Arslanbekova (1)	Georgia Tech	12 kills, 10 digs
Juhl (1)	Georgia Tech	17 kills, 10 digs
Brauneis (1)	Ohio	36 assists, 12 digs
Brauneis (2)	Virginia	50 assists, 17 digs
Arslanbekova (2)	Virginia	17 kills, 13 digs
Arslanbekova (3)	Purdue	20 kills, 13 digs
Arslanbekova (4)	Illinois	30 kills, 11 digs
James (1)	Illinois	10 kills, 13 digs
Arslanbekova (5)	St. John's	14 kills, 11 digs
Brauneis (3)	Connecticut	37 assists, 11 digs
Arslanbekova (6)	DePaul	19 kills, 12 digs
Arslanbekova (7)	Notre Dame	28 kills, 14 digs
Brauneis (4)	Rutgers	34 assists, 10 digs
Arslanbekova (8)	West Virginia	20 kills, 11 digs
Brauneis (5)	West Virginia	38 assists, 10 digs
Arslanbekova (9)	Pittsburgh	19 kills, 12 digs
Brauneis (6)	Marquette	33 assists, 13 digs
Arslanbekova (10)	Villanova	25 kills, 23 digs
Brauneis (7)	Villanova	48 assists, 13 digs
James (2)	Villanova	18 digs, 11 kills
Arslanbekova (11)	Georgetown	11 kills, 10 digs
Arslanbekova (12)	Pittsburgh	20 digs, 16 kills
Brauneis (8)	Pittsburgh	50 assists, 11 digs
Arslanbekova (13)	Notre Dame	24 kills, 10 digs

Welcome to the University of Louisville

Junior **Lola Arslanbekova** has been on fire this season. On Nov. 17, she was named BIG EAST Player of the Year and was one of two unanimous selections to the All-BIG EAST First Team. Arslanbekova was later named to the All-Tournament Team at the conclusion of the BIG EAST Championship. Through the first 14 weeks of the season, the junior has compiled three all-tournament accolades, two tournament most valuable player awards, BIG EAST Player of the Week on Sept. 5, Sept. 26, Oct. 3 and Oct. 9 and BIG EAST Honor Roll on Sept. 12, Sept. 19, Oct. 17 and Nov. 14. Arslanbekova has amassed 547 kills on the season (4.93/set) and has notched 13 double-doubles. She has recorded double-digit kill totals in 28 of Louisville's 30 matches, including 17 with 18 or more and seven with 20 or more. Arslanbekova surpassed Jackie Byrne on Sept. 25 for 10th all-time in school history in kills. On Oct. 2, she passed Beth Kunnell and Sonya Gubaidulina and now ranks eighth all-time in school history in kills. One week later, she passed Kim Blackstone for seventh all-time in school history. She went on to pass Tina Naehr for sixth all-time against Villanova on Nov. 11 and passed Bing Sun for fifth all-time against Notre Dame during Cardinals' loss to Notre Dame at the BIG EAST Championship.

Louisville Career Kills Leaders

1.	Lena Ustymenko ('02-'05)	1,861
2.	Sonja Percan ('99-'03)	1,850
3.	Laurie Maxwell ('88-'91)	1,545
4.	Shannon Misek ('89-'92)	1,543
5.	Lola Arslanbekova ('09-)	1,524
6.	Bing Sun ('00-'04)	1,501
7.	Tina Naehr ('92-'94)	1,455
8.	Kim Blackstone ('81-'84)	1,295
9.	Sonya Gubaidulina ('96-'98)	1,253
10.	Beth Kuhnell ('93-'96)	1,242

Move Over Coach Kordes, There is a New Setter In Town

Sophomore setter **Taylor Brauneis** has dished out 2,264 assists over her young career at Louisville. The Crystal Lake, Ill. native passed **Anne Kordes** for ninth all-time in school history against Marquette on Nov. 6 in a crucial regular-season conference match. Brauneis entered the top 10 during Louisville's win over Rutgers on Oct. 9 when she surpassed Elena Pilnikova. The sophomore went on to pass Estelle Armbruster against Villanova and Kelly Gillooly at Georgetown two days later. Brauneis set a career-high with 56 assists against Notre Dame.

Louisville Career Assists Leaders

1.	Stephanie Storen ('93-'96)	4,881
2.	Colleen Schug ('89-'92)	4,362
3.	Jing Ding ('98-'01)	4,290
4.	Jennifer Craven ('02-'05)	4,103
5.	Denise Dzik ('83-'86)	3,462
6.	Lesa Moore ('80-'83)	3,224
7.	Taylor Brauneis ('10-)	2,264
8.	Kelly Gillooly ('90-'93)	2,125
9.	Estelle Armbruster ('85-'87)	2,071
10.	Anne Kordes ('97-'98)	2,035

Into the Top 10 Nationally

Lola Arslanbekova cracked into the top 10 nationally in kills per set on Sept. 26. This week Arslanbekova ranks third nationally for the fifth straight week after being second for three straight weeks and is 0.40 kills per set behind national leader Lauren Wicinski from Northern Illinois. Here is a closer look at Arslanbekova's week-by-week kills per set national ranking.

Date	Rank
Sept. 11	20th
Sept. 18	13th
Sept. 25	8th
Oct. 2	4th
Oct. 9	2nd
Oct. 17	2nd
Oct. 24	2nd
Oct. 31	3rd
Nov. 7	3rd
Nov. 14	3rd
Nov. 21	3rd
Nov. 28	3rd

Louisville Wins Regular Season BIG EAST Title

The Cardinals lived up to expectations this season by capturing solo possession of the BIG EAST regular season title after sweeping Georgetown on Sunday. Louisville was picked to win the regular season crown by the coaches in the pre-season coaches' poll. The Cardinals clinched the top seed in the BIG EAST Championship with their win over Villanova on Nov. 11.

Cardinals Rank Third in BIG EAST Championships

The Cardinals have captured four BIG EAST Championship titles since joining the conference in 2005. Despite being relatively new to the conference, Louisville ranks third all-time behind Pittsburgh who has 11 and Notre Dame who has nine.

Louisville reached the title match of the BIG EAST Championship in six consecutive years (2005-10), which ranks third all-time in the BIG EAST. Notre Dame advanced to the title match 12 straight years from 1995-06 and took home the tournament title nine times. Pittsburgh reached the title match nine times from 1988-96 winning seven titles along the way.

Arslanbekova Named to BIG EAST Honor Roll Nov. 14

Junior **Lola Arslanbekova** took home her eighth weekly BIG EAST honors as announced by the conference on Monday. Arslanbekova was instrumental in helping Louisville grind out a five set victory at Villanova last Friday where she recorded 25 kills and a career-high 23 digs.

Cards Post Fourth 13-1 Finish in Conference Play

With Louisville's sweep over Georgetown on Saturday, the Cardinals finished 13-1 in the BIG EAST regular season for the fourth time since joining the league in 2005. The Cardinals previously finished 13-1 in conference play from 2005-07.

Louisville Inks Three Recruits for 2012

Middle blocker Davionna Holmes of East St. Louis, Ill., outside hitter/middle blocker Janelle Jenkins of Southlake, Texas and libero Haley Pouliezios of Imperial, Mo. have signed national letters of intent to continue their volleyball careers at the University of Louisville.

LOUISVILLE Volleyball 2011

About Holmes

Davionna Holmes is a 6-3 middle blocker who played for East St. Louis High School for Iletha Suggs where she just earned First Team All-Southwestern Conference honors as a senior. Playing her club ball with H2 St. Louis for Coach DeShea McBride, she credits Geoffrey Davis for giving her the opportunity to play for H2. Holmes was also selected for USA Volleyball's Girl's Youth Continental team. An excellent basketball player as well, she averaged 14.4 points and 4.4 rebounds per game for East St. Louis where as a center, she was among her conference leaders in three-point shooting.

About Jenkins

Janelle Jenkins is a 5-10 outside hitter/middle blocker who played for Carroll High School for Coach Arthur Stanfield. She played her club ball at Skyline Dallas Juniors for Coach Kirk Perry. Her 2010 USA Junior Olympics Select Team finished second in Open Division and in 2010 she was selected to compete in second round for position on USA Team for 17 year olds. For Skyline, she was voted to the area's 2010 Volleyball Super Team while leading in hitting average in overall select club statistics. For her high school as a senior, she was the Lone Star Prep Volleyball Player of the Week and was named Offensive Player of the of the Arlington Tournament, as well as All-Allen Tournament. As a junior, she was Varsity Volleyball 6-5A Blocker of the Year.

About Pouliezios

Haley Pouliezios is a 5-7 libero, who played for Windsor High School for Coach Stephanie Dueker and for High Performance -St. Louis Club for Coach Chris Nichols. She was a member of the U.S. Girls' Youth National Training Team and in 2010, she was libero for the U.S. Girls' Youth National Team which won the gold medal at the NORCECA Girls' Youth Continental Championship, which qualified the Americans for the 2010 Youth Olympic Games and 2011 FIVB Girls' Youth World Championship. She ranked second in the NORCECA Girls' Youth Continental Championship as best digger (2.94 digs per set), best receiver (47.22 efficiency) and best libero (49.16 success percent). In 2009, she attended U.S. Girls' Youth National Training Team Camp at the U.S. Olympic Training Center in Colorado Springs and was named to U.S. Girls' Select Blue Team which placed third at USA Volleyball High Performance Championships as well as being named Best Digger at USA Volleyball High Performance Championships. For Windsor High School, she was named all-region, all-district, unanimous first-team all-conference. To add to her pedigree, she was a 2012 Senior Ace - Top 120 and a three-time Gym Dandy selection.

Four Cardinals Have Career Nights at Villanova

Multiple Cardinals stepped up during Louisville's tight five set win over Villanova on Nov. 11. **Lola Arslanbekova** notched her 10th double-double of the season against the Wildcats, finishing with 25 kills and a career-high 23 digs. **Kaitlynn James** set new career-bests with 18 digs and 11 kills, notching her second double-double in the process. **Caitlin Welch** added a career-best with 29 kills while **Taylor Brauneis** added her seventh double-double of the season.

Cards Rank 24th in Attendance

Louisville ranks 24th in Division I in attendance. The Cards are averaging 1,527 fans per home match which is tops in the BIG EAST.

Brauneis Named to BIG EAST Honor Roll - Nov. 7

Sophomore setter Taylor Brauneis was named to the BIG EAST Weekly Honor Roll on Nov. 7 for her efforts in helping the Cardinals to a 2-1 week which included key BIG EAST victories over Syracuse and Marquette. For the week, Brauneis dished out 10.3 assists per set and recorded 2.4 digs per set. She notched her sixth double-double of the season against Marquette and passed Anne Kordes for ninth all-time in career assists.

The Blocking Machine

Louisville has seen several prolific blockers go through their program over the years including Lecia Brown, Laurie Maxwell and Jennifer Hoffman. Last season, the Cardinals' blocking attack was led by Amanda Simmons and **Gwen Rucker**. Louisville started off strong this season in blocking but an injury to Rucker slowed the Cards' block attack. However, against Tennessee, **Lola Arslanbekova** emerged with a career-best three solo blocks and a career-high five blocks. The three solos blocks are the most by an individual in a match this season for Louisville.

As Easy as .200

A key to Louisville's success this season has been to hit above .200 as a team. Louisville is 21-2 this season when hitting above .200 and is only 2-6 when hitting .200 or below.

Pivotal Set

The third set has proven pivotal in **Anne Kordes'** first season as head coach. Through the Cards' first 31 matches, Louisville is 22-0 when winning the third set this season and is 1-8 when dropping the third set. Louisville got their first win in a match in which they dropped the third set against Pittsburgh in the BIG EAST Championship.

LOUISVILLE Volleyball 2011

Spreading the Wealth

Louisville has been known to spread the wealth around on the court. The West Virginia match evidenced this as four players finished with double-digit dig totals. **Caitlin Welch** set a career-high with 25 digs while **Lola Arslanbekova** and **Kaitlynn James** each had 11. **Taylor Brauneis** rounded out the foursome with 10 digs.

The Cardinals also had four players record 10 or more digs against Pittsburgh with **Caitlin Welch** and **Maci Wachtel** each recording 14. **Lola Arslanbekova** finished with 12 while **Kaitlynn James** added 11 for the second straight match.

Arslanbekova Named to BIG EAST Honor Roll - Oct. 17

For the seventh-straight week, junior **Lola Arslanbekova** has received BIG EAST weekly conference honors. This week, Arslanbekova was named to the BIG EAST Honor Roll. Arslanbekova led Louisville over nemesis Cincinnati on Friday night. The junior accumulated 16 kills while hitting .312. Arslanbekova added four digs and three blocks. To date, Arslanbekova has been named BIG EAST Player of the Week four times and has also been named to the weekly honor roll three times.

11 Points

Louisville held Cincinnati to 11 points in the third set, tying the Bearcats' low for points in a set during the 25-point era (2008-present). Cincinnati also scored 11 points in a set at Hawai'i on Sept. 7, 2008.

Arslanbekova Named BIG EAST Player of the Week - Oct. 9

Junior **Lola Arslanbekova** received conference honors for the sixth straight week for her performances against Seton Hall and Rutgers. The Tashkent, Uzbekistan native smashed down 6.67 kills per set last week and averaged 20 kills per match while hitting .349 for the week. It marked the third-straight week Arslanbekova was named BIG EAST Player of the Week.

Déjà Vu

Louisville opened their 2011 conference slate with three straight sweeps after dominating St. John's, Connecticut and DePaul. The Cardinals needed four sets to defeat Notre Dame but stormed right back and swept Seton Hall, Rutgers and nemesis Cincinnati. After sweeping the Bearcats, Louisville needed four sets to defeat West Virginia.

The 2007 squad was the last Louisville team to open up conference play with three straight sweeps. In 2007, the Cardinals swept USF, Georgetown and Syracuse before dropping a set to Marquette. The 2007 team then went on to sweep St. John's, Connecticut and Seton Hall before beating Villanova in four sets.

Unstoppable at Home

Louisville finished 10-2 at home this season including 4-2 in the KFC Yum! Center. Dating back to last season, Louisville won 15 straight at home prior to the Pittsburgh loss.

Less Than .100

Morehead State became Louisville's seventh opponent this season that was held to a hitting percentage of under .100. The Cardinals held the Bearcats to a .037 hitting percentage. Previously Tennessee Tech hit .051 in the season-opener, Kansas State hit .070, Eastern Illinois hit .038, Connecticut hit .049, Rutgers hit .053 and Cincinnati hit .077. Seton Hall finished at .103, just over .100.

Arslanbekova Named BIG EAST Player of the Week - Oct. 3

Junior **Lola Arslanbekova** received conference accolades for the fifth-straight week on Oct. 3 when she won her second-straight player of the week award. Arslanbekova became the first BIG EAST player to win consecutive Player of the Week awards this season. Last week, Arslanbekova averaged 6.71 kills per set to lead Louisville past DePaul and Notre Dame. The junior also recorded two double-doubles on the week while hitting .341.

Louisville had Best Conference Start Since 2007

Through nine matches of BIG EAST Conference action, the Cardinals sit at 8-1. The last time Louisville started conference action with eight straight wins was 2007 when Louisville opened up conference play 13-0 before falling to Notre Dame in the regular-season conference finale. Louisville has only lost 13 BIG EAST matches since joining the conference in 2005.

Arslanbekova Named BIG EAST Player of the Week - Sept. 26

Lola Arslanbekova notched her fourth-consecutive weekly conference honors this season and her second player of the week award. In Louisville's first two BIG EAST matches this season, the junior hit a sparkling .537 with 32 kills and just three errors.

Single Digit Sets

Louisville held Connecticut to seven points in the first set on Sept. 25, the third set this season an opponent has been held to under 10 points. Tennessee Tech was limited to nine points in the first set and seven points in the second set on Aug. 26.

Service Ace x3

Multiple Cardinals have recorded three or more service aces in a single match this season. However senior **Gosia Lech** aced Connecticut three straight times on Sept. 25 to give her eight aces on the season. Most recently, **Caitlin Welch** notched three during Louisville's sweep over Georgetown on Nov. 13.

Seven Digs Per Set

Caitlin Welch averaged seven digs per set against Connecticut. The 21 digs was the most by a Cardinal in a three-set match since the inception of 25-point sets. Previously Lindsey Mango held the record with 20 against West Virginia in 2008.

LOUISVILLE Volleyball 2011

Arslanbekova Named to BIG EAST Honor Roll - Sept. 19

Junior **Lola Arslanbekova** was named to the BIG EAST Honor Roll on Monday, Sept. 19 for her performance in the BIG EAST/Big Ten Challenge. Arslanbekova received weekly accolades from the conference for the third straight week. Arslanbekova has been named Player of the Week once and has been on the honor role twice.

Kaitlynn James Having Solid Season for Cardinals

Nebraska transfer **Kaitlynn James** has quietly been putting up solid numbers for the Cardinals on a consistent basis. The junior ranks third on the team with 264 digs (2.44/set) and has recorded at least nine digs in 16 matches this season. The Louisville native recorded her first double-double against Illinois where she finished with 13 digs and 10 kills. She later added her second double-double against Villanova where she finished with a career-high 18 digs and a career-high 11 kills.

Arslanbekova Named to All-Tournament Team at BIG EAST/Big Ten Challenge

Lola Arslanbekova earned her third all-tournament accolades in as many weeks on Saturday, Sept. 17 at the conclusion of the BIG EAST/Big Ten Challenge. The junior set a career-high with 30 kills in the finale against Illinois. During the BIG EAST/Big Ten Challenge, Arslanbekova averaged 5.0 kills per set.

Arslanbekova Named to BIG EAST Honor Roll - Sept. 12

Junior **Lola Arslanbekova** was named to the BIG EAST Honor Roll on Monday, Sept. 12 for her effort in helping the Cardinals win the Baymont Bobcat Classic. The accolade marks the second time this season the BIG EAST Preseason Player of the Year has received weekly honors from the conference. Last week Arslanbekova averaged 4.14 kills per set to go along with 2.86 digs per set and one double-double.

Three Cardinals Named to All-Tournament Team at Baymont Bobcat Classic

Junior **Lola Arslanbekova** was named the Baymont Bobcat Classic MVP while sophomores and Louisville natives **Emily Juhl** and **Caitlin Welch** also earned spots on the All-Tournament Team. Arslanbekova recorded the match-high in kills for all three of Louisville's matches on the weekend. The Tashkent, Uzbekistan native totaled 53 kills over the two-day tournament while posting a double-double against Virginia when she added 13 digs. Juhl finished second on the Cards with 36 kills. Welch led the Cardinals' defensive efforts with 59 digs on the weekend, including 23 against Virginia which tied a career-high.

Louisville Had Best 10-Match Start Since 2005

Louisville got off to its best start since the 2005 campaign. Over the first 10 matches this season, the Cardinals went 8-2. The 2005 team started the season 20-0 before falling to then-No. 7 Notre Dame. The 2005 squad finished 31-3.

Lola Arslanbekova Named BIG EAST Player of the Week

Lola Arslanbekova was named the BIG EAST Player of the Week on Sept. 5, marking the third time in her career she's received the player of the week accolades in addition to four freshmen of the week honors as a freshman. In matches from Aug. 29-Sept. 4, Arslanbekova tallied 63 kills on 110 swings with only 11 hitting errors for an astounding .473 hitting percentage. The junior recorded kill totals of 19, 18 and 26 while leading the Cardinals to a 3-0 week.

Arslanbekova Named MVP of Crowne Plaza Cardinal Classic

Junior **Lola Arslanbekova** was named the MVP of the Crowne Plaza Cardinal Classic. Arslanbekova tied a career-high with 26 kills against Wichita State in the Cardinals' final match of the tournament. In three matches, Arslanbekova totaled 63 kills in 10 sets, good for 6.3 kills per set.

Brooke Mattingly Named to Crowne Plaza Cardinal Classic All-Tournament Team

Red-shirt sophomore **Brooke Mattingly** was named to the All-Tournament Team at the conclusion of the Crowne Plaza Cardinal Classic. For the tournament, the St. Henry, Ohio native totaled 17 kills on 36 swings for a .406 hitting percentage. Mattingly also added 10 blocks.

Anne Kordes Notches Career Win 150

Louisville volleyball head coach **Anne Kordes** notched her 150th-career win on Sept. 3 when the Cardinals swept Eastern Illinois. The milestone came in Kordes' fifth match of her seventh season as a head coach.

Four Cardinals Set Career-Highs Against Eastern Illinois

Four Cardinals set career-highs against Eastern Illinois on Sept. 3. Junior **Tanya Lukyanenko** and red-shirt sophomore **Brooke Mattingly** set career-highs in blocks with Lukyanenko finishing with five while Mattingly added six. Sophomore setter **Taylor Brauneis** set a career-high with four aces while senior middle blocker **Gwen Rucker** posted a personal best with five digs.

Gwen Rucker Named to BIG EAST Honor Roll

Senior **Gwen Rucker** was named to the BIG EAST Honor Roll on Aug. 29th for her role in helping the Cardinals to a 2-1 showing at the Georgia Tech Courtyard Classic. For the week, Rucker amassed 29 kills while accumulating a .412 hitting percentage. The Lexington, Ky. native tallied eight aces to go along with 15 total blocks.

Two Cardinals Named to Georgia Tech Courtyard Classic All-Tournament Team

Sophomore **Emily Juhl** and senior **Gwen Rucker** were named to the All-Tournament Team at the conclusion of the Georgia Tech Courtyard Classic. Juhl tied for the team-high with 36 kills, including a career-high 17 against Georgia Tech to go along with recording her first double-double of the season. Rucker amassed a career-high four service aces against Kansas State and led Louisville with 15 blocks on the weekend.

LOUISVILLE Volleyball 2011

1,000 Kills and Counting

Junior **Lola Arslanbekova** notched her 1,000th career kill on August 27th against Kansas State. The Tashkent, Uzbekistan native needed just 63 matches and 243 sets to reach the milestone.

Anne Kordes Wins Opener at Louisville

The Cardinals swept Tennessee Tech in the season opener, making **Anne Kordes** the first coach in program history to sweep their first match. Two other coaches in program history have won their opening matches at Louisville (Leonid Yelin and Don Hardin-both came in four sets).

Louisville Picked to Win BIG EAST Conference

The Cardinals were picked to repeat as BIG EAST Champions in the 2011 BIG EAST Volleyball Preseason Coaches' Poll. The Cardinals were picked to win the regular-season title for the third time in four years (2008, '09, '11). Louisville received 190 points and 11 first-place votes.

Since the inception of round-robin play in 1990, 20 of the last 21 preseason favorites have advanced to the finals of the BIG EAST Championship. Of those favorites, 15 have captured the tournament championship and advanced to the NCAA Championship, while 14 have taken the regular-season title. Teams have won both the regular-season title and BIG EAST Championship 14 times, most recently St. John's in 2007.

Arslanbekova Named BIG EAST Preseason Player of the Year

Junior outside hitter **Lola Arslanbekova** was tabbed as the BIG EAST Preseason Player of the Year as voted on by the league's head coaches. Arslanbekova finished second in the conference last season with 444 kills and third with 4.19 points per set.

Trio of Cards Named to All-BIG EAST Preseason Team

Junior **Lola Arslanbekova** was one of two unanimous selections to the All-BIG EAST Preseason Team while sophomore outside hitter **Emily Juhl** and senior middle blocker **Gwen Rucker** also were selected to the team by the league's head coaches. The Cardinals placed a league-high three players on the All-BIG EAST Preseason Team followed by Notre Dame and Villanova which each had two selections.

Gwen Rucker Named to Preseason Cobra Magazine National Team

Senior middle blocker **Gwen Rucker** was named to Cobra Magazine's All-National Second Team on Aug. 4.

Coaching Staff Gets a Head Start on Season

University of Louisville volleyball head coach **Anne Kordes** received an early jump on her coaching season this year. Kordes was selected to be the head coach of the 2011 USA Volleyball High Performance Indoor National Girls' Select A1 Program (GSA1) at the USA Volleyball High Performance Championships in Tucson, Arizona from July 20-30.

Joining Kordes were assistant coaches **Dani Busboom** and **Kyle Walton**. Busboom was selected to guide the USA A2 Select team while Walton took charge of the Ohio Valley Region Team.

Cardinals Played Six Matches Downtown

The Cardinals hosted St. John's (Sept. 23), Connecticut (Sept. 25), Pittsburgh (Oct. 23), Tennessee (Nov. 2), Syracuse (Nov. 5) and Marquette (Nov. 6) in the KFC Yum! Center in Downtown Louisville, finishing 4-2 in their new home. The other six home matches were played in Cardinal Arena on Floyd Street. The KFC Yum! Center will host the NCAA Volleyball Final Four in 2012.

Former Louisville Athletes Win CBS's Amazing Race: Unfinished Business

Former Louisville volleyball middle blocker and assistant coach Jennifer Hoffman and her sister Kisha Hoffman, a former standout on the women's basketball team for the Cardinals, took home the one-million dollar top prize after traveling through five continents, 23 cities and 40,000 miles. The duo never won a leg leading up to the finale, but had their eyes on the prize that mattered the most; being the first team to cross the finish line.

Duo of Cardinals Named to U.S. Women's National A2 Program

Sophomore setter **Taylor Brauneis** and senior middle blocker **Gwen Rucker** were named to the U.S. Women's National A2 Program roster along with 34 other players with collegiate eligibility remaining. The A2 Program took place in Dallas from May 23 through June 1. The program included training and competition in the 2011 USA Volleyball Open National Championship from May 28-31. USA Volleyball considers the event as the National Championship in the sport of volleyball. Brauneis and Rucker competed on the A2 Blue Team.

Three Cardinals Invited to USA National Team Tryouts

Sophomore setter **Taylor Brauneis**, sophomore outside hitter **Emily Juhl**, senior middle blocker **Gwen Rucker** and sophomore libero **Caitlin Welch** were amongst a record 208 athletes who participated in open tryouts for the U.S. Women's National Team and the U.S. Women's National A2 Program held at the U.S. Olympic Training Center in Colorado Springs, Colo. from Feb. 25-27.

HEAD COACH ANNE KORDES

Anne Kordes

Hometown: Louisville, Ky.

Education: University of Louisville (1998), BA Sport Administration

University of Louisville (2001) MA in Sport Administration

College Coaching Experience

Assistant Coach

Illinois 1999-2003

Head Coach

Saint Louis University 2004-10

University of Louisville 2011-pres.

Honors

- 2008 CVU.com (Collegiate Volleyball Update) National Coach of the Year

- 2008 AVCA (American Volleyball Coaches

Association) Northeast Region Division I Coach of the Year

- Finalist for 2008 AVCA Division I National Coach of the Year

- Three-time Atlantic 10 Conference Volleyball Coach of the Year (2006, 2008, 2009)

- 2009 recipient of the Missouri Athletic Club's Carl O.

Bauer Award

•Playing Experience

University of Cincinnati 1994-1996

University of Louisville 1997-98



Louisville native and former Cardinal volleyball star, Anne Kordes, was named the head volleyball coach at her alma mater, the University of Louisville in January of 2011. She is just the sixth head coach in the program's storied history and succeeds her collegiate coach, Leonid Yelin, who retired as U of L's winningest coach after a 15-year tenure.

"For Anne, we are so thrilled to welcome one of our own back. She has an excellent coaching pedigree and is well-known as a tireless recruiter. She took us to a conference championship and the Sweet Sixteen as our setter, she began her coaching career as an assistant in the Big Ten, and has taken Saint Louis to record heights as their head coach. I'm always looking for a good fit with any additions to our staff and this one's a natural."

In seven seasons at Saint Louis, Kordes led the Billiken volleyball program to unparalleled success, including three NCAA Tournament appearances. Her squad was selected as the "All-Sports Trophy Champion" as the top I-AAA women's volleyball program in the country by the Division I-AAA Athletics Directors Association in 2008. Individually, she is a three-time Atlantic 10 Conference Coach of the Year, and in 2008 she garnered CVU.com (Collegiate Volleyball Update) National and AVCA Northeast Region Coach of the Year plaudits.

"I would like to thank Tom Jurich and Julie Hermann for this opportunity to head one of the best volleyball programs in the country," said Kordes. "I would like to thank Coach Yelin for his years of hard work and dedication to Cardinal volleyball that has positioned the program to take a shot at a national championship, which is my dream. The fact that my dream job is in my hometown is just icing on the cake, because we have top notch facilities, great administrative leadership located in a vibrant volleyball community that is incredibly supportive of our team."

In all, she coached 14 All-Conference first-team honorees, 13 AVCA All-Region picks, 13 A-10 All-Championship designees, seven conference All-Rookie selections, six Academic All-Conference honorees, two A-10 Rookie of the Year picks and two A-10 Championship Most Outstanding Player recipients. Her teams had a combined 59-10 league record over the past five seasons.

Kordes ranks among the elite coaches in the game. With a career record of 146-75 (.661), she is 41st on the Division I volleyball winningest active coaches list. Kordes, the only coach in SLU's program to lead her teams to four straight 20-win seasons, was the 2009 recipient of the Missouri Athletic Club's Carl O. Bauer Award. The award is presented annually to the top amateur sports figure in the St. Louis city area.

Kordes' teams have annually played some of the strongest schedules in the country. SLU finished the 2008 season No. 8 on the NCAA Women's Volleyball RPI, playing seven teams that finished among the RPI's top 25. The 2009 campaign saw the Billikens finish 27th in the RPI.

The Billikens are coming off a 19-win campaign in 2010 with signature wins against Wake Forest, Xavier and Utah. In 2009, SLU earned an American Volleyball Coaches Association (AVCA) preseason ranking (No. 20) for the first time ever. In the 2009 season's opening weekend, a school-record 6,106 fans turned out for SLU's Active Ankle Challenge finale versus top-ranked and defending national champion Penn State. Over the next two weeks, the senior-laden Billikens battled four more teams ranked among the AVCA top 15, collecting a win over No. 10 California. Saint Louis earned the highest ranking in program history the following week, coming in at No. 16 on Sept. 7.

SLU rolled through its 2009 regular-season conference slate, amassing a 14-1 record to earn a share of the A-10 crown. The Billikens finished 24-8 overall, made its third NCAA Tournament appearance in four seasons after being awarded the program's first at-large bid in 2009. Kordes, Sammi McCloud and Whitney Roth swept A-10 Coach, Player and Setter of the Year laurels, respectively, for a second straight season.

Kordes' 2008 team finished 29-5 overall and enjoyed a historic campaign. Early in the season SLU upset No. 3 Stanford 3-1 and then broke into the Top 25 for the first time in program history on Oct. 20 in the 25th spot. The Bills remained in the Top 25 for the rest of the season, finishing at No. 21. Saint Louis put together a program-best 21-match winning streak that featured a 13-0 finish in the A-10 regular-season race and went on to capture the A-10 Championship and their second NCAA Tournament bid in three seasons. Thirteenth-seeded Saint Louis earned

LOUISVILLE Volleyball 2011

the first NCAA Tournament victory in program history, a 3-0 first-round win over Alabama A&M in Lexington, Ky.

In addition to their 2008 team successes, Kordes' players garnered numerous kudos. Topping the list of individual honors was the selection of four Billikens to the 2008 AVCA All-America teams and Kordes was named Coach of the Year for the second time in three seasons. Roth picked up her second straight Setter of the Year accolade and McCloud became the first Billiken volleyball student-athlete to be selected Player of the Year. SLU had a league-record four players named to the A-10 first team.

In 2007, Sutton Lasater, McCloud and Roth were named to the All-Conference first team. Roth went on to garner A-10 Setter of the Year accolades.

The 2006 campaign featured a number of firsts as Kordes led the Billikens to a share of the A-10 regular-season crown, the program's first A-10 Championship title and SLU's first berth in the NCAA Tournament. Her peers recognized her performance by selecting her as the A-10 Coach of the Year.

In her first season at the helm of the Billiken program in 2004, the Bills finished with 15 wins, with one of the season's highlights occurring when the Billikens ended Cincinnati's 23-match home winning streak. Kordes also coached the first All-American in program history as Aida Antanaviciute earned AVCA honorable mention laurels.

"I would like to thank the athletic administration at Saint Louis for whole-heartedly supporting me as a first time head coach and doing everything within their power to help me take Billiken Volleyball to the next level," said Kordes. "I loved my time there."

Kordes began her coaching career in 1999 when Indiana hired her as an assistant coach. However, her stay in Bloomington was short-lived as she had an opportunity to take the recruiting position at the University of Illinois under former U of L head coach Don Hardin. Kordes then spent the next six seasons with the Fighting Illini, serving as the top assistant from 1999-2003 and coaching two All-Americans. During her stint, the Illini qualified for the NCAA Tournament three times and posted a 90-61 record. In 2003, Kordes helped them to a 26-7 record, the Sweet 16 of the NCAA Tournament and a No. 15 final ranking.

Kordes has exhibited leadership within the AVCA, where she is president-elect. She will be president for the 2012 season that will culminate at the Final Four which will be held in Louisville at the KFC Yum! Center. From 2006-08, she was a member of the Northeast Region Ranking Committee and the region's All-America Committee. Kordes was named chair of the Northeast Region All-America Committee in 2009 and since

then has been a member of the national All-America Committee. She is also a member of the newly formed AVCA Coaches for Coaches Committee.

Kordes has been visible on the national coaching scene, serving as a coach for USA Volleyball summer programs. In 2010, she was tabbed lead head coach for the U.S. Girls' Select A1 National Team, which competed at the USA Volleyball High Performance Championships. She was an assistant coach for the USA Volleyball Girls' Youth National Team, which competed at the 2007 FIVB Girls' Youth National Championships in Baja California, Mexico.

In 2000, she was the assistant coach for the Youth National Team, and in 2001 she was an assistant for the Junior National Team. Kordes served as an assistant in 2002 and 2003 for the National A2 Collegiate Program. During the summer of 2003, she served as the assistant coach for the High Performance #2 team, the head coach for the High Performance #3 team and the head coach for the Youth National A3 team.

Kordes was the only college coach named as an assistant for the USA Junior National Team in 2004. She had an opportunity to coach some of the nation's best young players and accompanied the squad to an international tournament played in Ankara, Turkey, in 2005. Kordes was also tabbed an assistant coach in 2006 and 2009 for the USA Select Team. She helped with the team's training and competition at the USA High Performance Championships in Fort Lauderdale, Fla.

Kordes' pursuit of coaching was influenced by her father, Ron, who has coached at the grade school, high school and club levels in Louisville. He coached his daughter at Assumption High School before she moved on to the University of Cincinnati. Kordes was named the 1994 Great Midwest Conference Newcomer of the Year, set the league record for assists by a sophomore with 1,575 and was named second-team All-Conference USA. After a two-year stint with the Bearcats, she transferred to the University of Louisville.

As a senior, Kordes led Louisville to the C-USA Tournament championship and the Sweet 16 of the NCAA Tournament. The Cardinals were ranked as high as No. 21 and finished with a 29-5 slate. She closed her career with 4,874 assists, 886 digs and 128 service aces and was a three-time All-Conference USA selection.

Not only was Kordes a standout athlete, but she also excelled in the classroom. She was a member of the Louisville Athletic Director's Honor Roll every semester and was a Red and Black Scholar-Athlete. Kordes was twice selected to the C-USA Commissioner's Honor Roll. Kordes received her bachelor's degree in athletic administration from Louisville in 1998, and she earned a master's degree in athletic administration from Louisville in 2001.



LOUISVILLE'S RECORD WHEN

When playing at home:	10-2
When playing on road:	8-4
When playing at neutral sites:	5-2
When match goes three-sets:	15-2
When match goes four-sets:	7-3
When match goes five-sets:	1-3
When scoring first:	11-4
When opponent scores first:	12-4
When winning first set:	19-4
When opponent wins first set:	4-4
When winning second set:	20-5
When opponent wins second set:	3-3
When winning third set:	22-0
When opponent wins third set:	1-8
When winning fourth set:	7-2
When opponent wins fourth set:	1-4
When winning fifth set:	1-0
When opponent wins fifth set:	0-3
When Louisville records more kills:	23-1
When Opponent records more kills:	0-7
When kills are even:	0-0
When Louisville has higher hitting percentage:	22-1
When Opponent has higher hitting percentage:	1-7
When hitting percentage is tied:	0-0
When Louisville has more aces:	19-4
When Opponent has more aces:	2-3
When aces are even:	2-1
When Louisville has more digs:	17-1
When Opponent has more digs:	5-7
When digs are even:	1-0
When Louisville has more blocks:	17-5
When Opponent has more blocks:	5-2
When blocks are even:	1-1
When wearing red jerseys:	8-4
When wearing white jerseys:	8-1
When wearing black jerseys:	7-2
When wearing pink jerseys:	0-1
When match is on Tuesday:	0-1
When match is on Wednesday:	0-2
When match is on Friday:	10-1
When match is on Saturday:	8-3
When match is on Sunday:	5-1
When match is in the morning:	3-0
When match is in the afternoon:	10-3
When match is at night:	10-5

THE LAST TIME

Louisville recorded 50-59 kills	55 vs. Syracuse (11/5/11)
Louisville recorded 60+ kills	62 vs. Pittsburgh (11/18/11)
Louisville hit .300-.399	.344 vs. Marquette (11/6/11)
Louisville hit .400+	.402 at USF (10/28/11)
Louisville dished out 50+ assists	55 vs. Pittsburgh (11/18/11)
Louisville recorded 8-9 aces	8 at Georgetown (11/13/11)
Louisville recorded 10+ aces	11 vs. Pittsburgh (11/18/11)
Louisville recorded 50-59 digs	58 vs. Syracuse (11/5/11)
Louisville recorded 60+ digs	62 vs. Notre Dame (11/19/11)
Louisville recorded 5+ solo blocks	6 at Lipscomb (10/18/11)
Louisville recorded 10-14 total blocks	10 vs. Morehead State (11/26/11)
Louisville recorded 15+ blocks	15 vs. Wichita State (9/3/11)
A Cardinal recorded 15-19 kills	16 by Lola Arslanbekova vs. Pittsburgh (11/18/11)
A Cardinal recorded 20+ kills	24 by Lola Arslanbekova vs. Notre Dame (11/19/11)
A Cardinal recorded 30+ kills	30 by Lola Arslanbekova at Illinois (9/17/11)
A Cardinal dished out 50+ assists	56 by Taylor Brauneis at Notre Dame (10/2/11)
A Cardinal recorded 4-6 aces	4 by Lola Arslanbekova vs. Pittsburgh (11/18/11)
A Cardinal recorded 7+ aces	7 by Emily Juhl at West Virginia (11/7/10)
A Cardinal recorded 15-19 digs	18 by Kaitlynn James at Villanova (11/11/11)
A Cardinal recorded 20+ digs	25 by Caitlin Welch vs. Notre Dame (11/19/11)
A Cardinal recorded 3+ solo blocks	3 by Kaitlynn James vs. Morehead State (11/26/11)
A Cardinal recorded 5-9 block assists	7 by Tanya Lukyanenko at Georgetown (11/13/11)
A Cardinal recorded 10+ block assists	10 by Gwen Rucker vs. Cincinnati (10/16/10)

LOUISVILLE *Volleyball 2011*



**TAYLOR BRAUNEIS - MEMBER OF USA A2 NATIONAL TEAM
2011 ALL-BIG EAST FIRST TEAM**

LOUISVILLE Volleyball 2011



#1 Caitlin Welch
Sophomore - Libero
Louisville, Ky.
Mercy Academy

Named to the All-Tournament Team at the Baymont Bobcat Classic ... Leads the team with 487 digs (4.39/set) ... Third on the team with 29 aces ... Her 21 digs against Connecticut is tops by a Cardinal in a three-set match since the inception of 25 point sets.

Match-By-Match

Tennessee Tech: Recorded 11 digs. **Kansas State:** Led the Cardinals with 14 digs. **Georgia Tech:** Added 13 digs. **Ole Miss:** Compiled 12 digs. **Eastern Illinois:** Had a match-high nine digs. **Wichita State:** Recorded a match-high 22 digs. **Kentucky:** Recorded 14 digs. **Ohio:** Led the Cards with 22 digs. **Virginia:** Tied her career-high with 23 digs ... Reached the 20 dig mark for the third time this season. **Marshall:** Added 14 digs ... Notched a pair of aces for the second straight match. **Purdue:** Led the Cardinals with 19 digs. **Illinois:** Was one of three Cardinals to finish with at least 10 digs. **St. John's:** Finished with eight digs. **Connecticut:** Led the Cardinals with 21 digs and three service aces. **DePaul:** Recorded eight digs. **Notre Dame:** Led the team with 17 digs. **Seton Hall:** Added 10 digs and an ace. **Rutgers:** Had a match-high 11 digs. **Cincinnati:** Led the Cardinals with 12 digs. **Lipscomb:** Led Louisville with 14 digs. **West Virginia:** Recorded 25 digs. **Pittsburgh:** Had 14 digs. **USF:** Had a match-high 17 digs and two aces. **Tennessee:** Led Louisville with 12 digs. **Syracuse:** Recorded 17 digs. **Marquette:** Recorded double-digit digs for the 11th straight match. **Villanova:** Set a career-high with 29 digs. **Georgetown:** Tied for the match-high with 10 digs. **Pittsburgh:** Reached the 20 dig plateau for the second time in the last three matches. **Notre Dame:** Had a match-high 25 digs. **Morehead State:** Led the team with 14 digs.



#2 Brooke Mattingly
R-Sophomore - Middle Blocker
St. Henry, Ohio
St. Henry

Named to the All-Tournament Team for the Crowne Plaza Cardinal Classic ... Fifth on team with a .260 hitting percentage ... Third on the team with 228 kills (2.05/set) ... Second on the team with 84 blocks (0.76/set).

Match-By-Match

Tennessee Tech: Notched four kills. **Kansas State:** Tallied six kills and four blocks. **Georgia Tech:** Notched 12 kills, while hitting .455. **Ole Miss:** Recorded four kills. **Eastern Illinois:** Set a career-high with six blocks ... Also had five kills on eight swings. **Wichita State:** Added eight kills and four blocks. **Kentucky:** Notched four kills to go along with two blocks. **Ohio:** Added nine kills and four blocks. **Virginia:** Tied her career-high with 12 kills ... Hit .333 against the Cavaliers. **Marshall:** Recorded nine kills while tying career-high with six blocks. **Purdue:** Notched seven kills to go along with a career-high four digs. **Illinois:** Added eight kills to go along with eight kills. **DePaul:** Recorded one kill. **Notre Dame:** Rebounded with seven kills. **Seton Hall:** Notched seven kills and five blocks while hitting .500. **Rutgers:** Finished second on the team with eight kills and tied her career-high with four digs. **Cincinnati:** Finished with four kills and three blocks. **Lipscomb:** Recorded eight kills and five blocks. **West Virginia:** Finished with 10 kills, two short of tying career-high ... Added six blocks. **Pittsburgh:** Finished with 10 kills while hitting .389. **USF:** Recorded six kills and two blocks. **Tennessee:** Finished with four kills. **Syracuse:** Notched 14 kills while hitting .393. **Marquette:** Erupted for seven kills on 11 swings. **Villanova:** Finished the match with eight kills. **Georgetown:** Added four kills. **Pittsburgh:** Set a new career-high with 15 kills while hitting .571. **Notre Dame:** Added seven kills and tied career-high with four digs. **Morehead State:** Finished with six kills and three blocks.



#3 Hannah Kvitle
Sophomore - Setter
Quincy, Ill.
Saint Louis

Red-shirting for the 2011 season.

LOUISVILLE Volleyball 2011



#4 Emily Juhl
Sophomore - Outside Hitter
Louisville, Ky.
Sacred Heart

Named to All-BIG EAST First Team and All-BIG EAST Preseason Team ... Named to All-Tournament Team for Georgia Tech Courtyard Classic and the Baymont Bobcat Classic ... Tops on the team with 35 aces (0.33/set) ... Second on the team with 272 kills (2.54/set) ... Third on the team with 75 blocks (0.70/set) ... Third on the team with a .292 hitting percentage ... Sixth on the team with 102 digs (0.95/set) ... Has recorded one double-double.

Match-By-Match

Tennessee Tech: Recorded 10 kills and seven digs. **Kansas State:** Tallied nine kills. **Georgia Tech:** Recorded a career-high 17 kills while notching first double-double of the season ... Added 10 digs. **Ole Miss:** Recorded five aces to go along with four digs. **Eastern Illinois:** Added six kills. **Wichita State:** Recorded four kills. **Kentucky:** Had five digs and four kills. **Ohio:** Finished second on the team with 12 kills. **Virginia:** Second on the team with 14 kills. **Marshall:** Recorded 10 kills and three blocks. **Purdue:** Second on the team with 11 kills ... Hit .212. **Illinois:** Recorded eight kills while adding five blocks. **St. John's:** Second on the team with 12 kills. **Connecticut:** Second on the team with 10 kills. **DePaul:** Notched five kills. Notre Dame: Finished second on the team with 13 kills ... Also notched six blocks. **Seton Hall:** Recorded two kills in limited action. **Rutgers:** Did not play due to injury. **Cincinnati:** Erupted for nine kills while hitting .353 ... Had four blocks and two aces. **Lipscomb:** Finished with eight kills and five digs. **West Virginia:** Shredded the Mountaineer serve receive unit for three aces. **Pittsburgh:** Recorded 13 kills. **USF:** Hit .500 while recording 10 kills ... Served up two aces. **Tennessee:** Finished second on the team with 10 kills ... Hit .304. **Syracuse:** Recorded five digs and four blocks. **Marquette:** Shredded the Golden Eagles for a season-high five aces, two short of tying career-high. **Villanova:** Added eight kills and six digs. **Georgetown:** Added nine kills and five blocks. **Pittsburgh:** Recorded 14 kills to go along with five digs. **Notre Dame:** Recorded nine kills and seven digs. **Morehead State:** Had 13 kills on 17 swings with only one error ... hit .706 against the Eagles.



#5 Taylor Brauneis
Sophomore - Setter
Crystal Lake, Ill.
Prairie Ridge

Named to All-BIG EAST First Team ... Second on the team with 33 aces ... Fourth on the team with 56 blocks (0.50/set) ... Fourth on the team with 218 digs (1.96/set) ... Averaging 10.49 assists/set on the season ... Seventh all-time in program history in assists after passing **Anne Kordes** against Marquette, Estelle Armbruster against Villanova and Kelly Gillooly against Georgetown ... Second on the team with eight double-doubles.

Match-By-Match

Tennessee Tech: Dished out 34 assists. **Kansas State:** Dished out 34 assists and added six blocks. **Georgia Tech:** Notched 54 assists while adding eight digs. **Ole Miss:** Dished out 33 assists while adding six digs. **Eastern Illinois:** Set a career-high with four aces. **Wichita State:** Dished out 43 assists and added seven digs. **Kentucky:** Nearly recorded a double-double with 18 assists and eight digs. **Ohio:** Posted her first double-double of the season with 36 assists and 12 digs. **Virginia:** Recorded second straight double-double with 50 assists and 17 digs ... Missed tying her career-high in digs by one ... Reached the 50 assist plateau for the second time this season. **Marshall:** Dished out 41 assists to go along with six digs. **Purdue:** Recorded 43 assists, seven digs and three aces. **Illinois:** Dished out 49 assists and had six digs. **St. John's:** Dished out 37 assists. **Connecticut:** Notched third double-double of season with 37 assists and 11 digs. **DePaul:** Dished out 33 assists to go along with five kills. **Notre Dame:** Added a career-high 56 assists and seven digs. **Seton Hall:** Tied career-high with seven kills ... Also had 35 assists and seven digs. **Rutgers:** Dished out fourth double-double of the season with 34 assists and 10 digs ... Moved into 10th all-time in school history in assists. **Cincinnati:** Dished out 31 assists and had five digs. **Lipscomb:** Finished with 40 assists and eight digs. **West Virginia:** Posted fifth double-double of season with 38 assists and 10 digs. **Pittsburgh:** Finished with 19 assists and five digs. **USF:** Dished out 34 assists and recorded five kills. **Tennessee:** Finished with 32 assists and three kills. **Syracuse:** Narrowly missed a double-double ending the match with nine digs and 38 assists. **Marquette:** Notched sixth double-double of season with 33 assists and 13 digs ... Passed **Anne Kordes** for ninth all-time in school history in assists. **Villanova:** Notched seventh double-double of season with 48 assists and 13 digs. **Georgetown:** Dished out 29 assists en route to passing Kelly Gillooly for seventh all-time in school history. **Pittsburgh:** Posted eighth double-double of season with 50 assists and 11 digs. **Notre Dame:** Dished out 41 assists and had three blocks. **Morehead State:** dished out 34 assists.

LOUISVILLE Volleyball 2011



#7 Gwen Rucker
Senior - Middle Blocker
Lexington, Ky.
Henry Clay

Selected to All-BIG EAST Preseason Team and named to Cobra Magazine's All-Preseason National Second Team ... Named to the BIG EAST Honor Roll on Aug. 29 ... Named to the All-Tournament Team at the Georgia Tech Courtyard Classic ... Seventh on the team with 57 kills (2.38/set) ... Seventh on the team with 11 aces (0.46/set) ... Seventh on the team with 30 blocks (1.25/set) ... Has not played since the Kentucky match due to injury.

Match-By-Match

Tennessee Tech: Recorded nine kills. **Kansas State:** Tied for the match-high with 10 kills ... Set a career-high with four aces. **Georgia Tech:** Recorded 10 kills to go along with eight blocks. **Ole Miss:** Recorded eight kills and a match-high six blocks. **Eastern Illinois:** Added a career-high five digs and four kills. **Wichita State:** Recorded nine kills and had six blocks. **Kentucky:** Led the Cardinals with seven kills. **Has not played since Kentucky match due to injury.**



#9 Lola Arslanbekova
Junior - Outside Hitter
Tashkent, Uzbekistan
Secondary School #60

Named BIG EAST Player of the Year and was one of two unanimous selections to the All-BIG EAST First Team ... Tabbed as the BIG EAST Preseason Player of the Year and one of two unanimous selections to the All-BIG EAST Preseason Team ... Named to BIG EAST All-Tournament Team ... Named BIG EAST Player of the Week on Sept. 5, Sept. 26, Oct. 3 and Oct. 10... Named to BIG EAST Honor Roll on Sept. 12, Sept. 19, Oct. 17 and Nov. 14 ... Named MVP of the Crowne Plaza Cardinal Classic and Baymont Bobcat Classic ... Named to All-Tournament Team at conclusion of BIG EAST/Big Ten Challenge, marking third straight tournament receiving all-tournament honors ... Leads the team with 547 kills (4.93/set) ... Second on the team with 275 digs (2.48/set) ... Leads the team with 13 double-doubles ... Fifth all-time in school history in kills ... Ranks third nationally in kills per set.

Match-By-Match

Tennessee Tech: Recorded a match-high 17 kills. **Kansas State:** Recorded her 1,000th career kill in win. **Georgia Tech:** Notched first double-double of the season with 12 kills and 10 digs. **Ole Miss:** Recorded 19 kills while hitting .421. **Eastern Illinois:** Hit .452 while amassing 18 kills. **Wichita State:** Tied her career-high with 26 kills while hitting .537. **Kentucky:** Finished second on the team with 13 digs. **Ohio:** Led the Cardinals with 18 kills. **Virginia:** Posted second double-double of season with 17 kills and 13 digs. **Marshall:** Had a match-high 18 kills marking the third straight match with the highest kill total ... Hit .412 against the Herd. **Purdue:** Notched third double-double of season with 20 kills and 13 digs. **Illinois:** Set a career-high with 30 kills ... Posted second-straight double-double ... Had 11 digs. **St. John's:** Notched third-straight double-double and fourth in last five matches with 14 kills and 11 digs. **Connecticut:** Led the team with 18 kills. **DePaul:** Posted sixth double-double of season with 19 kills and 12 digs. **Notre Dame:** Added seventh double-double of season with 28 kills and 14 digs ... 28 kills was second-highest output of career. **Seton Hall:** Led the team with 21 kills ... Also had seven digs. **Rutgers:** Finished with 19 kills. **Cincinnati:** Had a match-high 16 kills. **Lipscomb:** Recorded 16 kills. **West Virginia:** Notched eighth double-double of season with 20 kills and 11 digs. **Pittsburgh:** Posted second-straight double-double, finishing with 19 kills and 12 digs. **USF:** Led the team with 13 kills ... Also had six digs. **Tennessee:** Led the team with 14 kills ... Set a career-high with three solo blocks and five overall blocks. **Syracuse:** Had a match-high 16 kills. **Marquette:** Added 18 kills while hitting .485. **Villanova:** Passed Tina Naehr for sixth all-time in school history in kills ... Recorded 25 kills and a career-high 23 digs. **Georgetown:** Posted 11th double-double with 11 kills and 10 digs. **Pittsburgh:** Had third-straight double-double with 20 digs and 16 kills. **Notre Dame:** Posted fourth-straight double-double with 24 kills and 10 digs. **Morehead State:** Had 13 kills to go along with seven digs.

LOUISVILLE Volleyball 2011

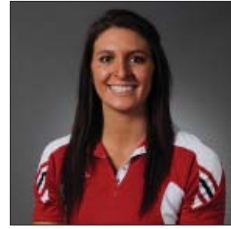


#11 Tanya Lukyanenko
Junior - Middle Blocker
Tashkent, Uzbekistan
Secondary School #60

Leads the team in blocks ... Has notched 99 blocks (1.08/set) on the season ... Fifth on the team with 109 kills (1.18/set) ... Has started every match since Kentucky, filling in for **Gwen Rucker**.

Match-By-Match

Tennessee Tech: Recorded two kills and two blocks. **Kansas State:** Did not play. **Georgia Tech:** Did not play. **Ole Miss:** Did not play. **Eastern Illinois:** Recorded a career-high five blocks while adding four kills. **Wichita State:** Did not play. **Kentucky:** Did not play. **Ohio:** Returned to action in starting role with four kills and three blocks. **Virginia:** Added six kills while tying career-high with five blocks. **Marshall:** Recorded four kills. **Purdue:** Added three blocks. **Illinois:** Set career-highs with seven total blocks, five block assists and two solo blocks. **St. John's:** Recorded a match high five blocks and finished with six kills. **Connecticut:** Led the team with five blocks. **DePaul:** Notched a season-high 10 kills. **Notre Dame:** Led the team with nine blocks. **Seton Hall:** Notched four blocks and two kills. **Rutgers:** Finished second on the team with two blocks. **Cincinnati:** Have five kills and four blocks. **Lipscomb:** Recorded five kills and five blocks. **West Virginia:** Finished with six kills. **Pittsburgh:** Added six kills and five blocks. **USF:** Recorded five kills and eight swings. **Tennessee:** Had three digs, two kills and two blocks. **Syracuse:** Finished with seven kills. **Marquette:** Contributed with six kills and one block. **Villanova:** Recorded four kills and three blocks. **Georgetown:** Tied career-high with nine blocks. **Pittsburgh:** Had three key kills and a block to help Louisville avenge their only regular season BIG EAST loss. **Notre Dame:** Contributed with three blocks. **Morehead State:** Contributed with four kills and three blocks.



#14 Kaitlynn James
Junior - Outside Hitter
Louisville, Ky.
Nebraska

Third on team with 275 digs (2.48/set) ... Fourth on team with 182 kills (1.69/set) ... Fifth on the team with 19 aces (0.18/set) ... Fifth on the team with 45 blocks (0.42/set) ... Has recorded two double-doubles.

Match-By-Match

Tennessee Tech: Recorded nine digs to go along with three kills. **Kansas State:** Posted first double-digit dig total of season with 11. **Georgia Tech:** Recorded seven kills and six digs. **Ole Miss:** Notched a career-high with 14 digs ... Added seven kills. **Eastern Illinois:** Did not play. **Wichita State:** Returned to action with nine kills and nine digs, narrowly missing a double-double. **Kentucky:** Added nine digs and a team-high three blocks. **Ohio:** Recorded six kills and seven digs while setting a career-high five blocks, including two solo blocks. **Virginia:** Recorded third double-digit dig output of season with 12... Also recorded eight kills. **Marshall:** Had five digs and four kills. **Purdue:** Recorded seven kills and nine digs. **Illinois:** Recorded 10 kills and added 13 digs en route to first double-double of the season. **St. John's:** Recorded five kills and three digs. **Connecticut:** Second on the team with 13 digs. **DePaul:** Finished second on team with 10 kills ... Added six kills. **Notre Dame:** Finished with 13 digs and eight kills. **Seton Hall:** Led the team with 13 digs, one short of tying career-high. **Rutgers:** Finished with seven kills and eight digs. **Cincinnati:** Finished second on the team with eight digs ... Added four blocks, including two solo blocks. **Lipscomb:** Recorded six kills and six digs. **West Virginia:** Finished with double-digit dig total (11) and added eight kills. **Pittsburgh:** Reached the double-digit dig plateau (11) for the second-straight match. **USF:** Rebounded with nine kills after struggling attacking against Pittsburgh. **Tennessee:** Ended the match with six kills and four digs. **Syracuse:** Finished with 12 digs, two short of tying career-high. **Marquette:** Put forth strong offensive effort with six kills on 12 swings ... Served up two aces for sixth time this season. **Villanova:** Recorded second double-double of season with career-high 11 kills and career-high 18 digs. **Georgetown:** Added six kills. **Pittsburgh:** Added 12 kills and eight digs. **Notre Dame:** Had six digs and five kills. **Morehead State:** Added six kills and three solo blocks.

LOUISVILLE Volleyball 2011



#15 Maci Wachtel
Senior - Defensive Specialist
Louisville, Ky.
Assumption

Fifth on the team with 145 digs (1.41/set) ... Third on the team with a .944 serve reception percentage amongst Cardinals with at least 20 serve receive attempts. Started against Notre Dame in the BIG EAST Championship.

Match-By-Match

Tennessee Tech: Recorded two digs. **Kansas State:** Recorded one dig. **Georgia Tech:** Did not play. **Ole Miss:** Added five digs. **Eastern Illinois:** Recorded five digs for the second straight match. **Wichita State:** Recorded four digs. **Kentucky:** Added four digs for the second straight match. **Ohio:** Posted eight digs. **Virginia:** Had nine digs. **Marshall:** Tallied eight digs. **Purdue:** Recorded eight digs for the second-straight match. **Illinois:** Recorded nine digs for the second time this season. **St. John's:** Finished with four digs. **Connecticut:** Added six digs. **DePaul:** Added two digs. **Notre Dame:** Finished with six digs. **Seton Hall:** Recorded four digs. **Rutgers:** Added three digs. **Cincinnati:** Finished with seven digs. **Lipscomb:** Notched two digs. **West Virginia:** Recorded three digs. **Pittsburgh:** Set a new season-high with 14 digs. **USF:** Added four digs. **Tennessee:** Finished with five digs. **Syracuse:** Ended the match with seven digs. **Marquette:** Recorded one dig. **Villanova:** Finished with five digs. **Georgetown:** Added five digs for the second straight match. **Pittsburgh:** Had four digs. **Notre Dame:** Had two digs. **Morehead State:** Recorded two digs on senior day.



#17 Gosia Lech
Senior - Setter
Milicz, Poland
Karola Miarki Pszczgna

Sixth on team with 15 aces ... Seventh on team with 48 digs (0.48/set) ... Has 15 kills on 38 swings this season with only three errors (.316 hitting percentage) ... Earned starts against Seton Hall and Rutgers, filling in for the injured **Emily Juhl**.

Match-By-Match

Tennessee Tech: Recorded two blocks. **Kansas State:** Did not play. **Georgia Tech:** Did not play. **Ole Miss:** Came on to serve in second set. **Eastern Illinois:** Earned the start ... Recorded four digs. **Wichita State:** Came in as a server. **Kentucky:** Recorded one dig while dishing out two assists. **Ohio:** Notched second ace of season and added one dig. **Virginia:** Served an ace for the second straight match. **Marshall:** Tallied three digs. **Purdue:** Recorded three digs and two aces. **Illinois:** Dished out one assist. **St. John's:** Recorded one dig. **Connecticut:** Aced the Huskies three-straight times. **DePaul:** Notched an ace. **Notre Dame:** Appeared as a server. **Seton Hall:** Recorded three kills on three swings. **Rutgers:** Added six digs and three blocks. **Cincinnati:** Recorded one dig. **Lipscomb:** Recorded three blocks. **West Virginia:** Earned the start and finished with six kills on 14 swings. **Pittsburgh:** Earned the start at setter and finished with 19 assists and seven digs. **USF:** Notched two digs. **Tennessee:** Finished with one dig. **Syracuse:** Added one dig. **Marquette:** Recorded one of Louisville's 10 aces in crucial win over Marquette. **Villanova:** Added three digs. **Georgetown:** Did not record a service error. **Pittsburgh:** Added an ace down the line during the match. **Notre Dame:** Notched two digs. **Morehead State:** Served up two aces on senior day.



2011 Division I Women's VOLLEYBALL CHAMPIONSHIP

First and Second Rounds
December 1-2 or 2-3

Regionals
December 9-10

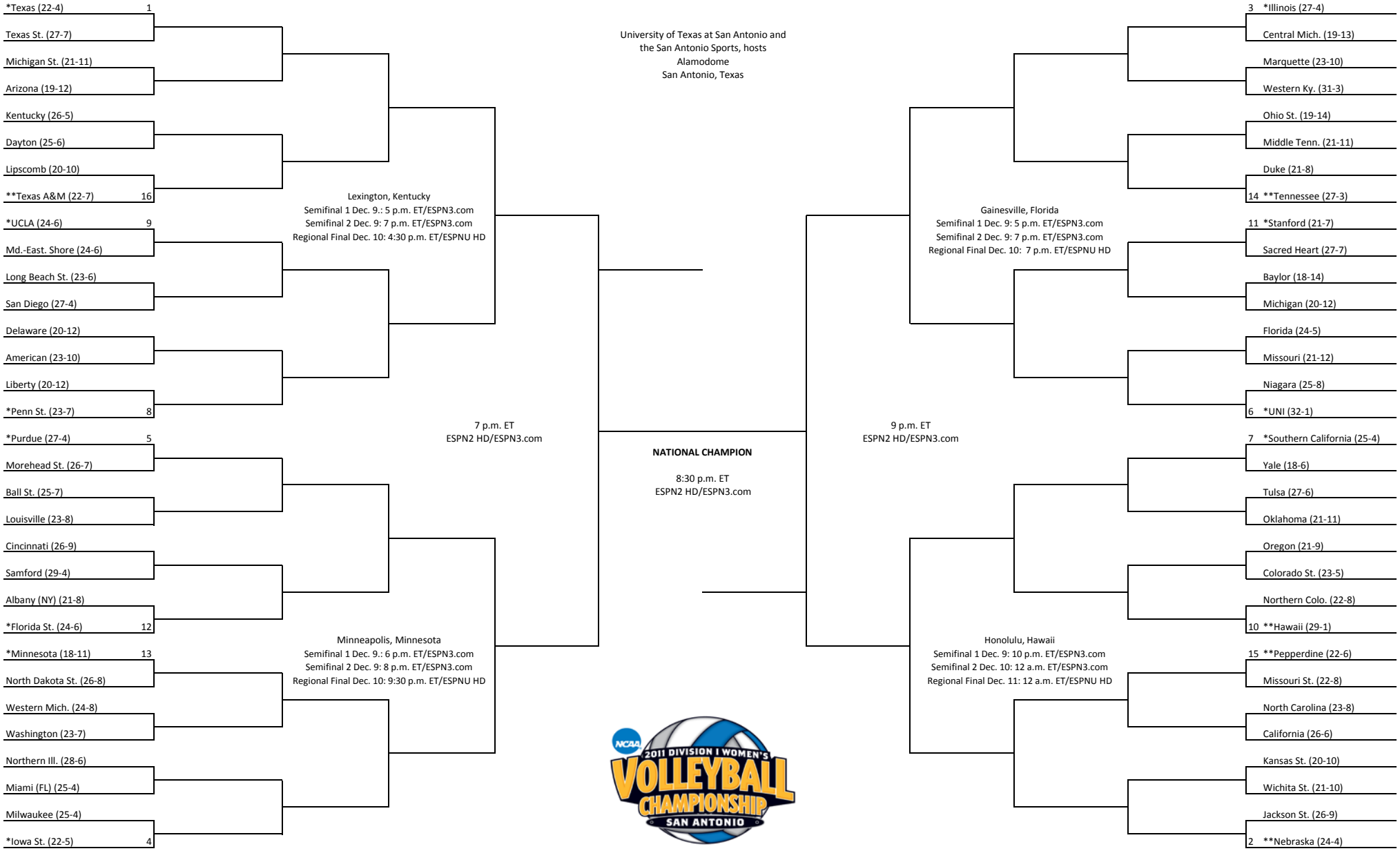
Semifinals
December 15

National Championship
December 17

Semifinals
December 15

Regionals
December 9-10

First and Second Rounds
December 1-2 or 2-3



* Host Institution - Friday/Saturday, December 2-3.
** Host Institution - Thursday/Friday, December 1-2.

2011 LOUISVILLE VOLLEYBALL STATISTICS
LOUISVILLE Combined Team Statistics (as of Nov 27, 2011)
All matches

RECORD:	OVERALL	HOME	AWAY	NEUTRAL
ALL GAMES	23-8	10-2	8-4	5-2
CONFERENCE	13-1	6-1	7-0	0-0
NON-CONFERENCE	10-7	4-1	1-4	5-2

##	Player	sp	Attack					Set		Serve			Dig			Blocking					points	
			k	k/s	e	ta	pct	a	a/s	sa	se	sa/s	re	dig	dig/s	bs	ba	total	blk/s	be		bhe
9	ARSLANBEKOVA, Lola	111	547	4.93	181	1287	.284	9	0.08	28	68	0.25	18	275	2.48	19	27	46	0.41	13	4	607.5
4	JUHL, Emily	107	272	2.54	81	654	.292	9	0.08	35	56	0.33	1	102	0.95	7	68	75	0.70	4	3	348.0
2	MATTINGLY, Brooke	111	228	2.05	92	523	.260	4	0.04	0	0	0.00	0	32	0.29	9	75	84	0.76	9	5	274.5
14	JAMES, Kaitlynn	108	182	1.69	75	618	.173	18	0.17	19	23	0.18	17	264	2.44	18	27	45	0.42	11	0	232.5
11	LUKYANENKO, Tanya	92	109	1.18	48	294	.207	3	0.03	0	4	0.00	1	24	0.26	17	82	99	1.08	7	1	167.0
5	BRAUNEIS, Taylor	111	77	0.69	30	208	.226	1164	10.49	33	23	0.30	2	218	1.96	9	47	56	0.50	7	8	142.5
7	RUCKER, Gwen	24	57	2.38	19	111	.342	1	0.04	11	14	0.46	0	17	0.71	6	24	30	1.25	2	0	86.0
17	LECH, Gosia	99	15	0.15	3	38	.316	32	0.32	15	36	0.15	0	48	0.48	2	9	11	0.11	2	0	36.5
1	WELCH, Caitlin	111	1	0.01	0	5	.200	104	0.94	29	47	0.26	42	487	4.39	0	0	0	0.00	0	2	30.0
15	WACHTEL, Maci	103	0	0.00	0	1	.000	16	0.16	0	0	0.00	13	145	1.41	0	0	0	0.00	0	0	0.0
	TEAM	-	-	-	-	-	-	-	-	-	-	-	3	-	-	-	-	-	-	-	-	-
	LOUISVILLE	111	1488	13.41	529	3739	.256	1360	12.25	170	271	1.53	97	1612	14.52	87	359	266.5	2.40	55	23	1924.5
	Opponents	111	1263	11.38	627	3766	.169	1160	10.45	97	217	0.87	170	1518	13.68	42	310	197.0	1.77	52	54	1557.0

Team Statistics	LOU	OPP	Date	Opponent	Score	Score by set	Att.
ATTACK			8/26/11	vs Tennessee Tech	w 3-0	25-9,25-20,25-7	257
Kills	1488	1263	Aug 27	vs Kansas State	w 3-0	25-12,25-21,25-20	301
Errors	529	627	Aug 27	at Georgia Tech	L 2-3	25-12,25-15,19-25,21-25,11-15	1009
Total Attacks	3739	3766	Sep 02	OLE MISS	w 3-0	28-26,25-19,25-18	979
Attack Pct	.256	.169	Sep 03	EASTERN ILLINOIS	w 3-0	25-12,25-17,25-15	746
Kills/Set	13.4	11.4	Sep 03	WICHITA STATE	w 3-1	25-20,21-25,25-17,25-16	894
SET			Sep 07	at Kentucky	L 0-3	22-25,24-26,11-25	1617
Assists	1360	1160	Sep 09	at Ohio	w 3-1	23-25,25-15,25-22,25-19	0
Attempts	3635	3741	Sep 10	vs Virginia	w 3-1	25-16,21-25,25-23,25-18	165
Assist Pct	.374	.310	Sep 10	vs Marshall	w 3-0	25-18,25-19,26-24	127
Assists/Set	12.3	10.5	%Sep 16	vs #14 Purdue	L 2-3	25-21,19-25,18-25,25-16,10-15	588
SERVE			%Sep 17	at #3 Illinois	L 2-3	20-25,25-23,20-25,25-21,9-15	933
Aces	170	97	*Sep 23	ST. JOHNS	w 3-0	25-19,25-14,25-23	2149
Errors	271	217	*Sep 25	UCONN	w 3-0	25-7,25-13,25-20	2179
Attempts	2571	2210	*Sep 30	at DePaul	w 3-0	25-15,25-15,26-24	229
Serve Pct	.895	.902	*Oct 02	at Notre Dame	w 3-1	17-25,25-16,25-22,25-21	1005
Aces/Set	1.5	0.9	*Oct 07	at Seton Hall	w 3-0	29-27,25-18,25-21	170
SERVE RECEPTIONS			*Oct 09	at Rutgers	w 3-0	25-19,25-13,25-16	116
Errors	97	170	*Oct 14	CINCINNATI	w 3-0	26-24,25-19,25-11	922
Errors/Set	0.9	1.5	Oct 18	at Lipscomb	L 1-3	22-25,25-18,23-25,21-25	492
Attempts	1984	2293	*Oct 22	WVU	w 3-1	25-14,22-25,25-17,25-16	889
Reception Pct	.951	.926	*Oct 23	PITTSBURGH	L 1-3	25-21,19-25,24-26,20-25	2202
DEFENSE			*Oct 28	at USF	w 3-0	25-23,25-14,25-23	400
Digs	1612	1518	Nov 02	#16 UT	L 0-3	23-25,21-25,19-25	2313
Digs/Set	14.5	13.7	*Nov 05	SYRACUSE	w 3-1	12-25,25-21,25-11,25-18	2082
BLOCKING			*Nov 06	MARQUETTE	w 3-0	25-22,25-19,25-18	2111
Block Solo	87	42	*Nov 11	at Villanova	w 3-2	17-25,25-23,25-20,21-25,15-10	311
Block Assist	359	310	*Nov 13	at Georgetown	w 3-0	25-19,25-14,25-23	275
Total Blocks	266.5	197.0	Nov 18	vs PITTSBURGH	w 3-1	25-13,25-20,24-26,25-20	0
Blocks/Set	2.4	1.8	Nov 19	vs Notre Dame	L 1-3	22-25,25-22,21-25,19-25	0
Block Errors	55	52	Nov 26	MOREHEAD ST	w 3-0	25-12,25-20,25-18	857
Ball handling errors	23	54					
ATTENDANCE							
Total	18323	6557					
Dates/Avg Per Date	12/1527	12/546					
Neutral site #/Avg	7/205						
Current win streak	1	-					
Home win streak	3	-					

Record in 3-set matches: 15-2
Record in 4-set matches: 7-3
Record in 5-set matches: 1-3

2011 LOUISVILLE VOLLEYBALL STATISTICS
LOUISVILLE Match Highs (as of Nov 26, 2011)
All matches

INDIVIDUAL MATCH HIGHS

ATTACK PERCENT (K-E-TA) minimum 12 kills

.706 (13- 1-17)	JUHL, Emily vs MOREHEAD ST (Nov 26, 2011)
.571 (15- 3-21)	MATTINGLY, Brooke vs PITTSBURGH (Nov 18, 2011 in Milwaukee, Wis.)
.571 (18- 2-28)	ARSLANBEKOVA, Lola vs UCONN (Sep 25, 2011)
.537 (26- 4-41)	ARSLANBEKOVA, Lola vs WICHITA STATE (Sep 03, 2011)
.516 (19- 3-31)	ARSLANBEKOVA, Lola at Rutgers (Oct 09, 2011)
.500 (14- 1-26)	ARSLANBEKOVA, Lola vs ST.JOHNS (Sep 23, 2011)
.485 (18- 2-33)	ARSLANBEKOVA, Lola vs MARQUETTE (Nov 06, 2011)
.455 (12- 2-22)	MATTINGLY, Brooke at Georgia Tech (Aug 27, 2011)
.452 (18- 4-31)	ARSLANBEKOVA, Lola vs EASTERN ILLINOIS (Sep 03, 2011)
.421 (19- 3-38)	ARSLANBEKOVA, Lola vs OLE MISS (Sep 02, 2011)

KILLS (K-E-TA)

30 (30-14-78) 5s	ARSLANBEKOVA, Lola at Illinois (Sep 17, 2011)
28 (28-10-48) 4s	ARSLANBEKOVA, Lola at Notre Dame (Oct 02, 2011)
26 (26- 4-41) 4s	ARSLANBEKOVA, Lola vs WICHITA STATE (Sep 03, 2011)
25 (25-10-76) 5s	ARSLANBEKOVA, Lola at Villanova (Nov 11, 2011)
24 (24- 9-56) 4s	ARSLANBEKOVA, Lola vs Notre Dame (Nov 19, 2011 in Milwaukee, Wis.)
21 (21- 8-52) 3s	ARSLANBEKOVA, Lola at Seton Hall (Oct 07, 2011)
20 (20- 4-44) 4s	ARSLANBEKOVA, Lola vs WVU (Oct 22, 2011)
20 (20- 9-58) 5s	ARSLANBEKOVA, Lola vs Purdue (Sep 16, 2011 in Champaign, Ill.)
19 (19-10-54) 4s	ARSLANBEKOVA, Lola vs PITTSBURGH (Oct 23, 2011)
19 (19- 7-40) 3s	ARSLANBEKOVA, Lola at DePaul (Sep 30, 2011)

KILLS 3-SETS (K-E-TA)

21 (21- 8-52)	ARSLANBEKOVA, Lola at Seton Hall (Oct 07, 2011)
19 (19- 3-31)	ARSLANBEKOVA, Lola at Rutgers (Oct 09, 2011)
19 (19- 3-38)	ARSLANBEKOVA, Lola vs OLE MISS (Sep 02, 2011)
19 (19- 7-40)	ARSLANBEKOVA, Lola at DePaul (Sep 30, 2011)
18 (18- 4-31)	ARSLANBEKOVA, Lola vs EASTERN ILLINOIS (Sep 03, 2011)

KILLS 4-SETS (K-E-TA)

28 (28-10-48)	ARSLANBEKOVA, Lola at Notre Dame (Oct 02, 2011)
26 (26- 4-41)	ARSLANBEKOVA, Lola vs WICHITA STATE (Sep 03, 2011)
24 (24- 9-56)	ARSLANBEKOVA, Lola vs Notre Dame (Nov 19, 2011 in Milwaukee, Wis.)
20 (20- 4-44)	ARSLANBEKOVA, Lola vs WVU (Oct 22, 2011)
19 (19-10-54)	ARSLANBEKOVA, Lola vs PITTSBURGH (Oct 23, 2011)

KILLS 5-SETS (K-E-TA)

30 (30-14-78)	ARSLANBEKOVA, Lola at Illinois (Sep 17, 2011)
25 (25-10-76)	ARSLANBEKOVA, Lola at Villanova (Nov 11, 2011)
20 (20- 9-58)	ARSLANBEKOVA, Lola vs Purdue (Sep 16, 2011 in Champaign, Ill.)
17 (17- 4-38)	JUHL, Emily at Georgia Tech (Aug 27, 2011)
12 (12- 2-22)	MATTINGLY, Brooke at Georgia Tech (Aug 27, 2011)

TOTAL ATTEMPTS (K-E-TA)

78 (30-14-78) 5s	ARSLANBEKOVA, Lola at Illinois (Sep 17, 2011)
76 (25-10-76) 5s	ARSLANBEKOVA, Lola at Villanova (Nov 11, 2011)
58 (20- 9-58) 5s	ARSLANBEKOVA, Lola vs Purdue (Sep 16, 2011 in Champaign, Ill.)
56 (24- 9-56) 4s	ARSLANBEKOVA, Lola vs Notre Dame (Nov 19, 2011 in Milwaukee, Wis.)
55 (16-14-55) 4s	ARSLANBEKOVA, Lola vs PITTSBURGH (Nov 18, 2011 in Milwaukee, Wis.)
54 (19-10-54) 4s	ARSLANBEKOVA, Lola vs PITTSBURGH (Oct 23, 2011)
53 (17- 4-53) 4s	ARSLANBEKOVA, Lola vs Virginia (Sep 10, 2011 in Athens Ohio)
52 (18- 7-52) 4s	ARSLANBEKOVA, Lola at Ohio (Sep 09, 2011)
52 (21- 8-52) 3s	ARSLANBEKOVA, Lola at Seton Hall (Oct 07, 2011)
48 (28-10-48) 4s	ARSLANBEKOVA, Lola at Notre Dame (Oct 02, 2011)

TOTAL ATTEMPTS 3-SETS (K-E-TA)

52 (21- 8-52)	ARSLANBEKOVA, Lola at Seton Hall (Oct 07, 2011)
40 (19- 7-40)	ARSLANBEKOVA, Lola at DePaul (Sep 30, 2011)
38 (19- 3-38)	ARSLANBEKOVA, Lola vs OLE MISS (Sep 02, 2011)
36 (14- 2-36)	ARSLANBEKOVA, Lola vs UT (Nov 02, 2011)
34 (17- 3-34)	ARSLANBEKOVA, Lola vs Tennessee Tech (8/26/11 in Atlanta, Ga.)

TOTAL ATTEMPTS 4-SETS (K-E-TA)

56 (24- 9-56)	ARSLANBEKOVA, Lola vs Notre Dame (Nov 19, 2011 in Milwaukee, Wis.)
55 (16-14-55)	ARSLANBEKOVA, Lola vs PITTSBURGH (Nov 18, 2011 in Milwaukee, Wis.)
54 (19-10-54)	ARSLANBEKOVA, Lola vs PITTSBURGH (Oct 23, 2011)
53 (17- 4-53)	ARSLANBEKOVA, Lola vs Virginia (Sep 10, 2011 in Athens Ohio)
52 (18- 7-52)	ARSLANBEKOVA, Lola at Ohio (Sep 09, 2011)

TOTAL ATTEMPTS 5-SETS (K-E-TA)

78 (30-14-78)	ARSLANBEKOVA, Lola at Illinois (Sep 17, 2011)
76 (25-10-76)	ARSLANBEKOVA, Lola at Villanova (Nov 11, 2011)
58 (20- 9-58)	ARSLANBEKOVA, Lola vs Purdue (Sep 16, 2011 in Champaign, Ill.)
38 (17- 4-38)	JUHL, Emily at Georgia Tech (Aug 27, 2011)
34 (8- 4-34)	MATTINGLY, Brooke at Villanova (Nov 11, 2011)

2011 LOUISVILLE VOLLEYBALL STATISTICS
LOUISVILLE Match Highs (as of Nov 26, 2011)
All matches

POINTS

32.0 (30- 1- 1.0) 5s	ARSLANBEKOVA, Lola at Illinois (Sep 17, 2011)
32.0 (28- 1- 3.0) 4s	ARSLANBEKOVA, Lola at Notre Dame (Oct 02, 2011)
27.5 (26- 0- 1.5) 4s	ARSLANBEKOVA, Lola vs WICHITA STATE (Sep 03, 2011)
26.5 (24- 0- 2.5) 4s	ARSLANBEKOVA, Lola vs Notre Dame (Nov 19, 2011 in Milwaukee, Wis.)
25.0 (25- 0- 0.0) 5s	ARSLANBEKOVA, Lola at Villanova (Nov 11, 2011)

POINTS 3-SETS

22.5 (21- 1- 0.5)	ARSLANBEKOVA, Lola at Seton Hall (Oct 07, 2011)
22.0 (19- 2- 1.0)	ARSLANBEKOVA, Lola at DePaul (Sep 30, 2011)
20.0 (18- 1- 1.0)	ARSLANBEKOVA, Lola vs Marshall (Sep 10, 2011 in Athens, Ohio)
20.0 (19- 0- 1.0)	ARSLANBEKOVA, Lola at Rutgers (Oct 09, 2011)
19.5 (19- 0- 0.5)	ARSLANBEKOVA, Lola vs OLE MISS (Sep 02, 2011)

POINTS 4-SETS

32.0 (28- 1- 3.0)	ARSLANBEKOVA, Lola at Notre Dame (Oct 02, 2011)
27.5 (26- 0- 1.5)	ARSLANBEKOVA, Lola vs WICHITA STATE (Sep 03, 2011)
26.5 (24- 0- 2.5)	ARSLANBEKOVA, Lola vs Notre Dame (Nov 19, 2011 in Milwaukee, Wis.)
22.0 (20- 1- 1.0)	ARSLANBEKOVA, Lola vs WVU (Oct 22, 2011)
20.0 (16- 4- 0.0)	ARSLANBEKOVA, Lola vs PITTSBURGH (Nov 18, 2011 in Milwaukee, Wis.)

POINTS 5-SETS

32.0 (30- 1- 1.0)	ARSLANBEKOVA, Lola at Illinois (Sep 17, 2011)
25.0 (25- 0- 0.0)	ARSLANBEKOVA, Lola at Villanova (Nov 11, 2011)
24.0 (20- 2- 2.0)	ARSLANBEKOVA, Lola vs Purdue (Sep 16, 2011 in Champaign, Ill.)
18.5 (17- 0- 1.5)	JUHL, Emily at Georgia Tech (Aug 27, 2011)
17.5 (10- 3- 4.5)	RUCKER, Gwen at Georgia Tech (Aug 27, 2011)

2011 LOUISVILLE VOLLEYBALL STATISTICS

LOUISVILLE Match Highs (as of Nov 26, 2011)

All matches

ASSISTS

56 (4s)	BRAUNEIS, Taylor at Notre Dame (Oct 02, 2011)
54 (5s)	BRAUNEIS, Taylor at Georgia Tech (Aug 27, 2011)
50 (4s)	BRAUNEIS, Taylor vs Virginia (Sep 10, 2011 in Athens Ohio)
50 (4s)	BRAUNEIS, Taylor vs PITTSBURGH (Nov 18, 2011 in Milwaukee, Wis.)
49 (5s)	BRAUNEIS, Taylor at Illinois (Sep 17, 2011)

ASSISTS 3-SETS

41	BRAUNEIS, Taylor vs Marshall (Sep 10, 2011 in Athens, Ohio)
37	BRAUNEIS, Taylor vs UCONN (Sep 25, 2011)
37	BRAUNEIS, Taylor vs ST.JOHNS (Sep 23, 2011)
35	BRAUNEIS, Taylor at Seton Hall (Oct 07, 2011)
34	BRAUNEIS, Taylor vs Kansas State (Aug 27, 2011 in Atlanta, Ga.)

ASSISTS 4-SETS

56	BRAUNEIS, Taylor at Notre Dame (Oct 02, 2011)
50	BRAUNEIS, Taylor vs Virginia (Sep 10, 2011 in Athens Ohio)
50	BRAUNEIS, Taylor vs PITTSBURGH (Nov 18, 2011 in Milwaukee, Wis.)
43	BRAUNEIS, Taylor vs WICHITA STATE (Sep 03, 2011)
41	BRAUNEIS, Taylor vs Notre Dame (Nov 19, 2011 in Milwaukee, Wis.)

ASSISTS 5-SETS

54	BRAUNEIS, Taylor at Georgia Tech (Aug 27, 2011)
49	BRAUNEIS, Taylor at Illinois (Sep 17, 2011)
48	BRAUNEIS, Taylor at Villanova (Nov 11, 2011)
43	BRAUNEIS, Taylor vs Purdue (Sep 16, 2011 in Champaign, Ill.)
5	WELCH, Caitlin at Villanova (Nov 11, 2011)

DIGS

29 (5s)	WELCH, Caitlin at Villanova (Nov 11, 2011)
25 (4s)	WELCH, Caitlin vs Notre Dame (Nov 19, 2011 in Milwaukee, Wis.)
25 (4s)	WELCH, Caitlin vs WVU (Oct 22, 2011)
24 (4s)	WELCH, Caitlin vs PITTSBURGH (Nov 18, 2011 in Milwaukee, Wis.)
23 (4s)	WELCH, Caitlin vs Virginia (Sep 10, 2011 in Athens Ohio)

DIGS 3-SETS

21	WELCH, Caitlin vs UCONN (Sep 25, 2011)
17	WELCH, Caitlin at USF (Oct 28, 2011)
14	WELCH, Caitlin vs Marshall (Sep 10, 2011 in Athens, Ohio)
14	WELCH, Caitlin vs Kansas State (Aug 27, 2011 in Atlanta, Ga.)
14	JAMES, Kaitlynn vs OLE MISS (Sep 02, 2011)

DIGS 4-SETS

25	WELCH, Caitlin vs Notre Dame (Nov 19, 2011 in Milwaukee, Wis.)
25	WELCH, Caitlin vs WVU (Oct 22, 2011)
24	WELCH, Caitlin vs PITTSBURGH (Nov 18, 2011 in Milwaukee, Wis.)
23	WELCH, Caitlin vs Virginia (Sep 10, 2011 in Athens Ohio)
22	WELCH, Caitlin vs WICHITA STATE (Sep 03, 2011)

DIGS 5-SETS

29	WELCH, Caitlin at Villanova (Nov 11, 2011)
23	ARSLANBEKOVA, Lola at Villanova (Nov 11, 2011)
19	WELCH, Caitlin vs Purdue (Sep 16, 2011 in Champaign, Ill.)
18	JAMES, Kaitlynn at Villanova (Nov 11, 2011)
16	WELCH, Caitlin at Illinois (Sep 17, 2011)

ACES

5	JUHL, Emily vs MARQUETTE (Nov 06, 2011)
4	ARSLANBEKOVA, Lola vs PITTSBURGH (Nov 18, 2011 in Milwaukee, Wis.)
4	RUCKER, Gwen vs Kansas State (Aug 27, 2011 in Atlanta, Ga.)
4	BRAUNEIS, Taylor vs EASTERN ILLINOIS (Sep 03, 2011)
4	JUHL, Emily vs ST.JOHNS (Sep 23, 2011)

BLOCKS (BS-BA)

9 (2- 7)	LUKYANENKO, Tanya at Georgetown (Nov 13, 2011)
9 (0- 9)	LUKYANENKO, Tanya at Notre Dame (Oct 02, 2011)
8 (1- 7)	RUCKER, Gwen at Georgia Tech (Aug 27, 2011)
7 (2- 5)	LUKYANENKO, Tanya at Illinois (Sep 17, 2011)
6 (2- 4)	RUCKER, Gwen vs WICHITA STATE (Sep 03, 2011)
6 (2- 4)	RUCKER, Gwen vs OLE MISS (Sep 02, 2011)
6 (1- 5)	MATTINGLY, Brooke vs Marshall (Sep 10, 2011 in Athens, Ohio)
6 (1- 5)	BRAUNEIS, Taylor vs Kansas State (Aug 27, 2011 in Atlanta, Ga.)
6 (0- 6)	JUHL, Emily at Notre Dame (Oct 02, 2011)
6 (0- 6)	MATTINGLY, Brooke vs WVU (Oct 22, 2011)

2011 LOUISVILLE VOLLEYBALL STATISTICS
LOUISVILLE Match Highs (as of Nov 26, 2011)
All matches

TEAM MATCH HIGHS

ATTACK PERCENT (K-E-TA)

.438 (48- 9- 89)	vs Tennessee Tech (8/26/11 in Atlanta, Ga.)
.402 (48- 9- 97)	at USF (Oct 28, 2011)
.397 (40-11- 73)	vs EASTERN ILLINOIS (Sep 03, 2011)
.391 (45- 9- 92)	vs UCONN (Sep 25, 2011)
.344 (53-11-122)	vs WVU (Oct 22, 2011)
.344 (47-14- 96)	vs MARQUETTE (Nov 06, 2011)
.337 (46-13- 98)	vs Marshall (Sep 10, 2011 in Athens, Ohio)
.328 (56-16-122)	vs WICHITA STATE (Sep 03, 2011)
.310 (44-13-100)	vs OLE MISS (Sep 02, 2011)
.301 (38-10- 93)	vs Kansas State (Aug 27, 2011 in Atlanta, Ga.)

KILLS (K-E-TA)

63 (63-19-173) 4s	vs Virginia (Sep 10, 2011 in Athens Ohio)
62 (62-26-161) 4s	vs PITTSBURGH (Nov 18, 2011 in Milwaukee, Wis.)
60 (60-27-165) 5s	at Illinois (Sep 17, 2011)
60 (60-34-196) 5s	at Villanova (Nov 11, 2011)
60 (60-20-140) 5s	at Georgia Tech (Aug 27, 2011)
59 (59-20-138) 4s	at Notre Dame (Oct 02, 2011)
56 (56-16-122) 4s	vs WICHITA STATE (Sep 03, 2011)
55 (55-22-147) 4s	vs SYRACUSE (Nov 05, 2011)
53 (53-11-122) 4s	vs WVU (Oct 22, 2011)
52 (52-25-143) 4s	at Ohio (Sep 09, 2011)

KILLS 3-SETS (K-E-TA)

48 (48- 9- 89)	vs Tennessee Tech (8/26/11 in Atlanta, Ga.)
48 (48- 9- 97)	at USF (Oct 28, 2011)
47 (47-14- 96)	vs MARQUETTE (Nov 06, 2011)
46 (46-17-110)	at DePaul (Sep 30, 2011)
46 (46-13- 98)	vs Marshall (Sep 10, 2011 in Athens, Ohio)

KILLS 4-SETS (K-E-TA)

63 (63-19-173)	vs Virginia (Sep 10, 2011 in Athens Ohio)
62 (62-26-161)	vs PITTSBURGH (Nov 18, 2011 in Milwaukee, Wis.)
59 (59-20-138)	at Notre Dame (Oct 02, 2011)
56 (56-16-122)	vs WICHITA STATE (Sep 03, 2011)
55 (55-22-147)	vs SYRACUSE (Nov 05, 2011)

KILLS 5-SETS (K-E-TA)

60 (60-27-165)	at Illinois (Sep 17, 2011)
60 (60-34-196)	at Villanova (Nov 11, 2011)
60 (60-20-140)	at Georgia Tech (Aug 27, 2011)
49 (49-24-159)	vs Purdue (Sep 16, 2011 in Champaign, Ill.)

TOTAL ATTEMPTS (K-E-TA)

196 (60-34-196) 5s	at Villanova (Nov 11, 2011)
173 (63-19-173) 4s	vs Virginia (Sep 10, 2011 in Athens Ohio)
165 (60-27-165) 5s	at Illinois (Sep 17, 2011)
161 (62-26-161) 4s	vs PITTSBURGH (Nov 18, 2011 in Milwaukee, Wis.)
159 (49-24-159) 5s	vs Purdue (Sep 16, 2011 in Champaign, Ill.)
155 (52-22-155) 4s	vs PITTSBURGH (Oct 23, 2011)
147 (55-22-147) 4s	vs SYRACUSE (Nov 05, 2011)
143 (52-25-143) 4s	at Ohio (Sep 09, 2011)
140 (60-20-140) 5s	at Georgia Tech (Aug 27, 2011)
138 (48-23-138) 4s	vs Notre Dame (Nov 19, 2011 in Milwaukee, Wis.)

TOTAL ATTEMPTS 3-SETS (K-E-TA)

118 (44-13-118)	at Seton Hall (Oct 07, 2011)
118 (28-22-118)	at Kentucky (Sep 07, 2011)
110 (46-17-110)	at DePaul (Sep 30, 2011)
103 (39-11-103)	vs UT (Nov 02, 2011)
100 (44-13-100)	vs OLE MISS (Sep 02, 2011)

TOTAL ATTEMPTS 4-SETS (K-E-TA)

173 (63-19-173)	vs Virginia (Sep 10, 2011 in Athens Ohio)
161 (62-26-161)	vs PITTSBURGH (Nov 18, 2011 in Milwaukee, Wis.)
155 (52-22-155)	vs PITTSBURGH (Oct 23, 2011)
147 (55-22-147)	vs SYRACUSE (Nov 05, 2011)
143 (52-25-143)	at Ohio (Sep 09, 2011)

TOTAL ATTEMPTS 5-SETS (K-E-TA)

196 (60-34-196)	at Villanova (Nov 11, 2011)
165 (60-27-165)	at Illinois (Sep 17, 2011)
159 (49-24-159)	vs Purdue (Sep 16, 2011 in Champaign, Ill.)
140 (60-20-140)	at Georgia Tech (Aug 27, 2011)

2011 LOUISVILLE VOLLEYBALL STATISTICS
LOUISVILLE Match Highs (as of Nov 26, 2011)
All matches

ASSISTS

60 (4s) vs Virginia (Sep 10, 2011 in Athens Ohio)
 59 (5s) at Georgia Tech (Aug 27, 2011)
 57 (4s) at Notre Dame (Oct 02, 2011)
 56 (5s) at Illinois (Sep 17, 2011)
 55 (4s) vs PITTSBURGH (Nov 18, 2011 in Milwaukee, Wis.)

ASSISTS 3-SETS

44 vs Marshall (Sep 10, 2011 in Athens, Ohio)
 43 vs UCONN (Sep 25, 2011)
 43 at USF (Oct 28, 2011)
 42 at DePaul (Sep 30, 2011)
 41 at Seton Hall (Oct 07, 2011)

ASSISTS 4-SETS

60 vs Virginia (Sep 10, 2011 in Athens Ohio)
 57 at Notre Dame (Oct 02, 2011)
 55 vs PITTSBURGH (Nov 18, 2011 in Milwaukee, Wis.)
 50 vs WICHITA STATE (Sep 03, 2011)
 47 vs Notre Dame (Nov 19, 2011 in Milwaukee, Wis.)

ASSISTS 5-SETS

59 at Georgia Tech (Aug 27, 2011)
 56 at Illinois (Sep 17, 2011)
 54 at Villanova (Nov 11, 2011)
 47 vs Purdue (Sep 16, 2011 in Champaign, Ill.)

DIGS

100 (5s) at Villanova (Nov 11, 2011)
 78 (4s) vs Virginia (Sep 10, 2011 in Athens Ohio)
 75 (4s) vs PITTSBURGH (Nov 18, 2011 in Milwaukee, Wis.)
 69 (4s) vs PITTSBURGH (Oct 23, 2011)
 66 (5s) vs Purdue (Sep 16, 2011 in Champaign, Ill.)

DIGS 3-SETS

56 vs UCONN (Sep 25, 2011)
 56 at Kentucky (Sep 07, 2011)
 49 at Seton Hall (Oct 07, 2011)
 48 vs Marshall (Sep 10, 2011 in Athens, Ohio)
 47 at Rutgers (Oct 09, 2011)

DIGS 4-SETS

78 vs Virginia (Sep 10, 2011 in Athens Ohio)
 75 vs PITTSBURGH (Nov 18, 2011 in Milwaukee, Wis.)
 69 vs PITTSBURGH (Oct 23, 2011)
 64 vs WVU (Oct 22, 2011)
 62 vs Notre Dame (Nov 19, 2011 in Milwaukee, Wis.)

DIGS 5-SETS

100 at Villanova (Nov 11, 2011)
 66 vs Purdue (Sep 16, 2011 in Champaign, Ill.)
 59 at Illinois (Sep 17, 2011)
 52 at Georgia Tech (Aug 27, 2011)

ACES

11 vs EASTERN ILLINOIS (Sep 03, 2011)
 11 vs Kansas State (Aug 27, 2011 in Atlanta, Ga.)
 11 vs PITTSBURGH (Nov 18, 2011 in Milwaukee, Wis.)
 10 vs MARQUETTE (Nov 06, 2011)
 9 vs Purdue (Sep 16, 2011 in Champaign, Ill.)

BLOCKS

15.0 vs WICHITA STATE (Sep 03, 2011)
 14.0 at Lipscomb (Oct 18, 2011)
 12.0 at Notre Dame (Oct 02, 2011)
 11.5 vs CINCINNATI (Oct 14, 2011)
 10.5 at Georgia Tech (Aug 27, 2011)
 10.5 vs Purdue (Sep 16, 2011 in Champaign, Ill.)
 10.0 at Seton Hall (Oct 07, 2011)
 10.0 vs Kansas State (Aug 27, 2011 in Atlanta, Ga.)
 10.0 vs WVU (Oct 22, 2011)
 10.0 vs ST.JOHNS (Sep 23, 2011)

2011 LOUISVILLE VOLLEYBALL STATISTICS
LOUISVILLE Match Highs (as of Nov 26, 2011)
All matches

OPPONENT INDIVIDUAL MATCH HIGHS

ATTACK PERCENT (K-E-TA) minimum 12 kills

.576 (20- 1-33)	McMahon, Liz at Illinois (Sep 17, 2011)
.512 (24- 2-43)	LEGGs,Kiesha vs PITTSBURGH (Oct 23, 2011)
.458 (13- 2-24)	DOBSON, Jewell at Lipscomb (Oct 18, 2011)
.452 (17- 3-31)	ROBINSON, Kelsey vs UT (Nov 02, 2011)
.407 (12- 1-27)	Jessica O'Shoney vs Virginia (Sep 10, 2011 in Athens Ohio)
.364 (12- 4-22)	EPPINK, Hilary at Notre Dame (Oct 02, 2011)
.324 (16- 5-34)	DE JONG, Anke vs WVU (Oct 22, 2011)
.311 (19- 5-45)	Ward, Colleen at Illinois (Sep 17, 2011)
.296 (12- 4-27)	ROSE, Katie at Lipscomb (Oct 18, 2011)
.281 (30-12-64)	Monique Mead at Georgia Tech (Aug 27, 2011)

KILLS (K-E-TA)

30 (30-12-64) 5s	Monique Mead at Georgia Tech (Aug 27, 2011)
24 (24- 2-43) 4s	LEGGs,Kiesha vs PITTSBURGH (Oct 23, 2011)
20 (20- 6-58) 5s	Turner, Ariel vs Purdue (Sep 16, 2011 in Champaign, Ill.)
20 (20- 1-33) 5s	McMahon, Liz at Illinois (Sep 17, 2011)
19 (19- 5-45) 5s	Ward, Colleen at Illinois (Sep 17, 2011)
18 (18- 6-45) 3s	EL HOUSSINE, Valerie at USF (Oct 28, 2011)
17 (17- 3-31) 3s	ROBINSON, Kelsey vs UT (Nov 02, 2011)
17 (17- 4-59) 5s	PETKOVICH, Morgan at Villanova (Nov 11, 2011)
17 (17- 7-53) 4s	WIGNOT, Monica vs PITTSBURGH (Oct 23, 2011)
16 (16- 5-34) 4s	DE JONG, Anke vs WVU (Oct 22, 2011)

KILLS 3-SETS (K-E-TA)

18 (18- 6-45)	EL HOUSSINE, Valerie at USF (Oct 28, 2011)
17 (17- 3-31)	ROBINSON, Kelsey vs UT (Nov 02, 2011)
11 (11- 4-26)	Allegra Wells vs OLE MISS (Sep 02, 2011)
11 (11- 6-38)	MATUSIAK, Meghan at Seton Hall (Oct 07, 2011)
11 (11- 3-26)	BAKER, Tiffany vs UT (Nov 02, 2011)

KILLS 4-SETS (K-E-TA)

24 (24- 2-43)	LEGGs,Kiesha vs PITTSBURGH (Oct 23, 2011)
17 (17- 7-53)	WIGNOT, Monica vs PITTSBURGH (Oct 23, 2011)
16 (16- 5-34)	DE JONG, Anke vs WVU (Oct 22, 2011)
15 (15- 6-46)	Simone Asque vs Virginia (Sep 10, 2011 in Athens Ohio)
15 (15- 9-43)	FORD, Lauren at Lipscomb (Oct 18, 2011)

KILLS 5-SETS (K-E-TA)

30 (30-12-64)	Monique Mead at Georgia Tech (Aug 27, 2011)
20 (20- 1-33)	McMahon, Liz at Illinois (Sep 17, 2011)
20 (20- 6-58)	Turner, Ariel vs Purdue (Sep 16, 2011 in Champaign, Ill.)
19 (19- 5-45)	Ward, Colleen at Illinois (Sep 17, 2011)
17 (17- 4-59)	PETKOVICH, Morgan at Villanova (Nov 11, 2011)

TOTAL ATTEMPTS (K-E-TA)

64 (30-12-64) 5s	Monique Mead at Georgia Tech (Aug 27, 2011)
59 (17- 4-59) 5s	PETKOVICH, Morgan at Villanova (Nov 11, 2011)
58 (20- 6-58) 5s	Turner, Ariel vs Purdue (Sep 16, 2011 in Champaign, Ill.)
53 (17- 7-53) 4s	WIGNOT, Monica vs PITTSBURGH (Oct 23, 2011)
46 (12-10-46) 5s	Bartsch, Michelle at Illinois (Sep 17, 2011)
46 (15- 6-46) 4s	Simone Asque vs Virginia (Sep 10, 2011 in Athens Ohio)
45 (19- 5-45) 5s	Ward, Colleen at Illinois (Sep 17, 2011)
45 (18- 6-45) 3s	EL HOUSSINE, Valerie at USF (Oct 28, 2011)
44 (11- 9-44) 4s	Zwiesler, Camri vs WICHITA STATE (Sep 03, 2011)
43 (24- 2-43) 4s	LEGGs,Kiesha vs PITTSBURGH (Oct 23, 2011)

TOTAL ATTEMPTS 3-SETS (K-E-TA)

45 (18- 6-45)	EL HOUSSINE, Valerie at USF (Oct 28, 2011)
38 (11- 6-38)	MATUSIAK, Meghan at Seton Hall (Oct 07, 2011)
33 (10- 6-33)	Porubek, Lilla vs Kansas State (Aug 27, 2011 in Atlanta, Ga.)
32 (7- 5-32)	KIRK, Jordan vs UCONN (Sep 25, 2011)
31 (17- 3-31)	ROBINSON, Kelsey vs UT (Nov 02, 2011)

TOTAL ATTEMPTS 4-SETS (K-E-TA)

53 (17- 7-53)	WIGNOT, Monica vs PITTSBURGH (Oct 23, 2011)
46 (15- 6-46)	Simone Asque vs Virginia (Sep 10, 2011 in Athens Ohio)
44 (11- 9-44)	Zwiesler, Camri vs WICHITA STATE (Sep 03, 2011)
43 (24- 2-43)	LEGGs,Kiesha vs PITTSBURGH (Oct 23, 2011)
43 (13- 6-43)	LAMBERTI, Kelly at Ohio (Sep 09, 2011)

TOTAL ATTEMPTS 5-SETS (K-E-TA)

64 (30-12-64)	Monique Mead at Georgia Tech (Aug 27, 2011)
59 (17- 4-59)	PETKOVICH, Morgan at Villanova (Nov 11, 2011)
58 (20- 6-58)	Turner, Ariel vs Purdue (Sep 16, 2011 in Champaign, Ill.)
46 (12-10-46)	Bartsch, Michelle at Illinois (Sep 17, 2011)
45 (19- 5-45)	Ward, Colleen at Illinois (Sep 17, 2011)

2011 LOUISVILLE VOLLEYBALL STATISTICS
LOUISVILLE Match Highs (as of Nov 26, 2011)
All matches

POINTS

33.5 (30- 2- 1.5) 5s	Monique Mead at Georgia Tech (Aug 27, 2011)
27.5 (24- 1- 2.5) 4s	LEGGs,Kiesha vs PITTSBURGH (Oct 23, 2011)
23.5 (20- 0- 3.5) 5s	McMahon, Liz at Illinois (Sep 17, 2011)
23.0 (20- 2- 1.0) 5s	Turner, Ariel vs Purdue (Sep 16, 2011 in Champaign, Ill.)
21.0 (19- 1- 1.0) 5s	Ward, Colleen at Illinois (Sep 17, 2011)

POINTS 3-SETS

19.0 (18- 0- 1.0)	EL HOUSSINE, Valerie at USF (Oct 28, 2011)
17.5 (17- 0- 0.5)	ROBINSON, Kelsey vs UT (Nov 02, 2011)
13.5 (10- 1- 2.5)	Ann Armes at Kentucky (Sep 07, 2011)
13.0 (11- 0- 2.0)	Whitney Billings at Kentucky (Sep 07, 2011)
13.0 (11- 1- 1.0)	MATUSIAK, Meghan at Seton Hall (Oct 07, 2011)

POINTS 4-SETS

27.5 (24- 1- 2.5)	LEGGs,Kiesha vs PITTSBURGH (Oct 23, 2011)
19.0 (17- 2- 0.0)	WIGNOT, Monica vs PITTSBURGH (Oct 23, 2011)
18.0 (12- 5- 1.0)	KOPECKY, Michelle vs WVU (Oct 22, 2011)
17.5 (11- 0- 6.5)	LEGGs,Kiesha vs PITTSBURGH (Nov 18, 2011 in Milwaukee, Wis.)
17.0 (15- 0- 2.0)	FORD, Lauren at Lipscomb (Oct 18, 2011)

POINTS 5-SETS

33.5 (30- 2- 1.5)	Monique Mead at Georgia Tech (Aug 27, 2011)
23.5 (20- 0- 3.5)	McMahon, Liz at Illinois (Sep 17, 2011)
23.0 (20- 2- 1.0)	Turner, Ariel vs Purdue (Sep 16, 2011 in Champaign, Ill.)
21.0 (19- 1- 1.0)	Ward, Colleen at Illinois (Sep 17, 2011)
18.5 (17- 0- 1.5)	PETKOVICH, Morgan at Villanova (Nov 11, 2011)

2011 LOUISVILLE VOLLEYBALL STATISTICS

LOUISVILLE Match Highs (as of Nov 26, 2011)

All matches

ASSISTS

55 (5s)	Davis, Rachel vs Purdue (Sep 16, 2011 in Champaign, Ill.)
49 (5s)	Luhrsen, Annie at Illinois (Sep 17, 2011)
44 (4s)	ZITZKE, Lindsey vs PITTSBURGH (Oct 23, 2011)
42 (3s)	POLLMILLER, Mary vs UT (Nov 02, 2011)
41 (5s)	Ali Santi at Georgia Tech (Aug 27, 2011)

ASSISTS 3-SETS

42	POLLMILLER, Mary vs UT (Nov 02, 2011)
36	Christine Hartmann at Kentucky (Sep 07, 2011)
34	DAILEY, Shelbie at USF (Oct 28, 2011)
31	BANE,Sammie vs Marshall (Sep 10, 2011 in Athens, Ohio)
26	HEIER, Chelsea vs MARQUETTE (Nov 06, 2011)

ASSISTS 4-SETS

44	ZITZKE, Lindsey vs PITTSBURGH (Oct 23, 2011)
35	KARST, Bailey at Ohio (Sep 09, 2011)
34	BETTERIDGE, Emily vs SYRACUSE (Nov 05, 2011)
33	POST, Kari vs WVU (Oct 22, 2011)
32	Beth Wildermuth vs Virginia (Sep 10, 2011 in Athens Ohio)

ASSISTS 5-SETS

55	Davis, Rachel vs Purdue (Sep 16, 2011 in Champaign, Ill.)
49	Luhrsen, Annie at Illinois (Sep 17, 2011)
41	Ali Santi at Georgia Tech (Aug 27, 2011)
19	DIBERNARDO, Allie at Villanova (Nov 11, 2011)
18	OERTLI, Courtney at Villanova (Nov 11, 2011)

DIGS

29 (5s)	MAROON, Kim at Villanova (Nov 11, 2011)
25 (4s)	BILGER, Chelsea at Ohio (Sep 09, 2011)
25 (4s)	RUSSO, Serinna vs WVU (Oct 22, 2011)
24 (5s)	Bashen, Blair vs Purdue (Sep 16, 2011 in Champaign, Ill.)
23 (4s)	WILLIAMS, Ashley vs SYRACUSE (Nov 05, 2011)

DIGS 3-SETS

21	Stephanie Klefot at Kentucky (Sep 07, 2011)
17	Morgan Springer vs OLE MISS (Sep 02, 2011)
15	PETKOVA, Gabriela vs ST.JOHNS (Sep 23, 2011)
15	MACINTYRE,Emily vs CINCINNATI (Oct 14, 2011)
15	Whitney Billings at Kentucky (Sep 07, 2011)

DIGS 4-SETS

25	BILGER, Chelsea at Ohio (Sep 09, 2011)
25	RUSSO, Serinna vs WVU (Oct 22, 2011)
23	WILLIAMS, Ashley vs SYRACUSE (Nov 05, 2011)
21	Waldorf, Sarah vs WICHITA STATE (Sep 03, 2011)
20	ACTON, Margy vs PITTSBURGH (Oct 23, 2011)

DIGS 5-SETS

29	MAROON, Kim at Villanova (Nov 11, 2011)
24	Bashen, Blair vs Purdue (Sep 16, 2011 in Champaign, Ill.)
22	HENLEY, Mariah at Villanova (Nov 11, 2011)
20	Beltran, Jennifer at Illinois (Sep 17, 2011)
16	Nicki Meyer at Georgia Tech (Aug 27, 2011)

ACES

5	KOPECKY, Michelle vs WVU (Oct 22, 2011)
4	DEALY, Kristen vs Notre Dame (Nov 19, 2011 in Milwaukee, Wis.)
3	MERGEN, Maggie at Villanova (Nov 11, 2011)
3	MAROON, Kim at Villanova (Nov 11, 2011)
2	Ashley Frazier at Kentucky (Sep 07, 2011)

BLOCKS (BS-BA)

12 (1-11)	LEGGs,Kiesha vs PITTSBURGH (Nov 18, 2011 in Milwaukee, Wis.)
7 (1- 6)	POST, Katie at Ohio (Sep 09, 2011)
7 (0- 7)	McMahon, Liz at Illinois (Sep 17, 2011)
6 (2- 4)	Jessica O'Shoney vs Virginia (Sep 10, 2011 in Athens Ohio)
6 (1- 5)	Johnson, Erin at Illinois (Sep 17, 2011)
6 (0- 6)	McCABE, Lindsay vs SYRACUSE (Nov 05, 2011)
6 (0- 6)	YEAZEL, Kate vs PITTSBURGH (Nov 18, 2011 in Milwaukee, Wis.)
5 (1- 4)	REFENES,Becca vs CINCINNATI (Oct 14, 2011)
5 (1- 4)	Rebarchak, Catherine vs Purdue (Sep 16, 2011 in Champaign, Ill.)
5 (0- 5)	Ann Armes at Kentucky (Sep 07, 2011)

2011 LOUISVILLE VOLLEYBALL STATISTICS
LOUISVILLE Match Highs (as of Nov 26, 2011)
All matches

OPPONENT TEAM MATCH HIGHS

ATTACK PERCENT (K-E-TA)

.374 (52-12-107)	vs UT (Nov 02, 2011)
.271 (44-15-107)	at USF (Oct 28, 2011)
.258 (66-24-163)	at Illinois (Sep 17, 2011)
.253 (64-26-150)	at Lipscomb (Oct 18, 2011)
.241 (33-12- 87)	vs MARQUETTE (Nov 06, 2011)
.238 (65-25-168)	vs Purdue (Sep 16, 2011 in Champaign, Ill.)
.229 (58-20-166)	vs PITTSBURGH (Oct 23, 2011)
.212 (54-23-146)	vs Notre Dame (Nov 19, 2011 in Milwaukee, Wis.)
.207 (49-21-135)	at Kentucky (Sep 07, 2011)
.201 (52-24-139)	at Georgia Tech (Aug 27, 2011)

KILLS (K-E-TA)

66 (66-24-163) 5s	at Illinois (Sep 17, 2011)
65 (65-25-168) 5s	vs Purdue (Sep 16, 2011 in Champaign, Ill.)
64 (64-26-150) 4s	at Lipscomb (Oct 18, 2011)
58 (58-20-166) 4s	vs PITTSBURGH (Oct 23, 2011)
54 (54-23-146) 4s	vs Notre Dame (Nov 19, 2011 in Milwaukee, Wis.)
52 (52-12-107) 3s	vs UT (Nov 02, 2011)
52 (52-24-139) 5s	at Georgia Tech (Aug 27, 2011)
50 (50-21-188) 5s	at Villanova (Nov 11, 2011)
50 (50-22-161) 4s	vs Virginia (Sep 10, 2011 in Athens Ohio)
49 (49-21-135) 3s	at Kentucky (Sep 07, 2011)

KILLS 3-SETS (K-E-TA)

52 (52-12-107)	vs UT (Nov 02, 2011)
49 (49-21-135)	at Kentucky (Sep 07, 2011)
44 (44-15-107)	at USF (Oct 28, 2011)
37 (37-17-111)	vs Marshall (Sep 10, 2011 in Athens, Ohio)
35 (35-22-108)	vs OLE MISS (Sep 02, 2011)

KILLS 4-SETS (K-E-TA)

64 (64-26-150)	at Lipscomb (Oct 18, 2011)
58 (58-20-166)	vs PITTSBURGH (Oct 23, 2011)
54 (54-23-146)	vs Notre Dame (Nov 19, 2011 in Milwaukee, Wis.)
50 (50-22-161)	vs Virginia (Sep 10, 2011 in Athens Ohio)
48 (48-24-138)	at Notre Dame (Oct 02, 2011)

KILLS 5-SETS (K-E-TA)

66 (66-24-163)	at Illinois (Sep 17, 2011)
65 (65-25-168)	vs Purdue (Sep 16, 2011 in Champaign, Ill.)
52 (52-24-139)	at Georgia Tech (Aug 27, 2011)
50 (50-21-188)	at Villanova (Nov 11, 2011)

TOTAL ATTEMPTS (K-E-TA)

188 (50-21-188) 5s	at Villanova (Nov 11, 2011)
168 (65-25-168) 5s	vs Purdue (Sep 16, 2011 in Champaign, Ill.)
166 (58-20-166) 4s	vs PITTSBURGH (Oct 23, 2011)
163 (66-24-163) 5s	at Illinois (Sep 17, 2011)
161 (50-22-161) 4s	vs Virginia (Sep 10, 2011 in Athens Ohio)
150 (64-26-150) 4s	at Lipscomb (Oct 18, 2011)
146 (54-23-146) 4s	vs Notre Dame (Nov 19, 2011 in Milwaukee, Wis.)
140 (46-25-140) 4s	vs WVU (Oct 22, 2011)
139 (52-24-139) 5s	at Georgia Tech (Aug 27, 2011)
138 (45-27-138) 4s	vs WICHITA STATE (Sep 03, 2011)

TOTAL ATTEMPTS 3-SETS (K-E-TA)

135 (49-21-135)	at Kentucky (Sep 07, 2011)
116 (34-22-116)	at Seton Hall (Oct 07, 2011)
111 (37-17-111)	vs Marshall (Sep 10, 2011 in Athens, Ohio)
108 (35-22-108)	vs OLE MISS (Sep 02, 2011)
107 (44-15-107)	at USF (Oct 28, 2011)

TOTAL ATTEMPTS 4-SETS (K-E-TA)

166 (58-20-166)	vs PITTSBURGH (Oct 23, 2011)
161 (50-22-161)	vs Virginia (Sep 10, 2011 in Athens Ohio)
150 (64-26-150)	at Lipscomb (Oct 18, 2011)
146 (54-23-146)	vs Notre Dame (Nov 19, 2011 in Milwaukee, Wis.)
140 (46-25-140)	vs WVU (Oct 22, 2011)

TOTAL ATTEMPTS 5-SETS (K-E-TA)

188 (50-21-188)	at Villanova (Nov 11, 2011)
168 (65-25-168)	vs Purdue (Sep 16, 2011 in Champaign, Ill.)
163 (66-24-163)	at Illinois (Sep 17, 2011)
139 (52-24-139)	at Georgia Tech (Aug 27, 2011)

2011 LOUISVILLE VOLLEYBALL STATISTICS
LOUISVILLE Match Highs (as of Nov 26, 2011)
All matches

ASSISTS

62 (5s) vs Purdue (Sep 16, 2011 in Champaign, Ill.)
60 (5s) at Illinois (Sep 17, 2011)
57 (4s) at Lipscomb (Oct 18, 2011)
53 (4s) vs PITTSBURGH (Oct 23, 2011)
50 (5s) at Georgia Tech (Aug 27, 2011)

ASSISTS 3-SETS

49 vs UT (Nov 02, 2011)
44 at Kentucky (Sep 07, 2011)
37 at USF (Oct 28, 2011)
35 vs Marshall (Sep 10, 2011 in Athens, Ohio)
32 vs CINCINNATI (Oct 14, 2011)

ASSISTS 4-SETS

57 at Lipscomb (Oct 18, 2011)
53 vs PITTSBURGH (Oct 23, 2011)
47 vs Notre Dame (Nov 19, 2011 in Milwaukee, Wis.)
45 vs Virginia (Sep 10, 2011 in Athens Ohio)
43 at Notre Dame (Oct 02, 2011)

ASSISTS 5-SETS

62 vs Purdue (Sep 16, 2011 in Champaign, Ill.)
60 at Illinois (Sep 17, 2011)
50 at Georgia Tech (Aug 27, 2011)
44 at Villanova (Nov 11, 2011)

DIGS

95 (5s) at Villanova (Nov 11, 2011)
75 (4s) vs Virginia (Sep 10, 2011 in Athens Ohio)
73 (5s) vs Purdue (Sep 16, 2011 in Champaign, Ill.)
70 (4s) vs PITTSBURGH (Oct 23, 2011)
66 (5s) at Illinois (Sep 17, 2011)

DIGS 3-SETS

65 at Kentucky (Sep 07, 2011)
49 at Seton Hall (Oct 07, 2011)
47 vs UT (Nov 02, 2011)
43 at DePaul (Sep 30, 2011)
40 at Georgetown (Nov 13, 2011)

DIGS 4-SETS

75 vs Virginia (Sep 10, 2011 in Athens Ohio)
70 vs PITTSBURGH (Oct 23, 2011)
62 vs SYRACUSE (Nov 05, 2011)
60 vs Notre Dame (Nov 19, 2011 in Milwaukee, Wis.)
59 vs PITTSBURGH (Nov 18, 2011 in Milwaukee, Wis.)

DIGS 5-SETS

95 at Villanova (Nov 11, 2011)
73 vs Purdue (Sep 16, 2011 in Champaign, Ill.)
66 at Illinois (Sep 17, 2011)
54 at Georgia Tech (Aug 27, 2011)

ACES

9 at Villanova (Nov 11, 2011)
8 vs Notre Dame (Nov 19, 2011 in Milwaukee, Wis.)
7 vs PITTSBURGH (Oct 23, 2011)
5 vs Purdue (Sep 16, 2011 in Champaign, Ill.)
5 vs WVU (Oct 22, 2011)

BLOCKS

15.0 vs PITTSBURGH (Nov 18, 2011 in Milwaukee, Wis.)
12.5 at Illinois (Sep 17, 2011)
11.0 at Kentucky (Sep 07, 2011)
10.0 at Notre Dame (Oct 02, 2011)
9.0 vs SYRACUSE (Nov 05, 2011)
8.5 vs Purdue (Sep 16, 2011 in Champaign, Ill.)
8.0 vs PITTSBURGH (Oct 23, 2011)
8.0 at Ohio (Sep 09, 2011)
8.0 vs Notre Dame (Nov 19, 2011 in Milwaukee, Wis.)
8.0 vs Marshall (Sep 10, 2011 in Athens, Ohio)

2011 LOUISVILLE VOLLEYBALL STATISTICS
LOUISVILLE Individual Match-by-Match (as of Nov 26, 2011)

All matches

1 WELCH, Caitlin

Date	Opponent	sp	attack				set			serve				recept			dig	blocking				team			
			k	e	ta	pct	a	ta	pct	sa	se	ta	pct	re	ta	pct		bs	ba	be	total	bhe	points	hit%	score
8/26/11	vs Tennessee Tech	3	0	0	0	.000	2	7	.286	1	1	11	.909	0	13	1.000	11	0	0	0	0.0	0	1.0	.438	3-0
Aug 27, 2011	vs Kansas State	3	0	0	0	.000	1	5	.200	2	1	11	.909	2	27	.926	14	0	0	0	0.0	0	2.0	.301	3-0
Aug 27, 2011	at Georgia Tech	5	0	0	1	.000	3	10	.300	1	2	17	.882	2	35	.943	13	0	0	0	0.0	0	1.0	.286	2-3
Sep 02, 2011	OLE MISS	3	0	0	0	.000	2	9	.222	0	4	12	.667	1	32	.969	12	0	0	0	0.0	0	0.0	.310	3-0
Sep 03, 2011	EASTERN ILLINOIS	3	0	0	0	.000	3	3	1.000	1	1	10	.900	2	20	.900	9	0	0	0	0.0	0	1.0	.397	3-0
Sep 03, 2011	WICHITA STATE	4	0	0	0	.000	5	10	.500	1	2	20	.900	2	31	.935	22	0	0	0	0.0	0	1.0	.328	3-1
Sep 07, 2011	at Kentucky	3	0	0	0	.000	1	5	.200	0	0	10	1.000	2	25	.920	14	0	0	0	0.0	0	0.0	.051	0-3
Sep 09, 2011	at Ohio	4	0	0	1	.000	7	14	.500	1	1	18	.944	0	34	1.000	22	0	0	0	0.0	0	1.0	.189	3-1
Sep 10, 2011	vs Virginia	4	0	0	1	.000	6	21	.286	2	2	17	.882	1	37	.973	23	0	0	0	0.0	0	2.0	.254	3-1
Sep 10, 2011	vs Marshall	3	1	0	1	1.000	1	10	.100	2	1	10	.900	0	35	1.000	14	0	0	0	0.0	1	3.0	.337	3-0
Sep 16, 2011	vs Purdue	5	0	0	0	.000	1	10	.100	0	0	13	1.000	2	43	.953	19	0	0	0	0.0	0	0.0	.157	2-3
Sep 17, 2011	at Illinois	5	0	0	0	.000	4	9	.444	0	0	13	1.000	2	47	.957	16	0	0	0	0.0	0	0.0	.200	2-3
Sep 23, 2011	ST.JOHNS	3	0	0	0	.000	1	4	.250	1	4	15	.733	2	39	.949	8	0	0	0	0.0	0	1.0	.299	3-0
Sep 25, 2011	UCONN	3	0	0	0	.000	5	11	.455	3	2	11	.818	1	24	.958	21	0	0	0	0.0	0	3.0	.391	3-0
Sep 30, 2011	at DePaul	3	0	0	0	.000	7	11	.636	2	0	15	1.000	1	33	.970	8	0	0	0	0.0	0	2.0	.264	3-0
Oct 02, 2011	at Notre Dame	4	0	0	0	.000	1	38	.026	0	0	16	1.000	0	53	1.000	17	0	0	0	0.0	0	0.0	.283	3-1
Oct 07, 2011	at Seton Hall	3	0	0	0	.000	1	9	.111	1	1	11	.909	2	26	.923	10	0	0	0	0.0	0	1.0	.263	3-0
Oct 09, 2011	at Rutgers	3	0	0	0	.000	5	8	.625	1	2	12	.833	0	23	1.000	11	0	0	0	0.0	0	1.0	.275	3-0
Oct 14, 2011	CINCINNATI	3	0	0	0	.000	6	10	.600	1	3	9	.667	0	33	1.000	12	0	0	0	0.0	0	1.0	.287	3-0
Oct 18, 2011	at Lipscomb	4	0	0	1	.000	1	12	.083	1	3	16	.812	1	45	.978	14	0	0	0	0.0	0	1.0	.197	1-3
Oct 22, 2011	WVU	4	0	0	0	.000	4	12	.333	2	3	16	.812	4	31	.871	25	0	0	0	0.0	0	2.0	.344	3-1
Oct 23, 2011	PITTSBURGH	4	0	0	0	.000	4	14	.286	0	0	15	1.000	3	43	.930	14	0	0	0	0.0	0	0.0	.194	1-3
Oct 28, 2011	at USF	3	0	0	0	.000	7	12	.583	2	0	11	1.000	0	33	1.000	17	0	0	0	0.0	1	2.0	.402	3-0
Nov 02, 2011	UT	3	0	0	0	.000	4	5	.800	0	0	9	1.000	1	32	.969	12	0	0	0	0.0	0	0.0	.272	0-3
Nov 05, 2011	SYRACUSE	4	0	0	0	.000	5	14	.357	0	3	13	.769	2	13	.846	17	0	0	0	0.0	0	0.0	.224	3-1
Nov 06, 2011	MARQUETTE	3	0	0	0	.000	4	15	.267	0	3	9	.667	1	26	.962	10	0	0	0	0.0	0	0.0	.344	3-0
Nov 11, 2011	at Villanova	5	0	0	0	.000	5	23	.217	0	2	21	.905	2	34	.941	29	0	0	0	0.0	0	0.0	.133	3-2
Nov 13, 2011	at Georgetown	3	0	0	0	.000	3	9	.333	3	1	13	.923	0	18	1.000	10	0	0	0	0.0	0	3.0	.275	3-0
Nov 18, 2011	vs PITTSBURGH	4	0	0	0	.000	2	16	.125	0	4	11	.636	3	48	.938	24	0	0	0	0.0	0	0.0	.224	3-1
Nov 19, 2011	vs Notre Dame	4	0	0	0	.000	3	12	.250	1	0	16	1.000	3	32	.906	25	0	0	0	0.0	0	1.0	.181	1-3
Nov 26, 2011	MOREHEAD ST	3	0	0	0	.000	0	2	.000	0	1	11	.909	0	16	1.000	14	0	0	0	0.0	0	0.0	.280	3-0
		111	1	0	5	.200	104	350	.297	29	47	412	.886	42	981	.957	487	0	0	0	0.0	2	30.0		

Sets played: 111
 Kills per set: 0.01
 Assists per set: 0.94

Service aces per set: 0.26
 Digs per set: 4.39

Points per set: 0.27

2011 LOUISVILLE VOLLEYBALL STATISTICS
LOUISVILLE Individual Match-by-Match (as of Nov 26, 2011)
All matches

2 MATTINGLY, Brooke

Date	Opponent	sp	attack				set			serve				recept			dig	blocking					team			
			k	e	ta	pct	a	ta	pct	sa	se	ta	pct	re	ta	pct		bs	ba	be	total	bhe	points	hit%	score	
8/26/11	vs Tennessee Tech	*3	4	1	8	.375	0	1	.000	0	0	0	.000	0	0	.000	1	0	0	0	0.0	0	4.0	.438	3-0	
Aug 27, 2011	vs Kansas State	*3	6	0	8	.750	1	1	1.000	0	0	0	.000	0	0	.000	1	1	3	0	4.0	0	8.5	.301	3-0	
Aug 27, 2011	at Georgia Tech	*5	12	2	22	.455	0	0	.000	0	0	0	.000	0	0	.000	2	0	1	0	1.0	0	12.5	.286	2-3	
Sep 02, 2011	OLE MISS	*3	4	1	6	.500	0	1	.000	0	0	0	.000	0	0	.000	1	0	0	0	0.0	1	4.0	.310	3-0	
Sep 03, 2011	EASTERN ILLINOIS	*3	5	0	8	.625	0	0	.000	0	0	0	.000	0	0	.000	0	0	6	1	6.0	0	8.0	.397	3-0	
Sep 03, 2011	WICHITA STATE	*4	8	3	18	.278	0	1	.000	0	0	0	.000	0	0	.000	0	0	4	0	4.0	1	10.0	.328	3-1	
Sep 07, 2011	at Kentucky	*3	4	2	16	.125	0	0	.000	0	0	0	.000	0	0	.000	1	1	1	0	2.0	0	5.5	.051	0-3	
Sep 09, 2011	at Ohio	*4	9	6	20	.150	0	3	.000	0	0	0	.000	0	0	.000	0	0	4	0	4.0	2	11.0	.189	3-1	
Sep 10, 2011	vs Virginia	*4	12	4	24	.333	1	4	.250	0	0	0	.000	0	0	.000	0	0	2	0	2.0	0	13.0	.254	3-1	
Sep 10, 2011	vs Marshall	*3	9	1	17	.471	0	0	.000	0	0	0	.000	0	0	.000	2	1	5	0	6.0	0	12.5	.337	3-0	
Sep 16, 2011	vs Purdue	*5	7	5	27	.074	0	2	.000	0	0	0	.000	0	1	1.000	4	1	3	0	4.0	0	9.5	.157	2-3	
Sep 17, 2011	at Illinois	*5	8	3	21	.238	0	1	.000	0	0	0	.000	0	0	.000	0	0	3	0	3.0	0	9.5	.200	2-3	
Sep 23, 2011	ST.JOHNS	*3	6	3	12	.250	0	0	.000	0	0	0	.000	0	0	.000	0	0	4	0	4.0	0	8.0	.299	3-0	
Sep 25, 2011	UCONN	*3	8	1	19	.368	0	0	.000	0	0	0	.000	0	0	.000	1	0	3	0	3.0	0	9.5	.391	3-0	
Sep 30, 2011	at DePaul	*3	1	4	10	-.300	0	0	.000	0	0	0	.000	0	0	.000	0	0	0	1	0.0	0	1.0	.264	3-0	
Oct 02, 2011	at Notre Dame	*4	7	3	17	.235	0	1	.000	0	0	0	.000	0	0	.000	0	0	1	1	1.0	1	7.5	.283	3-1	
Oct 07, 2011	at Seton Hall	*3	7	0	14	.500	1	1	1.000	0	0	0	.000	0	0	.000	3	1	4	1	5.0	0	10.0	.263	3-0	
Oct 09, 2011	at Rutgers	*3	8	6	18	.111	0	1	.000	0	0	0	.000	0	0	.000	4	0	0	0	0.0	0	8.0	.275	3-0	
Oct 14, 2011	CINCINNATI	*3	4	2	13	.154	0	0	.000	0	0	0	.000	0	0	.000	0	0	3	0	3.0	0	5.5	.287	3-0	
Oct 18, 2011	at Lipscomb	*4	8	6	18	.111	0	1	.000	0	0	0	.000	0	0	.000	1	1	4	0	5.0	0	11.0	.197	1-3	
Oct 22, 2011	WVU	*4	10	3	17	.412	0	1	.000	0	0	0	.000	0	0	.000	0	0	6	1	6.0	0	13.0	.344	3-1	
Oct 23, 2011	PITTSBURGH	*4	10	3	18	.389	1	1	1.000	0	0	0	.000	0	0	.000	0	0	1	1	1.0	0	10.5	.194	1-3	
Oct 28, 2011	at USF	*3	6	4	14	.143	0	0	.000	0	0	0	.000	0	0	.000	0	1	1	1	2.0	0	7.5	.402	3-0	
Nov 02, 2011	UT	*3	4	4	13	.000	0	1	.000	0	0	0	.000	0	0	.000	1	0	1	0	1.0	0	4.5	.272	0-3	
Nov 05, 2011	SYRACUSE	*4	14	3	28	.393	0	0	.000	0	0	0	.000	0	0	.000	2	0	2	0	2.0	0	15.0	.224	3-1	
Nov 06, 2011	MARQUETTE	*3	7	2	11	.455	0	0	.000	0	0	0	.000	0	0	.000	0	0	2	0	2.0	0	8.0	.344	3-0	
Nov 11, 2011	at Villanova	*5	8	4	34	.118	0	0	.000	0	0	0	.000	0	0	.000	2	0	3	0	3.0	0	9.5	.133	3-2	
Nov 13, 2011	at Georgetown	*3	4	3	13	.077	0	0	.000	0	0	0	.000	0	0	.000	2	0	0	0	0.0	0	4.0	.275	3-0	
Nov 18, 2011	vs PITTSBURGH	*4	15	3	21	.571	0	0	.000	0	0	0	.000	0	0	.000	0	1	2	0	3.0	0	17.0	.224	3-1	
Nov 19, 2011	vs Notre Dame	*4	7	7	20	.000	0	1	.000	0	0	1	1.000	0	0	.000	4	1	3	1	4.0	0	9.5	.181	1-3	
Nov 26, 2011	MOREHEAD ST	*3	6	3	18	.167	0	0	.000	0	0	0	.000	0	0	.000	0	0	3	1	3.0	0	7.5	.280	3-0	
		111	228	92	523	.260	4	22	.182	0	0	1	1.000	0	1	1.000	32	9	75	9	84.0	5	274.5			

Sets played: 111
Kills per set: 2.05
Assists per set: 0.04

Digs per set: 0.29
Blocks per set: 0.76

Points per set: 2.47

2011 LOUISVILLE VOLLEYBALL STATISTICS
LOUISVILLE Individual Match-by-Match (as of Nov 26, 2011)
All matches

4 JUHL, Emily

Date	Opponent	sp	attack				set			serve				recept			dig	blocking					team			
			k	e	ta	pct	a	ta	pct	sa	se	ta	pct	re	ta	pct		bs	ba	be	total	bhe	points	hit%	score	
8/26/11	vs Tennessee Tech	*3	10	2	17	.471	2	2	1.000	0	1	8	.875	0	0	.000	7	1	3	0	4.0	0	12.5	.438	3-0	
Aug 27, 2011	vs Kansas State	*3	9	2	20	.350	0	2	.000	0	3	8	.625	0	0	.000	5	0	3	1	3.0	0	10.5	.301	3-0	
Aug 27, 2011	at Georgia Tech	*5	17	4	38	.342	2	4	.500	0	3	14	.786	0	0	.000	10	0	3	0	3.0	0	18.5	.286	2-3	
Sep 02, 2011	OLE MISS	*3	5	3	15	.133	0	2	.000	0	2	13	.846	0	1	1.000	4	0	1	0	1.0	0	5.5	.310	3-0	
Sep 03, 2011	EASTERN ILLINOIS	*3	6	1	11	.455	1	1	1.000	2	0	10	1.000	0	8	1.000	3	0	0	0	0.0	0	8.0	.397	3-0	
Sep 03, 2011	WICHITA STATE	*4	4	3	18	.056	0	1	.000	2	1	13	.923	0	1	1.000	3	1	3	0	4.0	0	8.5	.328	3-1	
Sep 07, 2011	at Kentucky	*3	4	2	13	.154	1	4	.250	0	1	9	.889	0	0	.000	5	0	0	0	0.0	0	4.0	.051	0-3	
Sep 09, 2011	at Ohio	*4	12	3	24	.375	0	3	.000	0	1	13	.923	0	0	.000	3	0	1	0	1.0	0	12.5	.189	3-1	
Sep 10, 2011	vs Virginia	*4	14	4	38	.263	0	2	.000	1	2	16	.875	0	1	1.000	3	0	2	0	2.0	0	16.0	.254	3-1	
Sep 10, 2011	vs Marshall	*3	10	1	19	.474	0	2	.000	0	1	11	.909	0	0	.000	1	0	3	0	3.0	1	11.5	.337	3-0	
Sep 16, 2011	vs Purdue	*5	11	4	33	.212	0	2	.000	1	2	16	.875	1	3	.667	2	0	2	1	2.0	1	13.0	.157	2-3	
Sep 17, 2011	at Illinois	*5	8	4	26	.154	0	3	.000	0	2	15	.867	0	0	.000	4	0	5	0	5.0	0	10.5	.200	2-3	
Sep 23, 2011	ST. JOHNS	*3	12	3	27	.333	0	3	.000	4	4	12	.667	0	0	.000	0	0	4	0	4.0	0	18.0	.299	3-0	
Sep 25, 2011	UCONN	*3	10	4	23	.261	0	1	.000	0	1	8	.875	0	0	.000	0	0	3	0	3.0	0	11.5	.391	3-0	
Sep 30, 2011	at DePaul	*3	5	2	15	.200	0	1	.000	1	3	10	.700	0	0	.000	1	0	1	0	1.0	0	6.5	.264	3-0	
Oct 02, 2011	at Notre Dame	*4	13	1	30	.400	0	1	.000	1	3	13	.769	0	0	.000	2	0	6	0	6.0	0	17.0	.283	3-1	
Oct 07, 2011	at Seton Hall	2	2	2	10	.000	0	2	.000	1	1	7	.857	0	0	.000	2	0	1	0	1.0	0	3.5	.263	3-0	
Oct 14, 2011	CINCINNATI	*3	9	3	17	.353	0	1	.000	2	0	10	1.000	0	0	.000	3	1	3	0	4.0	0	13.5	.287	3-0	
Oct 18, 2011	at Lipscomb	*4	8	2	16	.375	1	3	.333	0	0	10	1.000	0	0	.000	5	1	1	0	2.0	0	9.5	.197	1-3	
Oct 22, 2011	WVU	4	0	0	0	.000	1	3	.333	3	1	19	.947	0	0	.000	1	0	0	0	0.0	0	3.0	.344	3-1	
Oct 23, 2011	PITTSBURGH	*4	13	2	35	.314	0	2	.000	1	1	15	.933	0	0	.000	3	1	3	0	4.0	1	16.5	.194	1-3	
Oct 28, 2011	at USF	*3	10	0	20	.500	0	1	.000	2	3	19	.842	0	0	.000	4	0	1	0	1.0	0	12.5	.402	3-0	
Nov 02, 2011	UT	*3	10	3	23	.304	1	3	.333	1	2	10	.800	0	0	.000	4	1	1	0	2.0	0	12.5	.272	0-3	
Nov 05, 2011	SYRACUSE	*4	9	6	30	.100	0	2	.000	0	2	12	.833	0	0	.000	5	0	4	0	4.0	0	11.0	.224	3-1	
Nov 06, 2011	MARQUETTE	*3	8	6	23	.087	0	2	.000	5	3	16	.812	0	1	1.000	1	0	2	0	2.0	0	14.0	.344	3-0	
Nov 11, 2011	at Villanova	*5	8	4	22	.182	0	4	.000	2	3	16	.812	0	1	1.000	6	1	2	1	3.0	0	12.0	.133	3-2	
Nov 13, 2011	at Georgetown	*3	9	2	20	.350	0	2	.000	1	4	15	.733	0	0	.000	3	0	5	0	5.0	0	12.5	.275	3-0	
Nov 18, 2011	vs PITTSBURGH	*4	14	3	33	.333	0	2	.000	2	2	16	.875	0	0	.000	5	0	1	0	1.0	0	16.5	.224	3-1	
Nov 19, 2011	vs Notre Dame	4	9	4	21	.238	0	2	.000	1	0	19	1.000	0	0	.000	7	0	2	1	2.0	0	11.0	.181	1-3	
Nov 26, 2011	MOREHEAD ST	*3	13	1	17	.706	0	1	.000	2	4	9	.556	0	0	.000	0	0	2	0	2.0	0	16.0	.280	3-0	
Totals		107	272	81	654	.292	9	64	.141	35	56	382	.853	1	16	.938	102	7	68	4	75.0	3	348.0			

Sets played: 107
Kills per set: 2.54
Assists per set: 0.08

Service aces per set: 0.33
Digs per set: 0.95
Blocks per set: 0.70

Points per set: 3.25

2011 LOUISVILLE VOLLEYBALL STATISTICS
LOUISVILLE Individual Match-by-Match (as of Nov 26, 2011)
All matches

5 BRAUNEIS, Taylor

Date	Opponent	sp	attack				set			serve				recept			dig	blocking					team			
			k	e	ta	pct	a	ta	pct	sa	se	ta	pct	re	ta	pct		bs	ba	be	total	bhe	points	hit%	score	
8/26/11	vs Tennessee Tech	*3	3	0	3	1.000	34	63	.540	1	0	25	1.000	0	0	.000	3	0	0	0	0.0	0	4.0	.438	3-0	
Aug 27, 2011	vs Kansas State	*3	1	1	5	.000	34	77	.442	2	1	17	.941	0	0	.000	4	1	5	0	6.0	0	6.5	.301	3-0	
Aug 27, 2011	at Georgia Tech	*5	2	1	6	.167	54	126	.429	0	0	18	1.000	0	0	.000	8	0	3	2	3.0	0	3.5	.286	2-3	
Sep 02, 2011	OLE MISS	*3	1	0	6	.167	33	81	.407	2	1	12	.917	0	0	.000	6	0	2	0	2.0	0	4.0	.310	3-0	
Sep 03, 2011	EASTERN ILLINOIS	*3	3	1	4	.500	30	58	.517	4	1	23	.957	0	0	.000	6	0	0	0	0.0	2	7.0	.397	3-0	
Sep 03, 2011	WICHITA STATE	*4	0	0	4	.000	43	101	.426	0	1	18	.944	0	0	.000	7	1	3	1	4.0	1	2.5	.328	3-1	
Sep 07, 2011	at Kentucky	*3	3	0	4	.750	18	83	.217	2	0	13	1.000	0	0	.000	8	0	1	0	1.0	0	5.5	.051	0-3	
Sep 09, 2011	at Ohio	*4	3	1	9	.222	36	106	.340	0	0	16	1.000	0	1	1.000	12	1	2	0	3.0	0	5.0	.189	3-1	
Sep 10, 2011	vs Virginia	*4	6	2	12	.333	50	132	.379	0	2	19	.895	0	0	.000	17	0	2	0	2.0	0	7.0	.254	3-1	
Sep 10, 2011	vs Marshall	*3	0	3	5	-.600	41	77	.532	0	1	11	.909	0	0	.000	6	0	0	0	0.0	1	0.0	.337	3-0	
Sep 16, 2011	vs Purdue	*5	2	2	10	.000	43	133	.323	3	2	19	.895	0	0	.000	7	0	2	0	2.0	0	6.0	.157	2-3	
Sep 17, 2011	at Illinois	*5	2	1	5	.200	49	138	.355	2	1	25	.960	0	0	.000	6	0	1	0	1.0	0	4.5	.200	2-3	
Sep 23, 2011	ST. JOHNS	*3	0	3	4	-.750	37	76	.487	0	0	14	1.000	0	0	.000	3	0	0	0	0.0	0	0.0	.299	3-0	
Sep 25, 2011	UCONN	*3	2	0	5	.400	37	70	.529	0	0	17	1.000	0	0	.000	11	0	3	0	3.0	0	3.5	.391	3-0	
Sep 30, 2011	at DePaul	*3	5	0	7	.714	33	89	.371	2	0	18	1.000	0	0	.000	3	0	1	0	1.0	0	7.5	.264	3-0	
Oct 02, 2011	at Notre Dame	*4	1	0	6	.167	56	62	.903	1	0	27	1.000	0	0	.000	7	0	2	0	2.0	0	3.0	.283	3-1	
Oct 07, 2011	at Seton Hall	*3	7	0	12	.583	35	97	.361	0	1	14	.929	0	0	.000	7	0	2	0	2.0	0	8.0	.263	3-0	
Oct 09, 2011	at Rutgers	*3	2	3	6	-.167	34	72	.472	2	1	17	.941	0	0	.000	10	1	0	1	1.0	0	5.0	.275	3-0	
Oct 14, 2011	CINCINNATI	*3	3	1	7	.286	31	77	.403	1	0	14	1.000	0	0	.000	5	1	0	0	1.0	1	5.0	.287	3-0	
Oct 18, 2011	at Lipscomb	*4	1	1	9	.000	40	101	.396	2	0	19	1.000	0	0	.000	8	1	4	0	5.0	0	6.0	.197	1-3	
Oct 22, 2011	WVU	*4	3	0	6	.500	38	90	.422	1	1	12	.917	0	0	.000	10	1	4	0	5.0	0	7.0	.344	3-1	
Oct 23, 2011	PITTSBURGH	4	1	0	4	.250	19	59	.322	0	0	17	1.000	1	1	.000	5	0	0	1	0.0	0	1.0	.194	1-3	
Oct 28, 2011	at USF	*3	5	1	10	.400	34	75	.453	0	0	15	1.000	0	0	.000	3	0	0	0	0.0	0	5.0	.402	3-0	
Nov 02, 2011	UT	*3	3	0	6	.500	32	89	.360	0	2	11	.818	1	1	.000	2	0	0	1	0.0	0	3.0	.272	0-3	
Nov 05, 2011	SYRACUSE	*4	5	2	9	.333	38	108	.352	0	2	20	.900	0	0	.000	9	0	2	0	2.0	0	6.0	.224	3-1	
Nov 06, 2011	MARQUETTE	*3	2	0	5	.400	33	68	.485	2	1	22	.955	0	1	1.000	13	0	1	0	1.0	1	4.5	.344	3-0	
Nov 11, 2011	at Villanova	*5	4	6	16	-.125	48	149	.322	1	0	19	1.000	0	0	.000	13	1	1	1	2.0	0	6.5	.133	3-2	
Nov 13, 2011	at Georgetown	*3	1	0	3	.333	29	70	.414	1	3	18	.833	0	0	.000	4	1	1	0	2.0	0	3.5	.275	3-0	
Nov 18, 2011	vs PITTSBURGH	*4	2	1	10	.100	50	126	.397	3	1	19	.947	0	0	.000	11	0	0	0	0.0	0	5.0	.224	3-1	
Nov 19, 2011	vs Notre Dame	*4	2	0	7	.286	41	119	.345	1	1	13	.923	0	0	.000	4	0	3	0	3.0	1	4.5	.181	1-3	
Nov 26, 2011	MOREHEAD ST	*3	2	0	3	.667	34	79	.430	0	0	10	1.000	0	1	1.000	0	0	2	0	2.0	1	3.0	.280	3-0	
		111	77	30	208	.226	1164	2851	.408	33	23	532	.957	2	5	.600	218	9	47	7	56.0	8	142.5			

Sets played: 111
Kills per set: 0.69
Assists per set: 10.49

Service aces per set: 0.30
Digs per set: 1.96
Blocks per set: 0.50

Points per set: 1.28

2011 LOUISVILLE VOLLEYBALL STATISTICS
 LOUISVILLE Individual Match-by-Match (as of Nov 26, 2011)
 All matches

7 RUCKER, Gwen

Date	Opponent	sp	attack				set			serve				recept			dig	blocking				team			
			k	e	ta	pct	a	ta	pct	sa	se	ta	pct	re	ta	pct		bs	ba	be	total	bhe	points	hit%	score
8/26/11	vs Tennessee Tech	*3	9	3	14	.429	0	1	.000	1	2	9	.778	0	0	.000	1	0	2	0	2.0	0	11.0	.438	3-0
Aug 27, 2011	vs Kansas State	*3	10	1	18	.500	0	2	.000	4	1	12	.917	0	2	1.000	4	0	5	1	5.0	0	16.5	.301	3-0
Aug 27, 2011	at Georgia Tech	*5	10	4	19	.316	0	0	.000	3	5	14	.643	0	1	1.000	3	1	7	0	8.0	0	17.5	.286	2-3
Sep 02, 2011	OLE MISS	*3	8	2	15	.400	0	0	.000	0	2	7	.714	0	0	.000	0	2	4	0	6.0	0	12.0	.310	3-0
Sep 03, 2011	EASTERN ILLINOIS	*3	4	3	10	.100	0	3	.000	3	1	13	.923	0	0	.000	5	1	0	1	1.0	0	8.0	.397	3-0
Sep 03, 2011	WICHITA STATE	*4	9	3	15	.400	1	3	.333	0	3	5	.400	0	0	.000	3	2	4	0	6.0	0	13.0	.328	3-1
Sep 07, 2011	at Kentucky	*3	7	3	20	.200	0	1	.000	0	0	1	1.000	0	1	1.000	1	0	2	0	2.0	0	8.0	.051	0-3
		24	57	19	111	.342	1	10	.100	11	14	61	.770	0	4	1.000	17	6	24	2	30.0	0	86.0		

Sets played: 24
 Kills per set: 2.38
 Assists per set: 0.04

Service aces per set: 0.46
 Digs per set: 0.71
 Blocks per set: 1.25

Points per set: 3.58

2011 LOUISVILLE VOLLEYBALL STATISTICS
LOUISVILLE Individual Match-by-Match (as of Nov 26, 2011)
All matches

9 ARSLANBEKOVA, Lola

Date	Opponent	sp	attack				set			serve				recept			dig	blocking					team			
			k	e	ta	pct	a	ta	pct	sa	se	ta	pct	re	ta	pct		bs	ba	be	total	bhe	points	hit%	score	
8/26/11	vs Tennessee Tech	*3	17	3	34	.412	0	1	.000	0	3	7	.571	0	8	1.000	4	1	1	0	2.0	0	18.5	.438	3-0	
Aug 27, 2011	vs Kansas State	*3	7	2	20	.250	0	4	.000	2	2	11	.818	1	13	.923	4	0	0	0	0.0	0	9.0	.301	3-0	
Aug 27, 2011	at Georgia Tech	*5	12	7	31	.161	0	1	.000	1	3	20	.850	2	20	.900	10	1	1	0	2.0	0	14.5	.286	2-3	
Sep 02, 2011	OLE MISS	*3	19	3	38	.421	1	1	1.000	0	3	10	.700	1	10	.900	4	0	1	0	1.0	0	19.5	.310	3-0	
Sep 03, 2011	EASTERN ILLINOIS	*3	18	4	31	.452	1	2	.500	0	4	8	.500	1	8	.875	5	0	2	0	2.0	0	19.0	.397	3-0	
Sep 03, 2011	WICHITA STATE	*4	26	4	41	.537	0	1	.000	0	2	18	.889	1	17	.941	7	1	1	0	2.0	1	27.5	.328	3-1	
Sep 07, 2011	at Kentucky	*3	5	10	32	-.156	0	1	.000	1	0	12	1.000	0	24	1.000	13	0	0	0	0.0	0	6.0	.051	0-3	
Sep 09, 2011	at Ohio	*4	18	7	52	.212	0	0	.000	1	4	18	.778	1	20	.950	6	0	0	0	0.0	0	19.0	.189	3-1	
Sep 10, 2011	vs Virginia	*4	17	4	53	.245	0	3	.000	0	1	15	.933	0	17	1.000	13	1	1	0	2.0	1	18.5	.254	3-1	
Sep 10, 2011	vs Marshall	*3	18	4	34	.412	1	7	.143	1	2	13	.846	0	9	1.000	8	0	2	0	2.0	0	20.0	.337	3-0	
Sep 16, 2011	vs Purdue	*5	20	9	58	.190	1	6	.167	2	2	17	.882	2	22	.909	13	2	0	0	2.0	0	24.0	.157	2-3	
Sep 17, 2011	at Illinois	*5	30	14	78	.205	0	1	.000	1	6	14	.571	0	24	1.000	11	0	2	0	2.0	0	32.0	.200	2-3	
Sep 23, 2011	ST.JOHNS	*3	14	1	26	.500	0	1	.000	1	3	14	.786	0	10	1.000	11	1	3	1	4.0	0	17.5	.299	3-0	
Sep 25, 2011	UCONN	*3	18	2	28	.571	0	2	.000	1	2	12	.833	0	10	1.000	3	0	1	0	1.0	0	19.5	.391	3-0	
Sep 30, 2011	at DePaul	*3	19	7	40	.300	0	0	.000	2	1	14	.929	0	6	1.000	12	1	0	0	1.0	0	22.0	.264	3-0	
Oct 02, 2011	at Notre Dame	*4	28	10	48	.375	0	10	.000	1	6	17	.647	2	15	.867	14	2	2	0	4.0	0	32.0	.283	3-1	
Oct 07, 2011	at Seton Hall	*3	21	8	52	.250	2	4	.500	1	4	12	.667	0	10	1.000	7	0	1	1	1.0	0	22.5	.263	3-0	
Oct 09, 2011	at Rutgers	*3	19	3	31	.516	0	3	.000	0	0	9	1.000	0	4	1.000	4	1	0	1	1.0	0	20.0	.275	3-0	
Oct 14, 2011	CINCINNATI	*3	16	6	32	.312	0	2	.000	0	2	17	.882	0	12	1.000	4	0	3	1	3.0	0	17.5	.287	3-0	
Oct 18, 2011	at Lipscomb	*4	16	7	46	.196	0	4	.000	0	0	19	1.000	0	15	1.000	8	1	0	1	1.0	0	17.0	.197	1-3	
Oct 22, 2011	WVU	*4	20	4	44	.364	0	2	.000	1	2	18	.889	0	14	1.000	11	1	0	0	1.0	0	22.0	.344	3-1	
Oct 23, 2011	PITTSBURGH	*4	19	10	54	.167	0	2	.000	1	4	17	.765	2	25	.920	12	0	0	0	0.0	0	20.0	.194	1-3	
Oct 28, 2011	at USF	*3	13	3	31	.323	1	4	.250	1	1	11	.909	0	16	1.000	6	0	0	3	0.0	0	14.0	.402	3-0	
Nov 02, 2011	UT	*3	14	2	36	.333	0	1	.000	0	2	15	.867	0	17	1.000	5	3	2	0	5.0	0	18.0	.272	0-3	
Nov 05, 2011	SYRACUSE	*4	16	5	42	.262	1	3	.333	2	0	11	1.000	0	34	1.000	5	0	0	0	0.0	1	18.0	.224	3-1	
Nov 06, 2011	MARQUETTE	*3	18	2	33	.485	0	1	.000	0	2	10	.800	1	9	.889	5	0	0	1	0.0	0	18.0	.344	3-0	
Nov 11, 2011	at Villanova	*5	25	10	76	.197	0	7	.000	0	0	16	1.000	1	19	.947	23	0	0	1	0.0	0	25.0	.133	3-2	
Nov 13, 2011	at Georgetown	*3	11	4	27	.259	0	3	.000	3	1	14	.929	0	16	1.000	10	0	1	1	1.0	0	14.5	.275	3-0	
Nov 18, 2011	vs PITTSBURGH	*4	16	14	55	.036	0	2	.000	4	1	21	.952	0	7	1.000	20	0	0	0	0.0	0	20.0	.224	3-1	
Nov 19, 2011	vs Notre Dame	*4	24	9	56	.268	1	4	.250	0	3	9	.667	2	30	.933	10	2	1	1	3.0	1	26.5	.181	1-3	
Nov 26, 2011	MOREHEAD ST	*3	13	3	28	.357	0	0	.000	1	2	17	.882	1	11	.909	7	1	2	1	3.0	0	16.0	.280	3-0	
		111	547	181	1287	.284	9	83	.108	28	68	436	.844	18	472	.962	275	19	27	13	46.0	4	607.5			

Sets played: 111
Kills per set: 4.93
Assists per set: 0.08

Service aces per set: 0.25
Digs per set: 2.48
Blocks per set: 0.41

Points per set: 5.47

2011 LOUISVILLE VOLLEYBALL STATISTICS
 LOUISVILLE Individual Match-by-Match (as of Nov 26, 2011)
 All matches

#11 LUKYANENKO, Tanya

Date	Opponent	sp	attack				set			serve				recept			dig	blocking					team			
			k	e	ta	pct	a	ta	pct	sa	se	ta	pct	re	ta	pct		bs	ba	be	total	bhe	points	hit%	score	
8/26/11	vs Tennessee Tech	2	2	0	3	.667	0	0	.000	0	0	0	.000	0	0	.000	0	0	2	0	2.0	0	3.0	.438	3-0	
Sep 03, 2011	EASTERN ILLINOIS	3	4	2	9	.222	0	0	.000	0	0	0	.000	0	0	.000	1	1	4	0	5.0	0	7.0	.397	3-0	
Sep 09, 2011	at Ohio	*4	4	6	17	-.118	0	0	.000	0	0	0	.000	0	0	.000	2	1	2	0	3.0	0	6.0	.189	3-1	
Sep 10, 2011	vs Virginia	*4	6	3	16	.188	0	2	.000	0	0	0	.000	0	0	.000	0	1	4	0	5.0	0	9.0	.254	3-1	
Sep 10, 2011	vs Marshall	*3	4	0	7	.571	0	2	.000	0	0	0	.000	0	0	.000	1	0	1	0	1.0	1	4.5	.337	3-0	
Sep 16, 2011	vs Purdue	*5	2	2	8	.000	0	0	.000	0	0	0	.000	0	0	.000	1	1	2	0	3.0	0	4.0	.157	2-3	
Sep 17, 2011	at Illinois	*5	2	2	9	.000	0	1	.000	0	0	0	.000	0	0	.000	0	2	5	0	7.0	0	6.5	.200	2-3	
Sep 23, 2011	ST. JOHNS	*3	6	3	16	.188	0	1	.000	0	0	0	.000	0	0	.000	1	1	4	0	5.0	0	9.0	.299	3-0	
Sep 25, 2011	UCONN	*3	4	1	7	.429	0	0	.000	0	0	0	.000	0	0	.000	1	1	4	1	5.0	0	7.0	.391	3-0	
Sep 30, 2011	at DePaul	*3	10	1	17	.529	1	1	1.000	0	0	0	.000	0	0	.000	2	0	3	1	3.0	0	11.5	.264	3-0	
Oct 02, 2011	at Notre Dame	*4	2	4	15	-.133	0	1	.000	0	0	0	.000	0	0	.000	1	0	9	0	9.0	0	6.5	.283	3-1	
Oct 07, 2011	at Seton Hall	*3	2	3	13	-.077	0	0	.000	0	2	3	.333	0	0	.000	1	1	3	0	4.0	0	4.5	.263	3-0	
Oct 09, 2011	at Rutgers	*3	2	0	7	.286	1	2	.500	0	1	11	.909	0	0	.000	1	0	2	0	2.0	0	3.0	.275	3-0	
Oct 14, 2011	CINCINNATI	*3	5	1	10	.400	0	0	.000	0	0	0	.000	0	0	.000	0	0	4	1	4.0	0	7.0	.287	3-0	
Oct 18, 2011	at Lipscomb	*4	5	2	15	.200	0	0	.000	0	1	2	.500	0	0	.000	1	1	4	0	5.0	0	8.0	.197	1-3	
Oct 22, 2011	WVU	*4	6	1	17	.294	0	1	.000	0	0	0	.000	0	0	.000	0	0	2	0	2.0	0	7.0	.344	3-1	
Oct 23, 2011	PITTSBURGH	*4	6	1	13	.385	0	2	.000	0	0	0	.000	0	1	1.000	3	1	4	0	5.0	0	9.0	.194	1-3	
Oct 28, 2011	at USF	*3	5	0	8	.625	0	0	.000	0	0	0	.000	0	0	.000	0	1	1	2	2.0	0	6.5	.402	3-0	
Nov 02, 2011	UT	*3	2	1	6	.167	0	0	.000	0	0	0	.000	0	0	.000	3	0	2	0	2.0	0	3.0	.272	0-3	
Nov 05, 2011	SYRACUSE	*4	7	2	15	.333	0	0	.000	0	0	0	.000	0	0	.000	0	1	4	0	5.0	0	10.0	.224	3-1	
Nov 06, 2011	MARQUETTE	*3	6	2	12	.333	1	1	1.000	0	0	0	.000	0	0	.000	1	0	1	0	1.0	0	6.5	.344	3-0	
Nov 11, 2011	at Villanova	*5	4	6	15	-.133	0	0	.000	0	0	0	.000	1	1	.000	1	1	2	0	3.0	0	6.0	.133	3-2	
Nov 13, 2011	at Georgetown	*3	5	2	10	.300	0	0	.000	0	0	0	.000	0	0	.000	0	2	7	0	9.0	0	10.5	.275	3-0	
Nov 18, 2011	vs PITTSBURGH	*4	3	1	8	.250	0	0	.000	0	0	0	.000	0	1	1.000	1	1	0	1	1.0	0	4.0	.224	3-1	
Nov 19, 2011	vs Notre Dame	*4	1	1	11	.000	0	0	.000	0	0	0	.000	0	0	.000	2	0	3	1	3.0	0	2.5	.181	1-3	
Nov 26, 2011	MOREHEAD ST	*3	4	1	10	.300	0	0	.000	0	0	0	.000	0	0	.000	0	0	3	0	3.0	0	5.5	.280	3-0	
Totals		92	109	48	294	.207	3	14	.214	0	4	16	.750	1	3	.667	24	17	82	7	99.0	1	167.0			

Sets played: 92
 Kills per set: 1.18
 Assists per set: 0.03

Digs per set: 0.26
 Blocks per set: 1.08

Points per set: 1.82

2011 LOUISVILLE VOLLEYBALL STATISTICS
LOUISVILLE Individual Match-by-Match (as of Nov 26, 2011)
All matches

#14 JAMES, Kaitlynn

Date	Opponent	sp	attack				set			serve				recept			dig	blocking					team			
			k	e	ta	pct	a	ta	pct	sa	se	ta	pct	re	ta	pct		bs	ba	be	total	bhe	points	hit%	score	
8/26/11	vs Tennessee Tech	*3	3	0	8	.375	0	0	.000	2	0	13	1.000	0	10	1.000	9	0	0	0	0.0	0	5.0	.438	3-0	
Aug 27, 2011	vs Kansas State	*3	5	4	22	.045	2	4	.500	1	4	15	.733	0	5	1.000	11	0	0	0	0.0	0	6.0	.301	3-0	
Aug 27, 2011	at Georgia Tech	*5	7	2	23	.217	0	5	.000	2	1	19	.947	1	27	.963	6	0	2	0	2.0	0	10.0	.286	2-3	
Sep 02, 2011	OLE MISS	*3	7	4	20	.150	0	1	.000	0	0	22	1.000	0	14	1.000	14	1	0	0	1.0	0	8.0	.310	3-0	
Sep 03, 2011	WICHITA STATE	*4	9	3	26	.231	0	0	.000	2	0	14	1.000	0	21	1.000	9	2	1	0	3.0	0	13.5	.328	3-1	
Sep 07, 2011	at Kentucky	*3	5	5	33	.000	2	4	.500	1	1	7	.857	1	20	.950	9	1	2	0	3.0	0	8.0	.051	0-3	
Sep 09, 2011	at Ohio	*4	6	2	20	.200	1	2	.500	0	1	16	.938	1	5	.800	7	2	3	0	5.0	0	9.5	.189	3-1	
Sep 10, 2011	vs Virginia	*4	8	2	28	.214	1	2	.500	0	0	13	1.000	2	15	.867	12	0	1	0	1.0	0	8.5	.254	3-1	
Sep 10, 2011	vs Marshall	*3	4	4	15	.000	1	3	.333	0	0	18	1.000	1	2	.500	5	0	1	0	1.0	0	4.5	.337	3-0	
Sep 16, 2011	vs Purdue	*5	7	2	23	.217	1	2	.500	1	0	14	1.000	0	12	1.000	9	1	2	3	3.0	0	10.0	.157	2-3	
Sep 17, 2011	at Illinois	*5	10	3	26	.269	0	5	.000	0	0	18	1.000	0	16	1.000	13	0	0	0	0.0	0	10.0	.200	2-3	
Sep 23, 2011	ST.JOHNS	*3	5	1	12	.333	0	2	.000	0	0	8	1.000	0	1	1.000	3	0	1	0	1.0	0	5.5	.299	3-0	
Sep 25, 2011	UCONN	*3	3	1	10	.200	1	3	.333	1	0	17	1.000	0	0	.000	12	0	0	0	0.0	0	4.0	.391	3-0	
Sep 30, 2011	at DePaul	*3	6	3	21	.143	0	0	.000	0	1	8	.875	0	1	1.000	10	1	1	0	2.0	0	7.5	.264	3-0	
Oct 02, 2011	at Notre Dame	*4	8	2	22	.273	0	5	.000	0	2	8	.750	0	2	1.000	13	0	0	1	0.0	0	8.0	.283	3-1	
Oct 07, 2011	at Seton Hall	*3	2	0	14	.143	1	2	.500	0	2	13	.846	0	10	1.000	13	1	2	0	3.0	0	4.0	.263	3-0	
Oct 09, 2011	at Rutgers	*3	7	4	20	.150	1	2	.500	0	1	8	.875	1	5	.800	8	1	0	0	1.0	0	8.0	.275	3-0	
Oct 14, 2011	CINCINNATI	*3	4	1	15	.200	1	3	.333	1	0	18	1.000	0	0	.000	8	2	2	0	4.0	0	8.0	.287	3-0	
Oct 18, 2011	at Lipscomb	*4	6	2	20	.200	0	1	.000	0	1	15	.933	1	8	.875	6	0	1	0	1.0	0	6.5	.197	1-3	
Oct 22, 2011	WVU	*4	8	1	24	.292	2	4	.500	0	2	15	.867	1	7	.857	11	0	3	2	3.0	0	9.5	.344	3-1	
Oct 23, 2011	PITTSBURGH	*4	1	5	24	-.167	0	4	.000	2	2	12	.833	0	5	1.000	11	1	1	0	2.0	0	4.5	.194	1-3	
Oct 28, 2011	at USF	*3	9	1	14	.571	0	1	.000	1	0	9	1.000	0	1	1.000	4	0	1	1	1.0	0	10.5	.402	3-0	
Nov 02, 2011	UT	*3	6	1	19	.263	0	2	.000	0	1	10	.900	0	7	1.000	4	0	0	0	0.0	0	6.0	.272	0-3	
Nov 05, 2011	SYRACUSE	*4	4	4	23	.000	1	2	.500	2	0	22	1.000	1	7	.857	12	0	0	0	0.0	0	6.0	.224	3-1	
Nov 06, 2011	MARQUETTE	*3	6	2	12	.333	0	0	.000	2	0	9	1.000	0	9	1.000	5	1	0	0	1.0	0	9.0	.344	3-0	
Nov 11, 2011	at Villanova	*5	11	4	33	.212	0	2	.000	0	2	18	.889	3	16	.812	18	1	2	3	3.0	0	13.0	.133	3-2	
Nov 13, 2011	at Georgetown	*3	6	0	18	.333	0	0	.000	0	0	7	1.000	2	14	.857	2	0	0	0	0.0	0	6.0	.275	3-0	
Nov 18, 2011	vs PITTSBURGH	*4	12	4	33	.242	2	5	.400	1	0	19	1.000	0	3	1.000	8	0	1	1	1.0	0	13.5	.224	3-1	
Nov 19, 2011	vs Notre Dame	*4	5	2	23	.130	1	1	1.000	0	1	20	.950	2	13	.846	6	0	0	0	0.0	0	5.0	.181	1-3	
Nov 26, 2011	MOREHEAD ST	*3	2	6	17	-.235	0	0	.000	0	1	16	.938	0	5	1.000	6	3	0	0	3.0	0	5.0	.280	3-0	
Totals		108	182	75	618	.173	18	67	.269	19	23	421	.945	17	261	.935	264	18	27	11	45.0	0	232.5			

Sets played: 108
Kills per set: 1.69
Assists per set: 0.17

Service aces per set: 0.18
Digs per set: 2.44
Blocks per set: 0.42

Points per set: 2.15

2011 LOUISVILLE VOLLEYBALL STATISTICS
LOUISVILLE Individual Match-by-Match (as of Nov 26, 2011)
All matches

#15 WACHTEL, Maci

Date	Opponent	sp	attack				set			serve				recept			dig	blocking				team			
			k	e	ta	pct	a	ta	pct	sa	se	ta	pct	re	ta	pct		bs	ba	be	total	bhe	points	hit%	score
8/26/11	vs Tennessee Tech	2	0	0	0	.000	0	0	.000	0	0	0	.000	0	3	1.000	2	0	0	0	0.0	0	0.0	.438	3-0
Aug 27, 2011	vs Kansas State	2	0	0	0	.000	0	0	.000	0	0	0	.000	0	2	1.000	1	0	0	0	0.0	0	0.0	.301	3-0
Sep 02, 2011	OLE MISS	3	0	0	0	.000	3	4	.750	0	0	0	.000	0	0	.000	5	0	0	0	0.0	0	0.0	.310	3-0
Sep 03, 2011	EASTERN ILLINOIS	3	0	0	0	.000	0	1	.000	0	0	0	.000	0	3	1.000	5	0	0	0	0.0	0	0.0	.397	3-0
Sep 03, 2011	WICHITA STATE	4	0	0	0	.000	1	3	.333	0	0	0	.000	0	0	.000	4	0	0	0	0.0	0	0.0	.328	3-1
Sep 07, 2011	at Kentucky	3	0	0	0	.000	0	4	.000	0	0	0	.000	0	0	.000	4	0	0	0	0.0	0	0.0	.051	0-3
Sep 09, 2011	at Ohio	4	0	0	0	.000	0	3	.000	0	0	0	.000	0	13	1.000	8	0	0	0	0.0	0	0.0	.189	3-1
Sep 10, 2011	vs Virginia	4	0	0	0	.000	1	3	.333	0	0	0	.000	1	10	.900	9	0	0	0	0.0	0	0.0	.254	3-1
Sep 10, 2011	vs Marshall	3	0	0	0	.000	0	2	.000	0	0	0	.000	0	5	1.000	8	0	0	0	0.0	0	0.0	.337	3-0
Sep 16, 2011	vs Purdue	5	0	0	0	.000	0	2	.000	0	0	0	.000	0	8	1.000	8	0	0	0	0.0	0	0.0	.157	2-3
Sep 17, 2011	at Illinois	5	0	0	0	.000	2	3	.667	0	0	0	.000	0	11	1.000	9	0	0	0	0.0	0	0.0	.200	2-3
Sep 23, 2011	ST.JOHNS	3	0	0	0	.000	0	3	.000	0	0	0	.000	0	3	1.000	4	0	0	0	0.0	0	0.0	.299	3-0
Sep 25, 2011	UCONN	3	0	0	0	.000	0	1	.000	0	0	0	.000	0	2	1.000	6	0	0	0	0.0	0	0.0	.391	3-0
Sep 30, 2011	at DePaul	3	0	0	0	.000	1	2	.500	0	0	0	.000	0	10	1.000	2	0	0	0	0.0	0	0.0	.264	3-0
Oct 02, 2011	at Notre Dame	4	0	0	0	.000	0	8	.000	0	0	0	.000	0	9	1.000	6	0	0	0	0.0	0	0.0	.283	3-1
Oct 07, 2011	at Seton Hall	3	0	0	0	.000	1	3	.333	0	0	0	.000	0	9	1.000	4	0	0	0	0.0	0	0.0	.263	3-0
Oct 09, 2011	at Rutgers	3	0	0	0	.000	0	1	.000	0	0	0	.000	2	10	.800	3	0	0	0	0.0	0	0.0	.275	3-0
Oct 14, 2011	CINCINNATI	3	0	0	0	.000	0	3	.000	0	0	0	.000	0	6	1.000	7	0	0	0	0.0	0	0.0	.287	3-0
Oct 18, 2011	at Lipscomb	4	0	0	0	.000	1	2	.500	0	0	0	.000	1	15	.933	2	0	0	0	0.0	0	0.0	.197	1-3
Oct 22, 2011	WVU	4	0	0	0	.000	0	3	.000	0	0	0	.000	0	9	1.000	3	0	0	0	0.0	0	0.0	.344	3-1
Oct 23, 2011	PITTSBURGH	4	0	0	0	.000	1	4	.250	0	0	0	.000	1	8	.875	14	0	0	0	0.0	0	0.0	.194	1-3
Oct 28, 2011	at USF	3	0	0	0	.000	1	2	.500	0	0	0	.000	2	7	.714	4	0	0	0	0.0	0	0.0	.402	3-0
Nov 02, 2011	UT	3	0	0	0	.000	0	1	.000	0	0	0	.000	1	7	.857	5	0	0	0	0.0	0	0.0	.272	0-3
Nov 05, 2011	SYRACUSE	4	0	0	0	.000	0	2	.000	0	0	0	.000	0	18	1.000	7	0	0	0	0.0	0	0.0	.224	3-1
Nov 06, 2011	MARQUETTE	3	0	0	0	.000	1	2	.500	0	0	0	.000	0	8	1.000	1	0	0	0	0.0	0	0.0	.344	3-0
Nov 11, 2011	at Villanova	5	0	0	0	.000	1	3	.333	0	0	0	.000	2	21	.905	5	0	0	0	0.0	0	0.0	.133	3-2
Nov 13, 2011	at Georgetown	3	0	0	0	.000	0	1	.000	0	0	0	.000	0	3	1.000	1	0	0	0	0.0	0	0.0	.275	3-0
Nov 18, 2011	vs PITTSBURGH	4	0	0	1	.000	1	2	.500	0	0	0	.000	1	11	.909	4	0	0	0	0.0	0	0.0	.224	3-1
Nov 19, 2011	vs Notre Dame	*3	0	0	0	.000	0	0	.000	0	0	0	.000	1	12	.917	2	0	0	0	0.0	0	0.0	.181	1-3
Nov 26, 2011	MOREHEAD ST	3	0	0	0	.000	1	2	.500	0	0	0	.000	1	10	.900	2	0	0	0	0.0	0	0.0	.280	3-0
Totals		103	0	0	1	.000	16	70	.229	0	0	0	.000	13	233	.944	145	0	0	0	0.0	0	0.0		

Sets played: 103
Kills per set: 0.00
Assists per set: 0.16

Digs per set: 1.41
Blocks per set: 0.00

Points per set: 0.00

2011 LOUISVILLE VOLLEYBALL STATISTICS
 LOUISVILLE Individual Match-by-Match (as of Nov 26, 2011)
 All matches

#17 LECH, Gosia

Date	Opponent	sp	attack				set			serve				recept			dig	blocking					team			
			k	e	ta	pct	a	ta	pct	sa	se	ta	pct	re	ta	pct		bs	ba	be	total	bhe	points	hit%	score	
8/26/11	vs Tennessee Tech	2	0	0	2	.000	3	9	.333	0	0	1	1.000	0	0	.000	1	0	2	0	2.0	0	1.0	.438	3-0	
Sep 02, 2011	OLE MISS	1	0	0	0	.000	0	0	.000	0	0	1	1.000	0	0	.000	0	0	0	0	0.0	0	0.0	.310	3-0	
Sep 03, 2011	EASTERN ILLINOIS	*3	0	0	0	.000	0	2	.000	1	1	9	.889	0	0	.000	4	0	0	0	0.0	0	1.0	.397	3-0	
Sep 03, 2011	WICHITA STATE	3	0	0	0	.000	0	1	.000	0	2	7	.714	0	0	.000	0	0	0	0	0.0	0	0.0	.328	3-1	
Sep 07, 2011	at Kentucky	3	0	0	0	.000	2	10	.200	0	0	7	1.000	0	0	.000	1	0	0	0	0.0	0	0.0	.051	0-3	
Sep 09, 2011	at Ohio	4	0	0	0	.000	2	2	1.000	1	1	16	.938	0	0	.000	1	0	0	0	0.0	0	1.0	.189	3-1	
Sep 10, 2011	vs Virginia	4	0	0	1	.000	1	5	.200	1	0	14	1.000	0	0	.000	1	0	0	0	0.0	0	1.0	.254	3-1	
Sep 10, 2011	vs Marshall	3	0	0	0	.000	0	2	.000	0	1	12	.917	0	0	.000	3	0	0	0	0.0	0	0.0	.337	3-0	
Sep 16, 2011	vs Purdue	5	0	0	0	.000	1	3	.333	2	1	20	.950	0	0	.000	3	0	0	0	0.0	0	2.0	.157	2-3	
Sep 17, 2011	at Illinois	5	0	0	0	.000	1	1	1.000	0	5	15	.667	0	0	.000	0	0	0	0	0.0	0	0.0	.200	2-3	
Sep 23, 2011	ST.JOHNS	3	0	0	0	.000	0	1	.000	0	2	11	.818	0	0	.000	1	0	0	0	0.0	0	0.0	.299	3-0	
Sep 25, 2011	UCONN	3	0	0	0	.000	0	1	.000	3	2	9	.778	0	0	.000	1	0	0	0	0.0	0	3.0	.391	3-0	
Sep 30, 2011	at DePaul	3	0	0	0	.000	0	1	.000	1	0	10	1.000	0	0	.000	0	0	0	0	0.0	0	1.0	.264	3-0	
Oct 02, 2011	at Notre Dame	4	0	0	0	.000	0	0	.000	0	1	10	.900	0	0	.000	0	0	0	0	0.0	0	0.0	.283	3-1	
Oct 07, 2011	at Seton Hall	*3	3	0	3	1.000	0	2	.000	0	2	18	.889	0	0	.000	2	0	1	1	1.0	0	3.5	.263	3-0	
Oct 09, 2011	at Rutgers	*3	3	0	9	.333	0	2	.000	1	1	14	.929	0	0	.000	6	1	2	0	3.0	0	6.0	.275	3-0	
Oct 14, 2011	CINCINNATI	3	0	0	0	.000	0	0	.000	0	1	7	.857	0	0	.000	1	0	0	0	0.0	0	0.0	.287	3-0	
Oct 18, 2011	at Lipscomb	4	1	0	2	.500	1	1	1.000	0	0	11	1.000	0	0	.000	1	1	2	1	3.0	0	3.0	.197	1-3	
Oct 22, 2011	WVU	*4	6	2	14	.286	1	3	.333	0	1	16	.938	0	0	.000	3	0	1	0	1.0	0	6.5	.344	3-1	
Oct 23, 2011	PITTSBURGH	*4	2	1	7	.143	19	57	.333	0	2	13	.846	0	0	.000	7	0	1	0	1.0	0	2.5	.194	1-3	
Oct 28, 2011	at USF	3	0	0	0	.000	0	0	.000	0	1	9	.889	0	0	.000	2	0	0	0	0.0	0	0.0	.402	3-0	
Nov 02, 2011	UT	3	0	0	0	.000	0	0	.000	0	2	10	.800	0	0	.000	1	0	0	0	0.0	0	0.0	.272	0-3	
Nov 05, 2011	SYRACUSE	4	0	0	0	.000	0	0	.000	0	3	8	.625	0	0	.000	1	0	0	0	0.0	0	0.0	.224	3-1	
Nov 06, 2011	MARQUETTE	3	0	0	0	.000	0	0	.000	1	0	8	1.000	0	0	.000	0	0	0	0	0.0	0	1.0	.344	3-0	
Nov 11, 2011	at Villanova	5	0	0	0	.000	0	0	.000	1	2	14	.857	0	0	.000	3	0	0	0	0.0	0	1.0	.133	3-2	
Nov 13, 2011	at Georgetown	3	0	0	0	.000	0	0	.000	0	0	7	1.000	0	0	.000	0	0	0	0	0.0	0	0.0	.275	3-0	
Nov 18, 2011	vs PITTSBURGH	4	0	0	0	.000	0	0	.000	1	1	12	.917	0	0	.000	2	0	0	0	0.0	0	1.0	.224	3-1	
Nov 19, 2011	vs Notre Dame	4	0	0	0	.000	1	1	1.000	0	2	10	.800	0	0	.000	2	0	0	0	0.0	0	0.0	.181	1-3	
Nov 26, 2011	MOREHEAD ST	3	0	0	0	.000	0	0	.000	2	2	11	.818	0	0	.000	1	0	0	0	0.0	0	2.0	.280	3-0	
		99	15	3	38	.316	32	104	.308	15	36	310	.884	0	0	.000	48	2	9	2	11.0	0	36.5			

Sets played: 99
 Kills per set: 0.15
 Assists per set: 0.32

Service aces per set: 0.15
 Digs per set: 0.48
 Blocks per set: 0.11

Points per set: 0.37

2011 LOUISVILLE VOLLEYBALL STATISTICS
 LOUISVILLE Individual Match-by-Match (as of Nov 26, 2011)
 All matches

#TM TEAM

Date	Opponent	sp	attack				set			serve				recept			dig	blocking					team			
			k	e	ta	pct	a	ta	pct	sa	se	ta	pct	re	ta	pct		bs	ba	be	total	bhe	points	hit%	score	
Sep 03, 2011	WICHITA STATE	1	0	0	0	.000	0	0	.000	0	0	0	.000	0	1	1.000	0	0	0	0	0.0	0	0.0	.328	3-1	
Sep 10, 2011	vs Virginia	1	0	0	0	.000	0	0	.000	0	0	0	.000	0	1	1.000	0	0	0	0	0.0	0	0.0	.254	3-1	
Sep 25, 2011	UCONN	1	0	0	0	.000	0	0	.000	0	0	0	.000	0	1	1.000	0	0	0	0	0.0	0	0.0	.391	3-0	
Oct 07, 2011	at Seton Hall	2	0	0	0	.000	0	0	.000	0	0	0	.000	3	3	.000	0	0	0	0	0.0	0	0.0	.263	3-0	
Oct 18, 2011	at Lipscomb	1	0	0	0	.000	0	0	.000	0	0	0	.000	0	1	1.000	0	0	0	0	0.0	0	0.0	.197	1-3	
Nov 19, 2011	vs Notre Dame	1	0	0	0	.000	0	0	.000	0	0	0	.000	0	1	1.000	0	0	0	0	0.0	0	0.0	.181	1-3	
Totals		7	0	0	0	.000	0	0	.000	0	0	0	.000	3	8	.625	0	0	0	0	0.0	0	0.0			

Sets played: 7

Points per set: 0.00

Individual Career History

ARSLANBEKOVA, Lola

Season	sp-mp	k	k/s	e	ta	pct	a	a/s	ta	ast%	sa	sa/s	se	ta	srv%
2009	122-32	533	4.37	208	1268	.256	22	0.18	100	.220	24	0.20	35	443	.921
2010	115-29	444	3.86	196	1087	.228	16	0.14	76	.211	11	0.10	44	359	.877
2011	111-31	547	4.93	181	1287	.284	9	0.08	83	.108	28	0.25	68	436	.844
TOTAL	348-92	1524	4.38	585	3642	.258	47	0.14	259	.181	63	0.18	147	1238	.881

Season	dig	d/s	re	ta	rec%	bs	ba	tb	b/s	be	bhe	points	pts/s
2009	210	1.72	15	305	.951	9	43	52	0.43	16	7	587.5	4.81
2010	198	1.72	26	274	.905	10	33	43	0.37	10	3	481.5	4.18
2011	275	2.48	18	472	.962	19	27	46	0.41	13	4	607.5	5.47
TOTAL	683	1.96	59	1051	.944	38	103	141	0.41	39	14	1676.5	4.82

BRAUNEIS, Taylor

Season	sp-mp	k	k/s	e	ta	pct	a	a/s	ta	ast%	sa	sa/s	se	ta	srv%
2010	121-31	72	0.60	27	215	.209	1100	9.09	2593	.424	16	0.13	28	440	.936
2011	111-31	77	0.69	30	208	.226	1164	10.49	2851	.408	33	0.30	23	532	.957
TOTAL	232-62	149	0.64	57	423	.217	2264	9.76	5444	.416	49	0.21	51	972	.948

Season	dig	d/s	re	ta	rec%	bs	ba	tb	b/s	be	bhe	points	pts/s
2010	237	1.96	1	2	.500	2	59	61	0.50	4	4	119.5	0.98
2011	218	1.96	2	5	.600	9	47	56	0.50	7	8	142.5	1.28
TOTAL	455	1.96	3	7	.571	11	106	117	0.50	11	12	262.0	1.13

JAMES, Kaitlynn

Season	sp-mp	k	k/s	e	ta	pct	a	a/s	ta	ast%	sa	sa/s	se	ta	srv%
2011	108-30	182	1.69	75	618	.173	18	0.17	67	.269	19	0.18	23	421	.945
TOTAL	108-30	182	1.69	75	618	.173	18	0.17	67	.269	19	0.18	23	421	.945

Season	dig	d/s	re	ta	rec%	bs	ba	tb	b/s	be	bhe	points	pts/s
2011	264	2.44	17	261	.935	18	27	45	0.42	11	0	232.5	2.15
TOTAL	264	2.44	17	261	.935	18	27	45	0.42	11	0	232.5	2.15

JUHL, Emily

Season	sp-mp	k	k/s	e	ta	pct	a	a/s	ta	ast%	sa	sa/s	se	ta	srv%
2010	115-30	308	2.68	133	811	.216	18	0.16	73	.247	31	0.27	62	408	.848
2011	107-30	272	2.54	81	654	.292	9	0.08	64	.141	35	0.33	56	382	.853
TOTAL	222-60	580	2.61	214	1465	.250	27	0.12	137	.197	66	0.30	118	790	.851

Season	dig	d/s	re	ta	rec%	bs	ba	tb	b/s	be	bhe	points	pts/s
2010	171	1.49	10	160	.938	6	47	53	0.46	15	0	368.5	3.20
2011	102	0.95	1	16	.938	7	68	75	0.70	4	3	348.0	3.25
TOTAL	273	1.23	11	176	.938	13	115	128	0.58	19	3	716.5	3.23

Individual Career History

LECH, Gosia

Season	sp-mp	k	k/s	e	ta	pct	a	a/s	ta	ast%	sa	sa/s	se	ta	srv%
2008	87-29	16	0.18	8	45	.178	515	5.92	1015	.507	13	0.15	24	186	.871
2009	98-30	56	0.57	27	149	.195	451	4.60	1112	.406	7	0.07	12	152	.921
2010	59-24	18	0.31	4	37	.378	152	2.58	402	.378	5	0.08	6	80	.925
2011	99-29	15	0.15	3	38	.316	32	0.32	104	.308	15	0.15	36	310	.884
TOTAL	343-112	105	0.31	42	269	.234	1150	3.35	2633	.437	40	0.12	78	728	.893

Season	dig	d/s	re	ta	rec%	bs	ba	tb	b/s	be	bhe	points	pts/s
2008	84	0.97	0	2	1.000	1	13	14	0.16	8	6	36.5	0.41
2009	82	0.84	1	4	.750	5	50	55	0.56	8	6	93.0	0.95
2010	26	0.44	1	1	.000	1	9	10	0.17	1	10	28.5	0.47
2011	48	0.48	0	0	.000	2	9	11	0.11	2	0	36.5	0.36
TOTAL	240	0.70	2	7	.714	9	81	90	0.26	19	22	194.5	0.57

LUKYANENKO, Tanya

Season	sp-mp	k	k/s	e	ta	pct	a	a/s	ta	ast%	sa	sa/s	se	ta	srv%
2010	37-17	52	1.41	16	146	.247	1	0.03	8	.125	4	0.11	1	40	.975
2011	92-26	109	1.18	48	294	.207	3	0.03	14	.214	0	0.00	4	16	.750
TOTAL	129-43	161	1.25	64	440	.220	4	0.03	22	.182	4	0.03	5	56	.911

Season	dig	d/s	re	ta	rec%	bs	ba	tb	b/s	be	bhe	points	pts/s
2010	10	0.27	0	8	1.000	2	15	17	0.46	3	0	65.5	1.76
2011	24	0.26	1	3	.667	17	82	99	1.08	7	1	167.0	1.82
TOTAL	34	0.26	1	11	.909	19	97	116	0.90	10	1	232.5	1.80

MATTINGLY, Brooke

Season	sp-mp	k	k/s	e	ta	pct	a	a/s	ta	ast%	sa	sa/s	se	ta	srv%
2009	1-1	0	0.00	0	0	.000	0	0.00	1	.000	0	0.00	0	0	.000
2010	23-14	12	0.52	6	24	.250	1	0.04	6	.167	3	0.13	2	24	.917
2011	111-31	228	2.05	92	523	.260	4	0.04	22	.182	0	0.00	0	1	1.000
TOTAL	135-46	240	1.78	98	547	.260	5	0.04	29	.172	3	0.02	2	25	.920

Season	dig	d/s	re	ta	rec%	bs	ba	tb	b/s	be	bhe	points	pts/s
2009	0	0.00	0	0	.000	0	0	0	0.00	0	0	0.0	0.00
2010	6	0.26	0	1	1.000	0	10	10	0.43	1	0	20.0	0.87
2011	32	0.29	0	1	1.000	9	75	84	0.76	9	5	274.5	2.47
TOTAL	38	0.28	0	2	1.000	9	85	94	0.70	10	5	294.5	2.18

RUCKER, Gwen

Season	sp-mp	k	k/s	e	ta	pct	a	a/s	ta	ast%	sa	sa/s	se	ta	srv%
2008	94-28	125	1.33	53	289	.249	9	0.10	31	.290	0	0.00	0	0	.000
2009	101-31	114	1.13	40	254	.291	6	0.06	18	.333	0	0.00	1	10	.900
2010	120-31	202	1.68	52	373	.402	5	0.04	40	.125	0	0.00	0	0	.000
2011	24-7	57	2.38	19	111	.342	1	0.04	10	.100	11	0.46	14	61	.770
TOTAL	339-97	498	1.47	164	1027	.325	21	0.06	99	.212	11	0.03	15	71	.789

Season	dig	d/s	re	ta	rec%	bs	ba	tb	b/s	be	bhe	points	pts/s
2008	23	0.24	1	8	.875	24	61	85	0.90	16	2	179.5	1.90
2009	23	0.23	1	5	.800	19	94	113	1.12	5	0	180.0	1.78
2010	30	0.25	1	7	.857	40	107	147	1.23	26	0	295.5	2.46
2011	17	0.71	0	4	1.000	6	24	30	1.25	2	0	86.0	3.58
TOTAL	93	0.27	3	24	.875	89	286	375	1.11	49	2	741.0	2.19

Individual Career History

WACHTEL, Maci

Season	sp-mp	k	k/s	e	ta	pct	a	a/s	ta	ast%	sa	sa/s	se	ta	srv%
2008	57-18	0	0.00	0	0	.000	7	0.12	26	.269	4	0.07	11	147	.925
2009	113-32	2	0.02	0	2	1.000	16	0.14	76	.211	9	0.08	37	370	.900
2010	98-28	4	0.04	1	5	.600	31	0.32	108	.287	3	0.03	15	193	.922
2011	103-30	0	0.00	0	1	.000	16	0.16	70	.229	0	0.00	0	0	.000
TOTAL	371-108	6	0.02	1	8	.625	70	0.19	280	.250	16	0.04	63	710	.911

Season	dig	d/s	re	ta	rec%	bs	ba	tb	b/s	be	bhe	points	pts/s
2008	67	1.18	6	88	.932	0	0	0	0.00	0	1	4.0	0.07
2009	165	1.46	30	419	.928	1	0	1	0.01	0	0	12.0	0.11
2010	177	1.81	24	350	.931	0	0	0	0.00	0	0	7.0	0.07
2011	145	1.41	13	233	.944	0	0	0	0.00	0	0	0.0	0.00
TOTAL	554	1.49	73	1090	.933	1	0	1	0.00	0	1	23.0	0.06

WELCH, Caitlin

Season	sp-mp	k	k/s	e	ta	pct	a	a/s	ta	ast%	sa	sa/s	se	ta	srv%
2010	119-31	2	0.02	3	11	-.091	75	0.63	277	.271	24	0.20	36	442	.919
2011	111-31	1	0.01	0	5	.200	104	0.94	350	.297	29	0.26	47	412	.886
TOTAL	230-62	3	0.01	3	16	.000	179	0.78	627	.285	53	0.23	83	854	.903

Season	dig	d/s	re	ta	rec%	bs	ba	tb	b/s	be	bhe	points	pts/s
2010	457	3.84	33	748	.956	0	0	0	0.00	0	0	26.0	0.22
2011	487	4.39	42	981	.957	0	0	0	0.00	0	2	30.0	0.27
TOTAL	944	4.10	75	1729	.957	0	0	0	0.00	0	2	56.0	0.24

Career single-match highs

ARSLANBEKOVA, Lola

Kills: 30, at Illinois, Sep 17, 2011
Attacks: 78, at Illinois, Sep 17, 2011
Attack pct: .571, UCONN, Sep 25, 2011 (18-2-28)
Assists: 3, Notre Dame, Oct 09, 2010; at Ball State, Sep 05, 2009; TOLEDO, Sep 12, 2009
Serve aces: 4, vs PITTSBURGH, Nov 18, 2011; vs IPFW, Sep 05, 2009
Digs: 23, at Villanova, Nov 11, 2011
Blocks: 5, UT, Nov 02, 2011
Block solo: 3, UT, Nov 02, 2011
Block assist: 4, at Georgetown, Nov 08, 2009; at Notre Dame, Oct 11, 2009

BRAUNEIS, Taylor

Kills: 7, at Seton Hall, Oct 07, 2011; at Tennessee, Oct 27, 2010
Attacks: 18, at Tennessee, Oct 27, 2010
Assists: 56, at Notre Dame, Oct 02, 2011
Serve aces: 4, EASTERN ILLINOIS, Sep 03, 2011
Digs: 18, Cincinnati, Oct 16, 2010
Blocks: 6, vs Kansas State, Aug 27, 2011
Block solo: 2, VILLANOVA, Oct 29, 2010
Block assist: 5, vs Kansas State, Aug 27, 2011; at Syracuse, Nov 14, 2010

JAMES, Kaitlynn

Kills: 12, vs PITTSBURGH, Nov 18, 2011
Attacks: 33, at Villanova, Nov 11, 2011; vs PITTSBURGH, Nov 18, 2011; at Kentucky, Sep 07, 2011
Attack pct: .292, WVU, Oct 22, 2011 (8-1-24)
Assists: 2, 4 times
Serve aces: 2, 6 times
Digs: 18, at Villanova, Nov 11, 2011
Blocks: 5, at Ohio, Sep 09, 2011
Block solo: 3, MOREHEAD ST, Nov 26, 2011
Block assist: 3, WVU, Oct 22, 2011; at Ohio, Sep 09, 2011

JUHL, Emily

Kills: 17, at Georgia Tech, Aug 27, 2011
Attacks: 45, at Kentucky, Sep 01, 2010
Attack pct: .565, vs Cincinnati, Nov 21, 2010 (13-0-23)
Assists: 3, at Connecticut, Oct 01, 2010
Serve aces: 7, at WVU, Nov 07, 2010
Digs: 16, vs Butler, Sep 04, 2010
Blocks: 7, at Kentucky, Sep 01, 2010
Block solo: 2, vs Cincinnati, Nov 21, 2010
Block assist: 7, at Kentucky, Sep 01, 2010

LECH, Gosia

Kills: 9, TTU, Sep 11, 2009
Attacks: 16, BELMONT, Aug 29, 2009
Assists: 54, vs Notre Dame, Nov 22, 2009
Serve aces: 3, 4 times
Digs: 12, at USF, Nov 06, 2009
Blocks: 7, JACKSONVILLE STATE, Nov 28, 2009
Block solo: 2, JACKSONVILLE STATE, Nov 28, 2009; TOLEDO, Sep 12, 2009
Block assist: 5, 5 times

Career Single-Match Highs

LUKYANENKO, Tanya

Kills: 12, at Connecticut, Oct 01, 2010
Attacks: 26, at St. John's, Oct 03, 2010
Attack pct: .435, at Connecticut, Oct 01, 2010 (12-2-23)
Assists: 1, 5 times
Serve aces: 2, DePaul, Oct 10, 2010
Digs: 3, UT, Nov 02, 2011; at Connecticut, Oct 01, 2010; PITTSBURGH, Oct 23, 2011
Blocks: 9, at Georgetown, Nov 13, 2011; at Notre Dame, Oct 02, 2011
Block solo: 2, at Georgetown, Nov 13, 2011; at Illinois, Sep 17, 2011
Block assist: 9, at Notre Dame, Oct 02, 2011

MATTINGLY, Brooke

Kills: 15, vs PITTSBURGH, Nov 18, 2011
Attacks: 34, at Villanova, Nov 11, 2011
Attack pct: .571, vs PITTSBURGH, Nov 18, 2011 (15-3-21)
Assists: 1, 5 times
Serve aces: 2, Rutgers, Sep 25, 2010
Digs: 4, vs Notre Dame, Nov 19, 2011; at Rutgers, Oct 09, 2011; vs Purdue, Sep 16, 2011
Blocks: 6, WVU, Oct 22, 2011; EASTERN ILLINOIS, Sep 03, 2011; vs Marshall, Sep 10, 2011
Block solo: 1, 9 times
Block assist: 6, WVU, Oct 22, 2011; EASTERN ILLINOIS, Sep 03, 2011

RUCKER, Gwen

Kills: 13, at Purdue, Dec 04, 2010
Attacks: 27, at Syracuse, Oct 26, 2008
Attack pct: .522, at Purdue, Dec 04, 2010 (13-1-23)
Assists: 4, vs UIC Flames, Sep 13, 2008
Serve aces: 4, vs Kansas State, Aug 27, 2011
Digs: 5, EASTERN ILLINOIS, Sep 03, 2011
Blocks: 13, Cincinnati, Oct 16, 2010
Block solo: 4, JACKSONVILLE STATE, Nov 28, 2009; at Arizona, Sep 03, 2010
Block assist: 10, Cincinnati, Oct 16, 2010

WACHTEL, Maci

Kills: 2, BELMONT, Aug 29, 2009
Attacks: 2, BELMONT, Aug 29, 2009
Assists: 3, 5 times
Serve aces: 2, DePaul, Oct 10, 2010; at Villanova, Sep 27, 2009
Digs: 15, Cincinnati, Oct 16, 2010
Blocks: 1, ST. John's, Nov 13, 2009
Block solo: 1, ST. John's, Nov 13, 2009

WELCH, Caitlin

Kills: 1, AUSTIN PEAY, Nov 27, 2010; DePaul, Oct 10, 2010; vs Marshall, Sep 10, 2011
Attacks: 2, Notre Dame, Oct 09, 2010; vs Butler, Sep 04, 2010
Assists: 10, USF, Oct 24, 2010
Serve aces: 4, at Purdue, Dec 04, 2010
Digs: 29, at Villanova, Nov 11, 2011