



Years	Coach	Yrs.	Won	Lost	Pct.
1911-1912	William Gardiner	1	0	3	.000
1912-1915	Coached by Players	3	8	14	.363
1915-1918	Ed Bowman	2*	11	7	.611
1918-1919	Earl Ford	1**	7	4	.636
1919-1920	Tuley Brucker	1	6	5	.545
1920-1921	Jimmie Powers	1	3	8	.272
1921-1922	Dr. John T. O'Rourke	1	1	13	.071
1922-1923	No Formal Team				
1923-1925	Fred Enke, Sr.	2	14	20	.411
1925-1930	Tom King	5	44	31	.586
1930-1932	Eddie Weber	2	20	18	.526
1932-1936	C.V. (Red) Money	4	46	40	.534
1936-1940	Lawrence E. (Laurie) Apitz	4	10	52	.161
1940-1942	John C. Heldman, Jr.	2	9	24	.272
1942-1943	No Formal Team				
1943-1944	C.Spec. Harold Church and C.Spec. Walter Casey	1	10	10	.500
1944-1967	Bernard L. (Peck) Hickman	23	443	183	.708
1967-1971	John Dromo	4***	68	23	.747
1970-1971	Howard Stacey	1****	12	8	.600
1971-2001	Denny Crum	30	675	295	.696
2001-2003	Rick Pitino	2	44	20	.688
Totals		88	1431	778	.648

* There was no formal team in 1916-17. Also, Bowman coached the opening season loss in 1918-19, then turned the team over to Earl Ford.
 ** Earl Ford was named head coach after the 1918-19 season opener.
 *** John Dromo suffered a heart attack after nine games in 1970-71 and did not complete his fourth season.
 **** Assistant Coach Howard Stacey was named interim head coach on Jan. 3, 1971, following John Dromo's heart attack. Stacey served as U of L's head coach for the final 20 games of the 1970-71 season.



Bernard "Peck" Hickman
1944-1967

Before Bernard "Peck" Hickman arrived, U of L had produced only one winning season in its previous nine. Hickman promptly turned the Cardinals' program around, guiding his initial U of L team in 1944 to a 16-3 record and starting a string of 46 consecutive winning seasons for the Cardinals. In 23 seasons at U of L (1944-67), Hickman directed the Cardinals to a 443-183 overall record, a .708 winning percentage that ranks him among the top 45 NCAA Division I coaches of all time.

He never had a team with a losing record, produced eleven 20-win seasons at U of L and averaged over 19 victories a season. He guided the Cardinals to five NCAA Tournament appearances and six NIT appearances. In only his fourth season at U of L, Hickman's Cardinals won the National Association of Intercollegiate Basketball Tournament (NAIB) in 1948, the school's first national championship. Eight years later, his 1956 team won the NIT championship. He directed U of L to its first NCAA Final Four appearance in 1959.

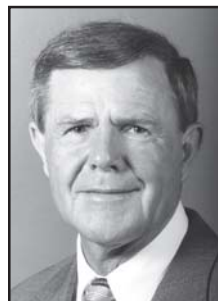
Hickman took over the administrative responsibilities of serving as U of L's Director of Athletics in 1954. He remained in the dual role of athletic director and head basketball coach until his retirement from coaching in 1967. His .708 winning percentage ranked seventh among active major college coaches when he retired to devote full time to his athletic director duties, a position he held until 1973. He died at the age of 88 on Feb. 20, 2000.



John Dromo
1967-71

John Dromo joined University of Louisville staff as an assistant coach in both football and basketball in 1948, beginning the longest coaching tenure in U of L history. He remained an assistant football coach under Frank Camp until 1951, when he gave up football to become the Cardinals' head golf coach. While an assistant for 17 years under Bernard "Peck" Hickman, U of L produced a 359-162 record, won the 1956 NIT Championship, played in five NCAA Tournaments and reached the 1959 NCAA Final Four.

He succeeded Hickman as head coach in 1967, compiling a 68-23 record (.747 winning percentage) in nearly four seasons as U of L's head basketball coach (1967-71). His first U of L team was 21-7, won the Missouri Valley Conference title and went to the NCAA Tournament. A heart attack during the 1970-71 season forced Dromo from continuing as the Cardinals' basketball coach. He died on Sept. 29, 1992 at the age of 76.



Denny Crum
1971-2001

One of the most impressive eras in collegiate basketball came to an end following the 2000-01 season as former U of L Coach Denny Crum retired after 30 seasons with the Cardinals.

The man admirably labeled "Cool Hand Luke" by former commentator Al McGuire was inducted into the Basketball Hall of Fame on May 9, 1994.

He directed Louisville to the 1980 and the 1986 NCAA Championships, ranking him as one of only 10 coaches in NCAA history to win two or more titles.

Six times he guided the Cardinals into the NCAA Final Four, including four times in the decade of the '80s. Only three coaches all-time coached more Final Four teams than Crum.

He directed the Cardinals to 23 NCAA Tournament appearances. Three of his squads participated in the NIT, reaching the NIT semifinals in 1985. The Cardinals captured or shared 12 Metro Conference regular season titles and 11 post-season tournament championships under Crum's guidance. Crum engineered U of L to 20 or more victories in 21 of his 30 seasons.

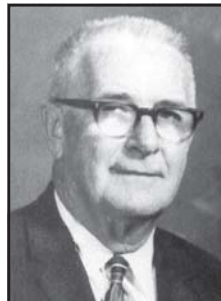
Crum's 675 victories rank him 15th all-time, holding a 675-295 career record. His NCAA Tournament mark is 42-23. He retired at the conclusion of the 2000-01 season and continues to work as a special assistant to the U of L president.



Dr. John T. O'Rourke
1921-22



Fred Enke
1923-25



Edward Weber
1930-32



C.V. Money
1932-36



Lawrence Apitz
1936-40



John Heldman, Jr.
1940-42





U of L's Overtime Record

U of L All-Time Assistant Coaches

Name	Years
Lawrence Apitz	1940-42
Mick Cronin	2001-03
Scott Davenport	1996-2001
Bobby Dotson	1980-88
John Dromo	1948-67
Jerry Eaves	1996-99
Larry Gay	1989-96
John Heldman	1936-40, '44-47
Wade Houston	1976-89
Jerry Jones	1973-96
Tommy Kienzle	1926-28
Dana Kirk	1971-76
Dave Lawrence	1947-48
Scotter McCray	1988-98
Bill Olsen	1969-80
T.L. Plain	1967-69
Pat Rafferty	1999-2001
Howard Stacey	1966-71
Vince Taylor	1998-current
Reggie Theus	2003-current
Eddie Weber	1929-30
Kevin Willard	2001-current

Career 1,000-Point Scorers

1. North Carolina 53
2. Louisville 52
3. Duke 50
4. Kentucky 49
5. Kansas 45
6. Syracuse 45
7. Notre Dame 42
8. Marshall 42
9. Wake Forest 41
10. St. John's 40

U of L's Overtime Record

Year	Opponent	Site	Result	Year	Opponent	Site	Result
1919-20	Cumberland	Cumberland	L 38-40	1975-76	West Texas St.	Louisville	L 78-84
1921-22	Centre	Louisville	L 18-27		Idaho St.*	Idaho	W 52-51
1926-27	Oakland City	Louisville	L 29-30		Tulsa	Louisville	W 98-90
	Rose Poly*	Rose Poly	W 41-39		Wichita	Wichita	L 74-78
1928-29	Concordia Seminary*	Concordia	W 29-27	1976-77	Vanderbilt	Nashville	W 81-76
1930-31	Berea*	Louisville	W 28-24		Marquette	Milwaukee	W 78-75
1931-32	Union (KY)	Louisville	W 28-27		Creighton*	Louisville	W 69-66
1933-34	Centre	Louisville	W 30-26		Florida St.	Louisville	W 78-75
	Transylvania*	Lexington	L 36-37	1977-78	DePaul*	Kansas	L 89-90
1934-35	Centre	Louisville	W 38-35	1979-80	Virginia Tech	Blacksburg	W 56-54
1935-36	Centre	Louisville	W 46-45		Kansas St.	Nebraska	W 71-69
	Transylvania	Louisville	L 35-37		Texas A & M	Texas	W 66-65
1937-38	Oakland City	Louisville	L 40-43	1980-81	Memphis St.	Memphis	L 55-60
	Georgetown College	Louisville	W 46-43		Florida St.	Tallahassee	W 82-73
1939-40	Ky. Wesleyan	Louisville	L 44-48	1981-82	Virginia Tech	Blacksburg	L 74-75
1943-44	Bowman Field	Louisville	L 37-39		Memphis St.	Memphis	L 65-74
1948-49	Seton Hall	New Jersey	W 71-69	1982-83	Memphis St.	Louisville	W 64-62
	Xavier	Louisville	W 64-57		Kentucky	Tennessee	W 80-68
1949-50	Washington (Mo.)	St. Louis	L 57-61	1983-84	Virginia Tech	Louisville	W 83-79
1951-52	Dayton	Dayton	W 79-76	1986-87	Northeastern	Alaska	L 84-88
1952-53	Temple*	Philadelphia	W 85-77		So. Mississippi	Louisville	W 85-84
1954-55	Dayton	Dayton	L 67-71	1987-88	Cincinnati	Cincinnati	W 91-89
	Eastern Kentucky	Richmond	L 77-79		South Carolina*	Columbia	W 98-88
1955-56	Notre Dame	Notre Dame	W 80-75	1988-89	Florida State	Tallahassee	W 78-77
	Dayton	Ohio	W 66-64	1989-90	Ohio State	Columbus	L 88-91
1956-57	Dayton	Louisville	W 61-53	1991-92	Tulane	Louisville	L 87-83
1957-58	Xavier**	Cincinnati	L 80-82		UNC Charlotte	Charlotte	L 77-68
1958-59	NC State	Raleigh	L 61-67		Arizona State	Tempe	W 63-62
1961-62	DePaul**	Louisville	L 78-79	1992-93	Va. Commonwealth	Richmond	W 90-88
1962-63	Dayton	Dayton	L 65-70	1993-94	Western Kentucky	Louisville	W 78-73
	Xavier	Cincinnati	W 70-68		Va. Commonwealth	Louisville	L 89-93
	Dayton	Louisville	W 61-55		Notre Dame	South Bend	W 85-82
	DePaul	Louisville	W 71-69	1994-95	Tulane	Louisville	W 82-81
1963-64	Ohio	Illinois	L 69-71	1995-96	Marquette*	Louisville	L 79-80
1964-65	No. Texas State	Texas	W 70-68		Tulsa	Milwaukee	W 82-80
	Cincinnati**	Louisville	W 82-80	1996-97	LSU	Anaheim, Ca.	W 93-87
1965-66	Miami (Fla.)	Miami	W 85-84		Arkansas	Fayetteville	W 91-88
	Boston College**	New York	L 90-96		Boston College*	Louisville	W 89-85
1966-67	Southern Illinois*	Louisville	W 70-66		Texas	Austin	W 85-78
1967-68	Kansas*	Louisville	L 76-84		Marquette	Milwaukee	L 71-79
	Wichita St.	Wichita	W 93-91		South Mississippi	Hattiesburg	W 75-72
	Tulsa	Louisville	W 76-67	1997-98	DePaul	Chicago	W 85-82
1968-69	St. Louis*	St. Louis	W 81-80	1999-00	Marquette	Milwaukee	L 64-66
	Tulsa	Louisville	W 83-81	2000-01	UNLV	Maui, Hawaii	W 86-85
1969-70	St. Louis	Louisville	W 62-60		Tulane	New Orleans	W 87-84
1970-71	Wichita St.	Louisville	W 98-97		Marquette**	Milwaukee	W 77-74
1971-72	Drake*	Des Moines	W 79-77	2001-02	Charlotte	Louisville	W 90-88
1972-73	Wichita St.*	Wichita	W 78-75	2002-03	Ohio State	Columbus	W 72-64
1973-74	Bradley	Peoria	W 87-84		DePaul	Chicago	L 76-79
1974-75	Bradley	Louisville	W 82-80				
	Drake	Louisville	W 55-53				
	UCLA	San Diego	L 74-75				
	Syracuse	San Diego	W 96-88				

* Double Overtime ** Triple Overtime

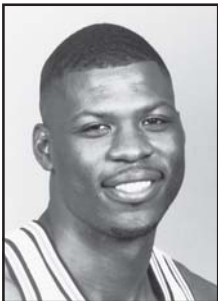
1,000-Point Scorers

Alex Sanders Career Statistics

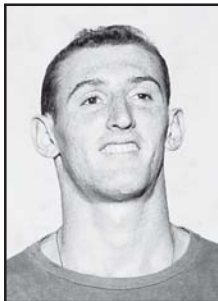
Year	G-GS	Min	FGM-FGA	Pct	3Pt-Att	Pct	FTM-FTA	Pct	Reb-Avg	PF-D	Ast-Avg	To	Blk	St	Pts-Avg
1996-97	35-35	1036	137-283	.484	30-89	.337	48-78	.615	201-5.7	87-3	63-1.8	76	12	46	352-10.1
1997-98	32-32	978	137-294	.466	32-104	.308	30-61	.492	191-6.0	75-1	95-3.0	56	17	31	336-10.5
1998-99	30-28	833	134-272	.493	31-99	.313	44-73	.603	188-6.3	72-1	75-2.5	51	25	28	343-11.4
Career	97-95	2847	408-849	.481	93-292	.318	122-212	.575	580-6.0	234-5	233-2.4	183	54	105	1031-10.6

Don Goldstein Career Statistics

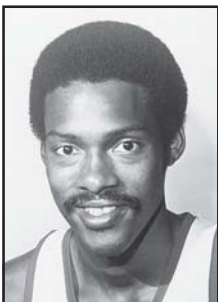
Year	G	Min	FGM-FGA	Pct	3Pt-Att	Pct	FTM-FTA	Pct	Reb-Avg	PF	To	Pts-Avg
1956-57	26	780	110-270	.410	--	--	65-86	.760	238-9.7	70	--	285-11.0
1957-58	24	--	117-340	.344	--	--	73-98	.745	--	--	--	307-12.8
1958-59	31	--	156-400	.390	--	--	115-153	.750	342-11.0	108	--	427-13.8
Career	81	--	383-1010	.380	--	--	253-337	.751	--	--	--	1019-12.8



Alex Sanders



Don Goldstein



Junior Bridgeman

Bridgeman Receives NCAA Silver Anniversary Award

Former U of L All-America **Junior Bridgeman** received the NCAA Silver Anniversary Award at the Jan. 9, 2000 honors dinner during the NCAA Convention in San Diego. The Silver Anniversary Award recognizes six former student-athletes who have distinguished themselves since completing their collegiate athletic careers 25 years ago. Bridgeman led Louisville to the 1975 Final Four as a senior, then went on to a distinguished 12-year career in the NBA before embarking on a successful career in restaurant management. He currently serves on the U of L Board of Trustees and Athletics Association Board of Directors.

