



LONG BEACH STATE WOMEN'S SOCCER

Contact: Andrea Ohta Phone: (562) 985-8569 Email: aohta@csulb.edu

www.longbeachstate.com | 1250 Bellflower Blvd. Long Beach, CA 90840 | Updated: Nov. 22, 2011

2011 Schedule/Results

Overall Record: 18-5-1 Big West Record: 6-2-0

Home: 10-1-0 Away: 6-4-1 Neutral: 2-0-0

Date	Opponent	Time/Result
Aug. 19	at #25 USC	W, 2-1
Aug. 21	Sacramento State	W, 3-0
Aug. 26	^ at Milwaukee	L, 3-2
Aug. 28	^ at #12 Marquette	L, 2-1
Sept. 2	Princeton	W, 3-1
Sept. 4	Hawaii	W, 3-0
Sept. 9	California	L, 2-0
Sept. 11	at San Diego State	T (2ot), 1-1
Sept. 16	at San Diego	W, 1-0
Sept. 18	Saint Mary's	W, 6-0
Sept. 23	UNLV	W, 4-1
Sept. 30	* at UC Santa Barbara	W (ot), 2-1
Oct. 2	* at Cal Poly	W, 6-0
Oct. 9	Cal State Fullerton	W (ot), 2-1
Oct. 14	* at Cal State Northridge	L, 1-0
Oct. 16	* at UC Irvine	L, 2-0
Oct. 21	UC Riverside	W, 1-0
Oct. 28	UC Davis	W, 2-0
Oct. 30	Pacific	W, 4-2
Nov. 3	% Cal State Northridge	W, 2-0
Nov. 6	% at #16 UC Irvine	W, 1-0
Nov. 12	\$ at #7 Pepperdine	W (ot), 1-0
Nov. 18	& vs. Miami (Fla.)	W, 1-0
Nov. 20	& vs. San Diego	W, 1-0
Nov. 25	! at #3 Duke	4 p.m.

* Big West Conference game
 ^ Milwaukee Cup (Milwaukee, Wis.)
 % Big West Tournament
 \$ NCAA Tournament First Round (Malibu, Calif.)
 & NCAA Tournament Second & Third Rounds (at UCLA)
 ! NCAA Quarterfinals (Durham, N.C.)
 Home games in **bold**
 All times Pacific

QUICK FACTS

Location	Long Beach, Calif.
Founded	1949
Enrollment	33,419
Nickname	49ers
Colors	Black and Gold
Conference	Big West
President	Dr. F. King Alexander
Athletics Director	Vic Cegles
Head Coach	Mauricio Ingrassia
Record at LBSU	96-53-17 (8th year)
Career Record (NCAA Division I)	Same
2010 Overall Record	14-6-2
2010 Big West Record	5-2-1 (2nd)
Postseason	NCAA First Round
Letterwinners Returning/Lost	16/9
Starters Returning/Lost	6/5
Redshirts Returning	2
Newcomers	13
All-Time Record	179-140-37 (18th year)

MEDIA INFORMATION

To arrange interviews and/or photo shoots with coaches and/or student-athletes, please contact Andrea Ohta at (562) 985-8569 at least 24 hours in advance. Recaps, box scores and other information is available at www.longbeachstate.com, the official website of Long Beach State athletics.



Game 25
NCAA Elite Eight
at #3 Duke (20-3-1)
Date: Friday, Nov. 25
Time: 4 p.m. (PST)
Location: Koskinen Stadium
Series Record
 Duke leads, 1-0-0
Last Meeting
 Sept. 11, 2004
 Duke 3, LBSU 0
 at Honolulu, Hawaii

NO. 8 49ERS CONTINUE HISTORIC SEASON WITH ELITE EIGHT SHOWDOWN AT NO. 3 DUKE ON FRIDAY

The No. 8 Long Beach State women's soccer team will continue its historic season on Friday, Nov. 25, when it takes on top-seeded and third-ranked Duke in the quarterfinals of the NCAA Tournament. Kick-off is set for 4 p.m. (PST) at Koskinen Stadium in Durham, N.C.

THIRD TIME'S A CHARM

Long Beach State is making its second consecutive appearance in the NCAA Division I Women's Soccer Championship. LBSU, which earned its first-ever bid in 2008, has now made the 64-team bracket three times in the last four years.

The third time has been the charm for the 49ers as they not only earned the program's first NCAA Tournament win, but they are also the only team in Big West Conference history to advance to the Elite Eight. Cal State Fullerton (2005) and UC Irvine (2010) are the other two Big West programs to earn a postseason victory as they reached the Sweet 16.

DEFENSIVE MINDED

Long Beach State is one of just three teams in the Elite Eight that has yet to allow a goal in the NCAA Tournament. The 49ers posted three straight 1-0 victories to advance to the quarterfinals. Top-ranked Stanford and No. 6 Virginia are the only other two schools to record a shutout in each of their first three games.

Dating back to the regular season, LBSU has posted five consecutive shutouts and has blanked its opponent in seven of the last eight contests.

KEEPING THE STREAK ALIVE

With its victory over San Diego in the Sweet 16, LBSU extended its season-long winning streak to eight games. That is also a school record, eclipsing the previous best of six games which was set in 2008 and 2010.

The 49ers also have an impressive streak going on the defensive end as they have not allowed a goal in 447 minutes.

IN THE POLLS

LBSU jumped 13 spots to No. 8 in the most recent *TopDrawerSoccer.com* poll released on Nov. 21. The 49ers also finished the regular season ranked 24th in the *Soccer America* poll and was receiving votes in the NSCAA poll (Nov. 8). Long Beach State has been in the top 25 six times this year with its highest ranking during the regular season coming at No. 22 in the NSCAA poll released on Oct. 11.



**HEAD COACH
MAURICIO INGRASSIA
Eighth Season**

Long Beach State soccer has risen to new levels under eighth-year head coach Mauricio Ingrassia, winning the program's first Big West Tournament championship in 2010, claiming an unprecedented three consecutive conference regular season titles from 2006-08, and making the program's first-ever NCAA Tournament appearances in 2008 and 2010.

Ingrassia has compiled an impressive 78-48-16 overall record in his seven years at the helm. He has led the 49ers to a Big West title in four of the last five years. During that span, LBSU has posted a 24-12-3 mark (.615) in conference play.

After being picked to finish sixth in the 2010 Big West Preseason Poll, the 49ers exceeded expectations, claiming the program's first Big West Tournament title and advancing to the NCAA Championships for the second time in the last three years. LBSU tied the school's win record, finishing with a 14-6-2 overall mark and was second in the Big West regular season standings at 5-2-1.

In 2008, the 49ers went 14-5-4, tying the single-season record for wins, while also establishing school records in goals (44), assists (37), points (125) and shots (326). The record-breaking campaign, which saw Long Beach State go undefeated in league play at 7-0-1, culminated in the program's third-straight Big West regular season title, its first at-large bid to the NCAA Division I Women's Soccer Championship and its first appearance in the conference tournament finals.

In 2005, the nation's 15th-ranked recruiting class quickly paid dividends, going 12-5-3, as Bolt was named the Big West Conference's Co-Freshman of the Year and joined Kim Silos as a freshman All-American, firsts for the LBSU program, as were the national and regional rankings during the season.

A year older in 2006, the squad broke the school record for victories in a season, going 14-5-1 and winning the franchise's first Big West regular season title. LBSU also established itself in the top 25, remaining there for a good portion of the season. The defensive unit ranked 19th nationally in goals against average (0.64).

In 2007, the 49ers won their second consecutive Big West title after posting a 5-2-0 mark in conference action. Despite outshooting Cal Poly 21-to-3 in the Big West Tournament semifinals, the 49ers fell by a single goal.

Prior to Long Beach State, Ingrassia won five state titles at Long Beach City College, the most by any coach in California history (1997, 2000, 2001, 2002, 2003). The Vikings finished the season ranked in the nation's top five in five of his final seven years, including a No. 1 ranking in 2002 and 2003. Overall, Ingrassia went 184-24-8 (.870), and ended on a 55-game unbeaten streak which began in October, 2001. From 2000-03, the Vikings went an astounding 95-3-1 (.965), starting with a 25-2-0 record in 2000, followed by marks of 24-1-0, and 24-0-1. In 2003 they went 22-0-0.

LBCCC won five South Coast Conference titles (1997, 2000, 2001, 2002, 2003), and made the playoffs eight times. The Vikings earned their first playoff berth in school history in 1996.

Ingrassia graduated from Cal State Fullerton in 1995 with a degree in psychology and earned his master's at Azusa Pacific in 1998. He has one daughter, Madison.

ANOTHER YEAR, ANOTHER TITLE

Since Mauricio Ingrassia took over the helm of the 49er women's soccer team in 2004, the program has established itself as one of the dominant forces in the Big West. The 49ers have won either a regular season or tournament championship in five of the last six years. LBSU, which has made an appearance in the conference finals in three of the last four seasons, recently claimed its second consecutive Big West Tournament title, and also won an unprecedented three straight regular season championships from 2006-08.

SIX 49ERS NAMED TO ALL-BIG WEST TEAM

Nadia Link and Shawna Gordon highlighted the postseason awards for Long Beach State as they were named the Big West Offensive Player and Midfielder of the Year, respectively. The duo, along with Alex Balcer, also earned first-team All-Big West honors. Kaitlyn Gustaves and Jordan Nelson were second-team selections, while Nicole Hubbard garnered honorable mention recognition.

SCOUTING THE BLUE DEVILS

Duke (20-3-1), which is undefeated at home with a 13-0-1 mark, advanced to the Elite Eight for the third time in school history with a 2-1 win over Ohio State. The Blue Devils were trailing, 1-0, at the break, but scored twice in the second half for the comeback victory. The last time Duke was in the NCAA quarterfinals was in 2008.

Kelly Cobb has paced the Blue Devils with 11 goals, eight assists and 30 points, while Kaitlyn Kerr has chipped in 10 goals. Mollie Pathman leads the team in assists with 10. On the defensive end, goalkeeper Tara Campbell has played in all 24 games, registering a 0.45 goals against average, 12 shutouts and 67 saves.

SERIES RECORD

Long Beach State trails in its short all-time series with Duke, 1-0. The two teams met in Honolulu, Hawaii, at the Outriggers Hotel Classic on Sept. 11, 2004. The Blue Devils prevailed, 3-0.

NEARING A MILESTONE

Eighth-year head coach Mauricio Ingrassia is closing in on the century mark for career wins at Long Beach State. Against UC Davis (Oct. 28), he picked up his 90th victory as he has led the 49ers to a 10-plus win season six times. Ingrassia is 96-53-17 at LBSU.

LAST TIME OUT

Long Beach State continued its historic season with a 1-0 win over San Diego on a rainy Sunday afternoon at UCLA's Drake Stadium, putting the 49ers in the Elite Eight for the first time in program history. Freshman Ashley Roese delivered the game-winner at the 56-minute mark when she worked to get free

NSCAA National Rankings Week 12 - November 8

No.	School	Record
1.	Stanford	19-0-1
2.	UCLA	15-1-3
3.	Duke	17-3-1
4.	Oklahoma State	19-1-2
5.	Memphis	21-0-1
6.	Wake Forest	14-3-4
7.	Pepperdine	15-1-4
8.	Virginia	14-4-2
9.	Florida State	14-6-1
10.	West Virginia	17-4-0
11.	Santa Clara	13-2-5
12.	Marquette	17-3-0
13.	Penn State	19-4-0
14.	Boston University	18-2-1
15.	Wisconsin-Milwaukee	18-2-0
16.	Illinois	16-4-2
17.	Texas A&M	15-5-2
18.	Maryland	10-5-4
19.	North Carolina	11-5-1
20.	Florida	16-7-0
21.	Boston College	11-5-2
22.	South Carolina	15-6-0
23.	Oregon State	13-5-2
24.	Auburn	14-6-2
25.	William & Mary	17-2-2

Also Receiving Votes: Dayton, **UC Irvine**, **San Diego**, *LONG BEACH STATE*, Tennessee, Michigan State, Louisville, Virginia Tech, LSU, La Salle, Notre Dame.

Soccer America Top 25 Poll Week 12 - November 8

No.	School	Record
1.	Stanford	19-0-1
2.	UCLA	15-1-3
3.	Memphis	21-0-1
4.	Oklahoma State	19-1-2
5.	Duke	17-3-1
6.	Florida State	14-6-1
7.	Wake Forest	14-3-4
8.	Virginia	14-4-2
9.	West Virginia	17-4-0
10.	Pepperdine	14-1-4
11.	Wisconsin-Milwaukee	18-2-0
12.	Boston University	18-2-1
13.	Illinois	16-4-2
14.	William & Mary	17-2-2
15.	Texas A&M	15-5-2
16.	Penn State	19-4-0
17.	Santa Clara	13-2-5
18.	North Carolina	11-5-1
19.	Marquette	17-3-0
20.	Auburn	14-6-2
21.	UC Irvine	14-4-2
22.	Boston College	11-5-2
23.	La Salle	15-1-3
24.	<i>LONG BEACH STATE</i>	15-5-1
25.	Maryland	10-5-4

*2011 opponents in **bold**.

2011 SEASON SUPERLATIVES**49er Team Highs**

Points20, vs. Saint Mary's (9/18/11)
 Goals..... 6, 2x, last at Cal Poly (10/2/11)
 Assists.....8, vs. Saint Mary's (9/18/11)
 Shots.....19, at Cal Poly (10/2/11)
 SOG14, at Cal Poly (10/2/11)
 Saves 12, at Pepperdine (11/12/11)
 CKs 9, at UCSB (9/30/11)
 Fouls 19, vs. Miami (11/18/11)

Opponent Team Highs

Points 7, 2x, last vs. Pacific (10/30/11)
 Goals..... 3, at Milwaukee (8/26/11)
 Assists.....3, vs. Pacific (10/30/11)
 Shots..... 18, 2x, last at UCI (10/16/11)
 SOG 12, at Pepperdine (11/12/11)
 Saves 8, 2x, last vs. UCD (10/28/11)
 CKs 9, at SDSU (9/21/11)
 Fouls16, at Cal Poly (10/2/11)

49er Team Lows

Points 0, 3x, last at UCI (10/16/11)
 Goals..... 0, 3x, last at UCI (10/16/11)
 Assists..... 0, 6x, last vs. San Diego (11/20/11)
 Shots.....5, 2x, last at UCI (11/6/11)
 SOG 1, vs. Cal (9/9/11)
 Saves0, vs. UCR (10/21/11)
 CKs 1, 2x, last vs. San Diego (11/20/11)
 Fouls5, at UCI (10/16/11)

Opponent Team Lows

Points 0, 12x, last vs. San Diego (11/20/11)
 Goals.... 0, 12x, last vs. San Diego (11/20/11)
 Assists.... 0, 14x, last vs. San Diego (11/20/11)
 Shots 3, at UCSB (9/30/11)
 SOG0, vs. UCR (10/21/11)
 Saves 1, 6x, last vs. San Diego (11/20/11)
 CKs 0, 3x, last at UCI (10/16/11)
 Fouls 3, at San Diego (9/16/11)

49er Player Game Highs

Points6, Two Times
Gordon vs. Saint Mary's (9/18/11)
Hubbard vs. Saint Mary's (9/18/11)
 Goals..... 3, Nicole Hubbard
vs. Saint Mary's (9/18/11)
 Assists.....4, Shawna Gordon
vs. Saint Mary's (9/18/11)
 Shots..... 7, Nadia Link
at Cal Poly (10/2/11)
 Saves 9, Kaitlyn Gustaves
 vs. CS Fullerton (10/9/11)

49ERS' RECORD WHEN...

Scoring 0-2 goals 11-5-1
 Scoring 3-5 goals 5-0-0
 Scoring 6 or more goals 2-0-0
 Opponent scores 0-2 goals 18-4-1
 Opponent scores 3-5 goals 0-1-0
 Opponent scores 6 or more goals 0-0-0
 Scoring first 15-1-1
 Opponent scores first 3-4-0

vs. ACC 1-0-0
 vs. BIG EAST 0-1-0
 vs. Big Sky 1-0-0
 vs. Big West 8-2-0
 vs. Horizon League 0-1-0
 vs. Ivy League 1-0-0
 vs. Mountain West 1-0-1
 vs. Pac-12 1-1-0
 vs. WAC 1-0-0
 vs. WCC 4-0-0
 vs. Top 25 Opponents 3-2-0

in August 2-2-0
 in September 6-1-1
 in October 5-2-0
 in November 5-0-0

Playing on Sunday 8-2-1
 Playing on Thursday 1-0-0
 Playing on Friday 8-3-0
 Playing on Saturday 1-0-0

in the box before scoring from close range in a one-on-one situation with Torero goalkeeper Courtney Parsons. It was Roese's first career goal. The 49ers finished with eight shots, including two each from Roese, Nadia Link and Sierra Mack. Kaitlyn Gustaves had two saves en route to her fifth consecutive shutout and 12th of the season.

A SEASON FOR THE BOOKS

Long Beach State has enjoyed an historic season in 2011. In addition to claiming their second consecutive Big West Tournament title and winning their first-ever NCAA Tournament games, the 49ers have notched single-season records in goals (49), assists (52) and points (150). LBSU has also shattered the old record of 14 wins that the 2006, 2008 and 2010 clubs established as it has totaled 18 victories in 2011. The 49ers have registered their sixth 10-win campaign in the last seven years.

Individually, Nadia Link is tied at the top of the single-season charts with 16 goals and sits at No. 2 with 42 points. In addition, Link and Shawna Gordon are tied for third with 10 assists as they trail only Janet Fettig (13) and Annette Fernandez (12), who both posted their top numbers in 1984.

ONE SHINING MOMENT

Freshman Ashley Roese made her first career goal one to remember as she scored the game-winner in a 1-0 victory over San Diego that put the 49ers in the NCAA Elite Eight. In the 56th minute, Roese worked to get free in the box before chipping a shot past a lunging USD goalkeeper in a one-on-one situation. The Arroyo Grande native was playing in just her ninth game of the season. Prior to the goal, Roese had two points as she notched a pair of assists in a 6-0 win at Cal Poly.

GUSTAVES ON POINT

Senior Kaitlyn Gustaves was named the *CollegeSoccer360.com* Primetime Player of the Week on Nov. 15 for her stellar outing in the 49ers' 1-0 overtime victory at No. 7 Pepperdine in the first round of the NCAA Tournament. Gustaves had a career-high 12 saves in the win. The Long Beach native also posted her fifth consecutive shutout and extended her streak to 477 scoreless minutes with the 1-0 triumph over San Diego on Sunday. Her previous best in saves was nine in a 2-1 overtime victory against Cal State Fullerton. That showing earned her Big West Defensive Player of the Week honors on Oct. 10. On the season, Gustaves has compiled 80 saves, 12 shutouts and a 0.74 goals against average.

LINKED IN

Junior Nadia Link, who was invited to the U.S. U-23 National Team camp in early October, ranks among the nation's best in points (12th), goals (T14th) and assists (T23rd). Link delivered the game-winner in the 99th minute of a 1-0 overtime win at No. 7 Pepperdine to give Long Beach State its first-ever NCAA Tournament victory. On the year, Link has posted a Big West leading 16 goals, 10 assists and 42 points. She is just the third 49er in school history, and the first since the program was reinstated in 1998, to reach double figures in both goals and assists. She has also tied the single-season school record for goals, ranks second in points and is tied for third in assists. Link has registered at least one point in 15 of LBSU's 24 contests. The Rowland Heights native received Big West Offensive Player of the Week honors and was named to the *Soccer America* Team of the Week twice this season, while also being selected to the *TopDrawerSoccer.com* Team of the Week. In the 49er career record books, Link is fifth in points (59), sixth in goals (24) and is tied for eighth with 11 assists.

GORDON DOES IT ALL

Senior Shawna Gordon is known for her finesse as she has a team-high 10 assists, but she is also one of the 49ers' top scoring threats with seven goals. The Rancho Cucamonga native established a school record with four assists in a 6-0 victory against Saint Mary's on Sept. 18. Gordon is currently third in LBSU history with 24 career helpers, is sixth with 58 points, and is tied for eighth with 17 career goals.

BALCER EARNS MVP HONORS

Junior Alex Balcer was named the Big West Tournament MVP after anchoring a stingy 49er defense that did not allow a goal in wins over Cal State Northridge and UC Irvine. Balcer also assisted on the game-winner in the championship match at UCI. On the season, the LBSU defense has posted a league-best 0.74 goals against average and 12 shutouts.

SINGLE-SEASON RECORDS

Shots

1. Nadia Link (2011).....	78
2. Hayley Bolt (2006).....	74
3. Hayley Bolt (2008).....	71
4. Hayley Bolt (2005).....	70
5. Kim Silos (2005).....	68
6. Lindsay Bullock (2010).....	58
Kim Silos (2006).....	58
8. Lindsay Bullock (2008).....	56
9. Hayley Bolt (2007).....	54
10. Kim Silos (2008).....	53
Kelli Barrett (1998).....	53

Goals

1. Nadia Link (2011).....	16
Annette Fernandez (1984).....	16
3. Janet Fettig (1984).....	13
Janet Fettig (1983).....	13
5. Lindsay Bullock (2008).....	10
Kim Silos (2005).....	10
7. Hayley Bolt (2008).....	9
Kim Silos (2006).....	9
9. Nicole Hubbard (2011).....	8
Kristen Kiefer (2008).....	8
Hayley Bolt (2006).....	8
Abie Curry (2002).....	8
Kelli Barrett (1998).....	8
Jamie Schneider (1985).....	8
Toni Wolff (1984).....	8

Assists

1. Janet Fettig (1984).....	13
2. Annette Fernandez (1984).....	12
3. Shawna Gordon (2011).....	10
Nadia Link (2011).....	10
5. Kim Silos (2007).....	9
Kim Silos (2006).....	9
Janet Fettig (1985).....	9
8. Hayley Bolt (2005).....	8
9. Tracy Anderson (1984).....	7
Norine Aoki (1984).....	7

Points

1. Annette Fernandez (1984).....	44
2. Nadia Link (2011).....	42
3. Janet Fettig (1984).....	37
4. Janet Fettig (1985).....	35
5. Tracy Anderson (1984).....	29
6. Kim Silos (2006).....	27
7. Kim Silos (2007).....	25
Kim Silos (2005).....	25
9. Shawna Gordon (2011).....	24
10. Annette Fernandez (1986).....	23

Shutouts

1. Kaitlyn Gustaves (2011).....	12.0
Liz Ramos (2006).....	12.0
3. Liz Ramos (2005).....	10.5
4. Liz Ramos (2008).....	8.0
5. Liz Ramos (2007).....	6.0
6. Tara Gotthardt (2004).....	5.5
7. Emily Kingsborough (2010).....	5.0
8. Megan Hartwyk (2003).....	4.0
Hannah Cochrun (2000).....	4.0
Jihan Elgazzar (1999).....	4.0
Natalie Barrad (1986).....	4.0

STROZIER COMES UP BIG

Senior Jazz Strozier scored her fourth goal of the season when the 49ers needed it most. At the 12:40 mark, she connected for the game-winner at then No. 16 UC Irvine to lift LBSU to a 1-0 victory and its second straight Big West Tournament title. Strozier ranks fifth on the team with 10 points.

SWEET SENSATION

Senior Nicole Sweetman put together quite a streak late in the season as she found the back of the net in three of the last five games prior to the NCAA Tournament. The Oxnard native ranks fourth on the squad with six goals and 15 points. She had a goal and an assist in the 49ers' 2-0 victory over Cal State Northridge in the Big West semifinals.

HATS OFF TO HUBBARD

Senior Nicole Hubbard registered her first career hat trick in a 6-0 win over Saint Mary's on Sept. 18. The Lakewood native is second on the team with eight goals this season. She is also tied for eighth on the 49ers' all-time top 10 list with 17 career goals.

UP NEXT

The 2011 NCAA Division I Women's College Cup is set for Dec. 2-4 at KSU Soccer Stadium in Kennesaw, Ga. The semifinals will be held on Friday, Dec. 2, at 5:00 and 7:30 p.m., while the championship game is slated for a 1 p.m. start on Sunday, Dec. 4.

2011 BIG WEST STANDINGS							
	Big West				Overall		
	W	L	T	Pts	W	L	T
UC Irvine	6	1	1	19	14	5	2
LBSU	6	2	0	18	18	5	1
CSUN	4	3	1	13	7	10	2
UC Davis	4	3	1	13	11	7	1
CS Fullerton	3	4	1	10	9	8	3
UC Riverside	3	4	1	10	8	9	2
Cal Poly	3	5	0	9	9	9	1
Pacific	2	5	1	7	8	9	1
UCSB	2	6	0	6	7	11	2

CAREER RECORD WATCH

Shots

1. Hayley Bolt (2005-08).....	269
2. Kim Silos (2005-08).....	224
3. Lindsay Bullock (2007-10).....	196
4. Nadia Link (2009-present).....	130
5. Shawna Gordon (2008-present).....	121
6. Abie Curry (2000-03).....	116
7. Allison Wiegand (2001-04).....	115
8. Kristin Travis (2001-04).....	112
9. Nicole Hubbard (2008-present).....	97
10. Kelli Barrett (1998-01).....	95

Goals

1. Janet Fettig (1983-86).....	33
2. Kim Silos (2005-08).....	32
3. Annette Fernandez (1984-86).....	29
4. Hayley Bolt (2005-08).....	28
5. Lindsay Bullock (2007-10).....	26
6. Nadia Link (2009-present).....	24
7. Allison Wiegand (2001-04).....	18
8. Shawna Gordon (2008-present).....	17
Nicole Hubbard (2008-present).....	17
10. Abie Curry (2000-03).....	16

Assists

1. Kim Silos (2005-08).....	29
2. Annette Fernandez (1984-86).....	26
3. Shawna Gordon (2008-present).....	24
4. Janet Fettig (1983-86).....	21
5. Hayley Bolt (2005-08).....	18
6. Dana Farquhar (2005-08).....	15
7. Sahar Haghdan (2005-08).....	14
8. Nicole Hubbard (2008-present).....	12
9. Nadia Link (2009-present).....	11
Tracy Anderson (1984-85).....	11
Gayle Provost (1985-86).....	11

Points

1. Kim Silos (2005-08).....	93
2. Janet Fettig (1983-86).....	87
3. Annette Fernandez (1984-86).....	84
4. Hayley Bolt (2005-08).....	74
5. Nadia Link (2009-present).....	59
6. Shawna Gordon (2008-present).....	58
7. Lindsay Bullock (2007-10).....	56
8. Nicole Hubbard (2008-present).....	46
Allison Wiegand (2001-04).....	46
10. Sahar Haghdan (2005-08).....	40

Shutouts

1. Liz Ramos (2005-08).....	36.5
2. Kaitlyn Gustaves (2010-11).....	12.0
3. Jihan Elgazzar (1999-01).....	9.5
4. Emily Kingsborough (2009-10).....	8.0
Megan Hartwyk (2002-05).....	8.0
6. Tara Gotthardt (2003-06).....	7.5
7. Hannah Cochrun (2000-02).....	6.5

BIG WEST TEAM LEADERS**Shots**

Team	GP	No.	Avg.
1. Cal State Fullerton	20	332	16.60
2. UC Irvine	21	317	15.10
3. Long Beach State	24	285	11.88
4. UC Santa Barbara	20	267	13.35
5. Pacific	18	260	14.44
6. Cal State Northridge	19	244	12.84
7. UC Davis	19	228	12.00
8. Cal Poly	19	224	11.79
9. UC Riverside	19	223	11.74

Points

Team	GP	No.	Avg.
1. Long Beach State	24	150	6.25
2. UC Irvine	21	119	5.67
3. UC Davis	19	96	5.05
4. Pacific	18	95	5.28
5. Cal Poly	19	79	4.16
6. Cal State Fullerton	20	78	3.90
7. Cal State Northridge	19	62	3.26
8. UC Riverside	19	59	3.11
9. UC Santa Barbara	20	49	2.45

Goals/Game

Team	GP	No.	Avg.
1. Long Beach State	24	49	2.04
2. UC Irvine	21	39	1.86
3. UC Davis	19	33	1.74
4. Pacific	18	31	1.72
5. Cal Poly	19	29	1.53
6. Cal State Fullerton	20	28	1.40
7. UC Riverside	19	21	1.11
8. Cal State Northridge	19	20	1.05
9. UC Santa Barbara	20	19	0.95

Assists/Game

Team	GP	No.	Avg.
1. Long Beach State	24	52	2.17
2. UC Irvine	21	41	1.95
3. Pacific	18	33	1.83
4. UC Davis	19	30	1.58
5. Cal State Northridge	19	22	1.16
6. Cal Poly	19	21	1.11
7. Cal State Fullerton	18	22	1.10
8. UC Riverside	19	17	0.89
9. UC Santa Barbara	20	11	0.55

Goals Against Average

Team	GP	GA	Avg.
1. Long Beach State	24	18	0.74
2. UC Irvine	21	20	0.92
3. Cal State Fullerton	20	21	0.98
4. UC Santa Barbara	20	26	1.27
5. UC Davis	19	25	1.30
6. UC Riverside	19	27	1.36
7. Cal State Northridge	19	27	1.39
8. Pacific	18	27	1.47
9. Cal Poly	19	32	1.62

BIG WEST INDIVIDUAL LEADERS**Shots**

Player	GP	No.	Avg.
1. Nadia Link - LBSU	24	78	3.25
Natalia Ledezma - UCI	21	78	3.71
3. Tiffany Gummow - CP	19	66	3.47
4. Kristina Wavomba - PAC	17	62	3.65
5. Melissa Fernandez - CSUN	17	53	3.12
Ann Marie Tangorra - CSF	17	53	3.12
7. Nicole Hubbard - LBSU	24	50	2.08
8. Alex Topp - PAC	18	44	2.44
9. Heidi Farran - CSUN	19	43	2.26
10. Allison Kelly - UCD	18	42	2.33
Erin Ortega - UCSB	20	42	2.10
Lexi Kopf - UCI	21	42	2.00

Points

Player	GP	No.	Avg.
1. Nadia Link - LBSU	24	42	1.75
2. Natalia Ledezma - UCI	21	32	1.52
3. Shawna Gordon - LBSU	24	24	1.00
4. Lexi Kopf - UCI	21	23	1.10
5. Nicole Hubbard - LBSU	24	21	0.88
6. Kristina Wavomba - PAC	17	20	1.18
7. Allison Kelly - UCD	18	19	1.06
8. Lisa Kemp - UCD	19	17	0.89
Sara Lancaster - CP	19	17	0.89
10. Ann Marie Tangorra - CSF	17	16	0.94
Heidi Farran - CSUN	19	16	0.84

Goals

Player	GP	No.	Avg.
1. Nadia Link - LBSU	24	16	0.67
2. Natalia Ledezma - UCI	21	12	0.57
3. Lexi Kopf - UCI	21	11	0.52
4. Nicole Hubbard - LBSU	24	8	0.33
Kristina Wavomba - PAC	17	8	0.47
Allison Kelly - UCD	18	8	0.44
Sara Lancaster - CP	19	8	0.42
8. Shawna Gordon - LBSU	24	7	0.29
Heidi Farran - CSUN	19	7	0.37
Tiffany Gummow - CP	19	7	0.37

Assists

Player	GP	No.	Avg.
1. Shawna Gordon - LBSU	24	10	0.42
Nadia Link - LBSU	24	10	0.42
3. Natalia Ledezma - UCI	21	8	0.38
4. Angelica Figueroa - PAC	18	7	0.39
5. Ann Marie Tangorra - CSF	17	6	0.36
Brittini Beeman - PAC	18	6	0.33
7. Nicole Hubbard - LBSU	24	5	0.21
Lexi Popoff - UCD	18	5	0.28
Lisa Kemp - UCD	19	5	0.26
Cami Privett - UCI	20	5	0.25
Dana Sanderlin - UCI	21	5	0.24
CoCo Goodson - UCI	21	5	0.24

Goals Against Average

Player	GP	GA	Avg.
1. Kaitlyn Gustaves - LBSU	24	18	0.74
2. Jennifer Randazzo - UCI	21	20	0.94
3. Lindsey Maricic - CSF	20	21	0.98
4. Maria Magana - UCD	19	24	1.25
5. Jessica Olafsen - UCR	11	13	1.26
6. Makenna Henry - UCSB	20	26	1.30
7. Sara Slaughter - UCR	8	10	1.36
8. Tashia Long - PAC	18	27	1.47
9. Cynthia Jacobo - CSUN	18	26	1.47
10. Brooke Gauvin - CP	19	32	1.62

NCAA LEADERS (as of Nov. 21)**Points**

Player	Pts.
1. Maya Hayes - Penn State	70
2. Sarah Hagen - Milwaukee	61
3. Silvia Fuentes - Ark. Pine Bluff	58
4. Rachel Tejada - Illinois State	51
5. Kelley Monogue - Texas A&M	47
Colleen Williams - Dayton	47

12. Nadia Link - LBSU	42

Goals

Player	Gls.
1. Maya Hayes - Penn State	31
2. Sarah Hagen - Milwaukee	26
3. Rachel Tejada - Illinois State	21
4. Morgan Marlborough - Nebraska	20
5. Kelley Monogue - Texas A&M	19
Lindsay Taylor - Stanford	19

T14. Nadia Link - LBSU	16

Assists

Player	No.
1. Silvia Fuentes - Ark. Pine Bluff	28
2. Colleen Williams - Dayton	15
3. Kylie Louw - Stephen F. Austin	14
Stephanie Ochs - San Diego	14
Beth West - Texas A&M	14

T23. Shawna Gordon - LBSU	10
Nadia Link - LBSU	10

BIG WEST PLAYERS OF THE WEEK**OFFENSIVE PLAYER OF THE WEEK**

Date	Player	Team	Yr.
8/22	Lexi Kopf	UCI	Sr.
8/29	Natalia Ledezma	UCI	So.
9/5	Nadia Link	LBSU	Jr.
9/12	Lisa Kemp	UCD	Sr.
9/19	Ann Marie Tangorra	CSF	Jr.
9/26	Erica Shelton	UCSB	So.
10/3	Alex Topp	Pacific	Sr.
10/10	Cami Privett	UCI	Fr.
10/17	Natalia Ledezma	UCI	So.
10/24	Natalia Ledezma	UCI	So.
10/31	Nadia Link	LBSU	Jr.

DEFENSIVE PLAYER OF THE WEEK

Date	Player	Team	Yr.
8/22	Jennifer Randazzo	UCI	Fr.
8/29	Kayde Hensley	UCR	Sr.
9/5	Jessica Olafsen	UCR	Fr.
9/12	Leslie Barkmann	CP	Jr.
9/19	Brooke Gauvin	CP	Sr.
9/26	CoCo Goodson	UCI	Sr.
10/3	Cynthia Jacobo	CSUN	Jr.
10/10	Kaitlyn Gustaves	LBSU	Sr.
10/17	Cynthia Jacobo	CSUN	Jr.
10/24	Sarah Devine	UCI	Sr.
10/31	Caitlin Mellano	CSF	Sr.

2011 Numerical Roster

NO.	PLAYER	POS	YR	HT	EXP	HOMETOWN (LAST SCHOOL)
00	Kaitlyn Gustaves	GK	Sr.	5-9	1L	Long Beach, Calif. (Oklahoma State)
0	Marrina Meyers	GK	Fr.	5-7	HS	Vista, Calif. (Rancho Buena Vista HS)
1	Kaci McCain	GK	Fr.	5-9	HS	Valencia, Calif. (Valencia HS)
2	Sidney Garza	MF	Sr.	5-4	1L	Ventura, Calif. (St. Mary's)
3	Kristyn Benavidez	F/MF	Fr.	5-5	RS	Long Beach, Calif. (Wilson HS)
4	Camille Berg	D	So.	5-4	1L	San Juan Capistrano, Calif. (San Clemente HS)
5	Taylor Nelson	MF	Fr.	5-6	HS	Garden Grove, Calif. (Pacifica HS)
6	Shawna Gordon	MF	Sr.	5-6	3L	Rancho Cucamonga, Calif. (Los Osos HS)
7	Sierra Mack	F	So.	5-6	RS	Anaheim, Calif. (UCLA)
8	Alex Balcer	D	Jr.	5-8	2L	Tucson, Ariz. (Catalina Foothills HS)
9	Jen Gonzalez	MF	Fr.	5-4	HS	Alta Loma, Calif. (Alta Loma HS)
10	Sarah Dryden	F	Fr.	5-4	HS	Palm Springs, Calif. (Palm Springs HS)
11	Jenny Soza	D	Jr.	5-5	2L	Fontana, Calif. (Summit HS)
12	Nadia Link	F	Jr.	5-6	2L	Rowland Heights, Calif. (Walnut HS)
13	Haylee Eguchi	MF	So.	5-2	1L	Alta Loma, Calif. (Los Osos HS)
14	Kassidy Hause	MF	So.	5-8	1L	Long Beach, Calif. (Lakewood HS)
15	Jazz Strozier	F	Sr.	6-1	1L	Ventura, Calif. (Ventura College)
16	Morgan Valenzuela	D	Fr.	5-6	HS	Newbury Park, Calif. (Newbury Park HS)
17	Ashley Roese	F	Fr.	5-8	HS	Arroyo Grande, Calif. (Arroyo Grande HS)
18	Kelsey Wilson	MF/D	So.	5-5	TR	San Clemente, Calif. (Loyola Marymount)
19	Jordan Nelson	D	Jr.	5-9	TR	Garden Grove, Calif. (Pacifica HS)
20	Katie Peterson	D	So.	5-4	RS	Los Alamitos, Calif. (Los Alamitos HS)
21	Shannon Bullock	F	Jr.	5-7	2L	Manhattan Beach, Calif. (Mira Costa HS)
22	Nicole Hubbard	F/D	Sr.	5-11	3L	Lakewood, Calif. (Mayfair HS)
23	Marysol Rosas	MF	Sr.	5-6	3L	Santa Ana, Calif. (Mater Dei HS)
24	Shannon Suarez	F	Jr.	5-1	2L	Saugus, Calif. (Saugus HS)
25	Chyann Saban	D/MF	So.	5-2	1L	Desert Hot Springs, Calif. (Desert Hot Springs HS)
26	Nicole Sweetman	F	Sr.	5-4	2L	Oxnard, Calif. (UCLA)
27	Renee Mendiola	D	Fr.	5-8	HS	Long Beach, Calif. (Wilson HS)
28	Chelsea Villaescusa	D	Fr.	5-7	HS	Buena Park, Calif. (St. Joseph HS)
29	Lara Balcer	MF	Fr.	5-6	RS	Tucson, Ariz. (Catalina Foothills HS)
30	Amanda Robles	GK	Fr.	5-7	HS	Pomona, Calif. (Diamond Ranch HS)
33	Marie Mackenzie	D	Fr.	5-4	HS	Simi Valley, Calif. (Royal HS)

Head Coach:	Mauricio Ingrassia, 8th year (Cal State Fullerton, 1995)
Assistant Coach:	Jeff Joyner, 2nd year (Cal State Dominguez Hills, 2001)
Assistant Coach:	Anton Arrache, 1st year (San Diego State, 2007)
Volunteer Assistant:	Lucas Curtolo, 4th year (UC San Diego, 2000)
Undergraduate Assistant:	Lindsay Bullock, 1st year
Strength & Conditioning Coach:	Sebastian Carrasco, 7th year

ROSTER BY CLASS

Seniors (7): Sidney Garza, Shawna Gordon, Kaitlyn Gustaves, Nicole Hubbard, Marysol Rosas, Jazz Strozier, Nicole Sweetman

Juniors (6): Alex Balcer, Shannon Bullock, Nadia Link, Jordan Nelson, Jenny Soza, Shannon Suarez

Sophomores (7): Camille Berg, Haylee Eguchi, Kassidy Hause, Sierra Mack, Katie Peterson, Chyann Saban, Kelsey Wilson

Freshmen (13): Lara Balcer, Kristyn Benavidez, Sarah Dryden, Jen Gonzalez, Marie Mackenzie, Kaci McCain, Renee Mendiola, Marrina Meyers, Taylor Nelson, Amanda Robles, Ashley Roese, Morgan Valenzuela, Chelsea Villaescusa

ROSTER BY POSITION

Forwards (10): Kristyn Benavidez, Shannon Bullock, Sarah Dryden, Nadia Link, Sierra Mack, Ashley Roese, Jazz Strozier, Shannon Suarez, Nicole Sweetman, Kelsey Wilson

Midfielders (9): Lara Balcer, Haylee Eguchi, Sidney Garza, Jen Gonzalez, Shawna Gordon, Kassidy Hause, Taylor Nelson, Marysol Rosas, Chyann Saban

Defenders (10): Alex Balcer, Camille Berg, Nicole Hubbard, Marie Mackenzie, Renee Mendiola, Jordan Nelson, Katie Peterson, Jenny Soza, Morgan Valenzuela, Chelsea Villaescusa

Goalkeepers (4): Kaitlyn Gustaves, Kaci McCain, Marrina Meyers, Amanda Robles

PRONUNCIATION GUIDE

00 - Gustaves (Gus-TAY-vis)

8 - Balcer (BALL-sir)

13 - Eguchi (ee-GOO-chi)

14 - Hause (Haas)

15 - Strozier (STROE-jure)

17 - Roese (ROE-zay)

25 - Chyann Saban (SHY-anne SAY-bin)

28 - Villaescusa (Vill-uh-squay-suh)

29 - Balcer (BALL-sir)

Ingrassia (in-GRAH-see-uh)

#00 ♦ Kaitlyn Gustaves ♦ 5-9 ♦ Goalkeeper ♦ Sr.							
Season Highs	LBSU Career Highs	LBSU Career Stats					
Minutes..... 110, at SDSU (9/11/11)	Minutes..... 110, at SDSU (9/11/11)	Year	GM-GS	GA	GAA	SVS	SHO
Saves..... 12, at Pepperdine (11/12/11)	Saves..... 12, at Pepperdine (11/12/11)	2010	4-2	4	1.61	10	0
Goals Against 3, at Milwaukee (8/26/11)	Goals Against 3, at Milwaukee (8/26/11)	2011	24-24	18	0.74	80	12
		Totals	28-26	22	0.82	90	12

#2 ♦ Sidney Garza ♦ 5-4 ♦ Midfielder/Defender ♦ Sr.							
Season Highs	LBSU Career Highs	LBSU Career Stats					
Points..... 1, 2x, last vs. UNLV (9/23/11)	Points..... 1, 2x, last vs. UNLV (9/23/11)	Year	GM-GS	G	A	PTS	SH
Goals n/a	Goals n/a	2010	21-18	0	0	0	10
Assists 1, 2x, last vs. UNLV (9/23/11)	Assists 1, 2x, last vs. UNLV (9/23/11)	2011	24-23	0	2	2	2
Shots .. 1, 2x, last vs. CS Fullerton (10/9/11)	Shots 3, vs. Santa Clara	Totals	45-41	0	2	2	12

#4 ♦ Camille Berg ♦ 5-4 ♦ Defender ♦ So.							
Season Highs	LBSU Career Highs	LBSU Career Stats					
Points..... n/a	Points..... 1, at UC Riverside (10/8/10)	Year	GM-GS	G	A	PTS	SH
Goals n/a	Goals n/a	2010	10-2	0	1	1	2
Assists n/a	Assists 1, at UC Riverside (10/8/10)	2011	16-0	0	0	0	2
Shots 1, 2x, last at SDSU (9/11/11)	Shots 1, 4x, last at SDSU (9/11/11)	Totals	26-2	0	1	1	4

#5 ♦ Taylor Nelson ♦ 5-6 ♦ Midfielder ♦ Fr.							
Season Highs	LBSU Career Highs	LBSU Career Stats					
Points.....2, vs. UC Davis (10/28/11)	Points.....2, vs. UC Davis (10/28/11)	Year	GM-GS	G	A	PTS	SH
Goals 1, vs. UC Davis (10/28/11)	Goals 1, vs. UC Davis (10/28/11)	2011	24-17	1	4	6	23
Assists 1, 4x, last vs. UCR (10/21/11)	Assists 1, 4x, last vs. UCR (10/21/11)						
Shots 4, vs. UC Davis (10/28/11)	Shots 4, vs. UC Davis (10/28/11)						

#6 ♦ Shawna Gordon ♦ 5-6 ♦ Midfielder ♦ Sr.							
Season Highs	LBSU Career Highs	LBSU Career Stats					
Points.....6, vs. Saint Mary's (9/18/11)	Points..... 6, vs. Saint Mary's (9/18/11)	Year	GM-GS	G	A	PTS	SH
Goals 2, at Cal Poly (10/2/11)	Goals 2, 2x, last at Cal Poly (10/2/11)	2008	23-16	1	2	4	17
Assists 4, vs. Saint Mary's (9/18/11)	Assists 4, vs. Saint Mary's (9/18/11)	2009	19-16	5	5	15	32
Shots 4, 2x, last at UCSB (9/30/11)	Shots 5, 2x, last at UCSB (10/15/09)	2010	22-22	4	7	15	33
		2011	24-24	7	10	24	39
		Totals	88-78	17	24	58	121



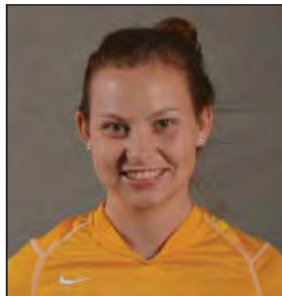
#7 ♦ Sierra Mack ♦ 5-6 ♦ Forward ♦ So.

Season Highs	LBSU Career Highs	LBSU Career Stats					
Points.....2, vs. Saint Mary's (9/18/11)	Points.....2, vs. Saint Mary's (9/18/11)	Year	GM-GS	G	A	PTS	SH
Goals.....1, vs. Saint Mary's (9/18/11)	Goals.....1, vs. Saint Mary's (9/18/11)	2011	23-1	1	2	4	10
Assists.....1, 2x, last at Cal Poly (10/2/11)	Assists.....1, 2x, last at Cal Poly (10/2/11)						
Shots.....2, vs. San Diego (11/20/11)	Shots.....2, vs. San Diego (11/20/11)						



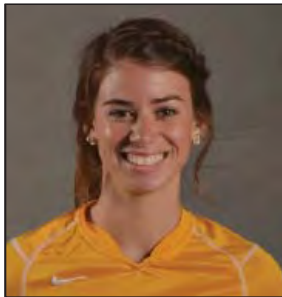
#8 ♦ Alex Balcer ♦ 5-8 ♦ Defender ♦ Jr.

Season Highs	LBSU Career Highs	LBSU Career Stats					
Points.....2, at USC (8/19/11)	Points.....2, at USC (8/19/11)	Year	GM-GS	G	A	PTS	SH
Goals.....1, at USC (8/19/11)	Goals.....1, at USC (8/19/11)	2009	19-18	0	0	0	6
Assists.....1, 4x, last at UC Irvine (11/6/11)	Assists.....1, 5x, last at UC Irvine (11/6/11)	2010	22-22	0	1	1	11
Shots.....2, 4x, last at UC Irvine (11/6/11)	Shots.....3, at Saint Mary's (9/10/10)	2011	23-23	1	4	6	12
		Totals	64-63	1	5	7	29



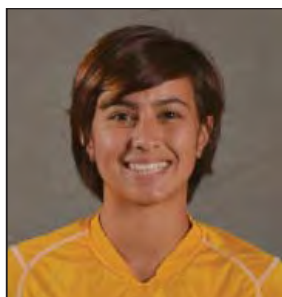
#10 ♦ Sarah Dryden ♦ 5-4 ♦ Forward ♦ Fr.

Season Highs	LBSU Career Highs	LBSU Career Stats					
Points.....n/a	Points.....n/a	Year	GM-GS	G	A	PTS	SH
Goals.....n/a	Goals.....n/a	2011	15-0	0	0	0	7
Assists.....n/a	Assists.....n/a						
Shots.....2, vs. Saint Mary's (9/18/11)	Shots.....2, vs. Saint Mary's (9/18/11)						




#11 ♦ Jenny Soza ♦ 5-5 ♦ Defender ♦ Jr.

Season Highs	LBSU Career Highs	LBSU Career Stats					
Points.....1, vs. Princeton (9/2/11)	Points.....2, 2x, last vs. Utah State (9/3/10)	Year	GM-GS	G	A	PTS	SH
Goals.....n/a	Goals.....1, 2x, last vs. Utah State (9/3/10)	2009	14-6	1	0	2	9
Assists.....1, vs. Princeton (9/2/11)	Assists.....1, 3x, last vs. Princeton (9/2/11)	2010	21-2	1	0	2	10
Shots.....1, 6x, last vs. CSUN (11/3/11)	Shots.....3, 2x, last vs. Sac State (9/5/10)	2011	24-24	0	1	1	6
		Totals	59-32	2	1	5	25



#12 ♦ Nadia Link ♦ 5-6 ♦ Forward ♦ Jr.

Season Highs	LBSU Career Highs	LBSU Career Stats					
Points.....5, 2x, last vs. Pacific (10/30/11)	Points.....5, 2x, last vs. Pacific (10/30/11)	Year	GM-GS	G	A	PTS	SH
Goals.....2, 4x, last vs. Pacific (10/30/11)	Goals.....2, 5x, last vs. Pacific (10/30/11)	2009	17-6	0	0	0	10
Assists...2, 2x, last vs. UC Davis (10/28/11)	Assists...2, 2x, last vs. UC Davis (10/28/11)	2010	22-22	8	1	17	42
Shots.....7, at Cal Poly (10/2/11)	Shots.....7, at Cal Poly (10/2/11)	2011	24-24	16	10	42	78
		Totals	63-52	24	11	59	130

	#14 ♦ Kassidy Hause ♦ 5-2 ♦ Midfielder ♦ So.									
	Season Highs		LBSU Career Highs		LBSU Career Stats					
	Points.....	n/a	Points.....	n/a	Year	GM-GS	G	A	PTS	SH
	Goals.....	n/a	Goals.....	n/a	2010	14-3	0	0	0	4
	Assists.....	n/a	Assists.....	n/a	2011	14-4	0	0	0	3
Shots.....	2, at SDSU (9/11/11)	Shots.....	2, at SDSU (9/11/11)	Totals	28-7	0	0	0	7	

	#15 ♦ Jazz Strozier ♦ 6-1 ♦ Forward ♦ Sr.									
	Season Highs		LBSU Career Highs		LBSU Career Stats					
	Points.....	3, 2x, last vs. Pacific (10/30/11)	Points.....	3, 2x, last vs. Pacific (10/30/11)	Year	GM-GS	G	A	PTS	SH
	Goals.....	1, 4x, last at UC Irvine (11/6/11)	Goals.....	1, 6x, last at UC Irvine (11/6/11)	2010	9-1	2	1	5	6
	Assists.....	1, 2x, last vs. Pacific (10/30/11)	Assists.....	1, 3x, last vs. Pacific (10/30/11)	2011	20-15	4	2	10	14
Shots.....	4, vs. Sac State (8/21/11)	Shots.....	4, vs. Sac State (8/21/11)	Totals	29-16	6	3	15	20	

	#17 ♦ Ashley Roesse ♦ 5-8 ♦ Forward ♦ Fr.									
	Season Highs		LBSU Career Highs		LBSU Career Stats					
	Points....	2, 2x, last vs. San Diego (11/20/11)	Points....	2, 2x, last vs. San Diego (11/20/11)	Year	GM-GS	G	A	PTS	SH
	Goals.....	1, vs. San Diego (11/20/11)	Goals.....	1, vs. San Diego (11/20/11)	2011	9-0	1	2	4	3
	Assists.....	2, at Cal Poly (10/2/11)	Assists.....	2, at Cal Poly (10/2/11)						
Shots.....	2, vs. San Diego (11/20/11)	Shots.....	2, vs. San Diego (11/20/11)							

	#18 ♦ Kelsey Wilson ♦ 5-5 ♦ Midfielder/Defender ♦ So.									
	Season Highs		LBSU Career Highs		LBSU Career Stats					
	Points.....	2, 2x, last vs. Miami (11/18/11)	Points.....	2, 2x, last vs. Miami (11/18/11)	Year	GM-GS	G	A	PTS	SH
	Goals.....	1, 2x, last vs. Miami (11/18/11)	Goals.....	1, 2x, last vs. Miami (11/18/11)	2011	24-24	2	4	8	10
	Assists.....	1, 4x, last vs. Pacific (10/30/11)	Assists.....	1, 4x, last vs. Pacific (10/30/11)						
Shots.....	3, vs. Cal (9/9/11)	Shots.....	3, vs. Cal (9/9/11)							

	#19 ♦ Jordan Nelson ♦ 5-9 ♦ Defender ♦ Jr.									
	Season Highs		LBSU Career Highs		LBSU Career Stats					
	Points.....	1, 2x, last vs. Pacific (10/30/11)	Points.....	1, 2x, last vs. Pacific (10/30/11)	Year	GM-GS	G	A	PTS	SH
	Goals.....	n/a	Goals.....	n/a	2011	24-24	0	2	2	2
	Assists.....	1, 2x, last vs. Pacific (10/30/11)	Assists.....	1, 2x, last vs. Pacific (10/30/11)						
Shots ..	1, 2x, last vs. CS Fullerton (10/9/11)	Shots ..	1, 2x, last vs. CS Fullerton (10/9/11)							

#21 ♦ Shannon Bullock ♦ 5-7 ♦ Forward ♦ Jr.							
Season Highs	LBSU Career Highs	LBSU Career Stats					
Points..... n/a	Points..... 2, vs. Pepperdine (9/18/09)	Year	GM-GS	G	A	PTS	SH
Goals..... n/a	Goals..... 1, vs. Pepperdine (9/18/09)	2009	17-1	1	0	2	7
Assists..... n/a	Assists..... n/a	2010	6-0	0	0	0	0
Shots..... 1, vs. Sac State (8/21/11)	Shots..... 2, 2x last at SDSU (9/20/09)	2011	8-1	0	0	0	1
		Totals	31-2	1	0	2	8

#22 ♦ Nicole Hubbard ♦ 5-11 ♦ Forward/Defender ♦ Sr.							
Season Highs	LBSU Career Highs	LBSU Career Stats					
Points..... 6, vs. Saint Mary's (9/18/11)	Points..... 6, vs. Saint Mary's (9/18/11)	Year	GM-GS	G	A	PTS	SH
Goals..... 3, vs. Saint Mary's (9/18/11)	Goals..... 3, vs. Saint Mary's (9/18/11)	2008	20-20	3	4	10	7
Assists..... 1, 5x, last vs. Miami (11/18/11)	Assists..... 1, 12x, last vs. Miami (11/18/11)	2009	19-18	3	1	7	21
Shots..... 6, 2x, last at UCSB (9/30/11)	Shots..... 6, 2x, last at UCSB (9/30/11)	2010	22-22	3	2	8	19
		2011	24-23	8	5	21	50
		Totals	85-83	17	12	46	97

#23 ♦ Marysol Rosas ♦ 5-6 ♦ Midfielder ♦ Sr.							
Season Highs	LBSU Career Highs	LBSU Career Stats					
Points..... 4, at Cal Poly (10/2/11)	Points..... 4, at Cal Poly (10/2/11)	Year	GM-GS	G	A	PTS	SH
Goals..... 2, at Cal Poly (10/2/11)	Goals..... 2, at Cal Poly (10/2/11)	2008	11-0	0	0	0	5
Assists..... 1, vs. CS Fullerton (10/9/11)	Assists..... 1, 4x, last vs. CSF (10/9/11)	2009	5-0	0	0	0	1
Shots..... 2, at Cal Poly (10/2/11)	Shots..... 2, 4x, last at Cal Poly (10/2/11)	2010	22-9	1	3	5	11
		2011	15-3	2	1	5	3
		Totals	53-12	3	4	10	20

#24 ♦ Shannon Suarez ♦ 5-1 ♦ Forward ♦ Jr.							
Season Highs	LBSU Career Highs	LBSU Career Stats					
Points..... n/a	Points..... n/a	Year	GM-GS	G	A	PTS	SH
Goals..... n/a	Goals..... n/a	2009	8-1	0	0	0	1
Assists..... n/a	Assists..... n/a	2010	4-1	0	0	0	0
Shots..... n/a	Shots..... 1, at UC Irvine (10/29/09)	2011	9-0	0	0	0	0
		Totals	21-2	0	0	0	1

#26 ♦ Nicole Sweetman ♦ 5-4 ♦ Forward ♦ Sr.							
Season Highs	LBSU Career Highs	LBSU Career Stats					
Points..... 4, vs. UNLV (9/23/11)	Points..... 4, 2x, last vs. UNLV (9/23/11)	Year	GM-GS	G	A	PTS	SH
Goals..... 1, 6x, last vs. CSUN (11/3/11)	Goals..... 2, vs. Akron (9/19/10)	2009	16-10	1	0	2	11
Assists..... 2, vs. UNLV (9/23/11)	Assists..... 2, vs. UNLV (9/23/11)	2010	22-16	2	2	6	18
Shots..... 3, vs. Miami (11/18/11)	Shots..... 4, 2x, last vs. Cal Poly (10/1/10)	2011	24-10	6	3	15	19
		Totals	62-36	9	5	23	48

2011 Long Beach State Women's Soccer
Long Beach State Game Results (as of Nov 22, 2011)
All games

Date	Opponent	Score	Overall	Conf	Att.	Goals scored
Aug 19	at #25 Southern California	W 2-1	1-0-0	0-0-0	426	Balcer, Alex (unassisted) Gordon, Shawna (unassisted)
Aug 21	SACRAMENTO STATE	W 3-0	2-0-0	0-0-0	433	Strozier, Jazz (Link, Nadia; Wilson, Kelsey) Gordon, Shawna (Strozier, Jazz) Hubbard, Nicole (unassisted)
Aug 26	at Milwaukee	L 2-3	2-1-0	0-0-0	212	Link, Nadia (Gordon, Shawna) Wilson, Kelsey (Link, Nadia)
Aug 28	at #12 Marquette	L 1-2	2-2-0	0-0-0	594	Link, Nadia (Balcer, Alex)
Sep 02	PRINCETON	W 3-1	3-2-0	0-0-0	438	Link, Nadia (unassisted) Link, Nadia (unassisted) Strozier, Jazz (Soza, Jenny)
Sep 04	HAWAII	W 3-0	4-2-0	0-0-0	399	Gordon, Shawna (Mack, Sierra; Link, Nadia) Link, Nadia (Garza, Sidney) Link, Nadia (Hubbard, Nicole)
Sep 09	CALIFORNIA	L 0-2	4-3-0	0-0-0	624	-
Sep 11	at San Diego State	TO2 1-1	4-3-1	0-0-0	296	Sweetman, Nicole (unassisted)
Sep 16	at San Diego	W 1-0	5-3-1	0-0-0	428	Link, Nadia (Nelson, Taylor; Gordon, Shawna)
Sep 18	SAINT MARY'S	W 6-0	6-3-1	0-0-0	419	Hubbard, Nicole (Gordon, Shawna) Hubbard, Nicole (Link, Nadia; Nelson, Taylor) Gordon, Shawna (Nelson, Jordan) Link, Nadia (Gordon, Shawna) Hubbard, Nicole (Gordon, Shawna) Mack, Sierra (Wilson, Kelsey; Gordon, Shawna)
Sep 23	UNLV	W 4-1	7-3-1	0-0-0	477	Link, Nadia (Garza, Sidney) Link, Nadia (Wilson, Kelsey; Sweetman, Nicole) Hubbard, Nicole (Sweetman, Nicole; Gordon, Shawna) Sweetman, Nicole (Balcer, Alex)
* Sep 30	at UC Santa Barbara	WOT 2-1	8-3-1	1-0-0	282	Hubbard, Nicole (Link, Nadia) Gordon, Shawna (penalty kick)
* Oct 02	at Cal Poly	W 6-0	9-3-1	2-0-0	567	Sweetman, Nicole (Gordon, Shawna; Link, Nadia) Gordon, Shawna (Mack, Sierra) Link, Nadia (Nelson, Taylor) Gordon, Shawna (Link, Nadia) Rosas, Marysol (Roese, Ashley) Rosas, Marysol (Roese, Ashley)
* Oct 09	CAL STATE FULLERTON	WOT 2-1	10-3-1	3-0-0	712	Hubbard, Nicole (Gordon, Shawna; Rosas, Marysol) Link, Nadia (Hubbard, Nicole)
* Oct 14	at CSUN	L 0-1	10-4-1	3-1-0	967	-
* Oct 16	at #22 UC Irvine	L 0-2	10-5-1	3-2-0	728	-
* Oct 21	UC RIVERSIDE	W 1-0	11-5-1	4-2-0	498	Sweetman, Nicole (Nelson, Taylor)
* Oct 28	UC DAVIS	W 2-0	12-5-1	5-2-0	311	Nelson, Taylor (Hubbard, Nicole; Link, Nadia) Sweetman, Nicole (Link, Nadia; Balcer, Alex)
* Oct 30	PACIFIC	W 4-2	13-5-1	6-2-0	547	Link, Nadia (Strozier, Jazz) Hubbard, Nicole (Wilson, Kelsey) Link, Nadia (Nelson, Jordan) Strozier, Jazz (Link, Nadia)
Nov 03	CAL STATE NORTHRIDGE	W 2-0	14-5-1	6-2-0	509	Link, Nadia (Sweetman, Nicole; Hubbard, Nicole) Sweetman, Nicole (unassisted)
Nov 06	at #16 UC Irvine	W 1-0	15-5-1	6-2-0	481	Strozier, Jazz (Gordon, Shawna; Balcer, Alex)
Nov 12	at #7 Pepperdine	WOT 1-0	16-5-1	6-2-0	632	Link, Nadia (unassisted)
Nov 18	vs Miami	W 1-0	17-5-1	6-2-0	1042	Wilson, Kelsey (Hubbard, Nicole)
Nov 20	vs San Diego	W 1-0	18-5-1	6-2-0	598	Roese, Ashley (unassisted)

2011 Long Beach State Women's Soccer
Long Beach State Combined Team Statistics (as of Nov 22, 2011)
All games

RECORD:	OVERALL	HOME	AWAY	NEUTRAL
ALL GAMES	18-5-1	10-1	6-4-1	2-0
CONFERENCE	6-2	4-0	2-2	0-0
NON-CONFERENCE	12-3-1	6-1	4-2-1	2-0

Date	Opponent	Score	Att.	#	Player	gp	g	a	pts	sh	sh%	sog	sog%	gw	pk-att	
Aug 19	at #25 Southern California	w	2-1	426	12	Link, Nadia	24	16	10	42	78	.205	38	.487	7	0-0
Aug 21	SACRAMENTO STATE	w	3-0	433	6	Gordon, Shawna	24	7	10	24	39	.179	17	.436	3	1-1
Aug 26	at Milwaukee	L	2-3	212	22	Hubbard, Nicole	24	8	5	21	50	.160	20	.400	1	0-0
Aug 28	at #12 Marquette	L	1-2	594	26	Sweetman, Nicole	24	6	3	15	19	.316	13	.684	2	0-0
Sep 02	PRINCETON	w	3-1	438	15	Strozier, Jazz	20	4	2	10	14	.286	6	.429	2	0-0
Sep 04	HAWAII	w	3-0	399	18	Wilson, Kelsey	24	2	4	8	10	.200	5	.500	1	0-0
Sep 09	CALIFORNIA	L	0-2	624	5	Nelson, Taylor	24	1	4	6	23	.043	8	.348	1	0-0
Sep 11	at San Diego State	To2	1-1	296	8	Balcer, Alex	23	1	4	6	12	.083	5	.417	0	0-0
Sep 16	at San Diego	w	1-0	428	23	Rosas, Marysol	15	2	1	5	3	.667	2	.667	0	0-0
Sep 18	SAINT MARY'S	w	6-0	419	7	Mack, Sierra	23	1	2	4	10	.100	3	.300	0	0-0
Sep 23	UNLV	w	4-1	477	17	Roese, Ashley	9	1	2	4	3	.333	1	.333	1	0-0
* Sep 30	at UC Santa Barbara	Wot	2-1	282	19	Nelson, Jordan	24	0	2	2	2	.000	2	1.000	0	0-0
* Oct 02	at Cal Poly	w	6-0	567	2	Garza, Sidney	24	0	2	2	2	.000	1	.500	0	0-0
* Oct 09	CAL STATE FULLERTON	Wot	2-1	712	11	Soza, Jenny	24	0	1	1	6	.000	4	.667	0	0-0
* Oct 14	at CSUN	L	0-1	967	10	Dryden, Sarah	15	0	0	0	7	.000	4	.571	0	0-0
* Oct 16	at #22 UC Irvine	L	0-2	728	14	Hause, Cassidy	14	0	0	0	3	.000	0	.000	0	0-0
* Oct 21	UC RIVERSIDE	w	1-0	498	4	Berg, Camille	16	0	0	0	2	.000	2	1.000	0	0-0
* Oct 28	UC DAVIS	w	2-0	311	25	Saban, Chyann	4	0	0	0	1	.000	0	.000	0	0-0
* Oct 30	PACIFIC	w	4-2	547	21	Bullock, Shannon	8	0	0	0	1	.000	0	.000	0	0-0
Nov 03	CAL STATE NORTHRIDGE	w	2-0	509	29	Balcer, Lara	1	0	0	0	0	.000	0	.000	0	0-0
Nov 06	at #16 UC Irvine	w	1-0	481	28	Villaescusa, Chelsea	4	0	0	0	0	.000	0	.000	0	0-0
Nov 12	at #7 Pepperdine	Wot	1-0	632	24	Suarez, Shannon	9	0	0	0	0	.000	0	.000	0	0-0
Nov 18	vs Miami	w	1-0	1042	13	Eguchi, Haylee	2	0	0	0	0	.000	0	.000	0	0-0
Nov 20	vs San Diego	w	1-0	598	3	Benavidez, Kristyn	3	0	0	0	0	.000	0	.000	0	0-0
Total						24	49	52	150	285	.172	131	.460	18	1-1	
Opponents						24	18	15	51	254	.071	100	.394	5	3-3	

TEAM STATISTICS **LBSU** **OPP**

SHOT STATISTICS		
Goals-Shot attempts	49-285	18-254
Goals scored per game	2.04	0.75
Shot pct.	.172	.071
Shots on goal-Attempts	131-285	100-254
SOG pct.	.460	.394
Shots/Game	11.9	10.6
CORNER KICKS	101	70
PENALTY KICKS	1-1	3-3
PENALTIES		
Yellow cards	18	7
Red cards	1	0
ATTENDANCE		
Total	5367	5613
Dates/Avg Per Date	11/488	11/510
Neutral Site #/Avg	2/820	

#	Goalie	GP	Min.	GA	GAAvg	Saves	Pct	W-L-T	Sho
00	Gustaves, Kaitlyn	24	2195:10	18	0.74	80	.816	18-5-1	12
Total		24	2195:10	18	0.74	82	.820	18-5-1	12
Opponents		24	2195:10	49	2.01	82	.626	5-18-1	3

Goals by Period	1st	2nd	OT	OT2	Total
Long Beach State	17	29	3	0	49
Opponents	8	10	0	0	18

Shots by Period	1st	2nd	OT	OT2	Total
Long Beach State	118	161	5	1	285
Opponents	111	139	4	0	254

Saves by Period	1st	2nd	OT	OT2	Total
Long Beach State	33	48	1	0	82
Opponents	32	47	2	1	82

Corners by Period	1st	2nd	OT	OT2	Total
Long Beach State	35	65	1	0	101
Opponents	26	43	1	0	70

Fouls by Period	1st	2nd	OT	OT2	Total
Long Beach State	137	147	1	0	285
Opponents	111	123	3	0	237