



LONG BEACH STATE MEN'S VOLLEYBALL

Contact: Andrea Ohta Phone: (562) 985-8569 Email: andrea.ohta@csulb.edu

www.longbeachstate.com | 1250 Bellflower Blvd. Long Beach, CA 90840 | Updated: Jan. 30, 2012

2012 Schedule/Results

Overall Record: 3-4 MPSF Record: 0-3

Home: 1-0 Away: 0-3 Neutral: 2-1

| Date | Opponent | Time/Result |
|-----------------|-------------------------------|---------------|
| Jan. 6 | ^ vs. #10 Loyola-Chicago | W, 3-0 |
| Jan. 6 | ^ vs. #2 UC Irvine | L, 3-2 |
| Jan. 7 | ^ vs. #8 Ohio State | W, 3-2 |
| Jan. 12 | * at #6 USC | L, 3-0 |
| Jan. 14 | * at #10 Pepperdine | L, 3-1 |
| Jan. 20 | * at #11 Cal State Northridge | L, 3-2 |
| Jan. 25 | Cal Baptist | W, 3-0 |
| Jan. 31 | Princeton | 7 p.m. |
| Feb. 3 | * Cal State Northridge | 7 p.m. |
| Feb. 10 | * Stanford | 7 p.m. |
| Feb. 11 | * Pacific | 7 p.m. |
| Feb. 14 | * UCLA | 7 p.m. |
| Feb. 17 | * UC Santa Barbara | 7 p.m. |
| Feb. 24 | * at UC Irvine | 6 p.m. |
| Feb. 25 | * at UC San Diego | 7 p.m. |
| Feb. 29 | * at UCLA | 7 p.m. |
| March 2 | * at UC Santa Barbara | 7 p.m. |
| March 9 | \$ IPFW | 7 p.m. |
| March 10 | \$ Lewis | 7 p.m. |
| March 15 | * UC San Diego | 7 p.m. |
| March 17 | * UC Irvine | 7 p.m. |
| March 23 | * BYU | 7 p.m. |
| March 24 | * BYU | 7 p.m. |
| March 30 | * at Hawaii | 10 p.m. |
| March 31 | * at Hawaii | 10 p.m. |
| April 6 | * at Stanford | 7 p.m. |
| April 7 | * at Pacific | 7 p.m. |
| April 12 | * USC | 7 p.m. |
| April 14 | * Pepperdine | 7 p.m. |

* MPSF match

^ UCSB/asics Invitational (Santa Barbara, Calif.)

\$ Active Ankle Classic (Walter Pyramid)

Home games in **bold**

All times Pacific

QUICK FACTS

| | |
|---------------------------------------|------------------------------------|
| Location | Long Beach, Calif. |
| Founded | 1949 |
| Enrollment | 33,419 |
| Nickname..... | 49ers |
| Colors | Black and Gold |
| Conference..... | Mountain Pacific Sports Federation |
| President | Dr. F. King Alexander |
| Athletics Director | Vic Cegles |
| Head Coach..... | Andy Read |
| Record at LBSU..... | 30-35 (3rd year) |
| Career Record (NCAA Division I) | 51-105 (7th year) |
| 2011 Overall Record..... | 15-14 |
| 2011 MPSF Record | 12-10 (6th) |
| Postseason..... | MPSF Semifinals |
| Letterwinners Returning/Lost..... | 12/6 |
| Starters Returning/Lost..... | 4/2+Libero |
| Redshirts Returning..... | 1 |
| Newcomers..... | 5 |
| All-Time Record..... | 693-419 (43rd year) |



Photo by Steven Georges

Senior Jim Baughman had 12 kills and hit .647 to lead the 49ers to a 25-16, 26-18, 25-10 victory over Cal Baptist in their home opener last Wednesday.

49ERS CONTINUE SEASON-LONG SEVEN-MATCH HOMESTAND; HOST PRINCETON, CAL STATE NORTHRIDGE THIS WEEK

The 11th-ranked Long Beach State men's volleyball team continues its season-long seven-match homestand this week when it hosts Princeton in non-conference action at 7 p.m. on Tuesday, Jan. 31.

The 49ers then return to the Walter Pyramid on Friday, Feb. 3, in search of their first Mountain Pacific Sports Federation win as they entertain No. 10 Cal State Northridge at 7 p.m.

LISTEN UP

This week's men's volleyball matches will be broadcast live via Stretch Internet Radio on longbeachstate.com.

IN THE POLLS

Long Beach State remained at No. 11 in the AVCA Division I-II Poll released Jan. 30. BYU topped the list with 269 points and was followed by UC Irvine (246), UCLA (241) and USC (200).

A GLANCE AT PRINCETON

Princeton begins its 2012 season in Southern California this week as it will play three matches in three days. The Tigers head to Cal Baptist on Monday, Jan. 30, before making their way to the Walter Pyramid on Tuesday. They then close out their stay on the West Coast at UC San Diego.

Princeton, which was picked to finish fifth in the EIVA, returns four starters from a 2011 squad that went 3-19 overall. Jeff Stapleton (2.68 kpg) and Michael Dye (2.65 kpg) are the Tigers' top returnees.

SERIES RECORD

The 49ers are undefeated in their all-time series with Princeton as they lead, 4-0. All four of the contests have been played in Long Beach and the two squads haven't met since 1998 when LBSU defeated the Tigers in three sets.

2012 AVCA Division I-II Poll (Week 4 - Jan. 30)

| Rk. | School | Pts | Rec. |
|-----|------------------|-----|------|
| 1. | BYU (15) | 269 | 6-1 |
| 2. | UC Irvine | 246 | 7-2 |
| 3. | UCLA (1) | 241 | 9-1 |
| 4. | USC | 200 | 4-3 |
| 5. | Penn State | 180 | 4-1 |
| 6. | Lewis | 179 | 6-2 |
| 7. | Stanford | 165 | 5-2 |
| 8. | Pepperdine | 164 | 6-2 |
| 9. | Ohio State | 118 | 6-4 |
| 10. | CS Northridge | 103 | 2-5 |
| 11. | Long Beach State | 97 | 3-4 |
| 12. | Pacific | 65 | 3-5 |
| 13. | Loyola-Chicago | 50 | 5-5 |
| 14. | Hawaii | 44 | 4-5 |
| 15. | UC Santa Barbara | 24 | 2-5 |



HEAD COACH ANDY READ Third Season

Andy Read enters his third season as the interim head coach at Long Beach State after spending the previous 13 years as an assistant to Alan Knipe. Read will serve as the interim head coach at LBSU through the 2012 season while Knipe is at the helm of the United States Men's Volleyball Team.

Read is no stranger to men's volleyball and has been a head coach once before, leading UC Irvine from 1992-1996. Read is known for his knowledge of the many technical intricacies of volleyball.

Last year, Read guided the 49ers to the Mountain Pacific Sports Federation Tournament semifinals for the first time since 2008. Long Beach State finished the campaign with a 15-14 overall record and saw three of its players earn All-MPSF honors. In addition, Antwan Aguilard was tabbed an AVCA Division I-II Second-Team All-American.

In 2010, Read's first year at the head of the LBSU program, the squad went 12-17 overall. Dean Bittner was named to the AVCA All-America Second Team, while Bittner, Aguilard and Dan Alexander also garnered All-MPSF recognition.

As an assistant to Knipe for the 49ers, Read worked primarily with the setters. He tutored Chris Seiffert, a three-time All-American and a former starter on the United States National Team, and Tyler Hildebrand, also a three-time All-American and former National Team member.

Read has coached several USA Developmental Teams including seven players from the 2008 Gold Medal USA Olympic Team. In 2009, Read guided the USA Boy's Youth National Team to a 10th-place finish at the World Championships in Italy. During the summer of 2008, he also led the Boy's Youth National Team which went undefeated at the NORCECA Championships.

Read was also the head coach for the USA Men's Junior National Team in 2006 when the squad had a second-place finish at NORCECA and earned a berth in the Men's Junior World Championships.

At the World Championships, the USA team finished seventh (tied for the best finish ever by a USA Men's Junior Team), and along the way defeated then reigning champion Russia in straight sets.

In January 2005, Read was named the USA Development Coach of the Year, after serving as head coach of the USA Boy's Youth National Team that earned a gold medal at the NORCECA Youth Championships in Mexico City with a record of 6-0. The team won its last 17 games in a row en route to earning a berth in the 2005 Boy's Youth World Championships.

Prior to the 2004 season, Read was an assistant on the U.S. Men's Volleyball team that competed in the World University Games in Korea. Read helped lead the squad, that included former 49ers, David Lee, Scott Touzinsky, and Tyler Hildebrand, to a third-place finish.

In the summer of 2001, Read served as the head coach for the U.S. Junior National Team which traveled to Brazil. Former 49ers Scott Touzinsky and Jeff Wootton were members of that U.S. squad.

Read was the head coach of the U.S. Youth National Team from 1998-99, while also assisting the USA Volleyball staff at the 1999 World Cup in Japan. In addition, he was an assistant coach for the World University Games in 1995 and 1997.

Prior to his stint at UC Irvine (1992-96), Read was an assistant coach at Pepperdine from 1990-92. In his final year at Pepperdine, the Waves captured the 1992 NCAA National Championship.

Read's connection with Long Beach State began when he was the head coach of the Marina High School boy's team from 1988-89, where he coached Alan Knipe.

Aside from his coaching duties, Read also serves as a science teacher at Westminster High School. Read, who resides in Garden Grove, graduated from Biola University in 1981 with a degree in biological science.

SCOUTING THE MATADORS

No. 10 Cal State Northridge (3-5, 1-3 MPSF) fell at No. 3 UCLA, 25-18, 25-15, 25-12, before edging Cal Baptist in five sets last week. Julius Hoefler leads the Matadors with 3.79 kills per set, while Sina Aghassy has registered a team-best 2.31 digs per set. Filip Tomicic (9.89 assists/set) and Travis Magorien (7.93 assists/set) have shared setting duties on the season.

SERIES RECORD

LBSU leads in its all-time series with Cal State Northridge, 35-32. The two teams faced each other just two weeks ago when the Matadors topped the 49ers, 15-25, 25-20, 22-25, 25-14, 15-11, on Friday, Jan. 20, in Northridge. CSUN has won four of the last five meetings but Long Beach State is 16-10 when playing at home.

LAST TIME OUT

Long Beach State snapped a three-match losing streak last week when it defeated Cal Baptist in its home opener on Wednesday, Jan. 25. The 49ers needed just 1 hour and 11 minutes to dispatch the Lancers, 25-16, 25-18, 25-10. Jim Baughman had a match-high 12 kills and hit .647 on the night. Taylor Crabb added seven kills and six digs, while Connor Olbright compiled 22 assists and seven digs.

DYNAMIC DUO

The duo of Jim Baughman and Taylor Crabb have provided a big chunk of the 49ers' offense. Baughman (3.14 k/s) and Crabb (2.86 k/s) have combined for 168 kills and have accounted for more than half of the team's total attempts with 407 swings between the two of them. In addition, either Baughman or Crabb have led LBSU in kills in every match so far.

CRABB ATTACK

Sophomore Taylor Crabb has reached double-figure kills in five of the 49ers' seven matches. He had a season-high 17 kills against Ohio State in the third-place game of the UCSB Invitational on Jan. 7. The Honolulu, Hawaii, native also registered his sixth career double-double at Pepperdine with 15 kills and 14 digs. Crabb added 12 kills at Cal State Northridge, 11 vs. Loyola-Chicago and 10 at USC. In MPSF play, Crabb is averaging a team-best 3.08 kills and 2.33 digs per set.

LET'S MAKE THAT TWO

Senior Brad Hemmerling has notched a team-best two double-doubles this season. His first came against UC Irvine (Jan. 6) when he finished with 12 kills and a career-high 12 digs. Hemmerling also tallied 11 kills and 11 digs at Cal State Northridge on Jan. 20. On the season, the Yorba Linda native is averaging 2.19 kills and 1.57 digs per set.

ORNEE STEPS UP

Sophomore Jeff Ornee has stepped into a starting role at middle blocker and has been a consistent force for LBSU, averaging 1.50 kills and 0.81 blocks per set.

LBSU vs. Princeton

Series: LBSU leads, 4-0
Current Streak: LBSU won 4

All-Time Series

| Date | Site | Result |
|---------|------------|--------|
| 1-29-98 | Long Beach | W, 3-0 |
| 1-30-97 | Long Beach | W, 3-0 |
| 2-1-96 | Long Beach | W, 3-0 |
| 1-25-95 | Long Beach | W, 3-1 |

2012 Comparative Team Stats

| LBSU | | PRI |
|------|-------------------|-----|
| 3-4 | Overall Record | 0-0 |
| 0-3 | Conference Record | 0-0 |
| 11th | National Ranking | n/a |
| 12.2 | Kills/Set | n/a |
| .279 | Attack Pct. | n/a |
| 8.1 | Digs/Set | n/a |
| 1.8 | Blocks/Set | n/a |

LBSU vs. Cal State Northridge

Series: LBSU leads, 35-32
Current Streak: CSUN won 1

All-Time Series (Last 10 Meetings)

| Date | Site | Result |
|---------|------------|--------|
| 1-20-12 | Northridge | L, 3-2 |
| 4-16-11 | Long Beach | W, 3-0 |
| 2-11-11 | Northridge | L, 3-2 |
| 2-11-10 | Northridge | L, 3-0 |
| 1-15-10 | Long Beach | L, 3-0 |
| 4-11-09 | Long Beach | W, 3-1 |
| 2-6-09 | Northridge | L, 3-0 |
| 4-12-08 | Northridge | W, 3-0 |
| 2-29-08 | Long Beach | L, 3-2 |
| 2-15-07 | Northridge | L, 3-2 |

2012 Comparative Team Stats

| LBSU | | CSUN |
|------|-------------------|------|
| 3-4 | Overall Record | 3-5 |
| 0-3 | Conference Record | 1-3 |
| 11th | National Ranking | 10th |
| 12.2 | Kills/Set | 11.1 |
| .279 | Attack Pct. | .252 |
| 8.1 | Digs/Set | 6.7 |
| 1.8 | Blocks/Set | 2.3 |

2012 SEASON SUPERLATIVES

49er Team Highs

Kills 61, vs. Loyola (1/6/12)
 Attempts..... 140, vs. UC Irvine (1/6/12)
 Percentage..... .447, vs. Loyola (1/6/12)
 Assists..... 54, at Pepperdine (1/14/12)
 Aces7, at CSUN (1/20/12)
 Digs..... 42, at Pepperdine (1/14/12)
 Solo Blocks .. 2, 3x, last at Pepperdine (1/14/12)
 Block Assists 24, vs. Ohio State (1/7/12)
 Total Blocks..... 12.0, vs. Ohio State (1/7/12)

Opponent Team Highs

Kills 68, vs. UC Irvine (1/6/12)
 Attempts..... 138, vs. UC Irvine (1/6/12)
 Percentage..... .383, vs. Loyola (1/6/12)
 Assists..... 59, vs. UC Irvine (1/6/12)
 Aces7, 2x, last vs. Ohio State (1/7/12)
 Digs..... 55, vs. UC Irvine (1/6/12)
 Solo Blocks 3, 3x, last at CSUN (1/20/12)
 Block Assists 26, at Pepperdine (1/14/12)
 Total Blocks..... 16.0, at Pepperdine (1/14/12)

49er Team Lows

Kills29, at USC (1/12/12)
 Attempts.....70, vs. Cal Baptist (1/25/12)
 Percentage..... .088, at USC (1/12/12)
 Assists..... 28, at USC (1/12/12)
 Aces 2, at USC (1/12/12)
 Digs 25, vs. Loyola (1/6/12)
 Solo Blocks 0, 2x, last at CSUN (1/20/12)
 Block Assists 4, vs. Loyola (1/6/12)
 Total Blocks..... 3.0, vs. Loyola (1/6/12)

Opponent Team Lows

Kills27, vs. Cal Baptist (1/25/12)
 Attempts.....84, vs. Cal Baptist (1/25/12)
 Percentage..... .095, vs. Cal Baptist (1/25/12)
 Assists..... 27, at Cal Baptist (1/25/12)
 Aces 2, 3x, last vs. Cal Baptist (1/25/12)
 Digs21, vs. Cal Baptist (1/25/12)
 Solo Blocks0, vs. Cal Baptist (1/25/12)
 Block Assists . 2, 2x, last vs. Cal Baptist (1/25/12)
 Total Blocks..... 1.0, vs. Cal Baptist (1/25/12)

49er Player Game Highs

Kills20, Jim Baughman
 vs. Ohio State (1/7/12)
 Attempts.....44, Taylor Crabb
 at Pepperdine (1/14/12)
 Pct. (Min. 12 kills)....778 (14-0-18), Jeff Ornee
 vs. Loyola (1/6/12)
 Assists.....51, Connor Olbright
 vs. Loyola (1/6/12)
 Aces3, 2x, last Jim Baughman
 at Cal State Northridge (1/20/12)
 Digs.....14, 2x, last Kyle McElderry
 at Cal State Northridge (1/20/12)
 Solo Blocks2, Ryan Meehan
 at USC (1/12/12)
 Block Assists 6, Jeff Ornee
 at Cal State Northridge (1/20/12)
 Total Blocks..... 6, Jeff Ornee
 at Cal State Northridge (1/20/12)

Ornee had a career-high 14 kills, while committing no errors on 18 attempts against Loyola-Chicago (Jan. 6), and finished with nine kills and hit .667 at Pepperdine on Jan. 14. The Cypress, Calif., native has also led the 49ers in blocking in four of their seven matches.

BAUGHMAN GOES FOR TWENTY

Senior Jim Baughman (Valencia, Calif.) registered his eighth career 20-plus kill match in a five-set win over then No. 8 Ohio State. Baughman pounded down 20 kills and committed just five errors on 32 attempts for a .469 hitting percentage. Baughman is currently tops on the team with 3.14 kills per set.

MIXING IT UP

After using the same starting lineup in the first four matches of the season, Long Beach State mixed it up at Pepperdine (Jan. 14) with senior Srdjan Nadazdin and freshman John La Rusch both earning their first starts of the year. Nadazdin finished with 10 kills and nine digs at outside hitter, while La Rusch compiled 12 kills, five digs and hit .409 (12-3-22) at opposite.

49ERS FINISH THIRD AT UCSB INVITATIONAL

Long Beach State opened the 2012 season at the UCSB/asics Collegiate Invitational where it went 2-1 to finish third overall. LBSU began the tournament on Friday, Jan. 6, with a 3-0 win over No. 10 Loyola-Chicago, before dropping a 3-2 decision to eventual champion and second-ranked UC Irvine. Jim Baughman paced the 49ers in both matches with 15 kills vs. Loyola and 18 kills vs. UCI.

LBSU rebounded on Saturday (Jan. 7) as it came back from a 2-0 deficit to top defending national champion Ohio State, 3-2, in the third-place match. Baughman led the way once again with 20 kills, while hitting .469. Taylor Crabb also finished with 17 kills and six digs, while older brother, Trevor Crabb, tallied 10 kills and five digs. Connor Olbright directed the offense to a .339 attack percentage with 50 assists.

CRABB NAMED PRESEASON ALL-AMERICAN

Sophomore outside hitter Taylor Crabb was selected to the Off the Block Preseason All-America Team the website announced in December. Crabb is the 49ers' only returning All-MPSF selection. The Honolulu, Hawaii, native garnered honorable mention recognition and was named to the MPSF All-Freshman Team after averaging 2.60 kills and 1.39 digs per set. Crabb registered 18 double-figure kill matches and had five double-doubles. He was also named to the MPSF All-Tournament Team.

UP NEXT

Long Beach State welcomes Stanford (Feb. 10) and Pacific (Feb. 11) to the Walter Pyramid for a pair of 7 p.m. MPSF matches next week.

LBSU's Record When...

| | |
|---------------------------|-----|
| Playing at home | 1-0 |
| Playing on the road | 0-3 |
| Playing at a neutral site | 2-1 |

| | |
|-------------------------------------|-----|
| Playing a night match | 1-4 |
| Playing a day match (Before 5 p.m.) | 2-0 |

| | |
|---------------|-----|
| Winning Set 1 | 2-2 |
| Losing Set 1 | 1-2 |

| | |
|--------------------------|-----|
| Winning First Two Sets | 2-1 |
| Losing First Two Sets | 1-1 |
| Splitting First Two Sets | 0-2 |

| | |
|---------------------|-----|
| Three-Set Decisions | 2-1 |
| Four-Set Decisions | 0-1 |
| Five-Set Decisions | 1-2 |

| | |
|-------------|-----|
| More Kills | 3-1 |
| Fewer Kills | 0-3 |
| Same Kills | 0-0 |

| | |
|---------------------------|-----|
| Better Hitting Percentage | 3-0 |
| Worse Hitting Percentage | 0-4 |
| Same Hitting Percentage | 0-0 |

| | |
|------------|-----|
| More Digs | 3-0 |
| Fewer Digs | 0-4 |
| Same Digs | 0-0 |

| | |
|--------------|-----|
| More Blocks | 2-0 |
| Fewer Blocks | 1-4 |
| Same Blocks | 0-0 |

| | |
|------------------------|-----|
| Hitting .300 or Better | 3-0 |
| Hitting Below .300 | 0-4 |

| | |
|-----------------|-----|
| vs. MPSF | 0-4 |
| vs. EIWA | 0-0 |
| vs. MIVA | 2-0 |
| vs. Independent | 1-0 |

| | |
|------------------------|-----|
| vs. Ranked Opponents | 2-4 |
| vs. Unranked Opponents | 1-0 |

| | |
|---------------------|-----|
| vs. Top 5 Opponents | 0-1 |
|---------------------|-----|

| | |
|-------------|-----|
| in January | 3-4 |
| in February | 0-0 |
| in March | 0-0 |
| in April | 0-0 |
| in May | 0-0 |

| | |
|----------------------|-----|
| Playing on Tuesday | 0-0 |
| Playing on Wednesday | 1-0 |
| Playing on Thursday | 0-1 |
| Playing on Friday | 1-2 |
| Playing on Saturday | 1-1 |

MISCELLANEOUS STATS**20+ Kill Matches**

| Player | 2012 | Career |
|--------------|------|--------|
| Jim Baughman | 1 | 8 |
| Taylor Crabb | 0 | 1 |

10+ Kill Matches

| Player | 2012 | Career |
|-----------------|------|--------|
| Jim Baughman | 5 | 45 |
| Taylor Crabb | 5 | 23 |
| Brad Hemmerling | 2 | 11 |
| Srdjan Nadazdin | 1 | 2 |
| Trevor Crabb | 1 | 1 |
| John La Rusch | 1 | 1 |
| Jeff Ornee | 1 | 1 |

10+ Dig Matches

| Player | 2012 | Career |
|-----------------|------|--------|
| Brad Hemmerling | 2 | 2 |
| Taylor Crabb | 1 | 6 |
| Kyle McEldery | 1 | 1 |
| Jim Baughman | 0 | 3 |
| Connor Olbright | 0 | 2 |

Double-Doubles

| Player | 2012 | Career |
|-----------------|------|--------|
| Brad Hemmerling | 2 | 2 |
| Taylor Crabb | 1 | 6 |
| Jim Baughman | 0 | 4 |
| Connor Olbright | 0 | 2 |

Led Team in Kills (Includes Co-Leaders)

| Player | 2012 | Career |
|-----------------|------|--------|
| Jim Baughman | 5 | 24 |
| Taylor Crabb | 3 | 7 |
| Brad Hemmerling | 0 | 3 |

Led Team in Digs (Includes Co-Leaders)

| Player | 2012 | Career |
|-----------------|------|--------|
| Taylor Crabb | 3 | 9 |
| Connor Olbright | 2 | 4 |
| Kyle McEldery | 2 | 2 |
| Brad Hemmerling | 1 | 1 |
| Jim Baughman | 0 | 1 |

Led Team in Blocks (Includes Co-Leaders)

| Player | 2012 | Career |
|-----------------|------|--------|
| Jeff Ornee | 4 | 6 |
| Ryan Meehan | 3 | 13 |
| Connor Olbright | 1 | 1 |
| Jim Baughman | 0 | 13 |
| Brad Hemmerling | 0 | 3 |
| Srdjan Nadazdin | 0 | 3 |
| Taylor Crabb | 0 | 2 |
| Colten Echave | 0 | 2 |
| Dalton Ammerman | 0 | 1 |

MPSF STANDINGS (as of Jan. 28)

| | Conference | | | Overall | | |
|----------------------|------------|---|-------|---------|---|------|
| | W | L | Pct. | W | L | Pct. |
| 1. UCLA | 4 | 0 | 1.000 | 9 | 1 | .900 |
| BYU | 4 | 0 | 1.000 | 6 | 1 | .857 |
| 3. Pepperdine | 5 | 1 | .833 | 6 | 2 | .750 |
| 4. Stanford | 2 | 1 | .667 | 5 | 2 | .714 |
| 5. UC Irvine | 3 | 2 | .600 | 7 | 2 | .778 |
| 6. USC | 3 | 3 | .500 | 4 | 3 | .571 |
| 7. Pacific | 1 | 2 | .333 | 3 | 5 | .375 |
| 8. Hawaii | 1 | 3 | .250 | 4 | 5 | .444 |
| CS Northridge | 1 | 3 | .250 | 3 | 5 | .375 |
| 10. UC San Diego | 1 | 4 | .200 | 2 | 6 | .250 |
| 11. Long Beach State | 0 | 3 | .000 | 3 | 4 | .429 |
| UC Santa Barbara | 0 | 3 | .000 | 2 | 5 | .286 |

THIS WEEK IN THE MPSF

Tuesday, Jan. 31

Princeton at Long Beach State, 7 p.m.

Wednesday, Feb. 1

Princeton at UC San Diego, 5 p.m.

*UCLA at Pepperdine, 7 p.m.

*UC Santa Barbara at USC, 7 p.m.

Friday, Feb. 3

*Stanford at BYU, 6 p.m.

*Cal State Northridge at Long Beach State, 7 p.m.

*Hawaii at Pacific, 7 p.m.

*UCLA at USC, 7 p.m.

*UC Santa Barbara at Pepperdine, 7 p.m.

UC San Diego at Hope International, 7 p.m.

Saturday, Feb. 4

*Stanford at BYU, 6 p.m.

*Hawaii at Pacific, 7 p.m.

** MPSF match*

All Times Pacific

MPSF PLAYERS OF THE WEEK

| Date | Player | Team | Pos. | Yr. |
|------|---------------|-----------|------|-----|
| 1/9 | Jeremy Dejno | UC Irvine | OH | So. |
| 1/16 | Taylor Sander | BYU | OH | So. |
| 1/23 | Taylor Sander | BYU | OH | So. |

2012 Numerical Roster

| NO. | PLAYER | POS | HT | WT | YR | EXP | HOMETOWN (LAST SCHOOL) |
|-----|-----------------|--------|-----|-----|-----|-----|---|
| 1 | Matt Silver | L | 6-0 | 205 | Fr. | HS | Calgary, Alberta (Western Canada HS) |
| 2 | Jim Baughman | OPP | 6-7 | 222 | Sr. | 3L | Valencia, Calif. (Valencia HS) |
| 3 | Trevor Crabb | OH | 6-4 | 195 | Jr. | 1L | Honolulu, Hawaii (Univ. of Puget Sound/Punahou HS) |
| 4 | Taylor Crabb | OH | 6-0 | 150 | So. | 1L | Honolulu, Hawaii (Punahou HS) |
| 5 | McKay Smith | MB | 6-6 | 215 | Jr. | TR | Dana Point, Calif. (Orange Coast College/Dana Hills HS) |
| 6 | John La Rusch | OPP | 6-6 | 190 | Fr. | HS | Long Beach, Calif. (Poly HS) |
| 8 | Alex Anshus | S | 6-4 | 195 | So. | RS | Escondido, Calif. (San Pasqual HS) |
| 10 | Dalton Ammerman | OH | 6-4 | 190 | Jr. | 2L | Parker, Colo. (Chaparral HS) |
| 11 | Dan Glamack | OH | 6-6 | 195 | Fr. | HS | Victor, N.Y. (Victor Senior HS) |
| 12 | Kyle McElderry | L | 6-5 | 230 | Jr. | 2L | La Palma, Calif. (Los Alamitos HS) |
| 13 | Taylor Gregory | MB | 6-7 | 225 | Fr. | HS | Saugus, Calif. (Hart HS) |
| 14 | Ian Satterfield | OPP | 6-5 | 205 | So. | 1L | Manhattan Beach, Calif. (Mira Costa HS) |
| 15 | Colten Echave | MB | 6-7 | 223 | Jr. | 2L | Ladera Ranch, Calif. (Tesoro HS) |
| 16 | Jeff Ornee | MB | 6-8 | 188 | So. | 1L | Cypress, Calif. (Valley Christian HS) |
| 19 | Brad Hemmerling | OH | 6-4 | 203 | Sr. | 1L | Yorba Linda, Calif. (Orange Coast College/Esperanza HS) |
| 21 | Connor Olbright | S | 6-4 | 197 | So. | 1L | Orange, Calif. (El Modena HS) |
| 23 | Srdjan Nadazdin | OH/OPP | 6-8 | 201 | Sr. | 3L | Los Alamitos, Calif. (Los Alamitos HS) |
| 25 | Ryan Meehan | MB | 6-8 | 209 | Sr. | 2L | Dana Point, Calif. (Pepperdine/Dana Hills HS) |

| | |
|-----------------------------|-----------------------------|
| Head Coach: | Andy Read, 3rd year |
| Assistant Coach: | Scott Lane, 3rd year |
| Assistant Coach: | Chris Seiffert, 1st year |
| Volunteer Assistant: | John Crutchfield, 11th year |

ROSTER BY CLASS

Seniors (4): Jim Baughman, Brad Hemmerling, Ryan Meehan, Srdjan Nadazdin

Juniors (5): Dalton Ammerman, Trevor Crabb, Colten Echave, Kyle McElderry, McKay Smith

Sophomores (5): Alex Anshus, Taylor Crabb, Connor Olbright, Jeff Ornee, Ian Satterfield

Freshmen (4): Dan Glamack, Taylor Gregory, John La Rusch, Matt Silver

ROSTER BY POSITION

Outsides (5): Dalton Ammerman, Trevor Crabb, Taylor Crabb, Dan Glamack, Brad Hemmerling

Middles (5): Colten Echave, Taylor Gregory, Ryan Meehan, Jeff Ornee, McKay Smith

Opposites (4): Jim Baughman, John La Rusch, Srdjan Nadazdin, Ian Satterfield

Setters (2): Alex Anshus, Connor Olbright

Liberos (2): Kyle McElderry, Matt Silver

PRONUNCIATION GUIDE

| | |
|----------------------|------------------------|
| Baughman | BOFF-men |
| Echave..... | uh-CHA-vey |
| La Rusch | luh-ROO-sh |
| McElderry | MACK-uhl-dairy |
| Olbright..... | ALL-bright |
| Ornee..... | oar-nay |
| Srdjan Nadazdin..... | sir-JUHN NAD-ah-z-deen |
| Seiffert | SIGH-fert |

49ers



#1 ♦ Matt Silver ♦ 6-0 ♦ 205 ♦ Libero ♦ Fr.

| Season Highs | LBSU Career Highs | LBSU Career Stats | | | | | | |
|---|---|-------------------|-------|---|---|----|---|----|
| Kills..... n/a | Kills..... n/a | Year | MP-SP | K | A | SA | D | TB |
| Attempts..... n/a | Attempts..... n/a | 2012 | 3-4 | 0 | 1 | 0 | 4 | 1 |
| Hitting Pct..... n/a | Hitting Pct..... n/a | | | | | | | |
| Aces..... n/a | Aces..... n/a | | | | | | | |
| Digs..... 3, vs. Ohio State (1/7/12) | Digs..... 3, vs. Ohio State (1/7/12) | | | | | | | |
| Blocks..... n/a | Blocks..... n/a | | | | | | | |
| Assists..... 1, vs. Cal Baptist (1/25/12) | Assists..... 1, vs. Cal Baptist (1/25/12) | | | | | | | |



#2 ♦ Jim Baughman ♦ 6-7 ♦ 222 ♦ Opposite ♦ Sr.

| Season Highs | LBSU Career Highs | LBSU Career Stats | | | | | | |
|--|---|-------------------|---------------|------------|-----------|-----------|------------|------------|
| Kills..... 20, vs. Ohio State (1/7/12) | Kills..... 23, vs. Loyola (3/9/10) | Year | MP-SP | K | A | SA | D | TB |
| Attempts..... 42, vs. UC Irvine (1/6/12) | Attempts..... 52, at UCSB (1/13/10) | 2009 | 28-113 | 224 | 11 | 22 | 43 | 105 |
| Hitting Pct..... .647, vs. Cal Baptist (1/25/12) | Hitting Pct..... .714, vs. Hawaii (2/13/09) | 2010 | 28-107 | 252 | 10 | 23 | 32 | 50 |
| Aces..... 3, at CS Northridge (1/20/12) | Aces..... 4, 3x, last vs. USC (2/25/11) | 2011 | 26-96 | 314 | 19 | 28 | 98 | 59 |
| Digs..... 4, 2x, last vs. UC Irvine (1/6/12) | Digs..... 14, at UCLA (3/4/11) | 2012 | 7-28 | 88 | 2 | 10 | 19 | 9 |
| Blocks..... 3, vs. Cal Baptist (1/25/12) | Blocks..... 11, vs. Hawaii (2/13/09) | Totals | 89-344 | 878 | 42 | 83 | 192 | 223 |
| Assists..... 2, vs. Cal Baptist (1/25/12) | Assists..... 3, at UCSB (3/2/11) | | | | | | | |



#3 ♦ Trevor Crabb ♦ 6-4 ♦ 195 ♦ Outside Hitter ♦ Jr.

| Season Highs | LBSU Career Highs | LBSU Career Stats | | | | | | |
|--|--|-------------------|-------|----|---|----|---|----|
| Kills..... 10, vs. Ohio State (1/7/12) | Kills..... 10, vs. Ohio State (1/7/12) | Year | MP-SP | K | A | SA | D | TB |
| Attempts..... 21, vs. Ohio State (1/7/12) | Attempts..... 21, vs. Ohio State (1/7/12) | 2012 | 4-7 | 10 | 0 | 0 | 8 | 3 |
| Hitting Pct..... .333, vs. Ohio State (1/7/12) | Hitting Pct..... .333, vs. Ohio State (1/7/12) | | | | | | | |
| Aces..... n/a | Aces..... n/a | | | | | | | |
| Digs..... 5, vs. Ohio State (1/7/12) | Digs..... 5, vs. Ohio State (1/7/12) | | | | | | | |
| Blocks..... 2, vs. Ohio State (1/7/12) | Blocks..... 2, vs. Ohio State (1/7/12) | | | | | | | |
| Assists..... n/a | Assists..... n/a | | | | | | | |



#4 ♦ Taylor Crabb ♦ 6-0 ♦ 150 ♦ Outside Hitter ♦ So.

| Season Highs | LBSU Career Highs | LBSU Career Stats | | | | | | |
|---|--|-------------------|---------------|------------|-----------|-----------|------------|-----------|
| Kills..... 17, vs. Ohio State (1/7/12) | Kills..... 20, vs. UC Irvine (4/6/11) | Year | MP-SP | K | A | SA | D | TB |
| Attempts..... 44, at Pepperdine (1/14/12) | Attempts..... 47, 2x, last at Stanford (4/23/11) | 2011 | 29-114 | 296 | 17 | 13 | 158 | 44 |
| Hitting Pct..... .286, vs. Ohio State (1/7/12) | Hitting Pct..... .500, 3x, last vs. UCI (4/6/11) | 2012 | 7-28 | 80 | 6 | 7 | 46 | 10 |
| Aces..... 2, 2x, last at USC (1/12/12) | Aces..... 2, 5x, last at USC (1/12/12) | Totals | 36-142 | 376 | 23 | 20 | 204 | 54 |
| Digs..... 14, at Pepperdine (1/14/12) | Digs..... 14, at Pepperdine (1/14/12) | | | | | | | |
| Blocks..... 4, vs. Ohio State (1/7/12) | Blocks..... 5, at CS Northridge (2/11/11) | | | | | | | |
| Assists..... 2, 2x last vs. Cal Baptist (1/25/12) | Assists..... 3, 2x, last vs. Lewis (3/11/11) | | | | | | | |



#5 ♦ McKay Smith ♦ 6-6 ♦ 215 ♦ Middle Blocker ♦ Jr.

| Season Highs | LBSU Career Highs | LBSU Career Stats | | | | | | |
|----------------------|----------------------|-------------------|-------|-----|-----|-----|-----|-----|
| Kills..... n/a | Kills..... n/a | Year | MP-SP | K | A | SA | D | TB |
| Attempts..... n/a | Attempts..... n/a | 2012 | n/a | n/a | n/a | n/a | n/a | n/a |
| Hitting Pct..... n/a | Hitting Pct..... n/a | | | | | | | |
| Aces..... n/a | Aces..... n/a | | | | | | | |
| Digs..... n/a | Digs..... n/a | | | | | | | |
| Blocks..... n/a | Blocks..... n/a | | | | | | | |
| Assists..... n/a | Assists..... n/a | | | | | | | |



#13 ♦ Taylor Gregory ♦ 6-7 ♦ 225 ♦ Middle Blocker ♦ Fr.

| Season Highs | | LBSU Career Highs | | LBSU Career Stats | | | | | | |
|------------------|-----|-------------------|-----|-------------------|-------|-----|-----|-----|-----|-----|
| Kills..... | n/a | Kills..... | n/a | Year | MP-SP | K | A | SA | D | TB |
| Attempts..... | n/a | Attempts..... | n/a | 2012 | n/a | n/a | n/a | n/a | n/a | n/a |
| Hitting Pct..... | n/a | Hitting Pct..... | n/a | | | | | | | |
| Aces..... | n/a | Aces..... | n/a | | | | | | | |
| Digs..... | n/a | Digs..... | n/a | | | | | | | |
| Blocks..... | n/a | Blocks..... | n/a | | | | | | | |
| Assists..... | n/a | Assists..... | n/a | | | | | | | |



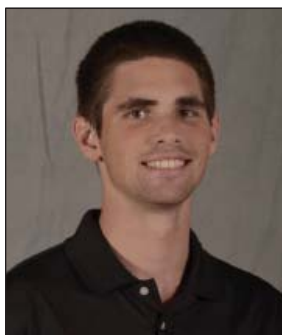
#14 ♦ Ian Satterfield ♦ 6-5 ♦ 205 ♦ Opposite ♦ So.

| Season Highs | | LBSU Career Highs | | LBSU Career Stats | | | | | | |
|------------------|---------------------------------------|-------------------|----------------------------------|-------------------|--------------|-----------|----------|----------|-----------|----------|
| Kills..... | 3, vs. Cal Baptist (1/25/12) | Kills..... | 6, vs. UCLA (1/8/11) | Year | MP-SP | K | A | SA | D | TB |
| Attempts..... | 8, at USC (1/12/12) | Attempts..... | 21, vs. UCLA (1/8/11) | 2011 | 25-81 | 6 | 0 | 3 | 13 | 0 |
| Hitting Pct..... | 1.000, vs. Cal Baptist (1/25/12) | Hitting Pct..... | 1.000, vs. Cal Baptist (1/25/12) | 2012 | 6-11 | 4 | 0 | 0 | 5 | 0 |
| Aces..... | n/a | Aces..... | 1, 3x, last at UCLA (3/4/11) | Totals | 31-92 | 10 | 0 | 3 | 18 | 0 |
| Digs..... | 2, 2x, last vs. Cal Baptist (1/25/12) | Digs..... | 3, at Pacific (3/25/11) | | | | | | | |
| Blocks..... | n/a | Blocks..... | n/a | | | | | | | |
| Assists..... | n/a | Assists..... | n/a | | | | | | | |



#15 ♦ Colten Echave ♦ 6-7 ♦ 223 ♦ Middle Blocker ♦ Jr.

| Season Highs | | LBSU Career Highs | | LBSU Career Stats | | | | | | |
|------------------|-------------------------------|-------------------|---------------------------------|-------------------|--------------|-----------|----------|----------|-----------|-----------|
| Kills..... | 3, vs. Ohio State (1/7/12) | Kills..... | 7, at UCSB (1/13/10) | Year | MP-SP | K | A | SA | D | TB |
| Attempts..... | 5, vs. Ohio State (1/7/12) | Attempts..... | 13, at UCSB (1/13/10) | 2010 | 12-25 | 20 | 0 | 0 | 7 | 12 |
| Hitting Pct..... | .600, vs. Ohio State (1/7/12) | Hitting Pct..... | .833, vs. St. Francis (3/12/10) | 2011 | | | | | | |
| Aces..... | n/a | Aces..... | n/a | | | | | | | |
| Digs..... | 2, vs. Ohio State (1/7/12) | Digs..... | 3, at USC (1/20/10) | 2012 | 5-10 | 5 | 0 | 0 | 4 | 4 |
| Blocks..... | 3, vs. Ohio State (1/7/12) | Blocks..... | 5, at UCSB (1/13/10) | Totals | 17-35 | 25 | 0 | 0 | 11 | 16 |
| Assists..... | n/a | Assists..... | n/a | | | | | | | |



#16 ♦ Jeff Ornee ♦ 6-8 ♦ 188 ♦ Middle Blocker ♦ So.

| Season Highs | | LBSU Career Highs | | LBSU Career Stats | | | | | | |
|------------------|---------------------------------------|-------------------|--|-------------------|--------------|-----------|----------|----------|-----------|-----------|
| Kills..... | 14, vs. Loyola (1/6/12) | Kills..... | 14, vs. Loyola (1/6/12) | Year | MP-SP | K | A | SA | D | TB |
| Attempts..... | 18, vs. Loyola (1/6/12) | Attempts..... | 18, vs. Loyola (1/6/12) | 2011 | 11-26 | 34 | 2 | 1 | 7 | 18 |
| Hitting Pct..... | .778, vs. Loyola (1/6/12) | Hitting Pct..... | .833, vs. Lewis (3/11/11) | 2012 | 7-26 | 39 | 2 | 1 | 3 | 21 |
| Aces..... | 1, at CS Northridge (1/20/12) | Aces..... | 1, 2x, last at CS Northridge (1/20/12) | Totals | 18-52 | 73 | 4 | 2 | 10 | 39 |
| Digs..... | 1, 3x, last vs. Cal Baptist (1/25/12) | Digs..... | 3, vs. Hawaii (3/19/11) | | | | | | | |
| Blocks..... | 6, at CS Northridge (1/20/12) | Blocks..... | 6, at CS Northridge (1/20/12) | | | | | | | |
| Assists..... | 1, 2x, last vs. Cal Baptist (1/25/12) | Assists..... | 1, 4x, last vs. Cal Baptist (1/25/12) | | | | | | | |



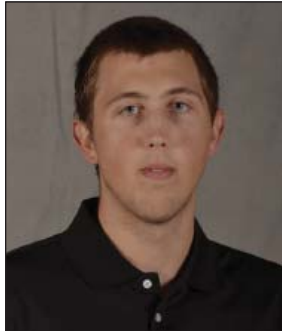
#19 ♦ Brad Hemmerling ♦ 6-4 ♦ 203 ♦ Outside Hitter ♦ Sr.

| Season Highs | | LBSU Career Highs | | LBSU Career Stats | | | | | | |
|------------------|------------------------------------|-------------------|--|-------------------|--------------|------------|----------|-----------|------------|-----------|
| Kills..... | 12, vs. UC Irvine (1/6/12) | Kills..... | 17, vs. Lewis (3/11/11) | Year | MP-SP | K | A | SA | D | TB |
| Attempts..... | 31, at CS Northridge (1/20/12) | Attempts..... | 36, vs. Lewis (3/11/11) | 2011 | 17-59 | 153 | 4 | 7 | 70 | 29 |
| Hitting Pct..... | .500, vs. Loyola (1/6/12) | Hitting Pct..... | .625, vs. Pepperdine (2/23/11) | 2012 | 6-21 | 46 | 2 | 5 | 33 | 9 |
| Aces..... | 3, vs. UC Irvine (1/6/12) | Aces..... | 3, vs. UC Irvine (1/6/12) | Totals | 23-80 | 199 | 6 | 12 | 103 | 38 |
| Digs..... | 12, vs. UC Irvine (1/6/12) | Digs..... | 12, vs. UC Irvine (1/6/12) | | | | | | | |
| Blocks..... | 4, at CS Northridge (1/20/12) | Blocks..... | 4, 5x, last at CS Northridge (1/20/12) | | | | | | | |
| Assists..... | 1, 2x, last vs. UC Irvine (1/6/12) | Assists..... | 1, 6x, last vs. UC Irvine (1/6/12) | | | | | | | |



#21 ♦ Connor Olbright ♦ 6-4 ♦ 197 ♦ Setter ♦ So.

| Season Highs | | LBSU Career Highs | | LBSU Career Stats | | | | | | |
|-----------------|--|-------------------|--|-------------------|--------------|-----------|------------|-----------|------------|-----------|
| Kills..... | 3, vs. UC Irvine (1/6/12) | Kills..... | 3, vs. UC Irvine (1/6/12) | Year | MP-SP | K | A | SA | D | TB |
| Attempts .. | 6, 2x, last at Pepperdine (1/14/12) | Attempts .. | 6, 2x, last at Pepperdine (1/14/12) | 2011 | 16-45 | 11 | 431 | 3 | 60 | 28 |
| Hitting Pct. .. | 1.000, 3x, last vs. CBU (1/25/12) | Hitting Pct. .. | 1.000, 5x, last vs. CBU (1/25/12) | 2012 | 7-28 | 14 | 282 | 3 | 40 | 12 |
| Aces..... | 1, 3x, last at CS Northridge (1/20/12) | Aces..... | 1, 6x, last at CS Northridge (1/20/12) | Totals | 23-73 | 25 | 713 | 6 | 100 | 40 |
| Digs ... | 8, 2x, last at CS Northridge (1/20/12) | Digs | 12, vs. UCI (4/6/11) | | | | | | | |
| Blocks | 5, vs. Ohio State (1/7/12) | Blocks..... | 5, 3x, last vs. Ohio State (1/7/12) | | | | | | | |
| Assists | 51, vs. Loyola (1/6/12) | Assists | 62, at Stanford (4/23/11) | | | | | | | |



#23 ♦ Srdjan Nadazdin ♦ 6-8 ♦ 201 ♦ Outside Hitter/Opposite ♦ Sr.

| Season Highs | | LBSU Career Highs | | LBSU Career Stats | | | | | | |
|-------------------|---------------------------------|-------------------|-------------------------------------|-------------------|---------------|-----------|----------|-----------|-----------|-----------|
| Kills..... | 10, at Pepperdine (1/14/12) | Kills..... | 11, vs. St. Francis (3/12/10) | Year | MP-SP | K | A | SA | D | TB |
| Attempts | 30, at Pepperdine (1/14/12) | Attempts | 31, vs. St. Francis (3/12/10) | 2009 | 13-29 | 22 | 0 | 0 | 4 | 15 |
| Hitting Pct. | .500, vs. Cal Baptist (1/25/12) | Hitting Pct. | .500, vs. Cal Baptist (1/25/12) | 2010 | 23-68 | 24 | 3 | 0 | 6 | 10 |
| Aces..... | 1, at Pepperdine (1/14/12) | Aces..... | 1, 2x, last at Pepperdine (1/14/12) | 2011 | 3-8 | 8 | 0 | 1 | 9 | 2 |
| Digs | 9, at Pepperdine (1/14/12) | Digs | 9, at Pepperdine (1/14/12) | 2012 | 3-7 | 13 | 0 | 1 | 9 | 1 |
| Blocks | 1, at Pepperdine (1/14/12) | Blocks | 5, 2x, last vs. Pacific (4/4/09) | Totals | 42-112 | 67 | 3 | 2 | 28 | 28 |
| Assists | n/a | Assists | 2, vs. St. Francis (3/12/10) | | | | | | | |



#25 ♦ Ryan Meehan ♦ 6-8 ♦ 209 ♦ Middle Blocker ♦ Sr.

| Season Highs | | LBSU Career Highs | | LBSU Career Stats | | | | | | |
|-------------------|-------------------------------------|-------------------|------------------------------------|-------------------|---------------|------------|----------|-----------|-----------|------------|
| Kills..... | 7, vs. Loyola (1/6/12) | Kills..... | 10, vs. USC (2/25/11) | Year | MP-SP | K | A | SA | D | TB |
| Attempts | 13, at CS Northridge (1/20/12) | Attempts | 16, vs. USC (2/25/11) | 2010 | 3-9 | 11 | 2 | 3 | 7 | 9 |
| Hitting Pct. | .700, vs. Loyola (1/6/12) | Hitting Pct. | .875, vs. UCI (4/6/11) | 2011 | 27-96 | 109 | 7 | 18 | 28 | 111 |
| Aces..... | 2, vs. UC Irvine (1/6/12) | Aces..... | 2, 6x, last vs. UC Irvine (1/6/12) | 2012 | 7-24 | 27 | 0 | 3 | 3 | 20 |
| Digs | 2, vs. Cal Baptist (1/25/12) | Digs | 4, at Pepperdine (1/12/11) | Totals | 37-129 | 147 | 9 | 24 | 38 | 140 |
| Blocks..... | 5, 2x, last vs. Ohio State (1/7/12) | Blocks..... | 11, vs. CS Northridge (4/16/11) | | | | | | | |
| Assists | n/a | Assists | 1, 7x, last vs. UCSD (4/9/11) | | | | | | | |

2012 Long Beach State Men's Volleyball
Long Beach State Match Results (as of Jan 30, 2012)
All matches

| Date | Opponent | | Score | Score-by-set | Overall | Conf | Time | Att. |
|-------------|-----------------------|---|--------------|-------------------------------|----------------|-------------|-------------|-------------|
| Jan 6 | vs #10 Loyola-Chicago | W | 3-0 | 25-21,32-30,25-21 | 1-0 | 0-0 | 1:27 | 275 |
| Jan 6 | vs #2 UC Irvine | L | 2-3 | 25-23,25-21,21-25,16-25,13-15 | 1-1 | 0-0 | 1:58 | 320 |
| Jan 07 | vs #8 OSU | W | 3-2 | 23-25,22-25,26-24,25-23,15-10 | 2-1 | 0-0 | 2:10 | 360 |
| * Jan 12 | at #6 USC | L | 0-3 | 17-25,16-25,18-25 | 2-2 | 0-1 | 1:15 | 600 |
| * Jan 14 | at #10 Pepperdine | L | 1-3 | 22-25,25-14,24-26,24-26 | 2-3 | 0-2 | 1:51 | 688 |
| * Jan 20 | at #11 Northridge | L | 2-3 | 25-15,20-25,25-22,14-25,11-15 | 2-4 | 0-3 | 2:06 | 563 |
| Jan 24 | CAL BAPTIST | W | 3-0 | 25-16,25-18,25-10 | 3-4 | 0-3 | 1:11 | 686 |

| Team Record | W-L-T | Attend | Dates | Total | Avg. |
|--------------------|--------------|---------------|--------------|--------------|-------------|
| Overall: | 3-4 | Total: | 7 | 3492 | 499 |
| Conference: | 0-3 | Home: | 1 | 686 | 686 |
| Home: | 1-0 | Away: | 3 | 1851 | 617 |
| Away: | 0-3 | Neutral: | 3 | 955 | 318 |
| Neutral: | 2-1 | | | | |
| 3 sets: | 2-1 | | | | |
| 4 sets: | 0-1 | | | | |
| 5 sets: | 1-2 | | | | |

2012 Long Beach State Men's Volleyball
Long Beach State Combined Team Statistics (as of Jan 30, 2012)
All matches

Overall record: 3-4 Conf: 0-3 Home: 1-0 Away: 0-3 Neutral: 2-1

| # | Player | sp | Attack | | | | pct | Set | | Serve | | | re | Dig | | Blocking | | | | | points | |
|------------------|-----------------|----|--------|-------|-----|-----|-------|-----|-------|-------|----|------|----|-----|-------|----------|-----|-------|-------|----|--------|-------|
| | | | k | k/s | e | ta | | a | a/s | sa | se | sa/s | | dig | dig/s | bs | ba | total | blk/s | be | | bhe |
| 2 | Jim Baughman | 28 | 88 | 3.14 | 35 | 197 | .269 | 2 | 0.07 | 10 | 15 | 0.36 | 0 | 19 | 0.68 | 0 | 9 | 9 | 0.32 | 4 | 0 | 102.5 |
| 4 | Taylor Crabb | 28 | 80 | 2.86 | 39 | 210 | .195 | 6 | 0.21 | 7 | 9 | 0.25 | 6 | 46 | 1.64 | 1 | 9 | 10 | 0.36 | 0 | 0 | 92.5 |
| 19 | Brad Hemmerling | 21 | 46 | 2.19 | 15 | 110 | .282 | 2 | 0.10 | 5 | 8 | 0.24 | 6 | 33 | 1.57 | 0 | 9 | 9 | 0.43 | 0 | 0 | 55.5 |
| 6 | John La Rusch | 7 | 14 | 2.00 | 4 | 29 | .345 | 0 | 0.00 | 1 | 0 | 0.14 | 0 | 5 | 0.71 | 1 | 3 | 4 | 0.57 | 0 | 0 | 17.5 |
| 23 | Srdjan Nadazdin | 7 | 13 | 1.86 | 6 | 40 | .175 | 0 | 0.00 | 1 | 1 | 0.14 | 1 | 9 | 1.29 | 0 | 1 | 1 | 0.14 | 1 | 0 | 14.5 |
| 16 | Jeff Ornee | 26 | 39 | 1.50 | 7 | 70 | .457 | 2 | 0.08 | 1 | 3 | 0.04 | 0 | 3 | 0.12 | 2 | 19 | 21 | 0.81 | 1 | 0 | 51.5 |
| 3 | Trevor Crabb | 7 | 10 | 1.43 | 4 | 28 | .214 | 0 | 0.00 | 0 | 1 | 0.00 | 2 | 8 | 1.14 | 0 | 3 | 3 | 0.43 | 0 | 0 | 11.5 |
| 25 | Ryan Meehan | 24 | 27 | 1.12 | 7 | 54 | .370 | 0 | 0.00 | 3 | 12 | 0.12 | 1 | 3 | 0.12 | 3 | 17 | 20 | 0.83 | 1 | 0 | 41.5 |
| 21 | Connor Olbright | 28 | 14 | 0.50 | 4 | 25 | .400 | 282 | 10.07 | 3 | 19 | 0.11 | 0 | 40 | 1.43 | 1 | 11 | 12 | 0.43 | 2 | 0 | 23.5 |
| 15 | Colten Echave | 10 | 5 | 0.50 | 1 | 9 | .444 | 0 | 0.00 | 0 | 5 | 0.00 | 0 | 4 | 0.40 | 0 | 4 | 4 | 0.40 | 0 | 0 | 7.0 |
| 14 | Ian Satterfield | 11 | 4 | 0.36 | 2 | 11 | .182 | 0 | 0.00 | 0 | 2 | 0.00 | 0 | 5 | 0.45 | 0 | 0 | 0 | 0.00 | 0 | 0 | 4.0 |
| 12 | Kyle McElderry | 27 | 3 | 0.11 | 0 | 3 | 1.000 | 14 | 0.52 | 0 | 0 | 0.00 | 10 | 47 | 1.74 | 0 | 0 | 0 | 0.00 | 0 | 0 | 3.0 |
| 10 | Dalton Ammerman | 2 | 0 | 0.00 | 0 | 0 | .000 | 0 | 0.00 | 0 | 2 | 0.00 | 0 | 0 | 0.00 | 0 | 0 | 0 | 0.00 | 0 | 0 | 0.0 |
| 8 | Alex Anshus | 4 | 0 | 0.00 | 0 | 0 | .000 | 5 | 1.25 | 0 | 0 | 0.00 | 0 | 2 | 0.50 | 0 | 0 | 0 | 0.00 | 0 | 0 | 0.0 |
| 1 | Matt Silver | 4 | 0 | 0.00 | 0 | 0 | .000 | 1 | 0.25 | 0 | 0 | 0.00 | 1 | 4 | 1.00 | 0 | 0 | 0 | 0.00 | 0 | 0 | 0.0 |
| LONG BEACH STATE | | 28 | 343 | 12.25 | 124 | 786 | .279 | 314 | 11.21 | 31 | 77 | 1.11 | 28 | 228 | 8.14 | 8 | 85 | 50.5 | 1.80 | 9 | 0 | 424.5 |
| Opponents | | 28 | 352 | 12.57 | 141 | 810 | .260 | 333 | 11.89 | 28 | 90 | 1.00 | 31 | 253 | 9.04 | 12 | 109 | 66.5 | 2.38 | 13 | 1 | 446.5 |

| Team Statistics | LBSU | OPP |
|-------------------------|-------|-------|
| ATTACK | | |
| Kills | 343 | 352 |
| Errors | 124 | 141 |
| Total Attacks | 786 | 810 |
| Attack Pct | .279 | .260 |
| Kills/Set | 12.2 | 12.6 |
| SET | | |
| Assists | 314 | 333 |
| Attempts | 529 | 555 |
| Assist Pct | .594 | .600 |
| Assists/Set | 11.2 | 11.9 |
| SERVE | | |
| Aces | 31 | 28 |
| Errors | 77 | 90 |
| Attempts | 429 | 418 |
| Serve Pct | .821 | .785 |
| Aces/Set | 1.1 | 1.0 |
| SERVE RECEPTIONS | | |
| Errors | 28 | 31 |
| Errors/Set | 1.0 | 1.1 |
| Attempts | 347 | 371 |
| Reception Pct | .919 | .916 |
| DEFENSE | | |
| Digs | 228 | 253 |
| Digs/Set | 8.1 | 9.0 |
| BLOCKING | | |
| Block Solo | 8 | 12 |
| Block Assist | 85 | 109 |
| Total Blocks | 50.5 | 66.5 |
| Blocks/Set | 1.8 | 2.4 |
| Block Errors | 9 | 13 |
| Ball handling errors | 0 | 1 |
| ATTENDANCE | | |
| Total | 686 | 1851 |
| Dates/Avg Per Date | 1/686 | 3/617 |
| Neutral site #/Avg | 3/318 | |
| Current win streak | 1 | - |
| Home win streak | 1 | - |

| Date | Opponent | Score | Score by set | Att. |
|---------|-----------------------|-------|-------------------------------|------|
| Jan 6 | vs #10 Loyola-Chicago | w 3-0 | 25-21,32-30,25-21 | 275 |
| Jan 6 | vs #2 UC Irvine | L 2-3 | 25-23,25-21,21-25,16-25,13-15 | 320 |
| Jan 07 | vs #8 OSU | w 3-2 | 23-25,22-25,26-24,25-23,15-10 | 360 |
| *Jan 12 | at #6 USC | L 0-3 | 17-25,16-25,18-25 | 600 |
| *Jan 14 | at #10 Pepperdine | L 1-3 | 22-25,25-14,24-26,24-26 | 688 |
| *Jan 20 | at #11 Northridge | L 2-3 | 25-15,20-25,25-22,14-25,11-15 | 563 |
| Jan 24 | CAL BAPTIST | w 3-0 | 25-16,25-18,25-10 | 686 |

Record in 3-set matches:2-1 • Record in 4-set matches:0-1 • Record in 5-set matches:1-2

2012 Long Beach State Men's Volleyball
Long Beach State Combined Team Statistics (as of Jan 30, 2012)
Conference matches

| RECORD: | OVERALL | HOME | AWAY | NEUTRAL |
|----------------|----------------|-------------|-------------|----------------|
| ALL GAMES | 0-3 | 0-0 | 0-3 | 0-0 |
| CONFERENCE | 0-3 | 0-0 | 0-3 | 0-0 |
| NON-CONFERENCE | 0-0 | 0-0 | 0-0 | 0-0 |

| # | Player | sp | Attack | | | | | Set | | Serve | | | Dig | | | Blocking | | | | | points | |
|----|------------------|----|--------|-------|----|-----|-------|-----|-------|-------|----|------|-----|-----|-------|----------|----|-------|-------|----|--------|-------|
| | | | k | k/s | e | ta | pct | a | a/s | sa | se | sa/s | re | dig | dig/s | bs | ba | total | blk/s | be | | bhe |
| 4 | Taylor Crabb | 12 | 37 | 3.08 | 20 | 98 | .173 | 3 | 0.25 | 3 | 3 | 0.25 | 2 | 28 | 2.33 | 0 | 4 | 4 | 0.33 | 0 | 0 | 42.0 |
| 6 | John La Rusch | 5 | 13 | 2.60 | 3 | 26 | .385 | 0 | 0.00 | 1 | 0 | 0.20 | 0 | 5 | 1.00 | 0 | 3 | 3 | 0.60 | 0 | 0 | 15.5 |
| 23 | Srdjan Nadazdin | 4 | 10 | 2.50 | 6 | 30 | .133 | 0 | 0.00 | 1 | 1 | 0.25 | 1 | 9 | 2.25 | 0 | 1 | 1 | 0.25 | 1 | 0 | 11.5 |
| 19 | Brad Hemmerling | 8 | 18 | 2.25 | 9 | 45 | .200 | 0 | 0.00 | 1 | 5 | 0.12 | 1 | 11 | 1.38 | 0 | 5 | 5 | 0.62 | 0 | 0 | 21.5 |
| 2 | Jim Baughman | 12 | 23 | 1.92 | 17 | 74 | .081 | 0 | 0.00 | 4 | 5 | 0.33 | 0 | 6 | 0.50 | 0 | 2 | 2 | 0.17 | 2 | 0 | 28.0 |
| 16 | Jeff Ornee | 11 | 12 | 1.09 | 5 | 26 | .269 | 0 | 0.00 | 1 | 1 | 0.09 | 0 | 1 | 0.09 | 1 | 11 | 12 | 1.09 | 0 | 0 | 19.5 |
| 25 | Ryan Meehan | 9 | 9 | 1.00 | 6 | 19 | .158 | 0 | 0.00 | 0 | 4 | 0.00 | 0 | 0 | 0.00 | 2 | 6 | 8 | 0.89 | 0 | 0 | 14.0 |
| 21 | Connor Olbright | 12 | 5 | 0.42 | 2 | 10 | .300 | 117 | 9.75 | 2 | 7 | 0.17 | 0 | 18 | 1.50 | 1 | 4 | 5 | 0.42 | 1 | 0 | 10.0 |
| 15 | Colten Echave | 4 | 1 | 0.25 | 0 | 2 | .500 | 0 | 0.00 | 0 | 1 | 0.00 | 0 | 0 | 0.00 | 0 | 0 | 0 | 0.00 | 0 | 0 | 1.0 |
| 14 | Ian Satterfield | 4 | 1 | 0.25 | 2 | 8 | -.125 | 0 | 0.00 | 0 | 1 | 0.00 | 0 | 2 | 0.50 | 0 | 0 | 0 | 0.00 | 0 | 0 | 1.0 |
| 10 | Dalton Ammerman | 2 | 0 | 0.00 | 0 | 0 | .000 | 0 | 0.00 | 0 | 2 | 0.00 | 0 | 0 | 0.00 | 0 | 0 | 0 | 0.00 | 0 | 0 | 0.0 |
| 12 | Kyle McElderry | 12 | 0 | 0.00 | 0 | 0 | .000 | 8 | 0.67 | 0 | 0 | 0.00 | 5 | 26 | 2.17 | 0 | 0 | 0 | 0.00 | 0 | 0 | 0.0 |
| 3 | Trevor Crabb | 3 | 0 | 0.00 | 1 | 6 | -.167 | 0 | 0.00 | 0 | 0 | 0.00 | 1 | 3 | 1.00 | 0 | 1 | 1 | 0.33 | 0 | 0 | 0.5 |
| 1 | Matt Silver | 1 | 0 | 0.00 | 0 | 0 | .000 | 0 | 0.00 | 0 | 0 | 0.00 | 0 | 0 | 0.00 | 0 | 0 | 0 | 0.00 | 0 | 0 | 0.0 |
| | #TM | - | - | - | - | - | - | - | - | - | - | - | 0 | - | - | - | - | - | - | - | - | - |
| | LONG BEACH STATE | 12 | 129 | 10.75 | 71 | 344 | .169 | 128 | 10.67 | 13 | 30 | 1.08 | 10 | 109 | 9.08 | 4 | 37 | 22.5 | 1.88 | 4 | 0 | 164.5 |
| | Opponents | 12 | 155 | 12.92 | 60 | 352 | .270 | 148 | 12.33 | 10 | 39 | 0.83 | 13 | 122 | 10.17 | 7 | 69 | 41.5 | 3.46 | 7 | 0 | 206.5 |

| Team Statistics | LBSU | OPP |
|-------------------------|-------------|------------|
| ATTACK | | |
| Kills | 129 | 155 |
| Errors | 71 | 60 |
| Total Attacks | 344 | 352 |
| Attack Pct | .169 | .270 |
| Kills/Set | 10.8 | 12.9 |
| SET | | |
| Assists | 128 | 148 |
| Attempts | 348 | 346 |
| Assist Pct | .368 | .428 |
| Assists/Set | 10.7 | 12.3 |
| SERVE | | |
| Aces | 13 | 10 |
| Errors | 30 | 39 |
| Attempts | 243 | 265 |
| Serve Pct | .877 | .853 |
| Aces/Set | 1.1 | 0.8 |
| SERVE RECEPTIONS | | |
| Errors | 10 | 13 |
| Errors/Set | 0.8 | 1.1 |
| Attempts | 226 | 213 |
| Reception Pct | .956 | .939 |
| DEFENSE | | |
| Digs | 109 | 122 |
| Digs/Set | 9.1 | 10.2 |
| BLOCKING | | |
| Block Solo | 4 | 7 |
| Block Assist | 37 | 69 |
| Total Blocks | 22.5 | 41.5 |
| Blocks/Set | 1.9 | 3.5 |
| Block Errors | 4 | 7 |
| Ball handling errors | 0 | 0 |
| ATTENDANCE | | |
| Total | 0 | 1851 |
| Dates/Avg Per Date | 0/0 | 3/617 |
| Neutral site #/Avg | 0/0 | |
| Current win streak | 0 | - |
| Home win streak | 0 | - |

| Date | Opponent | Score | Score by set | Att. |
|-------------|-------------------|--------------|-------------------------------|-------------|
| *Jan 12 | at #6 USC | L 0-3 | 17-25,16-25,18-25 | 600 |
| *Jan 14 | at #10 Pepperdine | L 1-3 | 22-25,25-14,24-26,24-26 | 688 |
| *Jan 20 | at #11 Northridge | L 2-3 | 25-15,20-25,25-22,14-25,11-15 | 563 |

Record in 3-set matches: 0-1
Record in 4-set matches: 0-1
Record in 5-set matches: 0-1