



VISITING TEAM GUIDE

- Operations Letter
- Hotel Information
- Restaurants
- Local Information
- Directions
- Staff Directory
- Sport Specific Information
- Maps/Facility Information





Coach/Administrator-

This game day packet was created to assist in making your visit to Illinois State University as smooth as possible. Please refer to this information to help answer any questions you have regarding our game day operations. We hope this packet will help you and your team in preparation for your upcoming game in Normal, Illinois.

A representative from the operations staff will meet and assist you upon arrival to campus, answering any questions you may have. If I can be of any assistance, please contact my office at (309) 438-3637.

We look forward to your visit to Illinois State University.

Sincerely,

Megan Brown

Director of Events and Game Operations

Phone: (309) 438-3637

mcbrow2@ilstu.edu





LOCAL HOTELS

Call For Rates and Availability

Baymont Inn & Suites

604 ½ IAA Drive
Bloomington, IL
309-662-2800

Doubletree Hotel & Conference Center

10 Brickyard Drive
Bloomington, IL
309-664-6446

Candlewood Suites Hotel

203 Susan Drive
Normal, IL
309-862-4100

Eastland Suites Hotel & Conference Center

1801 Eastland Drive
Bloomington, IL
309-662-0000

Chateau Hotel & Conference Center

1601 Jumer Drive
Bloomington, IL
309-662-2020

Hampton Inn & Suites

320 S. Towanda Ave.
Normal, IL
309-452-8900

Comfort Suites

310 B Greenbriar Drive
Normal, IL
309-452-8588

Holiday Inn & Suites

3202 E. Empire
Bloomington, IL
309-662-4700

Country Inn & Suites

4203 E. Empire
Bloomington, IL
309-662-3100

Marriott Hotel & Conference Center

201 Broadway
Normal, IL
309-862-9000

Courtyard By Marriott

310 A Greenbriar Drive
Normal, IL
309-862-1166

Parke Hotel & Conference Center

1413 Leslie Drive
Bloomington, IL
309-662-4300



RESTAURANTS

Alexander's Steakhouse

1503 E. College
Normal, IL
309-454-7300

Avanti's

407 S. Main Street
Normal, IL
309-452-4436

3302 E. Empire
Bloomington, IL
309-662-4436

Biaggi's

1501 N. Veterans Pkwy.
Bloomington, IL
309-661-8322

Bob Evans Restaurant

801 IAA Drive
Bloomington, IL
309-663-5131

Brewe Ha's

102 S. Linden
Normal, IL
309-452-7393

Buffalo Wild Wings

3220 E. Empire
Bloomington, IL
309-661-8027

Cosi Café Restaurant

138 E. Beaufort
Normal, IL
309-452-1900

Denny's Doughnuts & Bakery

503 N. Main Street
Bloomington, IL
309-454-1005

1503 E. Vernon
Bloomington, IL
309-663-8200

Bloomington Airport
309-664-6662

1107 S. Main Street
Bloomington, IL
309-827-0459

D.P. Dough

121 E. Beaufort
Normal, IL
309-888-ZONE (9663)

ElRoys

102 W. Washington St.
Bloomington, IL
309-828-0142

Famous Dave's Restaurant

1603 Morrissey Drive
Bloomington, IL
309-664-0044

Gill Street Sports Bar and Restaurant

3002 Gill Street
Bloomington, IL
309-661-6387

Great Harvest Bread

1704 Eastland Drive
Bloomington, IL
309-662-8500

Jim's Steakhouse

2301 E. Washington St.
Bloomington, IL
309-663-4142

LaGondola Spaghetti House

1501 E. Vernon Ave.
Bloomington, IL
309-664-6363

509 S. Main St.
Bloomington, IL
309-664-6363

Lunker's

104 S. Linden
Normal, IL
309-451-3474

Moe's Southwest Grill

1730 Bradford Lane
Normal, IL
309-862-MOES (6637)

Outback Steakhouse

1407 N. Veterans Pkwy.
Bloomington, IL
309-663-0455

Potbelly Sandwich Works

101 N. Veterans Pkwy
Bloomington, IL
309-662-9299

609 S. Main St.
Normal, IL
309-862-4850



RESTAURANTS

Schooner's

810 Grove St.
Bloomington, IL
309-829-6841

Swingers Grille

1304 Cross Creek Dr.
Normal, IL
309-829-5777

Times Past Inn

1216 Towanda Ave.
Bloomington, IL
309-828-8312

FAST FOOD

Arby's

610 W. Raab Rd., Normal, IL (309-454-5501)
1240 E. Empire, Bloomington, IL (309-829-2041)

1808 W. Market, Bloomington, IL (309-829-6214)

Jimmy John's

305 S. Main St., Normal, IL (309-451-1800)
207 North St., Normal, IL (309-452-8200)
2301 E. Washington, Bloomington, IL (309-664-6800)

McDonald's

804 S. Main St., Normal, IL (309-452-4023)
1535 E. College Ave., Normal, IL (309-454-4141)
1607 N. Main, Normal, IL (309-862-2277)
2507 E. Oakland Ave., Bloomington, IL (309-662-3114)
525 Brock Dr., Bloomington, IL (309-829-8613)
2410 S. Main, Bloomington, IL (309-828-1616)
1610 E. Empire, Bloomington, IL (309-663-8450)

Papa John's Pizza

602 Kingsley St., Normal, IL (309-454-7272)
1407 N. Veterans Pkwy., Bloomington, IL (309-662-4422)

Steak N Shake

614 W. Raab Rd., Normal, IL (309-451-3721)
325 S. Veterans Pkwy., Bloomington, IL (309-454-2899)
10001 Wylie Dr., Bloomington, IL (309-828-2222)
1802 S. Veterans Pkwy., Bloomington, IL (309-661-9204)

Subway

2310 E. Oakland Ave., Bloomington (309-663-0029)
1005 N. Main St., Bloomington (309-829-2466)
1905 W. Market St., Bloomington (309-828-9927)
1601 S. Main St., Bloomington (309-820-7827)
1519 E. College Ave., Normal (309-454-5600)
1602 Glasson St., Bloomington (309-662-4239)
300 Greenbriar, Normal (309-888-9500)
401 S. University, Normal (309-862-0744)
1715 Bradford, Normal (309-454-1024)

Taco Bell

1702 W. Market St., Bloomington (309-827-0590)
1527 E. College Ave., Normal (309-454-7576)



LOCAL INFORMATION

Theaters

Galaxy 14 Cinema 309-828-8081
1111 Wylie Dr., Bloomington

Palace Cinemas 309-661-2452
415 Detroit Ave., Bloomington

Parkway Cinemas 309-661-9114
2103 N. Veterans Pkwy., Bloomington

University Cinemas 309-862-2221
1010 S. Main St., Normal

Student Health Services: 309-438-8655

Campus Police: 309-438-8631

Bus Charter & Rentals

Peoria Charter:	309-688-9523
Avis Rent-A-Car	309-663-5831
Alamo Rent-A-Car	309-663-7353
Enterprise Rent-A-Car	309-664-0100
Hertz Car Rental	309-663-5201

Central Illinois Regional Airport

3201 CIRCA Dr., Bloomington
309-663-7383

Hospitals

OSF St. Joseph Medical Center
2200 E. Washington St., Bloomington
309-662-3311

Bromenn Regional Medical Center
1304 Franklin Ave., Normal
309-454-1400

Shopping Centers

Shoppes at College Hills
314 N. Towanda Ave., Bloomington

Eastland Mall
1615 E. Empire St., Bloomington

Grocery Stores

Schnuck's
1701 E. Empire St., Bloomington
1750 Bradford Ln., Normal

Kroger
1502 N. Main, Bloomington
2507 E. Oakland Ave., Bloomington
1550 E. College Ave., Normal

Cub Foods
403 N. Veterans Pkwy., Bloomington

Jewel-Osco
901 S. Cottage Ave., Normal
2203 East Oakland Ave., Bloomington
2103 N. Veterans Pkwy., Bloomington

Meijer
1900 College Ave., Normal



LOCAL INFORMATION

Museums

McLean County Museum of History
200 North Main Street
Bloomington, 61701

Prairie Aviation Museum
2929 E. Empire
Bloomington, 61704

Miller Park Zoo
1020 S. Morris Ave.
Bloomington, 61701

For additional attractions, please visit
www.bloomingtonnormalcvb.org

Gyms/Fitness Centers

Cardinal Fitness
1500 E. Empire St.
Bloomington, 61701
309-663-0602

Four Seasons
904 Four Seasons Rd.
Bloomington, 61701
309-663-2022

2401 Airport Rd.
Bloomington, 61704
309-663-2022

Gold's Gym
11 Currency Drive
Bloomington, 61704
309-661-GOLD

Entertainment

Circle Lanes Bowling
1225 Holiday Lane
Bloomington, 61704
309-663-7402

Pheasant Lanes Bowling
804 N. Hershey Rd.
Bloomington, 61704
309-663-8556

Pro-Putt Family Fun Center
Veterans/Main Plaza
Bloomington, 61701
309-828-2000

YMCA

602 South Main St.
Bloomington, 61701
309-827-6233

1201 North Hershey Rd.
Bloomington, 61701
309-662-0461



DIRECTIONS

Adelaide Street Field

From I-55, take exit 165, U.S. 51-South Main St., to Gregory and turn left on Adelaide. From I-39, exit at I-55 east, and the first exit is 165. From I-74, follow I-55 North to exit 165. From the airport, turn left on Empire (Rt. 9) for approximately two miles, right on Veteran's Parkway for approximately four miles, left on College Avenue, for approximately six miles and right on Adelaide Street for about a mile. Adelaide Street Field is on the right side past the student residence halls and adjacent to Redbird Softball Complex.

Duffy Bass Field

From I-55, take exit 165, U.S. 51-South Main St., south to Gregory Street. From I-39, exit at I-55 east, and the first exit is 165. From I-74, follow I-55 North to exit 165. From the airport, turn left on Empire (Rt. 9) for approximately two miles, right on Veteran's Parkway for approximately four miles, left on College Avenue, for approximately six miles, right on Main St. for about a mile and then left on Gregory. Redbird Field is on the left side of Gregory, just past University High School's tennis courts.

Gregory Street Tennis Courts

From Chicago or St. Louis on I-55, take exit 165 (Business 51/Main St.) south to second light, Gregory Street. Turn right and continue past Adelaide Street. The courts are on the right side of the street, just west of the clubhouse at the Weibring Golf Club at Illinois State University. From I-39 or I-74, go to I-55 North and follow directions above.

Hancock Stadium

From I-55, take exit 165, U.S. 51-South Main St., south to College Ave. From I-39, exit at I-55 east, and the first exit is 165. From I-74, follow I-55 North to exit 165. From the airport, turn left on Empire (Rt. 9) for approximately two miles, right on Veteran's Parkway for approximately four miles, left on College Ave., for approximately six miles. Hancock Stadium is on the northwest corner of College Ave., and Main St., two miles south of exit 165.

Horton Field House

From I-55, take exit 165, U.S. 51-South Main St., south to College Ave. From I-39, exit at I-55 east, and the first exit is 165. From I-74, follow I-55 North to exit 165. From the airport, turn left on Empire (Rt. 9) for approximately two miles, right on Veteran's Parkway for approximately four miles, left on College Ave., for approximately six miles. Make a right into the Kaufman Football Building parking lot just after Willow Street, and go to the south end of the lot. Horton Field House is located due west of Hancock Stadium. The entrance is on the south side of the building.





DIRECTIONS

Horton Pool

From I-55, take exit 165, U.S. 51-South Main St., south to College Ave. From I-39, exit at I-55 east, and the first exit is 165. From I-74, follow I-55 North to exit 165. From the airport, turn left on Empire (Rt. 9) for approximately two miles, right on Veteran's Parkway for approximately four miles, left on College Ave., for approximately six miles. Make a right on the road just past Redbird Arena. Horton Pool will be on the right side at the west end of Horton Field House, north of Redbird Arena.

Kaufman Football Building

From I-55, take exit 165, U.S. 51-South Main St., south to College Ave. From I-39, exit at I-55 east, and the first exit is 165. From I-74, follow I-55 North to exit 165. From the airport, turn left on Empire (Rt. 9) for approximately two miles, right on Veteran's Parkway for approximately four miles, left on College Ave., for approximately six miles. The Kaufman Football Building is located northeast of Hancock Stadium, just north of the intersection of College Ave., and Main St., two miles south of exit 165.

Marian Kneer Softball Stadium

From I-55, take exit 165, U.S. 51-South Main St., to Gregory and turn left on Adelaide. From I-39, exit at I-55 east, and the first exit is 165. From I-74, follow I-55 North to exit 165. From the airport, turn left on Empire (Rt. 9) for approximately two miles, right on Veteran's Parkway for approximately four miles, left on College Avenue, for approximately six miles and right on Adelaide Street for about a mile. Marian Kneer Softball Stadium is on the right side just past the student residence halls and before Adelaide Street Field.

Evergreen Racquet Club

From I-55, I-39 or I-74, take the Veterans Parkway exit to Washington Street. If traveling north on Veterans Parkway, make a right at Washington Street, otherwise make a left. Washington Street ends at the private drive of the Evergreen Racquet Club, 3203 E. Washington Street, Bloomington, Ill.





DIRECTIONS

Outdoor Track Facility

From I-55, take exit 165, U.S. 51-South Main St., to Gregory and turn left on Adelaide. From I-39, exit at I-55 east, and the first exit is 165. From I-74, follow I-55 North to exit 165. From the airport, turn left on Empire (Rt. 9) for approximately two miles, right on Veteran's Parkway for approximately four miles, left on College Avenue, for approximately six miles and right on Adelaide Street for about a mile. Take the first right and follow the road to the bend, then turn left. The outdoor track facility will be on your left behind Horton Field House.

Redbird Arena

From I-55, take exit 165, U.S. 51-South Main St., south to College Ave. From I-39, exit at I-55 east, and the first exit is 165. From I-74, follow I-55 North to exit 165. From the airport, turn left on Empire (Rt. 9) for approximately two miles, right on Veteran's Parkway for approximately four miles, left on College Ave., for approximately six miles. Redbird Arena is at the corner of College Ave., and Main St., two miles south of exit 165.

Weibring Golf Club

From I-55, take exit 165, U.S. 51-South Main St., south to Gregory Street. From I-39, exit at I-55 east, and the first exit is 165. From I-74, follow I-55 North to exit 165. From the airport, turn left on Empire (Rt. 9) for approximately two miles, right on Veteran's Parkway for approximately four miles, left on College Avenue, for approximately six miles, right on Main St. for about a mile and then left on Gregory. Weibring Golf Club is on the corner of Gregory and Adelaide, northwest of the majority of Illinois State's athletic facilities.



ISU Staff Directory

ADMINISTRATION

Larry Lyons	Interim Athletics Director	438-5626	lelyons@ilstu.edu
Aaron Leetch	Senior Associate Athletics Director/External Affairs	438-3264	arleetc@ilstu.edu
Leanna Bordner	Senior Associate Athletics Director/SWA	438-3639	lkbordn@ilstu.edu
Doug Banks	Associate Athletics Director	438-5455	drbanks@ilstu.edu
Jane Fulton	Associate Athletics Director/Academics & Life Skills	438-2750	mjfulto@ilstu.edu
Cindy Harris	Associate Athletics Director/Compliance	438-2677	caharri@ilstu.edu
Todd Kober	Associate Athletics Director	438-3805	gtkober@ilstu.edu
Bethany Bucholtz	Assistant Athletics Director/Ticket Operations	438-8787	bmfoss@ilstu.edu
Rohrk Cutchlow CSCS, *D	Assistant Athletics Director/Sport Performance	438-7065	recutch@ilstu.edu
Peyton Deterding	Assistant Athletics Director/Facilities and Operations	438-5111	pjdeter@ilstu.edu
Brad Ledford	Assistant Athletics Director/Marketing and Promotions	438-8471	jbledfo@ilstu.edu

BASEBALL

Mark Kingston	Head Coach	438-5709	mkingst@ilstu.edu
Mike Current	Assistant Coach	438-3338	mpcurre@ilstu.edu
Bo Durkac	Assistant Coach	438-4458	gbdurka@ilstu.edu
Bill Mohl	Assistant Coach	438-5151	wtmohl@ilstu.edu

BASKETBALL, MEN'S

Tim Jankovich	Head Coach	438-8681	
Anthony Beane	Assistant Coach	438-8681	abeane@ilstu.edu
Rob Judson	Assistant Coach	438-8681	rjudson@ilstu.edu
Paris Parham	Assistant Coach	438-8681	peparha@ilstu.edu

Kerry Darting	Director of Basketball Operations	438-8681	kdartin@ilstu.edu
Brendan Reilly	Administrative Assistant	438-8681	btreill@ilstu.edu

BASKETBALL, WOMEN'S

Stephanie Glance	Head Coach	438-2567	sglance@ilstu.edu
Travis Cantrell	Assistant Coach	438-5805	tacant2@ilstu.edu
Sheila Roux	Assistant Coach	438-8480	saroux@ilstu.edu
Danielle Santos	Assistant Coach	438-2567	dsantos@ilstu.edu
Cassie Kowaleski	Director of Basketball Operations	438-5772	cjkowa2@ilstu.edu
Lindsay Weiss	Coordinator of Basketball Operations	438-3263	llweiss@ilstu.edu

FOOTBALL

Brock Spack	Head Coach	438-1505	bspack@ilstu.edu
Phil Elmassian	Defensive Coordinator	438-3864	pelmass@ilstu.edu
Luke Huard	Offensive Coordinator/Quarterbacks	438-8571	mlhuard@ilstu.edu
Jay Peterson	Assistant Head Coach/Linebackers	438-3863	ajpeter@ilstu.edu
Lamar Conard	Assistant Coach/Defensive Backs	438-5163	ljconar@ilstu.edu
Spence Nowinsky	Assistant Coach/Defensive Line	438-8673	spnowin@ilstu.edu
Taylor Stubblefield	Assistant Coach/Wide Receivers	438-8674	testubb@ilstu.edu
Holmon Wiggins	Assistant Coach/Running Backs	438-8671	hdwigg@ilstu.edu
Rick Geitz	Game Analysis Coordinator	438-7015	rgeitz@ilstu.edu
Jim Williams	Recruiting Coordinator/Director of Football Operations	438-3865	jcwilli@ilstu.edu
Dan Shula	Offensive Assistant	438-3866	ddshula@ilstu.edu
George Barnett	Assistant Coach/Offensive Line	438-8474	gsbarne@ilstu.edu

GOLF, MEN'S AND WOMEN'S

Ray Kralis	Men's Golf Head Coach	438-7962	rakrali@ilstu.edu
Darby Sligh	Women's Golf Head Coach	438-3635	desligh@ilstu.edu

GYMNASTICS

Bob Conkling	Head Coach	438-3633	reconkl@ilstu.edu
--------------	------------	----------	-------------------

Steve Avgerinos	Assistant Coach	438-3274	scavger@ilstu.edu
-----------------	-----------------	----------	-------------------

SOCCER, WOMEN'S

Drew Roff	Head Coach	438-7074	adroff@ilstu.edu
-----------	------------	----------	------------------

Kellie Evans	Assistant Coach	438-8993	keevans@ilstu.edu
--------------	-----------------	----------	-------------------

Julie Hanley	Graduate Assistant	438-7042	jehanle@ilstu.edu
--------------	--------------------	----------	-------------------

SOFTBALL

Melinda Fischer	Head Coach	438-5807	msfisch@ilstu.edu
-----------------	------------	----------	-------------------

Tina Kramos	Assistant Coach	438-5209	klkramo@ilstu.edu
-------------	-----------------	----------	-------------------

Shannon Nicholson	Pitching Coach	438-3278	smnico@ilstu.edu
-------------------	----------------	----------	------------------

Bill Dickson	Volunteer Assistant	438-3633	
--------------	---------------------	----------	--

SWIMMING/DIVING

Steve Paska	Head Coach	438-7946	sepaska@ilstu.edu
-------------	------------	----------	-------------------

Phil Hoffmann	Head Diving Coach	438-8207	prhoffm@ilstu.edu
---------------	-------------------	----------	-------------------

TENNIS, MEN'S

Cris James	Head Coach	438-5577	cdjame2@ilstu.edu
------------	------------	----------	-------------------

Branko Kuzmanovic	Graduate Assistant	438-5577	bkuzman@ilstu.edu
-------------------	--------------------	----------	-------------------

TENNIS, WOMEN'S

Chris Hoover	Head Coach	438-5338	cjhoove@ilstu.edu
--------------	------------	----------	-------------------

Tanja Hrovatic	Graduate Assistant	438-5338	throvat@ilstu.edu
----------------	--------------------	----------	-------------------

TRACK, MEN'S AND WOMEN'S

Elvis Forde	Head Coach	438-3812	eaforde@ilstu.edu
-------------	------------	----------	-------------------

Jeff Bovee	Assistant Coach/Distance	438-3247	jlbovee@ilstu.edu
------------	--------------------------	----------	-------------------

Tim Thompson	Assistant Coach/Jumps	438-8295	tthomp2@ilstu.edu
Erik Whitsitt	Assistant Coach/Throws		
Stephanie Barnes	Graduate Assistant	438-3633	
Richard Maleniak	Graduate Assistant	438-8501	rfmalen@ilstu.edu

CROSS COUNTRY, MEN'S AND WOMEN'S

Jeff Bovee	Head Coach	438-3247	jlbovee@ilstu.edu
------------	------------	----------	-------------------

VOLLEYBALL

Melissa Myers	Head Coach	438-2567	mmyers2@ilstu.edu
Adriano de Souza	Assistant Coach	438-8478	adesouz@ilstu.edu
B.J. Trame	Assistant Coach	438-3423	bjtrame@ilstu.edu
Ashley Moore	Director of Volleyball Operations	438-3423	ajmoor4@ilstu.edu

ACADEMICS & LIFE SKILLS

Jane Widger Fulton	Associate Athletics Director/Academics and Life Skills	438-2750	mjfulto@ilstu.edu
Ted Crane	Director of Athletics Study Center	438-3711	tjcrane@ilstu.edu
Andrea Mosher	Assistant Director, Student-Athlete Development	438-3904	almoshe@ilstu.edu
Ryan Brown	Assistant Director, Academics and Leadership Development	438-3209	
Dr. Jim Johnson	Academic Consultant	438-3272	jjjohnso@ilstu.edu
Marci Hill	Coordinator of Study Center Operations	438-7129	mahill2@ilstu.edu
Jessica Flood	Graduate Assistant	438-3272	jmfflood@ilstu.edu
Matt Fowles	Graduate Assistant	438-7129	mhfowles@ilstu.edu
Khenon Hall	Graduate Assistant	438-3272	kjhall@ilstu.edu
Tiffany Hudson	Graduate Assistant	438-3272	tchudso@ilstu.edu
Jen Madgiak	Graduate Assistant	438-3272	jlmadgi@ilstu.edu

ADMINISTRATIVE ASSISTANTS

Shannon Anderson	Marketing Assistant	438-4500	slande3@ilstu.edu
Annie Campbell	Development Assistant	438-3803	amcampb@ilstu.edu
Sue Gerike	Men's Basketball Assistant	438-8681	sgerik@ilstu.edu
Nancy Guither	Compliance Assistant	438-2677	naguith@ilstu.edu
Pam Merna	Football Office Assistant	438-8671	pjmerna@ilstu.edu
Laurie Retzer	Horton Staff Assistant	438-3633	ljretze@ilstu.edu
Pam Rexroat	Women's Basketball/Volleyball Assistant	438-2567	psrexro@ilstu.edu
Marianne Riddell	Assistant to the Director of Athletics	438-3636	mkridde@ilstu.edu
Penny Stephens	Arena Assistant	438-2000	pdsteph@ilstu.edu

ARENA/FIELDHOUSE CREW

Keith Smith	Operations Manager	438-8035	kasmit4@ilstu.edu
Paul Crawford	Fieldhouse Attendant	438-2000	prcrawf@ilstu.edu
Jonathon Dorrell	Fieldhouse Attendant	438-2000	jdorrel@ilstu.edu
Adam Southwick	Fieldhouse Attendant	438-2000	amsout2@ilstu.edu
David Willert	Fieldhouse Attendant	438-2000	dfwille@ilstu.edu
Derek Lamberti	Fieldhouse Attendant	438-2000	dmlambe@ilstu.edu
Lucas Roach	Fieldhouse Attendant	438-2000	ljroach@ilstu.edu

ATHLETIC BUSINESS OFFICE

Larry Lyons	Executive Associate Athletics Director	438-5626	lelyons@ilstu.edu
Rob Siebert	Accountant	438-5809	rpsiebe@ilstu.edu
Kathy Lock	Account Tech	(309) 438-5626	kllock@ilstu.edu
Emily Newsome	Graduate Assistant	438-2000	eaforne@ilstu.edu

ATHLETIC DEVELOPMENT

Aaron Leetch	Senior Associate Athletics Director/External Affairs	438-3264	arleetc@ilstu.edu
Doug Banks	Associate Athletics Director	438-5455	drbanks@ilstu.edu

Paul Kabbes	Graduate Assistant	438-7817	pjkabbe@ilstu.edu
Jack North	Executive in Residence	438-3530	jwnorth@ilstu.edu
ATHLETIC TRAINING			
John Munn	Head Athletic Trainer	438-3110/438-7328	jcmunn@ilstu.edu
Joe Whitson	Associate Athletic Trainer	438-3110/438-3282	jhwhts@ilstu.edu
Kelly Haley	Assistant Athletic Trainer	438-7246	klhaley@ilstu.edu
Karri Miller	Assistant Athletic Trainer	438-2398	kmille3@ilstu.edu
Kimbra Fuesting	Graduate Assistant	438-3340	ksfuest@ilstu.edu
Yuriko Fujioka	Graduate Assistant	438-3340	yfujiok@ilstu.edu
Kele Mangus	Graduate Assistant	438-3340	kamangu@ilstu.edu
Elizabeth Mattson	Graduate Assistant	438-3340	emmats@ilstu.edu
Michelle Krischel	Graduate Assistant	438-3340	mlkrisc@ilstu.edu
Jacob Pope	Graduate Assistant	438-3340	jpope@ilstu.edu
Robert Lynall	Graduate Assistant	438-3111	rclynal@ilstu.edu
Scott Waehler	Graduate Assistant	438-3340	swaehle@ilstu.edu
CHEERLEADERS			
Steve Chorba	Head Coach	825-5351	
Dianna Gillett	Assistant Coach		TBA
COMPLIANCE			
Cindy Harris	Associate Athletics Director/Compliance & Certification	438-2677	caharri@ilstu.edu
Sean Strauch	Director of Compliance	438-3512	sastrau@ilstu.edu
Rich Eckert	Graduate Assistant	438-7063	sysreckert@Exchange.ilstu.edu
CONCESSIONS			
Brian Stanley	Sodexo Concessions Manager	452-5938	brian.stanley@sodexo.com

EQUIPMENT

Nicholas Watson	Director of Equipment Operations	438-8040	njwatso@ilstu.edu
Matt Harbeck	Area Coordinator HTN	438-8469	mjharbe@ilstu.edu
Julie Hardesty	Area Coordinator RBA	438-8454	jaharde@ilstu.edu
Samuel Nichols	Graduate Assistant	438-8040	sanicho@ilstu.edu

EVENT MANAGEMENT

Megan Brown	Director of Events and Game Operations	438-3637	mcbrow2@ilstu.edu
Melanie Spellmeyer	Ushers/Ticket Takers	438-2000	spellmeyer12@yahoo.com
Lauren Benson	Graduate Assistant	438-2000	lebenso@ilstu.edu
Brittany Erps	Graduate Assistant	438-2000	bmerps@ilstu.edu

FACULTY REPRESENTATIVE

Dr. Jeri Beggs	Faculty Athletic Representative	438-5564	jmbeggs@ilstu.edu
----------------	---------------------------------	----------	-------------------

GOLF COURSE

Laura Provost	Associate Director	438-8912	ljprovo@ilstu.edu
Mike Rayman	Golf Course Grounds Superintendent	438-2616	mjayma@ilstu.edu
Matt Schuerman	Assistant Golf Pro	438-3126	mtschue@ilstu.edu
Vince Carlson	Greens Worker	438-3112	vacarls@ilstu.edu
John Pokarney	Equipment Service Worker	438-3112	jmpokar@ilstu.edu
Michael Schumacher	Greens Worker	438-3112	maschum@ilstu.edu
Bill Croff	Greens Worker	438-3112	wrcroff@ilstu.edu
Thomas Rayman	Greens Worker	438-3112	twrayma@ilstu.edu

ISU MARCHING BAND

Dan Belongia	Band Director	438-8834	dabelon@ilstu.edu
--------------	---------------	----------	-------------------

MARKETING & PROMOTIONS

Brad Ledford	Assistant Athletics Director/Marketing and Promotions	438-8471	jbledfo@ilstu.edu
LB Nagle	Assistant Director of Marketing	438-3630	lbnagle@ilstu.edu
Tracy Patkunas	Director of Sales	438-7429	tipatku@ilstu.edu
Jeremy Havens	Director of Athletic Video Services	438-1432	jrhaven@ilstu.edu
Jeremy Carter	Production Graduate Assistant	438-1433	jccarte@ilstu.edu
Brian Nystrom	Graduate Assistant	438-3399	bcnystr@ilstu.edu
Chris Mallen	Graduate Assistant	438-3399	cdmalle@ilstu.edu
Mark Steiner	Graduate Assistant	438-3399	mastein@ilstu.edu
Kelby Weiter	Graduate Assistant	438-3399	kmweite@ilstu.edu

MEDIA RELATIONS

Todd Kober	Associate Athletics Director	438-3805	gtkober@ilstu.edu
Jimmy Knodel	Assistant Media Relations Director (VB, WBB)	438-3802	jbknode@ilstu.edu
Mike Williams	Assistant Media Relations Director (FB)	438-7748	mcwilli@ilstu.edu
Dustin Hall	Graduate Assistant (WSOC, SB)	438-3249	dmhall@ilstu.edu
Lauren Hutchcraft	Graduate Assistant (XC, TF)	438-3598	lehutch@ilstu.edu
Megan Thompson	Graduate Assistant (Social Media)	438-2110	mcthomp@ilstu.edu
John Twork	Graduate Assistant (BSB)	438-5746	jdtwork@ilstu.edu
Billy Mrazek	Student Assistant (M/WGLF)	438-3262	wgmraze@ilstu.edu
Bridget O'Brien	Student Assistant (SD)	438-3262	btobrie@ilstu.edu
Jase Roan	Student Assistant (MTN)	438-3262	jmroan@ilstu.edu
Ashley Sermak	Student Assistant (GYM)	438-3262	aaserma@ilstu.edu
Kim Zohfeld	Student Assistant (WTN)	438-3262	kjzohfe@ilstu.edu

REDLINE EXPRESS

Laura Daniels	Redline Express Coordinator	438-1166	
---------------	-----------------------------	----------	--

STRENGTH & CONDITIONING

Rohrk Cutchlow CSCS, *D	Assistant Athletics Director/Sport Performance	438-7065	recutch@ilstu.edu
Chris Carter, CSCS	Assistant Strength Coach	438-7417	cccarte@ilstu.edu
Landon Evans CSCS	Strength Coach/Nutritionist	438-3867	lcevans@ilstu.edu
Lindsay Dinkelman	Graduate Assistant	438-3867	ljdinkl@ilstu.edu
Chase Madison	Graduate Assistant	438-3867	cwmadis@ilstu.edu
Matt Mariani CSCS	Graduate Assistant	438-3867	mmmaria@ilstu.edu
Nathan Yelk CSCS	Graduate Assistant	438-3867	nseyelk@ilstu.edu
Sara Beaty	Graduate Assistant	438-3867	srbeaty@ilstu.edu
Zach Walrod CSCS	Student Intern	438-3867	zkwalro@ilstu.edu

ENTERPRISE SYSTEMS SUPPORT

Office		438-1818	systems@ilstu.edu
--------	--	----------	-------------------

TICKET OFFICE

Bethany Bucholtz	Assistant Athletics Director/Ticket Operations	438-8787	bmfoss@ilstu.edu
Sara Hogan	Assistant Ticket Manager	438-3638	shogan@ilstu.edu
Corey Ansfield	Graduate Assistant	438-3988	cjansfi@ilstu.edu
Jessica Judge	Graduate Assistant	438-3988	jajudge@ilstu.edu

UNIVERSITY COLLEGE ADVISORY

Gina Chiavini Dew	Academic Advisor	438-3785	grdew@ilstu.edu
Mindy Kinney	Academic Advisor	438-7604	mdkinn2@ilstu.edu
Julie Paska	Academic Advisor	438-7604	jlaska@ilstu.edu



BASEBALL

Sport Specific Information

- **Arrival Parking:** Team buses can drop off at the North end of Horton Fieldhouse or on the south end of Duffy Bass Field.
- **Game Parking:** For the duration of the game, the team bus should be parked in the lot south of Duffy Bass Field across the pedestrian bridge.
- **Locker Room:** Visiting team locker room is located in the southeast corner of Horton Fieldhouse (Men's HPERD Locker Room)
- **Training Room:** Training Room facilities are located on the lower north end of Horton Fieldhouse
- **Credentials:** Press credentials should be arranged through the media relations office. Contact Todd Kober at (309) 438-3805.
- **Player Comps** Visiting team pass list will be located at the North entrance to Redbird Arena. Each player is allowed four guests. Please have your pass list upon arrival or fax it ahead of time to (309) 438-2220.



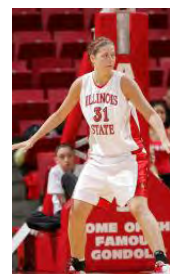


BASKETBALL

Sport Specific Information

- **Parking:** Team buses will be parked in the southwest loading dock. See arena map.
- **Locker Room:** Visiting team locker room is located on the arena floor level west side hallway.
- **Training Room:** Training Room facilities are located on the arena floor level west side hallway room #117.
- **Credentials:** Press credentials should be arranged through the media relations office. Contact Todd Kober at (309) 438-3805.
- **Bench Area:** Visiting team will be on the south bench
- **Uniforms:** Illinois State will wear white jerseys
- **Player Comps** Visiting team pass list will be located at the North entrance to Redbird Arena. Each player is allowed four guests. Please have your pass list upon arrival or fax it ahead of time to (309) 438-2220.
- **Videotaping** Videotaping area is on the concourse level south end

****Please contact Peyton Deterding, Assistant Athletic Director for Facilities/Operations at (309)438-5111 to schedule your practice time**

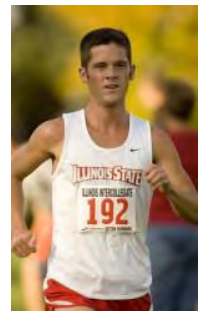




Cross Country

Sport Specific Information

- **Team Parking:** Team buses will be parked along the President's Drive off of Gregory Street. Look for parking attendant to assist you.
- **Fan Parking:** Fan parking is available at the Weibring Golf Course, Gregory Street or the ISU Baseball Field.
- **Locker Room:** Locker rooms are available upon request at Redbird Arena. Please contact Sherry West at (309) 438-3637 if you are in need of a locker room.
- **Training Room:** Training Room facilities will be located under the tent near the finish line.
- **Credentials:** Press credentials and media credentials should be arranged through the media relations office. Contact Todd Kober at (309) 438-3805.
- **Registration:** Registration will be located under the covered patio to the east of the clubhouse at Weibring Golf Course.





FOOTBALL

Sport Specific Information

- **Parking:** Team buses will park at the North circle drive at Redbird Arena
- **Locker Room:** Visiting team locker room is located in the southwest corner of Horton Fieldhouse (Women's HPERD Locker Room)
- **Training Room:** Training Room facilities are located on the lower north end of Horton Fieldhouse
- **Pre-game/Halftime Area** South Gym in Horton Fieldhouse
- **Pre-game Warm-up Area** Visiting teams will use the south end and east side of the field
- **Bench Area** Visiting team will be on the east side of the field
- **Enter/Exit Stadium** Visiting team will enter and exit the stadium through the southwest gate.
- **Visiting Team Scouting Box** A visiting team coaches scouting box is located on top of the press box. This area can be accessed through the press box.
- **Post-game Interviews/Media** The post-game interview area is located in the Kaufman Football Building. Media Relations will send a golf cart for players/coaches being interviewed. Media credentials should be arranged through the Media Relations office by contacting Todd Kober at (309) 438-3805.

**Please contact Peyton Deterding, Assistant Athletic Director for Facilities/Operations at (309)438-5111 to schedule your walk through

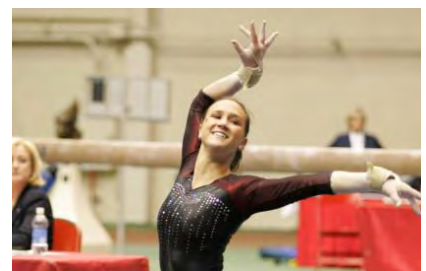




GYMNASTICS

Sport Specific Information

- **Arrival Parking:** Team buses can drop off at the North end of Horton Fieldhouse.
- **Game Parking:** For the duration of the meet, the team bus should be parked in the lot northwest of Horton Fieldhouse.
- **Locker Room:** Visiting team locker room is located in the southeast corner of Horton Fieldhouse (Women's HPERD Locker Room)
- **Training Room:** Training Room facilities are located on the lower north end of Horton Fieldhouse
- **Credentials:** Press credentials should be arranged through the media relations office. Contact Todd Kober at (309) 438-3805.
- **Player Comps**
Visiting team pass list will be located at Gates 1 & 2 of Horton Fieldhouse. Each gymnast is allowed four guests. Please have your pass list upon arrival or fax it ahead of time to (309) 438-2220.





SOCCER

Sport Specific Information

- **Arrival Parking:** Team buses can drop off at the North end of Horton Fieldhouse or in the lot adjacent to the soccer fields.
- **Game Parking:** For the duration of the game, the team bus should be parked in the lot across the pedestrian bridge from the soccer fields.
- **Locker Room:** Visiting team locker room is located in the southwest corner of Horton Fieldhouse (Women's HPERD Locker Room)
- **Training Room:** Training Room facilities are located on the lower north end of Horton Fieldhouse
- **Credentials:** Press credentials should be arranged through the media relations office. Contact Todd Kober at (309) 438-3805.
- **Player Comps** Visiting team pass list will be located at the North entrance to Redbird Arena. Each player is allowed four guests. Please have your pass list upon arrival or fax it ahead of time to (309) 438-2220.

****Please contact Peyton Deterding, Assistant Athletic Director for Facilities/Operations at (309)438-5111 to schedule your practice time**





SOFTBALL

Sport Specific Information

- **Arrival Parking:** Team buses can drop off at the North end of Horton Fieldhouse or in the lot adjacent to the softball fields.
- **Game Parking:** For the duration of the game, the team bus should be parked in the lot across the pedestrian bridge from the softball fields.
- **Locker Room:** Visiting team locker room is located in the southwest corner of Horton Fieldhouse (Women's HPERD Locker Room)
- **Training Room:** Training Room facilities are located on the lower north end of Horton Fieldhouse
- **Credentials:** Press credentials should be arranged through the media relations office. Contact Todd Kober at (309) 438-3805.
- **Player Comps** Visiting team pass list will be located at the North entrance to Redbird Arena. Each player is allowed four guests. Please have your pass list upon arrival or fax it ahead of time to (309) 438-2220.

****Please contact Peyton Deterding, Assistant Athletic Director for Facilities/Operations at (309)438-5111 to schedule your practice time**





VOLLEYBALL

Sport Specific Information

- **Parking:** Team buses will be parked in the southwest loading dock. See arena map.
- **Locker Room:** Visiting team locker room is located on the arena floor level west side hallway.
- **Training Room:** Training Room facilities are located on the arena floor level west side hallway room #117.
- **Credentials:** Press credentials should be arranged through the media relations office. Contact Todd Kober at (309) 438-3805.
- **Game Ball:** Molten
- **Bench Area:** Visiting team will begin on the north bench
- **Uniforms:** Illinois State will wear white jerseys
- **Player Comps** Visiting team pass list will be located at the North entrance to Redbird Arena. Each player is allowed four guests. Please have your pass list upon arrival or fax it ahead of time to (309) 438-2220.
- **Videotaping** Videotaping area is on the concourse level south end
- **Equipment/Laundry Contact** Julie Hardesty (309) 438-8454

**Please contact Peyton Deterding, Assistant Athletic Director for Facilities/Operations at (309)438-5111 to schedule your practice time





TRAVEL INFORMATION

School _____

Date of Game/Match _____

Travel Plans

Arrival Date _____ Arrival Time _____

Bus Company _____

Travel Coordinator _____ Phone _____

Accommodations

Team Hotel _____ Phone _____

Practice Times/Game Day Arrival

Practice: If needed, please contact Peyton Deterding at (309) 438-5111

Game Day Arrival Time: _____

Locker Room Needed: YES NO

Post Game Showers/Towels Needed: YES NO

This Form was completed by: _____

Telephone: _____ Fax: _____

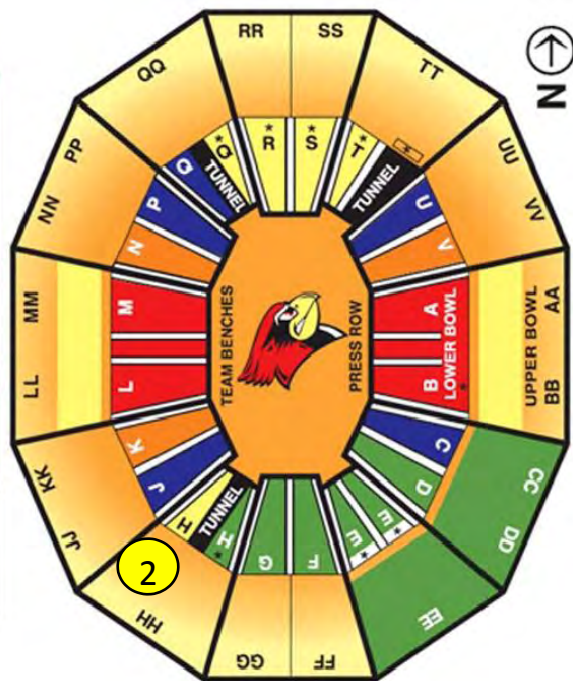
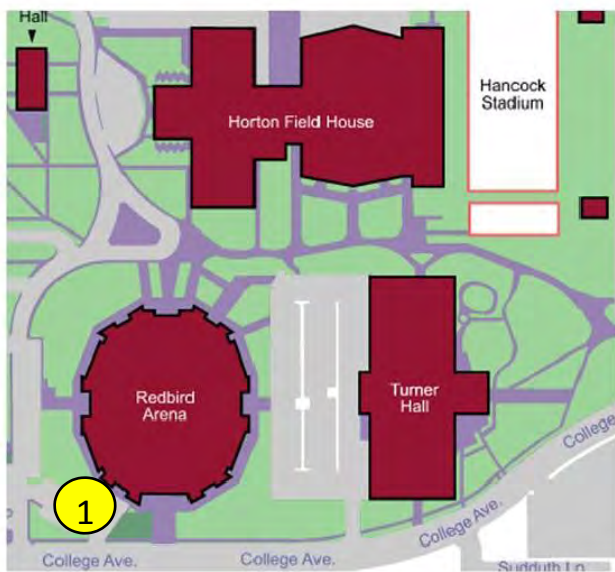
****Please return no later than one week prior to game day.**

Return to: Megan Brown
Director of Events/Game Operations
Illinois State University
2660 Redbird Arena
Normal, IL 61790-2660
Phone: (309)438-3637
Fax: (309)438-3513
mcbrow2@ilstu.edu

REDBIRD ATHLETICS

ARENA MAP

- 1 SW Loading Dock
- 2 Enter/Exit to Arena





CROSS COUNTRY MAP

1 Team Parking

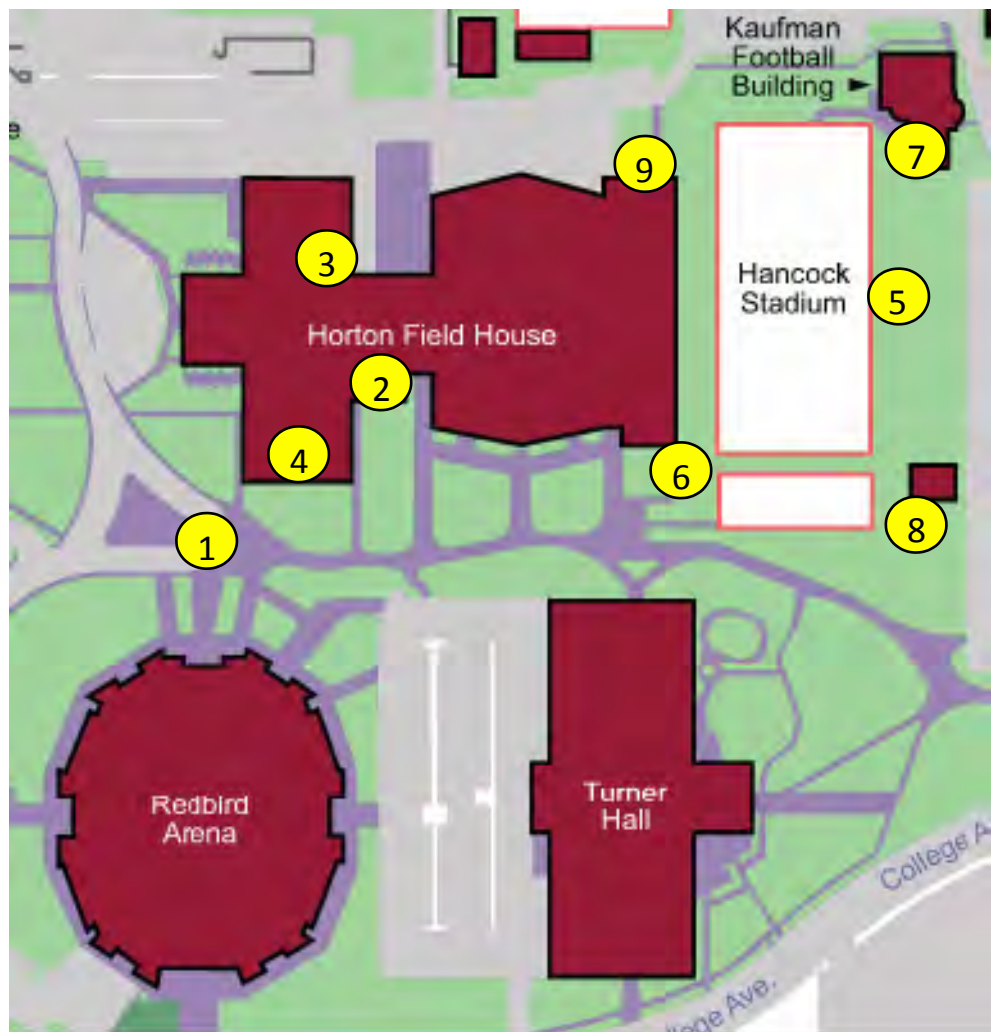
2 Fan Parking





HANCOCK STADIUM MAP

- 1 Team Bus Parking
- 2 Locker Room
- 3 Training Room
- 4 Pre-game/Half-time Area
- 5 Bench Area
- 6 Enter/Exit Stadium
- 7 Post-game Interview Area
- 8 Visiting Team Will Call Gate 7
- 9 Public Will Call Gate 4



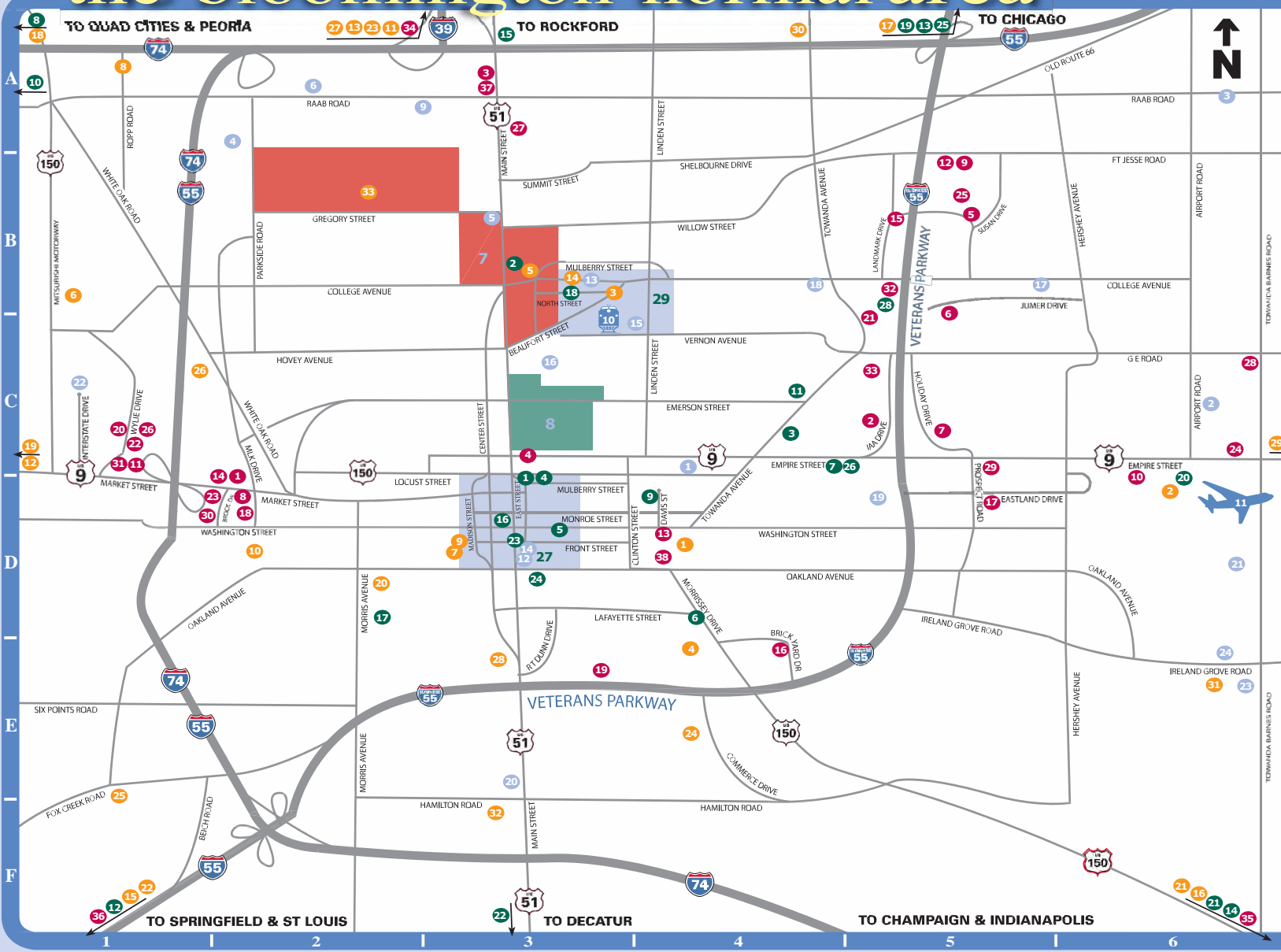
REDBIRD ATHLETICS

BASEBALL/SOFTBALL FIELDS

- 1 Bus Arrival Parking
- 2 Bus Game Parking
- 3 Locker Room
- 4 Training Room



the bloomington-normal area



ACCOMMODATIONS		ENTERTAINMENT	
1. America's Best Inn	D2	1. Beer Nuts, Inc.	D4
2. Baymont Inn & Suites	C5	2. Challenger Learning Center	D6
3. Best Western University Inn	A3	3. Children's Discovery Museum	B3
4. Burr House	C3	4. Grady's Family Fun Park	E4
5. Candlewood Suites Hotel	B5	5. ISU Planetarium	B1
6. Chateau Hotel & Conf Center	B5	6. Mitsubishi Motors North America	B3
7. Clarion Hotel	C5	7. Pepsi Ice Center	D3
8. Comfort Inn	D2	8. Ropp Jersey Cheese	A1
9. Comfort Suites	B5	9. U.S. Cellular Coliseum	D3
10. Country Inn & Suites (Airport)	D6	10. Upper Limits Rock Climbing	A2
11. Country Inn & Suites (West)	C1	11. Farrow Winery	A2
12. Courtyard by Marriott	B5	12. Mackinaw Valley Vineyard	C1
13. Davis Rose Inn	D4		
14. Days Inn	D2	NATURE & WILDLIFE	
15. Days Inn & Suites	B5	13. Comlara County Park	A2
16. Doubletree Hotel & Conf Center	E4	14. Ecology Action Center	B3
17. Eastland Suites & Conf Center	D2	15. Fank's Grove Pure Maple Syrup	F1
18. EconoLodge	D5	16. Grand Village of the Kickapoo	F6
19. Extended Stay America	E3	17. ISU Farm	A5
20. Fairfield Inn & Suites	C1	18. Kamp Komfort	A1
21. Hampton Inn & Suites	C5	19. Lavender Creek Farm	D2
22. Hampton Inn West	C1	20. Miller Park Zoo	C1
23. Hawthorn Suites & Conf Center	D2	21. Moraine View State Park	F6
24. Holiday Inn & Suites	C6	22. Sugar Grove Nature Center	F1
25. Holiday Inn Express & Suites	B5	23. Timber Pointe Outdoor Center	A2
26. Holiday Inn Express West	C1		
27. Motel 6	A3	GOLF COURSES	
28. Parke Hotel & Conf Center	C6	24. Bloomington Indoor Golf Club	E4
29. Quality Inn & Suites East	C5	25. The Den at Fox Creek	E1
30. Quality Inn & Suites West	D1	26. Golf Learning Center @ All Seasons	C1
31. Ramada Limited & Suites	C1	27. Hazy Hills Golf Course	A2
32. Signature Inn	B5	28. Highland Park Golf Course	E3
33. Super 8 Bloomington	C5	29. Indian Springs Golf Club	C6
34. Super 8 Channah	A2	30. Innowind Golf Course	A4
35. Super 8 LeRoy	F6	31. The Links at Ireland Golf	E6
36. Super 8 McLean	F1	32. Prairie Vista Golf Course	F3
37. Super 8 Normal	A3	33. Weibing Golf Club at ISU	B2
38. Vrooman Mansion	D4	ARTS & THEATRE	
		1. Bloomington Center for the Performing Arts	D3
		2. Bralen Auditorium	B3
		3. Community Players Theatre	C4
		4. McLean County Arts Center	D3
		5. McLean County Dance Assn	D3
		6. Twin Cities School of Dance	D4
		7. USA Ballet	C4
		8. Conklin's Barn II Dinner Theatre	A1
		HISTORIC SITES	
		9. David Davis Mansion	D4
		10. Distinctive Affairs	A1
		11. Ewing Cultural Center	C4
		12. Funks Prairie Home / Gem & Mineral Museum	F1
		13. Historic Route 66 Memory Lane	A2
		14. JT & EJ Crumbhaugh Museum	F6
		15. Matthew T Scott Home	F1
		16. McLean County Museum of History	D3
		17. Miller Park Pavilion War Memorial	D2
		18. Normal Theater	B3
		19. Patton Log Cabin	A5
		20. Prairie Aviation Museum	D6
		21. Rike House Museum	F6
		22. Simpkins War Museum	F1
		23. Site of Major's Hall	D3
		24. Stevenson Graves	D3
		25. Telephone Museum of Grutley	A5
		AREA EDUCATION	
		1. Bloomington High School	C4
		2. Central Catholic High School	C6
		3. Normal Community High School	A6
		4. Normal West High School	A2
		5. University High School	B3
		6. Heartland Community College	A2
		7. Illinois State University	B3
		8. Illinois Wesleyan University	C3
		9. Lincoln College - Normal	A2
		TRANSPORTATION	
		10. AMTRAK Station	C3
		11. Central Illinois Regional Airport	D6
		ESSENTIALS	
		12. Bloomington City Hall	D3
		13. Economic Development Council	B3
		14. McLean County Chamber	D3
		15. Normal City Hall	C4
		16. BnMenn Medical Center	C3
		17. Carle Clinic	B5
		18. Healthpoint	B4
		19. OSF St. Joseph Hospital	D5
		EVENT COMPLEXES	
		20. Bloomington Sale Barn	E3
		21. Game Time Gym II	D1
		22. Interstate Center	C6
		23. Pony Complex	E6
		24. Prairie City Soccer Complex	E6