



# UIC FLAMES

## 2008-09 WOMEN'S BASKETBALL GAME NOTES

### EXHIBITION GAME: UIC (0-0) VS. LEWIS (0-0)

Thursday, Nov. 6 • 7 p.m. CST • Chicago, Ill. • UIC Pavilion • 8,000 • Horizon League Network

#### SCHEDULE/RESULTS

|     |                   |        |
|-----|-------------------|--------|
| N6  | LEWIS (EXH.)      | 7 p.m. |
| N11 | ST. XAVIER (EXH.) | 6 p.m. |
| N22 | BRADLEY           | 2 p.m. |
| N25 | CANISIUS          | 7 p.m. |
| N30 | SIU-EDWARDSVILLE  | 3 p.m. |

|     |                      |           |
|-----|----------------------|-----------|
| D3  | FLORIDA ATLANTIC     | 7 p.m.    |
| D6  | WESTERN MICHIGAN     | 4:30 p.m. |
| D18 | CAL POLY ST.         | 7 p.m.    |
| D20 | at Northern Illinois | 2 p.m.    |
| D22 | DEPAUL               | 7 p.m.    |
| D28 | vs. San Diego ^      | 8 p.m.    |
| D30 | TBA ^                | TBA       |

|     |                     |           |
|-----|---------------------|-----------|
| J3  | WRIGHT ST. #        | 4:30 p.m. |
| J5  | DETROIT #           | 7 p.m.    |
| J10 | at Loyola #         | 2 p.m.    |
| J15 | at Valparaiso #     | 7 p.m.    |
| J17 | at Butler #         | 1 p.m.    |
| J22 | MILWAUKEE #         | 7 p.m.    |
| J24 | GREEN BAY #         | 7 p.m.    |
| J29 | at Youngstown St. # | 4:15 p.m. |
| J31 | at Cleveland St.#   | 4 p.m.    |

|     |                     |           |
|-----|---------------------|-----------|
| F4  | at Eastern Illinois | 7 p.m.    |
| F7  | LOYOLA #            | 4:30 p.m. |
| F12 | BUTLER #            | 7 p.m.    |
| F14 | VALPARAISO #        | 7 p.m.    |
| F19 | at Green Bay #      | 7 p.m.    |
| F21 | at Milwaukee #      | 2 p.m.    |
| F26 | CLEVELAND ST. # &   | 7 p.m.    |
| F28 | YOUNGSTOWN ST. # &  | 3 p.m.    |

|    |                 |         |
|----|-----------------|---------|
| M5 | at Detroit #    | 6 p.m.  |
| M7 | at Wright St. # | 12 p.m. |

#### @ 2009 Horizon League Tournament

|       |     |     |
|-------|-----|-----|
| M9-15 | TBA | TBA |
|-------|-----|-----|

^ at Maggie Dixon Surf N' Slam Classic hosted by the University of San Diego (San Diego, Calif. - field also includes San Diego, Long Island and New Mexico State) & Home games played at Flames Athletic Center # Horizon League Contest All Times Central

#### Home games in ALL CAPS

#### UIC ATHLETIC MEDIA RELATIONS

Flames Athletic Center  
839 W. Roosevelt Road  
Chicago, Ill. 60608

#### UIC Women's Basketball Contact:

Beth Usewicz  
Office: (312) 996-5881  
Cell: (314) 283-8369

#### GAME INFORMATION

| UIC FLAMES              |                            | LEWIS FLYERS       |                    |
|-------------------------|----------------------------|--------------------|--------------------|
| Date.....               | Thursday, Nov. 6           | Record .....       | 0-0                |
| Tip .....               | 7 p.m. CST                 | Streak .....       | N/A                |
| Internet Broadcast..... | HLN                        | Last 5/10 .....    | N/A                |
| .....                   | www.horizonleague.cstv.com | Head Coach.....    | Lisa Ryckbosch     |
| Talent .....            | Josh Fennell               | Career Record..... | 88-89 (7th Season) |
| Gametracker.....        | www.uicflames.com          | At UIC.....        | Same               |
| Series.....             | UIC leads 2-1              | WBK SID .....      | Beth Usewicz       |
| Last Meeting.....       | UIC won 68-45              | Email.....         | bethu@uic.edu      |
| .....                   | (12/22/81 in Chicago)      | Website.....       | www.uicflames.com  |

#### PROJECTED UIC STARTERS (Statistics from 2007-08 season)

| No. | Name.           | Pos. | Ht. | Yr. | Pts. | Rbs. | Assists | Min. |
|-----|-----------------|------|-----|-----|------|------|---------|------|
| 3   | Jessie Miller   | G    | 5-8 | Jr. | 14.0 | 5.2  | 5.0     | 30.6 |
| 12  | Briana Hinkle   | G    | 5-7 | Jr. | 10.9 | 3.0  | 3.4     | 31.3 |
| 22  | Meghan Hutchens | G/F  | 6-0 | Sr. | 5.2  | 2.8  | 2.1     | 19.2 |
| 25  | Jasmine Bailey  | G/F  | 5-8 | Fr. | -    | -    | -       | -    |
| 42  | Cassie Johnson  | C    | 6-2 | Jr. | 5.0  | 5.3  | 0.4     | 18.2 |

#### PROJECTED LEWIS STARTERS (Statistics after first exhibition game)

| No. | Name.          | Pos. | Ht.  | Yr. | Pts. | Rbs. | Assists | Min. |
|-----|----------------|------|------|-----|------|------|---------|------|
| 12  | Kady Currin    | G    | 5-6  | So. | 3.6  | 1.4  | 1.3     | 20.0 |
| 32  | Kelly Dianis   | G/F  | 5-10 | Sr. | 11.4 | 3.1  | 1.7     | 34.0 |
| 21  | Jenna Mooberry | F    | 5-10 | Sr. | 7.3  | 5.1  | 1.1     | 25.0 |
| 44  | Devon Carbaugh | F    | 5-10 | So. | -    | -    | -       | -    |
| 34  | Jenny Turpel   | G/F  | 5-10 | So. | 11.2 | 4.6  | 1.3     | 35.0 |

#### GAME NOTES

##### GAME PREVIEW:

UIC leads the series against Lewis, 2-1. The last time these two squads faced each other was on December 17, 1981. The Flames handed the Flyers a 23-point loss in Chicago (63-40).

##### JUST TWO WINS AWAY:

Head Coach Lisa Ryckbosch is just two wins away from becoming UIC's winningest coach in school history. Ryckbosch has recorded an 88-89 (.497) mark in six seasons. The current record belongs to Eileen McMahon with an 89-135 (.397) overall record. Ryckbosch already owns the winningest percentage in school history.

##### BROKE LEAGUE RECORD:

The Flames broke the Horizon League record for most blocks in a season with 86 in 18 conference games in 2007-08. The previous record was set during the 1999-2000 season.

##### RETURNING FIREPOWER:

UIC returns four starters and nine letterwinners back to the court in 2008-09. Included in the returning firepower is 2008-09 Preseason Second Team All-Horizon League guard Jessie Miller. Also returning are juniors Briana Hinkle and Cassie Johnson. Hinkle finished the year ranked in several Horizon League categories, while Johnson led the league in blocks (44). Senior Nikki Grobecker was powerful in the paint with 6.6 rebounds per game which ranked fourth in the league. Seniors Meghan Hutchens and Ashley Hluska will also contribute this season. Hutchens averaged 5.2 points per game, while Hluska totaled 17 blocks on the season.

##### IMPACT PLAYER:

Jessie Miller has provided the Flames with offensive firepower since she stepped on the court her freshman year. Last year, Miller led UIC and finished in seventh place in the league with 14.2 points per game. Miller also ranked fourth in the league with 2.1 three-pointers per game and finished ninth in steals (1.8 spg). Miller currently ranks ninth in the UIC career record book with 98 three-pointers.

##### NEW FACES:

UIC welcomes three freshmen to this year's squad from three different states. All three newcomers are diverse players that are capable of playing two positions. Jasmine Bailey is a 5-8 guard/forward from St. Louis, Mo. Bailey, a three-time Suburban East All-Conference recipient who scored over 1,000 points for Normandy High School, was named SEC Player of the Year on two occasions. Heidi Dahnke, a Martinsville, Ill. native, is a center/forward that helped guide her team to two Little Illini Conference Championships. Kiara Strickland, a 6-1 guard/forward from Minnesota, scored over 1,500-career points, helping Roosevelt High School to a first place Mid-section championship.

##### ON HER WAY TO 1,000-CAREER POINTS:

Jessie Miller doubled her scoring production last season with 421 points, 156 more than her rookie season. If Miller matches her total number of points in 2008-09, she will reach the 1,000-point plateau during her junior year.

## 2008-09 UIC WOMEN'S BASKETBALL

### UIC QUICK FACTS

#### UIC INFORMATION

Location ..... Chicago, Ill.  
 Founded ..... 1896  
 Enrollment ..... 24,541  
 Nickname ..... Flames  
 Colors ..... Navy Blue and Fire Engine Red  
 Arena (Capacity)..... UIC Pavilion (8,000)  
 Affiliation ..... NCAA Division I  
 Conference ..... Horizon League  
 Chancellor ..... Dr. Paula Allen-Meares  
 Director of Athletics ..... James W. Schmidt  
 Ticket Office Phone ..... (312) 413-UIC1  
 Athletics Web Site ..... www.uicflames.com

#### HISTORY

First Year of Basketball..... 1971  
 Overall All-Time Division I Record ..... 285-481  
 NCAA Tournament Appearances ..... N/A  
 WNIT Appearances ..... 1 (2007)

#### COACHING STAFF

Head Coach..... Lisa Ryckbosch  
 Alma Mater/Year ..... Loyola/1984  
 Record at UIC/Years..... 88-89/Six  
 Career Record ..... Same  
 Office Phone..... (312) 355-1359  
 Office Fax ..... (312) 996-8349  
 Best Time To Reach ..... Contact SID  
 Assistant Coach..... Kevin McManaman  
 Alma Mater/Year ..... St. Mary's (MN)/1992  
 Year at UIC ..... Seventh Season  
 Assistant Coach..... Jacob Morgan  
 Alma Mater/Year..... Northern Illinois/2000  
 Year at UIC ..... First Season  
 Assistant Coach..... Latasha White  
 Alma Mater/Year ..... DePaul/2003  
 Year at UIC ..... Sixth Season  
 Director of Basketball Operations..... Kristin Marco  
 Alma Mater/Year ..... Akron/2006  
 Year at UIC ..... First Season  
 Strength and Conditioning Coach..... Matt Sae

#### TEAM INFORMATION

2007-08 Overall Record ..... 10-20  
 Home ..... 9-5  
 Road ..... 1-13  
 Neutral ..... 0-2  
 2007-08 League Record/Finish ..... 6-12/8th  
 Starters Returning/Lost..... 4/1  
 Letterwinners Returning/Lost..... 8/3  
 Newcomers..... 4

#### SPORTS INFORMATION

Assistant SID (WBK Contact)..... Beth Usewicz  
 Office Phone..... (312) 996-5881  
 E-Mail ..... bethu@uic.edu  
 Sports Information Fax ..... (312) 996-8349  
 Press row phone..... (312) 413-5712  
 Mailing Address ..... Flames Athletic Center  
 839 W. Roosevelt Rd  
 Chicago, Ill. 60608

#### BIGGER LINEUP:

Unlike recent years, the 2008-09 lineup will not only have taller players, but the option to play a bigger lineup. In addition to five returners that are six-foot or taller, freshmen Kiara Strickland and Heidi Dahnke each measure in at 6-1.

#### NEW ADDITIONS:

After serving as the Director of Basketball Operations for the last two years, Jacob Morgan stepped up as an assistant coach after the departure of former assistant Amanda Reese. Morgan joins the Flames with more than seven years coaching experience and will be a positive addition to UIC's staff. Replacing Morgan as the Director of Basketball Operations is Kristin Marco. Marco, a Wisconsin native, played four years for the Akron basketball team where she was a 2005-06 co-captain for the Zips.

#### READY TO SHINE:

After sitting out her freshman year due to injury, St. Louis native Shameia Green will finally have an opportunity to show off her talent this season. Green, a standout at Normandy High School in Missouri, was expected to provide an extra-offensive weapon for the Flames, but was forced to cheer from the sidelines last season following an injury. Before arriving in Chicago, Green guided Normandy to two district championships and an elite eight appearance. The 5-7 guard was also named Blue East Conference Co-Player of the Year in 2006.

#### NEW OPPONENTS:

Before tackling the Horizon League schedule, UIC will face Canisius, Florida Atlantic, Cal Poly State, Long Island and San Diego for the first time in school history.

#### SIX STRAIGHT HOME GAMES:

The Flames play their first six games of the 2008-09 campaign at the UIC Pavilion. This bodes well for UIC since the team won nine games at home in 2007-08, including non-conference victories over Northwestern, Northern Illinois, Eastern Illinois and Bucknell. The Flames also recorded a big double overtime win over Milwaukee. The last time UIC beat the Panthers at home was on Jan. 17 2006.

#### MOTTO:

With this season's motto shaped around a strong work ethic and teamwork, the players know that these traits are what it takes to ultimately reach their goals. "The team understands that they have assembled the talent that is necessary to be competitive, but they know that without working hard and working together, they won't end up where they want to be at the end of the season," said head coach Lisa Ryckbosch.

#### MAGGIE DIXON SURF 'N SLAM:

The team will have the opportunity to play in a tournament this year in San Diego that holds a special meaning to the women's basketball program and head coach Lisa Ryckbosch. UIC competes in the 2008 Maggie Dixon Surf 'N Slam Tournament in San Diego, Calif. on Dec. 28 and 30 where they will face host San Diego in the opening round. The Flames then matchup against either Long Island or New Mexico State on the final day. The tournament honors the late Army head coach Maggie Dixon whom Ryckbosch coached alongside during her days at DePaul. "Maggie was a colleague and a dear friend of mine," said Ryckbosch. "We will honor and carry on her legacy by going out to San Diego and playing hard."

#### BLOCK PARTY:

UIC racked up 56 more blocks (130-74) than its opponents in 2007-08. The Flames led the league, averaging 4.3 blocks per game in all contests. UIC also totaled 49 more blocks (86-37) than its Horizon League opponents last season, averaging 4.8 blocks per game.

#### SOLID PERFORMANCE:

In addition to leading the league in blocks, UIC also finished the 2007-08 season ranked first in defensive rebounds (26.6), rebounding offense (39.1) and field goal percentage defense (.384).

#### 2007-08 HORIZON LEAGUE FINAL STANDINGS

| Team                   | Horizon League | Pct. | Overall | Pct. |
|------------------------|----------------|------|---------|------|
| Green Bay (WNIT)       | 17-1           | .944 | 26-6    | .813 |
| Milwaukee              | 11-7           | .611 | 17-14   | .548 |
| Wright State           | 11-7           | .611 | 16-16   | .500 |
| Butler                 | 10-8           | .556 | 20-10   | .667 |
| Cleveland State (NCAA) | 10-8           | .556 | 19-14   | .576 |
| Valparaiso             | 9-9            | .500 | 14-16   | .467 |
| Youngstown State       | 8-10           | .444 | 14-17   | .452 |
| UIC                    | 6-12           | .333 | 10-20   | .333 |
| Loyola                 | 5-13           | .278 | 8-23    | .258 |
| Detroit                | 3-15           | .167 | 6-24    | .200 |

#### 2008-09 NUMERICAL ROSTER

| No. | Name             | Pos. | Ht.  | Yr.    | Hometown/High School                     |
|-----|------------------|------|------|--------|--|
| 1   | Shanice Sadler   | F    | 5-11 | So.    | Flint, Mich./Flint Hamady                |
| 3   | Jessie Miller    | G    | 5-8  | Jr.    | Burnsville, Minn./Academy of Holy Angels |
| 4   | Katie O'Donoghue | G    | 5-11 | So.    | Chicago, Ill./St. Ignatius               |
| 12  | Briana Hinkle    | G    | 5-7  | Jr.    | Bexley, Ohio/Bexley                      |
| 21  | Cassie Johnson   | C    | 6-2  | Jr.    | Apple Valley, Minn./Eastview             |
| 22  | Meghan Hutchens  | F    | 6-0  | Sr.    | Riverside, Ill./Riverside-Brookfield     |
| 25  | Jasmine Bailey   | G/F  | 5-8  | Fr.    | St. Louis, Mo./Normandy                  |
| 30  | Nikki Grobbeck   | C    | 6-2  | Sr.    | Stratford, Ontario/St. Michael           |
| 32  | Kiara Strickland | G/F  | 6-1  | Fr.    | Minneapolis, Minn./Roosevelt             |
| 34  | Heidi Dahnke     | C/F  | 6-1  | Fr.    | Martinsville, Ill./Martinsville          |
| 35  | Ashley Hluska    | C/F  | 6-1  | Sr.    | Lansing, Ill./Marian Catholic            |
| 40  | Shameia Green    | G    | 5-7  | Rs-Fr. | St. Louis, Mo./Normandy                  |
| 44  | Kristin Petrinc  | C    | 6-2  | So.    | Bloomington, Ill./Bloomington            |

# 1 SHANICE SADLER

5-11 • So. • Flint, Mich.  
Flint Hamady **F**

| PTS | REB | AST | MIN  |
|-----|-----|-----|------|
| 4.0 | 2.8 | 1.0 | 12.2 |



**QUICK HITS:**

- Played in 28 games, including 17 Horizon League contests.
- Started back-to-back games versus Butler and Loyola in January.
- Scored a career-high 12 points against Valparaiso on Jan. 10.
- Totaled a career-high nine rebounds on two occasions.
- Swiped a career-high four steals versus Butler on Jan. 12.

# 3 JESSIE MILLER

5-8 • Jr. • Burnsville, Minn.  
Academy of Holy Angels **G**

| PTS  | REB | AST | MIN  |
|------|-----|-----|------|
| 14.0 | 5.2 | 5.0 | 30.6 |



**QUICK HITS:**

- Earned 2007-08 All-Horizon League Second Team Honors.
- Averaged 14.0 points per game, finishing first on the squad and seventh in the league.
- Finished eighth in the league with 3.3 assists per game.
- Averaged 2.1 three-pointers per game, ranking fourth in the league.
- Named Horizon League Player of the Week on Nov. 19.

# 4 KATIE O'DONOGHUE

5-11 • So. • Chicago, Ill.  
St. Ignatius **G**

| PTS | REB | AST | MIN |
|-----|-----|-----|-----|
| 0.3 | 0.1 | 0.0 | 3.0 |



**QUICK HITS:**

- Saw action in 15 games her rookie season.
- Totaled five points on the year.
- Finished 3-for-4 from the free throw line.
- Played a career-high 10 minutes versus Detroit on Feb. 2.

# 12 BRIANA HINKLE

5-7 • Jr. • Bexley, Ohio  
Bexley **G**

| PTS  | REB | AST | MIN  |
|------|-----|-----|------|
| 10.9 | 3.0 | 4.0 | 31.3 |



**QUICK HITS:**

- Finished second on the team and 19th in the Horizon League with 10.9 points per game.
- Averaged 1.9 steals per game, ranking sixth in the league.
- Finished the season tied for seventh place in the league with a 1.16 assist-to-turnover ratio.
- Picked up a career-high 23 points versus Green Bay on Jan. 26.
- Totaled 18 double-figure contests.

# 21 CASSIE JOHNSON

6-2 • Jr. • Apple Valley, Minn.  
Eastview **C**

| PTS | REB | AST | MIN  |
|-----|-----|-----|------|
| 5.0 | 5.3 | 0.2 | 18.2 |



**QUICK HITS:**

- Led the league with 1.4 blocks per game.
- Tied career-high 10 rebounds against Valparaiso on Jan. 10.
- Ranked 15th in the league and second on the team with 5.3 rebounds per game.
- Notched a career-high five blocks versus Loyola on March 10.
- Currently ranks eighth in the UIC career record book with 64 total blocks.

# 22 MEGHAN HUTCHENS

6-0 • Sr. • Riverside, Ill.  
Riverside-Brookefield **F**

| PTS | REB | AST | MIN  |
|-----|-----|-----|------|
| 5.2 | 2.8 | 2.0 | 19.2 |



**QUICK HITS:**

- Earned a starting nod in 12 games.
- Picked up a career-high 14 points versus Central Michigan on Nov. 19.
- Notched a career-high nine rebounds against Cleveland State on March 6.

# 25 JASMINE BAILEY

5-8 • Fr. • St. Louis, Mo.  
Normandy **G/F**

| PTS | REB | AST | MIN |
|-----|-----|-----|-----|
| N/A | N/A | N/A | N/A |



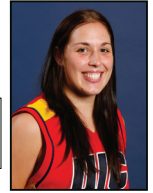
**QUICK HITS:**

- Helped guide Normandy High School to a 21-8 record her senior year.
- Three-time All-Suburban East Conference recipient.
- Fox 2 TV Player of the Week.
- Scored over 1,000-career points.
- Two-time SEC Player of the Year

# 30 NIKKI GROBBECKER

6-2 • Sr. • Stratford, Ontario  
St. Michael **C**

| PTS | REB | AST | MIN  |
|-----|-----|-----|------|
| 2.4 | 6.6 | 1.0 | 20.5 |



**QUICK HITS:**

- Led the Flames and ranked fourth in the league with 6.6 rebounds per game.
- Finished eighth in the league with 0.72 blocks per game.
- Finished fourth in the league in defensive rebounds per game (4.6).
- Totaled a season-high 10 rebounds on two occasions.

# 32 KIARA STRICKLAND

6-1 • Fr. • Minneapolis, Minn.  
Roosevelt **G/F**

| PTS | REB | AST | MIN |
|-----|-----|-----|-----|
| N/A | N/A | N/A | N/A |



**QUICK HITS:**

- Helped guide Roosevelt High School to a Minnesota Mid-State Sectional Championship.
- Scored over 1,500-career points.
- *Star Tribune* Athlete of the Week.
- Earned all-conference and MVP honors.

# 34 HEIDI DAHNKE

6-1 • Fr. • Martinsville, Ill.  
Martinsville **C/F**

| PTS | REB | AST | MIN |
|-----|-----|-----|-----|
| N/A | N/A | N/A | N/A |



**QUICK HITS:**

- Helped guide Martinsville High School to a 25-3 record her senior year.
- Two-time Little Illini Conference Champions.
- Named a First Team All-Little Illini Conference recipient.
- Four-year *Charleston Times-Courier* All-Area honoree selection.

# 35 ASHLEY HLUSKA

6-1 • Sr. • Lansing, Ill.  
Marian Catholic **C/F**

| PTS | REB | AST | MIN  |
|-----|-----|-----|------|
| 4.2 | 3.2 | 1.3 | 16.9 |



**QUICK HITS:**

- Totaled 17 blocks on the season.
- Tied a career-high 12 points versus Southern Mississippi on Dec. 19.
- Picked up a career-high nine rebounds against Loyola on Jan. 12.
- Notched a career-high three steals on two occasions.

# 40 SHAMEIA GREEN

5-7 • Rs-Fr. • St. Louis, Mo.  
Normandy **G**

| PTS | REB | AST | MIN |
|-----|-----|-----|-----|
| N/A | N/A | N/A | N/A |



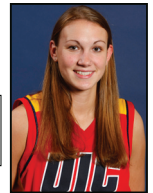
**QUICK HITS:**

- 2008-09 medical redshirt, retaining all four years of eligibility

# 42 KRISTEN PETRINEC

6-2 • So. • Bloomington, Ill.  
Bloomington **C**

| PTS | REB | AST | MIN |
|-----|-----|-----|-----|
| 0.9 | 1.3 | N/A | 5.8 |



**QUICK HITS:**

- Played in 26 games her rookie season.
- Scored a career-high six points versus Butler on Jan. 19.
- Swiped a career-high two steals against Green Bay on Feb. 21.
- Totaled a career-high five rebounds versus Valparaiso on Feb. 9.

**2007-08 UIC WOMEN'S BASKETBALL OVERALL STATISTICS**

| <b>RECORD:</b> | <b>OVERALL</b> | <b>HOME</b> | <b>AWAY</b> | <b>NEUTRAL</b> |
|----------------|----------------|-------------|-------------|----------------|
| ALL GAMES      | 10-20          | 9-5         | 1-13        | 0-2            |
| CONFERENCE     | 6-12           | 5-4         | 1-8         | 0-0            |
| NON-CONFERENCE | 4-8            | 4-1         | 0-5         | 0-2            |

| #              | Player            | gp-gs | min  | avg  | Total    |      | 3-Point |       | F-Throw |       | Rebounds |     |      |      | pts | avg |     |     |     |     |      |      |
|----------------|-------------------|-------|------|------|----------|------|---------|-------|---------|-------|----------|-----|------|------|-----|-----|-----|-----|-----|-----|------|------|
|                |                   |       |      |      | fg-fga   | pct  | 3fg-fga | pct   | ft-fga  | pct   | off      | def | tot  | avg  |     |     | pf  | dq  | a   | to  | blk  | stl  |
| 03             | MILLER, Jessica   | 30-29 | 917  | 30.6 | 150-355  | .423 | 63-183  | .344  | 56-86   | .651  | 58       | 99  | 157  | 5.2  | 74  | 2   | 101 | 107 | 14  | 55  | 419  | 14.0 |
| 12             | HINKLE, Briana    | 30-29 | 938  | 31.3 | 143-369  | .388 | 0-3     | .000  | 42-64   | .656  | 27       | 62  | 89   | 3.0  | 63  | 1   | 79  | 68  | 9   | 58  | 328  | 10.9 |
| 23             | MANLEY, Taylor    | 29-16 | 612  | 21.1 | 68-229   | .297 | 24-87   | .276  | 28-39   | .718  | 11       | 60  | 71   | 2.4  | 49  | 0   | 60  | 71  | 6   | 6   | 188  | 6.5  |
| 22             | HUTCHENS, Meghan  | 30-11 | 577  | 19.2 | 62-189   | .328 | 8-43    | .186  | 24-41   | .585  | 21       | 62  | 83   | 2.8  | 26  | 0   | 41  | 39  | 4   | 24  | 156  | 5.2  |
| 21             | JOHNSON, Cassie   | 30-16 | 546  | 18.2 | 49-138   | .355 | 0-0     | .000  | 52-81   | .642  | 62       | 96  | 158  | 5.3  | 43  | 0   | 8   | 53  | 44  | 13  | 150  | 5.0  |
| 35             | HLUSKA, Ashley    | 29-13 | 490  | 16.9 | 51-135   | .378 | 0-0     | .000  | 20-36   | .556  | 25       | 67  | 92   | 3.2  | 63  | 2   | 27  | 40  | 17  | 15  | 122  | 4.2  |
| 11             | TOMZIK, Ashley    | 28-3  | 510  | 18.2 | 45-143   | .315 | 15-59   | .254  | 12-24   | .500  | 6        | 31  | 37   | 1.3  | 43  | 1   | 30  | 35  | 0   | 18  | 117  | 4.2  |
| 01             | SADLER, Shanice   | 28-2  | 341  | 12.2 | 42-112   | .375 | 13-39   | .333  | 14-23   | .609  | 27       | 52  | 79   | 2.8  | 36  | 0   | 14  | 31  | 3   | 16  | 111  | 4.0  |
| 30             | GROBBECKER, Nikki | 29-23 | 595  | 20.5 | 27-68    | .397 | 0-0     | .000  | 17-37   | .459  | 56       | 134 | 190  | 6.6  | 51  | 0   | 20  | 25  | 21  | 14  | 71   | 2.4  |
| 54             | RINALDI, Nicole   | 28-3  | 292  | 10.4 | 27-45    | .600 | 1-1     | 1.000 | 10-18   | .556  | 16       | 36  | 52   | 1.9  | 25  | 0   | 12  | 9   | 8   | 14  | 65   | 2.3  |
| 40             | GREEN, Shameia    | 9-0   | 60   | 6.7  | 1-8      | .125 | 0-1     | .000  | 11-14   | .786  | 2        | 8   | 10   | 1.1  | 4   | 0   | 5   | 11  | 0   | 5   | 13   | 1.4  |
| 44             | PETRINEC, Kristin | 26-0  | 152  | 5.8  | 10-39    | .256 | 2-6     | .333  | 2-2     | 1.000 | 14       | 19  | 33   | 1.3  | 16  | 0   | 2   | 3   | 3   | 9   | 24   | 0.9  |
| 04             | O'DONOGHUE, Katie | 15-0  | 45   | 3.0  | 1-8      | .125 | 0-3     | .000  | 3-4     | .750  | 0        | 2   | 2    | 0.1  | 2   | 0   | 0   | 5   | 1   | 0   | 5    | 0.3  |
| Total.....     |                   | 30    | 6075 |      | 676-1838 | .368 | 126-425 | .296  | 291-469 | .620  | 375      | 798 | 1173 | 39.1 | 495 | 6   | 399 | 509 | 130 | 247 | 1769 | 59.0 |
| Opponents..... |                   | 30    | 5984 |      | 689-1796 | .384 | 157-451 | .348  | 435-605 | .719  | 416      | 886 | 1302 | 43.4 | 480 | -   | 433 | 519 | 74  | 263 | 1970 | 65.7 |

| <b>TEAM STATISTICS</b>  | <b>UIC</b> | <b>OPP</b> | <b>Date</b> | <b>Opponent</b>         | <b>Score</b>  | <b>Att.</b> |      |
|-------------------------|------------|------------|-------------|-------------------------|---------------|-------------|------|
| SCORING                 | 1769       | 1970       | 11/09/07    | at Central Michigan     | L             | 71-76       | 502  |
| Points per game         | 59.0       | 65.7       | 11-14-07    | NORTHWESTERN            | W             | 45-53       | 1140 |
| Scoring margin          | -6.7       | -          | 11-17-07    | at Bradley              | L             | 62-69       | 519  |
| FIELD GOALS-ATT         | 676-1838   | 689-1796   | 11-20-07    | EASTERN ILLINOIS        | W             | 58-62       | 565  |
| Field goal pct          | .368       | .384       | 11-25-07    | NORTHERN ILLINOIS       | W             | 42-50       | 510  |
| 3 POINT FG-ATT          | 126-425    | 157-451    | 11-29-07    | at DePaul               | L             | 35-74       | 2177 |
| 3-point FG pct          | .296       | .348       | 12/02/07    | at Illinois             | L             | 57-69       | 1471 |
| 3-pt FG made per game   | 4.2        | 5.2        | 12/8/07     | at Western Michigan     | L             | 39-51       | 1058 |
| FREE THROWS-ATT         | 291-469    | 435-605    | 12/18/07    | vs LSU                  | L             | 44-86       | 200  |
| Free throw pct          | .620       | .719       | 12/19/07    | vs Southern Mississippi | L             | 79-55       | 300  |
| REBOUNDS                | 1173       | 1302       | 12/28/07    | BUCKNELL                | W             | 62-70       | 569  |
| Rebounds per game       | 39.1       | 43.4       | * 1/03/08   | at Youngstown State     | L             | 62-73       | 1135 |
| Rebounding margin       | -4.3       | -          | * 1/5/08    | at Cleveland State      | L             | 58-66       | 312  |
| ASSISTS                 | 399        | 433        | * 1/10/08   | VALPARAISO              | L             | 72-63       | 466  |
| Assists per game        | 13.3       | 14.4       | * 1/12/08   | BUTLER                  | L             | 72-57       | 566  |
| TURNOVERS               | 509        | 519        | * 1/19/08   | LOYOLA                  | W             | 69-76       | 3216 |
| Turnovers per game      | 17.0       | 17.3       | * 01/23/08  | at Milwaukee            | W             | 62-59       | 433  |
| Turnover margin         | +0.3       | -          | * 01/26/08  | at Green Bay            | L             | 60-75       | 2461 |
| Assist/turnover ratio   | 0.8        | 0.8        | * 1/31/08   | WRIGHT STATE            | W             | 60-63       | 324  |
| STEALS                  | 247        | 263        | * 2/2/08    | DETROIT                 | W             | 36-66       | 452  |
| Steals per game         | 8.2        | 8.8        | * 02/07/08  | at Butler               | L             | 48-56       | 193  |
| BLOCKS                  | 130        | 74         | * 02/09/08  | at Valparaiso           | L             | 46-76       | 747  |
| Blocks per game         | 4.3        | 2.5        | * 02.16.08  | at Loyola               | L             | 57-63       | 519  |
| WINNING STREAK          | 0          | -          | * 2-21-08   | GREEN BAY               | L             | 78-60       | 374  |
| Home win streak         | 0          | -          | * 2-23-08   | MILWAUKEE               | Wot           | 69-70       | 908  |
| ATTENDANCE              | 10796      | 12856      | * 02/28/08  | at Detroit              | L             | 51-55       | 408  |
| Home games-Avg/Game     | 14-771     | 14-883     | * 3/1/08    | at Wright State         | L             | 48-56       | 421  |
| Neutral site-Avg/Game   | -          | 2-250      | * 3-6-08    | CLEVELAND STATE         | W             | 80-93       | 429  |
|                         |            |            | * 3-8-08    | YOUNGSTOWN STATE        | L             | 71-62       | 1018 |
|                         |            |            | * 3-10-08   | LOYOLA                  | Lot           | 73-69       | 259  |
| <b>Score by Periods</b> | <b>1st</b> | <b>2nd</b> | <b>OT</b>   | <b>OT2</b>              | <b>Totals</b> |             |      |
| UIC                     | 814        | 937        | 16          | 2                       | 1769          |             |      |
| Opponents               | 938        | 1011       | 20          | 1                       | 1970          |             |      |

**2007-08 UIC WOMEN'S BASKETBALL HORIZON LEAGUE STATISTICS**

| <b>RECORD:</b> | <b>OVERALL</b> | <b>HOME</b> | <b>AWAY</b> | <b>NEUTRAL</b> |
|----------------|----------------|-------------|-------------|----------------|
| ALL GAMES      | 6-12           | 5-4         | 1-8         | 0-0            |
| CONFERENCE     | 6-12           | 5-4         | 1-8         | 0-0            |
| NON-CONFERENCE | 0-0            | 0-0         | 0-0         | 0-0            |

| #              | Player            | gp-gs | min  | avg  | Total    |      | 3-Point |       | F-Throw |       | Rebounds |     |     |      | pf  | dq | a   | to  | blk | stl | pts  | avg  |
|----------------|-------------------|-------|------|------|----------|------|---------|-------|---------|-------|----------|-----|-----|------|-----|----|-----|-----|-----|-----|------|------|
|                |                   |       |      |      | fg-fga   | pct  | 3fg-fga | pct   | ft-fta  | pct   | off      | def | tot | avg  |     |    |     |     |     |     |      |      |
| 03             | MILLER, Jessica   | 18-18 | 556  | 30.9 | 92-207   | .444 | 43-108  | .398  | 22-35   | .629  | 38       | 57  | 95  | 5.3  | 44  | 1  | 56  | 68  | 8   | 32  | 249  | 13.8 |
| 12             | HINKLE, Briana    | 18-18 | 549  | 30.5 | 91-222   | .410 | 0-3     | .000  | 29-44   | .659  | 18       | 29  | 47  | 2.6  | 43  | 1  | 52  | 42  | 6   | 31  | 211  | 11.7 |
| 23             | MANLEY, Taylor    | 18-15 | 437  | 24.3 | 54-172   | .314 | 23-68   | .338  | 22-29   | .759  | 9        | 44  | 53  | 2.9  | 37  | 0  | 42  | 50  | 5   | 5   | 153  | 8.5  |
| 21             | JOHNSON, Cassie   | 18-14 | 339  | 18.8 | 33-88    | .375 | 0-0     | .000  | 34-48   | .708  | 45       | 64  | 109 | 6.1  | 28  | 0  | 4   | 33  | 31  | 9   | 100  | 5.6  |
| 01             | SADLER, Shanice   | 17-2  | 241  | 14.2 | 30-77    | .390 | 12-30   | .400  | 13-19   | .684  | 19       | 36  | 55  | 3.2  | 27  | 0  | 11  | 16  | 2   | 16  | 85   | 5.0  |
| 22             | HUTCHENS, Meghan  | 18-2  | 313  | 17.4 | 34-105   | .324 | 2-20    | .100  | 14-21   | .667  | 14       | 39  | 53  | 2.9  | 16  | 0  | 28  | 22  | 3   | 19  | 84   | 4.7  |
| 11             | TOMZIK, Ashley    | 18-2  | 331  | 18.4 | 27-95    | .284 | 9-41    | .220  | 7-13    | .538  | 6        | 20  | 26  | 1.4  | 31  | 1  | 21  | 23  | 0   | 8   | 70   | 3.9  |
| 35             | HLUSKA, Ashley    | 18-4  | 283  | 15.7 | 24-71    | .338 | 0-0     | .000  | 8-16    | .500  | 12       | 43  | 55  | 3.1  | 35  | 1  | 24  | 23  | 10  | 6   | 56   | 3.1  |
| 30             | GROBBECKER, Nikki | 17-13 | 332  | 19.5 | 18-39    | .462 | 0-0     | .000  | 6-13    | .462  | 33       | 75  | 108 | 6.4  | 36  | 0  | 13  | 14  | 12  | 8   | 42   | 2.5  |
| 54             | RINALDI, Nicole   | 16-2  | 153  | 9.6  | 13-20    | .650 | 1-1     | 1.000 | 2-4     | .500  | 9        | 18  | 27  | 1.7  | 12  | 0  | 7   | 5   | 5   | 2   | 29   | 1.8  |
| 44             | PETRINEC, Kristin | 14-0  | 89   | 6.4  | 8-25     | .320 | 2-4     | .500  | 2-2     | 1.000 | 9        | 9   | 18  | 1.3  | 7   | 0  | 1   | 0   | 3   | 4   | 20   | 1.4  |
| 04             | O'DONOGHUE, Katie | 8-0   | 27   | 3.4  | 0-6      | .000 | 0-2     | .000  | 3-4     | .750  | 0        | 1   | 1   | 0.1  | 0   | 0  | 0   | 2   | 1   | 0   | 3    | 0.4  |
| Total.....     |                   | 18    | 3650 |      | 424-1127 | .376 | 92-277  | .332  | 162-248 | .653  | 238      | 478 | 716 | 39.8 | 316 | 4  | 259 | 300 | 86  | 140 | 1102 | 61.2 |
| Opponents..... |                   | 18    | 3650 |      | 407-1046 | .389 | 104-279 | .373  | 268-379 | .707  | 225      | 517 | 742 | 41.2 | 276 | -  | 268 | 295 | 37  | 150 | 1186 | 65.9 |

| <b>Score by Periods</b> | <b>1st</b> | <b>2nd</b> | <b>OT</b> | <b>OT2</b> | <b>Totals</b> |
|-------------------------|------------|------------|-----------|------------|---------------|
| UIC                     | 531        | 563        | 6         | 2          | 1102          |
| Opponents               | 577        | 602        | 6         | 1          | 1186          |