



## 2008-09 UIC WOMEN'S BASKETBALL

### UIC QUICK FACTS

#### UIC INFORMATION

Location ..... Chicago, Ill.  
 Founded ..... 1896  
 Enrollment ..... 24,541  
 Nickname ..... Flames  
 Colors ..... Navy Blue and Fire Engine Red  
 Arena (Capacity)..... UIC Pavilion (8,000)  
 Affiliation ..... NCAA Division I  
 Conference ..... Horizon League  
 Chancellor ..... Dr. Paula Allen-Meares  
 Director of Athletics ..... James W. Schmidt  
 Ticket Office Phone ..... (312) 413-UIC1  
 Athletics Web Site ..... www.uicflames.com

#### HISTORY

First Year of Basketball ..... 1971  
 Overall All-Time Division I Record ..... 288-481  
 NCAA Tournament Appearances ..... N/A  
 WNIT Appearances ..... 1 (2007)

#### COACHING STAFF

Head Coach ..... Lisa Ryckbosch  
 Alma Mater/Year ..... Loyola/1984  
 Record at UIC/Years ..... 91-89/Seven  
 Career Record ..... Same  
 Office Phone ..... (312) 355-1359  
 Office Fax ..... (312) 996-8349  
 Best Time To Reach ..... Contact SID  
 Assistant Coach ..... Kevin McManaman  
 Alma Mater/Year ..... St. Mary's (MN)/1992  
 Year at UIC ..... Seventh Season  
 Assistant Coach ..... Jacob Morgan  
 Alma Mater/Year ..... Northern Illinois/2000  
 Year at UIC ..... First Season  
 Assistant Coach ..... Latasha White  
 Alma Mater/Year ..... DePaul/2003  
 Year at UIC ..... Sixth Season  
 Director of Basketball Operations ..... Kristin Marco  
 Alma Mater/Year ..... Akron/2006  
 Year at UIC ..... First Season  
 Strength and Conditioning Coach ..... Matt Saeys

#### TEAM INFORMATION

2007-08 Overall Record ..... 10-20  
 Home ..... 9-5  
 Road ..... 1-13  
 Neutral ..... 0-2  
 2007-08 League Record/Finish ..... 6-12/8th  
 Starters Returning/Lost ..... 4/1  
 Letterwinners Returning/Lost ..... 8/3  
 Newcomers ..... 4

#### SPORTS INFORMATION

Assistant SID (WBK Contact) ..... Beth Usewicz  
 Office Phone ..... (312) 996-5881  
 E-Mail ..... bethu@uic.edu  
 Sports Information Fax ..... (312) 996-8349  
 Press row phone ..... (312) 413-5712  
 Mailing Address ..... Flames Athletic Center  
 839 W. Roosevelt Rd  
 Chicago, Ill. 60608

#### CAPTURED THE COUGARS:

UIC recorded its third straight win of the season with a 75-54 win over Southern Illinois Edwardsville on Nov. 30. Jessie Miller led UIC with 10 points and 11 rebounds. Senior Nikki Grobbeck picked up her first double-digit scoring contest this season with 10 points. Briana Hinkle, Cassie Johnson and Meghan Hutchens each notched nine points in the win. The Flames outrebounded SIUE, 62-32. UIC held SIUE to a .279 field goal percentage with a solid defensive game. The Flames' bench contributed 24 points.

#### REBOUNDIN' BAILEY:

Jasmine Bailey has dominated on defense for the Flames in their first three games with 8.3 boards per game. The St. Louis native recorded a team-best 12 rebounds in UIC's season opener against Bradley on Nov. 22 before tying the team-high with nine rebounds in a come-from-behind win over Canisius on Nov. 25. Bailey ranks third in the Horizon League in overall rebounding. She is tied for second place with teammate Miller in offensive rebounds (3.3) and is tied for fourth place with four other players in defensive rebounds (5.0).

#### WHO'S HOT:

Jessie Miller is shooting 51.4 percent (18-for-35) from the field in 2008-09. Ranking seventh in the league, Miller averages a team-best 16.0 points per game. Behind Bailey, Miller is sixth in the league in rebounds (7.0). In addition, she also leads the team with seven three-pointers, averaging 2.3 treys per game. Miller also leads the Flames and is tied for fourth place in the league with 4.0 assists per game.

#### HEATIN' IT UP HUTCH:

Meghan Hutchens helped ignite the Flames in their comeback against Canisius on Nov. 25 with nine of her 14 total points coming in the second-half surge. Hutchens was 3-for-4 from the field, 2-for-2 from the free throw line and hit one trey in the final 20 minutes of play against the Golden Griffins. Hutchens added another trey in a win over SIUE on Nov. 30 to lead the league in three-point field goal percentage (.750).

#### BRING IT BREE:

Briana Hinkle has gotten off to an impressive start this season with 13.0 points per game. She is tied for 10th in the Horizon League with a .531 (17-for-32) field goal percentage. Hinkle is also tied for 10th in scoring and tied for third place with 2.7 steals per game.

#### MILLER'S MAGIC:

Jessie Miller is well on her way to 1,000 career points during the Flames' 2008-09 campaign. After just two seasons, Miller totaled 686 points. The junior guard continued to make her offensive presence known with 48 points in just three-games this season.

#### ON YOUR MARK:

Miller tied for eighth place in the UIC record book in three-pointers after draining three against Southern Illinois Edwardsville on Nov. 30. The Burnsville, Minn. native is also 40 points from cracking into the top ten in the UIC career record book in points as a junior.

#### MAGGIE DIXON SURF 'N SLAM:

The team will have the opportunity to play in a tournament this year in San Diego that holds a special meaning to the women's basketball program and head coach Lisa Ryckbosch. UIC competes in the 2008 Maggie Dixon Surf 'N Slam Tournament in San Diego, Calif. on Dec. 28 and 30 where they will face host San Diego in the opening round. The Flames then matchup against either Long Island or New Mexico State on the final day. The tournament honors the late Army head coach Maggie Dixon whom Ryckbosch coached alongside during her days at DePaul. "Maggie was a colleague and a dear friend of mine," said Ryckbosch. "We will honor and carry on her legacy by going out to San Diego and playing hard."

#### UP NEXT:

UIC wraps up its six-game homestand with contests against Western Michigan (Dec. 3) and Cal Poly. (Dec. 18) .

#### 2008-09 HORIZON LEAGUE STANDINGS

Team	Horizon League	Pct.	Overall	Pct.
Green Bay	0-0	.000	5-0	1.000
<b>UIC</b>	<b>0-0</b>	<b>.000</b>	<b>3-0</b>	<b>1.000</b>
Valparaiso	0-0	.000	3-1	.750
Loyola	0-0	.000	3-2	.600
Milwaukee	0-0	.000	3-2	.600
Cleveland State	0-0	.000	3-3	.500
Wright State	0-0	.000	2-2	.500
Detroit	0-0	.000	2-4	.333
Butler	0-0	.000	1-4	.200
Youngstown State	0-0	.000	1-4	.200

#### 2008-09 NUMERICAL ROSTER

No.	Name	Pos.	Ht.	Yr.	Hometown/High School
1	Shanice Sadler	F	5-11	So.	Flint, Mich./Flint Hamady
3	Jessie Miller	G	5-8	Jr.	Burnsville, Minn./Academy of Holy Angels
4	Katie O'Donoghue	G	5-11	So.	Chicago, Ill./St. Ignatius
12	Briana Hinkle	G	5-7	Jr.	Bexley, Ohio/Bexley
22	Meghan Hutchens	F	6-0	Sr.	Riverside, Ill./Riverside-Brookfield
25	Jasmine Bailey	G/F	5-8	Fr.	St. Louis, Mo./Normandy
30	Nikki Grobbeck	C	6-2	Sr.	Stratford, Ontario/St. Michael
32	Kiara Strickland	G/F	6-1	Fr.	Minneapolis, Minn./Roosevelt
34	Heidi Dahnke	C/F	6-1	Fr.	Martinsville, Ill./Martinsville
35	Ashley Hluska	C/F	6-1	Sr.	Lansing, Ill./Marian Catholic
40	Shameia Green	G	5-7	Rs-Fr.	St. Louis, Mo./Normandy
42	Cassie Johnson	C	6-2	Jr.	Apple Valley, Minn./Eastview
44	Kristin Petrinc	C	6-2	So.	Bloomington, Ill./Bloomington

# 1 SHANICE SADLER

5-11 • So. • Flint, Mich. F  
Flint Hamady



PTS	REB	AST	MIN
N/A	N/A	N/A	N/A

**QUICK HITS:**

- Totaled two points vs. Lewis on Nov. 6. in UIC's first exhibition game.
- Recorded two rebounds and two assists against the Flyers.
- Totaled five points and swiped two steals in UIC's final exhibition game against St. Xavier.

# 3 JESSIE MILLER

5-8 • Jr. • Burnsville, Minn. G  
Academy of Holy Angels



PTS	REB	AST	MIN
16.0	7.0	4.0	32.0

**QUICK HITS:**

- Recorded her first double-double of the season with 10 points and 11 rebounds against SIUE on Nov. 30
- Tied for eighth place in the UIC career record book with three treys against SIUE.
- Was one point shy of a double-double with 13 points and nine rebounds.
- Led UIC with 24 points in season opener against Bradley on Nov. 22.

# 4 KATIE O'DONOGHUE

5-11 • So. • Chicago, Ill. G  
St. Ignatius



PTS	REB	AST	MIN
N/A	N/A	N/A	N/A

**QUICK HITS:**

- Saw action in two minutes versus SIUE on Nov. 30.
- Saw action in five minutes against Lewis on Nov. 6.
- Totaled three rebounds against the Flyers.
- Chipped in three points and two steals against St. Xavier on Nov. 11.

# 12 BRIANA HINKLE

5-7 • Jr. • Bexley, Ohio G  
Bexley



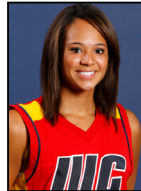
PTS	REB	AST	MIN
13.0	4.7	2.3	29.3

**QUICK HITS:**

- Totaled nine points and four steals against SIUE on Nov. 30.
- Was 6-for-10 from the field against Canisius on Nov. 25.
- Totaled a team-best 15 points against the Golden Griffins.
- Led UIC with seven rebounds and four steals against Bradley on Nov. 22.
- Chipped in 15 points against the Braves

# 42 CASSIE JOHNSON

6-2 • Jr. • Apple Valley, Minn. C  
Eastview



PTS	REB	AST	MIN
7.0	5.0	0.6	22.0

**QUICK HITS:**

- Totaled nine points, seven rebounds and two blocks against SIUE on Nov. 30.
- Tallied a game-high four blocks versus Canisius on Nov. 25.
- Totaled 10 points and five rebounds against the Golden Griffins.
- Led UIC with three blocks against Bradley on Nov. 22.

# 22 MEGHAN HUTCHENS

6-0 • Sr. • Riverside, Ill. F  
Riverside-Brookefield



PTS	REB	AST	MIN
9.0	3.0	4.3	21.0

**QUICK HITS:**

- Leads the league in three-point field goal percentage (.750).
- Dished out a game-high five assists against Canisius on Nov. 25.
- Totaled 14 points, including two treys versus the Golden Griffins.
- Swiped three steals against Canisius.
- Totaled four points, two rebounds, four assists and two steals against Bradley on Nov. 22.

# 25 JASMINE BAILEY

5-8 • Fr. • St. Louis, Mo. G/F  
Normandy



PTS	REB	AST	MIN
7.0	8.3	3.6	24.0

**QUICK HITS:**

- Totaled eight points, four rebounds, three assists and two steals against SIUE on Nov. 30.
- Totaled nine boards against Canisius on Nov. 25.
- Dished out four assists against the Golden Griffins.

# 30 NIKKI GROBBECKER

6-2 • Sr. • Stratford, Ontario C  
St. Michael



PTS	REB	AST	MIN
6.0	4.5	N/A	14.0

**QUICK HITS:**

- Recorded a season-high 10 points against SIUE on Nov. 30
- Totaled three boards against Bradley on Nov. 22.

# 32 KIARA STRICKLAND

6-1 • Fr. • Minneapolis, Minn. G/F  
Roosevelt



PTS	REB	AST	MIN
0.7	1.7	1.0	12.0

**QUICK HITS:**

- Totaled three rebounds versus SIUE on Nov. 30.
- Dished out two assists and one block against Canisius on Nov. 25.

# 34 HEIDI DAHNKE

6-1 • Fr. • Martinsville, Ill. C/F  
Martinsville



PTS	REB	AST	MIN
N/A	0.7	N/A	4.0

**QUICK HITS:**

- Totaled two rebounds against SIUE on Nov. 30.
- Totaled two rebounds and two assists against St. Xavier on Nov. 11.

# 35 ASHLEY HLUSKA

6-1 • Sr. • Lansing, Ill. C/F  
Marian Catholic



PTS	REB	AST	MIN
1.0	1.0	0.3	9.5

**QUICK HITS:**

- Totaled seven points in just 11 minutes of play against Lewis on Nov. 6.
- Led UIC with two blocks against St. Xavier on Nov. 11.

# 40 SHAMEIA GREEN

5-7 • Rs-Fr. • St. Louis, Mo. G  
Normandy



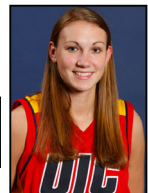
PTS	REB	AST	MIN
5.0	3.3	1.0	20.7

**QUICK HITS:**

- Chipped in six points and five rebounds against SIUE on Nov. 30.
- Totaled six points versus the Golden Griffins.
- Tallied three rebounds, one assist and two steals against Canisius.

# 42 KRISTIN PETRINEC

6-2 • So. • Bloomington, Ill. C  
Bloomington



PTS	REB	AST	MIN
4.7	3.7	0.3	14.0

**QUICK HITS:**

- Pulled down four rebounds against SIUE on Nov. 30.
- Collected three rebounds against Canisius on Nov. 25.
- Totaled a career-high nine points against Bradley on Nov. 22.

**2008-09 UIC WOMEN'S BASKETBALL OVERALL STATISTICS**

<b>RECORD:</b>	<b>OVERALL</b>	<b>HOME</b>	<b>AWAY</b>	<b>NEUTRAL</b>
ALL GAMES	3-0	3-0	0-0	0-0
CONFERENCE	0-0	0-0	0-0	0-0
NON-CONFERENCE	3-0	3-0	0-0	0-0

#	Player	gp-gs	min	avg	Total		3-Point		F-Throw		Rebounds				pf	dq	a	to	blk	stl	pts	avg
					fg-fga	pct	3fg-fga	pct	ft-fa	pct	off	def	tot	avg								
01	SADLER, Shanice	1-0	14	14.0	2-3	.667	0-1	.000	0-0	.000	0	6	6	6.0	1	0	0	2	0	0	4	4.0
03	MILLER, Jessie	3-3	96	32.0	18-35	.514	7-17	.412	5-9	.556	10	11	21	7.0	4	0	12	8	0	2	48	16.0
04	O'DONOGHUE, Katie	1-0	2	2.0	0-0	.000	0-0	.000	0-0	.000	0	0	0	0.0	0	0	0	0	0	0	0	0.0
12	HINKLE, Briana	3-3	88	29.3	17-32	.531	0-1	.000	5-8	.625	3	11	14	4.7	2	0	7	6	0	8	39	13.0
22	HUTCHENS, Meghan	3-3	63	21.0	11-24	.458	3-4	.750	2-2	1.000	4	5	9	3.0	4	0	13	3	0	5	27	9.0
25	BAILEY, Jasmine	3-3	72	24.0	7-18	.389	0-3	.000	7-9	.778	10	15	25	8.3	10	0	11	5	0	4	21	7.0
30	GROBBECKER, Nikki	2-0	28	14.0	5-6	.833	0-0	.000	2-3	.667	4	5	9	4.5	2	0	0	1	1	2	12	6.0
32	STRICKLAND, Kiara	3-0	36	12.0	1-10	.100	0-1	.000	0-0	.000	1	4	5	1.7	1	0	3	4	0	1	2	0.7
34	DAHNIKE, Heidi	3-0	12	4.0	0-2	.000	0-0	.000	0-0	.000	2	0	2	0.7	0	0	0	0	0	0	0	0.0
35	HLUSKA, Ashley	2-0	19	9.5	0-5	.000	0-0	.000	2-2	1.000	0	2	2	1.0	2	0	1	0	0	0	2	1.0
40	GREEN, Shameia	3-0	62	20.7	5-18	.278	1-4	.250	4-9	.444	1	9	10	3.3	9	0	3	11	0	4	15	5.0
42	JOHNSON, Cassie	3-3	66	22.0	7-21	.333	0-0	.000	7-8	.875	7	8	15	5.0	5	0	2	3	9	1	21	7.0
44	PETRINEC, Kristin	3-0	42	14.0	6-24	.250	0-6	.000	2-5	.400	2	9	11	3.7	3	0	1	1	1	0	14	4.7
Team											7	9	16									
Total.....		3	600		79-198	.399	11-37	.297	36-55	.655	51	94	145	48.3	43	0	53	44	11	27	205	68.3
Opponents.....		3	600		59-177	.333	26-56	.464	30-40	.750	28	81	109	36.3	50	-	45	47	5	22	174	58.0

TEAM STATISTICS	UIC	OPP	Date	Opponent	Score	Att.
SCORING	205	174	11-22-08	BRADLEY	w 72-61	651
Points per game	68.3	58.0	11-25-08	CANISIUS	w 63-59	403
Scoring margin	+10.3	-	11/30/08	SIU EDWARDSVILLE	w 70-54	341
FIELD GOALS-ATT	79-198	59-177	* - Conference game			
Field goal pct	.399	.333				
3 POINT FG-ATT	11-37	26-56				
3-point FG pct	.297	.464				
3-pt FG made per game	3.7	8.7				
FREE THROWS-ATT	36-55	30-40				
Free throw pct	.655	.750				
F-Throws made per game	12.0	10.0				
REBOUNDS	145	109				
Rebounds per game	48.3	36.3				
Rebounding margin	+12.0	-				
ASSISTS	53	45				
Assists per game	17.7	15.0				
TURNOVERS	44	47				
Turnovers per game	14.7	15.7				
Turnover margin	+1.0	-				
Assist/turnover ratio	1.2	1.0				
STEALS	27	22				
Steals per game	9.0	7.3				
BLOCKS	11	5				
Blocks per game	3.7	1.7				
ATTENDANCE	1395	0				
Home games-Avg/Game	3-465	0-0				
Neutral site-Avg/Game	-	0-0				

Score by Periods	1st	2nd	Totals
UIC Flames	101	104	205
Opponents	93	81	174