



WESTERN KENTUCKY UNIVERSITY HILLTOPPER BASKETBALL 2008-09

CHAMPIONSHIP EFFORT

40 Conference Championships • 38 20-win Seasons • 35 All-Americans •
20 NCAA Tournaments • 7 NCAA Sweet 16's • 1971 NCAA FINAL FOUR

GAME #1: WKU at Houston

Saturday, November 15, 2008 • 3:00 PM CDT

Hofheinz Pavilion (8,500) • Houston, Texas



WESTERN KENTUCKY UNIVERSITY (0-0)

Head Coach: Ken McDonald | **WKU's PPG:** ---
Alma Mater: Providence, 1992 | **OPP.'s PPG:** ---
At WKU: 0-0/1st season | **FG Pct.:** ---
Career: 0-0/1st season | **FG Pct. Defense:** ---



UNIVERSITY OF HOUSTON (1-1)

Head Coach: Tom Penders | **UH's PPG:** 69.5
Alma Mater: Connecticut, 1967 | **OPP.'S PPG:** 61.0
At UH: 82-50/5th season | **FG Pct.:** 44.2
Career: 609-411/35th season | **FG Pct. Defense:** 39.2

► **TOPPER TIP-OFF:** On Saturday afternoon, WKU will tip-off its 90th season of college basketball when the Hilltoppers take on Houston at Hofheinz Pavilion at 3:00 PM.

► **SIZING UP THE COUGARS:** Getting an early start to the 2008-09 campaign, Houston went 1-1 at the Durham Regional of the 2K Sports Classic benefitting Coaches vs. Cancer, hosted by Duke. The Cougars, members of Conference-USA, return eight letterwinners but only one starter from last year's 24-10 squad.

► **BIG EAST CONNECTIONS:** Saturday's game features a pair of head coaches in Tom Penders and Ken McDonald that graduated from Big East schools. Penders is a 1967 graduate of Connecticut while McDonald graduated from Providence in 1992.

► **RENEWING OLD ACQUAINTANCES:** Saturday will mark the first time in 40 years that WKU and Houston have met on the hardwood. The Cougars won that contest 87-66 in New Orleans, La. (the Sugar Bowl Classic) on December 31, 1968. The following day, #9 Arkansas beat #4 Georgia 16-2 in the 35th Sugar Bowl.

► **ROAD OPENERS:** This marks just the 35th time in 90 seasons that WKU has opened its basketball season on the road. The Hilltoppers are 16-18 in those contests, winning the last such occurrence on November 11, 2006 at Kennesaw State 96-55.

HOUSTON PROBABLE STARTERS

No.	Name	Pos.	Ht.	Yr.	PPG	RPG	APG	Last Game/Conf. Rank or Notes
00	Kevin Lewis	G	6-4	Jr.	15.5	5.5	1.0	15 pts, 9 rebs, 39 min/7-of-15 3FGs
03	Desmond Wade	G	5-9	Fr.	12.5	1.0	3.5	15 pts, 4 asts, 39 min/5-of-10 3FGs
12	Aubrey Coleman	G	6-4	Jr.	14.0	4.0	2.0	18 pts, 3 rebs, 4 stls/10-of-25 FGs
41	Qa'rraan Calhoun	F	6-8	Jr.	5.5	2.5	1.0	4 pts, 2 asts, 2 stls/1.5 blk per gm
50	Marcus Cousin	C	6-11	Sr.	15.0	10.0	1.0	17 pts, 7 rebs, 23 min/12-of-20 FGs

WKU PROBABLE STARTERS

No.	Name	Pos.	Ht.	Yr.	PPG	RPG	APG	Last Game/Conf. Rank or Notes
4	AJ Slaughter	G	6-3	Jr.	16.0	3.0	2.5	12 pts, 3 stls/SBC 3rd-Team (pre.)
2	Anthony Sally	G	6-2	Jr.	6.0	3.0	4.0	4 pts, 5 asts, 1 TO, 33 min.
30	Steffhon Pettigrew	G/F	6-5	So.	14.5	4.5	0.0	8 pts, 2 rebs, 2 stls/3-of-9 3FGs
40	Jeremy Evans	F	6-9	Jr.	15.5	14.5	0.5	14 pts, 13 reb/SBC 2nd-Team (pre)
35	DJ Magley	F	6-9	So.	3.5	6.0	0.5	2 pts, 5 rebs/3-of-11 FGs

THE SERIES

Overall Record (Streak)	1-1 (L-1)
in Bowling Green	0-0
in Houston	0-0
at Neutral Sites	1-1
McDonald vs. UH	0-0

BROADCAST INFORMATION

Television	none
Radio	100.7 FM
Internet	UHCougars.com
Live Stats	UHCougars.com

HILLTOPPER SCOREBOARD (0-0, 0-0 SBC)

Oct. 31	LCC International (Exh.)	(W) 89-64
Nov. 8	Bellarmine (Exh.)	(W) 70-65
Nov. 15	at Houston	3:00 PM
Nov. 18	Campbellsville	7:00 PM
Nov. 22	at Murray State [FCS]	7:00 PM
Nov. 26	Southern Illinois [HSSN]	7:00 PM
Nov. 30	vs. Louisville ¹ [FCS]	2:00 PM
Dec. 2	Georgia [ESPNU]	8:00 PM
Dec. 6	at Tulane [HSSN]	2:00 PM
Dec. 13	at Evansville [HSSN]	7:00 PM
Dec. 18	at South Alabama* [HSSN]	7:00 PM
Dec. 21	Alabama A&M [HSSN]	4:00 PM
Dec. 28	vs. Florida State ² [FSN]	3:00 PM
Jan. 1	Troy* [HSSN]	1:00 PM
Jan. 3	UALR* [HSSN]	7:00 PM
Jan. 5	at Mississippi State [CSS]	7:00 PM
Jan. 8	at FIU* [HSSN]	6:00 PM
Jan. 10	at Florida Atlantic* [HSSN]	6:00 PM
Jan. 15	Middle Tenn.* [HSSN]	7:00 PM
Jan. 17	New Orleans* [HSSN]	7:00 PM
Jan. 22	La.-Lafayette* [HSSN]	7:00 PM
Jan. 24	at Denver* [FSN]	8:00 PM
Jan. 29	at Arkansas State* [HSSN]	7:00 PM
Jan. 31	North Texas* [HSSN]	7:00 PM
Feb. 5	at ULM* [HSSN]	7:00 PM
Feb. 7	South Alabama* [ESPN2]	1:00 PM
Feb. 14	at Troy* [HSSN]	7:30 PM
Feb. 19	at UALR* [HSSN]	7:00 PM
Feb. 21	FIU* [CSS]	5:00 PM
Feb. 26	Florida Atlantic* [HSSN]	7:00 PM
Feb. 28	at Middle Tennessee [CSS]	7:00 PM
Mar. 4	SBC Tournament-1st Rd.	TBA
Mar. 8	SBC Tournament-Quarterfinals ³	TBA
Mar. 9	SBC Tournament-Semifinals ³	TBA
Mar. 10	SBC Tournament-Finals ³	TBA
Mar. 19	NCAA Tournament	TBA

ALL TIMES CENTRAL • Home games in **BOLD**
TV Coverage listed in []

¹Sommet Center (Nashville, Tenn.)

²MetroPCS Orange Bowl Classic (Miami, Fla.)

³Summitt Center (Hot Springs, Ark.)

*Sun Belt Conference game

MEDIA INFORMATION

MEN'S BASKETBALL CONTACTS

Director of Media Relations: Brad Fields

Office: (270) 745-5045

Cell: (270) 996-7620

Fax: (270) 745-3444

Email: brad.fields@wku.edu

Graduate Assistant: Alex Watkins

Office: (270) 745-4298

Cell: (270) 725-4170

Email: franklin.watkins@wku.edu

Student Assistant: Kyle Allen

Office: (270) 745-4298

Email: kyle.allen133@wku.edu

Administrative Assistant: Ann Handy

Office: (270) 745-4298

Email: ann.handy@wku.edu

Athletics Website: www.wkusports.com

Press Row Phone: (270) 745-6941

Mailing Address:

Western Kentucky University
Athletic Media Relations
1605 Avenue of Champions
Bowling Green, KY 42101-6412

MEDIA SERVICES

Ken McDonald Interviews

Media members wishing to arrange an interview with head coach Ken McDonald are asked to contact Brad Fields in the WKU Athletic Media Relations office. Times can be arranged after practice, but must be scheduled in advance.

Player Interviews

Media members wishing to arrange an interview with a WKU player must contact Brad Fields in the WKU Athletic Media Relations office. It is asked that at least 48 hours prior notice is given in order to arrange the interview and it must occur in a fashion that does not interfere with the student-athlete's academic schedule.

Post-Game Interviews

The WKU locker room is closed to the media.

During games at E.A. Diddle Arena, a member of the WKU media relations staff will collect player interview requests towards the end of the second half. Following the NCAA's recommended 10-minute cooling-off period, head coach Ken McDonald will address the media in the post-game media room, just off the arena floor. WKU players will be made available following McDonald.

On the road, interviews will be conducted outside the locker room unless an interview area is provided.

Credentials

All requests for working press, radio, and television should be made as soon as possible prior to game day by contacting the WKU athletic media relations office at 270-745-4298.

HILLTOPPER PRACTICE SCHEDULE

Monday • 10	Tuesday • 11	Wednesday • 12	Thursday • 13	Friday • 14	Saturday • 15	Sunday • 16
2:15-5:15 PM Practice	OFF	2:15-5:15 PM Practice	4:00-7:00 PM Practice	Travel to Houston	3:00 PM Game	Travel back to BG
Contact SID for availability	Contact SID for availability	Contact SID for availability	Contact SID for availability	No availability	Coach, play- ers available after game	No availability

INJURY UPDATE

The WKU Hilltoppers currently have two players battling injuries and one more awaiting clearance from the NCAA Eligibility Center. The status of each player is listed below with their injury or eligibility issue in parenthesis:

► **Japeth Aguilar** (Right Foot): Stress Fracture sustained on October 21 and will be out 6-8 weeks.

► **Matt Maresca** (Back): Back pain and is day-to-day.

► **Dejan Cvoro** (Amateurism): Awaiting NCAA processing of his amateurism status via the NCAA Eligibility Center, but is expected to miss an undetermined number of regular season games.

TWO TOPPERS TABBED FOR SBC PRESEASON HONORS

At the 2008-09 Sun Belt Conference Basketball Media Days in Hot Springs, Ark., WKU juniors Jeremy Evans and AJ Slaughter were named preseason SBC All-Conference.

Evans was named to the SBC Second-Team while Slaughter was a Third-Team honoree.

"I think it's an honor to be a part of any all-conference team and it just speaks to how hard Jeremy and AJ have worked," said WKU head coach Ken McDonald. "Now it's time to go forward and increase their roles on a new team. We have a lot of new faces and it will be an exciting time

for both Jeremy and AJ as well as for our program."

WKU PICKED THIRD IN EAST

In the preseason coaches' poll, Middle Tennessee was chosen as the team to beat in the East Division with 76 points including 11 of 13 first-place tallies. South Alabama was second with 60 points and two first-place votes, just ahead of WKU with 52 points. Florida Atlantic (38), Florida International (33), and Troy (14) round out the poll.

On the West Division side of the ledger, UALR and North Texas tied as the preseason favorites, each garnering 76 points, but with UALR edging the Mean Green in first-place votes six to four. Louisiana-Lafayette (75) was just one-point back in third, picked as the favorite on three coaches' ballots. Arkansas State (43) was a distant fourth followed by ULM (39), Denver (35), and New Orleans (20).

HOLDING IN HIGH REGARD

After their an impressive 2007-08 campaign that led the WKU Hilltoppers to the Sun Belt Conference Tournament Title, a 29-7 record, and a spot in the program's seventh NCAA "Sweet 16", the Toppers finished the year ranked 22nd in the ESPN/USA Today Top 25 Coaches Poll.

It marked the first time a Sun Belt school has ended the year nationally ranked since WKU did it in 1995.

No.	Name	Pos.	Ht.	Wt.	Yr.	Exp.	Hometown (Last School)
1	Sergio Kerusch	G/F	6-5	210	So.	TR	Memphis, Tenn. (Itawamba CC)
2	Anthony Sally	G	6-2	185	Jr.	TR	Richmond, Va. (Mottow State CC)
4	A.J. Slaughter	G	6-3	180	Jr.	2L	Shelbyville, Ky. (Shelby Co. HS)
11	Dejan Cvoro	G	6-5	185	Fr.	HS	Belgrade, Serbia (Partizan Belgrade)
20	Orlando Mendez-Valdez	G	6-1	185	Sr.	3L	San Antonio, Texas (Charis Prep)
21	Adam Decker	G	5-11	185	Fr.	HS	Louisville, Ky. (Pleasure Ridge Park HS)
23	Mike Walker	F	6-7	225	Sr.	3L	Macon, Ga. (Macon Southwest HS)
30	Steffphon Pettigrew	G/F	6-5	225	So.	1L	Elizabethtown, Ky. (Elizabethtown HS)
31	Japeth Aguilar	C	6-9	225	Sr.	1L	Pampanga, Philippines (Ateneo de Manila)
33	Uros Komadinic	F	6-6	210	Jr.	TR	Belgrade, Serbia (Allen County CC)
35	D.J. Magley	F	6-9	255	So.	1L	Bradenton, Fla. (Bradenton Christian)
40	Jeremy Evans	F	6-9	190	Jr.	2L	Crossett, Ark. (Crossett HS)
41	Matt Maresca	F	6-8	225	Sr.	3L	Bowling Green, Ky. (Warren Central HS)
45	x-Nemanja Milosevic	C	6-8	240	Sr.	TR	Centinje, Montenegro (NJIT)

x-denotes redshirting for 2008-09 season due to NCAA transfer rules

Head Coach: Ken McDonald (Providence, 1992)

Assistant Coach: Ray Harper (Kentucky Wesleyan, 1985)

Assistant Coach: Lawrence Brennehan (Geneva, 1985)

Assistant Coach: David Boyden (WKU, 2003)

Strength and Conditioning Coach: Todor Pandov (WKU, 2003)

Director of Basketball Operations: Tanner Ogden (Texas Tech, 2006)



Topper Tidbits

► **TV COVERAGE UPDATE:** WKU's November 22 game at Murray State has been picked up by Fox College Sports Central and will air live.

► **GETTING OFF TO A GOOD START:** In their 89 previous season openers, the Hilltoppers are 64-25 for a .719 winning percentage. WKU has won its last four season lidlifters dating back to an 86-64 loss at Auburn on November 21, 2003.

► **TAKING ON CONFERENCE-USA:** WKU is 45-35 all-time against the 12 current members of Conference-USA. The last meeting with a C-USA opponent was a 69-54 win over UAB at Diddle Arena on November 28, 2006.

► **MAINTAINING PERFECTION:** After the 70-65 exhibition win over Bellarmine on November 8, the Toppers improve to 7-0 all-time in exhibition games against four-year colleges in the United States.

► **LAST TIME OUT:** In the Hilltoppers' final exhibition tune-up of 2008-09, WKU rallied from a nine-point, second-half deficit to hold-off an upset-minded Bellarmine 70-65 at Diddle Arena on Saturday. Orlando Mendez-Valdez came off the bench to score 11 of his game-high 18 in the second half including a clutch three-pointer inside the closing minutes. Jeremy Evans added 14 points and 13 rebounds.

► **FIRST MEETING:** The first meeting between WKU and Houston occurred on December 28, 1953 when the two programs met in Louisville, Ky. as part of the Kentucky Invitational Tournament. WKU entered the game ranked sixth in the AP poll and handed the Cougars a 91-61 loss.

► **KEN McDONALD SHOW:** The Ken McDonald Show airs each Monday from 7-8 PM, originating at Double Dogs on Scottsville Road and airing on 100.7 FM WKLX.

► **OFF AND RUNNING:** The LCC and Bellarmine contests mark the 28th-straight season in which the Hilltoppers have participated in exhibition games.

► **"WOULD- BE" CAREER NIGHTS:** Five of six players in the exhibition contest with LCC International would have set career highs in points or rebounds if the game had been official. Only DJ Magley did not eclipse some sort of career best at WKU.

► **WKU IN THE PRESEASON:** The Hilltoppers are 43-4 all-time in preseason exhibition games for a .915 winning percentage. WKU has won 12-straight exhibition games dating back to a 2002-03 loss to the Harlem Globetrotters.

► **DECADE OF DOMINANCE:** WKU has had at least one player on the Sun Belt All-Conference team since 1999-2000, totalling 14 in the past nine seasons.

► **BEST OF THE BEST:** Of the Sun Belt Conference's highest individual awards, WKU has had five Players-of-the-Year and four Defensive Players-of-the-Year, tied for the most and the most respectively.

► **SCHEDULE RELEASED:** The 29-game regular season schedule includes 13 home games, 14 away games, two games at neutral sites, and has match-ups with six teams that participated in postseason play last year.

► **AND THE ESPY GOES TO...:** Ty Rogers, whose game-winning three-pointer at the buzzer in overtime gave WKU a 101-99 win over Drake in the 2008 NCAA Tournament, earned the ESPY Award for "Best Finish." Rogers was presented the trophy by WKU President Dr. Gary Ransdell in September at the Bowling Green Chamber of Commerce Breakfast.

QUICK FACTS

Location: Bowling Green, Ky.
Founded: 1906
Enrollment: 19,761
President: Dr. Gary Ransdell (WKU, 1973)
Athletics Director: Dr. Camden Wood Selig (Washington & Lee, 1983)
Faculty Athletic Representative: James L. Brown
Nickname: Hilltoppers
Mascot: Big Red
Colors: Red and White:
National Affiliation: NCAA Division I
Conference: Sun Belt
Arena: E.A. Diddle Arena (7,326)
Press Row Phone: (270) 745-6941
Ticket Office: (800) 5-BIG-RED
Athletic Dept. Website: www.WKUsports.com

BASKETBALL STAFF

Head Coach (First Season):
 Ken McDonald (Providence, 1992)
Assistant Coaches (First season for all):
 Ray Harper (Ky. Wesleyan, 1985)
 Lawrence Brenneman (Geneva, 1985)
 David Boyden (WKU, 2003)
Director of Basketball Operations:
 Tanner Ogden (Texas Tech, 2006)
Administrative Assistant:
 Renee Smith (Midway, 2008)
Interns:
 Anthony Winchester (WKU, 2006)
 Geoff Shyatt (Clemson, 2006)
Athletic Trainer:
 Mike Gaddie (Murray State, 1992)
Strength & Conditioning Coach:
 Todor Pandov (WKU, 2003)
Basketball Office: (270) 745-2131

HISTORY

First Year of Basketball: 1914-15
All-Time Record: 1581-770 (67.2 %)
Previous Season: 89
Years in the NCAA Tournament: 20
Last NCAA Tournament Appearance: 2008
Years in the NIT (Last): 13 (2006)
Postseason Record: 24-35 (33 appearances)
Last Postseason Appearance:
 (L, 88-78 vs. #2 UCLA, NCAA Sweet 16)



WE ARE WKU

In all references, please refer to us as either Western Kentucky University or WKU. Please do NOT use Western Kentucky, Western, Western Ky., W. Kentucky, or any other variation.

PRONUNCIATION GUIDE

1	Sergio KERUSCH	Kah-ROOSH
11	DEJAN CVORO	Dah-YAWN Ca-VOR-oh
30	STEFFPHON PETTIGREW	steph-FON PET-ee-grew
31	JAPETH AGUILAR	JAY-peth ag-EE-lar
33	UROS KOMADINIC	YOUR-os Comb-ah-DIN-itch
41	Matt MARESCA	MAH-res-kah
45	NEMANJA MILOSEVIC	NIM-in-ya Mil-OH-sa-vich
	Assistant Coach Lawrence BRENNEMAN	BRENN-eh-man

2008-09 SUN BELT CONFERENCE

EASTERN DIV.	SBC	Pct.	GB	All
WKU	0-0	.000	--	0-0
FIU	0-0	.000	--	0-0
Florida Atlantic	0-0	.000	--	0-0
Middle Tennessee	0-0	.000	--	0-0
South Alabama	0-0	.000	--	0-0
Troy	0-0	.000	--	0-0

WESTERN DIV.	SBC	Pct.	GB	All
UALR	0-0	.000	--	0-0
La.-Lafayette	0-0	.000	--	0-0
North Texas	0-0	.000	--	0-0
New Orleans	0-0	.000	--	0-0
Denver	0-0	.000	--	0-0
Arkansas State	0-0	.000	--	0-0
ULM	0-0	.000	--	0-0

THIS WEEK IN THE SBC

Nov. 14 (Friday)

Alcorn State at South Alabama, 7:05 PM
 Arkansas State at Ole Miss, 7:00 PM
 Cameron at North Texas, TBA
 Eastern Kentucky at FIU, TBA
 Monmouth at Florida Atlantic, 6:00 PM
 Morehead State at ULM, TBA
 Trevecca at Middle Tennessee, 7:00 PM
 UALR at Cal Poly, TBA

Nov. 15 (Saturday)

WKU at Houston, 3:00 PM
 Denver at Northern Iowa, TBA
 Louisiana Tech at La.-Lafayette, 7:05 PM
 NC State at New Orleans, 7:00 PM
 UAB at Troy, 7:00 PM

Nov. 16 (Sunday)

Houston Baptist at Middle Tennessee, 3 PM
 UALR at Pepperdine, TBA

HILLTOPPER BASKETBALL TO HAVE OVER 90 PERCENT OF GAMES ON TELEVISION

Coming off their 2008 NCAA "Sweet 16" run, the Western Kentucky University Hilltoppers, under first-year head coach Ken McDonald, will have 27 of their 29 games in 2008-09 on television. Highlighting the coverage are eight games broadcast on outside networks including a pair on the ESPN family of channels.

Nineteen of the 27 games broadcast will be produced by the Hilltopper Satellite Sports Network (HSSN) and air on Fox College Sports as well as locally on WKYU.

The December 2 visit to Diddle Arena by Georgia will be broadcast on ESPNU with a tip time of 8:00 PM. In the stretch run of the season, the February 7 match-up with South Alabama in Bowling Green will be a 1:00 PM showcase on ESPN2.

Fox College Sports will carry the November 30, neutral site game with #3 Louisville at the Sommet Center in Nashville, Tenn. while Fox Sports Rocky Mountain has picked up the January 24 game at Denver. For the December 28 game versus Florida State in Miami, Fla. as part of the MetroPCS Orange Bowl Classic, Fox Sports will provide the coverage.

The January 5 game in Starkville, Miss. against Mississippi State will be carried on CSS while the February 21 home game with FIU and the regular season finale at rival Middle Tennessee on February 28 are both listed as the Sun Belt Conference Games-of-the-Week and will be carried on Sun Belt TV.

STATISTICAL RANKINGS

TEAM (As of 11/15)	SBC	NCAA
Scoring Offense	--	--
Scoring Defense	--	--
Scoring Margin	--	--
FG Percentage	--	--
FG Pct. Defense	--	--
3FG Percentage	--	--
3FG Pct. Defense	--	--
Free Throw Pct.	--	--
Rebounding Offense	--	--
Offensive	--	--
Defensive	--	--
Rebounding Defense	--	--
Rebound Margin	--	--
Assists	--	--
Turnover Margin	--	--
Assist-to-TO Ratio	--	--
Steals	--	--
Blocks	--	--

INDIVIDUALS (As of 11/15)	SBC	NCAA
Scoring		
TBA	--	--
Rebounding		
TBA	--	--
FG Percentage		
TBA	--	--
3FG Percentage		
TBA	--	--
3FG Made/Game		
TBA	--	--
Free Throw Pct.		
TBA	--	--
Assists		
TBA	--	--
Steals		
TBA	--	--
Assist-to-TO Ratio		
TBA	--	--
Offensive Rebounds		
TBA	--	--
Defensive Rebounds		
TBA	--	--

WKU'S RECORD WHEN...

Category	Rec.	Pct.	Stk.
All Games	0-0	.000	--
Sun Belt Games	0-0	.000	--
Non-Conference Games	0-0	.000	--
Home	0-0	.000	--
Away	0-0	.000	--
Neutral Site	0-0	.000	--
Televised Games	0-0	.000	--
vs. Ranked Opponents	0-0	.000	--
vs. Unranked Opponents	0-0	.000	--
Winning the Tip	0-0	.000	--
Losing the Tip	0-0	.000	--
Scoring First	0-0	.000	--
Opponent Scores First	0-0	.000	--
Leading at Halftime	0-0	.000	--
Trailing at Halftime	0-0	.000	--
Tied at Halftime	0-0	.000	--
Leading with 5:00 to Play	0-0	.000	--
Trailing with 5:00 to Play	0-0	.000	--
Tied with 5:00 to Play	0-0	.000	--
In Overtime	0-0	.000	--
Games Decided by 3 pts. or Less	0-0	.000	--
Games Decided by 4-10 points	0-0	.000	--
Games Decided by 11+ points	0-0	.000	--
Shooting 50 Pct. of Higher	0-0	.000	--
Shooting 40-49 Pct.	0-0	.000	--
Shooting Less than 40 Pct.	0-0	.000	--
Opp. Shooting 50 Pct. of Higher	0-0	.000	--
Opp. Shooting 40-49 Pct.	0-0	.000	--
Opp. Shooting Less than 40 Pct.	0-0	.000	--
Make More 3FG than Opponent	0-0	.000	--
Make Less 3FG than Opponent	0-0	.000	--
3FG Made are Even	0-0	.000	--
Attempt More FT than Opponent	0-0	.000	--
Attempt Less FT than Opponent	0-0	.000	--
FT Attempts are Even	0-0	.000	--
More Rebounds than Opponent	0-0	.000	--
Less Rebounds than Opponent	0-0	.000	--
Rebounds are Even	0-0	.000	--
More Assists than Opponent	0-0	.000	--
Less Assists than Opponent	0-0	.000	--
Assists are Even	0-0	.000	--
Committ More Turnovers than Opp.	0-0	.000	--
Committ Less Turnovers than Opp.	0-0	.000	--
Turnovers are Even	0-0	.000	--
Scoring 100+ Points	0-0	.000	--
Scoring 90-99 Points	0-0	.000	--
Scoring 80-89 Points	0-0	.000	--
Scoring 70-79 Points	0-0	.000	--
Scoring 60-69 Points	0-0	.000	--
Scoring Less than 60 Points	0-0	.000	--
Allowing 100+ Points	0-0	.000	--
Allowing 90-99 Points	0-0	.000	--
Allowing 80-89 Points	0-0	.000	--
Allowing 70-79 Points	0-0	.000	--
Allowing 60-69 Points	0-0	.000	--
Allowing Less than 60 Points	0-0	.000	--
Following a Win	0-0	.000	--
Following a Loss	0-0	.000	--
More Bench Points than Opponent	0-0	.000	--
Less Bench Points than Opponent	0-0	.000	--
Bench Points are Even	0-0	.000	--
November	0-0	.000	--
December	0-0	.000	--
January	0-0	.000	--
February	0-0	.000	--
March	0-0	.000	--
Monday	0-0	.000	--
Tuesday	0-0	.000	--
Wednesday	0-0	.000	--
Thursday	0-0	.000	--
Friday	0-0	.000	--
Saturday	0-0	.000	--
Sunday	0-0	.000	--

THE LAST TIME IT HAPPENED...

A WKU TEAM...

Was ranked: No. 22, Associated Press (Final 2007-08 Poll)

Received votes in a national poll: Associated Press and ESPN/USA Today (Final 2007-08 Polls)

Played ranked team: #2 UCLA, 03/27/08 (L) 88-78

Beat ranked team: #14 Drake, 03/21/08 (W) 101-99 (OT)

Lost to ranked team: #2 UCLA, 03/27/08 (L) 88-78

Won 10+ straight: 11 (01/10/08-02/16/08)

Won 15+ straight: 15 (01/03/02-03/05/02)

Won 20+ straight: 21 (12/03/66-02/20/67)

Lost 5+ straight: 6 (03/20/03-12/07/03)

Scored 100 pts: 03/21/08 vs. Drake (WKU 101-99, OT)

Scored 100 pts on the road: 03/21/08 vs. Drake (WKU 101-99, OT)

Scored 100 pts and lost: 01/29/04 vs. Louisiana-Lafayette (ULL 110-102)

Allowed 100 pts: 11/24/06 vs. Florida (UF 101-68)

Allowed 100 pts at home: 01/29/04 vs. Louisiana-Lafayette (ULL 110-102)

Allowed 100 pts and won: 12/03/73 at Arkansas (WKU 102-100)

Scored less than 50 pts: 01/19/06 at Troy (Troy 76-49)

Allowed less than 50 pts: 01/31/08 vs. UALR (WKU 71-47)

30-point win: 02/13/08 vs. Troy (92-57)

40-point win: 11/11/06 vs. Kennesaw St. (96-55)

50-point win: 01/03/04 vs. Kentucky St. (107-52)

60-point win: 12/15/01 vs. W. Alabama (103-40)

30-point loss: 11/24/06 vs. Florida (101-68)

Played in OT game: 03/21/08 vs. Drake (WKU 101-99)

Played in a 2OT game: 01/05/05 at Virginia (UVA 80-79)

Played in a 3OT game: 01/19/84 vs. Jacksonville (JU 76-74)

Played in back-to-back OT gms: 12/29/98 vs. Oklahoma (L, 72-62) and 12/30/98 vs. Cal Poly (W, 93-88, 2OT)

Won on "last second" shot: 03/21/08 vs. Drake (WKU 101-99, OT) Ty Rogers 25-footer at 0.00 of OT

Lost on "last second" shot: 12/01/07 at Northern Arizona (NAU 64-61) Josh Wilson 3FG at 0:00.2

Had 6 players in double figures: 01/29/05 at New Mexico State (WKU 77-75)

Had 7 players in double figures: 11/24/01 vs. Murray State (WKU 101-77)

Had 8 players in double figures: 12/08/93 vs. North Florida (WKU 129-91)

Had 2 double figure rebounders: 02/24/05 vs. Middle Tennessee (WKU 85-83, OT)

Had two 20-point scorers: 03/01/08 at North Texas (WKU 88-78)

Had three 20-point scorers: 11/13/07 vs. Kentucky Wesleyan (WKU 88-67)

Had 10+ 3FGs: 03/21/08 vs. Drake (WKU 101-99, OT), 14-of-28 3FGs

Held opponent under 35.0 % shooting: 02/27/08 at FIU, (WKU 69-54), 17-of-50

Committed less than 10 TOs: 02/21/08 vs. South Alabama (USA 69-64), 8

Committed 25+ TOs: 12/21/05 at Arizona (UA 86-81, OT), 25

Forced 25+ TOs: 11/17/07 vs. Murray State (WKU 87-63), 27

Shot 60 pct. from the field: 02/02/08 vs. Denver (WKU 78-64), 32-of-53

Shot 70 pct. from the field: 02/24/84 vs. UAB (WKU 89-76), 32-of-45

Shot 90 pct. from FT line: 01/25/07 vs. Arkansas State (ASU 76-75), 15-of-16

A WKU INDIVIDUAL...

Scored 25 pts: 03/27/08 by Tyrone Brazelton (31) vs. UCLA (UCLA 88-78)

Scored 30 pts: 03/27/08 by Tyrone Brazelton (31) vs. UCLA (UCLA 88-78)

Scored 40 pts: 01/29/04 by Anthony Winchester (40) vs. Louisiana-Lafayette (ULL 110-102)

Scored 50 pts: 01/30/65 by Clem Haskins (55) vs. Middle Tennessee (WKU 134-84)

Had 10 rebounds: 03/11/08 by Jeremy Evans (14) vs. Middle Tennessee (WKU 67-57)

Had 15 rebounds: 02/24/07 by Jeremy Evans (15) vs. FIU (WKU 82-64)

Had 20 rebounds: 11/25/00 by Chris Marcus (21) vs. Tennessee State (WKU 90-66)

Had 25 rebounds: 03/07/72 by Granville Bunton (27) at Morehead State (MSU 82-79)

Had 10 assists: 01/31/07 by Tyrone Brazelton (10) vs. ULM (WKU 103-96)

Had 5 blocks: 03/23/08 by Jeremy Evans (5) vs. San Diego (WKU 72-63)

Had 5 steals: 11/13/07 by Courtney Lee (5) vs. Kentucky Wesleyan (WKU 88-67)

Had a double-double: 03/11/08 by Jeremy Evans vs. Middle Tennessee (WKU 67-57) 20 pts, 14 rebs

Had 20 pts and 10 rebs: 03/11/08 by Jeremy Evans vs. Middle Tennessee (WKU 67-57) 20 pts, 14 rebs

AN OPPOSING INDIVIDUAL...

Scored 30 pts: 12/29/07 by O'Darien Bassett (36), Troy (WKU 94-90)

Scored 40 pts: 01/16/71 by Ken Durrett (45), LaSalle (LaSalle 91-76)

Had 15 rebounds: 03/21/08 by Jonathan Cox (16), Drake (WKU 101-99, OT)

Had 20 rebounds: 12/07/03 by Cuthbert Victor (20), Murray State (MSU 100-95, 2OT)

Had 10 assists: 03/21/08 by Adam Emmenecker (14), Drake (WKU 101-99, OT)

Had a double-double: 03/27/08 by Kevin Love (29 pts, 14 rebs), UCLA (UCLA 88-78)

Had 20 pts and 10 rebs: 03/27/08 by Kevin Love (29 pts, 14 rebs), UCLA (UCLA 88-78)

E.A. DIDDLE ARENA



One of the finest on-campus arenas in the country, WKU's E.A. Diddle Arena begins its 46th year of operation in 2008-09. In addition to Lady Topper volleyball, Diddle Arena also serves as home to both Hilltopper and Lady Topper basketball.

The building, named for legendary Hilltopper coach E.A. Diddle, was officially dedicated in December 1963, and underwent a \$32 million renovation in 2002. The renovation has been the focal point of WKU's extensive athletic complex makeover which has also included numerous changes to baseball's Nick Denes Field, the construction of the softball and soccer complex on Creason Drive and the expansion to football's Houchens Industries-L.T. Smith Stadium/Jimmy Feix Field.

Included in the Diddle Arena renovation were a new playing floor, all-new seating, two "Pepsi Vision" video boards and 16 luxury suites. But those were just the changes made to the playing arena. A new addition was added

to the back side of the arena which houses new training and weight rooms, as well as a 30,000-square foot auxiliary gym complex, which contains two regulation basketball courts with a firewall divider. New locker rooms and office facilities were also added for multiple sports and the athletics administration.

The utility and versatility of the arena has been amply demonstrated throughout the years. It has been the site of NCAA Regional Tournaments in both men's and women's basketball, the Kentucky High School Athletic Association's girls Sweet 16 basketball tournament and an NBA exhibition game. The facility has also hosted several Sun Belt Conference basketball tournaments, and was the site of the 2003 SBC volleyball championship.

Diddle Arena has staged numerous concerts, hosted WKU's annual spring and winter commencement and has even welcomed the President of the United States during a 1988 visit by Ronald Reagan.

Diddle This Decade...

1999-2000	8-3
2000-01	13-2
2001-02	14-0
2002-03	16-0
2003-04	10-4
2004-05	15-1
2005-06	13-2
2006-07	12-3
2007-08	13-1
2008-09	0-0
Total	114-16 (87.6 %)

UPDATES

The 2002 Renovation Included:

- 16 luxury suites
- New seating and concessions
- New playing floor
- Elevator access to all levels
- New sound and lighting systems
- New 30,000 square-foot auxiliary gymnasiums with two regulation basketball courts with a firewall divider
- New training and weight rooms
- Air conditioning
- New locker and office complex facilities for multiple sports and athletics administration

WESTERN KENTUCKY UNIVERSITY • 2008 NCAA SWEET 16

Overall Record: 29-7 • Home: 13-1 • Away: 10-3 • Neutral: 6-3

Conference Record: 16-2 • Home: 8-1 • Away: 8-1

Player	G-GS	Min	Avg	FG-FGA	Pct	3FG-FGA	Pct	FT-FTA	Pct	Off	Def	Tot	Avg	PF	FO	A	TO	Blk	S	Pts	Avg
Courtney Lee	36-36	1079	30.0	259-543	.477	69-174	.397	148-180	.822	48	127	175	4.9	87	2	75	84	28	65	735	20.4
Tyrone Brazelton	36-36	986	27.4	174-389	.447	69-161	.429	101-150	.673	21	78	99	2.8	108	3	134	101	2	39	518	14.4
AJ Slaughter	36-7	677	18.8	98-225	.436	34-78	.436	43-57	.754	21	55	76	2.1	57	1	39	50	3	40	273	7.6
Ty Rogers	36-29	780	21.7	86-191	.450	46-125	.368	13-20	.650	19	62	81	2.3	74	3	39	26	1	27	231	6.4
Jeremy Evans	34-33	716	21.1	80-128	.625	8-19	.421	34-53	.642	60	116	176	5.2	78	2	20	37	51	16	202	5.9
O. Mendez-Valdez	36-0	685	19.0	65-154	.422	37-95	.389	38-48	.792	14	45	59	1.6	67	1	79	64	7	37	205	5.7
Boris Siakam	36-1	658	18.3	55-102	.539	1-7	.143	63-90	.700	66	73	139	3.9	72	1	20	51	4	13	174	4.8
DJ Magley	36-33	564	15.7	76-148	.514	0-0	.000	19-31	.613	60	57	117	3.3	107	5	22	26	14	20	171	4.8
Japeth Aguilar	2-0	32	16.0	2-5	.400	0-2	.000	4-5	.800	2	6	8	4.0	3	0	3	6	4	2	8	4.0
Steffphon Pettigrew	36-0	411	11.4	45-112	.402	2-8	.250	46-65	.708	42	60	102	2.8	43	1	7	25	9	13	138	3.8
Mike Walker	27-4	457	16.9	40-66	.606	0-1	.000	10-35	.286	50	64	114	4.2	55	1	11	24	11	12	90	3.3
Adam Howard	16-1	37	2.3	4-13	.308	2-8	.250	10-14	.714	0	1	1	0.1	1	0	2	5	0	1	20	1.3
Matt Maresca	20-0	61	3.1	5-10	.500	1-2	.500	0-1	.000	3	5	8	0.4	7	0	3	3	1	2	11	0.6
BJ Frazier	17-0	68	4.0	3-15	.200	1-7	.143	0-5	.000	2	9	11	0.6	7	0	3	4	0	1	7	0.4
Desire Gabou	17-0	39	2.3	1-5	.200	0-0	.000	0-1	.000	0	5	5	0.3	2	0	1	4	0	0	2	0.1
TEAM										47	44	91	2.5	0			4				
TOTAL	36	7250		993-2106	.472	270-687	.393	529-755	.701	455	807	1262	35.1	768	20	458	514	135	288	2785	77.4
OPPONENTS	36	7250		782-1846	.424	197-592	.333	642-911	.705	398	768	1166	32.4	706	-	418	643	98	228	2403	66.8

Date	Opponent	W/L	Score	Att
11.09.07	KENNESAW STATE	W	96-61	6271
11.13.07	KENTUCKY WESLEYAN	W	88-67	4848
11.17.07	MURRAY STATE (1)	W	87-63	5566
11.22.07	vs. #14 Gonzaga (2)	L	71-74	8383
11.23.07	at Alaska Anchorage (2)	W	71-67	6904
11.24.07	vs. Michigan (2)	W	73-69	7043
12.01.07	at Northern Arizona	L	61-64	1269
12.05.07	NEBRASKA	W (OT)	69-62	5809
12.08.08	at Eastern Kentucky	W	77-60	4900
12.15.07	vs. #11 Tennessee (3)	L	82-88	18071
12.18.07	NORTH CAROLINA CENTRAL	W	84-53	3879
12.22.07	at Southern Illinois	L	78-88	6010
12.29.07	at Troy*	W	94-90	1932
01.02.08	MIDDLE TENNESSEE*	W	62-51	4186
01.05.08	at South Alabama*	L	61-65	6783
01.10.08	at ULM*	W	71-44	1610
01.12.08	FIU*	W	76-60	5071
01.16.08	FLORIDA ATLANTIC*	W	80-62	4291
01.19.08	at Louisiana-Lafayette*	W	69-66	6190
01.23.08	at New Orleans*	W	73-55	1099
01.27.08	ARKANSAS STATE*	W	77-68	6109
01.31.08	UALR*	W	71-47	5022
02.02.08	DENVER*	W	78-64	6567
02.07.08	at North Texas*	W	94-84	3246
02.13.08	TROY*	W	92-57	5803
02.16.08	at Middle Tennessee*	W	71-66	5307
02.21.08	SOUTH ALABAMA*	L	64-69	7718
02.23.08	ULM*	W	86-75	6750
02.27.08	at FIU*	W	69-54	709
03.01.08	at Florida Atlantic*	W	88-78	802
03.09.08	vs. North Texas (4)	W	84-70	4734
03.10.08	vs. UALR (4)	W	70-55	6397
03.11.08	vs. Middle Tennessee (4)	W	67-57	5234
03.21.08	vs. #14 Drake (5)	W (OT)	101-99	15920
03.23.08	vs. San Diego (5)	W	72-63	14504
03.27.08	vs. #2 UCLA (6)	L	78-88	18103

* = Sun Belt Conference Game = Home Game

TEAM STATISTICS	WKU	OPP		
SCORING	2785	2403		
Points per game.....	77.4	66.8		
Scoring margin.....	+10.6	---		
FIELD GOALS-ATT	993-2106	782-1846		
Field goal pct.....	.472	.424		
3-POINT FG-ATT	270-687	197-592		
3-point FG pct.....	.393	.333		
3-pt FG made/game.....	7.5	5.5		
FREE THROWS-ATT	592-755	642-911		
Free throw Pct.....	.701	.705		
REBOUNDS	1262	1166		
Rebounds per game.....	35.1	32.4		
Rebounding margin.....	+2.7	---		
ASSISTS	458	418		
Assists per game.....	12.7	11.6		
TURNOVERS	514	643		
Turnovers per game.....	14.3	17.9		
Turnover margin.....	+3.6	---		
Assist/Turnover ratio.....	0.9	0.7		
STEALS	288	228		
Steals per game.....	8.0	6.3		
BLOCKS	135	98		
Blocks per game.....	3.8	2.7		
ATTENDANCE	77890	145150		
Home games-avg/gm.....	14-5564	13-3597		
Neutral site-avg/gm.....	---	9-10932		
Score By Periods:	1st	2nd	OT	Total
WKU	1347	1411	27	2785
Opponents	1118	1267	18	2403

- (1) BB&T Classic (Bowling Green, Ky.)
- (2) Great Alaska Shootout (Anchorage, Alaska)
- (3) Sun Belt Classic (Nashville, Tenn.)
- (4) Sun Belt Conference Tournament (Mobile, Ala.)
- (5) NCAA Tournament (Tampa, Fla.)
- (6) NCAA "Sweet 16" (Phoenix, Ariz.)

GAME-BY-GAME RESULTS


<u>Date</u>	<u>Opponent</u>	<u>Result</u>	<u>Score</u>	<u>Overall</u>	<u>SBC</u>	<u>WKU High Scorer</u>	<u>Opp. High Scorer</u>	<u>High Rebounder</u>	<u>High Assists</u>	<u>Att.</u>
Nov. 15	at Houston	--	---	--	--	--	--	--	--	--

HOME GAME

*Sun Belt Conference Game

MARGIN OF WINS/LOSSES

	1	2	3	4	5	6	7	8	9	10	11	12	13	14	15	16-19	20-24	25-29	30+
Wins	-	-	-	-	-	-	-	-	-	-	-	-	-	-	-	-	-	-	-
Losses	-	-	-	-	-	-	-	-	-	-	-	-	-	-	-	-	-	-	-

Nov. 8, 2008 ♦ Diddle Arena ♦ Bowling Green, Ky.	Game 2
 Bellarmine	65
WKU	70

BELLARMINE (1-1 Exhibition)

Name	FG	3FG	FT	R	E	Pts	A	TO	B	S	M
Patterson.....f	2-9	1-4	0-0	0	1	5	0	4	0	0	22
Veith.....f	0-2	0-1	0-0	3	4	0	0	2	0	0	11
Fagbenle.....c	3-5	0-1	2-4	11	1	8	2	3	0	1	32
Hall.....g	5-8	1-3	5-6	9	3	16	5	2	1	2	37
Allen.....g	0-2	0-2	0-0	0	1	0	0	0	0	0	8
Hobbs.....	5-10	0-3	6-6	6	2	16	1	2	1	0	27
Smallwood.....	3-9	1-6	1-2	0	3	8	1	0	0	0	15
Davenport.....	0-0	0-0	0-0	0	1	0	0	0	0	0	1
Benedetti.....	3-6	2-5	0-0	3	0	8	3	0	0	0	16
Holmes.....	2-3	0-0	0-0	2	4	4	0	0	0	0	27
Spargue.....	0-0	0-0	0-0	0	0	0	0	0	0	0	4
Team.....				2				1			
Totals.....	23-54	5-25	14-18	36	20	65	9	17	2	3	200

WKU (2-0 Exhibition)

Name	FG	3FG	FT	R	E	Pts	A	TO	B	S	M
Pettigrew.....f	3-8	1-3	1-2	2	3	8	0	0	0	2	21
Evans.....f	5-9	0-1	4-4	13	1	14	0	1	0	1	31
Magley.....c	1-3	0-0	0-0	5	4	2	0	2	0	0	14
Sally.....g	0-1	0-1	4-4	2	4	4	5	1	0	1	33
Slaughter.....g	6-15	0-5	0-0	2	3	12	4	0	3	3	37
Kerusch.....g	1-5	0-1	2-2	2	0	4	0	1	0	0	13
Mendez-Valdez	4-11	4-8	6-6	2	1	18	0	1	0	1	25
Walker.....	2-3	0-0	1-1	3	2	5	0	2	0	1	19
Komadinic.....	0-2	0-2	3-4	1	0	3	0	0	0	1	7
Team.....				1				1			
Totals.....	22-57	5-21	21-23	33	18	70	7	12	1	9	200

	1st	2nd	Tot	FG%	3FG%	FT%
Bellarmine	28	37	65	42.6	20.0	77.8
WKU	30	40	70	38.6	23.8	91.3

Officials: Gene Menees, Mark Morrison, Bret Smith
 Technicals: none; A: 3022

BOWLING GREEN, Ky.--Orlando Mendez-Valdez connected on his third three-pointer of the second half with 1:59 to play and newcomer Uros Komadinic came off the bench with 54.9 ticks left to knock down a pair of free throws as Western Kentucky University rallied from a nine-point second-half deficit to stave off a feisty Bellarmine University 70-65 on Saturday night at Diddle Arena.

It was the final of two preseason exhibition games for both squads. WKU wins its 12th-straight exhibition game dating back to 2002 and improves to 7-0 all-time against four-year, US schools.

With the Hilltoppers holding a slim 30-28 edge at the break, Bellarmine hit its first seven shots from the field, building a nine-point cushion with 12:42 to play in Forrest Smallwood's fastbreak lay-up. With eight of their 36 bench points coming from Smallwood, Bellarmine got 10 of its 16 points in the opening 16-5 run of the final frame from its reserves.

After the hot start, however, the Toppers' defense kicked in and cooled off the Knights, holding them to just 5-of-21 over the final 12 minutes, for 23.8 percent.

Trailing 51-46 with 9:31 on the clock, Jeremy Evans got an offensive putback while Mendez-Valdez drained back-to-back three-pointers as WKU surged in front 54-51. It was one of nine lead changes in the contest, to go along with 13 ties.


Evans finished with 14 points and 13 rebounds while Mendez-Valdez poured in a game-high 18 points on 4-of-8 from long range and a perfect 6-of-6 at the stripe. For the game, the Hilltoppers were near flawless at the stripe connecting on 21-of-23 attempts for 91.3 percent. A.J. Slaughter chipped in 12 points and three steals while Anthony Sally dished out five of the team's seven assists.

Trailing 54-51, Bellarmine scored 12 of the game's next 17 points to push back in front 63-59 with 2:13 to play on one of two free throws by Chartrael Hall. Hall tied Braydon Hobbs for team-high honors with 16 points for Bellarmine.

But the big three by Mendez-Valdez and WKU's perfect 10-of-10 performance at the charity stripe in the closing 3:03 allowed the Hilltoppers to pull out the win.

Bellarmine outrebounded WKU 36-33, but committed five more miscues (17-12).

With the exhibition portion of their schedule complete, WKU will tip-off its 90th season of college basketball on Saturday, November 15 in Houston, Texas against the University of Houston at 3:00 PM.

Oct. 31, 2008 ♦ Diddle Arena ♦ Bowling Green, Ky.	Game 1
 LCC International	64
WKU	89

LCC INTERNATIONAL (0-3 Exhibition)

Name	FG	3FG	FT	R	E	Pts	A	TO	B	S	M
Mulamba.....f	2-6	0-0	2-2	11	3	6	1	0	2	0	32
Seck.....f	4-11	0-1	0-0	7	2	8	1	1	0	0	29
Seck.....c	5-13	1-4	6-7	3	2	17	1	3	0	0	32
Quincy.....g	1-2	1-1	0-0	0	2	3	2	1	0	0	17
Latham.....g	3-9	2-4	5-6	4	3	13	2	7	0	0	32
Zurna.....	3-7	2-5	0-0	2	1	8	2	2	0	3	22
Macevicius.....	1-1	0-0	0-0	0	1	2	0	0	0	0	7
Mineika.....	2-3	1-2	0-0	3	0	5	1	4	0	0	14
Lanany.....	0-2	0-0	0-0	1	2	0	0	1	0	0	6
Kamarunas.....	0-1	0-1	2-2	0	2	2	1	1	0	1	9
Team.....				0							
Totals.....	21-55	7-18	15-17	31	18	64	11	20	2	4	200

WKU (1-0 Exhibition)

Name	FG	3FG	FT	R	E	Pts	A	TO	B	S	M
Pettigrew.....f	8-18	2-6	3-4	7	2	21	0	0	2	0	36
Evans.....f	8-10	0-1	1-1	16	3	17	1	1	0	1	31
Magley.....c	2-8	0-0	1-3	7	5	5	1	3	0	2	29
Sally.....g	3-7	1-4	1-2	4	4	8	3	1	0	1	37
Slaughter.....g	8-20	2-6	2-3	4	0	20	3	2	0	4	38
Kerusch.....g	5-16	0-0	8-10	14	0	18	2	4	0	1	29
Team.....				0							
Totals.....	34-79	5-17	16-23	52	14	89	10	11	2	9	200

	1st	2nd	Tot	FG%	3FG%	FT%
LCC International	28	36	64	38.2	38.9	88.2
WKU	48	41	89	43.0	29.4	69.6

Officials: Tom Eades, Kevin Mathis, Jene Menees

Technicals: none; A: 2534

BOWLING GREEN, Ky.--With only six players suited up to see action, the Western Kentucky University Hilltoppers kicked off the Ken McDonald era with an 89-64 victory over LCC International University in exhibition play on Friday night at E.A. Diddle Arena. Sophomore forward Steffphon Pettigrew led the Toppers with 21 points while junior guard A.J. Slaughter, a Sun Belt Preseason All-Conference Third-Team selection, added 20 points.

"It's obvious that I am very appreciative of the effort, especially since we only had six guys that were ready to play," said McDonald. "I thought Anthony Sally and AJ Slaughter controlled the game. I thought they handled the ball well and we only had two turnovers at the half. For the most part, they made good decisions."

LCC International University is based in Lithuania and has an academic community of over 600 students and staff from 21 countries. They played at Florida State and Mercer the two previous nights.

As a team, WKU grabbed 22 offensive rebounds and won the battle of the boards 52-31 behind double doubles from Sergio Kerusch and Jeremy Evans. Kerusch added 18 points along with 14 boards while Evans recorded 17 points and a game-high 16 rebounds, including nine on the offensive glass.

The Hilltoppers used a 17-3 run midway through the opening half to push out to a 28-10 advantage with 11:03 on the clock. Evans ignited the run with back-to-back buckets while Pettigrew contributed five points. Evans finished a perfect 5-of-5 from the field in the first half highlighted by four offensive stick-backs. For the game, the SBC Preseason All-Conference Second-Team honoree connected on 8-of-10 shot attempts.

Capitalizing on second chance opportunities and turnovers, WKU constructed a 48-28 lead at the break thanks to Slaughter's trey from the top of the key at the halftime horn. With LCC International maintaining that halftime deficit, WKU delivered the knock-out blow in the form of a 24-6 run to stake the Toppers to their biggest lead of the game 87-60 on Anthony Sally's lay-up with 2:47 to play. Sally finished with eight points and three assists in 37 minutes.

After Slaughter left the game in the closing minutes with a muscle cramp, D.J. Magley fouled out with 1:21 on the clock, forcing WKU to play the remaining time with just four players. Magley had five points and seven boards in his 31 minutes.

Mohammed Seck paced LCC International with 17 points while St. Paul Latham added 13.

WKU improves to 42-4 all-time in exhibition contests.

WESTERN KENTUCKY UNIVERSITY • 2008 NCAA SWEET 16



#1 Sergio Kerusch
6-5 • 210 • So. • G/F
Memphis, Tenn.
(Itawamba CC)



#2 Anthony Sally
6-2 • 185 • Jr. • G
Richmond, Va.
(Motlow State CC)



#4 AJ Slaughter
6-3 • 180 • Jr. • G
Shelbyville, Ky.
(Shelby Co. HS)



#11 Dejan Cvoro
6-5 • 185 • Fr. • G
Belgrade, Serbia
(Partizan Belgrade)



#20 O. Mendez-Valdez
6-1 • 185 • Sr. • G
San Antonio, Texas
(Charis Prep)



#21 Adam Decker
5-11 • 185 • Fr. • G
Louisville, Ky.
(Pleasure Ridge Park)



#23 Mike Walker
6-7 • 225 • Sr. • F
Macon, Ga.
(Macon Southwest)



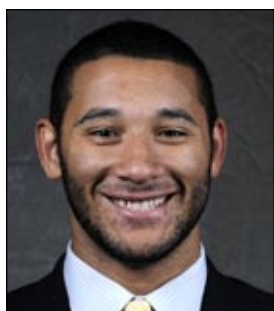
#30 S. Pettigrew
6-5 • 225 • So. • G/F
Elizabethtown, Ky.
(Elizabethtown HS)



#31 Japeth Aguilar
6-9 • 225 • Sr. • C
Pampanga, Philippines
(Ateneo de Manila)



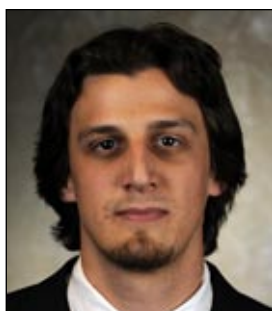
#33 Uros Komadinic
6-6 • 210 • Jr. • F
Belgrade, Serbia
(Allen County CC)



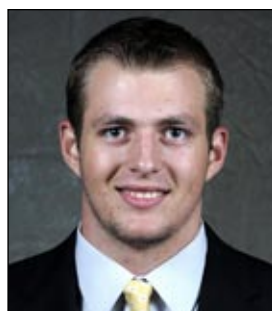
#35 DJ Magley
6-9 • 255 • So. • F
Bradenton, Fla.
(Bradenton Christian)



#40 Jeremy Evans
6-9 • 190 • Jr. • F
Crossett, Ark.
(Crossett HS)



#41 Matt Maresca
6-8 • 225 • Sr. • F
Bowling Green, Ky.
(Warren Central HS)



#45 Nemanja Milosevic
6-8 • 240 • Sr. • C
Centinje, Montenegro
(NJIT)



Ken McDonald
Head Coach
(Providence, 1992)



Ray Harper
Assistant Coach
(Ky. Wesleyan, 1985)



Lawrence Brenneman
Assistant Coach
(Geneva, 1985)



David Boyden
Assistant Coach
(WKU, 2003)



Anthony Winchester
Graduate Assistant
(WKU, 2006)



Geoff Shyatt
Graduate Assistant
(Clemson, 2006)

SERGIO KERUSCH



6-5 • 210
Sophomore
Memphis, Tenn.
(Itawamba CC)

2008-09 Notes:

► Important newcomer for the Hilltoppers

2007-08 Notes (Itawamba CC):

- Helped Itawamba Community College to a 30-4 record last season as a freshman
- Led the Indians to a berth in the National Junior College Athletic Association Tournament
- Averaged 18.9 points and 9.0 rebounds per game
- Shot 65.4 percent from the floor last year, ranking 19th in nation
- In three games at the NJCAA Tournament, averaged 21.7 points per game
- Had his team finishing fifth in the final NJCAA national poll

SEASON/CAREER HIGHS

Points	Season -- vs. N/A
Career -- vs. N/A	
Rebounds	Season -- vs. N/A
Career -- vs. N/A	
Field Goals	Season -- vs. N/A
Career -- vs. N/A	
Field Goal Attempts	Season -- vs. N/A
Career -- vs. N/A	
Three-Point Field Goals	Season -- vs. N/A
Career -- vs. N/A	
Three-Point Field Goal Attempts	Season -- vs. N/A
Career -- vs. N/A	
Free Throws	Season -- vs. N/A
Career -- vs. N/A	
Free Throws Attempts	Season -- vs. N/A
Career -- vs. N/A	
Assists	Season -- vs. N/A
Career -- vs. N/A	
Steals	Season -- vs. N/A
Career -- vs. N/A	
Blocked Shots	Season -- vs. N/A
Career -- vs. N/A	
Minutes Played	Season -- vs. N/A
Career -- vs. N/A	

2008-09 Kersch Game-by-Game

Opponent	Min	FG-A	Pct.	3FG-A	Pct.	FT-A	Pct.	O-D-TR	PF	A	TO	BS	ST	Pts
at Houston (11/15)														
CAMPBELLSVILLE (11/18)														
at Murray State (11/22)														
SOUTHERN ILLINOIS (11/26)														
vs. Louisville ¹ (11/30)														
GEORIGIA (12/02)														
at Tulane (12/06)														
at Evansville (12/13)														
at South Alabama* (12/18)														
ALABAMA A&M (12/21)														
vs. Florida State ² (12/28)														
TROY* (01/01)														
UALR* (01/03)														
at Mississippi State (01/05)														
at FIU* (01/08)														
at Florida Atlantic* (01/10)														
MIDDLE TENNESSEE* (01/15)														
NEW ORLEANS* (01/17)														
LOUISIANA-LAFAYETTE* (01/22)														
at Denver* (01/24)														
at Arkansas State* (01/29)														
NORTH TEXAS* (01/31)														
at ULM* (02/05)														
SOUTH ALABAMA* (02/07)														
at Troy* (02/14)														
at UALR* (02/19)														
FIU* (02/21)														
FLORIDA ATLANTIC* (02/26)														
at Middle Tennessee* (02/28)														
SBC Tournament (03/04-03/10)														

¹Played at Sommet Center in Nashville, Tenn. • ²MetroPCS Orange Bowl Classic in Miami, Fla.

MISCELLANEOUS

Category	2008-09	Career
Games Led WKU in Scoring	0	0
10+ Rebounding Games	0	0
10+ Scoring Games	0	0
20+ Scoring Games	0	0
30+ Scoring Games	0	0
Double-Doubles	0	0
Games Led WKU in Rebounds	0	0
Games Led WKU in Assists	0	0
Games Led WKU in Blocks	0	0
Games Led WKU in Steals	0	0

CAREER HIGHLIGHTS

- Standout player at Itawamba Community College as a freshman in 2007-08, leading the Indians to a 30-4 record and the program's first title in 46 years
- Averaged more than 20 points and 10 rebounds over his junior and senior seasons at Overton High School

KERUSCH'S Career Stats

Season	G-S	Min-Avg.	FG-A	Pct.	3FG-A	Pct.	FT-A	Pct.	Reb-Avg.	PF-D	A	TO	BS	ST	Pts-Avg.
2008-09															
Totals															

KERUSCH'S Career Sun Belt Conference Stats

Season	G-S	Min-Avg.	FG-A	Pct.	3FG-A	Pct.	FT-A	Pct.	Reb-Avg.	PF-D	A	TO	BS	ST	Pts-Avg.
2008-09															
Totals															

ANTHONY SALLY



2008-09 Notes:

► Important newcomer for the Hilltoppers

2007-08 Notes (Motlow State CC):

- Averaged 7.9 points, 7.6 assists, and 6.3 rebounds per game last year for Motlow State as a sophomore
- Led Motlow State to a 28-5 record, helping the team to the championship game of the National Junior College Athletic Association Region VII Tournament
- Added 101 steals and a 2.33 assist-to-turnover ratio
- Ranked 10th in NJCAA in assists and 14th in steals
- Handed out 10 or more assists on five different occasions

SEASON/CAREER HIGHS

Points	Season -- vs. N/A
Career -- vs. N/A	
Rebounds	Season -- vs. N/A
Career -- vs. N/A	
Field Goals	Season -- vs. N/A
Career -- vs. N/A	
Field Goal Attempts	Season -- vs. N/A
Career -- vs. N/A	
Three-Point Field Goals	Season -- vs. N/A
Career -- vs. N/A	
Three-Point Field Goal Attempts	Season -- vs. N/A
Career -- vs. N/A	
Free Throws	Season -- vs. N/A
Career -- vs. N/A	
Free Throws Attempts	Season -- vs. N/A
Career -- vs. N/A	
Assists	Season -- vs. N/A
Career -- vs. N/A	
Steals	Season -- vs. N/A
Career -- vs. N/A	
Blocked Shots	Season -- vs. N/A
Career -- vs. N/A	
Minutes Played	Season -- vs. N/A
Career -- vs. N/A	

2008-09 Sally Game-by-Game

Opponent	Min	FG-A	Pct.	3FG-A	Pct.	FT-A	Pct.	O-D-TR	PF	A	TO	BS	ST	Pts
at Houston (11/15)														
CAMPBELLSVILLE (11/18)														
at Murray State (11/22)														
SOUTHERN ILLINOIS (11/26)														
vs. Louisville ¹ (11/30)														
GEORIGIA (12/02)														
at Tulane (12/06)														
at Evansville (12/13)														
at South Alabama* (12/18)														
ALABAMA A&M (12/21)														
vs. Florida State ² (12/28)														
TROY* (01/01)														
UALR* (01/03)														
at Mississippi State (01/05)														
at FIU* (01/08)														
at Florida Atlantic* (01/10)														
MIDDLE TENNESSEE* (01/15)														
NEW ORLEANS* (01/17)														
LOUISIANA-LAFAYETTE* (01/22)														
at Denver* (01/24)														
at Arkansas State* (01/29)														
NORTH TEXAS* (01/31)														
at ULM* (02/05)														
SOUTH ALABAMA* (02/07)														
at Troy* (02/14)														
at UALR* (02/19)														
FIU* (02/21)														
FLORIDA ATLANTIC* (02/26)														
at Middle Tennessee* (02/28)														
SBC Tournament (03/04-03/10)														

¹Played at Sommet Center in Nashville, Tenn. • ²MetroPCS Orange Bowl Classic in Miami, Fla.

SALLY'S Career Stats

Season	G-S	Min-Avg.	FG-A	Pct.	3FG-A	Pct.	FT-A	Pct.	Reb-Avg.	PF-D	A	TO	BS	ST	Pts-Avg.
2008-09															
Totals															

SALLY'S Career Sun Belt Conference Stats

Season	G-S	Min-Avg.	FG-A	Pct.	3FG-A	Pct.	FT-A	Pct.	Reb-Avg.	PF-D	A	TO	BS	ST	Pts-Avg.
2008-09															
Totals															

MISCELLANEOUS

Category	2008-09	Career
Games Led WKU in Scoring	0	0
10+ Rebounding Games	0	0
10+ Scoring Games	0	0
20+ Scoring Games	0	0
30+ Scoring Games	0	0
Double-Doubles	0	0
Games Led WKU in Rebounds	0	0
Games Led WKU in Assists	0	0
Games Led WKU in Blocks	0	0
Games Led WKU in Steals	0	0

CAREER HIGHLIGHTS

- Had a record-breaking sophomore season at Motlow State Community College last year
- Played at Tallahassee Community College as a freshman
- Earned All-State honors after averaging 22.5 points and 9.2 rebounds per game as a senior at Chesterfield Community High School

A.J. SLAUGHTER



2008-09 Notes:

► Named to the Sun Belt Preseason All-Conference Third-Team

2007-08 Notes:

- Third on the Hilltoppers roster in scoring at 7.6 points per game
- Led the team in three-point shooting hitting at a 43.6 percent clip
- Started seven of 36 games played, averaging nearly 19 minutes per game
- Third on the team with 12 double-digit scoring performances
- Finished second on the squad with 40 steals
- Recorded seven points, three assists, no turnovers, and two steals against #2 UCLA in the NCAA "Sweet 16"
- Had 10 points, four rebounds, and a season-high-tying four assists in 18 minutes in the NCAA Tournament first round win over #14 Drake
- Stepped up production in Sun Belt play, averaging 8.1 points and connecting on 45.5 percent of his three-point attempts.

SEASON/CAREER HIGHS

Points	
Season	-- vs. N/A
Career	18 vs. Kennesaw State (11/11/06)
Rebounds	
Season	-- vs. N/A
Career	6 vs. Ky. Wesleyan (11/13/07)
Field Goals	
Season	-- vs. N/A
Career	6 vs. 5 Opp. (FIU, 02/27/08)
Field Goal Attempts	
Season	-- vs. N/A
Career	16 vs. UALR (01/17/07)
Three-Point Field Goals	
Season	-- vs. N/A
Career	4 vs. Florida Atlantic (03/01/08)
Three-Point Field Goal Attempts	
Season	-- vs. N/A
Career	6 vs. UALR (01/17/07)
Free Throws	
Season	-- vs. N/A
Career	4 vs. 4 Opp. (UCLA, 03/27/08)
Free Throws Attempts	
Season	-- vs. N/A
Career	6 vs. UCLA (03/27/08)
Assists	
Season	-- vs. N/A
Career	5 vs. 2 Opp. (FAU, 02/14/07)
Steals	
Season	-- vs. N/A
Career	4 vs. 3 Opp. (AK-Anch., 11/23/07)
Blocked Shots	
Season	-- vs. N/A
Career	1 vs. 5 Opp. (MTSU, 02/16/08)
Minutes Played	
Season	-- vs. N/A
Career	31 vs. AK-Anchorage (11/23/07)

2008-09 Slaughter Game-by-Game

Opponent	Min	FG-A	Pct.	3FG-A	Pct.	FT-A	Pct.	O-D-TR	PF	A	TO	BS	ST	Pts
at Houston (11/15)														
CAMPBELLSVILLE (11/18)														
at Murray State (11/22)														
SOUTHERN ILLINOIS (11/26)														
vs. Louisville ¹ (11/30)														
GEORIGIA (12/02)														
at Tulane (12/06)														
at Evansville (12/13)														
at South Alabama* (12/18)														
ALABAMA A&M (12/21)														
vs. Florida State ² (12/28)														
TROY* (01/01)														
UALR* (01/03)														
at Mississippi State (01/05)														
at FIU* (01/08)														
at Florida Atlantic* (01/10)														
MIDDLE TENNESSEE* (01/15)														
NEW ORLEANS* (01/17)														
LOUISIANA-LAFAYETTE* (01/22)														
at Denver* (01/24)														
at Arkansas State* (01/29)														
NORTH TEXAS* (01/31)														
at ULM* (02/05)														
SOUTH ALABAMA* (02/07)														
at Troy* (02/14)														
at UALR* (02/19)														
FIU* (02/21)														
FLORIDA ATLANTIC* (02/26)														
at Middle Tennessee* (02/28)														
SBC Tournament (03/04-03/10)														

¹Played at Sommet Center in Nashville, Tenn. • ²MetroPCS Orange Bowl Classic in Miami, Fla.

SLAUGHTER'S Career Stats

Season	G-S	Min-Avg.	FG-A	Pct.	3FG-A	Pct.	FT-A	Pct.	Reb-Avg.	PF-D	A	TO	BS	ST	Pts-Avg.
2008-09															
2007-08	36-7	677-18.8	98-225	.436	34-78	.436	43-57	.754	76-2.1	57-1	39	50	3	40	273-7.6
2006-07	33-3	526-15.9	75-178	.421	25-66	.379	25-37	.676	57-1.7	55-1	32	38	2	32	200-6.1
Totals	69-10	1203-17.4	173-403	.429	59-144	.409	68-94	.723	133-1.9	112-2	71	88	5	72	473-6.8

SLAUGHTER'S Career Sun Belt Conference Stats

Season	G-S	Min-Avg.	FG-A	Pct.	3FG-A	Pct.	FT-A	Pct.	Reb-Avg.	PF-D	A	TO	BS	ST	Pts-Avg.
2008-09															
2007-08	18-0	315-17.5	53-119	.445	20-44	.455	19-23	.826	36-2.0	24-0	12	25	2	20	145-8.1
2006-07	18-3	328-18.2	43-110	.391	10-36	.278	15-21	.714	28-1.6	30-1	23	23	1	23	111-6.2
Totals	36-3	643-17.8	96-229	.419	30-80	.375	34-44	.772	64-1.7	54-1	35	48	3	43	256-7.1

MISCELLANEOUS

Category	2008-09	Career
Games Led WKU in Scoring	0	2
10+ Rebounding Games	0	0
10+ Scoring Games	0	16
20+ Scoring Games	0	0
30+ Scoring Games	0	0
Double-Doubles	0	0
Games Led WKU in Rebounds	0	1
Games Led WKU in Assists	0	2
Games Led WKU in Blocks	0	2
Games Led WKU in Steals	0	15

CAREER HIGHLIGHTS

- Named to the 2008-09 Sun Belt Preseason All-Conference Third-Team
- Played in every game of his two-year career as a Hilltopper
- Participated in the Kentucky-Indiana All-Star series in summer of 2006
- Named the Louisville *Courier-Journal's* Player of the Year at Shelby County High School

DEJAN CVORO



2008-09 Notes:

► Important newcomer for the Hilltoppers

2007-08 Notes (Partizan Belgrade):

► Played on top Serbian junior team for past eight years
 ► Averaged 16.0 points, 4.0 assists, and 2.0 steals per game in the Serbian Junior League
 ► Helped lead the Serbian National Team (Under 18) to the European Championship in 2007

SEASON/CAREER HIGHS

Points	Season -- vs. N/A
Career -- vs. N/A	
Rebounds	Season -- vs. N/A
Career -- vs. N/A	
Field Goals	Season -- vs. N/A
Career -- vs. N/A	
Field Goal Attempts	Season -- vs. N/A
Career -- vs. N/A	
Three-Point Field Goals	Season -- vs. N/A
Career -- vs. N/A	
Three-Point Field Goal Attempts	Season -- vs. N/A
Career -- vs. N/A	
Free Throws	Season -- vs. N/A
Career -- vs. N/A	
Free Throws Attempts	Season -- vs. N/A
Career -- vs. N/A	
Assists	Season -- vs. N/A
Career -- vs. N/A	
Steals	Season -- vs. N/A
Career -- vs. N/A	
Blocked Shots	Season -- vs. N/A
Career -- vs. N/A	
Minutes Played	Season -- vs. N/A
Career -- vs. N/A	

2008-09 Cvoro Game-by-Game

Opponent	Min	FG-A	Pct.	3FG-A	Pct.	FT-A	Pct.	O-D-TR	PF	A	TO	BS	ST	Pts
at Houston (11/15)														
CAMPBELLSVILLE (11/18)														
at Murray State (11/22)														
SOUTHERN ILLINOIS (11/26)														
vs. Louisville ¹ (11/30)														
GEORIGIA (12/02)														
at Tulane (12/06)														
at Evansville (12/13)														
at South Alabama* (12/18)														
ALABAMA A&M (12/21)														
vs. Florida State ² (12/28)														
TROY* (01/01)														
UALR* (01/03)														
at Mississippi State (01/05)														
at FIU* (01/08)														
at Florida Atlantic* (01/10)														
MIDDLE TENNESSEE* (01/15)														
NEW ORLEANS* (01/17)														
LOUISIANA-LAFAYETTE* (01/22)														
at Denver* (01/24)														
at Arkansas State* (01/29)														
NORTH TEXAS* (01/31)														
at ULM* (02/05)														
SOUTH ALABAMA* (02/07)														
at Troy* (02/14)														
at UALR* (02/19)														
FIU* (02/21)														
FLORIDA ATLANTIC* (02/26)														
at Middle Tennessee* (02/28)														
SBC Tournament (03/04-03/10)														

¹Played at Sommet Center in Nashville, Tenn. • ²MetroPCS Orange Bowl Classic in Miami, Fla.

MISCELLANEOUS

Category	2008-09	Career
Games Led WKU in Scoring	0	0
10+ Rebounding Games	0	0
10+ Scoring Games	0	0
20+ Scoring Games	0	0
30+ Scoring Games	0	0
Double-Doubles	0	0
Games Led WKU in Rebounds	0	0
Games Led WKU in Assists	0	0
Games Led WKU in Blocks	0	0
Games Led WKU in Steals	0	0

CAREER HIGHLIGHTS

► Played eight seasons for Partizan Belgrade, a top Serbian junior team
 ► Led Serbian National Team (Under 18) to European Championship in 2007

CVORO'S Career Stats

Season	G-S	Min-Avg.	FG-A	Pct.	3FG-A	Pct.	FT-A	Pct.	Reb-Avg.	PF-D	A	TO	BS	ST	Pts-Avg.
2008-09															
Totals															

CVORO'S Career Sun Belt Conference Stats

Season	G-S	Min-Avg.	FG-A	Pct.	3FG-A	Pct.	FT-A	Pct.	Reb-Avg.	PF-D	A	TO	BS	ST	Pts-Avg.
2008-09															
Totals															

ORLANDO MENDEZ-VALDEZ



2008-09 Notes:

► Enters his final season as one of five seniors

2007-08 Notes:

- Played in every game, all off the bench
- Second on the team with 79 assists and fourth with 37 steals
- Shot 38.9 percent from three-point range, ranking 15th in the Sun Belt Conference
- Had seven points and five assists in NCAA Tournament first-round win over #14 Drake
- Scored 10 of his 14 points in first half in March 9 win over North Texas in quarterfinals of the Sun Belt Tournament, adding five rebounds
- Handed out six assists while scoring five points and grabbing three rebounds in a win over Michigan on November 24

SEASON/CAREER HIGHS

Points	Season	--	vs. N/A
	Career	23	vs. Florida Atlantic (12/30/06)
Rebounds	Season	--	vs. N/A
	Career	6	vs. NC Central (12/18/07)
Field Goals	Season	--	vs. N/A
	Career	8	vs. ULM (01/31/07)
Field Goal Attempts	Season	--	vs. N/A
	Career	14	vs. FIU (01/11/07)
Three-Point Field Goals	Season	--	vs. N/A
	Career	4	vs. 4 Opp. (NAU, 12/01/07)
Three-Point Field Goal Attempts	Season	--	vs. N/A
	Career	8	vs. Arkansas State (03/05/07)
Free Throws	Season	--	vs. N/A
	Career	8	vs. La.-Lafayette (01/13/07)
Free Throws Attempts	Season	--	vs. N/A
	Career	12	vs. La.-Lafayette (01/13/07)
Assists	Season	--	vs. N/A
	Career	8	vs. Troy (12/29/07)
Steals	Season	--	vs. N/A
	Career	3	vs. 9 Opp. (ULM, 02/23/08)
Blocked Shots	Season	--	vs. N/A
	Career	2	vs. 2 Opp. (UNT, 02/07/08)
Minutes Played	Season	--	vs. N/A
	Career	31	vs. UAB (11/29/05)

2008-09 Mendez-Valdez Game-by-Game

Opponent	Min	FG-A	Pct.	3FG-A	Pct.	FT-A	Pct.	O-D-TR	PF	A	TO	BS	ST	Pts
at Houston (11/15)														
CAMPBELLSVILLE (11/18)														
at Murray State (11/22)														
SOUTHERN ILLINOIS (11/26)														
vs. Louisville ¹ (11/30)														
GEORIGIA (12/02)														
at Tulane (12/06)														
at Evansville (12/13)														
at South Alabama* (12/18)														
ALABAMA A&M (12/21)														
vs. Florida State ² (12/28)														
TROY* (01/01)														
UALR* (01/03)														
at Mississippi State (01/05)														
at FIU* (01/08)														
at Florida Atlantic* (01/10)														
MIDDLE TENNESSEE* (01/15)														
NEW ORLEANS* (01/17)														
LOUISIANA-LAFAYETTE* (01/22)														
at Denver* (01/24)														
at Arkansas State* (01/29)														
NORTH TEXAS* (01/31)														
at ULM* (02/05)														
SOUTH ALABAMA* (02/07)														
at Troy* (02/14)														
at UALR* (02/19)														
FIU* (02/21)														
FLORIDA ATLANTIC* (02/26)														
at Middle Tennessee* (02/28)														
SBC Tournament (03/04-03/10)														

¹Played at Sommet Center in Nashville, Tenn. • ²MetroPCS Orange Bowl Classic in Miami, Fla.

MENDEZ-VALDEZ' Career Stats

Season	G-S	Min-Avg.	FG-A	Pct.	3FG-A	Pct.	FT-A	Pct.	Reb-Avg.	PF-D	A	TO	BS	ST	Pts-Avg.
2008-09															
2007-08	36-0	685-19.0	65-154	.422	37-95	.389	38-48	.792	59-1.6	67-1	79	64	7	37	205-5.7
2006-07	33-0	665-20.2	101-199	.508	45-95	.474	63-73	.863	42-1.3	57-1	98	59	2	35	310-9.4
2005-06	24-7	286-11.9	23-59	.390	14-36	.389	8-9	.889	16-0.7	30-1	38	41	0	8	68-2.8
Totals	93-7	1636-17.6	189-412	.458	96-226	.424	109-130	.838	117-1.3	154-3	215	164	9	80	583-6.3

MENDEZ-VALDEZ' Career Sun Belt Conference Stats

Season	G-S	Min-Avg.	FG-A	Pct.	3FG-A	Pct.	FT-A	Pct.	Reb-Avg.	PF-D	A	TO	BS	ST	Pts-Avg.
2008-09															
2007-08	18-0	348-19.3	35-89	.393	17-51	.333	10-15	.667	27-1.5	33-0	43	26	7	23	97-5.4
2006-07	18-0	381-21.2	71-127	.559	34-62	.548	35-41	.854	28-1.6	37-1	44	26	1	17	211-11.7
2005-06	12-1	132-11.0	7-27	.259	3-15	.200	2-3	.667	10-0.8	14-0	16	16	0	4	19-1.6
Totals	48-1	861-17.9	113-243	.465	54-128	.421	47-59	.796	65-1.4	84-1	103	68	8	44	327-6.8

MISCELLANEOUS

Category	2008-09	Career
Games Led WKU in Scoring	0	4
10+ Rebounding Games	0	0
10+ Scoring Games	0	20
20+ Scoring Games	0	5
30+ Scoring Games	0	0
Double-Doubles	0	0
Games Led WKU in Rebounds	0	0
Games Led WKU in Assists	0	23
Games Led WKU in Blocks	0	5
Games Led WKU in Steals	0	21

CAREER HIGHLIGHTS

- Enters his final season ranked second on the school's all-time list for three-point field-goal percentage (42.5)
- Third rated player in the state of Texas coming out of high school

ADAM DECKER



2008-09 Notes:

► Important newcomer for the Hilltoppers

2007-08 Notes (Pleasure Ridge Park):

- One of only four players in school history to start all four seasons
- Led the Panthers to a 108-23 mark during his four years, for an .824 winning percentage
- Led PRP in assists each of his last three seasons
- Earned honorable mention All-State as a senior

SEASON/CAREER HIGHS

Points	Season -- vs. N/A
Career -- vs. N/A	
Rebounds	Season -- vs. N/A
Career -- vs. N/A	
Field Goals	Season -- vs. N/A
Career -- vs. N/A	
Field Goal Attempts	Season -- vs. N/A
Career -- vs. N/A	
Three-Point Field Goals	Season -- vs. N/A
Career -- vs. N/A	
Three-Point Field Goal Attempts	Season -- vs. N/A
Career -- vs. N/A	
Free Throws	Season -- vs. N/A
Career -- vs. N/A	
Free Throws Attempts	Season -- vs. N/A
Career -- vs. N/A	
Assists	Season -- vs. N/A
Career -- vs. N/A	
Steals	Season -- vs. N/A
Career -- vs. N/A	
Blocked Shots	Season -- vs. N/A
Career -- vs. N/A	
Minutes Played	Season -- vs. N/A
Career -- vs. N/A	

2008-09 Decker Game-by-Game

Opponent	Min	FG-A	Pct.	3FG-A	Pct.	FT-A	Pct.	O-D-TR	PF	A	TO	BS	ST	Pts
at Houston (11/15)														
CAMPBELLSVILLE (11/18)														
at Murray State (11/22)														
SOUTHERN ILLINOIS (11/26)														
vs. Louisville ¹ (11/30)														
GEORIGIA (12/02)														
at Tulane (12/06)														
at Evansville (12/13)														
at South Alabama* (12/18)														
ALABAMA A&M (12/21)														
vs. Florida State ² (12/28)														
TROY* (01/01)														
UALR* (01/03)														
at Mississippi State (01/05)														
at FIU* (01/08)														
at Florida Atlantic* (01/10)														
MIDDLE TENNESSEE* (01/15)														
NEW ORLEANS* (01/17)														
LOUISIANA-LAFAYETTE* (01/22)														
at Denver* (01/24)														
at Arkansas State* (01/29)														
NORTH TEXAS* (01/31)														
at ULM* (02/05)														
SOUTH ALABAMA* (02/07)														
at Troy* (02/14)														
at UALR* (02/19)														
FIU* (02/21)														
FLORIDA ATLANTIC* (02/26)														
at Middle Tennessee* (02/28)														
SBC Tournament (03/04-03/10)														

¹Played at Sommet Center in Nashville, Tenn. • ²MetroPCS Orange Bowl Classic in Miami, Fla.

MISCELLANEOUS

Category	2008-09	Career
Games Led WKU in Scoring	0	0
10+ Rebounding Games	0	0
10+ Scoring Games	0	0
20+ Scoring Games	0	0
30+ Scoring Games	0	0
Double-Doubles	0	0
Games Led WKU in Rebounds	0	0
Games Led WKU in Assists	0	0
Games Led WKU in Blocks	0	0
Games Led WKU in Steals	0	0

CAREER HIGHLIGHTS

- Played four seasons at Pleasure Ridge Park High School
- Selected as the MVP of the Rim Rockers Holiday Classic in Middle Island, N.Y.
- Named All-Tournament at both the Las Vegas Holiday Invitational and the City of Hopkinsville Christmas Tournament

DECKER'S Career Stats

Season	G-S	Min-Avg.	FG-A	Pct.	3FG-A	Pct.	FT-A	Pct.	Reb-Avg.	PF-D	A	TO	BS	ST	Pts-Avg.
2008-09															
Totals															

DECKER'S Career Sun Belt Conference Stats

Season	G-S	Min-Avg.	FG-A	Pct.	3FG-A	Pct.	FT-A	Pct.	Reb-Avg.	PF-D	A	TO	BS	ST	Pts-Avg.
2008-09															
Totals															

MIKE WALKER



2008-09 Notes:

► Enters the season off his John Oldham Most Improved Player award bestowed at the end of 2007-08

2007-08 Notes:

► Averaged 3.3 points and 4.2 rebounds per game
 ► Finished third on the team in rebounding
 ► Connected on 60.6 percent of his shots from the floor
 ► Went down with an injury in the South Alabama game on February 21 and missed the remaining nine games
 ► Led the Hilltoppers in rebounding on eight occasions and in blocks five times
 ► Pulled down a career-best 11 boards against 11th-ranked Tennessee on December 15

SEASON/CAREER HIGHS

Points	Season	--	vs. N/A
	Career	11	vs. Kennesaw State (11/09/07)
Rebounds	Season	--	vs. N/A
	Career	11	vs. Tennessee (12/15/07)
Field Goals	Season	--	vs. N/A
	Career	5	vs. Kennesaw State (11/09/07)
Field Goal Attempts	Season	--	vs. N/A
	Career	5	vs. 6 Opp. (UNT, 02/07/08)
Three-Point Field Goals	Season	--	vs. N/A
	Career	0	vs. none
Three-Point Field Goal Attempts	Season	--	vs. N/A
	Career	1	vs. NC Central (12/18/07)
Free Throws	Season	--	vs. N/A
	Career	5	vs. Evansville (12/06/05)
Free Throws Attempts	Season	--	vs. N/A
	Career	11	vs. Evansville (12/06/05)
Assists	Season	--	vs. N/A
	Career	3	vs. IUPUI (11/22/05)
Steals	Season	--	vs. N/A
	Career	2	vs. 3 Opp. (UALR, 01/31/08)
Blocked Shots	Season	--	vs. N/A
	Career	2	vs. 3 Opp. (FAU, 01/16/08)
Minutes Played	Season	--	vs. N/A
	Career	26	vs. 3 Opp. (USA, 01/05/08)

2008-09 Walker Game-by-Game

Opponent	Min	FG-A	Pct.	3FG-A	Pct.	FT-A	Pct.	O-D-TR	PF	A	TO	BS	ST	Pts
at Houston (11/15)														
CAMPBELLSVILLE (11/18)														
at Murray State (11/22)														
SOUTHERN ILLINOIS (11/26)														
vs. Louisville ¹ (11/30)														
GEORIGIA (12/02)														
at Tulane (12/06)														
at Evansville (12/13)														
at South Alabama* (12/18)														
ALABAMA A&M (12/21)														
vs. Florida State ² (12/28)														
TROY* (01/01)														
UALR* (01/03)														
at Mississippi State (01/05)														
at FIU* (01/08)														
at Florida Atlantic* (01/10)														
MIDDLE TENNESSEE* (01/15)														
NEW ORLEANS* (01/17)														
LOUISIANA-LAFAYETTE* (01/22)														
at Denver* (01/24)														
at Arkansas State* (01/29)														
NORTH TEXAS* (01/31)														
at ULM* (02/05)														
SOUTH ALABAMA* (02/07)														
at Troy* (02/14)														
at UALR* (02/19)														
FIU* (02/21)														
FLORIDA ATLANTIC* (02/26)														
at Middle Tennessee* (02/28)														
SBC Tournament (03/04-03/10)														

¹Played at Sommet Center in Nashville, Tenn. • ²MetroPCS Orange Bowl Classic in Miami, Fla.

WALKER'S Career Stats

Season	G-S	Min-Avg.	FG-A	Pct.	3FG-A	Pct.	FT-A	Pct.	Reb-Avg.	PF-D	A	TO	BS	ST	Pts-Avg.
2008-09															
2007-08	27-4	457-16.9	40-66	.606	0-1	.000	10-35	.286	114-4.2	55-1	11	24	11	12	90-3.3
2006-07	24-2	188-7.8	17-26	.654	0-0	.000	9-13	.692	54-2.3	16-0	6	14	4	2	43-1.8
2005-06	31-4	377-12.2	36-66	.545	0-0	.000	19-34	.559	89-2.9	47-0	10	29	6	10	91-2.9
Totals	82-10	1022-12.5	90-158	.569	0-1	.000	38-82	.463	257-3.1	118-1	27	67	21	24	224-2.7

WALKER'S Career Sun Belt Conference Stats

Season	G-S	Min-Avg.	FG-A	Pct.	3FG-A	Pct.	FT-A	Pct.	Reb-Avg.	PF-D	A	TO	BS	ST	Pts-Avg.
2008-09															
2007-08	15-2	260-17.3	22-37	.595	0-0	.000	6-15	.400	62-4.1	25-0	3	15	8	6	50-3.3
2006-07	15-0	117-7.8	9-15	.600	0-0	.000	6-8	.750	37-2.5	14-0	3	14	4	2	24-1.6
2005-06	14-4	162-11.6	14-25	.560	0-0	.000	6-11	.545	38-2.7	23-0	3	8	3	6	34-2.4
Totals	44-6	539-12.2	45-77	.584	0-0	.000	18-34	.529	137-3.1	62-0	9	37	15	14	108-2.4

MISCELLANEOUS

Category	2008-09	Career
Games Led WKU in Scoring	0	0
10+ Rebounding Games	0	1
10+ Scoring Games	0	1
20+ Scoring Games	0	0
30+ Scoring Games	0	0
Double-Doubles	0	0
Games Led WKU in Rebounds	0	11
Games Led WKU in Assists	0	0
Games Led WKU in Blocks	0	10
Games Led WKU in Steals	0	4

CAREER HIGHLIGHTS

► Selected as the John Oldham Most Improved Player at the end of the 2007-08 season
 ► MVP of the Georgia Athletic Coaches Association North-South All-Star Game in 2004
 ► Holds Macon Southwest High School career records for scoring and rebounding

STEFFPHON PETTIGREW



2008-09 Notes:

► Enters the season looking for an expanded role as a sophomore returner

2007-08 Notes:

► Appeared in all 36 games as freshman, averaging better than 11 minutes per contest
 ► In the season finale at FIU, led the Hilltoppers with eight rebounds to go with six points
 ► Registered six points and four rebounds in 16 minutes at 11th-ranked Tennessee
 ► Had 11 points and eight rebounds in collegiate debut against Kennesaw State on November 9

SEASON/CAREER HIGHS

Points	
Season	-- vs. N/A
Career	14 vs. La.-Lafayette (01/19/08)
Rebounds	
Season	-- vs. N/A
Career	9 vs. Florida Atlantic (01/16/08)
Field Goals	
Season	-- vs. N/A
Career	5 vs. La.-Lafayette (01/19/08)
Field Goal Attempts	
Season	-- vs. N/A
Career	9 vs. La.-Lafayette (01/19/08)
Three-Point Field Goals	
Season	-- vs. N/A
Career	1 vs. 2 Opp. (ULL, 01/19/08)
Three-Point Field Goal Attempts	
Season	-- vs. N/A
Career	2 vs. Kennesaw State (11/09/07)
Free Throws	
Season	-- vs. N/A
Career	6 vs. Murray State (11/17/07)
Free Throws Attempts	
Season	-- vs. N/A
Career	8 vs. Murray State (11/17/07)
Assists	
Season	-- vs. N/A
Career	1 vs. 7 Opp. (FAU, 03/01/08)
Steals	
Season	-- vs. N/A
Career	2 vs. North Texas (03/09/08)
Blocked Shots	
Season	-- vs. N/A
Career	2 vs. FIU (01/12/08)
Minutes Played	
Season	-- vs. N/A
Career	22 vs. Kennesaw State (11/09/07)

2008-09 Pettigrew Game-by-Game

Opponent	Min	FG-A	Pct.	3FG-A	Pct.	FT-A	Pct.	O-D-TR	PF	A	TO	BS	ST	Pts
at Houston (11/15)														
CAMPBELLSVILLE (11/18)														
at Murray State (11/22)														
SOUTHERN ILLINOIS (11/26)														
vs. Louisville ¹ (11/30)														
GEORIGIA (12/02)														
at Tulane (12/06)														
at Evansville (12/13)														
at South Alabama* (12/18)														
ALABAMA A&M (12/21)														
vs. Florida State ² (12/28)														
TROY* (01/01)														
UALR* (01/03)														
at Mississippi State (01/05)														
at FIU* (01/08)														
at Florida Atlantic* (01/10)														
MIDDLE TENNESSEE* (01/15)														
NEW ORLEANS* (01/17)														
LOUISIANA-LAFAYETTE* (01/22)														
at Denver* (01/24)														
at Arkansas State* (01/29)														
NORTH TEXAS* (01/31)														
at ULM* (02/05)														
SOUTH ALABAMA* (02/07)														
at Troy* (02/14)														
at UALR* (02/19)														
FIU* (02/21)														
FLORIDA ATLANTIC* (02/26)														
at Middle Tennessee* (02/28)														
SBC Tournament (03/04-03/10)														

¹Played at Sommet Center in Nashville, Tenn. • ²MetroPCS Orange Bowl Classic in Miami, Fla.

PETTIGREW'S Career Stats

Season	G-S	Min-Avg.	FG-A	Pct.	3FG-A	Pct.	FT-A	Pct.	Reb-Avg.	PF-D	A	TO	BS	ST	Pts-Avg.
2008-09															
2007-08	36-0	411-11.4	45-112	.402	2-8	.250	46-65	.708	102-2.8	43-1	7	25	9	13	138-3.8
Totals	36-0	411-11.4	45-112	.402	2-8	.250	46-65	.708	102-2.8	43-1	7	25	9	13	138-3.8

PETTIGREW'S Career Sun Belt Conference Stats

Season	G-S	Min-Avg.	FG-A	Pct.	3FG-A	Pct.	FT-A	Pct.	Reb-Avg.	PF-D	A	TO	BS	ST	Pts-Avg.
2008-09															
2007-08	18-0	197-10.9	29-60	.483	1-2	.500	17-28	.607	55-3.1	17-0	3	10	5	5	76-4.2
Totals	18-0	197-10.9	29-60	.483	1-2	.500	17-28	.607	55-3.1	17-0	3	10	5	5	76-4.2

MISCELLANEOUS

Category	2008-09	Career
Games Led WKU in Scoring	0	0
10+ Rebounding Games	0	0
10+ Scoring Games	0	3
20+ Scoring Games	0	0
30+ Scoring Games	0	0
Double-Doubles	0	0
Games Led WKU in Rebounds	0	2
Games Led WKU in Assists	0	0
Games Led WKU in Blocks	0	4
Games Led WKU in Steals	0	1

CAREER HIGHLIGHTS

► Named Kentucky's Mr. Basketball as a senior in 2007
 ► Became first Mr. Basketball to sign at WKU since 1984
 ► Named the Kentucky Player of the Year by both the AP and the *Courier-Journal*
 ► Amassed 2,191 points, 1,000 rebounds, 156 blocks, and 108 steals in his three years as a starter at Elizabethtown High School

JAPETH AGUILAR



2008-09 Notes:

► One of five seniors on the Hilltoppers roster

2007-08 Notes:

- Made his defensive presence felt in his two games before going down with a season-ending injury, leading the Hilltoppers in blocks on both occasions
- Scored a season-best six points in the season-opening win over Kennesaw State on November 9
- Grabbed five rebounds in a victory against Kentucky Wesleyan on November 13
- Injured in practice after the Kentucky Wesleyan game and missed the final 34 games of the season

SEASON/CAREER HIGHS

Points	Season	--	vs. N/A
	Career	6	vs. Kennesaw State (11/09/07)
Rebounds	Season	--	vs. N/A
	Career	5	vs. Ky. Wesleyan (11/09/07)
Field Goals	Season	--	vs. N/A
	Career	2	vs. Kennesaw State (11/09/07)
Field Goal Attempts	Season	--	vs. N/A
	Career	4	vs. Kennesaw State (11/09/07)
Three-Point Field Goals	Season	--	vs. N/A
	Career	0	vs. none
Three-Point Field Goal Attempts	Season	--	vs. N/A
	Career	1	vs. 2 Opp. (KWC, 11/13/07)
Free Throws	Season	--	vs. N/A
	Career	2	vs. 2 Opp. (KWC, 11/13/07)
Free Throws Attempts	Season	--	vs. N/A
	Career	3	vs. Kennesaw State (11/09/07)
Assists	Season	--	vs. N/A
	Career	2	vs. Kennesaw State (11/09/07)
Steals	Season	--	vs. N/A
	Career	2	vs. Kennesaw State (11/09/07)
Blocked Shots	Season	--	vs. N/A
	Career	3	vs. Kennesaw State (11/09/07)
Minutes Played	Season	--	vs. N/A
	Career	17	vs. Kennesaw State (11/09/07)

2008-09 Aguilar Game-by-Game

Opponent	Min	FG-A	Pct.	3FG-A	Pct.	FT-A	Pct.	O-D-TR	PF	A	TO	BS	ST	Pts
at Houston (11/15)														
CAMPBELLSVILLE (11/18)														
at Murray State (11/22)														
SOUTHERN ILLINOIS (11/26)														
vs. Louisville ¹ (11/30)														
GEORIGIA (12/02)														
at Tulane (12/06)														
at Evansville (12/13)														
at South Alabama* (12/18)														
ALABAMA A&M (12/21)														
vs. Florida State ² (12/28)														
TROY* (01/01)														
UALR* (01/03)														
at Mississippi State (01/05)														
at FIU* (01/08)														
at Florida Atlantic* (01/10)														
MIDDLE TENNESSEE* (01/15)														
NEW ORLEANS* (01/17)														
LOUISIANA-LAFAYETTE* (01/22)														
at Denver* (01/24)														
at Arkansas State* (01/29)														
NORTH TEXAS* (01/31)														
at ULM* (02/05)														
SOUTH ALABAMA* (02/07)														
at Troy* (02/14)														
at UALR* (02/19)														
FIU* (02/21)														
FLORIDA ATLANTIC* (02/26)														
at Middle Tennessee* (02/28)														
SBC Tournament (03/04-03/10)														

¹Played at Sommet Center in Nashville, Tenn. • ²MetroPCS Orange Bowl Classic in Miami, Fla.

AGUILAR'S Career Stats

Season	G-S	Min-Avg.	FG-A	Pct.	3FG-A	Pct.	FT-A	Pct.	Reb-Avg.	PF-D	A	TO	BS	ST	Pts-Avg.
2008-09															
2007-08	2-0	32-16.0	2-5	.400	0-2	.000	4-5	.800	8-4.0	3-0	3	6	4	2	8-4.0
Totals	2-0	32-16.0	2-5	.400	0-2	.000	4-5	.800	8-4.0	3-0	3	6	4	2	8-4.0

AGUILAR'S Career Sun Belt Conference Stats

Season	G-S	Min-Avg.	FG-A	Pct.	3FG-A	Pct.	FT-A	Pct.	Reb-Avg.	PF-D	A	TO	BS	ST	Pts-Avg.
2008-09															
2007-08	DNP	Injured													
Totals	DNP	Injured													

MISCELLANEOUS

Category	2008-09	Career
Games Led WKU in Scoring	0	0
10+ Rebounding Games	0	0
10+ Scoring Games	0	0
20+ Scoring Games	0	0
30+ Scoring Games	0	0
Double-Doubles	0	0
Games Led WKU in Rebounds	0	0
Games Led WKU in Assists	0	0
Games Led WKU in Blocks	0	2
Games Led WKU in Steals	0	0

CAREER HIGHLIGHTS

- First Filipino-born basketball player ever to be recruited by a Division I program
- Played two seasons at Ateneo de Manila University in the Philippines

UROS KOMADINIC



2008-09 Notes:

► Important newcomer for the Hilltoppers

2007-08 Notes (Allen County CC):

- Played in 27 games last season for Allen County Community College, averaging 6.3 points per game
- Led the Red Devils to a 17-14 record, pulling down 4.3 rebounds per contest
- Ranked fifth on the team in scoring and fourth in rebounding

SEASON/CAREER HIGHS

Points	Season -- vs. N/A
Career -- vs. N/A	
Rebounds	Season -- vs. N/A
Career -- vs. N/A	
Field Goals	Season -- vs. N/A
Career -- vs. N/A	
Field Goal Attempts	Season -- vs. N/A
Career -- vs. N/A	
Three-Point Field Goals	Season -- vs. N/A
Career -- vs. N/A	
Three-Point Field Goal Attempts	Season -- vs. N/A
Career -- vs. N/A	
Free Throws	Season -- vs. N/A
Career -- vs. N/A	
Free Throws Attempts	Season -- vs. N/A
Career -- vs. N/A	
Assists	Season -- vs. N/A
Career -- vs. N/A	
Steals	Season -- vs. N/A
Career -- vs. N/A	
Blocked Shots	Season -- vs. N/A
Career -- vs. N/A	
Minutes Played	Season -- vs. N/A
Career -- vs. N/A	

2008-09 Komadinic Game-by-Game

Opponent	Min	FG-A	Pct.	3FG-A	Pct.	FT-A	Pct.	O-D-TR	PF	A	TO	BS	ST	Pts
at Houston (11/15)														
CAMPBELLSVILLE (11/18)														
at Murray State (11/22)														
SOUTHERN ILLINOIS (11/26)														
vs. Louisville ¹ (11/30)														
GEORIGIA (12/02)														
at Tulane (12/06)														
at Evansville (12/13)														
at South Alabama* (12/18)														
ALABAMA A&M (12/21)														
vs. Florida State ² (12/28)														
TROY* (01/01)														
UALR* (01/03)														
at Mississippi State (01/05)														
at FIU* (01/08)														
at Florida Atlantic* (01/10)														
MIDDLE TENNESSEE* (01/15)														
NEW ORLEANS* (01/17)														
LOUISIANA-LAFAYETTE* (01/22)														
at Denver* (01/24)														
at Arkansas State* (01/29)														
NORTH TEXAS* (01/31)														
at ULM* (02/05)														
SOUTH ALABAMA* (02/07)														
at Troy* (02/14)														
at UALR* (02/19)														
FIU* (02/21)														
FLORIDA ATLANTIC* (02/26)														
at Middle Tennessee* (02/28)														
SBC Tournament (03/04-03/10)														

¹Played at Sommet Center in Nashville, Tenn. • ²MetroPCS Orange Bowl Classic in Miami, Fla.

KOMADINIC'S Career Stats

Season	G-S	Min-Avg.	FG-A	Pct.	3FG-A	Pct.	FT-A	Pct.	Reb-Avg.	PF-D	A	TO	BS	ST	Pts-Avg.
2008-09															
Totals															

KOMADINIC'S Career Sun Belt Conference Stats

Season	G-S	Min-Avg.	FG-A	Pct.	3FG-A	Pct.	FT-A	Pct.	Reb-Avg.	PF-D	A	TO	BS	ST	Pts-Avg.
2008-09															
Totals															

MISCELLANEOUS

Category	2008-09	Career
Games Led WKU in Scoring	0	0
10+ Rebounding Games	0	0
10+ Scoring Games	0	0
20+ Scoring Games	0	0
30+ Scoring Games	0	0
Double-Doubles	0	0
Games Led WKU in Rebounds	0	0
Games Led WKU in Assists	0	0
Games Led WKU in Blocks	0	0
Games Led WKU in Steals	0	0

CAREER HIGHLIGHTS

- Played two years at Allen County Community College in Kansas
- Played for Midland High School in Midland, Mich.

D.J. MAGLEY



2008-09 Notes:

▶ Returning starter from last year's NCAA "Sweet 16" team

2007-08 Notes:

- ▶ Started 33 of 36 games played
- ▶ Averaged 4.8 points and 3.3 rebounds per game while shooting 51.4 percent from the field
- ▶ Led the Hilltoppers in blocks seven times, in rebounds on four occasions, and steals three times
- ▶ Had eight points and four rebounds in the March 21 win over #14 Drake in the first round of the NCAA Tournament
- ▶ Orchestrated WKU's win over Michigan on November 24 in the Carrs/Safeway Great Alaska Shootout with 18 points on 8-of-9 from the field to go with five rebounds and two blocks
- ▶ Finished the Great Alaska Shootout with a tournament best 84.6 percent shooting

SEASON/CAREER HIGHS

Points	
Season	-- vs. N/A
Career	18 vs. Michigan (11/24/07)
Rebounds	
Season	-- vs. N/A
Career	8 vs. North Texas (03/09/08)
Field Goals	
Season	-- vs. N/A
Career	8 vs. Michigan (11/24/07)
Field Goal Attempts	
Season	-- vs. N/A
Career	9 vs. 2 Opp. (FIU, 01/12/08)
Three-Point Field Goals	
Season	-- vs. N/A
Career	-- vs. N/A
Three-Point Field Goal Attempts	
Season	-- vs. N/A
Career	-- vs. N/A
Free Throws	
Season	-- vs. N/A
Career	3 vs. Middle Tennessee (3/11/08)
Free Throws Attempts	
Season	-- vs. N/A
Career	3 vs. 3 Opp. (MTSU, 03/11/08)
Assists	
Season	-- vs. N/A
Career	3 vs. FIU (01/12/08)
Steals	
Season	-- vs. N/A
Career	4 vs. UALR (03/10/08)
Blocked Shots	
Season	-- vs. N/A
Career	3 vs. Middle Tennessee (1/02/08)
Minutes Played	
Season	-- vs. N/A
Career	28 vs. North Texas (03/09/08)

2008-09 Magley Game-by-Game

Opponent	Min	FG-A	Pct.	3FG-A	Pct.	FT-A	Pct.	O-D-TR	PF	A	TO	BS	ST	Pts
at Houston (11/15)														
CAMPBELLSVILLE (11/18)														
at Murray State (11/22)														
SOUTHERN ILLINOIS (11/26)														
vs. Louisville ¹ (11/30)														
GEORIGIA (12/02)														
at Tulane (12/06)														
at Evansville (12/13)														
at South Alabama* (12/18)														
ALABAMA A&M (12/21)														
vs. Florida State ² (12/28)														
TROY* (01/01)														
UALR* (01/03)														
at Mississippi State (01/05)														
at FIU* (01/08)														
at Florida Atlantic* (01/10)														
MIDDLE TENNESSEE* (01/15)														
NEW ORLEANS* (01/17)														
LOUISIANA-LAFAYETTE* (01/22)														
at Denver* (01/24)														
at Arkansas State* (01/29)														
NORTH TEXAS* (01/31)														
at ULM* (02/05)														
SOUTH ALABAMA* (02/07)														
at Troy* (02/14)														
at UALR* (02/19)														
FIU* (02/21)														
FLORIDA ATLANTIC* (02/26)														
at Middle Tennessee* (02/28)														
SBC Tournament (03/04-03/10)														

¹Played at Sommet Center in Nashville, Tenn. • ²MetroPCS Orange Bowl Classic in Miami, Fla.

MAGLEY'S Career Stats

Season	G-S	Min-Avg.	FG-A	Pct.	3FG-A	Pct.	FT-A	Pct.	Reb-Avg.	PF-D	A	TO	BS	ST	Pts-Avg.
2008-09															
2007-08	36-33	564-15.7	76-148	.514	0-0	.000	19-31	.613	117-3.3	107-5	22	26	14	20	171-4.8
Totals	36-33	564-15.7	76-148	.514	0-0	.000	19-31	.613	117-3.3	107-5	22	26	14	20	171-4.8

MAGLEY'S Career Sun Belt Conference Stats

Season	G-S	Min-Avg.	FG-A	Pct.	3FG-A	Pct.	FT-A	Pct.	Reb-Avg.	PF-D	A	TO	BS	ST	Pts-Avg.
2008-09															
2007-08	18-15	269-14.9	38-77	.494	0-0	.000	11-17	.647	63-3.5	54-3	7	12	8	6	87-4.8
Totals	18-15	269-14.9	38-77	.494	0-0	.000	11-17	.647	63-3.5	54-3	7	12	8	6	87-4.8

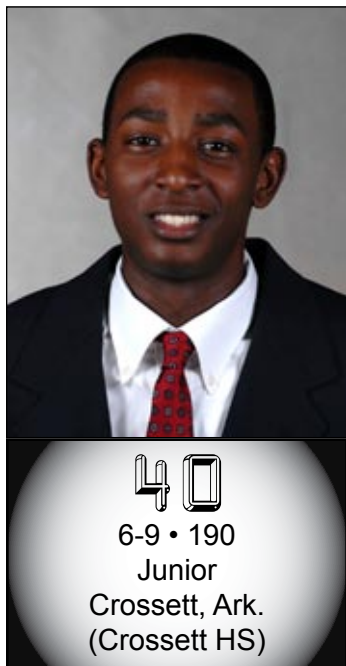
MISCELLANEOUS

Category	2008-09	Career
Games Led WKU in Scoring	0	0
10+ Rebounding Games	0	0
10+ Scoring Games	0	4
20+ Scoring Games	0	0
30+ Scoring Games	0	0
Double-Doubles	0	0
Games Led WKU in Rebounds	0	4
Games Led WKU in Assists	0	1
Games Led WKU in Blocks	0	7
Games Led WKU in Steals	0	3

CAREER HIGHLIGHTS

- ▶ Left Bradenton Christian School as the all-time leader in points (1,815), rebounds (1,269), assists (416), and blocks
- ▶ Named the Florida Gulf Coast and Manatee County Player of the Year
- ▶ Father, Dave, was Indiana Mr. Basketball, played four years at Kansas, and was the 28th pick in the 1982 NBA Draft
- ▶ Sister, Jessica, is a member of the Lady Topper program

JEREMY EVANS



2008-09 Notes:

► Named to the Sun Belt Preseason All-Conference Second-Team

2007-08 Notes:

- Selected as the 2007 Sun Belt Conference Tournament Most Valuable Player after averaging 13.0 points and 7.3 rebounds per game while shooting 78.9 percent (15-of-19) from the floor
- In the SBC Tournament championship game, Evans posted a career-best 20 points along with a season-high 14 rebounds
- Led the Hilltoppers in rebounding at 5.2 rpg
- His 51 blocked shots also led the team
- Finished 15th in the league in rebounding and third in blocked shots
- Shot a team-high 62.5 percent from the field in contributing 5.9 points per game
- Started 33 of 34 games played

SEASON/CAREER HIGHS

Points	
Season	-- vs. N/A
Career	20 vs. Middle Tennessee (3/11/08)
Rebounds	
Season	-- vs. N/A
Career	15 vs. FIU (02/24/07)
Field Goals	
Season	-- vs. N/A
Career	8 vs. 3 Opp. (MTSU, 03/11/08)
Field Goal Attempts	
Season	-- vs. N/A
Career	10 vs. Troy (02/27/07)
Three-Point Field Goals	
Season	-- vs. N/A
Career	2 vs. Gonzaga (11/22/07)
Three-Point Field Goal Attempts	
Season	-- vs. N/A
Career	3 vs. Gonzaga (11/22/07)
Free Throws	
Season	-- vs. N/A
Career	4 vs. 8 Opp. (MTSU, 03/11/08)
Free Throws Attempts	
Season	-- vs. N/A
Career	7 vs. 2 Opp. (Denver, 01/27/07)
Assists	
Season	-- vs. N/A
Career	3 vs. Eastern Kentucky (12/08/07)
Steals	
Season	-- vs. N/A
Career	3 vs. 3 Opp. (MTSU, 02/10/07)
Blocked Shots	
Season	-- vs. N/A
Career	6 vs. North Texas (12/19/06)
Minutes Played	
Season	-- vs. N/A
Career	40 vs. South Alabama (02/08/07)

2008-09 Evans Game-by-Game

Opponent	Min	FG-A	Pct.	3FG-A	Pct.	FT-A	Pct.	O-D-TR	PF	A	TO	BS	ST	Pts
at Houston (11/15)														
CAMPBELLSVILLE (11/18)														
at Murray State (11/22)														
SOUTHERN ILLINOIS (11/26)														
vs. Louisville ¹ (11/30)														
GEORIGIA (12/02)														
at Tulane (12/06)														
at Evansville (12/13)														
at South Alabama* (12/18)														
ALABAMA A&M (12/21)														
vs. Florida State ² (12/28)														
TROY* (01/01)														
UALR* (01/03)														
at Mississippi State (01/05)														
at FIU* (01/08)														
at Florida Atlantic* (01/10)														
MIDDLE TENNESSEE* (01/15)														
NEW ORLEANS* (01/17)														
LOUISIANA-LAFAYETTE* (01/22)														
at Denver* (01/24)														
at Arkansas State* (01/29)														
NORTH TEXAS* (01/31)														
at ULM* (02/05)														
SOUTH ALABAMA* (02/07)														
at Troy* (02/14)														
at UALR* (02/19)														
FIU* (02/21)														
FLORIDA ATLANTIC* (02/26)														
at Middle Tennessee* (02/28)														
SBC Tournament (03/04-03/10)														

¹Played at Sommet Center in Nashville, Tenn. • ²MetroPCS Orange Bowl Classic in Miami, Fla.

EVANS' Career Stats

Season	G-S	Min-Avg.	FG-A	Pct.	3FG-A	Pct.	FT-A	Pct.	Reb-Avg.	PF-D	A	TO	BS	ST	Pts-Avg.
2008-09															
2007-08	34-33	716-21.1	80-128	.625	8-19	.421	34-53	.642	176-5.2	78-2	20	37	51	16	202-5.9
2006-07	32-30	672-21.0	87-135	.644	1-1	1.000	49-73	.671	182-5.7	71-1	16	30	44	19	224-7.0
Totals	66-63	1388-21.0	167-263	.634	9-20	.450	83-126	.658	358-5.4	149-3	36	67	95	35	426-6.4

EVANS' Career Sun Belt Conference Stats

Season	G-S	Min-Avg.	FG-A	Pct.	3FG-A	Pct.	FT-A	Pct.	Reb-Avg.	PF-D	A	TO	BS	ST	Pts-Avg.
2008-09															
2007-08	18-17	378-21.0	41-64	.641	5-11	.455	18-29	.621	95-5.3	41-1	11	22	21	7	105-5.8
2006-07	17-17	376-22.1	47-77	.610	0-0	.000	36-52	.692	119-7.0	36-0	9	14	28	11	130-7.6
Totals	35-34	754-21.5	88-141	.624	5-11	.455	54-81	.667	214-6.1	77-1	20	36	49	18	235-6.7

MISCELLANEOUS

Category	2008-09	Career
Games Led WKU in Scoring	0	5
10+ Rebounding Games	0	8
10+ Scoring Games	0	16
20+ Scoring Games	0	1
30+ Scoring Games	0	0
Double-Doubles	0	5
Games Led WKU in Rebounds	0	24
Games Led WKU in Assists	0	0
Games Led WKU in Blocks	0	44
Games Led WKU in Steals	0	7

CAREER HIGHLIGHTS

- Named to Sun Belt Preseason All-Conference Second-Team
- After just two seasons, Evans stands sixth on the school's all-time blocks list with 95
- Selected as the 2008 Sun Belt Conference Tournament Most Valuable Player
- Earned the Bobby Rascoe Defensive Player of the Year Award at the WKU Postseason Banquet
- A two-time All-State selection at Crossett High School in Crossett, Ark.

MATT MARESCA



2008-09 Notes:

► One of three four-year seniors for the Hilltoppers

2007-08 Notes:

► Played in 20 games, shooting 50.0 percent from the field
 ► Grabbed a season-high four rebounds in a win over ULM on February 23

► Collected five points and two rebounds in his first appearance of the season on November 23 in a win over Alaska-Anchorage, hitting a three-pointer with less than 16 minutes to play to give WKU the lead for good

SEASON/CAREER HIGHS

Points	Season	--	vs. N/A
	Career	16	vs. Montana (12/06/06)
Rebounds	Season	--	vs. N/A
	Career	6	vs. Tennessee State (11/19/06)
Field Goals	Season	--	vs. N/A
	Career	6	vs. Montana (12/06/06)
Field Goal Attempts	Season	--	vs. N/A
	Career	8	vs. Montana (12/06/06)
Three-Point Field Goals	Season	--	vs. N/A
	Career	1	vs. AK-Anchorage (11/23/07)
Three-Point Field Goal Attempts	Season	--	vs. N/A
	Career	2	vs. AK-Anchorage (11/23/07)
Free Throws	Season	--	vs. N/A
	Career	4	vs. Montana (12/06/06)
Free Throws Attempts	Season	--	vs. N/A
	Career	4	vs. 2 Opp. (Montana, 12/06/06)
Assists	Season	--	vs. N/A
	Career	2	vs. 2 Opp. (Troy, 02/17/07)
Steals	Season	--	vs. N/A
	Career	2	vs. 3 Opp. (UAB, 11/28/06)
Blocked Shots	Season	--	vs. N/A
	Career	1	vs. 3 Opp. (ULM, 02/23/08)
Minutes Played	Season	--	vs. N/A
	Career	24	vs. UAB (11/28/06)

2008-09 Maresca Game-by-Game

Opponent	Min	FG-A	Pct.	3FG-A	Pct.	FT-A	Pct.	O-D-TR	PF	A	TO	BS	ST	Pts
at Houston (11/15)														
CAMPBELLSVILLE (11/18)														
at Murray State (11/22)														
SOUTHERN ILLINOIS (11/26)														
vs. Louisville ¹ (11/30)														
GEORIGIA (12/02)														
at Tulane (12/06)														
at Evansville (12/13)														
at South Alabama* (12/18)														
ALABAMA A&M (12/21)														
vs. Florida State ² (12/28)														
TROY* (01/01)														
UALR* (01/03)														
at Mississippi State (01/05)														
at FIU* (01/08)														
at Florida Atlantic* (01/10)														
MIDDLE TENNESSEE* (01/15)														
NEW ORLEANS* (01/17)														
LOUISIANA-LAFAYETTE* (01/22)														
at Denver* (01/24)														
at Arkansas State* (01/29)														
NORTH TEXAS* (01/31)														
at ULM* (02/05)														
SOUTH ALABAMA* (02/07)														
at Troy* (02/14)														
at UALR* (02/19)														
FIU* (02/21)														
FLORIDA ATLANTIC* (02/26)														
at Middle Tennessee* (02/28)														
SBC Tournament (03/04-03/10)														

¹Played at Sommet Center in Nashville, Tenn. • ²MetroPCS Orange Bowl Classic in Miami, Fla.

MARESCA'S Career Stats

Season	G-S	Min-Avg.	FG-A	Pct.	3FG-A	Pct.	FT-A	Pct.	Reb-Avg.	PF-D	A	TO	BS	ST	Pts-Avg.
2008-09															
2007-08	20-0	61-3.1	5-10	.500	1-2	.500	0-1	.000	8-0.4	7-0	3	3	1	2	11-0.6
2006-07	24-5	255-10.6	22-41	.537	0-1	.000	14-16	.875	41-1.7	37-0	8	16	0	7	58-2.4
2005-06	20-0	116-5.8	7-19	.368	0-0	.000	5-6	.833	16-0.8	18-0	6	7	2	2	19-1.0
Totals	64-5	432-6.8	34-70	.485	1-2	.500	19-23	.826	65-1.0	62-0	17	26	3	11	88-1.4

MARESCA'S Career Sun Belt Conference Stats

Season	G-S	Min-Avg.	FG-A	Pct.	3FG-A	Pct.	FT-A	Pct.	Reb-Avg.	PF-D	A	TO	BS	ST	Pts-Avg.
2008-09															
2007-08	11-0	33-3.0	3-5	.600	0-0	.000	0-1	.000	5-0.5	4-0	2	3	1	1	6-0.5
2006-07	10-2	84-8.4	6-12	.500	0-0	.000	2-2	1.000	11-1.1	11-0	3	6	0	0	14-1.4
2005-06	9-0	40-4.4	3-8	.375	0-0	.000	2-2	1.000	3-0.3	6-0	2	1	1	1	8-0.9
Totals	30-2	157-5.2	12-25	.480	0-0	.000	4-5	.800	19-0.6	21-0	7	10	2	2	28-0.9

MISCELLANEOUS

Category	2008-09	Career
Games Led WKU in Scoring	0	0
10+ Rebounding Games	0	0
10+ Scoring Games	0	1
20+ Scoring Games	0	0
30+ Scoring Games	0	0
Double-Doubles	0	0
Games Led WKU in Rebounds	0	0
Games Led WKU in Assists	0	0
Games Led WKU in Blocks	0	2
Games Led WKU in Steals	0	2

CAREER HIGHLIGHTS

- Participated in the 2004 Kentucky-Indiana All-Star series
- Voted the Fourth Region's Player of the Year as a senior after leading Warren Central High School to its first State Championship
- The ninth player in Dragon history to score 1,000 career points