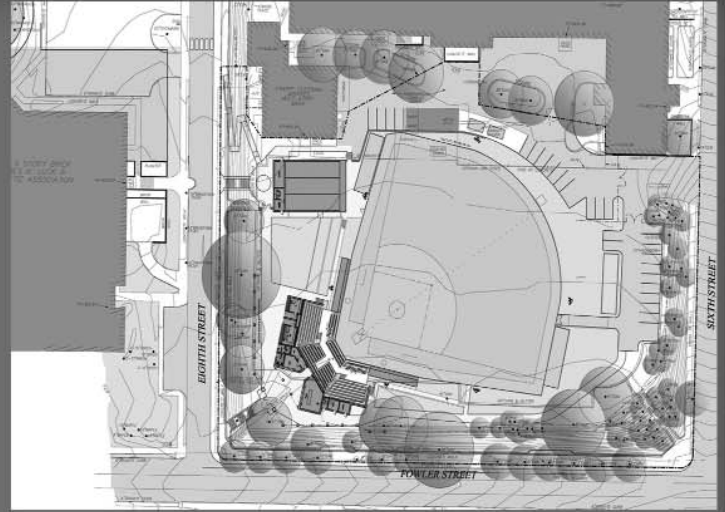
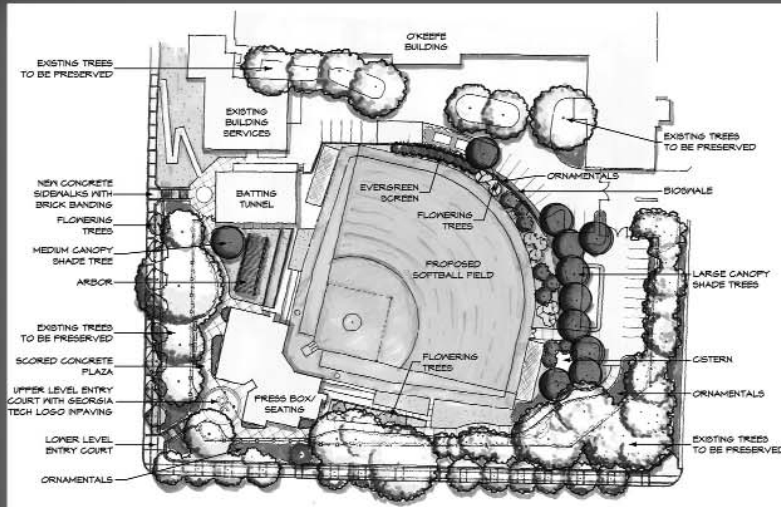


# NEW DIGS IN 2009

A Brand New Softball Stadium Is Scheduled To Be Built And Ready For The Start Of The 2009 Season..  
It Will Be Located At The Corner Of Fowler And 8th Streets In The Middle Of Campus.



## Highlights of the New **FIELD**

• Skyline views of downtown Atlanta • Indoor batting cages down the left-field line • Concrete plaza area with Georgia Tech logos in paving • Lower level entry court • Press box on top of the main grandstand behind home plate with areas to accommodate radio and television broadcasts • Shaded areas in the outfield for fans to watch the game • Flowering trees behind outfield wall • Bullpens for each team • Below ground dugouts on each baseline with terrace areas on top of them • Grandstand area from dugout to dugout with seating for 1,000 fans including chair-backs • Light structures • This facility will enable the Yellow Jackets to host ACC and NCAA Tournaments and compete with the top schools in the nation.