



1882

Overall: 14-1-0 (2-0-0)

Seton Hall	H	2-0, W
Seton Hall	A	4-2, W
St. Francis Xavier		4-0, W
St. Francis Xavier		6-10, L
New York Latin School		2-0, W
St. Francis Xavier		12-7, W
American Athletic Club		6-4, W
Fordham Reserves		6-0, W
Fordham Reserves		2-0, W
Fordham Reserves		20-0, W
Fordham Reserves		24-17, W
St. Francis Xavier		6-0, W
American Athletic Club		10-4, W
St. John's		12-7, W
St. John's		20-14, W

1883

Coach: John F. Condon
Captain: George Wallace
Overall: 10-8-0 (0-1-0)

St. Francis Xavier		6-12, L
American Athletic Club		10-6, W
St. Francis Xavier		6-12, L
American Athletic Club		4-12, L
Volunteers		15-6, W
Volunteers		20-6, W
New York Latin School		2-1, W
St. Francis Xavier		10-4, W
Olympics		10-6, W
Fordham Reserves		L
Fordham Reserves		W
American Athletic Club		0-6, L
St. Francis Xavier		4-16, L
Seton Hall		6-2, W
Seton Hall		8-2, W
Seton Hall		0-2, L
Seton Hall		0-10, L
St. John's		20-14, W
Deaf Mutes		10-0, W

1884

Overall: 17-3-0 (0-0-0)

Mott Haven Athletic Club		12-0, W
American Athletic Club		6-4, W
American Athletic Club		4-10, L
Olympics		15-0, W
Sylvans		21-0, W
Volunteers		18-0, W
Volunteers		21-0, W
St. Francis Xavier		0-10, L
Mott Haven Athletic Club		6-0, W
Volunteers		21-6, W
Fordham Reserves		10-4, W
Fordham Reserves		10-0, W
Seton Hall		10-4, W
Xavier Athletic Club		2-12, L
City College		18-0, W
St. John's		12-0, W
St. Francis Xavier		10-6, W
Volunteers		16-6, W
Mumbles		18-6, W
Mumbles		18-0, W

1885

Coach: George Wallace
Captain: George Wallace
Overall: 21-8-0 (0-3-0)

Seton Hall	H	0-14, L
Seton Hall	A	0-36, L
Seton Hall	H	0-12, L
Hobokens		10-0, W
American Athletic Club		10-4, W
Sylvans		6-0, W
Volunteers		15-12, W
Volunteers		12-6, W
St. Francis Xavier		10-0, W
Hobokens		6-10, L
Olympics		18-12, W
Sylvans		6-10, L
Olympics		18-0, W
American Athletic Club		16-6, W

Mott Haven Athletic Club		2-10, L
St. Francis Xavier		10-6, W
Fordham Reserves		4-0, W
Fordham Reserves		21-0, W
Fordham Reserves		7-14, L
Fordham Reserves		26-0, W
Fordham Reserves		0-13, L
St. John's		10-0, W
St. Francis Xavier		18-12, W
Volunteers		18-4, W
City College of New York		10-6, W
Betts Academy		26-6, W
Deaf Mutes		16-0, W
Fordham Prep		16-0, W
Mumbles		18-0, W

1886

Overall: 28-0 (11-0)

Hobokens		36-12, W
local athletic club		W
local athletic club		W
local athletic club		W
local athletic club		W
local athletic club		W
local athletic club		W
local athletic club		W
local athletic club		W
local athletic club		W
local athletic club		W
Olympics		16-0, W
Sylvans		16-6, W
American Athletic Club		10-0, W
American Athletic Club		16-0, W
Fordham Reserves		28-0, W
St. Francis Xavier		16-12, W
City College of New York		34-0, W
City College of New York		42-6, W
City College of New York		28-6, W
City College of New York		20-0, W
St. Francis Xavier		21-7, W
Sylvans		21-0, W
Betts Academy		30-0, W
St. John's		20-0, W
Fordham Prep		24-12, W
St. Francis Xavier		21-7, W
Sylvans		21-0, W
Betts Academy		30-0, W

1887

Coach: Unknown
Captain: Robert Cushion
Overall: 18-5-0 (4-0-0)

Olympics		6-0, W
Olympics		15-0, W
Verona Boat Club		12-4, W
Nautilus Boat Club		8-0, W
Verona Boat Club		0-10, L
Hobokens		6-0, W
American Athletic Club		10-6, W
Sylvans		28-10, W
St. Francis Xavier		6-0, W
Volunteers		6-10, L
Volunteers		6-0, W
Hobokens		16-6, W
Sylvans		16-0, W
Sagamore Athletic Club		10-4, W
American Athletic Club		10-6, W
American Athletic Club		10-4, W
Fordham Reserves		24-0, W
Fordham Reserves		17-6, W
Fordham Reserves		30-16, W
Fordham Reserves		20-6, W
Volunteers		0-6, L
American Athletic Club		0-20, L
Verona Boat Club		16-20, L

1888

Coach: Charles Livingston
Captain: Thomas Carmody
Overall: 25-6-0 (3-3-0)

Trinity		0-60, L
American Athletic Club		16-10, W
Volunteers		25-4, W

Seton Hall	A	0-12, L
American Athletic Club		4-0, W
Seton Hall	A	0-1, L
Volunteers		10-0, W
Verona Boat Club		6-10, L
Sagamore Athletic Club		6-0, W
Belmont Athletic Club		4-16, L
Hawthorne Athletic Club		10-0, W
Sylvans		16-6, W
Sylvans		10-6, W
Volunteers		21-0, W
Hobokens		16-4, W
Olympics		12-6, W
Hobokens		10-0, W
American Athletic Club		4-0, W
Fordham Reserves		30-6, W
Fordham Reserves		40-6, W
Seton Hall		W
St. Francis Xavier		20-6, W
Hobokens		20-6, W
American Athletic Club		16-0, W
American Athletic Club		17-0, W
American Athletic Club		19-0, W
Volunteers		0-12, L
Mumbles		10-0, W
Mumbles		26-6, W
Mumbles		30-0, W
Hobokens		27-0, W
Fordham Prep		16-12, W
Fordham Prep		18-6, W

1889

Coach: Thomas Carmody
Captain: Thomas Carmody
Overall: 20-5-1 (6-3-1)

Fordham Prep		24-0, W
Fordham Prep		26-4, W
New York A.C. (PG)		0-20, L
New York University A		34-6, W
St. Austin's		6-14, L
American Athletic Club		12-4, W
Franklin & Marshall		0-56, L
Volunteers		W
St. Austin's		16-4, W
American Athletic Club		16-0, W
American Athletic Club		10-6, W
Sagamore Athletic Club		4-0, W
Hawthorne Athletic Club		6-0, W
Belmont Athletic Club		6-16, L
Fordham Prep		10-0, W
Olympics		30-12, W
Hobokens		12-4, W
Fordham Reserves		6-6, T
Fordham Reserves		80-0, W
St. Francis Xavier		6-20, L
Hobokens		16-12, W
American Athletic Club		20-12, W
St. Peter's		48-0, W
St. Peter's		29-0, W
Georgetown		6-4, W
Mumbles		20-0, W

1890

Coach: James McNally
Captain: James McNally
Overall: 29-6-2 (5-3-2)

City College of New York		21-0, W
City College of New York		24-0, W
Columbia	A	0-40, L
Manhattan Athletic Club		0-32, L
New York University		1-0, W
City College of New York		6-6, T
Georgetown	H	6-6, T
Sylvans		28-6, W
Franklin & Marshall		0-18, L
Volunteers		29-0, W
Sylvans		16-0, W
Hawthorne Athletic Club		6-0, L
American Athletic Club		16-0, W
American Athletic Club		4-16, L
Belmont Athletic Club		10-0, W
Hawthorne Athletic Club		16-12, W
St. Francis Xavier		10-0, W

Hobokens		14-0, W
Olympics		26-12, W
Fordham Prep		19-8, W
Olympics		16-12, W
Hobokens		20-0, W
Fordham Reserves		6-4, W
Olympics		30-0, W
Fordham Prep		20-0, W
Fordham Prep		12-6, W
Columbia Freshmen		W
Jeromes		0-10, L
Jeromes		16-6, W
City College of New York		29-0, W
Georgetown		16-10, W
Olympics		16-0, W
New York University		31-0, W
City College of New York		39-0, W
St. Joseph's		9-0, W
Nautilus Boat Club		W
Volunteers		12-0, W

1891

Coach: John P. Lee
Captain: James McNally
Overall: 22-5-3 (8-2-3)

New York Athletic Club		0-0, T
New York Athletic Club		0-0, T
Sylvans		36-0, W
Williams		0-40, L
Army		6-10, L
Manhattan Athletic Club		0-0, T
New York Law		6-0, W
Georgetown	H	1-0, W
Volunteers		19-0, W
St. Francis Xavier		16-8, W
City College of New York		14-0, W
Belmont Athletic Club		0-16, L
Verona Boat Club		4-0, W
Sagamore Athletic Club		6-2, W
Hawthorne Athletic Club		16-4, W
Verona Boat Club		4-16, L
Belmont Athletic Club		16-12, W
Sylvans		12-6, W
Hobokens		21-6, W
Fordham Prep		W
Berkeley School		30-0, W
American Athletic Club		6-16, L
Fordham Reserves		6-0, W
Fordham Reserves		18-0, W
Sylvans		16-6, W
Sylvans		14-4, W
Columbia Freshmen		W
City College of New York		26-6, W
Jeromes		12-6, W
City College of New York		19-0, W

1892

Coach: Harry Ely
Captain: Thomas Ferguson
Overall: 33-7-0 (5-3-0)

New York Athletic Club		5-0, W
Y.M.C.A.		39-0, W
Stevens		0-22, L
Verona Boat Club		6-12, L
Deaf Mutes		29-4, W
St. Francis Xavier		28-7, W
Columbia Freshmen		W
St. Francis Xavier		6-0, W
Verona Boat Club		0-16, L
Hawthorne Athletic Club		10-4, W
Sagamore Athletic Club		6-0, W
Hobokens		30-0, W
Hobokens		24-6, W
Dominican		29-0, W
St. Agnes Lyceum		52-6, W
Paterson YMCA		37-6, W
St. Peter's		40-0, W
Jerome Club		0-10, L
Manhattan Athletic Club		0-6, L
American Athletic Club		14-4, W
Fordham Prep		17-4, W
Fordham Reserves		20-2, W
Fordham Reserves		30-12, W
City College		15-0, W



Maroons	20-14, W
Nutley Athletic Club	16-10, W
Maroons	18-6, W
Fordham Prep	6-0, W
Fordham Prep	2-12, L
Berkeley School	20-0, W
Sylvans	W
Maroons	12-10, W
Maroons	12-4, W
YMCA (23 St. Branch)	5-0, W
Jerome	6-0, W
Stephens	48-0, W
St. Peter's	18-0, W
Volunteers	0-10, L
Fordham Prep	24-6, W
Mumbles	24-0, W

1893

Coach: John P. Lee

Captain: Maurice Doran

Overall: 23-2-1 (5-1-0)

Dominican	64-0, W
St. Agnes Lyceum	46-0, W
Paterson YMCA	54-0, W
Jerome Club	4-0, W
Willet's Point	0-14, L
Columbia Freshmen	W
Hawthorne Athletic Club	6-14, L
St. Francis Xavier	10-0, W
Belmont Athletic Club	12-6, W
Verona Boat Club	12-0, W
Sagamore Athletic Club	16-12, W
Volunteers	21-0, W
Fordham Prep	W
Fordham Reserves	16-6, W
Fordham Reserves	6-3, W
YMCA	34-7, W
Berkeley School	24-7, W
City College of New York OF	W
City College of New York OF	W
Maroons	6-0, W
Maroons	10-4, W
Invincibles	24-0, W
Seton Hall	6-6, T
YMCA (23 St. Branch)	12-0, W
Jeromes	20-12, W
Dominican	63-0, W

1894

Coach: George Grainger

Captain: Maurice Doran

Overall: 23-3-0 (6-1-0)

Hawthorne Athletic Club	12-4, W
Fordham Prep	0-25, L
Fordham Prep	12-6, W
Maroons	6-4, W
Jerome Club	6-16, L
Volunteers	16-6, W
Sylvans	21-0, W
Deaf Mutes	28-0, W
St. Francis Xavier	12-6, W
Sagamore Athletic Club	16-12, W
Fordham Freshmen	4-2, W
Fordham Freshmen	12-0, W
Fordham Freshmen	20-6, W
Fordham Reserves	20-0, W
Fordham Reserves	26-6, W
YMCA	30-0, W
YMCA	30-20, W
Volunteers	6-12, L
St. Agnes Lyceum	50-0, W
Dominican	42-0, W
Maroons	16-12, W
Invincibles	36-0, W
St. Francis Xavier	16-0, W
Volunteers	20-0, W
Fordham Prep	24-18, W
Mumbles	36-0, W

1895

Coach: George Grainger

Captain: George Grainger

Overall: 24-6-0 (0-2-0)

Fordham Prep	0-8, L
Fordham Prep	6-12, L
Olympics	12-0, W
Sylvans	16-6, W
Volunteers	6-0, W
Olympics	18-12, W
St. Francis Xavier	6-0, W
Sagamore Athletic Club	16-6, W
Belmont Athletic Club	6-24, L
Sylvans	12-0, W
Jerome Club	10-4, W
Verona Boat Club	12-6, W
Hawthorne Athletic Club	16-12, W
Fordham Freshmen	10-0, W
Fordham Reserves	26-16, W
Fordham Reserves	20-10, W
Dominican	30-6, W
St. Agnes Lyceum	47-12, W
Maroons	12-0, W
Maroons	18-0, W
Maroons	20-0, W
Dauntless	6-10, L
Sagamore	0-12, L
Resolute	0-10, L
Invincibles	18-0, W
Volunteers	30-10, W
St. Peter's	7-0, W
Mumbles	18-6, W
Mumbles	18-0, W
Maroons	24-0, W

1896

Coach: George Grainger

Captain: George Grainger

Overall: 24-3-0 (3-1-0)

St. Francis Xavier	14-0, W
Sagamore Athletic Club	16-6, W
Hawthorne Athletic Club	4-16, L
Volunteers	6-0, W
Sylvans	21-0, W
Jerome Club	10-6, W
Deaf Mutes	35-6, W
Olympics	16-6, W
American Athletic Club	10-4, W
Fordham Prep	28-0, W
Fordham Freshmen	4-10, L
Fordham Reserves	16-0, W
Fordham Reserves	3-0, W
Fordham Freshmen	20-0, W
Fordham Freshmen	0-10, L
YMCA	18-6, W
Fordham Prep	20-10, W
Fordham Reserves	10-6, W
Fordham Reserves	10-0, W
Erasmus High School	26-6, W
Erasmus High School	10-6, W
Maroons	10-0, W
Maroons	10-6, W
Dauntless	6-0, W
Jeromes	10-0, W
Invincibles	18-0, W
Sylvans	26-7, W

1897

Coaches: Frederick Shaeffer,

Robert Carmody

Captain: George Grainger

Overall: 16-2-5 (3-1-2)

St. Peter's	H 20-0, W
St. Francis Xavier	32-0, W
Villanova	0-0, T
College All-Stars	0-0, T
Villanova	0-17, L
Sylvans	16-6, W
American Athletic Club	10-0, W
Belmont Athletic Club	0-24, L
Hawthorne Athletic Club	12-12, T
Jerome Club	6-0, W
Sylvans	21-6, W
Volunteers	16-12, W

Olympics	16-0, W
American Athletic Club	10-0, W
Erasmus High School	6-6, T
Fordham Reserves	10-0, W
Fordham Reserves	28-0, W
Fordham Reserves	30-0, W
Fordham Reserves	28-6, W
Fordham Prep	12-6, W
Fordham Prep	T
St. Peter's	18-6, W
Morris High School	30-0, W

1898

Coaches: James Masterson, John Couch

Captains: Maurice O'Gorman,

Peter Reilly

Overall: 17-4-3 (1-1-2)

Nutley Athletic Club	12-0, W
Knickerbocker Ath. Club	0-43, T
Seton Hall	H 0-0, T
Mount Vernon YMCA	0-0, T
Olympics	6-0, W
American Athletic Club	12-0, W
Verona Boat Club	16-6, W
American Athletic Club	16-0, W
Sagamore Athletic Club	0-21, L
Hawthorne Athletic Club	0-16, L
Jerome Club	10-0, W
Sylvans	21-0, W
Olympics	14-0, W
Nutley Athletic Club	16-6, W
McChesney's	12-9, W
Fordham Reserves	13-0, W
Fordham Reserves	23-6, W
Erasmus High School	6-0, W
Fordham Prep	L
Fordham Prep	W
Mumbles	24-9, W
St. Peter's	48-0, W
Morris High School	36-20, W
Maroons	6-20, L

1899

Coach: John Mullen

Captains: Maurice O'Gorman,

John Mullen

Overall: 18-8-0 (3-4-0)

Cathedral Institute	35-0, W
Murray Hill Athletic Club	11-0, W
Seton Hall	A 0-17, L
McChesney's	11-0, W
Army	0-37, L
St. Francis Xavier	0-10, L
Sylvans	21-0, W
Nutley Athletic Club	16-0, W
Olympics	10-0, W
Jerome Club	10-6, W
American Athletic Club	6-0, W
Verona Boat Club	16-6, W
Nutley Athletic Club	10-6, W
Fordham Reserves	L
Fordham Reserves	L
Fordham Reserves	24-3, W
Erasmus	10-0, W
Fordham Prep	6-10, L
Fordham Prep	10-14, L
Fordham Prep	20-16, W

Volunteers	18-6, W
Erasmus	10-6, W
Seton Hall	12-0, L
Maroons	16-12, W
St. Francis Xavier	W
Betts Academy	26-0, W

1900

Coach: Maurice McCarthy

Captain: Richard Harrington

Overall: 13-3-2 (2-1-2)

Fordham Prep	0-0, T
St. Joseph's	0-0, T
St. Francis Xavier	16-0, W
St. Francis Xavier	22-5, W
St. Thomas	5-10, L
Hawthorne Athletic Club	0-21, L
Bedford Athletic Club	6-0, W
Nutley Athletic Club	12-6, W
Olympics	6-0, W
American Athletic Club	10-6, W
Verona Boat Club	12-6, W
Sylvans	21-0, W
Fordham Reserves	31-7, W
St. Francis Xavier	20-0, W
St. Francis Xavier	L
St. Thomas	16-10, W
Cathedral	30-6, W
Xavier	22-0, W

1901

Coaches: Maurice McCarthy,

Frederick Smith

Captain: Edward Sweetnam

Overall: 12-3-2 (2-1-1)

New York University	6-6, T
Audobon Field Society	5-2, W
Fort Hancock	0-5, L
Audobon Field Society	16-0, W
Resolute Athletic Club	0-6, L
Harlem Athletic Club	12-6, W
Bedford Athletic Club	7-0, W
Sagamore Athletic Club	6-0, W
Hawthorne Athletic Club	10-6, W
Harlem Athletic Club	6-16, L
Fort Totten	6-0, W
Fort Wadsworth	12-6, W
Murray Hill Athletic Club	16-0, W
U & BNM	6-6, T
Fort Hancock	90-0, W
Sagamore Athletic Club	9-0, W
City College of New York	14-0, W

1902

Coach: William H. Murphy

Captain: James Fogarty

Overall: 15-10-1 (3-4-1)

Union	6-0, W
Columbia	PG 0-45, L
Villanova	H 6-15, L
New Paltz	17-0, W
Pittsfield Athletic Club	0-0, T
Delaware	H 0-16, L
Holy Cross	H 0-17, L
Sagamore Athletic Club	0-12, L
Resolute Athletic Club	12-0, W





Bedford Athletic Club	6-0, W
Hawthorne Athletic Club	12-6, W
Fort Hancock	6-0, W
Murray Hill Athletic Club	31-0, W
Nutley Athletic Club	16-12, W
City College of N.Y. OF	24-0, W
St. Francis Xavier	16-4, W
Pratt	W
Brooklyn Poly	1-0, W
Xavier	10-0, L
Xavier	16-0, L
Rutgers	A W
Betts Academy	20-57, L
Silents	12-7, W
Betts Academy	30-0, W
Fordham Prep	6-10, L

1903

Coach: Harry Ely
Captain: Thomas Plunkett
Overall: 16-2-1 (4-1-0)

Rutgers	15-0, W
Lafayette	0-41, L
Resolute Athletic Club	10-0, W
Manhattan	H 12-0, W
Delaware	12-7, W
Murray Hill Athletic Club	21-13, W
Nutley Athletic Club	13-6, W
Bedford Athletic Club	0-16, L
Medico	24-0, W
Betts Academy	6-0, W
Webster Academy	24-6, W
Hawthorne Athletic Club	12-6, W
Villanova	7-7, T
Betts Academy	42-0, W
New York University	20-6, W
City College	34-0, W
Brooklyn Poly	26-0, W
Columbia Freshmen	W
Silents	10-6, W

1904

Coach: Frederick Smith
Captain: Edward Glennon
Overall: 22-6-0 (6-1-1)

Betts Academy	5-2, W
Webster Academy	38-0, W
New York University	21-0, W
Rensselaer Polytechnic	22-0, W
Delaware	H 12-0, W
Seton Hall	H 0-6, L
Villanova	H 6-0, W
Pittsfield Athletic Club	10-0, W
Villanova	W
St. Joseph's (forfeit)	W
St. Francis Xavier	10-30, L
Resolute Athletic Club	13-7, W
City College of New York	30-6, W
Medico	30-0, W
Betts Academy	21-6, W
Audobon Field Society	0-13, L
Nutley Athletic Club	12-6, W
Murray Hill Athletic Club	13-6, W
Fordham Prep	24-7, W
Union	1-0, W
Fordham Prep	26-0, W
Fordham Prep	21-14, W
Bethay AC	17-12, W
Belmont Abbey	11-8, W
Brooklyn	6-17, L
Heght School	20-11, W
Berkshire	L
Xavier	L

1905

Coach: Eugene McGee
Captain: Howard Gargan
Overall: 12-3-1 (5-2-0)

Stevens	0-0, T
Rensselaer Polytechnic	5-0, W
Villanova	A 5-34, L
Maryland-Baltimore	16-0, W
St. Francis Xavier	22-0, W

Delaware	H 4-0, W
Rutgers	17-6, W
Holy Cross	H 5-27, L
Nutley Athletic Club	12-6, W
Medico	27-0, W
Resolute Athletic Club	0-10, L
Betts Academy	21-0, W
Murray Hill Athletic Club	16-6, W
Webster Academy	31-0, W
Middlebury	W
New York University	16-6, W

1906

Coach: Frederick Smith
Captain: Howard Gargan
Overall: 15-5 (6-3-0)

Rutgers	0-6, L
Rensselaer Polytechnic	14-0, W
Medico	29-0, W
Maryland Athletic Club	51-0, W
Holy Cross	A 5-8, L
Delaware	H 16-4, W
Villanova	H 18-5, W
Holy Cross	H 6-15, L
local athletic club	W
Murray Hill Athletic Club	10-6, W
Betts Academy	20-0, W
Bedford Athletic Club	0-17, L
Nutley Athletic Club	10-0, W
Audobon Field Society	6-0, W
New York University	12-0, W
St. John's College	37-5, W
Bedford	6-18, L
Bedford	18-0, W
Pratt	19-11, W
Fordham Prep	16-12, W

1907

Coach: Frederick Smith
Captain: Howard Gargan
Overall: 18-1-1 (6-1-1)

Rutgers	A 5-5, T
Rensselaer Polytechnic	12-0, W
Franklin & Marshall	57-5, W
Georgetown	H 36-0, W
Holy Cross	A 35-0, W
Villanova	A 11-15, L
Medico	54-0, W
Holy Cross	H 35-0, W
Betts Academy	37-0, W
Bedford Athletic Club	6-0, W
Audobon Field Society	14-7, W
Webster Academy	28-0, W
Nutley Athletic Club	10-0, W
YMCA	24-0, W

Site Legend

AC	— Atlantic City Convention Center
BB	— Bermuda Bowl, Hamilton, Berm.
BF	— Braves Field; Boston, Mass.
CB	— Cotton Bowl; Dallas, Texas
DC	— Griffith Stadium; Washington, D.C.
FP	— Fenway Park; Boston, Mass.
GG	— Limerick (Ireland) Gaelic Grounds
GS	— Giants Stadium; Meadowlands, N.J.
JS	— Johnstown (Pa.) Memorial Stadium
LF	— Lambeau Field; Green Bay, Wisc.
OF	— Ohio Field; New York, N.Y.
PG	— Polo Grounds; New York, N.Y.
SB	— Tulane Stadium; New Orleans, La.
TS	— Triborough Stadium; Randall's Island
WM	— War Memorial Stadium; Buffalo
YS	— Yankee Stadium; Bronx, N.Y.
HC	— Homecoming game
*	— night game

NOTE: Although they are listed in the year-by-year reviews, games vs. the Fordham Reserves and the Fordham Freshmen are considered intra-squad scrimmages and are not included in the won-loss totals for those seasons.

YMCA	23-10, W
New York University	16-5, W
Fordham JV	27-0, W
YMCA	21-7, W
Xavier	61-0, W
Fordham Prep	18-12, W

1908

Coach: Howard Gargan
Captain: Leo Fitzpatrick
Overall: 17-3-1 (7-1-1)

Amherst	5-0, W
Jefferson Medical	45-0, W
Princeton	0-17, L
USS Hancock	15-0, W
Georgetown	H 22-0, W
New York University	0-0, T
Rensselaer Polytechnic	22-12, W
Villanova	H 2-0, W
New York University	17-0, W
Medico	30-0, W
Fort Totten	17-6, W
Fort Wadsworth	14-6, W
Fort Hancock	17-7, W
Betts Academy	34-0, W
Murray Hill Athletic Club	28-7, W
Bedford Athletic Club	0-17, L
Syracuse	6-0, W
Commerce High School	W
New York University	18-0, W
Adelphi	7-9, L
Peekskill Military Academy	W

1909

Coach: Howard Gargan
Captain: Frank Gargan
Overall: 13-2-2 (6-1-2)

New York University	16-0, W
Rutgers	A 9-0, W
Princeton	0-3, L
Cornell	12-6, W
Swarthmore	21-3, W
Georgetown	H 0-0, T
Rensselaer Polytechnic	30-0, W
Holy Cross	H 9-5, W
Syracuse	5-5, T
Betts Academy	31-0, W

Fort Hancock	17-0, W
Murray Hill Athletic Club	21-6, W
Webster Academy	30-7, W
Bedford Athletic Club	0-17, L
Nutley Athletic Club	12-6, W
Peekskill Military Academy	W
Medics	10-0, W

1910

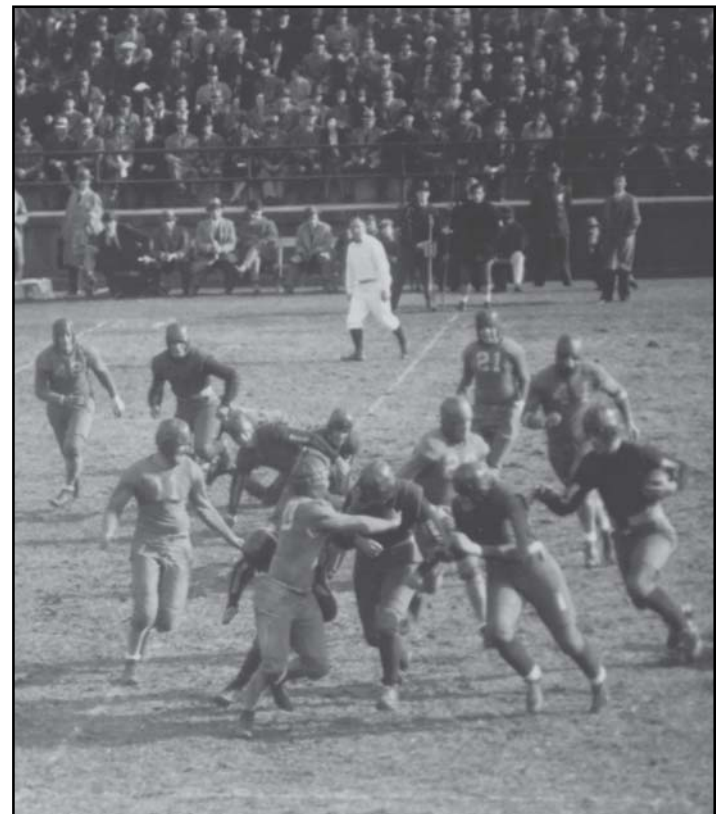
Captain: Edward Barrett
Overall: 11-3 (0-0)

Bedford Athletic Club	12-6, W
Local athletic club	10-6, W
Mott Haven Athletic Club	24-12, W
Audubon Athletic Club	12-18, L
Murray Hill Athletic Club	18-6, W
Bedford Athletic Club	16-10, W
Fordham Freshmen	18-0, W
Fordham Freshmen	12-0, W
Fordham Freshmen	24-0, W
Belmore Athletic Club	10-19, L
Fordham Prep	6-0, W
Fordham Reserves	6-16, L
Fordham Freshmen	20-10, W
Fordham Freshmen	20-6, W

1911

Overall: 14-3 (1-0)

Bedford Athletic Club	12-6, W
Rose Hill Athletic Club	12-0, W
Maroons	18-6, W
Mott Haven Athletic Club	6-12, L
Sagamore Athletic Club	12-18, L
Nutley Athletic Club	18-24, L
Bronx Athletic Club	6-0, W
Bedford Athletic Club	12-6, W
Fordham Freshmen	12-0, W
Fordham Freshmen	18-6, W
Fordham Freshmen	18-0, W
Fordham Freshmen	13-6, W
Fordham Prep	27-0, W
Fordham Prep	12-6, W
Fordham Reserves	13-0, W
Fordham Reserves	16-10, W
St. Peter's	10-0, W





1912

Coach: Thomas Thorpe
Captain: James Hinchcliffe
Overall: 17-5 (4-4)

Boston College	14-0, W
Rhode Island	0-6, L
Norwich	0-30, L
Stevens	13-12, W
Albright	13-6, W
Stevens	14-13, W
Rensselaer Polytechnic	3-13, L
Villanova	A 0-19, L
St. Peter's	1-0, W
St. Bonaventure	1-0, W
St. Bonaventure	12-0, W
New York University	16-0, W
New York University	26-12, W
Fort Hancock	24-12, W
Murray Hill Athletic Club	6-12, L
Fort Wadsworth	17-7, W
Fort Totten	13-0, W
Bedford Athletic Club	16-10, W
Commerce High School	45-0, W
St. Peter's	25-12, W
Rhode Island	6-4, W
Albright	18-0, W

1913

Coach: Thomas Thorpe
Captain: Frank Mulvey
Overall: 18-9-2 (5-4-2)

St. Peter's	H 34-0, W
Princeton	0-69, L
Rensselaer Polytechnic	7-0, W
Seton Hall	H 21-0, W
Villanova	H 0-43, L
Boston College	27-27, T
Holy Cross	A 0-60, L
Mount Saint Mary's	0-0, T
Murray Hill Athletic Club	14-6, L
USS Wyoming	21-0, L
USS Arkansas	17-0, L
New York University	W
Bedford Athletic Club	0-17, L
St. Joseph's	W
USS Hancock	24-0, W
Fort Wadsworth	28-7, W
Fort Totten	16-3, W
Vermont	W
St. Peter's	47-21, W
Pratt	38-16, W
Muhlenberg	W
Catholic	W
7th Regiment	W
Seton Hall	W
Concordia	7-0, W
St. Peter's	29-7, W
Rhode Island	W

1914

Coach: Skip Wymard
Captain: Charles Wymard
Overall: 18-4-1 (6-2-1)

Georgetown	A 0-0, T
Gallaudet	7-6, W
Rochester	21-0, W
Middlebury	28-0, W
Rhode Island	21-0, W
Gettysburg	21-2, W
Navy	0-21, L
Vermont	7-0, W
Boston College	14-3, W
Villanova	6-7, L
USS Texas	27-0, W
USS Arkansas	24-7, W
Fort Slocum	0-6, L
Bedford Athletic Club	10-6, W
Fort Wadsworth	21-0, W
Mount Saint Mary's	W
New York University	18-6, W
Fort Slocum	10-7, W
Fort Hancock	16-14, W
Rhode Island	36-0, W

St. Peter's
Pratt
Cathedral
38-16, W
6-8, L
W

1915

Coach: Harry Vaughan
Captain: David Dunn
Overall: 19-6 (4-4)

Union	0-6, L
Connecticut Aggies	35-0, W
Holy Cross	H 10-0, W
Georgetown	H 7-33, L
Boston College	A 0-3, L
Rhode Island	9-0, W
Carlisle	14-10, W
Villanova	H 0-33, L
Fort Totten	0-6, L
Fort Hancock	10-6, W
USS Wyoming	30-6, W
USS Texas	28-7, W
USS Arkansas	24-0, W
Carlisle	18-6, W
Temple	W
Cooper Pharmacy	30-0, W
New York University	20-0, W
USS Texas	31-7, W
USS Arkansas	20-0, W
Carlisle	L
Fordham Prep	21-0, W
St. Peter's	1-0, W
Lehigh Freshmen	42-0, W
Cooper Pharmacy	30-0, W
New York University	18-6, W
Army Plebes	W

Frank Gargan

8 Seasons • 1916, 19, 22-26
72-29-4 (.705)

Year	W	L	T	Pct.
1916	25	1	1	.944
1917	20	3	0	.857
1919	10	6	0	.600
1922	3	5	2	.400
1923	4	7	0	.300
1924	9	2	0	.818
1925	9	1	0	.900
1926	3	4	1	.438
Totals	76	29	4	.677

Site Legend

AC — Atlantic City Convention Center
BB — Bermuda Bowl; Hamilton, Berm.
BF — Braves Field; Boston, Mass.
CB — Cotton Bowl; Dallas, Texas
DC — Griffith Stadium; Washington, D.C.
FP — Fenway Park; Boston, Mass.
GG — Limerick (Ireland) Gaelic Grounds
GS — Giants Stadium; Meadowlands, N.J.
JS — Johnstown (Pa.) Memorial Stadium
LF — Lambeau Field; Green Bay, Wisc.
OF — Ohio Field; New York, N.Y.
PG — Polo Grounds; New York, N.Y.
SB — Tulane Stadium; New Orleans, La.
TS — Triborough Stadium; Randall's Island
WM — War Memorial Stadium; Buffalo
YS — Yankee Stadium; Bronx, N.Y.
HC — Homecoming game
* — night game

NOTE: Although they are listed in the year-by-year reviews, games vs. the Fordham Reserves and the Fordham Freshmen are considered intra-squad scrimmages and are not included in the won-loss totals.

1916

Coach: Frank Gargan
Captain: James Butler
Overall: 25-1-1 (11-1-1)

Lafayette	0-0, T
Western Maryland	20-0, W
USS Texas	22-0, W
Susquehanna	47-0, W
Georgetown	H 0-13, L
Gallaudet	68-0, W
Holy Cross	A 40-10, W
Villanova	H 14-7, W
USS Arkansas	30-0, W
USS Wyoming	24-0, W
Boston College	W
Widener	W
US Training Sta.-Bayshore	13-6, W
Mitchell Field Aviators	12-6, W
Pelham Bay Naval Reserve	24-0, W
USS Wyoming	20-10, W
USS Arkansas	14-10, W
Fordham Reserves	18-0, W
Fordham Reserves	14-0, W
Fordham Reserves	10-7, W
New York University	W
St. Joseph's	W
Fordham Prep	20-16, W
Fordham Prep	20-10, W
St. Peter's	10-0, W
Columbia Freshmen	30-0, W
New York University	12-0, W

1917

Coaches: Frank Gargan, Frank McCaffrey
Captains: Bill Lowe, James Conklin, James Kendrick

Overall: 22-3 (7-2)

Fort Wadsworth	35-0, W
Allentown	19-7, W
Norwich	60-0, W
Holy Cross	H 12-0, W
Rutgers	0-28, L
Georgetown	H 0-12, L
Cornell	27-6, W
Pelham Bay Naval Reserve	28-0, W
Camp Upton	35-0, W
USS Arkansas	30-7, W
USS Texas	20-0, W
USS Wyoming	14-0, W
US Training Sta.-Bayshore	10-7, W
Mitchell Field Aviators	0-7, L
Camp Upton	42-10, W
Camp Merritt	10-7, W
302nd Engineers	35-0, W
New York University	10-0, W
St. Joseph's	26-9, W
YMCA	21-7, W
Army Plebes	28-0, W
302nd Engineers	35-13, W
Army Plebes	10-6, W
Fort HG Wright	21-0, W
Fort HG Wright	10-7, W

1918

Coach: Edward Siskind
Captain: William Ewing
Overall: 16-2-1 (6-1-1)

New York University	7-0, W
10-30 USS Granite State	H 6-0, W
11- 2 St. John's	H 27-0, W
11- 9 New York University	A 7-0, W
11-16 Boston College	A 13-0, W
11-20 Fort Slocum	6-6, T
11-23 Camp Merritt	0-27, L
11-28 Georgetown	H 14-0, W
Pelham Bay Naval Reserve	31-7, W
US Training Station Bayshore	0-10, L
USS Texas	24-0, W
USS Arkansas	30-6, W
USS Wyoming	20-0, W
USS Texas	31-7, W
USS Arkansas	20-0, W
Columbia Freshmen	21-14, W

Fordham Prep
Fort HG Wright
New Mexico
10-3, W
7-0, W
28-10, W

1919

Coach: Frank Gargan
Captain: Frank Frisch
Overall: 10-7 (0-1)

Long Island Aggies	0-40, L
Fort Slocum	0-6, L
Fort Hancock	14-7, W
Fort Totten	0-6, L
Fort Slocum	10-0, W
Fort Totten	18-0, W
Mitchell Field Aviators	0-12, L
Fordham Prep	12-6, W
Fordham Prep	10-0, W
Fort Totten	18-12, W
Fort Hancock	21-7, W
Fordham Prep	10-14, L
Fort Hancock	27-6, W
Fort Slocum	0-20, L
Fort Wadsworth	24-6, W
Fort Totten	20-12, W
Fort HG Wright	14-10, L

1920

Coaches: Joseph DuMoe, Charles Brickley
Captain: Sylvester Fitzpatrick
Overall: 7-3

Long Island Aggies	71-0, W
10-9 Boston College	A 0-20, L
10-16 Villanova	H 12-6, W
Georgetown	H 16-40, L
Detroit	H 0-39, L
George Washington	40-0, W
Muhlenberg	13-0, W
Villanova	12-0, W
Fort HG Wright	14-0, W
Fort HG Wright	28-14, W

1921

Coach: Joseph DuMoe
Captain: Sylvester Fitzpatrick
Overall: 5-3-1

Maine	25-14, W
Washington (Md.)	101-0, W
Catholic	10-0, W
Villanova	H 20-19, W
Lafayette	7-28, L
10-29 Boston College	H 0-0, T
Georgetown	A 7-34, L
Muhlenberg	7-12, L
Springfield	14-0, W

1922

Coach: Frank Gargan
Captain: Thomas Myers
Overall: 3-5-2

Canisius	13-0, W
Rutgers	A 15-20, L
10-12 Boston College	A 0-27, L
Georgetown	H 13-28, L
Westminster	12-0, W
Springfield	0-17, L
New York University	A 14-0, W
Colby	6-6, T
Holy Cross	A 0-28, L
Muhlenberg	20-20, T

1923

Coach: Frank Gargan
Captain: Louis Healey
Overall: 4-7

10-5 Mount Saint Mary's	H 41-0, W
10-12 Boston College	A 0-20, L
10-19 Lehigh	A 6-9, L
10-26 St. John's	PG 0-13, L
11-2 New York University	YS 0-20, L
11-9 Holy Cross	PG 7-23, L
11-16 City College of New York	A 30-0, W
11-23 Rutgers	A 0-42, L



11-30 Georgetown	PG	0-6, L
Gallaudet		23-6, W
Mt. St. Mary's		64-0, W

1924

Coach: Frank Gargan
Captain: Raymond Snead
Overall: 9-2

9-27 Seventh Regiment	H	21-0, W
10-4 Manhattan	H	34-6, W
10-13 Boston College	A	0-28, L
10-18 Bard	H	26-0, W
10-25 Holy Cross	A	0-13, L
11-1 New York University	YS	27-0, W
11-15 City College of New York	A	31-0, W
11-29 Georgetown	PG	9-6, W
Mt. St. Mary's		34-0, W
City College of New York		20-9, W
Gallaudet		23-9, W

1925

Coach: Frank Gargan
Captain: James Manning
Overall: 9-1

10-3 Providence	H	20-6, W
10-10 Gallaudet	H	60-0, W
10-17 Manhattan	H	55-0, W
10-24 Akron	A	28-0, W
10-31 New York University	YS	26-6, W
11-7 Holy Cross	PG	17-0, W
11-14 City College of New York	H	76-0, W
11-21 Georgetown	PG	0-27, L
11-26 John Carroll	A	13-7, W
City College of New York		16-9, W

1926

Coach: Frank Gargan
Captain: Thomas Leary
Overall: 3-4-1

10-2 Mount Saint Mary's	H	48-0, W
10-9 Manhattan	H	41-0, W
10-16 Boston College	A	0-27, L
10-23 Washington & Jefferson	PG	13-28, L
10-30 New York University	YS	3-27, L
11-6 Holy Cross	A	7-7, T
11-13 City College of New York	A	7-3, W
11-20 Georgetown	PG	0-39, L

Site Legend

- AC - Atlantic City Convention Center
- BB - Bermuda Bowl, Hamilton, Berm.
- BF - Braves Field; Boston, Mass.
- CB - Cotton Bowl; Dallas, Texas
- DC - Griffith Stadium; Washington, DC
- FP - Fenway Park; Boston, Mass.
- GG - Limerick (Ireland) Gaelic Grounds
- GS - Giants Stadium; Meadowlands, NJ
- JS - Johnstown (Pa.) Memorial Stadium
- LF - Lambeau Field; Green Bay, Wisc.
- OF - Ohio Field; New York, N.Y.
- PG - Polo Grounds; New York, N.Y.
- SB - Tulane Stadium; New Orleans, La.
- TS - Triborough Stadium; Randall's Island
- WM - War Memorial Stadium; Buffalo
- YS - Yankee Stadium; Bronx, N.Y.
- HC - Homecoming game

(N) - Night game
 * - conference game

NOTE: Although they are listed in the year-by-year reviews, games vs. the Fordham Reserves and the Fordham Freshmen are considered intra-squad scrimmages and are not included in the won-loss totals for those seasons.



Frank Cavanaugh

6 Seasons • 1927-32
 34-14-4 (.692)

Year	W	L	T	Pct.
1927	3	5	0	.375
1928	4	5	0	.444
1929	7	0	2	.889
1930	8	1	0	.889
1931	6	1	2	.778
1932	6	2	0	.750
Totals	34	14	4	.692

1927

Coach: Frank Cavanaugh
Captains: William Feaster
Overall: 3-5

9-24 Bethany	H	34-0, W
10-1 Lebanon Valley	H	13-3, W
10-15 New York University	YS	0-32, L
10-22 George Washington	A	0-13, L
10-29 Boston College	PG	7-27, L
11-5 Holy Cross	PG	2-7, L
11-12 Providence	A	26-19, W
11-19 Georgetown	PG	0-38, L

1928

Coach: Frank Cavanaugh
Captain: John Smith
Overall: 4-5

9-29 St. Bonaventure	H	27-0, W
10-6 George Washington	H	20-0, W
10-13 New York University	PG	7-34, L
10-20 Holy Cross	A	19-13, W
10-27 Washington & Jefferson	PG	34-0, W
11-3 West Virginia	YS	0-18, L
11-10 Boston College	A	7-19, L
11-17 Detroit	PG	0-19, L
11-24 Georgetown	PG	7-27, L

1929

Coach: Frank Cavanaugh
Captain: Anthony Siano
Overall: 7-0-2

9-28 Westminster	H	43-0, W
10-5 St. Bonaventure	H	33-0, W
10-12 New York University	PG	26-0, W
10-19 Holy Cross	PG	7-0, W
10-26 Davis & Elkins	PG	6-6, T
11-5 West Virginia	PG	0-0, T
11-9 Boston College	FP	7-6, W
11-16 Thiel	PG	40-7, W
11-23 Bucknell	PG	14-0, W

1930

Coach: Frank Cavanaugh
Captain: Anthony Siano
Overall: 8-1

9-27 Baltimore	H	73-0, W
10-4 Buffalo	H	71-0, W
10-13 Boston College	A	3-0, W
10-18 Holy Cross	A	6-0, W
10-25 New York University	YS	7-0, W
11-1 West Virginia	PG	18-2, W
11-8 Detroit	A	13-7, W

11-15 St. Mary's (Calif.)	PG	12-20, L
11-22 Bucknell	PG	12-0, W

1931

Coach: Frank Cavanaugh
Captain: James Murphy
Overall: 6-1-2

9-26 Thiel	H	28-0, W
10-3 West Virginia	PG	20-7, W
10-12 Boston College	A	20-0, W
10-17 Holy Cross	PG	6-6, T
10-24 Drake	PG	46-0, W
10-31 West Liberty State	H	33-0, W
11-7 Detroit	A	39-9, W
11-14 New York University	YS	0-0, T
11-21 Bucknell	PG	13-14, L

1932

Coach: Frank Cavanaugh
Captain: Cornelius Murphy
Overall: 6-2

10-1 Baltimore	H	69-0, W
10-8 Bucknell	PG	30-0, W
10-15 Lebanon Valley	H	52-0, W
10-22 Michigan State	PG	13-19, L
10-29 Boston College	FP	0-3, L
11-6 St. Mary's (Calif.)	PG	14-0, W
11-12 New York University	YS	7-0, W
11-19 Oregon State	PG	8-6, W



James Crowley

9 Seasons • 1933-41
 56-13-7 (.783)

Year	W	L	T	Pct.
1933	6	2	0	.750
1934	5	3	0	.625
1935	6	1	2	.778
1936	5	1	2	.740
1937	7	0	1	.938
1938	6	1	2	.778
1939	6	2	0	.750
1940	7	2	0	.778
1941	8	1	0	.889
Totals	56	13	7	.783

1933

Coach: Jim Crowley
Captain: Ed Danowski
Overall: 6-2

9-30 Albright	H	52-0, W
10-7 Muhlenberg	H	57-0, W
10-14 West Virginia	PG	20-0, W
10-21 Boston College	PG	32-6, W
10-28 Alabama	PG	2-0, W
11-4 St. Mary's (Calif.)	PG	6-13, L
11-11 New York University	YS	20-12, W
11-18 Oregon State	PG	6-9, L

1934

Coach: Jim Crowley
Captain: Lester Borden
Overall: 5-3

10-6 Westminster	PG	57-0, W
10-12 Boston College	A	6-0, W
10-20 St. Mary's (Calif.)	A	9-14, L
10-27 Southern Methodist	PG	14-26, L
11-3 Tennessee	PG	13-12, W
11-10 West Virginia	PG	27-20, W
11-17 Purdue	PG	0-7, L
11-29 New York University	YS	39-13, W

1935

Coach: Jim Crowley
Captain: Joe Maniaci
Overall: 6-1-2

9-29 Franklin & Marshall	PG	14-7, W
10-5 Boston College	PG	19-0, W
10-12 Purdue	PG	0-20, L
10-19 Vanderbilt	PG	13-7, W
10-26 Lebanon Valley	PG	15-0, W
11-2 Pittsburgh	PG	0-0, T
11-9 St. Mary's (Calif.)	PG	7-7, T
11-16 Muhlenberg	PG	45-0, W
11-28 New York University	YS	21-0, W

1936

Coach: Jim Crowley
Captain: Frank Mautte
Overall: 5-1-2

10-3 Franklin & Marshall	TS	66-7, W
10-10 Southern Methodist	PG	7-0, W
10-17 Waynesburg	TS	20-6, W
10-24 St. Mary's (Calif.)	PG	7-6, W
10-31 Pittsburgh	PG	0-0, T
11-7 Purdue	PG	15-0, W
11-21 Georgia	PG	7-7, T
11-26 New York University	YS	6-7, L

1937

Coach: Jim Crowley
Captain: John Druze
Overall: 7-0-1

10-2 Franklin & Marshall	TS	66-0, W
10-9 Waynesburg	TS	48-0, W
10-16 Pittsburgh	PG	0-0, T
10-23 Texas Christian	PG	7-6, W
10-30 North Carolina	A	14-0, W
11-6 Purdue	PG	21-3, W
11-20 St. Mary's (Calif.)	PG	6-0, W
11-27 New York University	YS	20-7, W

1938

Coach: Jim Crowley
Captains: Henry Jacunski, Michael Kochel
Overall: 6-1-2

10-1 Upsala	TS	47-0, W
10-8 Waynesburg	TS	53-0, W
10-15 Purdue	PG	6-6, T
10-22 Oregon	PG	26-0, W
10-29 Pittsburgh	A	13-24, L
11-5 St. Mary's (Calif.)	PG	3-0, W
11-12 North Carolina	PG	0-0, T
11-19 South Carolina	PG	13-0, W
11-26 New York University	YS	25-0, W

1939

Coach: Jim Crowley
Captains: William Krywicki
Overall: 6-2

9-30 Waynesburg	TS	34-7, W
10-7 Alabama	PG	6-7, L
10-14 Tulane	A	0-7, L
10-28 Pittsburgh	PG	27-13, W
11-4 Rice	PG	13-7, W
11-11 Indiana	PG	13-0, W
11-18 St. Mary's (Calif.)	PG	13-0, W
11-25 New York University	YS	18-7, W



1940

Coach: Jim Crowley
Captain: Lou DeFilippo
Overall: 7-2

10- 5	West Virginia	PG	20-7, W
10-12	Tulane	PG	20-7, W
10-19	Pittsburgh	A	24-12, W
10-26	St. Mary's (Calif.)	PG	6-9, L
11- 2	North Carolina	PG	14-0, W
11- 9	Purdue	PG	13-7, W
11-21	Arkansas	PG	27-7, W
11-30	New York University	YS	26-0, W
5th Cotton Bowl			
1-1	Texas A & M	CB	12-13, L

1941

Coach: Jim Crowley
Captain: Lawrence Sartori
Overall: 8-1

10-4	Southern Methodist	PG	16-10, W
10-11	North Carolina	A	27-14, W
10-18	West Virginia	PG	27-0, W
10-25	Texas Christian	PG	28-14, W
11-1	Purdue	PG	17-0, W
11-8	Pittsburgh	A	0-13, L
11-22	St. Mary's (Calif.)	PG	35-7, W
11-30	New York University	YS	30-9, W
8th Sugar Bowl			
1-1	Missouri	SB	2-0, W

Earl Walsh

1 Season • 1942
 5-3-1 (.611)

Year	W	L	T	Pct.
1942	5	3	1	.611

1942

Coach: Earl Walsh
Captain: James Lansing
Overall: 5-3-1

9-26	Purdue	A	14-7, W
10-3	Tennessee	A	14-40, L
10-10	North Carolina	PG	0-0, T
10-17	West Virginia	PG	23-14, W
10-31	St. Mary's (Calif.)	PG	7-0, W
11-7	Louisiana State	PG	13-26, L
11-14	Boston College	A	6-56, L
11-21	Missouri	PG	20-12, W
11-28	North Carolina Pre-Flight	PG	6-0, W

Site Legend

AC — Atlantic City Convention Center
 BB — Bermuda Bowl; Hamilton, Berm.
 BF — Braves Field; Boston, Mass.
 CB — Cotton Bowl; Dallas, Texas
 DC — Griffith Stadium; Washington, D.C.
 FP — Fenway Park; Boston, Mass.
 GG — Limerick (Ireland) Gaelic Grounds
 GS — Giants Stadium; Meadowlands, N.J.
 JS — Johnstown (Pa.) Memorial Stadium
 LF — Lambeau Field; Green Bay, Wisc.
 OF — Ohio Field; New York, N.Y.
 PG — Polo Grounds; New York, N.Y.
 SB — Tulane Stadium; New Orleans, La.
 TS — Triborough Stadium; Randall's Island
 WM — War Memorial Stadium; Buffalo
 YS — Yankee Stadium; Bronx, N.Y.
 HC — Homecoming game

(N) - Night game
 * - conference game



Ed Danowski

9 Seasons • 1946-54
 29-44-3 (.401)

Year	W	L	T	Pct.
1946	0	7	0	.000
1947	1	6	1	.188
1948	3	6	0	.333
1949	5	3	0	.625
1950	8	1	0	.889
1951	5	4	0	.556
1952	2	5	1	.313
1953	4	5	0	.444
1954	1	7	1	.167
Totals	29	44	3	.401

1946

Coach: Ed Danowski
Captains: James Lansing,
 William Andrejco
Overall: 0-7

10-11	Georgetown (N)	DC	7-8, L
10-19	St. Mary's (Calif.)	PG	2-33, L
10-26	U.S.M.M.A.	A	6-7, L
11-2	Penn State	A	0-68, L
11-9	West Virginia	A	0-39, L
11-16	New York University	YS	28-33, L
11-22	Louisiana State	A	0-40, L

1947

Coach: Ed Danowski
Captain: George Reiss
Overall: 1-6-1

10-3	Georgetown (N)	DC	7-40, L
10-11	Penn State	PG	0-75, L
10-18	Rutgers	A	6-36, L
10-25	U.S.M.M.A.	A	12-0, W
11-1	Boston Univ. (N)	FP	6-26, L
11-15	Lafayette	PG	0-7, L
11-22	Holy Cross	A	0-48, L
11-29	New York University	PG	13-13, T

1948

Coach: Ed Danowski
Captain: Raymond Elster
Overall: 3-6

9-25	Lafayette	A	14-53, L
10-2	U.S.M.M.A.	A	48-0, W
10-9	Canisius	WM	21-30, L
10-16	St. Francis (Pa.)	JS	41-0, W
10-22	Georgetown	DC	0-35, L
11-6	Boston University	PG	7-33, L
11-13	Holy Cross	A	6-13, L
11-20	Rutgers	A	19-28, L
11-27	New York University	PG	26-0, W

1949

Coach: Ed Danowski
Captain: Herbert Seidell
Overall: 5-3

10-8	U.S.M.M.A.	A	44-9, W
10-15	Scranton	A	33-13, W
10-22	Syracuse	PG	47-21, W
10-29	Georgetown	PG	42-0, W
11-5	Army	A	0-35, L
11-12	Boston College	BF	12-20, L
11-19	Rutgers	A	14-35, L
11-26	New York University	PG	34-6, W

1950

Coach: Ed Danowski
Captain: Andrew Lukac
Overall: 8-1

9-23	Lafayette	A	20-19, W
10-7	Yale	A	14-21, L
10-13	Boston College	BF	26-6, W
10-21	West Virginia	A	27-23, W
10-28	San Francisco	PG	21-14, W
11-11	Georgetown	PG	14-13, W
11-18	Temple	A	26-21, W
11-25	New York University	PG	13-0, W
12-2	Syracuse	PG	13-6, W

1951

Coach: Ed Danowski
Captain: Chris Campbell
Overall: 5-4

9-22	Missouri	A	34-20, W
9-29	Dartmouth	A	14-6, W
10-6	Holy Cross	A	20-54, L
10-12	Boston College	A	35-19, W
10-20	San Francisco	TS	26-32, L
10-27	Syracuse	A	20-33, L
11-3	Rutgers	A	7-13, L
11-18	Temple	A	35-6, W
11-25	New York University	TS	41-0, W

1952

Coach: Ed Danowski
Captain: John Hyatt
Overall: 2-5-1

10-4	Holy Cross	A	7-12, L
10-18	Quantico	TS	8-21, L
10-24	Boston College	A	13-14, L
11-1	Detroit	TS	20-28, L
11-8	Clemson	TS	12-12, T
11-15	Temple	A	33-6, W
11-22	Syracuse	TS	13-26, L
11-29	New York University	TS	45-0, W

1953

Coach: Ed Danowski
Captain: John Hyatt, Charles Danielczuk
Overall: 4-5

10-3	Detroit	A	21-7, W
10-10	Syracuse	A	13-20, L
10-17	Boston College	PG	13-20, L
10-24	Rutgers	A	40-13, W
10-31	Miami (Fla.)	PG	20-0, W
11-7	Penn State	A	21-28, L
11-14	Temple	PG	28-0, W
11-21	Holy Cross	A	7-20, L
11-28	Villanova	PG	13-20, L

1954

Coach: Ed Danowski
Captain: Dick Algatt
Overall: 1-7-1

10-2	Rutgers	A	13-7, W
10-9	Boston University	A	20-55, L
10-16	Boston College	H	7-21, L
10-23	Marquette	A	14-14, T
10-29	Miami (Fla.)	A	7-75, L
11-6	West Virginia	A	9-39, L
11-13	Holy Cross	PG	19-20, L
11-20	Syracuse	H	7-20, L
11-27	Villanova	H	0-41, L





Jim Lansing

2 Seasons • 1970-71
7-8-2 (.471)

Year	W	L	T	Pct.
1964*	1	1	0	.500
1965*	4	1	0	.800
1966*	1	5	0	.167
1968*	7	1	0	.875
1969*	5	2	1	.689
1970	5	1	2	.750
1971	2	7	0	.222
Totals	7	8	2	.471

* - Club seasons

Football returned in 1964 at club level.

1964

Coach: Jim Lansing
Captains: John Collins, Edward Regazzi
Overall: 1-1
Maine Maritime 0-42, L
New York University 20-14, W

1965

Coach: Jim Lansing
Captains: Andy Cordaro, Anthony Rumore, Dan Somma
Overall: 4-1
Newport Naval Base 12-15, L
Iona 35-6, W
Seton Hall 34-6, W
New York University 28-0, W
Georgetown 34-28, W

1966

Coach: Jim Lansing
Captains: Joseph Boyle, Lawrence Brauer, Frank Silane
Overall: 1-5
Iona 19-12, W
Washington (Mo.) 7-39, L
New York University 0-7, L
Seton Hall 0-6, L
Manhattan 26-38, L
Georgetown 13-27, L

1967

Coach: James Lansing
Captains: Robert Boetig, Peter Schmerge
Overall: 5-3
9-22 Detroit 6-13, L
9-30 St. John's 31-3, W
10-7 Sewanee 7-51, L
10-14 Washington (Mo.) 8-14, L
10-28 Fairfield 21-19, W
11-11 Manhattan 33-7, W
11-18 Georgetown 20-18, W
11-25 Iona 20-18, W

1968

Coach: Jim Lansing
Captains: Lawrence Rainey, John Zizzo
Overall: 7-1
Detroit 12-7, W
Sewanee 0-21, L
St. John's 32-16, W
Fairfield 41-0, W
Georgetown 31-6, W
Louisiana State 14-6, W
Manhattan 33-6, W
Catholic 49-22, W

1969

Coach: Jim Lansing
Captain: Michael Rieth
Overall: 5-2-1
Fairfield 69-0, W
St. John's 12-0, W
Adelphi 20-0, W
Duquesne 36-0, W
Iona 31-0, W
Louisiana State 7-7, T
Georgetown 7-14, L
Manhattan 14-24, L

Football was elevated to the NCAA Division III level beginning in 1970.

1970

Coach: Jim Lansing
Captains: Stanley Aufieri, Eric Dadd, Gregory Murtaugh
Overall: 5-1-2
10-3 St. Peter's H 14-0, W
10-10 Adelphi A 7-7, T
10-17 Duquesne H 12-0, W
10-24 Iona H 20-0, W
10-31 St. John's A 21-21, T
11- 7 Georgetown (HC) H 39-17, W
11-14 Manhattan A 14-6, W
11-21 U.S.M.M.A. A 0-35, L

1971

Coach: Jim Lansing
Captains: Stanley Michael, Randy Reis
Overall: 2-7
9-24 Widener A 14-21, L
10-2 St. Peter's A 40-0, W
10-9 Ithaca H 6-39, L
10-16 Seton Hall A 6-7, L
10-23 Alfred H 33-42, L
10-30 St. John's H 14-24, L
11- 6 Georgetown A 9-30, L
11-13 Manhattan (HC) H 28-7, W
11-20 U.S.M.M.A. H 0-28, L

Site Legend

AC — Atlantic City Convention Center
BB — Bermuda Bowl, Hamilton, Berm.
BF — Braves Field; Boston, Mass.
CB — Cotton Bowl; Dallas, Texas
DC — Griffith Stadium; Washington, D.C.
FP — Fenway Park; Boston, Mass.
GG — Limerick (Ireland) Gaelic Grounds
GS — Giants Stadium; Meadowlands, N.J.
JS — Johnstown (Pa.) Memorial Stadium
LF — Lambeau Field; Green Bay, Wisc.
OF — Ohio Field; New York, N.Y.
PG — Polo Grounds; New York, N.Y.
SB — Tulane Stadium; New Orleans, La.
TS — Triborough Stadium; Randall's Island
WM — War Memorial Stadium; Buffalo
YS — Yankee Stadium; Bronx, N.Y.
HC — Homecoming game

(N) - Night game
* - conference game



G. Dean Loucks

3 Seasons • 1972-74
14-14-1 (.500)

Year	W	L	T	Pct.
1972	5	5	0	.500
1973	6	4	0	.600
1974	3	5	1	.389
Totals	14	14	1	.500

1972

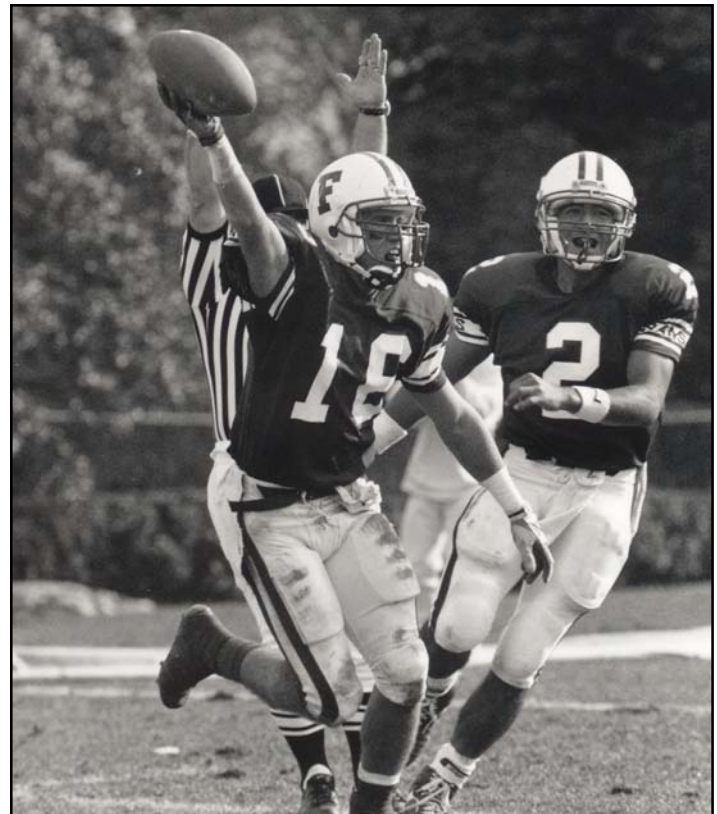
Coach: G. Dean Loucks
Captains: Bernard Carlesimo, Gregory Carlesimo, John O'Donnell
Overall: 5-5
9-16 Manhattan H 34-18, W
9-23 St. Peter's H 22-7, W
9-30 Columbia A 0-44, L
10-7 Widener H 7-21, L
10-14 Ithaca A 13-38, L
10-21 St. John's A 14-7, W
10-28 Drexel A 0-15, L
11-4 Georgetown (HC) H 14-8, W
11-11 Upsala H 26-14, W
11-18 Seton Hall H 7-13, L

1973

Coach: G. Dean Loucks
Captains: Barry Molloy, Paul Tuths
Overall: 6-4
9-21 St. Peter's A 9-0, W
9-29 Drexel H 0-27, L
10-6 Seton Hall H 18-17, W
10-13 Hofstra (HC) H 0-20, L
10-20 Johns Hopkins H 13-10, W
10-27 Manhattan H 28-20, W
11-3 Georgetown A 13-0, W
11-10 Upsala A 27-16, W
11-17 C.W. Post A 0-33, L
11-24 Widener AC 20-49, L

1974

Coach: G. Dean Loucks
Captains: Michael Ajello, Desmond Lawe, Egerton Maitland
Overall: 3-5-1
9-21 St. Peter's A 31-0, W
9-27 Widener H 6-30, L
10- 8 U.S.M.M.A. H 6-17, L
10-19 Hofstra A 21-21, T
10-26 Johns Hopkins A 20-10, W
11- 2 Georgetown (HC) H 7-35, L
11- 9 Hamilton H 16-13, W
11-16 Wagner A 13-20, L
11-23 Seton Hall A 0-27, L





Dave Rice

4 Seasons • 1975-78
23-13-2 (.632)

Year	W	L	T	Pct.
1975	3	5	1	.389
1976	5	3	1	.611
1977	8	2	0	.800
1978	7	3	0	.700
Totals	23	13	2	.632

1975

Coach: Dave Rice

Captains: James Bagley, Rich Henderson, Rich Gottsegen

Overall: 3-5-1

9-19	Iona	H	10-0, W
9-27	Widener	A	7-9, L
10-4	U.S.M.M.A.	A	0-37, L
10-11	Seton Hall (HC)	H	7-7, T
10-17	Hofstra (N)	H	10-7, W
10-24	St. Peter's (N)	H	25-14, W
11-1	Georgetown	A	0-24, L
11-8	Hamilton	A	0-42, L
11-15	Wagner	H	0-24, L

1976

Coach: Dave Rice

Captains: Dennis DeMeo, Jim Chause, Bob Hill

Overall: 5-3-1

9-18	Iona	A	14-6, W
9-24	Widener (N)	H	28-51, L
10-1	U.S.M.M.A. (N)	H	7-30, L
10-9	Seton Hall	A	22-22, T
10-16	Hofstra	A	21-23, L
10-22	Montclair State	H	24-18, W
10-30	Georgetown (HC)	H	49-6, W
11-13	Wagner	A	19-7, W
11-20	Brooklyn	H	45-14, W

1977

Coach: Dave Rice

Captains: Pierre Davis, Tom Gallagher, Bob Hill

Overall: 8-2-0

9-10	Davidson	H	17-20, L
9-17	Kean	H	44-3, W
9-24	Widener	A	19-14, W
10- 1	Hofstra (N)	H	33-0, W
10- 8	Seton Hall (HC)	H	21-10, W
10-22	Montclair State	A	18-15, W
10-29	Georgetown	A	40-0, W
11- 5	Lafayette	A	23-41, L
11-12	Wagner	H	52-8, W
11-19	New Haven	H	78-7, W

1978

Coach: Dave Rice

Captains: George Ganzenmuller, Bob Hill

Overall: 7-3-0

9-9	Davidson	A	30-14, W
9-16	Widener	GS	7-16, L
9-23	Rochester	A	14-3, W
9-30	Seton Hall	A	34-22, W
10-7	Lafayette	A	14-17, L
10-14	Coast Guard	H	28-7, W
10-21	Dayton (HC)	H	10-19, L
10-28	U.S.M.M.A.	H	14-9, W
11-4	Hofstra	A	17-14, W
11-11	Wagner	GS	30-19, W



Jack Stephans

2 Seasons • 1979-80
8-10-0 (.444)

Year	W	L	T	Pct.
1979	5	4	0	.556
1980	3	6	0	.333
Totals	8	10	0	.444

1979

Coach: Jack Stephans

Captains: Vince Connolly, Gary Shaw

Overall: 5-4-0

9-15	Millersville	H	7-48, L
9-22	#Rochester	H	26-12, W
9-29	Wagner	GS	17-18, L
10-6	#Washington & Lee	A	27-15, W
10-13	#Coast Guard	A	10-9, W
10-20	Dayton	A	11-59, L
10-27	#Seton Hall (HC)	H	10-0, W
11-3	Hofstra	H	23-27, L
11-10	#SUNY-Albany	A	35-28, W

#games forfeited due to use of an ineligible player

1980

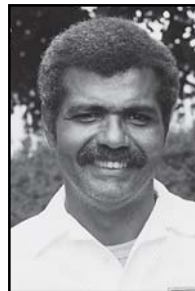
Coach: Jack Stephans

Captains: Bernie Lombardi, Juan Pacheco, Todd Vitale

Overall: 3-6

9-20	#Pace	H	32-6, W
9-27	Ithaca	A	16-28, L
10-4	SUNY-Albany (HC)	H	14-17, L
10-11	Coast Guard	A	9-27, L
10-18	Southern Connecticut	A	0-21, L
10-25	#Seton Hall	A	14-0, W
11-1	Iona	H	26-21, W
11-8	Hofstra	A	27-54, L
11-15	Wagner	H	23-56, L

#games forfeited due to use of an ineligible player



O'Neal Tutein

5 Seasons • 1981-85
20-32-0 (.385)

Year	W	L	T	Pct.
1981	5	5	0	.500
1982	2	8	0	.200
1983	2	9	0	.182
1984	5	5	0	.500
1985	6	5	0	.545
Totals	20	32	0	.385

1981

Coach: O'Neal Tutein

Captains: Brian Corcoran, Bernie Flynn, Craig Miller

Overall: 5-5-0

9-12	Southern Connecticut	H	7-13, L
9-19	Catholic	H	14-0, W
9-26	Pace	A	7-21, L
10-3	Wagner	A	0-39, L
10-10	Georgetown	A	24-0, W
10-17	Marist (N)	A	28-14, W
10-24	Seton Hall	H	27-6, W
10-31	Rochester (HC)	H	0-3, L
11-7	Hofstra	H	24-16, W
11-14	Iona	A	8-19, L

1982

Coach: O'Neal Tutein

Captains: Art Troilo, Steve Williams

Overall: 2-8-0

9-11	St. John's	A	9-14, L
9-18	Catholic	A	18-24, L
9-25	Ithaca	A	3-27, L
10-2	Pace	H	0-17, L
10-9	Georgetown (HC)	H	23-9, W
10-16	Marist	H	28-7, W
10-23	Lowell	H	13-21, L
11-6	Hofstra	A	21-27, L
11-13	Iona	H	15-21, L
11-20	St. Norbert	LF	10-14, L

1983

Coach: O'Neal Tutein

Captains: Ron Roemer, Charlie Spinelli

Overall: 2-9-0

9-10	St. John's	H	7-28, L
9-17	Catholic	H	10-7, W
9-24	Ithaca (HC)	H	7-36, L
10-1	Pace	A	0-16, L
10-8	Georgetown	A	6-12, L
10-15	Worcester Poly. Inst.	A	6-22, L
10-22	Hofstra	H	0-14, L
10-29	Wagner	H	7-56, L
11-5	Canisius	WM	7-26, L
11-12	Iona	A	17-14, W
11-19	St. Norbert	LF	9-18, L

1984

Coach: O'Neal Tutein

Captains: Darnell McClearn, Charlie Spinelli

Overall: 5-5

9-8	Fitchburg	H	40-0, W
9-15	Catholic	A	27-23, W
9-22	U.S.M.M.A.	H	20-26, L
9-29	St. John's	A	18-19, L
10-6	Georgetown (HC)	H	28-6, W
10-13	Worcester Poly. Inst.	H	14-17, L
10-20	Hofstra	A	16-42, L
10-27	Wagner	A	21-24, L
11-3	Canisius	H	21-15, W
11-10	Pace	H	21-0, W





1985

Coach: O'Neal Tutein
Captains: Chip Kron, Tom Feda, Darnell McClearn, Tony Rash, Andy Kerin
Overall: 6-5; **Liberty:** 2-3
 9-14 Worcester Poly. Inst. A 7-10, L
 9-21 Catholic (HC) H 10-7, W
 9-28 U.S.M.M.A.* A 6-28, L
 10-5 St. John's* H 27-26, W
 10-12 Georgetown A 56-0, W
 10-19 Franklin & Marshall A 37-10, W
 10-26 Hofstra H 31-20, W
 11-2 Iona* H 21-6, W
 11-9 Villanova H 3-17, L
 11-16 C.W. Post* H 14-21, L
 11-23 Pace* A 6-17, L

1988

Coach: Larry Glueck
Captains: Rodney Knight, Michael Vitale
Overall: 9-2; **Liberty:** 4-1 (First)
 9-3 U.S.M.M.A.* H 17-0, W
 9-17 Catholic A 27-0, W
 9-24 Davidson H 9-3, W
 9-30 St. John's* (N) A 46-15, W
 10-8 SUNY-Albany H 43-29, W
 10-15 Frank. & Marsh. (HC) H 14-6, W
 10-22 SUNY-Stony Brook A 0-3, L
 10-28 Iona* (N) A 31-29, W
 11-5 Pace* H 27-0, W
 11-12 C.W. Post* A 51-23, W
 11-19 Dickinson (ECAC) H 14-21, L

1993

Coach: Larry Glueck
Captains: Mike Costanzo, John Strauss
Overall: 1-10; **Patriot:** 1-4 (Sixth)
 9-11 Lehigh* H 6-24, L
 9-18 Villanova A 5-25, L
 9-25 Columbia A 0-7, L
 10-2 Pennsylvania A 30-34, L
 10-9 Buffalo H 14-33, L
 10-16 Cornell A 6-48, L
 10-23 Lafayette* A 12-27, L
 10-30 Bucknell* H 21-27, L
 11-6 Colgate* H 17-13, W
 11-13 Hofstra H 22-49, L
 11-20 Holy Cross* A 12-28, L

1994

Coach: Nick Quartaro
Captains: Mark Mooney, Maurice O'Shea, Chris Ross, Jeff Rupp
Overall: 0-11; **Patriot:** 0-5 (Sixth)
 9-3 Villanova H 7-23, L
 9-10 Lehigh* A 7-38, L
 9-17 Hofstra (N) A 20-30, L
 9-24 Cornell H 6-13, L
 10-1 Dartmouth A 14-31, L
 10-8 Columbia H 13-24, L
 10-15 Princeton H 20-27, L
 10-22 Colgate* A 6-35, L
 10-29 Holy Cross* H 21-31, L
 11-12 Lafayette* H 6-34, L
 11-19 Bucknell* A 26-29, L

1989

Coach: Larry Glueck
Captains: Rick Hollawell, Matt Michaels
Overall: 2-6
 9-2 Colgate A 3-35, L
 9-9 Lehigh H 7-42, L
 9-16 Bucknell H 7-31, L
 10-7 Davidson A 14-12, W
 10-14 Lafayette A 7-40, L
 10-21 Princeton A 20-38, L
 11-4 Hofstra H 35-42, L
 11-11 C.W. Post (HC) H 26-13, W

1990

Coach: Larry Glueck
Captains: Craig Jones, Eric Schweiker, Matt Stover, Chip Smith
Overall: 1-9; **Patriot:** 0-5 (Sixth)
 9-1 Hofstra (N) A 16-35, L
 9-8 Lehigh* A 3-35, L
 9-22 Princeton A 14-23, L
 9-29 Brown A 35-28, W
 10-13 Harvard A 13-19, L
 10-20 Colgate* H 7-31, L
 10-27 Washington & Jeff. H 18-20, L
 11-3 Lafayette* H 14-59, L
 11-10 Holy Cross* (HC) H 0-48, L
 11-17 Bucknell* A 7-44, L

1991

Coach: Larry Glueck
Captains: Mark Blazejewski, Gary Brennan
Overall: 2-8; **Patriot:** 0-5 (Sixth)
 9-14 Lehigh* H 7-32, L
 9-21 Bucknell* H 14-21, L
 9-28 Princeton H 17-20, L
 10-5 Columbia A 20-16, W
 10-12 Harvard (HC) H 14-7, W
 10-19 Hofstra H 30-50, L
 10-26 Colgate* A 12-25, L
 11-9 Lafayette* A 7-33, L
 11-16 Holy Cross* GG 19-24, L
 11-23 Villanova H 9-14, L

1992

Coach: Larry Glueck
Captains: Mark Blazejewski, Tony Iasiello
Overall: 1-9; **Patriot:** 1-4 (Fifth)
 9-12 Lehigh* A 14-16, L
 9-19 Colgate* H 7-17, L
 9-26 Columbia H 9-18, L
 10-3 Pennsylvania H 10-13, L
 10-10 Yale A 12-31, L
 10-16 Hofstra (N) A 20-31, L
 10-24 Lafayette* H 21-44, L
 10-31 Bucknell* A 21-0, W
 11-14 Villanova A 14-31, L
 11-21 Holy Cross* A 13-21, L

1995


Coach: Nick Quartaro
Captains: Jim Ciarlante, Joe Moorhead, Chris O'Leary, Won Kyu Rim
Overall: 4-6-1; **Patriot:** 0-5 (Sixth)
 9-2 Buffalo (N) A 13-49, L
 9-9 Marist H 46-0, W
 9-16 Bucknell* H 21-28, L
 9-23 Dartmouth H 14-34, L
 9-30 Harvard A 24-21, W
 10-7 Colgate* A 34-14, W
 10-14 Hofstra (HC) H 15-36, L
 10-21 Richmond H 3-3, T
 10-28 Holy Cross* BB 17-10, W
 11-4 Lehigh* H 0-17, L
 11-11 Lafayette* A 21-24, L

1996

Coach: Nick Quartaro
Captains: Carl Barbera, Mark Bourke, Jim Ciarlante, Kevin Szocik
Overall: 2-8; **Patriot:** 1-3 (Sixth)
 9-7 Maine H 13-24, L
 9-15 Lehigh A 14-20, L
 9-21 Villanova A 10-49, L
 9-28 Columbia H 10-17, L
 10-5 Dartmouth A 7-20, L
 10-12 Lafayette* Cancelled
 10-19 Brown A 14-27, L
 10-26 Georgetown H 46-6, W
 11-2 Holy Cross* H 28-0, W
 11-9 Colgate* H 13-34, L
 11-16 Bucknell* A 17-51, L


1997

Coach: Nick Quartaro
Captains: Cory Bailey, Jack Pieracini, Dave Scoblick, Lance Shaw, Bill Tierney (Honorary)
Overall: 5-6; **Patriot:** 4-2 (Third)
 9-6 Lafayette* A 23-0, W
 9-13 Lehigh* H 42-35, W
 9-20 Colgate* A 14-27, L
 9-27 Princeton A 7-9, L
 10-4 Brown H 14-45, L
 10-11 Dartmouth H 10-31, L
 10-18 Bucknell* H 10-36, L
 10-25 Cornell H 13-45, L
 11-1 Towson* H 12-7, W
 11-15 Georgetown A 42-0, W
 11-22 Holy Cross* A 28-12, W



Larry Glueck
 8 Seasons • 1986-93
 30-51-1 (.372)

Year	W	L	T	Pct.
1986	4	5	1	.450
1987	10	2	0	.833
1988	9	2	0	.818
1989	2	6	0	.250
1990	1	9	0	.100
1991	2	8	0	.200
1992	1	9	0	.100
1993	1	10	0	.091
Totals	30	51	1	.372



Nick Quartaro
 4 Seasons • 1994-97
 11-31-1 (.267)

Year	W	L	T	Pct.
1994	0	11	0	.000
1995	4	6	1	.409
1996	2	8	0	.200
1997	5	6	0	.455
Totals	11	31	1	.267

1986

Coach: Larry Glueck
Captains: Tom Feda, Chip Kron
Overall: 4-5-1; **Liberty:** 3-1-1
 9-13 Worcester Poly. Inst. H 20-31, L
 9-20 Catholic A 13-6, W
 9-27 U.S.M.M.A.* H 20-19, W
 10-4 St. John's* A 7-38, L
 10-11 Villanova A 14-52, L
 10-18 Frank. & Marsh. (HC) H 21-27, W
 10-25 Hofstra A 8-41, L
 11-1 Iona* A 55-7, W
 11-8 Pace* H 12-12, T
 11-15 C.W. Post* A 27-21, W

1987

Coach: Larry Glueck
Captains: Robert Hagan, Marty Mazzara
Overall: 10-2; **Liberty:** 5-0 (First)
 9-5 U.S.M.M.A.* A 14-9, W
 9-12 Rhodes H 24-12, W
 9-19 Catholic (HC) H 13-7, W
 10-3 St. John's* H 34-23, W
 10-10 SUNY-Albany (N) A 14-20, L
 10-17 Franklin & Marshall A 20-16, W
 10-24 SUNY-Stony Brook H 14-6, W
 10-31 Iona* H 38-13, W
 11-7 Pace* A 45-26, W
 11-14 C.W. Post* H 30-7, W
 11-21 Hofstra (NCAA) A 41-6, W
 11-28 Wagner (NCAA) H 0-21, L



Ken O'Keefe

1 Season • 1998
4-7 (.364)

Year	W	L	T	Pct.
1998	4	7	0	.364

1998

Coach: Ken O'Keefe

Captains: Cliff Moseley, Steve O'Hare

Overall: 4-7; **Patriot:** 2-4 (Tied Fifth)

9-12	Lehigh*	A	6-31, L
9-19	Bucknell*	A	20-17, W
9-26	Towson*	A	34-35 (OT), L
10-3	Princeton	H	20-17 (OT), W
10-10	Pennsylvania	H	31-34, L
10-17	Brown	A	27-38, L
10-24	Colgate* (HC)	H	20-42, L
10-31	Villanova	H	12-45, L
11-7	Lafayette*	H	20-27, L
11-14	Holy Cross*	A	13-10, W
11-21	Georgetown	H	49-40, W



Dave Clawson

5 Seasons • 1999-2003
29-29 (.500)

Year	W	L	T	Pct.
1999	0	11	0	.000
2000	3	8	0	.285
2001	7	4	0	.636
2002	10	3	0	.769
2003	9	3	0	.750
Totals	29	29	0	.500

1999

Coach: Dave Clawson

Captains: Jon Piela, Jim Walls

Overall: 0-11; **Patriot:** 0-6 (Seventh)

9-11	Lehigh*	H	7-49, L
9-18	Colgate*	H	24-49, L
9-25	Cornell	A	14-42, L
10-2	Princeton	A	0-27, L
10-9	Pennsylvania	A	18-35, L
10-16	Harvard (HC)	H	30-37, L
10-23	Towson*	A	23-25, L
10-30	Brown	H	18-37, L
11-6	Lafayette*	A	7-27, L
11-13	Holy Cross*	H	14-37, L
11-20	Bucknell*	H	15-45, L

2000

Coach: Dave Clawson

Captain: Ray Reddin

Overall: 3-8; **Patriot:** 1-5 (Sixth)

9-2	Towson*	H	13-36, L
9-9	Fairfield	H	34-7, W
9-16	Columbia	A	26-43, L
9-23	Colgate*	A	6-21, L
9-30	Georgetown	A	17-10, W
10-7	Brown	H	17-44, L
10-14	Yale (HC)	H	17-24, L
10-28	Bucknell*	A	13-27, L
11-4	Lafayette*	H	31-28, W
11-11	Lehigh*	A	17-51, L
11-18	Holy Cross*	A	20-27, L

2001

Coach: Dave Clawson

Captains: Chris Breen, Maurice Briscoe,

Tony Downs, Mark Manno, Joe Wyda

Overall: 7-4; **Patriot:** 5-2 (Third)

9-8	Fairfield	A	46-14, W
9-22	Colgate*	A	9-21, L
9-29	Georgetown* (HC)	H	48-13, W
10-6	Brown	A	23-40, L
10-13	Yale	A	27-36, L
10-20	Lehigh*	H	21-31, L
10-27	Bucknell*	H	17-12, W
11-3	Lafayette*	A	45-24, W
11-10	Towson*	A	28-23, W
11-17	Holy Cross*	H	24-21, W
11-22	Columbia	H	41-10, W

2002

Patriot League Co-Champions NCAA I-AA Playoffs

Coach: Dave Clawson

Captains: Rhamel Brown, Chris Rhodes,

John San Marco

Overall: 10-3; **Patriot:** 6-1 (Tied - First)

9-7	Saint Peter's	H	43-0, W
9-14	Colgate*	H	40-31, W
9-21	Columbia (N)	A	11-13, L
9-28	Fairfield	A	51-6, W
10-5	Georgetown*	A	41-10, W
10-12	Brown	H	24-17, W
10-26	Lafayette* (HC)	H	33-26, W
11-2	Lehigh*	H	23-26 (OT), L
11-9	Holy Cross*	A	37-27, W
11-16	Towson*	H	42-14, W
11-23	Bucknell*	A	34-7, W
11-30	Northeastern (I-AA)	A	29-24, W
12-7	Villanova (I-AA)	A	10-24, L

2003

Coach: Dave Clawson

Captains: Kevin Eakin, Colby Khuns,

Dan McGrath, Kirwin Watson

Overall: 9-3; **Patriot:** 4-3 (Tied - Third)

8-30	C.W. Post	H	42-7, W
9-6	Rhode Island	A	63-28, W
9-13	Lehigh*	A	16-23, L
9-20	Columbia (HC)	H	37-30, W
10-4	Bucknell*	H	10-31, L
10-11	Brown	A	24-21, W
10-18	New Haven	H	41-7, W
10-25	Lafayette*	A	32-30, W
11-1	Georgetown*	H	34-10, W
11-8	Holy Cross*	H	49-28, W
11-15	Colgate*	A	3-14, L
11-22	Towson*	A	35-22, W



Ed Foley

2 Seasons • 2004-2005
7-15 (.318)

Year	W	L	T	Pct.
2004	5	6	0	.455
2005	2	9	0	.182
Totals	7	15	0	.318

2004

Coach: Ed Foley

Captains: Jared Amatuzzo, NaQuinton

Gainous, Edward Gordon, Tad Kornegay

Overall: 5-6; **Patriot:** 2-4 (Fifth)

9-4	Rhode Island	H	36-37, L
9-11	Albany	A	14-0, W
9-18	Columbia (N)	A	17-14, W
9-25	Duquesne	H	41-34, W
10-2	Holy Cross*	A	42-35, W
10-9	Brown (HC)	H	20-27 (ot), L
10-23	Lafayette*	H	20-35, L
10-30	Georgetown*	H	36-6, W
11-6	Bucknell*	A	20-21, L
11-13	Lehigh*	A	14-21, L
11-20	Colgate*	H	28-40, L

2005

Coach: Ed Foley

Captains: James Caffarello, Edward

Gordon, Marcus Taylor

Overall: 2-9; **Patriot:** 2-4 (Sixth)

9-3	Rhode Island	A	34-20, L
9-10	Duquesne	A	30-13, L
9-17	Columbia	H	23-17, L
9-24	Lafayette*	A	27-10, L
10-8	Brown	A	37-14, L
10-15	Colgate*	A	23-0, L
10-22	Georgetown*	A	24-21, L
10-29	Holy Cross* (HC)	H	24-20, W
11-5	Bucknell*	H	28-21, W
11-12	Lehigh*	H	40-3, L
11-19	Albany	H	41-0, L



Tom Masella

2 Seasons • 2006
3-8 (.273)

Year	W	L	T	Pct.
2006	3	8	0	.273
2007	8	4	0	.667
Totals	11	12	0	.478

2006

Coach: Tom Masella

Captains: Micah Clukey, Carl Garritano,

James Prydatko, Marcus Taylor

Overall: 3-8; **Patriot:** 1-5 (Sixth)

9-2	Monmouth (N)	H	23-9, L
9-9	Albany (N)	A	9-7, W
9-16	Columbia	A	37-7, L
9-30	Holy Cross*	A	28-21, L
10-7	Duquesne	H	20-17, L
10-14	Marist (HC)	H	13-9, W
10-21	Colgate*	H	46-3, L
10-28	Bucknell*	A	13-3, L
11-4	Lafayette*	H	31-24, L
11-11	Lehigh*	A	45-14, L
11-18	Georgetown*	H	38-30, W

2007

Coach: Tom Masella

Captains: Mike Breznicky, Earl Hudnell,

Mike Nardone, Sam Orash,

Dominique Owens

Overall: 8-4; **Patriot:** 5-1 (First)

9-1	Rhode Island	A	27-23, W
9-8	Albany (N)	H	20-23, L
9-15	Columbia (N)	H	27-10, W
9-22	Dayton (HC)	H	24-31, L
9-29	Colgate*	A	34-31, W
10-6	Lehigh*	H	28-18, W
10-13	Georgetown*	A	38-31, W
10-20	Lafayette*	A	34-23, W
10-27	Marist (N)	A	33-0, W
11-3	Holy Cross*	H	24-21, W
11-17	Bucknell*	H	24-38, L
11-24	Massachusetts (FCS)	A	35-49, L

2008

Coach: Tom Masella

Captains: James Crockett, Fonzie Culver,

Greg DeMarco, Matt Loucks, Richard

Rayborn, John Skelton

Overall: 5-6; **Patriot:** 1-5 (Sixth)

9-7	Rhode Island	H	16-0, W
9-13	Dayton	A	23-20, L
9-20	Columbia	A	29-22, W
9-27	Colgate*(N)	H	31-24, L
10-11	Lehigh*	A	45-24, L
10-18	Yale	H	12-10, W
10-25	Lafayette*	H	48-13, L
11-1	Marist	H	45-21, W
11-8	Holy Cross*	A	38-17, L
11-15	Georgetown*	H	17-0, W
11-22	Bucknell*	A	13-10 (ot), L