

Colorado State University



Women's Basketball

FOR IMMEDIATE RELEASE
Jan. 26, 2012

Danielle Marshall, Assistant SID
Phone: 970/491-6494
E-mail: danielle.marshall@colostate.edu

2011-12 Schedule (8-12, 4-1 MW)

Date	Opponent	Time/Result
Nov. 11	at Northern Iowa	L, 61-50
Nov. 13	Arizona State	L, 56-52 OT
Nov. 17	Tulsa	W, 87-68
Nov. 20	Colorado	L, 72-53
Nov. 23	at Denver	L, 64-61
Nov. 29	at Montana State	L, 87-69
Dec. 2	at Northern Colorado	L, 66-60
Dec. 4	at Toledo	L, 58-51
Dec. 8	North Dakota	W, 58-52
Dec. 11	Maryville-St. Louis	W, 73-35
Dec. 20	vs. Michigan State [^]	L, 72-45
Dec. 21	vs. Indiana [^]	L, 47-39
Dec. 31	Bowling Green	L, 70-57
Jan. 4	at Cal-State Bakersfield	W, 65-63
Jan. 8	at Seattle University	L, 61-43
Jan. 11	Air Force*	W, 73-39
Jan. 14	at TCU*	L, 79-71
Jan. 17	at Boise State*	W, 60-52
Jan. 21	Wyoming*	W, 62-58
Jan. 25	New Mexico*	W, 61-54
Jan. 28	at San Diego State*	1 p.m.
Feb. 1	UNLV*	7 p.m.
Feb. 4	at Air Force*	2 p.m.
Feb. 11	TCU*	4:30 p.m.
Feb. 14	Boise State*	7:30 p.m.
Feb. 18	at Wyoming*	2 p.m.
Feb. 22	at New Mexico*	7 p.m.
Feb. 25	San Diego State*	2 p.m.
Feb. 29	at UNLV*	8 p.m.
March 7	Quarterfinal Round#	TBA
March 9	Semifinal Round#	TBA
March 10	Championship#	2 p.m.

All times listed are Mountain; home games in bold
[^] - Triple Crown Caribbean Classic - Cancun, Mexico
[#] - Conoco Mountain West Conference Championships - Las Vegas, Nev.
^{*} - Mountain West game

Colorado State at San Diego State | Game 21 Jan. 28 | 1 p.m. MT | San Diego, Calif. | Viejas Arena (12,414)



**COLORADO STATE
RAMS**

Team Information

2011-12 Record	8-12, 4-1 MW
Last Game	vs. New Mexico (W, 61-54)
Rankings (AP ESPN/USA Today)	NR NR
Head Coach	Kristen Holt (Ohio, 1993)
Overall Record	56-82 (Fifth Season)
Record at CSU	45-66 (Fourth Season)



**SAN DIEGO STATE
AZTECS**

Team Information

2011-12 Record	15-4, 5-0 MW
Last Game	vs. Wyoming (W, 56-45)
Rankings (AP ESPN/USA Today)	RV --
Head Coach	Beth Burns
Overall Record	339-241 (20th Season)
Record at SDSU	258-176 (15th Season)

Statistical Comparison

Category	CSU	SDSU
Points Per Game	59.5	67.2
Points Allowed Per Game	60.7	54.2
Field Goal Percentage	.428	.399
Opponent Field Goal Percentage	.378	.347
Three-Point Field Goal Percentage	.314	.330
Opponent Three-Point Field Goal Percentage	.318	.282
Free-Throw Percentage	.725	.709
Rebounds Per Game	36.5	43.1
Rebounding Margin	+3.1	+8.5
Assists Per Game	14.0	12.4
Turnovers Per Game	20.6	15.6
Opponent Turnovers Per Game	17.0	17.6
Steals Per Game	9.2	9.0
Blocks Per Game	3.6	4.9

Broadcast Information

Television: CBS Sports Network
 Streaming: CSURams.com/allaccess
 (Home games only)
Radio: Colorado State Sports Network
 In Fort Collins: 1410 AM (KIIH)
 Streaming: CSURams.com/allaccess
 Play-by-play: Matt Wozniak

Live Stats: Gametracker
 CSURams.com

Media Relations

Danielle Marshall, Assistant Director
 Office Phone: 970/491-6494
 Cell Phone: 970/980-7353
 E-mail: Danielle.Marshall@colostate.edu
 Fax: 970/491-1348
Cara Maio, Student-Assistant
Cyndee Black, Student-Assistant

2011-12 Colorado State Women's Basketball Roster

No.	Name	Ht.	Pos.	Cl.	Exp.	Hometown (Last School)	GP-GS	PPG	RPG	APG	BPG	SPG
1	LaDeyah Forte	5-4	G	FR	HS	Pensacola, Fla. (Pensacola)	20-15	5.4	2.1	3.3	0.0	1.6
2	Ashley Wiens	5-8	G	JR	TR	Grand Junction, Colo. (Clarendon)	8-0	1.0	0.5	0.4	0.0	0.0
3	Hayley Thompson	6-1	G	SO	1L	Denver, Colo. (Mullen)	17-12	4.1	3.9	2.2	0.2	0.8
4	Hanne Mestdagh	5-10	G/F	FR	HS	Ieper, Belgium (St. Katelijne Waver)	7-0	1.9	0.7	0.4	0.0	0.1
5	Kim Mestdagh	5-10	G/F	SR	3L	Ieper, Belgium (Sint Vincentius)	20-18	14.6	4.8	3.6	0.3	2.5
11	Meghan Heimstra	6-2	F	RS JR	2L	Longmont, Colo. (Silver Creek)	20-9	8.2	6.5	1.3	1.1	1.8
12	Sam Martin	6-2	F	SO	1L	Parker, Colo. (Chaparral)	20-19	13.9	5.8	0.9	1.0	0.7
13	Kelly Hartig	6-3	F	SR	1L	Highlands Ranch, Colo. (Virginia)	20-13	4.1	3.7	1.4	0.8	0.7
14	Carlyn Chavez	5-7	G	FR	HS	Portland, Ore. (LaSalle College Prep)	7-0	0.7	0.6	0.4	0.0	0.1
15	Amber Makeever	5-11	G	SO	1L	Peaster, Texas (Peaster)	--	--	--	--	--	--
20	Kara Spotton	6-2	F	FR	HS	Fort Collins, Colo. (Rocky Mountain)	20-8	4.0	3.5	0.6	0.2	0.7
21	Mandy Makeever	5-10	G	RS FR	HS	Peaster, Texas (Peaster)	9-5	6.3	1.7	1.6	0.1	0.8
23	Morgan Hunt	6-1	F	FR	HS	Colleyville, Texas (Heritage)	18-1	2.2	1.3	0.2	0.1	0.2

Head Coach: Kristen Holt (fourth season)

Assistants: Dick Lien (fifth season),
 Taylor Steven (third season),
 Sara Hemmings (first season)

Director of Basketball Operations: Corey Steven (second season)

Pronunciation Guide

Carlyn Chavez KAR-linn
LaDeyah Forte luh-DAY-uh for-TAY
Meghan Heimstra HIME-struh
Amber Makeever mack-EE-ver
Mandy Makeever mack-EE-ver

Hanne Mestdagh HAWN-uh mest-DOGG
Kim Mestdagh mest-DOGG
Kara Spotton SPOTT-in
Ashley Wiens WEENS

The Rams' Record in 2011-12 When

At Home.....	6-3
On the Road.....	2-7
On Neutral Court.....	0-2
Playing on Monday.....	0-0
Playing on Tuesday.....	1-2
Playing on Wednesday.....	3-2
Playing on Thursday.....	2-0
Playing on Friday.....	0-2
Playing on Saturday.....	1-2
Playing on Sunday.....	1-4
Playing during the day.....	3-8
Playing at night.....	5-4
Playing in November.....	1-5
Playing in December.....	2-6
Playing in January.....	5-2
Playing in February.....	0-0
Playing in March.....	0-0
An overtime game.....	0-1
Leading at the half.....	6-5
Tied at the half.....	0-0
Trailing at the half.....	1-7
Scoring 60 or fewer points.....	2-9
Scoring 61-70 points.....	3-2
Scoring 71-80 points.....	2-1
Scoring 81-90 points.....	1-0
Scoring 91 or more points.....	0-0
Allowing 60 points or less.....	6-4
Allowing 61-70 points.....	2-5
Allowing 71-80 points.....	0-3
Allowing 81-90 points.....	0-1
Allowing 91 or more points.....	0-0
Shooting higher field goal %.....	7-4
Shooting .350 or below.....	0-3
Shooting .351-.400.....	0-3
Shooting .401-.450.....	1-4
Shooting .451-.500.....	5-2
Shooting above .501.....	2-0
Allowing less than .350.....	5-2
Allowing .351-.400.....	1-3
Allowing above .400.....	2-7
Shooting higher 3-pt field goal %.....	4-4
Shooting .300 or higher 3-pt %.....	6-5
Allowing .300 or higher 3-pt %.....	2-9
Shooting higher free throw %.....	5-3
Making more free throws.....	4-5
Making less free throws.....	4-6
Free throws are equal.....	0-1
Outrebounding opponent.....	7-5
Being outrebounded.....	1-7
Rebounds are equal.....	0-0
Recording more assists.....	8-4
Recording more steals.....	3-4
Blocking more shots.....	6-6
Recording fewer turnovers.....	3-1
Win opening tip.....	4-5
Lose opening tip.....	4-7
When CSU scores first.....	5-5
When opponent scores first.....	3-7
On television.....	2-2

Rams travel west to face first-place Aztecs...

Colorado State (8-12, 4-1 MW) is in the hunt for first place in the Mountain West. If the Rams defeat San Diego State (15-4, 5-0) Saturday, they will be in the top spot. The Rams tip off at 1 p.m. MT.

The Rams are in for a tough matchup in San Diego as they will try and snap an 11-game win streak. As of this week, SDSU is receiving votes in the AP poll.

CSU is currently tied for second place in the MW. A win on Saturday would put CSU into a tie for first place with San Diego State and possibly UNLV, if the Rebels beat Air Force that same day. If that happens, then CSU would host UNLV on Wednesday in a 1-vs.-1 matchup at Moby Arena.

CSU's Kim Mestdagh earned the preseason Player of the Year title to start the 2011-12 season. She was the first to earn the honor since Becky Hammon in 1998-99. CSU was picked to finish third in the final standings. It was the highest prediction for the Rams since the 2002-03 season, when CSU was picked to finish in second place.

The game will be televised live on CBS Sports Network. Tammy Blackburn (play-by-play) and Brent Stover (color analysis) will be the commentators. This is the Rams' fourth televised game in January.

The game will also be broadcast live on AM 1410 KIXX. Matt Wozniak, in his third season with the Rams, calls all the action. Live game audio will also be available via Rams All-Access subscription on CSURams.com.

Rams vs. Aztecs series...

Saturday's meeting between Colorado State and San Diego State will be the 42nd game between the two schools. This is Head Coach Kristen Holt's seventh contest vs. the Aztecs. Under her watch the Rams have defeated SDSU two times, sweeping the Aztecs last season, snapping a six-game series losing streak. Holt is 2-4 vs. SDSU.

The Rams are 17-24 vs. San Diego State with a 5-14 record in San Diego.

Last season vs. SDSU...

Feb. 2, 2011 (away): The game was undecided all the way down to the final seconds, but it was free throws that sealed the win for the Rams over the Aztecs at Viejas Arena, 56-51.

Seven team fouls to only one SDSU (8-12, 2-6) foul early in the second half allowed the Aztecs to take a one-point lead with 13:43 remaining. The teams exchanged baskets for the next 9.5 minutes with eight lead changes. Chantel Kennedy then hit two layups in a row to maintain a lead in the final minutes.

March 5, 2011 (home): Playing its regular-season finale, and Senior Day at Moby Arena, the Colorado State women's basketball team saved its best performance for last, defeating the San Diego State Aztecs, 66-51.

Trailing by eight points at halftime, 34-26, the Rams got the spark they needed, holding the Aztecs scoreless through the first three minutes, 19 seconds of the second half, knotting the score at 40-40 with 13:56 to play.

The Rams never let off the gas, using a 13-6 run over the next 5:28 to extend their lead to nine. Soon after, the lead reached double digits, where it remained for the final 3:24 of the contest. The Rams' defense held the Aztecs to five points over the final 8:22 of the contest, and outscored them 40-17 in the second half.

About San Diego State...

- San Diego State's 11-game win streak is the fifth-longest active streak in the nation. The four teams with longer streaks are all ranked in the top 12 in the national polls. It's the Aztecs' longest win streak since 1996-97.
- This is SDSU's best start to the conference season since joining the MW. In 2010, the Aztecs got off to a 3-0 start before obtaining their first loss.
- After going 12-17 last season, San Diego State has already passed its win total from last year. With one more win the team will match its league wins from the 2010-11 campaign.
- This is the second time the Aztecs have received votes in the AP poll this season. After getting an upset win over No. 18 DePaul in late November, SDSU also received the voters' attention.
- The team leads the league in every margin statistic available since MW play began. The Aztecs average a plus-14.6 scoring margin, a plus-6.2 rebounding margin and plus-4.4 turnover margin.

Quick Facts

General Information

Location.....	Fort Collins, Colo.
Founded.....	1870
Enrollment.....	26,735
Nickname.....	Rams
Colors.....	Green and Gold
Elevation.....	5,004 feet
Arena (Capacity).....	Moby Arena (8,745)
Conference.....	Mountain West Conference
President.....	Dr. Anthony Frank
Director of Athletics.....	Jack Graham
Sr. Assoc. AD/SWA.....	Christine Susemihl
Faculty Representative.....	Jim Francis
Athletic Department Phone.....	970/491-3350
Athletic Web site.....	www.CSURams.com
Press Row Phone.....	970/491-3981

Coaching Staff Information

Head Coach

Kristen Holt.....	Fourth Year (Ohio, '93)
Record at CSU.....	45-66 (Fourth Season)
Career Record.....	56-82 (Fifth Season)

Assistant Coaches

Dick Lien.....	Fifth Season (Moorhead State, '65)
Taylor Steven.....	Third Season (Wichita State, '08)

Director of Basketball Operations

Corey Steven.....	Second Year (Illinois-Chicago, '06)
Women's Basketball Office.....	970/491-6569

Team Information

2010-11 Record.....	14-16
2010-11 MW Record (Finish).....	7-9 (4th)
2010-11 Postseason Play.....	None
All-Time Record.....	522-515 (.503)
NCAA Appearances (Record).....	5 (5-5)
Last NCAA Appearance.....	2002
WNIT Appearances (Record).....	3 (6-3)
Last WNIT Appearance.....	2004
Starters Returning/Lost.....	3/2
Letterwinners Returning./Lost.....	5/5

Media Information

Women's Basketball SID.....	Danielle Marshall
Office Phone.....	970/491-6494
Cell Phone.....	970/980-7353
E-Mail.....	Danielle.Marshall@colostate.edu
FAX.....	970/491-1348

Mountain West Standings: Jan. 26

Team	Conference					Overall					
	W-L	Pct.	H	A	W-L	Pct.	H	A	N	L-10	Strk
SDSU (RV/-)	5-0	1.000	3-0	2-0	15-4	.789	9-1	5-2	1-1	10-0	W11
UNLV (-/RV)	4-1	.800	1-1	3-0	16-5	.762	8-3	6-2	2-0	8-2	W3
Colorado State	4-1	.800	3-0	1-1	8-12	.400	6-3	2-7	0-2	5-5	W2
TCU	3-2	.600	1-1	2-1	10-10	.500	6-5	3-4	1-1	5-5	W2
Boise State	2-3	.400	1-2	1-1	11-9	.550	8-5	3-4	0-0	5-5	L3
Wyoming	2-3	.400	1-1	1-2	6-12	.333	4-5	2-6	0-1	4-6	L2
New Mexico	0-5	.000	0-2	0-3	6-13	.316	4-7	2-6	0-0	3-7	L5
Air Force	0-5	.000	0-3	0-2	5-15	.250	2-7	3-8	0-0	1-9	L6

AP/Writers' Poll - Jan. 23

1	Baylor (40)	19-0	1,000
2	Notre Dame	19-1	960
3	Connecticut	17-2	913
4	Stanford	17-1	884
5	Duke	16-2	836
6	Kentucky	18-2	793
7	Tennessee	14-4	713
8	Maryland	18-2	699
9	Ohio State	19-1	694
10	Miami (FL)	16-3	635
11	Rutgers	16-3	612
12	Green Bay	17-0	542
13	Purdue	16-3	485
14	Texas A&M	13-4	468
15	Delaware	16-1	429
16	Louisville	16-4	417
17	Georgia	16-4	391
18	Penn State	15-4	302
19	Nebraska	16-3	259
20	Georgetown	15-5	249
21	Texas Tech	14-4	156
22	Gonzaga	17-3	138
23	DePaul	15-5	60
23	Brigham Young	18-3	60
25	North Carolina	14-5	47

OTHERS RECEIVING VOTES

Georgia Tech 46, St. Bonaventure 42, Oklahoma 32, South Carolina 28, Kansas State 27, Michigan 13, Kansas 12, Princeton 10, Arkansas 9, California 9, St. John's 8, North Carolina State 4, FGCU 4, LSU 4, Saint Mary's 3, Vanderbilt 3, **San Diego State 2**, UTEP 1, Fresno State 1

Bold - Denotes Rams opponent in 2011-12

USA Today/ESPN Coaches' Poll - Jan. 24

1	Baylor	(19-0)	775
2	Notre Dame	(20-1)	742
3	Connecticut	(17-2)	711
4	Stanford	(17-1)	683
5	Duke	(16-2)	650
6	Kentucky	(18-2)	621
7	Maryland	(18-2)	570
8	Miami (Fla.)	(17-3)	543
9	Ohio State	(19-1)	478
9	Tennessee	(14-5)	478
9	Wisconsin-Green Bay	(17-0)	478
12	Rutgers	(16-3)	473
13	Texas A&M	(13-4)	422
14	Louisville	(16-4)	366
15	Georgia	(16-4)	333
16	Delaware	(16-1)	318
17	Purdue	(17-3)	293
18	Georgetown	(15-5)	239
19	Penn State	(15-4)	219
20	Gonzaga	(17-3)	125
21	Nebraska	(16-3)	107
22	DePaul	(15-5)	101
23	Texas Tech	(14-4)	86
24	Georgia Tech	(14-6)	49
25	North Carolina	(14-5)	43

OTHERS RECEIVING VOTES

Kansas (15-3) 34; Kansas State (13-5) 31; Michigan (16-4) 30; Middle Tennessee (16-5) 17; Vanderbilt (14-5) 17; Florida Gulf Coast (17-2) 16; South Carolina (15-5) 9; Brigham Young (18-3) 5; St. Bonaventure (18-2) 5; Princeton (13-4) 2; **UNLV (15-5) 2**; California (15-5) 1; Oklahoma (12-5) 1; St. John's (13-7) 1; Texas-El Paso (17-2) 1.

Bold - Denotes Rams' opponent in 2011-12

- Junior Courtney Clements, who is fourth in the league rankings in scoring (18.0), has equaled or surpassed the 20-point mark in three out of the past four games.
- In addition to Clements, Kiyana Stamps (11.8) and Chelsea Hopkins (11.2) are the other two players averaging double figures for the Aztecs.
- Hopkins, a junior, ranks 13th in the nation with 116 assists on the year. Since conference play began, she is averaging a league-leading 7.2 per game. She leads the MW in assist-to-turnover ratio with 2.6 assists to every turnover. She also is tied with Kim Mestdagh in the lead for steals per game with 2.8.
- An all-around player, Hopkins leads the team on the boards as well, averaging 7.2 in league play. Clements follows closely behind with 6.2 rebounds per game.

Last time out...

The Colorado State women's basketball team came back to win against the New Mexico Lobos, 61-54, on Wednesday night at Moby Arena. This is the first time the Rams have been 4-1 to start the conference since the 2001-02 season.

New Mexico (6-13, 0-5) started the game on a 12-2 run by shooting two three-pointers. CSU (8-12, 4-1) found its own rhythm and led at halftime. In the first half, Colorado State's field-goal percentage went from 12.5 on the first nine shots to 66.7 on the final 18 shots of the half.

Senior Kim Mestdagh scored 19 points and had three steals and three assists.

Meghan Heimstra recorded 10 points, nine rebounds, two assists and three steals while playing 28 minutes.

With three minutes to go in the game, Mestdagh hit a three-pointer to mark the Rams' biggest lead of the night and put the game out of reach for New Mexico.

Sam Martin had 15 points and seven rebounds while in foul trouble. She only played eight minutes in the second half. Sophomore Hayley Thompson recorded seven rebounds. Freshman LaDeyah Forte registered six assists.

A step in the right direction (as of Jan. 23)...

Hovering around 250 for most of the season, the Rams have finally made a step in the right direction in the NCAA RPI rankings. With a 2-0 record this past week, CSU has moved up 38 spots in the RPI and currently sits in 212th.

Colorado State has the fourth-highest RPI in the Mountain West, behind TCU (173), San Diego State (116) and UNLV (90). The Rams passed Boise State in the rankings this week, with a big win over the Broncos in Idaho.

NCAA stats (as of Jan. 23)...

The Rams (7-12) appear in the top 100 two times in the NCAA statistical categories:

- 51st in free-throw percentage: .725 (up eight spots from Jan. 19)
- 41st in field-goal percentage: .425 (up five spots)

Individually, Sam Martin and Kim Mestdagh rank in the top 100 in a combined five categories.

Martin:

- 12th in field-goal percentage (.559)
- 36th in free-throw percentage (.859)

Mestdagh:

- 87th in steals (2.5)
- 66th in three pointers (2.2)
- 89th in three-point field-goal percentage (.339)

MW notes (as of Jan. 24)...

Five games into league play the Rams are making their mark in the MW statistics. Freshman LaDeyah Forte is fifth in her class averaging 5.6 points per game. Sam Martin holds the top spot among sophomores with 13.8 points, while senior Kim Mestdagh is second among seniors averaging 14.3 points per matchup.

Three of the Rams' post players are also ranked in the top five in rebounds per contest. Kara Spotton holds the fifth spot among freshmen with 3.6 and captains Sam Martin and Hayley Thompson rank first and fifth, respectively, in the sophomore class with 5.7 and 3.8 boards per contest.

MW stats update...

With the 4-1 conference start, the Rams hold a high standing in the Mountain West statistical categories.

Kim Mestdagh ranks in the top five in seven categories in MW play:

- Third in field-goal percentage (.525)
- First in three-pointers per game (3.0)
- Fifth in assists (3.4 per game)
- Second in three-point field-goal percentage (.500)
- Tied for first in steals (2.8 per game)
- Fifth in assist-to-turnover ratio (1.0)
- Tied for fifth in defensive rebounds (4.4)
- Mestdagh is ranked in the top-15 in nine out of 13 statistical categories.

Sam Martin appears in the top five in two categories:

- First in field-goal percentage (.633)
- Second in scoring (18.2)
- Martin is ranked in the top-15 in seven out of 13 statistical categories.

LaDeyah Forte has entered the top five in three categories:

- Second in assists (5.2)
- Second in assist-to-turnover ratio (2.4)
- Second in minutes played (36.2)

In conference games CSU places in the top three in 11 out of 21 categories, including eight first-place rankings:

2011-12 Misc. Stats

(Rams' Record)

Games Led in Scoring

Martin	10 (3-7)
Mestdagh	9 (5-4)
Heimstra	2 (0-2)
Spotton	1 (0-1)

How Opp. First Scored

Jumper	8 (4-4)
Layup	6 (1-5)
Three-pointer	4 (3-1)
Tip-in	1 (0-1)
Free throw	1 (0-1)

Games Led in Rebounding

Heimstra	8 (4-4)
Martin	6 (2-4)
Mestdagh	4 (2-2)
Spotton	2 (0-2)
Thompson	1 (1-0)
Hartig	1 (1-0)

Opening Tips

Rams	9 (4-5)
Opponents	11 (4-7)

Rams Biggest Run

17, vs. Maryville, 12/11/11

Opp. Biggest Run

18, vs. CU, 11/20/11

Rams Biggest Lead

41, vs. Maryville, 12/11/11

Rams Biggest Deficit

29, vs. Michigan State, 12/20/11

Rams Biggest Halftime Lead

28, vs. Maryville, 12/11/11

Rams Biggest Halftime Deficit

19, vs. Michigan State, 12/20/11

Rams Biggest Deficit In A CSU Win

10, vs. New Mexico, 1/25/12

Rams Biggest Lead In A CSU Loss

14, vs. Indiana, 12/21/11

Games Led in Assists

Mestdagh	9 (2-7)
Forte	9 (5-3)
Thompson	2 (2-0)
Heimstra	2 (1-1)
Makeever	1 (0-1)
Hartig	1 (0-1)

Games Led in Steals

Mestdagh	10 (4-6)
Forte	6 (3-3)
Heimstra	6 (2-4)
Makeever	2 (0-2)
Thompson	1 (1-0)
Spotton	1 (0-1)
Hartig	1 (0-1)

Games Led in Blocks

Heimstra	11 (5-6)
Martin	5 (3-2)
Hartig	5 (2-3)
Mestdagh	2 (1-1)
Thompson	1 (1-0)
Hunt	1 (1-0)

Double-Double Games

Heimstra	3 (1-2)
Martin	2 (0-2)
Mestdagh	1 (1-0)

Dbl Fig. Scoring Games

Martin	16 (8-8)
Mestdagh	15 (7-8)
Heimstra	8 (4-4)
Forte	4 (3-1)
Spotton	2 (1-1)
Makeever	2 (0-2)

20-Point Games

Mestdagh	5 (4-1)
Martin	5 (1-4)

Double-Figure Rebound Games

Heimstra	4 (2-2)
Martin	2 (0-1)
Mestdagh	2 (1-1)

Scored First Point

Martin	7 (4-3)
Mestdagh	5 (2-3)
Thompson	2 (1-1)
Makeever	2 (0-2)
Heimstra	2 (0-2)
Hartig	1 (1-0)
Forte	1 (0-1)

How First Point Scored

Layup	8 (5-3)
Jumper	5 (2-3)
Three pointer	4 (0-4)
Free throw	3 (1-2)

The Last Time The Rams Had

Player score 20 points:

- 21, Kim Mestdagh vs. Wyoming, 1/21/12

Player score 30 points:

- 35, Kim Mestdagh vs. Tulsa, 11/17/11

Player score 40 points:

- 41, Sara Hunter vs USF, 11/13/07

Two or more players score 20 points:

- 26, Kim Mestdagh; 21, Sam Martin vs. Air Force, 2/26/11

Player grab 15 rebounds:

- 16, Amaka Uzomah vs. Wyoming, 1/24/09

Player grab 20 rebounds:

- 20, Jennifer Halbach at UT-San Antonio, 1/20/88

Player record a double-double:

- 21p-10r, Kim Mestdagh at Boise State, 1/17/12

Two players record double-doubles in game:

- 25p-12r, Sam Martin; 18p-12r, Chatilla van Grinsven vs. Texas A&M Corpus Christi, 11/28/10

Player record 10 assists:

- 10, LaDeyah Forte vs. Tulsa, 11/17/11

Player block five shots:

- 5, Meghan Heimstra, 11/17/11

Two players record 10 rebounds:

- 12, Chatilla van Grinsven; 12, Sam Martin vs. Texas A&M Corpus Christi, 11/28/10

Three players record 10 rebounds:

- 11, Elle Queen; 11, Juanise Cornell; 10, Carine Reimink vs. USF, 11/13/07

Five players record double figures in scoring:

- 17 Chatilla van Grinsven; 15 Bonnie Barbee; 13 Kim Mestdagh; 12 Natalie van den Adel; 12 Meixandra Porter vs. Air Force, 2/9/10

100 points or more in a game:

- Nov. 26, 2004; Colorado State 108, Iona 59

50 points or less in a game:

- Jan. 8, 2012; Colorado State 43, Seattle 61

Opponent score 100+ points in a game:

- Nov. 13, 2007; Colorado State 96, San Francisco 101

Opponent score 35 or fewer points in a game:

- Dec. 11, 2011; Colorado State 73, Maryville 35

Opponent shoot 25% or less from the field:

- Jan. 11, 2012; Air Force .186 (11-59)

Game over 60% from the field as a team:

- Dec. 21, 2004; vs Tenn.-Martin .607 (34-56)

Overtime victory:

- Jan. 21, 2010; Colorado State 66, UNLV 65

Overtime loss:

- Nov. 13, 2011; Arizona State 56, CSU 52

Double-overtime game:

- Nov. 13, 2007; Colorado State 96, San Francisco 101 (triple OT)

Triple-overtime game:

- Nov. 13, 2007; Colorado State 96, San Francisco 101

Game without a 3-pointer:

- Dec. 31, 2011 vs. Bowling Green (0-6)

- Second in scoring offense (.654)
- Third in scoring margin (plus-9.0)
- First in field-goal percentage (.480)
- First in field-goal percentage defense (.356)
- First in three-point field-goal percentage (.434)
- First in rebounding defense (33.4)
- First in steals (10.4)
- First in assists (18.2)
- First in assist-to-turnover ratio (1.1)
- First in defensive rebounds (25.6)
- Second in defensive rebounding percentage (.670)

MW career leaders (as of Jan. 24)...

Three Rams are ranked in the top 50 in the Mountain West record books. Sam Martin currently has the fourth-best field-goal percentage (.553) all-time since the league was formed in 1999, and she is first among active players. Meghan Heimstra is now 24th in blocked shots with 74 in her career. Kim Mestdagh appears on the list seven times, leading all active players in four categories: 1,505 points per game (16th), 516 field-goals made (19th), 263 three-point field-goals made (second), 203 steals (tied-15th), 530 rebounds (43rd), 249 assists (44th) and 210 free throws made (tied-44th).

Moving up the charts...

Midway through her senior year, Kim Mestdagh is on her way to the top of the charts in the Rams' record book. The leading returning point scorer in the Mountain West for the second-consecutive year has cracked the top-five on the all-time points list at CSU in fifth place. She currently has 1,524 career points, 72 away from fourth-place Jodi Robers. She also just became the seventh player in CSU history to make 500 from the field and the sixth player in CSU record books to record 200 steals.

Mestdagh, a two-time second-team all-conference recipient, has hit more single-season three-pointers than any sophomore or junior in CSU history, eclipsing Becky Hammon each year.

The following is a list of Mestdagh's current spot in CSU's all-time record books:

Points	5.	1,524
Points Per Game (min. 45 games)	7.	13.73 (1,524/111)
Field Goals Made	t6.	523 (1,240)
Field-Goal Attempts	6.	1,240 (523)
3-Point Field Goals Made	2.	266 (743)
3-Point Field Goal-Attempts	2.	743 (266)
3-PT Field-Goal % (Based on 75 attempts)	12.	.358 (266-743)
Free Throw % (Based on 100 attempts)	6.	.812 (212-261)
Steals	t5.	206

A family affair...

Colorado State's 2011-12 women's basketball organization features three sets of family members.

Players:

- Amber and Mandy Makeever (twin sisters)
- Kim and Hanne Mestdagh (sisters)

Staff:

- Taylor and Corey Steven (cousins)

Women's Basketball Weekly...

The Mtn. - MountainWest Sports Network is airing a new show, Women's Basketball Weekly, Thursdays at 8:30 p.m. MT.

This weekly program recaps the women's basketball action from across the conference with results and highlights plus player features, game breakdowns and a look ahead at upcoming games.

New in 2011-12: Video Streaming...

The Rams will have all of their non-televised home contests streamed live on CSURams.com/All-Access this season. Fans can watch home games live on their computer for \$9.95 per month or \$59.95 per year. The fee also includes the ability to listen to the radio broadcast of every game online.

2012 Women's Final Four in Denver...

The Mountain West, in conjunction with Denver Sports, will be the host of the 2012 NCAA Women's Final Four at the Pepsi Center in Denver, Colo., on April 1 & 3. Tickets are currently on sale to the general public. For more information about the event, go to NCAA.com or TheMWC.com

Up next...

Colorado State returns home for a bout with UNLV on Feb. 1 at 7 p.m. The Rams will not leave the state of Colorado for three weeks with three games at Moby Arena through the first half of February.

MW Preseason Coaches' Poll/Awards

The Colorado State women's basketball team was selected to finish third in the Mountain West's preseason poll, and senior Kim Mestdagh received preseason Player of the Year honors at the conference media day at The Mtn. studios.

TCU led the charge with 12 first-place votes, followed by San Diego State with seven first-place votes. The Rams received one first-place vote to round out the top three. New Mexico was predicted to finish fourth, followed by UNLV, which tied with Wyoming to finish fifth, then Air Force placed seventh and conference newcomer Boise State was picked to finish in the eighth spot.

Mestdagh, a two-time second-team all-conference selection, led the Rams to a fourth-place finish in 2010-11, averaging 17.1 points per game, currently 10th on the all-time points list at Colorado State. She is the first CSU player to receive the honor since Becky Hammon in 1998.

Rank	Team (First-Place Votes)	Points
1.	TCU (12)	136
2.	San Diego State (7)	127
3.	Colorado State (1)	106
4.	New Mexico	74
5.	UNLV	65
	Wyoming	65
7.	Air Force	42
8.	Boise State	39

Preseason All-Conference Team

- Dymond James, Jr., F Air Force
- **Kim Mestdagh, Sr., G/F Colorado State**
- Sara Halasz, Jr., G New Mexico
- Starr Crawford, Jr., F TCU
- Jamie Smith, Sr., F UNLV

Preseason Player of the Year

- **Kim Mestdagh, Sr., G/F, Colorado State**

Preseason Newcomer of the Year

- Chelsea Hopkins, Jr., G, San Diego State

Preseason Freshman of the Year

- Chairese Culberson, F, San Diego State

CSU women add three recruits for 2012-13 season

Courtney Lisowski is a 6-foot wing-guard that hails from Archbishop Mitty High School in San Jose, Calif. She comes from a high school that was voted No. 3 in the nation by Sports Illustrated and No. 1 program in California. In her first three varsity seasons, her team won two league championships and two section championships.

Emily Johnson, a 5-11 guard, comes from Georgetown (Texas) High School. She averaged 10.7 points, 3.0 assists, 1.8 steals and 2.2 rebounds per game. During her junior season she averaged 49.1 percent from the field, 40.2 percent beyond the arc, and 74.5 percent from the line.

Caitlin Duffy is a 5-11 guard from St. Thomas More High School in Rapid City, S.D. She averaged 19 points, 6.5 rebounds and 3.5 assists per game. She shot 55.2 percent from the floor and 47.1 percent beyond the arc.

Coors Light Coaches' Show...

Head basketball coaches Kristen Holt and Tim Miles will make their debuts on the 2011-12 Coors Light Coaches' Show Monday, Nov. 28. The show, which will air live at 6 p.m. MT from the Beach House Grill in downtown Fort Collins, can be heard on AM 600 KCOL in Fort Collins and AM 560 KLZ in Denver.

Coors Light Coaches' Show schedule

- | | |
|---------------|---------------|
| • November 28 | • January 30 |
| • December 5 | • February 6 |
| • December 12 | • February 13 |
| • January 9 | • February 20 |
| • January 16 | • February 27 |
| • January 23 | |

The Automated ScoreBook
Colorado State Combined Team Statistics (as of Jan 25, 2012)
Conference games

RECORD:	OVERALL	HOME	AWAY	NEUTRAL
ALL GAMES	4-1	3-0	1-1	0-0
CONFERENCE	4-1	3-0	1-1	0-0
NON-CONFERENCE	0-0	0-0	0-0	0-0

#	Player	gp-gs	min	avg	Total		3-Point		F-Throw		Rebounds				pf	dq	a	to	blk	stl	pts	avg
					fg-fga	fg%	3fg-fga	3fg%	ft-fta	ft%	off	def	tot	avg								
12	MARTIN, Sam	5-5	140	28.0	38-60	.633	2-3	.667	13-17	.765	13	20	33	6.6	15	0	5	11	6	5	91	18.2
05	MESTDAGH, Kim	5-5	152	30.4	31-59	.525	15-30	.500	8-9	.889	6	22	28	5.6	13	0	17	17	1	14	85	17.0
11	HEIMSTRA, Meghan	5-0	110	22.0	19-40	.475	0-2	.000	9-12	.750	7	20	27	5.4	8	0	10	11	2	7	47	9.4
01	FORTE, LaDeyah	5-5	181	36.2	12-31	.387	2-7	.286	5-9	.556	1	9	10	2.0	5	0	26	11	0	9	31	6.2
13	HARTIG, Kelly	5-5	133	26.6	13-27	.481	0-0	.000	2-8	.250	11	15	26	5.2	18	2	13	15	4	4	28	5.6
03	THOMPSON, Hayley	5-5	153	30.6	8-30	.267	1-5	.200	4-7	.571	1	22	23	4.6	8	0	11	5	1	7	21	4.2
04	MESTDAGH, Hanne	4-0	22	5.5	4-7	.571	3-6	.500	0-0	.000	1	2	3	0.8	3	0	2	3	0	0	11	2.8
23	HUNT, Morgan	4-0	25	6.3	3-5	.600	0-0	.000	0-0	.000	0	3	3	0.8	2	0	2	1	0	0	6	1.5
20	SPOTTON, Kara	5-0	74	14.8	3-14	.214	0-0	.000	0-0	.000	3	7	10	2.0	8	0	4	9	0	5	6	1.2
14	CHAVEZ, Carlyn	1-0	5	5.0	0-0	.000	0-0	.000	1-2	.500	0	2	2	2.0	0	0	1	0	0	1	1	1.0
02	WIENS, Ashley	1-0	5	5.0	0-0	.000	0-0	.000	0-0	.000	0	0	0	0.0	0	0	0	1	0	0	0	0.0
Team											8	6	14				1					
Total.....		5	1000		131-273	.480	23-53	.434	42-64	.656	51	128	179	35.8	80	2	91	85	14	52	327	65.4
Opponents.....		5	1001		96-270	.356	34-87	.391	56-86	.651	63	104	167	33.4	72	-	52	86	12	38	282	56.4

TEAM STATISTICS	CS	OPP	Date	Opponent	Score	Att.
SCORING	327	282	* 01/11/12	AIR FORCE	w 73-39	953
Points per game	65.4	56.4	* 01/14/12	at TCU	L 71-79	2506
Scoring margin	+9.0	-	* 01/17/12	at Boise State	w 60-52	502
FIELD GOALS-ATT	131-273	96-270	* 1/21/12	WYOMING	w 62-58	1779
Field goal pct	.480	.356	* 1/25/12	NEW MEXICO	w 61-54	1054
3 POINT FG-ATT	23-53	34-87	* - Conference game			
3-point FG pct	.434	.391				
3-pt FG made per game	4.6	6.8				
FREE THROWS-ATT	42-64	56-86				
Free throw pct	.656	.651				
F-Throws made per game	8.4	11.2				
REBOUNDS	179	167				
Rebounds per game	35.8	33.4				
Rebounding margin	+2.4	-				
ASSISTS	91	52				
Assists per game	18.2	10.4				
TURNOVERS	85	86				
Turnovers per game	17.0	17.2				
Turnover margin	+0.2	-				
Assist/turnover ratio	1.1	0.6				
STEALS	52	38				
Steals per game	10.4	7.6				
BLOCKS	14	12				
Blocks per game	2.8	2.4				
ATTENDANCE	3786	3008				
Home games-Avg/Game	3-1262	2-1504				
Neutral site-Avg/Game	-	0-0				

Score by Periods	1st	2nd	Totals
Colorado State	144	183	327
Opponents	124	158	282

The Automated ScoreBook
Colorado State Combined Team Statistics (as of Jan 25, 2012)
All games

RECORD:	OVERALL	HOME	AWAY	NEUTRAL
ALL GAMES	8-12	6-3	2-7	0-2
CONFERENCE	4-1	3-0	1-1	0-0
NON-CONFERENCE	4-11	3-3	1-6	0-2

#	Player	gp-gs	min	avg	Total		3-Point		F-Throw		Rebounds				pf	dq	a	to	blk	stl	pts	avg
					fg-fga	fg%	3fg-fga	3fg%	ft-fa	ft%	off	def	tot	avg								
05	MESTDAGH, Kim	20-18	648	32.4	103-241	.427	45-131	.344	40-47	.851	19	77	96	4.8	47	1	71	74	6	50	291	14.6
12	MARTIN, Sam	20-19	544	27.2	106-191	.555	9-26	.346	56-65	.862	46	69	115	5.8	53	2	17	44	19	14	277	13.9
11	HEIMSTRA, Meghan	20-9	449	22.5	64-150	.427	0-11	.000	35-60	.583	34	96	130	6.5	55	2	25	60	21	33	163	8.2
21	MAKEEVER, Mandy	9-5	210	23.3	16-52	.308	11-30	.367	14-15	.933	1	14	15	1.7	9	0	14	31	1	7	57	6.3
01	FORTE, LaDeyah	20-15	604	30.2	41-104	.394	9-33	.273	16-24	.667	3	39	42	2.1	27	0	65	51	0	32	107	5.4
03	THOMPSON, Hayley	17-12	469	27.6	28-82	.341	3-15	.200	10-19	.526	14	53	67	3.9	19	0	37	27	4	14	69	4.1
13	HARTIG, Kelly	20-13	444	22.2	35-87	.402	0-0	.000	11-23	.478	29	44	73	3.7	59	3	28	51	15	14	81	4.1
20	SPOTTON, Kara	20-8	389	19.5	30-91	.330	0-3	.000	19-26	.731	34	35	69	3.5	47	3	11	37	3	14	79	4.0
23	HUNT, Morgan	18-1	174	9.7	16-32	.500	0-0	.000	8-10	.800	8	16	24	1.3	10	0	3	19	2	3	40	2.2
04	MESTDAGH, Hanne	7-0	37	5.3	5-8	.625	3-6	.500	0-0	.000	1	4	5	0.7	4	0	3	4	0	1	13	1.9
02	WIENS, Ashley	8-0	28	3.5	3-6	.500	0-0	.000	2-2	1.000	1	3	4	0.5	3	0	3	4	0	0	8	1.0
14	CHAVEZ, Carlyn	7-0	29	4.1	1-2	.500	0-0	.000	3-4	.750	0	4	4	0.6	1	0	3	0	0	1	5	0.7
Team													35	50	85			9				
Total.....		20	4025		448-1046	.428	80-255	.314	214-295	.725	225	504	729	36.5	334	11	280	411	71	183	1190	59.5
Opponents.....		20	4026		426-1126	.378	126-396	.318	236-328	.720	249	418	667	33.3	297	-	237	340	55	183	1214	60.7

TEAM STATISTICS	CS	OPP	Date	Opponent	Score	Att.	
SCORING	1190	1214	11-11-11	at UNI	L	50-61	2311
Points per game	59.5	60.7	11/13/11	ARIZONA STATE	Lot	52-56	1420
Scoring margin	-1.2	-	11/17/11	TULSA	W	87-68	1050
FIELD GOALS-ATT	448-1046	426-1126	11/20/11	COLORADO	L	53-72	1223
Field goal pct	.428	.378	11/23/11	at Denver	L	61-64	635
3 POINT FG-ATT	80-255	126-396	11/29/11	at Montana State	L	69-87	1014
3-point FG pct	.314	.318	12-02-11	at Northern Colorado	L	60-66	1061
3-pt FG made per game	4.0	6.3	12/04/11	at Toledo	L	51-58	4244
FREE THROWS-ATT	214-295	236-328	12/08/11	NORTH DAKOTA	W	58-52	1020
Free throw pct	.725	.720	12/11/11	MARYVILLE	W	73-35	1085
F-Throws made per game	10.7	11.8	12/20/11	vs MSU	L	45-72	200
REBOUNDS	729	667	12/21/11	vs INDIANA	L	39-47	200
Rebounds per game	36.5	33.3	12/31/11	BOWLING GREEN	L	57-70	1062
Rebounding margin	+3.1	-	1/4/12	at CSU Bakersfield	W	65-63	256
ASSISTS	280	237	01/08/12	at Seattle University	L	43-61	384
Assists per game	14.0	11.9	* 01/11/12	AIR FORCE	W	73-39	953
TURNOVERS	411	340	* 01/14/12	at TCU	L	71-79	2506
Turnovers per game	20.6	17.0	* 01/17/12	at Boise State	W	60-52	502
Turnover margin	-3.5	-	* 1/21/12	WYOMING	W	62-58	1779
Assist/turnover ratio	0.7	0.7	* 1/25/12	NEW MEXICO	W	61-54	1054
STEALS	183	183					
Steals per game	9.2	9.2					
BLOCKS	71	55					
Blocks per game	3.6	2.8					
ATTENDANCE	10646	13313					
Home games-Avg/Game	9-1183	9-1435					
Neutral site-Avg/Game	-	2-200					

* - Conference game

Score by Periods	1st	2nd	OT	Totals
Colorado State	567	617	6	1190
Opponents	565	639	10	1214

Colorado State Game-by-Game Highs (as of Jan 25, 2012)
All games

Opponent	Date	Score	Points	Rebounds	Assists	Steals	Blocked shots
at UNI	11-11-11	50-61	13-MARTIN, Sam	12-MESTDAGH, Kim	4-MESTDAGH, Kim	2-SPOTTON, Kara MAKEEVER, Mandy	2-MARTIN, Sam
ARIZONA STATE	11/13/11	52-56	17-MARTIN, Sam MESTDAGH, Kim	7-SPOTTON, Kara	7-MESTDAGH, Kim	2-HEIMSTRA, Megha	1-MESTDAGH, Kim HEIMSTRA, Megha
TULSA	11/17/11	87-68	35-MESTDAGH, Kim	13-HEIMSTRA, Megh	10-FORTE, LaDeyah	2-MESTDAGH, Kim	5-HEIMSTRA, Megha
COLORADO	11/20/11	53-72	19-MESTDAGH, Kim	8-HEIMSTRA, Megha	4-MESTDAGH, Kim	2-HEIMSTRA, Megha FORTE, LaDeyah	1-HEIMSTRA, Megha
at Denver	11/23/11	61-64	28-MARTIN, Sam	13-MARTIN, Sam	4-HARTIG, Kelly	2-HARTIG, Kelly MAKEEVER, Mandy	3-MARTIN, Sam
at Montana State	11/29/11	69-87	21-MARTIN, Sam	10-HEIMSTRA, Megh	8-MESTDAGH, Kim	4-HEIMSTRA, Megha	2-HEIMSTRA, Megha
at Northern Colorado	12-02-11	60-66	28-MESTDAGH, Kim	13-MARTIN, Sam	4-MAKEEVER, Mand	6-MESTDAGH, Kim	2-HEIMSTRA, Megha
at Toledo	12/04/11	51-58	21-MARTIN, Sam	7-MARTIN, Sam	4-MESTDAGH, Kim FORTE, LaDeyah	2-FORTE, LaDeyah	1-HEIMSTRA, Megha HARTIG, Kelly THOMPSON, Hayle MARTIN, Sam SPOTTON, Kara
NORTH DAKOTA	12/08/11	58-52	12-MARTIN, Sam	11-HEIMSTRA, Megh	3-MESTDAGH, Kim	4-FORTE, LaDeyah	2-HARTIG, Kelly MARTIN, Sam HEIMSTRA, Megha
MARYVILLE	12/11/11	73-35	23-MESTDAGH, Kim	8-THOMPSON, Hayle	4-THOMPSON, Hayle	4-FORTE, LaDeyah	1-THOMPSON, Hayle MESTDAGH, Kim
vs MSU	12/20/11	45-72	14-MESTDAGH, Kim	6-SPOTTON, Kara	2-MESTDAGH, Kim HEIMSTRA, Megha THOMPSON, Hayle	4-MESTDAGH, Kim	2-HARTIG, Kelly
vs INDIANA	12/21/11	39-47	15-HEIMSTRA, Megh	10-HEIMSTRA, Megh	4-FORTE, LaDeyah	4-MESTDAGH, Kim FORTE, LaDeyah	3-HEIMSTRA, Megha
BOWLING GREEN	12/31/11	57-70	12-HEIMSTRA, Megh MARTIN, Sam	9-HEIMSTRA, Megha	4-MESTDAGH, Kim	3-MESTDAGH, Kim	1-HEIMSTRA, Megha
at CSU Bakersfield	1/4/12	65-63	21-MARTIN, Sam	10-HEIMSTRA, Megh	7-FORTE, LaDeyah	6-MESTDAGH, Kim	1-HUNT, Morgan HARTIG, Kelly
at Seattle University	01/08/12	43-61	11-SPOTTON, Kara	9-MESTDAGH, Kim	2-FORTE, LaDeyah HEIMSTRA, Megha	3-MESTDAGH, Kim HEIMSTRA, Megha	1-HARTIG, Kelly
AIR FORCE	01/11/12	73-39	17-MARTIN, Sam	7-MESTDAGH, Kim HARTIG, Kelly	4-HEIMSTRA, Megha THOMPSON, Hayle	3-HEIMSTRA, Megha	2-MARTIN, Sam
at TCU	01/14/12	71-79	28-MARTIN, Sam	9-MARTIN, Sam	6-MESTDAGH, Kim	5-MESTDAGH, Kim	2-HARTIG, Kelly
at Boise State	01/17/12	60-52	21-MESTDAGH, Kim	10-MESTDAGH, Kim	4-MESTDAGH, Kim FORTE, LaDeyah	1-MARTIN, Sam MESTDAGH, Kim FORTE, LaDeyah	3-MARTIN, Sam
WYOMING	1/21/12	62-58	21-MESTDAGH, Kim	6-MARTIN, Sam	8-FORTE, LaDeyah	3-FORTE, LaDeyah MESTDAGH, Kim THOMPSON, Hayle	1-HEIMSTRA, Megha HARTIG, Kelly
NEW MEXICO	1/25/12	61-54	19-MESTDAGH, Kim	9-HEIMSTRA, Megha	6-FORTE, LaDeyah	3-MESTDAGH, Kim HEIMSTRA, Megha	1-HEIMSTRA, Megha

CSU vs. New Mexico - 1/25

Official Basketball Box Score -- Game Totals -- Final Statistics
New Mexico vs Colorado State
1/25/12 7 p.m. at Fort Collins, Colo. (Moby Arena)

New Mexico 54 • 6-13 (0-5 MW)

#	Player	Total			3-Ptr			Rebounds			PF	TP	A	TO	Bk	Stl	Min
		FG-FGA	FG-FGA	FT-FTA	FG-FGA	FG-FGA	FT-FTA	Off	Def	Tot							
23	TORRANCE, Porche	f	2-4	1-1	4-5	2	6	8	5	9	3	4	1	3		27	
12	NELSON, Nikki	g	2-5	2-5	0-0	0	2	2	2	6	3	3	0	1		32	
21	JACKSON, Jayme	g	2-8	0-0	2-2	2	0	2	0	6	6	3	0	1		25	
24	DURBIN, Caroline	g	5-10	2-3	1-1	2	3	5	2	13	0	6	0	1		33	
35	NNAJI, Chinyere	g	1-3	0-0	0-0	0	3	3	2	2	0	2	1	0		25	
11	TAYLOR, Lauren	g	4-10	4-9	2-2	1	1	2	2	14	2	2	0	0		29	
14	ERSKINE, Jourdan	g	1-2	0-0	0-0	0	3	3	1	2	0	0	0	0		13	
25	RHOADES, Ashley	g	0-1	0-0	0-0	0	1	1	0	0	0	1	1	0		9	
43	STARK, Emily	g	1-1	0-0	0-0	0	1	1	0	2	0	1	0	0		7	
Team						1	1	2									
Totals			18-44	9-18	9-12	8	21	29	14	54	14	22	3	6		200	

FG % 1st Half: 8-23 34.8% 2nd half: 10-21 47.6% Game: 18-44 40.9%
 3FG % 1st Half: 3-9 33.3% 2nd half: 6-9 66.7% Game: 9-18 50.0%
 FT % 1st Half: 4-4 100.0% 2nd half: 5-8 62.5% Game: 9-12 75.0%

Colorado State 61 • 8-12 (4-1 MW)

#	Player	Total			3-Ptr			Rebounds			PF	TP	A	TO	Bk	Stl	Min
		FG-FGA	FG-FGA	FT-FTA	FG-FGA	FG-FGA	FT-FTA	Off	Def	Tot							
12	MARTIN, Sam	f	7-14	0-0	1-1	2	5	7	4	15	2	1	0	0		29	
13	HARTIG, Kelly	f	2-2	0-0	0-0	3	2	5	2	4	2	3	0	1		28	
01	FORTE, LaDeyah	g	0-3	0-0	0-1	0	0	0	0	0	6	2	0	2		36	
03	THOMPSON, Hayley	g	3-9	0-1	0-1	1	6	7	1	6	2	2	0	2		34	
05	MESTDAGH, Kim	g	7-15	3-7	2-2	1	1	2	4	19	3	5	0	3		26	
04	MESTDAGH, Hanne	g	1-2	1-2	0-0	0	0	0	0	3	1	0	0	0		4	
11	HEIMSTRA, Meghan	g	5-9	0-0	0-0	3	6	9	2	10	2	3	1	3		28	
20	SPOTTON, Kara	g	2-4	0-0	0-0	0	1	1	0	4	1	0	0	2		15	
Team						2	0	2									
Totals			27-58	4-10	3-5	12	21	33	13	61	19	16	1	13		200	

FG % 1st Half: 13-27 48.1% 2nd half: 14-31 45.2% Game: 27-58 46.6%
 3FG % 1st Half: 1-4 25.0% 2nd half: 3-6 50.0% Game: 4-10 40.0%
 FT % 1st Half: 0-0 0.0% 2nd half: 3-5 60.0% Game: 3-5 60.0%

Officials: Darren Krzesnik, Penny Davis, Gator Parrish
 Technical fouls: New Mexico-None. Colorado State-None.
 Attendance: 1054

Score by periods	1st	2nd	Total
New Mexico	23	31	54
Colorado State	27	34	61

Last FG - NM 2nd-00:15, CS 2nd-00:35.
 Largest lead - NM by 10 1st-13:53, CS by 11 2nd-03:03.

Points	In	Off	2nd	Fast	Bench
	Paint	T/O	Chance	Break	
NM	10	20	10	2	18
CS	30	26	13	4	17

Score tied - 1 time.
 Lead changed - 1 time.

CSU vs. Wyoming - 1/21

Official Basketball Box Score -- Game Totals -- Final Statistics
Wyoming vs Colorado State
1/21/12 1 p.m. at Fort Collins, Colo. (Moby Arena)

Wyoming 58 • 6-11 (2-2 MW)

#	Player	Total			3-Ptr			Rebounds			PF	TP	A	TO	Bk	Stl	Min
		FG-FGA	FG-FGA	FT-FTA	FG-FGA	FG-FGA	FT-FTA	Off	Def	Tot							
04	WOODWARD, Kayla	f	9-11	3-3	2-2	2	4	6	1	23	1	5	0	2		40	
13	SICKLES, Ashley	f	3-6	1-1	0-1	2	3	5	3	7	0	1	0	0		30	
33	SEWELL, Chaundra	f	4-10	0-0	2-5	3	4	7	5	10	2	2	0	1		28	
23	LANDRY, Chelan	g	0-2	0-0	3-4	0	1	1	2	3	1	4	0	0		18	
31	MILETO, Kaitlyn	g	2-8	1-2	0-0	1	2	3	3	5	0	2	0	0		33	
02	GORRELL, Alison	g	0-0	0-0	2-2	0	4	4	0	2	3	2	1	0		19	
22	FREEZE, Brenna	g	2-3	1-1	0-1	0	4	4	0	5	1	0	0	0		14	
32	HOFFMAN, Kaylee	g	1-4	1-2	0-0	0	1	1	1	3	1	0	0	0		10	
40	SIBREL, Jordan	g	0-1	0-0	0-0	0	1	1	0	0	0	2	0	0		8	
Team						1	0	1									
Totals			21-45	7-9	9-15	9	24	33	15	58	9	18	1	3		200	

FG % 1st Half: 9-24 37.5% 2nd half: 12-21 57.1% Game: 21-45 46.7%
 3FG % 1st Half: 3-5 60.0% 2nd half: 4-4 100.0% Game: 7-9 77.8%
 FT % 1st Half: 2-2 100.0% 2nd half: 7-13 53.8% Game: 9-15 60.0%

Colorado State 62 • 7-12 (3-1 MW)

#	Player	Total			3-Ptr			Rebounds			PF	TP	A	TO	Bk	Stl	Min
		FG-FGA	FG-FGA	FT-FTA	FG-FGA	FG-FGA	FT-FTA	Off	Def	Tot							
12	MARTIN, Sam	f	5-10	0-0	2-2	3	3	6	3	12	1	0	0	2		25	
13	HARTIG, Kelly	f	3-9	0-0	2-4	2	1	3	5	8	2	3	1	0		22	
01	FORTE, LaDeyah	g	1-6	0-1	2-2	1	2	3	1	4	8	2	0	3		36	
03	THOMPSON, Hayley	g	4-7	1-1	0-0	0	4	4	2	9	4	0	0	3		36	
05	MESTDAGH, Kim	g	8-14	3-6	2-2	1	4	5	3	21	1	3	0	3		36	
04	MESTDAGH, Hanne	g	0-1	0-1	0-0	0	0	0	0	0	0	0	0	0		5	
11	HEIMSTRA, Meghan	g	4-9	0-1	0-0	0	2	2	3	8	4	1	1	0		27	
20	SPOTTON, Kara	g	0-0	0-0	0-0	0	3	3	2	0	0	2	0	1		10	
23	HUNT, Morgan	g	0-0	0-0	0-0	0	0	0	0	0	0	0	0	0		3	
Team						1	0	1									
Totals			25-56	4-10	8-10	8	19	27	19	62	20	11	2	12		200	

FG % 1st Half: 10-24 41.7% 2nd half: 15-32 46.9% Game: 25-56 44.6%
 3FG % 1st Half: 1-5 20.0% 2nd half: 3-5 60.0% Game: 4-10 40.0%
 FT % 1st Half: 4-6 66.7% 2nd half: 4-4 100.0% Game: 8-10 80.0%

Officials: Scotty Hermann, Rick Morris, Roy Gulbeyan
 Technical fouls: Wyoming-None. Colorado State-None.
 Attendance: 1779

Score by periods	1st	2nd	Total
Wyoming	23	35	58
Colorado State	25	37	62

Last FG - WY 2nd-02:32, CS 2nd-02:59.
 Largest lead - WY None, CS by 10 2nd-11:24.

Points	In	Off	2nd	Fast	Bench
	Paint	T/O	Chance	Break	
WY	22	10	9	0	10
CS	24	17	6	0	8

Score tied - 5 times.
 Lead changed - 0 times.

CSU at Boise State - 1/17

Official Basketball Box Score -- Game Totals -- Final Statistics
Colorado State vs Boise State
01/17/12 6:02 pm at Boise, Idaho (Taco Bell Arena)

Colorado State 60 • 6-12, 2-1 MW

#	Player	Total			3-Ptr			Rebounds			PF	TP	A	TO	Bk	Stl	Min
		FG-FGA	FG-FGA	FT-FTA	FG-FGA	FG-FGA	FT-FTA	Off	Def	Tot							
12	MARTIN, Sam	f	8-11	0-0	3-4	2	3	5	2	19	0	4	3	1		31	
13	HARTIG, Kelly	f	3-4	0-0	0-1	3	4	7	2	6	2	4	0	0		32	
01	FORTE, LaDeyah	g	0-3	0-1	0-1	0	3	3	0	4	0	0	1	3		38	
03	THOMPSON, Hayley	g	1-4	0-0	2-2	0	7	7	1	4	1	2	0	0		31	
05	MESTDAGH, Kim	g	8-14	3-6	2-3	1	9	10	2	21	4	4	0	1		34	
11	HEIMSTRA, Meghan	g	3-7	0-1	4-5	1	6	7	1	10	0	0	0	0		17	
20	SPOTTON, Kara	g	0-6	0-0	0-0	2	1	3	1	0	1	2	0	0		16	
23	HUNT, Morgan	g	0-0	0-0	0-0	0	0	0	0	0	0	0	0	0		1	
Team						1	2	3									
Totals			23-49	3-8	11-16	10	35	45	12	60	12	17	3	3		200	

FG % 1st Half: 11-25 44.0% 2nd half: 12-24 50.0% Game: 23-49 46.9%
 3FG % 1st Half: 2-5 40.0% 2nd half: 1-3 33.3% Game: 3-8 37.5%
 FT % 1st Half: 3-4 75.0% 2nd half: 8-12 66.7% Game: 11-16 68.8%

Boise State 52 • 11-7, 2-1 MW

#	Player	Total			3-Ptr			Rebounds			PF	TP	A	TO	Bk	Stl	Min
		FG-FGA	FG-FGA	FT-FTA	FG-FGA	FG-FGA	FT-FTA	Off	Def	Tot							
30	BRADY, Nicole	f	4-9	1-4	0-0	4	4	8	5	9	1	1	1	1		29	
33	POTEET, Kinzi	f	1-5	0-0	2-4	2	4	6	3	4	1	1	1	2		28	
04	LENHARDT, Lauren	f	6-14	1-4	4-4	1	3	4	1	17	0	1	0	0		35	
01	PILCHER, Heather	g	1-8	0-3	0-0	2	1	3	3	2	3	2	0	2		26	
24	ISHAM, Kati	g	6-19	4-13	2-2	3	1	4	2	18	0	1	0	0		38	
05	LEE, Diana	g	0-3	0-1	0-0	0											

CSU vs. Air Force - 1/11

Official Basketball Box Score -- Game Totals -- Final Statistics
Air Force vs Colorado State
01/11/12 12 p.m. MT at Fort Collins, Colo. (Moby Arena)

Air Force 39 • 5-11, 0-1 MW

#	Player	Total			3-Ptr			Rebounds			PF	TP	A	TO	Bk	Stl	Min
		FG-FGA	FG-FGA	FT-FTA	Off	Def	Tot	Off	Def	Tot							
25	IVEY, Michelle	f	0-6	0-0	1-2	3	5	8	4	1	1	1	0	1	29		
30	SATTERFIELD, Jamela	f	2-6	0-0	1-4	3	2	5	3	5	0	1	0	2	34		
32	JAMES, Dymond	f	4-14	0-0	6-11	2	3	5	3	14	0	2	0	5	32		
02	LEIPPRANDT, Alicia	g	1-9	0-1	4-5	2	2	4	2	6	0	6	0	1	23		
20	THOMPSON, Camille	g	1-8	0-2	0-0	1	2	3	0	2	0	3	0	0	24		
03	BLAGOWSKY, Jimi	g	0-3	0-3	0-0	1	0	1	1	0	2	2	0	0	12		
05	SORRERA, Danielle	f	1-2	0-0	0-0	2	1	3	1	2	0	1	0	0	13		
11	MEDINA, Cherae	f	1-4	0-1	0-0	3	0	3	2	2	0	2	0	1	9		
13	JEFFERY, Forrest	g	0-1	0-0	0-0	0	0	0	0	0	0	0	0	0	4		
15	O'NEIL, Megan	f	1-5	0-0	5-8	1	1	2	2	7	0	1	0	2	16		
21	BOHANNON, Kami	f	0-1	0-0	0-0	0	0	0	0	0	0	1	0	0	3		
31	JOHNSON, Angela	f	0-0	0-0	0-0	0	0	0	0	0	0	0	0	1	1		
Team						3	2	5			1						
Totals			11-59	0-7	17-30	21	18	39	18	39	3	21	0	13	200		

FG % 1st Half: 4-33 12.1% 2nd half: 7-26 26.9% Game: 11-59 18.6% Deadball Rebounds 5
 3FG % 1st Half: 0-4 0.0% 2nd half: 0-3 0.0% Game: 0-7 0.0%
 FT % 1st Half: 5-8 62.5% 2nd half: 12-22 54.5% Game: 17-30 56.7%

Colorado State 73 • 5-11, 1-0 MW

#	Player	Total			3-Ptr			Rebounds			PF	TP	A	TO	Bk	Stl	Min
		FG-FGA	FG-FGA	FT-FTA	Off	Def	Tot	Off	Def	Tot							
12	MARTIN, Sam	f	7-8	1-1	2-4	2	4	6	4	17	0	2	2	1	23		
13	HARTIG, Kelly	f	2-5	0-0	0-1	1	6	7	5	4	3	3	1	1	26		
01	FORTE, LaDeyah	g	3-7	1-2	3-3	0	3	3	1	10	3	0	2	3	33		
03	THOMPSON, Hayley	g	0-5	0-0	2-4	0	3	3	1	2	4	0	0	0	24		
05	MESTDAGH, Kim	q	3-7	3-5	2-2	3	4	7	2	11	3	2	1	2	19		
02	WIENS, Ashley	g	0-0	0-0	0-0	0	0	0	0	0	1	1	0	0	5		
04	MESTDAGH, Hanne	g	3-4	2-3	0-0	0	2	2	3	8	1	2	0	0	12		
11	HEIMSTRA, Meghan	f	5-9	0-0	2-4	2	4	6	1	12	4	5	0	3	18		
14	CHAVEZ, Carlyn	f	0-0	0-0	1-2	0	2	2	0	1	1	0	0	1	5		
20	SPOTTON, Kara	f	1-2	0-0	0-0	1	2	3	2	2	0	4	0	2	22		
23	HUNT, Morgan	f	3-4	0-0	0-0	0	3	3	2	6	1	1	0	0	13		
Team						2	1	3									
Totals			27-51	7-11	12-20	11	34	45	21	73	20	23	4	12	200		

FG % 1st Half: 12-27 44.4% 2nd half: 15-24 62.5% Game: 27-51 52.9% Deadball Rebounds 4
 3FG % 1st Half: 1-4 25.0% 2nd half: 6-7 85.7% Game: 7-11 63.6%
 FT % 1st Half: 4-6 66.7% 2nd half: 8-14 57.1% Game: 12-20 60.0%

Officials: Penny Davis, Shelley Nakasone, Jack Jones
 Technical fouls: Air Force-TEAM. Colorado State-None.
 Attendance: 953

Score by periods	1st	2nd	Total
Air Force	13	26	39
Colorado State	29	44	73

Points	In Paint	Off T/O	2nd Chance	Fast Break	Bench
AF	10	18	8	4	11
CS	32	23	8	10	29

Last FG - AF 2nd-00:58, CS 2nd-01:37
 Largest lead - AF None, CS by 37, ind 32 21.

Scoring tied - 0 times.
 Lead changed - 0 times.

CSU at Seattle - 1/8

Official Basketball Box Score -- Game Totals -- Final Statistics
Colorado State vs Seattle University
01/08/12 12:00 p.m. at Seattle, WA (Connolly Center)

Colorado State 43 • 4-11

#	Player	Total			3-Ptr			Rebounds			PF	TP	A	TO	Bk	Stl	Min
		FG-FGA	FG-FGA	FT-FTA	Off	Def	Tot	Off	Def	Tot							
11	HEIMSTRA, Meghan	f	1-7	0-0	1-4	1	2	3	1	3	2	4	0	3	25		
12	MARTIN, Sam	f	0-2	0-0	1-2	3	1	4	0	1	1	0	0	0	7		
20	SPOTTON, Kara	f	4-10	0-0	3-4	2	1	3	4	11	0	6	0	1	31		
01	FORTE, LaDeyah	g	1-5	0-2	0-0	0	1	1	1	2	2	5	0	1	31		
03	THOMPSON, Hayley	g	2-4	0-0	2-2	1	2	3	2	6	1	1	0	0	25		
02	WIENS, Ashley	g	0-0	0-0	0-0	0	0	0	0	0	0	0	0	0	1		
04	MESTDAGH, Hanne	g	1-1	0-0	0-0	0	1	1	0	2	1	1	0	0	9		
05	MESTDAGH, Kim	g	4-12	2-9	0-1	2	7	9	2	10	1	3	0	3	32		
13	HARTIG, Kelly	g	2-5	0-0	2-2	1	3	4	3	6	0	1	1	0	23		
14	CHAVEZ, Carlyn	g	0-0	0-0	0-0	0	0	0	0	0	0	0	0	0	2		
23	HUNT, Morgan	g	1-1	0-0	0-0	0	1	1	1	2	1	2	0	0	14		
Team						2	0	2			1						
Totals			16-47	2-11	9-15	12	19	31	14	43	9	24	1	8	200		

FG % 1st Half: 11-25 44.0% 2nd half: 5-22 22.7% Game: 16-47 34.0% Deadball Rebounds 2.1
 3FG % 1st Half: 2-5 40.0% 2nd half: 0-6 0.0% Game: 2-11 18.2%
 FT % 1st Half: 2-4 50.0% 2nd half: 7-11 63.6% Game: 9-15 60.0%

Seattle University 61 • 10-6

#	Player	Total			3-Ptr			Rebounds			PF	TP	A	TO	Bk	Stl	Min
		FG-FGA	FG-FGA	FT-FTA	Off	Def	Tot	Off	Def	Tot							
14	Ward, Ashley	f	3-9	0-2	4-4	1	0	1	3	10	0	2	1	2	32		
41	Sowell, Kacie	f	4-8	0-0	5-5	6	5	11	4	13	0	2	1	2	32		
01	Shepherd, Sylvia	f	4-7	1-2	0-0	1	6	7	3	9	2	2	0	1	34		
05	Kerfoot, Elle	g	2-6	2-6	1-2	1	2	3	0	7	1	0	0	2	20		
11	Rhea, Talisa	g	6-15	1-8	3-4	0	5	5	1	16	4	3	0	0	37		
24	Brown, Daidra	f	1-4	0-1	0-0	1	1	2	2	2	2	5	0	4	23		
35	McCarthy, Maggie	f	1-2	0-1	0-0	0	0	0	0	2	0	1	0	0	8		
45	Adhiambo, Brenda	f	0-3	0-0	2-2	2	2	4	2	2	1	3	0	5	14		
Team						1	2	3									
Totals			21-54	4-20	15-17	13	23	36	15	61	10	18	2	16	200		

FG % 1st Half: 9-27 33.3% 2nd half: 12-27 44.4% Game: 21-54 38.9% Deadball Rebounds 2
 3FG % 1st Half: 2-8 25.0% 2nd half: 2-8 25.0% Game: 4-20 20.0%
 FT % 1st Half: 3-4 75.0% 2nd half: 12-13 92.3% Game: 15-17 88.2%

Officials: Clarke Stevens, Bob Scofield, Julie Krommenhoek
 Technical fouls: Colorado State-None. Seattle University-None.
 Attendance:

Score by periods	1st	2nd	Total
Colorado State	26	17	43
Seattle University	23	38	61

Points	In Paint	Off T/O	2nd Chance	Fast Break	Bench
CS	12	4	6	2	20
SU	30	29	12	8	6

Last FG - CS 2nd-00:58, SU 2nd-00:41.
 Largest lead - CS by 9 1st-03:28, SU by 19 2nd-06:50.

Scoring tied - 5 times.
 Lead changed - 1 time.

CSU at CSU Bakersfield - 1/4

Official Basketball Box Score -- Game Totals -- Final Statistics
Colorado State vs CSU Bakersfield
1/4/11 7:05 p.m. at Bakersfield, CA (Icardo Center)

Colorado State 65 • 4-10

#	Player	Total			3-Ptr			Rebounds			PF	TP	A	TO	Bk	Stl	Min
		FG-FGA	FG-FGA	FT-FTA	Off	Def	Tot	Off	Def	Tot							
01	FORTE, LaDeyah	*	6-13	1-5	2-2	0	4	4	2	15	7	3	0	1	39		
03	THOMPSON, Hayley	*	1-3	0-1	0-0	0	4	4	0	2	3	2	0	0	25		
12	MARTIN, Sam	*	9-14	0-2	3-3	2	7	9	4	21	0	0	0	0	29		
20	SPOTTON, Kara	*	7-9	0-0	3-4	3	4	7	2	17	2	4	0	1	37		
23	HUNT, Morgan	*	1-2	0-0	0-0	0	2	2	1	2	0	3	1	0	12		
04	MESTDAGH, Hanne	*	0-0	0-0	0-0	0	0	0	0	0	0	0	0	0	1		
05	MESTDAGH, Kim	*	0-5	0-3	0-0	0	3	3	2	0	6	5	0	6	25		
11	HEIMSTRA, Meghan	*	3-9	0-0	0-0	2	7	9	4	6	1	3	0	2	21		
13	HARTIG, Kelly	*	1-3	0-0	0-0	2	0	2	2	2	1	3	1	0	11		
Team						1	1	2									
Totals			28-58	1-11	8-9	10	32	42	17	65	20	23	2	10	200		

FG % 1st Half: 12-27 44.4% 2nd half: 16-31 51.6% Game: 28-58 48.3% Deadball Rebounds 1
 3FG % 1st Half: 1-5 20.0% 2nd half: 0-6 0.0% Game: 1-11 9.1%
 FT % 1st Half: 1-2 50.0% 2nd half: 7-7 100.0% Game: 8-9 88.9%

CSU Bakersfield 63 • 3-15

#	Player	Total			3-Ptr			Rebounds			PF	TP	A	TO	Bk	Stl	Min
		FG-FGA	FG-FGA	FT-FTA	Off	Def	Tot	Off	Def	Tot							
03	Williams, Amber	*	3-12	1-6	1-3	2	4	6	1	8	3	1	0	0	34		
04	Ford, Ciarra	*	3-8	2-4	0-0	0	3	3	1	8	3	3	0	0	30		
21	Herman, Kristine	*	7-19	3-10	2-2	1	0	1	0	19	4	3	0	4	39		
24	McKenney, Madison	*	2-7	1-5	2-2	1	0	1	3	7	2	0	0	3	26		
31	Carter, Lauren	*	3-9	1-6	2-3	1	4	5	4	9	4	5	1	0	28		
11	Hinkens, Brooklynn	*	2-5	2-4	2-2	1	3	4	0	8	0	1	0	2	24		
23	Smith, Tika	*	1-4	0-0	2-2	4	3	7	0	4	1	2	1	1	19		
Team						3	2	5									
Totals			21-64	10-35	11-14	13	19	32	9	63	17	15	2	10	200		

FG % 1st Half: 9-31 29.0% 2nd half: 12-33 36.4% Game: 21-64 32.8% Deadball Rebounds 1
 3FG % 1st Half: 3-13 23.1% 2nd half: 7-22 31.8% Game: 10-35 28.6%
 FT % 1st Half: 8-10 80.0% 2nd half: 3-4 75.0% Game: 11-14 78.6%

CSU vs. Indiana - 12/21

Official Basketball Box Score -- Game Totals -- Final Statistics
INDIANA vs Colorado State
12/21/11 12:00 pm CST at Moon Palace, Cancun, Mexico

INDIANA 47 • 4-8

##	Player	Total			3-Ptr			Rebounds			PF	TP	A	TO	Bk	Stl	Min
		FG-FGA	FG-FGA	FT-FTA	Off	Def	Tot	Off	Def	Tot							
21	Andujar, Danilsa	f	0-1	0-0	0-1	0	0	0	1	0	0	0	0	0	0	13	
24	Sinclair, Aulani	f	3-9	1-2	2-2	2	1	3	1	9	0	5	0	1	1	32	
22	Chaplin, Sasha	c	2-6	0-0	2-3	4	1	5	1	6	0	2	0	1	1	18	
13	Ussery, Candycye	g	0-3	0-0	0-0	0	1	1	0	0	2	2	0	0	0	10	
32	McGhee, Jasmine	q	4-14	1-1	0-2	2	9	11	2	9	1	4	0	0	0	39	
01	Goodwin, Alisha	g	0-2	0-0	0-0	1	0	1	1	0	0	0	0	0	1		
04	Rubene, Linda	g	1-7	1-3	0-0	0	3	3	0	3	3	2	0	0	26		
11	Newbauer, Andrea	g	0-1	0-0	0-2	2	1	3	2	0	5	3	0	0	29		
40	McCurty, Quaneisha	g	8-14	1-1	3-5	7	7	14	1	20	0	1	6	1	28		
44	Deloach, Simone	g	0-0	0-0	0-0	0	0	0	1	0	0	1	0	0	4		
Team						2 5 7											
Totals			18-57	4-7	7-15	20	28	48	10	47	11	21	6	3	200		

FG % 1st Half: 10-27 37.0% 2nd half: 8-30 26.7% Game: 18-57 31.6%
 3FG % 1st Half: 2-3 66.7% 2nd half: 2-4 50.0% Game: 4-7 57.1%
 FT % 1st Half: 4-7 57.1% 2nd half: 3-8 37.5% Game: 7-15 46.7%

Colorado State 39 • 3-9

##	Player	Total			3-Ptr			Rebounds			PF	TP	A	TO	Bk	Stl	Min
		FG-FGA	FG-FGA	FT-FTA	Off	Def	Tot	Off	Def	Tot							
05	MESTDAGH, Kim	f	3-16	1-10	0-0	2	5	7	3	7	2	5	0	4	37		
12	MARTIN, Sam	f	1-5	1-2	2-2	2	1	3	2	5	0	1	1	2	18		
13	HARTIG, Kelly	f	0-1	0-0	0-0	0	0	0	0	0	0	0	0	0	4		
20	SPOTTON, Kara	f	1-6	0-0	0-0	2	2	4	4	2	1	0	0	0	33		
01	FORTE, LaDeyah	g	2-9	0-2	0-0	1	5	6	1	4	4	2	0	4	39		
03	THOMPSON, Hayley	g	3-5	0-1	0-0	0	2	2	2	6	1	1	0	2	24		
11	HEIMSTRA, Meghan	g	5-18	0-0	5-5	6	4	10	4	15	2	3	3	1	31		
23	HUNT, Morgan	g	0-2	0-0	0-0	0	1	1	2	0	0	3	1	1	14		
Team						4 5 9											
Totals			15-62	2-15	7-7	17	25	42	18	39	10	17	5	14	200		

FG % 1st Half: 9-32 28.1% 2nd half: 6-30 20.0% Game: 15-62 24.2%
 3FG % 1st Half: 2-11 18.2% 2nd half: 0-4 0.0% Game: 2-15 13.3%
 FT % 1st Half: 5-5 100.0% 2nd half: 2-2 100.0% Game: 7-7 100.0%

Officials: Carol Comanita, Bruce Morris, Kevin Dillard
 Technical fouls: INDIANA-None. Colorado State-None.
 Attendance: 200
 Caribbean Classic, Moon Palace, Cancun Mexico
 Presented by Triple Crown Sports

Score by periods	1st	2nd	Total
INDIANA	26	21	47
Colorado State	25	14	39

Points	In	Off	2nd	Fast	Bench
	Paint	T/O	Chance	Break	
INDIANA	16	11	14	0	23
CS	12	15	13	4	21

Last FG - INDIANA 2nd-00:15, CS 2nd-01:03.
 Largest lead - INDIANA by 9 2nd-06:24, CS by 14 1st-07:14.

Score tied - 3 times.
 Lead changed - 2 times.

CSU vs. Michigan State - 12/20

Official Basketball Box Score -- Game Totals -- Final Statistics
Colorado State vs MSU
12/20/11 2:30 pm CST at Moon Palace, Cancun, Mexico

Colorado State 45 • 3-8

##	Player	Total			3-Ptr			Rebounds			PF	TP	A	TO	Bk	Stl	Min
		FG-FGA	FG-FGA	FT-FTA	Off	Def	Tot	Off	Def	Tot							
12	MARTIN, Sam	f	0-2	0-0	0-0	0	3	3	2	0	0	2	1	1	14		
13	HARTIG, Kelly	f	1-4	0-0	0-0	1	2	3	3	2	0	4	2	1	22		
20	SPOTTON, Kara	f	3-8	0-2	1-2	3	3	6	3	7	1	2	1	1	33		
01	FORTE, LaDeyah	g	3-8	0-3	0-0	0	3	3	2	6	0	5	0	2	36		
05	MESTDAGH, Kim	g	6-11	2-4	0-0	1	0	1	0	14	2	3	0	4	30		
02	WIENS, Ashley	g	0-0	0-0	0-0	0	0	0	0	0	0	0	0	0	2		
03	THOMPSON, Hayley	g	0-0	0-0	0-0	1	1	2	1	0	2	5	0	0	22		
11	HEIMSTRA, Meghan	g	2-4	0-1	4-7	0	0	0	3	8	2	4	0	2	18		
23	HUNT, Morgan	g	3-5	0-0	2-3	3	1	4	0	8	0	0	0	1	23		
Team						0 3 3											
Totals			18-42	2-10	7-12	9	16	25	14	45	7	27	4	12	200		

FG % 1st Half: 8-16 50.0% 2nd half: 10-26 38.5% Game: 18-42 42.9%
 3FG % 1st Half: 1-4 25.0% 2nd half: 1-6 16.7% Game: 2-10 20.0%
 FT % 1st Half: 3-3 100.0% 2nd half: 4-9 44.4% Game: 7-12 58.3%

MSU 72 • 8-4

##	Player	Total			3-Ptr			Rebounds			PF	TP	A	TO	Bk	Stl	Min
		FG-FGA	FG-FGA	FT-FTA	Off	Def	Tot	Off	Def	Tot							
30	Johnson, Lykendra	f	4-5	0-0	1-2	1	4	5	3	9	2	0	1	0	20		
52	Mills, Becca	f	4-9	1-3	2-2	1	0	1	0	11	0	2	1	1	24		
00	Johnson, Kiana	g	2-6	0-2	1-2	0	3	3	0	5	2	1	0	2	22		
01	Thomas, Jasmine	g	3-9	1-4	2-2	0	0	0	0	9	5	2	0	3	27		
33	Alton, Taylor	g	3-5	2-4	0-0	1	2	3	1	8	0	3	1	4	23		
03	Poole, Porsche	g	3-5	1-2	3-4	1	1	2	1	10	3	4	0	1	21		
04	Hines, Jasmine	g	4-6	0-0	0-0	1	1	2	2	8	0	2	0	1	16		
11	Pickrel, Annalise	g	1-3	1-2	0-0	3	1	4	0	3	1	2	0	0	17		
21	Bell, Klarissa	g	2-3	0-1	2-2	0	2	2	0	6	1	0	0	0	8		
22	Davis, Bryonna	g	1-1	0-0	0-0	0	0	0	0	2	1	1	0	0	5		
24	Schiffauer, Courtney	g	0-1	0-0	1-2	2	1	3	5	1	0	1	0	0	17		
Team						1 2 3											
Totals			27-53	6-18	12-16	11	17	28	12	72	15	18	3	12	200		

FG % 1st Half: 15-26 57.7% 2nd half: 12-27 44.4% Game: 27-53 50.9%
 3FG % 1st Half: 5-11 45.5% 2nd half: 1-7 14.3% Game: 6-18 33.3%
 FT % 1st Half: 4-7 57.1% 2nd half: 8-9 88.9% Game: 12-16 75.0%

Officials: Carol Comanita, Bruce Morris, Kim Thebo
 Technical fouls: Colorado State-None. MSU-None.
 Attendance: 200
 Caribbean Classic, Moon Palace, Cancun, Mexico
 Presented by Triple Crown Sports

Score by periods	1st	2nd	Total
Colorado State	20	25	45
MSU	39	33	72

Points	In	Off	2nd	Fast	Bench
	Paint	T/O	Chance	Break	
CS	16	20	5	2	16
MS	38	34	11	14	30

Last FG - CS 2nd-00:34, MS 2nd-00:16.
 Largest lead - CS None, MS by 29 2nd-01:33.

Score tied - 0 times.
 Lead changed - 0 times.

CSU vs. Maryville - 12/11

Official Basketball Box Score -- Game Totals -- Final Statistics
Maryville vs Colorado State
12/11/11 1 p.m. at Fort Collins, Colo. (Moby Arena)

Maryville 35 • 2-5

##	Player	Total			3-Ptr			Rebounds			PF	TP	A	TO	Bk	Stl	Min
		FG-FGA	FG-FGA	FT-FTA	Off	Def	Tot	Off	Def	Tot							
22	Childs, Kate	f	2-8	2-5	6-7	1	1	2	0	12	0	7	0	1	28		
42	Duethman, Abby	f	3-8	2-4	1-2	0	1	1	1	9	0	3	0	2	25		
3	Flynn, Rita	c	0-3	0-0	0-0	0	0	0	0	2	0	0	0	2	14		
05	Thompson, JoAnn	g	1-7	0-1	0-0	0	3	3	3	2	2	0	0	2	28		
13	Miller, Shelby	g	0-8	0-6	0-0	2	2	4	3	0	2	2	0	2	30		
02	Oney, Alissa	g	0-3	0-3	0-0	0	2	2	1	0	1	2	0	0	17		
12	Baker, Breann	g	2-3	2-3	0-0	0	4	4	2	6	0	4	0	0	18		
20	Tyner, Tori	g	2-2	0-0	0-0	0	0	0	0	4	1	0	0	0	6		
40	Robison, Samantha	g	0-4	0-4	0-0	1	1	2	1	0	0	1	0	0	10		
41	Lorton, Erica	g	0-0	0-0	2-2	2	0	2	2	0	3	1	0	0	20		
44	Pepowski, Angela	g	0-3	0-0	0-0	1	0	1	0	0	0	0	0	2	4		
Team						1 2 3											
Totals			10-49	6-26	9-11	8	16	24	15	35	6	22	1	11	200		

FG % 1st Half: 3-23 13.0% 2nd half: 7-26 26.9% Game: 10-49 20.4%
 3FG % 1st Half: 2-14 14.3% 2nd half: 4-12 33.3% Game: 6-26 23.1%
 FT % 1st Half: 2-2 100.0% 2nd half: 7-9 77.8% Game: 9-11 81.8%

Colorado State 73 • 3-7

##	Player	Total			3-Ptr			Rebounds			PF	TP	A	TO	Bk	Stl	Min
		FG-FGA	FG-FGA	FT-FTA	Off	Def	Tot	Off	Def	Tot							
13	HARTIG, Kelly	f	7-12	0-0	2-3	0	1	1	1	16	2	6	0	1	24		
20	SPOTTON, Kara	f	4-6	0-0	1-2	4	2	6	3	9	1	1	0	2	23		
01	FORTE, LaDeyah	g	1-3	0-0	3-3	0	5	5	0	5	3	2					

CSU at Toledo - 12/4

Official Basketball Box Score -- Game Totals -- Final Statistics
Colorado State vs TOLEDO
12/04/11 3:00 p.m. at Toledo, OH (Savage Arena)

Colorado State 51 • 1-7

#	Player	F	Total		3-Ptr		Rebounds			PF	TP	A	TO	Blk	Stl	Min		
			FG-FGA	FG-FGA	FT-FTA	Off	Def	Tot										
11	HEIMSTRA, Meghan	f	3-4	0-0	1-3	0	3	3	1	7	1	5	1	1	28			
12	MARTIN, Sam	f	8-12	0-2	5-5	3	4	7	5	21	1	7	1	1	35			
01	FORTE, LaDeyah	g	3-4	2-2	0-0	0	2	2	4	8	4	4	0	2	38			
05	MESTDAGH, Kim	g	6-14	2-7	0-0	0	5	5	1	14	4	6	0	0	39			
21	MAKEEVER, Mandy	g	0-2	0-1	0-0	0	1	1	1	0	1	1	0	0	5			
03	THOMPSON, Hayley	g	0-4	0-2	1-2	1	5	6	0	1	2	0	1	0	28			
13	HARTIG, Kelly	g	0-0	0-0	0-0	0	3	3	2	0	1	1	1	1	13			
20	SPOTTON, Kara	g	0-4	0-0	0-0	1	1	2	1	0	0	2	1	0	14			
Team			2-13		2-13		2-13			15			51					
Totals			20-44		4-14		7-10			7 25 32			15 51			13 27 5 5 200		

FG % 1st Half: 9-21 42.9% 2nd half: 11-23 47.8% Game: 20-44 45.5% Deadball Rebounds 2
 3FG % 1st Half: 3-9 33.3% 2nd half: 1-5 20.0% Game: 4-14 28.6%
 FT % 1st Half: 1-3 33.3% 2nd half: 6-7 85.7% Game: 7-10 70.0%

TOLEDO 58 • 5-2

#	Player	F	Total		3-Ptr		Rebounds			PF	TP	A	TO	Blk	Stl	Min		
			FG-FGA	FG-FGA	FT-FTA	Off	Def	Tot										
03	SMITH, Lecretia	f	3-5	0-0	0-0	1	3	4	0	6	3	0	0	0	25			
44	BAUMGARTNER, Kyle	f	0-1	0-1	0-0	0	0	0	3	0	1	1	0	0	10			
02	INGERSOLL, Courtney	g	4-9	2-6	0-0	1	2	3	1	10	1	3	0	0	34			
22	DORTCH, Andola	g	6-13	1-3	3-4	1	4	5	0	16	8	2	0	2	37			
35	LINN, Hayley	g	5-13	2-6	0-0	1	2	3	1	12	0	2	0	2	30			
05	REED-LEWIS, Janelle	g	0-0	0-0	0-0	1	1	2	0	0	0	1	0	0	5			
12	McCORMICK, Riley	g	0-1	0-1	0-0	0	0	0	0	0	0	0	0	1	10			
23	ZANOQUERA, Inma	g	1-5	0-4	1-1	1	4	5	0	3	0	1	0	1	16			
33	RICHARDSON, Yolanda	g	5-9	0-0	1-2	3	1	4	3	11	3	6	2	1	30			
50	JONES, Brianna	g	0-2	0-0	0-0	0	0	0	1	0	0	1	0	0	3			
Team			24-58		5-21		5-7			11 18 29			9 58			16 17 2 7 200		

FG % 1st Half: 9-28 32.1% 2nd half: 15-30 50.0% Game: 24-58 41.4% Deadball Rebounds 0
 3FG % 1st Half: 1-11 9.1% 2nd half: 4-10 40.0% Game: 5-21 23.8%
 FT % 1st Half: 4-5 80.0% 2nd half: 1-2 50.0% Game: 5-7 71.4%

Officials: Michelle Del Duco, Chris Minor, Matthew Balster
 Technical fouls: Colorado State-None. TOLEDO-None.
 Attendance: 4244

Score by periods	1st	2nd	Total
Colorado State	22	29	51
TOLEDO	23	35	58

Last FG - CSU 2nd-01:20, TOLEDO 2nd-01:00.
 Largest lead - CSU by 3 2nd-14:55, TOLEDO by 8 2nd-01:00.

Points	In	Off	2nd	Fast	Bench
CSU	22	6	7	0	1
TOLEDO	36	23	0	14	

Score tied - 7 times.
 Lead changed - 12 times.

CSU at Northern Colorado - 12/2

Official Basketball Box Score -- Game Totals -- Final Statistics
Colorado State vs Northern Colorado
12-02-11 7:05 pm at Greeley, Colo. (Butler-Hancock)

Colorado State 60 • 1-6

#	Player	F	Total		3-Ptr		Rebounds			PF	TP	A	TO	Blk	Stl	Min		
			FG-FGA	FG-FGA	FT-FTA	Off	Def	Tot										
11	HEIMSTRA, Meghan	f	4-8	0-0	0-2	2	2	4	5	8	1	6	2	1	22			
12	MARTIN, Sam	f	5-12	0-1	5-5	6	7	13	2	15	2	3	1	1	34			
03	THOMPSON, Hayley	g	1-7	0-1	0-0	1	3	4	1	2	3	3	0	1	34			
05	MESTDAGH, Kim	g	10-20	6-14	2-2	0	2	2	4	28	3	2	1	6	39			
21	MAKEEVER, Mandy	g	2-6	1-3	2-2	0	2	2	2	7	4	2	0	0	32			
01	FORTE, LaDeyah	g	0-1	0-0	0-0	0	0	0	0	0	1	1	0	0	9			
13	HARTIG, Kelly	g	0-2	0-0	0-1	3	1	4	4	0	2	2	0	0	19			
20	SPOTTON, Kara	g	0-1	0-0	0-0	2	3	5	0	0	0	2	1	0	10			
23	HUNT, Morgan	g	0-0	0-0	0-0	0	0	0	0	0	0	0	0	0	1			
Team			1-23		1-23		1-23			18			60					
Totals			22-57		7-19		9-12			15 22 37			18 60			16 22 5 9 200		

FG % 1st Half: 12-28 42.9% 2nd half: 10-29 34.5% Game: 22-57 38.6% Deadball Rebounds 1
 3FG % 1st Half: 4-8 50.0% 2nd half: 3-11 27.3% Game: 7-19 36.8%
 FT % 1st Half: 4-4 100.0 2nd half: 5-8 62.5% Game: 9-12 75.0%

Northern Colorado 66 • 5-3

#	Player	F	Total		3-Ptr		Rebounds			PF	TP	A	TO	Blk	Stl	Min		
			FG-FGA	FG-FGA	FT-FTA	Off	Def	Tot										
21	OOSDYKE, Lauren	f	2-7	0-1	0-0	2	3	5	4	4	1	3	0	1	22			
24	BROWN, Kaisha	f	4-9	4-7	2-3	0	2	2	1	14	1	3	0	0	35			
23	LOCKRIDGE, Kim	c	1-2	0-0	0-0	0	0	0	2	2	2	1	0	0	12			
03	STRANGE, D'shara	g	9-16	0-0	4-5	1	7	8	2	22	4	3	0	2	40			
15	TIMM, Victoria	g	2-7	2-5	0-0	0	5	5	1	6	1	3	0	1	25			
11	VIDOVIC, Katarina	g	0-2	0-1	2-2	0	0	0	0	2	2	1	0	1	17			
12	MARIN, Amy	g	0-1	0-1	0-0	0	0	0	0	0	1	0	0	1	2			
25	DUEHN, Molly	g	2-5	0-2	0-0	2	0	2	1	4	0	3	2	1	19			
44	LEE, Stephanie	g	6-7	0-0	0-0	3	4	7	1	12	2	1	0	1	28			
Team			26-56		6-17		8-10			10 21 31			12 66			14 18 3 8 200		

FG % 1st Half: 13-30 43.3% 2nd half: 13-26 50.0% Game: 26-56 46.4% Deadball Rebounds 0.1
 3FG % 1st Half: 2-7 28.6% 2nd half: 4-10 40.0% Game: 6-17 35.3%
 FT % 1st Half: 3-3 100.0 2nd half: 5-7 71.4% Game: 8-10 80.0%

Officials: Mark Munoz, Tiffany Bird, Theresa Walloch
 Technical fouls: Colorado State-None. Northern Colorado-None.
 Attendance: 1061

Score by periods	1st	2nd	Total
Colorado State	32	28	60
Northern Colorado	31	35	66

Points	In	Off	2nd	Fast	Bench
CS	26	18	7	3	0
NC	26	23	6	9	18

Last FG - CS 2nd-03:21, NC 2nd-01:38.
 Largest lead - CS by 10 1st-16:04, NC by 6 2nd-00:03.

Score tied - 7 times.
 Lead changed - 9 times.

CSU at Montana State - 11/29

Official Basketball Box Score -- Game Totals -- Final Statistics
Colorado State vs Montana State
11/29/11 7:05 p.m. at Bozeman, MT - Worthington Arena

Colorado State 69 • 1-5

#	Player	F	Total		3-Ptr		Rebounds			PF	TP	A	TO	Blk	Stl	Min		
			FG-FGA	FG-FGA	FT-FTA	Off	Def	Tot										
11	HEIMSTRA, Meghan	f	7-15	0-2	0-2	3	7	10	3	14	1	3	2	4	26			
13	HARTIG, Kelly	f	2-4	0-0	0-1	3	2	5	3	4	2	2	1	1	22			
12	MARTIN, Sam	c	8-14	0-0	5-5	3	2	5	3	21	3	3	1	1	35			
03	THOMPSON, Hayley	g	2-6	0-2	1-2	0	4	4	0	5	2	1	1	1	30			
05	MESTDAGH, Kim	g	0-9	0-7	2-2	1	0	1	1	2	8	4	0	2	31			
01	FORTE, LaDeyah	g	1-3	1-1	0-0	1	2	3	3	3	0	1	0	1	15			
02	WIENS, Ashley	g	1-1	0-0	0-0	0	1	1	0	2	1	0	0	0	1			
14	CHAVEZ, Carlyn	g	0-0	0-0	0-0	0	0	0	0	0	0	0	0	0	1			
20	SPOTTON, Kara	g	2-8	0-0	3-4	6	1	7	3	7	0	1	0	0	15			
21	MAKEEVER, Mandy	g	3-8	2-6	3-3	1	1	2	1	11	0	2	0	1	19			
23	HUNT, Morgan	g	0-1	0-0	0-0	1	1	2	1	0	0	1	0	0	5			
Team			4-15		4-15		4-15			20			87					
Totals			26-69		3-18		14-19			23 22 45			18 69			17 19 5 11 200		

FG % 1st Half: 11-29 37.9% 2nd half: 15-40 37.5% Game: 26-69 37.7% Deadball Rebounds 1
 3FG % 1st Half: 1-11 9.1% 2nd half: 2-7 28.6% Game: 3-18 16.7%
 FT % 1st Half: 8-9 88.9% 2nd half: 6-10 60.0% Game: 14-19 73.7%

Montana State 87 • 5-2

#	Player	F	Total		3-Ptr		Rebounds			PF	TP	A	TO	Blk	Stl	Min
			FG-FGA	FG-FGA	FT-FTA	Off	Def	Tot								
23	ALBERT, Ashley	f	5-12	3-8	0-0	0	2	2	4	13	1	1	0	1	27	
32	SEMANSKY, Rachel	f	4-6	0-0	2-4	4	4	8	4	10	4	2	0	1	33	
43	BANIS, Chelsea	c	5-8	0-0	2-3	1	2	3	4	12	1	0	1	0	25	
10	BUSSEY, Katie	g	9-17	2-7	0-0	2	4	6	2	20	6	8	0	1	34	
34	ADAMS, Latisha	g	3-6	3-5	0-0	1	1	2	1	9	4	5	0	1	30	
00	COLE, Ausha	g	3-5	0-1	4-6	1	2	3	0	10	3	0	0	3	19	
03	DURHAM, Kalli	g	3-7	1-3	0-0	1	1	2	0	7	1	0	0	1	10	
15	ELLIOTT, Jackie	g	1-3	1-2	0-0	1	1	2								

CSU vs. Colorado - 11/20

Official Basketball Box Score -- Game Totals -- Final Statistics
Colorado vs Colorado State
 11/20/11 2 p.m. at Fort Collins, Colo. (Moby Arena)

Colorado 72 • 3-0

#	Player	Total			3-Ptr			Rebounds			PF	TP	A	TO	Blk	Stl	Min
		FG-FGA	FG-FGA	FT-FTA	FG-FGA	FG-FGA	FT-FTA	Off	Def	Tot							
15	Seabrook, Julie	f	1-2	1-1	0-0	0	1	1	3	3	1	1	0	2	18		
40	Hargis, Rachel	c	3-6	0-0	3-4	3	5	8	2	9	0	5	1	0	28		
11	Wilson, Brittany	g	3-9	2-5	0-0	1	2	3	2	8	0	3	0	1	30		
14	Malcolm-Peck, Meagan	g	5-8	2-4	0-0	3	2	5	2	12	1	0	0	0	28		
23	Jeffery, Chucky	g	7-10	0-1	0-0	2	3	5	2	14	7	0	0	4	36		
01	Kresl, Lexy	g	4-9	1-5	5-5	0	6	6	2	14	4	0	1	1	26		
04	Lee, Esther	g	0-0	0-0	0-0	0	0	0	0	0	0	0	0	0	0+		
12	Wilson, Ashley	g	0-1	0-0	0-0	0	0	0	1	0	0	1	0	0	10		
21	Sborov, Jasmine	g	0-1	0-0	0-0	0	1	1	2	0	0	0	0	0	5		
34	Reese, Jen	g	5-11	0-2	2-3	1	6	7	5	12	0	2	0	2	19		
Team						1	0	1									
Totals			28-57	6-18	10-12	11	26	37	21	72	13	19	2	10	200		

FG % 1st Half: 15-31 48.4% 2nd half: 13-26 50.0% Game: 28-57 49.1%
 3FG % 1st Half: 3-9 33.3% 2nd half: 3-9 33.3% Game: 6-18 33.3%
 FT % 1st Half: 5-5 100.0% 2nd half: 5-7 71.4% Game: 10-12 83.3%

Colorado State 53 • 1-3

#	Player	Total			3-Ptr			Rebounds			PF	TP	A	TO	Blk	Stl	Min
		FG-FGA	FG-FGA	FT-FTA	FG-FGA	FG-FGA	FT-FTA	Off	Def	Tot							
11	HEIMSTRA, Meghan	f	4-8	0-1	1-5	2	6	8	2	9	0	4	1	2	29		
12	MARTIN, Sam	f	2-11	1-3	0-0	1	0	1	5	5	1	1	0	0	27		
13	HARTIG, Kelly	f	0-2	0-0	2-2	1	4	5	3	2	0	0	0	1	24		
01	FORTE, LeDeyah	g	0-3	0-0	0-0	0	0	0	1	0	3	4	0	2	21		
05	MESTDAGH, Kim	g	7-12	0-1	5-6	1	2	3	3	19	4	4	0	0	36		
02	WIENS, Ashley	g	0-0	0-0	2-2	1	0	1	0	2	0	0	0	0	1		
03	THOMPSON, Hayley	g	2-2	1-1	0-2	1	1	2	0	5	1	0	0	1	13		
14	CHAVEZ, Carlyn	g	0-0	0-0	0-0	0	0	0	0	0	0	0	0	0	1		
20	SPOTTON, Kara	g	2-4	0-0	2-2	1	2	3	0	6	0	1	0	0	15		
21	MAKEEVER, Mandy	g	2-6	1-3	0-0	0	2	2	1	5	1	6	0	1	21		
23	HUNT, Morgan	g	0-1	0-0	0-0	0	0	0	0	0	0	1	0	0	12		
Team						1	2	3									
Totals			19-49	3-9	12-19	9	19	28	15	53	10	21	1	7	200		

FG % 1st Half: 9-23 39.1% 2nd half: 10-26 38.5% Game: 19-49 38.8%
 3FG % 1st Half: 1-4 25.0% 2nd half: 2-5 40.0% Game: 3-9 33.3%
 FT % 1st Half: 3-7 42.9% 2nd half: 9-12 75.0% Game: 12-19 63.2%

Officials: Marianne Karp, Lisa Jones, Brenda Pantoja
 Technical fouls: Colorado-None. Colorado State-None.
 Attendance: 1223

Score by periods	1st	2nd	Total
Colorado	38	34	72
Colorado State	22	31	53

Last FG - CSU 2nd-00:22, CS 2nd-00:47.
 Largest lead - CSU by 21 2nd-02:19, CS by 2 2nd-19:44.

Score tied - 1 time.
 Lead changed - 1 time.

CSU vs. Arizona State - 11/13

Official Basketball Box Score -- Game Totals -- Final Statistics
Colorado State vs Colorado State
 11/13/11 2 pm at Fort Collins, Colo (Moby Arena)

Colorado State 56 • 2-0

#	Player	Total			3-Ptr			Rebounds			PF	TP	A	TO	Blk	Stl	Min
		FG-FGA	FG-FGA	FT-FTA	FG-FGA	FG-FGA	FT-FTA	Off	Def	Tot							
11	Bennett, Kall	f	0-1	0-1	1-2	0	4	4	4	1	2	5	1	2	29		
02	Pickens, Micaela	g	4-11	0-4	4-6	3	5	8	4	12	2	2	1	4	37		
05	Mann, Deja	g	3-14	0-5	2-4	2	4	6	0	8	1	1	0	0	41		
12	Earl, Alex	g	3-8	3-7	0-0	1	4	5	3	9	0	2	1	2	35		
25	Brandon, Kimberly	g	3-11	0-3	5-6	1	4	5	4	11	1	4	0	1	33		
00	Major, Olivia	g	0-0	0-0	0-0	0	1	1	0	0	0	0	0	0	0		
04	Burke, Joy	g	0-0	0-0	0-0	0	1	1	0	0	0	1	0	0	4		
03	Parsons, Haley	g	0-0	0-0	2-2	0	0	0	0	2	0	1	0	0	3		
10	Amukamara, Promise	g	0-3	0-0	0-0	0	1	1	0	0	0	1	0	1	14		
14	Thomas, Adrianne	g	0-0	0-0	0-0	0	0	0	0	0	0	1	0	0	1		
22	Fulcher, Janae	g	0-1	0-0	5-6	1	2	3	2	5	0	1	1	1	14		
32	Blackwell, Jada	g	4-8	0-0	0-0	3	1	4	2	8	1	1	0	0	14		
Team						3	3	6									
Totals			17-57	3-20	19-26	11	29	44	19	56	6	16	9	9	225		

FG % 1st Half: 7-26 26.9% 2nd half: 9-25 36.0% OT: 1-6 16.7% Game: 17-57 29.8%
 3FG % 1st Half: 1-8 12.5% 2nd half: 2-9 22.2% OT: 0-3 0.0% Game: 3-20 15.0%
 FT % 1st Half: 7-10 70.0% 2nd half: 4-6 66.7% OT: 1-2 50.0% Game: 19-26 73.1%

Colorado State 52 • 0-2

#	Player	Total			3-Ptr			Rebounds			PF	TP	A	TO	Blk	Stl	Min
		FG-FGA	FG-FGA	FT-FTA	FG-FGA	FG-FGA	FT-FTA	Off	Def	Tot							
11	HEIMSTRA, Meghan	f	2-6	0-1	0-0	1	5	6	4	4	0	1	1	2	18		
12	MARTIN, Sam	f	4-9	2-4	7-8	2	3	5	4	17	1	2	0	1	41		
20	SPOTTON, Kara	f	1-7	0-0	1-2	3	4	7	5	3	0	1	0	1	32		
05	MESTDAGH, Kim	g	5-16	1-9	6-9	1	4	5	1	17	7	4	1	1	42		
21	MAKEEVER, Mandy	g	2-8	1-3	2-2	0	4	4	0	7	1	5	0	0	41		
01	FORTE, LeDeyah	g	1-4	0-1	0-0	0	0	0	1	2	0	2	0	1	15		
13	HARTIG, Kelly	g	1-4	0-0	0-0	2	1	3	4	2	0	2	0	0	33		
23	HUNT, Morgan	g	0-0	0-0	0-0	0	0	0	0	0	0	0	0	0	3		
Team						2	8	10									
Totals			16-54	4-18	16-21	11	29	40	19	52	9	17	2	6	225		

FG % 1st Half: 8-26 30.8% 2nd half: 6-19 31.6% OT: 2-9 22.2% Game: 16-54 29.6%
 3FG % 1st Half: 3-10 30.0% 2nd half: 0-4 0.0% OT: 1-4 25.0% Game: 4-18 22.2%
 FT % 1st Half: 4-6 66.7% 2nd half: 11-13 84.6% OT: 1-2 50.0% Game: 16-21 76.2%

Officials: Lisa Jones, Michael Price, Kyle Bacon
 Technical fouls: Arizona State-None. Colorado State-None.
 Attendance: 1420

Score by periods	1st	2nd	OT	Total
Arizona State	22	24	10	56
Colorado State	23	23	6	52

Last FG - ASU OT-03:57, CS OT-01:09.
 Largest lead - ASU by 9 2nd-16:07, CS by 3 1st-01:57.

Score tied - 9 times.
 Lead changed - 8 times.

CSU vs. Tulsa - 11/17

Official Basketball Box Score -- Game Totals -- Final Statistics
Tulsa vs Colorado State
 11/17/11 6pm at Fort Collins, Colo (Moby Arena)

Tulsa 60 • 0-0

#	Player	Total			3-Ptr			Rebounds			PF	TP	A	TO	Blk	Stl	Min
		FG-FGA	FG-FGA	FT-FTA	FG-FGA	FG-FGA	FT-FTA	Off	Def	Tot							
31	COUISNARD, Tiffani	f	2-5	0-0	2-2	3	1	4	3	6	1	1	0	3	18		
42	SCOTT, Chanice	f	3-9	1-2	3-4	0	2	2	0	10	1	1	0	2	20		
54	MCDANIEL, Loren	f	1-5	0-0	0-2	2	1	3	1	2	0	1	1	0	19		
12	MAYBERRY, Taleya	g	4-18	2-5	7-11	1	0	1	3	17	0	1	0	2	29		
24	HOOKER, Taylor	g	5-9	0-1	1-1	0	3	3	5	11	2	0	0	2	23		
15	LEWIS, Denise	g	2-4	0-0	0-0	1	3	4	3	4	0	1	0	0	21		
22	MASON, Amanda	g	1-1	0-0	0-0	0	0	0	2	2	0	0	0	0	7		
25	MCQUIN, Jessica	g	5-10	1-3	0-0	1	2	3	11	0	3	0	2	0	20		
32	TURNER, Mariah	g	0-0	0-0	2-2	1	1	2	0	2	1	1	0	0	22		
35	BRADY, Kadan	g	1-6	1-6	0-0	1	1	2	1	3	0	2	0	1	21		
Team						5	0	5									
Totals			24-67	5-17	15-22	15	14	29	21	68	5	12	1	12	200		

FG % 1st Half: 15-41 36.6% 2nd half: 9-26 34.6% Game: 24-67 35.8%
 3FG % 1st Half: 3-8 37.5% 2nd half: 2-9 22.2% Game: 5-17 29.4%
 FT % 1st Half: 7-8 87.5% 2nd half: 8-14 57.1% Game: 15-22 68.2%

Colorado State 61 • 1-2

#	Player	Total			3-Ptr			Rebounds			PF	TP	A	TO	Blk	Stl	Min
		FG-FGA	FG-FGA	FT-FTA	FG-FGA	FG-FGA	FT-FTA	Off	Def	Tot							
11	HEIMSTRA, Meghan	f	5-7	0-0	2-2	1	12	13	2	12	0	3	5	1	23		
12	MARTIN, Sam	f	4-6	1-2	2-2	3	1	4	1	11	1	0	1	0	24		
20	SPOTTON, Kara	f	0-5	0-1	0-0	1	3	4	5	0	0	4	0	1	22		
05	MESTDAGH, Kim	g	11-15	7-9	6-6	0	1	1	2	35	3	2	0	2	29		
21	MAKEEVER, Mandy	g	2-7	2-6	3-4	0	2	2	1	9	1						

2011-12 Superlatives

Individual

	Colorado State	Opponent
Points	35, Kim Mestdagh vs. Tulsa (11/17)	25, Chrissy Steffen vs. Bowling Green (12/31)
Points In a Half	21, Sam Martin at TCU (1/14)	16, Twice, Last time: Chrissy Steffen vs. BGSU (12/31)
Field Goals Made	11, Three times, Last time: Sam Martin at TCU (1/14)	9, Three times, Last time: K. Woodward vs. Wyoming (1/21)
Field Goal Attempts	20, Kim Mestdagh at Northern Colorado (12/2)	19, Twice, Last time: Kati Isham at BSU (1/17)
Field Goal % (5 made)	.875 (7-8), Sam Martin vs. Air Force (1/11)	.857 (6-7), Stephanie Lee at Northern Colorado (12/2)
3-pt Field Goals Made	7, Kim Mestdagh vs. Tulsa (11/17)	4, Four times, Last time: Lauren Taylor vs. UNM (1/25)
3-pt Field Goal Attempts	14, Kim Mestdagh at Northern Colorado (12/2)	13, Katie Isham at Boise State (1/17)
3-pt Field Goal % (2 made)	1.000 (2-2), LaDeyah Forte at Toledo (12/4)	1.000 (3-3), Kayla Woodward vs. Wyoming (1/21)
Free Throws Made	7, Sam Martin vs. Arizona State (11/13)	7, Taleya Mayberry vs. Tulsa (11/17)
Free Throw Attempts	9, Kim Mestdagh vs. Arizona State (11/13)	11, Twice, Last time: Dymond James vs. Air Force (1/11)
Free Throw Percentage (4 made)	1.000 (6-6), Kim Mestdagh Twice, Last time: vs. Maryville (12/11)	1.000 (5-5) Three times, Last time: K. Sowell at Seattle (1/8)
Total Rebounds	13, Three times, Last time: Sam Martin at UNC (12/2)	14, Quaneisha McCurdy vs. Indiana (12/21)
Offensive Rebounds	6, Three times, Last time: Meghan Heimstra vs. Indiana (12/21)	7, Quaneisha McCurdy vs. Indiana (12/21)
Defensive Rebounds	12, Meghan Heimstra vs. Tulsa (11/17)	9, Jasmine McGhee vs. Indiana (12/21)
Assists	10, LaDeyah Forte vs. Tulsa (11/17)	8, Andola Dortch at Toledo (12/4)
Steals	6, Twice, Last time: Kim Mestdagh at Bakersfield (1/4)	5, Twice, Last time: Dymond James vs. Air Force (1/1)
Blocked Shots	5, Meghan Heimstra vs. Tulsa (11/17)	6, Quaneisha McCurdy vs. Indiana (12/21)

Team

	Colorado State High	Colorado State Low	Opponent High	Opponent Low
Points	87, vs. Tulsa (11/17)	39, vs. Indiana (12/21)	87, at Montana State (11/29)	35, vs. Maryville (12/11)
Points In First Half	43, vs. Tulsa (11/17)	20, vs. MSU (12/20)	47, at Montana State (11/29)	10, vs. Maryville (12/11)
Points In Second Half	44, Twice Last time: vs. Air Force (1/11)	14, vs. Indiana (12/21)	40, at Montana State (11/29)	21, vs. Indiana (12/21)
Victory Margin	38, vs. Maryville (12/11)	2, at Bakersfield (1/4)	27, vs. MSU (12/20)	3, at Denver (11/23)
Field Goals Made	29, Twice Last time: at TCU (1/14)	15, vs. Indiana (12/21)	34, at Montana State (11/29)	10, vs. Maryville (12/11)
Field Goals Attempted	69, at Montana State (11/29)	39, at Northern Iowa (11/11)	68, at Boise State (1/17)	44, vs. New Mexico (1/25)
Field Goal Percentage	.558 (29-52), vs. Tulsa (11/17)	.242 (15-62) vs. Indiana (12/21)	.523 (34-65), at Montana St (11/29)	.186 (11-59) vs. Air Force (1/11)
Single Half FG %	.625 (15-24) vs. Air Force (1/11)	.200 (6-30) vs. Indiana (12/21)	.577 (15-26) vs. MSU (12/20)	.121 (4-33) vs. Air Force (1/11)
3-Pt Field Goals Made	11, vs. Tulsa (11/17)	0, vs. Bowling Green (12/31)	12, at TCU (1/14)	0, vs. Air Force (1/11)
3-Pt Field Goals Attempted	22, at Denver (11/23)	6, vs. Bowling Green (12/31)	35, at Bakersfield (1/4)	7, Twice Last time: vs. Air Force (1/11)
3-Pt Field Goal %	.667 (6-9) vs. Maryville (12/11)	.000 (0-6) vs. BGSU (12/31)	.778 (7-9) vs. Wyoming (1/21)	.000 (0-7) vs. Air Force (1/11)
Free Throws Made	18, vs. Tulsa (11/17)	7, Three times Last time: vs. Indiana (12/21)	22, at Denver (11/23)	5, at Toledo (12/4)
Free Throws Attempted	21, Twice Last time: vs. Tulsa (11/17)	3, vs. New Mexico (1/25)	30, vs. Air Force (1/11)	7, at Toledo (12/4)
Free Throw %	1.000 (7-7) vs. Indiana (12/21)	.600 Three times Last time: (3-5) vs. UNM (1/25)	.882 (15-17) at Seattle (1/8)	.467 (7-15) vs. Indiana (12/21)
Total Rebounds	45, Three times Last time: at Boise State (1/17)	25, vs. MSU (12/20)	48, vs. Indiana (12/21)	24, vs. Maryville (12/11)
Offensive Rebounds	23, at Montana State (11/29)	7, Three times Last time: vs. BGSU (12/31)	21, vs. Air Force (1/11)	5, at Denver (11/23)
Defensive Rebounds	35, at Boise State (1/17)	16, vs. MSU (12/20)	30, vs. Arizona State (11/13)	14, vs. Tulsa (11/17)
Assists	20, Four times Last time: vs. Wyoming (1/21)	7, vs. Indiana (12/21)	20, at Montana State (11/29)	3, vs. Air Force (1/11)
Steals	14, vs. Indiana (12/21)	3, at Boise State (1/17)	13, Twice Last time: vs. Air Force (1/11)	3, Twice Last time: vs. Wyoming (1/21)
Blocked Shots	7, at Denver (11/23)	1, Four times Last time: vs. New Mexico (1/25)	9, vs. Arizona State (11/13)	0, Twice Last time: vs. Air Force (1/11)
Turnovers	27, Twice Last time: vs. MSU (12/20)	11, vs. Wyoming (1/21)	22, Twice Last time: vs. New Mexico (1/25)	7, at Boise State (1/17)
Fouls	23, at Denver (11/23)	11, vs. Maryville (12/11)	21, Twice Last time: vs. Colorado (11/20)	9, Twice Last time: at Bakersfield (1/4)

2010-11 Team and Opponent Game-by-Game Comparison

Opponent	Date	Score	W/L	TOTAL			3-PTS			FT			REBOUNDS			PF	A	TO	Blk	Stl	Pts	Avg	
				FG	FGA	Pct	3FG	FGA	Pct	FT	FTA	Pct	Off	Def	Tot								Avg
Colorado State at UNI	11-11-11	50-61	L	17	39	.436	3	7	.429	13	20	.650	11	24	35	35.0	22	10	25	5	7	50	50.0
Colorado State ARIZONA STATE	11/13/11	52-56	Lot	16	54	.296	4	18	.222	16	21	.762	11	29	40	37.5	19	9	17	2	6	52	51.0
Colorado State TULSA	11/17/11	87-68	W	29	52	.558	11	20	.550	18	21	.857	10	30	44	38.3	19	18	20	6	6	87	63.0
Colorado State COLORADO	11/20/11	53-72	L	19	49	.388	3	9	.333	12	19	.632	9	19	28	35.8	15	10	21	1	7	53	60.5
Colorado State at Denver	11/23/11	61-64	L	23	55	.418	7	22	.318	8	11	.727	14	28	42	37.0	23	15	23	7	6	61	60.6
Colorado State at Montana State	11/29/11	69-87	L	26	69	.377	3	18	.167	14	19	.737	23	22	45	38.3	18	17	19	5	11	69	62.0
Colorado State at Northern Colorado	12-02-11	60-66	L	22	57	.386	7	19	.368	9	12	.750	15	22	37	38.1	18	16	22	5	9	60	61.7
Colorado State at Toledo	12/04/11	51-58	L	20	44	.455	4	14	.286	7	10	.700	7	25	32	37.4	15	13	27	5	5	51	60.4
Colorado State NORTH DAKOTA	12/08/11	58-52	W	21	44	.477	2	13	.154	14	19	.737	7	30	37	37.3	15	9	23	6	11	58	60.1
Colorado State MARYVILLE	12/11/11	73-35	W	26	52	.500	6	9	.667	15	18	.833	11	31	42	37.8	11	17	21	2	13	73	61.4
Colorado State vs MSU	12/20/11	45-72	L	27	53	.509	6	18	.333	12	16	.750	11	17	28	32.0	12	15	18	3	12	72	62.8
Colorado State vs INDIANA	12/21/11	39-47	L	15	62	.242	2	15	.133	7	7	1.000	17	25	42	37.1	18	10	17	5	14	39	58.2
Colorado State BOWLING GREEN	12/31/11	57-70	L	21	49	.429	0	6	.000	15	18	.833	7	24	31	36.6	16	9	17	1	6	57	58.1
Colorado State at CSU Bakersfield	01/04/12	65-63	W	28	58	.483	1	11	.091	8	9	.889	10	32	42	37.0	17	20	23	2	10	65	58.6
Colorado State at Seattle University	01/08/12	43-61	L	16	47	.340	2	11	.182	9	15	.600	12	19	31	36.6	14	9	24	1	8	43	57.5
Colorado State AIR FORCE	01/11/12	73-39	W	27	51	.529	7	11	.636	12	20	.600	11	34	45	37.1	21	20	23	4	12	73	58.5
Colorado State at TCU	01/14/12	71-79	L	29	59	.492	5	14	.357	8	13	.615	10	19	29	36.6	15	20	18	4	12	71	59.2
Colorado State at Boise State	01/17/12	60-52	W	23	49	.469	3	8	.375	11	16	.688	10	35	45	37.1	12	12	17	3	3	60	59.3
Colorado State WYOMING	01/21/12	62-58	W	25	56	.446	4	10	.400	8	10	.800	8	19	27	36.6	19	20	11	2	12	62	59.4
Colorado State NEW MEXICO	1/25/12	61-54	W	27	58	.466	4	10	.400	3	5	.600	12	21	33	36.5	13	19	16	1	13	61	59.5
Colorado State Opponents		1190		448	1046	.428	80	255	.314	214	295	.725	225	504	729	36.5	334	280	411	71	183	1190	59.5
		1214		426	1126	.378	126	396	.318	236	328	.720	249	418	667	33.3	297	237	340	55	183	1214	60.7



Kristen Holt

Head Coach | Fourth Season | Ohio, '93

Head Coach Kristen Holt is in her fourth year at the reins of the Rams. Holt, who became the 11th head coach in the history of the Rams women's basketball program, has been hard at work guiding CSU as it transitions back to a program of excellence in the Mountain West and nationally.

Last season, Holt continued to build a program of excellence in her third season with the Rams, finishing fourth in the league. It was the team's highest finish since 2003-04 and an improvement of four spots in the standings from the previous season. Mar-queen wins included regular-season sweeps

over conference foes Air Force and San Diego State. CSU finished with a home record of 10-5 last season, its best home record since 2004-05, including two victories with over 80 points during non-conference play.

While Holt, 42, is a 16-year coaching veteran at the NCAA Division I level, she has brought a unique perspective to the Rams evolution. She believes in the importance of excellence on the court, in the classroom and in the community. The team has a strong presence in the community with its involvement with Habitat for Humanity and other organizations. In 2010, the team helped on its first LEED Certified home, and also implemented HabitatPro, a comprehensive LEED project experience program designed to help Northern Colorado professionals gain experience on the Habitat LEED registered construction site.

Following the 2000-01 season, her sixth year as an assistant coach at Radford University in Radford, Va., Holt was named interim head women's basketball coach of the Highlanders' program. Taking over the reins of a team selected in the preseason to finish last in the Big South, Holt guided Radford to an overall 11-16 mark, the school's best mark in four years. More impressive, however, was the Highlanders' third-place finish (8-6) in Big South Conference play, a performance that earned Holt recognition as the Big South Coach of the Year. While at Radford, her team won the 1996 Big South Conference tournament championship and participated in the 1996 NCAA tournament, before losing to eventual champion Tennessee in Knoxville. Holt also played an integral role in the development of three all-Big South Conference guards at Radford - Lorrie Mitchell, a first-team performer in 1998 and 1999, Catrice Horton, a first-team performer in 2000 and 2001, and Kim Hairston, a second-team honoree in 1997.

Prior to her time at Radford, Holt spent one season as an assistant coach at Xavier University in Cincinnati, Ohio, where she helped to guide the Musketeers to a Midwestern Collegiate Conference championship before moving on to Radford the following season.

Upon graduation from Ohio University, Holt served a stint with the Cincinnati Reds from 1993-94, helping the major-league club with group ticket sales and pregame events, before pursuing a full-time career as a coach.

Holt originally joined the Rams staff in 2007 as an assistant coach after four seasons at Wichita State University. While at Wichita State, she played a vital role in the development of the Shocker guards. She also was an asset off the court helping to coordinate "Jane's Gems" Kids Club and the women's basketball booster club, High Hoops.

A native of Lima, Ohio, Holt graduated in 1993 from Ohio University in Athens, Ohio, with both a master's degree ('93) and bachelor's degree ('92) in physical education. She was a four-year letterwinner for the Bobcats, and was named to the 1988 Mid-American Conference all-freshman team. She also served as OU's team captain from 1990-92.

She starred as a three-sport athlete at Lima (Ohio) Bath High School, and as a senior was named first-team all-state in both basketball and softball. During her time on the court for Lima Bath, Holt led the team to its first state championship and she was named MVP of the state tournament, pouring in 29 points in the championship game.

HOLT AT A GLANCE

Personal

- Full Name: Kristen Leigh Holt
- Birthdate: July 22, 1969
- Hometown: Lima, Ohio

Education

- Bachelor of science, physical education; Ohio University '92
- Master of science, physical education; Ohio University; '93

Playing Experience

- Ohio University; 1987-92

College Coaching Experience

- 2008-Present: Colorado State University; Head Coach
- 2007-08: Colorado State University; Assistant Coach
- 2003-07: Wichita State University; Assistant Coach
- 2001-02: Radford University; Head Coach
- 1995-01: Radford University; Assistant Coach
- 1993-94: Xavier University; Assistant Coach

BY THE NUMBERS

Year	Overall	League
2001-02	11-16	8-6
2008-09	10-21	4-12
2009-10	13-17	5-11
2010-11	14-16	7-9
2011-12	8-12	4-1
Totals	56-82	28-39

Opponent	Home	Road	Neutral	Total
Air Force	4-0	3-0	0-1	7-1
Appalachian State	1-0	0-0	0-0	1-0
Arizona State	0-1	0-1	0-0	0-2
Birmingham Southern	1-0	1-0	0-0	2-0
Boise State	0-0	1-0	0-0	1-0
Bowling Green	0-1	0-0	0-0	0-1
BYU	0-3	0-3	0-0	0-6
California	0-0	0-1	0-0	0-1
Charleston Southern	1-0	0-1	0-0	1-1
Coastal Carolina	1-0	1-0	0-0	2-0
Colorado	1-1	0-2	0-0	1-3
Creighton	0-0	0-1	0-0	0-1
CSU Bakersfield	0-0	0-1	0-0	0-1
Delaware	1-0	0-0	0-0	1-0
Denver	1-1	0-2	0-0	1-3
East Tennessee State	0-0	0-1	0-0	0-1
Elon University	0-1	0-1	0-0	0-2
Florida State	0-0	0-1	0-0	0-1
Glenville State	0-1	0-0	0-0	0-1
High Point	1-0	0-1	0-0	1-1
Idaho	1-0	1-0	0-0	2-0
Indiana	0-0	0-0	0-1	0-1
Liberty	1-0	0-1	0-0	1-1
Maryville (Mo.)	1-0	0-0	0-0	1-0
Michigan State	0-0	0-0	0-1	0-1
Montana	1-0	0-1	0-0	1-1
Montana State	0-0	0-1	0-0	0-1
Murray State	0-1	0-0	0-0	0-1
New Mexico	3-1	0-3	0-2	3-6
North Carolina State	0-0	0-1	0-0	0-1
North Dakota	1-0	1-0	0-0	2-0
Northern Colorado	2-0	0-2	0-0	2-2
Northern Iowa	1-1	0-1	0-0	1-2
Ohio	0-0	0-1	0-0	0-1
Prairie View A&M	0-0	0-0	1-0	1-0
Pepperdine	0-1	0-0	0-0	0-1
San Diego State	1-2	1-2	0-0	2-4
Seattle	0-0	0-1	0-0	0-1
South Dakota	3-0	0-0	0-0	3-0
Southern Illinois	0-0	0-0	1-0	1-0
Texas A&M Corpus Christi	1-0	0-1	0-0	1-1
TCU	0-3	0-4	0-0	0-7
Texas Southern	1-0	0-0	0-0	1-0
Texas State	1-0	0-0	0-0	1-0
Toledo	0-0	0-1	0-0	0-1
Tulsa	1-0	0-0	0-0	1-0
UAB	0-0	0-0	0-1	0-1
UNLV	3-0	2-1	0-0	5-1
UNC Asheville	1-0	1-0	0-0	2-0
Utah	1-2	0-3	0-0	1-5
UTSA	0-0	0-1	0-0	0-1
Valparaiso	0-1	0-1	0-0	0-2
Virginia Tech	0-1	0-0	0-0	0-1
Wake Forest	0-0	0-1	0-0	0-1
Westen Carolina	0-1	1-0	0-0	1-1
Wichita State	1-0	0-1	0-0	1-1
Winthrop	1-0	0-2	0-1	1-3
Wyoming	1-3	0-3	1-0	2-6
Overall Totals	39-26	13-49	3-7	56-82

NUMERICAL ROSTER

No.	Name	Ht.	Pos.	Yr.	Exp.	Hometown (Last School)
1	LaDeyah Forte	5-4	G	FR	HS	Pensacola, Fla. (Pensacola)
2	Ashley Wiens	5-8	G	JR	TR	Grand Junction, Colo. (Clarendon College)
3	Hayley Thompson	6-1	G	SO	1L	Denver, Colo. (Mullen)
4	Hanne Mestdagh	5-10	G/F	FR	HS	Ieper, Belgium (St. Katelijne Waver)
5	Kim Mestdagh	5-10	G/F	SR	3L	Ieper, Belgium (Sint Vincentius)
11	Meghan Heimstra	6-2	F	RS JR	2L	Longmont, Colo. (Silver Creek)
12	Sam Martin	6-2	F	SO	1L	Parker, Colo. (Chaparral)
13	Kelly Hartig	6-3	F	SR	1L	Highlands Ranch, Colo. (Virginia)
14	Carlyn Chavez	5-7	G	FR	HS	Portland, Ore. (LaSalle College Prep)
15	Amber Makeever	5-10	G	SO	1L	Peaster, Texas (Peaster)
20	Kara Spotton	6-2	F	FR	HS	Fort Collins, Colo. (Rocky Mountain)
21	Mandy Makeever	5-10	G	RS FR	RS	Peaster, Texas (Peaster)
23	Morgan Hunt	6-1	F	FR	HS	Colleyville, Texas (Heritage)

ALPHABETICAL ROSTER

No.	Name	Ht.	Pos.	Yr.	Exp.	Hometown (Last School)
14	Carlyn Chavez	5-7	G	FR	(HS)	Portland, Ore. (LaSalle College Prep)
1	LaDeyah Forte	5-4	G	FR	(HS)	Pensacola, Fla. (Pensacola)
13	Kelly Hartig	6-3	F	SR	(1L)	Highlands Ranch, Colo. (Virginia)
11	Meghan Heimstra	6-2	F	RS JR	(2L)	Longmont, Colo. (Silver Creek)
23	Morgan Hunt	6-1	F	FR	(HS)	Colleyville, Texas (Heritage)
15	Amber Makeever	5-10	G	SO	(1L)	Peaster, Texas (Peaster)
21	Mandy Makeever	5-10	G	RS FR	(RS)	Peaster, Texas (Peaster)
12	Sam Martin	6-2	F	SO	(1L)	Parker, Colo. (Chaparral)
4	Hanne Mestdagh	5-10	G/F	FR	(HS)	Ieper, Belgium (St. Katelijne Waver)
5	Kim Mestdagh	5-10	G/F	SR	(3L)	Ieper, Belgium (Sint Vincentius)
20	Kara Spotton	6-2	F	FR	(HS)	Fort Collins, Colo. (Rocky Mountain)
3	Hayley Thompson	6-1	G	SO	(1L)	Denver, Colo. (Mullen)
2	Ashley Wiens	5-8	G	JR	TR	Grand Junction, Colo. (Clarendon College)

Head Coach: Kristen Holt (Ohio, '93)

Assistant Coaches: Dick Lien (Moorhead State, '65); Taylor Steven (Wichita State, '08)

Director of Basketball Operations: Corey Steven (Illinois-Chicago, '06)

STATISTICAL BREAKDOWN (RETURNING/LOST)

Starters Returning (3)

No.	Name	Ht.	Pos.	Yr.	Exp.	2010-11 Statistics
3	Hayley Thompson	6-1	G	SO	1L	5.3 ppg, 3.5 rpg, 1.5 apg
5	Kim Mestdagh	5-10	G/F	SR	3L	17.1 ppg, 5.5 rpg, 2.6 apg
12	Sam Martin	6-2	F	SO	1L	13.0 ppg, 6.5 rpg, 1.7 apg

Starters Lost (2)

No.	Name	Ht.	Pos.	Yr.	Exp.	2010-11 Statistics
22	Sara Hemmings	5-3	G	SR	2L	2.2 ppg, 2.1 rpg, 3.2 apg
24	Chantel Kennedy	5-7	G	SO	2L	3.3 ppg, 4.2 rpg, 2.7 apg

Other Letterwinners Returning (2)

No.	Name	Ht.	Pos.	Yr.	Exp.	2010-11 Statistics
13	Kelly Hartig	6-3	F	SR	1L	2.1 ppg, 2.9 rpg, 1.0 apg
15	Amber Makeever	5-10	G	SO	1L	2.5 ppg, 0.9 rpg, 0.6 apg

Other Letterwinners Lost (3)

No.	Name	Ht.	Pos.	Yr.	Exp.	2010-11 Statistics
2	Bonnie Barbee	5-8	G	SR	4L	4.1 ppg, 2.1 rpg, 1.4 apg
23	Zoi Simmons	5-6	G	SR	4L	2.5 ppg, 1.5 rpg, 1.3 apg
32	Meixandra Porter	5-6	G	SO	2L	7.7 ppg, 2.0 rpg, 1.2 apg

Other Returners (2)

11	Meghan Heimstra	6-2	F	RS JR	2L	Longmont, Colo. (Silver Creek)
21	Mandy Makeever	5-10	G	RS FR	HS	Peaster, Texas (Peaster)

Newcomers (5)

No.	Name	Ht.	Pos.	Yr.	Exp.	Hometown (Last School)
1	LaDeyah Forte	5-4	G	FR	HS	Pensacola, Fla. (Pensacola)
2	Ashley Wiens	5-8	G	JR	TR	Grand Junction, Colo. (Clarendon College)
4	Hanne Mestdagh	5-10	G/F	FR	HS	Ieper, Belgium (St. Katelijne Waver)
14	Carlyn Chavez	5-7	G	FR	HS	Portland, Ore. (LaSalle College Prep)
20	Kara Spotton	6-2	F	FR	HS	Fort Collins, Colo. (Rocky Mountain)
23	Morgan Hunt	6-1	F	FR	HS	Colleyville, Texas (Heritage)

ROSTER BREAKDOWN

By Class

Senior (2):..... Kelly Hartig
..... Kim Mestdagh

Junior (2):..... Meghan Heimstra
..... Ashley Wiens

Sophomore (3):..... Amber Makeever
..... Sam Martin
..... Hayley Thompson

Freshman (6):..... Carlyn Chavez
..... LeDeyah Forte
..... Morgan Hunt
..... Mandy Makeever
..... Hanne Mestdagh
..... Kara Spotton

By Position

Guard (7):..... Carlyn Chavez
..... LeDeyah Forte
..... Amber Makeever
..... Mandy Makeever
..... Hanne Mestdagh
..... Kim Mestdagh
..... Hayley Thompson
..... Ashley Wiens

Forward (7):..... Kelly Hartig
..... Meghan Heimstra
..... Morgan Hunt
..... Sam Martin
..... Hanne Mestdagh
..... Kim Mestdagh
..... Kara Spotton

By State/Country

Colorado (5):..... Kelly Hartig
..... Meghan Heimstra
..... Sam Martin
..... Kara Spotton
..... Hayley Thompson
..... Ashley Wiens

Florida (1):..... LeDeyah Forte

Texas (3):..... Morgan Hunt
..... Amber Makeever
..... Mandy Makeever

Oregon (1):..... Carlyn Chavez

Belgium (2):..... Hanne Mestdagh
..... Kim Mestdagh



3 Hayley Thompson

SO • G • 6-1
Denver, Colo.

2011-12

At home vs. New Mexico (1/25) tied personal MW high with seven boards...At home vs. Wyoming (1/21) recorded three steals for a career high...On the road at Boise State (1/17) pulled down seven rebounds and made two crucial free throws to seal the win...At home vs. Air Force (1/11) assisted four shots with zero turnovers...At home vs. Maryville (12/11) pulled down career-high eight boards and registered four assists...At home vs. North Dakota (12/8) pulled down team-high three offensive boards...At Montana State (11/29), made first start of the season...Made first appearance, vs. Colorado (11/20)...Sat out first three games with an ankle injury.

2010-11

As a freshman, was one of only three Rams to see action in all 30 contests, including 21 starts...Ranks third all-time in individual three-point percentage in a single season at CSU with .440 (minimum 50 attempts)...Averaged 5.3 points and 3.5 rebounds per game in an average 26.2 minutes of action.

Mullen High School

Four-year letterwinner in basketball...As a junior posted 11.2 points per game while leading the team in rebounds (7.4 per game)...Was named first-team all-Centennial League her sophomore, junior and senior years...Received first-team all-state honors from MaxPreps and the Denver Post...Was a McDonald's All-American nominee...Team captain junior and senior years...Selected to play in "The Show" and the Colorado Coaches Association All-State Game...Played against current teammate Sam Martin.

Personal

Full name is Hayley Thompson...Born Oct. 4, 1991, in Denver, Colo. ...Parents are Rick and Kris Thompson...Father, Rick, is a CSU graduate and played baseball for the Rams...Has one older half sister, Shanna...Was junior and senior class president... Was part of National Honor Society and Spanish Honor Society...Undeclared major at Colorado State.

THOMPSON'S CAREER HIGHS

Scoring

Career 13, Three times
Mountain West..... 13, Twice

Rebounding

Career 8, vs. Maryville, 12/11/11
Mountain West..... 7, Four times

Offensive Rebounds

Career 4, at New Mexico, 2/12/11
Mountain West..... 4, at New Mexico, 2/12/11

Field Goals Made

Career 5, Three times
Mountain West..... 5, Twice

Field Goals Attempted

Career 10, Twice
Mountain West..... 10, Twice

Three-Point Field Goals Made

Career 3, Twice
Mountain West..... 3, Twice

Three-Point Field Goals Attempted

Career 3, Nine times
Mountain West..... 3, Nine times

Free Throws Made

Career 4, Twice
Mountain West..... 4, at UNLV, 2/19/11

Free Throws Attempted

Career 4, Six times
Mountain West..... 4, Twice

Assists

Career 5, vs. Air Force, 2/26/11
Mountain West..... 5, vs. Air Force, 2/26/11

Blocked Shots

Career 3, vs. Texas A&M Corpus Christi, 11/28/10
Mountain West..... 2, vs. BYU, 2/23/11

Steals

Career 3, vs. Wyoming, 1/21/12
Mountain West..... 3, vs. Wyoming, 1/21/12

Minutes

Career 36, Twice
Mountain West..... 36, Twice

THOMPSON'S CAREER STATISTICS

Year.....	GP-GS	Min	Avg	TOTAL			3-PTS			FT			REBOUNDS				PF-FO	A	TO	Blk	Stl	Pts	Avg
				FG	FGA	Pct	3FG	FGA	Pct	FT	FTA	Pct	Off	Def	Tot	Avg							
2010-11.....	30-21	785	26.2	57	152	.375	22	50	.440	22	34	.647	27	78	105	3.5	50-1	46	35	16	21	158	5.3
2011-12.....	17-12	469	27.6	28	82	.341	3	15	.200	10	19	.526	14	53	67	3.9	19-0	37	27	4	14	69	4.1
TOTAL.....	47-33	1254	26.7	85	234	.363	25	65	.385	32	53	.604	41	131	172	3.7	69-1	83	62	20	35	227	4.8

The Automated ScoreBook
Colorado State Individual Game-by-Game (as of Jan 25, 2012)
All games

#03 THOMPSON, Hayley

Opponent	Date	gs	min	Total		3-Pointers		Free throws		Rebounds				pf	a	t/o	blk	stl	pts	avg	
				fg-fga	pct	3fg-fga	pct	ft-fa	pct	off	def	tot	avg								
COLORADO	11/20/11		13	2-2	1.000	1-1	1.000	0-2	.000	1	1	2	2.0	0	1	0	0	1	5	5.0	
at Denver	11/23/11		27	2-4	.500	0-0	.000	0-0	.000	1	2	3	2.5	3	3	3	0	0	4	4.5	
at Montana State	11/29/11	*	30	2-6	.333	0-2	.000	1-2	.500	0	4	4	3.0	0	2	1	1	1	5	4.7	
at Northern Colorado	12-02-11	*	34	1-7	.143	0-1	.000	0-0	.000	1	3	4	3.3	1	3	3	0	1	2	4.0	
at Toledo	12/04/11		28	0-4	.000	0-2	.000	1-2	.500	1	5	6	3.8	0	2	0	1	0	1	3.4	
NORTH DAKOTA	12/08/11	*	30	3-5	.600	0-0	.000	0-2	.000	3	1	4	3.8	0	2	1	0	0	6	3.8	
MARYVILLE	12/11/11	*	29	2-7	.286	1-1	1.000	2-2	1.000	2	6	8	4.4	1	4	1	1	2	7	4.3	
vs MSU	12/20/11		22	0-0	.000	0-0	.000	0-0	.000	1	1	2	4.1	1	2	5	0	0	0	3.8	
vs INDIANA	12/21/11		24	3-5	.600	0-1	.000	0-0	.000	0	2	2	3.9	2	1	1	0	2	6	4.0	
BOWLING GREEN	12/31/11	*	29	2-5	.400	0-1	.000	0-0	.000	2	0	2	3.7	1	2	4	0	0	4	4.0	
at CSU Bakersfield	1/4/12	*	25	1-3	.333	0-1	.000	0-0	.000	0	4	4	3.7	0	3	2	0	0	2	3.8	
at Seattle University	01/08/12	*	25	2-4	.500	0-0	.000	2-2	1.000	1	2	3	3.7	2	1	1	0	0	6	4.0	
AIR FORCE	01/11/12	*	24	0-5	.000	0-0	.000	2-4	.500	0	3	3	3.6	1	4	0	0	0	2	3.8	
at TCU	01/14/12	*	28	0-5	.000	0-3	.000	0-0	.000	0	2	2	3.5	3	0	1	1	2	0	3.6	
at Boise State	01/17/12	*	31	1-4	.250	0-0	.000	2-2	1.000	0	7	7	3.7	1	1	2	0	0	4	3.6	
WYOMING	1/21/12	*	36	4-7	.571	1-1	1.000	0-0	.000	0	4	4	3.8	2	4	0	0	3	9	3.9	
NEW MEXICO	1/25/12	*	34	3-9	.333	0-1	.000	0-1	.000	1	6	7	3.9	1	2	2	0	2	6	4.1	
Totals			12	469	28-82	.341	3-15	.200	10-19	.526	14	53	67	3.9	19	37	27	4	14	69	4.1

Games played: 17
Minutes/game: 27.6
Points/game: 4.1
FG Pct: 34.1
3FG Pct: 20.0
FT Pct: 52.6

Rebounds/game: 3.9
Assists/game: 2.2
Turnovers/game: 1.6
Assist/turnover ratio: 1.4
Steals/game: 0.8
Blocks/game: 0.2



5 Kim Mestdagh

SR • G/F • 5-10
Ieper, Belgium

2011-12

At home vs. New Mexico (1/25) recorded fifth-consecutive game with three three-pointers; scored 19 points...At home vs. Wyoming (1/21) recorded her second-consecutive game with 20 or more points with 21...On the road at Boise State (1/17) tallied a double-double with game highs of 21 points and 10 boards...At TCU (1/14) recorded 13 points, six assists and five steals...At home vs. Air Force (1/11) registered 11 points, making three from beyond the arc...At Seattle (1/8) was one rebound short of a double-double with 10 points and nine boards...At Bakersfield (1/4) tied career high with six steals...At home vs. Maryville (12/11) tallied her third game this season over 20 points with 23, shooting 5-7 beyond the arc...At Northern Colorado (12/2) shot 50.0 percent, making six three-pointers en route to 28 points...At Montana State (11/29), tallied career-high eight assists...At Denver (11/23) scored 15 points...At home vs. Colorado (11/20) scored game-high 19 points...Set career high vs. Tulsa (11/17) with 35 points, shooting 73.3 percent...In game vs. Arizona State (11/13) scored game-high 17 points and tied career high with seven assists...At Northern Iowa (11/11) recorded career-high 12 rebounds.

2010-11

As a junior, earned second-team all-Mountain West recognition for the second consecutive year...Averaged 17.1 points and 5.5 rebounds per game...Scored double figures in team-leading 25 of 30 games for the Rams and scored at or above 20 points in 11 contests...Scored her 1,000th point, against UNLV at Moby Arena, on Jan. 18...Was the only active junior with over 1,000 points in the MW...Ended the season 10th on the all-time points list at CSU with 1,233 career points... Scored 32 points at North Dakota on Nov. 21, making 11 field goals, eight of which were from beyond the arc...Ranked 16th in the country in free-throw percentage...Ranked in the top 60 in three other categories...Did not miss a free-throw over her final 30 attempts, dating back to Jan. 29... Ranked in the MW's top five in five statistical categories...Was fourth in the MW in scoring with 513 points (17.1 ppg) first in free-throw percentage with .876, third in steals with 57 (1.9 per game), third in three-point percentage with .380 and second in three-point field goals made with 81 (2.7 per game)...Tallied two double-doubles on the season.

2009-10

Started 28 of 30 games for the Rams...Led the team in points with 489, ranking her third in the single-season record book by a sophomore...Averaged 16.3 points and 5.4 rebounds per game...Led the team in three-point shots with 240 attempts, most ever among CSU sophomores...Converted 89 of those three-point shots, most ever by a CSU sophomore...Hit 81.0 percent of free throws...Scored in double figures 27 times, including one double-double...Recorded a season high 30 points against Southern Illinois, sinking five baskets from beyond the arc...Led the team in steals with 63 on the season...Finished her sophomore season with three Mountain West Player of the Week recognitions, and a second-team all-Mountain West selection.

2008-09

Played in all 31 games for the Rams, earning a starting position in 14 of those contests...Scored in double digits eight times and recorded a personal best of 20 points against Montana, shooting .750 from behind the arc...Was ranked 28th in scoring in the conference with an average of 7.5 points per game, and also ranked eighth in the conference for three-point baskets made with a total of 51...Also led the team with 36 steals.

Sint Vincentius College

Played three seasons, 2005-08, as a member of the Ieper Blue Cats (D1) club team...In 2007-08 with Ieper, Mestdagh averaged 14.0 points and 7.4 rebounds per game while dishing out 3.0 assists per contest...Shot 50 percent from the field, including 40 percent from three-point range...Also competed in two European championships, the 2006 U16 and the 2007 U18, posting impressive marks in each tournament...In 2006, averaged 6.9 points, 2.6 rebounds and 2.5 assists per contest, and had a breakout performance at the 2007 championships, where she averaged a double-double (12.0 points, 10.0 rebounds) and dished out 2.0 assists per game.

Personal

Full name is Kim Mestdagh...Born March 12, 1990, in Ieper, Belgium...One of three children of Philip Mestdagh and Johanna Baert...Has one older brother, Robin, and one younger sister, Hanne...Human development and family studies major at Colorado State.

MESTDAGH'S CAREER STATISTICS

Year	GP-GS	Min	Avg	TOTAL			3-PTS			REBOUNDS													
				FG	FGA	Pct	3FG	FGA	Pct	FT	FTA	Pct	Off	Def	Tot	Avg	PF-FO	A	TO	Blk	Stl	Pts	Avg
2008-09	31-14	674	21.7	84	211	.398	51	159	.321	12	25	.480	25	83	108	3.5	59-1	41	44	11	36	231	7.5
2009-10	30-28	974	32.5	166	398	.417	89	240	.371	68	84	.810	50	113	163	5.4	72-1	63	83	7	63	489	16.3
2010-11	30-30	953	31.8	170	390	.436	81	213	.380	92	105	.876	33	132	165	5.5	88-2	77	110	3	57	513	17.1
2011-12	20-18	648	32.4	103	241	.427	45	131	.344	40	47	.851	19	77	96	4.8	47-1	71	74	6	50	291	14.6
TOTAL	111-90	3249	29.3	523	1240	.422	266	743	.358	212	261	.812	127	405	532	4.8	266-5	252	311	27	206	1524	13.7

MESTDAGH'S CAREER HIGHS

Scoring

Career35, vs. Tulsa, 11/17/11
Mountain West.....26, vs. Air Force, 2/26/11

Rebounding

Career 12, at Northern Iowa, 11/11/11
Mountain West..... 11, at New Mexico, 2/24/10

Offensive Rebounds

Career4, Five times
Mountain West.....4, Five times

Field Goals Made

Career 12, vs. Southern Illinois, 12/6/09
Mountain West.....9, Twice

Field Goals Attempted

Career 22, at UNLV, 1/20/10
Mountain West..... 22, at UNLV, 1/20/10

Three-Point Field Goals Made

Career8, at North Dakota, 11/21/10
Mountain West.....6, Twice

Three-Point Field Goals Attempted

Career 17, at UNLV, 1/20/10
Mountain West..... 17, at UNLV, 1/20/10

Free Throws Made

Career8, Twice
Mountain West..... 8, vs. Air Force, 2/26/11

Free Throws Attempted

Career 10, Twice
Mountain West..... 10, vs. Utah, 1/29/11

Assists

Career8, at Montana State, 11/29/11
Mountain West..... 7, vs. TCU, 2/16/11

Blocked Shots

Career2, vs. Southern Illinois, 12/6/09
Mountain West..... 1, 10 Times

Steals

Career 6, Three times
Mountain West..... 5, Three times

Minutes

Career 42, vs. Arizona State, 11/13/11
Mountain West..... 39, at UNLV, 2/19/11

The Automated ScoreBook
Colorado State Individual Game-by-Game (as of Jan 25, 2012)
All games

#05 MESTDAGH, Kim

Opponent	Date	gs	min	Total		3-Pointers		Free throws		Rebounds				pf	a	t/o	blk	stl	pts	avg	
				fg-fga	pct	3fg-fga	pct	ft-fga	pct	off	def	tot	avg								
at UNI	11-11-11	*	37	2-6	.333	0-1	.000	0-0	.000	1	11	12	12.0	2	4	1	1	0	4	4.0	
ARIZONA STATE	11/13/11	*	42	5-16	.313	1-9	.111	6-9	.667	1	4	5	8.5	1	7	4	1	1	17	10.5	
TULSA	11/17/11	*	29	11-15	.733	7-9	.778	6-6	1.000	0	1	1	6.0	2	3	2	0	2	35	18.7	
COLORADO	11/20/11	*	36	7-12	.583	0-1	.000	5-6	.833	1	2	3	5.3	3	4	4	0	0	19	18.8	
at Denver	11/23/11	*	38	5-14	.357	3-10	.300	2-2	1.000	1	4	5	5.2	5	2	4	1	1	15	18.0	
at Montana State	11/29/11	*	31	0-9	.000	0-7	.000	2-2	1.000	1	0	1	4.5	1	8	4	0	2	2	15.3	
at Northern Colorado	12-02-11	*	39	10-20	.500	6-14	.429	2-2	1.000	0	2	2	4.1	4	3	2	1	6	28	17.1	
at Toledo	12/04/11	*	39	6-14	.429	2-7	.286	0-0	.000	0	5	5	4.3	1	4	6	0	0	14	16.8	
NORTH DAKOTA	12/08/11	*	31	5-14	.357	1-8	.125	0-0	.000	2	6	8	4.7	3	3	10	0	2	11	16.1	
MARYVILLE	12/11/11	*	20	6-11	.545	5-7	.714	6-6	1.000	0	1	1	4.3	1	1	0	1	2	23	16.8	
vs MSU	12/20/11	*	30	6-11	.545	2-4	.500	0-0	.000	1	0	1	4.0	0	2	3	0	4	14	16.5	
vs INDIANA	12/21/11	*	37	3-16	.188	1-10	.100	0-0	.000	2	5	7	4.3	3	2	5	0	4	7	15.8	
BOWLING GREEN	12/31/11	*	30	2-7	.286	0-2	.000	3-4	.750	1	4	5	4.3	4	4	4	0	3	7	15.1	
at CSU Bakersfield	1/4/12		25	0-5	.000	0-3	.000	0-0	.000	0	3	3	4.2	2	6	5	0	6	0	14.0	
at Seattle University	01/08/12		32	4-12	.333	2-9	.222	0-1	.000	2	7	9	4.5	2	1	3	0	3	10	13.7	
AIR FORCE	01/11/12	*	19	3-7	.429	3-5	.600	2-2	1.000	3	4	7	4.7	2	3	2	1	2	11	13.6	
at TCU	01/14/12	*	37	5-9	.556	3-6	.500	0-0	.000	0	4	4	4.6	2	6	3	0	5	13	13.5	
at Boise State	01/17/12	*	34	8-14	.571	3-6	.500	2-3	.667	1	9	10	4.9	2	4	4	0	1	21	13.9	
WYOMING	1/21/12	*	36	8-14	.571	3-6	.500	2-2	1.000	1	4	5	4.9	3	1	3	0	3	21	14.3	
NEW MEXICO	1/25/12	*	26	7-15	.467	3-7	.429	2-2	1.000	1	1	2	4.8	4	3	5	0	3	19	14.6	
Totals			18	648	103-241	.427	45-131	.344	40-47	.851	19	77	96	4.8	47	71	74	6	50	291	14.6

Games played: 20
Minutes/game: 32.4
Points/game: 14.6
FG Pct: 42.7
3FG Pct: 34.4
FT Pct: 85.1

Rebounds/game: 4.8
Assists/game: 3.6
Turnovers/game: 3.7
Assist/turnover ratio: 1.0
Steals/game: 2.5
Blocks/game: 0.3



11 Meghan Heimstra

RS JR • F • 6-2
Longmont, Colo.

2011-12

At home vs. New Mexico (1/25) was one rebound short of a double-double with 10 points and nine boards...On the road at Boise State (1/17) gave the Rams a two-score lead with 46 seconds on the clock on a three-point play, making the free throw; totaled 10 points on the night...At home vs. Air Force (1/11) tallied 12 points, four assists and three steals...At home vs. Bowling Green (12/31) was one rebound short of a double-double with 12 points and nine boards...At the Triple Crown Caribbean Classic vs. Indiana (12/21) tallied double-double with 15 points and 10 rebounds, tying career high with six offensive boards...At home vs. North Dakota (12/8) registered game-high 11 rebounds...At Montana State (11/29) registered double-double with 14 points and 10 rebounds...At home vs. Tulsa (11/17), recorded double-double with 13 rebounds and 12 points...At Northern Iowa (11/11) registered 11 points in her first game since March 9, 2010.

2010-11

Redshirted due to a hip injury.

2009-10

Played in every game, starting in 25 of those contests...Averaged 8.8 points per game...Was sent to the line 129 times, and shot 61.2 percent, securing the 10th best mark in the Mountain West...With 41 blocked shots, not only led the team but recorded the third-highest total blocks by a Ram and the second-most by any CSU sophomore in a single season...Also led the team in assists (72).

2008-09

Played in 29 games for the Rams, averaging 14.3 minutes per game...Scored a personal best 19 points against New Mexico...Recorded a team-high 13 blocks on the season while pulling down 102 boards.

Silver Creek High School

Four-year starter at Silver Creek High School in Longmont, Colo. ...Was an all-Colorado performer in 2007 and 2008...As a senior averaged 14.8 points, while leading the Raptors to a 25-3 overall record, 13-1 in the Northern League, and an appearance in the Colorado Class 4A championship game...As a junior in 2006-07 averaged 15.1 points, 9.3 rebounds, 2.8 blocks and 2.5 assists per game, while shooting nearly 60 percent from the floor to lead the Raptors to a berth in the Final 16 of the Colorado Class 4A state tournament...During her sophomore season, averaged 12.3 points and pulled down 5.4 rebounds per contest to help guide Silver Creek to its second consecutive Great Eight appearance in the state tournament...a four-time recipient of the Raptor Award given to the Raptors' best all-around player...Named 2007 Raptor of the Year winner, given annually to the best athlete in any sport...Played for Wyco Pride club basketball team.

Personal

Full name is Meghan Karen Heimstra...Born Aug. 31, 1990, in Longmont, Colo. ...One of two children of Norm and Pam Heimstra...Has one older brother, Wes...Health and exercise science major at Colorado State...Brother, Wes, played football at Dakota State in Madison, S.D.

HEIMSTRA'S CAREER STATISTICS

Year	GP-GS	Min	Avg	TOTAL			3-PTS			FT	FTA	Pct	REBOUNDS					PF-FO	A	TO	Blk	Stl	Pts	Avg
				FG	FGA	Pct	3FG	FGA	Pct				Off	Def	Tot	Avg								
2008-09	29-4	416	14.3	46	110	.418	3	13	.231	43	65	.662	32	70	102	3.5	44-1	16	37	13	30	138	4.8	
2009-10	30-25	870	29.0	87	219	.397	10	35	.286	79	129	.612	75	161	236	7.9	94-6	72	98	41	46	263	8.8	
2011-12	20-9	449	22.5	64	150	.427	0	11	.000	35	60	.583	34	96	130	6.5	55-2	25	60	21	33	163	8.2	
TOTAL	79-38	1735	22.0	197	479	.411	13	59	.220	157	254	.618	141	327	468	5.9	193-9	113	195	75	109	564	7.1	

HEIMSTRA'S CAREER HIGHS

Scoring

Career 19, Twice
Mountain West..... 19, Twice

Rebounding

Career 14, vs. Wyoming, 1/5/10
Mountain West..... 14, vs. Wyoming, 1/5/10

Offensive Rebounds

Career 6, Twice
Mountain West..... 5, Twice

Field Goals Made

Career 7, Twice
Mountain West..... 7, vs. BYU, 1/16/10

Field Goals Attempted

Career 18, vs. Indiana, 12/21/11
Mountain West..... 11, vs. New Mexico 3/9/10

Three-Point Field Goals Made

Career 2, Twice
Mountain West..... 2, Twice

Three-Point Field Goals Attempted

Career 4, vs. Utah, 2/3/10
Mountain West..... 4, vs. Utah, 2/3/10

Free Throws Made

Career 10, vs. New Mexico, 1/23/10
Mountain West..... 10, vs. New Mexico, 1/23/10

Free Throws Attempted

Career 12, Twice
Mountain West..... 10, vs. New Mexico, 1/23/10

Assists

Career 6, vs. Wyoming, 1/5/10
Mountain West..... 6, vs. Wyoming, 1/5/10

Blocked Shots

Career 5, Twice
Mountain West..... 5, Twice

Steals

Career 5, Twice
Mountain West..... 5, at TCU, 2/7/09

Minutes

Career 38, vs. Montana, 11/13/09
Mountain West..... 33, vs. Wyoming, 1/5/10

The Automated ScoreBook
Colorado State Individual Game-by-Game (as of Jan 25, 2012)
All games

#11 HEIMSTRA, Meghan

Opponent	Date	gs	min	Total		3-Pointers		Free throws		Rebounds				pf	a	t/o	blk	stl	pts	avg	
				fg-fga	pct	3fg-fga	pct	ft-fa	pct	off	def	tot	avg								
at UNI	11-11-11	*	23	4-7	.571	0-0	.000	3-8	.375	2	4	6	6.0	5	0	3	0	1	11	11.0	
ARIZONA STATE	11/13/11	*	18	2-6	.333	0-1	.000	0-0	.000	1	5	6	6.0	4	0	1	1	2	4	7.5	
TULSA	11/17/11	*	23	5-7	.714	0-0	.000	2-2	1.000	1	12	13	8.3	2	0	3	5	1	12	9.0	
COLORADO	11/20/11	*	29	4-8	.500	0-1	.000	1-5	.200	2	6	8	8.3	2	0	4	1	2	9	9.0	
at Denver	11/23/11	*	20	0-5	.000	0-2	.000	1-2	.500	3	5	8	8.2	4	1	3	1	1	1	7.4	
at Montana State	11/29/11	*	26	7-15	.467	0-2	.000	0-2	.000	3	7	10	8.5	3	1	3	2	4	14	8.5	
at Northern Colorado	12-02-11	*	22	4-8	.500	0-0	.000	0-2	.000	2	2	4	7.9	5	1	6	2	1	8	8.4	
at Toledo	12/04/11	*	28	3-4	.750	0-0	.000	1-3	.333	0	3	3	7.3	1	1	5	1	1	7	8.3	
NORTH DAKOTA	12/08/11		15	1-2	.500	0-1	.000	4-4	1.000	0	11	11	7.7	4	1	6	2	2	6	8.0	
MARYVILLE	12/11/11		13	0-0	.000	0-0	.000	0-0	.000	0	2	2	7.1	2	2	1	0	2	0	7.2	
vs MSU	12/20/11		18	2-4	.500	0-1	.000	4-7	.571	0	0	0	6.5	3	2	4	0	2	8	7.3	
vs INDIANA	12/21/11		31	5-18	.278	0-0	.000	5-5	1.000	6	4	10	6.8	4	2	3	3	1	15	7.9	
BOWLING GREEN	12/31/11		27	4-10	.400	0-1	.000	4-4	1.000	3	6	9	6.9	3	1	0	1	1	12	8.2	
at CSU Bakersfield	1/4/12		21	3-9	.333	0-0	.000	0-0	.000	3	7	10	7.1	4	1	3	0	2	6	8.1	
at Seattle University	01/08/12	*	25	1-7	.143	0-0	.000	1-4	.250	1	2	3	6.9	1	2	4	0	3	3	7.7	
AIR FORCE	01/11/12		18	5-9	.556	0-0	.000	2-4	.500	2	4	6	6.8	1	4	5	0	3	12	8.0	
at TCU	01/14/12		20	2-6	.333	0-0	.000	3-3	1.000	1	2	3	6.6	1	0	2	0	1	7	7.9	
at Boise State	01/17/12		17	3-7	.429	0-1	.000	4-5	.800	1	6	7	6.6	1	0	0	0	0	10	8.1	
WYOMING	1/21/12		27	4-9	.444	0-1	.000	0-0	.000	0	2	2	6.4	3	4	1	1	0	8	8.1	
NEW MEXICO	1/25/12		28	5-9	.556	0-0	.000	0-0	.000	3	6	9	6.5	2	2	3	1	3	10	8.2	
Totals			9	449	64-150	.427	0-11	.000	35-60	.583	34	96	130	6.5	55	25	60	21	33	163	8.2

Games played: 20
 Minutes/game: 22.5
 Points/game: 8.2
 FG Pct: 42.7
 3FG Pct: 0.0
 FT Pct: 58.3

Rebounds/game: 6.5
 Assists/game: 1.3
 Turnovers/game: 3.0
 Assist/turnover ratio: 0.4
 Steals/game: 1.7
 Blocks/game: 1.1



12 Sam Martin

SO • F • 6-2
Parker, Colo.

2011-12

At home vs. New Mexico (1/25) tallied 15 points...On the road at Boise State (1/17) recorded 19 points and three blocks...At TCU (1/14) was a rebound short of a double-double with nine boards and 28 points...At home vs. Air Force (1/11) recorded game-high 17 points, shooting 87.5 percent...At Bakersfield (1/4) scored game-high 21 points, hitting two crucial free throws and a layup to seal the victory...At Toledo (12/4) scored game-high 21 points...At Northern Colorado (12/2) registered sixth-career double-double with 15 points and 13 rebounds...At Montana State (11/29) scored game-high 21 points...At Denver (11/23) set career highs in points (28) and rebounds (13)...At home vs. Tulsa (11/17) scored 11 points...At Northern Iowa (11/11) scored team-high 13 points...At home vs. Arizona State (11/13) tallied game-high 17 points.

2010-11

Received third-team all-Mountain West recognition as a freshman...Started 29 of the 30 games for the Rams, averaging 31.1 minutes per contest...Averaged 13.5 points per game, ranking 18th in the nation in field-goal percentage (.549)...Led team in rebounds per game (6.5)...Had team-leading four double-doubles, including 17 points and 12 rebounds against Air Force in MW tournament...Ranked seven times in the top 15 in MW statistical categories, including second in field-goal percentage and sixth in free-throw percentage, .815.

Chaparral High School

A letterwinner in volleyball and basketball for the Chaparral Wolverines...As a junior, posted 18.8 points, 8.6 rebounds, and 3.8 blocks per game, shattering her own school records established the previous season...Received all-league honors in 2008 and 2009...Also named second-team all-state those years, and was selected to play in "The Show" in 2009...Led her team as a captain both sophomore and junior year...Played club basketball for the Colorado Hoopsters...Slowed by an injury her senior year.

Personal

Full name is Samantha Martin...Born on Nov. 29, 1991, in Orange County, Calif. ...One of three children of Susan and Robert Martin... Mother played tennis at Indiana University of Pennsylvania...Has one younger brother, Walker, and one younger sister, Courtney...History major at Colorado State.

MARTIN'S CAREER HIGHS

Scoring

Career 28, Twice
Mountain West.....28, at TCU, 1/14/12

Rebounding

Career 13, Twice
Mountain West.....12, vs. Air Force, 3/8/11

Offensive Rebounds

Career 6, Three times
Mountain West.....6, Twice

Field Goals Made

Career 11, Three times
Mountain West.....11, at TCU, 1/14/12

Field Goals Attempted

Career 18, vs. San Diego State, 3/5/11
Mountain West....18, vs. San Diego State, 3/5/11

Three-Point Field Goals Made

Career 2, Four times
Mountain West..... 1, Six times

Three-Point Field Goals Attempted

Career 4, vs. Arizona State, 11/13/11
Mountain West..... 2, Twice

Free Throws Made

Career 8, at Western Carolina, 12/28/10
Mountain West..... 7, Twice

Free Throws Attempted

Career 10, at Western Carolina, 12/28/10
Mountain West..... 9, at Air Force, 1/25/11

Assists

Career 4, Twice
Mountain West..... 4, Twice

Blocked Shots

Career 3, Seven times
Mountain West..... 3, Six times

Steals

Career 2, Seven times
Mountain West.....2, Five times

Minutes

Career 41, vs. Arizona State, 11/13/11
Mountain West....38, vs. San Diego State, 3/5/11

MARTIN'S CAREER STATISTICS

Year.....	GP-GS	Min	Avg	TOTAL			3-PTS			REBOUNDS				PF-FO	A	TO	Blk	Stl	Pts	Avg			
				FG	FGA	Pct	3FG	FGA	Pct	FT	FTA	Pct	Off								Def	Tot	Avg
2010-11.....	30-29	933	31.1	157	286	.549	9	15	.600	66	81	.815	71	125	196	6.5	75-1	51	73	35	19	389	13.0
2011-12.....	20-19	544	27.2	106	191	.555	9	26	.346	56	65	.862	46	69	115	5.8	53-2	17	44	19	14	277	13.9
TOTAL.....	50-48	1477	29.5	263	477	.551	18	41	.439	122	146	.836	117	194	311	6.2	128-3	68	117	54	33	666	13.3

The Automated ScoreBook
Colorado State Individual Game-by-Game (as of Jan 25, 2012)
All games

#12 MARTIN, Sam

Opponent	Date	gs	min	Total		3-Pointers		Free throws		Rebounds				pf	a	t/o	blk	stl	pts	avg	
				fg-fga	pct	3fg-fga	pct	ft-fga	pct	off	def	tot	avg								
at UNI	11-11-11	*	37	4-8	.500	0-1	.000	5-6	.833	3	3	6	6.0	4	0	4	2	0	13	13.0	
ARIZONA STATE	11/13/11	*	41	4-9	.444	2-4	.500	7-8	.875	2	3	5	5.5	4	1	2	0	1	17	15.0	
TULSA	11/17/11	*	24	4-6	.667	1-2	.500	2-2	1.000	3	1	4	5.0	1	1	0	1	0	11	13.7	
COLORADO	11/20/11	*	27	2-11	.182	1-3	.333	0-0	.000	1	0	1	4.0	5	1	1	0	0	5	11.5	
at Denver	11/23/11	*	35	11-16	.688	2-3	.667	4-5	.800	4	9	13	5.8	2	1	4	3	0	28	14.8	
at Montana State	11/29/11	*	35	8-14	.571	0-0	.000	5-5	1.000	3	2	5	5.7	3	3	3	1	1	21	15.8	
at Northern Colorado	12-02-11	*	34	5-12	.417	0-1	.000	5-5	1.000	6	7	13	6.7	2	2	3	1	1	15	15.7	
at Toledo	12/04/11	*	35	8-12	.667	0-2	.000	5-5	1.000	3	4	7	6.8	5	1	7	1	1	21	16.4	
NORTH DAKOTA	12/08/11	*	31	5-8	.625	0-1	.000	2-3	.667	0	3	3	6.3	4	1	2	2	1	12	15.9	
MARYVILLE	12/11/11		10	2-4	.500	0-1	.000	0-0	.000	1	1	2	5.9	0	0	3	0	0	4	14.7	
vs MSU	12/20/11	*	14	0-2	.000	0-0	.000	0-0	.000	0	3	3	5.6	2	0	2	1	1	0	13.4	
vs INDIANA	12/21/11	*	18	1-5	.200	1-2	.500	2-2	1.000	2	1	3	5.4	2	0	1	1	2	5	12.7	
BOWLING GREEN	12/31/11	*	27	5-8	.625	0-1	.000	2-2	1.000	0	4	4	5.3	0	0	1	0	1	12	12.6	
at CSU Bakersfield	1/4/12	*	29	9-14	.643	0-2	.000	3-3	1.000	2	7	9	5.6	4	0	0	0	0	21	13.2	
at Seattle University	01/08/12	*	7	0-2	.000	0-0	.000	1-2	.500	3	1	4	5.5	0	1	0	0	0	1	12.4	
AIR FORCE	01/11/12	*	23	7-8	.875	1-1	1.000	2-4	.500	2	4	6	5.5	4	0	2	2	1	17	12.7	
at TCU	01/14/12	*	32	11-17	.647	1-2	.500	5-6	.833	4	5	9	5.7	2	2	4	1	1	28	13.6	
at Boise State	01/17/12	*	31	8-11	.727	0-0	.000	3-4	.750	2	3	5	5.7	2	0	4	3	1	19	13.9	
WYOMING	1/21/12	*	25	5-10	.500	0-0	.000	2-2	1.000	3	3	6	5.7	3	1	0	0	2	12	13.8	
NEW MEXICO	1/25/12	*	29	7-14	.500	0-0	.000	1-1	1.000	2	5	7	5.8	4	2	1	0	0	15	13.9	
Totals			19	544	106-191	.555	9-26	.346	56-65	.862	46	69	115	5.8	53	17	44	19	14	277	13.9

Games played: 20
Minutes/game: 27.2
Points/game: 13.9
FG Pct: 55.5
3FG Pct: 34.6
FT Pct: 86.2

Rebounds/game: 5.8
Assists/game: 0.9
Turnovers/game: 2.2
Assist/turnover ratio: 0.4
Steals/game: 0.7
Blocks/game: 1.0



13 Kelly Hartig

SR • F • 6-3
Highlands Ranch, Colo.

2011-12

On the road at Boise State (1/17) registered six points and seven rebounds, both tying her MW highs...At TCU (1/14) tied career highs with four assists and two blocks...At home vs. Air Force (1/11) pulled down team-high seven rebounds...At home vs. Maryville (12/11) doubled previous career high with 16 points, converting seven field goals...At home vs. North Dakota (12/8) tied career highs in blocks with two...At Denver (11/23) corralled seven rebounds and assisted four shots...At home vs. Tulsa (11/17) recorded three assists.

2010-11

Started in four of eight games for the Rams after a knee injury had her sidelined for the majority of the season...Averaged 18.3 minutes of playing time with 2.9 rebounds per contest... Sat out first six weeks of season due to NCAA transfer rules.

University of Virginia

Played 2007-08 and 2008-09 seasons...Helped Virginia to the NCAA tournament each of her two years, including the 2008-09 campaign as a starter...A starter in 32 of the Cavaliers' 34 games in 2008-09, helped the team to the second round of the NCAA tournament, as the No. 5 seed in the Trenton Region...Averaging 18.4 minutes per contest, was second on the team with 20 blocked shots... Also averaged 2.6 rebounds and 1.4 points...The team also advanced to the round of 32 in 2007-08, when it was a No. 4 seed...Among three multi-block games on the year, batted away two shots in the first round of the NCAA tournament...In two seasons at Virginia, played in 60 games with 32 starts, averaging 14.6 minutes, 2.0 rebounds and 1.7 points...Also blocked 33 shots.

ThunderRidge High School

As a senior at ThunderRidge, was a Street & Smith's honorable mention All-American and the End of the Oregon Trail MVP...The Collegiate Girls Basketball Report ranked her No. 7 in the nation at power forward...Helped lead the Grizzlies to a 2006 state semifinal appearance and also competed for an AAU team, the Boulder Rockies, averaging 12.0 points per game and 6.0 rebounds.

Personal

Full name is Kelly Lynn Hartig...Born July 24, 1989, in Denver, Colo. ...Has one older sister, Jayna... Parents, Chris and Pat Hartig, graduated from Colorado State University...Anthropology major at CSU.

HARTIG'S CAREER HIGHS

Scoring

Career 16, vs. Maryville, 12/11/11
Mountain West.....8, vs. Wyoming, 1/21/12

Rebounding

Career 8, Twice
Mountain West.....7, Twice

Offensive Rebounds

Career 3, Nine times
Mountain West.....3, Three times

Field Goals Made

Career 7, vs. Maryville, 12/11/11
Mountain West.....3, Three times

Field Goals Attempted

Career 12, vs. Maryville, 12/11/11
Mountain West.....9, vs. Wyoming, 1/21/12

Three-Point Field Goals Made

Career
Mountain West.....

Three-Point Field Goals Attempted

Career 1, Gonzaga, 11/30/08
Mountain West.....

Free Throws Made

Career 4, Longwood, 11/10/07
Mountain West.....2, vs. Wyoming, 1/21/12

Free Throws Attempted

Career 6, Miami, 2/19/09
Mountain West.....4, vs. Wyoming, 1/21/12

Assists

Career 4, Three times
Mountain West.....4, at TCU, 1/14/12

Blocked Shots

Career 2, Seven Times
Mountain West.....2, at TCU, 1/14/12

Steals

Career 4, at Virginia Tech, 1/21/09
Mountain West.....2, at TCU, 1/14/12

Minutes

Career 35, at Winthrop, 12/30/10
Mountain West.....32, at Boise State 1/17/12

HARTIG'S CAREER STATISTICS

Year.....	GP-GS	Min	Avg	TOTAL			3-PTS			REBOUNDS													
				FG	FGA	Pct	3FG	FGA	Pct	FT	FTA	Pct	Off	Def	Tot	Avg	PF-FO	A	TO	Blk	Stl	Pts	Avg
2007-08 (Virginia) ...	26-0	251	9.7	23	50	.460	0	0	.000	9	14	.643	13	21	34	1.3	49-1	6	14	13	3	55	2.1
2008-09 (Virginia) ..	34-32	627	18.4	21	67	.313	0	1	.000	6	15	.400	36	52	88	2.6	84-3	26	29	20	16	48	1.4
2010-11.....	8-4	146	18.3	7	22	.318	0	0	.000	3	4	.750	9	14	23	2.9	22-1	8	15	4	4	17	2.1
2011-12.....	20-13	444	22.2	35	87	.402	0	0	.000	11	23	.478	29	44	73	3.7	59-3	28	51	15	14	81	4.1
TOTAL.....	89-49	1468	16.5	85	216	.394	0	1	.000	29	56	.518	87	132	218	2.5	214-8	68	109	52	37	200	2.3

The Automated ScoreBook
Colorado State Individual Game-by-Game (as of Jan 25, 2012)
All games

#13 HARTIG, Kelly

Opponent	Date	gs	min	Total		3-Pointers		Free throws		Rebounds				pf	a	t/o	blk	stl	pts	avg	
				fg-fga	pct	3fg-fga	pct	ft-fga	pct	off	def	tot	avg								
at UNI	11-11-11		21	2-4	.500	0-0	.000	1-2	.500	0	1	1	1.0	3	1	2	1	1	5	5.0	
ARIZONA STATE	11/13/11		33	1-4	.250	0-0	.000	0-0	.000	2	1	3	2.0	4	0	2	0	0	2	3.5	
TULSA	11/17/11		21	2-3	.667	0-0	.000	0-0	.000	1	3	4	2.7	5	3	1	0	1	4	3.7	
COLORADO	11/20/11	*	24	0-2	.000	0-0	.000	2-2	1.000	1	4	5	3.3	3	0	0	0	1	2	3.3	
at Denver	11/23/11	*	31	0-6	.000	0-0	.000	1-2	.500	3	4	7	4.0	4	4	5	2	2	1	2.8	
at Montana State	11/29/11	*	22	2-4	.500	0-0	.000	0-1	.000	3	2	5	4.2	3	2	2	1	1	4	3.0	
at Northern Colorado	12-02-11		19	0-2	.000	0-0	.000	0-1	.000	3	1	4	4.1	4	2	2	0	0	0	2.6	
at Toledo	12/04/11		13	0-0	.000	0-0	.000	0-0	.000	0	3	3	4.0	2	0	1	1	1	0	2.3	
NORTH DAKOTA	12/08/11	*	27	3-5	.600	0-0	.000	1-2	.500	1	2	3	3.9	2	0	1	2	1	7	2.8	
MARYVILLE	12/11/11	*	24	7-12	.583	0-0	.000	2-3	.667	0	1	1	3.6	1	2	6	0	1	16	4.1	
vs MSU	12/20/11	*	22	1-4	.250	0-0	.000	0-0	.000	1	2	3	3.5	3	0	4	2	1	2	3.9	
vs INDIANA	12/21/11	*	4	0-1	.000	0-0	.000	0-0	.000	0	0	0	3.3	0	0	0	0	0	0	3.6	
BOWLING GREEN	12/31/11	*	16	1-5	.200	0-0	.000	0-0	.000	0	2	2	3.2	2	0	6	0	0	2	3.5	
at CSU Bakersfield	1/4/12		11	1-3	.333	0-0	.000	0-0	.000	2	0	2	3.1	2	1	3	1	0	2	3.4	
at Seattle University	01/08/12		23	2-5	.400	0-0	.000	2-2	1.000	1	3	4	3.1	3	0	1	1	0	6	3.5	
AIR FORCE	01/11/12	*	26	2-5	.400	0-0	.000	0-1	.000	1	6	7	3.4	5	3	3	1	1	4	3.6	
at TCU	01/14/12	*	25	3-7	.429	0-0	.000	0-2	.000	2	2	4	3.4	4	4	2	2	2	6	3.7	
at Boise State	01/17/12	*	32	3-4	.750	0-0	.000	0-1	.000	3	4	7	3.6	2	2	4	0	0	6	3.8	
WYOMING	1/21/12	*	22	3-9	.333	0-0	.000	2-4	.500	2	1	3	3.6	5	2	3	1	0	8	4.1	
NEW MEXICO	1/25/12	*	28	2-2	1.000	0-0	.000	0-0	.000	3	2	5	3.7	2	2	3	0	1	4	4.1	
Totals			13	444	35-87	.402	0-0	.000	11-23	.478	29	44	73	3.7	59	28	51	15	14	81	4.1

Games played: 20
Minutes/game: 22.2
Points/game: 4.1
FG Pct: 40.2
FT Pct: 47.8

Rebounds/game: 3.7
Assists/game: 1.4
Turnovers/game: 2.6
Assist/turnover ratio: 0.5
Steals/game: 0.7
Blocks/game: 0.8



2 Ashley Wiens

JR • G • 5-8
Grand Junction, Colo.

2011-12

At home vs. Maryville (12/11) recorded four points, two rebounds and two assists in 12 minutes of play...At Northern Iowa (11/11) played first Division I game.

Clarendon Junior College

2009-10 NJCAA national scoring leaders averaging 92.3 points per game... Earned spot on the Dean's List before graduating with an associates degree in science in 2011.

Kingwood High School

First team all-district in 2009...Honorable mention all-district in 2008... Played basketball, volleyball and track in high school... Letterwinner in basketball, volleyball and track... Earned Defensive Player of the Year in 2009... Volleyball captain in 2007 and basketball captain in 2009.

Personal

Full name is Ashley Nichole Wiens... Born Dec. 15, 1990, in Grand Junction, Colo. ... Parents are David Wiens, Ronda Shannon and step-dad Patrick Shannon... Has one brother, Tyler, 19, and a sister Erica, 22, and a half-sister, Alexis, 7... Biological science major at Colorado State.

WIENS' CAREER HIGHS

Scoring

Career 4, vs. Maryville, 12/11/11
Mountain West.....

Rebounding

Career 2, vs. Maryville, 12/11/11
Mountain West.....

Offensive Rebounds

Career 1, vs. Colorado, 11/20/11
Mountain West.....

Field Goals Made

Career 2, vs. Maryville, 12/11/11
Mountain West.....

Field Goals Attempted

Career 4, vs. Maryville, 12/11/11
Mountain West.....

Three-Point Field Goals Made

Career
Mountain West.....

Three-Point Field Goals Attempted

Career
Mountain West.....

Free Throws Made

Career 2, vs. Colorado, 11/20/11
Mountain West.....

Free Throws Attempted

Career 2, vs. Colorado, 11/20/11
Mountain West.....

Assists

Career 2, vs. Maryville, 12/11/11
Mountain West.....

Blocked Shots

Career
Mountain West.....

Steals

Career
Mountain West.....

Minutes

Career 12, vs. Maryville, 12/11/11
Mountain West..... 5, vs. Air Force, 1/11/12

WIENS' CAREER STATISTICS

Year.....	GP-GS	Min	Avg	TOTAL			3-PTS			FT			REBOUNDS				PF-FO	A	TO	Blk	Stl	Pts	Avg
				FG	FGA	Pct	3FG	FGA	Pct	FT	FTA	Pct	Off	Def	Tot	Avg							
2011-12.....	8-0	28	3.5	3	6	.500	0	0	.000	2	2	1.000	1	3	4	0.5	3-0	3	4	0	0	8	1.0
TOTAL.....	8-0	28	3.5	3	6	.500	0	0	.000	2	2	1.000	1	3	4	0.5	3-0	3	4	0	0	8	1.0

The Automated ScoreBook
Colorado State Individual Game-by-Game (as of Jan 25, 2012)
All games

#02 WIENS, Ashley

Opponent	Date	gs	min	Total		3-Pointers		Free throws		Rebounds				pf	a	t/o	blk	stl	pts	avg
				fg-fga	pct	3fg-fga	pct	ft-fta	pct	off	def	tot	avg							
at UNI	11-11-11		1	0-0	.000	0-0	.000	0-0	.000	0	0	0	0.0	0	0	0	0	0	0	0.0
TULSA	11/17/11		5	0-1	.000	0-0	.000	0-0	.000	0	0	0	0.0	1	0	0	0	0	0	0.0
COLORADO	11/20/11		1	0-0	.000	0-0	.000	2-2	1.000	1	0	1	0.3	0	0	0	0	0	2	0.7
at Montana State	11/29/11		1	1-1	1.000	0-0	.000	0-0	.000	0	1	1	0.5	0	1	0	0	0	2	1.0
MARYVILLE	12/11/11		12	2-4	.500	0-0	.000	0-0	.000	0	2	2	0.8	2	2	3	0	0	4	1.6
vs MSU	12/20/11		2	0-0	.000	0-0	.000	0-0	.000	0	0	0	0.7	0	0	0	0	0	0	1.3
at Seattle University	01/08/12		1	0-0	.000	0-0	.000	0-0	.000	0	0	0	0.6	0	0	0	0	0	0	1.1
AIR FORCE	01/11/12		5	0-0	.000	0-0	.000	0-0	.000	0	0	0	0.5	0	0	1	0	0	0	1.0
Totals		0	28	3-6	.500	0-0	.000	2-2	1.000	1	3	4	0.5	3	3	4	0	0	8	1.0

Games played: 8
Minutes/game: 3.5
Points/game: 1.0
FG Pct: 50.0
FT Pct: 100.0

Rebounds/game: 0.5
Assists/game: 0.4
Turnovers/game: 0.5
Assist/turnover ratio: 0.8



1

LaDeyah Forte
FR • G • 5-4
Pensacola, Fla.

2011-12

At home vs. New Mexico (1/25) registered a game-high six assists...At home vs. Wyoming (1/21) registered a game-high eight assists...At TCU (1/14) set career high with 17 points, making eight field goals...At home vs. Air Force (1/11) tallied double figures with 10 points...At Bakersfield (1/4) scored 15 points, making nine field goals...At the Triple Crown Caribbean Classic vs. Indiana (12/21) pulled down career-high six rebounds...At home vs. Maryville (12/11) pulled down five boards...At home vs. North Dakota (12/8) scored 10 points and recorded four steals...At Toledo (12/4) registered eight points and four assists in 38 minutes...At Denver (11/23) scored seven points and recorded three rebounds...At home vs. Tulsa (11/17) recorded career-high 10 assists...Made college debut at Northern Iowa (11/11).

Pensacola High School

Was named 2011 Pensacola News Journal Player of the Year... Voted MVP of 2011 Subway All-Star Game...Named 2011 first-team Florida Athletic Coaches Association and 2011 first-team Florida Athletic Basketball Association...Earned 2011 Florida High School Athletic Association all-state honorable mention...Was 2011 Scholar Athlete Basketball Player of the Year...Received 2011 Christian Athlete Award...Voted team's 2011 Most Valuable Player...Voted 2011 team captain...Led high school team to three consecutive final four appearances...Made ESPN's top 100 point guard list in 2011.

Personal

Full name is LaDeyah Yvette Forte...Born Jan. 28, 1993, to Fletcher and Wyvette Forte...Has one younger brother, Fletcher Forte II...Undeclared major at Colorado State...Both parents graduated from Alabama State University.

FORTE'S CAREER HIGHS

Scoring

Career 17, at TCU, 1/14/12
Mountain West..... 17, at TCU, 1/14/12

Rebounding

Career 6, vs. Indiana, 12/21/11
Mountain West..... 3, Twice

Offensive Rebounds

Career 1, Three times
Mountain West..... 1, vs. Wyoming, 1/21/12

Field Goals Made

Career 8, at TCU, 1/14/12
Mountain West..... 8, at TCU, 1/14/12

Field Goals Attempted

Career 13, at Bakersfield, 1/4/12
Mountain West..... 12, at TCU, 1/14/12

Three-Point Field Goals Made

Career 2, at Toledo, 12/4/11
Mountain West..... 1, Twice

Three-Point Field Goals Attempted

Career 5, Twice
Mountain West..... 3, at TCU, 1/14/12

Free Throws Made

Career 5, vs. North Dakota, 12/8/11
Mountain West..... 3, vs. Air Force, 1/11/12

Free Throws Attempted

Career 6, vs. North Dakota, 12/8/11
Mountain West..... 3, vs. Air Force, 1/11/12

Assists

Career 10, vs. Tulsa, 11/17/11
Mountain West..... 8, vs. Wyoming, 1/21/12

Blocked Shots

Career
Mountain West.....

Steals

Career 4, Three times
Mountain West..... 3, vs. Wyoming, 1/21/12

Minutes

Career 39, Twice
Mountain West..... 38, at Boise State 1/17/12

FORTE'S CAREER STATISTICS

		TOTAL			3-PTS			REBOUNDS															
Year.....	GP-GS	Min	Avg	FG	FGA	Pct	3FG	FGA	Pct	FT	FTA	Pct	Off	Def	Tot	Avg	PF-FO	A	TO	Blk	Stl	Pts	Avg
2011-12.....	20-15	604	30.2	41	104	.394	9	33	.273	16	24	.667	3	39	42	2.1	27-0	65	51	0	32	107	5.4
TOTAL.....	20-15	604	30.2	41	104	.394	9	33	.273	16	24	.667	3	39	42	2.1	27-0	65	51	0	32	107	5.4

The Automated ScoreBook
Colorado State Individual Game-by-Game (as of Jan 25, 2012)
All games

#01 FORTE, LaDeyah

Opponent	Date	gs	min	Total		3-Pointers		Free throws		Rebounds				pf	a	t/o	blk	stl	pts	avg	
				fg-fga	pct	3fg-fga	pct	ft-fa	pct	off	def	tot	avg								
at UNI	11-11-11		13	1-1	1.000	0-0	.000	0-0	.000	0	1	1	1.0	1	0	5	0	0	2	2.0	
ARIZONA STATE	11/13/11		15	1-4	.250	0-1	.000	0-0	.000	0	0	0	0.5	1	0	2	0	1	2	2.0	
TULSA	11/17/11		31	2-3	.667	1-2	.500	0-2	.000	0	1	1	0.7	0	10	3	0	1	5	3.0	
COLORADO	11/20/11	*	21	0-3	.000	0-0	.000	0-0	.000	0	0	0	0.5	1	3	4	0	2	0	2.3	
at Denver	11/23/11	*	29	3-7	.429	1-5	.200	0-0	.000	0	3	3	1.0	4	1	1	0	0	7	3.2	
at Montana State	11/29/11		15	1-3	.333	1-1	1.000	0-0	.000	1	2	3	1.3	3	0	1	0	1	3	3.2	
at Northern Colorado	12-02-11		9	0-1	.000	0-0	.000	0-0	.000	0	0	0	1.1	0	1	1	0	0	0	2.7	
at Toledo	12/04/11	*	38	3-4	.750	2-2	1.000	0-0	.000	0	2	2	1.3	4	4	4	0	2	8	3.4	
NORTH DAKOTA	12/08/11	*	38	2-4	.500	1-2	.500	5-6	.833	0	1	1	1.2	1	2	1	0	4	10	4.1	
MARYVILLE	12/11/11	*	31	1-3	.333	0-0	.000	3-3	1.000	0	5	5	1.6	0	3	2	0	4	5	4.2	
vs MSU	12/20/11	*	36	3-8	.375	0-3	.000	0-0	.000	0	3	3	1.7	2	0	5	0	2	6	4.4	
vs INDIANA	12/21/11	*	39	2-9	.222	0-2	.000	0-0	.000	1	5	6	2.1	1	4	2	0	4	4	4.3	
BOWLING GREEN	12/31/11	*	38	3-5	.600	0-1	.000	1-2	.500	0	2	2	2.1	1	2	1	0	0	7	4.5	
at CSU Bakersfield	1/4/12	*	39	6-13	.462	1-5	.200	2-2	1.000	0	4	4	2.2	2	7	3	0	1	15	5.3	
at Seattle University	01/08/12	*	31	1-5	.200	0-2	.000	0-0	.000	0	1	1	2.1	1	2	5	0	1	2	5.1	
AIR FORCE	01/11/12	*	33	3-7	.429	1-2	.500	3-3	1.000	0	3	3	2.2	1	3	3	0	2	10	5.4	
at TCU	01/14/12	*	38	8-12	.667	1-3	.333	0-2	.000	0	1	1	2.1	0	5	4	0	1	17	6.1	
at Boise State	01/17/12	*	38	0-3	.000	0-1	.000	0-1	.000	0	3	3	2.2	3	4	0	0	1	0	5.7	
WYOMING	1/21/12	*	36	1-6	.167	0-1	.000	2-2	1.000	1	2	3	2.2	1	8	2	0	3	4	5.6	
NEW MEXICO	1/25/12	*	36	0-3	.000	0-0	.000	0-1	.000	0	0	0	2.1	0	6	2	0	2	0	5.4	
Totals			15	604	41-104	.394	9-33	.273	16-24	.667	3	39	42	2.1	27	65	51	0	32	107	5.4

Games played: 20
Minutes/game: 30.2
Points/game: 5.4
FG Pct: 39.4
3FG Pct: 27.3
FT Pct: 66.7

Rebounds/game: 2.1
Assists/game: 3.3
Turnovers/game: 2.6
Assist/turnover ratio: 1.3
Steals/game: 1.6



14 Carlyn Chavez

FR • G • 5-7
Portland, Ore.

2011-12

At home vs. Maryville (12/11) recorded first points (2) and rebounds (2) in 14 minutes of play...Made college debut, at Northern Iowa (11/11).

La Salle Catholic College Prep High School

Four-year letterwinner in basketball... Team captain senior year... Played volleyball and basketball in high school... Earned all-league honors her junior year and second-team accolades her senior year... Led team to league championship her senior year, and second in state.

Personal

Full name is Carlyn Chavez... Born Oct. 5, 1992, in Salisbury, Md. ... Parents are Rob Chavez and Susan Orr... Father (Rob) played basketball for Mesa State... Has one sister, Lindsey... Undeclared major at Colorado State.

CHAVEZ'S CAREER HIGHS

Scoring

Career 2, vs. Maryville, 12/11/11
Mountain West..... 1, vs. Air Force, 1/11/12

Rebounding

Career 2, Twice
Mountain West..... 2, vs. Air Force, 1/11/12

Offensive Rebounds

Career
Mountain West.....

Field Goals Made

Career 1, vs. Maryville, 12/11/11
Mountain West.....

Field Goals Attempted

Career 2, vs. Maryville, 12/11/11
Mountain West.....

Three-Point Field Goals Made

Career
Mountain West.....

Three-Point Field Goals Attempted

Career
Mountain West.....

Free Throws Made

Career 2, vs. Tulsa, 11/17/11
Mountain West..... 1, vs. Air Force, 1/11/12

Free Throws Attempted

Career 2, Twice
Mountain West..... 2, vs. Air Force, 1/11/12

Assists

Career 2, vs. Maryville, 12/11/11
Mountain West..... 1, vs. Air Force, 1/11/12

Blocked Shots

Career
Mountain West.....

Steals

Career 1, vs. Air Force, 1/11/12
Mountain West..... 1, vs. Air Force, 1/11/12

Minutes

Career 14, vs. Maryville, 12/11/11
Mountain West..... 5, vs. Air Force, 1/11/12

CHAVEZ'S CAREER STATISTICS

Year.....	GP-GS	Min	Avg	TOTAL			3-PTS			REBOUNDS													
				FG	FGA	Pct	3FG	FGA	Pct	FT	FTA	Pct	Off	Def	Tot	Avg	PF-FO	A	TO	Blk	Stl	Pts	Avg
2011-12.....	7-0	29	4.1	1	2	.500	0	0	.000	3	4	.750	0	4	4	0.6	1-0	3	0	0	1	5	0.7
TOTAL.....	7-0	29	4.1	1	2	.500	0	0	.000	3	4	.750	0	4	4	0.6	1-0	3	0	0	1	5	0.7

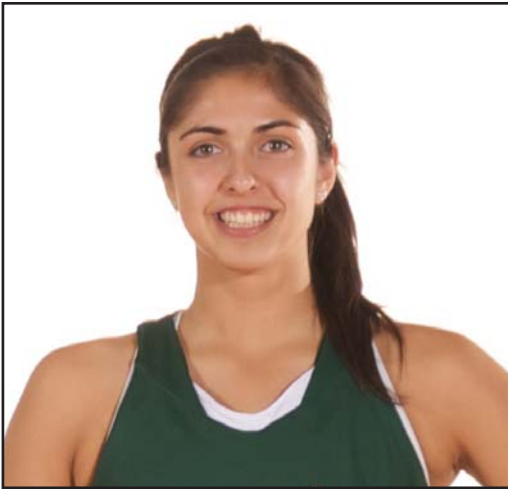
The Automated ScoreBook
Colorado State Individual Game-by-Game (as of Jan 25, 2012)
All games

#14 CHAVEZ, Carlyn

Opponent	Date	gs	min	Total		3-Pointers		Free throws		Rebounds				pf	a	t/o	blk	stl	pts	avg
				fg-fga	pct	3fg-fga	pct	ft-fta	pct	off	def	tot	avg							
at UNI	11-11-11		1	0-0	.000	0-0	.000	0-0	.000	0	0	0	0.0	0	0	0	0	0	0	0.0
TULSA	11/17/11		5	0-0	.000	0-0	.000	2-2	1.000	0	0	0	0.0	1	0	0	0	0	2	1.0
COLORADO	11/20/11		1	0-0	.000	0-0	.000	0-0	.000	0	0	0	0.0	0	0	0	0	0	0	0.7
at Montana State	11/29/11		1	0-0	.000	0-0	.000	0-0	.000	0	0	0	0.0	0	0	0	0	0	0	0.5
MARYVILLE	12/11/11		14	1-2	.500	0-0	.000	0-0	.000	0	2	2	0.4	0	2	0	0	0	2	0.8
at Seattle University	01/08/12		2	0-0	.000	0-0	.000	0-0	.000	0	0	0	0.3	0	0	0	0	0	0	0.7
AIR FORCE	01/11/12		5	0-0	.000	0-0	.000	1-2	.500	0	2	2	0.6	0	1	0	0	1	1	0.7
Totals		0	29	1-2	.500	0-0	.000	3-4	.750	0	4	4	0.6	1	3	0	0	1	5	0.7

Games played: 7
 Minutes/game: 4.1
 Points/game: 0.7
 FG Pct: 50.0
 FT Pct: 75.0

Rebounds/game: 0.6
 Assists/game: 0.4
 Assist/turnover ratio: 99.9
 Steals/game: 0.1



20 Kara Spotton

FR • F • 6-2
Fort Collins, Colo.

2011-12

At Seattle (1/8) recorded 11 points for second consecutive double-digit game...At Bakersfield (1/4) topped career highs in points (17), field goals made (seven), field goals attempted (nine) and minutes (37)...At home vs. Maryville (12/11) scored nine points...At Montana State (11/29) recorded six offensive rebounds and seven points...At home vs. Arizona State (11/13), recorded seven rebounds...In loss at UNI (11/11), made college debut, starting at forward.

Rocky Mountain High School

Averaged 14.1 points and 9.0 rebounds for the Lobos and shot .490 from the field as a junior...As a senior averaged 17.0 points, 9.0 rebounds, 3.1 steals, 1.9 assists and 1.7 blocks...Scored 425 points that year...Participated in Denver's "The Show"...Second-team all-state selection...Four-time all-conference selection...Ranked 98th in the country by ESPN Hoopgurlz...Earned first-team academic all-state honors her junior and senior year.

Personal

Full name is Kara Ann Miranda Spotton...Born on Jan. 29, 1993, in Belleville, Ontario, Canada...Parents are Theresa and James Spotton...Has two brothers, Chris, 23, and Matt, 21, and one sister, Katie, 14...Health and exercise science major at Colorado State.

SPOTTON'S CAREER HIGHS

Scoring

Career 17, at Bakersfield, 1/4/12
Mountain West.....4, vs. New Mexico, 1/25/12

Rebounding

Career 7, Three times
Mountain West.....3, Three times

Offensive Rebounds

Career 6, at Montana State, 11/29/11
Mountain West.....2, at Boise State 1/17/12

Field Goals Made

Career 7, at Bakersfield, 1/4/12
Mountain West.....2, vs. New Mexico, 1/25/12

Field Goals Attempted

Career 10, at Seattle, 1/8/12
Mountain West.....6, at Boise State 1/17/12

Three-Point Field Goals Made

Career
Mountain West.....

Three-Point Field Goals Attempted

Career 2, vs. MSU, 12/20/11
Mountain West.....

Free Throws Made

Career 3, Four times
Mountain West.....

Free Throws Attempted

Career 4, Four times
Mountain West.....

Assists

Career 2, Three times
Mountain West.....2, at TCU, 1/14/12

Blocked Shots

Career 1, Three times
Mountain West.....

Steals

Career 2, Four times
Mountain West.....2, Twice

Minutes

Career 37, at Bakersfield, 1/4/12
Mountain West.....22, vs. Air Force, 1/11/12

SPOTTON'S CAREER STATISTICS

Year.....	GP-GS	Min	Avg	TOTAL			3-PTS			REBOUNDS													
				FG	FGA	Pct	3FG	FGA	Pct	FT	FTA	Pct	Off	Def	Tot	Avg	PF-FO	A	TO	Blk	Stl	Pts	Avg
2011-12.....	20-8	389	19.5	30	91	.330	0	3	.000	19	26	.731	34	35	69	3.5	47-3	11	37	3	14	79	4.0
TOTAL.....	20-8	389	19.5	30	91	.330	0	3	.000	19	26	.731	34	35	69	3.5	47-3	11	37	3	14	79	4.0

The Automated ScoreBook
Colorado State Individual Game-by-Game (as of Jan 25, 2012)
All games

#20 SPOTTON, Kara

Opponent	Date	gs	min	Total		3-Pointers		Free throws		Rebounds				pf	a	t/o	blk	stl	pts	avg	
				fg-fga	pct	3fg-fga	pct	ft-fa	pct	off	def	tot	avg								
at UNI	11-11-11	*	24	1-3	.333	0-0	.000	2-2	1.000	2	1	3	3.0	5	2	2	0	2	4	4.0	
ARIZONA STATE	11/13/11	*	32	1-7	.143	0-0	.000	1-2	.500	3	4	7	5.0	5	0	1	0	1	3	3.5	
TULSA	11/17/11	*	22	0-5	.000	0-1	.000	0-0	.000	1	3	4	4.7	5	0	4	0	1	0	2.3	
COLORADO	11/20/11		15	2-4	.500	0-0	.000	2-2	1.000	1	2	3	4.3	0	0	1	0	0	6	3.3	
at Denver	11/23/11		0	0-0	.000	0-0	.000	0-0	.000	0	0	0	3.4	0	0	0	0	0	0	2.6	
at Montana State	11/29/11		15	2-8	.250	0-0	.000	3-4	.750	6	1	7	4.0	3	0	1	0	0	7	3.3	
at Northern Colorado	12-02-11		10	0-1	.000	0-0	.000	0-0	.000	2	3	5	4.1	0	0	2	1	0	0	2.9	
at Toledo	12/04/11		14	0-4	.000	0-0	.000	0-0	.000	1	1	2	3.9	1	0	2	1	0	0	2.5	
NORTH DAKOTA	12/08/11		7	0-0	.000	0-0	.000	0-0	.000	0	0	0	3.4	0	0	1	0	0	0	2.2	
MARYVILLE	12/11/11	*	23	4-6	.667	0-0	.000	1-2	.500	4	2	6	3.7	3	1	1	0	2	9	2.9	
vs MSU	12/20/11	*	33	3-8	.375	0-2	.000	1-2	.500	3	3	6	3.9	3	1	2	1	1	7	3.3	
vs INDIANA	12/21/11	*	33	1-6	.167	0-0	.000	0-0	.000	2	2	4	3.9	4	1	0	0	0	2	3.2	
BOWLING GREEN	12/31/11		19	2-6	.333	0-0	.000	3-4	.750	1	1	2	3.8	4	0	1	0	0	7	3.5	
at CSU Bakersfield	1/4/12	*	37	7-9	.778	0-0	.000	3-4	.750	3	4	7	4.0	2	2	4	0	1	17	4.4	
at Seattle University	01/08/12	*	31	4-10	.400	0-0	.000	3-4	.750	2	1	3	3.9	4	0	6	0	1	11	4.9	
AIR FORCE	01/11/12		22	1-2	.500	0-0	.000	0-0	.000	1	2	3	3.9	2	0	4	0	2	2	4.7	
at TCU	01/14/12		11	0-2	.000	0-0	.000	0-0	.000	0	0	0	3.6	3	2	1	0	0	0	4.4	
at Boise State	01/17/12		16	0-6	.000	0-0	.000	0-0	.000	2	1	3	3.6	1	1	2	0	0	0	4.2	
WYOMING	1/21/12		10	0-0	.000	0-0	.000	0-0	.000	0	3	3	3.6	2	0	2	0	1	0	3.9	
NEW MEXICO	1/25/12		15	2-4	.500	0-0	.000	0-0	.000	0	1	1	3.5	0	1	0	0	2	4	4.0	
Totals			8	389	30-91	.330	0-3	.000	19-26	.731	34	35	69	3.5	47	11	37	3	14	79	4.0

Games played: 20
Minutes/game: 19.5
Points/game: 4.0
FG Pct: 33.0
3FG Pct: 0.0
FT Pct: 73.1

Rebounds/game: 3.5
Assists/game: 0.6
Turnovers/game: 1.9
Assist/turnover ratio: 0.3
Steals/game: 0.7
Blocks/game: 0.2



23 Morgan Hunt

FR • F • 6-1
Colleyville, Texas

2011-12

At home vs. Air Force (1/11) scored six points, shooting 75.0 percent...At Bakersfield (1/4) started first collegiate game...At the Triple Crown Caribbean Classic vs. Michigan State (12/20) pulled down four rebounds, including three offensive boards... At home vs. Tulsa (11/17) scored nine points...Made college debut at Northern Iowa (11/11).

Colleyville Heritage HS

Was named MVP and first-team all-district her junior season (2009-10)...Named team captain as a senior.

Personal

Full name is Morgan T. Hunt...Born Oct. 21, 1992, in Arlington, Texas...One of two children born to Linda and Eleow Hunt... Has one older brother, Ryan, who played basketball at St. Edward's University...Undeclared major at Colorado State.

HUNT'S CAREER HIGHS

Scoring

Career9, vs. Tulsa, 11/17/11
Mountain West.....6, vs. Air Force, 1/11/12

Rebounding

Career4, vs. MSU, 12/20/11
Mountain West.....3, vs. Air Force, 1/11/12

Offensive Rebounds

Career3, vs. MSU, 12/20/11
Mountain West.....

Field Goals Made

Career3, Three times
Mountain West.....3, vs. Air Force, 1/11/12

Field Goals Attempted

Career5, Twice
Mountain West.....4, vs. Air Force, 1/11/12

Three-Point Field Goals Made

Career
Mountain West.....

Three-Point Field Goals Attempted

Career
Mountain West.....

Free Throws Made

Career3, vs. Tulsa, 11/17/11
Mountain West.....

Free Throws Attempted

Career3, Twice
Mountain West.....

Assists

Career1, Three times
Mountain West.....1, Twice

Blocked Shots

Career1, Twice
Mountain West.....

Steals

Career1, Three times
Mountain West.....

Minutes

Career24, vs. Maryville, 12/11/11
Mountain West.....13, vs. Air Force, 1/11/12

HUNT'S CAREER STATISTICS

Year.....	GP-GS	Min	Avg	TOTAL			3-PTS			REBOUNDS													
				FG	FGA	Pct	3FG	FGA	Pct	FT	FTA	Pct	Off	Def	Tot	Avg	PF-FO	A	TO	Blk	Stl	Pts	Avg
2011-12.....	18-1	174	9.7	16	32	.500	0	0	.000	8	10	.800	8	16	24	1.3	10-0	3	19	2	3	40	2.2
TOTAL.....	18-1	174	9.7	16	32	.500	0	0	.000	8	10	.800	8	16	24	1.3	10-0	3	19	2	3	40	2.2

The Automated ScoreBook
Colorado State Individual Game-by-Game (as of Jan 25, 2012)
All games

#23 HUNT, Morgan

Opponent	Date	gs	min	Total		3-Pointers		Free throws		Rebounds				pf	a	t/o	blk	stl	pts	avg	
				fg-fga	pct	3fg-fga	pct	ft-fa	pct	off	def	tot	avg								
at UNI	11-11-11		8	0-1	.000	0-0	.000	0-0	.000	1	0	1	1.0	1	0	1	0	1	0	0.0	
ARIZONA STATE	11/13/11		3	0-0	.000	0-0	.000	0-0	.000	0	0	0	0.5	0	0	0	0	0	0	0.0	
TULSA	11/17/11		15	3-5	.600	0-0	.000	3-3	1.000	1	0	1	0.7	1	0	3	0	0	9	3.0	
COLORADO	11/20/11		12	0-1	.000	0-0	.000	0-0	.000	0	0	0	0.5	0	0	1	0	0	0	2.3	
at Denver	11/23/11		1	0-0	.000	0-0	.000	0-0	.000	0	0	0	0.4	0	0	0	0	0	0	1.8	
at Montana State	11/29/11		5	0-1	.000	0-0	.000	0-0	.000	1	1	2	0.7	1	0	1	0	0	0	1.5	
at Northern Colorado	12-02-11		1	0-0	.000	0-0	.000	0-0	.000	0	0	0	0.6	0	0	0	0	0	0	1.3	
NORTH DAKOTA	12/08/11		8	2-3	.667	0-0	.000	0-0	.000	0	1	1	0.6	0	0	0	0	0	4	1.6	
MARYVILLE	12/11/11		24	1-3	.333	0-0	.000	1-2	.500	2	3	5	1.1	1	0	4	0	0	3	1.8	
vs MSU	12/20/11		23	3-5	.600	0-0	.000	2-3	.667	3	1	4	1.4	0	0	0	0	1	8	2.4	
vs INDIANA	12/21/11		14	0-2	.000	0-0	.000	0-0	.000	0	1	1	1.4	2	0	3	1	1	0	2.2	
BOWLING GREEN	12/31/11		9	2-3	.667	0-0	.000	2-2	1.000	0	3	3	1.5	0	0	0	0	0	6	2.5	
at CSU Bakersfield	1/4/12	*	12	1-2	.500	0-0	.000	0-0	.000	0	2	2	1.5	1	0	3	1	0	2	2.5	
at Seattle University	01/08/12		14	1-1	1.000	0-0	.000	0-0	.000	0	1	1	1.5	1	1	2	0	0	2	2.4	
AIR FORCE	01/11/12		13	3-4	.750	0-0	.000	0-0	.000	0	3	3	1.6	2	1	1	0	0	6	2.7	
at TCU	01/14/12		8	0-1	.000	0-0	.000	0-0	.000	0	0	0	1.5	0	1	0	0	0	0	2.5	
at Boise State	01/17/12		1	0-0	.000	0-0	.000	0-0	.000	0	0	0	1.4	0	0	0	0	0	0	2.4	
WYOMING	1/21/12		3	0-0	.000	0-0	.000	0-0	.000	0	0	0	1.3	0	0	0	0	0	0	2.2	
Totals			1	174	16-32	.500	0-0	.000	8-10	.800	8	16	24	1.3	10	3	19	2	3	40	2.2

Games played: 18
Minutes/game: 9.7
Points/game: 2.2
FG Pct: 50.0
FT Pct: 80.0

Rebounds/game: 1.3
Assists/game: 0.2
Turnovers/game: 1.1
Assist/turnover ratio: 0.2
Steals/game: 0.2
Blocks/game: 0.1



4

Hanne Mestdagh
FR • G/F • 5-10
Ieper, Belgium

2011-12

At home vs. Air Force (1/11) scored career-high eight points, making two shots from three-point range...At Seattle (1/8) scored first career points with two...At home vs. Bowling Green (12/31) played in her first collegiate game, recording one rebound and one steal in five minutes...Missed first 12 games due to a knee injury.

St. Katelijne Waver Sports School

Played club basketball at St. Katelijne Waver Sports School for two years...Is currently one of the youngest players to be competing in Belgium's Division I League (Senior Women's League)...Over the past two years, averaged 7.2 points and 4.0 rebounds per game and shot 30.0 percent from the three-point line, and 70.0 percent from the charity stripe...Competed in Belgium's first division Women's League, in which her team finished in the runner-up spot in the 2010-11 season...The finish qualified her team for the Euro League competition...In 2010, played on Belgium's under-17 national team and helped lead the team to a fourth-place finish in the world championships.

Personal

Full name is Hanne Mestdagh...Family lives in Ieper, Belgium, where her father serves as a club basketball coach and her mother works at a bank...One of three children...Older brother played Division I basketball at Eastern Kentucky...Older sister, Kim, attends CSU and plays on the women's basketball team...International studies major at Colorado State.

MESTDAGH'S CAREER HIGHS

Scoring

Career 8, vs. Air Force, 1/11/12
Mountain West..... 8, vs. Air Force, 1/11/12

Rebounding

Career 2, vs. Air Force, 1/11/12
Mountain West..... 2, vs. Air Force, 1/11/12

Offensive Rebounds

Career 1, at TCU, 1/14/12
Mountain West..... 1, at TCU, 1/14/12

Field Goals Made

Career 3, vs. Air Force, 1/11/12
Mountain West..... 3, vs. Air Force, 1/11/12

Field Goals Attempted

Career 4, vs. Air Force, 1/11/12
Mountain West..... 4, vs. Air Force, 1/11/12

Three-Point Field Goals Made

Career 2, vs. Air Force, 1/11/12
Mountain West..... 2, vs. Air Force, 1/11/12

Three-Point Field Goals Attempted

Career 3, vs. Air Force, 1/11/12
Mountain West..... 3, vs. Air Force, 1/11/12

Free Throws Made

Career
Mountain West.....

Free Throws Attempted

Career
Mountain West.....

Assists

Career 1, Three times
Mountain West..... 1, Twice

Blocked Shots

Career
Mountain West.....

Steals

Career 1, vs. Bowling Green, 12/31/Avg
Mountain West.....

Minutes

Career 12, vs. Air Force, 1/11/12
Mountain West..... 12, vs. Air Force, 1/11/12

MESTDAGH'S CAREER STATISTICS

Year.....	GP-GS	Min	Avg	TOTAL			3-PTS			REBOUNDS													
				FG	FGA	Pct	3FG	FGA	Pct	FT	FTA	Pct	Off	Def	Tot	Avg	PF-FO	A	TO	Blk	Stl	Pts	Avg
2011-12.....	7-0	37	5.3	5	8	.625	3	6	.500	0	0	.000	1	4	5	0.7	4-0	3	4	0	1	13	1.9
TOTAL.....	7-0	37	5.3	5	8	.625	3	6	.500	0	0	.000	1	4	5	0.7	4-0	3	4	0	1	13	1.9

The Automated ScoreBook
Colorado State Individual Game-by-Game (as of Jan 25, 2012)
All games

#04 MESTDAGH, Hanne

Opponent	Date	gs	min	Total		3-Pointers		Free throws		Rebounds				pf	a	t/o	blk	stl	pts	avg
				fg-fga	pct	3fg-fga	pct	ft-fa	pct	off	def	tot	avg							
BOWLING GREEN	12/31/11		5	0-0	.000	0-0	.000	0-0	.000	0	1	1	1.0	1	0	0	0	1	0	0.0
at CSU Bakersfield	1/4/12		1	0-0	.000	0-0	.000	0-0	.000	0	0	0	0.5	0	0	0	0	0	0	0.0
at Seattle University	01/08/12		9	1-1	1.000	0-0	.000	0-0	.000	0	1	1	0.7	0	1	1	0	0	2	0.7
AIR FORCE	01/11/12		12	3-4	.750	2-3	.667	0-0	.000	0	2	2	1.0	3	1	2	0	0	8	2.5
at TCU	01/14/12		1	0-0	.000	0-0	.000	0-0	.000	1	0	1	1.0	0	0	1	0	0	0	2.0
WYOMING	1/21/12		5	0-1	.000	0-1	.000	0-0	.000	0	0	0	0.8	0	0	0	0	0	0	1.7
NEW MEXICO	1/25/12		4	1-2	.500	1-2	.500	0-0	.000	0	0	0	0.7	0	1	0	0	0	3	1.9
Totals		0	37	5-8	.625	3-6	.500	0-0	.000	1	4	5	0.7	4	3	4	0	1	13	1.9

Games played: 7
 Minutes/game: 5.3
 Points/game: 1.9
 FG Pct: 62.5
 3FG Pct: 50.0

Rebounds/game: 0.7
 Assists/game: 0.4
 Turnovers/game: 0.6
 Assist/turnover ratio: 0.8
 Steals/game: 0.1



21 | Mandy Makeever

RS FR • G • 5-10
Peaster, Texas

2011-12

Will miss remainder of season due to shoulder injury...At Northern Colorado (12/2) recorded four assists...At Montana State (11/29) tied her career high in points with 11...At Northern Iowa (11/11) tallied 11 points in her first game since Nov. 12, 2010.

2010-11

Received a medical hardship waiver due to a shoulder injury.

Peaster High school

Earned varsity letters in basketball (4), cross country (3), track and field (2) and volleyball (1)...Averaged 18.6 points and 7.2 rebounds her junior season in addition to tallying 50 blocks...Helped lead the Greyhounds to a four-year record of 112-18...Received all-state basketball and academic honors all four years... Was named Texas Association of Basketball Coaches all-star and 2A Player of the Year in 2010...Was named Texas Girls Coaches Association all-star in 2010...Played AAU for Fort Worth Frogs and was picked as an AAU All-American in 2009... Was a McDonald's All-American nominee in 2009.

Personal

Full name Mandy Jo Makeever...Born Oct. 2, 1991, in Amarillo, Texas... One of three children of Mark and Kim Makeever...Has one older brother, Corey...Twin sister Amber also plays for the CSU women's basketball team...Equine science major at Colorado State.

MAKEEVER'S CAREER HIGHS

Scoring

Career 11, Twice
Mountain West.....

Rebounding

Career 4, vs. Arizona State, 11/13/11
Mountain West.....

Offensive Rebounds

Career 1, at Montana State, 11/29/11
Mountain West.....

Field Goals Made

Career 3, Three times
Mountain West.....

Field Goals Attempted

Career 9, at Northern Iowa, 11/11/11
Mountain West.....

Three-Point Field Goals Made

Career 3, at Northern Iowa, 11/11/11
Mountain West.....

Three-Point Field Goals Attempted

Career 6, Twice
Mountain West.....

Free Throws Made

Career 3, Twice
Mountain West.....

Free Throws Attempted

Career 4, vs. Tulsa, 11/17/11
Mountain West.....

Assists

Career 4, at Northern Colorado, 12/2/11
Mountain West.....

Blocked Shots

Career 1, at Northern Iowa, 11/11/11
Mountain West.....

Steals

Career 2, Twice
Mountain West.....

Minutes

Career 41, vs. Arizona State, 11/13/11
Mountain West.....

MAKEEVER'S CAREER STATISTICS

Year.....	GP-GS	Min	Avg	TOTAL			3-PTS			FT			REBOUNDS				PF-FO	A	TO	Blk	Stl	Pts	Avg
				FG	FGA	Pct	3FG	FGA	Pct	FT	FTA	Pct	Off	Def	Tot	Avg							
2010-11.....	1-1	20	20.0	3	5	.600	1	3	.333	0	0	.000	0	1	1	1.0	2-0	1	6	0	0	7	7.0
2011-12.....	9-5	210	23.3	16	52	.308	11	30	.367	14	15	.933	1	14	15	1.7	9-0	14	31	1	7	57	6.3
TOTAL.....	10-6	230	23.0	19	57	.333	12	33	.364	14	15	.933	1	15	16	1.6	11-0	15	37	1	7	64	6.4

The Automated ScoreBook
Colorado State Individual Game-by-Game (as of Dec 23, 2011)
All games

#21 MAKEEVER, Mandy

Opponent	Date	gs	min	Total		3-Pointers		Free throws		Rebounds				pf	a	t/o	blk	stl	pts	avg	
				fg-fga	pct	3fg-fga	pct	ft-fa	pct	off	def	tot	avg								
at UNI	11-11-11	*	35	3-9	.333	3-5	.600	2-2	1.000	0	0	0	0.0	1	3	7	1	2	11	11.0	
ARIZONA STATE	11/13/11	*	41	2-8	.250	1-3	.333	2-2	1.000	0	4	4	2.0	0	1	5	0	0	7	9.0	
TULSA	11/17/11	*	25	2-7	.286	2-6	.333	3-4	.750	0	2	2	2.0	1	1	4	0	0	9	9.0	
COLORADO	11/20/11		21	2-6	.333	1-3	.333	0-0	.000	0	2	2	2.0	1	1	6	0	1	5	8.0	
at Denver	11/23/11		19	2-3	.667	1-2	.500	0-0	.000	0	1	1	1.8	1	3	3	0	2	5	7.4	
at Montana State	11/29/11		19	3-8	.375	2-6	.333	3-3	1.000	1	1	2	1.8	1	0	2	0	1	11	8.0	
at Northern Colorado	12-02-11	*	32	2-6	.333	1-3	.333	2-2	1.000	0	2	2	1.9	2	4	2	0	0	7	7.9	
at Toledo	12/04/11	*	5	0-2	.000	0-1	.000	0-0	.000	0	1	1	1.8	1	1	1	0	0	0	6.9	
NORTH DAKOTA	12/08/11		13	0-3	.000	0-1	.000	2-2	1.000	0	1	1	1.7	1	0	1	0	1	2	6.3	
Totals			5	210	16-52	.308	11-30	.367	14-15	.933	1	14	15	1.7	9	14	31	1	7	57	6.3

Games played: 9
 Minutes/game: 23.3
 Points/game: 6.3
 FG Pct: 30.8
 3FG Pct: 36.7
 FT Pct: 93.3

Rebounds/game: 1.7
 Assists/game: 1.6
 Turnovers/game: 3.4
 Assist/turnover ratio: 0.5
 Steals/game: 0.8
 Blocks/game: 0.1



15 Amber Makeever

SO • G • 5-11
Peaster, Texas

2011-12

Will sit out season due to a hip injury.

2010-11

Saw action in 27 of 30 games for the Rams...Averaged 2.5 points per game...Had third highest three-point attempts on the team with 60 on the season...Scored 67 points as a freshman in 8.9 minutes per game.

Peaster High School

Earned varsity letters in basketball (4), track and field (3), cross country (3) and volleyball (1)...Averaged 15.2 points per game and 4.7 rebounds per game her junior season for the Peaster Greyhounds...Helped lead the team to a four-year record of 112-18...Was an all-state basketball player all four years...Earned academic all-state and Senior Hall of Fame recognition...Named district Offensive Player of the Year twice...Received Texas Association of Basketball Coaches and Texas Girls Coaches Association all-state honors...Named Texas Girls Coaches Association all-star in 2010...Named basketball team co-captain her senior year...Played AAU for the Fort Worth Frogs.

Personal

Full name is Amber Dawn Makeever...Born Oct. 2, 1991, in Amarillo, Texas...One of three children of Mark and Kim Makeever...Has one older brother, Corey...Twin sister Mandy also plays for the CSU women's basketball team...Studies communications at Colorado State.

MAKEEVER'S CAREER HIGHS

Scoring

Career 11, vs. Texas Southern, 11/27/10
Mountain West..... 7, at Air Force, 1/25/11

Rebounding

Career 4, vs. South Dakota, 12/20/10
Mountain West..... 2, Three times

Offensive Rebounds

Career 1, Three times
Mountain West..... 1, vs. UNLV, 1/18/11

Field Goals Made

Career 3, Three times
Mountain West..... 3, at Air Force, 1/25/11

Field Goals Attempted

Career 8, at Winthrop, 12/30/10
Mountain West..... 4, Three times

Three-Point Field Goals Made

Career 3, Twice
Mountain West..... 1, Four times

Three-Point Field Goals Attempted

Career 8, at Winthrop, 12/30/10
Mountain West..... 3, vs. Air Force, 2/26/11

Free Throws Made

Career 3, vs. UNLV, 1/18/11
Mountain West..... 3, vs. UNLV, 1/18/11

Free Throws Attempted

Career 4, vs. UNLV, 1/18/11
Mountain West..... 4, vs. UNLV, 1/18/11

Assists

Career 2, Three times
Mountain West..... 1, Six times

Blocked Shots

Career 1, vs. South Dakota, 12/20/10
Mountain West.....

Steals

Career 2, vs. Texas A&M Corpus Christi, 11/28/10
Mountain West..... 1, Three times

Minutes

Career 20, vs. South Dakota, 12/20/10
Mountain West..... 14, at New Mexico, 2/12/11

MAKEEVER'S CAREER STATISTICS

Year.....	GP-GS	Min	Avg	TOTAL			3-PTS			REBOUNDS			PF-FO	A	TO	Blk	Stl	Pts	Avg				
				FG	FGA	Pct	3FG	FGA	Pct	FT	FTA	Pct								Off	Def	Tot	Avg
2010-11.....	27-0	241	8.9	22	77	.286	16	60	.267	7	12	.583	3	22	25	0.9	23-0	16	21	2	5	67	2.5
TOTAL.....	27-0	241	8.9	22	77	.286	16	60	.267	7	12	.583	3	22	25	0.9	23-0	16	21	2	5	67	2.5