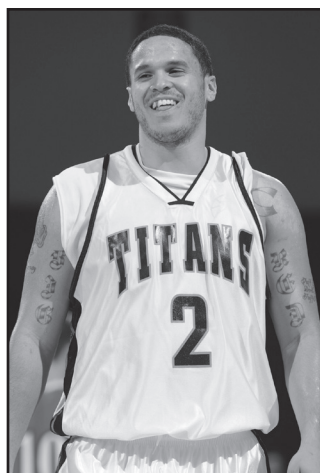


HIGH-POINT GAMES - Individual

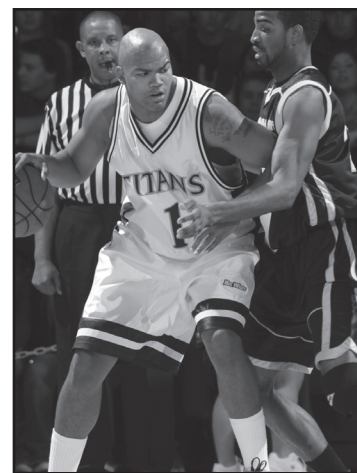
By Titan Players

Pts.	Player	Date	W/L, Opponent, Score
47	Bobby Brown	12/16/06	W vs. Beth.-Cookman, 94-65
41	Josh Akognon	12/13/08	W vs. CSU Bakersfield, 87-64
41	Josh Akognon	11/16/08	W at Hawaii, 90-76
38	Richard Morton	1/7/88	L vs. UC Irvine, 81-73
37	Josh Akognon	3/11/09	W vs. ³ UC Riverside, 59-46
36	Bobby Brown	2/14/07	L vs. Long Beach, 94-84
36	Jamaal Brown	12/10/05	L at USF, 93-91 OT
36	Pape Sow	12/6/01	L at Sacramento State, 85-79
36	Leon Wood	1/6/83	W vs. UC Irvine, 86-76
36	Leon Wood	2/11/82	W vs. Pacific, 82-65
35	Scott Cutley	1/25/07	W vs. UC Davis, 84-77
35	Richard Morton	3/13/87	L at California, 72-68 OT
35	Leon Wood	3/3/84	L at ¹ UC Irvine, 72-69
35	Leon Wood	11/25/83	W vs. ² McNeese St., 78-66
35	Agee Ward	12/14/91	W at Portland, 98-94
34	Isiah Umipig	11/11/11	W vs. Redlands, 118-68
34	Cedric Ceballos	3/3/90	L vs. UNLV, 103-85
34	Cedric Ceballos	11/29/89	W vs. W. Texas St., 89-74
34	Richard Morton	12/12/87	L at New Orleans, 80-57
34	Leon Wood	11/27/83	W at Hawaii, 90-60
33	Pape Sow	12/30/03	L vs. LMU, 67-71
33	Ike Harmon	2/13/99	W vs. UC Irvine, 104-97
33	Joe Small	12/3/91	L at Butler, 100-83
33	Joe Small	2/21/91	L vs. UC Irvine, 96-92
33	Cedric Ceballos	1/29/90	L at UCSB, 72-64 OT
33	Mark Hill	2/16/89	L at Utah State, 90-80
33	Kevin Henderson	12/11/85	W vs. USIU, 117-94
33	Henry Turner	12/23/87	W vs. USD, 71-49
33	Leon Wood	3/6/83	L at Fresno State, 94-72
33	Leon Wood	2/9/84	L vs. Fresno State, 69-68 2OT
32	Devon Peltier	2/19/11	L at Idaho State, 84-79
32	Orane Chin	12/12/10	L at Portland State, 93-89
32	Josh Akognon	3/3/09	W at CSU Bakersfield, 78-73
32	Josh Akognon	2/21/09	L at New Mexico St., 94-86
32	Ryan Dillon	1/31/01	L vs. Boise State, 84-76
32	Ike Harmon	1/29/00	L at North Texas, 82-84
32	Joe Small	1/2/91	W at Fresno State, 91-88
32	Cedric Ceballos	12/2/88	L vs. Weber State, 88-77
32	Cedric Ceballos	2/24/90	L at UC Irvine, 94-76
32	Richard Morton	1/4/86	W vs. Long Beach, 85-80 OT
31	21 times: most recently: Josh Akognon - 1/29/09, W at Long Beach State, 61-60		
30	16 times: most recently: Josh Akognon - 1/17/08, L at Pacific, 82-89		

¹ Crawford Hall ² Blaisdell Center, Honolulu ³ Anaheim C.C.



Scott Cutley



Jamaal Brown

By Opposing Players

Pts.	Player, Team	Date	Winner, Score
42	Rich Anema, Pacific	2/27/86	UoP, 85-77 OT
39	Mike Efevberha, at CSU North.	1/7/06	CSF, 83-78
39	Alphonso Ford, Miss. Valley St.	12/15/90	CSF, 109-100
39	Matt Waldron, at Pacific	2/4/82	CSF, 74-65
39	Kevin Magee, at UC Irvine	1/15/81	UCI, 99-84
37	David Dees, at La.-Lafayette	11/24/06	CSF, 91-89 OT
36	Raymond Tutt, at UCSB	1/16/97	UCSB, 83-76
35	Kyle Austin, UC Riverside	2/6/10	UCR, 76-59
35	Alex Harris, UCSB	2/22/07	CSF, 79-73
35	Royce Parran, Chicago State ⁴	12/9/05	CSF, 88-80
35	Andre Morgan, at Hawaii	11/22/85	UH, 79-76
34	Larry Cunningham, at UCR	2/3/07	UCR, 82-76
34	Brad Quinet, San Jose State	2/18/95	SJSU, 86-77
33	Mike Tolman, Boise State ¹	3/6/98	CSF, 89-82
33	Larry Johnson, UNLV	3/2/91	UNLV 101-83
33	Greg Grant, at Utah State	1/9/86	USU, 82-76 OT
32	Mark Yelovich, SIU Edw'ville	2/20/10	CSF, 78-74
32	Vince Oliver, UC Davis	2/14/09	CSF, 106-95
32	Shane Schilling, Cal Poly	3/8/03	CSF 88-85 OT
32	Mark Hull, UCSB	12/22/01	UCSB, 61-60
32	Michael Olowokandi, Pacific	2/19/98	UoP, 71-57
32	J. R. Rider, UNLV	3/6/93	CSF, 84-83
32	Bryon Russell, at Long Beach ²	2/20/92	LB, 85-71
32	Kendall Youngblood, Utah State	2/6/92	CSF, 111-99 OT
32	Ricky Butler, UC Irvine	1/26/91	UCI 92-87
32	Larry Johnson, UNLV ³	3/9/90	UNLV, 115-93
31	Donovan Morris, Long Beach	1/31/08	CSF, 91-75
31	Aaron Nixon, Long Beach State	3/9/06	LB, 94-91
31	Ian Boylan, CSU Northridge	3/10/04	CSUN, 80-70
31	Cardell Butler, Utah State	2/21/04	USU, 87-61
31	Raymond Tutt, UCSB	2/28/98	CSF 76-70
31	Marcus Saxon, Utah State ¹	3/7/98	USU, 65-56
31	D'Cean Bryant, Long Beach State	2/21/98	CSF, 92-70
31	Jeff Herdman, UC Irvine	2/21/91	UCI 96-92
31	Jay Goodman, Utah State	1/7/91	CSF, 93-91
31	Darin Archbold, Butler	12/1/90	CSF 79-76
30	11 times: most recently: Antonio Porch, Denver, 12/23/04, CSF 102-92		

¹ Lawlor Center, Reno ² 49er Campus Gym ³ Long Beach Arena ⁴ at USF

HIGH-POINT GAMES - Teams

Titans...

128 vs. Chapman College (88), Jan. 8, 1972
118 vs. Redlands (68), Nov. 11, 2011
117 vs. U.S. International (94), Dec. 11, 1985
113 at Cal State Northridge (112), 2/13/10 3OT
113 vs. Pasadena Nazarene (102), 1965-66
112 vs. Weber State (93), 1962-63
111 vs. Utah State (99), Feb. 6, 1992 OT
111 vs. LaVerne (73), 1968-69
110 vs. Cal Poly SLO (98), Feb. 27, 1997
110 vs. UC Riverside (60), 1960-61
109 vs. Miss. Valley St. (100), Dec. 15, 1990
109 vs. MacMurray (65), Jan. 6, 1979
109 vs. Portland State (92), Dec. 13, 1978
109 vs. UNLV (88), 1960-61
108 vs. Cal Maritime (56), Nov. 10, 2006
107 vs. Hope International (73), Nov. 27, 2004
107 vs. CSU Dominguez Hills (90), 1971-72
107 vs. Luke Air Force Base (73), 1960-61
106 at UC Davis (95), Feb. 14, 2009
106 vs. Hope International (60), Nov. 20, 2008
106 vs. Sacramento St. (97), Dec. 15, 2001 OT
106 vs. Brown (60), Dec. 30, 1987
106 vs. So. Calif. College (75), 1965-66
105 vs. San Diego (57), 1961-62
104 vs. San Jose State (77), Dec. 23, 2006
104 vs. UC Irvine (97), Feb. 13, 1999
104 vs. Lamar (67), Nov. 24, 1989
104 vs. CSU Sacramento (75), Dec. 10, 1982
104 vs. San Diego Navy (57), 1967-68
104 vs. Cal Poly Pomona (76), 1962-63
103 vs. Furman (72), Dec. 28, 2007
103 vs. Chapman College (79), 1968-69
103 vs. San Diego Marines (77), 1962-63
102 vs. Denver (92), Dec. 23, 2004
102 vs. Humboldt State (67), 1970-71
102 vs. Cal Poly Pomona (97), 1967-68
101 at UC Irvine (95), Feb. 24, 1994
101 vs. CSU Bakersfield (69), Jan. 3, 1976
101 vs. Chapman College (86), 1971-72
101 vs. CSU Northridge (98), 1961-62 OT
101 vs. LaVerne (64), 1960-61
100 at Montana (91), Nov. 30, 2007
100 vs. Pacific (92), Mar. 8, 2007 2OT
100 at E. Washington (110), Nov. 27, 2006
100 vs. Fresno State (98), Feb. 9, 1991 2OT
100 vs. Southern Utah (58), Dec. 8, 1986
100 vs. Whittier College (80), 1971-72
100 vs. Chapman College (87), 1970-71
100 vs. Stanislaus State (89), 1967-68
100 vs. Long Beach State (89), 1962-63
100 vs. Calvin College (83), 1961-62

-- 51 games (CSF 50-1) 100 or more points --
Bold Italics: CSF Lost game

Opponents...

120 at UCLA, Dec. 13, 1997
117 vs. CSU Northridge, Feb. 29, 1964
116 vs. Northern Illinois, 1971-72
115 vs. UNLV, Mar. 8, 1990
115 at Utah State, Dec. 23, 1973
115 vs. Westmont, 1964-65
114 vs. Long Beach State, 1964-65
112 at Cal St. Northridge, 2/13/10 3OT
112 vs. San Diego State, 1969-70
111 vs. Oral Roberts, 1970-71
111 vs. Nebraska, 1967-68
110 at E. Washington, Nov. 27, 2006
110 vs. Cal Poly SLO, 1971-72
110 vs. UNLV, 1966-67
109 vs. UC Riverside, 1971-72
108 at Cal Poly, Feb. 12, 2000
108 at Utah, Dec. 27, 1995
108 vs. Cal Poly SLO, 1967-68
108 vs. Fresno State, 1966-67
107 vs. Cal Poly SLO, 1964-65
106 vs. New Mexico St., Feb. 2, 1995
105 vs. Portland, Dec. 29, 1978
105 vs. San Diego State, 1965-66
104 vs. Pasadena College, 1960-61
104 vs. UNLV, Mar. 2, 1991
103 at Utah State, Feb. 11, 1995
103 vs. UNLV, Mar. 3, 1990
103 vs. Long Beach State, 1971-72
103 vs. Kansas State, 1967-68
103 vs. CSU Northridge, 1965-66
103 vs. CSU Sacramento, 1964-65
103 vs. Cal Poly Pomona, Jan. 14, 1964
102 vs. Cal State L.A., 1969-70
102 vs. CSU Northridge, 1966-67
102 vs. Pasadena Nazarene, 1965-66
102 vs. Cal State L.A., 1960-61
101 at Cal Poly SLO, Jan. 30, 1999
101 vs. Fresno State, 1971-72
101 vs. Drake, 1970-71
101 vs. UC Riverside, 1969-70
101 vs. UNLV, Feb. 1, 1964
100 at Butler, Dec. 3, 1991
100 vs. Miss. Valley St., Dec. 15, 1990
100 at Portland, Nov. 28, 1980
100 vs. Toledo, 1969-70

-- 45 games (CSF 3-42)
allowing 100 or more points --
Bold Italics: Opponent lost game

Combined Points by Both Teams...

225 -- CSF 113, CSU Northridge 112 (3ot), 2/13/10
216 -- CSF 128, Chapman 88, Jan. 8, 1972
215 -- CSF 113, Pasadena Naz. 102, 1965-66
211 -- UCLA 120, CSF 91, Dec. 13, 1997
211 -- CSF 117, U.S.I.U. 94, Dec. 11, 1985
211 -- Westmont 115, CSF 96, 1964-65
210 -- Eastern Washington 110, CSF 100, Nov. 27, 2006
210 -- CSF 111, Utah State 99 OT, Feb. 6, 1992
210 -- CSU Northridge 117, CSF 93, Feb. 29, 1964
209 -- CSF 109, Miss. Valley St. 100, Dec. 15, 1990
208 -- CSF 110, Cal Poly SLO 98, Feb. 27, 1997
208 -- UNLV 115, CSF 93, at Long Beach, Mar. 8, 1990
205 -- CSF 112, Weber State 93, 1962-63
204 -- UNLV 110, CSF 94, 1966-67
203 -- CSF 106, CSU Sacramento 97, Dec. 15, 2001 OT
201 -- CSF 106, UC Davis 95, Feb. 14, 2009
201 -- CSF 104, UC Irvine 97, Feb. 13, 1999
201 -- CSF 109, Portland State 92, Dec. 13, 1978
201 -- UC Riverside 109, CSF 92, 1971-72
200 -- Cal Poly SLO 110, CSF 90, 1971-72

-- 20 games (CSF 12-8) 200 or more points --