

**PLAY WITH IT. OR AGAINST IT.**



***EASTON***®

***OFFICIAL SPONSOR OF CHAMPIONSHIP SOFTBALL***

***eastonsports.com***

# 2007 SEASON IN REVIEW

## TOUGH SCHEDULE PROVES BENEFICIAL FOR YOUNG TEAM

The California Golden Bear softball team finished the 2007 season with a 34-32 record and a 22nd consecutive berth to the NCAA postseason. With the bid, Cal had the distinction of the longest active postseason streak in the Pac-10 and the second-longest streak in the nation. According to the National Fastpitch Coaches Association (NFCA), Cal boasted the fourth-hardest strength of schedule in the nation's No. 1-rated conference. With a squad that featured seven freshmen, the Bears also had eight wins against top 25 teams in 2007. Despite an up and down campaign, head coach Diane Ninemire guided the Cal program to a 34th consecutive winning season. Five players were named all-conference as well.



Alex Sutton

## SUTTON ENJOYS BEST SEASON; LEAVES BERKELEY IN STYLE

Alex Sutton enjoyed her finest season in a Golden Bear uniform in 2007. The Morgan Hill product was a second-team All-Pac-10 choice, as well as a Pac-10 Player of the Week honoree. She finished her senior campaign with a .306 batting average with career-highs (for a single-season) of 37 runs, 12 home runs, 47 RBI and 13 doubles in all 66 games. She logged 17 multi-hit games and boasted a ten-game

hitting streak (Mar. 3-Mar. 14). For her career Sutton scored 111 runs, logged 113 RBI, hit 16 home runs, and had a batting average of .276 in 244 games. She was a third round draft pick by the New England Riptide of the National Professional Fastpitch league and was a preseason top 50 Player of the Year candidate.



Vernae Sevilla

## BEARS SHOW OFFENSIVE SPARK

Cal set a school record with 49 home runs in 2007, eclipsing the previous mark of 46 set in 2004 ... Cal also established new single-season team records in runs scored (322) and RBI (278) ... the Bears achieved a postseason record for most runs scored in a game (13) vs. Florida State on May 18 ... the regional win over Florida State also gave the Bears their ninth in their last 10 opening regional games since 1998 ... Cal was 29-9 when scoring first, and 29-5 when leading after four innings ... the 18 runs scored by the Bears vs. Liberty on Mar. 23 were the most runs scored since 1993 when Cal defeated Stanford 22-2 ... the Bears pounded out 71 hits from Mar. 9-14 ... also in that span, Cal produced 47 runs and 42 RBI ... Cal had at least one home run from Mar. 9-15, a span of seven straight games ... Cal had a season-high 18 hits vs. Baylor on Mar. 14 ... Cal equaled its highest RBI output (14) vs. Liberty on Mar. 23 ... Cal recorded a season-high seven stolen bases vs. Liberty on Mar. 23 ... Cal scored a total of 101 runs in the first two innings (51 in the first and 50 in the second) and 71 total runs in the third inning.



Bernice Masaniai

## CAL HONORS

Senior Alex Sutton headlined Cal's all-conference selections after earning second-team honors, while Gina Leomiti, Bernice Masaniai, Christina Schallig and Vernae Sevilla landed honorable mention nods on the 2007 Pac-10 all-conference teams.



Head Coach Diane Ninemire

## NINEMIRE NEARING 900 WINS

Head coach Diane Ninemire logged career victory No. 889 after Cal's win over Florida State in the NCAA Regional last season. Since Ninemire's tenure at Cal, 34 All-America, 80 all-region, and 134 all-conference certificates have been issued to Golden Bear athletes.

2007 HONORS



ALEX SUTTON

All-Pac-10 (2nd team)



GINA LEOMITI

All-Pac-10 (honorable mention)



BERNICE MASANIAI

All-Pac-10 (honorable mention)



CHRISTINA SCHALLIG

All-Pac-10 (honorable mention)



VERNAE SEVILLA

All-Pac-10 (honorable mention)

# 2007 FINAL STATISTICS

RECORD: 34-32

HOME: 8-8 AWAY: 8-10 NEUTRAL: 18-14 PAC-10: 7-14

## BATTING

Player	AVG	GP	GS	AB	R	H	2B	3B	HR	RBI	TB	SLG%	BB	HBP	SO	OB%	SF	SH	SB-ATT	PO	A	E	FLD%
Leomiti, Gina	.354	57	45	147	25	52	11	1	5	30	80	.544	16	2	24	.422	1	2	1-1	49	2	0	1.000
Schallig, Christina	.339	66	66	186	39	63	10	0	5	41	88	.473	35	2	33	.442	3	1	5-5	342	38	4	.990
Sutton, Alex	.306	66	66	196	37	60	13	0	12	47	109	.556	26	9	46	.406	3	0	4-7	67	4	1	.987
Masaniai, Bernice	.289	63	63	180	36	52	7	0	10	35	89	.494	21	3	36	.373	0	2	2-4	67	11	2	.975
Racklin, Erika	.280	65	61	186	39	52	0	2	0	7	56	.301	5	1	52	.302	0	15	18-20	82	1	5	.943
Winger, Carly	.260	36	15	50	9	13	0	0	2	6	19	.380	3	0	12	.302	0	2	0-0	51	16	1	.985
Siegel, Morgan	.244	40	35	86	33	21	1	0	0	4	22	.256	29	1	26	.440	0	3	13-16	30	3	3	.917
Vickers, Katie	.244	66	66	201	19	49	6	1	3	37	66	.328	8	1	21	.275	1	4	2-2	54	103	5	.969
Sevilla, Vernae	.241	61	59	158	14	38	7	0	3	23	54	.342	14	2	32	.309	1	2	1-1	121	91	9	.959
Meyer, Julie	.240	62	55	150	27	36	9	2	8	24	73	.487	11	2	39	.297	2	1	2-3	279	16	3	.990
Kelly, Taylor	.211	51	49	109	17	23	3	1	1	15	31	.284	23	0	38	.346	1	3	5-5	66	92	17	.903
Houston, Shannon	.207	53	8	29	22	6	0	0	0	5	6	.207	4	0	11	.303	0	1	12-16	17	7	0	1.000
Moore, Jessica	.190	20	5	21	4	4	0	0	0	2	4	.190	2	0	4	.261	0	0	0-1	4	8	1	.923
LaRosa, Brittany	.167	4	1	6	1	1	1	0	0	2	2	.333	0	0	3	.167	0	0	0-0	9	27	1	.973
<b>Totals</b>	<b>.276</b>	<b>66-66</b>	<b>1705</b>	<b>322</b>	<b>470</b>	<b>68</b>	<b>7</b>	<b>49</b>	<b>278</b>	<b>699</b>	<b>.410</b>	<b>197</b>	<b>23</b>	<b>377</b>	<b>.356</b>	<b>12</b>	<b>36</b>	<b>65-81</b>	<b>1254</b>	<b>486</b>	<b>56</b>	<b>.969</b>	
<b>Opponents</b>	<b>.288</b>	<b>66-66</b>	<b>1673</b>	<b>300</b>	<b>482</b>	<b>88</b>	<b>9</b>	<b>39</b>	<b>263</b>	<b>705</b>	<b>.421</b>	<b>213</b>	<b>29</b>	<b>300</b>	<b>.375</b>	<b>17</b>	<b>49</b>	<b>90-102</b>	<b>1264</b>	<b>520</b>	<b>91</b>	<b>.951</b>	

LOB - Team (389), Opp (428). DPs turned - Team (15), Opp (32). CI - Team (0), Opp (1). IBB - Team (3), Schallig 3, Opp (2)

## PITCHING

Player	ERA	W-L	APP	GS	CG	SHO/CBO	SV	IP	H	R	ER	BB	SO	2B	3B	HR	AB	B/Avg	WP	HBP	BK	SFA	SHA
Frankiewicz, L.	3.39	18-16	48	34	15	2/1	1	208.1	217	118	101	95	200	39	7	25	799	.272	24	13	3	11	24
Drewrey, M.	4.36	11-8	40	23	5	1/2	3	123.2	148	95	77	74	71	24	0	3	506	.292	19	13	1	2	17
LaRosa, B.	6.19	5-8	35	9	2	2/1	1	86.0	117	87	76	44	29	25	2	11	368	.318	17	3	0	4	8
<b>Totals</b>	<b>4.25</b>	<b>34-32</b>	<b>66</b>	<b>66</b>	<b>22</b>	<b>7/2</b>	<b>5</b>	<b>418.0</b>	<b>482</b>	<b>300</b>	<b>254</b>	<b>213</b>	<b>300</b>	<b>88</b>	<b>9</b>	<b>39</b>	<b>1673</b>	<b>.288</b>	<b>60</b>	<b>29</b>	<b>4</b>	<b>17</b>	<b>49</b>
<b>Opponents</b>	<b>4.34</b>	<b>32-34</b>	<b>66</b>	<b>66</b>	<b>32</b>	<b>9/1</b>	<b>1</b>	<b>421.1</b>	<b>470</b>	<b>322</b>	<b>261</b>	<b>197</b>	<b>377</b>	<b>68</b>	<b>7</b>	<b>49</b>	<b>1705</b>	<b>.276</b>	<b>37</b>	<b>23</b>	<b>0</b>	<b>12</b>	<b>36</b>

PB - Team (15), Winger 6, Meyer 6, Masaniai 3, Opp (11). SBA/ATT - Meyer (59-67), Frankiewicz (38-43), Drewrey (35-39), Masaniai (25-28), LaRosa (17-20), Winger (6-7).

### USA TODAY/NFCA TOP 25 FINAL POLL (June 20, 2007)

Rank	Team	Record	Points
1	Arizona	50-14-1	600
2	Tennessee	63-8	576
3	Washington	42-19	544
4	Northwestern	52-13	532
5	Baylor	51-16	478
6	DePaul	47-13	477
7	Texas A&M	46-14	467
8	Arizona State	54-17	447
9	Alabama	55-10	375
10	LSU	55-12	374
11	Oklahoma	55-8	363
12	Hawaii	50-13	331
13	Michigan	47-13	327
14	Florida	50-22	272
15	Oregon State	41-23	188
16	CS Fullerton	38-23	171
17	Virginia Tech	49-16	158
18	UCLA	37-18	152
19	Georgia Tech	54-16	147
20	Stanford	35-21-1	116
21	South Carolina	38-26	113
22	Oregon	44-19	109
23	Ohio State	40-18	86
24	Texas	35-20	83
t25	Fresno State	47-18	63
t25	Missouri	40-24	63

### ESPN.COM/USA SOFTBALL COLLEGIATE TOP 25 FINAL POLL (June 8, 2007)

Rank	Team	Record	Points
1	Arizona	50-14-1	500
2	Tennessee	63-8	480
3	Washington	42-19	457
4	Northwestern	52-13	443
5	Baylor	51-16	415
6	DePaul	47-13	393
7	Arizona State	54-17	376
8	Texas A&M	46-14	369
9	Oklahoma	55-8	322
10	LSU	55-12	310
11	Alabama	55-10	306
12	Michigan	47-13	290
13	Hawaii	50-13	265
14	Virginia Tech	49-16	197
15	Florida	50-22	179
16	Georgia Tech	54-16	164
17	Oregon State	41-23	152
18	UCLA	37-18	122
19	Missouri	40-24	118
20	CS Fullerton	38-23	117
21	Stanford	25-21-1	113
22	Ohio State	40-18	99
23	Oregon	44-19	95
24	South Carolina	38-26	75
25	Fresno State	47-18	56

## 2007 FINAL RESULTS

Date	Opposing team	Score	R	H	E/R	H	E	Inns	Overall	Pac-10	Pitcher of record
%2-9-07	Kansas	W 8-0	8	10	0/0	2	1	5	1-0-0	0-0-0	LaRosa (1-0)
%2-9-07	at San Diego State	W 6-1	6	8	0/1	6	6	7	2-0-0	0-0-0	Frankiewicz (1-0)
%2-10-07	Massachusetts	L 0-1	0	4	1/1	2	1	7	2-1-0	0-0-0	Drewrey (0-1)
%2-10-07	UCSB	W 2-0	2	5	1/0	4	3	7	3-1-0	0-0-0	LaRosa (2-0)
2-14-07	San Jose State	W 9-1	9	6	0/1	3	3	5	4-1-0	0-0-0	Frankiewicz (2-0)
!2-16-07	Mississippi State	L 0-9	0	1	1/9	11	1	6	4-2-0	0-0-0	LaRosa (2-1)
!2-17-07	Colorado State	L 0-2	0	3	0/2	6	0	7	4-3-0	0-0-0	Frankiewicz (2-1)
!2-17-07	Northwestern	L 1-10	1	0	2/10	10	3	6	4-4-0	0-0-0	Drewrey (0-2)
!2-18-07	Utah State	W 13-1	13	12	2/1	2	2	5	5-4-0	0-0-0	Drewrey (1-2)
!2-18-07	Florida International	W 12-4	12	11	2/4	3	4	5	6-4-0	0-0-0	LaRosa (3-1)
2-20-07	St. Mary's	W 9-1	9	7	0/1	5	1	5	7-4-0	0-0-0	Drewrey (2-2)
#2-23-07	Notre Dame	W 7-5	7	8	0/5	6	1	7	8-4-0	0-0-0	Frankiewicz (3-1)
#2-23-07	Oklahoma State	W 6-3	6	10	1/3	8	1	7	9-4-0	0-0-0	Drewrey (3-2)
#2-24-07	Oklahoma	L 3-11	3	6	0/11	14	0	5	9-5-0	0-0-0	Drewrey (3-3)
#2-24-07	Ohio State	L 7-10	7	9	2/10	12	3	7	9-6-0	0-0-0	LaRosa (3-2)
#2-25-07	Maryland	W 11-1	11	10	0/1	4	0	5	10-6-0	0-0-0	Drewrey (4-3)
2-28-07	Santa Clara	W 9-4	9	13	0/4	7	1	7	11-6-0	0-0-0	Drewrey (5-3)
\$3-2-07	Fresno State	L 1-2	1	2	2/2	5	0	7	11-7-0	0-0-0	Frankiewicz (3-2)
\$3-2-07	Delaware State	W 14-6	14	15	2/6	9	6	6	12-7-0	0-0-0	LaRosa (4-2)
\$3-3-07	DePaul	L 1-2	1	1	0/2	5	2	7	12-8-0	0-0-0	Frankiewicz (3-3)
\$3-3-07	at UNLV	W 5-4	5	7	0/4	6	3	7	13-8-0	0-0-0	Frankiewicz (4-3)
\$3-4-07	Nebraska	L 2-5	2	3	2/5	7	2	(8)	13-9-0	0-0-0	Frankiewicz (4-4)
3-7-07	Loyola-Chicago	W 3-2	3	2	1/2	4	1	7	14-9-0	0-0-0	Drewrey (6-3)
^3-9-07	Iowa	W 4-1	4	7	0/1	5	2	7	15-9-0	0-0-0	Frankiewicz (5-4)
^3-9-07	UConn	L 11-12	11	16	2/12	13	1	7	15-10-0	0-0-0	LaRosa (4-3)
^3-10-07	Eastern Illinois	W 5-3	5	10	0/3	6	0	7	16-10-0	0-0-0	Frankiewicz (6-4)
^3-10-07	Iowa State	W 15-5	15	17	3/5	8	4	7	17-10-0	0-0-0	Drewrey (7-3)
^3-11-07	Northern Iowa	W 6-5	6	10	1/5	8	0	7	18-10-0	0-0-0	Frankiewicz (7-4)
&3-14-07	Baylor	W 10-6	10	18	0/6	7	4	7	19-10-0	0-0-0	Frankiewicz (8-4)
&3-14-07	at Hawaii	L 2-6	2	5	4/6	8	0	7	19-11-0	0-0-0	Drewrey (7-4)
&3-15-07	Liberty	W 1-0	1	2	1/0	4	1	7	20-11-0	0-0-0	Frankiewicz (9-4)
&3-16-07	Nevada	W 3-1	3	7	0/1	9	1	7	21-11-0	0-0-0	Drewrey (8-4)
&3-17-07	Baylor	L 0-4	0	4	0/4	11	1	7	21-12-0	0-0-0	Frankiewicz (9-5)
&3-17-07	Nevada	W 7-4	7	13	0/4	7	2	7	22-12-0	0-0-0	Drewrey (9-4)
+3-23-07	Michigan	L 8-11	8	12	2/11	13	0	7	22-13-0	0-0-0	LaRosa (4-4)
+3-23-07	Liberty	W 18-6	18	15	2/6	8	4	6	23-13-0	0-0-0	Frankiewicz (10-5)
+3-24-07	at Louisville	L 2-12	2	6	1/12	13	0	5	23-14-0	0-0-0	LaRosa (4-5)
+3-25-07	Northwestern	L 1-11	1	2	1/11	12	1	5	23-15-0	0-0-0	Frankiewicz (10-6)
3-28-07	Pacific	L 5-7	5	7	3/7	8	1	7	23-16-0	0-0-0	Frankiewicz (10-7)
3-30-07	*at Oregon	L 3-4	3	5	0/4	9	0	7	23-17-0	0-1-0	Frankiewicz (10-8)
3-31-07	*at Oregon State	L 3-4	3	5	0/4	7	1	7	23-18-0	0-2-0	LaRosa (4-6)
4-1-07	*at Oregon State	L 0-6	0	6	2/6	5	0	7	23-19-0	0-3-0	Frankiewicz (10-9)
4-5-07	*at Stanford	W 3-0	3	5	0/0	3	0	7	24-19-0	1-3-0	Frankiewicz (11-9)
4-6-07	*Stanford	L 6-8	6	6	0/8	10	3	7	24-20-0	1-4-0	LaRosa (4-7)
4-7-07	*Stanford	W 9-1	9	11	1/1	5	0	6	25-20-0	2-4-0	Frankiewicz (12-9)
4-13-07	*at Arizona State	L 0-8	0	1	1/8	7	1	5	25-21-0	2-5-0	Frankiewicz (12-10)
4-14-07	*at Arizona	L 4-6	4	6	0/6	7	0	7	25-22-0	2-6-0	Frankiewicz (12-11)
4-15-07	*at Arizona	L 2-5	2	6	2/5	10	1	7	25-23-0	2-7-0	LaRosa (4-8)
4-18-07	at Sacramento St.	W 9-0	9	12	0/0	5	3	7	26-23-0	2-7-0	Frankiewicz (13-11)
4-20-07	*Washington	L 2-4	2	4	0/4	7	2	(8)	26-24-0	2-8-0	Frankiewicz (13-12)
4-21-07	*UCLA	L 0-11	0	2	2/11	13	1	5	26-25-0	2-9-0	Drewrey (9-5)
4-22-07	*UCLA	L 3-5	3	9	0/5	8	0	7	26-26-0	2-10-0	Frankiewicz (13-13)
4-25-07	at UC Davis	W 9-3	9	12	0/3	7	4	7	27-26-0	2-10-0	Frankiewicz (14-13)
4-25-07	at UC Davis	W 7-0	7	12	1/0	2	1	7	28-26-0	2-10-0	LaRosa (5-8)
4-27-07	*Arizona	L 0-6	0	5	1/6	9	1	7	28-27-0	2-11-0	Frankiewicz (14-14)
4-28-07	*Arizona State	W 1-0	1	1	0/0	3	0	7	29-27-0	3-11-0	Drewrey (10-5)
4-29-07	*Arizona State	W 2-1	2	3	0/1	6	0	7	30-27-0	4-11-0	Frankiewicz (15-14)
5-4-07	*at UCLA	W 3-1	3	6	0/1	5	0	7	31-27-0	5-11-0	Frankiewicz (16-14)
5-5-07	*at Washington	W 7-1	7	7	0/1	7	2	7	32-27-0	6-11-0	Drewrey (11-5)
5-6-07	*at Washington	L 1-5	1	5	0/5	7	0	9	32-28-0	6-12-0	Frankiewicz (16-15)
5-9-07	*Oregon State	L 0-10	0	1	2/10	9	2	5	32-29-0	6-13-0	Drewrey (11-6)
5-11-07	*Oregon	L 2-8	2	8	1/8	13	0	7	32-30-0	6-14-0	Drewrey (11-7)
5-12-07	*Oregon	W 4-2	4	5	1/2	8	1	7	33-30-0	7-14-0	Frankiewicz (17-15)
\$^5-18-07	Florida State	W 13-6	13	13	0/6	10	1	7	34-30-0	7-14-0	Frankiewicz (18-15)
\$^5-19-07	Tennessee Tech	L 1-3	1	8	0/3	5	0	7	34-31-0	7-14-0	Frankiewicz (18-16)
\$^5-19-07	Alabama	L 1-13	1	2	3/13	14	0	5	34-32-0	7-14-0	Drewrey (11-8)

# 2007 NCAA RESULTS - TUSCALOOSA REGIONAL

## GAME 1

California 13, Florida State 6  
 May 18, 2007  
 UA Softball Complex -  
 Tuscaloosa, Ala.

### Linescore

California	00(10)	010	2	-	13	13	0
Florida State	000	312	0	-	6	10	1

W - Frankiewicz (18-15),  
 L - McDonald (17-16).

The California Golden Bears set a program record for the most runs scored in postseason history with their 13-6 win over the Florida State Seminoles in the opening game of the Tuscaloosa Regional hosted by Alabama. Cal scored nine runs against BYU in 2005 in the Fresno Regional and nine runs against Michigan in the Ann Arbor Regional in 2003. The ten runs in the third stanza were the most by Cal for an inning.

## GAME 2

Tennessee Tech 3, California 1  
 May 19, 2007  
 UA Softball Complex -  
 Tuscaloosa, Ala.

### Linescore

California	001	000	0	-	1	8	0
TT	200	001	X	-	3	5	0

W - Bynum (34-10), L - Frankiewicz (18-16)

The Tennessee Tech Golden Eagles continued to surprise fans at the Tuscaloosa Regional after their 3-1 win over the California Golden Bears from the Alabama Softball Complex. TTU, who remained in the winner's bracket, also defeated nationally-seeded Alabama the previous night. Tennessee Tech wasted little time in generating its first two runs of the game. After Beth Boden drew a lead off walk, Katie Speiser connected for a home run over the left field wall to put the Golden Eagles up 2-0.

## GAME 3

Alabama 13, California 1  
 May 19, 2007  
 UA Softball Complex -  
 Tuscaloosa, Ala.

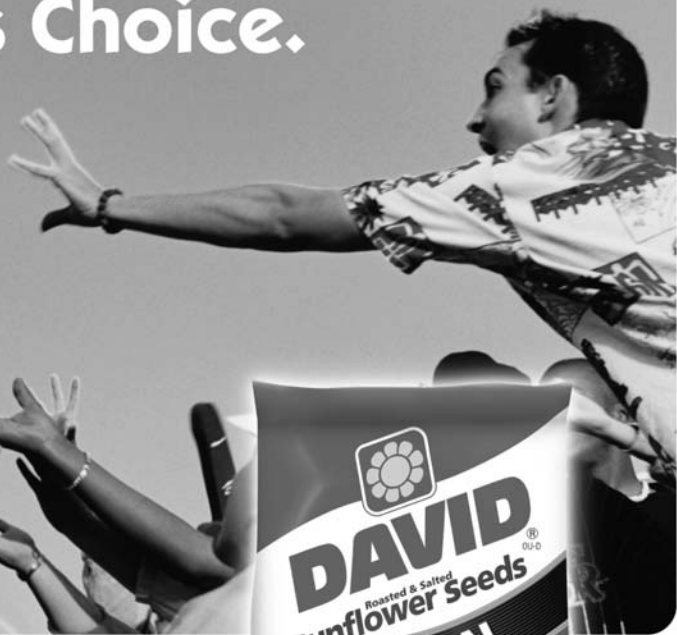
### Linescore

Alabama	014	44	-	13	14	0
California	100	00	-	1	2	3

W - Potter (18-2), L - Drewrey (11-8)

The 2007 postseason run came to an end for the California Golden Bears after their 13-1 loss to 11th-seeded and regional host, Alabama. Cal lost earlier in the day to Tennessee Tech, 3-1, in the double-elimination format. Cal concluded its season at 34-32. Alex Sutton, the lone senior on the squad, put the Bears on the scoreboard first after her solo home run (12th of the season) cleared the left field wall in the bottom of the first inning. Sutton finished her career with 111 runs, 112 RBI and 16 home runs in 244 games in a Cal uniform.

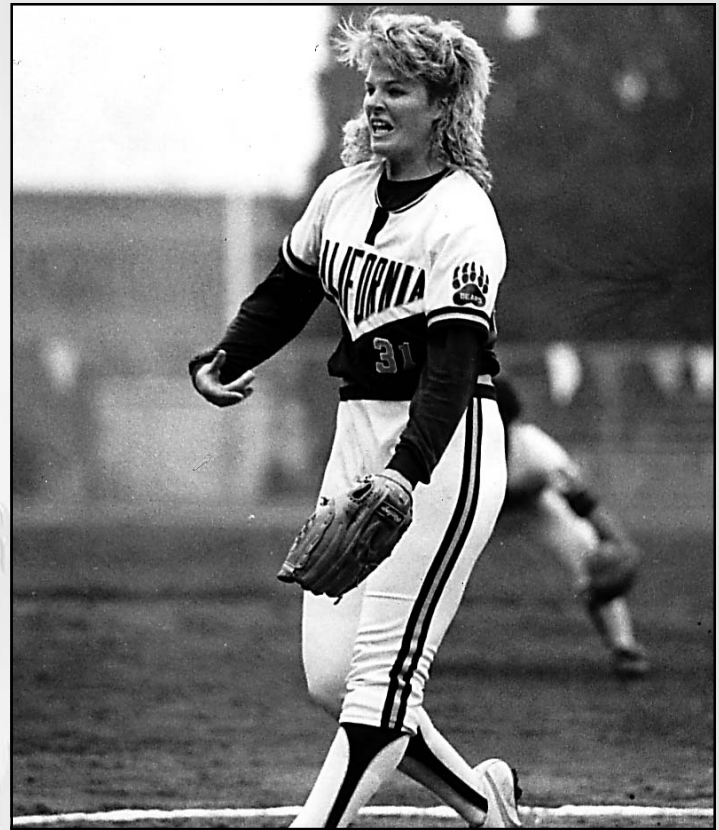
## The Fielder's Choice.



**Eat. Spit. Be Happy.®**

# CALIFORNIA NO-HITTERS

Pitcher	Opponent	Score	Date
Leslie Partch	Nevada	6-0	3/6/81
Leslie Partch	Utah State	3-0	4/3/81
Margaret Sutter	San Francisco	2-0	4/15/81
Leslie Partch	Santa Clara*	7-0	3/13/82
Margaret Sutter	Santa Clara	10-0	4/11/84
Lisa Martinez	Santa Clara	2-0	4/11/84
Kim Moe	Santa Clara	10-0	4/3/85
Lisa Martinez	Oregon	2-0	5/3/85
Erin Cassidy	Stanford	6-0	2/22/86
Kim Moe	San Francisco	5-1	3/14/86
Erin Cassidy	Brigham Young	2-0	3/18/86
Kim Moe	Fresno State	2-0	4/12/87
Erin Cassidy	San Francisco	1-0 (8)	4/29/87
Erin Cassidy	U.S. International	1-0	5/1/87
Erin Cassidy	Nevada	4-2	3/6/88
Michele Granger	New Mexico State*	8-0 (5)	2/16/89
Robyn Burgess	Nevada*	1-0	3/3/89
Robyn Burgess	U.S. International	5-0	4/12/89
Erin Cassidy	San Francisco	10-0 (5)	4/26/89
Michele Granger	Massachusetts	2-0	3/23/90
Michele Granger	U.S. International	0-1	4/14/90
Michele Granger	St. Mary's	11-0 (5)	4/25/90
Michele Granger	New Mexico State	3-0	4/28/90
Michele Granger	Oregon State	6-0	5/5/90
Michele Granger	Oregon State	1-0	3/9/91
Michele Granger	Stanford	4-0	3/11/91
Robyn Burgess	Adelphi*	8-0 (6)	3/22/91
Michele Granger	Creighton	3-0	3/22/91
Michele Granger	Adelphi*	5-0	3/27/91
Michele Granger	Minnesota	4-0	2/15/92
Michele Granger	New Mexico State	6-0	2/16/92
Michele Granger	Pacific	3-0	2/29/92
Michele Granger	St. Mary's*	10-0	4/14/92
Michele Granger	Santa Clara	8-0	4/16/92
Michele Granger	Stanford*	10-0 (5)	4/29/92
Robyn Burgess	Stanford	5-0	4/29/92
Michele Granger	Stanford	16-0 (5)	2/6/93
Tammy Dietrich	Stanford	16-0 (5)	2/6/93
Michele Granger	Pacific	10-0	2/13/93
Michele Granger	Long Beach State	0-1 (10)	2/20/93
Michele Granger	Nebraska*	8-0	3/21/93
Michele Granger	Oklahoma	1-0	3/26/93
Michele Granger	Hawaii	4-0	3/26/93
Michele Granger	Stanford	26-0 (5)	4/3/93
Michele Granger	Oregon State	2-0	4/4/93
Michele Granger	San Jose State	10-0 (5)	5/5/93
A. Walsh & S. Kerson	Santa Clara	9-0 (5)	2/26/94
Whitney Floyd	Arizona State	6-0	3/12/94
Anne Walsh	Iowa	5-0	3/27/94
A. Walsh & W. Floyd	St. Mary's	2-0	4/20/94
Anne Walsh	Santa Clara	1-0	2/26/95
Whitney Floyd	Oregon State	1-0 (10)	4/5/98
Nicole DiSalvio	San Jose State*	8-0 (6)	2/3/99
Nicole DiSalvio	Georgia	3-0	2/14/99
Jocelyn Forest	Massachusetts	2-0 (8)	5/22/99
N. DiSalvio & J. Deering	Cal Poly	6-0	3/22/00
Jocelyn Forest	UC Riverside	1-0	2/10/01
Jocelyn Forest	Harvard*	8-0 (5)	3/25/01
Cassie Bobrow	Illinois*	8-0	2/24/02
Jen Deering & Kelly Anderson	Hawaii	0-1	2/16/03
Kelly Anderson	Minnesota	7-0	3/2/03



Erin Cassidy had six career no-hitters.

Kelly Anderson	Florida International	5-1	3/15/03
Kristina Thorson	Virginia*	8-0	3/12/04
Kelly Anderson	North Carolina	5-0	3/26/05
Kelly Anderson	St. Mary's	10-0	4/6/05
Kelly Anderson	BYU	9-0	5/20/05
Kelly Anderson	Fresno St.	1-0	5/21/05
Lauren Frankiewicz	Miss. Valley State	9-0	03/02/06
Kristina Thorson	OSU	6-0	04/30/06

\*Perfect game

Number in parentheses refers to number of innings if not seven

## CAL PITCHERS WITH NO-HITTERS

Leaders	No-hitters	Perfect Games
Michele Granger	25	5
Erin Cassidy	6	0
Robyn Burgess	4	2
Nicole DiSalvio	3	1
Jocelyn Forest	3	1
Leslie Partch	3	1
Kim Moe	3	0
Kelly Anderson	7	0
Lisa Martinez	2	0
Margaret Sutter	2	0
Anne Walsh	2	0
Whitney Floyd	2	0
Kristina Thorson	1	1
Tammy Dietrich	1	0
Cassie Bobrow	1	1
Combined	3	0
<b>Totals</b>	<b>68</b>	<b>12</b>

# GOLDEN BEAR OLYMPIANS

## GOLDEN BEARS ON THE WORLD STAGE



**Lindsay James**



**Chloe Kloezeman**



**Nicole DiSalvio**

Since softball's inception as an Olympic sport in 1996, a Golden Bear player or coach has participated in each Olympiad. **Michele Granger** (USA), **Gillian Boxx** (USA) and **Lisa Martinez** (Puerto Rico) appeared in the 1996 Summer Olympics held in Atlanta. In addition, former Cal assistant coach **Kim Maher**, a standout at Fresno State, played for the United States as well that summer. In the 2000 Olympiad, **Nicole DiSalvio** was the pitcher for Team Italy. In the 2004 Olympics in Athens, head coach **Diane Ninemire**, along with **Lindsay James** and **Chloe Kloezeman**, suited up for the inaugural Greek national team, while DiSalvio returned for a second stint with Italian national team. Cal players have also competed for various national teams during non-Olympic years. **Vicky Galindo**, who is on the US National Team, has participated in the World Championships (2006) and the World Cup of Softball (2005 and 2006).



**MICHELE GRANGER**

A four-time All-American from 1989-93, Granger was a member of the USA Olympic team that won the gold medal at the 1996 Olympic Games in Atlanta. Granger squared off against former Golden Bear Lisa Martinez in the first-ever Olympic softball game. Granger finished the Summer Games 2-0 with a 0.87 ERA and 25 strikeouts. Her wins came in the opener against Puerto Rico and in the gold medal game against China.



**Michelle Granger and Gillian Boxx**



**GILLIAN BOXX**

A four-time All-American from 1992-95, Boxx was a member of the USA Olympic team that won the Gold Medal at the 1996 Olympic Games in Atlanta. She caught in six of the nine contests and hit .250 with one double and three RBI.



**Gillian Boxx meets President Clinton**



**LISA MARTINEZ**

Martinez (1984-86) was the NorPac Conference Player of the Year in 1985 and had a 0.22 ERA in 1986. Martinez was a member of Puerto Rico's Olympic team at the 1996 Summer Games in Atlanta, and was the starting pitcher against Team USA in the first-ever Olympic softball game.



**Atlanta 1996**

# CAL PLAYERS IN THE PROS



**Emily Friedman**



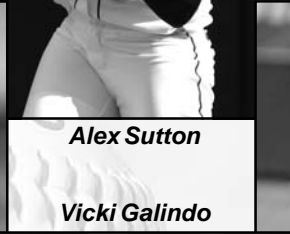
**Alex Sutton**



**Kaleo Eldredge**



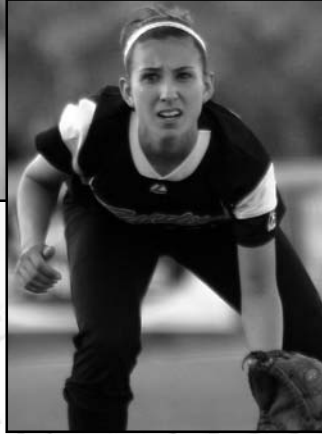
**Chelsea Spencer**



**Vicki Galindo**



**Lisa Iancin**



**KRISTINA THORSON**

Thorson was named the 2007 NPF Rookie of the Year, after finishing the season with 115 strikeouts. She posted a 14-5 record with 12 complete games, including a no-hitter against Team China. She allowed 20 earned runs with a 1.22 earned run average with 18 starts for the Philadelphia Force. During the off-season, Thorson was traded to the Chicago Bandits.



## NOTABLE ALUMNAE IN THE NPF

Eight former Cal players are or have competed in the National Pro Fastpitch softball league. Alex Sutton wrapped up her first season with the New England Riptide this past summer. She joined former Golden Bears Lisa Iancin and Jocelyn Forest who also play for the Riptide. Chelsea Spencer and Emily Friedman play for the Philadelphia Force, and Kristina Thorson now plays for the Chicago Bandits where she will join Vicky Galindo. Kaleo Eldredge was formerly with the Bandits as well, before moving on to a coaching career.



**JOCELYN FOREST**

Selected as the 2006 NPF Championship Series MVP, Forest struck out seven batters over seven innings to give the New England Riptide a 2-0 victory over the Connecticut Brakettes in the National Pro Fastpitch Championship game.

# HONORS AND AWARDS

## OLYMPIC TEAM (8)

- 2004 Lindsay James (Greece), Chloe Kloezman (Greece), Diane Ninemire (Greece, Coach), Nicole DiSalvio (Italy)
- 2000 Nicole DiSalvio (Italy)
- 1996 Gillian Boxx (U.S.), Michele Granger (U.S.), Lisa Martinez (Puerto Rico)

## ALL-AMERICAN (34)

- 2006 NFCA: Haley Woods (1st team), Kristina Thorson (2nd team)  
EASTON: Haley Woods (1st team), Kristina Thorson (1st)
- 2005 Vicky Galindo (1st team), Kristina Thorson (2nd team), Kaleo Eldredge (3rd team)
- 2004 Vicky Galindo (1st team), Kaleo Eldredge (2nd team), Kristina Thorson (2nd team), Chelsea Spencer (3rd team)
- 2003 Veronica Nelson (2nd team), Courtney Scott (2nd team)
- 2002 Jocelyn Forest (2nd team), Candace Harper (3rd team)
- 2001 Veronica Nelson (1st team), Jocelyn Forest (2nd team)
- 1996 Whitney Floyd (3rd team)
- 1995 Jenny Ackley (2nd team), Gillian Boxx (1st team), Whitney Floyd (2nd team)
- 1994 Gillian Boxx (3rd team)
- 1993 Gillian Boxx (1st team), Michele Granger (1st team), Keri Kropke (2nd team)
- 1992 Gillian Boxx (2nd team), Michele Granger (1st team)
- 1991 Michele Granger (1st team)
- 1990 Michele Granger (1st team)
- 1983 Pam Reinhoehl (1st team)
- 1982 Kelly Kirkland (1st team), Shari Fisher (1st team)
- 1981 Shari Fisher (1st team), Leslie Partch (1st team)

## ALL-REGION (80)

- 2006 Kristina Thorson (1st team), Haley Woods (1st team), Alex Sutton (1st team)
- 2005 Vicky Galindo (1st team), Kaleo Eldredge (1st team), Kristina Thorson (2nd team), Haley Woods (2nd team), Lindsay James (2nd team)
- 2004 Vicky Galindo (1st team), Kaleo Eldredge (1st team), Kristina Thorson (2nd team), Chelsea Spencer (2nd team)
- 2003 Veronica Nelson (1st team), Kaleo Eldredge (2nd team), Vicky Galindo (2nd team), Lindsay James (2nd team), Courtney Scott (2nd team)
- 2002 Kaleo Eldredge (2nd team), Jocelyn Forest (2nd team), Candace Harper (2nd team)
- 2001 Jocelyn Forest (2nd team), Veronica Nelson (2nd team), Eryn Manahan (2nd team)
- 2000 Candace Harper (2nd team), Lisa Iancin (2nd team), Veronica Nelson (2nd team)
- 1999 Candace Harper (2nd team), Lisa Iancin (2nd team)
- 1998 Lisa Iancin (1st team)
- 1997 Jenny Ackley (2nd team)
- 1996 Whitney Floyd (2nd team), Holly Yost (2nd team)
- 1995 Jenny Ackley (1st team), Gillian Boxx (1st team), Whitney Floyd (1st team)
- 1994 Gillian Boxx (2nd team), Kendall Richards (2nd team), Anne Walsh (2nd team)
- 1993 Gillian Boxx (1st team), Michele Granger (1st team), Keri Kropke (1st team), Kendall Richards (2nd team), Tonya Seymore (2nd team), Laura Terada (2nd team)
- 1992 Gillian Boxx (2nd team), Michele Granger (1st team), Jennifer Horgan (1st team), Sue Jacquez (1st team), Keri Kropke (2nd team)
- 1991 Michele Granger (1st team), Keri Kropke (1st team), Heather Smittle (2nd team)
- 1990 Michele Granger (1st team), Sue Jacquez (2nd team), Tina Montoya (2nd team)

- 1989 Robyn Burgess (2nd team), Angie Jacobs (1st team), Marielle Vaughn (1st team)
- 1988 Angie Jacobs (2nd team), Kim Moe (1st team), Caryn Williams (1st team)
- 1987 Kim Moe (1st team)
- 1986 Stephanie Hinds (1st team), Lisa Martinez (1st team), Kim Moe (1st team)
- 1985 Erin Cassidy (2nd team), Stephanie Hinds (1st team), Lisa Martinez (1st team), Kim Moe (1st team), Caryn Williams (2nd team)
- 1984 Roni Deutch (1st team), Stephanie Hinds (2nd team)
- 1982 Shari Fisher (1st team), Kelly Kirkland (1st team), Leslie Partch (1st team), Pam Reinhoehl (1st team)
- 1981 Shari Fisher (1st team), Leslie Partch (1st team)
- 1980 Shari Fisher (1st team), Leslie Partch (1st team)

## ALL-CONFERENCE (134)

- 2007 Alex Sutton (2nd team), Gina Leomiti (HM), Christina Schallig (HM), Bernice Masaniai (HM), Vernae Sevilla (HM)
- 2006 Kristina Thorson (1st team), Haley Woods (1st team), Lindsay James (2nd team), Alex Sutton (2nd team), Morgan Siegel (HM), Emily Friedman (HM)
- 2005 Kelly Anderson (1st team), Kristina Thorson (1st team), Vicky Galindo (1st team), Kaleo Eldredge (2nd team), Lindsay James (2nd team), Haley Woods (2nd team), Jessica Pamanian (HM), Chelsea Spencer (HM)
- 2004 Kaleo Eldredge (1st team), Kristina Thorson (1st team), Vicky Galindo (2nd team), Lindsay James (2nd team), Chelsea Spencer (2nd team), Kelly Anderson (HM), Jessica Pamanian (HM), Haley Woods (HM)
- 2003 Veronica Nelson (1st team), Courtney Scott (2nd team), Kelly Anderson (2nd team), Vicky Galindo (2nd team), Kaleo Eldredge (HM), Kristina Thorson (HM), Lindsay James (HM)
- 2002 Jocelyn Forest (1st team), Kaleo Eldredge (2nd team), Veronica Nelson (2nd team), Courtney Scott (2nd team), Candace Harper (2nd team)
- 2001 Jocelyn Forest (1st team), Veronica Nelson (1st team), Nicole DiSalvio (2nd team), Paige Bowie (HM), Candace Harper (HM), Eryn Manahan (HM), Amber Phillips (HM)
- 2000 Candace Harper (2nd team), Lisa Iancin (1st team), Veronica Nelson (HM)
- 1999 Paige Bowie (2nd team), Jocelyn Forest (2nd team), Candace Harper (2nd team)
- 1998 Lisa Iancin (2nd team), Whitney Floyd (2nd team)
- 1997 Jenny Ackley (2nd team), Melanie McCart (1st team), Holly Yost (2nd team)
- 1996 Whitney Floyd (1st team), Melanie McCart (2nd team), Jessica Parker (2nd team)
- 1995 Jenny Ackley (2nd team), Gillian Boxx (1st team), Whitney Floyd (1st team), Melanie McCart (2nd team)
- 1994 Gillian Boxx (1st team), Melanie McCart (2nd team), Kendall Richards (1st team), Anne Walsh (2nd team)
- 1993 Gillian Boxx (1st team), Michele Granger (1st team), Keri Kropke (1st team), Janeen LaGrace (2nd team), Kendall Richards (2nd team), Tonya Seymore (2nd team)
- 1992 Gillian Boxx (2nd team), Michele Granger (1st team), Jennifer Horgan (2nd team), Sue Jacquez (1st team), Keri Kropke (2nd team), Janeen LaGrace (1st team), Tonya Seymore (2nd team)
- 1991 Robyn Burgess (2nd team), Michele Granger (1st team), Keri Kropke (1st team), Janeen LaGrace (1st team), Heather Smittle (2nd team)
- 1990 Michele Granger (1st team), Sue Jacquez (2nd team), Tina Montoya (2nd team)
- 1989 Val Altamirano (1st team), Marielle Vaughn (1st team)
- 1988 Kim Moe (1st team)



- 1987 Kim Moe (1st team)
- 1986 Erin Cassidy, Roni Deutch, Stephanie Hinds, Lisa Martinez
- 1985 Roni Deutch, Stephanie Hinds, Angie Jacobs, Lisa Martinez
- 1984 Roni Deutch
- 1983 Roni Deutch, Kelly Kirkland, Pam Reinoehl
- 1982 Kelly Kirkland, Katy Meyer, Leslie Partch, Pam Reinoehl
- 1981 Roxi Bardwell, Shari Fisher, Kelly Kirkland, Leslie Partch, Pam Reinoehl, Andria Sievers, Margaret Sutter
- 1980 Roxi Bardwell, Shari Fisher, Pam Goldsborough, Leslie Partch, Pam Reinoehl, Cheryl Smith, Ann Wondolowski
- 1979 Vicki Cody, Shari Fisher, Mary Fleming, Pam Goldsborough, Sue Kensill, Pat Martinez, Leslie Partch, Michelle Quinney
- 1978 Themy Jo Adachi, Debbie Chaw, Vicki Cody

**NCAA COLLEGE WORLD SERIES  
ALL-TOURNAMENT (12)**

- 2004 Kelly Anderson, Vicky Galindo, Jessica Pamanian
- 2003 Veronica Nelson, Kelly Anderson, Vicky Galindo, Chelsea Spencer
- 2002 Jocelyn Forest (MOP), Veronica Nelson, Chelsea Spencer
- 1999 Lisa Iancin
- 1986 Roni Deutch

**NCAA REGIONAL ALL-TOURNAMENT (35)**

- 2004 Kaleo Eldredge, Vicky Galindo, Kristina Thorson (MOP), Haley Woods
- 2003 Kelly Anderson (MOP), Kaleo Eldredge, Vicky Galindo, Veronica Nelson, Chelsea Spencer, Courtney Scott, Haley Woods
- 2002 Jocelyn Forest (MOP), Candace Harper, Veronica Nelson
- 2001 Amber Phillips (MOP), Jocelyn Forest, Nicole DiSalvio, Eryn Manahan, Courtney Scott
- 2000 Paige Bowie (MOP), Nicole DiSalvio, Jocelyn Forest, Lisa Iancin
- 1999 Nicole DiSalvio, Kirsten Drake, Jocelyn Forest (MOP), Candace Harper, Lisa Iancin, Amber Phillips
- 1998 Lisa Iancin, Holly Yost, Megumi Takasaki
- 1997 Jessica Parker, Megumi Takasaki, Holly Yost

**ACADEMIC ALL-AMERICAN (11)**

- |  |  |
|--|--|
| <ul style="list-style-type: none"> <li>2006 Emily Friedman (1st)</li> <li>2002 Courtney Scott (District)</li> <li>2001 Paige Bowie (District)</li> <li>1999 Paige Bowie (District)</li> <li>1996 Anne Walsh (District)</li> <li>1993 Keri Kropke (District)</li> </ul> | <ul style="list-style-type: none"> <li>1992 Keri Kropke (District), Sue Jacquez (District)</li> <li>1991 Keri Kropke (District)</li> <li>1990 Sue Jacquez (2nd team), Kim Kappus (2nd team)</li> </ul> |
|--|--|

**ACADEMIC ALL-PAC-10 (41)**

- 2007 Lauren Frankiewicz (HM)
- 2006 Emily Friedman (1st), Jeana Gevas (HM), Erika Racklin (HM)
- 2005 Kelly Anderson (1st team), Jessica Pamanian (2nd team), Kaleo Eldredge (HM)
- 2004 Kelly Anderson (1st team), Jessica Pamanian (2nd team)
- 2003 Eryn Manahan (1st team), Courtney Scott (2nd team), Kelly Anderson (2nd team), Kristen Bayless (HM), Jessica Pamanian (HM)

- 2002 Courtney Scott (1st team)
- 2001 Paige Bowie (1st team)
- 1999 Paige Bowie (1st team), Maiko Bristow (1st team), Megumi Takasaki (2nd team), Holly Yost (2nd team)
- 1998 Holly Yost (1st team), Paige Bowie (2nd team), Maiko Bristow (2nd team), Valerie Nicklas (2nd team), Megumi Takasaki (2nd team)
- 1997 Jessica Parker (1st team), Megumi Takasaki (2nd team), Holly Yost (2nd team)
- 1996 Jessica Parker (2nd team), Anne Walsh (2nd team)
- 1993 Keri Kropke (1st team), Lisa O'Connor (1st team), Erika Perez (1st team)
- 1992 Marlo Cruz-Sands (1st team), Sue Jacquez (1st team), Keri Kropke, Lidia Stiglich (1st team)
- 1991 Sue Jacquez (1st team), Keri Kropke (1st team), Lidia Stiglich (1st team), Anne Williams (1st team)

**HONDA INSPIRATION AWARD (1)**

- 1989 Angie Jacobs

**HONDA SPORTS AWARD FINALIST (8)**

- |   |   |
|---|---|
| <ul style="list-style-type: none"> <li>1995 Gillian Boxx</li> <li>1993 Michele Granger</li> <li>1992 Michele Granger</li> <li>1991 Michele Granger</li> </ul> | <ul style="list-style-type: none"> <li>1990 Michele Granger</li> <li>1982 Leslie Partch</li> <li>1981 Leslie Partch</li> <li>1980 Shari Fisher</li> </ul> |
|---|---|

**CONFERENCE NEWCOMER OF THE YEAR (2)**

- 1986 Erin Cassidy (NorPac)
- 1985 Angie Jacobs (NorPac)

**CONFERENCE PLAYER OF THE YEAR (1)**

- 1985 Lisa Martinez (NorPac)

**CONFERENCE PITCHER OF THE YEAR (1)**

- 2006 Kristina Thorson

**CONFERENCE COACH OF THE YEAR (3)**

- 1991 Diane Ninemire (Pac-10)
- 1987 Donna Terry (Pac-10)
- 1979 Bonnie Johnson (NorCal)

**CONFERENCE CHAMPIONSHIP (5)**

- |   |  |
|---|--|
| <ul style="list-style-type: none"> <li>2005 Pacific-10</li> <li>1987 Pacific-10</li> <li>1981 NorCal</li> </ul> | <ul style="list-style-type: none"> <li>1980 NorCal</li> <li>1979 NorCal</li> </ul> |
|---|--|

**SPEEDLINE/NFCA COACHING  
STAFF OF THE YEAR (1)**

- 2002 California (Diane Ninemire, John Reeves, Kim Maher, Pauline Duenas)

*(x) Indicates the number of certificates, honors/selections, or times issued*