



B A S E B A L L

BULLPEN CLUB

NEWS

Spring 2005



Coaches David Esquer and Dan Hubbs (standing from right to left)

COACH ESQUER'S 2005 SEASON FORECAST

On paper, some question marks exist for the California baseball team as it enters the 2005 season; but in the minds of the Golden Bears, they have what it takes to make the NCAA regionals.

"This team has talent – young talent," said head coach David Esquer, who is looking to lead Cal to a NCAA postseason berth for the first time since his squad advanced to the Baton Rouge Regional in 2001. "We are going to have to rely on the progress of our young position players and improve the quality of our defense. The progress and development of our pitching staff will also be a key to our success. But, this is as motivated and hard-working a group as I've ever had. You mix that with our talent and we have a chance to surprise some people."

The 2005 Bears might get overlooked because of the number of last year's graduating seniors and drafted players, for 10 key players either graduated or signed professional contracts, including leading hitter David Nicholson (.367, drafted in the ninth round by the Los Angeles Dodgers) and top reliever Jesse Ingram (10 saves, tops in the Pac-10).

Yet last year's Bears did not rely solely on last year's upper class and will return several players who showed glimpses of brilliance in 2004 – Chris Errecart, Garrett Bussiere, Brennan Boesch, Allen Craig and James Holder in the field, and Adam Gold, Matt Swanson and Brandon Morrow on the mound. Even though Cal did not have the type of season it envisioned in 2004 (25-31, 9-15 in the Pac-10), the Bears displayed moments of excellence, sweeping BYU to begin the season and winning two-of-three in Pac-10 series at both Arizona State and USC.

"The team really exhibited a great work ethic in the fall," said Esquer. "Even though we have a lot of young players, this team has good leadership from both our younger and older players."

UPDATE ON EVANS DIAMOND IMPROVEMENTS

Visiting Evans this season will be a new experience with great new portraits of past players on the walls of the track and RSF and construction beginning on the Carl J. Van Heuit Training Center.

1992 COLLEGE WORLD SERIES TEAM REUNION

In conjunction with the recent Kick-Off Banquet and Awards Ceremony, over two thirds of the 1992 team came back to Berkeley to celebrate their awesome run. Coming from as far away as Washington D.C., Maryland and Orange County, they golfed, dined, and toasted one another, culminating in their recognition at the Banquet. Bob Milano extends his thanks for the extraordinary efforts made by these players.

2005 KEY PLAYER PROFILES



Team Co-Captain Chris Errecart

Chris Errecart

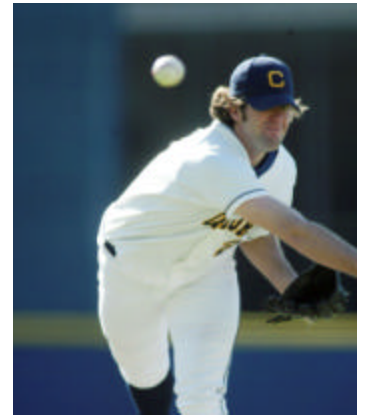
A talented outfielder who should be a key player for the Bears this season, Chris has shown the ability and leadership to become a top player in the Pac-10. One of Cal's team

captains as a sophomore, Chris is an outstanding hitter with good speed and a strong arm. Last season, Chris saw action at first base and in the outfield and had 12 starts as a designated hitter, batting .256 with four doubles, three home runs and 19 RBI. As a senior at Lincoln High in Stockton, Chris batted .531 with 12 home runs, 41 RBI and 20 stolen bases, earning both league and all-area MVP honors, as well as all-state and *Collegiate Baseball* All-America accolades.

Adam Gold

Gold is Cal's top returning starter after an outstanding sophomore season during which he came within one out of a no-hitter at Fresno State. Among the Pac-10 leaders in strikeouts and innings pitched in 2004, Adam compiled a 6-7 record with a 4.25 ERA and 89 strikeouts (eighth in the Pac-10) in 94.7

innings (ninth in the Pac-10). He was on the Roger Clemens Award Watch List as the nation's top collegiate pitcher. Adam also earned the George Wolfman Award as the team's Most Improved Player and received honorable mention on the Pac-10's All-Academic team. At Bear Creek High in Lakewood, Colorado, Adam was first team all-conference and honorable mention all-state as a senior.



Right-Handed Pitcher Adam Gold

WHERE IS HE NOW? WILLY WORKMAN

A Santa Barbara native, Willy pitched for Coach Milano from 1986-89. As a recruited walk-on, the southpaw posted ever-improving stats, culminating in a great senior season in 1989, in which he led the Pac-10 with a 2.69 ERA. Overall at Cal he went 8-5 with a 4.08 ERA.

Willy signed with the Angels organization after his senior season, deferring admission to Tulane's medical school. He played professionally for two seasons, winding up playing A ball in Palm Springs.

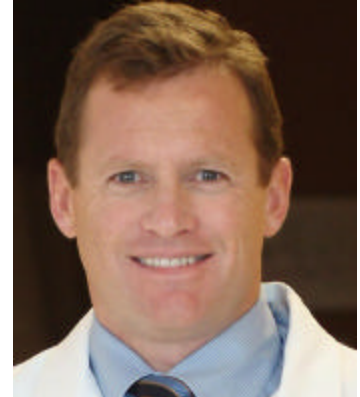
He followed Med school in the Big Easy with a five-year residency in orthopedic surgery at Yale and a one-year fellowship at Harvard, where he also worked as a team doctor for both the Patriots and Bruins. In 2000, Willy moved back to the Bay Area, establishing a solo practice in Walnut Creek. He lives in Oakland with his wife, Janis – an attorney from Boalt -- and their three children: Kenny (age 5), Emma (3) and Walter (1). In addition to his practice, Willy serves as the team doctor for the Cal Rugby team, works weekly at a Tang Center clinic for Cal athletes, and is the doctor for Lafayette's Acalanes High School football team. Busy man!

What did Willy take away from Cal? "The ability to face and meet the academic, cultural and social challenges of going to Cal...I was proud to make it successfully." As for Cal Baseball, this walk-on ended up winning a scholarship while balancing the demands of the sport with academics. And the experience obviously profoundly impacted his desire to stay involved with Cal athletes in his current profession. Note to Coach Milano: "I was always a better hitter than a pitcher!"

Ed. Note: This is the first in a series of profiles of Cal Baseball Alumni who have succeeded both on Evans Diamond and in the larger world.



Willy Workman, 1989



Willy Workman, current photo

IT'S BASEBALL SEASON! Come out and support your Golden Bears!

MARK YOUR CALENDAR!!

- Opening Day v. Pacific at Evans Diamond – Tuesday, February 1, 2005 at 2 PM
- Bullpen Club Days in 2005 (Club events will start at 11am). Don't forget to get your Bullpen Card for admission!
- --March 12 v. UNLV
- --April 9 v. Arizona State
- --May 7 v. Stanford

GIFT OPPORTUNITIES

Like any family or business, Cal Baseball must balance its budget to survive. We need your help! We know that you will respond to our goal of ensuring Cal Baseball's continued success.

Please see the following donation levels below of tax-deductible support as well as our thank-you gifts.

And thanks to each Bullpen Club member for your continued support from Coach Esquer.

CAL BASEBALL BULLPEN CLUB DONATION LEVELS

<u>LEVEL</u>	<u>GIFTS FOR DONORS</u>
\$99 and below	Cal Baseball Bumper Sticker
\$100	Bumper Sticker, Media Guide, T-shirt
\$250	The above, plus: Cal adjustable baseball cap, Blue Bullpen Club Card (free admission to Bullpen Club days)
\$500	The above, plus: Gold Bullpen Club Card (free admission to home games)
\$1,000	The above, plus: Golf shirt, Game Day Pullover, Sunglasses
\$2,500	The above, plus: Wind Jacket, Sport Jacket, Aluminum Bat with Cal logo
\$5,000	The above, plus: Tundra heavy jacket, personalized wood bat and baseball glove, fitted game cap (available in sizes 7 to 7 7/8)

Please indicate sizes for all apparel items: _____

And please note: Your gift in excess of the fair market value of benefits is tax deductible as a charitable contribution. Donors wishing full tax deductions must decline in writing all benefits associated with their membership level.



Senior First-Baseman James Holder



Sophomore Outfielder Brennan Boesch

CAL BASEBALL NEEDS YOUR CONTINUED SUPPORT!

Yes, I want to help Cal Baseball! Enclosed is...

\$ _____ for the Cal Baseball Bullpen Club. Make checks payable to: UC Regents-Bullpen Club

\$ _____ for the following endowment:

- ? Vance Haswell Scholarship Fund
- ? Welsh Endowment Scholarship Fund
- ? Kathleen Berner Memorial Fund (Program Discretionary Fund)

Name _____
 Address _____
 City, State, Zip _____
 Phone (w) _____ (h) _____
 E-Mail Address _____
 Business Affiliation _____

Please charge my credit card -
Visa, MC, or Discover – circle one
 Card Number _____
 Expiration date _____
 Signature _____

Please return to: University of California
 Bear Backers/Bullpen Club
 2223 Fulton Street, 3rd Floor
 Berkeley, CA 94720-4424

BC05M3

NOTE: It is the policy of U.C. Berkeley and the University of California, Berkeley Foundation that a portion of gifts and/or other income there from be used to defray costs of raising and administering funds. Your gift in excess of the fair market value is tax deductible as a charitable contribution. Donors wishing full tax deductions must decline in writing all benefits associated with their membership level. We request notification be returned with your check and application. If you would like to know the exact amount of your benefits, please call us at (510) 642-2427.



Bullpen Club

Intercollegiate Athletics and Recreational Sports
University of California
2223 Fulton Street #4424
Berkeley, CA 94720-4424

PRE-SORTED FIRST CLASS
U.S. POSTAGE PAID
UNIVERSITY OF CALIFORNIA



2005 California Baseball Schedule



Date/Day	Opponent	Time	Date/Day	Opponent	Time
2/1 (Tue)	Pacific	2:00pm	3/29 (Tue)	Sacramento St.	2:00pm
2/4 (Fri)	Irvine	2:00pm	4/1 (Fri)	Oregon St.	5:00pm*
2/5 (Sat)	Irvine	1:00pm	4/2 (Sat)	Oregon St.	1:00pm*
2/6 (Sun)	Irvine	1:00pm	4/3 (Sun)	Oregon St.	1:00pm*
2/11 (Fri)	Loyola M.	2:00pm	4/5 (Tue)	Nevada	2:00pm
2/12 (Sat)	Loyola M.	1:00pm	4/8 (Fri)	Arizona St.	2:00pm*
2/13 (Sun)	Loyola M.	1:00pm	4/9 (Sat)	Arizona St.	1:00pm*
2/15 (Tue)	San Jose St.	2:00pm	4/10 (Sun)	Arizona St.	1:00pm*
2/18 (Fri)	Long Beach St.	6:30pm	4/12 (Tue)	Sacramento St.	2:00pm
2/19 (Sat)	Long Beach St.	2:00pm	4/15 (Fri)	Washington	6:30pm*
2/20 (Sun)	Long Beach St.	1:00pm	4/16 (Sat)	Washington	1:00pm*
2/25 (Fri)	Saint Mary's	2:00pm	4/17 (Sun)	Washington	1:00pm*
2/26 (Sat)	Saint Mary's	1:00pm	4/20 (Wed)	Hawaii	2:00pm
2/27 (Sun)	Saint Mary's	1:00pm	4/22 (Fri)	USC	2:00pm*
3/1 (Tue)	San Francisco	2:00pm	4/23 (Sat)	USC	1:00pm*
3/4 (Fri)	Stanford	5:00pm	4/24 (Sun)	USC	1:00pm*
3/5 (Sat)	Stanford	1:00pm	4/26 (Tue)	UC Davis	2:30pm
3/6 (Sun)	Stanford	1:00pm	4/29 (Fri)	UCLA	7:00pm*
3/8 (Tue)	Saint Mary's	2:00pm	4/30 (Sat)	UCLA	1:00pm*
3/11 (Fri)	UNLV	2:00pm	5/1 (Sun)	UCLA	1:00pm*
3/12 (Sat)	UNLV	1:00pm	5/3 (Tue)	San Francisco	2:30pm
3/13 (Sun)	UNLV	1:00pm	5/6 (Fri)	Stanford	2:30pm*
3/15 (Tue)	Pacific	6:00pm	5/7 (Sat)	Stanford	1:00pm*
3/18 (Fri)	Hawaii-Hilo	2:00pm	5/8 (Sun)	Stanford	1:00pm*
3/19 (Sat)	Hawaii-Hilo	noon	5/10 (Tue)	San Jose St.	7:00pm
3/19 (Sat)	Hawaii-Hilo	3:00pm	5/24 (Tue)	UC Davis	6:00pm
3/20 (Sun)	Hawaii-Hilo	2:00pm	5/27 (Fri)	Arizona	7:00pm*
3/24 (Thur)	Washington St.	2:00pm*	5/28 (Sat)	Arizona	7:00pm*
3/25 (Fri)	Washington St.	2:00pm*	5/29 (Sun)	Arizona	12:00pm*
3/26 (Sat)	Washington St.	12:00pm*			

*Indicates pac-10 conference game
Home games indicated in bold