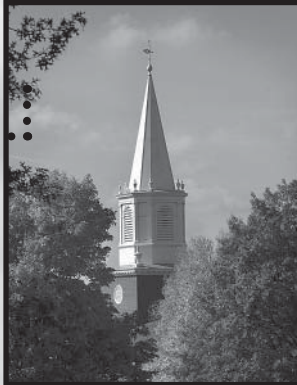


# Bucknell Bison Athletics: Setting the Standard of Excellence

Bucknell takes great pride in its commitment to excellence on and off the playing fields. From Presidents' Cups to Academic All-Americans to graduation rates that are ranked annually in the national top-10, Bucknell is clearly at the head of the class when it comes to upholding the scholar-athlete ideal. ....

Bucknell has captured the Patriot League Presidents' Cup, signifying the league's all-sports champion, 12 times in the 16-year history of the affiliation, including seven straight titles from 1998-2004. Bucknell won the Presidents' Cup in 2005-06 and it was also the ninth straight year, and 12th time overall, that the Bison captured the women's title. In 2005-06, Bucknell won titles in women's soccer, men's basketball, women's swimming & diving and women's cross country, indoor and outdoor track & field, women's rowing and men's golf. ....

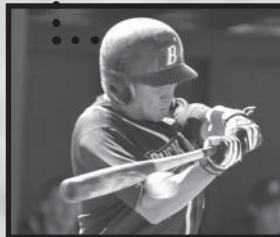


A major element in ensuring Bucknell's commitment to athletics excellence is the Kenneth G. Langone Athletics & Recreation Center, which opened fully in 2003. One of the finest collegiate athletics facilities of its kind, the center includes the 4,000-seat Sojka Pavilion, the Olympic class Kinney Natatorium, the Krebs Family Fitness Center and the Berger Family Weight Room. A new Hall of Fame area, a display of Bucknell's Medal of Honor recipients, a sports medicine suite, modern offices for coaches and staff, and new locker room and classroom space are also included in the facility's layout. ....



Bucknell claimed its 103rd Patriot League Scholar-Athlete of the Year in the spring of 2006. That is more than twice the next-highest total. ..

23 of Bucknell's varsity squads posted team GPAs of 3.0 or better in the spring of 2006, including all 12 spring sports. ....



In addition to the 113 ESPN The Magazine Academic All-Americans produced since 1970, Bucknell has also claimed 236 Academic All-District honorees over the same span, including 16 last year. Bucknell ranks **FOURTH** in the nation (to Nebraska, Notre Dame and Penn State) in total number of ESPN The Magazine All-America selections. ....



Bucknell's men's basketball team made history in 2005, writing national headlines with a stirring 64-63 upset of Kansas at the NCAA Tournament. It was the first NCAA men's basketball win in school and Patriot League history and with a victory over Arkansas in 2006, the team has now posted NCAA Tournament victories in consecutive seasons. The Bison also became the first Patriot League team to receive a national ranking and were 25th in the final ESPN /USA Today Coaches' Poll of the 2005-06 season. ....



Bucknell student-athletes comprised nearly one-fourth of the Patriot League Academic Honor Roll in 2005-06. A total of 330 Bison recorded a GPA of 3.2 or better during their sport's competition season. Among all BU student-athletes, 235 made the Dean's List with GPAs of 3.5 or better in the spring of 2006. ....

According to federal data released by the NCAA in the fall of 2006, Bucknell's four-year student-athlete graduation rate was highest in the nation among student-athletes who entered college between the 1996-97 and 1990-2000 academic years. Bucknell historically has been an annual leader in graduation rates. ....

With a school-record eight Patriot League championships in 2005-06, Bucknell has now earned 59 crowns in 16 years in the league. In addition, Bucknell has had 79 conference players of the year, 71 PL coaches of the year and a whopping 414 individual league champions from sports such as cross country, track & field, swimming & diving, tennis and golf. ....



# Bucknell Bison Athletics

## *A National Model in Promoting the Scholar-Athlete Ideal*

Bucknell Athletics is first and foremost a student-centered organization, one that strives to be a national model when it comes to operating by a true scholar-athlete model. At Bucknell, student-athletes' academic programs are their first priority, and providing a competitive Division I athletics program only advances the mission, values and residential learning goals of the university. To that end, the Department of Athletics and Recreation proactively seeks ways to assist student-athletes in their daily academic pursuits. Below are just some of the student-athlete support programs currently in place.

**FACULTY ATHLETICS REPRESENTATIVE:** The faculty athletics representative (FAR) is a member of the faculty or administrative staff who is designated to represent Bucknell in its relationships with the NCAA and the Patriot League. Bucknell's FAR is Mitch Chernin, Professor of Biology. The FAR can enhance the student-athlete experience by promoting a balance between academics, athletics and the social lives of student-athletes, which affords them opportunities to enjoy the full range of collegiate experiences available to students generally.

**SIDELINE COACH PROGRAM:** This program is a truly unique initiative in Division I college athletics, and it involves the invitation of a member of the faculty, administration, staff or community by one of Bucknell's 27 varsity teams. The participant has the opportunity to discuss the overall program with the respective coaching staff, including practice preparation and strategy for the upcoming contest. The sideline coach attends a practice session and an actual intercollegiate competition, where he/she is introduced to the team and gains rarely seen insight into the relationships that exist between player-coach and player-player. The purpose of the Sideline Coaches Program is to foster a better understanding by the faculty and administration of the roles played by coaches and athletes in the university's competitive intercollegiate athletic arena.

**ACADEMIC ENHANCEMENT CENTER:** Brand new last fall, the Department of Athletics has opened a study/computer lab for student-athletes on the concourse level of Sojka Pavilion. The center is outfitted with computers, a laser printer, four television monitors and a projection unit with computer, VCR and DVD player. Additionally, the study lab can be used as a meeting place for group projects, tutorial area or just a secluded and quiet study space before or after practice.

**LAPTOP PROGRAM:** The Department of Athletics owns a number of laptop computers that may be signed out by student-athletes for use on away trips.

**STUDENT-ATHLETE ADVISORY COMMITTEE (SAAC):** Representatives from each varsity team comprise the SAAC, which is designed to enhance the total student-athlete experience by promoting opportunity, protecting student-athlete welfare, and fostering a positive student-athlete image. The Committee is an invaluable resource for promoting communication between athletics administration and student-athletes; promoting communication between athletics and campus-wide administration; providing feedback and insight, as well as soliciting responses into department issues and proposed NCAA legislation; building a sense of community within the athletics program involving all athletics teams; organizing community service projects and efforts; creating a vehicle for student-athlete representation on campus-wide committees; serving as a collective voice of campus student-athletes; and disseminating information to the student-athlete body.

**OTHER PROGRAMMING:** The Department of Athletics, through the identification of outside speakers and monthly "Brown Bag Luncheons," thrives to enhance the quality of the student-athlete experience as well as to educate student-athletes on a variety of issues that may affect them throughout their collegiate career. Some recent topics of interest have been alcohol, nutrition, body image, hazing, sexuality, diversity, career development, study skills, religious life and gambling.



**Bucknell's 16 2005-06 ESPN  
the Magazine Academic All-  
District selections.**



**KEVIN JAMIESON**  
HEAD COACH  
SEVENTH SEASON

Now in his seventh season as the head coach of Bucknell's women's golf team, Kevin Jamieson has continued to elevate the young program to one of the region's best.

Only the second coach in the history of the Bucknell women's golf program, Jamieson is currently on a quest to become a PGA Professional, with a long-term goal to be a golf professional in a teaching and golf course management area. Coaching the Bison women's golf team has been a new challenge for Jamieson, but one that has been extraordinarily fulfilling.

Jamieson has overseen Bucknell's transition into the Big South Conference, and he has upgraded the team's schedule significantly in recent years. In their first two Big South Championship appearances, the Bison finished a solid sixth in a nine-team field, and in 2005 and 2006 the team moved up to fifth-place finishes with record-setting performances.

Under Jamieson's watch, the Bison have consistently lowered their team and individual scoring records. In fact, seven of the top eight individual rounds have come over the last four seasons, including Celine Herbin's school-record 73, accomplished twice in 2003-04.

Prior to the 2000-01 season, Jamieson succeeded Brad Tufts, who retired from Bucknell after more than 41 years of service to the University.

In addition to his duties as coach of the women's golf team, Jamieson also serves as assistant golf professional at the Bucknell Golf Club. Prior to his stint at the BGC, Jamieson was the assistant pro at Williamsport Country Club under Professional Tom Cioffi.

Jamieson also picked up golf experience in the state of Florida, where he was the second assistant professional at Sanctuary Golf Club on Sanibel Island and the assistant pro at the Country Club of Naples.

Jamieson is a 1996 graduate of Western Maryland College (now McDaniel College), where he studied communications with an emphasis in interpersonal communication and a background in human resources. While at Western Maryland he captained the golf team from 1993 to 1996.

His father, Sid, coached the Bucknell men's lacrosse team from the program's inception in 1968 until his retirement after the 2005 season.

### JAMIESON FACTS

**Birthdate:** April 12, 1973

**Relative(ly) Speaking:** Father, Sid, was Bucknell's head men's lacrosse coach from 1968-2005 and has been working in the athletic department for more than 40 years.

**Education:** Western Maryland '96 with a bachelor of arts degree in communications.

**PGA Professional Timeline:** Assistant Professional at Bucknell Golf Club 1999-present ... Assistant Golf Professional at Williamsport Country Club ... Second Assistant at the Country Club of Naples ... Held positions at The Sanctuary Golf Club in Florida and the White Deer Public Golf Course in Pennsylvania.

### 2006-07 WOMEN'S GOLF ROSTER

Name	Cl.	Hometown/Secondary School
Leah Antkiewicz	Fr.	Aliquippa, Pa./Quigley Catholic
Kathryn Batchelor	Jr.	Trenton, N.J./Princeton Day School
Laura Bentzen	Sr.	New Fairfield, Conn./Kent School
Emily Chiodo	Jr.	Strasburg, Pa./Lampeter-Strasburg
Laura Fisher	So.	Sellersville, Pa./Gremantown Academy
Meredith Kalman	Sr.	Mechanicsburg, Pa./Cumberland Valley
Amy Loughney	Jr.	Macungie, Pa./Allentown Central Catholic
Deirdre Moran	So.	Bryn Mawr, Pa./Academy of Notre Dame
Lexie Orr	Fr.	Geneva, Ill./Geneva
Teri Schlang	Sr.	Albany, N.Y./Stratton Mountain School (Vt.)

### THE BISON IN THE BIG SOUTH

In the fall of 2002 Bucknell director of athletics and recreation John Hardt announced that the Bucknell women's golf program would join the Big South Conference as an associate member. The Bison competed in the Palmetto Utility Protection Service Big South Women's Golf Championship for the first time in the spring of 2003 and finished in sixth place. They also finished sixth in 2004 and fifth in 2005 and 2006. In 2005, they crowned their first All-Big South performer in Amy Loughney.

Holy Cross also joined the Big South as an associate member along with Bucknell. Both schools are full-time members of the Patriot League, which does not offer women's golf as a championship sport. As current Division I members, both institutions are eligible for the Big South's automatic bid to the NCAA Women's Golf Championship.

"At Bucknell we are always looking to upgrade competitive opportunities for our student-athletes, and this partnership with the Big South Conference will certainly do that for our women's golf program," said Hardt at the time of the announcement. "We are pleased to be a part of such a well-established and well-respected affiliation."

The Big South is an NCAA Division I Conference with nine institutions in the Southeast. Birmingham-Southern College, Charleston Southern University, Coastal Carolina University, High Point University, Liberty University, Radford University, UNC Asheville, Virginia Military Institute and Winthrop University comprise the 23-year-old league, which is based in Charlotte, N.C.

### WOMEN'S GOLF QUICK FACTS

#### University Information

**Location:** Lewisburg, Pennsylvania, 17837

**Founded:** 1846 as the University at Lewisburg

**Enrollment:** 3,350

**Nickname:** Bison

**Colors:** Orange and Blue

**Affiliation:** NCAA (Div. I), ECAC

**Conference:** Big South for women's golf

**President:** Dr. Brian C. Mitchell

**Director of Athletics & Recreation:** John Hardt

**Associate AD/Senior Woman Administrator:** Amanda Backus

**Dir. of Athletic Communications:** Jon Terry

**Head Athletic Trainer:** Mark Kepler

#### Women's Golf Information

**Head Coach:** Kevin Jamieson

**Alma Mater:** Western Maryland ('96)

**2006 Big South Finish:** 5th

**Fall 2006 Average Team Score:** 323.2

**Women's Golf Phone:** (570) 523-8193

**Email:** kjamieso@bucknell.edu

**Webpage:** www.BucknellBison.com

**Athletic Department FAX Phone:** (570) 577-1660

**Women's Golf Address:** Kevin Jamieson, Head Women's Golf Coach, Bucknell University, Lewisburg PA 17837

**Home Course:** Bucknell Golf Club (Par 70)

#### Application Information

**Admissions Phone:** (570) 577-1101

**Application Deadline:** Regular Decision — January 1, 2008; Early Decision I — November 15, 2008; Early Decision II — January 1, 2008; Financial Aid — Nov. 15 (ED)/Jan. 1 (Reg).

**Credits:** This guide was written and edited by Bucknell's Office of Athletic Communications. Photography by Art Foxall. Printing by Harmony Press, Inc., of Easton, Pa. **On the Front Cover:** (Clockwise from top left) Teri Schlang, Emily Chiodo, Amy Loughney. **On the Back Cover:** Kathryn Batchelor.



Bucknell University, ranked among the top national liberal arts colleges in the nation, is a privately owned, co-educational institution with an undergraduate enrollment of approximately 3,350 students and nearly 300 faculty members, of which over 97 percent hold doctoral degrees.

The 100th college chartered in the United States, Bucknell was founded by Philadelphia Baptists in 1846 as the University at Lewisburg. The first class of seven men graduated in 1851 with the first woman receiving her degree in 1885. In 1886, the institution was renamed Bucknell University in honor of William Bucknell, a former trustee and benefactor.

A comprehensive university, Bucknell allows students to choose from many academic options, including more than 50 majors and more than 60 minors. In learning from and collaborating with experienced faculty, students have access to state-of-the-art resources within the library, laboratories, computer centers, multimedia rooms, and recreational facilities.

Enrolling at Bucknell allows one to acquire global connections through the International Focus Semester Program, Semester of Studying Abroad Program, and interaction with students and faculty from various countries and continents. Through the University's commitment to diversity, students of all ethnic, racial, geographical, intellectual, and political backgrounds converge on one campus to foster a community of acceptance and exploration in diversity. As members of the Bucknell and Lewisburg

communities, students are able to find their own niche while learning the importance of values.

The University's physical plant, located on a 400-acre campus overlooking the Susquehanna River, includes more than 100 buildings. Recent additions include a \$1 million computer center constructed as a wing of Dana Engineering Building; an \$8.2 million addition to the Ellen Clarke Bertrand Library; the \$9.7 million Weis Performing Arts Center; and the \$10.9 million Robert L. Rooke Chemistry Building and adjoining biology building.

In addition, construction of the Sigfried Weis Music Building was completed in the summer of 2001 in time for its doors to open for the fall semester. A new residence hall facility opened in 2001 and houses 300 students within "neighborhoods" — a contemporary design intended to promote a sense of community. The O'Leary Center for geology and psychology, and the Breakiron Engineering Building both opened recently as well.

And finally, the sparkling Kenneth G. Langone Athletics and Recreation Center opened in 2003, providing a state-of-the-art facility for varsity athletes and students, staff and faculty alike.

Bucknell is easily accessible, located on U.S. Route 15 approximately 60 miles north of Harrisburg and 25 miles south of Williamsport. The campus is seven miles south of Interstate 80 on Route 15.



The Bucknell University Department of Athletics and Recreation prides itself on setting the standard of excellence when it comes to success both on the playing fields and in the classroom. With 12 Patriot League Presidents' Cups in 16 years, annual top-10 national rankings in graduation rates, 113 Academic All-Americans in 36 years and 103 Patriot League Scholar-Athletes in 16 years, Bucknell is clearly at the head of the class in terms of upholding the scholar-athlete model.

The Kenneth G. Langone Athletics and Recreation Center, one of the finest collegiate athletics and recreation facilities of its kind in the nation, ensures the continuation of that success.

The facility enhances each of Bucknell's 27 varsity athletics programs and greatly expands the scope of its growing intramural and recreational sports offerings. A visually appealing structure located along Moore Avenue on the "downhill" side of campus, the Kenneth Langone Athletics and Recreation Center was designed to reach out to all members of the campus community, including the student body, varsity student-athletes, faculty, staff and alumni.



Three primary venues lie within the facility: the Arthur D. Kinney Jr. Natatorium, the 4,000-seat Gary A. Sojka Pavilion and the Krebs Family Fitness Center. Other features include a new location for the Bucknell Athletics Hall of Fame, a display of Bucknell's Congressional Medal of Honor recipients, a sports medicine and athletic training suite, classrooms, modern offices for coaches and staff

and increased locker room space for varsity and recreational athletes.

The facility is named in honor of Ken Langone, a 1957 Bucknell graduate who, along with his wife, Elaine, pledged \$11 million toward the center's construction. Langone was a member of the university Board of Trustees from 1980 to 1996.

One of the special qualities of the Kenneth Langone Center is the manner in which it supplements the pre-existing facilities. The construction surrounds Gerhard Fieldhouse and historic Davis Gymnasium, which has been restored as a competition venue for the Bison volleyball and wrestling teams, as well as intramural, recreation and other varsity practice activities.

## MAJOR FIELDS OF STUDY

**ARTS & SCIENCES DEPARTMENTS:** Accounting, Animal Behavior, Anthropology, Art, Art History, Biology, Cell Biology & Biochemistry, Chemistry, Classics, Comparative Humanities, East Asian Studies (Chinese, Japanese), Economics, Education (Early Childhood Development, Elementary and Secondary), English, Environmental Studies, French, Geography, Geology, German, History, International Relations, Latin American Studies, Management, Mathematics, Music (Music Education, Music History, Music Composition, Performance), Philosophy, Physics, Political Science, Psychology, Religion, Russian, Sociology, Spanish, Theater, and Women's and Gender Studies.

**ENGINEERING DEPARTMENTS:** Biomedical, Chemical, Civil & Environmental, Computer Science, Electrical, Mechanical and Engineering Management.

12 PRESIDENTS' CUPS • SCHOOL-RECORD EIGHT PATRIOT LEAGUE CHAMPIONSHIPS IN 2005-06



## BISON CONTINUE TO REACH NEW HEIGHTS IN RECORD-SETTING SPRING

### BUCKNELL SQUAD CONTINUES ASCENT IN COMPETITIVE BIG SOUTH

The rapid ascent of the Bucknell women's golf program continued in 2005-06, as the Bison were invited to participate in a number of elite tournaments, lowered school scoring records and made noise in the competitive Big South Conference.

Bucknell returned all but one starter last season, but that didn't necessarily mean it was a well-seasoned squad. Coach Kevin Jamieson's roster did not include any seniors, and of the eight players who saw tournament action in 2005-06, there was one junior, four sophomores and three freshmen.

A grueling schedule greeted the young squad as it returned to campus in the fall, a slate made tougher by the fact that a handful of the women were working on minor swing modifications designed to pay off in the spring championship season.

Highlighting the fall schedule were first-ever invitations to the Notre Dame Invitational and the Pat Bradley Invitational at the famed Doral Resort and Spa, as well as the annual Bison Invitational at Bucknell Golf Club. Unfortunately, bad weather wiped out two of those events. The team's home tournament was washed out on Oct. 8-9, then three weeks later the Pat Bradley was cancelled due to course damage in the wake of Hurricane Wilma.

Nonetheless, the Bison worked in four fall tournaments, beginning with the Notre Dame Invitational on Sept. 10-11 at Warren GC in South Bend. Playing 54 holes in two days, Bucknell placed 14th in the star-studded field, with Teri Schlang finishing with 79-80 to post a team-best 245.

Over the following two weekends Bucknell



**Amy Loughney**

visited two of the top Ivy League programs in Princeton and Yale. It was at the Princeton Invitational on Sept. 24-25 when then-freshman Deirdre Moran unleashed her talents for the first time, foreshadowing an outstanding rookie campaign. Following a first-round 86, Moran carded a stellar 76 in the second round, a score that would hold up as the team's best of the fall season. Also at Princeton, Schlang turned in her second career top-10 finish, posting 79-77 to finish in a tie for ninth. The team's second-round score of 316 was one shy of the school record at the time, and it helped the Orange & Blue finish in the top half of the field, eighth out of 17 teams.

The squad struggled a bit at Yale the following week, with Moran's 159 (77-82) leading the way, but after a two-week layoff thanks to the Bison Invitational rainout, Bucknell performed very well in windy conditions at the Penn State Invitational on Oct. 14-15. Schlang's first-round 78 was quite impressive, and her 159 total parlayed into a team-best 34th-place finish, while Kathryn Batchelor (83-81) enjoyed her best tournament of the fall.

Amy Loughney was the most notable swing experimenter in the fall. As a freshman Loughney turned heads by becoming the program's first-ever All-Big South honoree after shooting 77-76-76 at the conference championship. In the fall of her second year she averaged 85.1, but bigger and better things clearly awaited her in March and April.

Since joining the Big South in 2002-03, Bucknell's spring schedule has typically migrated in a southerly direction. Last season was no different, as the Bison played twice in Virginia, once in South Carolina and once in Alabama.

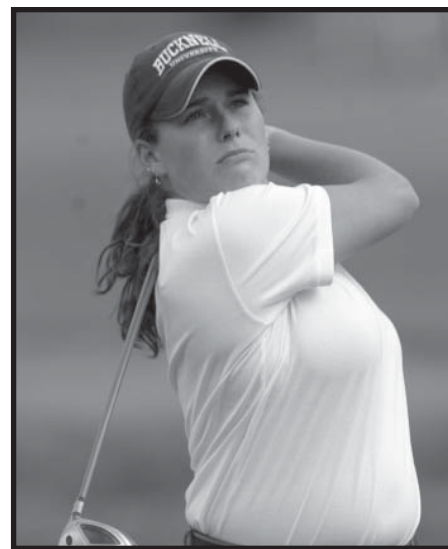
The spring campaign opened at the The Shamrock at Tega Cay GC on scenic Lake Wylie in South Carolina, just across the border from Charlotte, N.C. In its debut at The Shamrock in 2005, Bucknell shot 1007 and finished in 10th place. A year later, the Bison hacked 36 strokes off that score, shooting 971 to finish in a tie for third place in a very talented field. One of only two Northern schools in the event, Bucknell improved in each round (330-322-319) and finished behind only Elon and Winthrop.

Even more encouraging was that Loughney was clearly back. Remarkably consistent over three days, she shot 77-77-76 and finished alone in second place, only two shots behind Elon's Samantha Widmer, who needed a 2-under 70 in the final round to pull out the win. Backing up Loughney was Schlang with a 77 and Moran with a 79, giving the Herd three sub-80 rounds.

It was more of the same the following week, even though scores went up a bit in windy conditions at the William & Mary Invitational. Loughney's 80-79 weekend, with good support from Schlang (83-78) and Batchelor (81-83), helped Bucknell to an eighth-place finish in a mostly-Southern 18-team field.

On Apr. 1-2 the Bison went out for a final tuneup prior to the Big South Championship and placed ninth in a 15-team field at Georgetown's Hoya Invitational at Raspberry Falls GC in Leesburg, Va. Bucknell shot 329-333 for the second straight week, respectable given that the withdrawal of a player meant the Bison started only four players and could not throw away a high score. Round one also saw a personal milestone, as Loughney fired a career-best 75, the second-best score of the day. She followed with 82 and finished ninth for her second top-10 finish in three weeks.

The event the squad had been working towards all year — the PUPS/PDPS Big South Championship — opened a week later in the Birmingham suburb of McCalla, Ala. The Bison began with a solid round of 322, led by Loughney's 76, and they stood in sixth place after 18 holes. The following day brought nearly identical scores, including another 76 from Loughney, and a round of 320 moved Bucknell



**Teri Schlang**

ahead of Radford and into fifth place. Things would get even better in the final round.

Wednesday, Apr. 12 is now etched in the record book, as the Bison counted four scores in the 70s for the first time in school history en route to a record-setting round of 314. Ironically, the record-setting score did not even include the score of its No. 1 player, Loughney, who shot 80 to finish in a tie for 11th place.

Schlang led the way with a 77, while Batchelor, Moran and Emily Chiodo all carded 79s. Each member of that quartet recorded her best Big South Championship round that day, and the Bison finished a solid fifth, 20 strokes better than Radford, 38 better than Charleston Southern and 109 better than Northern compatriot Holy Cross.

After posting a 333.0 team scoring average in the fall, the Bison lowered that mark by a whopping eight strokes to 325.1 in the spring. Leading the way was Loughney, who finished the spring with a 77.80 scoring average, just .02 off the school record of 77.78 posted by Celine Herbin in the spring of 2004.

Schlang (81.1), Moran (82.4), Batchelor (83.4) and Chiodo (83.9) also had outstanding spring seasons, and with every letterwinner returning in 2006-07, the program's upward trend has already continued.

In the fall, Bucknell won its very first tournament, capturing the Bison Fall Classic. Schlang was the individual winner there, helping her become the first Bison to earn Big South Golfer of the Week accolades. Loughney earned that honor two weeks later after helping Bucknell to a runner-up finish at Rutgers and a third-place showing at Richmond.

In the second round of the Nittany Lion Invitational the Bison equaled the school record with a 314, leading to the second-best 54-hole score in school history (966).

The Bison lowered their team scoring average to 323.2, led by Loughney's team-best 79.6. Loughney closed the fall with three straight top-10s.



**KATHRYN BATCHELOR**  
JUNIOR  
LAWRENCEVILLE, N.J.



**Fall 2006:** Played in all five tournaments, averaging 83.8 ... Season-best round was 78 at Bison Fall Classic ... T-18th at Nittany Lion Invitational ... **Spring 2006:** In three tournaments, averaged career-low 83.4 ... Shot career-best 79 in final round of

Big South Championship, where she placed 31st ... **Fall 2005:** Saw action in all four fall events, posting an average of 85.0 ... Low round was 81 at Nittany Lion Invitational ... **Spring 2005:** Played in all four tournaments, averaging 85.4 ... Shot in the 80s in 8 of 9 rounds, with season-best 80 in first round of Big South Championship (32nd) ... T-21st at Hoya Invitational ... **Fall 2004:** Appeared in 4 of 5 events with a scoring average of 88.4 ... Best round was 81 at Penn State ... Best finish was T-42nd at Princeton ... **At Princeton Day School:** Won Golf Award in 2003 and 2004 ... Two-time basketball co-captain.

**Personal:** Daughter of Kevin and Deborah Batchelor ... Born Dec. 13, 1985 in Princeton, N.J. ... Has a sister, Elizabeth ... Mother played varsity basketball at Drexel ... Management major ... Dean's List student ... Member of Big South Presidential Honor Roll.

**Fall 2006 (Junior): 83.8 avg.**

9/9-10	Cardinal Classic	82-86	T77th
9/22-24	Nittany Lion Invitational	80-79-81	T18th
9/30-10/1	Bison Fall Classic	78-88	T21st
10/13-14	Rutgers Invitational	85-88	T38th
10/16-17	Richmond Spider Invitational	87-88	T42nd

**2005-06 (Sophomore): 84.6 avg.**

9/10-11	Notre Dame Invitational	84-88-82	T62nd
9/24-25	Princeton Invitational	91-87	T73rd
10/1-2	Yale Invitational	82-87	T44th
10/14-15	Nittany Lion Invitational	83-81	T53rd
3/17-19	The Shamrock	86-80-87	T37th
3/25-26	William & Mary Invitational	81-83	T34th
4/10-12	Big South Championship	87-84-79	31st

**2004-05 (Freshman): 86.9 avg.**

9/18-19	Dartmouth Invitational	86-92	T65th
9/25-26	Princeton Invitational	86-90	T42nd
10/2-3	Penn State Invitational	81-89-89	T78th
10/23-24	Bucknell Fall Classic	95-88	T63rd
3/18-20	The Shamrock	84-88-83	T46th
3/26-27	William & Mary Invitational	82-87	T54th
4/3	Hoya Invitational	87	T21st
4/11-13	Big South Championship	80-91-87	32nd



**Kathryn Batchelor**



**LAURA BENTZEN**  
SENIOR  
FAIRFIELD, CONN.



**Fall 2006:** Lone appearance came at Bison Fall Classic (T-76th) ... **Spring 2006:** Did not compete in a tournament ... **Fall 2005:** Did not compete in a tournament ... **Spring 2005:** Did not compete in a tournament ... **Fall 2004:** Competed at Bucknell Fall

Classic, carding 95-96 ... **Spring 2004:** Placed 45th at Bucknell Invitational in collegiate debut ... **Fall 2003:** Not with team ... Joined Bison as a walk-on prior to Spring 2004 season ... **At Kent School:** Member of junior varsity golf, soccer and tennis teams.

**Personal:** Daughter of Russell and Robin Bentzen ... Born Feb. 28, 1985 in Princeton, N.J. ... Sister, Jennifer, graduated from Bucknell ... Grandfather, both parents and aunt and uncle also attended Bucknell ... Majoring in International Relations ... Member of Big South Presidential Honor Roll ... Dean's List student.

**Fall 2006 (Senior): 96.5 avg.**

9/30-10/1	Bison Fall Classic	93-100	T76th
-----------	--------------------	--------	-------

**2005-06 (Junior): DNP**

**2004-05 (Sophomore): 95.5 avg.**

10/23-24	Bucknell Fall Classic	95-96	T72nd
----------	-----------------------	-------	-------

**2003-04 (Freshman): 115.0 avg.**

4/5-6	Bucknell Spring Invitational	114-116	45th
-------	------------------------------	---------	------



**EMILY CHIODO**  
JUNIOR  
STRASBURG, PA.



**Fall 2006:** Averaged 84.6 in four events ... Best finish was T-15th at Richmond (83-81) ... **Spring 2006:** Posted career-best 83.4 average in three events ... Strong showing at Big South Championship ... Finished T-30th with rounds of 84-81-79 ... **Fall 2005:** Played

in all four events and had a solid fall campaign ... Averaged 85.8 in nine rounds ... Opened season with career-low 79 in first round of Notre Dame Invitational ... **Spring 2005:** Competed at The Shamrock (69th) and Hoya Invitational (T-31st), averaging 94.5 ... **Fall 2004:** Played in all five events in collegiate debut ... Best finish was T-35th at Yale Invitational ... Best round was 83 at Penn State Invitational ... **At Lampeter-Strasburg HS:** Earned four letters each in golf and cheerleading ... Two-year captain in both ... Placed 9th in PIAA Championship as a senior after finishing 3rd in the district tournament ... UCA All-Star in cheerleading.

**Personal:** Daughter of Michael and Karen Chiodo ... Father was her high school golf coach ... Has two younger siblings, Sarah and Michael ... Born Jan. 25, 1986 in South Korea ... Management major ... Member of Dean's List and Big South Presidential Honor Roll.

**Fall 2006 (Junior): 84.6 avg.**

9/22-24	Nittany Lion Invitational	89-81-87	T59th
9/30-10/1	Bison Fall Classic	83-83	T21st
10/13-14	Rutgers Invitational	80-94	T41st
10/16-17	Richmond Spider Invitational	83-81	T15th

**2005-06 (Sophomore): 85.3 avg.**

9/10-11	Notre Dame Invitational	79-87-88	T62nd
9/24-25	Princeton Invitational	89-83	T56th
10/1-2	Yale Invitational	87-89	52nd
10/14-15	Nittany Lion Invitational	84-86	T69th
3/25-26	William & Mary Invitational	90-85	T63rd
4/1-2	Hoya Invitational	86-82	T40th
4/10-12	Big South Championship	84-81-79	30th

**2004-05 (Freshman): 90.6 avg.**

9/18-19	Dartmouth Invitational	90-95	T77th
9/25-26	Princeton Invitational	88-90	T50th
10/2-3	Penn State Invitational	87-83-86	T74th
10/16-17	Yale Invitational	89-85	T35th
10/23-24	Bucknell Fall Classic	90-98	T67th
3/18-20	The Shamrock	94-103-90	69th
4/3	Hoya Invitational	91	T31st



Emily Chiodo



**MEREDITH KALMAN**  
SENIOR  
MECHANICSBURG, PA.



**Fall 2006:** Shot 86-82 at Bison Fall Classic in lone tournament appearance ... **Spring 2006:** Did not compete in a tournament ... **Fall 2005:** Did not compete in a tournament ... **Spring 2005:** Competed in one event, finishing T-56th at The Shamrock

(92-83-91) ... **Fall 2004:** Finished T-20th at the Bucknell Fall Classic (82-86) in the second of her two fall starts ... Averaged 88.0 ... **Spring 2004:** Turned in solid spring season with an 87.3 average ... Shot three straight 84s to finish T-23rd at Big South Championship ... Best round was 81 at William & Mary ... **Fall 2003:** Competed in three tournaments during her rookie season, at Princeton, Yale and Penn State ... Fired a season-low 85 during the first round at Penn State ... Averaged 89.0 strokes in seven rounds ... T-54th at Yale ... **At Cumberland Valley HS:** Lettered four times in both golf and lacrosse ... PIAA state qualifier in 2001 and 2002 ... 2002 Mid Penn champion ... Mid Penn Lacrosse all-star in 2003.

**Personal:** Daughter of David and Deborah Kalman ... Born March 31, 1985 in Dallas, Texas ... Majoring in biomedical engineering ... Dean's List student ... Member of Big South Presidential Honor Roll.

**Fall 2006 (Senior): 84.0 avg.**

9/30-10/1	Bison Fall Classic	86-82	T52nd
-----------	--------------------	-------	-------

**2005-06 (Junior): DNP**

**2004-05 (Sophomore): 88.3 avg.**

9/25-26	Princeton Invitational	93-91	64th
10/23-24	Bucknell Fall Classic	82-86	T20th
3/18-20	The Shamrock	92-83-91	T56th

**2003-04 (Freshman): 88.1 avg.**

9/27-28	Princeton Invitational	89-92	72nd
10/4-5	Yale Invitational	89-90	T54th
10/10-12	Penn State Invitational	85-87-91	61st
3/20-21	Georgetown Invitational	87-90	T42nd
3/27-28	William & Mary Invitational	81-90	T86th
4/5-6	Bucknell Spring Invitational	92-94	27th
4/12-14	Big South Championship	84-84-84	T23rd



**AMY LOUGHNEY**  
JUNIOR  
MAGUNGIE, PA.



**Fall 2006:** Had another outstanding season, posting a team-best average of 79.6 ... Played in the Women's U.S. Amateur over the summer, then posted three top-8 finishes in five collegiate events ... Runner-up at Rutgers (78-76), as well as T-4th at

Richmond (79-79) and T-8th at Bison Fall Classic (80-79) ... Broke 80 in final five rounds of the fall ... Tied career best with 75 in second round at Penn State ... Named Big South Golfer of the Week in October ... **Spring 2006:** Bounced back with a terrific spring season, one of the best in school history ... Played to a 77.8 average ... Shot in the 70s in 7 of 10 rounds ... Career-best 75 in first round of Hoya Invitational ... Finished in second place at The Shamrock (77-77-76), while missing her own school 54-hole scoring record by one shot ... Also in the top 10 (9th) at Georgetown ... Shot 76-76-80 to finish T-11th at Big South Championship ... Earned Big South All-Academic honors ... **Fall 2005:** Underwent some swing



changes while sacrificing a few strokes on her average ... Competed in all four fall events and averaged 85.1 ... Best round was second-round 80 at Princeton Invitational ... **Spring 2005:** Solid spring season ended with a brilliant finish ... Became first Bison to earn All-Big South honors, finishing T-5th at Big South Championship (77-76-76) ... Set Bucknell 54-hole scoring record ... 83.4 spring scoring average was No. 2 on team ... **Fall 2004:** Played in every event and averaged a team-best 84.5 ... Carded season-best 77 in opening round of Penn State Invitational ... Finished T-16th at Yale Invitational (88-78) ... **At Allentown Central Catholic HS:** Earned all-state honors with 4th-place finish at PIAA Championship in 2003 ... 2003 District XI champion ... 2002 LVIAC champion.

**Personal:** Daughter of Donald and Geraldine Loughney ... Has one brother, Donald ... Born Jan. 9, 1986 in Allentown, Pa. ... Father played baseball at University of Scranton ... Majoring in biomedical engineering ... Made Dean's List in first semester at Bucknell.

**Fall 2006 (Junior): 79.6 avg.**

9/9-10	Cardinal Classic	79-83	T46th
9/22-24	Nittany Lion Invitational	85-75-83	T26th
9/30-10/1	Bison Fall Classic	80-79	T8th
10/13-14	Rutgers Invitational	78-76	T2nd
10/16-17	Richmond Spider Invitational	79-79	T4th

**2005-06 (Sophomore): 81.3 avg.**

9/10-11	Notre Dame Invitational	82-84-90	T68th
9/24-25	Princeton Invitational	84-80	T36th
10/1-2	Yale Invitational	89-89	53rd
10/14-15	Nittany Lion Invitational	82-86	T62nd
3/17-19	The Shamrock	77-77-76	2nd
3/25-26	William & Mary Invitational	80-79	T21st
4/1-2	Hoya Invitational	75-82	9th
4/10-12	Big South Championship	76-76-80	T11th

**2004-05 (Freshman): 84.1 avg.**

9/18-19	Dartmouth Invitational	91-85	T62nd
9/25-26	Princeton Invitational	82-95	T45th
10/2-3	Penn State Invitational	77-82-80	40th
10/16-17	Yale Invitational	88-78	T16th
10/23-24	Bucknell Fall Classic	88-84	T35th
3/18-20	The Shamrock	96-92-79	58th
3/26-27	William & Mary Invitational	84-79	T30th
4/3	Hoya Invitational	92	T39th
4/11-13	Big South Championship	77-76-76	T5th



**TERI SCHLANG**  
SENIOR  
ALBANY, N.Y.



**Fall 2006:** Equaled personal best with 80.4 average ... Earned medalist honors at Bison Fall Classic (76-75), helping Bucknell to its first team championship in program history ... Became first Bison ever to be named Big South Golfer of the Week ... Also named

Damon's Bison Athlete of the Week ... One week later finished T-10th at Rutgers (77-83) ... Shot career-best 75 twice, first at Nittany Lion Invitational final round ... **Spring 2006:** Had another solid season, averaging 81.1 in four events ... Twice equaled personal best with rounds of 77, including final round of Big South Championship ... T-22nd at Big South ... also shot 77 at The Shamrock ... Placed in top 25 in 3 of 4 tournaments ... Averaged team-best 81.0 for full 2005-06 year ... **Fall 2005:** Played in all four events and led squad with an 80.4 average ... Bucknell's top finisher in 3 of 4 tournneys ... Best showing was T-9th (79-77) at Princeton Invitational ... 77 was career best ... **Spring 2005:** Led team with consistent 82.0 average ... Shot 82 or better in 6 of 9 rounds, with best of 79 at The Shamrock ... 24th with 81-81-83 at Big South Championship ... T-24th at William & Mary (80-82) ... **Fall 2004:** Registered 85.0 scoring average ... Began season with T-8th (80-80) at Dartmouth Invitational ... T-20th at Bucknell Fall Classic with 83-85 ... **Spring 2004:** Second on team with 83.0 average ... Excellent T-18th finish at Big South Championship (90-79-79) ... Took 5th at Bucknell Invitational (78-83) ... **Fall 2003:** Member of the Bison starting line-up throughout the fall campaign ... Finished third on the team in stroke average during her rookie season with a 85.9 composite over 11 rounds ... Tied for 18th at the Rutgers Invitational with rounds of 81 and 80 ... **At Stratton Mountain (Vt.) School:** Attended high school focused on alpine skiing ... Member of 2000-01 Junior Olympic ski team ... Won Eastern Regional Finals in 2001 and 2002 and captured Vermont Cup in 2003 ... In addition to earning four varsity letters in skiing, also earned four each in golf and soccer and two in lacrosse ... On golf course was a four-time New England Championship qualifier ... Led team to two state titles ... Placed eighth at Plantation Junior Golf Tour National Championship.

**Personal:** Daughter of David and Dayna Schlang ... Father played three years of varsity golf at Lehigh ... Mother was a two-year cheerleader at Syracuse ... Born Dec. 5, 1984 in Albany, N.Y. ... Served as summer intern at the David Leadbetter Junior Golf Academy in Sarasota, Fla. ... Continues to compete with the Bucknell club skiing team ... Won the overall title at the 2003-04 USCSA Mid-Atlantic Regional Championships ... Also captured the overall season title in the Allegheny Ski Conference, winning 8 of 10 races in 2004 ... Majoring in psychology ... Dean's List student ... Member of Big South Presidential Honor Roll.

**Fall 2006 (Senior): 80.4 avg.**

9/9-10	Cardinal Classic	79-79	T26th
9/22-24	Nittany Lion Invitational	87-80-75	T24th
9/30-10/1	Bison Fall Classic	76-75	1st
10/13-14	Rutgers Invitational	77-83	T10th
10/16-17	Richmond Spider Invitational	90-83	T36th

**2005-06 (Junior): 81.0 avg.**

9/10-11	Notre Dame Invitational	86-79-80	T46th
9/24-25	Princeton Invitational	79-77	T9th
10/1-2	Yale Invitational	83-81	T29th
10/14-15	Nittany Lion Invitational	78-81	T34th
3/17-19	The Shamrock	83-84-77	T22nd
3/25-26	William & Mary Invitational	83-78	T24th
4/1-2	Hoya Invitational	83-85	T40th
4/10-12	Big South Championship	80-81-77	T22nd

**2004-05 (Sophomore): 83.5 avg.**

9/18-19	Dartmouth Invitational	80-80	T8th
10/2-3	Penn State Invitational	84-90-88	T81st
10/16-17	Yale Invitational	86-89	37th
10/23-24	Bucknell Fall Classic	83-85	T20th



Teri Schlang

12 PRESIDENTS' CUPS • SCHOOL-RECORD EIGHT PATRIOT LEAGUE CHAMPIONSHIPS IN 2005-06



3/18-20	The Shamrock	82-79-84	T22nd
3/26-27	William & Mary Invitational	80-82	T24th
4/3	Hoya Invitational	86	T16th
4/11-13	Big South Championship	81-81-83	24th

**2003-04 (Freshman): 84.6 avg.**

9/5-7	Unlimited Potential/Bay Tree Classic	86-84	T142nd
9/27-28	Princeton Invitational	89-91	T70th
10/4-5	Yale Invitational	87-91	T50th
10/10-12	Penn State Invitational	85-88-83	54th
10/17-18	Rutgers Invitational	81-80	T18th
3/20-21	Georgetown Invitational	83-87	T24th
3/27-28	William & Mary Invitational	83-85	T76th
4/5-6	Bucknell Spring Invitational	78-83	5th
4/12-14	Big South Championship	90-79-79	T18th



**LAURA FISHER**  
**SOPHOMORE**  
**SELLERSVILLE, PA.**

**Fall 2006:** Competed at Bison Fall Classic, shooting 89-90 ... **Spring 2006:** Did not compete in a tournament ... **Fall 2005:** Did not compete in a tournament ... **At Germantown Academy:** Earned two letters in golf and three in volleyball.

**Personal:** Daughter of Mary and Thomas Fisher ... Has three siblings, Elisabeth, Thomas and Robert ... Born July 29, 1987 in Lansdale, Pa. ... Majoring in biology.

**Fall 2006 (Sophomore): 89.5 avg.**

9/30-10/1	Bison Fall Classic	89-90	T54th
-----------	--------------------	-------	-------

**2005-06 (Freshman): DNP**



**DEIRDRE MORAN**  
**SOPHOMORE**  
**BRYN MAWR, PA.**

**Fall 2006:** Played in the final four events of the fall and ranked third on the team with an 81.0 average ... Best finish was 14th at Bison Fall Classic (82-79) ... Also finished T-22nd at Penn State, T-17th at Rutgers and T-18th at Richmond ... **Spring 2006:** A

regular in the Bison lineup ... Played to an 82.4 spring average (82.5 for fall and spring combined) ... Placed 29th in first Big South Championship ... **Fall 2005:** Made immediate impact as a freshman ... Played in three fall tournaments and averaged 82.2, second-best on squad ... In first collegiate tournament at Princeton shot final-round 76, the team's low round of the fall ... T-29th at Princeton, then T-19th a week later at Yale Invitational (77-82) ... **At Academy of Notre Dame:** First Team All-Main Line honoree ... Earned four letters in golf and served as team captain as a junior and senior ... Also earned three letters in field hockey and was elected team captain as a senior ... Honorable Mention All-Main Line performer in hockey.

**Personal:** Daughter of Denise and Michael Moran ... Has two brothers, Tom and Chris ... Born Sept. 27, 1986 in Wynnewood, Pa. ... Made Dean's List in first semester at Bucknell ... Member of Big South Academic Honor Roll ... Majoring in economics.

**Fall 2006 (Sophomore): 81.0 avg.**

9/22-24	Nittany Lion Invitational	82-80-79	T22nd
9/30-10/1	Bison Fall Classic	82-79	14th
10/13-14	Rutgers Invitational	81-81	T17th
10/16-17	Richmond Spider Invitational	85-80	T36th

**2005-06 (Freshman): 82.5 avg.**

9/24-25	Princeton Invitational	86-76	T29th
10/1-2	Yale Invitational	77-82	T19th
10/14-15	Nittany Lion Invitational	89-83	75th
3/17-19	The Shamrock	84-81-79	T22nd
3/25-26	William & Mary Invitational	85-83	T44th
4/1-2	Hoya Invitational	85-84	T47th
4/10-12	Big South Championship	82-82-79	29th



**LEAH ANTKIEWICZ**  
**FRESHMAN**  
**ALIQUIPPA, PA.**

**Fall 2006:** Averaged 86.0 in two tournaments ... Best round was her first, an 84 at Ball State ... **At Quigley Catholic H.S.:** Lettered three times in golf and also served as a basketball manager for four years ... Golf team captain ... Tri-State Player of the Year

... Two-time WPIAL Tournament qualifier.

**Personal:** Daughter of James and Renee Antkiewicz ... Has a brother, Vincent ... Born June 23, 1988 in Sewickley, Pa. ... Majoring in computer science and engineering.

**Fall 2006 (Sophomore): 86.0 avg.**

9/9-10	Cardinal Classic	84-85	T80th
9/30-10/1	Bison Fall Classic	87-88	T41st



**LEXIE ORR**  
**FRESHMAN**  
**GENEVA, ILL.**

**Fall 2006:** Played in two events in debut season and averaged 86.8 ... Opening-round 83 at Ball State was her low round of the fall ... **At Geneva H.S.:** Participated in golf and basketball ... Golf team captain ... Named MVP of the Prairie Conference ...

Earned all-region and all-area honors ... Helped lead basketball team to conference and regional titles.

**Personal:** Daughter of Brad and Cheryl Orr ... Has two brother, Nate and Ben ... Born March 9, 1988 in Boulder, Colo. ... Majoring in biochemistry.

**Fall 2006 (Sophomore): 86.0 avg.**

9/9-10	Cardinal Classic	83-86	T80th
9/30-10/1	Bison Fall Classic	87-91	T52nd

113 ACADEMIC ALL-AMERICANS • PERENNIAL LEADER IN GRADUATION RATES



12 PRESIDENTS' CUPS • SCHOOL-RECORD EIGHT PATRIOT LEAGUE CHAMPIONSHIPS IN 2005-06



## THE FRONT NINE SCORECARD

HOLE	1	2	3	4	5	6	7	8	9	OUT
BLUE TEES	333	209	593	155	366	357	370	432	499	3314
ORANGE TEES	323	187	582	146	341	345	352	418	481	3175
PAR	4	3	5	3	4	4	4	4	5	36
HANDICAP	7	9	1	17	13	15	11	5	3	
GREEN TEES	309	186	496	132	341	345	352	407	380	2948
CREAM TEES	250	148	496	132	298	292	293	407	337	2653
PAR	4	3	3	4	4	4	4	4/5	5	36/37
HANDICAP	5	7	1	17	9	13	11	15	3	

### Course Rating Slope

Blue	70.0-75.6	132-138
Orange	68.5-73.7	129-134
Green	65.9-70.5	124-128
Cream	63.7-67.8	119-122
	(Men-Women)	

### OVERVIEW

The front nine at the Bucknell Golf Club is a par-36 tough playing nine holes that requires precision driving and solid approach shots into well guarded greens. The first four holes are on the main side of the course, while holes five through nine are on the other side of the Smoketown road and become quite a bit lengthier than the rest of the course. Included on the front side is the most difficult hole on the course, the long par five third hole. The front side is a picturesque nine holes with the high point coming on a tough approach shot over a pond, complete with fountain, on the par five ninth hole. In order to reach the back nine, the golfer must cross the street back to the main course and an entirely different kind of nine holes, technically speaking.

### HOLE-BY-HOLE

**1st Hole, 333 yard par 4:** "An uphill, sharp dogleg right par four. The golfer should drive the ball to the left-center of the fairway in order to avoid the grove of trees on the right. The approach is a challenging short iron to a small green surrounded with bunkers on both sides."

**2nd Hole, 209 yard par 3:** "A difficult and long par three. An elevated tee shot must carry over a deep valley to a narrow green with large sand traps on either side. A straight tee shot is paramount."

**3rd Hole, 593 yard par 5:** "The longest hole on the course, a par five that veers to the left characterized by a challenging up hill third shot. While the hole has no sand traps, it is legitimately the number one handicap hole. Trees line the left and right for the entire length of the hole."

**4th Hole, 155 yard par 3:** "A short par three down to a large green with sand traps front right and left. Don't be long!"

**5th Hole, 366 yard par 4:** "A short but challenging par four that requires an accurate drive favoring the right side of the fairway. Avoid the right side fairway bunker and prepare for an uphill second shot to a large but well bunkered green."



Tee-Shot on the First Hole at the Bucknell Golf Club

**6th Hole, 357 yard par 4:** "Another short but narrow par four. A downhill tee shot to a tree lined narrow fairway. Again, the green is large but well protected by numerous sand traps."

**7th Hole, 370 yard par 4:** "A challenging uphill par four that once again needs an accurate straight drive to avoid out-of-bounds left and trees to the right. Expect a second shot with an uphill stance to a very large green with no sand traps. Watch the pin placement as there is a two club difference from front to back pin placements."

**8th Hole, 432 yard par 4:** "One of the most difficult par fours on the course. A long hole once again requiring a straight drive as there is a stand of dense pines to the right and out-of-bounds to the left. The approach is downhill to a large green surrounded by bunkers."

**9th Hole, 499 yard par 5:** "A par five back to the clubhouse that veers left around a picturesque barn. The tee shot is uphill to a plateau, the second shot is a downhill lay up shot short of a pond fronting a generous green. There is water, but no desert on this hole."



### THE BACK NINE SCORECARD

HOLE	10	11	12	13	14	15	16	17	18	IN	TOTAL
BLUE TEES	192	364	408	172	400	527	139	354	383	2939	6253
ORANGE TEES	178	354	387	120	364	509	123	336	374	2745	5920
PAR	3	4	4	3	4	5	3	4	4	34	70
HANDICAP	12	6	2	16	14	4	18	8	10		
GREEN TEES	170	322	322	95	364	406	108	234	361	2382	5330
CREAM TEES	138	292	322	95	289	406	108	234	314	2198	4851
PAR	3	4	4	3	4	5	3	4	4	34	70/71
HANDICAP	10	6	2	12	14	4	18	16	8		

### OVERVIEW

The back nine at the Bucknell Golf Club has a slightly different feel from the front nine. The golfer returns from across the street and is immediately met with a long par three straight up a hill. The back nine is not nearly as long as the front, but it makes up for a lack of distance by demanding the golfer to make accurate tee shots to narrow landing areas. A true golfer will say that a golf course is truly challenging when the golfer needs to play as well on the last hole as they did on the first hole. The BGC is no exception. The 18th hole at Bucknell is not a long hole but has a very small green that is well protected. A good score at the Bucknell Golf Club is well deserved at the end of the day.

### HOLE-BY-HOLE

**10th Hole, 192 yard par 3:** "The back nine starts with a difficult par three. A long iron or fairway wood to a narrow green that is very well fortified by sand traps."

**11th Hole, 364 yard par 4:** "A lovely mid-length par four veering slightly to the right. An accurate second shot is mandatory as the green is extremely narrow and has sand traps right and left."

**12th Hole, 408 yard par 4:** "Many say this is the signature hole. A demanding drive uphill to either a plateau or, for the long hitters, over the hill to a flat porch at green level. The second shot is over a pond to a generous green surrounded by bunkers."

**13th Hole, 172 yard par 3:** "A short par three over water to a large green fronted by a lone sand trap."

**14th Hole, 400 yard par 4:** "A slight dogleg left par four that, once again, requires the golfer to make an accurate drive as there are dense trees right and left. The second shot is to a generous green protected by numerous bunkers."

**15th Hole, 527 yard par 5:** "A picturesque straight-away par five with out-of-bounds all the way to the green on the right side, fairway traps on



Tee Shot on the 10th hole at Bucknell Golf Club

the left and trees lining both sides from tee to green. The approach shot is to a very narrow green protected by many well placed sand traps."

**16th Hole, 139 yard par 3:** "A short, downhill par three to a small green with bunkers front, left and rear. While birdie is possible, so is bogey, depending largely on the tee shot."

**17th Hole, 354 yard par 4:** "A short par four with a severely undulating fairway. The tee shot must avoid out-of-bounds right, a water hazard long left and trees along both sides of the fairway. The second shot may require an uphill, downhill or side hill play to a narrow, two-tiered green with sand traps on either side. Don't be long as there is out-of-bounds behind the green."

**18th Hole, 383 yard par 4:** "A straight away par four with what at first appears to be a wide and inviting fairway. However, there is out-of-bounds along the right from tee to green as well as ample trees lining both sides of the fairway. The second shot is slightly downhill to a very narrow green with sand traps right and grass depressions to the left."

Course description courtesy of George Burman, Class of '74



# BIG SOUTH WOMEN'S GOLF CHAMPIONSHIP

APRIL 10-12, 2006  
BENT BROOK G.C.  
McCALLA, ALA.

Teri Schlang shot 77, the best of four Bucknell scores in the 70s, and the Bison finished the 2006 PUPS/PDPS Big South Championship in style with a school-record 314 in the final round at Bent Brook Golf Course. The Bison matched their best-ever finish at the event, finishing in fifth place.

Remarkably, Bucknell's best-ever team total came despite not counting the score of its No. 1 player, Amy Loughney, who shot 80 in the final round after opening with a pair of 76s. Still, Loughney's 54-hole total of 232 was the best on the team, and she finished in a tie for 11th place individually.

Deirdre Moran, Emily Chiodo and Kathryn Batchelor all shot 79 for Bucknell, which finished 20 strokes clear of sixth-place Radford.

Birmingham Southern shot 290 in the final round to hold off hard-charging Coastal Carolina for the team title. The Chanticleers finished with a 1-under par 287, but Birmingham Southern's 889 total was still good for a 16-stroke win over Coastal.

Winthrop finished third at 907, followed by High Point at 930, Bucknell at 956, Radford at 976, Charleston Southern at 994 and Holy Cross at 1,065.

Ann Maness of Coastal Carolina shot a 4-under 68 in the final round to come from six shots down at the start of the day and edge Winthrop's Erin White by one for the individual title.

Schlang's 77 lofted her into a tie for 22nd place, while Moran, Chiodo and Batchelor took 29th, 30th and 31st, respectively. The Bison, who will return all five starters next season, set the previous school scoring record with an opening-round 315 at last year's Big South Championship. Bucknell's 54-hole total of 956 was its best by 14 strokes at the Big South tourney.

## BIG SOUTH CHAMPIONSHIP HISTORY

Year	Team Champion	Individual Champion
1989	Winthrop	Kelly Smith, Winthrop
1990	Winthrop	Margee Brennan, Winthrop
1991	Winthrop	Catherine Rheiner, Winthrop
1992	Coastal Carolina	Kim Chase, Coastal Carolina
1993	Campbell	Janet Wooten, Campbell
1994	Campbell	Jennifer Layman, Campbell
1995	UNC Greensboro	Becky Morgan, UNC Greensboro
1996	UNC Greensboro	Becky Morgan, UNC Greensboro
1997	Charleston Southern	Becky Morgan, UNC Greensboro
1998	Coastal Carolina	Janice Roberts, Winthrop
1999	Charleston Southern	Patricia Martinson, Charleston Southern
2000	Charleston Southern	Patricia Martinson, Charleston Southern
2001	Charleston Southern	Stephanie George, Radford
2002	UNC Wilmington	Paige Landry, Coastal Carolina
2003	UNC Wilmington	Yunuen Sanchez, UNC Wilmington
2004	UNC Wilmington	Becky Berzonski, UNC Wilmington
2005	Coastal Carolina	Line Cordes, Coastal Carolina
2006	Birmingham-Southern	Ann Maness, Coastal Carolina

## 2006 TEAM RESULTS

1.	Birmingham-Southern	889
2.	Coastal Carolina	905
3.	Winthrop	907
4.	High Point	930
5.	Bucknell	956
6.	Radford	976
7.	Charleston Southern	994
8.	Holy Cross	1065

## 2006 INDIVIDUAL RESULTS

1.	Maness (Coastal)	217
2.	White (Winthrop)	218
3.	Stupiansky (Birm. So.)	221
4.	O'Sullivan (High Pt.)	222
5.	Heher (Coastal)	223
	Mitchell (Birm. So.)	223
7.	Klein (Birm. So.)	224
	Hardy (Birm. So.)	224
9.	Franceschelli (Radford)	228
	Dabule (Winthrop)	228
11.	<b>Loughney (Bucknell)</b>	<b>232</b>
	Letzig (Coastal)	232
13.	Deyerman (Winthrop)	233
	Hester (Winthrop)	233
	Dodge (Birm. So.)	233
<b>T22.</b>	<b>Schlang (Bucknell)</b>	<b>238</b>
<b>29.</b>	<b>Moran (Bucknell)</b>	<b>243</b>
<b>30.</b>	<b>Chiodo (Bucknell)</b>	<b>244</b>
<b>31.</b>	<b>Batchelor (Bucknell)</b>	<b>250</b>



## BISON GOLF: LEADERS ON THE COURSE AND IN THE CLASSROOM

Bucknell athletics teams are well-known for their prowess both on the playing fields and in the classroom. The Bison women's golf team is no exception. In fact, Kevin Jamieson's squad had an stellar combined grade-point average of 3.23 in the spring 2006 semester, one of the highest of any of Bucknell's 27 teams. The following nine Bison women's golfers achieved a 3.2 GPA last spring and earned a spot on the Big South Presidential Honor Roll.

NAME	MAJOR(s)
Laura Ashpole	Undeclared
Kathryn Batchelor	Management
Katsie Calhoun	Management
Stephanie Calhoun	Management
Emily Chiodo	Management
Meredith Kalman	Biomedical Engineering
Deirdre Moran	Economics
Teri Schlang	Psychology
Jasmine Winters	Undeclared

## GOLF DIGEST LAUDS BUCKNELL GOLF PROGRAMS IN COLLEGIATE RANKINGS ISSUE

On the heels of one of the finest golf seasons ever at Bucknell, Golf Digest, one of the preeminent publications covering the sport of golf, has for the second straight year included the Bucknell men's and women's programs among the best for institutions that stress academics first, according to its college rankings in the September 2006 issue of the magazine.

In compiling a collegiate ranking system intended to be used as

### DID YOU KNOW?

- Half of the classes at Bucknell have 17 students or fewer.
- All classes are taught by professors, not graduate assistants.
- Student-Faculty ratio is 11:1.
- Bucknell's 94% retention rate and 89% graduation rate are among the highest in the nation.
- Bucknell students annually receive \$33 million in institutional financial aid.

a guide for junior players, Golf Digest rated each school in four categories: academics, climate, coach/facilities and golf performance.

The editors used statistics from U.S. News & World Report's 2006 guidebook, America's Best Colleges. To assist prep golfers who may have different educational priorities, the magazine created three categories of rankings: "Golf First," "Academics First," and "Balanced." In

each category, Golf Digest weighted the values of the four ratings to correspond with what student-golfers are looking for.

Both of Bucknell's teams received top-50 rankings in the "Academics First" category. The Bison women's squad, a member of the Big South Conference under head coach Kevin Jamieson, was ranked 27th nationally. Coach Jim Cotner's men's team, the 2006 Patriot League champion, was ranked 44th.

## THE PLAN FOR BUCKNELL



Bucknell is a unique national university where liberal arts and professional programs complement each other, where 3,350 full-time students

are educated for a lifetime of critical thinking and strong leadership. For 160 years, the University has remained true to its fundamental purpose: to educate and prepare students for lives that make a difference and have a positive impact on the world.

In keeping with that purpose, the University has developed *The Plan for Bucknell*, which includes its collective vision — "To provide students with the premier undergraduate experience in American higher education."

*The Plan* comprises five strategies:

**Strengthen the Academic Core** aims to ensure that a Bucknell education is challenging and engaging, with openness to new ideas and a culture of innovation;

**Deepen the Residential Learning Experience** will provide a residential learning and living experience that complements the academic program, integrates the athletics and recreation program and promotes personal growth and development and civic and ethical responsibility;

**Enhance Diversity** is a commitment to diversity in all its forms within a civil and supportive environment of open exchange to prepare Bucknell graduates to live and work in a globally integrated and intercultural world;

**Build Bridges** will bring the world to Bucknell — through visiting scholars and sports teams, international students and alumni, guest speakers, international focus semesters, and electronic communications — and bring Bucknell to the world through strategic partnerships and community engagement activities as well as opportunities for off-campus study and faculty research;

**Secure Our Financial Future** will secure resources necessary to engage new opportunities, lessen dependence on tuition, and ensure our financial future.

*The Plan for Bucknell* was unanimously approved by the Board of Trustees on April 29, 2006, having previously been approved by the students and faculty. We have begun implementing it and are determined to make it a reality over the next decade. To read the complete version of *The Plan for Bucknell* or to request a published version, see <http://www.bucknell.edu/ThePlan-forBucknell>





## BUCKNELL WOMEN'S GOLF HISTORY

Women's golf at Bucknell began at the varsity level in 1998, as longtime administrator and former men's coach Brad Tufts guided the fledgling program through its infancy.

Under the leadership of Tufts, a member of the Bucknell Athletics Hall of Fame, the first-year program won 3 of 4 dual matches and posted solid showings at four tournaments, including the prestigious ECAC Championship.

Bucknell's inaugural team consisted primarily of women on campus who had previously expressed an interest in the sport, although it was two prominent freshmen that had previously played on boys teams in high school that led the team week after week — Hilary Mainka and Bridget O'Mara.

Mainka was the top Bison finisher in 10 of 11 events, and her final-round 80 at the ECAC Championship was the lowest of that inaugural season. O'Mara



**Molly Campbell**

recorded the program's first hole-in-one at the Princeton Invitational.

In 1999 the scores continued to improve as the Bucknell program solidified. An outstanding freshman class, featuring Jess Hetrich, Molly Campbell, Amy Jones and Catherine Crews, infused even more talent into the young program. Mainka became the first Bison to break 80 in a competitive round, shooting 78 in the first round of the Rutgers Invitational, leading Bucknell to a fourth-place finish.

Taking advantage of its outstanding home course, the Bucknell Golf Club, the Bison hosted the ECAC Championship for the first time in 1999, placing 13th out of 22 teams.

Bucknell also played a spring schedule for the first time in 1999-2000, participating in five events,

including two in North Carolina and one in South Carolina.

In the fall of 2000, Tufts handed the program over to Lewisburg native Kevin Jamieson, who had been serving as Tufts' assistant coach, and the development of the program did not skip a beat.

The Bison hosted their first invitational tournament in the spring of 2001, finishing a strong third out of eight teams. Bucknell's team total of 650 broke the school 36-hole record by 22 shots, while the second-round score of 321 was also a record. Mainka's second-round 77 broke her own school individual record.

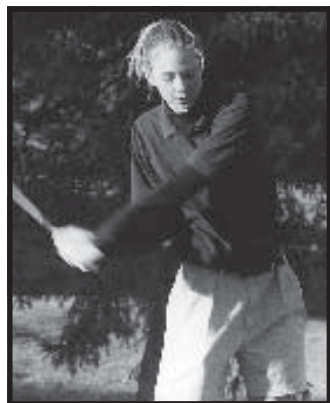
In 2001-02, the Bucknell women's golf program moved into its "senior year." Led by veterans Mainka and O'Mara, and the well-established Hetrich and Campbell, Bucknell enjoyed its best-ever season in the fall. The Bison tied for fifth on their home course at the ECAC Championship, while eight of the

top 11 team rounds to that point in program history were recorded during that campaign.

With several key players studying abroad in the spring of 2002, the Bison struggled a bit, but Hetrich reached a milestone in early April, becoming Bucknell's first tournament medalist by winning the Bucknell Invitational by a two-stroke margin.

In the fall of 2002, Jaime Hays carded a 74 in the first round of the Yale Invitational, which stood as the school record for one year, until Frenchwoman Celine Herbin shot 73 at Yale.

The evolution of the program took another turn in December 2002, when the Bison joined a conference for the first time, affiliating with the



**Hilary Mainka**

Big South. Bucknell took sixth in its first Big South Championship appearance in April 2003.

During the 2003-04 season the team was led by Herbin, a French foreign exchange student, who took advantage of her single year at Bucknell to re-write the golf team's record book. Herbin averaged a 77.8 in the spring of 2004 and shot a school-record 73 twice. She won the Georgetown Invitational, had four

top-10 finishes and placed 11th at the Big South Championship.

In 2005 the Bison posted their best-ever finish (fifth) at the Big South Championship, and they claimed their first All-Big South performer when then-freshman Amy Loughney posted 77-76-76 and tied for fifth place. Bucknell's opening-round 315 at the event shattered the school 18-hole team record by four shots. A year later, the Bison broke that record with a final round 314 at the Big South Championship in McCalla, Ala., in another fifth-place performance. Loughney tied Herbin's record with a 77.8 average in the spring of 2006. She tied for 11th at the Big South tourney after starting the spring with a terrific second-place finish at The Shamrock.

The Bison made even more history in the fall of 2006, claiming their first-ever tournament title on Sept. 30-Oct. 1 at the Bison Fall Classic. Teri Schlang became the team's first individual winner since Herbin in the spring of 2004, and she earned Bucknell's first-ever Big South Golfer of the Week honor. After finishing in a tie for 13th at Ball State's Cardinal Classic, the Bison were a best-ever sixth at Penn State two weeks later, equaling the team record with a second-round 314. They won their own tournament the next week, then took second at Rutgers and third at Richmond to finish the season.

## TOURNAMENT PROGRESSION

### 1998-99

9/19-20	Dartmouth Invitational	385-370—755	10th of 14
10/3-4	Princeton Invitational	392-379—771	6th of 9
10/9-10	Rutgers Invitational	386-395—781	5th of 9
10/17-18	ECAC Championship	405-370—775	T17th of 21

### 1999-2000

9/18-19	Dartmouth Invitational	340-342—682	6th of 18
10/2-3	Princeton Invitational	366-364—730	5th of 10
10/8-9	Rutgers Invitational	336-338—674	4th of 13
10/23-24	ECAC Championship	346-369—715	12th of 22
4/1-2	William & Mary Inv.	348-344—692	13th of 16
4/8*	Boston College Inv.	358	6th of 12
4/16-17	at Hartford Invitational	369-373—742	5th of 14

### 2000-01

9/16-17	Dartmouth Invitational	335-350—685	9th of 17
9/30-10/1	Princeton Invitational	353-345—698	7th of 16
10/6-7	Rutgers Invitational	346-346—692	7th of 17
10/21-22	ECAC Championship	332-340—672	11th of 13
4/6-8	Bucknell Invitational	329-321—650	3rd of 8
4/11-12	William & Mary Inv.	347-354—701	17th of 19
4/22-23	Hartford Invitational	346-337—683	3rd of 10

### 2001-02

9/4	Bucknell Invitational	341	3rd of 5
9/7-9	UP/Bay Tree Classic	326-337-339—1002	25th of 31
9/22-23	Yale Invitational	325-326—651	7th of 17
10/6-7	Princeton Invitational	341-352—693	9th of 24
10/12-13	Rutgers Invitational	321-326—647	2nd of 17
10/15-16	ECU Lady Pirate Classic	330-329-319—978	9th of 18
10/20-21	ECAC Championship	328-334—662	T5th of 23
3/14-15	NIU Snowbird	365-345—710	22nd of 22
3/30-31	William & Mary Inv.	341-332—673	12th of 15
4/6-7	Bucknell Invitational	338-342—680	2nd of 9

### 2002-03

9/6-8	UP/Bay Tree Classic	337-330-327—994	27th of 35
9/21-22	Yale Fall Intercollegiate	323-332—655	7th of 12
9/28-29	Princeton Invitational	351-326—677	7th of 15
10/5-6	Nittany Lion Invitational	332-333-325—990	13th of 15
10/12-13*	ECAC Championship	342-165—507	5th of 14
3/29	William & Mary Inv.	323	T12th of 22
4/5-6	Bucknell Spring Classic	323-338—661	5th of 14
4/13-15	Big South Championship	342-343-339—1024	6th of 9

### 2003-04

9/5-7*	UP/Bay Tree Classic	341-337—678	33rd of 36
9/27-28	Princeton Invitational	331-346—677	10th of 16
10/4-5	Yale Invitational	328-353—681	9th of 13
10/10-12	Penn State Invitational	336-338-336—1010	11th of 11
10/17-18	Rutgers Invitational	329-319—648	5th of 16
3/20-21	Georgetown Invitational	333-338—671	6th of 15
3/27-28	William & Mary Inv.	323-337—660	14th of 20
4/5-6	Bucknell Spring Inv.	335-333—668	2nd of 9
4/12-14	Big South Championship	333-334-328—995	6th of 9



**2004-05**

9/18-19	Dartmouth Invitational	342-341—683	9th of 20
9/25-26	Princeton Invitational	342-360—702	11th of 15
10/2-3	Penn State Invitational	325-340-331—996	13th of 15
10/16-17	Yale Invitational	344-338—682	6th of 9
10/23-24	Bucknell Fall Classic	331-338—669	T4th of 17
3/18-20	The Shamrock	341-334-332—1007	10th of 14
3/26-27	William & Mary Inv.	328-326—654	T7th of 16
4/3*	Hoya Invitational	356	6th of 14
4/11-13	Big South Championship	315-324-331—970	5th of 8

**2005-06**

9/10-11	Notre Dame Invitational	330-336-339—1005	14th of 17
9/24-25	Princeton Invitational	338-316—654	8th of 17
10/1-2	Yale Invitational	336-341—677	9th of 10
10/14-15	Nittany Lion Invitational	330-331—661	12th of 16
3/17-19	The Shamrock	330-322-319—971	T3rd of 13
3/25-26	William & Mary Inv.	329-333—662	8th of 18
4/1-2	Hoya Invitational	329-333—662	9th of 15
4/10-12	Big South Championship	322-320-314—956	5th of 8

**Fall 2006**

9/9-10	Ball State Cardinal Classic	323-333—656	T13th of 18
9/22-24	Nittany Lion Invitational	334-314-318—966	6th of 14
9/30-10/1	Bison Fall Classic	316-316—632	1st of 17
10/13-14	Rutgers Invitational	316-328—644	2nd of 15
10/16-17	Richmond Spider Inv.	334-323—657	3rd of 12

\*Rain Shortened

**TOP INDIVIDUAL ROUNDS  
18 HOLES**

Date	Player	Course	Score
10/4/03	Celine Herbin	Yale University GC	73
3/21/04	Celine Herbin	Reston GC	73
9/21/02	Jaime Hays	Yale University GC	74
3/27/04	Celine Herbin	Ford's Colony CC	75
4/1/06	Amy Loughney	Raspberry Falls GC	75
9/23/06	Amy Loughney	Penn State White Course	75
9/24/06	Teri Schlang	Penn State White Course	75
10/1/06	Teri Schlang	Bucknell GC	75
	10 players		76

**TOP TEAM ROUNDS  
4 SCORES, 18 HOLES**

Date	Course	Score
4/12/06	Bent Brook GC (Schlang, Batchelor, Chiodo, Moran)	77-79-79-79=314
9/23/06	Penn State White Course (Loughney, Batchelor, Moran, Schlang)	75-79-80-80=314
4/11/05	The Patriot at Grand Harbor (Loughney, Phalen, Batchelor, Schlang)	77-77-80-81=315
9/25/05	Springdale GC (Moran, Schlang, Loughney, Chiodo)	76-77-80-83=316
9/30/06	Bucknell GC (Schlang, Batchelor, Loughney, Moran)	76-78-80-82=316
10/1/06	Bucknell GC (Schlang, Loughney, Moran, Chiodo)	75-79-79-83=316
10/13/06	Rutgers GC (Schlang, Loughney, Chiodo, Moran)	77-78-80-81=316
9/24/06	Penn State White Course (Schlang, Moran, Batchelor, Loughney)	75-79-81-83=318
3/19/06	Tega Cay GC (Loughney, Schlang, Moran, Batchelor)	76-77-79-87=319
10/18/03	Rutgers GC (Herbin, Calhoun, Schlang, Hays)	77-80-80-82=319
10/16/01	Greenville (N.C.) CC (Hetrich, Mainka, Hays, Campbell)	78-78-80-83=319

**TOP TEAM ROUNDS  
4 SCORES, 36 HOLES**

Date	Course	Score
9/30-10/1/06	Bucknell GC	632 (316-316)
4/11-12/05	The Patriot at Grand Harbor	639 (315-324)*
4/10-11/06	Bent Brook GC	642 (322-320)*
10/13-14/06	Rutgers GC	644 (316-328)
10/12-13/01	Rutgers GC	647 (321-326)
10/17-18/03	Rutgers GC	648 (329-319)
9/22-23/06	Penn State White Course	648 (334-314)*
4/6-8/01	Bucknell GC	650 (329-321)
9/22-23/01	Yale University GC	651 (325-326)
3/17-18/06	Tega Cay GC	652 (330-322)*

\* First 36 holes of 54-hole tournament

**TOP TEAM ROUNDS  
4 SCORES, 54 HOLES**

Date	Course	Score
4/10-12/06	Bent Brook GC	956 (322-320-314)
9/22-24/06	Penn State White Course	966 (334-314-318)
4/11-13/05	The Patriot at Grand Harbor	970 (315-324-331)
3/17-19/06	Tega Cay GC	971 (330-322-319)
10/15-16/01	Greenville (N.C.) CC	978 (330-329-319)
10/5-6/02	Penn State Blue Course	990 (332-333-325)

**BUCKNELL GOLF CLUB**

Lewisburg, PA 17837

570-523-8193

Brian Kelly, Head Professional

**BUCKNELL GOLF CLUB GETS RECOGNITION**

In the June 2002 issue of *Washington Golf Monthly*, Vince Quinn wrote, "Just outside of Lewisburg, the Bucknell Golf Club is Pennsylvania's top university-associated golf course. Variety is the operative word at Bucknell, which has a 603-yard par 5, a 134-yard par 3 and virtually everything in between. Though open to the public, Bucknell has the feel of a traditional country club course." This was stated in Quinn's article titled "Pennsylvania Dutch Treats."





2006 BUCKNELL SPRING GOLF STATISTICS

March 17-19 at The Shamrock (Par-72 Tega Cay G.C., Tega Cay, S.C.).....T3rd of 13  
 March 25-26 at William & Mary Invitational (Par-72 Ford's Colony C.C., Williamsburg, Va.) .....8th of 18  
 Apr. 1-2 at Hoya Invitational (Par-72 Raspberry Falls G.C., Leesburg, Va.) .....9th of 15  
 Apr. 10-12 at Big South Championship (Par-72 Bent Brook GC, McCalla, Ala.) .....5th of 8

Team	3/17	3/18	3/19	3/25	3/26	4/1	4/2	4/10	4/11	4/12	Spring Avg.	Fall+Spring Avg.
Team	330	322	319	329	333	329	333	322	320	314	325.1	329.7
Laura Ashpole												89.3
Kathryn Batchelor	86	80	87 <b>T37th</b>	81	83 <b>T34th</b>			87	84	79 <b>31st</b>	83.4	84.6
Emily Chiodo				90	85 <b>T63rd</b>	86	82 <b>T40th</b>	84	81	79 <b>30th</b>	83.9	85.3
Amy Loughney	77	77	76 <b>2nd</b>	80	79 <b>T21st</b>	75	82 <b>9th</b>	76	76	80 <b>T11th</b>	77.8	81.3
Deirdre Moran	84	81	79 <b>T22nd</b>	85	83 <b>T44th</b>	85	84 <b>T47th</b>	82	82	79 <b>29th</b>	82.4	82.5
Kristen Phalen	89	94	91 <b>59th</b>								91.3	89.0
Teri Schlang	83	84	77 <b>T22nd</b>	83	78 <b>T24th</b>	83	85 <b>T40th</b>	80	81	77 <b>T22nd</b>	81.1	81.0
Jasmine Winters												87.5

2006 BUCKNELL FALL GOLF STATISTICS

Sept. 9-10 at Ball State Cardinal Classic (Par-72 The Players Club, Yorktown, Ind.) .....T13th of 18  
 Sept. 22-24 at Nittany Lion Invitational (Par-72 Penn State White Course, State College, Pa.) .....6th of 14  
 Sept. 30-Oct. 1 at Bison Fall Classic (Par-70 Bucknell Golf Club, Lewisburg, Pa.) .....1st of 17  
 Oct. 13-14 at Rutgers Invitational (Par-72 RU Golf Course, Piscataway, N.J.) .....2nd of 15  
 Oct. 16-17 at Richmond Spider Invitational (Par-72 Virginia Crossings GC, Glen Allen, Va.) .....3rd of 12

Team	9/9	9/10	9/22	9/23	9/24	9/30	10/1	10/13	10/14	10/16	10/17	Avg.
Team	323	333	334	314	318	316	316	316	328	334	323	323.2
Leah Antkiewicz	84	85 <b>T80th</b>				87	88 <b>T41st</b>					86.0
Kathryn Batchelor	82	86 <b>T77th</b>	80	79	81 <b>T18th</b>	78	88 <b>T21st</b>	85	88 <b>T38th</b>	87	88 <b>T42nd</b>	83.8
Emily Chiodo			89	81	87 <b>T59th</b>	83	83 <b>T21st</b>	80	94 <b>T41st</b>	83	81 <b>T15th</b>	84.6
Amy Loughney	79	83 <b>T46th</b>	85	75	83 <b>T26th</b>	80	79 <b>T8th</b>	78	76 <b>T2nd</b>	79	79 <b>T4th</b>	79.6
Deirdre Moran			82	80	79 <b>T22nd</b>	82	79 <b>14th</b>	81	81 <b>T17th</b>	85	80 <b>T18th</b>	81.0
Lexie Orr	83	86 <b>T80th</b>				87	91 <b>T52nd</b>					86.8
Teri Schlang	79	79 <b>T26th</b>	87	80	75 <b>T24th</b>	76	75 <b>1st</b>	77	83 <b>T10th</b>	90	83 <b>T36th</b>	80.4

113 ACADEMIC ALL-AMERICANS • PERENNIAL LEADER IN GRADUATION RATES



## THE ABC'S OF THE RECRUITING PROCESS

### ADMISSIONS & APPLICATIONS

You can reach our Admissions Office by calling (570) 577-1101. To receive an application, please call our admissions office or send a written request to: Bucknell Admissions Office, Freas Hall, Bucknell University, Lewisburg, PA 17837.

### CALENDAR

A typical recruiting calendar for a prospective student-athlete interested in golf would go something like this:

**\*\* Summer 2007** — Make unofficial visits to schools of interest.

**\*\* September 2007** — Contact head coach Kevin Jamieson if Bucknell falls within your top five list of potential colleges. Send a letter expressing interest in the women's golf program. It would be helpful to include a transcript and resume. Also, the student-athlete should be registered with the NCAA Clearinghouse. See your high school athletics director or guidance counselor for information.

**\*\* October 2007** — Head coach Kevin Jamieson will be in contact regarding the student-athlete's interest and possible visit date. The student-athlete and family should file CSS Financial Aid Profile Form. See your college guidance counselor for information.

**\*\* November 15, 2007** — Deadline for Admissions Early Decision I.

**\*\* Late December, 2007** — Target date for Admissions letters to go out for Early Decision I candidates.

**\*\* January 1, 2008** — Deadline for Admissions Regular Decision and Early Decision II.

**\*\* Late January, 2008** — Target date for Admissions decision letters to go out for Early Decision II candidates.

**\*\* February 1, 2008** — Deadline for Financial Aid applications.

**\*\* Late March, 2008** — Target date for Admissions decision letters to go out for Regular Decision candidates.

**\*\* Mid-April, 2008** — Target date for open house weekend for all accepted applicants.

**\*\* May 1, 2008** — Deadline for securing spot in class of 2012 with deposit.

### CLEARINGHOUSE

The NCAA mandates that all student-athletes interested in competing at the Division I or II level must be certified through the NCAA Initial Eligibility Clearinghouse. Contact high school coaches, athletics director and/or guidance counselor for necessary paperwork.

### CONTACTS

As per NCAA by-law 13.02.3, a contact is any face-to-face encounter between a prospect or the prospect's parent or legal guardian and an institutional staff member or athletics representative during which any dialogue occurs in excess of an exchange of a greeting. Any such face-to-face encounter that is pre-arranged or takes place on the grounds of the prospect's high school, or at the site of organized competition or practice involving the prospect's high school, preparatory school, two-year college, or all-star team is considered a contact, regardless of the conversation that occurs. We are limited to three off-campus contact days per prospective student-athlete.

### CORRESPONDENCE

It's important that the prospective student-athlete get in touch with head coach Kevin Jamieson as soon as possible. A letter of inquiry accompanied by a resume with academic and golf information will initiate the recruiting process. In the spring of your junior year or early senior year is the most appropriate time to contact Coach Jamieson.

### EARLY DECISION

Students who are absolutely, 100% confident Bucknell is their top college choice are encouraged to apply during the Early Decision process. Advantages are that you'll have an Admissions decision prior to Christmas and all students accepted during the early decision process are guaranteed financial aid for which they qualify.

### FINANCIAL AID

Bucknell University does not offer athletic scholarships in the sport of women's golf. All financial aid is awarded on the basis of need. Prospective student-athletes should complete the CSS "Profile Form" in the early Fall.

### INTERVIEWS

Head coach Kevin Jamieson strongly encourages all prospective student-athletes to arrange for an on-campus interview with the Admissions Office. If it is not possible to interview on campus, alumni interviews are highly recommended. All interviews should be arranged through the Admissions Office by calling (570) 577-1101.

### TELEPHONE CALLS

As per NCAA by-law 13.1.3.1, institutional staff members may not telephone a prospect (or the prospect's relatives or legal guardians) prior to July 1 following the prospect's completion of the junior year in high school. After July 1, institutional staff members may telephone a prospect once per week (measured Sunday through Saturday). The once-per-week limit applies to the entire institution.

### VISITS, Official

According to NCAA by-law 13.7.1.2, a prospect may not make more than five expense-paid visits to NCAA member institutions, regardless of the number of sports in which the prospect is involved. An institution may not provide an expense-paid visit to a prospect who has not presented the institution with a high school (or college) academic transcript and a score from a PSAT, an SAT, a PACTPlus, or an ACT test taken on a national testing date under national testing conditions. The official visit may not exceed 48 hours.

### VISITS, Unofficial

According to NCAA by-law 13.8.1, a prospect may visit an institution's campus at the prospect's own expense an unlimited number of times and may make an unofficial visit before the prospect's senior year in high school.

**If a prospective student-athlete and/or parent has any questions, please feel free to call head coach Kevin Jamieson at (570) 523-8193. Best times to reach Coach Jamieson are between the hours of 10 a.m. and 2 p.m. Also, please feel free to forward any correspondence you feel will be helpful in his assessment of a prospective student-athlete.**

## BUCKNELL DEPARTMENT OF ATHLETICS MISSION STATEMENT

The Department of Athletics and Recreation strives to set the standard of excellence for intercollegiate and intramural programs in higher education, thereby advancing and drawing attention to the mission, core values, and educational goals of Bucknell University.

The Department believes that student-athletes' academic programs must be their first priority. It is therefore committed to maintaining Bucknell's high national ranking for student-athletes' graduation rates and for producing Academic All-Americans, and to continued leadership of the Patriot League in Academic Honor Roll nominations, based on grade-point averages. The coaches' and staff's paramount responsibility is maintaining academic priorities and supporting student-athletes' education, even while providing the rigorous and serious NCAA Division I athletic opportunities Bucknell student-athletes seek.

Further, the Department promotes the personal growth of student-athletes and the general student body by encouraging personal health, development, and balance among intellectual, social, civic, and physical pursuits; by celebrating challenge and competition; and by preparing participants for service and leadership in the world. Coaches and staff direct a rich array of athletic programs and recreational opportunities aimed at increasing student engagement, as well as strengthening character, healthy living, teamwork, sportsmanship, and spirit. In creating shared experiences for students, faculty, and staff, as well as alumni, family, and friends, the Department's programs add substantially to Bucknell's sense of community and foster life-long relationships with Bucknell.

The Department embraces the University's decision to compete at the highest extramural level, in Division I of the National Collegiate Athletic Association (NCAA). Division I membership is valuable not only because this level of competition maximally challenges student-athletes, but also because it signals clearly Bucknell's high standards and seriousness of purpose in all extracurricular endeavors and it helps position Bucknell apart from other National Liberal Arts Colleges. Likewise, the competitive success the Department seeks, measured in part by consistent contention for the Patriot League's student-athletes and the University alike, and it brings distinction and national recognition to Bucknell.

A student-centered operation, the Department is committed to providing equitable opportunities to women and men, as well as members of minority and majority groups of all kinds. The Department subscribes to, and complies with, all principles and regulations of the Patriot League, the Eastern College Athletic Conference, and the NCAA.

The department is proud that so many of today's exemplary Bison scholar-athletes will be tomorrow's outstanding leaders.