



GAME INFORMATION

Who: Navy
When: Friday, March 7, 2003
 2:30 p.m. EST
Where: The Show Place Arena
 Upper Marlboro, Md.
Radio: WMLP-1380 AM
Internet Broadcast:
 www.BucknellBison.com
Television: None

Series vs. Navy: Bucknell leads, 16-13
 First Game: 12/5/81 (Navy, 71-49)
 Last Game: 2/16/03 (Bucknell, 73-60)
 Last Bucknell Win: 2/16/03 (73-60)
 Last Navy Win: 1/6/99 (65-58 OT)

ATHLETIC COMMUNICATIONS

Ath. Comm. Dir. Jon Terry
Asst. Ath. Comm. Dir. Kelli Sheesley
Office Phone (570) 577-3488
Home Phone (570) 522-9995
Email sheesley@bucknell.edu
Ath. Comm. Asst. Niki DeSantis
Fax (570) 577-1660
Press Box Phone (570) 577-1519

MEDIA INFORMATION

Mid-Week Interviews: All interview requests for head coach Kathy Fedorjaka and Bucknell players should be directed to Kelli Sheesley at (570) 577-3488.

Postgame Interviews: Following the NCAA-mandated 10-minute "cooling off" period, head coach Kathy Fedorjaka and select Bucknell players will be available for interviews. Per Patriot League Tournament procedures, the winning team will appear first in the postgame press conference. Check with Kelli Sheesley or Patriot League Media Relations Assistant Kris Petersen for press conference location. Please submit Bucknell player requests to Kelli Sheesley no later than five minutes prior to the end of regulation.

Bison Sports Hotline: (570) 577-1919
Ath. Web Site: www.BucknellBison.com
PL Web Site: www.patriotleague.com



BUCKNELL (12-14, 7-7 PL) vs. NAVY (16-11, 6-8) Friday, March 7, 2003 2:30 p.m. - The Show Place Arena Upper Marlboro, Md.

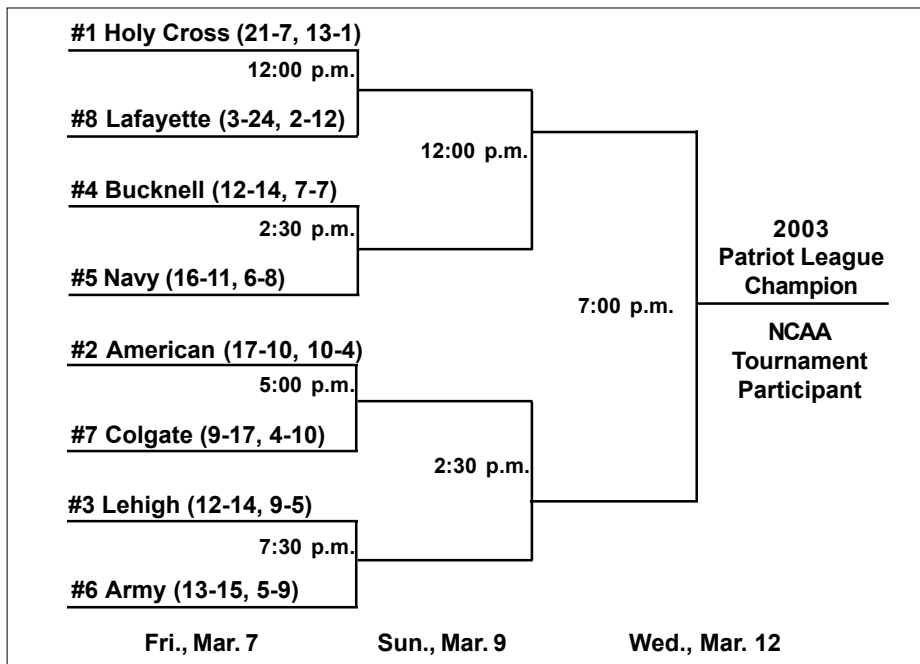
BUCKNELL'S PROBABLE STARTERS:

No.	Name	Pos.	Cl.	Ht.	PPG	RPG	Notable
13	Desire Almind	F	Jr.	6-0	15.0	8.5	Career-high 15 reb. vs. Navy/Colgate
31	Amy Ketcham	F	So.	6-0	1.4	1.7	Career-high 8 pts. vs. Holy Cross
15	Lindsey Geosits	G	Fr.	5-7	4.8	2.5	Career-high 11 pts. vs. Holy Cross
23	Molly Creamer	G	Sr.	5-10	27.2	4.5	Career-high 44 pts. at Lafayette
32	Kate Franks	G	Sr.	5-10	14.7	3.7	Career-best 28 pts. against Canisius

THE RESERVES:

10	<i>Gabrielle Miskinis</i>	G	Fr.	5-10	N/A	N/A	<i>Shin splints</i>
11	<i>Laura Hatalsky</i>	G	So.	5-9	N/A	N/A	<i>Broken bone in left foot</i>
12	Emilie Barruet	G	So.	5-7	0.2	0.2	Played in five games
20	Chelsea Smith	F	Fr.	6-1	3.1	2.9	.468 FG% (25-54)
21	Katie Hettler	G	Jr.	5-8	2.0	1.7	Career-high 9 pts., 8 reb. at Lehigh
24	Kathryn Hudock	G	Fr.	5-8	0.0	0.0	Played in first collegiate game vs. Akron
33	Jennie Ruth	F	Fr.	6-1	3.7	2.8	Career-high 19 pts. against Drexel
41	<i>Kristin Valdner</i>	F	Jr.	6-1	6.9	4.7	<i>Suffered broken left foot vs. American</i>
42	Cassie Heromin	F/C	So.	6-1	N/A	N/A	N/A
55	Mary Edwards	C	Fr.	6-3	1.9	1.1	Career-best 13 pts. against Akron

injured players in *italics*



2002-03 SCHEDULE/ RESULTS

November

F 15	at Penn State#	L, 72-86
F 22	at St. Bonaventure	L, 64-78
M 25	WEST VIRGINIA	L, 72-77
We 27	CANISIUS	W, 100-91
F 29	DREXEL	W, 95-83

December

Tu 3	at Loyola (Md.)	W, 76-73
Su 8	at Delaware	L, 45-71
Sa 21	at LaSalle	L, 74-85
Su 29	vs. Alabama\$	L, 64-89
M 30	vs. Akron\$	W, 64-49

January

Th 5	AIR FORCE	W, 85-69
Sa 4	at Long Island	L, 51-66
Sa 11	AMERICAN*	L, 74-75
We 15	LEHIGH*	L, 67-74
Sa 18	at Navy*	W, 74-65
F 24	ARMY*	W, 72-62
Su 26	LAFAYETTE*	W, 87-73
F 31	at Colgate*	W, 70-62

February

Su 2	at Holy Cross*	L, 76-86
Sa 8	at American*	L, 60-72
Tu 11	at Lehigh*	L, 61-68
Su 16	NAVY* (ESPN2)	W, 73-60
F 21	at Lafayette*	W, 71-67
Su 23	at Army*	L, 79-91
F 28	HOLY CROSS*	L, 79-91

March

Su 2	COLGATE*	W, 82-75
F 7	vs. #5 Navy%	2:30 p.m.
Su 9	PL Quarterfinals	12:00 p.m.
We 12	Patriot League Champ.	7:00 p.m.

- Pre-season WNIT

\$ - Saint Peter's Tournament

* - Patriot League Game

% - Patriot League Tournament

Home Events in **BOLD**

All Times Eastern

THE COACHING STAFF

Head Coach: Kathy Fedorjaka (Fairfield '90)

Overall Record: 160-113 (10th season)

Record at BU: 93-75 (sixth season)

1997-98..... 12-14

1998-99..... 13-14

1999-00..... 15-15

2000-01..... 20-8

2001-02..... 21-10

2002-03..... 12-14

Assistant Coach: Scott Foulis

Assistant Coach: Michelle Simons

Graduate Assistant Coach: Laurie Scherer

A Look at the Leaders ...

	Navy	Bucknell
PPG:	C. Davidson - 19.3	M. Creamer - 27.2
RPG:	A. Roseti - 7.9	D. Almind - 8.5
APG:	M. Shimoda - 4.2	M. Creamer - 5.9
SPG:	M. Shimoda - 1.7	M. Creamer - 3.0
BPG:	B. Herring - 0.9	D. Almind - 0.8
3-pt FG:	C. Davidson - 56	K. Franks - 61
FT %:	C. Davidson - .834	M. Creamer - .872

BUCKNELL IN THE PATRIOT LEAGUE

TOURNAMENT: This year marks the first time in five years that Bucknell enters the tournament as anything other than the second seed ... The Orange and Blue have won four first round games in the 11-year history of the league ... The last first-round game the Bison won was, ironically, against Navy (72-57) in the 2001-02 tournament ... Bucknell is facing Navy in the first round for the third time in four years.

FEDORJAKA AND THE TOURNAMENT:

Three years ago, when Bucknell won two tournament games to get to the championship tilt against Holy Cross, was the first time head coach Kathy Fedorjaka experienced a win in the Patriot League Tournament. Now at 4-3 in her five seasons, she has suffered losses to Lehigh (59-55, 1997-98), Army (72-67, 1998-99) and Colgate (85-69, 2000-01). Under her watch, when the Bison have won the first round game, they have advanced to the finals.

BUCKNELL VS. LEAGUE: Following is a record of Bucknell vs. every Patriot League school in the tournament. The Bison are 6-9 in tournament action:

American - 0-0
Army - 2-1
Colgate - 2-2
Holy Cross - 0-2
Lafayette - 0-2
Lehigh - 0-1
Navy - 2-0

THE NAVY SERIES: Bucknell leads in the all-time series 16-13.

Although the Mids have won 13 games since the series began in 1981, it has been all Bucknell in the past 11 meetings. The Orange and Blue have not dropped a decision to Navy since 1999, when the Mids used overtime to defeat Bucknell, 65-58, at Alumni Hall.

The Bison are 2-0 against the Mids in the Patriot League tournament. They have posted a record on neutral court.

NAVY, THE PATRIOT LEAGUE CHAMPIONSHIP
Molly Creamer (23),

and junior **Desire Almind** (22) combined to score 66 of Bucknell's 74 points as the Bison picked up their first Patriot League victory of the season at Navy, 74-65.

Bucknell used an 11-0 run that spanned just over five minutes to take a 26-22 lead in the first half, before closing the opening 20 by

outscored the Mids 9-2 to enter the locker room with a 37-28 lead.

The Bison led by as many as 13 in the second half, and trailed by two with just over six minutes left. BU hit 9-of-10 free throws in the final 2:14 to hang on for the win.

NAVY, PART TWO: Navy jumped out to a 2-0 lead, but that was the only time the Bison would trail in the contest. Senior **Kate Franks** put the Orange and Blue on the board, making three free throws after being fouled on a three-point attempt and giving the team a 3-2 lead it would never surrender. Bucknell led by as many as eight several times in the early part of the game, but the Mids put together a 10-3 run over a four minute span to climb back within one, 22-21.

Two foul shots by freshman **Jennie Ruth** jump started the Bison offense to an 11-1 spurt that put the team ahead 33-22 with 2:13 to go in the half. The Navy squad did not go quietly, however, battling back to within five at the break, 34-29. A Maile Shimoda three-pointer squeezed between four points from Nikki Curtis helped the Mids close out the frame on a 7-1 run.

Navy opened the second half strong, chipping away at the lead to get within two, 36-34, after a three-point play by Kate Maslowski. Bucknell led 43-40 with 15:20 to go in the game before senior **Molly Creamer** scored five unanswered for BU to give the team an eight-point cushion.

The Bison held a 56-51 lead with just over 10 minutes left in the contest before embarking on an 11-4 run that spanned five minutes to go ahead by 12, 67-55. Creamer tallied six points during the decisive run.

Navy closed the gap to within seven, 67-60, with just under three minutes to play, but the Orange and Blue ended the game outscoring the Mids 6-0 for the 73-60 victory.

Bucknell was hot in the second half, shooting .542 (13-24) from the field, including .556 (5-9) from three-point territory. The Bison won the battle on the glass, holding a 40-27 edge in the rebounding column. Junior **Desire Almind** led the way

MEET THE CAPTAINS



Senior Molly Creamer enters her final season with the Bison. From the moment she stepped onto the court wearing the Orange and Blue, Creamer has been a contributor. As a freshman, she led the team in scoring with 15.8 points per game, placing her second on the Bucknell list for rookie scoring average.

One year later, the 5-10 guard led the team and the conference in scoring with 19.0 ppg, and assists with 4.96 apg. On the way to her conference-high scoring average, she surpassed the 1,000-point plateau, becoming the first sophomore in school history to reach the milestone. Creamer was selected as the Patriot League's Player of the Year in just her second season, marking only the second time in conference history a sophomore has garnered the award.

As a junior, Creamer again led the conference in points and assists with 22.4 ppg and 5.81 apg. And, for the second year in a row, she was chosen as the Patriot League Player of the Year. During her third year, she broke a school and Patriot League single-game scoring record with 43 points against Army, while also becoming the school's all-time leader in career three-pointers.

Creamer has broken the Patriot League and Bucknell all-time scoring records already this season.



Senior Kate Franks joins Creamer as a co-captain on the 2002-03 squad. Franks has also been a steady contributor to the Bison throughout her first three years.

The 5-10 guard earned a start in 16 of 30 games as a freshman, averaging 9.6 ppg while finishing fourth on the team in scoring.

As a sophomore, Franks earned a start in every game, connecting on a career-best 27 three-pointers which was second-best on the team.

During her junior season, Franks exploded for a career-high scoring average of 10.7, third-best on the squad. She ended the year on a tear, recording a season-high 19 points in the Patriot League Championship game en route to earning a spot on the Patriot League All-Tournament team for the first time.

Franks entered her final season in fourth place on the Bucknell career three-pointers list, and currently stands in second behind Creamer. She passed the 1,000-point plateau during the 2002-03 campaign.

with a career-best 15 caroms to go along with 16 points.

THE LAST TIME OUT: Seniors **Molly Creamer** and **Kate Franks**, and junior **Desire Almind** combined to score 41 of Bucknell's 45 second half points propelling the Bison to an 82-75 victory over Colgate in the final regular-season game of the 2002-03 season.

It was a battle from start to finish with neither team holding more than a six-point lead until Bucknell's seven-point advantage at the final buzzer. The first half featured seven ties and four lead changes between the two squads.

Bucknell got the early advantage, leading 10-6 just over two minutes into the game. The Raiders came storming back with a 9-2 run, behind six-straight points from Leandra Fuller, to take their largest lead of the contest, 15-12. A three-point play from Creamer 20 seconds later knotted the game for the fourth time, and over the course of the next six minutes, their would be three more ties and two lead changes.

The Orange and Blue led by six, 37-31, with 1:27 remaining in the half, before a late surge by Colgate cut the halftime deficit to one. The Raiders' Emily Braseth scored five unanswered for the visitors to make it a 37-36 game at the break.

The second half was much the same as the first, featuring eight ties and five lead changes.

Colgate chipped away at the BU lead, getting five points from Megan Curtin during another 9-2 run that put the Raiders ahead, 55-53, for their last lead of the game. Franks responded with a three-pointer at the other end to give the Orange and Blue a one-point lead they would not relinquish.

The Bison, who only missed one free throw in the game, were a perfect eight-for-eight from the line in the final 2:01 of the game.

LAST YEAR'S OPENING ROUND GAME:

Bucknell trailed 8-3 after 2:30 of play, before embarking on a 19-2 run over the next seven minutes to take control of the game, 22-10. BU led by as many as 18 in the half after a **Molly Creamer** three-pointer with 24 seconds until the break. The Bison led Navy, 34-16, at halftime.

The Bison held a 20-point edge at the 12:18 mark of the final frame before a push by the Mids got them within eight with 1:35 to go. The Orange and Blue led 65-56 with 57 ticks on the clock, and sealed the win with five of six free throws in the final

28 seconds.

HISTORY NOT ON BUCKNELL'S SIDE: In the 11-year history of the Patriot League women's basketball tournament, there have only been three number four seeds that have advanced to the semifinals.

Bucknell has been the fourth seed two previous times, both losses in the first round. The #4 seed has never advanced to the Patriot League championship game.

CREAMER THREE-PEAT POY: Senior **Molly Creamer** was named the the Patriot League's Player of the Year for the third-straight year. The 5-10 guard, also a member of the all-league first team, becomes the first player in Patriot League history to garner the award three times.

ALMIND AND GEOSITS PICK UP ALL-LEAGUE RECOGNITION:

Junior **Desire Almind** and freshman **Lindsey Geosits** joined Creamer on the all-conference teams.

Almind was named to the all-league second team for the second time in her career.

Geosits was a member of the All-Rookie team.

FRANKS AND CREAMER IN THREE-POINT RACE:

Seniors **Kate Franks** and **Molly Creamer** have been neck-in-neck this season with three-pointers made, falling in at one and two, respectively, in the Patriot League in triples made-per-game.

Entering the contest with Navy, Franks, with a career-high 61 trifectas, is just three treys shy of breaking Creamer's single-season record. Creamer is close behind with 60 three-pointers on the year.

ALMIND REACHES MILESTONE:

Junior **Desire Almind** has had an impressive career to date, and the 6-0 forward added another accolade to her resume against Army (2/23/03).

Almind became just the fourth Bucknell player to reach 1,000 career points by her junior season. The former Patriot League Rookie of the Year became the 14th Bison women's player, and the 33rd in the conference, to reach the milestone. She joins teammates Creamer and Franks in the 1,000-point club.

THE TRIPLE THREAT ATTACK:

There's no question that seniors **Molly Creamer** and **Kate Franks**, and junior **Desire Almind** provide a 1-2-3 offensive punch for the Bison. The trio hold the first, fifth and sixth scoring spots, respectively, among league players this season.

20-POINT GAMES

Desire Almind (14):

vs. American (21), 11/18/00
 at Hampton (25), 11/22/00
 at Marist (25), 11/28/00
 vs. Harvard (26), 12/9/00
 at Lafayette (23), 1/13/01
 at Lehigh (22), 1/27/01
 at Army (26), 2/14/01
 at Penn State (26), 11/15/02
 vs. Canisius (22), 11/27/02
 at Loyola (23), 12/3/02
 at Navy (20), 1/18/03
 vs. Lafayette (22), 1/26/03
 at Holy Cross (20), 2/2/03
 vs. Colgate (24), 3/2/03

Molly Creamer (46):

vs. Hampton (27), 11/30/99
 vs. Hofstra (20), 12/3/99
 vs. Albany (21), 12/4/99
 vs. Coppin State (25), 12/17/99
 vs. Sacred Heart (20), 12/21/99
 at Pennsylvania (23), 1/2/00
 vs. Lehigh (21), 2/16/00
 * vs. Colgate (20), 3/4/00
 * at Holy Cross (20), 3/8/00
 vs. American (23), 11/18/00
 at Hampton (20), 11/22/00
 at Cornell (25), 12/2/00
 at St. Francis (Pa.) (28), 12/6/00
 vs. Harvard (25), 12/9/00
 vs. Cleveland State (21), 1/3/01
 at Navy (24), 1/10/01
 vs. Binghamton (25), 1/22/01
 at Colgate (26), 1/24/01
 at Lehigh (26), 1/27/01
 vs. Stony Brook (24), 1/31/01
 at Albany (23), 2/24/01
 * vs. Colgate (25), 3/2/01
 vs. Albany (26), 11/16/01
 at Pittsburgh (27), 11/20/01
 vs. St. Bonaventure (21), 12/4/01
 at Northeastern (29), 12/28/01
 vs. California (27), 1/5/02
 vs. Lafayette (23), 1/9/02
 at Colgate (23), 1/23/02
 vs. Holy Cross (20), 1/29/02
 vs. Colgate (29), 2/16/02
 at Lehigh (28), 2/24/02
 * vs. Army (23), 3/3/02
 * vs. Holy Cross (22), 3/6/02
 at Penn State (28), 11/15/02
 vs. Drexel (23), 11/29/02
 at La Salle (27), 12/21/02
 vs. Alabama (28), 12/29/02
 at Long Island (23), 1/4/03
 at Navy (23), 1/18/03
 vs. Lafayette (22), 1/26/03
 at American (26), 2/8/03
 vs. Navy (24), 2/16/03
 at Army (27), 2/23/03
 vs. Holy Cross (28), 2/28/03
 vs. Colgate (22), 3/2/03

Kate Franks (7)

vs. Lehigh (21), 2/16/00
 vs. Canisius (28), 11/27/02
 vs. Drexel (20), 11/29/02
 at La Salle (24), 12/21/02
 vs. Air Force (24), 1/2/03
 at Navy (23), 1/18/03
 vs. Lafayette (26), 1/26/03

30-POINT GAMES

Molly Creamer (14):

vs. Northeastern (33), 12/30/00
 vs. Delaware (30), 11/28/01
 at American (35), 1/19/02
 at Lafayette (31), 2/2/02
 vs. Navy (32), 2/6/02
 vs. American (32), 2/12/02
 vs. West Virginia (30), 11/25/02
 vs. Canisius (31), 11/27/02
 at Loyola (32), 12/3/02
 vs. Air Force (30), 1/2/03
 vs. Lehigh (35), 1/15/03
 vs. Army (32), 1/24/03
 at Colgate (37), 1/31/03
 at Holy Cross (33), 2/2/03

40-POINT GAMES

Molly Creamer (3):

vs. Army (43), 1/16/02
 vs. American (41), 1/11/03
 at Lafayette (44), 2/21/03

* Patriot League Tournament game

When Almind scored her 1,000th career point at Army, Bucknell became one of only six school's in the country to have three 1,000-point scorers currently on the roster. With 4,668 combined points, the three are the highest scoring trio of players with at least 1,000 points each.

BISON AMONG THE NATION'S BEST: The 2002-03 Bucknell squad has maintained a national ranking throughout most of the season to date. The team is currently 9th in the country in free throw percentage with a .773 clip.

In addition, senior **Molly Creamer** is present in three individual statistical categories, and has four of the nation's best performances this year.

At 27.2 points per game, Creamer is second in the country in scoring average. Her .872 free throw percentage, tops in the Patriot League, is 17th in the country. Her 5.9 assists per game, also tops in the conference, are 25th nationally.

In addition, with 44 points at Lafayette (2/21/03), and 41 points against American (1/11/03), Creamer has the fifth and ninth-best scoring performances, respectively, in the country. She is on the single-game free-throw percentage list twice, including a 16-for-16 showing against the Eagles. Her 13-of-13 performance against Canisius (11/27/02) is also tied for first.

FACES IN THE CROWD: If you pick up the February 24 issue of *Sports Illustrated*, you might recognize one of those Faces in the Crowd as Bucknell's own **Molly Creamer**.

Creamer is featured in the Faces in the Crowd section of the national sports magazine in the issue.

HATALSKY HITS THE COURT: Sophomore **Laura Hatalsky**, who has missed the entire season with a broken foot suffered in the preseason, was back on the floor practicing on Monday (2/24).

TEAM THREE-POINT RECORD FALLS: With 10 three-pointers at Army (2/23/03), the 2002-03 Bucknell squad broke the school record for treys in a season with 126. They now have 139.

Last season's team set the record with 121, passing the old mark of 100 that had stood since 1994-95.

OVER .500 A CHALLENGE: Bucknell has not fared well this season when facing team's with a winning record. The team is just 4-6 on the year in that situation, while going 8-5 when taking on opponents

with a .500 record or worse. Navy is 16-11 overall.

KETCHAM ON THE GLASS: Sophomore **Amy Ketcham** has seen increased playing time in the last seven games, going a career-high 23 minutes against Holy Cross (2/28) and scoring a career-high eight points. The 6-1 forward recorded a career-best six rebounds against Navy, before coming out the next game and pulling down seven boards at Lafayette (2/21/03).

Ketcham earned her first career start against Colgate (3/2/03).

ADVANTAGE ON THE GLASS: For only the fourth time this season, Bucknell outrebounded its opponent with a 36-35 edge against Colgate (3/2/03).

CRACKING THE NCAA CHARTS: Senior **Molly Creamer** increased her career scoring total to 2,411 with two games last weekend. That number is high enough to move the 5-10 guard up to 42nd on the career-list of prolific scorers. She became just the 47th player in NCAA history to score over 2,400 career points.

DESIRE DOUBLING-UP: Since returning from her injury, junior **Desire Almind** has recorded seven of her team-best nine double-doubles on the year.

In fact, the 6-0 forward has registered five in the last eight games, averaging 15.3 ppg and 10.5 rpg during that stretch.

WINS VS. LOSSES: The Bucknell offense has been clicking this season, only scoring less than 70 points on seven occasions.

However, in wins this year, the Bison are scoring an average of 79.1 ppg, and allowing 69.1 ppg.

In losses, however, the Orange and Blue reach only 67.0 ppg, while giving up 79.2 ppg.

WHY NOT?: Senior Molly Creamer is running out of records to break at Bucknell, so the 5-10 guard has started an assault on opposing teams record books. With 37 points against Colgate (1/31/03), Creamer set a Cotterell Court single-game record for points from a women's player.

At Lafayette (2/21/03), Creamer tallied a single-game record 44 points in the Allan P. Kirby Sports Center, breaking both the men's and women's marks.

HETTLER HAS CAREER-NIGHT: Junior **Katie Hettler** had a career-night at Lehigh

**BUCKNELL CAREER
RECORD BOOKS**

POINTS SCORED

1. Molly Creamer	2,411	1999-
2. Jennifer Walz	2,112	1985-89
3. Vicki Quimby	1,570	1998-2002
4. Lori Houck	1,447	1996-2000
5. Ann Kirwin	1,343	1983-87
6. Marie Kocornik	1,310	1984-88
7. Susie Hopper	1,228	1986-90
8. Stacey Spitko	1,220	1984-88
9. Kate Franks	1,218	1999-
10. Lynne Walshaw	1,209	1985-89

SCORING AVERAGE

1. Molly Creamer	21.0	1999-
2. Jennifer Walz	19.0	1985-89
3. Jane Meyer	16.8	1982-84
4. Vicki Quimby	13.5	1998-2002
5. Lori Houck	13.3	1996-2000
Desire Almind	13.3	2000-
7. Bobbi Castens	12.8	1975-79
8. Denise Cohen	12.5	1979-83
9. Ann Kirwin	12.4	1983-87
10. Julie Bachman	12.2	1987-91

3-POINT FIELD GOALS

1. Molly Creamer	193	1999-
2. Kate Franks	146	1999-
3. Chiara Sockel	97	1993-97
4. Lauren Wagner	90	1992-96
5. Lori Houck	74	1996-2000
6. Joy Sandler	73	1988-93
7. Kelly Dee	53	1990-92
8. Beth Coffey	47	1993-96
9. Anne McGovern	43	1989-93
10. Julie Bachman	41	1987-91

REBOUNDS

1. Vicki Quimby	902	1998-2002
2. Kirsten Ellison	892	1988-92
3. Marie Kocornik	842	1984-88
4. Jenny Burke	790	1979-83
5. Ann Kirwin	707	1983-87
6. Susie Hopper	706	1986-90
7. Shannon McGowan	696	1993-97
8. Lynne Walshaw	678	1985-89
9. Bobbi Castens	677	1975-79
10. Juliet McGee	668	1989-93

REBOUNDING AVERAGE

1. Bobbi Castens	15.0	1975-79
2. Jill Henry	9.6	1978-81
3. Jenny Burke	9.1	1979-83
4. Liz Rabenold	8.8	1977-81
5. Shannon McGowan	8.2	1993-97
Kirsten Ellison	8.2	1988-92
7. Vicki Quimby	7.8	1998-2002
8. Marie Kocornik	7.6	1984-88
9. Karen Hume	7.5	1983-85
10. Karin Wegener	7.2	1975-79

(2/11/03). The 5-8 guard posted a career-high nine points, seven of those coming in a three minute span, to go along with a career-best eight rebounds.

CREAMER CLIMBS ASSIST LIST: Senior Molly Creamer sits in second place on the Bucknell career assist list with 580 helpers. With nine against Colgate (3/2/03), the 5-10 guard moved into second place in the Patriot League annals.

She is only the second player in school history, and fourth in league history, to record 500 career assists.

SENIORS APPROACHING RECORD: Seniors Molly Creamer and Kate Franks need one more wins to tie last year's senior class for the most wins in school history.

With 68 victories, the duo could become the all-time winningest class in school history.

FRANKS FOR THREE: Senior Kate Franks has had 22 games in her career when she has made at least three treys, including a 4-for-4 showing against Navy (2/16/03), and the Bucknell squad is 15-7 in those contests.

CREAMER'S CONSECUTIVE 20-POINTERS: Senior Molly Creamer had a career-high 10-game stretch of 20 points or more snapped at Lehigh (2/11/03). The 5-10 guard has only been held under 20 points four times this year.

The 10 consecutive 20-point games is a Bucknell single-season record.

THERE'S NO PLACE LIKE HOME ... EXCEPT FOR ALMIND: Most players enjoy playing on their own home court, but junior Desire Almind has made a habit of playing better on the visiting court. The 6-0 forward is averaging 14.3 points per game away from home for her career (14.5 ppg this year), while only scoring 12.2 when playing at home (15.4 ppg this season). Almind does, however, shoot from the floor better at home, hitting .561 (60-107) of her shots at home, as opposed to .466 (62-133) on the road.

CREAMER DOUBLING UP: With 22 points and 13 assists against Lafayette the first time around (1/26/03), senior Molly Creamer has recorded at least one double-double against every Patriot League team except American. The 5-10 senior had never registered a double-double against the Leopards until that game.

FRANKS AND CREAMER IN 20-POINT GAMES: Senior Molly Creamer and Kate Franks have been through a lot together throughout their four years at Bucknell.

One of the things they do together is score in the 20's. Franks has recorded seven 20-point games in her career, including six this season. Every time she has hit for at least 20, Creamer has done the same.

The duo is 5-2 when both reach at least 20 in the scoring column.

CREAMER HELD OFF THE LINE: Against Lehigh (2/11/03), for the first time since January 12, 2002, a span of 38 games, senior Molly Creamer did not make a trip to the foul line.

For her career, Creamer has only failed to get to the line eight times in 115 games. The Bison are 6-2 in those games.

DOUBLE-FIGURES FOR FRANKS: Senior Kate Franks has scored in double-figures in 63 games in her career. When Franks reaches 10 or more points, the Bison win 58.7% of the time (37-26). The Orange and Blue are 24-11 (68.6%) in the past two years when the co-captain reaches double-figures, while going 5-2 when she scores 20 or more points.

CREAMER THREE-PEAT ONLY A TWO-PEAT: Bucknell senior Molly Creamer is on pace to become the first Patriot League women's basketball player to lead the conference in scoring and assists for three straight seasons.

In fact, only one other player in NCAA Division I history has accomplished the feat before. St. Mary's College's Anja Bordt led the West Coast Conference in both categories in 1989, 1990 and 1991.

Creamer is currently the only player in the country leading her conference in points and assists.

GRABBING THE O-BOARDS: Offensive rebounds are something each team desperately wants to win. The O-boards have been an area where Bucknell has struggled this year, failing to reach double-figures in that column on seven occasions.

In the loss at Holy Cross (2/2/03), however, the Bison recorded more offensive caroms (14) than defensive (13). There have only been two other occasions that has occurred in the past four years, both losses. The squad pulled down 20 O-boards and 19 D-boards in losses to Northeastern (12/30/00) and Cleveland State (12/28/99).

BUCKNELL CAREER RECORD BOOKS

STEALS

1. Lynne Walshaw	316	1985-89
2. K.C. Vlah	312	1993-96
3. Molly Creamer	298	1999-
4. Vicki Quimby	231	1998-2002
5. Chiara Sockel	227	1993-97
6. Denise Cohen	207	1979-83
7. Stacey Spitko	191	1984-88
8. Jennifer Walz	190	1985-89
9. Lori Houck	169	1999-2000
10. Kate Franks	150	1999-

ASSISTS

1. Stacey Spitko	661	1984-88
2. Molly Creamer	580	1999-
3. Lori Houck	336	1996-2000
4. Jane Meyer	328	1985-89
5. K.C. Vlah	268	1992-94
6. Kate Franks	269	1999-
7. Deb Boldry	265	1976-80
8. Jennifer Walz	247	1985-89
9. Caroline Shantz	246	1987-91
10. Chiara Sockel	236	1993-97

FREE THROWS MADE

1. Molly Creamer	600	1999-
2. Jennifer Walz	551	1985-89
3. Anne Kirwin	411	1983-87
4. Vicki Quimby	380	1998-2002
5. Lori Houck	353	1996-2000
6. Susie Hopper	310	1986-90
7. Kirsten Ellison	294	1988-92
8. Stacey Spitko	261	1984-88
9. Juliet McGee	258	1989-93
10. Lynne Walshaw	227	1985-89

FREE THROWS ATTEMPTED

1. Molly Creamer	714	1999-
2. Jennifer Walz	698	1985-89
3. Vicki Quimby	585	1998-2002
4. Anne Kirwin	561	1983-87
5. Kirsten Ellison	495	1988-92
6. Susie Hopper	461	1986-90
7. Lori Houck	444	1996-2000
8. Stacey Spitko	440	1984-88
9. Marie Kocornik	369	1984-88
10. Monica Nawarskas	366	1990-94

BLOCKED SHOTS

1. Marie Kocornik	132	1984-88
2. Susie Hopper	103	1986-90
3. Ann Kirwin	87	1983-87
4. Shannon McGowan	80	1993-97
5. Kim Delfs	72	1995-99
6. Julie Bachman	62	1986-91
7. Molly Creamer	52	1999-
8. Kirsten Ellison	51	1988-92
9. Desire Almind	43	2000-
10. Lynne Walshaw	37	1985-89

CREAMER SURPASSES FREE THROW

MARK: Senior **Molly Creamer** has scored 600 of her points from the free throw line, a school record. The co-captain became Bucknell's all-time leading scorer from the foul line, passing the old record of 551, held by 1989 graduate Jen Walz.

The free throw's made total is also a Patriot League record.

HETTLER GETS FIRST CAREER START:

Junior **Katie Hettler** earned her first career start at American (2/8/03), replacing the injured **Kate Franks**. Hettler made the most of her starting debut, matching her then career-high with seven rebounds and one block.

In fact, Hettler's only other career block came at American last season.

ANOTHER MILESTONE ACHIEVED:

Senior **Molly Creamer** has already set several records this season:

- The Patriot League career scoring record (currently 2,411).
- The Patriot League single-season consecutive free-throw's made mark. (34)
- The Patriot League record for career games scoring in double-figures (107).
- The Bucknell record for career 20-point games (63).
- The Bucknell record for career 30-point games (17).

The 5-10 guard captured another career record against Army (1/24/03). Creamer entered the game needing just 11 points to become Bucknell's all-time leading scorer and passing 1989 graduate Jen Walz (2,112). She did that in the first half, on her way to a game-high 32 points.

ALMIND STEALS ABOUND:

Before junior **Desire Almind** missed five games with an injury, the 6-0 forward had swiped only 13 steals in seven games for a 1.9 spg average.

Since returning, Almind has recorded at least three steals in 10 of 14 games, including a recent stretch of five-straight with at least four takeaways. With 44 thefts since coming back, Almind is averaging 3.1 spg in her 14 games back.

FRANKS KEY IN VICTORIES:

Senior **Kate Franks** is averaging a career-high 14.7 points per game this year. The co-captain is a vital part of the Bucknell success this season, averaging 18.8 ppg in victories. In Bison losses, however, Franks only contributes 10.8 ppg.

APOTENT COMBINATION:

Senior co-captains Molly Creamer (2,411) and Kate Franks (1,218) have become highest scoring classmate combination in Bucknell women's basketball history. The duo, with 3,629 combined points, passed 1989 graduates Jen Walz (2,112) and Lynne Walshaw (1,209) for the highest scoring teammates in school history (3,321 total).

TRIPLE THREAT IN VICTORIES:

The Bison triple threat attack of seniors **Molly Creamer**, **Kate Franks**, and junior **Desire Almind** combine to score 56.9 of Bucknell's 72.6 points per game (78.4%).

In Orange and Blue victories the trio teams up to score 79.8% of Bucknell's points (63.1 of 79.1). Creamer averages 28.2 ppg in wins, Franks adds 18.8 ppg, and Almind tosses in 16.1 ppg in victories.

THE TRIO UNDER .400:

It's obvious that seniors **Molly Creamer** and **Kate Franks**, and junior **Desire Almind** are a vital part of the success of the Bucknell program each night out.

When the three are on, the wins come a lot easier.

- **Franks** has had 11 games this season where she has shot under .400 from the field. Bucknell is 3-8 in those contests.
- **Creamer** has shot below .400 on seven occasions, with a 1-6 outcome.
- **Almind** failed to reach .400 four times this year, with BU going 1-3 in those games.

The trio is 0-2 when all three shoot below .400 from the field.

PATRIOT LEAGUE RECORD FALLS IN

THRILLING FASHION: Senior **Molly Creamer** entered the game against Lehigh (1/15/03) needing 32 points to become the Patriot League's all-time leading scorer. With only 16 points and just over three minutes left in the game, it looked as if the record would stand another day.

Much to the delight of the 2,641 fans on hand to see the first game in Sojka Pavilion, Creamer scored 19 points in the final 3:14 of the contest, giving her 35 for the game and the PL scoring title.

She now has 2,361 career points, passing Holy Cross' Amy O'Brien (1995-99), the former record holder with 2,075.

FREE-THROW RECORD FALLS AS WELL:

In addition to breaking the Patriot League

PATRIOT LEAGUE CAREER RECORD BOOKS

SCORING

1. Molly Creamer (B)	2,411	1999-
2. Amy O'Brien (HC)	2,075	1995-99
3. Anne Tierney (Le)	1,787	1999-
4. Lauren Maney (HC)	1,721	1992-96
5. Adria Schneck (N)	1,578	1993-97
6. Vicki Quimby (B)	1,570	1998-02
7. Kathy Courtney (HC)	1,539	1993-97
8. Jen Smith (C)	1,537	1991-95
9. Becky Dowling (N)	1,470	1994-98
10. Katie O'Keefe (HC)	1,469	1999-

REBOUNDING

1. Anne Tierney (Le)	1,116	1999-
2. Kathy Courtney (HC)	1,011	1993-97
3. Amy O'Brien (HC)	963	1995-99
4. Megan Gibbons (C)	947	1995-99
5. Becky Dowling (N)	923	1994-98
6. Vicki Quimby (B)	902	1998-02
7. Katie Macfarlane (Ar)	829	2000-
8. Alicia Yapsuga (La)	813	1995-99
9. Chris Sieling (La)	727	1990-94
10. Kelly Fitzpatrick (F)	715	1991-95

FIELD GOAL PERCENTAGE (entering 02-03)

1. Kathy Courtney (HC)	.561	1993-97
2. Katie O'Keefe (HC)	.558	1999-
3. Amy O'Brien (HC)	.532	1995-99
4. Nicole Williams (F)	.527	1990-92
5. Anne Tierney (Le)	.519	1999-
6. Jenna Hausvik (N)	.511	1990-94
7. Lisa Russell (A)	.510	1991-94
8. Adria Schneck (N)	.507	1993-97
9. Vicki Quimby (B)	.502	1998-02
10. Norinne Powers (HC)	.498	1990-93

FREETHROW PERCENTAGE

1. Molly Creamer (B)	.872	1999-
2. Anne Tierney (Le)	.795	1999-
Denise Hammersley (F)	.795	1991-95
Lori Houck (B)	.795	1996-00
5. Erica Hayes (N)	.778	1996-00
6. Kathy Courtney (HC)	.764	1993-97
7. Katie Macfarlane (Ar)	.754	2000-
8. Kelly Madden (Le)	.744	1993-97
Megan Gibbons (C)	.744	1995-99
10. Kara Crismale (C)	.738	1993-97

THREE-POINT FIELD GOAL PERCENTAGE

1. Heather Donlon (F)	.439	1990-93
2. Kelly Dee (B)	.405	1990-92
3. Courtney Davidson (N)	.401	2000-
4. Cat Nicholson (Le)	.396	1999-
5. Allison Lipinski (C)	.388	2001-
6. Jeanette Paukert (HC)	.373	1998-02
7. Lara Marcsisin (HC)	.370	1995-99
8. Denise Hammersley (F)	.353	1991-95
9. Danielle Baldwin (Le)	.350	1996-00
10. Molly Creamer (B)	.345	1999-

scoring record against Lehigh (1/15/03), senior **Molly Creamer** also shattered the Patriot League's single-season consecutive free throw's made record.

Creamer entered the game with 26-straight makes, just two short of the mark. Connecting on her first eight free throws of the game before missing, the 5-10 guard snapped her streak at 34-straight made foul shots for the new conference record.

VALDNER OUT: Junior **Kristin Valdner** left the American game (1/11/03) in the second half with a broken left foot. The 6-1 forward is expected to miss at least 4-6 weeks.

GEOSITS GETS CAREER-HIGH: Rookie **Lindsey Geosits** scored a career-best 11 points against Holy Cross (2/28/03), bettering her old career-high of nine. The freshman tallied 10 of those points in the first half.

OVER 30 CLUB: With 44 points at Lafayette (2/21/03), senior **Molly Creamer** scored 30 or more for the 17th time in her career, building on her school record for 30-point games in a career. The old record of 11 was first set by 1989 graduate Jen Walz.

OVER 40 CLUB: With her school and Patriot League record 44 points at Lafayette (2/21/03), senior **Molly Creamer** tied the Bucknell record for 40-point games in a season with two.

The 5-10 guard tallied 41 against American (1/11/03) to open the conference ledger. She now has three 40-point games in her career.

112-STRAIGHT: Senior Molly Creamer is making her 112th consecutive start this afternoon. The co-captain earned a start just four games into her rookie campaign and has been on the floor for opening tip in every game since.

FRANKS SCORES MILESTONE: Senior co-captain **Kate Franks** entered the game against Air Force (1/2/03) needing only 10 points to reach the 1,000-point plateau in her career.

The 5-10 guard/forward scored 17 points in the first half of the game, becoming the 13th played in Bucknell women's basketball history to eclipse the scoring mark, and the fourth player in the last four years.

DON'T FRET A SLOW START: Bucknell senior **Molly Creamer** doesn't always look

like she's going to reach her 27.2 ppg average. The 5-10 guard has scored in single digits in the first half nine times this year, and is averaging 11.0 ppg in the opening stanza.

The co-captain turns it on in the second, however, averaging 16.5 ppg over the final 20, and has in fact reached 20 points in the frame eight different times. Creamer recently scored 31 points in a second half, on her way to a career-high 44 points.

DAVIS CLOSSES DOORS WITH A WINNING RECORD: Davis Gym has been a challenging place to play for any opponent in the last 64 years. Since 1974, when the first women's team played on the court, the Bison women's squads have posted a 168-118 (.587) record at home.

Combined with the men's 462-233 (.665) record, the two team's have combined to defeat 64.2% of the opponents who entered the old barn (630-351).

MERIT AID APPROVED AT BUCKNELL: In November, the Bucknell University Board of Trustees approved a three-year pilot program that immediately implements merit aid for the first time in school history. Bucknell will award 42 merit scholarships to the incoming members of the Class of 2007, with six targeted to the basketball programs — three to the men's program and three to the women's program.

The merit scholarships will not take away from Bucknell's current need-based financial aid program. The merit aid plan is intended to help Bucknell enroll even more top academic students; increase campus diversity; support performing arts talent, such as music, theatre and dance; protect recent gains in Bucknell's first-year class profile; and strengthen Bucknell's competitive position with the Patriot League in men's and women's basketball.

CREAMER GOING THE DISTANCE: Senior **Molly Creamer** is certainly making the most of her playing time in her final season. Of 26 games, the 5-10 guard has played the entire 40 minutes in 13 of those.

In a potential 560 minutes of Patriot League play so far, Creamer has been on the court for 549 minutes, going all 40 in nine of 14 conference games.

PATRIOT LEAGUE WOMEN'S BASKETBALL ON THE AIR: Broadcasts of all Bucknell women's basketball Patriot League games will be carried live on the Bison Sports Network, which includes flagship station WMLP (AM-1380) in the

PATRIOT LEAGUE CAREER RECORD BOOKS

ASSISTS

1. Veronica Jutras (HC)	617	1996-00
2. Molly Creamer (B)	580	1999-
3. Kim Lynch (HC)	572	1992-96
4. Anna Kinne (HC)	532	1996-00
5. Jessica Mudry (Le)	497	1992-96
6. Kim Kawamoto (Ar)	457	1990-92
7. Anne Davis (HC)	418	1990-92
8. Denise Hammersley (F)	409	1991-95
9. Jeanette Paukert (HC)	402	1998-02
10. Hope Pellicane (Le)	374	1990-93

STEALS

1. Heidi Caruso (La)	354	1990-94
2. Anna Kinne (HC)	333	1996-00
3. K.C. Vlah (B)	312	1992-96
4. Jessica Mudry (Le)	309	1992-96
5. Molly Creamer (B)	298	1999-
6. Veronica Jutras (HC)	288	1996-00
7. Becky Dowling (N)	261	1994-98
8. Sara Harris (La)	249	1996-00
9. Frances Boone (C)	243	1997-01
10. Vicki Quimby (B)	231	1998-02

BLOCKED SHOTS

1. Kathy Courtney (HC)	309	1993-97
2. Karen Juda (HC)	194	1992-96
3. Kelly Roche (F)	174	1990-93
4. Therese Kelley (Ar)	105	1997-01
5. Yolanda Ray (N)	93	1991-94
6. Shannon McGowan (B)	80	1993-96
7. Lori Peretta (C)	79	1992-96
Laurie Coffey (N)	79	1995-99
9. Kim Delfs (B)	71	1995-99
10. Karin Gventer (Ar)	68	1990-94

3-PT. FIELD GOALS

1. Denise Hammersley (F)	211	1991-95
2. Molly Creamer (B)	193	1999-
3. Heather Donlon (F)	183	1990-93
4. Jeanette Paukert (HC)	170	1998-02
5. Courtney Davidson (N)	166	2000-
6. Anna Kinne (HC)	163	1996-00
7. Kate Franks (B)	146	1999-
8. Kim Lynch (HC)	144	1992-96
9. Mary Beth Bedics (La)	143	1991-95
10. Cat Nicholson (Le)	142	1999-

Lewisburg area.

Doug Birdsong is in his third season as play-by-play announcer and is joined on the broadcast team by Joe Schweitzer and Chris Duffany.

Each broadcast will begin with a pre-game show 15 minutes prior to tip-off and conclude with a post-game show, featuring interviews with head coach Kathy Fedorjaka and select players.

BUCKNELL STRUGGLES FROM FIELD: Bucknell shot a season-low .279 from the field at Long Island (1/4/03), losing the game 66-51. The percentage is the lowest the Bison have shot in a game since the 1997-98 season, when the Orange and Blue shot a dismal .241 at UMBC in a 52-35 loss.

In the past five years, the Orange and Blue have failed to reach .300 from the field on five different occasions, all on the road and all resulting in losses.

TEAM STEALS SEASON-HIGH: With 20 steals against American (1/11/03), the Bucknell squad improved on its season-high for thefts for the third game in a row.

In fact, that single-game steal total is the highest for any Bison squad since the 1995-96 team tied the school record with 23 takeaways against Lafayette.

ALMIND AND CREAMER CAREER-BEST THEFTS: Of Bucknell's 20 steals in the American game, 15 came from the duo of junior **Desire Almind** and senior **Molly Creamer**. Almind grabbed a career-best seven steals in the game, while Creamer swiped a career-high eight.

BISON REBOUND SEASON-HIGH: With 40 rebounds against Navy (2/16/03), the Bucknell squad reached a season-high for caroms this year.

SWITCHING IT UP: The Bison have used six different starting lineups this season so far. Following are the records with each combination (bolded is the most recent):

- Almind, Creamer, Franks, Geosits, Valdner
- 3-5
- Creamer, Franks, Geosits, Ruth, Valdner
- 0-2
- Creamer, Franks, Geosits, Smith, Valdner
- 2-1
- Almind, Creamer, Franks, Geosits, Smith
- 6-5
- Almind, Creamer, Geosits, Hettler, Smith
- 0-1

Almind, Creamer, Franks, Geosits,

Ketcham
- 1-0

CREAMER PLAYING 116th GAME: Senior co-captain **Molly Creamer** is playing in her 116th career game today. She has never missed a game in her college career.

The school record for games in a career is 116, set by Monique LeBlanc and Vicki Quimby of last year's senior class.

NO TAKEAWAYS FOR CREAMER: Senior **Molly Creamer** was held without any steals for a two game stretch against La Salle (12/21/02) and Alabama (12/29/02). Through her career, the 5-10 guard only has seven games without at least one steal, and the co-captain has never had more than two theftless games in one season.

FRANKS AND ALMIND GRAB 400TH CAREER CAROMS: Senior **Kate Franks** and junior **Desire Almind** both pulled down their 400th career rebounds at Lehigh (2/11/03).

ALMIND REBOUNDING FORCE: Junior **Desire Almind** is quickly becoming a rebounding force for the Bison, being the team-leader in rebounds in 16 of the 20 games she has played in.

CREAMER CLIMBING PL STEALS LIST: Senior **Molly Creamer**, with 298 career steals, is in fifth place on the Patriot League top-five list.

CREAMER CAPTURES ANOTHER CAREER MARK: Senior **Molly Creamer** enters this evening's contest having scored in double-figures in 107 career games, a Patriot League record, formerly held by 2002 Bucknell graduate Vicki Quimby (90).

The co-captain has only been held in single-digits on eight occasions in her career.

CREAMER NAMED TO ANOTHER ALL-TOURNAMENT SQUAD: Senior co-captain **Molly Creamer** earned a spot on the Saint Peter's Holiday Classic All-Tournament team, marking the seventh time in her career she has made an all-tournament squad.

In fact, except for missing a spot on the Patriot League All-Tournament team her sophomore year, Creamer has earned a spot on the all-star squad for each tournament she has played in during her four years at Bucknell.

RUTH GETS FIRST START: Freshman

BUCKNELL TRENDS WHEN ...

Leading at Halftime	10-2
Trailing at Halftime	1-12
Tied at Halftime	1-0
Overtime	0-0
BU Shoots 40% or Better	11-5
BU Shoots Under 40%	1-9
Opponents Shoot 40% or Better	7-13
Opponents Shoot Under 40%	5-1
BU scores at least 70 points	11-7
BU scores less than 70 points	1-7
BU Outrebounds Opponent	4-0
Opponent Outrebounds BU	8-12
Rebounds are even	0-2
BU Shoots 80% or better FT	6-8
BU Shoots more FT's than Opp.	10-5
BU Shoots less FT's than Opp.	2-9
BU Has Less TO's Than Opp.	5-9
Opp. Has Less TO's Than BU	5-4
3 or More BU Players Score in Double Figures	9-6
In November	2-3
In December	2-3
In January	5-4
In February	2-4
In March	1-0
In afternoon games	4-6
In evening games	8-8
Games by 1 point	0-1
Games by 5 or Less	2-1
Games by 6-10 points	5-3
Games by 11 or More	5-9
BU at Home	7-4
BU on Road	4-9
BU at Neutral Sites	1-1

BUCKNELL INDIVIDUAL TRENDS

Consecutive Games	Consecutive Starts
Molly Creamer (115) *	Molly Creamer (111)
Lindsey Geosits (26) *	Lindsey Geosits (26)
Chelsea Smith (23)	Desire Almind (14)
Desire Almind (14)	Kate Franks (6)
Amy Ketcham (13)	
Katie Hettler (9)	
Kate Franks (6)	
Jennie Ruth (6)	

* - has never missed a varsity game

Bucknell's Largest Lead:

28 points vs. Air Force (last time at 60-32 with 14:19 left in game)

Bucknell's Largest Deficit:

26 points at Delaware (71-45 with 0:00 remaining).

Largest Deficit Bucknell Overcame to Win:

15 points (26-11) with 8:32 remaining in 1st half against Colgate (70-62 win).

Bison From the Foul Line in Last 5 Minutes of a Game (Plus Overtime):

Mary Edwards	4-4	1.000
Molly Creamer	59-67	.881
Kristin Valdner	4-6	.767
Jennie Ruth	11-15	.733
Desire Almind	16-22	.727
Kate Franks	25-36	.694
Emilie Barrauet	1-2	.500
Lindsey Geosits	2-4	.500
Amy Ketcham	1-2	.500
Chelsea Smith	4-9	.444
Katie Hettler	2-6	.333
Totals:	129-174	.741

Jennie Ruth made her first collegiate start at La Salle (12/21/02), replacing injured Desire Almind. The rookie started in the following game (Alabama, 12/29/02) for two career starts.

THE NUMBERS DON'T LIE: In the past three seasons, the Bison are 53-9 when leading at halftime, including a 14-4 mark in 2001-02, and a 10-2 record this year. The squad is 9-38 in the past three years when trailing at the intermission, including a 1-12 record this season.

In addition, in the last two years, the Orange and Blue have won 79.0% (49-13) of their games when they shoot 40.0% or better from the field.

CREAMER GETS FIELD GOAL MARKS: Senior Molly Creamer has already set a Bucknell and Patriot League record for career field goal attempts with 1,803. The 5-10 guard has now broken the field goals made mark in both record books. Following is a breakdown:

	FG	FGA
Creamer	809	1,848
BU Record	768	1,701
PL Record	782	1,623

62-STRAIGHT FOR CREAMER: The streak continued when senior Molly Creamer tallied 22 points against Colgate (3/2/03), making it 62-straight games that she has scored in double-figures, dating back to February 14, 2001.

CREAMER BUILDS ON ANOTHER RECORD: With 22 points against Colgate (3/2/03), senior Molly Creamer recorded her 63rd career game with 20 or more points, continuing to build on her school record for career 20-point games.

The old mark of 46 was first set by 1989 graduate Jen Walz.

FRANKS' THEFTS: Senior Kate Franks has accumulated 150 career steals, placing her in tenth on Bucknell's all-time career top-10 list.

OFFENSE STRUGGLES: Bucknell had its lowest scoring output of the season in its 71-45 loss at Delaware (12/8/02). It was the first time since December 30, 2001, that the team was held under 50 points.

In fact, for a program that has been averaging 72.2 points per game over the past four years, the Delaware game marked only the fifth time in the last four years that the squad has been held to fewer than 50 points in a game.

CREAMER CONTRIBUTIONS: Senior Molly Creamer is leading the team and the Patriot League in points per game (27.2) and assists per game (5.9).

On the season, Creamer has made 225 field goals and assisted on 154 others, while the team has made 656 field goals, meaning she has a hand in 57.8% of Bucknell's points from the field.

TURNOVERS PLAGUE: In the loss at Delaware (12/8/02), Bucknell had a season-high 30 turnovers. That number is the highest for a Bison squad since the 1999-2000 team committed 31 giveaways at Niagara in the second game of the season.

POSITIVE BENCH PRODUCTION: For only the sixth time this season, the Bucknell bench scored in double-figures, tossing in 11 points at Lehigh (2/11/03).

Junior Katie Hettler had the majority of those points with a career-best nine.

NO BENCH PRODUCTION: Despite getting a season-high 24 points from the substitutes against Drexel (11/29/02), just one game later the bench failed to score at all in a 76-73 win at Loyola.

The last time that happened was on January 5, 2002, when the Orange and Blue squeaked out another three-point win, 59-56, against California in the championship game of the Nassau Knockout.

Bucknell got no points from the reserves again at Colgate (1/31/03).

FEDORJAKA REACHES 150: Head Coach Kathy Fedorjaka entered the early part of the 2002-03 season looking for her 150th career win. With the victory over Drexel (11/29/02), she reached the milestone. In nine seasons as a head coach, she has accumulated 160 victories.

LEADING FROM START TO FINISH: In Bucknell's 95-83 victory over Drexel (11/29/02), the team led from the opening tip to the final buzzer. The last time that had happened for the Bison was on January 4, 2002, when BU defeated IPFW, 73-44, in the opening round of the Nassau Knockout in Nassau, The Bahamas.

Bucknell came out at Loyola (12/3/02) and accomplished the feat again for the second game in a row. The Bison did it for the third time this season in a win over Army (1/24/03).

TWO IN A ROW: Senior Kate Franks did something she had never done before in her career on Friday, November 29. The 5-10 guard scored 20 points in the con-

NCAA STATISTICS LEADERS

(Through 3/4/03)

INDIVIDUAL

Scoring

Rank	Player, School	PPG
2.	Molly Creamer, B	27.2
25.	Courtney Davidson, N	19.3

Rebounding

Rank	Player, School	RPG
15.	Katie Macfarlane, Ar	10.6

Free Throw Percentage

Rank	Player, School	FT%
17.	Molly Creamer, B	.872

Filed Goal Percentage

Rank	Player, School	FG%
13.	Colleen Fitzpatrick, La	.584

Assists

Rank	Player, School	APG
25.	Molly Creamer, B	5.9

Steals

Rank	Player, School	SPG
9.	Chanel Sprigg, Am	3.7

TEAM

Free Throw Percentage

Rank	School	FT%
9.	Bucknell	.773
23.	Lafayette	.759
26.	Lehigh	.753

Steals

Rank	School	SPG
14.	American	12.9

INDIVIDUAL GAME HIGH

Points

5.	Molly Creamer, Bucknell	44
9t.	Molly Creamer, Bucknell	41

Free Throw Percentage

1t.	Molly Creamer, Bucknell	16-16
	Molly Creamer, Bucknell	13-13

Steals

1t.	Chanel Spriggs, American	11
-----	--------------------------	----

3-pt. FG%

1t.	Carli Toliver, Lehigh	1.000
-----	-----------------------	-------

TEAM GAME HIGH

Free Throw Percentage

1t.	Navy vs. UMBC	16-16
	Lafayette vs. Holy Cross	16-16

3-pt. FG%

7t.	Navy vs. Cal Poly	.688
-----	-------------------	------

Winning Streak

10t.	Holy Cross	7
------	------------	---

test, following a career-high 28 points the contest before, for her first-ever back-to-back 20-point games.

RUTH REACHES FOR CAREER-HIGH: In addition to scoring a career-best 19 points against Drexel (11/29/02), freshman **Jennie Ruth** also pulled in a career-best seven rebounds in the contest. The rookie equaled that number against Lafayette (1/26/03), leading the team in that contest.

CAREER TURNING POINT?: Senior **Molly Creamer** excited the crowd on January 16, 2002, when she lit up the scoreboard for 43 points against Army. In 73 career games to that point, the 5-10 guard had tallied 1,303 points for a 17.8 career points per game average.

In the 42 games she has played since that fateful day, Creamer has scored 1,110 points and has averaged 26.4 ppg.

TEAM HOT FROM THE FIELD: Bucknell shot a sizzling 59.2% (29-49) from the field in its win over Drexel. That field goal percentage is the highest in a game since the 2001-02 squad set a school record with a 66.1% (41-62) clip against Colgate.

STOP, THIEF!: With a career-high eight steals against American (1/11/03), senior **Molly Creamer** moved into sixth place on the Patriot League career-thefts list with 263. She now has 298 steals.

FRANKS ASSISTING THE PLAY: Senior **Kate Franks** has accumulated 269 career assists through 114 games. With that career number, she stands in sixth place on the Bucknell all-time assists list.

BISON PROTECTING THE ROCK: Through 26 games this season, Bucknell has had more assists than turnovers eight times.

The Bison only had three total games last season where their assist total was higher than their turnover number.

FRANKS HAS CAREER NIGHT: Senior **Kate Franks** had a solid game against Canisius (11/27/02), recording a career-high 28 points in the contest. It was only the second 20-point game for the 5-10 guard, the first coming in her freshman year. She also nailed a career-best seven three-pointers, breaking her old mark of five.

CREAMER CLIMBS PLASSIST LIST: With 11 helpers against Drexel (11/29/02), senior **Molly Creamer** jumped from seventh place on the Patriot League all-time assist list, into the top-5 with 465 career help-

ers. With 580 to date, she stands in second place on the conference annal.

FRANKS FROM DOWNTOWN: After a slow start from behind the arc to start the season, senior **Kate Franks** found her stroke against Canisius, hitting 7-of-12 from downtown. The number is a career-high for Franks, and also just one shy of the school single-game record.

Franks is currently in sole possession of second place on the Bucknell career three-pointers list with 146.

ARE YOU GOING TO FINISH THAT?: Senior go-to player **Molly Creamer** has made it a point to finish games on the floor. The 5-10 guard has only fouled out of four games in her 115 game career. The first time happened just four games into her freshman year, and she played in 96 straight games without fouling out, before picking up her fifth foul at Long Island (1/4/03). In fact, Creamer has only had four fouls on 18 different occasions in her career.

CREAMER PICKS UP PRE-SEASON ACCOLADES: Senior **Molly Creamer** is coming off arguably the best season in Bucknell women's basketball history. The media took notice.

The 5-10 guard earned several pre-season honors leading up to the 2002-03 season.

After winning the Patriot League's Player of the Year award two years in a row, Creamer was named the league's Pre-season Player of the Year for the first time in 2002-03.

Additionally, Creamer was selected as a pre-season honorable mention All-America by womenscollegehoops.com, joining the likes of Diana Taurasi of Connecticut, Alana Beard of Duke and Vanderbilt's Chantelle Anderson on the pre-season squad.

And finally, the co-captain was recently named a "Player to Watch" for the second annual Senior CLASS award, given annually to the nation's senior player-of-the-year for NCAA Division I basketball.

NEW FACES IN THE LINEUP: The Bucknell bench may look a little different this season. With the graduation of six seniors, the Bison have welcomed six new freshmen to the fold in 2002-03.

Mary Edwards, Lindsey Geosits, Kathryn Hudock, Gabrielle Miskinis, Jennie Ruth and Chelsea Smith are all hoping to have an immediate impact on the Bucknell program.

LAST TWO MEETINGS

15 BUCKNELL 74, Navy 65
Alumni Hall
Annapolis, Md. - Jan. 18, 2003

Seniors **Molly Creamer** and **Kate Franks**, and junior **Desire Almind** combined to score 66 of Bucknell's 74 points as the Bison picked up their first Patriot League victory of the season.

A Bryanna Herring layup with 4:54 to go in the frame tied the game at 26-26, but Bucknell closed the half by outscoring the Mids 9-2, including six from Almind, to enter the locker room with a 37-28 lead.

Bucknell was 9-of-10 from the foul line in the final 2:14 of the contest to come away with a 74-65 victory. The Orange and Blue were hot from the field, shooting 58.7% for the game after a 66.7% showing in the second half.

Bucknell (6-9, 1-2)	FG-A	FT-A	Reb	PF	Ast	T	Pts
Desire Almind, F	8-10	4-7	10	1	3	5	20
Chelsea Smith, F	0-2	0-0	1	4	1	2	0
Lindsey Geosits, F	1-3	0-0	3	2	5	3	2
Molly Creamer, G	9-13	2-2	3	3	5	6	23
Kate Franks, G	7-13	4-5	4	2	5	7	23
Emilie Barriet	0-0	0-0	1	0	0	0	0
Katie Hettler	0-0	0-0	0	0	0	0	0
Amy Ketcham	0-0	0-0	0	0	0	0	0
Jennie Ruth	2-4	2-4	4	4	0	1	6
Mary Edwards	0-1	0-0	0	4	0	1	0
Team			4				
Totals	27-46	12-18	30	20	19	25	74

Navy (10-6, 0-3)	FG-A	FT-A	Reb	PF	Ast	T	Pts
Adrienne Roseti, F	4-8	0-1	10	4	2	5	8
Kate Maslowski, C	3-4	0-1	1	3	1	1	6
Maile Shimoda, G	0-10	2-4	1	3	4	3	2
Courtney Davidson, G	9-19	4-4	6	5	1	3	27
Lisa Steinmetz, G	0-2	2-2	4	2	2	2	2
Lauren Skrel	0-0	0-0	1	0	0	1	0
Hannah Davis	0-2	0-0	3	0	0	1	0
Ashley Pelzek	0-0	0-0	1	0	0	1	0
Danielle Darby	0-1	0-0	0	0	0	0	0
Alison Luchsinger	1-1	0-0	0	0	0	0	2
Abi Campbell	2-4	0-0	0	0	2	3	5
Nikki Curtis	0-0	0-0	0	0	0	0	0
Bryanna Herring	4-10	5-8	8	2	0	2	13
Team			2				
Totals	23-61	13-20	37	19	12	22	65

Halftime: Bucknell 37, Navy 28. 3-point Goals: Bucknell 8-12 (Franks 5-7, Creamer 3-5); Navy 6-21 (Davidson 5-10, Campbell 1-3, Darby 0-1, Roseti 0-1, Shimoda 0-6). Attendance: 965.

22 BUCKNELL 73, Navy 60
Sojka Pavilion
Lewisburg, Pa. - Feb. 16, 2003

Navy led 2-0, but that was it for the Mids. Bucknell led 34-29 at the break, and Navy closed within two at 36-34, but that's as close as the visitors would get. The Bison shot 54.2 percent in the second half, including a five-for-nine showing from beyond the arc.

Navy closed the gap to within seven, 67-60, with just under three minutes to play, but the Orange and Blue ended the game outscoring the Mids 6-0 for the 73-60 victory.

Navy (14-9, 4-6 PL)	FG-A	FT-A	Reb	PF	Ast	T	Pts
Alison Luchsinger, F	4-9	0-0	4	2	3	1	11
Adrienne Roseti, F	5-9	0-3	6	4	0	5	10
Kate Maslowski, C	2-3	1-1	2	1	0	1	5
Maile Shimoda, G	3-8	0-0	0	3	2	1	8
Courtney Davidson, G	4-15	4-4	2	0	2	2	13
Lauren Skrel	0-0	0-0	0	0	0	1	0
Juliann Flacke	0-0	0-0	0	0	0	0	0
Lisa Steinmetz	0-3	2-2	2	0	2	0	2
Stephanie Hayes	0-0	0-0	0	0	0	0	0
Hannah Davis	0-1	0-0	1	1	0	0	0
Ashley Pelzek	0-1	0-0	1	0	0	2	0
Abi Campbell	0-0	0-0	0	0	0	1	0
Nikki Curtis	4-6	3-4	5	1	0	0	11
Bryanna Herring	0-1	0-0	3	3	1	0	0
Team			1				
Totals	22-56	10-14	27	15	10	14	60

Bucknell (10-12, 5-5 PL)	FG-A	FT-A	Reb	PF	Ast	T	Pts
Desire Almind, F	6-10	4-4	15	4	3	4	16
Chelsea Smith, F	0-1	2-2	3	1	3	0	2
Lindsey Geosits, G	2-8	0-0	1	4	1	4	6
Molly Creamer, G	8-19	5-7	7	2	7	6	24
Kate Franks, G	5-5	3-3	1	1	2	3	17
Katie Hettler	1-5	1-2	2	0	0	0	3
Amy Ketcham	0-0	1-2	6	1	0	2	1
Jennie Ruth	1-3	2-2	3	3	0	0	4
Team			2				
Totals	23-51	18-22	40	16	16	19	73

Halftime: Bucknell 34, Navy 29. 3-point Goals: Bucknell 9-18 (Franks 4-4, Creamer 3-9, Geosits 2-4, Hettler 0-1); Navy 6-21 (Luchsinger 3-6, Shimoda 2-4, Davidson 1-8, Pelzek 0-1, Roseti 0-1, Steinmetz 0-1). Attendance: 2,322.

Another newcomer who will have to wait a year to suit up is sophomore **Brooke Tomovich**, a transfer student from Loyola College.

MORE NEW FACES: In addition to seven new players this year, the Orange and Blue also have three new coaches.

Scott Foulis joined the staff as an assistant coach following a coaching stint at his alma mater, the University of Massachusetts.

Michelle Simons came on board with the Bison as a second assistant. Simons most recently coached at East Stroudsburg, and before that served as a graduate assistant at her alma mater, Bloomsburg.

Laurie Scherer rounds out the new coaching staff as the graduate assistant. Scherer joins the Bucknell staff after completing her playing days at Lycoming college.

GEOSITS START FIRST IN OVER TEN YEARS: Freshman Lindsey Geosits got introduced to the college game very early, earning a start against Penn State in the season-opener.

In fact, the 5-7 point guard became the first freshman to start a season-opener since the 1991-92 season when a rookie named Erin McCoy started in Bucknell's first game against Delaware.

GIVE ME THE ROCK!: Junior **Desire Almind** has been the recipient of 'the rock' often since her arrival at Bucknell, amassing 1,039 career points in just over two years.

But this past October, Almind received a different rock from senior men's basketball player Jordan Hardenbergh as he asked her to marry him on Friday, October 11.

And for the record ... she said yes!

ALMIND AWESOME IN OPENER: Junior **Desire Almind** had a solid all around game against Penn State, matching her career-best with 26 points, pulling down 10 rebounds, and recording one assist, block and steal.

Her double-double was only the third of her career, and the first since January 6 of her freshman year.

BUCKNELL REPRESENTS PATRIOT LEAGUE IN PRE-SEASON WNIT: On November 15, the Bucknell women's basketball team became just the second squad in Patriot League history to compete in the Pre-season WNIT. Holy Cross

was invited in 1997.

The Bison drew then 14th-ranked Penn State in the opening round, playing in the Bryce Jordan Center for the season-opener. The Orange and Blue challenged the Lady Lions to the end, facing only a nine-point deficit with just under six minutes to go before finally falling 86-72.

Senior **Molly Creamer** led all scorers with 28 points, and junior **Desire Almind** got her third season started off on the right foot with a 26-point/10-rebound effort.

FOUL LINE FACT #1: Bucknell was 20-0 last season when outscoring its opponents from the foul line.

This season, the Orange and Blue are 9-5 when accomplishing this feat.

FOUL LINE FACT #2: The Bison were 1-4 when they did not score in double figures from the free throw line.

This year, Bucknell has reached double-figures in all but three games, going 1-2 in those contests.

CREAMER NAMED ALL-AMERICAN: Last season, Bucknell's Molly Creamer was named to the inaugural Full Court Press Mid-Major All-America Team, announced Friday, May 10, 2002. The team is chosen by the staff at Full Court Press, an internet subscription site dedicated to providing the most comprehensive women's basketball coverage on the web (www.fullcourt.com).

The All-America team was created to honor outstanding women's basketball players who do not receive the same level of attention given to players from bigger conferences, yet are just as deserving of recognition as their more highly publicized counterparts. Any player is eligible for consideration who does not compete in one of the following conferences: ACC, Big 10, Big 12, Big East, Conference USA, Mountain West, Pac 10, SEC and WAC.



Bucknell in the Patriot League

2002-03 PATRIOT LEAGUE HONORS

Player-of-the-Week:

11/25/02 **Molly Creamer (B)**
 12/2/02 **Molly Creamer (B)**
 12/9/02 Katie Macfarlane (Ar)
 12/16/02 Katie Macfarlane (Ar)
 12/23/02 Courtney Davidson (N)
 12/30/02 Katie O'Keefe (HC)
 1/6/03 **Molly Creamer (B)**
 1/13/03 Chanel Hunt (Am)
 1/19/03 **Molly Creamer (B)**
 1/26/03 Maggie Fontana (HC)
2/3/03 Molly Creamer (B)
 2/10/03 Anne Tierney (Le)
 2/17/03 Katie Macfarlane (Ar)
 2/24/03 Colleen Fitzpatrick (La)
 3/3/03 Courtney Davidson (N)

Rookie-of-the-Week:

11/25/02 Devon Warwick (C)
 12/2/02 **Jennie Ruth (B)**
 12/9/02 Kristin Doherty (La)
 12/16/02 Meghan Curtain (C)
 12/23/02 Dawn Gorynski (Le)
 12/30/02 Sarah Placek (HC)
 1/6/03 Dawn Gorynski (Le)
 1/13/03 Dawn Gorynski (Le)
 1/19/03 Sarah Placek (HC)
 1/26/03 Sarah Placek (HC)
 2/3/03 Dawn Gorynski (Le)
 2/10/03 Sarah Placek (HC)
 2/17/03 Dawn Gorynski (Le)
 2/24/03 Dawn Gorynski (Le)
 3/3/03 Sarah Placek (HC)

Bison Take Their Place Among the League

Leaders:

After 12 non-conference contests and 14 Patriot League games, several Bison players find themselves among the league leaders in numerous statistical categories. The latest rankings were posted for games through 3/3/03:

Scoring Leaders:

1. Molly Creamer	Bucknell	27.2
2. Courtney Davidson	Navy	19.3
4. Katie Macfarlane	Army	17.5
3. Colleen Fitzpatrick	Lafayette	16.5
5. Maggie Fontana	Holy Cross	15.1
6. Desire Almind	Bucknell	15.0
7. Kate Franks	Bucknell	14.7

Rebounding

Desire Almind 3rd (8.5 rpg)

Field Goal Percentage

Desire Almind 5th, .508 (122-240)
 Molly Creamer 14th, .430 (225-523)
 Kate Franks 15th, .418 (124-297)

Free Throw Percentage

Molly Creamer 1st, .872 (198-227)
 Desire Almind 3rd, .817 (67-82)

Assists

Molly Creamer 1st (5.92 apg)
 Kate Franks 9th (2.84 apg)
 Lindsey Geosits 10th (2.62 apg)

Steals

Molly Creamer 2nd (3.00 spg)
 Desire Almind 4th (2.71 spg)
 Kate Franks 11th (1.68 spg)
 Lindsey Geosits 12th (1.54 spg)

3-Point Field Goal Percentage:

Kate Franks 5th (.353, 61-173)
 Molly Creamer 6th (.319, 60-188)

3-Point Field Goals Made Per Game:

Kate Franks 1st (61, 2.44)
 Molly Creamer 2nd (60, 2.31)

Blocked Shots

Desire Almind 9th (16, 0.76)
 Kate Franks 15th (10, 0.40)

Offensive Rebounds

Desire Almind 9th (52, 2.48)

Defensive Rebounds

Desire Almind 3rd (126, 6.00)

Team Statistical Categories:

Scoring Offense - 1st (72.6 ppg)
 FT Percentage - 1st (.773, 436-564)
 FG Percentage - 2nd (.430, 656-1525)
 Steals - 2nd (10.12)
 3-PT FG's Made/game - 2nd (139, 5.35)
 Turnover Margin - 2nd (+2.54)
 3-PT FG Percentage - 3rd (.328, 139-424)
 Assists - 3rd (14.54)
 Assist/Turnover Ratio - 3rd (0.85)

2002-03 PATRIOT LEAGUE STANDINGS - 3/3/03

	PL	W-L	Pct.	Home	Away
Holy Cross	13-1	21-7	.750	9-4	12-3
American	10-4	17-10	.714	10-2	7-8
Lehigh	9-5	12-14	.462	6-7	6-7
Bucknell	7-7	12-14	.462	7-4	5-11
Navy	6-8	16-11	.593	10-4	6-7
Army	5-9	13-15	.464	9-4	4-11
Colgate	4-10	9-17	.346	3-5	6-12
Lafayette	2-12	3-24	.111	2-11	1-13

Patriot League Quarterfinals (March 7):

#1 Holy Cross vs. #8 Lafayette - 12 p.m.
 #4 Bucknell vs. #5 Navy - 2:30 p.m.
 #2 American vs. #7 Colgate - 5 p.m.
 #3 Lehigh vs. #6 Army - 7:30 p.m.

Patriot League Semifinals (March 9):

#1/#8 vs. #4/#5 - 12 p.m.
 #2/#7 vs. #3/#6 - 2:30 p.m.

Patriot League Championship Games:

Wednesday, March 12, 7 p.m.

2001-02 PATRIOT LEAGUE STANDINGS - Final

	PL	W-L	Pct.	Home	Away
Holy Cross	12-2	23-8	.742	12-1	11-7
Bucknell	11-3	21-10	.677	9-4	12-6
Lehigh	8-6	12-16	.429	8-6	4-10
American	7-7	12-15	.444	8-5	4-10
Colgate	7-7	14-17	.452	7-6	7-11
Army	5-9	11-18	.379	5-8	6-10
Navy	5-9	13-15	.464	8-4	5-11
Lafayette	1-13	3-25	.107	2-10	1-15

Bucknell in the Patriot League:

Year-By-Year Results:

Year	W	L
1990-91	1	11
1991-92	4	10
1992-93	8	6
1993-94	3	11
1994-95	7	7
1995-96	10	2
1996-97	6	6
1997-98	6	6
1998-99	8	4
1999-2000	8	4
2000-01	9	3
2001-02	11	3
<u>2002-03</u>	<u>7</u>	<u>7</u>
	88	80

Regular Season League Titles: 1

Tournament Championships: 1

Tournament W/L: 6-9

2002-03 GAME 27: #1 BUCKNELL VS. #5 NAVY (PL QUARTERFINALS) (PAGE 13)

1 #14 Penn State 86, BUCKNELL 72
Bryce Jordan Center
State College, Pa. - Nov. 15, 2002

Bucknell opened the season in style, representing the Patriot League in the Pre-season WNIT. The Bison drew 14th-ranked Penn State in the first round and traveled to State College, Pa., to face the Lady Lions.
 Both teams started sluggishly, but it was Penn State jumping out to a 6-0 lead. Bucknell got on the board with two free throws from junior **Desire Almind**, and quickly tied the contest at 6-6. The Orange and Blue led the contest once, 20-19, after a pair of free throws from freshman **Jennie Ruth**. Penn State responded with a 21-6 run over the next seven minutes to help build a 46-32 halftime advantage.
 The Bison came out gunning in the second half, quickly erasing the 14-point halftime deficit and getting within four just three minutes into it. Bucknell was within nine with under six minutes left, but the Lady Lions used a 13-5 spurt over a three minute span to open up a 17 point lead, before ending the game with a 86-72 victory.

Bucknell (0-1)	FG-A	FT-A	Reb	PF	Ast	T	Pts
Desire Almind, F	10-20	6-8	10	2	1	2	26
Kate Franks, F	1-12	2-2	3	4	3	0	4
Kristin Valdner, C	3-6	0-0	2	1	0	1	6
Lindsey Geosits, G	1-2	0-0	2	4	6	0	2
Molly Creamer, G	8-20	8-11	4	4	5	6	28
Katie Hettler	0-0	0-0	0	0	1	0	0
Jennie Ruth	1-4	2-2	1	2	0	0	4
Mary Edwards	0-0	2-2	0	0	0	0	2
Team			5			1	
Totals	24-64	20-25	27	17	16	10	72

Penn State (0-0)	FG-A	FT-A	Reb	PF	Ast	T	Pts
Jessica Brungo, F	8-9	0-1	8	3	4	4	18
Ashli Schwab, C	4-6	2-2	5	4	0	5	10
Kelly Mazzante, G	7-15	8-11	5	3	2	2	25
Jess Strom, G	2-5	0-0	5	3	8	2	4
Tanisha Wright, G	9-21	1-2	9	3	4	1	19
Jennifer Brenden	3-6	0-0	3	1	0	1	8
Hazel Joseph	1-2	0-0	3	1	0	0	2
Tiffany Tomlinson	0-0	0-0	1	2	1	1	0
Team			4				
Totals	34-64	11-16	43	20	19	16	86

Halftime: Penn State 46, Bucknell 32. **3-point Goals:** Bucknell 4-13 (Creamer 4-8, Franks 0-5); Penn State 7-14 (Mazzante 3-7, Brungo 2-2, Brenden 2-3, Strom 0-2). **Attendance:** 4,874.

2 St. Bonaventure 78, BUCKNELL 64
Reilly Center
Olean, N.Y. - Nov. 22, 2002

The Bucknell squad got off to a quick start, building a 7-0 lead after just over two minutes of play, thanks to several St. Bonaventure turnovers. The Bonnies would not go quietly, however, quickly surging a comeback to lead 14-13 four minutes later. The two squads went back and forth over the next two minutes before St. Bonaventure mounted a 15-5 run that spanned over five minutes to take a commanding 32-20 lead. The Bison trailed by ten, 39-29, at halftime thanks to a last second jumper by freshman Lindsey Geosits.
 St. Bonaventure wasted little time in the second half, pushing the lead to 15 with two quick scores. Senior **Molly Creamer** answered with five points in 30 seconds to get it back to a 44-34 game, but that was as close as the Bison would get the rest of the way. The Bonnies went on to lead by as many as 24 (70-46), before a late push by Bucknell got the Orange and Blue within the final margin of 14.

Bucknell (0-2)	FG-A	FT-A	Reb	PF	Ast	T	Pts
Desire Almind, F	5-12	0-0	6	4	1	5	10
Kate Franks, F	6-18	2-3	4	3	2	3	17
Kristin Valdner, C	3-5	0-0	4	3	0	0	6
Lindsey Geosits, G	1-4	0-0	2	2	4	1	2
Molly Creamer, G	6-18	4-4	4	2	6	5	17
Chelsea Smith	1-1	2-3	2	1	0	0	4
Katie Hettler	0-2	0-0	0	2	0	0	0
Jennie Ruth	1-3	6-6	5	3	0	2	8
Mary Edwards	0-3	0-0	1	1	0	0	0
Team			3				
Totals	23-66	14-16	31	21	13	16	64

St. Bonaventure (1-0)	FG-A	FT-A	Reb	PF	Ast	T	Pts
Jade Humble, F	0-6	3-5	8	0	3	5	3
Becky Valenti, F	5-12	0-1	5	1	1	2	14
Eva Kadlecova, C	9-18	4-5	10	3	3	1	22
Courtney Mattingly, G	3-4	5-6	2	3	4	4	12
Lyndsey Maurer, G	1-2	0-0	1	4	1	0	3
Caitlin Crist	0-3	3-4	4	4	3	2	3
Tory Vybomy	6-10	1-1	8	0	3	4	13
Chimene Gordon	0-0	0-0	1	0	0	0	0
Shannon Bodamer	0-0	0-0	0	0	0	0	0
Kristin McGhee	0-0	0-0	0	0	0	0	0
Emma Haywood	3-4	2-2	7	2	0	4	8
Team			3				
Totals	27-59	18-24	49	17	18	22	78

Halftime: St. Bonaventure 39, Bucknell 29. **3-point Goals:** Bucknell 4-13 (Franks 3-8, Creamer 1-4, Almind 0-1); St. Bonaventure 6-9 (Valenti 4-6, Mattingly 1-1, Maurer 1-1, Kadlecova 0-1). **Attendance:** 621.

3 West Virginia 77, BUCKNELL 72
Davis Gymnasium
Lewisburg, Pa. - Nov. 25, 2002

The Orange and Blue opened the game with a 4-0 lead on two quick baskets, before the Mountaineers grabbed a 5-4 advantage at the 18:31 mark. The first half featured 12 more lead changes, with neither team holding more than a three point edge until West Virginia put together an 11-2 run spanning four minutes to take its largest lead of the ball game, 34-26. Bucknell responded with two buckets to end the half in a 34-30 hole.
 The Bison took the lead, 38-34, early in the second with an 8-0 spurt to open the frame. Bucknell either held the lead or was tied with the Mountaineers until a Janel Dunlap layup at the 10:50 mark gave West Virginia a 50-49 advantage. Bucknell tied it at 53-53 with 8:24 to go in the game, before a 10-3 run by WVU put the host team in a 63-56 disadvantage.
 The Bison cut it to two on three different occasions in the last 3:30, but West Virginia always had an answer. The Mountaineers hit 7-of-10 free throws down the stretch to keep Bucknell at a distance.

West Virginia (2-0)	FG-A	FT-A	Reb	PF	Ast	T	Pts
Michelle Carter, F	4-7	4-7	9	2	0	3	12
Eartha White, F	0-1	1-2	6	4	1	2	1
Yolanda Paige, G	7-13	2-2	4	1	6	0	17
Sherell Sowho, G	2-7	1-2	2	2	5	1	5
Kate Bulger, G	11-18	2-3	4	2	0	2	28
Tehana Geist	0-0	0-0	0	0	0	0	0
Ashley Dunn	0-0	0-0	0	0	0	1	0
Latitia Williams	1-2	0-0	4	0	0	4	2
Liz Holbrook	4-7	1-2	7	2	0	5	9
Janel Dunlap	1-1	1-2	0	4	1	0	3
Team			1			1	
Totals	30-56	12-20	37	17	13	19	77

Bucknell (0-3)	FG-A	FT-A	Reb	PF	Ast	T	Pts
Desire Almind, F	6-12	0-0	4	3	1	1	13
Kate Franks, F	3-7	2-4	6	2	4	4	8
Kristin Valdner, C	6-15	0-0	10	2	1	1	12
Lindsey Geosits, G	2-3	0-0	3	2	3	1	5
Molly Creamer, G	11-26	6-8	5	4	8	4	30
Katie Hettler	0-1	0-0	0	0	0	0	0
Jennie Ruth	1-2	2-2	3	3	0	2	4
Team			3				
Totals	29-66	10-14	34	16	17	13	72

Halftime: West Virginia 34, Bucknell 30. **3-point Goals:** West Virginia 5-12 (Bulger 4-7, Paige 1-3, Sowho 0-2); Bucknell 4-13 (Creamer 2-8, Almind 1-1, Geosits 1-2, Franks 0-2). **Attendance:** 1,198.

4 BUCKNELL 100, Canisius 91
Davis Gymnasium
Lewisburg, Pa. - Nov. 27, 2002

Bucknell picked up its first win of the season in an exciting 100-91 victory over visiting Canisius. It is the first time since 1996 that a Bucknell squad has reached the century mark. The last time was when the team set a school record for points in a game with a 115-92 win over, ironically, Canisius.
 The Bison found themselves in a 29-24 hole with 8:55 to go in the first half before mounting a 13-4 over the next 2:30 to take a 37-33 lead. The Golden Griffins came marching back to reclaim a 44-41 lead, but Bucknell closed the half on a 7-2 run to take a 48-46 lead into the locker room.
 After trailing by as many as six in the second, BU went on to lead by as many as 13 before claiming the 100-91 victory.

Canisius (2-1)	FG-A	FT-A	Reb	PF	Ast	T	Pts
Lonnie Brown, F	2-8	6-6	6	1	3	2	10
Paja Grasevova, F	2-2	0-0	7	4	1	3	5
Jes Butler, C	9-11	3-4	3	4	0	5	21
Daakeia McFadden, G	3-9	0-0	2	1	10	2	7
Jenel Stevens, G	13-16	1-1	9	3	2	3	29
Lisa Zak	1-2	0-0	1	0	0	0	3
Jessica Steeves	1-3	0-0	2	2	0	2	2
Becky Zak	0-0	0-0	1	1	0	3	0
Karly Chesko	2-2	2-2	0	2	0	1	7
Cheri Wittlieb	1-10	2-2	5	1	0	3	5
Cavanaugh Hagen	0-1	2-2	0	0	0	1	2
Team			0				
Totals	34-64	16-17	36	19	16	25	91

Bucknell (1-3)	FG-A	FT-A	Reb	PF	Ast	T	Pts
Desire Almind, F	8-15	4-4	10	3	4	1	22
Kate Franks, F	9-16	3-4	4	1	7	0	28
Kristin Valdner, C	2-7	0-0	3	4	2	1	4
Lindsey Geosits, G	3-5	0-0	2	4	2	2	6
Molly Creamer, G	8-20	13-13	6	2	9	11	31
Chelsea Smith	0-0	0-0	0	0	0	0	0
Katie Hettler	0-1	0-0	1	1	0	1	0
Jennie Ruth	4-9	1-3	6	2	0	0	9
Mary Edwards	0-0	0-0	1	0	1	0	0
Team			2				
Totals	34-73	21-24	35	17	25	16	100

Halftime: Bucknell 48, Canisius 46. **3-point Goals:** Bucknell 11-24 (Franks 7-12, Almind 2-2, Creamer 2-7, Geosits 0-1, Hettler 0-1, Ruth 0-1), Canisius 7-17 (Stevens 2-4, Chesko 1-1, Grasevova 1-1, McFadden 1-1, L. Zak 1-2, Wittlieb 1-7, Hagen 0-1). **Attendance:** 428.

5 BUCKNELL 95, Drexel 83
Davis Gymnasium
Lewisburg, Pa. - Nov. 29, 2002

The Bison led from start to finish, opening up a 12-point lead just seven minutes into the contest. BU made its first four shots of the game, but Drexel responded with makes on its first five shots to stay close at 12-11 with four minutes gone in the first. From there, the Orange and Blue rattled off a 13-2 run, keyed by five points each from senior **Kate Franks** and freshman **Jennie Ruth**, to lead 25-13 with 12:41 to play in the half. The Bison went on to shoot 58.6% (17-29) from the field in the first half for a 49-39 advantage at halftime.
 The Dragons started chipping away at Bucknell's lead again, cutting it to five, 85-80, with just under two minutes to go in the game. With Drexel forced to foul, the Orange and Blue hit 8-of-10 free throws in the final 1:32 to seal the victory.

Drexel (0-2)	FG-A	FT-A	Reb	PF	Ast	T	Pts
Kim Lucas, F	8-11	1-2	8	3	1	4	18
Katrina Martin, F	3-5	0-0	5	2	5	0	6
Steph Frysinger, G	10-22	6-6	3	4	5	5	30
Bridget Scanlon, G	1-6	0-0	1	2	6	2	2
Catherine Scanlon, G	2-5	3-4	4	4	1	0	7
Viktoria Hollosy	0-3	0-0	1	1	0	0	0
Candace Wilkins	4-8	0-0	3	5	1	1	8
Jackie Falso	0-3	0-2	1	3	0	1	0
Ola Snytsina	2-3	0-0	0	1	0	1	5
Candice Williams	3-5	1-1	2	4	0	3	7
Team			3				
Totals	33-71	11-15	31	29	19	17	83

Bucknell (2-3)	FG-A	FT-A	Reb	PF	Ast	T	Pts
Desire Almind, F	6-7	2-2	9	3	1	1	14
Kate Franks, F	7-12	4-6	2	2	7	6	20
Kristin Valdner, C	2-3	5-6	3	4	0	2	9
Lindsey Geosits, G	1-4	3-3	2	2	2	3	5
Molly Creamer, G	6-11	9-9	8	1	11	7	23
Emilie Barret	0-0	0-0	0	1	0	0	0
Chelsea Smith	0-0	0-0	0	0	0	0	0
Katie Hettler	0-0	0-0	0	0	0	2	0
Amy Ketcham	0-0	0-0	1	0	0	0	0
Jennie Ruth	6-11	7-9	7	2	0	1	19
Mary Edwards	1-1	3-4	3	2	0	0	5
Team			0				
Totals	29-49	33-39	35	17	21	22	95

Halftime: Bucknell 49, Drexel 39. **3-point Goals:** Drexel 6-19 (Frysinger 4-9, Lucas 1-2, Snytsina 1-2, Hollosy 0-1, Scanlon 0-1, Scanlon 0-4); Bucknell 4-10 (Creamer 2-4, Franks 2-6). **Attendance:** 422.

6 BUCKNELL 76, Loyola 73
Reitz Arena
Baltimore, Md. - Dec. 3, 2002

For the second game in a row, the Bison led from start to finish, but not without a scare. Bucknell led 65-52 with 8:34 remaining before Loyola started creeping back into it. The Greyhounds took advantage of a Bucknell scoring drought to get within four with 4:43 remaining. After a timeout by the Orange and Blue, senior **Molly Creamer** converted a three-point play to push the lead back to seven, but Smith forced two quick turnovers that led to easy buckets to get it back to a three-point game, 71-68.
 Shontrese Smith corralled a crucial defensive rebound for Loyola with 54 seconds remaining and the score in BU's favor, 74-73. The Greyhounds had two chances to take the lead after an offensive rebound and a ball out of bounds off of the Orange and Blue, but the Bison forced a shot clock violation with 2.3 seconds left to put a stop to the effort.
 Loyola immediately fouled on the ensuing inbounds play, and Creamer went to the line for two shots with two seconds remaining. The co-captain calmly sunk both shots to give Bucknell a 76-73 cushion. The Greyhounds got the game-tying shot off the buzzer, but it was short, giving Bucknell the hard fought victory.

Bucknell (3-3)	FG-A	FT-A	Reb	PF	Ast	T	Pts
Desire Almind, F	10-17	3-5	7	3	1	2	23
Kate Franks, F	4-10	3-3	3	3	3	3	12
Kristin Valdner, C	1-4	2-2	2	2	1	0	4
Lindsey Geosits, G	2-2	0-0	2	2	1	4	5
Molly Creamer, G	9-19	13-15	1	1	2	6	32
Chelsea Smith	0-0	0-0	0	0	0	0	0
Jennie Ruth	0-1	0-0	0	1	0	0	0
Mary Edwards	0-1	0-0	0	3	0	1	0
Team			10				
Totals	26-54	21-25	25	15	8	16	76

Loyola (1-3)	FG-A	FT-A	Reb	PF	Ast	T	Pts
Amy Dessart Mager, F	1-1	0-2	2	0	0	1	2
Katie Netherton, C	4-7						

7 Delaware 71, BUCKNELL 45
Bob Carpenter Center
Newark, Del. - Dec. 8, 2002

The Bison shot a dismal 26.1% in the second half, and scored only 22 points in the frame, on the way to a 71-45 setback at Delaware. The loss snapped a three-game losing streak for the Orange and Blue.

Both teams were sluggish to start the event, combining for only two field goals in the first 5:48 of the contest. The Bison did not get on the board until 4:36 had elapsed when a **Desire Almind** jumper was good to cut it to 4-2 in Delaware's favor.

Delaware connected on just 31.3 percent of its shots in the first half, but the Fighting Blue Hens opened up the second half on fire, hitting three of their first four shots to open the frame with a 9-0 run.

The Bison, who committed a season-high 30 turnovers, went cold from the floor in the game's final eight minutes. Senior **Kate Franks** hit BU's final field goal of the game with 8:05 remaining in the contest to get Bucknell within 15, but the Orange and Blue would only score four points the rest of the way, all from free throws.

Bucknell (3-4)	FG-A	FT-A	Reb	PF	Ast	T	Pts
Desire Almind, F	2-11	0-0	6	3	2	5	4
Kate Franks, F	1-5	4-4	4	3	2	5	6
Kristin Valdner, C	0-0	0-0	0	2	0	1	0
Lindsey Geosits, G	2-2	0-0	0	3	2	4	4
Molly Creamer, G	3-14	5-7	3	1	4	10	12
Emilie Barnuet	0-0	1-2	0	0	0	0	1
Chelsea Smith	0-0	0-0	0	2	0	1	0
Katie Hettler	0-0	0-0	0	0	0	0	0
Jennie Ruth	5-8	5-6	5	4	0	3	15
Mary Edwards	1-4	1-2	2	2	0	1	3
Team			4				
Totals	14-44	16-21	24	20	10	30	45

Delaware (2-3)	FG-A	FT-A	Reb	PF	Ast	T	Pts
Julie Sailer, F	4-16	6-8	7	3	1	0	16
Tiara Malcom, F	7-12	4-4	13	3	1	7	18
Christine Cole, C	2-2	0-0	3	4	2	0	4
Allison Trapp, G	6-14	4-6	2	1	2	8	16
Carnie Timmins, G	2-7	0-0	1	1	3	4	4
Juliette Warren	0-1	1-2	1	0	1	0	1
LaShannan Hogue	3-4	4-8	6	2	0	2	10
Kristin Mills	0-0	0-0	0	1	0	0	0
Jayne Boyer	0-0	0-0	0	0	0	0	0
Tiffany Young	0-0	0-0	0	0	0	0	0
Amanda Blackstone	1-3	0-0	2	0	0	0	2
Tracey Howell	0-0	0-0	8	4	1	4	0
Team			3				
Totals	25-59	19-28	46	19	11	26	71

Halftime: Delaware 28, Bucknell 23. **3-point Goals:** Delaware 2-12 (Sailer 2-8, Timmins 0-4); Bucknell 1-12 (Creamer 1-8, Franks 0-4). **Attendance:** 1,056.

8 La Salle 85, BUCKNELL 74
Tom Gola Arena
Philadelphia, Pa. - Dec. 21, 2002

La Salle turned a 14-point halftime advantage into a 21-point lead with 12:52 to play in the game. The Explorers hit their first three field goals attempts of the half, and outscored Bucknell, 8-1, over a three-minute span to jump ahead, 60-39.

The Bison came charging back, however, when freshman **Lindsey Geosits** capped a 14-3 run with her second three-pointer of the game, getting Bucknell within eight, 63-55. Senior **Molly Creamer** also tallied two from downtown during the three-minute stretch.

La Salle flirted between a seven and nine point lead over the next three minutes before a three-point play by Creamer got the Orange and Blue within six, 67-61, with 5:37 to go. The score stood at 72-62 with just under two minutes to play and the Bison were forced to foul. La Salle was clutch from the free throw line, making 13-of-14 attempts in the final 1:39, including 8-of-8 from sophomore Jill Marano. A three-pointer by senior **Kate Franks** with seven seconds left created the final deficit of 85-74.

Bucknell, which entered the contest with the second-highest team free throw percentage in the country, made only 9-of-20 attempts from the line for a season-low .450 showing.

Bucknell (3-5)	FG-A	FT-A	Reb	PF	Ast	T	Pts
Kate Franks, F	9-15	2-5	5	3	5	2	24
Jennie Ruth, F	1-4	0-0	2	3	0	0	2
Kristin Valdner, C	4-9	2-5	11	2	2	2	10
Lindsey Geosits, G	2-8	0-0	2	5	5	2	6
Molly Creamer, G	9-22	4-7	5	2	4	6	27
Chelsea Smith	2-2	1-3	3	3	0	3	5
Katie Hettler	0-0	0-0	0	0	1	2	0
Amy Ketcham	0-0	0-0	2	3	0	0	0
Mary Edwards	0-1	0-0	0	1	0	0	0
Team			4				
Totals	27-61	9-20	34	22	17	16	74

La Salle (5-3)	FG-A	FT-A	Reb	PF	Ast	T	Pts
Ekaterina Markova, F	2-9	5-8	9	4	4	0	9
Kat Foley, F	7-11	2-2	6	2	1	3	16
Christy Walker, G	3-7	0-0	4	3	8	4	7
Jill Marano, G	4-6	8-8	2	1	2	0	18
Davinea Payne, G	9-12	3-6	7	3	2	3	22
Meghan Wilkinson	2-4	0-0	0	0	0	0	6
Monica Garrido Sanz	2-8	0-0	2	3	2	1	5
Shaune McLaughlin	1-2	0-0	2	0	3	1	2
Team			2				
Totals	30-59	18-24	34	16	22	13	85

Halftime: La Salle 43, Bucknell 29. **3-point Goals:** Bucknell 11-23 (Creamer 5-11, Franks 4-7, Geosits 2-5); La Salle 7-16 (Marano 2-3, Wilkinson 2-4, Garrido Sanz 1-2, Payne 1-3, Walker 1-3, McLaughlin 0-1). **Attendance:** 303.

9 Alabama 89, BUCKNELL 64
Yanitelli Center
Jersey City, N.J. - Dec. 29, 2002

Bucknell trailed 52-36 in the rebounding category, and an 18-point halftime deficit was too much to overcome, as the Bison fell 89-64 to Alabama in the opening round of the Saint Peter's Holiday Classic.

The first half was a session of runs as the Tide would build a significant lead, only to have the Bison come charging back each time. Bucknell trailed by 10 early in the game before a 7-0 run by the Orange and Blue, capped by a three-point play by junior **Kristin Valdner**, cut it to 18-15. After an Alabama timeout, the Crimson Tide mounted a 17-7 run that increased their lead to 37-24 with 7:35 to play in the frame.

Once again, Bucknell came surging back to make it a six-point game after an 8-1 run cut it to 38-32. Freshman **Lindsey Geosits** capped the run with a steal and a layup to get the Bison back into it with just under six minutes to go in the half. The Crimson Tide had the last run of the period, however, outscoring BU 18-6 over the last 5:55 of the stanza to take a 56-38 lead into the locker room.

Bucknell got as close as 17 in the second half, but the Alabama squad took over, running up to a 23-point advantage just five minutes into the final frame.

Bucknell (3-6)	FG-A	FT-A	Reb	PF	Ast	T	Pts
Kate Franks, F	1-11	4-4	5	3	1	3	7
Jennie Ruth, F	0-1	0-0	2	4	2	2	0
Kristin Valdner, C	6-12	2-3	8	1	2	0	14
Lindsey Geosits, G	3-6	0-0	2	2	4	2	6
Molly Creamer, G	9-19	7-8	3	2	3	3	28
Chelsea Smith	2-3	1-2	4	4	0	2	5
Katie Hettler	0-2	0-0	0	0	1	0	0
Amy Ketcham	0-0	0-0	0	0	0	0	0
Mary Edwards	2-5	0-0	3	4	0	1	4
Team			9				
Totals	23-59	14-17	36	20	13	13	64

Alabama (9-2)	FG-A	FT-A	Reb	PF	Ast	T	Pts
Natasha Gamble, F	7-10	0-0	3	1	2	2	14
Jamilah Johns, C	4-13	4-6	13	2	0	1	12
Manisha Redus, G	0-1	7-8	6	1	10	2	7
Monique Bivins, G	7-14	1-2	3	3	0	0	22
Katie Sipe, G	4-13	0-0	4	2	2	0	11
Shun Hunter	1-2	2-3	1	3	0	0	4
Beth Vico	5-12	0-0	6	0	1	0	12
Copper Reed	0-0	0-0	0	0	1	0	0
Oreal Taylor	1-5	0-0	4	3	0	1	2
Dee Merriweather	2-3	1-6	10	2	0	3	5
Team			2				
Totals	31-73	15-25	52	17	16	10	89

Halftime: Alabama 56, Bucknell 38. **3-point Goals:** Alabama 12-30 (Bivins 7-12, Sipe 3-10, Vico 2-6, Redus 0-1, Taylor 0-1); Bucknell 4-21 (Creamer 3-9, Franks 1-9, Geosits 0-1, Smith 0-1, Valdner 0-1). **Attendance:** 710.

10 BUCKNELL 64, Akron 49
Yanitelli Center
Jersey City, N.J. - Dec. 30, 2002

Bucknell used a 23-0 run over a nine-minute span in the opening half to build a 33-10 lead and never look back as the team went on to defeat Akron, 64-49, in the consolation game of the Saint Peter's Holiday Classic. The Bison claimed third place in the event with the 15-point victory. Akron finally broke out of its scoring slump with a 6-0 run to get it to 33-16 with 4:37 to play in the half, but BU closed out the frame outscoring the Zips 5-1 for a 38-17 halftime lead.

Bucknell extended its lead to 24 just 40 seconds into the second half after a **Lindsey Geosits** free throw and a **Chelsea Smith** layup made the score 41-17.

With Bucknell holding a 54-37 lead and just over six minutes on the clock, junior **Katie Hettler** scored two of her career-high seven points and senior **Molly Creamer** added four during a three and a half minute stretch, to build the advantage back to 23, 60-37.

Akron got hot from the field over the final 2:35 of the contest, making its last five shots, including two three-pointers, to close the gap to 15 at the final buzzer.

Bucknell (4-6)	FG-A	FT-A	Reb	PF	Ast	T	Pts
Chelsea Smith, F	1-2	2-4	0	0	0	3	3
Kate Franks, F	4-12	2-2	5	0	6	3	13
Kristin Valdner, C	2-8	0-0	6	2	1	4	4
Lindsey Geosits, G	1-6	1-2	2	2	2	3	3
Molly Creamer, G	6-10	6-6	5	2	4	2	19
Emilie Barnuet	0-0	0-0	0	0	0	0	0
Katie Hettler	3-7	1-4	7	1	1	2	7
Kathryn Hudock	0-0	0-0	0	0	0	0	0
Amy Ketcham	0-1	0-0	0	1	0	0	0
Jennie Ruth	0-0	2-2	1	1	1	0	2
Mary Edwards	6-6	1-2	2	2	1	0	13
Team			6				
Totals	23-52	14-20	36	15	16	16	64

Akron (1-9)	FG-A	FT-A	Reb	PF	Ast	T	Pts
Cyndee Overton, F	0-3	0-2	3	1	1	2	0
Felecia Bell, F	1-3	1-3	3	4	1	1	3
Katrina Carter, G	1-6	0-0	6	1	0	2	2
Jen Arnold, G	1-7	1-2	4	2	3	1	3
Dominique Harris, G	7-12	0-0	2	3	1	2	16
Lindsay Hemmelgarn	4-10	0-0	4	3	3	4	10
Kristin Marco	0-4	0-0	2	1	0	0	0
Raegan Johnson	6-12	1-2	3	1	2	2	13
Kristy Booms	0-0	0-0	1	1	0	1	0
Celina Doppoulos	0-0	0-0	1	1	0	2	0
Mary Crews	1-2	0-1	2	0	0	0	2
Team			4				
Totals	21-59	3-8	32	18	11	20	49

Halftime: Bucknell 38, Akron 17. **3-point Goals:** Akron 4-13 (Harris 2-4, Hemmelgarn 2-4, Marco 0-1, Arnold 0-2, Carter 0-2); Bucknell 4-14 (Franks 3-7, Creamer 1-5, Hettler 0-2). **Attendance:** 432.

11 BUCKNELL 85, Air Force 69
Davis Gymnasium
Lewisburg, Pa. - Jan. 2, 2003

Bucknell took advantage of a 23-4 run over the final 11 minutes of the first half to break open a one-point game and go on to an 85-69 victory. Senior **Kate Franks** scored nine of her 17 first half points during the decisive run, becoming the 13th Bucknell women's player to eclipse 1,000 career points in the process.

BU trailed 14-10 with 15 minutes left in the frame before battling back with a 12-5 run to take a 22-19 lead three minutes later. Two quick buckets by the visitor saw the Orange and Blue fall in a 23-22 hole, but a three-pointer by Franks jump started the BU offense on its run to end the half with a 48-27 advantage.

Air Force struggled to get the offense moving in the second half, scoring just five points through the first six minutes of the final stanza. The Falcons would not go quietly, however, coming back from a 28-point deficit (60-32) to get within 14, 64-50, with 9:21 to play. BU, which struggled from the free throw line late in the game, made 3-of-6 foul shots in the final 21 seconds to win going away, 85-69.

The Orange and Blue were hot from the field in the second half, connecting on 54.2% of their shots, to finish the game an even .500 from the floor (29-58).

Air Force (5-5)	FG-A	FT-A	Reb	PF	Ast	T	Pts
Emily Gross, F	3-6	0-0	5	1	0	1	6
Shawna Neff, F	3-8	0-0	6	2	0	2	9
Wendy Stillman, C	4-9	0-0	5	4	2	5	8
LaToya Howell, G	6-11	6-7	4	2	6	7	18
Gwen Grove, G	4-6	0-0	2	1	0	3	9
Nicole Goss	2-6	0-0	1	2	0	4	4
Janea Childress	0-2	0-0	1	0	0	0	0
Jennifer Roesch	1-6	0-0	2	2	0	2	2
Dana Pounds	0-0	0-0	0	0	2	1	0
Briana Thomas	4-8	0-0	5	3	1	2	8
Alison Butler	2-4	1-1	3	4	1	0	5
Team			4				
Totals	29-68	7-8	38	21	14	27	69

Bucknell (5-6)	FG-A	FT-A	Reb	PF	Ast	T	Pts
Chelsea Smith, F	2-3	1-2	7	2	1	1	5
Kate Franks, F	9-14	0-1	2	0	3	1	24
Kristin Valdner, C	5-12	2-2	3	3	4	3	12
Lindsey Geosits, G	1-5	1-2	7	1	2	4	3
Molly Creamer, G	9-13	10-13	7	1	1	10	30
Emilie Barnuet	0-0	0-0	0	0	0	0	0
Katie Hettler	2-4	0-2	4	1	0	1	4
Amy Ketcham	0-1	1-2	0	1	0	0	1
Jennie Ruth	0-0	4-4	1	2	0	2	4
Mary Edwards	1-1	0-0	1	2	1	1	2
Team			3				
Totals	29-58	19-28	35	16	22	23	85

Halftime: Bucknell 45, Air Force 27. **3-point Goals:** Bucknell 8-17 (Franks 6-9, Creamer 2-6, Geosits 0-1, Hettler 0-1); 4-17 (Neff 3-5, Grove 1-2, Howell 0-1, Stillman 0-1, Butler 0-2, Roesch 0-6). **Attendance:** 5

13 American 75, BUCKNELL 74
Davis Gymnasium (Finale)
Lewisburg, Pa. - Jan. 11, 2003

Molly Creamer scored 41 points in her final game in Davis Gymnasium, but it was not enough as the Eagles of American spoiled Bucknell's Patriot League opener with a 75-74 win over the defending conference champions.

Bucknell led 30-23 at halftime, after leading by as many as 10 in the frame. American slowly chipped away at the deficit, and took a 61-59 lead on two free throws by Chanel Hunt with 5:31 to go. Bucknell's last lead of the game came with 21 seconds remaining when junior Desire Almind hit two foul shots to put the host team ahead, 71-73.

American's Katryn Costenbader fired off a three-point attempt with nine seconds left, and a battle for the rebound led to a jump ball in American's favor. After an Eagles timeout with five ticks left on the clock, Costenbader found herself open for a baseline jumper that put American ahead 75-74 with three seconds left.

Creamer led all players in the contest with 41 points, her second career 40-point game. In addition, the co-captain recorded a career-best eight steals.

American (8-6, 1-0)	FG-A	FT-A	Reb	PF	Ast	T	Pts
Chanel Hunt, F	6-13	11-12	9	3	4	7	23
Mariam Veppumthara, C	0-0	0-0	2	1	0	3	0
Joanna Barnes, G	1-2	0-0	0	3	1	1	2
Chanel Spriggs, G	1-4	2-2	2	5	0	6	4
Maria Werries, G	6-13	4-4	5	4	1	1	21
Damarah Rhymer	1-4	0-1	2	1	1	4	2
Kaitlin Schuyler	1-3	0-0	2	1	3	1	2
Katryn Costenbader	6-17	2-2	12	4	2	5	16
Angel McNatt	0-1	2-2	0	2	0	0	2
Kim Salem	0-0	1-2	2	1	0	2	1
Jenyce Woodruff	1-1	0-1	1	1	0	1	2
Team			3				
Totals	23-58	22-26	40	26	12	31	75

Bucknell (5-8, 0-1)	FG-A	FT-A	Reb	PF	Ast	T	Pts
Desire Almind, F	6-12	7-8	12	3	0	7	19
Kristin Valdner, C	1-5	0-0	3	2	0	0	2
Lindsey Geosits, G	1-3	1-2	4	3	0	4	3
Molly Creamer, G	11-24	16-16	3	3	4	6	41
Kate Franks, G	1-5	0-0	5	3	4	3	3
Chelsea Smith, G	2-4	1-4	6	4	1	3	5
Katie Hettler	0-3	0-1	0	0	1	0	0
Jennie Ruth	0-0	0-0	1	2	0	1	0
Mary Edwards	0-0	1-2	1	1	0	1	1
Team			2				
Totals	22-56	26-33	37	21	10	25	74

Halftime: Bucknell 30, American 23. **3-point Goals:** American 7-18 (Werries 5-8, Costenbader 2-7, McNatt 0-1, Schuyler 0-2); Bucknell 4-16 (Creamer 3-8, Franks 1-5, Hettler 0-1, Geosits 0-2). **Attendance:** 1,294.

14 Lehigh 74, BUCKNELL 67
Sojka Pavilion (Debut)
Lewisburg, Pa. - Jan. 15, 2003

It was another bittersweet night for Bucknell senior Molly Creamer. The 5-10 guard became the Patriot League's all-time leading scorer with a 35-point game and 2,079 career points, but it came in a 74-67 loss to Patriot League rival Lehigh on opening night of Sojka Pavilion, Bucknell's brand-new 4,000-seat arena.

The score stood at 45-46 in Lehigh's favor when Creamer scored 14 unanswered for the Orange and Blue, including two three-pointers with players in her face, over a two minute span to get Bucknell within five, 65-60. Less than a minute later, Creamer scored her 19th straight point for the Bison to make it a three-point game with less than a minute to play. Bucknell was forced to foul, and the Mountain Hawks converted 6-of-6 down the stretch for the seven-point victory.

Lehigh (5-8, 2-0)	FG-A	FT-A	Reb	PF	Ast	T	Pts
Jana Ransom, F	5-11	4-6	10	3	6	5	14
Jessica DePalo, F	5-7	0-0	4	3	0	1	10
Anne Tierney, F	3-11	4-6	17	0	4	3	10
Dawn Gorynski, G	1-7	2-2	2	1	5	1	4
Carli Toliver, G	8-8	4-4	7	2	2	2	26
Cat Nicholson	1-6	0-0	0	2	1	1	3
Mary Hynoski	1-3	3-5	1	3	1	1	5
Chantal St. Laurent	0-0	0-0	0	1	0	2	0
Billi Ford	1-2	0-0	0	0	0	1	2
Team			2				
Totals	25-55	17-23	43	15	19	17	74

Bucknell (5-9, 0-2)	FG-A	FT-A	Reb	PF	Ast	T	Pts
Desire Almind, F	2-11	1-1	6	2	1	0	5
Chelsea Smith, F	3-5	0-0	1	2	0	1	6
Lindsey Geosits, G	4-10	0-0	8	2	4	3	8
Molly Creamer, G	11-25	10-11	6	2	8	3	35
Kate Franks, G	4-10	1-3	3	5	1	1	9
Katie Hettler	0-3	0-0	0	0	0	0	0
Amy Ketcham	0-0	0-0	0	0	0	1	0
Jennie Ruth	1-2	0-0	2	0	0	1	2
Mary Edwards	1-2	0-0	3	2	0	1	2
Team			3				
Totals	26-68	12-15	32	15	14	11	67

Halftime: Lehigh 37, Bucknell 26. **3-point Goals:** Lehigh 7-16 (Toliver 6-6, Nicholson 1-5, Ford 0-1, Hynoski 0-1, Tierney 0-1, Gorynski 0-2); Bucknell 3-12 (Creamer 3-7, Hettler 0-1, Franks 0-2, Geosits 0-2). **Attendance:** 2,641.

15 BUCKNELL 74, Navy 65
Alumni Hall
Annapolis, Md. - Jan. 18, 2003

Seniors Molly Creamer and Kate Franks, and junior Desire Almind combined to score 66 of Bucknell's 74 points as the Bison picked up their first Patriot League victory of the season.

A Bryanna Herring layup with 4:54 to go in the frame tied the game at 26-26, but Bucknell closed the half by outscoring the Mids 9-2, including six from Almind, to enter the locker room with a 37-28 lead.

Bucknell was 9-of-10 from the foul line in the final 2:14 of the contest to come away with a 74-65 victory. The Orange and Blue were hot from the field, shooting 58.7% for the game after a 66.7% showing in the second half.

Bucknell (6-9, 1-2)	FG-A	FT-A	Reb	PF	Ast	T	Pts
Desire Almind, F	8-10	4-7	10	1	3	5	20
Chelsea Smith, F	0-2	0-0	1	4	1	2	0
Lindsey Geosits, G	1-3	0-0	3	2	5	3	2
Molly Creamer, G	9-13	2-2	3	3	5	6	23
Kate Franks, G	7-13	4-5	4	2	5	7	23
Emilie Barnuet	0-0	0-0	1	0	0	0	0
Katie Hettler	0-0	0-0	0	0	0	0	0
Amy Ketcham	0-0	0-0	0	0	0	0	0
Jennie Ruth	2-4	2-4	4	4	0	1	6
Mary Edwards	0-1	0-0	0	4	0	1	0
Team			4				
Totals	27-46	12-18	30	20	19	25	74

Navy (10-6, 0-3)	FG-A	FT-A	Reb	PF	Ast	T	Pts
Adrienne Roseti, F	4-8	0-1	10	4	2	5	8
Kate Maslowski, C	3-4	0-1	1	3	1	1	6
Maile Shimoda, G	0-10	2-4	1	3	4	3	2
Courtney Davidson, G	9-19	4-4	6	5	1	3	27
Lisa Steinmetz, G	0-2	2-2	4	2	2	2	2
Lauren Skrel	0-0	0-0	1	0	0	1	0
Hannah Davis	0-2	0-0	3	0	0	1	0
Ashley Petzek	0-0	0-0	1	0	0	1	0
Danielle Darby	0-1	0-0	0	0	0	0	0
Alison Luchsinger	1-1	0-0	0	0	0	0	2
Abi Campbell	2-4	0-0	0	0	2	3	5
Nikki Curtis	0-0	0-0	0	0	0	0	0
Bryanna Herring	4-10	5-8	8	2	0	2	13
Team			2				
Totals	23-61	13-20	37	19	12	22	65

Halftime: Bucknell 37, Navy 28. **3-point Goals:** Bucknell 8-12 (Franks 5-7, Creamer 3-5); Navy 6-21 (Davidson 5-10, Campbell 1-3, Darby 0-1, Roseti 0-1, Shimoda 0-6). **Attendance:** 965.

16 BUCKNELL 72, Army 62
Sojka Pavilion
Lewisburg, Pa. - Jan. 24, 2003

Senior Molly Creamer needed 11 points to become Bucknell's all-time leading scorer, and the co-captain got that in the first half, as the Bison gutted out a 72-62 victory over Army in Patriot League action.

Bucknell led from start to finish, but it was not without a fight from the Black Knights. The Cadets got within seven with six to play in the first half, but the Orange and Blue closed out the frame on an 11-3 tear to carry a 37-22 lead into the locker room.

Creamer's record-breaking bucket came with 5:00 left in the opening half, leading a Lindsey Geosits pass led to a layup, giving the host team a 32-19 lead.

Army got within eight on three different occasions throughout the final 4:44 of the game, but the Black Knights were forced to foul and Bucknell made 9-of-12 free throws down the stretch to keep Army at bay.

Army (9-9, 1-3 PL)	FG-A	FT-A	Reb	PF	Ast	T	Pts
Lindsay Brent, F	3-11	5-8	10	3	2	3	11
Shavonne Holden, F	1-6	2-2	2	1	1	1	4
Katie Macfarlane, C	5-13	5-8	13	4	2	4	15
Christine Gassman, G	2-8	0-0	3	4	1	4	6
Amy Saal, G	4-12	4-4	7	4	4	3	13
Adrienne Payne	0-0	0-0	0	0	0	0	0
Mallory Fritz	3-7	0-0	1	5	1	2	9
Ashley Magnani	0-0	0-0	1	0	1	0	0
Rejera Arnold	1-3	0-0	1	3	2	0	2
Myra Markey	0-1	0-0	0	1	1	0	0
Megan Vrabel	1-3	0-0	1	1	0	0	2
Team			7				
Totals	20-64	16-22	46	26	15	17	62

Bucknell (7-9, 2-2 PL)	FG-A	FT-A	Reb	PF	Ast	T	Pts
Desire Almind, F	2-5	2-2	3	5	0	0	6
Chelsea Smith, F	0-1	2-2	6	5	2	4	2
Lindsey Geosits, G	2-3	4-5	3	2	4	4	8
Molly Creamer, G	8-19	12-13	2	1	6	4	32
Kate Franks, G	7-14	4-6	8	1	1	2	19
Katie Hettler	0-0	0-0	0	1	0	0	0
Amy Ketcham	0-0	0-0	0	0	0	0	0
Jennie Ruth	0-2	0-0	4	3	0	0	0
Mary Edwards	1-1	3-4	1	4	0	2	5
Team			4				
Totals	20-45	27-32	31	22	13	17	72

Halftime: Bucknell 37, Army 22. **3-point Goals:** Army 6-15 (Fritz 3-4, Gassman 2-5, Saal 1-3, Macfarlane 0-1, Markey 0-1, Vrabel 0-1); Bucknell 5-14 (Creamer 4-10, Franks 1-4). **Attendance:** 1,088.

17 BUCKNELL 87, Lafayette 73
Sojka Pavilion
Lewisburg, Pa. - Jan. 26, 2003

Senior Kate Franks scored seven of her team-high 26 points during a crucial stretch in the second half, helping the squad to an 87-73 victory over Lafayette. The win was the third-straight for the Bison.

Bucknell led by as many as five in the opening frame before a 7-2 Leopards run tied the contest at 15-15 with 11:53 to go. With the score knotted at 20 a piece just over two minutes later, Lafayette mounted a 12-4 spurt, capped by an Ashley MacLelland three-pointer, to take a 32-24 lead with just under six minutes left in the half. Colleen Fitzpatrick scored five of her game-high 29 points during the stretch.

The Bison slowly chipped away at the deficit, getting within two on a jumper by senior Molly Creamer with 25 seconds until the intermission. With one second remaining until the break, Elecia Krusee fouled freshman Chelsea Smith on a battle for a rebound. Smith went to the line and calmly sunk both attempts to send the teams into the locker room in a 42-42 deadlock.

It remained a back-and-forth battle for the first two minutes of the final stanza, before a layup by Desire Almind jump started the Bison offense to a 22-9 run, spanning nearly 10 minutes, and giving the Orange and Blue a commanding 70-56 lead. Bucknell got points from six different players during the stretch, including seven from Franks and six each from Almind and Creamer.

The Leopards would only get within eight the rest of the way as Bucknell cruised to the 14-point victory.

Bucknell shot 56.4 (31-55) from the field for the game, due to an impressive .607 (17-28) percentage in the second half.

Lafayette (2-15, 1-4 PL)	FG-A	FT-A	Reb	PF	Ast	T	Pts
Ashley MacLelland, F	5-6	2-2	4	4	2	1	17
Liz Rojahn, F	3-2	0-0	5	1	6	3	7
Colleen Fitzpatrick, F	9-11	11-12	13	4	2	8	29
Kristin Doherty, G	3-8	5-6	4	3	1	2	11
Kim Costello, G	1-7	4-5	2	3	5	1	7
Tricia Indoe	0-0	0-0	1	4	0	0	0
Brittney Rothweiler	0-4	0-0	1	0	1	3	0
Elecia Krusee	2-8	1-1	2	1	1	2	5
Team			0				
Totals	23-56	23-26	32	20	17	21	73

Bucknell (8-9, 3-2 PL)	FG-A	FT-A	Reb	PF	Ast	T	Pts
Desire Almind, F	9-15	4-5	4	3	1	2	22
Chelsea Smith, F	1-3	3-0	0	0	0	5	5
Lindsey Geosits, G	2-4	0-0	5	4	5	2	4
Molly Creamer, G	7-14	6-6	2	3	13	3	22
Kate Franks, G	9-13	5-7	2	1	1	2	26
Amy Ketcham	1-1	0-0	4	1	0	3	2
Jennie Ruth	1-3	2-4	7	4	0	1	4
Mary Edwards	1-2	0-0	1	3	0	1	2
Team			1				
Totals	31-55	20-28	28	23	20	16	87

Halftime: Bucknell 42, Lafayette 42. **3-point Goals:** Bucknell 5-10 (Franks 3-5, Creamer 2-4, Almind 0-1); Lafayette 4-12 (MacLelland 2-3, Rojahn 1-1, Costello 1-5, Rothweiler 0-1, Doherty 0-2). **Attendance:** 1,013.

18 BUCKNELL 70, Colgate 62
Cotterell Court
Hamilton, N.Y. - Jan. 31, 2003

Bucknell overcame poor first half shooting and an 11-point halftime deficit (37-26) to come away with a 70-62 victory over Colgate. Senior Molly Creamer scored 37 points in the win, setting a Cotterell Court record for points in a game by a women's basketball player.

The Bison managed only four points over an eight-minute stretch, falling in a 26-13 hole with 7:09 left in the first half. Bucknell hit only three of its 16 shots during the drought on its way to the 13-point deficit. The Orange and Blue got within seven on two occasions in the final 4:02, but Colgate scored six of the final eight points of the half to enter the locker room up 37-26.

Colgate opened up another 13-point lead just over a minute into the second half, before a 7-0 Bucknell run cut it to 41-35 with 17:16 left. The Bison trailed by seven, 42-35, with 15:57 remaining, when Creamer hit a three-pointer to get the squad within four, 42-38. Creamer proceeded to score 11 straight points for BU over a six-minute stretch to keep the team within striking distance.

Bucknell improved to shoot an impressive .484 (15-31) in the second half, including 4-of-5 from downtown (.800). The Orange and Blue outscored the Raiders 44-25 in the frame.

Bucknell (9-9, 4-2 PL)	FG-A	FT-A	Reb	PF	Ast	T	Pts
Desire Almind, F	3-13	2-4	7	3	2	1	8
Chelsea Smith, F	1-1	4-5	2	0	0	2	6
Lindsey Geosits, G	1-5	0-0	3	4	0	1	2
Molly Creamer, G	14-32	6-6	8	3	3	3	37
Kate Franks, F	6-13	2-5	8	1	1	3	17
Katie Hettler	0-1	0-0	0	0	0	0	0
Amy Ketcham	0-3	0-0	0	0	0	0	0
Jennie Ruth	0-1	0-0	0	1	0	0	0
Mary Edwards	0-0	0-0	0	1	0	0	0
Team			5				
Totals	25-69	14-20	33	13	6	11	70

Colgate (6-12, 1-5 PL)	FG-A	FT-A	Reb	PF	Ast	T	Pts
------------------------	------	------	-----	----	-----	---	-----

19 Holy Cross 86, Bucknell 76
Hart Center
Worcester, Mass. - Feb. 2, 2003

Senior Molly Creamer scored 21 of her game-high 33 points in the second half, but a hot shooting Holy Cross team was too much to overcome as the Bison women's basketball team fell, 86-76, to the Crusaders. Holy Cross shot a sizzling 65.4 (17-26) from the floor in the second half on its way to a 57.1 (32-56) clip for the game.

Bucknell and Holy Cross went back and forth in the first half, with neither team holding more than a seven-point lead. The Bison jumped out to an 11-7 advantage before a Jessica Conte three-pointer got the host team back within one, 11-10. A jumper by junior Desire Almind put BU back on top by three, but Maggie Fontana answered with a trey at the other end to knot the score 13-13. From there, the Crusaders put together a 9-2 run to take a 22-15 lead with 8:15 left in the half.

Freshman Lindsey Geosits capped a 7-2 Bison run with a three-pointer to get the squad within two, 24-22, and the team remained in a two-point hole with five minutes remaining in the frame. The Crusaders used spurts of 6-2 and 5-1 to carry a 39-33 lead into the locker room at halftime.

Holy Cross quickly built a 14-point lead, holding the Orange and Blue to just two points in the first five minutes of the second half while rattling off 10, including two three-pointers from Liz O'Connor. The Crusaders' defense continued to stifle the Bison offense, going ahead by as many as 18 with just under 10 minutes to play.

The Bison got as close as seven, 79-72, with 2:13 left in the game after a Creamer three, but a Holy Cross offensive rebound on their next possession forced Bucknell to foul. Sarah Placek hit four foul shots in a row for the Crusaders to extend the lead back to 11, 83-72. HC made three of their final four free throw attempts in the last 35 seconds of the game to seal the 10-point victory.

Bucknell (9-10, 4-3 PL)	FG-A	FT-A	Reb	PF	Ast	T	Pts
Desire Almind, F	6-11	8-10	11	4	1	2	20
Chelsea Smith, F	2-2	0-0	1	3	1	1	4
Lindsey Geosits, G	2-6	2-2	3	3	4	2	9
Molly Creamer, G	10-21	10-13	4	5	4	8	33
Kate Franks, G	4-9	0-0	2	0	3	1	8
Katie Hettler	1-2	0-0	1	1	2	0	2
Amy Ketcham	0-0	0-0	1	2	0	0	0
Jennie Ruth	0-0	0-0	1	2	0	1	0
Mary Edwards	0-1	0-0	1	1	0	0	0
Team			2	2			
Totals	26-52	20-25	27	20	15	15	76

Holy Cross (13-7, 6-1 PL)	FG-A	FT-A	Reb	PF	Ast	T	Pts
Mary Rose Campbell, F	5-8	3-5	4	0	1	1	13
Katie O'Keefe, C	8-11	0-0	6	2	5	2	16
Sarah Placek, G	2-6	5-5	0	4	5	2	10
Liz O'Connor, G	3-7	5-5	4	3	2	1	13
Maggie Fontana, G	7-11	1-1	1	1	1	2	7
Lisa Andrews	0-0	0-0	3	0	0	0	0
Caitlin Agostinacchio	0-0	0-0	0	0	0	0	0
Shannon Bush	1-2	1-2	0	2	0	0	3
Jessica Conte	3-6	0-1	0	1	1	3	8
Patty Fitzgerald	1-1	0-0	0	0	0	1	2
Team			4				
Totals	32-56	15-20	27	19	24	15	86

Halftime: Holy Cross 39, Bucknell 33. **3-point Goals:** Bucknell 4-17 (Creamer 3-9, Geosits 1-2, Almind 0-1, Hettler 0-1, Franks 0-4); Holy Cross 7-20 (Conte 2-4, Fontana 2-4, O'Connor 2-6, Placek 1-5, Bush 0-1). **Attendance:** 2,789.

20 American 72, BUCKNELL 60
Bender Arena
Washington, D.C. - Feb. 8, 2003

The Orange and Blue were without the services of senior Kate Franks, missing the first game of her career, with a hip injury.

The American squad capitalized on cold Bison shooting to start the game, jumping out to a 10-2 lead before Molly Creamer beat the shot clock with a three-pointer to cut the deficit to 10-5. Creamer converted two free throws less than 40 seconds later to get the Orange and Blue within three, 10-7. With the Bucknell behind 23-22 with 6:41 to go in the opening frame, the Eagles put together an 11-4 run that spanned nearly four minutes to match their largest lead of the half at 34-26. The Bison got within six on three different occasions in the last 2:12 of the half, but a basket at the buzzer gave the host team a 40-32 cushion heading into the locker room.

American opened up a 10-point lead just three minutes into the second half before Bucknell mounted a 10-4 run, fueled by six points from Desire Almind, to cut it to four, 50-46, with 11:41 left in the game. The Bison went cold from the floor at that point, missing nine-straight shots to fall in a 55-46 hole. A 9-4 spurt got the squad within four again, 59-55, with just under five minutes remaining, but that was as close as the team would get. American outscored the Orange and Blue 13-5 over the final five minutes of the contest to come away with a 72-60 victory.

Bucknell (9-11, 4-4 PL)	FG-A	FT-A	Reb	PF	Ast	T	Pts
Desire Almind, F	6-12	6-6	10	3	0	4	18
Chelsea Smith, F	2-5	3-4	4	4	2	1	7
Lindsey Geosits, G	0-6	0-0	2	3	4	4	0
Katie Hettler, G	2-4	1-2	7	4	0	2	5
Molly Creamer, G	9-31	6-6	3	4	5	9	26
Amy Ketcham	2-2	0-0	4	1	0	2	4
Mary Edwards	0-3	0-2	4	2	0	0	0
Team			5				
Totals	21-63	16-20	39	21	11	22	60

American (13-8, 6-2 PL)	FG-A	FT-A	Reb	PF	Ast	T	Pts
Chanel Hunt, F	8-16	1-1	8	3	4	3	17
Mariam Veppumthara, C	1-3	2-2	3	2	0	3	4
Joanna Barnes, G	5-11	7-11	8	3	6	6	18
Chanel Spriggs, G	3-11	0-0	6	3	1	2	6
Maria Werries, G	3-7	2-2	4	2	1	3	10
Damarah Rhymer	0-0	0-0	0	0	0	0	0
Katlin Schuyler	1-3	0-0	0	2	1	1	2
Katryn Costenbader	3-10	2-2	9	0	0	2	9
Angel McNeill	2-3	0-0	1	0	0	0	4
Kim Salem	0-1	0-0	0	0	0	0	0
Emily Branitz	0-0	0-0	0	0	0	0	0
Katie Walsh	0-0	0-0	0	0	0	0	0
Alicia Zorzetto	0-0	0-0	0	0	0	0	0
Jenyce Woodruff	1-1	0-1	4	1	2	3	2
Team			4				
Totals	27-66	14-19	47	16	15	23	72

Halftime: American 40, Bucknell 32. **3-point Goals:** American 4-16 (Werries 2-3, Barnes 1-2, Costenbader 1-6, McNeill 0-1, Schuyler 0-2, Spriggs 0-2); Bucknell 2-16 (Creamer 2-12, Hettler 0-1, Smith 0-1, Geosits 0-2). **Attendance:** 1944.

21 Lehigh 68, BUCKNELL 61
Stabler Arena
Bethlehem, Pa. - Feb. 11, 2003

The road woes continued as the team fell at Lehigh, 68-61.

Bucknell led 6-5 with just under five minutes gone in the game before a 13-2 run by the Mountain Hawks gave the host team an 18-8 lead. Jessica DePalo, who had 10 of Lehigh's first 18 points, scored eight of those during the stretch. Katie Hettler ended the Orange and Blue drought with a layup at the 11:33 mark. The 5-7 guard followed with her first three-pointer of the season just 26 seconds later to cut the deficit to five, 18-13.

Bucknell outscored Lehigh 12-0 over the final five minutes of the half to carry a 32-27 lead into the locker room.

Lehigh opened the second half with two quick three-pointers to take over the lead, 33-32. Sandwiched by two Carl Tolver three-pointers, the Mountain Hawks outscored BU 12-2 over the three minute span to take over 49-44. The Bison got within one, 49-48, with 11:29 left in the game, but Lehigh eliminated the hopes of a comeback with an 8-0 spurt over two minutes to go up nine, 57-48. Bucknell could only get as close as five the rest of the way before falling 68-61.

Bucknell (9-12, 4-5 PL)	FG-A	FT-A	Reb	PF	Ast	T	Pts
Desire Almind, F	4-12	5-6	11	3	2	3	13
Chelsea Smith, F	1-6	0-0	6	3	1	0	2
Lindsey Geosits, G	1-5	2-2	0	1	1	0	4
Molly Creamer, G	7-20	0-0	3	2	6	6	14
Kate Franks, G	6-17	1-1	4	1	2	0	17
Katie Hettler	4-7	0-0	8	1	0	1	9
Amy Ketcham	1-1	0-0	0	0	0	0	2
Jennie Ruth	0-1	0-0	0	0	0	0	0
Mary Edwards	0-1	0-0	0	1	0	0	0
Team			3				
Totals	24-70	8-9	35	12	12	11	61

Lehigh (11-10, 8-1 PL)	FG-A	FT-A	Reb	PF	Ast	T	Pts
Jana Ransom, F	4-10	2-2	5	2	2	3	11
Anne Tierney, F	3-9	6-7	19	1	4	1	13
Jessica DePalo, C	6-9	2-2	5	3	3	4	14
Dawn Gorynski, G	2-8	2-2	3	1	2	3	7
Carl Tolver, G	6-12	1-2	4	3	4	3	18
Cat Nicholson	1-3	0-0	1	1	1	3	3
Teniece Johnson	0-1	0-0	0	0	0	0	0
Kelly Burk	0-0	2-2	1	1	0	0	2
Shelita Burks	0-0	0-0	3	1	0	0	0
Chantal St. Laurent	0-0	0-0	0	0	0	0	0
Team			3				
Totals	22-52	15-17	44	13	16	20	68

Halftime: Bucknell 32, Lehigh 27. **3-point Goals:** Lehigh 9-20 (Tolver 5-10, Ransom 1-1, Tierney 1-1, Nicholson 1-3, Gorynski 1-5); Bucknell 5-22 (Franks 4-15, Hettler 1-2, Geosits 0-1, Creamer 0-4). **Attendance:** 289.

22 BUCKNELL 73, Navy 60
Sojka Pavilion
Lewisburg, Pa. - Feb. 16, 2003

Navy led 2-0, but that was it for the Mids. Bucknell led 34-29 at the break, and Navy closed within two at 36-34, but that's as close as the visitors would get. The Bison shot 54.2 percent in the second half, including a five-for-nine showing from beyond the arc.

Navy closed the gap to within seven, 67-60, with just under three minutes to play, but the Orange and Blue ended the game outscoring the Mids 6-0 for the 73-60 victory.

Navy (14-9, 4-6 PL)	FG-A	FT-A	Reb	PF	Ast	T	Pts
Alison Luchsinger, F	4-9	0-0	4	2	3	1	11
Adrienne Roseti, F	5-9	0-3	6	4	0	5	10
Kate Maslowski, C	2-3	1-1	2	1	0	1	5
Maile Shimoda, G	3-8	0-0	0	3	2	1	8
Courtney Davidson, G	4-15	4-4	2	0	2	2	13
Lauren Skrel	0-0	0-0	0	0	0	0	0
Juliann Flacke	0-0	0-0	0	0	0	0	0
Lisa Steinmetz	0-3	2-2	2	0	2	0	2
Stephanie Hayes	0-0	0-0	0	0	0	0	0
Hannah Davis	0-1	0-0	1	1	0	0	0
Ashley Pelzek	0-1	0-0	1	0	0	0	0
Abi Campbell	0-0	0-0	0	0	0	0	0
Nikki Curtis	4-6	3-4	5	1	0	0	11
Bryanna Herring	0-1	0-0	3	3	1	0	0
Team			1				
Totals	22-56	10-14	27	15	10	14	60

Bucknell (10-12, 5-5 PL)	FG-A	FT-A	Reb	PF	Ast	T	Pts
Desire Almind, F	6-10	4-4	15	4	3	4	16
Chelsea Smith, F	0-1	2-2	3	1	3	0	2
Lindsey Geosits, G	2-8	0-0	1	4	1	4	6
Molly Creamer, G	8-19	5-7	7	2	7	6	24
Kate Franks, G	5-5	3-7	1	1	2	3	17
Katie Hettler	1-5	1-2	2	0	0	0	3
Amy Ketcham	0-0	1-2	6	1	0	2	1
Jennie Ruth	1-3	2-2	3	3	0	0	4
Team			2				
Totals	23-51	18-22	40	16	16	19	73

Halftime: Bucknell 34, Navy 29. **3-point Goals:** Bucknell 9-18 (Franks 4-4, Creamer 3-9, Geosits 2-4, Hettler 0-1); Navy 6-21 (Luchsinger 3-6, Shimoda 2-4, Davidson 1-8, Pelzek 0-1, Roseti 0-1, Steinmetz 0-1). **Attendance:** 2,322.

23 BUCKNELL 71, Lafayette 67
Allan P. Kirby Sports Center
Easton, Pa. - Feb. 21, 2003

Senior Molly Creamer took the Bucknell women's basketball team on her back, scoring BU's final 29 points of the game on her way to a career-high 44 points in a 71-67 win. With her final, Creamer set an Allan P. Kirby Sports Center scoring record.

Bucknell led 18-6 behind a solid defensive effort that held Lafayette to just a .143 (2-14) field goal percentage through the first 8:50 of the game. Leading 24-17 with just over five minutes left until halftime, Bucknell closed the frame outscoring Lafayette 11-6 for a 35-23 lead at the break.

A Creamer layup just 2:12 into the final frame gave BU its largest lead of the game at 44-23. The Orange and Blue, however, proceeded to miss the next seven shots over a five-minute span, while allowing the Leopards to creep back into it.

Clinging to a 44-40 lead after a 17-0 Lafayette run, Creamer snapped the Bison scoreless drought with a three-pointer at the 12:51 mark. No other Bucknell player would score the rest of the game, as the 5-10 co-captain went on to record BU's final 29 points of the contest.

The Bison held a 60-50 lead with just over six minutes to play before another scoring drought helped the Leopards to their first lead of the contest, 62-61. A free throw by Creamer at the other end quickly tied the contest, and a layup less than a minute later gave Bucknell a 64-62 lead.

Down 69-67 with nine seconds left, the Leopards' Ashley MacLelland got a good look at the basket, firing off a three-pointer, but the ball banged off the rim and the rebound came down into the hands of Creamer. Two free throws by the guard with six ticks left sealed the victory for Bucknell.

Bucknell (11-12, 6-5 PL)	FG-A	FT-A	Reb	PF	Ast	T	Pts
Desire Almind, F	3-6	0-0	7	4	5	3	6
Chelsea Smith, F	3-6	0-0	3	4	0	1	6
Lindsey Geosits, G	2-9	0-0	3	2	1	3	4
Molly Creamer, G	16-21	9-13	6	4	6	4	44
Kate Franks, G	3-12	0-0	4	4	0	3	9
Katie Hettler	0-3	0-0	1	0	0	2	0
Amy Ketcham	0-3	0-0	0	1	0	2	0
Jennie Ruth	0-0	0-0	0	1	0	0	0
Team			5				
Totals	28-60	9-13	36	23	13	21	71

Lafayette (2-22, 1-10 PL)	FG-A	FT-A	Reb	PF	Ast	T	Pts
Ashley MacLelland, F	2-8	5-6	9	3	2	1	9
Colleen Fitzpatrick, F	13-17						

25

Holy Cross 91, BUCKNELL 79
Sojka Pavilion
Lewisburg, Pa. - Feb. 28, 2003

Bucknell trailed by only one at halftime, 42-41, but a visiting Holy Cross squad outscored the Bison 49-38 in the second to come away with a 91-79 victory.

Both teams put on a three-point shooting display in the opening half. Senior **Molly Creamer** opened the scoring with a trey just 20 seconds into the contest, and two minutes later a Sarah Placek triple knotted the game at 5-5. Trailing 7-6, freshman **Lindsey Geosits** put the Orange and Blue back on top with a three of her own, but it was a short lived lead.

The Crusaders' Katie O'Keefe answered with a shot from downtown just 17 seconds later to give HC a 10-9 advantage, jump starting a 13-2 run that pushed the lead to nine, 20-11.

A put-back from sophomore **Amy Ketcham** tied the contest at 38-38, and Creamer hit Bucknell's fourth triple of the half with 19 seconds until the break to put Bucknell up by one. Holy Cross' Maggie Fontana got a layup to fall with time winding down to put HC on top 42-41 at the intermission.

Two early free throws by Creamer in the second half gave Bucknell a 43-42 lead, but it was the last time the Bison would be on top in the contest.

Holy Cross (20-7, 12-1 PL)	FG-A	FT-A	Reb	PF	Ast	T	Pts
Mary Rose Campbell, F	2-4	1-2	9	1	3	3	5
Maggie Fontana, F	11-18	1-1	7	2	2	3	23
Katie O'Keefe, C	7-13	1-2	3	3	4	3	17
Sarah Placek, G	3-7	5-6	3	4	2	4	12
Liz O'Connor, G	4-8	2-2	3	2	1	1	13
Lisa Andrews	4-6	4-6	6	3	1	0	12
Caïlin Agostinacchio	0-0	0-0	0	0	0	0	0
Shannon Bush	2-5	3-4	1	0	4	4	7
Jessica Conte	0-3	0-0	2	2	2	0	0
Patty Fitzgerald	1-1	0-0	1	0	1	1	2
Team			7				
Totals	34-65	17-23	42	17	20	19	91

Bucknell (11-14, 6-7 PL)	FG-A	FT-A	Reb	PF	Ast	T	Pts
Desire Almind, F	4-6	5-6	7	5	3	2	13
Chelsea Smith, F	1-2	1-2	4	4	0	2	3
Lindsey Geosits, G	4-6	1-2	3	3	1	3	11
Molly Creamer, G	11-25	2-2	3	1	6	6	28
Kate Franks, G	4-11	3-4	3	4	1	2	12
Katie Hettler	1-1	2-2	1	2	0	0	4
Amy Ketcham	3-7	2-2	3	0	0	1	8
Jennie Ruth	0-1	0-0	0	1	0	0	0
Mary Edwards	0-1	0-0	0	1	1	2	0
Team			2				
Totals	28-60	16-20	26	21	12	18	79

Halftime: Holy Cross 42, Bucknell 41. **3-point Goals:** Bucknell 7-21 (Creamer 4-12, Geosits 2-3, Franks 1-6); Holy Cross 6-11 (O'Connor 3-4, O'Keefe 2-2, Placek 1-2, Bush 0-1, Conte 0-1, Fontana 0-1). **Attendance:** 1,056.

26

BUCKNELL 82, Colgate 75
Sojka Pavilion
Lewisburg, Pa. - March 2, 2003

Seniors **Molly Creamer** and **Kate Franks**, and junior **Desire Almind** combined to score 41 of Bucknell's 45 second half points propelling the Bison to an 82-75 victory over Colgate in the final regular-season game of the 2002-03 season.

It was a battle from start to finish with neither team holding more than a six-point lead until Bucknell's seven-point advantage at the final buzzer. The first half featured seven ties and four lead changes between the two squads.

Bucknell got the early advantage, leading 10-6 just over two minutes into the game. The Raiders came storming back with a 9-2 run, behind six-straight points from Leandra Fuller, to take their largest lead of the contest, 15-12. A three-point play from Creamer 20 seconds later knotted the game for the fourth time, and over the course of the next six minutes, their would be three more ties and two lead changes.

The Orange and Blue led by six, 37-31, with 1:27 remaining in the half, before a late surge by Colgate cut the halftime deficit to one. The Raiders' Emily Braseth scored five unanswered for the visitors to make it a 37-36 game at the break.

The second half was much the same as the first, featuring eight ties and five lead changes.

Colgate chipped away at the BU lead, getting five points from Megan Curtin during another 9-2 run that put the Raiders ahead, 55-53, for their last lead of the game. Franks responded with a three-pointer at the other end to give the Orange and Blue a one-point lead they would not relinquish.

The Bison, who only missed one free throw in the game, were a perfect eight-for-eight from the line in the final 2:01 of the game.

Colgate (9-17, 4-10 PL)	FG-A	FT-A	Reb	PF	Ast	T	Pts
Emily Braseth, F	10-17	4-7	2	3	2	2	24
Leandra Fuller, F	8-9	0-0	4	2	1	0	16
Alison Hanson, G	2-8	0-1	9	2	5	3	5
Megan Ballard, G	1-6	0-0	3	3	2	4	3
Malissa Burke, G	4-15	2-2	1	4	8	5	11
Milaina Lagzdins	5-9	1-4	8	2	2	1	11
Meghan Curtin	2-5	0-0	2	1	3	1	5
Emily Damuth	0-0	0-0	0	0	0	0	0
Team			6				
Totals	32-69	7-14	35	17	23	16	75

Bucknell (12-14, 7-7 PL)	FG-A	FT-A	Reb	PF	Ast	T	Pts
Desire Almind, F	11-14	2-2	15	2	3	2	24
Amy Ketcham, F	3-4	0-0	2	4	0	0	6
Lindsey Geosits, G	2-3	0-0	2	4	2	4	5
Molly Creamer, G	7-20	8-8	5	0	9	7	22
Kate Franks, G	5-12	4-5	3	0	4	2	18
Chelsea Smith	0-1	0-0	1	1	0	1	0
Katie Hettler	2-2	0-0	2	4	1	0	5
Jennie Ruth	1-2	0-0	3	2	0	0	2
Team			3				
Totals	31-58	14-15	36	17	19	16	82

Halftime: Bucknell 37, Colgate 36. **3-point Goals:** Bucknell 6-20 (Franks 4-11, Hettler 1-1, Geosits 1-2, Creamer 0-6); Colgate 4-17 (Ballard 1-3, Hanson 1-3, Curtin 1-4, Burke 1-5, Braseth 0-2). **Attendance:** 1,861.

2002-03 INDIVIDUAL GAME-BY-GAME STATS

Opponent	#10 MISKINIS P-A-S	#11 HATALSKY P-A-S	#12 BARRUET P-A-S	#13 ALMIND P-R-B	#15 GEOSITS P-A-S	#20 SMITH P-R-B	#21 HETTLER P-A-S	#23 CREAMER P-A-S	#24 HUDOCK P-A-S	#31 KETCHAM P-R-B	#32 FRANKS P-A-S	#33 RUTH P-R-B	#41 VALDNER P-R-B	#42 HEROMIN P-R-B	#55 EDWARDS P-R-B
at #14 Penn State!	DNP	INJ	DNP	26-10-1	2-6-2	DNP	0-1-0	28-5-1	DNP	DNP	4-3-2	4-1-0	6-2-0	INJ	2-0-0
at St. Bonaventure	DNP	INJ	DNP	10-6-0	2-4-4	4-2-1	0-0-0	17-6-1	DNP	DNP	17-2-2	8-5-0	6-4-0	INJ	0-1-0
West Virginia	DNP	INJ	DNP	13-4-0	5-3-1	DNP	0-0-0	30-8-2	DNP	DNP	8-4-1	4-3-0	12-10-0	INJ	DNP
Canisius	DNP	INJ	DNP	22-10-3	6-2-1	0-0-0	0-0-0	31-9-4	DNP	DNP	28-7-2	9-6-0	4-3-0	INJ	0-1-1
Drexel	DNP	INJ	0-0-0	14-9-0	5-2-2	0-0-0	0-0-0	23-11-3	DNP	0-1-0	20-7-2	19-7-0	9-3-0	INJ	5-3-0
at Loyola	DNP	INJ	DNP	23-7-0	5-1-1	0-0-0	DNP	32-2-6	DNP	DNP	12-3-2	0-0-0	4-2-0	INJ	0-0-1
at Delaware	DNP	INJ	1-0-0	4-6-0	4-2-1	0-0-0	0-0-0	12-4-5	DNP	DNP	6-2-4	15-5-0	0-0-1	INJ	3-2-1
at La Salle	DNP	INJ	DNP	INJ	6-5-2	5-3-0	0-1-0	27-4-0	DNP	0-2-0	24-5-1	2-2-0	10-11-0	DNP	0-0-0
vs. Alabama@	INJ	INJ	DNP	INJ	6-4-3	5-4-0	0-1-0	28-3-0	DNP	0-0-0	7-1-0	0-2-0	14-8-0	DNP	4-3-0
Akron@	INJ	INJ	0-0-0	INJ	3-2-1	3-2-0	7-1-0	19-4-4	0-0-0	0-0-2	13-6-2	2-1-0	4-6-1	DNP	13-2-1
Air Force	INJ	INJ	0-0-0	INJ	3-2-2	5-7-1	4-0-1	30-11-5	DNP	1-0-0	24-3-3	4-1-0	12-3-1	DNP	2-1-0
at Long Island	INJ	INJ	DNP	INJ	4-1-1	4-5-0	6-1-1	23-2-4	DNP	0-0-0	7-0-4	0-6-0	7-6-0	DNP	0-0-0
American*	INJ	INJ	DNP	19-12-1	3-0-1	5-6-0	0-1-1	41-4-8	DNP	DNP	3-4-3	0-1-0	0-3-0	DNP	1-1-0
Lehigh*	INJ	INJ	DNP	5-6-2	8-4-3	6-1-0	0-0-0	35-8-1	DNP	0-0-0	9-1-1	2-2-0	INJ	DNP	2-3-0
at Navy*	INJ	INJ	0-0-0	20-10-1	2-5-1	0-1-0	0-0-0	23-5-3	DNP	0-0-0	23-5-2	6-4-0	INJ	DNP	0-0-0
Army*	INJ	INJ	DNP	6-3-0	8-4-2	2-6-0	0-0-1	32-6-2	DNP	0-0-0	19-1-0	0-4-1	INJ	DNP	5-1-1
Lafayette*	INJ	INJ	DNP	22-4-0	4-5-2	5-5-0	DNP	22-13-3	DNP	2-4-1	26-1-2	4-7-0	INJ	DNP	2-1-1
at Colgate*	INJ	INJ	DNP	8-7-2	2-0-1	6-2-0	0-0-0	37-3-6	DNP	0-0-0	17-1-1	0-0-0	INJ	DNP	0-0-0
at Holy Cross*	INJ	INJ	DNP	20-11-1	9-4-2	4-1-0	2-2-1	33-4-1	DNP	0-1-0	8-3-0	0-1-0	INJ	DNP	0-1-0
at American*	INJ	INJ	DNP	18-10-1	0-4-1	7-4-1	5-0-1	26-5-5	DNP	4-4-0	INJ	DNP	INJ	DNP	0-4-0
at Lehigh*	INJ	INJ	DNP	13-11-2	4-1-2	2-6-1	9-0-1	14-6-2	DNP	2-0-0	17-2-1	0-0-0	INJ	DNP	0-0-0
Navy*	INJ	INJ	DNP	16-15-0	6-1-1	2-3-0	3-0-2	24-7-2	DNP	1-6-0	17-2-0	4-3-0	INJ	DNP	DNP
at Lafayette*	INJ	INJ	DNP	6-7-1	4-1-2	6-3-1	0-0-1	44-6-2	DNP	2-7-1	9-0-3	0-0-0	INJ	DNP	DNP
at Army*	INJ	INJ	DNP	12-8-0	9-2-0	0-3-0	2-0-0	27-3-3	DNP	0-0-1	19-3-0	8-5-0	INJ	DNP	2-0-0
Holy Cross*	INJ	INJ	DNP	13-7-1	11-1-1	3-4-0	4-0-0	28-6-4	DNP	8-3-0	12-1-3	0-0-0	INJ	DNP	0-0-0
Colgate*	INJ	INJ	DNP	24-15-3	5-2-0	0-1-0	5-1-1	22-9-1	DNP	6-2-1	18-4-1	2-3-1	INJ	DNP	DNP

at Patriot League Tournament (Upper Marlboro, Md.)

vs. #5 Navy

Home Games in **Bold**

! - at Preseason WNIT

@ - at Saint Peter's Holiday Classic

* - Patriot League game

P=Points

R=Rebounds

S=Steals

A=Assists

B=Blocks

2002-03 GAME 27: #1 BUCKNELL VS. #5 NAVY (PL QUARTERFINALS) (PAGE 19)

Player	Season High	Career High
Molly Creamer		
Points	44 at Lafayette (2/21/03)	Same
Assists	13 vs. Lafayette (1/26/03)	14 vs. Lehigh (1/26/02)
Rebounds	8 (twice)	13 at Lehigh (2/24/02)
Steals	8 vs. American (1/11/03)	Same
Kate Franks		
Points	28 vs. Canisius (11/27/02)	Same
Assists	7 (twice)	8 vs. Army (3/3/02)
Rebounds	8 (twice)	12 at American (1/19/02)
Steals	4 (twice)	5 vs. Army (3/3/02)
Desire Almind		
Points	26 at Penn State (11/15/02)	26 (three times)
Assists	5 at Lafayette (2/21/03)	5 (three times)
Rebounds	15 (twice)	Same
Steals	7 vs. American (1/11/03)	Same
Katie Hettler		
Points	9 at Lehigh (2/11/03)	Same
Assists	2 at Holy Cross (2/2/03)	Same
Rebounds	8 at Lehigh (2/11/03)	Same
Steals	2 vs. Navy (2/16/03)	Same
Kristin Valdner		
Points	14 vs. Alabama (12/29/02)	Same
Assists	4 vs. Air Force (1/2/03)	Same
Rebounds	11 at La Salle (12/21/02)	Same
Steals	3 (twice)	3 (three times)
Emilie Barruet		
Points	1 at Delaware (12/8/02)	2 vs. Colgate (2/16/02)
Assists		
Rebounds	1 at Navy (1/18/03)	2 vs. IPFW (1/4/02)
Steals		
Laura Hatalsky		
Points		3 (five times)
Assists		2 (twice)
Rebounds		4 vs. IPFW (1/4/02)
Steals		1 at Navy (1/12/02)
Cassie Heromin		
Points		
Assists		
Rebounds		
Steals		
Amy Ketcham		
Points	8 vs. Holy Cross (2/28/03)	Same
Assists	1 (twice)	2 vs. IPFW (1/4/02)
Rebounds	7 at Lafayette (2/21/03)	Same
Steals	2 (twice)	Same
Mary Edwards		
Points	13 vs. Akron (12/30/02)	Same
Assists	1 (three times)	Same
Rebounds	4 at American (2/8/03)	Same
Steals	1 (twice)	Same
Lindsey Geosits		
Points	11 vs. Holy Cross (2/28/03)	Same
Assists	6 at Penn State (11/15/02)	Same
Rebounds	8 vs. Lehigh (1/15/03)	Same
Steals	4 at St. Bonaventure (11/22/02)	Same
Kathryn Hudock		
Points		
Assists		
Rebounds		
Steals		
Gabrielle Miskinis		
Points		
Assists		
Rebounds		
Steals		
Jennie Ruth		
Points	19 vs. Drexel (11/29/02)	Same
Assists	2 vs. Alabama (12/29/02)	Same
Rebounds	7 (twice)	Same
Steals	3 at Delaware (12/8/02)	Same
Chelsea Smith		
Points	7 at American (2/8/03)	Same
Assists	4 at Army (2/23/03)	Same
Rebounds	7 vs. Air Force (1/2/03)	Same
Steals	1 (six times)	Same

BUCKNELL 2002-03 GAME-BY-GAME

	FG Pct.	3-Pt. Pct.	FT Pct.	OFF REB	DEF REB	TOT REB*	A	TO	BI	S	Bench Pts.
at #14 Penn State!	.375 (24-64)	.308 (4-13)	.800 (20-25)	12	15	27	16	10	2	7	6
at St. Bonaventure	.348 (23-66)	.308 (4-13)	.875 (14-16)	14	17	31	13	16	1	9	12
WEST VIRGINIA	.439 (29-66)	.308 (4-13)	.714 (10-14)	13	21	34	17	13	3	9	4
CANISIUS	.466 (34-73)	.458 (11-24)	.875 (21-24)	17	18	35	25	16	5	13	9
DREXEL	.592 (29-49)	.400 (4-10)	.846 (33-39)	5	30	35	21	22	0	11	24
at Loyola	.481 (26-54)	.200 (3-15)	.840 (21-25)	5	20	25	8	16	1	13	0
at Delaware	.318 (14-44)	.083 (1-12)	.762 (16-21)	5	19	24	10	30	2	14	19
at La Salle	.443 (27-61)	.478 (11-23)	.450 (9-20)	12	22	34	17	16	0	4	5
vs. Alabama@	.390 (23-59)	.190 (4-21)	.824 (14-17)	11	25	36	13	13	0	3	9
Akron@	.442 (23-52)	.286 (4-14)	.700 (14-20)	10	26	36	16	16	5	7	22
AIR FORCE	.500 (29-58)	.471 (8-17)	.679 (19-28)	12	23	35	22	23	3	15	11
at Long Island	.279 (17-61)	.059 (1-17)	.727 (16-22)	13	15	28	6	8	0	16	6
AMERICAN*	.393 (22-56)	.250 (4-16)	.788 (26-33)	14	23	37	10	25	2	20	6
LEHIGH*	.382 (26-68)	.250 (3-12)	.800 (12-15)	6	26	32	14	11	3	6	4
at Navy*	.587 (27-46)	.667 (8-12)	.667 (12-18)	7	23	30	19	25	1	12	6
ARMY*	.444 (20-45)	.357 (5-14)	.844 (27-32)	7	24	31	13	17	4	6	5
LAFAYETTE*	.564 (31-55)	.500 (5-10)	.714 (20-28)	7	21	28	20	16	3	12	8
at Colgate*	.362 (25-69)	.462 (6-13)	.700 (14-20)	10	23	33	6	11	5	13	0
at Holy Cross*	.500 (26-52)	.235 (4-17)	.800 (20-25)	14	13	27	15	15	1	9	6
at American*	.333 (21-63)	.125 (2-16)	.800 (16-20)	15	24	39	11	22	3	14	4
at Lehigh*	.343 (24-70)	.227 (5-22)	.889 (8-9)	15	20	35	12	11	3	10	11
NAVY*	.451 (23-51)	.500 (9-18)	.818 (18-22)	10	30	40	16	19	1	6	8
at Lafayette*	.467 (28-60)	.400 (6-15)	.692 (9-13)	11	25	36	13	21	4	12	2
at Army*	.400 (26-65)	.385 (10-26)	.739 (17-23)	14	19	33	14	18	2	5	12
HOLY CROSS*	.467 (28-60)	.333 (7-21)	.800 (16-20)	5	21	26	12	18	4	11	12
COLGATE*	.534 (31-58)	.300 (6-20)	.933 (14-15)	8	28	36	19	16	3	6	7

OPPONENTS 2002-03 GAME-BY-GAME

	FG Pct.	3-Pt. Pct.	FT Pct.	OFF REB	DEF REB	TOT REB*	A	TO	BI	S	Bench Pts.
at #14 Penn State!	.531 (34-64)	.500 (7-14)	.688 (11-16)	13	30	43	19	16	3	8	10
at St. Bonaventure	.458 (27-59)	.667 (6-9)	.750 (18-24)	19	30	49	18	22	4	8	24
WEST VIRGINIA	.536 (30-56)	.417 (5-12)	.600 (12-20)	11	26	37	13	19	5	9	14
CANISIUS	.531 (34-64)	.412 (7-17)	.941 (16-17)	12	24	36	16	25	1	8	19
DREXEL	.465 (33-71)	.316 (6-19)	.733 (11-15)	11	20	31	19	17	2	16	20
at Loyola	.475 (28-59)	.143 (2-14)	.714 (15-21)	13	25	38	10	20	4	10	23
at Delaware	.424 (25-59)	.167 (2-12)	.679 (19-28)	19	27	46	11	26	1	14	13
at La Salle	.508 (30-59)	.438 (7-16)	.750 (18-24)	9	25	34	22	13	0	6	13
vs. Alabama@	.425 (31-73)	.400 (12-30)	.600 (15-25)	25	27	52	16	10	3	3	23
Akron@	.356 (21-59)	.308 (4-13)	.375 (3-8)	14	18	32	11	20	2	10	25
AIR FORCE	.426 (29-68)	.235 (4-17)	.875 (7-8)	15	23	38	14	27	1	11	19
at Long Island	.469 (23-49)	.440 (11-25)	.529 (9-17)	15	35	50	19	24	2	2	18
AMERICAN*	.397 (23-58)	.389 (7-18)	.846 (22-26)	16	24	40	12	31	2	16	25
LEHIGH*	.455 (25-55)	.438 (7-16)	.739 (17-23)	8	35	43	19	17	0	6	10
at Navy*	.377 (23-61)	.286 (6-21)	.650 (13-20)	21	16	37	12	22	1	11	20
ARMY*	.313 (20-64)	.400 (6-15)	.727 (16-22)	23	23	46	15	17	2	7	13
LAFAYETTE*	.411 (23-56)	.333 (4-12)	.885 (23-26)	13	19	32	17	21	0	9	5
at Colgate*	.455 (25-55)	.333 (3-9)	.643 (9-14)	9	36	45	14	25	3	5	7
at Holy Cross*	.571 (32-56)	.350 (7-20)	.750 (15-20)	14	13	27	24	15	3	5	17
at American*	.409 (27-66)	.250 (4-16)	.737 (14-19)	17	30	47	15	23	2	9	17
at Lehigh*	.423 (22-52)	.450 (9-20)	.882 (15-17)	12	32	44	16	20	2	3	5
NAVY*	.393 (22-56)	.286 (6-21)	.714 (10-14)	7	20	27	10	14	2	6	13
at Lafayette*	.359 (23-64)	.154 (2-13)	.792 (19-24)	18	24	42	17	18	1	6	20
at Army*	.528 (28-53)	.455 (5-11)	.732 (30-41)	9	26	35	17	14	1	8	24
HOLY CROSS*	.523 (34-65)	.545 (6-11)	.739 (17-23)	12	30	42	20	19	2	10	21
COLGATE*	.464 (32-69)	.235 (4-17)	.500 (7-14)	15	20	35	23	16	2	10	16



#23 Molly Creamer

Senior • Guard • 5-10
Mendham, N.J. (West Morris Mendham)

Knockout ... named to Full Court Press Mid-Major All-America team.

CREAMER'S CAREER-HIGHS

Points:	44	at Lafayette	2/21/2003
Rebounds:	13	at Lehigh	2/24/2002
Assists:	14	Lehigh	1/26/2002
Steals:	8	American	1/11/2003
Blocks:	3	at American	1/19/2002
FG Made:	16	twice	
FG Attempted:	32	at Colgate	1/31/2003
3-pt FG Made:	8	Army	1/16/2002
3-pt FG Attempted:	12	five times	
FT Made:	16	American	1/11/2003
FT Attempted:	16	American	1/11/2003

CREAMER SNAPSHOT

Dynamic guard with great playmaking abilities ... Has the ability to light up the crowd with exciting passes ... Entertaining player with a scorer's mentality.

2002-03

Elected 2002-03 co-captain ... Named Patriot League Pre-Season Player of the Year ... Named Pre-season All-American Honorable Mention by www.womenscollegehoops.com ... Named a "Player to Watch" for the second annual Senior CLASS Award ... Opened year with 28 point performance against 14th-ranked Penn State (11/15/02) ... Had her first 30 point game of the year against West Virginia (11/25/02) ... Followed that with 31 in a win over Canisius (11/27/02) ... Recorded her first double-double of the year with 23 points and 11 assists against Drexel (11/29/02) ... Tallied her second double-double of the year with 30 points and 11 assists against Air Force (1/2/03) ... Scored 2,000th career-point in loss at Long Island (1/4/03) ... Tossed in a season-high 41 points in loss against American (1/11/03) ... Grabbed a career-best eight steals in the game ... Became the Patriot League's all-time leading scorer with 35 points against Lehigh (1/15/03) ... Had only 16 points with 3:14 remaining before scoring 19 in a span of 2:22 to finish the game as the PL scoring leader by three ... Became Bucknell's all-time leading scorer with 32 points against Army (1/24/03) ... Registered another double-double against Lafayette, ending the game with 22 points and 13 assists (1/26/03) ... Scored 20 points or more in a school record 10-straight games ... Broke Colgate's Cotterell Court single-game scoring record with 37 points (1/31/03) ... tied her own single-season school record with her 18th 20-point game of the season with 24 against Navy (2/16/03) ... Broke her own school and Patriot League record with 44 points at Lafayette (2/21/03) ... Also broke the Alan P. Kirby Sports Center single game scoring record in the contest, while scoring Bucknell's final 29 points in the game ... Tallied over 20 for the 20th time this season with 27 markers at Army (2/23/03) ... Recorded her 21st 20-points game of the season with 28 vs. Holy Cross (2/28/03) ... Registered her fifth-straight 20-point game with 22 in her final home game against Colgate (3/2/03) ... Has only been held in single digits scoring in eight games in her career (115 games total) ... Has only been held under 20 four times this season.

2001-02

For the second year in a row, led the conference in scoring and assists ... 2001-02 Patriot League Player of the Year ... Set a school and Patriot League record with 43 points against Army (1/16/02) ... Broke the school career three-pointers record in the contest ... Broke the Bucknell single-game mark for three-pointers with eight ... Handed out a career-high 14 assists in Lehigh game (1/26/02) ... Tied the school record for assists in the game ... Recorded her sixth double-double of the season with 22 points and 11 assists at Holy Cross (3/6/02) ... Was named the MVP of the Nassau

2000-01

Led the Patriot League in scoring (19.0) and assists (4.96) ... Became the first sophomore in school history, and second in league history, to be named the Patriot League Player of the Year ... Named to the All-Patriot League First Team ... Was the first sophomore in Bucknell history to reach 1,000 points, tallying 1,008 by the end of her second season ... Tallied a career-high 33 points in loss to Northeastern in the consolation game of PNC Wildcat Classic (12/30/2000) ... Named to the All-Tournament team for her performance ... Tallied the first triple double of her career with 10 rebounds, 10 assists and 21 points against Cleveland State (1/3/01) ... Named to the Cornell Classic All-Tournament Team ... Was Patriot League Player of the Week twice during the season (12/11/2000 and 1/28/01) ... Named *Co-Catalyst of the Year* at the team's end of year banquet.

1999-2000

Became the highest scoring freshman in Bucknell history with 475 points as a rookie ... Was the only freshman named to the 2000 Patriot League All-Tournament team ... Named to 1999-2000 All-Rookie Team and All-League second-team ... Led the team in scoring in 15 of 30 games ... Scored a career-high 27 points in just her third game in a Bucknell uniform against Hampton (11/30/99) ... Was named the Patriot League Rookie-of-the-Week three times ... Hit double figures in all but five games ... Led the team in points per game (15.8), three-pointers made (25), three-point percentage (31.6, 25-79) and blocks (16) ... Recorded career-high nine assists against Lafayette (2/27/2000) ... Honored as Bucknell's Subway Female Athlete-of-the-Month for November.

HIGH SCHOOL/PERSONAL

Averaged 15.0 points, 5.0 assists and 4.0 rebounds per game at Mendham High School, Mendham, N.J. ... Selected to First-Team All-County, All-Area, All-Conference, and Group Two Teams ... Over four-year career, high school team recorded a 111-7 overall record ... Team posted a 32-1 mark as a senior ... Was "floor general" for state championship teams both her junior and senior years ... Named Most Valuable Player in New Jersey State Tournament at conclusion of senior year ... Also an All-Conference selection in softball ... Majoring in History and Education ... Daughter of Chris and Mary Creamer ... Born 9/23/81.

CREAMER'S 2002-03 GAME-BY-GAME STATS

Opponent	FG-FGA	Pct.	3P-3PA	Pct.	FT-FTA	Pct.	REB	PF	A	TO	B	S	PTS
at Penn State	8-20	.400	4-8	.500	8-11	.727	4	4	5	6	0	1	28
at SBU	6-18	.333	1-4	.250	4-4	1.00	4	2	6	5	0	1	17
West Virginia	11-26	.423	2-8	.250	6-8	.750	5	4	8	4	1	2	30
Canisius	8-20	.400	2-7	.286	13-13	1.00	6	2	9	11	0	4	31
Drexel	6-11	.545	2-4	.500	9-9	1.00	8	1	11	7	0	3	23
at Loyola	9-19	.474	1-7	.143	13-15	.867	1	1	2	6	0	6	32
at Delaware	3-14	.214	1-8	.125	5-7	.714	3	1	4	10	0	5	12
at La Salle	9-22	.409	5-11	.455	4-7	.571	5	2	4	5	0	0	27
vs. Alabama	9-19	.474	3-9	.333	7-8	.875	3	2	3	3	0	0	28
vs. Akron	6-10	.600	1-5	.200	6-6	1.00	5	2	4	2	0	4	19
Air Force	9-18	.500	2-6	.333	10-13	.769	7	1	11	10	0	5	30
at Long Island	6-20	.300	1-8	.125	10-10	1.00	4	5	2	4	0	4	23
American	11-24	.458	3-8	.375	16-16	1.00	3	3	4	6	1	8	41
Lehigh	11-25	.440	3-7	.429	10-11	.909	6	2	8	3	1	1	35
at Navy	9-13	.692	3-5	.600	2-2	1.00	3	3	5	6	0	3	23
Army	8-19	.421	4-10	.400	12-13	.923	2	1	6	4	0	2	32
Lafayette	7-14	.500	2-4	.500	6-6	1.00	2	3	13	3	0	3	22
at Colgate	14-32	.438	3-5	.600	6-6	1.00	8	3	3	3	1	6	37
at Holy Cross	10-21	.476	3-9	.333	10-13	.769	4	5	4	8	0	1	33
at American	9-31	.290	2-12	.167	6-6	1.00	3	4	5	9	0	5	26
at Lehigh	7-20	.350	0-4	.000	0-0	.000	3	2	6	6	0	2	14
Navy	8-19	.421	3-9	.333	5-7	.714	7	2	7	6	0	2	24
at Lafayette	16-21	.762	3-4	.750	9-13	.692	6	4	6	4	1	2	44
at Army	7-22	.318	2-8	.250	11-13	.846	7	5	3	6	1	3	27
Holy Cross	11-25	.440	4-12	.333	2-2	1.00	3	1	6	6	2	4	28
Colgate	7-20	.350	0-6	.000	8-8	1.00	5	0	9	7	1	1	22
vs. #5 Navy													

CREAMER'S CAREER STATISTICS

Year	G-GS	FG-FGA	Pct.	3FG-3A	Pct.	FT-FTA	Pct.	Reb.	Avg.	PF-D	A	TO	B	S	Pts.	Avg.	Min.-Avg.
1999-00	30-26	162-393	.412	25-79	.316	126-163	.773	99	3.3	72-1	107	127	16	64	475	15.8	1043-34.8
2000-01	28-28	189-407	.464	45-124	.363	110-134	.821	115	4.1	58-0	139	149	15	70	533	19.0	1010-36.1
2001-02	31-31	233-525	.444	63-169	.373	166-190	.874	155	5.0	72-0	180	135	12	86	695	22.4	1143-36.9
2002-03	26-26	225-523	.430	60-188	.319	198-227	.872	117	4.5	65-3	154	150	9	78	708	27.2	1006-38.7
Totals	115-111	809-1848	.438	193-560	.345	600-714	.840	486	4.2	264-4	580	561	52	298	2411	21.0	4165-36.2



#32 Kate Franks

Senior • Guard • 5-10
Philipsburg, Pa. (Philipsburg-Osceola)

FRANKS' CAREER-HIGHS

Points:	28	Canisius	11/27/2002
Rebounds:	12	at American	1/19/2002
Assists:	8	vs. Army	3/3/2002
Steals:	5	twice	
Blocks:	2	twice	
FG Made:	9	five times	
FG Attempted:	19	Marist	12/1/2001
3-pt FG Made:	7	Canisius	11/27/2002
3-pt FG Attempted:	15	at Lehigh	2/11/2003
FT Made:	6	three times	
FT Attempted:	8	Harvard	12/9/2000

FRANKS SNAPSHOT

Athletic player with scorer's mentality ... Represents a repertoire of scoring abilities ... Not afraid to take the ball to the hoop, but is also capable of hurting you with her outside game ... Has steadily improved her rebounding abilities ... Also has good playmaking skills.

2002-03

Elected 2002-03 co-captain ... Missed first game of her career at American (2/8/03) ... Had played in 108 consecutive games ... Scored a career-best 28 points in win over Canisius (11/27/02) ... Connected on a career-best seven three-pointers in the game ... Handed out a season-best seven assists ... Equalled that assist total against Drexel (11/29/02) ... Has six 20-point games this season ... Scored 1,000th career point with 24-point effort in 85-69 victory over Air Force (1/2/03) ... Moved into Bucknell top-10 for career scoring ... Attempted a school-record 15 three-pointers at Lehigh (2/11/03) ... Was perfect from the field against Navy (2/16/03), going 5-of-5 from the field, including 4-of-4 from downtown ... Reached double-figures for the 16th time this season with 18 points against Colgate (3/2/03).

2001-02

Started all 31 games ... Was the team's third-leading scorer ... Scored in double figures in over half of the games this season (19) ... Hit a single game-best five three-pointers in loss to Holy Cross (1/29/02) and then again in the championship game against the Crusaders (3/6/02) ... Scored a season-high 19 points in overtime win against Lehigh (2/24/02), going 4-for-8 from three-point territory ... Tallied 19 again in the Patriot League title game (3/6/02), going 7-for-14 from the floor (5-of-8 from 3) ... Scored 17 points in semi-final game against Army (3/3/02), all in the second half ... Finished second on the team with 3.2 assists per game ... Handed out a career-best eight assists against Army (3/3/02) ... Set a new career-best for caroms, collecting 12 at American (1/19/02) ... Recorded her first career double-double in the contest with 10 points and 12 rebounds ... Is currently in fourth place on the Bucknell all-time career three-pointers list with 83 ... Hit a career-best 43 three-pointers this season ... named to the Patriot League All-Tournament team.

2000-01

Started all 28 games ... Recorded a season-high 18 points on 8-of-10 shooting from the floor against Stony Brook (1/31/01) ... Scored Bucknell's first eight points against Cornell (12/2/2000) and nine of the team's first 11 ... Set career-highs with six assists and five steals in Niagara game (12/1/2000) ... Matched her career-best with seven rebounds against Cleveland State (1/3/01) and again against Navy (2/3/01) ... Shot 33.8% from three-point territory (27-80) ... Handed out 2.0 assists per game, 11th in the

Patriot League ... Grabbed 1.5 steals per game, 13th in the league ... was given the *Unsung Hero Award* at the team's post-season banquet.

1999-2000

Earned her first starting role against Navy (1/12/2000) and delivered with 10 points ... Handed out a career-high five assists in that contest ... Answered Navy performance with 11 points in BU victory over Holy Cross (1/15/2000) ... Came out to score a then career-high 18 points, all in the second half, to lead the team in Army victory (1/19/2000) ... Recorded career-high 21 points in double-overtime loss to Lehigh (2/16/2000) ... Led the team in scoring with 18 in 66-69 setback to Colgate (2/19/2000) ... Named Patriot League Rookie-of-the-Week for her play in Lehigh and Colgate games ... Scored in double figures in 15 games ... Was the team's fourth-leading scorer at 9.8 ppg ... Averaged 11.3 ppg in Patriot League play.

HIGH SCHOOL/PERSONAL

Averaged 21.6 points per game, eight rebounds and five assists during her senior campaign ... Selected to the *Associated Press*' Pennsylvania All-State Third-Team ... Chosen to participate in the Roundball Classic ... Named the Most Valuable Player of Centre County ... Earned All-Area Team honors at conclusion of senior season ... Also an All-State performer in volleyball ... Majoring in Business Management ... Daughter of Bob Franks and Mary Franks ... Born 6/23/81.

FRANKS' 2002-03 GAME-BY-GAME STATS

Opponent	FG-FGA	Pct	3P-3PA	Pct	FT-FTA	Pct	REB	PF	A	TO	B	S	PTS
at Penn State	1-12	.083	0-5	.000	2-2	1.00	3	4	3	0	1	2	4
at SBU	6-18	.333	3-8	.375	2-3	.667	4	3	2	3	0	2	17
West Virginia	3-7	.429	0-2	.000	2-4	.500	5	2	4	5	2	1	8
Canisius	9-16	.562	7-12	.583	3-4	.750	4	1	7	0	1	2	28
Drexel	7-12	.583	2-6	.333	4-6	.667	2	2	7	6	0	2	20
at Loyola	4-10	.400	1-5	.200	3-3	1.00	3	3	3	3	0	2	12
at Delaware	1-5	.200	0-4	.000	4-4	1.00	4	3	2	5	0	4	6
at La Salle	9-15	.600	4-7	.571	2-5	.400	5	3	5	2	0	1	24
vs. Alabama	1-11	.091	1-9	.111	4-4	1.00	5	3	1	3	0	0	7
vs. Akron	4-12	.333	3-7	.429	2-2	1.00	5	0	6	3	0	2	13
Air Force	9-14	.643	6-9	.667	0-1	.000	2	0	3	1	1	3	24
at Long Island	3-13	.231	0-6	.000	1-3	.333	2	3	0	0	0	4	7
American	1-5	.200	1-5	.200	0-0	.000	5	3	4	3	0	3	3
Lehigh	4-10	.400	0-2	.000	1-3	.333	3	5	1	1	0	1	9
at Navy	7-13	.538	5-7	.714	4-5	.800	4	2	5	7	0	2	23
Army	7-14	.500	1-4	.250	4-6	.667	8	1	1	2	1	0	19
Lafayette	9-13	.692	3-5	.600	5-7	.714	2	1	1	2	1	2	26
at Colgate	6-13	.462	3-8	.375	2-5	.400	8	1	1	3	2	1	17
at Holy Cross	4-9	.444	0-4	.000	0-0	.000	2	0	3	1	0	0	8
at American	INJ												
at Lehigh	6-17	.353	4-15	.267	1-1	1.00	4	1	2	0	0	1	17
Navy	5-5	1.00	4-4	1.00	3-3	1.00	1	1	2	3	0	0	17
at Lafayette	3-12	.250	3-9	.333	0-0	.000	4	4	0	3	0	3	9
at Army	6-18	.333	5-13	.385	2-3	.667	2	4	3	2	0	0	19
Holy Cross	4-11	.364	1-6	.167	3-4	.750	3	4	1	2	1	3	12
Colgate	5-12	.417	4-11	.364	4-5	.800	3	0	4	2	0	1	18
vs. #5 Navy													

FRANKS' CAREER STATISTICS

Year	G-GS	FG-FGA	Pct	3FG-3A	Pct	FT-FTA	Pct	Reb.	Avg.	PF-D	A	TO	B	S	Pts.	Avg.	Min.-Avg.
1999-00	30-16	110-269	.409	15-65	.231	54-79	.684	98	3.3	63-1	34	66	5	33	289	9.6	838-27.9
2000-01	28-28	81-220	.368	27-80	.338	42-64	.656	94	3.4	53-2	64	56	2	41	231	8.3	900-32.1
2001-02	31-31	116-315	.368	43-124	.347	56-75	.747	130	4.2	57-0	100	86	5	34	331	10.7	1056-34.1
2002-03	25-25	124-297	.418	61-173	.353	58-83	.699	93	3.7	54-1	71	62	10	42	367	14.7	927-37.1
Totals	114-100	431-1094	.394	146-461	.317	210-301	.698	415	3.6	225-4	269	267	22	150	1218	10.7	3685-32.3



#13 Desire Almind

Junior • Guard/Forward • 6-0
Blairstown, N.J. (North Warren Regional)

ALMIND'S CAREER-HIGHS

Points:	26	three times
Rebounds:	15	twice
Assists:	5	three times
Steals:	7	American 1/11/2003
Blocks:	3	Canisius 11/27/2002
FG Made:	11	three times
FG Attempted:	26	at Hampton 11/20/2000
3-pt FG Made:	2	Canisius 11/27/2002
3-pt FG Attempted:	6	vs. Northeastern 12/30/2000
FT Made:	9	at Albany 2/24/2001
FT Attempted:	10	twice

ALMIND SNAPSHOT

Brings an all-around game to the floor ... Has an above average vertical leap that allows her to get to balls ... Plays the 3 or 4 position ... Has range from outside, as well as being able to drive to the bucket or pull up and hit the short jumper.

2002-03

Opened the 2002-03 season equaling her career-high with 26 points ... Recorded the first double-double of the season, and third of her career, with 10 boards in the contest ... Has scored in double-figures in 58 of 78 career games ... Came back from a five-game hiatus due to injury to score 19 points against American (11/11/03) ... Also grabbed a career-best seven steals ... Pulled down a career-high 15 rebounds against Navy (2/16/03) ... Reached the career-best for caroms again against Colgate (3/2/03) ... Has recorded nine double-doubles on the year ... Had a string of four-consecutive double-doubles earlier in the year ... scored her 1,000th career point in loss at Army (2/23/03).

2001-02

Saw time in 29 games this season, starting 21 ... Missed the first two games of her career at the Nassau Knockout with a stomach ulcer ... Earned a starting role in five contests before missing the games ... Led the team with 20 blocks ... Was sidelined by mono in the preseason ... Scored a season-high 18 points at Army (2/9/02) ... Shot 7-of-12 from the field in the game ... Came back from a stomach ulcer to score 13 points, hand out a career-high five assists and grab four steals against Lafayette (1/9/02) ... Scored in double-figures in 12 of 14 Patriot League contests, averaging 11.9 ppg in conference action ... Named PPL Utilities Player of the Game at Army.

2000-01

Was named Patriot League Rookie of the Year and was a member of the Patriot League All-Rookie and Second-Team ... Was second on the team and third in the league in overall scoring ... Finished sixth among conference players in league scoring with 14.2 ppg ... Started 26 of 28 games as a rookie ... In just her second collegiate contest, recorded a double-double with 25 points and 11 rebounds ... Reached 25 points again against Marist (11/28/2000) in just her fourth college game ... Went 10-15 from the field in that game ... Tallied a career-high 26 points in victory over Harvard (12/9/2000) ... Matched that with 26 on 11-18 shooting at Army (2/14/01) ... Was named Patriot League Rookie of the Week six times ... Named to Cornell Classic All-Tournament Team ... Named Bucknell's Subway Athlete of the Month for November ... Had seven 20+-point games in her young career ... Named the Eastern College Women's Basketball Coaches & Media Association Regional Rookie of the Week (1/15/01) ... Pulled down career-high 12 boards against Navy (2/2/01).

AT NORTH WARREN REGIONAL HIGH SCHOOL/PERSONAL

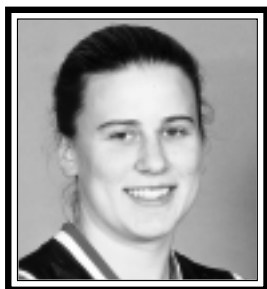
Earned four varsity letters in both basketball and softball, while earning two letters in cross country ... Averaged 25.4 ppg, 11.0 rpg, 5.0 spg, 4.0 apg and 4.5 blocks per game as a senior ... Broke high school and Warren, Sussex and Hunderton County career scoring records with 2,281 points over her four years ... Was named Player of the Year in All West Jersey, Warren County and Express Times ... Named first-team *Associated Press* All-State, All Groups All-State, Group 1 All-Seniors and Group 1 All-State ... Also earned first-team honors for All-West Jersey, Warren County, Skyland Conference, N.J. Herald and Express Times ... Majoring in Geography ... Daughter of William and Grege Almind ... Born 7/13/82.

ALMIND'S 2002-03 GAME-BY-GAME STATS

Opponent	FG-FGA	Pct.	3P-3PA	Pct.	FT-FTA	Pct.	REB	PF	A	TO	B	S	PTS
at Penn State	10-20	.500	0-0	.000	6-8	.750	10	2	1	2	1	1	26
at SBU	5-12	.417	0-1	.000	0-0	.000	6	4	1	5	0	0	10
West Virginia	6-12	.500	1-1	1.00	0-0	.000	4	3	1	1	0	3	13
Canisius	8-15	.533	2-2	1.00	4-4	1.00	10	3	4	1	3	3	22
Drexel	6-7	.857	0-0	.000	2-2	1.00	9	3	1	1	0	4	14
at Loyola	10-17	.588	0-1	.000	3-5	.600	7	3	1	2	0	2	23
at Delaware	2-11	.182	0-0	.000	0-0	.000	6	3	2	5	0	0	4
at La Salle													
vs. Alabama													
vs. Akron													
Air Force													
at Long Island													
American	6-12	.500	0-0	.000	7-8	.875	12	3	0	7	1	7	19
Lehigh	2-11	.182	0-0	.000	1-1	1.00	6	2	1	0	2	0	5
at Navy	8-10	.800	0-0	.000	4-7	.571	10	1	3	5	1	5	20
Army	2-5	.400	0-0	.000	2-2	1.00	3	5	0	0	0	0	6
Lafayette	9-15	.600	0-1	.00	4-5	.800	4	3	1	2	0	4	22
at Colgate	3-13	.231	0-0	.000	2-4	.500	7	3	2	1	2	4	8
at Holy Cross	6-11	.545	0-1	.000	8-10	.800	11	4	1	2	1	4	20
at American	6-12	.500	0-0	.000	6-6	1.00	10	3	0	4	1	4	18
at Lehigh	4-12	.333	0-0	.000	5-6	.833	11	3	2	3	2	4	13
Navy	6-10	.600	0-0	.000	4-4	1.00	15	4	3	4	0	1	16
at Lafayette	3-6	.500	0-0	.000	0-0	.000	7	4	5	3	1	3	6
at Army	5-9	.556	0-0	.000	2-2	1.00	8	4	1	4	0	2	12
Holy Cross	4-6	.667	0-0	.000	5-6	.833	7	5	3	2	1	3	13
Colgate	11-14	.786	0-0	.000	2-2	1.00	15	2	3	2	0	3	24
vs. #5 Navy													

ALMIND'S CAREER STATISTICS

Year	G-GS	FG-FGA	Pct.	3FG-3A	Pct.	FT-FTA	Pct.	Reb.	Avg.	PF-D	A	TO	B	S	Pts.	Avg.	Min.-Avg.
2000-01	28-26	172-373	.461	6-18	.333	73-91	.802	143	5.1	75-3	38	66	7	39	423	15.1	839-30.0
2001-02	29-21	129-272	.474	1-7	.143	43-54	.796	133	4.6	63-2	64	66	20	44	302	10.4	749-25.8
2002-03	21-21	122-240	.508	3-7	.429	67-82	.817	178	8.5	67-2	36	56	16	57	314	15.0	687-32.7
Totals	78-68	423-885	.478	10-32	.313	183-227	.806	454	5.8	205-7	138	188	43	140	1039	13.3	2275-29.2



#21 Katie Hettler

Junior • Guard • 5-8
Montoursville, Pa. (Montoursville)

HETTLER'S CAREER-HIGHS

Points:	9 at Lehigh	2/11/2003
Rebounds:	8 at Lehigh	2/11/2003
Assists:	2 at Holy Cross	2/2/2003
Steals:	2 Navy	2/16/2003
Blocks:	1 twice	
FG Made:	4 at Lehigh	2/11/2003
FG Attempted:	8 at Long Island	1/4/2003
3-pt FG Made:	1 four times	
3-pt FG Attempted:	3 at Harvard	12/30/2001
FT Made:	2 at Long Island	1/4/2003
FT Attempted:	4 vs. Akron	12/30/2002

HETTLER SNAPSHOT

Entered Bison program with previous college experience after transferring from UNC-Wilmington as a sophomore ... Is a versatile player who can play the one, two or three position ... Nice perimeter shooter, including three-point range ... Good rebounder at the guard position ... Likes to play physical ... Solid athletic player who plays under control and makes good decisions.

2002-03

Saw time in the first game against 14th-ranked Penn State ... Handed out one assist in the game ... Scored a then career-high seven points and pulled down a career-best seven rebounds against Akron (12/30/02) ... Made first career start at American (2/8/03) ... Played a career-high 29 minutes against the Eagles ... Came off the bench at Lehigh (2/11/03) to score a career-best nine points and pull down a career-high eight rebounds ... Recorded a career-high two steals against Navy (2/16/03) ... Has scored in seven of the last eight games.

2001-02

Saw action in her first game with Bucknell after transferring and sitting out the first two contests awaiting a ruling from the NCAA ... Played five minutes at Canisius, pulling down the first two rebounds of her career ... Scored the first points of her Bucknell career with a three-pointer against Harvard (12/30/01) ... Talled four points against Indiana-Purdue-Fort Wayne (1/4/02) ... Scored a career-high six points on 2-of-3 shooting against American (1/19/02) ... Played in 17 games this season.

AT MONTOURSVILLE HIGH SCHOOL

Was a member of two state championship runner up teams ... Was a co-captain during her senior campaign ... Selected to the all-league squad ... Was named the Sun Gazette Player of the Week on several occasions ... Was selected to play in the Pennsylvania vs. Maryland game ... Averaged 16.0 points per game ... Pulled in 8.0 rebounds per game ... Handed out 6.0 assists per game ... Grabbed 3.0 steals per game ... Majoring in Business Management ... Daughter of Gary and Jackie Hettler ... Born 3/15/82.

HETTLER'S 2002-03 GAME-BY-GAME STATS

Opponent	FG-FGA	Pct	3P-3PA	Pct	FT-FTA	Pct	REB	PF	A	TO	B	S	PTS
at Penn State	0-0	.000	0-0	.000	0-0	.000	0	0	1	0	0	0	0
at SBU	0-2	.000	0-0	.000	0-0	.000	0	2	0	0	0	0	0
West Virginia	0-1	.000	0-0	.000	0-0	.000	0	0	0	0	0	0	0
Canisius	0-1	.000	0-1	.000	0-0	.000	1	0	0	1	0	0	0
Drexel	0-0	.000	0-0	.000	0-0	.000	0	0	0	2	0	0	0
at Loyola	DNP												
at Delaware	0-0	.000	0-0	.000	0-0	.000	0	0	0	0	0	0	0
at La Salle	0-0	.000	0-0	.000	0-0	.000	0	0	1	2	0	0	0
vs. Alabama	0-2	.000	0-0	.000	0-0	.000	0	0	1	0	0	0	0
vs. Akron	3-7	.429	0-2	.000	1-4	.250	7	1	1	2	0	0	7
Air Force	2-4	.500	0-1	.000	0-2	.000	4	1	0	1	0	1	4
at Long Island	2-8	.250	0-2	.000	2-3	.667	3	2	1	0	0	1	6
American	0-3	.000	0-1	.000	0-1	.000	0	0	1	0	0	1	0
Lehigh	0-3	.000	0-1	.000	0-0	.000	0	0	0	0	0	0	0
at Navy	0-0	.000	0-0	.000	0-0	.000	0	0	0	0	0	0	0
Army	0-0	.000	0-0	.000	0-0	.000	0	1	0	0	0	1	0
Lafayette	DNP												
at Colgate	0-1	.000	0-0	.000	0-0	.000	0	0	0	0	0	0	0
at Holy Cross	1-2	.500	0-1	.000	0-0	.000	1	1	2	0	0	1	2
at American	2-4	.500	0-1	.000	1-2	.500	7	4	0	2	1	1	5
at Lehigh	4-7	.571	1-2	.500	0-0	.000	8	1	0	1	0	1	9
Navy	1-5	.200	0-1	.000	1-2	.500	2	0	0	0	0	2	3
at Lafayette	0-3	.000	0-0	.000	0-0	.000	1	0	0	2	0	1	0
at Army	0-1	.000	0-0	.000	2-3	.667	4	3	0	1	0	0	2
Holy Cross	1-1	1.00	0-0	.000	2-2	1.00	1	2	0	0	0	0	4
Colgate	2-2	1.00	1-1	1.00	0-0	.000	2	4	1	0	0	1	5
vs. #5 Navy													

HETTLER'S CAREER STATISTICS

Year	G-GS	FG-FGA	Pct	3FG-3A	Pct	FT-FTA	Pct	Reb.	Avg.	PF-D	A	TO	B	S	Pts.	Avg.	Min.-Avg.
2001-02	16-0	5-19	.263	2-9	.222	2-4	.500	9	0.6	7-0	3	7	1	1	14	0.9	105-6.6
2002-03	24-1	18-57	.316	2-14	.143	9-19	.474	41	1.7	23-0	9	14	1	11	47	2.0	235-9.8
Totals	40-1	23-76	.303	4-23	.174	11-23	.478	49	1.2	30-0	12	21	2	12	61	1.5	340-8.5



#41 Kristin Valdner

Junior • Forward • 6-1
Floral Park, N.Y. (Floral Park)

VALDNER'S CAREER-HIGHS

Points:	14	vs. Alabama	12/29/2002
Rebounds:	11	at La Salle	12/21/2002
Assists:	4	Air Force	1/2/2003
Steals:	3	three times	
Blocks:	1	four times	
FG Made:	6	twice	
FG Attempted:	15	West Virginia	11/25/2002
3-pt FG Made:	0		
3-pt FG Attempted:	1	twice	
FT Made:	5	Drexel	11/29/02
FT Attempted:	6	Drexel	11/29/02

VALDNER SNAPSHOT

Promising post player who brings offensive mentality to the floor ... Can score inside, but also possesses the ability to step out and hit the jumper ... Solid rebounder.

2002-03

Earned the first start of her career against 14th-ranked Penn State (11/15/02) ... Scored 12 points in loss to West Virginia (11/25/02) ... Also pulled down 10 rebounds in the contest ... Recorded her first career double-double in the game ... Handed out a career-high two assists against Canisius (11/27/02) ... Had her second double-double with 10 points and a career-best 11 rebounds at La Salle (12/21/02) ... Scored a career-high 14 points against Alabama (12/29/02) ... Left American game (1/11/03) with broken left foot.

2001-02

Played in 25 of Bucknell's games this season ... Matched her career-high for assists with one helper against Albany (11/16/01) in the season opener ... Had another assist against Indiana-Purdue-Fort Wayne (1/4/02) ... Scored a season-high five points in just four minutes of action against Army (3/3/02), going 2-for-2 from the field ... Pulled down three rebounds in seven minutes of action against IPFW ... Recorded a season-high three rebounds against LaSalle (12/21/01) ... Played a season-high 11 minutes at Army (2/9/02) ... Grabbed her first steal of the season in the contest ... Pulled down two rebounds in the game ... Grabbed a career-best three steals in just five minutes of action against Colgate (2/16/02) ... Recorded six steals in the last seven games of the season ... Made the most of her time in the game, connecting on 50.0% of her shots (11-22).

2000-01

Played in nine of Bucknell's 28 games on the season ... Saw action in her first collegiate game against Maryland-Eastern Shore (11/22/2000) ... Scored one point and pulled down four rebounds ... Set a career-high with six points in 12 minutes of action against Niagara (12/1/2000) ... Handed out her first collegiate assist at Lafayette (1/13/01) ... Scored in seven of the nine games she played in.

AT FLORAL PARK HIGH SCHOOL

Averaged 21.0 ppg and 13 rpg as a senior ... Topped the 1,000 mark in both points (1,272) and rebounds (1,024) in high school ... Named to the All-State team as both a junior (fifth-team) and a senior (second-team) ... Named to All-Nassau Country Team three-straight years ... Selected as her high school team's MVP three years in a row ... Named to All-Long Island Second-Team ... Business Management major ... Daughter of Michael and Virginia Valdner ... Born 8/1/82.

VALDNER'S 2002-03 GAME-BY-GAME STATS

Opponent	FG-FGA	Pct.	3P-3PA	Pct.	FT-FTA	Pct.	REB	PF	A	TO	B	S	PTS
at Penn State	3-6	.500	0-0	.000	0-0	.000	2	1	0	1	0	0	6
at SBU	3-5	.600	0-0	.000	0-0	.000	4	3	0	0	0	1	6
West Virginia	6-15	.400	0-0	.000	0-0	.000	10	2	1	1	0	2	12
Canisius	2-7	.286	0-0	.000	0-0	.000	3	4	2	1	0	2	4
Drexel	2-3	.667	0-0	.000	5-6	.833	3	4	0	2	0	0	9
at Loyola	1-4	.250	0-1	.000	2-2	1.00	2	2	1	0	0	1	4
at Delaware	0-0	.000	0-0	.000	0-0	.000	0	2	0	1	1	0	0
at La Salle	4-9	.444	0-0	.000	2-5	.400	11	2	2	2	0	1	10
vs. Alabama	6-12	.500	0-1	.000	2-3	.667	8	1	2	0	0	0	14
vs. Akron	2-8	.250	0-0	.000	0-0	.000	6	2	1	4	1	0	4
Air Force	5-12	.417	0-0	.000	2-2	1.00	3	3	4	3	1	3	12
at Long Island	3-10	.300	0-0	.000	1-2	.500	6	2	1	2	0	3	7
American	1-5	.200	0-0	.000	0-0	.000	3	2	0	0	0	0	2
Lehigh	INJ												
at Navy	INJ												
Army	INJ												
Lafayette	INJ												
at Colgate	INJ												
at Holy Cross	INJ												
at American	INJ												
at Lehigh	INJ												
Navy	INJ												
at Lafayette	INJ												
at Army	INJ												
Holy Cross	INJ												
Colgate	INJ												
vs. #5 Navy													

VALDNER'S CAREER STATISTICS

Year	G-GS	FG-FGA	Pct.	3FG-3A	Pct.	FT-FTA	Pct.	Reb.	Avg.	PF-D	A	TO	B	S	Pts.	Avg.	Min.-Avg.
2000-01	9-0	6-15	.400	0-0	.000	5-10	.500	17	1.9	14-0	1	4	1	3	17	1.9	43-4.8
2001-02	25-0	11-22	.500	0-0	.000	2-4	.500	24	1.0	19-0	4	9	0	7	24	1.0	118-4.7
2002-03	13-13	38-96	.396	0-2	.000	14-20	.700	61	4.7	30-0	14	17	3	13	90	6.9	299-23.0
Totals	47-13	55-133	.414	0-2	.000	21-34	.618	102	2.2	63-0	19	30	4	23	131	2.8	460-9.8



#11 Laura Hatalsky

Sophomore • Guard • 5-9
Fairview, N.C. (A.C. Reynolds)

HATALSKY'S CAREER-HIGHS

Points:	3	five times
Rebounds:	4	vs. IPFW 1/4/2002
Assists:	2	twice
Steals:	1	at Navy 1/12/2002
Blocks:	0		
FG Made:	1	eight times
FG Attempted:	4	vs. IPFW 1/4/2002
3-pt FG Made:	1	five times
3-pt FG Attempted:	2	at Lafayette 2/2/2002
FT Made:	2	at Army 2/9/2002
FT Attempted:	2	at Army 2/9/2002

HATALSKY SNAPSHOT

A solid ball handler who sees the floor well ... Good speed ... Strong perimeter shooter with nice offensive ability ... Provides depth in guard position.

2002-03

Suffered a broken left foot during the preseason ... Underwent surgery on November 26 ... Practiced for the first time since the surgery on 2/24/03.

2001-02

Played in 24 games this season ... Saw action in her first collegiate game against Albany (11/16/01) ... Scored her first collegiate points against Marist (12/1/01), connecting on her first three-point attempt of the season ... Collected her first career rebound against St. Bonaventure (12/4/01) ... Also passed out her first collegiate assist in the game ... Grabbed a career-best four rebounds against Indiana-Purdue-Fort Wayne (1/4/02) ... Collected the first steal of her career at Navy (1/12/02) ... Played a season-high 19 minutes at Lafayette, scoring three points ... Handed out a career high two assists in 12 minutes of action against Navy (2/6/02).

AT A.C. REYNOLDS HIGH SCHOOL

Was a three-year varsity letterwinner in basketball, two in tennis and one in soccer in high school ... Was named the All-Area Athlete of the Year ... Selected as one of 10 players in all of North Carolina to play in the North/South game (10 seniors from North Carolina and 10 seniors from South Carolina participate) ... Earned North Carolina East/West All-Star honors in basketball ... Was the Conference Player of the Year ... Also earned First-Team All-Area Recognition ... Averaged 14.0 points per game ... Handed out 4.0 assists per game ... Grabbed 5.0 steals per game ... Tallied 5.0 rebounds per game ... Was a soccer All-Area Honorable Mention ... Father, Morris, is a 20-year PGA Tour Professional with four Tour wins ... Enrolled in the College of Arts and Sciences ... Daughter of Morris and Tracy Hatalsky ... Born 2/26/83.

HATALSKY'S 2002-03 GAME-BY-GAME STATS

Opponent	FG-FGA	Pct	3P-3PA	Pct	FT-FTA	Pct	REB	PF	A	TO	B	S	PTS
at Penn State													
at SBU													
West Virginia													
Canisius													
Drexel													
at Loyola													
at Delaware													
at La Salle													
vs. Alabama													
vs. Akron													
Air Force													
at Long Island													
American													
Lehigh													
at Navy													
Army													
Lafayette													
at Colgate													
at Holy Cross													
at American													
at Lehigh													
Navy													
at Lafayette													
at Army													
Holy Cross													
Colgate													
vs. #5 Navy													

HATALSKY'S CAREER STATISTICS

Year	G-GS	FG-FGA	Pct.	3FG-3A	Pct.	FT-FTA	Pct.	Reb.	Avg.	PF-D	A	TO	B	S	Pts.	Avg.	Min.-Avg.
2001-02	24-0	8-32	.250	5-11	.455	2-2	1.00	17	0.7	13-0	12	8	0	1	23	1.0	167-7.0
2002-03																	
Totals	24-0	8-32	.250	5-11	.455	2-2	1.00	17	0.7	13-0	12	8	0	1	23	1.0	167-7.0

2002-03 ROSTER

ALPHABETICAL

No.	Name	Cl.	Pos.	Ht.	Hometown	Secondary School
13	** Desire Almind	Jr.	G/F	6-0	Blairstown, N.J.	North Warren Regional
12	* Emilie Barruet	So.	G	5-7	Ingre, France	Brandywine Heights
23	*** Molly Creamer	Sr.	G	5-10	Mendham, N.J.	West Morris Mendham
55	Mary Edwards	Fr.	C	6-3	Fairfax Station, Va.	Hayfield
32	*** Kate Franks	Sr.	G/F	5-10	Philipsburg, Pa.	Philipsburg-Osceola
15	Lindsey Geosits	Fr.	G	5-7	Emmaus, Pa.	Emmaus
11	* Laura Hatafsky	So.	G	5-9	Fairview, N.C.	A.C. Reynolds
42	* Cassie Heromin	So.	F/C	6-1	Elysburg, Pa.	Our Lady of Lourdes
21	* Katie Hettler	Jr.	G	5-8	Montoursville, Pa.	Montoursville
24	Kathryn Hudock	Fr.	G	5-8	Camp Hill, Pa.	Trinity
31	* Amy Ketcham	So.	F	6-0	Thornville, Ohio	Bexley
10	Gabrielle Miskinis	Fr.	G	5-10	Lewistown, Pa.	Lewistown
33	Jennie Ruth	Fr.	F	6-1	Columbus, Ohio	Westerville South
20	Chelsea Smith	Fr.	F	6-1	Grove City, Pa.	Grove City
44	<i>Brooke Tomovich</i>	So.	F	6-2	<i>Long Branch, N.J.</i>	<i>Red Bank Catholic</i>
41	** Kristin Valdner	Jr.	F	6-1	Floral Park, N.Y.	Floral Park

NUMERICAL

No.	Name	Cl.	Pos.	Ht.	Hometown	Secondary School
10	Gabrielle Miskinis	Fr.	G	5-10	Lewistown, Pa.	Lewistown
11	* Laura Hatafsky	So.	G	5-9	Fairview, N.C.	A.C. Reynolds
12	* Emilie Barruet	So.	G	5-7	Ingre, France	Brandywine Heights
13	** Desire Almind	Jr.	G/F	6-0	Blairstown, N.J.	North Warren Regional
15	Lindsey Geosits	Fr.	G	5-7	Emmaus, Pa.	Emmaus
20	Chelsea Smith	Fr.	F	6-1	Grove City, Pa.	Grove City
21	* Katie Hettler	Jr.	G	5-8	Montoursville, Pa.	Montoursville
23	*** Molly Creamer	Sr.	G	5-10	Mendham, N.J.	West Morris Mendham
24	Kathryn Hudock	Fr.	G	5-8	Camp Hill, Pa.	Trinity
31	* Amy Ketcham	So.	F	6-0	Thornville, Ohio	Bexley
32	*** Kate Franks	Sr.	G/F	5-10	Philipsburg, Pa.	Philipsburg-Osceola
33	Jennie Ruth	Fr.	F	6-1	Columbus, Ohio	Westerville South
41	** Kristin Valdner	Jr.	F	6-1	Floral Park, N.Y.	Floral Park
42	* Cassie Heromin	So.	F/C	6-1	Elysburg, Pa.	Our Lady of Lourdes
44	<i>Brooke Tomovich</i>	So.	F	6-2	<i>Long Branch, N.J.</i>	<i>Red Bank Catholic</i>
55	Mary Edwards	Fr.	C	6-3	Fairfax Station, Va.	Hayfield

* Indicates letters earned

Head Coach: Kathy Fedorjaka (Fairfield '90, Sixth season)

Assistant Coaches: Scott Foulis (Massachusetts '97), Michelle Simons (Bloomsburg '93)

Graduate Assistant: Laurie Scherer (Lycoming '02)

Captains: Molly Creamer and Kate Franks

Athletic Trainer: Lori Uretsky

Managers: Tricia Bourgeault, Susan Damaschke, Alexis Farah, Elizabeth Hannum

Italicized- Transfer

Pronunciation Guide

Barruet	BEAR-o-way	Creamer	CREE-mer
Desire Almind	DEZ-a-ray AHL-minnd	Fedorjaka	Fed-uh-ROCK-uh
Foulis	FOWL-iss	Geosits	GAY-uh-sits
Hatafsky	Ha-TAL-skee	Heromin	HAIR-o-min
Hudock	WHO-dock	Gabrielle Miskinis	GABE-ree-el Ma-SKIN-iss
Scherer	SHEER	Valdner	VOWLD-ner

Bucknell By State

New Jersey (3)

Desire Almind
Molly Creamer
Brooke Tomovich

New York (1)

Kristin Valdner

North Carolina (1)

Laura Hatafsky

Ohio (2)

Amy Ketcham
Jennie Ruth

Pennsylvania (7)

Kate Franks
Lindsey Geosits
Cassie Heromin
Katie Hettler
Kathryn Hudock
Gabrielle Miskinis
Chelsea Smith

Virginia (1)

Mary Edwards

Bucknell By Country

France (1)

Emilie Barruet

Bucknell By Class

Seniors (2)

Molly Creamer
Kate Franks

Juniors (3)

Desire Almind
Katie Hettler
Kristin Valdner

Sophomores (5)

Emilie Barruet
Laura Hatafsky
Cassie Heromin
Amy Ketcham
Brooke Tomovich

Freshmen (6)

Mary Edwards
Lindsey Geosits
Kathryn Hudock
Gabrielle Miskinis
Jennie Ruth
Chelsea Smith