

# BUCKNELL UNIVERSITY WRESTLING INFORMATION

## Bucknell vs. Franklin & Marshall (12/4/07) – 7:30 p.m.

### Staffing

Mike McFarland  
Leslie Moore – Event Operations; Team Liaison; Referee Liaison  
Custodial Staff – First / Second Shift

**Usher(s)** (directing to seats, restrooms, etc. – handing out Bison Good Sports fliers)

### Scorers Table

PA	Chip Marrara
Clock	Ernie Gromlich
Riding Time	Greg Gorton
Book	BU Wrestler
Back-up	Terrie Grieb
Referee	

### In-Match Staging

Anthem	
Music / Promotions	TBD

### Sports Information

Web	Todd Merriet
Hotline	Todd Merriet

### Doors

All doors unlocked two hours prior to match (including upper level outside door)

### Lighting

4 – Entry  
6, 7, 10, 11, 14, 15 – Over mats

### Set-up

Bench signs taped to back of chairs  
Rolled towels for each bench  
10 mini-towels for general use  
Computers and video board



### Locker Rooms

Official(s) – Fieldhouse Staff Locker Room  
Visiting Team(s) – SPAV 110/111

### Weigh-ins / Skin Check – 5:45 p.m. / 6:00 p.m.

Pre-match in Wrestling Room  
Whitewash light with halogen on tripod

### Back-up Equipment (closet)

Stop watch  
Flip Card Scoreboard

### Distribution

SID, Visiting Team, Home Team, Official(s), PA, Scorers Table

# BUCKNELL UNIVERSITY WRESTLING INFORMATION

---

## **Dec. 4 Match Schedule**

---

**5:45 p.m. - Wrestling Room, Skin Check**

**6:00 p.m. - Wrestling Room, Weigh-in**

**7:00 p.m. - Davis Gym**

### **Locker Rooms**

Franklin & Marshall – SPAV 111

Official – Men's FH Staff Locker Room

### **Team Benches**

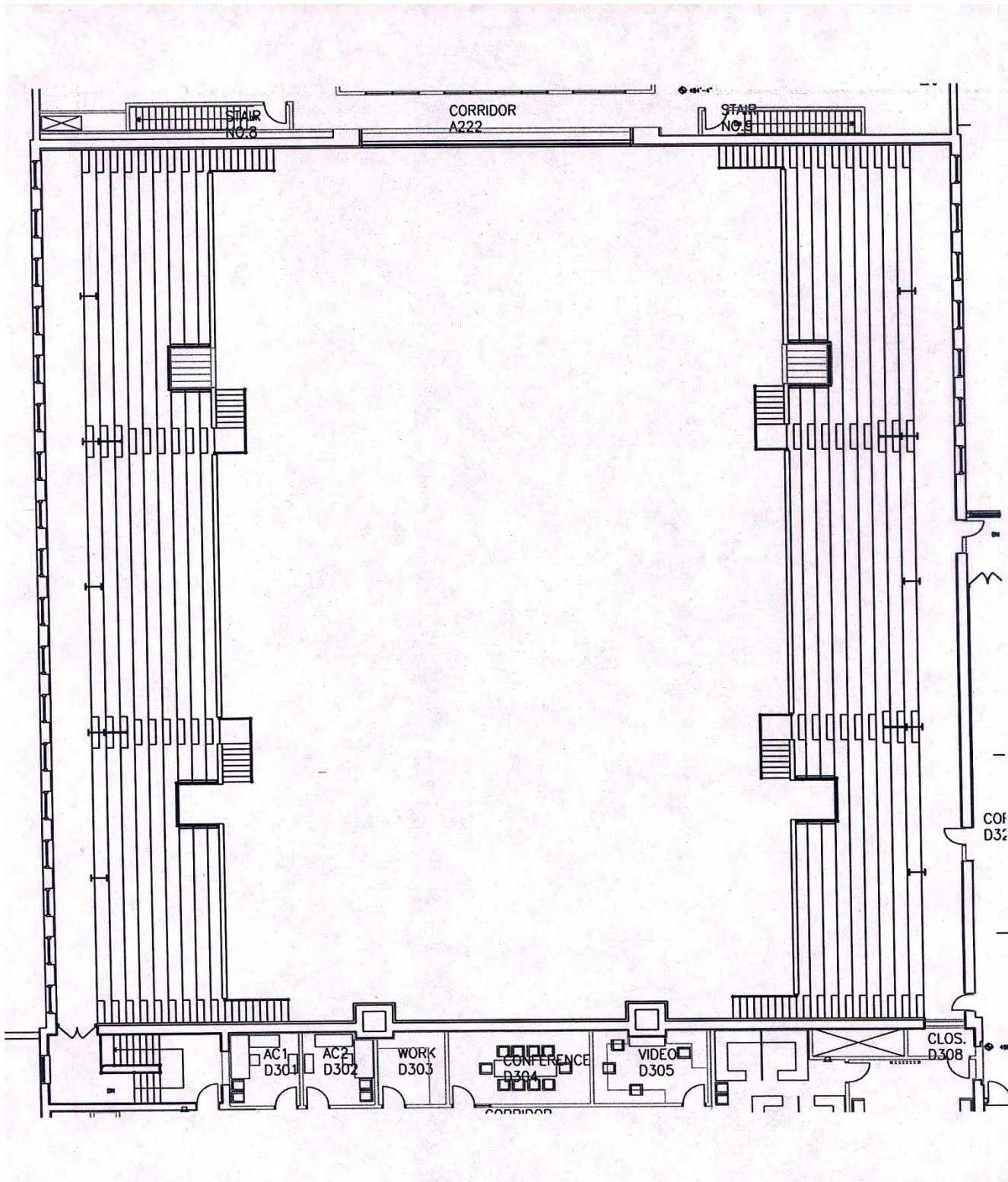
Match – Bucknell vs. Franklin & Marshall

Franklin & Marshall – Visitor's Bench (North End)

Bucknell – Home Bench (South End)

BUCKNELL UNIVERSITY WRESTLING INFORMATION

DAVIS GYMNASIUM MAP



*\*Volleyball also plays in Davis Gymnasium.*