

### TOP STORIES

- Conference slates opens in dramatic fashion.
- Big Ten ranks No. 1 in strength of schedule; Remains second in RPI.
- Nine teams reach 10-win plateau.
- Read the Big Ten men's basketball daily blog on [www.bigten.org](http://www.bigten.org).
- Michigan State's Raymar Morgan earns weekly accolade.

### 2008-09 CONFERENCE & OVERALL STANDINGS

|                   | Conference Games |       |     |     |     |      |      | All Games |      |     |     |     | Top 25* | Last 10 | Stk. |
|-------------------|------------------|-------|-----|-----|-----|------|------|-----------|------|-----|-----|-----|---------|---------|------|
|                   | W-L              | PCT   | H   | A   | N   | Stk. | W-L  | PCT       | H    | A   | N   |     |         |         |      |
| 1. Michigan State | 2-0              | 1.000 | 0-0 | 2-0 | 0-0 | W2   | 11-2 | .846      | 4-0  | 4-0 | 3-2 | 2-1 | 9-1     | W7      |      |
| Wisconsin         | 2-0              | 1.000 | 1-0 | 1-0 | 0-0 | W9   | 11-3 | .786      | 7-1  | 2-1 | 2-1 | 1-3 | 7-3     | W2      |      |
| 3. Illinois       | 1-1              | .500  | 0-0 | 1-1 | 0-0 | L1   | 13-2 | .867      | 7-1  | 2-1 | 4-0 | 2-1 | 8-2     | L1      |      |
| Iowa              | 1-1              | .500  | 1-0 | 0-1 | 0-0 | W1   | 11-4 | .733      | 9-0  | 1-3 | 1-1 | 0-1 | 6-4     | W1      |      |
| Minnesota         | 1-1              | .500  | 1-1 | 0-0 | 0-0 | W1   | 13-1 | .929      | 11-1 | 1-0 | 1-0 | 2-1 | 9-1     | W1      |      |
| Ohio State        | 1-1              | .500  | 1-0 | 0-1 | 0-0 | L1   | 10-2 | .833      | 8-1  | 1-1 | 1-0 | 2-1 | 8-2     | L1      |      |
| Penn State        | 1-1              | .500  | 1-0 | 0-1 | 0-0 | L1   | 12-3 | .800      | 9-1  | 2-1 | 1-1 | 0-0 | 7-3     | L1      |      |
| Michigan          | 1-1              | .500  | 1-0 | 0-0 | 0-0 | W1   | 11-3 | .786      | 9-1  | 0-1 | 2-1 | 2-1 | 8-2     | W1      |      |
| 9. Purdue         | 0-1              | .000  | 0-1 | 0-0 | 0-0 | L1   | 11-3 | .786      | 8-2  | 1-0 | 2-1 | 1-2 | 7-3     | L1      |      |
| Indiana           | 0-1              | .000  | 0-0 | 0-1 | 0-0 | L1   | 5-8  | .385      | 4-2  | 0-3 | 1-3 | 0-3 | 3-7     | L4      |      |
| Northwestern      | 0-2              | .000  | 0-1 | 0-1 | 0-0 | L2   | 8-4  | .667      | 7-1  | 1-3 | 0-0 | 0-1 | 6-4     | L2      |      |

\*AP or ESPN/USA Today polls

### FACES OF THE BIG TEN



#### JAMAL ABU-SHAMALA, minnesota senior guard

Jamal Abu-Shamala has spent his time as a Gopher representing Minnesota with the highest level of character. Starting his collegiate career as a walk-on, Jamal played himself into a scholarship his freshman season and began to climb in the Gopher records book. Now serving as co-captain in his senior season, Abu-Shamala has made the most of his opportunity at the University of Minnesota. This past summer, the senior guard spent his time overseas playing with the Jordanian national team in order to represent his country and improve his game.

Success followed Abu-Shamala to Jordan as the national team won the prestigious Walter Jones Cup in Shenzhen, China. Jamal now plans on competing with the national team again this summer in hopes of earning the Jordanians a berth into the 2012 Olympics.



### LAST WEEK'S RESULTS

#### MONDAY, DEC. 29

#32/24 MICHIGAN def. North Carolina Central, 77-57

#### TUESDAY, DEC. 30

#rv/rv ILLINOIS def. #9/11 PURDUE, 71-67 (OT)

#### WEDNESDAY, DEC. 31

PENN STATE def. NORTHWESTERN, 61-57

#10/15 MICHIGAN STATE def. #21/23 MINNESOTA, 70-58

WISCONSIN def. #23/24 MICHIGAN, 73-61

#24/23 OHIO STATE def. IOWA, 68-65

#### SATURDAY, JAN. 3

#21/21 MINNESOTA def. #24/23 OHIO STATE, 68-59

WISCONSIN def. PENN STATE, 65-61

IOWA def. INDIANA, 65-60

#10/15 MICHIGAN STATE def. NORTHWESTERN, 77-66

#### SUNDAY, JAN. 4

#23/24 MICHIGAN def. #rv/rv ILLINOIS, 74-64

### THIS WEEK'S SCHEDULE

#### TUESDAY, JAN. 6

#rv/rv OHIO STATE at #8/12 MICHIGAN STATE  
7 p.m. - ESPN2

#14/14 PURDUE at PENN STATE  
9 p.m. - Big Ten Network

#### WEDNESDAY, JAN. 7

#rv/rv MICHIGAN at INDIANA  
6:30 p.m. - Big Ten Network

NORTHWESTERN at #rv/rv WISCONSIN  
8:30 p.m. - Big Ten Network

#### THURSDAY, JAN. 8

#22/19 MINNESOTA at IOWA  
7 p.m. - ESPN2

#### FRIDAY, JAN. 9

Houston Baptist at #rv/rv OHIO STATE  
7 p.m. - Big Ten Network

#### SATURDAY, JAN. 10

INDIANA at #rv/rv ILLINOIS  
3 p.m. - Big Ten Network

#### SUNDAY, JAN. 11

IOWA at #rv/rv MICHIGAN  
11:30 a.m. - Big Ten Network

#rv/rv WISCONSIN at #14/14 PURDUE  
1:30 p.m. - CBS Sports

PENN STATE at #22/19 MINNESOTA  
3:30 p.m. - Big Ten Network

All Times Eastern Rankings: AP/ESPN/USA Today

### BIG TEN. BIG NEWS.

**Oh What a Week:** The 104th edition of Big Ten basketball tipped off last week in dramatic fashion. Twelve points or less decided all 10 games, while five points or less determined five of those 10 contests. Michigan State and Wisconsin opened the season with two wins to stand atop the conference leaderboard. Six teams are knotted at .500 in Illinois, Iowa, Michigan, Minnesota, Ohio State and Penn State. The confer-

ence matchups saw four ranked teams pitted against one another, with higher-ranked squads earning victories. Nine different teams have accounted for the 10 conference losses, and eight different teams are responsible for the 10 wins. Illinois upended Purdue to tip off the conference season, marking the first time a visiting Big Ten team has won in West Lafayette since Ohio State did so in 2007.

Rankings: AP/ESPN/USA Today

## BIG TEN. BIG NEWS.

**Foreshadowing:** Michigan State and Wisconsin both jumped out to 2-0 records, which is generally a sign of good things to come. Over the last 11 seasons, Big Ten teams that started 2-0 have ended the year above .500 in conference play on 25 of 32 occasions (78.1 percent), including Indiana, Michigan State, Ohio State and Wisconsin last season. In five of the last nine seasons, a 2-0 start has led to a share of the Big Ten crown for Michigan State (2000), Illinois (2001), Indiana (2002), Ohio State (2002, 2007) and Wisconsin (2008).

**More on the Great Starts:** If the secret of getting ahead is getting started, Michigan State and Wisconsin took their first steps toward the forefront as they opened conference play victorious on the road. Michigan State started the conference season with two road games and won both contests for the first time in school history, posting victories against Minnesota and Northwestern last week. Wisconsin won its sixth-straight Big Ten opener with a 73-61 victory at Michigan, representing the longest active streak in the conference.

**A Tough Road to Hoe:** Eight weeks into the 2008-09 season, the RPI Report ranks the Big Ten's strength of schedule as the toughest in the nation. Conference squads have met top-25 teams 22 times already this season. The Southern Conference ranks second and the Big East touts the third-toughest schedule in the country. Big Ten teams have met six top-five teams, going .500 on the season, while also meeting 11 top-10 teams to date, garnering a 5-6 record. The conference owns four of the toughest schedules led by Wisconsin, who is eighth and followed by Michigan State (10th), Northwestern (15th) and Indiana (24th).

**RPI Success:** The Big Ten remained second overall in the latest RPI Report by rpi.com. The conference follows the ACC (.5942) with an overall adjusted RPI of .5920. The Big Ten has four teams among the RPI top-25 in No. 7 Michigan State (.6514), No. 13 Wisconsin (.6362), No. 16 Ohio State (.6333) and No. 18 Illinois (.6262). The Big Ten ties the ACC (No. 3 Duke, No. 5 Clemson, No. 12 North Carolina, No. 17 Florida State) with four teams among the top 25 and trails only the Big East (No. 1 Pittsburgh, No. 8 Connecticut, No. 9 West Virginia, No. 10 Georgetown, No. 15 Syracuse) with five teams in the top 25. A complete listing of Big Ten squads' RPI rankings appears on page 5.

**Big Ten. Win Ten:** Eight weeks into the season the Big Ten has seen nine teams reach the 10-win plateau. Illinois and Minnesota pace the conference in the win column, each earning 13 wins to date, while Penn State follows close behind, besting its opponents 12 times on the year. Five other squads have garnered 11 wins, with Ohio State rounding out the nine schools after earning its 10th win against Iowa last week. A complete breakdown follows:

| Team           | Record |
|----------------|--------|
| Minnesota      | 13-1   |
| Illinois       | 13-2   |
| Penn State     | 12-3   |
| Michigan State | 11-2   |
| Michigan       | 11-3   |
| Purdue         | 11-3   |
| Wisconsin      | 11-3   |
| Iowa           | 11-4   |
| Ohio State     | 10-2   |

**More Top-10 Wins:** The Big Ten increased its win total over top-10 teams to five, as Illinois defeated then-No. 9 Purdue. The conference is now 5-6 on the season versus the top-10. The win marked the Illini's first road victory over a top-10 team since winning at No. 8 Michigan on March 11, 1989.

**Streaking in Conference Play:** Wisconsin boosted its Big Ten-best conference winning streak to nine consecutive games last week with two triumphs, as the Badgers ended the 2007-08 campaign with seven straight wins to earn the conference title outright. The nine-game streak is the longest for the Badgers since winning 12 straight from 1940-41. Illinois holds the record for longest streak in conference play, winning 25 straight games from 2003-2005.

**Home is Where the Wins Are:** Big Ten teams have won 83 of 94 home (83-11, .883) matchups this season for the nation's second-best home win percentage behind only the Big 12 (97-6, .942).

**Outside the Family:** Big Ten teams have posted a 106-25 record in non-conference play for a .809 win percentage during the 2008-09 season. Ten of 11 teams have won at a .750 clip or higher. Ohio State will play out of conference this week, hosting Houston Baptist in a tilt Friday night.

**The Team That Keeps on Giving:** Illinois leads the conference with 301 assists on 415 field goals, good enough to rank second in the nation. In their opening contests of conference play, the Fighting Illini handed out 44 helpers, posting 23 assists on 28 buckets against Michigan and 21 assists on 30 field goals at Purdue. Senior guard **Chester Frazier** leads the team with 96 assists, adding 12 over the first two outings against Big Ten foes.

**Not in Our House:** After opening the Big Ten slate on the road, Michigan State returns to the friendly confines of the Breslin Center on Tuesday to defend its home-court win streak. The Spartans have won 25 straight at home to own the nation's fourth-longest active streak. Notre Dame leads the country, winning 43 straight contests at home, while Tennessee (37) is second, Kansas (32) is third and Utah State ties the Spartans at No. 4.

## BIG TEN PLAYER OF THE WEEK



**Raymar Morgan, Michigan State F, Jr., Canton, Ohio/McKinley**

Raymar Morgan garners his first weekly laurel of the season after leading the Spartans to a pair of road victories to open conference play last week. The junior forward averaged 16.0 points and 11.5 rebounds over two games. In a win at No. 21 Minnesota on

Wednesday, Morgan posted a double-double with 10 points and 10 rebounds. In Saturday's contests at Northwestern, Morgan netted 22 points and grabbed 13 rebounds, leading the squad in both categories. He shot nine-of-13 (.692) from the field, including two-of-four from behind the arc. The double-doubles were the fifth and sixth, respectively, of his Spartan career. For the week, he shot 13-of-24 from the field (.542). The Ohio native averaged 4.0 offensive rebounds per outing as the Spartans out-rebounded their two Big Ten opponents by an average of 20.5 boards. The distinction marks the third career weekly award for Morgan, who was previously recognized in November 2007 and January 2008.

**Last Michigan State POW:** Goran Suton (March 3, 2008)

**Ministry of Defense:** Six Big Ten teams are holding their opponents under 60 points per game. The conference is allowing 60.5 to lead the country. The national average is 68.6 points scored per team each game so far this season. The Pac-10 ranks second in the nation, allowing its opposition 62.8 points per game, 2.3 more points than the Big Ten is allowing.

**Battle for Scoring Title Continues:** Michigan sophomore **Manny Harris** reclaims his spot atop the conference leaderboard in scoring after falling behind fellow Big Ten sophomore **Talor Battle** of Penn State last week. Harris compiled 54 points over three games, highlighted by a 29 point outing against North Carolina Central on Monday. Battle also started the week with a hot hand in the Nittany Lions' conference opener against Northwestern on Wednesday, where the sophomore guard netted 26 points in the win. Overall, Battle totaled 32 points in two contests, but his six-point contribution against Wisconsin would not prove enough to hold off Harris for a second consecutive week. Harris and Battle are now averaging just under 19 points per game, amassing 263 points (18.8 ppg.) and 281 points (18.7 ppg.), respectively after eight weeks of action.

**Taking Care of the Rock:** The Big Ten saw six players move up the national leaderboard in the assist-to-turnover ratio category, featuring three players in the top 12. Michigan State's **Kalin Lucas** paces the nation with a 5.13 assist-to-turnover ratio, while Minnesota's **Al Nolen** and Illinois' **Chester Frazier** earned spots at No. 4 (3.70) and a tie for No. 12 (3.00), respectively.

**The 1,000-Point Milestone:** Northwestern's **Craig Moore** became the third active Big Ten player to score 1,000 points when he tallied 16 points against Michigan State last week to boost his career total to 1,015 points. Two other conference standouts are on pace to join Moore as Northwestern's **Kevin Coble** (896) and Penn State's **Danny Morrissey** (836) are within 164 points of that scoring plateau. Moore joins PSU's **Jamelle Cornley** (1,265) and Michigan State's **Raymar Morgan** (1,032) as active 1,000-point scorers.

**Trial by Fire:** For the first time since freshmen became eligible in 1974, the Hoosiers started four freshmen in a Big Ten opener. Head coach **Tom Crean**, making his Big Ten debut, gave the starting nod to freshmen **Tom Pritchard**, **Matt Roth**, **Verdell Jones III** and **Nick Williams**. The quartet joined junior **Devan Dumes** in the starting lineup against the Hawkeyes.

**Return to Sender:** Three Big Ten squads are averaging 5.00 or more blocks per game. Minnesota leads the conference, swatting the opposition's offensive attack 7.14 times per game. Ohio State is averaging 6.50 blocks per contest, while Purdue ranks third with 5.21 bpg. The Gophers rank sixth nationally, while Ohio State is 10th. In individual honors, Minnesota's **Colton Iverson** shares the national lead for a single game with nine blocked shots versus Bowling Green on Nov. 15.

**Coaching Milestones:** With two conference wins last week, Michigan State's **Tom Izzo** is three wins shy of the 150-mark. The veteran skipper can move into 10th on the all-time win list with seven conference wins to tie Ohio State's Harold Olsen (1923-46). With Illinois' Big Ten win last week over Purdue, **Bruce Weber** moved to rank 40th with 54 conference wins, tying Iowa's Ralph Miller (1965-70). Weber is one win shy of tying Indiana's Mike Davis (2000-06) for 39th on the all-time list.

**The Million-Fan March:** The Big Ten is closing in on the one-million mark in attendance for the 37th consecutive season, as 939,225 fans have passed through the turnstiles in 84 home contests. Last year, the conference led the nation in total attendance for the 32nd-straight season with 2,437,673 total patrons. Overall, the Big Ten has broken the two-million mark in total attendance in each of the last 16 seasons.

**Big Ten. Big Blog.:** The Big Ten's men's basketball blog has tipped off as the race for the title is in full swing. The Big Ten. Big Blog. features up-to-the-minute information on what is happening around the conference. In addition to the latest news, the blog includes video, courtesy of the Big Ten Network, previews and reviews of each night's Big Ten action, and statistics. The latest blog entry can be found at: <http://bigten.cstv.com/sports/m-baskbl/spec-rel/122808aaa.html>.

**2009 Big Ten Tournament Media Hotel Information:** Media representatives who plan to cover the 2009 Big Ten Men's Basketball Tournament are advised that reservations are being accepted at the Crowne Plaza at a rate of \$169 for single or double room. Reservations can be made on-line by accessing: [www.indy.org/mens09](http://www.indy.org/mens09) or by calling 800-556-4639. You will need a private access code to reserve rooms on-line or over the phone--contact the Big Ten Communications office for that code. The Reservation deadline is February 27, 2009, and rooms are reserved on a first-come, first-serve basis until the room block is exhausted.

#### BIG TEN NATIONAL AWARD NOMINEES

##### Wooden Award Preseason Top 50

Robbie Hummel, PUR  
Marcus Landry, WIS  
Raymar Morgan, MSU

##### Naismith Trophy Watch List

Raymar Morgan, MSU  
Robbie Hummel, PUR  
E'Twaun Moore, PUR

##### Lowe's Senior CLASS Award

Danny Morrissey, PSU  
Marcus Landry, WIS

#### BIG TEN COACHES RECORDS

| Coach, School        | Career (Yrs.)  | at School (Yrs.) | Big Ten Only |
|----------------------|----------------|------------------|--------------|
| Bruce Weber, ILL     | 244-103 (11th) | 141-49 (6th)     | 54-30        |
| Tom Crean, IND       | 195-104 (10th) | 5-8 (1st)        | 0-1          |
| Todd Lickliter, IOWA | 155-84 (8th)   | 24-23 (2nd)      | 7-13         |
| John Beilein, MICH   | 572-343 (31st) | 21-25 (2nd)      | 6-14         |
| Tom Izzo, MSU        | 316-132 (14th) | 316-132 (14th)   | 147-69       |
| Tubby Smith, MINN    | 420-160 (18th) | 33-15 (2nd)      | 9-11         |
| Bill Carmody, NU     | 203-164 (13th) | 112-139 (9th)    | 37-96        |
| Thad Matta, OSU      | 217-68 (9th)   | 115-37 (5th)     | 46-22        |
| Ed DeChellis, PSU    | 174-188 (13th) | 69-95 (6th)      | 20-64        |
| Matt Painter, PUR    | 92-48 (5th)    | 67-43 (4th)      | 27-24        |
| Bo Ryan, WIS         | 566-166(25th)  | 183-63 (8th)     | 86-30        |

#### WEEKLY BASKETBALL TELECONFERENCE

The Big Ten Conference men's basketball coaches participate in a weekly media teleconference on Mondays from 9 a.m. - 11 a.m. CT.

The first teleconference is scheduled for Monday, Dec. 8, 2008 (non-conference review and Big Ten preview) before beginning the weekly teleconference during the Big Ten season starting on Monday, Jan. 5, 2009.

Contact the Big Ten Communications office for the teleconference phone number and weekly passcode.

The coaches order on each call is as follows (all times Central):

|            |                      |
|------------|----------------------|
| 9 a.m.     | Tom Crean, IND       |
| 9:10 a.m.  | Todd Lickliter, IOWA |
| 9:20 a.m.  | Bruce Weber, ILL     |
| 9:30 a.m.  | Bill Carmody, NU     |
| 9:40 a.m.  | Ed DeChellis, PSU    |
| 9:50 a.m.  | Matt Painter, PUR    |
| 10 p.m.    | Tom Izzo, MSU        |
| 10:10 p.m. | Bo Ryan, WIS         |
| 10:20 p.m. | John Beilein, MICH   |
| 10:30 p.m. | Thad Matta, OSU      |
| 10:40 p.m. | Tubby Smith, MINN    |

#### BIG TEN MEN'S BASKETBALL CONTACTS

**University of Illinois**  
Derrick Burson  
Assistant Director  
[burson@illinois.edu](mailto:burson@illinois.edu)  
Phone: (217) 766-7315

**Indiana University**  
J.D. Campbell, Director  
[jc56@indiana.edu](mailto:jc56@indiana.edu)  
Phone: (812) 322-1437

**University of Iowa**  
Steve Roe  
Associate Director  
[steven-roe@uiowa.edu](mailto:steven-roe@uiowa.edu)  
Phone: (319) 594-6581

**University of Michigan**  
Tom Wywrot  
Assistant Director  
[twywrot@umich.edu](mailto:twywrot@umich.edu)  
Phone: (734) 320-1148

**Michigan State University**  
Matt Larson  
Assistant Director  
[larson@ath.msu.edu](mailto:larson@ath.msu.edu)  
Phone: (517) 927-6421

**University of Minnesota**  
Matt Slieter  
Associate Director  
[slie0001@umn.edu](mailto:slie0001@umn.edu)  
Phone: (612) 236-8841

**Northwestern University**  
Nick Brilowski  
Associate Director  
[brilowski@northwestern.edu](mailto:brilowski@northwestern.edu)  
Phone: (847) 239-4127

**Ohio State University**  
Dan Wallenberg  
Assistant Athletics Director  
[wallenberg.1@osu.edu](mailto:wallenberg.1@osu.edu)  
Phone: (614) 266-4306

**Penn State University**  
Brian Siegrist  
Assistant Director  
[tbs1@psu.edu](mailto:tbs1@psu.edu)  
Phone: (814) 777-5126

**Purdue University**  
Mark Leddy  
Assistant Director  
[mleddy@purdue.edu](mailto:mleddy@purdue.edu)  
Phone: (765) 427-7042

**University of Wisconsin**  
Patrick Herb  
Assistant Director  
[pah@athletics.wisc.edu](mailto:pah@athletics.wisc.edu)  
Phone: (608) 957-2085

## OTHER TOP PERFORMERS -- WEEK ENDING JANUARY 4

**Mike Davis, So., F, ILL:** Averaged 11 points and 5.5 rebounds for the Illini last week. Had 12 points and six rebounds in the win at Purdue and finished with 10 points and five rebounds at Michigan.

**Zack Novak, Fr., G, MICH:** Continues his emergence among the Big Ten's top newcomers as he finished the week averaging 11.3 points while grabbing 4.0 rebounds. Shot 66.7 percent from the field (12-of-18) including 64.3 percent from long range (9-of-14). With his adjustment of playing the two guard and now the four with the addition of Laval Lucas-Perry, he had a quiet first game of the week tallying just three points in the lopsided win over N.C. Central. Moving into the starting lineup in the Big Ten opener against Wisconsin, posted a career-best 20 points, while grabbing a career-best eight rebounds. Finished the game going seven-of-11 from the field and five-of-eight from long range. Against Illinois, he added 11 points on four-of-five from the floor, including a three-of-four from long range. Left the game after getting hit above the left eye requiring six stitches, but came back to help U-M close out its first Big Ten win of the season.

**Lawrence Westbrook, Jr., G, MINN:** Scored 15 points against Ohio State, marking the 11th time this year and the 29th in his career that he has reached double figures in scoring. He has tallied double-figures in 11 of the 13 games he has played this year. Averaged 13 points on the week, after putting up 11 versus Michigan State.

**Jon Diebler, So., G, OSU:** Made 13-of-25 field goals in two Big Ten games. Has connected on 12-of-21 three-pointers (.571) in those two games, including a seven-of-10 outing from long range in the win vs. Iowa in the conference opener Jan. 3. Leads Ohio State with 21 points per game vs. Big Ten foes this year. Tied with P.J. Hill with the team lead in assists with six and also tops his teammates with eight steals and 79 minutes (39.5 mpg.) in conference play.

**JaJuan Johnson, So., F/C, PUR:** Posted first career double-double, scoring 16 points and pulling down a career-best 15 rebounds in Purdue's Big Ten opener against Illinois. The sophomore's rebound total in the game is the most by a Boilermaker this season. Also blocked three shots.

**Marcus Landry, Sr., F, WIS:** Led the Badgers to a pair of victories at Michigan and vs. Penn State. After tying for a team-high with 16 points at Michigan, he bested that by equaling a career-high with 23 points vs. Penn State. Also pulled down five rebounds, added two assists and two blocks in the win over the Nittany Lions. His second block came in the game's final minutes, preserving a narrow victory.

## 2009-10 BIG TEN MEN'S BASKETBALL EARLY NLI SIGNEES

## ILLINOIS

| Name            | Pos. | Ht. | Wt. | Hometown/Last School         |
|-----------------|------|-----|-----|------------------------------|
| Joseph Bertrand | G    | 6-5 | 175 | Sterling, Ill./Sterling      |
| Tyler Griffey   | F    | 6-9 | 220 | Wildwood, Mo./Lafayette      |
| Brandon Paul    | G    | 6-3 | 180 | Gurnee, Ill./Warren Township |
| D.J. Richardson | G    | 6-3 | 175 | Peoria, Ill./Findlay Prep    |

## INDIANA

| Name              | Pos. | Ht.  | Wt. | Hometown/Last School                       |
|-------------------|------|------|-----|--|
| Bobby Capobianco  | F    | 6-8  | 225 | Loveland, Ohio/Loveland                    |
| Maurice Creek     | G    | 6-5  | 195 | Chatham, Va./<br>Hargrave Military Academy |
| Derek Elston      | F    | 6-8  | 212 | Tipton, Ind./Tipton                        |
| Jordan Hulls      | G    | 6-0  | 170 | Bloomington, Ind./Bloomington South        |
| Bawa Muniru       | C    | 6-11 | 250 | Durham, N.C./Mt. Zion Academy              |
| Christian Watford | F    | 6-7  | 215 | Birmingham, Ala./Shades Valley             |

## IOWA

| Name             | Pos. | Ht. | Wt. | Hometown/Last School           |
|------------------|------|-----|-----|--------------------------------|
| Eric May         | G/F  | 6-5 | 220 | Dubuque, Iowa/Wahlert          |
| Brennan Coughill | F/C  | 6-9 | 260 | Sioux City, Iowa/Bishop Heelan |

## MICHIGAN

| Name           | Pos. | Ht.  | Wt. | Hometown/Last School          |
|----------------|------|------|-----|-------------------------------|
| Blake McLimans | F    | 6-10 | 210 | Hamburg, N.Y./Hamburg         |
| Jordan Morgan  | F    | 6-8  | 240 | Detroit, Mich./Detroit Jesuit |
| Darius Morris  | G    | 6-4  | 165 | Los Angeles, Calif./Windward  |
| Matt Vogrich   | G    | 6-4  | 185 | Lake Forest, Ill./Lake Forest |

## MICHIGAN STATE

| Name            | Pos. | Ht.  | Wt. | Hometown/Last School    |
|-----------------|------|------|-----|-------------------------|
| Derrick Nix     | C    | 6-9  | 275 | Detroit, Mich./Pershing |
| Garrick Sherman | C    | 6-10 | 235 | Kenton, Ohio/Kenton     |

## MINNESOTA

| Name            | Pos. | Ht. | Wt. | Hometown/Last School                       |
|-----------------|------|-----|-----|--|
| Justin Cobbs    | G    | 6-3 | 175 | Torrance, Calif./Bishop Montgomery         |
| Royce White     | F    | 6-8 | 200 | Minnetonka, Minn./Hopkins                  |
| Rodney Williams | F    | 6-6 | 185 | Robbinsdale, Minn./Cooper                  |
| Trevor Mbakwe   | F    | 6-7 | 240 | Mendota Heights, Minn./<br>Miami Dade C.C. |

## NORTHWESTERN

| Name             | Pos. | Ht. | Wt. | Hometown/Last School      |
|------------------|------|-----|-----|---------------------------|
| Drew Crawford    | G    | 6-5 | 180 | Naperville, Ill./Central  |
| Alex Marcotullio | G    | 6-3 | 180 | Warren, Mich./De La Salle |

## PENN STATE

| Name              | Pos. | Ht. | Wt. | Hometown/Last School         |
|-------------------|------|-----|-----|------------------------------|
| Tim Frazier       | G    | 6-2 | 160 | Houston, Texas/Sirake Jesuit |
| Jermaine Marshall | G    | 6-5 | 180 | Etters, Pa./Red Land         |

## PURDUE

| Name          | Pos. | Ht. | Wt. | Hometown/Last School                  |
|---------------|------|-----|-----|---------------------------------------|
| Patrick Bade  | F    | 6-8 | 225 | Indianapolis, Ind./Franklin Central   |
| Kelsey Barlow | G/F  | 6-6 | 185 | Indianapolis, Ind./Cathedral          |
| D.J. Byrd     | G    | 6-4 | 195 | Crawfordsville, Ind./North Montgomery |
| Jeff Robinson | F    | 6-9 | 210 | Indianapolis, Ind./Lawrence North     |

## WISCONSIN

| Name            | Pos. | Ht. | Wt. | Hometown/Last School                |
|-----------------|------|-----|-----|-------------------------------------|
| Mike Bruesewitz | F    | 6-7 | 215 | Mendota Heights, Minn./Henry Sibley |
| Diamond Taylor  | G    | 6-4 | 175 | Bolingbrook, Ill./St. Joseph        |

**IN THE POLLS (AP/USA TODAY)**

|           | ILL   | IND | IOWA | MICH  | MSU   | MINN  | NU   | OSU   | PSU | PUR   | WIS   |
|-----------|-------|-----|------|-------|-------|-------|------|-------|-----|-------|-------|
| Preseason | -/-   | -/- | -/-  | -/-   | 6/7   | -/-   | -/-  | rv/rv | -/- | 11/10 | 25/22 |
| Nov. 17   | -/-   | -/- | -/-  | -/-   | 5/7   | -/-   | -/-  | rv/rv | -/- | 11/10 | 25/22 |
| Nov. 24   | rv/-  | -/- | -/-  | rv/rv | 5/6   | -/-   | -/-  | rv/rv | -/- | 10/9  | 25/19 |
| Dec. 1    | rv/rv | -/- | -/-  | rv/rv | 13/12 | -/-   | -/-  | rv/rv | -/- | 9/10  | rv/23 |
| Dec. 8    | rv/-  | -/- | -/-  | rv/rv | 18/20 | rv/rv | rv/- | 21/21 | -/- | 14/17 | rv/rv |
| Dec. 15   | rv/-  | -/- | -/-  | rv/rv | 19/22 | rv/-  | rv/- | 17/16 | -/- | 13/18 | rv/rv |
| Dec. 22   | rv/-  | -/- | -/-  | 24/rv | 11/18 | 23/23 | -/-  | 15/13 | -/- | 10/15 | rv/rv |
| Dec. 29   | rv/rv | -/- | -/-  | 23/24 | 10/15 | 21/21 | -/-  | 24/23 | -/- | 9/11  | -/-   |
| Jan. 5    | rv/rv | -/- | -/-  | rv/rv | 8/12  | 22/19 | -/-  | rv/rv | -/- | 14/14 | rv/rv |
| Jan. 12   |       |     |      |       |       |       |      |       |     |       |       |
| Jan. 19   |       |     |      |       |       |       |      |       |     |       |       |
| Jan. 26   |       |     |      |       |       |       |      |       |     |       |       |
| Feb. 2    |       |     |      |       |       |       |      |       |     |       |       |
| Feb. 9    |       |     |      |       |       |       |      |       |     |       |       |
| Feb. 16   |       |     |      |       |       |       |      |       |     |       |       |
| Feb. 23   |       |     |      |       |       |       |      |       |     |       |       |
| March 2   |       |     |      |       |       |       |      |       |     |       |       |
| March 9   |       |     |      |       |       |       |      |       |     |       |       |
| March 16  |       |     |      |       |       |       |      |       |     |       |       |
| FINAL     |       |     |      |       |       |       |      |       |     |       |       |

RV--Receiving Votes

**RPI RANKINGS**

| Rank | Team           | RPI   | Conference Rank         |
|------|----------------|-------|-------------------------|
| 7    | Michigan State | .6514 | 1. ACC .5942            |
| 13   | Wisconsin      | .6362 | 2. <b>BIG TEN</b> .5920 |
| 16   | Ohio State     | .6333 | 3. Big East .5822       |
| 18   | Illinois       | .6262 | 4. Big 12 .5653         |
| 38   | Minnesota      | .6015 | 5. Pac-10 .5653         |
| 39   | Michigan       | .5995 |                         |
| 41   | Northwestern   | .5972 |                         |
| 48   | Iowa           | .5893 |                         |
| 76   | Purdue         | .5529 |                         |
| 99   | Penn State     | .4882 |                         |
| 183  | Indiana        | .4882 |                         |

**SAGARIN RANKINGS**

| Rank | Team           | Rating | Conference        | Central Mean |
|------|----------------|--------|-------------------|--------------|
| 11   | Michigan State | 88.21  | 1. ACC            | 84.52        |
| 14   | Illinois       | 87.96  | 2. <b>BIG TEN</b> | 83.80        |
| 20   | Purdue         | 86.50  | 3. Big East       | 83.01        |
| 24   | Ohio State     | 86.19  | 4. Big 12         | 82.27        |
| 35   | Wisconsin      | 84.32  | 5. Pac-10         | 82.02        |
| 36   | Michigan       | 84.15  |                   |              |
| 47   | Minnesota      | 83.25  |                   |              |
| 52   | Northwestern   | 82.83  |                   |              |
| 61   | Iowa           | 81.66  |                   |              |
| 72   | Penn State     | 79.85  |                   |              |
| 217  | Indiana        | 69.67  |                   |              |

**BIG TEN VS. NON-CONFERENCE**

| Conference      | '08-09 | Conference          | '08-09        |
|-----------------|--------|---------------------|---------------|
| America East    | 2-0    | Pac-10              | 1-1           |
| ACC             | 7-8    | Patriot             | 2-0           |
| Atlantic Sun    | 2-1    | SEC                 | 2-1           |
| Atlantic 10     | 0-3    | Southern            | 4-0           |
| Big East        | 3-5    | Southland           | 6-0           |
| Big Sky         | 3-0    | SWAC                | 3-0           |
| Big South       | 3-0    | Summit              | 10-0          |
| Big 12          | 5-2    | Sun Belt            | 0-0           |
| Big West        | 2-0    | WCC                 | 1-1           |
| Colonial        | 3-1    | WAC                 | 2-0           |
| Conference USA  | 2-0    | Independents        | 3-0           |
| Horizon         | 7-1    | NCAA II             | 3-0           |
| Independent     | 1-0    |                     |               |
| Ivy             | 4-0    | <b>Totals</b>       | <b>106-25</b> |
| MAAC            | 0-0    |                     |               |
| MAC             | 6-0    | <b>Winning Pct.</b> | <b>0.809</b>  |
| MEAC            | 4-0    |                     |               |
| Metro Atlantic  | 2-0    |                     |               |
| Missouri Valley | 4-1    |                     |               |
| Mountain West   | 2-0    |                     |               |
| Northeast       | 3-0    |                     |               |
| Northern Sun    | 1-0    |                     |               |
| Ohio Valley     | 2-0    |                     |               |

**HOME ATTENDANCE**

|                | Conference Games |                |               |          | All Games |                |               |           |
|----------------|------------------|----------------|---------------|----------|-----------|----------------|---------------|-----------|
|                | G                | Total          | AVG           | SO       | G         | Total          | AVG           | SO        |
| Illinois       | -                | -              | -             | -        | 8         | 116,708        | 14,589        | 0         |
| Indiana        | -                | -              | -             | -        | 6         | 74,476         | 12,413        | 0         |
| Iowa           | 1                | 11,161         | 11,161        | -        | 8         | 73,596         | 9,200         | 0         |
| Michigan       | 2                | 23,958         | 11,979        | -        | 8         | 70,496         | 8,812         | 1         |
| Michigan State | -                | -              | -             | -        | 4         | 59,036         | 14,759        | 4         |
| Minnesota      | 2                | 29,250         | 14,625        | 2        | 10        | 123,845        | 12,385        | 0         |
| Northwestern   | 1                | 8,117          | 8,117         | 1        | 7         | 23,171         | 3,310         | 0         |
| Ohio State     | 1                | 14,946         | 14,946        | -        | 8         | 105,172        | 13,147        | 1         |
| Penn State     | 1                | 5,525          | 5,525         | -        | 9         | 52,105         | 5,789         | 0         |
| Purdue         | 1                | 14,036         | 14,036        | -        | 9         | 120,010        | 13,334        | 3         |
| Wisconsin      | 1                | 17,230         | 17,230        | 1        | 7         | 120,610        | 17,230        | 7         |
| <b>Totals</b>  | <b>10</b>        | <b>124,223</b> | <b>12,422</b> | <b>4</b> | <b>84</b> | <b>939,225</b> | <b>11,181</b> | <b>16</b> |

**AP TOP 25 POLL**

| Jan. 5, 2009             |             |              |           |  |
|--------------------------|-------------|--------------|-----------|--|
| RANK/SCHOOL (#1 votes)   | RECORD      | PTS.         | PREV.     |  |
| 1. Pittsburgh (70)       | 14-0        | 1,798        | 3         |  |
| 2. Duke                  | 12-1        | 1,660        | 5         |  |
| 3. North Carolina (2)    | 13-1        | 1,651        | 1         |  |
| 4. Wake Forest           | 13-0        | 1,553        | 6         |  |
| 5. Connecticut           | 12-1        | 1,474        | 2         |  |
| 6. Oklahoma              | 13-1        | 1,358        | 4         |  |
| 7. Texas                 | 11-2        | 1,348        | 8         |  |
| 8. <b>MICHIGAN STATE</b> | <b>11-2</b> | <b>1,269</b> | <b>10</b> |  |
| 9. Georgetown            | 10-2        | 1,208        | 11        |  |
| 10. UCLA                 | 12-2        | 1,162        | 12        |  |
| 11. Syracuse             | 14-1        | 1,113        | 13        |  |
| 12. Clemson              | 14-0        | 968          | 20        |  |
| 13. Notre Dame           | 10-3        | 802          | 7         |  |
| 14. <b>PURDUE</b>        | <b>11-3</b> | <b>774</b>   | <b>9</b>  |  |
| 15. Tennessee            | 9-3         | 533          | 14        |  |
| 16. Xavier               | 11-2        | 483          | 22        |  |
| 17. Boston College       | 13-2        | 453          | NR        |  |
| 18. Marquette            | 13-2        | 436          | NR        |  |
| 18. Villanova            | 12-2        | 436          | 15        |  |
| 20. Arizona State        | 12-2        | 374          | 17        |  |
| 21. Butler               | 12-1        | 341          | 25        |  |
| 22. <b>MINNESOTA</b>     | <b>13-1</b> | <b>290</b>   | <b>21</b> |  |
| 23. Baylor               | 12-2        | 289          | 19        |  |
| 23. Louisville           | 9-3         | 289          | 18        |  |
| 25. West Virginia        | 11-2        | 230          | NR        |  |

Others Receiving Votes: MICHIGAN 153, California 122, Arkansas 109, ILLINOIS 108, Gonzaga 86, WISCONSIN 86, Memphis 67, Davidson 56, Saint Mary's 50, UNLV 43, Illinois State 39, Kansas 37, OHIO STATE 28, Texas A&M 27, Maryland 25, Dayton 22, Florida 13, Florida State 13, Brigham Young 12, Miami (FL) 8, Missouri 4.

**USA TODAY/ESPN COACHES POLL**

| Jan. 5, 2009              |             |            |           |  |
|---------------------------|-------------|------------|-----------|--|
| RANK/SCHOOL (#1 votes)    | RECORD      | PTS.       | PREV.     |  |
| 1. Pittsburgh (30)        | 14-0        | 774        | 3         |  |
| 2. Duke                   | 12-1        | 714        | 5         |  |
| 3. North Carolina (1)     | 13-1        | 707        | 1         |  |
| 4. Wake Forest            | 13-0        | 687        | 6         |  |
| 5. Connecticut            | 12-1        | 630        | 2         |  |
| 6. Oklahoma               | 13-1        | 593        | 4         |  |
| 7. Texas                  | 11-2        | 546        | 7         |  |
| 7. UCLA                   | 12-2        | 546        | 9         |  |
| 9. Syracuse               | 14-1        | 526        | 11        |  |
| 10. Georgetown            | 10-2        | 506        | 8         |  |
| 11. Clemson               | 14-0        | 480        | 16        |  |
| 12. <b>MICHIGAN STATE</b> | <b>11-2</b> | <b>452</b> | <b>15</b> |  |
| 13. Notre Dame            | 10-3        | 277        | 10        |  |
| 14. <b>PURDUE</b>         | <b>11-3</b> | <b>261</b> | <b>11</b> |  |
| 15. Marquette             | 13-2        | 251        | 25        |  |
| 16. Arizona State         | 12-2        | 238        | 14        |  |
| 17. Villanova             | 12-2        | 225        | 13        |  |
| 18. Xavier                | 11-2        | 217        | 22        |  |
| 19. <b>MINNESOTA</b>      | <b>13-1</b> | <b>183</b> | <b>21</b> |  |
| 20. Butler                | 12-1        | 147        | NR        |  |
| 21. Louisville            | 9-3         | 136        | 18        |  |
| 22. West Virginia         | 11-2        | 132        | NR        |  |
| 23. Baylor                | 12-2        | 98         | 20        |  |
| 24. Boston College        | 13-2        | 90         | NR        |  |
| 25. Tennessee             | 9-3         | 85         | 18        |  |

Others Receiving Votes: Dayton 54, Illinois State 50, MICHIGAN 49, Saint Mary's 43, OHIO STATE 40, Memphis 37, ILLINOIS 34, Brigham Young 34, California 31, Davidson 31, Arkansas 27, Gonzaga 27, WISCONSIN 26, Texas A&M 22, Missouri 21, Florida 11, UNLV 11, LSU 10, Kansas 7, Stanford 5, Maryland 1, Florida State 1, Utah State 1, Washington 1.

**1,000-POINT SCORERS**

| Player, School       | Total |
|----------------------|-------|
| Jamelle Cornley, PSU | 1,265 |
| Raymar Morgan, MSU   | 1,032 |
| Craig Moore, NU      | 1,015 |
| Kevin Coble, NU      | 896   |
| Danny Morrissey, PSU | 836   |

**GAMES OF 30+ POINTS**

| Player, School     | Points | Game                         |
|--------------------|--------|------------------------------|
| Craig Moore, NU    | 31     | at Brown (11/22/08)          |
| Manny Harris, MICH | 30     | vs. Michigan Tech (11/11/08) |

**GAMES OF 20+ POINTS**

| Player, School       | # | Player, School           | # |
|----------------------|---|--------------------------|---|
| Talor Battle, PSU    | 7 | Matt Gatens, IOWA        | 1 |
| Manny Harris, MICH   | 6 | Cyrus Tate, IOWA         | 1 |
| Raymar Morgan, MSU   | 6 | Zach Novack, MICH        | 1 |
| DeShawn Sims, MICH   | 4 | Kalin Lucas, MSU         | 1 |
| Mike Davis, ILL      | 3 | Jamal Abu-Shamala, MINN  | 1 |
| Demetri McCamey, ILL | 3 | Blake Hofferber, MINN    | 1 |
| Mike Tisdale, ILL    | 3 | Colton Iverson, MINN     | 1 |
| Evan Turner, OSU     | 3 | Damian Johnson, MINN     | 1 |
| Stanley Pringle, PSU | 3 | Lawrence Westbrook, MINN | 1 |
| Devon Dumes, IND     | 2 | John Shurna, NU          | 1 |
| Tom Pritchard, IND   | 2 | David Lighty, OSU        | 1 |
| Anthony Tucker, IOWA | 2 | Stanley Pringle, PSU     | 1 |
| Chris Allen, MSU     | 2 | Nemanja Calasan, PUR     | 1 |
| Kevin Coble, NU      | 2 | E'Twaun Moore, PUR       | 1 |
| Craig Moore, NU      | 2 |                          |   |
| Jon Diebler, OSU     | 2 |                          |   |
| Jamelle Cornley, PSU | 2 |                          |   |
| Robbie Hummel, PUR   | 2 |                          |   |
| JuJuan Johnson, PUR  | 2 |                          |   |
| Trévon Hughes, WIS   | 2 |                          |   |
| Marcus Landry, WIS   | 2 |                          |   |
| Trent Meacham, ILL   | 1 |                          |   |

**GAMES OF 10+ REBOUNDS**

| Player, School        | # |
|-----------------------|---|
| Mike Davis, ILL       | 4 |
| Tom Pritchard, IND    | 4 |
| Cyrus Tate, IOWA      | 4 |
| DeShawn Sims, MICH    | 4 |
| Raymar Morgan, MSU    | 4 |
| Robbie Hummel, PUR    | 4 |
| Evan Turner, OSU      | 3 |
| Manny Harris, MICH    | 3 |
| Goran Suton, MSU      | 2 |
| Talor Battle, PSU     | 2 |
| Andrew Jones, PSU     | 2 |
| Jamelle Cornley, PSU  | 2 |
| Joe Krabbenhoft, WIS  | 2 |
| Chester Frazier, ILL  | 1 |
| Mike Tisdale, ILL     | 1 |
| Matt Gatens, IOWA     | 1 |
| Anthony Tucker, IOWA  | 1 |
| Kalin Lucas, MSU      | 1 |
| Delvon Roe, MSU       | 1 |
| Blake Hofferber, MINN | 1 |
| Nemanja Calasan, PUR  | 1 |
| Marcus Green, PUR     | 1 |
| Keaton Nankivil, WIS  | 1 |
| JaJuan Johnson, PUR   | 1 |

**2008-09 DOUBLE-DOUBLES**

| Player, School            | 2008-09 | Career |
|---------------------------|---------|--------|
| DeShawn Sims, MICH        | 4       | 5      |
| Mike Davis, ILL           | 4       | 4      |
| Tom Pritchard, IND        | 4       | 4      |
| Manny Harris, MICH#       | 4       | 4      |
| Raymar Morgan, MSU        | 3       | 6      |
| Evan Turner, OSU          | 3       | 5      |
| Jamelle Cornley, PSU      | 2       | 10     |
| Robbie Hummel, PUR        | 2       | 6      |
| Joe Krabbenhoft, WIS      | 2       | 6      |
| Talor Battle, PSU         | 2       | 3      |
| Goran Suton, MSU          | 1       | 14     |
| Cyrus Tate, IOWA          | 1       | 5      |
| Demetri McCamey, ILL*     | 1       | 2      |
| Mike Tisdale, ILL         | 1       | 1      |
| Matt Gatens, IOWA         | 1       | 1      |
| Anthony Tucker, IOWA      | 1       | 1      |
| Kalin Lucas, MSU          | 1       | 1      |
| Nemanja Calasan, PUR      | 1       | 1      |
| Marcus Green, PUR         | 1       | 1      |
| JuJuan Johnson, PUR       | 1       | 1      |
| Kevin Coble, NU           | -       | 3      |
| Travis Walton, MSU*       | -       | 1      |
| Damian Johnson, MINN      | -       | 1      |
| Lawrence Westbrook, MINN* | -       | 1      |
| Craig Moore, NU           | -       | 1      |
| Michael Thompson, NU*     | -       | 1      |
| David Jackson, PSU        | -       | 1      |
| Andrew Jones, PSU         | -       | 1      |
| Marcus Landry, WIS        | -       | 1      |

\* points and assists  
# points and rebounds and points and assists

**DOUBLE-DOUBLES PERFORMANCES**

|                      |                        |                                       |
|----------------------|------------------------|---------------------------------------|
| Mike Davis, ILL      | 20 points, 14 rebounds | vs Texas A&M-CC (11/16/08)            |
|                      | 11 points, 12 rebounds | at Vanderbilt (11/20/08)              |
|                      | 17 points, 13 rebounds | vs. Kent State (11/28/08)             |
|                      | 11 points, 12 rebounds | vs. Chicago State (12/10/08)          |
| Mike Tisdale, ILL    | 25 points, 10 rebounds | vs. Chicago State (12/10/08)          |
| Tom Pritchard, IND   | 13 points, 10 rebounds | vs Northwestern State (11/15/08)      |
|                      | 19 points, 10 rebounds | vs. IUPUI (11/18/08)                  |
|                      | 15 points, 11 rebounds | vs. TCU (12/10/08)                    |
|                      | 12 points, 14 rebounds | vs. Northeastern (12/22/08)           |
|                      | 11 points, 10 rebounds | vs. Western Illinois (12/27/08)       |
|                      | 11 points, 13 rebounds | vs. Oakland (11/23/08)                |
|                      | 14 points, 10 rebounds | vs. SE Missouri State (11/25/08)      |
|                      | 26 points, 10 rebounds | vs Northeastern (11/12/08)            |
|                      | 16 points, 15 rebounds | vs. Norfolk State (11/25/08)          |
|                      | 15 points, 13 assists  | vs. Oakland (12/20/08)                |
|                      | 29 points, 16 rebounds | vs. North Carolina Central (12/29/08) |
| DeShawn Sims, MICH   | 10 points, 12 rebounds | vs Michigan Tech (11/11/08)           |
|                      | 23 points, 12 rebounds | vs. Savannah State (11/29/08)         |
|                      | 28 points, 12 rebounds | vs. Duke (12/06/08)                   |
|                      | 20 points, 20 rebounds | vs. Florida Gulf Coast (12/22/08)     |
| Raymar Morgan, MSU   | 26 points, 10 rebounds | vs. The Citadel (12/17/08)            |
|                      | 10 points, 10 rebounds | vs. Minnesota (12/31/08)              |
|                      | 22 points, 13 rebounds | vs. Northwestern (1/3/09)             |
|                      | 11 points, 12 rebounds | vs. Minnesota (12/31/08)              |
|                      | 16 points, 13 rebounds | vs. Samford (11/29/08)                |
|                      | 28 points, 10 rebounds | vs. Notre Dame (12/6/08)              |
|                      | 10 points, 11 rebounds | vs. West Virginia (12/27/08)          |
| Talor Battle, PSU    | 11 points, 10 rebounds | vs. Lafayette (12/21/08)              |
|                      | 26 points, 12 rebounds | vs. Northwestern (12/31/08)           |
| Jamelle Cornley, PSU | 14 points, 12 rebounds | vs William & Mary (11/14/08)          |
|                      | 17 points, 10 rebounds | vs. Hartford (11/20/08)               |
|                      | 12 points, 13 rebounds | vs. Arkansas-Pine Bluff (12/6/08)     |
|                      | 12 points, 10 rebounds | vs. Loyola-Chicago (11/18/08)         |
|                      | 20 points, 11 rebounds | vs. Coppin State (11/22/08)           |
|                      | 18 points, 14 rebounds | vs. Davidson (12/23/08)               |
|                      | 16 points, 15 rebounds | vs. Purdue (12/20/08)                 |
| JaJuan Johnson, PUR  | 12 points, 10 rebounds | vs. UW-Milwaukee (11/29/08)           |
| Joe Krabbenhoft, WIS | 10 points, 10 rebounds | vs. Penn State (1/3/09)               |

**BIG TEN PLAYERS OF THE WEEK**

|         |  |
|---------|--|
| Nov. 17 | Manny Harris, MICH, So., G   |
| Nov. 24 | Craig Moore, NU, Sr., G<br>Talor Battle, PSU, So., G                                   |
| Dec. 1  | Mike Tisdale, ILL, So., C<br>E'Twaun Moore, PUR, So., G                                |
| Dec. 8  | Evan Turner, OSU, So., G   |
| Dec. 15 | Robbie Hummel, PUR, So., F   |
| Dec. 22 | Robbie Hummel, PUR, So., F   |
| Dec. 29 | Trent Meacham, ILL, Sr., G<br>DeShawn Sims, MICH, Jr., F<br>Raymar Morgan, MSU, Jr., F |
| Jan. 5  |  |
| Jan. 12 |  |
| Jan. 19 |  |
| Jan. 26 |  |
| Feb. 2  |  |
| Feb. 9  |  |
| Feb. 16 |  |
| Feb. 23 |  |
| March 2 |  |
| March 9 |  |

## BIG TEN AMONG TOP 50 NCAA LEADERS (as of January 5, 2009)

|   |                                   |      |   |                   |      |  |                            |      |
|---|-----------------------------------|------|---|-------------------|------|--|----------------------------|------|
| <b>ASSISTS PER GAME</b>                 |                                   |      | <b>SCORING MARGIN</b>                   |                   |      | <b>STEALS PER GAME</b>                             |                            |      |
| 1                                       | Brock Young, East Carolina        | 8.1  | 1                                       | North Carolina    | 24.1 | 1  | VMI                        | 14.5 |
| 15                                      | Chester Frazier, Illinois         | 6.4  | 15                                      | Purdue            | 16.6 | T33  | Minnesota                  | 9.1  |
| T18                                     | Kalin Lucas, Michigan State       | 6.3  | 39                                      | Illinois          | 13.1 | <b>TURNOVERS PER GAME</b>                          |                            |      |
| T25                                     | Al Nolen, Minnesota               | 6.1  | <b>FIELD-GOAL PERCENTAGE</b>            |                   |      | 1  | Houston                    | 9.3  |
| <b>BLOCKED SHOTS PER GAME</b>           |                                   |      | 1                                       | Utah State        | .523 | 5  | Penn State                 | 10.7 |
| 1                                       | Jarvis Varnado, Mississippi State | 5.8  | 25                                      | Illinois          | .481 | 7  | Wisconsin                  | 10.8 |
| 10                                      | Dallas Lauderdale, Ohio State     | 2.9  | 27                                      | Michigan State    | .481 | 9  | Michigan                   | 11.0 |
| T22                                     | Damian Johnson, Minnesota         | 2.5  | 36                                      | Iowa              | .476 | T13  | Iowa                       | 11.6 |
| T38                                     | JaJuan Johnson, Purdue            | 2.2  | <b>FIELD-GOAL PERCENTAGE DEFENSE</b>    |                   |      | T19  | Northwestern               | 11.8 |
| <b>STEALS PER GAME</b>                  |                                   |      | 1                                       | Washington State  | .351 | T25  | Purdue                     | 12.1 |
| 1                                       | Travis Holmes, VMI                | 3.8  | 5                                       | Purdue            | .358 | 38   | Ohio State                 | 12.3 |
| T39                                     | Damian Johnson, Minnesota         | 2.4  | 36                                      | Minnesota         | .385 | <b>PERSONAL FOULS PER GAME</b>                     |                            |      |
| T41                                     | Evan Turner, Ohio State           | 2.3  | 41                                      | Northwestern      | .387 | 1  | Notre Dame                 | 12.6 |
| <b>FIELD-GOAL PERCENTAGE</b>            |                                   |      | 45                                      | Ohio State        | .391 | 10   | Michigan                   | 14.6 |
| 1                                       | Patrick Patterson, Kentucky       | .713 | <b>FREE-THROW PERCENTAGE</b>            |                   |      | 11   | Penn State                 | 14.6 |
| 11                                      | Raymar Morgan, Michigan State     | .630 | 1                                       | UC Davis          | .809 | 12   | Ohio State                 | 14.7 |
| <b>FREE-THROW PERCENTAGE</b>            |                                   |      | 7                                       | Michigan          | .777 | 23   | Wisconsin                  | 15.4 |
| 1                                       | Darren Collison, UCLA             | .976 | 26                                      | Iowa              | .743 | 36   | Illinois                   | 15.9 |
| T35                                     | Manny Harris, Michigan            | .874 | <b>REBOUND MARGIN</b>                   |                   |      | <b>ASSIST-TURNOVER RATIO</b>                       |                            |      |
| T40                                     | Jeff Peterson, Iowa               | .868 | 1                                       | Washington        | 11.8 | 1  | Notre Dame                 | 2.04 |
| <b>THREE-POINT FIELD GOALS PER GAME</b> |                                   |      | 7                                       | Michigan State    | 9.7  | 6  | Illinois                   | 1.52 |
| 1                                       | David Holston, Chicago State      | 5.1  | T42                                     | Penn State        | 6.3  | 7  | Michigan                   | 1.51 |
| 26                                      | Craig Moore, Northwestern         | 3.3  | <b>THREE-POINT FIELD GOALS PER GAME</b> |                   |      | 15   | Northwestern               | 1.37 |
| <b>ASSIST-TURNOVER RATIO</b>            |                                   |      | 1                                       | VMI               | 13.5 | 20   | Purdue                     | 1.32 |
| 1                                       | Kalin Lucas, Michigan State       | 5.13 | T18                                     | Iowa              | 8.9  | 21   | Michigan State             | 1.32 |
| 4                                       | Al Nolen, Minnesota               | 3.70 | 20                                      | Michigan          | 8.9  | 23   | Penn State                 | 1.31 |
| T12                                     | Chester Frazier, Illinois         | 3.00 | 36                                      | Northwestern      | 8.1  | 27   | Minnesota                  | 1.26 |
| 30                                      | Damian Johnson, Minnesota         | 2.54 | 48                                      | Penn State        | 7.8  | <b>MOST THREE-POINT FIELD GOALS MADE IN A GAME</b> |                            |      |
| 31                                      | Talor Battle, Penn State          | 2.53 | <b>ASSISTS PER GAME</b>                 |                   |      | 1  | Kyle McAlarney, Notre Dame | 10   |
| T48                                     | Michael Thompson, Northwestern    | 2.29 | 1                                       | North Carolina    | 20.2 | T2   | Craig Moore, Northwestern  | 9    |
| <b>SCORING DEFENSE</b>                  |                                   |      | 2                                       | Illinois          | 20.1 | <b>MOST BLOCKED SHOTS IN A GAME</b>                |                            |      |
| 1                                       | Washington State                  | 50.8 | 7                                       | Michigan State    | 18.8 | T1   | Colton Iverson, Minnesota  | 9    |
| 5                                       | Northwestern                      | 55.5 | T14                                     | Minnesota         | 17.6 |  |                            |      |
| 8                                       | Iowa                              | 55.9 | 27                                      | Michigan          | 16.6 |  |                            |      |
| 12                                      | Purdue                            | 57.1 | T37                                     | Northwestern      | 16.2 |  |                            |      |
| 15                                      | Ohio State                        | 57.6 | T44                                     | Purdue            | 15.9 |  |                            |      |
| 16                                      | Illinois                          | 57.8 | <b>BLOCKED SHOTS PER GAME</b>           |                   |      |  |                            |      |
| 34                                      | Wisconsin                         | 59.9 | 1                                       | Mississippi State | 9.5  |  |                            |      |
| 42                                      | Penn State                        | 60.5 | 6                                       | Minnesota         | 7.1  |  |                            |      |
|   |                                   |      | 10                                      | Ohio State        | 6.5  |  |                            |      |
|   |                                   |      | T29                                     | Purdue            | 5.2  |  |                            |      |

## TEAM-BY-TEAM RECORD IN GAMES DECIDED BY...

| Team           | OT  | 1-5 | 6-10 | 11-15 | 16-20 | 21+ | Record |
|----------------|-----|-----|------|-------|-------|-----|--------|
| Illinois       | 1-0 | 1-1 | 5-1  | 1-0   | 3-0   | 3-0 | 13-2   |
| Indiana        | 0-0 | 2-1 | 1-0  | 2-1   | 1-2   | 0-3 | 5-8    |
| Iowa           | 0-0 | 2-2 | 2-0  | 1-0   | 3-2   | 3-0 | 11-4   |
| Michigan       | 1-0 | 2-1 | 2-0  | 1-2   | 3-0   | 3-0 | 11-3   |
| Michigan State | 0-0 | 1-0 | 1-0  | 4-0   | 2-1   | 3-1 | 11-2   |
| Minnesota      | 0-0 | 1-0 | 6-0  | 2-1   | 1-0   | 3-0 | 13-1   |
| Northwestern   | 0-0 | 0-2 | 1-1  | 3-1   | 2-0   | 2-0 | 8-4    |
| Ohio State     | 0-0 | 5-0 | 0-1  | 1-0   | 1-0   | 3-1 | 10-2   |
| Penn State     | 0-0 | 3-2 | 1-1  | 3-0   | 1-0   | 4-0 | 12-3   |
| Purdue         | 0-2 | 0-2 | 1-0  | 3-0   | 2-1   | 5-0 | 11-3   |
| Wisconsin      | 1-0 | 4-2 | 1-0  | 3-0   | 1-1   | 2-0 | 11-3   |

## BIG TEN "ONE-PLAYS"

With an 18-game conference schedule, each Big Ten team will only meet two other conference teams once during conference play. Here is the breakdown of "one-plays" for 2008-09.

| Team           | Home | Away |
|----------------|------|------|
| Illinois       | IOWA | NU   |
| Indiana        | MICH | PUR  |
| Iowa           | MINN | ILL  |
| Michigan       | MSU  | IND  |
| Michigan State | WIS  | MICH |
| Minnesota      | PUR  | IOWA |
| Northwestern   | ILL  | PSU  |
| Ohio State     | PSU  | WIS  |
| Penn State     | NU   | OSU  |
| Purdue         | IND  | MINN |
| Wisconsin      | OSU  | MSU  |

## FACES OF THE BIG TEN

**KYLE TABER, indiana junior forward**

Taber is the lone senior returning for the Indiana men's basketball team. A native of Evansville, Taber has emerged as a crowd favorite for his loyalty to the Hoosier program. He has been active in the community by reading at local schools and helping serve meals to those less fortunate. During the summer, Taber completed his degree in sport marketing and management by doing an internship in the athletics communications office where among the many tasks, he was responsible for updating the men's basketball record section for the media guide.

**TRENT MEACHAM, illinois senior guard**

Meacham has fulfilled his dream of wearing the Orange and Blue. A lifelong native of Champaign, Meacham grew up attending Fighting Illini basketball games at the Assembly Hall and his favorite player was former point guard Kiwane Garris. Meacham played at the University of Dayton as a freshman before deciding the opportunity to play for his favorite school was too much to pass up. He joined the Illini program as a walk-on with no guarantee of playing time. But Meacham has worked his way into a starting spot and enters his senior season on scholarship and as the team's leading returning scorer. Meacham has excelled in the classroom as a two-time Academic All-Big Ten selection. He earned a bachelor's degree in sport management and is now working toward a master's degree in human resource education. Meacham also is active in the Fellowship of Christian Athletes (FCA) and served an internship with FCA over the summer to fulfill the final requirement toward his undergraduate degree.

**DANNY PETERS, ohio state junior guard**

Danny Peters is a junior on the Ohio State men's basketball team and is in his fourth season with the Buckeyes. He served as a team manager as a true freshman but then donned the scarlet and gray in 2006-07. He hopes to follow in the footsteps of his father, Dan Peters, who has been both a head coach and an assistant for many years at the collegiate level. Coach Peters now assists the Buckeyes with video scouting and basketball operations. Danny Peters spends his summers coaching at camps and working with underprivileged children. He is majoring in special education at Ohio State.

**MARCUS LANDRY, wisconsin senior forward**

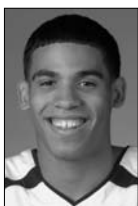
Senior Marcus Landry is assuming a lot of responsibility this season for the Badgers. As a preseason All-Big Ten selection, he will no doubt be relied on heavily to guide Wisconsin's on-court fortunes. But for Landry, responsibility is nothing new. A husband and father of three, Landry knows what it's like to have people counting on him. In addition to dedicating himself to his family and teammates, Landry is also committed to his academics, raising his grade point average nearly 1.5 points in the last two years on his way to earning the Academic Momentum Award this fall.

**JARRYD COLE, iowa sophomore forward**

Jarryd Cole is a native of Kansas City and began his Hawkeye career last season as a true freshman, starting six of the first 13 games of the season. Cole suffered a major knee injury in Iowa's final non-conference game a year ago and missed the entire Big Ten Conference season. After major surgery, Jarryd began his rehabilitation program almost immediately. While working throughout the summer on his re-habilitation, Jarryd also spent the summer working as a Youth Leadership counselor in Cedar Rapids, Iowa, working with youth groups throughout the summer and being very involved in the community.

**DAVID MERRITT, michigan senior guard**

A lifelong Michigan fan, David Merritt turned down Division II basketball scholarship offers to attend Michigan on an academic scholarship. Merritt attempted to walk on to the basketball program at U-M and was cut during tryouts each of his first two years on campus in Ann Arbor. Merritt finally made the team in his third attempt at walk-on tryouts in 2006-07. He appeared in four games, playing 29 minutes. Under new head coach John Beilein, Merritt saw action in 20 games a year ago despite being slowed by a knee injury that forced him to miss five games. He earned his degree in sports management in the spring and was then awarded a basketball scholarship for his fifth-year of eligibility. Merritt was also named a team captain this season and is currently enrolled in the Rackham Graduate School, pursuing a master's degree in urban planning. Merritt has started all nine games thus far for the Wolverines.

**TALOR BATTLE, penn state sophomore guard**

The third oldest of nine children, Talor Battle grew up in a rough part of Albany, N.Y., and learned at a young age to lead by example and care for his three younger brothers and three younger sisters. The work ethic that saw him earn Albany Times Large School Player of the Year on the court and National Honor Society recognition in the classroom has also gotten him elected a Penn State team co-captain as a sophomore. He looks to two

of his brothers for motivation. His older brother Tracy, who Battle says was his hero growing up, is currently serving a prison sentence. Battle speaks to him by phone regularly and thinks about doing the things he can't do. His younger brother Taran Buie has taken over for the current Nittany Lion as the star at Bishop Maginn High School in Albany and should be a top-50 prospect in the class of 2011.

**KEVIN COBLE, northwestern junior forward**

Junior Kevin Coble stepped away from the Northwestern basketball program prior to the start of the 2007-08 season to return home to his native Scottsdale, Arizona, to help care for his mother, Carlys, who was battling breast cancer. He eventually returned to Evanston and the Wildcats for the start of the Big Ten season and ended up leading the team in scoring in rebounding for the second straight season. Kevin was recognized for his decision by being named a finalist for the 2008 V Foundation Comeback of the Year Award. He and his mother have been active in the cause for breast cancer awareness.



**ILLINOIS fighting illini (13-2, 1-1 Big Ten)**

|                 |                              |               |
|-----------------|------------------------------|---------------|
| <b>NOVEMBER</b> |                              |               |
| 14              | Eastern Washington           | W, 66-50      |
| 16              | Texas A&M-Corpus Christi [1] | W, 72-53      |
| 20              | at Vanderbilt                | W, 69-63      |
| 23              | Jackson State [1]            | W, 78-64      |
| 28              | vs. Kent State [2]           | W, 69-63 (OT) |
| 29              | vs. Tulsa [2]                | W, 48-44      |
| <b>DECEMBER</b> |                              |               |
| 2               | Clemson [21]                 | L, 74-76      |
| 6               | vs. Georgia [3]              | W, 76-42      |
| 8               | Hawai'i                      | W, 68-58      |
| 10              | Chicago State                | W, 89-50      |
| 20              | Detroit Mercy                | W, 82-51      |
| 23              | vs. #25/- Missouri [23]      | W, 75-69      |
| 28              | Eastern Michigan             | W, 62-53      |
| 30              | at #9/11 Purdue              | W, 71-67 (OT) |
| <b>JANUARY</b>  |                              |               |
| 4               | at #23/24 Michigan           | L, 64-71      |
| 10              | Indiana                      | 3 p.m.        |
| 14              | Michigan                     | 8:30 p.m.     |
| 17              | at Michigan State            | 4 p.m.        |
| 20              | Ohio State                   | 7 p.m.        |
| 24              | Wisconsin                    | 4 p.m.        |
| 29              | at Minnesota                 | 9 p.m.        |
| <b>FEBRUARY</b> |                              |               |
| 1               | Iowa                         | 1 p.m.        |
| 5               | at Wisconsin                 | 9 p.m.        |
| 8               | Purdue                       | 1 p.m.        |
| 12              | at Northwestern              | 9 p.m.        |
| 15              | at Indiana                   | 1 p.m.        |
| 18              | Penn State                   | 7 p.m.        |
| 21/22           | at Ohio State                | TBA           |
| 26              | Minnesota                    | 6 p.m.        |
| 28/March 1      | Michigan State               | TBA           |
| March 3/4/5     | at Penn State                | TBA           |

**INDIANA hoosiers (5-8, 0-1 Big Ten)**

|                 |                            |                    |
|-----------------|----------------------------|--------------------|
| <b>NOVEMBER</b> |                            |                    |
| 15              | Northwestern State         | W, 83-65           |
| 18              | IUPUI                      | W, 60-57           |
| 24              | #8/8 Notre Dame [4]        | L, 50-88           |
| 25              | vs. St. Joseph's [4]       | L, 54-80           |
| 26              | vs. Chaminade [4]          | W, 81-79           |
| 30              | Cornell                    | W, 72-57           |
| <b>DECEMBER</b> |                            |                    |
| 3               | at #15/17 Wake Forest [21] | L, 58-83           |
| 6               | vs. #5/5 Gonzaga [5]       | L, 54-70           |
| 10              | TCU                        | W, 66-56           |
| 12              | at Kentucky                | L, 54-72           |
| 22              | Northeastern               | L, 42-55           |
| 28              | Lipscomb                   | L, 69-74           |
| <b>JANUARY</b>  |                            |                    |
| 3               | at Iowa                    | L, 60-65           |
| 7               | Michigan                   | 6:30 p.m.          |
| 10              | at Illinois                | 3 p.m.             |
| 13              | at Ohio State              | 7 p.m.             |
| 17              | Penn State                 | 6 p.m.             |
| 25              | Minnesota                  | Noon               |
| 28              | at Northwestern            | 8:30 p.m.          |
| 31              | Ohio State                 | 4 p.m.             |
| <b>FEBRUARY</b> |                            |                    |
| 4               | Iowa                       | 6:30 p.m.          |
| 7               | at Michigan State          | 4 p.m.             |
| 10              | at Minnesota               | 9 p.m.             |
| 15              | Illinois                   | 1 p.m.             |
| 19              | Wisconsin                  | 9 p.m.             |
| 21/22           | at Purdue                  | Noon/2 p.m./1 p.m. |
| 25              | Northwestern               | 6:30 p.m.          |
| 28              | at Penn State              | 6 p.m.             |
| <b>MARCH</b>    |                            |                    |
| 3/4/5           | Michigan State             | TBD                |
| 7/8             | at Wisconsin               | Noon/Noon/2 p.m.   |

**IOWA Hawkeyes (11-4, 1-1 Big Ten)**

|                 |                        |                 |
|-----------------|------------------------|-----------------|
| <b>NOVEMBER</b> |                        |                 |
| 14              | Charleston Southern    | W, 68-48        |
| 17              | Texas-San Antonio      | W, 73-67        |
| 20              | at The Citadel         | W, 70-48        |
| 23              | Oakland [6]            | W, 66-57        |
| 25              | Southeast Missouri [6] | W, 75-41        |
| 28              | vs. West Virginia [7]  | L, 68-87        |
| 29              | vs. Kansas State [7]   | W, 65-63        |
| <b>DECEMBER</b> |                        |                 |
| 2               | at Boston College [21] | L, 55-57        |
| 5               | Bryant University      | W, 61-36        |
|                 | Northern Iowa          | W, 65-46        |
| 12              | Iowa State             | W, 73-57        |
| 20              | at Drake               | L, 43-60        |
| 27              | Western Illinois       | W, 58-43        |
| 31              | at #24/23 Ohio State   | L, 65-68        |
| <b>JANUARY</b>  |                        |                 |
| 3               | Indiana                | W, 65-60        |
| 8               | #22/19 Minnesota       | 7 p.m.          |
| 11              | at Michigan            | 11:30 a.m./Noon |
| 18              | at Purdue              | Noon            |
| 21              | Wisconsin              | 8:30 p.m.       |
| 24              | at Penn State          | 6 p.m.          |
| <b>FEBRUARY</b> |                        |                 |
| 1               | at Illinois            | 2 p.m.          |
| 4               | at Indiana             | 6:30 p.m.       |
| 7               | Northwestern           | 6 p.m.          |
| 11              | at Wisconsin           | 8:30 p.m.       |
| 14              | Purdue                 | 4 p.m.          |
| 22              | Michigan               | 5 p.m.          |
| 25              | at Michigan State      | 8:30 p.m.       |
| 28              | at Northwestern        | 2 p.m.          |
| <b>MARCH</b>    |                        |                 |
| 3/4/5           | Ohio State             | TBD             |
| 7               | Penn State             | 2 p.m.          |

**MICHIGAN wolverines (11-3, 1-1 Big Ten)**

|                 |                        |                 |
|-----------------|------------------------|-----------------|
| <b>NOVEMBER</b> |                        |                 |
| 11              | vs. Michigan Tech [8]  | W, 77-55        |
| 12              | vs. Northeastern [8]   | W, 76-56        |
| 20              | vs. #4/4 UCLA [9]      | W, 55-52        |
| 21              | vs. #10/5 Duke [9]     | L, 56-71        |
| 25              | Norfolk State          | W, 83-41        |
| 29              | Savannah State         | W, 66-64 (OT)   |
| <b>DECEMBER</b> |                        |                 |
| 3               | at Maryland [21]       | L, 70-75        |
| 6               | #4/4 Duke              | W, 81-73        |
| 13              | Eastern Michigan       | W, 91-60        |
| 20              | vs. Oakland [10]       | W, 89-76        |
| 22              | Florida Gulf Coast     | W, 76-59        |
| 29              | North Carolina Central | W, 77-57        |
| 31              | Wisconsin              | L, 61-73        |
| <b>JANUARY</b>  |                        |                 |
| 4               | Illinois               | W, 74-64        |
| 7               | at Indiana             | 6:30 p.m.       |
| 11              | Iowa                   | 11:30 a.m./Noon |
| 14              | at Illinois            | 8:30 p.m.       |
| 17              | Ohio State             | 8 p.m.          |
| 20              | at Penn State          | 9 p.m.          |
| 24              | Northwestern           | 8 p.m.          |
| 28              | at Ohio State          | 6:30 p.m.       |
| 31              | at Purdue              | 1 p.m.          |
| <b>FEBRUARY</b> |                        |                 |
| 5               | Penn State             | 7 p.m.          |
| 7               | at Connecticut         | 6 p.m.          |
| 10              | Michigan State         | 7 p.m.          |
| 15              | at Northwestern        | 3 p.m.          |
| 19              | Minnesota              | 7 p.m.          |
| 22              | at Iowa                | 5 p.m.          |
| 26              | Purdue                 | 9 p.m.          |
| <b>MARCH</b>    |                        |                 |
| 1               | at Wisconsin           | 2 p.m./4 p.m.   |
| 7/8             | at Minnesota           | Noon or 4 p.m.  |

**#8/12 MICHIGAN STATE spartans (11-2, 2-0 Big Ten)**

|                 |                              |                      |
|-----------------|------------------------------|----------------------|
| <b>NOVEMBER</b> |                              |                      |
| 16              | Idaho                        | W, 100-62            |
| 19              | at IUPUI-Fort Wayne          | W, 70-59             |
| 27              | vs. Maryland [11]            | L, 62-80             |
| 28              | vs. Oklahoma State [11]      | W, 94-79             |
| 30              | vs. Wichita State [11]       | W, 65-57             |
| <b>DECEMBER</b> |                              |                      |
| 3               | vs. #1/1 North Carolina [22] | L, 63-98             |
| 7               | Bradley                      | W, 75-59             |
| 13              | Alcorn State                 | W, 118-60            |
| 17              | The Citadel                  | W, 79-65             |
| 20              | at #5/5 Texas [12]           | W, 67-63             |
| 27              | vs. Oakland [10]             | W, 88-66             |
| 31              | at #21/21 Minnesota          | W, 70-58             |
| <b>JANUARY</b>  |                              |                      |
| 3               | at Northwestern              | W, 77-66             |
| 6               | Ohio State                   | 7 p.m.               |
| 14              | at Penn State                | 6:30 p.m.            |
| 17              | Illinois                     | 4 p.m.               |
| 21              | Northwestern                 | 6:30 p.m.            |
| 25              | at Ohio State                | 3:45 p.m.            |
| 29              | at Iowa                      | 7 p.m.               |
| <b>FEBRUARY</b> |                              |                      |
| 1               | Penn State                   | Noon                 |
| 4               | Minnesota                    | 8:30 p.m.            |
| 7               | Indiana                      | 4 p.m.               |
| 10              | at Michigan                  | 7 p.m.               |
| 17              | at Purdue                    | 7 p.m.               |
| 22              | Wisconsin                    | 11 a.m./1p.m./3p.m.  |
| 25              | Iowa                         | 8:30 p.m.            |
| 28/March 1      | at Illinois                  | 4 p.m./8 p.m./4 p.m. |
| <b>MARCH</b>    |                              |                      |
| 3/4/5           | at Indiana                   | TBD                  |
| 7/8             | Purdue                       | Noon/8 p.m./Noon     |

**#22/19 MINNESOTA golden gophers (13-1, 1-1 Big Ten)**

|                 |                          |                  |
|-----------------|--------------------------|------------------|
| <b>NOVEMBER</b> |                          |                  |
| 14              | Concordia [13]           | W, 76-51         |
| 15              | Bowling Green [13]       | W, 68-61         |
| 16              | Georgia State [13]       | W, 60-52         |
| 22              | at Colorado State        | W, 72-71         |
| 26              | Eastern Washington       | W, 88-67         |
| 29              | North Dakota State       | W, 90-74         |
| <b>DECEMBER</b> |                          |                  |
| 2               | Virginia [21]            | W, 66-56         |
| 6               | Cornell                  | W, 71-54         |
| 10              | South Dakota State       | W, 74-60         |
| 20              | vs. #9/9 Louisville [24] | W, 70-64         |
| 23              | Southeastern Louisiana   | W, 80-71         |
| 28              | High Point               | W, 82-56         |
| 31              | #10/15 Michigan State    | L, 58-70         |
| <b>JANUARY</b>  |                          |                  |
| 3               | #24/23 Ohio State        | W, 68-59         |
| 8               | at Iowa                  | 7 p.m.           |
| 11              | Penn State               | 3:30 p.m./2 p.m. |
| 15              | at Wisconsin             | 9 p.m.           |
| 18              | at Northwestern          | 2 p.m.           |
| 22              | Purdue                   | 7 p.m.           |
| 25              | at Indiana               | Noon             |
| 29              | Illinois                 | 9 p.m.           |
| <b>FEBRUARY</b> |                          |                  |
| 4               | at Michigan State        | 8:30 p.m.        |
| 7               | at Ohio State            | 8 p.m.           |
| 10              | Indiana                  | 9 p.m.           |
| 14              | at Penn State            | 1:30 p.m.        |
| 19              | at Michigan              | 7 p.m.           |
| 22              | Northwestern             | 3 p.m./7 p.m.    |
| 26              | at Illinois              | 7 p.m.           |
| <b>MARCH</b>    |                          |                  |
| 3/4/5           | Wisconsin                | TBD              |
| 7/8             | Michigan                 | Noon/4 p.m./Noon |

**NORTHWESTERN wildcats (8-4, 0-2 Big Ten)**

|                 |                          |               |
|-----------------|--------------------------|---------------|
| <b>NOVEMBER</b> |                          |               |
| 16              | Central Arkansas         | W, 81-39      |
| 19              | Texas A&M-Corpus Christi | W, 66-48      |
| 22              | at Brown                 | W, 73-64      |
| 26              | at Butler                | L, 53-57      |
| <b>DECEMBER</b> |                          |               |
| 1               | UC Riverside             | W, 59-43      |
| 3               | Florida State [21]       | W, 73-59      |
| 6               | DePaul                   | W, 63-36      |
| 15              | Missouri-Kansas City     | W, 77-62      |
| 20              | at Stanford              | L, 59-65      |
| 23              | Southern Methodist       | W, 66-55      |
| 31              | at Penn State            | L, 57-61      |
| <b>JANUARY</b>  |                          |               |
| 3               | #1015 Michigan State     | L, 66-77      |
| 7               | at Wisconsin             | 8:30 p.m.     |
| 15              | Purdue                   | 7 p.m.        |
| 18              | Minnesota                | 2 p.m.        |
| 21              | at Michigan State        | 6:30 p.m.     |
| 24              | at Michigan              | 8 p.m.        |
| 28              | Indiana                  | 8:30 p.m.     |
| 31              | Wisconsin                | 8 p.m.        |
| <b>FEBRUARY</b> |                          |               |
| 7               | at Iowa                  | 6 p.m.        |
| 12              | Illinois                 | 9 p.m.        |
| 15              | Michigan                 | 3 p.m.        |
| 18              | Ohio State               | 9 p.m.        |
| 22              | at Minnesota             | 3 p.m./7 p.m. |
| 25              | at Indiana               | 6:30 p.m.     |
| 28              | Iowa                     | 2 p.m.        |
| <b>MARCH</b>    |                          |               |
| 3/4/5           | at Purdue                | TBD           |
| 8               | at Ohio State            | 4 p.m.        |

**OHIO STATE buckeyes (10-2, 1-1 Big Ten)**

|                 |                         |           |
|-----------------|-------------------------|-----------|
| <b>NOVEMBER</b> |                         |           |
| 20              | Delaware State [14]     | W, 70-42  |
| 24              | Bowling Green           | W, 61-57  |
| 29              | Samford                 | W, 59-22  |
| <b>DECEMBER</b> |                         |           |
| 2               | at #21/22 Miami [21]    | W, 73-68  |
| 6               | vs. #7/7 Notre Dame [5] | W, 67-62  |
| 13              | Butler                  | W, 54-51  |
| 17              | Jacksonville            | W, 81-68  |
| 20              | Iona                    | W, 71-53  |
| 22              | UNC-Ashville            | W, 83-59  |
| 27              | West Virginia           | L, 48-76  |
| 31              | Iowa                    | W, 68-65  |
| <b>JANUARY</b>  |                         |           |
| 3               | at #21/21 Minnesota     | L, 59-68  |
| 6               | at #8/12 Michigan State | 7 p.m.    |
| 9               | Houston Baptist         | 7 p.m.    |
| 13              | Indiana                 | 7 p.m.    |
| 17              | at Michigan             | 8 p.m.    |
| 20              | at Illinois             | 7 p.m.    |
| 25              | Michigan State          | 3:45 p.m. |
| 28              | Michigan                | 6:30 p.m. |
| 31              | at Indiana              | 4 p.m.    |
| <b>FEBRUARY</b> |                         |           |
| 3               | Purdue                  | 7 p.m.    |
| 7               | Minnesota               | 8 p.m.    |
| 14              | at Wisconsin            | 9 p.m.    |
| 18              | at Northwestern         | 9 p.m.    |
| 21/22           | Illinois                | TBD       |
| 24              | Penn State              | 7 p.m.    |
| 28/March 1      | at Purdue               | TBD       |
| <b>MARCH</b>    |                         |           |
| 3/4/5           | at Iowa                 | TBD       |
| 8               | Northwestern            | 4 p.m.    |

**PENN STATE nittany lions (12-3, 1-1 Big Ten)**

|                 |                       |                  |
|-----------------|-----------------------|------------------|
| <b>NOVEMBER</b> |                       |                  |
| 14              | William & Mary        | W, 65-51         |
| 17              | New Jersey Tech [15]  | W, 74-47         |
| 20              | Hartford [15]         | W, 89-64         |
| 23              | New Hampshire         | W, 70-50         |
| 25              | at Pennsylvania       | W, 85-73         |
| 28              | vs. Rhode Island [16] | L, 72-77         |
| 29              | vs. Towson [16]       | W, 78-54         |
| <b>DECEMBER</b> |                       |                  |
| 3               | at Georgia Tech [21]  | W, 85-83         |
| 6               | Temple                | L, 59-65         |
| 10              | Army                  | W, 60-45         |
| 13              | Mount St. Mary's      | W, 61-56         |
| 21              | Lafayette             | W, 83-55         |
| 23              | Sacred Heart          | W, 73-65         |
| 31              | Northwestern          | W, 61-57         |
| <b>JANUARY</b>  |                       |                  |
| 3               | at Wisconsin          | L, 61-65         |
| 6               | #14/14 Purdue         | 9 p.m.           |
| 11              | at #22/19 Minnesota   | 3:30 p.m./2 p.m. |
| 14              | Michigan State        | 6:30 p.m.        |
| 17              | at Indiana            | 6 p.m.           |
| 20              | Michigan              | 9 p.m.           |
| 24              | Iowa                  | 6 p.m.           |
| <b>FEBRUARY</b> |                       |                  |
| 1               | at Michigan State     | Noon             |
| 5               | at Michigan           | 7 p.m.           |
| 8               | Wisconsin             | 3 p.m.           |
| 11              | at Purdue             | 6:30 p.m.        |
| 14              | Minnesota             | 1:30 p.m.        |
| 18              | at Illinois           | 7 p.m.           |
| 24              | at Ohio State         | 7 p.m.           |
| 28              | Indiana               | 6 p.m.           |
| <b>MARCH</b>    |                       |                  |
| 3/4/5           | Illinois              | TBD              |
| 7               | at Iowa               | 2 p.m.           |

**#14/14 PURDUE boilermakers (11-3, 0-1 Big Ten)**

|                 |                          |                      |
|-----------------|--------------------------|----------------------|
| <b>NOVEMBER</b> |                          |                      |
| 14              | Detroit Mercy            | W, 82-50             |
| 17              | Eastern Michigan [17]    | W, 87-58             |
| 18              | Loyola Chicago [17]      | W, 78-46             |
| 22              | Coppin State             | W, 66-46             |
| 26              | vs. Boston College [18]  | W, 71-64             |
| 28              | vs. #11/13 Oklahoma [18] | L, 82-87 (OT)        |
| <b>DECEMBER</b> |                          |                      |
| 2               | #4/4 Duke [21]           | L, 60-76             |
| 6               | Arkansas-Pine Bluff      | W, 90-42             |
| 9               | at Ball State            | W, 68-39             |
| 13              | Indiana State            | W, 76-62             |
| 20              | vs. #22/20 Davidson [19] | W, 76-58             |
| 22              | Fort Wayne               | W, 70-55             |
| 28              | Valparaiso               | W, 59-45             |
| 30              | Illinois                 | L, 67-71 (OT)        |
| <b>JANUARY</b>  |                          |                      |
| 6               | at Penn State            | 9 p.m.               |
| 11              | Wisconsin                | 1:30 p.m./4:30 p.m.  |
| 15              | at Northwestern          | 7 p.m.               |
| 18              | Iowa                     | Noon                 |
| 22              | at Minnesota             | 7 p.m.               |
| 27              | at Wisconsin             | 9 p.m.               |
| 31              | Michigan                 | 1 p.m.               |
| <b>FEBRUARY</b> |                          |                      |
| 3               | at Ohio State            | 7 p.m.               |
| 8               | at Illinois              | 1 p.m.               |
| 11              | Penn State               | 6:30 p.m.            |
| 14              | at Iowa                  | 4 p.m.               |
| 17              | Michigan State           | 7 p.m.               |
| 21/22           | Indiana                  | Noon/2 p.m./1 p.m.   |
| 26              | at Michigan              | 9 p.m.               |
| 28/March 1      | Ohio State               | 4 p.m./8 p.m./4 p.m. |
| <b>MARCH</b>    |                          |                      |
| 3/4/5           | Northwestern             | TBD                  |
| 7/8             | at Michigan State        | Noon/8 p.m./Noon     |

**WISCONSIN badgers (11-3, 2-0 Big Ten)**

|                 |                       |                     |
|-----------------|-----------------------|---------------------|
| <b>NOVEMBER</b> |                       |                     |
| 16              | Long Beach State      | W, 68-61            |
| 18              | SIU-Edwardsville      | W, 88-58            |
| 21              | vs. Iona [20]         | W, 60-58 (OT)       |
| 23              | vs. San Diego [20]    | W, 61-52            |
| 24              | vs. #8/8 Connecticut  | L, 57-76            |
| 29              | UW-Milwaukee          | W, 67-46            |
| <b>DECEMBER</b> |                       |                     |
| 1               | at Virginia Tech [21] | W, 74-72            |
| 6               | at #25/- Marquette    | L, 58-61            |
| 9               | Idaho State           | W, 60-58            |
| 13              | UW-Green Bay          | W, 77-57            |
| 20              | Coppin State          | W, 57-46            |
| 23              | #9/8 Texas            | L, 69-74            |
| 31              | at #23/24 Michigan    | W, 73-61            |
| <b>JANUARY</b>  |                       |                     |
| 3               | Penn State            | W, 65-61            |
| 7               | Northwestern          | 8:30 p.m.           |
| 11              | at #14/14 Purdue      | 1:30 p.m.           |
| 15              | Minnesota             | 9 p.m.              |
| 21              | at Iowa               | 8:30 p.m.           |
| 24              | at Illinois           | 4 p.m.              |
| 27              | Purdue                | 9 p.m.              |
| 31              | at Northwestern       | 8 p.m.              |
| <b>FEBRUARY</b> |                       |                     |
| 5               | Illinois              | 9 p.m.              |
| 8               | at Penn State         | 3 p.m.              |
| 11              | Iowa                  | 8:30 p.m.           |
| 14              | Ohio State            | 9 p.m.              |
| 19              | at Indiana            | 9 p.m.              |
| 22              | at Michigan State     | 11 a.m./1p.m./3p.m. |
| <b>MARCH</b>    |                       |                     |
| 1               | Michigan              | 2 p.m./4 p.m.       |
| 3/4/5           | at Minnesota          | TBD                 |
| 7/8             | Indiana               | Noon/Noon/2 p.m.    |

**SCHEDULE legend**

- [1] South Padre Tournament, Champaign, Ill.
- [2] South Padre Tournament, South Padre, Texas
- [3] Lexus December to Remember Classic, United Center, Chicago, Ill.
- [4] EA Sports Maui Invitational, Maui, Hawai'i
- [5] Hall of Fame Showcase, Lucas Oil Stadium, Indianapolis, Ind.
- [6] Las Vegas Invitational, Iowa City, Iowa
- [7] Las Vegas Invitational, Las Vegas, Nev.
- [8] Coaches vs. Cancer, Ann Arbor, Mich.
- [9] Coaches vs. Cancer, New York, N.Y.
- [10] The Palace at Auburn Hills, Auburn Hills, Mich.
- [11] Old Spice Classic, Orlando, Fla.
- [12] Toyota Center, Houston, Texas
- [13] NABC Classic, Minneapolis, Minn.
- [14] St. John Arena, Columbus, Ohio
- [15] Philly Hoops Classic, State College, Pa.
- [16] Philly Hoops Classic, Philadelphia, Pa.
- [17] Preseason NIT, West Lafayette, Ind.
- [18] Preseason NIT, Madison Square Garden, New York, N.Y.
- [19] Wooden Tradition, Conseco Fieldhouse, Indianapolis, Ind.
- [20] Paradise Jam, St. Thomas, Virgin Islands
- [21] ACC/Big Ten Challenge
- [22] ACC/Big Ten Challenge, Ford Field, Detroit, Mich.
- [23] Busch Braggin' Rights, Scottrade Center, St. Louis, Mo.
- [24] Stadium Shootout, University of Phoenix Stadium, Glendale, Ariz.
- [25] Big Ten Tournament, Conseco Fieldhouse, Indianapolis, Ind.

2008-09 Big Ten Conference  
 Conference Standings  
 Through games of Jan 04, 2009 (All games)

Last week's results:

-----  
 #23/24 Michigan 77, NC Central 57 (12/29/08 at Crisler Arena)  
 #rv/rv Illinois 71, #9/11 Purdue 67 (12/30/08 at Mackey Arena)  
 #24/23 Ohio State 68, Iowa 65 (12/31/08 at Value City Arena)  
 Wisconsin 73, #23/24 Michigan 61 (12/31/08 at Crisler Arena)  
 #10/15 Michigan State 70, #21/23 Minnesota 58 (12/31/08 at Minneapolis, Minn.)  
 Penn State 61, Northwestern 57 (12/31/08 at State College, Pa.)  
 Wisconsin 65, Penn State 61 (01/03/09 at Kohl Center)  
 Iowa 65, Indiana 60 (01/03/09 at Carver-Hawkeye)  
 #21/21 Minnesota 68, #24/23 Ohio State 59 (01/03/09 at Minneapolis, Minn.)  
 #10/15 Michigan State 77, Northwestern 66 (1/3/09 at Evanston, Ill.)  
 #23/24 Michigan 74, #rv/rv Illinois 64 (01/04/09 at Crisler Arena, Ann)

| STANDINGS           | -----CONFERENCE----- |       |      |      | -----OVERALL----- |      |      |      |
|---------------------|----------------------|-------|------|------|-------------------|------|------|------|
|                     | W-L                  | Pct   | PF   | PA   | W-L               | Pct  | PF   | PA   |
| -----               | ---                  | ---   | --   | --   | ---               | ---  | --   | --   |
| Michigan State..... | 2-0                  | 1.000 | 73.5 | 62.0 | 11-2              | .846 | 78.6 | 67.1 |
| Wisconsin.....      | 2-0                  | 1.000 | 69.0 | 61.0 | 11-3              | .786 | 66.9 | 59.9 |
| Minnesota.....      | 1-1                  | .500  | 63.0 | 64.5 | 13-1              | .929 | 73.1 | 62.0 |
| Illinois.....       | 1-1                  | .500  | 67.5 | 70.5 | 13-2              | .867 | 70.9 | 57.8 |
| Ohio State.....     | 1-1                  | .500  | 63.5 | 66.5 | 10-2              | .833 | 66.2 | 57.6 |
| Penn State.....     | 1-1                  | .500  | 61.0 | 61.0 | 12-3              | .800 | 71.7 | 60.5 |
| Michigan.....       | 1-1                  | .500  | 67.5 | 68.5 | 11-3              | .786 | 73.7 | 63.1 |
| Iowa.....           | 1-1                  | .500  | 65.0 | 64.0 | 11-4              | .733 | 64.7 | 55.9 |
| Purdue.....         | 0-1                  | .000  | 67.0 | 71.0 | 11-3              | .786 | 73.7 | 57.1 |
| Indiana.....        | 0-1                  | .000  | 60.0 | 65.0 | 5-8               | .385 | 61.8 | 69.3 |
| Northwestern.....   | 0-2                  | .000  | 61.5 | 69.0 | 8-4               | .667 | 66.1 | 55.5 |

**2008-09 Big Ten Conference  
INDIVIDUAL BASKETBALL STATISTICS  
Through games of Jan 04, 2009 (All games)**

To be ranked, a player must appear in at least 75.0% of their team's games.

**SCORING**

| ##  | Player-Team               | Cl | G  | FG | 3FG | FT | Pts | Avg/G |
|-----|---------------------------|----|----|----|-----|----|-----|-------|
| 1.  | Harris, Manny-MICH.....   | SO | 14 | 81 | 18  | 83 | 263 | 18.8  |
| 2.  | Battle, Talor-PSU.....    | SO | 15 | 86 | 43  | 66 | 281 | 18.7  |
| 3.  | Sims, DeShawn-MICH.....   | JR | 14 | 92 | 14  | 35 | 233 | 16.6  |
| 4.  | Turner, Evan-OSU.....     | SO | 12 | 66 | 7   | 55 | 194 | 16.2  |
| 5.  | Morgan, Raymar-MSU.....   | JR | 13 | 75 | 3   | 47 | 200 | 15.4  |
| 6.  | Pringle, Stanley-PSU..... | SR | 14 | 77 | 32  | 22 | 208 | 14.9  |
| 7.  | Moore, E'Twaun-PUR.....   | SO | 14 | 77 | 21  | 29 | 204 | 14.6  |
| 8.  | Coble, Kevin-NU.....      | JR | 12 | 66 | 21  | 21 | 174 | 14.5  |
| 9.  | Cornley, Jamelle-PSU..... | SR | 15 | 87 | 6   | 37 | 217 | 14.5  |
| 10. | Hummel, Robbie-PUR.....   | SO | 13 | 62 | 24  | 32 | 180 | 13.8  |
| 11. | Moore, Craig-NU.....      | SR | 12 | 56 | 39  | 14 | 165 | 13.8  |
| 12. | Dumes, Devan-IND.....     | JR | 13 | 57 | 26  | 35 | 175 | 13.5  |
| 13. | Landry, Marcus-WIS.....   | SR | 14 | 72 | 14  | 26 | 184 | 13.1  |
| 14. | Westbrook, Lawrence-MINN. | JR | 13 | 54 | 22  | 39 | 169 | 13.0  |
| 15. | Pritchard, Tom-IND.....   | FR | 13 | 60 | 0   | 46 | 166 | 12.8  |
|     | Lucas, Kalin-MSU.....     | SO | 13 | 52 | 12  | 50 | 166 | 12.8  |
| 17. | Hughes, Trevon-WIS.....   | JR | 14 | 56 | 27  | 38 | 177 | 12.6  |
| 18. | Johnson, JaJuan-PUR.....  | SO | 14 | 69 | 0   | 38 | 176 | 12.6  |
| 19. | McCamey, Demetri-ILL..... | SO | 15 | 67 | 26  | 20 | 180 | 12.0  |
| 20. | Davis, Mike-ILL.....      | SO | 15 | 78 | 0   | 23 | 179 | 11.9  |
| 21. | Diebler, Jon-OSU.....     | SO | 12 | 44 | 33  | 20 | 141 | 11.8  |
| 22. | Tisdale, Mike-ILL.....    | SO | 15 | 74 | 0   | 28 | 176 | 11.7  |
| 23. | Meacham, Trent-ILL.....   | SR | 15 | 59 | 32  | 25 | 175 | 11.7  |
| 24. | Bohannon, Jason-WIS.....  | JR | 14 | 43 | 27  | 41 | 154 | 11.0  |
| 25. | Allen, Chris-MSU.....     | SO | 13 | 49 | 27  | 17 | 142 | 10.9  |
| 26. | Gatens, Matt-IOWA.....    | FR | 15 | 52 | 26  | 30 | 160 | 10.7  |
| 27. | Thompson, Michael-NU..... | SO | 12 | 42 | 18  | 22 | 124 | 10.3  |
| 28. | Johnson, Damian-MINN..... | JR | 11 | 47 | 2   | 15 | 111 | 10.1  |
| 29. | Peterson, Jeff-IOWA.....  | SO | 15 | 47 | 11  | 46 | 151 | 10.1  |
| 30. | Shurna, John-NU.....      | FR | 12 | 42 | 12  | 23 | 119 | 9.9   |

**REBOUNDING**

| ##  | Player-Team               | Cl | G  | OFF | DEF | TOT | Avg/G |
|-----|---------------------------|----|----|-----|-----|-----|-------|
| 1.  | Sims, DeShawn-MICH.....   | JR | 14 | 42  | 81  | 123 | 8.8   |
| 2.  | Hummel, Robbie-PUR.....   | SO | 13 | 23  | 82  | 105 | 8.1   |
| 3.  | Harris, Manny-MICH.....   | SO | 14 | 32  | 74  | 106 | 7.6   |
| 4.  | Davis, Mike-ILL.....      | SO | 15 | 25  | 88  | 113 | 7.5   |
| 5.  | Pritchard, Tom-IND.....   | FR | 13 | 47  | 48  | 95  | 7.3   |
| 6.  | Cornley, Jamelle-PSU..... | SR | 15 | 30  | 77  | 107 | 7.1   |
| 7.  | Turner, Evan-OSU.....     | SO | 12 | 18  | 67  | 85  | 7.1   |
| 8.  | Morgan, Raymar-MSU.....   | JR | 13 | 33  | 55  | 88  | 6.8   |
| 9.  | Tate, Cyrus-IOWA.....     | SR | 15 | 38  | 62  | 100 | 6.7   |
| 10. | Krabbenhoft, Joe-WIS..... | SR | 14 | 23  | 67  | 90  | 6.4   |
| 11. | Battle, Talor-PSU.....    | SO | 15 | 13  | 79  | 92  | 6.1   |
| 12. | Coble, Kevin-NU.....      | JR | 12 | 9   | 59  | 68  | 5.7   |
| 13. | Johnson, JaJuan-PUR.....  | SO | 14 | 33  | 44  | 77  | 5.5   |
| 14. | Jones, Andrew-PSU.....    | SO | 15 | 28  | 54  | 82  | 5.5   |
| 15. | Roe, Delvon-MSU.....      | FR | 13 | 27  | 40  | 67  | 5.2   |
| 16. | Taber, Kyle-IND.....      | SR | 13 | 22  | 43  | 65  | 5.0   |
| 17. | Lauderdale, Dallas-OSU... | SO | 12 | 27  | 32  | 59  | 4.9   |
| 18. | Williams, Nick-IND.....   | FR | 13 | 21  | 41  | 62  | 4.8   |
| 19. | Tisdale, Mike-ILL.....    | SO | 15 | 28  | 42  | 70  | 4.7   |
|     | Jackson, David-PSU.....   | SO | 12 | 23  | 33  | 56  | 4.7   |

**FIELD GOAL PCT (Min. 3.0 made per game)**

| ##  | Player-Team               | Cl | G  | FG | FGA | Pct  |
|-----|---------------------------|----|----|----|-----|------|
| 1.  | Morgan, Raymar-MSU.....   | JR | 13 | 75 | 119 | .630 |
| 2.  | Johnson, Damian-MINN..... | JR | 11 | 47 | 83  | .566 |
| 3.  | Pritchard, Tom-IND.....   | FR | 13 | 60 | 107 | .561 |
| 4.  | Johnson, JaJuan-PUR.....  | SO | 14 | 69 | 125 | .552 |
| 5.  | Leuer, Jon-WIS.....       | SO | 14 | 53 | 99  | .535 |
| 6.  | Sims, DeShawn-MICH.....   | JR | 14 | 92 | 172 | .535 |
| 7.  | Davis, Mike-ILL.....      | SO | 15 | 78 | 146 | .534 |
| 8.  | Landry, Marcus-WIS.....   | SR | 14 | 72 | 135 | .533 |
| 9.  | Shurna, John-NU.....      | FR | 12 | 42 | 81  | .519 |
| 10. | Pringle, Stanley-PSU..... | SR | 14 | 77 | 150 | .513 |
| 11. | Cornley, Jamelle-PSU..... | SR | 15 | 87 | 170 | .512 |
| 12. | Tisdale, Mike-ILL.....    | SO | 15 | 74 | 145 | .510 |
| 13. | Gatens, Matt-IOWA.....    | FR | 15 | 52 | 104 | .500 |
|     | Peterson, Jeff-IOWA.....  | SO | 15 | 47 | 94  | .500 |
|     | Calasan, Nemanja-PUR..... | SR | 14 | 42 | 84  | .500 |

**ASSISTS**

| ##  | Player-Team               | Cl | G  | Assists | Avg/G |
|-----|---------------------------|----|----|---------|-------|
| 1.  | Frazier, Chester-ILL..... | SR | 15 | 96      | 6.40  |
| 2.  | Lucas, Kalin-MSU.....     | SO | 13 | 82      | 6.31  |
| 3.  | Nolen, Al-MINN.....       | SO | 14 | 85      | 6.07  |
| 4.  | Battle, Talor-PSU.....    | SO | 15 | 76      | 5.07  |
| 5.  | Harris, Manny-MICH.....   | SO | 14 | 69      | 4.93  |
| 6.  | McCamey, Demetri-ILL..... | SO | 15 | 72      | 4.80  |
| 7.  | Peterson, Jeff-IOWA.....  | SO | 15 | 60      | 4.00  |
|     | Thompson, Michael-NU..... | SO | 12 | 48      | 4.00  |
| 9.  | Moore, Daniel-IND.....    | FR | 13 | 51      | 3.92  |
| 10. | Pringle, Stanley-PSU..... | SR | 14 | 46      | 3.29  |
|     | Jackson, Lewis-PUR.....   | FR | 14 | 46      | 3.29  |
| 12. | Walton, Travis-MSU.....   | SR | 13 | 40      | 3.08  |
| 13. | Moore, E'Twaun-PUR.....   | SO | 14 | 42      | 3.00  |
|     | Johnson, Damian-MINN..... | JR | 11 | 33      | 3.00  |
| 15. | Meacham, Trent-ILL.....   | SR | 15 | 44      | 2.93  |

**FREE THROW PCT (Min. 2.0 made per game)**

| ##  | Player-Team               | Cl | G  | FTM | FTA | Pct  |
|-----|---------------------------|----|----|-----|-----|------|
| 1.  | Gatens, Matt-IOWA.....    | FR | 15 | 30  | 31  | .968 |
| 2.  | Hummel, Robbie-PUR.....   | SO | 13 | 32  | 36  | .889 |
| 3.  | Harris, Manny-MICH.....   | SO | 14 | 83  | 95  | .874 |
| 4.  | Peterson, Jeff-IOWA.....  | SO | 15 | 46  | 53  | .868 |
| 5.  | Westbrook, Lawrence-MINN. | JR | 13 | 39  | 47  | .830 |
| 6.  | Bohannon, Jason-WIS.....  | JR | 14 | 41  | 51  | .804 |
| 7.  | Lucas, Kalin-MSU.....     | SO | 13 | 50  | 65  | .769 |
| 8.  | Turner, Evan-OSU.....     | SO | 12 | 55  | 73  | .753 |
| 9.  | Tate, Cyrus-IOWA.....     | SR | 15 | 32  | 43  | .744 |
| 10. | Sims, DeShawn-MICH.....   | JR | 14 | 35  | 48  | .729 |
| 11. | Moore, E'Twaun-PUR.....   | SO | 14 | 29  | 40  | .725 |
| 12. | Morgan, Raymar-MSU.....   | JR | 13 | 47  | 65  | .723 |
| 13. | Hughes, Trevon-WIS.....   | JR | 14 | 38  | 53  | .717 |
| 14. | Nolen, Al-MINN.....       | SO | 14 | 38  | 54  | .704 |
|     | Johnson, JaJuan-PUR.....  | SO | 14 | 38  | 54  | .704 |

**STEALS**

| ##  | Player-Team               | Cl | G  | Steals | Avg/G |
|-----|---------------------------|----|----|--------|-------|
| 1.  | Johnson, Damian-MINN..... | JR | 11 | 26     | 2.36  |
| 2.  | Turner, Evan-OSU.....     | SO | 12 | 28     | 2.33  |
| 3.  | Nolen, Al-MINN.....       | SO | 14 | 31     | 2.21  |
| 4.  | Kramer, Chris-PUR.....    | JR | 13 | 28     | 2.15  |
| 5.  | Moore, E'Twaun-PUR.....   | SO | 14 | 21     | 1.50  |
|     | Diebler, Jon-OSU.....     | SO | 12 | 18     | 1.50  |
| 7.  | Battle, Talor-PSU.....    | SO | 15 | 22     | 1.47  |
| 8.  | Moore, Craig-NU.....      | SR | 12 | 17     | 1.42  |
| 9.  | Frazier, Chester-ILL..... | SR | 15 | 21     | 1.40  |
| 10. | Pringle, Stanley-PSU..... | SR | 14 | 19     | 1.36  |
| 11. | Kelly, Jake-IOWA.....     | SO | 15 | 20     | 1.33  |
|     | Coble, Kevin-NU.....      | JR | 12 | 16     | 1.33  |
| 13. | Lucas, Kalin-MSU.....     | SO | 13 | 16     | 1.23  |
| 14. | Sims, DeShawn-MICH.....   | JR | 14 | 17     | 1.21  |
|     | Harris, Manny-MICH.....   | SO | 14 | 17     | 1.21  |

**2008-09 Big Ten Conference  
INDIVIDUAL BASKETBALL STATISTICS  
Through games of Jan 04, 2009 (All games)**

**3-POINT FG PCT (Min. 1.0 made per game)**

| ## Player-Team               | Cl | G  | 3FG | FGA | Pct  |
|------------------------------|----|----|-----|-----|------|
| 1.Gatens, Matt-IOWA.....     | FR | 15 | 26  | 48  | .542 |
| 2.Pringle, Stanley-PSU.....  | SR | 14 | 32  | 62  | .516 |
| 3.Summers, Durrell-MSU.....  | SO | 13 | 16  | 32  | .500 |
| 4.Hughes, Trevon-WIS.....    | JR | 14 | 27  | 55  | .491 |
| 5.Meacham, Trent-ILL.....    | SR | 15 | 32  | 70  | .457 |
| 6.Moore, Craig-NU.....       | SR | 12 | 39  | 86  | .453 |
| 7.Novak, Zack-MICH.....      | FR | 14 | 23  | 53  | .434 |
| 8.Hoffarber, Blake-MINN....  | SO | 13 | 29  | 67  | .433 |
| 9.Battle, Talor-PSU.....     | SO | 15 | 43  | 101 | .426 |
| 10.Landry, Marcus-WIS.....   | SR | 14 | 14  | 33  | .424 |
| 11.Thompson, Michael-NU..... | SO | 12 | 18  | 43  | .419 |
| 12.Diebler, Jon-OSU.....     | SO | 12 | 33  | 79  | .418 |
| 13.Bawinkel, Devan-IOWA....  | JR | 15 | 23  | 57  | .404 |
| 14.Allen, Chris-MSU.....     | SO | 13 | 27  | 68  | .397 |
| 15.Hummel, Robbie-PUR.....   | SO | 13 | 24  | 61  | .393 |

**3-POINT FG MADE**

| ## Player-Team               | Cl | G  | 3FG | Avg/G |
|------------------------------|----|----|-----|-------|
| 1.Moore, Craig-NU.....       | SR | 12 | 39  | 3.25  |
| 2.Battle, Talor-PSU.....     | SO | 15 | 43  | 2.87  |
| 3.Diebler, Jon-OSU.....      | SO | 12 | 33  | 2.75  |
| 4.Pringle, Stanley-PSU.....  | SR | 14 | 32  | 2.29  |
| 5.Hoffarber, Blake-MINN....  | SO | 13 | 29  | 2.23  |
| 6.Meacham, Trent-ILL.....    | SR | 15 | 32  | 2.13  |
| 7.Allen, Chris-MSU.....      | SO | 13 | 27  | 2.08  |
| 8.Dumes, Devan-IND.....      | JR | 13 | 26  | 2.00  |
| 9.Hughes, Trevon-WIS.....    | JR | 14 | 27  | 1.93  |
| Bohannon, Jason-WIS.....     | JR | 14 | 27  | 1.93  |
| 11.Hummel, Robbie-PUR.....   | SO | 13 | 24  | 1.85  |
| 12.Coble, Kevin-NU.....      | JR | 12 | 21  | 1.75  |
| 13.McCamey, Demetri-ILL....  | SO | 15 | 26  | 1.73  |
| Gatens, Matt-IOWA.....       | FR | 15 | 26  | 1.73  |
| 15.Westbrook, Lawrence-MINN. | JR | 13 | 22  | 1.69  |

**BLOCKED SHOTS**

| ## Player-Team                 | Cl | G  | Blocks | Avg/G |
|--------------------------------|----|----|--------|-------|
| 1.Lauderdale, Dallas-OSU... SO | 12 | 35 | 2.92   |       |
| 2.Johnson, Damian-MINN..... JR | 11 | 27 | 2.45   |       |
| 3.Johnson, JaJuan-PUR..... SO  | 14 | 31 | 2.21   |       |
| 4.Iverson, Colton-MINN..... FR | 14 | 26 | 1.86   |       |
| 5.Landry, Marcus-WIS..... SR   | 14 | 24 | 1.71   |       |
| 6.Sampson, Ralph-MINN..... FR  | 14 | 21 | 1.50   |       |
| 7.Mullens, B.J.-OSU..... FR    | 12 | 13 | 1.08   |       |
| 8.Roe, Delvon-MSU..... FR      | 13 | 14 | 1.08   |       |
| 9.Gibson, Zack-MICH..... JR    | 14 | 15 | 1.07   |       |
| 10.Tisdale, Mike-ILL..... SO   | 15 | 15 | 1.00   |       |
| Pritchard, Tom-IND..... FR     | 13 | 13 | 1.00   |       |
| 12.Green, Marcus-PUR..... SR   | 14 | 13 | 0.93   |       |
| 13.Shurna, John-NU..... FR     | 12 | 10 | 0.83   |       |
| Coble, Kevin-NU..... JR        | 12 | 10 | 0.83   |       |
| 15.Turner, Evan-OSU..... SO    | 12 | 9  | 0.75   |       |

**ASSIST/TURNOVER RATIO (Min. 3.0 assists/game)**

| ## Player-Team              | Cl | G  | Asst | Avg | Turn | Avg | Ratio |
|-----------------------------|----|----|------|-----|------|-----|-------|
| 1.Lucas, Kalin-MSU.....     | SO | 13 | 82   | 6.3 | 16   | 1.2 | 5.13  |
| 2.Nolen, Al-MINN.....       | SO | 14 | 85   | 6.1 | 23   | 1.6 | 3.70  |
| 3.Frazier, Chester-ILL..... | SR | 15 | 96   | 6.4 | 32   | 2.1 | 3.00  |
| 4.Johnson, Damian-MINN..... | JR | 11 | 33   | 3.0 | 13   | 1.2 | 2.54  |
| 5.Battle, Talor-PSU.....    | SO | 15 | 76   | 5.1 | 30   | 2.0 | 2.53  |
| 6.Thompson, Michael-NU..... | SO | 12 | 48   | 4.0 | 21   | 1.8 | 2.29  |
| 7.McCamey, Demetri-ILL..... | SO | 15 | 72   | 4.8 | 36   | 2.4 | 2.00  |
| 8.Pringle, Stanley-PSU..... | SR | 14 | 46   | 3.3 | 24   | 1.7 | 1.92  |
| 9.Jackson, Lewis-PUR.....   | FR | 14 | 46   | 3.3 | 27   | 1.9 | 1.70  |
| 10.Harris, Manny-MICH.....  | SO | 14 | 69   | 4.9 | 43   | 3.1 | 1.60  |
| 11.Walton, Travis-MSU.....  | SR | 13 | 40   | 3.1 | 25   | 1.9 | 1.60  |
| 12.Peterson, Jeff-IOWA..... | SO | 15 | 60   | 4.0 | 40   | 2.7 | 1.50  |
| 13.Moore, Daniel-IND.....   | FR | 13 | 51   | 3.9 | 42   | 3.2 | 1.21  |
| 14.Moore, E'Twaun-PUR.....  | SO | 14 | 42   | 3.0 | 41   | 2.9 | 1.02  |

**OFFENSIVE REBOUNDS**

| ## Player-Team                 | Cl | G  | No.  | Avg/G |
|--------------------------------|----|----|------|-------|
| 1.Pritchard, Tom-IND.....      | FR | 13 | 47   | 3.62  |
| 2.Sims, DeShawn-MICH.....      | JR | 14 | 42   | 3.00  |
| 3.Morgan, Raymar-MSU.....      | JR | 13 | 33   | 2.54  |
| 4.Tate, Cyrus-IOWA.....        | SR | 15 | 38   | 2.53  |
| 5.Johnson, JaJuan-PUR.....     | SO | 14 | 33   | 2.36  |
| 6.Harris, Manny-MICH.....      | SO | 14 | 32   | 2.29  |
| 7.Lauderdale, Dallas-OSU... SO | 12 | 27 | 2.25 |       |
| 8.Roe, Delvon-MSU.....         | FR | 13 | 27   | 2.08  |
| 9.Cornley, Jamelle-PSU.....    | SR | 15 | 30   | 2.00  |
| Iverson, Colton-MINN.....      | FR | 14 | 28   | 2.00  |
| 11.Jackson, David-PSU.....     | SO | 12 | 23   | 1.92  |
| 12.Jones, Andrew-PSU.....      | SO | 15 | 28   | 1.87  |
| Tisdale, Mike-ILL.....         | SO | 15 | 28   | 1.87  |
| 14.Hummel, Robbie-PUR.....     | SO | 13 | 23   | 1.77  |
| 15.Calasan, Nemanja-PUR.....   | SR | 14 | 24   | 1.71  |

**DEFENSIVE REBOUNDS**

| ## Player-Team              | Cl | G  | No. | Avg/G |
|-----------------------------|----|----|-----|-------|
| 1.Hummel, Robbie-PUR.....   | SO | 13 | 82  | 6.31  |
| 2.Davis, Mike-ILL.....      | SO | 15 | 88  | 5.87  |
| 3.Sims, DeShawn-MICH.....   | JR | 14 | 81  | 5.79  |
| 4.Turner, Evan-OSU.....     | SO | 12 | 67  | 5.58  |
| 5.Harris, Manny-MICH.....   | SO | 14 | 74  | 5.29  |
| 6.Battle, Talor-PSU.....    | SO | 15 | 79  | 5.27  |
| 7.Cornley, Jamelle-PSU..... | SR | 15 | 77  | 5.13  |
| 8.Coble, Kevin-NU.....      | JR | 12 | 59  | 4.92  |
| 9.Krabbenhoft, Joe-WIS..... | SR | 14 | 67  | 4.79  |
| 10.Morgan, Raymar-MSU.....  | JR | 13 | 55  | 4.23  |
| 11.Tate, Cyrus-IOWA.....    | SR | 15 | 62  | 4.13  |
| 12.Pritchard, Tom-IND.....  | FR | 13 | 48  | 3.69  |
| 13.Jones, Andrew-PSU.....   | SO | 15 | 54  | 3.60  |
| 14.Moore, E'Twaun-PUR.....  | SO | 14 | 50  | 3.57  |
| 15.Taber, Kyle-IND.....     | SR | 13 | 43  | 3.31  |

**MINUTES PLAYED**

| ## Player-Team              | Cl | G  | Minutes | Avg/G |
|-----------------------------|----|----|---------|-------|
| 1.Battle, Talor-PSU.....    | SO | 15 | 548     | 36.53 |
| 2.Moore, Craig-NU.....      | SR | 12 | 420     | 35.00 |
| 3.Coble, Kevin-NU.....      | JR | 12 | 408     | 34.00 |
| 4.Turner, Evan-OSU.....     | SO | 12 | 406     | 33.83 |
| 5.Cornley, Jamelle-PSU..... | SR | 15 | 507     | 33.80 |
| 6.Diebler, Jon-OSU.....     | SO | 12 | 403     | 33.58 |
| 7.Thompson, Michael-NU..... | SO | 12 | 401     | 33.42 |
| 8.Harris, Manny-MICH.....   | SO | 14 | 459     | 32.79 |
| 9.Frazier, Chester-ILL..... | SR | 15 | 480     | 32.00 |
| 10.Moore, E'Twaun-PUR.....  | SO | 14 | 440     | 31.43 |
| 11.Bohannon, Jason-WIS..... | JR | 14 | 438     | 31.29 |
| 12.Meacham, Trent-ILL.....  | SR | 15 | 466     | 31.07 |
| 13.Peterson, Jeff-IOWA..... | SO | 15 | 463     | 30.87 |
| 14.Sims, DeShawn-MICH.....  | JR | 14 | 432     | 30.86 |
| 15.Landry, Marcus-WIS.....  | SR | 14 | 430     | 30.71 |

**2008-09 Big Ten Conference  
CONFERENCE BASKETBALL STATISTICS  
Through games of Jan 04, 2009 (All games)**

**SCORING OFFENSE**

| ## Team                | G  | W-L  | Pts  | Avg/G |
|------------------------|----|------|------|-------|
| 1. Michigan State..... | 13 | 11-2 | 1022 | 78.6  |
| 2. Michigan.....       | 14 | 11-3 | 1032 | 73.7  |
| Purdue.....            | 14 | 11-3 | 1032 | 73.7  |
| 4. Minnesota.....      | 14 | 13-1 | 1023 | 73.1  |
| 5. Penn State.....     | 15 | 12-3 | 1076 | 71.7  |
| 6. Illinois.....       | 15 | 13-2 | 1063 | 70.9  |
| 7. Wisconsin.....      | 14 | 11-3 | 937  | 66.9  |
| 8. Ohio State.....     | 12 | 10-2 | 794  | 66.2  |
| 9. Northwestern.....   | 12 | 8-4  | 793  | 66.1  |
| 10. Iowa.....          | 15 | 11-4 | 970  | 64.7  |
| 11. Indiana.....       | 13 | 5-8  | 803  | 61.8  |

**SCORING DEFENSE**

| ## Team                 | G  | Pts | Avg/G |
|-------------------------|----|-----|-------|
| 1. Northwestern.....    | 12 | 666 | 55.5  |
| 2. Iowa.....            | 15 | 838 | 55.9  |
| 3. Purdue.....          | 14 | 799 | 57.1  |
| 4. Ohio State.....      | 12 | 691 | 57.6  |
| 5. Illinois.....        | 15 | 867 | 57.8  |
| 6. Wisconsin.....       | 14 | 838 | 59.9  |
| 7. Penn State.....      | 15 | 907 | 60.5  |
| 8. Minnesota.....       | 14 | 868 | 62.0  |
| 9. Michigan.....        | 14 | 884 | 63.1  |
| 10. Michigan State..... | 13 | 872 | 67.1  |
| 11. Indiana.....        | 13 | 901 | 69.3  |

**SCORING MARGIN**

| ## Team                | G  | OFF  | DEF  | Margin |
|------------------------|----|------|------|--------|
| 1. Purdue.....         | 14 | 73.7 | 57.1 | +16.6  |
| 2. Illinois.....       | 15 | 70.9 | 57.8 | +13.1  |
| 3. Michigan State..... | 13 | 78.6 | 67.1 | +11.5  |
| 4. Penn State.....     | 15 | 71.7 | 60.5 | +11.3  |
| 5. Minnesota.....      | 14 | 73.1 | 62.0 | +11.1  |
| 6. Northwestern.....   | 12 | 66.1 | 55.5 | +10.6  |
| 7. Michigan.....       | 14 | 73.7 | 63.1 | +10.6  |
| 8. Iowa.....           | 15 | 64.7 | 55.9 | +8.8   |
| 9. Ohio State.....     | 12 | 66.2 | 57.6 | +8.6   |
| 10. Wisconsin.....     | 14 | 66.9 | 59.9 | +7.1   |
| 11. Indiana.....       | 13 | 61.8 | 69.3 | -7.5   |

**FREE THROW PERCENTAGES**

| ## Team                | G  | FTM | FTA | Pct  |
|------------------------|----|-----|-----|------|
| 1. Michigan.....       | 14 | 195 | 251 | .777 |
| 2. Iowa.....           | 15 | 188 | 253 | .743 |
| 3. Illinois.....       | 15 | 148 | 204 | .725 |
| 4. Wisconsin.....      | 14 | 196 | 280 | .700 |
| 5. Purdue.....         | 14 | 192 | 275 | .698 |
| 6. Minnesota.....      | 14 | 185 | 266 | .695 |
| 7. Ohio State.....     | 12 | 179 | 265 | .675 |
| 8. Penn State.....     | 15 | 201 | 302 | .666 |
| 9. Michigan State..... | 13 | 199 | 303 | .657 |
| 10. Indiana.....       | 13 | 172 | 264 | .652 |
| 11. Northwestern.....  | 12 | 122 | 189 | .646 |

**FIELD GOAL PERCENTAGES**

| ## Team                | G  | FG  | FGA | Pct  |
|------------------------|----|-----|-----|------|
| 1. Illinois.....       | 15 | 415 | 862 | .481 |
| 2. Michigan State..... | 13 | 373 | 775 | .481 |
| 3. Iowa.....           | 15 | 324 | 681 | .476 |
| 4. Minnesota.....      | 14 | 370 | 785 | .471 |
| 5. Northwestern.....   | 12 | 287 | 613 | .468 |
| 6. Wisconsin.....      | 14 | 324 | 707 | .458 |
| 7. Penn State.....     | 15 | 379 | 830 | .457 |
| 8. Michigan.....       | 14 | 356 | 798 | .446 |
| 9. Ohio State.....     | 12 | 270 | 609 | .443 |
| 10. Purdue.....        | 14 | 373 | 845 | .441 |
| 11. Indiana.....       | 13 | 282 | 652 | .433 |

**FIELD GOAL PCT DEFENSE**

| ## Team                | G  | FG  | FGA | Pct  |
|------------------------|----|-----|-----|------|
| 1. Purdue.....         | 14 | 281 | 785 | .358 |
| 2. Minnesota.....      | 14 | 295 | 766 | .385 |
| 3. Northwestern.....   | 12 | 232 | 599 | .387 |
| 4. Ohio State.....     | 12 | 258 | 660 | .391 |
| 5. Illinois.....       | 15 | 331 | 825 | .401 |
| 6. Penn State.....     | 15 | 342 | 835 | .410 |
| 7. Iowa.....           | 15 | 290 | 702 | .413 |
| 8. Michigan State..... | 13 | 305 | 738 | .413 |
| 9. Michigan.....       | 14 | 337 | 804 | .419 |
| 10. Wisconsin.....     | 14 | 310 | 726 | .427 |
| 11. Indiana.....       | 13 | 333 | 714 | .466 |

**3-POINT FIELD GOAL PERCENTAGES**

| ## Team                | G  | FG  | FGA | Pct  |
|------------------------|----|-----|-----|------|
| 1. Iowa.....           | 15 | 134 | 328 | .409 |
| 2. Penn State.....     | 15 | 117 | 294 | .398 |
| 3. Michigan State..... | 13 | 77  | 194 | .397 |
| 4. Northwestern.....   | 12 | 97  | 249 | .390 |
| 5. Wisconsin.....      | 14 | 93  | 243 | .383 |
| 6. Illinois.....       | 15 | 85  | 226 | .376 |
| 7. Minnesota.....      | 14 | 98  | 270 | .363 |
| 8. Michigan.....       | 14 | 125 | 359 | .348 |
| 9. Ohio State.....     | 12 | 75  | 217 | .346 |
| 10. Purdue.....        | 14 | 94  | 283 | .332 |
| 11. Indiana.....       | 13 | 67  | 222 | .302 |

**3-POINT FIELD GOAL PCT DEFENSE**

| ## Team                | G  | FG | FGA | Pct  |
|------------------------|----|----|-----|------|
| 1. Illinois.....       | 15 | 70 | 251 | .279 |
| 2. Penn State.....     | 15 | 94 | 319 | .295 |
| 3. Purdue.....         | 14 | 72 | 244 | .295 |
| 4. Michigan.....       | 14 | 77 | 259 | .297 |
| 5. Minnesota.....      | 14 | 83 | 265 | .313 |
| 6. Ohio State.....     | 12 | 84 | 256 | .328 |
| 7. Wisconsin.....      | 14 | 78 | 230 | .339 |
| 8. Michigan State..... | 13 | 94 | 274 | .343 |
| 9. Iowa.....           | 15 | 80 | 229 | .349 |
| 10. Northwestern.....  | 12 | 72 | 202 | .356 |
| 11. Indiana.....       | 13 | 79 | 221 | .357 |

**REBOUNDING OFFENSE**

| ## Team                | G  | Reb | Avg/G |
|------------------------|----|-----|-------|
| 1. Michigan State..... | 13 | 529 | 40.7  |
| 2. Purdue.....         | 14 | 523 | 37.4  |
| 3. Penn State.....     | 15 | 553 | 36.9  |
| 4. Minnesota.....      | 14 | 500 | 35.7  |
| 5. Illinois.....       | 15 | 516 | 34.4  |
| 6. Ohio State.....     | 12 | 406 | 33.8  |
| 7. Michigan.....       | 14 | 472 | 33.7  |
| 8. Wisconsin.....      | 14 | 450 | 32.1  |
| 9. Indiana.....        | 13 | 414 | 31.8  |
| 10. Northwestern.....  | 12 | 373 | 31.1  |
| 11. Iowa.....          | 15 | 435 | 29.0  |

**REBOUNDING DEFENSE**

| ## Team                | G  | Reb | Avg/G |
|------------------------|----|-----|-------|
| 1. Iowa.....           | 15 | 424 | 28.3  |
| 2. Wisconsin.....      | 14 | 397 | 28.4  |
| 3. Penn State.....     | 15 | 458 | 30.5  |
| 4. Michigan State..... | 13 | 403 | 31.0  |
| 5. Illinois.....       | 15 | 494 | 32.9  |
| 6. Northwestern.....   | 12 | 396 | 33.0  |
| 7. Indiana.....        | 13 | 433 | 33.3  |
| 8. Ohio State.....     | 12 | 411 | 34.2  |
| 9. Minnesota.....      | 14 | 481 | 34.4  |
| 10. Michigan.....      | 14 | 495 | 35.4  |
| 11. Purdue.....        | 14 | 532 | 38.0  |

**2008-09 Big Ten Conference  
CONFERENCE BASKETBALL STATISTICS  
Through games of Jan 04, 2009 (All games)**

**REBOUNDING MARGIN**

| ## Team                | G  | TEAM | Avg  | OPP | Avg Margin |
|------------------------|----|------|------|-----|------------|
| 1. Michigan State..... | 13 | 529  | 40.7 | 403 | 31.0 +9.7  |
| 2. Penn State.....     | 15 | 553  | 36.9 | 458 | 30.5 +6.3  |
| 3. Wisconsin.....      | 14 | 450  | 32.1 | 397 | 28.4 +3.8  |
| 4. Illinois.....       | 15 | 516  | 34.4 | 494 | 32.9 +1.5  |
| 5. Minnesota.....      | 14 | 500  | 35.7 | 481 | 34.4 +1.4  |
| 6. Iowa.....           | 15 | 435  | 29.0 | 424 | 28.3 +0.7  |
| 7. Ohio State.....     | 12 | 406  | 33.8 | 411 | 34.2 -0.4  |
| 8. Purdue.....         | 14 | 523  | 37.4 | 532 | 38.0 -0.6  |
| 9. Indiana.....        | 13 | 414  | 31.8 | 433 | 33.3 -1.5  |
| 10. Michigan.....      | 14 | 472  | 33.7 | 495 | 35.4 -1.6  |
| 11. Northwestern.....  | 12 | 373  | 31.1 | 396 | 33.0 -1.9  |

**BLOCKED SHOTS**

| ## Team                | G  | Blocks | Avg/G |
|------------------------|----|--------|-------|
| 1. Minnesota.....      | 14 | 100    | 7.14  |
| 2. Ohio State.....     | 12 | 78     | 6.50  |
| 3. Purdue.....         | 14 | 73     | 5.21  |
| 4. Michigan State..... | 13 | 52     | 4.00  |
| 5. Northwestern.....   | 12 | 46     | 3.83  |
| 6. Wisconsin.....      | 14 | 47     | 3.36  |
| 7. Michigan.....       | 14 | 45     | 3.21  |
| 8. Illinois.....       | 15 | 44     | 2.93  |
| 9. Indiana.....        | 13 | 32     | 2.46  |
| 10. Iowa.....          | 15 | 32     | 2.13  |
| 11. Penn State.....    | 15 | 26     | 1.73  |

**ASSISTS**

| ## Team                | G  | Assists | Avg/G |
|------------------------|----|---------|-------|
| 1. Illinois.....       | 15 | 301     | 20.07 |
| 2. Michigan State..... | 13 | 244     | 18.77 |
| 3. Minnesota.....      | 14 | 246     | 17.57 |
| 4. Michigan.....       | 14 | 233     | 16.64 |
| 5. Northwestern.....   | 12 | 194     | 16.17 |
| 6. Purdue.....         | 14 | 223     | 15.93 |
| 7. Penn State.....     | 15 | 211     | 14.07 |
| 8. Iowa.....           | 15 | 196     | 13.07 |
| 9. Indiana.....        | 13 | 160     | 12.31 |
| 10. Wisconsin.....     | 14 | 166     | 11.86 |
| 11. Ohio State.....    | 12 | 138     | 11.50 |

**STEALS**

| ## Team                | G  | Steals | Avg/G |
|------------------------|----|--------|-------|
| 1. Minnesota.....      | 14 | 128    | 9.14  |
| 2. Purdue.....         | 14 | 114    | 8.14  |
| 3. Indiana.....        | 13 | 99     | 7.62  |
| 4. Ohio State.....     | 12 | 89     | 7.42  |
| 5. Northwestern.....   | 12 | 88     | 7.33  |
| 6. Michigan State..... | 13 | 90     | 6.92  |
| 7. Michigan.....       | 14 | 91     | 6.50  |
| 8. Illinois.....       | 15 | 91     | 6.07  |
| 9. Iowa.....           | 15 | 85     | 5.67  |
| 10. Penn State.....    | 15 | 79     | 5.27  |
| 11. Wisconsin.....     | 14 | 60     | 4.29  |

**TURNOVER MARGIN**

| ## Team                | G  | TEAM | Avg  | OPP | Avg Margin |
|------------------------|----|------|------|-----|------------|
| 1. Purdue.....         | 14 | 169  | 12.1 | 252 | 18.0 +5.93 |
| 2. Northwestern.....   | 12 | 142  | 11.8 | 189 | 15.8 +3.92 |
| 3. Michigan.....       | 14 | 154  | 11.0 | 198 | 14.1 +3.14 |
| 4. Illinois.....       | 15 | 198  | 13.2 | 237 | 15.8 +2.60 |
| 5. Ohio State.....     | 12 | 148  | 12.3 | 177 | 14.8 +2.42 |
| 6. Minnesota.....      | 14 | 196  | 14.0 | 228 | 16.3 +2.29 |
| 7. Penn State.....     | 15 | 161  | 10.7 | 183 | 12.2 +1.47 |
| 8. Wisconsin.....      | 14 | 151  | 10.8 | 156 | 11.1 +0.36 |
| 9. Michigan State..... | 13 | 185  | 14.2 | 187 | 14.4 +0.15 |
| 10. Iowa.....          | 15 | 174  | 11.6 | 176 | 11.7 +0.13 |
| 11. Indiana.....       | 13 | 246  | 18.9 | 217 | 16.7 -2.23 |

**ASSIST/TURNOVER RATIO**

| ## Team                | G  | Asst | Avg Turn | Avg Ratio     |
|------------------------|----|------|----------|---------------|
| 1. Illinois.....       | 15 | 301  | 20.1     | 198 13.2 1.52 |
| 2. Michigan.....       | 14 | 233  | 16.6     | 154 11.0 1.51 |
| 3. Northwestern.....   | 12 | 194  | 16.2     | 142 11.8 1.37 |
| 4. Purdue.....         | 14 | 223  | 15.9     | 169 12.1 1.32 |
| 5. Michigan State..... | 13 | 244  | 18.8     | 185 14.2 1.32 |
| 6. Penn State.....     | 15 | 211  | 14.1     | 161 10.7 1.31 |
| 7. Minnesota.....      | 14 | 246  | 17.6     | 196 14.0 1.26 |
| 8. Iowa.....           | 15 | 196  | 13.1     | 174 11.6 1.13 |
| 9. Wisconsin.....      | 14 | 166  | 11.9     | 151 10.8 1.10 |
| 10. Ohio State.....    | 12 | 138  | 11.5     | 148 12.3 0.93 |
| 11. Indiana.....       | 13 | 160  | 12.3     | 246 18.9 0.65 |

**OFFENSIVE REBOUNDS**

| ## Team                | G  | No. | Avg/G |
|------------------------|----|-----|-------|
| 1. Michigan State..... | 13 | 191 | 14.69 |
| 2. Minnesota.....      | 14 | 169 | 12.07 |
| 3. Penn State.....     | 15 | 168 | 11.20 |
| 4. Purdue.....         | 14 | 156 | 11.14 |
| 5. Michigan.....       | 14 | 147 | 10.50 |
| 6. Illinois.....       | 15 | 157 | 10.47 |
| 7. Indiana.....        | 13 | 135 | 10.38 |
| 8. Ohio State.....     | 12 | 117 | 9.75  |
| 9. Wisconsin.....      | 14 | 131 | 9.36  |
| 10. Northwestern.....  | 12 | 106 | 8.83  |
| 11. Iowa.....          | 15 | 113 | 7.53  |

**DEFENSIVE REBOUNDS**

| ## Team                | G  | No. | Avg/G |
|------------------------|----|-----|-------|
| 1. Purdue.....         | 14 | 367 | 26.21 |
| 2. Michigan State..... | 13 | 338 | 26.00 |
| 3. Penn State.....     | 15 | 385 | 25.67 |
| 4. Ohio State.....     | 12 | 289 | 24.08 |
| 5. Illinois.....       | 15 | 359 | 23.93 |
| 6. Minnesota.....      | 14 | 331 | 23.64 |
| 7. Michigan.....       | 14 | 325 | 23.21 |
| 8. Wisconsin.....      | 14 | 319 | 22.79 |
| 9. Northwestern.....   | 12 | 267 | 22.25 |
| 10. Iowa.....          | 15 | 322 | 21.47 |
| 11. Indiana.....       | 13 | 279 | 21.46 |

**3-POINT FIELD GOALS MADE**

| ## Team                | G  | 3FG | Avg/G |
|------------------------|----|-----|-------|
| 1. Iowa.....           | 15 | 134 | 8.93  |
| 2. Michigan.....       | 14 | 125 | 8.93  |
| 3. Northwestern.....   | 12 | 97  | 8.08  |
| 4. Penn State.....     | 15 | 117 | 7.80  |
| 5. Minnesota.....      | 14 | 98  | 7.00  |
| 6. Purdue.....         | 14 | 94  | 6.71  |
| 7. Wisconsin.....      | 14 | 93  | 6.64  |
| 8. Ohio State.....     | 12 | 75  | 6.25  |
| 9. Michigan State..... | 13 | 77  | 5.92  |
| 10. Illinois.....      | 15 | 85  | 5.67  |
| 11. Indiana.....       | 13 | 67  | 5.15  |

**2008-09 Big Ten Conference  
CONFERENCE BASKETBALL STATISTICS  
Through games of Jan 04, 2009 (All games)**

| STANDINGS           | -----CONFERENCE----- |       |      |      | -----OVERALL----- |      |      |      | WINNING STREAK |     |
|---------------------|----------------------|-------|------|------|-------------------|------|------|------|----------------|-----|
|                     | W-L                  | Pct   | PF   | PA   | W-L               | Pct  | PF   | PA   | Team           | NO. |
| Michigan State..... | 2-0                  | 1.000 | 73.5 | 62.0 | 11-2              | .846 | 78.6 | 67.1 | Michigan State | 7   |
| Wisconsin.....      | 2-0                  | 1.000 | 69.0 | 61.0 | 11-3              | .786 | 66.9 | 59.9 | Wisconsin      | 2   |
| Minnesota.....      | 1-1                  | .500  | 63.0 | 64.5 | 13-1              | .929 | 73.1 | 62.0 | Minnesota      | 1   |
| Illinois.....       | 1-1                  | .500  | 67.5 | 70.5 | 13-2              | .867 | 70.9 | 57.8 | Iowa           | 1   |
| Ohio State.....     | 1-1                  | .500  | 63.5 | 66.5 | 10-2              | .833 | 66.2 | 57.6 | Michigan       | 1   |
| Penn State.....     | 1-1                  | .500  | 61.0 | 61.0 | 12-3              | .800 | 71.7 | 60.5 |                |     |
| Michigan.....       | 1-1                  | .500  | 67.5 | 68.5 | 11-3              | .786 | 73.7 | 63.1 |                |     |
| Iowa.....           | 1-1                  | .500  | 65.0 | 64.0 | 11-4              | .733 | 64.7 | 55.9 |                |     |
| Purdue.....         | 0-1                  | .000  | 67.0 | 71.0 | 11-3              | .786 | 73.7 | 57.1 |                |     |
| Indiana.....        | 0-1                  | .000  | 60.0 | 65.0 | 5-8               | .385 | 61.8 | 69.3 |                |     |
| Northwestern.....   | 0-2                  | .000  | 61.5 | 69.0 | 8-4               | .667 | 66.1 | 55.5 |                |     |

**TEAM SUMMARIES**

| Team                | G  | PF-PA    | Avg Score | Margin | FG-FGA  | Pct  | 3FG-FGA | Pct  | FT-FTA  | Pct  | RebF | RebA | Margin |
|---------------------|----|----------|-----------|--------|---------|------|---------|------|---------|------|------|------|--------|
| Illinois.....       | 15 | 1063-867 | 70.9-57.8 | +13.1  | 415-862 | .481 | 85-226  | .376 | 148-204 | .725 | 516  | 494  | +1.5   |
| Indiana.....        | 13 | 803-901  | 61.8-69.3 | -7.5   | 282-652 | .433 | 67-222  | .302 | 172-264 | .652 | 414  | 433  | -1.5   |
| Iowa.....           | 15 | 970-838  | 64.7-55.9 | +8.8   | 324-681 | .476 | 134-328 | .409 | 188-253 | .743 | 435  | 424  | +0.7   |
| Michigan.....       | 14 | 1032-884 | 73.7-63.1 | +10.6  | 356-798 | .446 | 125-359 | .348 | 195-251 | .777 | 472  | 495  | -1.6   |
| Michigan State..... | 13 | 1022-872 | 78.6-67.1 | +11.5  | 373-775 | .481 | 77-194  | .397 | 199-303 | .657 | 529  | 403  | +9.7   |
| Minnesota.....      | 14 | 1023-868 | 73.1-62.0 | +11.1  | 370-785 | .471 | 98-270  | .363 | 185-266 | .695 | 500  | 481  | +1.4   |
| Northwestern.....   | 12 | 793-666  | 66.1-55.5 | +10.6  | 287-613 | .468 | 97-249  | .390 | 122-189 | .646 | 373  | 396  | -1.9   |
| Ohio State.....     | 12 | 794-691  | 66.2-57.6 | +8.6   | 270-609 | .443 | 75-217  | .346 | 179-265 | .675 | 406  | 411  | -0.4   |
| Penn State.....     | 15 | 1076-907 | 71.7-60.5 | +11.3  | 379-830 | .457 | 117-294 | .398 | 201-302 | .666 | 553  | 458  | +6.3   |
| Purdue.....         | 14 | 1032-799 | 73.7-57.1 | +16.6  | 373-845 | .441 | 94-283  | .332 | 192-275 | .698 | 523  | 532  | -0.6   |
| Wisconsin.....      | 14 | 937-838  | 66.9-59.9 | +7.1   | 324-707 | .458 | 93-243  | .383 | 196-280 | .700 | 450  | 397  | +3.8   |

**ATTENDANCE**

| Team           | HOME GAMES | Avg   | AWAY GAMES | Avg   | NEUT GAMES | Avg   | ALL GAMES   | Avg   |
|----------------|------------|-------|------------|-------|------------|-------|-------------|-------|
| Illinois       | 8-116708   | 14588 | 3-39578    | 13193 | 4-34860    | 8715  | 15-191146   | 12743 |
| Indiana        | 6-78602    | 13100 | 3-47373    | 15791 | 4-7500     | 1875  | 13-133475   | 10267 |
| Iowa           | 9-84757    | 9417  | 4-28206    | 7052  | 2-10500    | 5250  | 15-123463   | 8231  |
| Michigan       | 10-94454   | 9445  | 1-17950    | 17950 | 3-32096    | 10699 | 14-144500   | 10321 |
| Michigan State | 4-59036    | 14759 | 4-44807    | 11202 | 5-38157    | 7631  | 13-142000   | 10923 |
| Minnesota      | 12-153095  | 12758 | 1-5956     | 5956  | 1-0        | 0     | 14-159051   | 11361 |
| Northwestern   | 8-31288    | 3911  | 4-18704    | 4676  | 0-0        | 0     | 12-49992    | 4166  |
| Ohio State     | 9-120118   | 13346 | 2-20495    | 10248 | 1-17007    | 17007 | 12-157620   | 13135 |
| Penn State     | 10-57630   | 5763  | 3-29711    | 9904  | 2-0        | 0     | 15-87341    | 5823  |
| Purdue         | 10-134046  | 13405 | 1-8381     | 8381  | 3-12754    | 4251  | 14-155181   | 11084 |
| Wisconsin      | 8-137840   | 17230 | 3-39788    | 13263 | 3-10057    | 3352  | 14-187685   | 13406 |
| Totals         | 94-1067574 | 11357 | 29-300949  | 10378 | 28-162931  | 5819  | 141-1407231 | 9980  |

2008-09 Big Ten Conference  
 Conference Statistical Ranking Comparison  
 Through games of Jan 04, 2009 (All games)

| Team                | Offense |        |         |         | Defense |        |         |         |
|---------------------|---------|--------|---------|---------|---------|--------|---------|---------|
|                     | Scoring | FG-Pct | 3FG-Pct | Rebound | Scoring | FG-Pct | 3FG-Pct | Rebound |
| Illinois.....       | 6       | 1      | 6       | 5       | 5       | 5      | 1       | 5       |
| Indiana.....        | 11      | 11     | 11      | 9       | 11      | 11     | 11      | 7       |
| Iowa.....           | 10      | 3      | 1       | 11      | 2       | 7      | 9       | 1       |
| Michigan.....       | 2       | 8      | 8       | 7       | 9       | 9      | 4       | 10      |
| Michigan State..... | 1       | 2      | 3       | 1       | 10      | 8      | 8       | 4       |
| Minnesota.....      | 4       | 4      | 7       | 4       | 8       | 2      | 5       | 9       |
| Northwestern.....   | 9       | 5      | 4       | 10      | 1       | 3      | 10      | 6       |
| Ohio State.....     | 8       | 9      | 9       | 6       | 4       | 4      | 6       | 8       |
| Penn State.....     | 5       | 7      | 2       | 3       | 7       | 6      | 2       | 3       |
| Purdue.....         | 2       | 10     | 10      | 2       | 3       | 1      | 3       | 11      |
| Wisconsin.....      | 7       | 6      | 5       | 8       | 6       | 10     | 7       | 2       |

| Team                | FT-Pct | 3FGs | Other  |        |         | Scoring Margin | Rebound Margin | Turnovr Margin | Asst/TO Ratio |
|---------------------|--------|------|--------|--------|---------|----------------|----------------|----------------|---------------|
|                     |        |      | Blocks | Steals | Assists |                |                |                |               |
| Illinois.....       | 3      | 10   | 8      | 8      | 1       | 2              | 4              | 4              | 1             |
| Indiana.....        | 10     | 11   | 9      | 3      | 9       | 11             | 9              | 11             | 11            |
| Iowa.....           | 2      | 1    | 10     | 9      | 8       | 8              | 6              | 10             | 8             |
| Michigan.....       | 1      | 2    | 7      | 7      | 4       | 7              | 10             | 3              | 2             |
| Michigan State..... | 9      | 9    | 4      | 6      | 2       | 3              | 1              | 9              | 5             |
| Minnesota.....      | 6      | 5    | 1      | 1      | 3       | 5              | 5              | 6              | 7             |
| Northwestern.....   | 11     | 3    | 5      | 5      | 5       | 6              | 11             | 2              | 3             |
| Ohio State.....     | 7      | 8    | 2      | 4      | 11      | 9              | 7              | 5              | 10            |
| Penn State.....     | 8      | 4    | 11     | 10     | 7       | 4              | 2              | 7              | 6             |
| Purdue.....         | 5      | 6    | 3      | 2      | 6       | 1              | 8              | 1              | 4             |
| Wisconsin.....      | 4      | 7    | 6      | 11     | 10      | 10             | 3              | 8              | 9             |

**2008-09 Big Ten Conference  
Conference Individual Highs  
Through games of Jan 04, 2009 (All games)**

INDIVIDUAL PLAYER GAME HIGHS

---

|                           |               |  |
|---------------------------|---------------|--|
| POINTS.....               | 31            | Moore, Craig (Northwestern) at Brown (11/22/08)              |
|                           | 30            | Harris, Manny (Michigan) vs MICHIGAN TECH (11/11/08)         |
| FIELD GOALS MADE.....     | 12            | Davis, Mike (Illinois) vs CLEMSON (12/02/08)                 |
|                           | 11            | Moore, Craig (Northwestern) at Brown (11/22/08)              |
|                           | 11            | Cornley, Jamelle (Penn State) vs Rhode Island (11/28/08)     |
|                           | 11            | Coble, Kevin (Northwestern) vs DEPAUL (12/6/08)              |
|                           | 11            | Turner, Evan (Ohio State) vs Notre Dame (12/6/08)            |
|                           | 11            | Morgan, Raymar (Michigan State) vs THE CITADEL (12/17/08)    |
| FIELD GOAL ATTEMPTS.....  | 20            | Cornley, Jamelle (Penn State) vs Rhode Island (11/28/08)     |
|                           | 20            | Battle, Talor (Penn State) vs NORTHWESTERN (12/31/08)        |
| FIELD GOAL PERCENTAGE.... | 1.000 (8-8)   | Keller, Dominique (Illinois) vs JACKSON STATE (11/23/08)     |
|                           | .917 (11-12)  | Morgan, Raymar (Michigan State) vs THE CITADEL (12/17/08)    |
| 3 PT FG MADE.....         | 9             | Moore, Craig (Northwestern) at Brown (11/22/08)              |
|                           | 7             | Tucker, Anthony (Iowa) at The Citadel (11/20/08)             |
|                           | 7             | Diebler, Jon (Ohio State) vs IOWA (12/31/08)                 |
|                           | 7             | Battle, Talor (Penn State) vs NORTHWESTERN (12/31/08)        |
| 3 PT FG ATTEMPTS.....     | 13            | Moore, Craig (Northwestern) at Brown (11/22/08)              |
|                           | 13            | Battle, Talor (Penn State) vs NORTHWESTERN (12/31/08)        |
| 3 PT PERCENTAGE.....      | .714 (5-7)    | Pringle, Stanley (Penn State) at Penn (11/25/08)             |
|                           | .700 (7-10)   | Diebler, Jon (Ohio State) vs IOWA (12/31/08)                 |
| FREE THROWS MADE.....     | 14            | Harris, Manny (Michigan) vs SAVANNAH STATE (11/29/08)        |
|                           | 13            | Harris, Manny (Michigan) vs NORTHEASTERN (11/12/08)          |
|                           | 13            | Nolen, Al (Minnesota) vs Louisville (12-20-08)               |
|                           | 13            | Harris, Manny (Michigan) vs NC CENTRAL (12/29/08)            |
| FREE THROW ATTEMPTS.....  | 17            | Nolen, Al (Minnesota) vs Louisville (12-20-08)               |
|                           | 16            | Battle, Talor (Penn State) at Penn (11/25/08)                |
|                           | 16            | Harris, Manny (Michigan) vs NC CENTRAL (12/29/08)            |
| FREE THROW PERCENTAGE.... | 1.000 (10-10) | Davis, Jermain (Iowa) vs TEXAS-SAN ANTONIO (11/17/08)        |
|                           | 1.000 (14-14) | Harris, Manny (Michigan) vs SAVANNAH STATE (11/29/08)        |
| REBOUNDS.....             | 20            | Sims, DeShawn (Michigan) vs FLORIDA GULF COAST (12/22/08)    |
|                           | 16            | Harris, Manny (Michigan) vs NC CENTRAL (12/29/08)            |
| ASSISTS.....              | 13            | Harris, Manny (Michigan) vs Oakland (12/20/08)               |
|                           | 12            | Frazier, Chester (Illinois) vs CLEMSON (12/02/08)            |
| STEALS.....               | 6             | Moore, E'Twaun (Purdue) vs ARKANSAS-PINE BLUFF (12/06/08)    |
|                           | 5             | Nolen, Al (Minnesota) vs BOWLING GREEN (11/15/08)            |
|                           | 5             | Nolen, Al (Minnesota) vs GEORGIA STATE (11/16/08)            |
|                           | 5             | Turner, Evan (Ohio State) vs SAMFORD (11-29-08)              |
|                           | 5             | Nolen, Al (Minnesota) vs VIRGINIA (12/02/08)                 |
|                           | 5             | Diebler, Jon (Ohio State) at Minnesota (01/03/09)            |
| BLOCKED SHOTS.....        | 9             | Iverson, Colton (Minnesota) vs BOWLING GREEN (11/15/08)      |
|                           | 7             | Lauderdale, Dallas (Ohio State) vs DELAWARE STATE (11-20-08) |
| TURNOVERS.....            | 8             | Harris, Manny (Michigan) vs SAVANNAH STATE (11/29/08)        |
|                           | 7             | Moore, Daniel (Indiana) vs Saint Joseph's (11-25-08)         |
|                           | 7             | Peterson, Jeff (Iowa) vs West Virginia (11/28/08)            |
|                           | 7             | Dumes, Devan (Indiana) at Wake Forest (12/02/08)             |
|                           | 7             | Moore, Daniel (Indiana) vs Gonzaga (12/6/08)                 |
|                           | 7             | Moore, E'Twaun (Purdue) vs ARKANSAS-PINE BLUFF (12/06/08)    |

**2008-09 Big Ten Conference  
Conference Team Highs  
Through games of Jan 04, 2009 (All games)**

TEAM HIGHS (highest totals made by)

---

|                           |               |  |
|---------------------------|---------------|--|
| POINTS.....               | 118           | Michigan State vs ALCORN STATE (12/13/08)  |
|                           | 100           | Michigan State vs IDAHO (11/16/08)         |
| FIELD GOALS MADE.....     | 44            | Michigan State vs ALCORN STATE (12/13/08)  |
|                           | 36            | Penn State vs LAFAYETTE (12/21/08)         |
| FIELD GOAL ATTEMPTS.....  | 75            | Michigan State vs ALCORN STATE (12/13/08)  |
|                           | 71            | Michigan vs NORFOLK STATE (11/25/08)       |
| FIELD GOAL PERCENTAGE.... | .644 (29-45)  | Illinois vs DETROIT MERCY (12/20/08)       |
|                           | .643 (27-42)  | Ohio State vs JACKSONVILLE (12-17-08)      |
| 3 PT FG MADE.....         | 16            | Michigan vs EASTERN MICHIGAN (12/13/08)    |
|                           | 15            | Penn State vs HARTFORD (11/20/08)          |
| 3 PT FG ATTEMPTS.....     | 42            | Michigan vs FLORIDA GULF COAST (12/22/08)  |
|                           | 33            | Purdue vs Oklahoma (11/28/08)              |
|                           | 33            | Michigan vs EASTERN MICHIGAN (12/13/08)    |
| 3 PT PERCENTAGE.....      | .667 (12-18)  | Wisconsin at Virginia Tech (12/01/08)      |
|                           | .615 (8-13)   | Minnesota vs NORTH DAKOTA STATE (11/29/08) |
| FREE THROWS MADE.....     | 28            | Indiana vs NORTHWESTERN STATE (11/15/08)   |
|                           | 27            | Minnesota vs Louisville (12-20-08)         |
| FREE THROW ATTEMPTS.....  | 41            | Indiana vs NORTHWESTERN STATE (11/15/08)   |
|                           | 37            | Iowa vs Kansas State (11/29/08)            |
|                           | 37            | Minnesota vs Louisville (12-20-08)         |
| FREE THROW PERCENTAGE.... | 1.000 (11-11) | Illinois at Vanderbilt (11/20/08)          |
|                           | 1.000 (6-6)   | Michigan at Maryland (12/03/08)            |
|                           | 1.000 (8-8)   | Iowa vs NORTHERN IOWA (12/09/08)           |
|                           | 1.000 (2-2)   | Wisconsin vs COPPIN STATE (12/20/08)       |
|                           | 1.000 (7-7)   | Michigan State at Oakland (12/27/08)       |
| REBOUNDS.....             | 56            | Minnesota vs CONCORDIA-ST. PAUL (11/14/08) |
|                           | 53            | Michigan vs NORFOLK STATE (11/25/08)       |
|                           | 53            | Michigan State vs ALCORN STATE (12/13/08)  |
| ASSISTS.....              | 35            | Michigan State vs ALCORN STATE (12/13/08)  |
|                           | 25            | Illinois vs JACKSON STATE (11/23/08)       |
|                           | 25            | Michigan State at Oakland (12/27/08)       |
| STEALS.....               | 18            | Purdue vs ARKANSAS-PINE BLUFF (12/06/08)   |
|                           | 15            | Indiana vs NORTHWESTERN STATE (11/15/08)   |
| BLOCKED SHOTS.....        | 17            | Minnesota vs BOWLING GREEN (11/15/08)      |
|                           | 14            | Minnesota vs SOUTH DAKOTA STATE (12/10/08) |
| TURNOVERS.....            | 26            | Indiana at Wake Forest (12/02/08)          |
|                           | 25            | Indiana vs Gonzaga (12/6/08)               |
| FOULS.....                | 28            | Purdue vs Oklahoma (11/28/08)              |
|                           | 28            | Iowa vs West Virginia (11/28/08)           |

**2008-09 Big Ten Conference  
Conference Opponent Lows  
Through games of Jan 04, 2009 (All games)**

OPPONENT LOWS (lowest totals allowed by)

---

|                           |              |   |
|---------------------------|--------------|---|
| POINTS.....               | 22           | Ohio State vs SAMFORD (11-29-08)            |
|                           | 36           | Iowa vs BRYANT UNIVERSITY (12/05/08)        |
|                           | 36           | Northwestern vs DEPAUL (12/6/08)            |
| FIELD GOALS MADE.....     | 9            | Ohio State vs SAMFORD (11-29-08)            |
|                           | 11           | Northwestern vs CENTRAL ARKANSAS (11/16/08) |
|                           | 11           | Iowa vs SE MISSOURI STATE (11/25/08)        |
|                           | 11           | Iowa vs BRYANT UNIVERSITY (12/05/08)        |
|                           | 11           | Purdue vs ARKANSAS-PINE BLUFF (12/06/08)    |
| FIELD GOAL ATTEMPTS.....  | 37           | Northwestern at Brown (11/22/08)            |
|                           | 37           | Iowa vs BRYANT UNIVERSITY (12/05/08)        |
| FIELD GOAL PERCENTAGE.... | .188 (9-48)  | Ohio State vs SAMFORD (11-29-08)            |
|                           | .224 (11-49) | Iowa vs SE MISSOURI STATE (11/25/08)        |
| 3 PT FG MADE.....         | 0            | Iowa vs SE MISSOURI STATE (11/25/08)        |
|                           | 1            | Purdue vs ILLINOIS (12/30/08)               |
| 3 PT FG ATTEMPTS.....     | 7            | Iowa vs Kansas State (11/29/08)             |
|                           | 7            | Illinois vs HAWAI'I (12/08/08)              |
|                           | 7            | Iowa vs WESTERN ILLINOIS (12/27/08)         |
| 3 PT PERCENTAGE.....      | .000 (0-11)  | Iowa vs SE MISSOURI STATE (11/25/08)        |
|                           | .111 (1-9)   | Purdue vs ILLINOIS (12/30/08)               |
|                           | .111 (2-18)  | Illinois vs Missouri (12/23/08)             |
|                           | .111 (2-18)  | Ohio State vs SAMFORD (11-29-08)            |
|                           | .111 (2-18)  | Illinois vs Tulsa (11/29/08)                |
| FREE THROWS MADE.....     | 1            | Wisconsin vs COPPIN STATE (12/20/08)        |
|                           | 2            | Indiana vs Notre Dame (11-24-08)            |
|                           | 2            | Ohio State vs SAMFORD (11-29-08)            |
|                           | 2            | Michigan vs ILLINOIS (01/04/09)             |
| FREE THROW ATTEMPTS.....  | 2            | Wisconsin vs COPPIN STATE (12/20/08)        |
|                           | 3            | Ohio State vs DELAWARE STATE (11-20-08)     |
|                           | 3            | Ohio State vs SAMFORD (11-29-08)            |
|                           | 3            | Michigan vs ILLINOIS (01/04/09)             |
| FREE THROW PERCENTAGE.... | .286 (2-7)   | Indiana vs Notre Dame (11-24-08)            |
|                           | .294 (5-17)  | Illinois vs DETROIT MERCY (12/20/08)        |
| REBOUNDS.....             | 16           | Penn State vs HARTFORD (11/20/08)           |
|                           | 18           | Iowa vs BRYANT UNIVERSITY (12/05/08)        |
| ASSISTS.....              | 4            | Michigan State vs ALCORN STATE (12/13/08)   |
|                           | 5            | Iowa at The Citadel (11/20/08)              |
|                           | 5            | Iowa vs SE MISSOURI STATE (11/25/08)        |
|                           | 5            | Iowa vs Kansas State (11/29/08)             |
|                           | 5            | Iowa at Drake (12/20/08)                    |
| STEALS.....               | 0            | Purdue vs EASTERN MICHIGAN (11/17/08)       |
|                           | 0            | Iowa at The Citadel (11/20/08)              |
| BLOCKED SHOTS.....        | 0            | Several                                     |
| TURNOVERS.....            | 4            | Penn State at Wisconsin (01/03/09)          |
|                           | 5            | Michigan vs Oakland (12/20/08)              |
| FOULS.....                | 8            | Iowa vs SE MISSOURI STATE (11/25/08)        |
|                           | 10           | Michigan at Maryland (12/03/08)             |
|                           | 10           | Penn State at Wisconsin (01/03/09)          |
|                           | 10           | Illinois at Michigan (01/04/09)             |

**2008-09 Big Ten Conference  
INDIVIDUAL BASKETBALL STATISTICS  
Through games of Jan 04, 2009 (Conference games only)**

To be ranked, a player must appear in at least 75.0% of their team's games.

| SCORING |                           |    |   |    |     |    |           |
|---------|---------------------------|----|---|----|-----|----|-----------|
| ##      | Player-Team               | Cl | G | FG | 3FG | FT | Pts Avg/G |
| 1.      | Diebler, Jon-OSU.....     | SO | 2 | 13 | 12  | 4  | 42 21.0   |
| 2.      | Lucas, Kalin-MSU.....     | SO | 2 | 14 | 4   | 9  | 41 20.5   |
| 3.      | Pringle, Stanley-PSU..... | SR | 2 | 14 | 6   | 6  | 40 20.0   |
| 4.      | Landry, Marcus-WIS.....   | SR | 2 | 17 | 2   | 3  | 39 19.5   |
| 5.      | Moore, E'Twaun-PUR.....   | SO | 1 | 7  | 1   | 2  | 17 17.0   |
| 6.      | Battle, Talor-PSU.....    | SO | 2 | 10 | 8   | 4  | 32 16.0   |
|         | Morgan, Raymar-MSU.....   | JR | 2 | 13 | 2   | 4  | 32 16.0   |
|         | Turner, Evan-OSU.....     | SO | 2 | 11 | 1   | 9  | 32 16.0   |
|         | Johnson, JaJuan-PUR.....  | SO | 1 | 4  | 0   | 8  | 16 16.0   |
| 10.     | Novak, Zack-MICH.....     | FR | 2 | 11 | 8   | 1  | 31 15.5   |
| 11.     | Allen, Chris-MSU.....     | SO | 2 | 10 | 7   | 3  | 30 15.0   |
| 12.     | Coble, Kevin-NU.....      | JR | 2 | 10 | 3   | 5  | 28 14.0   |
|         | Gatens, Matt-IOWA.....    | FR | 2 | 10 | 5   | 3  | 28 14.0   |
|         | Williams, Nick-IND.....   | FR | 1 | 7  | 0   | 0  | 14 14.0   |
| 15.     | Moore, Craig-NU.....      | SR | 2 | 10 | 7   | 0  | 27 13.5   |
|         | Sims, DeShawn-MICH.....   | JR | 2 | 9  | 4   | 5  | 27 13.5   |
| 17.     | Hughes, Trevon-WIS.....   | JR | 2 | 8  | 5   | 5  | 26 13.0   |
|         | Westbrook, Lawrence-MINN. | JR | 2 | 9  | 3   | 5  | 26 13.0   |
| 19.     | Tisdale, Mike-ILL.....    | SO | 2 | 11 | 0   | 3  | 25 12.5   |
|         | Cornley, Jamelle-PSU..... | SR | 2 | 10 | 0   | 5  | 25 12.5   |
|         | Harris, Manny-MICH.....   | SO | 2 | 9  | 0   | 7  | 25 12.5   |
|         | Peterson, Jeff-IOWA.....  | SO | 2 | 8  | 2   | 7  | 25 12.5   |
| 23.     | Tate, Cyrus-IOWA.....     | SR | 2 | 7  | 0   | 10 | 24 12.0   |
|         | Lucas-Perry, Laval-MICH.. |    | 2 | 6  | 4   | 8  | 24 12.0   |
|         | Dumes, Devan-IND.....     | JR | 1 | 2  | 2   | 6  | 12 12.0   |
| 26.     | Davis, Mike-ILL.....      | SO | 2 | 11 | 0   | 0  | 22 11.0   |
|         | Legion, Alex-ILL.....     | SO | 2 | 9  | 3   | 1  | 22 11.0   |
|         | Buford, William-OSU.....  | FR | 2 | 7  | 1   | 7  | 22 11.0   |
|         | Pritchard, Tom-IND.....   | FR | 1 | 3  | 0   | 5  | 11 11.0   |
|         | Jackson, Lewis-PUR.....   | FR | 1 | 4  | 1   | 2  | 11 11.0   |

| FIELD GOAL PCT (Min. 3.0 made per game) |                          |    |   |    |     |       |
|---|--------------------------|----|---|----|-----|-------|
| ##                                      | Player-Team              | Cl | G | FG | FGA | Pct   |
| 1.                                      | Tate, Cyrus-IOWA.....    | SR | 2 | 7  | 7   | 1.000 |
| 2.                                      | Mirkovic, Luka-NU.....   |    | 2 | 6  | 8   | .750  |
| 3.                                      | Novak, Zack-MICH.....    | FR | 2 | 11 | 16  | .688  |
| 4.                                      | Landry, Marcus-WIS.....  | SR | 2 | 17 | 25  | .680  |
| 5.                                      | Williams, Nick-IND.....  | FR | 1 | 7  | 11  | .636  |
| 6.                                      | Gatens, Matt-IOWA.....   | FR | 2 | 10 | 16  | .625  |
| 7.                                      | Brock, Calvin-ILL.....   | SR | 2 | 9  | 15  | .600  |
| 8.                                      | Bohannon, Jason-WIS..... | JR | 2 | 7  | 12  | .583  |
| 9.                                      | Suton, Goran-MSU.....    | SR | 2 | 8  | 14  | .571  |
| 10.                                     | Morgan, Raymar-MSU.....  | JR | 2 | 13 | 24  | .542  |
| 11.                                     | Leuer, Jon-WIS.....      | SO | 2 | 7  | 13  | .538  |
| 12.                                     | Sims, DeShawn-MICH.....  | JR | 2 | 9  | 17  | .529  |
| 13.                                     | Diebler, Jon-OSU.....    | SO | 2 | 13 | 25  | .520  |
| 14.                                     | Tisdale, Mike-ILL.....   | SO | 2 | 11 | 22  | .500  |
|   | Jackson, Lewis-PUR.....  | FR | 1 | 4  | 8   | .500  |

| REBOUNDING |                           |    |   |     |     |     |       |
|------------|---------------------------|----|---|-----|-----|-----|-------|
| ##         | Player-Team               | Cl | G | OFF | DEF | TOT | Avg/G |
| 1.         | Johnson, JaJuan-PUR.....  | SO | 1 | 6   | 9   | 15  | 15.0  |
| 2.         | Morgan, Raymar-MSU.....   | JR | 2 | 8   | 15  | 23  | 11.5  |
| 3.         | Hummel, Robbie-PUR.....   | SO | 1 | 1   | 10  | 11  | 11.0  |
| 4.         | Battle, Talor-PSU.....    | SO | 2 | 4   | 15  | 19  | 9.5   |
| 5.         | Krabbenhof, Joe-WIS.....  | SR | 2 | 3   | 15  | 18  | 9.0   |
| 6.         | Suton, Goran-MSU.....     | SR | 2 | 8   | 9   | 17  | 8.5   |
| 7.         | Cornley, Jamelle-PSU..... | SR | 2 | 6   | 10  | 16  | 8.0   |
| 8.         | Jones, Andrew-PSU.....    | SO | 2 | 5   | 9   | 14  | 7.0   |
|            | Brock, Calvin-ILL.....    | SR | 2 | 2   | 12  | 14  | 7.0   |
|            | Dumes, Devan-IND.....     | JR | 1 | 1   | 6   | 7   | 7.0   |
| 11.        | Sims, DeShawn-MICH.....   | JR | 2 | 4   | 9   | 13  | 6.5   |
|            | Turner, Evan-OSU.....     | SO | 2 | 1   | 12  | 13  | 6.5   |
| 13.        | Tate, Cyrus-IOWA.....     | SR | 2 | 5   | 7   | 12  | 6.0   |
|            | Harris, Manny-MICH.....   | SO | 2 | 1   | 11  | 12  | 6.0   |
|            | Grant, Keaton-PUR.....    | JR | 1 | 2   | 4   | 6   | 6.0   |
| 16.        | Davis, Mike-ILL.....      | SO | 2 | 3   | 8   | 11  | 5.5   |
|            | Davis, Jermain-IOWA.....  | JR | 2 | 0   | 11  | 11  | 5.5   |
|            | Novak, Zack-MICH.....     | FR | 2 | 2   | 9   | 11  | 5.5   |
| 19.        | Coble, Kevin-NU.....      | JR | 2 | 1   | 9   | 10  | 5.0   |
|            | Iverson, Colton-MINN..... | FR | 2 | 4   | 6   | 10  | 5.0   |
|            | Leuer, Jon-WIS.....       | SO | 2 | 2   | 8   | 10  | 5.0   |
|            | Frazier, Chester-ILL..... | SR | 2 | 2   | 8   | 10  | 5.0   |
|            | Taber, Kyle-IND.....      | SR | 1 | 3   | 2   | 5   | 5.0   |
|            | Williams, Nick-IND.....   | FR | 1 | 0   | 5   | 5   | 5.0   |

| ASSISTS |                           |    |   |               |
|---------|---------------------------|----|---|---------------|
| ##      | Player-Team               | Cl | G | Assists Avg/G |
| 1.      | McCamey, Demetri-ILL..... | SO | 2 | 13 6.50       |
|         | Peterson, Jeff-IOWA.....  | SO | 2 | 13 6.50       |
| 3.      | Frazier, Chester-ILL..... | SR | 2 | 12 6.00       |
| 4.      | Lucas, Kalin-MSU.....     | SO | 2 | 11 5.50       |
| 5.      | Nolen, Al-MINN.....       | SO | 2 | 10 5.00       |
| 6.      | Walton, Travis-MSU.....   | SR | 2 | 9 4.50        |
|         | Thompson, Michael-NU..... | SO | 2 | 9 4.50        |
|         | Meacham, Trent-ILL.....   | SR | 2 | 9 4.50        |
| 9.      | Harris, Manny-MICH.....   | SO | 2 | 8 4.00        |
|         | Jackson, Lewis-PUR.....   | FR | 1 | 4 4.00        |
| 11.     | Lucas-Perry, Laval-MICH.. |    | 2 | 7 3.50        |
|         | Krabbenhof, Joe-WIS.....  | SR | 2 | 7 3.50        |
|         | Pringle, Stanley-PSU..... | SR | 2 | 7 3.50        |
| 14.     | Diebler, Jon-OSU.....     | SO | 2 | 6 3.00        |
|         | Hill, P.J.-OSU.....       | JR | 2 | 6 3.00        |
|         | Moore, Craig-NU.....      | SR | 2 | 6 3.00        |
|         | Davis, Jermain-IOWA.....  | JR | 2 | 6 3.00        |

**2008-09 Big Ten Conference  
INDIVIDUAL BASKETBALL STATISTICS  
Through games of Jan 04, 2009 (Conference games only)**

**FREE THROW PCT (Min. 2.0 made per game)**

| ## Player-Team               | Cl | G | FTM | FTA | Pct   |
|------------------------------|----|---|-----|-----|-------|
| 1.Lucas, Kalin-MSU.....      | SO | 2 | 9   | 9   | 1.000 |
| Buford, William-OSU.....     | FR | 2 | 7   | 7   | 1.000 |
| Krabbenhoft, Joe-WIS.....    | SR | 2 | 6   | 6   | 1.000 |
| Dumes, Devan-IND.....        | JR | 1 | 6   | 6   | 1.000 |
| Nolen, Al-MINN.....          | SO | 2 | 4   | 4   | 1.000 |
| Carter, Paul-MINN.....       | SO | 2 | 4   | 4   | 1.000 |
| Roth, Matt-IND.....          | FR | 1 | 4   | 4   | 1.000 |
| Madsen, Kyle-OSU.....        | JR | 2 | 4   | 4   | 1.000 |
| Jackson, Lewis-PUR.....      | FR | 1 | 2   | 2   | 1.000 |
| 10.Tate, Cyrus-IOWA.....     | SR | 2 | 10  | 11  | .909  |
| 11.Peterson, Jeff-IOWA.....  | SO | 2 | 7   | 8   | .875  |
| Harris, Manny-MICH.....      | SO | 2 | 7   | 8   | .875  |
| 13.Cornley, Jamelle-PSU..... | SR | 2 | 5   | 6   | .833  |
| Westbrook, Lawrence-MINN.    | JR | 2 | 5   | 6   | .833  |
| Coble, Kevin-NU.....         | JR | 2 | 5   | 6   | .833  |
| Johnson, Damian-MINN.....    | JR | 2 | 5   | 6   | .833  |
| Hughes, Trevon-WIS.....      | JR | 2 | 5   | 6   | .833  |
| Sims, DeShawn-MICH.....      | JR | 2 | 5   | 6   | .833  |

**STEALS**

| ## Player-Team              | Cl | G | Steals | Avg/G |
|-----------------------------|----|---|--------|-------|
| 1.Diebler, Jon-OSU.....     | SO | 2 | 8      | 4.00  |
| 2.Johnson, Damian-MINN..... | JR | 2 | 5      | 2.50  |
| Coble, Kevin-NU.....        | JR | 2 | 5      | 2.50  |
| 4.Moore, Craig-NU.....      | SR | 2 | 4      | 2.00  |
| 5.Suton, Goran-MSU.....     | SR | 2 | 3      | 1.50  |
| Joseph, Devoe-MINN.....     | FR | 2 | 3      | 1.50  |
| Hughes, Trevon-WIS.....     | JR | 2 | 3      | 1.50  |
| Lucas, Kalin-MSU.....       | SO | 2 | 3      | 1.50  |
| Harris, Manny-MICH.....     | SO | 2 | 3      | 1.50  |
| Nolen, Al-MINN.....         | SO | 2 | 3      | 1.50  |
| Thompson, Michael-NU.....   | SO | 2 | 3      | 1.50  |
| Simmons, Jeremie-OSU.....   | JR | 2 | 3      | 1.50  |
| Walton, Travis-MSU.....     | SR | 2 | 3      | 1.50  |
| 14.Douglass, Stu-MICH.....  | FR | 2 | 2      | 1.00  |
| Sims, DeShawn-MICH.....     | JR | 2 | 2      | 1.00  |
| Gatens, Matt-IOWA.....      | FR | 2 | 2      | 1.00  |
| Shurna, John-NU.....        | FR | 2 | 2      | 1.00  |
| Frazier, Chester-ILL.....   | SR | 2 | 2      | 1.00  |
| Kelly, Jake-IOWA.....       | SO | 2 | 2      | 1.00  |
| Leuer, Jon-WIS.....         | SO | 2 | 2      | 1.00  |
| Pringle, Stanley-PSU.....   | SR | 2 | 2      | 1.00  |
| Hill, P.J.-OSU.....         | JR | 2 | 2      | 1.00  |
| Kramer, Chris-PUR.....      | JR | 1 | 1      | 1.00  |
| Jackson, Lewis-PUR.....     | FR | 1 | 1      | 1.00  |
| Moore, E'Twaun-PUR.....     | SO | 1 | 1      | 1.00  |
| Story, Malik-IND.....       | FR | 1 | 1      | 1.00  |
| Jones III, Verdell-IND...   |    | 1 | 1      | 1.00  |
| Hummel, Robbie-PUR.....     | SO | 1 | 1      | 1.00  |

**3-POINT FG PCT (Min. 1.0 made per game)**

| ## Player-Team              | Cl | G | 3FG | FGA | Pct  |
|-----------------------------|----|---|-----|-----|------|
| 1.Novak, Zack-MICH.....     | FR | 2 | 8   | 12  | .667 |
| Story, Malik-IND.....       | FR | 1 | 2   | 3   | .667 |
| 3.Gatens, Matt-IOWA.....    | FR | 2 | 5   | 8   | .625 |
| 4.Diebler, Jon-OSU.....     | SO | 2 | 12  | 21  | .571 |
| Sims, DeShawn-MICH.....     | JR | 2 | 4   | 7   | .571 |
| Lucas, Kalin-MSU.....       | SO | 2 | 4   | 7   | .571 |
| 7.Hughes, Trevon-WIS.....   | JR | 2 | 5   | 9   | .556 |
| 8.Pringle, Stanley-PSU..... | SR | 2 | 6   | 12  | .500 |
| Bawinkel, Devan-IOWA.....   | JR | 2 | 5   | 10  | .500 |
| Joseph, Devoe-MINN.....     | FR | 2 | 2   | 4   | .500 |
| Dumes, Devan-IND.....       | JR | 1 | 2   | 4   | .500 |
| Morgan, Raymar-MSU.....     | JR | 2 | 2   | 4   | .500 |
| Jackson, Lewis-PUR.....     | FR | 1 | 1   | 2   | .500 |
| Riddell, Bobby-PUR.....     | SR | 1 | 1   | 2   | .500 |
| 15.Allen, Chris-MSU.....    | SO | 2 | 7   | 15  | .467 |

**3-POINT FG MADE**

| ## Player-Team               | Cl | G | 3FG | Avg/G |
|------------------------------|----|---|-----|-------|
| 1.Diebler, Jon-OSU.....      | SO | 2 | 12  | 6.00  |
| 2.Novak, Zack-MICH.....      | FR | 2 | 8   | 4.00  |
| Battle, Talor-PSU.....       | SO | 2 | 8   | 4.00  |
| 4.Allen, Chris-MSU.....      | SO | 2 | 7   | 3.50  |
| Moore, Craig-NU.....         | SR | 2 | 7   | 3.50  |
| 6.Pringle, Stanley-PSU.....  | SR | 2 | 6   | 3.00  |
| 7.Bawinkel, Devan-IOWA.....  | JR | 2 | 5   | 2.50  |
| Kelly, Jake-IOWA.....        | SO | 2 | 5   | 2.50  |
| Hughes, Trevon-WIS.....      | JR | 2 | 5   | 2.50  |
| Gatens, Matt-IOWA.....       | FR | 2 | 5   | 2.50  |
| 11.Lucas-Perry, Laval-MICH.. |    | 2 | 4   | 2.00  |
| Thompson, Michael-NU.....    | SO | 2 | 4   | 2.00  |
| Sims, DeShawn-MICH.....      | JR | 2 | 4   | 2.00  |
| Lucas, Kalin-MSU.....        | SO | 2 | 4   | 2.00  |
| Dumes, Devan-IND.....        | JR | 1 | 2   | 2.00  |
| Story, Malik-IND.....        | FR | 1 | 2   | 2.00  |

**BLOCKED SHOTS**

| ## Player-Team              | Cl | G | Blocks | Avg/G |
|-----------------------------|----|---|--------|-------|
| 1.Johnson, Damian-MINN..... | JR | 2 | 6      | 3.00  |
| Johnson, JaJuan-PUR.....    | SO | 1 | 3      | 3.00  |
| 3.Iverson, Colton-MINN..... | FR | 2 | 4      | 2.00  |
| 4.Lauderdale, Dallas-OSU... | SO | 2 | 3      | 1.50  |
| Roe, Delvon-MSU.....        | FR | 2 | 3      | 1.50  |
| 6.Davis, Mike-ILL.....      | SO | 2 | 2      | 1.00  |
| Gibson, Zack-MICH.....      | JR | 2 | 2      | 1.00  |
| Mirkovic, Luka-NU.....      |    | 2 | 2      | 1.00  |
| Moore, Craig-NU.....        | SR | 2 | 2      | 1.00  |
| Tisdale, Mike-ILL.....      | SO | 2 | 2      | 1.00  |
| Brommer, Andrew-IOWA.....   | FR | 2 | 2      | 1.00  |
| Landry, Marcus-WIS.....     | SR | 2 | 2      | 1.00  |
| Jones III, Verdell-IND...   |    | 1 | 1      | 1.00  |
| Hummel, Robbie-PUR.....     | SO | 1 | 1      | 1.00  |
| Taber, Kyle-IND.....        | SR | 1 | 1      | 1.00  |
| Green, Marcus-PUR.....      | SR | 1 | 1      | 1.00  |

**ASSIST/TURNOVER RATIO (Min. 3.0 assists/game)**

| ## Player-Team              | Cl | G | Asst | Avg | Turn | Avg | Ratio  |
|-----------------------------|----|---|------|-----|------|-----|--------|
| 1.McCamey, Demetri-ILL..... | SO | 2 | 13   | 6.5 | 0    | 0.0 | 999.00 |
| Meacham, Trent-ILL.....     | SR | 2 | 9    | 4.5 | 0    | 0.0 | 999.00 |
| 3.Thompson, Michael-NU..... | SO | 2 | 9    | 4.5 | 1    | 0.5 | 9.00   |
| 4.Lucas-Perry, Laval-MICH.. |    | 2 | 7    | 3.5 | 1    | 0.5 | 7.00   |
| 5.Frazier, Chester-ILL..... | SR | 2 | 12   | 6.0 | 2    | 1.0 | 6.00   |
| 6.Krabbenhoft, Joe-WIS..... | SR | 2 | 7    | 3.5 | 2    | 1.0 | 3.50   |
| 7.Davis, Jermain-IOWA.....  | JR | 2 | 6    | 3.0 | 2    | 1.0 | 3.00   |
| Moore, Craig-NU.....        | SR | 2 | 6    | 3.0 | 2    | 1.0 | 3.00   |
| 9.Walton, Travis-MSU.....   | SR | 2 | 9    | 4.5 | 4    | 2.0 | 2.25   |
| 10.Lucas, Kalin-MSU.....    | SO | 2 | 11   | 5.5 | 5    | 2.5 | 2.20   |
| 11.Peterson, Jeff-IOWA..... | SO | 2 | 13   | 6.5 | 6    | 3.0 | 2.17   |
| 12.Nolen, Al-MINN.....      | SO | 2 | 10   | 5.0 | 5    | 2.5 | 2.00   |
| Hill, P.J.-OSU.....         | JR | 2 | 6    | 3.0 | 3    | 1.5 | 2.00   |
| Jackson, Lewis-PUR.....     | FR | 1 | 4    | 4.0 | 2    | 2.0 | 2.00   |
| 15.Harris, Manny-MICH.....  | SO | 2 | 8    | 4.0 | 8    | 4.0 | 1.00   |
| Pringle, Stanley-PSU.....   | SR | 2 | 7    | 3.5 | 7    | 3.5 | 1.00   |
| Diebler, Jon-OSU.....       | SO | 2 | 6    | 3.0 | 6    | 3.0 | 1.00   |

**2008-09 Big Ten Conference  
INDIVIDUAL BASKETBALL STATISTICS  
Through games of Jan 04, 2009 (Conference games only)**

**OFFENSIVE REBOUNDS**

| ##  | Player-Team               | Cl | G | No. | Avg/G |
|-----|---------------------------|----|---|-----|-------|
| 1.  | Johnson, JaJuan-PUR.....  | SO | 1 | 6   | 6.00  |
| 2.  | Suton, Goran-MSU.....     | SR | 2 | 8   | 4.00  |
|     | Morgan, Raymar-MSU.....   | JR | 2 | 8   | 4.00  |
| 4.  | Cornley, Jamelle-PSU..... | SR | 2 | 6   | 3.00  |
|     | Taber, Kyle-IND.....      | SR | 1 | 3   | 3.00  |
| 6.  | Roe, Delvon-MSU.....      | FR | 2 | 5   | 2.50  |
|     | Tisdale, Mike-ILL.....    | SO | 2 | 5   | 2.50  |
|     | Lauderdale, Dallas-OSU... | SO | 2 | 5   | 2.50  |
|     | Tate, Cyrus-IOWA.....     | SR | 2 | 5   | 2.50  |
|     | Jones, Andrew-PSU.....    | SO | 2 | 5   | 2.50  |
| 11. | Battle, Talor-PSU.....    | SO | 2 | 4   | 2.00  |
|     | Carter, Paul-MINN.....    | SO | 2 | 4   | 2.00  |
|     | Allen, Chris-MSU.....     | SO | 2 | 4   | 2.00  |
|     | Summers, Durrell-MSU..... | SO | 2 | 4   | 2.00  |
|     | Sims, DeShawn-MICH.....   | JR | 2 | 4   | 2.00  |
|     | Iverson, Colton-MINN..... | FR | 2 | 4   | 2.00  |
|     | Grant, Keaton-PUR.....    | JR | 1 | 2   | 2.00  |
|     | Pritchard, Tom-IND.....   | FR | 1 | 2   | 2.00  |

**DEFENSIVE REBOUNDS**

| ##  | Player-Team               | Cl | G | No. | Avg/G |
|-----|---------------------------|----|---|-----|-------|
| 1.  | Hummel, Robbie-PUR.....   | SO | 1 | 10  | 10.00 |
| 2.  | Johnson, JaJuan-PUR.....  | SO | 1 | 9   | 9.00  |
| 3.  | Morgan, Raymar-MSU.....   | JR | 2 | 15  | 7.50  |
|     | Krabbenhoft, Joe-WIS..... | SR | 2 | 15  | 7.50  |
|     | Battle, Talor-PSU.....    | SO | 2 | 15  | 7.50  |
| 6.  | Brock, Calvin-ILL.....    | SR | 2 | 12  | 6.00  |
|     | Turner, Evan-OSU.....     | SO | 2 | 12  | 6.00  |
|     | Dumes, Devan-IND.....     | JR | 1 | 6   | 6.00  |
| 9.  | Davis, Jermain-IOWA.....  | JR | 2 | 11  | 5.50  |
|     | Harris, Manny-MICH.....   | SO | 2 | 11  | 5.50  |
| 11. | Cornley, Jamelle-PSU..... | SR | 2 | 10  | 5.00  |
|     | Williams, Nick-IND.....   | FR | 1 | 5   | 5.00  |
| 13. | Jones, Andrew-PSU.....    | SO | 2 | 9   | 4.50  |
|     | Coble, Kevin-NU.....      | JR | 2 | 9   | 4.50  |
|     | Novak, Zack-MICH.....     | FR | 2 | 9   | 4.50  |
|     | Diebler, Jon-OSU.....     | SO | 2 | 9   | 4.50  |
|     | Suton, Goran-MSU.....     | SR | 2 | 9   | 4.50  |
|     | Sims, DeShawn-MICH.....   | JR | 2 | 9   | 4.50  |

**MINUTES PLAYED**

| ##  | Player-Team               | Cl | G | Minutes | Avg/G |
|-----|---------------------------|----|---|---------|-------|
| 1.  | Diebler, Jon-OSU.....     | SO | 2 | 79      | 39.50 |
| 2.  | Battle, Talor-PSU.....    | SO | 2 | 78      | 39.00 |
|     | Turner, Evan-OSU.....     | SO | 2 | 78      | 39.00 |
|     | Hummel, Robbie-PUR.....   | SO | 1 | 39      | 39.00 |
| 5.  | Coble, Kevin-NU.....      | JR | 2 | 75      | 37.50 |
| 6.  | Cornley, Jamelle-PSU..... | SR | 2 | 74      | 37.00 |
|     | Moore, Craig-NU.....      | SR | 2 | 74      | 37.00 |
|     | Moore, E'Twaun-PUR.....   | SO | 1 | 37      | 37.00 |
| 9.  | Frazier, Chester-ILL..... | SR | 2 | 73      | 36.50 |
| 10. | Peterson, Jeff-IOWA.....  | SO | 2 | 72      | 36.00 |
|     | Thompson, Michael-NU..... | SO | 2 | 72      | 36.00 |
|     | Johnson, JaJuan-PUR.....  | SO | 1 | 36      | 36.00 |
| 13. | Lucas, Kalin-MSU.....     | SO | 2 | 71      | 35.50 |
| 14. | Jackson, Lewis-PUR.....   | FR | 1 | 35      | 35.00 |
| 15. | Harris, Manny-MICH.....   | SO | 2 | 69      | 34.50 |

**2008-09 Big Ten Conference  
CONFERENCE BASKETBALL STATISTICS  
Through games of Jan 04, 2009 (Conference games only)**

**SCORING OFFENSE**

| ## Team                | G | W-L | Pts | Avg/G |
|------------------------|---|-----|-----|-------|
| 1. Michigan State..... | 2 | 2-0 | 147 | 73.5  |
| 2. Wisconsin.....      | 2 | 2-0 | 138 | 69.0  |
| 3. Michigan.....       | 2 | 1-1 | 135 | 67.5  |
| Illinois.....          | 2 | 1-1 | 135 | 67.5  |
| 5. Purdue.....         | 1 | 0-1 | 67  | 67.0  |
| 6. Iowa.....           | 2 | 1-1 | 130 | 65.0  |
| 7. Ohio State.....     | 2 | 1-1 | 127 | 63.5  |
| 8. Minnesota.....      | 2 | 1-1 | 126 | 63.0  |
| 9. Northwestern.....   | 2 | 0-2 | 123 | 61.5  |
| 10. Penn State.....    | 2 | 1-1 | 122 | 61.0  |
| 11. Indiana.....       | 1 | 0-1 | 60  | 60.0  |

**SCORING DEFENSE**

| ## Team                | G | Pts | Avg/G |
|------------------------|---|-----|-------|
| 1. Wisconsin.....      | 2 | 122 | 61.0  |
| Penn State.....        | 2 | 122 | 61.0  |
| 3. Michigan State..... | 2 | 124 | 62.0  |
| 4. Iowa.....           | 2 | 128 | 64.0  |
| 5. Minnesota.....      | 2 | 129 | 64.5  |
| 6. Indiana.....        | 1 | 65  | 65.0  |
| 7. Ohio State.....     | 2 | 133 | 66.5  |
| 8. Michigan.....       | 2 | 137 | 68.5  |
| 9. Northwestern.....   | 2 | 138 | 69.0  |
| 10. Illinois.....      | 2 | 141 | 70.5  |
| 11. Purdue.....        | 1 | 71  | 71.0  |

**SCORING MARGIN**

| ## Team                | G | OFF  | DEF  | Margin |
|------------------------|---|------|------|--------|
| 1. Michigan State..... | 2 | 73.5 | 62.0 | +11.5  |
| 2. Wisconsin.....      | 2 | 69.0 | 61.0 | +8.0   |
| 3. Iowa.....           | 2 | 65.0 | 64.0 | +1.0   |
| 4. Penn State.....     | 2 | 61.0 | 61.0 | +0.0   |
| 5. Michigan.....       | 2 | 67.5 | 68.5 | -1.0   |
| 6. Minnesota.....      | 2 | 63.0 | 64.5 | -1.5   |
| 7. Ohio State.....     | 2 | 63.5 | 66.5 | -3.0   |
| Illinois.....          | 2 | 67.5 | 70.5 | -3.0   |
| 9. Purdue.....         | 1 | 67.0 | 71.0 | -4.0   |
| 10. Indiana.....       | 1 | 60.0 | 65.0 | -5.0   |
| 11. Northwestern.....  | 2 | 61.5 | 69.0 | -7.5   |

**FREE THROW PERCENTAGES**

| ## Team               | G | FTM | FTA | Pct  |
|-----------------------|---|-----|-----|------|
| 1. Wisconsin.....     | 2 | 25  | 32  | .781 |
| 2. Indiana.....       | 1 | 17  | 22  | .773 |
| 3. Minnesota.....     | 2 | 20  | 27  | .741 |
| 4. Iowa.....          | 2 | 25  | 34  | .735 |
| 5. Michigan.....      | 2 | 24  | 33  | .727 |
| 6. Penn State.....    | 2 | 22  | 31  | .710 |
| Michigan State.....   | 2 | 22  | 31  | .710 |
| 8. Ohio State.....    | 2 | 29  | 41  | .707 |
| 9. Illinois.....      | 2 | 12  | 17  | .706 |
| 10. Northwestern..... | 2 | 16  | 24  | .667 |
| 11. Purdue.....       | 1 | 15  | 27  | .556 |

**FIELD GOAL PERCENTAGES**

| ## Team                | G | FG | FGA | Pct  |
|------------------------|---|----|-----|------|
| 1. Wisconsin.....      | 2 | 51 | 100 | .510 |
| 2. Iowa.....           | 2 | 43 | 87  | .494 |
| 3. Michigan.....       | 2 | 46 | 104 | .442 |
| 4. Illinois.....       | 2 | 58 | 132 | .439 |
| 5. Michigan State..... | 2 | 55 | 126 | .437 |
| 6. Indiana.....        | 1 | 19 | 44  | .432 |
| 7. Ohio State.....     | 2 | 41 | 96  | .427 |
| 8. Northwestern.....   | 2 | 45 | 106 | .425 |
| 9. Minnesota.....      | 2 | 46 | 112 | .411 |
| 10. Purdue.....        | 1 | 24 | 63  | .381 |
| 11. Penn State.....    | 2 | 42 | 113 | .372 |

**FIELD GOAL PCT DEFENSE**

| ## Team                | G | FG | FGA | Pct  |
|------------------------|---|----|-----|------|
| 1. Minnesota.....      | 2 | 44 | 116 | .379 |
| 2. Northwestern.....   | 2 | 47 | 120 | .392 |
| 3. Michigan State..... | 2 | 43 | 108 | .398 |
| 4. Wisconsin.....      | 2 | 44 | 106 | .415 |
| 5. Purdue.....         | 1 | 30 | 70  | .429 |
| 6. Illinois.....       | 2 | 50 | 116 | .431 |
| 7. Penn State.....     | 2 | 47 | 105 | .448 |
| 8. Indiana.....        | 1 | 20 | 43  | .465 |
| 9. Ohio State.....     | 2 | 48 | 103 | .466 |
| 10. Iowa.....          | 2 | 42 | 88  | .477 |
| 11. Michigan.....      | 2 | 55 | 108 | .509 |

**3-POINT FIELD GOAL PERCENTAGES**

| ## Team                | G | FG | FGA | Pct  |
|------------------------|---|----|-----|------|
| 1. Ohio State.....     | 2 | 16 | 34  | .471 |
| 2. Iowa.....           | 2 | 19 | 42  | .452 |
| 3. Michigan State..... | 2 | 15 | 34  | .441 |
| 4. Wisconsin.....      | 2 | 11 | 28  | .393 |
| 5. Indiana.....        | 1 | 5  | 13  | .385 |
| 6. Michigan.....       | 2 | 19 | 51  | .373 |
| 7. Penn State.....     | 2 | 16 | 43  | .372 |
| 8. Minnesota.....      | 2 | 14 | 41  | .341 |
| 9. Northwestern.....   | 2 | 17 | 54  | .315 |
| 10. Purdue.....        | 1 | 4  | 16  | .250 |
| Illinois.....          | 2 | 7  | 28  | .250 |

**3-POINT FIELD GOAL PCT DEFENSE**

| ## Team                | G | FG | FGA | Pct  |
|------------------------|---|----|-----|------|
| 1. Purdue.....         | 1 | 1  | 9   | .111 |
| 2. Michigan State..... | 2 | 15 | 50  | .300 |
| 3. Wisconsin.....      | 2 | 13 | 40  | .325 |
| 4. Penn State.....     | 2 | 13 | 39  | .333 |
| 5. Illinois.....       | 2 | 15 | 43  | .349 |
| 6. Minnesota.....      | 2 | 13 | 37  | .351 |
| 7. Indiana.....        | 1 | 5  | 14  | .357 |
| 8. Michigan.....       | 2 | 12 | 33  | .364 |
| 9. Ohio State.....     | 2 | 22 | 48  | .458 |
| 10. Northwestern.....  | 2 | 20 | 43  | .465 |
| 11. Iowa.....          | 2 | 14 | 28  | .500 |

**REBOUNDING OFFENSE**

| ## Team                | G | Reb | Avg/G |
|------------------------|---|-----|-------|
| 1. Michigan State..... | 2 | 96  | 48.0  |
| 2. Purdue.....         | 1 | 47  | 47.0  |
| 3. Penn State.....     | 2 | 77  | 38.5  |
| 4. Illinois.....       | 2 | 74  | 37.0  |
| 5. Minnesota.....      | 2 | 69  | 34.5  |
| 6. Wisconsin.....      | 2 | 62  | 31.0  |
| 7. Indiana.....        | 1 | 30  | 30.0  |
| 8. Michigan.....       | 2 | 56  | 28.0  |
| 9. Ohio State.....     | 2 | 53  | 26.5  |
| 10. Northwestern.....  | 2 | 52  | 26.0  |
| 11. Iowa.....          | 2 | 50  | 25.0  |

**REBOUNDING DEFENSE**

| ## Team                | G | Reb | Avg/G |
|------------------------|---|-----|-------|
| 1. Iowa.....           | 2 | 53  | 26.5  |
| 2. Indiana.....        | 1 | 27  | 27.0  |
| 3. Michigan State..... | 2 | 55  | 27.5  |
| 4. Penn State.....     | 2 | 56  | 28.0  |
| 5. Wisconsin.....      | 2 | 57  | 28.5  |
| 6. Michigan.....       | 2 | 63  | 31.5  |
| 7. Ohio State.....     | 2 | 65  | 32.5  |
| 8. Illinois.....       | 2 | 77  | 38.5  |
| 9. Minnesota.....      | 2 | 79  | 39.5  |
| 10. Purdue.....        | 1 | 41  | 41.0  |
| 11. Northwestern.....  | 2 | 93  | 46.5  |

**2008-09 Big Ten Conference  
CONFERENCE BASKETBALL STATISTICS  
Through games of Jan 04, 2009 (Conference games only)**

**REBOUNDING MARGIN**

| ## Team                | G | TEAM | Avg  | OPP | Avg Margin |
|------------------------|---|------|------|-----|------------|
| 1. Michigan State..... | 2 | 96   | 48.0 | 55  | 27.5 +20.5 |
| 2. Penn State.....     | 2 | 77   | 38.5 | 56  | 28.0 +10.5 |
| 3. Purdue.....         | 1 | 47   | 47.0 | 41  | 41.0 +6.0  |
| 4. Indiana.....        | 1 | 30   | 30.0 | 27  | 27.0 +3.0  |
| 5. Wisconsin.....      | 2 | 62   | 31.0 | 57  | 28.5 +2.5  |
| 6. Illinois.....       | 2 | 74   | 37.0 | 77  | 38.5 -1.5  |
| Iowa.....              | 2 | 50   | 25.0 | 53  | 26.5 -1.5  |
| 8. Michigan.....       | 2 | 56   | 28.0 | 63  | 31.5 -3.5  |
| 9. Minnesota.....      | 2 | 69   | 34.5 | 79  | 39.5 -5.0  |
| 10. Ohio State.....    | 2 | 53   | 26.5 | 65  | 32.5 -6.0  |
| 11. Northwestern.....  | 2 | 52   | 26.0 | 93  | 46.5 -20.5 |

**BLOCKED SHOTS**

| ## Team              | G | Blocks | Avg/G |
|----------------------|---|--------|-------|
| 1. Minnesota.....    | 2 | 12     | 6.00  |
| 2. Purdue.....       | 1 | 5      | 5.00  |
| 3. Northwestern..... | 2 | 8      | 4.00  |
| Michigan State.....  | 2 | 8      | 4.00  |
| 5. Illinois.....     | 2 | 6      | 3.00  |
| 6. Ohio State.....   | 2 | 5      | 2.50  |
| Penn State.....      | 2 | 5      | 2.50  |
| Michigan.....        | 2 | 5      | 2.50  |
| 9. Indiana.....      | 1 | 2      | 2.00  |
| Iowa.....            | 2 | 4      | 2.00  |
| 11. Wisconsin.....   | 2 | 3      | 1.50  |

**ASSISTS**

| ## Team                | G | Assists | Avg/G |
|------------------------|---|---------|-------|
| 1. Illinois.....       | 2 | 44      | 22.00 |
| 2. Michigan State..... | 2 | 33      | 16.50 |
| Northwestern.....      | 2 | 33      | 16.50 |
| 4. Michigan.....       | 2 | 30      | 15.00 |
| 5. Minnesota.....      | 2 | 28      | 14.00 |
| Iowa.....              | 2 | 28      | 14.00 |
| 7. Purdue.....         | 1 | 13      | 13.00 |
| 8. Wisconsin.....      | 2 | 25      | 12.50 |
| 9. Ohio State.....     | 2 | 20      | 10.00 |
| 10. Indiana.....       | 1 | 9       | 9.00  |
| 11. Penn State.....    | 2 | 17      | 8.50  |

**STEALS**

| ## Team                | G | Steals | Avg/G |
|------------------------|---|--------|-------|
| 1. Northwestern.....   | 2 | 18     | 9.00  |
| 2. Ohio State.....     | 2 | 16     | 8.00  |
| 3. Minnesota.....      | 2 | 14     | 7.00  |
| 4. Michigan State..... | 2 | 10     | 5.00  |
| 5. Purdue.....         | 1 | 4      | 4.00  |
| Illinois.....          | 2 | 8      | 4.00  |
| Michigan.....          | 2 | 8      | 4.00  |
| 8. Iowa.....           | 2 | 7      | 3.50  |
| 9. Wisconsin.....      | 2 | 5      | 2.50  |
| 10. Indiana.....       | 1 | 2      | 2.00  |
| Penn State.....        | 2 | 4      | 2.00  |

**TURNOVER MARGIN**

| ## Team                | G | TEAM | Avg  | OPP | Avg Margin |
|------------------------|---|------|------|-----|------------|
| 1. Northwestern.....   | 2 | 18   | 9.0  | 27  | 13.5 +4.50 |
| 2. Illinois.....       | 2 | 14   | 7.0  | 20  | 10.0 +3.00 |
| 3. Ohio State.....     | 2 | 23   | 11.5 | 27  | 13.5 +2.00 |
| 4. Wisconsin.....      | 2 | 12   | 6.0  | 13  | 6.5 +0.50  |
| Michigan.....          | 2 | 15   | 7.5  | 16  | 8.0 +0.50  |
| Minnesota.....         | 2 | 26   | 13.0 | 27  | 13.5 +0.50 |
| 7. Indiana.....        | 1 | 11   | 11.0 | 10  | 10.0 -1.00 |
| 8. Iowa.....           | 2 | 24   | 12.0 | 20  | 10.0 -2.00 |
| 9. Michigan State..... | 2 | 26   | 13.0 | 21  | 10.5 -2.50 |
| 10. Penn State.....    | 2 | 20   | 10.0 | 14  | 7.0 -3.00  |
| 11. Purdue.....        | 1 | 12   | 12.0 | 6   | 6.0 -6.00  |

**ASSIST/TURNOVER RATIO**

| ## Team                | G | Asst | Avg Turn | Avg Ratio |           |
|------------------------|---|------|----------|-----------|-----------|
| 1. Illinois.....       | 2 | 44   | 22.0     | 14        | 7.0 3.14  |
| 2. Wisconsin.....      | 2 | 25   | 12.5     | 12        | 6.0 2.08  |
| 3. Michigan.....       | 2 | 30   | 15.0     | 15        | 7.5 2.00  |
| 4. Northwestern.....   | 2 | 33   | 16.5     | 18        | 9.0 1.83  |
| 5. Michigan State..... | 2 | 33   | 16.5     | 26        | 13.0 1.27 |
| 6. Iowa.....           | 2 | 28   | 14.0     | 24        | 12.0 1.17 |
| 7. Purdue.....         | 1 | 13   | 13.0     | 12        | 12.0 1.08 |
| 8. Minnesota.....      | 2 | 28   | 14.0     | 26        | 13.0 1.08 |
| 9. Ohio State.....     | 2 | 20   | 10.0     | 23        | 11.5 0.87 |
| 10. Penn State.....    | 2 | 17   | 8.5      | 20        | 10.0 0.85 |
| 11. Indiana.....       | 1 | 9    | 9.0      | 11        | 11.0 0.82 |

**OFFENSIVE REBOUNDS**

| ## Team                | G | No. | Avg/G |
|------------------------|---|-----|-------|
| 1. Michigan State..... | 2 | 42  | 21.00 |
| 2. Minnesota.....      | 2 | 26  | 13.00 |
| 3. Penn State.....     | 2 | 25  | 12.50 |
| 4. Purdue.....         | 1 | 12  | 12.00 |
| 5. Indiana.....        | 1 | 9   | 9.00  |
| Illinois.....          | 2 | 18  | 9.00  |
| 7. Ohio State.....     | 2 | 14  | 7.00  |
| 8. Michigan.....       | 2 | 13  | 6.50  |
| 9. Northwestern.....   | 2 | 11  | 5.50  |
| 10. Iowa.....          | 2 | 10  | 5.00  |
| 11. Wisconsin.....     | 2 | 9   | 4.50  |

**DEFENSIVE REBOUNDS**

| ## Team                | G | No. | Avg/G |
|------------------------|---|-----|-------|
| 1. Purdue.....         | 1 | 35  | 35.00 |
| 2. Illinois.....       | 2 | 56  | 28.00 |
| 3. Michigan State..... | 2 | 54  | 27.00 |
| 4. Wisconsin.....      | 2 | 53  | 26.50 |
| 5. Penn State.....     | 2 | 52  | 26.00 |
| 6. Minnesota.....      | 2 | 43  | 21.50 |
| Michigan.....          | 2 | 43  | 21.50 |
| 8. Indiana.....        | 1 | 21  | 21.00 |
| 9. Northwestern.....   | 2 | 41  | 20.50 |
| 10. Iowa.....          | 2 | 40  | 20.00 |
| 11. Ohio State.....    | 2 | 39  | 19.50 |

**3-POINT FIELD GOALS MADE**

| ## Team                | G | 3FG | Avg/G |
|------------------------|---|-----|-------|
| 1. Michigan.....       | 2 | 19  | 9.50  |
| Iowa.....              | 2 | 19  | 9.50  |
| 3. Northwestern.....   | 2 | 17  | 8.50  |
| 4. Penn State.....     | 2 | 16  | 8.00  |
| Ohio State.....        | 2 | 16  | 8.00  |
| 6. Michigan State..... | 2 | 15  | 7.50  |
| 7. Minnesota.....      | 2 | 14  | 7.00  |
| 8. Wisconsin.....      | 2 | 11  | 5.50  |
| 9. Indiana.....        | 1 | 5   | 5.00  |
| 10. Purdue.....        | 1 | 4   | 4.00  |
| 11. Illinois.....      | 2 | 7   | 3.50  |

**2008-09 Big Ten Conference  
CONFERENCE BASKETBALL STATISTICS  
Through games of Jan 04, 2009 (Conference games only)**

| STANDINGS           | -----CONFERENCE----- |       |      |      | -----OVERALL----- |       |      |      | WINNING STREAK |     |
|---------------------|----------------------|-------|------|------|-------------------|-------|------|------|----------------|-----|
|                     | W-L                  | Pct   | PF   | PA   | W-L               | Pct   | PF   | PA   | Team           | NO. |
| Michigan State..... | 2-0                  | 1.000 | 73.5 | 62.0 | 2-0               | 1.000 | 73.5 | 62.0 | Michigan State | 2   |
| Wisconsin.....      | 2-0                  | 1.000 | 69.0 | 61.0 | 2-0               | 1.000 | 69.0 | 61.0 | Wisconsin      | 2   |
| Illinois.....       | 1-1                  | .500  | 67.5 | 70.5 | 1-1               | .500  | 67.5 | 70.5 | Minnesota      | 1   |
| Michigan.....       | 1-1                  | .500  | 67.5 | 68.5 | 1-1               | .500  | 67.5 | 68.5 | Michigan       | 1   |
| Iowa.....           | 1-1                  | .500  | 65.0 | 64.0 | 1-1               | .500  | 65.0 | 64.0 | Iowa           | 1   |
| Ohio State.....     | 1-1                  | .500  | 63.5 | 66.5 | 1-1               | .500  | 63.5 | 66.5 |                |     |
| Minnesota.....      | 1-1                  | .500  | 63.0 | 64.5 | 1-1               | .500  | 63.0 | 64.5 |                |     |
| Penn State.....     | 1-1                  | .500  | 61.0 | 61.0 | 1-1               | .500  | 61.0 | 61.0 |                |     |
| Purdue.....         | 0-1                  | .000  | 67.0 | 71.0 | 0-1               | .000  | 67.0 | 71.0 |                |     |
| Indiana.....        | 0-1                  | .000  | 60.0 | 65.0 | 0-1               | .000  | 60.0 | 65.0 |                |     |
| Northwestern.....   | 0-2                  | .000  | 61.5 | 69.0 | 0-2               | .000  | 61.5 | 69.0 |                |     |

**TEAM SUMMARIES**

| Team                | G | PF-PA   | Avg Score | Margin | FG-FGA | Pct  | 3FG-FGA | Pct  | FT-FTA | Pct  | RebF | RebA | Margin |
|---------------------|---|---------|-----------|--------|--------|------|---------|------|--------|------|------|------|--------|
| Illinois.....       | 2 | 135-141 | 67.5-70.5 | -3.0   | 58-132 | .439 | 7-28    | .250 | 12-17  | .706 | 74   | 77   | -1.5   |
| Indiana.....        | 1 | 60-65   | 60.0-65.0 | -5.0   | 19-44  | .432 | 5-13    | .385 | 17-22  | .773 | 30   | 27   | +3.0   |
| Iowa.....           | 2 | 130-128 | 65.0-64.0 | +1.0   | 43-87  | .494 | 19-42   | .452 | 25-34  | .735 | 50   | 53   | -1.5   |
| Michigan.....       | 2 | 135-137 | 67.5-68.5 | -1.0   | 46-104 | .442 | 19-51   | .373 | 24-33  | .727 | 56   | 63   | -3.5   |
| Michigan State..... | 2 | 147-124 | 73.5-62.0 | +11.5  | 55-126 | .437 | 15-34   | .441 | 22-31  | .710 | 96   | 55   | +20.5  |
| Minnesota.....      | 2 | 126-129 | 63.0-64.5 | -1.5   | 46-112 | .411 | 14-41   | .341 | 20-27  | .741 | 69   | 79   | -5.0   |
| Northwestern.....   | 2 | 123-138 | 61.5-69.0 | -7.5   | 45-106 | .425 | 17-54   | .315 | 16-24  | .667 | 52   | 93   | -20.5  |
| Ohio State.....     | 2 | 127-133 | 63.5-66.5 | -3.0   | 41-96  | .427 | 16-34   | .471 | 29-41  | .707 | 53   | 65   | -6.0   |
| Penn State.....     | 2 | 122-122 | 61.0-61.0 | +0.0   | 42-113 | .372 | 16-43   | .372 | 22-31  | .710 | 77   | 56   | +10.5  |
| Purdue.....         | 1 | 67-71   | 67.0-71.0 | -4.0   | 24-63  | .381 | 4-16    | .250 | 15-27  | .556 | 47   | 41   | +6.0   |
| Wisconsin.....      | 2 | 138-122 | 69.0-61.0 | +8.0   | 51-100 | .510 | 11-28   | .393 | 25-32  | .781 | 62   | 57   | +2.5   |

**ATTENDANCE**

| Team           | HOME GAMES | Avg   | AWAY GAMES | Avg   | NEUT GAMES | Avg | ALL GAMES | Avg   |
|----------------|------------|-------|------------|-------|------------|-----|-----------|-------|
| Illinois       | 0-0        | 0     | 2-26948    | 13474 | 0-0        | 0   | 2-26948   | 13474 |
| Indiana        | 0-0        | 0     | 1-11161    | 11161 | 0-0        | 0   | 1-11161   | 11161 |
| Iowa           | 1-11161    | 11161 | 1-14946    | 14946 | 0-0        | 0   | 2-26107   | 13054 |
| Michigan       | 2-23958    | 11979 | 0-0        | 0     | 0-0        | 0   | 2-23958   | 11979 |
| Michigan State | 0-0        | 0     | 2-22742    | 11371 | 0-0        | 0   | 2-22742   | 11371 |
| Minnesota      | 2-29250    | 14625 | 0-0        | 0     | 0-0        | 0   | 2-29250   | 14625 |
| Northwestern   | 1-8117     | 8117  | 1-5525     | 5525  | 0-0        | 0   | 2-13642   | 6821  |
| Ohio State     | 1-14946    | 14946 | 1-14625    | 14625 | 0-0        | 0   | 2-29571   | 14786 |
| Penn State     | 1-5525     | 5525  | 1-17230    | 17230 | 0-0        | 0   | 2-22755   | 11378 |
| Purdue         | 1-14036    | 14036 | 0-0        | 0     | 0-0        | 0   | 1-14036   | 14036 |
| Wisconsin      | 1-17230    | 17230 | 1-11046    | 11046 | 0-0        | 0   | 2-28276   | 14138 |
| Totals         | 10-124223  | 12422 | 10-124223  | 12422 | 0-0        | 0   | 10-124223 | 12422 |

2008-09 Big Ten Conference  
 Conference Statistical Ranking Comparison  
 Through games of Jan 04, 2009 (Conference games only)

| Team                | Offense |        |         |         | Defense |        |         |         |
|---------------------|---------|--------|---------|---------|---------|--------|---------|---------|
|                     | Scoring | FG-Pct | 3FG-Pct | Rebound | Scoring | FG-Pct | 3FG-Pct | Rebound |
| Illinois.....       | 3       | 4      | 10      | 4       | 10      | 6      | 5       | 8       |
| Indiana.....        | 11      | 6      | 5       | 7       | 6       | 8      | 7       | 2       |
| Iowa.....           | 6       | 2      | 2       | 11      | 4       | 10     | 11      | 1       |
| Michigan.....       | 3       | 3      | 6       | 8       | 8       | 11     | 8       | 6       |
| Michigan State..... | 1       | 5      | 3       | 1       | 3       | 3      | 2       | 3       |
| Minnesota.....      | 8       | 9      | 8       | 5       | 5       | 1      | 6       | 9       |
| Northwestern.....   | 9       | 8      | 9       | 10      | 9       | 2      | 10      | 11      |
| Ohio State.....     | 7       | 7      | 1       | 9       | 7       | 9      | 9       | 7       |
| Penn State.....     | 10      | 11     | 7       | 3       | 1       | 7      | 4       | 4       |
| Purdue.....         | 5       | 10     | 10      | 2       | 11      | 5      | 1       | 10      |
| Wisconsin.....      | 2       | 1      | 4       | 6       | 1       | 4      | 3       | 5       |

| Team                | FT-Pct | 3FGs | Other  |        |         | Scoring Margin | Rebound Margin | Turnovr Margin | Asst/TO Ratio |
|---------------------|--------|------|--------|--------|---------|----------------|----------------|----------------|---------------|
|                     |        |      | Blocks | Steals | Assists |                |                |                |               |
| Illinois.....       | 9      | 11   | 5      | 5      | 1       | 7              | 6              | 2              | 1             |
| Indiana.....        | 2      | 9    | 9      | 10     | 10      | 10             | 4              | 7              | 11            |
| Iowa.....           | 4      | 1    | 9      | 8      | 5       | 3              | 6              | 8              | 6             |
| Michigan.....       | 5      | 1    | 6      | 5      | 4       | 5              | 8              | 4              | 3             |
| Michigan State..... | 6      | 6    | 3      | 4      | 2       | 1              | 1              | 9              | 5             |
| Minnesota.....      | 3      | 7    | 1      | 3      | 5       | 6              | 9              | 4              | 8             |
| Northwestern.....   | 10     | 3    | 3      | 1      | 2       | 11             | 11             | 1              | 4             |
| Ohio State.....     | 8      | 4    | 6      | 2      | 9       | 7              | 10             | 3              | 9             |
| Penn State.....     | 6      | 4    | 6      | 10     | 11      | 4              | 2              | 10             | 10            |
| Purdue.....         | 11     | 10   | 2      | 5      | 7       | 9              | 3              | 11             | 7             |
| Wisconsin.....      | 1      | 8    | 11     | 9      | 8       | 2              | 5              | 4              | 2             |

**2008-09 Big Ten Conference  
Conference Individual Highs  
Through games of Jan 04, 2009 (Conference games only)**

INDIVIDUAL PLAYER GAME HIGHS

---

|                           |              |  |
|---------------------------|--------------|--|
| POINTS.....               | 27           | Diebler, Jon (Ohio State) vs IOWA (12/31/08)             |
|                           | 26           | Battle, Talor (Penn State) vs NORTHWESTERN (12/31/08)    |
|                           | 26           | Pringle, Stanley (Penn State) at Wisconsin (01/03/09)    |
| FIELD GOALS MADE.....     | 10           | Landry, Marcus (Wisconsin) vs PENN STATE (01/03/09)      |
|                           | 10           | Pringle, Stanley (Penn State) at Wisconsin (01/03/09)    |
| FIELD GOAL ATTEMPTS.....  | 20           | Battle, Talor (Penn State) vs NORTHWESTERN (12/31/08)    |
|                           | 18           | Lucas, Kalin (Michigan State) at Minnesota (12/31/08)    |
|                           | 18           | Pringle, Stanley (Penn State) at Wisconsin (01/03/09)    |
| FIELD GOAL PERCENTAGE.... | .692 (9-13)  | Morgan, Raymar (Michigan State) at Northwestern (1/3/09) |
|                           | .667 (8-12)  | Diebler, Jon (Ohio State) vs IOWA (12/31/08)             |
|                           | .667 (8-12)  | Gatens, Matt (Iowa) at Ohio State (12/31/08)             |
|                           | .667 (10-15) | Landry, Marcus (Wisconsin) vs PENN STATE (01/03/09)      |
| 3 PT FG MADE.....         | 7            | Diebler, Jon (Ohio State) vs IOWA (12/31/08)             |
|                           | 7            | Battle, Talor (Penn State) vs NORTHWESTERN (12/31/08)    |
| 3 PT FG ATTEMPTS.....     | 13           | Battle, Talor (Penn State) vs NORTHWESTERN (12/31/08)    |
|                           | 11           | Diebler, Jon (Ohio State) at Minnesota (01/03/09)        |
|                           | 11           | Moore, Craig (Northwestern) vs MICHIGAN STATE (1/3/09)   |
| 3 PT PERCENTAGE.....      | .700 (7-10)  | Diebler, Jon (Ohio State) vs IOWA (12/31/08)             |
|                           | .625 (5-8)   | Bawinkel, Devan (Iowa) at Ohio State (12/31/08)          |
|                           | .625 (5-8)   | Novak, Zack (Michigan) vs WISCONSIN (12/31/08)           |
| FREE THROWS MADE.....     | 10           | Tate, Cyrus (Iowa) vs INDIANA (01/03/09)                 |
|                           | 8            | Johnson, JaJuan (Purdue) vs ILLINOIS (12/30/08)          |
| FREE THROW ATTEMPTS.....  | 11           | Tate, Cyrus (Iowa) vs INDIANA (01/03/09)                 |
|                           | 10           | Johnson, JaJuan (Purdue) vs ILLINOIS (12/30/08)          |
| FREE THROW PERCENTAGE.... | .909 (10-11) | Tate, Cyrus (Iowa) vs INDIANA (01/03/09)                 |
|                           | .800 (8-10)  | Johnson, JaJuan (Purdue) vs ILLINOIS (12/30/08)          |
| REBOUNDS.....             | 15           | Johnson, JaJuan (Purdue) vs ILLINOIS (12/30/08)          |
|                           | 13           | Morgan, Raymar (Michigan State) at Northwestern (1/3/09) |
| ASSISTS.....              | 10           | McCamey, Demetri (Illinois) at Michigan (01/04/09)       |
|                           | 9            | Lucas, Kalin (Michigan State) at Northwestern (1/3/09)   |
| STEALS.....               | 5            | Diebler, Jon (Ohio State) at Minnesota (01/03/09)        |
|                           | 4            | Johnson, Damian (Minnesota) vs OHIO STATE (01/03/09)     |
|                           | 4            | Coble, Kevin (Northwestern) vs MICHIGAN STATE (1/3/09)   |
| BLOCKED SHOTS.....        | 4            | Iverson, Colton (Minnesota) vs OHIO STATE (01/03/09)     |
|                           | 3            | Johnson, JaJuan (Purdue) vs ILLINOIS (12/30/08)          |
|                           | 3            | Johnson, Damian (Minnesota) vs MICHIGAN STATE (12/31/08) |
|                           | 3            | Johnson, Damian (Minnesota) vs OHIO STATE (01/03/09)     |
|                           | 3            | Roe, Delvon (Michigan State) at Northwestern (1/3/09)    |
| TURNOVERS.....            | 6            | Kelly, Jake (Iowa) at Ohio State (12/31/08)              |
|                           | 6            | Pringle, Stanley (Penn State) vs NORTHWESTERN (12/31/08) |

**2008-09 Big Ten Conference  
Conference Team Highs  
Through games of Jan 04, 2009 (Conference games only)**

TEAM HIGHS (highest totals made by)

---

|                           |              |   |
|---------------------------|--------------|---|
| POINTS.....               | 77           | Michigan State at Northwestern (1/3/09) |
|                           | 74           | Michigan vs ILLINOIS (01/04/09)         |
| FIELD GOALS MADE.....     | 30           | Illinois at Purdue (12/30/08)           |
|                           | 29           | Michigan State at Northwestern (1/3/09) |
| FIELD GOAL ATTEMPTS.....  | 70           | Illinois at Purdue (12/30/08)           |
|                           | 64           | Michigan State at Minnesota (12/31/08)  |
| FIELD GOAL PERCENTAGE.... | .587 (27-46) | Wisconsin at Michigan (12/31/08)        |
|                           | .523 (23-44) | Ohio State vs IOWA (12/31/08)           |
|                           | .523 (23-44) | Iowa at Ohio State (12/31/08)           |
| 3 PT FG MADE.....         | 14           | Iowa at Ohio State (12/31/08)           |
|                           | 11           | Penn State vs NORTHWESTERN (12/31/08)   |
|                           | 11           | Michigan vs ILLINOIS (01/04/09)         |
| 3 PT FG ATTEMPTS.....     | 29           | Northwestern vs MICHIGAN STATE (1/3/09) |
|                           | 28           | Iowa at Ohio State (12/31/08)           |
| 3 PT PERCENTAGE.....      | .600 (9-15)  | Ohio State vs IOWA (12/31/08)           |
|                           | .563 (9-16)  | Michigan State at Northwestern (1/3/09) |
| FREE THROWS MADE.....     | 20           | Iowa vs INDIANA (01/03/09)              |
|                           | 17           | Indiana at Iowa (01/03/09)              |
| FREE THROW ATTEMPTS.....  | 27           | Purdue vs ILLINOIS (12/30/08)           |
|                           | 27           | Iowa vs INDIANA (01/03/09)              |
| FREE THROW PERCENTAGE.... | .923 (12-13) | Michigan State at Minnesota (12/31/08)  |
|                           | .909 (10-11) | Minnesota vs OHIO STATE (01/03/09)      |
| REBOUNDS.....             | 49           | Michigan State at Minnesota (12/31/08)  |
|                           | 47           | Purdue vs ILLINOIS (12/30/08)           |
|                           | 47           | Michigan State at Northwestern (1/3/09) |
| ASSISTS.....              | 23           | Illinois at Michigan (01/04/09)         |
|                           | 22           | Michigan State at Northwestern (1/3/09) |
| STEALS.....               | 11           | Northwestern at Penn State (12/31/08)   |
|                           | 9            | Ohio State at Minnesota (01/03/09)      |
| BLOCKED SHOTS.....        | 7            | Minnesota vs OHIO STATE (01/03/09)      |
|                           | 5            | Purdue vs ILLINOIS (12/30/08)           |
|                           | 5            | Minnesota vs MICHIGAN STATE (12/31/08)  |
|                           | 5            | Michigan State at Northwestern (1/3/09) |
| TURNOVERS.....            | 14           | Iowa at Ohio State (12/31/08)           |
|                           | 14           | Penn State vs NORTHWESTERN (12/31/08)   |
|                           | 14           | Ohio State at Minnesota (01/03/09)      |
| FOULS.....                | 25           | Indiana at Iowa (01/03/09)              |
|                           | 22           | Iowa at Ohio State (12/31/08)           |

**2008-09 Big Ten Conference  
Conference Opponent Lows  
Through games of Jan 04, 2009 (Conference games only)**

OPPONENT LOWS (lowest totals allowed by)

---

|                           |              |   |
|---------------------------|--------------|---|
| POINTS.....               | 57           | Penn State vs NORTHWESTERN (12/31/08)   |
|                           | 58           | Michigan State at Minnesota (12/31/08)  |
| FIELD GOALS MADE.....     | 18           | Northwestern at Penn State (12/31/08)   |
|                           | 18           | Minnesota vs OHIO STATE (01/03/09)      |
| FIELD GOAL ATTEMPTS.....  | 43           | Indiana at Iowa (01/03/09)              |
|                           | 44           | Ohio State vs IOWA (12/31/08)           |
|                           | 44           | Iowa at Ohio State (12/31/08)           |
|                           | 44           | Iowa vs INDIANA (01/03/09)              |
| FIELD GOAL PERCENTAGE.... | .310 (18-58) | Northwestern at Penn State (12/31/08)   |
|                           | .346 (18-52) | Minnesota vs OHIO STATE (01/03/09)      |
| 3 PT FG MADE.....         | 1            | Purdue vs ILLINOIS (12/30/08)           |
|                           | 4            | Illinois at Purdue (12/30/08)           |
| 3 PT FG ATTEMPTS.....     | 9            | Purdue vs ILLINOIS (12/30/08)           |
|                           | 13           | Iowa vs INDIANA (01/03/09)              |
| 3 PT PERCENTAGE.....      | .111 (1-9)   | Purdue vs ILLINOIS (12/30/08)           |
|                           | .250 (4-16)  | Illinois at Purdue (12/30/08)           |
| FREE THROWS MADE.....     | 2            | Michigan vs ILLINOIS (01/04/09)         |
|                           | 3            | Penn State vs NORTHWESTERN (12/31/08)   |
| FREE THROW ATTEMPTS.....  | 3            | Michigan vs ILLINOIS (01/04/09)         |
|                           | 5            | Penn State vs NORTHWESTERN (12/31/08)   |
| FREE THROW PERCENTAGE.... | .556 (10-18) | Northwestern vs MICHIGAN STATE (1/3/09) |
|                           | .556 (15-27) | Illinois at Purdue (12/30/08)           |
| REBOUNDS.....             | 23           | Ohio State vs IOWA (12/31/08)           |
|                           | 23           | Iowa at Ohio State (12/31/08)           |
| ASSISTS.....              | 8            | Michigan State at Minnesota (12/31/08)  |
|                           | 8            | Wisconsin vs PENN STATE (01/03/09)      |
|                           | 8            | Minnesota vs OHIO STATE (01/03/09)      |
| STEALS.....               | 1            | Wisconsin vs PENN STATE (01/03/09)      |
|                           | 2            | Ohio State vs IOWA (12/31/08)           |
|                           | 2            | Wisconsin at Michigan (12/31/08)        |
|                           | 2            | Penn State at Wisconsin (01/03/09)      |
|                           | 2            | Iowa vs INDIANA (01/03/09)              |
| BLOCKED SHOTS.....        | 0            | Several                                 |
| TURNOVERS.....            | 4            | Penn State at Wisconsin (01/03/09)      |
|                           | 6            | Purdue vs ILLINOIS (12/30/08)           |
|                           | 6            | Wisconsin vs PENN STATE (01/03/09)      |
| FOULS.....                | 10           | Penn State at Wisconsin (01/03/09)      |
|                           | 10           | Illinois at Michigan (01/04/09)         |