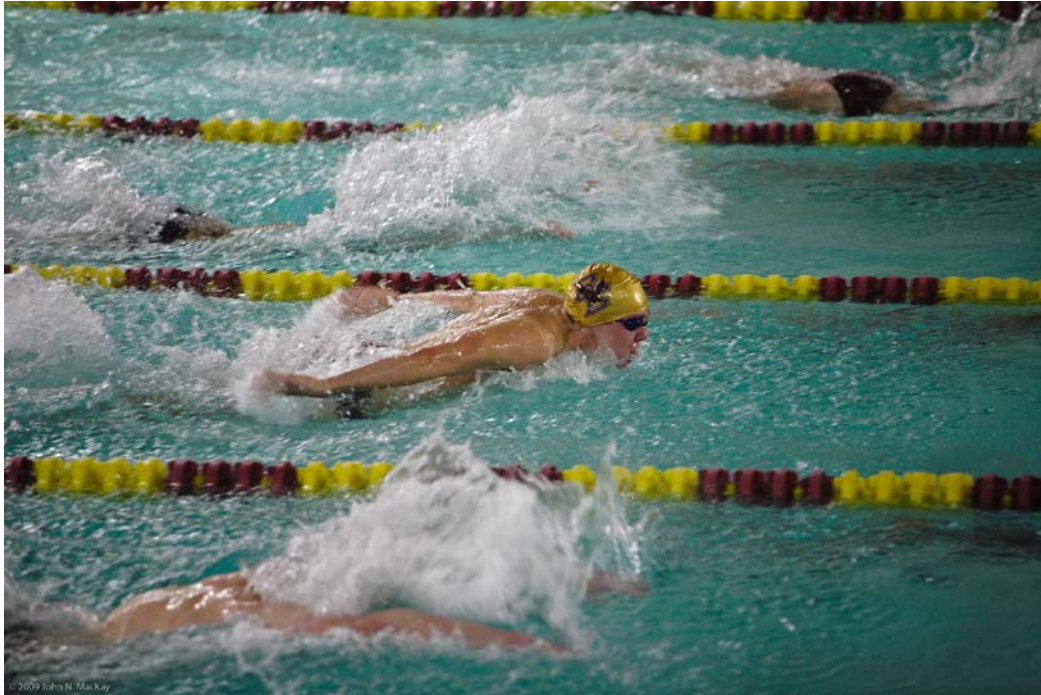


# ***BOSTON COLLEGE***

**E A G L E S**™



## ***2011-2012 MEN'S AND WOMEN'S SWIMMING & DIVING VISITING TEAM GUIDE***



# TABLE OF CONTENTS

Athletic Department Staff.....	2
General Information.....	3
Emergency Information .....	9
Appendices .....	13
Appendix A – Evacuation Plan.....	14
Appendix B - Sample Pre-Game Timeline .....	15
Appendix C – Directions to Flynn Recreation Complex.....	16
Appendix D - Map of Chestnut Hill, MA.....	17
Appendix E - Map of Boston College Main Campus .....	18
Appendix F - Map of MBTA .....	19



© 2009 John N. Mackay



# ATHLETIC DEPARTMENT STAFF

## MEET DIRECTOR

**Eric Zeckman**

Assistant Director – Facilities and Operations

Office: 617.552.2479

[eric.zeckman.1@bc.edu](mailto:eric.zeckman.1@bc.edu)

## ADMINISTRATION

**Tom Peters**

Senior Associate Athletics Director

Office: 617.552.4682

Cell: 617.438.3356

Fax: 617.552.4335

[peterste@bc.edu](mailto:peterste@bc.edu)

**Amy Coleman**

Administration Intern

Office: 617.552.6456

[amy.coleman@bc.edu](mailto:amy.coleman@bc.edu)

## SWIMMING & DIVING COACHING STAFF

**Tom Groden**

Head Swimming & Diving Coach

Office: 617.552.3037

Cell: 857.231.2801

Cell: 508.404.6908

Fax: 617.552.2614

[andrea.leonard.1@bc.edu](mailto:andrea.leonard.1@bc.edu)

**Erica Dour**

Diving Coach

Office: 617.552.3037

Cell: 781.789.0317

[Erica.dour.1@bc.edu](mailto:Erica.dour.1@bc.edu)

## EQUIPMENT

**David McKenna**

Assistant Equipment Manager

Office: 617.552.3013

[david.mckenna.3@bc.edu](mailto:david.mckenna.3@bc.edu)

## FLYNN COMPLEX

**Eric Zeckman**

Assistant Director – Facilities and Operations

Office: 617.552.2479

[eric.zeckman.1@bc.edu](mailto:eric.zeckman.1@bc.edu)

## MEDIA RELATIONS

**Ashley Robbins**

Media Relations Assistant

Office: 617.552.4508

[guerinca@bc.edu](mailto:guerinca@bc.edu)

## OPERATIONS

**Matt Conway**

Assistant AD, Operations

Office: 617.552.6672

Cell: 857.233.3557

Fax: 617.552.4335

[conwayml@bc.edu](mailto:conwayml@bc.edu)

**Kirsten Britton**

Events Administrator

Office: 617.552.2186

Cell: 857.231.2826

Fax: 617.552.4335

[brittoki@bc.edu](mailto:brittoki@bc.edu)

**Billy Flutie**

Operations (Visiting Team Liaison)

Office: 617.552.2628

Cell: 617.835.4882

Fax: 617.552.4335

[flutiew@bc.edu](mailto:flutiew@bc.edu)

## SPORTS MEDICINE

**Colin McCullough**

Resident Assistant, Sports Medicine

Office: 617.552.9113

[mccullco@bc.edu](mailto:mccullco@bc.edu)

## BOSTON COLLEGE POLICE

Emergency: 617.552.4444

From a campus phone: 2.4444

Non-Emergency: 617.552.4440

From a campus phone: 2.4440



---



# ***GENERAL INFORMATION***



# GENERAL INFORMATION

---

## Airports:

### Logan International Airport

Telephone: 800.23.LOGAN

Boston, MA

Miles to Boston College: 10

### Manchester-Boston Regional Airport

Telephone: 603.624.6556

Manchester, NH

Miles to Boston: 60

### T.F. Green Airport

Telephone: 401.737.8222

Providence, RI

Miles to Boston College: 55

### Hanscom Air Force Base

Telephone: 781.274.0010

Bedford, MA

Miles to Boston College: 20

No Commercial Service

## Bus Company:

### Peter Pan

Telephone: 800.343.9999

Contact: Lenny Rottenberg

Cell: 617.799.1732

## Car Rental:

### Alamo

Telephone: 877.222.9075

### Avis

Telephone: 800.230.4898

### Budget

Telephone: 800.527.0700

### Enterprise

Telephone: 800.261.7331

### Hertz

Telephone: 800.654.3131

### National

Telephone: 800.227.7368

## Concessions:

Concessions will **NOT** be available at the Flynn Recreation Complex.

## Driving Directions:

Please refer to Appendix C for directions to campus.

## Facility Information:

The natatorium is located within the William J. Flynn Recreation Complex. The pool is 8 lanes wide and 25 yards long with an attached diving well with two 1 meter springboards and one three meter springboard. Fan seating is available in the mezzanine/balcony area. The seating in the mezzanine/balcony is non-ADA accessible. Boston College Athletics asks if any guests require ADA seating, please contact the front desk upon arrival.



# GENERAL INFORMATION

---

## Filming Location:

Space is available for visiting teams to film on the upper deck of the pool area. Please check in with the Meet Director prior to setting up video equipment.

## Hotel Information:

### Holiday Inn Brookline

1200 Beacon St.  
Brookline, MA 02446  
Telephone: 617.277.1200  
Contact: Stephanie Urban  
Direct Line: 617.598.7637  
Email: [surban@brooklineinn.com](mailto:surban@brooklineinn.com)  
[www.holiday-inn.com/bos-brookline](http://www.holiday-inn.com/bos-brookline)

### Newton Marriott Hotel

2345 Commonwealth Avenue  
Newton, MA 02466  
Telephone: 617.969.1000  
Contact: Alyssa Werbela  
Direct Line: 617.630.3511  
Email: [Alyssa.werbela@marriott.com](mailto:Alyssa.werbela@marriott.com)  
[www.newtonmarriott.com](http://www.newtonmarriott.com)

### Sheraton Needham Hotel

100 Cabot St.  
Needham Heights, MA 02494  
Telephone: 781.444.1110  
Contact: Secil Kaufman  
Direct Line: 781.292.3869  
Email: [secil.kaufman@sheraton.com](mailto:secil.kaufman@sheraton.com)  
[www.starwoodhotels.com](http://www.starwoodhotels.com)

### Crowne Plaza Hotel (Boston- Newton)

320 Washington Street  
Newton, MA 02458  
Telephone: 617.630.2923  
Contact: Jennifer Rose  
Email: [jrose@cpbostonnewton.com](mailto:jrose@cpbostonnewton.com)

## Locker Room Facilities:

General public locker rooms are available for visiting teams. Personal belongings should not be left in the general locker room area. A designated team bag drop area will be assigned for each team on the pool deck. **Boston College does not provide towels, visiting teams are responsible for supplying their own.**

## Parking:

### Team Parking

- Visiting swimming and diving teams are instructed to park along Campanella Way in front of the Yawkey Athletics Center. Please refer to the campus map (Appendix E).

### Fan Parking

- Campus parking lots open for event attendees 1.5 hours prior to the start of the event.
- Individuals attending these events should park in the Beacon St. garage levels 3 & 4 or in the Commonwealth Avenue Garage above level 3.
- Parking Monday - Friday at 5:00 PM is \$3.00/hour to park in the garages with a daily maximum rate of \$25.00
- Parking Friday at 5:00 PM - Sunday is \$5.00 per exit
- No overnight parking in garages is permitted



# GENERAL INFORMATION

---

## ***Points of Local Interest:***

### **Faneuil Hall/Quincy Market:**

An easy drive from Boston College, Faneuil Hall has long been regarded as one of the finest attractions in the city of Boston. Cobblestone streets and a variety of performers populate this famous shopping area. Sample the food from the dozens of vendors inside Quincy Market or shop at the plethora of stores in the area.

### **The North End:**

Located across Route 93 from Faneuil Hall, the North End is famous for its small streets and Italian restaurants. A small close knit community with an overflow of history awaits any visitor.

### **Harvard Square, Cambridge:**

Harvard University as well as numerous shops and restaurants lie within the Harvard Square area. The beautiful landscape of the college is nestled against a maze of street performers and shopping areas.

### **Fenway Park: 617.471.3332**

Located in Kenmore Square, the home of the Boston Red Sox is the oldest park in Major League Baseball. This historic site has seen many of baseball's famous moments since opening in 1912.

### **The Museum of Science: 617.723.2500**

MOS is an interactive museum that explores the wonders of science through activities, exhibits, and programs located in downtown Boston. The Museum of Science also includes the Omni Theatre, an IMAX theatre. For more information please visit [www.mos.org](http://www.mos.org).

### **The Museum of Fine Arts: 617.267.9300**

Located a short distance from Boston College on Route 9 (Huntington Ave.), the Museum of Fine Arts is one of the leading fine arts museums in the country. For more information please visit [www.mfa.org](http://www.mfa.org).

### **The New England Aquarium: 617.973.5200**

Located right on the water in downtown Boston, the aquarium is a nationally recognized learning resource for people of all ages. Please visit [www.nea.org](http://www.nea.org) for more information.

### **Movie Theatres:**

AMC Chestnut Hill Cinema 5  
27 Boylston St. Chestnut Hill, MA  
1.888.262.4386

Kendall Square Cinema - Cambridge  
1 Kendall Square Cambridge, MA  
617.499.1996



# GENERAL INFORMATION

## **Post-game Meal Information:**

Visiting swimming and diving teams are asked to have their post-game meals delivered to their bus.

### **BC Dining Services**

(Boxed Lunches)  
Contact: David Early  
617.552.0311

### **Kelly's Roast Beef**

1227 Commonwealth Ave.  
Allston, MA 02134  
617.782.3999  
Contact: Dan Doherty or Artie Perrin

### **Bill's Pizzeria**

753 Beacon Street  
Newton, MA  
617.964.1116

### **Chick-Fil-A**

75 Middlesex Turnpike Suite 2110  
Burlington, MA 01803  
781.272.2110  
Contact: Juan Ortiz

### **Presto's Pizza**

1936 Beacon Street  
Brighton, MA  
617.232.4545

### **Comella's**

1 Boylston St  
Chestnut Hill, MA  
617-278-2400

## **Practice Times:**

The swimming pool is available to teams for warm-up one hour and thirty minutes prior to the start of the meet. If additional practice time is desired, please contact Head Coach Tom Groden at 617.552.3037.

Please complete and return the enclosed "Visiting Team Questionnaire" as soon as possible to:

### **Contact: Billy Flutie**

Office: 617.552.2628  
Cell: 617.835.4882  
Fax: 617.552.4335  
Email: [flutiew@bc.edu](mailto:flutiew@bc.edu)

## **Prohibited Items / Actions:**

1. No glass on pool deck.
2. No balloons in the natatorium (deck or pool mezzanine).
3. Per Massachusetts law, anyone entering the pool or dive well must take a cleansing soap shower prior to accessing pool.
4. Athletes and team staff are the only people allowed on the pool deck.
5. All spectators must remain on the pool mezzanine. If a spectator cannot access the pool mezzanine, they must contact the front desk upon arrival.



# GENERAL INFORMATION

---

## **Public Transportation:**

### **MBTA**

Telephone: 617.222.3200    Website: [www.mbta.com](http://www.mbta.com)    (Please see map in Appendix F).

## **Sports Medicine:**

The Athletic Training Room is located on main campus in room 124 on the West side of Conte Forum and will open two (2) hours prior to the start of the meet. Colin McCullough, Resident Assistant, Sports Medicine, will contact each school's athletic trainer prior to the meet to discuss specific athletic training needs. Please contact **Colin McCullough** at 617.552.9113 with any medical questions.

## **Tailgating:**

Please note that tailgating is NOT permitted.

## **Taxis:**

### **Newton Taxi**

Telephone: 617.244.6600

### **Red Cab**

Telephone: 617.789.3800

### **Veteran's Taxi**

Telephone: 617.527.0300

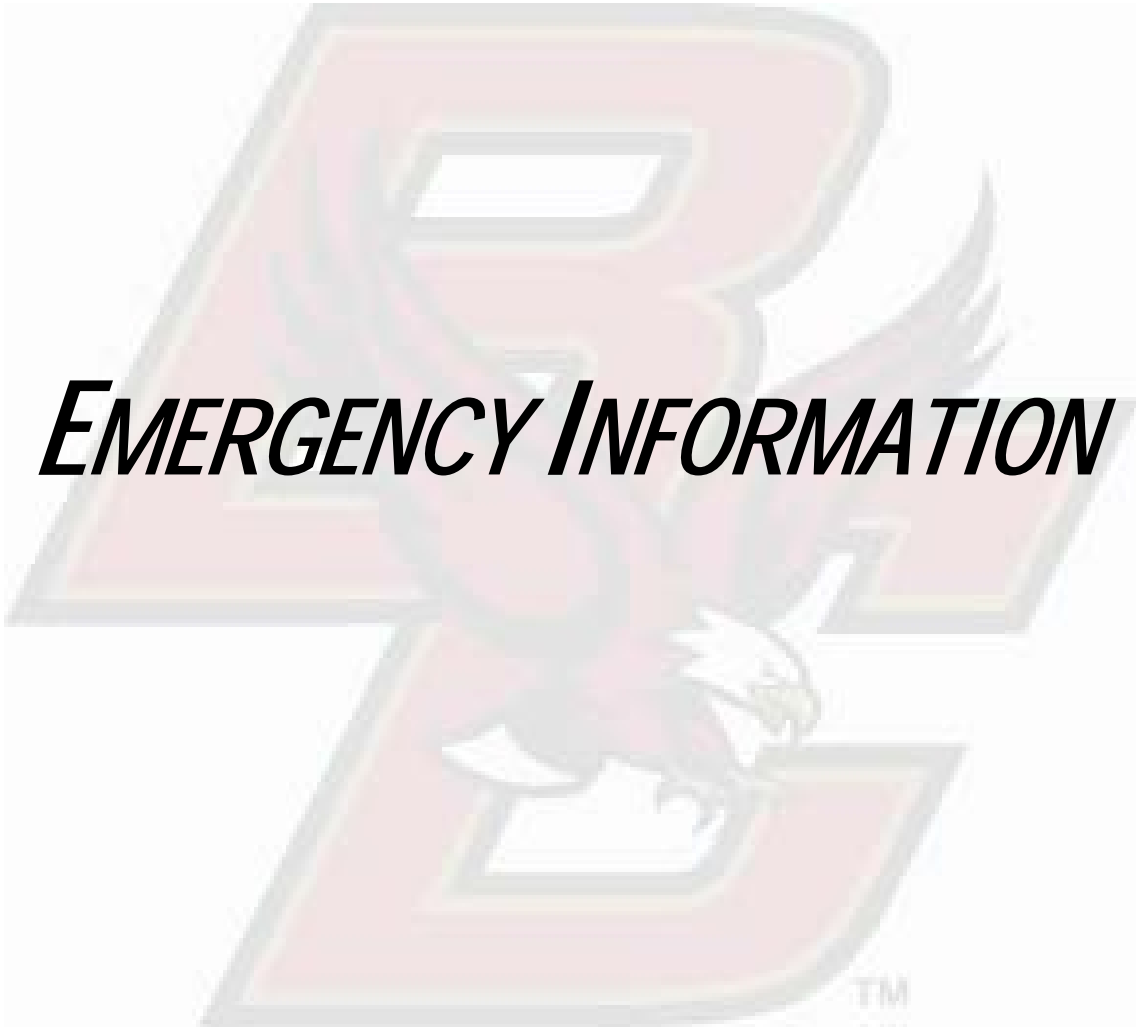
### **Yellow Cab**

Telephone: 617.536.3600

## **Tickets:**

There is no admission charged at the William J. Flynn Recreation Complex for home men's and women's swimming and diving meets.





# ***EMERGENCY INFORMATION***



# EMERGENCY INFORMATION

---

## **Emergency Phone Numbers:**

**Boston College Campus Police Emergency:** 617.552.4444

*From a campus phone dial: 2.4444*

**Boston College Campus Police Non-Emergency:** 617.552.4440

*From a campus phone dial: 2.4440*

**Sports Medicine Emergency Number:** 617.552.6666

*From a campus phone dial: 2.6666*

## **Emergency Phone Locations:**

**Pool Deck:** There are two emergency phones on the pool deck.

1. Behind main pool lifeguard stand.
2. Behind dive well lifeguard stand.

**Main Flynn Complex lobby:** Outside women's locker room entrance.

**Address:** William J. Flynn Student Recreation Complex 2603 Beacon St. Chestnut Hill, MA 02467

## **AED Locations:**

Pool Deck – behind main lifeguard stand (visiting team side)

Lobby – Main lobby outside women's locker room, by emergency phone

Basketball Wing – at the end of the ramp to the left, by water fountain

Fitness Wing – at the fitness attendant stand

\*If a student-athlete is injured and needs medical assistance/transportation, please call the Boston College Police Department at 617.552.4444 or on campus at 2.4444.



## Emergency Procedures:

### Fire Alarm

If the fire alarm sounds during a practice or competition, all athletes, spectators, coaches, and employees must exit the building. See Evacuation Maps (Appendix A) for emergency exits and follow the instructions from the lifeguards and/or Flynn Complex staff.

### Lightning

In the event of heavy lightning over the pool, practice or competition may be interrupted. Follow instructions from Flynn Complex staff.

### Power Outage

If the power goes out during a practice or competition, any person in the water must exit the pool. Everyone should remain in place (pool mezzanine, pool deck, or locker room) and wait for further instructions from Flynn Complex staff.

## Injuries:

### First Responder

- **In water:** Flynn Complex Lifeguard, then Sports Medicine Athletic Trainer
- **Out of water:** Sports Medicine Athletic Trainer
- If additional care is needed, the trainer signals a game management staff member to call BCPD (2.4444)
- BCPD requests the ambulance and guides it to the proper location
- Student-athletes will be transported to:
  - St. Elizabeth's Medical Center
  - Beth Israel Deaconess Medical Center (Level 1 Trauma Center).

## Home Team:

- A representative from Boston College (Assistant Coach) will go with the student-athlete to the hospital
- Parents may ride in the ambulance with the student-athlete at the discretion of the ambulance driver
- The Boston College athletic trainer will contact Bert Lenz, Director of Sports Medicine.
- Bert Lenz will contact Gene DeFilippo, Director of Athletics, if needed.

## Visiting Team:

- If a visiting team student-athlete is injured, the visiting team determines what representative, if any, will go with the student-athlete to the hospital.
- Parents may ride in the ambulance with the student-athlete at the discretion of the ambulance driver.
- The Boston College athletic trainer will contact Bert Lenz, Director of Sports Medicine.
- Bert Lenz will contact Gene DeFilippo, Director of Athletics, if needed.



# HOSPITAL DIRECTIONS

---

## ***St. Elizabeth's Medical Center:***

736 Cambridge St. Brighton, MA 02135

Hospital Main Number: 617.789.3000

From Main Campus (140 Commonwealth Ave. Chestnut Hill, MA 02467)

Exit the North side of campus and proceed directly across Commonwealth Avenue (Rte. 30) onto Lake Street. Follow Lake Street to the bottom of the hill and at the first traffic light turn right onto Washington Street. Follow Washington Street, going straight through two traffic lights. Approaching the third light, you will see the Medical Center in front of you on the right.

For the Emergency Room, go straight at the third light, drive past the Medical Center (on your right), turn right at the next light (Warren St.), and follow signs for the Emergency Room.

To reach the main entrance of the Medical Center, go straight at the third light, drive past the Medical Center (on you right), turn right at the next light (Warren St.) and the main drive will be your first right.

## ***Beth Israel Deaconess Medical Center:***

185 Pilgrim Rd., Boston, MA 02215

Hospital Main Number: 617.667.7000

From Main Campus (140 Commonwealth Ave. Chestnut Hill, MA 02467)

Go east on Commonwealth Ave. (Rt. 30) towards Boston  
Turn right onto Chestnut Hill Ave.  
Turn left onto Beacon St.  
Turn right onto Washington St.  
Take a slight left onto School St.  
School St. turns into Aspinwall Ave. (continue to follow Aspinwall for .5 miles)  
Turn left at Brookline Ave.  
Turn left at Francis St.  
Go right onto Pilgrim Rd.  
Emergency Room will be on the right.



---



# ***APPENDICES***





# APPENDIX - B

## Sample Timeline



### Sample 1:00pm Meet

<b>Actual Time</b>	<b>Time Until Meet</b>	<b>Protocol</b>
11:25am	1 hour 35 mins	Pool and Dive well open for warm up <i>Lanes 1-4 Boston College</i> <i>Lanes 5-8 Visiting Team</i> <i>Dive well all teams – Divers only</i>
12:30pm	30mins	Coaches and Officials meeting
12:53pm	7mins	Introductions
12:57pm	3mins	National Anthem
1:00pm		Meet Starts
4:00pm		Pool and Dive well open for cool down <i>Lanes 1-4 Boston College</i> <i>Lanes 5-8 Visiting Team</i>



## Directions to William J. Flynn Recreation

**GPS Address: 2597 Beacon St. Chestnut Hill, MA 02467**

### **From Points North and South:**

1. Take Interstate 95 (Route 128) to Exit 24 (Route 30).
2. Proceed east on Route 30, also known as Commonwealth Avenue, and follow for about five miles to Boston College.
3. Enter BC at the second entrance on the right, at St. Ignatius Church, and then turn right into campus
4. Follow Campanella Way (on-campus road) through campus and park along the curb in front of the Yawkey Athletic Center. Bus parking will be identified with A-frame signage.

### **From Points West:**

1. Take the Massachusetts Turnpike (Interstate 90) to Exit 17.
2. At the first set of lights off the exit ramp, take a right onto Centre Street.
3. Follow Centre Street to the fourth set of lights, and turn left onto Commonwealth Avenue.
4. Follow Commonwealth Avenue 1-1/2 miles to Boston College.
5. Enter BC at the second entrance on the right, at St. Ignatius Church, and then turn right into campus
6. Follow Campanella Way (on-campus road) through campus and park along the curb in front of the Yawkey Athletic Center. Bus parking will be identified with A-frame signage.

### **From Downtown Boston:**

1. Take the Massachusetts Turnpike (Interstate 90) to Exit 17.
2. Take a left over the bridge after passing the Sheraton Tara Hotel.
3. Take the first right onto Centre Street.
4. Follow Centre Street to the fourth set of lights, and turn left onto Commonwealth Avenue.
5. Follow Commonwealth Avenue 1-1/2 miles to Boston College.
6. Enter BC at the second entrance on the right, at St. Ignatius Church, and then turn right into campus
7. Follow Campanella Way (on-campus road) through campus and park along the curb in front of the Yawkey Athletic Center. Bus parking will be identified with A-frame signage.

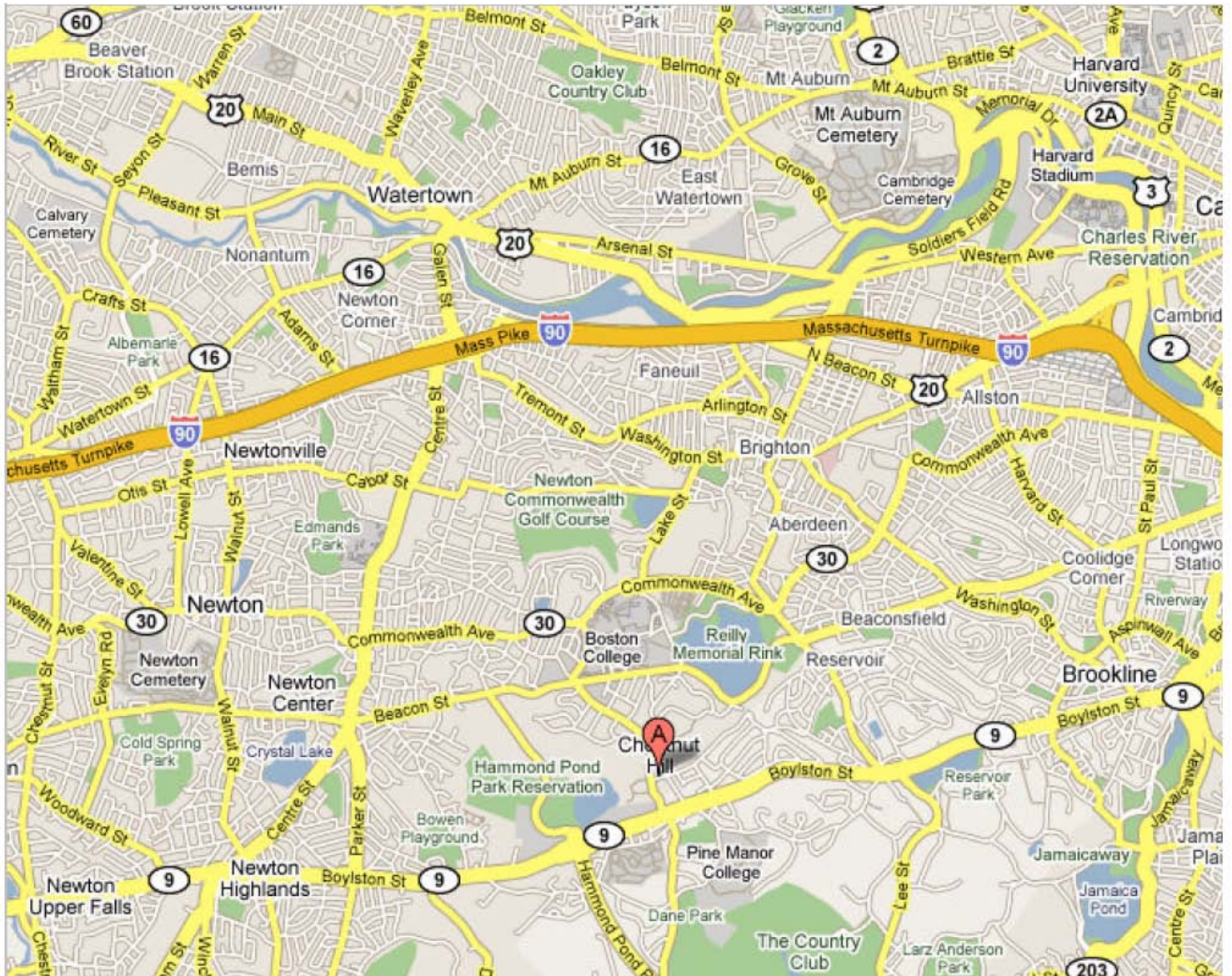
### **From Logan Airport:**

1. Follow signs to I-90 via the Williams Tunnel (Toll).
2. Take the Massachusetts Turnpike (I-90) to Exit 17.
3. Take a left over the bridge after passing the Sheraton Tara Hotel.
4. Take the first right onto Centre Street.
5. Follow Centre Street to the fourth set of lights, and turn left onto Commonwealth Avenue.
6. Follow Commonwealth Avenue 1-1/2 miles to Boston College.
7. Enter BC at the second entrance on the right, at St. Ignatius Church, and then turn right into campus
8. Follow Campanella Way (on-campus road) through campus and park along the curb in front of the Yawkey Athletic Center. Bus parking will be identified with A-frame signage.

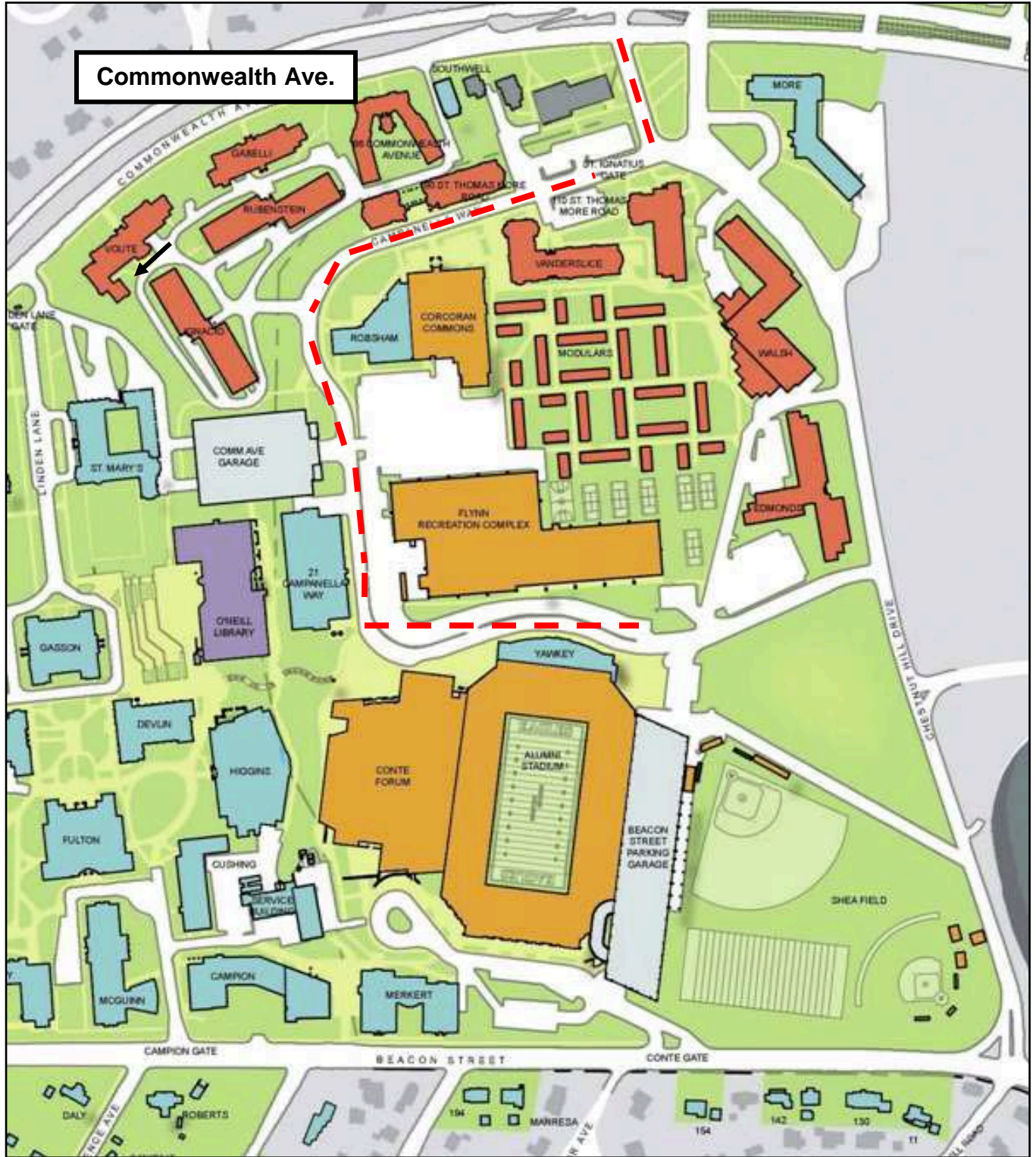


# APPENDIX - D

Map of Chestnut Hill, MA



# Map of Boston College Main Campus



# APPENDIX - F



## MASSACHUSETTS BAY TRANSPORTATION AUTHORITY RAPID TRANSIT MAP



### LEGEND

- TERMINAL STATION
- TRANSIT STATION
- TRANSFER STATION
- ACCESSIBLE
- PARKING
- TRANSFER TO COMMUTER RAIL

### NOTES

① CUSTOMER SERVICE & TRAVEL INFORMATION  
617-222-3200, 1-800-392-6100,  
TTY 617-222-5146  
WEB SITE: WWW.MBTA.COM

② MBTA POLICE: 617-222-1212  
TTY 617-222-1200

ELEVATOR/ESCALATOR/LIFT UPDATES: 800-292-6100

\*BOYLSTON: ACCESSIBLE FOR SILVER LINE WASHINGTON ST. ONLY.

\*\*STATE: ORANGE LINE ACCESSIBLE. BLUE LINE WHEELCHAIR ACCESS OUTBOUND SIDE ONLY. INBOUND RIDERS TRANSFER TO OUTBOUND TRAIN AT GOVERNMENT CENTER. EXIT STATE OUTBOUND.

\*\*\*BOWDOIN: OPEN 5:15 AM TO 6:30 PM WEEKDAYS ONLY

© August 2008

