

BOSTON COLLEGE

E A G L E S™



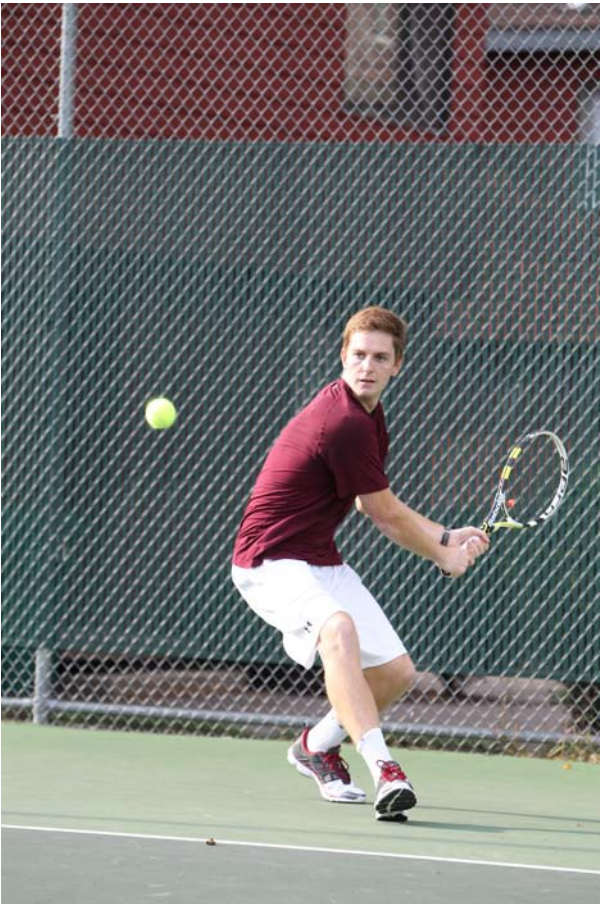
2012 TENNIS

VISITING TEAM GUIDE



TABLE OF CONTENTS

Athletic Department Staff.....	2
General Information.....	3
Emergency Information	11
Appendices	17
Appendix A – Directions to Main Campus.....	18
Appendix B – Map of Chestnut Hill, MA.....	19
Appendix C – Map of Boston College Main Campus	20
Appendix D – Map of MBTA	21
Appendix E – Directions to Weymouth Club	22
Appendix F – Map of Weymouth, MA	23



ATHLETIC DEPARTMENT STAFF

ADMINISTRATION

Jim O'Neill

Associate Athletics Director – Ticket Operations

Office: 617.552.3087

Fax: 617.552.2525

oneilljk@bc.edu

TENNIS COACHING STAFF

Scott Wilkins

Head Men's Tennis Coach

Office: 617.552.3169

Fax: 617.552.2614

mens.tennis@bc.edu

Nigel Bentley

Head Women's Tennis Coach

Office: 617.552.3171

Fax: 617.552.2614

womens.tennis@bc.edu

EQUIPMENT

Kelly Kenny

Equipment Manager - Olympic Sports

Office: 617.552.6202

kennykc@bc.edu

FLYNN COMPLEX

Eric Zeckman

Interim Director – Facilities and Operations

Office: 617.552.2479

eric.zeckman.1@bc.edu

WEYMOUTH CLUB

Steve Flanigan

Weymouth Club Controller

Office: 781.682.5885

Fax: 781.331.9155

sflanigan@weymouthclub.com

MEDIA RELATIONS

Suzanna Ollove

Media Relations Assistant

Office: 617.552.2004

suzanna.ollove@bc.edu

OPERATIONS

Matt Conway

Assistant Athletics Director - Operations

Office: 617.552.6672

Cell: 857.233.3557

Fax: 617.552.4335

conwayml@bc.edu

Kirsten Britton

Events Administrator

Office: 617.552.2186

Cell: 857.231.2826

Fax: 617.552.4335

brittoki@bc.edu

Billy Flutie

Operations (Visiting Team Liaison)

Office: 617.552.2628

Cell: 617.835.4882

Fax: 617.552.4335

flutiew@bc.edu

SPORTS MEDICINE

Beth Gillis

Sports Medicine

Office: 617.552.8266

elizabeth.gillis.1@bc.edu

BOSTON COLLEGE POLICE

Emergency: 617.552.4444

From a campus phone: 2.4444

Non-Emergency: 617.552.4440

From a campus phone: 2.4440





GENERAL INFORMATION



GENERAL INFORMATION

Airports:

Logan International Airport

Telephone: 800.23.LOGAN

Boston, MA

Miles to Boston College: 10

Manchester-Boston Regional Airport

Telephone: 603.624.6556

Manchester, NH

Miles to Boston: 60

T.F. Green Airport

Telephone: 401.737.8222

Providence, RI

Miles to Boston College: 55

Hanscom Air Force Base

Telephone: 781.274.0010

Bedford, MA

Miles to Boston College: 20

No Commercial Service

Bus Company:

Peter Pan

Telephone: 800.343.9999

Contact: Lenny Rottenberg

Cell: 617.799.1732

Car Rental:

Alamo

Telephone: 877.222.9075

Avis

Telephone: 800.230.4898

Budget

Telephone: 800.527.0700

Enterprise

Telephone: 800.261.7331

Hertz

Telephone: 800.654.3131

National

Telephone: 800.227.7368

Concessions:

Concessions will **NOT** be available at the Flynn Recreation Complex.

Driving Directions:

Please refer to Appendix A for directions to BC main campus and Appendix E for directions to the Weymouth Club.



GENERAL INFORMATION

Facility Information at Boston College:

The BC tennis courts are located just outside the William J. Flynn Recreation Complex. Boston College Athletics asks if any guests require ADA seating, please contact the front desk upon arrival.

Facility Information at Weymouth Club:

A majority of the scheduled home tennis matches are located at the Weymouth Club. The Weymouth Club is one of the largest and most well-rounded tennis facilities on the South Shore and Greater Boston Area. Weymouth Club has a total of 10 hard courts, all indoor. The club also has 3 clay courts that are indoors fall to spring and outdoor from Memorial Day to Labor Day. More information about the Weymouth Club can be found at www.weymouthclub.com

Hotel Information:

Holiday Inn Brookline (BC Event)

1200 Beacon St.
Brookline, MA 02446
Telephone: 617.277.1200
Contact: Stefanie LeBrun
Direct Line: 617.598.7637
Email: slebrun@brooklineinn.com
www.holiday-inn.com/bos-brookline

Newton Marriott Hotel (BC Event)

2345 Commonwealth Avenue
Newton, MA 02466
Telephone: 617.969.1000
Contact: Stephanie Gibson
Direct Line: 617.630.3511
Email: Stephanie.Gibson@Marriott.com
www.newtonmarriott.com

Sheraton Braintree Hotel (Weymouth Event)

37 Forbes Rd
Braintree, MA 02184
Telephone: 617.236.2000
Contact: Frank Guzzi
Direct Line: 617.236.6021
Email: frank.guzzi@sheraton.com

Holiday Inn Express Hotel Braintree (Weymouth Event)

190 Wood Rd
Braintree, MA 02184
Telephone: 781.848.1260
Contact: Raj Patel
Direct Line: 781.535.6404
Email: hiexbraintree@gmail.com

Sheraton Needham Hotel (BC Event)

100 Cabot St.
Needham Heights, MA 02494
Telephone: 781.444.1110
Contact: Nancy Hurley
Direct Line: 781.292.3845
Email: nancy.hurley@sheraton.com
www.starwoodhotels.com

Crowne Plaza Hotel – (Boston- Newton)

320 Washington Street
Newton, MA 02458
Telephone: 617.630.2923
Contact: Jennifer Rose
Email: jrose@cpbostonnewton.com



GENERAL INFORMATION

Locker Room Facilities at Boston College:

General public locker rooms are available for visiting teams. Personal belongings should not be left in the general locker room area. A designated team bag drop area will be assigned for each team. Boston College does not provide towels; visiting teams are responsible for supplying their own.

Locker Room Facilities at Weymouth Club:

Member only locker rooms are available for visiting teams in the main complex of the Weymouth Club. Personal belongings should not be left in the locker room area. Weymouth Club does not provide towels; visiting teams are responsible for supplying their own. Weymouth Club also provides a complimentary steam and sauna connected to the locker rooms.

Parking at Boston College:

Team Parking

- Visiting tennis teams are instructed to park along Campanella Way in front of the Yawkey Athletics Center. Please refer to the campus map in Appendix C.

Fan Parking

- Campus parking lots open for event attendees 1.5 hours prior to the start of the event.
- Individuals attending these events should park in the Beacon St. Garage levels 3 & 4 or in the Commonwealth Ave. Garage above level 3.
- Parking Monday – Friday at 5:00 PM is \$3.00/hour to park in the garages with a daily maximum rate of \$25.00
- Parking Friday at 5:00 PM – Sunday is \$5.00 per exit.
- No overnight parking in garages is permitted.

Parking at Weymouth Club:

Team Parking & Fan Parking

- Visiting tennis teams are instructed to park anywhere in the four lots that are surrounding the Weymouth Club. Fans are also welcomed to park anywhere in the four lots that are surrounding the Weymouth Club for no parking fee.



GENERAL INFORMATION

Points of Local Interest:

Faneuil Hall/Quincy Market:

An easy drive from Boston College, Faneuil Hall has long been regarded as one of the finest attractions in the city of Boston. Cobblestone streets and a variety of performers populate this famous shopping area. Sample the food from the dozens of vendors inside Quincy Market or shop at the plethora of stores in the area.

The North End:

Located across Route 93 from Faneuil Hall, the North End is famous for its small streets and Italian restaurants. A small close knit community with an overflow of history awaits any visitor.

Harvard Square, Cambridge:

Harvard University as well as numerous shops and restaurants lie within the Harvard Square area. The beautiful landscape of the college is nestled against a maze of street performers and shopping areas.

Fenway Park: 617.471.3332

Located in Kenmore Square, the home of the Boston Red Sox is the oldest park in Major League Baseball. This historic site has seen many of baseball's famous moments since opening in 1912.

The Museum of Science: 617.723.2500

MOS is an interactive museum that explores the wonders of science through activities, exhibits, and programs located in downtown Boston. The Museum of Science also includes the Omni Theatre, an IMAX theatre. For more information please visit www.mos.org.

The Museum of Fine Arts: 617.267.9300

Located a short distance from Boston College on Route 9 (Huntington Ave.), the Museum of Fine Arts is one of the leading fine arts museums in the country. For more information please visit www.mfa.org.

The New England Aquarium: 617.973.5200

Located right on the water in downtown Boston, the aquarium is a nationally recognized learning resource for people of all ages. Please visit www.neaq.org for more information.

Movie Theatres:

AMC Chestnut Hill Cinema 5
27 Boylston St. Chestnut Hill, MA
1.888.262.4386

Kendall Square Cinema - Cambridge
1 Kendall Square Cambridge, MA
617.499.1996



GENERAL INFORMATION

Post-game Meal Information:

Visiting tennis teams are asked to have their post-game meals delivered to their bus.

BC Dining Services

(Boxed Lunches)
Contact: David Early
617.552.0311

Kelly's Roast Beef (BC Event)

1227 Commonwealth Ave.
Allston, MA 02134
617.782.3999
Contact: Dan Doherty or Artie Perrin

Bill's Pizzeria (BC Event)

753 Beacon Street
Newton Center, MA
617.964.1116

Papa Gino's (Weymouth Event)

240 Grove St
Braintree, MA 02184
781.380.7744

Double GG Sub Shop (Weymouth Event)

303 Grove St
Braintree, MA 02184
781.843.6529

Presto's Pizza (BC Event)

1936 Beacon Street
Brighton, MA
617.232.4545

Flat Breads (BC Event)

11 Commonwealth Ave
Chestnut Hill, MA 02467
617.964.8484

Practice Times:

If practice time is desired, please contact Billy Flutie at 617.552.2628.

Please complete and return the enclosed "VisitingTeam Questionnaire" as soon as possible to:

Contact: Billy Flutie
Office: 617.552.2628
Cell: 617.835.4882
Fax: 617.552.4335
Email: flutiew@bc.edu



GENERAL INFORMATION

Prohibited Items / Actions:

The following items are prohibited within the Flynn Recreation and Weymouth Club Complexes:

- Smoking
- Alcoholic or other Beverages
- Artificial Noise Makers
- Audio or Video Recording Equipment
- Cameras with lenses larger than 4"
- Beach Balls
- Canes, Chains or Sticks or any length (non-medical)
- Cans, Glass or Metal Containers
- Coolers (unless containing medical supplies)
- Fireworks or any Explosive
- Folding Chairs
- Food and Beverage
- Helium Balloons
- Illegal Drugs
- Knives of any size
- Laser Pointers
- Pets (except service animals)
- Promotional items with commercial identification
- Tape Recorders
- Umbrellas
- Weapons of any description
- Signs, banners, flags
- Helium Balloons
- Illegal Drugs
- Knives of any size
- Laser Pointers
- Pets (except service animals)
- Umbrellas
- Weapons of any description



GENERAL INFORMATION

Public Transportation:

MBTA

Telephone: 617.222.3200 Website: www.mbta.com (Please see map in Appendix D).

Sports Medicine:

The Athletic Training Room is located on main campus in room 124 on the North side of Conte Forum. Please contact **Beth Gillis**, Assistant Director, Sports Medicine, at 617.552.8266 with any medical questions.

Tailgating:

Please note that tailgating is NOT permitted.

Taxis:

Newton Taxi

Telephone: 617.244.6600

Red Cab

Telephone: 617.789.3800

Veteran's Taxi

Telephone: 617.527.0300

Yellow Cab

Telephone: 617.536.3600

Radio:

Visiting Team radio requests must be submitted to the Boston College Media Relations office prior to your visit. Please contact **Suzanna Ollove** at 617.552.2004 with your radio request.

Tickets:

There is no admission charged at the William J. Flynn Recreation Complex or Weymouth Club for home men's and women's tennis matches.





EMERGENCY INFORMATION



Emergency Phone Numbers:

Boston College Campus Police Emergency: 617.552.4444

From a campus phone dial: 2.4444

Boston College Campus Police Non-Emergency: 617.552.4440

From a campus phone dial: 2.4440

Sports Medicine Emergency Number: 617.552.6666

From a campus phone dial: 2.6666

Emergency Phone Locations:

BC Main Flynn Complex lobby: Outside women's locker room entrance.

Address: William J. Flynn Student Recreation Complex 2603 Beacon St. Chestnut Hill, MA 02467

Bubble at Weymouth Club Complex: on wall in tennis courts.

GPS Address: Weymouth Club 75 Finnell Drive, Weymouth, MA 02188

AED Locations at Boston College:

Lobby – Main lobby outside women's locker room, by emergency phone

Basketball Wing – at the end of the ramp to the left, by water fountain

Fitness Wing – at the fitness attendant stand

*If a student-athlete is injured and needs medical assistance/transportation, please call the Boston College Police Department at 617.552.4444 or on campus at 2.4444.

AED Locations at Weymouth Club:

Main Weymouth Club Building – located in the Fitness Center

*If a student-athlete is injured and needs medical assistance/transportation, please call 911.



Emergency Procedures:

Fire Alarm

If the fire alarm sounds during a practice or competition, all athletes, spectators, coaches, and employees must exit the building. See Evacuation Maps (page 12) for emergency exits and follow the instructions from the lifeguards and or Flynn Complex staff.

Injuries:

First Responder

- Sports Medicine Athletic Trainer
- If additional care is needed, the trainer signals a game management staff member to call BCPD (2.4444)
- BCPD requests the ambulance and guides it to the proper location
- Student-athletes will be transported to:
 - St. Elizabeth's Medical Center (See directions on page 13)
 - Beth Israel Deaconess (Severe Head Injury Only) (See directions on page 13)

Home Team:

- A representative from Boston College (Assistant Coach) will go with the student-athlete to the hospital
- Parents may ride in the ambulance with the student-athlete at the discretion of the ambulance driver
- The Boston College athletic trainer will contact Bert Lenz, Director of Sports Medicine.
- Bert Lenz will contact Gene DeFilippo, Director of Athletics, if needed.

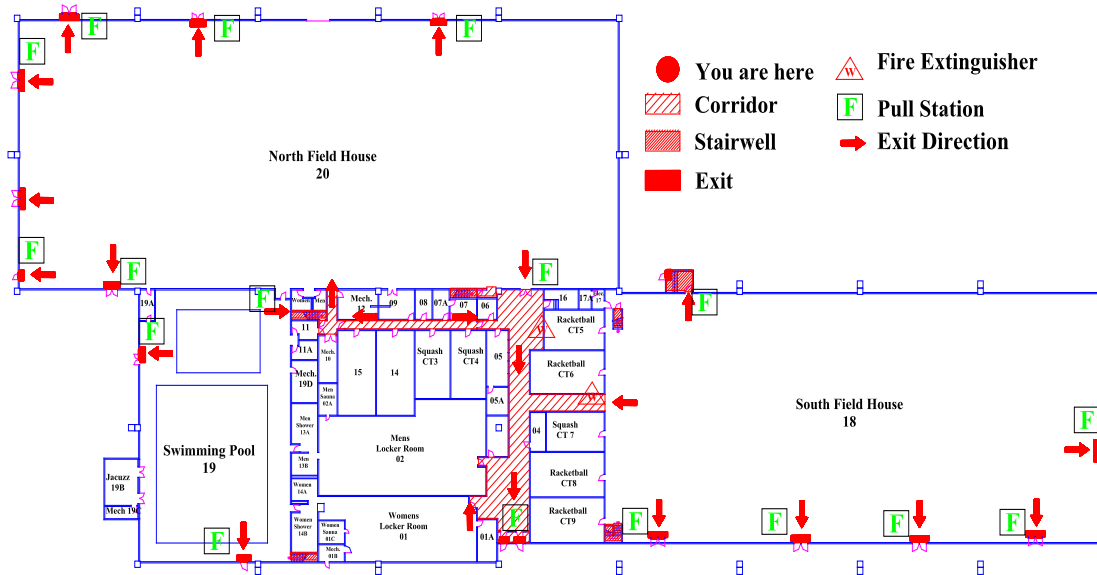
Visiting Team:

- If a visiting team student-athlete is injured, the visiting team determines what representative, if any, will go with the student-athlete to the hospital.
- Parents may ride in the ambulance with the student-athlete at the discretion of the ambulance driver.
- The Boston College athletic trainer will contact Bert Lenz, Director of Sports Medicine.
- Bert Lenz will contact Gene DeFilippo, Director of Athletics, if needed.

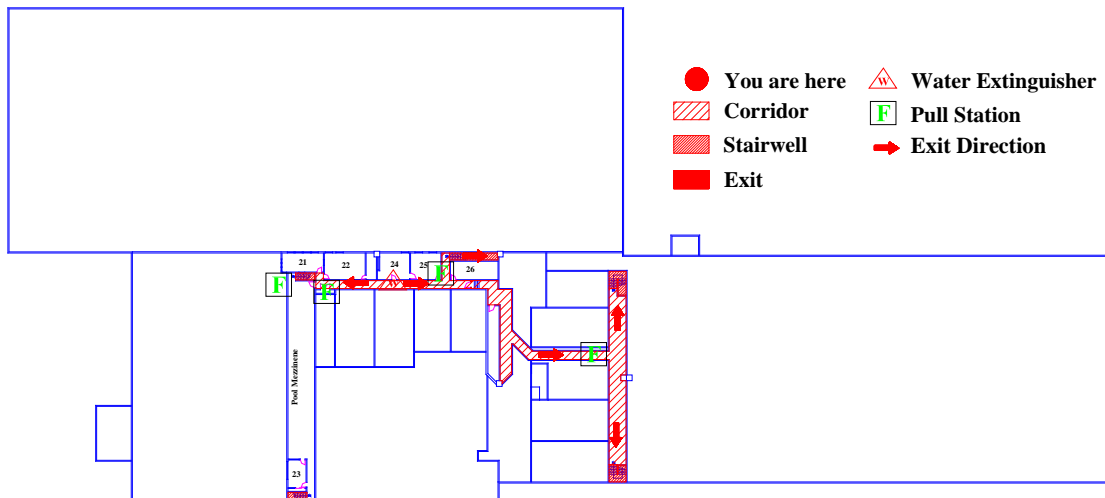


EVACUATION PLAN – FLYNN COMPLEX

Floor 1



Floor 2



HOSPITAL DIRECTIONS FOR BOSTON COLLEGE

St. Elizabeth's Medical Center:

736 Cambridge St. Brighton, MA 02135

Hospital Main Number: 617.789.3000

From BC Main Campus (140 Commonwealth Ave. Chestnut Hill, MA 02467)

Exit the North side of campus and proceed directly across Commonwealth Avenue (Rte. 30) onto Lake Street. Follow Lake Street to the bottom of the hill and at the first traffic light turn right onto Washington Street. Follow Washington Street, going straight through two traffic lights. Approaching the third light, you will see the Medical Center in front of you on the right. For the Emergency Room, go straight at the third light, drive past the Medical Center (on your right), turn right at the next light (Warren St.), and follow signs for the Emergency Room. To reach the main entrance of the Medical Center, go straight at the third light, drive past the Medical Center (on your right), turn right at the next light (Warren St.) and the main drive will be your first right.

Beth Israel Deaconess Medical Center:

185 Pilgrim Rd., Boston, MA 02215

Hospital Main Number: 617.667.7000

From BC Main Campus (140 Commonwealth Ave. Chestnut Hill, MA 02467)

Go east on Commonwealth Ave. (Rt. 30) towards Boston
Turn right onto Chestnut Hill Ave.
Turn left onto Beacon St.
Turn right onto Washington St.
Take a slight left onto School St.
School St. turns into Aspinwall Ave. (continue to follow Aspinwall for .5 miles)
Turn left at Brookline Ave.
Turn left at Francis St.
Go right onto Pilgrim Rd.
Emergency Room will be on the right.



HOSPITAL DIRECTIONS FOR WEYMOUTH CLUB

South Shore Hospital:

55 Fogg Rd. Weymouth, MA 02190

Hospital Main Number: 781.624.8000

From Weymouth Club (75 Finnell Dr. Weymouth, MA 02188)

Head south on Finnell Dr toward West St

Turn left at West St

Turn right at Main St

Turn left at Columbian St

Turn right at Fogg Rd

Destination will be on the right





Directions to Main Campus-Boston College

GPS Address: 140 Commonwealth Ave. Chestnut Hill, MA 02467

From Points North and South:

1. Take Interstate 95 (Route 128) to Exit 24 (Route 30).
2. Proceed east on Route 30, also known as Commonwealth Avenue, and follow for about five miles to Boston College.
3. Enter BC at the second entrance on the right, at St. Ignatius Church, and then turn right into campus
4. Follow Campanella Way (on-campus road) through campus and park along the curb in front of the Yawkey Athletic Center. Bus parking will be identified with A-frame signage.

From Points West:

1. Take the Massachusetts Turnpike (Interstate 90) to Exit 17.
2. At the first set of lights off the exit ramp, take a right onto Centre Street.
3. Follow Centre Street to the fourth set of lights, and turn left onto Commonwealth Avenue.
4. Follow Commonwealth Avenue 1-1/2 miles to Boston College.
5. Enter BC at the second entrance on the right, at St. Ignatius Church, and then turn right into campus
6. Follow Campanella Way (on-campus road) through campus and park along the curb in front of the Yawkey Athletic Center. Bus parking will be identified with A-frame signage.

From Downtown Boston:

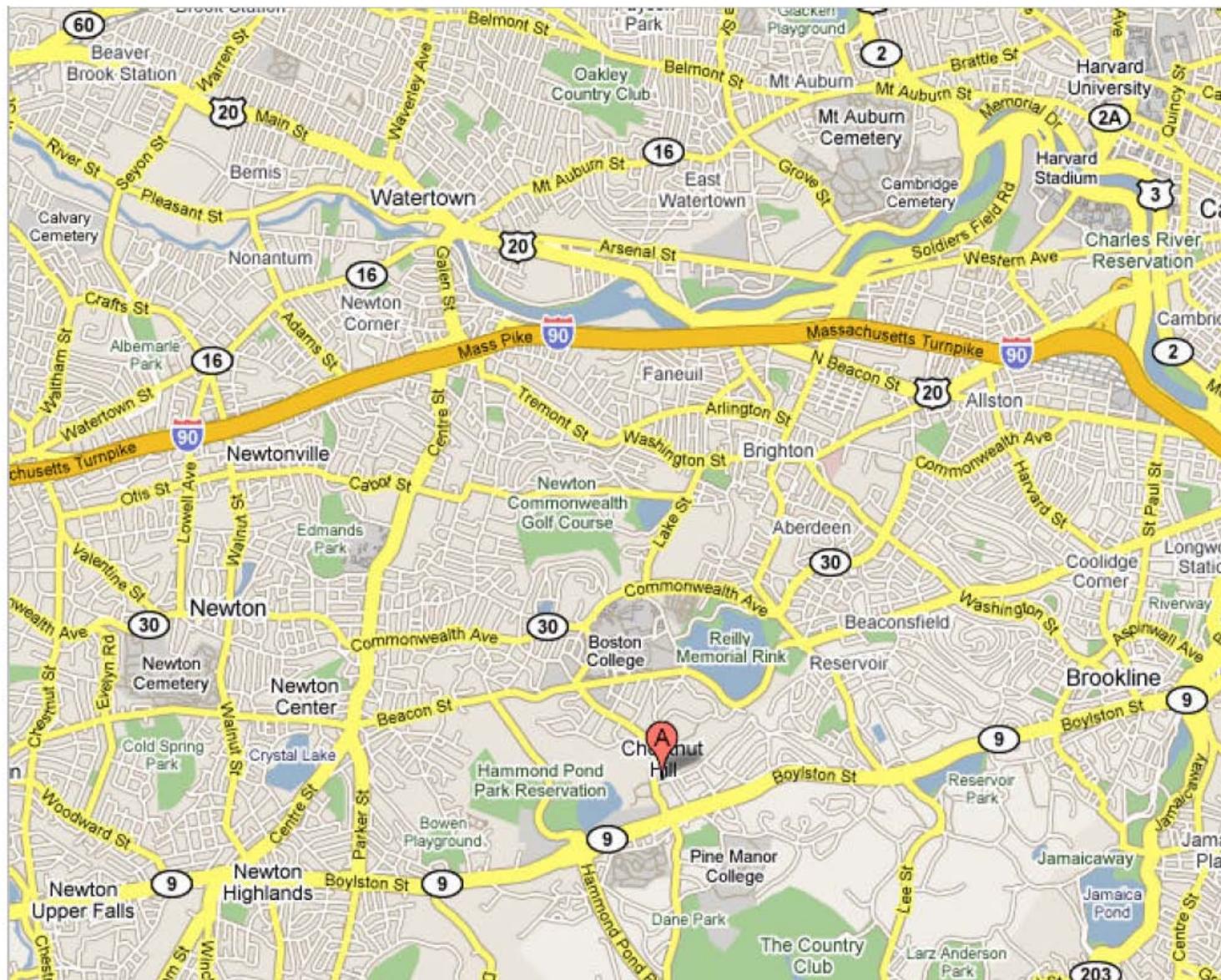
1. Take the Massachusetts Turnpike (Interstate 90) to Exit 17.
2. Take a left over the bridge after passing the Sheraton Tara Hotel.
3. Take the first right onto Centre Street.
4. Follow Centre Street to the fourth set of lights, and turn left onto Commonwealth Avenue.
5. Follow Commonwealth Avenue 1-1/2 miles to Boston College.
6. Enter BC at the second entrance on the right, at St. Ignatius Church, and then turn right into campus
7. Follow Campanella Way (on-campus road) through campus and park along the curb in front of the Yawkey Athletic Center. Bus parking will be identified with A-frame signage.

From Logan Airport:

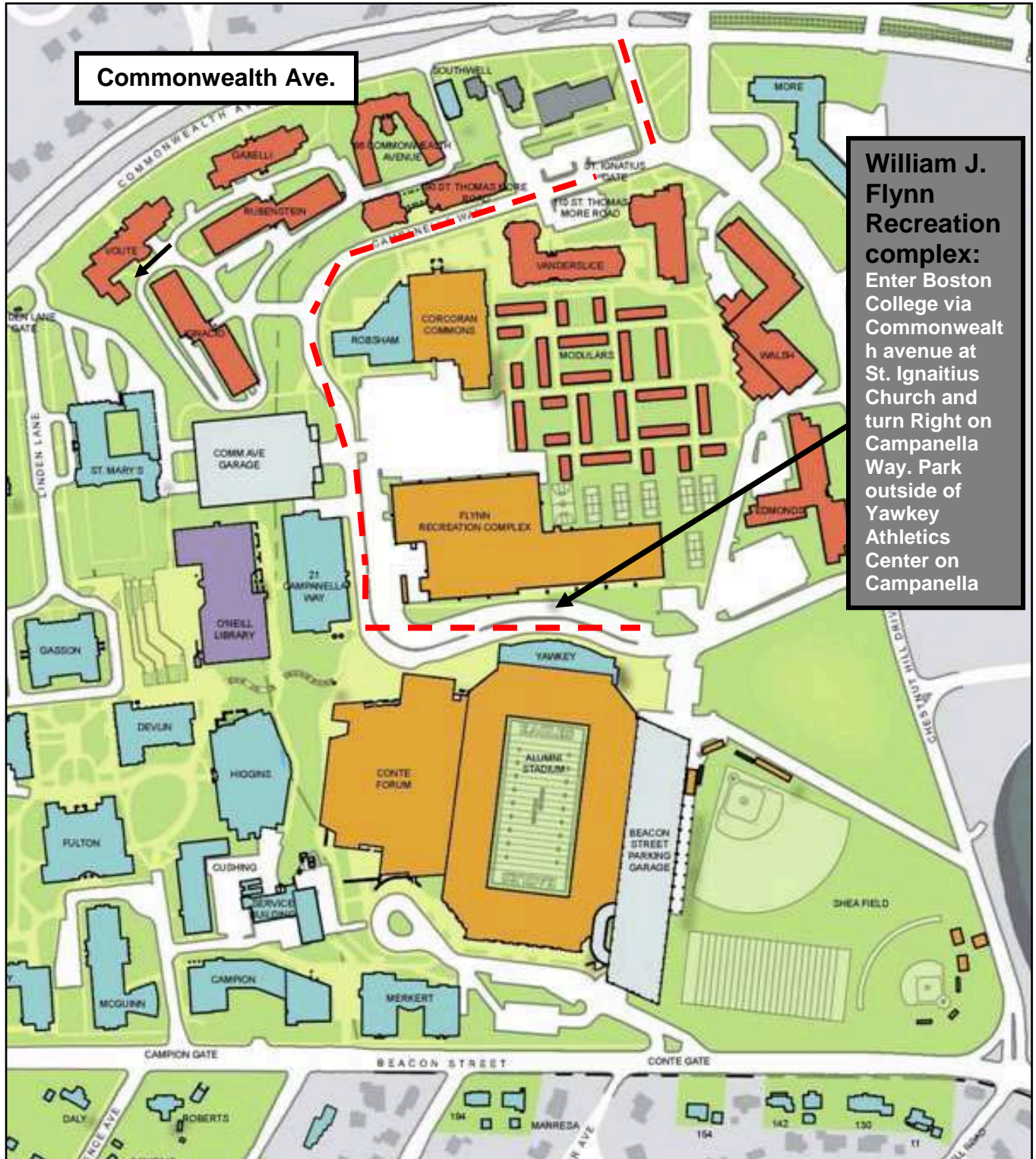
1. Follow signs to I-90 via the Williams Tunnel (Toll).
2. Take the Massachusetts Turnpike (I-90) to Exit 17.
3. Take a left over the bridge after passing the Sheraton Tara Hotel.
4. Take the first right onto Centre Street.
5. Follow Centre Street to the fourth set of lights, and turn left onto Commonwealth Avenue.
6. Follow Commonwealth Avenue 1-1/2 miles to Boston College.
7. Enter BC at the second entrance on the right, at St. Ignatius Church, and then turn right into campus
8. Follow Campanella Way (on-campus road) through campus and park along the curb in front of the Yawkey Athletic Center. Bus parking will be identified with A-frame signage.



Map of Chestnut Hill, MA



Map of Boston College Main Campus



APPENDIX - D

Map Of MBTA



Directions to Weymouth Club

GPS Address: 75 Finnell Dr. Weymouth, MA 02188

From Points North and South:

Take the exit onto I-95 N or S
Take exit 12 to merge onto I-93 N toward Boston
Take exit 18-7 to merge onto MA-3 S toward Cape Cod
Take exit 16B to merge onto MA-18 S/Main St toward Abington
Turn right at West St
Turn right at Finnell Dr

From Points West:

Take the I-90 E/I-90 W exit toward Masspike/Boston/Albany
Keep left at the fork to continue toward I-90 E and merge onto I-90 E
Take exit 24C on the left for Interstate 93 N toward Quincy N
Merge onto I-93 S
Take exit 7 on the left toward Cape Cod
Merge onto MA-3 S
Take exit 16B to merge onto MA-18 S/Main St toward Abington
Turn right at West St
Turn right at Finnell Dr

From Downtown Boston:

Turn right to merge onto I-93 S
Take exit 7 on the left toward Cape Cod
Merge onto MA-3 S
Take exit 16B to merge onto MA-18 S/Main St toward Abington
Turn right at West St
Turn right at Finnell Dr

From Logan Airport:

Take the ramp onto I-90 W
Take exit 24 for I-93
Continue toward I-93 S and merge onto I-93 S
Take exit 7 on the left toward Cape Cod
Merge onto MA-3 S
Take exit 16B to merge onto MA-18 S/Main St toward Abington
Turn right at West St
Turn right at Finnell Dr.



Map of Weymouth, MA

