



2011 - 2012 FENCING VISITING TEAM GUIDE



TABLE OF CONTENTS

Athletic Department Staff.....	2
General Information.....	3
Emergency Information	9
Sample Competition Timeline.....	14
Appendices	15
Appendix A – Directions to Main Campus	16
Appendix B – Map of Chestnut Hill, MA.....	17
Appendix C – Map of Boston College Main Campus	18
Appendix D – Map of MBTA.....	19



ATHLETIC DEPARTMENT STAFF

ADMINISTRATION

Tom Peters

Senior Associate Athletics Director

Office: 617.552.4682

Cell: 617.438.3356

Fax: 617.552.4335

peterste@bc.edu

Amy Coleman

Administration Intern

Office: 617.552.6456

colemaam@bc.edu

FENCING COACHING STAFF

Syd Fadner

Head Fencing Coach

Office: 617.552.1048

Fax: 617.552.2614

bc.fencing@bc.edu

EQUIPMENT

David McKenna

Assistant Equipment Manager

Office: 617.552.3013

david.mckenna.3@bc.edu

FLYNN COMPLEX

Eric Zeckman

Interim Director

Office: 617.552.2479

eric.zeckman.1@bc.edu

MEDIA RELATIONS

Nicholas Dow

Office: 617.552.3004

nicholas.dow@bc.edu

OPERATIONS

Matt Conway

Assistant AD, Operations

Office: 617.552.6672

Cell: 857.233.3557

Fax: 617.552.4335

conwayml@bc.edu

Kirsten Britton

Events Administrator

Office: 617.552.2186

Cell: 857.231.2826

Fax: 617.552.4335

brittoki@bc.edu

Billy Flutie

Operations (Visiting Team Liaison)

Office: 617.552.2628

Cell: 617.835.4882

Fax: 617.552.4335

flutiew@bc.edu

SPORTS MEDICINE

Donna Bennett

Senior Associate Director, Sports Medicine

Office: 617.552.4540

bennett@bc.edu

BOSTON COLLEGE POLICE

Emergency: 617.552.4444

From a campus phone: 2.4444

Non-Emergency: 617.552.4440

From a campus phone: 2.4440





GENERAL INFORMATION



GENERAL INFORMATION

Airports:

Logan International Airport

Telephone: 800.23.LOGAN

Boston, MA

Miles to Boston College: 10

Manchester-Boston Regional Airport

Telephone: 603.624.6556

Manchester, NH

Miles to Boston: 60

T.F. Green Airport

Telephone: 401.737.8222

Providence, RI

Miles to Boston College: 55

Hanscom Air Force Base

Telephone: 781.274.0010

Bedford, MA

Miles to Boston College: 20

No Commercial Service

Bus Company:

Peter Pan

Telephone: 800.343.9999

Contact: Lenny Rottenberg

Cell: 617.799.1732

Car Rental:

Alamo

Telephone: 877.222.9075

Avis

Telephone: 800.230.4898

Budget

Telephone: 800.527.0700

Enterprise

Telephone: 800.261.7331

Hertz

Telephone: 800.654.3131

National

Telephone: 800.227.7368

Concessions:

Concessions will **NOT** be available at the Flynn Recreation Complex.

Driving Directions:

Please refer to Appendix A for directions to campus.

Facility Information:

If visiting teams require additional warm-up space, an area can be designated in the Basketball Wing of the Flynn Recreation Complex.

Boston College Athletics asks if any guests require ADA seating, please contact the front desk upon arrival.



GENERAL INFORMATION

Hotel Information:

Holiday Inn Brookline

1200 Beacon St.
Brookline, MA 02446
Telephone: 617.277.1200
Contact: Stefanie LeBrun
Email: slebrun@brooklineinn.com
Direct Line: 617.598.7637
www.holiday-inn.com/bos-brookline

Newton Marriott Hotel

2345 Commonwealth Avenue
Newton, MA 02466
Telephone: 617.969.1000
Contact: Stephanie Gibson
Direct Line: 617.630.3511
Email: Stephanie.Gibson@marriott.com
www.newtonmarriott.com

Sheraton Needham Hotel

100 Cabot St.
Needham Heights, MA 02494
Telephone: 781.444.1110
Contact: Nancy Hurley
Direct Line: 781.292.3845
Email: nancy.hurley@sheraton.com
www.starwoodhotels.com

Crowne Plaza Hotel (Boston- Newton)

320 Washington Street
Newton, MA 02458
Telephone: 617.630.2923
Contact: Jennifer Rose
Email: jrose@cpbostonnewton.com

Locker Room Facilities:

General public locker rooms are available for visiting teams. Personal belongings should not be left in the general locker room area. A designated team bag drop area will be assigned for each team. Boston College does not provide towels; visiting teams are responsible for supplying their own.

Parking:

Team Parking

- Visiting fencing teams are instructed to park along Campanella Way in front of the Yawkey Athletics Center. Please refer to the campus map on page 18.

Fan Parking

- Campus parking lots open for event attendees 1.5 hours prior to the start of the event.
- Individuals attending these events should park in the Beacon St. garage levels 3 & 4 or in the Commonwealth Avenue Garage above level 3.
- Parking Monday - Friday at 5:00 PM is \$3.00/hour to park in the garages with a daily maximum rate of \$25.00
- Parking Friday at 5:00 PM - Sunday is \$5.00 per exit
- No overnight parking in garages is permitted



GENERAL INFORMATION

Points of Local Interest:

Faneuil Hall/Quincy Market:

An easy drive from Boston College, Faneuil Hall has long been regarded as one of the finest attractions in the city of Boston. Cobblestone streets and a variety of performers populate this famous shopping area. Sample the food from the dozens of vendors inside Quincy Market or shop at the plethora of stores in the area.

The North End:

Located across Route 93 from Faneuil Hall, the North End is famous for its small streets and Italian restaurants. A small close knit community with an overflow of history awaits any visitor.

Harvard Square, Cambridge:

Harvard University as well as numerous shops and restaurants lie within the Harvard Square area. The beautiful landscape of the college is nestled against a maze of street performers and shopping areas.

Fenway Park: 617.471.3332

Located in Kenmore Square, the home of the Boston Red Sox is the oldest park in Major League Baseball. This historic site has seen many of baseball's famous moments since opening in 1912.

The Museum of Science: 617.723.2500

MOS is an interactive museum that explores the wonders of science through activities, exhibits, and programs located in downtown Boston. The Museum of Science also includes the Omni Theatre, an IMAX theatre. For more information please visit www.mos.org.

The Museum of Fine Arts: 617.267.9300

Located a short distance from Boston College on Route 9 (Huntington Ave.), the Museum of Fine Arts is one of the leading fine arts museums in the country. For more information please visit www.mfa.org.

The New England Aquarium: 617.973.5200

Located right on the water in downtown Boston, the aquarium is a nationally recognized learning resource for people of all ages. Please visit www.neaq.org for more information.

Movie Theatres:

AMC Chestnut Hill Cinema 5
27 Boylston St. Chestnut Hill, MA
1.888.262.4386

Kendall Square Cinema - Cambridge
1 Kendall Square Cambridge, MA
617.499.1996



GENERAL INFORMATION

Post-game Meal Information:

Visiting fencing teams are asked to have their post-game meals delivered to their bus.

BC Dining Services

(Boxed Lunches)
Contact: David Early
617.552.0311

Big A's Deli

568 Cambridge St.
Allston, MA
617.782.1222
Contact: Nick Chicos

Bill's Pizzeria

753 Beacon Street
Newton Center, MA
617.964.1116

Chick-Fil-A

75 Middlesex Turnpike Suite 2110
Burlington, MA 01803
781.272.2110
Contact: Juan Ortiz

Presto's Pizza

1936 Beacon Street
Brighton, MA
617.232.4545

Comella's

1 Boylston St.
Chestnut Hill, MA 02465
617.278.2400

Prohibited Items / Actions:

The following items are prohibited within Alumni Stadium/Conte Forum:

- Smoking
- Alcoholic or other Beverages
- Artificial Noise Makers
- Audio or Video Recording Equipment
- Cameras with lenses larger than 4"
- Beach Balls
- Canes, Chains or Sticks or any length (non-medical)
- Cans, Glass or Metal Containers
- Coolers (unless containing medical supplies)
- Fireworks or any Explosive
- Folding Chairs
- Food and Beverage
- Helium Balloons
- Illegal Drugs
- Knives of any size
- Laser Pointers
- Pets (except service animals)
- Promotional items with commercial identification
- Tape Recorders
- Umbrellas
- Weapons of any description
- Signs, banners, flags



GENERAL INFORMATION

Public Transportation:

MBTA

Telephone: 617.222.3200 (Please see Appendix D).

Sports Medicine:

An Athletic Trainer will be on site and available at the meet. Should a visiting fencing team require additional medical attention prior to the meet, please contact **Donna Bennett, Senior Associate Director- Sports Medicine** at 617.552.4540 with any questions.

Tailgating:

Please note that tailgating is NOT permitted.

Taxis:

Newton Taxi

Telephone: 617.244.6600

Red Cab

Telephone: 617.734.5000

Veteran's Taxi

Telephone: 617.527.0300

Yellow Cab

Telephone: 617.625.5000





EMERGENCY INFORMATION



EMERGENCY INFORMATION

Emergency Phone Numbers:

Boston College Campus Police Emergency: 617.552.4444

From a campus phone dial: 2.4444

Boston College Campus Police Non-Emergency: 617.552.4440

From a campus phone dial: 2.4440

Sports Medicine Emergency Number: 617.552.6666

From a campus phone dial: 2.6666

Emergency Phone Locations:

Main Flynn Complex lobby: Outside women's locker room entrance.

Address: William J. Flynn Student Recreation Complex 2603 Beacon St. Chestnut Hill, MA 02467

AED Locations:

Lobby – Main lobby outside women's locker room, by emergency phone

Basketball Wing – at the end of the ramp to the left, by water fountain

Fitness Wing – at the fitness attendant stand

*If a student-athlete is injured and needs medical assistance/transportation, please call the Boston College Police Department at 617.552.4444 or on campus at 2.4444.



Emergency Procedures:

Fire Alarm

If the fire alarm sounds during a practice or competition, all athletes, spectators, coaches, and employees must exit the building. See Evacuation Maps (page 12) for emergency exits and follow the instructions from the Flynn Complex staff.

Injuries:

First Responder

- Sports Medicine Athletic Trainer
- If additional care is needed, the trainer signals a game management staff member to call BCPD (2.4444)
- BCPD requests the ambulance and guides it to the proper location
- Student-athletes will be transported to:
 - St. Elizabeth's Medical Center (See directions on page 13)
 - Beth Israel Deaconess Medical Center : Level 1 Trauma Center (See directions on page 13)

Home Team:

- A representative from Boston College (Assistant Coach) will go with the student-athlete to the hospital
- Parents may ride in the ambulance with the student-athlete at the discretion of the ambulance driver
- The Boston College athletic trainer will contact Bert Lenz, Director of Sports Medicine.
- Bert Lenz will contact Gene DeFilippo, Director of Athletics, if needed.

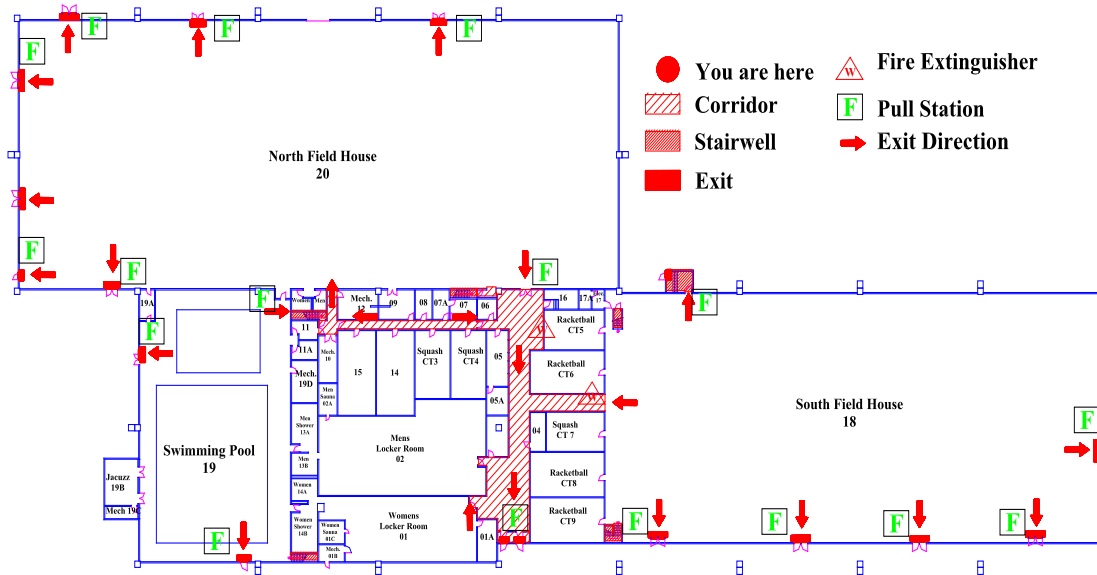
Visiting Team:

- If a visiting team student-athlete is injured, the visiting team determines what representative, if any, will go with the student-athlete to the hospital.
- Parents may ride in the ambulance with the student-athlete at the discretion of the ambulance driver.
- The Boston College athletic trainer will contact Bert Lenz, Director of Sports Medicine.
- Bert Lenz will contact Gene DeFilippo, Director of Athletics, if needed.

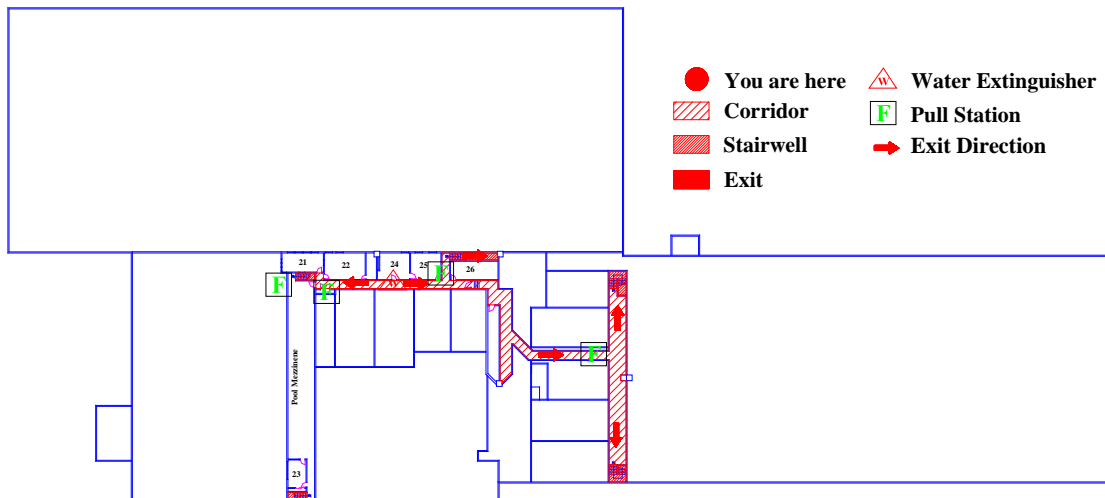


EVACUATION PLAN

Floor 1



Floor 2



HOSPITAL DIRECTIONS

St. Elizabeth's Medical Center:

736 Cambridge St. Brighton, MA 02135

Hospital Main Number: 617.789.3000

From Main Campus (140 Commonwealth Ave. Chestnut Hill, MA 02467)

Exit the North side of campus and proceed directly across Commonwealth Avenue (Rte. 30) onto Lake Street. Follow Lake Street to the bottom of the hill and at the first traffic light turn right onto Washington Street. Follow Washington Street, going straight through two traffic lights. Approaching the third light, you will see the Medical Center in front of you on the right.

For the Emergency Room, go straight at the third light, drive past the Medical Center (on your right), turn right at the next light (Warren St.), and follow signs for the Emergency Room.

To reach the main entrance of the Medical Center, go straight at the third light, drive past the Medical Center (on you right), turn right at the next light (Warren St.) and the main drive will be your first right.

Beth Israel Deaconess Medical Center:

185 Pilgrim Rd., Boston, MA 02215

Hospital Main Number: 617.667.7000

From Main Campus (140 Commonwealth Ave. Chestnut Hill, MA 02467)

Go east on Commonwealth Ave. (Rt. 30) towards Boston
Turn right onto Chestnut Hill Ave.
Turn left onto Beacon St.
Turn right onto Washington St.
Take a slight left onto School St.
School St. turns into Aspinwall Ave. (continue to follow Aspinwall for .5 miles)
Turn left at Brookline Ave.
Turn left at Francis St.
Go right onto Pilgrim Rd.
Emergency Room will be on the right.



SAMPLE TIMELINE



New England Fencing Championship

	Men	Women	Men	Women
Strip Number	1-2	3-4	5-6	7-8
Round 1	MIT- BC	MIT- BC	Brown - Tufts	Brown - Tufts
Round 2	BC - Smith (W)	Brown - Vassar	Brown - Vassar	Brandeis - Dartmouth
Round 3	Brandeis - BC	Brandeis - BC	Brown - Dartmouth	Brown - Dartmouth
LUNCH	LUNCH	LUNCH	LUNCH	LUNCH
Round 4	BC - Vassar	BC - Vassar	Brown - Brandeis	Brown - Brandeis
Round 5	Brown - BC	Brown - BC	Tufts - Dartmouth	Tufts - Dartmouth
Round 6	BC - Dartmouth	BC - Dartmouth	Brandeis - Vassar	Brandeis - Vassar
Round 7	Brown - MIT	Brown - MIT	Brandeis - Tufts	Brandeis - Tufts

	Men	Women	Women	BYE
Strip Number	9-10	11-12	13-14	
Round 1			Vassar - Smith	Vassar (M)
Round 2	Brandeis - Dartmouth	MIT - Tufts	MIT - Tufts	BC (M)
Round 3	Tufts - Vassar	Tufts - Vassar	MIT - Smith	MIT (M)
LUNCH	LUNCH	LUNCH	LUNCH	LUNCH
Round 4	MIT - Dartmouth	MIT - Dartmouth	Tufts - Smith	Tufts (M)
Round 5	MIT - Vassar	MIT - Vassar	Brandeis - Smith	Brandeis (M)
Round 6			Brown - Smith	Brown (M)
Round 7			Dartmouth - Smith	

Start Time: 9:00am.

Lunch Break: There will be a thirty (30) minute Lunch Break following the completion of the Third Round.





APPENDICES



APPENDIX - A

Directions to Main Campus

GPS Address: 140 Commonwealth Ave. Chestnut Hill, MA 02467

From Points North and South:

1. Take Interstate 95 (Route 128) to Exit 24 (Route 30).
2. Proceed east on Route 30, also known as Commonwealth Avenue, and follow for about five miles to Boston College.
3. Enter BC at the second entrance on the right, at St. Ignatius Church, and then turn right into campus
4. Follow Campanella Way (on-campus road) through campus and park along the curb in front of the Yawkey Athletic Center. Bus parking will be identified with A-frame signage.

From Points West:

1. Take the Massachusetts Turnpike (Interstate 90) to Exit 17.
2. At the first set of lights off the exit ramp, take a right onto Centre Street.
3. Follow Centre Street to the fourth set of lights, and turn left onto Commonwealth Avenue.
4. Follow Commonwealth Avenue 1-1/2 miles to Boston College.
5. Enter BC at the second entrance on the right, at St. Ignatius Church, and then turn right into campus
6. Follow Campanella Way (on-campus road) through campus and park along the curb in front of the Yawkey Athletic Center. Bus parking will be identified with A-frame signage.

From Downtown Boston:

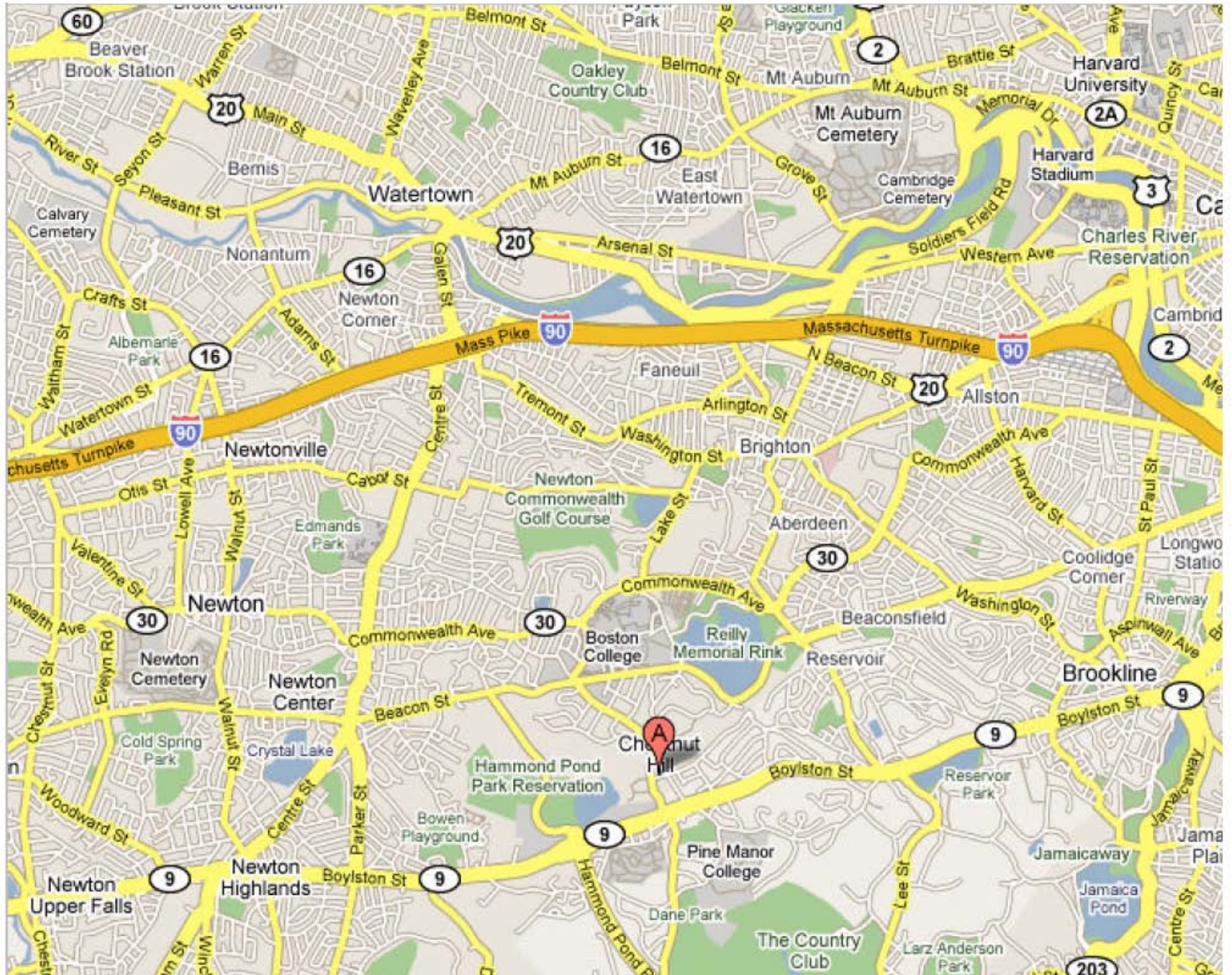
1. Take the Massachusetts Turnpike (Interstate 90) to Exit 17.
2. Take a left over the bridge after passing the Sheraton Tara Hotel.
3. Take the first right onto Centre Street.
4. Follow Centre Street to the fourth set of lights, and turn left onto Commonwealth Avenue.
5. Follow Commonwealth Avenue 1-1/2 miles to Boston College.
6. Enter BC at the second entrance on the right, at St. Ignatius Church, and then turn right into campus
7. Follow Campanella Way (on-campus road) through campus and park along the curb in front of the Yawkey Athletic Center. Bus parking will be identified with A-frame signage.

From Logan Airport:

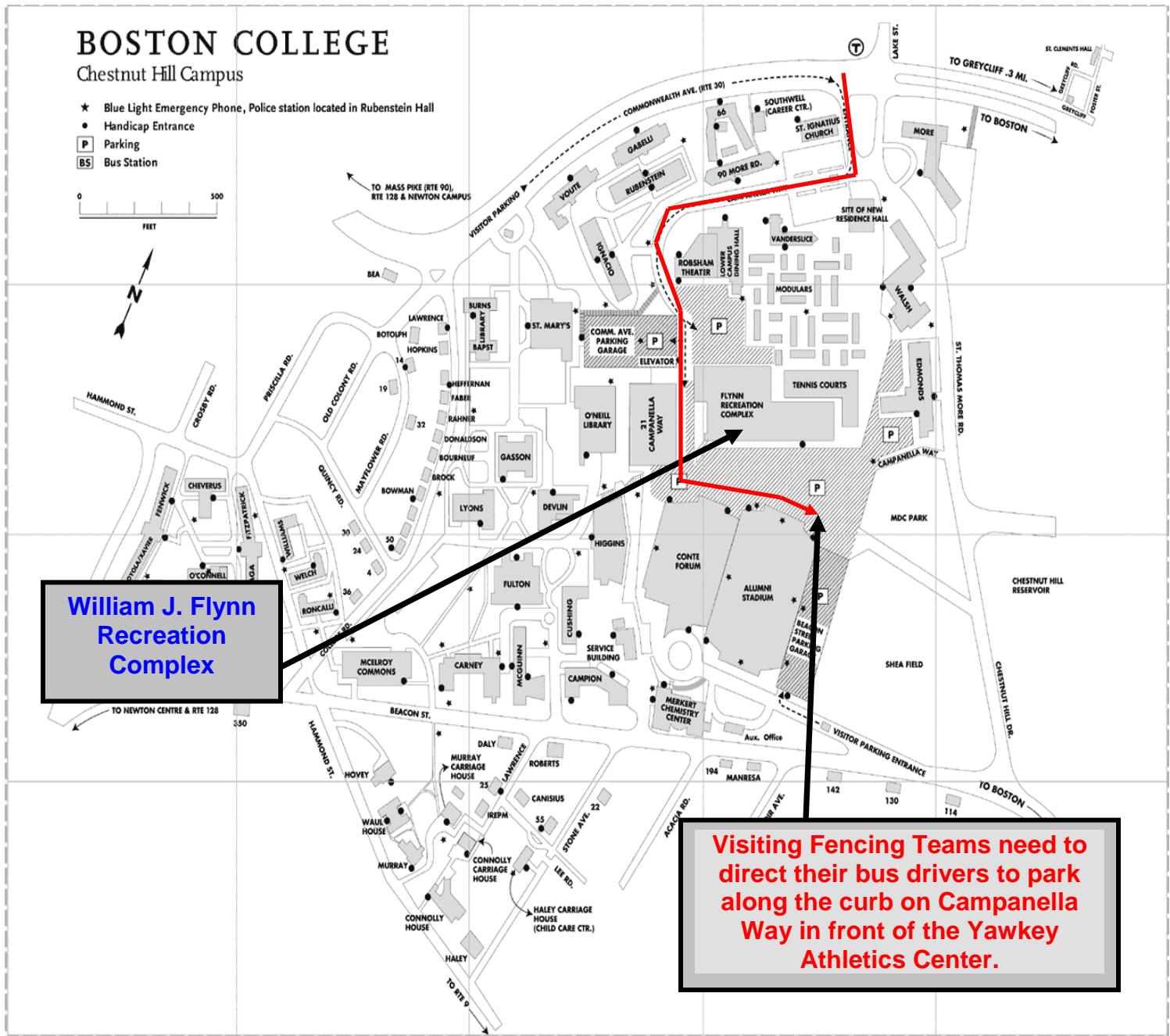
1. Follow signs to I-90 via the Williams Tunnel (Toll).
2. Take the Massachusetts Turnpike (I-90) to Exit 17.
3. Take a left over the bridge after passing the Sheraton Tara Hotel.
4. Take the first right onto Centre Street.
5. Follow Centre Street to the fourth set of lights, and turn left onto Commonwealth Avenue.
6. Follow Commonwealth Avenue 1-1/2 miles to Boston College.
7. Enter BC at the second entrance on the right, at St. Ignatius Church, and then turn right into campus
8. Follow Campanella Way (on-campus road) through campus and park along the curb in front of the Yawkey Athletic Center. Bus parking will be identified with A-frame signage.



Map of Chestnut Hill, MA



Map of Boston College Main Campus



APPENDIX - D

Map Of MBTA

